



Published in final edited form as:

*Nat Rev Mol Cell Biol.* ; 12(9): 551–564. doi:10.1038/nrm3176.

## Molecular control of endothelial cell behaviour during blood vessel morphogenesis

Shane P. Herbert<sup>\*,‡,§</sup> and Didier Y.R. Stainier<sup>\*</sup>

Shane P. Herbert: S.P.Herbert@leeds.ac.uk; Didier Y.R. Stainier: Didier.Stainier@ucsf.edu

<sup>\*</sup>Department of Biochemistry and Biophysics, Programs in Developmental and Stem Cell Biology, Genetics and Human Genetics, Cardiovascular Research Institute, University of California, San Francisco, California 94158, USA

<sup>‡</sup>Multidisciplinary Cardiovascular Research Centre and Institute of Molecular and Cellular Biology, Faculty of Biological Sciences, University of Leeds, Leeds LS2 9JT, UK

<sup>§</sup>Faculty of Life Sciences, Michael Smith Building, University of Manchester, Oxford Road, Manchester M13 9PT, UK

### Abstract

The vertebrate vasculature forms an extensive branched network of blood vessels that supplies tissues with nutrients and oxygen. During vascular development, coordinated control of endothelial cell behaviour at the levels of cell migration, proliferation, polarity, differentiation and cell–cell communication is critical for functional blood vessel morphogenesis. Recent data uncover elaborate transcriptional, post-transcriptional and post-translational mechanisms that fine-tune key signalling pathways (such as the vascular endothelial growth factor and Notch pathways) to control endothelial cell behaviour during blood vessel sprouting (angiogenesis). These emerging frameworks controlling angiogenesis provide unique insights into fundamental biological processes common to other systems, such as tissue branching morphogenesis, mechanotransduction and tubulogenesis.

---

During embryonic development, endothelial cells (ECs) assemble the tree-like tubular network of blood vessels that eventually permits the transport of fluids, nutrients, circulating cells, hormones and gasses to almost all tissues throughout the vertebrate body (FIG. 1). Once mature, the vasculature consists of an elaborate hierarchical system of arteries, arterioles, capillaries, venules and veins that promotes the circulation of oxygenated blood between the heart, lungs and target tissues. Despite the complexity of the vascular system, virtually all blood vessels that form during development and growth arise by the sprouting of new capillaries from pre-existing vessels, a process termed angiogenesis. Moreover, imbalances in angiogenesis contribute to the pathogenesis of numerous disease states<sup>1</sup>. For example, insufficient angiogenesis is a principal factor limiting tissue recovery in ischaemic diseases, whereas stimulation of angiogenesis by cancer cells promotes tumour neovascularization, growth and progression to metastasis. Considering the substantial clinical benefits of therapeutically manipulating pathological angiogenesis, the mechanisms controlling this process have formed a major focus for vascular research over the last two decades<sup>1</sup>.

#### Competing interests statement

The authors declare no competing financial interests.

This Review discusses new advances in our understanding of blood vessel morphogenesis, with particular emphasis on emerging mechanisms that control and coordinate EC behaviour during angiogenic sprouting and vascular tube formation. In recent years, a number of seminal studies have begun to unravel the molecular basis of these complex processes *in vivo*, and they have uncovered remarkable parallels between the signalling pathways that control angiogenesis and the development of epithelial and neuronal tissues. In addition, recent studies reveal intricate post-transcriptional and post-translational mechanisms that direct context-dependent fine-tuning of EC behaviour and allow the integration of cues from the extracellular environment to control angiogenesis. We do not touch on later aspects of vascular development, such as blood vessel maturation, vascular bed-specific specializations or development of the lymphatic vasculature, but refer the reader to excellent reviews covering these topics<sup>2–6</sup>. We instead limit our discussion to recent developments that alter our view of the early morphogenetic events in angiogenesis. Importantly, a recurring theme throughout this Review is that angiogenesis represents a paradigm for many core biological processes, such as tissue branching, guided cell migration and lumen formation, all of which have wide-reaching roles in the morphogenesis of many other organ systems.

## Vascular development and angiogenesis

The *de novo* formation of embryonic blood vessels (vasculogenesis) involves the differentiation, migration and coalescence of mesoderm-derived endothelial progenitors (angioblasts) to create a primordial vascular network<sup>1,2</sup> (FIG. 1). Immediately following vasculogenic blood vessel assembly, ECs undergo specification to either arterial or venous fate in response to a combination of haemodynamic stimuli and underlying genetic factors<sup>2,3</sup>. For example, Notch-mediated expression of the hairy- and enhancer of split-related with YRPW motif (HEY) basic helix–loop–helix transcription factor genes, *HEY1* and *HEY2*, promotes arterial differentiation<sup>7,8</sup>. By contrast, the orphan nuclear receptor COUP transcription factor 2 may repress Notch signalling to promote venous differentiation<sup>9</sup>. Subsequent angiogenic remodelling of these arterial and venous endothelial tissues and the extensive expansion of this primitive network lead to the formation of a complex functional vascular system<sup>1,2</sup>. Later in development, vessels that arise by angiogenesis may also adopt diverse vascular bed-specific functional specializations in response to local tissue-derived signals<sup>2,3</sup> (FIG. 1). In addition, the venous endothelium gives rise to the blind-ended network (that is, closed at one end) of lymphatic vessels that collect and return lymph fluid back to the vasculature<sup>4</sup>. Thus, ECs have a remarkably plastic capacity to give rise to vessels with diverse functional, morphological and molecular signatures<sup>3</sup>. Furthermore, a subset of ‘haemogenic’ arterial endothelium generates definitive haematopoietic stem cells that seed the adult haematopoietic system<sup>10</sup>. Hence, blood vessel morphogenesis not only gives rise to the mature vasculature but also influences the formation and function of a diverse range of vital tissues.

## Cellular mechanisms of angiogenesis

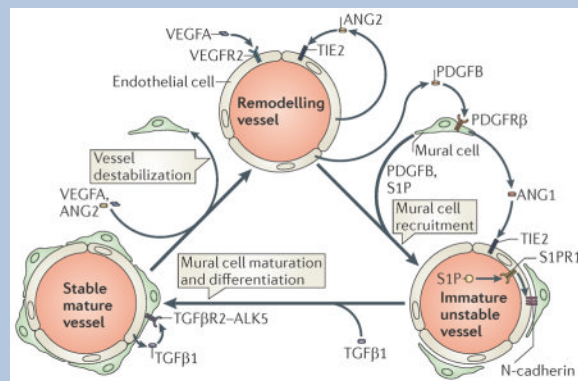
Blood vessel formation by angiogenesis is a complex multistep process that critically requires the tight control and coordination of EC behaviour (FIG. 2). In stable vessels, ECs typically form a cobblestone-like monolayer of inactive cells that lines the luminal surface of vascular tubes<sup>11</sup>. This quiescent phenotype is maintained until ECs detect pro-angiogenic signals that induce fundamental changes in their behaviour. In response to angiogenic cues, ECs loosen their cell–cell junctional contacts, activate proteases that degrade the surrounding basement membrane and acquire extensively invasive and motile behaviour to initiate new blood vessel sprouting<sup>1,2</sup> (FIG. 2b). For example, disruption of angiopoietin 1 (ANG1) signalling via the TIE2 (also known as TEK) receptor Tyr kinase by the antagonist ANG2 is thought to destabilize vessels and have key roles during early angiogenic vascular remodelling (this is covered in another review<sup>12</sup>). Importantly, of the ECs that sense

angiogenic stimuli, only a small proportion will be selected to lead newly sprouting vessels. These endothelial ‘tip cells’ (TCs) extend numerous dynamic filopodial extensions that sense and respond to attractive or repulsive guidance signals within their immediate microenvironment<sup>13,14</sup>. Hence, TCs share many morphological and functional similarities with the neuronal growth cones that guide axons<sup>15</sup>. By contrast, ECs that trail TCs (‘stalk cells’ (SCs)) are less motile but critically support the extension of sprouting vessels, generate the trunk of new capillaries and maintain connectivity with the parental vessel. Furthermore, SCs are thought to establish a vascular lumen in growing vessels<sup>2,16,17</sup> (FIG. 2c). This subdivision of sprouting ECs into leading TCs and following SCs is strikingly analogous to the hierarchical organization of epithelial TCs and SCs during *Drosophila melanogaster* tracheal branching morphogenesis<sup>18</sup>.

Once initiated, EC sprouting continues in a highly directional manner until TCs connect with adjacent vessels and undergo anastomosis, which leads to the fusion of the contacting vessels (FIG. 2c). On contact with other ECs, TCs lose their motile phenotype, generate tight EC–EC junctions and fuse with recipient vessels to form a continuous unobstructed (or patent) lumen, which allows blood flow. Although our understanding of the anastomotic process is rather limited, it is clear that other cell types may also influence vessel fusion. In particular, certain macrophage populations may act as cellular chaperones that promote vascular anastomosis<sup>19</sup>. Furthermore, the recruitment of other accessory cells is a critical factor in the subsequent maturation of this nascent vasculature. Factors such as platelet-derived growth factor B (PDGFB) and transforming growth factor- $\beta$ 1 (TGF $\beta$ 1) recruit mural cells (pericytes and vascular smooth muscle cells) to the developing vasculature, which stabilizes vessel walls<sup>2,5,6</sup> (BOX 1). Furthermore, deposition of the basement membrane at the abluminal surface and strengthening of cell–cell junctions suppress EC sprouting behaviour and re-establish a mature quiescent phenotype (FIG. 2d). Subsequent rounds of angiogenesis then allow further expansion of the vasculature. In addition, the intussusceptive insertion of pillars of tissue into blood vessel lumina promotes the splitting of vessels and permits additional remodelling of pre-existing vascular networks<sup>20</sup>. However, the molecular mechanisms of intussusceptive angiogenesis remain unclear. Simultaneous pruning of superfluous vessels allows overall remodelling of this actively growing network into a mature vascular bed.

### Box 1

#### Endothelial cell–mural cell interactions



The recruitment of mural cells (pericytes and vascular smooth muscle cells (vSMCs)) to nascent blood vessels plays an essential part in the stabilization and maturation of new vascular networks. Whereas pericytes primarily associate with small-calibre capillaries, vSMCs ensheath larger arteries and veins. Initially, platelet-derived growth factor B

(PDGFB) is released from endothelial cells (ECs) undergoing angiogenic remodelling (see the figure). Extracellular matrix-bound PDGFB acts as a chemoattractant for co-migrating pericytes that express the receptor Tyr kinase PDGF receptor  $\beta$  (PDGFR $\beta$ )<sup>5,6,112,113</sup>. Recruited pericytes are incorporated into the wall of immature vessels and establish direct cell–cell contacts with ECs. EC–mural cell contacts may be strengthened by the bioactive lipid spingosine 1 phosphate (S1P) through signalling via its EC expressed guanine nucleotide binding protein (G protein) coupled receptor, S1P receptor 1 (S1PR1; also known as EDG1)<sup>5,6,114,115</sup>. Secretion of S1P by platelets, haematopoietic cells and ECs may promote S1PR1 mediated trafficking of neural cadherin (N-cadherin) to areas of EC–pericyte contact and the assembly of adherens junctions<sup>116</sup>. Furthermore, angiopoietin 1 (ANG1) release from mural cells activates the TIE2 receptor in ECs<sup>117</sup>, which is thought to promote EC survival, maintain EC quiescence and mediate mural cell attachment<sup>5,6,12</sup>. However, a recent study using conditional *Ang1* out mice questions some of these previous findings<sup>118</sup>. In addition, work in mice suggests that ephrin B2–ephrin receptor (EPH) Tyr kinase interactions may also have key roles in mural cell motility and adhesion to nascent vessels<sup>119</sup>. Subsequent differentiation of pericytes into vSMCs is poorly understood but can be induced, in part, by the release of EC-derived transforming growth factor  $\beta$ 1 (TGF $\beta$ 1). Activation of activin receptor like kinase 5 (ALK5; also known as TGF $\beta$ R1) (which forms a heteromeric complex with TGF $\beta$  receptor type 2 (TGF $\beta$ R2)) by TGF $\beta$ 1 in mural cells may then promote vSMC differentiation<sup>120</sup> to generate vSMC-ensheathed quiescent mature vessels<sup>5,6</sup>. In mice, Notch 3 signalling may also modulate the subsequent maturation of arterial vSMCs<sup>121</sup>. Importantly, this whole process can be reversed in response to pro angiogenic signals, such as vascular endothelial growth factor A (VEGFA) or the TIE2 antagonist ANG2, which promote mural cell detachment and vessel destabilization to allow further rounds of vascular remodelling<sup>12,122</sup>. VEGFR2, VEGF receptor 2.

### VEGF stimulates angiogenic sprouting

Several general signalling pathways control EC behaviour during angiogenic sprouting, including TIE2 and Notch signalling (FIG. 3a), as does signalling via known axon guidance receptors that are expressed in ECs (FIG. 3b). However, the secreted growth factor vascular endothelial growth factor A (VEGFA; also known as vascular permeability factor (VPF)) is the principal master regulator of new blood vessel sprouting during development, growth and disease<sup>21–23</sup> (FIG. 3a). VEGFA is the best-characterized member of a family of homodimeric glycoproteins that includes placental growth factor (PLGF), VEGFB, VEGFC and VEGFD<sup>21–23</sup>. During angiogenesis, VEGFA binds its cognate receptor Tyr kinase, VEGF receptor-2 (VEGFR2; also known as KDR and FLK1), and activates multiple downstream pathways via signalling intermediates, such as mitogen-activated protein kinases (MAPKs), phosphoinositide 3-kinases (PI3Ks), AKT, phospholipase C $\gamma$  and small GTPases<sup>21–23</sup>. As a result, VEGF signalling promotes EC proliferation, filopodial extension, degradation of the extracellular matrix and chemotaxis<sup>2,14</sup>. Hence, VEGFA signalling induces the motile and invasive behaviour that drives TC sprouting and activates the angiogenic switch<sup>14</sup> (FIG. 4a). Expression of *VEGFA* is, chiefly, positively regulated by hypoxia, thus the angiogenic response is rapidly initiated in response to tissue oxygen deficiency during development, growth and disease<sup>24</sup>. Consequently, heterozygous *Vegfa*<sup>+/-</sup> mice manifest severe vascular defects and display haploinsufficient lethality<sup>25,26</sup>. Similarly, early embryonic lethality and deficient vascular assembly are observed in *Vegfr2*-null mice<sup>27</sup>.

Alternative splicing of the *VEGFA* transcript gives rise to a number of protein variants that have divergent functions and bioavailabilities during blood vessel morphogenesis<sup>1,2,28</sup>. For example, the heparan sulphate-binding isoform VEGFA165 (VEGFA164 in mice) is matrix associated and forms gradients that promote the extension of filopodia, the directional migration of ECs and the branching of blood vessels<sup>29</sup>. By contrast, VEGFA121 (VEGFA120 in mice) is unable to bind heparan sulphate, is freely diffusible and influences EC proliferation but not migration<sup>29</sup>. Recent evidence indicates that the VEGFR2 signalling output elicited by matrix-associated VEGFA is also distinct to that induced by soluble isoforms<sup>30</sup>. Moreover, VEGFA splice variants with altered carboxyl termini (b isoforms) possess greatly reduced abilities to activate VEGFR2 (REFS 28,31). Hence, tight spatial regulation of the production of distinct VEGFA isoforms is a key control point during blood vessel morphogenesis.

In addition to VEGFR2, VEGFA binds to the related receptor Tyr kinase VEGFR1 (encoded by *FLT1*) (FIG. 3a), which has a higher affinity for VEGFA than VEGFR2 but possesses weak Tyr kinase activity. Hence, VEGFR1 is considered to be a decoy receptor that counteracts pro-angiogenic signalling<sup>32</sup>. Furthermore, alternative splicing of VEGFR1 generates a secreted and catalytically inactive isoform (soluble VEGFR1 (sVEGFR1) that acts as a sink for free VEGFA. Consequently, *Flt1* knockout is associated with EC overgrowth, abnormal angiogenesis and embryonic lethality in mice<sup>32–34</sup>. Similarly, *flt1* knockdown enhances angiogenic EC behaviour in zebrafish<sup>35</sup>. In addition, *Flt1* expression in non-EC cell types may also directly influence angiogenesis. For example, recent data indicate that WNT signalling-induced *Flt1* expression in retinal myeloid cells suppresses angiogenesis in the mouse retina<sup>36</sup>. Other VEGF family members, such as PLGF and VEGFB, selectively bind VEGFR1; however, their functional role during vascular development is unclear.

VEGFC is another emerging determinant of vascular development. VEGFC binding to its receptor, VEGFR3 (encoded by *FLT4*) (FIG. 3a), is well-known to play key parts during lymphangiogenesis<sup>4</sup>. However, VEGFR3 signalling also positively regulates angiogenesis<sup>37</sup>. In particular, VEGFR3 is highly expressed in TCs and is required for EC sprouting in mice and zebrafish<sup>37,38</sup>. Furthermore, recent evidence indicates that VEGFC promotes the assembly of VEGFR2–VEGFR3 heterodimers, which are enriched in TCs and positively influence angiogenic sprouting<sup>39</sup>. Hence, the correct spatiotemporal expression of VEGFR3 is increasingly considered to be an important determinant of TC function, as is discussed below.

## Mechanisms of TC and SC selection

Angiogenesis requires the hierarchical organization of sprouting cells into leading TCs and trailing SCs. This coordination of cell migratory behaviour is a key aspect of tissue branching morphogenesis in many systems<sup>18</sup>. But why are only some ECs selected as TCs in response to VEGFA signalling? In recent years, our understanding of the molecular mechanisms of TC selection has benefited greatly from the development of *in vivo* models of blood vessel sprouting. In particular, studies of TC and SC organization and behaviour during retinal angiogenesis in mice, and intersegmental vessel (ISV) sprouting in zebrafish, have allowed dissection of the pathways involved at the level of single cells *in vivo*. These studies reveal remarkable conservation of the mechanisms controlling angiogenesis between vertebrate species.

## Notch signalling controls TC and SC fate

Notch signalling is an evolutionarily conserved pathway that has well-established roles in the determination of cell fate in all metazoans<sup>40</sup>. Ligand binding induces Notch receptor

cleavage (by ADAM10 (a disintegrin and metalloprotease 10), ADAM17 and presenilins) and the release of an intracellular fragment (known as the Notch intra-cellular domain (NICD)) (FIG. 3a), which functions as a key transcriptional regulator during cell-fate specification. ECs express multiple Notch receptors (NOTCH1, NOTCH3 and NOTCH4) and transmembrane Notch ligands (Delta-like 1 (DLL1), DLL4, Jagged 1 and Jagged 2) (FIG. 3a), and recent studies demonstrate that Notch signalling plays a critical part in TC and SC fate decisions during angiogenesis<sup>40,41</sup>. Studies in mouse and zebrafish reveal that expression of *Dll4* and *dll4*, respectively, in TCs activates Notch in adjacent SCs to laterally inhibit TC fate and maintain the hierarchical organization of sprouting ECs<sup>38,42–47</sup> (FIG. 4a). VEGFA–VEGFR2 signalling promotes DLL4 expression in TCs (FIG. 4b). Hence, ECs experiencing the highest level of VEGF signalling will be selected as TCs, whereas in adjacent cells TC fate is repressed. Consequently, reduced DLL4–Notch signalling *in vivo* is accompanied by excessive TC formation, expanded expression of TC-associated genes (such as *FLT4*, uncoordinated 5 homologue B (*UNC5B*) and *PDGFB*), increased EC proliferation, uncontrolled sprouting and disordered vessel branching<sup>38,42–45</sup>. Furthermore, elegant mosaic studies in zebrafish reveal that ECs expressing a constitutively active form of Notch are excluded from the TC position of sprouting vessels<sup>38</sup>. In addition, disruption of Notch cleavage on the EC-specific knockout of ADAM10 also promotes enhanced EC sprouting<sup>48</sup>. The role of DLL4–Notch signalling in suppressing TC specification is not only critical for physiological blood vessel formation but also controls tumour angiogenesis. Tumours are extensively vascularized on antibody-mediated reduction of DLL4–Notch interactions but vessels are hypoperfused and poorly functional, resulting in tumour hypoxia and decreased growth<sup>46,47</sup>. Hence, DLL4 is considered to be a promising target for anticancer therapeutics. However, recent evidence suggesting that chronic DLL4 blockade induces vascular tumours may hamper this effort<sup>49</sup>.

DLL4–Notch signalling efficiently suppresses TC fate by negatively regulating VEGFR signalling. In particular, Notch activation inhibits VEGFR2 function and blocks *FLT4* expression in SCs and consequently renders them less responsive to VEGF-mediated TC-inducing signals<sup>38,44–46,50</sup> (FIG. 4b). For example, *flt4* expression in zebrafish is normally restricted to endothelial TCs but is expanded throughout the SC domain in the absence of Notch signalling as a consequence of increased TC formation<sup>38</sup>. Consequently, ectopic *flt4* expression drives the hyper-sprouting phenotype observed in Notch signalling-deficient zebrafish embryos<sup>37,38,45</sup>. However, a recent study in zebrafish proposes that *Dll4* suppresses Vegfc-induced Vegfr3 function but does not influence the expression of Vegfr3's encoding gene, *flt4*, suggesting additional roles for other Notch ligands in the transcriptional control of *flt4* (REF. 51). By contrast, Notch signalling positively regulates *FLT1* expression<sup>52</sup> (FIG. 4b). In this context, VEGFR1 is likely to act as a negative determinant of TC behaviour by acting as a decoy receptor for VEGFA to further prevent VEGFA-mediated TC specification. Consistent with this concept, knockdown of *flt1* in zebrafish promotes increased TC formation and vessel hyperbranching<sup>35</sup>. Interestingly, recent data indicate that ECs can rapidly shift between the TC and SC positions during angiogenic sprouting *in vitro* and during the sprouting of blood vessels in the head of zebrafish<sup>53</sup>. Hence, TC and SC fates may be somewhat plastic rather than rigidly fixed. Consequently, sprouting ECs continually shuffle and compete for the TC position by dynamically regulating their levels of *VEGFR2* versus *FLT1* expression<sup>53</sup>. Furthermore, *sFLT1* expression in ECs adjacent to TCs was recently shown to act as a spatial cue that guides new angiogenic sprouts away from the parental vessel<sup>54</sup>. Hence, in addition to controlling VEGF signalling, the DLL4–Notch pathway may indirectly influence local guidance of sprouting vessels.

Control of TC specification by DLL4–Notch signalling shares remarkable similarities with the molecular mechanisms of epithelial tracheal branching in *D. melanogaster*. Similar to

the role of VEGF signalling in endothelial TC formation, tracheal TCs are specified by the fibroblast growth factor (FGF) ligand Branchless (BNL). Furthermore, in this system, Notch signalling via the ligand Delta limits excessive epithelial TC formation by repressing expression of the BNL receptor, *breathless (btl)*, in SCs. Hence, the Notch-mediated lateral inhibition of receptor Tyr kinase expression controls the correct specification of TC numbers, position and behaviour during tissue branching morphogenesis in multiple systems.

Whereas DLL4-mediated Notch signalling negatively regulates TC selection, SC-restricted expression of another Notch ligand, Jagged 1, promotes TC formation and angiogenesis<sup>55</sup> (FIG. 4b). In sprouting ECs, the extracellular domain of Notch is post-translationally glycosylated by the Fringe family of glycosyltransferases. This sugar modification enhances Notch signalling via DLL4 but represses signalling via Jagged 1. Hence, Jagged 1–Notch interactions do not induce productive Notch signalling. According to this model, SC-restricted Jagged 1 competes with DLL4 for binding to Notch receptors on TCs and effectively suppresses TC Notch signalling. Consequently, TC formation and vascular sprouting is severely disrupted in the retinal vessels of EC-specific Jagged 1-knockout mice. By contrast, TC formation is enhanced upon the EC-specific Jagged 1 gain-of-function. These findings indicate that distinct Notch ligands have opposing roles in the control of TC selection and angiogenic sprouting, which may have important implications for tissue branching morphogenesis in other systems.

### Emerging players in TC and SC fate decisions

The remarkable similarity between angiogenesis and the branching of the *D. melanogaster* trachea raises the exciting possibility that other known determinants of epithelial sprouting may control blood vessel morphogenesis. Indeed, a recent study highlights this evolutionary conservation by identifying a critical role for the ETS-related factor translocation ETS leukaemia (TEL; also known as ETV6) in angiogenic sprouting<sup>56</sup>. TEL is a mammalian orthologue of the *D. melanogaster* transcriptional repressor YAN, which is negatively regulated by BTL signalling and is important for trachea branching<sup>57,58</sup>. In ECs, TEL interacts with the co-repressor C-terminal-binding protein (CtBP) to repress the expression of sprouting antagonists (such as *DLL4* and Sprouty homologue 4 (*SPRY4*)) before VEGF-driven TC formation and angiogenesis<sup>56</sup> (FIG. 4b). Consequently, EC sprouting in *in vitro* assays and during zebrafish angiogenesis is disrupted upon *TEL* or *tel* knockdown, respectively, which correlates with increased *DLL4* expression. These findings indicate that further research exploiting lessons learnt in other systems will have a direct impact on our understanding of blood vessel morphogenesis.

As discussed above, the acquisition of TC and SC fates and behaviours involves the tight spatiotemporal control of EC-type-specific gene expression. Consequently, recent comparative transcriptome analyses of TCs versus SCs and wild-type versus *Dll4*-deficient mouse retinal ECs are yielding a wealth of knowledge regarding the molecular control of angiogenic sprouting<sup>59,60</sup>. In particular, these studies indicate key roles for CXC chemokine receptor 4 (CXCR4) in TC behaviour<sup>59</sup> and the APJ endogenous ligand (APELIN) guanine-nucleotide-binding protein (G protein)-coupled receptor APJ in SC function<sup>60</sup>. Hence, further functional analyses of TC and SC enriched genes identified in these and other studies should yield additional critical insight.

Recent studies of angiogenesis are also shedding light on fundamental mechanisms that control Notch signalling in different cellular contexts. For example, studies using mice overexpressing  $\beta$ -catenin in ECs show that the WNT– $\beta$ -catenin pathway positively regulates *Dll4* expression in the vasculature<sup>61</sup> (FIG. 4b). Consequently,  $\beta$ -catenin gain-of-function induces endothelial Notch signalling and disrupts EC branching, although the role of this

pathway in TC selection is unclear. In parallel, DLL4–Notch interactions can feed back to activate WNT signalling in SCs, which maintains EC–EC connections<sup>62</sup>. Notch signalling promotes vascular stability by inducing expression of the WNT regulator gene Notch-regulated ankyrin repeat-containing protein (*NRARP*). NRARP limits Notch activity and stimulates lymphoid enhancer-binding factor 1 (LEF1)- and  $\beta$ -catenin-dependent WNT signalling to stabilize SCs and prevent EC retraction (FIG. 4b). As a result, loss of *Nrarp* in mice or *nrarpa* and/or *nrarpb* in zebrafish causes ectopic vessel regression and reduced WNT-mediated vascular stability<sup>62</sup>. Hence, functional interplay between Notch and WNT signalling is critical for vascular development.

Strikingly, a recent study of the NAD<sup>+</sup>-dependent deacetylase sirtuin 1 (SIRT1) reveals that acetylation of the NICD decreases its turnover, thereby enhancing Notch signalling<sup>63</sup> (FIG. 4b). SIRT1 deacetylates NICD in ECs to oppose its acetylation-mediated stabilization. Consequently, knockdown of *Sirt1* in mice (which enhances DLL4-mediated Notch signalling) and *sirt1* in zebrafish disrupts EC sprouting and perturbs vessel branching. Interestingly, enriched expression of SIRT1 in SCs suggests that the repression of Notch signalling might have key roles in SC biology in addition to its known role in TC selection. Most importantly, these studies define SIRT1 as a potential general regulator of Notch signalling, which may have important implications for cell fate decisions in multiple tissues.

## Vascular lumen morphogenesis

During angiogenic sprouting, all functional blood vessels need to form a patent vascular lumen to establish blood flow. Whereas the molecular pathways controlling epithelial lumen morphogenesis are under intense investigation<sup>64</sup>, progress towards defining the mechanisms of vascular tube formation has been slow. Indeed, until a few years ago our understanding of blood vessel lumen formation relied almost exclusively on *in vitro* research exploiting three-dimensional tubulogenesis assays. Although *in vitro* studies have revealed a wealth of knowledge regarding potential players in this process (including integrins, CDC42, SRC, RAC1, p21-activated kinase 2 (PAK2), PAK4, RAF, partitioning defective 3 (PAR3; also known as PARD3), PAR6 and atypical protein kinase C)<sup>16</sup>, it has been difficult to confirm these observations *in vivo*. Recent studies in mice and zebrafish are shedding new light on the cellular and molecular mechanisms of vascular lumen morphogenesis, confirming many previous *in vitro* observations and adding important new insights. In particular, it is now clear that lumen formation in most multicellular vessels involves the transition through a number of discrete phases, as discussed below.

### Establishing EC polarity

Prior to tube formation, blood vessels consist of multicellular rods of ECs that are interconnected by uniform EC–EC junctions and have yet to establish apicobasal polarity (FIG. 5a). PAR3 is a critical determinant of cell polarity that is known to influence epithelial lumen formation and has been implicated in vascular tube formation *in vitro*<sup>16</sup>. The first phase of blood vessel lumen morphogenesis appears to involve PAR3-mediated acquisition of EC apicobasal polarity and the lateral redistribution of junctional proteins (including zonula occludens 1 (ZO1), claudin 5, CD99 and vascular endothelial cadherin (VE-cadherin)) from the apical EC surface to the vascular cord periphery<sup>65,66</sup> (FIG. 5a). Importantly,  $\beta$ 1 integrin–matrix interactions at the basal EC surface establish EC polarity *in vivo* by regulating PAR3 expression and localization to the basal EC surface<sup>65</sup>. In addition, recent evidence indicates that RAS-interacting protein 1 (RASIP1) and its binding partner RHOA GTPase-activating protein 29 (ARHGAP29) also influence lumen morphogenesis in mouse<sup>66</sup>. Vascular-specific expression of RASIP1 regulates RHO GTPase activity and also shifts junctional proteins laterally by activating integrins (including  $\beta$ 1 integrin) and



controlling PAR3 localization. Hence, correct acquisition of apicobasal polarity and spatial redistribution of EC–EC junctions initiate lumen formation.

### Recruiting key proteins to the site of lumen formation

Once EC polarity is established, CD34 and podocalyxin (PODXL) (glycoproteins that are expressed on vascular endothelium) are recruited to apical membranes, which are initially at contact points between adjacent ECs<sup>65–67</sup> (FIG. 5b). Both  $\beta$ 1 integrin and VE-cadherin (but not RASIP1) regulate the accumulation of PODXL at the apical surface, which may be important for lumen formation *in vivo*<sup>65–67</sup>. Following its redistribution, PODXL recruits other apical proteins (moesin and filamentous actin (F-actin)) as the vascular lumen begins to form<sup>67</sup>. Similar to what is seen with PODXL and VE-cadherin, the apical accumulation of moesin may control lumen morphogenesis and appears to function by recruiting F-actin<sup>67,68</sup>. Hence, the acquisition of apicobasal polarity seems to function, in part, to sequester key components of the tubulogenesis machinery at sites of lumen formation.

### Luminal expansion

Expansion of the blood vessel lumen probably occurs by a number of mechanisms (FIG. 5c). For example, VEGFA signalling promotes the recruitment of non-muscle myosin II to the apical surface, suggesting that actomyosin contractility may induce shape changes that help to form the lumen<sup>67</sup>. Furthermore, the fact that RASIP1 suppresses actomyosin contractility may suggest that a fine balance is required for effective tube formation<sup>66</sup>. By contrast, blood vessels lacking the beta1 integrin gene do not form lumina but accumulate large numbers of intracellular vesicles, suggesting that vesicular trafficking may also contribute to luminal expansion<sup>65</sup>. In addition, interpretation of live-imaging studies in zebrafish ISV tube formation suggests that EC lumina assemble by the coalescence and fusion of intracellular vacuoles<sup>17</sup>. However, this is disputed by recent studies indicating that the ISV lumen mainly forms extracellularly<sup>69</sup>, consistent with studies in mice<sup>65–67</sup>. Importantly, the role of  $\beta$ 1 integrin in tubulogenesis is restricted to the arterial endothelium, and venous vessels must use alternative mechanisms<sup>65</sup>. Consistent with these observations, the first embryonic arterial and venous vessels in zebrafish form lumina by very distinct mechanisms<sup>70</sup>. Thus, it appears likely that a range of tubulogenesis mechanisms are used in different cellular contexts, indicating that we have only just scratched the surface of this complex process.

### Axon guidance signals and angiogenesis

Endothelial TCs share many of the morphological and functional features of axonal growth cones<sup>15</sup>. For example, both migrating TCs and growth cones represent motile guidance structures that extend dynamic filopodial protrusions and respond to both attractive and repulsive cues. Importantly, recent evidence suggests that ECs and neurons have also recruited various common mechanisms to control directional migration and patterning of the complex vascular and neuronal networks.

### Netrins in angiogenesis

Netrins are a family of secreted guidance molecules that bind the extracellular matrix and can have either attractive or repulsive effects on axon guidance<sup>71</sup>. For example, netrin binding to members of the deleted in colorectal cancer (DCC) family of receptors is attractive, whereas binding to members of the UNC5 receptor family promotes axon repulsion<sup>15,72</sup>. Of the netrin receptors, *UNC5B* expression is vascular-specific and restricted to arterial ECs and TCs in sprouting capillaries<sup>45,73</sup> (FIG. 3b). Importantly, the vasculature of *Unc5b*-knockout mice is excessively branched and TCs lacking *Unc5b* display uncontrolled filopodial extensions<sup>73</sup>. Hence, similar to the role of UNC5 receptors in neurons, UNC5B normally represses the motile behaviour of ECs. Consequently,

stimulation of UNC5B with netrin 1 promotes retraction of TC filopodia and blocks neovessel sprouting<sup>73,74</sup>. By contrast, netrins may also have pro-angiogenic roles, as local delivery of netrin 1 or netrin 4 promotes therapeutic angiogenesis<sup>75</sup>. These apparently contradictory observations that netrin 1 acts as both an anti- and a pro-angiogenic factor may be explained by recent evidence indicating that UNC5B is an EC dependence receptor that stimulates apoptosis in the absence of ligand<sup>76</sup>. Consequently, netrin 1 may enhance EC sprouting by inhibiting the pro-apoptotic effect of unbound UNC5B<sup>76</sup>. However, which endogenous netrins trigger UNC5B signalling *in vivo* remains unclear considering that netrin 1-knockout mice display no vascular defects<sup>77</sup>.

### ROBO receptors in angiogenesis

The Slit proteins form another family of secreted molecules important for guidance, and they repel axon growth cones upon binding Roundabout (ROBO) receptors. Of the four known mammalian *ROBO* genes (*ROBO1*, *ROBO2*, *ROBO3* and *ROBO4*), *ROBO4* (also known as Magic roundabout) is selectively expressed in ECs<sup>78</sup> (FIG. 3b). Studies of *ROBO4* in mice and *Robo4* in zebrafish indicate that this protein maintains vascular stability and inhibits angiogenesis by counteracting VEGF-mediated signalling<sup>79–83</sup>. Considering that *ROBO4* is enriched in endothelial SCs<sup>80</sup>, these findings may suggest that *ROBO4*–Slit signalling negatively regulates VEGF signalling to repress TC behaviour in SCs. However, whether the interaction of *ROBO4* with Slit ligands regulates *ROBO4* function *in vivo* is controversial. For example, Slit 2 was shown to co-immunoprecipitate with *ROBO4* (REF. 84); however, Slit 2 binding to *ROBO4* is not observed in Biacore binding assays<sup>85</sup>. Furthermore, structural analysis suggests that *ROBO4* lacks residues that are essential for *ROBO*–Slit binding<sup>15</sup>. Importantly, recent data show that *ROBO4* unexpectedly binds to and activates UNC5B in ECs<sup>82</sup>. These findings indicate that *ROBO4* function may not be regulated by Slit 2 but might involve the interaction of two unrelated guidance receptors.

### Semaphorins in angiogenesis

The secreted or membrane-anchored semaphorin family of guidance molecules also has key roles during axon guidance and vascular patterning<sup>86</sup> (FIG. 3b). Membrane-associated semaphorins influence cell motility by binding the plexin family of transmembrane receptors, whereas the secreted class III semaphorins (from semaphorin 3A (SEMA3A) to SEMA3G) typically interact with the neuropilin (NRP) family of transmembrane co-receptors<sup>15</sup>. One exception is SEMA3E, which promotes signalling via the EC-enriched receptor, plexin D1 (REF. 87). EC-specific knockdown of plexin D1 in mice disrupts vascular patterning, enhances EC sprouting and is associated with neonatal lethality<sup>88</sup>. Furthermore, precocious ISV sprouting is observed in the zebrafish *plexin D1* mutant, *out of bounds (obd)*<sup>89</sup>. Hence, semaphorin–plexin D1 signalling plays an evolutionarily conserved role as a repulsive guidance cue during angiogenesis. However, recent evidence showing that SEMA3E–plexin D1 signalling negatively regulates DLL4–Notch signalling may indicate an additional role for this pathway during TC fate decisions in mouse retinal vessels<sup>90</sup>.

### NRP co-receptors in angiogenesis

NRP co-receptors (NRP1 and NRP2) play key parts in axon guidance upon binding class III semaphorins<sup>15,91</sup>. In addition, NRPs modulate angiogenic sprouting upon binding VEGFA165 (VEGFA164 in mice), but not VEGFA121 (VEGFA120 in mice)<sup>2,91,92</sup> (FIG. 3b). NRPs form complexes with various VEGFRs and enhance VEGFR-mediated signalling when bound to VEGFA. Consequently, NRPs are essential for vascular development and *Nrp1*-knockout mice display disrupted EC remodelling and vessel branching during development<sup>93,94</sup>. However, vascular defects in *Nrp1*-null mice are, overall, relatively mild,

suggesting that NRP-mediated VEGF signalling may not have key roles during TC specification and sprouting.

### EPHs in angiogenesis

Ephrin receptors (EPHs) are transmembrane receptor Tyr kinases that bind, and are activated by, cell surface proteins called ephrins<sup>95</sup>. EPH–ephrin forward and reverse signalling have long been known to be important for both neuronal and vascular development; however, the cellular and molecular mechanisms underlying EPH–ephrin function in the vasculature *in vivo* are only just emerging. Ephrin B2 and its cognate receptor EPHB4 have key roles during blood vessel morphogenesis and have attracted the most attention owing to their strikingly restricted expression in arteries and veins, respectively<sup>95</sup> (FIG. 3b). For example, recent data suggests that ephrin B2 may directly interact with VEGFRs to regulate VEGF signalling<sup>96,97</sup>, as is discussed later in this Review. In addition, a recent study in zebrafish indicates that ephrin b2a–Ephb4a interactions regulate segregation and sorting of arterial and venous EC precursor cells into discrete primary arterial and venous vessels during early development<sup>70</sup>. In this process, Vegfa-induced expression of *ephrin b2a* in arterial precursors blocks the ventral migration of these cells to exclude them from the primary venous vessel. By contrast, *ephb4a* expression in venous precursors permits ventral migration of venous progenitors and promotes exclusion from the first embryonic artery. Hence, ephrin b2- and Ephb4-mediated directional control of EC migration drives arterial and venous segregation and the generation of separate parallel vessels. Furthermore, these results are supported by previous observations that ephrin B2–EPHB4 signalling regulates the calibre of arterial and venous vessels in mice<sup>98</sup>. However, further research is required to determine whether this pathway functions as the chief mechanism for regulating primary vessel formation or, alternatively, acts more as a checkpoint to suppress arterial and venous vessel mixing.

These findings clearly demonstrate that ECs respond to multiple neuronal signals during vascular development. Similarly, a growing body of evidence suggests that vascular guidance cues may also influence neuronal development. For example, recent data indicate that VEGFR3 signalling controls neurogenesis in mice<sup>99</sup>. Furthermore, the release of neural-derived signals that influence neurovascular interactions (such as thrombospondin type I domain-containing 7A (THSD7A)) may also play key parts in the regulation of angiogenesis<sup>100</sup>. Hence, future studies investigating the functional overlap between vascular and neuronal pathways will shed important light on the mechanisms controlling the development of both systems.

### Fine-tuning angiogenesis

Vascular research over the past 20 years has succeeded in identifying many key molecular pathways that control angiogenesis. However, recent studies are additionally starting to define elegant post-transcriptional and post-translational mechanisms that adjust responses mediated by known angiogenic pathways. Hence, current research is revealing a remarkable level of complexity in the control of pro-angiogenic signalling, as discussed below.

### Post-transcriptional control of angiogenesis

MicroRNAs (miRNAs) are a large family of small (~22 base pairs) non-coding single-stranded RNAs that are considered to be key post-transcriptional regulators of gene expression<sup>101</sup>. miRNAs function by binding complementary sequences within target mRNAs, which blocks the translation, or promotes the degradation, of the bound mRNA. Recent data implicate certain miRNAs as crucial determinants of EC behaviour during angiogenesis<sup>101</sup> (FIG. 6a). For example, modulation of VEGF signalling during

development by the EC-restricted miRNA miR-126 is essential for normal angiogenesis in mice and zebrafish<sup>102–104</sup>. miR-126 is located in intron 7 of the endothelial gene epidermal growth factor-like 7 (*EGFL7*). Expression of miR-126 positively influences VEGF-induced signalling by post-transcriptionally repressing SPRED1 (Sprouty-related EVH1 domain-containing 1) and PI3K regulatory subunit 2 (PIK3R2; also known as p85 $\beta$ ), which are negative regulators of MAPK and PI3K signalling, respectively<sup>102–104</sup>. Consequently, enhanced SPRED1 and PIK3R2 expression upon miR-126 knockdown blocks VEGF-induced MAPK and PI3K signalling. As a result, angiogenesis and vascular integrity are compromised in mice or zebrafish deficient for miR-126, resulting in fragile and leaky vessels that often haemorrhage.

Strikingly, recent data in zebrafish indicate that modulation of the miR-126–Spred1 axis may even allow integration of mechanical cues from the extracellular environment to control blood vessel morphogenesis<sup>105</sup> (FIG. 6a). In response to blood flow, the mechanosensitive transcription factor Krüppel-like factor 2a (Klf2a) promotes miR-126 expression in sprouting vessels of the aortic arches. Consequently, miR-126-mediated augmentation of VEGF signalling is essential for flow-induced aortic arch vessel angiogenesis. Hence, these findings shed new light on the mechanosensitive mechanisms that integrate blood flow and VEGFR signalling during remodelling of the developing vasculature.

Other vascular miRNAs seem to have critical roles during pathological angiogenesis<sup>106,107</sup>. Expression of miR-132 in ECs promotes angiogenesis by targeting RAS-specific GAP p120 (p120RASGAP), a known negative regulator of RAS activity<sup>106</sup> (FIG. 6a). Hence, miR-132 activates RAS to promote EC proliferation, tube formation and angiogenesis *in vivo*. Consequently, miR-132 expression in sprouting ECs acts as an angiogenic switch that promotes tumour neovascularization and growth. By contrast, EC expression of miR-92a appears to block new blood vessel sprouting by repressing the expression of pro-angiogenic proteins, such as  $\alpha 5$  integrin<sup>107</sup>. Consequently, inhibition of miR-92a enhances therapeutic angiogenesis and neovascularization of ischaemic tissues in mice. Interestingly, a potential target of miR-92a is SIRT1, suggesting that miR-92a may suppress SIRT1-mediated deacetylation of NICD and inhibit angiogenesis by stabilising anti-angiogenic Notch signalling<sup>63</sup>. However a direct link between miR-92a and Notch signalling has not been reported.

### Post-translational control of VEGFR signalling

The internalization of ligand-bound VEGFR-2 into endosomal compartments is known to prolong the magnitude and duration of downstream pro-angiogenic signalling *in vitro*<sup>108</sup>. Importantly, a number of recent studies are confirming that tight spatial control of VEGFR trafficking is also a critical control point during angiogenesis *in vivo* (FIG. 6b). For example, synectin–myosin VI-dependent trafficking of VEGFR2-containing endosomes shuttles VEGF-activated receptors away from the plasma membrane<sup>109</sup>. This spatial redistribution of VEGFR2 blocks the dephosphorylation of active receptors by protein Tyr phosphatase 1B (PTP1B; also known as PTPN1) at the plasma membrane. Hence, synectin–myosin VI-mediated maintenance of VEGFR2 signalling influences many VEGF-regulated processes *in vivo*. Following these observations, two recent studies also identified a key role for the neuronal guidance molecule ephrin B2 in this process<sup>96,97</sup>. Expression of ephrin B2 in ECs unexpectedly promotes the internalization of VEGFRs (VEGFR2 and VEGFR3) and their signalling from endosomes, which is essential for the extension of TC filopodia. Consequently, loss of ephrin B2 and *ephrin b2a* expression in mice and zebrafish, respectively, disrupts TC formation, blocks EC sprouting and perturbs angiogenesis<sup>96,97</sup>.

In addition to receptor internalization, enhanced recycling of endocytosed VEGFR2 appears to play important parts in angiogenesis *in vivo* (FIG. 6b). In particular, recent data implicate

$\alpha\beta3$  integrin in the RAB4A-mediated recycling of VEGFR2 to the plasma membrane of ECs<sup>110</sup>. Consequently, pharmacological augmentation of this mechanism blocks VEGF-induced lysosomal degradation of VEGFR2 and enhances EC migration and angiogenesis *in vitro* and *in vivo*. Moreover, RAB-mediated membrane trafficking of other signalling components (such as RHOA and SYX (also known as PLEKHG5)) may also have key roles in angiogenic sprouting<sup>111</sup>. As new determinants of VEGFR internalization and recycling will probably emerge over the next few years, a key question will be whether (and how) these mechanisms are modulated in cell-type-specific manners during angiogenesis. For example, can these pro-angiogenic mechanisms be selectively recruited by TCs during sprouting?

## Perspectives

In recent years, our understanding of the molecular mechanisms that control and coordinate diverse EC behaviours during blood vessel morphogenesis has expanded remarkably. In particular, the development of advanced vertebrate model systems has allowed the field to address fundamental vascular questions *in vivo* at a spatiotemporal resolution never before possible. Studies exploiting these tools have greatly enriched our knowledge of key aspects of blood vessel assembly, such as the mechanisms of TC selection and vascular lumen morphogenesis. However, our understanding of many processes is still in its infancy. For example, the molecular machinery that terminates EC sprouting and stimulates vessel anastomosis remains largely a mystery. Moreover, the cell-type-specific mechanisms regulating venous vascular tube formation remain unknown. Importantly, glaring gaps still exist in our knowledge of the sprouting process itself. For example, are endothelial SCs also specified during angiogenesis or do they just passively trail migrating TCs? Likewise, the plasticity of the TC and SC fates needs to be investigated further. Furthermore, the precise spatiotemporal dynamics of TC and SC Notch signalling during EC sprouting is unclear. As recent studies have demonstrated, blood vessel morphogenesis represents a paradigm for many fundamental processes common to other biological systems<sup>3,18</sup>. Hence, future studies addressing the questions raised above should reveal important mechanistic insights that can be readily translated into other systems.

The therapeutic targeting of blood vessel morphogenesis remains a predominant strategy for tackling the diverse range of diseases that are driven by pathological angiogenesis<sup>1</sup>. Considering the critical role of the DLL4–Notch–VEGF signalling axis in angiogenic sprouting<sup>38,42–47</sup>, much of the current clinical research is focused on modulating this pathway<sup>1</sup>. However, it is clear that there is still vast therapeutic demand and scope for identifying new determinants of blood vessel formation. In particular, a better molecular understanding of currently under-explored processes, such as lumen morphogenesis and SC formation, will pave the way for novel targets that may ultimately translate into more effective therapies.

## Acknowledgments

We apologize to those authors whose work could not be referenced directly because of space limitations. S.P.H. is a Wellcome Trust research career development fellow. Vascular work in the laboratory of D.Y.R.S. is supported in part by grants from the US National Institutes of Health (HL54737) and the Packard Foundation to D.Y.R.S.

## Glossary

<b>Ischaemic diseases</b>	Disease states that are characterized by a restriction in the blood supply to an organ or tissue, such as ischaemic heart disease, stroke or ischaemic colitis
---------------------------	--

<b>Metastasis</b>	The spread of cancer cells from the site of a primary tumour to distant parts of the body
<b>Basement membrane</b>	The sheet-like layer of laminin-and collagen-rich fibres that separates endothelial or epithelial cells from adjacent tissues
<b>Filopodial extensions</b>	Thin cytoplasmic protrusions containing bundled actin filaments that dynamically extend from the leading edge of migrating cells and explore the surrounding microenvironment
<b>Neuronal growth cones</b>	Specialized guidance structures located at the distal end of developing axons that sense extrinsic guidance cues to direct the movement of axons
<b>Vascular lumen</b>	The open and unobstructed (or patent) space within a hollow vascular tube that is lined by endothelial cells and through which blood flows
<b>Anastomosis</b>	The union of two hollow structures so as to interconnect and establish continuity between both structures
<b>Abluminal surface</b>	The surface away from the lumen (to distinguish it from the luminal surface, which is the one adjacent to the lumen)
<b>Intussusceptive angiogenesis</b>	Blood vessel formation by the splitting of existing vessels. Intussusception involves the insertion of a tissue pillar into the vascular lumen to split a single parent vessel into two daughter vessels
<b>Hypoxia</b>	A deficiency in the supply of oxygen to an organ or tissue
<b>Haploinsufficient</b>	The term applied to a gene of a diploid organism if a single copy of that gene is insufficient to support a wild-type phenotype
<b>Heparan sulphate</b>	A linear polysaccharide present on the surface of cells or in extracellular matrices, which function by binding wide varieties of proteins (such as growth factors) to regulate key biological processes
<b>Decoy receptor</b>	Generally considered to be a non-signalling receptor that binds a ligand and reduces the interaction of the bound ligand with its signalling receptor
<b>Lymphangiogenesis</b>	The formation of new lymphatic vessels by sprouting from pre-existing vessels
<b>Lateral inhibition</b>	In developmental biology, this term refers to the ability of a cell to inhibit the differentiation of its immediate neighbours through cell–cell interactions

## References

1. Carmeliet P, Jain RK. Molecular mechanisms and clinical applications of angiogenesis. *Nature*. 2011; 473:298–307. [PubMed: 21593862]
2. Adams RH, Alitalo K. Molecular regulation of angiogenesis and lymphangiogenesis. *Nature Rev Mol Cell Biol*. 2007; 8:464–478. [PubMed: 17522591]
3. Rocha SF, Adams RH. Molecular differentiation and specialization of vascular beds. *Angiogenesis*. 2009; 12:139–147. [PubMed: 19212819]

4. Tammela T, Alitalo K. Lymphangiogenesis: molecular mechanisms and future promise. *Cell*. 2010; 140:460–476. [PubMed: 20178740]
5. Gaengel K, Genove G, Armulik A, Betsholtz C. Endothelial-mural cell signaling in vascular development and angiogenesis. *Arterioscler Thromb Vasc Biol*. 2009; 29:630–638. [PubMed: 19164813]
6. Jain RK. Molecular regulation of vessel maturation. *Nature Med*. 2003; 9:685–693. [PubMed: 12778167]
7. Fischer A, Schumacher N, Maier M, Sendtner M, Gessler M. The Notch target genes *Hey1* and *Hey2* are required for embryonic vascular development. *Genes Dev*. 2004; 18:901–911. [PubMed: 15107403]
8. Zhong TP, Childs S, Leu JP, Fishman MC. Gridlock signalling pathway fashions the first embryonic artery. *Nature*. 2001; 414:216–220. [PubMed: 11700560]
9. You LR, et al. Suppression of Notch signalling by the COUP-TFII transcription factor regulates vein identity. *Nature*. 2005; 435:98–104. [PubMed: 15875024]
10. Bertrand JY, Traver D. Hematopoietic cell development in the zebrafish embryo. *Curr Opin Hematol*. 2009; 16:243–248. [PubMed: 19491671]
11. Mazzone M, et al. Heterozygous deficiency of PHD2 restores tumor oxygenation and inhibits metastasis via endothelial normalization. *Cell*. 2009; 136:839–851. [PubMed: 19217150]
12. Augustin HG, Koh GY, Thurston G, Alitalo K. Control of vascular morphogenesis and homeostasis through the angiopoietin-Tie system. *Nature Rev Mol Cell Biol*. 2009; 10:165–177. [PubMed: 19234476]
13. De Smet F, Segura I, De Bock K, Hohensinner PJ, Carmeliet P. Mechanisms of vessel branching: filopodia on endothelial tip cells lead the way. *Arterioscler Thromb Vasc Biol*. 2009; 29:639–649. [PubMed: 19265031]
14. Gerhardt H, et al. VEGF guides angiogenic sprouting utilizing endothelial tip cell filopodia. *J Cell Biol*. 2003; 161:1163–1177. [PubMed: 12810700]
15. Adams RH, Eichmann A. Axon guidance molecules in vascular patterning. *Cold Spring Harb Perspect Biol*. 2010; 2:a001875. [PubMed: 20452960]
16. Iruela-Arispe ML, Davis GE. Cellular and molecular mechanisms of vascular lumen formation. *Dev Cell*. 2009; 16:222–231. [PubMed: 19217424]
17. Kamei M, et al. Endothelial tubes assemble from intracellular vacuoles *in vivo*. *Nature*. 2006; 442:453–456. [PubMed: 16799567]
18. Affolter M, Zeller R, Caussinus E. Tissue remodelling through branching morphogenesis. *Nature Rev Mol Cell Biol*. 2009; 10:831–842. [PubMed: 19888266]
19. Fantin A, et al. Tissue macrophages act as cellular chaperones for vascular anastomosis downstream of VEGF-mediated endothelial tip cell induction. *Blood*. 2010; 116:829–840. [PubMed: 20404134]
20. Makanya AN, Hlushchuk R, Djonov VG. Intussusceptive angiogenesis and its role in vascular morphogenesis, patterning, and remodeling. *Angiogenesis*. 2009; 12:113–123. [PubMed: 19194777]
21. Lohela M, Bry M, Tammela T, Alitalo K. VEGFs and receptors involved in angiogenesis versus lymphangiogenesis. *Curr Opin Cell Biol*. 2009; 21:154–165. [PubMed: 19230644]
22. Coultas L, Chawengsaksophak K, Rossant J. Endothelial cells and VEGF in vascular development. *Nature*. 2005; 438:937–945. [PubMed: 16355211]
23. Shibuya M. Differential roles of vascular endothelial growth factor receptor-1 and receptor-2 in angiogenesis. *J Biochem Mol Biol*. 2006; 39:469–478. [PubMed: 17002866]
24. Pugh CW, Ratcliffe PJ. Regulation of angiogenesis by hypoxia: role of the HIF system. *Nature Med*. 2003; 9:677–684. [PubMed: 12778166]
25. Carmeliet P, et al. Abnormal blood vessel development and lethality in embryos lacking a single VEGF allele. *Nature*. 1996; 380:435–439. [PubMed: 8602241]
26. Ferrara N, et al. Heterozygous embryonic lethality induced by targeted inactivation of the *VEGF* gene. *Nature*. 1996; 380:439–442. [PubMed: 8602242]

27. Shalaby F, et al. Failure of blood-island formation and vasculogenesis in Flk-1-deficient mice. *Nature*. 1995; 376:62–66. [PubMed: 7596435]
28. Ladomery MR, Harper SJ, Bates DO. Alternative splicing in angiogenesis: the vascular endothelial growth factor paradigm. *Cancer Lett*. 2007; 249:133–142. [PubMed: 17027147]
29. Ruhrberg C, et al. Spatially restricted patterning cues provided by heparin-binding VEGF-A control blood vessel branching morphogenesis. *Genes Dev*. 2002; 16:2684–2698. [PubMed: 12381667]
30. Chen TT, et al. Anchorage of VEGF to the extracellular matrix conveys differential signaling responses to endothelial cells. *J Cell Biol*. 2010; 188:595–609. [PubMed: 20176926]
31. Kawamura H, Li X, Harper SJ, Bates DO, Claesson-Welsh L. Vascular endothelial growth factor (VEGF)-A165b is a weak *in vitro* agonist for VEGF receptor-2 due to lack of coreceptor binding and deficient regulation of kinase activity. *Cancer Res*. 2008; 68:4683–4692. [PubMed: 18559514]
32. Hiratsuka S, et al. Membrane fixation of vascular endothelial growth factor receptor 1 ligand-binding domain is important for vasculogenesis and angiogenesis in mice. *Mol Cell Biol*. 2005; 25:346–354. [PubMed: 15601855]
33. Fong GH, Rossant J, Gertsenstein M, Breitman ML. Role of the Flt-1 receptor tyrosine kinase in regulating the assembly of vascular endothelium. *Nature*. 1995; 376:66–70. [PubMed: 7596436]
34. Fong GH, Zhang L, Bryce DM, Peng J. Increased hemangioblast commitment, not vascular disorganization, is the primary defect in *flt-1* knockout mice. *Development*. 1999; 126:3015–3025. [PubMed: 10357944]
35. Krueger J, et al. Flt1 acts as a negative regulator of tip cell formation and branching morphogenesis in the zebrafish embryo. *Development*. 2011; 138:2111–2120. [PubMed: 21521739]
36. Stefater JA III, et al. Regulation of angiogenesis by a non-canonical Wnt-Flt1 pathway in myeloid cells. *Nature*. 2011; 474:511–515. [PubMed: 21623369]
37. Tammela T, et al. Blocking VEGFR-3 suppresses angiogenic sprouting and vascular network formation. *Nature*. 2008; 454:656–660. [PubMed: 18594512]
38. Siekmann AF, Lawson ND. Notch signalling limits angiogenic cell behaviour in developing zebrafish arteries. *Nature*. 2007; 445:781–784. References 37 and 38 are the first papers to identify VEGFR3 as a key determinant of endothelial TC behaviour and define a critical role for Notch signalling in the negative regulation of VEGFR3 expression in endothelial SCs. [PubMed: 17259972]
39. Nilsson I, et al. VEGF receptor 2/3 heterodimers detected *in situ* by proximity ligation on angiogenic sprouts. *EMBO J*. 2010; 29:1377–1388. [PubMed: 20224550]
40. Roca C, Adams RH. Regulation of vascular morphogenesis by Notch signaling. *Genes Dev*. 2007; 21:2511–2524. [PubMed: 17938237]
41. Phng LK, Gerhardt H. Angiogenesis: a team effort coordinated by notch. *Dev Cell*. 2009; 16:196–208. [PubMed: 19217422]
42. Hellstrom M, et al. Dll4 signalling through Notch1 regulates formation of tip cells during angiogenesis. *Nature*. 2007; 445:776–780. [PubMed: 17259973]
43. Leslie JD, et al. Endothelial signalling by the Notch ligand Delta-like 4 restricts angiogenesis. *Development*. 2007; 134:839–844. [PubMed: 17251261]
44. Lobov IB, et al. Delta-like ligand 4 (Dll4) is induced by VEGF as a negative regulator of angiogenic sprouting. *Proc Natl Acad Sci USA*. 2007; 104:3219–3224. [PubMed: 17296940]
45. Suchting S, et al. The Notch ligand Delta-like 4 negatively regulates endothelial tip cell formation and vessel branching. *Proc Natl Acad Sci USA*. 2007; 104:3225–3230. References 38 and 42–45 are the first to describe the important role of DLL4–Notch signalling in the selection of endothelial TCs during blood vessel sprouting *in vivo*. [PubMed: 17296941]
46. Noguera-Troise I, et al. Blockade of Dll4 inhibits tumour growth by promoting non-productive angiogenesis. *Nature*. 2006; 444:1032–1037. [PubMed: 17183313]
47. Ridgway J, et al. Inhibition of Dll4 signalling inhibits tumour growth by deregulating angiogenesis. *Nature*. 2006; 444:1083–1087. References 46 and 47 report that blocking DLL4–Notch signalling inhibits tumour growth by promoting excessive non-productive angiogenesis that results in poor tumour perfusion and hypoxia. [PubMed: 17183323]

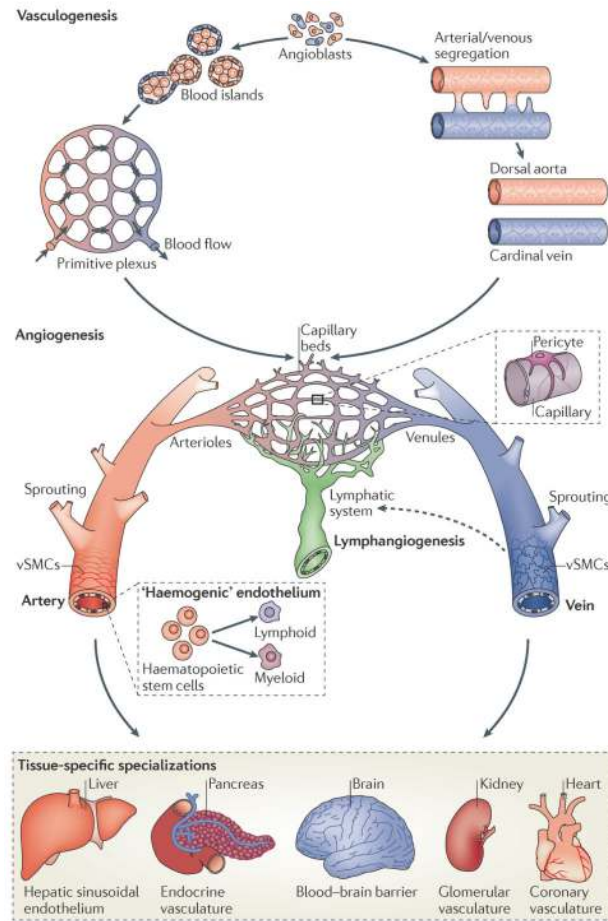


48. Glomski K, et al. Deletion of Adam10 in endothelial cells leads to defects in organ-specific vascular structures. *Blood*. 2011; 118:1163–1174. [PubMed: 21652679]
49. Yan M, et al. Chronic DLL4 blockade induces vascular neoplasms. *Nature*. 2010; 463:E6–E7. [PubMed: 20147986]
50. Sainson RC, et al. Cell-autonomous notch signaling regulates endothelial cell branching and proliferation during vascular tubulogenesis. *FASEB J*. 2005; 19:1027–1029. [PubMed: 15774577]
51. Hogan BM, et al. Vegfc/Flt4 signalling is suppressed by Dll4 in developing zebrafish intersegmental arteries. *Development*. 2009; 136:4001–4009. [PubMed: 19906867]
52. Funahashi Y, et al. Notch regulates the angiogenic response via induction of VEGFR-1. *J Angiogenes Res*. 2010; 2:3. [PubMed: 20298529]
53. Jakobsson L, et al. Endothelial cells dynamically compete for the tip cell position during angiogenic sprouting. *Nature Cell Biol*. 2010; 12:943–953. [PubMed: 20871601]
54. Chappell JC, Taylor SM, Ferrara N, Bautch VL. Local guidance of emerging vessel sprouts requires soluble Flt-1. *Dev Cell*. 2009; 17:377–386. [PubMed: 19758562]
55. Benedito R, et al. The notch ligands Dll4 and Jagged1 have opposing effects on angiogenesis. *Cell*. 2009; 137:1124–1135. Shows an unexpected pro-angiogenic role for the Notch ligand Jagged 1, which antagonises EC DLL4–Notch signalling to regulate new blood vessel sprouting in mice. [PubMed: 19524514]
56. Roukens MG, et al. Control of endothelial sprouting by a Tel–CtBP complex. *Nature Cell Biol*. 2010; 12:933–942. Identifies a new role for the transcriptional repressor complex TEL–CtBP in the regulation of VEGFA-mediated *DLL4* expression during angiogenesis. [PubMed: 20835243]
57. Rebay I, Rubin GM. Yan functions as a general inhibitor of differentiation and is negatively regulated by activation of the Ras1/MAPK pathway. *Cell*. 1995; 81:857–866. [PubMed: 7781063]
58. Hacohen N, Kramer S, Sutherland D, Hiromi Y, Krasnow M. *Asprouty* encodes a novel antagonist of FGF signaling that patterns apical branching of the *Drosophila* airways. *Cell*. 1998; 92:253–263. [PubMed: 9458049]
59. Strasser GA, Kaminker JS, Tessier-Lavigne M. Microarray analysis of retinal endothelial tip cells identifies CXCR4 as a mediator of tip cell morphology and branching. *Blood*. 2010; 115:5102–5110. [PubMed: 20154215]
60. del Toro R, et al. Identification and functional analysis of endothelial tip cell-enriched genes. *Blood*. 2010; 116:4025–4033. [PubMed: 20705756]
61. Corada M, et al. The Wnt/ $\beta$ -catenin pathway modulates vascular remodeling and specification by upregulating Dll4/Notch signaling. *Dev Cell*. 2010; 18:938–949. [PubMed: 20627076]
62. Phng LK, et al. Nrarp coordinates endothelial Notch and Wnt signaling to control vessel density in angiogenesis. *Dev Cell*. 2009; 16:70–82. [PubMed: 19154719]
63. Guarani V, et al. Acetylation-dependent regulation of endothelial Notch signalling by the SIRT1 deacetylase. *Nature*. 2011; 473:234–238. Reveals that acetylation of the NICD increases its stability, and that this is counteracted by the SIRT1 deacetylase to allow fine-tuning of Notch signalling in sprouting ECs. [PubMed: 21499261]
64. Bryant DM, Mostov KE. From cells to organs: building polarized tissue. *Nature Rev Mol Cell Biol*. 2008; 9:887–901. [PubMed: 18946477]
65. Zovein AC, et al.  $\beta$ 1 integrin establishes endothelial cell polarity and arteriolar lumen formation via a Par3-dependent mechanism. *Dev Cell*. 2010; 18:39–51. [PubMed: 20152176]
66. Xu K, et al. Blood vessel tubulogenesis requires Rasip1 regulation of GTPase signaling. *Dev Cell*. 2011; 20:526–539. [PubMed: 21396893]
67. Strilic B, et al. The molecular basis of vascular lumen formation in the developing mouse aorta. *Dev Cell*. 2009; 17:505–515. [PubMed: 19853564]
68. Wang Y, et al. Moesin1 and VE-cadherin are required in endothelial cells during *in vivo* tubulogenesis. *Development*. 2010; 137:3119–3128. References 65–68 are the first to define molecular mechanisms that control vascular lumen morphogenesis *in vivo* and reveal key roles for signalling mediated by integrins, small GTPases, PAR3, VEGFA and VE-cadherin. [PubMed: 20736288]
69. Blum Y, et al. Complex cell rearrangements during intersegmental vessel sprouting and vessel fusion in the zebrafish embryo. *Dev Biol*. 2008; 316:312–322. [PubMed: 18342303]

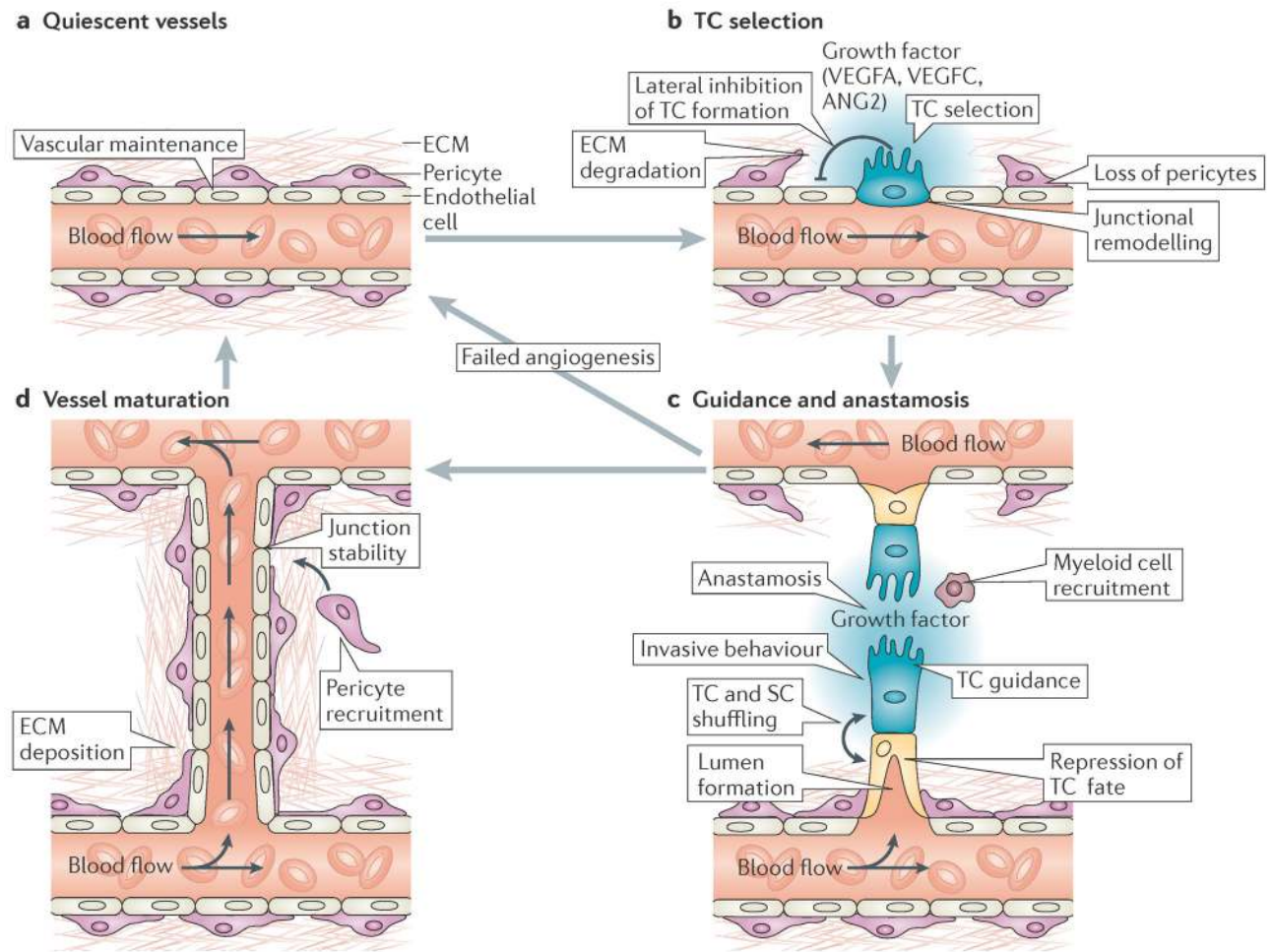
70. Herbert SP, et al. Arterial–venous segregation by selective cell sprouting: an alternative mode of blood vessel formation. *Science*. 2009; 326:294–298. [PubMed: 19815777]
71. Tessier-Lavigne M, Goodman CS. The molecular biology of axon guidance. *Science*. 1996; 274:1123–1133. [PubMed: 8895455]
72. Carmeliet P, Tessier-Lavigne M. Common mechanisms of nerve and blood vessel wiring. *Nature*. 2005; 436:193–200. [PubMed: 16015319]
73. Lu X, et al. The netrin receptor UNC5B mediates guidance events controlling morphogenesis of the vascular system. *Nature*. 2004; 432:179–186. [PubMed: 15510105]
74. Larrivee B, et al. Activation of the UNC5B receptor by Netrin-1 inhibits sprouting angiogenesis. *Genes Dev*. 2007; 21:2433–2447. [PubMed: 17908930]
75. Wilson BD, et al. Netrins promote developmental and therapeutic angiogenesis. *Science*. 2006; 313:640–644. [PubMed: 16809490]
76. Castets M, et al. Inhibition of endothelial cell apoptosis by netrin-1 during angiogenesis. *Dev Cell*. 2009; 16:614–620. [PubMed: 19386270]
77. Serafini T, et al. Netrin-1 is required for commissural axon guidance in the developing vertebrate nervous system. *Cell*. 1996; 87:1001–1014. [PubMed: 8978605]
78. Huminiecki L, Gorn M, Suchting S, Poulsom R, Bicknell R. Magic roundabout is a new member of the roundabout receptor family that is endothelial specific and expressed at sites of active angiogenesis. *Genomics*. 2002; 79:547–552. [PubMed: 11944987]
79. Bedell VM, et al. *roundabout4* is essential for angiogenesis *in vivo*. *Proc Natl Acad Sci USA*. 2005; 102:6373–6378. [PubMed: 15849270]
80. Jones CA, et al. Robo4 stabilizes the vascular network by inhibiting pathologic angiogenesis and endothelial hyperpermeability. *Nature Med*. 2008; 14:448–453. [PubMed: 18345009]
81. Jones CA, et al. Slit2–Robo4 signalling promotes vascular stability by blocking Arf6 activity. *Nature Cell Biol*. 2009; 11:1325–1331. [PubMed: 19855388]
82. Koch AW, et al. Robo4 maintains vessel integrity and inhibits angiogenesis by interacting with UNC5B. *Dev Cell*. 2011; 20:33–46. Reports that the interaction of two unrelated axon guidance receptors, ROBO4 and UNC5B, negatively regulates VEGFA signalling in ECs to inhibit angiogenesis. [PubMed: 21238923]
83. Marlow R, et al. Vascular Robo4 restricts proangiogenic VEGF signaling in breast. *Proc Natl Acad Sci USA*. 2010; 107:10520–10525. [PubMed: 20498081]
84. Park KW, et al. Robo4 is a vascular-specific receptor that inhibits endothelial migration. *Dev Biol*. 2003; 261:251–267. [PubMed: 12941633]
85. Suchting S, Heal P, Tahtis K, Stewart LM, Bicknell R. Soluble Robo4 receptor inhibits *in vivo* angiogenesis and endothelial cell migration. *FASEB J*. 2005; 19:121–123. [PubMed: 15486058]
86. Yazdani U, Terman JR. The semaphorins. *Genome Biol*. 2006; 7:211. [PubMed: 16584533]
87. Gu C, et al. Semaphorin 3E and plexin-D1 control vascular pattern independently of neuropilins. *Science*. 2005; 307:265–268. [PubMed: 15550623]
88. Gitler AD, Lu MM, Epstein JA. PlexinD1 and semaphorin signaling are required in endothelial cells for cardiovascular development. *Dev Cell*. 2004; 7:107–116. [PubMed: 15239958]
89. Torres-Vazquez J, et al. Semaphorin-plexin signaling guides patterning of the developing vasculature. *Dev Cell*. 2004; 7:117–123. [PubMed: 15239959]
90. Kim J, Oh WJ, Gaiano N, Yoshida Y, Gu C. Semaphorin 3E–Plexin-D1 signaling regulates VEGF function in developmental angiogenesis via a feedback mechanism. *Genes Dev*. 2011; 25:1399–1411. [PubMed: 21724832]
91. Neufeld G, et al. The neuropilins: multifunctional semaphorin and VEGF receptors that modulate axon guidance and angiogenesis. *Trends Cardiovasc Med*. 2002; 12:13–19. [PubMed: 11796239]
92. Pan Q, et al. Blocking neuropilin-1 function has an additive effect with anti-VEGF to inhibit tumor growth. *Cancer Cell*. 2007; 11:53–67. [PubMed: 17222790]
93. Gerhardt H, et al. Neuropilin-1 is required for endothelial tip cell guidance in the developing central nervous system. *Dev Dyn*. 2004; 231:503–509. [PubMed: 15376331]
94. Kawasaki T, et al. A requirement for neuropilin-1 in embryonic vessel formation. *Development*. 1999; 126:4895–4902. [PubMed: 10518505]

95. Kuijper S, Turner CJ, Adams RH. Regulation of angiogenesis by Eph–ephrin interactions. *Trends Cardiovasc Med*. 2007; 17:145–151. [PubMed: 17574121]
96. Sawamiphak S, et al. Ephrin-B2 regulates VEGFR2 function in developmental and tumour angiogenesis. *Nature*. 2010; 465:487–491. [PubMed: 20445540]
97. Wang Y, et al. Ephrin-B2 controls VEGF-induced angiogenesis and lymphangiogenesis. *Nature*. 2010; 465:483–486. References 96 and 97 show that ephrin B2 unexpectedly positively regulates angiogenesis upon its interaction with VEGFR2 and VEGFR3, which promotes receptor internalisation and signalling from intracellular endosomal compartments. [PubMed: 20445537]
98. Kim YH, et al. Artery and vein size is balanced by Notch and ephrin B2/EphB4 during angiogenesis. *Development*. 2008; 135:3755–3764. [PubMed: 18952909]
99. Calvo CF, et al. Vascular endothelial growth factor receptor 3 directly regulates murine neurogenesis. *Genes Dev*. 2011; 25:831–844. [PubMed: 21498572]
100. Wang CH, et al. Zebrafish *Thsd7a* is a neural protein required for angiogenic patterning during development. *Dev Dyn*. 2011; 240:1412–1421. [PubMed: 21520329]
101. Small EM, Olson EN. Pervasive roles of microRNAs in cardiovascular biology. *Nature*. 2011; 469:336–342. [PubMed: 21248840]
102. Fish JE, et al. miR-126 regulates angiogenic signaling and vascular integrity. *Dev Cell*. 2008; 15:272–284. [PubMed: 18694566]
103. Kuhnert F, et al. Attribution of vascular phenotypes of the murine *Egfl7* locus to the microRNA *miR-126*. *Development*. 2008; 135:3989–3993. [PubMed: 18987025]
104. Wang S, et al. The endothelial-specific microRNA miR-126 governs vascular integrity and angiogenesis. *Dev Cell*. 2008; 15:261–271. [PubMed: 18694565]
105. Nicoli S, et al. MicroRNA-mediated integration of haemodynamics and Vegf signalling during angiogenesis. *Nature*. 2010; 464:1196–1200. Provides evidence that blood flow positively influences angiogenesis by promoting the Klf2a-mediated expression of a pro-angiogenic miRNA, miR-126. [PubMed: 20364122]
106. Anand S, et al. MicroRNA-132-mediated loss of p120RasGAP activates the endothelium to facilitate pathological angiogenesis. *Nature Med*. 2010; 16:909–914. [PubMed: 20676106]
107. Bonauer A, et al. MicroRNA-92a controls angiogenesis and functional recovery of ischemic tissues in mice. *Science*. 2009; 324:1710–1713. [PubMed: 19460962]
108. Lampugnani MG, Orsenigo F, Gagliani MC, Tacchetti C, Dejana E. Vascular endothelial cadherin controls VEGFR-2 internalization and signaling from intracellular compartments. *J Cell Biol*. 2006; 174:593–604. [PubMed: 16893970]
109. Lanahan AA, et al. VEGF receptor 2 endocytic trafficking regulates arterial morphogenesis. *Dev Cell*. 2010; 18:713–724. [PubMed: 20434959]
110. Reynolds AR, et al. Stimulation of tumor growth and angiogenesis by low concentrations of RGD-mimetic integrin inhibitors. *Nature Med*. 2009; 15:392–400. [PubMed: 19305413]
111. Wu C, et al. Rab13-dependent trafficking of RhoA is required for directional migration and angiogenesis. *J Biol Chem*. 2011; 286:23511–23520. [PubMed: 21543326]
112. Lindahl P, Johansson BR, Leveen P, Betsholtz C. Pericyte loss and microaneurysm formation in PDGF-B-deficient mice. *Science*. 1997; 277:242–245. [PubMed: 9211853]
113. Lindblom P, et al. Endothelial PDGF-B retention is required for proper investment of pericytes in the microvessel wall. *Genes Dev*. 2003; 17:1835–1840. [PubMed: 12897053]
114. Liu Y, et al. Edg-1, the G protein-coupled receptor for sphingosine-1-phosphate, is essential for vascular maturation. *J Clin Invest*. 2000; 106:951–961. [PubMed: 11032855]
115. Allende ML, Yamashita T, Proia RL. G-protein-coupled receptor S1P1 acts within endothelial cells to regulate vascular maturation. *Blood*. 2003; 102:3665–3667. [PubMed: 12869509]
116. Paik JH, et al. Sphingosine 1-phosphate receptor regulation of N-cadherin mediates vascular stabilization. *Genes Dev*. 2004; 18:2392–2403. [PubMed: 15371328]
117. Suri C, et al. Requisite role of angiopoietin-1, a ligand for the TIE2 receptor, during embryonic angiogenesis. *Cell*. 1996; 87:1171–1180. [PubMed: 8980224]
118. Jeansson M, et al. Angiopoietin-1 is essential in mouse vasculature during development and in response to injury. *J Clin Invest*. 2011; 121:2278–2289. [PubMed: 21606590]

119. Foo SS, et al. Ephrin-B2 controls cell motility and adhesion during blood-vessel-wall assembly. *Cell*. 2006; 124:161–173. [PubMed: 16413489]
120. Chen S, Lechleider RJ. Transforming growth factor- $\beta$ -induced differentiation of smooth muscle from a neural crest stem cell line. *Circ Res*. 2004; 94:1195–1202. [PubMed: 15059931]
121. Domenga V, et al. Notch3 is required for arterial identity and maturation of vascular smooth muscle cells. *Genes Dev*. 2004; 18:2730–2735. [PubMed: 15545631]
122. Maisonpierre PC, et al. Angiopoietin-2, a natural antagonist for Tie2 that disrupts *in vivo* angiogenesis. *Science*. 1997; 277:55–60. [PubMed: 9204896]
123. Red-Horse K, Ueno H, Weissman IL, Krasnow MA. Coronary arteries form by developmental reprogramming of venous cells. *Nature*. 2010; 464:549–553. [PubMed: 20336138]
124. Lee S, et al. Autocrine VEGF signaling is required for vascular homeostasis. *Cell*. 2007; 130:691–703. [PubMed: 17719546]
125. Saharinen P, et al. Angiopoietins assemble distinct Tie2 signalling complexes in endothelial cell–cell and cell–matrix contacts. *Nature Cell Biol*. 2008; 10:527–537. [PubMed: 18425119]



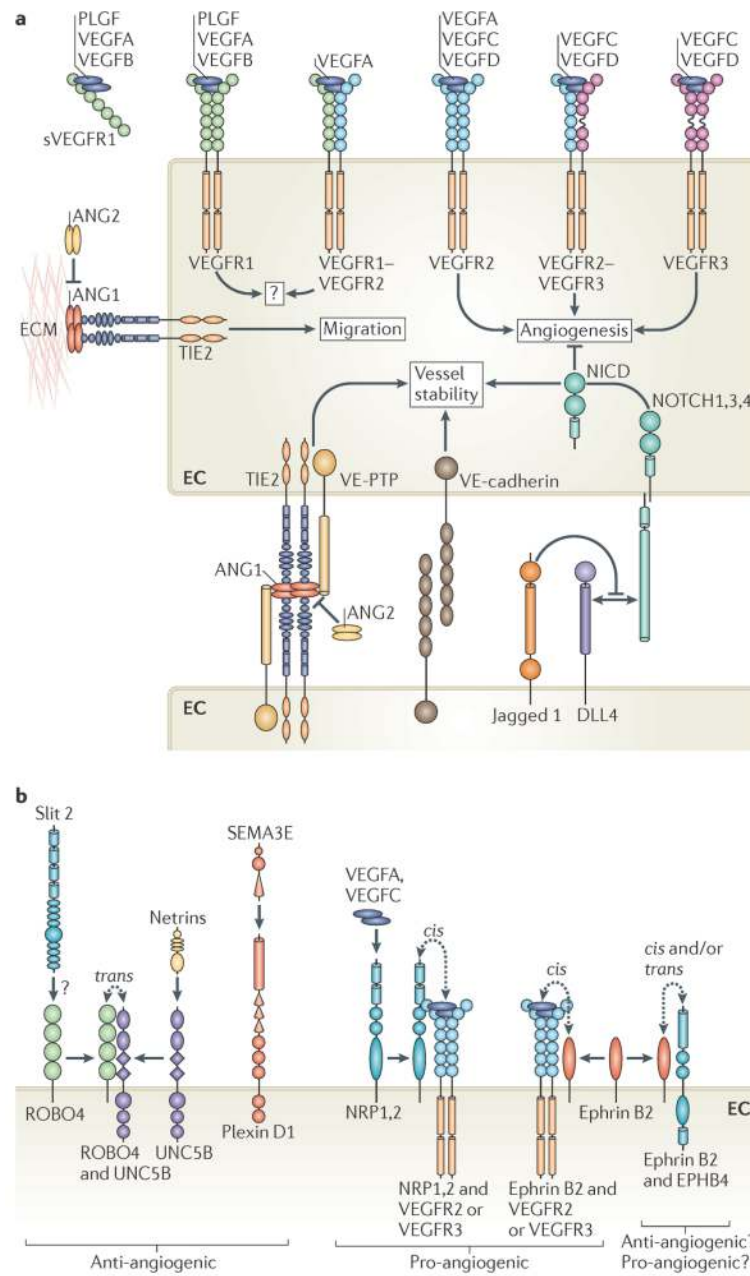
**Figure 1. Development of a functional vasculature from endothelial progenitor cells**  
 Endothelial progenitors (angioblasts) differentiate from mesodermal cells during early vertebrate development. Once formed, angioblasts may acquire arterial (red) or venous (blue) fates and coalesce to generate the first embryonic blood vessels, the dorsal aorta and cardinal vein. In zebrafish, the coordinated sorting and segregation of arterial and venous angioblasts ensures the assembly of distinct dorsal aorta and cardinal vein vessels. Angioblasts also aggregate to form blood islands, which fuse and remodel in response to haemodynamic stimuli or inherent genetic factors to generate a primitive interlaced network of arterial and venous plexi. Following their vasculogenic assembly, angiogenic remodelling of the dorsal aorta, cardinal vein and vascular plexi creates a complex hierarchical network of arteries, arterioles, capillary beds, venules and veins. Subsequent recruitment of mural cells (pericytes and vascular smooth-muscle cells (vSMCs)) stabilizes nascent vessels and promotes vessel maturation. In addition, the sprouting of lymphatic endothelial cells from venous vessels (lymphangiogenesis) seeds the lymphatic system (indicated by a dotted arrow). Moreover, the emergence of haematopoietic stem cells from arterial 'haemogenic' endothelium gives rise to all myeloid and lymphoid blood cell lineages. Vessel diversity is further augmented by tissue-specific specializations that alter key properties, such as permeability, or modify endothelial cells to generate vascular networks with new molecular signatures<sup>3,123</sup>.



**Figure 2. Cellular mechanisms of angiogenic sprouting**

**a** | In the absence of pro-angiogenic stimuli, endothelial cells (ECs) are retained in a quiescent state. In addition, EC homeostasis is maintained by low-level autocrine vascular endothelial growth factor A (VEGFA) signalling<sup>124</sup>. **b** | During angiogenesis, high levels of exogenous pro-angiogenic factors (such as VEGFA and VEGFC) and of VEGF receptor 2 (VEGFR2) or VEGFR3 signalling select ‘tip cells’ (TCs; blue) for sprouting. By contrast, Delta-like 4–Notch signalling laterally inhibits TC fate in adjacent ECs. TC sprouting behaviour is facilitated by the vascular endothelial cadherin-mediated loosening of EC–EC junctions, matrix metalloproteinase-mediated degradation of extracellular matrix (ECM) and the detachment of pericytes (purple). **c** | Invasive TC sprouting is guided by gradients of pro-angiogenic growth factors and various environmental guidance cues, such as semaphorins and ephrins. During sprout elongation, TCs are trailed by endothelial ‘stalk cells’ (SCs; yellow), which maintain connectivity with parental vessels and initiate partitioning-defective 3 (PAR3)-mediated vascular lumen morphogenesis. Expression of VEGFR1 and activation of Notch, Roundabout homologue 4 and WNT signalling in SCs repress TC behaviour to maintain the hierarchical organization of sprouting ECs. However, TCs and SCs may also shuffle and exchange positions during angiogenic sprouting. Upon contact with other vessels, TC behaviour is repressed and vessels fuse by the process of anastomosis, which is assisted by associated myeloid cells. **d** | Nascent perfused vessels are subsequently stabilized by the platelet-derived growth factor B-mediated recruitment of supporting pericytes, the

strengthening of EC–EC contacts and the deposition of an ECM to re-establish a quiescent endothelial phenotype. ANG2, angiopoietin 2.

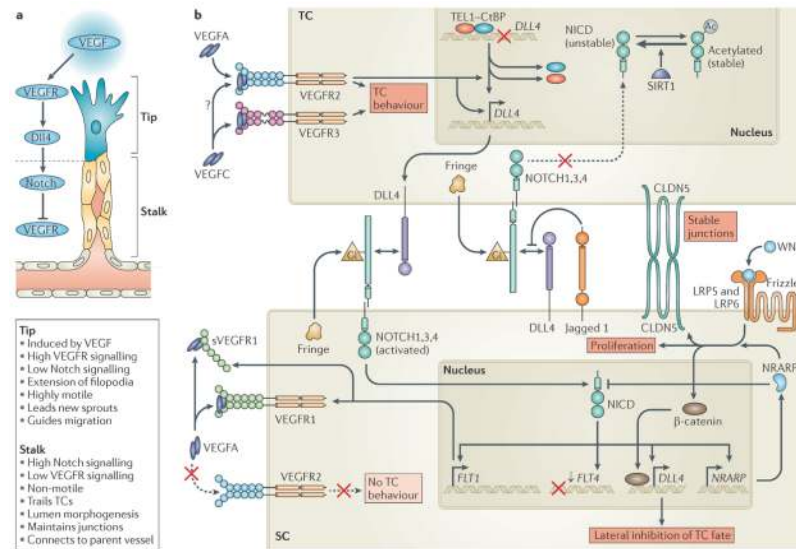


**Figure 3. Key signalling pathways that control angiogenesis**

**a** | General signalling pathways that control endothelial cell (EC) behaviour. Mammalian vascular endothelial growth factors (VEGFs) bind homodimers and heterodimers of three VEGF receptors (VEGFRs). Signalling via VEGFR2, VEGFR3 or VEGFR2 VEGFR3 heterodimers is pro-angiogenic. Proteolytic processing of VEGFC and VEGFD is required to permit their interaction with VEGFR2. VEGFA binding to VEGFR1 and the secreted VEGFR1 extracellular domain (soluble VEGFR1 (sVEGFR1)) acts as a sink for VEGFA that limits its availability to activate VEGFR2. The interaction of TIE2 receptor with matrix-associated angiopoietin 1 (ANG1) at EC–extracellular matrix (ECM) junctions induces migration<sup>125</sup>. By contrast, at EC–EC junctions ANG1–TIE2 interactions promote quiescence upon *trans*-complex formation with TIE2 on adjacent cells. These complexes

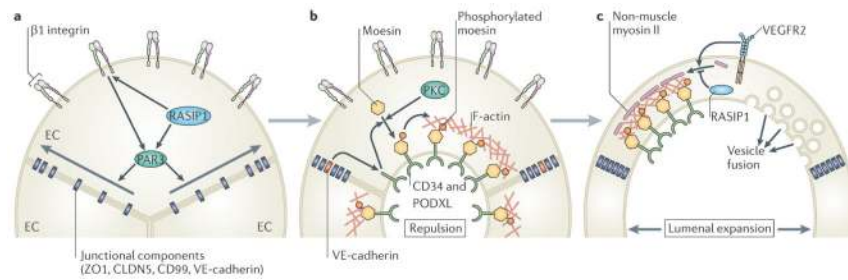


include vascular endothelial protein Tyr phosphatase (VE-PTP; also known as PTPRB) and activate distinct signalling pathways from those at cell–matrix contacts<sup>125</sup>. ANG2 antagonizes ANG1 activity on TIE2 to destabilize vessels and aid angiogenic remodelling. Homophilic VE-cadherin interactions maintain EC–EC junctions. Delta-like 4 (DLL4)-mediated activation of Notch receptors represses angiogenic cell behaviour and promotes vessel stability upon the proteolytic release of the Notch intracellular domain (NICD). In certain contexts, Jagged 1 competes with DLL4 for Notch to decrease DLL4–Notch-mediated signalling. **b** | Known axon guidance receptors expressed in ECs. Roundabout homologue 4 (ROBO4)–uncoordinated 5 homologue B (UNC5B) interactions promote UNC5B-mediated inhibition of VEGFR signalling, block angiogenesis and maintain vessel integrity. Activation of ROBO4 by Slit 2 may also block VEGFR signalling but is controversial. Activation of UNC5B by netrins may also disrupt angiogenesis. Secreted class III semaphorins (such as semaphorin 3E (SEMA3E)) promote EC repulsion to perturb angiogenesis upon binding their receptor, plexin D1. By contrast, neuropilin 1 (NRP1) or NRP2 augment angiogenic EC behaviour on binding VEGFA or VEGFC and/or on interaction with VEGFR2 or VEGFR3. Activation of ephrin receptor B4 (EPHB4) upon interaction with its membrane-associated ligand, ephrin B2, may promote EC–EC repulsion or attraction in various cellular contexts and is essential for angiogenesis. Reverse EPHB4–ephrin B2 signalling may also play key parts in vascular development. Importantly, association of ephrin B2 with VEGFR2 or VEGFR3 promotes membrane internalization of the VEGFR and enhances angiogenic signalling. PLGF, placental growth factor.



**Figure 4. Molecular mechanisms of endothelial tip cell selection**

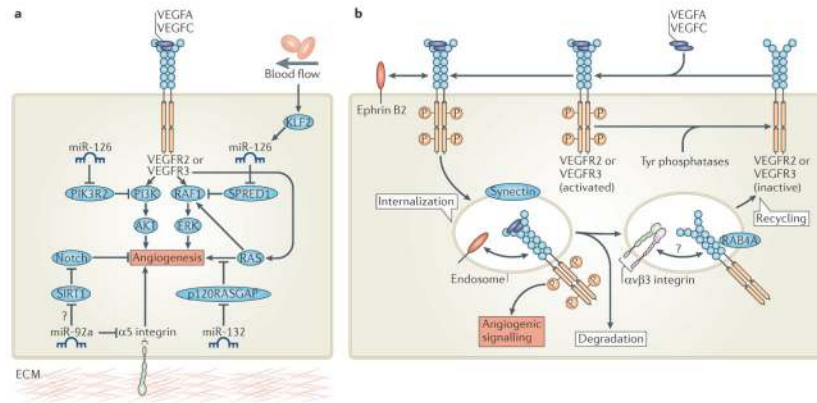
**a** | Sprouting endothelial cells are hierarchically organized into leading ‘tip cells’ (TCs) and trailing ‘stalk cells’ (SCs) that exhibit very distinct and specialized cell behaviours. TC formation is induced by vascular endothelial growth factor (VEGF) signalling, whereas Delta-like 4 (DLL4)–Notch signalling represses VEGF receptor (VEGFR) signalling and TC fate in SCs. **b** | VEGFA and VEGFC signalling via VEGFR2 and VEGFR3 induce the invasive and motile TC behaviour that drives angiogenesis. VEGFR2 activation induces *DLL4* expression in TCs, which activates Notch on adjacent SCs. VEGF-mediated disruption of a repressive translocation ETS leukaemia (TEL) and carboxy-terminal-binding protein (CtBP) complex that binds the *DLL4* promoter may partially account for the ability of VEGF to induce *DLL4* expression. Notch signalling in SCs downregulates the expression of VEGFR3 (encoded by *FLT4*) and upregulates the expression of VEGFR1 (encoded by *FLT1*) and soluble VEGFR1 (sVEGFR1), which represses VEGFR2 function and blocks TC behaviour. Notch activation also induces *DLL4* expression in SCs to propagate the *DLL4* Notch-mediated lateral inhibition of VEGFR2 and VEGFR3 along developing vessels. Notch-induced Notch-regulated ankyrin repeat-containing protein (NRARP) expression enhances WNT signalling in SCs, which maintains EC–EC junctions, promotes proliferation and may augment *DLL4* expression via  $\beta$ -catenin. NRARP also promotes feedback inhibition of Notch signalling. Notch signalling in TCs is blocked by Jagged 1, which is expressed in SCs and impedes *DLL4*–Notch interactions on TCs when Notch is glycosylated (GI) by Fringe family glycosyltransferases in the Golgi apparatus. Deacetylation of the Notch intracellular domain (NICD) by sirtuin 1 (SIRT1) may also negatively influence TC Notch signalling. CLDN5, claudin 5; LRP, low-density lipoprotein receptor-related protein.



**Figure 5. Molecular mechanisms of lumen morphogenesis**

**a** | Prior to lumen morphogenesis, blood vessels consist of coalesced cords of endothelial cells (ECs) that lack apicobasal polarity.  $\beta 1$  integrin–matrix interactions and RAS interacting protein 1 (RASIP1) establish EC apicobasal polarity in a partitioning defective 3 (PAR3)-mediated manner to promote the lateral redistribution of junctional components from the apical surface to the periphery of EC–EC contacts. **b** | Once EC apicobasal polarity is established, lumen formation is triggered, at least in part, by vascular endothelial cadherin (VE-cadherin)-mediated redistribution of CD34 and podocalyxin (PODXL) to the apical surface.  $\beta 1$  integrin may also promote the redistribution of PODXL to EC apical membranes. Subsequently, protein kinase C (PKC)-mediated phosphorylation and redistribution of moesin to PODXL-enriched apical EC membranes promotes the deposition of filamentous actin (F-actin). Furthermore, PODXL may initiate lumen formation by inducing the electrostatic repulsion of EC–EC apical surfaces. **c** | Lumenal expansion proceeds by a variety of mechanisms. For example, vascular endothelial growth factor receptor 2 (VEGFR2) signalling and activation of RHO-associated coiled-coil kinase (ROCK) may promote the association of non-muscle myosin II with apical F-actin to drive actomyosin-mediated cell shape changes. By contrast, RASIP1 may repress actomyosin contractility to fine-tune this response. Alternatively, or more likely in addition, directed exocytic vacuole trafficking and fusion of these vacuoles with the apical surface may also drive lumen expansion.

ZO1, zonula occludens 1; CLDN5, claudin 5.



**Figure 6. Fine-tuning angiogenic signals**

**a** | Post-transcriptional modification of key angiogenic signalling pathways by microRNAs (miRNAs) modulates angiogenesis. Expression of miR-126 de-represses phosphoinositide 3-kinase (PI3K) and/or RAF1 signalling to promote vascular endothelial growth factor (VEGF)-induced angiogenesis. Blood flow also influences VEGF signalling by promoting Krüppel-like factor 2 (KLF2)-induced expression of miR-126 during angiogenic sprouting. Furthermore, endothelial cell expression of miR-132 enhances angiogenic signalling controlled by RAS small GTPases by reducing the expression of RAS-specific GTPase-activating protein p120 (p120RASGAP), a negative regulator of RAS. By contrast, miR-92a blocks angiogenesis by repressing pro-angiogenic  $\alpha 5$  integrin protein expression. miR-92a may also activate Notch signalling to block VEGF-induced angiogenesis by reducing the expression of sirtuin 1 (SIRT1), which deacetylates the Notch intracellular domain to destabilize it. **b** | Post-translational modulation of VEGF receptor 2 (VEGFR2) or VEGFR3 membrane trafficking determines the duration and magnitude of VEGFA and VEGFC signalling. Synectin and ephrin B2-mediated membrane internalization protects phosphorylated active VEGFR from inactivation by cell-surface Tyr phosphatases. Furthermore, transport of VEGFR to intracellular endocytic compartments enhances pro-angiogenic signalling. Internalized VEGFR is subsequently either degraded or recycled to the cell surface for another round of activation. Hence,  $\alpha v \beta 3$  integrin and RAB4A-mediated recycling of VEGFR stabilizes receptor protein expression and enhances VEGF signalling. PIK3R2, PI3K regulatory subunit 2; SPRED1, Sprouty-related EVH1 domain-containing 1; ERK, extracellular signal-regulated kinase.