

## Molecular diagnosis in mitochondrial complex I deficiency using exome sequencing

— [Source link](#) 

Tobias B. Haack, Birgit Haberberger, Eva-Maria Frisch, Thomas Wieland ...+24 more authors

**Institutions:** Technische Universität München, Charité, Goethe University Frankfurt, University of Bonn ...+5 more institutions

**Published on:** 01 Apr 2012 - Journal of Medical Genetics (BMJ Publishing Group Ltd)

**Topics:** Exome sequencing, Exome, Genetic heterogeneity, DNA sequencing and Molecular genetics

Related papers:

- [Molecular diagnosis of infantile mitochondrial disease with targeted next-generation sequencing](#)
- [Exome sequencing identifies ACAD9 mutations as a cause of complex I deficiency.](#)
- [A Mitochondrial Protein Compendium Elucidates Complex I Disease Biology](#)
- [High-throughput, pooled sequencing identifies mutations in NUBPL and FOXRED1 in human complex I deficiency](#)
- [Riboflavin-responsive oxidative phosphorylation complex I deficiency caused by defective ACAD9: new function for an old gene.](#)

Share this paper:    

View more about this paper here: <https://typeset.io/papers/molecular-diagnosis-in-mitochondrial-complex-i-deficiency-e1chx5x89q>

## ORIGINAL ARTICLE

# Molecular diagnosis in mitochondrial complex I deficiency using exome sequencing

Tobias B Haack,<sup>1,2</sup> Birgit Haberberger,<sup>1,2</sup> Eva-Maria Frisch,<sup>3</sup> Thomas Wieland,<sup>1</sup> Arcangela Iuso,<sup>1</sup> Matteo Gorza,<sup>4</sup> Valentina Strecker,<sup>5</sup> Elisabeth Graf,<sup>1</sup> Johannes A Mayr,<sup>6</sup> Ulrike Herberg,<sup>7</sup> Julia B Hennermann,<sup>8</sup> Thomas Klopstock,<sup>9</sup> Klaus A Kuhn,<sup>13</sup> Uwe Ahting,<sup>10</sup> Wolfgang Sperl,<sup>6</sup> Ekkehard Wilichowski,<sup>11</sup> Georg F Hoffmann,<sup>12</sup> Marketa Tesarova,<sup>14</sup> Hana Hansikova,<sup>14</sup> Jiri Zeman,<sup>14</sup> Barbara Plecko,<sup>15</sup> Massimo Zeviani,<sup>16</sup> Ilka Wittig,<sup>5</sup> Tim M Strom,<sup>1,2</sup> Markus Schuelke,<sup>3</sup> Peter Freisinger,<sup>17</sup> Thomas Meitinger,<sup>1,2,18</sup> Holger Prokisch<sup>1,2</sup>

► Additional materials are published online only. To view these files please visit the journal online (<http://jmg.bmj.com/content/49/4.toc>).

For numbered affiliations see end of article.

## Correspondence to

Dr Holger Prokisch, Institute of Human Genetics, Technische Universität München, Klinikum Rechts der Isar, Trogerstr. 32, 81675 Munich, Germany; [prokisch@helmholtz-muenchen.de](mailto:prokisch@helmholtz-muenchen.de)

Received 22 February 2012

Revised 2 March 2012

Accepted 3 March 2012

## ABSTRACT

**Background** Next generation sequencing has become the core technology for gene discovery in rare inherited disorders. However, the interpretation of the numerous sequence variants identified remains challenging. We assessed the application of exome sequencing for diagnostics in complex I deficiency, a disease with vast genetic heterogeneity.

**Methods** Ten unrelated individuals with complex I deficiency were selected for exome sequencing and sequential bioinformatic filtering. Cellular rescue experiments were performed to verify pathogenicity of novel disease alleles.

**Results** The first filter criterion was 'Presence of known pathogenic complex I deficiency variants'. This revealed homozygous mutations in *NDUFS3* and *ACAD9* in two individuals. A second criterion was 'Presence of two novel potentially pathogenic variants in a structural gene of complex I', which discovered rare variants in *NDUFS8* in two unrelated individuals and in *NDUFB3* in a third. Expression of wild-type cDNA in mutant cell lines rescued complex I activity and assembly, thus providing a functional validation of their pathogenicity. Using the third criterion 'Presence of two potentially pathogenic variants in a gene encoding a mitochondrial protein', loss-of-function mutations in *MTFMT* were discovered in two patients. In three patients the molecular genetic correlate remained unclear and follow-up analysis is ongoing.

**Conclusion** Appropriate in silico filtering of exome sequencing data, coupled with functional validation of new disease alleles, is effective in rapidly identifying disease-causative variants in known and new complex I associated disease genes.

## INTRODUCTION

The advent of next generation sequencing (NGS) technology facilitates the discovery of new disease genes and is expected to transform and complement routine clinical diagnosis. This is particularly true for conditions characterised by extensive genetic heterogeneity that hampers the prioritisation of obvious candidate genes and the identification of causative mutations.

Human mitochondrial respiratory chain complex I deficiency (MIM 252010) is the most common biochemical signature of mitochondrial disorders, a group of highly heterogeneous conditions characterised by faulty oxidative phosphorylation (OXPHOS), which collectively affects 1 in 5–10 000 live births.<sup>1</sup> Human complex I is a giant multiheteromeric structure of 45 subunits. Among these are eight Fe-S clusters and an FMN moiety, which transfer electrons from NADH to ubiquinone, using the free energy of this process to pump protons across the inner mitochondrial membrane. Seven subunits of complex I are encoded by mtDNA genes, the remaining ones by nuclear genes. Several additional gene products have been shown to contribute to its formation and activity, and further ones are hypothesised.<sup>2</sup> This structural and functional complexity can explain, at least in part, the extraordinary heterogeneity of complex I defects that may range from mild to severe. Complex I deficiency is known to be associated with a broad spectrum of clinical presentations, affecting single or multiple organs at any time in life.<sup>3</sup> Obvious genotype–phenotype correlations are missing, making inference from the biochemical or clinical presentation on the gene involved difficult or impossible.<sup>4</sup> Complex I deficiency is caused by a large set of disease genes, most of which are still unknown. In fact, mutations associated with complex I deficiency have been reported in 21 complex I subunits encoded by the seven mtDNA genes, and by 17 nuclear genes and in 10 accessory factors essential for complex I assembly and stability. However, these genes account for only half of the biochemically defined cases of complex I deficiency.<sup>5,6</sup> Taken together, these considerations make complex I deficiency a paradigmatic disorder to validate NGS protocols for diagnostic purposes.

A major hurdle for NGS to become the standard approach in routine molecular screening is the difficulty to distinguish between causal mutations and thousands of DNA sequence variants present in each individual. In this context, a distinct advantage of the biochemically well defined OXPHOS disorders is the possibility to validate the pathogenicity of a given variant by integrating in silico

analysis with functional complementation in mutant cells (figure 1).

## PATIENTS, MATERIALS AND METHODS

### Patients

Informed written consent was obtained from all participants or their guardians, and the ethics committee of the Technical University of Munich approved the study. We evaluated 10 index patients with isolated complex I deficiency. This diagnosis was based on established diagnostic criteria<sup>7</sup> and disease manifestation was before the age of 3 years. Accordingly, seven patients (33027, 37796, 44409, 46072, 50845, 59029, 61606) had residual complex I activities of <25% of the mean of  $\geq 10$  healthy controls. Another three patients (33281, 33284, 33463) had residual complex I activities between 26% and 40% in muscle and fibroblasts. Complex II, III, and IV deficiencies were biochemically excluded in all patients and none of the patients had a molecular diagnosis before. Rare mtDNA variants had been excluded by Sanger sequencing of the entire mtDNA. The clinical presentation and biochemical findings of all patients and affected siblings are summarised in table 1. A detailed case report of patient 50845 with causative mutations identified in *NDUFB3* is provided in the supplementary data.

### Exome sequencing and variant filtering

Within the framework of the German network for rare diseases 'mitoNET' and the European E-Rare program 'GENOMIT' we established an exome sequencing and variant filtering pipeline for the molecular diagnosis of mitochondrial disorders. The exome of individual 33284 was sequenced as 54 bp paired-end runs using two lanes of a flowcell on a Genome Analyser IIX system (Illumina, San Diego, CA, USA) after in-solution enrichment of exonic sequences using the SureSelect Human All Exon 38 Mb kit (Agilent, Santa Clara, CA, USA). All other

samples were processed with the SureSelect Human All Exon 50 Mb kit (Agilent) and subsequently sequenced as 76 bp paired-end runs to an average 120 × coverage corresponding to 9–12 Gb of sequence data. Read alignment was performed with BWA (version 0.5.8 or 0.5.9) to the human genome assembly hg19. Single nucleotide variants and small insertions and deletions were detected with SAMtools (V.0.1.7). Since mitochondrial disorders are rare conditions, we excluded variants present with a frequency >0.4% in 879 control exomes. Assuming an autosomal recessive mode of inheritance, homozygous or compound heterozygous variants were searched for (table 2), yielding a median of 28 mutated genes per individual.

We then applied three sequential filters to identify the causal mutations: (1) a first filter for disease variants known to be associated with respiratory chain defects according to the Human Gene Mutation Database; (2) a second filter based on the identification of novel homozygous or compound heterozygous variants affecting genes encoding complex I subunits or known complex I assembly factors; and (3) a third filter for genes encoding known and predicted mitochondrial proteins listed in MitoP2.<sup>8</sup>

### Rescue experiments and investigation of complex I assembly

In order to prove the pathogenicity of newly identified missense alleles, we tested the biochemical rescue of complex I defective skin fibroblast cell lines from three index cases after lentiviral mediated expression of wild type (wt) cDNAs using the p.Lenti6.3/V5-TOPO vector system (Invitrogen).<sup>9</sup> Complex I activity was measured as rotenone-sensitive oxygen consumption rate using the Seahorse system (Bioscience, North Billerica, MA, USA).<sup>10</sup>

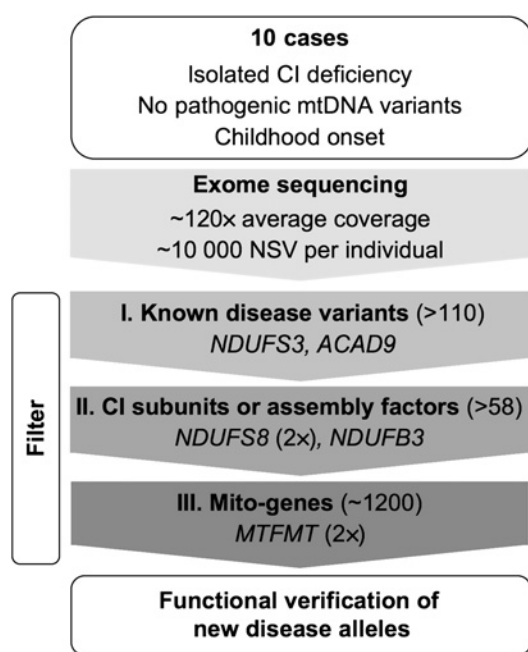
In the same samples, we also analysed the amount of fully assembled complex I by immuno-detection on electroblotted blue-native polyacrylamide gels using an NDUFA9 antibody as described by Nijtmans *et al.*<sup>11</sup>

In patient 50845 carrying the *NDUFB3* mutations, we additionally performed electrophoresis and in-gel quantification of fluorescent labelled proteins. Standard protocols for solubilisation and isolation of mitochondrial complexes<sup>12–13</sup> were modified to improve quantification of mitochondrial complexes from human fibroblasts.<sup>14</sup> Briefly, native proteins and protein complexes in homogenates from 10 mg fibroblasts (wet weight) were labelled with NHS-fluorescein (Thermo). Sediments containing mitochondrial membranes were resuspended in a buffer containing 50 mM NaCl, 50 mM imidazole, 2 mM aminohexanoic acid, and 1 mM EDTA, pH 7 and solubilised with 5  $\mu$ l digitonin (20%). Following 1-D BNE (blue native electrophoresis) and 2D SDS-PAGE, the 2D gels were scanned using the blue laser (488 nm) of a Typhoon 9400 scanner (GE Healthcare) to detect fluorescein labelled proteins in mitochondrial complexes. 2D gels were further stained with silver.<sup>15</sup> We used the DIA module (differential in-gel analysis) of the DeCyder 2D 7.0 software (GE Healthcare) for densitometric quantification of the fluorescence intensities in 2D gels. A few clearly visible signals of subunits from ATP synthase, complexes III and IV, the supercomplexes containing complex I, III, IV, and the porin complexes<sup>16</sup> were selected for quantification (circled).

## RESULTS

### Exome analysis

By combining unbiased exome analysis, sequential filtering, and functional investigation, we report here the identification of disease mutations in five genes in seven out of 10 index cases with isolated complex I deficiency. The first filter for known



**Figure 1** Schematic overview of the exome study in complex I deficiency. CI, complex I; NSV, non-synonymous variants. Mito-genes refers to genes coding for known and predicted (MitoP2 SVM score  $\geq 1.0$ ) mitochondrial proteins. Numbers in parentheses indicate estimated numbers for each category.

**Table 1** Clinical and biochemical features of index patients and affected siblings

Pedigree	Patient ID number	Affected gene	Clinical diagnosis	CI/CS		Other features
				Muscle	Fibroblasts	
MITO005	50845	<i>NDUFB3</i> comp het	ME, MM	ND	21%*/17%	Muscular hypotonia, developmental delay, lactic acidosis blood
MITO036	33463	<i>NDUFS3</i> hom	ME, MM	28%	36%	Developmental delay, muscular hypotonia, lactic acidosis, rapid progress of disease
MITO004	33284	<i>NDUFS8</i> comp het	ME, HCM	38%	52%	Muscular hypotonia, respiratory insufficiency
MITO021	33027	<i>NDUFS8</i> hom	LS	8%	54%	Muscular hypotonia, dyskinesia, epilepsy, lactic acidosis, MRI changes
MITO021	44559	<i>NDUFS8</i> hom	LS	ND	ND	Muscular hypotonia, lactic acidosis blood and CSF, MRI lesions basal ganglia and brainstem, hypertrophic cardiomyopathy
MITO053	59029	<i>ACAD9</i> hom	HCM	3%	ND	Muscular hypotonia, lactic acidosis, exercise intolerance
MITO053	59033	<i>ACAD9</i> hom	HCM	ND	ND	Muscular hypotonia, lactic acidosis, exercise intolerance
MITO053	59036	<i>ACAD9</i> hom	HCM	ND	ND	Muscular hypotonia, lactic acidosis, exercise intolerance
MITO049	44409	<i>MTFMT</i> comp het	LS	16%	ND	Vertical gaze palsy, partial optic atrophy, mental retardation, tetra-spastic, neurosensory bladder dysfunction
MITO061	61606	<i>MTFMT</i> hom.	LS	12%	ND	Developmental delay, muscular hypotonia, ataxia, MRI lesions basal ganglia, periventricular white matter, dorsal column
MITO028	33281	Unclear	ME	33%	49%	Developmental delay, muscular hypotonia, spastic tetraparesis, brain atrophy and demyelination,
MITO028	37800	Unclear	ME	ND	ND	Developmental delay, muscular hypotonia, spastic tetraparesis, seizures, brain atrophy, lactic acidosis
MITO038	46072	Unclear	ME, MM	4%	27%*	Lactic acidosis, developmental delay, muscular hypotonia, ataxia, coarctation of aorta
MITO023	37796	Unclear	ME	19%	67%	Developmental delay, failure to thrive, muscular hypotonia, seizures, lactic acidosis

\*Normalised to complex IV.

CI/CS, complex I activity normalised to citrate synthase in per cent of mean of >10 controls; comp het, compound heterozygous; CSF, cerebrospinal fluid; hom, homozygous; HCM, hypertrophic cardiomyopathy; LS, Leigh syndrome; ME, mitochondrial encephalopathy; MM, mitochondrial myopathy; ND, not determined.

complex I deficiency disease alleles identified homozygous mutations in two individuals, 33463 and 59029. We found previously reported missense mutations in *NDUFS3*<sup>17</sup> (MIM 603864) and *ACAD9*<sup>14</sup> (MIM 611126), coding for a structural complex I subunit and a complex I assembly factor, respectively (table 3).

The second filter prioritised novel homozygous or compound heterozygous variants affecting genes encoding complex I subunits or known complex I assembly factors. Novel variants in such genes were identified in exomes from individuals 33284 (c.229C>T, p.Arg77Trp; c.476C>A, p.Ala159Asp in *NDUFS8* (MIM 602141)), and 50845 (c.64T>C, p.Trp22Arg; c.208G>T, p.Gly70X in *NDUFB3* (MIM 603839)) (table 3). Mutations in

both genes have been previously shown to cause complex I deficiency.<sup>19–21</sup> In individual 33027 we identified variants in two genes encoding complex I subunits, *NDUFS7* (c.124C>T, p.Pro42Ser; c.514C>A, p.Arg172Ser (MIM 161825)) and *NDUFS8* (homozygous c.187G>C/ p.Glu63Gln). Since the equally affected sister (44559) only carried the homozygous *NDUFS8* mutation, we concluded that the *NDUFS7* variants were not responsible for complex I deficiency.

DNA of available relatives was then tested. Concordant with a postulated pathogenic role of the *NDUFS8* and *NDUFB3* variants, affected individuals were homozygous (MITO021) or compound heterozygous mutants (MITO004, MITO005) (table 3), while the parents were heterozygous carriers.

**Table 2** Variants identified in 10 individuals with complex I deficiency by exome sequencing

Patient ID number	33027	33281	33284	33463	37796	44409	46072	50845	59029	61606
NSV (frequency <0.4% in controls)	2523	450	231	393	261	349	299	246	527	323
Genes with ≥2 NSV	588	54	13	49	7	23	13	9	36	19
Known disease alleles	0	0	0	1 ( <i>NDUFS3</i> )	0	0	0	0	1 ( <i>ACAD9</i> )	0
Known complex I subunits and assembly factors	2 ( <i>NDUFS7/8</i> )	0	1 ( <i>NDUFS8</i> )	1	0	0	0	1 ( <i>NDUFB3</i> )	1	0
Mitochondrial localisation	14	5	1	3	0	1 ( <i>MTFMT</i> )	0	1	3	1 ( <i>MTFMT</i> )

Mitochondrial localisation refers to genes coding for known mitochondrial proteins and proteins with a MitoP2-score ≥1.0.

Bold indicates gene carrying the causal mutations.

NSV, missense, nonsense, stoploss, splice site disruption, insertions, deletions.



**Table 3** New genetic diagnoses for seven index cases with complex I deficiency

Pedigree	Patient ID number	Gene	Position (hg19)	dbSNP	Transcript	Variations Nucleotide	Amino acid	Supporting evidence
MIT005	50845	<i>NDUFB3</i>	chr2:201943669 chr2:201950249		NM_002491.2	c.64T>C het* c.208G>T het*	p.Trp22Arg p.Gly70X	Rescue, seg, conserv, truncation
MIT0036	33463	<i>NDUFS3</i>	chr11:47603988	rs104894270	NM_004551.2	c.532C>T hom	p.Arg199Trp	Known disease variant <sup>17</sup>
MIT0004	33284	<i>NDUFS8</i>	chr11:67800607 chr11:67803823		NM_002496.3	c.229C>T het* c.476C>A het*	p.Arg77Trp p.Ala159Asp	Rescue, seg, conserv
MIT0021	33027	<i>NDUFS8</i>	chr11:67800467		NM_002496.3	c.187G>C hom*	p.Glu63Gln	Rescue, seg, conserv
MIT0053	59029	<i>ACAD9</i>	chr3:128528894		NM_014049.4	c.1594C>T hom	p.Arg532Trp	Known disease variant <sup>14</sup>
MIT0049	44409	<i>MTFMT</i>	chr15:65295576 chr15:65313871		NM_139242.3	c.994C>T het* c.626C>T het	p.Arg332X p.Arg181SerfsX5 (p.Ser209Leu)	Truncation, seg, known disease variant, <sup>18</sup> skipping exon 4
MIT0061	61606	<i>MTFMT</i>	chr15:65313871		NM_139242.3	c.626C>T hom	p.Arg181SerfsX5 (p.Ser209Leu)	Known disease variant, <sup>18</sup> skipping exon 4

\*Previously undescribed DNA variant.

conserv, amino acid conserved in  $\geq 85\%$  of 39–42 vertebrate species; het, heterozygous; hom, homozygous; rescue, pathogenicity established by rescue of complex I defect in patient fibroblasts; seg, variant segregates with disease phenotype in family.

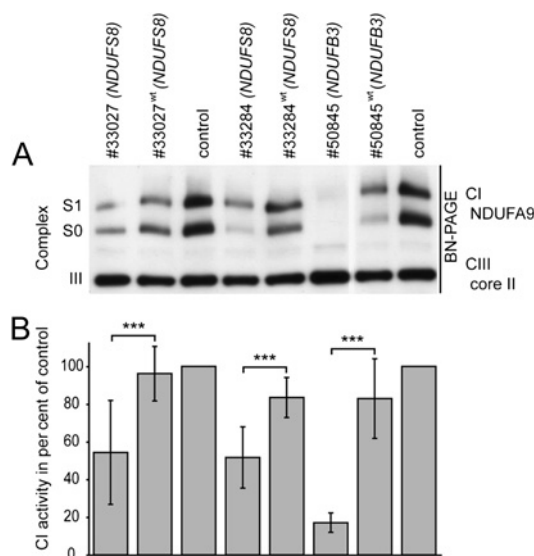
In the remaining samples we applied a third filter for genes encoding mitochondrial proteins listed in MitoP2 (n=1239).<sup>8</sup> This filter revealed that individual 44409 was compound heterozygous for a maternal mutation c.626C>T, p.Ser209Leu and a paternal mutation c.994C>T, p.Arg332X in *MTFMT* (MIM 611766), the gene encoding mitochondrial methionyl-tRNA-formyltransferase. *MTFMT* has so far not been associated with isolated complex I deficiency. However, the c.626C>T mutation was recently reported in a family with Leigh syndrome, impaired mitochondrial translation, and combined OXPHOS defects.<sup>18</sup> The c.626C>T, p.Ser209Leu mutation was also identified in the homozygous state in patient 52075, with both reportedly non-consanguineous parents being heterozygous carriers. In addition to the predicted p.Ser209Leu change, c.626C>T has been demonstrated to cause skipping of exon 4 resulting in a frameshift and premature stop codon, p.Arg181SerfsX5.<sup>18</sup> The second mutation found in individual 44409, c.994C>T, p.Arg332X, determines the synthesis of a truncated variant missing the highly conserved C-terminal portion of the protein. Thus, both mutations are shown or predicted to severely impair the function of *MTFMT*, supporting their pathogenic impact. In metazoan mitochondria, tRNAMet plays a role in both translation initiation as well as translation elongation. *MTFMT* formylates Met-tRNAMet to form fMet-tRNAMet. Formylated methionine-tRNA has high affinity to, and is preferentially recruited by, mitochondrial translation initiation factor (IF2mt) to the ribosomal P site for translation initiation.<sup>22</sup>

### Confirmation of the pathogenicity of *NDUFS8* and *NDUFB3* mutations

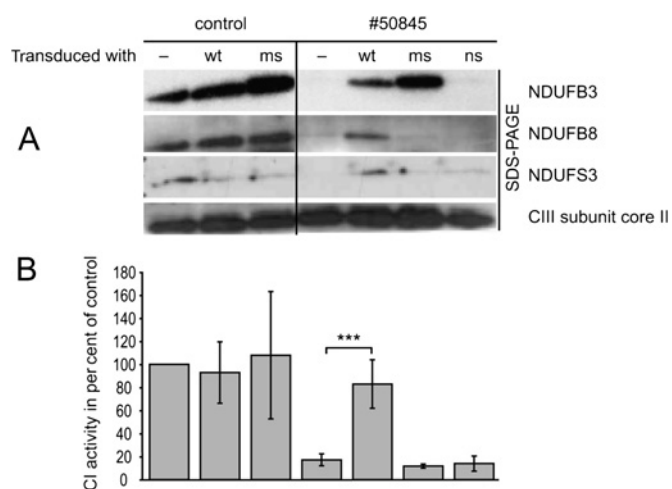
The newly identified disease segregating missense mutations in *NDUFS8* and *NDUFB3* affected amino acid residues conserved in >85% of at least 39 vertebrates. Nevertheless, their pathogenic role remained to be proven. To this aim, complementation experiments were performed followed by functional and protein level investigations. Expression of *NDUFS8*<sup>wt</sup> cDNA in fibroblasts of individuals 33284 and 33027, and *NDUFB3*<sup>wt</sup> in cells of patient 50845, led to a significant increase of complex I activity (figure 2). In the same samples, we also analysed the amount of fully assembled complex I by blue-native PAGE electrophoresis. The complex I content was consistently low in naïve cells, but increased significantly after expression of the corresponding wild type cDNA (figure 2).

Since expression of the *NDUFB3*<sup>wt</sup> cDNA re-established complex I dependent respiration to low normal levels, we

further tested the functional consequence of the identified variants in *NDUFB3*. The low complex I activity found in naïve cells of patient 50845 (17% of controls) remained unchanged after expression of *NDUFB3* cDNA carrying either the p.Trp22Arg or the p.Gly70X mutations (figure 3). In parallel we



**Figure 2** Introduction of *NDUFS8* and *NDUFB3* cDNA rescues both amount and activity of complex I in subject fibroblasts. The mutations in *NDUFS8* and *NDUFB3* result in decreased activity and amount of complex I. (A) 30  $\mu$ g digitonin-solubilised protein from control and patients 33027, 33284, 50845 fibroblasts were separated on a 4–16% acrylamide blue-native PAGE (Novex System, Invitrogen), transferred on PVDF membrane and immuno-decorated with antibodies specific for subunits NDUF9 of complex I and core II of complex III (1:1000; MitoSciences, Eugene, Oregon, USA). The analysis shows reduced amounts of subunit NDUF9 assembled in supercomplex 0 and 1 (S0, S1) in patient cell lines indicating a decreased amount of whole complex I. (B) Control and patient fibroblasts were seeded at 20 000 cells/well in 80  $\mu$ l DMEM, and incubated at 37°C, 5% CO<sub>2</sub> for 24 h. Oxygen consumption rates (OCR) were measured using the XF96 extracellular flux analyser (Seahorse bioscience). The OCR was determined with no additions, and after addition of oligomycin (1  $\mu$ M), carbonyl cyanide 4-(trifluoromethoxy) phenylhydrazone (FCCP, 0.4  $\mu$ M), and rotenone (5  $\mu$ M). Complex I activity was calculated as rotenone-sensitive OCR. Both amount and activity of complex I are rescued upon lentiviral-mediated stable expression of *NDUFS8*<sup>wt</sup> and *NDUFB3*<sup>wt</sup> cDNA. Data shown are mean of >10 biological replicates  $\pm$  SD. \*\*\*p<0.001.



**Figure 3** Expression of mitochondrial complex I subunits/complex I assembly. For Western-blot analysis 20  $\mu$ g of total cell protein from patient 50845 and control (Ct) skin cultured fibroblasts with ectopic expression of wild type (wt) form or mutated versions of *NDUFB3* cDNA were separated and immuno-decorated with antibodies specific for subunits of the respiratory chain complex I (NDUFB3, NDUFB8, NDUFS3) and subunit core II of complex III as control (MitoSciences 1:1000). Only expression of *NDUFB3*<sup>wt</sup> cDNA rescued complex I (A) and restored normal levels of several other complex I subunits (B). ms, *NDUFB3* cDNA carrying the c.64T>C missense variant; ns, *NDUFB3* cDNA with the c.208G>T stop mutation.

also showed that the *NDUFB3* protein was absent in naïve cells of patient 50845, but present in an amount comparable to controls after transduction with the *NDUFB3*<sup>wt</sup> cDNA. The same effect was also observed for the *NDUFB8* and *NDUFS3* subunits, indicating a general assembly/stability defect of complex I. The impaired complex I assembly or stability due to *NDUFB3* mutations was further confirmed by two-dimensional blue-native/SDS-PAGE separation and quantification of fluorescein-labelled mitochondrial complexes (figure 4). Comparing

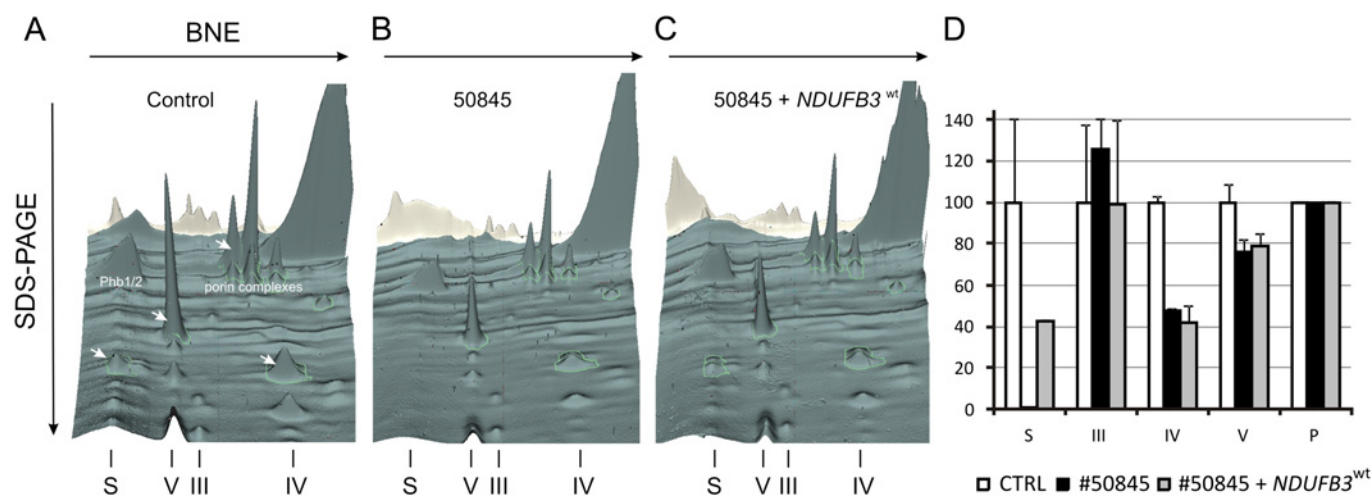
patient and control fibroblast, the signal intensity of complex III was of the same level. Complex IV and V of patient fibroblasts were reduced to 48% and 76%, respectively. The supercomplexes were not detectable in the patient. After the transduction of the patient cell line with the *NDUFB3*<sup>wt</sup>, the amounts of mitochondrial supercomplexes in patient fibroblasts increased up to 43% of the control. The amounts of complexes III, IV, and V did not change significantly.

Taken together, these results demonstrate the causal role of the mutations identified in *NDUFS8* and *NDUFB3*, thereby establishing *NDUFB3* as a gene responsible for human complex I deficiency.

## DISCUSSION

In this study, increasingly wider variant filters were applied on exome sequencing datasets, in combination with functional complementation, to identify causative mutations in single individuals with complex I deficiency. Filtering of rare variants was facilitated by the availability of a large set of control exomes (n=879), and pathogenic mutations were identified using mutation databases and in silico selection of genes encoding known or potential mitochondrial proteins. Importantly, when the list of genes was further processed against public databases—for example, exclusion of variants present in dbSNP with an average heterozygosity of more than 0.02—the number of candidate genes was reduced by just one or two entries. The only exception was a sub-Saharan African individual (33027), whose gene variation dataset matched poorly with our set that was largely composed of Europeans.

Our stepwise filtering approach successfully identified variants in *NDUFB3*. Complementation experiments established the pathogenicity of the mutations. Two previous large candidate-gene based screening studies failed to identify rare DNA variants in the *NDUFB3* gene among 103<sup>5</sup> and 152<sup>6</sup> patients with complex I deficiency. *NDUFB3* variants were found only recently in a screen of 42 patients<sup>19</sup> with infantile onset mitochondrial disorders, suggesting that mutations in *NDUFB3* are rare.



**Figure 4** Mito-Panorama: two dimensional (2D) BN/SDS-PAGE separation and quantification of fluorescein labelled mitochondrial complexes and supercomplexes. For analysis we used 10 mg of control fibroblasts (A) and patient 50845 fibroblasts before (B) and after (C) transduction with the *NDUFB3*<sup>wt</sup> construct. 2D gel area for 3D visualisation see supplementary figure 1. Assignment of complexes: S, supercomplexes composed of respiratory chain complexes I, III, and IV, V, complex V or ATP synthase; III, complex III or cytochrome c reductase; IV, complex IV or cytochrome c oxidase; Phb1/2, prohibitin complex and P for porin complexes, which were used for normalisation. D, densitometric quantification of mitochondrial complexes in 2D BN/SDS-PAGE from human fibroblasts, expressed as per cent of healthy control cells (two technical replicates). Arrows indicate fluorescent signals used for complex quantification that are visible in this 3D view.

## Diagnostics

**Table 4** Biochemical analysis of OXPHOS complexes in muscle biopsy in individuals 44409 and 61606 harbouring *MTFMT* mutations

OXPHOS complex	Activity in muscle (44409)		Activity in muscle (61606)	
	Patient	Reference range	Patient	Reference range
CI	<b>0.026</b>	0.07–0.25	<b>0.03</b>	0.14–0.35
CII	0.154	0.067–0.177	0.29	0.18–0.41
CIII	2.889	2.50–6.61	1.48	1.45–3.76
CIV	0.929	0.81–3.12	1.30	0.91–2.24
CII+CIII	0.416	0.30–0.97	0.50	0.30–0.67

Activity values of complexes I, II, III, IV (CI-IV) are given relative to citrate synthase (CS) in mUnit/mUnit CS.

Italics and bold indicate abnormal value.

NA, not assessed; ND, not detectable; OXPHOS, oxidative phosphorylation.

NDUFB3 is a single transmembrane domain subunit localised in the Q<sub>D</sub> module of the complex I membrane arm—being one of the many complex I accessory subunits<sup>23</sup> present in eukaryotes but not in bacterial complex I—which play a role in regulation, assembly and stability of the 14 subunit catalytic core of complex I, possibly protecting it from reactive oxygen species damage.<sup>24</sup> The ancillary but essential role of the complex I accessory subunits is confirmed by the identification of mutations resulting in impaired complex I activity in eight of them, including *NDUFB3* (present study).

Filtering for genes encoding mitochondrial proteins revealed loss-of-function mutations in *MTFMT* in two patients. The very same disease allele, c.626C>T, shared by patients 44409 and 61606 has also been reported in a patient presenting with a biochemical signature of combined respiratory chain deficiency.<sup>18</sup> *MTFMT* is a protein involved in mtDNA translation, which suggests that complex I deficiency can be a biochemical signature common to mutations of genes neither directly nor exclusively involved in complex I formation and activity. Giant size, structural complexity and intricate functional and structural interactions with other respiratory chain components and mitochondrial pathways are likely concurring to make complex I an exquisitely sensitive target in a wide spectrum of pathological conditions related to OXPHOS. For example, seven of the 13 mtDNA encoded proteins are complex I subunits, which could explain why mtDNA translation defects such as those associated with mutations in *MTFMT* can predominantly impair complex I activity (table 4).

These considerations have relevant implications for the diagnostic workup and for the elucidation of complex I functions and interactions.

Three individuals remained genetically undefined even after exome analysis, which may be due to: (1) insufficient gene coverage; (2) too stringent filtering; (3) mutations in non-coding regions or non-annotated exons; (4) heterozygous deletions of whole exons; or (5) non-autosomal recessive mode of inheritance. However, the third filter detected between 0–5 mitochondrial proteins. We are currently analysing the candidate genes in the unsolved cases. An interesting finding of our present study confirming a previous report<sup>14</sup> is the identification of unexpected disease genes associated with complex I pathophysiology: the first example has been the recently identified gene encoding *ACAD9*, a bona fide component of the  $\beta$  oxida-

tion of fatty acids, followed here by *MTFMT*. Along the same line, the individuals that escaped the mitochondrial filter are of special interest, since they offer the possibility to discover mutations in genes so far unlinked to mitochondrial function. This option, important for many patients, would have been missed in an approach focused on genes predicted to code for mitochondrial proteins only.<sup>19</sup>

In summary, this study demonstrates the efficacy of exome sequencing, coupled with prioritisation for mitochondrial proteins and experimental validation, to elucidate the genetic basis of a metabolic disorder with extreme locus heterogeneity. This integrated strategy can be further exploited to define fully the gene repertoire involved in complex I deficiency and in other mitochondrial disorders displaying a biochemical phenotype at the cellular level. In some cases, as for family MITO053 with mutations in *ACAD9*, the identification of the disease gene offers the pathophysiological basis for promising therapeutic interventions—for example, the high dose supplementation with riboflavin.<sup>14 25 26</sup>

#### Author affiliations

<sup>1</sup>Institute of Human Genetics, Helmholtz Zentrum München, Neuherberg, Germany

<sup>2</sup>Institute of Human Genetics, Technische Universität München, Munich, Germany

<sup>3</sup>Department of Neuropediatrics and NeuroCure Clinical Research Center, Charité

University Medical Center, Berlin, Germany

<sup>4</sup>Research Unit of Protein Science, Helmholtz Zentrum München, Neuherberg, Germany

<sup>5</sup>Molecular Bioenergetics, Medical School, Goethe-Universität Frankfurt, Frankfurt am Main, Germany

<sup>6</sup>Department of Pediatrics, Paracelsus Medical University Salzburg, Salzburg, Austria

<sup>7</sup>Department of Pediatric Cardiology, University of Bonn, Bonn, Germany

<sup>8</sup>Center for Metabolic Disorders, Charité University Medical Center, Berlin, Germany

<sup>9</sup>Department of Neurology, Friedrich-Baur-Institute, Ludwig-Maximilians-Universität München, Munich, Germany

<sup>10</sup>Department of Clinical Chemistry, Städtisches Klinikum München, Munich, Germany

<sup>11</sup>Department of Pediatrics and Pediatric Neurology, University Medicine Göttingen, Göttingen, Germany

<sup>12</sup>Department of Pediatrics, University Hospital, Heidelberg, Germany

<sup>13</sup>Institute of Medical Statistics and Epidemiology, Technische Universität München, Munich, Germany

<sup>14</sup>Department of Pediatrics and Adolescent Medicine, First Faculty of Medicine, Charles University in Prague and General University Hospital in Prague, Prague, Czech Republic

<sup>15</sup>Department of Neurology, Kinderspital Zürich, Zürich, Switzerland

<sup>16</sup>Unit of Molecular Neurogenetics Fondazione, Istituto Neurologico “Carlo Besta”, Milano, Italy

<sup>17</sup>Department of Pediatrics, Community Hospital Reutlingen, Germany

<sup>18</sup>Munich Heart Alliance, Munich, Germany

**Acknowledgements** We thank the patients and their families for their participation in the study, and R Hellinger, E Botz, and C Fischer for technical support.

**Contributors** HP and TM designed the study; TH, JAM, UH, TK, KAK WS, EW, GFH, MT, HH, JZ, BP, MZ, MS, and PF collected clinical data; TBH and HP analysed and interpreted the data; TH, TW, EG, TMS, and HP performed mutation screening; BH, EF, AI, MG, VS, JAM, UA, and IW conducted complementation and proteomic experiments; TH, MS, MZ, and HP wrote the manuscript; and all authors critically revised the manuscript and approved the version to be published.

#### Web resources

► <http://www.mitop.de>

► <http://omim.org>



**Funding** This work was supported by the Impulse and Networking Fund of the Helmholtz Association in the framework of the Helmholtz Alliance for Mental Health in an Ageing Society (HA-215), the German Federal Ministry of Education and Research (BMBF) funded Systems Biology of Metabotypes grant (SysMBo #0315494A), and the German Network for Mitochondrial Disorders (mitoNET #01GM0867 and 01GM0862). TM is supported by the BMBF funded German Center for Heart Research. TM and TMS were supported by the European Commission 7th Framework Program, Project N. 261123, GEUVADIS and the German Ministry for Education and Research (01GR0804-4). JAM was supported by the Wissenschaftspreis 2008 of the Austrian Paediatric Society (ÖGKJ), WS was supported by the Jubiläumsfonds of Oesterreichische Nationalbank (#12568) and JAM, FZ and WS were supported by the Vereinigung zur pädiatrischen Forschung und Fortbildung Salzburg. MT, HH, and JZ were supported by research project PRVOUK of the Charles University in Prague - First Faculty of Medicine (program MOLMED). VS was supported by the Bundesministerium für Bildung und Forschung (BMBF 01GM0863; mitoNET) and IW by the Deutsche Forschungsgemeinschaft, Sonderforschungsbereich 815, Project Z1 (Redox-Proteomics). MZ was supported by Telethon GPP 10005, Telethon GGP11011, Cariplo 2011-05-26.

**Competing interests** None.

**Patient consent** Obtained.

**Ethics approval** Ethics approval was provided by the ethics committee of the medical faculty of the Technical University of Munich. Written informed consent was obtained from all study participants or their guardians and the study was approved at the recruiting centre.

**Provenance and peer review** Not commissioned; externally peer reviewed.

## REFERENCES

1. Skladal D, Halliday J, Thorburn DR. Minimum birth prevalence of mitochondrial respiratory chain disorders in children. *Brain* 2003;**126**:1905–12.
2. Pagniez-Mammeri H, Rak M, Legrand A, Benit P, Rustin P, Slama A. Mitochondrial complex I deficiency of nuclear origin II. Non-structural genes. *Mol Genet Metab* 2012;**105**:173–9.
3. Munnich A, Rustin P. Clinical spectrum and diagnosis of mitochondrial disorders. *Am J Med Genet* 2001;**106**:4–17.
4. Distelmaier F, Koopman WJ, van den Heuvel LP, Rodenburg RJ, Mayatepek E, Willems PH, Smeitink JA. Mitochondrial complex I deficiency: from organelle dysfunction to clinical disease. *Brain* 2009;**132**:833–42.
5. Calvo SE, Tucker EJ, Compton AG, Kirby DM, Crawford G, Burt NP, Rivas M, Guiducci C, Bruno DL, Goldberger OA, Redman MC, Wiltshire E, Wilson CJ, Altshuler D, Gabriel SB, Daly MJ, Thorburn DR, Mootha VK. High-throughput, pooled sequencing identifies mutations in NUBPL and FOXRED1 in human complex I deficiency. *Nat Genet* 2010;**42**:851–8.
6. Haack TB, Madignier F, Herzer M, Lamantea E, Danhauser K, Invernizzi F, Koch J, Freitag M, Drost R, Hillier I, Haberberger B, Mayr JA, Ahting U, Tiranti V, Rotig A, Iuso A, Horvath R, Tesarova M, Baric I, Uziel G, Rolinski B, Sperl W, Meitinger T, Zeviani M, Freisinger P, Prokisch H. Mutation screening of 75 candidate genes in 152 complex I deficiency cases identifies pathogenic variants in 16 genes including NDUFB9. *J Med Genet* 2012;**49**:83–9.
7. Kirby DM, Crawford M, Cleary MA, Dahl HH, Dennett X, Thorburn DR. Respiratory chain complex I deficiency: an underdiagnosed energy generation disorder. *Neurology* 1999;**52**:1255–64.
8. Elstner M, Andreoli C, Ahting U, Tetko I, Klopstock T, Meitinger T, Prokisch H. MitoP2: an integrative tool for the analysis of the mitochondrial proteome. *Mol Biotechnol* 2008;**40**:306–15.
9. Danhauser K, Iuso A, Haack TB, Freisinger P, Brockmann K, Mayr JA, Meitinger T, Prokisch H. Cellular rescue-assay aids verification of causative DNA-variants in mitochondrial complex I deficiency. *Mol Genet Metab* 2011;**103**:161–6.
10. Moran M, Rivera H, Sanchez-Arago M, Blazquez A, Merinero B, Ugalde C, Arenas J, Cuezva JM, Martin MA. Mitochondrial bioenergetics and dynamics interplay in complex I-deficient fibroblasts. *Biochim Biophys Acta* 2010;**1802**:443–53.
11. Nijtmans LG, Henderson NS, Holt IJ. Blue Native electrophoresis to study mitochondrial and other protein complexes. *Methods* 2002;**26**:327–34.
12. Wittig I, Braun HP, Schagger H. Blue native PAGE. *Nat Protoc* 2006;**1**:418–28.
13. Schagger H. Tricine-SDS-PAGE. *Nat Protoc* 2006;**1**:16–22.
14. Haack TB, Danhauser K, Haberberger B, Hoser J, Strecker V, Boehm D, Uziel G, Lamantea E, Invernizzi F, Poulton J, Rolinski B, Iuso A, Biskup S, Schmidt T, Mewes HW, Wittig I, Meitinger T, Zeviani M, Prokisch H. Exome sequencing identifies ACAD9 mutations as a cause of complex I deficiency. *Nat Genet* 2010;**42**:1131–4.
15. Rais I, Karas M, Schagger H. Two-dimensional electrophoresis for the isolation of integral membrane proteins and mass spectrometric identification. *Proteomics* 2004;**4**:2567–71.
16. Huckabee DB, Jekabsons MB. Identification of Bax-voltage-dependent anion channel 1 complexes in digitonin-solubilized cerebellar granule neurons. *J Neurochem* 2011;**119**:1137–50.
17. Benit P, Slama A, Cartault F, Giurgea I, Chretien D, Lebon S, Marsac C, Munnich A, Rotig A, Rustin P. Mutant NDUFS3 subunit of mitochondrial complex I causes Leigh syndrome. *J Med Genet* 2004;**41**:14–17.
18. Tucker EJ, Hershman SG, Kohrer C, Belcher-Timme CA, Patel J, Goldberger OA, Christodoulou J, Silberstein JM, McKenzie M, Ryan MT, Compton AG, Jaffe JD, Carr SA, Calvo SE, Rajbhandary UL, Thorburn DR, Mootha VK. Mutations in MTFMT Underlie a Human Disorder of Formylation Causing Impaired Mitochondrial Translation. *Cell Metab* 2011;**14**:428–34.
19. Calvo SE, Compton AG, Hershman SG, Lim SC, Lieber DS, Tucker EJ, Laskowski A, Garone C, Liu S, Jaffe DB, Christodoulou J, Fletcher JM, Bruno DL, Goldblatt J, Dimauro S, Thorburn DR, Mootha VK. Molecular diagnosis of infantile mitochondrial disease with targeted next-generation sequencing. *Sci Transl Med* 2012;**4**:118ra10.
20. Loeffen J, Smeitink J, Triepels R, Smeets R, Schuelke M, Sengers R, Trijbels F, Hamel B, Mullaart R, van den Heuvel L. The first nuclear-encoded complex I mutation in a patient with Leigh syndrome. *Am J Hum Genet* 1998;**63**:1598–608.
21. Procaccio V, Wallace DC. Late-onset Leigh syndrome in a patient with mitochondrial complex I NDUFS8 mutations. *Neurology* 2004;**62**:1899–901.
22. Spencer AC, Spemulli LL. Interaction of mitochondrial initiation factor 2 with mitochondrial fMet-tRNA. *Nucleic Acids Res* 2004;**32**:5464–70.
23. Angerer H, Zwicker K, Wumaier Z, Sokolova L, Heide H, Steger M, Kaiser S, Nubel E, Brutschy B, Radermacher M, Brandt U, Zickermann V. A scaffold of accessory subunits links the peripheral arm and the distal proton-pumping module of mitochondrial complex I. *Biochem J* 2011;**437**:279–88.
24. Hirst J, Carroll J, Fearnley IM, Shannon RJ, Walker JE. The nuclear encoded subunits of complex I from bovine heart mitochondria. *Biochim Biophys Acta* 2003;**1604**:135–50.
25. Gerards M, van den Bosch BJ, Danhauser K, Serre V, van Weeghel M, Wanders RJ, Nicolaes GA, Sluiter VW, Schoonderwoerd K, Scholte HR, Prokisch H, Rotig A, de Coo IF, Smeets HJ. Riboflavin-responsive oxidative phosphorylation complex I deficiency caused by defective ACAD9: new function for an old gene. *Brain* 2010;**134**:210–19.
26. Saada A. The use of individual patient's fibroblasts in the search for personalized treatment of nuclear encoded OXPHOS diseases. *Mol Genet Metab* 2011;**104**:39–47.





## Molecular diagnosis in mitochondrial complex I deficiency using exome sequencing

Tobias B Haack, Birgit Haberberger, Eva-Maria Frisch, Thomas Wieland, Arcangela Iuso, Matteo Gorza, Valentina Strecker, Elisabeth Graf, Johannes A Mayr, Ulrike Herberg, Julia B Hennermann, Thomas Klopstock, Klaus A Kuhn, Uwe Ahting, Wolfgang Sperl, Ekkehard Wilichowski, Georg F Hoffmann, Marketa Tesarova, Hana Hansikova, Jiri Zeman, Barbara Plecko, Massimo Zeviani, Ilka Wittig, Tim M Strom, Markus Schuelke, Peter Freisinger, Thomas Meitinger and Holger Prokisch

*J Med Genet* 2012 49: 277-283  
doi: [10.1136/jmedgenet-2012-100846](https://doi.org/10.1136/jmedgenet-2012-100846)

---

Updated information and services can be found at:  
<http://jmg.bmj.com/content/49/4/277>

---

### Supplementary Material

Supplementary material can be found at:  
<http://jmg.bmj.com/content/suppl/2012/07/27/jmedgenet-2012-100846.DC1.html>

*These include:*

### References

This article cites 26 articles, 8 of which you can access for free at:  
<http://jmg.bmj.com/content/49/4/277#BIBL>

### Email alerting service

Receive free email alerts when new articles cite this article. Sign up in the box at the top right corner of the online article.

---

### Topic Collections

Articles on similar topics can be found in the following collections

[Molecular genetics](#) (1178)  
[Genetic screening / counselling](#) (804)

---

### Notes

---

To request permissions go to:  
<http://group.bmj.com/group/rights-licensing/permissions>

To order reprints go to:  
<http://journals.bmj.com/cgi/reprintform>

To subscribe to BMJ go to:  
<http://group.bmj.com/subscribe/>