

Molecular dynamics simulations of carbon nanotube porins in lipid bilayers†

Martin Vögele, ^a Jürgen Köfinger ^a and Gerhard Hummer ^{*ab}

Received 2nd February 2018, Accepted 11th April 2018

DOI: 10.1039/c8fd00011e

Artificial channels made of carbon nanotube (CNT) porins are promising candidates for applications in filtration and molecular delivery devices. Their symmetric shape and high mechanical, chemical, and thermal stability ensure well-defined transport properties, and at the same time make them ideal model systems for more complicated membrane protein pores. As the technology to produce and tune CNTs advances, simulations can aid in the design of customized membrane porins. Here we concentrate on CNTs embedded in lipid membranes. To derive design guidelines, we systematically studied the interaction of CNT porins with their surrounding lipids. For our simulations, we developed an AMBER- and Lipid14-compatible parameterization scheme for CNTs with different chirality and with functional groups attached to their rim, and a flexible coarse-grained description for open-ended CNTs fitting to the MARTINI lipid model. We found that the interaction with lipid acyl chains is independent of the CNT chirality and the chemical details of functional groups at the CNT rims. The latter, however, are important for the interactions with lipid head groups, and for water permeability. The orientation and permeability of the pore are mainly determined by how well its hydrophobicity pattern matches the membrane. By identifying the factors that determine the structure both of isolated CNTs in lipid membranes and of CNT clusters, we set the foundation for a targeted design of CNT–membrane systems.

1 Introduction

The unique properties of carbon nanotubes (CNTs) have attracted a lot of interest, and a large number of possible CNT applications have been proposed. A particularly interesting property is their excellent water conductivity, as predicted from simulations¹ and confirmed in experiments.^{2,3} Inserted as artificial channels into lipid membranes^{4–7} or assembled into densely packed hexagonal arrays,^{8–10} CNT porins are candidates for drug delivery^{11,12} and filtration.^{13–15} Their transport

^aDepartment of Theoretical Biophysics, Max Planck Institute of Biophysics, Max-von-Laue-Str. 3, 60438 Frankfurt am Main, Germany. E-mail: gerhard.hummer@biophys.mpg.de; Tel: +49 69 6303 2501

^bInstitute for Biophysics, Goethe University, Frankfurt am Main, Germany

† Electronic supplementary information (ESI) available. See DOI: 10.1039/c8fd00011e



properties show similarities with those of protein channels,^{16,17} including a high ion selectivity^{4,18–23} and an ultrafast proton transport mechanism.^{24–27}

Simulations were able to investigate water transport^{1,28–30} and ion conductivity through CNTs,^{18,19,31} and the factors that govern the membrane embedding and pore permeability.^{32–45} CNTs can be tuned, *e.g.*, by variations in their diameter^{18,19,31} or by adding functional groups within the CNT³¹ or at the ends.^{43,46,47} As another critical but difficult-to-measure property controlling the orientation and permeability of the pores, CNT–lipid interactions have also been studied *via* computer simulations.¹² The simulations, while mostly focused on insertion and permeation,^{33–45} also shed light on adsorption of free lipids on the CNT surface^{48,49} and on CNTs as vesicle-fusion devices.⁵⁰ It has been found that, upon insertion, CNTs and bundles of them strongly perturb the membrane.^{51–53} Lipid interactions of a CNT porin and the resulting lipid density distribution have also been compared to that of biological nanopores.⁵⁴

Here we study the impact of different kinds of CNT porins on the surrounding membrane, and of different lipid environments on the membrane embedding of the CNTs. In simulations at fully atomistic resolution (see Fig. 1 for a snapshot), we focus on the influence of CNT chirality and end-group functionalization on CNT–lipid interactions and lipid organization. To test for lipid sensitivity, we also explore different lipid types. In coarse-grained simulations, we study the effect of the length and diameter of the CNTs. In atomistic simulations, we determine the dependence of the water permeability on the CNT chirality and rim functionalization. The results provide useful guidance for the computer-aided design of specific porins.

The atomistic and coarse-grained simulation schemes and methods we develop are flexible and compatible with the existing AMBER and MARTINI force fields. They make it possible to study arbitrary porin geometries and various functionalizations as well as interactions with other molecules parameterized in the respective force fields.

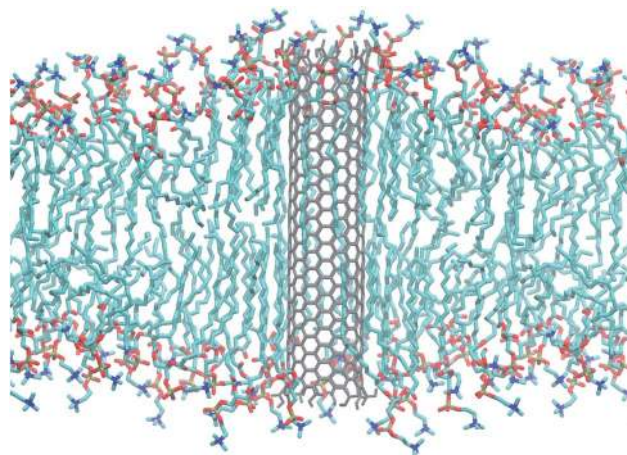


Fig. 1 Armchair CNT of 4.5 nm length with COOH end termination embedded in a POPC lipid membrane. Snapshot taken from an atomistic simulation after 240 ns. Water not shown for clarity.



2 Computational methods

2.1 Atomistic simulations

We performed atomistic molecular dynamics simulations of single CNTs, pairs, and groups of four in lipid membranes. We created CNTs with four different functionalizations (COOH, COO⁻, OH and H-only) in zigzag and armchair configurations with three different lengths of the CNTs (4.0 nm, 4.5 nm 5.0 nm) and simulated them in a POPC membrane. To test for the effects of different lipids, we simulated a CNT of 4.5 nm with OH functionalization in membranes of DOPC, DPPC and POPE. In addition, we simulated pairs and quartets of CNTs in POPC using different starting conditions. We used the Lipid14 force field⁵⁵ in Amber 14 (ref. 56) and derived GAFF-style^{57–59} models for the differently functionalized CNTs.

2.1.1 Lipids and solvent. We modeled the lipids using the Lipid14 force field.⁵⁵ Compared to previous attempts to model lipids with GAFF,⁵⁷ they were corrected such that simulations in a tensionless NPT ensemble give correct values for the area per lipid.^{55,60} The starting configurations of the bilayers were generated using the software Membrane Builder^{61–63} *via* the graphical interface CHARMM-GUI.⁶⁴ With the help of the parameterization tools acpype⁵⁹ and antechamber,⁵⁸ generalized AMBER (GAFF) parameters can easily be created for other molecules, which are compatible with all AMBER force fields. The water molecules were modeled using the TIP3P model. About 150 mM NaCl was added. For all solvent atoms, the AMBER12SB force field was applied.

2.1.2 Carbon nanotubes. The structures of the CNTs were generated using the python script BuildCstruct.^{65,66} We extended this tool in order to include the possibility of adding the functional groups OH, COOH, or COO⁻ at both ends of the nanotube. The modified code is available at <https://github.com/bio-phys/cnt-gaff>.

The GAFF parameters⁵⁷ were assigned to the nanotubes by running acpype⁵⁹ on these structures. Partial charges were defined by a standard scheme, which was parameterized as follows. For several nanotubes with different functionalizations and of different (small) sizes, the geometry was optimized and restraint electrostatic potential (RESP) charges⁶⁷ were calculated using R.E.D. (version III.52) with Gaussian 09 (RESP-A1: HF/6-31G* Connolly surface algo., 2 stage RESP fit qwt = 0.0005/0.001). The structures from BuildCstruct were either used directly as input, or (if the algorithm did not converge) a short atomistic energy minimization with non-optimized partial charges was performed.

We averaged and rounded the charges to two significant digits (under the constraint to preserve the total charge of a functional group of 0 or -1, respectively) such that all identical functional groups have the same charge distribution and such that all charges beginning from the third carbon ring are assigned a value of zero. This is a good approximation according to our results as well as to results obtained by DFT calculations,⁶⁸ where partial charges of pristine single wall CNTs have been shown to concentrate on the edges and decrease rapidly towards the middle of the tube. Our results indicate that this is also true for functionalized CNTs.



2.2 Coarse-grained simulations

We simulated single CNT porins embedded in lipid membranes using Gromacs.⁶⁹ The lipid membrane was set up with the insane.py⁷⁰ tool. We varied the CNT in both length and diameter and repeated the study for three different functionalizations at the rim (SNda, SP3, and none), and simulated them all in a POPC membrane. In an additional study, we simulated one SNda-functionalized CNT in POPC/DOPC membranes of various size. Details on the procedure can be found in the ESI† and the force fields are described below.

2.2.1 The MARTINI lipid model. The coarse-grained (CG) simulations were performed using the MARTINI model.⁷¹ In this model, in general, four heavy atoms are mapped to one CG interaction site (bead). For ring structures, there are special beads with a 2 : 1 mapping. Water is accordingly modeled with one bead for four water molecules.

Due to the flattening of the energy landscape, the overall dynamics in coarse-grained simulations are accelerated. The developers of the MARTINI force field recommend a scaling factor of four.⁷¹ This means that the actual time is (approximately four times) longer than the simulated time.

2.2.2 Carbon nanotube model. We used a MARTINI-compatible CNT model generalized from the ones already used in previous work.^{50,72} Our software to generate the respective topology files and input structures for use with Gromacs is available online at <https://github.com/bio-phys/cnt-martini>.

For the carbon-only region of the nanotube, we chose the CNP interaction sites, which have already been used for fullerenes⁷³ and for capped nanotubes.⁵³ As in the latter model, end-group functionalization is modeled by replacing the CNP bead type with a more polar one. We used beads of the types SNda (weakly

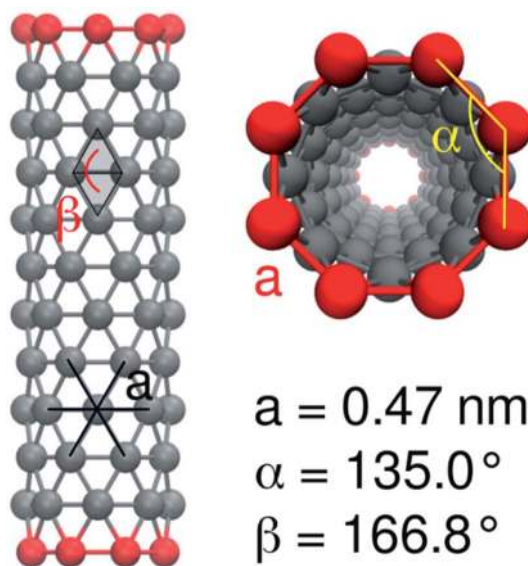


Fig. 2 MARTINI model of a CNT with 12×8 nonpolar CNP beads and polar end groups, with angles and bond lengths indicated.



polar) and SP3 (strongly polar). An example of this configuration is shown in Fig. 2.

The bonded interactions between neighbor atoms were chosen as in the model for the capped nanotubes⁵³ with a bond length of 0.47 nm and a force constant of 5000 kJ mol⁻¹ nm⁻².

For the angle potentials along the rings, we used a force constant of 350 kJ mol⁻¹ rad⁻² and an equilibrium angle of

$$\alpha = \pi \left(1 - \frac{2}{N} \right) \quad (1)$$

with N being the number of beads in one ring.

We accounted for the stiffness along the tube by introducing harmonic improper dihedral angle potentials that maintained the angle β between two triangles with a force constant of 350 kJ mol⁻¹ rad⁻², as shown in Fig. 2. As an equilibrium value, we get

$$\beta_0 = 2 \arccos \left[\frac{1}{\sqrt{3}} \tan \left(\frac{\pi}{2N} \right) \right]. \quad (2)$$

2.3 Analysis

The python scripts used to analyze the simulations are publicly available. The scripts for the atomistic simulations can be found at <https://github.com/bio-phys/cnt-lipid14-analysis> and those for the coarse-grained simulations at <https://github.com/bio-phys/cnt-martini-analysis>. Both extensively use the MDAnalysis^{74,75} python package.

2.3.1 Tilting. The tilting was measured using the main principle axis of the CNT. We calculated its angle with respect to the membrane normal, as given by the z axis of the system.

2.3.2 Two-dimensional radial distribution function. In analogy to the classical three-dimensional radial distribution function (RDF), we define the two-dimensional RDF $g(r)$ using the number $n(r, r + dr)$ of particles of a given type on average in a distance interval $(r, r + dr)$ from an axis in space as

$$g(r + dr/2) = \frac{n(r, r + dr)}{\sigma A_{\text{ring}}(r, r + dr)} \quad (3)$$

with σ being the area density of particles and $A_{\text{ring}}(r, r + dr) = \pi(r + dr)^2 - \pi r^2 \approx 2\pi r dr$ being the area of a ring around the center of the axis with radius r and thickness dr .

2.3.3 Order parameter. The order of the lipids in a membrane is quantified using the deuterium order parameter defined as

$$S_{\text{CD}}^i = \frac{1}{2} \langle 3 \cos^2 \theta_i - 1 \rangle \quad (4)$$

where θ_i is the angle between the bilayer normal and the vector joining the respective carbon atom C_i to its H (resp. deuterium) atom, and $\langle \dots \rangle$ denotes an ensemble average.⁵⁵ For convenience, we report $-S_{\text{CD}}$, averaged over all C-H bonds i in each acyl chain.

To estimate the influence of the CNTs on the lipid ordering, we assigned the order parameter of each lipid acyl chain (averaged over all atoms) to the annular



lipid shell to which the tail belongs. We used the minima of the RDF as cut-off distances to separate the shells. To get a bulk value for comparison, we simulated a patch of a pure lipid membrane of 288 POPC lipids.

In coarse-grained simulations, a different definition of the order parameter has to be used. There are no hydrogen atoms and therefore no information on CH bonds. A rough estimate can be provided by the angle α_j between the membrane normal and bond j connecting two MARTINI beads. This angle is supposed to be averaged over various C–C bonds and roughly perpendicular to the average orientation of a C–H bond. Due to the symmetry of $\cos^2(x)$, the coarse-grained order parameter

$$S_{\text{MARTINI}}^j = \frac{1}{2} 3 \langle \cos^2 \alpha_j - 1 \rangle. \quad (5)$$

indicates lipid order in a similar way as $-S_{\text{CD}}$. Again, we average over all bonds in each acyl chain. We note that this coarse-grained version and its atomistic counterpart cannot be compared quantitatively. However, we use them to compare general trends.

2.3.4 Water permeability. The permeability of a channel can be estimated from fluctuations in equilibrium simulations *via* a collective diffusion model.⁷⁶ This model was developed for CNTs of arbitrary diameter as a generalization of an earlier single-file model.⁷⁷ The model by Zhu *et al.*⁷⁶ monitors the water motion using the positions z_i along the CNT axis of the $S(t)$ water molecules in the CNT at time t . From the displacements dz_i of each water molecule $i \in S(t)$, the permeation change in an interval dt at time t is defined in a differential way as

$$dn = \sum_{i \in S(t)} dz_i / L. \quad (6)$$

The net permeation $n(t)$ is then obtained by integration with the initial condition $n(0) = 0$. In equilibrium simulations, the trajectory of $n(t)$ shows random-walk behavior. Its mean-squared displacement (MSD) is linear in time and defines a diffusion coefficient D_n *via*

$$\langle n^2(t) \rangle = 2D_n t. \quad (7)$$

An increase of $n(t)$ by one means that one water molecule has been transported in the direction of positive z . Using the fluctuation–dissipation theorem,⁷⁶ the pore permeability p_f is obtained as $p_f = \nu_w D_n$ with $\nu_w \approx 29.7 \text{ \AA}^3$ being the volume of a water molecule.

3 Results and discussion

3.1 Interaction of single CNTs with lipids

The lipids form a strong annular shell around the CNT. We evaluated the radial distribution function (RDF) with respect to the principal axis of the CNT for the carbon atoms of the lipid acyl chains in all simulations containing only one CNT (Fig. 3). A pronounced ring-like multilayer structure is clearly visible, with a strong first peak of the RDF followed by up to about five further maxima. In accordance with recent simulations comparing different biological and biomimetic



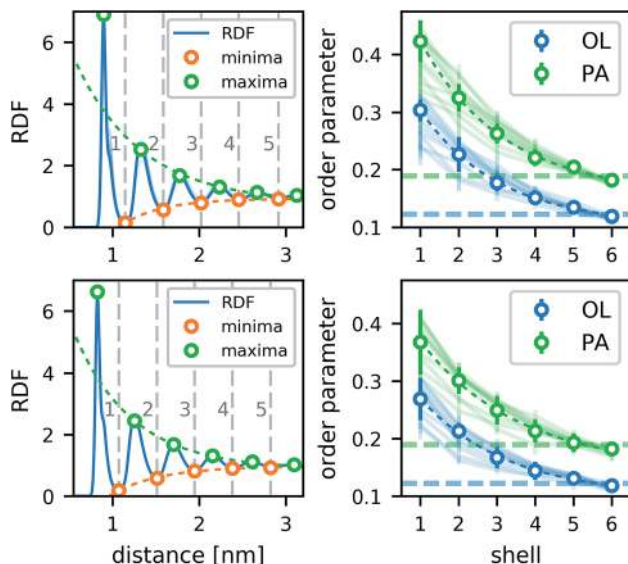


Fig. 3 Lipid structure around CNTs in atomistic simulations. (Left) Radial distribution function of POPC lipid-tail carbon atoms around the main axis of an armchair (top) and a zigzag (bottom) CNT of 4.5 nm length and with COO^- end groups. Minima and maxima are marked and the respective exponential fits to the peak amplitudes are shown. Extrema below 1 nm were excluded from the fits. The RDFs in simulations of armchair CNTs with different functionalizations and lengths in POPC membranes are shown as faint lines. (Right) The lipid order parameter $-S_{\text{CD}}$ of palmitoyl (PA) and oleoyl (OL) tails in the distinct shells for the same CNTs. Dashed lines show the bulk values. The order parameters of the lipids around armchair CNTs with other rim functionalizations are shown as faint lines.

nanopores,⁵⁴ this structuring is a consequence, first, of the tight lipid-CNT interactions and, second, of the relatively smooth surface of the CNT. Because we calculated the RDF with respect to the main CNT axis, to minimize the effect of CNT tilting, we could resolve the first very pronounced peak in more detail. This peak shows a distinct shoulder on the far side. Inspections of the structures showed that this shoulder is caused by acyl chains adhering to the CNT surface only partly while the rest is kept close to the tube, but not in direct contact with it. The amplitudes of all further maxima and minima decrease exponentially with the distance from the CNT (Fig. 3), and remain visible up to the fifth layer.

In contrast to typical transmembrane proteins, the CNTs increase the lipid order in their proximity. For all CNTs, the order parameters in the first four shells around them were significantly higher than the respective bulk values. In the first shell, they even became twice as high as in the bulk. Both effects, the pronounced lipid shells as well as the increase of the order parameter, were observed with minimal differences for the two CNT chiralities studied, and for every type of functional group at the rim.

In tests for possible artifacts of the finite box size (see ESI†), no dependence of the lipid layering on the box size was found. However, the increase in the order parameter near the CNT might be overestimated by ≈ 0.03 – 0.05 in the typical simulation boxes of this study (7–10 nm). In narrow boxes, lipid ordering around CNTs is more pronounced, likely enhanced by periodic boundary conditions.



Therefore, caution is advised also in studies of lipid shells formed around membrane proteins in simulations using typical box sizes.

Due to its regular hydrophobic surface and its mostly upright position, a CNT binds strongly to lipids and orders them in distinct rings. In the immediate vicinity of the CNTs, the lipids adopt structures not typical of a liquid-disordered phase. Instead, the lipids seem to form a strong coat around the nanotube, especially those in the very first shell. Annular lipid shells are well-known for membrane proteins,^{78,79} but the protein coating is not as strong and regular as seen here.⁵⁴ The effects of such lipid shells can be observed here in pure and unperturbed form. We can therefore consider CNTs as idealized models for the study of annular-lipid structures forming around membrane proteins (especially barrel-shaped proteins), and possibly as models for the induction of an “order-philic” transition.⁸⁰

For different lipid types, the density of annular rings differs slightly but the main characteristics are preserved (Fig. 4). Those lipids that would be highly ordered even without the CNT show more pronounced maxima in the RDF (*e.g.*, DPPC). The less-ordered lipids (*e.g.*, DOPC) show a stronger shoulder in the first peak. As this shoulder occurs for POPC but not for POPE, we conclude that it does not stem directly from an inherent property of the lipid acyl chains (which are the same in both lipids), but from the overall order. The most distinct behavior is seen for DPPC. Due to its two palmitoyl tails, it is substantially more ordered. It not only forms a dense layer around the CNT but also all further density peaks are sharper and their distance is a bit shorter than for the other lipids. By and large, however, the behavior is qualitatively the same for all lipid types.

3.2 CNT functional end groups

In contrast to the lipid acyl chains, the RDFs of the lipid head groups show a strong dependence on the rim functionalization of the CNT. For armchair and zigzag CNTs, the RDFs show a common trend (Fig. 5). The head-group density at the edge of the CNT increases with the length of the CNT. The longer tubes order the polar head groups around them more strongly, and keep them away from the CNT openings. For short tubes without or with only weakly polar end-

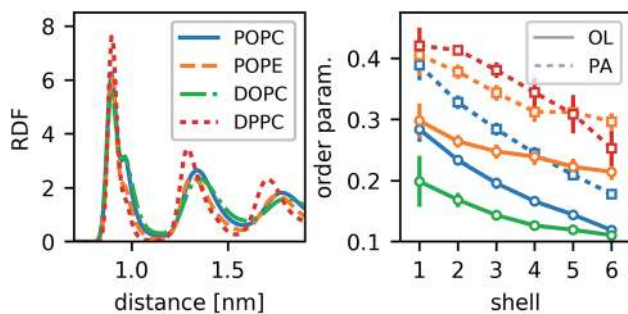


Fig. 4 Radial distribution function (RDF) of lipid-tail carbon beads (left), and order parameter $-S_{CD}$ of different lipid types (right) around an armchair CNT with 4.5 nm length and OH functionalization. Colors indicate different lipids, as indicated in the left panel. OL denotes oleoyl and PA palmitoyl chains.



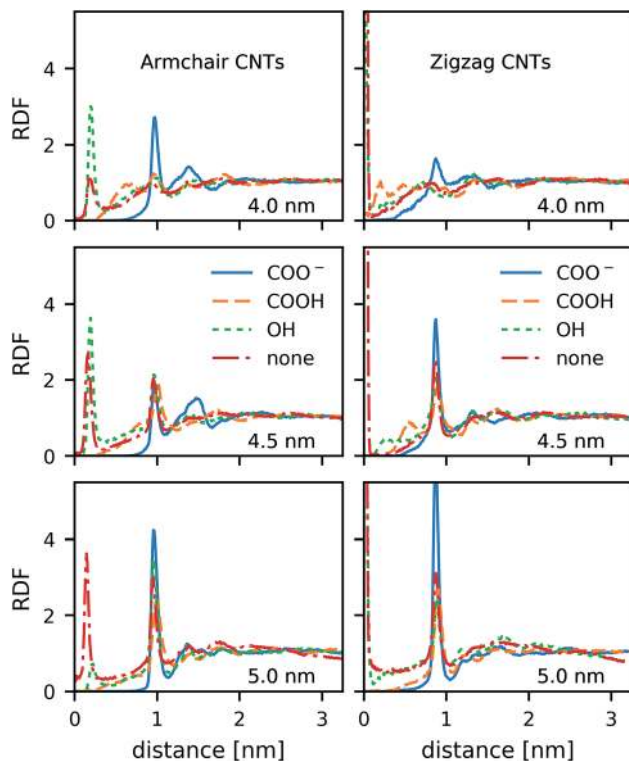


Fig. 5 Radial distribution function (RDF) of head group nitrogen atoms around the main axis of the four armchair (left) and the four zigzag (right) nanotubes with different lengths and different rim-functionalizations, as indicated in the figure.

functionalization, the head groups can bend over the edge of the CNT (Fig. 6), especially when the CNT is tilted. This effect is represented in the RDF as a peak in the region where r is smaller than the radius of the CNT. CNTs with

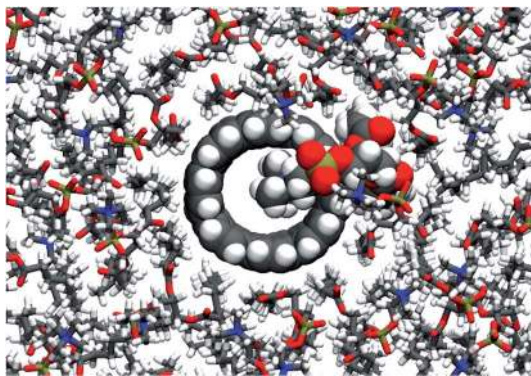


Fig. 6 Head group of a POPC molecule blocking the pore of a non-functionalized armchair CNT of 4 nm length. In this view down onto the membrane, atoms of the CNT and the pore-blocking lipid are shown as spheres and the bonds of surrounding lipids as sticks.



carboxylate (COO^-) functionalization, carrying a negative charge, manage best to prevent the head groups from bending over the rim and into the opening. Depending on the purpose of the membrane, charged rims might be more or less desirable. In any case, polar functional groups can prevent the pore from closing by lipid blockage.

3.3 Comparison to coarse-grained simulations

The structure of the lipid shells seen in the atomistic simulations is well reproduced in the coarse-grained MARTINI model simulations (Fig. 7). The distances and widths of the distinct shells are in excellent agreement. Lipid structuring extends out to five layers in both models. Even though the first peak is less sharp in MARTINI (which is to be expected in a coarse-grained model), it is still higher than that extrapolated from the exponential behavior of the outer shells. The MARTINI model is therefore suitable to model the effects of CNT–lipid–tail interactions.

The order parameters in the MARTINI model show the same trend as in the atomistic model, but it is less pronounced. The order parameter is strongly increased in the first two shells around the CNT and slightly increased up to the fifth shell. The difference between the models is not dramatic as, by definition, the MARTINI order parameter is not able to capture the ordering effect on single CH bonds, but only the much coarser general orientation of the tail.

As in the atomistic simulations, no dependence of lipid layering on the box size was found for the MARTINI model (see ESI†). In contrast to the atomistic model, no trend was found for the order parameter. This is not surprising as the overall ordering effect is less pronounced in the MARTINI model. The box sizes in the MARTINI simulations (≈ 15 nm) are therefore sufficient.

We note that the CNT chirality and the specific details of the functional groups are not resolved within our coarse-grained MARTINI model. However, the

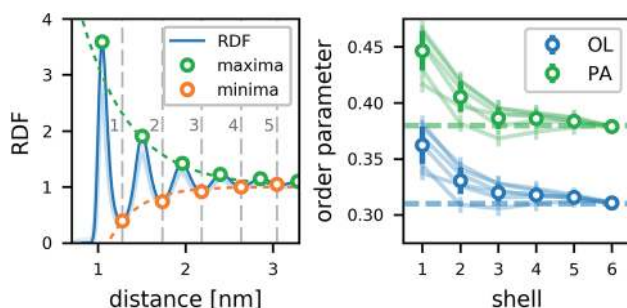


Fig. 7 Lipid structure around CNTs in coarse-grained simulations. (Left) Radial distribution function of POPC lipid-tail carbon beads around the main axis of a coarse-grained CNT of 4.5 nm length and with SNda end groups. Minima and maxima are marked and the respective exponential fits are shown. Extrema below 1.2 nm were excluded from the fits. The RDFs of the other coarse-grained CNTs of similar length are shown as faint lines. (Right) The lipid order parameter S_{MARTINI} of oleoyl (OL) and palmitoyl (PA) tails in the distinct shells around a coarse-grained CNT of 4.5 nm length and with SNda end groups. The order parameters of POPC around differently functionalized coarse-grained CNTs of the same width and similar length are shown as faint lines.



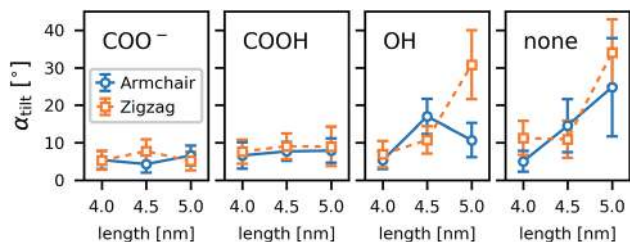


Fig. 8 Tilting angle of the CNTs with respect to the z axis in atomistic simulations of single CNT porins in a POPC lipid membrane. The chirality (armchair, zigzag) was varied as well as the length of the CNT (4.0 nm, 4.5 nm, and 5.0 nm). Rims with four different functionalizations (COO⁻, COOH, OH, none) were studied. Vertical bars denote the standard deviation.

MARTINI CNTs reproduce well the structural properties found in the atomistic simulations. These are dominated by geometry and the hydrophobic effect.

3.4 Tilting of CNTs

As a general trend in the atomistic simulations, the longer tubes tend to tilt more with respect to the membrane normal than the shorter ones and polar functional groups prevent tilting (Fig. 8). These two observations can be explained by the CNTs striving to minimize hydrophobic mismatch, *i.e.*, the contact of the hydrophobic CNT surface with water or hydrophilic lipid head groups.

Even though we can identify trends within a large number of simulations, the individual simulations are too short for tilting to be fully equilibrated. A study on one CNT (armchair, 5 nm, COOH) in differently sized boxes (see ESI†) indicates that the tilting is only marginally affected by the finite size and rather under- than overestimated in small boxes. To achieve much better sampling in fully equilibrated simulations, we turned to coarse-grained methods. To study the geometry effects on tilting (Fig. 9), we compared CNTs of three different diameters and five different lengths, each for one type of functional end group: strongly polar (SP3), weakly polar (SNda), and no functionalization at all. We conclude from the

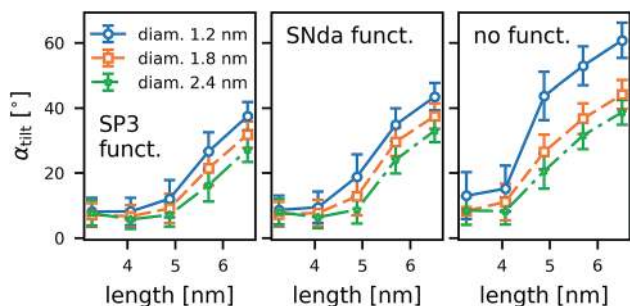


Fig. 9 Tilting angle of the CNTs in POPC lipid membranes. Results are shown for coarse-grained simulations as a function of the CNT length for three different CNT diameters. The polarity of the rim decreases from left to right, with functionalization indicated in the figure. Vertical bars denote the standard deviation.



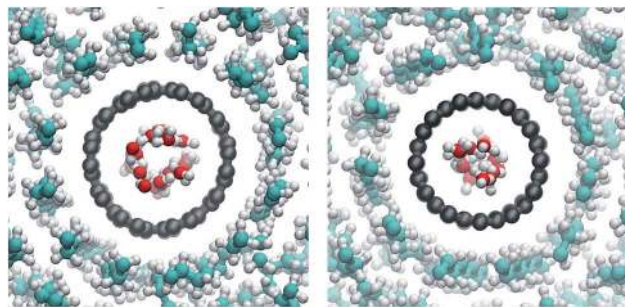


Fig. 10 Horizontal cut with view along the CNT axes in atomistic simulations of an armchair (left) and a zigzag CNT (right), with penetrating water chains at the center and POPC lipids surrounding the CNT. Both CNTs are of length 4.5 nm and COOH-functionalized. Oxygen atoms are shown in red, hydrogen atoms in white, carbon atoms of the CNTs in gray, and carbon atoms of the lipids in cyan.

MARTINI box-size study (see ESI†) that for the box sizes studied we obtained an unperturbed estimate of tilting.

The coarse-grained tubes confirm the trend from the atomistic simulations: long tubes tilt, especially when they are thin and have no polar groups at their rim. Below 4.5 nm length (the thickness of the membrane), the CNT length has almost no influence. These results are in full accordance with the atomistic ones and confirm that hydrophobic mismatch is the main determinant of the CNT porin tilt.

3.5 Water structure and permeation

Water in nanopores is strongly confined. In our simulations, the water inside the CNTs adopted cylindrical shapes (Fig. 10), which are more pronounced in the wider armchair CNTs. The radius of the volume accessible for the water (carbon

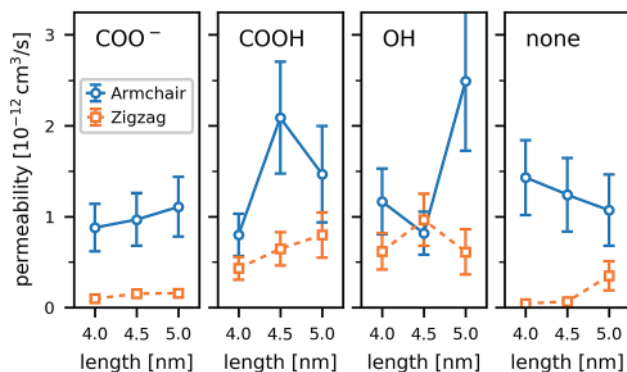


Fig. 11 Water permeability p_f calculated from the MSD of the net permeation $n(t)$ in equilibrium atomistic simulations of single CNT porins in a POPC lipid membrane. Results are shown for two chiralities (armchair, zigzag), three CNT lengths (4.0 nm, 4.5 nm, and 5.0 nm), and rims with four different functionalizations (COO⁻, COOH, OH, none). Vertical bars denote the standard error estimated from block averaging using 12 blocks.



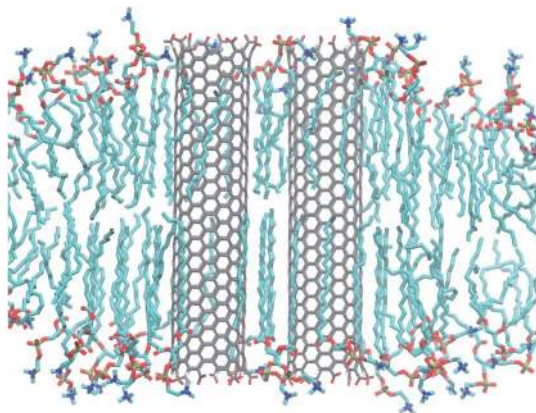


Fig. 12 Side view on a pair of COO^- -functionalized armchair CNTs and surrounding lipids. Clearly visible is the strong order around and between the two CNTs compared to the lower order in the surrounding bulk.

coordinates minus van der Waals radius of a carbon atom) is 3.8 \AA in our armchair CNTs and 3.0 \AA in our zigzag CNTs.

The functional groups attached to the rim can significantly change the permeability of a CNT porin (Fig. 11). Whereas for the wider armchair CNTs in this work the permeability varies considerably, a clear trend is visible for the narrower zigzag CNTs. The polar hydroxyl (OH) and carboxyl (COOH) groups clearly enhance permeability compared to an unfunctionalized CNT. They prevent tilting and blockage of the pore by lipid headgroups, as discussed in the previous sections. The negatively charged COO^- groups have the same effects structurally, but still reduce water permeability. They attract cations (here Na^+) that reside at the pore entrance and partially block it. In the smaller CNTs (here those with a zigzag configuration), this leads to an almost complete blockage of the pore. These results show that, especially for small radii, rim functionalization is an important factor determining the permeability.

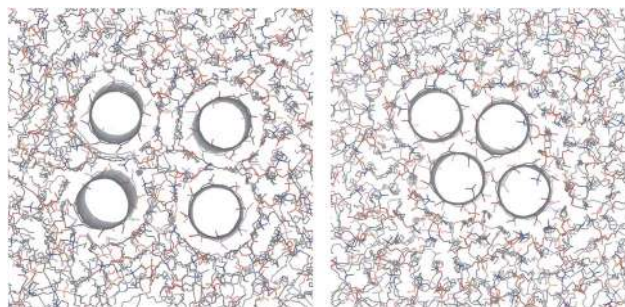


Fig. 13 Atomistic simulations of CNT tetramers in a POPC lipid membrane. Shown are four COOH -functionalized CNTs initially set up with (left) and without (right) lipid separation. Snapshots were taken after 150 ns of simulation.



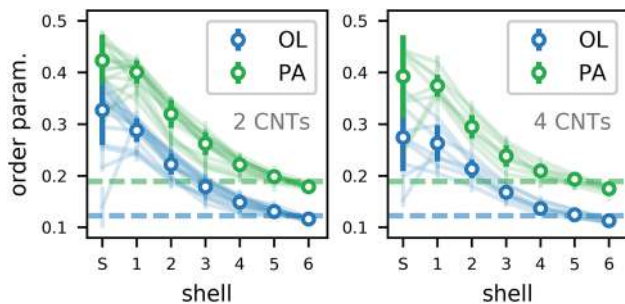


Fig. 14 Order parameter of lipids in atomistic simulations of two (left) and four (right) CNTs in a POPS lipid membrane. The shell denoted as S contains all acyl chains that are shared between CNTs (being in shell 1 of more than one CNT). Otherwise, the shell is assigned according to the CNT closest to the acyl chain.

3.6 Carbon nanotube pairs and quartets

In atomistic simulations of more than one nanotube, lipids formed strong layers around the tubes for CNT pairs as well as quartets. Order is especially strong between two CNTs (Fig. 12). The lipid acyl chains stretch out and adapt to their squeezed-in position. This results in structures that are quite stable at least on the time scales of our simulations.

The resulting configuration of CNTs in each simulation strongly depends on the starting conditions (see the ESI† for more details). CNT pairs that were prepared in direct carbon–carbon contact stayed in contact and pairs prepared with a distance of 2 nm between the central axes of the CNTs remained separated by one layer of lipid. Quartets of CNTs that were initially prepared in a square configuration with 2.5 nm distance remained separate. Quartet bundles initially prepared in contact quickly turned towards a stable rhombic shape (Fig. 13, right). This represents the hexagonal lattice structure expected on large scales due to the cylindrical shape.⁸

The lipid order parameter in all structures with more than one CNT (Fig. 14) shows the same behavior as for single CNTs. In our analysis, we distinguished shared (S) lipids that belong to the first shell of two CNTs and are therefore in a particularly confined configuration. For them, the order parameter varied more strongly due to the lower number of samples and depending on the exact position in which the lipid got trapped. However, the trend over all simulations shows a slight increase in order. Overall, we expect a lipid membrane densely packed with CNTs to be more ordered and maybe to undergo a phase transition to a gel phase.

4 Conclusions

We performed atomistic simulations of single CNT porins with different lengths, functionalizations and chiralities, and of CNT pairs and quartets. We also performed simulations of membrane embedded CNTs using a coarse-grained MARTINI-compatible model. In both atomistic and coarse-grained models, we observed pronounced annular lipid shells around the CNTs. The influences of



functionalization and CNT chirality on the shell are negligible. The strong structuring of the lipids is therefore a universal feature for CNT porins.

We observed in our simulations that the position and stability of the porin within the lipid bilayer depended on its length and the hydrophobicity of the functional groups at the rim. We found in atomistic and in coarse-grained simulations that CNTs minimize water exposure of their hydrophobic surface. In recent experiments,⁵ CNTs were observed without significant tilt. The mechanism behind this stability is still unclear. The tendency to tilt might be counterbalanced by external factors that minimize the exposure of the hydrophobic CNT surface, such as coating lipids or detergents, or by mechanical effects not captured in our simulation setup.

To control the openings of a CNT porin, different kinds of polar rim functionalizations can be used. Polar groups help prevent the blocking of short porins by lipid head groups, keep the pore open, and thus increase the efficiency of CNT-mediated transport across the membrane. Charged groups, however, attract ions that can block narrow pores and lower the water permeability. As a consequence, polar end functionalization affects the embedding structure and permeability of lipid-membrane embedded nanopores and in turn modulates the transport properties, *e.g.*, by making the pore selective.²¹

The formation of CNT bundles within the membrane or the pairing of CNT porins result in stable membrane-spanning configurations with pores open to the solvent. Packing of CNTs into lattice structures stabilizes their vertical orientation. The lipid layering effect around these axially aligned CNTs is at least as strong as around isolated porins, and it might even have a stabilizing and structuring effect on the assemblies. We thus expect a large concentration of CNT porins to increase the permeability per CNT. However, such CNT bundles or more extended arrays will alter the mechanical properties of the membrane.

In conclusion, we demonstrated that CNT porins exert a strong influence on the surrounding membrane lipids. General principles emerge that artificial water channels made from CNT porins should fulfill, providing guidance for further experiments.

Conflicts of interest

There are no conflicts to declare.

Acknowledgements

We thank Daniel Rhinow, Ramachandra Bhaskara, Roberto Covino, Lukas Stelzl, and Max Linke for helpful discussions. We acknowledge PRACE for access to *Mare Nostrum* at the Barcelona Supercomputing Centre, where we performed the box-size study. We ran all other simulations at the Max Planck Computing and Data Facility. This work was supported by the Max Planck Society. Open Access funding provided by the Max Planck Society.

References

- 1 G. Hummer, J. C. Rasaiah and J. P. Noworyta, *Nature*, 2001, **414**, 188–190.
- 2 M. Majumder, N. Chopra, R. Andrews and B. J. Hinds, *Nature*, 2005, **438**, 930.



- 3 J. K. Holt, H. G. Park, Y. Wang, M. Stadermann, A. B. Artyukhin, C. P. Grigoropoulos, A. Noy and O. Bakajin, *Science*, 2006, **312**, 1034–1037.
- 4 K. Kim, J. Geng, R. Tunuguntla, L. R. Comolli, C. P. Grigoropoulos, C. M. Ajo-Franklin and A. Noy, *Nano Lett.*, 2014, **14**, 7051–7056.
- 5 J. Geng, K. Kim, J. Zhang, A. Escalada, R. Tunuguntla, L. R. Comolli, F. I. Allen, A. V. Shnyrova, K. R. Cho, D. Munoz, Y. M. Wang, C. P. Grigoropoulos, C. M. Ajo-Franklin, V. A. Frolov and A. Noy, *Nature*, 2014, **514**, 612–615.
- 6 A. Noy, G. Jia, Z. Jianfei and V. Frolov, Nanotube Trans-Membrane Channels Mimicking Biological Porins, *US Pat.*, 20170304447A1, 2017, <http://www.freepatentsonline.com/y2017/0304447.html>.
- 7 Y. Zhang, R. H. Tunuguntla, P.-o. Choi, A. Noy and A. Noy, *Philos. Trans. R. Soc., B*, 2017, **372**, 20160226.
- 8 A. Kalra, S. Garde and G. Hummer, *Proc. Natl. Acad. Sci. U. S. A.*, 2003, **100**, 10175–10180.
- 9 B. J. Hinds, N. Chopra, T. Rantell, R. Andrews, V. Gavalas and L. G. Bachas, *Science*, 2004, **303**, 62–65.
- 10 J. Wu, K. Gerstandt, H. Zhang, J. Liu and B. J. Hinds, *Nat. Nanotechnol.*, 2012, **7**, 133–139.
- 11 P. Boyer, H. Shams, S. L. Baker, M. R. K. Mofrad, M. F. Islam and K. N. Dahl, *J. Mater. Chem. B*, 2016, **4**, 1324–1330.
- 12 M. N. Al-Qattan, P. K. Deb and R. K. Tekade, *Drug Discovery Today*, 2017, 1–16.
- 13 M. Majumder, A. Stinchcomb and B. J. Hinds, *Life Sci.*, 2010, **86**, 563–568.
- 14 B. Lee, Y. Baek, M. Lee, D. H. Jeong, H. H. Lee, J. Yoon and Y. H. Kim, *Nat. Commun.*, 2015, **6**, 7109.
- 15 M. Thomas and B. Corry, *Philos. Trans. R. Soc., A*, 2015, **374**, 1–20.
- 16 A. Noy, H. G. Park, F. Fornasiero, J. K. Holt, C. P. Grigoropoulos and O. Bakajin, *Structure*, 2007, **2**, 22–29.
- 17 H. G. Park and Y. Jung, *Chem. Soc. Rev.*, 2014, **43**, 565–576.
- 18 O. Beckstein, K. Tai and M. S. Sansom, *J. Am. Chem. Soc.*, 2004, **126**, 14694–14695.
- 19 C. Peter and G. Hummer, *Biophys. J.*, 2005, **89**, 2222–2234.
- 20 F. Fornasiero, H. G. Park, J. K. Holt, M. Stadermann, C. P. Grigoropoulos, A. Noy and O. Bakajin, *Proc. Natl. Acad. Sci. U. S. A.*, 2008, **105**, 17250–17255.
- 21 F. Fornasiero, J. B. In, S. Kim, H. G. Park, Y. Wang, C. P. Grigoropoulos, A. Noy and O. Bakajin, *Langmuir*, 2010, **26**, 14848–14853.
- 22 C. Y. Lee, W. Choi, J. H. Han and M. S. Strano, *Science*, 2010, **329**, 1320–1324.
- 23 R. H. Tunuguntla, R. Y. Henley, Y. C. Yao, T. A. Pham, M. Wanunu and A. Noy, *Science*, 2017, **357**, 792–796.
- 24 C. Dellago, M. M. Naor and G. Hummer, *Phys. Rev. Lett.*, 2003, **90**, 4.
- 25 C. Dellago and G. Hummer, *Phys. Rev. Lett.*, 2006, **97**, 1–4.
- 26 D. J. Mann and M. D. Halls, *Phys. Rev. Lett.*, 2003, **90**, 4.
- 27 R. H. Tunuguntla, F. I. Allen, K. Kim, A. Belliveau and A. Noy, *Nat. Nanotechnol.*, 2016, 1–12.
- 28 M. Whitby and N. Quirke, *Nat. Nanotechnol.*, 2007, **2**, 87–94.
- 29 S. Joseph and N. R. Aluru, *Nano Lett.*, 2008, **8**, 452–458.
- 30 E. Secchi, S. Marbach, A. Nigues, D. Stein, A. Siria and L. Bocquet, *Nature*, 2016, **537**, 210–213.
- 31 R. García-Fandiño and M. S. P. Sansom, *Proc. Natl. Acad. Sci. U. S. A.*, 2012, **109**, 6939–6944.



- 32 C. F. Lopez, S. O. Nielsen, P. B. Moore and M. L. Klein, *Proc. Natl. Acad. Sci. U. S. A.*, 2004, **101**, 4431–4434.
- 33 X. Shi, Y. Kong and H. Gao, *Acta Mech. Sin.*, 2008, **24**, 161–169.
- 34 E. J. Wallace and M. S. Sansom, *Nano Lett.*, 2008, **8**, 2751–2756.
- 35 M. Dutt, O. Kuksenok, S. R. Little and A. C. Balazs, *Nanoscale*, 2011, **3**, 240–250.
- 36 M. Dutt, M. J. Nayhouse, O. Kuksenok, S. R. Little and A. C. Balazs, *Curr. Nanosci.*, 2011, **7**, 699–715.
- 37 V. K. Gangupomu and F. M. Capaldi, *J. Nanomater.*, 2011, **2011**, 1–6.
- 38 S. Höfninger, M. Melle-Franco, T. Gallo, A. Cantelli, M. Calvaresi, J. A. N. F. Gomes and F. Zerbetto, *Biomaterials*, 2011, **32**, 7079–7085.
- 39 A. A. Skandani, R. Zeineldin and M. Al-Haik, *Langmuir*, 2012, **28**, 7872–7879.
- 40 S. Kraszewski, A. Bianco, M. Tarek and C. Ramseyer, *PLoS One*, 2012, **7**, 1–11.
- 41 S. Z. Mousavi, S. Amjad-Iranagh, Y. Nademi and H. Modarress, *J. Membr. Biol.*, 2013, **246**, 697–704.
- 42 P. Raczyński, K. Górny, M. Pabiszczak and Z. Gburski, *Comput. Mater. Sci.*, 2013, **70**, 13–18.
- 43 W. F. Chan, H. Y. Chen, A. Surapathi, M. G. Taylor, X. H. Shao, E. Marand and J. K. Johnson, *ACS Nano*, 2013, **7**, 5308–5319.
- 44 E. Sarukhanyan, A. De Nicola, D. Roccatano, T. Kawakatsu and G. Milano, *Chem. Phys. Lett.*, 2014, **595–596**, 156–166.
- 45 S. Tabari, Y. Jamali and R. Poursalehi, *Procedia Mater. Sci.*, 2015, **11**, 423–427.
- 46 S. Joseph, R. J. Mashl, E. Jakobsson and N. R. Aluru, *Nano Lett.*, 2003, **3**, 1399–1403.
- 47 Z. E. Hughes, C. J. Shearer, J. Shapter and J. D. Gale, *J. Phys. Chem. C*, 2012, **116**, 24943–24953.
- 48 E. J. Wallace and M. S. P. Sansom, *Nanotechnology*, 2009, **20**, 045101.
- 49 M. Dutt, O. Kuksenok, M. J. Nayhouse, S. R. Little and A. C. Balazs, *ACS Nano*, 2011, **5**, 4769–4782.
- 50 R. M. Bhaskara, S. M. Linker, M. Vögele, J. Köfinger and G. Hummer, *ACS Nano*, 2017, **11**, 1273–1280.
- 51 R. Parthasarathi, N. R. Tummala and A. Striolo, *J. Phys. Chem. B*, 2012, **116**, 12769–12782.
- 52 M. Lelimosin and M. S. P. Sansom, *Small*, 2013, **9**, 3639–3646.
- 53 S. Baoukina, L. Monticelli and D. P. Tieleman, *J. Phys. Chem. B*, 2013, **117**, 12113–12123.
- 54 R. Garcia-Fandiño, Á. Piñeiro, J. L. Trick and M. S. P. Sansom, *ACS Nano*, 2016, **10**, 3693–3701.
- 55 C. J. Dickson, B. D. Madej, Å. A. Skjevik, R. M. Betz, K. Teigen, I. R. Gould and R. C. Walker, *J. Chem. Theory Comput.*, 2014, **10**, 865–879.
- 56 D. Case, V. Babin, J. Berryman, R. Betz, Q. Cai, D. Cerutti, I. T. E. Cheatham, T. Darden, R. E. Duke, H. Gohlke, A. Goetz, S. Gusarov, N. Homeyer, P. Janowski, J. Kaus, I. Kolossváry, A. Kovalenko, T. Lee, S. LeGrand, T. Luchko, R. Luo, B. Madej, K. Merz, F. Paesani, D. Roe, A. Roitberg, C. Sagui, R. Salomon-Ferrer, G. Seabra, C. Simmerling, W. Smith, J. Swails, R. Walker, J. Wang, R. Wolf, X. Wu and P. Kollman, *AMBER 14*, 2014.
- 57 J. Wang, R. M. Wolf, J. W. Caldwell, P. A. Kollman and D. A. Case, *J. Comput. Chem.*, 2004, **25**, 1157–1174.
- 58 J. Wang, W. Wang, P. A. Kollman and D. A. Case, *J. Comput. Chem.*, 2004, **25**, 1157–1174.



- 59 A. W. Sousa da Silva and W. F. Vranken, *BMC Res. Notes*, 2012, **5**, 367.
- 60 C. J. Dickson, L. Rosso, R. M. Betz, R. C. Walker and I. R. Gould, *Soft Matter*, 2012, **8**, 9617.
- 61 E. L. Wu, X. Cheng, S. Jo, H. Rui, K. C. Song, E. M. Dávila-Contreras, Y. Qi, J. Lee, V. Monje-Galvan, R. M. Venable, J. B. Klauda and W. Im, *J. Comput. Chem.*, 2014, **35**, 1997–2004.
- 62 S. Jo, J. B. Lim, J. B. Klauda and W. Im, *Biophys. J.*, 2009, **97**, 50–58.
- 63 S. Jo, T. Kim and W. Im, *PLoS One*, 2007, **2**, 1–9.
- 64 S. Jo, T. Kim, V. G. Iyer and W. Im, *J. Comput. Chem.*, 2008, **29**, 1859–1865.
- 65 A. Minoia, *BuildCstruct*, 2011, <http://chembytes.wikidot.com/buildcstruct>.
- 66 A. Minoia, L. Chen, D. Beljonne and R. Lazzaroni, *Polymer*, 2012, **53**, 5480–5490.
- 67 C. I. Bayly, P. Cieplak, W. D. Cornell and P. A. Kollman, *J. Phys. Chem.*, 1993, **97**, 10269–10280.
- 68 D. Lu, Y. Li, U. Ravaioli and K. Schulten, *J. Phys. Chem. B*, 2005, **109**, 11461–11467.
- 69 B. Hess, C. Kutzner, D. Van Der Spoel and E. Lindahl, *J. Chem. Theory Comput.*, 2008, **4**, 435–447.
- 70 T. A. Wassenaar, H. I. Ingólfsson, R. A. Böckmann, D. P. Tieleman and S. J. Marrink, *J. Chem. Theory Comput.*, 2015, **11**, 2144–2155.
- 71 S. J. Marrink, H. J. Risselada, S. Yefimov, D. P. Tieleman and A. H. D. Vries, *J. Phys. Chem. B*, 2007, **111**, 7812–7824.
- 72 M. Vögele and G. Hummer, *J. Phys. Chem. B*, 2016, **120**, 8722–8732.
- 73 L. Monticelli, *J. Chem. Theory Comput.*, 2012, **8**, 1370–1378.
- 74 N. Michaud-Agrawal, E. J. Denning, T. B. Woolf and O. Beckstein, *J. Comput. Chem.*, 2011, **32**, 2319–2327.
- 75 R. J. Gowers, M. Linke, J. Barnoud, T. J. E. Reddy, M. N. Melo, S. L. Seyler, J. Domański, D. L. Dotson, S. Buchoux, I. M. Kenney and O. Beckstein, *Proc. 15th Python Sci. Conf.*, 2016, pp. 98–105.
- 76 F. Zhu, E. Tajkhorshid and K. Schulten, *Phys. Rev. Lett.*, 2004, **93**, 224501.
- 77 A. Berezhkovskii and G. Hummer, *Phys. Rev. Lett.*, 2002, **89**, 064503.
- 78 F.-X. Contreras, A. M. Ernst and F. Wieland, *Cold Spring Harbor Perspect. Biol.*, 2011, **3**, 1–19.
- 79 A. G. Lee, *Biochim. Biophys. Acta, Biomembr.*, 2004, **1666**, 62–87.
- 80 S. Katira, K. K. Mandadapu, S. Vaikuntanathan, B. Smit and D. Chandler, *eLife*, 2016, **5**, 1–19.

