



Monitoring small reservoirs' storage with satellite remote sensing in inaccessible areas

Nicolas Avisse¹, Amaury Tilmant¹, Marc François Müller², and Hua Zhang³

¹Department of Civil Engineering and Water Engineering, Université Laval, Québec, QC G1V 0A6, Canada

²Department of Civil & Environmental Engineering & Earth Science, University of Notre Dame, Notre Dame, IN 46556, USA

³Department of Engineering, School of Engineering and Computing Sciences, Texas A & M University – Corpus Christi, Corpus Christi, TX 78412, USA

Correspondence: Nicolas Avisse (nicolas.avisse@gmail.com)

Received: 28 June 2017 – Discussion started: 19 July 2017

Revised: 7 November 2017 – Accepted: 12 November 2017 – Published: 18 December 2017

Abstract. In river basins with water storage facilities, the availability of regularly updated information on reservoir level and capacity is of paramount importance for the effective management of those systems. However, for the vast majority of reservoirs around the world, storage levels are either not measured or not readily available due to financial, political, or legal considerations. This paper proposes a novel approach using Landsat imagery and digital elevation models (DEMs) to retrieve information on storage variations in any inaccessible region. Unlike existing approaches, the method does not require any in situ measurement and is appropriate for monitoring small, and often undocumented, irrigation reservoirs. It consists of three recovery steps: (i) a 2-D dynamic classification of Landsat spectral band information to quantify the surface area of water, (ii) a statistical correction of DEM data to characterize the topography of each reservoir, and (iii) a 3-D reconstruction algorithm to correct for clouds and Landsat 7 Scan Line Corrector failure. The method is applied to quantify reservoir storage in the Yarmouk basin in southern Syria, where ground monitoring is impeded by the ongoing civil war. It is validated against available in situ measurements in neighbouring Jordanian reservoirs. Coefficients of determination range from 0.69 to 0.84, and the normalized root-mean-square error from 10 to 16 % for storage estimations on six Jordanian reservoirs with maximal water surface areas ranging from 0.59 to 3.79 km².

1 Introduction

Reservoirs are essential for the development and management of a river basin's water resources, no matter their size (Liebe et al., 2005; Leemhuis et al., 2009). By increasing the availability of water during low-flow periods (International Commission On Large Dams, 2016), dams often play a key role in water supply, irrigated agriculture, hydropower generation, navigation, cattle breeding, fisheries, etc.

Despite these valuable applications, there is a scarcity of monitoring data as many countries cannot financially afford to build gauging stations (Solander et al., 2016). And even when monitoring systems do exist, there may not be institutions to collect the data, or legal means to disseminate them, as they are often considered sensitive data (Alsdorf et al., 2007; Dombrowsky, 2007; Duan and Bastiaanssen, 2013). Yet this information is essential to conduct hydrological studies in committed basins, from defining reservoir operation rules in simulation models (Yoon and Beighley, 2015) to assessing the impact of multi-reservoir systems on downstream river discharge (Vörösmarty et al., 1997; Hanasaki et al., 2006; Döll et al., 2009).

In that context, remote sensing is a promising tool to overcome the difficulty in accessing reliable information on a reservoir. This technique has also been applied to characterize a range of continental water bodies such as large lakes (Birkett, 1995; Ponchaut and Cazenave, 1998; Mercier et al., 2002), paddy rice fields (Islam et al., 2010), or tidal floods (Yan et al., 2010). The general procedure to monitor storage consists in associating water surface elevation and area after evaluating them independently (e.g. Frappart et al., 2006).

Satellite radar and laser altimetry are the predominant approaches to estimating the elevation of open water bodies (e.g. Morris and Gill, 1994; Crétaux and Birkett, 2006; Calmant et al., 2008; Gao et al., 2012; Wang et al., 2013), or their bathymetry (Arsen et al., 2014). Orbit repeat periods of radar altimeters such as Topex/Poseidon (T/P), GFO, Jason-1 and 2, or Envisat range from 10 to 35 days. They have a high vertical accuracy with root-mean-square errors of the order of centimetres to tens of centimetres, depending on the altimeter and the size of the water body (Calmant et al., 2008; Crétaux et al., 2016). However, the above-mentioned sensors are affected by important drawbacks, including nadir viewing, narrow swath, coarse cross-track spacing (a few hundred kilometres), long along-track path length (about 1 km), and large elevation differences around some water areas that impede their application to more than a few hundred large lakes and reservoirs on the planet (i.e. area > 100 km² and width > 500 m) (Crétaux and Birkett, 2006; Alsdorf et al., 2007; Gao et al., 2012). More recent satellites such as Cryosat-2 or Sentinel-3 present significant improvements in terms of along-track resolution (~ 300 m). However, their respective inter-tracks of 7 and 52 km (Donlon et al., 2012; Crétaux et al., 2016) still place many reservoirs out of the trajectory of their nadir-viewing sensors onboard. The small inter-track of Cryosat is also realized at the expense of a long revisit cycle (369 days) that impedes any monitoring of small reservoirs on a monthly basis. Alternatively, the Geoscience Laser Altimeter System onboard the Ice, Cloud, and Elevation Satellite (ICESat/GLAS) measured land surface elevations between 2003 and 2009 with a much finer spatial resolution (footprint size between 50 and 105 m every 170 m along the track), a vertical accuracy close to 10 cm (Zhang et al., 2011; Duan and Bastiaanssen, 2013), and a finer cross-track resolution (15 km maximum at the Equator, Zwally et al., 2002). There was however no continuous elevation retrieval: ICESat/GLAS gathered data only during designated campaigns, with a long ground-track repeat cycle for almost all of it (183 days). Furthermore, unlike radar altimeters that can be used under all weather conditions (Birkett and Beckley, 2010), laser measurements are affected by the presence of thin clouds (Duan and Bastiaanssen, 2013). Many existing studies consequently used ICESat/GLAS data to get a trend on pre-determined large lake variations over several years (e.g. Zhang et al., 2011; Duan and Bastiaanssen, 2013; Song et al., 2013), or to calibrate area–elevation relationships for a limited number of water bodies large enough for the satellite to take sufficient elevation measurements per track (Zhang et al., 2014).

Water surface areas are commonly determined from optical satellite imagery such as MODerate Resolution Imaging Spectroradiometer (MODIS) and Landsat products (Xiao et al., 2006; Gao et al., 2012), or synthetic aperture radar (SAR) sensors (e.g. RADARSAT, JERS-1, ERS, or Sentinel-1) (Annor et al., 2009; Duan and Bastiaanssen, 2013; Amitrano et al., 2014). The latter has however been

less used due to the difficulty in getting consistent results, as the required condition of a significantly lower phase coherence of water areas than of the surrounding land surface is not always met, with orbital repeat cycles of more than a few days, or with wind or rain (Alsdorf et al., 2007; Eilander et al., 2014). Therefore, existing approaches have used either MODIS or Landsat, depending on their emphasis on spatial or temporal resolution (Solander et al., 2016; Zhang et al., 2016). Images acquired during the various Landsat missions have a much finer spatial resolution (30 m) than MODIS' (250 m for the red band, 500 m for infrared), but they are taken on a repeat cycle of 16 days compared to the daily MODIS products. The higher revisit frequency of MODIS satellites allows MODIS-based approaches to better address clouds and smoke artifacts in optical images. However, MODIS missions cover a much shorter period (July 2000 to present) than Landsat missions (July 1982 to present). The potential of the recent two Sentinel-2 satellites can also be mentioned for post-2015 studies. Launched in June 2015 (Sentinel-2A) and March 2017 (Sentinel-2B), they provide spectral bands at a resolution of 10 m for visible and NIR bands, and at 20 m for SWIR bands. They also have a repeat cycle of 5 days by combining the two (European Space Agency, 2013; Yang et al., 2017).

The common protocol to separate water areas from other land use categories is to apply a threshold to indices such as the Normalized Difference Vegetation Index (NDVI) (e.g. Frappart et al., 2006; Gao et al., 2012), or the Modified Normalized Difference Water Index (MNDWI) proposed by Xu (2006) (e.g. Crétaux et al., 2015; Müller et al., 2016). But determining an adequate value for a multi-temporal analysis can be challenging because such a threshold is known to be case-dependent (Liu et al., 2012; Coltin et al., 2016). Furthermore, separating water from land or vegetation may be difficult due to subpixel land-cover components (Ji et al., 2009) or water quality that can vary throughout a water body (Gao et al., 2012). To address these issues, decision tree defined thresholds have successfully been applied with various vegetation indices (e.g. Xiao et al., 2006; Islam et al., 2010; Yan et al., 2010), but remain case-dependent. Coltin et al. (2016) then advocated the implementation of automatic thresholds as they developed a supervised learning approach to improve flood mapping. Other methods like unsupervised classification (Wang et al., 2008), or direct elevation–area relationships from a digital elevation model (DEM, Wang et al., 2005), have also been tested, but did not prove to be more precise. Gao et al. (2012) recently developed a method to combine both an index analysis and an unsupervised classification to improve the accuracy of the delineation of water areas. The approach was refined by Zhang et al. (2014), who enhanced the storage assessment with a novel surface area retrieval algorithm.

While promising, these approaches generally fail to systematically combine remote sensing surface area and elevation due to the different timing in orbital repeat cycles

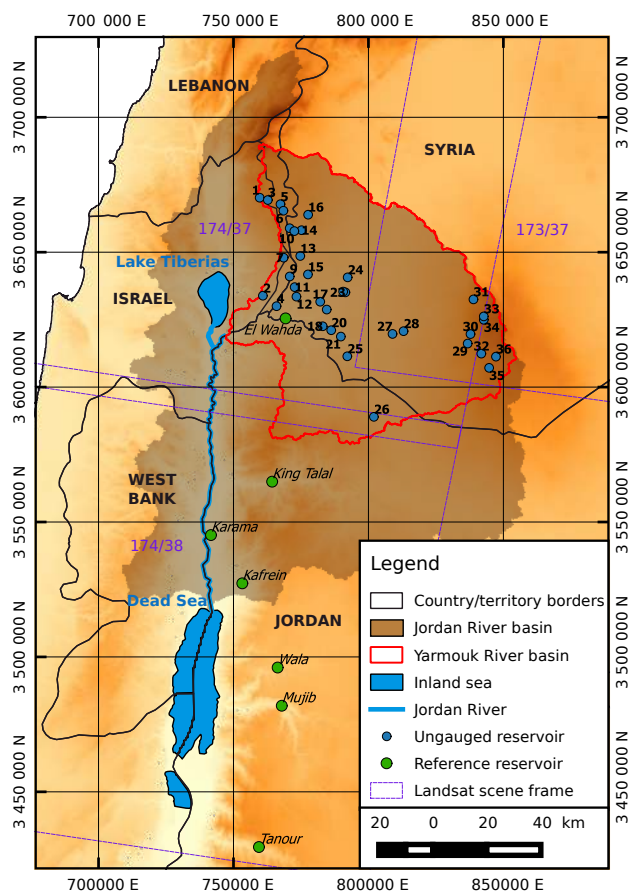


Figure 1. Reservoirs identified in Jordan and the Yarmouk River basin using the method developed in this paper. Because in situ measurements are accessible for those managed by Jordan, they are used to validate the method. Coordinates are expressed in the Coordinate Reference System (CRS) WGS 84/UTM zone 36N (EPSG:32636), in which 1 unit equals 1 m.

of different satellites. Elevation–area relationships are then deduced from remote sensing data that are available at the same time (e.g. through linear or polynomial regressions, Gao et al., 2012; Duan and Bastiaanssen, 2013; Song et al., 2013), so that reservoir storage can be computed with either remote sensing elevation or area only. Even then, existing methods estimate storage in relative terms, either from the already known elevation, area and storage at capacity (Zhang et al., 2014), or from the lowest water level detected (Duan and Bastiaanssen, 2013).

Furthermore, these approaches have only been applied to reservoirs larger than 100 km², which are estimated to represent only 0.54 % of reservoirs larger than 0.1 km² in the world (Lehner et al., 2011). Studies that analysed small reservoirs delineated water surface with Landsat optical sensors (e.g. Liebe et al., 2005; Sawunyama et al., 2006; Rodrigues et al., 2012) or radar images to address the cloud cover issue (Annor et al., 2009; Liebe et al., 2009), and could only get an estimation of storage capacities by conducting bathymetrical

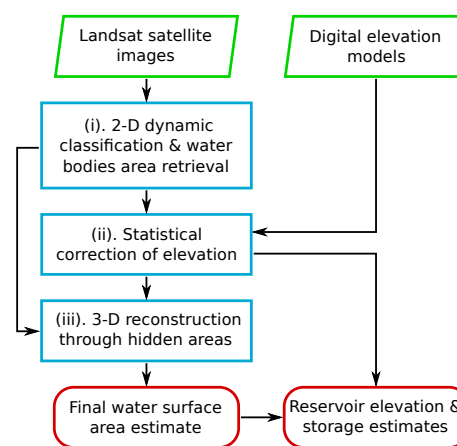


Figure 2. Flowchart of the whole procedure.

surveys. Due to their reliance on in situ observations, these methods are inapplicable to remote, ungauged, or conflict-torn areas.

This paper introduces a new method to monitor reservoir storage based on remote sensing data exclusively. The method is applied to small reservoirs – capacities and water surface areas starting from 1 hm³ (million cubic metres) and 0.5 km² respectively – in the Yarmouk River basin (YRB; see Fig. 1) in southern Syria during the ongoing civil war and the decade before it started. Its prediction performance is tested against available in situ observations of reservoir storage and elevation in neighbouring Jordan.

The document is organized as follows: Sect. 2 presents the method and algorithms developed for the monitoring of reservoir storage, Sect. 3 reviews results, error measurements, and sensitivity analysis, and Sect. 4 concludes the study.

2 Methodology

The procedure is based on two types of data: Landsat images for water area estimation, and DEM for topography. It works in three stages that are presented in the flowchart in Fig. 2. The idea behind the process is (i) to use Landsat bands to enhance the detection of water pixels, then (ii) to exploit this information to statistically correct the DEM vertical errors and characterize reservoir bathymetry, and (iii) to use the updated topography to reconstruct missing parts of Landsat images (e.g. pixels covered by clouds or not captured by the Landsat sensor).

2.1 Two-dimensional dynamic classification and water body area retrieval

Landsat images are chosen because they are freely available with a spatial resolution fine enough (30 m) to detect variations in the area of small reservoirs. The spatial resolution of MODIS images is indeed too coarse to assign to any small reservoir a proper range of area and elevation (1 km² is covered by 16 MODIS image 250 m pixels only). Thus, about 300 Landsat 4, 5, 7, and 8 images for each scene – index 173/37 above a part of the YRB, 174/38 above reservoirs in Jordan, and 174/37 above parts of both in the Worldwide Reference System (WRS; see the scene frames in Fig. 1) – are downloaded from the United States Geological Survey (USGS) EarthExplorer website (<https://earthexplorer.usgs.gov/>).

2.1.1 Fmask

We use the Fmask (Function of mask) algorithm (Zhu and Woodcock, 2012; Zhu et al., 2015) to discriminate cloud coverage from open water. The algorithm was originally designed to separate potential cloud pixels from clear sky pixels on Landsat images using empirical thresholds on the NDVI and the near-infrared band, with an overall accuracy of 96.41 % (Zhu and Woodcock, 2012). Fmask distinguishes land and water areas and produces a probability mask for clouds, which we use to manually remove images that are almost entirely covered by clouds or with obvious large errors in water body detection. After quality control, about 245 images remain per location.

Most pixels classified as water by Fmask can reasonably be considered water due to the relatively selective thresholds used in the algorithm. Hence, at this stage, the uncertainty remains with regards to pixels hidden by clouds or cloud shadows, misclassified by Fmask as land or snow, or not captured by the Landsat sensor (e.g. “N/A” – not available – stripes caused by the Landsat 7 Scan Line Corrector – SLC – failure; see Fig. 4a and b). Our analysis reveals that, on average, 24.1 % of the reservoirs' pixels are misclassified as land, 8.1 % are covered with clouds or cloud shadows, and 8.6 % are in “N/A” areas (see Sect. 3.1).

2.1.2 Occurrence mask

We use the frequency with which pixels are classified as water to distinguish actual reservoirs from small pools or misclassified land, and to delimit them. For each Landsat scene, the ~245 satellite images are superimposed to form an image where each pixel represents the number of times it has been covered by water (see Fig. 3). This occurrence mask (M_{occ}) is useful for filtering occasional Fmask classification errors, and for creating a water mask (M_{wat}): pixels with values greater than 5 in M_{occ} are classified as water and kept in M_{wat} , while those with lower values are considered

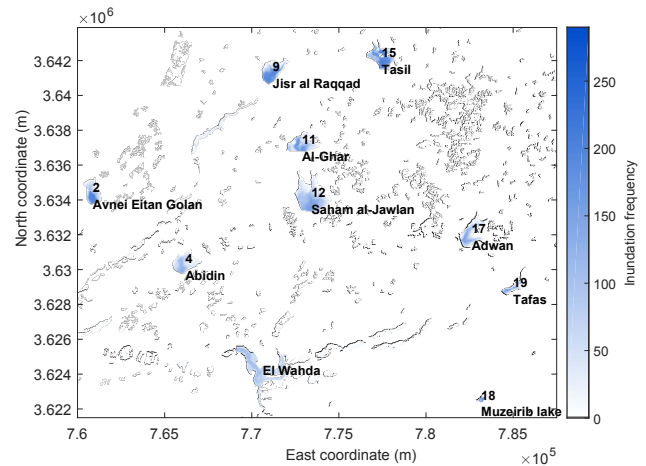


Figure 3. Image of the number of times each pixel has been covered by water (M_{occ}). The text in black indicates the identification number (for Syrian reservoirs) and the name of known reservoirs. Coordinates are expressed in CRS WGS 84/UTM zone 36N.

misclassified land and removed from water bodies (i.e. hidden by M_{wat}). In practice, the threshold of 5 was empirically chosen after comparing detected water bodies with Google Earth high-resolution (~1 m) imagery. The same threshold is applied to reservoirs located in the overlapping area of two Landsat images as it does not change their contours. Its small value is justified by the fact that most images with obvious mistakes have already been manually discarded at the previous step.

Aside from sporadic large wadis (intermittent rivers) that are manually removed from the mask, final water bodies in M_{wat} are deemed to be reservoirs. They are the ones depicted in blue and green dots on the map in Fig. 1.

2.1.3 Classification enhancement for each Landsat image

The detection of water bodies is enhanced using NDVI and MNDWI rasters computed from Landsat imagery. A low NDVI can be attributed to both water and bare land, and a low MNDWI value can denote either water or clouds. We combine these indices and leverage their complementary nature to detect open water.

To ensure more reliable and repeatable values for identical land use categories in different images, the two indices are computed from surface reflectance, which is estimated by applying the image-based atmospheric correction Dark Object Subtraction 1 (DOS1, Chavez, 1996) to top of atmosphere (TOA) reflectance. However, the DOS1 adjustment is not optimal because it is not based on actual atmospheric or cloud cover measurements. Moreover, the slight band variations between the various Landsat missions may affect NDVI and MNDWI, and may require different thresholds to detect water. Consequently, two supplementary water detection ad-

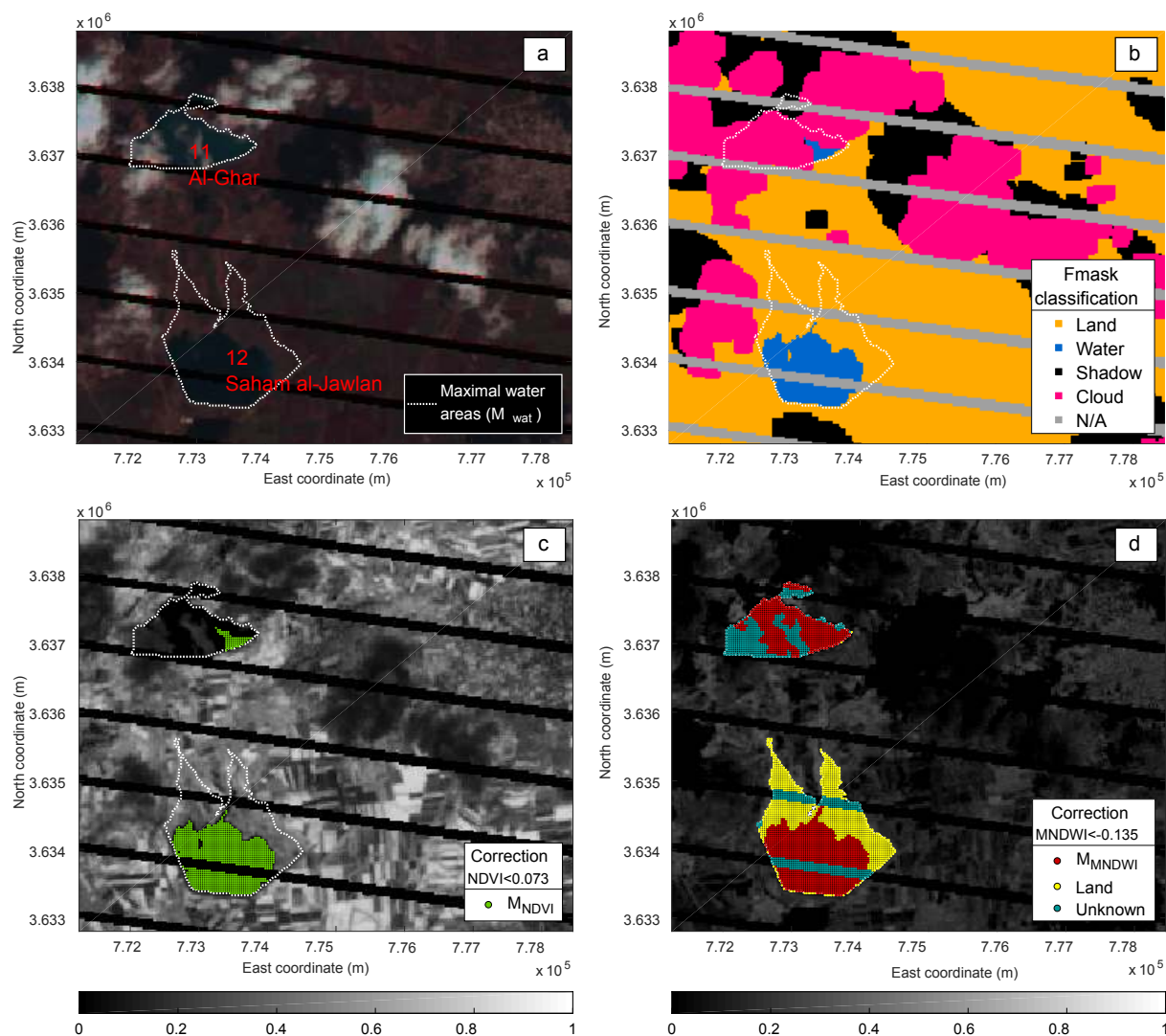


Figure 4. Two-dimensional dynamic water classification over a part of a Landsat 7 image (174/37) obtained on 30 March 2010. Coordinates are expressed in CRS WGS 84/UTM zone 36N. (a) SWIR-R-G image. Two reservoirs can be seen by eye – even if their appearance is very similar to cloud shadow areas – but the hedges are not easy to detect due to the cloud cover. (b) Results of the Fmask classification. Water area detection is not precise enough to directly use the results for the estimation of reservoir surface area. (c) NDVI image. Water pixels' low NDVI here contrasts with the surrounding irrigated crops' high NDVI, as the two reservoirs are located close to cultivation areas. (d) MNDWI image. Red dots indicate water areas obtained after the 2-D enhancement (Sect. 2.1). The 3-D reconstruction is done later (Sect. 2.3) on the *Unknown* part.

adjustments are performed through the method presented in the flowchart in Fig. 5 to define a MNDWI threshold adapted to each date and climatic condition (i.e. each time t over a given scene). A NDVI mask ($M_{\text{NDVI}}(t)$) is first created to calibrate the MNDWI threshold, which is then used to build a MNDWI mask representing water areas ($M_{\text{MNDWI}}(t)$).

1. The goal of $M_{\text{NDVI}}(t)$ is to find with the NDVI all pixels where there could potentially be water. Depending on the results of the Fmask classification in M_{wat} , three situations can arise.

- i. If water is already detected by Fmask in M_{wat} reservoirs, $M_{\text{NDVI}}(t)$ is formed from those ones (see the green dots in the Fig. 4c example).
- ii. Where water is not detected by Fmask, we impose a threshold on the NDVI. Pixels with a NDVI of less than -0.1 in M_{wat} are used to form $M_{\text{NDVI}}(t)$. The lowest values are indeed generally typical of water. This condition has been added to take into account images where thin clouds cover reservoirs.
- iii. In $\sim 1\%$ of all images, no pixel meets the previous conditions, even if water can be seen by eye on the

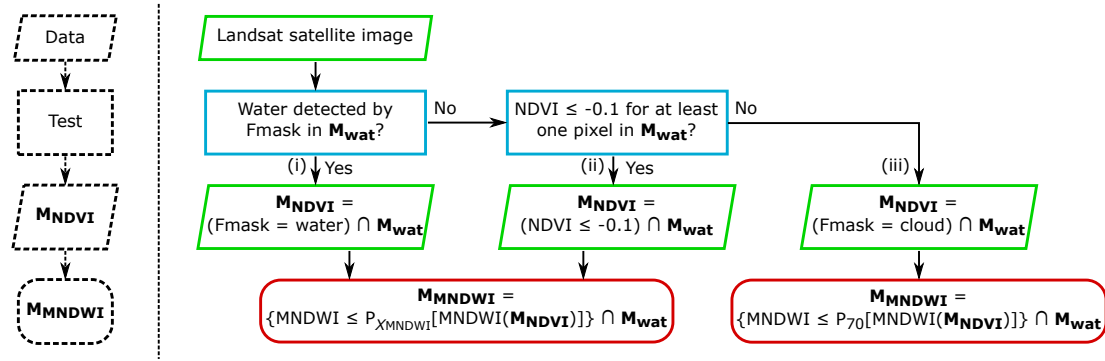


Figure 5. Two-dimensional dynamic classification procedure.

original spectral bands. We have indeed noticed that for these few cases, Fmask associates water bodies with clouds. $M_{NDVI}(t)$ is thus built on pixels classified as cloud in M_{wat} .

- The detection of water bodies is further enhanced by imposing a threshold on MNDWI images. The threshold is defined automatically so as to optimally distinguish water bodies from clouds. For the two first situations, the threshold is set to the X_{MNDWI} th percentile ($P_{X_{MNDWI}}$) of MNDWI values in $M_{NDVI}(t)$. X_{MNDWI} is set to the maximum, 100, in order to avoid over-constraining the classification. The sensitivity of the method to the choice of this parameter is presented in Sect. 3.2 below. For the third case, the threshold is set to the 70th percentile (P_{70}) of MNDWI values in $M_{NDVI}(t)$.

Finally, the water mask – or MNDWI mask – $M_{MNDWI}(t)$ is formed by including only areas with a MNDWI of less than the MNDWI threshold in M_{wat} . This last step allows us to incorporate most water pixels left out by Fmask and undetectable with NDVI (see the red dots in Fig. 4d).

After removing water areas smaller than 20 pixels ($20 \times 900 \text{ m}^2$), considered noise, the classified images have three categories: (i) *Water* as identified by the protocol developed above, (ii) *Land* according to Fmask, and if not in the category *Water*, and (iii) *Unknown*, which includes all other pixels (see Fig. 4d).

2.2 Statistical correction of elevation

2.2.1 Digital elevation models

Unlike most studies, the proposed method does not rely on satellite altimetry to assess water bodies' elevation, but on DEMs to get the topography. It is then required that reservoirs were almost empty or not yet built when the DEM satellites passed over them, for at least one of the two sources considered: ASTER GDEM v2 and SRTM-C/X. ASTER

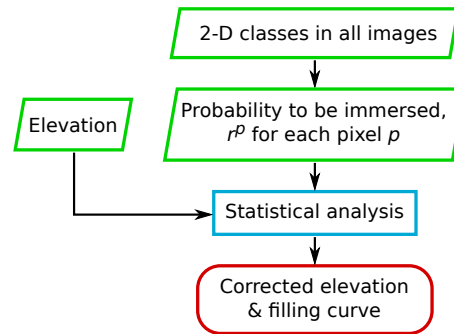


Figure 6. Procedure for the statistical correction of topography.

GDEM v2 data were acquired between 2001 and 2008, and SRTM-C/X data on 11–22 February 2000. All have a spatial resolution of 1'' (approximately 30 m at the Equator), which we resample to match Landsat images. The large coverage of these datasets is chosen over the very low precision of the measures. They indeed cover almost all of the Earth's land surface (except for SRTM-X): from 83° N to 83° S for ASTER GDEM v2, and from 60° N to 56° S for SRTM-C; but the vertical relative precision is very low compared to satellite altimetry: objectives of 15 and 6 m for 90 % of SRTM-C and SRTM-X data respectively (German Aerospace Center, 2017; Rodriguez et al., 2005), and standard deviations estimated to 3.95 and 8.68 m for SRTM-C and ASTER data respectively (ASTER GDEM Validation Team, 2011).

2.2.2 Elevation–area relationship

To improve elevation assessment, DEMs are statistically corrected by using the information on water surface areas obtained from Landsat images. The protocol presented in Fig. 6 is implemented for each reservoir.

- a water coverage quantile is computed at each pixel to determine the probability of it being immersed. With each pixel p is associated the ratio r^p defined as

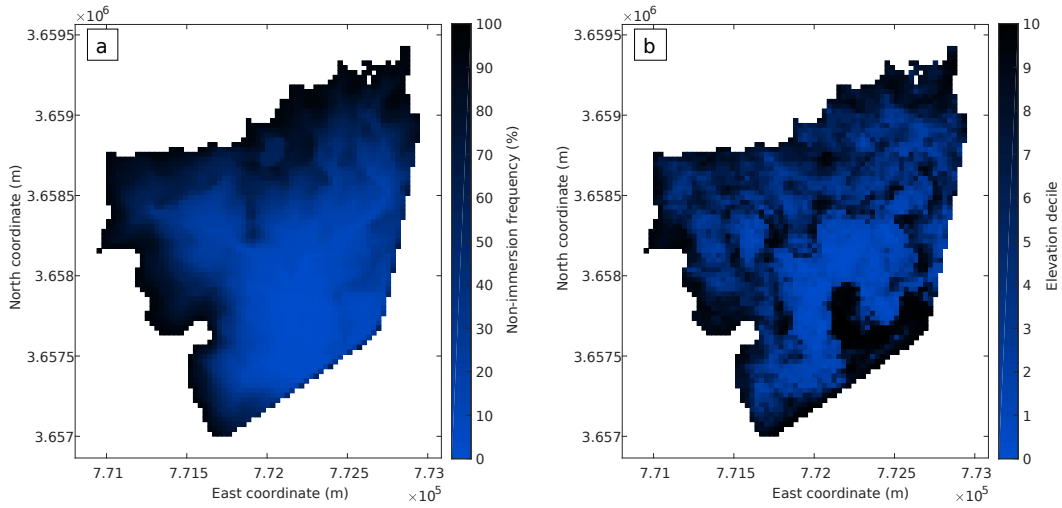


Figure 7. (a) Relative non-immersion frequency ($1 - r^P$, from the 2-D classes) and (b) elevation (from the DEMs, in terms of decile) in the Kudnah reservoir. Coordinates are expressed in CRS WGS 84/UTM zone 36N.

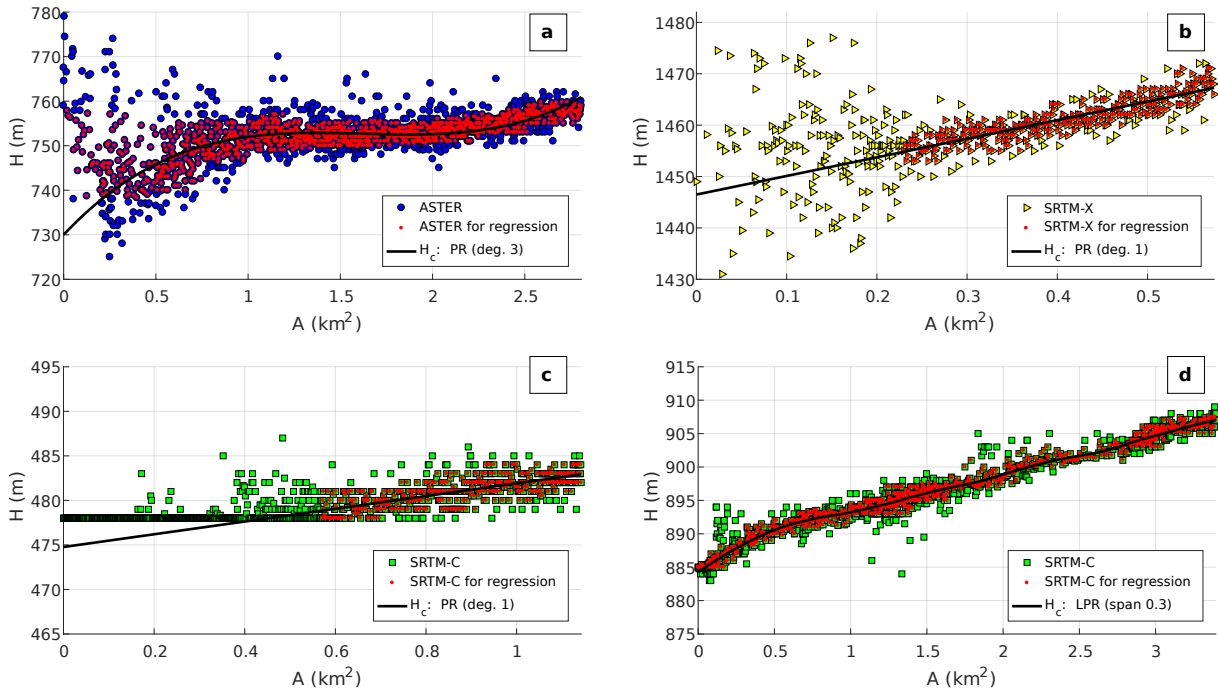


Figure 8. Elevation–area relationship and regression for a few reservoirs in the Yarmouk River basin: (a) Kudnah, (b) Roum, (c) Al Ghar, and (d) Qunaitera. Each symbol (circle, square, or triangle, depending on the DEM) represents the information associated with 1 pixel in a reservoir. PR and LPR stand for polynomial regression and local polynomial regression respectively.

$$r^P = \frac{N_{\text{water}}^P}{N_{\text{water}}^P + N_{\text{land}}^P}, \quad (1)$$

where N_{water}^P is the number of times the given pixel p is counted as Water, and N_{land}^P is the number of times it is counted as Land. We ignore the images where the pixel p is classified as Unknown.

2. To illustrate the interest of this section, Fig. 7 shows both r^P and the relative elevation in the Kudnah reservoir. We can see that the two do not always match as we would expect – i.e. the lowest pixels are not always the most frequently immersed, nor are the highest pixels the most rarely immersed. The immersion frequency (r^P) can actually be used to correct the results of the 2-D clas-

sification enhancement, is indeed assumed to be more reliable than the original DEM. Hence, each pixel's elevation H^p is put in relation with the area A^p , defined as the cumulated area of all pixels q in the reservoir for which $r^q \geq r^p$. The examples of Fig. 8 confirm the observations made in Fig. 7: pixels' elevations are not always correlated with the number of times they are classified as water. To a certain extent the difference was expected from the DEM's low vertical precision, but some "anomalies" concerning the most often immersed pixels (i.e. lowest A^p) can be recurrent from one reservoir to another, due to either a strong dispersion in elevation (see the SRTM-X data in Fig. 8b), or a flat elevation (see the SRTM-C data in Fig. 8c). We interpret this irregularity as arising from the presence of water where the satellite tried to evaluate elevation: in the case of SRTM-X, the measure over water is hampered for reasons inherent to the use of a SAR sensor; and in the case of SRTM-C, DEM pixels covered with water may have been filled during a post-treatment analysis. Either way, elevation cannot be retrieved from the given DEM for these reservoirs' most often immersed pixels.

3. To address the issue, a polynomial regression on observed land pixels ($A > A_i$, with A_i the area assumed to be immersed during the satellite elevation retrieval) is used to build a "corrected elevation"–area relationship ($A \rightarrow H_c(A)$) that best fits the data (in a least-squares sense). Values of H greater than the 80th percentile or lower than the 20th percentile are ignored to filter potential errors and smooth the data. This step is executed three times – one for each DEM – and the better quality dataset (i.e. the one with less dispersion and fewer "anomalies" as defined above) is kept. Examples are shown in Fig. 8.
4. A filling curve – the volume–area relationship – is finally constructed using the outcomes of the previous step.

The regression relies on the assumption that elevation estimates are correct on average by considering many pixels. Indeed, the relative error in elevation approaches zero when the number of images taken into account grows. This property has already been used by LeFavour and Alsdorf (2005) for instance, in order to estimate the slope of the Amazon River.

Parameters and results of the regression for reservoirs that fulfil the criteria mentioned at the beginning of this article – maximum storage and area larger than 1 hm^3 and 0.5 km^2 respectively – are summarized in Table 1.

2.3 Three-dimensional reconstruction through hidden areas

Retrieving missing parts of water bodies in the Unknown areas means dealing with Landsat drawbacks: (i) the 16-day

repeat cycle making images regularly covered by clouds, and (ii) the failure of the Landsat 7 SLC that led to large data losses for the Enhanced Thematic Mapper Plus (ETM+) sensor after May 2003 (see the grey stripes in Fig. 4b).

Zhang et al. (2014) developed an approach to improve quite significantly the estimation of a reservoir's water area. However, their method requires that only a small part of the reservoir is misclassified or hidden. This is not a problem if one works with MODIS images over very large reservoirs, but in our situation – Landsat images over small water bodies – the condition is rarely met.

We developed an alternative algorithm to use the information from each individual pixel.

1. As the area A^p has been associated with each pixel p , and H_c has been expressed in terms of A , a corrected elevation is associated with each pixel in a reservoir.
2. Each pixel in an Unknown area adjacent to water areas is set to Water if (i) the pixel is in M_{wat} , and (ii) its corrected elevation H_c^p is less than the X_{H_c} th percentile of the corrected elevation in all adjacent water bodies. This threshold is set to 98 to ignore the highest values of H_c , in case they were associated with pixels misclassified as water. A sensitivity analysis has been conducted with regard to this threshold, and the results are available in Sect. 3.2 below.

This water body reconstruction technique relies on the fact that a pixel that is often immersed likely has an elevation lower than a pixel that is rarely immersed. This is a reasonable assumption due to the large number of images analysed. The blue dots in Fig. 9 show how the 3-D reconstruction complements the previous 2-D information retrieval. Finally, storage variations are obtained by combining final reconstructed areas with the previously determined filling curves.

3 Results

3.1 Storage variations: validation and discussion

Storage variations estimated by remote sensing for all reservoirs that cannot be gauged in the YRB are displayed in Fig. 10. These reservoirs are located in Syria and in the Israel-controlled Golan Heights. By qualitatively comparing our results to those obtained by Müller et al. (2016) (monitoring of Syrian reservoirs using Landsat 7 datasets but before the 2-D and 3-D corrections), we can see more coherent storage variations through the presence of annual drawdown–refill cycles – particularly for Roum and Sahwat al-Khadr. This means that the 2-D enhancement and 3-D reconstruction steps have improved the detection of water and helped to overcome the low Landsat repeat cycle of 16 days.

Reservoirs managed by Jordan are used to validate the method by comparing our remote sensing estimates of elevation and storage with monthly in situ measurements con-

Table 1. Parameters and results of the elevation–area regression. PR and LPR stand for polynomial regression and local polynomial regression respectively. R^2 is the coefficient of determination between the corrected elevation H_c and the elevation H for pixels taken into account by the regression (red dots in Fig. 8).

Location	Reservoir	DEM	Visible area $1 - \frac{A_i}{A_{max}}$ (%)	Regression	R^2	A_{max} (km ²)	$\Delta H_{c,max}$ (m)	V_{max} (hm ³)
Israel-controlled Golan Heights	Al Manzarah	ASTER	100	PR (deg. 2)	0.34	0.53	9.14	2.64
	Avnei Eitan Golan	ASTER	70	PR (deg. 2)	0.31	0.93	4.88	2.34
Syria	Abidin	ASTER	65	PR (deg. 1)	0.37	1.16	8.74	5.07
	Qunaitera	SRTM-C	100	LPR (span 0.3)	0.98	3.40	22.81	33.94
	Jisr al Raqqad	ASTER	30	PR (deg. 1)	0.52	1.16	16.23	9.43
	Kudnah	ASTER	100	PR (deg. 3)	0.46	2.81	30.92	29.45
	Al Ghar	SRTM-C	50	PR (deg. 1)	0.56	1.14	8.17	4.66
	Saham al-Jawlan	SRTM-C	55	PR (deg. 1)	0.84	2.48	12.93	15.99
	Ghadir al-Bustan	ASTER	50	PR (deg. 1)	0.56	1.19	15.02	8.93
	Tasil	ASTER	60	PR (deg. 1)	0.28	1.28	9.59	6.15
	Adwan	ASTER	100	PR (deg. 1)	0.33	1.31	7.92	5.17
	Ebtaa kabeer	SRTM-C	80	PR (deg. 1)	0.71	0.73	6.56	2.39
	Sheikh Miskin	SRTM-C	45	PR (deg. 1)	0.71	2.85	7.51	10.71
	Roum	SRTM-X	60	PR (deg. 1)	0.81	0.57	20.77	5.94
Sahwat al-Khadr	SRTM-C	80	PR (deg. 3)	0.78	1.27	10.07	6.49	
Border Jordan–Syria	El Wahda	SRTM-C	100	LPR (span 0.3)	0.97	2.69	53.31	66.72
Jordan	Karama	SRTM-C	85	LPR (span 0.1)	0.90	3.79	17.00	35.91
	Kafrein	SRTM-C	30	PR (deg. 1)	0.56	0.66	17.80	5.85
	Tanour	SRTM-C	85	PR (deg. 1)	0.94	0.59	36.00	10.56
	King Talal	SRTM-C	20	PR (deg. 1)	0.29	2.17	31.66	33.69
	Wala	SRTM-C	100	LPR (span 0.5)	0.85	0.61	25.86	6.37
	Mujib	SRTM-C	50	LPR (span 0.3)	0.79	1.30	44.33	30.49

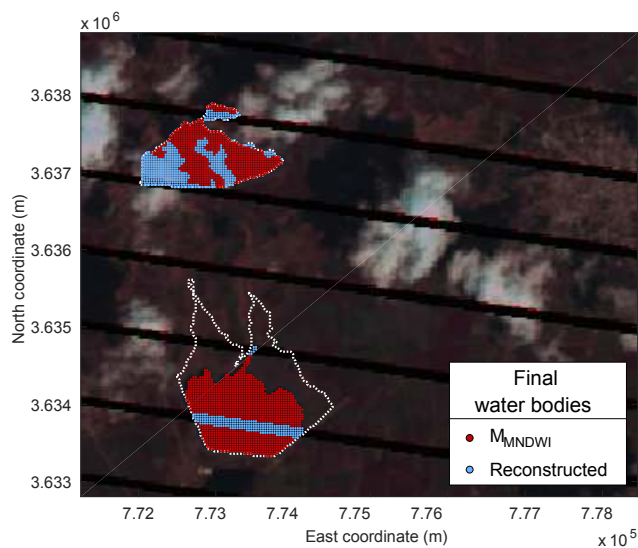


Figure 9. SWIR-R-G image. Final water bodies as obtained after the 2-D enhancement and the 3-D reconstruction applied to the Landsat 7 image (174/37) taken on 30 March 2010 (same as Fig. 4). Coordinates are expressed in CRS WGS 84/UTM zone 36N.

ducted by the Jordan Valley Authority (JVA). With the exception of the King Talal dam, our results seem to follow quite accurately the historical records (see Fig. 11). For some reservoirs (i.e. Karama and Tanour), the method seems to have difficulties in predicting the highest storages. Indeed, if the number of high-elevation pixels is small, the uncertainty in their corrected elevation (and thus the filling curve) can potentially affect the estimate of the maximum storage. This may be a limitation of the method. In addition, we can note that elevation H and volume V may vary a lot from month to month: up to 10 m or 15 hm³ – i.e. 50 % of the maximal storage – for instance for the Mujib reservoir. Because no information is available regarding the data collection date, some of the differences between our estimates and measured data might then come from this lack of metadata.

With regard to the King Talal reservoir, we can see large errors in storage estimates (see Fig. 11). But they could have been expected at the end of the elevation–area relationship establishment step: the assumptions that were made to define H_c were maybe not justified in this case. Indeed, 80 % of the reservoir maximal area was covered with water when the SRTM satellite passed over the dam, and the R^2 is only 0.29 for the regression applied to the remaining visible pixels (see Table 1). A small visible surface area does not necessar-

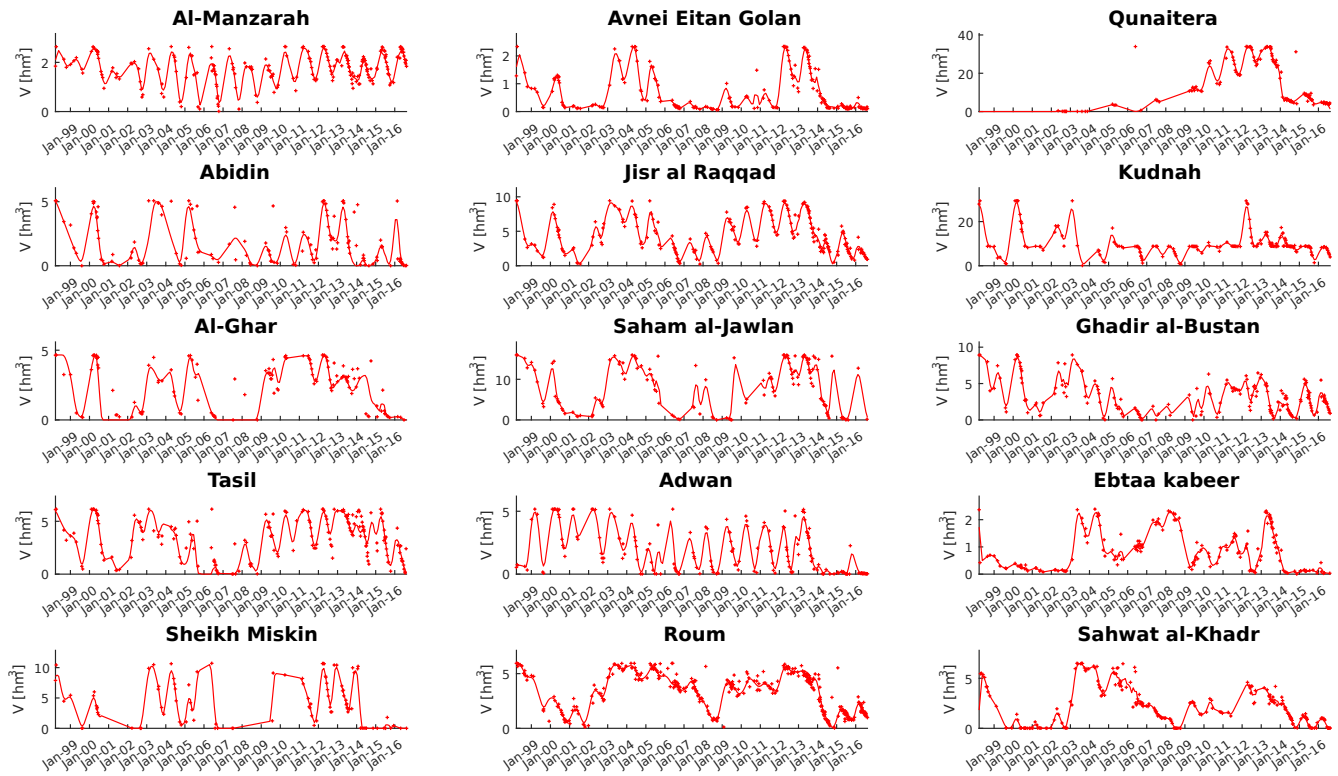


Figure 10. Storage variations. Red crosses indicate estimates from the method developed in this paper. Red lines are local polynomial regressions that are plotted only with the purpose of showing storage variation trends.

ily lead to a low-quality elevation–area relationship – see the good estimates for the Kafrein reservoir, while 70 % of its maximal area was hidden when the SRTM satellite passed over it – but it certainly is a sign that results might be biased.

Errors in the estimation of elevation and storage are evaluated in terms of the coefficient of determination (R^2 , Eq. 2) and the normalized root-mean-square error (NRMSE, Eq. 3):

$$R^2 = \frac{\text{Cov}(\text{RS}, \text{Hist})^2}{\sigma_{\text{RS}}^2 \cdot \sigma_{\text{Hist}}^2}, \quad (2)$$

$$\text{NRMSE} = \frac{1}{\text{Hist}_{\max} - \text{Hist}_{\min}} \sqrt{\sum_{i=1}^N \frac{(\text{RS}_i - \text{Hist}_i)^2}{N}}, \quad (3)$$

where $\text{Cov}(\text{RS}, \text{Hist})$ is the covariance between remote sensing (RS) estimates and JVA historical measurements, σ^2 the variance, and N the number of RS estimates during the period in which JVA measured storage or elevation. Results are presented in Table 2.

The coefficient of determination for storage ranges from 0.69 to 0.84. These high values confirm an important correlation and the similar variation trends that can be seen between the method's estimates and JVA records (see Fig. 11). A few high NRMSE values for both V and H_c though indicate that there is still some uncertainty with regard to the estimation of their absolute value at a given

Table 2. Errors in terms of R^2 and NRMSE for Jordanian reservoirs' H_c and V assessments.

Reservoir	N		R^2		NRMSE	
	H_c	V	H_c	V	H_c	V
El Wahda	25	107	0.54	0.76	0.30	0.15
Karama	29	123	0.98	0.79	0.05	0.10
Kafrein	35	136	0.91	0.81	0.11	0.10
Tanour	16	117	0.83	0.84	0.12	0.15
King Talal	40	159	0.50	0.76	0.36	0.19
Wala	15	37	0.36	0.69	0.21	0.16
Mujib	15	104	0.73	0.75	0.15	0.15

month. Indeed, by ignoring the King Talal dam, NRMSE ranges from 10 to 16 % for storage, and reaches up to 30 % for elevation. These error estimates for elevation though need to be taken into account with caution due to the small number of JVA measurements available for comparison ($15 \leq N \leq 35$).

In order to better evaluate the proposed method compared to a basic fixed NDVI and near-infrared thresholds water area detection, we consider the results presented in Table 3: on average, only 30.0 to 59.4 % of final reservoir areas are detected by Fmask. The average additional part of final wa-

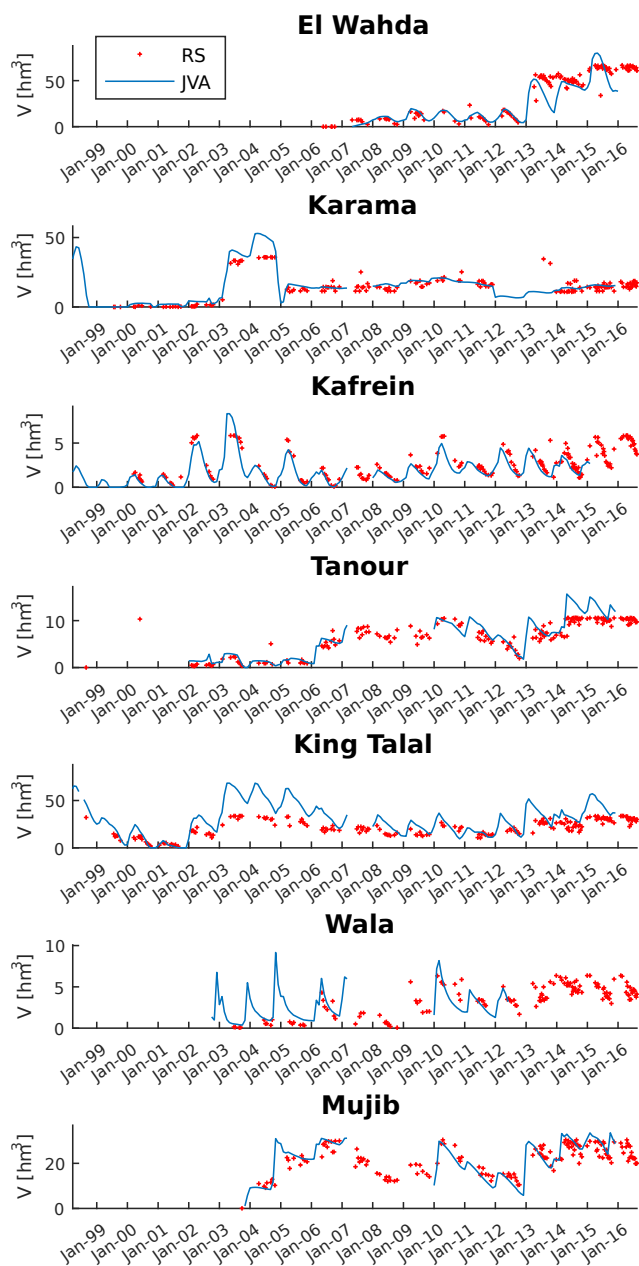


Figure 11. Storage variations for Jordan managed reservoirs. Red crosses indicate estimates from the method developed in this paper. The blue lines indicate in situ data records that were made by the Jordan Valley Authority (JVA).

ter bodies that is detected with the employment of a NDVI-based dynamic threshold for MNDWI is larger than 30 % for all Jordanian reservoirs, and can reach more than 50 % for the Tanour and Wala reservoirs. Similarly, the average additional part obtained through the 3-D reconstruction is larger than 3.9 % (Karama reservoir), and goes beyond 16 % for the more recent reservoirs Tanour, Wala, and Mujib, whose construction ended after 2002 – proportionally, more Landsat 7 images affected by “N/A” stripes were then used for them

Table 3. Initial Fmask classification inside the final water areas (“Other” refers to clouds, cloud shadows, and snow), and stages’ percentage changes that led to the classification as water (“2-D” for the 2-D classification enhancement, and “3-D” for the 3-D reconstruction). “N/A” means not available.

Reservoir	Fmask classification (%)				Changes (%)	
	Water	Land	Other	N/A	2-D	3-D
El Wahda	58.6	20.8	13.1	7.5	32.2	9.2
Karama	64.1	13.3	20.9	1.7	32.0	3.9
Kafrein	58.5	15.9	17.2	8.4	31.9	9.7
Tanour	31.3	15.4	39.0	14.3	52.5	16.1
King Talal	59.4	22.1	9.7	8.8	30.8	9.8
Wala	30.0	24.4	30.0	15.7	52.6	17.5
Mujib	36.1	9.6	37.2	17.2	45.2	18.6

than for older dams. In light of these large shares of hidden or undetected water areas, corrections were obviously essential to consistently monitor reservoir elevation and storage.

3.2 Sensitivity analysis

The two algorithms used to improve the estimation of reservoir area rely on one empirical threshold each: the classification enhancement is performed through the definition of a MNDWI percentile threshold (X_{MNDWI}) to build a mask dynamically adapted to each Landsat image, and the reconstruction is achieved with the choice of a percentile for H_c values (X_{H_c}), which is set to avoid water area overestimation.

The sensitivity of the whole method to these two parameters is tested in terms of the above defined indices: R^2 and NRMSE, which are averaged for all reservoirs in Jordan (King Talal excluded). The sensitivity analysis is conducted by making the percentile thresholds vary between 90 and 100 with a step of 1. Results are presented for both storage and elevation in Fig. 12.

The coefficient of determination reaches its maximum with X_{MNDWI} values around 98 for storage and 93 or 95 for elevation. However, R^2 does not quantitatively assess the accuracy of the method, and as it remains fairly high (above 0.78 for storage, or 0.74 for elevation) in the whole 90–100 range for both parameters, it is not considered to select the threshold percentiles.

NRMSE decreases as X_{MNDWI} and X_{H_c} increase. The method does not detect an excessive number of water pixels – see the retrieval over the large missing parts detailed in Table 3 – but rather obtains estimates for elevation and storage closer to the measurements conducted by JVA. Two conclusions can be drawn from these observations. First, the success in the 2-D enhancement means that there is enough information in Landsat bands to better detect water areas. And second, the precision of the 3-D reconstruction implies that enough Landsat images are available for most reservoirs

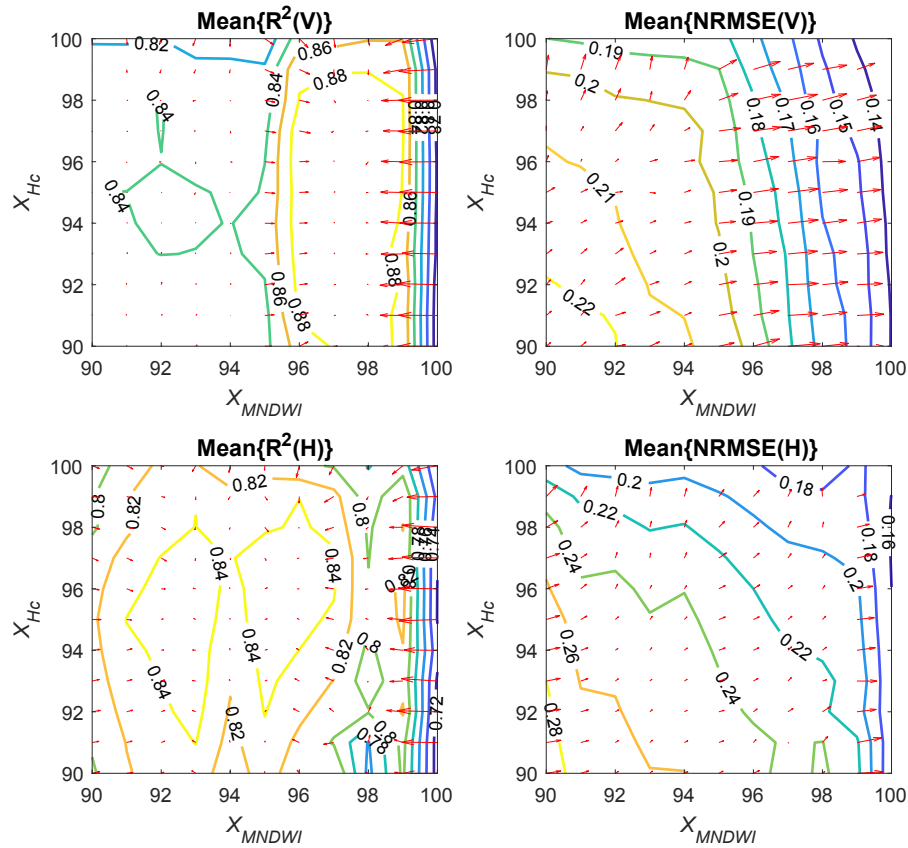


Figure 12. Sensitivity analysis of the two thresholds used to improve water body surface area estimates. Indices are averaged for all Jordanian reservoirs (except King Talal). Arrows point towards larger R^2 , or lower NRMSE, and lengths are proportional to the gradient.

to statistically improve the detection of water bodies when clouds or “N/A” stripes hide land.

However, the H_c upper limit for the reconstruction has a decreasing impact on NRMSE as the MNDWI threshold increases: fewer missing water pixels lead to fewer pixels available to “fill with water” during the subsequent reconstruction. For lower X_{MNDWI} values, the decrease in NRMSE for high X_{Hc} values is clearer. It shows that the reconstruction algorithm addresses well the Fmask and dynamic threshold method limitations, even if it cannot entirely balance the errors. The fact that NRMSE is on average lower for maximal X_{Hc} values than for maximal X_{MNDWI} values could however be expected as the reconstruction relies on the reservoir’s elevation–area relationship, which is established from the elevation of the pixels that are detected in the first stage.

In the end, the percentiles that we chose in this study – respectively 100 and 98 for X_{MNDWI} and X_{Hc} – enable a trade-off between the options of lowering NRMSE for both storage and elevation. Also, with these percentiles, R^2 is still sufficiently high to ensure a strong correlation. It should be noted that the thresholds do not depend on the location, nor the date on which the Landsat images were taken. Therefore, the sensitivity analysis reveals that the highest values for both

X_{MNDWI} and X_{Hc} could be used to apply the method to any other region in the world.

4 Conclusions

Although information on small reservoirs’ storage is crucial for water management in a river basin, it is most of the time not freely available in remote, ungauged, or conflict-torn areas. A remote sensing method is proposed in this paper to monitor small water bodies (capacities and water surface areas starting from 1 hm³ and 0.5 km² respectively). The method is based only on DEMs for elevation, and Landsat satellite images for water surface area, to quantitatively estimate storage variations.

The method is applied to reservoirs in Syria and the Israel-controlled Golan Heights in the Yarmouk River basin, and an uncertainty analysis is conducted with neighbouring Jordan reservoirs for which in situ measurements are available. The NRMSE is relatively low compared to the size of the studied reservoirs and the precision of the datasets that are used.

The main limitation of the approach is its inapplicability to reservoirs that were significantly “covered” with water when the DEM satellites passed over them. Fortunately, this infor-

mation can be readily obtained from remote sensing data and used to determine the applicability of the method a priori.

For all “uncovered” small or large reservoirs, the uses of datasets available over the whole continental surface make this method a valuable complement to satellite altimetry to increase the number of reservoirs observable anywhere in the world. The thresholds dynamically defined for both the 2-D enhancement and the 3-D reconstruction also make the method potentially suitable to monitor reservoirs in truly inaccessible areas. Moreover, the precision of the filling curve and the 3-D reconstruction algorithm increases with the number of pixels taken into account. Applying the method to large “uncovered” reservoirs could then potentially lead to better results. The sensitivity analysis also shows that choosing maximum thresholds in both water area retrieval stages gives the best reservoir storage estimates.

The recent two Sentinel-2 satellites also promise a great improvement of the method for post-2015 studies, as they produce images with spatial and temporal resolutions finer than Landsat (up to 10 m and 5 days). Combining Landsat and Sentinel-2 satellites would then reduce the already short revisit cycle of water bodies and would provide near real-time updates on water body storage.

Furthermore, the algorithms used in the method automatically detect water bodies, define the water area retrieval parameters, build filling curves, and assess reservoir storage. Such algorithmic tools can then be dynamically updated with each new image from Sentinel-2 and Landsat satellites, giving the model the potential to learn by itself and correct previous storage estimates while generating new ones. This approach is somehow comparable to the continuous change detection proposed by Zhu and Woodcock (2014).

Code and data availability. The source code of the algorithm is available at <https://drive.google.com/open?id=0B54cRCK06X-9RUdqaTZmWkdsOXc>. Underlying research data are not publicly accessible. Remote sensing data access for this study is explained in Sect. 2. JVA data records are not publicly available.

Competing interests. The authors declare that they have no conflict of interest.

Acknowledgements. Jordanian reservoirs' monitoring data were provided by Jordan's Ministry of Water and Irrigation, and the Jordan Valley Authority. Landsat satellite images were obtained through the United States Geological Survey (USGS) EarthExplorer (<https://earthexplorer.usgs.gov/>). ASTER GDEM is a product of METI and NASA, and was found on EarthExplorer. SRTM (C-band) data were released by NASA, and are available at the US Geological Survey's EROS Data Center (<https://eros.usgs.gov/>). SRTM/X-SAR were operated by the German Aerospace Center (DLR) with participation of the Italian Space Agency (ASI), and

obtained through EOWEB (<http://eoweb.dlr.de:8080/index.html>). This work was conducted as part of the Belmont Forum water security theme for which coordination was supported by the National Science Foundation under grant GEO/OAD-1342869 to Stanford University. Any opinions, findings, and conclusions or recommendations expressed in this material are those of the authors and do not necessarily reflect the views of the National Science Foundation. The authors acknowledge the financial support of NSERC through grant G8PJ-437384-2012. The authors also thank T. Francke, W. Gumindoga and an anonymous referee for their constructive comments and suggestions.

Edited by: Dominic Mazvimavi

Reviewed by: Webster Gumindoga and one anonymous referee

References

- Alsdorf, D. E., Rodríguez, E., and Lettenmaier, D. P.: Measuring surface water from space, *Rev. Geophys.*, 45, rG2002, <https://doi.org/10.1029/2006RG000197>, 2007.
- Amitrano, D., Martino, G. D., Iodice, A., Mitidieri, F., Papa, M. N., Riccio, D., and Ruello, G.: Sentinel-1 for Monitoring Reservoirs: A Performance Analysis, *Remote Sensing*, 6, 10676–10693, <https://doi.org/10.3390/rs61110676>, 2014.
- Annor, F., van de Giesen, N., Liebe, J., van de Zaag, P., Tilmant, A., and Odai, S.: Delineation of small reservoirs using radar imagery in a semi-arid environment: A case study in the upper east region of Ghana, *Phys. Chem. Earth Pt. A/B/C*, 34, 309–315, <https://doi.org/10.1016/j.pce.2008.08.005>, 2009.
- Arsen, A., Crétaux, J.-F., Berge-Nguyen, M., and del Rio, R. A.: Remote Sensing-Derived Bathymetry of Lake Poopó, *Remote Sensing*, 6, 407–420, <https://doi.org/10.3390/rs6010407>, 2014.
- ASTER GDEM Validation Team: ASTER Global Digital Elevation Model Version 2 – Summary of Validation Results, Tech. rep., NASA LPDAAC-Japan-US ASTER Science Team, https://lpdaacaster.cr.usgs.gov/GDEM/Summary_GDEM2_validation_report_final.pdf (last access: 13 December 2017), 2011.
- Birkett, C. M.: The contribution of TOPEX/POSEIDON to the global monitoring of climatically sensitive lakes, *J. Geophys. Res.-Oceans*, 100, 25179–25204, <https://doi.org/10.1029/95JC02125>, 1995.
- Birkett, C. M. and Beckley, B.: Investigating the Performance of the Jason-2/OSTM Radar Altimeter over Lakes and Reservoirs, *Mar. Geodesy*, 33, 204–238, <https://doi.org/10.1080/01490419.2010.488983>, 2010.
- Calmant, S., Seyler, F., and Crétaux, J. F.: Monitoring Continental Surface Waters by Satellite Altimetry, *Surv. Geophys.*, 29, 247–269, <https://doi.org/10.1007/s10712-008-9051-1>, 2008.
- Chavez, P.: Image-based atmospheric corrections revisited and improved, *Photogram. Eng. Remote Sens.*, 62, 1025–1036, 1996.
- Coltin, B., McMichael, S., Smith, T., and Fong, T.: Automatic boosted flood mapping from satellite data, *Int. J. Remote Sens.*, 37, 993–1015, <https://doi.org/10.1080/01431161.2016.1145366>, 2016.
- Crétaux, J.-F. and Birkett, C.: Lake studies from satellite radar altimetry, *Comptes Rendus Geoscience*, 338, 1098–1112, <https://doi.org/10.1016/j.crte.2006.08.002>, 2006.

- Crétaux, J.-F., Biancamaria, S., Arsen, A., Bergé-Nguyen, M., and Becker, M.: Global surveys of reservoirs and lakes from satellites and regional application to the Syrdarya river basin, *Environ. Res. Lett.*, 10, 015002, <https://doi.org/10.1088/1748-9326/10/1/015002>, 2015.
- Crétaux, J.-F., Abarca-del Río, R., Bergé-Nguyen, M., Arsen, A., Drolon, V., Clos, G., and Maisongrande, P.: Lake Volume Monitoring from Space, *Surv. Geophys.*, 37, 269–305, <https://doi.org/10.1007/s10712-016-9362-6>, 2016.
- Döll, P., Fiedler, K., and Zhang, J.: Global-scale analysis of river flow alterations due to water withdrawals and reservoirs, *Hydrol. Earth Syst. Sci.*, 13, 2413–2432, <https://doi.org/10.5194/hess-13-2413-2009>, 2009.
- Dombrowsky, I.: Conflict, cooperation and institutions in international water management: An economic approach, Edward Elgar Publishing, Cheltenham, 2007.
- Donlon, C., Berruti, B., Buongiorno, A., Ferreira, M.-H., Féménias, P., Frerick, J., Goryl, P., Klein, U., Laur, H., Mavrocordatos, C., Nieke, J., Rebhan, H., Seitz, B., Stroede, J., and Sciarra, R.: The Global Monitoring for Environment and Security (GMES) Sentinel-3 mission, *Remote Sens. Environ.*, 120, 37–57, <https://doi.org/10.1016/j.rse.2011.07.024>, 2012.
- Duan, Z. and Bastiaanssen, W.: Estimating water volume variations in lakes and reservoirs from four operational satellite altimetry databases and satellite imagery data, *Remote Sens. Environ.*, 134, 403–416, <https://doi.org/10.1016/j.rse.2013.03.010>, 2013.
- Eilander, D., Annor, F. O., Iannini, L., and van de Giesen, N.: Remotely Sensed Monitoring of Small Reservoir Dynamics: A Bayesian Approach, *Remote Sensing*, 6, 1191, <https://doi.org/10.3390/rs6021191>, 2014.
- European Space Agency: Sentinel-2 Mission Details, available at: <https://earth.esa.int/web/guest/missions/esa-operational-eo-missions/sentinel-2> (last access: 15 October 2017), 2013.
- Frappart, F., Minh, K. D., L'Hermitte, J., Cazenave, A., Ramilien, G., Le Toan, T., and Mognard-Campbell, N.: Water volume change in the lower Mekong from satellite altimetry and imagery data, *Geophys. J. Int.*, 167, 570–584, <https://doi.org/10.1111/j.1365-246X.2006.03184.x>, 2006.
- Gao, H., Birkett, C., and Lettenmaier, D. P.: Global monitoring of large reservoir storage from satellite remote sensing, *Water Resour. Res.*, 48, w09504, <https://doi.org/10.1029/2012WR012063>, 2012.
- German Aerospace Center (DLR): SRTM Products, available at: http://www.dlr.de/eoc/en/Portaldata/60/Resources/dokumente/7_sat_miss/srtm_products_en.pdf, last access: 11 January 2017.
- Hanasaki, N., Kanae, S., and Oki, T.: A reservoir operation scheme for global river routing models, *J. Hydrol.*, 327, 22–41, <https://doi.org/10.1016/j.jhydrol.2005.11.011>, 2006.
- International Commission On Large Dams: Register of dams, available at: http://www.icold-cigb.org/GB/World_register/data_base_presentation.asp, last access: 24 November 2016.
- Islam, A., Bala, S., and Haque, M.: Flood inundation map of Bangladesh using MODIS time-series images, *J. Flood Risk Manage.*, 3, 210–222, <https://doi.org/10.1111/j.1753-318X.2010.01074.x>, 2010.
- Ji, L., Zhang, L., and Wylie, B.: Analysis of Dynamic Thresholds for the Normalized Difference Water Index, *Photogram. Eng. Remote Sens.*, 75, 1307–1317, <https://doi.org/10.14358/PERS.75.11.1307>, 2009.
- Leemhuis, C., Jung, G., Kasei, R., and Liebe, J.: The Volta Basin Water Allocation System: assessing the impact of small-scale reservoir development on the water resources of the Volta basin, West Africa, *Adv. Geosci.*, 21, 57–62, <https://doi.org/10.5194/adgeo-21-57-2009>, 2009.
- LeFavour, G. and Alsdorf, D.: Water slope and discharge in the Amazon River estimated using the shuttle radar topography mission digital elevation model, *Geophys. Res. Lett.*, 32, L17404, <https://doi.org/10.1029/2005GL023836>, 2005.
- Lehner, B., Liermann, C. R., Revenga, C., Vörösmarty, C., Fekete, B., Crouzet, P., Döll, P., Endejan, M., Frenken, K., Magome, J., Nilsson, C., Robertson, J. C., Rödel, R., Sindorf, N., and Wisser, D.: High-resolution mapping of the world's reservoirs and dams for sustainable river-flow management, *Front. Ecol. Environ.*, 9, 494–502, <https://doi.org/10.1890/100125>, 2011.
- Liebe, J. R., van de Giesen, N., and Andreini, M.: Estimation of small reservoir storage capacities in a semi-arid environment: A case study in the Upper East Region of Ghana, *Phys. Chem. Earth Pt. A/B/C*, 30, 448–454, <https://doi.org/10.1016/j.pce.2005.06.011>, 2005.
- Liebe, J. R., van de Giesen, N., Andreini, M., Walter, M. T., and Steenhuis, T. S.: Determining watershed response in data poor environments with remotely sensed small reservoirs as runoff gauges, *Water Resour. Res.*, 45, w07410, <https://doi.org/10.1029/2008WR007369>, 2009.
- Liu, Y., Song, P., Peng, J., and Ye, C.: A physical explanation of the variation in threshold for delineating terrestrial water surfaces from multi-temporal images: effects of radiometric correction, *Int. J. Remote Sens.*, 33, 5862–5875, <https://doi.org/10.1080/01431161.2012.675452>, 2012.
- Mercier, F., Cazenave, A., and Maheu, C.: Interannual lake level fluctuations (1993–1999) in Africa from Topex/Poseidon: connections with ocean-atmosphere interactions over the Indian Ocean, *Global Planet. Change*, 32, 141–163, [https://doi.org/10.1016/S0921-8181\(01\)00139-4](https://doi.org/10.1016/S0921-8181(01)00139-4), 2002.
- Morris, C. S. and Gill, S. K.: Variation of Great Lakes water levels derived from Geosat altimetry, *Water Resour. Res.*, 30, 1009–1017, <https://doi.org/10.1029/94WR00064>, 1994.
- Müller, M. F., Yoon, J., Gorelick, S. M., Avisse, N., and Tilmant, A.: Impact of the Syrian refugee crisis on land use and transboundary freshwater resources, *P. Natl. Acad. Sci. USA*, 113, 14932–14937, <https://doi.org/10.1073/pnas.1614342113>, 2016.
- Ponchaut, F. and Cazenave, A.: Continental lake level variations from Topex/Poseidon (1993–1996), *Comptes Rendus de l'Académie des Sciences – Series IIA – Earth and Planetary Science*, 326, 13–20, [https://doi.org/10.1016/S1251-8050\(97\)83198-9](https://doi.org/10.1016/S1251-8050(97)83198-9), 1998.
- Rodrigues, L. N., Sano, E. E., Steenhuis, T. S., and Passo, D. P.: Estimation of Small Reservoir Storage Capacities with Remote Sensing in the Brazilian Savannah Region, *Water Resour. Manage.*, 26, 873–882, <https://doi.org/10.1007/s11269-011-9941-8>, 2012.
- Rodriguez, E., Morris, C., Belz, J., Chapin, E., Martin, J., Daffer, W., and Hensley, S.: An assessment of the SRTM topographic products, Technical Report JPL D-31639, Jet Propulsion Laboratory, Pasadena, California, 2005.

- Sawunyama, T., Senzanje, A., and Mhizha, A.: Estimation of small reservoir storage capacities in Limpopo River Basin using geographical information systems (GIS) and remotely sensed surface areas: Case of Mzingwane catchment, *Phys. Chem. Earth Pt. A/B/C*, 31, 935–943, <https://doi.org/10.1016/j.pce.2006.08.008>, 2006.
- Solander, K. C., Reager, J. T., and Famiglietti, J. S.: How well will the Surface Water and Ocean Topography (SWOT) mission observe global reservoirs?, *Water Resour. Res.*, 52, 2123–2140, <https://doi.org/10.1002/2015WR017952>, 2016.
- Song, C., Huang, B., and Ke, L.: Modeling and analysis of lake water storage changes on the Tibetan Plateau using multi-mission satellite data, *Remote Sens. Environ.*, 135, 25–35, <https://doi.org/10.1016/j.rse.2013.03.013>, 2013.
- Vörösmarty, C. J., Sharma, K. P., Fekete, B. M., Copeland, A. H., Holden, J., Marble, J., and Lough, J. A.: The Storage and Aging of Continental Runoff in Large Reservoir Systems of the World, *Ambio*, 26, 210–219, 1997.
- Wang, X., Gong, P., Zhao, Y., Xu, Y., Cheng, X., Niu, Z., Luo, Z., Huang, H., Sun, F., and Li, X.: Water-level changes in China's large lakes determined from ICESat/GLAS data, *Remote Sens. Environ.*, 132, 131–144, 2013.
- Wang, Y., Liao, M., Sun, G., and Gong, J.: Analysis of the water volume, length, total area and inundated area of the Three Gorges Reservoir, China using the SRTM DEM data, *Int. J. Remote Sens.*, 26, 4001–4012, <https://doi.org/10.1080/01431160500176788>, 2005.
- Wang, Y., Sun, G., Liao, M., and Gong, J.: Using MODIS images to examine the surface extents and variations derived from the DEM and laser altimeter data in the Danjiangkou Reservoir, China, *Int. J. Remote Sens.*, 29, 293–311, <https://doi.org/10.1080/01431160701253311>, 2008.
- Xiao, X., Boles, S., Froking, S., Li, C., Babu, J. Y., Salas, W., and Moore, B.: Mapping paddy rice agriculture in South and Southeast Asia using multi-temporal MODIS images, *Remote Sens. Environ.*, 100, 95–113, <https://doi.org/10.1016/j.rse.2005.10.004>, 2006.
- Xu, H.: Modification of normalised difference water index (NDWI) to enhance open water features in remotely sensed imagery, *Int. J. Remote Sens.*, 27, 3025–3033, <https://doi.org/10.1080/01431160600589179>, 2006.
- Yan, Y.-E., Ouyang, Z.-T., Guo, H.-Q., Jin, S.-S., and Zhao, B.: Detecting the spatiotemporal changes of tidal flood in the estuarine wetland by using MODIS time series data, *J. Hydrol.*, 384, 156–163, <https://doi.org/10.1016/j.jhydrol.2010.01.019>, 2010.
- Yang, X., Zhao, S., Qin, X., Zhao, N., and Liang, L.: Mapping of Urban Surface Water Bodies from Sentinel-2 MSI Imagery at 10 m Resolution via NDWI-Based Image Sharpening, *Remote Sensing*, 9, 596, <https://doi.org/10.3390/rs9060596>, 2017.
- Yoon, Y. and Beighley, E.: Simulating streamflow on regulated rivers using characteristic reservoir storage patterns derived from synthetic remote sensing data, *Hydrol. Process.*, 29, 2014–2026, <https://doi.org/10.1002/hyp.10342>, 2015.
- Zhang, G., Xie, H., Kang, S., Yi, D., and Ackley, S. F.: Monitoring lake level changes on the Tibetan Plateau using ICESat altimetry data (2003–2009), *Remote Sens. Environ.*, 115, 1733–1742, <https://doi.org/10.1016/j.rse.2011.03.005>, 2011.
- Zhang, H., Gorelick, S. M., Avisse, N., Tilmant, A., Rajsekhar, D., and Yoon, J.: A New Temperature-Vegetation Triangle Algorithm with Variable Edges (TAVE) for Satellite-Based Actual Evapotranspiration Estimation, *Remote Sensing*, 8, 735, <https://doi.org/10.3390/rs8090735>, 2016.
- Zhang, S., Gao, H., and Naz, B. S.: Monitoring reservoir storage in South Asia from multisatellite remote sensing, *Water Resour. Res.*, 50, 8927–8943, <https://doi.org/10.1002/2014WR015829>, 2014.
- Zhu, Z. and Woodcock, C. E.: Object-based cloud and cloud shadow detection in Landsat imagery, *Remote Sens. Environ.*, 118, 83–94, <https://doi.org/10.1016/j.rse.2011.10.028>, 2012.
- Zhu, Z. and Woodcock, C. E.: Continuous change detection and classification of land cover using all available Landsat data, *Remote Sens. Environ.*, 144, 152–171, <https://doi.org/10.1016/j.rse.2014.01.011>, 2014.
- Zhu, Z., Wang, S., and Woodcock, C. E.: Improvement and expansion of the Fmask algorithm: cloud, cloud shadow, and snow detection for Landsats 4-7, 8, and Sentinel 2 images, *Remote Sens. Environ.*, 159, 269–277, <https://doi.org/10.1016/j.rse.2014.12.014>, 2015.
- Zwally, H., Schutz, B., Abdalati, W., Abshire, J., Bentley, C., Brenner, A., Bufton, J., Dezio, J., Hancock, D., Harding, D., Herring, T., Minster, B., Quinn, K., Palm, S., Spinhirne, J., and Thomas, R.: ICESat's laser measurements of polar ice, atmosphere, ocean, and land, *J. Geodynam.*, 34, 405–445, [https://doi.org/10.1016/S0264-3707\(02\)00042-X](https://doi.org/10.1016/S0264-3707(02)00042-X), 2002.