

## Clinical Article

# Morphometrical Study of Uncinate Processes and Vertebral Body of Cervical Spine

Tae Hoon Lee, M.D., Ph.D.,<sup>1</sup> Sang Jin Kim, M.D., Ph.D.,<sup>2</sup> In Hyuk Chung, M.D., Ph.D.<sup>3</sup>

*Department of Neurosurgery,<sup>1</sup> 21st Century Hospital, Seoul, Korea*

*Department of Neurosurgery,<sup>2</sup> Ewha Womans University School of Medicine, Mokdong Hospital, Seoul, Korea*

*Department of Anatomy,<sup>3</sup> Yonsei University School of Medicine, Seoul, Korea*

**Objective :** The anatomical knowledge is the most important and has a direct link with success of operation in cervical spine surgery. The authors measured various cervical parameters in cadaveric dry bones and compared with previous reported results.

**Methods :** We made 255 dry bones age from 19 to 72 years (mean, 42.3 years) that were obtained from 51 subjects in 100 subjects who donated their bodies. All measurements from C3-C7 levels were made using digital vernier calipers, standard goniometer, and self-made fix tool for two different cervical axes (canal and disc setting). We classified into 4 groups (uncinate process, vertebral body, lamina, and pedicle) and measured independently by two neurosurgeons for 28 parameters.

**Results :** We analyzed 23970 measurements by mean value and standard deviations. In comparing with previous literatures, there are some different results. The mean values for uncinate process (UP) width ranged from 5.5 mm at C4 and 5 to 6.3 mm at C3 and C7 in men. Also, in women, the mean values for UP width ranged from 5.5 mm at C5 to 6.3 mm at C7. C7 was widest and C5 was most narrow than other levels. The antero-posterior length of UP tended to increase gradually from C3 to C6. The tip way, tip distance, and base distance of UP also showed increasing pattern from C3 to C7.

**Conclusion :** These measurements can provide the spinal surgeons with a starting point to address bony architectures surrounding targeted soft tissues for safeguard against unintended damages during cervical operation.

**Key Words :** Cervical vertebra · Uncinate process · Dry bone · Parameters.

## INTRODUCTION

The definition of uncinate process (UP) is the bony protuberances that extends cranially from postero-lateral margins of superior end plates in lower cervical spine (C3-C7). In 1858, Luschka named as "eminencia costaria" due to resembled head of rudimentary rib, and Trolard named as "processus uncinatus" in 1893 and its function is to protect brachial plexus and to allow rotational movement<sup>12)</sup>. So far, anatomic studies for cervical UP were demonstrated by several investigators<sup>6,9,11)</sup>, the biomechanical role of cervical UP is both guiding mechanism during flexion and extension and a limiting mechanism during posterior translation and lateral bending<sup>18)</sup>.

Recently, anterior cervical microforaminotomy has been regarded as one of surgical methods, and UP is frequently removed during surgery. Therefore, the anatomical knowledge is

the most important and has a direct link with success of operation in cervical spine surgery. For prevention of nerve roots and vertebral artery (VA) injuries, the surgeons must keep in mind of normal range and understand of the relationships between the neurovascular structures and bony surroundings. Authors measured various cervical parameters, especially for UP, in cadaveric dry bones and compared with previous reported results.

## MATERIALS AND METHODS

### Study population

A total of 100 individuals who donated their bodies to the Department of Anatomy were selected for appropriate study subjects. In 100 subjects, there are no information for age in 32 and severe cervical injuries in 11. So, we tried to make dry bones from 57 subjects. Fifty-seven subjects died with the cause

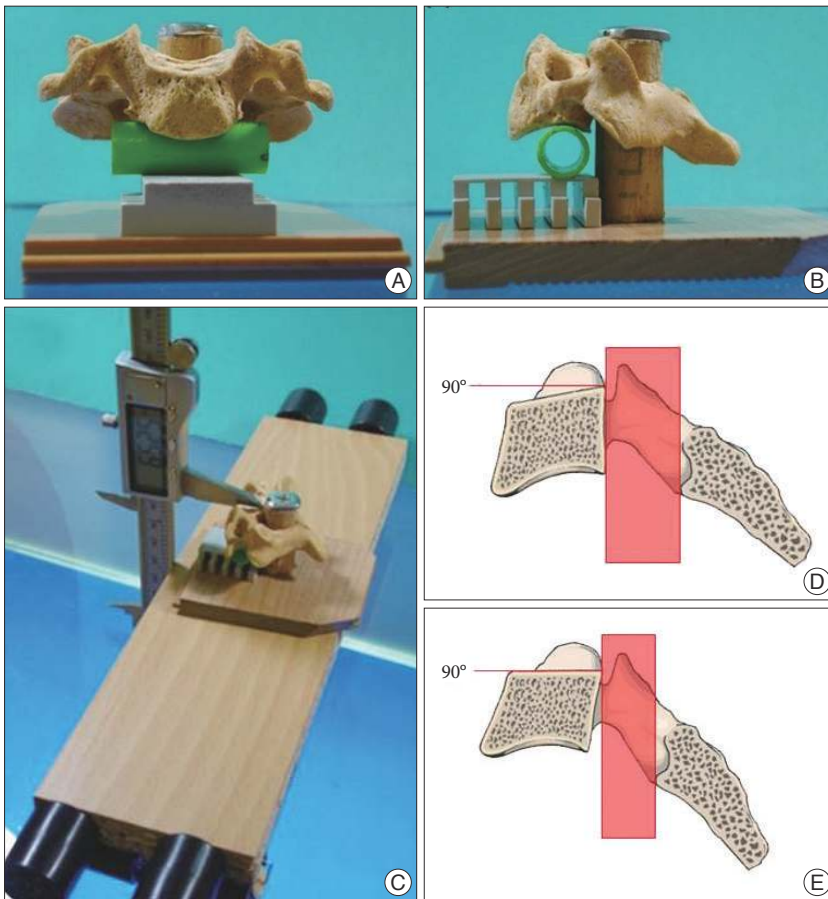
• Received : January 11, 2012 • Revised : March 21, 2012 • Accepted : May 15, 2012

• Address for reprints : Sang Jin Kim, M.D., Ph.D.

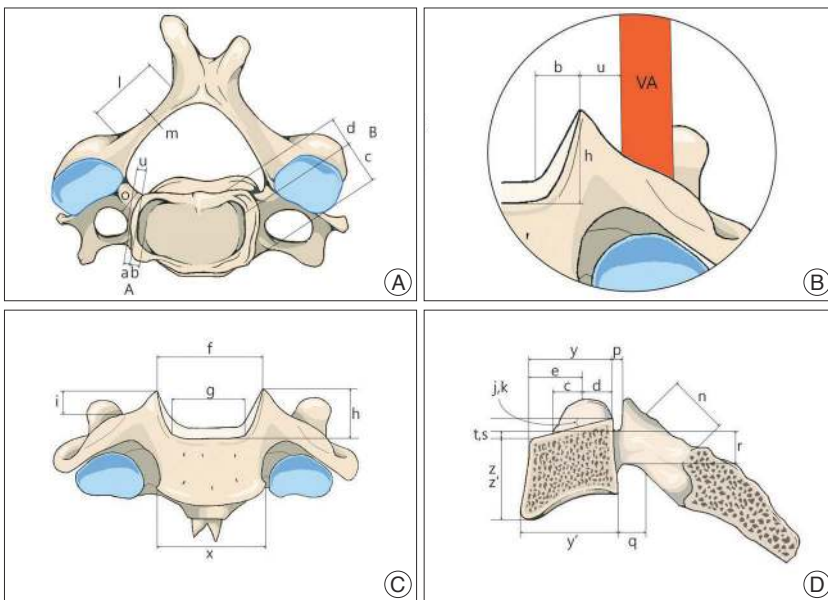
• Department of Neurosurgery, Ewha Womans University School of Medicine, Mokdong Hospital, 1071 Anyangcheon-ro, Yangcheon-gu, Seoul 158-710, Korea

• Tel : +82-2-2650-2633, Fax : +82-2-2650-2652, E-mail : sjkimmd@unitel.co.kr

• This is an Open Access article distributed under the terms of the Creative Commons Attribution Non-Commercial License (<http://creativecommons.org/licenses/by-nc/3.0>) which permits unrestricted non-commercial use, distribution, and reproduction in any medium, provided the original work is properly cited.



**Fig. 1.** The self-made fix tools which authors made and used. Anterior (A), lateral (B), and oblique (C) aspect applied with vernier calipers. Schematic sagittal figures of two different axes for cervical vertebra. Canal setting (D) is the state when imaginary longitudinal line made by posterior side of vertebral body is perpendicular to the ground. Disc setting (E) is the state when imaginary horizontal line made by superior side of vertebral body (endplate) is parallel to the ground.



**Fig. 2.** Schematic figures of parameters of cervical vertebra. Superior (A), enlarged figure of anterior with imaginary line of vertebral artery (B), anterior (C), and sagittal cross section of lateral aspect (D). Illustration (A) from *The Textbook of Spine, Korea, 2004, p.37*, with permission.

of tumor, cerebral stroke, acute myocardial infarction, pneumonia, and etc. After making dry bone, we found that 6 subjects were exclusive status (cervical operation, severe degenerative change, vertebral body injuries, invasion of tumor, and loss of cervical level). Finally, 255 dry bones (32 male and 19 female) were obtained from 51 subjects.

Total of 51 subjects between the ages of 19 and 72 years (mean, 42.3 years) were categorized according to age and sex. We performed the measurements on 255 cervical dry vertebrae from the C3-C7 levels.

### Instruments of measurement

All measurements were made using digital vernier calipers which has accuracy to 0.01 mm and standard goniometer. We used self-made fix tool for cervical vertebrae measurements (Fig. 1). Cervical vertebra has two different axes. One is canal setting and the other is disc setting. Canal setting is the state when imaginary longitudinal line made by posterior side of vertebral body (VB) is perpendicular to the ground (Fig. 1D). Disc setting is the state when imaginary horizontal line made by superior side of VB (endplate) is parallel to the ground. Fix tool was able to support two kinds of axis (Fig. 1E).

### Parameters

We measured and classified into 4 groups which are UP, VB, lamina, and pedicle. The parameters of measurements from C3 to C7 were precisely performed. All measurements were checked independently by two neurosurgeons, and mean values were calculated. Total of 28 parameters (27 linear and 1 angular) for 255 vertebrae were used (Table 1) (Fig. 2). There were 19 paired and 9 unpaired parameters.

### Statistical analysis

Analysis of total 23970 measurements (results from two neurosurgeons) was performed by mean value and standard deviations. The final table was made by the average of bilateral structures (right

**Table 1.** Anatomical parameters of cervical vertebra

Parameters	Remarks
A=UP width	Width of the UP from its medial to lateral surface of the largest part of its base (a=lateral part width, b=medial part width)
B=UP length	Antero-posterior length of the UP between its posterior and anterior borders above the superior surface of the VB (c=anterior length, d=posterior length)
e=UP tip way	Distance between the imaginary line of anterior aspect of VB and the tip of the UP
f=UP tip distance	Distance between the highest points of UP
g=UP base distance	Distance between the anterior innermost point of each cervical UP at their bases or the superior surface of the vertebra
h=UP tip height	Greatest height of the UP from its tip to the superior surface of VB
i=UP tip-CP height	Distance between the tip of the UP and superior surface of the CP
j=Inclination (mm)	Inclination (mm) of superior surface of the vertebra
k=Inclination (°)	Inclination (°) of superior surface of the vertebra
l=Lamina length	Length of outer surface of lamina
m=Lamina width	Width of lamina
n=Lamina height	Height of lamina
o=Pedicle width	Width of pedicle
p=Pedicle length (upper)	Length of superior side of pedicle
q=Pedicle length (lower)	Length of inferior side of pedicle
r=Pedicle height	Height of pedicle
s=PDH (disc setting)	Height between the antero-superior point of VB and superior surface of pedicle in disc and canal setting
t=PDH (canal setting)	
u=UP tip-TF distance	Distance between the tip of the UP and TF
x=VB width	Width of the VB at its inferior surface
y=VB length (upper)	AP midline width of VB on its superior end plate
y'=VB length (lower)	AP midline width of VB on its inferior end plate
z=VB height (anterior)	Height of VB at its anterior aspect
z'=VB height (posterior)	Height of VB at its posterior aspect

UP : uncinat process, AP : antero-posterior, VB : vertebral body, CP : costal process, TF : transverse foramen, PDH : pedicle-disc height, canal setting : the state when imaginary longitudinal line made by posterior side of vertebral body is perpendicular to the ground (Fig. 1D), disc setting : the state when imaginary horizontal line made by superior side of vertebral body (endplate) is parallel to the ground (Fig. 1E)

and left). The authors compared the data with the results in previous literatures.

## RESULTS

A total of 255 vertebrae obtained from 51 cervical spines were studied between the C3 and C7 levels. All symmetrical structures were measured bilaterally. The results of measurement for cervical parameters are shown in Table 2 with the mean value and the standard deviation for linear and angular parameters.

The mean values for UP width ranged from 5.5 mm at C4 and 5 to 6.3 mm at C3 and C7 in men. Also, in women, the mean values for UP width ranged from 5.5 mm at C5 to 6.3 mm at C7. C7 was widest and C5 was narrower than other levels. The AP length of UP ranged 13.1 mm at C3, 13.3 mm at C4 and C5, 13.7 mm at C6, and 13.0 mm at C7 in men. In women, it ranged 11.0 mm at C3 and 12.2 mm at C6. Thus, they tended to increase gradually from C3 to C6. The tip way, tip distance, and base distance of UP also showed increasing pattern from C3 to C7. The UP height ranged from 5.9 mm at C3 to 5.1 mm at C7

in men and from 6.0 mm at C5 to 4.2 mm at C7 in women. There was no increasing pattern in height and C5 was highest than other levels. Not unexpectedly, the inclination tended to decrease gradually from C3 to C7.

There were no increasing patterns in lamina parameters. C5 lamina was longest in length, narrowest in width, and lowest in height than other levels. The width and lower length of pedicle showed increasing pattern from C3 to C7. But upper pedicle length had a similar value in 5 cervical vertebrae. The pedicle-disc height (PDH) were within 1 mm at C3 in canal setting (0.1-0.7 mm) and at C4-C7 in disc setting (0.0-0.9 mm). The distance of UP tip and transverse foramen (TF) was narrowest at C4, C5 and C6.

The parameters of VB showed gradual increasing pattern in width, length, and posterior height. But in anterior height, C5 was lowest than other levels.

## DISCUSSION

According to our study result, the mean values for UP width

ranged from 5.5 mm at C4 and 5 to 6.3 mm at C3 and C7. In 1996, Ebraheim et al.<sup>3)</sup> reported that C5 is widest level, and this may be originated from the clinical occurrence of cervical spondylosis due to excessive cervical segmental motion<sup>3,8)</sup>. In our subject, C7 was widest and C5 was narrower than other levels. The AP length of UP tended to increase gradually from C3 to C6. And the tip way, tip distance, and base distance of UP also showed increasing pattern from C3 to C7. These patterns were similar with previous studies<sup>2,3)</sup>. However, the UP height showed no increasing pattern in height, and C5 was highest than other levels. Ebraheim et al. reported that C6 was highest level in UP height<sup>1)</sup> and Yilmazlar et al.<sup>20)</sup> reported that C7 was highest level. We thought that it might have caused from different measuring method (disc or canal setting), ethnic character, and etc.

The PDH was within 1 mm at C3 in canal setting (0.1-0.7 mm) and at C4-C7 in disc setting (0.0-0.9 mm). So, antero-superior point of VB and superior pedicle surface can be considered as nearly same height. The distance of UP tip and TF was narrow-

est at C4, C5 and C6 (1.4 and 1.7 mm). Ebraheim et al.<sup>2)</sup> reported that the UP tip-TF distance showed decreasing pattern from C3 to C4 (1.2 and 1.6 mm) and increasing from C4 to C7. In that study, they used calculation formula instead of direct measuring as following: (TF medial border distance-interuncinate distance)/2. Pait et al.<sup>10)</sup> reported that the distance from the tip of UP to VA averaged 0.8 mm at C2-C3 and 1.6 mm at C4-C5 in cadaver. In view of the results so far achieved, when UP is recognized, we must remember that the VA is within about 1-2 mm from the lateral border of UP. In a review of 10 cases of VA injury, Smith et al.<sup>15)</sup> found that the use of a high-powered drill was the most frequent cause of VA injury.

There are some literatures about measurement for cervical UP and VB using dry bone (Table 3). We selected 3 literatures used dry bone, and compared with our results (Table 4). We averaged all the values from C3 to C7, and compared with those of previous reports. Eight parameters are comparable among 28 parameters, and 3 parameters showed a difference above the standard

**Table 2.** Anatomical parameters of cervical vertebra

Parameters	C3		C4		C5		C6		C7	
	M	F	M	F	M	F	M	F	M	F
A=UP width	6.3±0.8	5.6±0.8	5.5±0.7	5.5±0.6	5.5±0.7	5.8±0.8	5.8±1.0	6.1±1.1	6.3±0.9	6.3±0.5
a=UP width (lateral)	3.5±0.9	3.3±0.6	2.1±0.7	2.1±0.7	1.8±0.6	1.6±0.6	1.5±0.7	1.5±0.7	2.1±0.8	1.5±0.9
b=UP width (medial)	2.8±0.9	2.4±0.8	3.3±0.8	3.1±1.0	3.6±0.7	4.0±1.4	4.2±1.3	4.5±1.5	4.2±1.1	4.5±1.5
B=UP length	13.1±1.2	11.0±0.6	13.3±1.1	11.8±1.3	13.3±1.2	12.1±1.4	13.7±1.7	12.2±1.3	13.0±1.5	11.9±1.5
c=UP length (anterior)	4.2±0.9	3.7±0.8	4.9±1.3	4.4±0.7	5.3±1.2	5.0±1.3	6.2±1.4	5.7±1.0	6.6±1.7	6.4±1.4
d=UP length (posterior)	8.9±1.0	7.0±0.5	8.6±1.0	7.1±0.9	8.4±1.0	7.2±1.4	7.4±1.4	6.6±1.0	5.9±1.3	5.5±1.3
e=UP tip way	7.4±1.2	7.3±1.6	8.2±1.8	8.4±1.5	9.0±1.8	7.9±1.1	10.8±1.8	9.7±1.1	14.0±1.9	12.5±1.0
f=UP tip distance	19.9±2.0	17.9±1.6	22.2±2.3	20.6±1.5	23.6±2.0	23.1±2.5	26.0±2.5	25.0±2.9	28.0±2.2	26.7±2.5
g=UP base distance	14.9±1.5	13.7±1.0	16.8±1.7	15.1±0.8	17.7±1.7	16.1±1.0	19.8±1.8	17.6±1.3	23.5±2.7	20.2±1.3
h=UP tip height	5.9±1.1	4.7±0.8	5.5±1.2	5.0±0.8	5.8±1.1	6.0±1.6	5.9±1.0	4.9±0.8	5.1±1.3	4.2±0.6
i=UP tip-CP height	5.6±1.3	4.0±1.4	5.0±1.8	3.7±1.4	4.4±1.5	4.2±1.4	5.3±1.8	4.5±1.3	7.9±1.6	7.2±1.2
j=Inclination (mm)	2.6±0.7	2.1±0.5	2.0±0.6	1.9±0.6	1.8±0.7	1.4±0.5	1.2±0.7	1.6±0.4	1.2±0.6	1.2±0.4
k=Inclination (°)	9.4±2.5	8.4±1.8	7.1±2.2	7.5±2.3	6.3±2.3	5.7±1.9	4.1±2.3	6.0±1.6	3.8±2.0	4.4±1.6
l=Lamina length	14.3±0.8	13.4±0.8	15.2±1.0	14.3±1.2	15.5±1.2	15.1±1.2	14.7±1.3	14.7±1.4	13.5±1.2	12.9±1.6
m=Lamina width	4.0±0.9	3.4±0.9	3.1±0.7	2.7±0.6	2.9±0.6	2.4±0.4	3.6±0.8	3.1±0.5	5.3±0.8	4.7±0.8
n=Lamina height	12.3±1.0	11.2±0.7	12.1±1.4	10.7±1.3	12.1±1.3	10.5±1.3	13.5±1.4	12.6±1.1	15.8±1.5	14.8±1.6
o=Pedicle width	5.6±0.5	4.9±0.4	5.5±0.6	4.8±0.7	5.8±0.7	5.5±0.5	6.1±0.8	5.8±0.7	6.9±0.9	6.5±0.6
p=Pedicle length (upper)	3.6±0.8	3.5±1.1	3.5±0.7	3.8±0.7	4.0±0.7	3.8±1.0	3.9±0.9	3.6±0.9	3.8±1.1	4.1±0.7
q=Pedicle length (lower)	5.4±0.9	5.3±0.6	6.0±0.8	5.5±1.6	6.2±1.0	5.6±1.4	6.4±1.0	6.1±1.7	6.9±0.8	6.4±0.7
r=Pedicle height	7.5±0.8	6.4±0.5	7.7±0.8	6.6±0.8	6.8±0.8	6.2±1.0	6.8±0.8	5.9±0.9	7.9±0.9	6.8±0.8
s=PDH (disc setting)	-1.9±1.0	-2.2±0.8	-0.3±0.8	-0.8±0.9	-0.1±1.0	-0.5±0.9	0.4±0.9	-0.5±0.8	0.9±0.8	0.0±0.7
t=PDH (canal setting)	0.7±1.0	0.1±0.6	1.7±0.9	1.2±1.3	1.7±0.9	1.2±0.9	1.4±1.1	1.4±0.6	1.8±1.1	1.4±0.9
u=UP tip-TF distance	3.3±1.5	3.8±1.7	1.9±1.4	1.9±0.8	1.8±1.4	1.4±0.9	1.7±1.7	1.4±1.0	2.8±2.2	2.3±0.8
x=VB width	22.7±2.2	20.8±1.8	22.7±1.6	21.6±1.5	24.5±1.9	22.9±2.4	27.1±2.1	24.6±2.3	30.4±1.8	27.3±1.7
y=VB length (upper)	16.0±1.0	14.4±1.2	16.2±1.5	15.1±1.4	16.4±1.6	14.5±1.2	16.9±1.5	15.6±1.1	17.8±1.8	16.1±1.1
y'=VB length (lower)	16.9±1.1	15.4±1.1	17.0±1.5	15.1±1.1	17.7±1.5	15.8±1.3	18.2±1.9	16.3±1.4	17.5±1.6	16.0±1.6
z=VB height (anterior)	14.9±1.0	13.9±0.9	14.0±1.6	12.8±0.5	13.3±1.5	12.6±0.9	13.5±1.5	13.1±0.9	15.2±1.3	14.6±0.7
z'=VB height (posterior)	15.2±1.1	14.0±0.4	14.1±1.6	13.7±0.8	13.8±1.6	13.4±0.6	13.6±1.5	13.0±0.7	15.0±1.4	14.5±0.7

All parameters are the mean of right and left in millimeters. They are presented as mean±standard deviation. M : male, F : female, UP : uncinat process, CP : costal process, PDH : pedicle-disc height, TF : transverse foramen, canal setting : the state when imaginary longitudinal line made by posterior side of vertebral body is perpendicular to the ground (Fig. 1D), disc setting : the state when imaginary horizontal line made by superior side of vertebral body (endplate) is parallel to the ground (Fig. 1E)

deviation. The UP tip distance, the UP-TF distance, and the VB width were slightly wide in our result. Other parameters showed similar figures and within the standard deviation.

The authors started this study because there were only few data of oriental cadaveric measurements for cervical vertebra,

although increasing of cervical operation. We introduced the concept of disc and canal setting. This is important that without these setting, the more parameters are measured, the more the error is increased. We had interest in the PDH values, because anterior cervical disc height and upper pedicle height are nearly

**Table 3.** The published studies of uncinat process and cervical vertebrae

Authors	Year of published study	Subject	Vertebrae	Age	Remarks
Milne <sup>9)</sup> (Australia)	1991	67	335	Unknown	Dry bone
Ebraheim et al. <sup>2-5,7)</sup> (US)	1996, 1997, 1998, 1998, 1999	54	270	21-68	Dry bone
Uğur et al. <sup>17)</sup> (Turkey)	2000	49	245	21-64	Dry bone
Yilmazlar et al. <sup>19)</sup> (Turkey)	2003	35	175	Unknown	Dry bone
Authors (Korea)	2010	51	255	19-72	Dry bone
Pait et al. <sup>10)</sup> (US)	1996	6	30	61-85	Cadaver
Taşçioğlu et al. <sup>16)</sup> (Turkey)	2001	9	54	34-67	Cadaver
Saringer et al. <sup>13,14)</sup> (Austria)	2002, 2003	4	20	Unknown	Cadaver
Yilmazlar et al. <sup>20)</sup> (Turkey)	2003	8	32	Unknown	Cadaver

**Table 4.** Mean values and standard deviation of parameters of cervical vertebra

Parameters	Authors (2009)			Yilmazlar et al. <sup>20)</sup>	Uğur et al. <sup>17)</sup>	Ebraheim et al. <sup>2-5,7)</sup>		
	M	F	T	T	T	M	F	T
A=UP width	5.9±1.0	5.9±0.9	5.9±0.9	5.11±1.09	5.1±0.9	5.7±0.7	5.6±0.7	5.6±0.7
a=UP width (lateral)	2.2±1.0	1.9±1.0	2.1±1.0					
b=UP width (medial)	3.7±1.1	3.8±1.5	3.7±1.3					
B=UP length	13.3±1.4	11.8±1.4	12.8±1.6	12.20±1.74	12.2±1.7	12.2±1.2	11.9±1.5	12.0±1.3
c=UP length (anterior)	5.5±1.6	5.1±1.4	5.4±1.6					
d=UP length (posterior)	7.8±1.6	6.6±1.3	7.4±1.6					
e=UP tip way	10.1±3.0	9.3±2.3	9.8±2.8					
f=UP tip distance	24.2±3.6	22.9±3.8	23.8±3.7			22.0±1.7	17.6±1.8	19.8±1.8
g=UP base distance	18.8±3.6	16.7±2.5	18.1±3.4	18.28±1.72	17.7±2.0			
h=UP tip height	5.6±1.2	4.9±1.3	5.4±1.3	5.81±1.03	5.8±1.0	5.6±1.1	5.3±1.2	5.4±1.1
i=UP tip-CP height	5.7±2.1	4.8±1.9	5.4±2.1					
j=Inclination (mm)	1.7±0.8	1.6±0.6	1.7±0.8					
k=Inclination (°)	5.9±3.0	6.3±2.3	6.1±2.8					
l=Lamina length	14.6±1.4	14.1±1.5	14.4±1.4					
m=Lamina width	3.8±1.2	3.3±1.1	3.6±1.2					
n=Lamina height	13.3±2.0	12.0±2.1	12.8±2.1					
o=Pedicle width	6.0±0.9	5.5±0.9	5.9±0.9					
p=Pedicle length (upper)	3.8±0.9	3.8±1.0	3.8±0.9					
q=Pedicle length (lower)	6.2±1.0	5.8±1.4	6.1±1.2					
r=Pedicle height	7.3±1.0	6.4±0.9	7.0±1.0					
s=PDH (disc setting)	-0.1±1.3	-0.8±1.1	-0.3±1.3					
t=PDH (canal setting)	1.5±1.1	1.1±1.1	1.4±1.1					
u=UP tip-TF distance	2.3±1.8	2.1±1.4	2.2±1.7		1.3±0.1			
x=VB width	25.7±3.6	23.6±3.0	25.0±3.5		18.3±1.7	21.8±1.7	20.9±1.8	21.4±1.8
y=VB length (upper)	16.7±1.7	15.2±1.4	16.2±1.7	15.03±1.66	15.8±1.7	15.8±1.4	15.3±1.6	15.5±1.5
y'=VB length (lower)	17.5±1.7	15.7±1.4	16.9±1.8					
z=VB height (anterior)	14.2±1.6	13.4±1.1	13.9±1.5					
z'=VB height (posterior)	14.3±1.6	13.7±0.8	14.1±1.4					

All parameters are in millimeters. All measurements are presented as mean±standard deviation. M : male, F : female, T : total, UP : uncinat process, CP : costal process, PDH : pedicle-disc height, TF : transverse foramen, canal setting : the state when imaginary longitudinal line made by posterior side of vertebral body is perpendicular to the ground (Fig. 1D), disc setting : the state when imaginary horizontal line made by superior side of vertebral body (endplate) is parallel to the ground (Fig. 1E)

same level, unlikely lumbar and thoracic vertebra. We would like to emphasize that various parameters and methods for cervical measuring, along with results of measurement.

These measurements can provide the spinal surgeons with a starting point to address bony architectures surrounding targeted soft tissues. The spinal surgeon must have a complete understanding of the hidden vascular and bony anatomy and knowledge of the changes during discectomy in anterior cervical spine surgery. Although avoiding unfortunate injury is not always possible, being well-informed with the location and relations among the anatomic features is the only safeguard against unintended damages during cervical operation.

## CONCLUSION

The authors measured various cervical parameters with dry bones from donated subjects, and reported the result. There were some different results with previous literatures. These measurements could help spinal surgeon to success in cervical operation.

## References

1. Clausen JD, Goel VK, Traynelis VC, Scifert J : Uncinate processes and Luschka joints influence the biomechanics of the cervical spine : quantification using a finite element model of the C5-C6 segment. *J Orthop Res* 15 : 342-347, 1997
2. Ebraheim NA, Lu J, Biyani A, Brown JA, Yeasting RA : Anatomic considerations for uncovertebral involvement in cervical spondylosis. *Clin Orthop Relat Res* : 200-206, 1997
3. Ebraheim NA, Lu J, Brown JA, Biyani A, Yeasting RA : Vulnerability of vertebral artery in anterolateral decompression for cervical spondylosis. *Clin Orthop Relat Res* : 146-151, 1996
4. Ebraheim NA, Xu R, Bhatti RA, Yeasting RA : The projection of the cervical disc and uncinat process on the posterior aspect of the cervical spine. *Surg Neurol* 51 : 363-367, 1999
5. Ebraheim NA, Xu R, Lin D, Haman S, Yeasting RA : Quantitative anatomy of the transverse foramen and pedicle of the axis. *J Spinal Disord* 11 : 521-525, 1998
6. Frykholm R : Lower cervical vertebrae and intervertebral discs; surgical anatomy and pathology. *Acta Chir Scand* 101 : 345-359, 1951
7. Lu J, Ebraheim NA, Yang H, Skie M, Yeasting RA : Cervical uncinat process : an anatomic study for anterior decompression of the cervical spine. *Surg Radiol Anat* 20 : 249-252, 1998
8. Marchiori DM, Henderson CN : A cross-sectional study correlating cervical radiographic degenerative findings to pain and disability. *Spine (Phila Pa 1976)* 21 : 2747-2751, 1996
9. Milne N : The role of zygapophysial joint orientation and uncinat processes in controlling motion in the cervical spine. *J Anat* 178 : 189-201, 1991
10. Pait TG, Killefer JA, Arnautovic KI : Surgical anatomy of the anterior cervical spine : the disc space, vertebral artery, and associated bony structures. *Neurosurgery* 39 : 769-776, 1996
11. Panjabi MM, Duranceau J, Goel V, Oxland T, Takata K : Cervical human vertebrae. Quantitative three-dimensional anatomy of the middle and lower regions. *Spine (Phila Pa 1976)* 16 : 861-869, 1991
12. Payne EE, Spillane JD : The cervical spine; an anatomico-pathological study of 70 specimens (using a special technique) with particular reference to the problem of cervical spondylosis. *Brain* 80 : 571-596, 1957
13. Saringer W, Nöbauer I, Reddy M, Tschabitscher M, Horaczek A : Microsurgical anterior cervical foraminotomy (uncoforaminotomy) for unilateral radiculopathy : clinical results of a new technique. *Acta Neurochir (Wien)* 144 : 685-694, 2002
14. Saringer WF, Reddy B, Nöbauer-Huhmann I, Regatschnig R, Reddy M, Tschabitscher M, et al. : Endoscopic anterior cervical foraminotomy for unilateral radiculopathy : anatomical morphometric analysis and preliminary clinical experience. *J Neurosurg* 98 : 171-180, 2003
15. Smith MD, Emery SE, Dudley A, Murray KJ, Leventhal M : Vertebral artery injury during anterior decompression of the cervical spine. A retrospective review of ten patients. *J Bone Joint Surg Br* 75 : 410-415, 1993
16. Taşçıoğlu AO, Attar A, Taşçıoğlu B : Microsurgical anterior cervical foraminotomy (uncinatectomy) for cervical disc herniation. Report of three cases. *J Neurosurg* 94 : 121-125, 2001
17. Uğur HC, Uz A, Attar A, Tekdemir I, Egemen N, Elhan A : Anatomical projection of the cervical uncinat process in ventral, ventrolateral, and posterior decompressive surgery. *J Neurosurg* 93 : 248-251, 2000
18. White AA, Panjabi MM : *Clinical biomechanics of the spine*, ed 2. Philadelphia : Lippincott, 1990, pp722
19. Yilmazlar S, İkiz I, Kocaeli H, Tekdemir I, Adim SB : Details of fibroligamentous structures in the cervical unco-vertebral region : an obscure corner. *Surg Radiol Anat* 25 : 50-53, 2003
20. Yilmazlar S, Kocaeli H, Uz A, Tekdemir I : Clinical importance of ligamentous and osseous structures in the cervical uncovertebral foraminal region. *Clin Anat* 16 : 404-410, 2003