

# Multicopy Suppression Underpins Metabolic Evolvability

Wayne M. Patrick,<sup>1</sup> Erik M. Quandt, Dan B. Swartzlander, and Ichiro Matsumura

Department of Biochemistry, Center for Fundamental and Applied Molecular Evolution, Emory University, Atlanta, Georgia

Our understanding of the origins of new metabolic functions is based upon anecdotal genetic and biochemical evidence. Some auxotrophies can be suppressed by overexpressing substrate-ambiguous enzymes (i.e., those that catalyze the same chemical transformation on different substrates). Other enzymes exhibit weak but detectable catalytic promiscuity *in vitro* (i.e., they catalyze different transformations on similar substrates). Cells adapt to novel environments through the evolution of these secondary activities, but neither their chemical natures nor their frequencies of occurrence have been characterized en bloc. Here, we systematically identified multifunctional genes within the *Escherichia coli* genome. We screened 104 single-gene knockout strains and discovered that many (20%) of these auxotrophs were rescued by the overexpression of at least one noncognate *E. coli* gene. The deleted gene and its suppressor were generally unrelated, suggesting that promiscuity is a product of contingency. This genome-wide survey demonstrates that multifunctional genes are common and illustrates the mechanistic diversity by which their products enhance metabolic robustness and evolvability.

## Introduction

Our goal is to understand the origins of novel catalytic functions. This process underlies the evolution of new metabolic pathways and the adaptive speciation of microorganisms (Hegeman and Rosenberg 1970). New genes are primarily produced by duplication (Ohno 1970; Force et al. 1999); however, the relationship between gene duplication and the emergence of new biochemical functions remains incompletely understood (Roth et al. 2007). Questions about origins underlie those about evolution, but they cannot be addressed in the same way. Protein sequence comparisons can reveal phylogenetic relationships and suggest the occurrence of adaptive evolution. Recent advances in covariation analysis can highlight specific relationships between protein sequences, structures, and functions (Suel et al. 2003; Merlo et al. 2007). Biochemical techniques, including site-directed mutagenesis and reconstructive gene synthesis, can also be applied to test hypotheses about adaptive evolution experimentally (Gaucher et al. 2003; Thomson et al. 2005; Bridgham et al. 2006).

Comparisons of extant proteins, however, generally reveal little about the emergence of new catalytic functions. Many extant activities are ancient and their origins apparently precede the last universal ancestor. The predominance of functionally neutral mutations (Kimura 1983), the complicated nature of “fitness” *in situ*, and the complexity of protein structure/function relationships all tend to obscure the earliest stages of an enzyme’s evolutionary history. Nevertheless, novel catalytic functions continue to emerge in the biosphere, such as when bacteria are challenged with a novel nutrient or a toxic molecule. An appealing hypothesis posits that the evolutionary starting point for these functions is the broad specificity and/or secondary activities of existing protein scaffolds (Jensen 1976; D’Ari and Casadesús 1998; Khersonsky et al. 2006). Indeed, it has long been recognized that many proteins retain the ability to catalyze identical chemical transformations on numerous

substrates (substrate ambiguity). Some enzymes also display catalytic promiscuity *in vitro*; that is, they possess the ability to catalyze different transformations on one or more substrates (O’Brien and Herschlag 1999). These properties could serve as the molecular basis of contingency, which describes instances when “a feature evolved long ago for a different use has fortuitously permitted survival during a sudden and unpredictable change in rules” (Gould 1989).

We speculated that ambiguity and promiscuity are commonplace, even within the small proteome of a well-characterized organism such as *Escherichia coli*. Further, we hypothesized that adaptation routinely begins with the overexpression of ambiguous and/or promiscuous enzymes. Anecdotal evidence in support of this hypothesis includes early experiments showing that the enzymes of fucose metabolism could be recruited for the catabolism of L-1,2-propanediol (Cocks et al. 1974) and D-arabinose (St Martin and Mortlock 1976). Campbell, Hall, and Hartl also demonstrated that a repressor mutation enabling constitutive expression of a cryptic  $\beta$ -galactosidase, Ebg, was critical for its ability to suppress *E. coli lacZ* mutants (Hall 2003). Berg et al. (1998) demonstrated that *avtA* on a high copy number plasmid was able to suppress *ilvE* mutations but that a single chromosomal copy could not. More recently, Miller and Raines screened a library of *E. coli* genomic fragments and identified 4 glycokinases that were able to complement a glucokinase auxotroph, provided they were overexpressed using a strong T7 promoter (Miller and Raines 2004, 2005). If the evolutionary mechanisms that create new catalytic functions are similar to those that recreate old ones, auxotrophy suppression experiments emulate the responses of asexual bacterial populations to xenobiotic nutrients or toxins.

In this study, we have conducted a systematic survey to demonstrate the prevalence of ambiguity and promiscuity within the *E. coli* proteome, using 2 recently constructed functional genomics tools. The first is the Keio collection, which comprises 3,985 single-gene knockout strains (Baba et al. 2006). The second is the A Complete Set of *E. coli* K-12 Open Reading Frame Archive (ASKA) library, which contains every *E. coli* open reading frame (ORF), each individually cloned into the expression vector pCA24N (Kitagawa et al. 2005). By transforming each conditional Keio auxotroph with every clone from the ASKA library,

<sup>1</sup> Present address: Institute of Molecular Biosciences, Massey University, Auckland 0745, New Zealand.

Key words: catalytic promiscuity, directed evolution, multicopy suppression, substrate ambiguity.

E-mail: imatsum@emory.edu.

*Mol. Biol. Evol.* 24(12):2716–2722. 2007

doi:10.1093/molbev/msm204

Advance Access publication September 19, 2007

we provide experimental evidence that the *E. coli* genome contains a large and diverse reservoir of multifunctional suppressors, which can be readily accessed via regulatory mutations or gene amplification events.

## Materials and Methods

### *Escherichia coli* Strains

The Keio knockout and green fluorescent protein (GFP)-tagged ASKA collections were purchased from Hirotsada Mori (Nara Institute of Science and Technology, Nara, Japan). These resources were constructed as part of the National BioResource Project (National Institute of Genetics, Shizuoka, Japan) and have been described elsewhere (Kitagawa et al. 2005; Baba et al. 2006). The ASKA library includes duplicates of many recently reannotated ORFs; in total, it contains 5,272 clones.

### Identification of Conditionally Essential Genes

Two recent reports have assessed the growth of every Keio strain in glucose-supplemented 3-cMorpholinopropylsulfonic acid medium (Baba et al. 2006) and in glycerol-supplemented M9 medium (Joyce et al. 2006). By combining the results of these studies, we derived a list of 155 strains that we predicted would be unable to form colonies on M9-glucose. Each strain was cultured in Luria-Bertani (LB) medium (0.4 ml) supplemented with kanamycin (Kan; 30  $\mu\text{g ml}^{-1}$ ). After overnight growth at 37 °C, each saturated culture was washed and resuspended to a final OD<sub>600</sub>  $\approx$  0.1 with sterile M9 salts (1 $\times$  concentration; Difco, Sparks, MD). A 3- $\mu\text{l}$  aliquot of the resuspended cells was streaked on M9-glucose medium, which comprised M9 salts (1 $\times$ ), agar (1.5%, w/v), MgSO<sub>4</sub> (2 mM), CaCl<sub>2</sub> (0.1 mM), glucose (0.4%, w/v), and Kan. Plates were incubated at 37 °C for up to 7 days, and colony formation was monitored.

### Selection of Rescuing Activities

Aliquots (25  $\mu\text{l}$ ) of the 5,272 clones in the ASKA library were mixed, and plasmid DNA (pCA24N-[ASKA]) was isolated from the resulting pool. Deletion strains that failed to grow on M9-glucose were made electrocompetent and transformed with pCA24N-[ASKA] DNA. Transformed cells were washed and resuspended in M9 salts (1 $\times$ ), then spread on M9-glucose-isopropyl- $\beta$ -D-thiogalactoside (IPTG) medium. The latter was M9-glucose as described above, further supplemented with IPTG (50  $\mu\text{M}$ ) and chloramphenicol (Cam; 34  $\mu\text{g ml}^{-1}$ ). An average (median) of 30,500 transformed cells (lower quartile = 21,400 and upper quartile = 50,500) were plated in each experiment, thereby ensuring that >95% of the ASKA library was represented (Firth and Patrick 2005). Plates were placed in airtight containers with moistened paper towels (to prevent overdrying) and incubated at 37 °C for 4–5 weeks.

### Identification of Rescuing Clones

Colonies that appeared on the M9-glucose-IPTG selection plates were used to inoculate LB-Cam-Kan me-

dium. After overnight growth at 37 °C, a 0.5- $\mu\text{l}$  aliquot of each saturated culture was used as the source of template DNA for PCR, using the pCA24N-specific primers pCA24N.for (5'-GAT AAC AAT TTC ACA CAG AAT TCA TTA AAG AG) and pCA24N.rev (5'-CCC ATT AAC ATC ACC ATC TAA TTC AAC). Each rescuing clone was identified by sequencing the amplified product using primer pCA24N.for.

### Retransformation Test

The rescuing activity of each selected clone was verified by retransformation. Plasmid DNA was isolated from the corresponding member of the ASKA library using EconoSpin plasmid mini-prep columns (Epoch Biolabs, Houston, TX). The purified plasmid was used to transform a fresh aliquot of the appropriate deletion strain by electroporation. Approximately 100–1,000 transformed cells were washed and resuspended in M9 salts (1 $\times$ ), then spread on M9-glucose-IPTG medium. A negative control plasmid (pCA24N-*lacZ*) was used to transform the same strain, and growth at 37 °C was monitored.

### Pairwise Structural Alignments

The MAMMOTH algorithm (Ortiz et al. 2002) and the DBAli database (<http://salilab.org/DBAli/>; Pieper et al. 2006) were used to superimpose the structure of each deleted protein upon that of its non-cognate suppressor. When an experimentally determined structure was not available, a homology model from ModBase (<http://modbase.compbio.ucsf.edu/modbase-cgi/index.cgi>; Pieper et al. 2006) was used for the structural alignment.

## Results and Discussion

### High-Throughput Selection of Multicopy Suppressors

The objective of this study was to identify enzymes that evince biologically relevant substrate ambiguity or catalytic promiscuity. The first step was to develop a high-throughput screen for multifunctional genes derived from the *E. coli* genome. To begin, we identified 107 strains from the Keio knockout collection (each with a single-gene deletion) that were unable to form colonies when streaked on M9-glucose. Three strains ( $\Delta$ *guaA*,  $\Delta$ *lpd*, and  $\Delta$ *thyA*) were subsequently excluded because they could not be transformed efficiently by plasmid DNA. Most of the remaining 104 strains contained deletions in genes of central metabolism, including 62 in amino acid metabolism (3 of which encode regulatory proteins), 20 in cofactor biosynthesis, and 17 in nucleotide biosynthesis (see supplementary tables 1 and 2, Supplementary Material online). The failure of these conditional auxotrophs to grow on M9-glucose implies that each is suffering from a severe metabolic imbalance.

The ASKA ORF library was constructed by individually cloning every protein-coding *E. coli* gene; each ORF is overexpressed as a fusion protein with N-terminal (His)<sub>6</sub> and C-terminal GFP tags (Kitagawa et al. 2005). We propagated each of the 5,272 clones to saturation in 96-well

microplates, pooled equal volumes of each culture and isolated plasmid DNA (presumably containing genes that could rescue the 104 auxotrophs) from the pool. We reasoned that the deletion of an essential gene from the chromosome of a Keio strain would lead to the accumulation of an “orphaned” substrate for the corresponding enzyme, perhaps to concentrations in excess of 1 mM within the cytoplasm (~2 fL total volume). Concomitant overexpression of a native protein from the ASKA library (concentration >1  $\mu$ M) would then facilitate the discovery of weak but physiologically relevant catalytic activities.

Each of the 104 Keio strains was transformed with the pooled plasmids of the ASKA library, plated on M9–glucose (supplemented with IPTG to induce the overexpression of each ASKA-encoded gene), and incubated at 37 °C. Any colony that appeared in 4–5 weeks was analyzed by PCR and DNA sequencing to identify the ASKA clone responsible for suppression. In 92 selections (88%), the plasmid-borne copy of the chromosomally deleted gene could effect colony formation. This is consistent with a previous study, in which 61% of the clones in the ASKA library were soluble when overexpressed and purified (Ariuzzaman et al. 2006). The implication is that only a minority of ASKA clones are inactivated by fusion to an N-terminal (His)<sub>6</sub> tag and/or a C-terminal GFP tag.

As expected, the observed “self-complementation” was usually rapid, with colonies appearing in 2–5 days. Slower growing self-complementers included expression from pCA24N-*pdxH* in the  $\Delta$ *pdxH* strain (9 days to form colonies); *bioF*/ $\Delta$ *bioF*, *cysD*/ $\Delta$ *cysD*, and *cysN*/ $\Delta$ *cysN* (each 11 days to form colonies); *metA*/ $\Delta$ *metA* (16 days); and *glnA*/ $\Delta$ *glnA* (29 days). In the latter strain, colonies expressing AsnB (asparagine synthetase) actually appeared more rapidly (20 days) than those expressing the self-complementer, suggesting that the tagged version of GlnA (glutamine synthetase) possesses substantially reduced catalytic activity. However, the primary focus of this study was the numerous noncognate suppressors that were also discovered (see below).

### Retransformation Tests

To confirm the rescue phenotypes, plasmid DNA corresponding to each suppressor was purified from the (unpooled) ASKA collection. Naïve cells of the rescued Keio strain were transformed with the clonal plasmid preparations, and the growth of transformants on M9–glucose–IPTG plates was monitored. These retests were designed to focus this study on monogenic, cell-autonomous suppressors. Complex (multigene and/or multicell) suppression mechanisms are important but were excluded from this initial survey. For example, *proY*, which is annotated as a cryptic proline transporter (Keseler et al. 2005), was selected in experiments with the  $\Delta$ *hisB*,  $\Delta$ *hisH*, and  $\Delta$ *hisI* strains. However, it did not suppress these strains when retested in the absence of neighboring cells expressing other ASKA-encoded proteins. ProY apparently catalyzes histidine transport in *E. coli* (rather than proline), but ProY-expressing cells need an extracellular source of histidine (e.g., from the  $\Delta$ *hisB* strain harboring pCA24N-*hisB*) to enable cell survival.

The retransformation tests also eliminated instances of chromosomal suppression from our analysis. The minimal medium used for retesting contained Cam, which ensured that only cells containing the plasmid-encoded multicopy suppressor were viable. A small population of transformed cells (typically 100–1,000; median = 640) was plated, to ensure that low-frequency chromosomal mutation events were unlikely to be observed. In general, 100% of the plated transformants formed colonies. In a few exceptional cases, smaller numbers of colonies arose at uniform growth rates across the plate. Each strain was transformed with pCA24N-*lacZ*, and a similar number of transformants were spread on a separate M9–glucose–IPTG plate; de novo chromosomal suppressors were never observed under these selection conditions. Overall, 55% of the putative suppressors passed this stringent retesting process.

### Diverse Mechanisms of Multicopy Suppression

Remarkably, the retransformation tests confirmed that 21 of the 104 strains (20%) could be rescued by ASKA plasmids encoding a noncognate gene. Each of these strains was rescued by 1–4 ASKA clones; in total, 41 examples of suppression were identified (table 1). Most suppressors displayed specificity in their action: isogenic strains, each with deletions in the same metabolic pathway, were rescued by a common suppressor in only 3 cases (overexpression of *avtA* suppressed the  $\Delta$ *ilvD* and  $\Delta$ *ilvE* lesions, *menF* suppressed  $\Delta$ *pabA* and  $\Delta$ *pabB*, and *yneH* suppressed  $\Delta$ *serA* and  $\Delta$ *serC*). Growth rates were highly variable, with colonies taking 2–28 days to form (median = 6 days; supplementary table 2, Supplementary Material online). In 6 cases, growth did not proceed beyond pinprick-sized colonies, but all rescued strains grew significantly faster than the corresponding negative control (i.e., the same strain expressing  $\beta$ -galactosidase from pCA24N-*lacZ*).

The suppressors in table 1 are grouped according to their proposed mechanisms of rescue, which were assigned using the EcoCyc database of *E. coli* genes and metabolic pathways (Keseler et al. 2005). To our knowledge, only 8 of the 41 cases had been described previously. These included suppression of the  $\Delta$ *glyA*,  $\Delta$ *ilvA*,  $\Delta$ *ilvE*, and  $\Delta$ *metC* auxotrophies by expression of the known isozymes LtaE (Liu et al. 1998), TdcB (Datta et al. 1987), AvtA (Berg et al. 1988), and MalY (Awano et al. 2005), respectively. The  $\Delta$ *glyA* mutation was also suppressed by *tdh*, consistent with a previous observation that *glyA* mutants can be rescued in an epistatic, 2-step pathway catalyzed by the *tdh* and *kbl* gene products (Aronson et al. 1989). MetR normally activates transcription of *metE* (Maxon et al. 1989), so it was reassuring that IPTG-induced expression of MetE rescued  $\Delta$ *metR*. Finally, PurK deficiency could be complemented by overexpression of PurE, which follows PurK in the purine biosynthetic pathway. Depletion of the PurK reaction product (due to PurE-catalyzed turnover) perturbs the equilibrium in vivo and favors its spontaneous, nonenzymatic formation (Firestine et al. 1994). Overall, these rediscoveries confirmed that the ASKA and Keio clones behave like regular expression vectors and deletion mutants, respectively, and that our less intuitive results cannot be ascribed to any systematic peculiarity in plasmid or strain construction.

**Table 1**  
**Multicopy Suppressors Rescue 21 Conditional Auxotrophs, via 8 Proposed Mechanisms**

Strain	Protein Deficiency	MS	Rescuing Gene Product
<b>Isozyme overexpression</b>			
$\Delta glyA$	Glycine hydroxymethyltransferase	<i>ltaE</i>	L- <i>allo</i> -threonine aldolase
$\Delta ilvA$	Threonine dehydratase (biosynthetic)	<i>tdcB</i>	Threonine dehydratase (catabolic)
$\Delta ilvE$	Branched-chain amino acid transferase	<i>avtA</i>	Valine-pyruvate AT
$\Delta metC$	Cystathionine $\beta$ -lyase/cysteine desulfhydrase	<i>malY</i>	Cystathionine $\beta$ -lyase/maltose regulon repressor
<b>Substrate ambiguity</b>			
$\Delta glnA$	Glutamine synthetase	<i>asnB</i>	Asparagine synthetase
$\Delta pdxB$	Erythronate-4-phosphate dehydrogenase	<i>tdh</i>	Threonine dehydrogenase
$\Delta serB$	Phosphoserine phosphatase	<i>gph</i>	Phosphoglycolate phosphatase
$\Delta serB$	Phosphoserine phosphatase	<i>hisB</i>	IGP dehydratase/histidinol phosphate phosphatase
$\Delta serB$	Phosphoserine phosphatase	<i>yjC</i>	Predicted bisphosphatase; uncharacterized
<b>Ambiguity in metabolite transport</b>			
$\Delta fes$	Enterochelin esterase	<i>setB</i>	Predicted lactose/IPTG efflux transporter
$\Delta ilvA$	Threonine dehydratase (biosynthetic)	<i>emrD</i>	Multidrug efflux transporter
$\Delta ppc$	Phosphoenolpyruvate carboxylase	<i>ecfM</i>	Predicted extracytoplasmic factor; uncharacterized
$\Delta ppc$	Phosphoenolpyruvate carboxylase	<i>yccT</i>	Predicted outer membrane protein; uncharacterized
$\Delta ptsI$	Carbohydrate PTS system, enzyme I	<i>fucP</i>	Fucose transporter
$\Delta ptsI$	Carbohydrate PTS system, enzyme I	<i>xylE</i>	Xylose transporter
<b>Catalytic promiscuity</b>			
$\Delta fes$	Enterochelin esterase	<i>thiL</i>	Thiamine monophosphate kinase
$\Delta metC$	Cystathionine $\beta$ -lyase/cysteine desulfhydrase	<i>alr</i>	Alanine racemase
$\Delta pabA$	Aminodeoxychorismate synthase, small subunit	<i>menF</i>	Isochorismate synthase
$\Delta pabB$	Aminodeoxychorismate synthase, large subunit	<i>menF</i>	Isochorismate synthase
$\Delta pdxB$	Erythronate-4-phosphate dehydrogenase	<i>purF</i>	Glutamine PRPP amidotransferase
$\Delta purK$	Carboxyaminoimidazole ribonucleotide synthetase	<i>anmK</i>	Anhydro- <i>N</i> -acetylmuramic acid kinase
<b>Maintaining metabolic flux</b>			
$\Delta ilvD$	Dihydroxy-acid dehydratase	<i>avtA</i>	Valine-pyruvate AT
$\Delta purK$	Carboxyaminoimidazole ribonucleotide synthetase	<i>purE</i>	Carboxyaminoimidazole ribonucleotide mutase
<b>Metabolic pathway bypass and/or alternate source of downstream substrate</b>			
$\Delta carA$	Carbamoyl phosphate synthase, small subunit	<i>carB</i>	Carbamoyl phosphate synthase, large subunit
$\Delta glyA$	Glycine hydroxymethyltransferase	<i>tdh</i>	Threonine dehydrogenase
$\Delta glyA$	Glycine hydroxymethyltransferase	<i>yneH</i>	Predicted glutaminase; uncharacterized
$\Delta hisH$	IGP synthase; small subunit	<i>hisF</i>	IGP synthase; large subunit
$\Delta pabA$	Aminodeoxychorismate synthase, small subunit	<i>pabB</i>	Aminodeoxychorismate synthase, large subunit
$\Delta ptsI$	Carbohydrate PTS system, enzyme I	<i>galE</i>	UDP-glucose 4-epimerase
$\Delta serA$	Phosphoglycerate dehydrogenase	<i>yneH</i>	Predicted glutaminase; uncharacterized
$\Delta serC$	Phosphoserine AT/phosphohydroxythreonine AT	<i>yneH</i>	Predicted glutaminase; uncharacterized
<b>Regulatory effects</b>			
$\Delta carA$	Carbamoyl phosphate synthase, small subunit	<i>ygiT</i>	Predicted transcriptional regulator; uncharacterized
$\Delta glyA$	Glycine hydroxymethyltransferase	<i>rsd</i>	Anti-sigma factor
$\Delta metC$	Cystathionine $\beta$ -lyase/cysteine desulfhydrase	<i>fmE</i>	Recombinase for fimbrial phase switching
$\Delta metR$	Transcriptional activator of methionine biosynthesis	<i>metE</i>	Homocysteine transmethylase
$\Delta purK$	Carboxyaminoimidazole ribonucleotide synthetase	<i>cpdA</i>	Cyclic adenosine monophosphate phosphodiesterase
<b>Unknown</b>			
$\Delta carA$	Carbamoyl phosphate synthase, small subunit	<i>cho</i>	Stress (SOS)-induced endonuclease for DNA repair
$\Delta carA$	Carbamoyl phosphate synthase, small subunit	<i>yncK</i>	Predicted transposase; uncharacterized
$\Delta purF$	Glutamine PRPP amidotransferase	<i>chbA</i>	Carbohydrate phosphotransferase system, enzyme II <sup>Chb</sup>
$\Delta yhhK$	Putative acetyltransferase	<i>murI</i>	Glutamate racemase
$\Delta yhhK$	Putative acetyltransferase	<i>purF</i>	Glutamine PRPP amidotransferase

NOTE.—MS, multicopy suppressor; AT, aminotransferase; IGP, imidazole glycerol phosphate; PRPP, phosphoribosylpyrophosphate; UDP, uridine diphosphate.

In 3 further experiments, overexpression of the large subunit of a protein complex (CarB, HisF, and PabB) rescued strains in which the small subunit was deleted ( $\Delta carA$ ,  $\Delta hisH$ , and  $\Delta pabA$ ). In each case, the large subunit is a synthase, whereas the small subunit possesses glutaminase activity. It has been reported previously that each large subunit is able to function (albeit inefficiently) using exogenous ammonia, rather than the ammonia generated by small subunit-catalyzed glutamine hydrolysis (Rubino et al. 1987; Ye et al. 1990; Klem and Davisson 1993). These

results therefore reflected the ready availability of free ammonia from the M9 salts of the selection medium.

### Suppression Does Not Imply Homology

It is becoming clear that the traditional “one enzyme, one substrate” view of enzyme specificity does not reflect biological reality (D’Ari and Casadesús 1998; O’Brien and Herschlag 1999; Khersonsky et al. 2006). Substrate ambiguity and catalytic promiscuity can provide starting points

**Table 2**  
**All Instances of Structural Homology between Deleted Proteins and Their Suppressors (out of 41 cases; table 1)**

Deleted Protein	Rescuing Protein	<i>P</i> Value*
IlvA	TdcB	31.3
GlyA	LtaE	30.7
PabB	MenF	28.7
MetC	MalY	22.9
SerB	Gph	15.1
SerB	HisB	9.1

\*A *P* value > 5.2 from the alignment was considered evidence of homology (Ortiz et al. 2002).

for the evolution of new catalytic functions, both in nature and in the laboratory. Studies of adaptive molecular evolution are often guided by structural similarities and differences among enzyme family and superfamily members (Orengo and Thornton 2005; Glasner et al. 2007). Therefore, we assessed structure-based superimpositions of each deleted protein with its multifunctional suppressor (input chains for each alignment are listed in supplementary table 3, Supplementary Material online). Significant structural similarity was only detected for 6 of the 41 protein pairs (table 2), 3 of which were pairs of isozymes. In the remainder of cases, the deleted protein and its suppressor were not structural homologues.

The phosphoserine phosphatase, SerB, provides an illustrative example. The  $\Delta serB$  strain was rescued by overexpression of Gph (phosphoglycolate phosphatase), HisB (histidinol phosphate phosphatase), and YtjC. In vitro, the homologous haloacid dehalogenase (HAD)-like phosphatases SerB and Gph possess overlapping specificities (Kuznetsova et al. 2006), and in vivo, their metabolic substrates are similar (fig. 1). We might therefore have predicted this result. The  $\Delta serB$  mutation was also suppressed by a third HAD-like phosphatase, HisB, even though this enzyme showed no activity in vitro (Kuznetsova et al. 2006) and acts on a considerably bulkier substrate than phosphoserine in histidine biosynthesis (fig. 1). This result validated our application of highly sensitive genetic selections, rather than in vitro assays, to evaluate promiscuous activities. Most unpredictably of all, the  $\Delta serB$  strain was rescued by YtjC, which is not a HAD-like phosphatase, but which instead possesses limited sequence similarity to fructose-2,6-bisphosphatases. Moreover, cells expressing YtjC formed colonies more rapidly (3 days) than those expressing the most “logical” suppressor, Gph (5 days).

In addition to enzymes, we also discovered examples in which an overexpressed transport protein displayed substrate ambiguity (table 1). In rescuing the  $\Delta ptsI$  strain, for example, it seems likely that the fucose and xylose transporters, FucP and XylE, are importing glucose instead and thereby enabling glucokinase-mediated cell survival in the absence of a functioning carbohydrate phosphotransferase system. The substrate ambiguity of transporter proteins is of practical utility as it offers a means to introduce novel feedstocks or pharmaceutical precursors into the cytoplasmic compartment.

Catalytic promiscuity might be expected to occur less frequently than substrate ambiguity as it is predicated upon a finer degree of molecular recognition—between the enzyme and 2 or more potentially unrelated transition states.

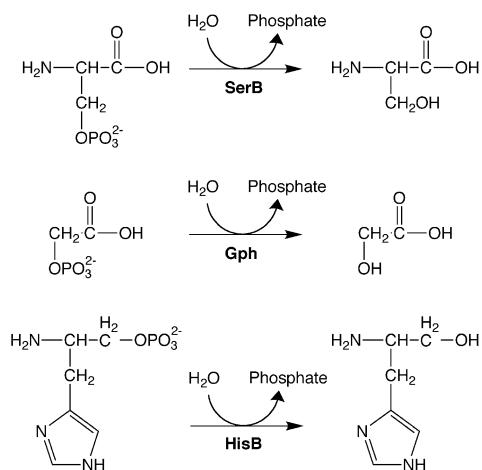


FIG. 1.—Phosphatase substrate ambiguity. SerB is the phosphoserine phosphatase that catalyzes the final step in the biosynthesis of serine from 3-phosphoglycerate (top). Deletion of *serB* can be rescued by expression of 2 other HAD-like phosphatases: Gph, which hydrolyzes the phosphate monoester 2-phosphoglycolate (middle), and HisB, which ordinarily catalyzes the phosphorolysis of histidinol phosphate (bottom).

Nevertheless, 6 strains were rescued by catalytically promiscuous enzymes (table 1). These examples run the gamut from recently diverged enzymes that catalyze shared part reactions (PabB and MenF; fig. 2) to nonhomologous enzymes that both utilize the cofactor pyridoxal 5'-phosphate (MetC and Alr) and to enzymes in which the promiscuous activity appears to be completely serendipitous (PdxB and PurF). None of these results were particularly intuitive. Even in the case of promiscuous homologues, PabB (aminodeoxychorismate synthase) appears mechanistically more similar to TrpE (anthranilate synthase) than to the isochorismate synthase, MenF (He et al. 2004). Moreover, *entC*, encoding a second *E. coli* isochorismate synthase, was not identified in the  $\Delta pabB$  selection experiment. These results demonstrate that even homologous isozymes (such as MenF and EntC) can show important differences in their promiscuous activities. Previous workers have demonstrated that mutating enzymes to increase their catalytic promiscuity can rescue otherwise auxotrophic *E. coli* (Jürgens et al. 2000; Schmidt et al. 2003). The promiscuous activity of a purified wild-type enzyme is usually orders of magnitude less than its primary activity (O'Brien and Herschlag 1999). Here, we show that these weak activities are nevertheless sufficient to overcome a number of chemically distinct metabolic imbalances in vivo.

### Implications for Directed Evolution

Our results demonstrate that the ambiguous and promiscuous activities of proteins are often products of contingency. Homology-based site-directed mutagenesis and directed evolution can be used to test evolutionary hypotheses, but the functional interconversion of paralogs remains challenging (Jürgens et al. 2000; Hedstrom 2002; Schmidt et al. 2003). In contrast, examples such as the suppression

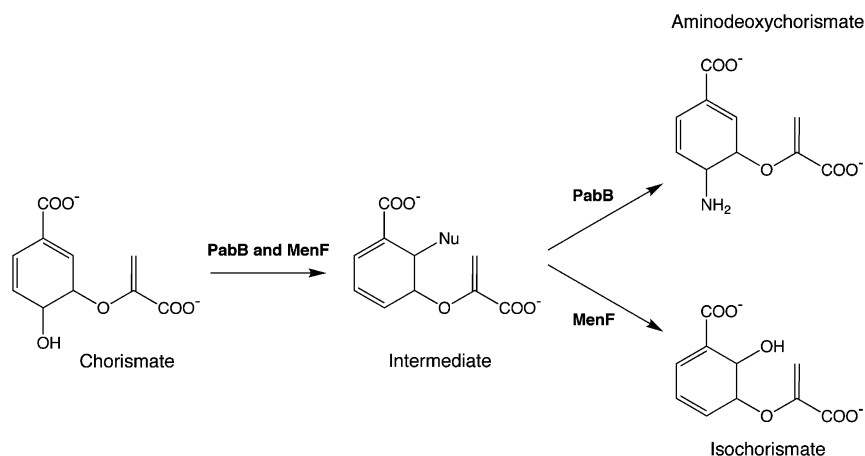


FIG. 2.—Catalytic promiscuity among chorismate-utilizing enzymes. PabB catalyzes the formation of 4-amino-4-deoxychorismate; the  $\Delta$ pabB strain can be rescued by expression of its homologue, MenF (isochorismate synthase). The 2 enzymes act via a common intermediate, generated in an  $S_N2'$  mechanism that leads to addition of a nucleophile at C2, with concomitant elimination of the C4 hydroxyl group (He et al. 2004). In PabB, the nucleophile is the  $\epsilon$ -amino group of an active site lysine; the result is a covalent intermediate. In MenF, the nucleophile is assumed to be water, although its isozyme, EntC, can also utilize ammonia. Our results suggest that product release by MenF is sufficiently slow that ammonia can enter the active site and effect a second  $S_N2'$  displacement, yielding aminodeoxychorismate in quantities that enable cell survival in the absence of PabB.

of  $\Delta$ serB by ytc suggest that functional convergence of otherwise unrelated protein scaffolds can be readily achieved. The ASKA library encodes a vast assortment of protein folds and offers an unbiased starting point for directed evolution. ORF library-based evolution experiments are also intrinsically less contrived than those based on semirationally chosen single genes and should provide greater insight into natural adaptive processes.

## Conclusion

We have conducted the first quantitative survey of enzymatic ambiguity and promiscuity. Even under stringent selection conditions, many genetic lesions could be suppressed by the overexpression of preexisting genes. We have used the EcoCyc database to propose possible mechanisms by which the suppressors act (table 1); future studies will explore specific examples in greater biochemical and genetic detail. In spite of the comprehensive annotation of the *E. coli* genome, the majority of these secondary activities were previously undiscovered. It has been postulated that, compared with extant enzymes, primitive catalysts possessed very broad specificity and that gene duplication afforded the “luxury of increased specialization and improved metabolic efficiency” (Jensen 1976). Here we have demonstrated that contemporary enzymes remain surprisingly broad in reaction specificity. This general property of proteins enhances metabolic robustness and generates the seeds of evolutionary innovation, as it has since primordial times.

## Supplementary Material

Supplementary tables 1–3 are available at *Molecular Biology and Evolution* online (<http://www.mbe.oxfordjournals.org/>).

## Acknowledgments

We thank P. Mars for technical assistance and J. Reed for helpful discussions. We also thank J. Bull, J. Gallivan, M. Gerth, M. Hecht, T. Schlenke, and D. Tawfik for their critiques of the manuscript. This study was supported by grants from the National Institutes of Health (R01 GM074264) and the National Science Foundation (CHE-0404677). W.M.P. and I.M. conceived the project and wrote the paper. W.M.P. and E.M.Q. designed the protocols for screening and selection, conducted the selection experiments, and analyzed the data. D.B.S. screened for usable Keio strains and W.M.P. conducted the retransformation tests. W.M.P. performed the pairwise structural alignments.

## Literature Cited

- Arifuzzaman M, Maeda M, Itoh A, et al. (23 co-authors). 2006. Large-scale identification of protein-protein interaction of *Escherichia coli* K-12. *Genome Res.* 16:686–691.
- Aronson BD, Somerville RL, Epperly BR, Dekker EE. 1989. The primary structure of *Escherichia coli* L-threonine dehydrogenase. *J Biol Chem.* 264:5226–5232.
- Awano N, Wada M, Mori H, Nakamori S, Takagi H. 2005. Identification and functional analysis of *Escherichia coli* cysteine desulfhydrases. *Appl Environ Microbiol.* 71:4149–4152.
- Baba T, Ara T, Hasegawa M, Takai Y, Okumura Y, Baba M, Datsenko KA, Tomita M, Wanner BL, Mori H. 2006. Construction of *Escherichia coli* K-12 in-frame, single-gene knockout mutants: the Keio collection. *Mol Syst Biol.* 2:2006.0008.
- Berg CM, Wang MD, Vartak NB, Liu L. 1988. Acquisition of new metabolic capabilities: multicopy suppression by cloned transaminase genes in *Escherichia coli* K-12. *Gene.* 65:195–202.
- Bridgham JT, Carroll SM, Thornton JW. 2006. Evolution of hormone-receptor complexity by molecular exploitation. *Science.* 312:97–101.
- Cocks GT, Aguilar T, Lin EC. 1974. Evolution of L-1,2-propanediol catabolism in *Escherichia coli* by recruitment of

- enzymes for L-fucose and L-lactate metabolism. *J Bacteriol.* 118:83–88.
- D'Ari R, Casadesús J. 1998. Underground metabolism. *Bioessays.* 20:181–186.
- Datta P, Goss TJ, Omnaas JR, Patil RV. 1987. Covalent structure of biodegradative threonine dehydratase of *Escherichia coli*: homology with other dehydratases. *Proc Natl Acad Sci USA.* 84:393–397.
- Firestone SM, Poon SW, Mueller EJ, Stubbe J, Davisson VJ. 1994. Reactions catalyzed by 5-aminoimidazole ribonucleotide carboxylases from *Escherichia coli* and *Gallus gallus*: a case for divergent catalytic mechanisms. *Biochemistry.* 33:11927–11934.
- Firth AE, Patrick WM. 2005. Statistics of protein library construction. *Bioinformatics.* 21:3314–3315.
- Force A, Lynch M, Pickett FB, Amores A, Yan YL, Postlethwait J. 1999. Preservation of duplicate genes by complementary, degenerative mutations. *Genetics.* 151:1531–1545.
- Gaucher EA, Thomson JM, Burgan MF, Benner SA. 2003. Inferring the palaeoenvironment of ancient bacteria on the basis of resurrected proteins. *Nature.* 425:285–288.
- Glasner ME, Gerlt JA, Babbitt PC. 2007. Mechanisms of protein evolution and their application to protein engineering. *Adv Enzymol Relat Areas Mol Biol.* 75:193–239.
- Gould SJ. 1989. *Wonderful life: the burgess shale and the nature of history.* New York: W W Norton and Company.
- Hall BG. 2003. The EBG system of *E. coli*: origin and evolution of a novel  $\beta$ -galactosidase for the metabolism of lactose. *Genetica.* 118:143–156.
- He Z, Stigers Lavoie KD, Bartlett PA, Toney MD. 2004. Conservation of mechanism in three chorismate-utilizing enzymes. *J Am Chem Soc.* 126:2378–2385.
- Hedstrom L. 2002. Serine protease mechanism and specificity. *Chem Rev.* 102:4501–4524.
- Hegeman GD, Rosenberg SL. 1970. The evolution of bacterial enzyme systems. *Annu Rev Microbiol.* 24:429–462.
- Jensen RA. 1976. Enzyme recruitment in evolution of new function. *Annu Rev Microbiol.* 30:409–425.
- Joyce AR, Reed JL, White A, Edwards R, Osterman A, Baba T, Mori H, Lesely SA, Palsson BO, Agarwalla S. 2006. Experimental and computational assessment of conditionally essential genes in *Escherichia coli*. *J Bacteriol.* 188:8259–8271.
- Jürgens C, Strom A, Wegener D, Hettwer S, Wilmanns M, Sterner R. 2000. Directed evolution of a  $(\beta\alpha)_8$ -barrel enzyme to catalyze related reactions in two different metabolic pathways. *Proc Natl Acad Sci USA.* 97:9925–9930.
- Keseler IM, Collado-Vides J, Gama-Castro S, Ingraham J, Paley S, Paulsen IT, Peralta-Gil M, Karp PD. 2005. EcoCyc: a comprehensive database resource for *Escherichia coli*. *Nucleic Acids Res.* 33:D334–D337.
- Khersonsky O, Roodveldt C, Tawfik DS. 2006. Enzyme promiscuity: evolutionary and mechanistic aspects. *Curr Opin Chem Biol.* 10:498–508.
- Kimura M. 1983. *The neutral theory of molecular evolution.* Cambridge: Cambridge University Press.
- Kitagawa M, Ara T, Arifuzzaman M, Ioka-Nakamichi T, Inamoto E, Toyonaga H, Mori H. 2005. Complete set of ORF clones of *Escherichia coli* ASKA library (a complete set of *E. coli* K-12 ORF archive): unique resources for biological research. *DNA Res.* 12:291–299.
- Klem TJ, Davisson VJ. 1993. Imidazole glycerol phosphate synthase: the glutamine amidotransferase in histidine biosynthesis. *Biochemistry.* 32:5177–5186.
- Kuznetsova E, Proudfoot M, Gonzalez CF, et al. (14 co-authors). 2006. Genome-wide analysis of substrate specificities of the *Escherichia coli* haloacid dehalogenase-like phosphatase family. *J Biol Chem.* 281:36149–36161.
- Liu JQ, Dairi T, Itoh N, Kataoka M, Shimizu S, Yamada H. 1998. Gene cloning, biochemical characterization and physiological role of a thermostable low-specificity L-threonine aldolase from *Escherichia coli*. *Eur J Biochem.* 255:220–226.
- Maxon ME, Redfield B, Cai XY, Shoeman R, Fujita K, Fisher W, Stauffer G, Weissbach H, Brot N. 1989. Regulation of methionine synthesis in *Escherichia coli*: effect of the MetR protein on the expression of the *metE* and *metR* genes. *Proc Natl Acad Sci USA.* 86:85–89.
- Merlo LM, Lunzer M, Dean AM. 2007. An empirical test of the concomitantly variable codon hypothesis. *Proc Natl Acad Sci USA.* 104:10938–10943.
- Miller BG, Raines RT. 2004. Identifying latent enzyme activities: substrate ambiguity within modern bacterial sugar kinases. *Biochemistry.* 43:6387–6392.
- Miller BG, Raines RT. 2005. Reconstitution of a defunct glycolytic pathway via recruitment of ambiguous sugar kinases. *Biochemistry.* 44:10776–10783.
- O'Brien PJ, Herschlag D. 1999. Catalytic promiscuity and the evolution of new enzymatic activities. *Chem Biol.* 6:R91–R105.
- Ohno S. 1970. *Evolution by gene duplication.* New York: Springer-Verlag.
- Orengo CA, Thornton JM. 2005. Protein families and their evolution—a structural perspective. *Annu Rev Biochem.* 74:867–900.
- Ortiz AR, Strauss CE, Olmea O. 2002. MAMMOTH (matching molecular models obtained from theory): an automated method for model comparison. *Protein Sci.* 11:2606–2621.
- Pieper U, Eswar N, Davis FP, et al. (14 co-authors). 2006. MODBASE: a database of annotated comparative protein structure models and associated resources. *Nucleic Acids Res.* 34:D291–D295.
- Roth C, Rastogi S, Arvestad L, Dittmar K, Light S, Ekman D, Liberles DA. 2007. Evolution after gene duplication: models, mechanisms, sequences, systems, and organisms. *J Exp Zool B Mol Dev Evol.* 308B:58–73.
- Rubino SD, Nyunoya H, Lusty CJ. 1987. *In vivo* synthesis of carbamyl phosphate from  $\text{NH}_3$  by the large subunit of *Escherichia coli* carbamyl phosphate synthetase. *J Biol Chem.* 262:4382–4386.
- Schmidt DM, Mundorff EC, Dojka M, Bermudez E, Ness JE, Govindarajan S, Babbitt PC, Minshull J, Gerlt JA. 2003. Evolutionary potential of  $(\beta\alpha)_8$ -barrels: functional promiscuity produced by single substitutions in the enolase superfamily. *Biochemistry.* 42:8387–8393.
- St Martin EJ, Mortlock RP. 1976. Natural and altered induction of the L-fucose catabolic enzymes in *Klebsiella aerogenes*. *J Bacteriol.* 127:91–97.
- Suel GM, Lockless SW, Wall MA, Ranganathan R. 2003. Evolutionarily conserved networks of residues mediate allosteric communication in proteins. *Nat Struct Biol.* 10:59–69.
- Thomson JM, Gaucher EA, Burgan MF, De Kee DW, Li T, Aris JP, Benner SA. 2005. Resurrecting ancestral alcohol dehydrogenases from yeast. *Nat Genet.* 37:630–635.
- Ye QZ, Liu J, Walsh CT. 1990. *p*-Aminobenzoate synthesis in *Escherichia coli*: purification and characterization of PabB as aminodeoxychorismate synthase and enzyme X as aminodeoxychorismate lyase. *Proc Natl Acad Sci USA.* 87:9391–9395.

Laura Katz, Associate Editor

Accepted September 16, 2007