

Multimodality imaging in the diagnosis, risk stratification, and management of patients with dilated cardiomyopathies: an expert consensus document from the European Association of Cardiovascular Imaging

Erwan Donal^{1,2*}, Victoria Delgado³, Chiara Bucciarelli-Ducci⁴, Elena Galli^{1,2}, Kristina H. Haugaa⁵, Philippe Charron^{6,7†}, Jens-Uwe Voigt⁸, Nuno Cardim⁹, P.G. Masci¹⁰, Maurizio Galderisi¹¹, Oliver Gaemperli¹², Alessia Gimelli¹³, Yigal M. Pinto^{14†}, Patrizio Lancellotti¹⁵, Gilbert Habib^{16,17}, Perry Elliott^{18,19†}, Thor Edvardsen⁵, Bernard Cosyns^{20†‡}, and Bogdan A. Popescu^{21‡}

Reviewers: This document was reviewed by members of the 2016–18 EACVI Scientific Documents Committee: Bernhard Gerber, Denisa Muraru, and Frank Flachskampf and external reviewers: Sven Plein, Danilo Neglia, Matteo Cameli, and Caroline Weytjens.

¹Service de Cardiologie et CIC-IT INSERM 1414, CHU Pontchaillou, 2 rue Henri Le Guilloux, 35000 Rennes, France; ²LTSI, Université de Rennes 1, INSERM, UMR 1099, Rennes, France; ³Department of Cardiology, Leiden University Medical Centre, Albinusdreef 2, Leiden 2300RC, The Netherlands; ⁴Bristol Heart Institute, University of Bristol, University Hospitals Bristol NHS Foundation Trust, Malborough St, Bristol BS2 8HW, UK; ⁵Department of Cardiology, Center for Cardiological Innovation, Oslo University Hospital, Rikshospitalet, Sognsvannsveien 20, 0372 Oslo, Norway; ⁶Centre de Référence pour les Maladies Cardiaques Héritaires, APHP, ICAN, Hôpital de la Pitié Salpêtrière, Paris, France; ⁷Université Versailles Saint Quentin & AP-HP, CESP, INSERM U1018, Service de Génétique, Hôpital Ambroise Paré, Boulogne-Billancourt, France; ⁸Department of Cardiovascular Sciences, University of Leuven, Herestraat 49, 3000 Leuven, Belgium; ⁹Cardiology Department, Hospital da Luz, Av. Lusíada, n° 100, 1500-650 Lisbon, Portugal; ¹⁰HeartClinic, Hirslanden Hospital Zurich, Witellikerstrasse 32, CH-8032 Zurich, Switzerland; ¹¹Department of Advanced Biomedical Sciences, Federico II University, Naples, Italy; ¹²HeartClinic, Hirslanden Hospital Zurich, Witellikerstrasse 32, CH-8032 Zurich, Switzerland; ¹³Fondazione Toscana Gabriele Monasterio, Via Moruzzi, 1, 56124 Pisa, Italy; ¹⁴Department of Cardiology, Academic Medical Center, University of Amsterdam, Amsterdam, The Netherlands; ¹⁵Department of Cardiology, University of Liège Hospital, Domaine Universitaire du Sart Tilman, B.4000 Liège, Belgium; ¹⁶Cardiology Department, APHM, La Timone Hospital, Boulevard Jean Moulin, 13005 Marseille, France; ¹⁷Aix Marseille University, IRD, APHM, MEPHI, IHU-Méditerranée Infection, Boulevard Jean Moulin, 13005 Marseille, France; ¹⁸Institute of Cardiovascular Science, University College London, London, UK; ¹⁹Barts Heart Centre, St Bartholomew's Hospital, London, UK; ²⁰Centrum voor Hart en Vaatziekten (CHVZ), Universitair Ziekenhuis Brussel, Laarbeeklaan 101, 1090 Brussel, Belgium; and ²¹Department of Cardiology, University of Medicine and Pharmacy "Carol Davila" - Eurocolab, Emergency Institute of Cardiovascular Diseases "Prof. Dr. C. C. Iliescu", Sos. Fundeni 258, Sector 2, 022328 Bucharest, Romania

Received 10 June 2019; editorial decision 11 June 2019; accepted 19 June 2019; online publish-ahead-of-print 26 August 2019

Dilated cardiomyopathy (DCM) is defined by the presence of left ventricular or biventricular dilatation and systolic dysfunction in the absence of abnormal loading conditions or coronary artery disease sufficient to explain these changes. This is a heterogeneous disease frequently having a genetic background. Imaging is important for the diagnosis, the prognostic assessment and for guiding therapy. A multimodality imaging approach provides a comprehensive evaluation of all the issues related to this disease. The present document aims to provide recommendations for the use of multimodality imaging according to the clinical question. Selection of one or another imaging technique should be based on the clinical condition and context. Techniques are presented with the aim to underscore what is 'clinically relevant' and what are the tools that 'can be

* Corresponding author. +33 (299) 282 525; Fax: +33 (299) 282 510. E-mail: erwan.donal@chu-rennes.fr

† Member of the European Reference Network on Rare or low prevalence Heart diseases (ERN GUARD-HEART).

‡ The last two authors share the senior position in the list of authors.

used'. There remain some gaps in evidence on the impact of multimodality imaging on the management and the treatment of DCM patients where ongoing research is important.

Keywords

dilated cardiomyopathy • prognosis • treatment • echocardiography • cardiac magnetic resonance • nuclear imaging

A definition for dilated cardiomyopathy

Dilated cardiomyopathy (DCM) is defined by the presence of left ventricular (LV) or biventricular dilatation and systolic dysfunction in the absence of abnormal loading conditions (hypertension and valve disease) or coronary artery disease sufficient to cause global systolic impairment (Figure 1 and Tables 1 and 2).¹⁻³

DCM has an estimated prevalence of one case in 2500 individuals, is a major cause of heart failure (HF) with reduced ejection fraction (EF) and is the leading indication for heart transplantation worldwide.¹⁻³

This heterogeneous disease encompasses a broad range of underlying causes, including genetic and acquired disorders (Table 3) that have been revisited within recent years with a growing proportion of familial/genetic causes (about one-third and up to half of cases) and increasing identification of inflammatory cardiomyopathy that may be related to concealed myocarditis or unrecognized autoimmune diseases.^{1,2,6}

The appropriate recognition of DCM is of paramount importance. First, the correct identification of the cause through a dedicated diagnostic workup will lead to an aetiology-oriented approach to therapy, which was illustrated and detailed in a recent Consensus document from the ESC Working Group on Myocardial & Pericardial diseases.¹ Second, over recent decades, research has shed new light on the natural history of DCM, and it is recognized that many patients have a long preclinical phase characterized by few (if any) symptoms and

minor cardiac abnormalities that fall outside current disease definitions.¹ The clinical spectrum of cardiac expression in DCM is described in Figure 1. Genes have been identified. But there are many forms of DCM that are isolated/sporadic cases and 'idiopathic'. In some relatives, there is a preclinical phase without cardiac expression that subsequently progresses towards mild cardiac abnormalities, such as isolated LV dilatation (present in ~25% of relatives of familial DCM) or arrhythmogenic features (ventricular or supraventricular arrhythmia or conduction defects) that can be observed in myocarditis or in the early phase of genetic diseases, such as Lamin A/C mutation DCM and neuromuscular disorders. The overt phase of systolic dysfunction is usually associated with LV dilatation though in some cases it may be absent, leading to diagnostic confusion. For this reason, a new category of *hypokinetic non-DCM* was recently proposed (Table 2) as well as a scoring system for characterization of clinical status in the early stage.¹

Imaging methods for diagnosing a DCM and for excluding ischaemic aetiology

Symptoms of HF are the most common presenting clinical manifestations. Atrial or ventricular arrhythmias or even sudden death can occur at any stage of the disease but are more common in advanced disease.

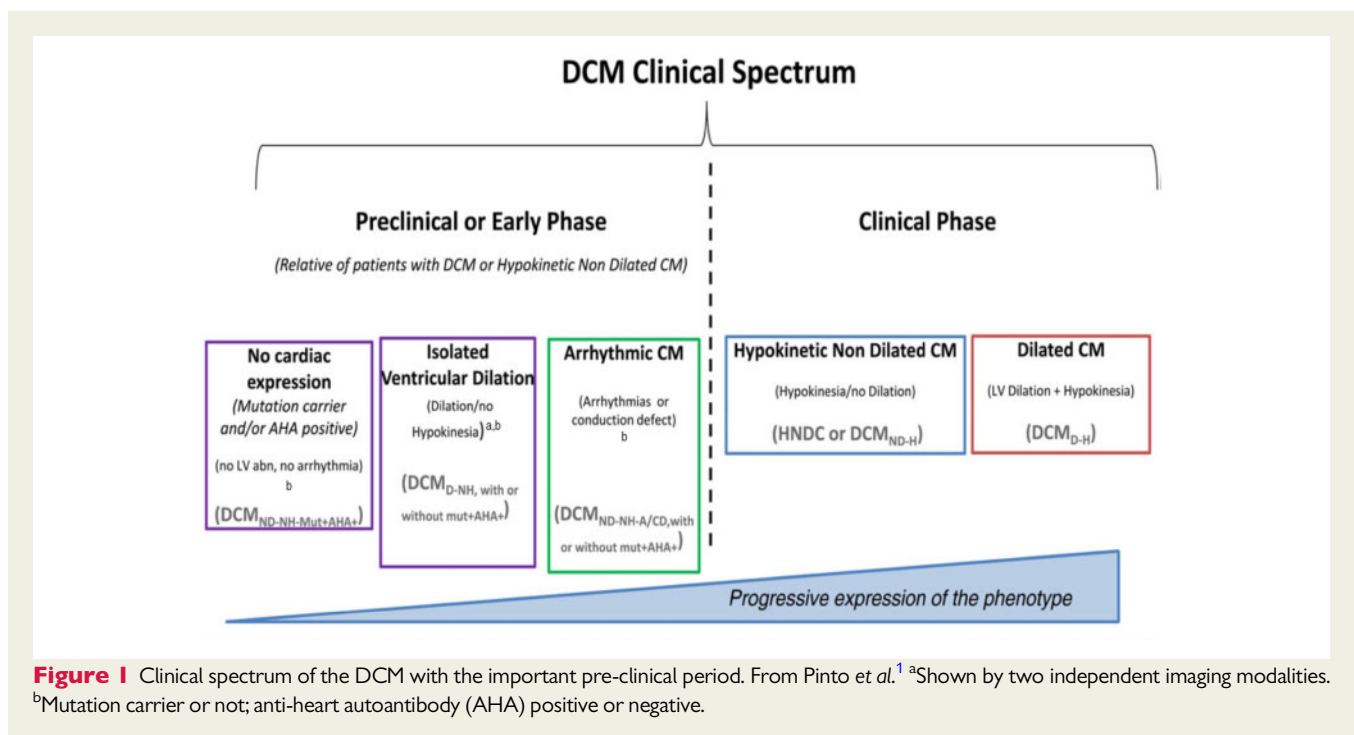


Table 1 Key points of the position paper based on scientific background and experts' consensus

Key points	
1	Dilated cardiomyopathy (DCM) is defined by the presence of left ventricular (LV) or biventricular dilatation and systolic dysfunction in the absence of abnormal loading conditions (hypertension and valve disease) or coronary artery disease sufficient to cause global systolic impairment.
2	All the imaging techniques should not be performed and repeated in every single DCM-patient. They should be used to answer a specific clinical question.
3	Imaging techniques (echocardiography first) should be used for screening individuals with risk factors for non-familial DCM and for early diagnosis of first-degree relatives in familial DCM.
4	Echocardiography is the 'first step' imaging technique. It provides information about anatomy, function, and haemodynamics, as well as prognostic information, for the best treatment selection.
5	Cardiac magnetic resonance (CMR) is an important tool to consider (at least once) in every patient with DCM. It is the gold standard for measuring LV-, RV volumes, and ejection fraction. It also provides tissue characterization and may suggest the cause of ventricular dysfunction.
6	Nuclear imaging is not used in the routine assessment of every DCM. It is the reference standard for the non-invasive evaluation of myocardial adrenergic tone.
7	Cardiac-computed tomography (CT) is highly valuable to exclude significant epicardial coronary artery disease. Additionally, the good spatial resolution and ease of navigation make cardiac-CT suitable when device implantation is proposed (e.g. transcatheter prosthesis, ventricular assist device, or left ventricular pacing lead).
8	Left ventricular (LV) longitudinal dysfunction is a sensitive marker of subclinical, early myocardial dysfunction, usually assessed with the measurement of long-axis myocardial velocities, and by longitudinal deformation. The measurement of s' and the use of global longitudinal strain are recommended.
9	In DCM patients at risk for ventricular arrhythmias, though the level of evidence remains insufficient, there are strong elements encouraging the use of speckle tracking echocardiography, CMR, or MIBG-SPECT imaging for best assessing.
10	When cardiac resynchronization therapy (CRT) is a therapeutic option, early systolic septal shortening with inward motion (septal bounce and septal flash) followed by late systolic stretch of the septum, and an apex motion towards the late contracting lateral wall (apical rocking) are considered strong predictors of CRT-response. New semi-automatic approaches based on the use of regional longitudinal strain curves are highly promising.
11	The quantification of right ventricular (RV) function is mandatory as well as the assessment of diastolic function and valvular function during the follow-up of a DCM-patient. Imaging of DCM should not be limited to the LV size and function.
12	For LVADs carriers: echocardiographic (and sometimes haemodynamic) testing provides an objective means of optimizing the medical management and the LVAD pump speed.
13	Secondary mitral regurgitation (MR) is a key prognostic marker in DCM. It should be quantified carefully and systematically integrated with the other haemodynamic data and with the adequation between the degree of regurgitation and the degree of LV enlargement.

Imaging plays a key role in these patients. Imaging techniques should be used for the diagnosis and for excluding ischaemic aetiology.

A comprehensive echocardiography is mandatory. A 'Focused cardiac ultrasound (FoCUS) exam' (eventually using handheld ultrasound device) can only raise the suspicion of DCM and should always be complemented by a complete echocardiographic examination, integrating strain measurements, and—increasingly—3D imaging. Only comprehensive echocardiography provides all relevant information on haemodynamics, global ventricular anatomy and function, regional function, dyssynchrony, valvular heart disease, right heart function, atrial characteristics, and geometry (remodelling) that should be obtained.⁷⁻⁹

Contrast agents could be considered to exclude a mural thrombus or evoking a non-compaction DCM for instance.

Transoesophageal echocardiography may be considered for assessing valvular function, presence of atrial thrombi and for guiding transcatheter therapy in patients with concomitant valvular heart disease (mostly secondary mitral and tricuspid regurgitation). Stress echocardiography might also be used for dynamicity of secondary

valvular disease in addition to the important goal of exploring the potential ischaemic aetiology.

Excluding ischaemic aetiology is fundamental, but other conditions have to be listed:

- a tachycardiomyopathy should be also diagnosed by repeating the comprehensive echocardiography after correction of a rapid tachyarrhythmia.
- In pregnant women, peripartum cardiomyopathy and screening for cardiomyopathy should be proposed when a heart dysfunction has been reported during a previous pregnancy.
- In patients treated for cancer, treatments might induce a DCM but can also facilitate the expression of a DCM in patients at risk.
- Myocarditis or iron overload are potentially reversible causes of DCM.
- Toxic like alcohol should not be forgotten.

To exclude coronary artery disease, one of the three modalities listed below may be required:

- Cardiac computed tomography (CT) is highly valuable for excluding significant epicardial coronary artery disease. Additionally, its

Table 2 Diagnostic criteria of DCM

LV or biventricular systolic dysfunction (defined as LVEF <45%) and dilatation^a that are not explained by abnormal loading conditions or coronary artery disease.

Left ventricular or biventricular global systolic dysfunction (defined as LVEF <45%) without dilatation, not explained by abnormal loading conditions or coronary artery disease.

From Pinto et al.¹

^aLV dilatation is defined by LV end-diastolic (ED) volumes or diameters >2 SD from normal according to normograms (Z scores >2 SD) corrected for body surface area (BSA) and age or BSA and gender.

spatial resolution and ease of navigation make cardiac CT suitable when device implantation is proposed (e.g. prosthesis, mechanical assist device, or LV pacing lead). In patients with atrial fibrillation, cardiac CT has high accuracy for excluding left atrial (LA) thrombus and guiding ablation procedures using electroanatomical mapping of the left atrium. Perfusion could be evaluated but also fractional flow reserve via CT has demonstrated a substantial improvement in the identification of haemodynamically significant coronary artery disease.¹⁰

- Radionuclide imaging techniques allow non-invasive assessment of myocardial perfusion and metabolism and even cardiac innervation through injection of radio-labelled targeted imaging compounds. Myocardial perfusion techniques are clinically relevant especially for distinguishing DCM from ischaemic cardiomyopathy.
- Cardiovascular magnetic resonance (CMR) is clinically relevant. CMR could be used for excluding the ischaemic component of LV dysfunctions.¹¹ Its main value is on the myocardial tissue characterization. It detects the presence and extent of myocardial oedema, scarring, fibrosis, and infiltration (as well as an iron overload) in the dysfunctional myocardium. This additional unique non-invasive information can aid the identification of the final underlying diagnosis and provide prognostic value.

Specific issues—clinical scenarios

De novo diagnosis of unrecognized ventricular dysfunction/HF

The early detection of DCM can be done in still asymptomatic patients. It has to be based on risk factors (importance of the family tree and of the family history, uncontrolled cardiovascular risk factors like diabetes could be considered as well). The disease often has a long asymptomatic phase, with normal left ventricular ejection fraction (LVEF) and or, sometimes dilated LV cavity dimensions.¹ The subclinical phase of early myocardial dysfunction may, however, be identified with advanced imaging techniques.¹² The importance of the detection of subclinical disease [by careful analysis of LV size, diastolic function, and global longitudinal strain (GLS)] is important as it allows the institution of early preventive and therapeutic measures, such as lifestyle changes or medical treatments. It may alter the course of the disease^{2,12–14}; and it may result in a substantial reduction of morbidity and mortality.⁷

Table 3 Main causes of a DCM

Causes	Sub-type of causes
Genetic causes	<ul style="list-style-type: none"> • Main genes, such as titin, are related to predominant cardiac expression • Neuromuscular disorders • Syndromic diseases¹
Infectious causes (chronic myocarditis)	Viral, bacterial, fungal, and parasitic causes
Toxic and overload	Such as ethanol, cocaine, and iron overload
Electrolyte disturbance	Such as hypocalcaemia
Endocrinology causes	Such as dysthyroidism and acromegaly
Nutritional deficiency	Such as selenium, thiamine, and carnitine deficiencies
Autoimmune diseases	Organ-specific (such as inflammatory cardiomyopathy) or not (such as polymyositis)
Drugs induced	Such as antineoplastic and psychiatric drugs
Tachycardia-induced cardiomyopathy ⁴	
Peripartum cardiomyopathy ⁵	

Early phenotypes

Decreased LVEF is a late and insensitive finding in the natural history of DCM, often reflecting irreversible myocardial dysfunction.

Considering echocardiography, tissue Doppler imaging with the measurement of the positive peak mid-systolic velocity (averaging septal and lateral side of mitral annulus; normal value 8.9 ± 1.6 cm¹⁵) can be considered as a clinically relevant early marker of LV longitudinal dysfunction.^{12,15,16} Additionally, GLS by 2D speckle tracking echocardiography is the most commonly studied parameter for detecting preclinical disease and is highly reproducible when performed by trained operators.^{8,17–19} The current recommendation is to use the same vendor for serial surveillance. Inter-vendor variability has improved after the work performed by the standardization Task Force initiated by EACVI and American Society of Echocardiography.^{20,21}

Abnormal circumferential and radial deformation parameters, as well as abnormal torsion, have also been described in preclinical DCM patients.²² Nevertheless, major limitations are the lack of reliable cut-off values and the lack of large studies.

If these more advanced echocardiographic techniques are not available for preclinical screening,^{3,6} echocardiography is limited in only performing LVEF measurements. Quality of the acquisitions of the apical views should be optimized. The apex foreshortening should be carefully avoided. The relatively high variability of manually traced 2D LVEF (biplane Simpson's method), the concomitant use of LV cavity opacification or the use of automated 2D EF or 3D EF has to be considered for more reliable and reproducible assessments of small changes in LV volumes and function.⁸ More recent data are also encouraging the use of 3D transthoracic echocardiographic (TTE) for the right ventricular (RV) function and volumes.²³

- CMR may impact preclinical diagnosis, as it is golden standard for LV and RV quantification. CMR should be considered in the case of suboptimal, borderline or doubtful echocardiographic data, and in high-risk families when the diagnosis of DCM is still in doubt and would have direct implications on management.²⁴ Despite its relatively low availability and high cost, CMR may be used in the assessment of myocardial longitudinal strain and helps in early diagnosis of specific aetiologies (sarcoidosis and post-myocarditis DCM).²⁵ The tissue characterization [early gadolinium enhancement, T2- and T1-weighted sequences or mapping, and late gadolinium enhancement (LGE)] are a key clinical feature of CMR.²⁶ The clinical value of CMR in the early detection of the disease must be further explored in larger trials.
- Cardiac CT: Despite its excellent spatial resolution, the role of cardiac CT for early diagnosis of DCM is limited due to its lower temporal resolution, radiation and the need for iodinated contrast. It can be useful when echocardiographic images are suboptimal (and CMR contraindicated) and concomitant coronary artery or pericardial disease have to be excluded.^{13,27} Cardiac CT can make the diagnosis by demonstrating dilatation of left and right ventricles, pulmonary oedema, dilatation of pulmonary arteries, and absence of coronary artery disease.
- Gated radionuclide imaging studies provide an accurate alternative to echocardiography or CMR to assess LV systolic function and regional contractility. Radionuclide ventriculography can be used to assess LV systolic (and diastolic) function without any geometrical assumptions of the LV. Due to its low intraobserver variability, this technique has been used but it is no more recommended.^{28,29}
- RV systolic function can be assessed with radionuclide ventriculography (particularly using first-pass or equilibrium gated blood pool techniques). It requires an expertise.

Diagnostic criteria for relatives of familial DCM

DCM is idiopathic in 50% of cases, about one-third of which are hereditary. There are already more than 50 genes identified that are associated with DCM, many related to the cytoskeleton. The most frequent ones are titin, lamin, and desmin. The ESC working group on myocardial and pericardial diseases recently proposed diagnostic criteria for relatives of familial DCM patients,¹ integrating at least imaging methods and 12-lead electrocardiogram (ECG) (Table 4).

In this proposal, imaging criteria may be major (LVEF and LV dilatation) or minor (abnormal regional wall motion in the absence of conduction defects and non-ischaemic LGE CMR). The measurement of GLS is encouraged, as mentioned in key point 3.

Timing of screening

A general time frame to perform echocardiography in first-degree relatives of patients with cardiomyopathy, when genetic results are not available, has been proposed.³⁰ More recently, specific recommendations were provided for familial DCM, in which echocardiography and ECG should be performed in all first-degree relatives starting in childhood (~10 years of age) and repeated every 2–3 years if cardiovascular tests are normal and every year if minor abnormalities are detected.¹ When to stop the screening remains an unresolved issue and it might differ according to the family history. The limit of 60–65 years of age has been proposed.³⁰ The screening intervals will also depend on the course of the specific types of DCM.

Table 4 Diagnostic criteria for relatives of familial DCM¹

Major
1. Unexplained decrease of LVEF $\leq 50\%$ but $>45\%$
OR
2. Unexplained LVED dilatation (diameter or volume) according to nomograms (LVED diameter/volume $2\text{ SD} + 5\%$ since this more specific echocardiographic criterion was used in studies that demonstrated the predictive impact of isolated dilatation in relatives).
Minor
1. Complete LBBB or AV block (PR ≥ 200 ms or higher degree of AV block).
2. Unexplained ventricular arrhythmia (100 ventricular premature beats per hour in 24 h or non-sustained ventricular tachycardia, ≥ 3 beats at a rate of ≥ 120 bpm).
3. Segmental wall motion abnormalities in the left ventricle in the absence of intraventricular conduction defect.
4. Late enhancement (LGE) of non-ischaemic origin on cardiac magnetic resonance imaging.
5. Evidence of non-ischaemic myocardial abnormalities (inflammation, necrosis, and/or fibrosis) on EMB.
6. Presence of serum organ-specific and disease-specific AHA by one or more autoantibody tests.

Note: Feature shown by two independent imaging modalities.¹

For instance, in cardio-oncology patients, this screening will follow specific recommendations.^{29,31,32}

Prognosis and risk stratification: new parameters that can be used in clinical practice; a pragmatic approach

Despite advances in DCM-treatments, 10-year survival remains $<60\%$, with death preceded by numerous HF exacerbations, reflecting the difficulty in assessing the individual risk. Remarkably, the clinical course of DCM patients varies widely, ranging from rapidly progressive HF or sudden cardiac death (SCD) to LV reverse remodelling (RR), i.e. significant reduction of LV volumes along with sustained recovery of LVEF. Nearly 40% of newly diagnosed DCM patients experience LV RR under optimal medical therapy (OMT) at a median of 2 years of follow-up, foreseeing a favourable long-term outcome.^{33,34} This evidence questioned the appropriateness of at least 3 months of OMT in newly diagnosed DCM patients with HF before proceeding to device(s) implantation, as proposed by the current guidelines.³⁵ Additionally, the LV ejection-fraction cut-off of $\leq 35\%$ in symptomatic [New York Heart Association (NYHA) Class II and III] DCM patients for primary prevention implantable cardioverter-defibrillator (ICD) placement (Class I, Level of evidence B)³⁵ is subject of controversies,³⁶ considering its low sensitivity and specificity in identifying high-risk patients as well as the poor cost-effectiveness profile.

Prognostic markers

LV dilatation and impaired contractile function are major prognostic factors (for cardiovascular death and hospitalization) in DCM (whatever the imaging technique used). While dilatation is associated with adverse outcome, RR and normalization of the LV dimensions are associated with improved survival.^{33,37} RR is a therapeutic objective that may take months/years to reach and is monitored by serial imaging. Other imaging parameters, associated with the risk of death or hospitalization for HF, include LA enlargement, RV dilatation, and RV contractile dysfunction.^{38,39} The latter may be caused by the intrinsic disease or develop secondary to left HF. LV strain has also been repeatedly demonstrated as a key and independent prognostic marker in DCM.^{40–42}

Recently, RV strain imaging has been suggested as a tool of choice to consider to best define the risk of death and hospitalization in patients with DCM.⁴³ The quantification of RV function and size should be systematically reported in DCM patients.^{9,44}

LV filling pressure and diastolic function should be assessed and reported. The necessary parameters comprise at least LA volume, E/A ratio and E velocity deceleration time, e', E/e', maximal velocity of tricuspid regurgitation have to be reported when a DCM-patient is scanned by echocardiography.⁴⁵ LA strain is a new promising approach tested but still under investigation.^{46,47}

Secondary (functional) MR (Carpentier I + IIIb) is a potentially reversible consequence and aggravator of ventricular remodelling that is incrementally associated with adverse outcome.⁴⁸ In clinical practice, TTE is used for quantification of secondary MR severity and potential response to therapy.^{49–51}

Stress echocardiography parameters, but also nuclear imaging measurements such as contractile reserve and coronary flow reserve, predict RR, and functional recovery in patients with DCM.^{52,53} Coronary flow reserve assessment could be assessed also by echocardiography in DCM patients with left bundle branch block.^{54,55} Also, the presence of microvascular dysfunction (as assessed by positron emission tomography) is associated with poorer outcomes and a higher risk of progression to overt HF and death.⁵⁶

Specific predictors for ventricular arrhythmias

Ventricular arrhythmias are the most feared complications in DCM. Compared to patients with ischaemic cardiomyopathy, the incidence of ventricular arrhythmias in patients with DCM is lower. ICD implantation is the standard of care for prevention of SCD in high-risk patients.⁵⁷ The identification of high-risk individuals is difficult. Current guidelines recommend ICD for primary prevention, as a Class IB indication in patients with non-ischaemic DCM and LVEF $\leq 35\%$, on OMT, and with more than 1-year life expectancy.⁵⁷ However, adherence to current guidelines has been questioned, and previous trials have not been convincing in the beneficial effect of primary prevention ICD in non-ischaemic patients.^{58–60} Primary prevention ICD in patients with non-ischaemic DCM was less efficient at preventing total mortality compared to patients with ischaemic heart disease.^{61,62} A beneficial effect on all-cause mortality has only been shown in one randomized trial including patients with non-ischaemic heart disease (SCD-HeFT), even if a predefined SCD-HeFT subgroup analysis demonstrated that the benefit was significant only for the

ischaemic subgroup.⁶³ The most recent study on this topic, the DANISH study, further showed the limited effect of primary prevention ICD on total mortality in patients with non-ischaemic DCM,⁶⁰ indicating that recommendations for primary prevention ICD in these patients need to be improved. Despite its known limitations, EF still remains the only imaging parameter to guide decisions on primary prevention ICD therapy in non-ischaemic DCM.

- *Echocardiographic* parameters have been proposed as risk markers of ventricular tachycardia/VF, which are additive to EF. However, none of these echocardiographic markers have emerged to substantially influence patient care. The most important emerging parameters from echocardiography include GLS^{64,65} and mechanical dispersion.⁶⁶ GLS has shown to be a better marker of ventricular arrhythmias in patients with DCM and remains a good predictor in patients with relatively preserved EF.⁶⁴ Reversed apical rotation and loss of LV torsion are also associated with significant LV remodelling and more impaired LV function, indicating a more advanced disease stage.⁶⁷ Mechanical dispersion has been suggested as a marker of unfavourable arrhythmic outcome^{64,66} (Figures 2 and 3). Mechanical dispersion is measured as the standard deviation of time from Q/R on ECG to peak strain by longitudinal strain in a 16 LV segment model. Mechanical dispersion reflects heterogeneous myocardial contraction and might be associated with increased myocardial interstitial fibrosis.⁶⁸
- *CMR* holds promises in this context by showing that newly diagnosed DCM patients without mid-wall LGE are more likely to experience LV RR than those with LGE, irrespective of the severity of clinical status and of LV dilatation and dysfunction at initial evaluation.³⁴ Moreover, CMR renders available important risk markers at multiple levels in addition to LV functional parameters. As an example, RV systolic dysfunction (ejection-fraction $\leq 45\%$), as quantified by CMR, is a powerful and independent adverse predictor of transplant-free survival and other HF outcomes.⁶⁹ About one-third of DCM patients show mid-wall LGE, reflecting replacement fibrosis, and this has been shown to be a strong and independent predictor of all-cause mortality, cardiovascular death/transplantation, and SCD^{37,70–73} with incremental prognostic value to LV ejection-fraction.^{37,70,71} DCM patients with mid-wall LGE had been reported with a four-fold increased risk of SCD or aborted SCD after correction for other confounders, refining the arrhythmic risk estimation with potential important implications for public health and resource utilization (Figure 4).^{37,71–73} Mid-wall fibrosis has been shown to be an effective prognosticator amongst a wide range of disease severity, including in DCM patients without history of HF (Class B of HF) and in candidates for device(s) treatment.^{70,71,73–75} Patients with DCM and mid-wall fibrosis receiving cardiac resynchronization therapy (CRT) were less likely to exhibit LV RR and had worse clinical outcomes compared to non-LGE patients, and these outcomes were similar to those of ischaemic cardiomyopathy patients.⁷⁴ These data are in line with a meta-analysis on nine studies, including nearly 1500 patients with DCM, which reported that LGE has an excellent prognostic value for all-cause mortality, HF hospitalization, and SCD.⁷⁶ Several studies have proposed diverse cut-off values for fibrosis extent for predicting clinical outcomes, but currently, there is no consensus about which cut-off can effectively stratify DCM patients.^{71,72} Nonetheless, mid-wall fibrosis retained its prognostic value when considered as a continuous variable, supporting the concept that

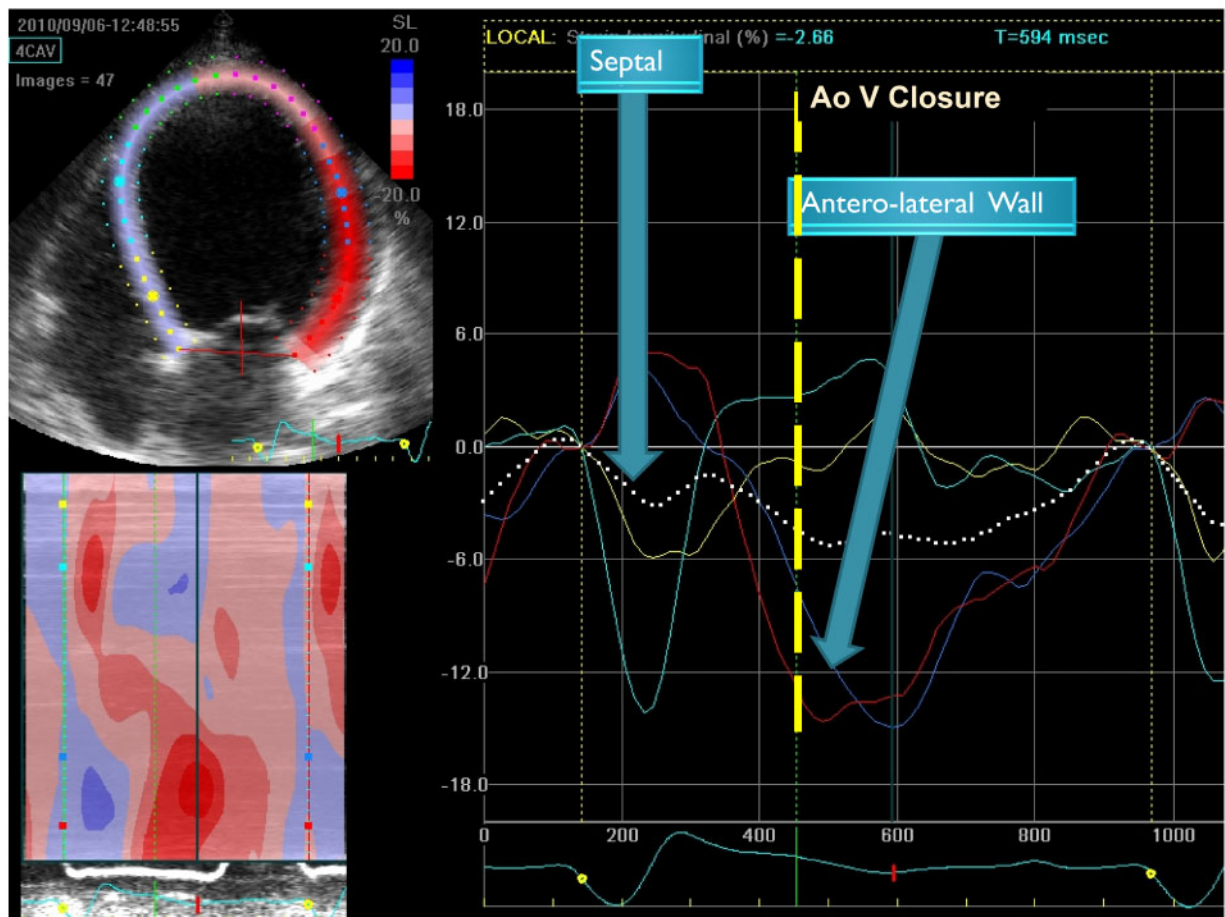


Figure 2 Example of a DCM with a typical pattern of mechanical dyssynchrony: too early contraction of the septum before the aortic valve opening and lengthening of the anterolateral wall leading to a delayed shortening of this wall. (Longitudinal strain imaging—take care at the timing and at the colour according to each left ventricular wall).

the extent, the location and not only the presence of fibrosis may be a prognostic marker.^{37,77,78}

Parametric mapping sequences have been applied in DCM cohorts to quantify myocardial native T1 and T2 relaxation times as well as extracellular volume fraction (ECV). The results from different studies using different T1 mapping sequences at diverse magnetic fields were concordant in their reporting of higher native T1 and ECV values in DCM patients compared to controls.^{79,80} In DCM patients, myocardial ECV reflects histology-verified collagen content and may serve as a potential non-invasive marker of diffuse interstitial fibrosis and for monitoring the response to anti-remodelling treatments.⁸¹ Recently, a higher native T1 value of myocardium was demonstrated as an independent predictor of all-cause mortality and HF events in a cohort of 637 patients with DCM.⁸⁰

Despite the adoption of parametric imaging as a promising tool in DCM patients and potentially providing diagnostic as well prognostic information in addition to LGE, multicentre, multivendor, multi-sequence studies in large cohorts of normal subjects, and DCM patients are still warranted.

Cardiac radionuclide imaging techniques

Single photon emission computed tomography (SPECT): DCM is among the major predisposing factor for ventricular arrhythmias, whose genesis relies on the combined presence of a triggering mechanism that initiates the arrhythmia and of an anatomic substrate that maintains the arrhythmia once it is initiated (i.e. islands of scar tissue after myocarditis). One of the most relevant factors that may trigger ventricular arrhythmias is represented by an abnormality of cardiac sympathetic tone. Preliminary data indicated that impairment of cardiac adrenergic innervation may represent a relevant marker of adverse prognosis, particularly predisposing to the development of malignant ventricular arrhythmias.⁸² Nuclear imaging might offer the chance to shed light on cardiac sympathetic tone through the use of a dedicated nervous radiotracer [123I-metaiodobenzyl-guanidine (123I-MIBG)] (Figure 5). From planar images, 123I-MIBG uptake is semi-quantitatively assessed by calculating the heart-to-mediastinum (H/M) ratio and the washout rate, which estimates cardiac global adrenergic receptor density and has been associated with adverse prognosis.⁸³ However, despite their excellent reproducibility, those planar scintigraphic measures are unable to unmask regional alterations of cardiac adrenergic tone, whose

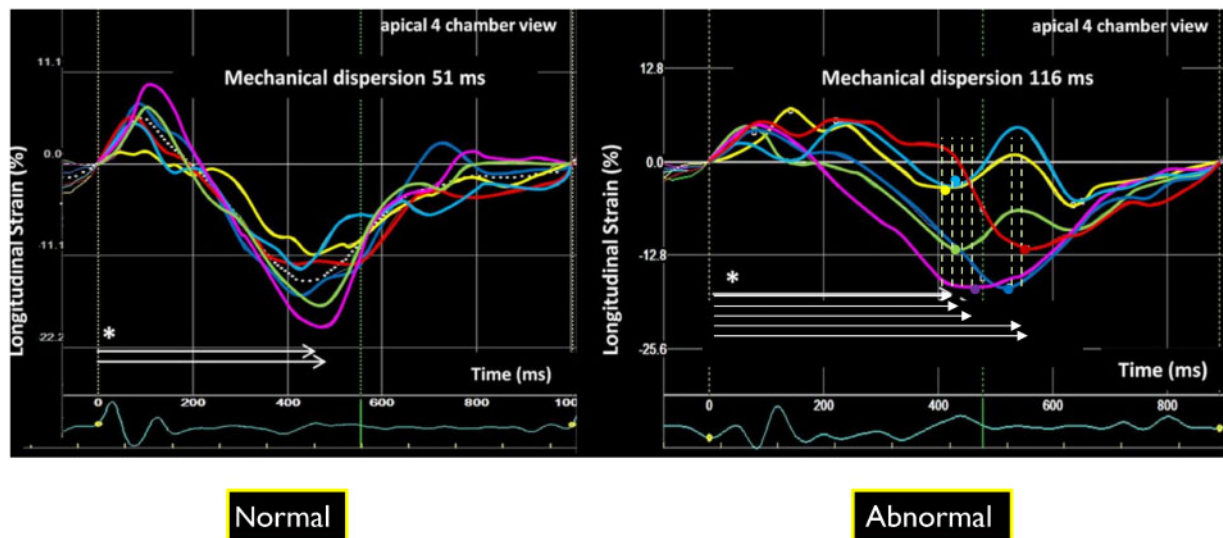


Figure 3 Mechanical dispersion: the longitudinal peaks of longitudinal deformation are not reaching their peak at the same period of time in patients with DCM at increased risk of ventricular arrhythmias.

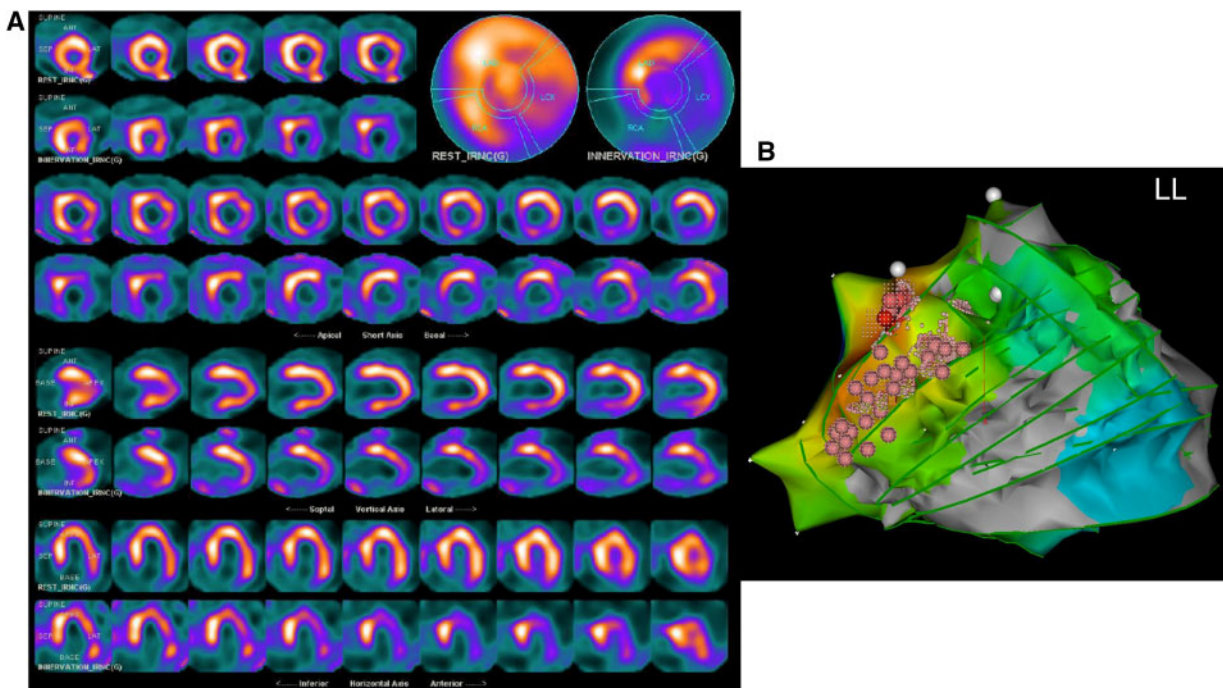


Figure 4 A 62-year-old woman with idiopathic cardiomyopathy and a history of ventricular arrhythmias presenting recurrent episodes of ventricular tachycardia. (A) The scintigraphic perfusion images show homogeneous perfusion in the whole left ventricle, with the exception of a minimum reduction of perfusion in the proximal portion of the inferior wall (SRS 1, not significant). The innervation images (lower rows) reveal an extensive area of denervation involving the lateral and inferior walls (SS-MIBG 17) with a clear innervation/perfusion mismatch. (B) At EP study located the sites of origin of the arrhythmia at the level of the inferior and inferolateral LV walls.

presence has been shown to be associated with different cardiac pathologies, independently predicting patient outcomes. Some studies have suggested that a regional ^{123}I -MIBG defect score, derived from

SPECT images, may be superior to the H/M ratio in predicting patients' adverse prognosis, highlighting the independent detrimental effect of regional adrenergic innervation heterogeneity.⁸⁴

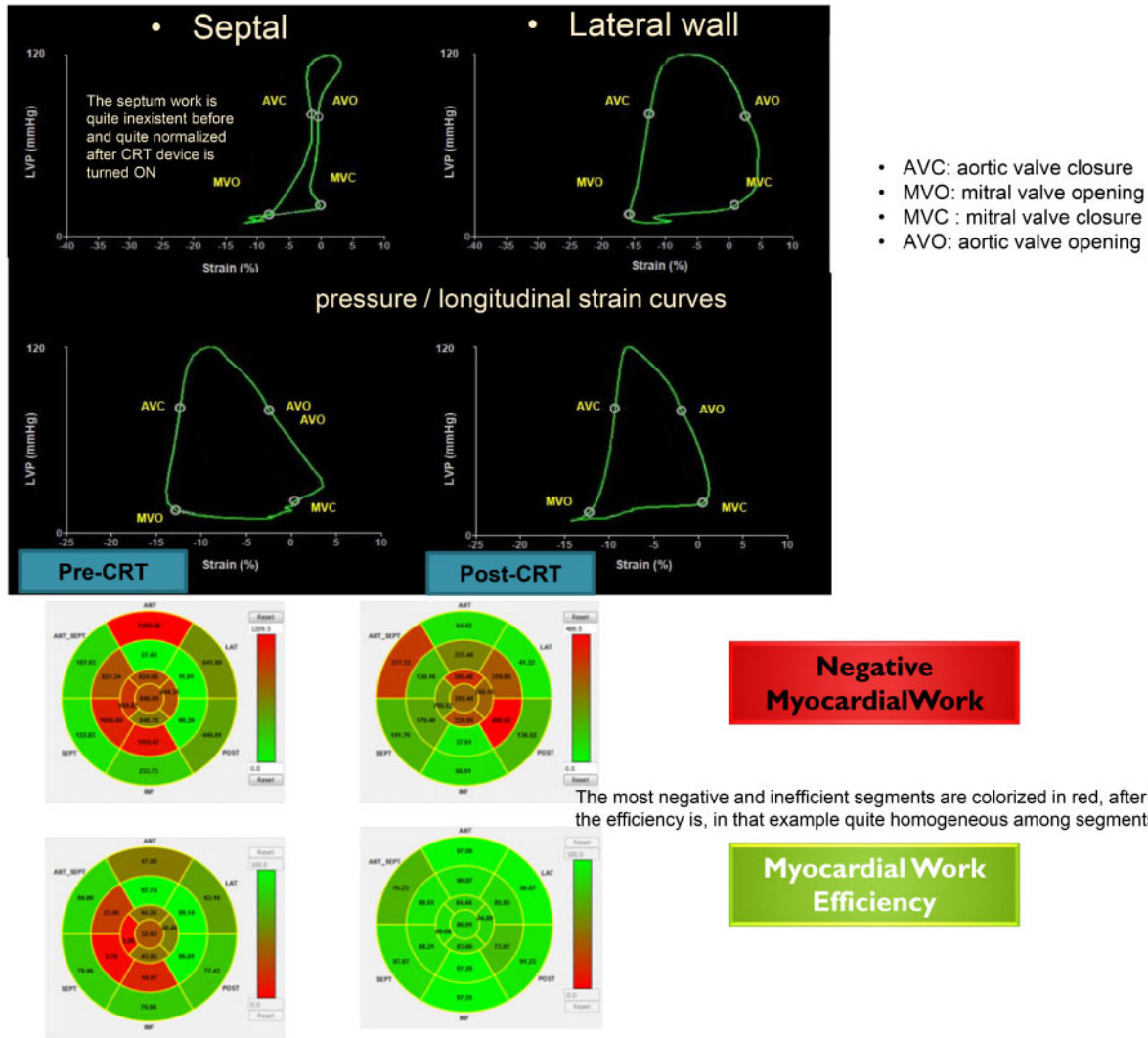


Figure 6 New approach of longitudinal strain (globally and regionally). The strain curves are computed according to the blood pressure and the calculation of the intra-left ventricular pressures (pressure–strain loops). Promising approach for calculating the myocardial work and the potential clinical value for predicting better the response to cardiac resynchronization therapy. AVC, aortic valve closure; AVO, aortic valve opening; MVC, mitral valve closure; MVO, mitral valve opening.

Although GLS has emerged as a sensitive and robust measure of global LV function, there is currently no sufficient evidence for recommending a certain cut-off value for this parameter for patient selection. No randomized study with a control group has demonstrated that GLS-based implantation of a CRT-device change the outcomes.

Regional LV functional assessment. CRT resynchronizes the contraction of the cardiac walls, which improves cardiac performance and induces RR.⁹³ Consequently, the assessment of mechanical dyssynchrony has been proposed as selection criteria in CRT candidates. Unlike nonspecific parameters, which showed no added predictive value over ECG criteria,^{94,95} parameters reflecting the typical deformation patterns amendable to CRT can accurately identify responders to CRT.^{96–98} In particular, early systolic septal shortening

with inward motion (septal bounce and septal flash)^{99,100} followed by late systolic stretch of the septum and an apex motion towards the late contracting lateral wall (apical rocking)^{96,101–103} are strong predictors of CRT success.^{96,98} These patterns are visually recognizable.^{96,100–102} If needed, less experienced readers may benefit from quantitative assessments.¹⁰⁴ A low-dose dobutamine challenge can unmask apical rocking and septal flash in a minority of patients where typical dyssynchrony patterns are difficult to recognize.^{102,105} The modality of choice for the assessment of mechanical dyssynchrony is echocardiography, as it combines the best temporal resolution with the option of quantification by tissue Doppler or speckle tracking techniques.⁸ CMR and radionuclide imaging techniques may also serve this purpose.¹⁰⁶

Unlike echocardiography, SPECT myocardial perfusion imaging provides a single parameter to define mechanical dyssynchrony

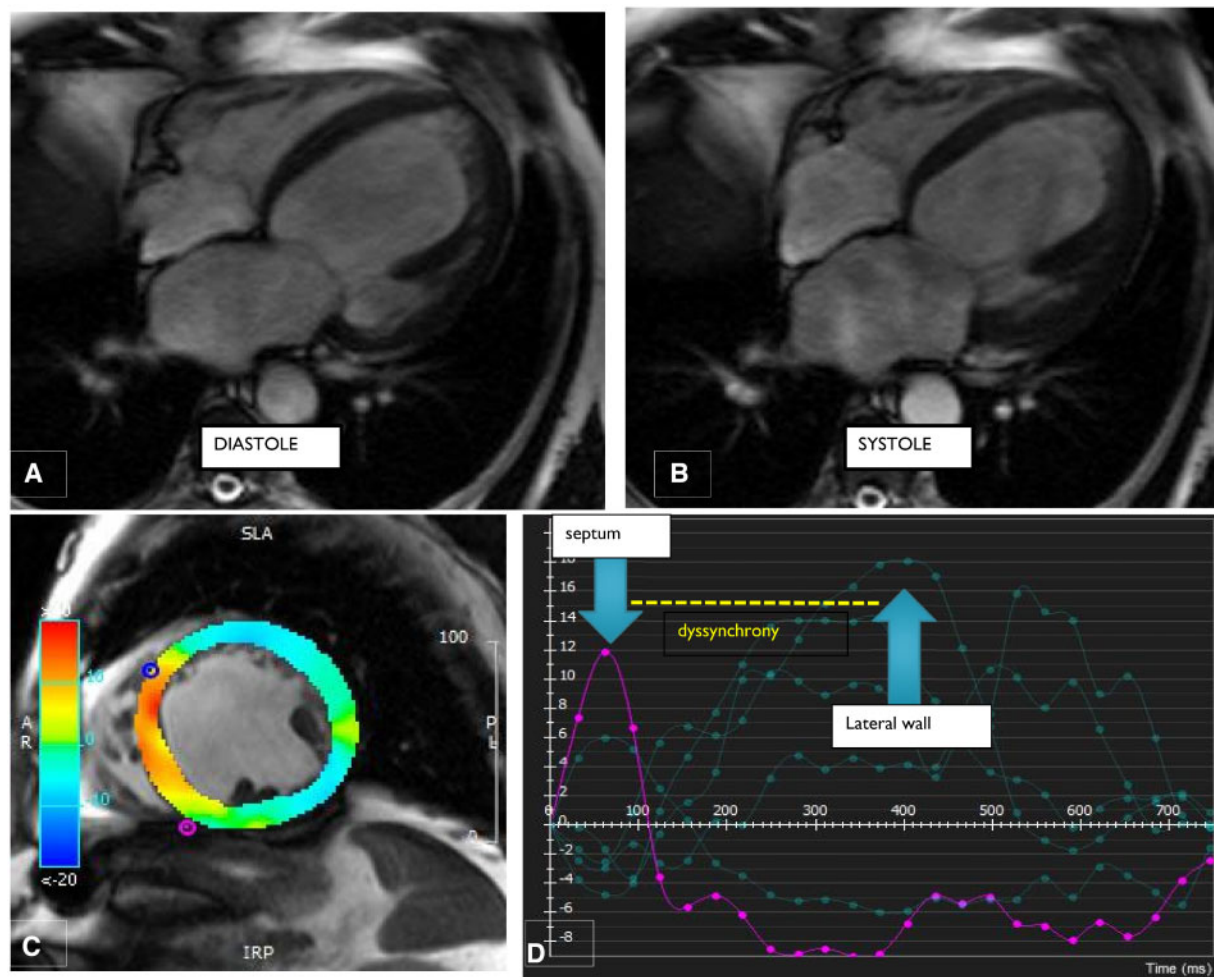


Figure 7 Four-chamber cine of patient affected by DCM and severe LV systolic dysfunction and LBBB in diastole (A) and systole (B); mid-ventricle LV short-axis view used for tissue tracking analysis (C); representation of the radial strain curves showing the amount of dyssynchrony (D); schematic representation of radial strain (%) curves: the two arrows represent the dyssynchrony between the septum and the lateral walls.

MR in DCM is not mainly due to a disease of the leaflets but to the symmetrical or asymmetrical dilation of the left ventricle. The detection of the MR should not wait that the LV dysfunction become too severe. When the LV is too enlarged and the function to decrease, MR loses its prognostic value.¹²⁸

Secondary MR needs to be carefully assessed⁵⁰ (Figures 7 and 8). Medical treatment including CRT will impact on the severity of the MR.

If MR remains severe and symptomatic, surgery and percutaneous correction of the regurgitation could be considered. The ESC guidelines in valvular heart disease provide a Class IIbC indication for the percutaneous edge-to-edge procedure or valve surgery after careful evaluation for ventricular assist device or heart transplant, according to individual patient characteristics in patients with severe secondary mitral regurgitation and LVEF <30% who remain symptomatic despite optimal medical management (heart team decision).

The discrepancy between European and American approaches for defining a severe secondary MR exist.^{51,129} This issue is related to a

gap in evidence. The recent Mitra-FR and COAPT trials are encouraging the use of regurgitant volume >45 mL and/or regurgitant orifice area >30 mm² for deciding for the implantation of clips in symptomatic patients and having a LVEF >20% especially when the degree of the regurgitation is greater than expected according to the degree of LV dilatation.^{130–134}

Appropriateness of each imaging technique to assess patients with DCM

European appropriateness criteria for the use of cardiovascular imaging (CVI) in HF have been developed using a rigorous process described elsewhere.¹³⁵ This document provides a framework for decisions regarding judicious utilization of imaging in the management of patients with HF seen in clinical practice. However, the

Table 6 Post-LVAD implantation complications

One has to be systematic and specialized in the assessment of patients with LVAD (being aware of the device implanted, the patient and the history):

1. Pericardial effusion or haematoma
Cardiac tamponade will lead to RV compression and decrease in RV outflow tract velocity time integral. Check for the pericardium using all the echocardiographic windows (TOE if needed) and assess right heart output.
2. LV failure related to LV overloading
Important of serial exam comparison
 - a. 2D/3D: increasing LV size; increased AV opening duration, increased left atrial volume.
 - b. Doppler: increased mitral inflow peak E-wave diastolic velocity, increased E/A and E/e' ratio, decreased deceleration time of mitral E velocity, worsening functional MR, and elevated pulmonary artery systolic pressure.
3. RV failure
 - a. 2D: increased RV size, decreased RV systolic function, high RAP (dilated IVC/leftward atrial septal shift), and leftward deviation of ventricular septum.
 - b. Doppler: increased TR severity, reduced RVOT SV, reduced LVAD inflow cannula, and/or outflow-graft velocities (<0.5 m/s with severe failure); inflow-cannula high velocities if associated with a suction event.
Of Note: a 'too-high' LVAD pump speed may contribute to RV failure by increasing TR (septal shift) and/or by increasing RV preload.
4. Inadequate LV filling or excessive LV unloading
Small LV dimensions (typically <3 cm and/or marked deviation of interventricular septum towards LV). Danger to not misinterpret an RV failure and/or pump speed too high for loading conditions.
5. LVAD suction with induced ventricular ectopy
Underfilled LV and mechanical impact of inflow cannula with LV endocardium, typically septum, and resolves with speed turndown.
6. LVAD-related continuous aortic insufficiency
Clinically significant—at least moderate and possibly severe—characterized by an AR vena contracta >3 mm; increased LV size and relatively decreased RVOT SV despite normal/increased inflow cannula and/or outflow-graft flows.
7. LVAD-related mitral regurgitation
 - a. Primary: inflow cannula interference with mitral apparatus.
 - b. Secondary: MR-functional, related to partial LV unloading/persistent heart failure.
8. Intracardiac thrombus
Including right and left atrial, LV apical, and aortic root thrombus
9. Inflow-cannula abnormality
 - a. 2D/3D: small or crowded inflow zone with or without evidence of localized obstructive muscle trabeculation, adjacent MV apparatus or thrombus; mispositioned inflow cannula.
 - b. High-velocity colour or spectral Doppler at inflow orifice. Results from malposition, suction event/other inflow obstruction: aliased colour-flow Doppler, and CW Doppler velocity >1.5 m/s.
 - c. Low-velocity inflow (markedly reduced peak systolic and nadir diastolic velocities) may indicate internal inflow-cannula thrombosis or more distal obstruction within the system. Doppler flow velocity profile may appear relatively 'continuous' (decreased phasic/pulsatile pattern).
10. Outflow-graft abnormality
Typically, due to obstruction/pump cessation.
 - a. 2D imaging (TOE): visible kink or thrombus.
 - b. Doppler: peak outflow-graft velocity >2 m/s at the obstruction site; but diminished or no spectral Doppler signal if sample volume is remote from obstruction location, combined with lack of RVOT SV change and/or expected LV dimension change with pump-speed changes.
11. Pump malfunction/pump arrest
 - a. Reduced inflow-cannula or outflow-graft flow velocities on colour and spectral Doppler or, with pump arrest, show diastolic flow reversal.
 - b. Signs of worsening HF: including dilated LV, worsening MR, worsened TR, and/or increased TR velocity; attenuated speed-change responses: decrease or absence of expected changes in LV linear dimension.

Value of echocardiography. Adapted from Estep *et al.*¹⁴¹

2D, two-dimensional; 3D, three-dimensional; AR, aortic regurgitation; AV, aortic valve; BP, blood pressure; CW, continuous-wave; E, mitral valve early peak diastolic velocity; e' , mitral annular velocity; IVC, inferior vena cava; LV, left ventricular; LVAD, left ventricular assist device; LVOT, left ventricular outflow tract; MR, mitral regurgitation; MV, mitral valve; RAP, right atrial pressure; RV, right ventricular; RVOT, right ventricular outflow tract; SV, stroke volume; TR, tricuspid regurgitation.

appropriate use of each non-invasive CVI technique in DCM has not been studied extensively. As in HF patients, CVI can be used for DCM patients in various clinical scenarios and settings: (i) for the diagnosis of the DCM, (ii) for the planning of treatment (CRT/

LVAD), and (iii) for the follow-up of the DCM patients (Figure 9). The appropriateness of use for each technique may be dependent on the mode of presentation (urgent or not), the stage of the DCM (early vs. clinical), the symptomatic status, and the need to

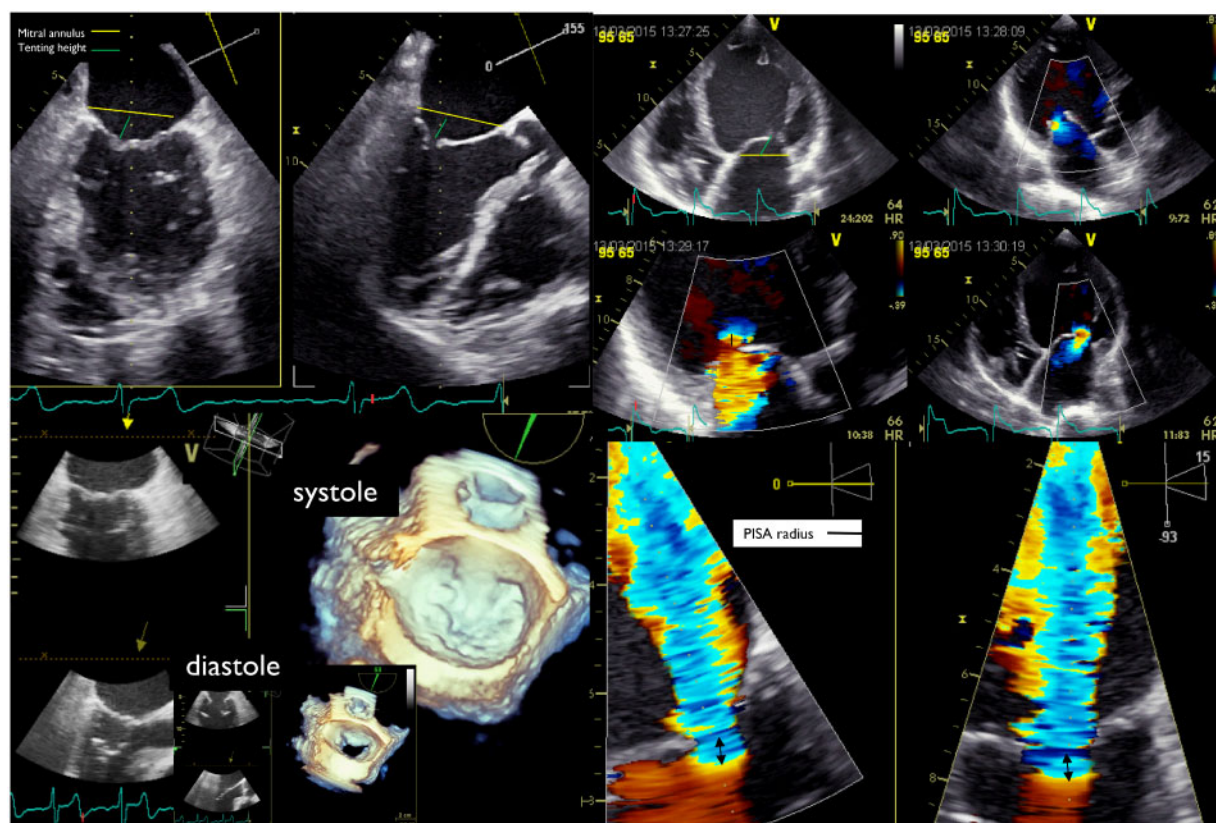


Figure 8 A woman 75 years old, idiopathic DCM, who justified a cardiac resynchronization therapy and an ICD. After few years, despite an OMT she is still NYHA II+ and recently hospitalized for acute HF. The transthoracic echocardiography completed by a transoesophageal exam allows to describe the spherization of the left ventricle (LVEF 35% and LV end-diastolic diameter 64 mm). The tethering effect related to this LV remodelling on both mitral leaflets. The leaflets are thin without any large indentation, without any calcification, and the regurgitant jet is greater than 45 mL/beat (regurgitant orifice area $>20 \text{ mm}^2$) and maximal in regard to A2P2.

perform a screening. It should also reflect practice heterogeneity across Europe, with broad variations in access to modern technology and imaging facilities, educational platforms, training requirements, certification guidelines, and reimbursement systems.

Challenges and gaps in evidence

Large studies testing imaging-based approach to disease treatment vs. non-imaging-based approach are lacking. The literature suggests that imaging, especially echocardiography, which was tested, was unsuccessful to improve patients' selection for CRT. Nevertheless, imaging techniques are becoming more mature in the precision and the potential clinical value of parameters offered. Scientific Associations, like the EACVI, are committed to define the most appropriate imaging approach and patients' pathways.¹³⁶ Individual modalities and multimodality imaging appropriateness criteria are warranted, as well as randomized prospective large studies involving imaging strategy scenarios. In an era of precision medicine,

imaging phenotyping might play a key role in therapeutic decisions and management.

Perspectives

Despite several imaging and genetic improvements, several challenges persist concerning the diagnosis, genetics and other aetiologies, prognosis, and even definition of DCM. Although a revised definition of DCM has recently been proposed,¹ including the creation of a new category of hypokinetic non-dilated cardiomyopathies, several uncertainties persist. Multimodality imaging combined with genetic studies could have a central role in the evaluation of DCM (Table 1 and Figure 10).

In the present document, the differential diagnoses of DCM (excepting the ischaemic aetiology) are not specifically addressed. One of the major challenges is being able to both make an early diagnosis of DCM, leading to earlier and more effective preventive and therapeutic strategies, but to avoid erroneous diagnosis and

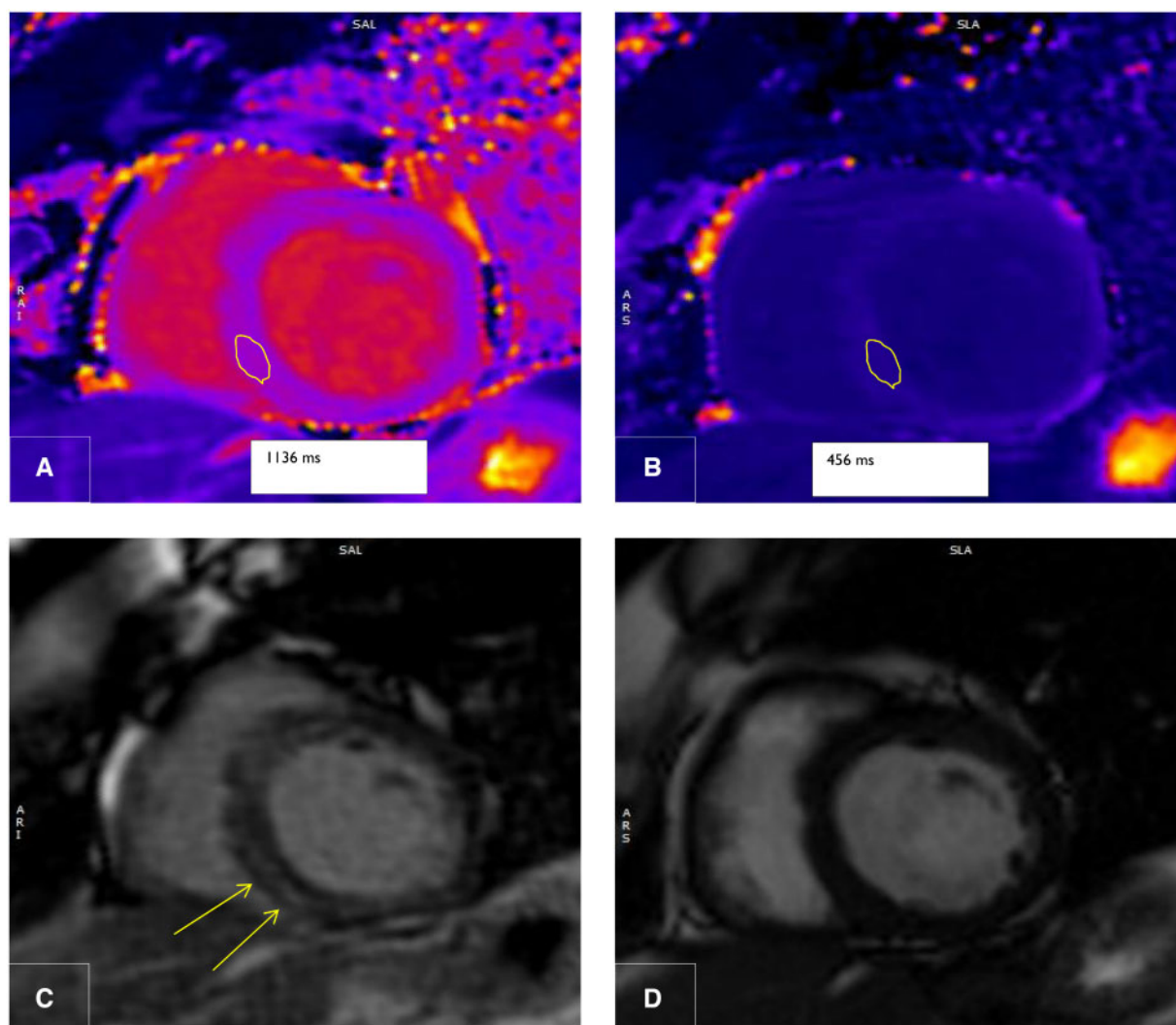


Figure 9 Native T1 mapping (MOLLI) of basal LV short axis showing increased values in the septum. Region of interest for T1 mapping measurement before gadolinium: 1136 ms (A). Post-contrast T1 mapping of basal LV short axis. Region of interest for T1 mapping measurement post gadolinium enhancement: 456 ms (B). Post-contrast basal LV short axis, showing mid-wall myocardial late enhancement (yellow arrows) (C). Basal LV short-axis cine (D).

misinterpretation of physiological variants. Two such examples are the 'grey-zone' LV modifications observed in athletes¹³⁷ and the frequently difficult diagnosis of LV non-compaction, with the known risk of both over- and under-diagnosis. A unified definition of the diagnostic criteria for LV non-compaction is awaited pending results from ongoing studies.^{138,139}

In all these difficult situations, the combined use of two different imaging modalities is recommended, including preferable echocardiography and CMR. These techniques give additional information and should frequently be used in combination in the same patient to maximize diagnostic performance.

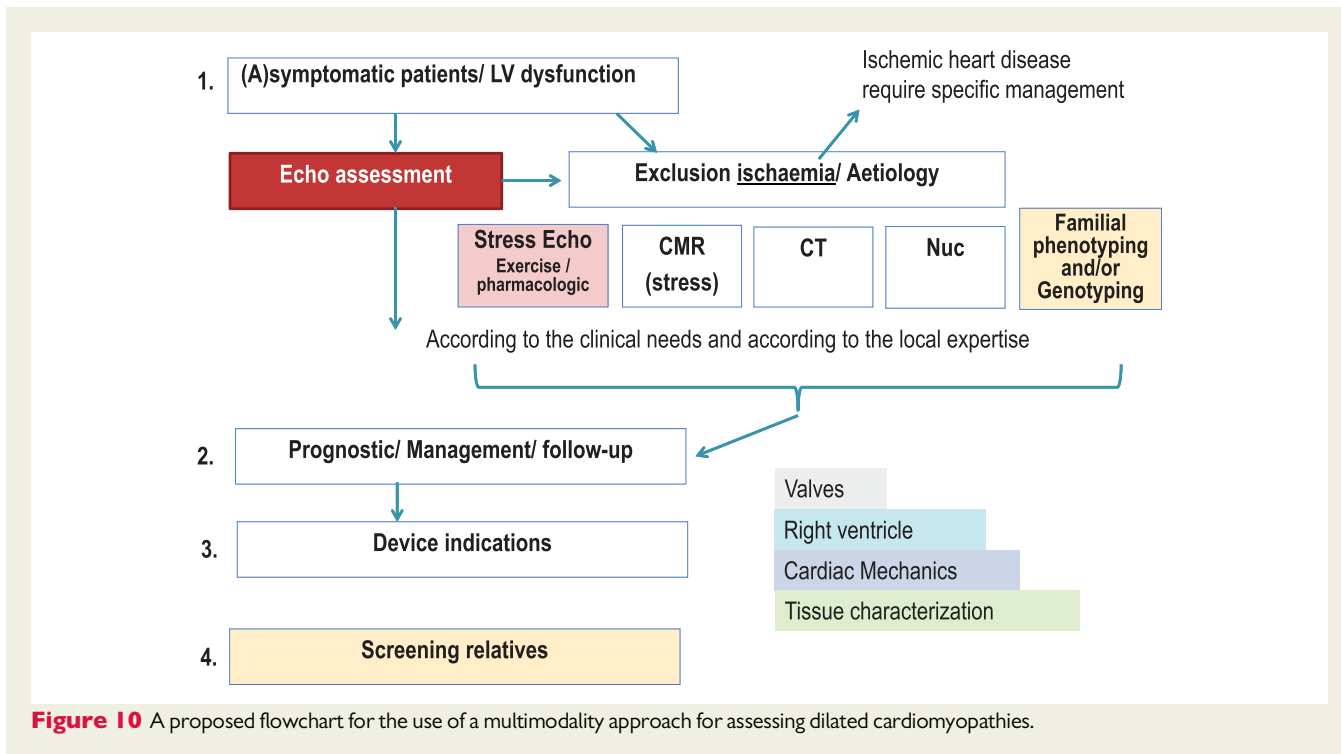
Additional studies are warranted to select the most appropriate utilization of each imaging technique when facing a patient with

suspected or definite DCM.^{1,140} Finally, additional investigations such as familial screening, and genetic studies are frequently necessary.

Patients with suspected DCM should be referred to specialized centres that can provide a multidisciplinary team approach for early diagnosis, avoiding over-diagnosis, providing adequate familial counselling, prognostic stratification, and finally optimal patients' management.

Funding

C.B.D. is supported by the Bristol National Institute of Health Research (NIHR) Biomedical Research Centre (BRC). The views expressed in this publication are those of the authors and not necessarily those of the



NHS, the National Institute for Health Research, or the Department of Health.

Conflict of interest: Fees for V.D. from Abbott and E.D. from Bristol Myer Squibb and Novartis. All other authors declared no conflict of interest.

References

- Pinto YM, Elliott PM, Arbustini E, Adler Y, Anastasakis A, Bohm M. Proposal for a revised definition of dilated cardiomyopathy, hypokinetic non-dilated cardiomyopathy, and its implications for clinical practice: a position statement of the ESC working group on myocardial and pericardial diseases. *Eur Heart J* 2016;**37**: 1850–8.
- Weintraub RG, Semsarian C, Macdonald P. Dilated cardiomyopathy. *Lancet* 2017;**390**:400–14.
- Elliott P, Andersson B, Arbustini E, Bilinska Z, Cecchi F, Charron P et al. Classification of the cardiomyopathies: a position statement from the European Society of Cardiology Working Group on Myocardial and Pericardial Diseases. *Eur Heart J* 2007;**29**:270–6.
- Donal E, Lip GY, Galderisi M, Goette A, Shah D, Marwan M et al. EACVI/EHRA Expert Consensus Document on the role of multi-modality imaging for the evaluation of patients with atrial fibrillation. *Eur Heart J Cardiovasc Imaging* 2016;**17**:355–83.
- Bouabdallaoui N, Mouquet F, Lebreton G, Demondion P, Le Jemtel TH, Ennezat PV. Current knowledge and recent development on management of peripartum cardiomyopathy. *Eur Heart J Acute Cardiovasc Care* 2017;**6**:359–66.
- Caforio ALP, Adler Y, Agostini C, Allanore Y, Anastasakis A, Arad M et al. Diagnosis and management of myocardial involvement in systemic immune-mediated diseases: a position statement of the European Society of Cardiology Working Group on Myocardial and Pericardial Disease. *Eur Heart J* 2017;**38**: 2649–62.
- Japp AG, Gulati A, Cook SA, Cowie MR, Prasad SK. The diagnosis and evaluation of dilated cardiomyopathy. *J Am Coll Cardiol* 2016;**67**:2996–3010.
- Lang RM, Badano LP, Mor-Avi V, Afilalo J, Armstrong A, Ernande L et al. Recommendations for cardiac chamber quantification by echocardiography in adults: an update from the American Society of Echocardiography and the European Association of Cardiovascular Imaging. *Eur Heart J Cardiovasc Imaging* 2015;**16**:233–70.
- Galderisi M, Cosyns B, Edvardsen T, Cardim N, Delgado V, Di Salvo G et al. Standardization of adult transthoracic echocardiography reporting in agreement with recent chamber quantification, diastolic function, and heart valve disease recommendations: an expert consensus document of the European Association of Cardiovascular Imaging. *Eur Heart J Cardiovasc Imaging* 2017;**18**:1301–10.
- Celeng C, Leiner T, Maurovich-Horvat P, Merkely B, de Jong P, Dankbaar JW et al. Anatomical and functional computed tomography for diagnosing hemodynamically significant coronary artery disease: a meta-analysis. *JACC Cardiovasc Imaging* 2019;**12**:1316–25.
- Soriano CJ, Ridocci F, Estornell J, Jimenez J, Martinez V, De Velasco JA. Noninvasive diagnosis of coronary artery disease in patients with heart failure and systolic dysfunction of uncertain etiology, using late gadolinium-enhanced cardiovascular magnetic resonance. *J Am Coll Cardiol* 2005;**45**:743–8.
- Ponikowski P, Voors AA, Anker SD, Bueno H, Cleland JG, Coats AJ et al. 2016 ESC Guidelines for the diagnosis and treatment of acute and chronic heart failure: the Task Force for the diagnosis and treatment of acute and chronic heart failure of the European Society of Cardiology (ESC) Developed with the special contribution of the Heart Failure Association (HFA) of the ESC. *Eur Heart J* 2016;**37**:2129–200.
- Fatkin D, Yeoh T, Hayward CS, Benson V, Sheu A, Richmond Z et al. Evaluation of left ventricular enlargement as a marker of early disease in familial dilated cardiomyopathy. *Circ Cardiovasc Genet* 2011;**4**:342–8.
- George A, Figueredo VM. Alcoholic cardiomyopathy: a review. *J Card Fail* 2011;**17**:844–9.
- Caballero L, Kou S, Dulgheru R, Gonjilashvili N, Athanassopoulos GD, Barone D et al. Echocardiographic reference ranges for normal cardiac Doppler data: results from the NORRE Study. *Eur Heart J Cardiovasc Imaging* 2015;**16**: 1031–41.
- Sugimoto T, Dulgheru R, Bernard A, Ilardi F, Contu L, Addetia K et al. Echocardiographic reference ranges for normal left ventricular 2D strain: results from the EACVI NORRE study. *Eur Heart J Cardiovasc Imaging* 2017;**18**:833–40.
- Farsalinos KE, Daraban AM, Unlu S, Thomas JD, Badano LP, Voigt JU. Head-to-head comparison of global longitudinal strain measurements among nine different vendors: the EACVI/ASE Inter-Vendor Comparison Study. *J Am Soc Echocardiogr* 2015;**28**:1171–81.e2.
- Boyd A, Stoodley P, Richards D, Hui R, Harnett P, Vo K et al. Anthracyclines induce early changes in left ventricular systolic and diastolic function: a single centre study. *PLoS One* 2017;**12**:e0175544.
- Holland DJ, Marwick TH, Haluska BA, Leano R, Hordern MD, Hare JL et al. Subclinical LV dysfunction and 10-year outcomes in type 2 diabetes mellitus. *Heart* 2015;**101**:1061–6.
- Voigt JU, Pedrizzetti G, Lysyansky P, Marwick TH, Houle H, Baumann R et al. Definitions for a common standard for 2D speckle tracking echocardiography:

- consensus document of the EACVI/ASE/Industry Task Force to standardize deformation imaging. *Eur Heart J Cardiovasc Imaging* 2015;**16**:1–11.
21. Yang H, Marwick TH, Fukuda N, Oe H, Saito M, Thomas JD *et al*. Improvement in strain concordance between two major vendors after the strain standardization initiative. *J Am Soc Echocardiogr* 2015;**28**:642–8.e7.
 22. Lakdawala NK, Thune JJ, Colan SD, Cirino AL, Farrohi F, Rivero J *et al*. Subtle abnormalities in contractile function are an early manifestation of sarcomere mutations in dilated cardiomyopathy. *Circ Cardiovasc Genet* 2012;**5**:503–10.
 23. Muraru D, Spadotto V, Cecchetto A, Romeo G, Aruta P, Ermacorà D *et al*. New speckle-tracking algorithm for right ventricular volume analysis from three-dimensional echocardiographic data sets: validation with cardiac magnetic resonance and comparison with the previous analysis tool. *Eur Heart J Cardiovasc Imaging* 2016;**17**:1279–89.
 24. Mavrogeni S, Dimitroulas T, Kitas GD. Multimodality imaging and the emerging role of cardiac magnetic resonance in autoimmune myocarditis. *Autoimmun Rev* 2012;**12**:305–12.
 25. Ponikowski P, Voors AA, Anker SD, Bueno H, Cleland JG, Coats AJ *et al*. 2016 ESC Guidelines for the diagnosis and treatment of acute and chronic heart failure: the Task Force for the diagnosis and treatment of acute and chronic heart failure of the European Society of Cardiology (ESC) Developed with the special contribution of the Heart Failure Association (HFA) of the ESC. *Eur Heart J* 2016;**37**:2129–200.
 26. Lopez-Fernandez T, Thavendiranathan P. Emerging cardiac imaging modalities for the early detection of cardiotoxicity due to anticancer therapies. *Rev Esp Cardiol (Engl Ed)* 2017;**70**:487–95.
 27. Boulmier D, Audinet C, Heautot JF, Larralde A, Veillard D, Hamonic S *et al*. Clinical contributions of 64-slice computed tomography in the evaluation of cardiomyopathy of unknown origin. *Arch Cardiovasc Dis* 2009;**102**:685–96.
 28. Naik MM, Diamond GA, Pai T, Soffer A, Siegel RJ. Correspondence of left ventricular ejection fraction determinations from two-dimensional echocardiography, radionuclide angiography and contrast cineangiography. *J Am Coll Cardiol* 1995;**25**:937–42.
 29. Zamorano JL, Lancellotti P, Rodriguez Munoz D, Aboyans V, Asteggiano R, Galderisi M *et al*. 2016 ESC Position Paper on cancer treatments and cardiovascular toxicity developed under the auspices of the ESC Committee for Practice Guidelines: the Task Force for cancer treatments and cardiovascular toxicity of the European Society of Cardiology (ESC). *Eur Heart J* 2016;**37**:2768–801.
 30. Charron P, Arad M, Arbustini E, Basso C, Bilinska Z, Elliott P *et al*. Genetic counselling and testing in cardiomyopathies: a position statement of the European Society of Cardiology Working Group on Myocardial and Pericardial Diseases. *Eur Heart J* 2010;**31**:2715–26.
 31. Lancellotti P, Anker SD, Donal E, Edvardsen T, Popescu BA, Farmakis D *et al*. EACVI/HFA Cardiac Oncology Toxicity Registry in breast cancer patients: rationale, study design, and methodology (EACVI/HFA COT Registry)—EURObservational Research Program of the European Society of Cardiology. *Eur Heart J Cardiovasc Imaging* 2015;**16**:466–70.
 32. Plana JC, Galderisi M, Barac A, Ewer MS, Ky B, Scherrer-Crosbie M *et al*. Expert consensus for multimodality imaging evaluation of adult patients during and after cancer therapy: a report from the American Society of Echocardiography and the European Association of Cardiovascular Imaging. *Eur Heart J Cardiovasc Imaging* 2014;**15**:1063–93.
 33. Merlo M, Pyxaras SA, Pinamonti B, Barbati G, Di Lenarda A, Sinagra G. Prevalence and prognostic significance of left ventricular reverse remodeling in dilated cardiomyopathy receiving tailored medical treatment. *J Am Coll Cardiol* 2011;**57**:1468–76.
 34. Masci PG, Schuurman R, Andrea B, Ripoli A, Coceani M, Chiappino S *et al*. Myocardial fibrosis as a key determinant of left ventricular remodeling in idiopathic dilated cardiomyopathy: a contrast-enhanced cardiovascular magnetic study. *Circ Cardiovasc Imaging* 2013;**6**:790–9.
 35. McMurray JJ, Adamopoulos S, Anker SD, Auricchio A, Bohm M, Dickstein K *et al*. ESC Guidelines for the diagnosis and treatment of acute and chronic heart failure 2012: the Task Force for the Diagnosis and Treatment of Acute and Chronic Heart Failure 2012 of the European Society of Cardiology. Developed in collaboration with the Heart Failure Association (HFA) of the ESC. *Eur Heart J* 2012;**33**:1787–847.
 36. Alba AC, Foroutan F, Duero Posada J, Battioni L, Schofield T, Alhussein M *et al*. Implantable cardiac defibrillator and mortality in non-ischaemic cardiomyopathy: an updated meta-analysis. *Heart* 2018;**104**:230–6.
 37. Gulati A, Jabbar A, Ismail TF, Guha K, Khwaja J, Raza S *et al*. Association of fibrosis with mortality and sudden cardiac death in patients with nonischemic dilated cardiomyopathy. *JAMA* 2013;**309**:896–908.
 38. Merlo M, Gobbo M, Stolfo D, Losurdo P, Ramani F, Barbati G *et al*. The prognostic impact of the evolution of RV function in idiopathic DCM. *JACC Cardiovasc Imaging* 2016;**9**:1034–42.
 39. Venner C, Selton-Suty C, Huttin O, Erpelding M-L, Aliot E, Juillière Y. Right ventricular dysfunction in patients with idiopathic dilated cardiomyopathy: prognostic value and predictive factors. *Arch Cardiovasc Dis* 2016;**109**:231–41.
 40. Mignot A, Donal E, Zaroui A, Reant P, Salem A, Hamon C *et al*. Global longitudinal strain as a major predictor of cardiac events in patients with depressed left ventricular function: a multicenter study. *J Am Soc Echocardiogr* 2010;**23**:1019–24.
 41. Saito M, Negishi K, Eskandari M, Huynh Q, Hawson J, Moore A *et al*. Association of left ventricular strain with 30-day mortality and readmission in patients with heart failure. *J Am Soc Echocardiogr* 2015;**28**:652–66.
 42. Cho GY, Marwick TH, Kim HS, Kim MK, Hong KS, Oh DJ. Global 2-dimensional strain as a new prognosticator in patients with heart failure. *J Am Coll Cardiol* 2009;**54**:618–24.
 43. Carluccio E, Biagioli P, Alunni G, Murrone A, Zuchi C, Coiro S *et al*. Prognostic value of right ventricular dysfunction in heart failure with reduced ejection fraction: superiority of longitudinal strain over tricuspid annular plane systolic excursion. *Circ Cardiovasc Imaging* 2018;**11**:e006894.
 44. Gorter TM, van Veldhuisen DJ, Bauersachs J, Borlaug BA, Celutkiene J, Coats AJS *et al*. Right heart dysfunction and failure in heart failure with preserved ejection fraction: mechanisms and management. Position statement on behalf of the Heart Failure Association of the European Society of Cardiology. *Eur J Heart Fail* 2018;**20**:16–37.
 45. Nagueh SF, Smiseth OA, Appleton CP, Byrd BF 3rd, Dokainish H, Edvardsen T *et al*. Recommendations for the evaluation of left ventricular diastolic function by echocardiography: an update from the American Society of Echocardiography and the European Association of Cardiovascular Imaging. *Eur Heart J Cardiovasc Imaging* 2016;**17**:1321–60.
 46. Fenech D, Behaghel A, Bernard A, Fournet M, Mabo P, Daubert JC *et al*. Left atrial function, a new predictor of response to cardiac resynchronization therapy? *Heart Rhythm* 2015;**12**:1800–6.
 47. Badano LP, Kolias TJ, Muraru D, Abraham TP, Aurigemma G, Edvardsen T *et al*. Standardization of left atrial, right ventricular, and right atrial deformation imaging using two-dimensional speckle tracking echocardiography: a consensus document of the EACVI/ASE/Industry Task Force to standardize deformation imaging. *Eur Heart J Cardiovasc Imaging* 2018;**19**:591–600.
 48. Rossi A, Dini FL, Faggiano P, Agricola E, Cicoira M, Frattini S *et al*. Independent prognostic value of functional mitral regurgitation in patients with heart failure. A quantitative analysis of 1256 patients with ischaemic and non-ischaemic dilated cardiomyopathy. *Heart* 2011;**97**:1675–80.
 49. Mack M, Grayburn P. Guideline-directed medical therapy for secondary mitral regurgitation: more questions than answers! *JACC Heart Fail* 2017;**5**:660–2.
 50. Grayburn PA, Carabello B, Hung J, Gillam LD, Liang D, Mack MJ *et al*. Defining “severe” secondary mitral regurgitation: emphasizing an integrated approach. *J Am Coll Cardiol* 2014;**64**:2792–801.
 51. Lancellotti P, Tribouilloy C, Hagendorff A, Popescu BA, Edvardsen T, Pierard LA *et al*. Recommendations for the echocardiographic assessment of native valvular regurgitation: an executive summary from the European Association of Cardiovascular Imaging. *Eur Heart J Cardiovasc Imaging* 2013;**14**:611–44.
 52. Naqvi TZ, Goel RK, Forrester JS, Siegel RJ. Myocardial contractile reserve on dobutamine echocardiography predicts late spontaneous improvement in cardiac function in patients with recent onset idiopathic dilated cardiomyopathy. *J Am Coll Cardiol* 1999;**34**:1537–44.
 53. Lee JH, Yang DH, Choi WS, Kim KH, Park SH, Bae MH *et al*. Prediction of improvement in cardiac function by high dose dobutamine stress echocardiography in patients with recent onset idiopathic dilated cardiomyopathy. *Int J Cardiol* 2013;**167**:1649–50.
 54. Cortigiani L, Rigo F, Gherardi S, Bovenzi F, Molinaro S, Picano E *et al*. Prognostic implication of Doppler echocardiographic derived coronary flow reserve in patients with left bundle branch block. *Eur Heart J* 2013;**34**:364–73.
 55. Rigo F, Gherardi S, Galderisi M, Pratali L, Cortigiani L, Sicari R *et al*. The prognostic impact of coronary flow-reserve assessed by Doppler echocardiography in non-ischaemic dilated cardiomyopathy. *Eur Heart J* 2006;**27**:1319–23.
 56. Neglia D, Michelassi C, Trivieri MG, Sambucetti G, Giorgetti A, Pratali L *et al*. Prognostic role of myocardial blood flow impairment in idiopathic left ventricular dysfunction. *Circulation* 2002;**105**:186–93.
 57. Priori SG, Blomstrom-Lundqvist C, Mazzanti A, Blom N, Borggrefe M, Camm J *et al*. 2015 ESC Guidelines for the management of patients with ventricular arrhythmias and the prevention of sudden cardiac death: the Task Force for the Management of Patients with Ventricular Arrhythmias and the Prevention of Sudden Cardiac Death of the European Society of Cardiology (ESC). Endorsed by: Association for European Paediatric and Congenital Cardiology (AEP). *Eur Heart J* 2015;**36**:2793–867.
 58. Goldberger JJ, Subacius H, Patel T, Cunnane R, Kadish AH. Sudden cardiac death risk stratification in patients with nonischemic dilated cardiomyopathy. *J Am Coll Cardiol* 2014;**63**:1879–89.

59. Beggs SAS, Jhund PS, Jackson CE, McMurray JJV, Gardner RS. Non-ischæmic cardiomyopathy, sudden death and implantable defibrillators: a review and meta-analysis. *Heart* 2018;**104**:144–50.
60. Køber L, Thune JJ, Nielsen JC, Haarlo J, Videbæk L, Korup E et al. Defibrillator implantation in patients with nonischemic systolic heart failure. *N Engl J Med* 2016;**375**:1221–30.
61. Kadish A, Dyer A, Daubert JP, Quigg R, Estes NA, Anderson KP et al. Prophylactic defibrillator implantation in patients with nonischemic dilated cardiomyopathy. *N Engl J Med* 2004;**350**:2151–8.
62. Bansch D, Antz M, Boczor S, Volkmer M, Tebbenjohanns J, Seidl K et al. Primary prevention of sudden cardiac death in idiopathic dilated cardiomyopathy: the Cardiomyopathy Trial (CAT). *Circulation* 2002;**105**:1453–8.
63. Bardy GH, Lee KL, Mark DB, Poole JE, Toff WD, Tonkin AM et al. Home use of automated external defibrillators for sudden cardiac arrest. *N Engl J Med* 2008;**358**:1793–804.
64. Haugaa KH, Smedsrud MK, Steen T, Kongsgaard E, Loennechen JP, Skjaerpe T et al. Mechanical dispersion assessed by myocardial strain in patients after myocardial infarction for risk prediction of ventricular arrhythmia. *JACC Cardiovasc Imaging* 2010;**3**:247–56.
65. Hasselberg NE, Haugaa KH, Sarvari SI, Gullestad L, Andreassen AK, Smiseth OA et al. Left ventricular global longitudinal strain is associated with exercise capacity in failing hearts with preserved and reduced ejection fraction. *Eur Heart J Cardiovasc Imaging* 2015;**16**:217–24.
66. Haugaa KH, Marek JJ, Ahmed M, Ryo K, Adelstein EC, Schwartzman D et al. Mechanical dyssynchrony after cardiac resynchronization therapy for severely symptomatic heart failure is associated with risk for ventricular arrhythmias. *J Am Soc Echocardiogr* 2014;**27**:872–9.
67. Popescu BA, Beladan CC, Călin A, Muraru D, Deleanu D, Roșca M et al. Left ventricular remodelling and torsional dynamics in dilated cardiomyopathy: reversed apical rotation as a marker of disease severity. *Eur J Heart Fail* 2009;**11**:945–51.
68. Haland TF, Almaas VM, Hasselberg NE, Saberniak J, Leren IS, Hopp E et al. Strain echocardiography is related to fibrosis and ventricular arrhythmias in hypertrophic cardiomyopathy. *Eur Heart J Cardiovasc Imaging* 2016;**17**:613–21.
69. Gulati A, Ismail TF, Jabbour A, Alpendurada F, Guha K, Ismail NA et al. The prevalence and prognostic significance of right ventricular systolic dysfunction in nonischemic dilated cardiomyopathy. *Circulation* 2013;**128**:1623–33.
70. Masci PG, Doulaptsis C, Bertella E, Del Torto A, Symons R, Pontone G et al. Incremental prognostic value of myocardial fibrosis in patients with non-ischemic cardiomyopathy without congestive heart failure. *Circ Heart Fail* 2014;**7**:448–56.
71. Neilan TG, Coelho-Filho OR, Danik SB, Shah RV, Dodson JA, Verdini DJ et al. CMR quantification of myocardial scar provides additive prognostic information in nonischemic cardiomyopathy. *JACC Cardiovasc Imaging* 2013;**6**:944–54.
72. Assomull RG, Prasad SK, Lyne J, Smith G, Burman ED, Khan M et al. Cardiovascular magnetic resonance, fibrosis, and prognosis in dilated cardiomyopathy. *J Am Coll Cardiol* 2006;**48**:1977–85.
73. Wu KC, Weiss RG, Thiemann DR, Kitagawa K, Schmidt A, Dalal D et al. Late gadolinium enhancement by cardiovascular magnetic resonance heralds an adverse prognosis in nonischemic cardiomyopathy. *J Am Coll Cardiol* 2008;**51**:2414–21.
74. Leyva F, Taylor RJ, Foley PV, Umar F, Mulligan LJ, Patel K et al. Left ventricular midwall fibrosis as a predictor of mortality and morbidity after cardiac resynchronization therapy in patients with nonischemic cardiomyopathy. *J Am Coll Cardiol* 2012;**60**:1659–67.
75. Iles L, Pfluger H, Lefkowitz L, Butler MJ, Kistler PM, Kaye DM et al. Myocardial fibrosis predicts appropriate device therapy in patients with implantable cardioverter-defibrillators for primary prevention of sudden cardiac death. *J Am Coll Cardiol* 2011;**57**:821–8.
76. Kuruvilla S, Adenaw N, Katwal AB, Lipinski MJ, Kramer CM, Salerno M. Late gadolinium enhancement on cardiac magnetic resonance predicts adverse cardiovascular outcomes in nonischemic cardiomyopathy: a systematic review and meta-analysis. *Circ Cardiovasc Imaging* 2014;**7**:250–8.
77. Halliday BP, Cleland JGF, Goldberger JJ, Prasad SK. Personalizing risk stratification for sudden death in dilated cardiomyopathy: the past, present, and future. *Circulation* 2017;**136**:215–31.
78. Aquaro GD, Perfetti M, Camastra G, Monti L, Dellegrottaglie S, Moro C et al. Cardiac MR with late gadolinium enhancement in acute myocarditis with preserved systolic function: ITAMY Study. *J Am Coll Cardiol* 2017;**70**:1977–87.
79. Dass S, Suttie JJ, Piechnik SK, Ferreira VM, Holloway CJ, Banerjee R et al. Myocardial tissue characterization using magnetic resonance noncontrast T1 mapping in hypertrophic and dilated cardiomyopathy. *Circ Cardiovasc Imaging* 2012;**5**:726–33.
80. Puntmann VO, Carr-White G, Jabbour A, Yu CY, Gebker R, Kelle S et al. T1-mapping and outcome in nonischemic cardiomyopathy: all-cause mortality and heart failure. *JACC Cardiovasc Imaging* 2016;**9**:40–50.
81. Aus Dem Siepen F, Buss SJ, Messroghli D, Andre F, Lossnitzer D, Seitz S et al. T1 mapping in dilated cardiomyopathy with cardiac magnetic resonance: quantification of diffuse myocardial fibrosis and comparison with endomyocardial biopsy. *Eur Heart J Cardiovasc Imaging* 2015;**16**:210–6.
82. Arora R, Ferrick KJ, Nakata T, Kaplan RC, Rozengarten M, Latif F et al. I-123 MIBG imaging and heart rate variability analysis to predict the need for an implantable cardioverter defibrillator. *J Nucl Cardiol* 2003;**10**:121–31.
83. Bristow MR. The adrenergic nervous system in heart failure. *N Engl J Med* 1984;**311**:850–1.
84. Hachamovitch R, Nutter B, Menon V, Cerqueira MD. Predicting risk versus predicting potential survival benefit using 123I-mIBG imaging in patients with systolic dysfunction eligible for implantable cardiac defibrillator implantation: analysis of data from the prospective ADMIRE-HF study. *Circ Cardiovasc Imaging* 2015;**8**:e003110.
85. Klein T, Abdulghani M, Smith M, Huang R, Asoglu R, Remo BF et al. Three-dimensional 123I-meta-iodobenzylguanidine cardiac innervation maps to assess substrate and successful ablation sites for ventricular tachycardia: feasibility study for a novel paradigm of innervation imaging. *Circ Arrhythm Electrophysiol* 2015;**8**:583–91.
86. Gimelli A, Liga R, Bottai M, Pasanisi EM, Giorgetti A, Fucci S et al. Diastolic dysfunction assessed by ultra-fast cadmium-zinc-telluride cardiac imaging: impact on the evaluation of ischaemia. *Eur Heart J Cardiovasc Imaging* 2015;**16**:68–73.
87. Gimelli A, Liga R, Avogliero F, Coceani M, Marzullo P. Relationships between left ventricular sympathetic innervation and diastolic dysfunction: the role of myocardial innervation/perfusion mismatch. *J Nucl Cardiol* 2016;**25**:1101–9.
88. Hasselberg NE, Edvardsen T, Petri H, Berge KE, Leren TP, Bundgaard H et al. Risk prediction of ventricular arrhythmias and myocardial function in Lamin A/C mutation positive subjects. *Europace* 2014;**16**:563–71.
89. van Berlo JH, Duboc D, Pinto YM. Often seen but rarely recognised: cardiac complications of Lamin A/C mutations. *Eur Heart J* 2004;**25**:812–4.
90. van Rijsingen IA, Arbustini E, Elliott PM, Mogensen J, Hermans-van Ast JF, van der Kooij AJ et al. Risk factors for malignant ventricular arrhythmias in Lamin A/C mutation carriers a European Cohort Study. *J Am Coll Cardiol* 2012;**59**:493–500.
91. Pasotti M, Klersy C, Pilotto A, Marziliano N, Rapezzi C, Serio A et al. Long-term outcome and risk stratification in dilated cardiomyopathies. *J Am Coll Cardiol* 2008;**52**:1250–60.
92. Haugaa KH, Hasselberg NE, Edvardsen T. Mechanical dispersion by strain echocardiography: a predictor of ventricular arrhythmias in subjects with Lamin A/C mutations. *JACC Cardiovasc Imaging* 2015;**8**:104–6.
93. Leclercq C, Kass DA. Retiming the failing heart: principles and current clinical status of cardiac resynchronization. *J Am Coll Cardiol* 2002;**39**:194–201.
94. Chung ES, Leon AR, Tavazzi L, Sun JP, Nihoyannopoulos P, Merlino J et al. Results of the predictors of response to CRT (PROSPECT) trial. *Circulation* 2008;**117**:2608–16.
95. Ruschitzka F, Abraham WT, Singh JP, Bax JJ, Borer JS, Brugada J et al. Cardiac-resynchronization therapy in heart failure with a narrow QRS complex. *N Engl J Med* 2013;**369**:1395–405.
96. Stankovic I, Prinz C, Ciarka A, Daraban AM, Kotrc M, Aaronson M et al. Relationship of visually assessed apical rocking and septal flash to response and long-term survival following cardiac resynchronization therapy (PREDICT-CRT). *Eur Heart J Cardiovasc Imaging* 2016;**17**:262–9.
97. Menet A, Bernard A, Tribouilloy C, Leclercq C, Gevaert C, Guyomar Y et al. Clinical significance of septal deformation patterns in heart failure patients receiving cardiac resynchronization therapy. *Eur Heart J Cardiovasc Imaging* 2017;**18**:1388–97.
98. Risum N, Tayal B, Hansen TF, Bruun NE, Jensen MT, Lauridsen TK et al. Identification of typical left bundle branch block contraction by strain echocardiography is additive to electrocardiography in prediction of long-term outcome after cardiac resynchronization therapy. *J Am Coll Cardiol* 2015;**66**:631–41.
99. Parsai C, Bijnens B, Sutherland GR, Baltabaeva A, Claus P, Marciniaik M et al. Toward understanding response to cardiac resynchronization therapy: left ventricular dyssynchrony is only one of multiple mechanisms. *Eur Heart J* 2009;**30**:940–9.
100. Dillon JC, Chang S, Feigenbaum H. Echocardiographic manifestations of left bundle branch block. *Circulation* 1974;**49**:876–80.
101. Stankovic I, Belmans A, Prinz C, Ciarka A, Maria Daraban A, Kotrc M et al. The association of volumetric response and long-term survival after cardiac resynchronization therapy. *Eur Heart J Cardiovasc Imaging* 2017;**18**:1109–17.
102. Stankovic I, Aaronson M, Smith HJ, Voros G, Kongsgaard E, Neskovic AN et al. Dynamic relationship of left-ventricular dyssynchrony and contractile reserve in

- patients undergoing cardiac resynchronization therapy. *Eur Heart J* 2014;**35**:48–55.
103. Voigt JU, Schneider TM, Korder S, Szulik M, Gurel E, Daniel WG *et al*. Apical transverse motion as surrogate parameter to determine regional left ventricular function inhomogeneities: a new, integrative approach to left ventricular asynchrony assessment. *Eur Heart J* 2008;**30**:959–68.
 104. Mada RO, Lysyansky P, Duchenne J, Beyer R, Mada C, Muresan L *et al*. New automatic tools to identify responders to cardiac resynchronization therapy. *J Am Soc Echocardiogr* 2016;**29**:966–72.
 105. Parsai C, Baltabaeva A, Anderson L, Chaparro M, Bijmens B, Sutherland GR. Low-dose dobutamine stress echo to quantify the degree of remodelling after cardiac resynchronization therapy. *Eur Heart J* 2008;**30**:950–8.
 106. Claus P, Omar AMS, Pedrizzetti G, Sengupta PP, Nagel E. Tissue tracking technology for assessing cardiac mechanics: principles, normal values, and clinical applications. *JACC Cardiovasc Imaging* 2015;**8**:1444–60.
 107. Aljaroudi W, Chen J, Jaber WA, Lloyd SG, Cerqueira MD, Marwick T. Nonechocardiographic imaging in evaluation for cardiac resynchronization therapy. *Circ Cardiovasc Imaging* 2011;**4**:334–43.
 108. Nowak B, Sinha AM, Schaefer WM, Koch KC, Kaiser HJ, Hanrath P *et al*. Cardiac resynchronization therapy homogenizes myocardial glucose metabolism and perfusion in dilated cardiomyopathy and left bundle branch block. *J Am Coll Cardiol* 2003;**41**:1523–8.
 109. Urheim S, Rabben SI, Skulstad H, Lyseggen E, Ihlen H, Smiseth OA. Regional myocardial work by strain Doppler echocardiography and LV pressure: a new method for quantifying myocardial function. *Am J Physiol Heart Circ Physiol* 2005;**288**:H2375–80.
 110. Galli E, Leclercq C, Fournet M, Hubert A, Bernard A, Smiseth OA *et al*. Value of myocardial work estimation in the prediction of response to cardiac resynchronization therapy. *J Am Soc Echocardiogr* 2018;**31**:220–30.
 111. Galli E, Leclercq C, Hubert A, Bernard A, Smiseth OA, Mabo P *et al*. Role of myocardial constructive work in the identification of responders to CRT. *Eur Heart J Cardiovasc Imaging* 2018;**19**:1010–8.
 112. Galli E, Leclercq C, Donal E. Mechanical dyssynchrony in heart failure: still a valid concept for optimizing treatment? *Arch Cardiovasc Dis* 2017;**110**:60–8.
 113. Marsan NA, Westenberg JJ, Ypenburg C, van Bommel RJ, Roes S, Delgado V *et al*. Magnetic resonance imaging and response to cardiac resynchronization therapy: relative merits of left ventricular dyssynchrony and scar tissue. *Eur Heart J* 2009;**30**:2360–7.
 114. Hendel RC, Friedrich MG, Schulz-Menger J, Zemmerich C, Bengel F, Berman DS *et al*. CMR first-pass perfusion for suspected inducible myocardial ischemia. *JACC Cardiovasc Imaging* 2016;**9**:1338–48.
 115. Garbi M, Edvardsen T, Bax J, Petersen SE, McDonagh T, Filippatos G *et al*. EACVI appropriateness criteria for the use of cardiovascular imaging in heart failure derived from European National Imaging Societies voting. *Eur Heart J Cardiovasc Imaging* 2016;**17**:711–21.
 116. Ellenbogen KA, Gold MR, Meyer TE, Fernandez Lozano I, Mittal S, Waggoner AD *et al*. Primary results from the SmartDelay determined AV optimization: a comparison to other AV delay methods used in cardiac resynchronization therapy (SMART-AV) trial: a randomized trial comparing empirical, echocardiography-guided, and algorithmic atrioventricular delay programming in cardiac resynchronization therapy. *Circulation* 2010;**122**:2660–8.
 117. Auger D, Hoke U, Bax JJ, Boersma E, Delgado V. Effect of atrioventricular and ventriculoventricular delay optimization on clinical and echocardiographic outcomes of patients treated with cardiac resynchronization therapy: a meta-analysis. *Am Heart J* 2013;**166**:20–9.
 118. Nazarian S, Hansford R, Rahsepar AA, Weltin V, McVeigh D, Gucuk Ipek E *et al*. Safety of magnetic resonance imaging in patients with cardiac devices. *N Engl J Med* 2017;**377**:2555–64.
 119. Sabzevari K, Oldman J, Herrey AS, Moon JC, Kydd AC, Manisty C. Provision of magnetic resonance imaging for patients with 'MR-conditional' cardiac implantable electronic devices: an unmet clinical need. *Europace* 2017;**19**:425–31.
 120. Gold MR, Daubert C, Abraham WT, Ghio S, St John Sutton M, Hudnall JH *et al*. The effect of reverse remodeling on long-term survival in mildly symptomatic patients with heart failure receiving cardiac resynchronization therapy: results of the REVERSE study. *Heart Rhythm* 2015;**12**:524–30.
 121. Jurcut R, Giusca S, La Gerche A, Vasile S, Ghingina C, Voigt JU. The echocardiographic assessment of the right ventricle: what to do in 2010? *Eur J Echocardiogr* 2010;**11**:81–96.
 122. Grant AD, Smedira NG, Starling RC, Marwick TH. Independent and incremental role of quantitative right ventricular evaluation for the prediction of right ventricular failure after left ventricular assist device implantation. *J Am Coll Cardiol* 2012;**60**:521–8.
 123. Cameli M, Lisi M, Righini FM, Focardi M, Lunghetti S, Bernazzali S *et al*. Speckle tracking echocardiography as a new technique to evaluate right ventricular function in patients with left ventricular assist device therapy. *J Heart Lung Transplant* 2013;**32**:424–30.
 124. Badano LP, Koliaf TJ, Muraru D, Abraham TP, Aurigemma G, Edvardsen T *et al*. Standardization of left atrial, right ventricular, and right atrial deformation imaging using two-dimensional speckle tracking echocardiography: a consensus document of the EACVI/ASE/Industry Task Force to standardize deformation imaging. *Eur Heart J Cardiovasc Imaging* 2018;**19**:591–600.
 125. Addetia K, Uriel N, Maffessanti F, Sayer G, Adatya S, Kim GH *et al*. 3D Morphological Changes in LV and RV During LVAD Ramp Studies. *JACC Cardiovasc Imaging* 2018;**11**:159–69.
 126. Uriel N, Sayer G, Addetia K, Fedson S, Kim GH, Rodgers D *et al*. Hemodynamic ramp tests in patients with left ventricular assist devices. *JACC Heart Fail* 2016;**4**:208–17.
 127. Burkhoff D, Sayer G, Doshi D, Uriel N. Hemodynamics of mechanical circulatory support. *J Am Coll Cardiol* 2015;**66**:2663–74.
 128. Patel JB, Borgeson DD, Barnes ME, Rihal CS, Daly RC, Redfield MM. Mitral regurgitation in patients with advanced systolic heart failure. *J Card Fail* 2004;**10**:285–91.
 129. Zoghbi WA, Adams D, Bonow RO, Enriquez-Sarano M, Foster E, Grayburn PA *et al*. Recommendations for noninvasive evaluation of native valvular regurgitation: a report from the American Society of Echocardiography developed in collaboration with the society for cardiovascular magnetic resonance. *J Am Soc Echocardiogr* 2017;**30**:303–71.
 130. Kamperidis V, van Wijngaarden SE, van Rosendaal PJ, Kong WK, Regeer MV, van der Kley F *et al*. Mitral valve repair for secondary mitral regurgitation in non-ischaemic dilated cardiomyopathy is associated with left ventricular reverse remodelling and increase of forward flow. *Eur Heart J Cardiovasc Imaging* 2018;**19**:208–15.
 131. Nishimura RA, Vahanian A, Eleid MF, Mack MJ. Mitral valve disease—current management and future challenges. *Lancet* 2016;**387**:1324–34.
 132. Stone GW, Lindenfeld J, Abraham WT, Kar S, Lim DS, Mishell JM *et al*. Transcatheter mitral-valve repair in patients with heart failure. *N Engl J Med* 2018;**379**:2307.
 133. Obadia JF, Messika-Zeitoun D, Leurent G, Lung B, Bonnet G, Piriou N *et al*. Percutaneous repair or medical treatment for secondary mitral regurgitation. *N Engl J Med* 2018;**379**:2297.
 134. Grayburn PA, Sannino A, Packer M. Proportionate and disproportionate functional mitral regurgitation: a new conceptual framework that reconciles the results of the MITRA-FR and COAPT trials. *JACC Cardiovasc Imaging* 2019;**12**:353–62.
 135. Garbi M, McDonagh T, Cosyns B, Bucciarelli-Ducci C, Edvardsen T, Kitsiou A *et al*. Appropriateness criteria for cardiovascular imaging use in heart failure: report of literature review. *Eur Heart J Cardiovasc Imaging* 2015;**16**:147–53.
 136. Donal E, Delgado V, Magne J, Bucciarelli-Ducci C, Leclercq C, Cosyns B *et al*. Rational and design of EuroCRT: an international observational study on multi-modality imaging and cardiac resynchronization therapy. *Eur Heart J Cardiovasc Imaging* 2017;**18**:1120–7.
 137. Galderisi M, Cardim N, D'Andrea A, Bruder O, Cosyns B, Davin L *et al*. The multi-modality cardiac imaging approach to the Athlete's heart: an expert consensus of the European Association of Cardiovascular Imaging. *Eur Heart J Cardiovasc Imaging* 2015;**16**:353.
 138. Towbin JA, Lorts A, Jefferies JL. Left ventricular non-compaction cardiomyopathy. *Lancet* 2015;**386**:813–25.
 139. Thavendiranathan P, Dahiya A, Phelan D, Desai MY, Tang WH. Isolated left ventricular non-compaction controversies in diagnostic criteria, adverse outcomes and management. *Heart* 2013;**99**:681–9.
 140. Oechslin E, Jenni R. Left ventricular non-compaction revisited: a distinct phenotype with genetic heterogeneity? *Eur Heart J* 2011;**32**:1446–56.
 141. Estep JD, Stainback RF, Little SH, Torre G, Zoghbi WA *et al*. The role of echocardiography and other imaging modalities in patients with left ventricular assist devices. *JACC Cardiovasc Imaging* 2010;**3**:1049–64.