

Published in final edited form as:

*Nat Genet.* 2013 April ; 45(4): 371–384e2. doi:10.1038/ng.2566.

## Multiple independent variants at the *TERT* locus are associated with telomere length and risks of breast and ovarian cancer

Stig E Bojesen<sup>1,2,\*</sup>, Karen A Pooley<sup>3,\*</sup>, Sharon E Johnatty<sup>4,\*</sup>, Jonathan Beesley<sup>4,\*</sup>, Kyriaki Michailidou<sup>3,\*</sup>, Jonathan P Tyrer<sup>5,\*</sup>, Stacey L Edwards<sup>6</sup>, Hilda A Pickett<sup>7,8</sup>, Howard C Shen<sup>9</sup>, Chanel E Smart<sup>10</sup>, Kristine M Hillman<sup>6</sup>, Phuong L Mai<sup>11</sup>, Kate Lawrenson<sup>9</sup>, Michael D Stutz<sup>7,8</sup>, Yi Lu<sup>4</sup>, Rod Karevan<sup>9</sup>, Nicholas Woods<sup>12</sup>, Rebecca L Johnston<sup>10</sup>, Juliet D French<sup>6</sup>, Xiaoqing Chen<sup>4</sup>, Maren Weischer<sup>1,2</sup>, Sune F Nielsen<sup>1,2</sup>, Melanie J Maranian<sup>5</sup>, Maya Ghousaini<sup>5</sup>, Shahana Ahmed<sup>5</sup>, Caroline Baynes<sup>5</sup>, Manjeet K Bolla<sup>3</sup>, Qin Wang<sup>3</sup>, Joe Dennis<sup>3</sup>, Lesley McGuffog<sup>3</sup>, Daniel Barrowdale<sup>3</sup>, Andrew Lee<sup>3</sup>, Sue Healey<sup>4</sup>, Michael Lush<sup>3</sup>, Daniel C Tessier<sup>13,14</sup>, Daniel Vincent<sup>13,14</sup>, François Bacot<sup>13,14</sup>, Study Group members<sup>15</sup>, Ignace Vergote<sup>16,17</sup>, Sandrina Lambrechts<sup>16,17</sup>, Evelyn Despierre<sup>16,17</sup>, Harvey A Risch<sup>18</sup>, Anna González-Neira<sup>19</sup>, Mary Anne Rossing<sup>20,21</sup>, Guillermo Pita<sup>19</sup>, Jennifer A Doherty<sup>22</sup>, Nuria Álvarez<sup>19</sup>, Melissa C Larson<sup>23</sup>, Brooke L Fridley<sup>23</sup>, Nils Schoof<sup>24</sup>, Jenny Chang-Claude<sup>25</sup>, Mine S Cicek<sup>26</sup>, Julian Peto<sup>27</sup>, Kimberly R Kalli<sup>28</sup>, Annegien Broeks<sup>29</sup>, Sebastian M Armasu<sup>23</sup>, Marjanka K Schmidt<sup>29,30</sup>, Linde M Braaf<sup>29</sup>, Boris Winterhoff<sup>31</sup>, Heli Nevanlinna<sup>32</sup>, Gottfried E Konecny<sup>33</sup>, Diether Lambrechts<sup>34,35</sup>, Lisa Rogmann<sup>31</sup>, Pascal Guénel<sup>36,37</sup>, Attila Teoman<sup>31</sup>, Roger L Milne<sup>38</sup>, Joaquin J Garcia<sup>39</sup>, Angela Cox<sup>40</sup>, Vijayalakshmi Shridhar<sup>39</sup>, Barbara Burwinkel<sup>41,42</sup>, Frederik Marme<sup>41,43</sup>, Rebecca Hein<sup>25,44</sup>, Elinor J Sawyer<sup>45</sup>, Christopher A Haiman<sup>9</sup>, Shan Wang-Gohrke<sup>46</sup>, Irene L Andrulis<sup>47,48</sup>, Kirsten B Moysich<sup>49</sup>, John L Hopper<sup>50</sup>, Kunle Odunsi<sup>49</sup>, Annika Lindblom<sup>51</sup>, Graham G Giles<sup>50,52,53</sup>, Hermann Brenner<sup>54</sup>, Jacques Simard<sup>55</sup>, Galina Lurie<sup>56</sup>, Peter A Fasching<sup>33,57</sup>, Michael E Carney<sup>56</sup>, Paolo Radice<sup>58,59</sup>, Lynne R Wilkens<sup>56</sup>, Anthony Swerdlow<sup>60,61</sup>, Marc T Goodman<sup>62</sup>, Hiltrud Brauch<sup>63,64</sup>, Montserrat García-Closas<sup>65</sup>, Peter Hillemanns<sup>66</sup>, Robert Winqvist<sup>67,68</sup>, Matthias Dürst<sup>69</sup>, Peter Devilee<sup>70,71</sup>, Ingo Runnebaum<sup>69</sup>, Anna Jakubowska<sup>72</sup>, Jan Lubinski<sup>72</sup>, Arto Mannermaa<sup>73,74</sup>, Ralf Butzow<sup>32,75</sup>, Natalia V Bogdanova<sup>76,77</sup>, Thilo Dörk<sup>76</sup>, Liisa M Peltari<sup>32</sup>, Wei Zheng<sup>78</sup>, Arto Leminen<sup>32</sup>, Hoda Anton-Culver<sup>79</sup>, Clareann H Bunker<sup>80</sup>, Vessela Kristensen<sup>81,82</sup>, Roberta B Ness<sup>83</sup>, Kenneth Muir<sup>84,85</sup>, Robert Edwards<sup>86</sup>, Alfons Meindl<sup>87</sup>, Florian Heitz<sup>88,89</sup>, Keitaro Matsuo<sup>90</sup>, Andreas du Bois<sup>88,89</sup>, Anna H Wu<sup>9</sup>, Philipp Harter<sup>88,89</sup>, Soo-Hwang Teo<sup>91,92</sup>, Ira Schwaab<sup>93</sup>, Xiao-Ou Shu<sup>78</sup>, William Blot<sup>78,94</sup>, Satoyo Hosono<sup>90</sup>, Daehee Kang<sup>95</sup>, Toru Nakanishi<sup>96</sup>, Mikael Hartman<sup>24,97,98</sup>, Yasushi Yatabe<sup>99</sup>, Ute Hamann<sup>100</sup>, Beth Y Karlan<sup>101</sup>, Suleeporn Sangrajang<sup>102</sup>, Susanne Krüger Kjaer<sup>103,104</sup>, Valerie Gaborieau<sup>105</sup>, Allan Jensen<sup>103</sup>, Diana Eccles<sup>106</sup>, Estrid Høgdall<sup>103,107</sup>, Chen-Yang Shen<sup>108,109</sup>, Judith Brown<sup>3</sup>, Yin Ling Woo<sup>110</sup>, Mitul Shah<sup>5</sup>, Mat Adenan Noor Azmi<sup>110</sup>, Robert Luben<sup>3</sup>, Siti Zawiah Omar<sup>110</sup>, Kamila Czene<sup>24</sup>, Robert A Vierkant<sup>23</sup>, Børge G Nordestgaard<sup>1,2</sup>, Henrik Flyger<sup>111</sup>, Celine Vachon<sup>112</sup>, Janet E Olson<sup>112</sup>, Xianshu Wang<sup>39</sup>, Douglas A Levine<sup>113</sup>, Anja Rudolph<sup>25</sup>, Rachel Palmieri Weber<sup>114</sup>, Dieter Flesch-Janys<sup>115,116</sup>, Edwin Iversen<sup>117,118</sup>, Stefan

Correspondence to: Stig E Bojesen, Georgia Chenevix-Trench and Alison M Dunning SEB Department of Clinical Biochemistry, Herlev Hospital Copenhagen University Hospital Herlev Ringvej 75 2730 Herlev Denmark Phone: +45-3868 3843 Fax: +45-3868 3311 stig.egil.bojesen@regionh.dk GC-T The Queensland Institute of Medical Research Locked Bag 2000 Royal Brisbane Hospital, Herston QLD 4029 Australia Phone +61 7 3362 0390 Fax +61 7 3362 0105 georgiaT@qimr.edu.au AMD Centre for Cancer Genetic Epidemiology & Dept. of Oncology, University of Cambridge Strangeways Research Laboratory Worts Causeway Cambridge CB1 8RN, UK Phone +44 (0)1223 740683 amd24@medschl.cam.ac.uk.

\*These authors contributed equally

\$These authors jointly directed this work

URLs *TERT* gene, <http://www.ncbi.nlm.nih.gov/gene/7015>.

HapMap3 catalogue, <http://www.sanger.ac.uk/resources/downloads/human/hapmap3.html>.

Nickels<sup>25</sup>, Joellen M Schildkraut<sup>114,118</sup>, Isabel Dos Santos Silva<sup>27</sup>, Daniel W Cramer<sup>119,120</sup>, Lorna Gibson<sup>27</sup>, Kathryn L Terry<sup>119,120</sup>, Olivia Fletcher<sup>65</sup>, Allison F Vitonis<sup>119</sup>, C Ellen van der Schoot<sup>121</sup>, Elizabeth M Poole<sup>120,122</sup>, Frans B L Hogervorst<sup>123</sup>, Shelley S Tworoger<sup>120,122</sup>, Jianjun Liu<sup>124</sup>, Elisa V Bandera<sup>125</sup>, Jingmei Li<sup>124</sup>, Sara H Olson<sup>126</sup>, Keith Humphreys<sup>24</sup>, Irene Orlow<sup>126</sup>, Carl Blomqvist<sup>127</sup>, Lorna Rodriguez-Rodriguez<sup>125</sup>, Kristiina Aittomäki<sup>128</sup>, Helga B Salvesen<sup>129,130</sup>, Taru A Muranen<sup>32</sup>, Elisabeth Wik<sup>129,130</sup>, Barbara Brouwers<sup>131,132</sup>, Camilla Krakstad<sup>129,130</sup>, Els Wauters<sup>34,35</sup>, Mari K Halle<sup>129,130</sup>, Hans Wildiers<sup>133</sup>, Lambertus A Kiemeny<sup>134,135,136</sup>, Claire Mulot<sup>137</sup>, Katja K Aben<sup>134,135</sup>, Pierre Laurent-Puig<sup>137</sup>, Anne M van Altena<sup>138</sup>, Thérèse Truong<sup>36,37</sup>, Leon F A G Massuger<sup>138</sup>, Javier Benitez<sup>19,139,140</sup>, Tanja Pejovic<sup>141,142</sup>, Jose Ignacio Arias Perez<sup>143</sup>, Maureen Hoatlin<sup>144</sup>, M Pilar Zamora<sup>145</sup>, Linda S Cook<sup>146</sup>, Sabapathy P Balasubramanian<sup>40</sup>, Linda E Kelemen<sup>147,148,149</sup>, Andreas Schneeweiss<sup>41,43</sup>, Nhu D Le<sup>150</sup>, Christof Sohn<sup>41</sup>, Angela Brooks-Wilson<sup>151,152</sup>, Ian Tomlinson<sup>153,154</sup>, Michael J Kerin<sup>155</sup>, Nicola Miller<sup>155</sup>, Cezary Cybulski<sup>156</sup>, Brian E Henderson<sup>9</sup>, Janusz Menkiszak<sup>157</sup>, Fredrick Schumacher<sup>9</sup>, Nicolas Wentzensen<sup>158</sup>, Loic Le Marchand<sup>159</sup>, Hannah P Yang<sup>158</sup>, Anna Marie Mulligan<sup>160,161</sup>, Gord Glendon<sup>162</sup>, Svend Aage Engelholm<sup>163</sup>, Julia A Knight<sup>164,165</sup>, Claus K Høgdall<sup>104</sup>, Carmel Apicella<sup>50</sup>, Martin Gore<sup>166</sup>, Helen Tsimiklis<sup>167</sup>, Honglin Song<sup>5</sup>, Melissa C Southey<sup>167</sup>, Agnes Jager<sup>168</sup>, Ans M W van den Ouweland<sup>169</sup>, Robert Brown<sup>170</sup>, John W M Martens<sup>168</sup>, James M Flanagan<sup>170</sup>, Mieke Kriege<sup>168</sup>, James Paul<sup>171</sup>, Sara Margolin<sup>172</sup>, Nadeem Siddiqui<sup>173</sup>, Gianluca Severi<sup>50,52</sup>, Alice S Whittemore<sup>174</sup>, Laura Baglietto<sup>50,52</sup>, Valerie McGuire<sup>174</sup>, Christa Stegmaier<sup>175</sup>, Weiva Sieh<sup>174</sup>, Heiko Müller<sup>54</sup>, Volker Arndt<sup>54</sup>, France Labrèche<sup>176</sup>, Yu-Tang Gao<sup>177</sup>, Mark S Goldberg<sup>178,179</sup>, Gong Yang<sup>78</sup>, Martine Dumont<sup>55</sup>, John R McLaughlin<sup>162,180</sup>, Arndt Hartmann<sup>181</sup>, Arif B Ekici<sup>182</sup>, Matthias W Beckmann<sup>57</sup>, Catherine M Phelan<sup>12</sup>, Michael P Lux<sup>57</sup>, Jenny Permuth-Wey<sup>12</sup>, Bernard Peissel<sup>183</sup>, Thomas A Sellers<sup>12</sup>, Filomena Ficarazzi<sup>59,184</sup>, Monica Barile<sup>185</sup>, Argyrios Ziogas<sup>186</sup>, Alan Ashworth<sup>65</sup>, Aleksandra Gentry-Maharaj<sup>187</sup>, Michael Jones<sup>60</sup>, Susan J Ramus<sup>9</sup>, Nick Orr<sup>65</sup>, Usha Menon<sup>187</sup>, Celeste L Pearce<sup>9</sup>, Thomas Brüning<sup>188</sup>, Malcolm C Pike<sup>9,126</sup>, Yon-Dschun Ko<sup>189</sup>, Jolanta Lissowska<sup>190</sup>, Jonine Figueroa<sup>158</sup>, Jolanta Kupryjanczyk<sup>191</sup>, Stephen J Chanock<sup>158</sup>, Agnieszka Dansonka-Mieszkowska<sup>191</sup>, Arja Jukkola-Vuorinen<sup>192</sup>, Iwona K Rzepecka<sup>191</sup>, Katri Pylkäs<sup>67,68</sup>, Mariusz Bidzinski<sup>193</sup>, Saila Kauppila<sup>194</sup>, Antoinette Hollestelle<sup>195</sup>, Caroline Seynaeve<sup>195</sup>, Rob A E M Tollenaar<sup>196</sup>, Katarzyna Durda<sup>72</sup>, Katarzyna Jaworska<sup>72,197</sup>, Jaana M Hartikainen<sup>73,74</sup>, Veli-Matti Kosma<sup>73,74</sup>, Vesa Kataja<sup>74</sup>, Natalia N Antonenkova<sup>198</sup>, Jirong Long<sup>78</sup>, Martha Shrubsole<sup>78</sup>, Sandra Deming-Halverson<sup>78</sup>, Artitaya Lophatananon<sup>84,85</sup>, Pornthep Siriwanarangsang<sup>199</sup>, Sarah Stewart-Brown<sup>84</sup>, Nina Ditsch<sup>200</sup>, Peter Lichtner<sup>201</sup>, Rita K Schmutzler<sup>202,203</sup>, Hidemi Ito<sup>90</sup>, Hiroji Iwata<sup>204</sup>, Kazuo Tajima<sup>90</sup>, Chiu-Chen Tseng<sup>9</sup>, Daniel O Stram<sup>9</sup>, David van den Berg<sup>9</sup>, Cheng Har Yip<sup>92</sup>, M Kamran Ikram<sup>205</sup>, Yew-Ching Teh<sup>92</sup>, Hui Cai<sup>78</sup>, Wei Lu<sup>206</sup>, Lisa B Signorello<sup>78,94</sup>, Qiuyin Cai<sup>78</sup>, Dong-Young Noh<sup>95</sup>, Keun-Young Yoo<sup>95</sup>, Hui Miao<sup>98</sup>, Philip Tsau-Choong Iau<sup>97</sup>, Yik Ying Teo<sup>98</sup>, James McKay<sup>105</sup>, Charles Shapiro<sup>207</sup>, Foluso Ademuyiwa<sup>208</sup>, George Fountzilas<sup>209</sup>, Chia-Ni Hsiung<sup>109</sup>, Jyh-Cherng Yu<sup>210</sup>, Ming-Feng Hou<sup>211,212</sup>, Catherine S Healey<sup>5</sup>, Craig Luccarini<sup>5</sup>, Susan Peock<sup>3</sup>, Dominique Stoppa-Lyonnet<sup>213,214,215</sup>, Paolo Peterlongo<sup>58,59</sup>, Timothy R Rebbeck<sup>216,217</sup>, Marion Piedmonte<sup>218</sup>, Christian F Singer<sup>219</sup>, Eitan Friedman<sup>220,221</sup>, Mads Thomassen<sup>222</sup>, Kenneth Offit<sup>223</sup>, Thomas V O Hansen<sup>224</sup>, Susan L Neuhausen<sup>225</sup>, Csilla I Szabo<sup>226</sup>, Ignacio Blanco<sup>227</sup>, Judy Garber<sup>228</sup>, Steven A Narod<sup>229</sup>, Jeffrey N Weitzel<sup>230</sup>, Marco Montagna<sup>231</sup>, Edith Olah<sup>232</sup>, Andrew K Godwin<sup>233</sup>, Drakoulis Yannoukakos<sup>234</sup>, David E Goldgar<sup>235,236</sup>, Trinidad Caldes<sup>237</sup>, Evgeny N Imyanitov<sup>238</sup>, Laima Tihomirova<sup>239</sup>, Banu K Arun<sup>240,241</sup>, Ian Campbell<sup>242</sup>, Arjen R Mensenkamp<sup>243</sup>, Christi J van Asperen<sup>244</sup>, Kees E P van Roozendaal<sup>245</sup>, Hanne Meijers-Heijboer<sup>246</sup>, J Margriet Collée<sup>247</sup>, Jan C Oosterwijk<sup>248</sup>, Maartje J Hoening<sup>249</sup>, Matti A Rookus<sup>29</sup>, Rob B van der Luijt<sup>250</sup>, Theo A M van Os<sup>251</sup>, D Gareth Evans<sup>252</sup>, Debra Frost<sup>3</sup>, Elena Fineberg<sup>3</sup>, Julian Barwell<sup>253</sup>, Lisa Walker<sup>254</sup>, M John Kennedy<sup>255</sup>, Radka Platte<sup>3</sup>, Rosemarie Davidson<sup>256</sup>, Steve D Ellis<sup>3</sup>, Trevor Cole<sup>257</sup>, Brigitte Bressac-de Paillerets<sup>258,259</sup>, Bruno Buecher<sup>213</sup>, Francesca Damiola<sup>260</sup>, Laurence Faivre<sup>261</sup>,

**Marc Frenay<sup>262</sup>, Olga M Sinilnikova<sup>260,263</sup>, Olivier Caron<sup>264</sup>, Sophie Giraud<sup>263</sup>, Sylvie Mazoyer<sup>260</sup>, Valérie Bonadona<sup>265,266</sup>, Virginie Caux-Moncoutier<sup>213</sup>, Aleksandra Toloczko-Grabarek<sup>72</sup>, Jacek Gronwald<sup>72</sup>, Tomasz Byrski<sup>72</sup>, Amanda B Spurdle<sup>4</sup>, Bernardo Bonanni<sup>185</sup>, Daniela Zaffaroni<sup>183</sup>, Giuseppe Giannini<sup>267</sup>, Lorin Bernard<sup>184,268</sup>, Riccardo Dolcetti<sup>269</sup>, Siranoush Manoukian<sup>183</sup>, Norbert Arnold<sup>270</sup>, Christoph Engel<sup>271</sup>, Helmut Deissler<sup>272</sup>, Kerstin Rhiem<sup>202,203</sup>, Dieter Niederacher<sup>273</sup>, Hansjoerg Plendl<sup>274</sup>, Christian Sutter<sup>275</sup>, Barbara Wappenschmidt<sup>202,203</sup>, Åke Borg<sup>276</sup>, Beatrice Melin<sup>277</sup>, Johanna Rantala<sup>278</sup>, Maria Soller<sup>279</sup>, Katherine L Nathanson<sup>216,280</sup>, Susan M Domchek<sup>216,280</sup>, Gustavo C Rodriguez<sup>281</sup>, Ritu Salani<sup>282</sup>, Daphne Gschwantler Kaulich<sup>219</sup>, Muy-Kheng Tea<sup>219</sup>, Shani Shimon Paluch<sup>220,221</sup>, Yael Laitman<sup>220,221</sup>, Anne-Bine Skytte<sup>283</sup>, Torben A Kruse<sup>222</sup>, Uffe Birk Jensen<sup>284</sup>, Mark Robson<sup>223</sup>, Anne-Marie Gerdes<sup>285</sup>, Bent Ejlersen<sup>286</sup>, Lenka Foretova<sup>287</sup>, Sharon A Savage<sup>11</sup>, Jenny Lester<sup>101</sup>, Penny Soucy<sup>55</sup>, Karoline B Kuchenbaecker<sup>3</sup>, Curtis Olswold<sup>112</sup>, Julie M Cunningham<sup>39</sup>, Susan Slager<sup>112</sup>, Vernon S Pankratz<sup>112</sup>, Ed Dicks<sup>3</sup>, Sunil R Lakhani<sup>10,288</sup>, Fergus J Couch<sup>39,112</sup>, Per Hall<sup>24</sup>, Alvaro N A Monteiro<sup>12</sup>, Simon A Gayther<sup>9</sup>, Paul D P Pharoah<sup>5</sup>, Roger R Reddel<sup>7,8</sup>, Ellen L Goode<sup>26</sup>, Mark H Greene<sup>11</sup>, Douglas F Easton<sup>3,5,\$</sup>, Andrew Berchuck<sup>289,\$</sup>, Antonis C Antoniou<sup>3,\$</sup>, Georgia Chenevix-Trench<sup>4,\$</sup>, and Alison M Dunning<sup>5,\$</sup>**

<sup>1</sup>Copenhagen General Population Study, Herlev Hospital, Copenhagen University Hospital, University of Copenhagen, Copenhagen, Denmark <sup>2</sup>Department of Clinical Biochemistry, Herlev Hospital, Copenhagen University Hospital, University of Copenhagen, Copenhagen, Denmark <sup>3</sup>Centre for Cancer Genetic Epidemiology, Department of Public Health and Primary Care, University of Cambridge, Cambridge, UK <sup>4</sup>Department of Genetics, Queensland Institute of Medical Research, Brisbane, Australia <sup>5</sup>Centre for Cancer Genetic Epidemiology, Department of Oncology, University of Cambridge, Cambridge, UK <sup>6</sup>School of Chemistry and Molecular Biosciences, The University of Queensland, Brisbane, Australia <sup>7</sup>Cancer Research Unit, Children's Medical Research Institute, Westmead, NSW, Australia <sup>8</sup>Sydney Medical School, University of Sydney, Sydney, NSW, Australia <sup>9</sup>Department of Preventive Medicine, Keck School of Medicine, University of Southern California, Los Angeles, CA, USA <sup>10</sup>University of Queensland, UQ Centre for Clinical Research (UQCCR) Royal Brisbane and Women's Hospital, Herston, QLD, Australia <sup>11</sup>Clinical Genetics Branch, Division of Cancer Epidemiology and Genetics, National Cancer Institute, National Institutes of Health, Rockville, MD, USA <sup>12</sup>Department of Cancer Epidemiology, H. Lee Moffitt Cancer Center and Research Institute, Tampa, FL, USA <sup>13</sup>McGill University, Montréal, QC, Canada <sup>14</sup>Génome Québec Innovation Centre, Montréal, QC, Canada <sup>15</sup>Australian Cancer Study, Australian Ovarian Cancer Study Group, kConFab, GENICA, SWE-BRCA, HEBON, EMBRACE, GEMO Study Collaborators. Full membership lists are provided in the Supplementary Note <sup>16</sup>Division of Gynecologic Oncology, Department of Obstetrics and Gynaecology, University Hospitals Leuven, Leuven, Belgium <sup>17</sup>Leuven Cancer Institute, University Hospitals Leuven, Leuven, Belgium <sup>18</sup>Department of Epidemiology and Public Health, Yale University School of Public Health and School of Medicine, New Haven, CT, USA <sup>19</sup>Human Genotyping-CEGEN Unit, Human Cancer Genetics Program, Spanish National Cancer Research Centre (CNIO), Madrid, Spain <sup>20</sup>Department of Epidemiology, University of Washington, Seattle, WA, USA <sup>21</sup>Program in Epidemiology, Division of Public Health Sciences, Fred Hutchinson Cancer Research Center, Seattle, WA, USA <sup>22</sup>Section of Biostatistics and Epidemiology, The Geisel School of Medicine at Dartmouth, Lebanon, NH, USA <sup>23</sup>Department of Health Science Research, Division of Biomedical Statistics and Informatics, Mayo Clinic, Rochester, MN, USA <sup>24</sup>Department of Medical Epidemiology and Biostatistics, Karolinska Institutet, Stockholm, Sweden <sup>25</sup>Division of Cancer Epidemiology, German Cancer Research Center (DKFZ), Heidelberg, Germany <sup>26</sup>Department of Health Science Research, Division of Epidemiology, Mayo Clinic, Rochester, MN, USA <sup>27</sup>Non-communicable Disease Epidemiology Department, London School of Hygiene and Tropical Medicine, London, UK <sup>28</sup>Department of Medical Oncology, Mayo Clinic, Rochester, MN, USA <sup>29</sup>Division of Molecular Pathology, Netherlands Cancer Institute,

Antoni van Leeuwenhoek Hospital, Amsterdam, The Netherlands <sup>30</sup>Division of Psychosocial Research and Epidemiology, Netherlands Cancer Institute, Antoni van Leeuwenhoek Hospital, Amsterdam, The Netherlands <sup>31</sup>Department of Obstetrics and Gynecology, Mayo Clinic, Rochester, MN, USA <sup>32</sup>Department of Obstetrics and Gynecology, Helsinki University Central Hospital, University of Helsinki, Helsinki, Finland <sup>33</sup>David Geffen School of Medicine, Department of Medicine Division of Hematology and Oncology, University of California at Los Angeles, CA, USA <sup>34</sup>Laboratory for Translational Genetics, Department of Oncology, University of Leuven, Belgium <sup>35</sup>Vesalius Research Center (VRC), VIB, Leuven, Belgium <sup>36</sup>INSERM U1018, CESP (Center for Research in Epidemiology and Population Health), Environmental Epidemiology of Cancer, Villejuif, France <sup>37</sup>University Paris-Sud, UMRs 1018, Villejuif, France <sup>38</sup>Genetic and Molecular Epidemiology Group, Human Cancer Genetics Program, Spanish National Cancer Research Centre (CNIO), Madrid, Spain <sup>39</sup>Department of Laboratory Medicine and Pathology, Division of Experimental Pathology, Mayo Clinic, Rochester, MN, USA <sup>40</sup>CRUK/YCR Sheffield Cancer Research Centre, Department of Oncology, University of Sheffield, UK <sup>41</sup>Department of Obstetrics and Gynecology, University of Heidelberg, Heidelberg, Germany <sup>42</sup>Molecular Epidemiology Group, German Cancer Research Center (DKFZ), Heidelberg, Germany <sup>43</sup>National Center for Tumor Diseases, University of Heidelberg, Heidelberg, Germany <sup>44</sup>PMV Research Group at the Department of Child and Adolescent Psychiatry and Psychotherapy, University of Cologne, Cologne, Germany <sup>45</sup>Division of Cancer Studies, NIHR Comprehensive Biomedical Research Centre, Guy's & St. Thomas' NHS Foundation Trust in partnership with King's College London, London, UK <sup>46</sup>Department of Obstetrics and Gynecology, University of Ulm, Ulm, Germany <sup>47</sup>Department of Molecular Genetics, University of Toronto, Toronto, ON, Canada <sup>48</sup>Ontario Cancer Genetics Network, Fred A. Litwin Center for Cancer Genetics, Samuel Lunenfeld Research Institute, Mount Sinai Hospital, Toronto, Ontario, Canada <sup>49</sup>Department of Cancer Prevention and Control, Roswell Park Cancer Institute, Buffalo, NY, USA <sup>50</sup>Centre for Molecular, Environmental, Genetic and Analytic Epidemiology, University of Melbourne, Melbourne, VIC, Australia <sup>51</sup>Department of Molecular Medicine and Surgery, Karolinska Institutet, Stockholm, Sweden <sup>52</sup>Cancer Epidemiology Centre, The Cancer Council Victoria, Melbourne, VIC, Australia <sup>53</sup>Department of Epidemiology and Preventive Medicine, Monash University, Melbourne, VIC, Australia <sup>54</sup>Division of Clinical Epidemiology and Aging Research, German Cancer Research Center, Heidelberg, Germany <sup>55</sup>Cancer Genomics Laboratory, Centre Hospitalier Universitaire de Québec and Laval University, Quebec, Canada <sup>56</sup>Cancer Epidemiology Program, University of Hawaii Cancer Center, HI, USA <sup>57</sup>University Breast Center Franconia, Department of Gynecology and Obstetrics, University Hospital Erlangen, Erlangen, Germany <sup>58</sup>Unit of Molecular Bases of Genetic Risk and Genetic Testing, Department of Preventive and Predictive Medicine, Fondazione IRCCS Istituto Nazionale Tumori (INT), Milan, Italy <sup>59</sup>IFOM, Fondazione Istituto FIRC di Oncologia Molecolare, Milan, Italy <sup>60</sup>Division of Genetics and Epidemiology, The Institute of Cancer Research, Sutton, Surrey, UK <sup>61</sup>Division of Breast Cancer Research, The Institute of Cancer Research, Sutton, Surrey, UK <sup>62</sup>Samuel Oschin Comprehensive Cancer Institute, Cedars Sinai Medical Center, Los Angeles, CA, USA <sup>63</sup>Dr. Margarete Fischer-Bosch-Institute of Clinical Pharmacology, Stuttgart, Germany <sup>64</sup>University of Tübingen, Germany <sup>65</sup>Breakthrough Breast Cancer Research Centre, Division of Breast Cancer Research, The Institute of Cancer Research, London, UK <sup>66</sup>Clinics of Obstetrics and Gynaecology, Hannover Medical School, Hannover, Germany <sup>67</sup>Laboratory of Cancer Genetics and Tumor Biology, Department of Clinical Genetics, University of Oulu, Oulu University Hospital, Oulu, Finland <sup>68</sup>Biocenter Oulu, University of Oulu, Oulu, Finland <sup>69</sup>Department of Gynecology, Jena University Hospital, Jena, Germany <sup>70</sup>Department of Human Genetics, Leiden University Medical Center, Leiden, The Netherlands <sup>71</sup>Department of Pathology, Leiden University Medical Center, Leiden, The Netherlands <sup>72</sup>Department of Genetics and Pathology, Pomeranian Medical University, Szczecin, Poland <sup>73</sup>Imaging Center, Department of Clinical Pathology, Kuopio University Hospital, Kuopio, Finland <sup>74</sup>School of Medicine, Institute of Clinical Medicine,



Pathology and Forensic Medicine, Biocenter Kuopio, Cancer Center of Eastern Finland, University of Eastern Finland, Kuopio, Finland <sup>75</sup>Department of Pathology, Helsinki University Central Hospital, Helsinki, Finland <sup>76</sup>Department of Obstetrics and Gynaecology, Hannover Medical School, Hannover, Germany <sup>77</sup>Department of Radiation Oncology, Hannover Medical School, Hannover, Germany <sup>78</sup>Division of Epidemiology, Department of Medicine, Vanderbilt Epidemiology Center, Vanderbilt-Ingram Cancer Center, Vanderbilt University School of Medicine, Nashville, TN, USA <sup>79</sup>Department of Epidemiology, University of California Irvine, Irvine, CA, USA <sup>80</sup>Department of Epidemiology, Graduate School of Public Health, University of Pittsburgh, Pittsburgh, PA, USA <sup>81</sup>Department of Genetics, Institute for Cancer Research, Oslo University Hospital, Radiumhospitalet, Oslo, Norway <sup>82</sup>Faculty of Medicine (Faculty Division Ahus), UiO, Norway <sup>83</sup>The University of Texas School of Public Health, Houston, TX, USA <sup>84</sup>Warwick Medical School, Warwick University, Coventry, UK <sup>85</sup>Institute of Population Health, University of Manchester, Manchester, UK <sup>86</sup>Maggee Women's Hospital, Pittsburg, PA, USA <sup>87</sup>Department of Gynecology and Obstetrics, Division of Tumor Genetics, Klinikum rechts der Isar, Technical University Munich, Munich, Germany <sup>88</sup>Department of Gynecology and Gynecologic Oncology, Dr. Horst Schmidt Klinik Wiesbaden, Wiesbaden, Germany <sup>89</sup>Department of Gynecology and Gynecologic Oncology, Kliniken Essen-Mitte, Essen, Germany <sup>90</sup>Division of Epidemiology and Prevention, Aichi Cancer Center Research Institute, Nagoya, Japan <sup>91</sup>Cancer Research Initiatives Foundation, Sime Darby Medical Centre, Subang Jaya, Malaysia <sup>92</sup>Breast Cancer Research Unit, University Malaya Cancer Research Institute, University Malaya Medical Centre, Kuala Lumpur, Malaysia <sup>93</sup>Institut für Humangenetik Wiesbaden, Wiesbaden, Germany <sup>94</sup>International Epidemiology Institute, Rockville, MD, USA <sup>95</sup>Seoul National University College of Medicine, Seoul, Korea <sup>96</sup>Department of Gynecologic Oncology, Aichi Cancer Center Central Hospital, Nagoya, Aichi, Japan <sup>97</sup>Department of Surgery, Yong Loo Lin School of Medicine, National University of Singapore <sup>98</sup>Saw Swee Hock School of Public Health, National University of Singapore <sup>99</sup>Department of Pathology and Molecular Diagnostic, Aichi Cancer Center Central Hospital, Nagoya, Aichi, Japan <sup>100</sup>Molecular Genetics of Breast Cancer, German Cancer Research Center (DKFZ), Heidelberg, Germany <sup>101</sup>Women's Cancer Program, Samuel Oschin Comprehensive Cancer Institute, Cedars-Sinai Medical Center, Los Angeles, CA, USA <sup>102</sup>National Cancer Institute, Bangkok, Thailand <sup>103</sup>Virus, Lifestyle and Genes, Danish Cancer Society Research Center, Copenhagen, Denmark <sup>104</sup>The Juliane Marie Centre, Department of Obstetrics and Gynecology, Rigshospitalet, Copenhagen, Denmark <sup>105</sup>International Agency for Research on Cancer, Lyon, France <sup>106</sup>Faculty of Medicine, University of Southampton, University Hospital Southampton, Southampton, UK <sup>107</sup>Molecular Unit, Department of Pathology, Herlev Hospital, University of Copenhagen, Copenhagen, Denmark <sup>108</sup>Colleague of Public Health, China Medical University, Taichong, Taiwan <sup>109</sup>Institute of Biomedical Sciences, Academia Sinica, Taipei, Taiwan <sup>110</sup>Department of Obstetrics and Gynaecology, Faculty of Medicine, University Malaya Medical Centre, University Malaya, Kuala Lumpur, Malaysia <sup>111</sup>Department of Breast Surgery, Herlev Hospital, Copenhagen University Hospital, Copenhagen, Denmark <sup>112</sup>Department of Health Sciences Research, Mayo Clinic, Rochester, MN, USA <sup>113</sup>Gynecology Service, Department of Surgery, Memorial Sloan-Kettering Cancer Center, New York, NY, USA <sup>114</sup>Department of Community and Family Medicine, Duke University Medical Center, Durham, NC, USA <sup>115</sup>Department of Cancer Epidemiology/Clinical Cancer Registry, University Clinic Hamburg-Eppendorf, Hamburg, Germany <sup>116</sup>Institute for Medical Biometrics and Epidemiology, University Clinic Hamburg-Eppendorf, Hamburg, Germany <sup>117</sup>Department of Statistical Science, Duke University, Durham, NC, USA <sup>118</sup>Cancer Prevention, Detection and Control Research Program, Duke Cancer Institute, Durham, NC, USA <sup>119</sup>Obstetrics and Gynecology Epidemiology Center, Brigham and Women's Hospital and Harvard Medical School, Boston, MA, USA <sup>120</sup>Department of Epidemiology, Harvard School of Public Health, Boston, MA, USA <sup>121</sup>Sanquin Research, Amsterdam, The Netherlands <sup>122</sup>Channing Division of Network Medicine, Harvard Medical School and Brigham and Women's Hospital, Boston, MA, USA <sup>123</sup>Netherlands Cancer

Institute, Antoni van Leeuwenhoek Hospital, Amsterdam, The Netherlands <sup>124</sup>Human Genetics Division, Genome Institute of Singapore, Singapore <sup>125</sup>The Cancer Institute of New Jersey, Robert Wood Johnson Medical School, New Brunswick, NJ, USA <sup>126</sup>Department of Epidemiology and Biostatistics, Memorial Sloan-Kettering Cancer Center, New York, NY, USA <sup>127</sup>Department of Oncology, University of Helsinki and Helsinki University Central Hospital, Helsinki, Finland <sup>128</sup>Department of Clinical Genetics, Helsinki University Central Hospital, University of Helsinki, Helsinki, Finland <sup>129</sup>Department of Gynecology and Obstetrics, Haukeland University Hospital, Bergen, Norway <sup>130</sup>Department of Clinical Medicine, University of Bergen, Bergen, Norway <sup>131</sup>Laboratory of Experimental Oncology, Department of Oncology, KU Leuven, Leuven, Belgium <sup>132</sup>Department of General Medical Oncology, University Hospitals Leuven, Leuven Cancer Institute, Leuven, Belgium <sup>133</sup>Department of General Medical Oncology, University Hospitals Leuven, Belgium <sup>134</sup>Comprehensive Cancer Center The Netherlands, Utrecht, The Netherlands <sup>135</sup>Department of Epidemiology, Biostatistics and HTA, Radboud University Medical Centre, Nijmegen, Netherlands <sup>136</sup>Department of Urology, Radboud University Medical Centre, Nijmegen, Netherlands <sup>137</sup>Université Paris Sorbonne Cité, UMR-S775 Inserm, Paris, France <sup>138</sup>Department of Gynecology, Radboud University Medical Centre, Nijmegen, Netherlands <sup>139</sup>Human Genetics Group, Spanish National Cancer Research Centre (CNIO), Madrid, Spain <sup>140</sup>Biomedical Network on Rare Diseases (CIBERER), Madrid, Spain <sup>141</sup>Department of Obstetrics and Gynecology, Oregon Health and Science University, Portland, OR, USA <sup>142</sup>Knight Cancer Institute, Oregon Health and Science University, Portland, OR, USA <sup>143</sup>Servicio de Cirugía General y Especialidades, Hospital Monte Naranco, Oviedo, Spain <sup>144</sup>Department of Biochemistry and Molecular Biology, Oregon Health and Science University, Portland, OR, USA <sup>145</sup>Servicio de Oncología Médica, Hospital Universitario La Paz, Madrid, Spain <sup>146</sup>Division of Epidemiology and Biostatistics, University of New Mexico, Albuquerque, NM, USA <sup>147</sup>Department of Population Health Research, Alberta Health Services-Cancer Care, Calgary, Alberta, Canada <sup>148</sup>Department of Medical Genetics, University of Calgary, Calgary, Alberta, Canada <sup>149</sup>Department of Oncology, University of Calgary, Calgary, Alberta, Canada <sup>150</sup>Cancer Control Research, BC Cancer Agency, Vancouver, BC, Canada <sup>151</sup>Genome Sciences Centre, BC Cancer Agency, Vancouver, BC, Canada <sup>152</sup>Department of Biomedical Physiology and Kinesiology, Simon Fraser University, Burnaby, BC, Canada <sup>153</sup>Wellcome Trust Centre for Human Genetics, University of Oxford, UK <sup>154</sup>Oxford Biomedical Research Centre, University of Oxford, UK <sup>155</sup>School of medicine, National University of Ireland Galway, Ireland <sup>156</sup>International Hereditary Cancer Center, Department of Genetics and Pathology, Pomeranian Medical Academy, Szczecin, Poland <sup>157</sup>Department of Surgical Gynecology and Gynecological Oncology of Adults and Adolescents, Pomeranian Medical University, Szczecin, Poland <sup>158</sup>Division of Cancer Epidemiology and Genetics, National Cancer Institute, Bethesda, MD, USA <sup>159</sup>Epidemiology Program, Cancer Research Center, University of Hawaii, Honolulu, HI, USA <sup>160</sup>Department of Laboratory Medicine and Pathobiology, University of Toronto, Toronto, ON, Canada <sup>161</sup>Laboratory Medicine Program, University Health Network, Toronto, ON, Canada <sup>162</sup>Samuel Lunenfeld Research Institute, Mount Sinai Hospital, Toronto, Ontario, Canada <sup>163</sup>Department of Radiation Oncology, Rigshospitalet, University of Copenhagen, Denmark <sup>164</sup>Division of Epidemiology, Dalla Lana School of Public Health, University of Toronto, Toronto, Ontario, Canada <sup>165</sup>Prosserman Centre for Health Research, Samuel Lunenfeld Research Institute, Mount Sinai Hospital, Toronto, Ontario, Canada <sup>166</sup>Gynecological Oncology Unit, The Royal Marsden Hospital, London, UK <sup>167</sup>Genetic Epidemiology Department, Department of Pathology, The University of Melbourne, Melbourne, Australia <sup>168</sup>Department of Medical Oncology, Erasmus University Medical Center, Rotterdam, The Netherlands <sup>169</sup>Department of Clinical Genetics, Erasmus University Medical Center, Rotterdam, The Netherlands <sup>170</sup>Department of Surgery and Cancer, Imperial College London, London, UK <sup>171</sup>The Beatson West of Scotland Cancer Centre, Glasgow, UK <sup>172</sup>Department of Oncology and Pathology, Karolinska Institutet, Stockholm, Sweden <sup>173</sup>Department of Gynecological Oncology, Glasgow Royal Infirmary, Glasgow, UK <sup>174</sup>Department of Health

Research and Policy, Stanford University School of Medicine, Stanford, CA, USA <sup>175</sup>Saarland Cancer Registry, Saarbrücken, Germany <sup>176</sup>Département de médecine sociale et préventive, Département de santé environnementale et santé au travail, Université de Montréal, Montreal, Quebec, Canada <sup>177</sup>Department of Epidemiology, Shanghai Cancer Institute, Shanghai, China <sup>178</sup>Department of Medicine, McGill University, Montreal, Quebec, Canada <sup>179</sup>Division of Clinical Epidemiology, McGill University Health Centre, Royal Victoria Hospital, Montreal, Quebec, Canada <sup>180</sup>Dalla Lana School of Public Health, Faculty of Medicine, University of Toronto, Canada <sup>181</sup>Institute of Pathology, University Hospital Erlangen, Friedrich-Alexander University Erlangen-Nuremberg, Erlangen, Germany <sup>182</sup>Institute of Human Genetics, Friedrich Alexander University Erlangen-Nuremberg, Erlangen, Germany <sup>183</sup>Unit of Medical Genetics, Department of Preventive and Predictive Medicine, Fondazione IRCCS Istituto Nazionale Tumori (INT), Milan, Italy <sup>184</sup>Cogentech Cancer Genetic Test Laboratory, Milan, Italy <sup>185</sup>Division of Cancer Prevention and Genetics, Istituto Europeo di Oncologia, Milan, Italy <sup>186</sup>Department of Epidemiology, Center for Cancer Genetics Research and Prevention, School of Medicine, University of California Irvine, Irvine, CA, USA <sup>187</sup>Gynaecological Cancer Research Centre, UCL EGA Institute for Women's Health, London, UK <sup>188</sup>Institute for Prevention and Occupational Medicine of the German Social Accident Insurance, Institute of the Ruhr-Universität Bochum, Bochum, Germany <sup>189</sup>Department of Internal Medicine, Evangelische Kliniken Bonn GmbH, Johanniter Krankenhaus, Bonn, Germany <sup>190</sup>Department of Cancer Epidemiology and Prevention, M. Sklodowska-Curie Memorial Cancer Center & Institute of Oncology, Warsaw, Poland <sup>191</sup>Department of Molecular Pathology, The Maria Sklodowska-Curie Memorial Cancer Center and Institute of Oncology, Warsaw, Poland <sup>192</sup>Department of Oncology, Oulu University Hospital, University of Oulu, Oulu, Finland <sup>193</sup>Department of Gynecologic Oncology, The Maria Sklodowska-Curie Memorial Cancer Center and Institute of Oncology, Warsaw, Poland <sup>194</sup>Department of Pathology, Oulu University Hospital, University of Oulu, Oulu, Finland <sup>195</sup>Family Cancer Clinic, Department of Medical Oncology, Erasmus MC, Daniel den Hoed Cancer Center, Rotterdam, The Netherlands <sup>196</sup>Department of Surgical Oncology, Leiden University Medical Center, Leiden, The Netherlands <sup>197</sup>Postgraduate School of Molecular Medicine, Warsaw Medical University, Warsaw, Poland <sup>198</sup>N.N. Alexandrov Research Institute of Oncology and Medical Radiology, Minsk, Belarus <sup>199</sup>Ministry of Public Health, Thailand <sup>200</sup>Department of Gynecology and Obstetrics, Ludwig-Maximilians-Universität, Munich, Germany <sup>201</sup>Institute of Human Genetics, Technische Universität, Munich, Germany <sup>202</sup>Centre of Familial Breast and Ovarian Cancer, Department of Gynaecology and Obstetrics, University Hospital of Cologne, Cologne, Germany <sup>203</sup>Centre for Molecular Medicine Cologne (CMMC), University Hospital of Cologne, Cologne, Germany <sup>204</sup>Department of Breast Oncology, Aichi Cancer Center Hospital, Nagoya, Japan <sup>205</sup>Singapore Eye Research Institute, National University of Singapore, Singapore <sup>206</sup>Shanghai Center for Disease Control and Prevention, Shanghai, China <sup>207</sup>Division of Oncology, Wexner Medical Center, The Ohio State University, Columbus, OH, USA <sup>208</sup>Roswell Park Cancer Institute, Buffalo, NY, USA <sup>209</sup>Department of Medical Oncology, Papageorgiou Hospital, Aristotle University of Thessaloniki School of Medicine, Thessaloniki, Macedonia, Greece <sup>210</sup>Department of Surgery, Tri-Service General Hospital, Taipei, Taiwan <sup>211</sup>Cancer Center, Kaohsiung Medical University Chung-Ho Memorial Hospital, Kaohsiung, Taiwan <sup>212</sup>Department of Surgery, Kaohsiung Medical University Chung-Ho Memorial Hospital, Kaohsiung, Taiwan <sup>213</sup>Institut Curie, Department of Tumour Biology, Paris, France <sup>214</sup>Institut Curie, INSERM U830, Paris, France <sup>215</sup>Université Paris Descartes, Sorbonne Paris Cité, France <sup>216</sup>Basser Research Centre, Abramson Cancer Center, The University of Pennsylvania Perelman School of Medicine, Philadelphia, PA, USA <sup>217</sup>Center for Clinical Epidemiology and Biostatistics, The University of Pennsylvania Perelman School of Medicine, Philadelphia, PA, USA <sup>218</sup>Gynecologic Oncology Group Statistical and Data Center, Roswell Park Cancer Institute, Buffalo, NY, USA <sup>219</sup>Department of Obstetrics and Gynecology, Comprehensive Cancer Center, Medical University of Vienna, Vienna, Austria <sup>220</sup>The Susanne Levy Gertner Oncogenetics Unit, Sheba Medical Center, Tel-Hashomer, Israel <sup>221</sup>Institute of Oncology, Sheba

Medical Center, Tel-Hashomer, Israel <sup>222</sup>Department of Clinical Genetics, Odense University Hospital, Odense, Denmark <sup>223</sup>Clinical Genetics Service, Memorial Sloan-Kettering Cancer Center, New York, NY, USA <sup>224</sup>Center for Genomic Medicine, Rigshospitalet, Copenhagen University Hospital, Copenhagen, Denmark <sup>225</sup>Department of Population Sciences, Beckman Research Institute of City of Hope, Duarte, CA, USA <sup>226</sup>Center for Translational Cancer Research, Department of Biological Sciences, University of Delaware, Newark, DE, USA <sup>227</sup>Genetic Counseling Unit, Hereditary Cancer Program, IDIBELL-Catalan Institute of Oncology, Barcelona, Spain <sup>228</sup>Dana-Farber Cancer Institute, Boston, MA, USA <sup>229</sup>Women's College Research Institute, University of Toronto, Toronto, Ontario, Canada <sup>230</sup>Clinical Cancer Genetics, City of Hope, Duarte, CA, USA <sup>231</sup>Immunology and Molecular Oncology Unit, Istituto Oncologico Veneto IOV - IRCCS, Padua, Italy <sup>232</sup>Department of Molecular Genetics, National Institute of Oncology, Budapest, Hungary <sup>233</sup>Department of Pathology and Laboratory Medicine, University of Kansas Medical Center, Kansas City, KS, USA <sup>234</sup>Molecular Diagnostics Laboratory, IRRP, National Centre for Scientific Research Demokritos, Aghia Paraskevi Attikis, Athens, Greece <sup>235</sup>Department of Dermatology, University of Utah School of Medicine, Salt Lake City, UT, USA <sup>236</sup>Huntsman Cancer Institute, University of Utah School of Medicine, Salt Lake City, UT, USA <sup>237</sup>Molecular Oncology Laboratory, Hospital Clinico San Carlos, IdISSC, Madrid, Spain <sup>238</sup>N.N. Petrov Institute of Oncology, St.-Petersburg, Russia <sup>239</sup>Latvian Biomedical Research and Study Centre, Riga, Latvia <sup>240</sup>Department of Breast Medical Oncology, University of Texas MD Anderson Cancer Center, Houston, TX, USA <sup>241</sup>Clinical Cancer Genetics, University of Texas MD Anderson Cancer Center, Houston, TX, USA <sup>242</sup>VBCRC Cancer Genetics Laboratory, Peter MacCallum Cancer Centre, Melbourne, Australia <sup>243</sup>Department of Human Genetics, Radboud University Nijmegen Medical Centre, Nijmegen, The Netherlands <sup>244</sup>Department of Clinical Genetics, Leiden University Medical Center, Leiden, The Netherlands <sup>245</sup>Department of Clinical Genetics, Maastricht University Medical Center, Maastricht, The Netherlands <sup>246</sup>Department of Clinical Genetics, VU University Medical Centre, Amsterdam, The Netherlands <sup>247</sup>Department of Clinical Genetics, Family Cancer Clinic, Erasmus University Medical Center, Rotterdam, The Netherlands <sup>248</sup>University of Groningen, University Medical Center, Department of Genetics, Groningen, The Netherlands <sup>249</sup>Department of Medical Oncology, Family Cancer Clinic, Erasmus University Medical Center, Rotterdam, The Netherlands <sup>250</sup>Department of Medical Genetics, University Medical Center Utrecht, Utrecht, The Netherlands <sup>251</sup>Department of Clinical Genetics, Academic Medical Center, Amsterdam, The Netherlands <sup>252</sup>Genetic Medicine, Manchester Academic Health Sciences Centre, Central Manchester University Hospitals NHS Foundation Trust, Manchester, UK <sup>253</sup>Leicestershire Clinical Genetics Service, University Hospitals of Leicester NHS Trust, UK <sup>254</sup>Oxford Regional Genetics Service, Churchill Hospital, Oxford, UK <sup>255</sup>Academic Unit of Clinical and Molecular Oncology, Trinity College Dublin and St James's Hospital, Dublin, Eire <sup>256</sup>Laboratory Medicine at Southern General Hospital, Glasgow, UK <sup>257</sup>West Midlands Regional Genetics Service, Birmingham Women's Hospital Healthcare NHS Trust, Edgbaston, Birmingham, UK <sup>258</sup>INSERM U946, Fondation Jean Dausset, Paris, France <sup>259</sup>Service de Génétique, Institut de Cancérologie Gustave Roussy, Villejuif, France <sup>260</sup>INSERM U1052, CNRS UMR5286, Université Lyon 1, Centre de Recherche en Cancérologie de Lyon, Lyon, France <sup>261</sup>Centre de Génétique, CHU Dijon, Université de Bourgogne, Dijon, France, and Centre Georges François Leclerc, Dijon, France <sup>262</sup>Centre Antoine Lacassagne, Nice, France <sup>263</sup>Unité Mixte de Génétique Constitutionnelle des Cancers Fréquents, Hospices Civils de Lyon, Centre Léon Bérard, Lyon, France <sup>264</sup>Consultation de Génétique, Département de Médecine, Institut de Cancérologie Gustave Roussy, Villejuif, France <sup>265</sup>Unité de Prévention et d'Epidémiologie Génétique, Centre Léon Bérard, Lyon, France <sup>266</sup>Université Lyon 1, CNRS UMR5558, Lyon, France <sup>267</sup>Department of Molecular Medicine, Sapienza University, Rome, Italy <sup>268</sup>Department of Experimental Oncology, Istituto Europeo di Oncologia, Milan, Italy <sup>269</sup>Cancer Bioimmunotherapy Unit, Centro di Riferimento Oncologico, IRCCS, Aviano, Italy <sup>270</sup>Department of Gynecology and Obstetrics, University Hospital of Schleswig-Holstein/University Kiel, Kiel,



Germany <sup>271</sup>Institute for Medical Informatics, Statistics and Epidemiology, University of Leipzig, Leipzig, Germany <sup>272</sup>University Hospital Ulm, Ulm, Germany <sup>273</sup>Department of Obstetrics and Gynecology, University Medical Center, Heinrich-Heine University, Düsseldorf, Germany <sup>274</sup>Institute of Human Genetics, University Hospital of Schleswig-Holstein, University Kiel, Kiel, Germany <sup>275</sup>Department of Human Genetics, University of Heidelberg, Heidelberg, Germany <sup>276</sup>Department of Oncology, Lund University, Lund, Sweden <sup>277</sup>Department of Radiation Sciences, Oncology, Umeå University, Umeå, Sweden <sup>278</sup>Department of Clinical Genetics, Karolinska University Hospital, Stockholm, Sweden <sup>279</sup>Department of Clinical Genetics, University and Regional Laboratories, Lund University Hospital, Lund, Sweden <sup>280</sup>Department of Medicine, Perelman School of Medicine at the University of Pennsylvania, Philadelphia, PA, USA <sup>281</sup>Division of Gynecologic Oncology, North Shore University Health System, University of Chicago, Evanston, IL, USA <sup>282</sup>Department of Obstetrics and Gynecology, Ohio State University College of Medicine, Columbus, OH, USA <sup>283</sup>Department of Clinical Genetics, Vejle Hospital, Vejle, Denmark <sup>284</sup>Department of Clinical Genetics, Aarhus University Hospital, Aarhus, Denmark <sup>285</sup>Department of Clinical Genetics, Rigshospitalet, Copenhagen University Hospital, Copenhagen, Denmark <sup>286</sup>Department of Oncology, Rigshospitalet, Copenhagen University Hospital, Copenhagen, Denmark <sup>287</sup>Department of Cancer Epidemiology and Genetics, Masaryk Memorial Cancer Institute, Brno, Czech Republic <sup>288</sup>The UQ Centre for Clinical Research, The University of Queensland, The Royal Brisbane and Women's Hospital, Herston, Brisbane, QLD, Australia <sup>289</sup>Duke Cancer Institute, Duke University Medical Center, Durham, NC, USA

## Abstract

*TERT*-locus single nucleotide polymorphisms (SNPs) and leucocyte telomere measures are reportedly associated with risks of multiple cancers. Using the iCOGs chip, we analysed ~480 *TERT*-locus SNPs in breast (n=103,991), ovarian (n=39,774) and *BRCA1* mutation carrier (11,705) cancer cases and controls. 53,724 participants have leucocyte telomere measures. Most associations cluster into three independent peaks. Peak 1 SNP rs2736108 minor allele associates with longer telomeres ( $P=5.8\times10^{-7}$ ), reduced estrogen receptor negative (ER-negative) ( $P=1.0\times10^{-8}$ ) and *BRCA1* mutation carrier ( $P=1.1\times10^{-5}$ ) breast cancer risks, and altered promoter-assay signal. Peak 2 SNP rs7705526 minor allele associates with longer telomeres ( $P=2.3\times10^{-14}$ ), increased low malignant potential ovarian cancer risk ( $P=1.3\times10^{-15}$ ) and increased promoter activity. Peak 3 SNPs rs10069690 and rs2242652 minor alleles increase ER-negative ( $P=1.2\times10^{-12}$ ) and *BRCA1* mutation carrier ( $P=1.6\times10^{-14}$ ) breast and invasive ovarian ( $P=1.3\times10^{-11}$ ) cancer risks, but not via altered telomere length. The cancer-risk alleles of rs2242652 and rs10069690 respectively increase silencing and generate a truncated *TERT* splice-variant.

## Introduction

Chromosome ends are capped by telomeres, which protect them from inappropriate DNA repair and maintain genomic integrity<sup>1</sup>. Telomeres consist of structural proteins<sup>2</sup> combined with many hundreds of hexanucleotide DNA repeats<sup>3,4</sup>, which are progressively shortened by normal cell division<sup>5-7</sup>. Shortening restricts proliferation of normal somatic cells, but not of cancer cells, which can maintain long telomeres, usually via telomerase<sup>8-10</sup>, and may divide indefinitely. The *TERT* gene at 5p15.33 (see URLs) encodes the catalytic subunit of telomerase reverse transcriptase, an important component of telomerase. Germline mutations in *TERT* cause dyskeratosis congenita, a cancer susceptibility disorder characterized by exceedingly short telomeres<sup>11</sup>. Although up to 80% of the variation of telomere length is estimated to be due to heritable factors<sup>12,13</sup>, association studies on *TERT* SNPs and differences in leucocyte telomere length have, to date, been inconclusive<sup>14-17</sup>. Furthermore,

it is unclear whether telomere length, measured in leucocyte DNA, is predictive of cancer risk: retrospective studies report that cancer patients, after diagnosis, have shorter telomeres than unaffected controls<sup>18–21</sup>, but prospective studies, with DNA taken prior to diagnosis, have been inconclusive<sup>19,22,23</sup>. SNPs at 5p15.33 are reported to be associated with risks of several human cancers<sup>14–16,24–32</sup>, including certain subtypes of both ovarian<sup>33</sup> and breast cancers<sup>34</sup>.

Due to a common interest, SNPs surrounding the *TERT* locus were nominated by members of each of the constituent COGS consortia. Consequently, the iCOGS chip design included a combination of individual *TERT* gene candidate SNPs, as well as a more comprehensive set to fine-scale map the entire locus, for shared use by all consortia. This study had three aims: to assess SNPs across the *TERT*-locus for all detectable associations with mean telomere length and breast and ovarian cancer subtypes; to fine-scale map this locus to identify potentially-causal variants for the observed associations; and to evaluate the functional effects of the strongest candidate causative variants.

## Results

One hundred and ten SNPs at the 5p15.33 locus (Build 37 positions 1,227,693 – 1,361,969) passed quality control tests (QC) in 103,991 breast cancer cases and controls from 52 Breast Cancer Association Consortium (BCAC) studies, of which 41 studies (89,050 individuals) were of European, nine were of Asian (12,893 individuals) and two were of African-American ancestry (2,048 individuals). The same 110 SNPs passed QC in 11,705 *BRCA1* mutation carriers of European ancestry, recruited by 45 studies from the Consortium of Investigators of Modifiers of *BRCA1/2* (CIMBA), while 108 SNPs passed QC in 44,308 ovarian cancer cases and controls from 43 Ovarian Cancer Association Consortium (OCAC) studies. For OCAC, analysis was confined to the 39,774 European ancestry participants, of whom 8,371 cases had invasive epithelial ovarian- and 986 had serous low malignant potential (LMP) neoplasia. For all study participants, genotype-imputation, using the 110 genotyped SNPs together with the January 2012 release of the 1000 Genome Project (1000GP)<sup>35–38</sup> was used to increase coverage to ~480 SNPs (imputation  $r^2 > 0.3$ , minor allele frequency (MAF)  $> 0.02$ ) for each phenotype. Telomere length was initially measured in control subjects from two BCAC studies (SEARCH and CCHS, combined  $n = 15,567$ ) (see Supplementary Information).

Figure 1 shows Manhattan plots of the genotyped and well-imputed SNPs for the seven phenotypes analyzed: mean telomere length (a), overall breast cancer (b), breast cancer in *BRCA1* carriers (c), estrogen receptor negative (ER-negative) breast cancer (d), estrogen receptor positive (ER-positive) breast cancer (e), serous LMP ovarian cancer (f) and serous invasive ovarian cancer (g). Conditional analyses within each of these phenotypes revealed multiple independent SNP associations each for telomere length, overall breast cancer, ER-negative breast cancer and overall breast cancer risk in *BRCA1* mutation carriers, but only one peak each for ER-positive breast cancer, serous LMP and invasive ovarian cancer (Table 1). Full results of all these SNP analyses are given in Supplementary Tables 1–3. All associations are consistent with a log-additive model.

### Associations with telomere length

SNPs in two distinct regions (hereafter denoted Peaks 1 and 2) are strongly associated with telomere length (Tables 1 and 2; Fig.1, **panel a**; Supplementary Fig.1, **panel a**). Imputed SNP rs7705526 (Peak 2, position 1285974, *TERT* intron 2) has the largest effect with a change in relative telomere length of 1.026-fold per-allele (95%CI 1.019–1.033,  $P = 2.3 \times 10^{-14}$ , conditional  $P = 2.5 \times 10^{-11}$ ). We confirmed this finding in an additional 20,512 women and 17,645 men from a third study (CGPS) genotyped for rs7726159 (the best

directly-genotyped SNP;  $r^2=0.83$  with rs7705526). From a joint analysis of all 53,724 individuals, the change in relative telomere length is 1.020-fold per-allele (95% CI 1.016–1.023,  $P=7.5\times 10^{-28}$ ). A second, independent association was observed with rs2736108 (Peak 1, position 1297488, *TERT* promoter) with a per-allele change in relative telomere length of 1.017-fold (95% CI 1.010–1.024,  $P=5.8\times 10^{-7}$ , conditional  $P=4.0\times 10^{-4}$ ) (Fig. 1, **panel a**; Supplementary Fig. 1, **panel a**; Tables 1 and 2). SNPs rs7705526 and rs2736108 are only weakly correlated ( $r^2=0.04$  in Europeans). Weak associations between Peak 3 SNPs and telomere length became non-significant after adjustment for Peak 2 SNP rs7705526 (data not shown).

### Associations with breast cancer risk

We identified SNPs associated with breast cancer risk ( $P<10^{-4}$ ) in three distinct regions in BCAC studies and two in CIMBA *BRCA1* mutation carriers. No significant ( $P<10^{-4}$ ) evidence for heterogeneity among odds ratios (OR) or hazard ratios (HR) between studies for any of the top SNPs was observed (Supplementary Fig. 6). The strongest association with overall breast cancer risk in BCAC is with Peak 1 SNP rs3215401 (Fig. 1, **panel b**; Supplementary Fig. 1, **panel b**; Tables 1 and 2). There is also good evidence for an association with SNPs in Peak 2 and weaker evidence for an additional SNP, outside the three main association peaks, to be independently associated with breast cancer risk (Supplementary Table 1; Table 1). The most strongly-associated SNPs in *BRCA1* mutation carriers are located in introns 2–4 (hereafter denoted Peak 3) including rs10069690 (Fig. 1, **panel c**; Supplementary Fig. 2, **panel c**; Tables 1 and 2) and rs2242652 (correlation with rs10069690,  $r^2=0.70$ ). The latter SNP also exhibits the strongest association with ER-negative breast cancer in BCAC (Fig. 1, **panel d**; Supplementary Fig. 1, **panel d**; Tables 1 and 2), but shows little evidence of association with ER-positive breast cancer (Table 2). Stepwise regression analysis in CIMBA studies indicated two independent associations with breast cancer risk in *BRCA1* mutation carriers (conditional  $P=5\times 10^{-5}$  for rs2736108 in Peak 1;  $P=4.8\times 10^{-13}$  for rs10069690 in Peak 3). A very similar pattern was observed for ER-negative breast cancer in BCAC (conditional  $P=6\times 10^{-6}$  for rs3215401 in Peak 1 and  $P=4.3\times 10^{-9}$  for rs2242652 in Peak 3; Table 1). The most strongly associated SNP with ER-positive breast cancer is rs2736107 in Peak 1 (Fig. 1, **panel e**; Supplementary Fig. 2, **panel e**; Tables 1 and 2). Weak associations between the key SNPs and risk for *BRCA2* mutation carriers are also observed, but the sample size is too small to draw definitive conclusions (data not shown).

### Associations with ovarian cancer risk

The strongest association observed for risk of LMP ovarian cancer is with Peak 2 SNP rs7705526 and this is the only SNP retained in the stepwise regression analysis (Fig. 1, **panel f**; Supplementary Fig. 1, **panel f**; Table 1 and 2). The strongest observed association for serous invasive ovarian cancer is with Peak 3 SNP rs10069690 (Fig. 1, **panel g**; Supplementary Fig. 1, **panel g**; Tables 1 and 2). No other independent associations were observed for serous invasive ovarian cancer (Table 1). We also analysed SNP associations with endometrioid, mucinous, clear cell invasive and mucinous LMP ovarian cancers but found no associations at  $P<10^{-4}$  (Supplementary Table 4). We attempted analysis of invasive serous ovarian cancer stratified by grade, but again statistical power was low (Supplementary Fig. 2).

### Three main peaks of association within the *TERT* locus

The above results indicate that the majority of observed associations with all seven tested phenotypes fall into association Peaks 1–3. Correlated SNPs in the *TERT* promoter (Peak 1) are associated with telomere length, ER-positive breast cancer, ER-negative breast cancer

and breast cancer in *BRCA1* mutation carriers. SNPs in Peak 2, spanning *TERT* introns 2–4, are independently associated with telomere length, overall breast cancer and serous LMP ovarian cancer. Finally, SNPs in Peak 3, also spanning *TERT* introns 2–4, display strong associations with ER-negative breast cancer, breast cancer risk for *BRCA1* mutation carriers and serous invasive ovarian cancer, but not with telomere length (Tables 1 and 2). Although Peaks 2 and 3 overlap physically, they define distinct sets of SNPs that are only partially correlated (e.g. correlation between rs10069690 and rs7705526;  $r^2=0.33$ ; Fig.2). Some SNP-phenotype associations in Peak 2 are clearly weaker than those in Peak 3 (e.g. with ER-negative breast cancer) and become non-significant after adjustment for SNP rs2242652 in Peak 3. Conversely, the associations with telomere length and serous LMP ovarian cancer are stronger for SNPs in Peak 2, indicating that the associations in Peaks 2 and 3 are not being driven by the same causal variants.

The strongest candidates for causation within each peak were identified by computing likelihood ratios; the SNPs listed in Tables 1 and 2 are those that cannot be excluded at a likelihood ratio of >1:100 fold compared to the top hit in the peak. The power to exclude SNPs differs between phenotypes; in Peak 1, all but seven SNPs can be excluded from being causal for relative telomere length, breast cancer risk in *BRCA1* mutation carriers and ER-negative risk, but an additional SNP can be excluded for ER-positive breast cancer risk (Table 2). In Peak 2, the greatest power is for the telomere length phenotype, where all but three SNPs can be excluded, whilst five or six remain for cancer risk. For Peak 3, three putative causal SNPs remain for ER-negative breast cancer risk, two for serous invasive ovarian cancer risk and just one for breast cancer risk in *BRCA1* carriers. Results in each peak are compatible with a single causative variant being responsible for the multiple phenotype associations (n.b. in Peak 3, SNPs rs2242652 and rs10069690 are equally compatible with being the single causal variant). However the possibilities of different causal variants being responsible for different phenotypes, or of the associations being due to haplotype effects, cannot be ruled out.

### Asian and African studies

We tested all SNPs ( $n=341$ ) with MAF >0.02 and imputation  $r^2>0.3$  for association with breast cancer in the nine BCAC Asian studies (comprising 6,269 cases and 6,624 controls) but none reached formal levels of significance. Furthermore none of the European top SNPs displayed more than borderline levels of significance in Asians (Supplementary Table 5). Peak 3 SNP rs10069690 was directly genotyped in two BCAC African-American studies (1,116 cases and 932 controls), as well as the above mentioned Asian studies and has estimated effects on ER-negative breast cancer similar to those in European populations: per-allele OR=1.19, 95%CI 1.06–1.31,  $P=0.009$  in African-Americans and OR=1.09, 95%CI 1.00–1.19,  $P=0.07$  in Asian women. Within OCAC there were too few women of Asian and African ethnicity to draw meaningful conclusions. (Supplementary Table 6).

### Functional and *in silico* analyses

**Chromatin analysis**—Analysis of the ENCyclopedia Of DNA Elements (ENCODE) data<sup>39</sup> revealed no evidence of regulatory elements or open chromatin coinciding with any risk-associated SNPs in normal breast epithelial cells or the other represented tissues (Supplementary Fig.3) (Data for ovarian tissues are not included in ENCODE). We therefore performed site-specific formaldehyde-assisted isolation of regulatory elements (FAIRE<sup>40</sup>) in ovarian cancer precursor tissues to identify regulatory elements in a 1Mb region centred on Peak 3. In fallopian tube secretory- and ovarian surface- epithelial cells, we detected FAIRE peaks coinciding with the *CLPTMIL* promoter but not the *TERT* promoter (Supplementary Fig.3). *In silico* analyses additionally indicated that *TERT* introns 4 and 5 (within and beyond Peak 3) contain regions showing regulatory potential and



vertebrate sequence conservation<sup>41</sup>. We used site-specific FAIRE analyses of a ~1 kb region centered on the Peak 3 SNP rs10069690 in normal tissue samples from breast reduction mammoplasty (n=4), ovarian cancer precursor tissues (n=4) and ovarian cancer cell-lines (n=4). Breast cells from each woman were sorted into four enriched fractions based on differential expression of cell surface markers<sup>42</sup> (myoepithelial/stem, luminal progenitor, mature luminal and stromal) and assays were performed on each fraction (Fig.3). Chromatin was closed in all the ovarian, breast luminal progenitor and mature luminal fractions. However, in 2/4 stromal cell fractions, we detected ~600bp open chromatin of varying amplitude, covering the position of SNP rs10069690, but not of rs2242652, and in 3/4 myoepithelial/stem cell fractions, we detected ~800bp open chromatin, covering the positions of both SNPs rs10069690 and rs2242652.

**Luciferase reporter assays**—The regulatory capabilities of the DNA in each of the three peaks, and the effects of most of the strongest candidate causative variants in each one, were examined in luciferase reporter assays, using a construct containing 3915bp of the *TERT* promoter sequence<sup>43</sup>. Effects of Peak 1 *TERT* promoter variants were examined via five haplotype constructs differing at rs2736107, rs2736108 and rs2736109<sup>25</sup> (Fig.4a): one with all three major alleles (*TERT* wt), another with all three minor alleles (rs2736107, rs2736108, and rs2736109), and three with minor alleles of each SNP individually. Relative promoter activity was determined in ER-positive (MCF7), ER-negative (MDA-MB-468) breast and ovarian (A2780) cancer cell-lines. The construct containing all three minor alleles consistently generated the lowest luciferase signals, close to baseline. To determine whether the risk-associated variants in Peaks 2 and 3 fall within putative *cis*-acting regulatory elements (PREs), we cloned ~3 kb of sequence surrounding each SNP. Constructs of PRE-A (Peak 2) had no significant effect on the activity of either promoter construct (Fig.4b). However, inclusion of the minor allele of rs7705526 increased *TERT* promoter activity by ~30% in all three cell-lines, suggesting that it can act as a transcriptional enhancer. This increase in promoter activity was also observed with the construct in A2780 ovarian cells, but not in the two breast cancer cell-lines. Constructs of PRE-B (Peak 3) consistently act as strong transcriptional silencers, leading to a 40–50% decrease in activity, specifically in constructs containing the *TERT* wt promoter. Notably, inclusion of the minor allele of rs2242652 in PRE-B constructs decreased relative *TERT* wt promoter activity by a further ~20% compared to the silencer containing the major alleles, but highly-correlated SNP rs10069690 did not generate this effect (Fig.4b).

**Alternative splicing of *TERT***—Several *TERT* alternative splice variants have been found to impact on telomerase activity<sup>44,45</sup>. To determine the role of PRE-B (Peak 3) SNPs in *TERT* alternative splicing, we inserted intron 4 sequence into a full length *TERT* cDNA mini-gene construct, and confirmed accurate splicing. Cancer risk-associated alleles for rs10069690 and rs2242652 were generated individually and in combination within the mini-gene. RT-PCR, using primers spanning intron 4, revealed that all SNP permutations in all cell-lines produced comparable levels of both wild-type and an INS1 alternative splice variant, which includes the first 38bp of *TERT* intron 4<sup>46,47</sup> (Supplementary Fig.5a). We also identified a novel *TERT* splice variant, specifically associated with the minor allele of rs10069690 (termed INS1b; Supplementary Fig.5a). Sequence analysis confirmed that INS1b includes the first 480bp of intron 4 and results from an alternative splice donor created by the minor allele of rs10069690<sup>48</sup>. INS1b has a premature stop codon 16 amino acids into intron 4 and is predicted to generate a severely truncated protein product, likely to impact on telomerase activity (Supplementary Fig.5b).

**Gene expression and methylation analyses in ovarian tissue**—We used The Cancer Genome Atlas (TCGA)<sup>49</sup> data to examine gene expression of the 11 protein-coding

genes and one microRNA (*MIR4457*) located within 1Mb of Peak 3 SNP rs10069690. Most genes showed higher expression in ovarian tumors compared with normal tissues (Supplementary Fig.3; Supplementary Table 7). We observed no association between rs10069690 and expression levels of any of the genes in any of the cells tested (Supplementary Table 7; Supplementary Table 8; Supplementary Fig.5). There is some evidence of association between rs10069690 and tumor methylation with probes cg23827991 (*TERT*CpG island,  $P=1.3\times 10^{-6}$ ) and cg06550200 (*CLPTMIL*,  $P=6.9\times 10^{-4}$ ) among 935 probes tested. Both showed reduced methylation with the minor, cancer-risk allele (Supplementary Table 9) but this did not correlate with changes in expression.

## Discussion

Our comprehensive examination of the *TERT* locus has answered some long-standing questions and raised several new ones. We have identified two independent regions associated with telomere length in leucocyte DNA; these provide definitive evidence for genetic control of telomere length by common *TERT* variants. For rs2736108, the most significant SNP in promoter Peak 1, the minor allele is associated with a 1.7%-fold increase in telomere length. This equates to a telomere length change of ~60bp and, since telomere length decreases by approximately 19bp per year of age<sup>50</sup>, this is equivalent in magnitude to an age difference of 3.1 years. We estimate that rs2736108 explains 0.08% of the variance in telomere length in men and 0.06% in women. SNPs in Peak 2 have a stronger effect on telomere length with each additional A (minor) allele of rs7705526 associated with a 2.6%-fold increase. This equates to a ~90bp change in telomere length and, correspondingly, to 4.7 years of age. We estimate that rs7705526 explains 0.31% of the variance in telomere length in men and 0.16% in women. The only other reported associations with telomere length, reaching genome-wide significance, involve *TERC*-locus SNP rs1269304<sup>51</sup> and *OBFC1*-locus SNP rs4387287<sup>52</sup>, which have similar effects on telomere length (75bp and 115bp per-allele, respectively).

Our only findings consistent with the hypothesis that shorter telomeres predispose to increased cancer risk<sup>53</sup> (equivalent to longer telomeres being protective) are those from the Peak 1 SNPs. However, a regulatory-element construct containing the longer telomere associated alleles of three highly correlated SNPs, rs2736108, rs2736107 and rs2736109 (reconstructing a haplotype with 25% frequency in Europeans<sup>35</sup>) virtually abolished promoter activity in a reporter assay. This finding leaves an apparently paradoxical association between decreased enhancer activity and increased telomere length (Figure 4). Control of telomerase activity is currently poorly understood and this clearly merits further investigation.

SNPs within Peak 3 (*TERT* introns 2–4) exhibit strong associations with hormone-related cancers: Peak 3 SNP rs10069690 is associated with risk of ER-negative breast cancer<sup>34</sup> and breast cancer in *BRCA1* mutation carriers, consistent with the observation that the majority of breast cancers arising in *BRCA1* mutation carriers are ER-negative. This variant has been reported to be associated with prostate cancer<sup>26,54</sup> and we find it associated with serous invasive ovarian cancer. Although SNPs in Peaks 2 and 3 overlap on a physical map, the SNPs most strongly associated with cancer risk or telomere length were not highly correlated with each other [ $r^2$  between rs10069690 and rs7705526 = 0.33 (Fig.2, **panel b**)]. These observations suggest that either the associations observed with multiple cancers and SNPs in Peak 3 are mediated via a mechanism distinct from control of telomere length, or that telomere length in breast, prostate and ovarian cells is under the control of a different set of SNPs to those controlling telomere length in leucocytes. Luciferase reporter assays show that Peak 3 contains a silencer of the *TERT* promoter and that the minor allele of Peak 3 SNP rs2242652 further reduces expression. Consistent with this finding, Kote-Jarai Z. *et*

*al.*<sup>54</sup>, report that the minor, risk allele of this SNP is associated with reduced *TERT* expression in benign prostate tissue. However, our search for comparable associations in ovarian or breast tumor tissue has been negative, possibly because *TERT* expression is severely dysregulated in most tumors. Taken together, our luciferase assays indicate that either reduced signal from regulatory elements in Peaks 1 and 3, or increased signal from Peak 2, increases risk of specific cancer types.

We have additionally shown that the minor allele of rs10069690 affects splicing and is associated with transcription of a novel, truncated isoform resulting from a premature stop codon (Supplementary Fig.4). We do not yet know whether this isoform affects canonical telomerase activity, or how it changes activity. We further identified novel, open chromatin signatures overlapping rs10069690 in breast stromal and myoepithelial/stem cell fractions but not in progenitor or differentiated luminal epithelial cell fractions. Senescent stromal cells can stimulate malignant transformation of epithelial cells in *in vitro* and *in vivo* models<sup>55,56</sup>, and these SNP mechanisms merit investigation in future studies.

The SNPs originally reported to be associated with risk of lung (rs402710)<sup>57</sup> and breast cancer (rs3816659)<sup>58</sup> (Supplementary Table 10) were not associated with any cancer in this study. Moreover SNP rs2736100, in Peak 2, has been reported to be associated with glioma, lung and testicular cancer<sup>27,28,31,57,59–62</sup> while nearby SNP rs2853677 was reported to be associated with glioma in the Chinese Han population<sup>63</sup>. Despite their physical proximity, these are not highly correlated with rs7705526 ( $r^2=0.52$  and  $0.18$  respectively), nor do they display independent associations with telomere length after adjustment for rs7705526. Thus, variants underlying susceptibility to different cancer types are different from the set of variants in the *TERT* region mediating changes in telomere length.

One limitation of this study is the incomplete representation of all SNPs at 5p15.33 on the iCOGS chip, which was designed in March 2010 using SNPs catalogued in HapMap3, together with those from the pilot study of the 1000GP<sup>35</sup>. To help fill known gaps on the iCOGS chip, additional SNPs were genotyped from the October 2010 1000GP data release, and imputation was based on the most recent, January 2012 release. However, several gaps remain across the *TERT* locus and this, coupled with the strikingly low linkage disequilibrium across the region (Fig.2), raises the possibility that there could be more independent associations that we have not yet detected. Furthermore, the incomplete SNP catalogue at the time of study design means that we cannot assume with certainty that the true causal variants, directly responsible for the observed association peaks, were captured in our analysis. It is also possible that more rare variants, not specifically investigated in this study, could have additional functional effects within this locus. Further re-sequencing of this region is needed to uncover the full spectrum of variation and phenotype associations. Another limitation is that telomere length was measured in DNA from leucocytes rather than from breast or ovarian tissue. Whilst we obtained suitable blood DNA for measurements in >53,000 subjects (a necessary sample size for adequate statistical power), obtaining comparable qualities and quantities of DNA from normal breast or ovary cells would be almost impossible. Telomere lengths, measured in different tissues within one individual have been shown to be highly correlated<sup>64–66</sup> meaning that leukocyte telomere lengths are likely to be good surrogates for other tissues. Furthermore, one of our aims was to investigate whether the previously reported associations between mean telomere length and cancer risk might be mediated through *TERT* variants, and such studies have been based on telomere length measured in blood cell DNA. Another limitation was that we were unable to stratify OCAC ovarian cancer cases by *BRCA1* and *BRCA2* mutation status because this information was not available; nor was there sufficient power to evaluate ovarian cancer risk in mutation carriers in CIMBA.

Our findings provide evidence relevant to the hypothesis that shorter telomeres increase cancer risks: associations in the *TERT* promoter (Peak 1) fit this hypothesis best, while those in Peaks 2 and 3 (introns 2–4) and other reported 5p15.33 SNP-cancer associations (Supplementary Table 10) do not. Thus, it would appear that the majority of cancer associations within the *TERT* locus are mediated via alternative mechanisms involving the *TERT* gene. The protein product of *TERT* has functions beyond the telomerase-mediated extension of telomeres<sup>67</sup>. These non-canonical functions of TERT strongly resemble those mediated by MYC and WNT<sup>68</sup>, which are upstream regulators of proliferation, differentiation and migration. TERT also modulates WNT/ $\beta$ -catenin signaling<sup>69</sup>, and ectopic TERT expression induces increased cell division and decreased apoptosis in primary mammary cells, independently of telomere elongation<sup>70</sup>.

In conclusion, this study provides definitive evidence for genetic control of telomere length by common genetic variants in the *TERT* locus. Additionally, we report multiple, independent *TERT* SNP associations with breast cancer risk, confirming previously-reported associations and identifying new associations in both the general population and in *BRCA1* mutation carriers. We also provide, for the first time, highly significant evidence for the association of distinct *TERT* SNPs with serous LMP and invasive ovarian cancer risk. Our results demonstrate that the relationships between *TERT* genotype, telomere length and cancer risk are complex, and that the *TERT* locus may influence cancer risk through multiple mechanisms.

## Online Methods

### SNP selection and genotyping

Most SNPs were genotyped on the iCOGS custom array<sup>36,37,71</sup>. SNPs at 5p15.33 (Build 36 positions 1280000–1415000; Build 37 positions 1227693 to 1361969) were selected, based on published cancer associations, from the March 2010 release of the 1000 Genomes Project (1000GP)<sup>35</sup>. These included all known SNPs with minor allele frequency (MAF) > 0.02 in Europeans and  $r^2$  > 0.1 with the then-known cancer associated SNPs (rs402710<sup>57</sup> and/or rs3816659<sup>58</sup>), plus a tagging set for all known SNPs in the linkage disequilibrium blocks encompassing the genes in the region (*SLC6A18*, *TERT* and *CLPTMIL*). An additional 30 SNPs in *TERT* were selected through a telomere length candidate gene approach. In total, 134 SNPs were selected, 121 of which were successfully manufactured; 110 of those passed quality control (QC)<sup>36</sup> in BCAC and CIMBA, and 108 in OCAC (Supplementary Tables 1–3). After genotyping, these SNPs were complemented with 22 SNPs, selected from the October 2010 release of 1000GP, to improve coverage. These were genotyped in two BCAC studies, SEARCH<sup>72</sup> and CCHS<sup>73</sup>, using a Fluidigm<sup>TM</sup> array according to the manufacturer's instructions. To improve SNP density further, comprehensive genotype data for the locus were imputed for all subjects based on the January 2012 1000GP release. The genotype imputation process is described in<sup>36–38</sup>.

### Samples and Quality Control

Study characteristics, iCOGS methodology and quality control for cancer-risk analyses are detailed elsewhere<sup>36–38</sup>. We measured telomere length in 6,766 control samples from the SEARCH study; 1,569 of these were accrued by SEARCH itself<sup>36</sup>, 793 were collected as part of the Sisters in Breast Screening (SIBS) study<sup>15</sup> and 4,404 were cancer-free participants in the EPIC-Norfolk study<sup>19</sup>. We also measured telomere length in 8,841 participants in the Copenhagen City Heart Study (CCHS)<sup>73,74</sup> and in 38,145 participants in the Copenhagen General Population Study (CGPS)<sup>75,76</sup>. Genotype clusters were visually inspected for the most strongly associated SNPs (Supplementary Fig. 6). For all studies, ethnicity was assigned using HapMap (release 22) genotype data for European, African and



Asian populations as reference (for BCAC and CIMBA using multidimensional scaling, for OCAC using LAMP<sup>77</sup>). All CIMBA analyses were restricted to individuals of European ancestry. For BCAC, separate estimates for individuals of East Asian and African-American ancestry were also derived. For OCAC, limited analyses of non-European ancestry groups were also performed. A subset of BCAC and OCAC were utilised in previous breast and ovarian cancer association studies of individual SNPs<sup>78</sup>. However, the associations with the key SNPs (rs10069690, rs2736108 and rs7705526) remained significant after excluding these studies, demonstrating similar ORs.

### Telomere length measurement

Telomere length was measured in SEARCH using a modified version of the protocol as described elsewhere<sup>19,79</sup>. Twelve percent of samples were run in duplicate. Failed PCR reactions were not repeated. Telomere length was measured in CCHS and CGPS with a modified version of the protocol as described elsewhere<sup>50,80</sup>. Each individual was measured in quadruplicate. After exclusion of outliers, average cycle threshold (Ct) values of the remaining samples were calculated. Failed measurements were repeated up to twice. For meta-analysis, telomere length measurements from SEARCH were converted to the same scale as the CCHS and CGPS measurements, based on parameters from the linear regression between corresponding CCHS and SEARCH 10-year-age and 5-percentile groups in women only (Supplementary Fig.7). This measure of telomere length was used for all the analyses and then converted into fold changes (RTL) to aid interpretation (Supplementary Fig.7).

### Statistical analyses

SNP associations with telomere length were evaluated using linear regression to model the fold-change in telomere length per-minor-allele, adjusted for age, 384-well plate, sex, seven principal components and study. The SNP was coded as number of minor alleles (0, 1, 2 for genotyped and the inferred genotype for imputed SNPs). The test of association was based on the 1 degree of freedom (1 *df*) trend-test statistic. We also performed separate analyses (SEARCH, CCHS females, CCHS males, CGPS females, CGPS males) and combined the parameter estimates in a fixed-effect meta-analysis<sup>81</sup>. Associations with breast and ovarian cancer risk in BCAC and OCAC were evaluated by comparing genotype frequencies in cases and controls using unconditional logistic regression. Analyses were adjusted for study and seven principal components in BCAC<sup>36</sup> and five in OCAC<sup>37</sup>. Nine OCAC studies with case-only genotype data were paired with case-control studies from similar geographic regions, resulting in 34 analysis study-strata. The principal analysis fitted the SNP as an allelic dose and tested for association using a 1 *df* trend-test, but genotype-specific risks were also obtained. Associations between genotypes and breast cancer risk in CIMBA studies (*BRCA1* carriers) were evaluated using a 1 *df* per-allele trend-score test, based on modeling the retrospective likelihood of the observed genotypes conditional on breast cancer phenotypes<sup>82</sup>. To allow for non-independence among related individuals, an adjusted version of the score-test was used in which the variance of the score was derived, taking into account the correlation between the genotypes by estimating the kinship coefficient for each pair of individuals using the available genotype data<sup>83</sup>. Per-allele Hazard Ratio (HR) estimates were obtained by maximizing the retrospective likelihood. All analyses were stratified by country of residence. USA and Canada strata were further stratified on the basis of reported Ashkenazi Jewish ancestry.

Conditional analyses were performed to identify SNPs independently associated with each phenotype. To identify the most parsimonious model, all SNPs with marginal *P*-value<0.001 were included in forward-selection regression analyses with a threshold for inclusion of *P*-value<10<sup>-4</sup>, and including terms for age (for telomere length only), principal components and study. Similarly, forward-selection Cox-regression analysis was performed for *BRCA1*

carriers, stratified by country of residence, using the same *P*-value thresholds. This approach provides valid association tests, although the estimates can be biased<sup>82,84</sup>. Parameter estimates for the most parsimonious model were obtained using the retrospective likelihood approach.

### FACS-sorting

Normal breast tissue was donated by women undergoing reduction mammoplasty surgery. Patients provided written consent and all work was performed with full local institutional human ethics approval. Tissue was dissociated as described previously<sup>85</sup>. Cells were prepared for flow cytometry as described previously<sup>42</sup> by staining with a cocktail of Lin+ markers (CD31-PE, CD45-PE and CD235a-PE), EpCAM-FITC, CD49f-PE-Cy5 and Sytox Blue. Cells were then processed by a BD FACSAria II Cell Sorter and live cells immunonegative for Lin+ markers were sorted into four subpopulations on the basis of their EpCAM-FITC and CD49f-PE-Cy5 fluorescence.

### FAIRE analysis

Cell pellets derived from FACS-sorting of breast tissue samples were cross-linked in 1% formaldehyde, then lysed in 200μl Tris-buffered 1% SDS lysis buffer containing protease inhibitors. Lysates were sonicated using a QSONICA Model Q125 Ultra Sonic Processor to shear chromatin to 200bp-1kb fragments. Insoluble cell material was removed through centrifugation, and supernatants equally divided into 100μl INPUT and FAIRE samples. INPUTs were incubated overnight at 65°C to reverse cross-linking. All samples were purified through two rounds of phenol-chloroform extraction and DNA recovered through ethanol precipitation and re-suspended in water for use as PCR templates.

### Plasmid construction and luciferase assays

*TERT* promoter variants were introduced into pGL3-*TERT*-3915<sup>43</sup> by site-directed mutagenesis (Agilent Technologies). *TERT* Putative Regulatory Elements PRE-A (hg19; chr5:1,284,900–1,287,087) and PRE-B (chr5:1,279,401–1,282,763), were PCR amplified using KAPAHifi DNA polymerase (Geneworks) and cloned into pGL3-*TERT*-3915 or rs2736107/8/9 vectors. Individual SNPs were incorporated using overlap extension PCR. Cells were transfected with equimolar amounts of luciferase reporter plasmids and 50ng of pRLTK using siPORT NeoFX Transfection Agent (Ambion), according to the manufacturer's instructions, and harvested after 48h. Luminescence was measured with a Wallac Victor3 1420 multilabel counter and data (n=3) was analysed by one-way ANOVA with post-hoc Dunnett's tests.

### Mini-gene construction and qRT-PCR analysis

*TERT* intron 4 was synthesised by GenScript and subcloned into pIRES-*TERT*<sup>44</sup>. The minor alleles at rs10069690 and rs2242652 were introduced by site-directed mutagenesis (Agilent Technologies). The resultant plasmids, designated pIRES-*TERT*int4-WT (wild-type intron 4), pIRES-*TERT*int4-rs10069690, pIRES-*TERT*int4-rs2242652 and pIRES-*TERT*int4-DM (minor alleles at both sites), were transfected using siPORT NeoFX Transfection Agent (Ambion) and cells harvested after 24h. Total RNA was extracted using the RNeasy Mini Kit (Qiagen) and digested with DNaseI (Invitrogen). cDNA was synthesised from 1μg RNA by random priming using SuperScript III reverse transcriptase (Invitrogen). Samples were screened for the presence of *TERT* splice variants by RT-PCR.

### Molecular correlations at the 5p15.33 locus

For each gene within 1Mb we performed the following assays: (1) gene expression analysis in ovarian cancer cell lines (N=50) compared to ovarian surface epithelial and fallopian tube

secretory cell lines (N=73) and tissues from high-grade serous ovarian cancers; (2) methylation analysis in high-grade serous ovarian cancers compared to normal tissues, and methylation quantitative trait locus (mQTL) analysis; (3) expression quantitative trait locus (eQTL) analysis to evaluate genotype-gene expression associations in normal high-grade serous ovarian cancers precursor tissues. We also evaluated these genes *in silico* in the somatic data from The Cancer Genome Atlas (TCGA<sup>49</sup>). We also profiled the spectrum of non-coding regulatory elements in ovarian surface epithelial and fallopian tube secretory cell lines using a combination of formaldehyde-assisted isolation of regulatory elements sequencing (FAIRE-seq<sup>40</sup>) and RNA sequencing (RNA-seq).

## Supplementary Material

Refer to Web version on PubMed Central for supplementary material.

## Acknowledgments

COGS is funded through a European Commission's Seventh Framework Programme grant (agreement number 223175 - HEALTH-F2-2009-223175). BCAC is funded by CR-UK (C1287/A10118 and C1287/A12014). BCAC meetings have been funded by the European Union COST programme (BM0606). Telomere length measurement and analysis was funded by CR-UK project grant C1287/A9540 and Chief Physician Johan Boserup and Lise Boserup's Fund. CIMBA data management and analysis were supported by Cancer Research – UK grants C12292/A11174 and C1287/A10118. OCAC is supported by a grant from the Ovarian Cancer Research Fund thanks to the family and friends of Kathryn Sladek Smith (PPD/RPCL07). Genotyping of the iCOGS array was funded by the European Union (HEALTH-F2-2009-223175), Cancer Research UK (C1287/A10710), the Canadian Institutes of Health Research for the “CIHR Team in Familial Risks of Breast Cancer” program (J.S. & D.E.), and the Ministry of Economic Development, Innovation and Export Trade of Quebec – grant # PSR-SIIRI-701 (J.S. & D.E., P.Hall). Scientific development and funding of the OCAC portion of this project were supported by the Genetic Associations and Mechanisms in Oncology (GAME-ON; U19-CA148112). CIMBA genotyping was supported by NIH grant CA128978, an NCI Specialized Program of Research Excellence (SPORE) in Breast Cancer (CA116201), a U.S. Department of Defense Ovarian Cancer Idea award (W81XWH-10-1-0341), grants from the Breast Cancer Research Foundation and the Komen Foundation for the Cure. This study made use of data generated by: The Wellcome Trust Case Control Consortium (A full list of WTCCC investigators is available from <http://www.wtccc.org.uk/>; funding was provided by Wellcome Trust award 076113) and The Cancer Genome Atlas (TCGA) Pilot Project established by the National Cancer Institute and National Human Genome Research Institute (The investigators and institutions constituting the TCGA research network, can be found at <http://cancergenome.nih.gov/>.)

We thank all the individuals who took part in these studies and all the researchers, clinicians, technicians and administrative staff who have enabled this work to be carried out.

## References

1. McEachern MJ, Krauskopf A, Blackburn EH. Telomeres and their control. *Annu. Rev. Genet.* 2000; 34:331–358. [PubMed: 11092831]
2. Palm W, de LT. How shelterin protects mammalian telomeres. *Annu. Rev. Genet.* 2008; 42:301–334. [PubMed: 18680434]
3. Baird DM. Telomeres. *Exp. Gerontol.* 2006; 41:1223–1227. [PubMed: 17084054]
4. Moyzis RK, et al. A highly conserved repetitive DNA sequence, (TTAGGG)<sub>n</sub>, present at the telomeres of human chromosomes. *Proc. Natl. Acad. Sci. U. S. A.* 1988; 85:6622–6626. [PubMed: 3413114]
5. Allsopp RC, et al. Telomere length predicts replicative capacity of human fibroblasts. *Proc. Natl. Acad. Sci. U. S. A.* 1992; 89:10114–10118. [PubMed: 1438199]
6. Harley CB. Telomere loss: mitotic clock or genetic time bomb? *Mutat. Res.* 1991; 256:271–282. [PubMed: 1722017]
7. Levy MZ, et al. Telomere end-replication problem and cell aging. *J. Mol. Biol.* 1992; 225:951–960. [PubMed: 1613801]

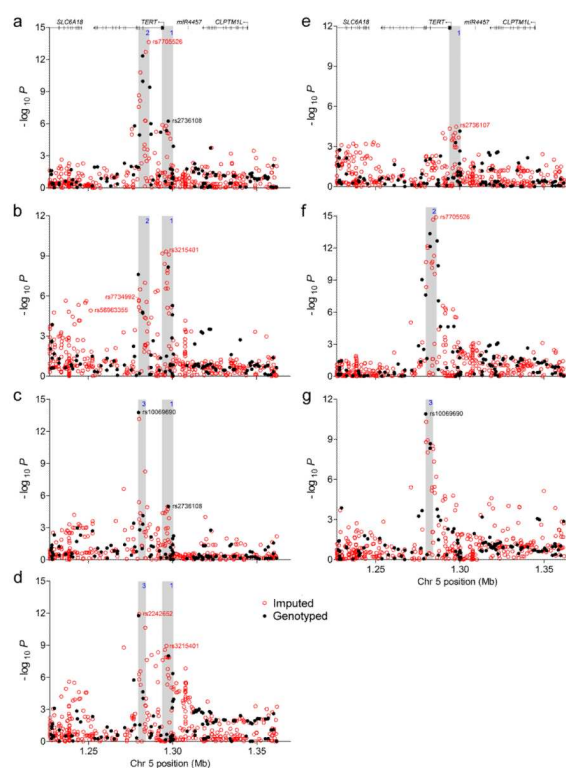
8. Counter CM, et al. Telomere shortening associated with chromosome instability is arrested in immortal cells which express telomerase activity. *EMBO J.* 1992; 11:1921–1929. [PubMed: 1582420]
9. Hiyama E, et al. Telomerase activity in human breast tumors. *J. Natl. Cancer Inst.* 1996; 88:116–122. [PubMed: 8537972]
10. Stampfer MR, Yaswen P. Human epithelial cell immortalization as a step in carcinogenesis. *Cancer Lett.* 2003; 194:199–208. [PubMed: 12757978]
11. Alter BP, et al. Telomere length is associated with disease severity and declines with age in dyskeratosis congenita. *Haematologica.* 2012; 97:353–359. [PubMed: 22058220]
12. Njajou OT, et al. Telomere length is paternally inherited and is associated with parental lifespan. *Proc. Natl. Acad. Sci. U. S. A.* 2007; 104:12135–12139. [PubMed: 17623782]
13. Slagboom PE, Droog S, Boomsma DI. Genetic determination of telomere size in humans: a twin study of three age groups. *Am. J. Hum. Genet.* 1994; 55:876–882. [PubMed: 7977349]
14. Mirabello L, et al. The association of telomere length and genetic variation in telomere biology genes. *Hum. Mutat.* 2010; 31:1050–1058. [PubMed: 20597107]
15. Pooley KA, et al. No association between TERT-CLPTM1L single nucleotide polymorphism rs401681 and mean telomere length or cancer risk. *Cancer Epidemiol. Biomarkers Prev.* 2010; 19:1862–1865. [PubMed: 20570912]
16. Mocellin S, et al. Telomerase reverse transcriptase locus polymorphisms and cancer risk: a field synopsis and meta-Analysis. *J. Natl. Cancer Inst.* 2012
17. Sørensen M, et al. Genetic variation in TERT and TERC and human leukocyte telomere length and longevity: a cross-sectional and longitudinal analysis. *Aging Cell.* 2012; 11:223–227. [PubMed: 22136229]
18. McGrath M, et al. Telomere length, cigarette smoking, and bladder cancer risk in men and women. *Cancer Epidemiol. Biomarkers Prev.* 2007; 16:815–819. [PubMed: 17416776]
19. Pooley KA, et al. Telomere length in prospective and retrospective cancer case-control studies. *Cancer Res.* 2010; 70:3170–3176. [PubMed: 20395204]
20. Shen J, et al. Telomere length, oxidative damage, antioxidants and breast cancer risk. *Int. J. Cancer.* 2009; 124:1637–1643. [PubMed: 19089916]
21. Wentzensen IM, et al. The association of telomere length and cancer: a meta-analysis. *Cancer Epidemiol. Biomarkers Prev.* 2011; 20:1238–1250. [PubMed: 21467229]
22. de Vivo I, et al. A prospective study of relative telomere length and postmenopausal breast cancer risk. *Cancer Epidemiol. Biomarkers Prev.* 2009; 18:1152–1156. [PubMed: 19293310]
23. Zee RY, et al. Mean telomere length and risk of incident colorectal carcinoma: a prospective, nested case-control approach. *Cancer Epidemiol. Biomarkers Prev.* 2009; 18:2280–2282. [PubMed: 19661087]
24. Baird DM. Variation at the TERT locus and predisposition for cancer. *Expert. Rev. Mol. Med.* 2010; 12:e16. [PubMed: 20478107]
25. Beesley J, et al. Functional polymorphisms in the TERT promoter are associated with risk of serous epithelial ovarian and breast cancers. *PLoS. One.* 2011; 6:e24987. [PubMed: 21949822]
26. Kote-Jarai Z, et al. Seven prostate cancer susceptibility loci identified by a multi-stage genome-wide association study. *Nat. Genet.* 2011; 43:785–791. [PubMed: 21743467]
27. Landi MT, et al. A genome-wide association study of lung cancer identifies a region of chromosome 5p15 associated with risk for adenocarcinoma. *Am. J. Hum. Genet.* 2009; 85:679–691. [PubMed: 19836008]
28. Rafnar T, et al. Sequence variants at the TERT-CLPTM1L locus associate with many cancer types. *Nat. Genet.* 2009; 41:221–227. [PubMed: 19151717]
29. Shete S, et al. Genome-wide association study identifies five susceptibility loci for glioma. *Nat. Genet.* 2009; 41:899–904. [PubMed: 19578367]
30. Stacey SN, et al. New common variants affecting susceptibility to basal cell carcinoma. *Nat. Genet.* 2009; 41:909–914. [PubMed: 19578363]
31. Turnbull C, et al. Variants near DMRT1, TERT and ATF7IP are associated with testicular germ cell cancer. *Nat. Genet.* 2010; 42:604–607. [PubMed: 20543847]



32. Wang Y, et al. Common 5p15.33 and 6p21.33 variants influence lung cancer risk. *Nat. Genet.* 2008; 40:1407–1409. [PubMed: 18978787]
33. Johnatty SE, et al. Evaluation of candidate stromal epithelial cross-talk genes identifies association between risk of serous ovarian cancer and TERT, a cancer susceptibility “hot-spot”. *PLoS. Genet.* 2010; 6:e1001016. [PubMed: 20628624]
34. Haiman CA, et al. A common variant at the TERT-CLPTM1L locus is associated with estrogen receptor-negative breast cancer. *Nat. Genet.* 2011; 43:1210–1214. [PubMed: 22037553]
35. Durbin RM, et al. A map of human genome variation from population-scale sequencing. *Nature.* 2010; 467:1061–1073. [PubMed: 20981092]
36. Michailidou K, et al. Large-scale genotyping identifies 41 new loci associated with breast cancer risk. *Nat. Genet.* 2013 Accepted.
37. Pharoah P, et al. GWAS meta-analysis and replication identifies three new common susceptibility loci for ovarian cancer. *Nat. Genet.* 2013 Accepted.
38. Garcia-Closas M, et al. Genome-wide association studies identify four ER-negative specific breast cancer risk loci. *Nat. Genet.* 2013 Accepted.
39. Rosenbloom KR, et al. ENCODE whole-genome data in the UCSC Genome Browser: update 2012. *Nucleic Acids Res.* 2012; 40:D912–D917. [PubMed: 22075998]
40. Giresi PG, et al. FAIRE (Formaldehyde-Assisted Isolation of Regulatory Elements) isolates active regulatory elements from human chromatin. *Genome Res.* 2007; 17:877–885. [PubMed: 17179217]
41. Taylor J, et al. ESPERR: learning strong and weak signals in genomic sequence alignments to identify functional elements. *Genome Res.* 2006; 16:1596–1604. [PubMed: 17053093]
42. Lim E, et al. Aberrant luminal progenitors as the candidate target population for basal tumor development in BRCA1 mutation carriers. *Nat. Med.* 2009; 15:907–913. [PubMed: 19648928]
43. Chen YJ, et al. PAX8 regulates telomerase reverse transcriptase and telomerase RNA component in glioma. *Cancer Res.* 2008; 68:5724–5732. [PubMed: 18632625]
44. Colgin LM, et al. The hTERTalpha splice variant is a dominant negative inhibitor of telomerase activity. *Neoplasia.* 2000; 2:426–432. [PubMed: 11191109]
45. Saeboe-Larssen S, Fosberg E, Gaudernack G. Characterization of novel alternative splicing sites in human telomerase reverse transcriptase (hTERT): analysis of expression and mutual correlation in mRNA isoforms from normal and tumour tissues. *BMC. Mol. Biol.* 2006; 7:26. [PubMed: 16939641]
46. Kilian A, et al. Isolation of a candidate human telomerase catalytic subunit gene, which reveals complex splicing patterns in different cell types. *Hum. Mol. Genet.* 1997; 6:2011–2019. [PubMed: 9328464]
47. Wick M, Zubov D, Hagen G. Genomic organization and promoter characterization of the gene encoding the human telomerase reverse transcriptase (hTERT). *Gene.* 1999; 232:97–106. [PubMed: 10333526]
48. Desmet FO, et al. Human Splicing Finder: an online bioinformatics tool to predict splicing signals. *Nucleic Acids Res.* 2009; 37:e67. [PubMed: 19339519]
49. Integrated genomic analyses of ovarian carcinoma. *Nature.* 2011; 474:609–615. [PubMed: 21720365]
50. Weischer M, et al. Short telomere length, myocardial infarction, ischemic heart disease, and early death. *Arterioscler. Thromb. Vasc. Biol.* 2012; 32:822–829. [PubMed: 22199369]
51. Codd V, et al. Common variants near TERC are associated with mean telomere length. *Nat. Genet.* 2010; 42:197–199. [PubMed: 20139977]
52. Levy D, et al. Genome-wide association identifies OBFC1 as a locus involved in human leukocyte telomere biology. *Proc. Natl. Acad. Sci. U. S. A.* 2010; 107:9293–9298. [PubMed: 20421499]
53. Willeit P, et al. Telomere length and risk of incident cancer and cancer mortality. *JAMA.* 2010; 304:69–75. [PubMed: 20606151]
54. Kote-Jarai Z, et al. Fine-mapping identifies multiple prostate cancer risk loci on 5p15, one of which associates with *TERT* expression. *Hum. Mol. Genet.* 2013 Submitted.

55. Krtolica A, et al. Senescent fibroblasts promote epithelial cell growth and tumorigenesis: a link between cancer and aging. *Proc. Natl. Acad. Sci. U. S. A.* 2001; 98:12072–12077. [PubMed: 11593017]
56. Lawrenson K, et al. Senescent fibroblasts promote neoplastic transformation of partially transformed ovarian epithelial cells in a three-dimensional model of early stage ovarian cancer. *Neoplasia.* 2010; 12:317–325. [PubMed: 20360942]
57. McKay JD, et al. Lung cancer susceptibility locus at 5p15.33. *Nat. Genet.* 2008; 40:1404–1406. [PubMed: 18978790]
58. Shen J, et al. Multiple genetic variants in telomere pathway genes and breast cancer risk. *Cancer Epidemiol. Biomarkers Prev.* 2010; 19:219–228. [PubMed: 20056641]
59. Hu Z, et al. A genome-wide association study identifies two new lung cancer susceptibility loci at 13q12.12 and 22q12.2 in Han Chinese. *Nat. Genet.* 2011; 43:792–796. [PubMed: 21725308]
60. Mushiroda T, et al. A genome-wide association study identifies an association of a common variant in TERT with susceptibility to idiopathic pulmonary fibrosis. *J. Med. Genet.* 2008; 45:654–656. [PubMed: 18835860]
61. Truong T, et al. Replication of lung cancer susceptibility loci at chromosomes 15q25, 5p15, and 6p21: a pooled analysis from the International Lung Cancer Consortium. *J. Natl. Cancer Inst.* 2010; 102:959–971. [PubMed: 20548021]
62. Zou P, et al. The TERT rs2736100 Polymorphism and Cancer Risk: A Meta-analysis Based on 25 Case-Control Studies. *BMC. Cancer.* 2012; 12:7. [PubMed: 22221621]
63. Zhao Y, et al. Fine-mapping of a region of chromosome 5p15.33 (TERT-CLPTM1L) suggests a novel locus in TERT and a CLPTM1L haplotype are associated with glioma susceptibility in a Chinese population. *Int. J. Cancer.* 2011
64. Takubo K, et al. Telomere lengths are characteristic in each human individual. *Exp. Gerontol.* 2002; 37:523–531. [PubMed: 11830355]
65. Gadalla SM, et al. Telomere length in blood, buccal cells, and fibroblasts from patients with inherited bone marrow failure syndromes. *Aging (Albany. NY).* 2010; 2:867–874. [PubMed: 21113082]
66. Thomas P, O' Callaghan NJ, Fenech M. Telomere length in white blood cells, buccal cells and brain tissue and its variation with ageing and Alzheimer's disease. *Mech. Ageing Dev.* 2008; 129:183–190. [PubMed: 18242664]
67. Greider CW, Blackburn EH. Identification of a specific telomere terminal transferase activity in Tetrahymena extracts. *Cell.* 1985; 43:405–413. [PubMed: 3907856]
68. Choi J, et al. TERT promotes epithelial proliferation through transcriptional control of a Myc- and Wnt-related developmental program. *PLoS Genet.* 2008; 4:e10. [PubMed: 18208333]
69. Park JI, et al. Telomerase modulates Wnt signalling by association with target gene chromatin. *Nature.* 2009; 460:66–72. [PubMed: 19571879]
70. Mukherjee S, et al. Separation of telomerase functions by reverse genetics. *Proc. Natl. Acad. Sci. U. S. A.* 2011; 108:E1363–E1371. [PubMed: 21949400]
71. Gaudet M, et al. Identification of a *BRCA2*-specific Modifier Locus at 6p24 Related to Breast Cancer Risk. *PLoS Genet.* 2013 Accepted.
72. Azzato EM, et al. Association between a germline OCA2 polymorphism at chromosome 15q13.1 and estrogen receptor-negative breast cancer survival. *J. Natl. Cancer Inst.* 2010; 102:650–662. [PubMed: 20308648]
73. Bojesen SE, Tybjaerg-Hansen A, Nordestgaard BG. Integrin beta3 Leu33Pro homozygosity and risk of cancer. *J. Natl. Cancer Inst.* 2003; 95:1150–1157. [PubMed: 12902444]
74. Allin KH, Bojesen SE, Nordestgaard BG. Baseline C-reactive protein is associated with incident cancer and survival in patients with cancer. *J. Clin. Oncol.* 2009; 27:2217–2224. [PubMed: 19289618]
75. Allin KH, et al. C-reactive protein and the risk of cancer: a mendelian randomization study. *J. Natl. Cancer Inst.* 2010; 102:202–206. [PubMed: 20056955]
76. Zacho J, et al. Genetically elevated C-reactive protein and ischemic vascular disease. *N. Engl. J. Med.* 2008; 359:1897–1908. [PubMed: 18971492]

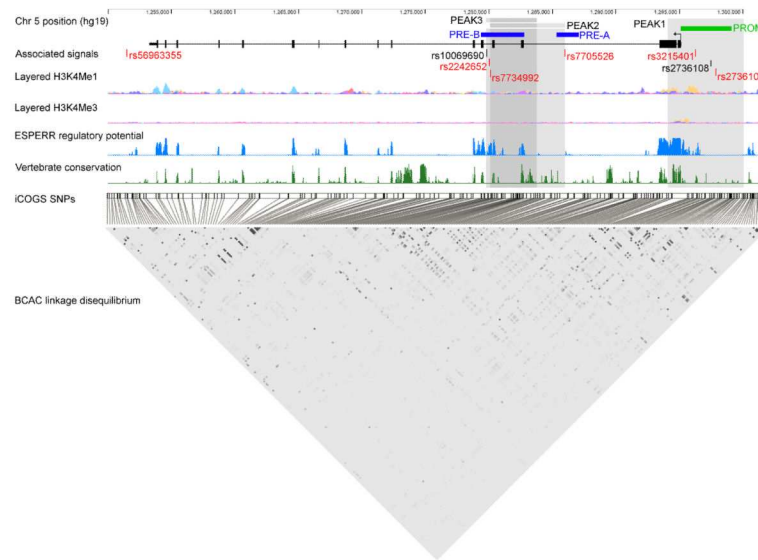
77. Sankararaman S, et al. Estimating local ancestry in admixed populations. *Am. J. Hum. Genet.* 2008; 82:290–303. [PubMed: 18252211]
78. Terry KL, et al. Telomere length and genetic variation in telomere maintenance genes in relation to ovarian cancer risk. *Cancer Epidemiol. Biomarkers Prev.* 2012; 21:504–512. [PubMed: 22267287]
79. Cawthon RM. Telomere measurement by quantitative PCR. *Nucleic Acids Res.* 2002; 30:e47. [PubMed: 12000852]
80. Cawthon RM. Telomere length measurement by a novel monochrome multiplex quantitative PCR method. *Nucleic Acids Res.* 2009; 37:e21. [PubMed: 19129229]
81. STATA, SE. Windows. StataCorp.; College Station, TX: 2012.
82. Barnes DR, et al. Evaluation of association methods for analysing modifiers of disease risk in carriers of high-risk mutations. *Genet. Epidemiol.* 2012; 36:274–291. [PubMed: 22714938]
83. Antoniou AC, et al. A locus on 19p13 modifies risk of breast cancer in BRCA1 mutation carriers and is associated with hormone receptor-negative breast cancer in the general population. *Nat. Genet.* 2010; 42:885–892. [PubMed: 20852631]
84. Antoniou AC, et al. A weighted cohort approach for analysing factors modifying disease risks in carriers of high-risk susceptibility genes. *Genet. Epidemiol.* 2005; 29:1–11. [PubMed: 15880399]
85. Eirew P, et al. A method for quantifying normal human mammary epithelial stem cells with in vivo regenerative ability. *Nat. Med.* 2008; 14:1384–1389. [PubMed: 19029987]



**Figure 1.**

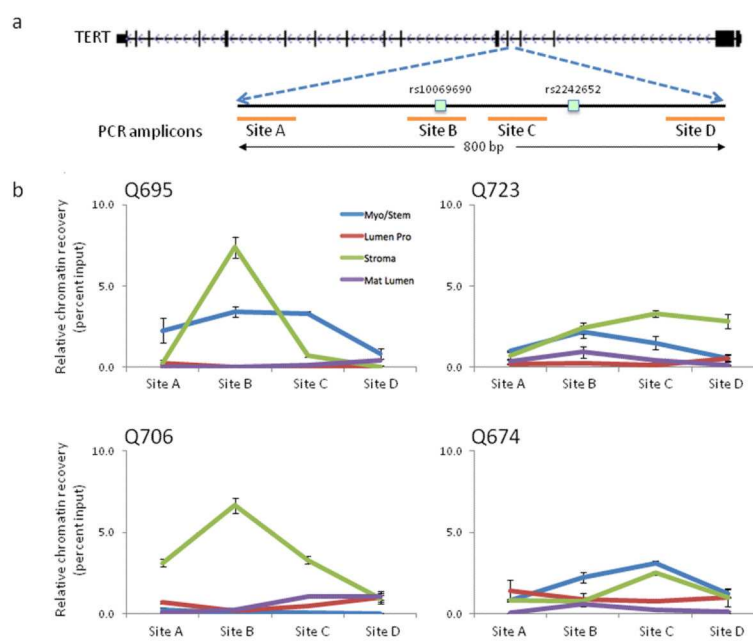
Association results for all SNPs for seven phenotypes including: (a) telomere length, (b) overall breast cancer, (c) breast cancer risk in *BRCA1* mutation carriers, (d) ER-negative breast cancer, (e) ER-positive breast cancer, (f) serous low malignant potential (LMP) ovarian cancer and (g) serous invasive ovarian cancer. Directly-genotyped SNPs are represented by solid black circles and imputed SNPs ( $r^2 > 0.3$ , minor allele frequency (MAF)  $> 0.02$ ) as open red circles, plotted as the negative log of the  $P$ -value against relative position across the locus. Schematics of the gene structures are shown above panel a. Association peaks, as described in the text are labeled at the top of the figure, and are shown as grey regions, when appropriate.



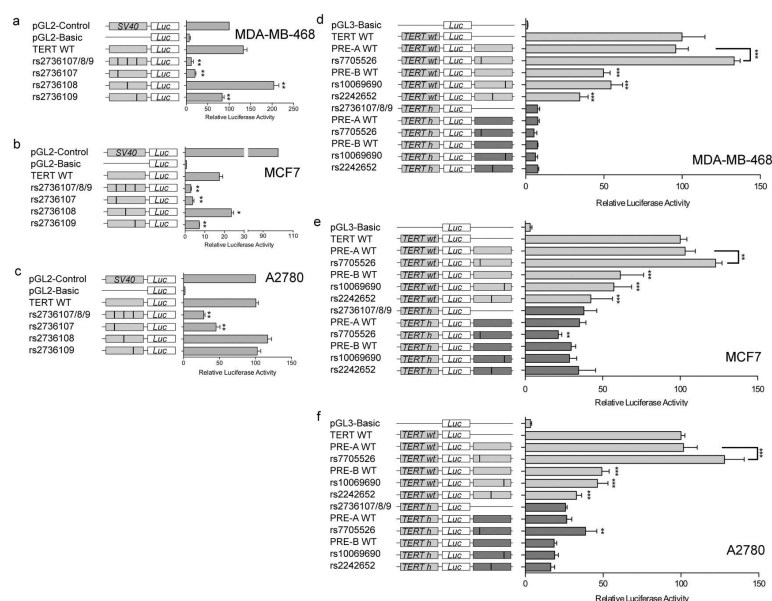


**Figure 2.**

Associated signals within the *TERT* gene. Peak regions described in the text are labeled: Peaks 2 and 3 overlap around introns 2–4, and Peak 1 encompasses the promoter. The positions of associated SNPs are shown as black and red ticks representing genotyped and imputed SNPs, respectively. The *TERT* gene structure is depicted with exons (boxes) joined by introns (lines). The positions of all analyzed iCOGS SNPs are marked. Data from the UCSC genome browser including epigenetic marks for H3K4Me1 and H3K4Me3, ESPERR regulatory potential, and vertebrate conservation tracks are shown. Regions cloned into reporter constructs are depicted as the green bar (*TERT* promoter) or blue bars (PRE-A and PRE-B). The pattern of linkage disequilibrium based on the BCAC population is shown where white represents  $r^2=0$  and black  $r^2=1$ .



**Figure 3.** Open chromatin signatures around rs10069690. (A) Map of the PCR amplicon sites A-D used to annotate a 1 kilobase region surrounding rs10069690 and rs2442652. Primer sequences are listed in Supplementary Table 11. (B) PCR analysis of FAIRE-processed chromatin from FACS-sorted myoepithelial/stem, luminal progenitor, mature luminal and stromal cell enriched fractions derived from breast tissues of four subjects Q695, Q723, Q706, and Q674. Error bars represent standard errors of triplicate PCR reactions.

**Figure 4.**

*TERT* promoter and putative regulatory element (PRE) activity. Luciferase reporter assays following transient transfection of ER-negative breast cancer cell line (MDA-MB-468), ER-positive breast cancer cell line (MCF7), and ovarian cancer cell line (A2780). Error bars represent standard error between at least three separate experiments. (a-c) Luciferase reporter assays following transient transfection with pGL2-control (SV40 promoter and enhancer), pGL2-basic (lacks promoter and enhancer), and the *TERT* reporter vectors *TERT* wildtype (wt) (3.9kb of *TERT* promoter), the minor (T) alleles of rs2736107, rs2736108, rs2736109, and rs2736107/8/9 (T-alleles at all sites). Comparisons with *TERT*wt performed using one-way ANOVA with post hoc Dunnett's tests are represented by \*\* ( $P$ -value <0.001) and \* ( $P$ -value 0.005).

(d-f) PRE-A or PRE-B were cloned downstream of either the *TERT*wt or *TERT* rs2736107/8/9 (*TERT*<sub>th</sub>) promoter-driven reporters with and without SNPs rs10069690, rs2242652 and rs7705526. Comparisons with *TERT*wt or *TERT*<sub>th</sub> performed using one way ANOVA with post hoc Dunnett's tests are represented by \*\*\* ( $P$ -value <0.0001) and \*\* ( $P$ -value <0.001).

**Table 1**  
**Independently-associated SNPs for each phenotype**

The independently-associated SNPs are shown for each phenotype following the forward conditional stepwise logistic regression analysis of overall breast cancer and estrogen receptor subgroups in European individuals in BCAC, invasive and LMP subgroups in OCAC, relative change of telomere length (RTL) in the SEARCH and CCHS combined data following the forward stepwise linear regression analysis, and CIMBA *BRCA1* mutation carriers, following the forward stepwise Cox regression. These analyses were performed on all SNPs with MAF>0.02 and  $P<10^{-4}$  in the single SNP analyses.

	SNP	Chr5 position	<i>TERT</i> Peak	Source	Effect (95%CI)	P-Trend
<b>Telomere length (RTL)</b>						
BCAC (SEARCH & CCHS)						
<i>n=15567</i>	rs2736108	1297488	1	Genotyped	1.010 (1.004–1.016)	0.0004
	rs7705526	1285974	2	Imputed	1.019 (1.014–1.025)	2.47E-11
<b>Overall breast cancer</b>						
BCAC						
<i>46451 cases, 42599 controls</i>	rs3215401	1296255	1	Imputed	0.94 (0.91–0.96)	9.91E-10
	rs7734992	1280128	2	Imputed	1.06 (1.04–1.08)	1.73E-07
	rs56963355	1251503	None	Imputed	0.90 (0.84–0.95)	1.95E-05
<b>Risk of breast cancer in <i>BRCA1</i> carriers</b>						
CIMBA						
<i>n=11705</i>	rs2736108	1297488	1	Genotyped	0.92 (0.88–0.96)	5.12E-05
	rs10069690	1279790	3	Genotyped	1.16 (1.11–1.21)	4.83E-13
<b>Estrogen receptor negative breast cancer</b>						
BCAC						
<i>7435 cases, 41575 controls</i>	rs3215401	1296255	1	Imputed	0.91 (0.86–0.95)	6.15E-06
	rs2242652	1280028	3	Imputed	1.15 (1.10–1.20)	4.29E-09
<b>Estrogen receptor positive breast cancer</b>						
BCAC						
<i>27074 cases, 41749 controls</i>	rs2736107	1297854	1	Imputed	0.95 (0.92–0.97)	3.32E-05
<b>Serous LMP ovarian cancer</b>						
OCAC						
<i>986 cases, 23491 controls</i>	rs7705526	1285974	2	Imputed	1.51 (1.36–1.67)	1.34E-15
<b>Serous invasive ovarian cancer</b>						
OCAC						
<i>8371 cases, 23491 controls</i>	rs10069690	1279790	3	Genotyped	1.15 (1.11–1.20)	1.25E-11



Table 2

Peaks and the seven studied phenotypes

Significant SNPs per peak per phenotype in the *TERT* fine mapping region of Chromosome 5 from position 1227014 to 1227014 and minor alleles are from the genotyping assay and not necessarily from the coding strand. The change in length is given as fold-change (RTL) with respect to the estimated telomere length for the common homozygote per SNP, both for breast and ovarian cancer (Methods). All breast and ovarian cancer risk results are given as odds ratios (OR) with 95% confidence intervals (CI). For breast cancer, carrier risk results are given as hazard ratios (HR) with 95% CI. All SNPs that cannot be excluded as >100× worse than the best SNP for each phenotype are listed. The independent Peaks 1–3 were localized using forward conditional analyses described in the Methods. The results of the SNPs emerging as most significant in the forward conditional analyses, and described further in Table 1, are marked with an asterisk. Genotyped SNPs are marked with a hash (#) and directly genotyped variant.

Allele	MAF	Telomere length change RTL (95% CI), <i>P</i> -trend	Overall breast cancer risk OR (95% CI), <i>P</i> -trend	Risk of breast cancer in <i>BRCA1</i> Carriers HR (95% CI), <i>P</i> -trend	Estrogen receptor negative breast cancer risk OR (95% CI), <i>P</i> -trend	Estrogen receptor positive breast cancer risk OR (95% CI), <i>P</i> -trend	Serous low malignant potential ovarian cancer risk OR (95% CI), <i>P</i> -trend	Serous invasive epithelial ovarian cancer risk OR (95% CI), <i>P</i> -trend
	0.28	1.016 (1.009–1.022), 8.33E-07	0.93 (0.91–0.96), 7.95E-10	0.90 (0.86–0.95), 0.00013	0.88 (0.83–0.93), 1.41E-08	<b>*0.95 (0.92–0.97), 3.32E-05</b>	1.01 (0.91–1.11), 0.909	0.98 (0.94–1.02), 0.301
	0.29	<b>*1.027 (1.010–1.024), 5.81E-07</b>	0.94 (0.92–0.95), 6.73E-09	*0.89 (0.85–0.94), 1.05E-05	0.89 (0.84–0.93), 1.01E-08	0.96 (0.93–0.98), 0.00051	1.00 (0.91–1.10), 0.996	0.98 (0.94–1.02), 0.238
	0.27	1.016 (1.009–1.023), 7.13E-06	0.94 (0.92–0.96), 1.20E-08	<b>0.88 (0.84–0.93), 1.04E-05</b>	0.88 (0.84–0.92), 1.21E-08	0.96 (0.93–0.98), 0.00083	1.02 (0.92–1.13), 0.762	0.98 (0.94–1.02), 0.324
	0.27	1.016 (1.009–1.023), 7.13E-06	0.94 (0.92–0.96), 1.91E-08	0.89 (0.84–0.94), 1.90E-05	0.88 (0.84–0.93), 1.37E-08	0.96 (0.93–0.98), 0.00051	1.02 (0.92–1.13), 0.769	0.98 (0.94–1.02), 0.351
	0.30	1.016 (1.009–1.023), 1.63E-06	<b>*0.94 (0.91–0.96), 4.68E-10</b>	0.90 (0.85–0.94), 3.05E-05	<b>*0.88 (0.84–0.92), 1.19E-09</b>	0.95 (0.93–0.98), 0.0012	1.01 (0.91–1.11), 0.908	0.98 (0.94–1.01), 0.188
	0.30	1.016 (1.009–1.024), 2.95E-06	0.94 (0.92–0.96), 4.01E-09	0.90 (0.85–0.94), 4.26E-05	0.88 (0.84–0.92), 2.60E-09	0.96 (0.93–0.98), 0.00034	1.01 (0.91–1.11), 0.893	0.97 (0.94–1.01), 0.204
	0.27	1.016 (1.010–1.024), 1.35E-06	0.93 (0.91–0.96), 6.65E-10	0.89 (0.85–0.94), 4.22E-05	0.88 (0.84–0.93), 2.41E-08	0.95 (0.92–0.97), 4.58E-05	1.00 (0.91–1.11), 0.935	0.97 (0.93–1.01), 0.152
	0.33	<b>*1.026 (1.019–1.033), 2.32E-14</b>	1.04 (1.02–1.06), 0.00011	1.04 (0.99–1.10), 0.120	1.06 (1.02–1.10), 0.0035	1.04 (1.01–1.06), 0.0049	<b>*1.51 (1.36–1.67), 1.34E-15</b>	1.11 (1.06–1.15), 6.38E-07
	0.34	1.025 (1.018–1.031), 1.93E-13	1.04 (1.02–1.06), 4.75E-05	1.08 (1.03–1.14), 0.002	1.08 (1.04–1.12), 9.68E-05	1.03 (1.01–1.06), 0.014	1.49 (1.35–1.64), 2.18E-15	1.13 (1.08–1.17), 5.38E-09
	0.35	1.021 (1.015–1.028), 1.10E-10	1.04 (1.02–1.06), 1.95E-05	1.10 (1.05–1.16), 7.47E-05	1.08 (1.04–1.12), 9.29E-05	1.03 (1.01–1.06), 0.0083	1.42 (1.29–1.56), 7.24E-13	1.12 (1.08–1.17), 2.08E-09
	0.34	1.024 (1.017–1.031), 4.52E-13	1.05 (1.03–1.07), 1.29E-05	1.09 (1.04–1.15), 0.00047	1.09 (1.05–1.13), 2.23E-05	1.03 (1.01–1.06), 0.0090	1.44 (1.31–1.59), 4.50E-14	1.12 (1.08–1.17), 4.59E-09
CC/G	0.37	1.023 (1.016–1.029), 1.62E-11	1.05 (1.03–1.07), 1.62E-05	1.10 (1.04–1.15), 0.00038	1.10 (1.06–1.14), 5.02E-06	1.03 (1.00–1.05), 0.021	1.44 (1.30–1.59), 9.83E-13	1.12 (1.08–1.17), 9.46E-09
	0.43	1.019 (1.013–1.025), 2.23E-09	<b>*1.05 (1.03–1.07), 2.06E-06</b>	1.10 (1.05–1.15), 0.00017	1.10 (1.06–1.14), 1.57E-06	1.03 (1.01–1.06), 0.0053	1.45 (1.31–1.59), 5.25E-14	1.12 (1.08–1.16), 2.75E-09
	0.22	1.012 (1.005–1.020), 0.0010	1.07 (1.04–1.09), 1.02E-07	1.19 (1.12–1.25), 5.61E-09	1.17 (1.12–1.21), 2.34E-11	1.04 (1.01–1.06), 0.014	1.45 (1.30–1.61), 1.96E-11	1.15 (1.10–1.20), 3.04E-09
	0.20	1.009 (1.002–1.017), 0.016	1.06 (1.03–1.08), 6.82E-06	1.25 (1.18–1.32), 6.89E-14	<b>*1.18 (1.14–1.23), 1.23E-12</b>	1.02 (0.99–1.05), 0.131	1.40 (1.25–1.56), 4.45E-09	1.17 (1.12–1.22), 4.85E-11

NIH-PA Author Manuscript								
allele	MAF	Telomere length change	Overall breast cancer risk	Risk of breast cancer in <i>BRCA1</i> Carriers	Estrogen receptor negative breast cancer risk	Estrogen receptor positive breast cancer risk	Serous low malignant potential ovarian cancer risk	Serous invasive epithelial ovarian cancer risk
		RTL (95%CI), <i>P</i> -trend	OR (95%CI), <i>P</i> -trend	HR (95%CI), <i>P</i> -trend	OR (95%CI), <i>P</i> -trend	OR (95%CI), <i>P</i> -trend	OR (95%CI), <i>P</i> -trend	OR (95%CI), <i>P</i> -trend
	0.26	1.009 (1.002–1.016), 0.013	1.06 (1.04–1.08), 2.43E-08	<b>*1.23 (1.16–1.29), 1.60E-14</b>	1.16 (1.12–1.20), 1.68E-12	1.03 (1.01–1.06), 0.011	1.33 (1.20–1.47), 2.49E-08	<b>*1.15 (1.11–1.20), 1.25E-11</b>