



Published in final edited form as:

Annu Rev Biomed Eng. 2011 August 15; 13: . doi:10.1146/annurev-bioeng-071910-124729.

Multiscale Cancer Modeling

Thomas S. Deisboeck^{#1,§}, Zhihui Wang^{#1}, Paul Macklin², and Vittorio Cristini^{3,4}

¹Harvard-MIT (HST) Athinoula A. Martinoula Center for Biomedical Imaging, Massachusetts General Hospital, Harvard Medical School, Charlestown, Massachusetts 02129

²Division of Mathematics, University of Dundee, Dundee DD1 4HN, United Kingdom

³Department of Pathology, University of New Mexico, Albuquerque, New Mexico 87131

⁴Department of Chemical and Biomedical Engineering, University of New Mexico, Albuquerque, NM 87131]

These authors contributed equally to this work.

Abstract

Simulating cancer behavior across multiple biological scales in space and time, i.e., multiscale cancer modeling, is increasingly being recognized as a powerful tool to refine hypotheses, focus experiments, and enable more accurate predictions. A growing number of examples illustrate the value of this approach in providing quantitative insight on the initiation, progression, and treatment of cancer. In this review, we introduce the most recent and important multiscale cancer modeling works that have successfully established a mechanistic link between different biological scales. Biophysical, biochemical, and biomechanical factors are considered in these models. We also discuss innovative, cutting-edge modeling methods that are moving predictive multiscale cancer modeling toward clinical application. Furthermore, because the development of multiscale cancer models requires a new level of collaboration among scientists from a variety of fields such as biology, medicine, physics, mathematics, engineering, and computer science, an innovative Web-based infrastructure is needed to support this growing community.

Keywords

cancer systems biology; discrete; continuum; hybrid; clinical translation; personalized medicine

1. INTRODUCTION

Cancer is a class of diseases characterized by out-of-control cell growth and tissue invasion. Because cancer initiation seems to depend on a series of genetic mutations affecting intrinsic cellular programs, to date, the vast majority of cancer research has focused on the identification and characterization of these genetic and molecular properties of cancer cells themselves (1). However, tumors are also heterogeneous cellular entities whose growth is dependent upon dynamical interactions among the cancer cells themselves, and between cells and the constantly changing microenvironment (2). For example, such interactions include signaling through cell adhesion molecules such as cadherins and integrins (3) and differential cell responses to growth factors and other external signals (4). All of these

§deisboec@helix.mgh.harvard.edu.

DISCLOSURE STATEMENT The authors are not aware of any affiliations, memberships, funding, or financial holdings that might be perceived as affecting the objectivity of this review.

interactive processes act together to control cell phenotypic behaviors such as proliferation, apoptosis, and migration. There is increasing consensus that these dynamic interactions cannot be investigated purely by using biological experiments, since experimental complexity usually restricts the accessible spatial and temporal scales of observations. Consequently, as of late, there is a transition within the cancer research community to treat and study cancer as a *systems* disease.

Cancer systems biology is a newly emerging field that uses an interdisciplinary approach to provide the systemic understanding of cancer initiation and progression by investigating how individual components interact to give rise to the function and behavior of the cancerous system as a whole (5). It seeks to decipher emergent behavior rather than to focus only on the system's constituents' properties. In addition to conventional biological and medical experiments, a systems approach often involves mathematical and computational modeling to interpret and integrate the massive amount of data that experimentalists are currently uncovering, especially in molecular and cell biology (6). *In silico* cancer models are necessarily simplified, yet we argue can provide adequate representations of a particular cancer phenomenon to be investigated. In fact, such a theoretical approach has been increasingly recognized as having the capability 1) to simulate experimental procedures and to optimize and predict clinical therapies and outcome, and 2) to test and refine medical hypotheses (7). The development of a successful *in silico* cancer model is a long-term process, expected to be iteratively conducted, with available experimental data used to guide the model design, and to verify and validate model results.

Most current computational cancer models focus on cancer behaviors that occur at a single biological scale (7), and the decades of dedicated efforts by cancer modelers have made scale-specific models not only possible, but advanced enough to be practical for applications in oncology (8). However, because cancer growth and invasion indeed span multiple scales, using a scale-specific model is insufficient to uncover cross-scale mechanisms let alone to render predictions about the clinical outcome of the disease system as a whole (9). Modeling cancer *across* different biological scales has recently begun to play a more important role in moving the field of cancer systems biology towards clinical implementation. In the context of biology and physiology at large, a model is considered to be “multiscale” if it spans two or more different spatial scales and/or includes processes that occur at two or more temporal scales. Because a multiscale cancer model has to quantify parameters on, and relationships between biological processes that occur at different scales, the complexity of model development is significantly increased.

In this review, we present representative works that have investigated key questions on cancer progression, invasion, angiogenesis and metastasis using a multiscale modeling approach. Systems approaches emphasize the integration and coordination between computational modeling and experimental efforts. Hence, attention will be given to the evaluation of the models' capacity to account for *in vitro*, *in vivo*, or clinical data, and more importantly, an analysis of how the computational findings drive new hypotheses for further experimental investigation.

2. MULTISCALE CANCER MODELING

Multiscale cancer modelers already have a wealth of useful, mostly scale-specific resources to refer to or base their innovative work on, but they also face the enormous challenge of developing more realistic and more accurate predictive models. The fundamental reason is that, when considering the increasing number of components at multiple scales (whether in time or space), more model parameters and the relationships between them will have to be defined, quantified, and frequently adjusted according to data from the literature, from

experiments or clinics. Additionally, defining the linkage between different scales poses a significant barrier to model development; in many cases, the link is bidirectional, meaning that higher- and lower-level variables, parameters, and functions characterizing the model are influenced by each other. Furthermore, it has proven challenging to adaptively interface discrete (individual-based) and continuum (population-based) models while 1) ensuring mathematical consistency between the models, and 2) adequately conserving mass and momentum when switching between the models; indeed, these are continuing challenges in cutting-edge scientific computing (10-11). Generally, when developing a multiscale cancer model, particularly if with a clinical application in mind, it is imperative to maximize the accuracy and predictive power of the model while at the same time constraining the size of the model as much as possible in order to produce tractable results within a reasonable time frame.

2.1. Concept: Integration of multiple hierarchies (in space and time)

Various definitions of biological scales have been created in different life sciences fields (see (12) for an excellent review). We focus our discussion of multiscale on four main biological spatial scales: atomic, molecular, microscopic, and macroscopic (Figure 1). While each of these spatial scales may have multiple temporal scales, biological processes that take place at a lower-scale generally happen much faster than those at a higher-scale, i.e., spatial and temporal scales tend to vary together, with slower to faster at the temporal scale corresponding to smaller to larger at the spatial scale. In the following, we briefly explain what processes occur at each of these four spatial scales and the main methods employed to simulate these processes, all from the cancer modeling perspective and practice. We note here that, as also commented in (12), model design and development should take into account the nature of the system being modeled rather than simply follow an invariable hierarchical structure. That is, depending on modeling purpose, it is no violation to merge two of the levels discussed here or to split one or more of them into distinct sub-levels.

Atomic scale—This scale is used to study the structure and dynamic properties of proteins, peptides, and lipids, as well as their dependence on the features of the environment or on ligand binding (13). The most common modeling method used at this scale is molecular dynamics (MD) simulation, where atoms and molecules are allowed to interact for a period of time. Atomic-scale models deal with length scales in the order of nm and time scales of ns.

Molecular scale—Models at this scale do not represent the molecular dynamics of individual proteins, but represent an average of the properties of a population of proteins. Cell signaling mechanisms, the natural regulators of biological systems, are usually investigated at this scale (14). Analysis of this scale constitutes an intensely active field of biomedical research and has the potential to provide new therapeutic targets to combat disease. Signal transduction starts with the binding of extracellular molecules (ligands) to cell-surface receptors, and ends with a change in cell function. Most of the current modeling efforts focus on this scale, adding insights into quantifying signal-response relationships and signaling events that control cellular responses (15). Ordinary differential equations (ODEs) are often used to represent biochemical reactions contained in a signaling pathway. Molecular-scale models deal with length scales in the order of nm~ μ m and time scales of μ s~s.

Microscopic scale—This scale is also referred to as the tissue or multicellular scale, and in our definition, it also includes the cellular scale (i.e., single cell behaviors and properties). Individual cells are contained in a selectively permeable cell membrane (16). Models at this scale must suitably describe the malignant transformation of normal cells, associated

alterations of cell–cell and cell–matrix interactions, the heterogeneous tumor environment and the element of tumor heterogeneity. These models usually use partial differential equations (PDEs) or agent-based modeling (ABM) rather than ODEs to simulate these factors and processes. The simulation run time can increase substantially if individual cell behaviors are investigated in fine detail. Tissue-scale models deal with length scales in the order of μm – mm and time scales of min – hour .

Macroscopic scale—Models at this scale focus on the dynamics of the gross tumor behavior including morphology, shape, extent of vascularization, and invasion, under different environmental conditions (17). Microscopic details of tissue structure are averaged over short spatial scales to produce a description of the macroscopic-level tissue properties. At this scale, because the number of cells in the model is sufficiently large, it becomes possible and sometimes necessary to treat some or all of the cells as a single continuum. This in turn allows for cell and substrate transport to be modeled with conservation laws for spatiotemporally-varying densities (i.e., PDEs), rather than keeping track of individual cell activities. Models generally consider cell responses to gradient fields of diverse origins, such as concentration gradients of diffusible or non-diffusible molecules as well as strain and stress gradients generated by the growing tumor mass. Macroscopic-scale models deal with length scales on the order of mm – cm and time scales of day – ear .

Since lower-level processes are much faster, it is reasonable to assume that they are in quasi-equilibrium with the slower, higher-level processes, i.e., lower-level processes can be included at the higher level via e.g. constitutive equations or force fields (18). For example, if a reaction occurs on a very fast time scale, then we can assume that the chemicals in that reaction are in equilibrium. This assumption eliminates one of the differential equations from the integrated system, making its solution more straightforward and less computationally intensive, while still maintaining the accuracy of the model. This type of multiscale modeling, where lower-level processes (small spatial scales, fast dynamics) are coupled to higher-level processes (large spatial scales, slow dynamics), has received the most attention in the current quantitative cancer research field, and is particularly useful when developing multiscale models because the system of governing equations is generally large.

2.2. Modeling Techniques: discrete, continuum, hybrid [Summary box]

Modeling cancer behaviors can involve techniques that are *discrete*, *continuum*, or *hybrid*, i.e. the integration of both [see **Summary box**]. Continuum models are capable of capturing larger-scale volumetric tumor growth dynamics (which are also accessible to conventional clinical imaging modalities) at a comparatively lesser computational cost (19). Continuum descriptions of tumor growth are also to some degree supported by fundamental physical principles, and thus benefit from the knowledge gained in this field (20). Despite these advantages, the averaging over space realized in continuum formalisms often cannot fully account for the diversity of cellular and sub-cellular dynamical features as well as genetic or epigenetic regulatory mechanisms exhibited at the individual cell level. In other words, a continuum technique is often a lesser choice when exploring tumor heterogeneity when the cell properties vary over small spatiotemporal scales, which is an inherent feature of cancer cells (21). Moreover, continuum models cannot easily describe processes where individual cell effects are important or dominate, such as the epithelial–mesenchymal transition (EMT) process (22). Alternatively, discrete models are suitable to address these shortcomings, since they operate at the scale of individual cells or cell clusters. Discrete models can easily incorporate biological rules (based on biomedical data or data-driven assumptions), such as those defining cell–cell and cell–matrix interactions involved in both chemotaxis and haptotaxis. However, discrete techniques also have drawbacks. The most serious one is the

large computational demand when modeling each cell in fine detail, which limits the model to a relatively small number of cells. As a result, a typical discrete model is usually designed with a sub-millimeter or lower domain size (23). Furthermore, some effects (e.g., tissue biomechanics) are best described at the macroscopic scale with continuum techniques (11). For these reasons, cancer modelers are increasingly turning to hybrid techniques that combine the benefits of both continuum and discrete descriptions. In fact, in current discrete-based cancer models, extracellular factors are often modeled as continuous quantities, thereby rendering the models hybrid in nature (9, 23).

2.3. Case Studies

Regardless of which techniques are used to develop a cancer model, all of them are abstractions of reality. All hypotheses on which the models are based will eventually prove to be incomplete in one way or another (27). However, models have the advantage of being quantitative and interactive rather than solely descriptive. Thus, modeling and experimentation in cancer research can and should work cooperatively, supplement, and promote each other. In the following, we highlight some of the most recent and representative multiscale modeling works that demonstrate the importance and necessity of this approach in current cancer research.

2.3.1. Atomic – Molecular—Signaling pathways induced by growth factors and mediated by receptors are responsible for transmitting information into the cell to regulate a diverse array of cellular processes including proliferation, migration, differentiation, and apoptosis. Molecular alterations (mutation, overexpression, or underexpression of genes or proteins) of these pathways contribute to cancer initiation and progression. It has been found that differential phosphorylation rates are associated with different phosphorylation docking sites in receptors, resulting in differing downstream signaling response. Therefore, understanding the effects of a receptor's different docking sites on preferential signaling will help differentiate signaling characteristics of mutant cell lines derived from cancer patients. In this section, we introduce such a modeling approach linking atomic and molecular scales that can be used to investigate the effects of point mutations on preferential downstream signaling response.

Transcribing the effects of molecular alterations in receptors to differing signaling response: Epidermal growth factor receptor (EGFR) is frequently overexpressed and mutated in a variety of cancers, and as a result, small molecule tyrosine kinase inhibitors for EGFR are of significant interest as anti-cancer drugs (28). It has been reported that cytosolic signaling proteins bind to different phospho-tyrosine docking sites of EGFR, which may cause differential patterns of EGFR downstream signaling (29). Hence, quantifying the difference in wild-type and mutant EGFR signaling and accounting for differential signaling through different phospho-tyrosines docking sites of EGFR is useful in identifying the role and significance of drug sensitizing mutations of EGFR in cancers.

Radhakrishnan and co-workers have been developing multiscale models across atomic and molecular scales to understand the mechanisms of how altered signaling induced by point-mutations in EGFR leads to the onset of oncogenic transformations. In models presented in (30-31), they mathematically implemented a wild-type and a mutant EGFR activation mechanism, which differ in that the wild-type receptor tyrosine kinase (RTK) initiates phosphorylation of C-terminal tail substrate tyrosines only as a dimer, whereas the mutants can initiate phosphorylation as a monomer and as a dimer. In order to translate these context-specific phospho-tyrosine mechanisms into differences in the downstream response, they introduced a branched signaling approach through EGFR. As shown in Figure 2, two parallel phosphorylation pathways are implemented, corresponding to tyrosine 1068

(Y1068) and tyrosine 1173 (Y1173), where phosphorylated Y1068 (pY1068) binds only to Gab-1 and Grb2, while phosphorylated Y1173 (pY1173) binds only to Shc. Accordingly, phosphorylation events at the Y1068 and Y1173 sites transduce signals through different signaling routes. This approach allows for transcribing the effects of somatic mutations (L834R and Del) in the EGFR to different downstream responses in phosphorylated ERK (ERK-p) and Akt (Akt-p) in the EGF-induced signaling pathway (31-32). Using these models, the authors predicted that the ratio of Akt-p/ERK-p increases in mutants compared to wild-type (33), and found that the perturbation of the phosphotyrosine kinetics of Y1068 and Y1173 through mutations is directly responsible for the differential signaling leading to preferential Akt activation. They also investigated the inhibitory effects of small molecule tyrosine kinase inhibitors on EGFR phosphorylation and downstream ERK and Akt activation.

Another major finding of their models is that the clinically identified mutations of EGFR kinase induce network fragility in the stabilizing interactions of the inactive kinase conformation. This in turn provides a persistent stimulus for kinase activation even in the absence of any growth factor. Moreover, parameters that drive network hypersensitivity through the enhancement of phosphorylated ERK and Akt levels show a striking correlation with observed mutations of specific proteins in oncogenic cell lines as well as the observed mechanisms of drug resistance to EGFR inhibition. Therefore, the authors suggested that cascading mechanisms of network hypersensitivity and fragility may enable molecular-level perturbations (clinical mutations) to induce oncogenic transformations and mechanisms of drug resistance (31-32). As a specific example, they described a possible mechanism for preferential Akt activation in non-small cell lung cancer (NSCLC) harboring EGFR activating mutations. This preferential Akt activation makes these mutant cell lines conducive to oncogenic addiction, and this pathway addiction mechanism also results in a remarkable sensitivity to EGFR kinase inhibition. These structural studies on kinase activation can be used to forecast the mutation landscape associated with other ErbB family members that may have not yet been reported (34).

2.3.2. Molecular – Microscopic—Cancer models across molecular and microscopic scales are important and necessary due to (at least) two characteristics of cancer. One is that cancer is widely viewed as a disease involving irreversible genomic changes affecting intrinsic cellular programs (1), and thus it is difficult for wet-lab cancer researchers to trust a cancer model which misses correlations of molecular-level alterations with cancer cell properties. The other is that cancer is a context-dependent disease (35): depending on different microenvironments, cancer cells and the emergent tumor exhibit different phenotypes and behaviors. Cancer models introduced in this section are discrete-based models because they need to function on a single cell level, and most of them use ABM technique. ABM is of particular interest to cancer modelers because it helps to address the role of diversity in cell populations and also within each individual cell, which in turn enables us to explore how cancer growth and invasion patterns (due to cell proliferation and migration) emerge as a result of individual dynamics, including cell-cell and cell-environment interactions and intracellular signaling of individual cells. In the following, we introduce the development of some of the most recent molecular-microscopic cancer models.

Signaling dynamics of individual cells influencing microscopic tumor outcome:

Deisboeck and coworkers have been working extensively on the development of molecular-microscopic ABMs to simulate tumor properties within both brain tumors and NSCLC. Their models aim to quantify the relationship between extracellular stimuli, intracellular signaling dynamics, and multicellular tumor growth and expansion. At the molecular level are signaling pathways induced by growth factors and mediated by growth factor receptors.

Similar to general pathway analysis studies, the pathway models are implemented using ODEs. At the microscopic level is a biochemical microenvironment constructed to represent a virtual tissue in a two dimensional (2D) or three dimensional (3D) domain. Heterogeneous environments are attained by distributing external diffusive chemical cues (such as growth factors, glucose, and oxygen tension) throughout the microenvironment. Throughout the simulation, the concentrations of the chemical cues are continuously diffused and updated at a fixed rate based on PDEs. Each cell carries a self-maintained signaling pathway or networked pathway combination, meaning that cells will differ in signaling profiles and thus will exhibit different phenotypic behaviors as the simulation progresses.

A molecular-level module, i.e., an EGFR signaling pathway, was first incorporated into a 2D brain tumor model to study and describe how context-dependent single-cell activities potentially affect the dynamics of the entire tumor system (36). In this model, an experimentally-supported molecularly-driven cellular phenotypic decision algorithm was established to link molecular changes to cell phenotype determinations. It is noteworthy that, for processing phenotype transitions, a series of subsequent modeling works all adopt this algorithm directly, or a variety of it. We briefly demonstrate how this algorithm determines the cell's migration fate. Experimental studies have shown that the transient acceleration of accumulating phospholipase C γ (PLC γ) levels leads to cell migration (37), and thus the rate of change of PLC γ can be used to determine the cellular migration decision. In this algorithm, the potential for any individual tumor cell to migrate was assessed by evaluating $M_n[(PLC\gamma)] = [d(PLC\gamma)/dt]_n$, where $d(PLC\gamma)/dt$ is the change in concentration of PLC γ over time, t , for a cell with an ID, n ; if M_n exceeds a pre-specified threshold, then the cell becomes eligible to migrate; otherwise it can proliferate or become quiescent (i.e. it neither proliferates nor migrates yet remains viable). Note that a cell additionally has to meet other microenvironmental requirements, such as sufficient local nutrient conditions and available adjacent space, in order to proliferate or migrate successfully. In a follow-up study (38), increasing the EGFR density per cell was found to lead to an acceleration of the entire tumor system's spatiotemporal expansion dynamics in accordance with experimental data (39). To simulate brain tumor growth in a more realistic microenvironment, a 3D model was developed (40), where a simplified cell-cycle description based on (41) and a more complicated extracellular matrix representation were implemented. Simulation results indicated that over time, proliferative and migratory cell populations oscillate and have a direct effect on the entire spatiotemporal tumor expansion pattern. Using the 3D model (40), an element of genetic instability was added, to investigate how heterogeneity impacts brain tumor progression patterns (42). The extended model found that cell clones with higher EGFR density are comprised of a larger migratory fraction and smaller proliferative and quiescent fractions, a result that agrees well with reported experimental data (43).

EGFR signaling also plays a vital role in the pathogenesis and progression of NSCLC (44). Deisboeck, Wang and colleagues attempted to look into how the methods applied to modeling brain tumors could be applied to the case of NSCLC. They also explored the possibility of using a cross-scale approach to determine critical molecular parameters that have a significant impact on tumor outcome at the microscopic level (45). A multiscale NSCLC model was first developed, with a revised EGF-induced EGFR-mediated signaling pathway implemented at the molecular level and a 2D heterogeneous biochemical tumor growth environment implemented at the microscopic level (46). This model revised the previous cellular phenotypic decision algorithm used in the brain tumor models by adding another decision molecule, ERK, in determining the cell's proliferation fate. This was also based on an experimental study which reported that the transient acceleration of accumulating ERK concentration levels triggers cell replication (47). Figure 3a demonstrates this essential algorithm. With this 2D NSCLC model, they found that a minimal increase in EGF concentration can temporarily abolish the proliferative phenotype

in the cancer cell closest to the nutrient source. More recently, Wang et al. (48) presented a 3D model in which both EGF and transforming growth factor beta (TGF β) as well as their interplay were taken into account. This model was used to investigate how the effects of individual and combined changes in EGF and TGF β concentrations at the molecular level alter tumor growth dynamics on the multicellular level, i.e., tumor volume and expansion rate. As shown in Figure 3b, when EGF and TGF β concentrations were jointly varied asynchronously, a particular region of tumor system stability, generated by unique pairs of EGF and TGF β concentration variations, was discovered. The simulated tumor system became sensitive to external variations in EGF and/or TGF β when they occurred outside this robust region. The expansion rate for the standard simulation (with all kinetic parameters set to their reference values) was 2.07 $\mu\text{m/hr}$, which is in very good agreement with both computational modeling (49) and experimental studies (50).

Tumor microenvironment and genotype-to-phenotype mapping: The importance of the tumor microenvironment is currently of great interest to both the biological and the modeling communities (51). To investigate the impact of the microenvironment on the tumor growth dynamics, a series of hybrid ABMs were developed by Gerlee and Anderson. Each cell in their models was equipped with a microenvironment response network modeled using a feed-forward artificial neural network. In the neural network, microenvironmental variables such as local oxygen concentration, glucose concentration and extracellular matrix (ECM) gradient were represented as the input layer, regulatory genes as the hidden layer, and the response for cell phenotypes as the output nodes. This way, a genotype-to-phenotype mapping with the use of a neural network approach was established, in order to determine the actions of the cell based on its genotype, the microenvironment in which it resides, and their interactions. Furthermore, the neural network is subject to mutations when the cells divide. This means that the behavior of cancer cells can change from one generation to the next, implying that the models have the capability to capture the evolutionary dynamics of tumor growth. In (52), it was revealed that tumors grown in low oxygen concentrations exhibited branched morphologies, and the oxygen concentration influenced the evolutionary dynamics. A subsequent extension of the model involving the effect of the ECM and anaerobic metabolism was used to examine the emergence of a glycolytic phenotype and the influence of the tissue oxygen concentration and ECM density on the dynamics of the model (53). Simulation results showed that this glycolytic phenotype was most likely to occur in low oxygen concentrations and within a dense ECM. Moreover, it was observed that, while a low oxygen concentration results in branched tumor morphology, increased ECM density gave rise to more compact tumors with less fingering morphology. Figure 4 shows a series of simulation results with this model. More recently, these authors investigated the impact of the microenvironment on the emergence of a motile invasive phenotype in an evolving tumor population using the same approach (54). The model focused on haptotaxis, i.e., directed cell movement along ECM gradients in the tissue, which is known to be the dominant mechanisms in tumor invasion (55). Results showed that in identical simulation conditions, the tumor's evolutionary dynamics converge to a proliferating or migratory phenotype, which suggests that the introduction of cell motility into the model changes the shape of the fitness landscape on which the cancer cell population evolves.

Linking cell signaling to cell-cell and cell-matrix interactions: E-cadherin mediates cell-cell adhesion and plays a critical role in the formation and maintenance of cell contact, and loss of E-cadherin-mediated adhesion is a key feature of the EMT. Only recently, cancer modelers began to explore linking the intracellular signaling dynamics-related cell-cell adhesion and the extracellular consequences in invasive tumors. A molecular-microscopic multiscale agent-based lattice-free model was first developed for this purpose by taking into account the intracellular dynamics of the E-cadherin and β -catenin interactions and the

physical forces on the cells (56). The model focused on a simplified β -catenin pathway which captures the key features of the cell adhesion process. Simulation results showed that down-regulation of β -catenin can be mainly driven by cell-cell contacts, and EMT can be achieved and reversed depending on the regulation of soluble β -catenin by local contacts. The intra- and intercellular protein interactions that govern cell–cell adhesion combined with cellular physical properties are also the driving forces of an essential mechanism that a cancer cell uses to attach to the endothelial wall, i.e., transendothelial migration (TEM) (57). Thus, with necessary extensions and modifications to the previous model (e.g., the addition of the Src pathway, which plays a principal role in TEM), the same modeling group examined the influence of different protein pathways in the achievement of TEM (58). Four cancer cell genotypes that differ in the adhesion protein pathways were considered. The genotypes were characterized by their capacity of creating N-cadherin-mediated bonds with the tunica intima and by their capacity of inducing a detachment of the endothelial–endothelial bonds by Src activity. Their results indicate that the slowest migration was found in the case when both N-cadherin and Src were knocked out, while the fastest case occurred when both N-cadherin and Src remained active.

2.3.3. Microscopic – Macroscopic—Molecular-microscopic modeling has enjoyed good success in predicting the local behavior of cancer on scales of hundreds of microns to millimeters, and has proved a valuable tool for investigating the links between our current wealth of experimental molecular and cellular biology data and complex, emergent behavior of large multicellular systems. However, this approach is too computationally intense to simulate full tumors and their surrounding tissues. Furthermore, some important aspects of tumor biology, such as mechanical stresses, are best characterized by macroscopic, continuum models (10-11). Hence, there is need to dynamically combine microscopic models to describe important cell-scale phenomena (e.g., EMT) with the efficiencies of continuum models.

Current microscopic-macroscopic models can be roughly categorized (with increasing levels of multiscalarity) as 1) *composite hybrid models*, where a microscopic model of one phenomenon is coupled with a macroscopic model of another, 2) *continuum models with functional parameters*, where continuum models express microscopic effects through heterogeneous, time-dependent parameters, and 3) *adaptive hybrid models*, where one or more phenomenon is represented using *both* microscopic and macroscopic descriptions, with a physically-motivated means of adaptively choosing the appropriate characterization. We focus here on representative examples of these three approaches; interested readers may also consider recent reviews (10) and books (11, 59).

Composite hybrid models: To date, most hybrid microscopic-macroscopic models have been composite, where a discrete cell-scale representation of one phenomenon is combined with a continuum tissue-scale model of another. Some of the most important examples have been coupled models of tumor growth (using a continuum model) with angiogenesis (using a discrete model) (60-65). Zheng et al. (60) used a sharp interface continuum model of tumor growth, where the moving tumor boundary is modeled as the boundary between two incompressible fluids, with a discrete cellular automaton model of angiogenic sprout tip motion first introduced by McDougall, Chaplain, and Anderson (66-70). In the viable rim of the tumor region (where substrate—oxygen, glucose, and growth factors—levels were higher than a threshold value), the tumor volume increased with a proliferation rate proportional to the substrate level. In the necrotic core (where the substrate level fell below the threshold), volume was lost due to cell lysis and subsequent fluid flux. Cell mechanics were modeled by introducing a mechanical pressure P that was related to the local tissue velocity \mathbf{v} by Darcy's law ($\mathbf{v} = -\mu\nabla P$), and cell-cell adhesion was modeled as a surface tension along the tumor boundary. The boundary of the necrotic region released

angiogenesis-promoting factors that diffused out of the tumor, reached the sprout tips, guided their chemotaxis and branching behavior, and ultimately determined the vascular topology. Simultaneously, the authors solved for the local substrate concentration throughout the tumor and surrounding tissue using a quasi-static reaction-diffusion equation. The models were further coupled by releasing substrate from the neovasculature and by restricting this nutrient source whenever the tumor pressure exceeded a threshold value. This model was able to reproduce tumor morphological instability caused by substrate heterogeneity, as well as biased tumor growth along the neovasculature (Figure 5a).

More recently (64), Macklin et al. coupled a refined sharp interface model by Macklin and Lowengrub (71-74) with a more advanced discrete model of angiogenesis, i.e., dynamic adaptive tumour-induced angiogenesis (DATIA), by McDougall, Chaplain, and Anderson (70). In the DATIA model, blood flow (including the effect of hematocrit) is solved throughout the vasculature as a coupled system of Poiseuille flow equations in individual segments of the neovasculature. The vessel segment radii vary according to the balance of wall shear stresses, vessel fluid pressure, and vessel elasticity—this, in turn, affects transport throughout the vasculature. The refined tumor model introduced a hypoxic region, where substrate levels were too low to promote cell proliferation but not so low as to induce necrosis. This region, rather than the necrotic core, released angiogenesis-promoting factors that drove chemotaxis in the angiogenesis model. The proliferating rim released matrix metalloproteinases (MMPs) that degraded the ECM in and near the tumor; this, in turn, affected the development of the vasculature due to haptotaxis of the sprout tips, as well as the evolution of the tumor by altering the distribution of the mechanical pressure. As an advance over the work by Zheng et al. (60), oxygen was released by the neovasculature at a rate proportional to the hematocrit level (to model oxygen transport by red blood cells). Furthermore, the vessel radius was determined by the balance of vessel pressure, wall shear stress, vessel elasticity, and the mechanical tumor pressure, leading to tumor vessel collapse as an emergent phenomenon (Figure 5b). This work was able to capture the complex dynamics of 1) hypoxia-induced angiogenesis, 2) increased oxygen supply by the vasculature following anastomosis of the vessels, 3) rapid subsequent tumor growth leading to increased proliferation-induced mechanical pressure, followed by 4) new regions of hypoxia due to vessel collapse (64). The results led the authors to hypothesize repeated hypoxia-angiogenesis-growth cycles due to the combined effects of tumor shape instabilities, mechanical collapse of the neovasculature, and heterogeneous oxygen distributions. Similar recent work by Cristini, Frieboes, Lowengrub, Wise and co-workers combined a more general, multiphase model of tumor growth with a “free-swimming”, off-lattice angiogenesis model, and observed continued hypoxia and angiogenesis (61-63, 65).

Continuum models with functional parameters: In this approach, a continuum model is endowed with spatiotemporally-varying parameters that encapsulate smaller-scale biophysics, effectively including these as constitutive relations. Early notable examples include nonlinear oxygen consumption and proliferation terms in various tumor growth models. Ward and King used nonlinear, Michaelis-Menten-type uptake and proliferation terms to model the relationship between oxygen availability, proliferation, and observations that cell growth tends to saturate due to independent limiting factors even when supplied unlimited growth substrates (75-76). Gatenby, Smallbone, and other colleagues more recently included similar such relationships between proliferation and substrate (oxygen and glucose) uptake, based upon the analysis of molecular-scale metabolism modeling (77-79). Macklin et al. recently observed Michaelis-Menten population dynamics as an *emergent phenomenon* from an ABM that varied the quiescent-to-proliferative phenotypic transition probability with oxygen, and validated the result by comparing against breast cancer patient data (Figure 6) (80-81).

Based in part upon earlier parameter studies (60, 73, 82-83), Macklin and co-workers formulated a phenomenological relationship between the local ECM density E and a tumor's mechanical response to pressure gradients by varying the mobility coefficient in Darcy's law as $\mu = \mu_0/(1 + bE)$, where b is constant (10, 61, 64). Thus, the tumor tissue's mechanical response (μ) decreases as the ECM density increases, modeling 1) the increased mechanical resistance of a denser ECM, and 2) the greater number of cell-ECM integrin bonds that must be broken for cell motion (73). This functional relationship can be derived through a careful upscaling analysis (e.g., as in (10) and later expanded in (84)) of the adhesive, repulsive, and frictional forces in mechanistic, force-based agent models (e.g., (49, 56, 58, 80, 85)). Similar models have been used by Macklin et al. in nonlinear chemotaxis and haptotaxis coefficient functions (10, 64), and other groups have used a nonlocal, integral term to model cell-scale adhesion effects in continuum tumor invasion models (86-88). Indeed, such functional relationships between microenvironmental quantities and averaged cell phenotypic behavior could be incorporated in functional, spatiotemporally varying model parameters by analyzing or numerically sampling appropriate molecular-microscopic models.

This approach has been applied to multiscale chemotherapy modeling. Sinek, Frieboes, Cristini and coworkers developed a cell-scale compartmental model of chemotherapeutic drug (doxorubicin) transport within a cell's cytoplasm and nucleus, which they combined with a mechanistic model of DNA-drug adduct formation, repair, and apoptosis (89-91). Their model accounted for cell cycling effects by varying the probability of apoptosis with the substrate level via a Hill-type function. This model, in turn, informed a spatiotemporally-varying apoptosis parameter in a continuum model of tumor growth, which, when combined with reaction-diffusion equations for substrate and drug transport, was very successful in predicting 3D, whole-tumor response to doxorubicin administered via the (neo)vasculature. As shown in Figure 7, cell monolayer drug response data was used to calibrate the model, and subsequently used to predict 3D tumor response. As in our previous examples, the functional parameters are informed by upscaling mechanistic microscale models. Indeed, the Hill-type substrate dependence (which was imposed *a priori* in (89-91)) can be predicted as the emergent behavior of an ABM of Macklin et al (see Figure 6) (80-81, 85).

Adaptive hybrid models: In the fullest realization of the "multiple hierarchies" paradigm discussed earlier, discrete and continuum representations of the *same phenomenon* are applied dynamically and simultaneously, along with a biophysical rule to appropriately select the correct representation throughout the spatiotemporal modeling domain. This fully hybrid approach is an ongoing, cutting-edge topic in the scientific computing community; until recently, this approach has largely been computationally infeasible, and only recently have tools begun to emerge that can enforce mathematical and biophysical consistency between such simultaneous representations (10).

In recent work, Kim, Stolarska, and Othmer coupled a viscoelastic model of a tumor's quiescent and necrotic regions with an ABM of tumor cells in the outer proliferative rim (of thickness ~ 100 - $200 \mu\text{m}$), allowing for more detailed treatment of molecular and cellular biology within the viable rim while making use of the computational efficiency of a continuum model for the majority of the millimeter-sized tumor (Figure 8a) (92-93). The discrete cellular model, which updated earlier work by Dallon and Othmer to include apoptosis and proliferation (94), described the cells as deformable, viscoelastic ellipsoids subject to adhesive, repulsive, and drag forces, as well as growth-induced stresses. The model included a careful transfer of forces from the discrete cells onto the continuum model in the quiescent region by interpolation of the discrete cells' forces onto the nearest nodes of a triangular mesh; mass could be transferred between the discrete and continuum models as cells changed between the quiescent and proliferative states using a least-squares projection

algorithm. This work is characteristic of one main approach to hybrid modeling, where the discrete and continuum representations are applied in pre-specified regions.

More recently, Wise, Lowengrub, Cristini and colleagues combined a 3-D multiphase continuum model (where each “voxel” of tissue is modeled as a mixture of fluid, ECM, and various cell populations, and a Cahn-Hilliard type equation to regulates the mechanics of the mixture) with a lattice-free, discrete model of migrating tumor cells (10, 62-63, 65). As in previous hybrid models, the discrete and continuum representations exchange forces with one another. As an advance over earlier hybrid modeling, their approach could dynamically convert between the discrete and continuum representations while conserving mass and momentum, using criteria such as cell density and hypoxia to trigger the conversion. Mutation dynamics were modeled as transfers between the multiphase mixture cell components. The group investigated the epithelial-mesenchymal transition in hypoxic glioma (brain tumor) cells, and observed such behavior as single-file like strands of motile, palisading cells moving from the hypoxic regions towards high-oxygen environments—an effect observed in clinical histopathology (Figure 8*b-c*). The model was also able to treat the formation of satellite tumors in regions where discrete cells aggregated sufficiently to satisfy the continuum hypothesis (e.g., in normoxic regions) (Figure 8*d*).

3. CONCLUSIONS: CHALLENGES AND FUTURE DIRECTIONS

We outlined the different ways that recent models link lower-scale modules with those at higher-scale, in the interest of developing more realistic and predictive models of cancer. We emphasize the viewpoint that mathematical and computational cancer models, whether scale-specific or multiscale, are most efficient when they are as complex as necessary, yet as simple as possible (95). The integration of an ever growing body of experimental and clinical data will demand even broader ranges of expertise and knowledge thus will require the formation of cross-disciplinary and multi-institutional groups focusing on particular fine-grained building blocks or functional modules (96). In the following, we discuss several of these daunting challenges and conclude with future directions of multiscale cancer modeling.

3.1. Parameter estimation

It is widely accepted that the more quantitative experimental data are available to build and constrain the parameter values, the more likely models are to accurately describe observed behaviors (97). Parameters of scale-specific cancer models are already difficult to quantify, not to mention those for multiscale cancer models for which parameters have to be defined at different scales. Not all of these parameters are experimentally available or even measurable with current techniques hence some have to be estimated by comparing model results to experiments. There are two classes of parameter estimation techniques that are frequently used in systems biology: local optimization (e.g., direct-search, and gradient-based methods) and global optimization (e.g., simulated annealing, branch and bound, and evolutionary algorithm). Each method has its advantages and disadvantages, and interested readers should refer to (98-100) for a comprehensive survey of parameter estimation methods.

Due to the complexity of cancer models and the quality of the data, over-fitting is a common problem in parameter estimation (101). When a model has many estimated parameters and the corresponding data are insufficient, over-fitting can lead to some unwarranted conclusions. To narrow the range of the parameter space, constraint-based modeling, which involves a multi-step procedure and accounts for both quantitative and qualitative data at the same time, may be an alternative choice (102). However, cancer modelers should be aware that, given the current underlying difficulty in estimating parameter values, many models

may remain limited in the mechanistic insight they provide and in their capability to predict system dynamics in unforeseen conditions. To constrain these models and thereby improve predictive power, modelers must integrate insights from numerical parameter studies, direct experimental data from collaborators, and any information that can be gleaned from the experimental and theoretical biology literature (which itself may require reinterpretation with a mathematical point of view) (81). The hybrid modeling approach may also be useful for integrating patient data across a variety of spatial scales, where calibration to each datum occurs at the appropriate scale, and the information is subsequently allowed to propagate throughout the multiscale framework (11, 81).

3.2. Computational demand

Significant efforts have been made to seek mathematical approaches and computational resources that will enable cancer models to be run in a reasonable period of time (103). It is generally accepted that if a model works on higher spatial and temporal resolution, it will need higher compute power and thus longer run time to accomplish computing tasks. Discrete or discrete-based hybrid models are more seriously affected by the compute intensity constraints because they are generally too detailed to simulate over a long period of time, particularly in large, 3D domains. One solution is to take advantage of very powerful, massively parallel supercomputers and develop numerical algorithms that can run on these machines. However, doing so may not resolve all the difficulties in handling the enormous amount of experimental and clinical data; it is also not practical in many current clinical settings thus would have limited usage.

As discussed, adaptive hybrid modeling has the potential to save computational time while maintaining the predictive power of the model (see **Section 2.2**). Other methods for solving the compute intensity issue are also available, but are all at an experimental stage. For instance, the equation-free approach developed by Kevrekidis and co-workers (104-106) leverages the spatiotemporal scale separation to allow for significant gains in computational efficiency by alternating short bursts of appropriately initialized microscopic simulations with accelerated result processing at the macroscopic, continuum scale. Furthermore, methods from other modeling communities, such as the Heterogeneous Multiscale Method (HMM, e.g., (107-108)), can provide useful insight into efficient numerical methods that may be incorporated into the development of multiscale cancer models as well. By drawing on the strengths of these potentially very useful methods and integrating them into the next generation of multiscale cancer modeling, we may be able to produce more comprehensive and computationally efficient models to simulate tumor progression and predict treatment impact.

3.3. Data sharing and model reusability

Data sharing is an active topic in the field of systems biology (95). We also advocate that, in order to avoid duplication of effort and thus waste of resources, achievements of publicly funded work including data and models should be made accessible to the community in a form where others can review and reproduce the modeling results, and then reuse and revise these resources in future works. In the following, we focus on two aspects of data sharing and model reuse.

First, the data and models should be presented in *standardized formats* with clearly stated dependencies and problems. This will improve the reusability of models and clarify their limitations. In systems biology at large, there have been a few standards established, such as SBML for biochemical pathways, CellML for biophysical models, and FieldML for spatial fields (109). These standards define how models are structured, how the mathematical equations are encoded, and how units are defined. Establishing these standards has been a

significant step towards achieving a robust foundation for the modeling community; such standardization efforts, including amending existing or creating new ontologies, can facilitate translation of multiscale models into and eventual adoption of these *in silico* tools in clinics.

Second, to store and exchange modeling tools, the cancer modeling community needs *digital repositories* of models provided by researchers from academic, governmental and corporate laboratories. Web services are needed to connect and integrate these currently often incompatible models and tools for data acquisition, storage, analysis and presentation in order to bridge the integration gap (18). In brief, cancer modelers need to efficiently share data, information and knowledge across geographic and organizational boundaries within the context of distributed, multi-disciplinary and multi-organizational collaborative teams, while at the same time effectively protecting data ownership and data security.

Many web-based systems biology communities or databases have been created over the past years, and some of them are developed based on semantic technology (see (110) for a review). Among them, the Center for the Development of a Virtual Tumor (CViT) (111) is building an ever-growing community of researchers around the world dedicated to cancer modeling. It currently provides cancer researchers a community-driven web platform with functions including wikis, blogs, forums, member profiles, and RSS-based news updates (112). It also develops NIH/NCI-caBIG® compliant infrastructure tools to facilitate interaction among its contributing scientists. Members of CViT come together online on a regular basis to discuss cutting-edge literature on CViT's online forums which separates CViT from other model repositories such as BioModels (113). Additionally, the social networking aspect of the site allows research teams to collaborate from anywhere around the world in a workflow designed specifically for the cancer modeling community. Recently, CViT released the Digital Model Repository (DMR), an innovative web platform for the exchange of cancer models (114). Cancer investigators can upload their models, experimental data, and simulation results and publish them to other DMR users of their choice who will then be able to access those files. The DMR also implements an innovative elicencing workflow and is built using semantic web technologies through the Resource Description Framework (RDF; a standard metadata model for describing the relationship between two objects (115)). The newest feature of the DMR is the Computational Model Execution Framework (CMEF). Its aim is to allow executable files to be uploaded as part of a model. The owner of the model can indicate variable parameters which can be defined for each run, and specify details of the model, including programming language and runtime computing environment. Others can either download the model and run it on their own computers, or simply execute the model using computing resources provided by the DMR. Altogether, CViT and its semantic services help to advance the cancer modeling field in facilitating web-based multidisciplinary cancer research.

3.4. Personalized medicine

Approaches provided by systems biology are beginning to impact medicine (116). In treating cancers, the integration of computational and experimental techniques may improve our abilities to design more efficient cancer therapies. Corresponding applications include biomarker validation, development of more accurate diagnostic tests, and targeted drug discovery - all geared towards the optimization of individualized cancer therapy.

The conventional population-based approach for therapeutic developments in clinics still relies on a series of randomized clinical trials aimed at searching for favorable yet averaged treatment outcome (117). However, patient responses to a particular drug or therapy are known to fall into a more or less wide range that deviates from this averaged behavior. Multiscale cancer modeling may eventually help to explain not only why some therapies fail

while others prove to be effective in controlling tumor progression, but also why a particular treatment works only in a fraction of patients. Models will have to incorporate patient-specific experimental and clinical data at all biological levels, including, e.g., genomic, proteomic, anatomical, physiological, and pathological data. Training the model on a patient's data will yield a more accurate description of the specific kinetics of disease progression. Hence, this approach should provide a higher predictive power than that achieved with pooled data only and thus should be able to guide personalized treatment strategies more accurately to improve outcome (117). Moreover, multiscale cancer models can be used to help characterize a patient's specific biomarkers (ranging from critical pathway proteins to phenotypic profiles and imaging patterns) and then compare these 'cross-scale signatures' with pooled data from conventional clinical practice or from a trial with the candidate drug being applied, in an effort to simulate the specific response of the patient. Introducing multiscale cancer modeling to medicine has the potential to facilitate the breakthrough of personalized medicine, and eventually maximize advances in science and technology for the benefit of cancer patients by helping select or optimize preventative and therapeutic patient care.

In summary, multiscale cancer modeling is a most promising, innovative research area that constitutes a critical driver for the field of integrative cancer systems biology. Challenges to the success of this approach arise as a result of our still limited understanding of the complex, dynamic nature of cancers, the often constrained access to appropriate experimental and clinical data, the difficulties in validating models against these data, and the challenges involved in communicating and sharing modeling methods amongst the field's multiple stakeholders. However, by drawing on the collaborative effort and expertise of scientists from different disciplines and the continuing development of advanced, innovative computational and mathematical methods, we believe that multiscale cancer modeling will reach its full potential in guiding targeted experimental research, in enabling patient-specific predictions and thus in accelerating personalized medicine.

Acknowledgments

This work has been supported in part by the National Institutes of Health (NIH) grant CA 113004 and by the Harvard-MIT (HST) Athinoula A. Martinos Center for Biomedical Imaging and the Department of Radiology at Massachusetts General Hospital. Vittorio Cristini acknowledges the NIH for support through the Physical Sciences in Oncology Center grants 1U54CA143837 and 1U54CA143907. He also acknowledges the NIH Integrative Cancer Biology Program for support under grant 1U54CA149196, and the National Science Foundation (NSF) for support under grant DMS-0818104.

Acronyms list

ABM	agent-based modeling or agent-based model
CViT	Center for the Development of a Virtual Tumor
DATIA	dynamic adaptive tumour-induced angiogenesis
DCIS	ductal carcinoma in situ (of the breast)
ECM	extracellular matrix
EGFR	epidermal growth factor receptor
EMT	epithelial–mesenchymal transition
MD	molecular dynamics
MMP	matrix metalloproteinase

ODEs	ordinary differential equations
PDEs	partial differential equations
PLCγ	phospholipase C γ
RTK	receptor tyrosine kinase

LITERATURE CITED

- Balmain A, Gray J, Ponder B. The genetics and genomics of cancer. *Nat Genet.* 2003; 33(Suppl): 238–44. [PubMed: 12610533]
- Bissell MJ, Radisky D. Putting tumours in context. *Nat Rev Cancer.* 2001; 1:46–54. [PubMed: 11900251]
- Hynes RO. Integrins: bidirectional, allosteric signaling machines. *Cell.* 2002; 110:673–87. [PubMed: 12297042]
- Giles R, Loberg RD. Can we target the chemokine network for cancer therapeutics? *Curr Cancer Drug Targets.* 2006; 6:659–70. [PubMed: 17168671]
- Deisboeck TS, Berens ME, Kansal AR, Torquato S, Stemmer-Rachamimov AO, Chiocca EA. Pattern of self-organization in tumour systems: complex growth dynamics in a novel brain tumour spheroid model. *Cell Prolif.* 2001; 34:115–34. [PubMed: 11348426]
- Popel AS, Hunter PJ. *Systems Biology and Physiome Projects.* Wiley Interdisciplinary Reviews: Systems Biology and Medicine. 2009; 1:153–8. [PubMed: 20835988]
- Schnell S, Grima R, Maini PK. Multiscale modeling in biology - New insights into cancer illustrate how mathematical tools are enhancing the understanding of life from the smallest scale to the grandest. *American Scientist.* 2007; 95:134–42.
- Komarova NL. Mathematical modeling of tumorigenesis: mission possible. *Curr Opin Oncol.* 2005; 17:39–43. [PubMed: 15608511]
- Anderson AR, Quaranta V. Integrative mathematical oncology. *Nat Rev Cancer.* 2008; 8:227–34. [PubMed: 18273038]
- Lowengrub JS, Frieboes HB, Jin F, Chuang YL, Li X, et al. Nonlinear modelling of cancer: bridging the gap between cells and tumours. *Nonlinearity.* 2010; 23:R1–R9. [PubMed: 20808719]
- Cristini V, Lowengrub J. *Multiscale modeling of cancer : an integrated experimental and mathematical modeling approach.* Cambridge University Press; Cambridge: 2010.
- Hunter PJ, Crampin EJ, Nielsen PM. Bioinformatics, multiscale modeling and the IUPS Physiome Project. *Brief Bioinform.* 2008; 9:333–43. [PubMed: 18477639]
- Zewail, A., editor. *Physical Biology: From Atoms to Medicine.* Imperial College Press; London, UK: 2008.
- Di Ventura B, Lemerle C, Michalodimitrakis K, Serrano L. From in vivo to in silico biology and back. *Nature.* 2006; 443:527–33. [PubMed: 17024084]
- Aldridge BB, Burke JM, Lauffenburger DA, Sorger PK. Physicochemical modelling of cell signalling pathways. *Nat Cell Biol.* 2006; 8:1195–203. [PubMed: 17060902]
- Walker DC, Southgate J. The virtual cell--a candidate co-ordinator for 'middle-out' modelling of biological systems. *Brief Bioinform.* 2009; 10:450–61. [PubMed: 19293250]
- Sanga S, Frieboes HB, Zheng X, Gatenby R, Bearer EL, Cristini V. Predictive oncology: a review of multidisciplinary, multiscale in silico modeling linking phenotype, morphology and growth. *Neuroimage.* 2007; 37(Suppl 1):S120–34. [PubMed: 17629503]
- Sloot PM, Hoekstra AG. Multi-scale modelling in computational biomedicine. *Brief Bioinform.* 2010; 11:142–52. [PubMed: 20028713]
- Araujo RP, McElwain DL. A history of the study of solid tumour growth: the contribution of mathematical modelling. *Bull Math Biol.* 2004; 66:1039–91. [PubMed: 15294418]
- Tracqui P. Biophysical models of tumour growth. *Reports on Progress in Physics.* 2009:72.

21. Gatenby RA, Silva AS, Gillies RJ, Frieden BR. Adaptive therapy. *Cancer Res.* 2009; 69:4894–903. [PubMed: 19487300]
22. Christiansen JJ, Rajasekaran AK. Reassessing epithelial to mesenchymal transition as a prerequisite for carcinoma invasion and metastasis. *Cancer Res.* 2006; 66:8319–26. [PubMed: 16951136]
23. Wang Z, Deisboeck TS. Computational modeling of brain tumors: Discrete, continuum or hybrid? *Scientific Modeling and Simulation.* 2008; 15:381–93.
24. An G. Introduction of an agent-based multi-scale modular architecture for dynamic knowledge representation of acute inflammation. *Theor Biol Med Model.* 2008; 5:11. [PubMed: 18505587]
25. Schaller G, Meyer-Hermann M. Continuum versus discrete model: a comparison for multicellular tumour spheroids. *Philos Transact A Math Phys Eng Sci.* 2006; 364:1443–64.
26. Berg OG, Paulsson J, Ehrenberg M. Fluctuations and quality of control in biological cells: zero-order ultrasensitivity reinvestigated. *Biophys J.* 2000; 79:1228–36. [PubMed: 10968987]
27. Wolkenhauer O, Auffray C, Baltrusch S, Bluthgen N, Byrne H, et al. Systems biologists seek fuller integration of systems biology approaches in new cancer research programs. *Cancer Res.* 2010; 70:12–3. [PubMed: 20028868]
28. Shawver LK, Slamon D, Ullrich A. Smart drugs: tyrosine kinase inhibitors in cancer therapy. *Cancer Cell.* 2002; 1:117–23. [PubMed: 12086869]
29. Schulze WX, Deng L, Mann M. Phosphotyrosine interactome of the ErbB-receptor kinase family. *Mol Syst Biol.* 2005; 1 2005 0008.
30. Liu Y, Purvis J, Shih A, Weinstein J, Agrawal N, Radhakrishnan R. A multiscale computational approach to dissect early events in the Erb family receptor mediated activation, differential signaling, and relevance to oncogenic transformations. *Ann Biomed Eng.* 2007; 35:1012–25. [PubMed: 17273938]
31. Purvis J, Ilango V, Radhakrishnan R. Role of network branching in eliciting differential short-term signaling responses in the hypersensitive epidermal growth factor receptor mutants implicated in lung cancer. *Biotechnol Prog.* 2008; 24:540–53. [PubMed: 18412405]
32. Shih AJ, Purvis J, Radhakrishnan R. Molecular systems biology of ErbB1 signaling: bridging the gap through multiscale modeling and high-performance computing. *Mol Biosyst.* 2008; 4:1151–9. [PubMed: 19396377]
33. Purvis J, Ilango V, Radhakrishnan R. Role of Network Branching in Eliciting Differential Short-Term Signaling Responses in the Hyper-Sensitive Epidermal Growth Factor Receptor Mutants Implicated in Lung Cancer. *Biotechnol Prog.* 2008; 24:540–53. [PubMed: 18412405]
34. Telesco SE, Radhakrishnan R. Atomistic insights into regulatory mechanisms of the HER2 tyrosine kinase domain: a molecular dynamics study. *Biophys J.* 2009; 96:2321–34. [PubMed: 19289058]
35. Postovit LM, Seftor EA, Seftor RE, Hendrix MJ. Influence of the microenvironment on melanoma cell fate determination and phenotype. *Cancer Res.* 2006; 66:7833–6. [PubMed: 16912153]
36. Athale C, Mansury Y, Deisboeck TS. Simulating the impact of a molecular ‘decision-process’ on cellular phenotype and multicellular patterns in brain tumors. *J Theor Biol.* 2005; 233:469–81. [PubMed: 15748909]
37. Dittmar T, Husemann A, Schewe Y, Nofer JR, Niggemann B, et al. Induction of cancer cell migration by epidermal growth factor is initiated by specific phosphorylation of tyrosine 1248 of c-erbB-2 receptor via EGFR. *Faseb J.* 2002; 16:1823–5. [PubMed: 12354693]
38. Athale CA, Deisboeck TS. The effects of EGF-receptor density on multiscale tumor growth patterns. *J Theor Biol.* 2006; 238:771–9. [PubMed: 16126230]
39. Lund-Johansen M, Bjerkvig R, Humphrey PA, Bigner SH, Bigner DD, Laerum OD. Effect of epidermal growth factor on glioma cell growth, migration, and invasion in vitro. *Cancer Res.* 1990; 50:6039–44. [PubMed: 2393868]
40. Zhang L, Athale CA, Deisboeck TS. Development of a three-dimensional multiscale agent-based tumor model: simulating gene-protein interaction profiles, cell phenotypes and multicellular patterns in brain cancer. *J Theor Biol.* 2007; 244:96–107. [PubMed: 16949103]
41. Alarcon T, Byrne HM, Maini PK. A mathematical model of the effects of hypoxia on the cell-cycle of normal and cancer cells. *J Theor Biol.* 2004; 229:395–411. [PubMed: 15234206]

42. Zhang L, Strouthos CG, Wang Z, Deisboeck TS. Simulating brain tumor heterogeneity with a multiscale agent-based model: Linking molecular signatures, phenotypes and expansion rate. *Mathematical and Computer Modelling*. 2009; 49:307–19. [PubMed: 20047002]
43. Steinbach JP, Klumpp A, Wolburg H, Weller M. Inhibition of epidermal growth factor receptor signaling protects human malignant glioma cells from hypoxia-induced cell death. *Cancer Res*. 2004; 64:1575–8. [PubMed: 14996711]
44. Lynch TJ, Bell DW, Sordella R, Gurubhagavatula S, Okimoto RA, et al. Activating mutations in the epidermal growth factor receptor underlying responsiveness of non-small-cell lung cancer to gefitinib. *N Engl J Med*. 2004; 350:2129–39. [PubMed: 15118073]
45. Wang Z, Birch CM, Deisboeck TS. Cross-scale sensitivity analysis of a non-small cell lung cancer model: linking molecular signaling properties to cellular behavior. *Biosystems*. 2008; 92:249–58. [PubMed: 18448237]
46. Wang Z, Zhang L, Sagotsky J, Deisboeck TS. Simulating non-small cell lung cancer with a multiscale agent-based model. *Theor Biol Med Model*. 2007; 4:50. [PubMed: 18154660]
47. Santos SD, Verveer PJ, Bastiaens PI. Growth factor-induced MAPK network topology shapes Erk response determining PC-12 cell fate. *Nat Cell Biol*. 2007; 9:324–30. [PubMed: 17310240]
48. Wang Z, Birch CM, Sagotsky J, Deisboeck TS. Cross-Scale, Cross-Pathway Evaluation using an Agent-Based Non-Small Cell Lung Cancer Model. *Bioinformatics*. 2009
49. Galle J, Loeffler M, Drasdo D. Modeling the effect of deregulated proliferation and apoptosis on the growth dynamics of epithelial cell populations in vitro. *Biophys J*. 2005; 88:62–75. [PubMed: 15475585]
50. Bru A, Albertos S, Luis Subiza J, Garcia-Asenjo JL, Bru I. The universal dynamics of tumor growth. *Biophys J*. 2003; 85:2948–61. [PubMed: 14581197]
51. Albini A, Sporn MB. The tumour microenvironment as a target for chemoprevention. *Nat Rev Cancer*. 2007; 7:139–47. [PubMed: 17218951]
52. Gerlee P, Anderson AR. An evolutionary hybrid cellular automaton model of solid tumour growth. *J Theor Biol*. 2007; 246:583–603. [PubMed: 17374383]
53. Gerlee P, Anderson AR. A hybrid cellular automaton model of clonal evolution in cancer: the emergence of the glycolytic phenotype. *J Theor Biol*. 2008; 250:705–22. [PubMed: 18068192]
54. Gerlee P, Anderson AR. Evolution of cell motility in an individual-based model of tumour growth. *J Theor Biol*. 2009; 259:67–83. [PubMed: 19285513]
55. Hood JD, Cheresh DA. Role of integrins in cell invasion and migration. *Nat Rev Cancer*. 2002; 2:91–100. [PubMed: 12635172]
56. Ramis-Conde I, Drasdo D, Anderson AR, Chaplain MA. Modeling the influence of the E-cadherin-beta-catenin pathway in cancer cell invasion: a multiscale approach. *Biophys J*. 2008; 95:155–65. [PubMed: 18339758]
57. Qi J, Wang J, Romanyuk O, Siu CH. Involvement of Src family kinases in N-cadherin phosphorylation and beta-catenin dissociation during transendothelial migration of melanoma cells. *Mol Biol Cell*. 2006; 17:1261–72. [PubMed: 16371504]
58. Ramis-Conde I, Chaplain MA, Anderson AR, Drasdo D. Multi-scale modelling of cancer cell intravasation: the role of cadherins in metastasis. *Phys Biol*. 2009; 6:16008.
59. Anderson, ARA.; Chaplain, MAJ.; Rejniak, KA., editors. *Single-cell-based models in biology and medicine*. Vol. ix. Birkhäuser; Basel ; Boston: 2007. p. 349
60. Zheng X, Wise SM, Cristini V. Nonlinear simulation of tumor necrosis, neo-vascularization and tissue invasion via an adaptive finite-element/level-set method. *Bull Math Biol*. 2005; 67:211–59. [PubMed: 15710180]
61. Frieboes HB, Lowengrub JS, Wise S, Zheng X, Macklin P, et al. Computer simulation of glioma growth and morphology. *Neuroimage*. 2007; 37(Suppl 1):S59–70. [PubMed: 17475515]
62. Wise SM, Lowengrub JS, Frieboes HB, Cristini V. Three-dimensional multispecies nonlinear tumor growth–I Model and numerical method. *J Theor Biol*. 2008; 253:524–43. [PubMed: 18485374]
63. Bearer EL, Lowengrub JS, Frieboes HB, Chuang YL, Jin F, et al. Multiparameter computational modeling of tumor invasion. *Cancer Res*. 2009; 69:4493–501. [PubMed: 19366801]

64. Macklin P, McDougall S, Anderson AR, Chaplain MA, Cristini V, Lowengrub J. Multiscale modelling and nonlinear simulation of vascular tumour growth. *J Math Biol.* 2009; 58:765–98. [PubMed: 18781303]
65. Frieboes HB, Jin F, Chuang YL, Wise SM, Lowengrub JS, Cristini V. Three-dimensional multispecies nonlinear tumor growth-II: Tumor invasion and angiogenesis. *J Theor Biol.* 2010; 264:1254–78. [PubMed: 20303982]
66. Anderson AR, Chaplain MA. Continuous and discrete mathematical models of tumor-induced angiogenesis. *Bull Math Biol.* 1998; 60:857–99. [PubMed: 9739618]
67. McDougall SR, Anderson AR, Chaplain MA, Sherratt JA. Mathematical modelling of flow through vascular networks: implications for tumour-induced angiogenesis and chemotherapy strategies. *Bull Math Biol.* 2002; 64:673–702. [PubMed: 12216417]
68. Chaplain M, Anderson A. Mathematical modelling of tumour-induced angiogenesis: network growth and structure. *Cancer Treat Res.* 2004; 117:51–75. [PubMed: 15015552]
69. Chaplain MA, McDougall SR, Anderson AR. Mathematical modeling of tumor-induced angiogenesis. *Annu Rev Biomed Eng.* 2006; 8:233–57. [PubMed: 16834556]
70. McDougall SR, Anderson AR, Chaplain MA. Mathematical modelling of dynamic adaptive tumour-induced angiogenesis: clinical implications and therapeutic targeting strategies. *J Theor Biol.* 2006; 241:564–89. [PubMed: 16487543]
71. Macklin P, Lowengrub J. Evolving interfaces via gradients of geometry-dependent interior Poisson problems: application to tumor growth. *Journal of Computational Physics.* 2005; 203:191–220.
72. Macklin P, Lowengrub J. An improved geometry-aware curvature discretization for level set methods: Application to tumor growth. *Journal of Computational Physics.* 2006; 215:392–401.
73. Macklin P, Lowengrub J. Nonlinear simulation of the effect of microenvironment on tumor growth. *J Theor Biol.* 2007; 245:677–704. [PubMed: 17239903]
74. Macklin P, Lowengrub J. A New Ghost Cell/Level Set Method for Moving Boundary Problems: Application to Tumor Growth. *Journal of Scientific Computing.* 2008; 35:266–99. [PubMed: 21331304]
75. Ward JP, King JR. Mathematical modelling of avascular-tumour growth. *IMA J Math Appl Med Biol.* 1997; 14:39–69. [PubMed: 9080687]
76. Ward JP, King JR. Mathematical modelling of avascular-tumour growth. II: Modelling growth saturation. *IMA J Math Appl Med Biol.* 1999; 16:171–211. [PubMed: 10399312]
77. Smallbone K, Gavaghan DJ, Gatenby RA, Maini PK. The role of acidity in solid tumour growth and invasion. *J Theor Biol.* 2005; 235:476–84. [PubMed: 15935166]
78. Gatenby RA, Smallbone K, Maini PK, Rose F, Averill J, et al. Cellular adaptations to hypoxia and acidosis during somatic evolution of breast cancer. *Br J Cancer.* 2007; 97:646–53. [PubMed: 17687336]
79. Smallbone K, Gatenby RA, Maini PK. Mathematical modelling of tumour acidity. *J Theor Biol.* 2008; 255:106–12. [PubMed: 18725231]
80. Macklin, P.; Kim, J.; Tomaiuolo, G.; Edgerton, ME.; Cristini, V. Agent-Based Modeling of Ductal Carcinoma in Situ: Application to Patient-Specific Breast Cancer Modeling. In: Pham, T., editor. *Computational Biology: Issues and Applications in Oncology.* Springer; New York: 2009. p. 77-112.
81. Macklin, P.; Edgerton, ME.; Cristini, V. Agent-based cell modeling: application to breast cancer. In: Cristini, V.; Lowengrub, J., editors. *Multiscale Modeling of Cancer: An Integrated Experimental and Mathematical Modeling Approach.* Cambridge University Press; Cambridge, United Kingdom: 2010. p. 206-34.
82. Cristini V, Frieboes HB, Gatenby R, Caserta S, Ferrari M, Sinek J. Morphologic instability and cancer invasion. *Clin Cancer Res.* 2005; 11:6772–9. [PubMed: 16203763]
83. Frieboes HB, Zheng X, Sun CH, Tromberg B, Gatenby R, Cristini V. An integrated computational/experimental model of tumor invasion. *Cancer Res.* 2006; 66:1597–604. [PubMed: 16452218]
84. Jin, F.; Chuang, Y-L.; Cristini, V.; Lowengrub, J. Hybrid continuum-discrete tumor models. In: Cristini, V.; Lowengrub, J., editors. *Multiscale Modeling of Cancer: An Integrated Experimental and Mathematical Modeling Approach.* Cambridge University Press; Cambridge, United Kingdom: 2010. p. 123-52.

85. Macklin, P.; Edgerton, ME.; Lowengrub, JS.; Cristini, V. Discrete cell modeling. In: Cristini, V.; Lowengrub, J., editors. *Multiscale Modeling of Cancer: An Integrated Experimental and Mathematical Modeling Approach*. Cambridge University Press; Cambridge, United Kingdom: 2010. p. 88-122.
86. Armstrong NJ, Painter KJ, Sherratt JA. A continuum approach to modelling cell-cell adhesion. *J Theor Biol*. 2006; 243:98–113. [PubMed: 16860344]
87. Sherratt JA, Gourley SA, Armstrong NJ, Painter KJ. Boundedness of solutions of a non-local reaction–diffusion model for adhesion in cell aggregation and cancer invasion. *Euro. J. Appl. Math*. 2009; 20:123–44.
88. Gerisch A, Chaplain MA. Mathematical modelling of cancer cell invasion of tissue: local and non-local models and the effect of adhesion. *J Theor Biol*. 2008; 250:684–704. [PubMed: 18068728]
89. Sinek J, Frieboes H, Zheng X, Cristini V. Two-dimensional chemotherapy simulations demonstrate fundamental transport and tumor response limitations involving nanoparticles. *Biomed Microdevices*. 2004; 6:297–309. [PubMed: 15548877]
90. Sinek JP, Sanga S, Zheng X, Frieboes HB, Ferrari M, Cristini V. Predicting drug pharmacokinetics and effect in vascularized tumors using computer simulation. *J Math Biol*. 2009; 58:485–510. [PubMed: 18781304]
91. Frieboes H, Edgerton ME, Fruehauf JP, Rose FRAJ, Worrall LK, et al. Prediction of drug response in breast cancer using integrative experimental/computational modeling. *Cancer Res*. 2009; 69:4484–92. [PubMed: 19366802]
92. Kim Y, Stolarska MA, Othmer HG. A Hybrid Model for Tumor Spheroid Growth *in vitro*: I. Theoretical Development and Early Results. *Math. Mod. Methods Appl. Sci*. 2007; 17:1773–98.
93. Stolarska MA, Kim Y, Othmer HG. Multi-scale models of cell and tissue dynamics. *Philosophical Transactions of the Royal Society A: Mathematical, Physical and Engineering Sciences*. 2009; 367:3525–53.
94. Dallon JC, Othmer HG. How cellular movement determines the collective force generated by the Dictyostelium discoideum slug. *J Theor Biol*. 2004; 231:203–22. [PubMed: 15380385]
95. Kohl P, Noble D. Systems biology and the virtual physiological human. *Mol Syst Biol*. 2009; 5:292. [PubMed: 19638973]
96. Beard DA, Bassingthwaite JB, Greene AS. Computational modeling of physiological systems. *Physiol Genomics*. 2005; 23:1–3. discussion 4. [PubMed: 16179418]
97. Sible JC, Tyson JJ. Mathematical modeling as a tool for investigating cell cycle control networks. *Methods*. 2007; 41:238–47. [PubMed: 17189866]
98. Ashyraliyev M, Fomekong-Nanfack Y, Kaandorp JA, Blom JG. Systems biology: parameter estimation for biochemical models. *FEBS J*. 2009; 276:886–902. [PubMed: 19215296]
99. Mendes P, Kell D. Non-linear optimization of biochemical pathways: applications to metabolic engineering and parameter estimation. *Bioinformatics*. 1998; 14:869–83. [PubMed: 9927716]
100. Moles CG, Mendes P, Banga JR. Parameter estimation in biochemical pathways: a comparison of global optimization methods. *Genome Res*. 2003; 13:2467–74. [PubMed: 14559783]
101. Price ND, Papin JA, Schilling CH, Palsson BO. Genome-scale microbial *in silico* models: the constraints-based approach. *Trends Biotechnol*. 2003; 21:162–9. [PubMed: 12679064]
102. Zi Z, Klipp E. Constraint-based modeling and kinetic analysis of the Smad dependent TGF-beta signaling pathway. *PLoS One*. 2007; 2:e936. [PubMed: 17895977]
103. Deisboeck TS, Zhang L, Yoon J, Costa J. *In silico* cancer modeling: is it ready for prime time? *Nat Clin Pract Oncol*. 2009; 6:34–42. [PubMed: 18852721]
104. Erban R, Frewen TA, Wang X, Elston TC, Coifman R, et al. Variable-free exploration of stochastic models: a gene regulatory network example. *J Chem Phys*. 2007; 126:155103. [PubMed: 17461667]
105. Gear CW, Kevrekidis IG. Telescopic projective methods for parabolic differential equations. *Journal of Computational Physics*. 2003; 187:95–109.
106. Kolpas A, Moehlis J, Kevrekidis IG. Coarse-grained analysis of stochasticity-induced switching between collective motion states. *Proceedings of the National Academy of Sciences of the United States of America*. 2007; 104:5931–35. [PubMed: 17389400]

107. E WN, Engquist B, Huang ZY. Heterogeneous multiscale method: A general methodology for multiscale modeling. *Physical Review B*. 2003; 67:4.
108. Ren WQ, E WN. Heterogeneous multiscale method for the modeling of complex fluids and micro-fluidics. *Journal of Computational Physics*. 2005; 204:1–26.
109. Popel AS, Hunter P. *Systems Biology and Physiome Projects*. Wiley Interdisciplinary Reviews: Systems Biology and Medicine. 2009; 1:153–8. [PubMed: 20835988]
110. Antezana E, Kuiper M, Mironov V. Biological knowledge management: the emerging role of the Semantic Web technologies. *Brief Bioinform*. 2009; 10:392–407. [PubMed: 19457869]
111. CViT. The Center for the Development of a Virtual Tumor.
112. Deisboeck TS, Zhang L, Martin S. Advancing cancer systems biology: introducing the Center for the Development of a Virtual Tumor, CViT. *Cancer Inform*. 2007; 5:1–8. [PubMed: 19390664]
113. Li C, Courtot M, Le Novere N, Laibe C. BioModels.net Web Services, a free and integrated toolkit for computational modelling software. *Brief Bioinform*. 2010; 11:270–7. [PubMed: 19939940]
114. Sagotsky JA, Zhang L, Wang Z, Martin S, Deisboeck TS. Life Sciences and the web: a new era for collaboration. *Mol Syst Biol*. 2008; 4:201. [PubMed: 18594519]
115. Wang X, Gorlitsky R, Almeida JS. From XML to RDF: how semantic web technologies will change the design of 'omic' standards. *Nat Biotechnol*. 2005; 23:1099–103. [PubMed: 16151403]
116. Butcher EC, Berg EL, Kunkel EJ. Systems biology in drug discovery. *Nat Biotechnol*. 2004; 22:1253–9. [PubMed: 15470465]
117. Deisboeck TS. Personalizing medicine: a systems biology perspective. *Mol Syst Biol*. 2009; 5:249. [PubMed: 19293829]

Summary Box

Discrete modeling can explicitly represent individual cells in space and time, and track and update their internal states according to a pre-defined set of biological and biophysical rules. This approach is particularly useful for studying carcinogenesis, genetic instability, natural selection and cell-cell and cell-matrix interaction mechanisms. The dynamics of discrete cancer cells can be investigated with lattice-based or lattice-free methods, where the former builds a grid with a finite number of dimensions in which cells live, while the latter describes cell actions in arbitrary locations and their interactions in arbitrary directions. Because discrete modeling is based on a series of rules applied to each cell, it is possible to translate detailed biological findings into rules for the model (24). However, the computational demand increases rapidly with the number of cells modeled, limiting these models in the spatial and temporal scales they can represent.

Continuum modeling describes tumor tissue as a continuum medium rather than working at the resolution of individual cells, and thus is a good choice for modeling larger-scale systems. This approach draws upon principles from continuum mechanics to describe model variables as continuous fields mostly by means of partial differential or integro-differential equations. Common continuum model variables (e.g., cell volume fractions, density, and cell substrate concentrations, e.g. nutrient, oxygen, and growth factors) are somewhat easier to obtain, analyze, and control, compared with those in the discrete case (25). Although these models can characterize global properties of gross tumor growth and invasion at the tissue or higher-scales, they cannot be used to examine individual cell dynamics and discrete events, such as EMT, since in a process that small, changes to a cell or a set of cells can move a nonlinear cancer system to a different state (26). This may be important when studying the effects of genetic, cellular, and microenvironment characteristics on overall tumor behavior.

Hybrid modeling attempts to integrate and draw on the strengths of both continuum and discrete descriptions. Different definitions on hybrid modeling exist in the field (9-10, 23), but in this article, hybrid models are roughly divided into two categories: *composite* and *adaptive* hybrid modeling. In composite hybrid models, individual cells are treated discretely but interact with other chemical and mechanical continuum fields. Under appropriate formalisms, such models are able to couple different scales impacted by the growth process with biophysical, biochemical, and biomechanical information passed between scales. In adaptive hybrid models, both discrete and continuum representations of cells are chosen dynamically and adaptively where appropriate, e.g., discrete modeling for EMT and continuum modeling for the tumor bulk. Thus, the adaptive hybrid modeling can achieve discretely high resolution wherever and whenever necessary, while at the same time reducing the compute intensity as much as possible to support scalability of the approach to clinically relevant levels. Together, although continuum and discrete approaches have each provided important insights into cancer-related processes occurring at particular spatial and temporal scales, the complexity of cancer and the interactions among the cells and their complex tumor environment call for a multiscale continuum-discrete (hybrid) approach (10). Hybrid models have the potential to couple biological phenomena from the molecular and cellular scales to the tumor scale.

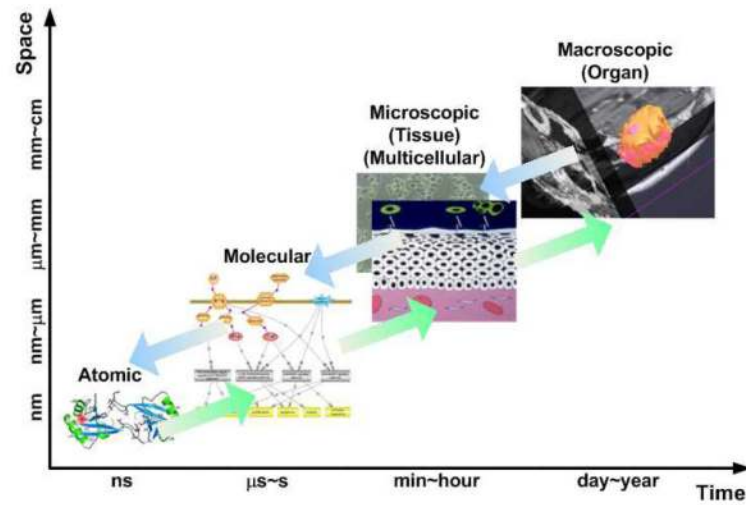


Figure 1. Schematic illustration of the biological scales of significant relevance for cancer modeling including atomic, molecular, microscopic (tissue/multicellular), and macroscopic (organ) scales. Different scales represent different spatial and temporal ranges; the methods for modeling these distinct scales differ as well. Multiscale cancer modeling requires the establishment of a linkage between these scales.

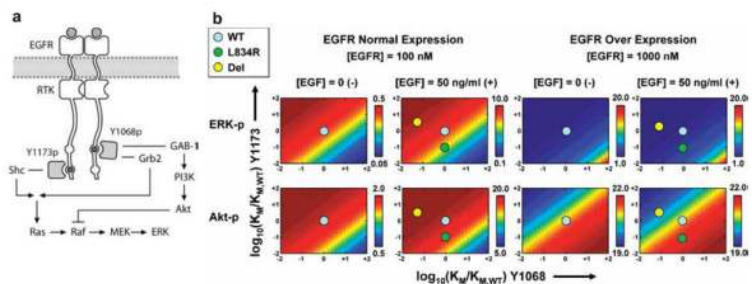


Figure 2. Mechanistically linking EGFR point-mutations to altered signaling characteristics leading to the onset of oncogenic transformations. (a) Branched signaling model of the ErbB1, i.e., through two parallel phosphorylation pathways, corresponding to tyrosine 1068 (Y1068) and tyrosine 1173 (Y1173). (b) Calculated ERK and Akt phosphorylation levels in units of nM under serum starved (EGF⁻) and serum cultured (EGF⁺) conditions for cells with normal ErbB1 (EGFR) expression and ErbB1 over expression. In each panel the Y1173-ErbB1 affinity (K_M) is varied along the x-axis (log value relative to wild-type) and the Y1068-ErbB1 affinity (K_M) is varied along the y-axis. The blue circle denotes the wild-type, the green denotes the L834R mutant and the yellow the Del L723-S728 ins S (or Del) mutant cell lines. Reproduced with permission from (31).

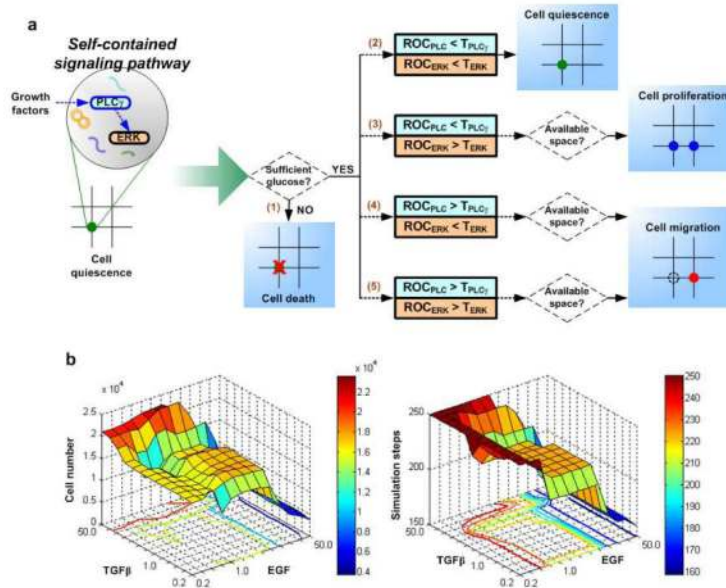


Figure 3.

(a) Experimentally-supported molecularly-driven cellular phenotypic decision algorithm. Decisions are made dependent on the molecular dynamics of PLC γ and ERK, two downstream signaling molecules of EGFR, for options (2)-(4). Beginning with a quiescent cancer cell, its phenotype for the next step is determined as follows: (1) cell death, if the on-site glucose level is insufficient; dependent on the molecular dynamics of PLC γ and ERK, (2) the cell will remain quiescent if the rate of change of both PLC γ and ERK remain below their corresponding thresholds; (3) the cell will proliferate (and a new cell will then occupy an adjacent free location) if only the rate of change of ERK exceeds its threshold; (4-5) the cell will migrate to the adjacent free location that has the greatest chemotactic cue weight if the rate of change of PLC γ (regardless of ERK) exceeds its threshold. (b) The effects of asynchronous combinatorial change in EGF and TGF β concentrations on tumor volume represented by cell number (left panel) and tumor expansion rate represented by the inverse simulation step (right panel). In the tumor volume evaluation, the largest tumor volume is reached under conditions of high TGF β and low or standard (with a variation of 1.0-fold) EGF concentrations. However, in the tumor expansion rate evaluation, the most aggressive tumor expansion rate (fewest simulation steps) occurs under conditions of high EGF, regardless of TGF β concentrations. Adapted with permission from (48).

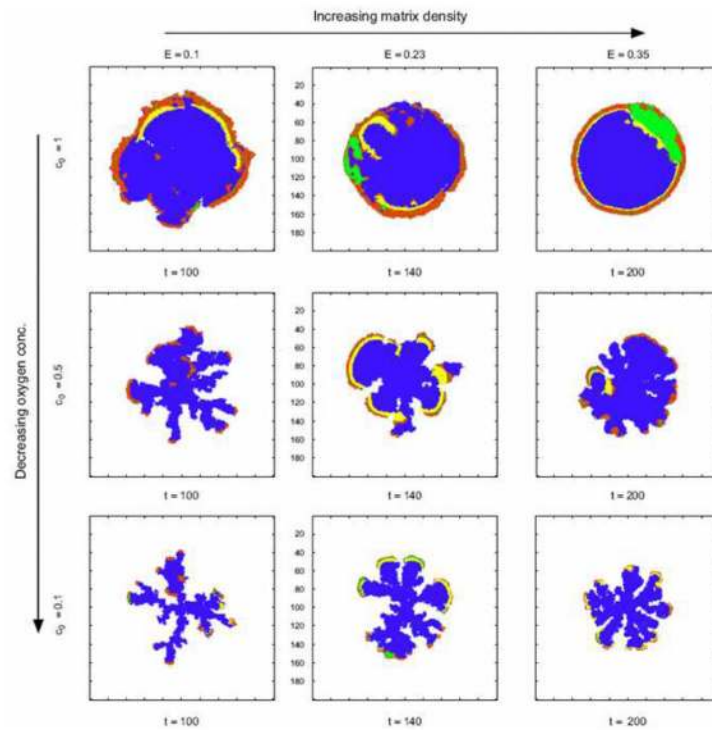


Figure 4.

Background oxygen concentration and matrix density influence the growth rate and tumor morphology. Oxygen concentration level is represented by c_0 and matrix density by E . Low oxygen concentration gives rise to branched tumor morphology, while the matrix density tends to stabilize the morphology, giving rise to wider branches in a more dense matrix. Proliferating cells are shown as red, quiescent cells as green, necrotic cells as yellow, dead cells as blue; empty grid points are displayed in white. Adapted with permission from (53).

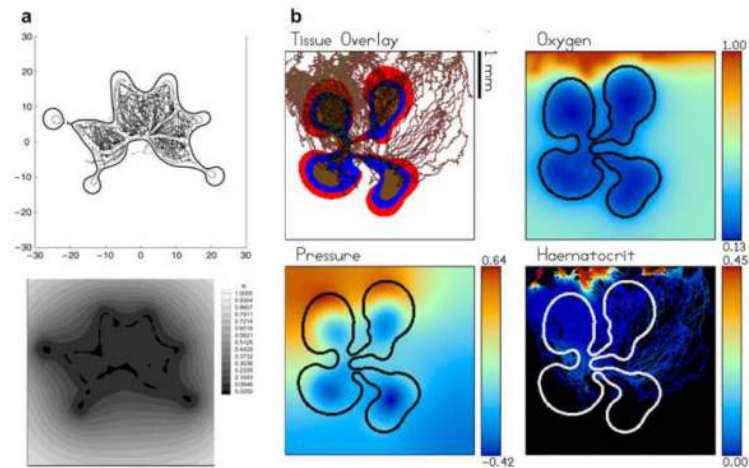


Figure 5.

Early microscopic-macroscopic composite models of tumor-induced angiogenesis and growth response. *(a)* A continuum tumor model (dark curve in top plot) is coupled with a discrete angiogenesis model (thin curves in top plot), which releases oxygen (bottom plot) that fuels tumor growth, shape instabilities such as fragmentation, and co-option of the vasculature. Reproduced with permission from (60). *(b)* A continuum tumor model (top left: red = proliferative rim, blue = hypoxic region, brown = necrotic core) is coupled with an advanced discrete angiogenesis model (top left: brown transparent curves), whose topology is determined by sprout tips (top left: green points) that respond chemotactically to growth factors released by the blue hypoxic region, and haptotactically to the ECM density. The proliferating tumor generates mechanical pressure (bottom left) that can collapse vessels, thereby obstructing hematocrit transport (bottom right) and subsequently oxygen transport delivery (top right). This, in turn, feeds back into the tumor growth pattern, the distribution of oxygen and thereby the spatial distribution of angiogenesis-promoting factors, and consequently the neovascular network topology. Reproduced with permission from (64).

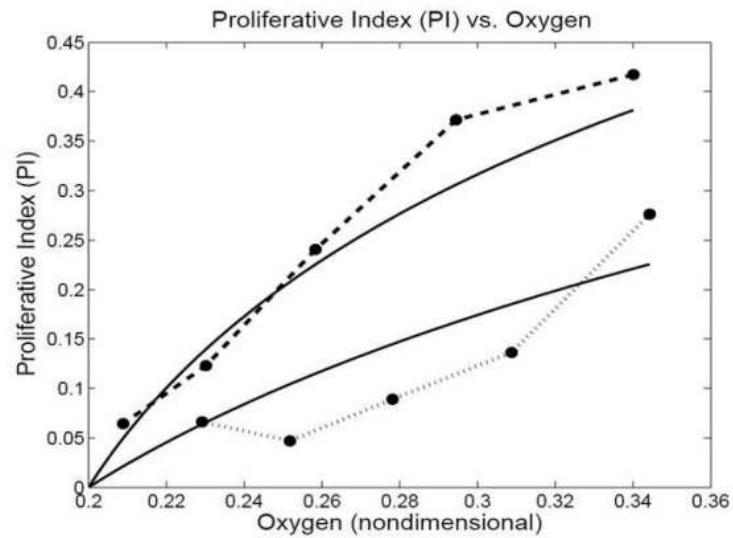


Figure 6. Macroscopic-scale functional relationships as emergent phenomena from microscopic models. The volume-averaged behavior of an agent-based model of ductal carcinoma in situ (DCIS)—a type of breast cancer where growth is constrained to a breast duct—was analyzed to postulate a Michaelis-Menten type relationship between oxygen (σ) and proliferation (PI) as an *emergent phenomenon* of the model (80)—see the solid curves above. This hypothesized relationship was later validated by analyzing post-mastectomy Ki-67 immunohistochemical data for proliferation in two separate breast ducts (dashed curves), with excellent qualitative and quantitative agreement (81).

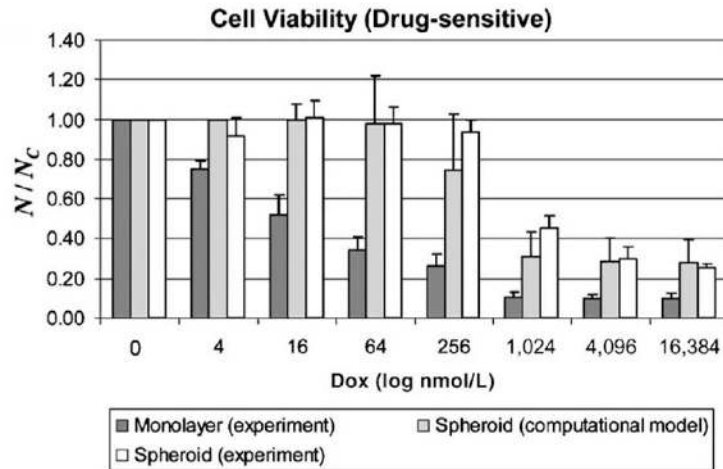


Figure 7. Calibrated macroscopic behavior as mechanistic functional relationships. Sinek, Frieboes, Cristini and co-workers (89-91) used a mechanistic, compartmental cell-scale model to determine a calibrated relationship between the local substrate level, doxorubicin level, and the spatiotemporally-varying tumor apoptotic response to chemotherapy. After calibrating to experimental monolayer data (dark gray bars), the same tumor types were simulated in 3D, with the model accurately predicting the tumor's heterogeneous apoptotic response (light gray bars) to the large substrate and doxorubicin substrates within the tumor. This work not only demonstrates the capacity for a calibrated multiscale model to provide better predictions of 3D tumor behavior than monolayer experiments alone, but also shows how analysis and simulation of microscopic models can motivate improve constitutive laws in continuum models that properly incorporate microscopic effects. Reproduced with permission from (91).

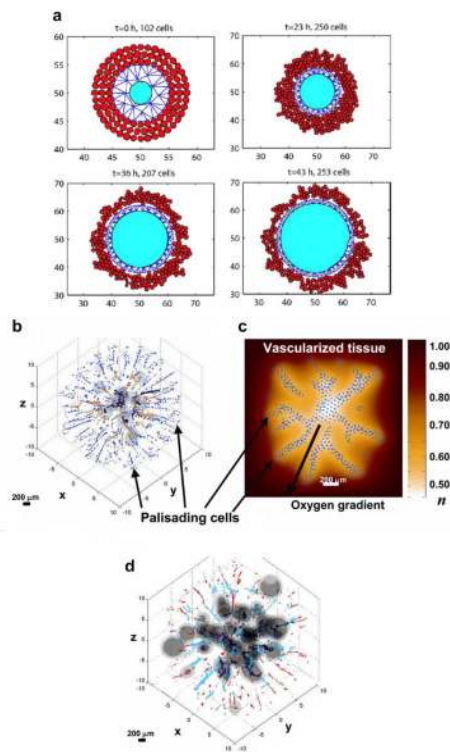


Figure 8.

Hybrid microscopic-macroscopic modeling. (a) Kim, Stolarska and Othmer (92-93) coupled a discrete model of proliferating cells (red circles) with a viscoelastic continuum model of the necrotic core (cyan solid), by coupling the triangular computational mesh through the quiescent region (blue lines). The model could successfully transfer forces and masses between the two representations. Reproduced by permission from (92). (b-d) Wise, Lowengrub, Cristini, Frieboes and colleagues (10, 62-63, 65) used a discrete model of motile glioma cells (blue dots in (b) and (c)) to model the EMT in glioma, and a continuum mixture model (gray regions in (b) and (d)) to model regions of tumor cell aggregation. The model was successful in dynamically choosing between discrete and continuum representation according to localized biophysical criteria (in this case, a threshold density, coupled with hypoxic considerations), while maintaining mathematical consistency between the models and conserving mass and momentum during any switch. Palisading cells were observed to move up oxygen gradients (blue dots; see (c)), and once cells aggregated in normoxic regions in sufficient numbers, they were converted back to the continuum representation, thus creating a satellite tumor (outer gray regions in (d)). Adapted with permission from (63, 65).