



# HHS Public Access

Author manuscript

*JAMA Oncol.* Author manuscript; available in PMC 2017 December 21.

Published in final edited form as:

*JAMA Oncol.* 2016 November 01; 2(11): 1477–1486. doi:10.1001/jamaoncol.2016.1897.

## Neoadjuvant Endocrine Therapy for Estrogen Receptor-Positive Breast Cancer:

### A Systematic Review and Meta-analysis

**Laura M. Spring, MD,**

Massachusetts General Hospital Cancer Center, Harvard Medical School, Boston

**Arjun Gupta, MD,**

Department of Medicine, University of Texas Southwestern Medical Center, Dallas

**Kerry L. Reynolds, MD,**

Massachusetts General Hospital Cancer Center, Harvard Medical School, Boston

**Michele A. Gadd, MD,**

Massachusetts General Hospital Cancer Center, Harvard Medical School, Boston

**Leif W. Ellisen, MD, PhD,**

Massachusetts General Hospital Cancer Center, Harvard Medical School, Boston

**Steven J. Isakoff, MD, PhD,**

Massachusetts General Hospital Cancer Center, Harvard Medical School, Boston

**Beverly Moy, MD,** and

Massachusetts General Hospital Cancer Center, Harvard Medical School, Boston

**Aditya Bardia, MD, MPH**

Massachusetts General Hospital Cancer Center, Harvard Medical School, Boston

### Abstract

**IMPORTANCE**—Estrogen receptor-positive (ER+) tumors of the breast are generally highly responsive to endocrine treatment. Although endocrine therapy is the mainstay of adjuvant treatment for ER+ breast cancer, the role of endocrine therapy in the neoadjuvant setting is unclear.

---

**Corresponding Author:** Aditya Bardia, MD, MPH, Massachusetts General Hospital Cancer Center, Harvard Medical School, 10 N Grove St, Lawrence House 304, Boston, MA 02114 (bardia.aditya@mgh.harvard.edu).

**Author Contributions:** Drs Spring and Bardia had full access to all the data in the study and take responsibility for the integrity of the data and the accuracy of the data analysis.

*Study concept and design:* Spring, Reynolds, Gadd, Moy, Bardia.

*Acquisition, analysis, or interpretation of data:* Spring, Gupta, Ellisen, Isakoff, Moy, Bardia.

*Drafting of the manuscript:* Spring, Moy, Bardia. *Critical revision of the manuscript for important intellectual content:* All authors.

*Statistical analysis:* Spring, Gupta, Bardia.

*Administrative, technical, or material support:* Moy.

*Study supervision:* Reynolds, Ellisen, Isakoff, Bardia.

**Conflict of Interest Disclosures:** None reported.

**Previous Presentation:** This paper was presented in part at the San Antonio Breast Cancer Symposium; December 11, 2015; San Antonio, Texas.

**OBJECTIVE**—To evaluate the effect of neoadjuvant endocrine therapy (NET) on the response rate and the rate of breast conservation surgery (BCS) for ER+ breast cancer.

**DATA SOURCES**—Based on PRISMA guidelines, a librarian-led search of PubMed and Ovid MEDLINE was performed to identify eligible trials published from inception to May 15, 2015. The search was performed in May 2015.

**STUDY SELECTION**—Inclusion criteria were prospective, randomized, neoadjuvant clinical trials that reported response rates with at least 1 arm incorporating NET (n = 20). Two authors independently analyzed the studies for inclusion.

**DATA EXTRACTION AND SYNTHESIS**—Pooled odds ratios (ORs), 95% CIs, and *P* values were estimated for end points using the fixed- and random-effects statistical model.

**RESULTS**—The analysis included 20 studies with 3490 unique patients. Compared with combination chemotherapy, NET as monotherapy with aromatase inhibitors had a similar clinical response rate (OR, 1.08; 95% CI, 0.50–2.35; *P* = .85; n = 378), radiological response rate (OR, 1.38; 95% CI, 0.92–2.07; *P* = .12; n = 378), and BCS rate (OR, 0.65; 95% CI, 0.41–1.03; *P* = .07; n = 334) but with lower toxicity. Aromatase inhibitors were associated with a significantly higher clinical response rate (OR, 1.69; 95% CI, 1.36–2.10; *P* < .001; n = 1352), radiological response rate (OR, 1.49; 95% CI, 1.18–1.89; *P* < .001; n = 1418), and BCS rate (OR, 1.62; 95% CI, 1.24–2.12; *P* < .001; n = 918) compared with tamoxifen. Dual combination therapy with growth factor pathway inhibitors was associated with a higher radiological response rate (OR, 1.59; 95% CI, 1.04–2.43; *P* = .03; n = 355), but not clinical response rate (OR, 0.76; 95% CI, 0.54–1.07; *P* = .11; n = 537), compared with endocrine monotherapy. The incidence of pathologic complete response was low (<10%).

**CONCLUSIONS AND RELEVANCE**—Neoadjuvant endocrine therapy, even as monotherapy, is associated with similar response rates as neoadjuvant combination chemotherapy but with significantly lower toxicity, suggesting that NET needs to be reconsidered as a potential option in the appropriate setting. Additional research is needed to develop rational NET combinations and predictive biomarkers to personalize the optimal neoadjuvant strategy for ER+ breast cancer.

Endocrine therapy is the mainstay of treatment for estrogen receptor-positive (ER+) breast cancer. At approximately 75% of all breast cancers, ER+ constitutes the most common subtype of the disease.<sup>1,2</sup> Conceptually, endocrine therapy strategies include 2 approaches. The first approach inhibits the production of estrogen (ligand) so no ligand is available to activate the receptor. This strategy is used by aromatase inhibitors (AI), which block the aromatase enzyme and lower estrogen levels in postmenopausal women, or by luteinizing hormone-releasing hormone agonists, which reduce estrogen production by the ovaries and lower estrogen levels in premenopausal women. The second approach targets the estrogen receptor itself and is used by drugs such as tamoxifen, a selective estrogen receptor modulator, or fulvestrant, a selective estrogen receptor degrader.

Although medical therapy for localized breast cancer is primarily used in the adjuvant setting, it can also be effectively used in the neoadjuvant (preoperative) setting. Neoadjuvant therapy for breast cancer is generally established as a therapeutic option for selected high-risk breast cancers, such as tumors 2 cm or greater, and for locally advanced disease

(including tumors initially ineligible for resection). The use of neoadjuvant therapy offers several clinical and research advantages. In patients with large tumors, neoadjuvant therapy is likely to reduce the tumor size and can make some patients candidates for breast conservation surgery (BCS) rather than mastectomy.<sup>3</sup> Given that the primary tumor remains intact during therapy, the neoadjuvant treatment approach allows for monitoring of treatment response and discontinuation of inactive therapy in the event of disease progression, thereby saving the patient exposure to potentially toxic therapy. From a research perspective, the preoperative setting has become recognized as a human in vivo system to explore biomarker development and the efficacy of therapies, including novel agents.<sup>4</sup> A number of studies<sup>5</sup> have shown that the benefit of chemotherapy is similar whether treatment is given in the adjuvant or neoadjuvant setting.

Although the role of neoadjuvant chemotherapy (NACT) is well established in localized breast cancer, the role of neoadjuvant endocrine therapy (NET), as monotherapy and in combination with other therapies, remains unclear. Owing to concern for delayed time to response compared with cytotoxic chemotherapy, NET was initially used to treat elderly patients with ER+ breast cancer, particularly those who were not considered good candidates for systemic chemotherapy or surgery, because NET in general is well tolerated.<sup>6–10</sup> Since 2001, a number of studies<sup>11–24</sup> have explored the efficacy of NET in a more general population and demonstrated considerable response rates in patients with ER+ breast cancer, suggesting that NET could be a significantly less toxic alternative to NACT. However, these studies had small sample sizes with low power, which limited their ability to make robust conclusions to guide clinical application. Moreover, considerable debate remains on the optimal choice of endocrine therapy. Consequently, NET is used infrequently in clinical practice. To address these issues, we conducted a comprehensive systematic review and meta-analysis to evaluate and compare the efficacy of various NETs, including combination strategies, for ER+ breast cancer.

## Methods

Based on the guidelines of the Preferred Reporting Items for Systematic Reviews and Meta-Analyses (PRISMA) statement,<sup>25</sup> a librarian-led systematic search restricted to English-language studies in PubMed and Ovid MEDLINE was performed in May 2015 to identify eligible trials published from inception to May 15, 2015. The search strategy is detailed in eMethods in the Supplement. Gray literature was not included. Inclusion criteria were prospective, randomized, neoadjuvant clinical trials that had at least 1 NET arm and reported response rates. Studies including patients with any neoplasm other than female breast cancer were excluded, as were studies analyzing unresectable or metastatic breast cancer. This meta-analysis of readily available literature did not require institutional review board approval, and each respective study detailed their consent procedures.

Data extraction was performed independently by two of us (L.M.S. and A.G.), with very good interobserver agreement ( $\kappa = 0.95$ ). The response rate was the primary end point of interest. Data on pathologic complete response (pCR) rate and rates of BCS were also collected when available. *Response rate* was defined as the probability of achieving a complete response and/or a partial response, determined by serial clinical or radiological

measurement, as reported by the study under consideration. A *pCR* was defined as no residual malignant lesion detected by pathologic examination of the resected tissue.

Pooled odds ratios (ORs) and *P* values were estimated for end points using the Mantel-Haenzel method and considering a fixed- and random-effects statistical model, with analyses repeated using the Peto 1-step OR method to account for rare events.<sup>26</sup> Meta-analyses were conducted with the computer program Review Manager (RevMan; version 5.1 for Windows; Nordic Cochrane Centre). The 95% CIs were calculated and presented in forest plots. Statistical heterogeneity was evaluated with the  $\chi^2$  test, and inconsistency was estimated using the *I*<sup>2</sup> statistic.<sup>27</sup> Differences between studies regarding eligibility criteria, patient population, potential bias, and treatment-delivered arms were discussed. The quality of the selected randomized clinical trials was assessed based on the instrument developed by Jadad et al<sup>28</sup> (eTable 1 in the Supplement). Sensitivity analyses were conducted to evaluate the effect of various variables on outcomes and to evaluate trends. A *P* value of .05 was considered statistically significant.

## Results

A total of 477 potential studies were identified by the systematic search. Studies that were duplicated (n = 200) were excluded, and we reviewed abstracts for the remaining 277 studies. Of these, a total of 27 randomized clinical trials were selected for full review. Seven trials were excluded for incomplete data (n = 1), duplication (n = 1), and lack of comparisons of interest (n = 5). Ultimately, 20 trials met the criteria for inclusion, with 3490 unique patients. The PRISMA diagram detailing the inclusion process is shown in eFigure 1 in the Supplement. The PubMed search was repeated in April 2016, and 1 additional study of interest was found.<sup>29</sup>

### Study Characteristics

The selected studies<sup>22–24, 30–46</sup> were published from January 2001 to December 2014. The sample sizes ranged from 44 to 374 and featured a broad patient population. Eighteen studies (90%)<sup>22–24, 31–33, 35–46</sup> included postmenopausal women only; 1 study (5%)<sup>30</sup> included premenopausal and postmenopausal women, and 1 study (5%)<sup>34</sup> focused entirely on premenopausal women. The selected trials compared NACT vs NET and tamoxifen vs AIs, used different durations of AI therapy, and administered NET with additional agents. Details on the selected studies are shown in the Table.

### NET vs NACT

Pooled data of trials comparing NET monotherapy with AI and combination NACT for localized breast cancer demonstrated no significant difference in the clinical response rate (OR, 1.08; 95% CI, 0.50–2.35; *P* = .85; n = 378), radiological response rate (OR, 1.38; 95% CI, 0.92–2.07; *P* = .12; n = 378), pCR (OR, 1.99; 95% CI, 0.62–6.39; *P* = .25; n = 378), or BCS rate (OR, 0.65; 95% CI, 0.41–1.03; *P* = .07; n = 334), as outlined in Figure 1. Alternative statistical models demonstrating consistent results are found in eFigure 2 in the Supplement.<sup>30–32</sup>

However, toxicity was significantly increased in the NACT arm in all 3 studies (eTable 2 in the Supplement). Alba et al<sup>30</sup> reported a reduction in grade 3 (severe) to 4 (life-threatening) adverse events (OR, 0.11; 95% CI, 0.03–0.35;  $P \leq .001$ ) favoring NET. Semiglazov et al<sup>32</sup> reported increased rates of neutropenia, febrile neutropenia, and cardiotoxicity with chemotherapy. Palmieri et al<sup>31</sup> reported statistically significant increases in alopecia, nausea, vomiting, stomatitis, and anemia with NACT. One trial<sup>33</sup> compared NET plus chemotherapy with NACT alone. This trial included patients with ER+ and ER-negative tumors, but in the subgroup analysis focused on those with ER+ tumors, a statistically significant benefit accrued for the clinical response rate ( $P = .007$ ) and pCR ( $P = .04$ ) by adding endocrine therapy.

### Different Types of NET

Seven trials compared NET plus AIs vs tamoxifen.<sup>22–24, 34–37</sup> The pooled analysis demonstrated a highly statistically significant benefit favoring the AI over tamoxifen for the clinical response rate (OR, 1.69; 95% CI, 1.36–2.10;  $P < .001$ ;  $n = 1352$ ) and radiological response rate (OR, 1.49; 95% CI, 1.18–1.89;  $P < .001$ ;  $n = 1418$ ), as outlined in Figure 2A and B and eFigure 3 in the Supplement. The IMPACT study (Immediate Preoperative Anastrozole, Tamoxifen, or Combined With Tamoxifen)<sup>23</sup> compared a third treatment arm in which patients received a combination of tamoxifen and letrozole vs tamoxifen alone, with no significant difference in the clinical response rate (OR, 1.15; 95% CI, 0.67–2.00;  $P = .61$ ) and radiological response rate (OR, 1.48; 95% CI, 0.79–2.79;  $P = .22$ ) between the 2 groups. No difference was seen in the pCR rate (OR, 1.42; 95% CI, 0.38–5.33;  $P = .60$ ;  $n = 633$ ), although the total number of events was small and only 3 studies<sup>22, 34, 36</sup> reported pCR (Figure 2C). For the BCS rate, a statistically significant benefit favored AI over tamoxifen (OR, 1.62; 95% CI, 1.24–2.12;  $P < .001$ ;  $n = 918$ ) (Figure 2D). For all studies, toxicity was low with both treatment strategies.

One study<sup>38</sup> compared durations of exemestane, 25 mg/d, for 6 and 4 months and reported no difference between the 2 groups in clinical response rates. Another study<sup>39</sup> compared 3 different AIs and reported no significant difference in clinical response rates among patients who received letrozole and anastrozole compared with those who received exemestane (95 of 127 [74.8%] vs 85 of 123 [69.1%] vs 78 of 124 [62.9%], respectively) and similar biological activity based on changes in the Ki67 proliferative index and the preoperative endocrine prognostic index. In addition, surgical outcomes were improved in all 3 groups, with 81 of 159 patients (50.9%) who were considered mastectomy-only candidates at the start of treatment undergoing BCS and 157 of 189 patients (83.1%) who were marginal candidates for BCS undergoing BCS.<sup>39</sup>

One study<sup>40</sup> compared fulvestrant dosages of 500 and 250 mg/mo for 16 weeks before surgery. Results demonstrated no significant difference in tumor response by ultrasonography in the intent-to-treat population (OR, 1.30; 95% CI, 0.64–2.64;  $P = .47$ ) but higher biological activity for the 500-mg vs the 250-mg doses, consistent with observations in the metastatic setting. Our updated search revealed 1 study<sup>29</sup> that compared neoadjuvant anastrozole with fulvestrant, which showed similar response rates (33 of 56 [58.9%] vs 28 of

52 [53.8%], respectively) and BCS rates (33 of 56 [58.9%] vs 26 of 52 [50.0%], respectively).

### NET as Monotherapy vs Dual Therapy

Agents used in combination with NET in the studies were everolimus,<sup>41</sup> celecoxib,<sup>42</sup> zoledronic acid,<sup>43</sup> gefitinib,<sup>44, 45</sup> dual endocrine therapy with AI plus tamoxifen,<sup>23</sup> and lapatinib.<sup>46</sup> As seen in Figure 3A and B, the analysis of monotherapy vs dual therapy showed no difference in terms of clinical response rate (OR, 0.91; 95% CI, 0.70–1.19;  $P = .50$ ;  $n = 941$ ) although with significant heterogeneity, but dual therapy was associated with a higher radiological response rate (OR, 1.49; 95% CI, 1.11–2.02;  $P = .008$ ;  $n = 758$ ), with similar results seen with alternative statistical models (eFigure 4 in the Supplement). Of the trials looking at NET with an additional agent considered to be a growth factor pathway inhibitor, dual therapy was associated with a higher radiological response rate (OR, 1.59; 95% CI, 1.04–2.43;  $P = .03$ ;  $n = 355$ ) but not clinical response rate (OR, 0.76; 95% CI, 0.54–1.07;  $P = .11$ ;  $n = 537$ ), which had significant heterogeneity compared with endocrine monotherapy (Figure 3C and D), with similar results noted using alternative statistical models (eFigure 4 in the Supplement). The incidence of a pCR in any arm was low overall (<10%), with resultant low numbers not suitable for intergroup comparisons. Rates of conversion to BCS were not uniformly reported. An additional study<sup>44</sup> testing gefitinib plus an AI was not suitable for direct comparison because gefitinib plus placebo represented the control arm. This small study ( $n = 56$ ) showed that the addition of an AI resulted in greater tumor size reduction with a minimal increase in treatment-related adverse events.

### Discussion

This comprehensive systematic review and meta-analysis suggests that NET, even as monotherapy, is associated with similar response rates to NACT given as combination therapy but with lower toxicity. The incidence of pCR was uniformly low, consistent with other neoadjuvant studies in ER+ breast cancer.<sup>47</sup> As demonstrated, neoadjuvant AIs are more effective than tamoxifen. Our study also suggests that dual combination therapy might be superior to monotherapy.

Although NACT is more widely used for fit patients than NET, both therapies have similar efficacy and low toxicity, and NET needs to be reconsidered as a potential option. In terms of choice of NET, results of this analysis mirror those seen in the adjuvant setting, with superior results for letrozole over tamoxifen in the neoadjuvant trial PO24 and the adjuvant trial BIG (Breast International Group) 1–98.<sup>22, 48</sup> Notably, similar to the adjuvant trial ATAC (Arimidex, Tamoxifen, Alone or in Combination), combining tamoxifen and an AI was not found to be beneficial in the neoadjuvant IMPACT trial.<sup>23, 49</sup> Similarly, the 1 study solely focusing on premenopausal women, the STAGE study,<sup>34</sup> demonstrated 6 months of ovarian suppression plus an AI was more effective in reducing tumor size than tamoxifen, which supported results seen in the adjuvant setting in the SOFT (Suppression of Ovarian Function Plus Either Tamoxifen or Exemestane Compared With Tamoxifen Alone) and TEXT (Triptorelin With Either Exemestane or Tamoxifen) trials.<sup>50</sup>



In the traditional treatment paradigm in ER+ breast cancer, endocrine therapy and chemotherapy were not combined because endocrine therapy might have a negative effect on concurrent chemotherapy by arresting the cell cycle in the G<sub>0</sub> phase and limiting the sensitivity of cancer cells to cytotoxic chemotherapy.<sup>51, 52</sup> However, as reviewed above, combination treatment with NET plus chemotherapy compared with NACT alone showed a statistically significant benefit to adding endocrine therapy for the clinical response rate and pCR, which challenges the notion that, at least in certain instances, endocrine therapy might not negatively affect the therapeutic efficacy of concurrent chemotherapy.<sup>33</sup> With the remarkable therapeutic success seen in the metastatic setting with the combination of endocrine therapy and cyclindependent kinase (CDK) 4/6 inhibition, which also affects the cell cycle, and the growing appreciation of tumor heterogeneity, it might be time to revisit the dogma of never combining endocrine therapies with cell cycle-specific therapies.<sup>53, 54</sup>

Another traditional treatment paradigm that might warrant reconsideration is the general recommendation that NET should not be offered to premenopausal women and that NACT should be preferred. This area is understudied. Most of the randomized trials reviewed in this analysis focused on postmenopausal women. A potential concern is the time (approximately 4 weeks) needed for the combination of AI and luteinizing hormone-releasing hormone agonists to induce estradiol suppression.<sup>30</sup> This concern further underscores the importance of other novel endocrine therapies and biomarker-driven trials in premenopausal ER+ breast cancer. Furthermore, the use of targeted agents in combination with NET for premenopausal women has not been well studied and should be evaluated further to balance efficacy with potential toxicities, including long-term toxicities of chemotherapy in young breast cancer survivors.

Determination of the correct patient population for NET remains in question. Tools such as Oncotype Dx Breast Recurrence Score and the Breast Cancer Index have been validated in the adjuvant setting and could be explored in the neoadjuvant setting as a potential mechanism to predict response to endocrine therapy.<sup>55, 56</sup> In addition, biopsies performed during the course of treatment can provide valuable information regarding treatment response. Data from the IMPACT trial suggest that 2- to 4-week tumor Ki67 expression during endocrine therapy is predictive of long-term outcomes.<sup>57</sup> The Alliance for Clinical Trials in Oncology cooperative group has designed a phase 3 neoadjuvant clinical trial (ALTERNATE)<sup>58</sup> randomizing postmenopausal women with localized ER+ invasive breast cancer to anastrozole, fulvestrant, or their combination to assess a biomarker-driven treatment strategy and identify women with a low risk for disease recurrence. In this trial, biopsies are performed during NET, and patients with Ki67 expression greater than 10% are switched to chemotherapy. This strategy allows early assessment of endocrine therapy-responsive vs -unresponsive disease, which could obviate the need for chemotherapy in select settings.

The neoadjuvant setting might serve as an attractive model for drug development in ER+ breast cancer. The trials comparing endocrine monotherapy with combination therapy suggest superior radiological response rates, but the low number of trials, different drugs, and nonselective inhibitors limit specific conclusions. Several ongoing trials are combining endocrine therapy with selective inhibitors of the PI3K/Akt/mTOR/D-cyclin-CDK4/6

pathways in the neoadjuvant setting, such as letrozole with or without the PI3K inhibitor taselisib (LORELEI)<sup>59</sup> and letrozole with or without the CDK4/6 inhibitor palbociclib (PALLET).<sup>60</sup> Preliminary analysis of a phase 2 trial examining palbociclib combined with anastrozole as neoadjuvant therapy for stage 2 or 3 ER+ breast cancer showed that the addition of a CDK4/6 inhibitor significantly lowers Ki67, suggesting that the addition of CDK4/6 inhibition can improve the efficacy of NET.<sup>61</sup>

This study has several limitations. First, to avoid mixing studies with different treatment arms and to limit heterogeneity, only studies with similar arms were combined, and some pooled analyses were therefore restricted to 2 to 3 studies with resultant small sample sizes. Second, some of the studies comparing NET vs NACT used different radiological modalities to assess the radiological response rate. Sensitivity analysis including only the studies reporting the radiological response rate by ultrasonography demonstrated similar results (OR, 1.20; 95%CI, 0.75–1.92;  $P = .45$ ). Although the response rate was not assessed uniformly in all trials, most used Response Evaluation Criteria in Solid Tumors (RECIST), and no evidence of major publication bias was found (eFigure 5 in the Supplement). Third, the definition of ER+ varied among some of the studies. The PO24 and IMPACT trials demonstrated higher response rates in patients with higher ER expression.<sup>22, 23</sup> In addition, the studies do not report survival data. Survival is a difficult end point for NET studies given the recommended use of adjuvant endocrine therapy, varying adherence with adjuvant endocrine therapy, differing use of adjuvant chemotherapy, and the long-term follow-up needed for late recurrences in ER+ breast cancer. Semiglazov et al<sup>32</sup> reported the local recurrence rate after a mean follow-up of less than 36 months (3.3% and 3.4% of patients who received endocrine therapy and chemotherapy, respectively). Last, conclusions regarding improved rates of BCS are limited overall because determining eligibility for BCS is subjective by nature and depends on several variables, including patient preference.

## Conclusions

Neoadjuvant endocrine therapy can be a safe and effective option for localized ER+ breast cancer. Given the low toxicity associated with NET, reconsideration of NET as a worthwhile treatment option in the neoadjuvant setting is reasonable, particularly as combination therapy, similar to NACT in combination, for the correct patient population. Determining the correct patient population for NET remains an unanswered question, and will be best addressed by additional studies incorporating NET with strong biomarker-driven hypotheses. Neoadjuvant endocrine therapy also provides the opportunity to examine mechanisms of endocrine resistance, to optimize and compare endocrine therapies, and to investigate combination approaches with novel targeted therapies that may delay or prevent endocrine resistance. Further studies examining predictive biomarkers are needed to personalize optimal NET plus targeted therapy combinations.

## Supplementary Material

Refer to Web version on PubMed Central for supplementary material.



## Acknowledgments

**Funding/Support:** This study was supported in part by a Jerry Younger Grant for Clinical and Translational Breast Cancer Research. Dr Bardia is supported by National Cancer Institute grant 5K12CA087723-13. Dr Spring is supported by National Cancer Institute grant 5T32CA071345-19.

**Role of the Funder/Sponsor:** The funding source had no role in the design and conduct of the study; collection, management, analysis, and interpretation of the data; preparation, review, or approval of the manuscript; and decision to submit the manuscript for publication.

## References

- Dunnwald LK, Rossing MA, Li CI. Hormone receptor status, tumor characteristics, and prognosis: a prospective cohort of breast cancer patients. *Breast Cancer Res.* 2007; 9(1):R6. [PubMed: 17239243]
- Burstein HJ, Prestrud AA, Seidenfeld J, et al. American Society of Clinical Oncology. American Society of Clinical Oncology clinical practice guideline: update on adjuvant endocrine therapy for women with hormone receptor-positive breast cancer. *J Clin Oncol.* 2010; 28(23):3784–3796. [PubMed: 20625130]
- Rastogi P, Anderson SJ, Bear HD, et al. Preoperative chemotherapy: updates of National Surgical Adjuvant Breast and Bowel Project protocols B-18 and B-27. *J Clin Oncol.* 2008; 26(5):778–785. [PubMed: 18258986]
- Bardia A, Baselga J. Neoadjuvant therapy as a platform for drug development and approval in breast cancer. *Clin Cancer Res.* 2013; 19(23):6360–6370. [PubMed: 24298066]
- Mauri D, Pavlidis N, Ioannidis JPA. Neoadjuvant versus adjuvant systemic treatment in breast cancer: a meta-analysis. *J Natl Cancer Inst.* 2005; 97(3):188–194. [PubMed: 15687361]
- Mustacchi G, Ceccherini R, Milani S, et al. Italian Cooperative Group GRETA. Tamoxifen alone versus adjuvant tamoxifen for operable breast cancer of the elderly: long-term results of the phase III randomized controlled multicenter GRETA trial. *Ann Oncol.* 2003; 14(3):414–420. [PubMed: 12598347]
- Gazet JC, Ford HT, Coombes RC, et al. Prospective randomized trial of tamoxifen vs surgery in elderly patients with breast cancer. *Eur J Surg Oncol.* 1994; 20(3):207–214. [PubMed: 8181594]
- Mathew J, Asgeirsson KS, Jackson LR, Cheung KL, Robertson JFR. Neoadjuvant endocrine treatment in primary breast cancer: review of literature. *Breast.* 2009; 18(6):339–344. [PubMed: 19836953]
- Monnier A. Clinical management of adverse events in adjuvant therapy for hormone-responsive early breast cancer. *Ann Oncol.* 2007; 18(suppl 8):viii, 36–44.
- Leal F, Liutti VT, Antunes dos Santos VC, et al. Neoadjuvant endocrine therapy for resectable breast cancer: a systematic review and meta-analysis. *Breast.* 2015; 24(4):406–412. [PubMed: 25858103]
- Llombart-Cussac A, Guerrero Á, Galán A, et al. Phase II trial with letrozole to maximum response as primary systemic therapy in postmenopausal patients with ER/PgR[+] operable breast cancer. *Clin Transl Oncol.* 2012; 14(2):125–131. [PubMed: 22301401]
- Hille U, Soergel P, Länger F, Schippert C, Makowski L, Hillemanns P. Aromatase inhibitors as solely treatment in postmenopausal breast cancer patients. *Breast J.* 2012; 18(2):145–150. [PubMed: 22176032]
- Dixon JM, Renshaw L, Dixon J, Thomas J. Invasive lobular carcinoma: response to neoadjuvant letrozole therapy. *Breast Cancer Res Treat.* 2011; 130(3):871–87. [PubMed: 21870129]
- Olson JA Jr, Budd GT, Carey LA, et al. Improved surgical outcomes for breast cancer patients receiving neoadjuvant aromatase inhibitor therapy: results from a multicenter phase II trial. *J Am Coll Surg.* 2009; 208(5):906–914. [PubMed: 19476859]
- Dixon JM, Renshaw L, Macaskill EJ, et al. Increase in response rate by prolonged treatment with neoadjuvant letrozole. *Breast Cancer Res Treat.* 2009; 113(1):145–151. [PubMed: 18264759]
- Krainick-Strobel UE, Lichtenegger W, Wallwiener D, et al. Neoadjuvant letrozole in postmenopausal estrogen and/or progesterone receptor positive breast cancer: a phase IIb/III trial

to investigate optimal duration of preoperative endocrine therapy. *BMC Cancer*. 2008; 8:62. [PubMed: 18302747]

17. Torrisi R, Bagnardi V, Pruneri G, et al. Antitumour and biological effects of letrozole and GnRH analogue as primary therapy in premenopausal women with ER and PgR positive locally advanced operable breast cancer. *Br J Cancer*. 2007; 97(6):802–808. [PubMed: 17712311]
18. Salmon RJ, Alran S, Malka I, et al. Breast Group of the Institut Curie. Estrogen receptors evolution in neoadjuvant aromatase inhibitor (AI) therapy for breast cancer in elderly women: stability of hormonal receptor expression during treatment. *Am J Clin Oncol*. 2006; 29(4):385–388. [PubMed: 16891867]
19. Miller WR, White S, Dixon JM, Murray J, Renshaw L, Anderson TJ. Proliferation, steroid receptors and clinical/pathological response in breast cancer treated with letrozole. *Br J Cancer*. 2006; 94(7):1051–1056. [PubMed: 16538221]
20. Cappelletti V, Celio L, Bajetta E, et al. Prospective evaluation of estrogen receptor- $\beta$  in predicting response to neoadjuvant antiestrogen therapy in elderly breast cancer patients. *Endocr Relat Cancer*. 2004; 11(4):761–770. [PubMed: 15613450]
21. Milla-Santos A, Milla L, Calvo N, et al. Anastrozole as neoadjuvant therapy for patients with hormone-dependent, locally-advanced breast cancer. *Anticancer Res*. 2004; 24(2C):1315–1318. [PubMed: 15154667]
22. Eiermann W, Paepke S, Appfelstaedt J, et al. Letrozole Neo-Adjuvant Breast Cancer Study Group. Preoperative treatment of postmenopausal breast cancer patients with letrozole: a randomized double-blind multicenter study. *Ann Oncol*. 2001; 12(11):1527–1532. [PubMed: 11822750]
23. Smith IE, Dowsett M, Ebbs SR, et al. IMPACT Trialists Group. Neoadjuvant treatment of postmenopausal breast cancer with anastrozole, tamoxifen, or both in combination: the Immediate Preoperative Anastrozole, Tamoxifen, or Combined with Tamoxifen (IMPACT) multicenter double-blind randomized trial. *J Clin Oncol*. 2005; 23(22):5108–5116. [PubMed: 15998903]
24. Ellis MJ, Coop A, Singh B, et al. Letrozole is more effective neoadjuvant endocrine therapy than tamoxifen for ErbB-1- and/or ErbB-2-positive, estrogen receptor-positive primary breast cancer: evidence from a phase III randomized trial. *J Clin Oncol*. 2001; 19(18):3808–3816. [PubMed: 11559718]
25. Moher D, Liberati A, Tetzlaff J, Altman DG, PRISMA Group. Preferred Reporting Items for Systematic Reviews and Meta-analyses: the PRISMA statement. *Int J Surg Lond Engl*. 2010; 8(5): 336–341.
26. Mantel N, Haenzel W. Statistical aspects of the analysis of data from retrospective studies of disease. *J Natl Cancer Inst*. 1959; 22(4):719–748. [PubMed: 13655060]
27. Higgins JPT, Thompson SG, Deeks JJ, Altman DG. Measuring inconsistency in meta-analyses. *BMJ*. 2003; 327(7414):557–560. [PubMed: 12958120]
28. Jadad AR, Moore RA, Carroll D, et al. Assessing the quality of reports of randomized clinical trials: is blinding necessary? *Control Clin Trials*. 1996; 17(1):1–12. [PubMed: 8721797]
29. Quenel-Tueux N, Debled M, Rudewicz J, et al. Clinical and genomic analysis of a randomised phase II study evaluating anastrozole and fulvestrant in postmenopausal patients treated for large operable or locally advanced hormone-receptor-positive breast cancer. *Br J Cancer*. 2015; 113(4): 585–594. [PubMed: 26171933]
30. Alba E, Calvo L, Albanell J, et al. GEICAM. Chemotherapy (CT) and hormone therapy (HT) as neoadjuvant treatment in luminal breast cancer patients: results from the GEICAM/2006–03, a multicenter, randomized, phase-II study. *Ann Oncol*. 2012; 23(12):3069–3074. [PubMed: 22674146]
31. Palmieri C, Cleator S, Kilburn LS, et al. NEOCENT: a randomised feasibility and translational study comparing neoadjuvant endocrine therapy with chemotherapy in ER-rich postmenopausal primary breast cancer. *Breast Cancer Res Treat*. 2014; 148(3):581–590. [PubMed: 25395314]
32. Semiglazov VF, Semiglazov VV, Dashyan GA, et al. Phase 2 randomized trial of primary endocrine therapy versus chemotherapy in postmenopausal patients with estrogen receptor-positive breast cancer. *Cancer*. 2007; 110(2):244–254. [PubMed: 17538978]
33. Mohammadianpanah M, Ashouri Y, Hoseini S, et al. The efficacy and safety of neoadjuvant chemotherapy +/- letrozole in postmenopausal women with locally advanced breast cancer: a

- randomized phase III clinical trial. *Breast Cancer Res Treat.* 2012; 132(3):853–861. [PubMed: 22002564]
34. Masuda N, Sagara Y, Kinoshita T, et al. Neoadjuvant anastrozole versus tamoxifen in patients receiving goserelin for premenopausal breast cancer (STAGE): a double-blind, randomised phase 3 trial. *Lancet Oncol.* 2012; 13(4):345–352. [PubMed: 22265697]
  35. Cataliotti L, Buzdar AU, Noguchi S, et al. Comparison of anastrozole vs tamoxifen as preoperative therapy in postmenopausal women with hormone receptor-positive breast cancer: the Pre-Operative “Arimidex” Compared to Tamoxifen (PROACT) trial. *Cancer.* 2006; 106(10):2095–2103. [PubMed: 16598749]
  36. Miller WR, Dixon JM, Cameron DA, Anderson TJ. Biological and clinical effects of aromatase inhibitors in neoadjuvant therapy. *J Steroid Biochem Mol Biol.* 2001; 79(1–5):103–107. [PubMed: 11850213]
  37. Harper-Wynne CL, Sacks NPM, Shenton K, et al. Comparison of the systemic and intratumoral effects of tamoxifen and the aromatase inhibitor vorozole in postmenopausal patients with primary breast cancer. *J Clin Oncol.* 2002; 20(4):1026–1035. [PubMed: 11844826]
  38. Hojo T, Kinoshita T, Imoto S, et al. Use of the neo-adjuvant exemestane in post-menopausal estrogen receptor-positive breast cancer: a randomized phase II trial (PTEX46) to investigate the optimal duration of preoperative endocrine therapy. *Breast.* 2013; 22(3):263–267. [PubMed: 23587451]
  39. Ellis MJ, Suman VJ, Hoog J, et al. Randomized phase II neoadjuvant comparison between letrozole, anastrozole, and exemestane for postmenopausal women with estrogen receptor-rich stage 2 to 3 breast cancer: clinical and biomarker outcomes and predictive value of the baseline PAM50-based intrinsic subtype–ACOSOG Z1031. *J Clin Oncol.* 2011; 29(17):2342–2349. [PubMed: 21555689]
  40. Kuter I, Gee JMW, Hegg R, et al. Dose-dependent change in biomarkers during neoadjuvant endocrine therapy with fulvestrant: results from NEWEST, a randomized phase II study. *Breast Cancer Res Treat.* 2012; 133(1):237–246. [PubMed: 22286314]
  41. Baselga J, Semiglazov V, van Dam P, et al. Phase II randomized study of neoadjuvant everolimus plus letrozole compared with placebo plus letrozole in patients with estrogen receptor-positive breast cancer. *J Clin Oncol.* 2009; 27(16):2630–2637. [PubMed: 19380449]
  42. Chow LW-C, Yip AY-S, Loo WT-Y, Lam C-K, Toi M. Celecoxib anti-aromatase neoadjuvant (CAAN) trial for locally advanced breast cancer. *J Steroid Biochem Mol Biol.* 2008; 111(1–2):13–17. [PubMed: 18514508]
  43. Fasching PA, Jud SM, Hauschild M, et al. FemZone trial: a randomized phase II trial comparing neoadjuvant letrozole and zoledronic acid with letrozole in primary breast cancer patients. *BMC Cancer.* 2014; 14(1):66. [PubMed: 24499441]
  44. Polychronis A, Sinnott HD, Hadjiminas D, et al. Preoperative gefitinib versus gefitinib and anastrozole in postmenopausal patients with oestrogen-receptor positive and epidermal-growth-factor-receptor-positive primary breast cancer: a double-blind placebo-controlled phase II randomised trial. *Lancet Oncol.* 2005; 6(6):383–391. [PubMed: 15925816]
  45. Smith IE, Walsh G, Skene A, et al. A phase II placebo-controlled trial of neoadjuvant anastrozole alone or with gefitinib in early breast cancer. *J Clin Oncol.* 2007; 25(25):3816–3822. [PubMed: 17679728]
  46. Guarneri V, Generali DG, Frassoldati A, et al. Double-blind, placebo-controlled, multicenter, randomized, phase IIb neoadjuvant study of letrozole-lapatinib in postmenopausal hormone receptor-positive, human epidermal growth factor receptor 2-negative, operable breast cancer. *J Clin Oncol.* 2014; 32(10):1050–1057. [PubMed: 24590635]
  47. Cortazar P, Zhang L, Untch M, et al. Pathological complete response and long-term clinical benefit in breast cancer: the CTNeoBC pooled analysis. *Lancet.* 2014; 384(9938):164–172. [PubMed: 24529560]
  48. Regan MM, Neven P, Giobbie-Hurder A, et al. BIG 1-98 Collaborative Group; International Breast Cancer Study Group (IBCSG). Assessment of letrozole and tamoxifen alone and in sequence for postmenopausal women with steroid hormone receptor-positive breast cancer: the BIG 1-98 randomised clinical trial at 8.1 years median follow-up. *Lancet Oncol.* 2011; 12(12):1101–1108. [PubMed: 22018631]

49. Howell A, Cuzick J, Baum M, et al. ATAC Trialists' Group. Results of the ATAC (Arimidex, Tamoxifen, Alone or in Combination) trial after completion of 5 years' adjuvant treatment for breast cancer. *Lancet*. 2005; 365(9453):60–62. [PubMed: 15639680]
50. Pagani O, Regan MM, Walley BA, et al. TEXT SOFT Investigators; International Breast Cancer Study Group. Adjuvant exemestane with ovarian suppression in premenopausal breast cancer. *N Engl J Med*. 2014; 371(2):107–118. [PubMed: 24881463]
51. Hug V, Thames H, Clark J. Chemotherapy and hormonal therapy in combination. *J Clin Oncol*. 1988; 6(1):173–177. [PubMed: 3275747]
52. Bear HD, Anderson S, Smith RE, et al. Sequential preoperative or postoperative docetaxel added to preoperative doxorubicin plus cyclophosphamide for operable breast cancer: National Surgical Adjuvant Breast and Bowel Project Protocol B-27. *J Clin Oncol*. 2006; 24(13):2019–2027. [PubMed: 16606972]
53. Finn RS, Crown JP, Lang I, et al. The cyclin-dependent kinase 4/6 inhibitor palbociclib in combination with letrozole versus letrozole alone as first-line treatment of oestrogen receptor-positive, HER2-negative, advanced breast cancer (PALOMA-1/TRIO-18): a randomised phase 2 study. *Lancet Oncol*. 2015; 16(1):25–35. [PubMed: 25524798]
54. Turner NC, Ro J, André F, et al. PALOMA3 Study Group. Palbociclib in hormone-receptor-positive advanced breast cancer. *N Engl J Med*. 2015; 373(3):209–219. [PubMed: 26030518]
55. Sparano JA, Gray RJ, Makower DF, et al. Prospective validation of a 21-gene expression assay in breast cancer. *N Engl J Med*. 2015; 373(21):2005–2014. [PubMed: 26412349]
56. Sgroi DC, Carney E, Zarrella E, et al. Prediction of late disease recurrence and extended adjuvant letrozole benefit by the HOXB13/IL17BR biomarker. *J Natl Cancer Inst*. 2013; 105(14):1036–1042. [PubMed: 23812955]
57. Dowsett M, Smith IE, Ebbs SR, et al. IMPACT Trialists Group. Prognostic value of Ki67 expression after short-term presurgical endocrine therapy for primary breast cancer. *J Natl Cancer Inst*. 2007; 99(2):167–170. [PubMed: 17228000]
58. ClinicalTrials.gov. Fulvestrant and/or Anastrozole in Treating Postmenopausal Patients With Stage II-III Breast Cancer Undergoing Surgery. NCT01953588. <https://clinicaltrials.gov/ct/show/NCT01953588>. Accessed January 15, 2016.
59. ClinicalTrials.gov. A Study of Neoadjuvant Letrozole + GDC-0032 Versus Letrozole + Placebo in Post-Menopausal Women With Breast Cancer (LORELEI). NCT02273973. <https://clinicaltrials.gov/ct/show/NCT02273973>. Accessed January 15, 2016.
60. ClinicalTrials.gov. A Phase II Randomized Study Evaluating the Biological and Clinical Effects of the Combination of Palbociclib With Letrozole as Neoadjuvant Therapy in Post-Menopausal Women With Estrogen-Receptor Positive Primary Breast Cancer. NCT02296801. <https://clinicaltrials.gov/ct/show/NCT02296801>. Accessed January 15, 2016.
61. Ma, CX., Gao, F., Northfelt, D., et al. A phase II trial of neoadjuvant palbociclib, a cyclin-dependent kinase (CDK) 4/6 inhibitor, in combination with anastrozole for clinical stage 2 or 3 estrogen receptor positive HER2 negative (ER+HER2-) breast cancer (BC). Presented at: San Antonio Breast Cancer Symposium; December 11, 2015; San Antonio, TX. Abstract S6-05

## Key Points

### Question

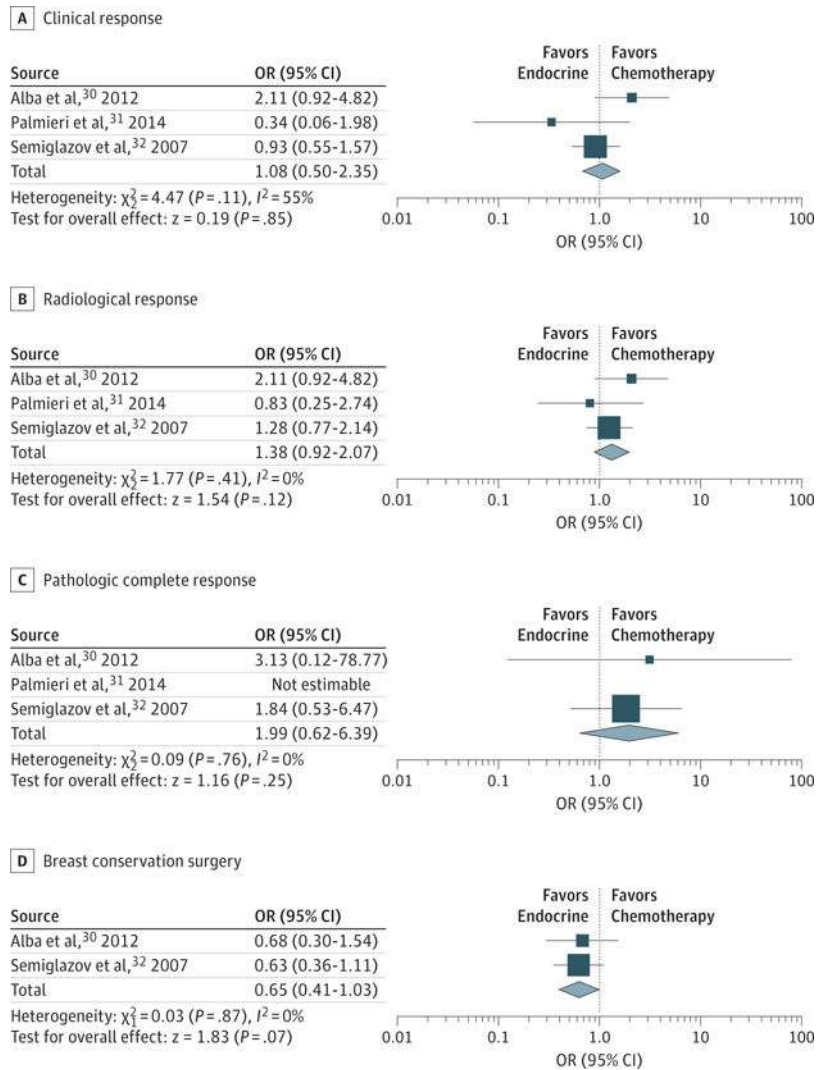
Is neoadjuvant endocrine therapy (NET), as monotherapy and in combination with other therapies, an effective treatment option for localized estrogen receptor-positive (ER+) breast cancer?

### Findings

In this meta-analysis of 20 randomized clinical trials with a total sample size of 3490 women, NET, even as monotherapy, was associated with response rates similar to those of neoadjuvant combination chemotherapy but with lower toxicity.

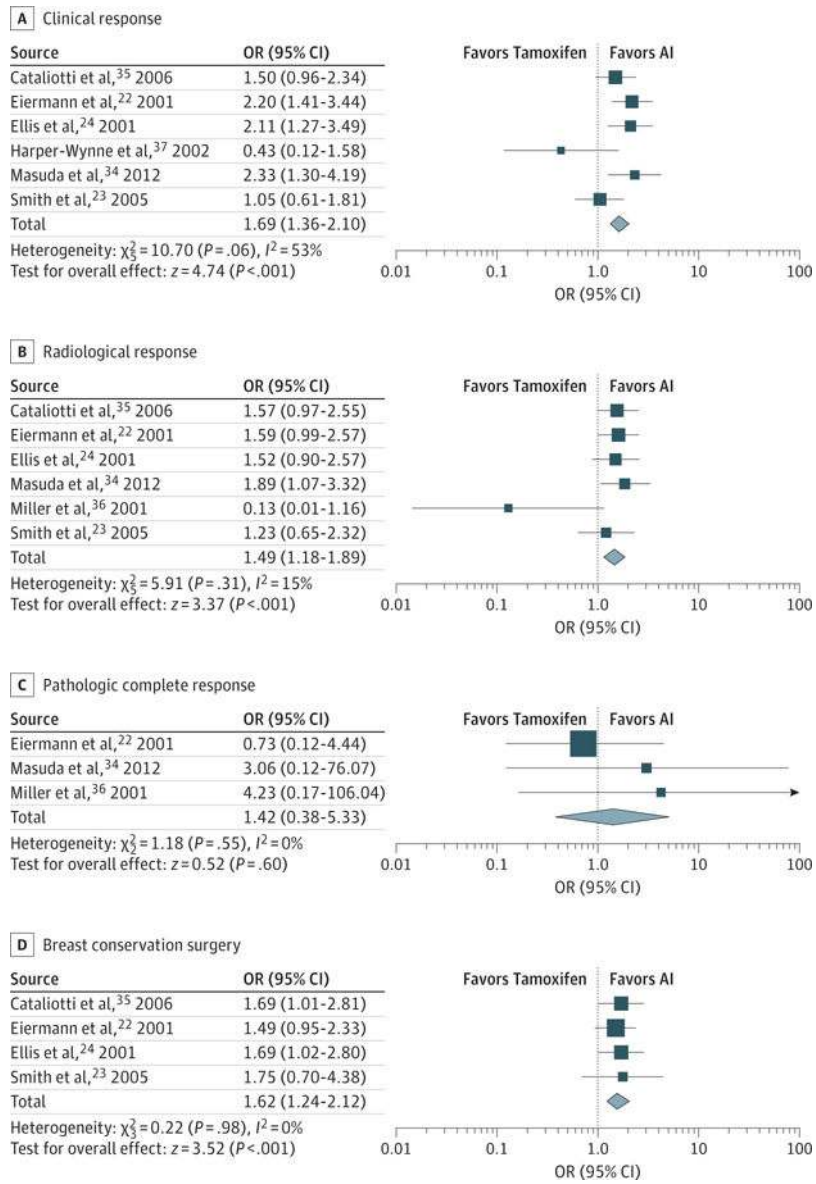
### Meaning

Neoadjuvant endocrine therapy is a reasonable treatment option for localized ER+ breast cancer, and additional studies are needed to develop rational endocrine therapy combinations and predictive biomarkers to optimize NET strategies.

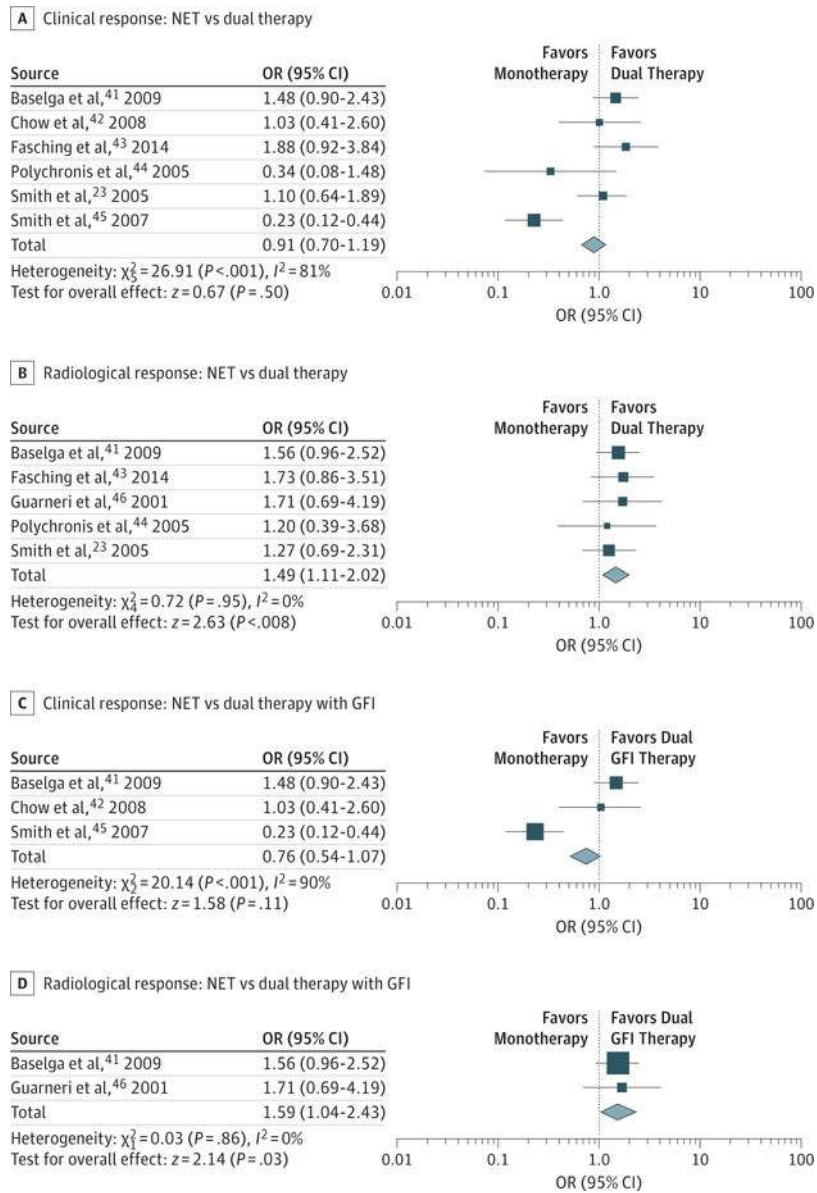


**Figure 1. Neoadjuvant Hormone Therapy vs Neoadjuvant Cytotoxic Chemotherapy**  
 Fixed-effects odds ratios (ORs) are calculated using the Mantel-Haenszel test with nonevent as the reference. Error bars represent 95% CI. Different marker sizes indicate the weight given to the specific study.





**Figure 2. Neoadjuvant Aromatase Inhibitors (AIs) vs Neoadjuvant Tamoxifen**  
 Fixed-effects odds ratios (ORs) are calculated using the Mantel-Haenszel test with nonevent as the reference. Error bars represent 95% CI. Different marker sizes indicate the weight given to the specific study.



### Figure 3. Neoadjuvant Endocrine Therapy as Monotherapy vs Dual Therapy

For comparison of aromatase inhibitors with dual therapy, dual therapy includes tamoxifen, zoledronic acid, everolimus, celecoxib, gefitinib, or lapatinib. Fixed-effects odds ratios (ORs) are calculated using the Mantel-Haenszel test with nonevent as the reference. Error bars represent 95% CI. Different marker sizes indicate the weight given to the specific study. GFI indicates growth factor pathway inhibitor.

Summary of the Clinical Trials Included in the Meta-analysis<sup>a</sup>

Table

| Source (Trial Name)                            | Experimental Arm Therapy  | Experimental Arm Therapy Duration, wk | Control Arm Therapy   | Control Arm Therapy Duration, wk | Total No. of Participants for Comparisons | Primary End Point   |
|--|---|---------------------------------------|---|----------------------------------|---|---|
| <b>Endocrine Therapy vs Chemotherapy</b>       |   |                                       |   |                                  |   |   |
| Alba et al. <sup>30</sup> 2012 (GECAM/2006-03) | Exemestane, 25 mg/d, plus goserelin, 3.6 mg/mo if premenopausal | 24                                    | EC-T: epirubicin, 90 mg/m <sup>2</sup> , plus cyclophosphamide, 600 mg/m <sup>2</sup> × 4 cycles q21d<br>Docetaxel, 100 mg/m <sup>2</sup> × 4 cycles q21d plus goserelin, 3.6 mg/mo if premenopausal  | 24                               | 95  | OR by MRI based on RECIST criteria  |
| Palmieri et al. <sup>31</sup> 2014 (NEOCENT)   | Letrozole, 2.5 mg/d   | 18–23                                 | FEC: fluorouracil, 500–600 mg/m <sup>2</sup> , plus epirubicin, 75–100 mg/m <sup>2</sup> , plus cyclophosphamide, 500–600 mg/m <sup>2</sup> × 6 cycles q21d; switched to docetaxel, 100 mg/m <sup>2</sup> after 3 cycles if SD or PD (n = 11) | 18                               | 44  | Feasibility OR (by US or mammography based on RECIST criteria) was a secondary end point                |
| Semiglazov et al. <sup>32</sup> 2007           | Anastrozole, 1 mg/d Exemestane, 25 mg/d                         | 12                                    | Doxorubicin, 60 mg/m <sup>2</sup> , plus paclitaxel, 200 mg/m <sup>2</sup> × 4 cycles q21d  | 12                               | 239                                       | OR by clinical palpation (PR defined as regression >50%) OR by US/mammography was a secondary end point |
| <b>Different Types of Endocrine Therapy</b>    |   |                                       |   |                                  |   |   |
| Eiermann et al. <sup>22</sup> 2001 (PO24)      | Letrozole, 2.5 mg/d   | 16                                    | Tamoxifen, 20 mg/d  | 16                               | 324                                       | OR by clinical palpation OR by US/mammography was a secondary end point                                 |
| Smith et al. <sup>23</sup> 2005 (IMPACT)       | Anastrozole, 1 mg/d plus tamoxifen, 20 mg/d                     | 12                                    | Tamoxifen, 20 mg/d  | 12                               | 330                                       | OR by caliper assessment based on WHO criteria OR by US was a secondary end point                       |
| Masuda et al. <sup>34</sup> 2012 (STAGE)       | Anastrozole, 1 mg/d, plus goserelin, 3.6 mg/mo                  | 24                                    | Tamoxifen, 20 mg/d, plus goserelin, 3.6 mg/mo   | 24                               | 197                                       | OR by caliper assessment OR by US, MRI, or CT based on RECIST criteria was a secondary end point        |
| Cataliotti et al. <sup>35</sup> 2006 (PROACT)  | Anastrozole, 1 mg/d   | 12                                    | Tamoxifen, 20 mg/d  | 12                               | 314 <sup>b</sup>                          | OR based on US by RECIST criteria   |
| Ellis et al. <sup>24</sup> 2001                | Letrozole, 2.5 mg/d   | 16                                    | Tamoxifen, 20 mg/d  | 16                               | 250                                       | OR by clinical assessment based on WHO criteria OR by US/mammography was a secondary end point          |

| Source (Trial Name)  | Experimental Arm Therapy  | Experimental Arm Therapy Duration, wk | Control Arm Therapy   | Control Arm Therapy Duration, wk | Total No. of Participants for Comparisons | Primary End Point  |
|--|---|---------------------------------------|---|----------------------------------|---|--|
| Miller et al. <sup>36</sup> 2001                               | Anastrozole, 1 mg/d (n = 12) or 10 mg/d (n = 11)  | 12                                    | Tamoxifen, 40 mg/d  | 12                               | 112                                       | OR by caliper assessment and by US based on percentage reduction in tumor volume                               |
| Harper-Wynne et al. <sup>37</sup> 2002                         | Vorozole, 2.5 mg/d  | 12                                    | Tamoxifen, 20 mg/d  | 12                               | 53  | Biological differences, including OR by US, and clinical assessment based on percentage change in tumor volume |
| <b>Endocrine Therapy With Growth Factor Pathway Inhibitors</b> |   |                                       |   |                                  |   |  |
| Guarnieri et al. <sup>46</sup> 2014                            | Letrozole, 2.5 mg/d, plus lapatinib, 1500 mg/d  | 24                                    | Letrozole, 2.5 mg/d, plus placebo   | 24                               | 92  | OR based on US by RECIST criteria  |
| Baselga et al. <sup>41</sup> 2009                              | Letrozole, 2.5 mg/d, plus everolimus, 10 mg/d   | 16                                    | Letrozole, 2.5 mg/d, plus placebo   | 16                               | 270                                       | OR based on palpation by WHO criteria OR also assessed by US/mammography                                       |
| Chow et al. <sup>42</sup> 2008 (CAAN)                          | Exemestane, 25 mg/d, plus celecoxib, 400 mg twice daily   | 12                                    | Exemestane, 25 mg/d, plus letrozole, 2.5 mg/d   | 12                               | 79  | OR by caliper assessment based on UICC criteria  |
| Smith et al. <sup>45</sup> 2007                                | Anastrozole, 1 mg/d, plus gefitinib, 250 mg/d (combined 2 arms, gefitinib 14 vs 16 weeks)   | 16                                    | Anastrozole, 1 mg/d   | 16                               | 206                                       | Change in Ki67 Secondary end point was OR (modality not specified) based on UICC/WHO criteria                  |
| <b>Studies Without Direct Comparisons for Meta-analysis</b>    |   |                                       |   |                                  |   |  |
| Hojo et al. <sup>38</sup> 2013 (PTEX46)                        | Exemestane, 25 mg/d   | 24                                    | Exemestane, 25 mg/d   | 16                               | 51  | OR by caliper assessment based on RECIST criteria  |
| Kuter et al. <sup>40</sup> 2012 (NEWEST)                       | Fulvestrant, 500 mg/mo, plus 500 mg on d 14 of mo 1   | 16                                    | Fulvestrant, 250 mg/mo  | 16                               | 211                                       | OR by 3-dimensional US assessment (PR defined as regression ≥5%)   |
| Ellis et al. <sup>39</sup> 2011 (ACOSOG Z1031)                 | Exemestane, 25 mg/d   | 16–18                                 | Letrozole, 2.5 mg/d Anastrozole, 1 mg/d   | 16–18                            | 374                                       | OR by clinical assessment based on WHO criteria  |
| Polychronis et al. <sup>44</sup> 2005                          | Gefitinib, 250 mg/d, plus anastrozole, 1 mg/d   | 4–6                                   | Gefitinib, 250 mg/d, plus placebo   | 4–6                              | 56  | Change in Ki67 Secondary end points included clinical and US assessments                                       |
| Fasching et al. <sup>43</sup> 2014 (FemZone)                   | Letrozole, 2.5 mg/d, plus intravenous zoledronic acid, 4 mg q4w   | 24                                    | Letrozole, 2.5 mg/d   | 24                               | 131                                       | OR by mammography based on RECIST criteria   |
| Mohammadianpanah et al. <sup>33</sup> 2012                     | Letrozole, 2.5 mg/d, plus fluorouracil, 600 mg/m <sup>2</sup> , doxorubicin, 60 mg/m <sup>2</sup> , and cyclophosphamide, 600 mg/m <sup>2</sup> (FAC), q21d | 9–13                                  | Fluorouracil, 600 mg/m <sup>2</sup> , doxorubicin, 60 mg/m <sup>2</sup> , and cyclophosphamide, 600 mg/m <sup>2</sup> (FAC), q21d | 9–13                             | 62 (ER+)                                  | OR by caliper assessment and US based on RECIST criteria pCR   |

Author Manuscript

Author Manuscript

Author Manuscript

Author Manuscript

Abbreviations: CT, computed tomography; ER+, estrogen receptor positive; MRI, magnetic resonance imaging; OR, overall response rate; pCR, pathologic complete response; PD, progressive disease; PR, partial response; q4w, every 4 weeks; q21d, every 21 days; RECIST, Response Evaluation Criteria in Solid Tumors; SD, stable disease; UICC, Union for International Cancer Control; US, ultrasonography; WHO, World Health Organization.

<sup>a</sup> All study participants were postmenopausal except for the study by Alba et al,<sup>30</sup> in which participants were premenopausal and postmenopausal.

<sup>b</sup> Excluded patients who received hormone therapy plus chemotherapy.