

Neurochemical identity of neurones expressing oestrogen and androgen receptors in sheep hypothalamus

A. E. Herbison

Laboratory of Neuroendocrinology, The Babraham Institute, Cambridge CB2 4AT, UK

Gonadal steroids exert important feedback influences on hypothalamic neurones involved in regulating reproductive behaviour and pituitary hormone secretion. The recent development of antibodies specific for individual gonadal steroid receptors has been of great use in determining precisely which cells in the hypothalamus express androgen, oestrogen and progesterone receptors. In the sheep brain, both oestrogen and androgen receptor antibodies have been used successfully and the distribution of cells expressing both receptors has now been determined in ewes and rams, respectively. In addition, the predominantly nuclear localization of the steroid receptors has enabled double-labelling immunocytochemical procedures to determine the neurochemical phenotype of neurones expressing the steroid receptor. Work in the sheep hypothalamus shows that gonadotrophin-releasing hormone neurones do not possess oestrogen or androgen receptors. However, substantial numbers of cells containing oestrogen receptors in the preoptic area of ewes contain the inhibitory neurotransmitter gamma aminobutyric acid, while most oestrogen receptor-immunoreactive neurones in the ventromedial nucleus synthesize the inhibitory neuropeptide somatostatin. Androgen receptors have been detected in many of the ventromedial somatostatin neurones in rams. In contrast, the neurochemical phenotype of the great majority of oestrogen and androgen receptor-immunoreactive cells in the arcuate nucleus remains unknown. The identification of the neurotransmitters and neuropeptides synthesized by neurones possessing androgen and oestrogen receptors in different regions of the ovine hypothalamus provides a neuroanatomical basis for understanding the mechanisms by which gonadal steroids regulate reproductive function.

Introduction

The profile of LH secretion in ewes and rams depends upon the feedback actions of gonadal steroids throughout the year. In ewes, oestrogen acts in a primarily positive feedback manner during the breeding season to generate the LH surge, as well as oestrous behaviour, but changes to exert a negative feedback influence on LH secretion during anoestrus (Goodman, 1994). In rams, testosterone exerts negative feedback actions on LH pulse frequency which are greatest in efficacy during the non-breeding season (Pelletier and Ortavant, 1975; D'Occhio *et al.*, 1983). Although the pituitary gland is an important site of gonadal steroid action, studies examining the effects of restricted brain lesions and those involving measurement of portal GnRH concentrations have shown that the hypothalamus is an equally, if not more important, location of oestrogen and androgen action in the regulation of LH secretion (Caraty and Locatelli, 1988; Tilbrook *et al.*, 1991 and see Goodman, 1994). Hence, to make

further advances in our understanding of how steroids regulate LH release it has become essential that we define precisely which hypothalamic cell types are targeted by gonadal steroids to influence GnRH release into the portal circulation. As the effects of oestrogens and androgens depend upon season (Pelletier and Ortavant, 1975; Goodman, 1994) and the role of progesterone in regulating LH release is different in sheep compared with primates and rodents (Goodman, 1994), it may not be sufficient to simply extrapolate data on steroid-receptive cells from other species to sheep. In an effort to define the cells possessing oestrogen receptors in the sheep hypothalamus, we (Skinner *et al.*, 1992; Herbison *et al.*, 1993a) and others at Nouzilly (Batailler *et al.*, 1992; Blache *et al.*, 1994) and Cincinnati (Lehman *et al.*, 1993; Lehman and Karsch, 1993) have used the H222 monoclonal antibody directed against the hormone-binding domain of the human oestrogen receptor to determine the cells immunoreactive for this receptor and elucidate the neurotransmitters or neuropeptides that they synthesize. This review summarizes work to date involving the characterization of cells expressing oestrogen receptors in the ovine hypothalamus and provides an overview of recent work using the PG-21 antibody directed against the amino-terminal domain of the human androgen receptor (Prins *et al.*, 1991) to map and characterize cells possessing androgen receptors in the ram hypothalamus.

Distribution of Oestrogen Receptor-Immunoreactive Cells in Ewes

As in other mammals, most cells containing oestrogen receptors in the brain of the ewe are located in the preoptic area (POA), adjoining anterior hypothalamic area (AHA), ventrolateral septum, bed nucleus of the stria terminalis (BNST), ventromedial nucleus (VMN) and arcuate nucleus (ARN; Herbison *et al.*, 1993a; Lehman *et al.*, 1993; Blache *et al.*, 1994). Large numbers of oestrogen receptor-immunoreactive cells are found in the medial aspect of the POA adjacent to both the wall of the third ventricle and the organum vasculosum of the lamina terminalis, which itself possesses many oestrogen receptor cells. Although the density of oestrogen receptor-positive cells decreases markedly in the AHA, a distinct cluster of densely packed oestrogen receptor-immunoreactive cells is found in the dorsal AHA. It has been suggested that this cell group may be equivalent to the posterodorsal nucleus (PDN) of rats (Ju and Swanson, 1989; also called the striohypothalamic nucleus) and it appears to be continuous with the principal encapsulated nucleus of the BNST which shares a similar high density of oestrogen receptor-immunoreactive cells in rats and sheep (Herbison *et al.*, 1993a). An oestrogen receptor-containing, PDN-like structure has also been identified in the primate AHA (Herbison *et al.*, in press). Between the POA-AHA and mediobasal hypothalamus, there are few oestrogen receptor-immunoreactive cells being present mostly in the immediate periventricular zone and above the optic chiasma. Similar to guinea-pigs, but not to rats or monkeys (see Herbison *et al.*, in press), oestrogen receptors have been detected in the supraoptic nucleus of ewes within its dorsomedial aspect. Only a very few oestrogen receptor-immunoreactive cells are found in the paraventricular nucleus. Within the mediobasal hypothalamus, oestrogen receptor-immunoreactive cells are clustered in the VMN and ARN. As in guinea-pigs (Blaustein and Turcotte, 1989) and primates (Herbison *et al.*, in press), oestrogen receptor-immunoreactive cells in the VMN are located mainly in its ventrolateral division and extend in a broad band from beneath the fornix to the base of the brain where a small gap separates them from the oestrogen-receptor-containing cells of the ARN. In ewes, the highest density of oestrogen-receptor-immunoreactive cells is found in the ARN (Blache *et al.*, 1994) and oestrogen receptor cells are distributed throughout the nucleus from the retrochiasmatic region to the level of the mammillary bodies. A few scattered oestrogen receptor-positive cells are present in the dorsomedial and posterior hypothalamic nuclei. A substantial number of oestrogen receptor-immunoreactive cells have been detected in the pars tuberalis (Skinner *et al.*, 1992; Lehman and Karsch, 1993) and, as expected, in the pars distalis (Skinner *et al.*, 1992) of the anterior pituitary gland. In addition, Lehman *et al.* (1993) reported oestrogen receptor-immunoreactive cells in the amygdala, hippocampus and periaqueductal grey of ovariectomized ewes.

The three studies that have described the distribution of oestrogen receptor-containing cells in ewes (Herbison *et al.*, 1993a; Lehman *et al.*, 1993; Blache *et al.*, 1994) have all used the rat monoclonal H222 antibody (Greene *et al.*, 1984) to define oestrogen receptors. Studies in rats with the H222 antibody have

shown clearly that circulating oestrogen concentrations must be low to enable optimal visualization of oestrogen receptor immunoreactivity (Cintra *et al.*, 1986; Herbison and Theodosis, 1992a; Blaustein, 1993). Although oestrogen receptor synthesis is itself regulated by oestrogens (Simerly and Young, 1991), the dependence of H222 staining on the relative absence of oestrogen in rats is thought to result from direct competition between the H222 antibody and oestrogen for the hormone-binding site on the oestrogen receptor (Blaustein, 1993). On this basis, two of the distribution studies undertaken in ewes were carried out on ovariectomized animals (Herbison *et al.*, 1993a; Lehman *et al.*, 1993). However, the most recent investigation (Blache *et al.*, 1994) used brain sections from both ovariectomized and steroid-treated, ovariectomized ewes and found no effect of oestrogen replacement on oestrogen receptor cell density in the POA, VMN or ARN. Overall, the distribution of oestrogen receptor-immunoreactive cells reported in this study was very similar to that given in the two previous reports in ovariectomized ewes. We also note (A. E. Herbison, unpublished) that the distribution and number of oestrogen receptor-immunoreactive cells are not markedly different in anoestrous and ovariectomized (see Herbison *et al.*, 1993a) ewes. As oestrogen has been reported to increase nuclear oestrogen receptor concentrations in the POA and basal hypothalamus of ewes (Bittman and Blaustein, 1990), it is possible that oestrogen has little effect on the number of H222-stained cells detected as the competition between H222 and oestrogen is offset by the increased concentrations of oestrogen receptors. It is of note that nuclear oestrogen receptor immunoreactivity using the H222 antibody is similarly not altered greatly by oestrogen treatment in monkeys (Herbison *et al.*, in press), guinea-pigs (Blaustein and Turcolte, 1989) and mice (Koch and Ehret, 1989). Why H222 staining should be so dependent on circulating oestrogens in rats but not ewes is not clear but may be related to species differences in the relative concentrations of oestrogen and oestrogen receptor within hypothalamic cells, or possibly conformational differences in the oestrogen receptor. However, Blache *et al.* (1994) did show that the administration of progesterone to ovariectomized ewes resulted in the detection of greater numbers of oestrogen-receptor-immunoreactive cells in the VMN. As the necessity for reduced oestrogen concentrations may not be of paramount importance when using the H222 antibody in ewes and the presence of progesterone is necessary to visualize maximal numbers of oestrogen receptors in the VMN, it may be more appropriate (and physiologically relevant) for future studies of oestrogen receptor-immunoreactive cells to be undertaken in intact ewes. A quantitative analysis of oestrogen receptor-immunoreactive cells in the hypothalamus of ewes in the breeding and non-breeding seasons might be helpful in determining whether there are differences in the number of oestrogen receptor-expressing neurones between the two seasons (Clarke *et al.*, 1981; Glass *et al.*, 1984; Bittman and Blaustein, 1990).

Distribution of Androgen Receptor-Immunoreactive Cells in Rams

Using the polyclonal rabbit PG-21 antibody, we carried out initial studies to determine the distribution of androgen-receptor-immunoreactive cells in the hypothalamus of rams during the non-breeding season (A. Herbison, D. Skinner, J. Robinson and I. King, unpublished). In general, the overall distribution of cells is very similar to that of oestrogen receptors in ewes, and the largest numbers of androgen receptor-immunoreactive cells are found in the POA, VMN and ARN. Many cells containing androgen receptors are found in the medial POA where they lie next to the wall of the third ventricle or in the organum vasculosum of the lamina terminalis. Again, like cells expressing oestrogen receptors in ewes, fewer cells are seen in the AHA but a distinct cluster of androgen-receptor-containing cells is found in the PDN and the density and intensity of staining of these cells appear very similar to the androgen-receptor-immunoreactive cells detected in the principal encapsulated nucleus of the BNST. Cells immunoreactive for the androgen receptor are also located in other regions of the BNST and in the ventrolateral septum. Again, relatively few androgen-receptor-immunoreactive cells are found between the POA-AHA and mediobasal hypothalamus, although it is notable that androgen receptors are not detected in the supraoptic nucleus. A large population of androgen-receptor-containing cells is found in the VMN and most are located in the ventrolateral region similar to the oestrogen receptor-containing cells. However, a further group of androgen-receptor-immunoreactive cells is distributed more medially in the dorsomedial division of the VMN where oestrogen receptors are not found. Cells immunoreactive

for the androgen receptor are detected throughout the ARN but at a much lower density compared with oestrogen-receptor-immunoreactive cells in ewes. Menard and Harlan (1993) using the PG-21 antibody in the rat brain, showed a very similar distribution of androgen-receptor-immunoreactive cells in the rat hypothalamus.

Although at present the comparison must be made between ewes and rams, it is apparent that there are both overlapping and dissimilar distributions of oestrogen-receptor- and androgen-receptor-immunoreactive cells in the sheep hypothalamus. The POA, lateral septum, PDN, principal encapsulated nucleus of the BNST and ventrolateral VMN appear to have very similar numbers and distributions of androgen receptor and oestrogen receptor cells. Other regions such as the supraoptic nucleus exhibit oestrogen receptors but not androgen receptors, whereas the dorsomedial VMN has androgen receptors but not oestrogen receptors and the ARN has markedly fewer androgen-receptor-containing cells compared with oestrogen-receptor-immunoreactive cells in ewes. The absence of androgen receptor immunoreactivity in intact ewes and only faint oestrogen receptor staining in intact rams (Herbison, unpublished) has prohibited us from determining whether the same cells in the overlapping regions express both oestrogen receptors and androgen receptors in intact animals. Geffroy-Roisné *et al.* (1993) demonstrated the presence of a cytosolic 50 kDa oestrogen receptor in the ram hypothalamus and reported that there are no sex differences in the number of cytosolic oestrogen receptors detected in the POA and mediobasal hypothalamus (Glass *et al.*, 1984). Our present studies using the H222 antibody in the intact ram indicate that the distribution of oestrogen-receptor-immunoreactive cells is approximately similar to that of its androgen-receptor-containing cells. However, the low intensity of oestrogen receptor immunoreactivity in intact rams suggests that oestrogen receptor protein concentrations in the cell nucleus may be lower in males than in females. The potential for aromatized androgens to compete with the H222 antibody for the oestrogen-receptor-hormone-binding domain makes investigation of castrated rams necessary to clarify this point.

Absence of Oestrogen and Androgen Receptors in Sheep GnRH Neurones

It is now apparent that GnRH neurones in a variety of species do not possess gonadal steroid receptors. In terms of androgen and oestrogen receptors, previous studies have reported that the GnRH neurones in female and male rats (Shivers *et al.*, 1983; Herbison and Theodosis, 1992a), guinea-pigs (Watson *et al.*, 1992) and female monkeys (Herbison *et al.*, 1994) do not possess oestrogen receptor immunoreactivity or concentrate tritiated oestradiol. Studies with ovariectomized (Herbison *et al.*, 1993a; Lehman and Karsch, 1993) and anoestrous (Herbison, unpublished; Fig. 1a) ewes have similarly demonstrated that GnRH neurones throughout the hypothalamus do not display oestrogen receptor immunoreactivity. With respect to androgen receptors, recent work has shown that the GnRH neurones of rats do not possess androgen receptors (Huang and Harlan, 1993) and our own studies (Herbison, unpublished; Fig. 1b) in intact rams also show an absence of androgen receptor immunoreactivity within GnRH neurones located throughout the hypothalamus. A further consistent observation from these double-labelling studies in sheep, guinea-pigs and monkeys is that GnRH neurones are usually surrounded by oestrogen-receptor- and androgen-receptor-immunoreactive cells (Fig. 1a, b). It seems likely therefore that the genomic influences of oestrogen and androgen upon GnRH neurones are mediated by steroid-receptive interneurone populations.

Neurochemical Identity of Oestrogen- and Androgen-Receptor-Expressing Cells in Sheep Hypothalamus

Preoptic and anterior hypothalamic areas

The only neuronal cell population shown to express oestrogen receptors in the POA is the population that synthesizes the inhibitory amino acid, gamma amino butyric acid (GABA, Fig. 1c). Oestrogen-receptive neurones synthesizing GABA can be found throughout the POA and AHA and make up approximately 40% of the oestrogen-receptor-immunoreactive cells in the central region of the

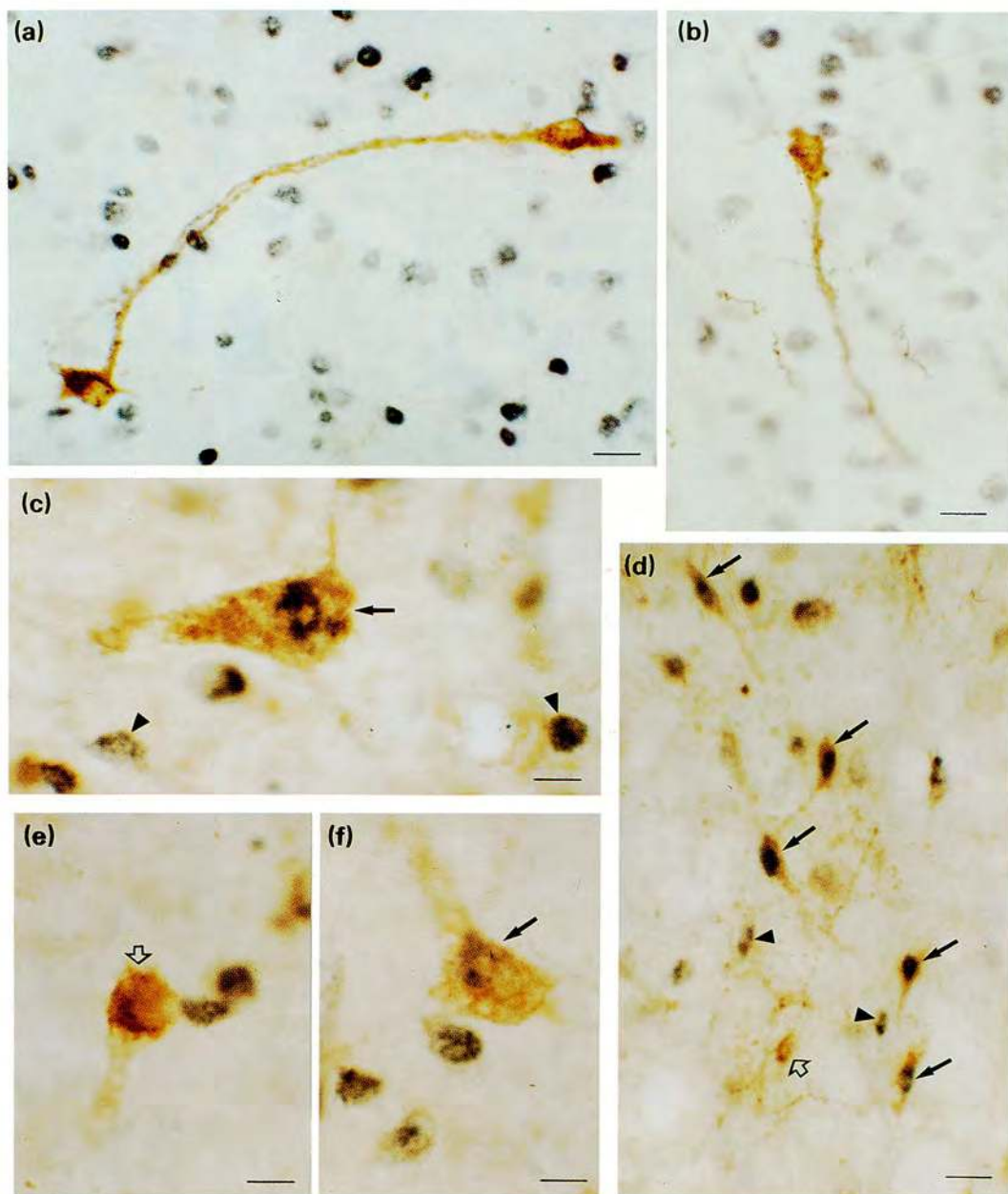


Fig. 1. High power views of sheep preoptic area (a, b, c, e), ventromedial nucleus (d) and bed nucleus of the stria terminalis (f) following double-labelling immunocytochemistry for (a) oestrogen receptor and GnRH, (b) androgen receptor and GnRH, (c) oestrogen receptor and glutamic acid decarboxylase (marker for GABA), (d) androgen receptor and somatostatin, and (e and f) oestrogen receptor and calcitonin gene-related peptide. Double-labelled cells with black nuclear staining (oestrogen or androgen receptor) and brown cytoplasmic staining (neuropeptide) are marked by solid arrows, some of the cells possessing only oestrogen or androgen receptor nuclear staining are indicated by arrowheads and other cells with only neuropeptide immunoreactivity are labelled with open arrows. Note that GnRH neurones do not possess oestrogen receptors or androgen receptors but are surrounded by cells possessing these receptors. In (d) a high abundance of androgen receptor and somatostatin co-expression is observed in the ventromedial nucleus. Only those double-labelled cells clearly in the plane of focus are marked with an arrow. (a) anoestrous ewe; (b and d) intact non-breeding season ram; (c, e, f) ovariectomized ewe. Scale bars represent 15 μm (a, b), 5 μm (c, e, f) and 25 μm (d).

Table 1. Neurotransmitters and neuropeptides synthesized by oestrogen receptor(ER)-immunoreactive cells of ewe hypothalamus

Neurotransmitters/ neuropeptide	Sheep model	Location	ER cells containing neurochemical (%)	Identified neurones with ER (%)	Reference
CGRP	OVX and anoestrus	Paraventricular nucleus and preoptic area	0	0	Herbison, unpublished
Dopamine	OVX + P	A12 (arcuate nucleus)	< 10	—	Batailler <i>et al.</i> , 1992
	OVX	A12 (arcuate nucleus)	—	3–5	Lehman and Karsch, 1993
		A11, A13, A14, A15	0	0	Lehman and Karsch, 1993
β -Endorphin	OVX	Arcuate nucleus	—	15–20	Lehman and Karsch, 1993
GABA	OVX	Preoptic area	30	40	Herbison <i>et al.</i> , 1993
GnRH	OVX	Preoptic area	0	0	Herbison <i>et al.</i> , 1993
	OVX	Hypothalamus	0	0–1	Lehman and Karsch, 1993
	Anoestrus	Hypothalamus	0	0	Herbison, unpublished
SOM	Anoestrus	Periventricular	0	0	Herbison, unpublished
		Ventromedial nucleus	~ 70	~ 35	Herbison, unpublished
		Arcuate nucleus	0	0	Herbison, unpublished

Summary of co-localization studies with regard to oestrogen-receptor-containing neurones in the hypothalamus of ewes. Note that results for the oestrogen receptor and somatostatin arise from just two anoestrous ewes and percentages are therefore given as approximations. Abbreviations: A12–A15, the various dopaminergic cell groups; CGRP: calcitonin gene-related peptide; OVX: ovariectomized; OVX + P: ovariectomized ewes treated with progesterone; SOM: somatostatin; GABA: gamma amino butyric acid.

POA and about 30% of the many neurones containing GABA located in this area (Table 1; Herbison *et al.*, 1993a). Although studies have yet to be conducted to establish whether GABA neurones in the POA express androgen receptors, the density of GABA neurones and androgen-receptor-immunoreactive cells in this region make co-expression likely. The A14 group of dopaminergic neurones residing in the POA do not possess oestrogen receptors in ovariectomized ewes (Lehman and Karsch, 1993). The small number of parvocellular neurones containing calcitonin gene-related peptide (CGRP) found in the POA (Herbison *et al.*, 1993b) are not immunoreactive for oestrogen receptors in either ovariectomized or anoestrous ewes (Fig. 1), or androgen receptors in intact rams (Herbison, unpublished). However, a few neurones staining lightly for CGRP located in the BNST have been detected to express oestrogen receptors (Fig. 1f).

Periventricular region

Although oestrogen-receptor-immunoreactive cells are readily detectable in this region outside of the paraventricular nucleus (PVN), double-labelling studies have failed to detect oestrogen receptors in any of the dopaminergic cells in this region (Lehman and Karsch, 1993). Neurones in the A15 group of dopaminergic cells located medial to the optic tracts are similarly devoid of oestrogen receptor immunoreactivity (Lehman and Karsch, 1993). No oestrogen receptor or androgen receptor immunoreactivity has been detected in the magnocellular CGRP neurones of the ventral PVN (Herbison *et al.*, 1993b) or the somatostatin neurones located throughout the PVN (Herbison, unpublished).

Ventromedial nucleus

Preliminary work in anoestrous ewes has shown that, as in rats (Herbison, 1994), a large population of somatostatin-immunoreactive neurones are located in the ventrolateral VMN and over a third of these cells express oestrogen receptors in ewes and androgen receptors in rams (Herbison, unpublished). In

ewes, about 70% of the neurones expressing oestrogen receptors in this region synthesize somatostatin compared with approximately 40% of androgen-receptor-immunoreactive cells in the ventrolateral VMN of rams (Fig. 1d). The dorsomedial division of the VMN receives a dense somatostatin innervation and it seems likely that the androgen-receptor-immunoreactive cells in this region receive somatostatin inputs.

Arcuate nucleus

Batailler *et al.* (1992) and Lehman and Karsch (1993) have shown that a small subpopulation of the A12 dopaminergic neurones scattered throughout the ARN express oestrogen receptors. In the former study, these cells were estimated to account for less than 10% of all oestrogen-receptor-immunoreactive neurones in the ARN, while in the second report, 3–5% of the dopaminergic neurones were shown to be immunoreactive for the oestrogen receptor. Preliminary investigations (Herbison, unpublished) have been unable to detect androgen receptors in A12 dopaminergic neurones of rams. More numerous in the ARN, however, are the 15–20% of β -endorphin-immunoreactive cells that possess oestrogen receptors (Lehman and Karsch, 1993). Although located throughout the ARN, neurones co-expressing β -endorphin and oestrogen receptors are clustered in particularly large numbers at the base of the third ventricle. The small population of somatostatin neurones located in the dorsomedial aspect of the ARN do not possess oestrogen receptors (Herbison, unpublished).

Anterior pituitary

Large numbers of gonadotrophs expressing oestrogen receptors are reported in the pars tuberalis (Skinner *et al.*, 1992; Lehman and Karsch, 1993) and pars distalis (Skinner *et al.*, 1992) of ewes and all oestrogen-receptor-immunoreactive cells in the anteroventral region of the pars tuberalis are gonadotrophs (Skinner *et al.*, 1992). Faint androgen receptor immunoreactivity can be detected in the pars tuberalis of rams.

Species Differences

As the GnRH neurones of all mammals examined lack nuclear gonadal steroid receptors, there may be a common indirect mechanism of gonadal steroid input to these cells. Across species uniformity in specific steroid-receptive cells believed to interact with GnRH neurones might suggest an essential role for these cell types in, for example, the generation of the LH surge, while the identification of steroid-receptive populations peculiar to a single species might suggest a role for these cells in steroid-dependent functions unique to that species. At present, all four of the neurochemically identified neural populations containing oestrogen receptors in sheep have also been reported to express oestrogen receptors in the same regions of the rodent brain: the preoptic GABA neurones (Flugge *et al.*, 1986), cells in the ventromedial nucleus containing somatostatin (Herbison, 1994) and the dopaminergic and β -endorphin neurones of the ARN (Sar, 1984; Morell *et al.*, 1985; Jirikowski *et al.*, 1986). Equally, the dopaminergic neurones of the POA-AHA and periventricular somatostatin cells do not express oestrogen receptors in either ovariectomized sheep or rats (Sar, 1984; Herbison and Theodosis, 1992a, 1993). In contrast, however, the preoptic CGRP neurones of sheep do not display oestrogen receptors (Fig. 2) or sex differences (Robinson and Herbison, unpublished) as they do in rats (Herbison and Theodosis, 1992b) and the presence of oestrogen receptors in neurones containing neurotensin, natriuretic peptide and galanin, as found in the rat preoptic area (Herbison and Theodosis, 1992a; Bloch *et al.*, 1992; Watson *et al.*, 1994), has not been reported in sheep. However, it was surprising to find that the A12 dopaminergic cells of female monkeys do not express oestrogen receptors (Herbison *et al.*, 1994), suggesting a species difference in the steroid regulation and a precise role of this neuroendocrine cell population. Although present observations in the sheep are restricted to the identification of neural populations the detection of which does not require colchicine treatment, the above argument would indicate that the oestrogen receptive GABA, somatostatin and β -endorphin neurones (Fig. 2) in the

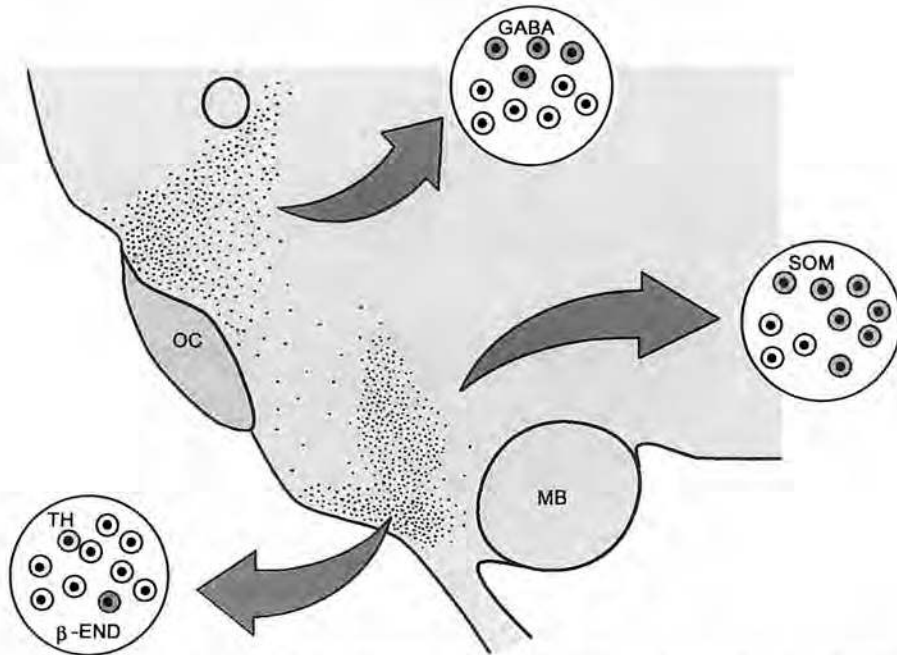


Fig. 2. Schematic drawing of sheep preoptic area and hypothalamus in sagittal section showing the three main populations of cells expressing oestrogen receptors in the preoptic area, ventromedial and arcuate nuclei. Circular insets show the relative percentage of oestrogen receptor-expressing cells (cells with black nuclei) synthesizing different neurotransmitters (shaded cells) in each region. β -END: β -endorphin; GABA: gamma aminobutyric acid; MB: mammillary bodies; OC: optic chiasma; SOM: somatostatin; TH: tyrosine hydroxylase (marker for dopamine).

POA, VMN and ARN, respectively, form part of a core group of gonadal-steroid-expressing neurones responsible for the regulation of elements of reproductive behaviour common to several species.

How do Oestrogens and Androgens Influence GnRH Neurones?

The identification of cells possessing oestrogen receptors and androgen receptors in the sheep hypothalamus is clearly far from complete; the neurotransmitters and neuropeptides synthesized by 60–100% of oestrogen-receptor- and androgen-receptor-containing cells in the POA is unknown, as is the identity of 80–90% of steroid-receptive neurones in the ARN. Furthermore, the precise relationship of the various populations of neurones expressing gonadal steroid receptors to the steroid-dependent control of different components of reproductive hormone secretion or behaviour are unknown. Nevertheless, the present information (Fig. 2), combined with neural monitoring and neuropharmacological studies in sheep provides a start in determining the way in which oestrogens and androgens are likely to orchestrate several neural populations to influence the activity of GnRH neurones.

In sheep, dopamine is perhaps the most investigated of the classical neurotransmitters with respect to a role in mediating gonadal steroid influences on LH secretion. Results from several laboratories (see Goodman, 1994) indicate that dopamine may be particularly important in mediating part of the negative feedback effects of oestrogen on LH during the non-breeding season in ewes. It has been proposed that the rostral hypothalamic A14 and A15 dopaminergic neurones (Thiery *et al.*, 1988; Havern *et al.*, 1994) can inhibit GnRH release presynaptically at the level of the median eminence (Kuljis and Advis, 1989) and that these neurones are activated by oestrogen during the non-breeding season but not at other times (Goodman, 1994). It is perplexing, therefore, to find that the A14 and A15 dopaminergic neurones

do not express oestrogen receptor immunoreactivity in ovariectomized ewes (Lehman and Karsch, 1993). Such observations indicate that if the A14 and A15 groups are to be involved in oestrogen negative feedback on LH secretion, oestrogen must influence these cells either indirectly, through yet another interneurone population, or in a non-genomic manner. Indirect evidence to support the latter contention comes from recent studies in rats in which oestradiol exerts rapid non-genomic actions on A10 dopaminergic neurones (Thompson and Moss, 1994). A further possibility for the A14 and A15 cells is that they may express immunocytochemically detectable oestrogen receptors only in anoestrous and not in ovariectomized or breeding season ewes when dopamine is not thought to have a role in regulating LH secretion (Goodman, 1994). However, it would seem that this does not occur in GnRH neurones, as oestrogen receptors do not appear in GnRH neurones during anoestrus (Fig. 1a). It is of equal interest that dopamine is not implicated in the negative feedback actions of testosterone on LH in rams during the non-breeding season (Tilbrook and Clarke, 1992), suggesting that there are sex differences in oestrogen receptor or androgen receptor localization or expression at this time. The role of the oestrogen-receptive ARN dopamine neurones in regulating GnRH neurones is unknown, but it is possible that they may contribute to the presynaptic innervation of the nearby GnRH terminals (Kuljis and Advis, 1989). Our preliminary evidence suggests that there is a sex difference in steroid receptor expression by ARN dopaminergic neurones, as they do not appear to express androgen or oestrogen receptors in rams (Herbison, unpublished) but express oestrogen receptors in ewes (Batailler *et al.*, 1992; Lehman and Karsch, 1993).

Preoptic GABA neurones are thought to have an important influence on the activity of neighbouring GnRH neurones in ewes (Robinson *et al.*, 1991; Robinson and Kendrick, 1992; Scott and Clarke, 1993a, b). However, precisely what role they play in the gonadal steroid regulation of LH secretion in sheep is not clear. During the breeding season, preoptic infusion studies indicate that GABA actions through the GABA_A receptor are essential for the normal pulsatile release of LH (Scott and Clarke, 1993a) and that a fall in extracellular GABA concentrations in the vicinity of the GnRH neurones occurs before the oestrogen-induced LH surge (Robinson *et al.*, 1991). Whether this decrease in GABA is brought about by oestrogen is unknown, but work in the rat POA suggests that this is unlikely as mRNA expression of glutamic acid decarboxylase, the synthetic enzyme for GABA, is not dependent on circulating oestrogen concentrations but falls before the LH surge (Herbison *et al.*, 1992). At present it seems more probable that preoptic GABA neurones in ewes are targeted by progesterone during the breeding season to help bring about its negative feedback actions on LH secretion (Robinson and Kendrick, 1992). During the non-breeding season, however, recent work has indicated that GABA_A receptors located in the POA may mediate part of the inhibitory effects of oestrogen on LH secretion. Bicuculline, the GABA_A receptor antagonist, exerts similar inhibitory effects on LH secretion in the breeding season and in ovariectomized, anoestrous ewes, but stimulates LH release in ovariectomized ewes the LH secretion of which has been inhibited by oestrogen during the non-breeding season (Scott and Clarke, 1993b). This suggests that GABA neurones, acting through the GABA_A receptor, are actively restraining GnRH secretion in the presence of oestrogen during the non-breeding season. Similarly, GABA actions on LH release through the GABA_B receptor have been identified only in oestrogen-treated ovariectomized ewes during anoestrus, although, in this instance, the effects appear to be mostly on LH pulse amplitude (Scott and Clarke 1993b). The presence of oestrogen receptors in preoptic GABA neurones (Herbison *et al.*, 1993a) and probably direct GABA innervation of GnRH neurones in ewes (Karsch *et al.*, 1989), combined with evidence for preoptic GABA neurones mediating negative feedback influences of oestrogen on LH secretion in rats (Herbison *et al.*, 1991), makes the preoptic GABA neurones of ewes a likely target for oestrogen in inhibiting LH secretion during the non-breeding season. It will be interesting to examine whether preoptic GABA neurones in the ram possess oestrogen receptors or androgen receptors and to determine whether there is an equivalent role for these cells in the negative feedback influences of testosterone on LH secretion.

Although there is little evidence that β -endorphin neurones mediate oestrogen negative feedback actions on LH secretion during anoestrus (Brooks *et al.*, 1986; Horton *et al.*, 1989), naloxone has been shown by several groups to stimulate LH secretion in the breeding season (Horton *et al.*, 1989; Conover *et al.*, 1993; Goodman, 1994). Whether this tonic inhibition of GnRH neurones by β -endorphin is brought about by steroid dependent or independent mechanisms is not fully understood but recent

evidence indicates that β -endorphin concentrations in the median eminence increase from luteal to follicular stages of the oestrous cycle before falling at the time of the LH surge (Domanski *et al.*, 1991; Conover *et al.*, 1993). This pattern of increasing β -endorphin concentrations coincides with increasing oestrogen concentrations and the presence of oestrogen receptors in β -endorphin cells (Lehman and Karsch, 1993) makes it possible that oestrogen stimulates these cells directly. Although oestrogen is not known to have dominant negative feedback effects during the sheep oestrous cycle (Goodman, 1994), Evans *et al.* (1993) reported that oestradiol acts centrally to reduce GnRH pulse size immediately before the LH surge, an action compatible with an oestrogen-induced increase in opioid tone at the level of the median eminence (Conover *et al.*, 1993). As β -endorphin is likely to influence GnRH neurones at both their cell bodies and terminals, it may play a particularly important role in preventing the premature activation of GnRH neurones early in the follicular phase (Domanski *et al.*, 1991; Conover *et al.*, 1993). Rams have also been shown to have an endogenous opioid mechanism restraining LH secretion which, as in ewes, is active only in the breeding season and in the presence of gonadal steroids (Lincoln *et al.*, 1987). Whether β -endorphin cells in the ARN of the male possess oestrogen receptors or androgen receptors is not known but, on the basis of the similar steroid-dependent actions of opioids on LH secretion in males and females, it is possible that there is a similar pattern of gonadal steroid receptor localization within β -endorphin cells in rams.

Finally, it is interesting to speculate on the possible role(s) of the steroid-receptive somatostatin neurones located in the ventrolateral division of the VMN. Blache *et al.* (1991) showed that implants of oestrogen in the general region of the VMN induce sexual behaviour as well as increments in LH secretion in steroid-treated ewes during the breeding season, and Moenter *et al.* (1993) reported increased immediate early gene expression in cells of the ventrolateral VMN following the oestrogen-induced LH surge. Such findings suggest that oestrogen-receptive neurones in the VMN may participate in the positive feedback effects of oestrogen on both reproductive behaviour and LH secretion. Hence, the cells synthesizing somatostatin in the VMN, which account for nearly three-quarters of the oestrogen-receptor-expressing neurones in this region in ewes, might be considered to play a role in one or both of these functions. Although somatostatin is known to be a potent inhibitory neurotransmitter in the rat hypothalamus (Renaud *et al.*, 1975), little is known about the function of VMN somatostatin neurones in any species. Somatostatin neurones in the ventrolateral VMN of the female rat also possess oestrogen receptors and preliminary evidence suggests that many of these somatostatin cells are activated during mating (Herbison, 1994). A similar situation may occur in sheep as, unless there is a marked sex difference in the role of somatostatin neurones in the VMN, the observation that they possess oestrogen receptors in ewes and androgen receptors in rams suggests that these cells may be more involved in modulating sexual behaviour than the LH surge. However, it should be noted that neurones containing oestrogen receptors in the VMN of rats project to the POA and interconnections between these two steroid-receptive areas are well described in rats (Morrell *et al.*, 1992) and sheep (Tillet *et al.*, 1993). Hence, an identified steroid-receptive neural population in the POA or VMN may function in the steroid-dependent actions of both regions.

Conclusions

Considerable progress has been made in defining the sites of oestrogen and androgen action in the sheep hypothalamus and a rational hypothesis can be formulated for the ways in which these steroids influence GnRH neurones in the breeding and non-breeding seasons. However, much remains to be done at both neuroanatomical and whole animal levels. In particular, the need for a full description of cells expressing oestrogen receptors in the ram hypothalamus and both qualitative and quantitative descriptions of neurones containing oestrogen receptors and androgen receptors in males and females, and in both seasons of the year are required. The identification of female-predominant sex differences in gonadal-steroid-receptive neurones may provide important information regarding the specific neural populations responsible for the generation of the LH surge in ewes. So far, we have identified only inhibitory neurotransmitters or neuropeptides in steroid-receptive cells of the sheep hypothalamus. It is envisaged that the combination of steroid receptor and immediate early gene immunocytochemistry,

with or without the addition of neuroanatomical tracing methodologies, will be of great use in defining precisely which neurochemically identified, steroid-receptive neurones are involved in regulating which steroid-regulated components of reproductive behaviour and hormone secretion.

R. J. Bicknell and J. E. Robinson are thanked for critical reading of an earlier version of this manuscript as are D. Skinner and T. Harris for invaluable assistance in the sheep perfusions. G. Prins and Abbott Laboratories (Chicago) are thanked for the generous gifts of androgen and oestrogen receptor antibodies. A. E. Herbison is a Lister Institute-Jenner Fellow.

References

- Batailler M, Blache D, Thibault J and Tillet Y (1992) Immunohistochemical colocalization of tyrosine hydroxylase and estradiol receptors in the sheep arcuate nucleus *Neuroscience Letters* **146** 125–130
- Bittman EL and Blaustein JD (1990) Effects of day length on sheep neuroendocrine oestrogen and progesterin receptors *American Journal of Physiology* **258** R135–142
- Blache D, Fabre-Nys CJ and Venier G (1991) Ventromedial hypothalamus as a target for oestradiol action on proceptivity, receptivity and luteinizing hormone surge of the ewe *Brain Research* **546** 241–249
- Blache D, Batailler M and Fabre-Nys C (1994) Oestrogen receptors in the preoptic-hypothalamic continuum: immunohistochemical study of the distribution and cell density during induced oestrous cycle in ovariectomized ewe *Journal of Neuroendocrinology* **6** 329–339
- Blaustein JD (1993) Estrogen receptor immunoreactivity in rat brain: rapid effect of estradiol injection *Endocrinology* **132** 1218–1224
- Blaustein JD and Turcotte JC (1989) Estrogen receptor-immunostaining of neuronal cytoplasmic processes as well as cell nuclei in guinea pig brain *Brain Research* **495** 75–82
- Bloch GJ, Kurth SM, Akesson TR and Micevych PE (1992) Estrogen-concentrating cells within cell groups of the medial preoptic area: sex differences and co-localization with galanin-immunoreactive cells *Brain Research* **595** 301–308
- Brooks AN, Haynes NB, Yang K and Lamming GE (1986) Ovarian steroid involvement in endogenous opioid modulation of LH secretion in seasonally anoestrous mature ewes *Journal of Reproduction and Fertility* **76** 709–715
- Caraty A and Locatelli A (1988) Effect of time after castration on secretion of GnRH and LH in the ram *Journal of Reproduction and Fertility* **82** 263–269
- Cintra A, Fuxe K, Härfstrand A, Agnati LF, Miller LS, Greene JL and Gustafsson JA (1986) On the cellular localization and distribution of oestrogen receptors in the rat tel- and diencephalon using monoclonal antibodies to human oestrogen receptor *Neurochemistry International* **8** 587–595
- Clarke IJ, Burman JW, Funder JW and Findlay JK (1981) Estrogen receptors in the neuroendocrine tissues of the ewe in relation to breed, season, and stage of the estrous cycle *Biology of Reproduction* **24** 323–331
- Conover CD, Kuljis RO, Rabbit J and Advis J-P (1993) Beta-endorphin regulation of luteinizing hormone-releasing hormone release at the median eminence in ewes: immunocytochemical and physiological evidence *Neuroendocrinology* **57** 1182–1195
- D'Occhio MJ, Schanbacher BD and Kinder JE (1983) Androgenic and oestrogenic steroid participation in feedback control of luteinizing hormone secretion in male sheep *Acta Endocrinologica* **102** 499–504
- Domanski E, Chomicka LK, Ostrowska A, Gajewska A and Mateusiak K (1991) Release of luteinizing hormone-releasing hormone, beta-endorphin and noradrenaline by the nucleus fundibularis/median eminence during preovulatory period in the sheep *Neuroendocrinology* **54** 151–158
- Evans NP, Dahl GE, Glover BH and Karsch FJ (1994) Central regulation of pulsatile gonadotropin-releasing hormone (GnRH) secretion by estradiol during the period leading up to the preovulatory GnRH surge in the ewe *Endocrinology* **134** 1806–1812
- Flugge G, Oertel WH and Wuttke W (1986) Evidence for oestrogen-receptive GABAergic neurons in the preoptic/anterior hypothalamic area of the rat brain *Neuroendocrinology* **43** 1–5
- Geffroy-Roisne S, Madigou T, Pelletier J and Thieulant M-L (1993) Size heterogeneity of affinity-labeled oestrogen receptor in the ram hypothalamo-pituitary axis *Neuroendocrinology* **57** 648–653
- Glass JD, Amann RP and Nett TM (1984) Effects of season and sex on the distribution of cytosolic oestrogen receptors within the brain and the anterior pituitary gland of sheep *Biology of Reproduction* **30** 894–902
- Goodman RL (1994) Neuroendocrine control of the ovine estrous cycle. In *The Physiology of Reproduction* Vol. 2 pp 659–710 Ed. E Knobil and JD Neill. Raven Press, New York
- Greene GL, Sobel NB, King WJ and Jensen EV (1984) Immunohistochemical studies of oestrogen receptors *Journal of Steroid Biochemistry* **20** 51–56
- Havern RL, Whisnant CS and Goodman RL (1994) Dopaminergic structures in the ovine hypothalamus mediating estradiol negative feedback in anestrus ewes *Endocrinology* **134** 1905–1911
- Herbison AE (1994) Somatostatin-immunoreactive neurones in the hypothalamic ventromedial nucleus possess oestrogen receptors in the male and female rat *Journal of Neuroendocrinology* **6** 323–328
- Herbison AE and Theodosis DT (1992a) Localization of oestrogen receptors in preoptic neurones containing neurotensin but not tyrosine hydroxylase, cholecystokinin or luteinizing hormone-releasing hormone in the male and female rat *Neuroscience* **50** 283–298
- Herbison AE and Theodosis DT (1992b) Immunocytochemical identification of oestrogen receptors in preoptic neurones containing calcitonin gene-related peptide in the male and female rat *Neuroendocrinology* **56** 761–764

- Herbison AE and Theodosis DT (1993) Absence of oestrogen receptor immunoreactivity in somatostatin (SRIF) neurons of the periventricular nucleus but sexually dimorphic colocalization of oestrogen receptor and SRIF immunoreactivities in neurons of the bed nucleus of the stria terminalis *Endocrinology* **132** 1707-1713
- Herbison AE, Heavens RP, Dye S and Dyer RG (1991) Acute action of oestrogen on medial preoptic gamma-aminobutyric acid neurons: correlation with oestrogen negative feedback on luteinizing hormone secretion *Journal of Neuroendocrinology* **3** 101-106
- Herbison AE, Augood SJ and McGowan EM (1992) Expression of glutamic acid decarboxylase messenger RNA in rat medial preoptic area neurons during the oestrous cycle and after ovariectomy *Molecular Brain Research* **14** 310-316
- Herbison AE, Robinson JE and Skinner DC (1993a) Distribution of oestrogen receptor-immunoreactive cells in the preoptic area of the ewe: co-localization with glutamic acid decarboxylase but not luteinizing hormone-releasing hormone *Neuroendocrinology* **57** 751-759
- Herbison AE, Robinson JE and Skinner DC (1993b) Calcitonin gene-related peptide (CGRP): immunocytochemical identification of a neuropeptide synthesised by ventral paraventricular magnocellular neurones in the sheep *Brain Research* **611** 147-151
- Herbison AE, Horvath TL, Naftolin F and Leranath C Distribution of oestrogen receptor-immunoreactive cells in monkey hypothalamus: relationship to neurones containing luteinizing hormone-releasing hormone and tyrosine hydroxylase *Neuroendocrinology* (in press)
- Horton RJE, Francis H and Clarke IJ (1989) Seasonal and steroid-dependent effects on the modulation of LH secretion in the ewe by intracerebroventricularly administered β -endorphin or naloxone *Journal of Endocrinology* **122** 509-517
- Huang X and Harlan RE (1993) Absence of androgen receptors in GnRH immunoreactive neurons *Brain Research* **624** 309-311
- Jirkowski GF, Merchenthaler I, Rieger GE and Stumpf WE (1986) Estradiol target sites immunoreactive for β -endorphin in the arcuate nucleus of the rat and mouse hypothalamus *Neuroscience Letters* **65** 121-126
- Ju G and Swanson LW (1989) Studies on the cellular architecture of the bed nuclei of the stria terminalis in the rat: I. Cytoarchitecture *Journal of Comparative Neurology* **280** 587-602
- Karsch FJ, Ebling FJP and Lehman MN (1989) Do catecholaminergic, neuropeptide Y, substance P and GABAergic terminals innervate GnRH neurons in the sheep? *Society for Neuroscience Abstracts* **15** 1083
- Koch M and Ehret G (1989) Immunocytochemical localization and quantitation of oestrogen-binding cells in the male and female (virgin, pregnant, lactating) mouse brain *Brain Research* **489** 101-112
- Kuljis RO and Advis JP (1989) Immunocytochemical and physiological evidence of a synapse between dopamine- and luteinizing hormone releasing hormone-containing neurons in the ewe median eminence *Endocrinology* **124** 1579-1583
- Lehman MN and Karsch FJ (1993) Do gonadotropin-releasing hormone, tyrosine hydroxylase- and β -endorphin-immunoreactive neurons contain oestrogen receptors? A double-label immunocytochemical study in the Suffolk ewe *Endocrinology* **133** 887-895
- Lehman MN, Ebling FJP, Moenter SM and Karsch FJ (1993) Distribution of oestrogen receptor-immunoreactive cells in the sheep brain *Endocrinology* **133** 876-886
- Lincoln GA, Ebling FJP and Martin GB (1987) Endogenous opioid control of pulsatile LH secretion in rams: modulation by photoperiod and gonadal steroids *Journal of Endocrinology* **115** 425-438
- Menard CS and Harlan RE (1993) Up-regulation of androgen receptor immunoreactivity in the rat brain by androgenic-anabolic steroids *Brain Research* **622** 226-236
- Moenter SM, Karsch FJ and Lehman MN (1993) Fos expression during the estradiol-induced gonadotropin-releasing hormone (GnRH) surge of the ewe: induction in GnRH and other neurones *Endocrinology* **133** 896-903
- Morrell JL, McGinty JF and Pfaff DW (1985) A subset of beta-endorphin or dynorphin-containing neurons in the medial basal hypothalamus accumulates estradiol *Neuroendocrinology* **41** 417-426
- Morrell JL, Corodimas KP, DonCarlos LL and Lisciotto CA (1992) Axonal projections of gonadal steroid receptor-containing neurons *Neuroprotocols* **1** 4-15
- Pelletier J and Ortavant R (1975) Photoperiodic control of LH release in the ram II. Light-androgens interaction *Acta Endocrinologica* **78** 442-450
- Prins GS, Birch L and Greene GL (1991) Androgen receptor localization in different cell types of the adult rat prostate *Endocrinology* **129** 3187-3199
- Renaud LP, Martin JB and Brazeau P (1975) Depressant action of TRH, LH-RH and somatostatin on the activity of central neurones *Nature* **255** 233-235
- Robinson JE and Kendrick KM (1992) Inhibition of luteinizing hormone secretion in the ewe by progesterone: associated changes in the release of gamma-aminobutyric acid and noradrenaline in the preoptic area as measured by intracranial microdialysis *Journal of Neuroendocrinology* **4** 231-236
- Robinson JE, Kendrick KM and Lambart CE (1991) Changes in the release of gamma-aminobutyric acid and catecholamines in the preoptic/septal area prior to and during the preovulatory surge of luteinizing hormone in the ewe *Journal of Neuroendocrinology* **3** 393-399
- Sar M (1988) Distribution of progesterin-concentrating cells in rat brain: colocalisation of [3 H]ORG.2058, a synthetic progesterin, and antibodies to tyrosine hydroxylase in hypothalamus by combined autoradiography and immunocytochemistry *Endocrinology* **123** 1110-1118
- Scott CJ and Clarke IJ (1993a) Inhibition of LH secretion in ovariectomised ewes during the breeding season by γ -aminobutyric acid (GABA) is effected by GABA-A receptors but not GABA-B receptors *Endocrinology* **132** 1789-1796
- Scott CJ and Clarke IJ (1993b) Evidence that changes in the function of the subtypes of the receptors for γ -aminobutyric acid may be involved in the seasonal changes in the negative-feedback effects of oestrogen on gonadotropin-releasing hormone secretion and plasma luteinizing hormone levels in the ewe *Endocrinology* **133** 2904-2912
- Shivers BD, Harlan RE, Morrell JL and Pfaff DW (1983) Absence of estradiol concentration in cell nuclei of GnRH-immunoreactive neurons *Nature* **304** 345-347
- Simerly RB and Young BJ (1991) Regulation of oestrogen receptor messenger ribonucleic acid in rat hypothalamus by sex steroid hormones *Molecular Endocrinology* **5** 424-432
- Skinner DC, Herbison AE and Robinson JE (1992) Immunocytochemical identification of oestrogen receptors in the ovine pars tuberalis: localization within gonadotrophs *Journal of Neuroendocrinology* **4** 659-662

- Thiery J-C, Martin GB, Tillet Y, Caldani M, Quentin M, Jamain C and Revault J-P (1989) Role of hypothalamic catecholamines in the regulation of luteinizing hormone and prolactin secretion in the ewe during seasonal anestrus *Neuroendocrinology* **49** 80-87
- Thompson TL and Moss RL (1994) Estrogen regulation of dopamine release in the nucleus accumbens: genomic- and nongenomic-mediated effects *Journal of Neurochemistry* **62** 1750-1756
- Tilbrook AJ and Clarke IJ (1992) Evidence that dopaminergic neurons are not involved in the negative feedback effect of testosterone on luteinizing hormone in rams in the non-breeding season *Journal of Neuroendocrinology* **4** 365-374
- Tilbrook AJ, de Kretser DM, Cummins JT and Clarke IJ (1991) The negative feedback effects of testicular steroids are predominantly at the hypothalamus in the ram *Endocrinology* **129** 3080-3092
- Tillet Y, Batailler M and Thibault J (1993) Neuronal projections to the medial preoptic area of the sheep, with special reference to monoaminergic afferents: immunohistochemical and retrograde tract tracing studies *Journal of Comparative Neurology* **330** 195-220
- Watson RE Jr, Langub MC Jr and Landis JW (1992) Further evidence that most luteinizing hormone-releasing hormone neurons are not directly oestrogen-responsive: simultaneous localisation of luteinizing hormone-releasing hormone and oestrogen receptor immunoreactivity in the guinea-pig brain *Journal of Neuroendocrinology* **4** 311-318
- Watson RE Jr, Hutchinson RK, Langub MC Jr, Landis JW, Seksaria S, Rainey DM and Keil LC (1994) Colocalization of natriuretic peptide and oestrogen receptor immunoreactivities in preoptic nuclei in the female rat *Journal of Neuroendocrinology* **6** 79-87