

Neuronal autophagy and neurodegenerative diseases

Jin H. Son^{1,2,3}, Jung Hee Shim¹, Kyung-Hee Kim¹,
Ji-Young Ha² and Ji Young Han¹

¹Department of Brain and Cognitive Sciences

²Division of Life and Pharmaceutical Sciences

College of Pharmacy

Brain Disease Research Institute

Ewha Womans University

Seoul 120-750, Korea

³Corresponding author: Tel, 82-2-3277-4504;

Fax, 82-2-3277-3760; E-mail, hjson@ewha.ac.kr

<http://dx.doi.org/10.3858/emm.2012.44.2.031>

Accepted 13 January 2012

Available Online 19 January 2012

Abbreviations: AD, Alzheimer's disease; ALS, amyotrophic lateral sclerosis; HD, Huntington's disease; mTOR, mammalian target of rapamycin; PD, Parkinson's disease

Abstract

Autophagy is a dynamic cellular pathway involved in the turnover of proteins, protein complexes, and organelles through lysosomal degradation. The integrity of postmitotic neurons is heavily dependent on high basal autophagy compared to non-neuronal cells as misfolded proteins and damaged organelles cannot be diluted through cell division. Moreover, neurons contain the specialized structures for intercellular communication, such as axons, dendrites and synapses, which require the reciprocal transport of proteins, organelles and autophagosomes over significant distances from the soma. Defects in autophagy affect the intercellular communication and subsequently, contributing to neurodegeneration. The presence of abnormal autophagic activity is frequently observed in selective neuronal populations afflicted in common neurodegenerative diseases, such as Alzheimer's disease, Parkinson's disease, Huntington's disease and amyotrophic lateral sclerosis. These observations have provoked controversy regarding whether the increase in autophagosomes observed in the degenerating neurons play a protective role or instead contribute to pathogenic neuronal cell death. It is still unknown what factors may determine whether active autophagy

is beneficial or pathogenic during neurodegeneration. In this review, we consider both the normal and pathophysiological roles of neuronal autophagy and its potential therapeutic implications for common neurodegenerative diseases.

Keywords: Alzheimer disease; amyotrophic lateral sclerosis; autophagy; Huntington disease; neurodegenerative diseases; neurons; Parkinson disease

Introduction

Neurons have highly specialized structures for intercellular communication, which typically include the axon, dendrites and synapses (Figure 1). In particular, the axon transfers proteins and organelles over significant distances in the nervous system. Almost all the materials contained in the axon originate in the soma and are localized to the axon *via* axoplasmic transport, in which the constant quality control of proteins and mitochondria is critical for proper neuronal function. Synapses represent regions of high energy demand and protein turnover; they contain abundant mitochondria and polyribosomes which make them more susceptible to the consequences of dysfunctional autophagy. In addition, the fact that neurons are postmitotic and do not replicate in general might predispose them to the accumulation of toxic proteins and damaged organelles inside neurons that could become diluted through cell division in replicating cells.

The critical importance of tightly controlled proteins and organelles in the neurons suggests that neuronal autophagy may be regulated distinctively from that of non-neuronal cells. In accordance with this notion, a study using GFP-LC3 transgenic mouse model demonstrated that autophagy is distinctly regulated in neurons (Mizushima *et al.*, 2008). Other work has revealed significant differences in basal autophagy between neuronal and non-neuronal cells (Mitra *et al.*, 2009). Recent loss-of function studies demonstrate a critical role for basal autophagy in the removal of damaged proteins and organelles in specific neurons of the brain (Hara *et al.*, 2006; Komatsu *et al.*, 2006).

Intracellular protein aggregates and dysfunctional organelles are common features of neurodegenerative diseases, such as Alzheimer's disease (AD),

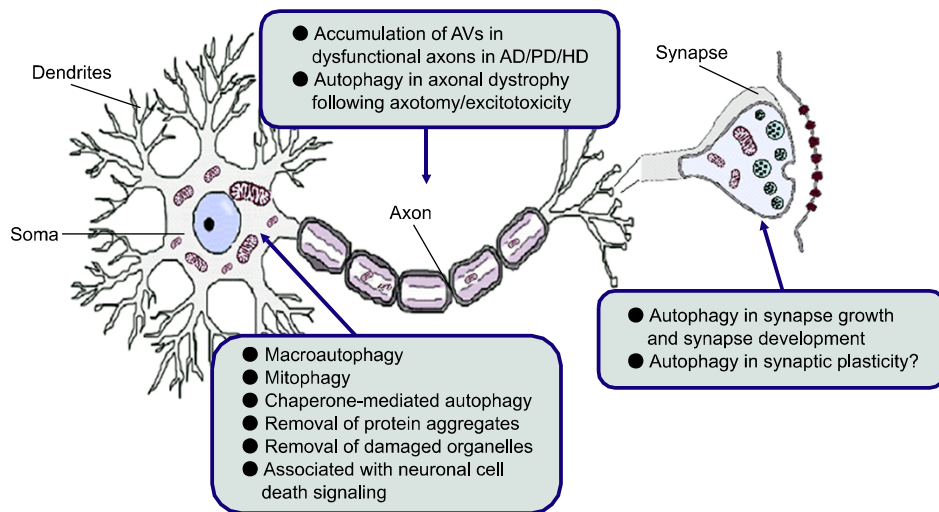


Figure 1. The basic and pathogenic role of neuronal autophagy. Neurons have highly specialized structures for intercellular communication, which typically include the soma, axon, dendrites and synapses. In the soma, the central region of the neuron containing the nucleus, basal levels of autophagy, including macroautophagy, mitophagy and chaperone-mediated autophagy (CMA), occur to maintain normal cellular homeostasis. The axon, a specialized structure to conduct nerve impulses, transfers proteins and organelles over significant distances by axoplasmic transport. Axotomy and excitotoxic insult trigger the accumulation of autophagosomes in dystrophic axonal swellings. Autophagic vacuoles (AVs) have also been observed in dysfunctional axons in Alzheimer's disease (AD), Parkinson's disease (PD) and Huntington's disease (HD). Synapse, the region of contact where a neuron transferring information to another cell, represents a region of high energy demand and protein turnover; They contain abundant mitochondria and polyribosomes. Autophagy is known to play an important role in synapse development as autophagy is induced in response to many developmental and environmental cues. Thus, autophagy may play an important role in the synapse growth and plasticity required for learning and memory.

Parkinson's disease (PD), Huntington's disease (HD) and amyotrophic lateral sclerosis (ALS). Subsequently, in the course of these diseases, toxic protein aggregates and damaged organelles accumulate within specific types of neurons and lead to neuronal dysfunction and ultimate neuronal death (Figure 2). Therefore, the precise and localized activation of autophagy in soma, axons or synapses may represent a beneficial therapeutic intervention for neurodegenerative diseases, even though potential pathogenic contribution of activated autophagy must be carefully monitored.

Characteristics of neuronal autophagy in the synapse and axon

Autophagy in synapse development

Neuronal autophagy plays an important role in synapse development. A recent study demonstrates that decreasing or increasing autophagy results in corresponding effects on synapse size (Shen and Ganetzky, 2009). They found that neuronal autophagy positively regulates synaptic development in the *Drosophila* neuromuscular junction. Overexpression of Atg1, a serine/threonine kinase and key regulator of autophagy, is sufficient to induce high levels of autophagy and subsequent enhancement of synaptic growth. In contrast, reducing autophagy activity

through mutations in autophagy genes results in the reduction of synapse size. The ubiquitin-proteasome pathway system (UPS) is known to be an important negative regulator of synaptic development in the neuromuscular junction (Wan *et al.*, 2000). Neuronal autophagy and UPS converge to regulate synapse development by regulating Hiw, an E3 ubiquitin ligase. Of interest, Atg1 is suggested to play a role in the regulation of synaptic structure *via* the downregulation of the MAP kinase ERK activity (Wairkar *et al.*, 2009). In mice carrying an Atg1 mutation, synaptic density was decreased by excessive ERK activity, suggesting that activated ERK negatively regulates synapse formation. As autophagy is induced in response to many developmental and environmental cues, neuronal autophagy may play an important role in the synapse growth and plasticity required for learning and memory.

Axonal autophagy in injured neurons

The axon is a highly specialized structure dedicated to information transfer over sometimes lengthy distances in the nervous system. Autophagy has previously been suggested to be associated with axonal dystrophy following axotomy or excitotoxic stimuli. For instance, after axotomy, autophagosome-like vesicles accumulate in axon terminals (Dixon, 1967; Matthews and Raisman, 1972). This increased

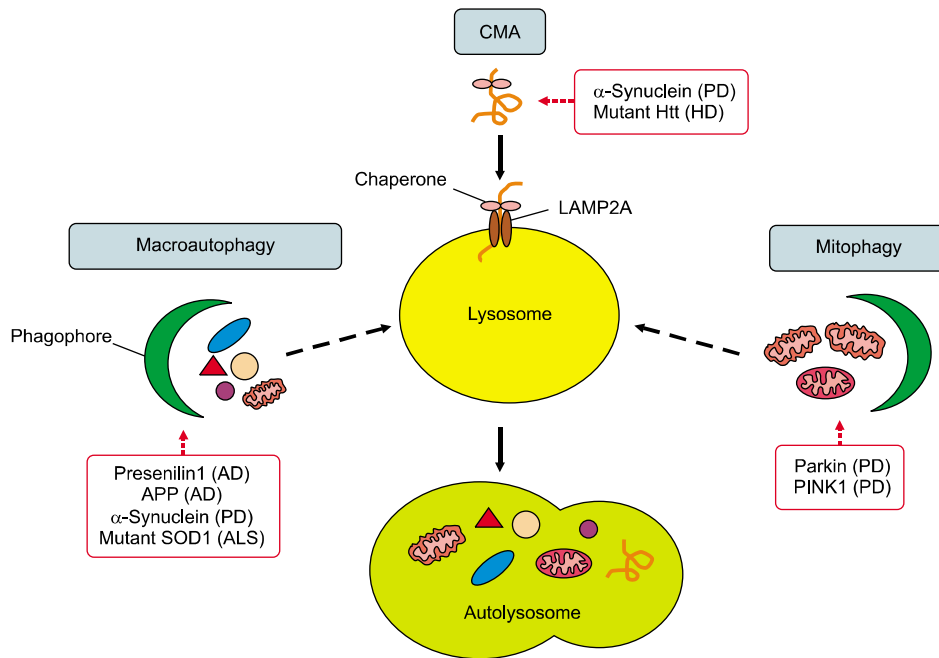


Figure 2. Disease causing proteins affecting various types of autophagy in common neurodegenerative diseases. Familial forms of the common neurodegenerative diseases, such as AD, PD, HD and ALS, are caused by gene mutations, which affect different types and steps of autophagy. AD is characterized by the pathogenic accumulation of amyloid plaques consisting of β -amyloid ($A\beta$) peptides generated by proteolytic cleavage of amyloid precursor protein (APP). AVs are a major reservoir of intracellular $A\beta$ in the brain. Mutant presenilin 1 (PS1) impairs autophagosome clearance, resulting in enhanced $A\beta$ accumulation in AD. PD is characterized by the presence of Lewy bodies, the intracytoplasmic inclusions containing α -synuclein, which is degraded by macroautophagy and CMA. The inhibition of CMA leads to an accumulation of soluble high molecular weight and detergent-insoluble species of α -synuclein and the inhibition of macroautophagy also leads to the accumulation of wild type α -synuclein. Mitochondrial dysfunction has been implicated in the pathogenesis of PD. PINK1 and parkin mediate the removal of mitochondria by mitophagy, of which mutations result in the accumulation of impaired mitochondria. HD is characterized by the presence of inclusion bodies composed of the N-terminal fragment of mutant Htt, which is associated with the primary defect in the ability of autophagic vacuoles to recognize cytosolic cargo. Mutations in the SOD1 gene underlie 20% of familial ALS cases. Agents promoting autophagy, such as lithium and rapamycin, help autophagic clearance of mutant SOD1.

autophagy is accompanied by chromatolysis, a term that describes an area of cytoplasm that is devoid of organelles and filled with various types of vesicles including autophagosomes (Dixon, 1967). Similarly, in Purkinje cells of the Lurcher mouse, a model of excitotoxic neurodegeneration, excitotoxic insults trigger the accumulation of GFP-LC3-labeled autophagosomes in dystrophic axonal swellings, a hallmark of CNS axonopathy (Wang *et al.*, 2006). Autophagosome-like vesicles have also been observed in dysfunctional axons in AD, PD and HD (Roizin *et al.*, 1974; Anglade *et al.*, 1997; Nixon *et al.*, 2005).

Autophagy in Alzheimer's disease

AD is the most common form of senile dementia. AD is characterized by the pathogenic accumulation of amyloid plaques consisting of β -amyloid ($A\beta$) peptides, which are generated by the sequential cleavage of amyloid precursor protein (APP) *via* the β -secretase and γ -secretase, and by the intracellular

accumulation of neurofibrillary tangles containing hyperphosphorylated tau (Vassar *et al.*, 1999). Electron microscopy studies on AD brain provided the first evidence that autophagy is extensively involved in the neurodegenerative process (Nixon *et al.*, 2005). Autophagic vacuoles (AVs) were abundant in AD brains, particularly, within dystrophic neuritis. Autophagy was also evident in the perikarya of affected neurons, especially in those with neurofibrillary tangles. The significant accumulations of immature AV forms in dystrophic neurites suggest that the transport of AVs and their maturation to lysosomes, may be impaired in AD. Subsequently, immunolabeling studies identified AVs in the brain to be a major reservoir of intracellular $A\beta$ (Yu *et al.*, 2005). Purified AVs contain both full-length APP and β -secretase cleaved APP and are highly enriched in the γ -secretase complex subunits presenilin-1 (PS1) and nicastrin. In addition, the mammalian target of rapamycin (mTOR) kinase-mediated modulation of autophagy in neuronal cells elicits parallel changes in AV proliferation and $A\beta$ production. These data suggest a direct link

between β -amyloidogenic and cell survival pathways *via* activated autophagy in AD.

Autophagosomes and endosomes within neurons actively form in synapses and along neuritic processes; however, their efficient clearance requires their retrograde transport towards the soma, which contains the highest concentration of lysosomes. In AD the maturation of autophagolysosomes and their retrograde transport are impaired, which results in a massive accumulation of AVs within degenerating neurites. This combination of increased autophagy induction and defective clearance of $A\beta$ -generating AVs results in $A\beta$ accumulation (Nixon, 2007; Boland *et al.*, 2008). Furthermore, defective lysosomal proteolysis may underlie further pathogenic protein accumulations and neuronal cell death in AD. The AD-related protein PS1 is required for autophagy and in neurons from mice hypomorphic for PS1, autophagosome clearance is prevented as a result of the selective impairment of autolysosome acidification and cathepsin activation, which are caused by the failure of PS-1-dependent targeting of v-ATPase subunit to lysosomes (Lee *et al.*, 2010). N-glycosylation of the v-ATPase subunit is essential for its efficient ER-to-lysosome delivery, which requires the selective binding of PS1 to its unglycosylated subunit. Similarly, PS1 mutations responsible for early-onset AD produce a defective lysosomal/autophagy phenotype in fibroblasts of AD patients. These phenomena could be explained by the fact that PS1 is essential for the targeting of v-ATPase subunit to lysosomes, lysosome acidification, and proteolysis during autophagy (Cataldo *et al.*, 2004; Lee *et al.*, 2010). These findings show that the impairment of autophagosome maturation could lead to the increased accumulation of $A\beta$ in AD.

Beclin1, also known as Atg6, is a proautophagic protein. The protein Beclin1 expression decreases in aged human brain, leading to a reduction of autophagy with aging. Beclin 1 has been shown to be decreased in the AD brains (Pickford *et al.*, 2008). Decreased neuronal autophagy and subsequent neurodegeneration is observed in mice carrying a heterozygous deletion of beclin 1 (Pickford *et al.*, 2008). In the APP transgenic mouse model of AD, the reduced expression of beclin1 results in an increase of intraneuronal $A\beta$ accumulation, extracellular $A\beta$ deposition and neurodegeneration, which was ameliorated by the lentiviral expression of beclin 1 (Pickford *et al.*, 2008). Moreover, beclin1 deficiency has been shown to disrupt cellular autophagy and autophagosomal-lysosomal degradation and to alter APP metabolism (Jaeger *et al.*, 2010). These studies suggest that reduced autophagy *via* beclin1 deficiency might reduce $A\beta$ clearance;

therefore, increasing beclin 1 levels may have a therapeutic potential in AD.

The mTOR pathway plays an essential role in neuronal functions by controlling protein homeostasis. mTOR signaling has been shown to regulate various forms of learning and memory. In an animal model of AD, the pharmacological inhibition of mTOR signaling with rapamycin rescues cognitive deficits and ameliorates $A\beta$ and tau pathology by increasing autophagy (Caccamo *et al.*, 2010). Similarly, the long-term inhibition of mTOR by rapamycin prevents AD-like cognitive deficits and lowered levels of $A\beta$ in the PDAPP transgenic mouse model (Spilman *et al.*, 2010). These results provide a molecular basis for the efficacy of mTOR inhibition in ameliorating cognitive impairment in AD models by demonstrating that the resultant increased autophagy results in the reduction in $A\beta$ and the improvement in cognitive function. These observations collectively suggest that autophagy plays a critical role in the pathogenesis of AD and that the inhibition of mTOR signaling and/or the activation of beclin 1 signaling may reduce $A\beta$ and tau pathology, subsequently improving learning and memory in AD patients.

Autophagy in Parkinson's disease

PD is one of the most common neurodegenerative disorders. PD is caused by the selective cell death of dopamine neurons in the substantia nigra (SN) and is characterized by the presence of Lewy bodies, which are the intracytoplasmic inclusions containing α -synuclein and ubiquitin. Early ultrastructural examinations in PD patients revealed characteristics of apoptosis and autophagy in the degenerating melanized neurons of the SN (Anglade *et al.*, 1997). Subsequently, the pathogenic role of autophagy in PD was demonstrated by the finding that α -synuclein, a major constituent of Lewy body, is degraded by macroautophagy and chaperone-mediated autophagy (CMA) (Webb *et al.*, 2003; Cuevo *et al.*, 2004; Vogiatzi *et al.*, 2008). The inhibition of CMA leads to an accumulation of soluble high molecular weight and detergent-insoluble species of α -synuclein and the inhibition of macroautophagy also leads to the accumulation of wild type α -synuclein, suggesting that CMA and macroautophagy are important pathways for wild type α -synuclein degradation in neurons (Vogiatzi *et al.*, 2008). In addition, beclin 1 plays an important role in the intracellular degradation of α -synuclein either directly or indirectly through the autophagic pathway. When a lentivirus expressing beclin 1 was delivered to the brain of an α -synuclein

transgenic mouse, the synaptic and dendritic pathology was ameliorated and the accumulation of α -synuclein in the limbic system was reduced (Spencer *et al.*, 2009). These results were accompanied by enhanced lysosomal activation and a reduction in deficits in the autophagy pathway.

The familial PD-associated molecules, such as the wild type, A53T and A30P mutants of α -synuclein, DJ-1, parkin, PINK1 and LRRK2 are known to be involved in the autophagic pathway. For instance, overexpression of wild type α -synuclein impairs macroautophagy both *in vitro*, in mammalian cells and *in vivo*, in transgenic mice because multiplication of the α -synuclein gene locus is known to increase α -synuclein expression and cause familial PD (Winslow *et al.*, 2010). α -Synuclein overexpression causes the mislocalization of the autophagy protein, Atg9, and decreased formation of omegasome. Both α -synuclein, and Atg9 regulate formation of the omegasomes, marking autophagosome precursors. Of interest, A53T and A30P mutants inhibit CMA *via* a higher binding affinity for the lysosomal-associated membrane protein 2A (LAMP2A) compared with wild type α -synuclein (Cuevo *et al.*, 2004; Xilouri *et al.*, 2009). Overexpression of both mutant and wild type α -synuclein is accompanied by the induction of compensatory macroautophagy. The mutant α -synuclein is degraded by macroautophagy instead of CMA. Therefore, impaired CMA might trigger neuronal death and the preservation of proper CMA activity could be a potential target for PD therapeutics. The functional deficiency of DJ-1, a recessive familial PD gene, also leads to altered autophagy (i.e. increased autophagic flux) in murine and human cells (Irrcher *et al.*, 2010). In addition, mutations in the leucine-rich repeat kinase 2 (LRRK2) have been implicated in both autosomal dominant and some cases of sporadic PD. Cells transfected with G2019S LRRK2 mutant exhibit striking increases of autophagic vacuoles in both neuritic and somatic compartments (Plowey *et al.*, 2008). Knockdown of LC3 or Atg7, two essential components of the autophagic machinery, reversed the effects of G2019S LRRK2 expression on neuronal process length, whereas rapamycin potentiated these effects, suggesting that the pathogenic mutation of LRRK2 plays active role for autophagy in neurite remodeling. Mutations in the PTEN-induced putative kinase 1 (PINK1) gene also cause autosomal recessive PD. The full-length PINK1 interacts with Beclin1 and the overexpression of PINK1 significantly enhances both basal and starvation-induced autophagy, which can be reduced by beclin1 gene knockdown. Of interest, the W437X mutant of PINK1 demonstrates an impaired interaction with Beclin1

and lacks the ability to induce autophagy, whereas the G309D mutant of PINK1, which has defective kinase activity, does bind with Beclin1 (Michiorri *et al.*, 2010).

Although neuronal autophagy appears primarily to be a protective process in the nervous system, it can also play a paradoxical role in neuronal death. With respect to the role of autophagy in neuronal death, several studies employing PD toxins, a mutant familial PD gene and postmortem PD brains have demonstrated an important role for autophagy in promoting the death of dopamine neurons. For example, autophagic cell death has been observed in nigral dopamine neurons of PD patients (Anglade *et al.*, 1997). MPP⁺ or dopamine toxicity-induced oxidative stress, increases the number of AVs, autophagy and cell death, all of which differs from what is observed in starvation-induced autophagy (Gomez-Santos *et al.*, 2003; Zhu *et al.*, 2007). Oxidative stress, a major pathogenic mechanism of PD, has been shown to increase autophagic cell death in dopaminergic neurons by suppressing the expression of Oxi- α gene, which encodes a novel mTOR activator (Choi *et al.*, 2010). The Oxi- α gene knockdown resulted in not only the repression of mTOR kinase activity, but also enhances neuronal susceptibility to oxidative stress. In agreement with these observations, treatment with rapamycin, an mTOR inhibitor and autophagy inducer, potentiates cell death induced by oxidative stress. In addition, overexpression of the A53T mutant of human α -synuclein induces an accumulation of AVs and autophagic cell death (Stefanis *et al.*, 2001; Kirik *et al.*, 2002; Xilouri *et al.*, 2009; Yang *et al.*, 2009). These studies suggest that pathogenic autophagy associated with neuronal death does occur and may be distinct from basal neuronal autophagy. The contribution of autophagy and autophagic cell death to degeneration of dopamine neurons may vary depending on the initial cause and specific cellular context. A better understanding of autophagic stress (Chu, 2006) and further identification of autophagic cell death mechanisms may lead to therapeutics that help restore homeostasis to dopamine neurons in PD.

Damaged mitochondria accumulate with age and mitochondrial dysfunction has been implicated in the pathogenesis of PD. Previously, recessive mutations in parkin, an ubiquitin E3 ligase, have been identified as a cause of early onset, familial PD. However, the precise role of parkin in mitochondria is unknown. It was recently shown that parkin is selectively recruited to damaged mitochondria, which have low membrane potential in mammalian cells. Following recruitment, parkin

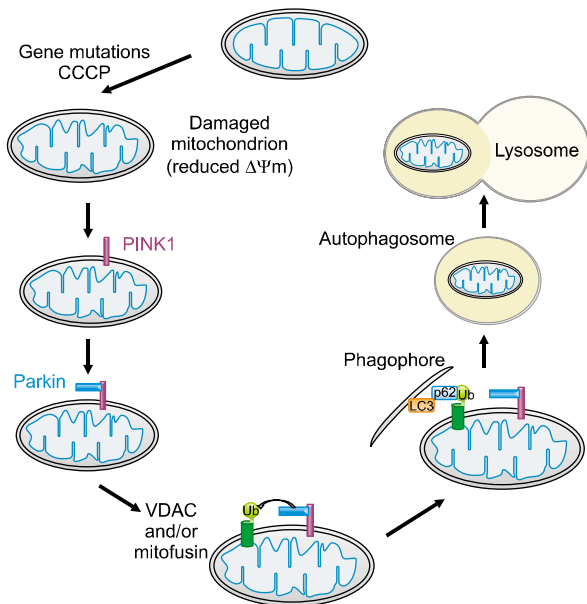


Figure 3. PINK1 and parkin-mediated mitophagy. In the current model of the PINK1/parkin-mediated mitophagy, PINK1, implicated in familial PD, is normally maintained at low levels on mitochondria by voltage-dependent proteolysis, which is mediated by the mitochondrial presenilin-associated rhomboid-like protein (PARL) present in the inner mitochondrial membrane. In the absence of PARL, the constitutive degradation of PINK1 is inhibited and a 60-kD form of PINK1 is stabilized inside mitochondria. When the mitochondrial membrane potential is dissipated, PINK1 accumulates as a 63-kD full-length form in the outer mitochondrial membrane. Thus, accumulation of mitochondrial damage by gene mutations or carbonyl cyanide *m*-chloro phenyl hydrazone (CCCP), a mitochondrial uncoupling agent, facilitates the rapid accumulation of PINK1 and the subsequent PINK1 accumulation in the mitochondria recruits parkin to ubiquitinate VDAC (and/or mitofusin) on the mitochondrial outer membrane, which becomes a target for mitophagy. The ubiquitin-binding adaptor p62 (also known as sequestosome 1) recruits ubiquitinated cargo into autophagosomes by binding to LC3.

mediates the removal of mitochondria by autophagy and the selective elimination of impaired mitochondria (Narendra *et al.*, 2008). This discovery revealed a link between the mitochondrial quality control and proteins mutated in familial PD, and further implicates a failure to eliminate dysfunctional mitochondria in the pathogenesis of PD.

The link between parkin and mitophagy has brought about great interest in the molecular mechanism of mitophagy as well as the pathogenic role of mitophagy in PD (Figure 3). Of interest, PINK1, a mitochondrial serine/threonine kinase, also implicated in familial PD, is normally maintained at low levels on mitochondria by voltage-dependent proteolysis (Narendra *et al.*, 2010), mediated by the mitochondrial presenilin-associated rhomboid-like protein (PARL) present in the inner mitochondrial membrane (Jin *et al.*, 2010). In the absence of PARL, the constitutive degradation of PINK1 is

inhibited and a 60-kD form of PINK1 is stabilized inside mitochondria. When the mitochondrial membrane potential is dissipated, PINK1 accumulates as a 63-kD full-length form in the outer mitochondrial membrane. Thus, damage to mitochondria facilitates the rapid accumulation of PINK1 and the subsequent PINK1 accumulation in the mitochondria recruits parkin to induce mitophagy (Narendra *et al.*, 2010; Geisler *et al.*, 2010). At this stage, the autophagic adaptor protein p62/SQSTM1 is recruited to mitochondria, which may be important for the clearance of mitochondria (Figure 3). In addition, the voltage-dependent anion channel 1 (VDAC1) is a target for parkin-mediated poly-ubiquitylation of Lys 27 and mitophagy (Geisler *et al.*, 2010). Thus, pathogenic parkin mutations, together with PINK1 mutations, could lead to the disruption of mitochondrial recruitment of parkin, ubiquitination of mitochondrial substrates, formation of AVs and the final clearance of damaged mitochondria *via* mitophagy. Consistent with this notion, a detailed analysis of PINK1 and parkin knockout models revealed an accumulation of damaged mitochondria in various tissues including dopamine neurons (Greene *et al.*, 2003; Gautier *et al.*, 2008; Shim *et al.*, 2011). These observations suggest that neuronal autophagy is essential for the turnover of damaged mitochondria in PD and that the failure to induce mitophagy may underlie the selective dopaminergic neuronal loss observed in PD. Thus, stimulating the proper induction of mitophagy in dopaminergic neurons may serve as a therapeutic target to slow disease progression in PD.

Autophagy in Huntington's disease

HD, an autosomal dominant movement disorder, is caused by the expansion (>35 repeats) of CAG trinucleotide repeats in the huntingtin (*htt*) gene, which encodes an expanded polyglutamine (poly(Q)) tract in the N-terminus of the Htt protein. The toxicity of the mutant Htt protein is believed to result from the intraneuronal aggregates of the N-terminal fragments, the typical pathological hallmark of HD. The characteristic features of altered autophagy were first observed in postmortem brains of HD patients (Tellez-Nagel *et al.*, 1974). In the models of HD, when mutant Htt was exogenously expressed in striatal neurons, mutant Htt-labeled vacuoles displayed the ultrastructural features of autophagosomes. In addition, neurons with excess cytoplasmic Htt exhibited an increased tubulation of endosomal membranes (Kegel *et al.*, 2000). Thus, the accumulation of mutant Htt might activate the endosomal-lysosomal system and contribute to an

autophagic process of cell death. The involvement of autophagy in HD was further demonstrated by the sequestration of mTOR in polyglutamine aggregates in cell models, transgenic mice and human brains. The sequestration of mTOR impairs its kinase activity and induces autophagy. This autophagy protects against polyglutamine toxicity, as rapamycin attenuates Htt accumulation and cell death in cell models of HD and the inhibition of autophagy has the opposite effects (Ravikumar *et al.*, 2004). Subsequently, a number of studies probed the therapeutic potential of autophagy induction in various models of HD (Ravikumar *et al.*, 2003, 2004; Sakar *et al.*, 2007).

The precise mechanism that underlies autophagic dysfunction in HD is poorly understood. The inefficient engulfment of cytosolic components by autophagosomes has been proposed to be responsible for their slower turnover and the accumulation of Htt in HD cells. Using cellular and mouse models of HD and cells from HD patients, a primary defect in the ability of autophagic vacuoles to recognize cytosolic cargo, was identified in HD cells. Autophagic vacuoles formed at normal rates and were adequately eliminated by lysosomes, however, they failed to efficiently trap cytosolic cargo in their lumen (Matinez-Vincente *et al.*, 2010). Another mechanism underlying the intracellular accumulation of mutant Htt is that the accumulated mutant Htt recruits beclin 1 and impairs the beclin 1-mediated long lived protein turnover. Thus, the sequestration of beclin 1 in the vulnerable neuronal population of HD patients might further reduce beclin 1 function and autophagic degradation of mutant Htt (Shibata *et al.*, 2006). As beclin 1 expression decreases in an age-dependent fashion in the human brains and the heterozygous deletion of beclin 1 gene is insufficient for the regulation of autophagosomes, it has been proposed that the age-dependent decrease of beclin 1 expression may lead to a reduction of autophagic activity, which in turn promotes the accumulation of mutant Htt and the progression of the disease (Shibata *et al.*, 2006).

One homeostatic function of the wild type Htt protein has been proposed to be to act as an endoplasmic reticulum (ER) sentinel, regulating autophagy in response to ER stress (Atwal *et al.*, 2008). As a result, cells expressing mutant Htt may have perturbed ER function and have increased autophagic vesicles. Moreover, a number of findings suggest that the Htt protein exhibits structural and functional similarities to the central autophagy regulator, mTOR. For instance, Htt and mTOR are both scaffolding proteins and contain similar leucine-rich repeats, termed HEAT domains (Andrade

and Bork, 1995). Both Htt and mTOR use amino-terminal HEAT repeats to specifically recognize membranous structures. In this way, mTOR reversibly associates with ER and Golgi membranes (Drenan *et al.*, 2004). Similarly, Htt reversibly associate with ER and autophagic vesicles (Omi *et al.*, 2005). As a result, cells expressing mutant Htt may have a perturbed ER and an increase in AVs (Atwal *et al.*, 2008). Therefore, these observations imply a potential role of Htt in the regulation of autophagy.

The initial increase in AVs and autophagy observed in HD models may represent an attempt to remove mutant Htt protein and over time the autophagy machinery becomes dysfunctional, leading to neurodegeneration. Thus, the therapeutic induction and recovery of autophagy might enhance the clearance of mutant Htt protein and reduce its toxic effect in HD neurons.

Autophagy in amyotrophic lateral sclerosis

ALS is a progressive neurodegenerative disorder that selectively affects motor neurons. Approximately 10% of ALS cases are familial ALS (fALS) and, mutations in the Cu, Zn-superoxide dismutase (SOD1) gene underlie 20% of fALS cases, suggesting its crucial role in the pathogenesis of fALS. Although various pathogenic mechanisms have been proposed for ALS, a possible role for autophagy was observed in transgenic mouse models of fALS. For instance, in the transgenic SOD1G93A mouse, increased autophagy was observed during the presymptomatic stage (< 90 days of age). Surprisingly, any significant changes in autophagy in the soma of motor neurons were not observed until the terminal stage in these mice (140 days of age) (Li *et al.*, 2008). Another study also demonstrated that autophagosome formation was increased at the symptomatic stage and the percentage of motor neurons that contained phosphorylated mTOR/Ser2448 was decreased in the SOD1G93A transgenic mice (Morimoto *et al.*, 2007), which suggests the possibility that increased and/or impaired autophagy underlies pathological phenomena in this model. Much uncertainty still remains on the pathogenic mechanisms underlying motor neuron degeneration in ALS; Riluzole is the only available drug for the treatment of ALS and has marginal effects on disease survival. A number of putative therapeutic agents have recently been investigated for their potential role in neuroprotection (Siciliano *et al.*, 2010). Among these, agents promoting autophagy, such as lithium and rapamycin, have been suggested to be effective for the survival of motor neurons in ALS by autophagic

clearance of SOD1. Additional studies to address the precise pathogenic mechanism of autophagy in motor neuron death are essential for the identification of therapeutic targets in ALS.

Conclusion

Mounting evidence has firmly established the importance of neuronal autophagy in both the normal functioning and patho-physiological conditions, of the brain. Neuronal integrity is more sensitive to alterations in basal autophagy than that of non-neuronal cells due to their postmitotic nature and the specialized structures necessary for intercellular communications. Impairments in the quality control of proteins and organelles in the neuronal soma, axon and synapses likely disrupt normal neuronal function due to the accumulation of toxic protein aggregates and damaged organelles, ultimately leading to neurodegenerative conditions observed in diseases, such as AD, PD, HD and ALS. However, the cellular factors underlying homeostatic vs. pathogenic activation of autophagy have not been identified, nor is it understood how dysfunctional autophagy leads to neuronal death. Under certain pathophysiological conditions autophagy may represent a cell death mechanism *via* excessive removal of key survival factors or cellular organelles. More importantly, protein aggregates and damaged organelles picked up by autophagosomes in axon and synapses must be transported over distances to lysosomes in the soma, which implies the involvement of complex processes in neuronal autophagy. Therefore, an improved understanding of neuronal autophagy will provide novel insights into the pathogenic mechanisms of dysfunctional autophagy that underlie common neurodegenerative diseases and, ultimately, help develop therapeutic interventions for autophagic dysregulation.

Acknowledgements

This research was supported in part by a grant (2010-0009233) from NRF and a grant (2011-0006244) from NCRC program, the Republic of Korea.

References

Andrade MA, Bork P. HEAT repeats in the Huntington's disease protein. *Nat Genet* 1995;11:115-6

Anglade P, Vyas S, Javoy-Agid F, Herrero MT, Michel PP, Marquez J, *et al.* Apoptosis and autophagy in nigral neurons of patients with Parkinson's disease. *Histol Histopathol*

1997;12:25-31

Atwal RS, Truant R. A stress sensitive ER membrane-association domain in Huntingtin protein defines a potential role for Huntingtin in the regulation of autophagy. *Autophagy* 2008;4:91-3

Boland B, Kumar A, Lee S, Platt FM, Wegiel J, Yu WH, *et al.* Autophagy induction and autophagosome clearance in neurons: relationship to autophagic pathology in Alzheimer's disease. *J Neurosci* 2008;28:6926-37

Caccamo A, Majumder S, Richardson A, Strong R, Oddo S. Molecular interplay between mammalian target of rapamycin (mTOR), amyloid-beta, and Tau: effects on cognitive impairments. *J Biol Chem* 2010;285:13107-20

Cataldo AM, Peterhoff CM, Schmidt SD, Terio NB, Duff K, Beard M, *et al.* Presenilin mutations in familial Alzheimer disease and transgenic mouse models accelerate neuronal lysosomal pathology. *J Neuropathol Exp Neurol* 2004;63:821-30

Choi KC, Kim SH, Ha JY, Kim ST, Son JH. A novel mTOR activating protein protects dopamine neurons against oxidative stress by repressing autophagy related cell death. *J Neurochem* 2010;112:366-76

Chu CT. Autophagic stress in neuronal injury and disease. *J Neuropathol Exp Neurol* 2006;65:423-32

Cuervo AM, Stefanis L, Fredenburg R, Lansbury PT, Sulzer D. Impaired degradation of mutant alpha-synuclein by chaperone-mediated autophagy. *Science* 2004;305:1292-5

Dixon JS. "Phagocytic" lysosomes in chromatolytic neurones. *Nature* 1967;215:657-8

Drenan RM, Liu X, Bertram PG, Zheng XF. FKBP12-rapamycin-associated protein or mammalian target of rapamycin (FRAP/mTOR) localization in the endoplasmic reticulum and the Golgi apparatus. *J Biol Chem* 2004;279:772-8

Gautier CA, Kitada T, Shen J. Loss of PINK1 causes mitochondrial functional defects and increased sensitivity to oxidative stress. *Proc Natl Acad Sci USA* 2008;105:11364-9

Geisler S, Holmstrom KM, Skujat D, Fiesel FC, Rothfuss OC, Kahle PJ, *et al.* PINK1/Parkin-mediated mitophagy is dependent on VDAC1 and p62/SQSTM1. *Nat Cell Biol* 2010;12:119-31

Gomez-Santos C, Ferrer I, Santidrian AF, Barrachina M, Gil J, Ambrosio S. Dopamine induces autophagic cell death and alpha-synuclein increase in human neuroblastoma SH-SY5Y cells. *J Neurosci Res* 2003;73:341-50

Greene JC, Whitworth AJ, Kuo I, Andrews LA, Feany MB, Pallanck LJ. Mitochondrial pathology and apoptotic muscle degeneration in *Drosophila* parkin mutants. *Proc Natl Acad Sci USA* 2003;100:4078-83

Hara T, Nakamura K, Matsui M, Yamamoto A, Nakahara Y, Suzuki-Migishima R, *et al.* Suppression of basal autophagy in neural cells causes neurodegenerative disease in mice. *Nature* 2006;441:885-9

Irrcher I, Aleyasin H, Seifert EL, Hewitt SJ, Chhabra S, Phillips M, *et al.* Loss of the Parkinson's disease-linked gene

- DJ-1 perturbs mitochondrial dynamics. *Hum Mol Genet* 2010;19:3734-46
- Jaeger PA, Pickford F, Sun CH, Lucin KM, Masliah E, Wyss-Coray T. Regulation of amyloid precursor protein processing by the Beclin 1 complex. *PLoS One* 2010;5:e11102
- Jin SM, Lazarou M, Wang C, Kane LA, Narendra DP, Youle RJ. Mitochondrial membrane potential regulates PINK1 import and proteolytic destabilization by PARL. *J Cell Biol* 2010;191:933-42
- Kegel KB, Kim M, Sapp E, McIntyre C, Castano JG, Aronin N, *et al.* Huntingtin expression stimulates endosomal-lysosomal activity, endosome tubulation, and autophagy. *J Neurosci* 2000;20:7268-78
- Kirik D, Rosenblad C, Burger C, Lundberg C, Johansen TE, Muzyczka N, *et al.* Parkinson-like neurodegeneration induced by targeted overexpression of alpha-synuclein in the nigrostriatal system. *J Neurosci* 2002;22:2780-91
- Komatsu M, Waguri S, Chiba T, Murata S, Iwata J, Tanida I, *et al.* Loss of autophagy in the central nervous system causes neurodegeneration in mice. *Nature* 2006;441:880-4
- Lee JH, Yu WH, Kumar A, Lee S, Mohan PS, Peterhoff CM, *et al.* Lysosomal proteolysis and autophagy require presenilin 1 and are disrupted by Alzheimer-related PS1 mutations. *Cell* 2010;141:1146-58
- Li L, Zhang X, Le W. Altered macroautophagy in the spinal cord of SOD1 mutant mice. *Autophagy* 2008;4:290-3
- Martinez-Vicente M, Tallozy Z, Wong E, Tang G, Koga H, Kaushik S, *et al.* Cargo recognition failure is responsible for inefficient autophagy in Huntington's disease. *Nat Neurosci* 2010;13:567-76
- Matthews MR, Raisman G. A light and electron microscopic study of the cellular response to axonal injury in the superior cervical ganglion of the rat. *Proc R Soc Lond B Biol Sci* 1972;181:43-79
- Michiorri S, Gelmetti V, Giarda E, Lombardi F, Romano F, Marongiu R, *et al.* The Parkinson-associated protein PINK1 interacts with Beclin1 and promotes autophagy. *Cell Death Differ* 2010;17:962-74
- Mitra S, Tsvetkov AS, Finkbeiner S. Protein turnover and inclusion body formation. *Autophagy* 2009;5:1037-8
- Mizushima N, Levine B, Cuervo AM, Klionsky DJ. Autophagy fights disease through cellular self-digestion. *Nature* 2008;451:1069-75
- Morimoto N, Nagai M, Ohta Y, Miyazaki K, Kurata T, Morimoto M, *et al.* Increased autophagy in transgenic mice with a G93A mutant SOD1 gene. *Brain Res* 2007;1167:112-7
- Narendra D, Tanaka A, Suen DF, Youle RJ. Parkin is recruited selectively to impaired mitochondria and promotes their autophagy. *J Cell Biol* 2008;183:795-803
- Narendra DP, Jin SM, Tanaka A, Suen DF, Gautier CA, Shen J, *et al.* PINK1 is selectively stabilized on impaired mitochondria to activate Parkin. *PLoS Biol* 2010;8:e1000298
- Nixon RA, Wegiel J, Kumar A, Yu WH, Peterhoff C, Cataldo A, *et al.* Extensive involvement of autophagy in Alzheimer disease: an immuno-electron microscopy study. *J Neuropathol Exp Neurol* 2005;64:113-22
- Nixon RA. Autophagy, amyloidogenesis and Alzheimer disease. *J Cell Sci* 2007;120:4081-91
- Omi K, Hachiya NS, Tokunaga K, Kaneko K. siRNA-mediated inhibition of endogenous Huntington disease gene expression induces an aberrant configuration of the ER network *in vitro*. *Biochem Biophys Res Commun* 2005;338:1229-35
- Pickford F, Masliah E, Britschgi M, Lucin K, Narasimhan R, Jaeger PA, *et al.* The autophagy-related protein beclin 1 shows reduced expression in early Alzheimer disease and regulates amyloid beta accumulation in mice. *J Clin Invest* 2008;118:2190-9
- Plowey ED, Cherra SJ 3rd, Liu YJ, Chu CT. Role of autophagy in G2019S-LRRK2-associated neurite shortening in differentiated SH-SY5Y cells. *J Neurochem* 2008;105:1048-56
- Ravikumar B, Stewart A, Kita H, Kato K, Duden R, Rubinsztein DC. Raised intracellular glucose concentrations reduce aggregation and cell death caused by mutant huntingtin exon 1 by decreasing mTOR phosphorylation and inducing autophagy. *Hum Mol Genet* 2003;12:985-94
- Ravikumar B, Vacher C, Berger Z, Davies JE, Luo S, Oroz LG, *et al.* Inhibition of mTOR induces autophagy and reduces toxicity of polyglutamine expansions in fly and mouse models of Huntington disease. *Nat Genet* 2004;36:585-95
- Roizin L, Stellar S, Willson N, Whittier J, Liu JC. Electron microscope and enzyme studies in cerebral biopsies of Huntington's chorea. *Trans Am Neurol Assoc* 1974;99:240-3
- Sarkar S, Perlstein EO, Imarisio S, Pineau S, Cordenier A, Maglathlin RL, *et al.* Small molecules enhance autophagy and reduce toxicity in Huntington's disease models. *Nat Chem Biol* 2007;3:331-8
- Shen W, Ganetzky B. Autophagy promotes synapse development in *Drosophila*. *J Cell Biol* 2009;187:71-9
- Shibata M, Lu T, Furuya T, Degterev A, Mizushima N, Yoshimori T, *et al.* Regulation of intracellular accumulation of mutant Huntingtin by Beclin 1. *J Biol Chem* 2006;281:14474-85
- Shim JH, Yoon SH, Kim KH, Han JY, Ha JY, Hyun DH, *et al.* The antioxidant Trolox helps recovery from the familial Parkinson's disease-specific mitochondrial deficits caused by PINK1- and DJ-1-deficiency in dopaminergic neuronal cells. *Mitochondrion* 2011;11:707-15
- Siciliano G, Carlesi C, Pasquali L, Piazza S, Pietracupa S, Fornai F, *et al.* Clinical trials for neuroprotection in ALS. *CNS Neurol Disord Drug Targets* 2010;9:305-13
- Spencer B, Potkar R, Trejo M, Rockenstein E, Patrick C, Gindi R, *et al.* Beclin 1 gene transfer activates autophagy and ameliorates the neurodegenerative pathology in alpha-synuclein models of Parkinson's and Lewy body diseases. *J Neurosci* 2009;29:13578-88
- Spilman P, Podluskaya N, Hart MJ, Debnath J, Gorostiza O, Bredesen D, *et al.* Inhibition of mTOR by rapamycin abolishes cognitive deficits and reduces amyloid-beta levels in a mouse model of Alzheimer's disease. *PLoS One*

2010;5:e9979

Stefanis L, Larsen KE, Rideout HJ, Sulzer D, Greene LA. Expression of A53T mutant but not wild-type alpha-synuclein in PC12 cells induces alterations of the ubiquitin-dependent degradation system, loss of dopamine release, and autophagic cell death. *J Neurosci* 2001;21:9549-60

Steiner H, Capell A, Leimer U, Haass C. Genes and mechanisms involved in beta-amyloid generation and Alzheimer's disease. *Eur Arch Psychiatry Clin Neurosci* 1999;249:266-70

Tellez-Nagel I, Johnson AB, Terry RD. Studies on brain biopsies of patients with Huntington's chorea. *J Neuropathol Exp Neurol* 1974;33:308-32

Vassar R, Bennett BD, Babu-Khan S, Kahn S, Mendiaz EA, Denis P, *et al.* Beta-secretase cleavage of Alzheimer's amyloid precursor protein by the transmembrane aspartic protease BACE. *Science* 1999;286:735-41

Vogiatzi T, Xilouri M, Vekrellis K, Stefanis L. Wild type alpha-synuclein is degraded by chaperone-mediated autophagy and macroautophagy in neuronal cells. *J Biol Chem* 2008;283:23542-56

Wairkar YP, Toda H, Mochizuki H, Furukubo-Tokunaga K, Tomoda T, Diantonio A. Unc-51 controls active zone density and protein composition by downregulating ERK signaling. *J Neurosci* 2009;29:517-28

Wan HJ, DiAntonio A, Fetter RD, Bergstrom K, Strauss R, Goodman CS. Highwire regulates synaptic growth in

Drosophila. *Neuron* 2000;26:313-29

Wang QJ, Ding Y, Kohtz DS, Mizushima N, Cristea IM, Rout MP, *et al.* Induction of autophagy in axonal dystrophy and degeneration. *J Neurosci* 2006;26:8057-68

Webb JL, Ravikumar B, Atkins J, Skepper JN, Rubinsztein DC. Alpha-Synuclein is degraded by both autophagy and the proteasome. *J Biol Chem* 2003;278:25009-13

Winslow AR, Chen CW, Corrochano S, Acevedo-Arozena A, Gordon DE, Peden AA, *et al.* alpha-Synuclein impairs macroautophagy: implications for Parkinson's disease. *J Cell Biol* 2010;190:1023-37

Xilouri M, Vogiatzi T, Vekrellis K, Park D, Stefanis L. Abberant alpha-synuclein confers toxicity to neurons in part through inhibition of chaperone-mediated autophagy. *PLoS One* 2009;4:e5515

Yang Q, She H, Gearing M, Colla E, Lee M, Shacka JJ, *et al.* Regulation of neuronal survival factor MEF2D by chaperone-mediated autophagy. *Science* 2009;323:124-7

Yu WH, Cuervo AM, Kumar A, Peterhoff CM, Schmidt SD, Lee JH, *et al.* Macroautophagy--a novel Beta-amyloid peptide-generating pathway activated in Alzheimer's disease. *J Cell Biol* 2005;171:87-98

Zhu JH, Horbinski C, Guo F, Watkins S, Uchiyama Y, Chu CT. Regulation of autophagy by extracellular signal-regulated protein kinases during 1-methyl-4-phenylpyridinium-induced cell death. *Am J Pathol* 2007;170:75-86