

New galactic star clusters discovered in the VVV survey. Candidates projected on the inner disk and bulge[★]

J. Borissova^{1,15}, A.-N. Chené², S. Ramírez Alegría^{1,15}, S. Sharma³, J. R. A. Clarke¹, R. Kurtev^{1,15}, I. Negueruela⁴,
A. Marco⁴, P. Amigo^{1,15}, D. Minniti^{5,14,15}, E. Bica⁶, C. Bonatto⁶, M. Catelan^{5,15}, C. Fierro¹, D. Geisler⁷,
M. Gromadzki^{1,15}, M. Hempel^{5,15}, M. M. Hanson⁸, V. D. Ivanov⁹, P. Lucas¹⁰, D. Majaess¹¹, C. Moni Bidin¹²,
B. Popescu⁸, and R.K. Saito¹³

(Affiliations can be found after the references)

Received 13 August 2013 / Accepted 8 June 2014

ABSTRACT

Context. VISTA Variables in the Vía Láctea (VVV) is one of six ESO Public Surveys using the 4 meter Visible and Infrared Survey Telescope for Astronomy (VISTA). The VVV survey covers the Milky Way bulge and an adjacent section of the disk, and one of the principal objectives is to search for new star clusters within previously unreachable obscured parts of the Galaxy.

Aims. The primary motivation behind this work is to discover and analyze obscured star clusters in the direction of the inner Galactic disk and bulge.

Methods. Regions of the inner disk and bulge covered by the VVV survey were visually inspected using composite JHK_s color images to select new cluster candidates on the basis of apparent overdensities. DR1, DR2, CASU, and point spread function photometry of 10×10 arcmin fields centered on each candidate cluster were used to construct color–magnitude and color–color diagrams. Follow-up spectroscopy of the brightest members of several cluster candidates was obtained in order to clarify their nature.

Results. We report the discovery of 58 new infrared cluster candidates. Fundamental parameters such as age, distance, and metallicity were determined for 20 of the most populous clusters.

Key words. open clusters and associations: general – infrared: general – globular clusters: general

1. Introduction

Open clusters provide important insight into the past and present properties of the Milky Way. Open clusters feature ages that span nearly ten billion years and are detected at varying Galactocentric distances, thus enabling us to investigate the Galaxy’s star formation history, the chemical evolution of the disk, and the competing influences of cluster formation and disruption that shape the properties of the current cluster population. However, to draw reliable conclusions, a sizable sample exhibiting accurately and homogeneously determined properties is desirable. The new generation of all-sky surveys (UKIDSS, the VISTA-based VHS and VVV, and *Gaia*) provide an opportunity to achieve those objectives.

The Vista Variables in the Vía Láctea (VVV) is one of the six ESO Public Surveys using the 4 m VISTA telescope (Arnaboldi et al. 2007). The survey started in 2010, and 1929 h of observing time were allocated for the project over several years (Minniti et al. 2010; Saito et al. 2010, 2012). The VVV survey is observing the target regions using five filters, $ZYJHK_s$. The individual pawprints and tile images are processed by the Cambridge Astronomical Unit (CASU). Aperture photometry and astrometry are likewise performed. The VVV data are publicly available through the VISTA Science Archive (VSA, Cross et al. 2012),

and additional technical information about the survey can be found in Saito et al. (2012) and Soto et al. (2013).

A primary objective of the VVV survey is to describe numerous star clusters in detail to build a statistically significant sample. Indeed, the infrared nature of the VVV survey ensures increased sampling of clusters in highly obscured and crowded regions. The effort aims to build upon existing catalogs that are complete within only 1 kpc from the Sun (version 3.3 – jan./10/2013 of the Dias et al. 2002 catalog; see also Lamers et al. 2005; Piskunov et al. 2008). In Borissova et al. (2011), we presented a catalog of 96 new cluster candidates in the disk area covered by the VVV survey. Most of these clusters were found toward known star forming regions associated with methanol maser emission, hot molecular cores (Longmore et al. 2009), Galactic bubbles detected by GLIMPSE (Churchwell et al. 2006, 2007), and infrared and radio sources. Those tracers are indicators of early epochs of star formation. In Chené et al. (2012) we described the methodology employed to establish cluster parameters by analyzing four known young clusters: Danks 1, Danks 2, RCW 79, and DBS 132. In Chené et al. (2013) we presented the first study of six clusters from the Borissova et al. (2011) catalog, and at least one newly discovered Wolf-Rayet (WR) star, member of these clusters was highlighted. In Ramírez Alegría et al. (2014) we presented the physical characterization of VVV CL 086, a new massive cluster, found at the far edge of the Milky Way bar at a distance of 11 ± 6 kpc. In this paper we report the results of our search for new star cluster candidates projected on the inner disk and bulge area covered by the VVV survey.

[★] Based on observations gathered as part of observing programs: 179.B-2002.VIRCAM, VISTA at ESO, Paranal Observatory; NTT at ESO, La Silla Observatory (programs 087.D-0490A and 089.D-0462A) and with the SOAR telescope at the NOAO (program CN2012A-045).

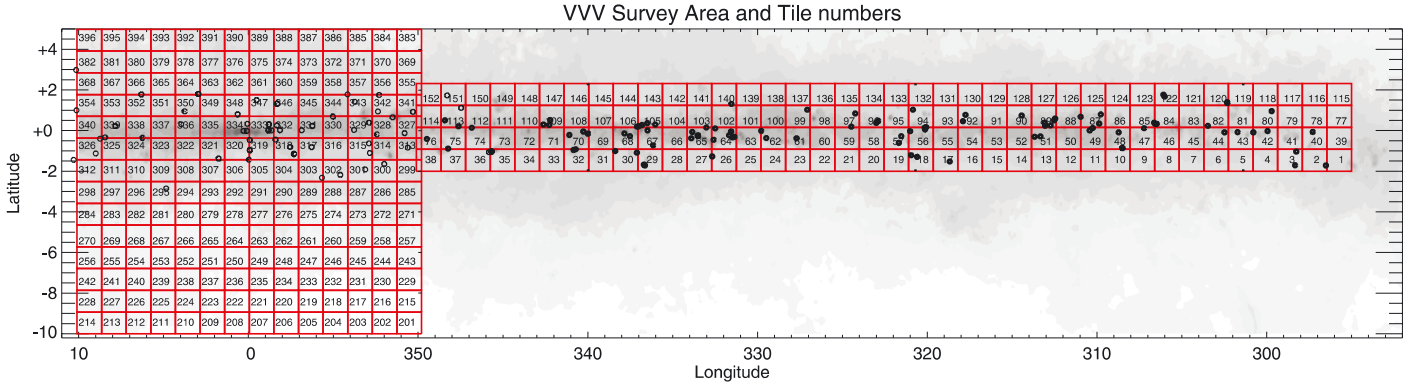


Fig. 1. VVV survey area described by individually numbered tiles (prepared by M. Hempel, see Minniti et al. 2010 for details). The Galactic latitude b and Galactic longitude l coordinates are overlaid on a differential extinction contour map. The positions of the new star cluster candidates, 96 taken from Borissova et al. (2011) and 58 from this work are marked.

2. Cluster search and methods of analysis

The VIRCAM (VISTA Infrared CAMERA; Dalton et al. 2006) is a 16 detector-array infrared camera that samples 1.65 deg^2 . Each 2048×2048 detector is sensitive over $\lambda = 0.8\text{--}2.5 \mu\text{m}$ and delivers images with an average pixel scale of $0.34 \text{ arcsec px}^{-1}$. A single exposure corresponds to a patchy individual “pawprint” coverage on the sky. To fill the gaps and to obtain a contiguous image, six shifted pawprints are combined into a “tile” covering 1.5 deg by 1.1 deg , which are aligned along Galactic l and b coordinates, respectively. To cover the VVV survey area, the disk field is subsequently divided into 152 tiles, while the bulge field contains 196 tiles (Fig. 1). The data reduction was carried out in the canonical manner associated with infrared imaging, and details of the procedure are described by Irwin et al. (2004).

In Borissova et al. (2011) we searched for new cluster candidates by visually inspecting the true color JHK_S image tiles for obvious stellar overdensities towards known star forming regions in the Galactic disk. That procedure was repeated here, but we now include the area encompassing the Galactic bulge. The analysis yielded 58 new cluster candidates. These are not necessarily connected with HII regions, but clearly show a significant overdensity with respect to the surrounding field. Prior to the use of color–magnitude diagrams, our main criteria for identifying star cluster candidates included a visually compact appearance that was distinct from the surrounding field, and which exhibited at least five to six stars with similar colors on the composed J, H, K_S VVV image. Because of the subjective and qualitative method used, the catalog presented here is incomplete.

Undoubtedly, future automated searches will discover additional, less concentrated cluster candidates. However, it is likely that we uncovered the most populous objects. In the recent compilation of stellar clusters, updated to August 2011 of all Galactic star cluster catalogs (e.g., Dias et al. 2002; Mercer et al. 2005; Dutra et al. 2003; Bica et al. 2003; Borissova et al. 2011), Morales et al. (2013) counted 2247 clusters visible in the optical and 1950 and 197 cluster candidates found in the near- and mid-infrared, respectively. Since then, Solin et al. (2012, 2014), Majaess (2013), and Zasowski et al. (2013) reported 137; 88; 229 and 20 new embedded cluster candidates in the UKIDSS GPS, VVV, WISE, and *Spitzer* GLIMPSE-360 areas. This increases the number of near-infrared cluster candidates to 2404. Froebrich et al. (2007) estimate that the spurious contamination rate (false positives) for new and unconfirmed infrared clusters from these catalogs may be as high as 50%. However, the probability of yielding bona fide stellar clusters in our sample is high

(as in Borissova et al. 2011) and we expect minimal contamination from spurious detections. This is because the identified cluster candidates stem from a color–magnitude analysis (and 30% are confirmed by spectroscopy). Our new sample is also of particular interest since it is projected against the Galactic bulge, which is a relatively challenging region.

The color–magnitude diagrams (CMDs) are constructed using the First and Second Data Releases of the VISTA variables in the Vía Láctea (hereafter VVV DR1 and DR2; Saito et al. 2012¹) and CASU² catalogs, which provided aperture photometry. The tests show that the aperture radius of three pixels represents an optimum value for moderately crowded fields. For crowded regions, we performed point spread function (PSF) photometry of $10 \times 10 \text{ arcmin}$ fields surrounding each selected candidate. We used the VVV-SkZ pipeline, which is an automatic PSF-fitting photometric pipeline for the VVV survey (Mauro et al. 2013). Where possible, the saturated stars (usually $K_S \leq 13.5 \text{ mag}$) were replaced by 2MASS stars (point source catalog). Since 2MASS has a much lower angular resolution than the VVV, when replacing stars we carefully examined each cluster to avoid contamination effects of crowding. The Point Source Catalog (PSC) Quality Flags given in the 2MASS catalog were used to identify reliable data. Specifically, the brightest stars are from 2MASS for the following clusters: VVV CL 113, 117, 119, 120, 123, 130, 140, 143, 146, 149, 150, 154, 160, and CL 161. The typical internal photometric uncertainties of the VVV data vary from 0.009 mag for stars with $K_S \sim 13 \text{ mag}$ to 0.16 mag for $K_S \sim 18 \text{ mag}$.

A preliminary analysis of the color–magnitude and color–color diagrams revealed 58 new star cluster candidates. Their basic properties are listed in Table 1. The first column of the table cites the identification, followed by the equatorial coordinates of the candidate’s center, the VVV tile name, a visually estimated apparent cluster radius in arcseconds, the number of probable cluster members after statistical decontamination down to $K_S = 16 \text{ mag}$, and comments on the object. Regarding the nomenclature of VVV clusters, VVV CL001 is the first new VVV globular cluster candidate (Minniti et al. 2011), and the clusters VVV CL002, VVV CL003, and VVV CL004 were investigated by Moni Bidin et al. (2011). The candidates from VVV CL005 to VVV CL100 were presented in Borissova et al. (2011), while the discovery and preliminary results for VVV candidates CL101, CL102, CL103, and CL105 are reported in Mauro et al. (2011),

¹ <http://horus.roe.ac.uk/vsa/index.html>

² <http://casu.ast.cam.ac.uk/vistasp/>

Table 1. VVV cluster candidates.

| Name | RA(J2000) hh:mm:ss | Dec(J2000) deg:mm:ss | Tile | Radius arcsec | Numb. | Comments |
|-----------|-----------------------|-------------------------|------|------------------|-------|--|
| VVV CL106 | 17:17:09 | -36:22:00 | b341 | 20 | 10 | close to DBSB 121 and DBSB 122 |
| VVV CL107 | 17:17:27 | -36:14:44 | b341 | 30 | 10 | 6–7 bright blue stars, stellar group |
| VVV CL108 | 17:19:22 | -34:16:31 | b342 | 30 | 45 | concentrated, has a core |
| VVV CL109 | 17:21:36 | -35:32:52 | b328 | 31 | 30 | close to [CWP2007] CS78 bubble, at edge of dark nebula |
| VVV CL110 | 17:22:47 | -34:41:17 | b342 | 20 | 30 | GIC candidate or Old OC? |
| VVV CL111 | 17:22:50 | -36:34:16 | b327 | 35 | 58 | old open cluster |
| VVV CL112 | 17:24:14 | -32:45:30 | b343 | 30 | 40 | loose cluster |
| VVV CL113 | 17:24:34 | -33:18:35 | d343 | 20 | 23 | compact group |
| VVV CL114 | 17:25:13 | -37:07:38 | b313 | 12 | 10 | nebulousity, group |
| VVV CL115 | 17:26:23 | -34:34:53 | b329 | 45 | 30 | at edge of dark nebula, OC candidate |
| VVV CL116 | 17:27:31 | -35:16:28 | b328 | 20 | 10 | nebulousity, Young Cluster, Dark Nebula around |
| VVV CL117 | 17:30:13 | -34:02:37 | b329 | 12 | 20 | red supergiant candidate |
| VVV CL118 | 17:30:35 | -35:08:02 | b315 | 20 | 37 | bright stars, low overdensity |
| VVV CL119 | 17:30:46 | -32:39:05 | b330 | 55 | 157 | old open cluster |
| VVV CL120 | 17:32:21 | -36:25:48 | b300 | 25 | 72 | old open cluster |
| VVV CL121 | 17:32:22 | -35:26:22 | b315 | 34 | 50 | bright stars, low overdensity |
| VVV CL122 | 17:35:46 | -31:54:39 | b331 | 30 | 27 | nebulousity, [CWP2007] CS28, CS30, in dark nebula |
| VVV CL123 | 17:36:27 | -35:39:16 | b301 | 40 | 67 | old open cluster |
| VVV CL124 | 17:36:35 | -29:34:54 | b346 | 15 | 15 | open cluster |
| VVV CL125 | 17:34:29 | -30:27:09 | b346 | 30 | 16 | bright stars, overdensity |
| VVV CL126 | 17:38:06 | -31:30:34 | b331 | 40 | 44 | loose OC |
| VVV CL127 | 17:38:46 | -28:29:57 | b347 | 25 | 33 | loose cluster? |
| VVV CL128 | 17:39:59 | -32:26:27 | b317 | 30 | 100 | GIC candidate or Old OC |
| VVV CL129 | 17:40:44 | -30:09:25 | b332 | 20 | 19 | several red stars, loose cluster |
| VVV CL130 | 17:41:11 | -30:26:31 | b332 | 20 | 24 | red supergiant candidate |
| VVV CL131 | 17:41:17 | -34:34:02 | b302 | 50 | 87 | old OC or GIC candidate |
| VVV CL132 | 17:41:37 | -29:44:08 | b333 | 20 | 20 | compact cluster |
| VVV CL133 | 17:41:43 | -29:44:46 | b333 | 16 | 20 | compact cluster |
| VVV CL134 | 17:42:30 | -30:01:17 | b332 | 12 | 14 | embedded cluster |
| VVV CL135 | 17:42:43 | -29:51:35 | b333 | 30 | 15 | embedded cluster or dust window |
| VVV CL136 | 17:42:57 | -29:52:40 | b333 | 10 | 12 | compact cluster |
| VVV CL137 | 17:43:01 | -31:23:12 | b318 | 45 | 70 | Young Cluster or Dust Window? |
| VVV CL138 | 17:43:40 | -30:27:43 | b318 | 10 | 25 | Compact, Dark Nebulae around |
| VVV CL139 | 17:43:50 | -31:44:16 | b318 | 20 | 47 | open cluster, pair with CL140 |
| VVV CL140 | 17:43:53 | -31:43:59 | b318 | 20 | 51 | open cluster, pair with CL139 |
| VVV CL141 | 17:44:05 | -27:56:10 | b348 | 10 | 16 | embedded cluster |
| VVV CL142 | 17:44:34 | -28:39:52 | b333 | 20 | 31 | compact open cluster or edge of dark nebula |
| VVV CL143 | 17:44:36 | -33:44:18 | b302 | 50 | 93 | old open cluster or young globular cluster |
| VVV CL144 | 17:45:35 | -25:28:14 | b363 | 10 | 12 | compact cluster |
| VVV CL145 | 17:45:38 | -25:27:38 | b363 | 25 | 38 | poorly populated OC |
| VVV CL146 | 17:46:00 | -28:49:09 | b333 | 20 | 49 | open cluster or dust window |
| VVV CL147 | 17:46:28 | -28:39:18 | b334 | 10 | 5 | nebulousity, Maser, IR, in dark cloud |
| VVV CL148 | 17:47:20 | -29:11:55 | b319 | 10 | 5 | embedded |
| VVV CL149 | 17:49:22 | -29:27:56 | b319 | 20 | 41 | open cluster |
| VVV CL150 | 17:50:41 | -25:13:06 | b350 | 25 | 312 | old open cluster or young globular cluster |
| VVV CL151 | 17:51:17 | -29:39:04 | b319 | 30 | 38 | prominent OC |
| VVV CL152 | 17:53:08 | -22:38:41 | b366 | 20 | 64 | open cluster |
| VVV CL153 | 17:53:32 | -25:22:56 | b336 | 30 | 56 | prominent bright cluster |
| VVV CL154 | 17:55:08 | -28:06:01 | b321 | 20 | 38 | old open cluster |
| VVV CL155 | 18:01:00 | -23:46:12 | b338 | 15 | 12 | concentrated coordinates a bit off |
| VVV CL156 | 18:02:12 | -22:07:34 | b339 | 30 | 49 | big cluster or field |
| VVV CL157 | 18:04:06 | -19:43:50 | b354 | 35 | 39 | old open cluster |
| VVV CL158 | 18:05:34 | -21:52:58 | b339 | 25 | 31 | nebulousity, close to bubbles, embedded dark nebula around |
| VVV CL159 | 18:06:27 | -21:38:57 | b339 | 10 | 15 | faint, very reddened, in dark cloud, embedded |
| VVV CL160 | 18:06:57 | -20:00:40 | b340 | 25 | 114 | old open cluster |
| VVV CL161 | 18:07:40 | -26:11:51 | b295 | 75 | 10 | overdensity |
| VVV CL162 | 18:09:42 | -21:46:56 | b325 | 20 | 27 | OC |
| VVV CL163 | 18:13:57 | -20:42:07 | b326 | 15 | 24 | rather loose OC |

and an analysis of VVV CL104 is in preparation. Thus, in this paper the analysis begins with VVV CL106. The JHK_S composite images of all cluster candidates are shown in Figs. A.1 and A.2.

For 20 cluster candidates, we collected spectra for the brightest potential members using the IR spectrograph and imaging camera SofI in long-slit mode, which is mounted on the ESO New Technology Telescope (NTT), Chile. The OSIRIS instrument was likewise used and is mounted on the Southern Astrophysical Research (SOAR) telescope, Chile. The instrument set-ups give resolution of $R = 2200$ for SofI and 3000 \AA for OSIRIS. Total exposure times were typically 200–400 s for the brightest stars and 1200 s for the faintest. The reduction procedure for the spectra is described in Chené et al. (2012, 2013). Spectral classification was performed using atlases of K -band spectra that feature spectral types stemming from optical studies (Rayner et al. 2009; Hanson et al. 1996, 2005), in concert with the spectral atlases of Martins et al. (2007), Crowther et al. (2006), Liermann et al. (2009), Mauerhan et al. (2011), Meyer et al. (1998), and Wallace & Hinkle (1997). The equivalent widths (EWs) were measured from the continuum-normalized spectra using the IRAF task *splot*. When the signal-to-noise ratio (S/N) was high enough, the luminosity class of the star was determined using the EW of the CO line and the Davies et al. (2007) calibration. However, for spectroscopic targets displaying low S/N it was difficult to distinguish luminosity class I objects from their class III counterparts.

The procedure employed for determining the fundamental cluster parameters such as age, reddening, and distance is described in Borissova et al. (2011) and Chené et al. (2012, 2013). As described in Borissova et al. (2011), we used the field-star decontamination algorithm of Bonatto & Bica (2010), which was tweaked to exploit the VVV photometric depth in H and K_S . The first step defines a comparison field, but we need to be aware of the distribution of stars and extinction clouds in the image. To avoid biases introduced by the subjective choice of a comparison field, we selected field samples from the surrounding control fields. The sampling geometry, position, and size of the fields were purposely varied. Since the VVV catalog is well populated, the differences in the final color–magnitude diagram from field to field were marginal. The decontamination algorithm divides the full range of magnitude and colors of a CMD into a 3D grid of cells with axes along K_S , $(H - K_S)$, and $(J - K_S)$.

Initially, cell dimensions were $\Delta K_S = 1.0$ and $\Delta(H - K_S) = \Delta(J - K_S) = 0.2 \text{ mag}$, but sizes half and twice those values were also used. We also applied shifts in the grid positioning by $\pm 1/3$ of the respective cell size along the three axes. Thus, the number of independent decontamination outputs amounted to 729 for each cluster candidate. For each cell, the algorithm estimated the expected number density of member stars by subtracting the respective field-star number density³. Thus, each grid setup produced a total number of member stars N_{mem} . Repeating the above procedure for the 729 different setups, we obtained the average number of member stars $\langle N_{\text{mem}} \rangle$. Each star was ranked according to the number of times it survived after all runs (survival frequency), and only the $\langle N_{\text{mem}} \rangle$ highest ranked stars were taken as cluster members. For the present cases we obtained survival frequencies higher than 85%. More details about the algorithm are described in Bonatto & Bica (2010, and references therein).

Stars that are far from the main cluster fiducial lines and/or exhibit discrepant reddening and distance (spectroscopic) determinations are considered field stars and were not used to determine the mean cluster parameters. The radial velocity information, when available, was used as an additional constraint. Those results, obtained via DAOSPEC (Stetson & Pancino 2008), warrant caution since only three to four lines were typically assessed from low-resolution and relatively noisy spectra.

Individual extinction and distance estimates for stars with spectral classifications were estimated using the intrinsic colors and luminosities cited by Straizys et al. (2009). The individual reddening of every star is listed in Table 3, where the uncertainties are calculated by quadratically adding the uncertainties tied to the photometry and the spectral classification (e.g., 2 subtypes). The mean values were adopted as a first guess for establishing the cluster’s reddening, distance, and age via isochrone fitting. The isochrones stemmed from the Padova library (Bressan et al. 2012) and exhibited a resolution of $\log(\text{Age}) = 0.05$.

For each cluster we selected the isochrones (between $\log(\text{Age})$ from 6.6 to 10.1) corresponding to a specific metallicity, whereby the latter was derived using the Frogel et al. (2001) calibration (see below). Starting with the spectroscopically derived mean reddening, isochrones were shifted along the reddening vector from its intrinsic position in a color–color diagram (Fig. 2, upper right part) until the best agreement with the observations was achieved. The distance to the cluster was determined in the same fashion, namely by using the spectroscopic parallax as a start and shifting isochrones along the color–magnitude diagram (K_S , $J - K_S$). The selection of an isochrone likewise requires knowledge of the cluster age, so the cluster distance, age, and reddening were determined iteratively. The iterations were stopped when the parameters did not change. Uncertainties tied to the cluster reddening and distance were calculated by accounting for the errors of the best fit, with quadratically added errors from the photometry. In certain cases (VVV CL 119, 143, 149, 150, 160, 161), we used the Beletsky et al. (2009) method to estimate the age prior to isochrone fitting. The age uncertainties are conservative upper-limit estimates, which include the error of the best fit and quadratically added uncertainties of the isochrone bin. Our cluster candidates are projected upon the bulge and inner disk, and thus we adopted the Nishiyama et al. (2009) extinction laws instead of the standard values of Cardelli et al. (1989), because it does not appear to describe observations obtained for the high-reddening regions analyzed here (see also Gonzalez et al. 2011, 2012, and Zoccali et al. 2014) as follows: $A_J = 1.526 * E(J - K_S)$, $A_H = 0.855 * E(J - K_S)$, $A_K = 0.528 * E(J - K_S)$, $A_K = 1.580 * E(H - K_S)$. A marginal extinction law of $R_V = 2.6$ was adopted following the work of Nataf et al. (2013).

The metallicity [Fe/H] of the clusters was calculated using Eq. (3) in Frogel et al. (2001). The metallicity estimate relies on the equivalent widths of three lines: Na I ($2.21 \mu\text{m}$), Ca I ($2.26 \mu\text{m}$) atomic line blends, and the EW of the first band head of CO ($2.29 \mu\text{m}$). Frogel et al. (2001) also calibrated the relations using more than 100 giants in 15 Galactic globular clusters with well-determined [Fe/H] values. The calibration spans a metallicity interval between -1.8 and 0 dex (on the Harris, 1996 metallicity scale). We prefer to use that calibration because it is based on moderate-resolution near-IR spectroscopy in the K band, which is similar to our spectral database. Moreover, the later work of Carrera et al. (2013) shows that the metallicity vs. spectral index relation of globular and open clusters can be successfully combined and thus the range

³ Photometric uncertainties were taken into account by computing the probability of detecting a star of a given magnitude and color in any cell (i.e., the difference of the error function computed at the cell’s borders).

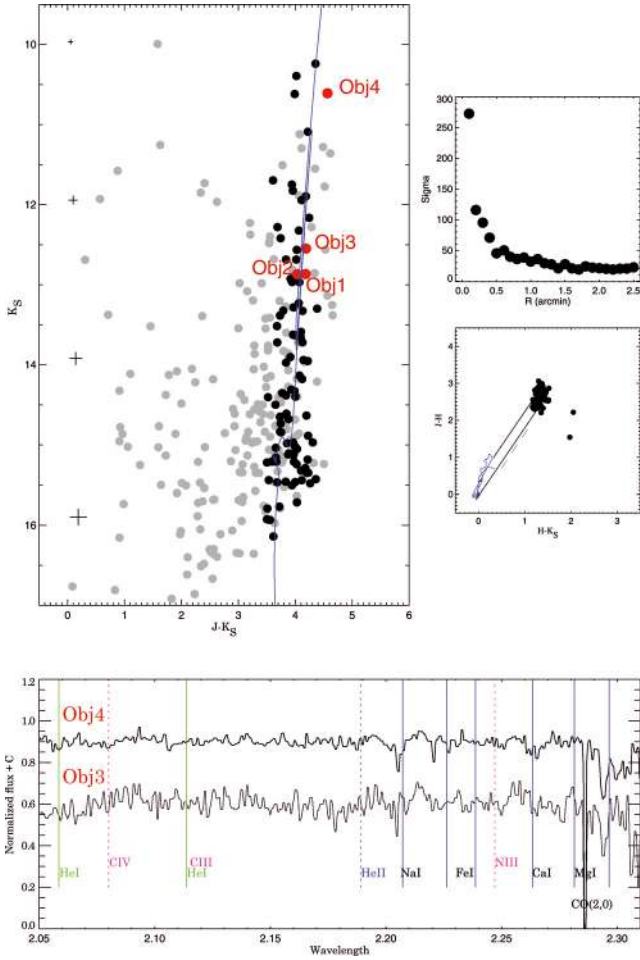


Fig. 2. *Top left:* $(J - K_S)$ vs. K_S color-magnitude diagram for CL 111. Gray circles are all stars within the estimated cluster radius, dark circles are probable cluster members that remained after statistical decontamination. Stars with spectra are denoted by red circles and are labeled. The best fit is 1.6 Gyr ($z = 0.050$) Padova isochrone (Bressan et al. 2012). The crosses convey the representative errors in a magnitude bin of $2 K_S$ mag. *Top right:* The stellar surface density σ (stars per square arcmin) versus radius (arcmin) of all stars in the cluster area. *Bottom left:* SoffI low resolution spectra of Obj 3 and Obj 4. *Bottom right:* color-color diagram of the most probable cluster members. The locus of Class III and V stars are conveyed as solid lines and are taken from Stead & Hoare (2011, 2MASS system).

extended between $[\text{Fe}/\text{H}] +0.5$ and -4.0 . Consequently, we extrapolated the Frogel calibration to the metal-rich values up to $+0.5$ and included the uncertainties of this procedure in the error budget. Only one star cited in Table 3 (CL 130 Obj. 2) exhibits an abundance that is marginally beyond that range. The individual uncertainties are calculated by quadratically adding uncertainties tied to the EW measurements, the accuracy of the calibration, and the extrapolation. Generally, the metallicity cited for the clusters is calculated from an average of the most probable cluster members, and the uncertainties issued are conservative upper-limit estimates of the Poisson statistics of the measurements and quadratically added uncertainties of the individual determinations. Details of the individual cases are given in Sect. 3, together with the number of stars used to calculate the mean.

Recall that the radial velocity measurements for low-resolution spectra were inferred from only 3–4 lines, and should be interpreted cautiously. In general, if possible, the membership for the stars is verified on the basis of the radial velocity

histogram (see the notes of individual clusters in Sect. 3). The histogram is then fitted with a Gaussian function and the mean radial velocity emerges. The uncertainty of the mean is determined from Poisson statistics, the error of the wavelength solution and errors of the individual determination. We likewise calculated the radial velocities of field stars at the cluster’s location using the Besançon Galactic model (Robin et al. 2003).

3. Fundamental parameters for populous cluster candidates

In this section we present a detailed analysis of the 20 most populous star cluster candidates, by relying on photometric and spectral analyses.

VVV CL111: the open cluster candidate CL 111 lies in VVV tile b327. It is far from any known HII and bubble regions and is selected because it contains approximately 20 stars with similar colors on the composed J, H, K_S VVV image. The cluster is relatively compact, with a radius of $35''$. Using the CASU photometric catalog, we analyzed the $(J - K_S)$ vs. K_S diagram of the region (Fig. 2). On the statistically decontaminated diagram we can identify a poorly populated red clump (RC) at $K_S = 12.8 \pm 0.1$ mag and a turn-off point (TO) at $K_S = 15.3 \pm 0.3$ mag. The radial density profile of the cluster is shown in the right hand panel of Fig. 2 and the point where the radial density profile meets the level of the field stars is adopted as the projected angular size of the cluster. The deduced result of 0.6 arcmin is consistent with that estimated visually. We observed four stars during our SoffI 2012 run. Two of the spectra exhibit low S/N, and the others are classified as K0-1 and K4-5 giants (labeled in Fig. 2 as Obj 3 and Obj 4). The analysis yields a reddening and distance modulus for the cluster of $(J - K) = 3.4 \pm 0.4$ and $(M - m)_0 = 13.1 \pm 0.6$ (4.17 kpc). The metallicity of the cluster $[\text{Fe}/\text{H}] = +0.43 \pm 0.2$ relies on a single star, but nonetheless agrees with the photometrically derived value of $[\text{Fe}/\text{H}] = +0.54 \pm 0.2$ obtained via the Ferraro et al. (2004) calibration. The best Padova isochrone fit ($z = 0.050$, Bressan et al. 2012) implies an age of 1.6 ± 0.7 Gyr, which agrees with the result of 1.3–1.6 Gyr derived from the Beletsky et al. (2009) method. The radial velocity measurement for Obj 4 is $RV = -77 \pm 21 \text{ km s}^{-1}$. For comparison, the Besançon model of the Galaxy (Robin et al. 2003) in this direction yields $RV = -35 \pm 72 \text{ km s}^{-1}$. Thus, this cluster candidate is most likely an old and populous metal-rich open cluster.

VVV CL113: this open cluster candidate lies in VVV tile b343. Approximately ten bright stars with similar colors on the composed VVV color image constitute an overdensity, within a projected radius of $20''$. Using the VSA DR1 photometric catalog we analyzed the $(J - K_S)$ vs. K_S diagram of the region (Fig. 3). Three stars are evolved from the MS, and the bulk of the probable cluster members form a poorly populated MS. Two of the brightest stars (labeled in Fig. 3) were observed during our SoffI 2012 run and classified as M0-1 giants. We estimated a reddening to the cluster of $E(J - K) = 2.3 \pm 0.4$, a distance modulus of $(M - m)_0 = 13.6 \pm 0.6$ (5.25 kpc), and an age of 32 ± 7 Myr ($z = 0.011$). The mean metallicity of the cluster is $[\text{Fe}/\text{H}] = -0.23 \pm 0.15$, and the result is a mean of the velocities derived for Obj 1 and Obj 2 (see Table 3). Radial velocity information was only inferred from Obj 2 ($RV = +7 \pm 23 \text{ km s}^{-1}$), while the Besançon model of the Galaxy cites $RV = -32 \pm 96 \text{ km s}^{-1}$.

VVV CL117: this open cluster candidate lies in VVV tile b329, and an overdensity is apparent with four bright stars projected within a radius of $20''$. These stars were observed

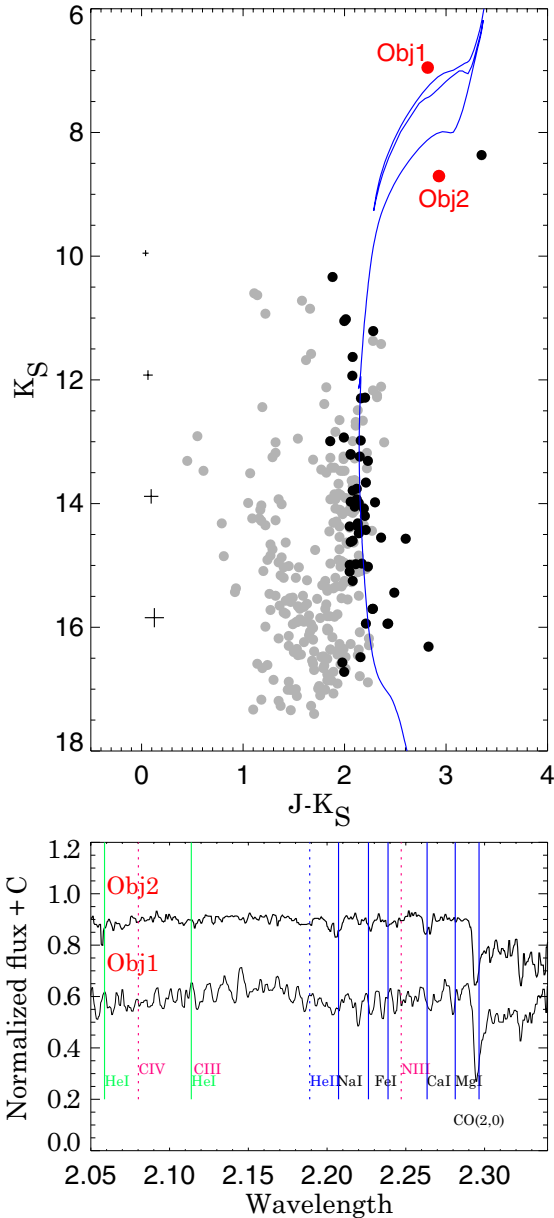


Fig. 3. *Top:* $(J - K_S)$ vs. K_S color–magnitude diagram for CL 113. The symbols are the same as in Fig. 2. The best fit is a 32 Myr ($z = 0.011$) Padova isochrone, which is displayed. *Bottom:* SoffI low resolution spectra of Obj 1 and Obj 2.

during our SoffI, 2012 run (Fig. 4). Based on the spectral type vs. EW(CO) relation established by Davies et al. (2007), the stars could be G9-K2 supergiants. The spectra of the fifth star Obj 5 is different, however, and exhibits shallow and irregularly shaped CO and He I absorption lines (at $\lambda 2.05 \mu\text{m}$). Interestingly, Obj 4 likewise displays the $2.05 \mu\text{m}$ He I line in absorption. Radial velocities for the stars are highlighted in Table 3. The RV distribution histogram fit with a Gaussian function yields a mean cluster velocity of $RV = +72 \pm 25 \text{ km s}^{-1}$, while the Besançon model predicts $RV = -114 \pm 56 \text{ km s}^{-1}$. For the Obj 5 we measured $RV = +10 \pm 13 \text{ km s}^{-1}$, which is outside the 1σ interval, and is considered a field star. We performed PSF photometry using the VVV-SkZ pipeline (Mauro et al. 2013) to construct the color–magnitude diagram. The brightest stars are clearly separated from the rest, and the color–magnitude diagram is conducive to a red supergiant cluster (RSC). The fundamental parameters are

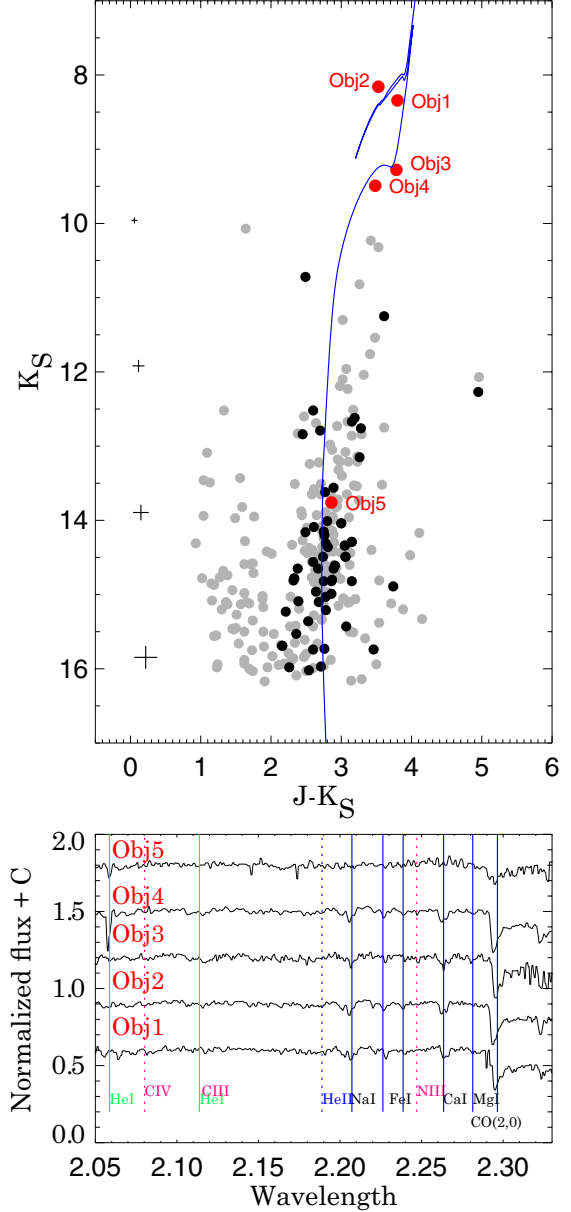


Fig. 4. *Top:* $(J - K_S)$ vs. K_S color–magnitude diagram for CL 117. The symbols are the same as in Fig. 2. The best fit is a 20 Myr ($z = 0.018$) Padova isochrone, which is shown. *Bottom:* SoffI low resolution spectra of Obj 1, Obj 2, Obj 3, Obj 4, and Obj 5.

estimated as $E(J - K) = 2.9 \pm 0.6$, $(M - m)_0 = 15.35 \pm 0.3$ (11.75 kpc), and age of 20 ± 5 Myr. If confirmed, the candidate would be a rather interesting RSC occupying a large heliocentric distance. Additional high resolution spectroscopy and deeper imaging observations are in progress and will be published in a forthcoming paper.

VVV CL119: the open cluster candidate CL 119 lies in VVV tile b344. The radius is $55''$, which makes the cluster candidate relatively large. Six stars were observed during our SoffI, 2012 run, and are classified as K0-4 giants. The radial velocity histogram implies a mean cluster velocity of $RV = +96 \pm 29 \text{ km s}^{-1}$, while the Besançon model predicts $RV = -77 \pm 64 \text{ km s}^{-1}$. All spectroscopically observed stars, except Obj 5, lie within a 1σ interval, and could be considered cluster members. The brightest two stars, namely Obj 1 and Obj 2, are far from the mean locus of the RGB stars (Fig. 5) and could be variable star candidates. We performed PSF photometry using the VVV-SkZ pipeline

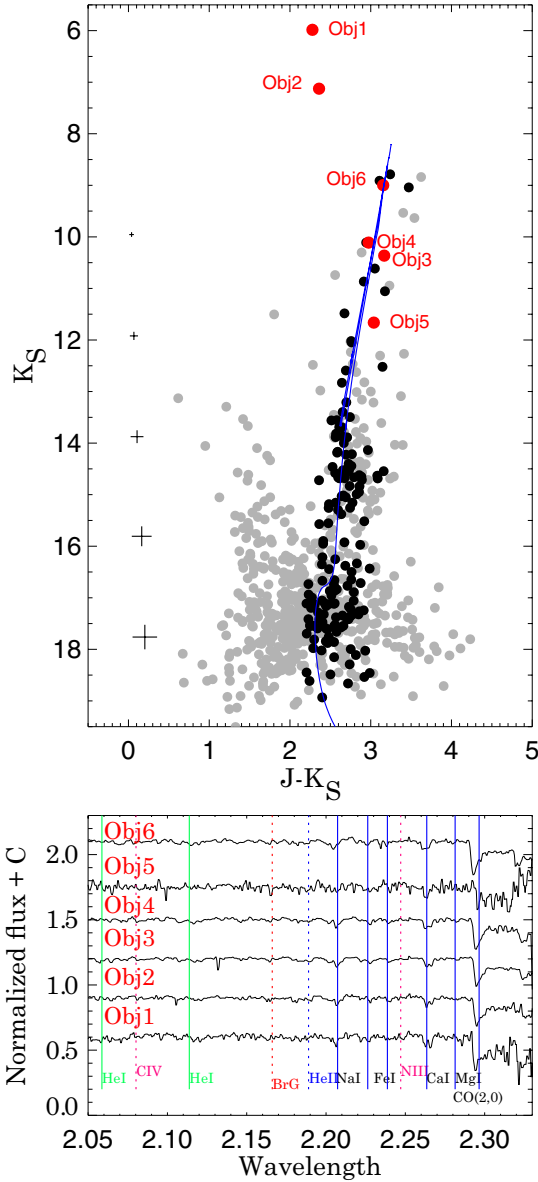


Fig. 5. *Top:* $(J - K_S)$ vs. K_S color–magnitude diagram for CL 119. The symbols are the same as in Fig. 2. The best fit is a 5 Gyr ($z = 0.009$) Padova isochrone, which is displayed. *Bottom:* SofI low resolution spectra of Obj 1, Obj 2, Obj 3, Obj 4, Obj 5, and Obj 6.

(Mauro et al. 2013) to construct the color–magnitude diagram. The RC stars and the TO point are identified at $K_S = 13.8 \pm 0.2$ mag and $K_S = 17.3 \pm 0.3$ mag, respectively. We estimate a mean reddening of $E(J - K) = 2.03 \pm 0.4$, distance modulus of $(M - m)_0 = 14.17 \pm 0.3$ (6.8 kpc), and an age of 5 ± 1.2 Gyr ($z = 0.009$). The mean metallicity of the cluster is calculated from an average of five stars (Obj 5 is not included) as $[\text{Fe}/\text{H}] = -0.30 \pm 0.18$. Such an old cluster in the inner few kpc from the Galactic center is quite unusual, and additional observations will be acquired to investigate the candidate.

VVVCL120: this open cluster candidate lies in VVV tile b300. The candidate constitutes a small group of relatively bright stars within a radius of $30''$. Five stars were observed during our SofI run (Fig. 6) and were classified as K5-M2 giants. The VVV DR1 database was used to construct the color–magnitude diagram. The RGB sequence is visible, and main sequence (MS) stars can likewise be seen. Objects 4 and 5 appear distant from the mean locus of the RGB stars, and exhibit lower reddening

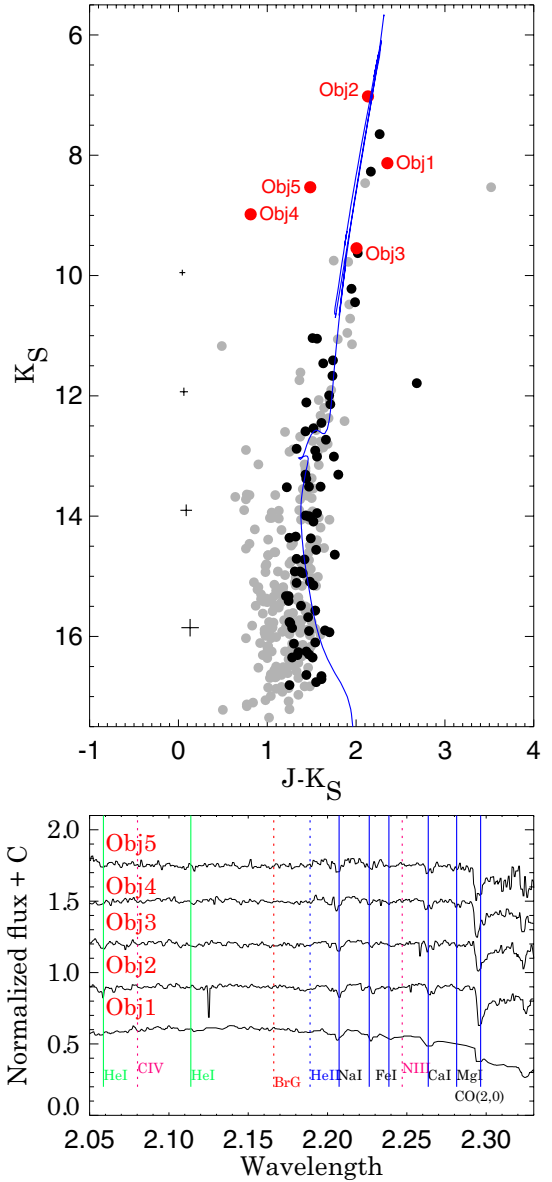


Fig. 6. *Top:* $(J - K_S)$ vs. K_S color–magnitude diagram for CL 120. The symbols are the same as in Fig. 2. The best fit is a 2 Gyr ($z = 0.008$) Padova isochrone, which is displayed. *Bottom:* SofI low resolution spectra of Obj 1, Obj 2, Obj 3, Obj 4, and Obj 5.

and different radial velocities (see Table 3). Those objects are probably field stars. The radial velocity of the cluster is $RV = +51 \pm 9 \text{ km s}^{-1}$ and stems from a mean of Obj 2 and 3, while the Besançon model predicts $RV = -16 \pm 59 \text{ km s}^{-1}$ in this direction. The mean reddening and distance modulus are $E(J - K) = 1.2 \pm 0.1$ and $(M - m)_0 = 11.6 \pm 0.6$ (2.09 kpc), respectively. The best fit Padova isochrone ($z = 0.008$) implies a cluster that is 2 ± 0.5 Gyr old. The mean metallicity of the cluster is $[\text{Fe}/\text{H}] = -0.36 \pm 0.45$, and is merely the average of the metallicities of Obj 2 and Obj 3.

VVVCL123: this open cluster candidate lies in VVV tile b301. Several bright stars form an overdensity within a $55''$ radius. Five stars were observed in our SofI 2012 run (Fig. 7). They are classified as G9-M6 giants. The VVV DR2 was used to construct the color–magnitude diagram. The RGB sequence is visible, in concert with main sequence stars. The TO point lies near $K_S = 15.0 \pm 0.3$. Object 5 is situated far from the mean locus of the RGB stars and features a different velocity which implies it is likely a field star (see Table 3). The S/N of Obj 2 is

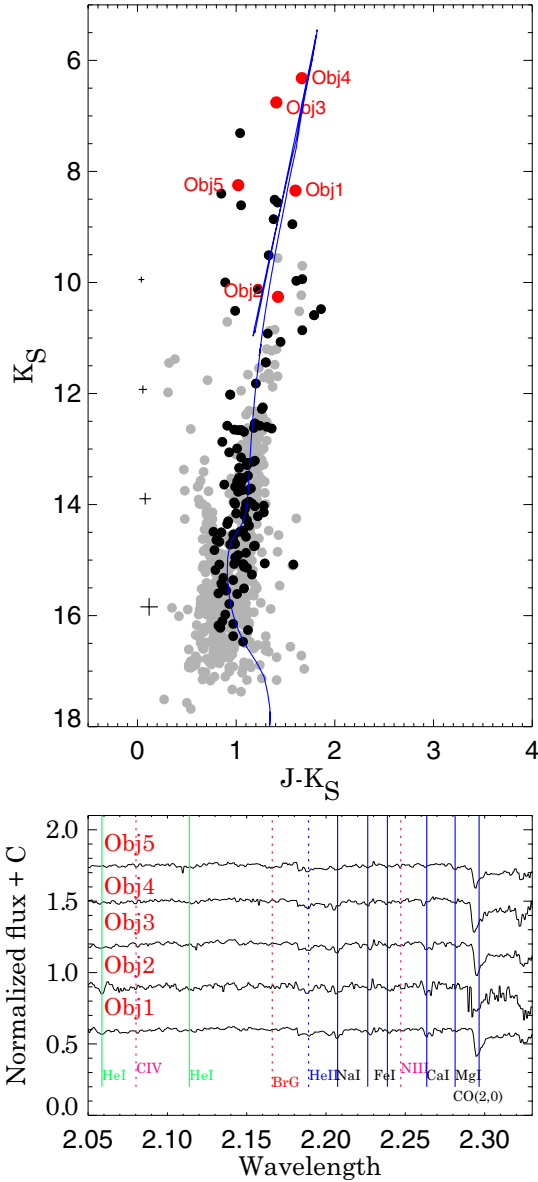


Fig. 7. *Top:* $(J - K_S)$ vs. K_S color–magnitude diagram for CL 123. The symbols are the same as in Fig. 2. The best fit is a 9 Gyr ($z = 0.012$) Padova isochrone, which is shown. *Bottom:* SofI low resolution spectra of Obj 1, Obj 2, Obj 3, Obj 4 and, Obj 5.

low, and consequently a radial velocity measurement could not be secured. The mean radial velocity is $RV = -50 \pm 17 \text{ km s}^{-1}$, based on Obj 1, Obj 3, and Obj 4. The Besançon model predicts $RV = -20 \pm 78 \text{ km s}^{-1}$ along this direction. We estimated a reddening of $E(J - K) = 0.55 \pm 0.21$ and distance modulus of $(M - m)_0 = 12.1 \pm 0.5$ (2.63 kpc). The best Padova isochrone fit yields a cluster age of 9 ± 0.7 Gyr ($z = 0.012$). The mean metallicity of the cluster is $[Fe/H] = -0.19 \pm 0.14$, and relies on the individual metallicities of Obj 1, Obj 2, Obj 3, and Obj 4.

VVVCL124: this open cluster candidate lies in the VVV tile b346. The candidate appears as a concentrated group of seven to eight stars within a radius of $15''$. Five stars were observed with SofI (Fig. 8) and are classified as K1-M1 giants. The VVV DR2 database was used to construct the color–magnitude diagram, which shows a distinct sequence of evolved and main sequence stars. We estimated the reddening to be $E(J - K) = 1.8 \pm 0.3$ and the distance is $(M - m)_0 = 13.6 \pm 0.5$ (5.25 kpc). The best Padova isochrone fit implies an age of 50 ± 6 Myr

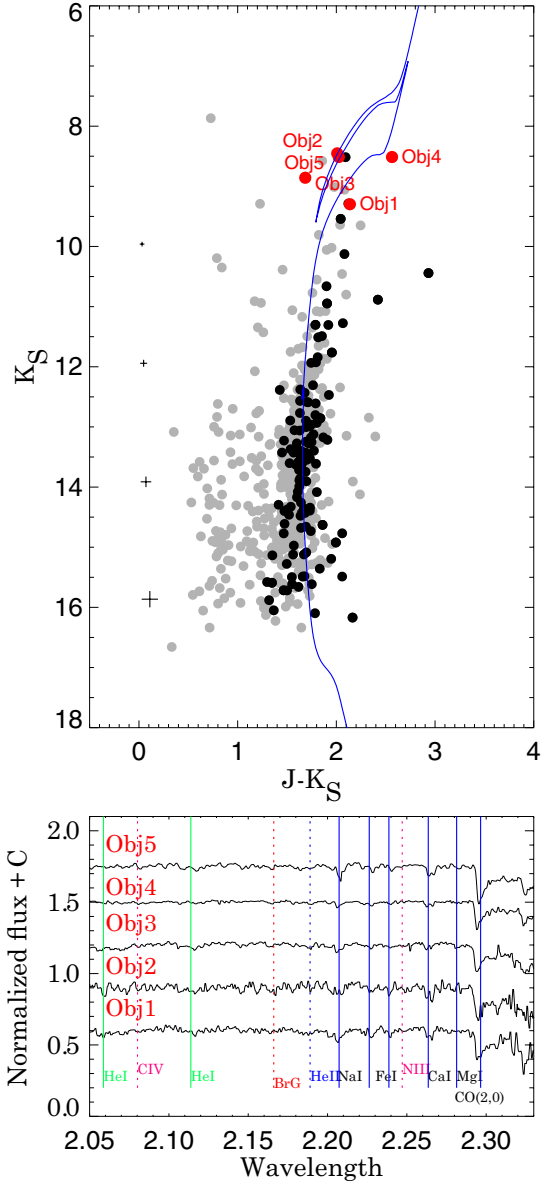


Fig. 8. *Top:* $(J - K_S)$ vs. K_S color–magnitude diagram for CL 124. The symbols are the same as in Fig. 2. The best fit is a 50 Myr ($z = 0.007$) Padova isochrone, which is shown. *Bottom:* SofI low resolution spectra of Obj 1, Obj 2, Obj 3, Obj 4, and Obj 5.

($z = 0.007$). The radial velocity distribution displays comparable velocities for all five stars (see Table 3), with a mean value of $RV = -36 \pm 8 \text{ km s}^{-1}$. The Besançon model predicts $RV = -18 \pm 103 \text{ km s}^{-1}$ in this direction. The mean metallicity is $[Fe/H] = -0.4 \pm 0.5$, and was determined using all the stars.

VVVCL130: this open cluster candidate lies in VVV tile b332. Similar to the case of VVV CL 117, four bright stars are concentrated within a radius of $20''$. These stars were observed with SofI during our 2012 run (Fig. 9). Based on the spectral type vs. EW(CO) relation established by Davies et al. (2007), the stars could be classified as G9-K2 supergiants. The position in the CMD of Obj 3 suggests that it is probably a field star. The radial velocity histogram exhibits a peak near $RV = -20 \pm 8 \text{ km s}^{-1}$, while the Besançon model predicts $RV = -12 \pm 76 \text{ km s}^{-1}$. We performed PSF photometry using the VVV-SkZ pipeline (Mauro et al. 2013) to construct a color–magnitude diagram. The brightest stars are separated from the rest in the upper part of the color–magnitude diagram, which

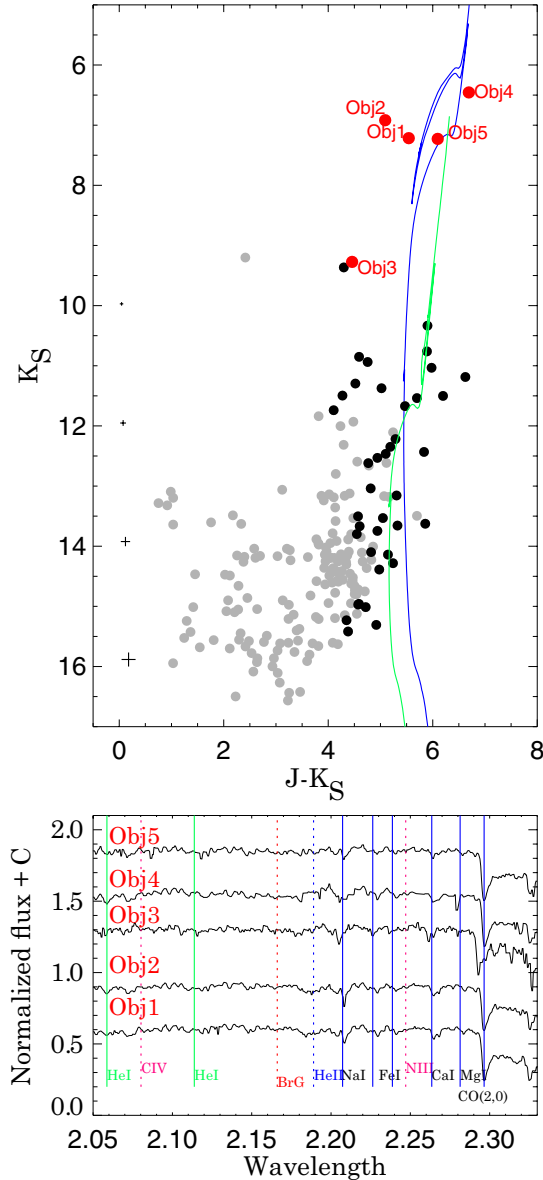


Fig. 9. *Top:* $(J - K_S)$ vs. K_S color–magnitude diagram for CL 139. The symbols are the same as in Fig. 2. The best fits are 32 (blue) and 316 Myr (green) Padova isochrones ($z = 0.018$), which are over-plotted. *Bottom:* SofI low resolution spectra of Obj 1, Obj 2, Obj 3, Obj 4, and Obj 5.

is typical for RSG clusters. There is no indication of main sequence stars in our photometry. Assuming that the candidate is an RSG cluster, we estimated a reddening of $E(J-K) = 5.6 \pm 0.3$, distance modulus of $(M - m)_0 = 11.0 \pm 0.4$ (1.58 kpc), and age of 32 ± 8 Myr ($z = 0.018$). If confirmed, it would be an interesting and heavily reddened RSG cluster projected close to the Sun. However, we cannot exclude a luminosity class III classification outright, and in that instance the best fit yields $E(J - K) = 5.2 \pm 0.3$, $(M - m)_0 = 11.4 \pm 0.4$ (1.9 kpc), and age of 316 ± 37 Myr. Additional observations are being obtained and will be published in a subsequent paper.

VVV CL139 and VVV CL140: these two cluster candidates lie in VVV tile b318. The two groups are projected close together (less than 1 arcmin) and form an overdensity with respect to the field. Interactions between star clusters are short processes, which may lead to star cluster disruption (i.e., infant mortality) or to a merger scenario. If the pair is gravitationally

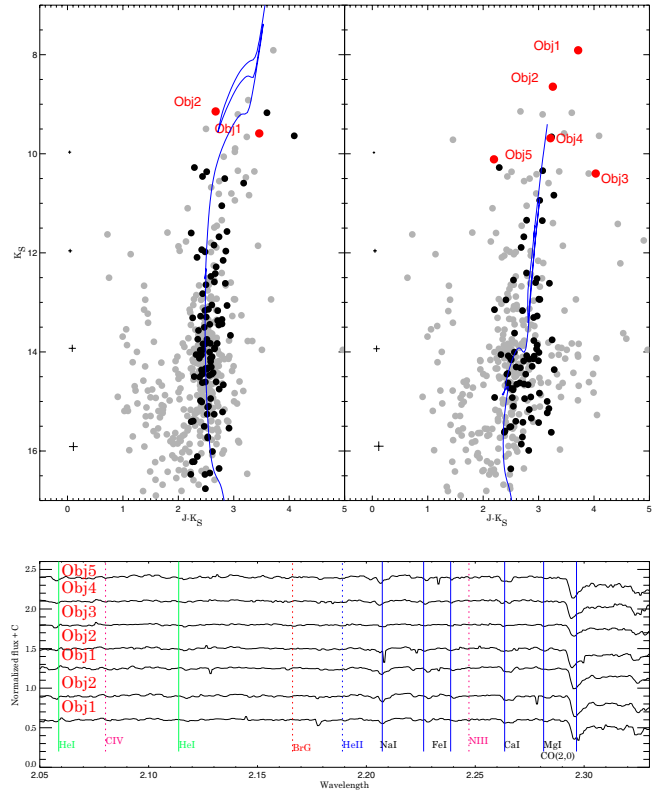


Fig. 10. *Top:* $(J - K_S)$ vs. K_S color–magnitude diagram for CL 139 (left) and CL 140 (right). The symbols are the same as in Fig. 2. The best fits are 80 Myr and 1.3 Gyr Padova isochrones (Bressan et al. 2012), respectively. Those isochrones are tied to $z = 0.012$ and $z = 0.008$ abundances, accordingly. *Bottom:* SofI low resolution spectra of Obj 1 and Obj 2 of CL 139 and Obj 1, Obj 2, Obj 3, Obj 4 and Obj 5, of CL 140.

bound, they may form a more massive cluster, mixing the constituent stellar generations. CL 139 and CL 140 could be two independent clusters simply constituting a spatial projection along the sight line or potentially a single cluster divided owing to dust extinction. To verify the last hypothesis we retrieved WISE, GLIMPSE and MIPS GAL 24 μm images. No signatures of strong dust emission between the cluster candidates can be found, and the images show a relatively homogeneous background. Marginal dust is visible to the left of CL 140, which could partially obscure the cluster. Two stars in CL 139 and five stars in CL 140 have been observed with SofI during our 2012 observing run. The stars are plotted in Fig. 10. All are late type G9-M1 giants. Radial velocities cited in Table 3 are comparable within the uncertainties. The VVV DR1 database was used to construct the color–magnitude diagrams (Fig. 10). The cluster candidate CL 139 displays evolved stars and a distinct MS. We estimate cluster parameters of $E(J - K) = 2.6 \pm 0.3$ and $(M - m)_0 = 12.90 \pm 0.6$ (3.8 kpc). The age of this cluster candidate is approximately 80 ± 19 Myr. The mean metallicity of the cluster is $[\text{Fe}/\text{H}] = -0.20 \pm 0.25$ and is linked to Obj 1 and Obj 2. The cluster candidate CL 140 exhibits a distinct RGB, and the TO point discernible at $K_S = 14.0 \pm 0.1$. The cluster is slightly less reddened ($E(J - K) = 2.3 \pm 0.4$) than CL 139. An isochrone of 1.3 ± 0.3 Gyr fits the CMD, assuming the above distance. The results are consistent with the mean metallicity of the cluster estimated as $[\text{Fe}/\text{H}] = -0.42 \pm 0.35$ (Obj 1, 2, and 4). The existing data imply that a new possible cluster pair in the Galaxy has been discovered.

VVV CL142: the VVV CL142 star cluster candidate lies in VVV tile b333, and occupies a complex field encompassed by

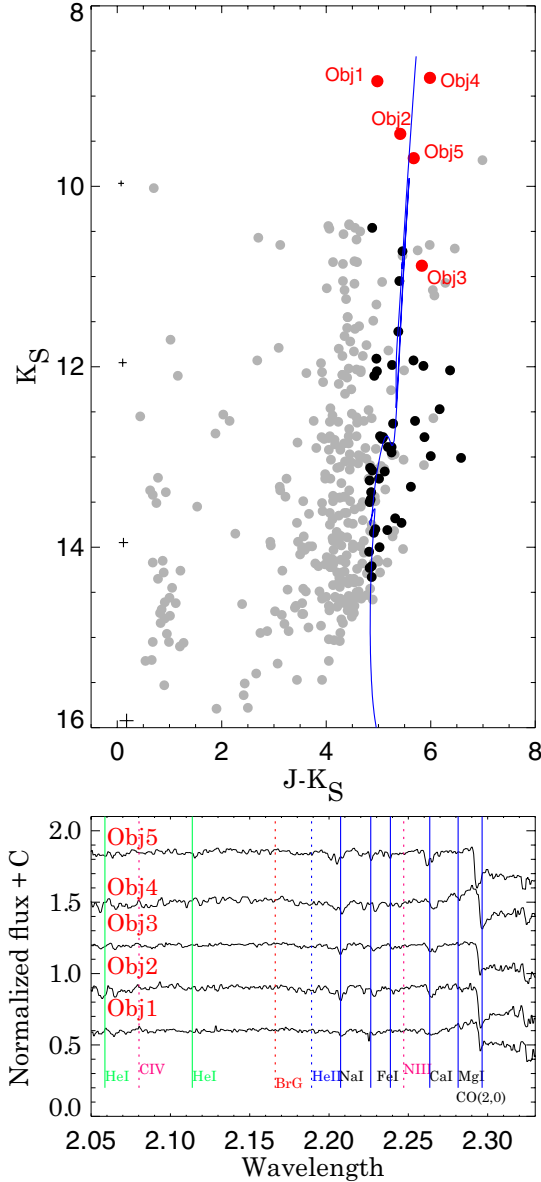


Fig. 11. *Top:* $(J - K_S)$ vs. K_S color–magnitude diagram for CL 142. The symbols are the same as in Fig. 2. The best fit is an 800 Myr ($z = 0.013$) Padova isochrone, which is plotted. *Bottom:* SofI low resolution spectra of Obj 1, Obj 2, Obj 3, Obj 4, and Obj 5.

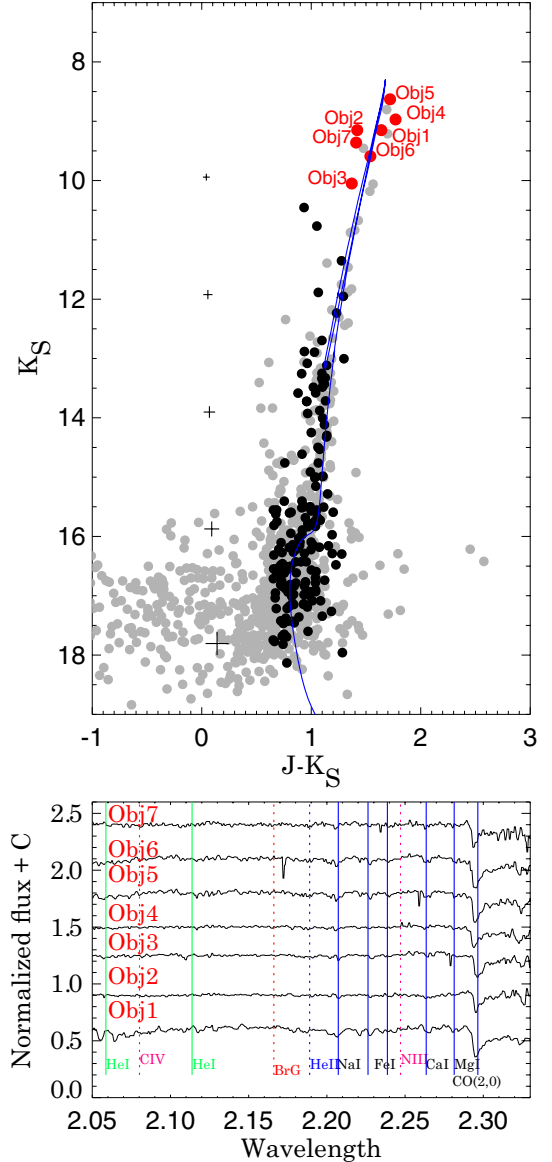


Fig. 12. *Top:* $(J - K_S)$ vs. K_S color–magnitude diagram for CL 143. The symbols are the same as in Fig. 2, and probable candidates within 25 arcsec are shown. The best fit is a 4 Gyr ($z = 0.004$) Padova isochrone, which is displayed. *Bottom:* SofI low resolution spectra of Obj 1, Obj 2, Obj 3, Obj 4, Obj 5, Obj 6, and Obj 7.

dark clouds according to the MIPS GAL 24 μm image. The cluster candidate appears as a compact group (radius of 20'', Fig. 11) of 6 stars with similar colors, as inferred from the VVV images. Five of those targets were observed and subsequently classified as G3–M5 giants. The radial velocity of Obj 1 is larger than that of Obj 4 and Obj 5, which in concert with its CMD position, indicates this star could belong to the field. The mean velocity of Obj 4 and Obj 5 is $RV = 14 \pm 17 \text{ km s}^{-1}$, while the Besançon model predicts $-11 \pm 70 \text{ km s}^{-1}$. A similar value is reported in the velocity map of the Galactic bulge giants by Zoccali et al. (2014). The VVV DR1 photometry reveal RGB stars and a poorly populated MS. The estimated cluster parameters are $E(J - K) = 4.8 \pm 0.3$ and $(M - m)_0 = 11.25 \pm 0.6$ (1.8 kpc). The cluster age of $800 \pm 92 \text{ Myr}$ ($z = 0.013$) was determined using a Padova isochrone (Bressan et al. 2012). The mean metallicity ($[\text{Fe}/\text{H}] = -0.14 \pm 0.4$) was computed using all the spectroscopically observed stars. If confirmed, this would be another case of

a highly reddened intermediate age cluster discovered relatively close to the Sun.

VVV CL 143: the cluster candidate VVV CL 143 lies in VVV tile b302, and appears as a group of 10–12 relatively bright stars within a radius of 35''. Seven stars were observed during our SofI run (Fig. 12), and exhibit similar velocities (see Table 3) with a mean of $RV = +86 \pm 26 \text{ km s}^{-1}$. Conversely, the Besançon model predicts $-126 \pm 67 \text{ km s}^{-1}$. The stars are classified as G8–M1 giants. We performed PSF photometry using VVV-SkZ pipeline (Mauro et al. 2013) to construct the color–magnitude diagram. The diagram conveys a defined RGB, several RC stars at $K_S = 13.3 \pm 0.2 \text{ mag}$, and the TO at $K_S = 16.62 \pm 0.3 \text{ mag}$. We estimated cluster parameters of $E(J - K) = 0.58 \pm 0.2$, $(M - m)_0 = 14.45 \pm 0.6$ (7.8 kpc), and age of $4 \pm 0.7 \text{ Gyr}$. The mean metallicity of the cluster is $[\text{Fe}/\text{H}] = -0.62 \pm 0.52$, which was evaluated using all spectroscopically observed stars. The data could imply that the candidate is a populated old open cluster. However, taking the morphology of the CMD and its

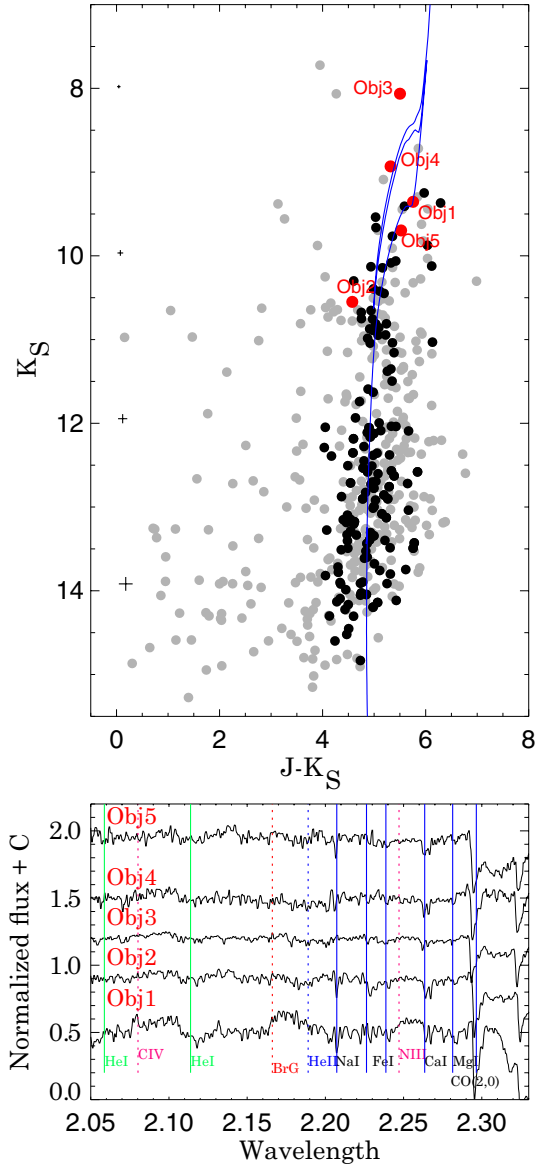


Fig. 13. *Top:* $(J - K_S)$ vs. K_S color–magnitude diagram for CL 146. The symbols are the same as in Fig. 2. The best fit is a 40 Myr ($z = 0.013$) Padova isochrone, which is shown. *Bottom:* SofI low resolution spectra of Obj 1, Obj 2, Obj 3, Obj 4, and Obj 5.

relatively low metallicity into account, it could be a young globular cluster. Additional support for that hypothesis is the large number of bright objects near the top of the isochrone of CL 143. Those objects could be AGB stars since the red clump appears well populated and the turn-off is defined. The position of the cluster in the Galaxy should also be considered, and old open clusters are rarely detected in the inner Galaxy. Friel (1995) argued that they should be completely absent in the inner 7 kpc and, yet a globular cluster in the location of CL 143 would be among the youngest that can have an extragalactic origin (Moni Bidin et al. 2011). A detailed analysis is necessary to clarify the nature of this interesting cluster candidate.

VVV CL 146: the cluster candidate VVV CL 146 lies in tile b333, very close to the galactic center, and appears as a loose group of stars within a radius of $30''$. Five stars were observed with SOAR, 2012 run (Fig. 13) and were classified as K5-M7 giants. The VVV DR1 color–magnitude diagram reveals some evolved RGB and MS stars. It is extremely hard

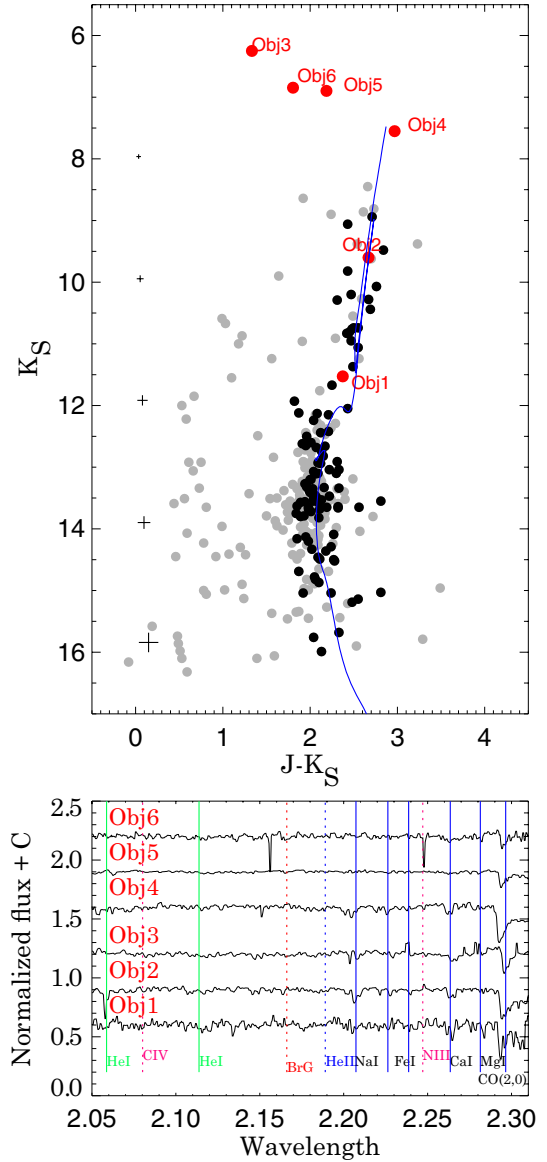


Fig. 14. *Top:* $(J - K_S)$ vs. K_S color–magnitude diagram for CL 149. The symbols are the same as in Fig. 2. The best fit is a 1.3 Gyr ($z = 0.007$) Padova isochrone, which is shown. *Bottom:* SofI low resolution spectra of Obj 1, Obj 2, Obj 3, Obj 4, Obj 5, and Obj 6.

to analyze this region of the galaxy because of heavy crowding and differential reddening. The WISE and MIPS GAL images show obscuring clouds of dust. We have estimated the reddening of $E(J - K_S) = 5.0 \pm 0.5$ and distance modulus of $(M - m)_0 = 13.2 \pm 0.6$ (4.37 kpc). The radial velocity histogram exhibits a peak near $RV = 123 \pm 24 \text{ km s}^{-1}$, while the Besançon model predicts $RV = -11 \pm 75 \text{ km s}^{-1}$. The age of this star cluster candidate is estimated to be around $40 \pm 7 \text{ Myr}$ for $z = 0.013$ Padova isochrone. The mean metallicity of the cluster is calculated as an average of all spectroscopically observed stars as $[\text{Fe}/\text{H}] = -0.15 \pm 0.25$. Deeper photometry is needed to confirm the reality of this cluster candidate.

VVV CL 149: the cluster candidate VVV CL 149 lies in VVV tile b319. The surrounding area contains numerous infrared sources discovered by Ojha et al. (2003) using ISOGAL. Several stars form a compact group projected within a $30''$ radius. Consequently, we initially suspected that this was a young star cluster candidate. Using SofI and the NTT-ESO telescope we observed six stars during our 2012 run (Fig. 14). All stars

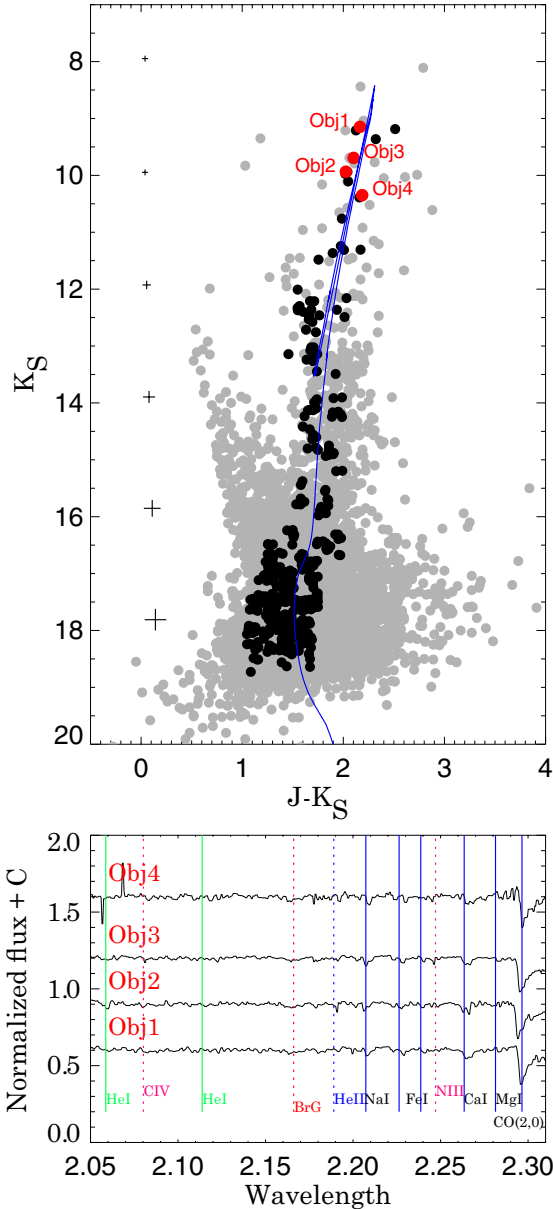


Fig. 15. *Top:* $(J - K_S)$ vs. K_S color–magnitude diagram for CL 150. The symbols are the same as in Fig. 2. The best fit is a 10 Gyr ($z = 0.003$) Padova isochrone, which is shown. *Bottom:* SofI low resolution spectra of Obj 1, Obj 2, Obj 3, and Obj 4.

exhibit CO lines and are classified as G9-M0 giants. The VVV DR1 color–magnitude diagram reveals RGB and main sequence stars. The TO point appears near $K_S = 12.6 \pm 0.2$ mag. The brightest stars, Obj 3, Obj 5, and Obj 6, are far from the mean locus of the RGB population. The targets are likely field stars, which is likewise supported by their RV velocities (see Table 3). The mean velocity and metallicity of the cluster is $RV = +54 \pm 17$ km s $^{-1}$ and $[Fe/H] = -0.48 \pm 0.1$, respectively. The results are tied to the measurements for Obj 1, Obj 2, and Obj 4. We estimated a reddening of $E(J - K) = 2.0 \pm 0.3$ and distance modulus of $(M - m)_0 = 11.3 \pm 0.8$ (1.82 kpc). The age of this cluster candidate is approximately 1.3 ± 0.4 Gyr.

VVV CL150: the open cluster candidate lies in VVV tile b350 and appears confined within a radius of $60''$. That makes this candidate one of the largest in our sample. Four stars were observed during our SofI run (Fig. 15) and were subsequently classified as K2-5 giants. We performed PSF photometry using

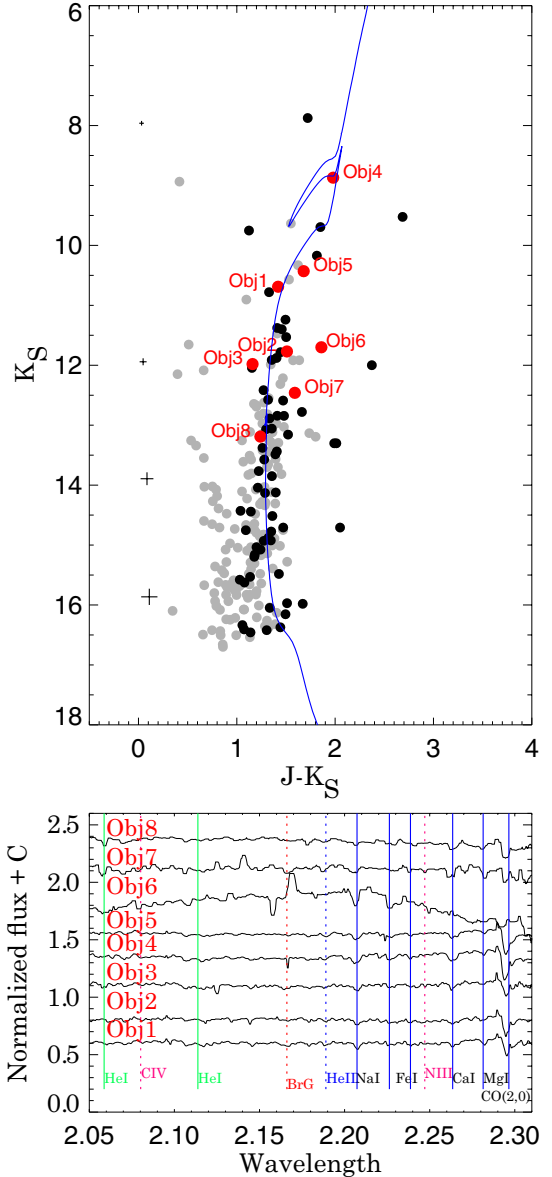


Fig. 16. *Top:* $(J - K_S)$ vs. K_S color–magnitude diagram for CL 152. The symbols are the same as in Fig. 2. The best fit is a 160 Myr ($z = 0.002$) Padova isochrone, which is shown. *Bottom:* SofI low resolution spectra of observed objects.

VVV-SkZ pipeline (Mauro et al. 2013) to construct the color–magnitude diagram. The diagram is well populated, and RC stars are readily discernible at $K_S = 13.10 \pm 0.2$ mag. Moreover, the TO is likewise apparent at $K_S = 17.2 \pm 0.4$ mag. We estimated a reddening of $E(J - K) = 1.2 \pm 0.1$, distance modulus of $(M - m)_0 = 14.22 \pm 0.7$ (6.98 kpc), and age of 10 ± 0.8 Gyr. CL 150 is one of the most metal poor clusters in our sample, and it exhibits $[Fe/H] = -0.75 \pm 0.11$. That determination relies on the metallicity measurements of all observed stars. Owing to its age and metallicity, CL 150 is the most promising candidate for a new globular cluster in the Galactic bulge.

VVV CL152: the open cluster candidate lies in VVV tile b366. The candidate appears as a small stellar group confined within a radius of $35''$. Eight stars were observed with SofI, and most are classified as G7-K0 giants. Obj 6 and Obj 8 are O9-B0 and K3-4 V dwarfs, respectively. The VVV DR1 color–magnitude diagram displays evolved RGB stars and a relatively populated MS. We estimated a reddening of $E(J - K) = 1.4 \pm 0.3$

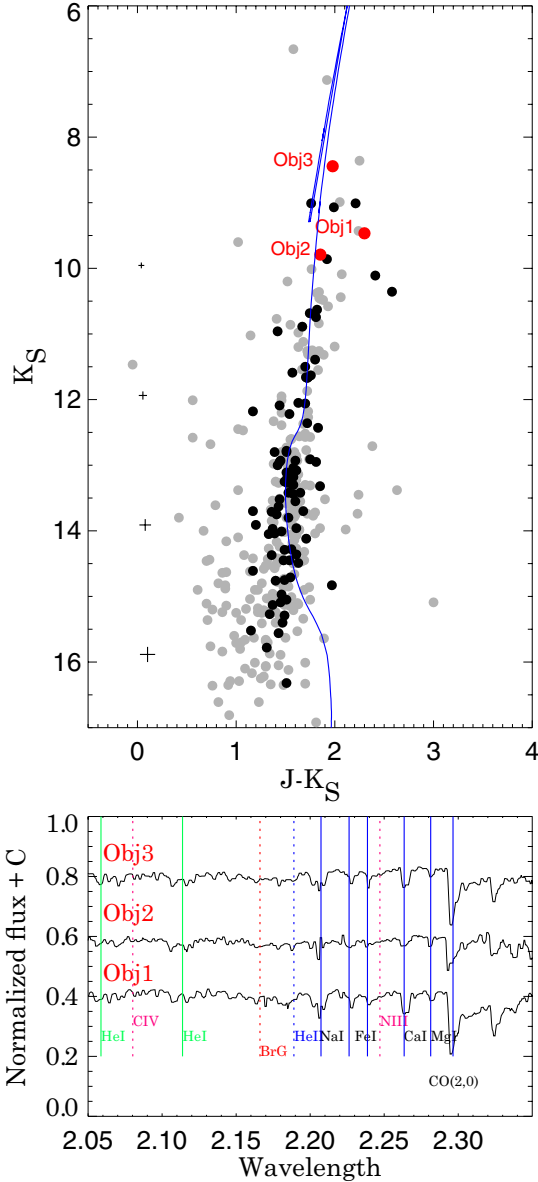


Fig. 17. *Top:* $(J - K_S)$ vs. K_S color–magnitude diagram for CL 154. The symbols are the same as in Fig. 2. The best fit is an 8 Gyr ($z = 0.004$) Padova isochrone, which is displayed. *Bottom:* SofI low resolution spectra of the observed objects.

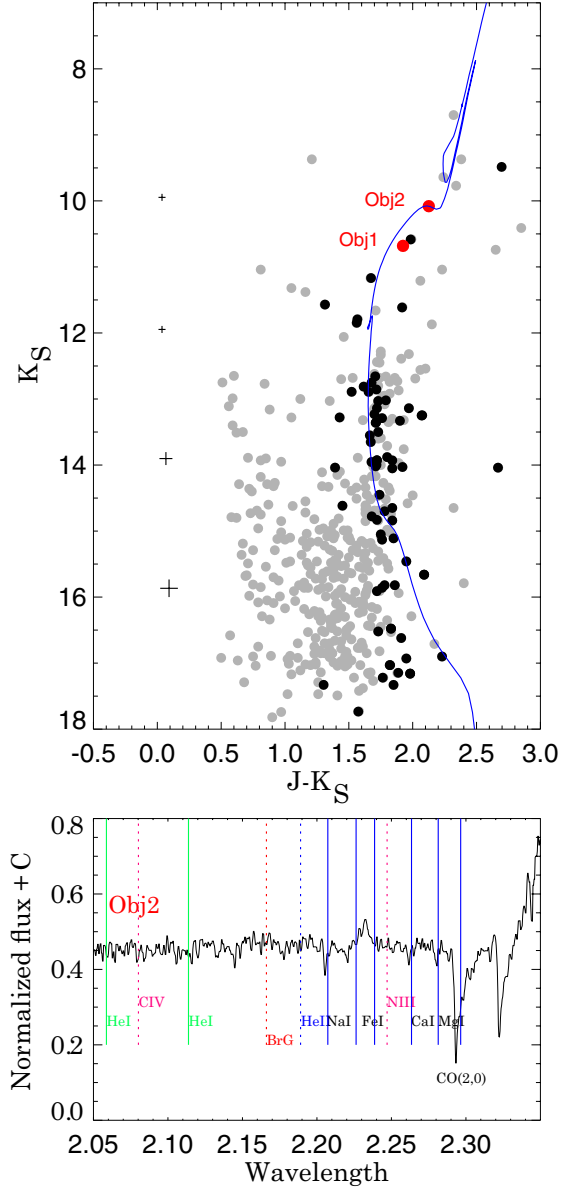


Fig. 18. *Top:* $(J - K_S)$ vs. K_S color–magnitude diagram for CL 157. The symbols are the same as in Fig. 2. The best fit is a 316 Gyr ($z = 0.011$) Padova isochrone, which is plotted. *Bottom:* SofI low resolution spectrum of Obj2.

and distance modulus of $(M - m)_0 = 12.9 \pm 0.4$ (3.8 kpc). The age of this candidate is estimated near 160 ± 20 Myr. The metallicity of the cluster is $[\text{Fe}/\text{H}] = -0.90 \pm 0.37$, which is lower than expected for the estimated age.

VVVCL154: the open cluster candidate lies in VVV tile b321 and appears as an overdensity confined within a radius of $30''$. Three stars were observed during our SofI run and are classified as G5-K4 giants. The VVV DR1 color–magnitude diagram shows a poorly populated RGB, but a populated MS. We estimate a reddening of $E(J - K) = 1.2 \pm 0.1$ and a distance of $(M - m)_0 = 10.1 \pm 0.3$ (1.05 kpc). The age of this cluster candidate is approximately 8 ± 0.2 Gyr. The metallicity of the cluster is $[\text{Fe}/\text{H}] = -0.69 \pm 0.4$, as inferred from measurements of Obj 2 and Obj 3 (Obj 1 is rejected due to its position of the CMD). This is a good candidate for an old open cluster in close proximity to the Sun.

VVVCL157: the open cluster candidate lies in VVV tile b354. It appears as an overdensity that is contained within a

radius of $40''$. Two stars were observed during our SofI run (Fig. 18) and are classified as K2-3 giants. However, one of the stars exhibits low S/N and is not shown on the plot. The VVV DR1 database was used to construct the color–magnitude diagram, which shows few evolved stars and a poorly populated MS. We estimated a reddening of $E(J - K) = 1.7 \pm 0.1$ and distance modulus of $(M - m)_0 = 11.7 \pm 0.2$ (2.19 kpc). The age and metallicity of this cluster candidate is approximately 316 ± 38 Myr and $[\text{Fe}/\text{H}] = -0.23 \pm 0.15$, respectively. The latter estimate relies solely on Obj 2.

VVVCL160: the open cluster candidate lies in VVV tile b340 and appears as an overdensity that occupies a radius of $55''$. Two stars were observed during our SOAR run (Fig. 19) and are classified as K0-4 giants. The VVV DR1 database was used to construct the color–magnitude diagram, which exhibits a defined RGB and MS. Object 2 lies far from the cluster center and features a lower velocity than Obj 1. The Besançon model predicts $RV = +45 \pm 75 \text{ km s}^{-1}$ in this direction. The former star likely

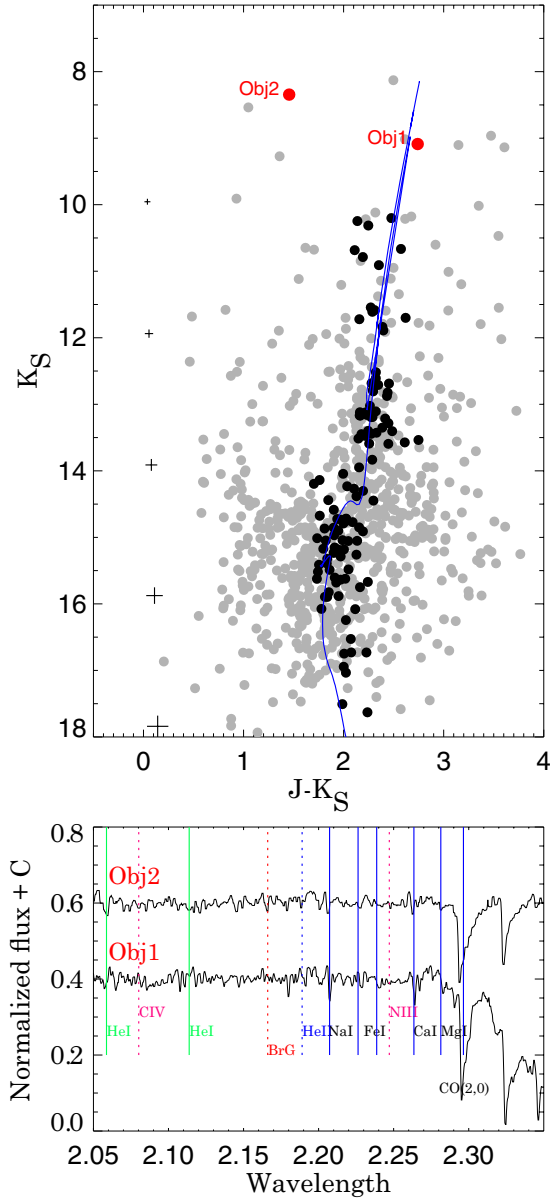


Fig. 19. *Top:* $(J - K_S)$ vs. K_S color–magnitude diagram for CL 160. The symbols are the same as in Fig. 2. The best fit is a 1.6 Gyr ($z = 0.004$) Padova isochrone, which is shown. *Bottom:* SOFI low resolution spectra of the observed objects.

belongs to the field. The RC can be identified at $K_S = 13.1 \pm 0.3$ mag, while the TO point appears at $K_S = 14.8 \pm 0.4$ mag. We estimated a reddening of $E(J - K) = 1.72 \pm 0.1$ and distance modulus of $(M - m)_0 = 13.60 \pm 0.3$ (5.25 kpc). The age of this star cluster candidate is approximately 1.6 ± 0.5 Gyr. The cluster metallicity is $[\text{Fe}/\text{H}] = -0.72 \pm 0.21$, but the result relies solely on Obj 1. In sum, this candidate is probably an old metal-poor open cluster.

VVVCL161: the open cluster candidate lies in VVV tile b295. Ten bright stars form an overdensity that spans a radius of $75''$. Six of those stars were observed with SOAR during the 2012 run (Fig. 20). The stars can be classified as K3-M5 giants or K0-M1 supergiants. The low S/N and resolution of the spectra give rise to that degeneracy. In the VVV DR1 color–magnitude diagram those bright stars form two groups and suffer from different extinction. According to the Messineo et al. (2012) Q1 and Q2 parameters, the stars designated Obj 1, Obj 2,

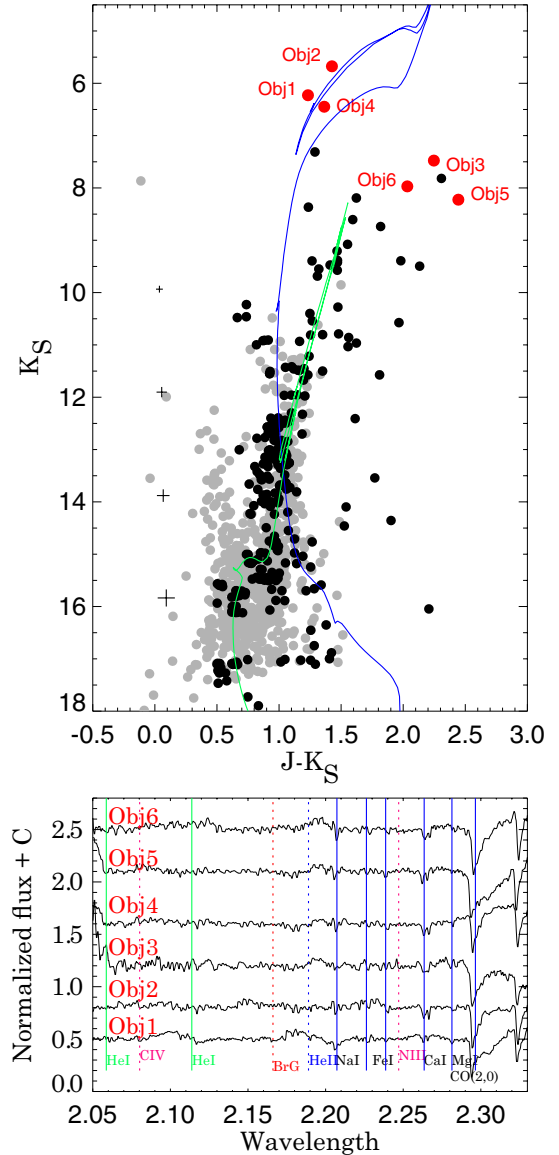


Fig. 20. *Top:* $(J - K_S)$ vs. K_S color–magnitude diagram for CL 161. The symbols are the same as in Fig. 2. Both 25 Myr (blue) and 2 Gyr (green) Padova isochrones ($z = 0.018$) are shown (see text). *Bottom:* SOFI low resolution spectra of the observed objects.

and Obj 4 could be red supergiants. Adopting the RSG cluster hypothesis, we derived a reddening of $E(J - K) = 1.15 \pm 0.12$ and distance modulus of $(M - m)_0 = 12.70 \pm 0.3$ (3.47 kpc). The cluster age is approximately 25 ± 6 Myr. Obj 3, Obj 5, and Obj 6 are field stars under the RSG cluster scenario. Alternatively, if stars near $K_S = 13.2 \pm 0.2$ mag are of the RG class, and the TO lies near $K_S = 16.0 \pm 0.4$ mag, the cluster parameters are $E(J - K) = 0.4 \pm 0.2$, $(M - m)_0 = 14.50 \pm 0.4$ (7.94 kpc), and 2 ± 0.5 Gyr. Deeper photometry and higher resolution spectroscopy are needed to verify the nature of this candidate.

The parameters derived for the 20 clusters described above are listed in Table 2. The column headers are as follows: name of the cluster, mean color excess of the cluster, distance in kpc, age from the isochrone fit in Myr or Gyr, mean metallicity of the cluster ($[\text{Fe}/\text{H}]$ in dex), mean radial velocity RV in km s^{-1} , and the reddening derived from Gonzalez et al. (2011, 2012) as a comparison. For CL 130 and CL 161, we give the derived parameters for both red-supergiant and red-giant spectral classifications of the observed stars.

Table 2. Parameters for the relatively sizable VVV cluster candidates.

| Name | $E(J - K_S)$ mag | Dist. kpc | Age | [Fe/H] dex | RV km s ⁻¹ | $E(J - K_S)$ G2011 |
|------------------------|---------------------|--------------|---------------|---------------|--------------------------|-----------------------|
| VVV CL111 | 3.4 ± 0.4 | 4.17 ± 0.8 | 1.6 ± 0.7 Gyr | +0.43 ± 0.20 | -77 ± 21 | 3.09 |
| VVV CL113 | 2.3 ± 0.4 | 5.25 ± 1 | 32 ± 7 Myr | -0.23 ± 0.15 | +7 ± 23 | 1.56 |
| VVV CL117 | 2.9 ± 0.6 | 11.75 ± 1 | 20 ± 5 Myr | | +72 ± 25 | 2.22 |
| VVV CL119 | 2.03 ± 0.4 | 6.8 ± 0.7 | 5 ± 1.2 Gyr | -0.30 ± 0.18 | +96 ± 29 | 2.15 |
| VVV CL120 | 1.2 ± 0.1 | 2.09 ± 0.4 | 2 ± 0.5 Gyr | -0.36 ± 0.45 | +51 ± 9 | 0.87 |
| VVV CL123 | 0.55 ± 0.2 | 2.63 ± 0.4 | 9.0 ± 0.7 Gyr | -0.19 ± 0.14 | -50 ± 17 | 0.55 |
| VVV CL124 | 1.8 ± 0.3 | 5.25 ± 0.8 | 50 ± 6 Myr | -0.40 ± 0.50 | -36 ± 8 | 0.98 |
| VVV CL130 ^a | 5.6 ± 0.3 | 1.58 ± 0.2 | 32 ± 8 Myr | | -20 ± 8 | 3.40 |
| VVV CL130 ^b | 5.2 ± 0.3 | 1.9 ± 0.3 | 316 ± 37 Myr | | -20 ± 8 | 3.40 |
| VVV CL139 | 2.6 ± 0.3 | 3.8 ± 0.7 | 80 ± 19 Myr | -0.20 ± 0.25 | -35 ± 25 | 1.92 |
| VVV CL140 | 2.3 ± 0.4 | 3.8 ± 0.7 | 1.3 ± 0.3 Gyr | -0.42 ± 0.35 | -19 ± 4 | 1.92 |
| VVV CL142 | 4.8 ± 0.3 | 1.8 ± 0.3 | 800 ± 92 Myr | -0.14 ± 0.40 | +14 ± 17 | 3.66 |
| VVV CL143 | 0.58 ± 0.2 | 7.8 ± 1.5 | 4 ± 0.7 Gyr | -0.62 ± 0.52 | +86 ± 26 | 0.45 |
| VVV CL146 | 5.0 ± 0.5 | 4.37 ± 0.8 | 40 ± 7 Myr | -0.15 ± 0.25 | | 4.20 |
| VVV CL149 | 2.0 ± 0.3 | 1.82 ± 0.5 | 1.3 ± 0.4 Gyr | -0.48 ± 0.1 | +54 ± 17 | 1.43 |
| VVV CL150 | 1.2 ± 0.1 | 6.98 ± 1.2 | 10 ± 0.8 Gyr | -0.75 ± 0.11 | | 1.20 |
| VVV CL152 | 1.4 ± 0.3 | 3.8 ± 0.5 | 160 ± 20 Myr | -0.90 ± 0.37 | | 0.70 |
| VVV CL154 | 1.2 ± 0.1 | 1.05 ± 0.1 | 8 ± 0.2 Gyr | -0.69 ± 0.4 | | 0.88 |
| VVV CL157 | 1.7 ± 0.1 | 2.19 ± 0.1 | 316 ± 38 Myr | -0.23 ± 0.15 | | 1.20 |
| VVV CL160 | 1.72 ± 0.1 | 5.25 ± 0.5 | 1.6 ± 0.5 Gyr | -0.72 ± 0.21 | | 1.73 |
| VVV CL161 ^c | 1.15 ± 0.12 | 3.47 ± 0.3 | 25 ± 0.6 Myr | | | 0.43 |
| VVV CL161 ^d | 0.4 ± 0.2 | 7.94 ± 1 | 2 ± 0.5 Gyr | | | 0.43 |

Notes. ^(a) Red supergiants. ^(b) Red giants. ^(c) Red supergiants. ^(d) Red giants.

In Table 3 we highlight the parameters derived for individual cluster stars that possess spectra. The column headers are as follows: names of the cluster and constituent star, coordinates in degrees, near-infrared photometric (J , H , and K_S) magnitudes, the assigned spectral type, individual reddening derived from its spectral type, the individual radial velocities in km s⁻¹, individual abundance estimates ([Fe/H] in dex), and date and instrument tied to the observations.

4. Summary

In this paper we have reported the discovery of 58 star cluster candidates projected on the Galactic bulge and inner disk area. The candidates were identified in near-infrared images and photometry associated with the “VVV – Vista Variables in the Vía Láctea” ESO Large Survey. Relative to the Borissova et al. (2011) cluster sample, the catalog presented here contains older candidates that feature larger angular radii. Most clusters in the present sample are not embedded or near nebulosity. However, the candidates detected are highly obscured and suffer from upwards of $E(J - K) = 5.6$ mag of extinction. For 20 cluster we have the fundamental parameters such as reddening, age, distance, and metallicity. The most interesting candidates are as follows. The color–magnitude diagrams of VVV CL 119, VVV CL 143, and VVV CL 150 show well-defined red giant branch stars and some red clump and main sequence stars. They are projected at 6.8, 7.8, and 6.98 kpc, are 2–10 Gyr old and intermediate metal poor, and could be classified as old open clusters. However, these objects in the inner few kpc from the Galactic center are quite unusual, because they should be rare in the inner Galaxy. Thus, these are promising candidates for new globular clusters in the galactic bulge. The cluster candidates VVV CL 139 and VVV CL 140 are projected very close to each other and show similar radial velocities and distance modulus

of 3.8 kpc. The age of CL139 is estimated around 80 Myr, while CL140 is older (1.3 Gyr). Both clusters are relatively metal rich and are good new cluster pair-candidates. And finally, three cluster candidates from our sample, namely VVV CL 117, VVV CL 130 and VVV CL 161 show typical color–magnitude diagrams of red supergiant clusters, but more data are needed to confirm their nature.

Acknowledgements. The data used in this paper were obtained with VIRCAM/VISTA at the ESO Paranal Observatory. The VVV Survey is supported by BASAL Center for Astrophysics and Associated Technologies CATA PFB-06, by the Ministry of Economy, Development, and Tourism’s Millennium Science Initiative through grant ICI2009, awarded to The Millennium Institute of Astrophysics (MAS). This publication makes use of data products from the Two Micron All Sky Survey, which is a joint project of the University of Massachusetts and the Infrared Processing and Analysis Center/California Institute of Technology, funded by the National Aeronautics and Space Administration and the National Science Foundation. This research has made use of the Aladin and SIMBAD database, operated at the CDS, Strasbourg, France. Support for J.B. and R.K. is provided from Fondecyt Reg. No. 1120601 and No. 1130140 and Centro de Astrofísica de Valparaíso. D.M. is supported by FONDECYT No. 1130196. C.B. and E.B. acknowledge support from Brazil’s CNPq. M.G. is financed by the GEMINI-CONICYT Fund, allocated to Project 32110014. The SOAR Telescope is a joint project of: Conselho Nacional de Pesquisas Científicas e Tecnológicas CNPq-Brazil, The University of North Carolina at Chapel Hill, Michigan State University, and the National Optical Astronomy Observatory. IRAF is distributed by the National Optical Astronomy Observatory, which is operated by the Association of Universities for Research in Astronomy (AURA) under cooperative agreement with the National Science Foundation. I.N. is partially supported by Gemini-Conycit No. 32120017. M.M.H. and B.P. acknowledge support by the National Science Foundation under Grant No. 1009550. I.N. and A.M. acknowledge support for this work by the Spanish Government Ministerio de Ciencia e Innovación (MICINN) through grant AYA2012-39364-C02-02. R.K.S. acknowledges support from CNPq/Brazil through projects 310636/2013-2 and 481468/2013-7. S.R.A. was supported by the FONDECYT project No. 3140605. P. Amigo is supported by the ALMA-CONICYT project number 31110002. We thank the anonymous referee for the useful suggestions that helped to improve our paper.

Table 3. Parameters for the individual cluster stars.

| Name | RA deg | Dec deg | <i>J</i> mag | <i>H</i> mag | <i>K_s</i> mag | Sp.Type | <i>E(J - K_s)</i> mag | <i>RV</i> kms ⁻¹ | [Fe/H] dex | Log |
|----------|------------|------------|-----------------|-----------------|-----------------------------|-----------|------------------------------------|--------------------------------|---------------|------------------|
| CL1110b3 | 260.709080 | -36.571393 | 16.74 ± 0.03 | 13.67 ± 0.03 | 12.55 ± 0.02 | K4-5III | 3.00 ± 0.12 | | | 2012-05-04, SofI |
| CL1110b4 | 260.708095 | -36.571335 | 15.18 ± 0.10 | 12.18 ± 0.06 | 10.61 ± 0.04 | K0-1III | 4.02 ± 0.12 | -77 ± 23 | +0.43 ± 0.15 | 2012-05-04, SofI |
| CL1130b1 | 261.139858 | -33.309269 | 9.77 ± 0.04 | 7.9 ± 0.06 | 6.95 ± 0.02 | M0-1III | 2.59 ± 0.07 | | -0.16 ± 0.12 | 2012-05-04, SofI |
| CL1130b2 | 261.139260 | -33.313648 | 11.64 ± 0.04 | 9.62 ± 0.03 | 8.71 ± 0.03 | M0-1III | 2.70 ± 0.07 | +7 ± 24 | -0.30 ± 0.14 | 2012-05-04, SofI |
| CL1170b1 | 262.556760 | -34.044170 | 12.14 ± 0.04 | 9.78 ± 0.05 | 8.34 ± 0.06 | K0-1I | 2.92 ± 0.09 | +63 ± 34 | | 2012-05-04, SofI |
| CL1170b2 | 262.555067 | -34.044415 | 11.69 ± 0.06 | 9.39 ± 0.04 | 8.16 ± 0.04 | G8-9I | 2.74 ± 0.05 | 90 ± 22 | | 2012-05-04, SofI |
| CL1170b3 | 262.556359 | -34.042732 | 13.06 ± 0.06 | 10.55 ± 0.08 | 9.28 ± 0.03 | K0-1I | 2.91 ± 0.09 | 32 ± 21 | | 2012-05-04, SofI |
| CL1170b4 | 262.565930 | -34.038769 | 12.98 ± 0.06 | 10.61 ± 0.06 | 9.49 ± 0.05 | K0-1I | 2.00 ± 0.09 | 60 ± 17 | | 2012-05-04, SofI |
| CL1170b5 | 262.550472 | -34.044296 | 16.62 ± 0.04 | 14.52 ± 0.02 | 13.76 ± 0.02 | late star | | 10 ± 27 | | 2012-05-04, SofI |
| CL1190b1 | 262.694627 | -32.645966 | 8.26 ± 0.02 | 6.74 ± 0.05 | 5.98 ± 0.03 | K0-1III | 1.88 ± 0.12 | 108 ± 21 | -0.07 ± 0.11 | 2012-05-04, SofI |
| CL1190b2 | 262.692057 | -32.657436 | 9.49 ± 0.02 | 7.89 ± 0.06 | 7.13 ± 0.02 | K3-4III | 1.81 ± 0.15 | 107 ± 27 | -0.25 ± 0.13 | 2012-05-04, SofI |
| CL1190b3 | 262.691191 | -32.645840 | 13.53 ± 0.15 | 11.18 ± 0.06 | 10.36 ± 0.02 | K3-4III | 2.68 ± 0.15 | 79 ± 34 | -0.31 ± 0.14 | 2012-05-04, SofI |
| CL1190b4 | 262.688083 | -32.648609 | 13.09 ± 0.02 | 11.03 ± 0.02 | 10.11 ± 0.03 | K2-3III | 2.48 ± 0.16 | 112 ± 23 | -0.36 ± 0.17 | 2012-05-04, SofI |
| CL1190b5 | 262.690626 | -32.646135 | 14.7 ± 0.01 | 12.55 ± 0.01 | 11.66 ± 0.01 | K2-3III | 2.55 ± 0.16 | -7 ± 16 | -0.60 ± 0.21 | 2012-05-04, SofI |
| CL1190b6 | 262.685225 | -32.651222 | 12.15 ± 0.03 | 9.95 ± 0.03 | 9.0 ± 0.03 | K1-2III | 2.7 ± 0.08 | 153 ± 33 | -0.52 ± 0.24 | 2012-05-04, SofI |
| CL1200b1 | 263.088451 | -36.428932 | 10.48 ± 0.04 | 8.91 ± 0.02 | 8.13 ± 0.02 | M6-7III | 1.64 ± 0.06 | | | 2012-05-03, SofI |
| CL1200b2 | 263.089948 | -36.430817 | 9.16 ± 0.02 | 7.7 ± 0.04 | 7.02 ± 0.03 | M1-2III | 1.49 ± 0.09 | 54 ± 16 | -0.07 ± 0.10 | 2012-05-03, SofI |
| CL1200b3 | 263.087256 | -36.423359 | 11.55 ± 0.03 | 10.09 ± 0.03 | 9.55 ± 0.02 | K1-2III | 1.56 ± 0.08 | 48 ± 22 | -0.66 ± 0.21 | 2012-05-03, SofI |
| CL1200b4 | 263.085037 | -36.429344 | 9.8 ± 0.08 | 8.69 ± 0.04 | 8.98 ± 0.04 | K4-5III | 0.16 ± 0.12 | 111 ± 27 | -0.12 ± 0.11 | 2012-05-03, SofI |
| CL1200b5 | 263.084764 | -36.430126 | 10.02 ± 0.05 | 8.57 ± 0.02 | 8.53 ± 0.06 | K3-4III | 0.84 ± 0.15 | 152 ± 20 | -0.12 ± 0.11 | 2012-05-03, SofI |
| CL1230b1 | 264.120148 | -35.656879 | 9.95 ± 0.02 | 8.81 ± 0.03 | 8.35 ± 0.02 | K1-2III | 1.15 ± 0.08 | -36 ± 9 | -0.03 ± 0.12 | 2012-05-03, SofI |
| CL1230b2 | 264.112250 | -35.651253 | 11.68 ± 0.04 | 10.66 ± 0.04 | 10.26 ± 0.02 | K1-2III | 0.97 ± 0.08 | | -0.16 ± 0.14 | 2012-05-03, SofI |
| CL1230b3 | 264.107672 | -35.647839 | 8.16 ± 0.02 | 7.1 ± 0.02 | 6.76 ± 0.02 | M3 | 0.74 ± 0.16 | -46 ± 13 | -0.25 ± 0.13 | 2012-05-03, SofI |
| CL1230b4 | 264.110832 | -35.660934 | 7.99 ± 0.03 | 6.84 ± 0.03 | 6.32 ± 0.03 | M6 | 1.03 ± 0.12 | -67 ± 10 | -0.31 ± 0.15 | 2012-05-03, SofI |
| CL1230b5 | 264.104189 | -35.654114 | 9.27 ± 0.03 | 8.51 ± 0.02 | 8.25 ± 0.03 | G8-9III | 0.65 ± 0.07 | 6 ± 21 | -0.26 ± 0.11 | 2012-05-03, SofI |
| CL1240b1 | 264.145178 | -29.580191 | 11.44 ± 0.07 | 10.02 ± 0.10 | 9.3 ± 0.06 | K3-4III | 1.59 ± 0.15 | -37 ± 16 | -0.03 ± 0.10 | 2012-05-06, SofI |
| CL1240b2 | 264.144743 | -29.581400 | 10.46 ± 0.05 | 10.41 ± 0.08 | 8.45 ± 0.05 | K4-5III | 1.41 ± 0.12 | -46 ± 19 | -0.01 ± 0.11 | 2012-05-06, SofI |
| CL1240b3 | 264.143778 | -29.582207 | 10.54 ± 0.06 | 9.57 ± 0.10 | 8.86 ± 0.04 | K1-2III | 1.24 ± 0.08 | -39 ± 25 | -0.93 ± 0.21 | 2012-05-06, SofI |
| CL1240b4 | 264.145985 | -29.581848 | 11.08 ± 0.07 | 9.52 ± 0.09 | 8.51 ± 0.04 | K0-1III | 2.14 ± 0.12 | -30 ± 26 | -1.03 ± 0.34 | 2012-05-06, SofI |
| CL1240b5 | 264.145014 | -29.582500 | 10.54 ± 0.05 | 10.26 ± 0.08 | 8.51 ± 0.06 | M1-2III | 1.36 ± 0.09 | -27 ± 19 | +0.05 ± 0.10 | 2012-05-06, SofI |
| CL1300b1 | 265.295189 | -30.440063 | 12.76 ± 0.03 | 9.08 ± 0.03 | 7.22 ± 0.02 | M0-1I | 4.52 ± 0.05 | -15 ± 31 | +0.08 ± 0.12 | 2012-05-03, SofI |
| CL1300b2 | 265.293421 | -30.441717 | 12.01 ± 0.02 | 8.55 ± 0.04 | 6.92 ± 0.02 | K3-4I | 4.28 ± 0.10 | -42 ± 35 | +0.62 ± 0.24 | 2012-05-03, SofI |
| CL1300b3 | 265.301513 | -30.437988 | 13.73 ± 0.03 | 10.65 ± 0.02 | 9.27 ± 0.02 | K1-2III | 4.01 ± 0.08 | | +0.10 ± 0.14 | 2012-05-03, SofI |
| CL1300b4 | 265.297311 | -30.441914 | 13.15 ± 0.06 | 8.73 ± 0.04 | 6.46 ± 0.02 | K3-4I | 5.88 ± 0.10 | -16 ± 27 | | 2012-05-03, SofI |
| CL1300b5 | 265.296287 | -30.442829 | 13.32 ± 0.04 | 9.64 ± 0.03 | 7.23 ± 0.08 | M0-1I | 5.08 ± 0.05 | 18 ± 13 | -0.02 ± 0.11 | 2012-05-03, SofI |
| CL1390b1 | 265.957411 | -31.737024 | 13.05 ± 0.06 | 10.89 ± 0.09 | 9.59 ± 0.05 | M0-1III | 2.79 ± 0.07 | | -0.39 ± 0.14 | 2012-05-06, SofI |
| CL1390b2 | 265.955805 | -31.739756 | 11.82 ± 0.06 | 10.11 ± 0.03 | 9.15 ± 0.03 | M0-1III | 2.00 ± 0.07 | -35 ± 25 | -0.01 ± 0.11 | 2012-05-06, SofI |
| CL1400b1 | 265.971981 | -31.737429 | 11.63 ± 0.02 | 9.12 ± 0.03 | 7.91 ± 0.02 | M1III | 3.04 ± 0.07 | | -0.10 ± 0.13 | 2012-05-06, SofI |
| CL1400b2 | 265.974657 | -31.736923 | 11.90 ± 0.02 | 9.63 ± 0.03 | 8.65 ± 0.02 | K4-5III | 2.66 ± 0.12 | -21 ± 28 | -0.42 ± 0.15 | 2012-05-06, SofI |
| CL1400b3 | 265.973223 | -31.731306 | 14.43 ± 0.05 | 11.67 ± 0.04 | 10.4 ± 0.04 | G9III | 3.66 ± 0.05 | 87 ± 19 | -1.02 ± 0.23 | 2012-05-06, SofI |
| CL1400b4 | 265.971785 | -31.730059 | 12.90 ± 0.04 | 10.67 ± 0.06 | 9.69 ± 0.05 | K3III | 2.72 ± 0.14 | -16 ± 39 | -0.74 ± 0.19 | 2012-05-06, SofI |
| CL1400b5 | 265.970468 | -31.729139 | 12.31 ± 0.05 | 10.77 ± 0.03 | 10.11 ± 0.03 | K0III | 1.80 ± 0.08 | 2 ± 33 | -0.11 ± 0.14 | 2012-05-06, SofI |
| CL1420b1 | 266.143009 | -28.663368 | 13.81 ± 0.07 | 10.66 ± 0.08 | 8.84 ± 0.07 | K0III | 4.58 ± 0.08 | 45 ± 30 | -0.86 ± 0.22 | 2012-05-02, SofI |
| CL1420b2 | 266.142651 | -28.664537 | 14.84 ± 0.08 | 11.23 ± 0.07 | 9.42 ± 0.07 | M5-8III | 4.78 ± 0.08 | | +0.33 ± 0.12 | 2012-05-02, SofI |

Table 3. continued.

| Name | RA deg | Dec deg | <i>J</i> mag | <i>H</i> mag | <i>K_s</i> mag | Sp.Type | <i>E(J - K_s)</i> mag | RV km s ⁻¹ | [Fe/H] dex | Log |
|-----------|------------|------------|-----------------|-----------------|-----------------------------|----------|------------------------------------|--------------------------|---------------|--------------------|
| CL1420bj3 | 266.142397 | -28.665148 | 16.71 ± 0.03 | 12.63 ± 0.05 | 10.88 ± 0.05 | M0III | 5.21 ± 0.05 | | -0.03 ± 0.11 | 2012-05-02, SofI |
| CL1420bj4 | 266.141444 | -28.664568 | 14.78 ± 0.11 | 10.92 ± 0.08 | 8.80 ± 0.08 | M3-4III | 5.32 ± 0.10 | 17 ± 23 | +0.05 ± 0.11 | 2012-05-02, SofI |
| CL1420bj5 | 266.143705 | -28.664934 | 15.36 ± 0.07 | 11.58 ± 0.04 | 9.69 ± 0.04 | M0III | 5.06 ± 0.05 | 12 ± 25 | -0.17 ± 0.12 | 2012-05-02, SofI |
| CL1430bj1 | 266.153022 | -33.740978 | 10.79 ± 0.03 | 9.6 ± 0.03 | 9.15 ± 0.03 | M0-1III | 0.98 ± 0.07 | 102 ± 23 | +0.02 ± 0.12 | 2012-05-02, SofI |
| CL1430bj2 | 266.147631 | -33.735596 | 10.57 ± 0.04 | 9.46 ± 0.04 | 9.15 ± 0.04 | M0III | 0.80 ± 0.05 | 79 ± 15 | -1.13 ± 0.32 | 2012-05-02, SofI |
| CL1430bj3 | 266.146035 | -33.733501 | 11.42 ± 0.04 | 10.38 ± 0.03 | 10.05 ± 0.03 | K0III | 0.97 ± 0.08 | 119 ± 18 | -0.99 ± 0.21 | 2012-05-02, SofI |
| CL1430bj4 | 266.165291 | -33.733170 | 10.74 ± 0.03 | 9.5 ± 0.03 | 8.97 ± 0.03 | M0III | 1.16 ± 0.05 | | -1.17 ± 0.27 | 2012-05-02, SofI |
| CL1430bj5 | 266.156442 | -33.736031 | 10.35 ± 0.03 | 9.19 ± 0.03 | 8.63 ± 0.03 | M0III | 1.10 ± 0.05 | 88 ± 21 | -0.16 ± 0.11 | 2012-05-02, SofI |
| CL1430bj6 | 266.145125 | -33.739616 | 11.13 ± 0.03 | 9.92 ± 0.03 | 9.59 ± 0.04 | K3III | 1.35 ± 0.14 | 60 ± 18 | -0.25 ± 0.12 | 2012-05-02, SofI |
| CL1430bj7 | 266.154177 | -33.736938 | 10.77 ± 0.03 | 9.65 ± 0.03 | 9.36 ± 0.03 | G8III | 1.04 ± 0.04 | 67 ± 28 | -1.05 ± 0.25 | 2012-05-02, SofI |
| CL1460bj1 | 266.503501 | -28.817527 | 15.22 ± 0.08 | 11.33 ± 0.05 | 9.35 ± 0.05 | M5III | 4.88 ± 0.06 | | | 2012-05-14, OSIRIS |
| CL1460bj2 | 266.500850 | -28.817808 | 15.11 ± 0.15 | 11.53 ± 0.15 | 9.36 ± 0.05 | M5-7III | 5.12 ± 0.08 | | -0.01 ± 0.12 | 2012-05-14, OSIRIS |
| CL1460bj3 | 266.499904 | -28.818137 | 15.13 ± 0.01 | 12.05 ± 0.01 | 10.55 ± 0.01 | K5III | 3.97 ± 0.09 | 114 ± 21 | -0.37 ± 0.17 | 2012-05-14, OSIRIS |
| CL1460bj4 | 266.498021 | -28.818344 | 13.57 ± 0.04 | 9.83 ± 0.05 | 8.06 ± 0.03 | K5I | 4.55 ± 0.06 | 133 ± 21 | +0.15 ± 0.11 | 2012-05-14, OSIRIS |
| CL1460bj5 | 266.496767 | -28.818642 | 14.25 ± 0.05 | 12.14 ± 0.07 | 8.93 ± 0.05 | M0III | 4.70 ± 0.05 | 121 ± 29 | -0.36 ± 0.15 | 2012-05-14, OSIRIS |
| CL1490bj1 | 267.347058 | -29.462183 | 13.90 ± 0.10 | 12.29 ± 0.08 | 11.53 ± 0.07 | K1III | 1.95 ± 0.07 | 54 ± 23 | -0.50 ± 0.16 | 2012-05-02, SofI |
| CL1490bj2 | 267.345025 | -29.464018 | 12.27 ± 0.07 | 10.44 ± 0.07 | 9.60 ± 0.04 | M0III | 2.05 ± 0.05 | 53 ± 23 | -0.53 ± 0.15 | 2012-05-02, SofI |
| CL1490bj3 | 267.343054 | -29.466053 | 7.58 ± 0.02 | 6.62 ± 0.04 | 6.25 ± 0.02 | G9-K0III | 0.93 ± 0.09 | -91 ± 29 | +0.02 ± 0.11 | 2012-05-02, SofI |
| CL1490bj4 | 267.340996 | -29.467297 | 10.52 ± 0.05 | 8.6 ± 0.03 | 7.55 ± 0.02 | K4-5III | 2.42 ± 0.12 | 55 ± 15 | -0.40 ± 0.12 | 2012-05-02, SofI |
| CL1490bj5 | 267.338429 | -29.463346 | 9.09 ± 0.06 | 7.52 ± 0.10 | 6.90 ± 0.04 | K4-5III | 1.64 ± 0.12 | -41 ± 18 | -0.30 ± 0.21 | 2012-05-02, SofI |
| CL1490bj6 | 267.338266 | -29.464169 | 8.65 ± 0.03 | 7.36 ± 0.03 | 6.85 ± 0.02 | K2-3III | 1.35 ± 0.16 | 36 ± 30 | | 2012-05-02, SofI |
| CL1500bj1 | 267.677058 | -25.218052 | 11.31 ± 0.03 | 9.79 ± 0.03 | 9.15 ± 0.02 | K3III | 1.68 ± 0.14 | | -0.83 ± 0.13 | 2012-05-05, SofI |
| CL1500bj2 | 267.670466 | -25.217829 | 11.96 ± 0.05 | 10.52 ± 0.04 | 9.94 ± 0.05 | K2-3III | 1.58 ± 0.16 | | -0.65 ± 0.11 | 2012-05-05, SofI |
| CL1500bj3 | 267.668962 | -25.217709 | 11.80 ± 0.07 | 10.29 ± 0.07 | 9.69 ± 0.06 | K4-5III | 1.55 ± 0.12 | | -0.77 ± 0.17 | 2012-05-05, SofI |
| CL1500bj4 | 267.665514 | -25.217760 | 12.54 ± 0.04 | 10.99 ± 0.04 | 10.35 ± 0.03 | K4-5III | 1.64 ± 0.12 | 50 ± 10 | -0.76 ± 0.15 | 2012-05-05, SofI |
| CL1520bj1 | 268.281935 | -22.643370 | 12.11 ± 0.08 | 11.16 ± 0.10 | 10.69 ± 0.07 | G9III | 1.05 ± 0.05 | | -1.12 ± 0.21 | 2011-04-19, SofI |
| CL1520bj2 | 268.282059 | -22.643873 | 13.28 ± 0.01 | 12.22 ± 0.01 | 11.77 ± 0.01 | G9III | 1.14 ± 0.05 | | -1.09 ± 0.27 | 2011-04-19, SofI |
| CL1520bj3 | 268.282080 | -22.644624 | 13.14 ± 0.01 | 12.22 ± 0.01 | 11.98 ± 0.01 | G9III | 0.79 ± 0.05 | | -0.96 ± 0.22 | 2011-04-19, SofI |
| CL1520bj4 | 268.281984 | -22.646515 | 10.85 ± 0.05 | 9.45 ± 0.05 | 8.87 ± 0.04 | G7III | 1.60 ± 0.04 | | -1.11 ± 0.19 | 2011-04-19, SofI |
| CL1520bj5 | 268.282065 | -22.647198 | 12.11 ± 0.01 | 11.36 ± 0.01 | 10.43 ± 0.01 | K0-3III | 1.23 ± 0.19 | | -0.32 ± 0.15 | 2011-04-19, SofI |
| CL1520bj6 | 268.282567 | -22.652021 | 13.56 ± 0.06 | 12.20 ± 0.06 | 11.7 ± 0.05 | O9V | 2.03 ± 0.04 | | | 2011-04-19, SofI |
| CL1520bj7 | 268.282738 | -22.653069 | 14.05 ± 0.07 | 12.88 ± 0.07 | 12.46 ± 0.05 | G8-K0III | 1.20 ± 0.06 | | -0.80 ± 0.18 | 2011-04-19, SofI |
| CL1520bj8 | 268.282276 | -22.656670 | 14.43 ± 0.09 | 13.44 ± 0.09 | 13.19 ± 0.07 | K3V | 0.59 ± 0.08 | | | 2011-04-19, SofI |
| CL1540bj1 | 268.786860 | -28.099880 | 11.77 ± 0.04 | 10.22 ± 0.04 | 9.47 ± 0.03 | K0-4III | 1.85 ± 0.19 | | -0.19 ± 0.11 | 2011-04-19, SofI |
| CL1540bj2 | 268.783761 | -28.100582 | 11.64 ± 0.04 | 10.40 ± 0.05 | 9.79 ± 0.04 | G5III | 1.50 ± 0.32 | | -0.45 ± 0.13 | 2011-04-19, SofI |
| CL1540bj3 | 268.780811 | -28.101231 | 10.42 ± 0.01 | 9.06 ± 0.01 | 8.44 ± 0.06 | K0-4III | 1.53 ± 0.19 | | -0.93 ± 0.27 | 2011-04-19, SofI |
| CL1570bj1 | 271.022438 | -19.729368 | 12.61 ± 0.03 | 11.25 ± 0.03 | 10.68 ± 0.03 | K2III | 1.47 ± 0.12 | | | 2012-05-14, OSIRIS |
| CL1570bj2 | 271.024838 | -19.733290 | 12.21 ± 0.04 | 10.71 ± 0.04 | 10.08 ± 0.03 | K2-3III | 1.64 ± 0.16 | -14 ± 16 | -0.23 ± 0.15 | 2012-05-14, OSIRIS |
| CL1600bj1 | 271.740450 | -20.007586 | 11.83 ± 0.03 | 9.85 ± 0.03 | 9.09 ± 0.03 | K2-4III | 2.29 ± 0.17 | 185 ± 10 | -0.72 ± 0.21 | 2012-05-14, OSIRIS |
| CL1600bj2 | 271.736140 | -20.009516 | 9.80 ± 0.02 | 8.79 ± 0.04 | 8.35 ± 0.03 | K0III | 1.06 ± 0.08 | 20 ± 14 | | 2012-05-14, OSIRIS |
| CL1610bj1 | 271.912188 | -26.207048 | 7.46 ± 0.03 | 6.51 ± 0.03 | 6.23 ± 0.02 | K0-1I | 0.68 ± 0.09 | | | 2012-05-14, OSIRIS |
| CL1610bj2 | 271.910090 | -26.196815 | 7.10 ± 0.02 | 6.12 ± 0.02 | 5.68 ± 0.02 | K5-6I | 0.88 ± 0.07 | | | 2012-05-14, OSIRIS |
| CL1610bj3 | 271.924521 | -26.192663 | 9.72 ± 0.02 | 8.32 ± 0.03 | 7.48 ± 0.03 | M0-1I | 1.61 ± 0.05 | | | 2012-05-14, OSIRIS |
| CL1610bj4 | 271.914693 | -26.190865 | 7.81 ± 0.02 | 6.82 ± 0.04 | 6.45 ± 0.02 | K8-9I | 0.81 ± 0.06 | | | 2012-05-14, OSIRIS |
| CL1610bj5 | 271.930827 | -26.207802 | 10.67 ± 0.03 | 8.61 ± 0.03 | 8.22 ± 0.03 | K1-2I | 1.80 ± 0.08 | | | 2012-05-14, OSIRIS |
| CL1610bj6 | 271.930011 | -26.207237 | 10.00 ± 0.05 | 8.48 ± 0.03 | 7.97 ± 0.02 | K2-3I | 1.39 ± 0.12 | | | 2012-05-14, OSIRIS |

Appendix A

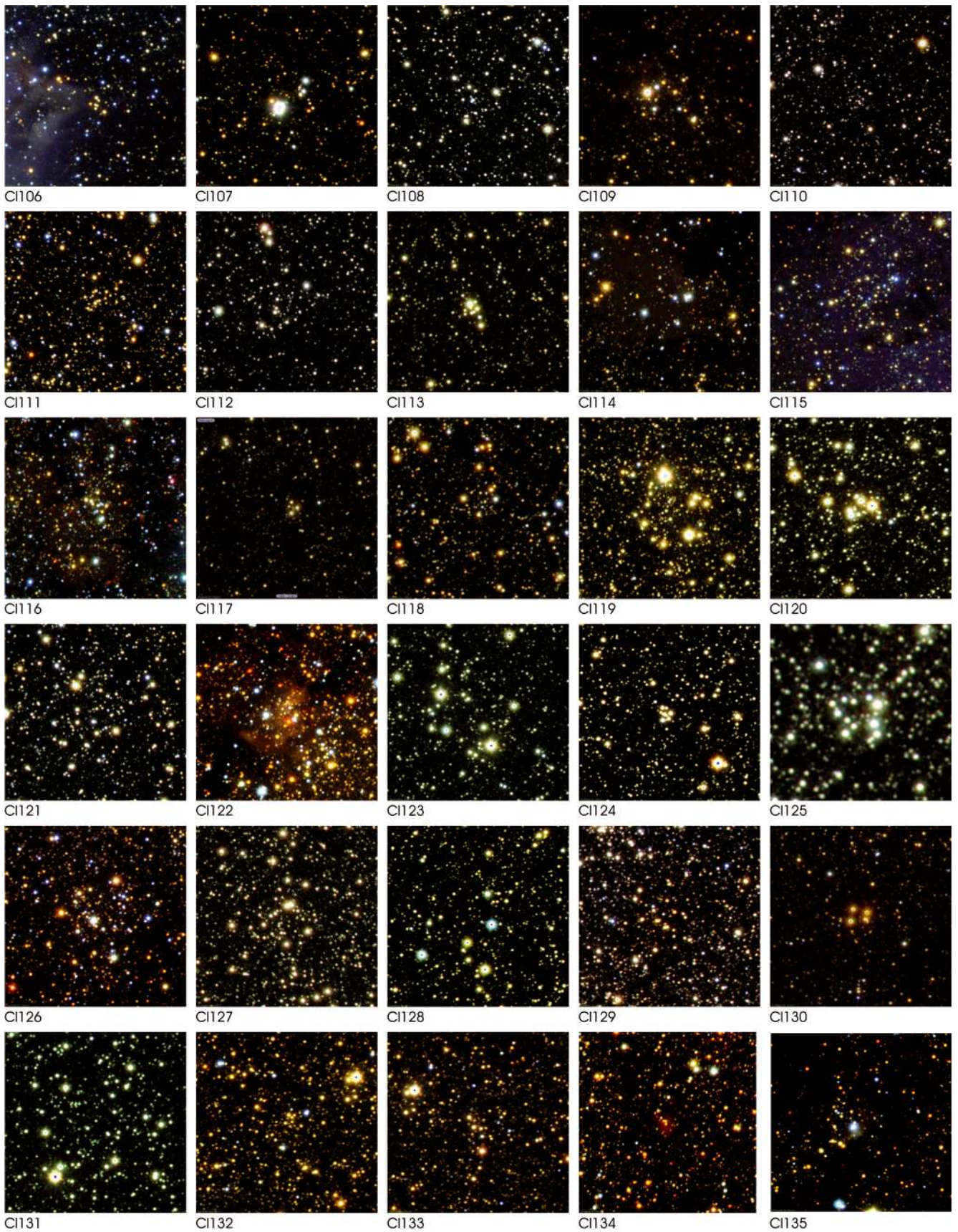


Fig. A.1. VVV JHK_s composite color images of VVV open cluster candidates. The field of view is approx. 2.5×2.5 arcmin, and north is up, east to the right.

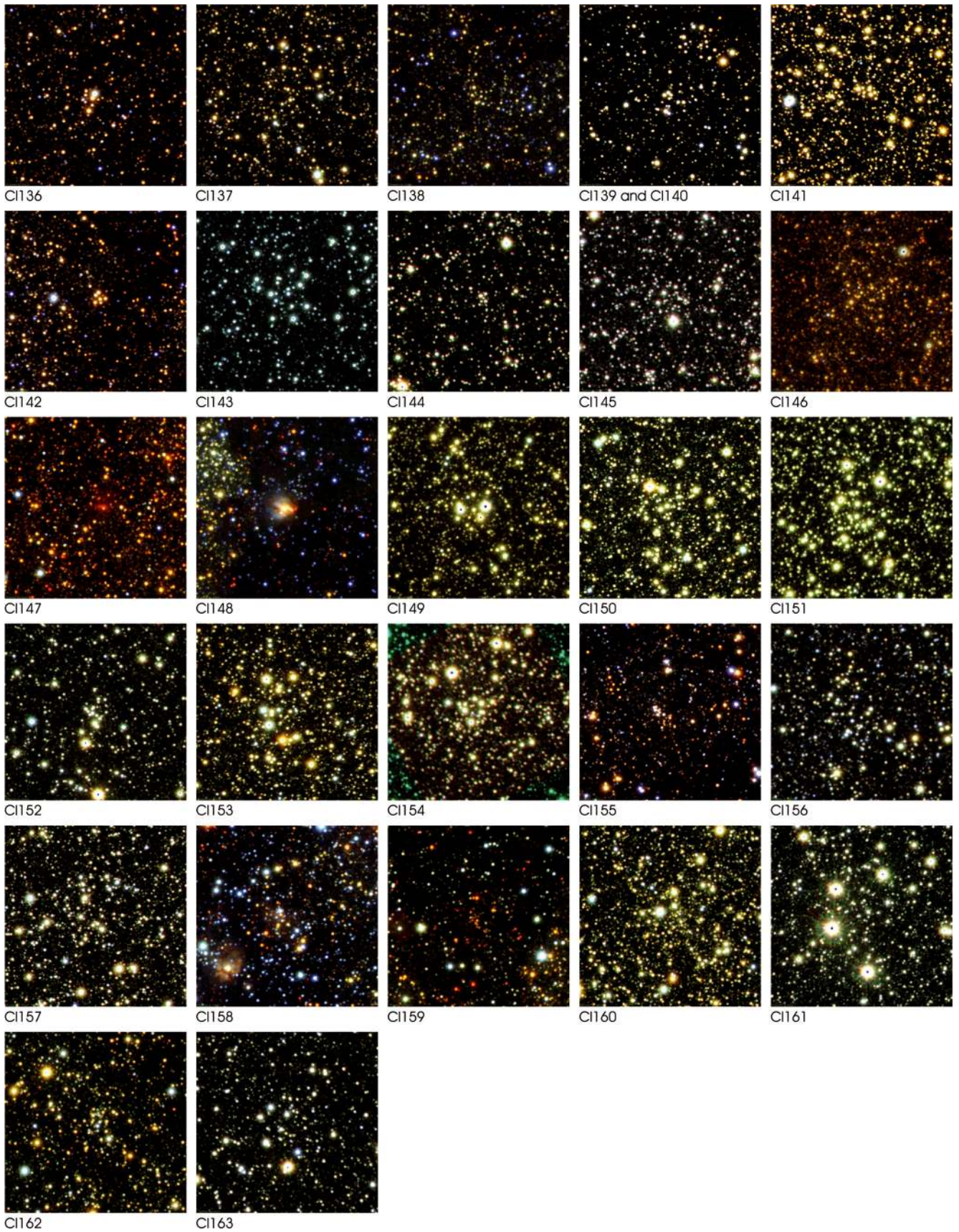


Fig. A.2. VVV JHK_S composite color images of VVV open cluster candidates. The field of view is approx. 2.5×2.5 arcmin, and north is up, east to the right.

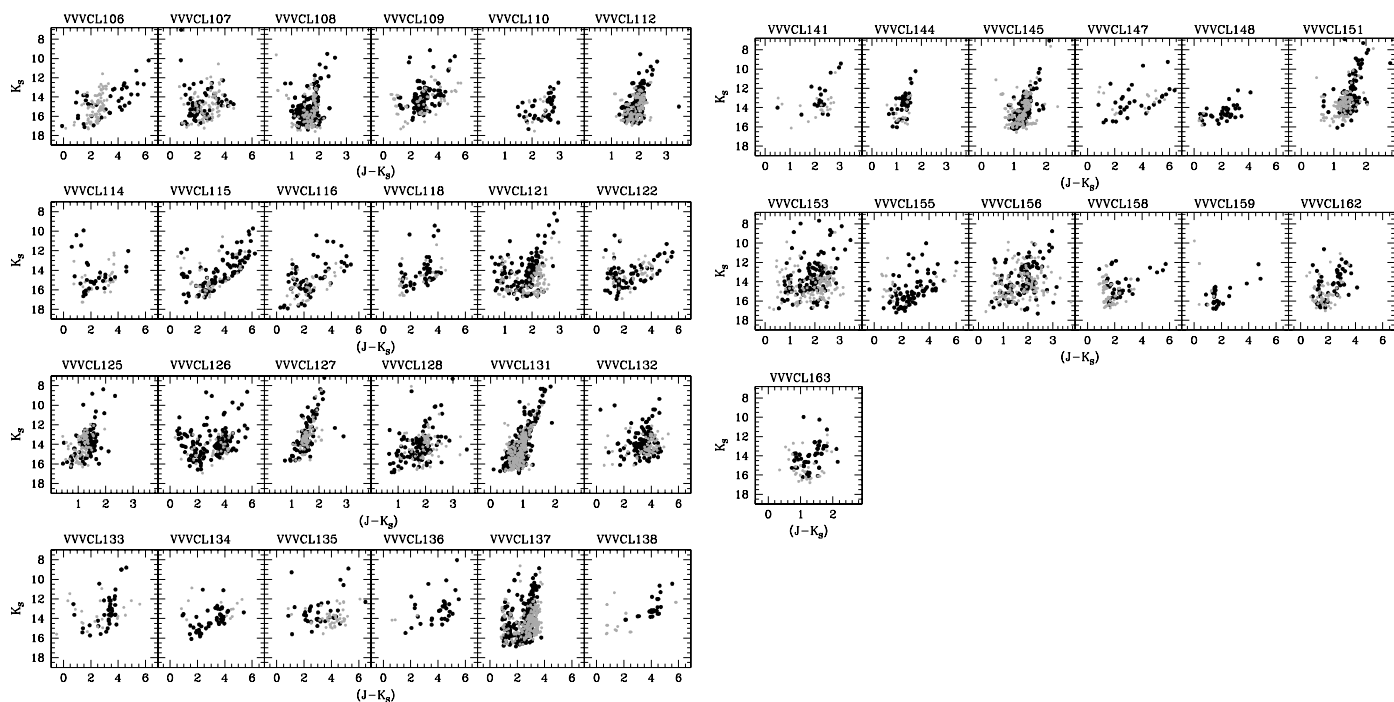


Fig. A.3. Color–magnitude diagrams of the rest of the clusters listed in Table 1. Gray circles are stars of the comparison field, dark circles are all the stars in the corresponding cluster radius.

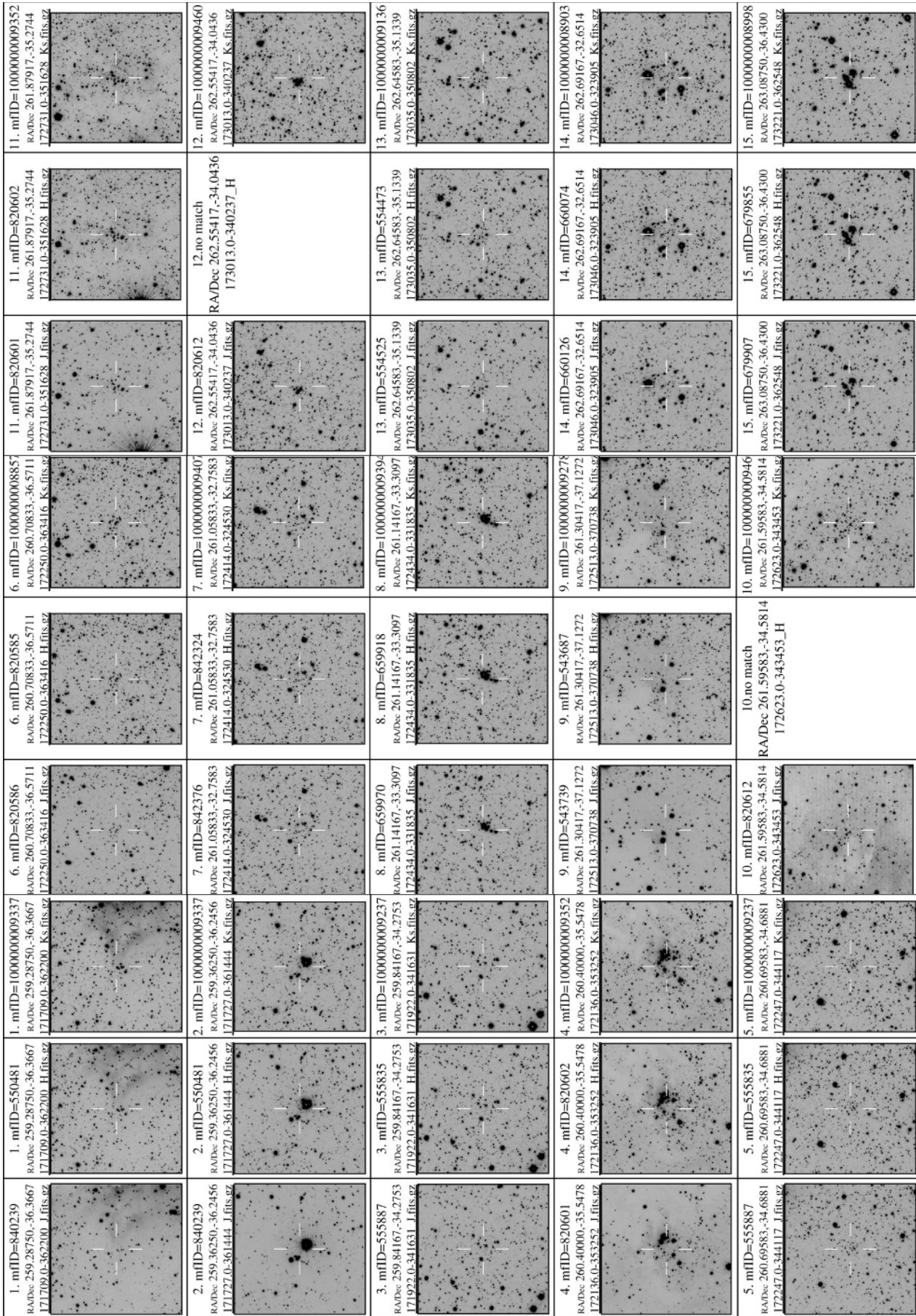


Fig. A.4. *J*, *H*, *K_s* VSA individual images of the cluster candidates. The field of view is 2.5 × 2.5 arcmin and the north is up, east is to the left.

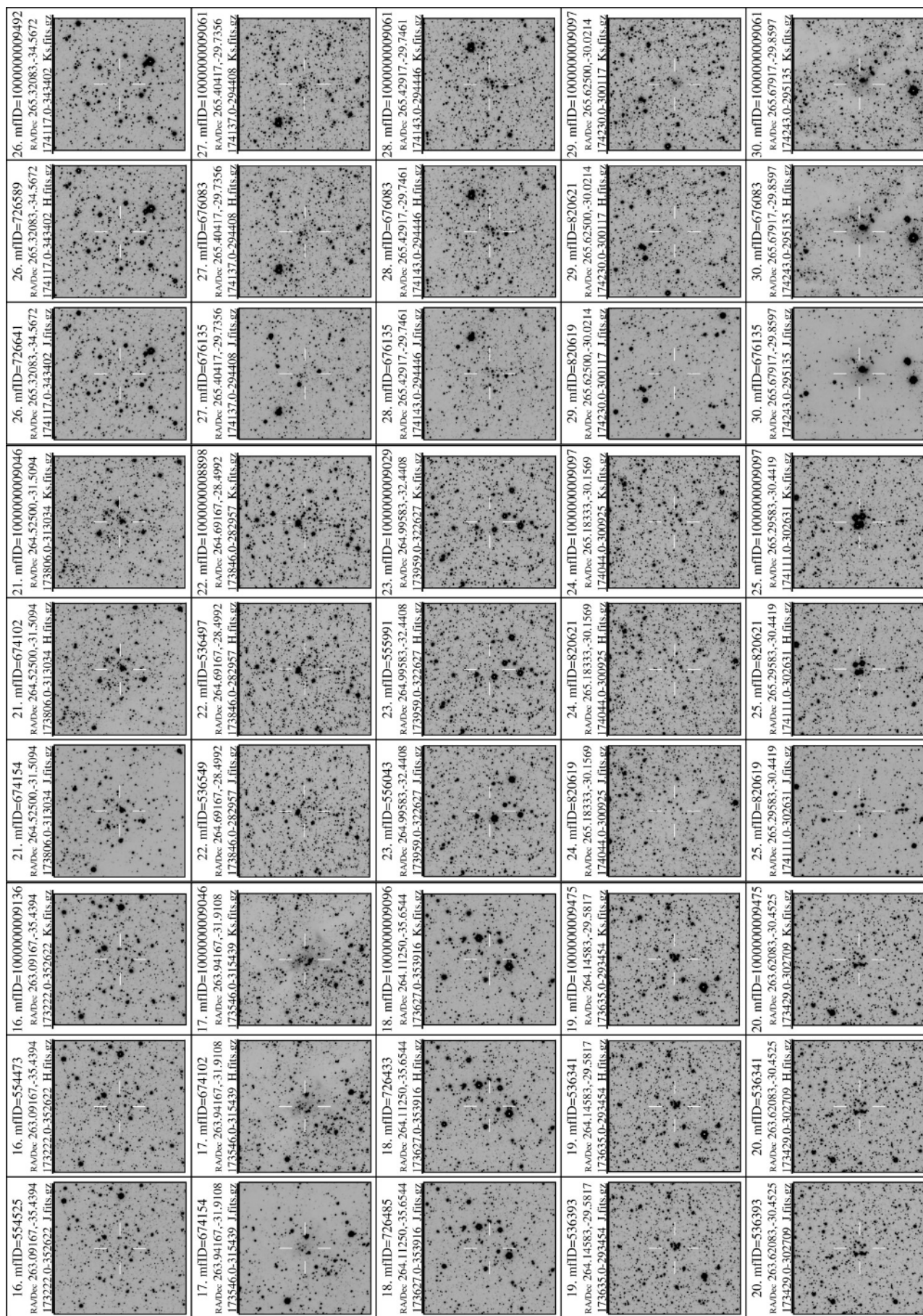


Fig. A.4. continued.

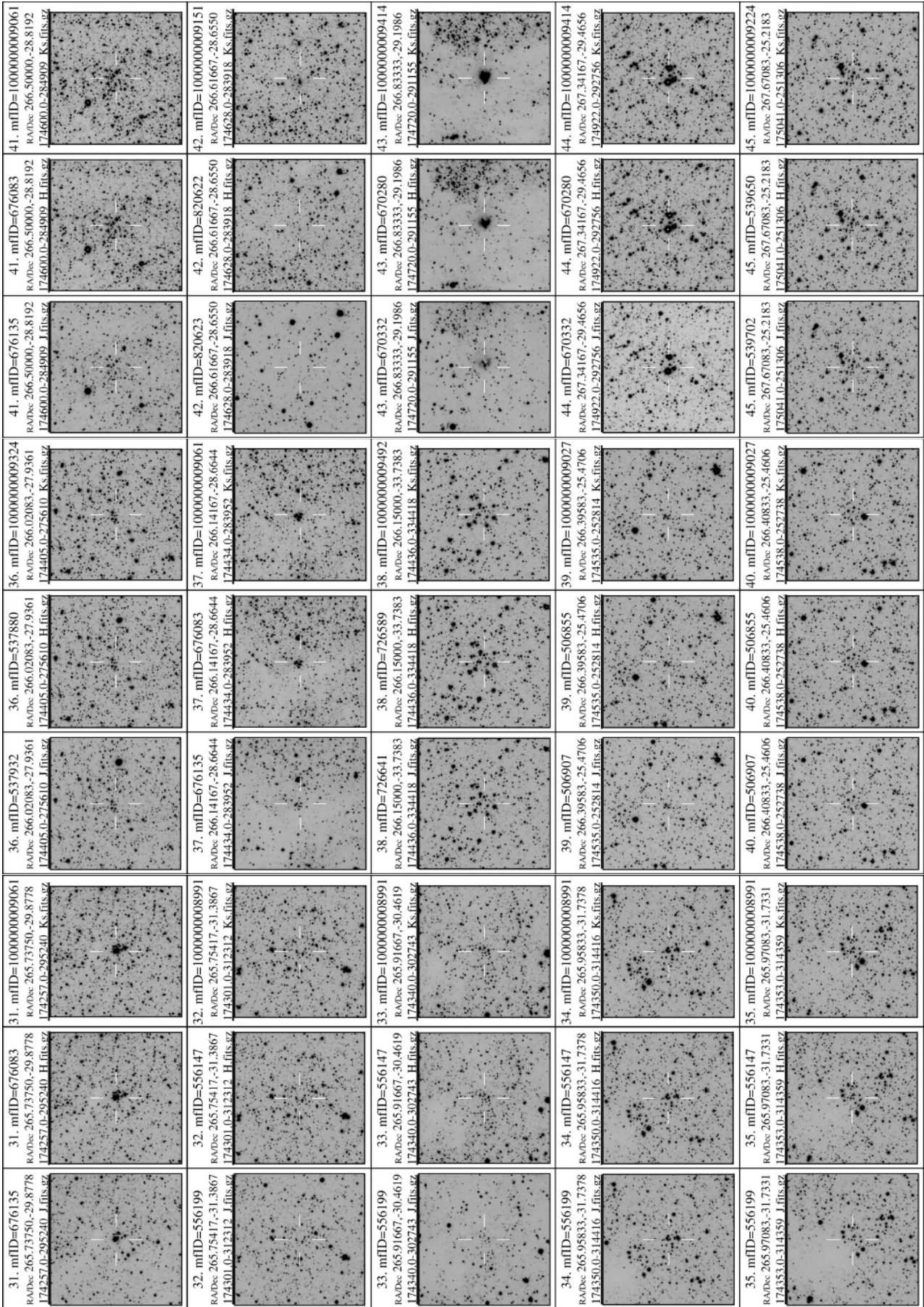


Fig. A.4. continued.

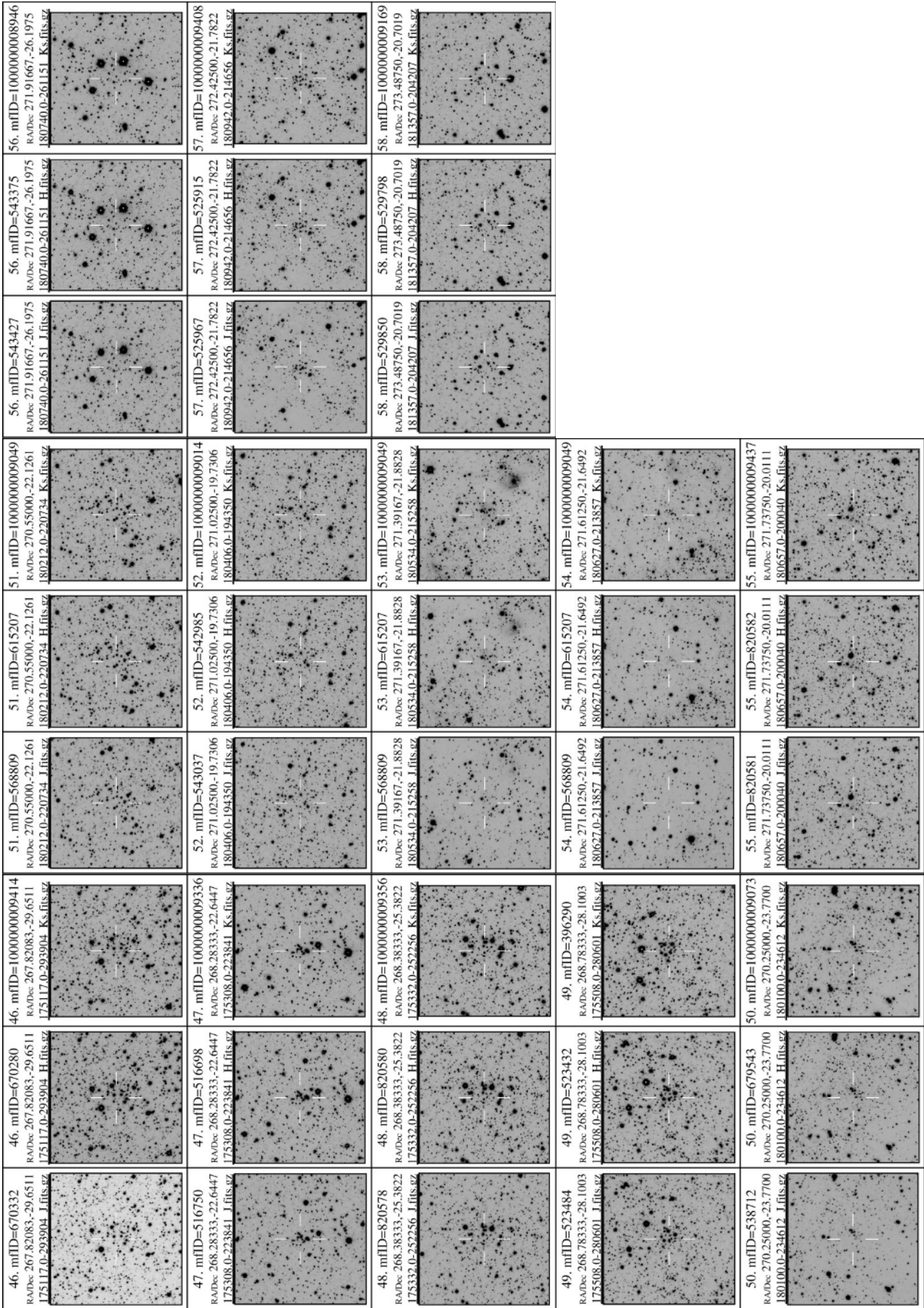


Fig. A.4. continued.

References

- Arnaboldi, M., Neeser, M. J., Parker, L. C., et al. 2007, *The Messenger*, 127, 28
- Beletsky, Y., Carraro, G., Ivanov, V. D. 2009, *A&A*, 508, 1279
- Bica, E., Dutra, C.M., Soares, J., Barbuy, B. 2003, *A&A*, 404, 223
- Bonatto C., & Bica E. 2010, *A&A*, 516, A81
- Borissova, J., Bonatto, C., Kurtev, R., et al. 2011, *A&A*, 532, A131
- Bressan, A., Marigo, P., Girardi, L., et al. 2012, *MNRAS*, 427, 127
- Carrera, R., Pancino, E., Gallart, C., & del Pino, A. 2013, *MNRAS*, 434, 1681
- Chenè, A.-N., Borissova, J., Clarke, J. R. A., et al. 2012, *A&A*, 545, A54
- Chenè, A.-N., Borissova, J., Bonatto, C., et al. 2013, *A&A*, 549, A98
- Cross, N. J. G., Collins, R. S., Mann, R. G., et al. 2012, *A&A*, 548, A119
- Crowther, P., Hadfield, L., Clark, J., S. Negueruela, I., & Vacca, W. 2006, *MNRAS*, 372, 1407
- Churchwell, E., Povich, M., Allen, D., et al. 2006, *ApJ*, 649, 759
- Churchwell, E., Watson, D., Povich, M., et al. 2007, *ApJ*, 670, 428
- Dalton, G. B., Caldwell, M., Ward, A. K., et al. 2006, *Ground-based and Airborne Instrumentation for Astronomy*. eds. I. S. McLean, & I. Masanori, *Proc. SPIE*, 6269, 30
- Davies, B., Figer, D., Kudritzki, R., et al. 2007, *ApJ*, 671, 781
- Dias, W. S., Alessi B. S., Moitinho A., & Lepine J. R. D., 2002, *A&A*, 389, 871
- Dutra, C. M., Bica, E., Soares, J., & Barbuy, B., 2003, *A&A*, 400, 533
- Ferraro, F., Origlia, L., Testa, V., & Maraston, C. 2004, *ApJ*, 608, 772
- Frogel, J., Stephens, A., Ramirez, S., & DePoy, D. 2001, *AJ*, 122, 1896
- Friel, F. 1995, *ARA&A*, 33, 381
- Froebich, D., Scholz, A., & Raftery, C. L., 2007, *MNRAS*, 374, 399
- Gonzalez, O. A., Rejkuba, M., Zoccali, M., Valenti, E., & Minniti, D. 2011, *A&A*, 534, 3
- Gonzalez, O. A., Rejkuba, M., Zoccali, M., et al. 2012, *A&A*, 543, A13
- Hanson, M. M., Conti, P. S., & Rieke, M. J. 1996, *ApJS*, 107, 281
- Hanson, M. M., Kudritzki, R.-P., Kenworthy, M. A., Puls, J., & Tokunaga, A. T. 2005, *ApJS*, 161, 154
- Irwin, M. J., Lewis, J., Hodgkin, S., et al. 2004, *Optimizing Scientific Return for Astronomy through Information Technologies*. eds. P. J. Quinn, & A. Bridger, *Proc. of the SPIE*, 5493, 411
- Lamers, H. J. G. L. M., Gieles, M., Bastian, N., et al. 2005, *A&A*, 437, 129
- Liermann, A., Hamann, W.-R., & Oskinova, L. M. 2009, *A&A*, 494, 1137
- Longmore, S. N., & Burton, M. G. 2009, *PASA*, 26, 439
- Majaess, D. 2013, *Ap&SS*, 344, 175
- Mauerhan, J., Van Dyk, S., & Morris, P. 2011, *AJ*, 142, 40
- Martins, L. P., & Coelho, P. 2007, *MNRAS*, 381, 1329
- Morales, E., Wyrowski, F., Schuller, F., Menten, & Karl, M. 2013, *A&A*, 560, A76
- Mauro, F., Moni Bidin, C., Geisler, D., et al. 2011, *BAAA*, 54, 191
- Mauro, F., Moni Bidin, Ch., Chenè, A.-N., Geisler, D., & Alonso-Garcia, J. 2013, *Rev. Mex. Astron. Astrophys.*, 49, 2
- Mercer, E., Clemens, D., Meade, M., et al. 2005, *ApJ*, 635, 560
- Meyer, M., Edwards, S., Hinkle, K., Strom, S. 1998, *ApJ*, 508, 397
- Minniti, D., Lucas, P., Emerson, J., et al. 2010, *New Astron.*, 15, 433
- Minniti, D., Hempel, M., Toledo, I., et al. 2011, *A&A*, 527, A81
- Messineo, M., Menten, K. M., Churchwell, E., & Habing, H. 2012, *A&A*, 537, L10
- Nataf, D. M., Gould, A., Fouqué, P., et al. 2013, *ApJ*, 769, 88
- Moni Bidin, C., Mauro, F., Geisler, D., et al. 2011, *A&A*, 535, A33
- Nishiyama, S., Tamura, M., Hatano, H., et al. 2009, *ApJ*, 696, 1407
- Ojha, D. K., Omont, A., Schuller, F., et al. 2003, *A&A*, 403, 141
- Piskunov, A., Schilbach, E., Kharchenko, N. V., Roser, S., & Scholz, R. 2008, *A&A*, 477, 165
- Ramírez Alegría, S., Borissova, J., Chenè, A. N., et al. 2014, *A&A*, 564, L9
- Rayner, J. T., Cushing, M. C., & Vacca, W. D. 2009, *ApJS*, 185, 289
- Robin, A. C., Reylé, C., Derrière, S., & Picaud, S. 2003, *A&A*, 409, 523
- Saito, R., Hempel, M., Alonso-Garcia, J., et al. 2010, *The Messenger*, 141, 24
- Saito, R. K., Hempel, M., Minniti, D., et al. 2012, *A&A*, 537, A107
- Solin, O., Ukkonen, E., & Haikala, L. 2012, *A&A*, 542, A3
- Solin, O., Haikala, L., & Ukkonen, E. 2014, *A&A*, 562, A115
- Soto, M., Barba, R., Gunthardt, G., et al. 2013, *A&A*, 552, A101
- Stead, J. J., & Hoare, M. G. 2011, *MNRAS*, 418, 2219
- Stetson, P., & Pancino, R. 2008, *PASP*, 120, 1332
- Straizys, V., & Lazauskaitė, R. 2009, *Baltic Astron.*, 18, 19
- Wallace, L., & Hinkle, K. 1997, *ApJS*, 111, 445
- Zasowski, G., Beaton, R. L., Hamm, K. K., et al. 2013, *AJ*, 146, 64
- Zoccali, M., Gonzalez, O. A., Vasquez, S., et al. 2014, *A&A*, 562, A66

-
- ¹ Departamento de Física y Astronomía, Facultad de Ciencias, Universidad de Valparaíso, Av. Gran Bretaña 1111, Playa Ancha, Casilla 5030 Valparaíso, Chile
e-mail: jura.borissova@uv.cl
- ² Gemini Observatory, Northern Operations Centre, 670 North A'ohoku Place, Hilo, HI 96720, USA
e-mail: andrenicolas.chene@gmail.com
- ³ Aryabhata Research Institute of Observational Sciences (ARIES), Manora Peak, 263 129 Nainital, India
e-mail: saurabh175@gmail.com
- ⁴ Departamento de Física, Ingeniería de Sistemas y Teoría de la Señal, Universidad de Alicante, Apdo. 99, 03080 Alicante, Spain
e-mail: ignacio.negueruela@ua.es
- ⁵ Departamento de Astronomía y Astrofísica, Pontificia Universidad Católica de Chile, Av. Vicuña Mackenna 4860, Casilla 306 Santiago 22, Chile
e-mail: [dante;mcatean]@astro.puc.cl
- ⁶ Universidade Federal do Rio Grande do Sul, Departamento de Astronomia CP 15051, RS, 91501-970 Porto Alegre, Brazil
e-mail: charles@if.ufrgs.br
- ⁷ Departamento de Astronomía, Casilla 160-C Concepción, Universidad de Concepción, Chile
e-mail: dgeisler@astro-udec.cl
- ⁸ Department of Physics, University of Cincinnati, Cincinnati, OH 45221-0011, USA
e-mail: [margaret.hanson;bogdan.popescu]@uc.edu
- ⁹ European Southern Observatory, Ave. Alonso de Cordova 3107, Casilla 19 Santiago 19001, Chile
e-mail: vivanov@eso.org
- ¹⁰ Centre for Astrophysics Research, University of Hertfordshire, Hatfield AL10 9AB, UK
e-mail: p.w.lucas@herts.ac.uk
- ¹¹ Department of Astronomy & Physics, Saint Mary's University, Halifax, NS B3H 3C3; Mount Saint Vincent University, Halifax, NS B3M 2J6, Canada
e-mail: dmajaess@ns.sympatico.ca
- ¹² Instituto de Astronomía, Universidad Católica del Norte, Av. Angamos 0610, Antofagasta, Chile
e-mail: cmoni@ucn.cl
- ¹³ Universidade Federal de Sergipe, Departamento de Física, Av. Marechal Rondon s/n, 49100-000 São Cristóvão, SE, Brazil
e-mail: robsaito@gmail.com
- ¹⁴ Vatican Observatory, V00120 Vatican City State, Italy
- ¹⁵ Millennium Institute of Astrophysics.