



New Y and T Dwarfs from *WISE* Identified by Methane Imaging^{*†}

C. G. Tinney^{1,2}, J. Davy Kirkpatrick³, Jacqueline K. Faherty⁴, Gregory N. Mace⁵, Mike Cushing⁶, Christopher R. Gelino³,

Adam J. Burgasser⁷, Scott S. Sheppard⁸, and Edward L. Wright⁹

¹ Exoplanetary Science at UNSW, School of Physics, UNSW Sydney, NSW 2052, Australia; c.tinney@unsw.edu.au

² Australian Centre for Astrobiology, UNSW Sydney, NSW 2052, Australia

³ IPAC, Mail Code 100-22, Caltech, Pasadena, CA 91125, USA

⁴ Department of Astrophysics, American Museum of Natural History, New York, NY 10023, USA

⁵ McDonald Observatory and Department of Astronomy, University of Texas at Austin, Austin, TX 78712-1205, USA

⁶ Department of Physics and Astronomy, The University of Toledo, OH 43606, USA

⁷ Center for Astrophysics and Space Science, University of California San Diego, La Jolla, CA 92093, USA

⁸ Department of Terrestrial Magnetism, Carnegie Institution for Science, Washington, DC 20015, USA

⁹ Department of Physics and Astronomy, UCLA, Los Angeles, CA 90095-1547, USA

Received 2017 December 27; revised 2018 March 26; accepted 2018 March 27; published 2018 May 17

Abstract

We identify new Y- and T-type brown dwarfs from the *WISE All Sky* data release using images obtained in filters that divide the traditional near-infrared H and J bands into two halves—specifically CH₄s and CH₄l in the H and J2, and J3 in the J. This proves to be very effective at identifying cool brown dwarfs via the detection of their methane absorption, as well as providing preliminary classification using methane colors and *WISE*-to-near-infrared colors. New and updated calibrations between T/Y spectral types and CH₄s–CH₄l J3–W2, and CH₄s–W2 colors are derived, producing classification estimates good to a few spectral sub-types. We present photometry for a large sample of T and Y dwarfs in these filters, together with spectroscopy for 23 new ultra-cool dwarfs—2 Y dwarfs and 21 T dwarfs. We identify a further 8 new cool brown dwarfs, which we have high confidence are T dwarfs based on their methane photometry. We find that, for objects observed on a 4 m class telescope at J-band magnitudes of ~ 20 or brighter, CH₄s–CH₄l is the more powerful color for detecting objects and then estimating spectral types. Due to the lower sky background in the J-band, the J3 and J2 bands are more useful for identifying fainter cool dwarfs at $J \gtrsim 22$. The J3–J2 color is poor at estimating spectral types. But fortunately, once J3–J2 confirms that an object *is* a cool dwarf, the J3–W2 color is very effective at estimating approximate spectral types.

Key words: brown dwarfs – methods: observational – techniques: photometric

1. Introduction

Data from the NASA *Wide-field Infrared Survey Explorer* (*WISE*; Wright et al. 2010; Mainzer et al. 2011) have delivered unprecedented advances in our understanding of the properties and space densities of the coldest compact astrophysical sources identified outside our solar system—the T- and Y-type brown dwarfs (e.g., Cushing et al. 2011; Kirkpatrick et al. 2011, 2012, 2013). These very cold brown dwarfs have scientific impacts that span multiple astronomical arenas. In the field of star formation, they can deliver a historical record of the star formation process at very low masses and at epochs billions of years prior to the star-forming regions we observe today. In the field of planetary atmospheric theory, they represent low-temperature atmospheres that can be readily observed without the contaminating glare of a host star, and without the photochemical complications introduced by host star irradiation. In the field of exoplanet searches, they provide nearby, low-luminosity search targets that potentially host planetary systems of their own, which could have implications for the debate on what differentiates a low-mass brown dwarf from a high-mass planet.

WISE readily identifies these very cold brown dwarfs as a result of their strong thermal-infrared methane absorption. The shortest-wavelength *WISE* band (hereafter W1) has a central

wavelength of 3.4 μm , which sits in the middle of the strong fundamental methane absorption band near 3.3 μm . The second shortest *WISE* band (hereafter W2), has a central wavelength of 4.6 μm , where the photosphere is reasonably transparent and thus detects flux from deeper, hotter layers in the brown dwarf. As a result, cold brown dwarfs can be identified via their very red W1–W2 color. *WISE*'s relatively uniform all-sky coverage, coupled with its ability to identify cool objects even when quite close to the Galactic plane, makes it the ideal data source from which to generate a complete thermal-infrared magnitude-limited sample of T and Y dwarfs in the Solar Neighborhood. The generation of just such a T/Y dwarf census is a key goal of the *WISE Science Team* brown dwarf collaboration. Large numbers of Y- and T-type brown dwarfs have been identified and spectroscopically confirmed to date by the *WISE Science Team* brown dwarf collaboration using color selection (see, e.g., Cushing et al. 2011; Kirkpatrick et al. 2011, 2012; Mainzer et al. 2011; Tinney et al. 2012; Mace et al. 2013), and more recently, proper motion selection from the *AllWISE* and *NEOWISE* samples (see, e.g., Kirkpatrick et al. 2014, 2016; Schneider et al. 2016b). Additional cool brown dwarfs have been found by multiple teams independently working with public *WISE* data (e.g., Luhman 2014; Pinfield et al. 2014), while others have been identified from searches for cool companions to nearby stars (e.g., Luhman et al. 2011; Liu et al. 2012; Dupuy et al. 2015).

The *WISE Science Team* brown dwarf collaboration has largely selected targets for follow-up on the basis of photometry, consistent with $W1-W2 > 2.9$ over the full range

* This paper includes data gathered with the 3.9 m Anglo-Australian Telescope located at Siding Spring Observatory, Coonabarabran, Australia.

† This paper includes data gathered with the 6.5 m *Magellan* Telescopes located at Las Campanas Observatory, Chile.

Table 1
AAT CH₄s, CH₄l Methane Imaging

Run	Prog.	Useful Nights	Seeing
2011 Jun 11–18	11A/14
2011 Sep 6–13	11B/26	Sep 6, 7, 10, 12, 13	1"05–1"5
2012 May 30–Jun 3	12A/27	May 30, 31	1"2–2"0
2012 Jun 27–30	12A/27	Jun 28, 29, 30	1"2–2"0
2012 Sep 4–6	12B/26	Sep 4, 5, 6	1"4–2"2
2012 Dec 28–Jan 1	12B/26	Dec 28, 29, 30, 31, Jan 1	1"2–2"6

of *WISE* W2 magnitudes, plus somewhat bluer objects (i.e., down to $W1 - W2 = 2.0$) if colors and magnitudes suggested a distance less than 20 pc. In many cases these objects are non-detections at W1 (i.e., their $W1 - W2$ colors are 3σ upper limits). This substantially increases the observational phase space probed by this follow-up program, at the cost of increasing the number of “false positives” identified from the *WISE* data, which must then be eliminated by subsequent observations.

Follow-up observations require the identification and spectral classification of a near-infrared counterpart to the *WISE* source. Unfortunately, the coldest objects (i.e., the Y dwarfs) can be very faint in the near-infrared (i.e., $J \sim H \gtrsim 22$), making them challenging targets even for 8 m class ground-based telescopes. T dwarfs in *WISE* will be somewhat brighter in the near-infrared, and this gives medium-sized 4 m class telescopes a role in targeting them as part of the completion of the *WISE* T/Y dwarf census.

Methane imaging can play a useful role in this process. The discovery of very strong and broad methane absorption in the spectrum of the known T dwarf (Gl 229B Nakajima et al. 1995; Oppenheimer et al. 1995) made use of this spectral signature for T dwarf identification using specially designed imaging filters self-evidently obvious. This was confirmed when Rosenthal et al. (1996) used a circularly variable filter (i.e., an adjustable narrowband filter) to differentially re-detect Gl 229B. Subsequent use of methane imaging (rather than spectroscopy) to “winnow” out T dwarfs from wide-field survey data was first carried out by Herbst et al. (1999), while the first use of methane filters in blind searches for new T dwarfs was carried out by Mainzer & Ian (2003). At around the same time, Tinney et al. (2005) began using specially constructed methane filters in the IRIS2 instrument at the Anglo-Australian Telescope to identify T dwarfs from lists of candidates from the 2MASS survey.

The power of this technique for *WISE* follow-up comes from the fact that the identification of a near-infrared counterpart that shows methane absorption within a small distance on the sky from a *WISE All-Sky* or *ALLWISE* position uniquely identifies this near-infrared object as the counterpart to the *WISE* source. Following this, the strength of the methane absorption can then provide a spectral type estimate, reducing the necessity for spectroscopic follow-up in all cases.

2. Imaging—Anglo-Australian Telescope (AAT)

Imaging observations were carried out on the AAT on the nights listed in Table 1 with the IRIS2 imaging spectrograph (Tinney et al. 2005). IRIS2 is a near-infrared imager and spectrograph, with a single 1024×1024 pixel detector giving

an imaging field of view of $7'7$ on a side at a pixel scale of $0''.4486/\text{pixel}$.

Data were obtained in seeing conditions ranging from $1''.05$ to over $2''.0$. Targets for observation were selected in 2011 from then extant catalogs using the pipeline software developed to produce the *WISE* Preliminary Data Release (for details see the Explanatory Supplement¹⁰), and in 2012 from the *WISE All-Sky* release. As the optimal candidate selection procedures were being developed at the same time as improved versions of the *WISE* pipeline, we report in Table 2 the *WISE* photometry for our observed sources as presented in the *WISE* All-Sky data release made in 2012 March (rather than the photometry on which their original selections were based).

In general, the selected candidates satisfy the criteria that they were detected in W2 and had $W1 - W2 < 2.0$. The *WISE* processing pipeline records either detections at greater than 3σ significance, or 3σ upper limits. Requiring a W1 detection (or 3σ upper limit) and $W1 - W2 < 2.0$, pushes the effective W2 detection floor to be much brighter than that imposed by the pipeline’s 3σ detection threshold. Our faintest T and Y dwarf candidates typically had $W2 \lesssim 15.5$, which corresponds to a signal-to-noise ratio of ~ 10 . Additional selection criteria have been found to greatly assist in improving the rejection of non-brown dwarf contaminants. Broadly, we require that the source was not identified as an artifact (i.e., known to be spurious), and that it was not flagged as blended (in which case it would have poorly determined photometry). For more details, including values of the specific flags used, see Section 2.1 of Kirkpatrick et al. (2012).

2.1. J-band Imaging

Each candidate was initially observed in the J-band with a planned exposure time of 54 minutes, broken up into thirty-six 90s pseudo-randomly dithered exposures. Online data reduction using the ORACDR pipeline system (Cavanagh et al. 2008)¹¹ would then produce a near-publication-quality processed sub-mosaic soon after the first nine images of this dither pattern were completed. This processed image was then analyzed using purpose-built Perl scripts that automated the extraction of photometry for the image (using SExtractor; Bertin & Arnouts 1996), followed by the photometric and astrometric calibration of that data using the 2MASS Point Source Catalog (PSC; Skrutskie et al. 2006).

This meant that within 5 minutes of the completion of the first 9-image sub-mosaic, we would know whether a J-band positional counterpart had been identified down to $J \approx 19.5$. If a positionally matched candidate clearly emerged after this first sub-mosaic (when such an object emerged, it usually did so at the $< 10\text{-}\sigma$ level), then the dithering sequence would be truncated, and methane imaging observations would begin. In the absence of an “early” match, the J-band imaging sequence was allowed to run to completion, providing imaging data to a depth of $J \approx 21$.

2.2. Methane Imaging

Once a plausible J-band counterpart had been identified, methane imaging observations were carried out with the CH₄s and CH₄l filters in IRIS2. The use of these filters for the study

¹⁰ <http://wise2.ipac.caltech.edu/docs/release/prelim/expsup/>

¹¹ See also <http://www.oracdr.org/>.

Table 2
WISE, J_{MKO} and $\text{CH}_4\text{s}-\text{CH}_4$ photometry for Candidate Cool *WISE* Brown Dwarfs

WISE Desig. ^a	W1	W2	W1-W2	J_{MKO} ^b	CH_4s^c	$\text{CH}_4\text{s}-\text{CH}_4\text{l}^c$	CH_4 SpT ^d	J -W2	$\text{CH}_4\text{s}-\text{W2}$	Spec	Notes
T/Y dwarfs : Position matches with unresolved sources showing CH_4 absorption											
J001505.87-461517.6	17.02 0.15	14.25 0.06	2.77 0.16	17.76 0.06	17.45 0.06	-1.24 0.16	T7.0 0.5	3.51 0.09	3.23 0.08	T8	FIRE, this paper
J003231.09-494651.4	18.08 0.34	15.07 0.09	3.01 0.35	18.54 0.09	18.20 0.07	-1.96 0.23	T8.6 0.5	3.47 0.13	3.13 0.11	T8.5	FIRE, this paper
J014807.25-720258.7	>18.94	14.69 0.05	>4.25	...	18.77 0.05	-2.34 0.20	T9.2 0.5	...	4.08 0.07	T9.5	Kirkpatrick et al. (2012)
J024124.73-365328.0	16.89 0.10	14.34 0.04	2.55 0.11	16.59 0.04	16.55 0.03	-1.06 0.06	T6.5 0.5	2.25 0.06	2.21 0.08	T7	FIRE, this paper
J030919.67-501614.3	16.51 0.08	13.61 0.03	2.90 0.09	17.17 0.03	17.01 0.03	-1.31 0.06	T7.2 0.5	3.56 0.10	3.40 0.05	...	
J032504.33-504400.3	>18.73	15.70 0.10	>3.03	18.94 0.09	18.39 0.09	-2.20 0.36	T9.0 0.5	3.24 0.13	2.69 0.13	T9	Schneider et al. (2015)
J035000.32-565830.2	>18.90	14.73 0.06	>4.17	22.47 0.49	7.74 0.51	...	Y1	Kirkpatrick et al. (2012)
J040443.48-642029.9	>18.86	15.73 0.09	>2.60	19.55 0.22	19.43 0.04	-1.27 0.10	T7.1 0.5	3.82 0.23	3.70 0.10	T9	Schneider et al. (2015)
J041022.71+150248.4	>18.33	14.18 0.06	>4.15	...	20.47 0.07	6.29 0.09	Y0	Kirkpatrick et al. (2012)
J062842.71-805725.0	>18.78	15.45 0.08	>3.32	18.71 0.16	18.34 0.04	-2.30 0.13	T9.1 0.5	3.26 0.18	2.89 0.09	...	
J064528.38-030248.2	>18.18	14.94 0.10	>3.24	16.91 0.04	16.88 0.04	-1.00 0.09	T6.3 0.5	1.97 0.12	1.94 0.15	T6	SpeX, this paper
J071322.55-291751.9	>18.35	14.48 0.06	>3.87	19.64 0.15	19.33 0.04	-2.72 0.15	T9.7 0.5	5.16 0.16	4.85 0.08	Y0	Kirkpatrick et al. (2012)
J071301.84-585445.1	>19.04	15.44 0.07	>3.60	T9	FIRE, this paper
J072227.27-054029.9 ^e	15.19 0.05	12.21 0.03	2.98 0.06	16.52 0.02	16.39 0.02	-2.12 0.04	T8.9 0.5	4.31 0.03	4.18 0.03	T9 ^f	Kirkpatrick et al. (2012)
J091408.96-345941.5	>17.83	15.03 0.09	>2.80	18.36 0.11	17.79 0.02	-1.70 0.07	T8.2 0.5	3.33 0.14	2.76 0.10	T8	FIRE, this paper
J094020.10-220820.5	17.01 0.14	14.57 0.07	2.43 0.16	17.36 0.05	17.30 0.04	-1.52 0.11	T7.8 0.5	2.79 0.17	2.73 0.08	T8	SpeX, this paper
J105553.59-165216.3	>18.37	15.04 0.10	>3.33	20.79 0.02	20.35 0.06	< - 1.69	>T8.2	5.75 0.11	5.31 0.14	T9	FIRE, this paper
J111239.24-385700.7	17.97 0.40	14.36 0.06	3.61 0.40	20.26 0.15	19.94 0.05	-1.72 0.12	T8.2 0.5	5.90 0.16	5.58 0.08	T9	FIRE, this paper
J114156.71-332635.8	17.20 0.17	14.53 0.06	2.67 0.18	19.76 0.14	19.69 0.04	(-0.71 0.09) ^g	(T5.4 0.5) ^g	5.23 0.15	5.16 0.07	Y0	FIRE, this paper
J143311.42-083736.4	>18.74	15.23 0.10	>3.51	19.07 0.11	3.84 0.15	...	T8 ^h	FIRE, this paper
J144806.48-253420.3	>18.28	15.03 0.09	>3.25	18.85 0.11	18.71 0.13	-1.02 0.29	T6.4 0.5	3.82 0.14	3.68 0.16	T8	FIRE, this paper
J150115.92-400418.4	16.48 0.11	14.21 0.05	2.07 0.12	16.53 0.04	16.05 0.03	-0.86 0.06	T5.9 0.5	2.32 0.06	1.84 0.05	T6	SpeX, this paper
J173551.72-820900.1	15.61 0.06	13.73 0.04	1.88 0.07	16.58 0.03	16.41 0.03	-0.76 0.08	T5.6 0.5	2.85 0.05	2.68 0.05	T6	FIRE, this paper
J201748.72-342102.5	>18.21	15.09 0.13	>3.12	20.89 0.24	20.19 0.06	-1.46 0.15	T7.7 0.5	5.80 0.27	5.10 0.14	...	
J205628.91+145953.2	>18.25	13.93 0.05	>4.33	...	18.99 0.04	-3.17 0.25	Y0.2 0.5	...	5.06 0.06	Y0	Kirkpatrick et al. (2011)
J210200.15-442919.5	16.94 0.17	14.12 0.05	2.83 0.18	18.25 0.06	18.06 0.06	-2.20 0.24	T9.0 0.5	4.13 0.08	3.94 0.08	T9	NIRSPEC, this paper
J215949.48-480854.9	17.76 0.29	14.54 0.07	3.19 0.30	18.89 0.08	18.64 0.09	-1.31 0.28	T7.2 0.5	4.35 0.11	4.10 0.13	T9	FIRE, this paper
J221140.52-475826.5	17.67 0.21	14.58 0.06	3.09 0.22	17.38 0.04	17.38 0.04	-1.51 0.14	T7.8 0.5	2.80 0.07	2.80 0.07	...	
J221216.33-693121.6	18.05 0.40	14.90 0.09	3.15 0.41	19.72 0.13	19.29 0.04	-3.15 0.23	Y0.2 0.5	4.82 0.16	4.39 0.10	T9.5	FIRE, this paper
J222055.31-362817.4	>18.65	14.66 0.06	>3.99	20.38 0.17	20.20 0.07	< - 1.52	>T7.8	5.72 0.18	5.58 0.09	Y0	Kirkpatrick et al. (2012)
J223204.50-573010.5	>17.90	15.15 0.11	>2.75	18.86 0.09	18.74 0.10	-1.49 0.30	T7.7 0.5	3.71 0.14	3.59 0.14	T9	FIRE, this paper
J230228.68-713441.6	17.14 0.14	14.28 0.05	2.86 0.14	16.97 0.04	17.52 0.07	-1.14 0.15	T4.7 0.5	2.69 0.06	3.24 0.09	...	
J233226.49-432510.6	>17.88	14.99 0.09	>2.89	...	19.14 0.04	< - 2.59	>T9.5	...	4.15 0.09	T9:	NIRSPEC, this paper
J235425.33-564928.6	16.93 0.13	14.84 0.08	2.09 0.15	17.09 0.04	16.98 0.04	-0.55 0.07	T7.8 0.5	2.25 0.09	2.14 0.09	T6	FIRE, this paper
J235447.80-814044.9	18.23 0.33	15.03 0.07	>3.20	17.64 0.05	17.68 0.06	-1.04 0.12	T6.4 0.5	2.61 0.09	2.65 0.10	...	
T/Y dwarfs : Position matches (<1'') with an extended source, sources showing no methane absorption and/or non-detections											
J012102.92-190656.9	16.47 0.09	14.71 0.07	1.76 0.11	19.67 0.16	18.87 0.13	+0.17 0.17	...	4.96 0.17	4.16 0.15	...	i
J071939.54-173514.8	16.72 0.07	13.71 0.03	3.01 0.08	...	20.1 0.1	+0.33 0.15	6.39 0.17	...	j
J074551.79-015122.1	18.14 0.41	14.97 0.09	3.17 0.42	19.90 0.16	19.53 0.15	+0.25 0.20	...	4.93 0.17	4.56 0.17	...	i
J083942.85-402938.9	17.37 0.24	13.66 0.04	3.71 0.25	20.6 0.2	18.82 0.11	+0.40 0.15	...	6.94 0.22	5.16 0.12	...	k
J130740.45-463035.1	15.00 0.03	12.93 0.03	2.07 0.04	...	16.59 0.04	+0.24 0.05	3.66 0.05	...	l
J150711.06-344026.0	15.64 0.06	14.03 0.05	1.62 0.08	17.73 0.04	17.18 0.05	+0.26 0.07	...	3.70 0.07	3.15 0.09	...	m
J164445.19-645628.9	>18.50	15.22 0.10	>3.28	...	18.13 0.09	+0.15 0.11	2.91 0.13	...	i
J185709.40-315345.5	16.48 0.12	14.42 0.07	2.06 0.14	18.58 0.10	17.84 0.09	+0.05 0.12	...	4.16 0.12	3.42 0.11	...	i
J190230.27-371246.1	17.18 0.21	14.46 0.07	2.72 0.22	20.27 0.29	5.81 0.30	n
J193441.70-490837.6	17.00 0.12	14.50 0.06	2.50 0.13	20.36 0.31	5.86 0.32	See Table 4
J203020.25-692043.0	18.06 0.43	14.83 0.09	3.23 0.44	19.51 0.17	18.83 0.15	-0.07 0.23	...	4.68 0.20	4.00 0.17	...	o

Table 2
(Continued)

WISE Desig. ^a	W1	W2	W1–W2	J_{MKO} ^b	CH ₄ s ^c	CH ₄ s–CH ₄ l ^c	CH ₄ SpT ^d	J–W2	CH ₄ s–W2	Spec	Notes
J203119.30–690500.3	>17.58	14.41 0.07	>3.17	20.44 0.22	19.18 0.03	–0.41 0.06	T4.2 0.5	6.03 0.23	4.77 0.08	...	^p
J224245.85–201511.0	>18.32	15.15 0.13	>3.17	20.03 0.16	4.88 0.21	^q

Notes.

^a *WISE* object designations and photometry are from the 2012 March release of the All-sky Source Catalog, unless an “A” prefix is used, in which case they come from the 2013 November AllWISE Source Catalog release. The All-Sky *WISE* designation combines the prefix “WISE” with the position designation (i.e., WISE J001505.87–461517.6 for an All-sky Source and WISEA J030237.53–581740 for an AllWISE Source). These are abbreviated with the first four digits of the right ascension and declination throughout this paper—e.g., W0015–4615.

^b IRIS2 J photometry was obtained through a J_{MKO} filter, differentially calibrated using $J_{2\text{MASS}}$ photometry converted to J_{MKO} in each field.

^c IRIS2 CH₄s and CH₄s–CH₄l photometry calibrated (as described in the text) on the system of Tinney et al. (2005).

^d Estimated spectral types using CH₄s–CH₄l and the calibration of Section 6.1.

^e The discovery name for this object is UGPS J072227.51–054031.2 (Lucas et al. 2010) and J_{MKO} is from that paper.

^f While noting that the spectral type for this object has been the subject of some debate, we adopt the T9 type of Kirkpatrick et al. (2012).

^g The methane color of W1141 suggests a spectral type of \approx T5.5. However, the J–W2 color is indicative of a type of T9 or later. As discussed in the text and shown in Figure 2, the CH₄s–CH₄l (and especially the CH₄l) photometry is contaminated by a background galaxy. The J3–W2 photometry (Section 6.3) and the FIRE spectrum (Section 5) clearly show this to be a Y0. We do not include this object in the CH₄s–CH₄l calibration of Section 6.1.

^h 143311.42–083736.4: a spectrum and spectral type for this object have also been published by Lodieu et al. (2012). Those values are in agreement with those presented here.

ⁱ J012102.92–190656.9, J074551.79–015122.1, J164445.19–645628.9 and J185709.40–315345.5: a bright source has a position match with the *WISE* position. The CH₄s–CH₄l colors indicate they are not T dwarfs.

^j J071939.54–173514.8: extended source at position with no methane absorption.

^k J083942.85–402938.9: is clearly an extended source ($2''1 \times 3''0$), with no methane absorption. *WISE* source is likely this galaxy.

^l J130740.45–463035.1: a bright CH₄s = 16.60 source has a position match with the *WISE* position, and shows no proper motion since the 2MASS epoch. The CH₄s–CH₄l color indicates this object is not a T dwarf.

^m J150711.06–344026.0: this bright W2 source was observed as a poor conditions backup target and it has a position match with the *WISE* position, but the CH₄s–CH₄l color indicates this object is not a T dwarf. It has shown no proper motion since the 2MASS epoch).

ⁿ J190230.27–371246.1: very extended ($3''5$) source at position, making this galaxy the likely *WISE* source.

^o J203020.23–692043.1: has excellent position match with $J = 19.51$. However, this is marginally resolved ($2''2$ fwhm) in $2''0$ seeing, and shows no methane absorption. The *WISE* flux likely arises from this galaxy.

^p J203119.30–690500.3: has excellent position match with $J = 20.44$ and methane absorption. However, the object is resolved at J ($2''2$ fwhm in $2''0$) and H ($1''84$ fwhm in $1''39$ seeing). Moreover, the methane color suggests a spectral type of T4, which is inconsistent with the J–W2 and CH₄s–W2 colors (which suggest a much later spectral type of $>$ T9). This identification is therefore considered tentative.

^q J224245.85–201511.0: has $J = 20.03$ object $1''2$ from the *WISE* position. However, this object has almost identical J and J2 magnitudes, which suggests methane absorption would be extremely weak.

Table 3
Magellan J2/J3 Methane Imaging

UT Date	Median Seeing (")
2012 Mar 10	0.64
2012 May 10	0.56
2012 Jul 6	0.70
2012 Jul 7	0.53
2013 Jan 15	0.40
2013 Mar 22	0.56
2013 Apr 22	0.57
2013 Aug 15	0.50
2016 Nov 18	0.80
2017 Jan 05	0.54

of cool brown dwarfs is described in Tinney et al. (2005)—we summarize just the salient points here. The IRIS2 methane filters (CH_4s and CH_4l) divide the H-band in half, sampling the wavelength ranges 1.520–1.620 μm and 1.640–1.740 μm (respectively). Flux in the CH_4l filter is substantially depressed by methane absorption in T and Y dwarfs, so the CH_4s – CH_4l color provides a powerful means of determining T and Y dwarf classifications. Methane filter observations are obtained by interleaving CH_4s and CH_4l observations (in an ABBA sense), while also dithering the telescope on the sky. These data are also processed “on the fly” by ORACDR and deliver pairs of reduced images after every 7–9 pairs of images, which are then processed and differentially calibrated onto the CH_4s – CH_4l photometric system of Tinney et al. (2005). As with the J-band imaging, purpose-built scripts are run as soon as the first pair of CH_4s and CH_4l mosaics are produced. Once again, if a clear methane signature was detected, the observing sequence was truncated, and observations moved onto the next *WISE* candidate.

2.3. Photometry

Following the initial processing done at the telescope, the ORACDR pipeline was used to reprocess these data for final analysis. A simple two-step process is followed: in the first step, *all* images on each object are processed together to produce a flat-field and a first-pass mosaic, allowing the flattened images that went into this first-pass mosaic to be analyzed to determine their photometric zero-point and image quality; in the second-pass, frames with poor image quality or poor photometric throughput are culled and the remaining images were reprocessed to produce a final mosaic. Photometry was then obtained from the final mosaics on each field, by differentially calibrating onto the J_{MKO} or CH_4s – CH_4l systems using 2MASS PSC photometry for stars lying within the IRIS2 field of view.

For J-band data this differential calibration is achieved by identifying objects in the field of view with 2MASS $-0.2 < J-K < 1.5$ and then converting those J magnitudes from the 2MASS photometric system to the MKO photometric system, using the equations determined by J. Carpenter in the 2MASS All-sky Survey Explanatory Supplement.¹² As the IRIS2 J,H, K,Ks filters are MKO ones (i.e., manufactured to the prescriptions of Tokunaga et al. 2002), the result is J photometry on the MKO system.

For CH_4s , CH_4l data, objects in the field of view for which transformations from the 2MASS to MKO photometric systems are reliable (i.e., have 2MASS colors in ranges where the Carpenter transformations are valid—see Tinney et al. 2005) are converted to MKO H, and then used to define zero-points for the CH_4s and CH_4l systems, and to determine CH_4s – CH_4l . The resulting zero-points for a given field are typically determined to be between ± 0.02 –0.1 mag, and the scatter about the zero-point determination is used to determine a standard error in the mean, which is then propagated to the finally quoted photometric uncertainties.

Table 2 presents J and CH_4s – CH_4l photometry from the AAT, as well as *WISE* W1 and W2 photometry from the *All-Sky* release—the official *WISE* designation for all sources combines the prefix “*WISE*” with the position designation in column 1 of the table—e.g., *WISE* J001505.87-461517.6. These are abbreviated thereafter with the letter “W” and the first four digits of the right ascension and declination of the designation—e.g., W0015-4615. Also listed in the table are spectral types resulting from spectroscopic observations in this paper (Section 5) and other programs, as well as estimated spectral types based on a new CH_4s – CH_4l calibration derived in Section 6.1.

3. Imaging—Magellan

Imaging observations were obtained using the FourStar imaging camera (Persson et al. 2013) on the *Magellan* Baade telescope between 2012 March 10 and 2017 January 5. FourStar is a near-infrared mosaic imager with four 2048×2048 pixel detectors giving an imaging field of view of $11'$ on a side at a pixel scale of $0''.159/\text{pixel}$. It is equipped with a set of intermediate-band filters, originally specified for the measurement of photometric redshifts. These filters turn out to be almost ideally suited for observing very cool brown dwarfs (see Figure 1 in Tinney et al. 2012). In particular, the J3 filter ($\lambda_{\text{cen}} \approx 1.29 \mu\text{m}$, 90% of the peak throughput range 1.210–1.366 μm), collects almost all of the “methane free” J-band flux from late T and Y dwarfs, while the J2 filter ($\lambda_{\text{cen}} \approx 1.14 \mu\text{m}$, 90% of the peak throughput range 1.067–1.224 μm) is strongly impacted by methane absorption between 1.1 μm and 1.2 μm . All the observations described here were performed with the *WISE* target positioned in FourStar’s Chip 2.

Image quality over the course of this program varied between $0''.4$ and $0''.7$ (see Table 3). Our observing and analysis techniques follow those previously described by us (Tinney et al. 2012, 2014), and involve observing each target with the FourStar J3 and J2 filters in a sequence of 60–20s pseudo-randomly dithered exposures. Targets are observed with net integration times ranging from 5 minutes to 1.0h. As with the AAT data, images are processed at the telescope using a modified version of the ORACDR¹³ data reduction pipeline, and examined during observing to determine whether a counterpart had been detected. As for the AAT data, the final analysis involves running ORACDR twice for each jitter set, with individual exposures of poor image quality removed from the list used in the second-pass.

Photometric processing and calibration followed the procedures outlined above for AAT data, except for the final stage of calibration onto the J2/J3 photometric system, which followed

¹² http://www.ipac.caltech.edu/2mass/releases/allsky/doc/sec6_4b.html

¹³ <http://www.ukirt.hawaii.edu/instruments/cgs4/orac-dr/printable.html>

Table 4
WISE and *Magellan* J3,J2 photometry of Candidate Cool Brown Dwarfs from *WISE*

WISE Designation ^a	W1	W2	W1–W2	J3 ^b	J3–J2	J3–W2	Est. SpT ^c	Notes
T/Y dwarfs : Position matches with unresolved sources showing CH ₄ absorption								
AJ004206.84–584023.9	18.86 0.49	15.60 0.10	3.26 0.50	17.76 0.04	–1.10 0.06	2.16 0.11	T6.6	...
J014807.25–720258.7	>18.94	14.69 0.05	>4.25	18.83 0.02 (9) ^d	–1.72 0.12	4.16 0.07	T8.9	T9.5 Kirkpatrick et al. (2013)
AJ030237.53–581740.3	>19.26	15.81 0.09	>3.45	20.76 0.11	–1.52 0.27	4.95 0.14	T9.5	Y0 FIRE, this paper
J064723.23–623235.5	>19.09	15.32 0.08		22.51 0.09 (2)	–1.21 0.20	7.19 0.12	Y0.9	Y1 Kirkpatrick et al. (2014)
J071322.55–291751.9	>18.35	14.48 0.06	>3.87	19.42 0.03 (8)	–1.58 0.06	4.94 0.0	T9.5	Y0 Kirkpatrick et al. (2012)
J081117.81–805141.3	17.29 0.12	14.38 0.04	2.91 0.13	19.31 0.01 (6)	–1.71 0.09	4.95 0.04	T9.5	T9.5 Mace et al. (2013)
J091408.96–345941.5	>17.83	15.03 0.09	>2.80	17.73 0.02	–1.29 0.03	2.70 0.09	T7.4	T8 FIRE, this paper
AJ102313.22–315126.7	>18.94	15.76 0.12	>3.18	18.24 0.03	–1.12 0.06	2.48 0.13	T7.1	T8 FIRE, this paper
J111239.24–385700.7	17.97 0.40	14.36 0.06	3.61 0.40	20.11 0.04 (4)	–1.36 0.11	5.77 0.07	Y0.1	T9 FIRE, this paper
J114156.71–332635.8	17.20 0.17	14.53 0.06	2.67 0.18	19.63 0.05 (6)	–1.30 0.10	5.22 0.08	T9.7	Y0 FIRE, this paper
J122152.28–313600.8	15.86 0.06	13.85 0.04	2.01 0.07	15.80 0.03	–1.14 0.05	1.95 0.05	T6.3	T5.5 Mace et al. (2013)
J150115.92–400418.4	16.48 0.11	14.21 0.05	2.07 0.12	15.95 0.01	–1.06 0.02	1.74 0.05	T5.8	T6 SpeX, this paper
J163940.83–684738.6	<17.89	13.65 0.05	>4.24	20.62 0.08	–1.65 0.12	6.98 0.09	Y0.8	Y0 Tinney et al. (2012)
AJ172907.10–753017.0	18.74 0.38	15.55 0.08	3.19 0.39	17.71 0.02	–1.09 0.04	2.16 0.08	T6.6	T7 FIRE, this paper
J173551.72–820900.1	15.61 0.06	13.73 0.04	1.88 0.07	16.17 0.01	–1.09 0.01	2.44 0.05	T6.9	T6 FIRE, this paper
AJ204928.59–443143.9	>18.94	15.64 0.11	>3.30	18.22 0.03	–1.39 0.06	2.58 0.11	T7.3	...
J210200.15–442919.5	16.94 0.17	14.12 0.05	2.83 0.18	18.08 0.01 (11)	–1.52 0.14	3.96 0.06	T8.7	T9 NIRSPEC, this paper
J233226.49–432510.6	>17.88	14.99 0.09	>2.89	19.13 0.02 (6)	–1.64 0.18	4.19 0.10	T8.9	T9: NIRSPEC, this paper
T/Y dwarfs : Position matches (<1") with an extended source, sources showing no methane absorption and/or non-detections								
J080811.36–682521.2	<19.27	16.18 0.11	>3.08	20.97 0.07	+0.12 0.09			e
J083440.09–643616.4	>18.79	14.75 0.05	>4.04	20.29 0.03	–0.21 0.05			f
J092958.73–712733.0	<19.29	16.40 0.14	>2.89	g
J093730.46–735454.0	<18.97	16.15 0.12	>2.81	19.47 0.05	–0.29 0.07			h
J101242.66–482842.3	<18.66	15.73 0.12	>2.93	20.86 0.06	–0.26 0.10			i
J102719.82–443656.7	18.12 0.47	15.20 0.09	2.92 0.47	20.48 0.04	–0.38 0.07			j
J103059.32–373140.3	<18.25	15.78 0.17	>2.48	20.41 0.08	–0.13 0.11			k
J120906.70–520034.5	<18.82	15.85 0.13	>2.97	21.44 0.10	–0.07 0.13			l
J122329.62–480051.3	<18.51	15.85 0.16	>2.66	20.78 0.08	–0.07 0.11			m
J123252.86–800525.4	<18.47	15.88 0.15	>2.59	n
J124156.18–370345.5	17.78 0.22	14.87 0.06	2.91 0.23	20.49 0.03	–0.11 0.05			o
J130348.35–460959.4	<18.79	16.09 0.18	>2.71	21.60 0.06	+0.08 0.08			p
J143032.81–323321.7	17.11 0.17	14.72 0.08	2.39 0.19	20.57 0.04	–0.49 0.07			q
J153802.79–450936.5	<17.96	14.90 0.10	>3.06	See note				r
J171507.17–552116.8	<17.23	14.60 0.08	>2.63	20.74 0.05	–0.21 0.08			s
J193441.70–490837.6	17.00 0.12	14.50 0.06	2.50 0.13	20.50 0.05	–0.12 0.08			t
J211213.88–552855.5	<18.55	15.83 0.18	>2.71	21.46 0.08	–0.36 0.13	u
J212505.20–323412.9	<18.48	15.06 0.11	>3.42	20.21 0.03	–0.11 0.05			v
J220011.60–544914.2	<17.37	14.86 0.11	>2.51	19.78 0.03	–0.11 0.04			w
J221342.90–294908.7	17.87 0.43	14.59 0.09	3.28 0.44	20.73 0.01	–0.14 0.04			x

Unconfirmed methane absorbers within 30" of *WISE* position

Table 4
(Continued)

WISE Designation ^a	W1	W2	W1–W2	J3 ^b	J3–J2	J3–W2	Est. SpT ^c	Notes
J011020.86–132313.0	<18.247	14.85 0.18	>3.39	y
J092320.42–731704.1	<19.124	16.68 0.19	>2.45	z
AJ183437.34–584119.4	<18.714	15.67 0.11	>3.04	aa

Notes.

^a WISE designations follow Table 2

^b FourStar J3 and J2 photometry was processed as described in Tinney et al. (2014, 2012). J3 observations with numbers in parentheses are the average of the indicated number of independent observations, and the uncertainty is the standard error in the mean. For other observations, the uncertainty is the photon-counting and calibration zero-point uncertainties combined in quadrature.

^c Estimated spectral type from J3–W2 color and the calibration described in Section 6.3.

^d The J3 photometry reported here corrects the incorrect value in Table 1 of Tinney et al. (2012).

^e J080811.36–682521.2: object 0^{''}.5 from a WISE position with no methane absorption. No methane absorbers within 30^{''} to J3 = 22.

^f J083440.09–643616.4: galaxy (resolved in 0^{''}.48 seeing) 0^{''}.2 from WISE. No methane absorbers within 30^{''} to J3 = 22.

^g J092958.73–712733.0: no objects with methane absorption within 30^{''} to J3 = 21.

^h J093730.46–735454.0: object 0^{''}.5 from a WISE position with no methane absorption. No methane absorbers within 30^{''} to J3 = 21.5.

ⁱ J101242.66–482842.3: object 0^{''}.6 from a WISE position with no methane absorption. No methane absorbers within 30^{''} to J3 = 22.

^j J102719.82–443656.7: unresolved object (in 0^{''}.5 seeing) with no methane absorption 0^{''}.2 from WISE, plus J3 = 21.0 galaxy 1^{''}.7^{''} from a WISE position. This pair would be confused in WISE and likely be the cause of W1–W2 colors. No methane absorbers within 30^{''} to J3 = 22.

^k J103059.32–373140.3: object with no methane absorption 1^{''}.9 from a WISE position. No methane absorbers within 30^{''} to J3 = 21.

^l J120906.70–520034.5: object with no methane absorption 0^{''}.5 from a WISE position. No methane absorbers within 30^{''} to J3 = 21.

^m J122329.62–480051.3: object with no methane absorption 1^{''}.5 from a WISE position. No methane absorbers within 30^{''} to J3 = 21.5.

ⁿ J123252.86–800525.4: no sources within 10^{''} of a WISE position to J = 21. No methane absorbers within 30^{''}.

^o J124156.18–370345.5: galaxy (resolved in 0^{''}.48 seeing) 0^{''}.3 from a WISE position. No methane absorbers within 30^{''} to J3 = 22.5.

^p J130348.35–460959.4: galaxy (1.0 × 0^{''}.8 in 0^{''}.55 seeing) at a WISE position. No methane absorbers within 30^{''} to J3 = 22.5.

^q J143032.81–323321.7: galaxy (resolved in 0^{''}.47 seeing) 0^{''}.3 from a WISE position. No methane absorbers within 30^{''} to J3 = 22.

^r J153802.79–450936.5: crowded field with multiple objects (J3 = 19.3, 20.4, 17.1, 21.4, 21.5, 21.0) within 5^{''} of a WISE position, none with methane absorption. No methane absorbers within 30^{''} to J3 = 21.5.

^s J171507.17–552116.8: unresolved source (0^{''}.6 seeing) with no methane 0^{''}.5 from WISE. No methane absorbers within 30^{''} to J3 = 22.5.

^t J193441.70–490837.6: J3 = 20.5 galaxy (1^{''}.1 resolved in 0^{''}.9 seeing) 0^{''}.2 from WISE. No methane absorbers within 30^{''} to J3 = 21.5.

^u J211213.88–552855.5: object 2^{''}.4 from a WISE position with no methane absorption. No methane absorbers within 30^{''} to J3 = 21.5.

^v J212505.20–323412.9: galaxy 0^{''}.7 from a WISE position. One methane absorber 21^{''} from WISE at 21:25:06.3–32:33:56 with J3 = 21.3, J3–J2 = –0.84 ± 0.12, but the galaxy is the more likely WISE source.

^w J220011.60–544914.2: galaxy (1^{''}.0 resolved in 0^{''}.6 seeing) 0^{''}.4 from a WISE position. No methane absorbers within 30^{''} to J3 = 22.

^x J221342.90–294908.7: galaxy (0.7 × 0^{''}.6) 0^{''}.3 from a WISE position with no methane. No methane absorbers within 30^{''} to J3 = 22.

^y J011020.86–132313.0: the only candidate methane absorber is J3 = 21.0, J3–J2 = –0.88 ± 0.08, but 32^{''}.6 away from a WISE position at 01:10:18.7–13:2322 requires ~11^{''}/yr motion to be the WISE source. If a match would have J3–W2 = 6.17 suggesting a possibly Y0.

^z J092320.42–731704.1: only candidate methane absorber within 30^{''} is J3 = 21.1, J3–J2 = –0.96 ± 0.18, 19^{''}.4 from a WISE position at 09:23:20.4–73:16:44. If a match would require a ~3^{''}/yr motion, J3–W2 = 4.42 would suggest a T9–T9.5.

^{aa} J183437.34–584119.4: only candidate methane absorber within 30^{''} is J3 = 22.4, J3–J2 = –1.2 ± 0.2, 14^{''}.0 from a WISE position at 18:34:36.5–58:41:06. If a match would require a ~3^{''}/yr motion, J3–W2 = 6.8 ± 0.2 would suggest a Y0.

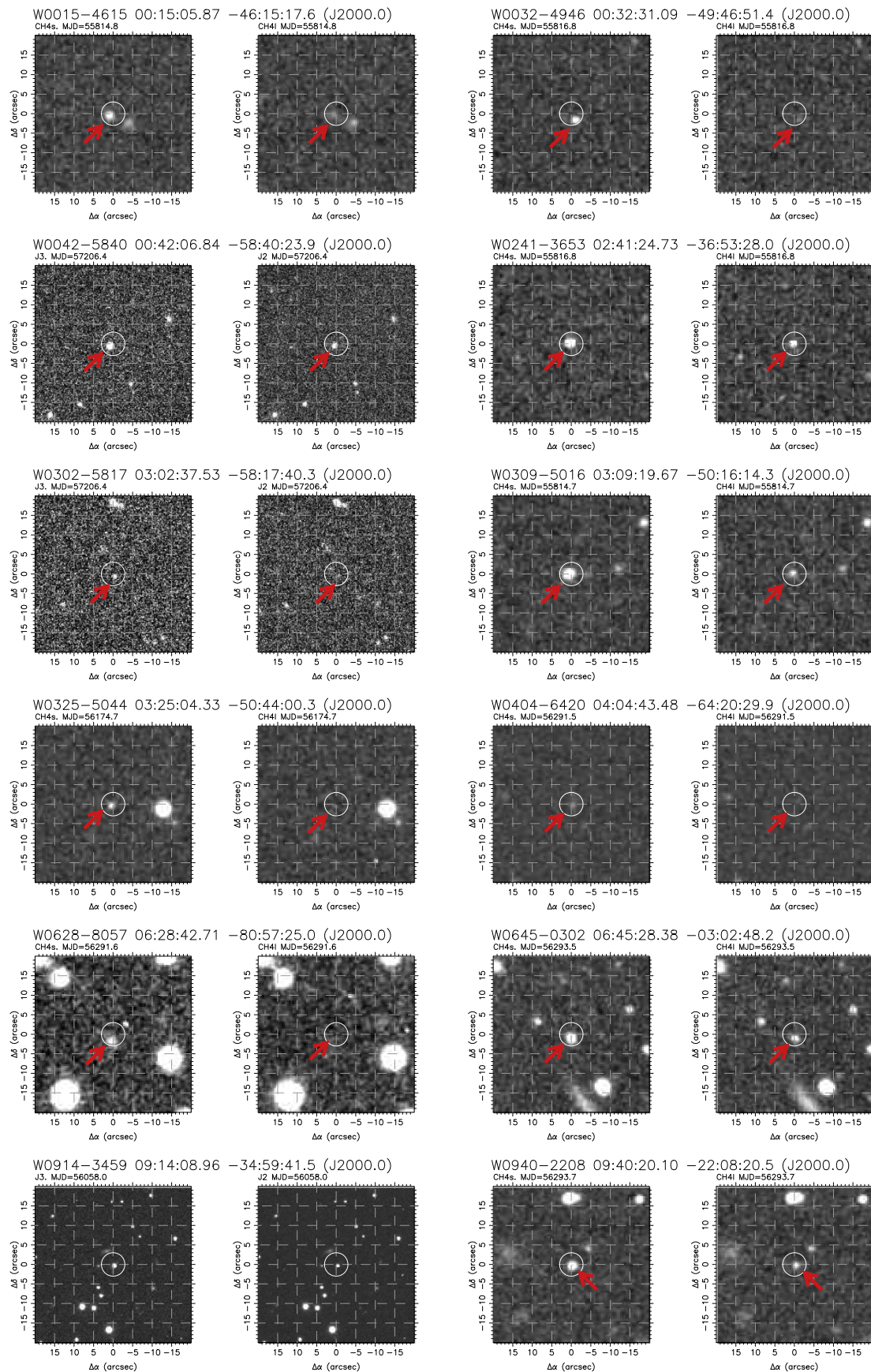


Figure 1. (a) Pairs of finding charts in CH₄s/CH₄l or J3/J2 for the imaging observations tabulated in Tables 2 and 4. All charts are 40'' on a side, with north to the top and west to the right, centered on the *WISE* source position, and with a 3'' circle drawn at the *WISE* position. Methane-absorbing objects are brighter in the left panel of each pair of images. In ambiguous cases, an arrow is used to identify the cool brown dwarf. (b) The single image of W1433-0837 is a J-band image from the AAT.

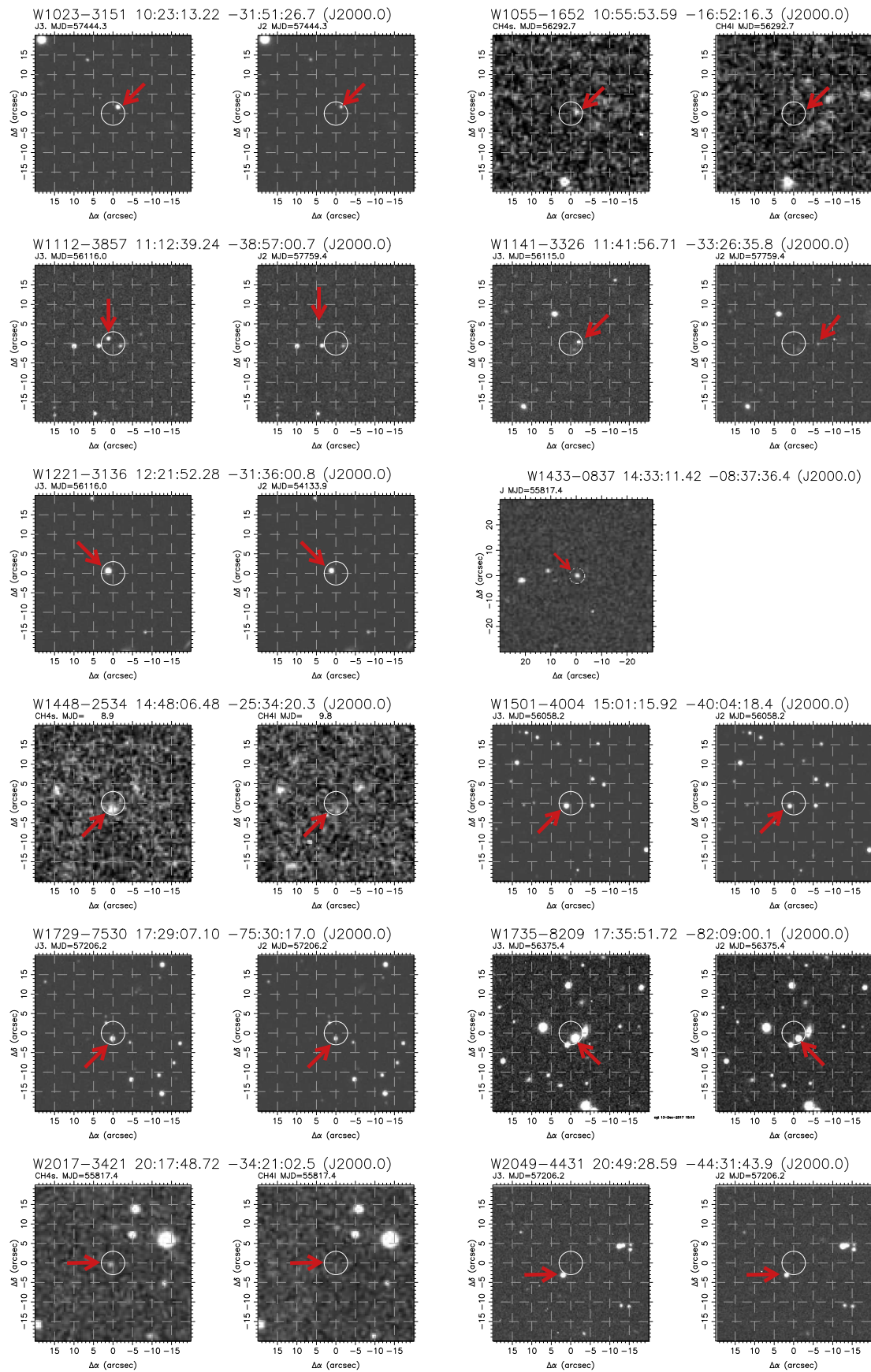


Figure 1. (Continued.)

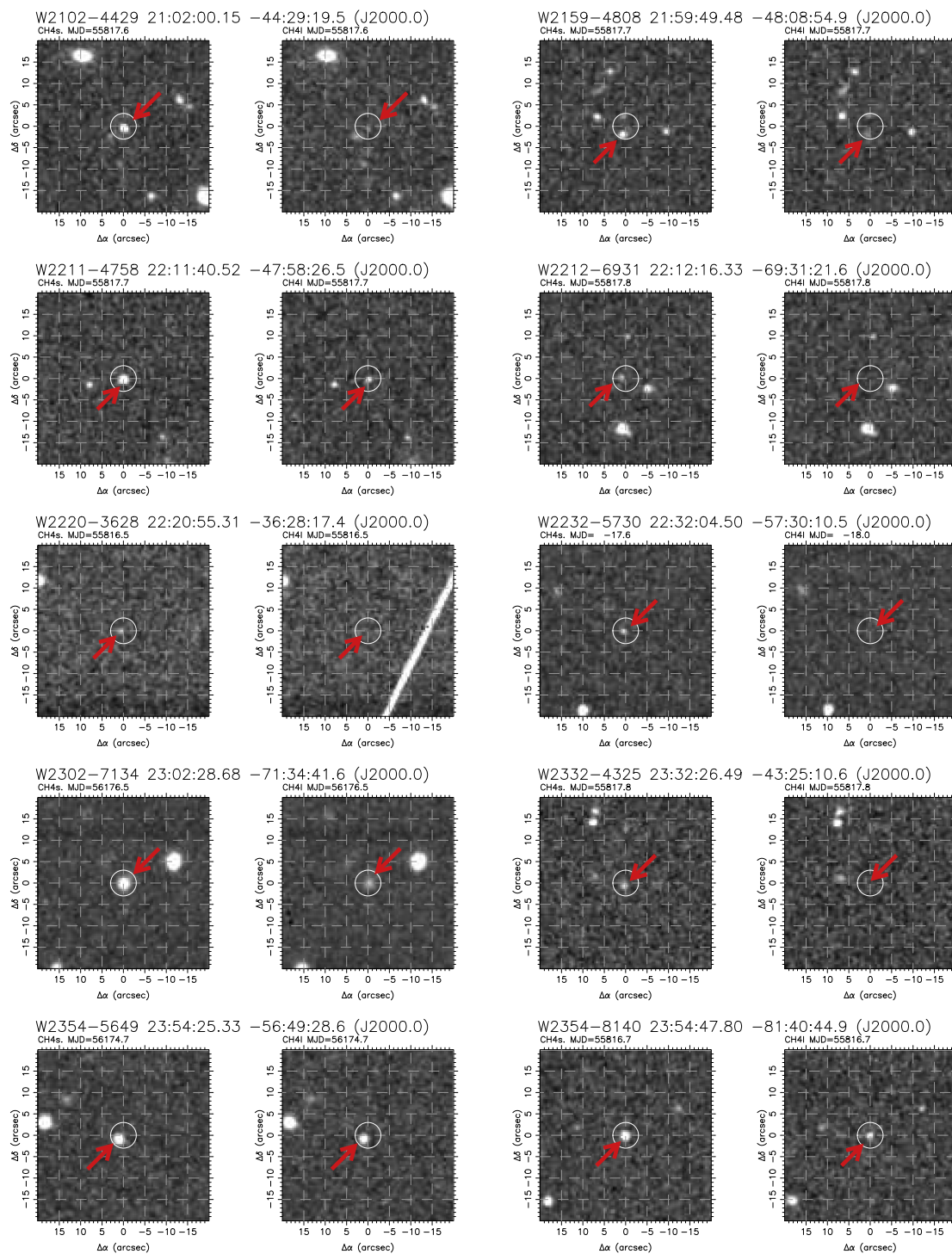


Figure 1. (Continued.)

4. Imaging Summary

that outlined in Tinney et al. (2012). That is, 2MASS sources in the field of view were calibrated onto the J_{MKO} system, and we used this MKO photometry for stars in the range $0.4 < (J-K)_{MKO} < 0.8$ to define the zero-point for the J2 and J3 magnitude system. Table 4 presents J2 and J3 photometry from *Magellan*, as well as *WISE* W1 and W2 photometry (as contained in the 2012 March *WISE All-Sky* data release).

The *WISE* candidates observed naturally fall into a few classes:

- (a) A bright (i.e., $J < 19.5$) object is readily detected as a positional match with the *WISE* source. In 100% of cases, these objects are subsequently confirmed by methane imaging as T dwarfs.

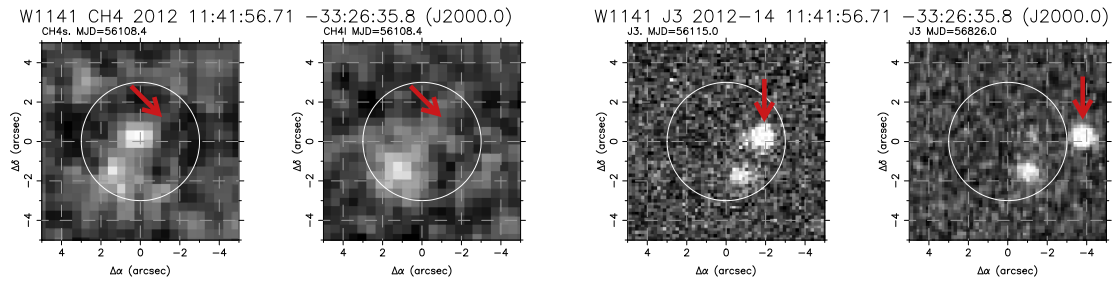


Figure 2. Zoomed-in images $10''$ on a side at the location of W1141-3326. CH_4s and CH_4l images from 2012 are shown on the left, and J3 images from 2012 and 2014 are shown on the right. W1141-3326's proper motion moved it $2''$ to the W between 2012 July and 2014 June, and away from a group of background sources that clearly contaminated the CH_4l photometry in 2012, producing a spuriously red CH_4s – CH_4l color.

Table 5

Apparent (μ') and Proper (μ) Motions for New Cool Brown Dwarfs from *WISE*

Object ^a	WISE –IRIS2/FouStar			FourStar alone		
	μ'_α	μ'_δ	Unc.	μ_α	μ_δ	Unc.
	(mas yr ⁻¹)			(mas yr ⁻¹)		
W0015–4615	+720	–450	±250			
W0032–4946	–714	–1300	±250			
W0042–5840	+122	–140	±120			
W0241–3653	+350	+100	±230			
W0302–5817	–86	–150	±120			
W0309–5016	+645	+100	±270			
W0404–6420	–139	+180	±155			
W0628–8057	+110	–550	±150			
W0645–0302	–43	–430	±160			
W0914–3459	–160	–20	±180			
W0940–2208	–70	+30	±160			
W1023–3151	–220	+250	±110			
W1055–1652	–728	+250	±160			
W1112–3857	+510	+590	±180	+666	+638	±10
W1141–3326	–915	+120	±180	–897	–84	±6
W1221–3136	+550	+360	±180			
W1433–0837	–130	0	±240			
W1448–2534	+110	–670	±180			
W1501–4004	+580	–290	±170			
W1729–7530	+30	–230	±120			
W1735–8209	–350	–540	±230			
W2017–3421	+385	+10	±240			
W2049–4431	+415	–585	±120			
W2102–4429	–250	–340	±240	+41	–354	±3
W2159–4808	+275	–1380	±240			
W2211–4758	–170	–160	±240			
W2212–6931	+600	+200	±240			
W2220–3628	+320	+60	±250	+283	–94	±4
W2232–5730	+240	+80	±170			
W2302–7134	–220	0	±160			
W2332–4325	+200	–315	±250	+248	–256	±4
W2354–5649	+390	–330	±160			
W2354–8140	+30	–15	±230			

Note.

^a *WISE* designations follow Table 2.

(b) A fainter (i.e., $19.5 < J < 21.5$) object is detected as a positional match that (in some cases) we have been able to verify is a T or Y dwarf using either methane imaging, or spectroscopy obtained on other telescopes in parallel with this methane imaging program).

(c) Either a fainter (i.e., $19.5 < J < 21.5$) object is detected as a positional match with photometry that is inconsistent with this object being a T/Y dwarf, or we observe the

Table 6

WISE Cool Dwarf Spectroscopy

WISE Designation ^a	UT Date	Telescope	Exp. (s)	Sp. Type
J001505.87–461517.6	2012 Jan 05	Magellan ^b	1014	T8
J003231.09–494651.4	2012 Jan 05	Magellan ^b	1268	T8.5
J024124.73–365328.0	2011 Sep 08	Keck ^b	600	T7
AJ030237.53–581740.3	2017 Jan 05	Magellan ^c	2700	Y0:
J064528.38–030248.2	2013 Mar 04	IRTF	2400	T6
J071301.84–585445.1	2012 May 06	Magellan ^b	1200	T9
J091408.96–345941.5	2016 Mar 23	Magellan ^c	900	T8
J094020.10–220820.5	2013 Mar 04	IRTF	1600	T8
AJ102313.22–315126.7	2016 Mar 23	Magellan ^c	900	T8
J105553.59–165216.3	2013 Mar 22	Magellan ^c	800	T9:
J111239.24–385700.7	2012 May 06	Magellan ^b	1680	T9
J114156.71–332635.8	2014 Mar 10	Magellan ^c	2000	Y0
J143311.42–083736.4	2012 Jan 17	Magellan ^b	240	T8
J144806.48–253420.3	2014 Mar 10	Magellan ^c	800	T8
J150115.92–400418.4	2014 Mar 04	IRTF	2000	T6
AJ172907.10–753017.0	2016 Mar 23	Magellan ^c	900	T7
J173551.72–820900.1	2016 Mar 23	Magellan ^c	600	T6
J210200.15–442919.5	2011 Oct 09	Keck ^d	4200	T9
J215949.48–480854.9	2012 May 05	Magellan ^b	1400	T9
J221216.33–693121.6	2012 May 06	Magellan ^b	1400	T9.5
J223204.50–573010.5	2012 May 06	Magellan ^b	1400	T9
J233226.49–432510.6	2011 Oct 09	Keck ^d	4200	T9:
J235425.33–564928.6	2016 Nov 18	Magellan ^c	1200	T6

Notes.

^a *WISE* designations follow Table 2.

^b Data processing carried out with FIREHOSE package, as described in the text.

^c Data processing carried out with Figaro package, as described in the text.

^d These are the same spectra used to obtain spectral types by Kirkpatrick et al. (2012), albeit independently classified in this paper (Figure 3). In both cases we obtain the same types as Kirkpatrick et al.

Table 7

Adopted Spectral Standards

Spectral Type	Full Designation	Short Designation
T5	2MASS J15031961+ 2525196	2M1503
T6	SDSS J162414.37+002915.6	S1624
T7	2MASS J07271824+1710012	2M0727
T8	2MASS J04151954–0935066	2M0415
T9	UGPS J072227.51–054031.2	U0722
T9.5	WISE J014807.25–720258.7	W0148
Y0	WISEPA J173835.53+273258.9	W1738
Y0.5	WISEPA J154151.66–225025.2	W1541
Y1	WISE J035000.32–565830.2	W0350

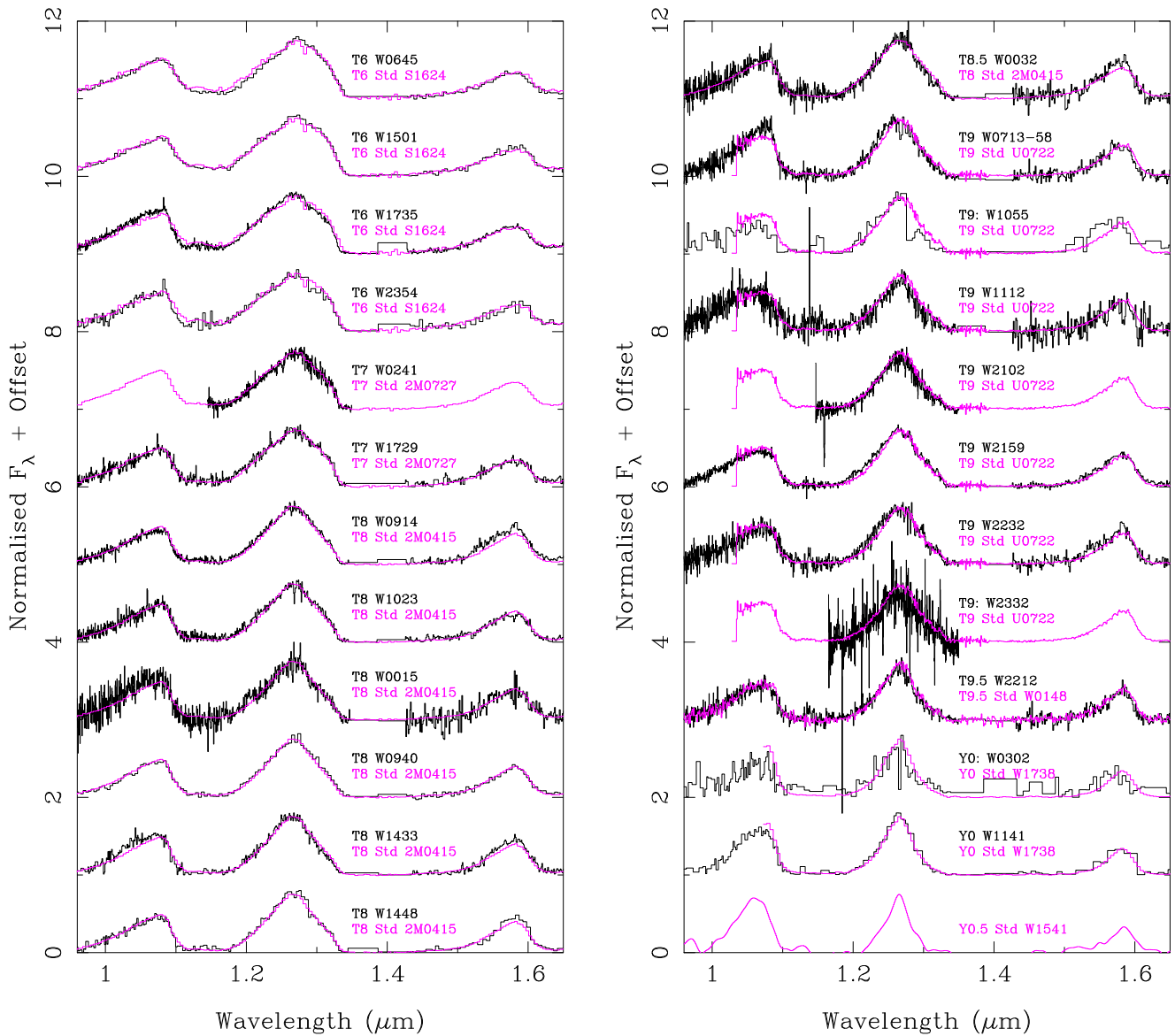


Figure 3. T and Y dwarf spectra listed in Table 6 plotted to demonstrate spectral classifications derived as described in the text. Each new spectrum (black lines) is overlotted with the relevant spectral standard (magenta lines).

object to be resolved in good imaging at *Magellan*, indicating the *WISE* source is most likely a galaxy.

- (d) No counterpart is detected down to $J \sim 21.5$ – 22 —these could either be contaminant sources (i.e., non-cool-brown dwarfs whose *WISE* photometry mimics those of brown dwarfs due to confusion, photometric scatter, etc.) or cool brown dwarfs fainter than $J \sim 22$.

Finding charts for objects newly identified as being T or Y dwarfs are provided in Figure 1. Figure 2 shows expanded images at the position of the new Y0 dwarf W1141-3326. These show how the 2012 CH_4s – CH_4l photometry for this object was contaminated by confusion with a background source. The images from 2014 (by which time W1141-2236 had moved $\approx 2''$ to the west) show W1141-2236 clearly separated from this background source. It is also clear that in the 2012 images, CH_4s is more contaminated than CH_4l , making CH_4s – CH_4l more positive than it should be. We

therefore exclude W1141-3326 from our updated CH_4s – CH_4l -to-spectral-type calibration in Section 6.1.

4.1. Brown Dwarf Proper Motions

Figure 1 highlights the complicating factor of proper motion when seeking to identify cool brown dwarfs. The charts for W2049-4431, W2159-4808, W1112-3857, and W1141-3326 (for example) all show substantial motion between the epoch of the *WISE* detection (mean *WISE* epochs are in the range 2010 April–June for these four targets) and the epoch of follow-up (from 2011 September to 2017 January).

The observed motions of our new *WISE* T and Y dwarfs are summarized in Table 5. We obtained astrometry for our J, CH_4s , or J3 images by cross-matching against the 2MASS PSC and relying on *WISE* and the PSC being on the same coordinate system. The individual positional uncertainty of the *WISE* objects ($0''.3$ – $0''.5$) is the dominant source of uncertainty, so this

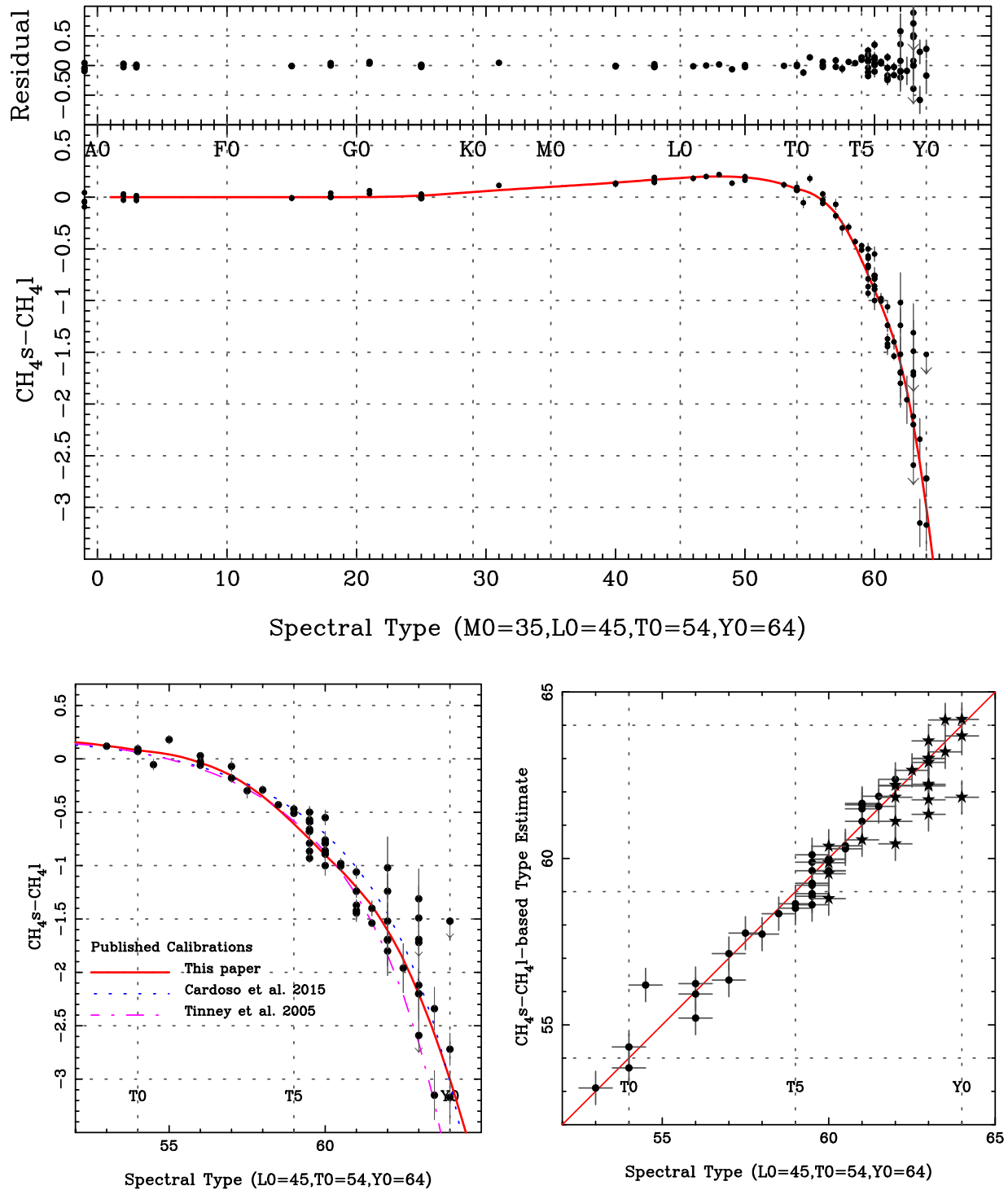


Figure 4. Upper panel: methane-sensitive $\text{CH}_4\text{s}-\text{CH}_4\text{l}$ as a function of A-Y spectral type. The uncertainties plotted are a combination of photon-counting uncertainties, aperture correction uncertainties, and photometric calibration uncertainties. Typical uncertainties on spectral types (not plotted) are ± 0.5 . The plotted parameterization is a spline constrained at the locations in Table 8. rms scatter about the parameterization is 0.18 mag for the whole range, 0.06 mag for L0-T2 dwarfs, and 0.12 mag for T3-T8 dwarfs, and 0.45 mag for T9-Y0 dwarfs. The corresponding spectral type scatters are 0.6 sub-type for L0-T2 dwarfs and 0.43 sub-type for T3-T8 dwarfs, and 0.6 sub-type for T9-Y0 dwarfs. Lower right panel: zoomed-in view of the T and Y dwarf regions as seen in the upper panel, with the previously published calibration relations due to Tinney et al. (2005) and Cardoso et al. (2015) also shown. Lower left panel: comparison of the predicted spectral types from this $\text{CH}_4\text{s}-\text{CH}_4\text{l}$ relation with observed spectral types (solid circles are from Tinney et al. (2005); solid stars are from this paper).

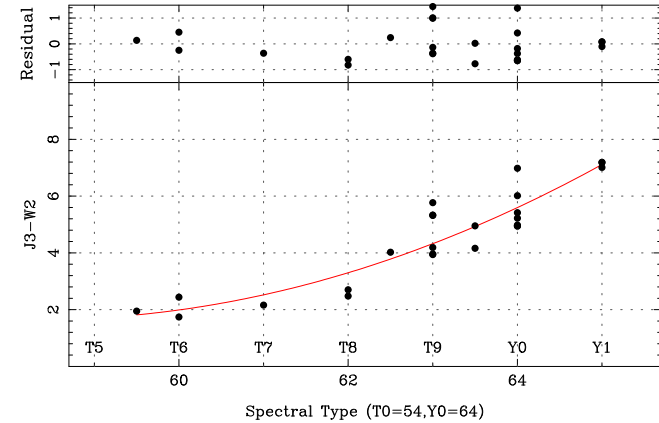
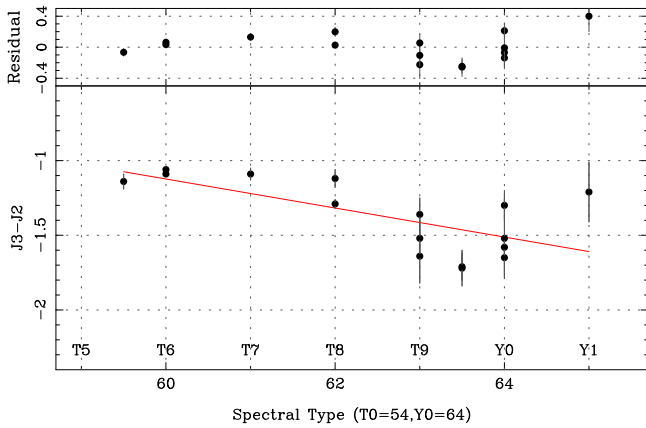


Figure 5. (a) Upper panel: methane-sensitive $J3-J2$ as a function of T5.5-Y1 spectral type. The uncertainties plotted are a combination of photon-counting uncertainties, aperture correction uncertainties, and photometric calibration uncertainties. Typical uncertainties on spectral types (not plotted) are ± 0.5 . The plotted linear fit is described in Section 6.2, and has an rms of 0.19 mag. (b) Lower panel: temperature-sensitive $J3-W2$ as a function of T5.5-Y1 spectral type. Along with the objects in Table 4, we also show nine objects with $J3$ and $W2$ (but without $J2$) from Tinney et al. (2014). The uncertainties are the same as the upper panel. The plotted parameterization is a quadratic fit described in Section 6.3, with an rms of 0.65 mag.

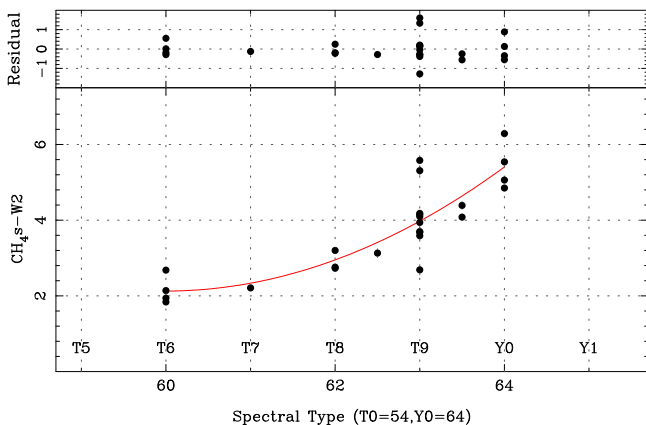


Figure 6. Temperature-sensitive CH_4s-W2 as a function of T6-Y0 spectral type. Uncertainties are the same as those in Figure 5. The plotted parameterization is the quadratic fit described in Section 6.3, with an rms of 0.60 mag.

is a good assumption. Note that we distinguish between the “apparent” motion of our targets from just two epochs as observed by *WISE* and our *IRIS2* or *FourStar* follow-up

Table 8
 CH_4s-CH_4l vs. Spectral Type

SpT	CH_4s-CH_4l	SpT	CH_4s-CH_4l	SpT	CH_4s-CH_4l
A0	0.000	M4	0.132	T2	-0.035
A5	0.000	M6	0.150	T3	-0.157
F0	0.000	M8	0.169	T4	-0.350
F5	0.000	L0	0.185	T5	-0.595
G0	0.001	L2	0.199	T6	-0.900
G5	0.015	L4	0.198	T7	-1.250
K0	0.050	L6	0.178	T8	-1.600
K3	0.076	L8	0.123	T9	-2.200
M0	0.099	T0	0.080	Y0	-3.000
M2	0.115	T1	0.043	Y1	-4.000

imaging (here denoted μ'), and the true proper motion from an astrometric solution that includes parallax. The large *WISE* position uncertainties mean that the uncertainty in the right ascension and declination components of μ' are very similar, so only a single uncertainty is quoted for both in the table. This uncertainty includes an additional term added in quadrature of 100 mas to account for possible parallax motion not being accounted for in objects that could be as close as 10 pc away. Five of these brown dwarfs are the subject of our ongoing astrometric program with *FourStar*, so we provide preliminary proper motion solutions (in this case including a parallax solution) for comparison. In each case the solutions agree, although the *FourStar* astrometric solutions are between 10 and 20 times better than the *WISE-IRIS2/FourStar* estimates.

Motions of $0''.5 \text{ yr}^{-1}$ are not uncommon, and the motions observed for the most rapidly moving brown dwarfs (*W0032-4946* $\sim 1''.5 \text{ yr}^{-1}$, *W2159-4808* $\sim 1''.4 \text{ yr}^{-1}$, *W1141-3326* $\sim 0''.95 \text{ yr}^{-1}$, *W1112-3857* $\sim 0''.9 \text{ yr}^{-1}$, *W2049-4431* $\sim 0''.7 \text{ yr}^{-1}$) highlight how identification via “blind” spectroscopy becomes substantially more difficult after just a few years. After 5 years the positional error box that must be searched can be as large as $20''$ on a side, and can contain multiple objects that would have to be spectroscopically observed in turn to find the correct T/Y dwarf. In this situation methane imaging becomes an even more powerful tool to pick out the correct counterpart.

5. Observations—Spectroscopy

Follow-up spectroscopy is the “gold standard” for confirming a T or Y dwarf identification. Spectroscopic observations have therefore been carried out by members of the *WISE* Science Team brown dwarf collaboration on a variety of telescopes in parallel with our imaging program at the AAT and *Magellan*. We report here spectroscopy obtained on multiple nights between 2011 September 8 and 2017 January 05 (Table 6).

5.1. *Magellan/FIRE*

The Folded-port Infrared Echellette (*FIRE*; Simcoe et al. 2008, 2010) at the 6.5 m Walter Baade Telescope on Cerro Manqui at the Las Campanas Observatory, Chile, uses a 2048×2048 *HAWAII-2RG* array. In prism mode, it covers a wavelength range from 0.8 to $2.5 \mu\text{m}$ at a resolution ranging from $R = 500$ at the J-band to $R = 300$ at the K-band for a slit width of $0''.6$. *FIRE* was used to obtain spectroscopy of T dwarf candidates on the nights listed in Table 6. *FIRE* reductions in

Table 9
J3–W2, CH_{4s}–W2 vs. Spectral Type

SpT	J3–W2	J3–W2	SpT	J3–W2	J3–W2	SpT	J3–W2	J3–W2
T5	1.70	...	T8	3.30	2.95	Y0	5.60	5.41
T6	1.98	2.13	T9	4.32	3.97	Y0.5	6.33	...
T7	2.52	2.34	T9.5	4.93	4.64	Y1	7.11	...

Table 10
Comparison with Extant Spectroscopy

Object	CH _{4s} –CH _{4l} “Type”	SpT (this paper)	SpT (other)	Reference
W0404–6420	T7.1 ± 0.5	...	T9	Schneider et al. (2015)
W1055–1652	>T8.2	T9 ± 0.5	T9.5	E. C. Martin et al. (2018, in preparation)
W1433–0837	...	T8 ± 0.5	T8	Lodieu et al. (2012)
W1448–2534	T6.4 ± 0.5	T8 ± 0.5	T8	Thompson et al. (2013)
W2212–6931	Y0.2 ± 0.5	T9.5 ± 0.5	T9	Schneider et al. (2015)

this paper were carried out in two ways. Roughly half the spectra were processed in the same manner as the spectroscopy presented in Tinney et al. (2012) using the Figaro data reduction package, with telluric removal carried out using A0 spectra acquired immediately before or after the science target at similar airmass. Remaining objects were processed using the FIREHOSE package for low-dispersion data following the procedure in the online “cookbook.”¹⁴ For our faintest objects, pair subtraction prior to insertion into the pipeline greatly improved the accuracy of the sky-line fitting procedure. The combined spectrum was then corrected for telluric absorption and flux-calibrated using observations of an A0 V star and the technique described in Vacca et al. (2003) and the XTELLCOR program from SpeXtool (see Cushing et al. 2004).

5.2. Keck/NIRSPEC

The Near-Infrared Spectrometer (NIRSPEC; McLean et al. 1998, 2000) at the 10 m W. M. Keck Observatory on Maunakea, Hawai’i, was used to obtain confirmation spectroscopy of several new T dwarfs. For spectroscopy, NIRSPEC uses a 1024 × 1024 InSb array. The NIRSPEC observations employed the 42" × 0".57 slit, providing a resolution $R \sim 1500$. Our brown dwarf candidates were observed in the N3 configuration (see McLean et al. 2003) that covers part of the J-band window from 1.15 to 1.35 μm . Data reduction made use of the publicly available REDSPEC package, with modifications to remove residuals from the sky-subtracted pairs prior to 1D spectral extraction.

5.3. IRTF/SpeX

SpeX is a medium-resolution spectrograph and imager at NASA’s 3 m Infrared Telescope Facility (IRTF) on Maunakea, Hawai’i. It uses a 1024 × 1024 InSb array for its spectroscopic observations (Rayner et al. 2003). We used the prism mode with a 0".5 wide slit to achieve a resolving power of $R \equiv \lambda/\Delta\lambda \approx 150$ over the range 0.8–2.5 μm . A series of 200 s exposures were typically obtained at two different positions along the 15" long slit. A0 dwarf stars were observed soon after or before the target and at similar airmass, and used for telluric correction and flux calibration. A set of exposures of internal

flat-field and argon arc lamps were obtained for flat-fielding and wavelength calibration.

The data were reduced using Spextool (Cushing et al. 2004), the IDL-based data reduction package for SpeX. The raw images were first corrected for nonlinearity, pair-subtracted, and then flat-fielded. For some of the fainter sources, multiple pair-subtracted images were averaged in order to facilitate tracing. The spectra were then optimally extracted (e.g., Horne 1986) and wavelength-calibrated using the argon lamp exposures. Multiple spectra were then averaged and the resulting spectrum was corrected for telluric absorption and flux-calibrated using observations of an A0 V star using the technique described in Vacca et al. (2003).

5.4. Spectral Types

The objects listed in Table 6 were spectrally classified using the near-infrared T0-to-T8 dwarf sequence of Burgasser et al. (2006), extended to later T and Y dwarfs by Cushing et al. (2011) and Kirkpatrick et al. (2012). (See Table 7 for the specifically adopted standard spectra.) Assignment of types was performed by overplotting these standards onto the candidate spectra and determining by eye which standard provided the best match. In some cases two adjacent standards, such as T8 and T9, provided an equally good match, so the candidate spectrum was assigned an intermediate type (in this example, T8.5). In Figure 3 we show the near-infrared spectra for all of our sources compared with the relevant spectral standard. We consider these types to have an uncertainty of ± 0.5 sub-types. Types that are more uncertain due to low signal-to-noise ratio spectra (i.e., ± 1 sub-type) are marked with a colon “:” next to the spectral type.

6. Discussion

6.1. An Updated CH_{4s}–CH_{4l} Spectral Type Calibration

Tinney et al. (2005) presented a calibration between the IRIS2 CH_{4s}–CH_{4l} color and spectral type. Cardoso et al. (2015) used very similar filters on the NICS instrument on the Telescope Nazionale Galileo and derived a calibration using the same functional form as Tinney et al. (2005), but with slightly different values. With the additional methane imaging data for later-type objects available in Table 2, we have updated this calibration to derive the relation shown in the

¹⁴ See http://www.mit.edu/people/rsimcoe/FIRE/ob_data.htm for details.

upper panel of Figure 4. A relation with a simple functional form (like that used by Tinney et al.) proved to be impossible to obtain, so we have instead used a spline calibration, which we present as the sequence shown in Table 8. The scatter about this calibration over the whole spectral type range is 0.11 mag. More importantly, for the use of $\text{CH}_4\text{s}-\text{CH}_4\text{l}$ colors to estimate spectral types, the slope of the relation for types beyond T5 is very steep, so that typical measurement errors of ± 0.1 mag in the color map turn into uncertainties in spectral type estimates of less than ± 0.3 sub-types for all objects later than T5. We therefore adopt an uncertainty, for our estimated T and Y types in Table 2, of better than 0.5 sub-types.

The lower left panel of Figure 4 shows an expanded version of this plot, along with the calibration relations from Tinney et al. (2005) and Cardoso et al. (2015). The authors of the latter have already noted that their calibration is systematically redder (in $\text{CH}_4\text{s}-\text{CH}_4\text{l}$) for a given spectral type than the earlier calibration. Examination of their Figure 4 suggests that this may be due to either a fortuitous observation of a sample of objects lying above the sequence of Tinney et al. (2005), or a systematic difference in the color terms driven by the optics of NICS on the Telescopio Nazionale Galileo, or both. (The filters and detectors in both IRIS2 and NICS are identical, so only the rest of the optical train can plausibly produce this difference.) The addition of further very late objects in our new sample of T and Y dwarfs brings our new calibration and that of Cardoso et al. (2015) into much closer alignment for all objects later than T7, while the differences at earlier types now seem consistent with cosmic scatter about the calibration.

The lower right panel of Figure 4 plots the resulting estimated spectral types against actual spectral types, for objects from both this paper and Tinney et al. (2005). In the vast majority of cases, the estimated spectral types predicted based on $\text{CH}_4\text{s}-\text{CH}_4\text{l}$ color are in line with the spectroscopic types—70% of the objects plotted have estimated types agreeing with their observed types to within ± 0.5 types, and 91% agree to within ± 1 type. The most prominent exception is W1141-3326, which (as already noted) was found to be *much* later when a spectrum was acquired (Y0) than predicted (T5), due to confusion with a background object. Of the five objects observed to deviate by more than one whole spectral type from their predicted type, four are deviant in the sense that the observed type was *later* than predicted. Indeed, only 1 of 53 objects was found to be earlier than predicted by more than a whole spectral type, which reinforces the power of these filters for robustly and rapidly identifying (and approximately typing) T- and Y-type dwarfs—if imaging detects a methane absorption signature in an unresolved object (i.e., not a galaxy) near the position of a *WISE* or 2MASS candidate object, then it is almost certainly a legitimate match with the *WISE* or 2MASS candidate, making it a T or Y dwarf. If the estimated type that results in “error” it is more likely to predict the object to be earlier, rather than later. (A similar result was found by Cardoso et al. 2015.) These results give us confidence in the T dwarf identifications, even for the eight T dwarfs in Tables 2 and 4 for which spectroscopy has not yet been obtained.

6.2. J_3-J_2 Versus Spectral Type

To observe fainter cool dwarfs (i.e., $J \gtrsim 21$ candidates where methane observations in the H-band with $\text{CH}_4\text{s}, \text{CH}_4\text{l}$ filters on the 4 m AAT became problematic) we made use of methane-sensitive filters in the J-band (i.e., the J_3 and J_2 filters

installed in FourStar). These J-band filters see a substantially lower sky background than the equivalent H-band filters, while the blue colors of late T and Y dwarfs mean they see essentially the same flux as in the H-band. This combination makes it feasible to target fainter objects down to $J \sim 22-24$ —and in one extreme case down to $J_3 \sim 25$ (Faherty et al. 2014).

We take this opportunity to note that the faintest ground-based near-infrared detection of a Y dwarf (WISE J085510.83-071442.5 at $J_3 = 24.8_{-0.35}^{+0.5}$) reported by Faherty et al. (2014) has been the subject of some debate (Luhman & Esplin 2016; Schneider et al. 2016a). The claimed discrepancy here is almost certainly not real, but rather a result of issues associated with conversion to a standard MKO J passband from the measured bandpasses (in order of decreasing width): *HST* filter F125W 1.10–1.40 μm for Schneider et al.; $J_3 = 1.21-1.37 \mu\text{m}$ for Faherty et al.; and *HST* filter F127M 1.24–1.31 μm for Luhman & Esplin. Faherty et al. measured $J_3 = 24.8_{-0.35}^{+0.5}$, after which Schneider et al. reported $F125W = 26.41 \pm 0.27$ and Luhman & Esplin reported a mean value of $F127M = 24.45 \pm 0.1$ from three observations (all Vega-magnitudes). When one considers the different bandpasses, these magnitude differences make sense. F125W includes substantial water vapor and methane absorption in its wider bandpass than J_3 . So the F125W Vega-magnitude should be fainter than J_3 . In turn J_3 includes slightly more molecular absorption than F127M, which selects out a Y dwarf flux peak. The significant “discrepancy” that Schneider et al. noted with the result of Faherty et al. is not in the observed detections in these three bands, but rather in J magnitudes derived after conversion from the measured bandpass. For the Faherty et al. J_3 detection, this was done using an empirical color correction based on (hotter) T and Y dwarfs, which is clearly not appropriate for this very cool object.

We have J_2 and J_3 photometry for a smaller range of spectral types than we have CH_4s and CH_4l , i.e., only spanning T5.5 to Y1. These data are plotted in the upper panel of Figure 5. Recalling that our J_3-J_2 system is defined so that objects in the A-G spectral type range will have $J_3-J_2 = 0$, the observation of a significantly negative J_3-J_2 color does clearly distinguish T and Y dwarfs from much hotter field stars. The simple linear fit to these data in the figure is parameterized as a function of a modified numeric spectral type n' , such that $n' = n - 60$ (making $n' = 4$ equivalent to a Y0), as

$$J_3 - J_2 = -1.12 - 0.097 n',$$

with an rms scatter of 0.19 mag.

Unfortunately, it would appear that the ability to observe fainter targets in J_3/J_2 comes with the penalty of obtaining less information on the spectral types of those objects. The J_3-J_2 color appears to “saturate” at $J_3-J_2 \approx -1.5$ for late T and Y dwarfs—a range of spectral types over which $\text{CH}_4\text{s}-\text{CH}_4\text{l}$ continues to become more and more negative for later objects. Moreover, Y dwarfs are only ~ 0.5 magnitudes more negative in J_3-J_2 than mid-T dwarfs, and the scatter about any trend is substantial at ± 0.18 mag. The equivalent numbers for $\text{CH}_4\text{s}-\text{CH}_4\text{l}$ are ~ 3 mag and ± 0.45 mag. This means that while J_3-J_2 can unequivocally identify a very cool brown dwarf’s near-infrared counterpart (given the prior information that a cool dwarf is expected at that position from a large survey like *WISE*), it cannot provide a very good estimate of *how* cool that brown dwarf is.

6.3. J3–W2 versus Spectral Type

However, all is not lost, because the ability of J3–J2 to unequivocally associate a near-infrared source with a *WISE* thermal-infrared one means that its J3–W2 color is therefore determined. J3–W2 is primarily sensitive to effective temperature by sampling stellar flux in gaps between the strongest molecular absorptions over a long wavelength baseline, as has already been shown for J–W2 by Cushing et al. (2011) and Kirkpatrick et al. (2012)—as distinct to the methane colors CH_{4s}–CH_{4l} and J3–J2, which are sensitive to effective temperature by measuring the strength of a specific molecular absorption.

As the lower panel of Figure 5 demonstrates, J3–W2 shows a pronounced trend with spectral type, and while the scatter about a quadratic fit to these data is substantial (we again parameterize this fit as a function of a modified numeric spectral type n' such that $n' = n - 60$, meaning a Y0 dwarf has $n' = 4$)

$$J3 - W2 = 1.99 + 0.4090 n' + 0.12313 n'^2,$$

with an rms = 0.65 mag. It also spans a large range in J3–W2 of over 5.5 mag. This means that its discriminating power for assigning an estimated spectral type is similar to that of the CH_{4s}–CH_{4l} color over this spectral type range. For convenience, we show the value of this parameterization as a function of spectral type in Table 9.

In Figure 6 we show the equivalent plot to the lower panel of Figure 5, but based on CH_{4s}–W2 color instead of J3–W2. The CH_{4s}–W2 color has a similar “lever arm” on spectral type as J3–J2, spanning a smaller range in colors (3.5 mag), with a slightly smaller rms of 0.60 mag. The equivalent polynomial fit is

$$\text{CH}_{4s} - \text{W2} = 2.13 + 0.00519 n' + 0.20357 n'^2.$$

It is important to note, however, that observation of a candidate *WISE* counterpart in J3 or CH_{4s} (or indeed J or H) alone is *not sufficient to make a cool brown dwarf identification*. J2 or CH_{4l} is essential to obtain a clear identification of methane absorption. Without that identification, the association of a chance (usually faint) background source will invariably result in a large, *but completely spurious*, J3–W2 or CH_{4s}–W2 color. Both J3 and J2 methane-sensitive bands are to identify a near-infrared, methane-absorbing counterpart, following which J3–W2 or CH_{4s}–W2 can provide an estimate of how cool that object is.

6.4. New Y Dwarfs

W0302–5817 is one of two new Y dwarfs presented for the first time in this paper. Its spectrum (obtained in 2017 January) is of low signal-to-noise but does clearly indicate a Y0 spectral type. This allows us to make a distance estimate using both its J3 and W2 photometry. The mean correction between J_{MKO} and J3 for cool dwarfs ($J_{\text{MKO}} - J3 = 0.20 \pm 0.03$) and the median J_{MKO} absolute magnitude for Y0 dwarfs (Tinney et al. 2014, $M_J = 20.32 \pm 1.25$, giving a median $M_{J3} = 20.12 \pm 1.25$), gives a distance for W0302–5817 lying in the range 24–7.5pc. A better estimate can be obtained using W2 (the median absolute magnitude for a Y0 has much lower scatter— $M_{\text{W2}} = 14.65 \pm 0.35$), which predicts $d = 17.5 \pm 3.5$ pc. This places

W0302 on the outer edge of the 20 pc sample of nearby brown dwarfs.

W1141-3326 is the second new Y dwarf presented here. As noted earlier, despite being observed with CH_{4s},CH_{4l} filters in mid-2012, it took some time to obtain spectra for this object, because confusion with background sources meant its CH_{4s}–CH_{4l} color was that of a mid-T dwarf, so it was not made a high priority (see Figure 2). A high-quality spectrum was eventually obtained in 2014 March, and it is an excellent match to the template Y0 spectrum. W1141-3326’s W2 photometry indicates a likely distance in the range 11.4–8.0 pc. This is a distance fully consistent with the preliminary trigonometric distance presented in Tinney et al. (2014) of 9.5 ± 0.4 pc.

Both W1141-3326 and W0302–5817 are targets of our ongoing parallax program with FourStar on the *Magellan* Baade telescope (Tinney et al. 2014).

6.5. Comparison with Extant Spectroscopy

Table 10 compares previously published spectral types for objects where we present new spectra, as well as objects where we identify the object as a T dwarf but do not have spectroscopy. For W1433–0837 and W1448–2534, we obtain the same spectral types from completely independent spectra and typing processes, while for W2212–6931 we obtain a type that is different by only 0.5 sub-types, which we consider to be consistent—especially since an examination of Figure 8 in Schneider et al. (2015) suggests that W221–6931 has the narrowest 1.3 μm peak of all the T9 objects shown, and so is possibly the closest to T9.5 in that group on their classification system.

We have not been able to obtain a spectrum for W0404–6420, and the T9 classification of Schneider et al. (2015) is two sub-types later from that estimated by our CH_{4s}–CH_{4l} photometry. This is 3–4 times larger than the 0.43–0.6 sub-type scatters observed in our calibration (Figure 4), which reinforces our view that while a methane absorption detection is robust for identifying a cool brown dwarf, and the color provides an estimate of the spectral type, spectroscopy remains the “gold standard” for a firm classification.

7. Conclusion

Our results show that, despite using a modest 4 m class telescope like the AAT on targets at $J \sim 20$, methane imaging is an effective technique for refining cool dwarf candidate lists arising from an external survey. These are magnitudes at which near-infrared spectroscopy on a 4 m telescope would be almost impossible, or at least prohibitively expensive. Methane imaging observations make both identifications and first estimates of the spectral type in a single observation—without having to obtain spectra for the multiple candidate targets that can usually be found in the substantial positional error boxes that arise from a survey like *WISE*.

Cool brown dwarfs from a large area, yet shallow survey, like *WISE*, will reside quite close to the Sun, and almost invariably have significant proper motions. As such, the position error box to search in a follow-up program grows with time. Indeed it has been our experience that substantial proper motions (i.e., $<0''.2/\text{year}$) are so ubiquitous for *WISE* brown dwarfs that once follow-up extended more than

a few years beyond the baseline of the *WISE* mission, any objects that *do* positionally match with the *WISE* source to better than about half an arcsecond, are invariably found to *not* be cool brown dwarfs, but rather background sources.

We have shown that methane imaging observations—either in the H-band using CH₄s and CH₄l filters or in the J-band using J2 and J3 filters—can rapidly and efficiently identify and *preliminarily classify* cool brown dwarf candidates that arise from large, all-sky surveys like *WISE*.

We have presented data identifying 21 new T dwarfs and 2 new Y dwarfs from the *WISE* All-Sky Survey using methane imaging (in addition to the Y dwarf W1639 previously published by Tinney et al. 2012). In many cases, these identifications were made for objects using a 4 m class telescope (the AAT) for objects at $J \gtrsim 20$ —magnitudes at which near-infrared spectroscopy on such a telescope would be either impossible or prohibitively expensive.

We present a further five late T dwarfs (W0309-5016, W0628-8057, W2017-3421, W2211-4758) and three early T dwarfs (W0042-5840, W2302-7134, W2354-8140) with methane identifications, for which typing spectroscopy is required.

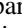
C.G.T. gratefully acknowledges the support of ARC Australian Professorial Fellowship grant DP0774000 and ARC Discovery Outstanding Researcher Award DP130102695. We are grateful for the extraordinary support we have received from the AAT's technical staff—K. Fiegert, Y. Kondrat, S. Lee, R. Paterson, and D. Stafford. Australian access to the *Magellan* Telescopes was supported through the National Collaborative Research Infrastructure Strategy of the Australian Federal Government. Travel support for *Magellan* and AAT observing was provided by the Australian Astronomical Observatory.

This publication makes use of data products from the *Wide-field Infrared Survey Explorer*, which is a joint project of the University of California, Los Angeles, and the Jet Propulsion Laboratory/California Institute of Technology, funded by the National Aeronautics and Space Administration. This publication also makes use of data products from 2MASS, which is a joint project of the University of Massachusetts and the Infrared Processing and Analysis Center/California Institute of Technology, funded by the National Aeronautics and Space Administration and the National Science Foundation. This research has made extensive use of the NASA/IPAC Infrared Science Archive (IRSA), which is operated by the Jet Propulsion Laboratory, California Institute of Technology, under contract with the National Aeronautics and Space Administration. This research has also benefitted from the M, L, and T dwarf compendium housed at DwarfArchives.org, whose server was funded by a NASA Small Research Grant, administered by the American Astronomical Society.

Facilities: AAT (IRIS2), *Magellan*:Baade (FourStar, FIRE), Keck:II (NIRSPEC), IRTF (SpeX), WISE, CTIO:2MASS.

Software: Figaro, FIREHOSE (http://www.mit.edu/people/rsimcoe/FIRE/ob_data.htm), Spextool (Cushing et al. 2004), ORACDR (<http://www.ukirt.hawaii.edu/instruments/cgs4/oracdr/printable.html>).

ORCID iDs

C. G. Tinney  <https://orcid.org/0000-0002-7595-0970>
 Jacqueline K. Faherty  <https://orcid.org/0000-0001-6251-0573>
 Gregory N. Mace  <https://orcid.org/0000-0001-7875-6391>
 Mike Cushing  <https://orcid.org/0000-0001-7780-3352>
 Adam J. Burgasser  <https://orcid.org/0000-0002-6523-9536>
 Scott S. Sheppard  <https://orcid.org/0000-0003-3145-8682>
 Edward L. Wright  <https://orcid.org/0000-0001-5058-1593>

References

- Bertin, E., & Arnouts, S. 1996, *A&AS*, 117, 393
 Burgasser, A. J., Geballe, T. R., Leggett, S. K., Kirkpatrick, J. D., & Golimowski, D. A. 2006, *ApJ*, 637, 106
 Cardoso, C. V., Burningham, B., Smart, R. L., et al. 2015, *MNRAS*, 450, 2486
 Cavanagh, B., Jenness, T., Economou, F., & Currie, M. J. 2008, *AN*, 329, 295
 Cushing, M. C., Kirkpatrick, J. D., Gelino, C. R., et al. 2011, *ApJ*, 743, 50
 Cushing, M. C., Vacca, W. D., & Rayner, J. T. 2004, *PASP*, 116, 362
 Dupuy, T. J., Liu, M. C., & Leggett, S. K. 2015, *ApJ*, 803, 102
 Faherty, J. K., Beletsky, Y., & Burgasser, A. J. 2014, *ApJ*, 790, 90
 Herbst, T. M., Thompson, D., Fockenbrock, R., Rix, H.-W., & Beckwith, S. V. W. 1999, *ApJL*, 526, L17
 Home, K. 1986, *PASP*, 98, 609
 Kirkpatrick, J. D., Cushing, M. C., Gelino, C. R., et al. 2011, *ApJS*, 197, 19
 Kirkpatrick, J. D., Cushing, M. C., Gelino, C. R., et al. 2013, *ApJ*, 776, 128
 Kirkpatrick, J. D., Gelino, C. R., Cushing, M. C., et al. 2012, *ApJ*, 753, 156
 Kirkpatrick, J. D., Kellogg, K., Schneider, A. C., et al. 2016, *ApJS*, 224, 36
 Kirkpatrick, J. D., Schneider, A. C., Fajardo-Acosta, S., et al. 2014, *ApJ*, 783, 122
 Liu, M. C., Michael, C., Dupuy, T. J., et al. 2012, *ApJ*, 758, 57
 Lodieu, N., Burningham, B., Day-Jones, A., et al. 2012, *A&A*, 548, A53
 Lucas, P. W., Tinney, C. G., Burningham, B., et al. 2010, *MNRAS*, 408, L56
 Luhman, K. L. 2014, *ApJL*, 786, L18
 Luhman, K. L., Burgasser, A. J., & Bochanski, J. J. 2011, *ApJL*, 730, L9
 Luhman, K. L., & Esplin, T. L. 2016, *AJ*, 152, 78
 Mace, G. N., Cushing, M. C., Skrutskie, M., et al. 2013, *ApJ*, 726, 30
 Mainzer, A., Bauer, J., Grav, T., et al. 2011, *ApJ*, 731, 53
 Mainzer, A. K., McLean, & Ian, S. 2003, *ApJ*, 597, 555
 McLean, I. S., Becklin, E. E., Bendiksen, O., et al. 1998, *Proc. SPIE*, 3354, 566
 McLean, I. S., Graham, J. R., Becklin, E. E., et al. 2000, *Proc. SPIE*, 4008, 1048
 McLean, I. S., McGovern, M. R., Burgasser, A. J., et al. 2003, *ApJ*, 596, 561
 Nakajima, T., Oppenheimer, B. R., Kulkarni, S. R., et al. 1995, *Natur*, 378, 463
 Oppenheimer, B. R., Kulkarni, S. R., Matthews, K., & Nakajima, T. 1995, *Sci*, 270, 1478
 Persson, S. E., Murphy, D. C., Smee, S., et al. 2013, *PASP*, 125, 654
 Pinfield, D. J., Gromadzki, M., Leggett, S. K., et al. 2014, *MNRAS*, 444, 1931
 Rayner, J. T., Toomey, D. W., Onaka, P. M., et al. 2003, *PASP*, 115, 362
 Rosenthal, E. D., Gurwell, M. A., Ho, & Paul, T. P. 1996, *Natur*, 384, 243
 Schneider, A. C., Cushing, M. C., Kirkpatrick, J. D., et al. 2015, *ApJ*, 817, 112
 Schneider, A. C., Cushing, M. C., Kirkpatrick, J. D., & Gelino, C. R. 2016a, *ApJL*, 823, L35
 Schneider, A. C., Greco, J., Cushing, M. C., et al. 2016b, *ApJ*, 804, 92
 Simcoe, R. A., Burgasser, A. J., Bernstein, R. A., et al. 2008, *Proc. SPIE*, 7014, 7014U
 Simcoe, R. A., Burgasser, A. J., Bochanski, J. J., et al. 2010, *Proc. SPIE*, 7735, 773514
 Skrutskie, M. F., Cutri, R. M., Stiening, R., et al. 2006, *AJ*, 131, 1163
 Thompson, M. A., Kirkpatrick, J. D., Mace, G. N., et al. 2013, *PASP*, 125, 809
 Tinney, C. G., Burgasser, A. J., Kirkpatrick, J. D., & McElwain, M. W. 2005, *AJ*, 130, 2326
 Tinney, C. G., Faherty, J. K., Kirkpatrick, J. D., et al. 2012, *ApJ*, 759, 60
 Tinney, C. G., Faherty, J. K., Kirkpatrick, J. D., et al. 2014, *ApJ*, 796, 39
 Tokunaga, A. T., Simons, D. A., & Vacca, W. D. 2002, *PASP*, 114, 180
 Vacca, W. D., Cushing, M. C., & Rayner, J. T. 2003, *PASP*, 115, 389
 Wright, E. L., Eisenhardt, P. R. M., Mainzer, A. K., et al. 2010, *AJ*, 140, 1868