

NBER WORKING PAPER SERIES

NEWS AND BUSINESS CYCLES IN OPEN ECONOMIES

Nir Jaimovich  
Sergio Rebelo

Working Paper 13444  
<http://www.nber.org/papers/w13444>

NATIONAL BUREAU OF ECONOMIC RESEARCH  
1050 Massachusetts Avenue  
Cambridge, MA 02138  
September 2007

We thank the editor, Mark Gertler, three anonymous referees, and Gadi Barlevy, Paul Beaudry, Larry Christiano, Fabrice Collard, Wouter Denhaan, Martin Eichenbaum, Zvi Hercowitz, Erin Hoge, Navin Kartik, Benjamin Malin, Franck Portier, and Laura Veldkamp for their comments. The views expressed herein are those of the author(s) and do not necessarily reflect the views of the National Bureau of Economic Research.

© 2007 by Nir Jaimovich and Sergio Rebelo. All rights reserved. Short sections of text, not to exceed two paragraphs, may be quoted without explicit permission provided that full credit, including © notice, is given to the source.

News and Business Cycles in Open Economies  
Nir Jaimovich and Sergio Rebelo  
NBER Working Paper No. 13444  
September 2007, Revised October 2008  
JEL No. F3

**ABSTRACT**

Aggregate and sectoral comovement are central features of business cycle data. Therefore, the ability to generate comovement is a natural litmus test for macroeconomic models. But it is a test that most existing models fail. In this paper we propose a unified model that generates both aggregate and sectoral comovement in response to contemporaneous shocks and news shocks about fundamentals. The fundamentals that we consider are aggregate and sectoral TFP shocks as well as investment-specific technical change. The model has three key elements: variable capital utilization, adjustment costs to investment, and a new form of preferences that allow us to parameterize the strength of short-run wealth effects on the labor supply.

Nir Jaimovich  
Department of Economics  
579 Serra Mall  
Stanford University  
Stanford, CA 94305-6072  
and NBER  
njaimo@stanford.edu

Sergio Rebelo  
Northwestern University  
Kellogg School of Management  
Department of Finance  
Leverone Hall  
Evanston, IL 60208-2001  
and NBER  
s-rebelo@northwestern.edu

# Can News About the Future Drive the Business Cycle?

By Nir Jaimovich and Sergio Rebelo \*

## ABSTRACT

Aggregate and sectoral comovement are central features of business cycle data. Therefore, the ability to generate comovement is a natural litmus test for macroeconomic models. But it is a test that most existing models fail. In this paper we propose a unified model that generates both aggregate and sectoral comovement in response to contemporaneous shocks and news shocks about fundamentals. The fundamentals that we consider are aggregate and sectoral TFP shocks as well as investment-specific technical change. The model has three key elements: variable capital utilization, adjustment costs to investment, and a new form of preferences that allow us to parameterize the strength of short-run wealth effects on the labor supply. (*JEL* E3)

Business cycle data feature two important forms of comovement. The first is aggregate comovement: major macroeconomic aggregates, such as output, consumption, investment, hours worked, and the real wage tend to rise and fall together. The second is sectoral comovement: output, employment, and investment tend to rise and fall together in different sectors of the economy.

Robert Lucas (1977) argues that these comovement properties reflect the central role that aggregate shocks play in driving business fluctuations. However, it is surprisingly difficult to generate both aggregate and sectoral comovement, even in models driven by aggregate shocks. Robert J. Barro and Robert G. King (1984) show that the one-sector growth model

---

\*Jaimovich: Department of Economics, Stanford University. Stanford, CA, 94305-6072, njaimo@stanford.edu. Rebelo: Department of Finance, Kellogg Graduate School of Management, Northwestern University, Evanston, IL 60208, s-rebelo@kellogg.northwestern.edu. We thank the editor, Mark Gertler, three anonymous referees, and Gadi Barlevy, Paul Beaudry, Larry Christiano, Fabrice Collard, Wouter Denhaan, Martin Eichenbaum, Zvi Hercowitz, Erin Hoge, Navin Kartik, Benjamin Malin, Franck Portier, and Laura Veldkamp for their comments.

generates aggregate comovement only in the presence of contemporaneous shocks to total factor productivity (TFP). Other shocks generate a negative correlation between consumption and hours worked. Lawrence Christiano and Terry Fitzgerald (1998) show that a two-sector version of the neoclassical model driven by aggregate, contemporaneous TFP shocks does not generate sectoral comovement of investment and hours worked.

In this paper we propose a model that generates aggregate and sectoral comovement in response to both aggregate and sectoral shocks. The shocks that we consider are aggregate TFP shocks, investment-specific shocks, and sectoral TFP shocks to the consumption and investment sectors. We consider both contemporaneous shocks and news shocks. News shocks consist of information that is useful for predicting future fundamentals but does not affect current fundamentals.

The early literature on business cycles (e.g. William H. Beveridge (1909), Arthur Pigou (1927), and John Maurice Clark (1934)) emphasizes news shocks as potentially important drivers of business cycles. The idea is that news shocks change agents' expectations about the future, affecting their current investment, consumption, and work decisions. There is a revival of interest in this idea, motivated in part by the U.S. investment boom of the late 1990s and the subsequent economic slowdown. Figure 1 displays some suggestive data for this episode. The first panel shows data obtained from the Institutional Brokers Estimate System on the median analyst forecast of the value-weighted long-run growth rate of earnings for companies in the Standard & Poors 500 index. The second panel shows the level of investment and realized earnings for the same companies. We see that after 1995 the expected annual earnings growth rate rises rapidly, from roughly 11.5 percent to 17.7 in 2001.<sup>1</sup> Investment and earnings forecasts are positively correlated, whereas investment and realized earnings are negatively correlated.<sup>2</sup> One plausible interpretation of these data is that high expectations

---

<sup>1</sup>The realized average annual earnings growth rate is nine percent for the 1985-95 period and 11 percent for the 1995-2000 period.

<sup>2</sup>The correlation between investment and earnings growth forecasts is 0.60 for the whole sample and 0.71 for the 1995-2004 period. Earnings forecasts lead investment; the correlation between the earnings forecast at time  $t$  and investment at time  $t + 1$  is 0.55 for the full sample. The correlation between investment and realized earnings is  $-0.21$  for the whole sample and  $-0.46$  for the 1995-2004 period.

about earnings growth driven by the prospects of new technologies lead to high levels of investment and to an economic boom. When the new technologies fail to live up to what was expected, investment falls, and a recession ensues.

It is surprisingly difficult to make this story work in a standard business cycle model. John H. Cochrane (1994), Jean Pierre Danthine, John B. Donaldson, and Thore Johnsen (1998), and Paul Beaudry and Frank Portier (2004, 2007) find that many variants of the neoclassical growth model fail to generate a boom in response to expectations of higher future total factor productivity (TFP). Good news about future productivity make agents wealthier, so they increase their consumption, as well as their leisure, reducing the labor supply. This fall in labor supply causes output to fall. Therefore, good news about tomorrow generates a recession today!

Our model introduces three elements into the neoclassical growth model that together generate comovement in response to news shocks. These same elements generate comovement in response to contemporaneous shocks. The first element, variable capital utilization, increases the response of output to news about the future. The second element, adjustment costs to investment, gives agents an incentive to respond immediately to news about future fundamentals.<sup>3</sup> The third element, a weak short-run wealth effect on the labor supply, helps generate a rise in hours worked in response to positive news. We introduce this element by using a new class of preferences which gives us the ability to parameterize the strength of the short-run wealth effect on the labor supply. These preferences nest, as special cases, the two classes of utility functions most widely used in the business cycle literature, those characterized in Robert G. King, Charles Plosser, and Sergio Rebelo (1988) and in Jeremy Greenwood, Zvi Hercowitz, and Gregory Huffman (1988).

In our quantitative work, we consider a one-sector and a two-sector version of our model. The latter is used to study sectoral comovement. Using our preferences to vary the strength

---

<sup>3</sup>The first two elements, variable capital utilization and adjustment costs to investment, are generally necessary to generate comovement in response to contemporaneous investment-specific shocks, see Jeremy Greenwood, Zvi Hercowitz, and Per Krusell (2000).

of short-run wealth effects on the labor supply we find that these effects lie at the heart of the model's ability to generate comovement. We can generate *aggregate* comovement in the presence of moderate labor-supply wealth effects. However, low short-run labor-supply wealth effects are essential to generate *sectoral* comovement that is robust to the timing and nature of the shocks.<sup>4</sup>

Our work is related to several recent papers on the role of news and expectations as drivers of business cycles. Beaudry and Portier (2004) propose the first model that produces an expansion in response to news. Their model features two complementary consumption goods, one durable and one non-durable. Both goods are produced with labor and a fixed factor but with no physical capital. The model generates a boom in response to good news about TFP in the non-durable goods sector. Lawrence Christiano, Cosmin Ilut, Roberto Motto, and Massimo Rostagno (2007) show that habit persistence and investment adjustment costs produce aggregate comovement in response to news about a future TFP shock. In their model, intertemporal substitution in the supply of labor is large enough to compensate for the negative wealth effect of the news shock on the labor supply. However, hours worked fall when the shock materializes because there continues to be a negative wealth effect on labor supply, but there is no longer a strong intertemporal substitution effect on labor supply. Wouter Denhaan and Georg Kaltenbrunner (2005) study the effects of news in a matching model. Matching frictions are a form of labor adjustment costs, so their model is related to the version of our model with adjustment costs to labor, which we discuss in section 4. Guido Lorenzoni (2005) studies a model in which productivity has a temporary and a permanent component and agents have imperfect information about the relative importance of these two components. Simon Gilchrist and John Leahy (2002) discuss the effects of news in both a sticky price model and in a version of the model proposed by Ben Bernanke, Mark Gertler, and Simon Gilchrist (1999). Olivier Blanchard (2007) emphasizes the importance of news

---

<sup>4</sup>Guido Imbens, Donald Rubin, and Bruce Sacerdote (1999) provide microeconomic evidence that is consistent with the view that short-run wealth effects on the labor supply are weak. Their evidence is based on a sample of lottery prize winners. They find that prizes of \$15,000 per year for twenty years have no effect on the labor supply.

about future fundamentals in an open economy setting.

Our paper is organized as follows. In Section 2 we propose a one-sector model that generates aggregate comovement with respect to news about TFP and investment-specific shocks. In Section 3 we explore the role that capital utilization, adjustment costs, and preferences play in these results. In Section 4 we present a two-sector model that generates sectoral comovement with respect to both contemporaneous and news shocks to fundamentals. The fundamentals that we consider are aggregate TFP shocks and sectoral TFP shocks to consumption and investment. In Section 5 we study simulations of a version of our one-sector model with investment-specific technological progress in which agents receive forecasts about future output growth. Section 6 concludes.

## I. The one-sector model

Our model economy is populated by identical agents ( $U$ ) defined over sequences of consumption ( $C_t$ ) and hours worked ( $N_t$ ):

$$(1) \quad U = E_0 \sum_{t=0}^{\infty} \beta^t \frac{(C_t - \psi N_t^\theta X_t)^{1-\sigma} - 1}{1-\sigma},$$

where

$$(2) \quad X_t = C_t^\gamma X_{t-1}^{1-\gamma},$$

and  $E_0$  denotes the expectation conditional on the information available at time zero. We assume that  $0 < \beta < 1$ ,  $\theta > 1$ ,  $\psi > 0$ , and  $\sigma > 0$ . Agents internalize the dynamics of  $X_t$  in their maximization problem. The presence of  $X_t$  makes preferences non-time-separable in consumption and hours worked. These preferences nest as special cases the two classes of utility functions most widely used in the business cycle literature. When  $\gamma = 1$  we obtain preferences of the class discussed in King, Plosser, and Rebelo (1988), which we refer to as KPR. When  $\gamma = 0$  we obtain the preferences proposed by Greenwood, Hercowitz, and Huffman (1988), which we refer to as GHH.

Output ( $Y_t$ ) is produced with a Cobb-Douglas production function using capital services and labor:

$$(3) \quad Y_t = A_t (u_t K_t)^{1-\alpha} N_t^\alpha.$$

Here  $A_t$  represents the level of TFP. Capital services are equal to the product of the stock of capital ( $K_t$ ) and the rate of capital utilization ( $u_t$ ). Output can be used for consumption or investment ( $I_t$ ):

$$(4) \quad Y_t = C_t + I_t/z_t.$$

The variable  $z_t$  represents the current state of technology for producing capital goods. We interpret an increase in  $z_t$  as resulting from investment-specific technological progress, as in Greenwood, Hercowitz, and Krusell (2000). Combining (3) and (4) we obtain:

$$(5) \quad A_t (u_t K_t)^{1-\alpha} N_t^\alpha = C_t + I_t/z_t.$$

Capital accumulation is given by:

$$(6) \quad K_{t+1} = I_t \left[ 1 - \phi \left( \frac{I_t}{I_{t-1}} \right) \right] + [1 - \delta(u_t)] K_t.$$

The function  $\phi(\cdot)$  represents adjustment costs that are incurred when the level of investment changes over time. We assume that  $\phi(1) = 0$ ,  $\phi'(1) = 0$ , so that there are no adjustment costs in the steady state, and that  $\phi''(1) > 0$ . Lawrence Christiano, Martin Eichenbaum, and Charles Evans (2005) (henceforth CEE) argue that this form of adjustment costs is better at mimicking the response of investment to a monetary shock than the specifications in Robert Lucas and Edward Prescott (1971), Andrew Abel and Olivier Blanchard (1983), and Fumio Hayashi (1982).<sup>5</sup>

The function  $\delta(u_t)$  represents the rate of capital depreciation. We assume that depreciation is convex in the rate of utilization:  $\delta'(u_t) > 0$ ,  $\delta''(u_t) \geq 0$ . The initial conditions of the model are  $K_0$ ,  $I_{-1}$ , and  $X_{-1} > 0$ .

---

<sup>5</sup>David Lucca (2007) provides microfoundations for the CEE adjustment cost formulation. He shows that these adjustments costs are equivalent, up to a first-order approximation, to a model in which there is time to build and where firms invest in many complementary projects that have uncertain duration.



The first-order conditions for this economy's planning problem are:

$$(7) \quad (C_t - \psi N_t^\theta X_t)^{-\sigma} + \mu_t \gamma C_t^{\gamma-1} X_{t-1}^{1-\gamma} = \lambda_t,$$

$$(8) \quad (C_t - \psi N_t^\theta X_t)^{-\sigma} \psi N_t^\theta + \mu_t = \beta E_t [\mu_{t+1} (1 - \gamma) C_{t+1}^\gamma X_t^{-\gamma}],$$

$$(9) \quad (C_t - \psi N_t^\theta X_t)^{-\sigma} \theta \psi N_t^{\theta-1} X_t = \lambda_t \alpha A_t (u_t K_t)^{1-\alpha} N_t^{\alpha-1},$$

$$(10) \quad \lambda_t (1 - \alpha) A_t u_t^{-\alpha} K_t^{1-\alpha} N_t^\alpha = \eta_t \delta'(u_t) K_t,$$

$$(11) \quad \eta_t = \beta E_t [\lambda_{t+1} (1 - \alpha) A_{t+1} u_{t+1}^{1-\alpha} K_{t+1}^{-\alpha} N_{t+1}^\alpha + \eta_{t+1} [1 - \delta(u_{t+1})]],$$

$$(12) \quad \lambda_t / z_t = \eta_t \left[ 1 - \phi \left( \frac{I_t}{I_{t-1}} \right) - \phi' \left( \frac{I_t}{I_{t-1}} \right) \frac{I_t}{I_{t-1}} \right] + E_t \left[ \beta \eta_{t+1} \phi' \left( \frac{I_{t+1}}{I_t} \right) \left( \frac{I_{t+1}}{I_t} \right)^2 \right],$$

where  $\mu_t$ ,  $\lambda_t$ , and  $\eta_t$  are the Lagrange multipliers associated with (2), (5), and (6), respectively.

We choose the following parameter values for our benchmark model. We set  $\sigma = 1$ , which corresponds to the case of logarithmic utility. We set  $\theta$  to 1.4, which corresponds to an elasticity of labor supply of 2.5 when preferences take the GHH form. We set the discount factor  $\beta$  to 0.985, implying a quarterly steady-state real interest rate of 1.5 percent. The share of labor in the production function,  $\alpha$ , is set to 0.64. We set the value of  $\gamma$  to 0.001, so preferences are close to a GHH specification. We choose the second derivative of the adjustment-cost functions evaluated at the steady state,  $\phi''(1)$ , to equal 1.3. Finally, we set the elasticity of  $\delta'(u)$  evaluated in the steady state ( $\delta''(u)u/\delta'(u)$ , where  $u$  is the level of utilization in the steady state) to 0.15. The value of  $\delta''(u)u/\delta'(u)$  influences the degree of shock amplification present in the economy. When  $\delta''(u)u/\delta'(u)$  is low, the cost of utilization rises slowly with the level of utilization. In this case, the level of capital utilization is highly responsive to shocks, resulting in a powerful amplification mechanism. Since there is little guidance in the literature about appropriate values for  $\phi''(1)$  and  $\delta''(u)$ , we discuss below the robustness of our results to these parameters. We solve the model by linearizing the equations that characterize the planner's problem around the steady state.

**News shocks** Given these parameter values, the model produces aggregate comovement in response to both contemporaneous shocks to  $A_t$  or  $z_t$  and to news about future values of  $A_t$  or  $z_t$ . Most macroeconomic models generate aggregate comovement in response to contemporaneous shocks. For this reason, we focus our discussion on the response of our model to news shocks.

The timing of the news shock we consider is as follows. At time zero the economy is in the steady state. At time one, unanticipated news arrives. Agents learn that there will be a one-percent permanent increase in  $A_t$  or  $z_t$  beginning two periods later, in period three. Figure 2 depicts the response of the economy to this news. In all cases, there is an expansion in periods one and two in response to positive news about future productivity. Consumption, investment, output, hours worked, average labor productivity, and capital utilization all rise in periods one and two even though the positive shock only occurs in period three.<sup>6</sup>

Figure 2 shows that the impact of news about  $A_t$  is less important than the realization of the  $A_t$  shock. An increase in  $A_t$ , once it materializes, has an immediate, direct impact on output. On the other hand, news of a future increase in  $A_t$  affects output only through changes in the supply of labor and in the amount of capital that is accumulated before the shock arrives.

In contrast, with investment-specific technical change, most of the rise in output occurs in period one, when the news arrives, not in period three, when the  $z_t$  shock materializes. This property results from the fact that an increase in  $z_t$  does not have a direct effect on output. Output is only affected by changes in the supply of labor and in the amount of capital accumulated both before and after the realization of the shock.

Table 1 shows that there is a wide range of parameters that generate aggregate comovement in response to news about future  $A_t$  and  $z_t$ . This table is constructed by using our benchmark calibration and changing one parameter at a time to find the range of values for

---

<sup>6</sup>Beaudry and Portier (2007) provide a useful characterization of the class of models that cannot generate aggregate comovement in response to news about future TFP. Our model has preferences and investment adjustment costs that are outside the set of specifications that they consider.

this parameter consistent with aggregate comovement in the period in which the news arrives. We find that adjustments to investment do not have to be high, ( $\phi''(1) > 0.4$ ), varying utilization can be relatively costly ( $\delta''(u)u/\delta'(u) < 2.5$ ), and the labor supply does not need to be very responsive ( $\theta < 10$ ). The value of  $\gamma$  has to be lower than 0.4. Therefore, although the model does not generate aggregate comovement when preferences take the KPR form, short-run wealth effects on the labor supply can still be substantial.

## II. The elements of the one-sector model

In this section we discuss the role played by the three features of the model that generate comovement between consumption, investment, output, and hours worked in response to news about the future values of  $A_t$  or  $z_t$ . In discussing the influence of capital utilization and adjustment costs on investment decisions it is useful to consider a version of the model with GHH preferences ( $\gamma = 0$ ). In this case  $X_t$  is constant so, to simplify, we normalize the level of  $X$  to one. The first-order conditions for the planner's problem for this version of the model are:

$$(13) \quad (C_t - \psi N_t^\theta)^{-\sigma} = \lambda_t,$$

$$(14) \quad \theta\psi N_t^{\theta-1} = \alpha A_t (u_t K_t)^{1-\alpha} N_t^{\alpha-1},$$

together with (10), (11), and (12).

**Variable Capital Utilization** To explain the role played by capital utilization, we consider a version of the model with constant capital utilization. To obtain the planner's first-order conditions for this model, we eliminate the first-order condition for  $u_t$ , (10), set  $u_t = 1$  in equations (5) and (14), and  $\delta(u_t) = \delta$  in equation (6):

$$(15) \quad \theta\psi N_t^{\theta-1} = \alpha A_t K_t^{1-\alpha} N_t^{\alpha-1}.$$

This equation implies that  $N_t$  does not respond to news about future changes in  $A_t$  or  $z_t$ . The positive wealth effect of future shocks reduces the marginal utility of consumption today,  $\lambda_t$ .

Equation (13) implies that  $C_t$  rises. When  $u_t = 1$ , equation (5) implies that investment must fall. Therefore, labor and output do not respond to the news shock, consumption rises, and investment falls. In the case of variable utilization, equation (14) implies that an increase in utilization raises the marginal product of labor. This increase provides an incentive for hours worked to rise.

**Preferences** To understand the role of preferences in shaping the effects of news about the future it is useful to study the problem of a worker in our economy.

We first consider the response of a worker to a contemporaneous, permanent increase in the real wage,  $w_t$ . To simplify, we abstract from uncertainty and assume that the real interest rate is constant and given by:  $r = 1/\beta - 1$ . The worker's problem is to maximize (1) subject to the budget constraint:

$$a_{t+1} = (1 + r)a_t + w_t N_t - C_t,$$

and to the non-Ponzi game condition,  $\lim_{t \rightarrow \infty} a_{t+1}/(1 + r)^t = 0$ , and the initial value of the worker's assets,  $a_0$ . The timing is as follows. At time zero, the worker is in the steady state with a constant wage rate. At time one, there is an unanticipated, one percent permanent increase in  $w_t$ . The first panel of Figure 3 shows the response of  $N_t$  for four different values of  $\gamma$ : zero, 0.001, 0.25, and one. The strongest response of  $N_t$  occurs with GHH preferences ( $\gamma = 0$ ). However, in this case hours worked are not stationary, they rise permanently.<sup>7</sup> With KPR preferences ( $\gamma = 1$ ),  $N_t$  converges back to the steady state after the shock, but its short-run response is very weak. When  $\gamma$  is equal to 0.001 or 0.25, the short-run impact of the wage rise on  $N_t$  is in between that obtained with GHH and KPR preferences. Lower values of  $\gamma$  produce short-run responses that are closer to those obtained with GHH preferences. As long as  $0 < \gamma \leq 1$ , hours worked converge to the steady state.

---

<sup>7</sup>A simple way to make hours stationary when preferences take a GHH form is to introduce a trend in the utility function such that the utility cost of supplying labor increases at the same rate as the real wage. This trend can be justified by appealing to home production. However, we find that, in models with stochastic technical progress, this formulation can generate large recessions through an implausible mechanism. In periods with low rates of technical progress, hours worked can fall significantly because the trend increase in the utility cost of supplying labor is not offset by increases in the real wage rate.

We now compute the Hicksian wealth effect on hours worked of the real wage increase. We denote by  $U$  and  $U^*$  the lifetime utility of the worker before and after the permanent increase in  $w_t$ , respectively. To calculate the wealth effect we compute the path of  $N_t$  for a worker who does not benefit from the wage increase but who receives an output transfer at time one that raises his utility to  $U^*$ . Our results are displayed in the second panel of Figure 3. The wealth effect is zero for GHH preferences and negative for KPR. In both cases the wealth effect is constant over time. When  $0 < \gamma < 1$  the wealth effect varies over time. In the long run, this effect is similar to that with KPR preferences. In the short-run, the effect is actually positive, helping to raise the labor supply. This positive wealth effect results from the fact that the disutility of work is high when  $X_t$  is high.<sup>8</sup> Since consumption rises over time,  $X_t$  also increases over time, and the disutility of work is higher in the future than in the present.

It is easy to see why it is generally difficult to generate an expansion in response to good news about the future with KPR preferences. Suppose we tell a worker with KPR preferences that his real wage goes up in the future but not in the present. This news generates a wealth effect that reduces the worker's supply of labor today.

**Investment Adjustment Costs** The first-order condition for labor, (14), implies that, unless the rate of capital utilization changes,  $N_t$  does not respond to news about the future. The first-order condition for capital utilization, (10), implies that  $\eta_t/\lambda_t$  must fall in order for  $u_t$  to rise. A fall in  $\eta_t/\lambda_t$  requires the presence of adjustment costs to investment. Without adjustment costs,  $\eta_t/\lambda_t = z_t$  and the capital utilization equation reduces to:

$$(1 - \alpha)A_t u_t^{-\alpha} K_t^{1-\alpha} N_t^\alpha = z_t \delta'(u_t) K_t.$$

Since  $z_t$  and  $A_t$  both remain constant at time two, this equation along with (14) implies that both  $N_t$  and  $u_t$  remain constant.

---

<sup>8</sup>The disutility of labor at time  $t$  is given by:  $(C_t - \psi N_t^\theta X_t)^{-\sigma} \theta \psi N_t^{\theta-1} X_t$ . It is easy to see that this disutility is increasing in  $X_t$ .

We can now put all the elements of the model together to explain how we can generate comovement in response to news about the future. A future increase in  $A_t$  or  $z_t$  implies that investment will rise in the future. In the presence of investment adjustment costs it is optimal to smooth investment over time, and so investment rises in period one. An increase in investment leads to a decline in  $\eta_t/\lambda_t$ , the value of installed capital in units of consumption. This fall occurs because the adjustment costs embedded in (6) imply that higher levels of investment today reduce the cost of investment tomorrow.

The fall in  $\eta_t/\lambda_t$  lowers the value of installed capital. Capital is less valuable because it is less costly to replace, so it is efficient to increase today's rate of capital utilization. The rise in utilization increases the marginal product of labor. This increase provides an incentive for hours worked to rise. As long as the wealth effect on the supply of labor is small enough, hours rise and we see an expansion in response to good news about future values of  $A_t$  or  $z_t$ .

**Implications for the Value of the Firm** The ratio  $\eta_t/\lambda_t$  is equal to Tobin's marginal  $q$ , which is the value of an additional unit of installed capital. Therefore, to generate comovement, good news about future productivity must lead to a fall in Tobin's marginal  $q$ . A natural question is: does this fall imply a decline in the value of firm? The answer is no because with CEE adjustment costs, average  $q$  (the ratio of firm value to the capital stock) is different from marginal  $q$ . To see this result, define the end-of period value of the firm as the result of the following problem:<sup>9</sup>

$$V(K_1, I_0, A_0, z_0) = \max E_0 \sum_{t=1}^{\infty} \frac{\beta^t \lambda_t}{\lambda_0} [A_t (u_t K_t)^{1-\alpha} N_t^\alpha - w_t N_t - I_t/z_t],$$

subject to (6). The expression  $V(K_1, I_0, A_0, z_0)$  represents the time-zero value of the firm after it receives the cash flow  $(Y_0 - w_0 N_0)$ , incurs investment expenses  $(I_0/z_0)$ , and chooses values for  $I_1$  and  $K_1$ . We show in Nir Jaimovich and Sergio Rebelo (2008) that  $V(K_1, I_0, z_0)$

---

<sup>9</sup>Our motivation for using the end-of-period value of the firm is as follows. In a discrete-time version of the Hayashi (1982) model marginal and average  $q$  coincide only when they are based on the end-of-period value of the firm. This timing is not required in continuous time, see the Jaimovich and Rebelo (2008).

can be written as:

$$(16) \quad V(K_1, I_0, A_0, z_0) = \frac{\eta_0}{\lambda_0} (1 - \delta) K_0 + I_0 \left\{ 1/z_0 + \frac{\eta_0}{\lambda_0} \left[ \phi' \left( \frac{I_0}{I_{-1}} \right) \left( \frac{I_0}{I_{-1}} \right) \right] \right\}.$$

The value of the firm is the sum of two components. The first component,  $(\eta_0/\lambda_0) (1 - \delta) K_0$ , is the value of the capital stock. The second component, is the value of investment. This second term is present because higher investment today lowers the cost of higher investment in the future.

News about future  $A_t$  or  $z_t$  reduce the value of the capital stock but can raise the value of investment. For our parameter values, the value of the capital falls and the value of the investment rises. The first effect dominates so the overall value of the firm falls.

An easy way to overturn this implication without changing any of the other key properties of our model is to introduce decreasing returns to scale into the production function. We find that the value of the firm rises in response to news about future increases in  $A_t$  or  $z_t$  when the degree of returns to scale is lower than 0.9. A production function that exhibits decreasing returns to capital and labor can be written as:  $Y_t = A_t (u_t K_t)^{\alpha_1} N_t^{\alpha_2} T^{1-\alpha_2-\alpha_3}$ , where  $\alpha_1 + \alpha_2 < 1$ , and  $T$  can be interpreted as a production factor that belongs to the firm.<sup>10</sup> The value of this factor increases whenever there is an increase in the future values of  $A_t$  or  $z_t$ .<sup>11</sup> This effect produces an overall increase in the value of the firm.

### III. The two-sector model

To study sectoral comovement we consider a two-sector version of our model with a consumption sector and an investment sector.<sup>12</sup> Preferences are described by (1) and (2). The

---

<sup>10</sup>A degree of returns to scale of 0.9 is consistent with the estimates in Craig Burnside (1996). The factor  $T$  can be interpreted as organizational capital, see Edward Prescott and Michael Visscher (1980).

<sup>11</sup>Another avenue to generate an increase in the value of the firm in response to news shocks is to introduce adjustment costs to labor (see Jaimovich and Rebelo (2008)). These adjustment costs add a term similar to the investment value to the overall value of the firm.

<sup>12</sup>See Greg Huffman and Mark Wynne (1998) for evidence on sectoral comovement. These authors propose a model that generates sectoral comovement in response to contemporaneous shocks. Their model does not produce comovement in response to news shocks because it has no forces that can compensate for the negative wealth effect on the labor supply of news about future fundamentals.

resource constraint (5) is replaced with the following two equations:

$$(17) \quad C_t = A_t z_t^c (u_t^c K_t^c)^{1-\alpha} (N_t^c)^\alpha,$$

$$(18) \quad I_t^c + I_t^i = A_t z_t^i (u_t^i K_t^i)^{1-\alpha} (N_t^i)^\alpha,$$

where the superscript  $c$  and  $i$  denotes variables that are specific to the consumption and investment sector, respectively. The capital accumulation equation, (6), is replaced by:

$$(19) \quad K_{t+1}^c = I_t^c \left[ 1 - \phi \left( \frac{I_t^c}{I_{t-1}^c} \right) \right] + [1 - \delta(u_t^c)] K_t^c,$$

$$(20) \quad K_{t+1}^i = I_t^i \left[ 1 - \phi \left( \frac{I_t^i}{I_{t-1}^i} \right) \right] + [1 - \delta(u_t^i)] K_t^i.$$

Finally, we introduce the condition:

$$N_t^c + N_t^i = N_t.$$

Before turning to our results it is useful to review Christiano and Fitzgerald's (1998) discussion of why sectoral comovement of hours worked cannot arise with KPR preferences. Combining the first-order conditions for consumption and labor for the case of  $\gamma = 1$  yields the following expression:

$$(21) \quad \theta \psi (N_t^c + N_t^i)^{\theta-1} = \alpha / N_t^c.$$

Equation (21) implies that  $N_t^c$  and  $N_t^i$  cannot move in the same direction. The analogous equation for the case of GHH preferences is:

$$(22) \quad \theta \psi (N_t^c + N_t^i)^{\theta-1} = \alpha \frac{C_t}{N_t^c}.$$

Equation (22) shows that with GHH preferences it is possible for  $N_t^c$  and  $N_t^i$  to move in the same direction. The fact that comovement is not possible with  $\gamma = 1$  but it is possible with  $\gamma = 0$  suggests that wealth effects on the labor supply plays a crucial role in determining



sectoral comovement.<sup>13</sup> Our preferences allow us to consider intermediate values of  $\gamma$  to obtain a better understanding of the role played by short-run wealth effects on the labor supply in generating sectoral comovement.

We now discuss numerical results for a version of the model calibrated with the same parameter values used for the one-sector model. Figure 4 shows the effects of three different permanent, contemporaneous one-percent shocks. The first shock is an aggregate TFP shock ( $A_t$ ). The second is a sectoral shock to TFP in the consumption sector ( $z_t^c$ ). The third is a sectoral shock to TFP in the investment sector ( $z_t^i$  or, equivalently,  $z_t$ ). The timing is as follows. The economy is in the steady state at time zero and the shock occurs at time one. It is clear from Figure 4 that the model generates both aggregate and sectoral comovement in response to all three shocks.

Figure 5 shows the response to news about the same three shocks ( $A_t$ ,  $z_t^c$ , and  $z_t^i$ ). The timing is as follows. The economy is in the steady state at time zero. At time one the economy learns that there is a permanent, one-percent increase in one of the three shocks in period three. Figure 5 shows that the model generates both aggregate and sectoral comovement in response to news about all three shocks.

**Robustness** To understand better the mechanism that drives the results displayed in Figures 4 and 5 we now discuss the range of parameters that generate sectoral comovement with respect to contemporaneous and news shocks. We follow the same procedure we use to study robustness in the one-sector model.

Table 1 shows that it is easy to generate comovement with respect to contemporaneous shocks to  $z_t^c$ , even with KPR preferences. Generating sectoral comovement in response to contemporaneous shocks to  $A_t$  requires only that short-run wealth effects be somewhat weaker than those implied by KPR ( $\gamma < 0.6$ ). In both of these cases minimal adjustment

---

<sup>13</sup>The results in Riccardo DiCecio (2005) also suggest that wealth effects play a central role in generating sectoral comovement in response to contemporaneous shocks. In his model there is sectoral comovement because wages are sticky. Workers have to supply the number of hours demanded by firms at a fixed nominal wage, and so the wealth effect on the labor supply plays no role in the short run.

costs to investment are required and variable utilization is not necessary. It is much more difficult to generate sectoral comovement in response to contemporaneous shocks to  $z_t^i$ . We need very weak short-run wealth effects ( $\gamma < 0.11$ ) and a responsive labor supply ( $\theta < 2$ ). We also need variable utilization, but increasing utilization can be relatively costly ( $\delta''(u)u/\delta'(u) < 2.8$ ).

Finally, it is essential to have low values of  $\gamma$  ( $\gamma < 0.006$ ) to obtain sectoral comovement in response to news about  $A_t$ ,  $z_t^c$ , and  $z_t^i$ . We also need moderate investment adjustment costs ( $\phi''(1) > 1$ ), a low elasticity of the cost of utilization with respect to the rate of utilization ( $\delta''(u)u/\delta'(u) < 0.25$ ), and a responsive labor supply ( $\theta < 1.6$ ).

We find that sectoral comovement of labor and of investment are driven by different features of the model. Low values of  $\gamma$  are essential to generate comovement of labor in the two sectors. Investment adjustment costs are important to generate comovement in sectoral investment.

**Adjustment Costs to Labor** We now consider a version of our model that incorporates adjustment costs to labor, along the lines of Thomas Sargent (1978) and Timothy Cogley and James M. Nason (1995). We replace equations (17) and (18) with the following two equations:

$$C_t + N_t^c \varphi(N_t^c/N_{t-1}^c) = A_t z_t^c (u_t^c K_t^c)^{1-\alpha} (N_t^c)^\alpha,$$

$$I_t^c + I_t^i + N_t^i \varphi(N_t^i/N_{t-1}^i) = A_t z_t^i (u_t^i K_t^i)^{1-\alpha} (N_t^i)^\alpha,$$

where  $\varphi(\cdot)$  is a function such that  $\varphi(1) = \varphi'(1) = 0$ ,  $\varphi'(\cdot) \geq 0$ , and  $\varphi''(\cdot) > 0$ .

We find that adjustment costs to labor help generate aggregate comovement with respect to news shocks. These costs provide an incentive to increase the labor supply immediately in anticipation of future increases in the labor supply that occur in response to the shock. In the presence of adjustment costs it is not efficient to reduce the labor supply today and then increase it in the future once the shock occurs. As a result, the short-run wealth effect on the labor supply can be stronger than in the benchmark model. Indeed, we find that the

introduction of labor adjustment costs allows the model to generate aggregate comovement in the one-sector model in response to news about  $A_t$  or  $z_t$  for a much wider range of parameters, including high values of  $\gamma$ . However, we find that adjustment costs to labor do not help with generating sectoral comovement in response to news shocks in the two-sector model.

## IV. Model Simulations

We have shown that our model can generate expansions and contractions in response to good news about future productivity. One natural question is whether this success comes at a cost of the model’s ability to generate empirically recognizable business fluctuations. That is, can the model, when calibrated with the same parameters used in the experiments discussed so far, generate volatility, comovement, and persistence of macroeconomic aggregates that are empirically plausible? To answer this question we simulate a version of our model driven by stochastic, investment-specific technical progress and compute the standard set of business-cycle statistics.<sup>14</sup> We assume that  $\log(z_t)$  follows a random walk:

$$\log(z_{t+1}) = \log(z_t) + \varepsilon_{t+1}.$$

We use the method proposed by George Tauchen and Robert Hussey (1991) to estimate a two-point Markov chain for  $\varepsilon_t$ . We measure  $z_t$  using quarterly data on the U.S. real price of investment for the period 1947.I to 2004.IV. These data were constructed by Fisher (2006) using National Income and Product Accounts series for the consumption deflator and Jason Cummins and Giovanni Violante’s (2002) updated series for Robert Gordon’s (1989) quality-adjusted producer durable-equipment deflator.<sup>15</sup> The support of the estimated Markov chain is:  $\{0.00, 0.0115\}$ . The transition matrix is:

$$(23) \quad \pi = \begin{bmatrix} 0.7378 & 0.2622 \\ 0.2622 & 0.7378 \end{bmatrix}.$$

---

<sup>14</sup>Jonas Fisher (2006) and Alejandro Justiniano and Giorgio Primiceri (2005) argue that investment-specific technical progress is the most important determinant of output variability.

<sup>15</sup>We thank Ricardo DiCecio for providing us with an updated version of this time series.

We generate 1000 model simulations with 230 periods each. For each simulation, we detrend the logarithm of the relevant time series with the Hodrick-Prescott filter using a smoothing parameter of 1600. In our main calibration we consider a setting in which agents receive noisy news about the future. Our measure of news is based on the Livingston survey of output forecasts.<sup>16</sup> The Livingston survey pools professional forecasters to obtain forecasts of different economic variables. Two-quarter ahead GDP forecasts are available for the period 1971.IV – 2003.IV. To study the robustness of the results to different assumptions about the timing of information arrival, we simulate the model under two additional information scenarios. In the first scenario agents receive no news. In the second scenario agents receive perfect information about  $z_t^i$ .

**Noisy News** Forecasts of future rates of investment-specific technical change are not available for our sample, so it is difficult to choose the precision of signals about  $\varepsilon_{t+2}$ . For this reason, we consider a setting in which we provide agents with a signal,  $S^y$ , for whether the growth rate of output two periods later is going to be above or below the average. The signal has two values, high ( $H$ ) or low ( $L$ ). We choose the signal to have the same precision as the Livingston survey of output forecasts. To obtain a discrete signal with two possible values we use the Tauchen and Hussey (1991) method to estimate a two-point Markov chain for the Livingston survey forecasts. The precision of these forecasts is as follows:

$$(24) \quad \begin{aligned} \Pr(g_{t+2}^y \geq \text{Average}(g^y) | S^y = H) &= 0.70, \\ \Pr(g_{t+2}^y < \text{Average}(g^y) | S^l = L) &= 0.58, \end{aligned}$$

where  $g_{t+2}^y$  represents the growth rate of output at time  $t+2$ . The forecast precision is higher in expansions than in recessions.<sup>17</sup>

To provide agents in the model with a signal on output with the same precision as the

---

<sup>16</sup>See Dean Croushore (1993) for a description of the Livingston survey. The Survey of Professional Forecasters (SPF) is an alternative source of output growth forecasts for the U.S. economy. We also use SPF forecasts to calibrate our model. The results are similar to those we obtain with the Livingston forecasts.

<sup>17</sup>Using the Survey of Professional Forecasters, Stijn Van Nieuwerburgh and Laura Veldkamp (2006) also find that forecast precision is higher in expansions than in recessions.

Livingston survey forecast, we implement the following algorithm. First, we assume values  $q_1$  and  $q_2$  for the following conditional probabilities:

$$\begin{aligned}\Pr(S^y = H | \varepsilon_{t+2} = H) &= q_1, \\ \Pr(S^y = L | \varepsilon_{t+2} = L) &= q_2.\end{aligned}$$

We simulate time series for  $\varepsilon_t$  and generate  $S^y$  according to  $q_1$  and  $q_2$ . Agents receive these signals and forecast  $\varepsilon_{t+2}$  using both the signal and the current realization of  $\varepsilon_t$ :

$$\Pr(\varepsilon_{t+2} = H | S^y = i, \varepsilon_t) = \frac{\Pr(S^y = i | \varepsilon_{t+2} = H) \Pr(\varepsilon_{t+2} = H | \varepsilon_t)}{\sum_{j=H,L} \Pr(S^y = i | \varepsilon_{t+2} = j) \Pr(\varepsilon_{t+2} = j | \varepsilon_t)}.$$

We simulate the model and compute:

$$\begin{aligned}\Pr(g_{t+2}^y \geq \text{Average}(g^y) | S^y = H), \\ \Pr(g_{t+2}^y < \text{Average}(g^y) | S^l = L).\end{aligned}$$

We then revise the values of  $q_1$  and  $q_2$  until the precision of  $S^y$  in the model coincides with the precision (24) estimated in the data. We obtain  $q_1 = 0.99$  and  $q_2 = 0.62$ .

Column 5 of Table 2 shows the results for this version of the model. This model generates business cycle moments that are similar to those in postwar U.S. data reported in column 1. Consumption, investment, and hours worked are procyclical. Investment is more volatile than output, consumption is less volatile than output, and the volatility of hours is similar to that of output. The model accounts for 64 percent of the standard deviation of output in the data.

**Robustness** To understand the robustness of our results to different assumptions about the timing of information arrival we consider two additional cases. In the first case agents receive no news about the future. In the second case agents receive a perfect signal about  $\varepsilon_{t+2}$ .

Table 2 reports moments for U.S. data and model simulated data. These moments were computed using data detrended with the HP filter with a smoothing parameter of 1600. Column 4 in Table 2 summarizes the business cycle properties of a version of our model in which the economy receives no news. Forecasts of future values of  $\varepsilon_t$  are solely based on the Markov chain (23). This version of the model generates business cycle moments that are similar to those in the postwar U.S. data we report in column 1. Consumption, investment, and hours worked are procyclical. Investment is more volatile than output, consumption is less volatile than output, and the volatility of hours is similar to that of output. Column 6 of Table 2 summarizes the business cycle properties of our model when at time  $t$  agents receive perfect signals about  $\varepsilon_{t+2}$ , the growth rate of  $z_t$  in two periods. This model generates patterns of volatility and comovement that are similar to those of the model with no news.

To summarize, Columns 4 and 6 show that the business cycle implications of our model are robust to changes in the information structure of the shocks. Providing the economy with news about the future does not alter the basic patterns of comovement or relative volatility of the major macroeconomic aggregates. Therefore the business cycle properties of our model are robust to the timing of information arrival. In contrast, the business cycle properties of the neoclassical one-sector growth model depend heavily on the timing of information arrival.

**News and Volatility** It is well known that in the past 60 years output volatility has declined and output persistence has increased in virtually all developed countries. These facts are documented for the U.S. in Table 2. Columns 2 and 3 provide statistics for the U.S. for the period 1947-1982 and 1983-2003. The volatility of output declines from 1.88 in the first sample to 0.97 in the second sample. The persistence of output, as measured by the sum of the four estimated coefficients in an AR(4) process for output, rises from 0.65 to 0.86.

James Stock and Mark Watson (2003) document both the reduction in output volatility

and the increase in persistence for the G7 countries and discuss several possible explanations, including better monetary policy, changes in sectoral composition toward sectors with lower volatility, and declines in the volatility of the shocks to the economy.

Our model provides a complementary explanation for the volatility decline and persistence increase. Advances in information technology have led to dramatic increases in the volume of available data and in the ability to process these data. Let us assume that the increase in information volume has made it easier to forecast the future. Under this assumption, we can think of the increased volume of information as moving the economy from Column 4 of Table 2 (no news) toward Column 6. An increase in the availability of news makes it easier to forecast the future, thus reducing economic volatility and increasing persistence.

Evidence from the Livingston survey is consistent with the idea that business cycles have become easier to forecast. The survey contains unemployment forecasts at a six-month horizon from the fourth quarter of 1961 to the fourth quarter of 2003. The average absolute percentage forecast error is 3.3 percent in the first part of the sample (1961.IV-1982.IV) but only 1.5 percent in the second part of the sample (1983.I-2003.IV). Therefore, the forecast error declined by 79 percent. This increase in forecast precision cannot be solely accounted for by the reduction in unemployment volatility. The standard deviation of  $\log(\text{unemployment})$  declined only by 23 percent between the first and the second part of the sample.

**Recessions** According to our estimated Markov chain, (23), the rate of technical progress is always positive. This Markov process is a good approximation to the behavior of investment-specific technical progress in the data. Declines in  $z_t$  are rare (they occur in only 6 percent of the quarters in our sample) and small in magnitude. The average percentage decline in  $z_t$  in quarters in which  $z_t$  falls is 0.8 percent.

The absence of technical regress in our calibration raises the question of whether the model can generate recessions.<sup>18</sup> To study this question we first describe a simple method to

---

<sup>18</sup>Robert G. King and Sergio Rebelo (1999) propose a real business cycle model that generates recessions

determine the timing of recessions. Our strategy is similar to that used by the Business Cycle Dating Committee of the National Bureau of Economic Research (NBER) for comparing different recessions (see Robert Hall, Martin Feldstein, Jeffrey Frankel, Robert Gordon, Christina Romer, David Romer, and Victor Zarnowitz (2003)). It is also reminiscent of the methods used by Arthur Burns and Wesley Mitchell (1946) in their study of the properties of U.S. business cycles.

To date the beginning of U.S. recessions, we compute trend output using the HP filter with a smoothing parameter of 1600. We identify periods in which output is below trend for at least two consecutive quarters, say  $t$  and  $t + 1$ . Recessions are dated as starting at time  $t - 1$ . This timing method produces recession dates that are similar to those chosen by the NBER dating committee.<sup>19</sup>

We compute the average time series for different macroeconomic variables during recession periods for the U.S. economy. The solid line in Figure 6 shows the average behavior during recessions of the HP-detrended logarithm of real GDP, real consumption of nondurables and services, real private investment, and hours worked. Time zero is the quarter in which the recession begins. The dashed lines represent the 95 percent confidence interval around the average for each variable. The fall from peak to trough in output, consumption, investment, and hours is 1.8 percent, 0.7 percent, 4.3 percent, and 1.7 percent, respectively.

The dashed line in Figure 6 shows the average recession in our model. The model captures the salient features of recessions in the data. The last graph in this figure, which displays the behavior of investment-specific technical change in the average recession, shows an interesting feature of the recessions generated by the model. On average, recessions occur when there

---

in the absence of negative technology shocks. Their model shares one key feature with our model, which is variable capital utilization, but it relies on a much higher elasticity of labor supply.

<sup>19</sup>The HP procedure produces six recessions whose starting dates coincide with those chosen by the NBER: 1948.IV, 1957.III, 1960.II, 1980.I, 1981.III, 1990.III. There are four other recessions in which the HP procedure produces recession dates that are within two quarters of the NBER dates (indicated in parentheses): 1953.III (1953.II), 1969.III (1969.IV), 1974.II (1974.III), and 2001.II (2001.I). The HP procedure identifies four additional recessions starting in 1962.II, 1967.II, 1986.III, and 1994.III. None of the latter episodes involves a fall in output, which suggests that our procedure corresponds to a broader definition of recession than that of the NBER.



is a high contemporaneous rate of change in investment-specific technical progress but the economy learns that two periods later technical change will slow down. It is impossible to identify what causes recessions in our model by lining up the usual suspects—contemporaneous shocks to the economy. Recessions are driven not by bad shocks today but by lackluster news about the future. This property is generally not present in a version of the model in which agents do not receive news about the future. In the no-news version of the model recessions tend to coincide with periods in which the rate of investment-specific technical change is low.

The model only generates nine recessions, as opposed to 14 in the data. In addition, recessions are more shallow in the model than in the data. These two differences between the implications of the model and U.S. data occur in part because the U.S. economy is affected by shocks, such as oil shocks, that are absent from the model.

## V. Conclusion

Aggregate and sectoral comovement are central features of business cycles data. Therefore, the ability to generate comovement is a natural litmus test for macroeconomic models. But it is a test that most existing models fail. In this paper we propose a unified model that generates both aggregate and sectoral comovement in response to both contemporaneous shocks and news shocks about fundamentals. The fundamentals that we consider are aggregate TFP shocks, TFP shocks to the consumption and investment sector, and shocks to investment-specific technical change. The model has three key elements: variable capital utilization, adjustment costs to investment, and a new form of preferences that allows us to parameterize the strength of short-run wealth effects on labor supply. We find that, in order for comovement to be robust to the timing and nature of the shocks that buffet the economy, short-run wealth effects on the labor supply must be weak.

## REFERENCES

- Abel, Andrew and Olivier Blanchard. 1983. "An Intertemporal Equilibrium Model of Savings and Investment," *Econometrica* 51(3): 675-692.
- Barro, Robert J. and Robert G. King. 1984. "Time-Separable Preferences and Intertemporal-Substitution Models of Business Cycles," *The Quarterly Journal of Economics*, 99(4): 817-839.
- Beaudry, Paul, and Franck Portier. 2004. "An Exploration into Pigou's Theory of Cycles," *Journal of Monetary Economics*, 51(6): 1183-1216.
- Beaudry, Paul and Franck Portier. 2007. "When Can Changes in Expectations Cause Business Cycle Fluctuations in Neo-Classical Settings?," *Journal of Economic Theory*, 135(1): 458-477.
- Bernanke, Ben, Mark Gertler, and Simon Gilchrist. 1999. "The Financial Accelerator in a Quantitative Business Cycle Framework," In *Handbook of Macroeconomics*, ed. John Taylor and Michael Woodford. 1341-1393.
- Beveridge, William H. 1909. *Unemployment: A Problem of Industry*. London: Longmans Green..
- Blanchard, Olivier. 2007. "Adjustment Within the Euro. The Difficult Case of Portugal," *Portuguese Economic Journal*, 6(1): 1-22.
- Burns, Arthur and Wesley Mitchell. 1946. *Measuring Business Cycles*. New York: National Bureau of Economic Research.
- Burnside, Craig. 1996. "Production Function Regression, Returns to Scale and Externalities," *Journal of Monetary Economics*, 37(2): 177-201.
- Christiano, Lawrence and Terry Fitzgerald. 1998. "The Business Cycle: It's Still a Puzzle," *Federal Reserve Bank of Chicago Economic Perspectives* 22: 56- 83.
- Christiano, Lawrence, Martin Eichenbaum, and Charles Evans. 2005. "Nominal Rigidities and the Dynamic Effects of a Shock to Monetary Policy," *Journal of Political Economy*, 113(1): 1-45.
- Christiano, Lawrence, Cosmin Ilut, Roberto Motto, and Massimo Rostagno. 2007. "Monetary Policy and a Stock Market Boom-Bust Cycle," mimeo, Northwestern University.
- Clark, John Maurice. 1934. "Strategic Factors in Business Cycles," Boston, MA: National Bureau of Economic Research.
- Cochrane, John H. 1994. "Shocks," *Carnegie-Rochester Conference Series on Public Policy*, 41: 295-364.
- Cogley, Timothy and James M. Nason. 1995. "Output Dynamics in Real-Business-Cycle Models," *American Economic Review*, 85(3): 492-511.

- Croushore, Dean. 1993. "Introducing: The Survey of Professional Forecasters," *Federal Reserve Bank of Philadelphia Business Review*, 3–15.
- Cummins, Jason and Giovanni Violante. 2002. "Investment-Specific Technical Change in the United States (1947-2000): Measurement and Macroeconomic Consequences," *Review of Economic Dynamics*, 5(2): 243-284.
- Danthine, Jean Pierre, John B. Donaldson and Thore Johnsen. 1998. "Productivity Growth, Consumer Confidence and the Business Cycle," *European Economic Review*, 42(6): 1113-1140.
- Denhaan, Wouter J. and Georg Kaltenbrunner. 2005. "Growth Expectations and Business Cycles," mimeo, London Business School.
- DiCecio, Riccardo. 2005. "Comovement: It's Not A Puzzle," Working Paper 2005-035B, St. Louis Federal Reserve Bank.
- Fisher, Jonas. 2006. "The Dynamic Effects of Neutral and Investment-Specific Technology Shocks," *Journal of Political Economy*, 114(3): 413-451.
- Gordon, Robert, 1989. *The Measurement of Durable Goods Prices*, Chicago: University of Chicago Press.
- Greenwood, Jeremy, Zvi Hercowitz and Gregory Huffman. 1988. "Investment, Capacity Utilization and the Real Business Cycle," *American Economic Review* 78(3): 402-417.
- Greenwood, Jeremy Zvi Hercowitz and Per Krusell. 2000. "The Role of Investment-specific Technological Change in the Business Cycle," *European Economic Review*, 44(1): 91-115.
- Hall, Robert, Martin Feldstein, Jeffrey Frankel, Robert Gordon, Christina Romer, David Romer, and Victor Zarnowitz. 2003. "The NBER's Recession Dating Procedure," mimeo, National Bureau of Economic Research.
- Hayashi, Fumio. 1982. "Tobin's Marginal q and Average q: A Neoclassical Interpretation," *Econometrica* 50(1): 213–24.
- Huffman, Greg and Mark Wynne. 1999. "The Role of Intratemporal Adjustment Costs in a Multi-Sector Economy," *Journal of Monetary Economics*, 43(2): 317-350.
- Imbens, Guido, Donald Rubin, and Bruce Sacerdote. 1999. "Estimating the Effects of Unearned Income on Labor Supply, Earnings, Savings, and Consumption: Evidence from a Survey of Lottery Players," National Bureau of Economic Research working paper 7001.
- Jaimovich, Nir and Sergio Rebelo. 2008. "Tobin's Marginal q and Average q Revisited," mimeo, Stanford University.
- Justiniano, Alejandro and Giorgio Primiceri. 2005. "The Time Varying Volatility of Macroeconomic Fluctuations," mimeo, Northwestern University.

- King, Robert G., Charles Plosser, and Sergio Rebelo. 1988. "Production, Growth and Business Cycles: I. the Basic Neoclassical Model," *Journal of Monetary Economics*, 21(2-3): 195-232.
- King, Robert G. and Sergio Rebelo. 1999. "Resuscitating Real Business Cycles." In *Handbook of Macroeconomics*, ed. John Taylor and Michael Woodford, 1B: 928-1002.
- Lorenzoni, Guido. 2005. "Imperfect Information, Consumers' Expectations and Business Cycles," mimeo. MIT.
- Lucas, Robert and Edward Prescott. 1971. "Investment Under Uncertainty," *Econometrica*, 39(5): 659-681.
- Lucas, Robert E., Jr. 1977. "Understanding Business Cycles," *Carnegie-Rochester Conference Series on Public Policy*, 5: 7-29.
- Lucca, David. 2007. "Resuscitating Time-to-Build," mimeo, Board of Governors of the Federal Reserve System.
- Van Nieuwerburgh, Stijn and Laura Veldkamp. 2006. "Learning Asymmetries in Real Business Cycles," *Journal of Monetary Economics*, 53(4): 753-772.
- Pigou, Arthur. 1927. *Industrial Fluctuations*, London: MacMillan.
- Prescott, Edward C. and Michael Visscher. 1980. "Organization Capital," *The Journal of Political Economy*, 88(3): 446-461.
- Sargent, Thomas. 1978. "Estimation of Dynamic Labor Demand Schedules under Rational Expectations," *Journal of Political Economy* 86(6): 1009-1044.
- Stock, James H. and Watson, Mark W. 2003. "Has the Business Cycle Changed? Evidence and Explanations," FRB Kansas City Symposium, Jackson Hole, Wyoming, 28-30.
- Tauchen, George and Robert Hussey. 1991. "Quadrature Based Methods for Obtaining Approximate Solutions to Nonlinear Asset Pricing Models," *Econometrica*, 59(2): 371-396.

**TABLE 1: ROBUSTNESS ANALYSIS****One-sector model**

	News A	News z
Maximum $\gamma$	0.650	0.400
Minimum adjustment costs, $\phi''(1)$	0.370	0.400
Minimum elasticity of labor supply ( $1/(\theta-1)$ )	0.111	0.111
Maximum elasticity of utilization	2.500	5.000

**Two-sector model**

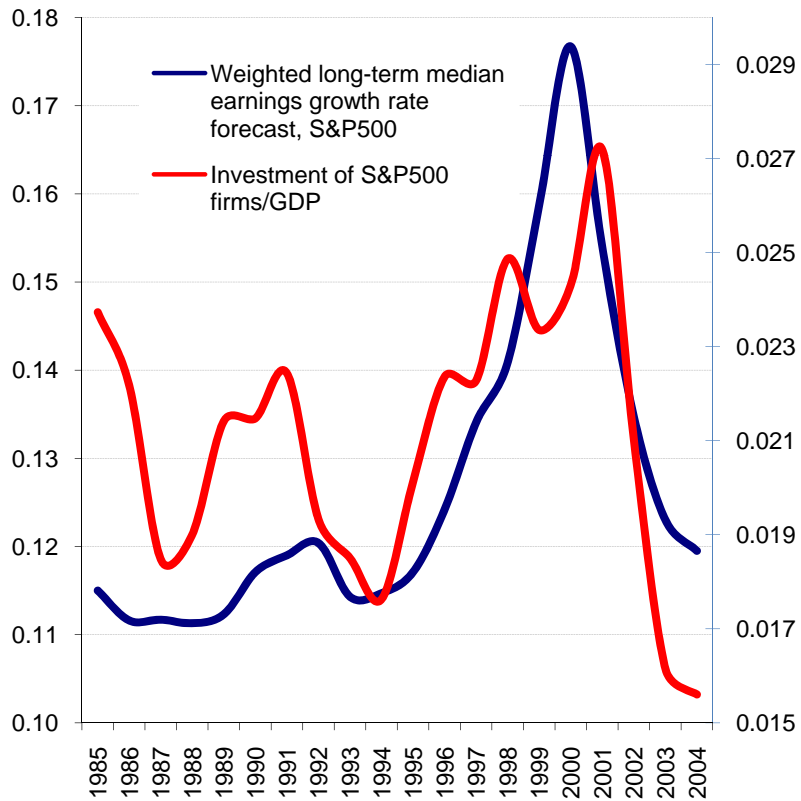
	Contemporaneous shocks			News shocks		
	A	$z^c$	$z^i$	A	$z^c$	$z^i$
Maximum $\gamma$	0.600	1.000	0.110	0.009	0.006	0.006
Minimum adjustment costs, $\phi''(1)$	0.010	0.010	0.010	1.100	1.000	1.100
Minimum elasticity of labor supply ( $1/(\theta-1)$ )	0.256	0.001	1.000	1.667	1.667	1.667
Maximum elasticity of utilization	infinity	infinity	2.800	0.300	0.300	0.250

**TABLE 2: BUSINESS CYCLE MOMENTS**

	DATA			MODEL		
	1947-2004	1947-1983	1983-2004	No signal	Signal with Livingston-survey precision	Perfect signal
Std. Dev. Output	1.56	1.88	0.97	1.10	1.00	0.94
Std. Dev. Hours	1.51	1.88	1.00	0.78	0.71	0.67
Std. Dev. Investment	4.84	5.41	3.69	3.45	3.33	3.30
Std. Dev. Consumption	1.11	1.22	0.75	0.81	0.75	0.73
Correlation Output and Hours	0.86	0.88	0.87	1.00	1.00	1.00
Correlation Output and Investment	0.89	0.75	0.91	0.97	0.93	0.85
Correlation Output and Consumption	0.77	0.68	0.75	0.94	0.92	0.89
Sum of 4 coefficients in AR(4)	0.77	0.65	0.86	0.71	0.78	0.80
Number of Recessions	14			9	9	9

Figure 1: Investment, earnings growth forecasts, and realized earnings

Correlation (investment, earnings growth forecast) = 0.60



Correlation(investment, realized earnings) = -0.21

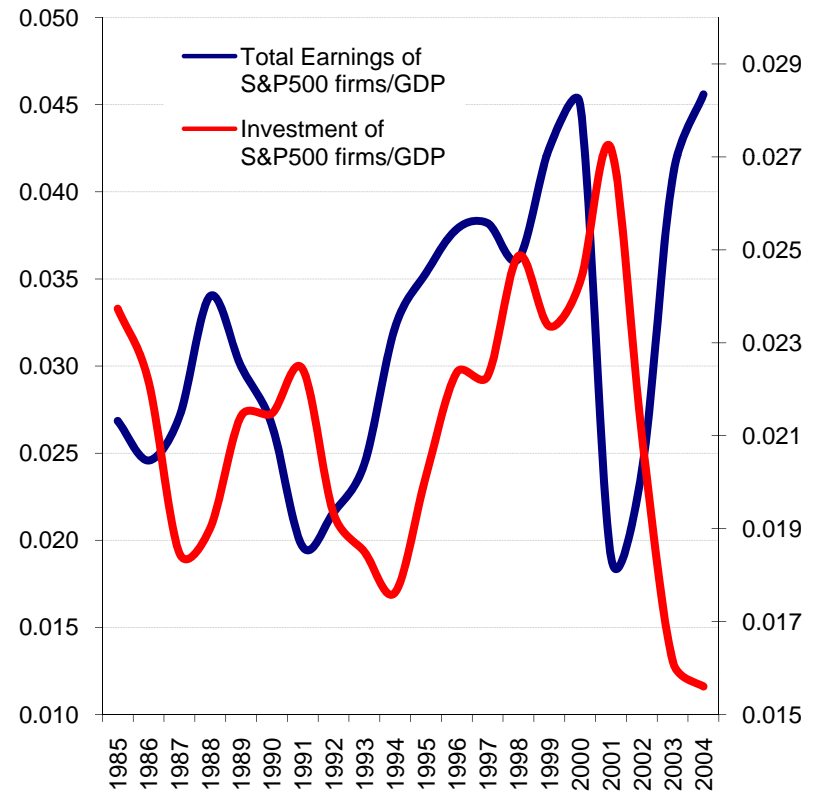


Figure 2: One-sector model, response to news shocks

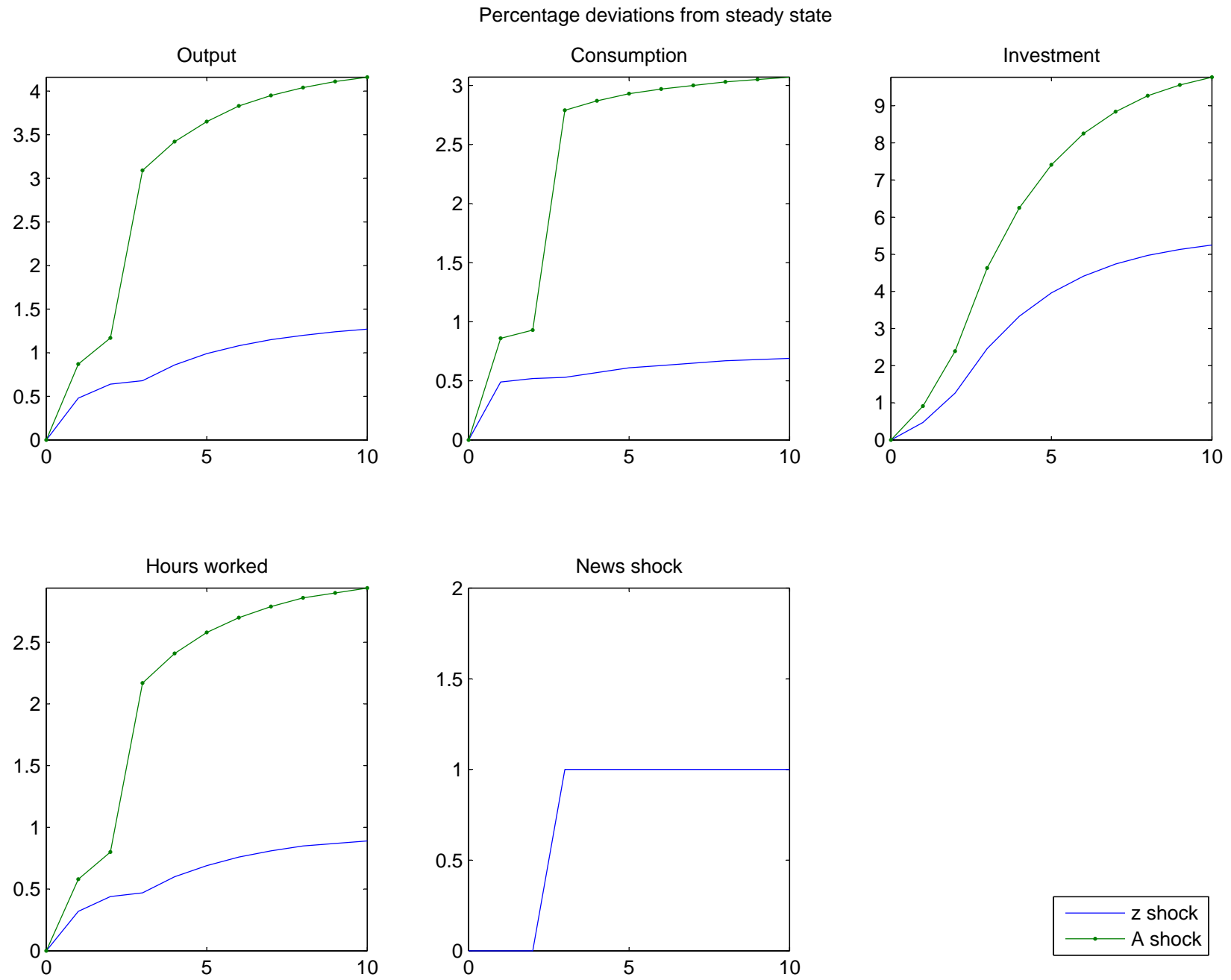




Figure 3: Wealth effects on the labor supply of a one percent permanent real wage increase

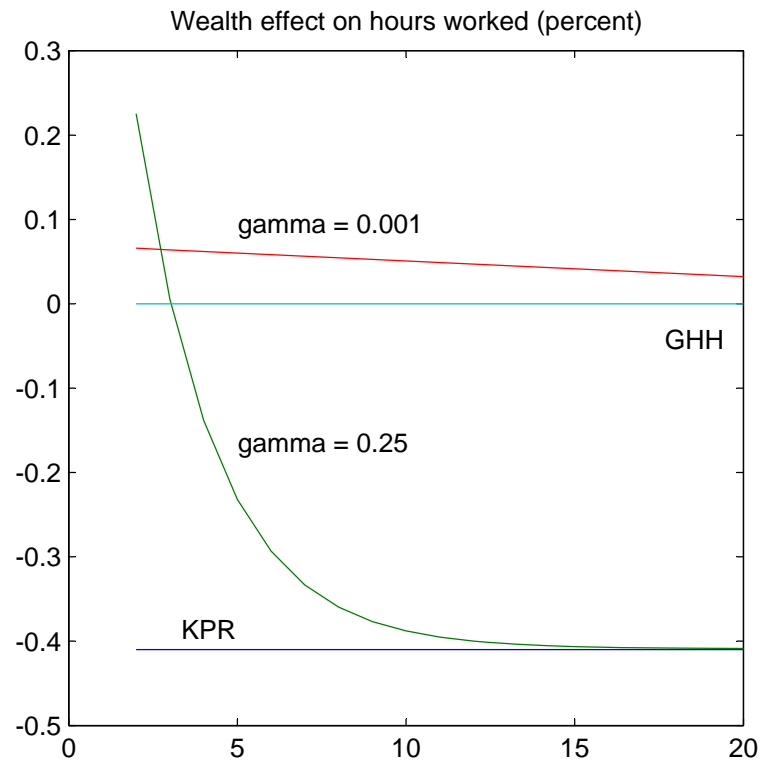
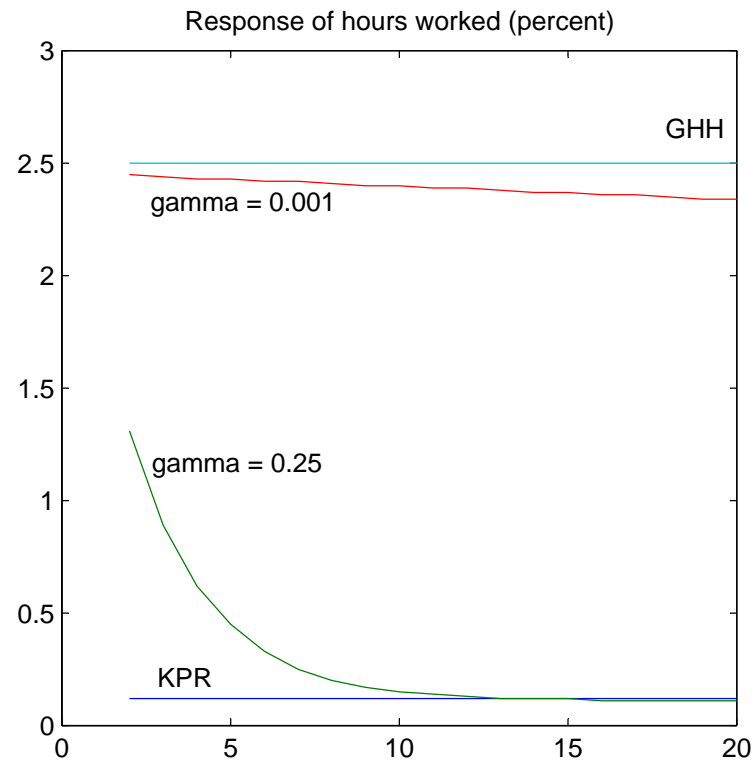
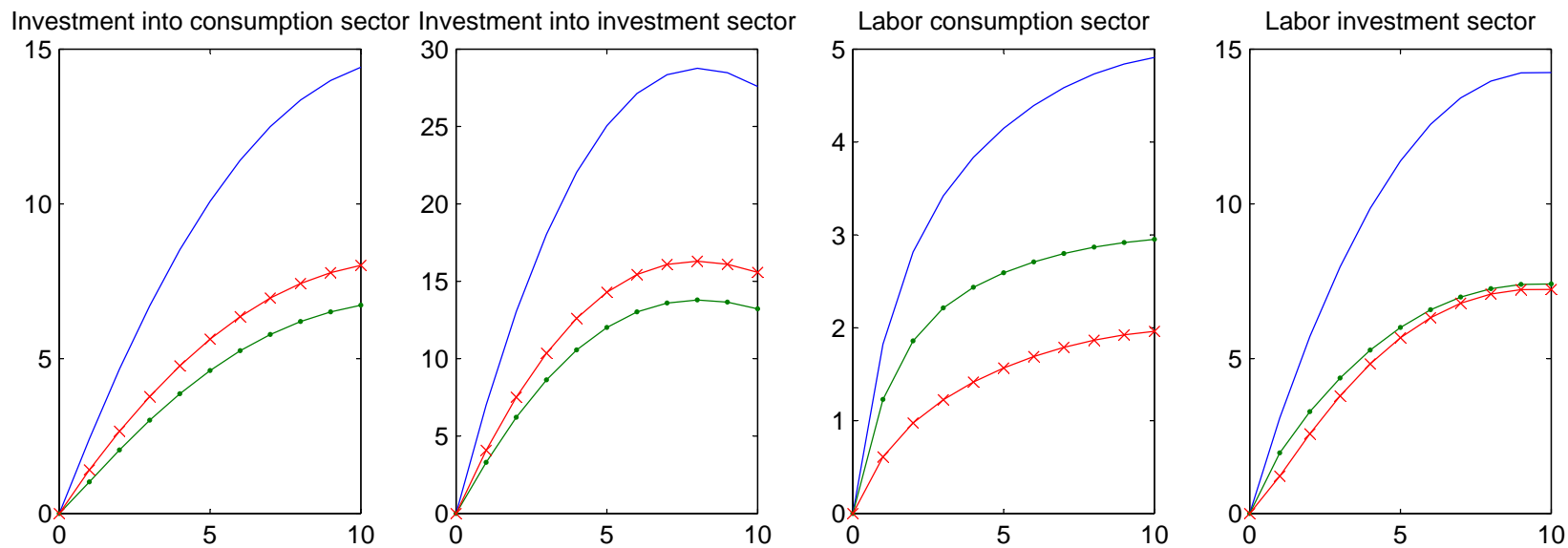
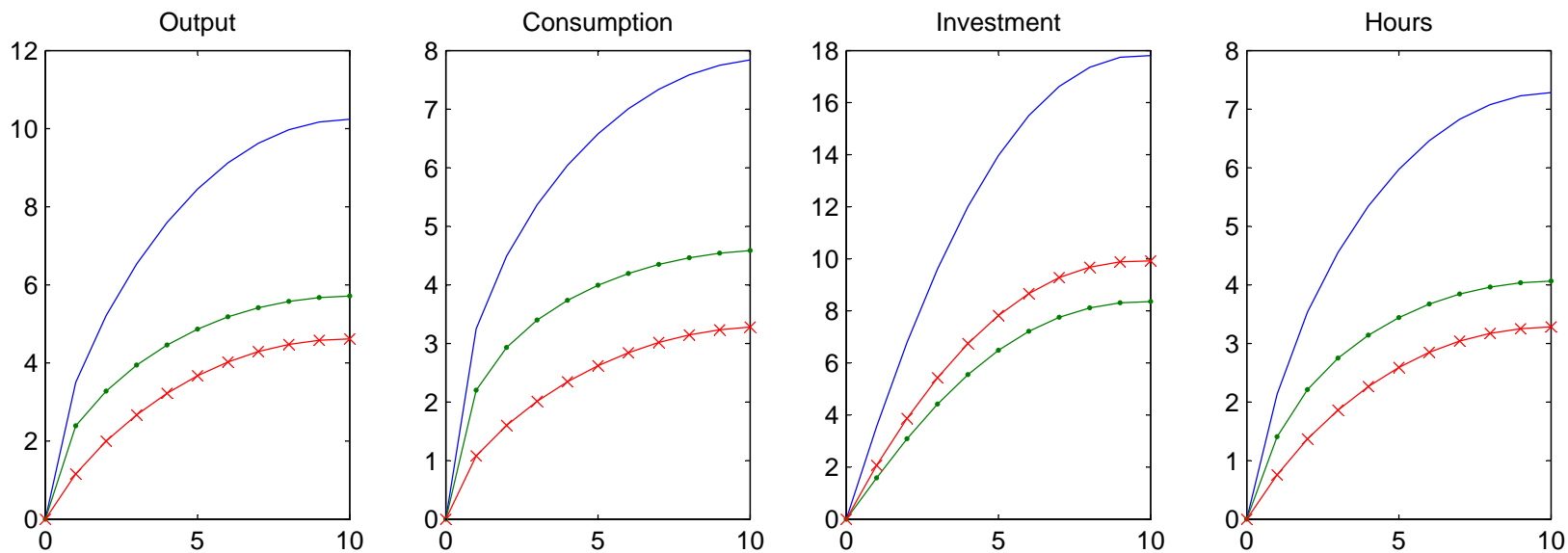
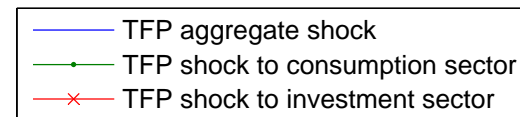


Figure 4: Effects of contemporaneous shocks

Percentage deviations from steady state



# Figure 5: Effects of news shocks

Percentage deviations from steady state

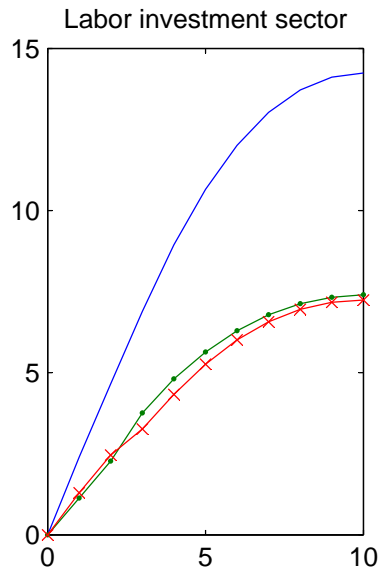
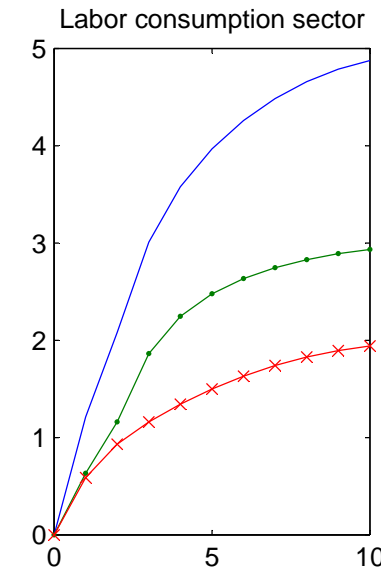
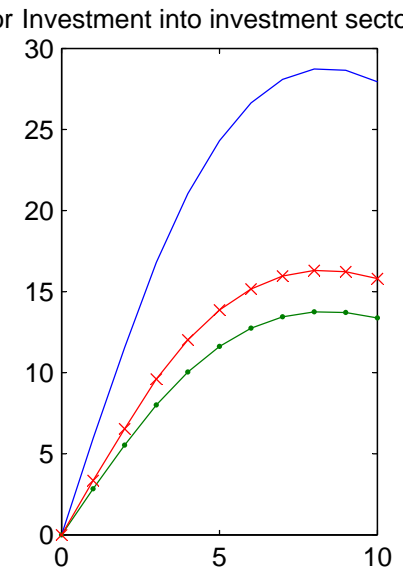
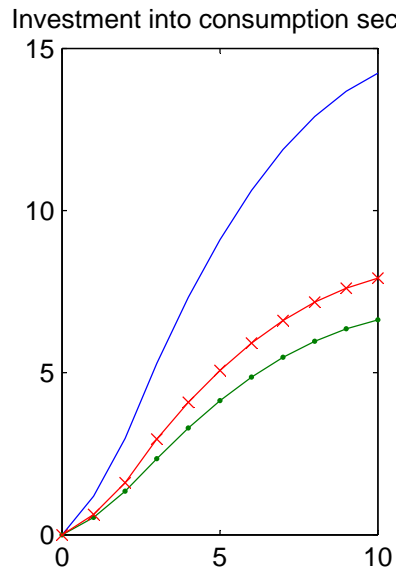
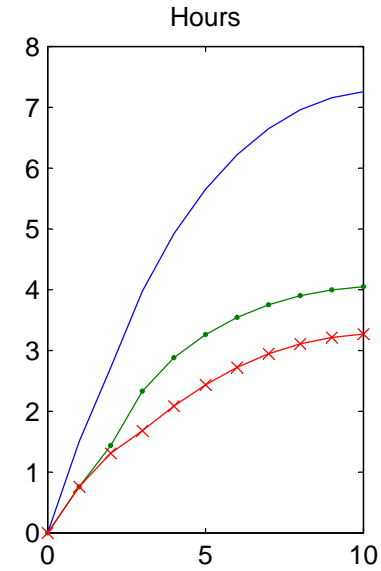
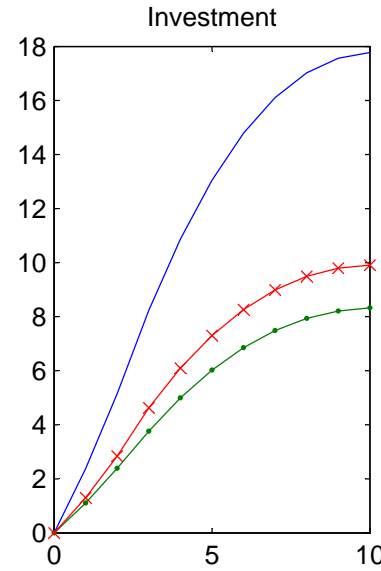
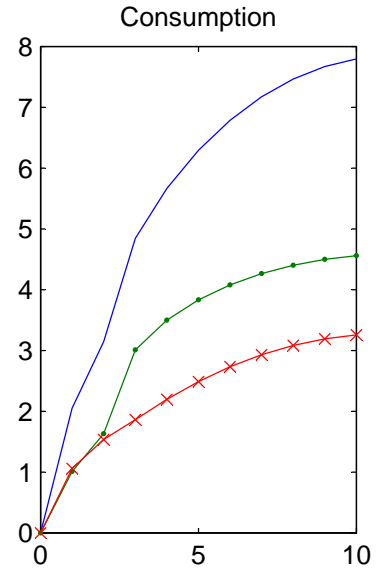
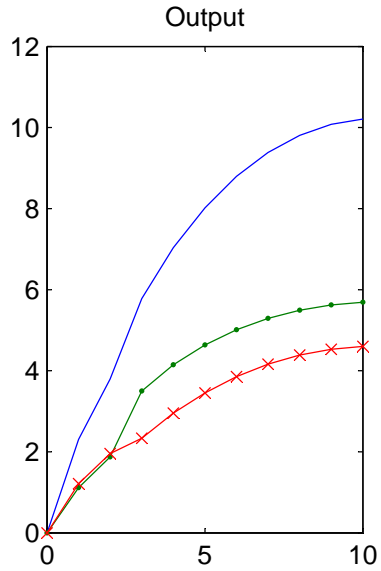
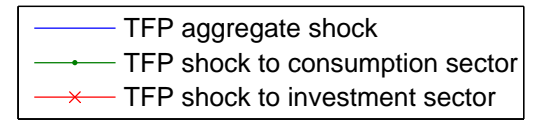


Figure 6: Average recession in the model and in U.S. data

