

NHEJ regulation by mating type is exercised through a novel protein, Lif2p, essential to the Ligase IV pathway

Marie Frank-Vaillant and Stéphane Marcand¹

Laboratoire du cycle cellulaire, Service de biochimie et de génétique moléculaire, CEA/Saclay, 91191 Gif sur Yvette cedex, France

In the yeast *Saccharomyces cerevisiae*, DNA double strand break (DSB) repair by nonhomologous end-joining (NHEJ) requires the DNA end-binding heterodimer Yku70p–Yku80p and the ligase Dnl4p associated with its cofactor Lif1p. NHEJ efficiency is down-regulated in *MATa/MAT α* cells relative to *MATa* or *MAT α* cells, but the mechanism of this mating type regulation is unknown. Here we report the identification of Lif2p, a *S. cerevisiae* protein that interacts with Lif1p in a two-hybrid system. Disruption of *LIF2* abolishes the capacity of cells to repair DSBs by end-joining to the same extent than *lif1* and *dnl4* mutants. In *MATa/MAT α* cells, Lif2p steady-state level is strongly repressed when other factors involved in NHEJ are unaffected. Increasing the dosage of the Lif2p protein can suppress the NHEJ defect in *a/* α cells. Together, these results indicate that NHEJ regulation by mating type is achieved, at least in part, by a regulation of Lif2p activity.

[Key Words: DNA repair; end-joining; HO; I-SceI; *a/* α repression]

Received April 30, 2001; revised version accepted September 26, 2001.

In eucaryotes, DNA double strand breaks (DSBs) can be induced by metabolic processes, DNA damaging agents, or specific endonucleases. If unrepaired or wrongly repaired, such breaks lead to cell death or genomic rearrangements. DSBs can be repaired by at least two pathways, homologous recombination or nonhomologous end-joining (NHEJ). Homologous recombination is a mostly error-free process that involves the presence of homologous sequences. In the nonhomologous repair mechanism, DNA ends are joined with little or no base pairing at the junction and the end-joining product may be accompanied with insertions or deletions (Paques and Haber 1999; Wood et al. 2001). In addition to its major role in resistance to DNA damage, NHEJ is required for *V(D)J* recombination in mammals (Frank et al. 1998).

To date, genetic and biochemical studies have established that end-joining in yeast and mammals requires the same core set of proteins, the DNA end-binding proteins KU70 and KU80 that form the KU heterodimer, as well as DNA ligase IV and its associated factor XRCC4 (called Dnl4p/Lig4p and Lif1p, respectively, in *S. cerevisiae*) (Schar et al. 1997; Teo and Jackson 1997; Wilson et al. 1997; Herrmann et al. 1998; Wood et al. 2001). In addition, NHEJ in mammals also required DNA-PK_{cs} (Wood et al. 2001). Lif1p interacts with the carboxy-ter-

минаl domain of Dnl4p and is required for its activity in vivo (Herrmann et al. 1998). Lif1p is detectable near DNA ends, suggesting that Lif1p binds DNA in cooperation with KU and targets Dnl4p to DSB (Teo and Jackson 2000). In *S. cerevisiae*, a complex formed by Rad50p, Mre11p, and Xrs2p is essential to NHEJ (Moore and Haber 1996; Boulton and Jackson 1998). In the fission yeast *Schizosaccharomyces pombe* and in vertebrates, the homologs of these proteins do not appear to be required for NHEJ, suggesting that the role played by this complex in the end-joining reaction is not conserved in all eucaryotes (Wilson et al. 1999; Yamaguchi-Iwai et al. 1999; Harfst et al. 2000; Manolis et al. 2001).

In *S. cerevisiae*, NHEJ level is influenced by mating-type status. Diploid cells, expressing simultaneously *MATa* and *MAT α* , exhibit levels of NHEJ lower than haploid cells expressing either *MATa* or *MAT α* (Astrom et al. 1999; Lee et al. 1999; Clikeman et al. 2001). Deletions of the *SIR2*, *SIR3*, and *SIR4* genes, which are involved in transcriptional silencing, have been reported to reduce NHEJ (Tsukamoto et al. 1997). This effect is largely attributable to the derepression of the silent mating-type loci *HML α* and *HMRa*, resulting in the coexpression of *a* and α information in haploid cells (Astrom et al. 1999; Lee et al. 1999). To date, the genes controlled by mating type that carry out this NHEJ regulation are unknown.

To dissect the mechanism of end-joining, we set out to isolate proteins interacting with Lif1p in a two-hybrid assay in *S. cerevisiae*. We identified Lif2p as a new Lif1p-

¹Corresponding author.

E-MAIL marcand@jonas.saclay.cea.fr; FAX 33-1-69-08-47-12.

Article and publication are at <http://www.genesdev.org/cgi/doi/10.1101/gad.206801>.

interacting factor and showed that Lif2p is required for DSB repair by end-joining. Lif2p expression is specifically reduced in *MATa/MAT α* cells and its overexpression restores higher NHEJ efficiency.

Results

Isolation of LIF2

To investigate the function of the Lif1p–Dnl4p complex, we used the yeast two-hybrid system to search for yeast proteins that interact with Lif1p. Plasmid pGBT9-LIF1, encoding full-length Lif1p fused to the DNA-binding domain of Gal4p (Gal4p–DBD) was used for screening a library of random genomic fragments fused to the Gal4p-activation domain (Gal4p–AD). Eight different positive clones were isolated with plasmids encoding Gal4p–AD fused in-frame with the *DNL4* gene (Fig. 1A). Clones start from amino acid 539 to 812 and extend over the carboxy-terminal end of Dnl4p, all encompassing the entire second BRCT domain. This result is in agreement

with the previously described interaction between the BRCT domains of Dnl4p and Lif1p (Herrmann et al. 1998; Teo and Jackson 2000).

In addition, seven different plasmids encoding Gal4p–AD fused in-frame with the *YLR265c* ORF were isolated (Fig. 1A). Hereafter, *YLR265c* is designated as *LIF2*, encoding a 342 amino acid protein. The fusion domains of the different clones start at amino acids ranging from 121 to 254 and extend over the carboxy-terminal end of Lif2p. The two-hybrid interaction between Lif1p and Lif2p was reproduced after reintroduction of fusion protein encoding plasmids into yeast (Fig. 1B). These results suggest that the carboxy-terminal part of Lif2p specifically interacts with Lif1p. They also suggest a potential role of Lif2p in end-joining.

Lif2p is essential for NHEJ

To examine whether *LIF2* could play a role in end-joining, we created null strains by gene disruption. *lif2 Δ* mutant strains were viable and displayed no obvious growth

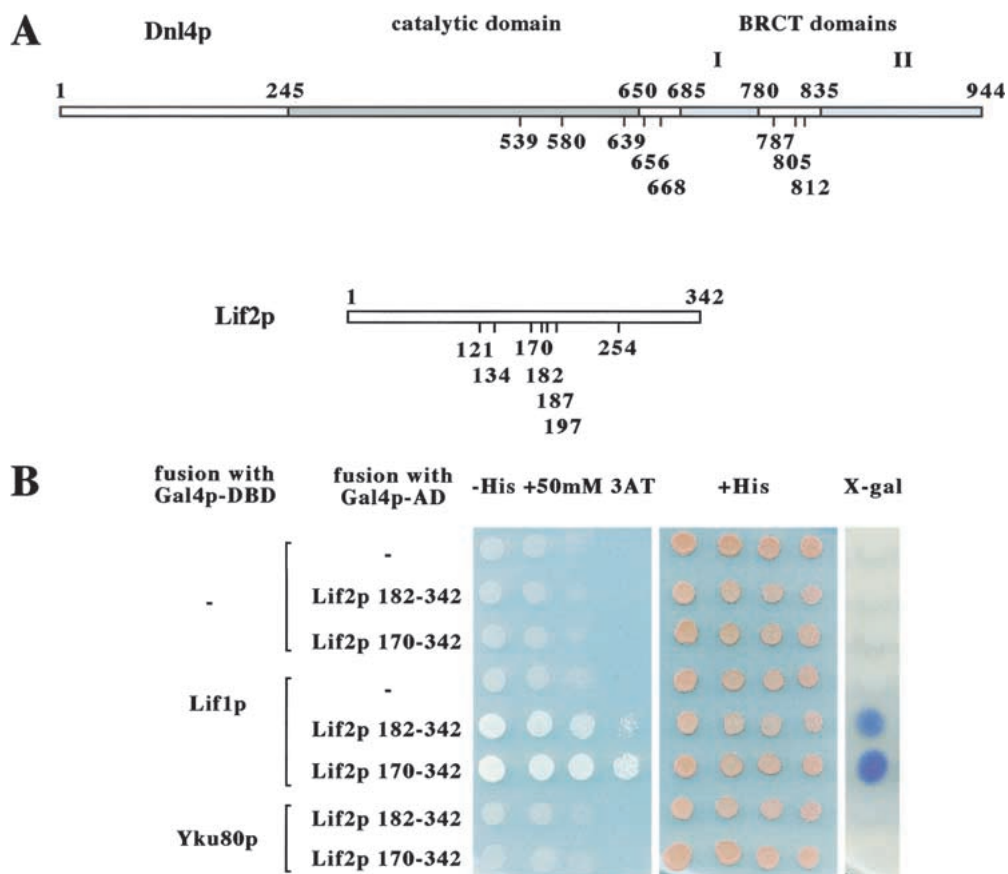


Figure 1. Identification of *LIF2* by a two-hybrid screen. (A) Schematic representation of Dnl4p and Lif2p with the positions of the carboxy-terminal fusions interacting with Lif1p. The boundaries of the catalytic and BRCT domains of Dnl4p are reproduced from Schar et al. (1997). (B) Specificity of the Lif1p–Lif2p interaction in the two-hybrid assay. Two Lif2p–Gal4p–AD fusions isolated in the screen were reintroduced into the Y190 two-hybrid strain in the presence of the Gal4p–DBD alone or fused to Lif1p or Yku80p. The two-hybrid interaction is revealed by growth on plates lacking histidine complemented with 50 mM 3-amino-triazole, and by X-gal staining.

defect at 30 and 37°C (data not shown). We analyzed NHEJ efficiency in *lif2Δ* mutants using two DSB-inducer systems in two distinct genetic backgrounds. The HO system was developed by Lee and colleagues in a DBY745 background (Lee et al. 1998). Under conditions of mating-type switching in yeast, HO endonuclease physiologically creates a DSB at the mating type (*MAT*) locus. The break is normally repaired by homologous recombination with one of the two silent mating-type loci, *HML* and *HMR*. Here, we used haploid strains lacking *HML* and *HMR*, in which the DSB can only be repaired by NHEJ. The gene encoding HO was placed under the control of a galactose regulatable promoter. Addition of galactose to the medium induces a single DSB at *MAT* (Moore and Haber 1996; Lee et al. 1998). The I-SceI system was developed in a W303 genetic background. A restriction site for the I-SceI endonuclease was introduced upstream of *URA3* on chromosome V and the cells were transformed with a plasmid expressing I-SceI under the control of a galactose regulatable promoter. Galactose addition to the medium induces a single DSB, which should only be repaired by end-joining.

First, we examined religation efficiency of an HO cut by Southern blot analysis in wild-type, *dln4Δ*, *lif1Δ*, and *lif2Δ* cells. Cells were induced to express HO for 1 h. Galactose was then replaced by glucose to turn off the expression of the endonuclease. To allow for an unbiased quantification of the repair products, cells were maintained blocked in late G₁ phase with α -factor during the whole experiment. In wild-type cells, the amount of intact DNA molecules dropped after HO induction and then increased after glucose repression of the endonuclease (Fig. 2). After 4 h in glucose containing medium, the DSB has been repaired by religation in about one-third of the cells. In cells lacking *LIF2*, as in cells lacking *DNL4*

and *LIF1*, the reformation of intact DNA molecules was not observed. In addition, cell viability at the end of the experiment has dropped to ~5% in *dnl4Δ*, *lif1Δ*, and *lif2Δ* cells from ~45% in wild-type cells (data not shown). Thus, like Lif1p and Dnl4p, Lif2p is required for the religation of a DSB by end-joining.

When HO and I-SceI endonucleases are expressed continuously, complementary ends cannot simply religate, as the restored site will be cut again. When the DSB occurs on an essential chromosome, this continuous cleavage leads to cell death (Fairhead and Dujon 1993; Moore and Haber 1996). Only in cells competent for NHEJ short-range mutations altering the endonuclease cleavage site can occur, giving rise to survivors (Moore and Haber 1996; see below). The frequency of survival on galactose plates can therefore be used to examine the role of *LIF2* in NHEJ. In wild-type haploid cells, we found that cell viability on galactose was at $\sim 1 \times 10^{-3}$ and $\sim 2 \times 10^{-3}$ with HO and I-SceI, respectively (Table 1, line 1). In *dnl4Δ*, *lif1Δ*, and *lif2Δ* strains, cell viability fell by two orders of magnitude indicating that these particular religation events are abolished to the same level in all three mutants (Table 1, lines 2–4). After HO induction, cell viability was not reduced further in a *lif1Δ lif2Δ* double-mutant strain, indicating that *LIF1* and *LIF2* act in the same pathway (Table 1, lines 3–5). To ensure specificity of the *lif2* disruption effect, we analyzed the rescue by a centromeric plasmid encoding Lif2p (pCEN-*LIF2*). This low copy number plasmid restored wild-type viability in *lif2Δ* cells when HO and I-SceI were expressed continuously (Table 1, line 6). These results confirm the specific requirement for Lif2p in NHEJ.

Finally, we performed plasmid rejoining assays (Boulton and Jackson 1996) and compared *lif2Δ* mutant with isogenic *dnl4Δ* mutant. The yeast plasmid pRS313 was

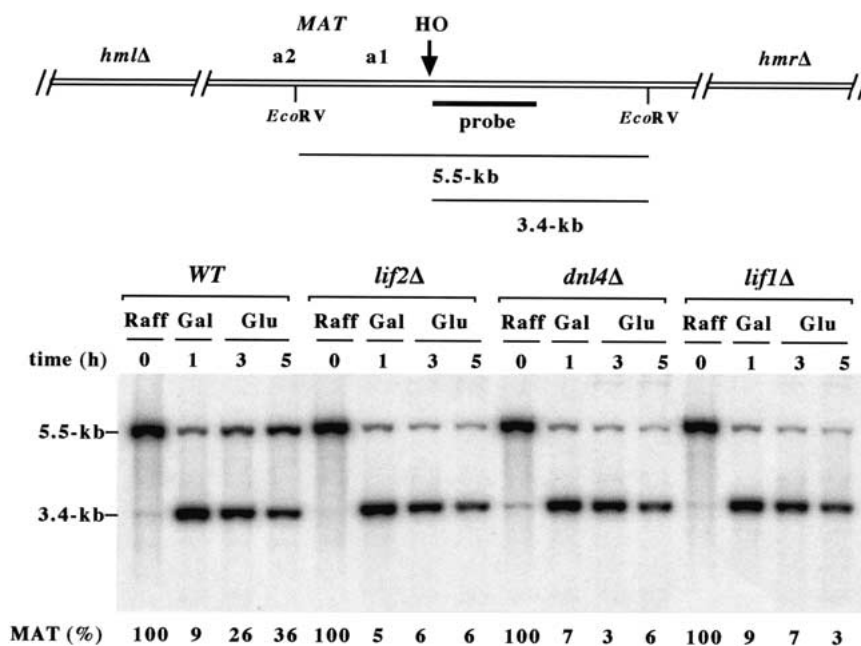


Figure 2. *LIF2* is required for the religation of an HO cut at *MAT* in the absence of a homologous sequence. Yeast strains Lev348 (WT), Lev406 (*lif2Δ*), Lev349 (*dnl4Δ*), and Lev379 (*lif1Δ*) grown exponentially in raffinose-containing medium were blocked in late G₁ phase by the addition of α factor (Sigma, 60 ng/ml) for 4 h and exposed to galactose for an additional 1 h. Cells were resuspended in glucose-containing medium and maintained in G₁ phase with α factor for an additional 4 h. Genomic DNAs were digested with *EcoRV*, separated by electrophoresis on a 1% agarose gel, and blotted onto a nitrocellulose membrane. The membrane was probed with a 700-bp fragment immediately adjacent to the HO site. After exposure, the membrane was rehybridized with a *TRP1* fragment (data not shown). The signal from the uncut/repaired *MAT* band at 5.5 kb was quantified with Image-Quant using the signal at *TRP1* as an internal control for each lane and normalized for each strain.

Table 1. Survival frequency in strains with a continuously induced DSB

Relevant genotype	Survival ($\times 10^6$) ^a with HO	Survival ($\times 10^6$) ^a with I-SceI
Haploid <i>MATa</i> strains		
1 wild type	970 \pm 140	1700 \pm 610
2 <i>dn14</i> Δ	10 \pm 7	14 \pm 8
3 <i>lif1</i> Δ	8 \pm 6	n.d.
4 <i>lif2</i> Δ	6 \pm 3	7 \pm 5
5 <i>lif1</i> Δ <i>lif2</i> Δ	14 \pm 9	n.d.
6 <i>lif2</i> Δ p <i>CEN-LIF2</i>	960 \pm 150	2600 \pm 680
7 wild-type p2 μ - <i>LIF2</i>	990 \pm 160	2600 \pm 400
Haploid <i>MATa/MATα</i> strains		
8 wild type	n.d.	30 \pm 20
9 wild type p2 μ - <i>LIF2</i>	n.d.	190 \pm 70
10 <i>dn14</i> Δ	n.d.	11 \pm 3
11 <i>dn14</i> Δ p2 μ - <i>LIF2</i>	n.d.	38 \pm 26
Diploid <i>MATa/MATα</i> strains		
12 wild type	150 \pm 50	n.d.
13 wild type p2 μ - <i>LIF2</i>	870 \pm 140	n.d.
14 <i>dn14</i> Δ / <i>dn14</i> Δ	<1	n.d.
15 <i>dn14</i> Δ / <i>dn14</i> Δ p2 μ - <i>LIF2</i>	<2	n.d.

All haploid strains expressing HO were isogenic to Lev 348. Diploid strains were obtained by crossing Lev 348 \times Lev 360 (wild type) and Lev 349 \times Lev 363 (*dn14* Δ /*dn14* Δ). All strains expressing I-SceI were isogenic to Lev 338. (n.d.) Not determined.

^aThe mean and standard deviation were calculated by averaging three samples.

linearized by the restriction endonuclease *Eco*RI in a region without sequence homology to chromosomal DNA. Competent cells were then transformed in parallel with limiting amounts of cut and uncut plasmid DNA, and the number of transformants was determined after selection for a plasmid-expressed genetic marker (*HIS3*). The relative transformation efficiency obtained with linear versus circular plasmid DNA was used as a measure of end-joining. From three independent experiments, the relative transformation efficiency in wild-type cells was estimated at 28 \pm 7%. In *dn14* Δ and *lif2* Δ cells, this level was two orders of magnitude lower to 0.24 \pm 0.04% and 0.23 \pm 0.05%, respectively. This result confirms that *LIF2* is required for NHEJ to the same extent as *DNL4*.

Lif2p expression is down-regulated in *MATa/MAT α* cells

A systematic analysis by DNA microarray indicates that *YLR265c/LIF2* mRNA steady-state level is repressed in *MATa/MAT α* cells compared with *MATa* or *MAT α* cells (Galitski et al. 1999). The *MAT* loci encode $\alpha 1$ and $\alpha 2$, which dimerize to form a transcriptional repressor. The $\alpha 1/\alpha 2$ repressor recognizes a consensus sequence (AC-TACATNNANWNNTGTRC) present in the promoter region of haploid-specific genes (Goutte and Johnson 1988). In the *LIF2* gene, a perfect match of this consensus is located 130 bp upstream of the putative start codon. These observations prompted us to examine directly whether *Lif2p* dosage is affected by mating type.

By Western blot, we compared epitope-tagged protein steady-state levels in *MATa* haploid cells, in *MATa* haploid cells harboring an integrated copy of *MAT α* and in *MATa/MAT α* diploid cells. As shown in Figure 3, the amount of *Lif2p* fell dramatically in *MATa/MAT α* cells compared with *MATa* cells by at least 25-fold. Among the other proteins required for NHEJ that were tested, only *Lif1p* displayed a very modest repression in *MATa/MAT α* cells. The levels of *Dnl4p*, *Yku70p*, and *Yku80p* were unaffected by mating type and slightly reduced in diploid cells, as expected, because only one of the two gene copies was tagged.

The striking and specific regulation of *Lif2p* level by mating type correlates with the known repression of NHEJ in *MATa/MAT α* cells. Could *Lif2p* overexpression bypass this regulation?

Higher dosage of *LIF2* suppresses NHEJ defect in *MATa/MAT α* cells

First, we quantified the repression of NHEJ by *MAT* heterozygosity in the two DSB inducer systems used in this study. On continuous expression of HO, *MATa/MAT α* diploid strain containing a cleavable site on each homolog displayed an ~sixfold reduction in cell viability relative to a *MATa* haploid strain (Table 1, line 12). On continuous expression of I-SceI, the integration of a copy of *MAT α* in *MATa* haploid cells caused a ~60-fold reduction in cell viability (Table 1, line 8). To increase the dosage of *LIF2*, cells were transformed with a 2 μ -based

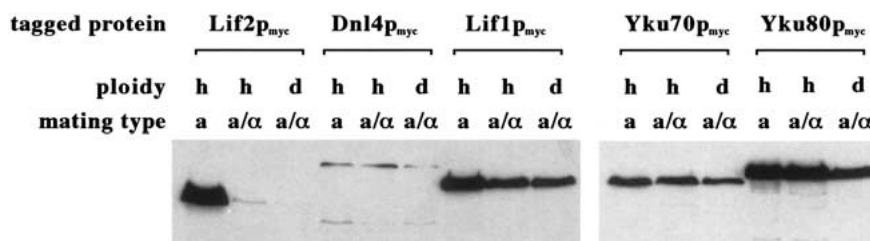


Figure 3. *Lif2p* is down-regulated in *MATa/MAT α* cells. Haploid *MATa* strains Lev412 (*Lif2p_{myc}*), Lev413 (*Dnl4p_{myc}*), Lev368 (*Lif1p_{myc}*), Lev359 (*Yku70p_{myc}*), and Lev355 (*Yku80p_{myc}*) were transformed with an integrative plasmid bearing *MAT α* (sp427) or crossed with *MAT α* strain Lev360. Total proteins were extracted with TCA and 30 μ g were analyzed by Western blotting using monoclonal 9E10 anti-myc antibody. All tagged alleles behaved as wild type when tested for NHEJ (data not shown). (h) Haploid; (d) diploid.

plasmid containing the *LIF2* sequence under the control of its own promoter (*p2 μ -LIF2*). The plasmid was maintained at ~20 copies per cell (data not shown). On continuous induction of HO and I-SceI, higher dosage of *LIF2* increased cell viability by approximately sixfold in *MATa/MAT α* cells (Table 1, lines 9 and 13). An improvement of survival by a higher dosage of *LIF2* was not observed in *MATa/MAT α* cells lacking *DNL4* (Table 1, lines 10–11 and 14–15) and in wild-type *MATa* haploid cells (Table 1, line 7). Thus, even though *LIF2* on the plasmid is still subject to *a*/ α repression, its increased dosage was able to at least partially suppress the NHEJ repression by *MAT* heterozygosity.

Processing associated with NHEJ following I-SceI cleavage

The repair events obtained when I-SceI was expressed continuously were characterized by sequencing the re-

gion around the cleavage site in the survivors. In all analyzed cells, changes were limited to a few nucleotides in the sequence recognized by the endonuclease. As shown in Figure 4, in NHEJ-competent *MATa* haploid cells displaying a higher viability (wild-type, *lif2 Δ* *pCEN-LIF2* and wild-type *p2 μ -LIF2*), almost all mutations were small deletions of 1 to 9 bases within the restriction site. The insertion of one or two bases was also observed. In NHEJ-deficient *MATa* haploid cells (*dnl4 Δ* and *lif2 Δ*), the site in most cases was either intact or affected by a single base-pair substitution. An intact site indicates that the event responsible for survival occurred elsewhere (e.g., on the endonuclease expressing plasmid) prior to plating on galactose. Base-pair substitutions at the cleavage site could also have pre-existed or be particular products of attempts at repairing the break (e.g., polymerase error during a gene conversion repair event using information from the uncleaved sister chromatid; Strathern et al. 1995).

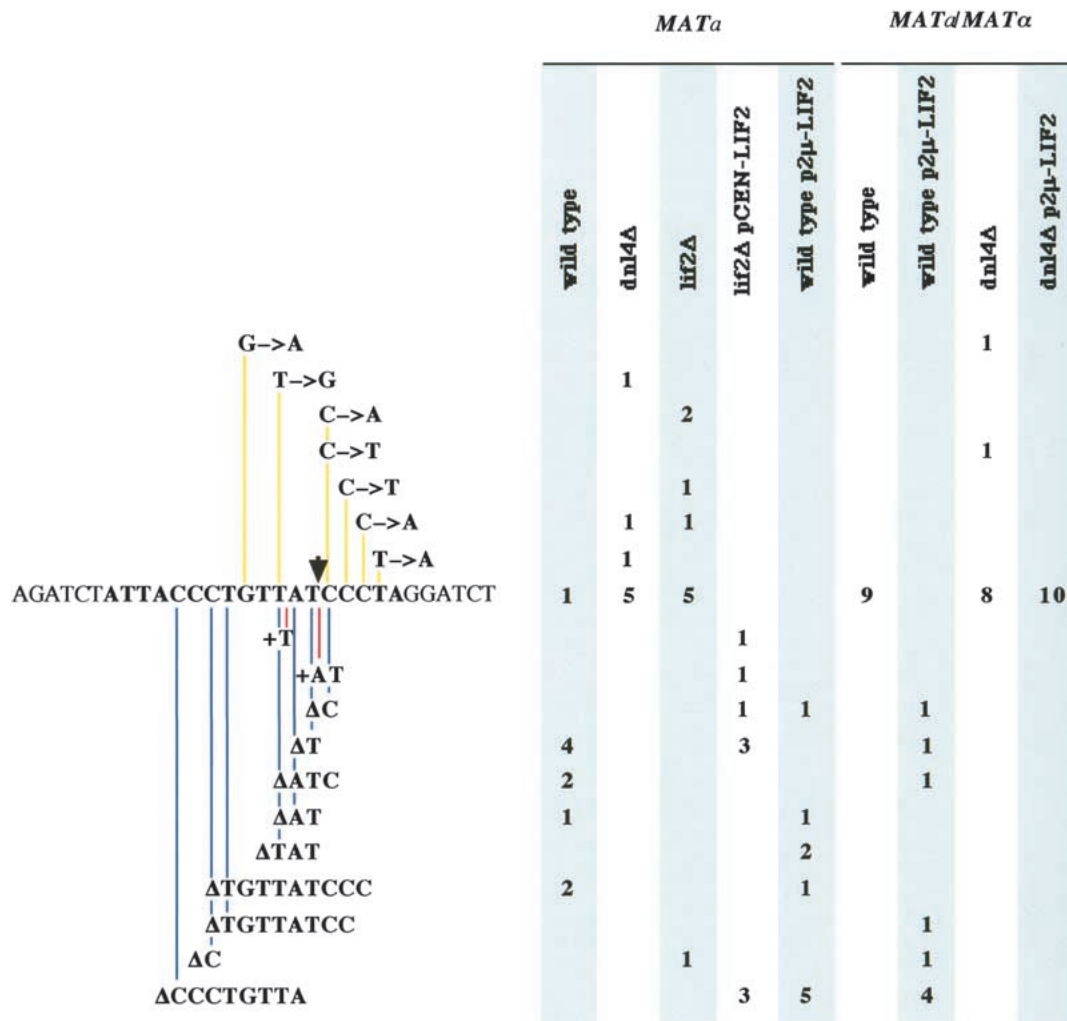


Figure 4. Modifications of the I-SceI site arising in survivors. The 600 base pairs surrounding the site were amplified by PCR and sequenced. For each context, 8 to 10 independent clones were analyzed. The original sequence with the 18-bp site recognized by I-SceI is represented. The arrow indicates the position of cleavage. The deletions are drawn in blue, the insertion in red, and the base substitution in yellow.

These data indicate that repair events associated with limited sequence loss at the DSB site are specific products of the NHEJ pathway. We found that in *MATa/MAT α* wild-type cells, small deletions within the I-SceI site were not present, and in this regard these cells behaved as NHEJ-deficient mutants (Fig. 4). Higher dosage of *LIF2* restored the occurrence of small deletions in *MATa/MAT α* cells. This was not observed in *MATa/MAT α* cells lacking *DNL4*, indicating that the restoration of small deletions was a product of NHEJ.

Discussion

Position of LIF2 in the NHEJ pathway

Lif2p is a previously uncharacterized protein of *S. cerevisiae* that we identified through its two-hybrid interaction with Lif1p, a protein associated to the NHEJ ligase Dnl4p. The *LIF2* gene is essential to the precise rejoining of a DSB induced by a transient expression of the HO endonuclease in the absence of homologous template. *LIF2* is also required for the imprecise end-joining events observed with continuous cleavage of the DNA by HO and I-SceI endonucleases, and for the rejoining of a plasmid linearized with an endonuclease prior to transformation into yeast cells. The end-joining defects observed in cells lacking *LIF2* are undistinguishable from the ones observed in cells lacking *DNL4* or *LIF1*. We conclude that *LIF2* is required for DSB repair by NHEJ.

In budding yeast, three distinct gene groups are involved to the same degree in the NHEJ pathway as follows: *DNL4* and *LIF1*; *YKU70* and *YKU80*; and *RAD50*, *MRE11*, and *XRS2* (Boulton and Jackson 1996, 1998; Milne et al. 1996; Tsukamoto et al. 1996; Herrmann et al. 1998). In addition, the last two groups are required for a different function at telomeres and the loss of one of their genes results in telomere shortening (Boulton and Jackson 1996, 1998). *YKU70* and *YKU80* are involved in telomere protection and *RAD50*, *MRE11*, and *XRS2* are required for wild-type telomerase-dependent telomere elongation (Gravel et al. 1998; Nugent et al. 1998; Marcand et al. 1999; Peterson et al. 2001). Behaving as *dnl4* and *lif1* mutants (Teo and Jackson 1997; Herrmann et al. 1998), cells lacking *LIF2* displayed normal telomere length (data not shown). These data, in addition to the complete loss of Dnl4p-dependent end-joining observed in *lif2 Δ* cells, and the interaction of Lif1p with Dnl4p and Lif2p in a two-hybrid system, indicate that *LIF2* belongs to the *DNL4-LIF1* group.

Database searching failed to reveal any striking similarity between Lif2p and other known protein sequences, and our data do not address its biochemical function. We were unsuccessful at demonstrating the Lif1p–Lif2p interaction biochemically by coimmunoprecipitation of epitope-tagged proteins expressed at endogenous levels. Interestingly, double-tagged Lif2p-myc_{1,3} Dnl4p-HA₄ strains were partially defective in NHEJ when single-tagged strains were not (data not shown). This negative genetic interaction could be interpreted as an evidence for a Lif2p–Dnl4p complex important to NHEJ and dis-

rupted by the two epitope tags. In conclusion, although strongly suggested by genetic evidence, the physical interaction between Lif2p and the Lif1p–Dnl4p complex remains to be unambiguously proven.

Lif2p may fulfill a role in association with Lif1p–Dnl4p, possibly acting as a mediator between DNA ends and ligation at DSBs. In vertebrates, the crystal structure of XRCC4, the Lif1p homolog, shows a strikingly elongated dumbbell-like tetramer that can bind Ligase IV and DNA simultaneously (Junop et al. 2000). In addition, the KU heterodimer is required for targeting Lif1p–Dnl4p to DNA ends in vivo (Teo and Jackson 2000). A protein-like Lif2p could be involved in the recruitment of these proteins at DSBs, or in the alteration in chromatin structure to permit DNA access. Future experiments are needed to elaborate a model of Lif1p binding to Dnl4p, Lif2p, and DNA and the predicted assembly of these components in NHEJ.

A mechanism for NHEJ regulation by mating type

Here we present evidence that Lif2p is a target of NHEJ regulation by mating type. First, Lif2p steady-state level was strongly repressed by *MAT* heterozygosity when other factors involved in the NHEJ pathway were unaffected. Second, Lif2p overexpression restores higher repair efficiency in *MATa/MAT α* cells. DSB repair in these conditions was bona fide NHEJ, as it required *DNL4* and the molecular events associated with repair were indistinguishable from those observed in *MATa* wild-type cells.

The inhibition of Lif2p activity by mating type provides a molecular mechanism for the regulation of the channeling of DNA ends into either homologous or non-homologous repair pathways. In nature, cells expressing *a* or *α* mating type would almost always be haploid and *a/a* cells would be diploid. In haploid cells, NHEJ would be the only efficient pathway to repair a DSB occurring prior to DNA replication. In diploid cells, error-free recombination using the homologous chromosome would be preferred and it should be advantageous to repress the alternative pathway.

In agreement with this model, DNA repair by homologous recombination is enhanced by mating type heterozygosity (Heude and Fabre 1993; Fasullo et al. 1999; Lee et al. 1999; Clikeman et al. 2001). In diploid cells lacking *YKU70*, DSB-induced allelic recombination is still reduced in *a/a* compared with *a/a* cells, suggesting that homologous recombination regulation by mating type is not entirely due to the repression of the competing NHEJ pathway (Clikeman et al. 2001). Identification of other repair proteins submitted to *a/a* regulation should further increase our understanding of how the choice between pathways is controlled.

The efficiency of the essential but unknown function performed by Lif2p in NHEJ seems particularly sensitive to the dosage of the protein. This would explain why this protein, and not Dnl4p or Lif1p, is a regulatory target. Homologs of Lif2p in other organisms remain to be identified. In theory, they too could be the targets of different

forms of regulation. For instance, in the fission yeast *S. pombe*, end-joining between defective telomeres was observed in cells arrested in an uncommitted G₁ state, but not in cycling cells (Godhino Ferreira and Cooper 2001). It will be interesting to determine whether this regulation of NHEJ during the cell cycle involves a Lif2p homolog.

Material and methods

Strains

The yeast strains used in this study are listed in Table 2. Gene disruption and tagging used to generate these strains were done according to Longtine et al. (1998). Strain Lev348 results from the transformation of JKM139 with the linearized plasmid CY807+TRP1 (*bar1::TRP1*; Aparicio and Gottschling 1994). Strain Lev360 results from the transformation of JKM179 with the linearized plasmid sp59 (Marcand et al. 1997). Strain Lev338 results from the transformation of Lev306 with the linearized plasmid sp392. Strains Lev414 and Lev415 result from the transformation of Lev338 and Lev339, respectively, with the linearized plasmid sp433.

Plasmids

The region upstream of *URA3* was amplified by PCR and inserted into sp59 (Marcand et al. 1997) cut with *HindIII* and *SalI*, creating plasmid sp391 with a *BglIII* site adjacent to the *HindIII*

site. An *I-SceI* site was inserted upstream of *URA3* sequences at the *BglIII* site of plasmid sp391 using oligonucleotides *Isce* 1 (5'-GATCCTAGGGATAACAGGGTAATA-3') and *Isce* 2 (5'-GATCTATTACCCTGTTATCCCTAG-3'), creating plasmid sp392 with a unique *BglIII* site distal of *URA3*. Plasmid sp392 was linearized with *SalI* and *BamHI* prior to transformation into yeast. Plasmid p373 (*pGAL-I-SceI*) was created by inserting a *BamHI* fragment from pPEX7 (Fairhead and Dujon 1993) into p413GAL1 (*CEN, HIS3*).

The *LIF2* gene was amplified by PCR (including 360 bp upstream of start codon and 330 bp downstream of the stop codon) and inserted into pRS315 (*CEN, LEU2*) and pRS425 (*2μ, LEU2*) creating plasmids sp421 (*pCEN-LIF2*) and sp431 (*p2μ-LIF2*), respectively.

A 4-kb fragment encompassing *MATα* was amplified by PCR and inserted into pRS404 (integrative, *TRP1*) and pRS406 (integrative, *URA3*), creating plasmids sp433 and sp427, respectively. Prior to transformation into yeast, sp433 and sp427 were linearized with *Bsu36I* and *StuI*, respectively.

Two-hybrid screen

The screening was done according to Flores et al. (1999). The bait construct contained the complete ORF of *LIF1* cloned in pGBT9. About 7 × 10⁶ transformed cells were selected on plates containing 50 mM 3-amino-triazole.

Cell survival

Cells were grown exponentially in raffinose containing medium, diluted in water and spread at appropriate dilutions on glucose and galactose containing plates. After 3 d at 30°C, colonies were counted. The survival rates were calculated by dividing the number of colonies on galactose by the number of colonies on glucose.

Acknowledgments

We thank James Haber and Cécile Fairhead for strains and plasmids; Michel Werner and Claire Boschiero for help with the two-hybrid screen; and Cécile Haumaitre, Bruno Fievet and Thomas Germe for their participation at the start of this work. We thank Carl Mann for continuous support, Francis Fabre for encouragement, and Serge Gangloff, Julie Smith, and Marie-Claude Marsolier for advice and critical reading of the manuscript. This work is supported by the Association pour la Recherche sur le Cancer and by Electricité de France.

The publication costs of this article were defrayed in part by payment of page charges. This article must therefore be hereby marked "advertisement" in accordance with 18 USC section 1734 solely to indicate this fact.

References

- Aparicio, O.M. and Gottschling, D.E. 1994. Overcoming telomeric silencing: A *trans*-activator competes to establish gene expression in a cell cycle-dependent way. *Genes & Dev.* **8**: 1133–1146.
- Astrom, S.U., Okamura, S.M., and Rine, J. 1999. Yeast cell-type regulation of DNA repair. *Nature* **397**: 310.
- Boulton, S.J. and Jackson, S.P. 1996. Identification of a *Saccharomyces cerevisiae* Ku80 homologue: Roles in DNA double strand break rejoining and in telomeric maintenance. *Nucleic Acids Res.* **24**: 4639–4648.
- . 1998. Components of the Ku-dependent non-homolo-

Table 2. Yeast strains

Strain	Genotype
Y190	<i>MATα gal4 gal80 his3 trp1-901 ade-101 ura3-52 leu2-3,112 URA3::GAL1-lacZ LYS2::GAL4(UAS)-HIS3</i> (Harper et al. 1993)
JKM139	<i>MATα hmrΔ::ADE1 hmlΔ::ADE1 ade1-100 leu2-3,112 lys5 trp1::hisG ura3-52 ade3::GAL-HO</i> (Lee et al. 1998)
JKM179	<i>MATα hmrΔ::ADE1 hmlΔ::ADE1 ade1-100 leu2-3,112 lys5 trp1::hisG ura3-52 ade3::GAL-HO</i> (Lee et al. 1998)
Lev 348	JKM139 <i>bar1::TRP1</i>
Lev 349	JKM139 <i>bar1::TRP1 dnl4Δ::KAN</i>
Lev 379	JKM139 <i>bar1::TRP1 lif1Δ::KAN</i>
Lev 406	JKM139 <i>bar1::TRP1 lif2Δ::KAN</i>
Lev 411	JKM139 <i>bar1::TRP1 lif1Δ::klURA3 lif2Δ::KAN</i>
Lev 360	JKM179 <i>adh4::URA3::TEL</i>
Lev 363	JKM179 <i>adh4::URA3-TEL dnl4Δ::KAN</i>
Lev 355	JKM139 <i>bar1::TRP1 YKU80-13myc::KAN</i>
Lev 359	JKM139 <i>bar1::TRP1 YKU70-13myc::KAN</i>
Lev 368	JKM139 <i>bar1::TRP1 LIF1-13myc::KAN</i>
Lev 412	JKM139 <i>bar1::TRP1 LIF2-13myc::KAN</i>
Lev 413	JKM139 <i>bar1::TRP1 DNL4-13myc::KAN</i>
W303-1a	<i>MATα ade2-1 trp1-1 ura3-1 leu2-3,112 his3-11,15 can1-100 rad5-535</i>
Lev 306	W303-1a <i>cdc5^{ad}</i>
Lev 338	Lev 306 <i>GEA2::I-SceI::URA3</i>
Lev 339	Lev 306 <i>GEA2::I-SceI::URA3 dnl4Δ::KAN</i>
Lev 408	Lev 306 <i>GEA2::I-SceI::URA3 lif2Δ::KAN</i>
Lev 414	Lev 306 <i>GEA2::I-SceI::URA3 TRP1::MATα</i>
Lev 415	Lev 306 <i>GEA2::I-SceI::URA3 dnl4Δ::KAN TRP1::MATα</i>

Frank-Vaillant and Marcand

- gous end-joining pathway are involved in telomeric length maintenance and telomeric silencing. *EMBO J.* **17**: 1819–1828.
- Clikeman, J., Khalsa, G., Barton, S., and Nickoloff, J. 2001. Homologous recombinational repair of double-strand breaks in yeast is enhanced by MAT heterozygosity through yKU-dependent and -independent mechanisms. *Genetics* **157**: 579–589.
- Fairhead, C. and Dujon, B. 1993. Consequences of unique double-stranded breaks in yeast chromosomes: Death or homozygosis. *Mol. Gen. Genet.* **240**: 170–178.
- Fasullo, M., Bennett, T., and Dave, P. 1999. Expression of *Saccharomyces cerevisiae* MAT α and MAT α enhances the HO endonuclease-stimulation of chromosomal rearrangements directed by his3 recombinational substrates. *Mutat. Res.* **433**: 33–44.
- Flores, A., Briand, J.F., Gadai, O., Andrau, J.C., Rubbi, L., Van Mullem, V., Boschiero, C., Goussot, M., Marck, C., Carles, C., et al. 1999. A protein-protein interaction map of yeast RNA polymerase III. *Proc. Natl. Acad. Sci.* **96**: 7815–7820.
- Frank, K.M., Sekiguchi, J.M., Seidl, K.J., Swat, W., Rathbun, G.A., Cheng, H.L., Davidson, L., Kangaloo, L., and Alt, F.W. 1998. Late embryonic lethality and impaired V(D)J recombination in mice lacking DNA ligase IV. *Nature* **396**: 173–177.
- Galitski, T., Saldanha, A.J., Styles, C.A., Lander, E.S., and Fink, G.R. 1999. Ploidy regulation of gene expression. *Science* **285**: 251–254.
- Godhino Ferreira, M. and Cooper, J.P. 2001. The fission yeast Taz1 protein protects chromosomes from Ku-dependent end-to-end fusions. *Mol. Cell* **7**: 55–63.
- Goutte, C. and Johnson, A.D. 1988. $\alpha 2$ protein alters the DNA binding specificity of $\alpha 2$ repressor. *Cell* **52**: 875–882.
- Gravel, S., Larrivee, M., Labrecque, P., and Wellinger, R.J. 1998. Yeast Ku as a regulator of chromosomal DNA end structure. *Science* **280**: 741–744.
- Harfst, E., Cooper, S., Neubauer, S., Distel, L., and Grawunder, U. 2000. Normal V(D)J recombination in cells from patients with Nijmegen breakage syndrome. *Mol. Immunol.* **37**: 915–929.
- Harper, J.W., Adami, G.R., Wei, N., Keyomarsi, K., and Elledge, S.J. 1993. The p21 Cdk-interacting protein Cip1 is a potent inhibitor of G1 cyclin-dependent kinases. *Cell* **75**: 805–816.
- Herrmann, G., Lindahl, T., and Schar, P. 1998. *Saccharomyces cerevisiae* LIF1: A function involved in DNA double-strand break repair related to mammalian XRCC4. *EMBO J.* **17**: 4188–4198.
- Heude, M. and Fabre, F. 1993. α -control of DNA repair in the yeast *Saccharomyces cerevisiae*: Genetic and physiological aspects. *Genetics* **133**: 489–498.
- Junop, M.S., Modesti, M., Guarne, A., Ghirlando, R., Gellert, M., and Yang, W. 2000. Crystal structure of the Xrcc4 DNA repair protein and implications for end joining. *EMBO J.* **19**: 5962–5970.
- Lee, S.E., Moore, A., Holmes, J.K., Umezū, K., Kolodner, R.D., and Haber, J.E. 1998. *Saccharomyces* Ku70, mre11/rad50 and RPA proteins regulate adaptation to G2/M arrest after DNA damage. *Cell* **94**: 399–409.
- Lee, S.E., Paques, F., Sylvan, J., and Haber, J.E. 1999. Role of yeast SIR genes and mating type in directing DNA double-strand breaks to homologous and non-homologous repair paths. *Curr. Biol.* **9**: 767–770.
- Longtine, M.S., McKenzie, 3rd, A., Demarini, D.J., Shah, N.G., Wach, A., Brachat, A., Philippsen, P., and Pringle, J.R. 1998. Additional modules for versatile and economical PCR-based gene deletion and modification in *Saccharomyces cerevisiae*. *Yeast* **14**: 953–961.
- Manolis, K.G., Nimmo, E.R., Hartsuiker, E., Carr, A.M., Jeggo, P.A., and Allshire, R.C. 2001. Novel functional requirements for non-homologous DNA end joining in *Schizosaccharomyces pombe*. *EMBO J.* **20**: 210–221.
- Marcand, S., Gilson, E., and Shore, D. 1997. A protein-counting mechanism for telomere length regulation in yeast. *Science* **275**: 986–990.
- Marcand, S., Brevet, V., and Gilson, E. 1999. Progressive cis-inhibition of telomerase upon telomere elongation. *EMBO J.* **18**: 3509–3519.
- Milne, G.T., Jin, S., Shannon, K.B., and Weaver, D.T. 1996. Mutations in two Ku homologs define a DNA end-joining repair pathway in *Saccharomyces cerevisiae*. *Mol. Cell. Biol.* **16**: 4189–4198.
- Moore, J.K. and Haber, J.E. 1996. Cell cycle and genetic requirements of two pathways of nonhomologous end-joining repair of double-strand breaks in *Saccharomyces cerevisiae*. *Mol. Cell. Biol.* **16**: 2164–2173.
- Nugent, C.I., Bosco, G., Ross, L.O., Evans, S.K., Salinger, A.P., Moore, J.K., Haber, J.E., and Lundblad, V. 1998. Telomere maintenance is dependent on activities required for end repair of double-strand breaks. *Curr. Biol.* **8**: 657–660.
- Paques, F. and Haber, J.E. 1999. Multiple pathways of recombination induced by double-strand breaks in *Saccharomyces cerevisiae*. *Microbiol. Mol. Biol. Rev.* **63**: 349–404.
- Peterson, S.E., Stellwagen, A.E., Diède, S.J., Singer, M.S., Haimberger, Z.W., Johnson, C.O., Tzoneva, M., and Gottschling, D.E. 2001. The function of a stem-loop in telomerase RNA is linked to the DNA repair protein Ku. *Nat. Genet.* **27**: 64–67.
- Schar, P., Herrmann, G., Daly, G., and Lindahl, T. 1997. A newly identified DNA ligase of *Saccharomyces cerevisiae* involved in RAD52-independent repair of DNA double-strand breaks. *Genes & Dev.* **11**: 1912–1924.
- Strathern, J.N., Shafer, B.K., and McGill, C.B. 1995. DNA synthesis errors associated with double-strand-break repair. *Genetics* **140**: 965–972.
- Teo, S.H. and Jackson, S.P. 1997. Identification of *Saccharomyces cerevisiae* DNA ligase IV: Involvement in DNA double-strand break repair. *EMBO J.* **16**: 4788–4795.
- . 2000. Lif1p targets the DNA ligase Lig4p to sites of DNA double-strand breaks. *Curr. Biol.* **10**: 165–168.
- Tsukamoto, Y., Kato, J., and Ikeda, H. 1996. Hdf1, a yeast Ku-protein homologue, is involved in illegitimate recombination, but not in homologous recombination. *Nucleic Acids Res.* **24**: 2067–2072.
- . 1997. Silencing factors participate in DNA repair and recombination in *Saccharomyces cerevisiae*. *Nature* **388**: 900–903.
- Wilson, S., Warr, N., Taylor, D.L., and Watts, F.Z. 1999. The role of *Schizosaccharomyces pombe* Rad32, the Mre11 homologue, and other DNA damage response proteins in non-homologous end joining and telomere length maintenance. *Nucleic Acids Res.* **27**: 2655–2661.
- Wilson, T.E., Grawunder, U., and Lieber, M.R. 1997. Yeast DNA ligase IV mediates non-homologous DNA end joining. *Nature* **388**: 495–498.
- Wood, R.D., Mitchell, M., Sgouros, J., and Lindahl, T. 2001. Human DNA repair genes. *Science* **291**: 1284–1289.
- Yamaguchi-Iwai, Y., Sonoda, E., Sasaki, M.S., Morrison, C., Haraguchi, T., Hiraoka, Y., Yamashita, Y.M., Yagi, T., Takata, M., Price, C., et al. 1999. Mre11 is essential for the maintenance of chromosomal DNA in vertebrate cells. *EMBO J.* **18**: 6619–6629.



NHEJ regulation by mating type is exercised through a novel protein, Lif2p, essential to the Ligase IV pathway

Marie Frank-Vaillant and Stéphane Marcand

Genes Dev. 2001, **15**:

Access the most recent version at doi:[10.1101/gad.206801](https://doi.org/10.1101/gad.206801)

References

This article cites 39 articles, 20 of which can be accessed free at:
<http://genesdev.cshlp.org/content/15/22/3005.full.html#ref-list-1>

License

Email Alerting Service

Receive free email alerts when new articles cite this article - sign up in the box at the top right corner of the article or [click here](#).

An advertisement banner with a dark background. On the left, it says "Dharmacon™ Reagents" with "Custom synthesis, RNAi, and CRISPR solutions" below it. In the center, the words "Infinite Reliability" are written in large white font. On the right, the "horizon" logo is shown in white, with "a PerkinElmer company" underneath. A small white box with the word "More" is positioned near the bottom right of the banner.