



**Niemann-Pick C1-Like 1 (NPC1L1) inhibition and cardiovascular diseases**

Journal:	<i>Current Medicinal Chemistry</i>
Manuscript ID	CMC-2015-0219.R1
Manuscript Type:	Review
Date Submitted by the Author:	n/a
Complete List of Authors:	Pirillo, Angela; Centro SIS studio aterosclerosi Catapano, Alberico Norata, Giuseppe; Universita degli Studi di Milano
Keywords:	NPC1L1, cholesterol, cholesterol absorption, ezetimibe, LDL-C, cardiovascular disease

SCHOLARONE™  
Manuscripts

Only

1  
2  
3 **Niemann-Pick C1-Like 1 (NPC1L1) inhibition and**  
4  
5  
6 **cardiovascular diseases**  
7  
8  
9

10  
11 **Pirillo A<sup>1,2</sup>, Catapano AL<sup>2,3</sup>, Norata GD<sup>1,3</sup>**  
12  
13

14  
15  
16 <sup>1</sup>Center for the Study of Atherosclerosis, Bassini Hospital, Cinisello Balsamo, Italy  
17

18  
19 <sup>2</sup>IRCCS Multimedica, Milan, Italy  
20

21  
22 <sup>3</sup>Department of Pharmacological and Biomolecular Sciences. Università degli Studi  
23  
24 di Milano, Milan, Italy  
25

26  
27  
28  
29  
30  
31  
32  
33  
34  
35  
36  
37  
38  
39  
40  
41  
42  
43  
44  
45  
46  
47 Address correspondence to:

48 **Professor Alberico Luigi Catapano**  
49

50 Department of Pharmacological and Biomolecular Sciences - Università degli Studi di Milano,  
51 Via Balzaretti 9, 20133 Milan, Italy

52 [Alberico.Catapano@unimi.it](mailto:Alberico.Catapano@unimi.it)  
53  
54  
55  
56  
57

**Abstract**

Circulating levels of cholesterol derive from either endogenous production or intestinal absorption of dietary and biliary cholesterol. Niemann-Pick C1-Like 1 (NPC1L1) is a transmembrane protein that plays a key role in the intestinal absorption of cholesterol by facilitating its uptake through vesicular endocytosis. NPC1L1 is the molecular target of ezetimibe which binds its extracellular loop and inhibits sterol absorption without affecting the absorption of other molecules. Ezetimibe significantly reduces plasma levels of total and low density lipoprotein cholesterol (LDL-C) as monotherapy or when added to statins, the association with a low dose of statin is of particular interest for patients experiencing statin-related side effects. The recent results of the IMPROVE-IT study, which evaluated the cardiovascular effect of ezetimibe added to simvastatin therapy in subjects who had had an acute coronary syndrome and with LDL-C levels within the recommended range, showed that a further LDL-C lowering reduced the incidence of cardiovascular events. To date, ezetimibe represents the only inhibitor of NPC1L1 available for clinical use, however, novel amino- $\beta$ -lactam ezetimibe derivatives have been synthesized and their efficacy to inhibit NPC1L1 protein and decrease plasma cholesterol levels is under evaluation.

**Keywords:** NPC1L1; cholesterol; cholesterol absorption; ezetimibe; LDL-C; cardiovascular disease

## Introduction

Niemann-Pick C1L1 (NPC1L1) protein plays a central role in the intestinal absorption of cholesterol and is a key determinant of plasma cholesterol levels<sup>1, 2</sup>. In humans, NPC1L1 is present also in the liver, where it prevents excessive loss of biliary cholesterol<sup>3</sup>.

While NPC1L1 overexpression increases cholesterol uptake in cells<sup>4</sup>, NPC1L1 knockout mice were protected against diet-induced hypercholesterolemia, as a consequence of the defective intestinal uptake of cholesterol<sup>5</sup>. In addition, naturally occurring loss of function mutations of NPC1L1 are associated with lower LDL-C levels and a reduced risk of coronary heart disease<sup>6</sup>. The observation that ezetimibe decreases intestinal cholesterol absorption via NPC1L1 inhibition, thus resulting in a reduction of plasma LDL-C levels by about 20% in monotherapy<sup>7</sup>, paved the road for a novel complementary approach for the treatment of hypercholesterolemia aimed at controlling endogenous cholesterol synthesis in the liver (statins) as well as dietary cholesterol absorption (ezetimibe).

Adding ezetimibe to established statin therapy results in a further incremental LDL-C lowering of 15%–20%<sup>8</sup>; the recent results of the IMPROVE-IT trial showed that ezetimibe, given in combination with simvastatin, reduced the combined cardiovascular outcome compared with simvastatin alone in acute coronary syndrome patients as a result of the additional LDL-C lowering obtained<sup>9</sup>. The aim of this review is to discuss the biological consequences of NPC1L1 inhibition on cholesterol homeostasis and the key aspects to be considered when designing novel ezetimibe analogs as potential cholesterol absorption inhibitors.

## Biology of NPC1L1

### *Cholesterol homeostasis*

Cholesterol plays a key role in cell biology, as it is a main constituent of cell membranes, and in the body, as it is required for the formation of bile salts and is the precursor of steroid hormones and vitamin D. Due to its importance, there are several cellular and systemic mechanisms able to tightly regulate the abundance of cholesterol, including intestinal absorption, endogenous biosynthesis, reverse cholesterol transport and biliary/intestinal excretion. Elevated plasma cholesterol levels represent a risk factor for atherosclerosis and cardiovascular disease.

Intestinal cholesterol absorption is a complex multistep process regulated by multiple genes; among them, NPC1L1, which is involved in cholesterol uptake<sup>2</sup>, and ATP-binding cassette transporters ABCG5 and ABCG8, that function as heterodimer and promote cholesterol efflux into the intestinal lumen for excretion<sup>10</sup>. Defects in the ABCG5/ABCG8 system are linked to sitosterolemia, a condition characterized by high plasma levels of dietary sterols and premature coronary heart disease<sup>10</sup>.

### *Expression, regulation and tissue distribution of NPC1L1*

NPC1L1 is a protein of 1,332 amino acids that plays a key role in the absorption of cholesterol; a truncated transcript has also been described, although its biological relevance is still not defined<sup>11, 12</sup>. NPC1L1 is a homolog of Niemann-Pick C1 (NPC1) protein which plays a key role in chaperoning lysosomal cholesterol and, when mutated, causes Niemann-Pick disease type 1, a severe disease characterized by the accumulation of cholesterol and glycolipids in lysosomes<sup>13</sup>. NPC1L1 is a plasma membrane protein containing 13 putative transmembrane domains, several N-linked

glycosylation sites in the extracellular loops of the protein and a sterol-sensing domain (SSD)<sup>12, 14, 15</sup> (Figure 1). The SSD is a region of 180 amino acids that forms five membrane-spanning helices with short intervening loops; this region is conserved in several other proteins playing a critical role in cholesterol homeostasis<sup>16, 17</sup>. The extracellular N-terminal domain of NPC1L1, **that in the absence of cholesterol is in a closed conformation**, directly binds cholesterol, and this interaction is essential for NPC1L1-mediated cellular cholesterol uptake<sup>18, 19</sup> (Figure 1).

The cellular localization of NPC1L1 is strictly related to **cholesterol content**: when cells are enriched in cholesterol, NPC1L1 localizes in the endocytic recycling compartment; **following** cholesterol depletion it translocates to an apical-like subdomain at the cell surface, thus facilitating free cholesterol uptake<sup>20, 21</sup>. **Also** NPC1L1 expression is tightly regulated by cellular cholesterol content and depends on several transcription factors, including SREBP-2, LXR $\alpha$ , HNF4 $\alpha$  and PPARs<sup>22-26</sup>. Mice fed a high cholesterol diet have very low levels of intestinal *NPC1L1* mRNA<sup>27</sup> **associated to** reduced expression of HNF4 $\alpha$  and SREBP-2<sup>26, 28</sup>; on the contrary, cholesterol deprivation significantly raises NPC1L1 mRNA levels in both intestine and liver, while increasing SREBP-2 mRNA expression<sup>28</sup>. Recently, the nuclear receptor liver receptor homolog-1 (LRH-1) has been shown to affect hepatic expression of NPC1L1, likely through a synergistic transcriptional activation in combination with SREBP-2<sup>29</sup>.

In addition to cholesterol, several other stimuli may modulate the expression of NPC1L1. As example, **in mice**, cholecystokinin, a peptide hormone responsible for the release of digestive enzymes and bile into the intestinal lumen, is known to raise plasma cholesterol levels by increasing cell-surface associated NPC1L1 in intestinal cells<sup>30, 31</sup>. **In vitro**, colestykinin induces the activation of PI3K-Akt pathway that in turn facilitates the physical interaction of NPC1L1 with Rab11 and the subsequent

1  
2  
3 NPC1L1 translocation to the cell surface<sup>31</sup>. Also high glucose levels increase the  
4  
5 cellular uptake of cholesterol in cultured intestinal cells; this effect is due to the  
6  
7 modulation of cholesterol transporters present in intestinal epithelial cells, being  
8  
9 NPC1L1 and CD36 upregulated and SR-BI downregulated<sup>32</sup>. Glucose also increases  
10  
11 NPC1L1 promoter activity in cultured intestinal cells, thus suggesting a transcriptional  
12  
13 regulation<sup>33</sup>; the effect of glucose seems to be dependent on glucose metabolism as  
14  
15 well as the activation of cellular protein phosphatases<sup>33</sup>. Whether these mechanisms  
16  
17 could account for the altered cholesterol absorption observed in diabetic patients<sup>34</sup>  
18  
19 remains to be explored.  
20  
21

22  
23 In contrast to NPC1, which is highly expressed and widely distributed in various  
24  
25 tissues<sup>35</sup>, NPC1L1 mRNA and protein are mostly expressed in the gastrointestinal  
26  
27 tract, being the small intestine and especially enterocytes from the proximal  
28  
29 (jejunum) region highly enriched in NPC1L1<sup>14</sup>.  
30

31  
32 While in mice and rats NPC1L1 expression is restricted to the intestine<sup>5</sup>, in  
33  
34 humans and in non-human primates, NPC1L1 is also expressed in the liver, within the  
35  
36 canalicular membrane of hepatocytes, where it facilitates cholesterol uptake, thus  
37  
38 potentially preventing excessive loss of biliary cholesterol<sup>3</sup>. Opposing the function for  
39  
40 NPC1L1 in the liver, ABCG5 and ABCG8 promote the removal of sterols from the body  
41  
42 through biliary excretion<sup>36</sup>. The acquisition of hepatic NPC1L1 expression could  
43  
44 represent an evolutionary advantage to locally control the cholesterol content in the  
45  
46 membrane of hepatocytes, which appears to be a relevant factor for the canalicular  
47  
48 membrane to limit the cytotoxic effect of biliary acids<sup>37</sup>.  
49  
50

51  
52 Recently, the possibility that epigenetics mechanisms could control NPC1L1  
53  
54 transcription and differential tissue localization was proposed. In animal models,  
55  
56 increased DNA methylation was observed in the colon compared with jejunum and  
57  
58  
59  
60

1  
2  
3 ileum and the treatment with a DNA methyltransferase inhibitor agent was associated  
4 with increased NPC1L1 expression in the colon<sup>38</sup>. A similar epigenetic mechanism was  
5 proposed to modulate also human NPC1L1 expression<sup>38</sup>.  
6  
7  
8  
9

#### 10 11 12 *Mechanisms of NPC1L1-mediated intestinal cholesterol absorption*

13  
14  
15 Several pathways and multiple receptors/transporters are involved in intestinal  
16 cholesterol absorption<sup>1</sup>. As detailed above, NPC1L1 which is expressed at the apical  
17 membrane of enterocytes plays a crucial role in this process<sup>14</sup>.  
18  
19

20  
21 Several observations have suggested that the mechanism by which NPC1L1  
22 mediates cholesterol uptake is through a clathrin-dependent endocytosis:  
23  
24

25  
26 a) NPC1L1 cycles between plasma membrane and recycling endosome, a process  
27 coupled to cholesterol uptake that can be inhibited by blocking clathrin-mediated  
28 endocytosis<sup>20</sup>;  
29  
30  
31

32  
33 b) caveolae-mediated endocytosis is not involved in the process of cholesterol  
34 absorption, as mice lacking caveolin-1 exhibit normal intestinal cholesterol  
35 absorption<sup>39</sup>;  
36  
37  
38

39  
40 c) finally, NPC1L1 co-immunoprecipitates with proteins (a subunit of the adaptor  
41 protein complex AP2 and the clathrin heavy chain) essential for clathrin-dependent  
42 endocytosis<sup>21</sup>. NPC1L1 contains a YVNXXF internalization motif located at the  
43 cytoplasmic C-terminal tail, a sequence that is highly conserved among mammalian  
44 NPC1L1 proteins and is not present in the homolog NPC1<sup>40</sup>. The binding of cholesterol  
45 to the N-terminal domain of NPC1L1 induces the dissociation of YVNXXF-containing  
46 region from plasma membrane thus enabling the binding of the clathrin adaptor  
47 Numb, that, in turn, recruits clathrin/AP2 complex for internalization<sup>40</sup>.  
48  
49  
50  
51  
52  
53  
54  
55  
56  
57  
58  
59  
60



1  
2  
3 NPC1L1, following the binding of cholesterol to its N-terminal domain<sup>18</sup>, forms  
4  
5 cholesterol-enriched membrane microdomains on plasma membrane by interacting  
6  
7 with lipid raft proteins including flotillin; these microdomains function as carriers for  
8  
9 bulk of cholesterol<sup>41</sup>. NPC1L1-flotillins containing microdomains might provide a  
10  
11 cholesterol-enriched region required to initiate the process of NPC1L1 endocytosis. In  
12  
13 fact, in the presence of high cholesterol levels, the sterol-sensing domain of NPC1L1  
14  
15 might induce protein conformational changes promoting endocytosis<sup>41</sup>. The possibility  
16  
17 that, during the assembly of these cholesterol-enriched microdomains, other unknown  
18  
19 factors might be incorporated and activate the process of NPC1L1 endocytosis<sup>41</sup>,  
20  
21 should be considered. NPC1L1 inhibitors limit the formation of these cholesterol-  
22  
23 enriched microdomains by disrupting the NPC1L1-flotillins complex<sup>41</sup>.  
24  
25  
26  
27  
28  
29  
30  
31  
32  
33  
34  
35  
36  
37  
38  
39  
40  
41  
42  
43  
44  
45  
46  
47  
48  
49  
50  
51  
52  
53  
54  
55  
56  
57  
58  
59  
60

view Only

### *Human loss of function mutations of NPC1L1 and cardiovascular disease*

Given that pre-clinical data indicate the key relevance of NPC1L1 in determining cholesterol absorption, **molecular approaches** to inhibit NPC1L1 **activity** thus limiting cholesterol absorption and reducing plasma cholesterol levels have been explored<sup>42</sup>. A critical aspect to translate the relevance of NPC1L1 inhibition to the human context is the demonstration that this process results also in cardiovascular protection. While the gold standard is **represented by** a long clinical trial with cardiovascular hard events as endpoint, a parallel approach to estimate the potential efficacy of NPC1L1 targeting **is the study of** plasma lipid profile and cardiovascular outcome in subjects with naturally occurring DNA sequence variants that affect the activity/expression of NPC1L1. **Although** DNA sequence variants in NPC1L1 were associated with modest alterations in plasma LDL cholesterol levels<sup>43</sup>, a large screening in 7364 patients with coronary heart disease and in 14,728 controls without such disease identified 15 distinct NPC1L1 **rare** inactivating mutations<sup>6</sup>. **Carriers of a single mutant NPC1L1 allele** presented a significant reduction in plasma LDL-C levels (12 mg/dL) but, more importantly, they presented a relative reduction of 53% in coronary heart disease risk<sup>6</sup>. This finding represents an elegant demonstration that genetically determined lifelong lower activity of NPC1L1 is associated with cardiovascular protection. **Extrapolation of genetic findings into pharmacology needs some caution, indeed while genetic data provides a lifelong NPC1L1 lower expression, pharmacological treatment will start later in life and be limited in time. Therefore, the benefit in terms of cardiovascular risk reduction (-53%) as a consequence of genetically driven (NPC1L1 inactivating mutations) LDL-C reduction (-12mg/dL) will be much higher compared with the cardiovascular risk reduction observed in clinical trials with a similar degree of LDL-C reduction<sup>44-46</sup>. A finding which has been confirmed in all the analyses of lipid**

1  
2  
3 lowering genes<sup>47</sup>.  
4  
5

6 *Human loss of function mutations of NPC1L1 and gallstone disease*  
7

8  
9 Preclinical observations point to a protective role for NPC1L1 on cholesterol  
10 gallstone disease as a consequence of the reduction in bile secretion of cholesterol.  
11  
12 Even in this context, the genetic approach is instrumental to investigate the impact of  
13 NPC1L1 inhibition on gallstone disease. Loss of function variations of NPC1L1,  
14  
15 although associated with reduced risk of ischemic vascular disease, were initially  
16  
17 associated with a modest but significant increased risk of symptomatic gallstone  
18  
19 disease<sup>48</sup>. However, this finding was not confirmed later, and indeed in a larger  
20  
21 analysis, which included more than 100,000 subjects, no association between NPC1L1  
22  
23 polymorphisms and the risk of gallstone disease was observed<sup>49</sup>. Similarly, a genome-  
24  
25 wide association study of symptomatic gallbladder disease among women failed to  
26  
27 observed any association of NPC1L1 polymorphisms with symptomatic gallbladder  
28  
29 disease ( $p=0.39$ )<sup>50</sup>. More importantly when the data from these three studies were  
30  
31 combined, NPC1L1 inactivating variants were not associated with a significantly  
32  
33 increased risk of symptomatic gallbladder disease. More importantly, this result is in  
34  
35 line with data from pharmacological inhibition of NPC1L1 which excluded an increased  
36  
37 risk of symptomatic gallbladder disease over an average 6-years follow-up in the  
38  
39 IMPROVE-IT study<sup>9</sup>.  
40  
41  
42  
43  
44  
45  
46  
47  
48  
49  
50  
51  
52  
53  
54  
55  
56  
57  
58  
59  
60

## Experimental pharmacology of NPC1L1 inhibition

Ezetimibe, a drug initially designed to inhibit cholesterol absorption for treating hypercholesterolemia, was later discovered to target NPC1L1<sup>14, 51</sup>. Both oxysterols and ezetimibe inhibit the formation of NPC1L1-flotillin-cholesterol microdomains; however, in contrast to oxysterols which compete with cholesterol for the N-terminal domain of NPC1L1, ezetimibe binds to a region within a large extracellular domain (loop C) (Figure 1), which is distinct from the binding site of cholesterol and is located in the intestinal lumen<sup>52</sup>, thus inducing the dissociation of NPC1L1 from flotillin, preventing the formation of NPC1L1-flotillin-cholesterol microdomains<sup>41</sup> and blocking the internalization of NPC1L1 and cholesterol in intestinal enterocytes<sup>53</sup>.

NPC1L1-deficient mice (NPC1L1 KO) exhibit a significantly decreased absorption of cholesterol (-69%) compared with wild type mice. A similar extent of reduction in cholesterol absorption (-70%) is observed in wild type mice treated with ezetimibe<sup>14</sup>. More importantly NPC1L1 KO mice are completely resistant to diet-induced hypercholesterolemia and present plasma and hepatic cholesterol levels similar to those of wild type mice treated with ezetimibe<sup>5, 27</sup>.

On the other hand, transgenic mice expressing human NPC1L1 in hepatocytes present a 30%-60% increase in plasma cholesterol, mainly due to the accumulation of apoE-rich HDL, together with the reduction in biliary cholesterol concentration; in these animals ezetimibe restore both biliary and plasma cholesterol levels<sup>3, 54</sup>.

Ezetimibe is rapidly absorbed from the gastrointestinal tract and transformed into its glucuronides (Figure 2). The main metabolite in human plasma is a phenolic glucuronide that accounts for about 90% of total ezetimibe. This glucuronide localizes more avidly in the intestine compared with ezetimibe and exhibit similar or even higher cholesterol-lowering activity compared with the parent compound<sup>17, 55</sup>. The

1  
2  
3 plasma concentration-time profile of ezetimibe and its conjugated metabolite shows  
4  
5 multiple peaks, indicating enterohepatic recycling<sup>56</sup>.  
6

7  
8 Enterocytes isolated from NPC1L1-deficient mice do not exhibit detectable  
9  
10 binding ability to radiolabeled ezetimibe glucuronide, **in contrast** to the high level of  
11  
12 binding observed in enterocytes isolated from wild type mice<sup>51</sup>, clearly reaffirming that  
13  
14 NPC1L1 is the direct molecular target of ezetimibe.  
15

16  
17 The deficiency of NPC1L1 in atherosclerosis prone animals such as the apoE<sup>-/-</sup>  
18  
19 mice is associated with a significantly reduced ability of these animals to absorb  
20  
21 cholesterol compared with that of apoE<sup>-/-57</sup>. The most remarkable effect of NPC1L1  
22  
23 deletion in this animal model is the almost complete protection from the development  
24  
25 of atherosclerotic lesions; this effect is similar to that obtained in apoE<sup>-/-</sup> mice treated  
26  
27 with ezetimibe<sup>57</sup>.  
28

29  
30 Cholesterol feeding of NPC1L1<sup>-/-</sup>/LDLR<sup>-/-</sup> knockout mice **genetically modified to**  
31  
32 **overexpress** human NPC1L1 only in the gastrointestinal tract resulted in a  
33  
34 significantly increased cholesterol absorption, compared with the double knockout  
35  
36 mice<sup>58</sup>, **which was associated with increased apolipoprotein B100 and B48 secretion**  
37  
38 **and plasma cholesterol levels**<sup>58</sup>. These findings suggested that, at least in animal  
39  
40 models, NPC1L1-mediated cholesterol absorption is a major determinant of  
41  
42 atherogenic apoB-containing lipoproteins.  
43  
44

45  
46 The reduction of cholesterol absorption, promotes, as a feedback mechanism to  
47  
48 maintain cholesterol homeostasis, the increase of reverse cholesterol transport  
49  
50 (RCT)<sup>59</sup>, a process involved in the transport of cholesterol from peripheral cells back  
51  
52 to the liver. This mechanism is common in mice genetically manipulated to present  
53  
54 reduced cholesterol absorption<sup>59</sup>, but is also observed in mice<sup>60, 61</sup> and hamsters<sup>62</sup>  
55  
56 following ezetimibe administration. These findings suggest that the inhibition of  
57  
58

1  
2  
3 cholesterol absorption may exert an atheroprotective effects also by promoting the  
4  
5 removal of cholesterol excess from peripheral tissues.  
6

7  
8 As the maintenance of cholesterol homeostasis is critical for several biological  
9  
10 processes and cholesterol synthesis and absorption are inversely regulated to  
11  
12 maintain cholesterol balance, it is not surprising that the inhibition of endogenous  
13  
14 cholesterol absorption activates also a series of mechanistic feedbacks resulting in  
15  
16 increased endogenous cholesterol synthesis<sup>63</sup>. Thus, while statins inhibit hepatic  
17  
18 synthesis of cholesterol and increase cholesterol absorption markers, ezetimibe  
19  
20 negatively affects cholesterol absorption but also increases cholesterol synthesis<sup>63</sup>.  
21  
22 These pharmacological responses may reduce the efficacy of the single drugs, but also  
23  
24 set the stage for combining the two pharmacological approaches with the aim of  
25  
26 limiting both cholesterol absorption and synthesis. In this context, it is worth to  
27  
28 mention that statins cause elevation of plasma PCSK9, a proprotein convertase that  
29  
30 promotes LDLR degradation, and this effect can reduce the cholesterol-lowering  
31  
32 efficacy of statins<sup>64</sup>. However, in healthy subjects, while a 2-week treatment with  
33  
34 simvastatin (40 mg) resulted in the upregulation of circulating PCSK9 levels, neither  
35  
36 ezetimibe alone nor the addition of ezetimibe to simvastatin induced an increase in  
37  
38 PCSK9 levels<sup>65</sup>. This finding could perhaps be the consequence of the limited absolute  
39  
40 LDL-C reduction induced by ezetimibe on the top of simvastatin which may not be  
41  
42 enough to further upregulate PCSK9 expression. In line with this, modest LDL-C  
43  
44 lowering such as that observed with simvastatin 10 mg does not increase PCSK9  
45  
46 levels<sup>66</sup>. The observation that key players in cholesterol metabolism, including HMG-  
47  
48 CoA reductase, LDL-R, PCSK9 and NPC1L1 are cross-regulated depending on how  
49  
50 cholesterol homeostasis is targeted, reinforce the rationale for the use of  
51  
52 pharmacological approaches combining ezetimibe and a statin.  
53  
54  
55  
56  
57  
58  
59  
60

## ***Clinical pharmacology of the NPC1L1 inhibitor ezetimibe***

### *Inhibition of NPC1L1 by ezetimibe and LDL-C lowering*

LDL-C lowering represents the primary target of therapy in the primary and secondary prevention of cardiovascular disease. Statins, which inhibit endogenous cholesterol biosynthesis, mainly in the liver, are the first-choice drug for the treatment of hypercholesterolemia<sup>67</sup>. The observation that the extent of plasma LDL-C reduction is directly associated with the decrease of cardiovascular diseases<sup>46</sup> supports the need of novel pharmacological approaches beyond statins for patients with hypercholesterolaemia<sup>42, 68-70</sup>. Among them, ezetimibe possesses a mechanism of action that is complementary to that of statins, and thus the combination statin-ezetimibe represents a successful approach to improve the management of hypercholesterolemia and the prevention of cardiovascular disease. In addition, the residual risk of recurrent cardiovascular events even with aggressive statin-based cholesterol-lowering therapies and concerns regarding the safety and adverse events observed with high-dose statins further supported the search for lipid-lowering therapies with a complementary mechanism of action<sup>71, 72</sup>.

A large number of clinical trials have evaluated the effect of adding ezetimibe to statins, showing an average additional LDL-C levels reduction of about 20%<sup>42, 73-75</sup> (Table 1). These findings have been confirmed in a pooled analysis of over 21,000 subjects from 27 clinical trials that compared the effect of statin versus statin plus ezetimibe and showed that the combination therapy was more effective at reducing LDL-C levels (treatment difference: -15.1%,  $p < 0.0001$ )<sup>76</sup>. Overall, the lipid profile was greatly improved with the combination therapy compared to similar statin doses and in most of the cases also when higher statin doses were used. Furthermore, safety profiles were comparable among the treatments.

1  
2  
3 Moreover, a retrospective, observational study showed that both LDL-C lowering  
4 and goal attainment were significantly higher in patients with CHD or CHD risk-  
5 equivalent treated with ezetimibe added to current statin therapy compared with  
6 patients who titrated the statin doses (-26% to 27% vs -8.8% to -9.8%)<sup>77</sup>. Finally,  
7 ezetimibe seems to have beneficial effect also on RCT in humans, similarly to what  
8 observed in animal models, resulting in an increased flux of cholesterol to feces in  
9 hyperlipidemic patients<sup>78</sup>.

10  
11  
12  
13  
14  
15  
16  
17  
18 The higher efficacy of ezetimibe combined with statin for the treatment of  
19 atherogenic dyslipidemia has been recently confirmed also in diabetic patients. The  
20 RESEARCH (Recognized Effect of Statin and Ezetimibe therapy for Achieving LDL-C  
21 Goal) trial compared, in type 2 diabetic subjects who failed to achieve their LDL-C  
22 target, the 12-week effect of a high-potency statin plus ezetimibe (atorvastatin 10 mg  
23 or pitavastatin 1 mg + ezetimibe 10 mg) versus doubled dose of statin (atorvastatin  
24 20 mg or pitavastatin 2 mg)<sup>79</sup>. The combination ezetimibe+statin was more effective  
25 at reducing LDL-C levels than doubling the dose of statins (-24.6% vs -10.9%,  
26 respectively)<sup>79</sup> and a significantly higher percentage of subjects reached their LDL-C  
27 goals in the group treated with ezetimibe+statin than in the group treated with a  
28 doubled statin dose (89.3% vs 51%, p<0.0001)<sup>79</sup>. In addition, the treatment with  
29 ezetimibe+statin improved the atherogenic plasma lipid profile more effectively than  
30 statin therapy, including a more pronounced reduction of small dense LDL levels  
31 (-20.5% vs -3.7%) and remnant-like particle cholesterol (-19.7% vs +5.5%)<sup>79</sup>.  
32 Diabetic patients have been suggested to benefit from combination therapy  
33 ezetimibe+statin more than non-diabetic subjects, as they seem to achieve  
34 significantly higher reduction in LDL-C and non-HDL-C; this might be due to a higher  
35 expression of NPC1L1 in diabetic patients, but a defined explanation is still lacking<sup>80</sup>.



1  
2  
3 Besides, it emerged that statin use may impair glucose tolerance and increase  
4 the risk of new-onset type 2 diabetes, although the benefits of cardiovascular risk  
5 reduction still largely exceeds the risk of incident diabetes<sup>81</sup>. On the contrary, current  
6 data suggest that ezetimibe ameliorates glycemic control and insulin sensitivity<sup>82</sup>.  
7 However, conclusive results are still lacking, as most clinical trials did not evaluate the  
8 impact of ezetimibe on glucose metabolism and commonly tested the effect of  
9 ezetimibe in combination with a statin<sup>82</sup>. An analysis of the IMPROVE-IT trial suggests  
10 that type 2 diabetic patients with a recent acute coronary syndrome may benefit from  
11 the addition of ezetimibe to a statin therapy: in fact, in this subgroup of patients,  
12 ezetimibe added to a statin lowered LDL-C more than the statin alone (43 mg/dL vs  
13 23 mg/dL) and reduced the relative cardiovascular risk by 14%<sup>83</sup>. In non-diabetics  
14 this effect was less evident, with a 2% relative risk reduction<sup>83</sup>.  
15  
16  
17  
18  
19  
20  
21  
22  
23  
24  
25  
26  
27  
28  
29  
30

### 31 *Inhibition of NPC1L1 by ezetimibe and inflammation*

32  
33  
34 Statins were proposed to have pleiotropic effects **beyond lipid-lowering**; among  
35 them, the ability to reduce inflammation, a process that play a crucial role in the  
36 atherogenic process<sup>84</sup>. **Indeed, studies designed to evaluate the effect of ezetimibe on**  
37 **inflammatory markers in subjects at increased cardiovascular risk showed a decreased**  
38 **expression of markers of oxidative stress and inflammation<sup>85-87</sup>. This may suggest that**  
39 **the beneficial effect of ezetimibe on inflammation could depend on the degree of**  
40 **plasma cholesterol reduction achieved, further supporting the correlation between**  
41 **plasma cholesterol and the immuno-inflammatory status<sup>88-91</sup>.**  
42  
43  
44  
45  
46  
47  
48  
49  
50

51  
52 Conversely, no effects were observed on the amount of circulating microparticles  
53 or endothelial progenitor cells in subjects with coronary heart disease under  
54 antiplatelet therapy and treated with the combination ezetimibe/simvastatin, in spite  
55  
56  
57  
58  
59  
60

1  
2  
3 of a significant increase of endothelial function measured as flow-mediated  
4 dilatation<sup>92</sup>. A lack of effect on microparticles and endothelial progenitor cells by  
5 ezetimibe treatment was reported also in patients at high-risk for coronary heart  
6 disease<sup>93</sup>.  
7  
8  
9  
10

#### 11 12 13 14 15 *Inhibition of NPC1L1 by ezetimibe and carotid and coronary atherosclerosis*

16  
17  
18 Some studies have raised concerns about the efficacy of ezetimibe treatment in  
19 the prevention of cardiovascular disease. The ENHANCE (Ezetimibe and Simvastatin in  
20 Hypercholesterolemia Enhances Atherosclerosis Regression) trial evaluated the effect  
21 of the administration of 10 mg ezetimibe in combination with 80 mg simvastatin on  
22 the progression of atherosclerosis in patients with familial hypercholesterolemia and  
23 found that the addition of ezetimibe to the highest recommended dose of simvastatin,  
24 although further reducing LDL-C levels, did not result in reduction of the intima-media  
25 thickness of the carotid artery wall<sup>94</sup> (Table 2).  
26  
27  
28  
29  
30  
31  
32  
33  
34

35  
36 This result was confirmed by the ARBITER 6-HALTS (Arterial Biology for the  
37 Investigation of the Treatment Effects of Reducing Cholesterol 6-HDL and LDL  
38 Treatment Strategies in Atherosclerosis) trial that evaluated the effect of adding  
39 ezetimibe or extended-release niacin to a chronic statin therapy in patients with  
40 coronary heart disease (CHD) or CHD-equivalent<sup>95</sup>. The primary endpoint was the  
41 change in mean carotid intima-media thickness (CIMT): while niacin induced a  
42 significant regression in mean CIMT, ezetimibe did not change this parameter and  
43 instead increased cumulative drug exposure resulted in CIMT progression in patients  
44 treated with ezetimibe<sup>95</sup> (Table 2). It appears that the inconclusive results observed  
45 with these studies are dependent on the starting status of the carotid arteries, i.e if  
46 the subjects present with IMT values in the normal range the likelihood that an  
47  
48  
49  
50  
51  
52  
53  
54  
55  
56  
57  
58  
59  
60

1  
2  
3 hypolipidaemic treatment will be effective is quite low, thus perhaps explaining the  
4  
5 findings of the ENHANCE trial.  
6

7  
8 The Simvastatin and Ezetimibe in Aortic Stenosis (SEAS) trial has been designed  
9  
10 to assess the effects of long-term (4.3 years) treatment with ezetimibe+simvastatin in  
11  
12 patients with asymptomatic, mild-to-moderate aortic-valve stenosis<sup>96</sup> (Table 2). This  
13  
14 intervention resulted in an average reduction of LDL-C of at least 50% compared with  
15  
16 placebo; however, no effect on aortic-valve events was observed, despite a reduction  
17  
18 of ischemic cardiovascular events<sup>96</sup>. The reduction of ischemic events was significant  
19  
20 in subjects with less severe aortic stenosis at baseline; the lack of effect on ischemic  
21  
22 events in more severe aortic stenosis at baseline may be explained with the shorter  
23  
24 duration of lipid-lowering therapy before valve replacement; aortic-valve associated  
25  
26 events did not decrease even for the mildest degree of aortic stenosis<sup>97</sup>.  
27

28  
29 On the other hand, the Stop Atherosclerosis in Native Diabetics Study (SANDS)  
30  
31 trial showed that, in subjects with type 2 diabetes, aggressive lipid-lowering treatment  
32  
33 with ezetimibe+statin induced the regression of carotid IMT, as compared with  
34  
35 standard lipid-lowering therapy that resulted in a modest carotid IMT progression<sup>98</sup>.  
36  
37 When comparing aggressive statin monotherapy with aggressive statin+ezetimibe, the  
38  
39 last induced a greater regression of CIMT after 36-month therapy<sup>99</sup>, indicating that  
40  
41 ezetimibe is effective in reversing carotid atherosclerosis. A similar result was  
42  
43 reported in another study showing that adding ezetimibe to statin monotherapy  
44  
45 significantly reduces LDL-C levels and decreases IMT in a high-risk group of subjects  
46  
47 with thickened carotid walls<sup>100</sup>. Similarly, the addition of ezetimibe to the current lipid-  
48  
49 lowering regimen of patients attending vascular prevention clinics resulted in the  
50  
51 regression of carotid total plaque area<sup>101</sup> (Table 2).  
52  
53  
54  
55  
56  
57  
58  
59  
60

1  
2  
3 A significant incremental reduction of coronary plaques has been recently  
4 reported in subjects who received ezetimibe in addition to usual rosuvastatin  
5 monotherapy in patients with stable coronary artery disease, with a percent change in  
6 plaque volume greater in the group of combined therapy compared with rosuvastatin  
7 alone (-13.2% vs -3.1%,  $p=0.05$ )<sup>102</sup>. In this study, the addition of ezetimibe reduced  
8 **was more effective in reducing not only** LDL-C but also TG, non-HDL-C and small  
9 dense LDL (sd-LDL), being this last associated with increased risk of coronary artery  
10 disease; the reduction in plaque volume correlated not only with reduction of LDL-C  
11 but also with levels of sd-LDL at follow-up<sup>102</sup> (Table 2). This finding is in agreement  
12 with the results of another study showing that the addition of ezetimibe to fluvastatin  
13 therapy resulted in a major increase of the minimum fibrous thickness of lipid-rich  
14 plaque compared with fluvastatin alone, with a negative correlation between the  
15 change in minimum fibrous cap thickness and change in LDL-C<sup>103</sup>. Altogether these  
16 observations suggest that ezetimibe addition to statin therapy may affect plaque  
17 stabilization (Table 2).  
18  
19  
20  
21  
22  
23  
24  
25  
26  
27  
28  
29  
30  
31  
32  
33  
34  
35

#### 36 *NPC1L1 inhibition and cardiovascular disease*

37  
38 Although a large number of studies showed that adding ezetimibe to a statin  
39 therapy further reduces LDL-C levels by an additional 23-24%<sup>76, 104</sup>, to date few  
40 clinical trials have evaluated the effect of adding ezetimibe to statin therapy on clinical  
41 cardiovascular outcomes. The Study of Heart and Renal Protection (SHARP) was  
42 designed to evaluate the effect of the combination ezetimibe+simvastatin in patients  
43 with moderate-to-severe kidney disease<sup>105</sup>. Patients randomized to  
44 ezetimibe+simvastatin or to placebo were followed-up for 4.9 years; LDL-C-lowering  
45 with ezetimibe+simvastatin resulted in a significantly reduced incidence (-17%) of  
46 major atherosclerotic events<sup>105</sup> although it did not slow kidney disease progression<sup>106</sup>.  
47  
48  
49  
50  
51  
52  
53  
54  
55  
56  
57  
58  
59  
60

1  
2  
3 When patients with CKD and LDL-C levels above 120 mg/dL (despite statin therapy)  
4 were randomized to receive double dose of statin or ezetimibe in addition to the usual  
5 dose of statin, during the first year of follow-up, in spite of similar LDL-C reduction the  
6 incidence of adverse effects was significantly lower in the combination therapy group  
7 compared with the high dose of statin<sup>107</sup>. These findings suggest that combining a  
8 statin with ezetimibe may help to safely reduce cardiovascular complications of high-  
9 risk patients with chronic kidney disease.  
10  
11  
12  
13  
14  
15  
16  
17

18 The Improved Reduction of Outcomes: Vitorn Efficacy International Trial  
19 (IMPROVE-IT) evaluated the effect of ezetimibe (10 mg) combined with simvastatin  
20 (40 mg) or simvastatin (40 mg) alone in patients who had had an acute coronary  
21 syndrome within the preceding 10 days and LDL-C levels within the range of  
22 recommended values<sup>9</sup>. After a median follow-up of 6 years, median time-weighted  
23 average LDL-C level was significantly lower in the group treated with  
24 ezetimibe+simvastatin compared with patients treated with simvastatin alone  
25 (53.7 mg/dL vs 69.5 mg/dL,  $p < 0.001$ ); in addition, a higher proportion of patients  
26 treated with ezetimibe+simvastatin reached a dual goal including a LDL-C level  $< 70$   
27 mg/dL (1.8 mmol/L)<sup>9</sup>. Also cardiovascular outcomes were improved in the group  
28 treated with ezetimibe+simvastatin; indeed the primary end point (a composite of  
29 cardiovascular death, nonfatal myocardial infarction (MI), unstable angina requiring  
30 hospitalization, coronary revascularization, nonfatal stroke) was lower in  
31 ezetimibe+simvastatin group than in simvastatin group (32.7% vs 34.7%,  $p = 0.016$ )<sup>9</sup>;  
32 the risk of any myocardial infarction or ischemic stroke were significantly lower in the  
33 ezetimibe+simvastatin group than in simvastatin group (any MI: 13.1% vs 14.8%,  
34  $p = 0.002$ ; IS: 3.4% vs 4.1%,  $p = 0.008$ ), as were other prespecified end points, while  
35 no differences were observed in terms of safety between the two groups<sup>9</sup> (Table 2).  
36  
37  
38  
39  
40  
41  
42  
43  
44  
45  
46  
47  
48  
49  
50  
51  
52  
53  
54  
55  
56  
57  
58  
59  
60

1  
2  
3 The benefits of adding ezetimibe seemed to be more evident in diabetics and in older  
4 ( $\geq 75$  years) patients<sup>9</sup>. A recent analysis of the IMPROVE-IT trial showed that patients  
5 reaching the dual LDL-C and hs-CRP targets had the lowest absolute and relative risk  
6 of recurrent events, **independently of the pharmacological approach** used to achieve  
7 the target levels<sup>108</sup>. These findings support the concept that LDL-C lowering **per se**  
8 translates into clinical benefits<sup>9</sup>.

#### 16 *NPC1L1 inhibition in familial hypercholesterolemia*

19 Patients with homozygous familial hypercholesterolemia (HoFH) have a very high  
20 risk of premature coronary artery disease; statins, that represent the main lipid-  
21 lowering drug class, may be effective in some HoFH patients, but this requires the  
22 presence of an at least in part functional LDLR<sup>109, 110</sup>. Novel options are becoming  
23 available for the treatment of HoFH which include apoB gene silencing<sup>69</sup> as well as  
24 MTP inhibitors<sup>42</sup> but also inhibitors on NPC1L1. Indeed, the addition of ezetimibe to  
25 atorvastatin or simvastatin for 12-week induced a significant reduction in LDL-C levels  
26 (14% to 20.5%) compared with statins alone<sup>111</sup>.

37 In patients with heterozygous FH (HeFH), which exhibit a less severe phenotype  
38 and a lower cardiovascular risk compared with HoFH, co-administration of ezetimibe  
39 with a statin resulted in a further decrease of LDL-C levels<sup>112</sup>. **Of note, in this cohort a**  
40 **wide inter-individual variability response to ezetimibe was observed; indeed,**  
41 **ezetimibe was less effective in statin hyper-responders (who also present with a**  
42 **higher cholesterol synthesis and lower cholesterol absorption) and vice versa<sup>112</sup>.**  
43  
44 However, the addition of ezetimibe to the highest recommended dose of simvastatin  
45 did not result in a further reduction of the carotid intima-media thickness compared  
46 with simvastatin alone in patients with FH, despite LDL-C and C-reactive protein levels  
47 were lowered to a larger extent in patients treated with the combination therapy<sup>94</sup>.

1  
2  
3 Given that these patients were treated for many years with statins before the study, it  
4 is possible that the benefit of the therapy had already occurred and the resultant  
5 fibrotic, calcified lesion may not further benefit of an additional LDL-C lowering<sup>113</sup>. Of  
6  
7 note, another study performed in HeFH with a history of acute myocardial infarction or  
8  
9 with carotid lesions but no history of cardiovascular events treated for 30 months with  
10  
11 the combination ezetimibe/simvastatin showed a **considerable** reduction of LDL-C, an  
12  
13 improvement of lipid profile and inflammatory markers and a significant reduction of  
14  
15 the mean of the carotid IMT in both groups<sup>114</sup>.  
16  
17  
18  
19  
20  
21  
22

### 23 **Other NPC1L1 inhibitors**

24  
25 To date, ezetimibe represents the only inhibitor of NPC1L1 available for clinical  
26  
27 use. In an effort to identify new cholesterol absorption inhibitors, some studies have  
28  
29 evaluated the possibility to obtain ezetimibe analogs with superior ability to inhibit  
30  
31 cholesterol absorption. In one study, six new amide ezetimibe analogs have been  
32  
33 synthesized; these compounds exhibited low toxicity and a significant ability to inhibit  
34  
35 cholesterol uptake in cells overexpressing human NPC1L1; among them, 3 compounds  
36  
37 were tested also *in vivo* in mice, showing the ability to reduce hepatic and intestinal  
38  
39 cholesterol levels<sup>115</sup> (Figure 3). The same authors, in a previous study synthesized two  
40  
41 new amino- $\beta$ -lactam derivatives that efficiently inhibited cholesterol absorption  
42  
43 comparable to ezetimibe<sup>116</sup> (Figure 3).  
44  
45  
46

47  
48 Although several compounds with structural similarities to ezetimibe were  
49  
50 designed, few of them were reported to lower cholesterol absorption<sup>96-98</sup>. Eight new  
51  
52 2-azetidinone analogs of ezetimibe have been designed through *in silico* docking  
53  
54 experiments with the crystal structure of NPC1L1 and synthesized; some of these  
55  
56 molecules have significant lipid-lowering effects, comparable to those of ezetimibe<sup>117</sup>.  
57  
58  
59  
60

## Conclusions

Experimental and human genetics evidences point to a critical role for NPC1L1 in intestinal cholesterol absorption. NPC1L1 inhibition provides a complimentary approach to decrease plasma cholesterol levels beyond statins which inhibit liver cholesterol biosynthesis. The possibility of targeting two pathways involved in cholesterol body homeostasis allows to maintain statins doses within the lower range without affecting the efficacy in reducing LDL-C levels and the risk of cardiovascular events. Therefore the pharmaceutical research is highly active in identifying chemical requirements to design novel ezetimibe analogs with increased efficiency thus paving the road for novel dual therapies to reduce hypercholesterolemia and the associated cardiovascular risk.



## Legends to the Figures

**Figure 1. Structure of human NPC1L1.** NPC1L1 contains 13 transmembrane domains, comprising a sterol-sensing domain (SSD), a region of 180 amino acids that forms five membrane-spanning helices with short intervening loops. The extracellular N-terminal domain of NPC1L1 directly binds cholesterol, while ezetimibe binds to the loop C.

**Figure 2. Main metabolites of ezetimibe.**

**Figure 3. Structures of ezetimibe analogs.**

## References

- [1] Wang, D.Q. Regulation of intestinal cholesterol absorption. *Annu Rev Physiol*, **2007**, *69* (221-248).
- [2] Wang, L.J.; Song, B.L. Niemann-Pick C1-Like 1 and cholesterol uptake. *Biochim Biophys Acta*, **2012**, *1821* (7), 964-972.
- [3] Temel, R.E.; Tang, W.; Ma, Y.; Rudel, L.L.; Willingham, M.C.; Ioannou, Y.A.; Davies, J.P.; Nilsson, L.M.; Yu, L. Hepatic Niemann-Pick C1-like 1 regulates biliary cholesterol concentration and is a target of ezetimibe. *J Clin Invest*, **2007**, *117* (7), 1968-1978.
- [4] Yamanashi, Y.; Takada, T.; Suzuki, H. Niemann-Pick C1-like 1 overexpression facilitates ezetimibe-sensitive cholesterol and beta-sitosterol uptake in CaCo-2 cells. *J Pharmacol Exp Ther*, **2007**, *320* (2), 559-564.
- [5] Davies, J.P.; Scott, C.; Oishi, K.; Liapis, A.; Ioannou, Y.A. Inactivation of NPC1L1 causes multiple lipid transport defects and protects against diet-induced hypercholesterolemia. *J Biol Chem*, **2005**, *280* (13), 12710-12720.
- [6] Stitzel, N.O.; Won, H.H.; Morrison, A.C.; Peloso, G.M.; Do, R.; Lange, L.A.; Fontanillas, P.; Gupta, N.; Duga, S.; Goel, A.; Farrall, M.; Saleheen, D.; Ferrario, P.; Konig, I.; Asselta, R.; Merlini, P.A.; Marziliano, N.; Notarangelo, M.F.; Schick, U.; Auer, P.; Assimes, T.L.; Reilly, M.; Wilensky, R.; Rader, D.J.; Hovingh, G.K.; Meitinger, T.; Kessler, T.; Kastrati, A.; Laugwitz, K.L.; Siscovick, D.; Rotter, J.I.; Hazen, S.L.; Tracy, R.; Cresci, S.; Spertus, J.; Jackson, R.; Schwartz, S.M.; Natarajan, P.; Crosby, J.; Muzny, D.; Ballantyne, C.; Rich, S.S.; O'Donnell, C.J.; Abecasis, G.; Sunyaev, S.; Nickerson, D.A.; Buring, J.E.; Ridker, P.M.; Chasman, D.I.; Austin, E.; Ye, Z.; Kullo, I.J.; Weeke, P.E.; Shaffer, C.M.; Bastarache, L.A.; Denny, J.C.; Roden, D.M.; Palmer, C.; Deloukas, P.; Lin, D.Y.; Tang, Z.Z.; Erdmann, J.; Schunkert, H.; Danesh, J.; Marrugat, J.; Elosua, R.; Ardissino, D.; McPherson, R.; Watkins, H.; Reiner, A.P.; Wilson, J.G.; Altshuler, D.; Gibbs, R.A.; Lander, E.S.; Boerwinkle, E.; Gabriel, S.; Kathiresan, S. Inactivating mutations in NPC1L1 and protection from coronary heart disease. *N Engl J Med*, **2014**, *371* (22), 2072-2082.
- [7] Davis, H.R.; Veltri, E.P. Zetia: inhibition of Niemann-Pick C1 Like 1 (NPC1L1) to reduce intestinal cholesterol absorption and treat hyperlipidemia. *J Atheroscler Thromb*, **2007**, *14* (3), 99-108.
- [8] [http://www.merck.com/product/usa/pi\\_circulars/z/zetia/zetia\\_pi.pdf](http://www.merck.com/product/usa/pi_circulars/z/zetia/zetia_pi.pdf). (Accessed October 7, 2015)
- [9] Cannon, C.P.; Blazing, M.A.; Giugliano, R.P.; McCagg, A.; White, J.A.; Theroux, P.; Darius, H.; Lewis, B.S.; Ophuis, T.O.; Jukema, J.W.; De Ferrari, G.M.; Ruzyllo, W.; De Lucca, P.; Im, K.; Bohula, E.A.; Reist, C.; Wiviott, S.D.; Tershakovec, A.M.; Musliner, T.A.; Braunwald, E.; Califf, R.M. Ezetimibe Added to Statin Therapy after Acute Coronary Syndromes. *N Engl J Med*, **2015**, *372* (25), 2387-2397.
- [10] Yu, X.H.; Qian, K.; Jiang, N.; Zheng, X.L.; Cayabyab, F.S.; Tang, C.K. ABCG5/ABCG8 in cholesterol excretion and atherosclerosis. *Clin Chim Acta*, **2014**, *428* (82-88).
- [11] Davies, J.P.; Levy, B.; Ioannou, Y.A. Evidence for a Niemann-pick C (NPC) gene family: identification and characterization of NPC1L1. *Genomics*, **2000**, *65* (2), 137-145.
- [12] Jia, L.; Betters, J.L.; Yu, L. Niemann-pick C1-like 1 (NPC1L1) protein in intestinal and hepatic cholesterol transport. *Annu Rev Physiol*, **2011**, *73* (239-259).
- [13] Carstea, E.D.; Morris, J.A.; Coleman, K.G.; Loftus, S.K.; Zhang, D.; Cummings, C.; Gu, J.; Rosenfeld, M.A.; Pavan, W.J.; Krizman, D.B.; Nagle, J.; Polymeropoulos, M.H.; Sturley, S.L.; Ioannou, Y.A.; Higgins, M.E.; Comly, M.; Cooney, A.; Brown, A.; Kaneski, C.R.; Blanchette-Mackie, E.J.; Dwyer, N.K.; Neufeld, E.B.; Chang, T.Y.; Liscum, L.; Strauss, J.F., 3rd; Ohno, K.; Zeigler, M.; Carmi, R.; Sokol, J.; Markie, D.; O'Neill, R.R.; van Diggelen, O.P.; Elleder, M.; Patterson, M.C.; Brady, R.O.; Vanier, M.T.; Pentchev, P.G.; Tagle, D.A. Niemann-Pick C1 disease gene: homology to mediators of cholesterol homeostasis. *Science*, **1997**, *277* (5323), 228-231.
- [14] Altmann, S.W.; Davis, H.R., Jr.; Zhu, L.J.; Yao, X.; Hoos, L.M.; Tetzloff, G.; Iyer, S.P.; Maguire, M.; Golovko, A.; Zeng, M.; Wang, L.; Murgolo, N.; Graziano, M.P. Niemann-Pick C1 Like 1 protein is critical for intestinal cholesterol absorption. *Science*, **2004**, *303* (5661), 1201-1204.

- 1  
2  
3 [15] Iyer, S.P.; Yao, X.; Crona, J.H.; Hoos, L.M.; Tetzloff, G.; Davis, H.R., Jr.; Graziano, M.P.; Altmann, S.W.  
4 Characterization of the putative native and recombinant rat sterol transporter Niemann-Pick C1 Like 1  
5 (NPC1L1) protein. *Biochim Biophys Acta*, **2005**, *1722* (3), 282-292.
- 6 [16] Yu, L. The structure and function of Niemann-Pick C1-like 1 protein. *Curr Opin Lipidol*, **2008**, *19* (3),  
7 263-269.
- 8 [17] Wang, J.; Chu, B.B.; Ge, L.; Li, B.L.; Yan, Y.; Song, B.L. Membrane topology of human NPC1L1, a key  
9 protein in enterohepatic cholesterol absorption. *J Lipid Res*, **2009**, *50* (8), 1653-1662.
- 10 [18] Zhang, J.H.; Ge, L.; Qi, W.; Zhang, L.; Miao, H.H.; Li, B.L.; Yang, M.; Song, B.L. The N-terminal domain  
11 of NPC1L1 protein binds cholesterol and plays essential roles in cholesterol uptake. *J Biol Chem*, **2011**, *286*  
12 (28), 25088-25097.
- 13 [19] Kwon, H.J.; Palnitkar, M.; Deisenhofer, J. The structure of the NPC1L1 N-terminal domain in a closed  
14 conformation. *PLoS One*, **2011**, *6* (4), e18722.
- 15 [20] Yu, L.; Bharadwaj, S.; Brown, J.M.; Ma, Y.; Du, W.; Davis, M.A.; Michaely, P.; Liu, P.; Willingham,  
16 M.C.; Rudel, L.L. Cholesterol-regulated translocation of NPC1L1 to the cell surface facilitates free  
17 cholesterol uptake. *J Biol Chem*, **2006**, *281* (10), 6616-6624.
- 18 [21] Ge, L.; Wang, J.; Qi, W.; Miao, H.H.; Cao, J.; Qu, Y.X.; Li, B.L.; Song, B.L. The cholesterol absorption  
19 inhibitor ezetimibe acts by blocking the sterol-induced internalization of NPC1L1. *Cell Metab*, **2008**, *7* (6),  
20 508-519.
- 21 [22] Duval, C.; Touche, V.; Tailleux, A.; Fruchart, J.C.; Fievet, C.; Clavey, V.; Staels, B.; Lestavel, S.  
22 Niemann-Pick C1 like 1 gene expression is down-regulated by LXR activators in the intestine. *Biochem*  
23 *Biophys Res Commun*, **2006**, *340* (4), 1259-1263.
- 24 [23] Iwayanagi, Y.; Takada, T.; Suzuki, H. HNF4alpha is a crucial modulator of the cholesterol-dependent  
25 regulation of NPC1L1. *Pharm Res*, **2008**, *25* (5), 1134-1141.
- 26 [24] Iwayanagi, Y.; Takada, T.; Tomura, F.; Yamanashi, Y.; Terada, T.; Inui, K.; Suzuki, H. Human NPC1L1  
27 expression is positively regulated by PPARalpha. *Pharm Res*, **2011**, *28* (2), 405-412.
- 28 [25] van der Veen, J.N.; Kruit, J.K.; Havinga, R.; Baller, J.F.; Chimini, G.; Lestavel, S.; Staels, B.; Groot, P.H.;  
29 Groen, A.K.; Kuipers, F. Reduced cholesterol absorption upon PPARdelta activation coincides with  
30 decreased intestinal expression of NPC1L1. *J Lipid Res*, **2005**, *46* (3), 526-534.
- 31 [26] Kawase, A.; Araki, Y.; Ueda, Y.; Nakazaki, S.; Iwaki, M. Impact of a high-cholesterol diet on  
32 expression levels of Niemann-Pick C1-like 1 and intestinal transporters in rats and mice. *Eur J Drug Metab*  
33 *Pharmacokinet*, **2015**.
- 34 [27] Davis, H.R., Jr.; Zhu, L.J.; Hoos, L.M.; Tetzloff, G.; Maguire, M.; Liu, J.; Yao, X.; Iyer, S.P.; Lam, M.H.;  
35 Lund, E.G.; Detmers, P.A.; Graziano, M.P.; Altmann, S.W. Niemann-Pick C1 Like 1 (NPC1L1) is the intestinal  
36 phytosterol and cholesterol transporter and a key modulator of whole-body cholesterol homeostasis. *J Biol*  
37 *Chem*, **2004**, *279* (32), 33586-33592.
- 38 [28] Telford, D.E.; Sutherland, B.G.; Edwards, J.Y.; Andrews, J.D.; Barrett, P.H.; Huff, M.W. The molecular  
39 mechanisms underlying the reduction of LDL apoB-100 by ezetimibe plus simvastatin. *J Lipid Res*, **2007**, *48*  
40 (3), 699-708.
- 41 [29] Lee, E.S.; Seo, H.J.; Back, S.S.; Han, S.H.; Jeong, Y.J.; Lee, J.W.; Choi, S.Y.; Han, K. Transcriptional  
42 Regulation of Niemann-Pick C1-like 1 (NPC1L1) Gene by Liver Receptor Homolog-1 (LRH-1). *BMB Rep*, **2015**.
- 43 [30] Zhou, L.; Yang, H.; Lin, X.; Okoro, E.U.; Guo, Z. Cholecystokinin elevates mouse plasma lipids. *PLoS*  
44 *One*, **2012**, *7* (12), e51011.
- 45 [31] Zhou, L.; Yang, H.; Okoro, E.U.; Guo, Z. Up-regulation of cholesterol absorption is a mechanism for  
46 cholecystokinin-induced hypercholesterolemia. *J Biol Chem*, **2014**, *289* (19), 12989-12999.
- 47 [32] Ravid, Z.; Bendayan, M.; Delvin, E.; Sane, A.T.; Elchebly, M.; Lafond, J.; Lambert, M.; Mailhot, G.;  
48 Levy, E. Modulation of intestinal cholesterol absorption by high glucose levels: impact on cholesterol  
49 transporters, regulatory enzymes, and transcription factors. *Am J Physiol Gastrointest Liver Physiol*, **2008**,  
50 295 (5), G873-885.
- 51  
52  
53  
54  
55  
56  
57  
58  
59  
60

- 1  
2  
3 [33] Malhotra, P.; Boddy, C.S.; Soni, V.; Saksena, S.; Dudeja, P.K.; Gill, R.K.; Alrefai, W.A. D-Glucose  
4 modulates intestinal Niemann-Pick C1-like 1 (NPC1L1) gene expression via transcriptional regulation. *Am J*  
5 *Physiol Gastrointest Liver Physiol*, **2012**, *304* (2), G203-210.
- 6 [34] Tomkin, G.H.; Owens, D. Dyslipidaemia of diabetes and the intestine. *World J Diabetes*, **2015**, *6* (7),  
7 970-977.
- 8 [35] Loftus, S.K.; Morris, J.A.; Carstea, E.D.; Gu, J.Z.; Cummings, C.; Brown, A.; Ellison, J.; Ohno, K.;  
9 Rosenfeld, M.A.; Tagle, D.A.; Pentchev, P.G.; Pavan, W.J. Murine model of Niemann-Pick C disease:  
10 mutation in a cholesterol homeostasis gene. *Science*, **1997**, *277* (5323), 232-235.
- 11 [36] Brown, J.M.; Yu, L. Opposing Gatekeepers of Apical Sterol Transport: Niemann-Pick C1-Like 1  
12 (NPC1L1) and ATP-Binding Cassette Transporters G5 and G8 (ABCG5/ABCG8). *Immunol Endocr Metab*  
13 *Agents Med Chem*, **2009**, *9* (1), 18-29.
- 14 [37] Oude Elferink, R.P.; Paulusma, C.C.; Groen, A.K. Hepatocanalicular transport defects:  
15 pathophysiologic mechanisms of rare diseases. *Gastroenterology*, **2006**, *130* (3), 908-925.
- 16 [38] Malhotra, P.; Soni, V.; Kumar, A.; Anbazhagan, A.N.; Dudeja, A.; Saksena, S.; Gill, R.K.; Dudeja, P.K.;  
17 Alrefai, W.A. Epigenetic modulation of intestinal cholesterol transporter Niemann-Pick C1-like 1 (NPC1L1)  
18 gene expression by DNA methylation. *J Biol Chem*, **2014**, *289* (33), 23132-23140.
- 19 [39] Valasek, M.A.; Weng, J.; Shaul, P.W.; Anderson, R.G.; Repa, J.J. Caveolin-1 is not required for murine  
20 intestinal cholesterol transport. *J Biol Chem*, **2005**, *280* (30), 28103-28109.
- 21 [40] Li, P.S.; Fu, Z.Y.; Zhang, Y.Y.; Zhang, J.H.; Xu, C.Q.; Ma, Y.T.; Li, B.L.; Song, B.L. The clathrin adaptor  
22 Numb regulates intestinal cholesterol absorption through dynamic interaction with NPC1L1. *Nat Med*,  
23 **2014**, *20* (1), 80-86.
- 24 [41] Ge, L.; Qi, W.; Wang, L.J.; Miao, H.H.; Qu, Y.X.; Li, B.L.; Song, B.L. Flotillins play an essential role in  
25 Niemann-Pick C1-like 1-mediated cholesterol uptake. *Proc Natl Acad Sci U S A*, **2011**, *108* (2), 551-556.
- 26 [42] Norata, G.D.; Ballantyne, C.M.; Catapano, A.L. New therapeutic principles in dyslipidaemia: focus on  
27 LDL and Lp(a) lowering drugs. *Eur Heart J*, **2013**, *34* (24), 1783-1789.
- 28 [43] Teslovich, T.M.; Musunuru, K.; Smith, A.V.; Edmondson, A.C.; Stylianou, I.M.; Koseki, M.; Pirruccello,  
29 J.P.; Ripatti, S.; Chasman, D.I.; Willer, C.J.; Johansen, C.T.; Fouchier, S.W.; Isaacs, A.; Peloso, G.M.; Barbalic,  
30 M.; Ricketts, S.L.; Bis, J.C.; Aulchenko, Y.S.; Thorleifsson, G.; Feitosa, M.F.; Chambers, J.; Orho-Melander, M.;  
31 Melander, O.; Johnson, T.; Li, X.; Guo, X.; Li, M.; Shin Cho, Y.; Jin Go, M.; Jin Kim, Y.; Lee, J.Y.; Park, T.; Kim,  
32 K.; Sim, X.; Twee-Hee Ong, R.; Croteau-Chonka, D.C.; Lange, L.A.; Smith, J.D.; Song, K.; Hua Zhao, J.; Yuan, X.;  
33 Luan, J.; Lamina, C.; Ziegler, A.; Zhang, W.; Zee, R.Y.; Wright, A.F.; Witteman, J.C.; Wilson, J.F.; Willemssen,  
34 G.; Wichmann, H.E.; Whitfield, J.B.; Waterworth, D.M.; Wareham, N.J.; Waeber, G.; Vollenweider, P.;  
35 Voight, B.F.; Vitart, V.; Uitterlinden, A.G.; Uda, M.; Tuomilehto, J.; Thompson, J.R.; Tanaka, T.; Surakka, I.;  
36 Stringham, H.M.; Spector, T.D.; Soranzo, N.; Smit, J.H.; Sinisalo, J.; Silander, K.; Sijbrands, E.J.; Scuteri, A.;  
37 Scott, J.; Schlessinger, D.; Sanna, S.; Salomaa, V.; Saharinen, J.; Sabatti, C.; Ruokonen, A.; Rudan, I.; Rose,  
38 L.M.; Roberts, R.; Rieder, M.; Psaty, B.M.; Pramstaller, P.P.; Pichler, I.; Perola, M.; Penninx, B.W.; Pedersen,  
39 N.L.; Pattaro, C.; Parker, A.N.; Pare, G.; Oostra, B.A.; O'Donnell, C.J.; Nieminen, M.S.; Nickerson, D.A.;  
40 Montgomery, G.W.; Meitinger, T.; McPherson, R.; McCarthy, M.I.; McArdle, W.; Masson, D.; Martin, N.G.;  
41 Marroni, F.; Mangino, M.; Magnusson, P.K.; Lucas, G.; Luben, R.; Loos, R.J.; Lokki, M.L.; Lettre, G.;  
42 Langenberg, C.; Launer, L.J.; Lakatta, E.G.; Laaksonen, R.; Kyvik, K.O.; Kronenberg, F.; Konig, I.R.; Khaw, K.T.;  
43 Kaprio, J.; Kaplan, L.M.; Johansson, A.; Jarvelin, M.R.; Janssens, A.C.; Ingelsson, E.; Igl, W.; Kees Hovingh, G.;  
44 Hottenga, J.J.; Hofman, A.; Hicks, A.A.; Hengstenberg, C.; Heid, I.M.; Hayward, C.; Havulinna, A.S.; Hastie,  
45 N.D.; Harris, T.B.; Haritunians, T.; Hall, A.S.; Gyllensten, U.; Guiducci, C.; Groop, L.C.; Gonzalez, E.; Gieger, C.;  
46 Freimer, N.B.; Ferrucci, L.; Erdmann, J.; Elliott, P.; Ejebe, K.G.; Doring, A.; Dominiczak, A.F.; Demissie, S.;  
47 Deloukas, P.; de Geus, E.J.; de Faire, U.; Crawford, G.; Collins, F.S.; Chen, Y.D.; Caulfield, M.J.; Campbell, H.;  
48 Burt, N.P.; Bonnycastle, L.L.; Boomsma, D.I.; Boekholdt, S.M.; Bergman, R.N.; Barroso, I.; Bandinelli, S.;  
49 Ballantyne, C.M.; Assimes, T.L.; Quertermous, T.; Altshuler, D.; Seielstad, M.; Wong, T.Y.; Tai, E.S.; Feranil,  
50 A.B.; Kuzawa, C.W.; Adair, L.S.; Taylor, H.A., Jr.; Borecki, I.B.; Gabriel, S.B.; Wilson, J.G.; Holm, H.;  
51 Thorsteinsdottir, U.; Gudnason, V.; Krauss, R.M.; Mohlke, K.L.; Ordovas, J.M.; Munroe, P.B.; Kooner, J.S.;  
52 Tall, A.R.; Hegele, R.A.; Kastelein, J.J.; Schadt, E.E.; Rotter, J.I.; Boerwinkle, E.; Strachan, D.P.; Mooser, V.;

- 1  
2  
3 Stefansson, K.; Reilly, M.P.; Samani, N.J.; Schunkert, H.; Cupples, L.A.; Sandhu, M.S.; Ridker, P.M.; Rader,  
4 D.J.; van Duijn, C.M.; Peltonen, L.; Abecasis, G.R.; Boehnke, M.; Kathiresan, S. Biological, clinical and  
5 population relevance of 95 loci for blood lipids. *Nature*, **2010**, *466* (7307), 707-713.
- 6 [44] Delahoy, P.J.; Magliano, D.J.; Webb, K.; Grobler, M.; Liew, D. The relationship between reduction in  
7 low-density lipoprotein cholesterol by statins and reduction in risk of cardiovascular outcomes: an updated  
8 meta-analysis. *Clin Ther*, **2009**, *31* (2), 236-244.
- 9 [45] Baigent, C.; Blackwell, L.; Emberson, J.; Holland, L.E.; Reith, C.; Bhala, N.; Peto, R.; Barnes, E.H.;  
10 Keech, A.; Simes, J.; Collins, R. Efficacy and safety of more intensive lowering of LDL cholesterol: a meta-  
11 analysis of data from 170,000 participants in 26 randomised trials. *Lancet*, **2010**, *376* (9753), 1670-1681.
- 12 [46] Baigent, C.; Keech, A.; Kearney, P.M.; Blackwell, L.; Buck, G.; Pollicino, C.; Kirby, A.; Sourjina, T.;  
13 Peto, R.; Collins, R.; Simes, R. Efficacy and safety of cholesterol-lowering treatment: prospective meta-  
14 analysis of data from 90,056 participants in 14 randomised trials of statins. *Lancet*, **2005**, *366* (9493), 1267-  
15 1278.
- 16 [47] Cohen, J.C.; Stender, S.; Hobbs, H.H. APOC3, coronary disease, and complexities of Mendelian  
17 randomization. *Cell Metab*, **2014**, *20* (3), 387-389.
- 18 [48] Lauridsen, B.K.; Stender, S.; Frikke-Schmidt, R.; Nordestgaard, B.G.; Tybjaerg-Hansen, A. Genetic  
19 variation in the cholesterol transporter NPC1L1, ischaemic vascular disease, and gallstone disease. *Eur*  
20 *Heart J*, **2015**, *36* (25), 1601-1608.
- 21 [49] Ference, B.A.; Penumetcha, R. Reply: Genetic Variation in NPC1L1 and Risk of Gallstone Disease. *J*  
22 *Am Coll Cardiol*, **2015**, *66* (9), 1086-1088.
- 23 [50] Rodriguez, S.; Gaunt, T.R.; Guo, Y.; Zheng, J.; Barnes, M.R.; Tang, W.; Danish, F.; Johnson, A.;  
24 Castillo, B.A.; Li, Y.R.; Hakonarson, H.; Buxbaum, S.G.; Palmer, T.; Tsai, M.Y.; Lange, L.A.; Ebrahim, S.; Davey  
25 Smith, G.; Lawlor, D.A.; Folsom, A.R.; Hoogeveen, R.; Reiner, A.; Keating, B.; Day, I.N. Lipids, obesity and  
26 gallbladder disease in women: insights from genetic studies using the cardiovascular gene-centric 50K SNP  
27 array. *Eur J Hum Genet*, **2015**.
- 28 [51] Garcia-Calvo, M.; Lisnock, J.; Bull, H.G.; Hawes, B.E.; Burnett, D.A.; Braun, M.P.; Crona, J.H.; Davis,  
29 H.R., Jr.; Dean, D.C.; Detmers, P.A.; Graziano, M.P.; Hughes, M.; Macintyre, D.E.; Ogawa, A.; O'Neill K, A.;  
30 Iyer, S.P.; Shevell, D.E.; Smith, M.M.; Tang, Y.S.; Makarewicz, A.M.; Ujjainwalla, F.; Altmann, S.W.; Chapman,  
31 K.T.; Thornberry, N.A. The target of ezetimibe is Niemann-Pick C1-Like 1 (NPC1L1). *Proc Natl Acad Sci U S A*,  
32 **2005**, *102* (23), 8132-8137.
- 33 [52] Weinglass, A.B.; Kohler, M.; Schulte, U.; Liu, J.; Nketiah, E.O.; Thomas, A.; Schmalhofer, W.;  
34 Williams, B.; Bildl, W.; McMasters, D.R.; Dai, K.; Beers, L.; McCann, M.E.; Kaczorowski, G.J.; Garcia, M.L.  
35 Extracellular loop C of NPC1L1 is important for binding to ezetimibe. *Proc Natl Acad Sci U S A*, **2008**, *105*  
36 (32), 11140-11145.
- 37 [53] Xie, C.; Zhou, Z.S.; Li, N.; Bian, Y.; Wang, Y.J.; Wang, L.J.; Li, B.L.; Song, B.L. Ezetimibe blocks the  
38 internalization of NPC1L1 and cholesterol in mouse small intestine. *J Lipid Res*, **2012**, *53* (10), 2092-2101.
- 39 [54] Tang, W.; Jia, L.; Ma, Y.; Xie, P.; Haywood, J.; Dawson, P.A.; Li, J.; Yu, L. Ezetimibe restores biliary  
40 cholesterol excretion in mice expressing Niemann-Pick C1-Like 1 only in liver. *Biochim Biophys Acta*, **2011**,  
41 *1811* (9), 549-555.
- 42 [55] Hawes, B.E.; O'Neill K, A.; Yao, X.; Crona, J.H.; Davis, H.R., Jr.; Graziano, M.P.; Altmann, S.W. In vivo  
43 responsiveness to ezetimibe correlates with niemann-pick C1 like-1 (NPC1L1) binding affinity: Comparison  
44 of multiple species NPC1L1 orthologs. *Mol Pharmacol*, **2007**, *71* (1), 19-29.
- 45 [56] Patrick, J.E.; Kosoglou, T.; Stauber, K.L.; Alton, K.B.; Maxwell, S.E.; Zhu, Y.; Statkevich, P.; Iannucci,  
46 R.; Chowdhury, S.; Affrime, M.; Cayen, M.N. Disposition of the selective cholesterol absorption inhibitor  
47 ezetimibe in healthy male subjects. *Drug Metab Dispos*, **2002**, *30* (4), 430-437.
- 48 [57] Davis, H.R., Jr.; Hoos, L.M.; Tetzloff, G.; Maguire, M.; Zhu, L.J.; Graziano, M.P.; Altmann, S.W.  
49 Deficiency of Niemann-Pick C1 Like 1 prevents atherosclerosis in ApoE<sup>-/-</sup> mice. *Arterioscler Thromb Vasc*  
50 *Biol*, **2007**, *27* (4), 841-849.
- 51  
52  
53  
54  
55  
56  
57  
58  
59  
60

- 1  
2  
3 [58] Xie, P.; Zhu, H.; Jia, L.; Ma, Y.; Tang, W.; Wang, Y.; Xue, B.; Shi, H.; Yu, L. Genetic demonstration of  
4 intestinal NPC1L1 as a major determinant of hepatic cholesterol and blood atherogenic lipoprotein levels.  
5 *Atherosclerosis*, **2014**, *237* (2), 609-617.
- 6 [59] Greenberg, M.E.; Smith, J.D.; Sehayek, E. Moderately decreased cholesterol absorption rates are  
7 associated with a large atheroprotective effect. *Arterioscler Thromb Vasc Biol*, **2009**, *29* (11), 1745-1750.
- 8 [60] Briand, F.; Naik, S.U.; Fuki, I.; Millar, J.S.; Macphee, C.; Walker, M.; Billheimer, J.; Rothblat, G.;  
9 Rader, D.J. Both the peroxisome proliferator-activated receptor delta agonist, GW0742, and ezetimibe  
10 promote reverse cholesterol transport in mice by reducing intestinal reabsorption of HDL-derived  
11 cholesterol. *Clin Transl Sci*, **2009**, *2* (2), 127-133.
- 12 [61] Xie, P.; Jia, L.; Ma, Y.; Ou, J.; Miao, H.; Wang, N.; Guo, F.; Yazdanyar, A.; Jiang, X.C.; Yu, L. Ezetimibe  
13 inhibits hepatic Niemann-Pick C1-Like 1 to facilitate macrophage reverse cholesterol transport in mice.  
14 *Arterioscler Thromb Vasc Biol*, **2013**, *33* (5), 920-925.
- 15 [62] Uto-Kondo, H.; Ayaori, M.; Sotherden, G.M.; Nakaya, K.; Sasaki, M.; Yogo, M.; Komatsu, T.;  
16 Takiguchi, S.; Yakushiji, E.; Ogura, M.; Nishida, T.; Endo, Y.; Ikewaki, K. Ezetimibe enhances macrophage  
17 reverse cholesterol transport in hamsters: contribution of hepato-biliary pathway. *Biochim Biophys Acta*,  
18 **2014**, *1841* (9), 1247-1255.
- 19 [63] Descamps, O.S.; De Sutter, J.; Guillaume, M.; Missault, L. Where does the interplay between  
20 cholesterol absorption and synthesis in the context of statin and/or ezetimibe treatment stand today?  
21 *Atherosclerosis*, **2011**, *217* (2), 308-321.
- 22 [64] Dubuc, G.; Chamberland, A.; Wassef, H.; Davignon, J.; Seidah, N.G.; Bernier, L.; Prat, A. Statins  
23 upregulate PCSK9, the gene encoding the proprotein convertase neural apoptosis-regulated convertase-1  
24 implicated in familial hypercholesterolemia. *Arterioscler Thromb Vasc Biol*, **2004**, *24* (8), 1454-1459.
- 25 [65] Berthold, H.K.; Seidah, N.G.; Benjannet, S.; Gouni-Berthold, I. Evidence from a randomized trial that  
26 simvastatin, but not ezetimibe, upregulates circulating PCSK9 levels. *PLoS One*, **2013**, *8* (3), e60095.
- 27 [66] Lakoski, S.G.; Xu, F.; Vega, G.L.; Grundy, S.M.; Chandalia, M.; Lam, C.; Lowe, R.S.; Stepanavage, M.E.;  
28 Musliner, T.A.; Cohen, J.C.; Hobbs, H.H. Indices of cholesterol metabolism and relative responsiveness to  
29 ezetimibe and simvastatin. *J Clin Endocrinol Metab*, **2010**, *95* (2), 800-809.
- 30 [67] Catapano, A.L.; Reiner, Z.; De Backer, G.; Graham, I.; Taskinen, M.R.; Wiklund, O.; Agewall, S.;  
31 Alegria, E.; Chapman, M.J.; Durrington, P.; Erdine, S.; Halcox, J.; Hobbs, R.; Kjekshus, J.; Filardi, P.P.; Riccardi,  
32 G.; Storey, R.F.; Wood, D. ESC/EAS Guidelines for the management of dyslipidaemias The Task Force for the  
33 management of dyslipidaemias of the European Society of Cardiology (ESC) and the European  
34 Atherosclerosis Society (EAS). *Atherosclerosis*, **2011**, *217* (1), 3-46.
- 35 [68] Norata, G.D.; Tibolla, G.; Catapano, A.L. Targeting PCSK9 for hypercholesterolemia. *Annu Rev*  
36 *Pharmacol Toxicol*, **2014**, *54* (273-293).
- 37 [69] Norata, G.D.; Tibolla, G.; Catapano, A.L. Gene silencing approaches for the management of  
38 dyslipidaemia. *Trends Pharmacol Sci*, **2013**, *34* (4), 198-205.
- 39 [70] Norata, G.D.; Tibolla, G.; Catapano, A.L. PCSK9 inhibition for the treatment of  
40 hypercholesterolemia: promises and emerging challenges. *Vascul Pharmacol*, **2014**, *62* (2), 103-111.
- 41 [71] Norata, G.D.; Tibolla, G.; Catapano, A.L. Statins and skeletal muscles toxicity: from clinical trials to  
42 everyday practice. *Pharmacol Res*, **2014**, *88* (107-113).
- 43 [72] Pirillo, A.; Catapano, A.L. Statin intolerance: diagnosis and remedies. *Curr Cardiol Rep*, **2015**, *17* (5),  
44 27.
- 45 [73] Mikhailidis, D.P.; Sibbring, G.C.; Ballantyne, C.M.; Davies, G.M.; Catapano, A.L. Meta-analysis of the  
46 cholesterol-lowering effect of ezetimibe added to ongoing statin therapy. *Curr Med Res Opin*, **2007**, *23* (8),  
47 2009-2026.
- 48 [74] Catapano, A.L.; Davidson, M.H.; Ballantyne, C.M.; Brady, W.E.; Gazzara, R.A.; Tomassini, J.E.;  
49 Tershakovec, A.M. Lipid-altering efficacy of the ezetimibe/simvastatin single tablet versus rosuvastatin in  
50 hypercholesterolemic patients. *Curr Med Res Opin*, **2006**, *22* (10), 2041-2053.
- 51  
52  
53  
54  
55  
56  
57  
58  
59  
60

- 1  
2  
3 [75] Catapano, A.; Brady, W.E.; King, T.R.; Palmisano, J. Lipid altering-efficacy of ezetimibe co-  
4 administered with simvastatin compared with rosuvastatin: a meta-analysis of pooled data from 14 clinical  
5 trials. *Curr Med Res Opin*, **2005**, *21* (7), 1123-1130.
- 6 [76] Morrone, D.; Weintraub, W.S.; Toth, P.P.; Hanson, M.E.; Lowe, R.S.; Lin, J.; Shah, A.K.; Tershakovec,  
7 A.M. Lipid-altering efficacy of ezetimibe plus statin and statin monotherapy and identification of factors  
8 associated with treatment response: a pooled analysis of over 21,000 subjects from 27 clinical trials.  
9 *Atherosclerosis*, **2012**, *223* (2), 251-261.
- 10 [77] Foody, J.M.; Toth, P.P.; Tomassini, J.E.; Sajjan, S.; Ramey, D.R.; Neff, D.; Tershakovec, A.M.; Hu, H.;  
11 Tunceli, K. Changes in LDL-C levels and goal attainment associated with addition of ezetimibe to  
12 simvastatin, atorvastatin, or rosuvastatin compared with titrating statin monotherapy. *Vasc Health Risk*  
13 *Manag*, **2013**, *9* (719-727).
- 14 [78] Davidson, M.H.; Voogt, J.; Luchoomun, J.; Decaris, J.; Killion, S.; Boban, D.; Glass, A.; Mohammad,  
15 H.; Lu, Y.; Villegas, D.; Neese, R.; Hellerstein, M.; Neff, D.; Musliner, T.; Tomassini, J.E.; Turner, S. Inhibition  
16 of intestinal cholesterol absorption with ezetimibe increases components of reverse cholesterol transport  
17 in humans. *Atherosclerosis*, **2013**, *230* (2), 322-329.
- 18 [79] Sakamoto, K.; Kawamura, M.; Kohro, T.; Omura, M.; Watanabe, T.; Ashidate, K.; Horiuchi, T.; Hara,  
19 H.; Sekine, N.; Chin, R.; Tsujino, M.; Hiyoshi, T.; Tagami, M.; Tanaka, A.; Mori, Y.; Inazawa, T.; Hirano, T.;  
20 Yamazaki, T.; Shiba, T. Effect of Ezetimibe on LDL-C Lowering and Atherogenic Lipoprotein Profiles in Type 2  
21 Diabetic Patients Poorly Controlled by Statins. *PLoS One*, **2015**, *10* (9), e0138332.
- 22 [80] Farnier, M. Ezetimibe/statin combination therapy to treat patients with type 2 diabetes. *Atheroscler*  
23 *Suppl*, **2015**, *17* (2-8).
- 24 [81] Ruscica, M.; Macchi, C.; Morlotti, B.; Sirtori, C.R.; Magni, P. Statin therapy and related risk of new-  
25 onset type 2 diabetes mellitus. *Eur J Intern Med*, **2014**, *25* (5), 401-406.
- 26 [82] Zafir, B.; Jain, M. Lipid-lowering therapies, glucose control and incident diabetes: evidence,  
27 mechanisms and clinical implications. *Cardiovasc Drugs Ther*, **2014**, *28* (4), 361-377.
- 28 [83] Giugliano, R.P. et al; for the IMPROVE-IT Investigators. Benefit of adding ezetimibe to statin therapy  
29 on cardiovascular outcomes and safety in patients with vs without diabetes: the IMPROVE-IT trial.  
30 Presented at ESC Congress 2015. London, England, UK. Abstract 1947.
- 31 [84] Satoh, M.; Takahashi, Y.; Tabuchi, T.; Minami, Y.; Tamada, M.; Takahashi, K.; Itoh, T.; Morino, Y.;  
32 Nakamura, M. Cellular and molecular mechanisms of statins: an update on pleiotropic effects. *Clin Sci*  
33 *(Lond)*, **2015**, *129* (2), 93-105.
- 34 [85] Moutzouri, E.; Liberopoulos, E.N.; Tellis, C.C.; Milionis, H.J.; Tselepis, A.D.; Elisaf, M.S. Comparison  
35 of the effect of simvastatin versus simvastatin/ezetimibe versus rosuvastatin on markers of inflammation  
36 and oxidative stress in subjects with hypercholesterolemia. *Atherosclerosis*, **2013**, *231* (1), 8-14.
- 37 [86] Krysiak, R.; Okopien, B. The effect of ezetimibe and simvastatin on monocyte cytokine release in  
38 patients with isolated hypercholesterolemia. *J Cardiovasc Pharmacol*, **2011**, *57* (4), 505-512.
- 39 [87] Krysiak, R.; Zmuda, W.; Okopien, B. The effect of ezetimibe, administered alone or in combination  
40 with simvastatin, on lymphocyte cytokine release in patients with elevated cholesterol levels. *J Intern Med*,  
41 **2011**, *271* (1), 32-42.
- 42 [88] Ammirati, E.; Cianflone, D.; Vecchio, V.; Banfi, M.; Vermi, A.C.; De Metrio, M.; Grigore, L.; Pellegatta,  
43 F.; Pirillo, A.; Garlaschelli, K.; Manfredi, A.A.; Catapano, A.L.; Maseri, A.; Palini, A.G.; Norata, G.D. Effector  
44 Memory T cells Are Associated With Atherosclerosis in Humans and Animal Models. *J Am Heart Assoc*,  
45 **2012**, *1* (1), 27-41.
- 46 [89] Catapano, A.L.; Pirillo, A.; Bonacina, F.; Norata, G.D. HDL in innate and adaptive immunity.  
47 *Cardiovasc Res*, **2014**, *103* (3), 372-383.
- 48 [90] Grigore, L.; Raselli, S.; Garlaschelli, K.; Redaelli, L.; Norata, G.D.; Pirillo, A.; Catapano, A.L. Effect of  
49 treatment with pravastatin or ezetimibe on endothelial function in patients with moderate  
50 hypercholesterolemia. *Eur J Clin Pharmacol*, **2013**, *69* (3), 341-346.
- 51  
52  
53  
54  
55  
56  
57  
58  
59  
60

- 1  
2  
3 [91] Norata, G.D.; Caligiuri, G.; Chavakis, T.; Matarese, G.; Netea, M.G.; Nicoletti, A.; O'Neill, L.A.;  
4 Marelli-Berg, F.M. The Cellular and Molecular Basis of Translational Immunometabolism. *Immunity*, **2015**,  
5 43 (3), 421-434.
- 6 [92] Camargo, L.M.; Franca, C.N.; Izar, M.C.; Bianco, H.T.; Lins, L.S.; Barbosa, S.P.; Pinheiro, L.F.; Fonseca,  
7 F.A. Effects of simvastatin/ezetimibe on microparticles, endothelial progenitor cells and platelet  
8 aggregation in subjects with coronary heart disease under antiplatelet therapy. *Braz J Med Biol Res*, **2014**,  
9 47 (5), 432-437.
- 10 [93] Lins, L.C.; Franca, C.N.; Fonseca, F.A.; Barbosa, S.P.; Matos, L.N.; Aguirre, A.C.; Bianco, H.T.; do  
11 Amaral, J.B.; Izar, M.C. Effects of ezetimibe on endothelial progenitor cells and microparticles in high-risk  
12 patients. *Cell Biochem Biophys*, **2014**, 70 (1), 687-696.
- 13 [94] Kastelein, J.J.; Akdim, F.; Stroes, E.S.; Zwinderman, A.H.; Bots, M.L.; Stalenhoef, A.F.; Visseren, F.L.;  
14 Sijbrands, E.J.; Trip, M.D.; Stein, E.A.; Gaudet, D.; Duivenvoorden, R.; Veltri, E.P.; Marais, A.D.; de Groot, E.  
15 Simvastatin with or without ezetimibe in familial hypercholesterolemia. *N Engl J Med*, **2008**, 358 (14), 1431-  
16 1443.
- 17 [95] Villines, T.C.; Stanek, E.J.; Devine, P.J.; Turco, M.; Miller, M.; Weissman, N.J.; Griffen, L.; Taylor, A.J.  
18 The ARBITER 6-HALTS Trial (Arterial Biology for the Investigation of the Treatment Effects of Reducing  
19 Cholesterol 6-HDL and LDL Treatment Strategies in Atherosclerosis): final results and the impact of  
20 medication adherence, dose, and treatment duration. *J Am Coll Cardiol*, **2010**, 55 (24), 2721-2726.
- 21 [96] Rossebo, A.B.; Pedersen, T.R.; Boman, K.; Brudi, P.; Chambers, J.B.; Egstrup, K.; Gerds, E.; Gohlke-  
22 Barwolf, C.; Holme, I.; Kesaniemi, Y.A.; Malbecq, W.; Nienaber, C.A.; Ray, S.; Skjaerpe, T.; Wachtell, K.;  
23 Willenheimer, R. Intensive lipid lowering with simvastatin and ezetimibe in aortic stenosis. *N Engl J Med*,  
24 **2008**, 359 (13), 1343-1356.
- 25 [97] Gerds, E.; Rossebo, A.B.; Pedersen, T.R.; Boman, K.; Brudi, P.; Chambers, J.B.; Egstrup, K.; Gohlke-  
26 Barwolf, C.; Holme, I.; Kesaniemi, Y.A.; Malbecq, W.; Nienaber, C.; Ray, S.; Skjaerpe, T.; Wachtell, K.;  
27 Willenheimer, R. Impact of baseline severity of aortic valve stenosis on effect of intensive lipid lowering  
28 therapy (from the SEAS study). *Am J Cardiol*, **2010**, 106 (11), 1634-1639.
- 29 [98] Howard, B.V.; Roman, M.J.; Devereux, R.B.; Fleg, J.L.; Galloway, J.M.; Henderson, J.A.; Howard, W.J.;  
30 Lee, E.T.; Mete, M.; Poolaw, B.; Ratner, R.E.; Russell, M.; Silverman, A.; Stylianou, M.; Umans, J.G.; Wang,  
31 W.; Weir, M.R.; Weissman, N.J.; Wilson, C.; Yeh, F.; Zhu, J. Effect of lower targets for blood pressure and  
32 LDL cholesterol on atherosclerosis in diabetes: the SANDS randomized trial. *JAMA*, **2008**, 299 (14), 1678-  
33 1689.
- 34 [99] Fleg, J.L.; Mete, M.; Howard, B.V.; Umans, J.G.; Roman, M.J.; Ratner, R.E.; Silverman, A.; Galloway,  
35 J.M.; Henderson, J.A.; Weir, M.R.; Wilson, C.; Stylianou, M.; Howard, W.J. Effect of statins alone versus  
36 statins plus ezetimibe on carotid atherosclerosis in type 2 diabetes: the SANDS (Stop Atherosclerosis in  
37 Native Diabetics Study) trial. *J Am Coll Cardiol*, **2008**, 52 (25), 2198-2205.
- 38 [100] Meaney, A.; Ceballos, G.; Asbun, J.; Solache, G.; Mendoza, E.; Vela, A.; Meaney, E. The VYtorin on  
39 Carotid intima-media thickness and overall arterial rigidity (VYCTOR) study. *J Clin Pharmacol*, **2009**, 49 (7),  
40 838-847.
- 41 [101] Bogiatzi, C.; Spence, J.D. Ezetimibe and regression of carotid atherosclerosis: importance of  
42 measuring plaque burden. *Stroke*, **2012**, 43 (4), 1153-1155.
- 43 [102] Masuda, J.; Tanigawa, T.; Yamada, T.; Nishimura, Y.; Sasou, T.; Nakata, T.; Sawai, T.; Fujimoto, N.;  
44 Dohi, K.; Miyahara, M.; Nishikawa, M.; Nakamura, M.; Ito, M. Effect of combination therapy of ezetimibe  
45 and rosuvastatin on regression of coronary atherosclerosis in patients with coronary artery disease. *Int*  
46 *Heart J*, **2015**, 56 (3), 278-285.
- 47 [103] Habara, M.; Nasu, K.; Terashima, M.; Ko, E.; Yokota, D.; Ito, T.; Kurita, T.; Teramoto, T.; Kimura, M.;  
48 Kinoshita, Y.; Tsuchikane, E.; Asakura, Y.; Matsubara, T.; Suzuki, T. Impact on optical coherence  
49 tomographic coronary findings of fluvastatin alone versus fluvastatin + ezetimibe. *Am J Cardiol*, **2014**, 113  
50 (4), 580-587.
- 51  
52  
53  
54  
55  
56  
57  
58  
59  
60



- 1  
2  
3 [104] Ballantyne, C.M.; Blazing, M.A.; King, T.R.; Brady, W.E.; Palmisano, J. Efficacy and safety of  
4 ezetimibe co-administered with simvastatin compared with atorvastatin in adults with  
5 hypercholesterolemia. *Am J Cardiol*, **2004**, *93* (12), 1487-1494.
- 6 [105] Baigent, C.; Landray, M.J.; Reith, C.; Emberson, J.; Wheeler, D.C.; Tomson, C.; Wanner, C.; Krane, V.;  
7 Cass, A.; Craig, J.; Neal, B.; Jiang, L.; Hooi, L.S.; Levin, A.; Agodoa, L.; Gaziano, M.; Kasiske, B.; Walker, R.;  
8 Massy, Z.A.; Feldt-Rasmussen, B.; Krairitichai, U.; Ophascharoensuk, V.; Fellstrom, B.; Holdaas, H.; Tesar,  
9 V.; Wiecek, A.; Grobbee, D.; de Zeeuw, D.; Gronhagen-Riska, C.; Dasgupta, T.; Lewis, D.; Herrington, W.;  
10 Mafham, M.; Majoni, W.; Wallendszus, K.; Grimm, R.; Pedersen, T.; Tobert, J.; Armitage, J.; Baxter, A.; Bray,  
11 C.; Chen, Y.; Chen, Z.; Hill, M.; Knott, C.; Parish, S.; Simpson, D.; Sleight, P.; Young, A.; Collins, R. The effects  
12 of lowering LDL cholesterol with simvastatin plus ezetimibe in patients with chronic kidney disease (Study  
13 of Heart and Renal Protection): a randomised placebo-controlled trial. *Lancet*, **2011**, *377* (9784), 2181-2192.
- 14 [106] Haynes, R.; Lewis, D.; Emberson, J.; Reith, C.; Agodoa, L.; Cass, A.; Craig, J.C.; de Zeeuw, D.; Feldt-  
15 Rasmussen, B.; Fellstrom, B.; Levin, A.; Wheeler, D.C.; Walker, R.; Herrington, W.G.; Baigent, C.; Landray,  
16 M.J. Effects of lowering LDL cholesterol on progression of kidney disease. *J Am Soc Nephrol*, **2014**, *25* (8),  
17 1825-1833.
- 18 [107] Suzuki, H.; Watanabe, Y.; Kumagai, H.; Shuto, H. Comparative efficacy and adverse effects of the  
19 addition of ezetimibe to statin versus statin titration in chronic kidney disease patients. *Ther Adv Cardiovasc*  
20 *Dis*, **2013**, *7* (6), 306-315.
- 21 [108] Bohula, E.A.; Giugliano, R.P.; Cannon, C.P.; Zhou, J.; Murphy, S.A.; White, J.A.; Tershakovec, A.M.;  
22 Blazing, M.A.; Braunwald, E. Achievement of Dual Low-Density Lipoprotein Cholesterol and High-Sensitivity  
23 C-Reactive Protein Targets More Frequent With the Addition of Ezetimibe to Simvastatin and Associated  
24 With Better Outcomes in IMPROVE-IT. *Circulation*, **2015**, *132* (13), 1224-1233.
- 25 [109] Cuchel, M.; Bruckert, E.; Ginsberg, H.N.; Raal, F.J.; Santos, R.D.; Hegele, R.A.; Kuivenhoven, J.A.;  
26 Nordestgaard, B.G.; Descamps, O.S.; Steinhagen-Thiessen, E.; Tybjaerg-Hansen, A.; Watts, G.F.; Averna, M.;  
27 Boileau, C.; Boren, J.; Catapano, A.L.; Defesche, J.C.; Hovingh, G.K.; Humphries, S.E.; Kovanen, P.T.; Masana,  
28 L.; Pajukanta, P.; Parhofer, K.G.; Ray, K.K.; Stalenhoef, A.F.; Stroes, E.; Taskinen, M.R.; Wiegman, A.;  
29 Wiklund, O.; Chapman, M.J. Homozygous familial hypercholesterolaemia: new insights and guidance for  
30 clinicians to improve detection and clinical management. A position paper from the Consensus Panel on  
31 Familial Hypercholesterolaemia of the European Atherosclerosis Society. *Eur Heart J*, **2014**, *35* (32), 2146-  
32 2157.
- 33 [110] Nordestgaard, B.G.; Chapman, M.J.; Humphries, S.E.; Ginsberg, H.N.; Masana, L.; Descamps, O.S.;  
34 Wiklund, O.; Hegele, R.A.; Raal, F.J.; Defesche, J.C.; Wiegman, A.; Santos, R.D.; Watts, G.F.; Parhofer, K.G.;  
35 Hovingh, G.K.; Kovanen, P.T.; Boileau, C.; Averna, M.; Boren, J.; Bruckert, E.; Catapano, A.L.; Kuivenhoven,  
36 J.A.; Pajukanta, P.; Ray, K.; Stalenhoef, A.F.; Stroes, E.; Taskinen, M.R.; Tybjaerg-Hansen, A. Familial  
37 hypercholesterolaemia is underdiagnosed and undertreated in the general population: guidance for  
38 clinicians to prevent coronary heart disease: consensus statement of the European Atherosclerosis Society.  
39 *Eur Heart J*, **2013**, *34* (45), 3478-3490a.
- 40 [111] Gagne, C.; Gaudet, D.; Bruckert, E. Efficacy and safety of ezetimibe coadministered with  
41 atorvastatin or simvastatin in patients with homozygous familial hypercholesterolemia. *Circulation*, **2002**,  
42 *105* (21), 2469-2475.
- 43 [112] Pisciotta, L.; Fasano, T.; Bellocchio, A.; Bocchi, L.; Sallo, R.; Fresa, R.; Colangeli, I.; Cantafora, A.;  
44 Calandra, S.; Bertolini, S. Effect of ezetimibe coadministered with statins in genotype-confirmed  
45 heterozygous FH patients. *Atherosclerosis*, **2007**, *194* (2), e116-122.
- 46 [113] Diamond, G.A.; Kaul, S. Simvastatin with or without ezetimibe in familial hypercholesterolemia. *N*  
47 *Engl J Med*, **2008**, *359* (5), 530; author reply 532.
- 48 [114] Avellone, G.; Di Garbo, V.; Guarnotta, V.; Scaglione, R.; Parrinello, G.; Purpura, L.; Torres, D.;  
49 Campisi, D. Efficacy and safety of long-term ezetimibe/simvastatin treatment in patients with familial  
50 hypercholesterolemia. *Int Angiol*, **2010**, *29* (6), 514-524.
- 51  
52  
53  
54  
55  
56  
57  
58  
59  
60

- 1  
2  
3 [115] Drazic, T.; Sachdev, V.; Leopold, C.; Patankar, J.V.; Malnar, M.; Hecimovic, S.; Levak-Frank, S.; Habus,  
4 I.; Kratky, D. Synthesis and evaluation of novel amide amino-beta-lactam derivatives as cholesterol  
5 absorption inhibitors. *Bioorg Med Chem*, **2015**, *23* (10), 2353-2359.
- 6 [116] Drazic, T.; Molcanov, K.; Sachdev, V.; Malnar, M.; Hecimovic, S.; Patankar, J.V.; Obrowsky, S.; Levak-  
7 Frank, S.; Habus, I.; Kratky, D. Novel amino-beta-lactam derivatives as potent cholesterol absorption  
8 inhibitors. *Eur J Med Chem*, **2014**, *87* (722-734).
- 9 [117] Arya, N.; Dwivedi, J.; Khedkar, V.M.; Coutinho, E.C.; Jain, K.S. Design, synthesis and biological  
10 evaluation of some 2-azetidinone derivatives as potential antihyperlipidemic agents. *Arch Pharm*  
11 (*Weinheim*), **2013**, *346* (12), 872-881.
- 12 [118] Ballantyne, C.M.; Weiss, R.; Moccetti, T.; Vogt, A.; Eber, B.; Sosef, F.; Duffield, E. Efficacy and safety  
13 of rosuvastatin 40 mg alone or in combination with ezetimibe in patients at high risk of cardiovascular  
14 disease (results from the EXPLORER study). *Am J Cardiol*, **2007**, *99* (5), 673-680.
- 15 [119] Robinson, J.G.; Ballantyne, C.M.; Grundy, S.M.; Hsueh, W.A.; Parving, H.H.; Rosen, J.B.; Adewale,  
16 A.J.; Polis, A.B.; Tomassini, J.E.; Tershakovec, A.M. Lipid-altering efficacy and safety of  
17 ezetimibe/simvastatin versus atorvastatin in patients with hypercholesterolemia and the metabolic  
18 syndrome (from the VYMET study). *Am J Cardiol*, **2009**, *103* (12), 1694-1702.
- 19 [120] Leiter, L.A.; Bays, H.; Conard, S.; Bird, S.; Rubino, J.; Hanson, M.E.; Tomassini, J.E.; Tershakovec,  
20 A.M. Efficacy and safety of ezetimibe added on to atorvastatin (40 mg) compared with uptitration of  
21 atorvastatin (to 80 mg) in hypercholesterolemic patients at high risk of coronary heart disease. *Am J*  
22 *Cardiol*, **2008**, *102* (11), 1495-1501.
- 23 [121] Conard, S.E.; Bays, H.E.; Leiter, L.A.; Bird, S.R.; Rubino, J.; Lowe, R.S.; Tomassini, J.E.; Tershakovec,  
24 A.M. Efficacy and safety of ezetimibe added on to atorvastatin (20 mg) versus uptitration of atorvastatin (to  
25 40 mg) in hypercholesterolemic patients at moderately high risk for coronary heart disease. *Am J Cardiol*,  
26 **2008**, *102* (11), 1489-1494.
- 27 [122] Bays, H.E.; Davidson, M.H.; Massaad, R.; Flaim, D.; Lowe, R.S.; Tershakovec, A.M.; Jones-Burton, C.  
28 Safety and efficacy of ezetimibe added on to rosuvastatin 5 or 10 mg versus up-titration of rosuvastatin in  
29 patients with hypercholesterolemia (the ACTE Study). *Am J Cardiol*, **2011**, *108* (4), 523-530.
- 30 [123] Gagne, C.; Bays, H.E.; Weiss, S.R.; Mata, P.; Quinto, K.; Melino, M.; Cho, M.; Musliner, T.A.;  
31 Gumbiner, B. Efficacy and safety of ezetimibe added to ongoing statin therapy for treatment of patients  
32 with primary hypercholesterolemia. *Am J Cardiol*, **2002**, *90* (10), 1084-1091.
- 33 [124] Bays, H.E.; Averna, M.; Majul, C.; Muller-Wieland, D.; De Pellegrin, A.; Giezek, H.; Lee, R.; Lowe, R.S.;  
34 Brudi, P.; Triscari, J.; Farnier, M. Efficacy and safety of ezetimibe added to atorvastatin versus atorvastatin  
35 uptitration or switching to rosuvastatin in patients with primary hypercholesterolemia. *Am J Cardiol*, **2013**,  
36 *112* (12), 1885-1895.
- 37 [125] Abate, N.; Catapano, A.L.; Ballantyne, C.M.; Davidson, M.H.; Polis, A.; Smugar, S.S.; Tershakovec,  
38 A.M. Effect of ezetimibe/simvastatin versus atorvastatin or rosuvastatin on modifying lipid profiles in  
39 patients with diabetes, metabolic syndrome, or neither: Results of two subgroup analyses. *J Clin Lipidol*,  
40 **2008**, *2* (2), 91-105.
- 41  
42  
43  
44  
45  
46  
47  
48  
49  
50  
51  
52  
53  
54  
55  
56  
57  
58  
59  
60

**Table 1.** Effects of ezetimibe added to statins compared with statin monotherapy on blood lipids

	LDL-C	TC	apoB	HDL-C	TG	Non-HDL-C
<b>Ballantyne et al.<sup>104</sup></b>						
E10/S80	-59.4%	-43.3%	-48.6%	+12.3	-35.3%	-55.3
A80	-5.2%	-40.2%	-45.2%	+6.5%	-34.8%	-50.3
	*	*	*	*		*
<b>Ballantyne et al.<sup>118</sup></b>						
E10/R40	-70%	-51%	-56%	+11%	-35%	-67%
R40	-57%	-42%	-45%	+9%	-25%	-55%
	*	*	*	*	*	*
<b>Robinson et al.<sup>119</sup></b>						
E10/S40	-53.9%	-37.3%	-41.1%	+8.8%	-29.5%	-48.3%
A40	-46%	-32.8%	-35.8%	+4.9%	-30%	-41.4%
	*	*	*	*		*
<b>Leiter et al.<sup>120</sup></b>						
E10/A40	-27%	-17%	-18%	+0%	-12%	-23%
A80	-11%	-7%	-8%	-1%	-6%	-9%
	*	*	*		*	*
<b>Conard et al.<sup>121</sup></b>						
E10/A20	-31%	-20%	-21%	+3%	-18%	-27%
A40 p	-11%	-7%	-8%	+1%	-6%	-10%
	*	*	*			*
<b>Bays et al.<sup>122</sup></b>						
E10/R5, 10	-21%	-12.6%	-13.8%	-0.5%	-6.3%	-17.1%
R10,20	-5.7%	-3.9%	-4.4%	+1.7%	-3.2%	-5.2%
	*	*	*			*
<b>Gagné et al.<sup>123</sup></b>						
E10/Statin	-25%	-17%	-19%	+2.7%	-14%	-23%
Statin	-3.7%	-2.3%	-3.5%	+1%	-2.9%	-3.1%
	*	*	*	*	*	*
<b>Bays et al.<sup>124</sup></b>						
A20→E10/A20	-17.4%	-10.7%	-9.8%	+0.7%	-5.9%	-15.1%
A20→A40	-6.9%	-3.8%	-5.4%	+1.7%	-3.1%	-5.8%
	*	*				*
R10→E10/A20	-17.1%	-11.8%	-11.9%	+0.1%	-10.2%	-16.2%
R10→R20	-7.5%	-4.5%	-4.1%	+0.8%	-3.2%	-6.4%
	*	*				*
<b>Abate et al.<sup>125</sup></b>						
<b>DM</b>						
E/S	-56.1%	-40.7%	-45.0%	+6.4%	-26.9%	-51.1%
A	-45.9%	-34.6%	-38.6%	+3.8%	-25.2%	-42.8%
	*	*	*	*		*
<b>MetS</b>						
E/S	-52.6%	-38.4%	-42.5%	+9.9%	-30.7%	-48%
A	-44%	-33.6%	-37.4%	+6.6%	-29.9%	-41.5%
	*	*	*	*		*
<b>No DM/MetS</b>						
E/S	-52.7%	-37.1%	-42.3%	+7.2%	-24.2%	-48.4%
A	-45.7%	-33.2%	-38.2%	+3.0%	-22.1%	-42.2%
	*	*	*	*		*

E=ezetimibe; A=atorvastatin; S=simvastatin; R=rosuvastatin; DM= diabetes mellitus; MetS=metabolic syndrome; \*: statistically significant differences between treatments

**Table 2.** Effects of ezetimibe+statin versus statins monotherapies on carotid atherosclerosis or major atherosclerotic events.

	Subjects	Duration	LDL-C (% change from baseline)	Primary outcomes
<b>Kastelein et al. (ENHANCE)<sup>94</sup></b>				<b>Carotid IMT (change from baseline, mm)</b>
Eze 10mg/Simva 80mg Simva 80mg	FH	24 mo	-55.6% -39.1%	+0.0111±0.0038 +0.0058±0.0037 <i>P</i> =0.29
<b>Villines et al. (ARBITER 6-HALTS)<sup>95</sup></b>				<b>Carotid IMT (change from baseline, mm)</b>
Eze 10 mg Niacin 2g	CHD or CHD equivalent on stable statin therapy	14 mo	-22.5% -14%	-0.0007±0.0035, <i>NS</i> -0.0142±0.0041, <i>P</i> =0.001
<b>Rossebo et al. (SEAS)<sup>96</sup></b>				<b>Aortic valve events</b>
Eze 10mg/Simva 40mg Placebo	Stenosis of the aortic valve	52 mo	-53.8% -3.8%	32.6% 35.1% <i>P</i> =0.73
<b>Howard et al. (SANDS)<sup>98</sup></b>				<b>Mean change CIMT (mm)</b>
Aggressive LLT Standard LLT	T2DM	36 mo	-31% +1%	-0.017±0.12 +0.041±0.14 <i>P</i> <0.0001
Aggressive Eze+Statin Aggressive Statin alone			-31.1% -32.3%	-0.025 -0.012 <i>P</i> <0.0001
<b>Masuda et al.<sup>102</sup></b>				<b>% Change in plaque volume</b>
Eze 10mg/Rosuva 5mg Rosuva 5mg	Stable CAD	6 mo	-55.8% -36.8%	-13.2% -3.1% <i>P</i> =0.05
<b>Habara et al.<sup>103</sup></b>				<b>Change in the fibrous cap thickness (mm)</b>
Eze 10mg/Fluva 30mg Fluva 30mg	Angina pectoris	9 mo	-34.0% -8.3% <i>P</i> <0.001	+0.08±0.08 +0.04±0.06 <i>P</i> <0.001
<b>Baigent et al. (SHARP)<sup>105</sup></b>				<b>Major atherosclerotic events</b>
Eze 10mg+Simva 20mg Placebo	CKD	4.9 y	-68% -14%	11.3% 13.4% (RR 0.83, <i>P</i> =0.0021)
<b>Cannon et al. (IMPROVE-IT)<sup>9</sup></b>				<b>Primary endpoints*</b>
Eze 10mg/Simva 40mg Simva 40mg	ACS	6 y	-42.8% -25.9%	32.7% 34.7% <i>P</i> =0.016

FH: familial hypercholesterolemia; CHD: coronary heart disease; T2DM: type 2 diabetes mellitus; CAD: coronary artery disease; CKD: chronic kidney disease; ACS: acute coronary syndrome

\* Death from cardiovascular causes, major coronary event, or nonfatal stroke

1  
2  
3  
4  
5  
6  
7  
8  
9  
10  
11  
12  
13  
14  
15  
16  
17  
18  
19  
20  
21  
22  
23  
24  
25  
26  
27  
28  
29  
30  
31  
32  
33  
34  
35  
36  
37  
38  
39  
40  
41  
42  
43

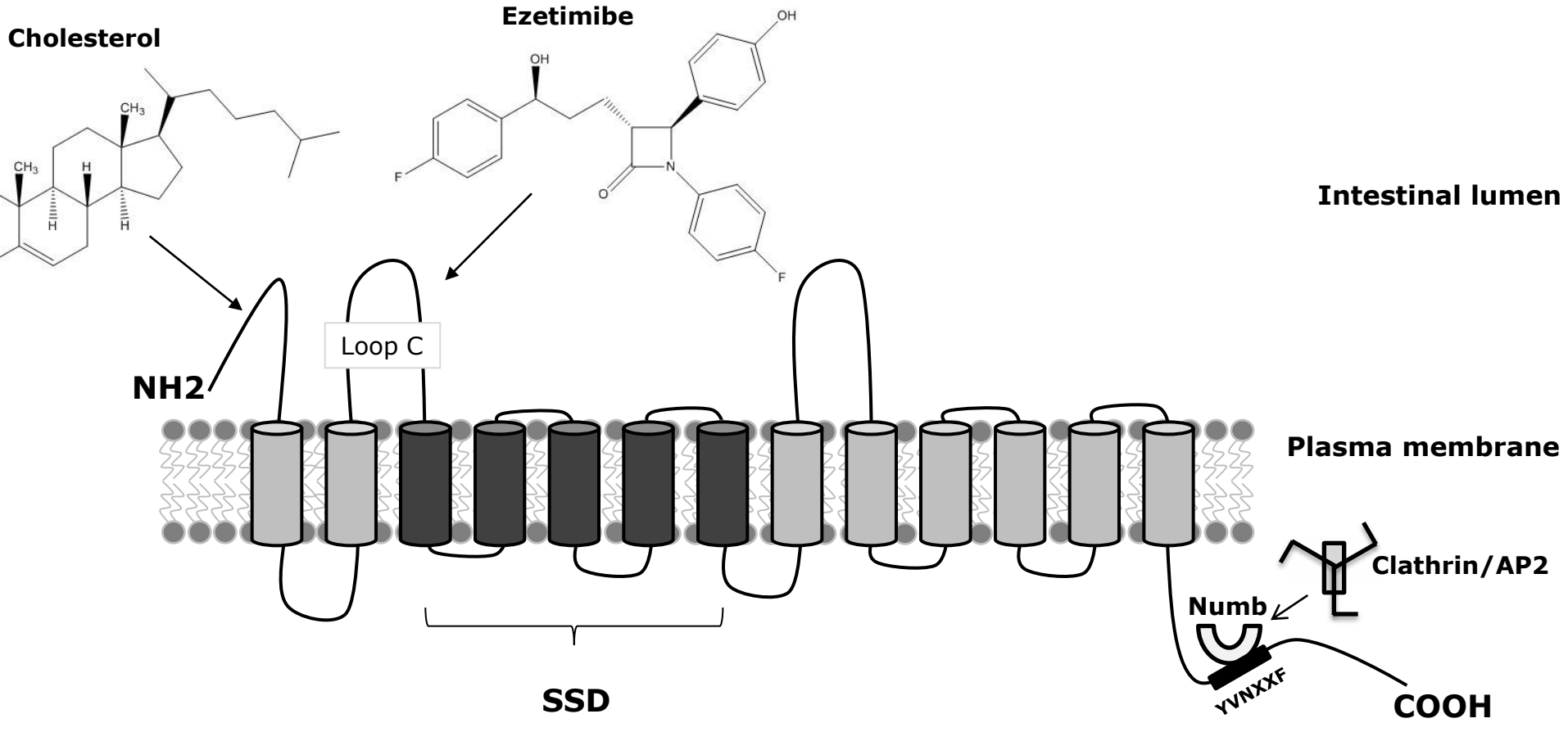
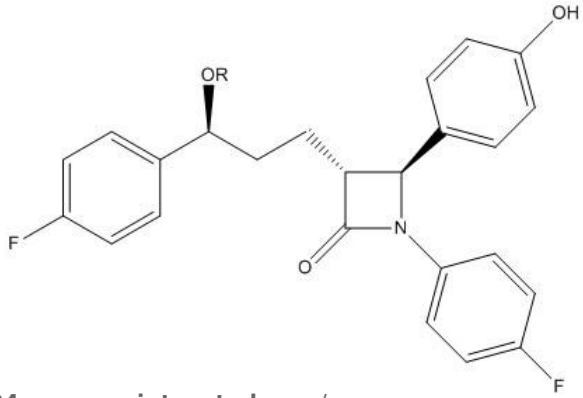
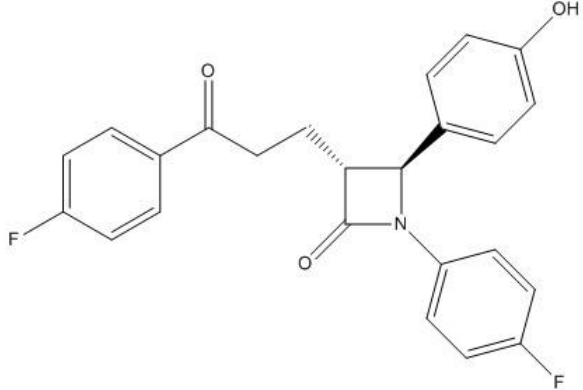
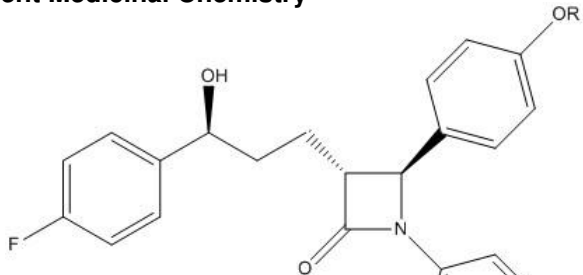
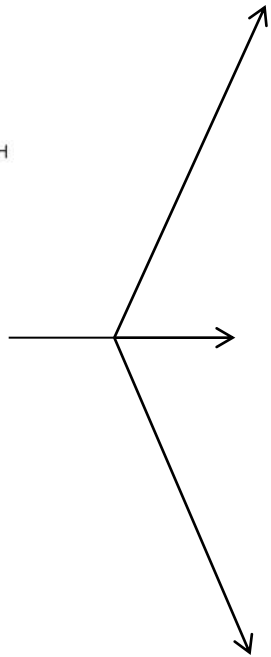
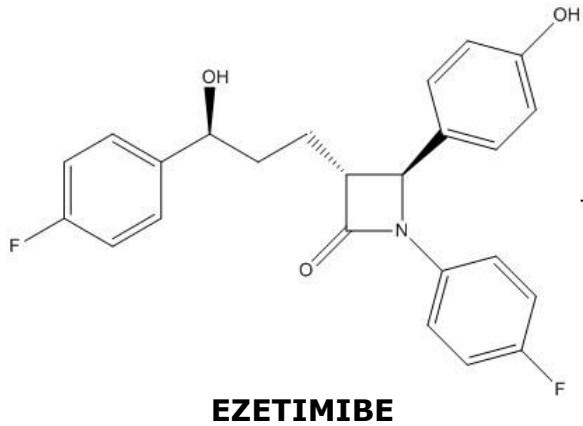


Figure 1

1  
2  
3  
4  
5  
6  
7  
8  
9  
10  
11  
12  
13  
14  
15  
16  
17  
18  
19  
20  
21  
22  
23  
24  
25  
26  
27  
28  
29  
30  
31  
32  
33  
34  
35  
36  
37  
38  
39  
40  
41  
42  
43



R=C<sub>6</sub>H<sub>9</sub>O<sub>6</sub>

Figure 2

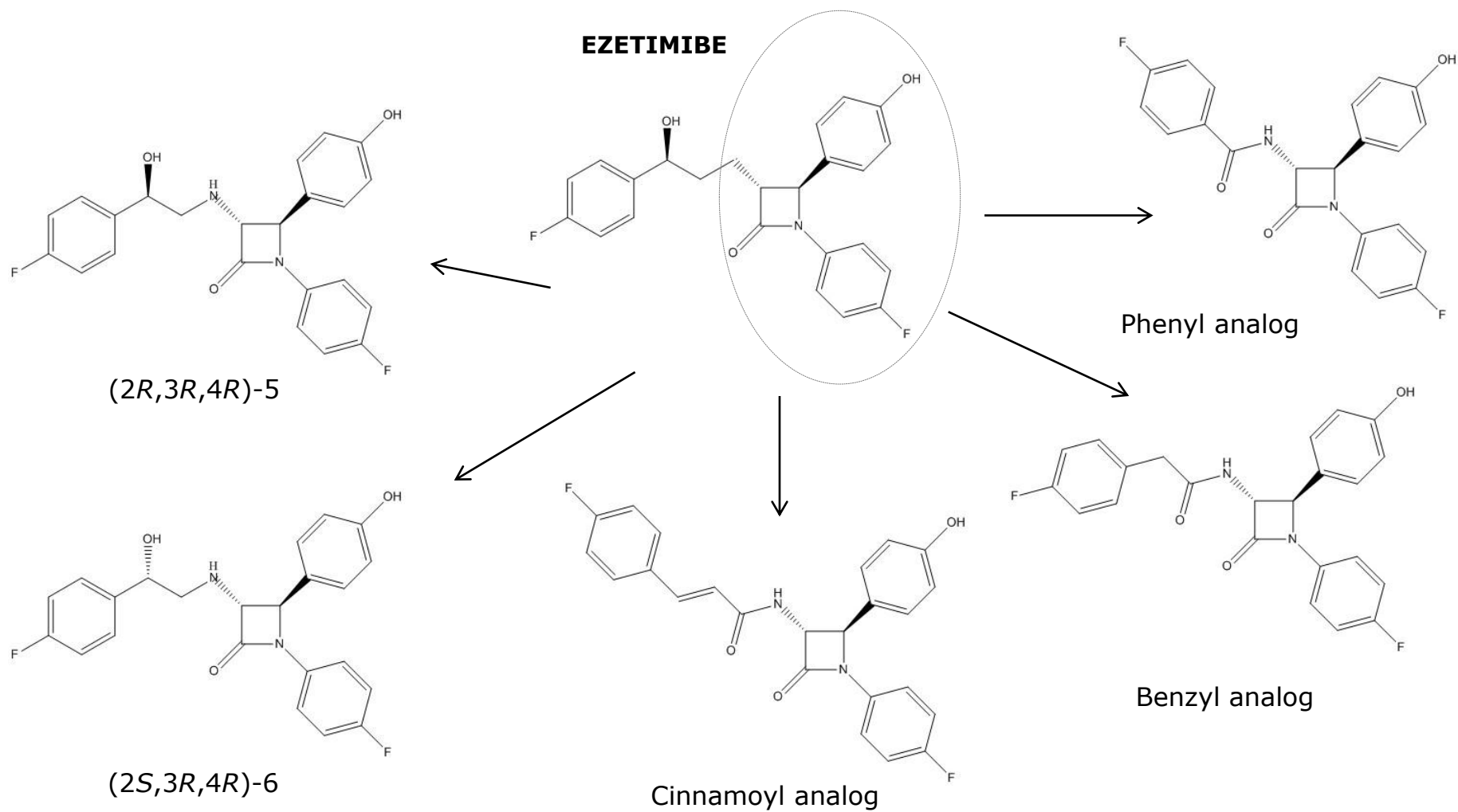


Figure 3

**Reply to comments from Reviewer: 1**

Dear Reviewer #1, thank you for your comments.

In this revised version of the manuscript we have addressed all aspects raised by you and by the other reviewers. Concerning your specific comments, we offer the following reply:

**1) Page 5, para2: Is the reference to 'high glucose' to blood levels or a cell medium? This is an important section due to the diabetes finding in IMPROVE-IT. The sense needs to be clearer i.e. (in vitro versus in vivo findings).**

Sorry for the misunderstanding, these data result from "in vitro" experiments. This is now clearly stated in the text. Please see page 6, "*Also high glucose levels increase the cellular uptake of cholesterol in cultured intestinal cells; this effect is due to the modulation of cholesterol transporters present in intestinal epithelial cells, being NPC1L1 and CD36 upregulated and SR-BI downregulated*".

**2) Page 8, para 1: The expression 'Carriers of NPCL1 .... in heterozygosis' is an unusual way of saying Carriers of a single mutant allele ...' Should be reworded.**

The sentence has been reworded as follows: "*Carriers of a single mutant NPC1L1 allele*".

**3) Page 9, para 1: 'This finding was neither confirmed ...' Better with 'not confirmed' and the rest of the sentence needs reworded.**

The sentence has been reworded as suggested.

**4) Page 12, para1: 'CTT' is not a trial. The reference is to the analysis conducted by the CTT collaboration.**

Sorry for the mistake, the sentence has been deleted.

**5) Page 12 bottom: The statements here and following relating to the lipid lowering with statin monotherapy versus statin plus ezetimibe need reworked to make clear the situation where combination therapy is superior. A high potency statin like rosuvastatin can be more effective than some combinations of statin and ezetimibe.**

Your point is well taken, we have rephrased the sentence as follows (page 14): "*These findings have been confirmed in a pooled analysis of over 21,000 subjects from 27 clinical trials that compared the effect of statin versus statin plus ezetimibe and showed that the combination therapy was more effective at reducing LDL-C levels (treatment difference: -15.1%,  $p < 0.0001$ ). Overall, the lipid profile was greatly improved with the combination therapy compared to similar statin doses and in most of the cases also when higher statin doses were used. Furthermore, safety profiles were comparable among the treatments*".

**6) Page 13, para 2: The sentence 'A greater LDL reduction .. added to a statin with high potency ...' is not easy to follow for the non-expert reader. This section needs revision to make the English clearer and the findings more specific.**

Your suggestion is well taken and the sentence has been revised as follows (page 15): "*The combination ezetimibe+statin was more effective at reducing LDL-C levels than doubling the dose of statins (-24.6% vs -10.9%, respectively)*".

**7) Page 14, para 1: Again, the sense (English and scientific) here is difficult to follow ' In other studies ... in a significantly strongest effect'.**

Your suggestion is well taken and the sentence has been revised as follows (page 16): "*Indeed, studies designed to evaluate the effect of ezetimibe on inflammatory markers in subjects at increased cardiovascular risk showed a decreased expression of markers of oxidative stress and inflammation. This may suggest that the beneficial effect of ezetimibe on*



1  
2  
3 *inflammation could depend on the degree of plasma cholesterol reduction achieved, further*  
4 *supporting the correlation between plasma cholesterol and the immuno-inflammatory status".*  
5

6 **8) Page 15, end of para 1: 'This will explain the ENHANCE results' should be 'This is a**  
7 **possible explanation for ...'**

8 Your suggestion is well taken and the sentence has been amended accordingly (page 17):  
9 *"...thus perhaps explaining the findings of the ENHANCE trial".*  
10

11  
12 **9) Page 16, para 2: English usage needs corrected 'treatment determined a slight**  
13 **progression ...'. Similarly, in para 3, 'In this study 'more not only ...'.**

14 The sentences have been reworded as follows (page 18): *"...as compared with standard lipid-*  
15 *lowering therapy that resulted in a modest carotid IMT progression"; "In this study, the*  
16 *addition of ezetimibe reduced was more effective in reducing not only LDL-C but also...."*  
17

18  
19 **10) Page 19, para 2: Sense again of 'being patients hyper responders ...'. End of para**  
20 **- 'massive' is not a good term in science.**

21 Thank you for your suggestion, the paragraph was reworded as follows (page 21): *"Of note, in*  
22 *this cohort a wide inter-individual variability response to ezetimibe was observed; indeed,*  
23 *ezetimibe was less effective in statin hyper-responders (who also present with a higher*  
24 *cholesterol synthesis and lower cholesterol absorption) and vice versa";*  
25

26 **11) End of para - 'massive' is not a good term in science.**

27 The sentence has been revised as follows (page 22): *"...showed a considerable reduction of*  
28 *LDL-C"*  
29  
30  
31  
32  
33  
34  
35  
36  
37  
38  
39  
40  
41  
42  
43  
44  
45  
46  
47  
48  
49  
50  
51  
52  
53  
54  
55  
56  
57  
58  
59  
60

**Reply to comments from Reviewer 2**

Dear Reviewer#2, thank you for you comments.

In this revised version of the manuscript we have addressed all aspects raised by you and by the other reviewers. Concerning your specific comments, we offer the following reply:

**1) In Figure 1, I suggest the authors to point out that the C-terminus of NPC1L1 is a key domain for recruitment of Numb and clathrin/AP2.**

Your point is well taken, the figure has been amended accordingly.

**2) Line 34, another paper should be cited: Kwon HJ, et al., The structure of the NPC1L1 N-terminal domain in a closed conformation. Plos One, 2011**

The indication that the structure of the NPC1L1 N-terminal domain is in a closed conformation was now included. Please see page 5: "*The extracellular N-terminal domain of NPC1L1, that in the absence of cholesterol is in a closed conformation, directly binds cholesterol, and this interaction is essential for NPC1L1-mediated cellular cholesterol uptake*".

**3) Line 43, another paper should be cited: Ge L, et al., The cholesterol absorption inhibitor ezetimibe acts by blocking the sterol-induced internalization of NPC1L1. Cell Metabolism, 2008.**

Your point is well taken the paper by Ge et al was now included in the manuscript (Reference n°21).

**4) Page 9, line5, the NPC1L1-gallstone association should be described in a separated paragraph**

Your suggestion is well taken, we now divided the two paragraphs and presented the association of NPC1L1 LOFs with cardiovascular diseases or with gallstone disease.

only

**Reply to comments from Reviewer 3**

Dear Reviewer #3, thank you for your comments.

In this revised version of the manuscript we have addressed all aspects raised by you and by the other reviewers. Concerning your specific comments, we offer the following reply:

**1) It may be better to generate a table to summarize major clinical outcomes of these trials.**

A table summarizing the major clinical outcomes of the clinical trials is now included (Table 2).

**2) Most relevant papers are listed under references section, but many of them are not placed at where they should be as original studies.**

Thank you for bringing this point, the references were updated accordingly.

Cr Review Only

**Reply to comments from Reviewer: 4**

Dear Reviewer #4, thank you for your comments.

In this revised version of the manuscript we have addressed all aspects raised by you and by the other reviewers. Concerning your specific comments, we offer the following reply:

**1. In the general description of the cholesterol absorption/biliary secretion pathways ABCG5/G8 should be briefly mentioned.**

Your suggestion is well taken, the description of the ABCG5/G8 pathway was now introduced. Please see page 4: *"Intestinal cholesterol absorption is a complex multistep process regulated by multiple genes; among them, NPC1L1, which is involved in cholesterol uptake, and ATP-binding cassette transporters ABCG5 and ABCG8, that function as heterodimer and promote cholesterol efflux into the intestinal lumen for excretion. Defects in the ABCG5/ABCG8 system are linked to sitosterolemia, a condition characterized by high plasma levels of dietary sterols and premature coronary heart disease"*.

**2. Ezetimibe increases endogenous cholesterol synthesis, which is thus far not discussed in the review. There are several spots in the text, especially where the rationale for combining this drug with statins is discussed and when selection of potential best therapy responders is mentioned, where I would suggest to touch on this issue.**

Thank you for bringing this point, which is now discussed at page 13 *"As the maintenance of cholesterol homeostasis is critical for several biological processes and cholesterol synthesis and absorption are inversely regulated to maintain cholesterol balance, it is not surprising that the inhibition of endogenous cholesterol absorption activates also a series of mechanistic feedbacks resulting in increased endogenous cholesterol synthesis. Thus, while statins inhibit hepatic synthesis of cholesterol and increase cholesterol absorption markers, ezetimibe negatively affects cholesterol absorption but also increases cholesterol synthesis"*.

**3. Given the increasing interest in PCSK9 inhibitors, the effect of ezetimibe/NPC1L1 deficiency on PCSK9 might be worth to include.**

This is also a good point and the molecular mechanisms controlling PCSK9 expression as a consequence of cholesterol homeostasis are now discussed (page 13): *"These pharmacological responses may reduce the efficacy of the single drugs, but also set the stage for combining the two pharmacological approaches with the aim of limiting both cholesterol absorption and synthesis. In this context, it is worth to mention that statins cause elevation of plasma PCSK9, a proprotein convertase that promotes LDLR degradation, and this effect can reduce the cholesterol-lowering efficacy of statins. However, in healthy subjects, while a 2-week treatment with simvastatin (40 mg) resulted in the upregulation of circulating PCSK9 levels, neither ezetimibe alone nor the addition of ezetimibe to simvastatin induced an increase in PCSK9 levels. This finding could perhaps be the consequence of the limited absolute LDL-C reduction induced by ezetimibe on the top of simvastatin which may not be enough to further upregulate PCSK9 expression. In line with this, modest LDL-C lowering such as that observed with simvastatin 10 mg does not increase PCSK9 levels"*.

**4. Stating potential reasons for the discrepancy between LDL-C lowering (12 mgdl) and CVD risk reduction (-53%) would add a valuable perspective for the reader (p.8, topic: data from reference 6).**

The observation that lifelong exposure to lower LDL-C levels even of a limited magnitude results in a greater reduction in CVD risk compared to a similar magnitude of LDL-C reduction achieved by pharmacological inhibition is true for all genes involved in lipid metabolism (including HMGCoA-Reductase LOF but also PCSK9 LOF). These clearly point to the fact that lower LDL-C since birth expose the arteries to a lower risk factor burden, while, when pharmacological intervention starts, the arteries have been exposed for decades to the risk

1  
2  
3 factor thus requiring a more intensive lipid lowering to achieve a similar rate of vascular  
4 protection. This is now described in the main text. Please see page 9: "*Extrapolation of genetic*  
5 *findings into pharmacology needs some caution, indeed while genetic data provides a lifelong*  
6 *NPC1L1 lower expression, pharmacological treatment will start later in life and be limited in*  
7 *time. Therefore, the benefit in terms of cardiovascular risk reduction (-53%) as a consequence*  
8 *of genetically driven (NPC1L1 inactivating mutations) LDL-C reduction (-12mg/dL) will be*  
9 *much higher compared with the cardiovascular risk reduction observed in clinical trials with a*  
10 *similar degree of LDL-C reduction. A finding which has been confirmed in all the analyses of*  
11 *lipid lowering genes".*

12  
13 **5. Statins appear to increase the risk for T2DM, adding a statement on what is known**  
14 **with respect to ezetimibe/NPC1L1 deficiency would be helpful to provide a more**  
15 **complete point of view.**

16 Your point is well taken, this aspect is now mentioned in the manuscript. Please see page  
17 16: "*Besides, it emerged that statin use may impair glucose tolerance and increase the risk of*  
18 *new-onset type 2 diabetes, although the benefits of cardiovascular risk reduction still largely*  
19 *exceeds the risk of incident diabetes. On the contrary, current data suggest that ezetimibe*  
20 *ameliorates glycemic control and insulin sensitivity. However, conclusive results are still*  
21 *lacking, as most clinical trials did not evaluate the impact of ezetimibe on glucose metabolism*  
22 *and commonly tested the effect of ezetimibe in combination with a statin. An analysis of the*  
23 *IMPROVE-IT trial suggests that type 2 diabetic patients with a recent acute coronary syndrome*  
24 *may benefit from the addition of ezetimibe to a statin therapy: in fact, in these subgroup of*  
25 *patients, ezetimibe added to a statin lowered LDL-C more than a statin alone (43 mg/dL vs 23*  
26 *mg/dL) and reduced the relative cardiovascular risk by 14%. In non-diabetics this effect was*  
27 *less evident, with a 2% relative risk reduction"*

28  
29  
30 **6. Extending the readers view from apoB-containing lipoproteins to HDL, some**  
31 **mention of the impact of NPC1L1/ezetimibe on RCT should be included, since both,**  
32 **the hepatic (although not in rodents) and the intestinal compartment of RCT are**  
33 **affected by NPC1L1. This might also be pertinent to my point 4 above.**

34 Thank you for bringing this point which is now discussed in the text. Please see page 12 :  
35 "*The reduction of cholesterol absorption, promotes, as a feedback mechanism to maintain*  
36 *cholesterol homeostasis, the increase of reverse cholesterol transport (RCT), a process*  
37 *involved in the transport of cholesterol from peripheral cells back to the liver. This mechanism*  
38 *is common in mice genetically manipulated to present reduced cholesterol absorption, but is*  
39 *also observed in mice and hamsters following ezetimibe administration. These findings suggest*  
40 *that the inhibition of cholesterol absorption may exert an atheroprotective effects also by*  
41 *promoting the removal of cholesterol excess from peripheral tissues".*

42  
43 **7. Please carefully re-edit for punctuation, typos and use of English language.**

44 A careful editing was performed.

45  
46  
47 **Minor points:**

48  
49 **1. Please cite the primary references for the statements on p.6, lines 44-53.**

50 The primary references were introduced.  
51  
52  
53  
54  
55  
56  
57  
58  
59  
60

**Reviewer: 5**

Dear Reviewer #5, thank you for your comments.

In this revised version of the manuscript we have addressed all aspects raised by you and by the other reviewers. Concerning your specific comments, we offer the following reply:

**Comments are necessary for the abstract:**

- **Line 1: "...either endogenous production or intestinal absorption..."**
- **Line 6: "molecules" instead of "component"**
- **Line 8: no comma after "statin therapy"**
- **4th line from bottom: "effects" instead of "effect"**

The abstract was amended as per your suggestion.