

# Nonradial $p$ -modes in the G9.5 giant $\epsilon$ Ophiuchi? Pulsation model fits to MOST<sup>\*</sup> photometry

T. Kallinger<sup>1</sup>, D. B. Guenther<sup>2</sup>, J. M. Matthews<sup>3</sup>, W. W. Weiss<sup>1</sup>, D. Huber<sup>1</sup>,  
R. Kuschnig<sup>3</sup>, A. F. J. Moffat<sup>4</sup>, S. M. Rucinski<sup>5</sup>, and D. Sasselov<sup>6</sup>

<sup>1</sup> Institute for Astronomy (IfA), University of Vienna, Türkenschanzstrasse 17, 1180 Vienna, Austria  
e-mail: kallinger@astro.univie.ac.at

<sup>2</sup> Institute for Computational Astrophysics, Department of Astronomy and Physics, Saint Marys University, Halifax, NS B3H 3C3, Canada

<sup>3</sup> Department of Physics and Astronomy, University of British Columbia, 6224 Agricultural Road, Vancouver, BC V6T 1Z1, Canada

<sup>4</sup> Observatoire Astronomique du Mont Mégantic, Département de Physique, Université de Montréal, C. P. 6128, Succursale: Centre-Ville, Montréal, QC H3C 3J7 and Observatoire du mont Mégantic, Canada

<sup>5</sup> Department of Astronomy and Astrophysics, David Dunlap Observatory, University of Toronto, PO Box 360, Richmond Hill, ON L4C 4Y6, Canada

<sup>6</sup> Harvard-Smithsonian Center for Astrophysics, 60 Garden Street, Cambridge, MA 02138, USA

Received 27 June 2007 / Accepted 31 October 2007

## ABSTRACT

The G9.5 giant  $\epsilon$  Oph shows evidence of radial  $p$ -mode pulsations in both radial velocity and luminosity. We re-examine the observed frequencies in the photometry and radial velocities and find a best model fit to 18 of the 21 most significant photometric frequencies. The observed frequencies are matched to both radial and nonradial modes in the best model fit. The small scatter of the frequencies about the model predicted frequencies indicate that the average lifetimes of the modes could be as long as 10–20 d. The best fit model itself, constrained only by the observed frequencies, lies within  $\pm 1\sigma$  of  $\epsilon$  Oph's position in the HR-diagram and the interferometrically determined radius.

**Key words.** stars: late-type – stars: oscillations – stars: fundamental parameters – stars: individual:  $\epsilon$  Ophiuchi – techniques: photometric – techniques: radial velocities

## 1. Introduction

In radial velocity measurements from the ground, De Ridder et al. (2006) found power excess in the frequency spectrum of  $\epsilon$  Oph with a maximum amplitude of about  $3.5 \text{ ms}^{-1}$  at a frequency of approximately  $60 \mu\text{Hz}$  ( $\sim 5.2 \text{ d}^{-1}$ ). However, the modest duty cycle of the groundbased observations and the resulting  $\text{d}^{-1}$  aliases made it difficult for them to choose between possible  $p$ -mode spacings of  $\sim 5$  and  $\sim 7 \mu\text{Hz}$ . Barban et al. (2007) analyzed recent MOST (*Microvariability & Oscillations of STars*) satellite observations and obtained frequencies, amplitudes and mode lifetimes for a sequence of radial modes. Their mode lifetimes ( $\sim 2.7 \text{ d}$ ), compared to another giant  $\xi$  Hya, are consistent with the lifetimes determined from observations (Stello et al. 2006) but are shorter than the lifetimes inferred from theoretical considerations (e.g., Houdek & Gough 2002).

Barban et al. (2007) only considered radial modes in their analysis. Indeed, it has been suggested that only radial  $p$ -modes should be observable in giants owing in part to the complex frequency spacings of nonradial mixed (or bumped) modes. The theoretical position is unclear. The nonadiabatic models of Dziembowski et al. (2001) show the existence of strongly trapped unstable (STU) nonradial modes in the central regions of giants in between very closely spaced modes of the same

degree  $l$ . The STU modes follow the same pattern of frequency spacing as radial acoustic modes (i.e.,  $p$ -modes). They correspond to mixed  $g$ -modes/ $p$ -modes. Furthermore, the authors find more  $l = 2$  STU modes to be unstable than  $l = 1$  STU modes for stars in the luminosity range of  $\epsilon$  Oph (see Fig. 4 in Dziembowski et al. 2001). Only in their linear stability analysis, which includes the effects of turbulent pressure based on the mixing-length formalism, do they find predicted amplitudes of the radial modes of the sub-giant star  $\alpha$  UMa to be much smaller than observed, with the nonradial mode amplitudes predicted to be even smaller. On the observational side, Hekker et al. (2006) note that the line profile variations of several pulsating red giants (including  $\epsilon$  Oph) suggest the existence of nonradial modes.

If some or all pulsating red giants do have radial and observable nonradial modes with relatively long lifetimes, then these modes will enable asteroseismologists to constrain the deep interiors of red giant stars, as well as set limits on the excitation mechanisms themselves. We are therefore motivated to re-examine the MOST photometry of  $\epsilon$  Oph, combined with the radial velocities obtained by De Ridder et al. (2006), to explore the possibility of longer-lived (longer than 3 days) nonradial pulsations.

## 2. Observations

### 2.1. Spectroscopy

The radial velocity data of  $\epsilon$  Oph were provided to us by De Ridder et al. (2006) from their double-site campaign with

\* Based on data from the MOST satellite, a Canadian Space Agency mission jointly operated by Dynacon, Inc., the University of Toronto Institute of Aerospace Studies, and the University of British Columbia, with assistance from the University of Vienna, Austria.

the fibre-fed echelle spectrographs CORALIE (Swiss 1.2-m Euler telescope at La Silla, Chile) and ELODIE (French 1.93-m telescope at the Observatoire de Haute-Provence). The spectra were obtained during 53 nights (spanning 75 days) in July and August 2003, with  $S/N$  of at least 100 in every spectrum at a wavelength of 550 nm. Radial velocities were measured from the spectra using the optimum-weight method relative to a nightly reference spectrum. This suppresses any signal (including signal intrinsic to the star) with periods longer than about 1 day.

## 2.2. Photometry

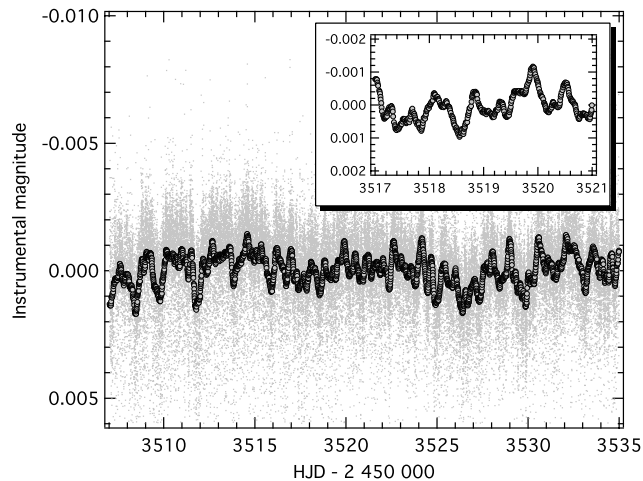
MOST houses a CCD photometer fed by a 15-cm Maksutov telescope through a custom broadband optical filter (350–750 nm). The satellite's Sun-synchronous 820 km polar orbit (period = 101.4 min) enables uninterrupted observations of stars in its Continuous Viewing Zone ( $+36^\circ \geq \delta \geq -18^\circ$ ) for up to 8 weeks. A pre-launch summary of the mission is given by Walker et al. (2003) and on-orbit science operations are described by Matthews et al. (2004).

The MOST photometry of  $\epsilon$  Oph is described by Barban et al. (2007). The data cover 28.4 d during 16 May–13 June 2005, and were obtained in Fabry Imaging mode, where the telescope pupil, illuminated by the star, is projected onto the CCD by a Fabry microlens as an annulus covering about 1300 pixels. To meet satellite downlink restrictions, the data are downloaded in two formats: resolved CCD subasters of the stellar and background Fabry images (Science Data Stream 2 or SDS2), and compressed data preprocessed on board the satellite (SDS1). We use the resolved SDS2 data for our analysis here because it allows us to carry out background decorrelation of the Fabry images (Reegen et al. 2006). Our subset of the MOST photometry contains 83 238 measurements with an exposure time of 7.5 s, sampled every 30 s.

As in the Barban et al. (2007) analysis, for our re-analysis of  $\epsilon$  Oph we reject images obtained during MOST orbital phases of high scattered Earthshine, which for the  $\epsilon$  Oph run, occurred when the satellite was passing over the fully illuminated North Pole. We introduce gaps in the data of about 24 min duration every 101.4 min (the MOST orbital period). We also reject all  $3\sigma$  outlier frames. In total 24% of the exposures were rejected, yielding an overall duty cycle of 76%. The regular gaps per orbit introduce aliases in the spectral window of the data, but these alias peaks are spaced  $\sim 14.2 \text{ d}^{-1}$  ( $\sim 165 \mu\text{Hz}$ ) apart. Fortunately, this alias spacing, unlike the  $1 \text{ d}^{-1}$  ground based alias spacing, does not introduce any ambiguities in the frequency identifications in the range where  $\epsilon$  Oph exhibits  $p$ -mode pulsations.

MOST was not originally designed to obtain differential photometry, but thanks to its stable thermal environment and compact design, the instrument is sensitive to stellar variability at the millimagnitude level (and below) over timescales of up to one week. Only for very long timescales, comparable to the duration of the observations, instrumental drifts became severe and superpose possible intrinsic variations. Stars like the red giant  $\epsilon$  Oph have turbulent envelopes which probably introduce longer-term variability than the  $p$ -modes. Regardless, all long term variations (i.e., longer than a week), whether or not they are intrinsic, are ignored.

Figure 1 presents the binned light curve of  $\epsilon$  Oph, as well as the original unbinned reduced photometry. The data show very complex variations on timescales of hours to days, also seen by Barban et al. (2007), in addition to some slower trends. The clean spectral window of the data, with alias peaks spaced by  $14.2 \text{ d}^{-1}$ , shows that the slower trends do not interfere with the  $p$ -mode



**Fig. 1.** MOST photometry of  $\epsilon$  Oph ( $V = 3^m24$ ). For better visibility, circles are averages of 20 consecutive data points (covering about 10 min each) of the smoothed raw data (running average of 350 exposures); the un-averaged measurements of  $\epsilon$  Oph are shown as small grey dots. The inset is an enlargement of a 4 day subset of the data.

identifications. There exists some modulation of stray light at low harmonics of  $1 \text{ d}^{-1}$ . This is caused by the fact that the MOST orbit carries the spacecraft over nearly the same location on the Earth (hence, a similar albedo feature) every day.

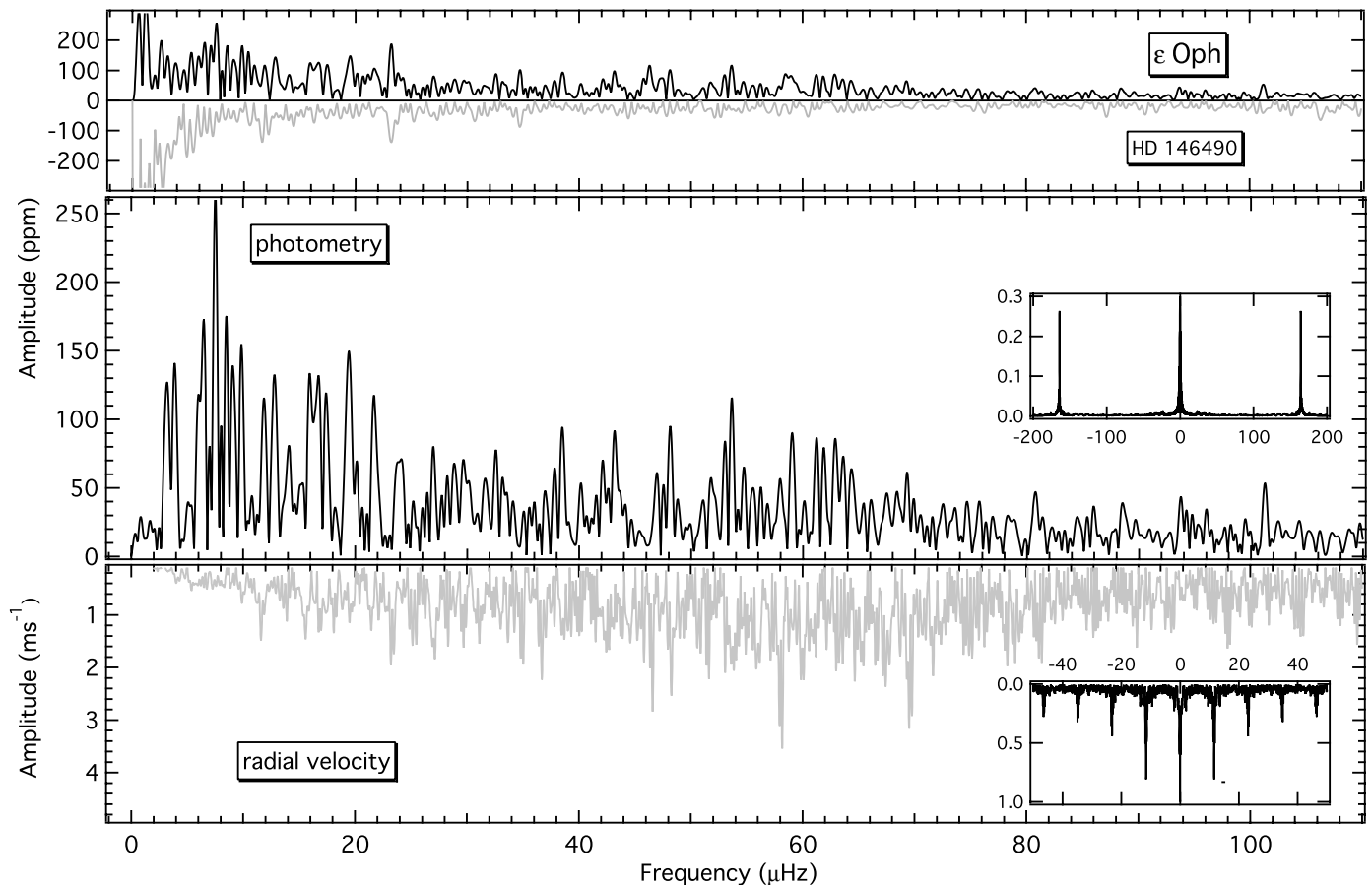
The reduced MOST  $\epsilon$  Oph photometry used in this paper, as well as the raw data and the Barban et al. (2006) reduction, are available in the MOST Public Data Archive on the Science page at [www.astro.ubc.ca/MOST](http://www.astro.ubc.ca/MOST)

## 3. Frequency analysis

The Fourier amplitude spectra of the  $\epsilon$  Oph MOST photometry (already prewhitened for instrumental signal; see latter in this section) and the radial velocity (RV) data are plotted in Fig. 2 along with the spectral window functions of both data sets. In the photometric amplitude spectrum, there are no aliases in the frequency range plotted, since the sampling sidelobes fall well outside the  $p$ -mode frequency range. There are, however, peaks at 2 and  $3 \text{ d}^{-1}$  ( $\sim 23.1$  and  $\sim 34.7 \mu\text{Hz}$ ) due to modulation of stray light in the data, as mentioned above. Some of the power at frequencies below  $10 \mu\text{Hz}$  may be due to intrinsic turbulence in the stellar envelope, and some may be due to slow instrumental drifts but there is no significant leakage of this power to higher frequencies in the  $p$ -mode range because of the clean spectral window.

The RV amplitude spectrum shows the cycle/day ( $\text{d}^{-1}$ ) alias patterns due to the daily gaps in the groundbased spectroscopy. The data were subjected to a high-pass filter by De Ridder et al. (2006) so amplitudes at frequencies below  $\sim 20 \mu\text{Hz}$  are suppressed. The RV spectrum has better frequency resolution than the photometric spectrum because of the longer time coverage of the RV data.

We used the routine *SigSpec* (Reegen 2007) to identify significant frequencies in the Discrete Fourier Transform (DFT) spectra of both data sets. *SigSpec* employs an exact analytical solution for the probability that a peak of given amplitude could be generated by white noise. Its main advantage over commonly used signal-to-noise ratio estimates is that *SigSpec* appropriately incorporates the frequency and phase angle in Fourier space and



**Fig. 2.** *Top panel:* Fourier amplitude spectra of  $\epsilon$  Oph, and that of an intrinsically constant MOST guide star, HD 146490 (inverted for easier comparison). Both are shown at the same scale. *Middle and bottom panel:* residual amplitude spectra of  $\epsilon$  Oph MOST photometry after prewhitening the instrumental signal and radial velocity data (De Ridder et al. 2006). The spectral window functions of both data sets are shown in the insets; note the truncated amplitude scale for MOST spectral window.

the time domain sampling. On average, a signal-to-noise ratio of 4, suggested as a reliable significance estimator by Breger et al. (1993), roughly corresponds to a *SigSpec* significance value of 5.46. The *SigSpec* significance is equal to  $\log_{10}$  the probability that the peak is not due to white noise. In other words, a signal amplitude of 4 times the noise level would appear by chance at its given frequency in only one of  $10^{5.46}$  cases, assuming white noise.

*SigSpec* automatically identifies the peak with the largest significance in the frequency range searched, determines the amplitude and phase associated with this frequency through least-squares sinusoidal fitting, and subtracts that signal from the time series. The residuals are then used in the next *SigSpec* significance calculation, and the process is repeated until there are no frequencies remaining with *SigSpec* significance above the threshold value set for the search.

In the MOST photometry we find 99 peaks with *SigSpec* significances ( $\text{sig}$ ) greater than 4.8 (equivalent to  $S/N \sim 3.75$ ) from 0–350  $\mu\text{Hz}$  ( $\sim 30 \text{ d}^{-1}$ ). 17 of the peaks are coincident with the MOST satellite orbital frequency ( $\sim 165 \mu\text{Hz}$  or  $14.2 \text{ d}^{-1}$ ) and its first overtone as well as with sidelobes produced by the 1 cycle/day and long term modulation of the stray light amplitude. We compare the remaining 82 frequencies (all below  $\sim 120 \mu\text{Hz}$  or  $\sim 10 \text{ d}^{-1}$ ) with frequencies in the background signal and with frequencies in the light curve of the simultaneously observed guide star HD 146490 ( $V = 7^{\text{m}2}$ , sp. A2). (MOST guide star photometry is collected from defocused star images in subrasters

of  $40 \times 40$  pixels. Although not suitable for differential comparisons with Fabry Imaging photometry, the guide star photometry can be used to help identify instrumental or environmental frequencies in the data.) The background time series was extracted from the raw  $\epsilon$  Oph Fabry Image data using the average intensity of pixels well outside the annulus illuminated by stellar light that contains only signal from the sky background along with the bias and dark current levels of the CCD. *SigSpec* identified 34 peaks, from 0 to 120  $\mu\text{Hz}$ , with  $\text{sig} \geq 4.8$  in the background signal, and 14 peaks in the guide star, HD 146490, time series.

We reject all frequencies that occur (within the uncertainties) in both the  $\epsilon$  Oph photometry and either the background or HD 146490 time series, even if the amplitudes in the latter data sets are small. The frequency uncertainties are estimated according to Kallinger et al. (2007b) who define an upper limit for the frequency error of a least-squares sinusoidal fit as  $(T \cdot \sqrt{\text{sig}})^{-1}$  for a monoperoic signal and  $(4T)^{-1}$  if a second signal component is present within twice the classical frequency resolution defined by the time series length  $T$ . We are left with 59 frequencies ranging from 3.11  $\mu\text{Hz}$  to 93.7  $\mu\text{Hz}$  (see Table 1).

Figure 2 illustrates our problem of safely determining intrinsic frequencies below approximately 20  $\mu\text{Hz}$ . The average amplitudes increase by a factor of about 3 and it is not clear – nor can it be decided on the grounds of the present photometry – which contribution comes from possibly yet undetected instrumental properties, granulation signal ( $1/f$  characteristics), pulsation, artefacts enforced by short mode lifetimes of a

**Table 1.** Oscillation frequencies ( $f$ ), amplitudes ( $A$ ) and *SigSpec* significances ( $\text{sig}$ ) for  $\epsilon$  Oph. Frequencies used to constrain the fit are marked in bold face. P23, P52 and P56 are also used in the model search procedure but do not match any mode of the best fitting model. “+” or “-” indicate RV frequencies which are presumably  $+1 \text{ d}^{-1}$  or  $-1 \text{ d}^{-1}$  aliases. Asterisk symbols indicate frequencies matched by modes of the best fitting model (see Table 2).

| Photometry      |                                    |            |              |            |                                    |            |              |
|-----------------|------------------------------------|------------|--------------|------------|------------------------------------|------------|--------------|
| $P$             | $f$<br>$\mu\text{Hz}$              | $A$<br>ppm | $\text{sig}$ | $P$        | $f$<br>$\mu\text{Hz}$              | $A$<br>ppm | $\text{sig}$ |
| 01              | $3.11 \pm 0.07$                    | 111        | 30.3         | <b>30*</b> | <b><math>31.59 \pm 0.12</math></b> | <b>69</b>  | <b>12.3</b>  |
| 02              | $3.50 \pm 0.15$                    | 54         | 7.6          | <b>31*</b> | <b><math>32.57 \pm 0.11</math></b> | <b>72</b>  | <b>13.3</b>  |
| 03*             | $3.92 \pm 0.06$                    | 146        | 50.1         | 32*        | $33.27 \pm 0.17$                   | 48         | 6.0          |
| 04              | $5.98 \pm 0.09$                    | 96         | 22.7         | 33*        | $36.97 \pm 0.15$                   | 53         | 7.5          |
| 05*             | $6.44 \pm 0.04$                    | 190        | 82.4         | <b>34*</b> | <b><math>37.82 \pm 0.13</math></b> | <b>62</b>  | <b>10.0</b>  |
| 06*             | $7.54 \pm 0.03$                    | 254        | 145.0        | <b>35*</b> | <b><math>38.52 \pm 0.09</math></b> | <b>96</b>  | <b>22.7</b>  |
| 07*             | $8.49 \pm 0.06$                    | 152        | 54.1         | 36*        | $40.16 \pm 0.16$                   | 48         | 6.2          |
| 08              | $9.07 \pm 0.07$                    | 121        | 35.6         | <b>37*</b> | <b><math>42.12 \pm 0.11</math></b> | <b>72</b>  | <b>13.0</b>  |
| 09              | $9.84 \pm 0.05$                    | 176        | 72.3         | <b>38*</b> | <b><math>43.17 \pm 0.09</math></b> | <b>88</b>  | <b>19.5</b>  |
| 10*             | $11.83 \pm 0.07$                   | 126        | 38.2         | 39*        | $43.69 \pm 0.16$                   | 48         | 6.2          |
| 11              | $12.83 \pm 0.06$                   | 145        | 50.0         | <b>40*</b> | <b><math>46.87 \pm 0.13</math></b> | <b>64</b>  | <b>10.5</b>  |
| 12*             | $13.99 \pm 0.09$                   | 88         | 19.3         | <b>41*</b> | <b><math>48.11 \pm 0.09</math></b> | <b>93</b>  | <b>21.3</b>  |
| 13*             | $15.20 \pm 0.16$                   | 49         | 6.3          | 42*        | $51.84 \pm 0.13$                   | 59         | 9.1          |
| 14*             | $15.99 \pm 0.06$                   | 142        | 48.7         | 43         | $53.02 \pm 0.14$                   | 59         | 9.1          |
| 15              | $16.29 \pm 0.13$                   | 64         | 10.6         | <b>44*</b> | <b><math>53.65 \pm 0.07</math></b> | <b>119</b> | <b>34.8</b>  |
| 16              | $16.65 \pm 0.06$                   | 131        | 40.8         | 45         | $54.69 \pm 0.14$                   | 55         | 8.0          |
| 17              | $17.50 \pm 0.08$                   | 109        | 29.5         | 46*        | $55.50 \pm 0.14$                   | 59         | 9.0          |
| 18              | $19.04 \pm 0.12$                   | 69         | 12.3         | 47*        | $57.91 \pm 0.16$                   | 50         | 6.7          |
| 19              | $19.48 \pm 0.06$                   | 146        | 50.3         | <b>48*</b> | <b><math>59.04 \pm 0.10</math></b> | <b>78</b>  | <b>15.5</b>  |
|                 |                                    |            |              | <b>49*</b> | <b><math>61.22 \pm 0.09</math></b> | <b>92</b>  | <b>20.9</b>  |
| 20*             | <b><math>20.03 \pm 0.13</math></b> | <b>64</b>  | <b>10.5</b>  | 50         | $61.92 \pm 0.14$                   | 57         | 8.4          |
| 21*             | <b><math>21.70 \pm 0.07</math></b> | <b>124</b> | <b>37.3</b>  | <b>51*</b> | <b><math>62.90 \pm 0.10</math></b> | <b>83</b>  | <b>17.5</b>  |
| 22*             | $22.14 \pm 0.18$                   | 43         | 4.9          | 52         | $63.58 \pm 0.12$                   | 70         | 12.5         |
| 23              | $23.75 \pm 0.11$                   | 73         | 13.5         | <b>53*</b> | <b><math>64.39 \pm 0.12</math></b> | <b>65</b>  | <b>10.9</b>  |
| 24*             | <b><math>24.24 \pm 0.12</math></b> | <b>70</b>  | <b>12.5</b>  | 54         | $67.49 \pm 0.17$                   | 48         | 6.0          |
| 25*             | <b><math>26.98 \pm 0.10</math></b> | <b>80</b>  | <b>16.3</b>  | 55*        | $68.30 \pm 0.17$                   | 46         | 5.6          |
| 26*             | $27.66 \pm 0.17$                   | 47         | 5.9          | 56         | $69.27 \pm 0.13$                   | 63         | 10.2         |
| 27              | $28.81 \pm 0.13$                   | 61         | 9.6          | 57*        | $75.72 \pm 0.18$                   | 44         | 5.2          |
| 28*             | <b><math>29.66 \pm 0.12</math></b> | <b>69</b>  | <b>12.3</b>  | 58         | $80.77 \pm 0.17$                   | 46         | 5.7          |
| 29              | $30.22 \pm 0.16$                   | 49         | 6.3          | 59         | $93.74 \pm 0.18$                   | 44         | 5.1          |
| Radial velocity |                                    |            |              |            |                                    |            |              |
| $R$             | $f$<br>$\mu\text{Hz}$              | $A$<br>m/s | $\text{sig}$ | $R$        | $f$<br>$\mu\text{Hz}$              | $A$<br>m/s | $\text{sig}$ |
| 01*             | $11.55 \pm 0.06$                   | 2.1        | 5.8          | 14*        | $54.03 \pm 0.05$                   | 2.0        | 10.2         |
| 02*             | $12.31 \pm 0.07$                   | 0.9        | 5.4          | 15*        | $54.38 \pm 0.06$                   | 1.2        | 5.8          |
| 03              | $16.86 \pm 0.07$                   | 1.1        | 5.2          | 16*        | $58.18 \pm 0.03$                   | 3.4        | 21.2         |
| 04*             | $27.13 \pm 0.05$                   | 1.9        | 9.0          | 17*        | $58.80 \pm 0.05$                   | 1.8        | 9.3          |
| 05*             | $34.73 \pm 0.06$                   | 1.6        | 7.8          | 18*        | $60.11 \pm 0.05$                   | 2.1        | 9.8          |
| 06*             | $37.99 \pm 0.07$                   | 1.0        | 5.2          | 19*        | $61.01 \pm 0.06$                   | 1.2        | 5.8          |
| 07*             | $43.72 \pm 0.06$                   | 1.3        | 5.8          | 20*        | $62.99 \pm 0.05$                   | 2.1        | 9.7          |
| 08              | $44.92 \pm 0.07$                   | 1.2        | 5.5          | 21*        | $66.72 \pm 0.05$                   | 1.7        | 9.0          |
| 09*             | $45.21 \pm 0.06$                   | 1.0        | 5.8          | 22*        | $67.18 \pm 0.05$                   | 2.2        | 9.9          |
| 10              | $45.81 \pm 0.05$                   | 2.1        | 9.8          | 23         | $74.89 \pm 0.06$                   | 1.5        | 7.0          |
| 11*             | $48.20 \pm 0.06$                   | 1.4        | 6.1          | 24         | $82.51 \pm 0.07$                   | 0.9        | 5.5          |
| 12*             | $48.91 \pm 0.07$                   | 1.1        | 5.4          | 25*        | $85.40 \pm 0.07$                   | 1.2        | 5.5          |
| 13              | $50.88 \pm 0.06$                   | 1.3        | 6.4          |            |                                    |            |              |

genuine signal, or a combination of all this. Furthermore, *SigSpec* – designed to handle white noise only – cannot be applied anylonger in this low frequency region. An unsatisfying compromise to take the increasing noise level towards the low frequencies into account could be to increase the acceptance level in the low frequency region from  $\text{sig}=4$  to about 36, as

**Table 2.** Adiabatic  $p$ -mode frequencies of the best fitting model up to the acoustic cut-off frequency in units of  $\mu\text{Hz}$ . For nonradial modes  $n_p$  is the number of radial nodes in the  $p$ -mode part of the modes. Identifier of observed modes matching a model frequency are listed in brackets. Bold faced modes indicate the modes matched by observed frequencies used for model fitting.

| $n_p$ | $l=0$                                       | $l=1$                                       | $l=2$                                       | $l=3$                                     |
|-------|---|---|---|---|
| 0     | $7.974 \binom{P06}{-}$                      | $3.668 \binom{P03}{-}$                      | $6.797 \binom{P05}{-}$                      | $8.416 \binom{P07}{-}$                    |
| 1     | $15.170 \binom{P13}{-}$                     | $11.540 \binom{P10}{R01}$                   | $13.856 \binom{P12}{-}$                     | $15.561 \binom{P14}{-}$                   |
| 2     | <b><math>21.348 \binom{P21}{-}</math></b>   | 18.042                                      | <b><math>20.119 \binom{P20}{-}</math></b>   | $21.807 \binom{P22}{-}$                   |
| 3     | <b><math>27.268 \binom{P25}{R04}</math></b> | <b><math>24.005 \binom{P24}{R02}</math></b> | 26.062                                      | $27.779 \binom{P26}{-}$                   |
| 4     | <b><math>32.609 \binom{P31}{-}</math></b>   | <b><math>29.700 \binom{P28}{-}</math></b>   | <b><math>31.549 \binom{P30}{-}</math></b>   | $33.089 \binom{P32}{-}$                   |
| 5     | <b><math>37.706 \binom{P34}{R06}</math></b> | $34.731 \binom{-}{R05}$                     | $36.562 \binom{P33}{-}$                     | <b><math>38.235 \binom{P35}{-}</math></b> |
| 6     | <b><math>43.073 \binom{P38}{R15}</math></b> | $39.948 \binom{P36}{-}$                     | <b><math>41.892 \binom{P37}{-}</math></b>   | $43.585 \binom{P39}{R07}$                 |
| 7     | <b><math>48.200 \binom{P41}{R11}</math></b> | $45.149 \binom{-}{R09}$                     | <b><math>47.002 \binom{P40}{-}</math></b>   | $48.694 \binom{-}{R12}$                   |
| 8     | <b><math>53.588 \binom{P44}{-}</math></b>   | 50.257                                      | $52.243 \binom{P42}{-}$                     | $54.078 \binom{-}{R14}$                   |
| 9     | <b><math>59.104 \binom{P48}{R17}</math></b> | $55.671 \binom{P46}{R22}$                   | $57.693 \binom{P47}{R16}$                   | 59.539                                    |
| 10    | <b><math>64.560 \binom{P53}{-}</math></b>   | <b><math>61.077 \binom{P49}{R19}</math></b> | <b><math>63.074 \binom{P51}{R20}</math></b> | 64.940                                    |
| 11    | 70.117                                      | $66.475 \binom{-}{R21}$                     | $68.508 \binom{P55}{-}$                     | 70.434                                    |
| 12    | $75.747 \binom{P57}{-}$                     | $71.991 \binom{-}{R18}$                     | 74.035                                      | 75.985                                    |
| 13    | 81.366                                      | 77.539                                      | 79.559                                      | 81.516                                    |
| 14    | 87.004                                      | 83.083                                      | $85.086 \binom{-}{R25}$                     | 87.061                                    |
| 15    | 92.639                                      | 88.652                                      | 90.625                                      | 92.597                                    |

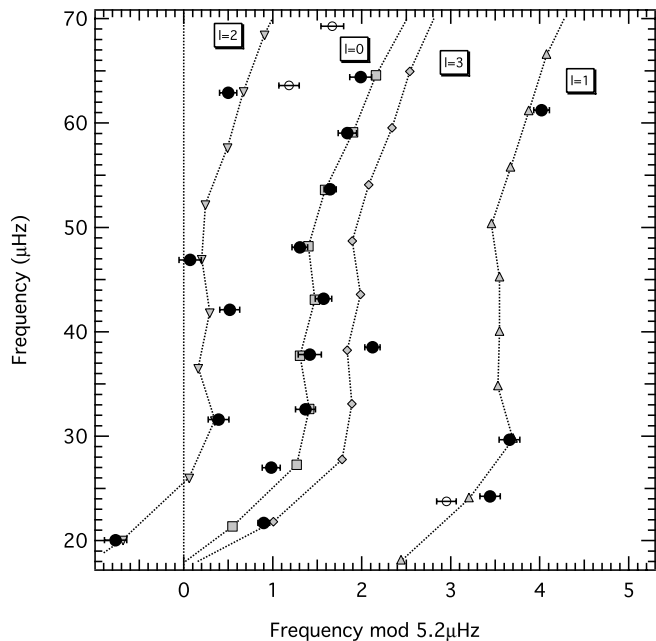
significance scales with power. We divide Table 1 in a set of frequencies below  $20 \mu\text{Hz}$ , not used for modeling  $\epsilon$  Oph, and above  $20 \mu\text{Hz}$ .

We are then left with 39 frequencies (20 to  $93.7 \mu\text{Hz}$ ). Because it is extraordinarily difficult to fit a model to a set of frequencies when the list of frequencies contains even a small number of spurious frequencies, i.e., of non stellar origin, we restrict our analysis to those frequencies above  $20 \mu\text{Hz}$  with significance  $\geq 10$  (roughly corresponding to amplitudes  $\geq 60$  ppm). We are convinced that these large amplitude frequencies are truly intrinsic and not contaminated by instrumental or other effects (different from pulsation). There are 21 frequencies that satisfy these conditions, more than enough to constrain the models. The low frequency set was not used for modelling, but is listed for completeness. However, a surprisingly large fraction of frequencies (8 of 19, indicated by an asterisk in Table 1) coincides with predictions of our best model (see Sect. 4.1).

We searched the RV data for frequencies from  $0$ – $120 \mu\text{Hz}$  ( $\sim 10 \text{ d}^{-1}$ ) down to a sig limit of 5.2 (corresponding to  $S/N \sim 3.9$ ). We identify 25 frequencies. These are more ambiguous identifications because of the aliasing of the RV data; some of the frequencies may be  $\pm 1 \text{ d}^{-1}$  sidelobes of the real values. 11 of the 25 frequencies identified in the RV data are also present, within the frequency uncertainties, in the MOST photometric data. All significant RV frequencies are listed in Table 1.

#### 4. Asteroseismic analysis

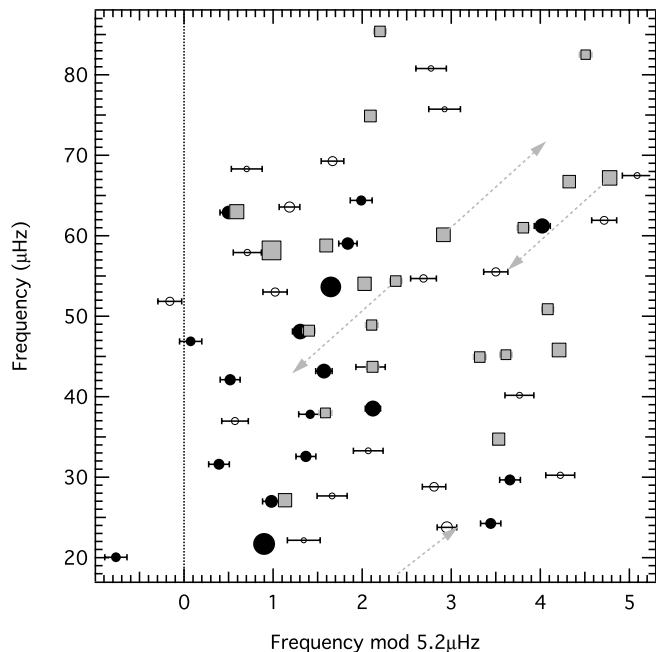
As a first step toward understanding the nature of the oscillations in  $\epsilon$  Oph, we attempt to match the observed frequency



**Fig. 3.** Echelle diagram of the 21 most significant observed oscillation frequencies (above  $20 \mu\text{Hz}$ ) used to constrain the fit and the best fitting model modes. The observed photometric modes are shown as circles with error bars indicating observational uncertainties. Filled circles show the 18 observed frequencies matched by model modes and open circles to the remaining 3 frequencies. The model modes are given by grey symbols connected by line segments.

spectrum with the eigenspectra determined from stellar models. We calculated radial and nonradial pulsation frequencies of models distributed along evolutionary tracks on the giant branch of the HR diagram. The models were constructed with the Yale Rotating Evolutionary Code (YREC, Guenther et al. 1992), adopting the OPAL equation of state (Iglesias & Rogers 1996), OPAL opacities in the interior (Rogers & Iglesias 1994) and the low-temperature opacities from Alexander & Ferguson (1994) in the envelope. Diffusion of helium and heavy elements was not included. The model eigenspectra were generated by the nonradial, nonadiabatic stellar pulsation program developed by Guenther (1994). The program solves the linearised nonadiabatic oscillation equations using the Henyey relaxation method.

The inert helium core in giant stars supports closely spaced  $g$ -modes at frequencies that overlap the frequency range of the  $p$ -modes. As a consequence there is significant mode mixing (also known as mode bumping) where the nonradial  $p$ -modes and  $g$ -modes interfere with each other (see Kallinger et al. 2007a; and Guenther et al. 2000). Any nonradial  $p$ -modes seen on the surface of the star have a  $g$ -mode character in the interior. For giants the radial order  $n$  of the  $g$ -mode part of the mode can be very high ( $\sim 20$  to  $100$ ). These are the same modes identified as strongly trapped unstable (STU) modes by Dziembowski et al. (2001). The densely packed fluctuations in the radial displacement eigenfunctions near the stellar core heavily strain the numerical calculation and can lead to numerical instabilities that prevent convergence of a solution. To avoid this complication, we force the code to ignore the inner 10% (in radius) of the stellar models. We have shown (Kallinger et al. 2007a) that the mode eigenfunctions in the outer 90% of the model are practically the same if the inner part of the model is used or not. The disadvantage of this method is that one does not obtain the correct



**Fig. 4.** Same as Fig. 3 but for all photometric (circles) and radial velocity (squares) frequencies. Symbol sizes are scaled with mode amplitudes:  $40 \text{ ppm}$  to  $125 \text{ ppm}$  and  $0.9$  to  $3.4 \text{ m s}^{-1}$  for the luminosity and radial velocity amplitudes, respectively. Arrows indicate RV modes which are presumably daily aliases.

number of radial nodes for the  $g$ -mode part of the eigenfunction. For more details, see Kallinger et al. (2007a).

We computed radial and nonradial eigenfrequencies (with mode degree  $l$  up to 3) for more than 37 000 models of intermediate-mass stars (from  $1.5$  to  $3.5 M_{\odot}$  in steps of  $0.02 M_{\odot}$ ) during their H-shell burning phase. The model sequences start at temperatures around  $5500 \text{ K}$  (near spectral type G1) and continue up to the initiation of He-core burning at the end of the red giant phase. We set the initial hydrogen and metal mass fractions to  $(X, Z) = (0.71, 0.01)$ , to match the observationally determined metal abundance from Cayrel de Strobel et al. (2001), who found  $[\text{Fe}/\text{H}] = -0.25$ . The mixing length parameter, which adjusts the temperature gradient in convective regions, was set to  $\alpha = 1.74$  to match the findings of Yi et al. (2003). For the model physics we are using, a calibrated solar model would have  $\alpha = 1.63$ . The value of  $\alpha$  we adopt yields a model at the solar age and luminosity that is hotter than the Sun by  $\sim 30 \text{ K}$ .

The best fits between the observed frequency spectrum and our grid of model frequencies were found by searching for minima in  $\chi^2$ , defined as:

$$\chi^2 = \frac{1}{N} \sum_{i=1}^N \frac{(f_{\text{obs},i} - f_{\text{model},i})^2}{\sigma_{\text{obs},i}^2},$$

where  $f_{\text{obs},i}$  and  $f_{\text{model},i}$  are the observed and corresponding model eigenfrequency of the  $i$ th mode, respectively,  $\sigma_{\text{obs},i}$  is the uncertainty of the observed frequency, and  $N$  is the total number of modes used for the fit. This approach provides a reliable and unbiased estimate of how well a set of observed frequencies coincides with a model eigenspectrum. A value of  $\chi^2 \leq 1.0$  means that, on average, the model frequencies are within the uncertainty of the matched observed frequencies. For more details, see Guenther et al. (2005). However, if there is more than one model with  $\chi^2 \leq 1.0$ , the set of observed frequencies (and uncertainties) is not sufficient to identify a unique model. In this

case, additional stellar parameters (such as independently determined temperature and/or luminosity) are necessary to narrow the parameter space of the model search.

#### 4.1. Mode identifications

Trying to match the observed oscillation spectrum to the models is made significantly more difficult if we are not sure that all the observed frequencies are  $p$ -modes intrinsic to the star. With 59 frequencies identified as possible modes it is computationally impractical to consider all possible combinations of  $p$ -modes versus spurious (i.e., not  $p$ -) modes. We therefore limited our model search to the 21 most significant frequencies ( $\text{sig} > 10.0$ ), as determined by *SigSpec*, in our list of 59 frequencies in the frequency range 20 to 95  $\mu\text{Hz}$ . The searching code will try to find the best fit to as many frequencies as possible and this may, as is the case here, require that some modes be excluded from the fit. The modes excluded vary from model to model in the search. For the best fit model frequencies P23, P52, and P56 are unmatched. We were unable to find any models whose radial  $p$ -modes match more than 9 of the 21 observed frequencies. Only when we allowed the search to include nonradial modes up to and including  $l = 3$  were we able to fit 18 (bold in Table 1) of the 21 observed frequencies. The best model fit matches 9 of the frequencies to radial  $p$ -modes, 3 to  $l = 1$ , 5 to  $l = 2$ , and 1 to  $l = 3$  modes with a  $\chi^2 = 0.22$ . The best fitting model has a mass of  $2.02 M_{\odot}$ , an effective temperature of 4892 K and a luminosity of  $60.1 L_{\odot}$ , which places it within  $\pm 1\sigma$  of  $\epsilon$  Oph's position in the HR-diagram. In Table 2 we list the adiabatic  $p$ -mode frequencies of the best fitting model up to the acoustic cut-off frequency of  $\sim 92 \mu\text{Hz}$ .

In Fig. 3 we show, in an echelle diagram with folding frequency 5.2  $\mu\text{Hz}$ , the 21 most significant photometric frequencies, used in the search for the best fitting model, along with the  $p$ -mode frequencies of the best model fit. The filled circles correspond to the 18 photometric frequencies that are fit by the model. The  $p$ -mode frequencies of the best fitting model are shown as small grey filled symbols connected by line segments. In Fig. 4 we show both the MOST (circles) and the RV (squares) frequencies to provide a direct comparison between the two data sets. Needless to say, there are some observed frequencies that do not appear to fall on the  $l$ -ridges of our best fit model. We argue below that some of these frequencies could still be intrinsic to the star.

The two frequencies P05 and P06 (6.44 and 7.54  $\mu\text{Hz}$ ) that have the largest photometric amplitudes, but lie outside the 20 to 95  $\mu\text{Hz}$  range used to constrain the best fit model, do not match (within the uncertainties) any of the low  $n$ -valued  $p$ -modes of the best fit model but are still close to the fundamental mode of the radial and  $l = 2$  sequence. If these two frequencies are indeed low order  $p$ -modes than they imply that the deep interior structure of our models is slightly inaccurate. This is possible since the higher order modes mainly constrain the outer layers of the model. It is possible that a different assumed initial helium abundance for the model, which would affect the frequencies of very lowest order modes, could yield a model that fits the lowest two frequencies along with the rest of the frequencies. We will address this and other modeling interpretations of the original 59 MOST frequencies in a separate paper.

Nine of the frequencies detected in the RV data match the  $p$ -mode frequencies of the best fitting model and are found in the list of photometrically observed frequencies, and 6 of the RV frequencies match the best fitting model and are not found in the list of photometrically observed frequencies. We note that

4 RV frequencies would lie close to model frequencies if they are 1 cycle/day aliases of the real frequencies. The presumed real frequencies are at the tips of the arrows in Fig. 4.

Although we are able to fit 18 of the 21 photometric frequencies with the largest *SigSpec* significances, only 63% (“\*” in Table 1) of the photometric frequencies (70% in the frequency region above 20  $\mu\text{Hz}$ ) and 76% of the RV frequencies can be attributed to pulsation modes in our best-fitting model. A few of the lowest frequencies may be associated with turbulence or rotational modulation in the envelope of the red giant or, as noted above, may not fit the model because the model does not have the correct helium abundance. We speculate, though, that frequencies that are not matched by the model could be the result of the damping and stochastic re-excitation of the modes. These modulations introduce spurious peaks around the true frequencies of modes in Fourier space. We discuss this hypothesis in Sect. 4.4 below.

We note that Hekker et al. (2006) attempted mode identifications for the dominant frequency in the  $\epsilon$  Oph spectroscopic data (De Ridder et al. 2006). They identified the frequency R16 at 58.2  $\mu\text{Hz}$  (having the largest RV amplitude) to be a mode of  $(l, m) = (2, 2)$ . Our best fitting model matches this frequency with a mode of degree  $l = 2$  as well.

#### 4.2. Position of $\epsilon$ Oph in the HR-diagram

A summary of fundamental parameters of the best fitting model and values found in the literature is given in Table 2. De Ridder et al. (2006) conducted an extensive literature search to locate  $\epsilon$  Oph reliably in the HR-Diagram. They adopted an effective temperature of  $4887 \pm 100$  K and a luminosity of  $59 \pm 5 L_{\odot}$ . These values compare well with our best fit model which has a surface temperature of 4892 K and a luminosity of  $60.1 L_{\odot}$ .

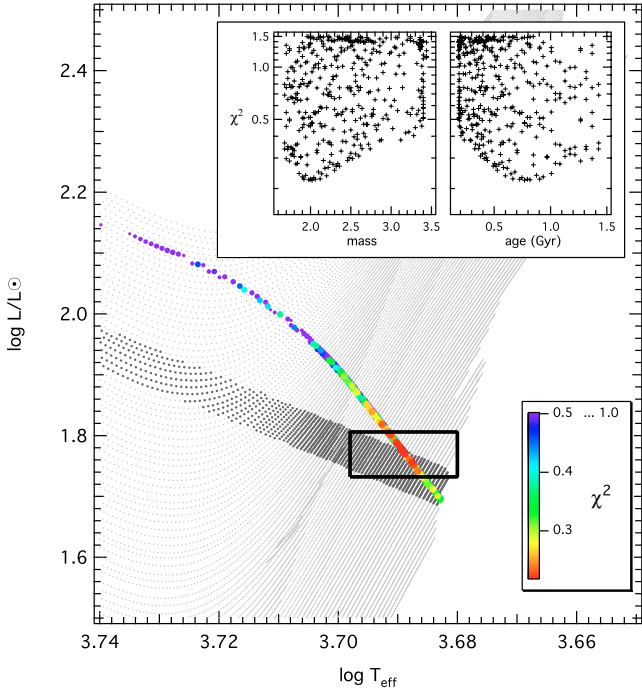
In Fig. 5, we present a theoretical HR-Diagram showing a subset of the stellar model grid used for the pulsation analysis (small light grey points), the best model fits to the observed frequencies with  $\chi^2$  less than 1.0 (color), and the error box for the luminosity and effective temperature of  $\epsilon$  Oph. The models with the smallest deviation from the oscillation observations ( $0.28 < \chi^2 < 0.3$ ) are shown in red, and lie close to the centre of the error box.  $\chi^2$  is determined from the oscillation data only, that is, other observables are not used in any way to help determine the best model fit. The insets in Fig. 5 show  $\chi^2$  as a function of model mass and age. They illustrate the smooth distribution of  $\chi^2$  along the track of best fitting models (colored region) with constant large frequency separation.

Richichi et al. (2005) list an angular diameter of  $2.94 \pm 0.08$  mas for  $\epsilon$  Oph in their catalogue of stellar radii obtained with the ESO VLTI. This angular diameter and the Hipparcos parallax of  $30.34 \pm 0.79$  mas give a stellar radius of  $10.4 \pm 0.45 R_{\odot}$ . In Fig. 5, all models with a stellar radius within that range are marked by dark grey dots. The radius of the best-fitting model is about  $10.8 R_{\odot}$ , within the uncertainty of the interferometrically determined radius.

#### 4.3. Mode amplitudes

Using the effective temperature, mass and radius of our best-fitting model of  $\epsilon$  Oph (see Sect. 4.2), we obtain from the Kjeldsen & Bedding (1995) scaling relation a radial order of  $n = 9$  at a frequency of  $\sim 59 \mu\text{Hz}$  for the mode of maximum power. The frequency with the largest RV amplitude is R14 at 58.2  $\mu\text{Hz}$ , corresponding to a mode with radial order  $n = 9$  in our





**Fig. 5.** Theoretical HR-diagram showing the uncertainty box location of  $\epsilon$  Oph and a subset of the stellar model grid used for the pulsation analysis (light grey dots). The color scale gives the  $\chi^2$  values from the differences between the observed and model frequencies, where the scale is limited to values less than 1.0 (for better visibility the color dark blue includes all models with  $\chi^2$  from 0.5 to 1.0).  $\chi^2 < 1$  indicated that the model frequencies are within  $1\sigma$  of the observed frequency uncertainty. The dark grey dots show models with a stellar radius of  $10.4 \pm 0.45 R_{\odot}$ . The insert illustrates  $\chi^2$  as a function of model mass and age, respectively.

best fitting model and consistent with Kjeldsen and Bedding’s scaling relation.

Kjeldsen & Bedding (1995) provide a heuristically determined relation between luminosity and RV amplitudes for solar-like oscillations scaled by the amplitude ratio of solar  $p$ -modes in light and velocity:  $20.1 \text{ ppm per ms}^{-1}$  at a wavelength of 550 nm.

The average amplitude of the frequencies in the photometry of  $\epsilon$  Oph matched to  $p$ -modes in the model (plus the two largest-amplitude peaks) is 85 ppm. The corresponding value for the RV data is  $1.64 \text{ m s}^{-1}$ . This corresponds to an amplitude ratio of  $51.8 \text{ ppm per m s}^{-1}$ . If we perform a linear regression of the photometric and RV amplitudes for the subset of frequencies identified in both data sets, we obtain a slope of  $41 \pm 7 \text{ ppm per ms}^{-1}$  (we must neglect the frequency  $\sim 58 \mu\text{Hz}$  with the largest RV amplitude to obtain this fit). This slope results in the following relation calibrated by the luminosity and temperature of  $\epsilon$  Oph and the central wavelength of the MOST passband:

$$(\delta L/L)_{\lambda} = \frac{v_{\text{osc}}/\text{ms}^{-1}}{(\lambda/550 \text{ nm})(T_{\text{eff}}/5777 \text{ K})^2} 26.4 \pm 4.6 \text{ ppm}.$$

The coefficient ( $26.4 \pm 4.6 \text{ ppm per ms}^{-1}$ ) is close to that of the Kjeldsen & Bedding (1995) amplitude ratio for solar  $p$ -modes ( $20.1 \text{ ppm per ms}^{-1}$ ). However, we caution that the reduction of the  $\epsilon$  Oph spectroscopic time series was performed with respect to a nightly reference spectrum, which suppresses lower-frequency power and likely means a decrease of the measured RV amplitudes with increasing frequency relative to the intrinsic values.

#### 4.4. Mode lifetimes

Unlike  $p$ -modes in stars in the classical instability strip, which can coherently oscillate for millions of years, solar-type oscillations driven stochastically by turbulence in the convective envelope have much shorter lifetimes. Pulsations of this nature can be characterized by a superposition of randomly excited, intrinsically damped, harmonic oscillations. The Fourier transform of a set of such incoherent signals produces peaks randomly distributed under a Lorentzian profile with a width given by the damping rate (inversely proportional to the mode lifetime).

In this work, we treat the individual frequencies in the data as independent radial and nonradial modes whose lifetimes are comparable to the duration of the observations. For solar-type oscillations, the scatter of observed frequencies about the true mode frequencies is a function of the mode lifetime (and the signal-to-noise ratio of the data). Kjeldsen et al. (2005) performed extensive simulations in their analysis of the RV oscillations of  $\alpha$  Cen B to quantify the dependence of the frequency scatter on the lifetime and the  $S/N$  ratio.

We apply a similar approach, assessing roughly 100 000 simulated data sets using the time sampling of the MOST  $\epsilon$  Oph photometry. Each data set contains a damped and randomly re-excited oscillation at a given input frequency, generated by the method described by Chaplin et al. (1997), plus white noise of random amplitude. The generated mode lifetimes range from 0.5 to 50 days. The average absolute deviation of the highest amplitude peak (determined by *SigSpec*) from the input frequency,  $\Delta\nu$ , as a function of the peak’s *SigSpec* significance is presented in Fig. 6 for different mode lifetimes (solid lines). The left axis scale in this figure is specific to the MOST data run. From additional simulations with data sets of different length  $T$  we found that the frequency deviation due to finite mode lifetime scales with the square root of  $T$ . The right-hand axis in Fig. 6 is calibrated to be independent of  $T$ . We also present upper limits for the observational uncertainties of a stable mono-periodic signal (horizontal dashed line scaled to the left axis) and a multi-periodic signal (diagonal dashed line, also, scaled to the left axis). (For more background details, see Kallinger et al. 2007b).

As an example, consider some modes in our MOST observations of  $\epsilon$  Oph with *SigSpec* significance of 10 or more. If the mode lifetimes are 1 day on average, then according to our simulation we can expect the observed frequencies of the modes to be on average within  $1 \mu\text{Hz}$  of the intrinsic frequencies of the modes. If the modes have a lifetime of 20 days, then our simulation indicates that the observed frequency of the modes will be on average within  $0.2 \mu\text{Hz}$  of the intrinsic frequencies of the modes.

We can invert this, by using the apparent scatter of observed frequencies to estimate the mode lifetimes. To determine the scatter in the observed frequencies we can either compare the frequencies of the modes observed in RV with the frequencies of the same modes observed in MOST photometry or we can compare the observed MOST frequencies with the nearest corresponding frequency in the best fit model. Unfortunately, the latter method depends on the model fit itself. To avoid this we adopt the approach of Kjeldsen et al. (2005). We assume the modes to lie along ridges of common  $l$ -value and take the amount the modes deviate from the ridge as the scatter frequency (i.e., frequency difference). The frequency difference is taken to be the amount the mode’s frequency deviates from a line drawn between the mode below and the mode above the mode of common  $l$ -value. Clearly, both of these methods depend on the

**Table 3.** Fundamental stellar parameters for  $\epsilon$  Oph as found in the literature and for the best fitting model.

|                                       | Literature        | best fitting model |
|---------------------------------------|-------------------|--------------------|
| Effective temperature ... [K]         | $4877 \pm 100^1$  | 4892               |
| Luminosity ... [ $L_{\odot}$ ]        | $59 \pm 5^1$      | 60.13              |
| Radius ... [ $R_{\odot}$ ]            | $10.4 \pm 0.45^2$ | 10.82              |
| Mass ... [ $M_{\odot}$ ]              |                   | 2.02               |
| $\log g$ ... [ $\text{g cm s}^{-2}$ ] | $2.48 \pm 0.36^3$ | 2.674              |
| Age ... [Gyr]                         |                   | 0.770              |
| Mixing length parameter ... [Hp]      |                   | 1.74               |
| Metallicity ... [Z]                   | $0.01^4$          | 0.01               |

<sup>1</sup> De Ridder et al. (2006).<sup>2</sup> Richichi et al. (2005) and Hipparcos.<sup>3</sup> Allende & Lambert (1999).<sup>4</sup>  $[\text{Fe}/\text{H}] = -0.25$  from Cayrel de Strobel et al. (2001).

correct identification of the modes. We present the results of both methods.

In Fig. 6 we plot, using light grey squares, the frequency differences (i.e., scatter) between the 12 modes common in the RV and MOST determined frequencies as a function of their *SigSpec* significance. The data points all (except one) lie below the 5 d lifetime line of our simulation. Indeed, the average value of the frequency differences, shown as a black square in Fig. 6, corresponds to an average mode lifetime of  $\sim 12$  days.

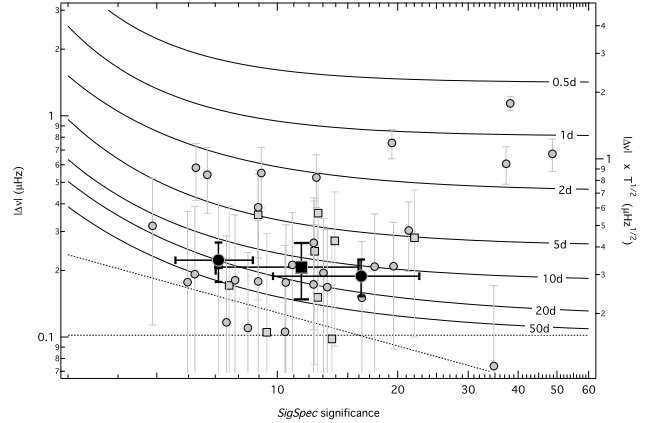
Also in Fig. 6 we plot, using light grey circles, the frequency differences of the MOST photometric data assuming that the intrinsic mode frequencies do lie along smooth curves of common  $l$ -value. Although the scatter is greater than using the previous method, the averaged absolute deviations in the *SigSpec* significance range below and above 10 correspond to  $\sim 20$  day and  $\sim 13$  day mode lifetimes, respectively (black circles in Fig. 6). The light grey circles in the upper right corner of Fig. 6 correspond to low frequency modes, i.e., modes that naturally deviate the most from the regular spacing of the asymptotic formula. Both methods give similar average frequency deviations allocated to mode lifetimes of approximately 10 to 20 days.

We also performed simulations to estimate the likelihood of a second (“spurious”) peak appearing in Fourier space, given a mode with a lifetime of 10–20 days and *SigSpec* significances comparable to those observed in  $\epsilon$  Oph. The simulation assumed the time sample cadence of the MOST photometry and, separately, the time sample cadence of the RV data. We find that almost half of the frequencies will appear as “spurious” and apparently do not match the model, as we have found in Sect. 4.1 when considering all 59 photometric frequencies.

## 5. Discussion and conclusions

By demonstrating the mutual consistency between our best fit models and the observations we conclude that observable nonradial modes do exist in giants.

We have shown that the significant intrinsic frequencies present in the MOST photometry (Barban et al. 2007) and CORALIE + ELODIE RV measurements (De Ridder et al. 2006) of  $\epsilon$  Oph can be best matched to a model of radial and nonradial  $p$ -modes. The number of matched  $p$ -modes compared to unmatched modes as well as the scatter of the observed frequencies around the mode frequencies is consistent with mode lifetimes of 10–20 days.



**Fig. 6.** Calibration of mode lifetimes for the observed oscillation modes. As a result of numerical simulations of solar-type oscillations, solid lines indicate how much a detected frequency deviates on average from the input frequency as a function of the *SigSpec* significance for various mode lifetimes. The left axis gives the absolute deviation  $|\Delta\nu|$  for the  $\epsilon$  Oph observing window and to be independent from the data set length  $T$ , the right axis gives the absolute deviation normalized to  $T^{1/2}$ . The dotted lines correspond to the upper limit of the observational frequency uncertainty of a stable sinusoidal multi-periodic (horizontal line) and a mono-periodic signal (tilted line), respectively. Both are a function of  $T$  and are only valid for the left axis. Squares indicate the absolute deviations between frequencies determined from MOST and RV data for the same modes with an average value given by the large square symbol. Dots label the absolute deviation of all photometric mode frequencies from that expected from the neighboring modes with equal degree  $l$ , using linear interpolation. Average values are shown as large dots for two ranges of *SigSpec* significance (below and above 10).

Like Barban et al. (2007), we find in the MOST data a clear well-populated sequence of radial modes with a fundamental spacing of  $\sim 5.8 \mu\text{Hz}$  in the asymptotic regime and  $\sim 5.2 \mu\text{Hz}$  in the range where most of the frequencies were observed. But for the 21 most significant frequencies in the photometric data above  $20 \mu\text{Hz}$ , we are only able to fit 9 of the frequencies to radial  $p$ -modes. Furthermore, we cannot find any model in our grid of more than 30 000 models that matches all 7 radial mode frequencies found by Barban et al. (2007) via Lorentzian profile fitting. We can, though, match 18 of the 21 most significant frequencies in the photometric data if we consider nonradial modes.

The  $l = 0$  sequence is nearly fully populated and the  $l = 2$  sequence is also well populated, while the  $l = 1$  and 3 sequences are less densely populated. This is not so surprising for  $l = 3$  modes because their photometric and RV amplitudes in light integrated over the stellar disk are expected to be very small, even given the high precision of the data. But from the geometrical aspects of the spherical harmonics,  $l = 1$  modes should have larger amplitudes than  $l = 2$  modes for almost every orientation except nearly pulsational-equator-on. A possible explanation is suggested by Dziembowski et al. (2001). Their theoretical models show that  $l = 2$  nonradial modes are more frequently unstable than others, hence,  $l = 1$  modes are less likely to be observable. In general, the distribution of modes according to  $l$ -value for  $\epsilon$  Oph resembles what Kallinger et al. (2007a) found for the red giant HD 20884.

The intrinsic nature of the most significant observed frequencies is also supported by the good agreement between the oscillation-only constrained best-fit model and the independently derived effective temperature, luminosity, and radius. Our best fit model has an effective temperature of 4892 K and luminosity of  $60.1 L_{\odot}$  compared to, e.g., the De Ridder et al. (2006)



non-asteroseismically derived temperature  $4887 \pm 100$  K and luminosity  $59 \pm 5 L_{\odot}$ . Furthermore our best model fit has a radius of  $10.82 R_{\odot}$  that agrees with the radius  $10.4 \pm 0.45 R_{\odot}$  based on ESO VLTI angular diameter determination of Richichi et al. (2005) and the Hipparcos parallax. The mass and age of  $\epsilon$  Oph as constrained by the oscillations is  $2.02 M_{\odot}$  and  $0.77$  Gyr.

*Acknowledgements.* The Natural Sciences and Engineering Research Council of Canada supports the research of D.B.G., J.M.M., A.F.J.M., S.M.R., and A.F.J.M. is also supported by FQRNT (Québec), and R.K. is supported by the Canadian Space Agency. T.K., D.H. and W.W.W. are supported by the Austrian Research Promotion Agency (FFG), and the Austrian Science Fund (FWF P17580). Furthermore, it is a pleasure to thank C. Aerts and J. De Ridder (Universiteit Leuven) for providing us with the radial velocity data.

## References

- Allende, P. C., & Lambert, D. L. 1999, *A&A*, 352, 555  
 Alexander, D. R., & Ferguson, J. W. 1994, *ApJ*, 437, 879  
 Barban, C., Matthews, M. J., De Ridder, J., et al. 2007, *A&A*, 468, 1033  
 Breger, M., Stich, J., Garrido, R., Martin, B., et al. 1993, *A&A*, 271, 482  
 Chaplin, W. J., Elsworth, Y., Howe, R., et al. 1997, *MNRAS*, 287, 51  
 Cayrel de Strobel, G., Soubiran, C., & Ralite, N. 2001, *A&A*, 373, 159  
 Deeming, T. J. 1975, *Ap&SS*, 36, 137  
 De Ridder, J., Barban, C., Carrier, F., et al. 2006, *A&A*, 448, 689  
 Dziembowski, W. A., Gough, D. O., Houdek, G., & Sienkiewicz, R. 2001, *MNRAS*, 328, 601  
 Guenther, D. B. 1994, *ApJ*, 422, 400  
 Guenther, D. B., Demarque, P., Kim, Y. -C., & Pinsonneault, M. H. 1992, *ApJ*, 387, 372  
 Guenther, D. B., Demarque, P., Buzasi, D., et al. 2000, *ApJ*, 530, L45  
 Guenther, D. B., Kallinger, T., Reegen, P., et al. 2005, *ApJ*, 635, 547  
 Hekker, S., Aerts, C., De Ridder, J., & Carrier, F. 2006, *A&A*, 458, 931  
 Houdek, G., & Gough, D. O. 2002, *MNRAS*, 336, L65  
 Iglesias, C. A., & Rogers, F. J. 1996, *ApJ*, 464, 943  
 Kallinger, T., Guenther, D. B., Weiss, W. W., et al. 2007a, *ApJ*, submitted  
 Kallinger, T., Reegen, P., & Weiss, W. W. 2007b, *A&A*, submitted  
 Kjeldsen, H., & Bedding, T. R. 1995, *A&A*, 293, 87  
 Kjeldsen, H., Bedding, T. R., Butler, R. P., et al. 2005, *ApJ*, 635, 1281  
 Matthews, J. M., Kuschnig, R., Guenther, D. B., et al. 2004, *Nature*, 430, 51  
 Reegen, P. 2007, *A&A*, 467, 1353  
 Reegen, P., Kallinger, T., Frast, D., et al. 2006, *MNRAS*, 367, 1417  
 Richichi, A., Percheron, I., & Christoforova, M. 2005, *A&A*, 431, 773  
 Rogers, F. J., & Iglesias, C. A. 1994, *Science*, 263, 50  
 Stello, D., Kjeldsen, H., Bedding, T. R., & Buzasi, D. 2006, *A&A*, 448, 709  
 Walker, G., Matthews, J. M., Kuschnig, R., et al. 2003, *PASP*, 115, 1023  
 Yi, S. K., Kim, Y. C., & Demarque, P. 2003, *ApJS*, 144, 259