

ARTICLE

Open Access

# Nonreciprocal metasurface with space–time phase modulation

Xuexue Guo<sup>1</sup>, Yimin Ding<sup>1</sup>, Yao Duan<sup>1</sup> and Xingjie Ni<sup>1</sup> 

## Abstract

Creating materials with time-variant properties is critical for breaking reciprocity that imposes fundamental limitations on wave propagation. However, it is challenging to realize efficient and ultrafast temporal modulation in a photonic system. Here, leveraging both spatial and temporal phase manipulation offered by an ultrathin nonlinear metasurface, we experimentally demonstrated nonreciprocal light reflection at wavelengths around 860 nm. The metasurface, with travelling-wave modulation upon nonlinear Kerr building blocks, creates spatial phase gradient and multi-terahertz temporal phase wobbling, which leads to unidirectional photonic transitions in both the momentum and energy spaces. We observed completely asymmetric reflections in forward and backward light propagations over a large bandwidth around 5.77 THz within a sub-wavelength interaction length of 150 nm. Our approach highlights a potential means for creating miniaturized and integratable nonreciprocal optical components.

## Introduction

Reciprocity is a fundamental principle rooted in linear physical systems with time-reversal symmetry, requiring that the received–transmitted field ratios are the same when the source and detector are interchanged<sup>1</sup>. However, it is preferable to break reciprocity in many practical applications, such as lasers and full-duplex communication systems, so that back-scattering from defects or boundaries can be avoided<sup>2</sup>. Traditionally, nonreciprocity has been realized through magneto-optic materials that are too bulky and lossy to be integrated into modern photonic systems<sup>3</sup>. In addition, nonlinear materials<sup>4–6</sup> are employed to achieve nonreciprocity at the cost of a high intensity requirement, but they suffer from poor isolation and are reciprocal to noises<sup>7</sup>. To circumvent these limitations, an increasing number of studies have focused on developing materials with time-variant properties in which time-reversal symmetry is explicitly broken to achieve nonreciprocity<sup>1,8</sup>. To date, based on the strong electro-optic<sup>9,10</sup>, acousto-optic<sup>11–14</sup>, or optomechanical effects<sup>15,16</sup> of different materials, proof-of-concept temporal modulation

has been demonstrated at frequencies ranging from kilohertz to gigahertz, which are much lower than the optical frequency as a result of the slow carrier injection of electro-optic modulation and low-frequency acoustic or mechanical modes in acousto-optic or optomechanical modulation. In addition, these dynamic systems suffer from limited bandwidth either due to the group velocity mismatch among photonic modes or the intrinsic narrow linewidths of acoustic and mechanical modes. Moreover, they require long interaction lengths to observe the desired effect. Nonreciprocity with a sub-wavelength interaction length and an ultrafast modulation frequency over the THz bandwidth is technically challenging and has not been realized to date.

Here, we experimentally demonstrate a new approach that achieves nonreciprocity on an ultrathin metasurface with space–time phase modulation. A metasurface<sup>17</sup> is an optically thin nanostructured two-dimensional material that can manipulate light through its subwavelength-sized building blocks. Designed specifically to achieve a controlled optical response, metasurfaces have been used to create novel optical devices, including invisibility cloaks<sup>18</sup>, flat lenses<sup>19–21</sup>, and ultrathin holograms<sup>22,23</sup>, to enhance nonlinear generation<sup>24,25</sup>, and to explore interesting

Correspondence: Xingjie Ni (xingjie@psu.edu)

<sup>1</sup>Department of Electrical Engineering, The Pennsylvania State University, University Park, PA 16802, USA

© The Author(s) 2019



**Open Access** This article is licensed under a Creative Commons Attribution 4.0 International License, which permits use, sharing, adaptation, distribution and reproduction in any medium or format, as long as you give appropriate credit to the original author(s) and the source, provide a link to the Creative Commons license, and indicate if changes were made. The images or other third party material in this article are included in the article's Creative Commons license, unless indicated otherwise in a credit line to the material. If material is not included in the article's Creative Commons license and your intended use is not permitted by statutory regulation or exceeds the permitted use, you will need to obtain permission directly from the copyright holder. To view a copy of this license, visit <http://creativecommons.org/licenses/by/4.0/>.

physical effects<sup>26,27</sup>. While these concepts have opened up a new paradigm for manipulating light with an ultrathin layer, there are fundamental limitations that a spatially modulated metasurface alone cannot overcome. In particular, a time-varying response is required to violate reciprocity in a non-power and non-magnetic-field-dependent fashion. Metasurfaces with spatiotemporal modulation<sup>28</sup> in the index<sup>29,30</sup> or directly in their phase profile<sup>31</sup> have been theoretically proposed recently and experimentally demonstrated at radio frequencies<sup>32–36</sup>, offering an opportunity to overcome this limitation. We experimentally demonstrate this new dynamic metasurface with an additional fast temporal phase modulation. Our space–time modulated metasurface (Fig. 1a) consists of a set of specifically designed nonlinear nanoantennas that not only provide abrupt static phase shifts for the incident light but also are capable of changing the phase shifts dynamically in the presence of an external travelling-wave modulation. To introduce the dynamic phase change to the metasurface, we incorporate a heterodyne interference of two coherent waves to generate multi-terahertz ( $\sim 2.8$  THz) time-varying modulation<sup>37</sup>. This breaks the time-reversal symmetry of the metasurface. Our experiments demonstrate nonreciprocal light propagation in free space at around  $\lambda = 860$  nm across an ultrathin (150 nm) layer. Furthermore, we achieve completely asymmetric photonic transitions over a wavelength range of  $\sim 15$  nm (corresponding to a bandwidth of 5.77 THz). We believe that the space–time modulated metasurface demonstrates a viable way to obtain ultrafast time-variant material responses and potentially motivates a new direction in constructing miniaturized and integratable magnetic-free nonreciprocal optical components.

## Results

A conventional spatially modulated metasurface with a phase gradient (e.g.,  $\phi = k_s x$ ) on the surface is capable of imparting additional linear or orbital angular momentum to incident light, which breaks the inversion symmetry and enables full control over the photonic transitions in the momentum space. However, this process is linear and time-reversal symmetric and is inherently reciprocal (Fig. 1b, c). In contrast, our space–time modulated metasurface has a phase modulation of the form

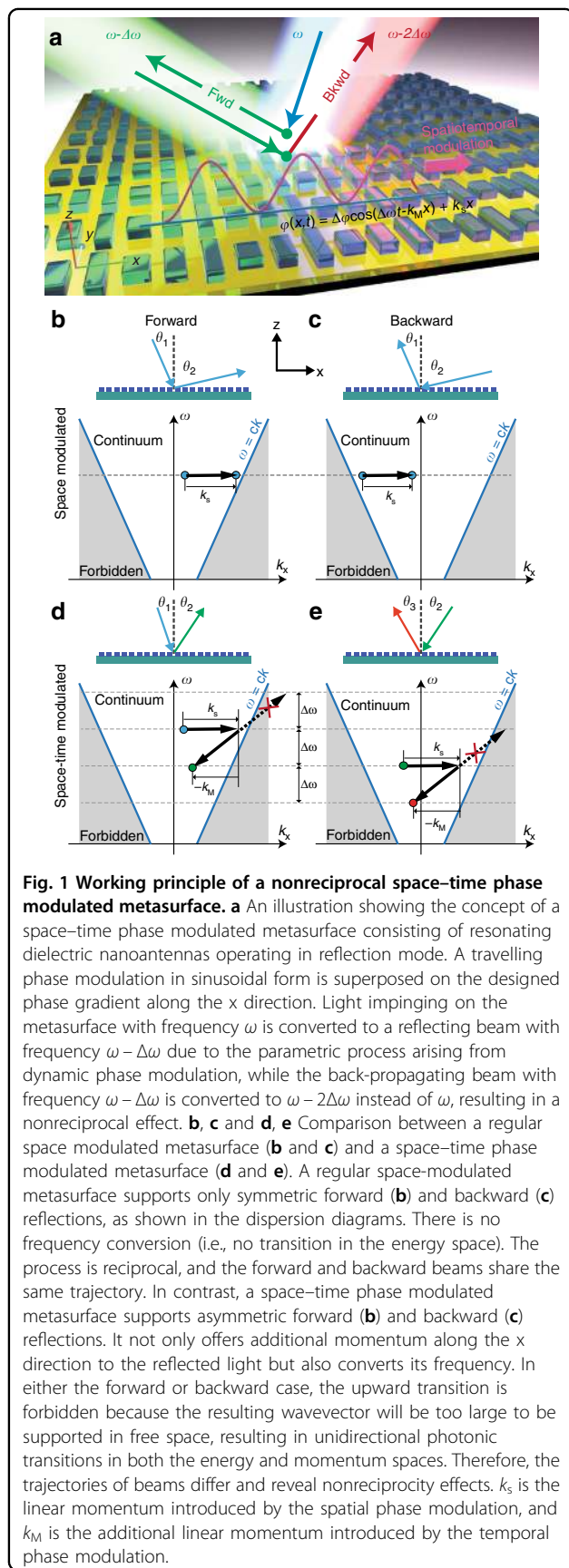
$$\phi(x, t) = \Delta\phi \cos(\Delta\omega t - k_M x) + k_s x \quad (1)$$

where  $\Delta\phi$  is the temporal modulation depth,  $\Delta\omega$  the modulation frequency,  $k_M$  is the modulation spatial frequency, and  $k_s$  is the static phase gradient introduced by the spatial distribution of the nanoantennas. This modulation acting upon the incident light field gives an additional space–time varying phase factor, expressed as  $\exp[i\phi(x, t)]$ . Applying the Jacobi–Anger expansion, this phase

term can be rewritten as a series of Bessel functions of the first kind, which enables the reflected field to be expressed as

$$\begin{aligned} \vec{E}_r(\vec{r}, t) = & \zeta J_0(\Delta\phi) \vec{E}_i e^{i(\vec{k}_i \vec{r} + k_s x - \omega_i t)} + i\zeta J_1(\Delta\phi) \vec{E}_i \\ & \times \left\{ e^{i[(\vec{k}_i \vec{r} + k_M x + k_s x) - (\omega_i + \Delta\omega)t]} + e^{i[(\vec{k}_i \vec{r} - k_M x + k_s x) - (\omega_i - \Delta\omega)t]} \right\} \end{aligned} \quad (2)$$

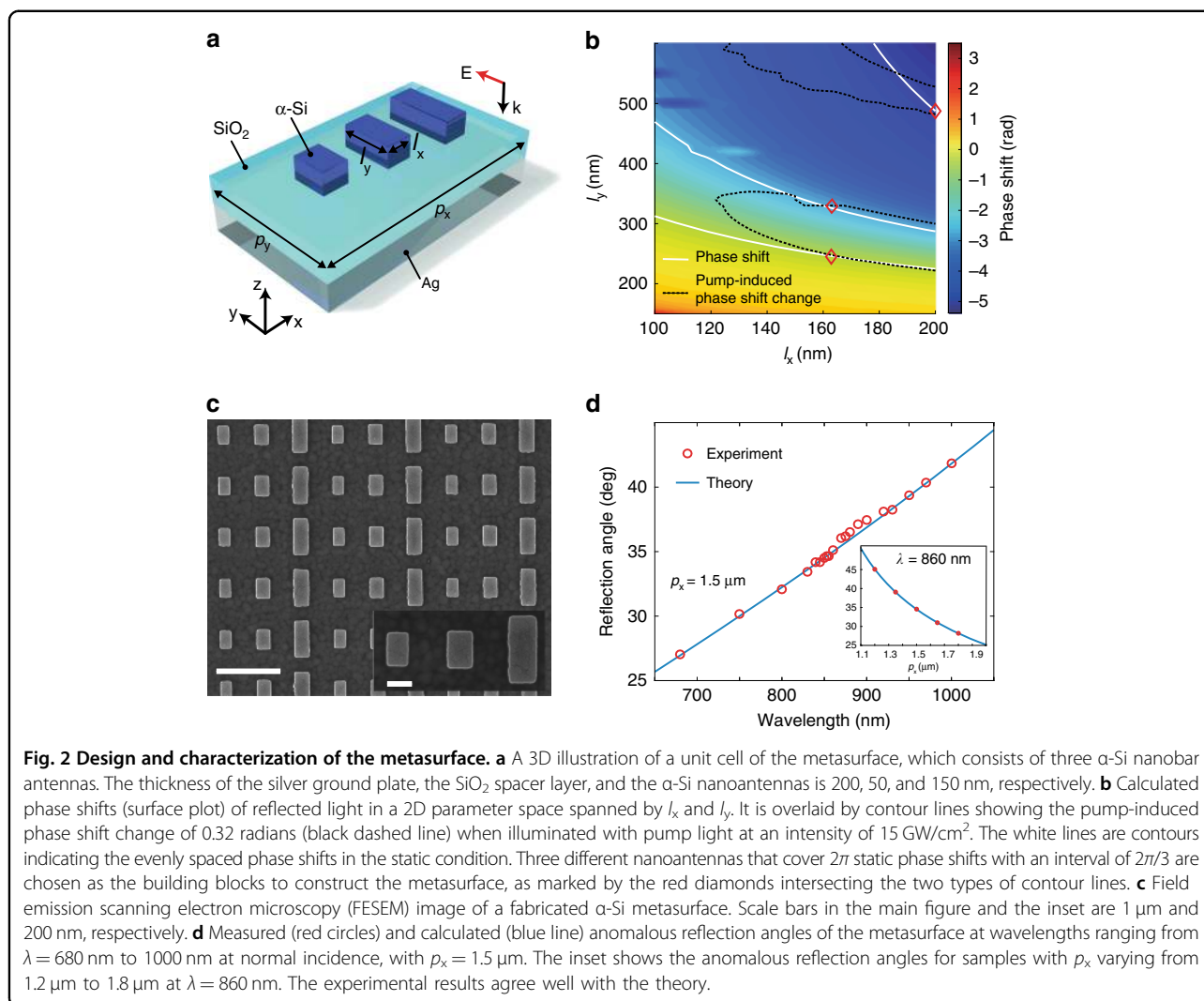
where  $\omega_i$  and  $\vec{k}_i$  are the frequency and free-space wavevector of the incident wave,  $\zeta = \sqrt{\eta}$ , and  $\eta$  is the static diffraction efficiency of the metasurface. Note that only the zeroth- and first-order Bessel functions are retained since the phase modulation depth  $\Delta\phi$  is small, which leads to negligible contributions from higher-order functions. It is evident from the second term on the right-hand side of Eq. (2) that a sinusoidal phase component will be decomposed into two photonic transitions (i.e., sidebands) in the energy space with resulting frequencies  $\omega_r = \omega_i \pm \Delta\omega$ , where ‘+’ and ‘−’ denote an upward and downward transition, respectively. The dynamic phase modulation breaks reciprocity and leads to time-reversal-asymmetric photonic transitions<sup>38</sup>. Different from the recently reported phonon-assisted nonreciprocal waveguides<sup>13,14</sup> based on indirect interband photonic transitions<sup>38</sup>, our system is naturally phase matched for all free space modes and does not require complex design of the acoustic and photonic modes to fulfil stringent momentum/energy matching conditions. Furthermore, our space–time metasurfaces exhibit agile control over both momentum and energy conversions. To achieve unidirectional frequency conversion, the metasurface can be designed to either fulfil  $k_{ix} + k_s + k_M > k_i$  ( $k_{ix}$  is the projection of incident wavevector  $k_i$  along the x direction),  $2k_M > k_{ix}$ , and  $-k_i < k_{ix} + k_s - k_M < k_i$  to ensure unidirectional down-conversions (Fig. 1d, e) or fulfil  $k_{ix} - k_s - k_M < -k_{ix}$ ,  $2k_M > k_i$  and  $-k_i < k_{ix} - k_s + k_M < k_i$  to ensure unidirectional up-conversions. As an example, we depict the case of unidirectional down-conversions in Fig. 1d, e. The optical paths of forward and backward propagation are shown schematically in the top panel, and the photonic states represented by different colour dots are shown in the bottom dispersion diagrams. The photonic transition from the blue dot state to green occurs in the forward propagation, whereas green to red occurs in the backward propagation. With a space–time modulated metasurface, the frequency transitions arise from the parametric processes caused by the temporal modulation, while the momentum transitions arise from both temporal and spatial modulation. As a result, the allowed transitions (i.e., downward transitions) can be selected by pushing a given output state (i.e., upward transitions) to the forbidden (i.e., non-propagative) region with a unidirectional momentum transfer,  $k_s$ , provided by the spatial phase modulation of the metasurface. Note that the reflection angle of the backward propagating light is



not necessarily the same as that of the forward propagating light even though they have the same  $x$  component of the wavevector ( $k_x$ ), because the frequency shift also changes the length of the wavevector. The paths of the incident and returning beam overlap only in the special case of normal incidence (i.e.,  $k_{ix} = 0$ ), which is particularly useful for free-space optical isolators. For completeness, we also presented bi-directional photonic transitions on the space-time metasurfaces, which also exhibit nonreciprocity (Fig. S2). In all cases, the spatio-temporal phase modulation leads to completely asymmetric reflections in the forward and backward directions. The back reflected wave does not return to the same state as the forward incident wave, and therefore, the process is nonreciprocal.

We used a set of nanobar antennas (Fig. 2a) made of amorphous silicon ( $\alpha$ -Si), which has a large Kerr index and low optical loss, as the building blocks of the metasurface. With the adoption of a 50-nm-thick  $\text{SiO}_2$  spacer layer and a silver back-reflector plate to create a gap resonance, the nanoantenna can induce a large phase shift (over  $2\pi$ ) upon arrival of the incident light. The permittivity of the  $\alpha$ -Si nanoantennas can be modulated by an intense optical field due to the nonlinear Kerr effect. This is an ultrafast process (Fig. S6) and is the key to obtaining the THz temporal phase modulation. Subsequently, the light-induced permittivity change of the nanoantennas will detune their resonances and therefore lead to a change in the phase shift upon arrival of the incident light at the operational wavelength. The static phase shifts ( $\phi$ ) and the changes in the phase shifts ( $\Delta\phi$ ) induced by the pump light ( $\lambda_{\text{pump}} = 800 \text{ nm}$ ,  $I_{\text{pump}} = 15 \text{ GW/cm}^2$ ) are simulated separately and mapped out for the selection of designs in a two-dimensional parameter space spanned by nanoantenna dimensions  $l_x$  and  $l_y$ . Three different nanoantennas with static phase shifts covering a  $2\pi$  range while preserving a uniform phase shift change under pump light illumination were chosen to build a supercell of the metasurface. The parameters for the nanoantenna designs used in our experiment are indicated as red diamonds in Fig. 2b. The spatial distribution of these nanoantennas creates a static phase gradient  $k_s = 2\pi/p_x$ , where  $p_x$  is the supercell period in the  $x$  direction. Note that the nanoantennas transform the small permittivity modulation from the Kerr effect into relatively large dynamic phase modulation, leading to an efficient nonreciprocal photonic transition at moderate pump power. Moreover, the local field is enhanced by those resonant elements. As a result, the designed nanoantennas significantly boost the temporal phase modulation depth.

We fabricated the metasurface as shown in Fig. 2c and characterized its linear performance with a  $k$ -space imaging microscope (Fig. S5a). Our metasurface attains an overall diffraction efficiency of 84% *experimentally* around



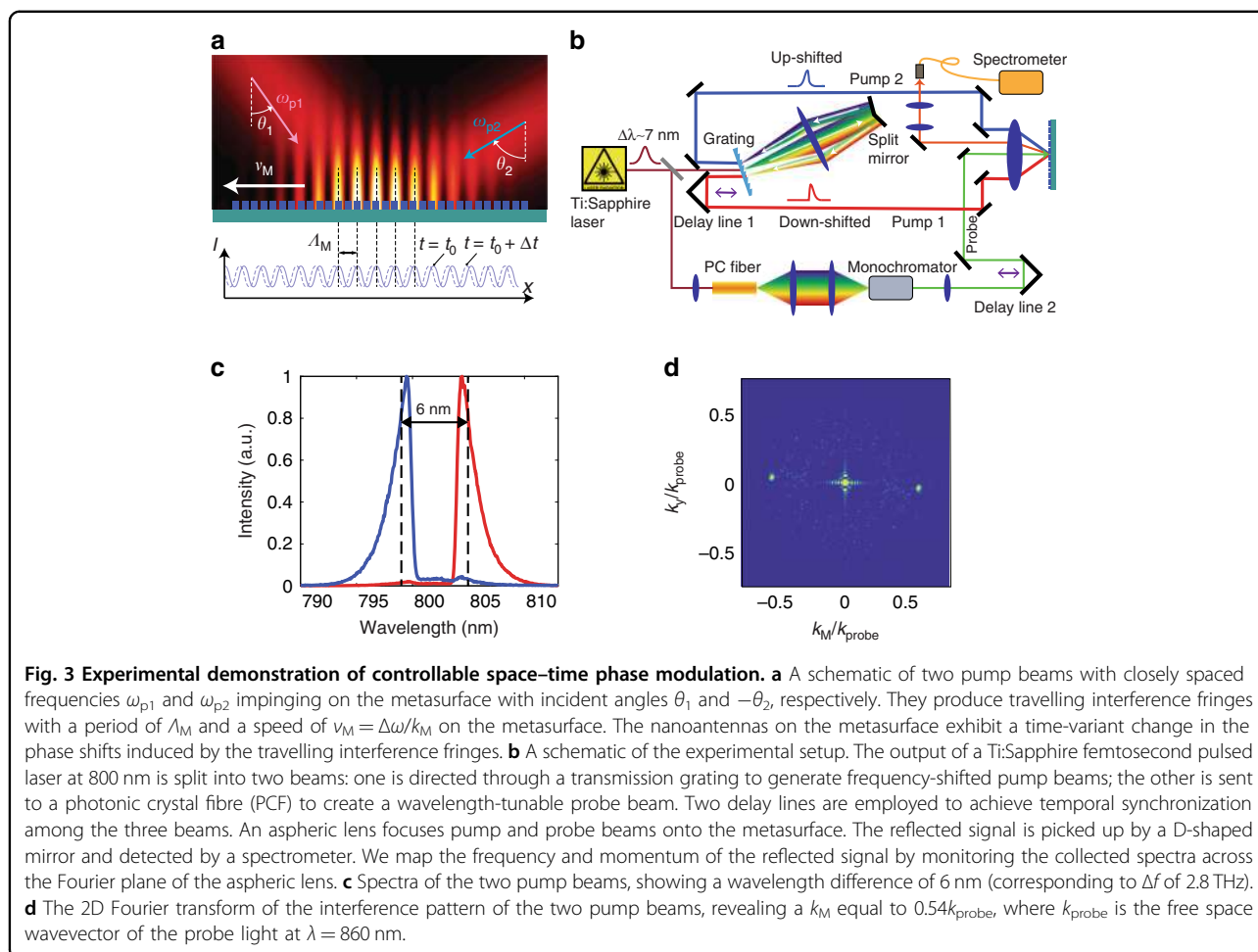
**Fig. 2 Design and characterization of the metasurface.** **a** A 3D illustration of a unit cell of the metasurface, which consists of three  $\alpha$ -Si nanobar antennas. The thickness of the silver ground plate, the  $\text{SiO}_2$  spacer layer, and the  $\alpha$ -Si nanoantennas is 200, 50, and 150 nm, respectively. **b** Calculated phase shifts (surface plot) of reflected light in a 2D parameter space spanned by  $l_x$  and  $l_y$ . It is overlaid by contour lines showing the pump-induced phase shift change of 0.32 radians (black dashed line) when illuminated with pump light at an intensity of  $15 \text{ GW/cm}^2$ . The white lines are contours indicating the evenly spaced phase shifts in the static condition. Three different nanoantennas that cover  $2\pi$  static phase shifts with an interval of  $2\pi/3$  are chosen as the building blocks to construct the metasurface, as marked by the red diamonds intersecting the two types of contour lines. **c** Field emission scanning electron microscopy (FESEM) image of a fabricated  $\alpha$ -Si metasurface. Scale bars in the main figure and the inset are  $1 \mu\text{m}$  and  $200 \text{ nm}$ , respectively. **d** Measured (red circles) and calculated (blue line) anomalous reflection angles of the metasurface at wavelengths ranging from  $\lambda = 680 \text{ nm}$  to  $1000 \text{ nm}$  at normal incidence, with  $p_x = 1.5 \mu\text{m}$ . The inset shows the anomalous reflection angles for samples with  $p_x$  varying from  $1.2 \mu\text{m}$  to  $1.8 \mu\text{m}$  at  $\lambda = 860 \text{ nm}$ . The experimental results agree well with the theory.

the designed operational wavelength  $\lambda = 860 \text{ nm}$  (Fig. S5c). The measured reflection angles agree with the theory at different wavelengths and different supercell periods (Fig. 2d).

Next, we developed a fast temporal modulation technique that uses a heterodyne interference between two laser lines that are closely spaced in frequency (Fig. 3)<sup>39</sup>. In contrast to a homodyne interference setup, the heterodyne interference pattern results in a travelling-wave intensity distribution given by  $I(x,t) = I_0[1 + \cos(\Delta\omega t - k_M x)]$ , where  $k_M = 2\pi/\Lambda_M$  ( $\Lambda_M$  is the period of the interference fringes) and  $\Delta\omega = \omega_{p2} - \omega_{p1}$  is the frequency difference between the two pump laser lines. Projecting this interference pattern on the designed nonlinear metasurface imprints a travelling-wave phase profile,  $\Delta\phi \cos(\Delta\omega t - k_M x)$ , onto the reflected wave. Together with the spatial phase modulation  $\phi = k_s x$  created by the distribution of nanoantennas on the metasurface, we obtained a space–time modulation of the form described

by Eq. (1). Therefore, the incident wave acquires the energy and momentum shifts when reflected by the metasurface. This process shares some similarities with conventional four-wave mixing in a homogeneous nonlinear material<sup>40</sup>. However, there are subtle but essential differences between them. In our case, we used the meta-atoms to tailor locally both the linear and nonlinear responses—collectively, the metasurface exhibits large temporal phase wobbling under a driving field in addition to a static phase shift, which cannot be achieved using a natural material.

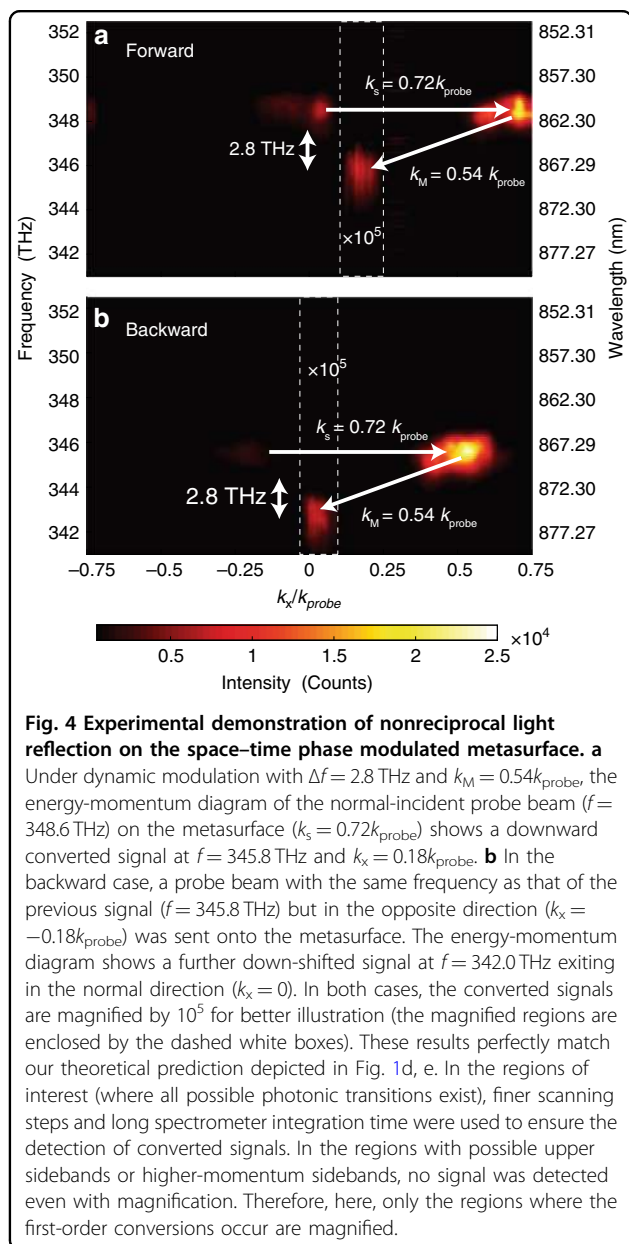
The experimental setup for creating the temporal modulation is illustrated in Fig. 3b and described in the Methods section. In our experiment, the centre wavelength difference was  $\sim 6 \text{ nm}$ , and the frequency difference was  $\sim 2.8 \text{ THz}$  (Fig. 3c). In addition,  $k_M$  was adjusted by changing the angle between the two pump beams impinging onto the metasurfaces. Fourier transform analysis of the interference pattern shows a  $k_M$



equal to  $0.54k_{probe}$  (Fig. 3d), where  $k_{probe}$  is the length of the free-space wavevector of the probe beam.

To demonstrate the nonreciprocal light propagation, the metasurface with  $k_s = 0.72k_{probe}$  was imprinted by the interference pattern at a peak pump intensity of  $\sim 1$  GW/cm<sup>2</sup>, which generated a dynamic phase modulation with  $\Delta f = 2.8$  THz and  $k_M = 0.54k_{probe}$ . For the forward propagation experiment, the 860 nm probe light hit the metasurface at normal incidence and resulted in a reflected wave with a shift in the energy-momentum space. This shift was captured by collecting the reflected spectra with a fibre aperture scanning spatially on the Fourier plane (along the  $k_x$  direction) of the focusing lens before the metasurface. Figure 4a displays a static diffraction at 348.6 THz and  $0.72k_{probe}$  determined by  $k_s$  and a down-shifted signal at 345.8 THz and  $0.18k_{probe}$  produced by the spatiotemporal-modulation-induced  $\Delta f$ ,  $k_M$ , and  $k_s$ . The zeroth-order reflection can also be detected, as the diffraction efficiency dropped due to edge effects and slight polarization misalignment. The aspheric lens used to focus the pump and probe beams and to collect converted signals has an effective NA of 0.76;  $k_x/k_{probe}$  is

therefore bounded by the limited collection angle. On the other hand, the accumulated  $k_x/k_{probe} \sim 1.26$  of the upward transition is greater than unity. Therefore, it is evanescent and cannot carry energy away from the metasurface. For the backward propagation experiment, we sent a probe beam ( $f = 345.8$  THz and  $k_x = -0.18k_{probe}$ ) with the same frequency as that of the previous down-converted signal but in the opposite direction onto the metasurface. We observed another downward transition at 343.0 THz exit along the normal direction (Fig. 4b). Similarly, the upward transition is nonexistent since its accumulative  $k_x$  is greater than  $k_{probe}$ . Therefore, the backward propagating light cannot return to the initial state. We also performed a fine scan over the  $\omega - k_x$  regions where high-order conversions may exist. However, no converted signals were observed since these processes have much lower efficiency. In addition, we performed a control experiment on amorphous silicon film (thickness  $\sim 150$  nm) using a similar pump intensity, but no converted signal was detected. We experimentally realized nonreciprocal light reflections on the space-time phase modulated metasurface. The experimental results



are also confirmed by our finite-difference time domain (FDTD) simulations (Fig. S3). In addition, we investigated the scattering matrix of our space–time phase modulated metasurface. It is asymmetric and hence is direct evidence that our system is nonreciprocal (see S4 of the Supplementary information). To experimentally show the nonreciprocal operation wavelength range of our metasurface, we conducted additional measurements on the nonreciprocal processes by mapping out the dispersion diagrams (Fig. S11) with a narrowband probe, of which the centre wavelength ranges from 854 to 914 nm. By extracting the conversion efficiencies at the tested wavelengths (Fig. S12), a 3-dB bandwidth (full-width at half-maximum, FWHM) of  $\sim 5.77$  THz was demonstrated (see

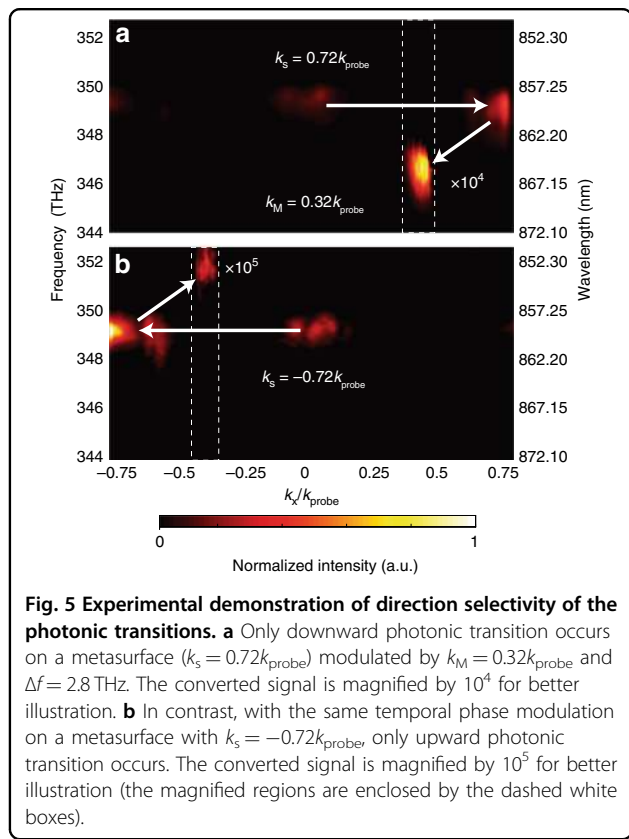
S6 of the Supplementary information). It is worth noting that in contrast to the waveguide-based systems, the bandwidth of our space–time metasurface is not constrained by the phase-matching conditions. Our experimentally obtained bandwidth is at least one order of magnitude greater than the largest ones reported (a few hundred gigahertz)<sup>9,14</sup> on time-dependent nonreciprocal systems.

Using our space–time metasurface, we are able to independently control the static phase gradient  $k_s$ , the dynamic spatial frequency  $k_M$ , and the temporal modulation frequency  $\Delta\omega$ , which provides unprecedented flexibility in manipulating the photonic transitions. As shown in Fig. 5, by changing  $k_s$ , we can selectively enable downward or upward transitions. Additionally, we demonstrated nonreciprocal reflections with arbitrary transverse momenta by tuning both  $k_s$  and  $k_M$  along the metasurfaces (Fig. S10). Moreover, we showed that the modulation frequency can be changed by adjusting the frequency splitting between the two pumps (Fig. S9a). It is worth noting that this level of controllability has not been achieved in previous time-variant nonreciprocal systems<sup>9–16,41</sup>.

## Discussion

We experimentally demonstrated nonreciprocal light reflection based on the space–time modulated nonlinear metasurface. The heterodyne interference created by frequency-shifted pump beams provides robust and controllable spatiotemporal modulation, of which  $\Delta\omega$  and  $k_M$  can be readily tuned as desired. It is worth noting that more complex two-dimensional spatiotemporal modulation can be constructed from the heterodyne interference of three or more pump beams. The spatiotemporal phase modulation greatly expands the functions of conventional static phase gradient metasurfaces, providing an additional degree of freedom for manipulating the temporal properties of light and achieving nonreciprocal light propagation. Particularly, we achieved in our experiment a 2.8-THz modulation frequency, a huge step towards optical frequencies, and an  $\sim 5.77$ -THz 3-dB bandwidth, which is orders of magnitude greater than that of current time-variant nonreciprocal systems to the best of our knowledge.

Although travelling-wave-modulation-induced nonreciprocity has already been explored in theory and demonstrated in waveguide systems, such as optical fibre and silicon waveguides, experimental realizations in free space optical systems remain scarce due to the lack of fast, efficient dynamic modulation techniques. Previous demonstrations rely on long interaction lengths (centimetre to metre scale) to amplify the weak dynamic modulation, which makes it difficult to realize in a free space optical system. However, through the use of nonlinear optical metasurfaces to greatly enhance the dynamic modulation strength, optical nonreciprocity is



achieved at a subwavelength-scale interaction length on metasurfaces, making this approach potentially compatible with integrated nanophotonic and quantum optical systems. Moreover, by using dynamic phase modulation of a metasurface working in free space, our operation bandwidth is not limited by the group velocity mismatch among guided modes<sup>10,14</sup>. Instead, it is the resonant linewidth of the metasurface that determines the non-reciprocal bandwidth, which is approximately in the range of tens of terahertz.

The conversion efficiency, which is defined as  $P_{signal}/P_{probe}$  and is proportional to  $J_1(\Delta\phi)^2$ , is on the order of  $2.5 \times 10^{-4}$  in our experiments due to limited experimental conditions. The temporal mismatch (Fig. S6 a) between the pump ( $\sim 400$  fs) and probe ( $\sim 2$  ps) beams limits the effective interaction time between the probe and the dynamic modulation. Due to the poor spatial profile of the probe beam and lens aberration, only  $\sim 20\%$  of the probe beam overlaps with the pump beams, resulting in a reduced effective interaction area. In addition, due to the high repetition rate of our laser system (80 MHz), we need to maintain a low pump intensity to avoid significant thermal effects (Fig. S14).

The conversion efficiency of our space–time metasurface can be improved in the following aspects. We find

that the conversion efficiency increases super-linearly with the pump intensity in our system (Fig. S14). Using pump light with a low repetition rate and optimized spatiotemporal overlap, we will be able to achieve a higher conversion efficiency. In addition, highly nonlinear materials, e.g., indium tin oxide (ITO), which has large third-order nonlinearity in its epsilon-near-zero region<sup>42,43</sup>, can be used to greatly increase the dynamic phase modulation depth. Furthermore, an optimized nanoantenna design, e.g., a design involving doubly resonant nanoantennas, will improve the temporal phase modulation depth and relax the pump power requirement. In addition, by stacking a pair of space–time phase modulated metasurfaces to form a cavity or integrating metasurface with resonator structures, i.e., micro-ring resonators, the effective interaction length/time will be tremendously increased without sacrificing the device footprint, leading to enhanced nonreciprocal mode conversion efficiency. (A detailed quantitative analysis is included in S7 of the Supplementary information.)

In conclusion, we have demonstrated nonreciprocal light reflection on an ultrafast space–time phase modulated metasurface. This approach exhibits excellent flexibility in controlling optical mode conversions. Moreover, the dynamic system features broken time reversal symmetry compatible with topological insulators, which inspires a new route for isolation using topologically protected edge states<sup>44</sup> that are immune to disorders. We believe that it will provide a new platform for exploring interesting physics in time-dependent material properties and will open a new paradigm in the development of scalable and integratable non-reciprocal devices.

## Materials and methods

### Sample fabrication

A 200-nm layer of silver was deposited onto a silicon substrate with a 5-nm Ge adhesion layer by electron-beam (e-beam) physical vapour deposition (SEMICORE E-Gun Thermal Evaporator). A 50-nm SiO<sub>2</sub> dielectric spacer layer and 150-nm amorphous silicon layer were then grown by plasma enhanced chemical vapour deposition (PECVD). The metasurface nanoantennas were created using a sequential process of e-beam lithography (EBL), lift-off of a chromium mask, and inductively coupled plasma-reactive ion etching (ICP-RIE). In the EBL process, we employed a 1:1 diluted ZEP 520A e-beam resist to achieve high resolution. The total pattern size was  $200 \times 200 \mu\text{m}^2$ , written using a Vistec 5200 100 kV e-beam writer. A chlorine-based plasma RIE recipe involving Cl<sub>2</sub> and Ar gas was used to etch amorphous Si, creating the nanoantennas. The sample was finally immersed in a chrome etchant to remove the chrome mask.

### Simulation method

We developed a two-step full-wave model in a commercial finite element method solver (COMSOL Multiphysics) to obtain the nonlinear Kerr-effect-induced phase shift change ( $\Delta\phi$ ). The first step iteratively calculates the pump-beam-modified effective permittivity of the structure. The second step simulates a weak probe beam incident onto the structure with the calculated effective permittivity in the first step. By varying the geometrical parameters of the nanoantennas, we obtained the corresponding phase shift changes.

We also performed time-domain simulations using the FDTD to study the spatiotemporal-phase-modulation-induced nonreciprocal photonic transitions. We updated the fields in each time step, taking into account the temporal changes in permittivity. By varying the spatiotemporal modulation parameters  $\Delta\phi$ ,  $k_s$ ,  $k_m$  and  $\Delta\omega$ , we simulated different conditions corresponding to the experimental demonstrations.

Please refer to section S1 of the Supplementary information for more detailed information on the simulation method.

### Nonreciprocal reflection experiment

To perform measurements of nonreciprocal reflection, the experimental setup shown in Fig. 3b was used. To create two pump beams with a frequency separation for the travelling-wave modulation, the output of a Ti:Sapphire pulsed laser (140-fs pulse width, 80-MHz repetition rate) at  $\lambda = 800$  nm was dispersed by a transmission grating and then spatially separated by a customized split mirror with a variable-size block attached in the centre to tune the frequency separation. The spatially separated beams were then reflected back through the grating and recombined into two pump beams with shifted central frequencies. By adjusting delay line 1, the temporal delay between the two pump beams can be tuned. To create the probe beam, the other small portion of the Ti:Sapphire pulsed laser radiation was sent to a nonlinear photonic crystal fibre (PCF) to generate a supercontinuum. Probe light with a 860-nm wavelength was selected using a monochromator. By adjusting delay line 2, the probe can be synchronized with the pumps. An aspheric lens with an effective NA of 0.76 focused the three beams onto the metasurface, which was mounted on a three-dimensional (3D) translation stage. Due to aberration of the aspheric lens, the focal spot of the pump beams was an ellipse with major and minor axis lengths of 50  $\mu\text{m}$  and 45  $\mu\text{m}$ , respectively. The reflected signal was directed to a fibre coupler by a D-shaped pickup mirror, of which the position was adjusted by a linear translation stage to collect the  $k$ -space information of the output signal.

### Acknowledgements

The work is partially supported from the Gordon and Betty Moore Foundation and the Penn State MRSEC, the Center for Nanoscale Science, under award

number NSF DMR-1420620. The authors gratefully acknowledge Zhiwen Liu for fruitful discussions.

### Author contributions

X.N. and X.G. conceived the project, designed the simulations and experiments. X.G. performed the numerical simulations, fabricated the samples, and conducted the measurements. Y. Ding helped with the  $k$ -space imaging and performed the ray-tracing simulations. Y. Duan calculated the metasurface diffraction efficiency. X.N. and X.G. analysed the data and wrote the manuscript. All authors contributed to the discussion of the results. X.N. supervised the project.

### Conflict of interest

The authors declare that they have no conflict of interest.

**Supplementary information** is available for this paper at <https://doi.org/10.1038/s41377-019-0225-z>.

Received: 24 July 2019 Revised: 31 October 2019 Accepted: 18 November 2019

Published online: 18 December 2019

### References

- Caloz, C. et al. Electromagnetic nonreciprocity. *Phys. Rev. Appl.* **10**, 047001 (2018).
- Bharadia, D., McMillin, E. & Katti, S. Full duplex radios. *ACM Sigcomm Comput. Commun. Rev.* **43**, 375–386 (2013).
- Bi, L. et al. On-chip optical isolation in monolithically integrated non-reciprocal optical resonators. *Nat. Photonics* **5**, 758–762 (2011).
- Fan, L. et al. An all-silicon passive optical diode. *Science* **335**, 447–450 (2012).
- Bender, N. et al. Observation of asymmetric transport in structures with active nonlinearities. *Phys. Rev. Lett.* **110**, 234101 (2013).
- Chang, L. et al. Parity-time symmetry and variable optical isolation in active-passive-coupled microresonators. *Nat. Photonics* **8**, 524–529 (2014).
- Shi, Y., Yu, Z. F. & Fan, S. H. Limitations of nonlinear optical isolators due to dynamic reciprocity. *Nat. Photonics* **9**, 388–392 (2015).
- Sounas, D. L. & Alù, A. Non-reciprocal photonics based on time modulation. *Nat. Photonics* **11**, 774–783 (2017).
- Lira, H. et al. Electrically driven nonreciprocity induced by interband photonic transition on a silicon chip. *Phys. Rev. Lett.* **109**, 033901 (2012).
- Correas-Serrano, D. et al. Nonreciprocal graphene devices and antennas based on spatiotemporal modulation. *IEEE Antennas Wirel. Propag. Lett.* **15**, 1529–1532 (2016).
- Kang, M. S., Butsch, A. & Russell, P. S. J. Reconfigurable light-driven opto-acoustic isolators in photonic crystal fibre. *Nat. Photonics* **5**, 549–553 (2011).
- Kim, J. H. et al. Non-reciprocal Brillouin scattering induced transparency. *Nat. Phys.* **11**, 275–280 (2015).
- Sohn, D. B., Kim, S. & Bahl, G. Time-reversal symmetry breaking with acoustic pumping of nanophotonic circuits. *Nat. Photonics* **12**, 91–97 (2018).
- Kittlaus, E. A. et al. Non-reciprocal interband Brillouin modulation. *Nat. Photonics* **12**, 613–619 (2018).
- Shen, Z. et al. Experimental realization of optomechanically induced non-reciprocity. *Nat. Photonics* **10**, 657–661 (2016).
- Ruesink, F. et al. Nonreciprocity and magnetic-free isolation based on optomechanical interactions. *Nat. Commun.* **7**, 13662 (2016).
- Yu, N. F. & Capasso, F. Flat optics with designer metasurfaces. *Nat. Mater.* **13**, 139–150 (2014).
- Ni, X. J. et al. An ultrathin invisibility skin cloak for visible light. *Science* **349**, 1310–1314 (2015).
- Aieta, F. et al. Applied optics. Multiwavelength achromatic metasurfaces by dispersive phase compensation. *Science* **347**, 1342–1345 (2015).
- Chen, W. T. et al. A broadband achromatic metalens for focusing and imaging in the visible. *Nat. Nanotechnol.* **13**, 220–226 (2018).
- Wang, S. M. et al. A broadband achromatic metalens in the visible. *Nat. Nanotechnol.* **13**, 227–232 (2018).
- Ni, X. J., Kildishev, A. V. & Shaleev, V. M. Metasurface holograms for visible light. *Nat. Commun.* **4**, 2807 (2013).



23. Zheng, G. X. et al. Metasurface holograms reaching 80% efficiency. *Nat. Nanotechnol.* **10**, 308–312 (2015).
24. Lee, J. et al. Giant nonlinear response from plasmonic metasurfaces coupled to intersubband transitions. *Nature* **511**, 65–69 (2014).
25. Li, G. X. et al. Continuous control of the nonlinearity phase for harmonic generations. *Nat. Mater.* **14**, 607–612 (2015).
26. Shaltout, A. et al. Optically active metasurface with non-chiral plasmonic nanoantennas. *Nano Lett.* **14**, 4426–4431 (2014).
27. Yin, X. B. et al. Photonic spin hall effect at metasurfaces. *Science* **339**, 1405–1407 (2013).
28. Shaltout, A. M., Shalaev, V. M. & Brongersma, M. L. Spatiotemporal light control with active metasurfaces. *Science* **364**, eaat3100 (2019).
29. Hadad, Y., Sounas, D. L. & Alu, A. Space-time gradient metasurfaces. *Phys. Rev. B* **92**, 100304(R) (2015).
30. Shi, Y. & Fan, S. H. Dynamic non-reciprocal meta-surfaces with arbitrary phase reconfigurability based on photonic transition in meta-atoms. *Appl. Phys. Lett.* **108**, 021110 (2016).
31. Shaltout, A., Kildishev, A. & Shalaev, V. Time-varying metasurfaces and Lorentz non-reciprocity. *Optical Mater. Express* **5**, 2459–2467 (2015).
32. Zhang, L. et al. Space-time-coding digital metasurfaces. *Nat. Commun.* **9**, 4334 (2018).
33. Dai, J. Y. et al. Independent control of harmonic amplitudes and phases via a time-domain digital coding metasurface. *Light Sci. Appl.* **7**, 90 (2018).
34. Liu, M. K. et al. Huygens' metadevices for parametric waves. *Phys. Rev. X* **8**, 031077 (2018).
35. Zhang, L. et al. Breaking reciprocity with space-time-coding digital metasurfaces. *Adv. Mater.* **31**, 1904069 (2019).
36. Zang, J. W. et al. Nonreciprocal wavefront engineering with time-modulated gradient metasurfaces. *Phys. Rev. Appl.* **11**, 054054 (2019).
37. Eichler, H. J., Günter, P. & Pohl, D. W. *Laser-Induced Dynamic Gratings* (Springer, Berlin, Heidelberg, 2013).
38. Yu, Z. F. & Fan, S. H. Complete optical isolation created by indirect interband photonic transitions. *Nat. Photonics* **3**, 91–94 (2009).
39. Odoulov, S. et al. Interference and holography with femtosecond laser pulses of different colours. *Nat. Commun.* **6**, 5866 (2015).
40. Shen, Y. Basic considerations of four-wave mixing and dynamic gratings. *IEEE J. Quantum Electron.* **22**, 1196–1203 (1986).
41. Fang, K. J. et al. Generalized non-reciprocity in an optomechanical circuit via synthetic magnetism and reservoir engineering. *Nat. Phys.* **13**, 465–471 (2017).
42. Alam, M. Z., De Leon, I. & Boyd, R. W. Large optical nonlinearity of indium tin oxide in its epsilon-near-zero region. *Science* **352**, 795–797 (2016).
43. Alam, M. Z. et al. Large optical nonlinearity of nanoantennas coupled to an epsilon-near-zero material. *Nat. Photonics* **12**, 79–83 (2018).
44. Hasan, M. Z. & Kane, C. L. *Colloquium: topological insulators*. *Rev. Mod. Phys.* **82**, 3045–3067 (2010).