



# Normative Values for Heart Rate Variability Parameters in School-Aged Children: Simple Approach Considering Differences in Average Heart Rate

Jakub S. Gąsior<sup>1,2\*</sup>, Jerzy Sacha<sup>3,4</sup>, Mariusz Pawłowski<sup>1,2</sup>, Jakub Zieliński<sup>5,6</sup>, Piotr J. Jeleń<sup>5</sup>, Agnieszka Tomik<sup>7</sup>, Tomasz M. Książczyk<sup>7</sup>, Bożena Werner<sup>7</sup> and Marek J. Dąbrowski<sup>2</sup>

<sup>1</sup> Faculty of Health Sciences and Physical Education, Kazimierz Pulaski University of Technology and Humanities in Radom, Radom, Poland, <sup>2</sup> Cardiology Clinic of Physiotherapy Division of the 2nd Faculty of Medicine, Medical University of Warsaw, Warsaw, Poland, <sup>3</sup> Faculty of Physical Education and Physiotherapy, Opole University of Technology, Opole, Poland, <sup>4</sup> Department of Cardiology, University Hospital, Faculty of Natural Sciences and Technology, University of Opole, Opole, Poland, <sup>5</sup> Department of Biophysics and Human Physiology, Medical University of Warsaw, Warsaw, Poland, <sup>6</sup> Interdisciplinary Centre for Mathematical and Computational Modelling, University of Warsaw, Warsaw, Poland, <sup>7</sup> Department of Pediatric Cardiology and General Pediatrics, Medical University of Warsaw, Warsaw, Poland

## OPEN ACCESS

### Edited by:

Federico Lombardi,  
Università degli Studi di Milano, Italy

### Reviewed by:

Heikki Veli Huikuri,  
University of Oulu, Finland  
Tomi Petteri Laitinen,  
Kuopio University Hospital, Finland

### \*Correspondence:

Jakub S. Gąsior  
gasiorjakub@gmail.com

### Specialty section:

This article was submitted to  
Clinical and Translational Physiology,  
a section of the journal  
Frontiers in Physiology

**Received:** 15 December 2017

**Accepted:** 03 October 2018

**Published:** 24 October 2018

### Citation:

Gąsior JS, Sacha J, Pawłowski M,  
Zieliński J, Jeleń PJ, Tomik A,  
Książczyk TM, Werner B and  
Dąbrowski MJ (2018) Normative  
Values for Heart Rate Variability  
Parameters in School-Aged Children:  
Simple Approach Considering  
Differences in Average Heart Rate.  
*Front. Physiol.* 9:1495.  
doi: 10.3389/fphys.2018.01495

**Background:** Heart rate variability (HRV) analysis is a clinical tool frequently used to characterize cardiac autonomic status. The aim of this study was to establish normative values for short-term HRV parameters by considering their main determinants in school-aged children.

**Methods:** Five-minute electrocardiograms were taken from 312 non-athlete children (153 boys) at age of 6 to 13 years for computation of conventional time- and frequency-domain HRV parameters. Heart rate (HR), respiratory rate, age, body mass index, and sex were considered as their potential determinants. Multiple regression analysis revealed that HR was the principal predictor of all standard HRV indices. To develop their universal normative limits, standard HRV parameters were corrected for prevailing HR.

**Results:** The HRV correction for HR yielded the parameters which became independent on both sex and HR, and only poorly dependent on age (with small effect size). Normal ranges were calculated for both time- and frequency-domain indices (the latter computed with either fast Fourier transform and autoregressive method). To facilitate recalculation of standard HRV parameters into corrected ones, a calculator was created and attached as a **Supplementary Material** that can be downloaded and used for both research and clinical purposes.

**Conclusion:** This study provides HRV normative values for school-aged children which have been developed independently of their major determinants. The calculator accessible in the **Supplementary Material** can considerably simplify determination if HRV parameters accommodate within normal limits.

**Keywords:** heart rate, heart rate variability, heart rate correction, children and adolescents, normative values, reference values, autonomic nervous system, autonomic cardiac control

## INTRODUCTION

Since the early 1970s, when power spectral analysis was applied to explore the physiological basis of intermittent variations in heart rate (HR) (Hyndman et al., 1971; Chess et al., 1975; Akselrod et al., 1981; Billman, 2011; Ernst, 2017b), a large number of studies addressing heart rate variability (HRV) have been published (Xhyheri et al., 2012). Reduced HRV corresponds to the autonomic nervous system (ANS) imbalance and may be associated with worse prognosis (particularly increased mortality) in various disease states among adults (Kleiger et al., 1987; Dekker et al., 2000; Stein et al., 2005; Thayer et al., 2010; Ernst, 2017a). Also in children, depressed HRV may be related to some cardiac (Massin and von Bernuth, 1998; Heragu and Scott, 1999; Bakari et al., 2013) and non-cardiac disorders (Chessa et al., 2002; Birch et al., 2012). However, to diagnose the ANS imbalance normative or reference values for HRV indices need to be established. Nevertheless, only a limited number of studies reported such normative/reference HRV values in pediatric populations (Goto et al., 1997; Massin and von Bernuth, 1997; Umetani et al., 1998; Silvetti et al., 2001; Rêkawek et al., 2003; Longin et al., 2009; Michels et al., 2013; Seppälä et al., 2014; Jarrin et al., 2015; Sharma et al., 2015; Bobkowski et al., 2017). Usually, authors presented their normal values for children by categorizing them according to age and/or sex (Massin and von Bernuth, 1997; Silvetti et al., 2001; Rêkawek et al., 2003; Sharma et al., 2015), however, HRV parameters are also significantly associated with other factors, like HR (Goto et al., 1997; Massin and von Bernuth, 1997; Jarrin et al., 2015), respiration (Grossman and Taylor, 2007; Beda et al., 2014; Quintana et al., 2016a,b; Shader et al., 2017; Shaffer and Ginsberg, 2017), physical activity (Oliveira et al., 2017), or weight status (Eyre et al., 2014). Since HRV is primarily HR dependent (Fleiss et al., 1992; Goto et al., 1997; Massin and von Bernuth, 1997; Sacha and Grzeszczak, 2001; Sacha and Pluta, 2005a,b; Sacha and Pluta, 2008; Burr et al., 2006; Nieminen et al., 2007; Billman, 2013; Sacha, 2013, 2014a,b,c; Sacha et al., 2013a,b,c; Monfredi et al., 2014; Billman et al., 2015; Gąsior et al., 2015; Jarrin et al., 2015), any alteration in average HR automatically changes HRV. Consequently, a comparison of HRV corresponding to different HR may be biased (Sacha and Grzeszczak, 2001; Nieminen et al., 2007; Sacha and Pluta, 2008). Mathematical methods removing the HRV dependence on HR (i.e., the HRV correction for prevailing HR) (Hayano et al., 1990, 1991; Sacha and Grzeszczak, 2001; Sacha and Pluta, 2008; Sacha et al., 2013b,c; Monfredi et al., 2014; Estévez-Báez et al., 2015; van Roon et al., 2016) should allow to draw objective conclusions when comparing HRV associated with various HR (Sacha, 2013, 2014a,b,c; Monfredi et al., 2014; Billman et al., 2015). So far, only one study dealing with normal ranges of HRV employed the HRV correction for HR, however, authors presented normal values only for two time domain HRV markers derived from 10-s ECGs (van den Berg et al., 2018). Recently, researchers applying such a correction have demonstrated a significant interaction between HRV and HR in healthy pediatric populations (Gąsior et al., 2015; Bjelakovic et al., 2017; Herzig et al., 2017). It has been shown that while standard HRV may remain constant in different age subgroups,

corrected HRV decreases with age along with a decrease in average HR.

Another important factor, usually not accounted for in HRV normative studies but significantly influencing both HR and HRV, is breathing (Quintana et al., 2016a; Shader et al., 2017). The respiratory rate declines from birth to early adolescence (Fleming et al., 2011), and consequently such changes may influence HRV (Billman, 2011; Quintana and Heathers, 2014; Quintana et al., 2016a,b; Laborde et al., 2017).

The aims of the present study were to determine the main determinants of HRV in healthy school-aged children, and by incorporating the significant determinants to define normative values for both time- and frequency-domain HRV indices.

## MATERIALS AND METHODS

### Study Population

The whole study group consisted of 346 children of both sexes. The inclusion criteria to this study were as follows: (i) age between 6 and 13 years, (ii) absence of diseases and/or regular use of medications affecting the cardiopulmonary system and/or interfering with the autonomic nervous system, and (iii) not being an active athlete in any sports. The parents/legal guardians were interviewed about children's diseases and/or medications (the school health records concerning health status were additionally verified). Fifteen subjects were excluded from the analysis due to suspicion of cardiac/non-cardiac diseases. The group participated in an earlier study, its details and description of the procedures imposed before or during the proper electrocardiographic examinations have been published elsewhere (Gąsior et al., 2015). Since there are data indicating an association of cardiac autonomic function with physical activity in children and adolescents (Oliveira et al., 2017), we excluded 19 active athletes (Araújo and Scharhag, 2016) from the present study providing normative values. Consequently, 312 healthy Caucasian children of both sexes between the ages of 6 and 13 years were enrolled in the final analysis. The group was divided into four subgroups according to age: (I)  $6 \leq \text{age} < 8$  years; (II)  $8 \leq \text{age} < 10$  years; (III)  $10 \leq \text{age} < 12$  years; and (IV)  $12 \leq \text{age} < 14$  years. This classification is in accordance with other studies where participants younger than 10 years were considered as children and those between 10 and 14 years as preadolescents or early adolescents (Frigerio et al., 2006; Cysarz et al., 2011; Varlinskaya et al., 2013). The study was approved by the University Bioethical Committee and followed the rules and principles of the Helsinki Declaration, as well as all parents or legal guardians gave their informed written consent.

### Body Mass Status Measurement

The body mass status was measured using Body Mass Index (BMI) defined as body mass in kilograms divided by height in meters squared. BMI is widely used for assessing the weight status of pediatric participants since it can identify those who are overweight, at risk of being overweight,

or underweight based on age and sex (Barlow and Dietz, 1998).

## Electrocardiographic (ECG) Recordings and HRV Analysis

Twelve-lead, 6-min ECG recordings (sampling frequency = 1000 Hz) were performed using a portable PC with integrated software system (Custo cardio 100 12-channel PC ECG system; Custo med GmbH, Ottobrunn, Germany) during regular school days between 8 a.m. and 2 p.m. in a supine position. For heart rate stabilization, children were placed in a supine position for 5 min before the examination. All ECG recordings were preprocessed before HRV analysis, i.e., they were visually inspected for potential non-sinus or aberrant beats and such erroneous beats were properly corrected (interpolation of degree zero) (Peltola, 2012). Time- and frequency-domain HRV analyses were performed from 5-min ECG recordings by using Kubios HRV Standard 3.0.2 software (University of Eastern Finland, Kuopio, Finland) (Tarvainen et al., 2014, 2017). Standard deviation of R-R intervals (SDNN), root mean square of successive R-R interval differences (RMSSD), and pNN50, which denotes percent of R-R intervals differing >50 ms from the preceding one, were determined. Before calculating spectral HRV parameters, smoothness priors based detrending approach was applied (smoothing parameter, Lambda value = 500) (Tarvainen et al., 2002), and then R-R interval series were transformed to evenly sampled time series with 4-Hz resampling rate. The detrended and interpolated R-R interval series were used to compute HRV spectra by employing fast-Fourier-transform (FFT) with Welch's periodogram method (300 s window width without overlap) and by using the autoregressive model (AR) with model order set at 16 (Boardman et al., 2002). The following spectral components were distinguished: very low frequency (VLF, 0–0.04 Hz), low frequency (LF, 0.04–0.15 Hz), high frequency (HF, 0.15–0.50 Hz), and total power [(in two versions, i.e., TP<sub>1</sub>, 0–0.5 Hz (VLF+LF+HF) and TP<sub>2</sub>, 0.04–0.50 Hz (LF+HF)] in absolute units (ms<sup>2</sup>), as well as nLF, nHF in normalized units (nu) (Task Force, 1996).

## ECG Derived Respiration

The respiratory rate (RespRate) was calculated from ECG recordings according to Sinnecker et al. (2014). The time series of the QRS amplitude for all 12 ECG leads were calculated and then local maxima (i.e., data points with values greater than both the preceding and the following data point) were established. Then, the mean interval between consecutive local maxima for each time series was computed and the reciprocal value of the mean maximum-to-maximum interval was obtained. The median of these reciprocal values over all-time series represented RespRate used in this analysis (Sinnecker et al., 2014).

## HRV Correction

Since HRV is dependent on HR due to both physiological (i.e., the autonomic nervous system influence) and mathematical (i.e., the

inverse non-linear relationships between HR and R-R interval) reasons, it is hard to ascertain if clinical significance of HRV comes from the variability or from HR (Sacha and Pluta, 2008) – it is even more important in populations where average HR is changing, like in children during their grow and development. Therefore, to investigate the “objective” variability, one should get rid of the HR impact on HRV. To do so, one should correct the HRV for the prevailing HR. The correction procedure employed in this study relied on the division or multiplication of standard HRV indices by different powers of their corresponding mean R-R interval (mRR) – the higher HRV dependence on HR, the higher power of mRR must be used to get rid of this dependence. Specifically, if HRV parameters revealed negative relation with HR (i.e., SDNN, RMSSD, pNN50, VLF, LF, HF, TP<sub>1</sub>, TP<sub>2</sub>, and nHF), they should be divided by the suitable power of mRR in order to become HR independent, however, if the HRV parameters are positively related with HR (i.e., nLF and LF/HF), they must be multiplied by the appropriate power of mRR – this way we were able to remove both physiological and mathematical HRV dependence on HR (Sacha et al., 2013b,c).

## Statistical Analysis

The Kolmogorov–Smirnov test was used to assess the normality of the data distribution. Normally distributed values were presented as mean ± standard deviation, but others as median and interquartile range (IQR). Accordingly, Pearson's correlation coefficient (*r*) or Spearman's rank correlation coefficient (*R*) were used to assess the relationship between variables, and Student's *t*-test or non-parametric Mann–Whitney test were employed to determine differences. The Pearson's chi-squared test was applied to determine differences between variables prevalence in multiple groups. Values of the standard and corrected HRV parameters were compared between four age subgroups by using Kruskal–Wallis (K-W) test and analysis of variance (ANOVA), respectively. Multiple regression analysis was carried out to identify independent determinants of standard and corrected HRV parameters – variables with a skewed distribution were logarithmically transformed (ln). To avoid multicollinearity, redundant variables were removed from the multivariate regression models in the case of pairwise correlations between continuous variables (Slinker and Glantz, 2008). The effect size was measured by calculating Cohen's *f*<sup>2</sup> within a multiple regression model (Selya et al., 2012). The *f*<sup>2</sup> were calculated for a combined prediction of the model, and Cohen's *f*<sup>2</sup> variation was computed to measure the local effect size (Cohen, 1992; Selya et al., 2012). According to Cohen's guidelines, *f*<sup>2</sup> ≥ 0.02, *f*<sup>2</sup> ≥ 0.15, and *f*<sup>2</sup> ≥ 0.35 represent small, medium, and large effect sizes, respectively (Cohen et al., 2003). The threshold probability of *p* < 0.05 was taken as the level of statistical significance. Since all HRV parameters were not normally distributed, normative ranges have been given as medians with the 5th and 95th percentiles. Statistical calculations were performed by using the software STATISTICA 10 (StatSoft, Inc., Software, Tulsa, OK, United States). Graphs were created with GraphPad PRISM® Version 5.0 (GraphPad Software, Inc., San Diego, CA, United States) and Microsoft Office Excel 2007 (Microsoft Corporation, Silicon Valley, CA, United States).

## RESULTS

The group of 312 healthy non-athlete children (153 ♂, 159 ♀) at age of 6 to 13 years (median: 10.1 years, IQR: 8.4–11.8 years) were analyzed in the present study. The group's characteristics were: median body mass, 34.1 kg (IQR: 27.7–45.1 kg); median height, 140.0 cm (IQR: 129.5–152.5 cm); median BMI, 17.3 kg/m<sup>2</sup> (IQR: 15.7–20.1 kg/m<sup>2</sup>); mean HR, 84.4 ± 10.6 bpm (range: 54.7–113.8 bpm); and mean respiratory rate (RespRate), 22.7 ± 3.2 bpm (range: 12.4–30.7 bpm).

Comparing with boys, girls presented significantly higher HR, lower values of all time-domain HRV parameters, i.e., SDNN, RMSSD, pNN50, and the following frequency-domain parameters (calculated with both FFT and AR): VLF, LF, TP<sub>1</sub> (VLF+LF+HF), TP<sub>2</sub> (LF+HF) ( $p < 0.05$  for all). Boys and girls did not differ in RespRate ( $p = 0.64$ ), BMI ( $p = 0.71$ ), and the following spectral parameters: HF, LF/HF, nLF, and nHF ( $p > 0.05$  for all).

Heart rate, RespRate, age, BMI and sex were initially chosen as potential determinants of standard HRV parameters (Table 1 presents their correlations with HRV). All these variables were associated with each other with one exception, i.e., there was no significant correlation between RespRate and BMI (Figure 1). Since the association between RespRate and HR was stronger than between RespRate and HRV, as well as, the association between BMI and age was stronger than between BMI and HRV, (Figure 1 and Table 1), both RespRate and BMI were considered to be redundant for the multivariate analysis (collinearity tests confirmed this redundancy). Accordingly to the statistical

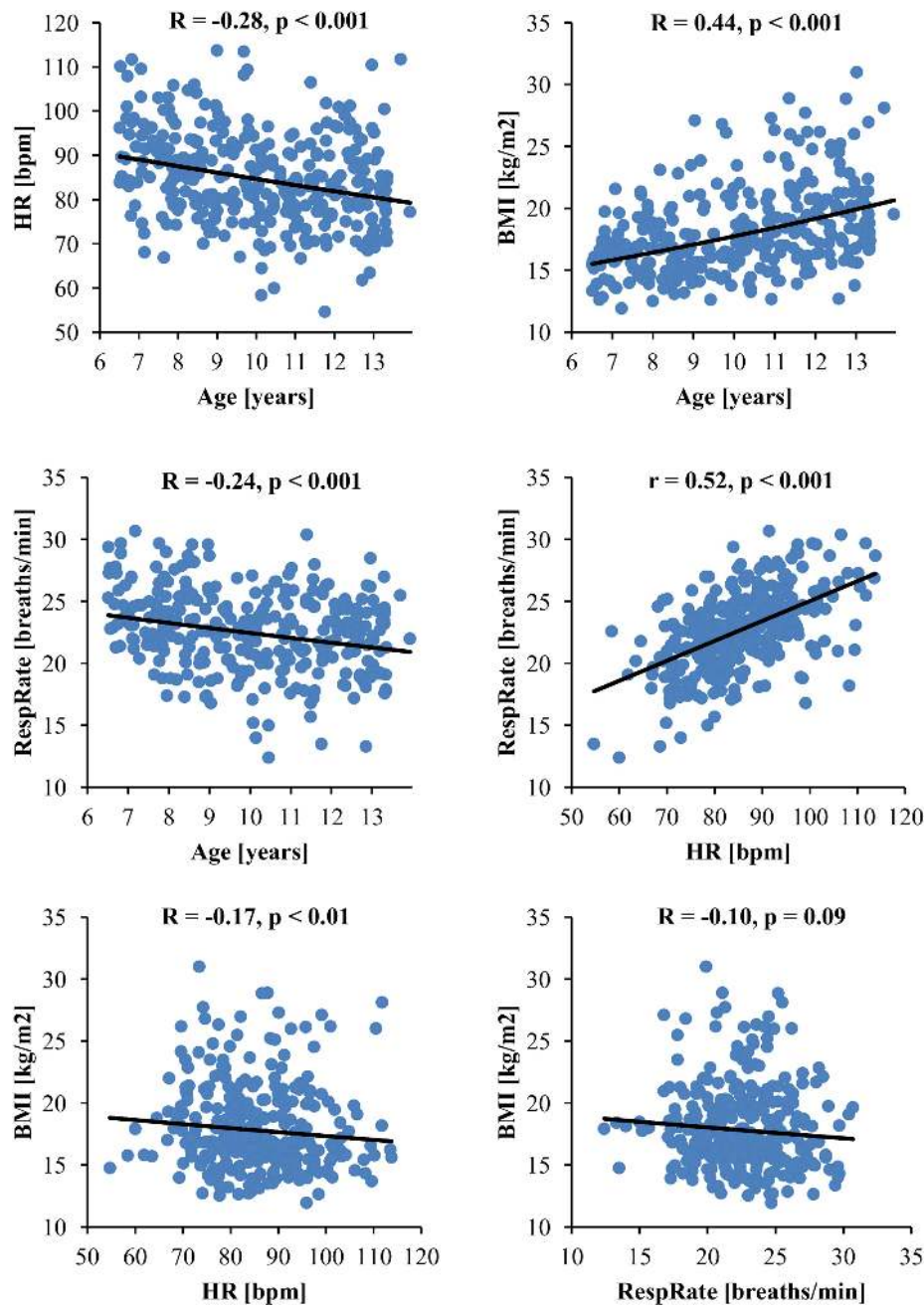
assumptions of the multiple regression analysis (Kraha et al., 2012; Ray-Mukherjee et al., 2014) and taking into account the practicality of normative data in a clinical context, the following variables were included in the regression analysis: HR, age, and sex. Table 2 exhibits results of this analysis for time- and frequency-domain HRV parameters calculated with FFT – the results for HRV spectra estimated with AR were similar and are presented in Supplementary Table S1. The models accounted for 9–60% of the entire HRV variance, but importantly, HR was the strongest predictor for all analyzed standard HRV parameters. HR was the most powerful determinant in the whole group (Table 2 and Supplementary Table S1) and also within the age subgroups: 6–7, 8–9, 10–11, and 12–13 years (Supplementary Tables S2–S9).

Since HR was the strongest predictor for all standard HRV parameters, in order to calculate the normative values, the overall study group was classified into four quartile subgroups based on HR value: 1st quartile (Q1: <25%), 54.7–77.8 bpm; 2nd quartile (Q2: 25–50%), >77.8–84.3 bpm; 3rd quartile (Q3: 50–75%), >84.3–92.0 bpm; and 4th quartile (Q4: >75%), >92.0–113.8 bpm. The number of participants equaled to 78 in each subgroup: Q1 (male/female), 45/33; Q2, 41/37; Q3, 32/46; and Q4, 35/43. There was no significant difference in sex distribution in these subgroups (Pearson's Chi-squared = 5.27,  $p = 0.15$ ). There were statistically significant differences in all standard HRV parameters between the HR quartile subgroups (results of K-W test ranged between 26.6 and 160.8 with  $p < 0.001$  for all). Normative values of standard time- and frequency-domain HRV parameters according to HR quartiles are presented in Table 3.

**TABLE 1** | Correlations of standard time- and frequency-domain HRV parameters with heart rate, respiratory rate, age, and body mass index.

Standard HRV parameter	HR [bpm]		RespRate [breaths/min]		Age [years]		BMI [kg/m <sup>2</sup> ]	
	<i>R</i>	<i>p</i>	<i>R</i>	<i>p</i>	<i>R</i>	<i>p</i>	<i>R</i>	<i>p</i>
SDNN [ms]	−0.64		−0.41		−0.03	0.61	−0.04	0.52
RMSSD [ms]	−0.72		−0.37		< −0.01	0.99	−0.04	0.45
pNN50 [%]	−0.75		−0.36		0.02	0.72	−0.04	0.54
FFT VLF [ms <sup>2</sup> ]	−0.42		−0.22		−0.07	0.23	0.04	0.50
FFT LF [ms <sup>2</sup> ]	−0.53		−0.31		−0.04	0.49	< 0.01	0.97
FFT HF [ms <sup>2</sup> ]	−0.60		−0.44		−0.06	0.29	−0.07	0.22
FFT TP <sub>1</sub> (VLF+LF+HF) [ms <sup>2</sup> ]	−0.60		−0.41		−0.06	0.28	−0.04	0.46
FFT TP <sub>2</sub> (LF+HF) [ms <sup>2</sup> ]	−0.60		−0.41		−0.06	0.31	−0.05	0.42
FFT LF/HF	0.25		0.26		0.05	0.36	0.10	0.08
FFT nLF [nu]	0.25	<0.001	0.26	<0.001	0.05	0.36	0.10	0.08
FFT nHF [nu]	−0.25		−0.26		−0.05	0.36	−0.10	0.08
AR VLF [ms <sup>2</sup> ]	−0.56		−0.33		−0.08	0.19	−0.02	0.68
AR LF [ms <sup>2</sup> ]	−0.56		−0.34		−0.02	0.77	0.01	0.81
AR HF [ms <sup>2</sup> ]	−0.63		−0.45		−0.03	0.57	−0.06	0.28
AR TP <sub>1</sub> (VLF+LF+HF) [ms <sup>2</sup> ]	−0.63		−0.43		−0.03	0.64	−0.03	0.57
AR TP <sub>2</sub> (LF+HF) [ms <sup>2</sup> ]	−0.63		−0.43		−0.02	0.67	−0.03	0.55
AR LF/HF	0.26		0.25		0.05	0.36	0.10	0.06
AR nLF [nu]	0.26		0.25		0.05	0.36	0.10	0.06
AR nHF [nu]	−0.26		−0.25		−0.05	0.37	−0.10	0.06

FFT denotes that a given HRV parameter was calculated by using Fast Fourier Transform, while AR indicates that the HRV spectrum was calculated with autoregressive method. *R*, Spearman's rank correlation coefficient.



**FIGURE 1 |** Association between variables selected as potential independent predictors of standard HRV parameters. BMI, body mass index; HR, heart rate; HRV, heart rate variability; RespRate, respiratory rate; R, Spearman’s rank correlation coefficient; r, Pearson’s correlation coefficient.

However, there was a significant overlap in the normative ranges between consecutive HR quartile subgroups which makes such data impractical. Therefore, considering the fact that HR was the most influential factor determining all standard HRV parameters, we excluded its impact by correcting the standard HRV parameters for their prevailing HR. This way we were able to get normative values for so called corrected HRV, i.e., the variability independent on average HR. Indeed, standard time-domain HRV parameters lost their dependence on HR after

dividing SDNN, RMSSD, and pNN50 by mRR to the power: 2.2, 3.0, and 5.0, respectively. In spectral analysis, VLF obtained by FFT and AR lost its dependence on HR after dividing by mRR to the power 3.0 and 4.0, respectively. Other frequency-domain HRV indices lost their association with HR after dividing LF, HF, TP<sub>1</sub> (VLF+LF+HF), TP<sub>2</sub> (LF+HF), and nHF by mRR to the power: 4.0, 5.0, 5.0, 5.0, and 0.5, respectively (for both FFT and AR). The nLF and LF/HF (calculated with either FFT and AR) stopped being dependent on HR after multiplying by mRR to the

**TABLE 2** | Determinants of standard time- and frequency-domain (calculated with FFT) HRV parameters.

Standard HRV parameter	Determinant	Parameters of multiple regression analysis					
		$\beta$	$p$	Partial correlation	Multiple $R^2$	F-test	$p$
SDNN (ln)	HR	-0.73	< 0.001	-0.70	0.50	102.3	<0.001
	Age (ln)	-0.23	< 0.001	-0.30			
	Sex	0.03	0.54	0.04			
RMSSD (ln)	HR	-0.81	< 0.001	-0.77	0.60	153.8	<0.001
	Age (ln)	-0.24	< 0.001	-0.35			
	Sex	0.01	0.74	0.02			
pNN50 (ln)	HR	-0.77	< 0.001	-0.72	0.53	113.0	<0.001
	Age (ln)	-0.23	< 0.001	-0.30			
	Sex	-0.02	0.59	-0.03			
VLF (ln)	HR	-0.49	< 0.001	-0.47	0.24	31.9	<0.001
	Age (ln)	-0.19	< 0.001	-0.21			
	Sex	0.05	0.30	0.06			
LF (ln)	HR	-0.61	< 0.001	-0.58	0.36	57.3	<0.001
	Age (ln)	-0.20	< 0.001	-0.23			
	Sex	0.08	0.09	0.10			
HF (ln)	HR	-0.70	< 0.001	-0.67	0.46	85.9	<0.001
	Age (ln)	-0.26	< 0.001	-0.32			
	Sex	< 0.01	0.88	< 0.01			
TP <sub>1</sub> (VLF+LF+HF) (ln)	HR	-0.69	< 0.001	-0.67	0.45	85.4	<0.001
	Age (ln)	-0.24	< 0.001	-0.30			
	Sex	0.03	0.43	0.05			
TP <sub>2</sub> (LF+HF) (ln)	HR	-0.70	< 0.001	-0.67	0.46	86.1	<0.001
	Age (ln)	-0.24	< 0.001	-0.30			
	Sex	0.03	0.46	0.04			
LF/HF (ln)	HR	0.31	< 0.001	0.29	0.09	10.4	<0.001
	Age (ln)	0.15	< 0.01	0.15			
	Sex	0.10	0.08	0.10			
nLF	HR	0.31	< 0.001	0.30	0.10	10.8	<0.001
	Age (ln)	0.16	< 0.01	0.15			
	Sex	0.10	0.07	0.10			
nHF	HR	-0.31	< 0.001	-0.30	0.10	10.8	<0.001
	Age (ln)	-0.15	< 0.01	-0.15			
	Sex	-0.10	0.07	-0.10			

power 1.0 (Sacha et al., 2013b). Correlation coefficients between HR and all corrected HRV parameters were not statistically significant and ranged between -0.09 and 0.08 ( $p > 0.10$  for all).

In the multiple regression analysis, age turned out to be the strongest determinant of the corrected time- and frequency-domain HRV parameters calculated with FFT (Table 4) – the results were the same when HRV spectra were estimated with AR (the AR data are presented in Supplementary Table S10). However, the calculated models accounted for only 2–9% of the whole variance of the corrected HRV indices. The age contribution to this model was quite low (i.e.,  $\beta$ -value ranged between -0.13 and -0.29), and the effect size for the combined model, as well as for the variables taken individually (age and sex) was small ( $f^2 \leq 0.091$  for all). Therefore, practically there was no reason to establish normative values according to age, and we calculated normal limits for the overall study group (Table 5). Of note, due to division by high powers of mRR, the

numbers in Table 5 are long (i.e., they present many zeros after the decimal place), consequently calculations and interpretations of such results may be uninterpretable in clinical situations, hence in the **Supplementary Material** one may find the Excel sheet calculator which recalculates standard HRV parameters into corrected ones and determines whether a given value of corrected HRV parameter is within normal limits (Supplementary Table S11, Sheet “Corrected HRV Calculator”).

## DISCUSSION

The aim of the present study was to define, by incorporating the significant determinants, normative values for HRV indices in healthy children. HRV is changing during childhood and adolescence which may reflect developmental alterations in the ANS activity. Thus, in order to follow these changes, normal

**TABLE 3 |** Normative standard time- and frequency-domain HRV parameters values according to heart rate quartiles are presented as median, 5th–95th percentiles.

Standard HRV parameter	Q1	Q2	Q3	Q4
SDNN [ms]	75 (38–118)	56 (29–95)	43 (25–80)	35 (16–54)
RMSSD [ms]	86 (42–137)	65 (31–107)	44 (22–89)	33 (15–55)
pNN50 [%]	54 (22–70)	42 (11–63)	23 (2–54)	10 (0–30)
FFT VLF [ms <sup>2</sup> ]	102 (30–389)	66 (19–220)	47 (13–138)	41 (8–216)
FFT LF [ms <sup>2</sup> ]	1479 (328–5162)	705 (162–3286)	546 (236–2562)	421 (75–1193)
FFT HF [ms <sup>2</sup> ]	3269 (681–9485)	1808 (396–5679)	912 (265–4647)	527 (96–1956)
FFT TP <sub>1</sub> (VLF+LF+HF) [ms <sup>2</sup> ]	5096 (1178–13023)	2750 (777–8791)	1544 (563–6671)	1079 (222–2959)
FFT TP <sub>2</sub> (LF+HF) [ms <sup>2</sup> ]	4994 (1129–12787)	2703 (760–8608)	1493 (528–6558)	1043 (206–2924)
FFT LF/HF	0.48 (0.17–1.31)	0.54 (0.12–1.42)	0.67 (0.24–1.97)	0.87 (0.21–2.45)
FFT nLF [nu]	32 (15–57)	35 (11–59)	40 (20–66)	46 (18–71)
FFT nHF [nu]	68 (43–86)	65 (41–89)	60 (34–81)	54 (29–82)
AR VLF [ms <sup>2</sup> ]	205 (68–516)	122 (32–397)	88 (34–284)	61 (18–191)
AR LF [ms <sup>2</sup> ]	1411 (376–4547)	828 (146–2702)	559 (195–2029)	387 (92–1216)
AR HF [ms <sup>2</sup> ]	3063 (717–5454)	1939 (396–6127)	988 (261–4325)	576 (85–1706)
AR TP <sub>1</sub> (VLF+LF+HF) [ms <sup>2</sup> ]	5061 (1444–12919)	2936 (791–8646)	1778 (580–6636)	1118 (202–2774)
AR TP <sub>2</sub> (LF+HF) [ms <sup>2</sup> ]	4826 (1248–12277)	2800 (734–8404)	1662 (542–6502)	1015 (184–2638)
AR LF/HF	0.44 (0.17–1.32)	0.55 (0.15–1.19)	0.61 (0.26–1.83)	0.73 (0.23–2.29)
AR nLF [nu]	30 (14–57)	35 (13–54)	38 (20–65)	42 (19–70)
AR nHF [nu]	69 (43–86)	65 (46–87)	62 (35–79)	58 (30–81)

FFT denotes that a given HRV parameter was calculated by using Fast Fourier Transform, while AR indicates that the HRV spectrum was calculated with autoregressive method. HR quartiles for overall study group: (Q1), 54.7–77.8 bpm; (Q2), >77.8–84.3 bpm; (Q3), >84.3–92.0 bpm; (Q4), >92.0–113.8 bpm.

**TABLE 4 |** Determinants and Cohen's *f*<sup>2</sup> indexes for corrected time- and frequency-domain (calculated with FFT) HRV parameters.

Corrected HRV parameter	Det.	Parameters of multiple regression analysis						Cohen's <i>f</i> <sup>2</sup>	
		$\beta$	<i>p</i>	PC	M. R2	<i>F</i> -test	<i>p</i>	Loc.	Comb.
corr-SDNN	Age (ln)	−0.24	< 0.001	−0.24	0.06	10.6	< 0.001	0.063	0.063
	Sex	0.07	0.21	0.07				0.005	
corr-RMSSD	Age (ln)	−0.28	< 0.001	−0.28	0.08	13.9	< 0.001	0.086	0.086
	Sex	0.06	0.27	0.06				0.004	
corr-pNN50	Age (ln)	−0.28	< 0.001	−0.28	0.08	12.8	< 0.001	0.083	0.083
	Sex	0.01	0.80	0.01				0.001	
corr-VLF	Age (ln)	−0.20	< 0.001	−0.20	0.04	6.3	< 0.01	0.041	0.039
	Sex	0.03	0.62	0.03				0.001	
corr-LF	Age (ln)	−0.20	< 0.001	−0.21	0.06	9.1	< 0.001	0.044	0.044
	Sex	0.12	< 0.05	0.12				0.014	
corr-HF	Age (ln)	−0.20	< 0.001	−0.20	0.04	6.7	< 0.01	0.044	0.044
	Sex	0.01	0.95	0.01				0.001	
corr-TP <sub>1</sub> (VLF+LF+HF)	Age (ln)	−0.25	< 0.001	−0.25	0.06	10.2	< 0.001	0.065	0.065
	Sex	0.03	0.54	0.04				0.001	
corr-TP <sub>2</sub> (LF+HF)	Age (ln)	−0.24	< 0.001	−0.24	0.06	9.8	< 0.001	0.063	0.063
	Sex	0.03	0.54	0.04				0.001	
corr-LF/HF	Age (ln)	0.13	< 0.05	0.13	0.02	3.3	< 0.05	0.017	0.017
	Sex	0.06	0.26	0.06				0.004	
corr-nLF	Age (ln)	0.15	< 0.01	0.15	0.03	5.4	< 0.01	0.024	0.024
	Sex	0.11	0.06	0.11				0.011	
corr-nHF	Age (ln)	−0.15	< 0.01	−0.15	0.03	5.0	< 0.01	0.024	0.024
	Sex	−0.10	0.08	−0.11				0.008	

Abbreviations: Det., determinant; PC, partial correlation; M. R2, multiple R2; Loc., local; Comb., combined. Corrected HRV parameters were calculated as follows: corr-SDNN, SDNN/mRR<sup>2.2</sup>; corr-RMSSD, RMSSD/mRR<sup>3.0</sup>; corr-pNN50, pNN50/mRR<sup>5.0</sup>; FFT corr-VLF, VLF/mRR<sup>3.0</sup>; AR corr-VLF, VLF/mRR<sup>4.0</sup>; for both FFT and AR: corr-LF, LF/mRR<sup>4.0</sup>; corr-HF, HF/mRR<sup>5.0</sup>; corr-TP<sub>1</sub>, TP<sub>1</sub>/mRR<sup>5.0</sup>; corr-TP<sub>2</sub>, TP<sub>2</sub>/mRR<sup>5.0</sup>; corr-LF/HF, LF/HF\*mRR<sup>1.0</sup>; corr-nLF, nLF\*mRR<sup>1.0</sup>; and corr-nHF, nHF/mRR<sup>0.5</sup>.

**TABLE 5 |** Normative values for corrected HRV parameters for the whole study group.

Corrected HRV parameters	Normative values		
	Median	5th percentile	95th percentile
corr-SDNN [ms <sup>-1.2</sup> ]	2.6E-05	1.5E-05	4.6E-05
corr-RMSSD [ms <sup>-2</sup> ]	1.4E-07	7.6E-08	2.6E-07
corr-pNN50 [%/ms <sup>5</sup> ]	1.4E-13	2.0E-14	3.0E-13
FFT corr-VLF [ms <sup>-1</sup> ]	1.7E-07	4.4E-08	5.5E-07
FFT corr-LF [ms <sup>-2</sup> ]	2.9E-09	7.5E-10	9.8E-09
FFT corr-HF [ms <sup>-3</sup> ]	6.8E-12	1.7E-12	2.5E-11
FFT corr-TP <sub>1</sub> (VLF+LF+HF) [ms <sup>-3</sup> ]	1.2E-11	3.6E-12	3.8E-11
FFT corr-TP <sub>2</sub> (LF+HF) [ms <sup>-3</sup> ]	1.1E-11	3.3E-12	3.7E-11
FFT corr-LF/HF [ms]	4.5E+02	1.5E+02	1.2E+03
FFT corr-nLF [nu*ms]	2.7E+04	1.3E+04	4.5E+04
FFT corr-nHF [nu/ms <sup>0.5</sup> ]	2.3E+00	1.4E+00	3.1E+00
AR corr-VLF [ms <sup>-2</sup> ]	4.3E-10	1.4E-10	1.2E-09
AR corr-LF [ms <sup>-2</sup> ]	2.7E-09	7.9E-10	8.8E-09
AR corr-HF [ms <sup>-3</sup> ]	7.3E-12	1.6E-12	2.7E-11
AR corr-TP <sub>1</sub> (VLF+LF+HF) [ms <sup>-3</sup> ]	1.2E-11	3.7E-12	4.0E-11
AR corr-TP <sub>2</sub> (LF+HF) [ms <sup>-3</sup> ]	1.1E-11	3.4E-12	3.8E-11
AR corr-LF/HF [ms]	4.1E+02	1.4E+02	1.1E+03
AR corr-nLF [nu*ms]	2.6E+04	1.2E+04	4.3E+04
AR corr-nHF [nu/ms <sup>0.5</sup> ]	2.4E+00	1.5E+00	3.1E+00

FFT denotes that a given HRV parameter was calculated by using Fast Fourier Transform, while AR indicates that the HRV spectrum was calculated with autoregressive method. Corrected HRV parameters were calculated as follows: corr-SDNN, SDNN/mRR<sup>2.2</sup>; corr-RMSSD, RMSSD/mRR<sup>3.0</sup>; corr-pNN50, pNN50/mRR<sup>5.0</sup>; FFT corr-VLF, VLF/mRR<sup>3.0</sup>; AR corr-VLF, VLF/mRR<sup>4.0</sup>; for both FFT and AR: corr-LF, LF/mRR<sup>4.0</sup>; corr-HF, HF/mRR<sup>5.0</sup>; corr-TP<sub>1</sub>, TP<sub>1</sub>/mRR<sup>5.0</sup>; corr-TP<sub>2</sub>, TP<sub>2</sub>/mRR<sup>5.0</sup>; corr-LF/HF, LF/HF\*mRR<sup>1.0</sup>; corr-nLF, nLF\*mRR<sup>1.0</sup>; and corr-nHF, nHF/mRR<sup>0.5</sup>.

values for HRV parameters need to be established. This study provides such normative quantities for short-term (i.e., 5 min) time- and frequency-domain HRV parameters based on a group of 312 school-aged children, i.e., at age of 6–13 years.

Since HRV is under influence of a number of factors, we conducted the multiple regression analysis which revealed that HR is the strongest predictor for all standard HRV parameters in the overall study group and in each analyzed age subgroups (Table 2 and Supplementary Tables S1–S9). Age was the second independent predictor but accounted only for a small percentage of the entire HRV variance. Interestingly, in the multivariate analysis sex did not independently determine HRV in our study population (Table 2 and Supplementary Table S1). The reason for this possibly comes from the observation that boys usually present significantly lower HR than girls and therefore sex differences in HRV may result from differences in HR. When considering HR, we could ignore differences between the sexes and establish normative HRV values only for subgroups categorized according to the quartiles of HR (Table 3). However, among such specified subgroups, confidence intervals significantly overlapped for most of HRV parameters, which may contest practicality of this approach. Hence, we calculated HRV independent on HR by correcting standard HRV indices for prevailing HR. In this method, we obtained so-called

corrected HRV parameters, which reflect “objective” variability regardless whatever the average HR is. In the multiple regression analysis, age was significant predictor for such corrected HRV indices (Table 4 and Supplementary Table S10), nevertheless, its contribution to the whole variance of HRV was small, i.e., the models only accounted for up to 9% of the HRV variance and the age role in these models was modest ( $\beta$  values ranged between  $-0.29$  and  $0.13$ ) as well as its effect size turned out to be small ( $f^2 \leq 0.091$ ) (Table 4 and Supplementary Table S10). Therefore, we omitted age impact in these 6 to 13-year-old children and established normal limits for the entire study group (Table 5). The calculation of corrected HRV parameters and their assessment become simpler by using the file provided in the Supplementary Material, which recalculates standard HRV indices into corrected ones and automatically determines whether they accommodate within normal limits (Supplementary Table S11, Sheet “Corrected HRV Calculator”).

The influence of HR on HRV in children has also been recognized in other studies (Goto et al., 1997; Massin and von Bernuth, 1997; Jarrin et al., 2015; Bjelakovic et al., 2017; Herzig et al., 2017). Indeed, Jarrin et al. (2015), accounted the observation that HR is the strongest factor determining HRV and presented their normative values adjusted for HR, however, only in participants with a very narrow age range, i.e., 9–11 years (mean  $\pm$  SD:  $10.2 \pm 0.3$  years) (Jarrin et al., 2015). Yet, the problem of the strong association between HR and HRV can simply be resolved by correcting HRV parameters for prevailing HR (Sacha and Grzeszczak, 2001; Sacha and Pluta, 2005a,b, 2008; Sacha, 2013, 2014a,b,c; Sacha et al., 2013a,b,c, 2014; Gaşior et al., 2016) and this method turns out to be feasible and convenient also in children populations (Gaşior et al., 2015).

More and more clinical and methodological papers highlight that respiration should be taken into account, or at least monitored, in HRV studies (Brown et al., 1993; Williams and Lopes, 2002; Eckberg, 2003; Song and Lehrer, 2003; Yildiz and Ider, 2006; Beda et al., 2014; Heathers, 2014; Lehrer and Gevirtz, 2014; Quintana and Heathers, 2014; Quintana et al., 2016a; Laborde et al., 2017). In population with known fast breathing rate, like children, respiratory depth, and frequency are particularly associated with heart rate and its fluctuations and may influence HRV data independently of cardiac autonomic activity (Eckberg, 2009; Quintana et al., 2016b). Also in our study, we observed significant correlation between children’s respiratory rate and HR, nevertheless, the correlation between HRV and HR was stronger than the association between HRV and breathing rate, and the statistical analysis revealed that respiratory rate was redundant in the multiple regression analysis. In our recent study, we have shown that the influence of breathing rate on HRV appears to be, at least in part, HR dependent, i.e., after HRV correction for prevailing HR, the correlation between breathing rate and HRV decreases (Gaşior et al., 2016).

In the present study, we calculated VLF power from short-term ECG recordings (i.e., lasting 5 min) which may be problematic from methodological point of view (Task Force, 1996; Heathers, 2014). However, this parameter was also considered in the previous study concerning reference values for short-term (5 min recordings) standard HRV in children



(Michels et al., 2013). Shaffer and Ginsberg in an overview paper concerning HRV metrics and norms state that “the VLF band requires a recording period of at least 5 min” (Shaffer and Ginsberg, 2017). Moreover, in our previous studies addressing large populations of patients after myocardial infarction, VLF parameter calculated from 512 R-R intervals turned out to be the strongest predictor of different causes of death (Sacha et al., 2013a, 2014). Therefore, we included this parameter in the present analysis despite the short-term nature of ECG recordings. This may enable future studies aiming to explore its clinical value in pediatric populations with various disorders and consequently may help to understand the nature of this parameter.

To make our data pragmatic and comparable for other studies: (i) we calculated short-term time- and frequency-domain HRV parameters by using actual version of a very popular and free tool: Kubios HRV Standard ver. 3.0.2 (Tarvainen et al., 2014, 2017); (ii) in spectral analysis, we used frequency bands up to 0,5 Hz which is appropriate for children populations; (iii) we presented frequency-domain HRV parameters calculated with both fast Fourier transform and autoregressive method; and (iv) we provide the Excel sheet calculator to facilitate computation and assessment of corrected HRV parameters.

## Limitations

A limitation of this study is the relatively narrow age range for which these normal limits can be applied, i.e., 6–13 years. However, this age period corresponds to the considerable developmental changes in both circulatory and neurological systems, and therefore the HRV normative values for this life period may be very useful in different clinical scenarios.

Finally, the norms can only be applied in Caucasian children. Caution is needed in applying the normative HRV values for other populations as the significant ethnic differences of HRV in children and youth were shown (Wang et al., 2005; Reed et al., 2006; Eyre et al., 2013). Future studies using approach considering differences in average HR may help to identify ethnic differences in corrected HRV indices.

## CONCLUSION

This study provides HRV normative values for school-aged children which have been developed independently of their major determinants, especially related to average HR. An Excel sheet calculator is provided to increase accessibility (**Supplementary**

**Table S11**, Sheet “Corrected HRV Calculator”) and simplifies determination of HRV parameters from an individual child and if values are within normal limits.

## AUTHOR CONTRIBUTIONS

JG, JS, and MP conceived and designed the experiment. JG and MP acquired the data. AT, TK, and BW analyzed the data for ECG assessment. JZ analyzed the data for respiratory rate calculations. JG and JS analyzed the data for HRV and statistical analysis. JG, JS, MP, JZ, PJ, AT, TK, BW, and MD interpreted the data. JG, JS, MP, JZ, PJ, AT, TK, BW, and MD drafted the work and revised it critically for important intellectual content. JG, JS, MP, JZ, PJ, AT, TK, BW, and MD approved the final version of the manuscript to be published.

## FUNDING

The authors and clinical organizations with which the authors are affiliated or associated did not receive any grants or outside funding in support of the research for or preparation of the manuscript, did not receive payments or other benefits from a commercial entity, do not have any professional relationships with companies or manufacturers who will benefit from the results of the present study. The aforementioned disclosure also applies to the authors’ immediate families.

## ACKNOWLEDGMENTS

We gratefully acknowledge Professor Craig Anthony Williams for his constructive comments and language correction. We thank the children for participation in the study and their parents/legal guardians for permission to conduct the measurements. We also thank the teachers, nurse, and school staff for help and cooperation during the study.

## SUPPLEMENTARY MATERIAL

The Supplementary Material for this article can be found online at: <https://www.frontiersin.org/articles/10.3389/fphys.2018.01495/full#supplementary-material>

## REFERENCES

- Akselrod, S., Gordon, D., Ubel, F. A., Shannon, D. C., Berger, A. C., and Cohen, R. J. (1981). Power spectrum analysis of heart rate fluctuation: a quantitative probe of beat-to-beat cardiovascular control. *Science* 213, 220–222. doi: 10.1126/science.6166045
- Araújo, C. G., and Scharhag, J. (2016). Athlete: a working definition for medical and health sciences research. *Scand. J. Med. Sci. Sports* 26, 4–7. doi: 10.1111/sms.12632
- Bakari, S., Koca, B., Oztunç, F., and Abuhandan, M. (2013). Heart rate variability in patients with atrial septal defect and healthy children. *J. Cardiol.* 61, 436–439. doi: 10.1016/j.jcc.2013.01.014

- Barlow, S. E., and Dietz, W. H. (1998). Obesity evaluation and treatment: expert committee recommendation. The maternal and child health bureau, health resources and services administration and the department of health and human services. *J. Paediatr.* 102:E29. doi: 10.1542/peds.102.3.e29
- Beda, A., Simpson, D. M., Carvalho, N. C., and Carvalho, A. R. (2014). Low-frequency heart rate variability is related to the breath-to-breath variability in the respiratory pattern. *Psychophysiology* 51, 197–205. doi: 10.1111/psyp.12163
- Billman, G. E. (2011). Heart rate variability - a historical perspective. *Front. Physiol.* 2:86. doi: 10.3389/fphys.2011.00086
- Billman, G. E. (2013). The effect of heart rate on the heart rate variability response to autonomic interventions. *Front. Physiol.* 4:222. doi: 10.3389/fphys.2013.00222

- Billman, G. E., Huikuri, H. V., Sacha, J., and Trimmel, K. (2015). An introduction to heart rate variability: methodological considerations and clinical applications. *Front. Physiol.* 6:55. doi: 10.3389/fphys.2015.00055
- Birch, S. L., Duncan, M. J., and Franklin, C. (2012). Overweight and reduced heart rate variability in British children: an exploratory study. *Prev. Med.* 55, 430–432. doi: 10.1016/j.ypmed.2012.09.015
- Bjelakovic, B., Ilic, D., Lukic, S., Vukomanovic, V., Zarko, C., Stankovic, Z., et al. (2017). Reproducibility of 24-h heart rate variability in children. *Clin. Auton. Res.* 27, 273–278. doi: 10.1007/s10286-017-0445-3
- Boardman, A., Schlindwein, F. S., Rocha, A. P., and Leite, A. (2002). A study on the optimum order of autoregressive models for heart rate variability. *Physiol. Meas.* 23, 325–336. doi: 10.1088/0967-3334/23/2/308
- Bobkowski, W., Stefaniak, M. E., Krauze, T., Gendera, K., Wykretowicz, A., Piskorski, J., et al. (2017). Measures of heart rate variability in 24-h ECGs depend on age but not gender of healthy children. *Front. Physiol.* 8:311. doi: 10.3389/fphys.2017.00311
- Brown, T. E., Beightol, L. A., Koh, J., and Eckberg, D. L. (1993). Important influence of respiration on human R-R interval power spectra is largely ignored. *J. Appl. Physiol.* 75, 2310–2317. doi: 10.1152/jap.1993.75.5.2310
- Burr, R. L., Motzer, S. A., Chen, W., Cowan, M. J., Shulman, R. J., and Heitkemper, M. M. (2006). Heart rate variability and 24-hour minimum heart rate. *Biol. Res. Nurs.* 7, 256–267. doi: 10.1177/1099800405285268
- Chess, G. F., Tam, R. M., and Calaresu, F. R. (1975). Influence of cardiac neural inputs on rhythmic variations of heart period in the cat. *Am. J. Physiol.* 228, 775–780.
- Chessa, M., Butera, G., Lanza, G. A., Bossoni, E., Delogu, A., De Rosa, G., et al. (2002). Role of heart rate variability in the early diagnosis of diabetic autonomic neuropathy in children. *Herz* 27, 785–790. doi: 10.1007/s00059-002-2340-4
- Cohen, J. (1992). A power primer. *Psychol. Bull.* 112, 155–159. doi: 10.1037/0033-2909.112.1.155
- Cohen, J., Cohen, P., West, S. G., and Aiken, L. S. (2003). *Applied Multiple Regression/Correlation Analysis for the Behavioral Sciences*. Mahwah, NJ: Lawrence Erlbaum Associates.
- Cysarz, D., Linhard, M., Edelhäuser, F., Längler, A., Van Leeuwen, P., Henze, G., et al. (2011). Unexpected course of nonlinear cardiac interbeat interval dynamics during childhood and adolescence. *PLoS One* 6:e19400. doi: 10.1371/journal.pone.0019400
- Dekker, J. M., Crow, R. S., Folsom, A. R., Hannan, P. J., Liao, D., Swenne, C. A., et al. (2000). Low heart rate variability in a 2-minute rhythm strip predicts risk of coronary heart disease and mortality from several causes: the ARIC Study. Atherosclerosis risk in communities. *Circulation* 102, 1239–1244. doi: 10.1161/01.CIR.102.11.1239
- Eckberg, D. L. (2003). The human respiratory gate. *J. Physiol.* 548(Pt 2), 339–352. doi: 10.1113/jphysiol.2002.037192
- Eckberg, D. L. (2009). Point-counterpoint: respiratory sinus arrhythmia is due to a central mechanism vs. respiratory sinus arrhythmia is due to the baroreflex mechanism. *J. Appl. Physiol.* 106, 1740–1742. doi: 10.1152/jap.191107.2008
- Ernst, G. (2017a). Heart-rate variability—more than heart beats? *Front. Public Health* 5:240. doi: 10.3389/fpubh.2017.00240
- Ernst, G. (2017b). Hidden signals—the history and methods of heart rate variability. *Front. Public Health* 5:265. doi: 10.3389/fpubh.2017.00265
- Estévez-Báez, M., Machado, C., Leisman, G., Brown-Martínez, M., Jas-García, J. D., Montes-Brown, J., et al. (2015). A procedure to correct the effect of heart rate on heart rate variability indices: description and assessment. *Int. J. Disabil. Hum. Dev.* 15, 277–292. doi: 10.1515/ijdh-2015-0014
- Eyre, E. L., Duncan, M. J., Birch, S. L., and Fisher, J. P. (2014). The influence of age and weight status on cardiac autonomic control in healthy children: a review. *Auton. Neurosci.* 186, 8–21. doi: 10.1016/j.autneu.2014.09.019
- Eyre, E. L., Fisher, J. P., Smith, E. C., Wagenmakers, A. J., and Matyka, K. A. (2013). Ethnicity and long-term heart rate variability in children. *Arch. Dis. Child.* 98, 292–298. doi: 10.1136/archdischild-2012-302266
- Fleiss, J. L., Bigger, J. T. Jr., and Rolnitzky, L. M. (1992). The correlation between heart period variability and mean period length. *Stat. Med.* 11, 125–129. doi: 10.1002/sim.4780110111
- Fleming, S., Thompson, M., Stevens, R., Heneghan, C., Plüddemann, A., Maconochie, I., et al. (2011). Normal ranges of heart rate and respiratory rate in children from birth to 18 years of age: a systematic review of observational studies. *Lancet* 377, 1011–1018. doi: 10.1016/S0140-6736(10)62226-X
- Frigerio, A., Vanzin, L., Pastore, V., Nobile, M., Giorda, R., Marino, C., et al. (2006). The Italian preadolescent mental health project (PrISMA): rationale and methods. *Int. J. Methods Psychiatr. Res.* 15, 22–35. doi: 10.1002/mpr.25
- Gąsior, J. S., Sacha, J., Jeleń, P. J., Pawłowski, M., Werner, B., and Dąbrowski, M. J. (2015). Interaction between heart rate variability and heart rate in pediatric population. *Front. Physiol.* 6:385. doi: 10.3389/fphys.2015.00385
- Gąsior, J. S., Sacha, J., Jeleń, P. J., Zieliński, J., and Przybylski, J. (2016). Heart rate and respiratory rate influence on heart rate variability repeatability: effects of the correction for the prevailing heart rate. *Front. Physiol.* 7:356. doi: 10.3389/fphys.2016.00356
- Goto, M., Nagashima, M., Baba, R., Nagano, Y., Yokota, M., Nishibata, K., et al. (1997). Analysis of heart rate variability demonstrates effects of development on vagal modulation of heart rate in healthy children. *J. Pediatr.* 130, 725–729. doi: 10.1016/S0022-3476(97)80013-3
- Grossman, P., and Taylor, E. W. (2007). Toward understanding respiratory sinus arrhythmia: relations to cardiac vagal tone, evolution and biobehavioral functions. *Biol. Psychol.* 74, 263–285. doi: 10.1016/j.biopsycho.2005.11.014
- Hayano, J., Sakakibara, Y., Yamada, A., Yamada, M., Mukai, S., Fujinami, T., et al. (1991). Accuracy of assessment of cardiac vagal tone by heart rate variability in normal subjects. *Am. J. Cardiol.* 67, 199–204. doi: 10.1016/0002-9149(91)90445-Q
- Hayano, J., Sakakibara, Y., Yamada, M., Ohte, N., Fujinami, T., Yokoyama, K., et al. (1990). Decreased magnitude of heart rate spectral components in coronary artery disease. Its relation to angiographic severity. *Circulation* 81, 1217–1224. doi: 10.1161/01.CIR.81.4.1217
- Heathers, J. A. (2014). Everything Hertz: methodological issues in short-term frequency-domain HRV. *Front. Physiol.* 5:177. doi: 10.3389/fphys.2014.00177
- Heragu, N. P., and Scott, W. A. (1999). Heart rate variability in healthy children and in those with congenital heart disease both before and after operation. *Am. J. Cardiol.* 83, 1654–1657. doi: 10.1016/S0002-9149(99)00173-3
- Herzig, D., Eser, P., Radtke, T., Wenger, A., Rusterholz, T., Wilhelm, M., et al. (2017). Relation of heart rate and its variability during sleep with age, physical activity, and body composition in young children. *Front. Physiol.* 8:109. doi: 10.3389/fphys.2017.00109
- Hyndman, B. W., Kitney, R. I., and Sayers, B. M. (1971). Spontaneous rhythms in physiological control systems. *Nature* 233, 339–341. doi: 10.1038/233339a0
- Jarrin, D. C., McGrath, J. J., Poirier, P., Séguin, L., Tremblay, R. E., Montplaisir, J. Y., et al. (2015). Short-term heart rate variability in a population-based sample of 10-year-old children. *Pediatr. Cardiol.* 36, 41–48. doi: 10.1007/s00246-014-0962-y
- Kleiger, R. E., Miller, J. P., Bigger, J. T. Jr., and Moss, A. J. (1987). Decreased heart rate variability and its association with increased mortality after acute myocardial infarction. *Am. J. Cardiol.* 59, 256–262. doi: 10.1016/0002-9149(87)90795-8
- Kraha, A., Turner, H., Nimon, K., Zientek, L. R., and Henson, R. K. (2012). Tools to support interpreting multiple regression in the face of multicollinearity. *Front. Psychol.* 3:44. doi: 10.3389/fpsyg.2012.00044
- Laborde, S., Mosley, E., and Thayer, J. F. (2017). Heart rate variability and cardiac vagal tone in psychophysiological research - recommendations for experiment planning, data analysis, and data reporting. *Front. Psychol.* 8:213. doi: 10.3389/fpsyg.2017.00213
- Lehrer, P. M., and Gevirtz, R. (2014). Heart rate variability biofeedback: how and why does it work? *Front. Psychol.* 5:756. doi: 10.3389/fpsyg.2014.00756
- Longin, E., Dimitriadis, C., Shazi, S., Gerstner, T., Lenz, T., and König, S. (2009). Autonomic nervous system function in infants and adolescents: impact of autonomic tests on heart rate variability. *Pediatr. Cardiol.* 30, 311–324. doi: 10.1007/s00246-008-9327-8
- Massin, M., and von Bernuth, G. (1997). Normal ranges of heart rate variability during infancy and childhood. *Pediatr. Cardiol.* 18, 297–302. doi: 10.1007/s002469900178
- Massin, M., and von Bernuth, G. (1998). Clinical and haemodynamic correlates of heart rate variability in children with congenital heart disease. *Eur. J. Pediatr.* 157, 967–971. doi: 10.1007/s004310050979
- Michels, N., Clays, E., De Buyzere, M., Huybrechts, I., Marild, S., Vanaelst, B., et al. (2013). Determinants and reference values of short-term heart rate variability

- in children. *Eur. J. Appl. Physiol.* 113, 1477–1488. doi: 10.1007/s00421-012-02572-9
- Monfredi, O., Lyashkov, A. E., Johnsen, A. B., Inada, S., Schneider, H., Wang, R., et al. (2014). Biophysical characterization of the underappreciated and important relationship between heart rate variability and heart rate. *Hypertension* 64, 1334–1343. doi: 10.1161/HYPERTENSIONAHA.114.03782
- Nieminen, T., Kähönen, M., Kööbi, T., Nikus, K., and Viik, J. (2007). Heart rate variability is dependent on the level of heart rate. *Am. Heart J.* 154: e13; author reply e15. doi: 10.1016/j.ahj.2007.04.050
- Oliveira, R. S., Barker, A. R., Wilkinson, K. M., Abbott, R. A., and Williams, C. A. (2017). Is cardiac autonomic function associated with cardiorespiratory fitness and physical activity in children and adolescents? A systematic review of cross-sectional studies. *Int. J. Cardiol.* 236, 113–122. doi: 10.1016/j.ijcard.2017.02.022
- Peltola, M. A. (2012). Role of editing of R-R intervals in the analysis of heart rate variability. *Front. Physiol.* 3:148. doi: 10.3389/fphys.2012.00148
- Quintana, D. S., Alvares, G. A., and Heathers, J. A. (2016a). Guidelines for reporting articles on psychiatry and heart rate variability (GRAPH): recommendations to advance research communication. *Transl. Psychiatry* 6:e803. doi: 10.1038/tp.2016.73
- Quintana, D. S., Elstad, M., Kaufmann, T., Brandt, C. L., Haatveit, B., Haram, M., et al. (2016b). Resting-state high-frequency heart rate variability is related to respiratory frequency in individuals with severe mental illness but not healthy controls. *Sci. Rep.* 6:37212. doi: 10.1038/srep37212
- Quintana, D. S., and Heathers, J. A. (2014). Considerations in the assessment of heart rate variability in biobehavioral research. *Front. Psychol.* 5:805. doi: 10.3389/fpsyg.2014.00805
- Ray-Mukherjee, J., Nimon, K., Mukherjee, S., Morris, D. W., Slotow, R., and Hamer, M. (2014). Using commonality analysis in multiple regressions: a tool to decompose regression effects in the face of multicollinearity. *Methods Ecol. Evol.* 5, 320–328. doi: 10.1111/2041-210X.12166
- Reed, K. E., Warburton, D. E., Whitney, C. L., and McKay, H. A. (2006). Differences in heart rate variability between Asian and Caucasian children living in the same Canadian community. *Appl. Physiol. Nutr. Metab.* 31, 277–282. doi: 10.1139/h05-015
- Rękawek, J., Miszczyk-Knecht, M., Kawalec, W., and Mielniczuk, J. (2003). Heart rate variability in healthy children. *Folia Cardiol.* 10, 203–211.
- Sacha, J. (2013). Why should one normalize heart rate variability with respect to average heart rate. *Front. Physiol.* 4:306. doi: 10.3389/fphys.2013.00306
- Sacha, J. (2014a). Heart rate contribution to the clinical value of heart rate variability. *Kardiol. Pol.* 72, 919–924. doi: 10.5603/KP.a2014.0116
- Sacha, J. (2014b). Interaction between heart rate and heart rate variability. *Ann. Noninvasive Electrocardiol.* 19, 207–216. doi: 10.1111/anec.12148
- Sacha, J. (2014c). Interplay between heart rate and its variability: a prognostic game. *Front. Physiol.* 5:347. doi: 10.3389/fphys.2014.00347
- Sacha, J., Barabach, S., Statkiewicz-Barabach, G., Sacha, K., Müller, A., Piskorski, J., et al. (2013a). How to select patients who will not benefit from ICD therapy by using heart rate and its variability? *Int. J. Cardiol.* 168, 1655–1658. doi: 10.1016/j.ijcard.2013.03.040
- Sacha, J., Barabach, S., Statkiewicz-Barabach, G., Sacha, K., Müller, A., Piskorski, J., et al. (2013b). How to strengthen or weaken the HRV dependence on heart rate - Description of the method and its perspectives. *Int. J. Cardiol.* 168, 1660–1663. doi: 10.1016/j.ijcard.2013.03.038
- Sacha, J., Barabach, S., Statkiewicz-Barabach, G., Sacha, K., Müller, A., Piskorski, J., et al. (2014). Gender differences in the interaction between heart rate and its variability - how to use it to improve the prognostic power of heart rate variability. *Int. J. Cardiol.* 171, e42–e45. doi: 10.1016/j.ijcard.2013.11.116
- Sacha, J., Sobon, J., Sacha, K., and Barabach, S. (2013c). Heart rate impact on the reproducibility of heart rate variability analysis. *Int. J. Cardiol.* 168, 4257–4259. doi: 10.1016/j.ijcard.2013.04.160
- Sacha, J., and Grzeszczak, W. (2001). Left ventricular mass index determines variability of the sinus rhythm in essential hypertension. New insight into heart period fluctuations via corrected spectral analysis. *Folia Cardiol.* 8, 487–497.
- Sacha, J., and Pluta, W. (2005a). Different methods of heart rate variability analysis reveal different correlations of heart rate variability spectrum with average heart rate. *J. Electrocardiol.* 38, 47–53. doi: 10.1016/j.jelectrocard.2004.09.015
- Sacha, J., and Pluta, W. (2005b). Which heart rate is more variable: a slow or a fast one? - it depends on the method of heart rate variability analysis. *Folia Cardiol.* 12(Suppl. D), 1–4.
- Sacha, J., and Pluta, W. (2008). Alterations of an average heart rate change heart rate variability due to mathematical reasons. *Int. J. Cardiol.* 128, 444–447. doi: 10.1016/j.ijcard.2007.06.047
- Selya, A. S., Rose, J. S., Dierker, L. C., Hedeker, D., and Mermelstein, R. J. (2012). A practical guide to calculating Cohen's  $f^2$ , a measure of local effect size, from PROC MIXED. *Front. Psychol.* 3:111. doi: 10.3389/fpsyg.2012.00111
- Seppälä, S., Laitinen, T., Tarvainen, M. P., Tompuri, T., Veijalainen, A., Savonen, K., et al. (2014). Normal values for heart rate variability parameters in children 6–8 years of age: the PANIC Study. *Clin. Physiol. Funct. Imaging* 4, 290–296. doi: 10.1111/cpf.12096
- Shader, T. M., Gatzke-Kopp, L. M., Crowell, S. E., Jamila Reid, M., Thayer, J. F., Vasey, M. W., et al. (2017). Quantifying respiratory sinus arrhythmia: Effects of misspecifying breathing frequencies across development. *Dev. Psychopathol.* 30, 351–366. doi: 10.1017/S0954579417000669
- Shaffer, F., and Ginsberg, J. P. (2017). An overview of heart rate variability metrics and norms. *Front. Public Health* 5:258. doi: 10.3389/fpubh.2017.00258
- Sharma, V. K., Subramanian, S. K., Arunachalam, V., and Rajendran, R. (2015). Heart rate variability in adolescents - normative data stratified by sex and physical activity. *J. Clin. Diagn. Res.* 9, CC08–CC13. doi: 10.7860/JCDR/2015/15373.6662
- Silvetti, M. S., Drago, F., and Ragonese, P. (2001). Heart rate variability in healthy children and adolescents is partially related to age and gender. *Int. J. Cardiol.* 81, 169–174. doi: 10.1016/S0167-5273(01)00537-X
- Sinnecker, D., Dommasch, M., Barthel, P., Müller, A., Dirschinger, R. J., Hapfelmeier, A., et al. (2014). Assessment of mean respiratory rate from ECG recordings for risk stratification after myocardial infarction. *J. Electrocardiol.* 47, 700–704. doi: 10.1016/j.jelectrocard.2014.04.021
- Slinker, B. K., and Glantz, S. A. (2008). Multiple linear regression: accounting for multiple simultaneous determinants of a continuous dependent variable. *Circulation* 117, 1732–1737. doi: 10.1161/CIRCULATIONAHA.106.654376
- Song, H. S., and Lehrer, P. M. (2003). The effects of specific respiratory rates on heart rate and heart rate variability. *Appl. Psychophysiol. Biofeedback* 28, 13–24. doi: 10.1023/A:1022312815649
- Stein, P. K., Domitrovich, P. P., Huikuri, H. V., Kleiger, R. E., and Cast Investigators. (2005). Traditional and nonlinear heart rate variability are each independently associated with mortality after myocardial infarction. *J. Cardiovasc. Electrophysiol.* 16, 13–20. doi: 10.1046/j.1540-8167.2005.04358.x
- Tarvainen, M. P., Lipponen, J., Niskanen, J. P., and Ranta-Aho, P. O. (2017). *Kubios HRV (ver. 3.0.2). User's Guide*. Available at: [http://www.kubios.com/downloads/Kubios\\_HRV\\_Users\\_Guide.pdf](http://www.kubios.com/downloads/Kubios_HRV_Users_Guide.pdf)
- Tarvainen, M. P., Niskanen, J. P., Lipponen, J. A., Ranta-Aho, P. O., and Karjalainen, P. A. (2014). Kubios HRV-heart rate variability analysis software. *Comput. Methods Programs Biomed.* 113, 210–220. doi: 10.1016/j.cmpb.2013.07.024
- Tarvainen, M. P., Ranta-Aho, P. O., and Karjalainen, P. A. (2002). An advanced detrending method with application to HRV analysis. *IEEE Trans. Biomed. Eng.* 49, 172–175. doi: 10.1109/10.979357
- Task Force (1996). Heart rate variability: standards of measurement, physiological interpretation and clinical use. Task force of the European society of cardiology and the North American society of pacing and electrophysiology. *Circulation* 93, 1043–1065. doi: 10.1161/01.CIR.93.5.1043
- Thayer, J. F., Yamamoto, S. S., and Brosschot, J. F. (2010). The relationship of autonomic imbalance, heart rate variability and cardiovascular disease risk factors. *Int. J. Cardiol.* 141, 122–131. doi: 10.1016/j.ijcard.2009.09.543
- Umetani, K., Singer, D. H., McCraty, R., and Atkinson, M. (1998). Twenty-four hour time domain heart rate variability and heart rate: relations to age and gender over nine decades. *J. Am. Coll. Cardiol.* 31, 593–601. doi: 10.1016/S0735-1097(97)00554-8
- van den Berg, M. E., Rijnbeek, P. R., Niemeijer, M. N., Hofman, A., van Herpen, G., Bots, M. L., et al. (2018). Normal values of corrected heart-rate variability in 10-second electrocardiograms for all ages. *Front. Physiol.* 9:424. doi: 10.3389/fphys.2018.00424

- van Roon, A. M., Snieder, H., Lefrandt, J. D., de Geus, E. J. C., and Riese, H. (2016). Parsimonious correction of heart rate variability for its dependency on heart rate. *Hypertension* 68, e63–e65. doi: 10.1161/HYPERTENSIONAHA.116.08053
- Varlinskaya, E. I., Vetter-O'Hagen, C. S., and Spear, L. P. (2013). Puberty and gonadal hormones: role in adolescent-typical behavioral alterations. *Horm. Behav.* 64, 343–349. doi: 10.1016/j.yhbeh.2012.11.012
- Wang, X., Thayer, J. F., Treiber, F., and Snieder, H. (2005). Ethnic differences and heritability of heart rate variability in African- and European American youth. *Am. J. Cardiol.* 96, 1166–1172. doi: 10.1016/j.amjcard.2005.06.050
- Williams, C. A., and Lopes, P. (2002). The influence of ventilatory control on heart rate variability in children. *J. Sports Sci.* 20, 407–415. doi: 10.1080/026404102317366663
- Xhyheri, B., Manfrini, O., Mazzolini, M., Pizzi, C., and Bugiardini, R. (2012). Heart rate variability today. *Prog. Cardiovasc. Dis.* 55, 321–331. doi: 10.1016/j.pcad.2012.09.001
- Yildiz, M., and Ider, Y. Z. (2006). Model based and experimental investigation of respiratory effect on the HRV power spectrum. *Physiol. Meas.* 27, 973–988. doi: 10.1088/0967-3334/27/10/004

**Conflict of Interest Statement:** The authors declare that the research was conducted in the absence of any commercial or financial relationships that could be construed as a potential conflict of interest.

Copyright © 2018 Gąsior, Sacha, Pawłowski, Zieliński, Jeleń, Tomik, Książczyk, Werner and Dąbrowski. This is an open-access article distributed under the terms of the Creative Commons Attribution License (CC BY). The use, distribution or reproduction in other forums is permitted, provided the original author(s) and the copyright owner(s) are credited and that the original publication in this journal is cited, in accordance with accepted academic practice. No use, distribution or reproduction is permitted which does not comply with these terms.