



NREL's Balance-of-System Cost Model for Land-Based Wind

Annika Eberle, Owen Roberts, Alicia Key, Parangat Bhaskar, and Katherine Dykes

National Renewable Energy Laboratory

**NREL is a national laboratory of the U.S. Department of Energy
Office of Energy Efficiency & Renewable Energy
Operated by the Alliance for Sustainable Energy, LLC**

This report is available at no cost from the National Renewable Energy Laboratory (NREL) at www.nrel.gov/publications.

Contract No. DE-AC36-08GO28308

Technical Report
NREL/TP-6A20-72201
September 2019



NREL's Balance-of-System Cost Model for Land-Based Wind

Annika Eberle, Owen Roberts, Alicia Key,
Parangat Bhaskar, and Katherine Dykes

National Renewable Energy Laboratory

Suggested Citation

Eberle, Annika, Owen Roberts, Alicia Key, Parangat Bhaskar, and Katherine Dykes. 2019. *NREL's Balance-of-System Cost Model for Land-Based Wind*. Golden, CO: National Renewable Energy Laboratory. NREL/TP-6A20-72201. <https://www.nrel.gov/docs/fy19osti/72201.pdf>.

**NREL is a national laboratory of the U.S. Department of Energy
Office of Energy Efficiency & Renewable Energy
Operated by the Alliance for Sustainable Energy, LLC**

This report is available at no cost from the National Renewable Energy Laboratory (NREL) at www.nrel.gov/publications.

Contract No. DE-AC36-08GO28308

Technical Report
NREL/TP-6A20-72201
September 2019

National Renewable Energy Laboratory
15013 Denver West Parkway
Golden, CO 80401
303-275-3000 • www.nrel.gov

NOTICE

This work was authored by the National Renewable Energy Laboratory, operated by Alliance for Sustainable Energy, LLC, for the U.S. Department of Energy (DOE) under Contract No. DE-AC36-08GO28308. Funding provided by U.S. Department of Energy Office of Energy Efficiency and Renewable Energy Wind Energy Technologies Office. The views expressed herein do not necessarily represent the views of the DOE or the U.S. Government.

This report is available at no cost from the National Renewable Energy Laboratory (NREL) at www.nrel.gov/publications.

U.S. Department of Energy (DOE) reports produced after 1991 and a growing number of pre-1991 documents are available free via www.OSTI.gov.

Cover Photos by Dennis Schroeder: (clockwise, left to right) NREL 51934, NREL 45897, NREL 42160, NREL 45891, NREL 48097, NREL 46526.

NREL prints on paper that contains recycled content.

Acknowledgments

This work was supported by the U.S. Department of Energy under Contract No. DE-AC36-08GO28308 with Alliance for Sustainable Energy, LLC, the Manager and Operator of the National Renewable Energy Laboratory. Funding was provided by the U.S. Department of Energy Office of Energy Efficiency and Renewable Energy Wind Energy Technologies Office. We would like to thank several industry contacts at Wind Tower Technologies, Mortenson, Renewable Energy Systems, and Apex for providing helpful comments and suggestions about the model. The views and opinions of the authors expressed herein do not necessarily state or reflect those of the United States Government or any agency thereof. Neither the United States Government nor any agency thereof, nor any of their employees, makes any warranty, expressed or implied, or assumes any legal liability or responsibility for the accuracy, completeness, or usefulness of any information, apparatus, product, or process disclosed, or represents that its use would not infringe privately owned rights.

List of Acronyms

BOS	balance of system
IEA	International Energy Agency
IEC	International Electrotechnical Commission
kV	kilovolts
LandBOSSE	Land-based BOS Systems Engineering model
LCY	loose cubic yards
LF	linear foot
m/s	meters per second
MW	megawatt
NREL	National Renewable Energy Laboratory
O&M	operation and maintenance
OT	operation time
psi	pounds per square inch
RNA	rotor nacelle assembly
RSMMeans	RSMMeans Construction Cost Database
USD	U.S. dollars

Executive Summary

NREL's Land-based Balance of System Systems Engineering (LandBOSSE) model is a tool for modeling the balance-of-system (BOS) costs of land-based wind plants. BOS costs currently account for approximately 30% of the capital expenditures needed to install a land-based wind plant; they include all costs associated with installing a wind plant, such as permitting, labor, material, and equipment costs associated with site preparation, foundation construction, electrical infrastructure, and tower installation.

NREL developed LandBOSSE after identifying a need for a hybrid of a process-based model and an empirically derived model that can provide flexibility for assessing wind plant BOS costs at a system level. Other NREL BOS models have relied on empirical fits of legacy industry data, which limits their predictive ability. LandBOSSE, however, was designed to help users explore tradeoffs between innovative design scenarios while balancing the level of detail and speed required for model execution. The model was developed using a hybrid of process-based and empirically derived methods to create a modular model design that will allow for updates as wind energy technologies evolves. The goal of LandBOSSE is to allow researchers, analysts, wind power developers, government agencies, and the public to explore how BOS costs may vary for different wind plant designs.

This report summarizes the approach, methods, and equations used to develop LandBOSSE Version 2.1. Future versions of the model may incorporate additional process-based capabilities or modify calculations within the code. Refer to the GitHub repository at <https://github.com/WISDEM/LandBOSSE> for the most up-to-date version of the software documentation and code.

Table of Contents

1	Introduction	1
1.1	Purpose of the Model	1
1.2	Approach to Model Development	2
2	Land-Based BOS Process Descriptions	2
2.1	Site Development	3
2.2	Management	4
2.3	Site Preparation	5
2.4	Foundation Construction	6
2.5	Turbine Erection.....	7
2.6	Collection System Construction.....	8
2.7	Grid Connection	9
2.8	Substation Construction	10
3	LandBOSSE Architecture	11
4	LandBOSSE Modules	13
4.1	Process-Based Modules.....	13
4.1.1	SitePreparationCost.....	14
4.1.2	FoundationCost	18
4.1.3	ErectionCost	25
4.1.4	CollectionCost.....	27
4.1.5	WeatherDelay.....	30
4.2	Empirical Modules	31
4.2.1	DevelopmentCost.....	31
4.2.2	ManagementCost.....	32
4.2.3	GridConnectionCost.....	36
4.2.4	SubstationCost.....	37
5	LandBOSSE Verification	39
6	Conclusion	40
7	References	41
Appendix: Data Structure for LandBOSSE Inputs		42
A.1	Proxy Inputs	42
A.2	Summary of Model Inputs.....	43
A.3	Hard-Coded Values	55

List of Figures

Figure 1. Process diagram for site development	3
Figure 2. Process diagram for management.....	4
Figure 3. Process diagram for site preparation	5
Figure 4. Process diagram for foundation construction	6
Figure 5. Process diagram for the erection of the tower and rotor nacelle assembly.....	7
Figure 6. Process diagram for the collection system.....	8
Figure 7. Process diagram for grid connection	9
Figure 8. Process diagram for substation construction	10
Figure 9. LandBOSSE 2.1 Architecture.....	12
Figure 10. Implementation of SitePreparationCost module in LandBOSSE 2.1	14
Figure 11. Implementation of FoundationCost module in LandBOSSE 2.1	19
Figure 12. Illustration of idealized foundation design used in LandBOSSE	20
Figure 13. Implementation of ErectionCost module in LandBOSSE 2.1	25
Figure 14. Implementation of CollectionCost module in LandBOSSE 2.1	28
Figure 15. Sample array design used in LandBOSSE for trench length calculation	29
Figure 16. Implementation of DevelopmentCost module in LandBOSSE 2.1	32
Figure 17. Implementation of ManagementCost module in LandBOSSE 2.1	33
Figure 18. Implementation of GridConnectionCost module in LandBOSSE 2.1	37
Figure 19. Implementation of SubstationCost module in LandBOSSE 2.1	38

List of Tables

Table 1. Implementation Method Used for Each Module in LandBOSSE 2.1	13
Table 2. Number of Met Masts by Project Size	35
Table 3. Met Mast Multipliers by Hub Height.....	35
Table 4. Size of Operation and Maintenance (O&M) Facilities by Project Size	36
Table 5. Constants for Compound Security by Number of Turbines.....	36
Table A-1. Proxy Inputs.....	42
Table A-2. LandBOSSE Input Data.....	43
Table A-3. Summary of Data Sources.....	45
Table A-4. Sample Inputs for Project List, Listed by Project ID.....	46
Table A-5. Sample Turbine and Tower Components Data.....	47
Table A-6. Sample Cable Specs Data	47
Table A-7. Sample Equipment Data	48
Table A-8. Sample Data for Equipment Prices.....	48
Table A-9. Sample Input for Crane Specifications	49
Table A-10. Sample Data for Crew	51
Table A-11. Sample Price Data for Crew	53
Table A-12. Sample Data for Material Prices.....	54
Table A-13. Sample Data for RSMeans.....	54
Table A-14. Site Facility Building Area Defaults as Function of Project Size.....	55
Table A-15. Road Properties.....	55
Table A-16. Defaults Used in ManagementCost Module.....	56
Table A-17. Inputs and Outputs in CollectionCost Module	56
Table A-18. Inputs and Outputs in FoundationCost Module.....	58
Table A-19. Inputs and Outputs in SitePreparationCost Module	59
Table A-20. Inputs and Outputs in SubstationCost Module	60
Table A-21. Inputs and Outputs in GridConnectionCost Module	60
Table A-22. Inputs and Outputs in ErectionCost Module.....	61
Table A-23. Inputs and Outputs in ManagementCost Module	62
Table A-24. Inputs and Outputs in WeatherDelay Module	62

1 Introduction

Wind power comprised 6.6% of total net generation in the United States in 2018, and it is projected to become the largest source of renewable electricity generation in 2019 (1). However, significant cost and performance improvements in wind power technology will be needed in order to achieve the U.S. Department of Energy's *Wind Vision* report scenarios of wind power supplying 20% of national end-use electricity demand by 2030 and 35% by 2050 (2). Although the contiguous United States has the technical resource potential to generate up to 32,700 terawatt-hours of electricity per year (more than eight times the amount of electricity that was consumed in the United States in 2018) from land-based wind plants (2), the development of much of this resource is not currently economically feasible because of technology constraints, site complexities, competition from lower cost power sources, or other factors.

Improving the cost and performance of wind power plants will likely involve modifying multiple aspects of wind plant design and operation, including improving methods for turbine erection and modifying the plant layout to increase energy capture, altering maintenance procedures to reduce operational costs, and changing aspects of the balance of system (BOS) to decrease construction costs. BOS costs include all of the costs associated with installing a wind plant, such as permitting, labor, material, and equipment costs associated with site preparation, foundation construction, electrical infrastructure, and tower installation. BOS costs do not include the capital costs of the turbine or operation and maintenance (O&M) costs associated for the plant. However, depending on site-specific factors, the BOS costs for land-based wind plants comprise about one-third of the project's total investment costs (3). As turbine technology and costs change, modeling how BOS costs change with different foundation designs, tower technologies, and turbine installation methods is valuable for understanding the potential for cost reductions in a wind project's total investment costs.

1.1 Purpose of the Model

The goal of NREL's Land-based BOS Systems Engineering (LandBOSSE) model is to provide researchers, analysts, wind power developers, government agencies, and the public with a flexible tool that can be used to estimate the BOS costs associated with land-based wind plants. The model is also intended to provide a common framework for modeling costs, and it is designed in a modular manner to allow future modifications and user-created enhancements. For example, although the model was originally developed for estimating the BOS costs for utility-scale wind plants, the model framework is adaptable and could accommodate smaller facilities with modifications.

The model aims to achieve an American Association of Cost Engineers Class 4 rating with an expected accuracy range of -10% to -20% on the low end of estimation (underestimation) and +20% to +50% on the high end (overestimation) (4). As a result, the model is not intended to be used for project planning or budgeting; it is instead designed to provide a moderate level of information for screening different design concepts and studying their feasibility. For example, the model could be used to generate rough order-of-magnitude estimates of BOS costs for different types of turbines, foundation materials, labor rates, and crane sizes.

1.2 Approach to Model Development

LandBOSSE was developed using a four-tiered approach, which required collecting proprietary data and input from multiple sources, integrating these data with publicly available sources, and curating these sources for use within the model. First, we identified the major categories of BOS costs for land-based wind plants and mapped their underlying processes to input and output variables (see Section 2). Then, we reviewed our mapped process diagrams with industry experts and collected data for the calculations. Third, in parallel with industry review, we implemented the process diagrams based on our knowledge of the construction of conventional steel tower turbines; this step required simplifying our implementation of the detailed process diagrams in Section 2 because of data or other limitations (see Section 3). Finally, we verified that the model outputs aligned with industry data. In some cases, because of data limitations or other constraints, we use curve fits of industry data rather than implementing detailed process-based approaches (e.g., development, management, substation, and grid connection modules). Finally, we talked with industry experts to evaluate trends in technology innovation and updated or expanded the model structure to accommodate potential innovation pathways. Overall, the model is based on a bottom-up assessment of inputs and outputs associated with each BOS operation and, where needed, it is supplemented by top-down estimates of costs from industry.

This type of cost estimation tool may be of value to industry, as it may increase the fidelity of cost estimation in some cases. Industry currently performs high-level, low-fidelity cost analysis using empirical data to evaluate whether projects are worth pursuing and executes low-level, high-fidelity cost studies to more accurately assess costs for project bidding. However, the low-fidelity cost estimates used in industry cannot be used to examine how changes in technology development might impact these estimates and the high-fidelity site-specific analysis, which is often executed separately by experts in each BOS cost category (e.g., site preparation, collection, and erection), is time-consuming. LandBOSSE allows for costs to be evaluated at a mid-level between the two levels used in industry, which allows for relatively fast iteration around technology alternatives and holistic analysis of changes in BOS costs across cost categories.

This report describes the approach, methods, and equations used to develop LandBOSSE Version 2.1 (LandBOSSE 2.1). Future versions of the model may incorporate additional process-based capabilities or modify calculations within the code. Refer to the GitHub repository at <https://github.com/WISDEM/LandBOSSE> for the current version of the documentation and code.

2 Land-Based BOS Process Descriptions

Land-based BOS construction costs can be broken down into eight categories: 1) development, 2) management, 3) site preparation, including road construction, 4) foundation construction, 5) turbine erection, 6) collection system construction, 7) grid connection costs, including transmission and interconnection, and 8) substation construction. The detailed processes associated with each of these modules is outlined in the sections that follow. Note that the process diagrams presented are intended to serve as an idealized model of actual BOS processes and are not implemented completely within LandBOSSE 2.1 (see Section 3 and 4 for details about the implementation within the model). The descriptions and figures provided in this section are intended to illustrate the most important inputs, calculated parameters, process steps,

and final costs within each BOS cost category. The actual implementation of these processes within LandBOSSE 2.1 is described in Section 4.

2.1 Site Development

Developing a site for a land-based wind plant includes evaluating the quality of the wind resource, obtaining environmental permits, marketing the power, acquiring the necessary land, and assessing distribution costs. Various factors influence the costs of each of these steps, which are primarily driven by the terrain complexity, the number of turbines, the turbine rating, and the regional location of the site (see Figure 1). The total development costs equal the sum of the costs for all underlying processes.

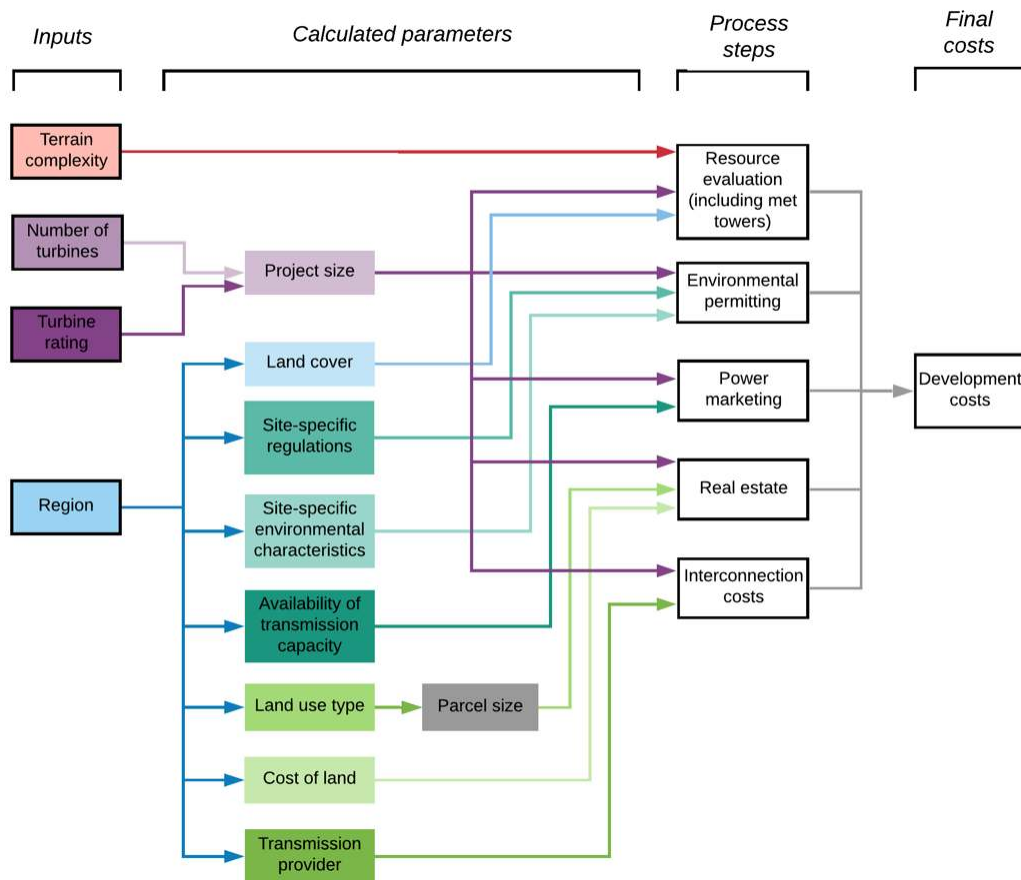


Figure 1. Process diagram for site development

2.2 Management

Management at a land-based wind plant includes acquiring insurance, permitting construction, bonding the project, managing the project, mark-up and contingency costs, performing site-specific engineering, and developing the facilities for site access and staging. Various factors impact the costs for each of these steps, but they are primarily driven by the project value, builder size, number of turbines, turbine rating, and regional location of the project (see Figure 2). The total management costs equal the sum all costs for the underlying processes.

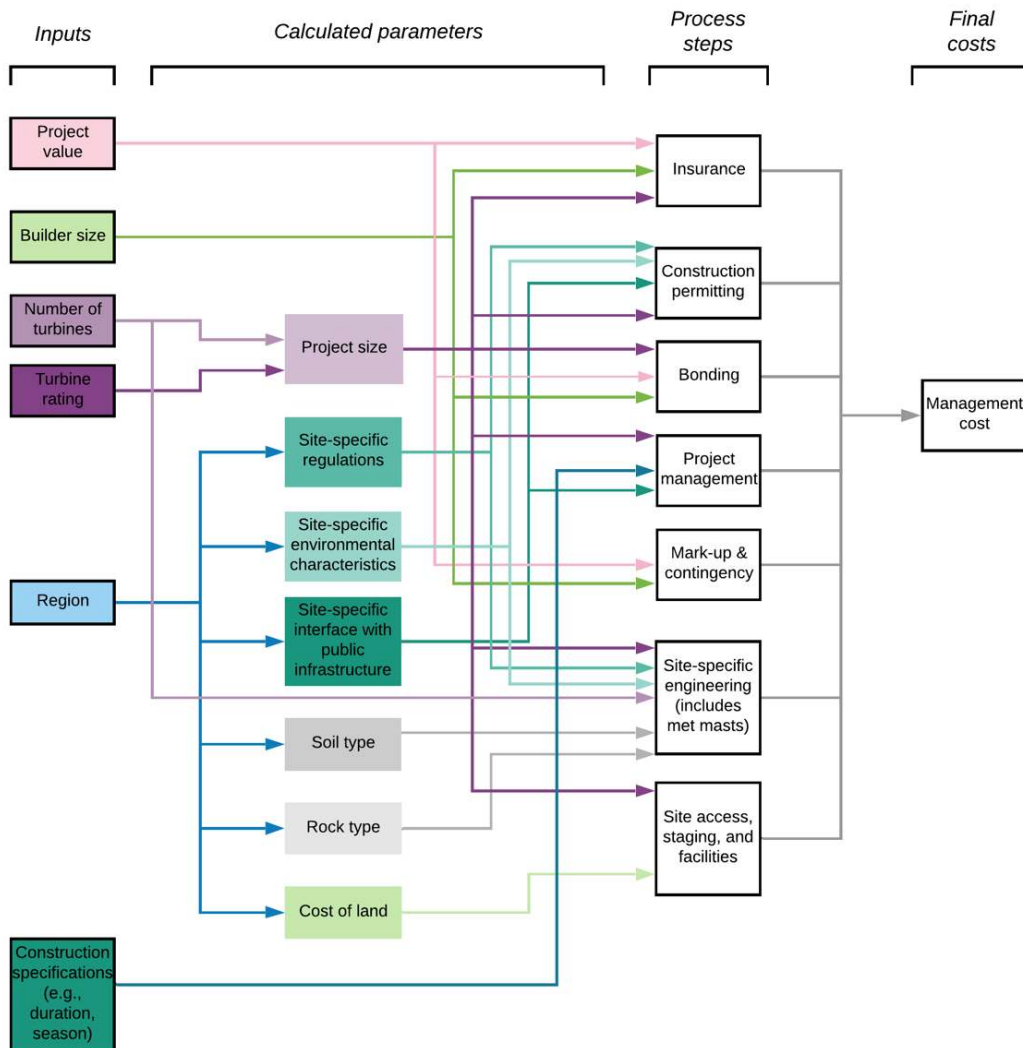


Figure 2. Process diagram for management

2.3 Site Preparation

Preparing the site for a land-based wind plant is a detailed process that includes constructing roads and ranges from performing a road survey and clearing the roads to compacting the soil and placing rock. Various factors influence each of the steps in the process, and they are primarily driven by the site and terrain complexity, regional location of the project, bearing pressure of the trailers, method of crane travel, distance to a quarry, crane width, existing road crossings, site transport method, specifications for the road design, blade length, turbine spacing, number of turbines, and turbine rating (see Figure 3). We separated the parameters that influence the costs of each underlying site preparation process into four major categories: engineering hours, person hours, equipment hours, and quantity of materials. The final site preparation costs are then computed for labor, fuel, equipment, and materials based on the prices associated with each of these goods.

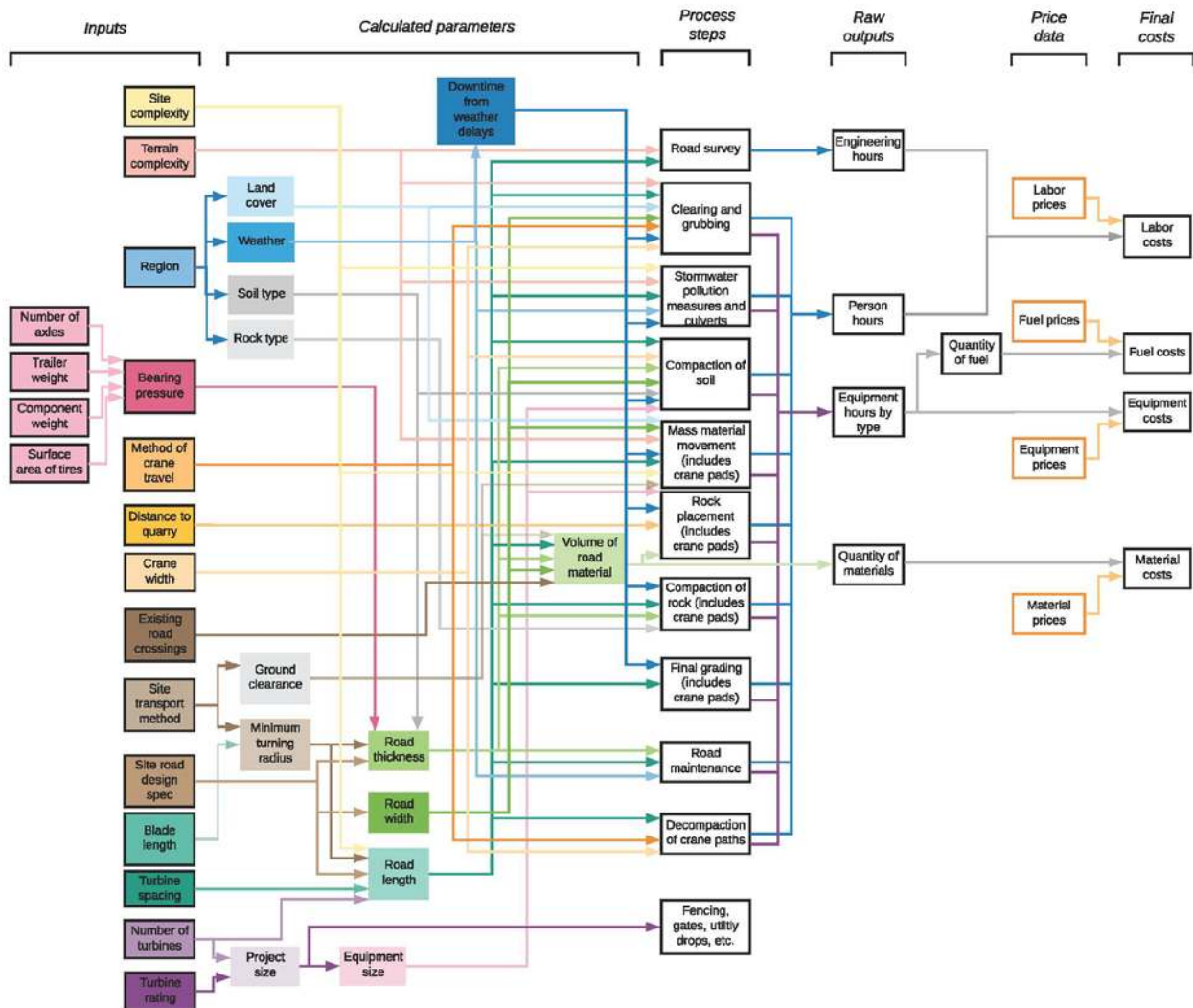


Figure 3. Process diagram for site preparation

2.4 Foundation Construction

Constructing tower foundations for a land-based wind plant is largely driven by the foundation design, and it includes excavating the site, putting down rebar and constructing a bolt cage, pouring concrete for the base, constructing the pedestal, and backfilling the foundation. Various factors influence each of these processes, but they are primarily driven by the number of turbines, the duration of construction, the regional location of the project, the rotor diameter, the hub height, the turbine rating, whether a buoyant foundation design is required, the seismic zone of the site, and the type of tower technology being used (see Figure 4). The dominant parameters that influence the foundation design, and therefore the foundation construction costs, are the soil type and the foundation loads.

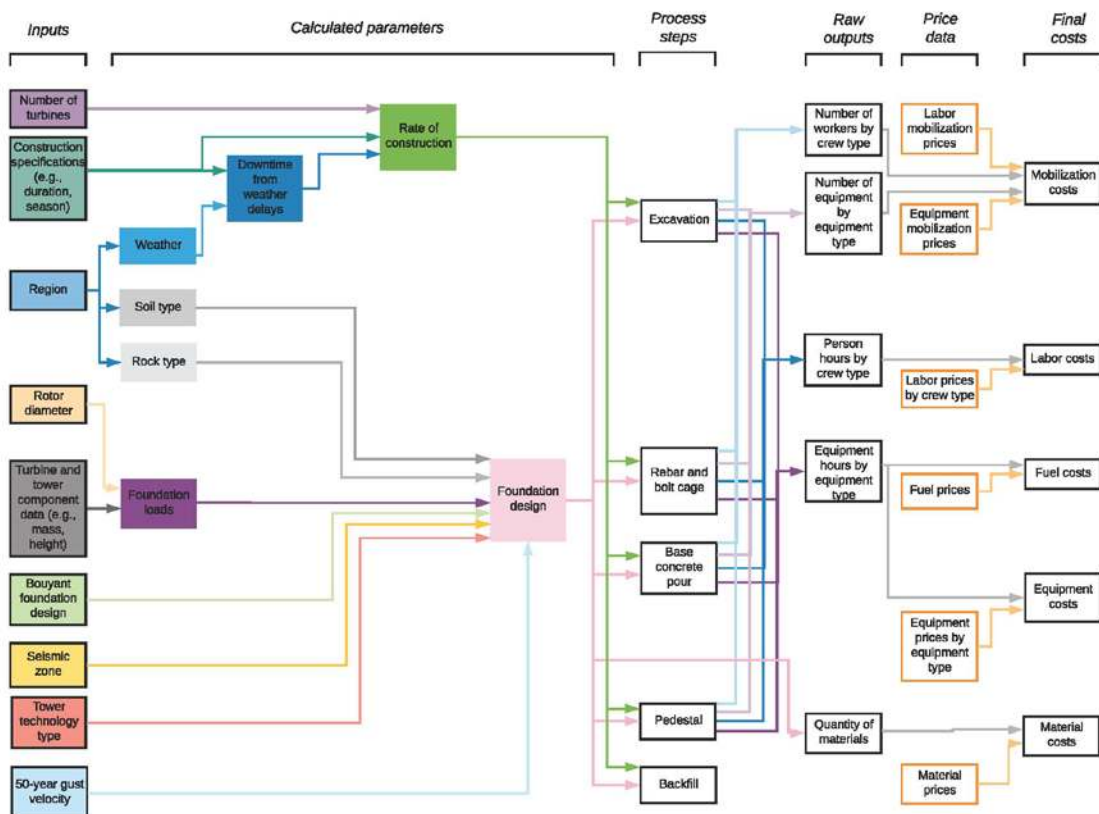


Figure 4. Process diagram for foundation construction

2.5 Turbine Erection

As shown in Figure 5, the traditional process of erecting a turbine starts with the delivery of parts, including the rotors, the nacelle, and the tower sections. The tower is then installed with a crane, which is often split into two phases so different cranes can be used for the base and top of the tower. The rotors and nacelle are installed using the same crane used for the top of the tower, and any civil work related to crane travel is performed alongside the other processes. The major drivers of the erection costs are the size, quantity, and type of cranes and the crews required for the project, which is influenced by the risk of short-term weather (specifically wind) delays and the size and weight of the tower and turbine components. The number of crane breakdowns required when moving the crane from turbine to turbine is also an important driver of erection costs.

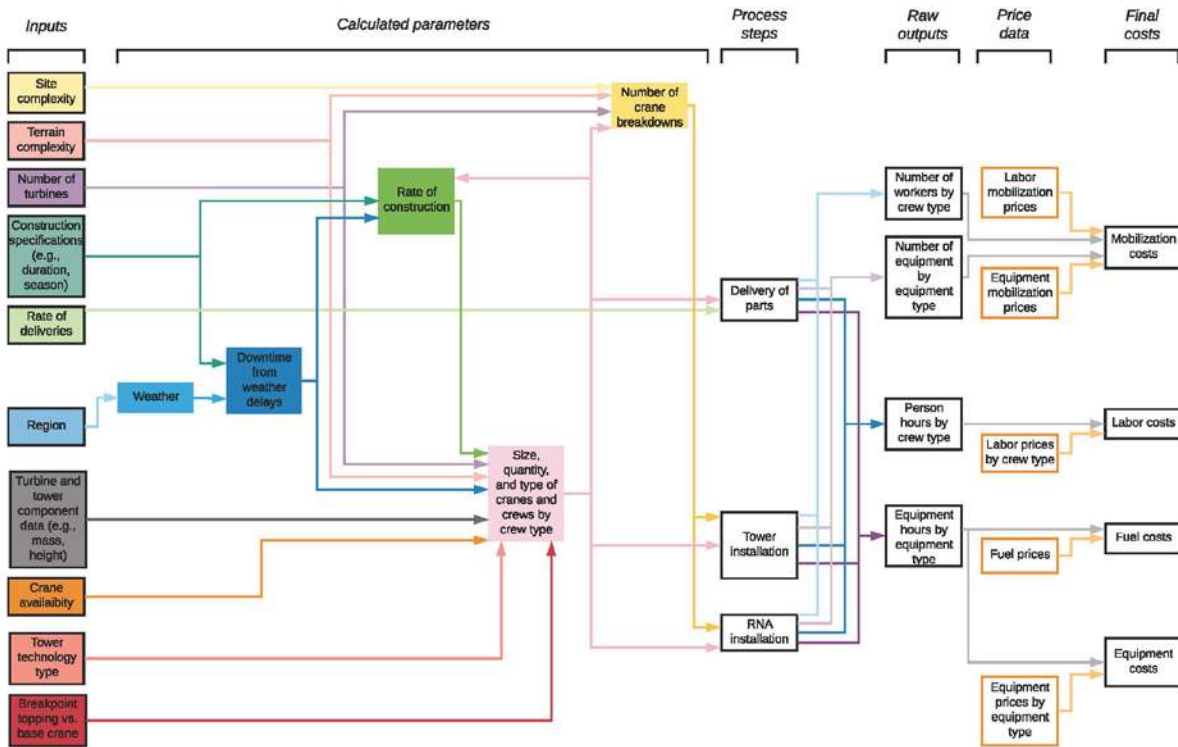


Figure 5. Process diagram for the erection of the tower and rotor nacelle assembly

2.6 Collection System Construction

Installing a collection system for a land-based wind plant involves preparing the site for the type of collection system being used (e.g., trenching, boring, or overhead preparation) and then installing the conductors. The primary factors that influence the cost of the collection system are the number of electrical connections—which is a function of numerous input parameters—along with the type of collection system and the volume of cable required for the project. The major input parameters for collection system costs are therefore the site complexity, terrain complexity, electrical system losses, number of turbines, turbine rating, turbine model, average distance to the substation, regional location of the project, and plant layout (see Figure 6).

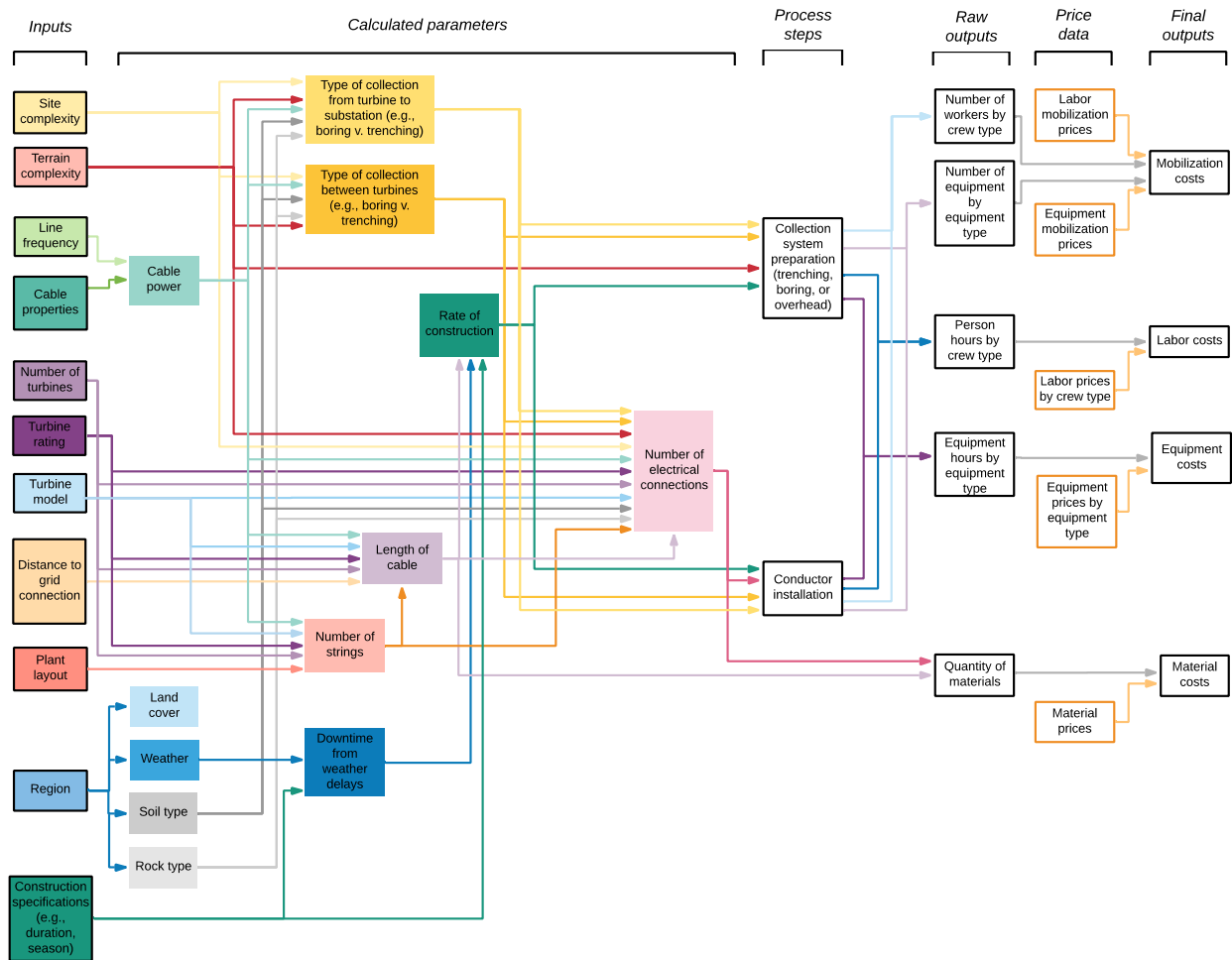


Figure 6. Process diagram for the collection system

2.7 Grid Connection

The grid connection process, which includes transmission and interconnection, for utility-scale, land-based wind plants includes performing a land survey, clearing and grubbing the area, implementing storm-water pollution measures, installing the poles, installing the conductor, and restoring the right of way. The costs of these processes are driven by the terrain complexity, the line voltage, the line length, and the regional location of the project (see Figure 7).

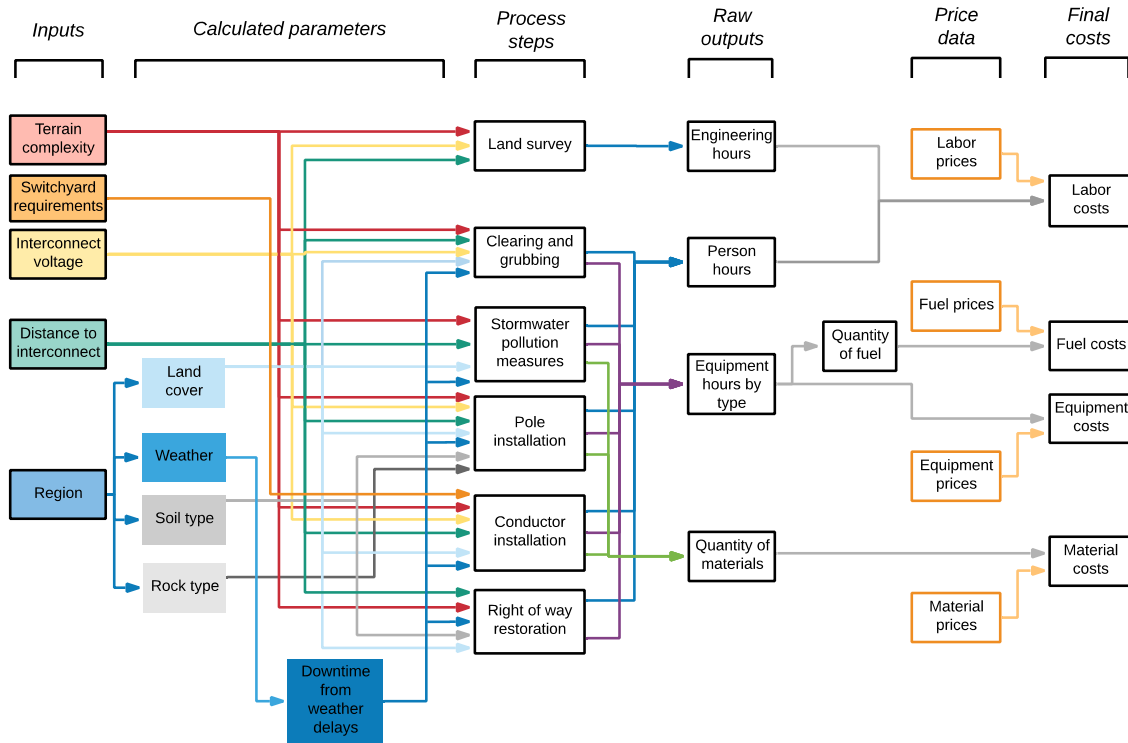


Figure 7. Process diagram for grid connection

2.8 Substation Construction

Substation construction for land-based wind plants includes performing a land survey, clearing and grubbing the area, excavating, installing foundations, implementing storm-water pollution measures, installing the dead-end structures, installing the conductors, transformers, relays, meters, switches, controls, and breakers as well as restoring the disturbed areas after construction is complete. The costs of these processes are driven by the plant size, terrain complexity, rock and soil conditions on site, interconnection and collection voltages, the collection system design, and the regional location of the project (see Figure 8).

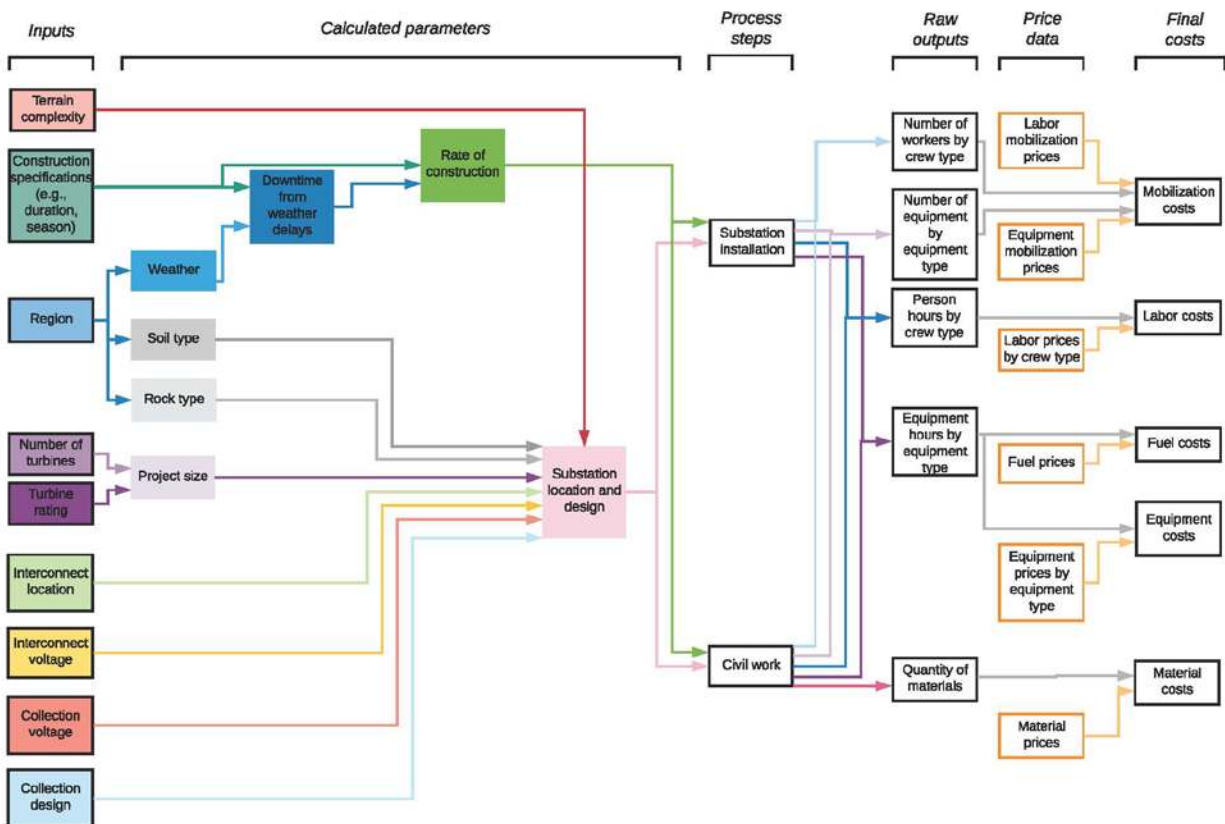


Figure 8. Process diagram for substation construction

3 LandBOSSE Architecture

As described in Section 1, this report describes the approach, methods, and equations used to develop LandBOSSE 2.1. The model uses a modular software architecture developed in Python 3.7 and includes nine BOS cost calculation modules (see Figure 9).¹

At its highest level, the software's interface is a set of input and output Python dictionaries. A user only needs to instantiate the Manager class (i.e., highest-level class; see Figure 9) with an input Python dictionary that contains the required set of inputs and an empty Python dictionary to store the outputs. The Manager class owns and coordinates the sharing of input and output data with all lower-level modules. This design is intended to prevent interdependencies between the any of the modules and to provide a standard, single point of entry into the LandBOSSE library. This structure will allow for additions of new input and output data without a risk of breaking the software because of hidden dependencies. Additionally, new modules can be incorporated by simply attaching them directly to the Manager class.

The LandBOSSE software includes a mix of two architectural styles: the pipe and filter style, and the data abstraction and object-oriented organization style. The input and output dictionaries are analogous to pipes, and each of the modules are similar to filters that transform input data streams; the modules themselves (including the Manager class) represent a standalone class with their own unique share of the data and relevant operations.

When combined, the two styles of architecture described above achieve a few important design benefits: (1) preserving the integrity of the software, (2) limiting lower-level interdependencies (of data and operations that process these data) between the modules, and (3) allowing reuse of the software, as it can be easily connected to other tools. For example, as long as the necessary input data are provided, each module can be run independently of the rest of the code. All modules can also be run together to execute total BOS costs for all cost categories.

¹ Future versions of LandBOSSE may differ from the design and implementation described here; refer to the GitHub repository at <https://github.com/WISDEM/LandBOSSE> for the latest version of the software documentation and code.

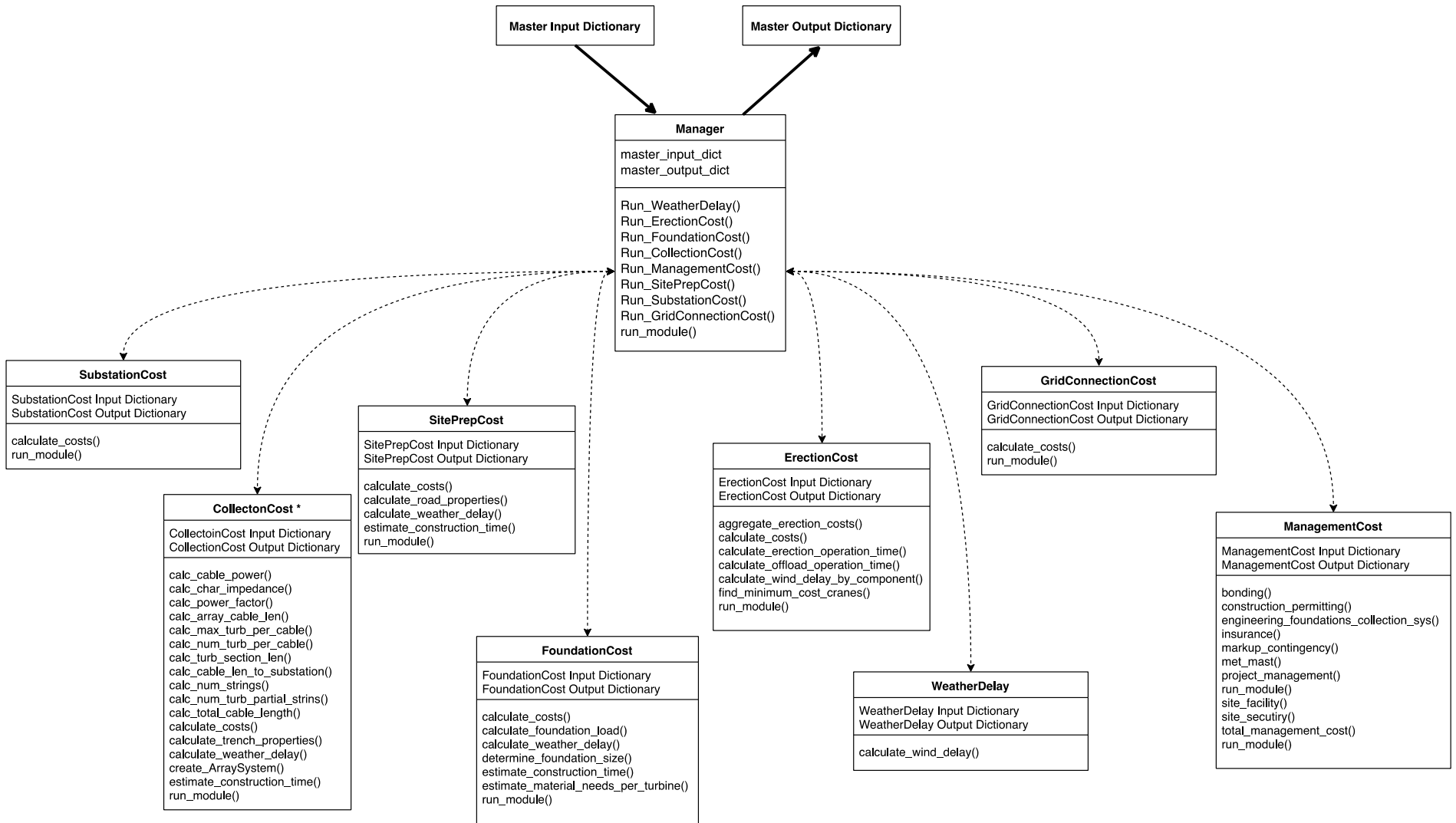


Figure 9. LandBOSSE 2.1 Architecture

*CollectionCost module in LandBOSSE is made up of three classes. However, it is represented as a single class here for the sake of simplicity. Detailed inputs and outputs for each module can be found in the appendix.

4 LandBOSSE Modules

As described in Section 3, the LandBOSSE model was developed in a modular manner to allow it to be updated and modified fairly easily and to accommodate a variety of factors, including tower technologies, turbine types, and site-specific parameters. This section describes the approach, methods, and equations used to develop LandBOSSE 2.1.²

As shown in Figure 9, LandBOSSE 2.1 consists of nine modules that correspond to each of the eight land-based BOS construction phases and an additional weather delay module. As shown in Table 1, LandBOSSE 2.1 is implemented using a hybrid of process-based equations and curve fits of empirical data. Five of the modules are implemented using the process-based approach, which involves computing equipment hours, labor hours, mobilization costs, and material needs, and combining them with price data for each of these parameters. Because of data limitations or other constraints, the other four modules are currently implemented using curve fits of industry data. Total costs are summed within each module and over all modules, and, where possible, costs are broken down by type, including mobilization, labor, fuel, equipment, and materials. All costs are computed and reported in U.S. dollars (USD). The following sections, which are organized by implementation style (process-based versus empirical), detail the implementation of each module.

Table 1. Implementation Method Used for Each Module in LandBOSSE 2.1

Implementation Method	Module Name
Process-based equations	SitePreparationCost
	FoundationCost
	ErectionCost
	CollectionCost
	WeatherDelay
Curve fit of empirical data	DevelopmentCost ^a
	ManagementCost
	GridConnectionCost
	SubstationCost

^a DevelopmentCost is currently implemented as a user input.

4.1 Process-Based Modules

The process diagrams in Section 2 illustrate the general approach used to implement each of the process-based modules. Within these modules, BOS costs are calculated based on user-specified labor, fuel, equipment, material, and mobilization prices in combination with process-based calculations that compute parameters such as the number of workers, number of equipment, equipment hours, person hours, and quantity of materials. However, because of data limitations or other constraints, the implementation of the process-based modules differs from the ideal

² Future versions of LandBOSSE may differ from the design and implementation described here; refer to the GitHub repository at <https://github.com/WISDEM/LandBOSSE> for the latest version of the software documentation and code.

process diagrams illustrated in Section 2. The content and figures in this section describe the current implementation of these processes within LandBOSSE 2.1.

4.1.1 SitePreparationCost

We implement the site preparation cost module using the highlighted structure in Figure 10. Because of data restrictions or other constraints, we are unable to implement all the ideal inputs and calculated parameters. However, we attempt to either (1) use proxy inputs when the needed data are unavailable (e.g., operation time is used as a proxy for project size) or (2) implement a calculated parameter as a user input (e.g., weather) rather than derive the data directly from the higher-level input (e.g., region).

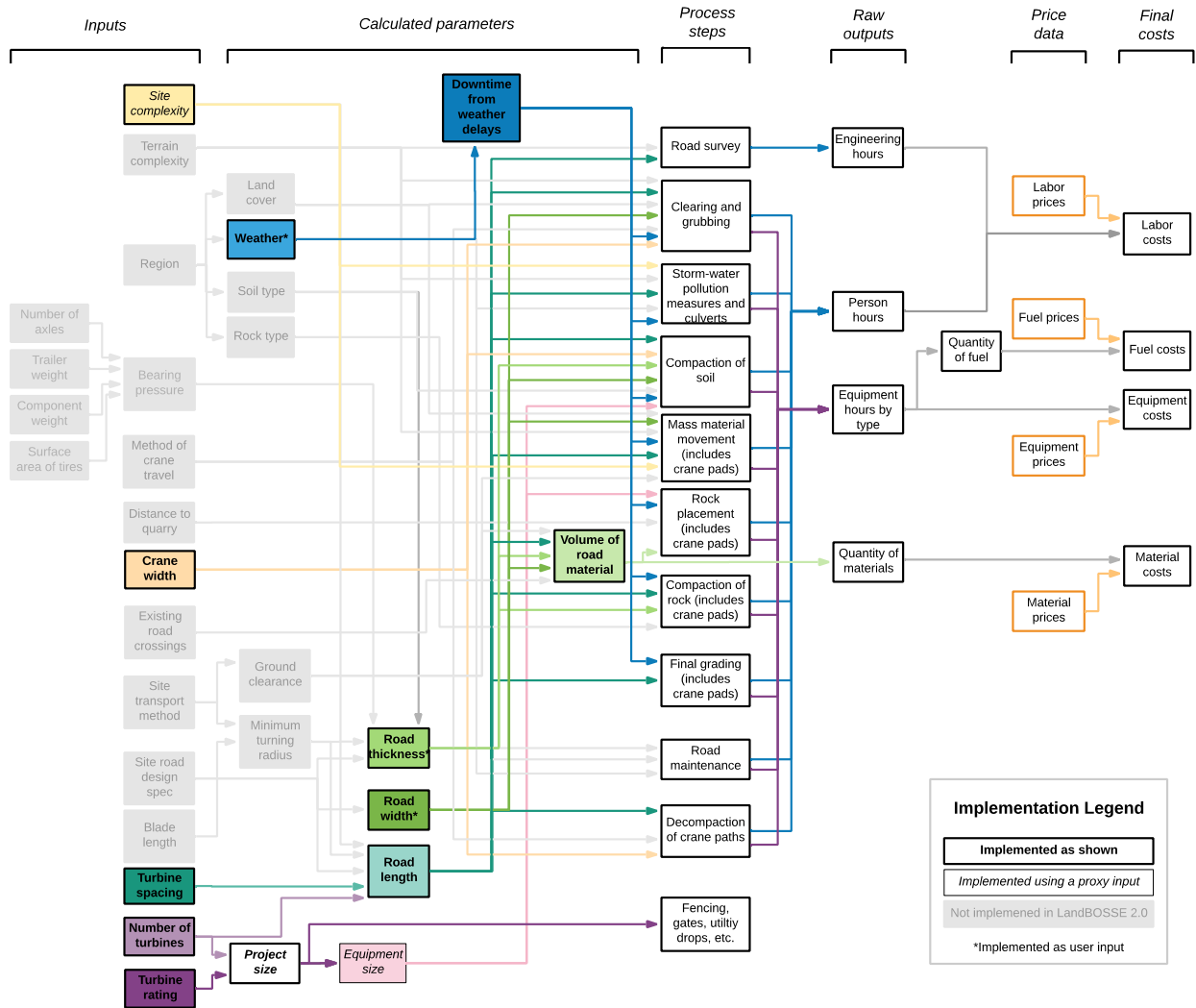


Figure 10. Implementation of SitePreparationCost module in LandBOSSE 2.1

Proxy inputs are listed in the appendix.

As shown in Figure 10, the general structure of the site preparation (SitePreparationCost) module includes:

1. Estimating the road length based on the number of turbines and the average turbine spacing
2. Determining the time required for five major operations associated with new site preparation based on road length, road width, road thickness, and crane width, including:
 - A. Topsoil stripping and stock piling, where organic material and topsoil must be removed and stockpiled for site preparation and for remediation of the crane paths
 - B. Compacting of subgrade and shoulders for crane paths
 - C. Placing of aggregate
 - D. Rough grading of aggregate
 - E. Compacting of aggregate.
3. Determining the additional time needed for weather delays for new site preparation
4. Estimating the labor, material, and equipment costs based on the road length, road width, road thickness, operational time, and additional time for weather delays for new site preparation
5. Estimating the relative contribution of existing roads compared to new roads and calculating the total site preparation cost.

For the purposes of this model, *road* refers to the surface on which wheeled traffic such as turbine component delivery trucks travel. The road is typically made of compacted crushed stone and is typically 3.7–4.9 m wide and 0.2 m thick (model defaults for road width and thickness are 4.9 m and 0.2 m respectively). Each of the road cost calculations is detailed below.

In Step 1, the total length of road, L_r (in m), for the project is calculated by estimating an average road length based on a simple, semi-rectangular turbine layout constructed on flat to rolling terrain and is given by:

$$L_r = (N_t - 1) * D_r * S_t + l_{adder} \quad (1)$$

where N_t is the number of turbines, D_r is the diameter of the rotor in meters, S_t is the spacing of the turbines relative to the rotor diameter (unitless), and l_{adder} is the excess roads for access to road strings from existing public roads and/or highway.

In Step 2, the operational time is calculated for five major site preparation operations. RSMeans Construction Cost Database (RSMeans) or industry data for labor and equipment operation rates are combined with the road length to determine the operation time for these five major operations associated with site preparation. The detailed calculations for each operation are outlined below.

In Step 2a, we calculate the operational time for stripping and stock piling topsoil, which is required to reach a suitable subgrade that will have a suitable bearing capacity depending on road thickness. Stripping and stock piling is performed for the width of the road and the area for crane

paths—large shoulders of the road used for crane travel. For the purposes of this model, we assume the crane path width is equal to the width of the crane that is specified by the user (typically 9–11 meters) plus 1.5 meters to allow shoulders for crane travel. The depth of organic material and topsoil can vary widely depending on ground cover and geographic region, but the model does not currently take these factors into account. The operational time for stripping and stock piling topsoil, OT_{st} (in days), is given by:

$$OT_{st} = \frac{(L_r * (W_c + 1.5) * d_{sub})}{T_{st}} * \frac{1.30795 \text{ cubic yards}}{1 \text{ cubic meter}} \frac{(L_r * (W_c + 1.5) * d_{sub})}{T_{st}} * \frac{1.30795 \text{ cubic yards}}{1 \text{ cubic meter}} \quad (2)$$

where L_r is the length of the road (in m) given by Eq. 1, W_c is the width of the crane used for erection (in m; default value is 11 m), d_{sub} is the depth of the subgrade (default value is 0.1 m), and T_{st} is the daily output for stripping and stock piling topsoil (in cubic yards per day).

It is important to note that cranes typically have low bearing pressures because of the large surface area of the tracks and thus do not require a constructed road to travel across. However, it is common practice to construct dedicated crane paths to minimize crane travel time and breakdowns as well as relieve traffic congestion. The cost of developing dedicated crane paths is a function of project layout, local topography, and site complexity. This model assumes all crane travel either occurs on road shoulders or does not require the construction of dedicated crane paths. Thus, the model does not include costs associated with developing dedicated crane paths.

In Step 2b, we estimate the time, in days, required to compact the subgrade and shoulders for crane paths, OT_{sc} , using an equation similar to Eq. 2, which is given by:

$$OT_{sc} = \frac{(L_r * (W_c + 1.5) * d_{sub})}{T_{sc}} * \frac{1.30795 \text{ cubic yards}}{1 \text{ cubic meter}} \quad (3)$$

where T_{sc} is the daily output for compacting the subgrade and shoulders (in cubic yards per day).

In Step 2c, we calculate the operational time, in days, required to place aggregate, OT_p , which is given by:

$$OT_p = \frac{(L_r * W_r * t_r)}{T_p} * \frac{1.30795 \text{ cubic yards}}{1 \text{ cubic meter}} \quad (4)$$

where t_r is the thickness of the road (in m; default value is 0.2 m), and T_p is the daily output for placing aggregate (in embankment cubic yards per day). Note that the $(L_r * W_r * t_r)$ term is the compacted volume of the road, which is generally measured in units of embankment cubic yards (ECY).

In Step 2d, the operational time, in days, for rough grading aggregate, OT_g , is given by:

$$OT_g = * \text{ceiling} \left(\frac{t_r}{l_h} \right) * \frac{1.30795 \text{ cubic yards}}{1 \text{ cubic meter}} \quad (5)$$

where L_r is the length of the road (in m) given by Eq. 1, W_r is the width of the road (in m; default value is 4.9 m), t_r is the thickness of the road (in m; default value is 0.2 m), T_g is the daily output for grading aggregate (in embankment cubic yards per day), and l_h is the lift height

of each grading operation. Because the data we found for daily output for grading assume the material will be compacted at a lift height of 0.2 m, if the road thickness is greater than 0.2 m, multiple passes are necessary (as determined by the “ceiling” factor in Eq. 5).

In Step 2e, we evaluate the time, in days, needed to compact aggregate, OT_c using an equation similar to Eq. 5, with:

$$OT_c = * \text{ceiling} \left(\frac{t_r}{l_h} \right) * \frac{1.30795 \text{ cubic yards}}{1 \text{ cubic meter}} \quad (6)$$

where T_c is the daily output for compacting aggregate (in embankment cubic yards per day).

To calculate the potential for a wind delay in Step 3, we combine the operation times computed in Step 2 with a critical wind speed and height for wind delays (assumed to be 15 m/s at 10 m for road construction) into the WeatherDelay module to estimate the potential wind delays that might occur for each crew during site preparation. Details can be found in Section 4.1.5.

In Step 4, we estimate the equipment and labor costs for each road operation based on operation times in Step 2, weather delays in Step 3, and RSMMeans equipment and labor rates for each operation. We also calculate the total material cost for aggregate using the material price for aggregate and the volume of the road, V_r (in loose cubic yards), which is given by:

$$V_r = (L_r * W_r * t_r) * 1.39 \quad (7)$$

where L_r is the length of the road (in m) given by Eq. 1, W_r is the width of the road (in m; default value is 4.9 m), t_r is the thickness of the road (in m; default value is 0.2 m), and 1.39 is a factor from RSMMeans that converts embankment cubic yards to loose cubic yards (LCY).

Steps 1 through 4 outline the approach for estimating the cost of developing new roads for the entire project. However, many wind farms use existing roads to transport turbine components rather than construct new roads. For example, the Blue Creek Wind Farm in Ohio (completed in 2012) used existing asphalt roads as well as smaller sections of cement-stabilized and new gravel roads (5). Because the one-mile grid of existing road infrastructure that is observed at Blue Creek is very common in agricultural areas and in the Western United States, we use the Blue Creek Wind Farm to inform the default model inputs associated with the relative contribution of existing and new site preparation (e.g., approximately 66% of the roads used for construction were existing asphalt roads and 33% were new roads). In the case of Blue Creek, the developer paid for the preconstruction road improvements and the county waived the trucking permit costs.

To calculate the total road cost in Step 5, we consider the potential contribution from new versus existing roads. The total cost, C_{total} , is given by:

$$C_{total} = (F_{new}C_{new} + (1 - F_{new})R_qC_{existing}) \quad (8)$$

where F_{new} is the fraction of new roads that will be built (default assumes 33% new); C_{new} is the cost constructing new roads for the entire project, which is calculated by summing the values over all operations in Step 1 to 4; R_q is a nondimensional representation of road quality (default assumes 0.6, which is representative of average road conditions); and $C_{existing}$ is the

cost of installing existing roads for the entire project, which we assume in the default case to equal $0.5C_{new}$.

4.1.2 FoundationCost

We implement the FoundationCost module of the LandBOSSE model using the highlighted structure in Figure 11. Because of data restrictions or other constraints, we are unable to implement all the ideal inputs and calculated parameters. However, we attempt to either use proxy inputs when the needed data are unavailable (e.g., bearing capacity is used as a proxy input for soil type) or implement a calculated parameter as a user input (e.g., weather) rather than derive the data directly from the higher-level input (e.g., region).

As shown in Figure 11, the general structure of the FoundationCost module includes:

1. Determining the critical loads for the foundation design based on turbine and tower components
2. Estimating the foundation size based on the critical loads
3. Calculating the quantity of material based on the foundation size
4. Determining the operational time for foundation construction based on foundation size
5. Determining the additional time for weather delays
6. Estimating the labor, material, equipment, and mobilization costs based on foundation size and additional time for weather delays
7. Calculating the total foundation cost.

Each of these calculations is detailed below.

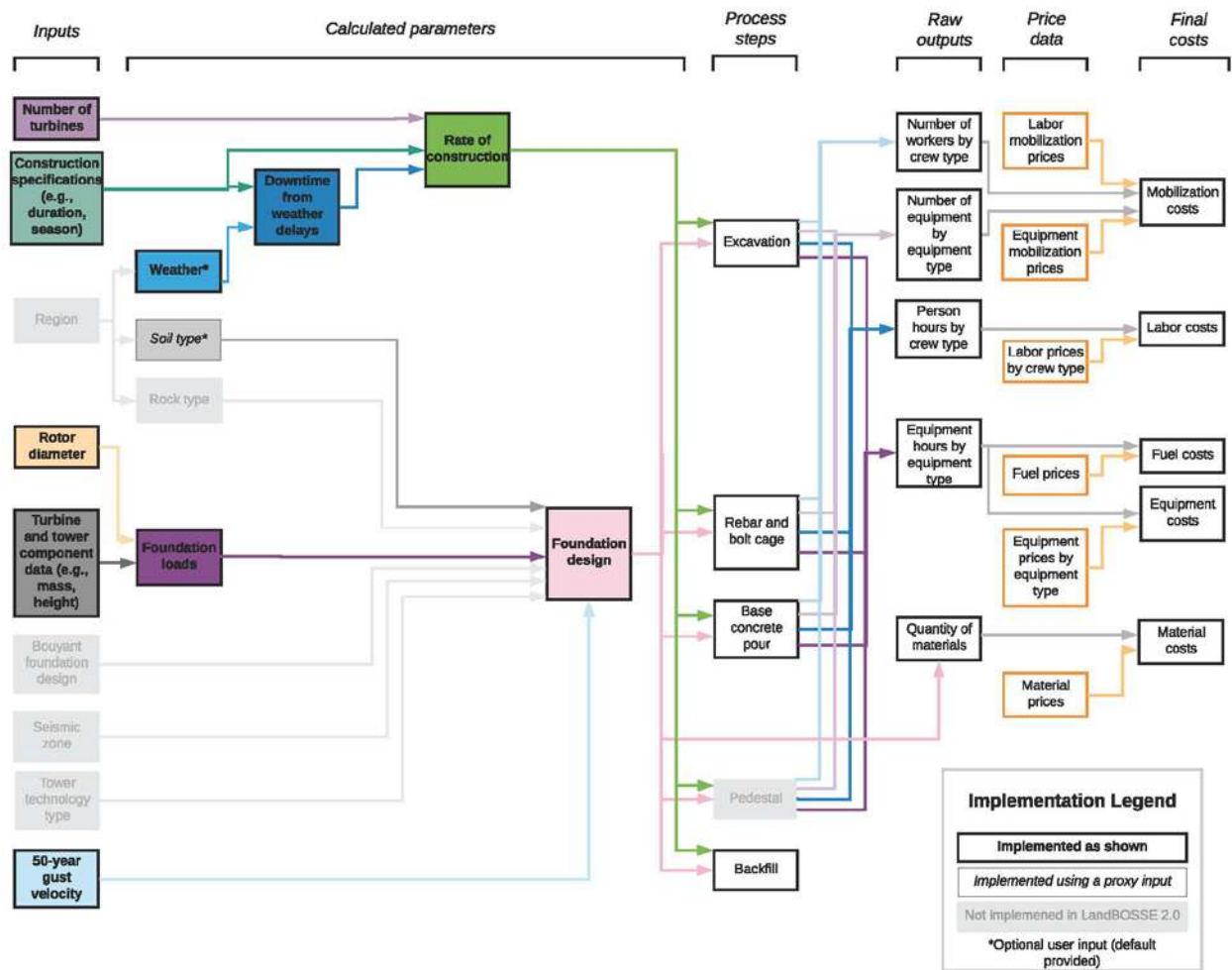


Figure 11. Implementation of FoundationCost module in LandBOSSE 2.1

Proxy inputs are listed in the appendix.

In Step 1, the FoundationCost module estimates the critical loads for the foundation design using the minimum design load guidelines outlined by the American Society of Civil Engineers (7). Note that the following equations are based on an idealized cylindrical gravity or spread-foot foundation (see Figure 12). Foundations such as rock anchors, monopiles, pile and cap, and other foundations may be more appropriate, depending on soil and rock types or labor and material costs, but the model does not currently calculate costs for these types of foundations.

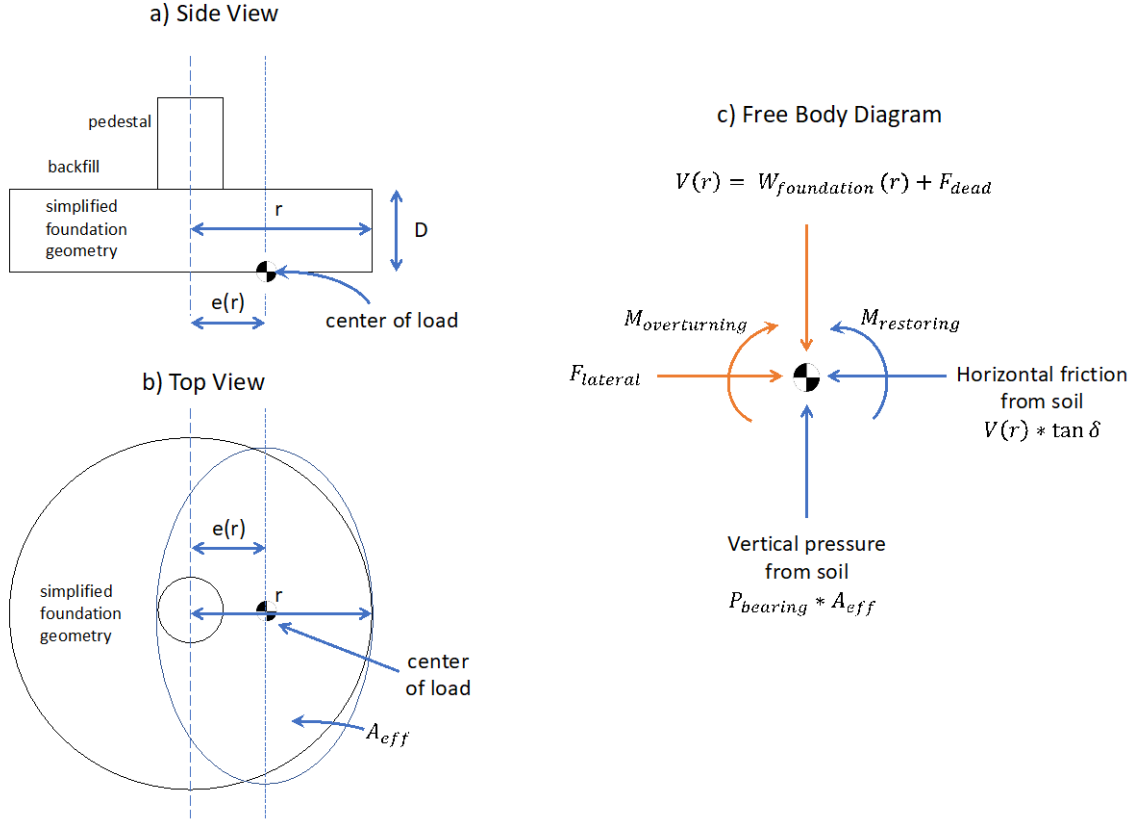


Figure 12. Illustration of idealized foundation design used in LandBOSSE

For the case of the idealized cylindrical spread-foot foundation shown in Figure 12, the total vertical force on the foundation, V (in N), which is a function of the foundation radius, r (in m), is given by:

$$V(r) = W_{foundation}(r) + F_{dead} \quad (9)$$

with the weight of the foundation, $W_{foundation}(r)$ (measured in N) is a function of the foundation radius, and the dead weight of the turbine and tower, F_{dead} (in N), given by:

$$W_{foundation}(r) = [\pi r^2 * D] * \left[\frac{2}{3} UW_{fill} + \frac{1}{3} UW_{concrete} \right] \quad (10)$$

$$F_{dead} = \sum_{i=1}^c m_i * g \quad (11)$$

where D is the depth of the foundation (user input; default is assumed to be 3 m based on industry experience), UW_{fill} and $UW_{concrete}$ are weight-per-volume of fill and concrete (default values are based on RSMMeans data and are equal to 17.3 kilonewton per cubic meter [kN m^{-3}] and 23.6 kN m^{-3} respectively), m_i is the mass of the i^{th} component in metric tons, c is the number of components in the tower and turbine, and g is the acceleration due to gravity, which is equal to 9.81 m/s.

Based on the minimum design load guidelines outlined by the American Society of Civil Engineers (7), the magnitude of the lateral load from the i^{th} component of the tower, $F_{tower,i}$ (in N), is given by:

$$F_{tower,i} = p_{wind,i} * G * C_f * A_{f,i} \quad (12)$$

where G is a gust factor (assumed to equal 0.85), C_f is the force coefficient (assumed to equal 0.4), $A_{f,i}$ is the projected area of the i^{th} component of the tower that is normal to the wind, and $p_{wind,i}$ is the pressure due to wind on the i^{th} component, which is equal to

$$p_{wind,i} = 0.613 * \left[2.11 * \left(\frac{z_i}{z_g} \right)^{\frac{2}{a}} \right] * K_{zt} * K_{zd} * V^2 \quad (13)$$

where z_i is the height of the center of mass of the i^{th} component in meters, z_g is a constant equal to 274.32 m, a is a constant equal to 9.5, K_{zt} is a topographic factor (assumed to equal to 1), K_{zd} is a wind directionality factor (assumed to equal 0.95), V is the velocity of an extreme 50-year wind gust in m/s. Equations 12 and 13 are derived from the American Society of Civil Engineers (7) and the default gust velocity is based on an International Electrotechnical Commission (IEC) 64100 Class II site, which has an extreme 50-year wind gust of 59.5 m/s. The magnitude of the lateral load of the lateral load from the j^{th} component of rotor nacelle assembly (RNA) is derived using a similar approach and is equal to:

$$F_{RNA,j} = \frac{\rho * C_{d,j} * A_{f,j} * V^2}{2} * multiplier_{rotor} \quad (14)$$

where ρ is the density of air (assumed to equal 1.225 kg m⁻³), $C_{d,j}$ is the coefficient of drag for the j^{th} component of the RNA, $A_{f,j}$ is the surface area of the j^{th} component of the RNA, $multiplier_{rotor}$ is the rotor's drag multiplier, and V is the velocity of an extreme 50-year wind gust in m/s. As above, the default gust velocity is based on an IEC 64100 Class II site, which has an extreme 50-year wind gust of 59.5 m/s.

The total lateral force (in N) is equal to:

$$F_{lateral,calc} = \sum_{i=1}^{ct} F_{tower,i} + \sum_{j=1}^{cr} F_{RNA,j} \quad (15)$$

where $F_{tower,i}$ is given by Eq. 12 and $F_{RNA,j}$ is given by Eq. 14.

The total governing moment, $M_{gov,calc}$ (in N · m), is then given by:

$$M_{gov,calc} = \sum_{i=1}^c F_{lateral,i} * z_i \quad (16)$$

where $F_{lateral,i}$ is given by Eq. 12 above and z_i is the height of the center of mass of the i^{th} component in meters. For the overturning moment and lateral loads, we compared the calculated loads above to the loads that could be generated based on the turbine's rated thrust and used the largest of these two values:

$$M_{gov} = \max(M_{gov,calc}, F_{lateral,rated_{thrust}} * H) \quad (17)$$

$$F_{lateral} = \max(F_{lateral,calc}, F_{lateral,rated_{thrust}}) \quad (18)$$

where the calculated values are given by Eqs. 15 and 16, $F_{lateral,rated_{thrust}}$ is the force generated based on the turbine's rated thrust (in the default case, we assume this value is equal to 742 kN), and H is the hub height of the turbine. While we recognize that the method described above does not fully capture the loads used for engineering a foundation design, we plan to refine this approach to add load factors that will better align the results with empirical data from industry.

In Step 2, the foundation design loads are used to estimate the foundation size for the idealized cylindrical spread-foot foundation.³ Although additional consideration should be given to sites with high groundwater (buoyancy), seismic loads, soft soils, fatigue loads, local building codes, and sites with higher than the reference site wind speeds, these factors are not included in LandBOSSE 2.1.

To estimate the foundation size, we use the foundation design loads determined in Step 1 to evaluate the necessary foundation radius needed to prevent four types of failure modes: gapping, bearing pressure, slipping, and overturning moment. For all these calculations, we assume the foundation design is cylindrical and the default depth is 3 m (users may instead specify their own foundation depth, if desired). We then choose the maximum foundation radius determined across all four of these failure modes and evaluate the foundation size.

The following equations are derived from DNV/Riso's *Guidelines for Design of Wind Turbines* (8) and the Federal Highway Administration's *Geotechnical Engineering Circular No. 6 Shallow Foundations* (9). The minimum foundation radius required to prevent gapping, $R_{gapping}$, is given by:

$$R_{gapping} \leq 3 e(R_{gapping}) \quad (19)$$

$$e(r) = \frac{M_{gov}}{V(r)} \quad (20)$$

where $e(r)$ is the eccentricity of the load, which is a function of the foundation radius, r (in m); $e(R_{gapping})$, is given by plugging $R_{gapping}$ into Eq. 20; the governing moment, M_{gov} , is given by Eq. 17; and the total vertical force as a function of r , $V(r)$, is described by Eq. 9.

The minimum foundation radius to prevent exceeding the bearing pressure, $R_{bearing}$, is found by solving:

$$P_{bearing} * A_{eff} \geq V(R_{bearing}) \quad (21)$$

³ Note that the model only considers this type of idealized spread-foot foundation. Foundations such as rock anchors, monopiles, pile and cap, and other foundations may be more appropriate depending on soil and rock types or labor and material costs at a particular location. However, LandBOSSE 2.1 does not calculate costs for these other types of foundations.

$$A_{eff} = 2 * \left[R_{bearing}^2 * \text{acos} \left(\frac{e_{R_{bearing}}}{R_{bearing}} \right) - e * \sqrt{R_{bearing}^2 - e_{R_{bearing}}^2} \right] \quad (22)$$

$$e_{R_{bearing}} = e(R_{bearing}) \quad (23)$$

where $P_{bearing}$ is the bearing pressure of the soil (in N m^{-2} ; default value is assumed to be $244,200 \text{ kN m}^{-2}$); $V(R_{bearing})$, is given by plugging $R_{bearing}$ into Eq. 9; and the eccentricity based on $R_{bearing}$, $e_{R_{bearing}}$, is given by plugging $R_{bearing}$ into Eq. 20.

The minimum foundation radius required to withstand slipping is found by solving:

$$SF_{slipping} * F_{lateral} \leq V(R_{slipping}) * \tan \delta \quad (24)$$

where $SF_{slipping}$ is the safety factor for slipping (assumed to be 1.5), $F_{lateral}$ is given by Eq. 18 above, $V(R_{slipping})$ is evaluated by plugging $R_{slipping}$ into Eq. 9, and δ is the friction angle of the soil, which is highly variable based on soil type. In LandBOSSE 2.1, we assume the soil is a silty gravel or silty sandy gravel (Unified Soil Classification System class GM) with a friction angle of 25° (9).

The minimum foundation radius required to withstand the overturning moment, $R_{overturn}$, is found by solving:

$$SF_{overturn} \leq \frac{M_{restoring}}{M_{overturning}} \quad (25)$$

$$M_{restoring} = V(R_{overturn}) * R_{overturn} \quad (26)$$

$$M_{overturning} = M_{gov} + F_{lateral} * D \quad (27)$$

where $SF_{overturn}$ is the safety factor for overturning (assumed to be 1.5); $V(R_{overturn})$ is evaluated by plugging $R_{overturn}$ into Eq. 9; the governing moment, M_{gov} , is given by Eq. 17; $F_{lateral}$ is given by Eq. 18; and D is the depth of the foundation (user input; default is assumed to be 3 m based on industry experience).

The foundation design radius, r (in m), is then equal to:

$$r = \max (R_{overturn}, R_{slipping}, R_{bearing}, R_{gapping}) \quad (28)$$

where the overturn, slipping, bearing, and gapping radii are given by the equations above.

In Step 3, the quantity of materials is determined based on the foundation size. The excavated volume, $V_{excavated}$, is given by:

$$V_{excavated} = \pi (r + 0.5)^2 * D \quad (29)$$

where r is the foundation radius given by Eq. 28 and D is the depth of the foundation (user input; default is assumed to be 3 m based on industry experience). The excavated volume is calculated

with the assumption that an additional 0.5 m of space must be excavated beyond the actual foundation radius in order to satisfy the Occupational Safety and Health Administration space requirements for workers during foundation construction activities. The volume of foundation materials, $V_{foundation}$, is given by

$$V_{foundation} = \pi r^2 * D * 0.45 \quad (30)$$

where r is the foundation radius given by Eq. 28, D is the depth of the foundation (user input; default is assumed to be 3 m based on industry experience), and the 0.45 factor accounts for the fact that a portion of the foundation is composed of concrete and steel (the other portion is backfill).

Based on industry data from several constructed spread-foot foundations in the United States, typical spread-foot foundation steel volumetric quantities are between 0.8% and 1.6% for 1.5-MW to 3-MW turbines. As a result, we assume concrete comprises 98.5% of the foundation volume and steel comprises 1.2% of the foundation volume. We compute the material quantities for steel and concrete based on these assumptions in combination with the foundation volume in Eq. 30.

In Step 4, adjusted RSMMeans or industry data on labor and equipment operation rates are combined with the foundation size to determine the operation time for foundation construction associated with the j^{th} material (in days), $OT_{F,j}$, which is given by:

$$OT_{F,j} = \frac{Q_j}{T_j} \quad (31)$$

where Q_j is the quantity of the j^{th} material needed to construct the foundation (units vary depending on the material type; for example, concrete is measured in cubic yards), which is a function of the volume of the foundation given in Eq. 17, and T_j is the daily throughput of a crew to construction a unit of the j^{th} material.

To calculate the potential for a wind delay in Step 5, we input the operational time and a critical wind speed and height (assumed to be 15 m/s at 10 m for foundation construction) into the WeatherDelay module to estimate the potential wind delays that might occur during each operation of foundation construction. Details can be found in Section 4.1.5.

In Step 6, we calculate the total foundation costs by joining the FoundationSize costs and WeatherDelay costs with the costs for labor and equipment. We then multiply the labor and equipment fuel prices by the foundation volume and the weather delay factor to get the total labor and equipment costs. We assume a per diem rate of \$144/day for all days of operation and add one day of per diem per week of operation because workers only work six days of the week but are paid for seven days of per diem. We also calculate the total material cost using the material prices and the material quantities determined in Step 3, and we estimate that mobilization costs will add an extra 10% to the total foundation costs.

Finally, in Step 7, we join these summed foundation costs to get the total cost for foundation construction.

4.1.3 ErectionCost

We implement the ErectionCost module using the highlighted structure in Figure 13. Because of data restrictions or other constraints, we are unable to implement all the ideal inputs and calculated parameters. However, we attempt to either (1) use proxy inputs when the needed data are unavailable (e.g., tower component data and crane specifications are used as a proxy for tower technology type) or (2) implement a calculated parameter as a user input (e.g., weather) rather than derive the data directly from the higher-level input (e.g., region).

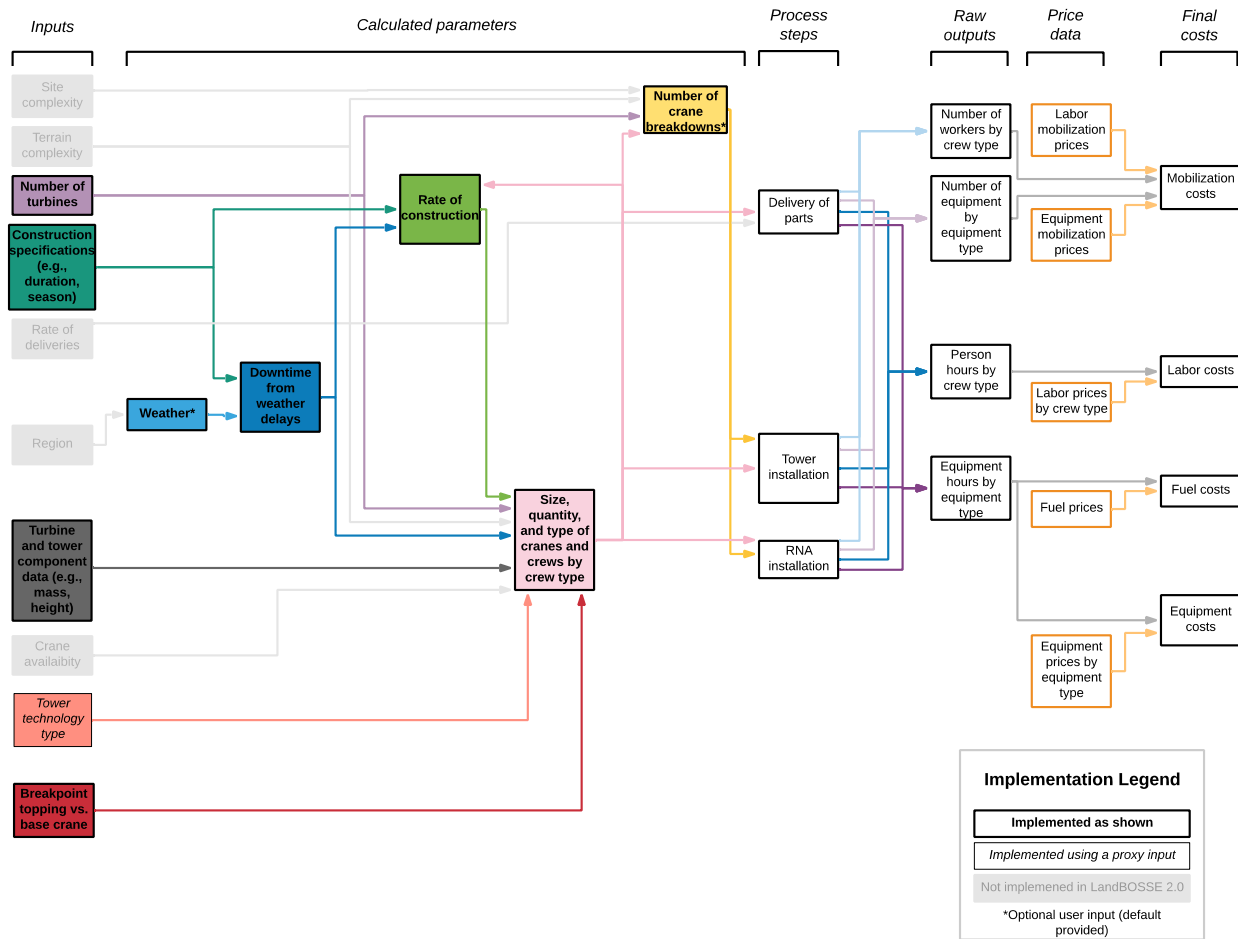


Figure 13. Implementation of ErectionCost module in LandBOSSE 2.1

Proxy inputs are listed in the appendix.

As shown in Figure 13, the general structure of the Erection module includes:

1. Evaluating the operation time associated with using each type of crane input by the user
2. Determining the additional time for wind delays using the WeatherDelay module
3. Calculating the total erection costs for each crane, including the wind delays
4. Choosing the least cost crane.

Each of these calculations is detailed below.

In Step 1, the operational cycle time and critical wind speed for lifting each component are calculated for all cranes that can lift the component. The required lift height and component mass are compared against the crane specifications for hook height and lift capacity to ensure the specified component can be lifted by a given crane. If the crane can lift the component, the cycle time for crane C lifting component q ($CT_{C,q}$ in hours) is computed as:

$$CT_{C,q} = \frac{h_q}{H_C * \frac{60 \text{ minutes}}{\text{hour}}} + T_q \quad (32)$$

where h_q is the height (in m) to which component, q , must be lifted; H_C is the hoist speed of the crane (m/min); and T_q is the cycle time (hours) needed to prepare component q for erection. The critical wind speed (m/s) for lifting component q with crane C ($V_{critical,C,q}$) is given by:

$$V_{critical,C,q} = V_{max,C} \sqrt{\left(\frac{1.2 m_q}{A_q * C_{d,q}}\right)} \quad (33)$$

where $V_{max,C}$ is the max wind speed (m/s) used to develop the crane load data; 1.2 is a constant (m²/metric ton), m_q is the mass of component, q , in metric tons; A_q is the surface area of component q (m²); and $C_{d,q}$ is the coefficient of drag associated with component q (unitless) (10). The surface area, coefficient of drag, and mass for each component are obtained from a table of component properties.

The total operation time (hours) for each crane, OT_C , is calculated as:

$$OT_C = N_t * \sum_{i=1}^n CT_{C,q_i} \quad (34)$$

where N_t is the number of turbines for the project; n is the number of components; and CT_{C,q_i} is the cycle time (hours) for the i^{th} component being lifted by crane C , which is calculated using Eq. 32 (1).

In Step 2, for each crane and component combination, we input the operational time and the critical wind speed into the WeatherDelay module to estimate the potential wind delays that might occur based on historical hourly wind speed measurements. Details can be found in Section 4.1.5.

In Step 3, we calculate the total erection costs for each crane by joining the operational time and weather delays for each crane with the associated prices for labor, equipment, and fuel. Labor costs include the labor associated with each process as well as site management costs specific to the erection scope. We then multiply the labor, equipment, and fuel prices by the operational time to get the costs for each crane and sum these costs over all the components to get the labor, equipment, and fuel costs for each crane. Finally, we join these summed crane costs with the mobilization costs to get the total costs for erection using each crane.

In Step 4, we use the matrix of cost data from Step 3 to find the crane that has the minimum cost for erecting the components input by the user. The outputs from the erection model include the labor, equipment, fuel, and mobilization costs associated with the least-cost erection strategy.

The ErectionCost module could be expanded to determine the most cost-effective breakpoint between base and topping cranes and crews.

4.1.4 CollectionCost

We implement the collection system cost (CollectionCost) module using the highlighted structure in Figure 14. Because of data restrictions or other constraints, we are unable to implement all the ideal inputs and calculated parameters. However, we attempt to either (1) use proxy inputs when the needed data are unavailable (e.g., interconnect voltage is used a proxy input for turbine model) or (2) implement a calculated parameter as a user input (e.g., weather) rather than derive the data directly from the higher-level input (e.g., region).

As shown in Figure 14, the general structure of the CollectionCost module includes:

1. Creating an array system which estimates the length of each cable, cost of each cable type, and number of array cable strings
 - A. Calculating rated power capacity of a cable
 - B. Calculating the number of turbines per cable in a string
 - C. Calculating the length of each string
2. Determining total trench length required for laying cables based on array system
3. Estimating operation time based on trench length
4. Determining the additional time for weather delays for collection system construction
5. Estimating the labor, material, and equipment costs based on total trench length, length of each cable type, operational time, and additional time for weather delays for collection system construction; this includes labor for cable terminations and splices.
6. Calculating the total collection system cost.

Each of these calculations is detailed below.

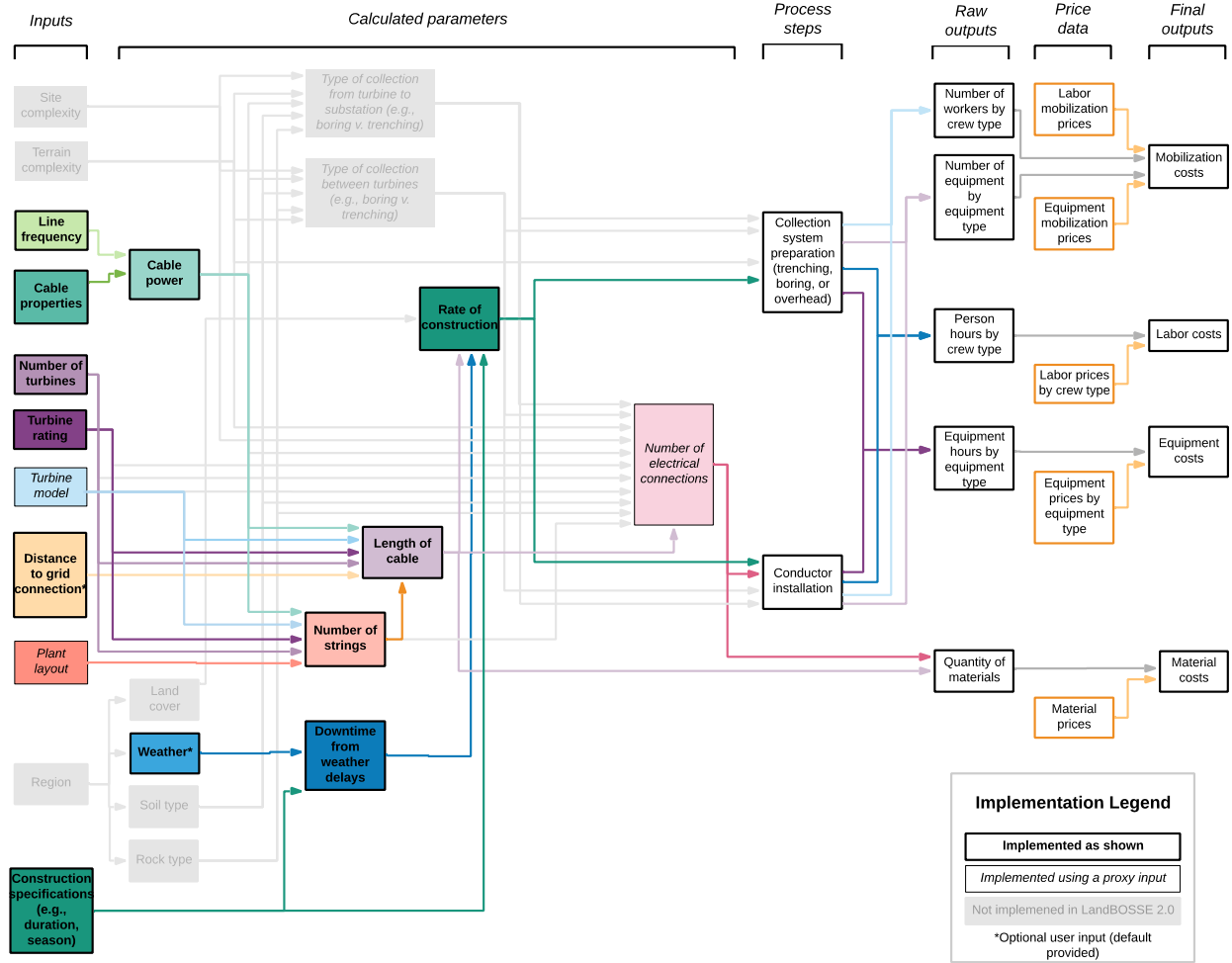


Figure 14. Implementation of CollectionCost module in LandBOSSE 2.1

Proxy inputs are listed in the appendix.

In Step 1.A, the rated power capacity of each user input cable type is calculated. The total power transmission for a balanced three-phase AC power line (12) is given by:

$$P_{cable} = \sqrt{3}V_{LL}I \cos \phi \quad (35)$$

where V_{LL} is the line-to-line voltage (typically specified on a power cable data sheet), I is the total current, and $\cos \phi$ is the power factor. The power factor is a function of the phase angle, ϕ , which is given by

$$\phi = \text{atan} \left(\frac{X_L}{R} \right) \quad (36)$$

where X_L is the reactance (in ohms) and R is the resistance (in ohms).

In Step 1.B, the number of turbines that the smallest cable on each string can support is given by:

$$N_{turb,upstream} = \text{floor} \left(\frac{P_{cable,smallest}}{P_{turbine}} \right) \quad (37)$$

Because the power generation from the turbines on the smallest cable must also be transmitted through subsequent “downstream” cables, the number of turbines supported by each downstream cable is given by:

$$N_{turb,downstream} = floor\left(\frac{P_{cable}}{P_{turbine}} - N_{turb,upstream}\right) \quad (38)$$

where P_{cable} is given by Eq. (35), $P_{turbine}$ is the power rating of the turbine, and $N_{turb,upstream}$ (the number of upstream turbines on a string) is given by Eq. 37.

Given the number and spacing of turbines on a string, the length of a string is calculated in Step 1.C:

$$L_{string} = \sum_i^{CableTypes} (N_{turb_i} + \gamma_i) * (l_{turb} * D_{rotor}) \quad (39)$$

where l_{turb} is the spacing between turbines, D_{rotor} is the rotor diameter, γ_i is an adder that takes the value of -1 for the first cable type in a string and a value of 0 otherwise. The γ_i adder is to account for the fact that the first turbine on the smallest cable in a string does not have an associated upstream length of cable.

Cumulative “homerun” distance for all strings can be specified as either a user-defined input or a calculated value in LandBOSSE. Calculated total homerun length is the distance of the largest cable of each string to the substation. The substation placement in the model depends on the number of strings in the array. For an even number of strings, the substation is centered between middle two strings. And for an odd number of strings, the substation is centered on the middle string. The hypotenuse-length calculation of each string is then a simple implementation of the Pythagorean theorem (Figure 15) where the perpendicular distance to substation is equal to the user-defined turbine spacing (expressed in terms of rotor diameter). Note that the sample array design shown in Figure 15 is for illustrative purposes only and is not representative of a specific layout used in the model.

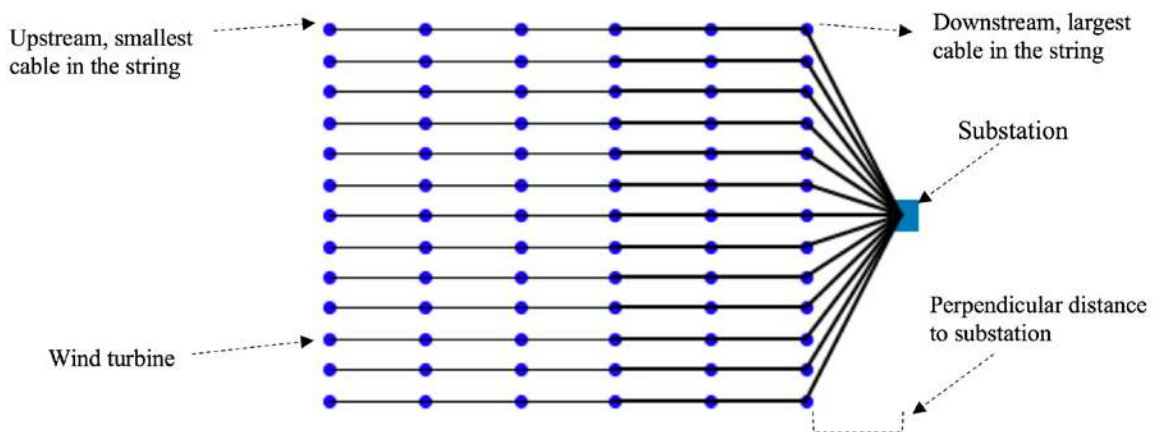


Figure 15. Sample array design used in LandBOSSE for trench length calculation

The array layout shown here is for illustrative purposes only and is not representative of specific layout used in the model. LandBOSSE 2.1 does not accommodate specific layout designs.

In Step 2, the total array trench length (total length of trenching required to bury the cables underground) is a function of the number of strings, length of each string, and total homerun distance and is given by:

$$L_{trench} = L_{string} * N_{string} + \sum_i^{string} L_{homerun} \quad (40)$$

The total array cable length for a three-phase power line is three times the trench length and is given by:

$$L_{cable} = 3 * L_{trench} \quad (41)$$

In Step 3, adjusted RSMMeans, industry, or user-defined data on labor and equipment operation rates are combined with the total trench length to determine the operation time ($OT_{collection}$) required for constructing the collection system before wind delays. This is given by:

$$OT_{collection} = \frac{L_{trench}}{T_{collection}} \quad (42)$$

where L_{trench} is the total trench length required by the project for laying underground cables and $T_{collection}$ is the daily output (linear-feet/day) for collection system related operations, which includes clearing the trenching area, grubbing, digging the trench, placing cables, backfilling, and reseeding the trenched area.

In Step 4, weather-related delays are factored in to estimate the additional time that will be required to complete construction of the project's collection system within the user-specified construction time. The calculation of weather-based construction delays is described in Section 4.1.5.

In Step 5, we calculate the total collection system costs by joining the trench length and weather delay data with the costs for labor and equipment. We then multiply the labor and equipment prices by the total trench length and weather delay factor to get the total labor and equipment costs. Labor costs include the labor associated with each process as well as site management costs specific to the erection scope. The total material cost ($Cost_{material}$), which is the total cumulative cost of all cables used, is calculated by:

$$Cost_{material} = \sum_i^{CableTypes} L_i * Cost_{unit,cable,i} \quad (43)$$

where, L_i is the total length of each cable type in the array and $Cost_{unit,cable,i}$ is the cost per unit of each unique cable type.

Finally, in Step 6, we join these summed collection costs with the mobilization costs to get the total costs for collection system construction.

4.1.5 WeatherDelay

To calculate the potential for a wind delay for an operation, we first filter the weather data using the construction time (i.e., time of year and duration of construction) and the hours of operation ("normal" [8 a.m. to 6 p.m.] or "long [24-hour]"). We then use the operational time for the type of

construction, OT , to filter the weather window for the portion of construction time of interest for the operation. If OT is greater than the duration allowed for that aspect of construction (e.g., site preparation), we set the weather window to the duration allowed for that part of construction.

Using the weather data in the calculated weather window of interest, we determine the number of wind delays and the duration of each delay for a given operation by assessing when and for how long the wind data exceeds a critical wind speed at a specified height as input by the user. (For site preparation and foundations, we assume the critical wind speed is 15 m/s at 10 m; for erection, the crucial wind speed and height vary depending on the crane being used and the part being lifted.) We then use the list of wind delays to estimate the average amount of time the operation would be delayed over the entire operational window. The WeatherDelay module is used by the CollectionCost, ErectionCost, FoundationCost, and SitePreparationCost modules to calculate a list of delays associated with each operation in these modules.

Within each of the modules, a wind delay factor is calculated from the list of wind delays. This happens in two steps. For the first step, all wind delays of four hours or longer are transformed into delays of ten hours. This codifies an assumption that construction delays longer than four hours shut down operations for an entire day. For the second step, we obtain the wind delay factor, D_{wind} by:

$$D_{wind} = \frac{\sum_{i=1}^k D_{shutdown_i}}{OT} \quad (44)$$

where $D_{shutdown_i}$ is the number of hours the construction will halt because of a period of wind speed exceeding the critical wind speed, OT is the operational time in hours of construction, and k is the total number of shutdowns in the original wind delay list calculated by the WeatherDelay module.

After it is calculated, D_{wind} is used as a multiplier for labor costs or construction time to obtain total costs or total time anticipated by the delay. For example, given labor cost L before weather delay and D_{wind} , the total labor cost C is obtained by:

$$C = L \frac{1}{1-D_{wind}} \quad (45)$$

4.2 Empirical Modules

Because of data limitations or other constraints, four of the LandBOSSE 2.1 modules are implemented using curve fits of industry data DevelopmentCost, ManagementCost, GridConnectionCost, and SubstationCost. The sections that follow detail the implementation of each of these modules.

4.2.1 DevelopmentCost

For the DevelopmentCost module, we do not implement the detailed process diagram in Figure 16, because obtaining data for most of the inputs was outside the scope of this work and the contribution of development costs to the total BOS costs is small compared to the cost in other

modules.⁴ For now, the development costs are input by the user directly and do not vary based on project size (Figure 16). As more data become available, site development costs could be refined to include more-detailed inputs and calculated parameters.

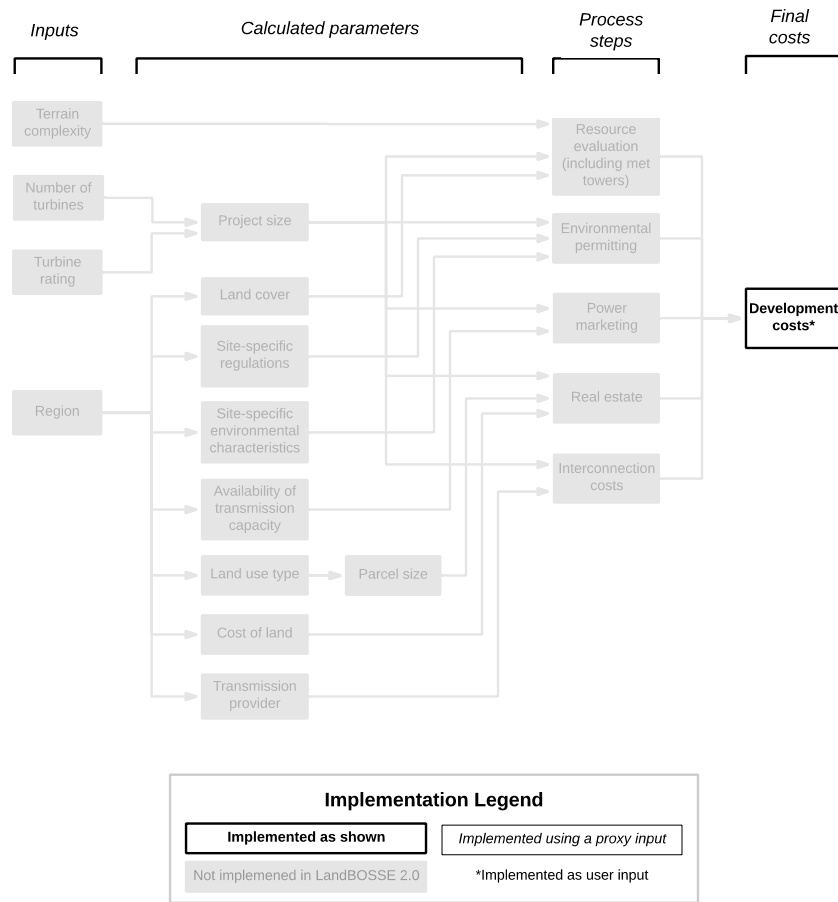


Figure 16. Implementation of DevelopmentCost module in LandBOSSE 2.1

Proxy inputs are listed in the appendix.

4.2.2 ManagementCost

We implement the ManagementCost module using the general structure outlined in Section 2.2, and we make a few minor modifications to accommodate data limitations and other restrictions (see Figure 17). For example, certain parameters are not implemented in LandBOSSE 2.1 (e.g., region and soil type), and other parameters are implemented using a proxy input (e.g., mark-up and contingency constants are used as proxies for builder size and the number of highway permits is used as a proxy for a site-specific interface with public infrastructure).

⁴ Based on proprietary data from industry, typical development costs comprise less than 10% of total BOS costs.

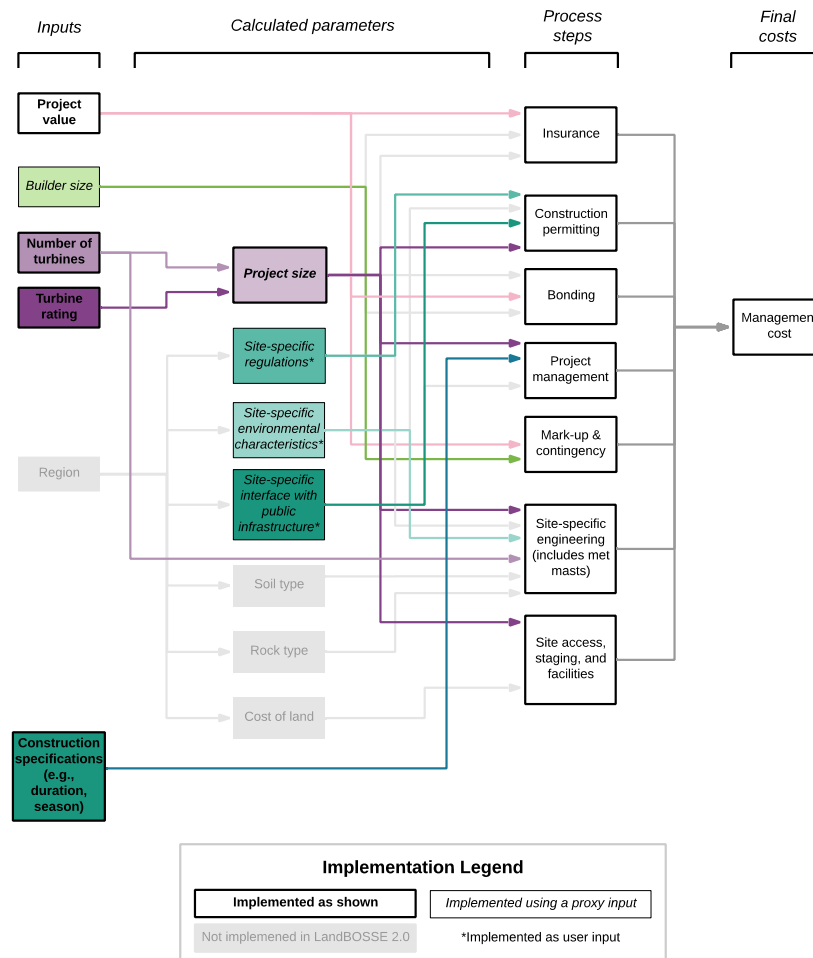


Figure 17. Implementation of ManagementCost module in LandBOSSE 2.1

Proxy inputs are listed in the appendix.

In general, the ManagementCost module includes:

1. Evaluating the insurance costs based on the project value
2. Determining cost of construction permitting based on the foundation cost
3. Calculating the bonding costs based on the project value
4. Estimating the project management costs based on the construction time
5. Evaluating the mark-up and contingency costs based on the project value
6. Calculating the site-specific costs for engineering the foundation and collection systems and installing measurement towers with meteorological equipment (met masts)
7. Estimating the costs for developing site facilities required for site access and staging, including infrastructure for construction management at the laydown yard (e.g., electrical hook-up for site trailers, restroom facilities, cattle guards, site security, batch plant, construction of site offices, monthly office costs, and project signage).

Each of these calculations is detailed below.

The total management costs, C_M , (in USD) are given by:

$$C_M = C_I + C_P + C_B + C_{PM} + C_{MC} + C_E + C_S \quad (46)$$

where C_I is the insurance cost, C_P is the permitting cost, C_B is the bonding cost, C_{PM} is the project management cost, C_M is the mark-up and contingency cost, C_E is the site-specific engineering cost, and C_S is the cost of developing site facilities for construction management at the laydown yard (including met masts). All these subtypes of management costs are derived by fitting curves to proprietary industry data. The insurance cost, C_I , is given by:

$$C_I = 0.0056 * V_p \quad (47)$$

where V_p is the value of the project (in USD), which is equal to the sum of the costs from the other modules (total costs except management). The construction permitting cost, C_P , is given by:

$$C_P = 0.02 * C_F + 20,000 * N_h \quad (48)$$

where C_F is the cost of the foundation (in USD) and N_h is the number of highway permits required for the project (user input). The bonding cost, C_B , is given by:

$$C_B = 0.01 * V_p \quad (49)$$

where V_p is the value of the project (in USD). The project management cost is given by:

$$C_{PM} = \begin{cases} (53.33 * CT^2 - 3442 * CT + 209,542) * (CT + 2) & \text{if } CT < 28 \text{ months} \\ 155,000 * (CT + 2) & \text{if } CT \geq 28 \text{ months} \end{cases} \quad (50)$$

where CT is the construction time (in months). The project mark-up and contingency cost, C_{MC} , is given by:

$$C_{MC} = c * V_p \quad (51)$$

where V_p is the value of the project (in USD), and c is the sum of the following user-specified inputs:

$$c = c_{mc} + c_{mw} + c_{st} + c_{mo} + c_{pm} \quad (52)$$

where c_{mc} is the markup contingency (%), c_{mw} is the markup warranty management (%), c_{st} is the sales and use tax (%), c_{mo} is the markup overhead (%), and c_{pm} is the markup profit margin (%).

The engineering cost, C_E , is given by:

$$C_E = C_{eng} + C_{met} \quad (53)$$

$$C_{eng} = \begin{cases} (7188.5 * N_t) + (3.4893 * \ln(N_t) - 7.3049) * (16,800) + 165,675 & \text{if}(PS) < 200 \\ (7188.5 * N_t) + (3.4893 * \ln(N_t) - 7.3049) * (16,800) + 327,250 & \text{if}(PS) \geq 200 \end{cases} \quad (54)$$

$$C_{met} = N_{perm_{met}} * M_{perm_{met}} + N_{temp_{met}} * M_{temp_{met}} + 200,000 \quad (55)$$

$$PS = R_t * N_t \quad (56)$$

where C_{eng} is the development engineering cost for foundations and collection system, C_{met} is the cost for met masts, N_t is the number of turbines, PS is the project size (given by Eq. 56) R_t is the turbine rating (in megawatts [MW]), and the number of permanent met masts ($N_{perm_{met}}$) and temporary met masts ($N_{temp_{met}}$) are given in Table 2 and their corresponding multipliers are in Table 3.

Table 2. Number of Met Masts by Project Size

Project Size (MW)	Number of Permanent Met Masts ($N_{perm_{met}}$)	Number of Temporary Met Masts ($N_{temp_{met}}$)
<30	1	1
30–100	2	2
100–300	2	4
300+	Round($PS/100$)	Round($PS/100$) * 2

Compiled from proprietary industry data;
PS is project size, which is given by Eq. 56.

Table 3. Met Mast Multipliers by Hub Height

Hub Height (m)	Multiplier for Permanent Met Masts	Multiplier for Temporary Met Masts ($M_{temp_{met}}$)
Below 90	232,600	92,600
Above 90	290,000	116,800

Compiled from proprietary industry data;
PS is project size, which is given by Eq. 56.

Finally, the site facility costs for construction management, C_S , at the laydown yard are given by:

$$C_S = C_{OM} + C_{CS} \quad (57)$$

where C_{OM} is the cost of constructing operation and maintenance buildings (given by Eq. 58 below) and C_{CS} is the cost of developing infrastructure for compound security at the laydown yard, including electrical hook-up for site trailers, restroom facilities, cattle guards, site security, batch plant, construction of site offices, monthly office costs, and project signage (given by Eq. 3.2.9, below).

The cost of constructing operation and maintenance buildings, C_{OM} , is given by the following empirical relationship, which was derived from industry data:

$$C_{OM} = BA * 125 + 176,125 \quad (58)$$

where BA is the building area in square feet, which is a function of project size (given by Eq. 56) as indicated in Table 4.

Table 4. Size of Operation and Maintenance (O&M) Facilities by Project Size

Project Size (MW)		O&M Building Area (BA, in sq. ft.)
Minimum	Maximum	
0	199	3,000
200	499	5,000
500	799	7,000
800	999	9,000
1,000+	4,999	12,000

Compiled from proprietary industry data

The cost of developing infrastructure for compound security at the laydown yard, C_{CS} , is given by:

$$C_{CS} = 9,825 * N_R + 29,850 * CT + A_{CS} + 60 * PS + 62,400 \quad (59)$$

where N_R is the number of access roads for the laydown yard, which varies with the number of turbines according to Table 5; CT is the total construction time (in months, which is implemented as a user input); A_{CS} is the cost adder for compound security, which varies with the number of turbines according to Table 5; and PS is the project size given by Eq. 56.

Table 5. Constants for Compound Security by Number of Turbines

Number of Turbines (Nt)	Number of Access Roads for Laydown Yard (NR)	Cost Adder for Compound Security (ACS, in USD)
0–29	1	30,000
30–99	Round(0.05 * NT)	240,000
100+	Round(0.05 * NT)	390,000

Compiled from proprietary industry data

4.2.3 GridConnectionCost

We implement the grid connection cost module (GridConnectionCost), which includes transmission and interconnection costs, using a curve fit of empirical data. We are only able to derive a relationship for the total costs associated with substation construction, and we are unable to break down the costs by type (e.g., material versus labor; see Figure 18 for an illustration of implementation of substation costs in LandBOSSE 2.1).

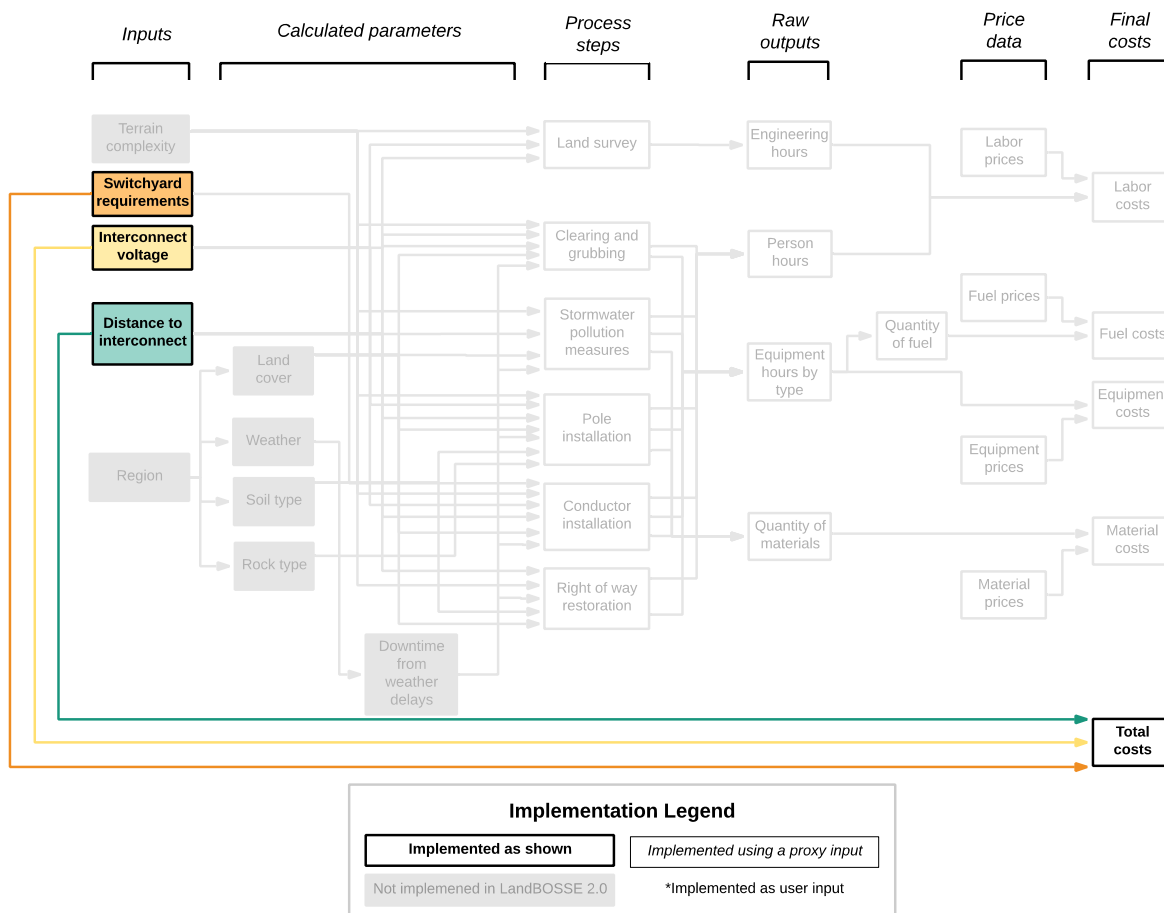


Figure 18. Implementation of GridConnectionCost module in LandBOSSE 2.1

Proxy inputs are listed in the appendix.

We are only able to derive a relationship for the total costs associated with grid connection, and we are unable to break down the costs by type (e.g., material versus labor). Based on a regression analysis of industry data, the grid connection costs, C_{GC} , for non-zero distance to interconnection are given by:

$$C_{GC} = (1,176 V + 218,257)D_i^{0.8937} + A_I \quad (60)$$

where V is the line, or interconnection, voltage (in kV); D_i is distance to interconnection (in miles); and A_I is an adder for interconnection costs that is driven by the requirements for a new switchyard (if the project requires a new switchyard, $A_I = 18,115 V + 165,994$; otherwise $A_I = 0$). Our default assumption is that a new switchyard is required. If the distance to an interconnection is zero, we assume the grid connection costs are zero. Default data are described in the appendix.

4.2.4 SubstationCost

We implement the SubstationCost module using a curve fit of empirical data. We are only able to derive a relationship for the total costs associated with substation construction, and we are

unable to break down the costs by type (e.g., material versus labor; see Figure 19 for an illustration of implementation of substation costs in LandBOSSE 2.1). Based on a regression analysis of industry data, the substation costs, C_S , are given by:

$$C_S = 11,652 (V + S) + 11,795 (S)^{0.3549} + 1,526,800 \quad (61)$$

$$S = N_t R_t \quad (62)$$

where V is line, or interconnection, voltage (in kV); S is the project size; N_t is the number of turbines; and R_t is the turbine rating (in MW). Default data values are described in the appendix.

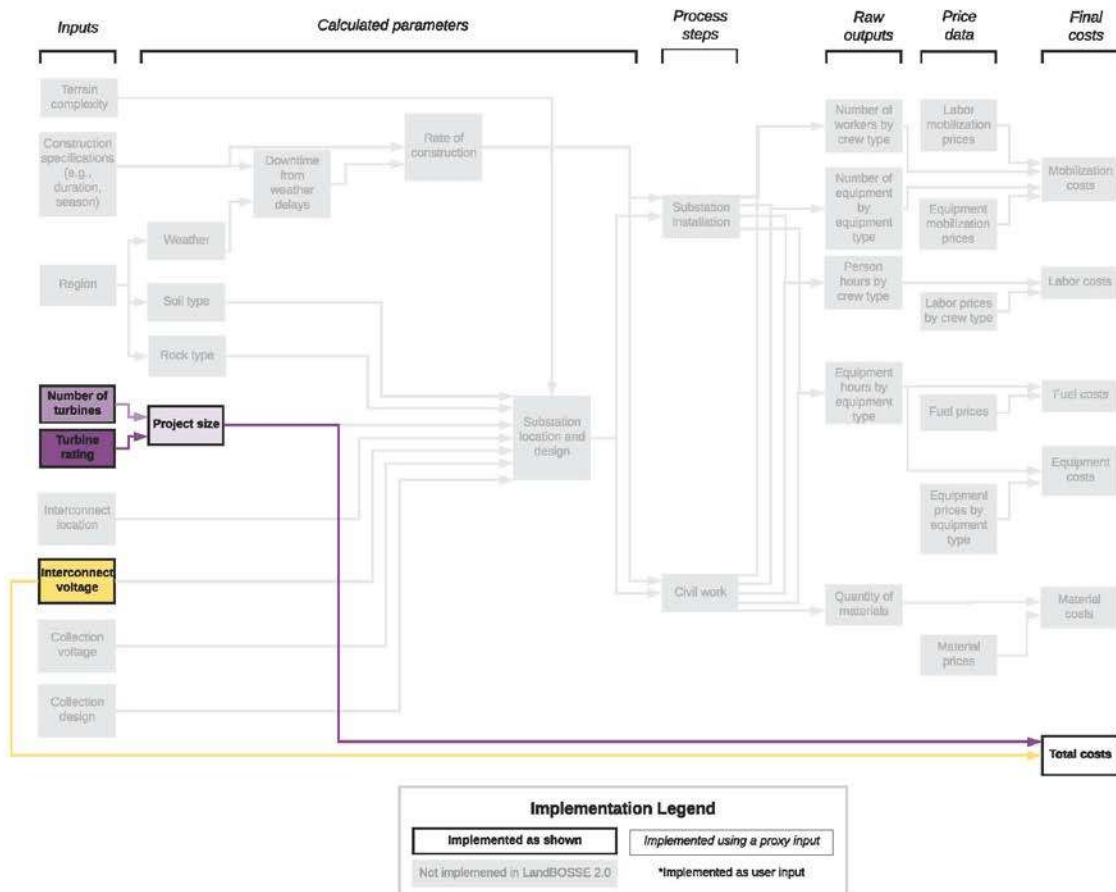


Figure 19. Implementation of SubstationCost module in LandBOSSE 2.1

Proxy inputs are listed in the appendix.

5 LandBOSSE Verification

We engaged with several wind industry BOS contractors to verify our understanding of the wind plant construction processes and practices. Based on industry feedback, we made changes to the structure of the code to reflect current industry practices. We also added capabilities to more accurately capture variations in construction in different regions of the country. We validated the model against proprietary industry data for current construction practices as well as alternative tower and erection technologies. We are unable to provide additional details about the data that were used to verify the model because these data are proprietary.

The validation scenarios included a range of turbine nameplate capacities, rotor diameters, and plant sizes. Cycle times and rates of construction, material quantities, labor fraction, equipment type and number were compared at the module level over a range of turbine and plant sizes. Adjustments were made to the inputs of the model to more accurately reproduce empirical values. However, it is important to note that these scenarios were based on current plant construction practices and technology. Additional validations should be performed by the user to ensure the model generates reasonable results for their scenario(s) of interest, particularly for future technology or construction scenarios (e.g., turbines above 3 MW, hub heights greater than 120 m, or alternative erection technologies).

6 Conclusion

The LandBOSSE model allows users to explore how the capital expenditures needed to install a utility-scale, land-based wind plant might change under different innovation scenarios. The model outputs all cost estimates for all operations associated with installing a wind plant. For process-based modules, which include site preparation, foundation construction, collection system construction, and tower installation, these costs are broken down by type (e.g., labor, material, and equipment) costs. For all other modules (development, management, substation, and grid connection), only total costs are reported. Potential applications could include:

- Examinations of economies of scale for BOS costs with regard to wind plant size and turbine size
- Assessments of alternative BOS technologies, such as foundations, tower technologies, erection technologies, and collection system configurations
- Comparisons of BOS costs for farms with different turbine types and heights
- Estimations of potential costs of repowering.

This report summarizes the approach, methods, and equations used to develop LandBOSSE. The model was developed using a hybrid of process-based and empirically derived methods to create a modular model design that will allow for updates as wind energy technology evolves. The goal of LandBOSSE is to allow researchers, analysts, wind power developers, government agencies, and the public to explore how BOS may vary for different wind plant designs.

7 References

1. U.S. Energy Information Administration. Electricity Generation from Fossil Fuels Declined in 2017 as Renewable Generation Rose. Today in Energy. 2018 [cited 2018 Mar 27]. <https://www.eia.gov/todayinenergy/detail.php?id=35412>.
2. U.S. Department of Energy Wind and Water Power Technologies Office. Wind Vision: A New Era for Wind Power in the United States. U.S. Department of Energy; 2015 Mar [cited 2018 Mar 27]. DOE/GO-102015-4640. <https://www.energy.gov/eere/wind/maps/wind-vision>.
3. Moné C, Maples B, Hand M. Land-Based Wind Plant Balance-of-System Cost Drivers and Sensitivities. In Las Vegas, NV; 2014.
4. Christensen P, Dysert L. Cost Estimate Classification System: As Applied in Engineering, Procurement, and Construction for the Process Industries. Association for the Advancement of Cost Engineering. 2005;Recommended Practice No. 18R-97:10.
5. Iberdrola Renewables, LLC. Blue Creek Wind Farm Van Wert County. [cited 2018 Dec 10]. <https://www.ccao.org/wp-content/uploads/15%20sum%20Wendel%20Energy.pdf>.
6. U.S. Energy Information Administration. Gasoline and Diesel Fuel Update: Energy Information Administration. 2018 [cited 2018 Mar 29]. <https://www.eia.gov/petroleum/gasdiesel/>.
7. American Society of Civil Engineers (ASCE). Minimum Design Loads for Buildings and Other Structures: ASCE/SEI 7-10. Reston, VA: American Society of Civil Engineers; 2013 [cited 2018 Apr 5]. <http://ascelibrary.org/doi/book/10.1061/9780784412916>.
8. DNV/Riso. Guidelines for Design of Wind Turbines. Copenhagen, Denmark: Det Norske Veritas; 2002 p. 294. http://www.homepages.ucl.ac.uk/~uceseug/Fluids2/Wind_Turbines/Codes_and_Manuals/Guidelines_for_Design_of_Wind_Turbines.pdf.
9. Kimmerling R. Geotechnical Engineering Circular No. 6: Shallow Foundations. Washington, D.C.: Federal Highway Administration; 2002 p. 310. FHWA-SA-02-054. <https://www.fhwa.dot.gov/engineering/geotech/pubs/010943.pdf>.
10. Liebherr-Werk Ehingen GmbH. Training Documents: Influence of Wind on Crane Operation. Ehingen, Germany: Liebherr-Werk Ehingen GmbH; 2017 p. 56. 4th Edition. <https://www.liebherr.com/shared/media/mobile-and-crawler-cranes/brochures/wind-influences/liebherr-influence-of-wind-p403-e04-2017.pdf>.
11. Liebherr-Werk Ehingen GmbH. LR Crawler Cranes: Liebherr. 2018 [cited 2018 Mar 29]. <https://www.liebherr.com/en/deu/products/mobile-and-crawler-cranes/crawler-cranes/lr-crawler-cranes/lr-crawler-cranes.html>.
12. Purkait P, Biswas B, Das S, Koley C. Electrical and Electronics Measurements and Instrumentation. 2013 p. 272.

Appendix: Data Structure for LandBOSSE Inputs

This appendix documents the data structure for user inputs and default data in LandBOSSE 2.1. It is broken down into three sections: (A.1) proxy inputs and their correspondence to variables in the implementation process diagrams shown in Section 4, (A.2) model inputs that can be modified by the user, (A.3) hard-coded values, and (A.4) inputs and outputs for each module within the model.

A.1 Proxy Inputs

Table A.1 summarizes the proxy inputs that are used in each module. Refer to the implementation process diagrams in Section 4 for an illustration of how these variables are used in the model.

Table A-1. Proxy Inputs

Module	Name in Process Diagram	Proxy Variable (Implementation Approach in LandBOSSE 2.1)
DevelopmentCost	n/a	n/a
ManagementCost	Builder size	Project cost (calculated by model) and markup constants (hard-coded)
	Site-specific regulations	Foundation cost (calculated by model and used to estimate number of building permits), and number of highway permits (hard-coded)
	Site-specific environmental characteristics Site-specific interface with public infrastructure	Number of met towers (hard-coded) Number of access roads (hard-coded)
SitePreparationCost	Site complexity Project size	Number of access roads (hard-coded) Operation time required for constructing roads (calculated by model)
	Equipment size	Throughput data for operations (user input)
FoundationCost	Soil type	Bearing pressure (user input) and friction angle of soil (hard-coded)
ErectionCost	Tower technology type	List of tower and turbine component data (user input) and list of crane specifications (user input)
CollectionCost	Turbine model	Line frequency (user input) and interconnect voltage (user input)

Module	Name in Process Diagram	Proxy Variable (Implementation Approach in LandBOSSE 2.1)
	Plant layout	Row spacing (user input) and turbine spacing (user input)
	Number of electrical connections	Operation time required for trenching (calculated by model)
GridConnectionCost	n/a	n/a
SubstationCost	n/a	n/a

A.2 Summary of Model Inputs

As shown in Table A-2, there are 11 main types of input data. The data sources for each of these types of input data are provided in Table A-3, and sample data for each of these data types are provided in Tables A-4 through A-14 (Table A-2 lists the table numbers that provide details for each data type). All these data are provided to illustrate default model inputs, and users should modify these values based on their specific project. Refer to the GitHub repository (<https://github.com/WISDEM/LandBOSSE>) for more information on how to modify these values.

Table A-2. LandBOSSE Input Data

Type of Data	Description	Sample Data Table	Relevant Module(s)
Project list	List of projects to be executed during model run ^a	Table A-4	All modules
Components data	Properties of turbine and tower components	Table A-5	ErectionCost FoundationCost
Cable specs	Specifications for electrical cables	Table A-6	CollectionCost
Equipment data	List of non-crane equipment types that pair with specific cranes based on Equipment ID	Table A-7	ErectionCost

Type of Data	Description	Sample Data Table	Relevant Module(s)
Equipment price	List of equipment prices (including crane prices)	Table A-8	ErectionCost
Crane specs	List of crane specifications (including capacity limits and Equipment IDs)	Table A-9	ErectionCost
Crew data	List of crews for different types of operations (linked to prices and other tables using Crew ID)	Table A-10	ErectionCost FoundationCost SitePreparationCost CollectionCost
Crew price	List of prices for crews (linked to crew data by Crew ID)	Table A-11	ErectionCost FoundationCost SitePreparationCost CollectionCost
Material price	List of material prices by Material type ID in RSMMeans data	Table A-12	SitePreparationCost FoundationCost
RSMMeans	List of throughput, cost, and operation data for various processes	Table A-13	SitePreparationCost FoundationCost CollectionCost
Building area	List of site facility building sizes by plant size	Table A-14	ManagementCost

^a At least one project must be listed to run LandBOSSE 2.1.

Table A.3. Summary of Data Sources

Type of Data	Source
Project list	Engineering judgement, knowledge of industry practice, and fuel prices from the U.S. Energy Information Administration (6)
Components data	Knowledge of industry practice and publicly available turbine and tower data
Cable specs	Knowledge of industry practice and publicly available cable data
Equipment data	Knowledge of industry practice
Equipment price	Proprietary data from industry
Crane specs	Publicly available crane charts from Liebherr (11)
Crew data	Knowledge of industry practice
Crew price	Proprietary data from industry
Material price	RSMeans Construction Cost Database adjusted with proprietary data from industry
RSMeans	RSMeans Construction Cost Database
Building area	Knowledge of industry practice

Table A-4. Sample Inputs for Project List, Listed by Project ID

Parameter Name	GE 1.5-MW, 80 m HH	Clipper 2.5-MW, 80-m HH	IEA^a 3.6-MW, 85-m HH	IEA 3.6-MW, 120-m HH
Total project construction time (months)	9	9	9	9
Turbine rating (MW)	1.5	2.5	3.6	3.6
Hub height (m)	80	80	85	120
Rotor diameter (m)	77	96	130	130
Number of breakdowns per 100 MW	1	1	1	1
Turbine spacing (times rotor diameter)	4	4	4	4
Row spacing (times rotor diameter)	10	10	10	10
Number of sections per tower	3	4	4	7
Number of RNA picks (at hub height)	4	4	4	4
Number of turbines	67	40	28	28
Number of turbines per day	2	2	2	2
Breakpoint between base and topping (percent)	0.75	0.75	0.75	0.75
Fuel cost (USD per gallons)	1	1	1	1
Rate of deliveries (turbines per week)	10	10	10	10
Wind shear exponent	0.2	0.2	0.2	0.2
Tower type	steel	steel	steel	steel
Foundation depth (m)	3	3	1.5	3
Rated thrust (kN)	589	1,010	1,260	1,780
Bearing pressure (N/m ²)	191,521	191,521	191,521	191,521
50-year gust velocity (m/s)	59.5	59.5	52.5	52.5
Line frequency (Hz)	60	60	60	60
Combined homerun length to substation (km)	50	50	50	50

Data for at least one project ID are required to execute all LandBOSSE modules.

^a IEA = International Energy Agency

Table A-5. Sample Turbine and Tower Components Data

Component	Property Name											
	Mass (metric tons)	Lift Height (m)	Surface area (m ²)	Coeff. Drag	Coeff. Drag (installed)	Section Height (m)	Lever Arm (m)	Cycle Time Installation (hrs)	Offload Hook Height (m)	Offload Cycle Time (hrs)	Multiplier for Drag Rotor	Multiplier for Tower Drag
Nacelle	57	90	33	0.8	0.8	0	80	1.5	6	0.5	1	0
Hub	17	90	11.3	1.1	1.1	0	80	1	6	0.5	0	0
Blade 1	5.8	90	33.44	0.1	1.4	0	80	1	6	0.5	0.67	0
Blade 2	5.8	90	33.44	0.1	1.4	0	80	1	6	0.5	0.67	0
Blade 3	5.8	90	33.44	0.1	1.4	0	80	1	6	0.5	0.67	0
Tower Section 1	57.5	30	95.89	0.6	1.1	25	12	1	6	0.5	0	1
Tower Section 2	37.85	60	96.25	0.6	1.1	25	37	1	6	0.5	0	1
Tower Section 3	29.91	90	90	0.6	1.1	30	65	1	6	0.5	0	1

These data are required for the ErectionCost and FoundationCost modules.

Table A-6. Sample Cable Specs Data

Array Cable	Current Capacity (A)	Rated Voltage (kV)	AC Resistance (Ohms/km)	Inductance (mH/km)	Capacitance (nF/km)	Cost (USD/linear foot)
AWG 1/0	300	36	0.253	0.398	0.179	X
AWG 4/0	440	36	0.125	0.359	0.223	X
MCM 500	640	36	0.061	0.317	0.293	X
MCM 1000	830	36	0.037	0.291	0.375	X
MCM 1250	935	36	0.029	0.284	0.411	X

These data are required for the CollectionCost module.

X indicates proprietary input. AWG = American Wire Gauge, MCM = thousands of circular mils, mH/km = millihenry per kilometer, and nF/km = nanofarad per kilometer.

Table A-7. Sample Equipment Data

Equipment ID	Operation	Equipment Name	Number of Equipment
E1	Base	500t crawler	1
E1	Base	50t Truck crane	1
E1	Top	500t crawler	1
E1	Top	50t Truck crane	2
E2	Top	600t crawler	1
E2	Top	50t Truck crane	2
E2	Top	100t RT	2
E3	Top	750t crawler	1
E3	Top	100t RT	2
E4	Top	1,000t crawler	1
E4	Top	100t RT	2
ST1	Top	200t mobile	1
ST1	Top	100t RT	2
OL1	Offload	75t mobile	2
OL2	Offload	200t mobile	2

These data are required for the ErectionCost module.

Table A-8. Sample Data for Equipment Prices

Equipment Name	Crane Capacity (metric tons)	Number of Equipment	Equipment Price (USD/hr)	Cost per Breakdown (USD)	Fuel Consumption (gallons/day)
Crawler crane	X	1	X	X	X
Truck crane	X	1	X	X	X
RT	X	1	X	X	X
Offload crane	X	1	X	X	X

X indicates proprietary input. These data are required for the ErectionCost module.

Table A-9. Sample Input for Crane Specifications

Crane Name	Boom System	Crane Capacity (metric tons)	Travel Speed (km/hr)	Hoist Speed (m/min)	Crew Type ID	Equipment ID	Setup Time (hrs)	Max. Wind Speed (m/s)	Hub Height (m)	Max. Capacity (metric tons)	Mobilization Cost (USD)
LR1500	SL3F	500	2	20	C0	OL1	0	9	80	102	X
LR1500	SL3F	500	2	20	C0	OL2	0	9	85	95	X
LR1500	SL3F	500	2	20	C1	B1	0	9	90	87	X
LR1500	SL3F	500	2	20	C1	E1	0	9	100	77	X
LR1500	SL4DFB + Derrick	500	2	20	C1	E1	0	9	80	112	X
LR1500	SL4DFB + Derrick	500	2	20	C1	E1	0	9	90	105	X
LR1500	SL4DFB + Derrick	500	2	20	C1	E1	0	9	100	90	X
LR1500	SL4DFB + Derrick	500	2	20	C1	E1	2	9	120	74	X
LR1500	SL4DFB + Derrick	500	2	20	C1	E1	2	9	130	60	X
LR1600/2	SL8F3	600	2	20	C1	E1	2	9	80	137	X
LR1600/2	SL8F3	600	2	20	C1	E1	2	9	100	118	X
LR1600/2	SL3F	600	2	20	C1	E1	2	9	105	93	X
LR1600/2	HSL4DF + Derrick	600	2	20	C2	E2	0	9	120	87	X
LR1600/2	SL13DFB + Derrick	600	2	20	C2	E2	0	9	135	96	X
LR1600/2	SL13DFB + Derrick	600	2	20	C2	E2	0	9	140	87	X
LR1600/2	SL13DFB2 + Derrick	600	2	20	C2	E2	2	9	150	71	X
LR1750/2	HSL8HS	750	2	20	C2	E2	2	9	80	111	X
LR1500/2	HSL8HS	750	2	20	C2	E2	2	9	95	110	X
LR1750/2	HSL7DHS	750	2	20	C2	E2	2	9	120	108	X
LR1750/2	HSL7DHS	750	2	20	C3	E3	0	9	130	98	X
LR1500/2	HSL7DHS	750	2	20	C3	E3	0	9	140	89	X
LR1750/2	SX3D4F2B Derrick (walk)	750	2	20	C3	E3	2	9	140	141	X

Crane Name	Boom System	Crane Capacity (metric tons)	Travel Speed (km/hr)	Hoist Speed (m/min)	Crew Type ID	Equipment ID	Setup Time (hrs)	Max. Wind Speed (m/s)	Hub Height (m)	Max. Capacity (metric tons)	Mobilization Cost (USD)
LR1750/2	SX3D4F2B Derrick (walk)	750	2	20	C3	E3	2	9	150	118	X
LR11000	SL3F	1,000	1	25	C3	E3	2	9	100	179	X
LR11000	SL3F	1,000	1	25	C3	E3	0	9	110	152	X
LR11000	SL2DFB	1,000	1	25	C3	E3	0	9	120	179	X
LR11000	SL2DFB	1,000	1	25	C4	E4	3	9	140	133	X
LR11000	SL2DFB	1,000	1	25	C4	E4	3	9	150	154	X
LR11000	SL2DFB	1,000	1	25	C4	E4	3	9	155	140	X
LR11000	SL2DFB	1,000	1	25	C4	E4	3	9	160	120	X
LR11000	SL2DFB	1,000	1	25	C4	E4	3	9	180	73	X
LR11000	SL2DFB	1,000	1	25	C4	E4	3	9	185	54	X
LR11002	PDW3B Derrick	1,000	1	25	C4	E4	3	9	130	227	X
LR11003	PDW3B2 Derrick	1,000	1	25	C4	E4	3	9	165	142	X

Liebherr-Werk Ehingen GmbH 2018 (11) and industry data
X indicates proprietary input and these data are required for the ErectionCost module.

Table A-10. Sample Data for Crew

Crew Type ID	Operation	Crew Name	Labor Type ID	Number of Workers
M0	Management	Management - project size	Project manager	1
M0	Management	Management - project size	Site manager	1
M0	Management	Management - project size	Construction manager	1
M0	Management	Management - project size	Project engineer	1
M0	Management	Management - project size	Safety or QC manager	1
M0	Management	Management - project size	Logistics manager	1
M0	Management	Management - project size	Office admin	1
M1	Management	Management - rate construction	Tool room	1
M1	Management	Management - rate construction	Electrician	2
MC0	Mechanical completion	Mechanical completion	QC/QA tech	2
MC0	Mechanical completion	Mechanical completion	Electrician	1
C0	Offload	Offload can tower	Crane operator	2
C0	Offload	Offload can tower	Oiler	2
C0	Offload	Offload can tower	Iron worker	3
C0	Offload	Offload can tower	Rigger foreman	1
C5	Base	Base 300t	Crane operator	2
C5	Base	Base 300t	Oiler	2
C5	Base	Base 300t	Iron worker	3
C5	Base	Base 300t	Truck driver	1
C5	Base	Base 300t	Rigger foreman	1
C6	Base	Base 400t	Crane operator	2
C6	Base	Base 400t	Oiler	2
C6	Base	Base 400t	Iron worker	3
C6	Base	Base 400t	Truck driver	1

Crew Type ID	Operation	Crew Name	Labor Type ID	Number of Workers
C6	Base	Base 400t	Rigger foreman	1
C1	Base	Base 500t	Crane operator	2
C1	Base	Base 500t	Oiler	2
C1	Base	Base 500t	Iron worker	3
C1	Base	Base 500t	Truck driver	1
C1	Base	Base 500t	Rigger foreman	1
C7	Top	Top 400t	Crane operator	2
C7	Top	Top 400t	Oiler	2
C7	Top	Top 400t	Iron worker	6
C7	Top	Top 400t	Truck driver	1
C7	Top	Top 400t	Rigger foreman	1
C1	Top	Top 500t	Crane operator	2
C1	Top	Top 500t	Oiler	2
C1	Top	Top 500t	Iron worker	6
C1	Top	Top 500t	Truck driver	1
C1	Top	Top 500t	Rigger foreman	1
C2	Top	Top 600t	Crane operator	2
C2	Top	Top 600t	Oiler	2
C2	Top	Top 600t	Iron worker	6
C2	Top	Top 600t	Truck driver	1
C2	Top	Top 600t	Rigger foreman	1
C3	Top	Top 750t	Crane operator	2
C3	Top	Top 750t	Oiler	2
C3	Top	Top 750t	Iron worker	6
C3	Top	Top 750t	Truck driver	1

Crew Type ID	Operation	Crew Name	Labor Type ID	Number of Workers
C3	Top	Top 750t	Rigger foreman	1
C4	Top	Top 1,000t	Crane operator	2
C4	Top	Top 1,000t	Oiler	2
C4	Top	Top 1,000t	Iron worker	6
C4	Top	Top 1,000t	Truck driver	1
C4	Top	Top 1,000t	Rigger foreman	1

Table A-11. Sample Price Data for Crew

Labor Type ID	Hourly Rate (USD/hr)	Per Diem (USD/day)
Crane operator	X	X
Oiler	X	X
Rigger	X	X
Truck driver	X	X
Iron worker	X	X
Project manager	X	X
Site manager	X	X
Construction manager	X	X
Project engineer	X	X
Safety or QC manager	X	X
Logistics manager	X	X
Rigger foreman	X	X
Rigger	X	X
Operator	X	X
Oiler	X	X
Electrician	X	X

X indicates proprietary input.

Table A-12. Sample Data for Material Prices

Material Type ID	Unit	USD per Unit
Concrete 3000 psi	cubic yard	X
Concrete 5000 psi	cubic yard	X
Concrete 8000	cubic yard	X
Steel—rebar	ton (short)	X
¾" crushed stone	LCY	X
Excavated dirt	cubic yard	0
Backfill	cubic yard	0

X indicates proprietary input.

Table A-13. Sample Data for RSMeans

Operation ID	Type of Cost	Material Type ID	Rate (USD/ Unit)	Units	Daily Output
Topsoil stripping and stockpiling	Labor		X	cubic yard	X
Compaction of soil (subgrade and crane path)	Labor		X	ECY	X
Placing road base (hauling)	Labor	¾" crushed stone	X	LCY	X
Rough grading road base	Labor			100,000 ft ²	
Compacting road base	Labor		X	LCY	X
Topsoil stripping and stockpiling	Equipment rental		X	cubic yard	X
Compaction of soil (subgrade and crane path)	Equipment rental		X	ECY	X
Placing road base (hauling)	Equipment rental	¾" crushed stone	X	LCY	X
Rough grading road base	Equipment rental		X	100,000 ft ²	X
Compacting road base	Equipment rental		X	LCY	X

X indicates proprietary input.

Table A-14. Site Facility Building Area Defaults as Function of Project Size

Size Minimum (MW)	Size Maximum (MW)	Building Area (sq. ft.)
0	200	3,000
200	500	5,000
800	1,000	9,000
1,000	5,000	12,000

A.3 Hard-Coded Values

In addition to the input data listed above, the model contains several hard-coded values, including road properties (Table A-15) and parameters used in the ManagementCost module (Table A-16). These values can be changed by the user, but they must be modified within the code rather than in the input data.

Table A-15. Road Properties

Property	Default Value (m)
Road width	6.1
Crane width	11
Depth to subgrade	0.1
Thickness	0.2
Lift depth	0.2

Table A-16. Defaults Used in ManagementCost Module

Parameter Name	Units	Value
Number of highway permits	n/a	10
Number of access roads	n/a	2
Markup contingency	%	0.03
Markup warranty management	multiplier	0.0002
Markup sales and use tax	multiplier	0
Markup overhead	multiplier	0.05
Markup profit margin	multiplier	0.05

A.4 Inputs and Outputs by Module Type

Tables A-17 through A-24 list the inputs and outputs for each of the modules. These inputs and outputs populate the input and output dictionaries shown in the software architecture diagram (Figure 9).

Table A-17. Inputs and Outputs in CollectionCost Module

Inputs	Outputs
project_name	max_turb_per_cable
ac_resistance	num_turb_per_cable
cable_power	turb_section_length
capacitance	total_cable_len_km
char_impedance	total_turb_per_string
current_capacity	num_full_strings
inductance	num_leftover_turb
line_frequency_hz	num_partial_strings
power_factor	perc_partial_string
rated_voltage	num_strings
downstream_connection	trench_len_to_substation_km

Inputs	Outputs
turb_sequence	cable_len_to_substation_km
rsmeans (dataframe)	trench_length_km
crew_cost	management_crew (dataframe)
crew	operation_data_entire_farm (dataframe)
construction_duration	wind_delays
time_construct	wind_delay_time
hour_day	time_construct_days
user_defined_home_run_trench	wind_multiplier
trench_len_to_substation_km	operation_data_id_days_crews_workers (dataframe)
plant_capacity_MW	operation_data_entire_farm (dataframe)
row_spacing_rotor_diameters	total_collection_cost (dataframe)
upstream_turb	
turbine_spacing_rotor_diameters	
rotor_diameter_m	
overtime_multiplier	
weather_window	
start_delay_hours	
mission_time_hours	
critical_wind_speed_m_per_s	
wind_height_of_interest_m	
wind_shear_exponent	
time_construct	
hour_day	
per_diem_rate	

Table A-18. Inputs and Outputs in FoundationCost Module

Inputs	Outputs
project_name	F_dead_kN_per_turbine
depth	F_horiz_kN_per_turbine
rated_thrust_N	M_tot_kN_m_per_turbine
bearing_pressure_n_m2	Radius_s_m
gust_velocity_m_per_s	Radius_b_m
component_data (dataframe)	Radius_m
num_turbines	foundation_volume_m3_per_turbine
overtime_multiplier	material_needs_per_turbine (dataframe)
material_price (dataframe)	material_needs_entire_farm (dataframe)
rsmeans (dataframe)	operation_data_id_days_crews_workers (dataframe)
weather_window	operation_data_entire_farm (dataframe)
start_delay_hours	labor equip_data (dataframe)
mission_time_hours	total_foundation_cost (dataframe)
critical_wind_speed_m_per_s	
wind_height_of_interest_m	
wind_shear_exponent	
time_construct	
hour_day	
per_diem_rate	

Table A-19. Inputs and Outputs in SitePreparationCost Module

Inputs	Outputs
project_name	road_length_m
road_width_ft	road_volume_m3
road_thickness	depth_to_subgrade_m
crane_width	material_volume_cubic_yards
num_access_roads	topsoil_volume
rotor_diameter_m	embankment_volume_crane
turbine_spacing_rotor_diameters	embankment_volume_road
num_turbines	rough_grading_area
overtime_multiplier	material_needs (dataframe)
material_price (dataframe)	operation_data (dataframe)
rsmeans (dataframe)	total_road_cost (dataframe)
weather_window	
start_delay_hours	
mission_time_hours	
critical_wind_speed_m_per_s	
wind_height_of_interest_m	
wind_shear_exponent	
time_construct	
hour_day	
per_diem_rate	

Table A-20. Inputs and Outputs in SubstationCost Module

Inputs	Outputs
project_name	
distance_to_interconnect_mi	total_substation_cost (dataframe)
project_size	

Table A-21. Inputs and Outputs in GridConnectionCost Module

Inputs	Outputs
project_name	interconnect_adder_USD
distance_to_interconnect_mi	total_transdict_cost (dataframe)
interconnect_voltage_kV	
new_switchyard	

Table A-22. Inputs and Outputs in ErectionCost Module

Inputs	Outputs
project_specs (dataframe)	component_name_topvbase (dataframe)
crane_specs (dataframe)	possible_cranes (dataframe)
crew (dataframe)	operation_time (dataframe)
crew_price (dataframe)	offload_specs (dataframe)
equip (dataframe)	offload_time
equip_price (dataframe)	crane_specs_withoffload (dataframe)
component_specs (dataframe)	operation_time_withoffload (dataframe)
rate_of_deliveries	enhanced_crane_specs (dataframe)
weather_window	separate_basetop (dataframe)
wind_shear_exponent	same_basetop (dataframe)
overtime_multiplier	crew_cost (dataframe)
allow_same_flag	erection_cost_output (dataframe)
time_construct	erection_wind_mult
hour_day	crane_choice (dataframe)
	crane_data_output (dataframe)
	crane_cost_details (dataframe)
	total_cost_summed_erection
	management_crews (dataframe)
	management_crews_grouped (dataframe)

Table A-23. Inputs and Outputs in ManagementCost Module

Inputs	Outputs
project_value_usd	insurance
foundation_cost_usd	construction_permitting
construction_time_months	project_management
num_hwy_permits	bonding
num_turbines	engineering_foundations_and_collection_sys
project_size_megawatts	site_security
hub_height_meters	met_mast
num_access_roads	site_facility
markup_contingency	markup_contingency
markup_warranty_management	total_cost
markup_sales_anduse_tax	
markup_overhead	
markup_profit_margin	
site_facility_building_area_df (dataframe)	

Table A-24. Inputs and Outputs in WeatherDelay Module

Inputs	Outputs
weather_window	wind_delay
start_delay_hours	
mission_time_hours	
critical_wind_speed_m_per_s	
wind_height_of_interest_m	
wind_shear_exponent	