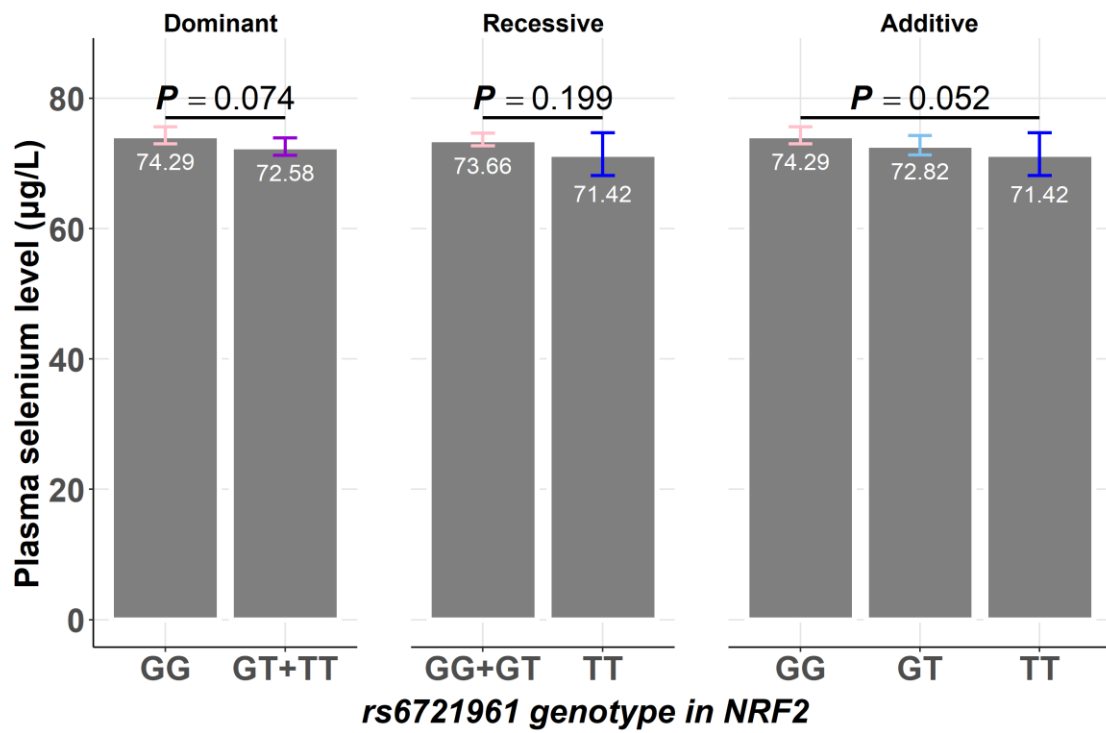
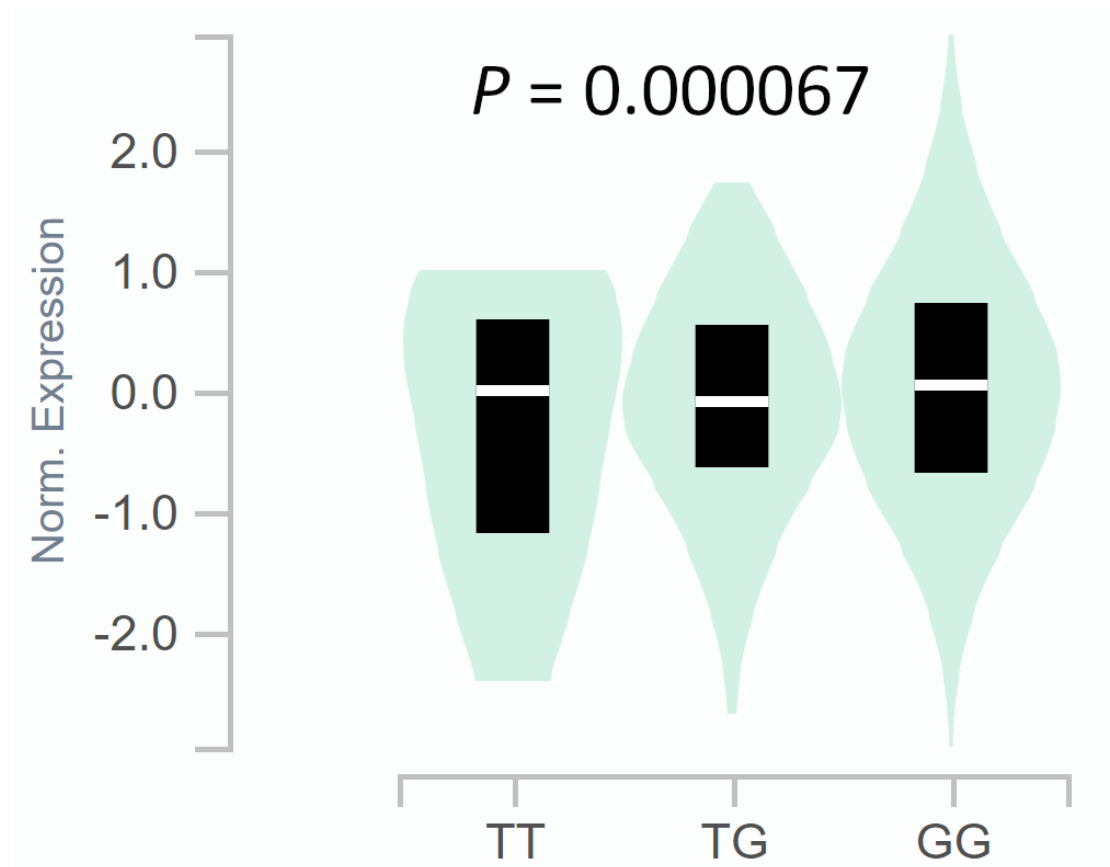


**Supplementary Figure 1**–Flow chart of the inclusion or exclusion criteria in the present study.



**Supplementary Figure 2**—Adjusted mean selenium level by *NRF2* promoter rs6721961 genotype. The bars (labels) represent the estimated mean value of plasma selenium levels adjusting for sex and age, and the whiskers represent the 95% confidence interval (CI). *P* value was derived from linear model by modeling the association between *NRF2*-located genotype rs6721961 and plasma selenium level.



**Supplementary Figure 3**—The mRNA levels of whole blood in subjects with different genotypes of *NRF2* promoter polymorphism rs6721961 (data from GTEx database)