

## OFF-LIMB SOLAR CORONAL WAVEFRONTS FROM *SDO*/AIA EXTREME-ULTRAVIOLET OBSERVATIONS—IMPLICATIONS FOR PARTICLE PRODUCTION

K. A. KOZAREV<sup>1,5</sup>, K. E. KORRECK<sup>2</sup>, V. V. LOBZIN<sup>3</sup>, M. A. WEBER<sup>2</sup>, AND N. A. SCHWADRON<sup>4</sup>

<sup>1</sup> Astronomy Department, Boston University, Boston, MA 02215, USA; [kamen@bu.edu](mailto:kamen@bu.edu)

<sup>2</sup> Harvard-Smithsonian Center for Astrophysics, Cambridge, MA 02138, USA

<sup>3</sup> School of Physics, University of Sydney, NSW 2006, Australia

<sup>4</sup> Institute for the Study of Earth, Oceans, and Space, University of New Hampshire, Durham, NH 03824, USA

Received 2010 December 13; accepted 2011 April 19; published 2011 May 6

### ABSTRACT

We derive kinematic properties for two recent solar coronal transient waves observed off the western solar limb with the Atmospheric Imaging Assembly (AIA) on board the *Solar Dynamics Observatory* (*SDO*) mission. The two waves occurred over  $\sim 10$  minute intervals on consecutive days—2010 June 12 and 13. For the first time, off-limb waves are imaged with a high 12 s cadence, making possible detailed analysis of these transients in the low corona between  $\sim 1.1$  and  $2.0$  solar radii ( $R_S$ ). We use observations in the 193 and 211 Å AIA channels to constrain the kinematics of both waves. We obtain initial velocities for the two fronts of  $\sim 1287$  and  $\sim 736$  km s<sup>-1</sup>, and accelerations of  $-1170$  and  $-800$  m s<sup>-2</sup>, respectively. Additionally, differential emission measure analysis shows the June 13 wave is consistent with a weak shock. Extreme-ultraviolet (EUV) wave positions are correlated with positions from simultaneous type II radio burst observations. We find good temporal and height association between the two, suggesting that the waves may be the EUV signatures of coronal shocks. Furthermore, the events are associated with significant increases in proton fluxes at 1 AU, possibly related to how waves propagate through the coronal magnetic field. Characterizing these coronal transients will be key to connecting their properties with energetic particle production close to the Sun.

*Key words:* shock waves – Sun: coronal mass ejections (CMEs) – Sun: particle emission – Sun: radio radiation

*Online-only material:* animations, color figures

### 1. INTRODUCTION

A growing body of theoretical and observational research suggests that charged solar energetic particles (SEPs) gain most of their energy at traveling shocks relatively close to the Sun (Zank et al. 2008). Interplanetary shocks have been well studied with in situ measurements near Earth and throughout the solar system (Stone & Tsurutani 1985; Forbes et al. 2006). Many SEP bursts observed close to Earth are not directly associated with Earth-detected shocks. This suggests that SEPs are accelerated much closer to the solar corona, possibly by shocks near the Sun (Reiner et al. 2007). Coronal shocks could accelerate particles to very high energies in short periods (Roussev et al. 2004). However, field and shock geometry are key parameters in the ability of shocks to accelerate particles regardless of the shock strength, especially near the Sun (Giacalone & Kóta 2006).

Coronal shocks have been observed earlier (Pick et al. 2006; Nindos et al. 2008). Maia et al. (2000) reported on fast coronal transients propagating with similar speeds in both radio and white light. Vourlidis et al. (2003) used coronagraph observations to study a white-light coronal shock beyond  $2.5 R_S$ . Recent results (e.g., Gallagher & Long 2010; Patsourakos et al. 2009; Patsourakos & Vourlidis 2009) have used Extreme-ultraviolet (EUV) observations to show the intimate connection between EUV waves and coronal mass ejections (CMEs). However, there is still considerable debate about how shocks appear in these observations. Additionally, a widely used means of characterizing coronal shock kinematics is observations of drifting metric radio emissions from the Sun. These type II radio

bursts are associated with coronal shocks (McLean & Labrum 1985; Reiner et al. 2003; Mancuso et al. 2003).

Ultra-high-cadence EUV imaging observations of off-limb coronal waves are presented for two recent solar eruptions on 2010 June 12 and 13. We use the Atmospheric Imaging Assembly (AIA) instrument (Title & AIA Team 2006) on board the *Solar Dynamics Observatory* (*SDO*). The temporal resolution,  $\sim 12$  s, allows for following the evolution of impulsive features in the low corona ( $1.2$ – $2.0 R_S$ )—a capability newly available in EUV imaging of the Sun. About 3 hr after the June 12 event and 2 hr after the June 13 event, elevated proton fluxes (6.5 MeV) were observed at 1 AU, leading us to investigate the connection between the remote wave observations and in situ particle fluxes. We combine simultaneous EUV wave and type II radio burst observations with a coronal magnetic field model to investigate the morphology, kinematics, thermal and density properties of the wavefronts, and their energetic particle production capability.

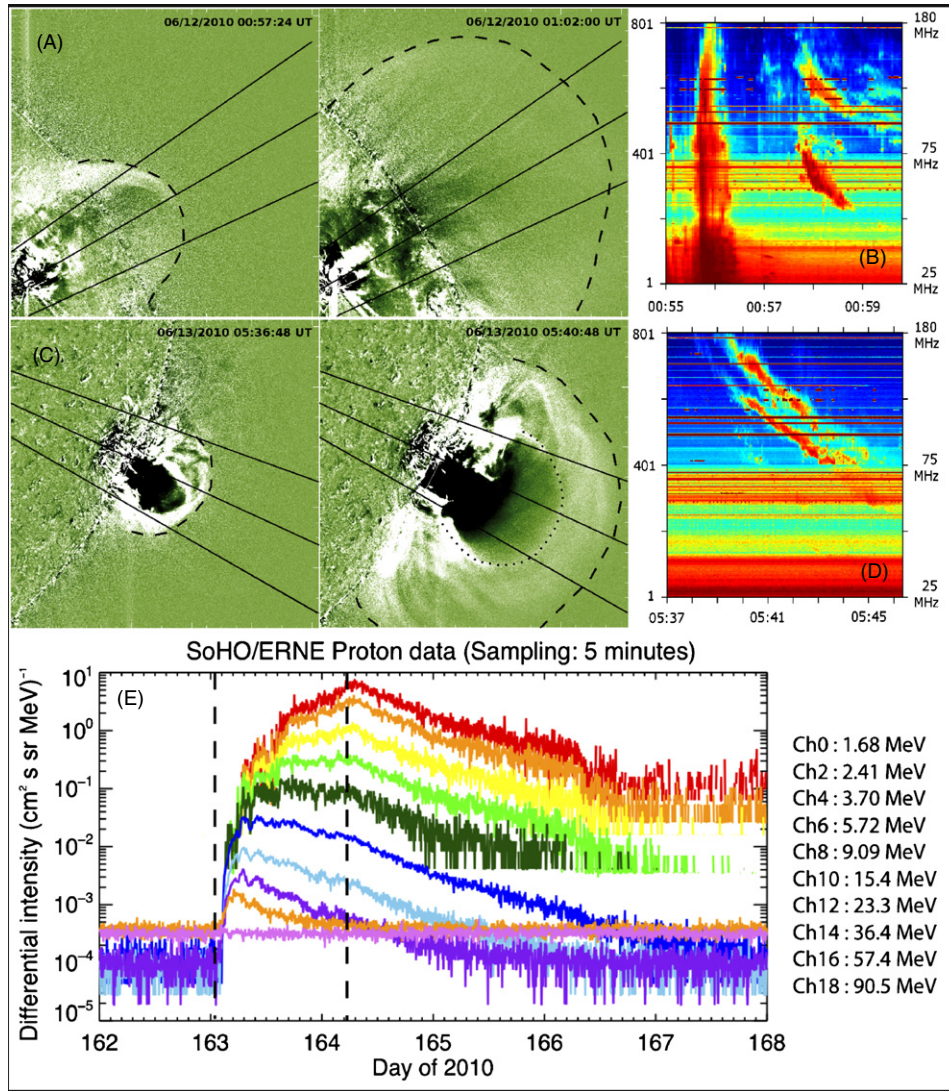
The Letter is structured as follows: In Section 2, we detail the AIA and radio observations used. In Section 3, the kinematics, morphology, and physical properties of the EUV transients are described. We summarize our findings in Section 4.

### 2. OBSERVATIONS AND DATA ANALYSIS

#### 2.1. EUV Observations

We used observations from two AIA channels peaking at 193 (Fe XII) and 211 Å (Fe XIV). We refer to them as the 193 and 211 channels throughout the paper. Both channels have  $\sim 12$  s cadence, 6 s lag between the two. The data were processed to level 1.5 using a standard AIA pipeline. Base difference images were produced from an average of 10 subframes immediately preceding the events. Event animations can be found as online

<sup>5</sup> Also at Harvard-Smithsonian Center for Astrophysics, Cambridge, MA 02138, USA.



**Figure 1.** (a and c) AIA/211 base difference images showing two stages of the 2010 June 12 and 13 coronal waves, respectively. The two frames in each panel are  $\sim 4$  minutes apart. Approximate positions of the wavefronts are in dashed black lines. Dotted lines in panel (c) outline the June 13 CME. The radial profiles along which velocity measurements were made are also shown. (b and d) Radio spectra from Learmonth observatory for June 12 and 13, respectively. Panel (b) also shows a strong type III burst around 00:56 UT on June 12. (e) Proton fluxes observed between 2010 June 11 (DOY 162) and June 17 (DOY 168) by the *SOHO/ERNE* instrument. Proton energies vary between 1.68 and 90.5 MeV. Vertical dashed lines show AIA waves onsets.

(Animations [A, B] and a color version of this figure are available in the online version of the journal.)

supplemental materials to this Letter. For temperature and density analysis of the June 13 event, we use six EUV AIA channels dominated by Fe lines (details are given below).

The first event occurred on 2010 June 12 above active region (AR) 11081 located close to the northwestern limb (N23W43). The EUV transient coincided with an M2.0 X-ray flare between 00:30–01:02 UT, peaking at 00:57 UT. We considered observations between 00:56 and 01:03 UT, the times during which we could detect and measure the coronal transient feature in the field of view (FOV) of the AIA instrument. During this period a faint, but discernible front was launched roughly radially above the AR.

The second event occurred on 2010 June 13 above AR11079, on the southwestern limb (S25W84). It coincided with an M1.0 flare between 05:30 and 05:44 UT, peaking at 05:39 UT. In EUV an eruption started at 05:34 UT on the limb, turning into a CME loop propagating radially outward. At 05:37 UT, a hemispheric wavefront appeared (in both 193 and 211 channels) in front of

the CME and separated from it, traveling in the same direction but markedly faster. The wave reached the AIA FOV edge at 05:42 UT, followed by the CME at 05:44 UT.

In Figure 1, panels (a) and (c) show two base difference images in the 211 AIA channel of the June 12 and 13 events, respectively. Dashed lines trace the wavefronts. Although both events were only clearly visible in difference images, the second event was notably brighter, exhibiting lower velocities, as we show below.

Since wave signatures were very faint, we made manual measurements. For each subframe in each event, the expanding wavefront edge was selected along three radial profiles close to the wave’s nose. To reduce measurement errors, they were repeated 10 times for each image sequence in both channels. We fitted second-order polynomials to measured positions in order to obtain front velocities and accelerations, using MPFIT routines (Markwardt 2009) combined with a statistical bootstrapping technique (Efron 1979). Since the waves were

**Table 1**  
EUV Wave/Radio Shock Kinematics, June 12 and 13, Second-order Fits

Time	Channel/Profile <sup>a</sup>	Initial Velocity (km s <sup>-1</sup> )	Acceleration (km s <sup>-2</sup> )
Jun 12 00:56	193/II	1169.34 ± 29.31	-0.88 ± 0.16
Jun 12 00:56	193/III	1381.59 ± 32.70	-1.29 ± 0.17
Jun 12 00:56	211/II	1180.25 ± 31.67	-0.95 ± 0.17
Jun 12 00:56	211/III	1418.08 ± 31.56	-1.55 ± 0.17
<b>Jun 12 00:56</b>	<b>193/AVG<sup>b</sup></b>	<b>1275.46 ± 43.91</b>	<b>-1.09 ± 0.23</b>
<b>Jun 12 00:56</b>	<b>211/AVG</b>	<b>1299.16 ± 44.71</b>	<b>-1.25 ± 0.24</b>
Jun 13 05:37	193/I	774.29 ± 18.90	-0.97 ± 0.18
Jun 13 05:37	193/II	688.86 ± 11.93	-0.45 ± 0.11
Jun 13 05:37	211/I	791.89 ± 25.30	-1.15 ± 0.24
Jun 13 05:37	211/II	691.31 ± 18.98	-0.62 ± 0.18
<b>Jun 13 05:37</b>	<b>193/AVG</b>	<b>731.57 ± 22.35</b>	<b>-0.71 ± 0.21</b>
<b>Jun 13 05:37</b>	<b>211/AVG</b>	<b>741.60 ± 31.63</b>	<b>-0.89 ± 0.30</b>
Jun 12 00:57	FUND	2819.09 ± 95.79	-26.78 ± 1.76
Jun 12 00:57	HARM	2905.60 ± 147.92	-46.79 ± 5.30
Jun 13 05:39	HARM	589.54 ± 27.21	-0.53 ± 0.23
Jun 13 05:38	HARM	610.93 ± 14.97	0.28 ± 0.11

**Notes.** Measurements for the June 12 event started at 00:56 UT, for the June 13 event—at 05:37 UT—the times we were able to first measure waves.

<sup>a</sup> For radio measurements—emission type.

<sup>b</sup> Average of the profile measurements for that channel and event.

very dim, we only managed meaningful observations for two profiles in each event. Third-order fits were also attempted, but did not produce significantly different results.

We also corrected for plane-of-sky projection of the wavefronts, assuming spherical waves propagating radially away from the Sun. Then, the brightest EUV emission is detected at front edges. We deprojected front positions by assuming  $r = r' / \sin(\phi)$ , where  $r$  and  $r'$  are the true and projected radial distances from the flare site, respectively, and  $\phi$  is the AR heliographic longitude. Velocities and accelerations are presented in Table 1.

## 2.2. Radio Observations

Metric radio spectra were provided by the Learmonth Solar Radio Observatory (Western Australia). Type II bursts indicate electron acceleration by coronal shocks, which may also accelerate protons and heavier ions. The Newkirk coronal electron density model (Newkirk 1961) was used to relate the observed emissions to the height of the emission source.

Figure 1, panels (b) and (d), show type II burst dynamic spectra. Multiple bands are visible for the June 12 type II radio burst, indicating that this event is rather complex. Both fundamental and harmonic emissions were observed for that event, starting at 00:57:45 UT. The harmonic emission persisted longer, until about 01:07 UT, but was too faint to be measured. A strong type III burst was also observed at 00:53 UT—an indication of an impulsive release of energetic electrons in the corona. We separated two emission lanes in each spectrogram and fitted the peak emission frequencies.

We performed the same analysis for the June 13 radio burst, which started at 05:38:13 UT. The fundamental emission was barely discernible in the radio spectrogram (panel (d)). However, there were two parallel bands of harmonic emission.

## 3. RESULTS AND DISCUSSION

Figure 1, panel (e), shows particle flux enhancements possibly associated with the coronal shocks observed by AIA. The in situ particle measurements were made by the Energetic and

Relativistic Nuclei and Electron (ERNE; Torsti et al. 1995) instrument on *Solar and Heliospheric Observatory (SOHO)*. The time series of energetic protons (between 1.68 and 90.5 MeV) show an impulsive flux increase at all energies on June 12, followed by an additional increase in the low energies on June 13. Vertical dashed lines denote onsets of the EUV waves. Below we investigate EUV wave observations and radio shock properties in an attempt to characterize the solar sources of the elevated particle fluxes.

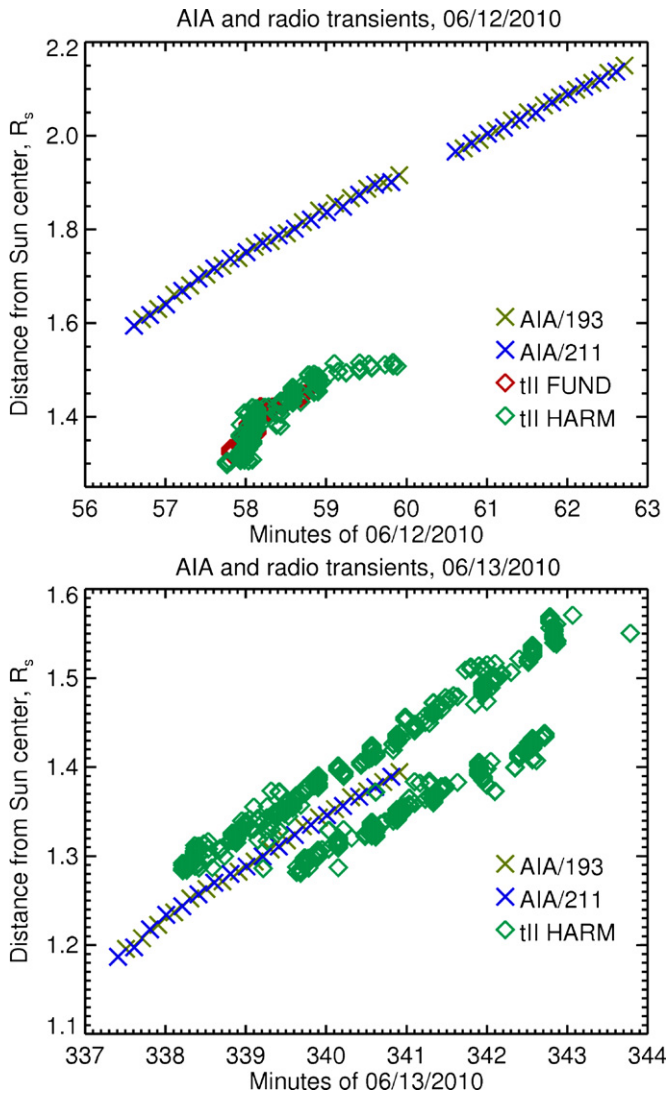
### 3.1. Kinematics of the EUV Waves and Radio Shocks

Table 1 presents measured EUV wavefront and radio shock kinematics. As described previously, we performed measurements of front edge positions along three linear profiles starting from the flare region (hereafter trials). These are denoted in roman numerals in the second column of the table, together with the AIA channel. The third and fourth columns show initial velocities and acceleration, respectively, derived from second-order polynomial fits to the deprojected position measurements in two trials for each event. The rows in bold show trial averages for each wavelength, for each event.

For June 12, we obtained velocities of  $\sim 1275 \pm 44$  km s<sup>-1</sup> for AIA/193 and  $\sim 1300 \pm 44$  km s<sup>-1</sup> for AIA/211 channel. For June 13, we get  $\sim 731 \pm 22$  km s<sup>-1</sup> for AIA/193 and  $\sim 741 \pm 31$  km s<sup>-1</sup> for AIA/211 channel. The fits imply average decelerations of  $-1000$  m s<sup>-2</sup> for June 12 and  $-800$  m s<sup>-2</sup> for June 13.

Patsourakos et al. (2010) studied the June 13 CME in EUV with AIA, between 05:34 and 05:43 UT. They fit circles to the expanding CME bubble and determined its kinematics. They found that the bubble front in the direction of propagation away from the solar limb accelerated to a maximum speed of 400 km s<sup>-1</sup>, after which it decelerated. They did not comment on the wave kinematics in that work.

Veronig et al. (2010) studied a very similar dome-like CME and wave event off the eastern solar limb (seen from the *STEREO-B* spacecraft) with EUV observations. They measured upward expansion speeds of the dome-like wave of  $\sim 650$  km s<sup>-1</sup>. They also found that the EUV wavefront



**Figure 2.** Time–height profiles of June 12 (top) and 13 (bottom) EUV waves and radio shocks. Wavefront positions from the lowest uncertainty trial (see Table 1) from AIA/193 and 211 channels are shown as “x” symbols. Diamonds denote shock positions estimated from radio type II burst observations with the Newkirk density model.

(A color version of this figure is available in the online journal.)

coincided with the white-light transient observed by *STEREO-B* coronagraphs. This implies that the front edge of the white-light emission may be caused by compressed plasma behind the traveling shock. Quadrature position modeling was done by Patsourakos & Vourlidis (2009) to first show this connection.

Figure 2 compares measured AIA EUV wavefront positions and estimated shock locations from radio observations. Wavefront positions measured in the 193 and 211 channels for the trial with lowest uncertainties are plotted as “x” symbols. Diamonds denote radio shock positions. The June 12 radio emission occurred at lower heights than the EUV wavefront, suggesting electron acceleration away from the shock nose. Alternatively, the electron density model used might not apply for this case of open magnetic geometry (see Section 3.4). The radio shock signature started faster than the EUV wave, but decelerated completely by 01:00 UT, while the EUV wave continued to rise. By contrast, the radio emission on June 13 was split into two harmonic bands, which correlate very well with the EUV wave positions. This might imply local electron acceleration in

front of and behind the nose of the traveling shock. Section 3.4 considers the coronal magnetic geometry in interpreting these observations.

### 3.2. Temperature and Density Behavior of the EUV Waves

To investigate the temporal and density properties of the EUV waves, we performed differential emission measure (DEM) analysis on the June 13 wave (we were not able to do so for the June 12 wave due to data constraints), using region-averaged pixel values in the six EUV Fe-dominated channels (94, 131, 171, 193, 211, 335 Å). We hand-selected four regions (labeled R1–4 in the top panel of Figure 3) in two frames—05:37:00 UT and 05:39:00 UT (hereafter T1 and T2)—corresponding to times before and during the wavefront passage. The first three regions were chosen to sample different parts of the wave; the fourth was chosen upstream of the wave for comparison. Calculations were done for 16 temperature bins in the range  $\log T = 5.5\text{--}7.0$ , following the Monte Carlo method as implemented in Weber et al. (2004). Results for regions 1 and 4 were not statistically significant, so our analysis was limited to times T1 and T2 in R2 and R3.

For each region (of approximately 10,000 pixels), time, and channel, we constructed mean intensity data and errors. The mean observation sets were then solved for their DEM distributions. The DEM solutions we quote provide model intensities with the smallest  $\chi^2$  fit to the data, when folded through the AIA responses. (See the bottom panels of Figure 3.) We considered the relative degree of model fits versus the difference between T1 and T2 data.

The DEMs for regions 2 and 3 are plotted in the bottom panels of Figure 3, where T1 is shown in red and T2 is shown in green. The Monte Carlo analysis produces multiple solutions by varying the data by the errors, and these are represented as clouds of colored dotted lines with a very small spread. It can be seen that observations for T1 and T2 are significantly different. We find that the DEM temperature profile does not change appreciably from T1 to T2, for either region, but the overall emission measure (EM) increases.

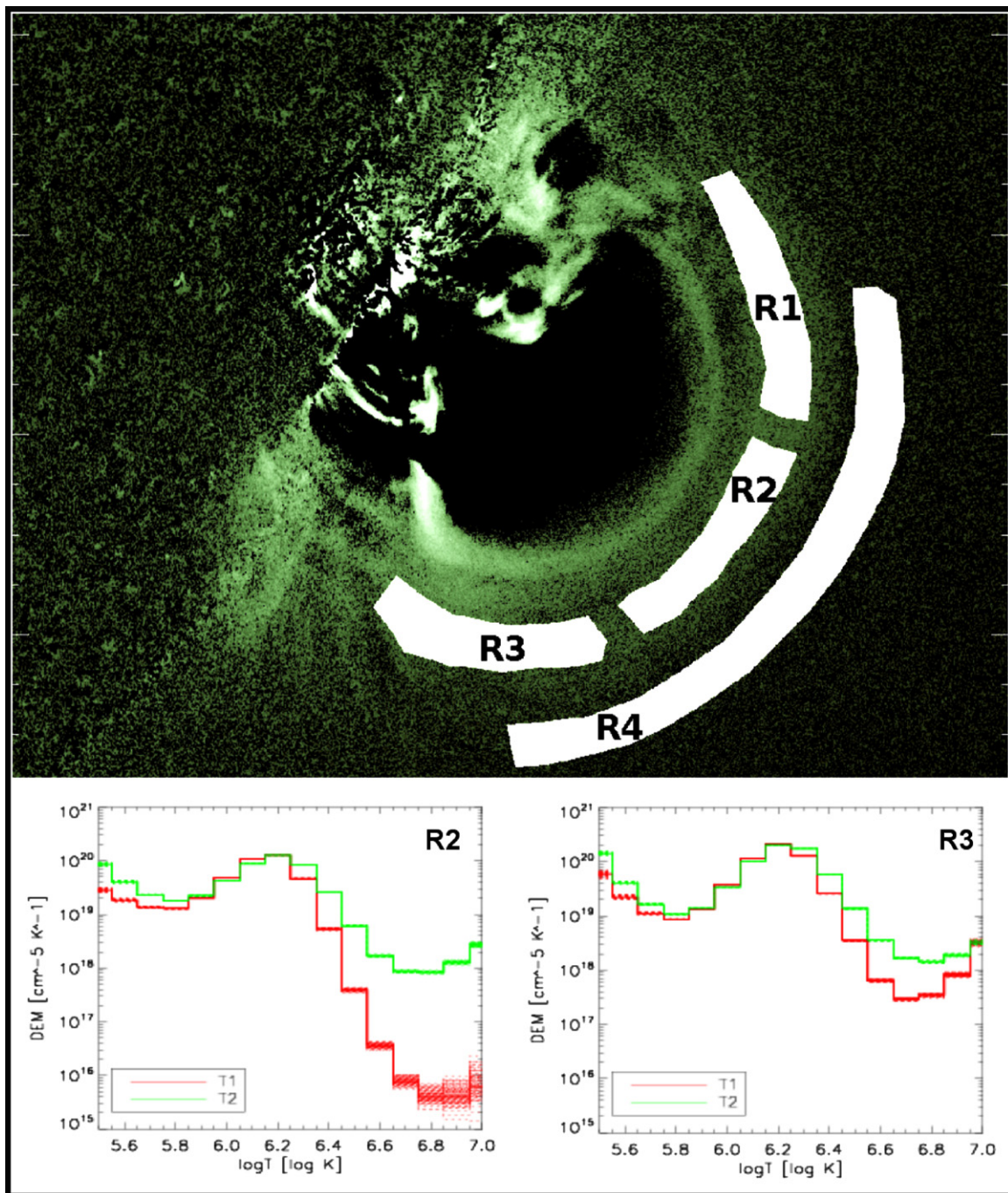
To roughly estimate the jump in density, we consider a simple model. Assume that all measured intensity is emitted along the region’s line of sight only from the wave-affected volume, i.e., no foreground nor background emission. Also assume no change in temperature. Then, since the integrated DEM is the full emission measure of the volume, we may estimate the density ratio as

$$\frac{n_{e2}}{n_{e1}} \sim \frac{\sqrt{\text{EM}_2}}{\sqrt{\text{EM}_1}} \sim \frac{\sqrt{\int \text{DEM}_2(T) dT}}{\sqrt{\int \text{DEM}_1(T) dT}}. \quad (1)$$

For region 2, we find that  $n_{e2}/n_{e1} \simeq 1.18$ , and for region 3, we find that  $n_{e2}/n_{e1} \simeq 1.12$ , consistent with weak coronal shocks. For a more sophisticated model that accounts for foreground and background emission, the density changes within the wave-affected volume would have to be *even larger* in order to generate the observed change in intensities. Therefore, we find that  $n_{e2}/n_{e1} \simeq 1.12$  is a *lower* limit.

### 3.3. EUV Wave Morphology

In both 211 and 193 channels, brightness increases downstream of the EUV wavefronts, relative to upstream. In the 211 channel this brightening is more pronounced, and is also more uniform throughout the downstream region. In the 193 channel, by contrast, the downstream material emits only close to



**Figure 3.** Top: a snapshot of the June 13 event (base difference) with overlaid regions for which DEM solutions were attempted. Bottom: the DEM solutions for regions 2 (left) and 3 (right) as overlaid dotted histograms for the two times T1 (red) and T2 (green).

(A color version of this figure is available in the online journal.)

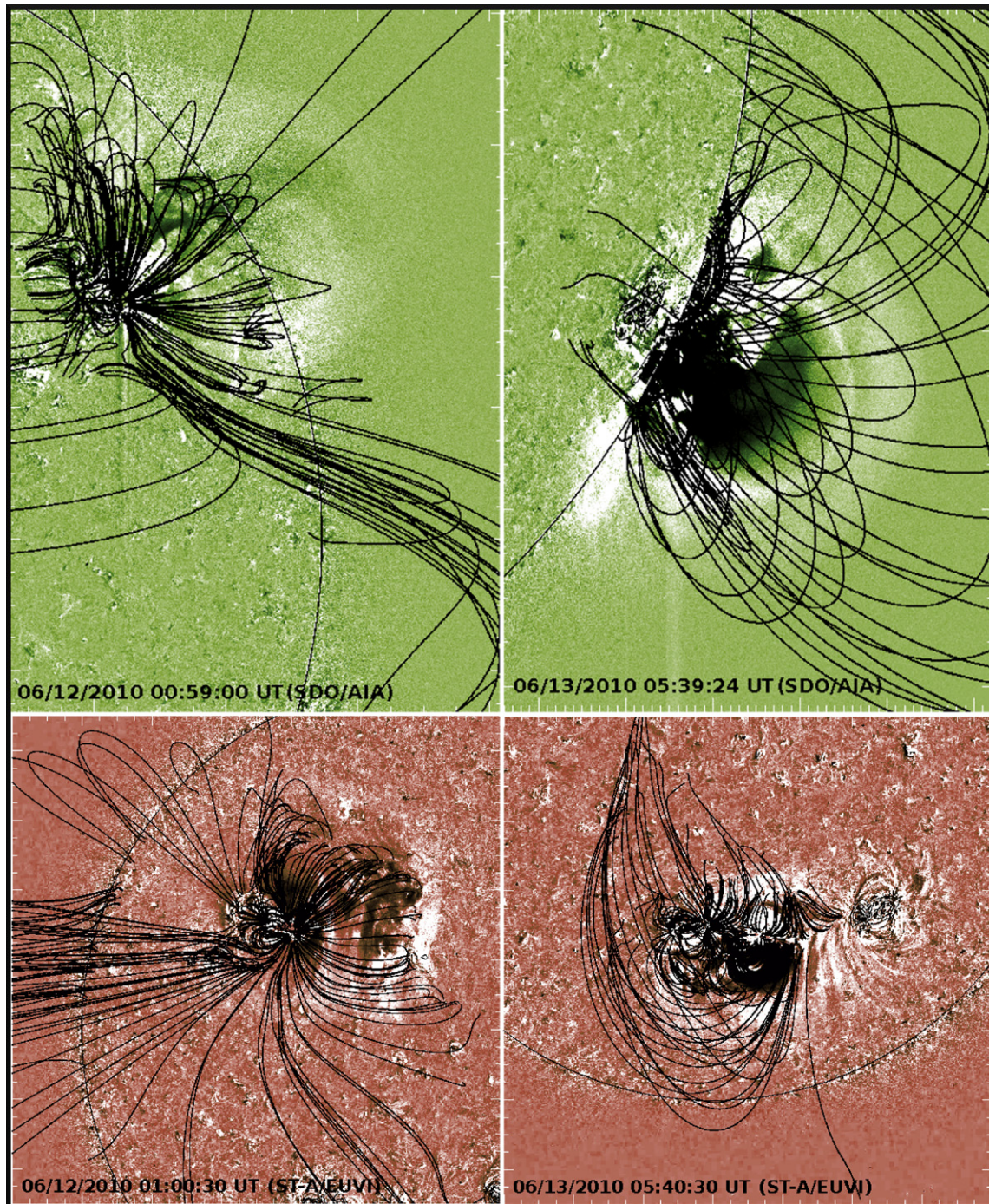
the leading front. In both cases, ripples of emission behind the wavefronts expand as the fronts sweep through regions of upstream coronal plasma. These features persist until the transients leave the AIA FOV for both events. However, the downstream sheath emission on June 12 was dimmer than the emission on June 13 (where a CME bubble was seen).

### 3.3.1. Lateral Overexpansion of the June 13 CME

Patsourakos et al. (2010) studied the CME of June 13 and found a strong lateral overexpansion of the CME bubble in the first 4 minutes after which the bubble expansion became equal in the radial and lateral directions (see the top panel in

their Figure 4.) Recently reported three-dimensional numerical MHD simulations of coronal CME propagation (Das et al. 2011) show that a pile-up compression (PUC) of coronal plasma may form between coronal shocks and the CMEs behind them. This occurred in the simulation whenever the CME expanded faster laterally than radially. Their interpretation is that as a CME expands fast laterally, plasma piles in front of it in a “sheath” behind the shock (Opher 2010). Additionally, there was no significant temperature increase in the PUC in the simulations, consistent with our DEM results.

Comparing the intensities of the June 13 wave with results from Patsourakos et al. (2010, their Figure 4), we find that



**Figure 4.** *SDO/AIA* (top panels) and *STEREO-A/EUVI* (bottom panels) base difference images during the June 12 (left) and 13 (right) events. The PFSS model coronal fields are overlaid to show the topology in which the waves/shocks propagated.

(A color version of this figure is available in the online journal.)

the wave began increasing in brightness significantly toward 05:38 UT, roughly coincident with the maximum speed of the CME. Even as the CME bubble aspect ratio reduced to 1, the overall wave brightness increased, peaking around 05:42 UT (after that the wave begins to disappear from the AIA FOV). Since the waves are quite dim, it was difficult to obtain quantitative observations. Future work will elucidate the temporal connection between lateral overexpansion and PUC formation. However, the DEM result of no significant temperature change supports the modeling findings of a plasma compression sheath behind the shock from Das et al. (2011).

### 3.4. Importance of the Magnetic Geometry for Particle Acceleration and Release

Figure 4 shows *SDO/AIA* (green) and *STEREO-A/EUVI* (red; Howard et al. 2008) difference images during both events, with a magnetic potential field source surface (PFSS; Schrijver & De Rosa 2003) model overlaid. On June 12 (left, top, and bottom) the field geometry above the AR was very open, so particles were free to escape into interplanetary space as they gained energy. However, the complex magnetic topology does not allow us to address the possible sites of particle acceleration,

and thus the discrepancy in positions and velocities between the EUV wave and radio shock.

On June 13 (Figure 4, right panel), the magnetic geometry above the AR was much more closed—the shock might have been quasi-perpendicular at its nose, accelerating particles more effectively there (evidenced by the radio emission bands positioned in front of and behind the AIA wavefront). However, DEM analysis shows that it was weak, so the 1 AU impulsive proton fluxes higher than 8 MeV did not increase above the already elevated levels (Figure 1, panel (E)).

#### 4. SUMMARY

We have presented observations of two western off-limb coronal waves in very high cadence EUV imaging data. The waves were associated with metric type II bursts and significant increases in proton fluxes observed at 1 AU. We characterized the wave events in relation to the elevated particle fluxes at 1 AU. Our findings are: (1) the 2010 June 12 and 13 waves were large-scale, dome-like off-limb coronal transients, seen in EUV light. Enhanced emission sheaths followed the wavefronts. (2) The June 12 wave has a high initial speed ( $\sim 1287 \text{ km s}^{-1}$ ), but without a discernible driver, supported by a high average deceleration rate ( $-1170 \text{ m s}^{-2}$ ). Similar behavior was observed in radio shock emission, although a discrepancy is clear between wave/shock positions and velocities. This might signify a more complex relation between the shock and wave, or alternatively, that the electron density model used for the radio data does not apply in this case. The June 13 wave started slower ( $\sim 736 \text{ km s}^{-1}$ ), but had a clear CME driver behind it sustaining its propagation, and consequently, a lower deceleration rate ( $-800 \text{ m s}^{-2}$ ). (3) DEM analysis of the June 13 wave event shows that the enhanced emission was likely due to a density increase in the sheath behind the shock and not due to a temperature increase. We deduce from the EMs ratio a density jump of at least  $\sim 1.12$ . (4) EUV, radio, and particle observations, combined with a potential magnetic field model, reveal differences in the two events in terms of the possible field-to-shock orientation. In our interpretation, a more open field geometry of the June 12 event allowed protons accelerated impulsively (to  $\sim 50 \text{ MeV}$ ) to escape quickly into interplanetary space. A closed field geometry during the June 13 event is supported by radio observations indicating that the shock was effective in accelerating electrons at its nose, although proton fluxes above  $\sim 8 \text{ MeV}$  at 1 AU did not increase appreciably.

The mechanisms of shock formation in the low corona are still under considerable debate. However, it seems that shocks do form low in the corona, and they are able to accelerate particles. The newly introduced capability for multi-wavelength ultra-high-cadence EUV observations of transients in the corona with *SDO/AIA* enables studying their dynamics in great detail. Based

on our findings, the magnetic field geometry is important both for accelerating particles, and for their release into interplanetary space. Future work will involve analyzing multiple events and associated in situ particle fluxes from multiple spacecraft, in order to constrain remote EUV wave observables significant for particle acceleration in the corona.

We acknowledge support under AIA subcontract SP02H 1701R from Lockheed-Martin and NASA LWS EMMREM project NNX07AC14G. We thank David Long, Maher Dayeh, Marc De Rosa, Steve Saar, and Suli Ma for help and discussions.

#### REFERENCES

- Das, I., Opher, M., Evans, R., Loesch, C., & Gombosi, T. I. 2011, *ApJ*, **729**, 112
- Efron, B. 1979, *Ann. Stat.*, **7**, 1
- Forbes, T. G., et al. 2006, *Space Sci. Rev.*, **123**, 251
- Gallagher, P. T., & Long, D. M. 2010, *Space Sci. Rev.*, **135**, 127
- Giacalone, J., & Kóta, J. 2006, *Space Sci. Rev.*, **124**, 277
- Howard, R. A., et al. 2008, *Space Sci. Rev.*, **136**, 67
- Maia, D., Pick, M., Vourlidas, A., & Howard, R. 2000, *ApJ*, **528**, L49
- Mancuso, S., Raymond, J. C., Kohl, J., Ko, Y., Uzzo, M., & Wu, R. 2003, *A&A*, **400**, 347
- Markwardt, C. B. 2009, in ASP Conf. Ser. 411, *Astronomical Data Analysis Software and Systems XVIII*, ed. D. A. Bohlender, D. Durand, & P. Dowler (San Francisco, CA: ASP), 251
- McLean, D. J., & Labrum, N. R. 1985, *Solar Radiophysics: Studies of Emission from the Sun at Metre Wavelengths* (Cambridge: Cambridge Univ. Press)
- Newkirk, G., Jr. 1961, *ApJ*, **133**, 983
- Nindos, A., Aurass, H., Klein, K., & Trotter, G. 2008, *Sol. Phys.*, **253**, 3
- Opher, M. 2010, in *Shocks in Heliophysics*, ed. C. J. Schrijver & G. L. Siscoe (Cambridge: Cambridge Univ. Press), 193
- Patsourakos, S., & Vourlidas, A. 2009, *ApJ*, **700**, L182
- Patsourakos, S., Vourlidas, A., & Stenborg, G. 2010, *ApJ*, **724**, L188
- Patsourakos, S., Vourlidas, A., Wang, Y. M., Stenborg, G., & Thernisien, A. 2009, *Sol. Phys.*, **259**, 49
- Pick, M., et al. 2006, *Space Sci. Rev.*, **123**, 341
- Reiner, M. J., Kaiser, M. L., & Bougeret, J. 2007, *ApJ*, **663**, 1369
- Reiner, M. J., Vourlidas, A., Cyr, O. C. S., Burkepile, J. T., Howard, R. A., Kaiser, M. L., Prestage, N. P., & Bougeret, J. 2003, *ApJ*, **590**, 533
- Roussev, I. I., Sokolov, I. V., Forbes, T. G., Gombosi, T. I., Lee, M. A., & Sakai, J. I. 2004, *ApJ*, **605**, L73
- Schrijver, C. J., & De Rosa, M. L. 2003, *Sol. Phys.*, **212**, 165
- Stone, R. G., & Tsurutani, B. T. 1985, *Collisionless Shocks in the Heliosphere: A Tutorial Review* (AGU Geophys. Monogr. Ser. 34; Washington, DC: AGU)
- Title, A. M., & AIA Team. 2006, *BAAS*, **38**, 261
- Torsti, J., et al. 1995, *Sol. Phys.*, **162**, 505
- Veronig, A. M., Muhr, N., Kienreich, I. W., Temmer, M., & Vršnak, B. 2010, *ApJ*, **716**, L57
- Vourlidas, A., Wu, S. T., Wang, A. H., Subramanian, P., & Howard, R. A. 2003, *ApJ*, **598**, 1392
- Weber, M. A., De Luca, E. E., Golub, L., & Sette, A. L. 2004, in *IAU Symp. 223, Multi-Wavelength Investigations of Solar Activity*, ed. A. V. Stepanov, E. E. Benevolenskaya, & A. G. Kosovichev (Cambridge: Cambridge Univ. Press), 321
- Zank, G. P., Li, G., & Verkhoglyadova, O. 2008, in *AIP Conf. Ser. 1039, Particle Acceleration and Transport in the Heliosphere and Beyond*, ed. G. Li et al. (Melville, NY: AIP), 203