

# One-year record of organic and elemental carbon in fine particles in downtown Beijing and Shanghai

F. Yang<sup>1,2</sup>, K. He<sup>1</sup>, B. Ye<sup>3</sup>, X. Chen<sup>2</sup>, L. Cha<sup>2</sup>, S. H. Cadle<sup>4</sup>, T. Chan<sup>4</sup>, and P. A. Mulawa<sup>4</sup>

<sup>1</sup>Department of Environmental Science and Engineering, Tsinghua University, Beijing 100084, China

<sup>2</sup>Department of Electronic Engineering, Tsinghua University, Beijing 100084, China

<sup>3</sup>College of Environmental Science and Engineering, Tongji University, Shanghai 200092, China

<sup>4</sup>GM R&D Center, Chemical and Environmental Sciences Laboratory, MC 480-106-269, Warren, MI 48090, USA

Received: 7 December 2004 – Published in Atmos. Chem. Phys. Discuss.: 14 January 2005

Revised: 14 April 2005 – Accepted: 17 May 2005 – Published: 15 June 2005

**Abstract.** Weekly PM<sub>2.5</sub> samples were collected for one year (1999–2000) in Beijing and Shanghai and the carbonaceous species analyzed to investigate and compare their time series patterns and possible sources in the two biggest cities of China. Weekly carbonaceous concentrations varied in wide ranges with 8.6–59  $\mu\text{g m}^{-3}$  for OC and 1.5–25.4  $\mu\text{g m}^{-3}$  for EC in Beijing, and with 5.1–38.4  $\mu\text{g m}^{-3}$  for OC and 2.3–13.0  $\mu\text{g m}^{-3}$  for EC in Shanghai. Similar weekly and seasonal variations of OC and EC concentrations were found in each city though major combustion sources presented source-dependent emission characteristics and seasonal differences in emission amount for carbonaceous species. Both OC and EC maintained much higher concentrations in late fall through winter, probably due to enhanced emissions coupled with unfavorable meteorological conditions. In Beijing, the <sup>14</sup>C analysis of limited samples suggested there was a significant contribution (33–48%) of modern carbon to the total fine carbonaceous PM burden with higher fractions in the harvest seasons. The high mass ratios of excessive potassium to EC in both Beijing and Shanghai also indicated that biomass burning had important contribution to fine carbonaceous particles.

a wide range of chemical and thermodynamic properties, is formed by a variety of processes, including combustion and secondary organic carbon (SOC) formation. Recently, increased attention has been focused on the carbonaceous component of fine particulate matter (PM) because of the role OC and EC play in visibility reduction, the radiative budget of the atmosphere (Malm and Day, 2000; Jacobson, 2001), and their potential to influence many heterogeneous reactions involving atmospheric aerosols and trace gases (Lary et al., 1999), and because of the suspected health effects of some of the individual OC components of known toxicity such as PAHs. Jacobson (2002) concludes, based on a global-model calculation, that control of fossil-fuel carbonaceous PM is possibly the most effective method of slowing global warming, along with improving human health. In the meantime, China is of great concern because its high rates of usage of coal and biofuels, which are primarily responsible for high black (element) carbon (BC) emissions (Streets et al., 2001). Menon et al. (2002) suggest that the observed trend in China over the past several decades, with increased summer floods in the south and drought in the north, may be related to increased BC aerosols.

With recent rapid industrialization and urbanization, the city-clusters have formed in the three most developed regions in China through the connection of intensive economic activities. These regions, all located in the eastern coast areas, are Pearl River Delta Region (PRDR), Yangtze River Delta Region (including Shanghai, Jiangsu and Zhejiang provinces), and Beijing-Tianjin Region. Due to booming economic activities and fast increased vehicle population within the regions, high PM levels and poor visibility have become a common serious problem. According to the 1997 China Environmental Situation Report (State Environmental Protection Administration of China, 1998), Guangzhou, Shanghai, and Beijing, the center in each of these regions, are the worst for NO<sub>x</sub> pollution of all the Chinese cities with annual averages

## 1 Introduction

Organic and element carbon (OC and EC) aerosol are usually concentrated in the fine size class and typically constitute a significant, sometimes dominant, fraction of the total fine particle mass, especially in urban areas (Castro et al., 1999; Andrews et al., 2000). EC is released directly from the incomplete combustion of fossil fuels and biomass while OC, an aggregate of hundreds of individual compounds spanning

Correspondence to: K. He  
(hekb@tsinghua.edu.cn)

of over  $100 \mu\text{g m}^{-3}$ , implying vehicular pollution is getting more and more serious while coal smoke pollution is still far to be under effective control. These two kinds of major sources are believed to emit abundant fine carbonaceous particles aside from biomass burning in the urban areas of China.

Cao et al. (2003) investigated the relative contribution of carbonaceous aerosol to  $\text{PM}_{2.5}/\text{PM}_{10}$  and SOC production in PRDR based on ambient sampling during 2002 winter period. Their study demonstrated that carbonaceous aerosol was a significant contributor to  $\text{PM}_{2.5}$  and SOC was an important component of fine organic PM with an average fraction of 42.6%. To our knowledge, there are very limited researches focusing on fine carbonaceous particles reported to date for the urban areas of the latter two regions (He et al., 2004; Dan et al., 2004), which are based on short-term measurement with the overall sampling period rarely exceeding a few weeks. We initiated a 1-year  $\text{PM}_{2.5}$  monitoring program in 1999 in Beijing and Shanghai. We showed that carbonaceous and secondary ionic species (e.g., sulfate, nitrate, and ammonium) dominated the  $\text{PM}_{2.5}$  in the two cities (He et al., 2001; Ye et al., 2003). This study is a part of that program with a focus on the time series of carbonaceous species, their possible sources and comparison for the two urban areas during a 1-year period. This information will provide a baseline to examine the reasons of heavy carbonaceous particulate pollution and its trends and has implications for local and regional PM control effectiveness in China.

## 2 Sampling and analysis

Beijing, the capital of China, is located at the northwestern border of the Great North China Plain at  $39^{\circ}48'$  N latitude and  $116^{\circ}28'$  E longitude. The main terrain of Beijing is plain, with mountain embaying in 3 directions, and on southeast, plain turns into a "dustpan" spreading forward. The area of planning district only takes 6% of the total area of Beijing, but 50% of the total population, 80% of buildings, 60% of the industrial output value and 80% of the energy consumption are concentrated here. Shanghai, a national commercial center, is situated at the mouth of the Yangtze River at  $31^{\circ}14'$  N latitude and  $121^{\circ}19'$  E longitude. It is bordered by the East China Sea on the east and Hangzhou Bay on the south. Population is also strongly concentrated in the inner urbanized area of Shanghai municipality. The special geographical environment and deficient city planning of Beijing make the air pollution stagnant over the urban area, which can not be easily expelled relative to that in Shanghai. The PM concentration level in Beijing is usually about twice that in Shanghai. For example, the annual mean concentrations of the total suspended particles (TSP) in 1999 were 364 and  $188 \mu\text{g m}^{-3}$  in Beijing and Shanghai, respectively.

Ambient  $\text{PM}_{2.5}$  sampling was conducted simultaneously at a pair of locations (Chegongzhuang and Tsinghua in Bei-

jing and Hainan Road and Tongji in Shanghai) from July 1999 to June 2000 in Beijing and in Shanghai from March 1999 to March 2000. Chegongzhuang lies in urban area in Beijing but not Tsinghua while the two Shanghai sites both locate in urban area. Our former papers have shown impressive similarity in  $\text{PM}_{2.5}$  concentration and composition for the two locations in each city of Beijing and Shanghai (He et al., 2001; Ye et al., 2003). In this study we therefore choose Chegongzhuang and Tongji sites to represent urban areas of each city for further comparative analysis since the sampling period was longer at the Tongji site than at Hainan Road (Ye et al., 2003). The sampling sites were about 3 m and 16 m above the ground in Beijing and Shanghai, respectively. Both sites were approximately 50 m from major roads. During the study period, 49 and 51 sets of samples were collected at each site in Beijing and Shanghai, respectively. More detailed introduction of the sampling locations, the ambient sampling and chemical analyses of  $\text{PM}_{2.5}$ , and the quality assurance employed in this study are referred to He et al. (2001) and Ye et al. (2003).

Roughly, special low flow rate samplers equipped with three cassettes for collecting  $\text{PM}_{2.5}$  for speciation analysis, each at an identical flow rate of  $0.41 \text{ min}^{-1}$ , were used (Aerosol Dynamics, USA). The total volume filtered for each sample was about  $4 \text{ m}^3$  on average. Of the three parallel sampling cassettes, a tandem-filter  $\text{PM}_{2.5}$  cassette accommodates two Gelman (Ann Arbor, MI) quartz-fiber filters (#2500 QAT-UP) for carbon analysis. These filters were pre-fired at  $900^{\circ}\text{C}$  in air for a minimum of three hours to remove any carbon. The front quartz filter of the tandem-filter  $\text{PM}_{2.5}$  cassette was analyzed for OC and EC by the thermal/optical reflectance (TOR) method at the Desert Research Institute (DRI) in Reno, NV (Chow et al., 1993a). Measurement range of carbon mass analyzed per sample is  $0.2\text{--}750 \mu\text{g C}$  and total carbon precision is  $\pm 3\%$  for sample load  $\geq 10 \mu\text{g C}$  and  $\pm 0.5 \mu\text{g C}$  for sample load  $< 10 \mu\text{g C}$ . Uncertainties in OC and EC measurements were both  $0.8 \mu\text{g m}^{-3}$  (He et al., 2001). A subset of the backup quartz filters was also analyzed for volatilized/adsorbed carbon.

Carbonate carbon is a minor fraction in fine particles and usually ignored (Chow et al., 1993b). Based on 13 TSP samples collected during March–June 2001 in Beijing, Zhang and Dong (2002) reported that carbonate carbon amounted to 0.1–0.7% of TSP mass for common samples while the values were 1.0%, 1.3%, and 1.7% for 3 dust storm samples, respectively. It is expected that its mass percentages in fine particles are much less than this range, since it is dominantly in coarse mode. This is also supported by the fact that  $\text{PM}_{2.5}$  constituted only 8% of TSP for the week (6–13 April) of the most serious dust storm in 2000 compared to a whole year average 29% (Yang et al., 2002). Given the total carbon comprises about 28% of  $\text{PM}_{2.5}$  mass as mentioned below, it is presumed that carbonate carbon usually constitutes no more than 5% of the total carbon in fine particles even for the samples impacted by dust storms. In addition, the mass ratio of

OC to EC in this week (3.0) is close to its annual mean (2.9), probably indicating carbonate should not represent a significant fraction of the PM<sub>2.5</sub> samples collected over one week covering dust period. The carbonate procedure is therefore not applied in carbon analysis.

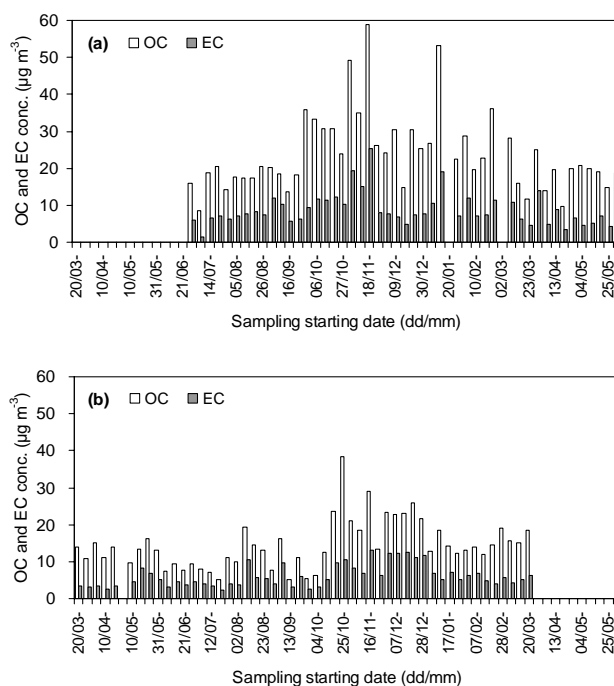
In a key review paper Turpin et al. (2000) comment on the sampling artifacts of OC. Mader et al. (2003) also investigate in a very recent work this issue for several different sampling configurations with sampling intervals from less than one hour to 24 h, and point out large difference between uncorrected and properly corrected sampling. To our knowledge, there is no such investigation on a weeklong sampling configuration adopted in this study, of which the 1-week sampling periods exacerbate the possible loss of semi-volatile organic compounds during sampling (He et al., 2001). It is uncertain to what extent the use of the backup quartz filter improves the accuracy of OC measurements. Therefore, the OC results reported in this paper are uncorrected, i.e. the front quartz-fiber filter only. It is noted, however, that we analyzed the backup quartz samples once every four weeks, and the backup filter average OC concentrations were about 35% of those on the front quartz samples in our Beijing study.

The Teflon-membrane filter of the single-filter PM<sub>2.5</sub> cassette was also analyzed for mass by gravimetry and for elements including K and Fe by x-ray fluorescence (XRF) using standard methods at DRI (Chow and Watson, 1994). For a limited set of samples collected at Chegongzhuang using the same sampler in 2001, they were analyzed for <sup>14</sup>C at the National Ocean Sciences Accelerator Mass Spectrometry (NOSAMS) Facility at the Woods Hole Oceanographic Institution using standard NOSAMS procedures (McNichol et al., 1994; Pearson et al., 1998), aside from OC and EC at DRI using the TOR method. Briefly, weighed portions of filters were transferred to pre-combusted Vycor tubes containing CuO and Ag powder. After evacuation, samples were sealed and combusted to CO<sub>2</sub> at 850°C for 5 h. After purification and quantification, a split of the CO<sub>2</sub> was analyzed for <sup>13</sup>C analysis, and the remainder was reduced to graphite for <sup>14</sup>C analysis. For this AMS facility, the minimum nominal sample size is 25 μg C (1 μg modern carbon equivalent), and total carbon processing blank value is small (ca. 0.6 μg) and is taken into account by the calculation procedures (Currie et al., 2000).

### 3 Results and discussion

#### 3.1 Time series of OC and EC

As shown in Fig. 1, OC and EC exhibited similar weekly variations in both Beijing and Shanghai. Weekly concentrations of OC ranged from 8.6 to 59 μg m<sup>-3</sup> in Beijing and from 5.1 to 38.4 μg m<sup>-3</sup> in Shanghai, while those of EC varied from 1.5 to 25.4 μg m<sup>-3</sup> in Beijing and from 2.3 to 13.0 μg m<sup>-3</sup> in Shanghai. OC and EC concentrations expe-

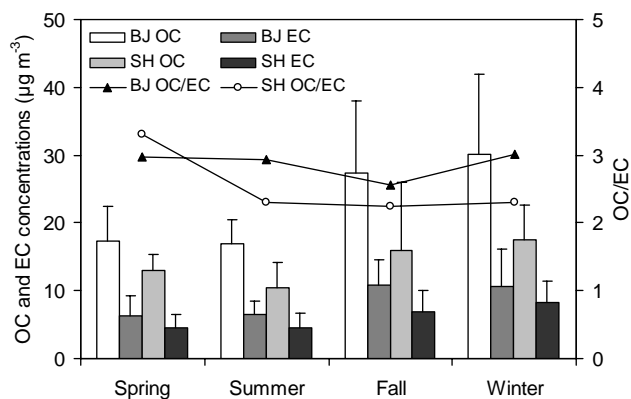


**Fig. 1.** Time series of weekly OC and EC concentrations in Beijing (a) and Shanghai (b).

rienced more or less significant variations from week to week in both Beijing and Shanghai. From late spring to early fall, weekly OC and EC concentrations varied in low magnitude relative to other times. This was reasonable since the local winds were usually mild during this period.

In Beijing, high weekly concentrations of OC and EC (>30 μg m<sup>-3</sup>) occurred from the beginning of October through the end of February, probably due to much enhanced combustion source emissions coupled with low dispersion meteorology. On the other hand, the prevailing northwest airflow could cause rapid dispersion of pollution-derived fine particles including carbonaceous particles from local emissions while increase regional and/or local soil dust (Yang et al., 2005), thereby resulting in their strong weekly variations. The week of 18–25 November saw the maximum OC and EC concentrations for the study period. Given space heating started on 15 November, it was evident that coal combustion emissions increased dramatically. In the meantime, low daily wind speed (<1.4 m s<sup>-1</sup> except on 24 November) and high relative humidity (65–91% from 20–23 November) favored trapping pollutants since dispersion was low, thereby increasing the accumulation of fine carbonaceous particles. In the next week, the OC and EC concentrations dropped by 55% and 68%, respectively due to snowfall and much better meteorology for atmospheric dispersion.

In Shanghai, high weekly concentrations of OC and EC (>20 μg m<sup>-3</sup>) corresponded to the period from late October to early January. Both the OC and EC concentrations



**Fig. 2.** Seasonal variations of OC and EC concentrations and OC/EC in Beijing (BJ) and Shanghai (SH).

and their weekly variations were much lower than those in Beijing. Though there is no official central space heating, combustion source emissions could also be enhanced due to cold weather with weekly average temperature ranging 0–10°C in this period (Ye et al., 2003). Compared to those in Beijing, northerly cold fronts usually become much weaker even when they could reach Shanghai, thereby causing much less weekly variations in OC and EC concentrations. Owing to mixed influences of different processes on the loadings of ambient carbonaceous species, consecutive sampling with higher resolution would be more appropriate to interpret their temporal variations with meteorological episodes in different seasons.

As shown in Fig. 2, clear seasonal patterns in carbonaceous species were observed in the two cities. OC and EC both exhibited much higher concentrations in fall and winter and much lower concentrations in spring and summer. It is noted that this seasonality also corresponded to that of their differences between Beijing and Shanghai to some degree. In Beijing, the average concentrations of OC and EC in the winter were 30.2 and 10.5  $\mu\text{g m}^{-3}$ , 26% and 19% higher than their annual means, respectively. In Shanghai, the winter average concentration of OC was very close to the lowest seasonal OC value in Beijing while that of EC was intermediate between the high and low seasonal EC values in Beijing.

This seasonal variation is likely due to a combination of changes in emission rates and seasonal meteorology. Low summer concentrations can be explained in part by the fact that about three quarters of its annual precipitation (584 mm on average) in Beijing occurs in this season (Yang et al., 2004). Shanghai also receives abundant rains in the summer with about half of its annual precipitation (1040 mm on average) falling during the May–September flood season. Given that it was the coldest winter in the last 23 years in Beijing, during which weekly average temperatures were about 10°C lower than in Shanghai (He et al., 2001; Ye et al., 2003), the high concentrations of carbonaceous species could be due to

enhanced space heating activities as well as to longer vehicle cold starts (Chow et al., 1993b; Singer et al., 1999). In addition, the low temperature and frequent inversion conditions were also likely favorable for the formation of secondary organic aerosol according to the study by Sheehan and Bowman (2001) using an absorptive-partitioning model.

### 3.2 Concentration levels of carbonaceous species

Descriptive statistics of the average concentrations of OC, EC, total carbon (TC, i.e. sum of OC and EC), particulate organic matter (POM), and the percentages of TC and POM in  $\text{PM}_{2.5}$  for this study are summarized in Table 1. According to a recent work by Turpin and Lim (2001), urban POM may be better estimated by multiplying the amount of OC by  $1.6 \pm 0.2$ . The factor of 1.6 is adopted in the current study. The literature values from urban areas of Guangzhou (Cao et al., 2003), Los Angeles (Kim et al., 2000), and Chongju in Korea (Lee et al., 2001) are also included for comparison. All these studies except Guangzhou study covered a period of about one year, and adopted the same method (TOR) and analyzer (DRI products) to measure carbonaceous species, thus these results are of high comparability. Chongju is a medium sized subtropical coastal city without serious atmospheric pollution problems, while Los Angeles is a megacity with air pollution mainly caused by vehicular emissions during the study period. Coal combustion is not a major source of PM in these two foreign cities.

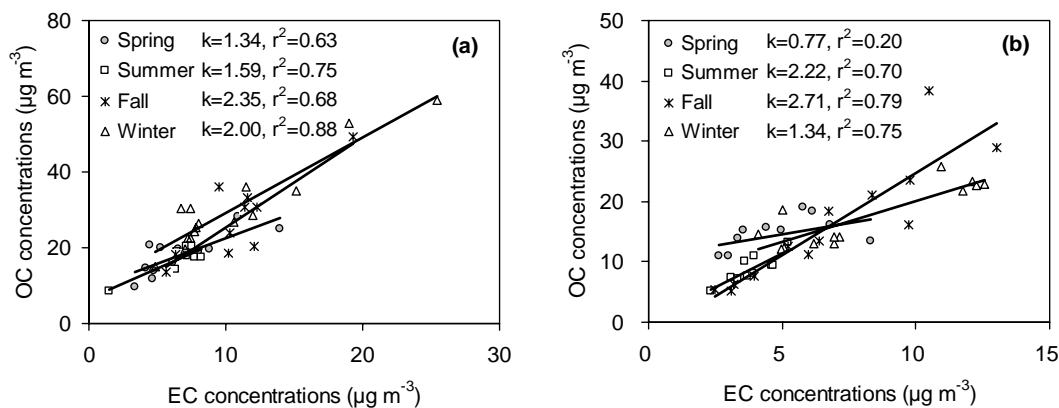
The average concentrations of OC and EC in Beijing were 55% and 30% higher than those in Shanghai, respectively. It is noted that these concentration levels and the calculated amount and percentages of TC and POM were very close to those measured in the winter months of 2002 in Guangzhou, which had the highest  $\text{PM}_{2.5}$  mass and carbonaceous concentrations among the urban areas of PRDR (Cao et al., 2003). These comparisons indicate that Beijing was heavily polluted by fine carbonaceous particles and their majorities likely originated from anthropogenic sources. Attention should also be paid to high OC and EC levels in Shanghai.

TC was the most abundant single species of  $\text{PM}_{2.5}$  in both Beijing and Shanghai. The fraction of  $\text{PM}_{2.5}$  mass was highest in Shanghai and lowest in Chongju while Beijing and Guangzhou had intermediate values. POM accounted for more than 30% of  $\text{PM}_{2.5}$  mass in all the listed metropolitans. OC was the predominant contributor to TC with an average percentage of more than 70% in both Beijing and Shanghai. The average EC fractions of TC in the three Chinese megacities were very close (27–29%), much lower than in Los Angeles (39%) and Chongju (47%) but the measured EC concentrations were much higher. This is likely to be their difference in major sources for carbonaceous species.

Coal is used in both honeycomb briquette stoves and industrial coal-burning boilers in Chinese cities including Beijing and Shanghai. Both of these sources emitted abundant carbonaceous particles as reported before by Chen et

**Table 1.** Statistical summary of the concentrations ( $\mu\text{g m}^{-3}$ ) and percentages of carbonaceous species in  $\text{PM}_{2.5}$  in Beijing, Shanghai, and other cities.

Locations	Sampling period	OC	EC	TC	POM	TC/ $\text{PM}_{2.5}$	POM/ $\text{PM}_{2.5}$
Beijing	1999.7–2000.6	23.9	8.79	32.7	38.2	28%	33%
Shanghai	1999.3–2000.3	14.6	6.10	20.7	23.4	34%	38%
Los Angeles	1995.1–1996.2	5.96	3.81	9.77	9.54	32%	32%
Chongju	1995.10–1996.8	4.99	4.44	9.43	7.98	21%	18%
Guangzhou	2002.1–2002.2	22.6	8.30	30.9	36.2	29%	34%

**Fig. 3.** Seasonal correlations of OC and EC concentrations in Beijing (a) and Shanghai (b).

al. (1994) and Zhang et al. (2000), respectively. Considering the annual coal consumption was much less in Beijing than in Shanghai (26.5 and 39.6 million tons in 1999, respectively), it was expected that the emission intensities of fine carbonaceous particles were probably much higher in Beijing. Shanghai used its coal mainly in power plants and industrial sectors while Beijing consumed major its coal in winter due to residential heating (about 23% of coal was used for this purpose alone). Even in downtown area of Beijing there were many residential areas without central space heating and gas supplying system, where residents including a significant migrant population (about 3 million in all) tended to burn low quality honeycomb briquettes or even raw coal for heating and cooking. Since the emissions from these coal combustion activities are emitted near ground level, and are likely to be higher per unit mass of coal than for boilers, their contribution to high winter levels of carbonaceous species in Beijing is likely to be significant. This is supported by the fact that the abundance of OC in  $\text{PM}_{2.5}$  from a honeycomb coal stove was one order of magnitude greater than that from a utility boiler (Chen et al., 1994).

In addition, it was popular to burn maize and wheat residue in situ especially in the northern rural areas. For this kind of biomass burning it was reported that over 60% was emitted as carbonaceous particulate (Watson and Chow, 2001). Another possible factor was that the SOC contribution was dif-

ferent between Beijing and Shanghai due to their differences in both atmospheric oxidation ability and the amount of the gaseous organic pollutants that may transform into fine particles. At last, the geographical and meteorological conditions could also be important reasons for different carbonaceous intensity in fine particles between Beijing and Shanghai as mentioned above. In the future study, an emission inventory and a source profile of carbonaceous particles will help explain in a quantitative way the intercity difference or seasonal variability in OC and EC levels.

### 3.3 Relationship between OC and EC

As mentioned above, the obvious temporal coherence between OC and EC was observed for both Beijing and Shanghai samples. Further statistical analysis indicated they were strongly correlated with a correlation coefficient  $r=0.90$  for 47 samples in Beijing and  $r=0.82$  for 51 samples in Shanghai. These co-varying patterns suggested that the ambient concentration levels of carbonaceous species were controlled by similar processes including source emissions and atmospheric dispersion, and that OC and EC were likely attributable to their common dominant sources of combustion such as coal burning.

When split seasonally, OC and EC presented somewhat different correlations (Fig. 3). In Beijing, they were highly

**Table 2.** Modern carbon fraction in 2001 PM<sub>2.5</sub> samples from Beijing.

Season	Sampling duration dd/mm	OC $\mu\text{g m}^{-3}$	EC $\mu\text{g m}^{-3}$	TC $\mu\text{g m}^{-3}$	PM <sub>2.5</sub> $\mu\text{g m}^{-3}$	Modern carbon fraction**
Winter	11–18/01	43.2	7.8	50.9	160.5	33.7%
Winter	15–22/02	37	12	50	208.4	33.0%
Spring	08–15/03	26.6	6.4	33	137.8	38.1%
Spring	15–22/03, 05–12/04*	16.3	6.6	22.9	99.2	39.4%
Summer	14–21/06	18.7	9.1	27.8	105.4	48.1%
Summer	12–19/07, 09–16/08*	15.4	6.9	22.3	83.3	38.9%
Fall	20–27/09, 04–11/10*	19.3	9.4	28.7	79.4	42.3%
Fall	08–15/11	22.6	11.9	34.4	105.2	45.7%

\* 2-week sample.

\*\* Corrected for  $\delta^{13}\text{C}$ .

associated in all the seasons with  $r$  ranging from 0.79 to 0.94, while in Shanghai they were strongly correlated in the summer through winter with  $r=0.75$ – $0.93$ , but not distinctly correlated in the spring with  $r=0.45$ . The wide variations in regression slopes with  $k=1.34$ – $2.00$  in Beijing and  $k=0.77$ – $2.71$  in Shanghai probably indicated their seasonal variability and intercity difference in OC contributions from combustion sources.

The mass ratio of OC to EC (OC/EC) can be used to interpret the emission and transformation characteristics of carbonaceous aerosol. Weekly OC/EC ranged from 1.7 to 5.8 with an average of 2.9 in Beijing, and from 1.6 to 4.3 with an average of 2.5 in Shanghai. The OC/EC ratios exhibited weekly variations while no clear seasonal trends were found for the study period in both Beijing and Shanghai (Fig. 2). For most of the samples, the weekly OC/EC ratios shifted between 2.0 and 4.0 in the two cities. As mentioned below, OC/EC ratios are quite different for different sources, of which the emissions are more or less seasonally different through out the year. We do not have an explanation now for the observed OC/EC results of varying impacts of different sources, including regional transport of PM within the city clusters mentioned above. Additional work is ongoing to better understand the emission characteristics and activity levels for the major sources of carbonaceous species, and the regional contribution to the Beijing and Shanghai aerosols.

### 3.4 Sources of carbonaceous species

The fractions of organic aerosols from primary and secondary sources are not generally known although modeling efforts are proceeding. Because EC originates solely as a primary emission and is inert in the atmosphere, it is often used as a tracer of primary OC. Ambient ratios of OC/EC that are greater than the OC/EC ratio of the primary aerosol indicate times when secondary formation occurred. An OC/EC ratio exceeding 2.0–2.2 has been used to indicate the presence of secondary organic aerosols in some studies (Turpin et al., 1990; Chow et al., 1996). If that was true for Beijing

and Shanghai aerosol, SOC was formed during most of the study period. However, it is difficult to conclude the presence of SOC from the absolute values of OC/EC alone since OC/EC ratios are strongly source dependent and therefore quite variable (Watson et al., 2001; Na et al., 2004). According to a source profile measured in Beijing by Chen et al. (1994), the OC/EC ratios for emissions from honeycomb coal stove, briquette stove, utility boiler, and industrial boiler were 8.54, 1.05, 2.32, and 2.51, respectively. For different tropical biomass burning, the OC/EC was as high as 9.0 (Cachier et al., 1989). Overall, the combustions of coal and biomass exhibited much higher OC/EC ratios than that for motor vehicle (1.1) measured by Watson et al. (2001), and thereby likely important contributors to high ambient OC/EC ratios of PM<sub>2.5</sub> in both Beijing and Shanghai, which were much greater than those in Chongju (Lee et al., 2001) and Los Angeles (Kim et al., 2000).

EC production is uniquely related to combustion including both fossil fuel and biomass burning while the combustion of the fossil fuel, especially of petroleum products seems to generate little non soil potassium  $K_{excess}$ . Therefore, Andreae (1983) suggests the mass ratio of  $K_{excess}$  to EC may prove an important tracer in the source identification of pollutant aerosol. We estimate soil potassium using the mass ratio of K to Fe in Beijing and Shanghai crusts of 0.65 and 0.56, respectively (China Environmental Monitoring Center, 1990; Yang et al., 2005). Considering sea salt particles are usually in coarse mode, we calculate  $K_{excess}$  in PM<sub>2.5</sub> by subtracting soil potassium from total potassium. In fact, sea salt had very limited impact even on aerosols and dry and wet depositions in Beijing (Yang et al., 2003). The calculated  $K_{excess}/\text{EC}$  ranged between 0.10–0.51 with an average of  $0.23 \pm 0.08$  in Beijing. This average ratio were much higher than those observed in the United States (0.025 to 0.09) and close to the lower end of the values measured on aerosols dominated by brush-fire emissions collected in Brazil (0.21 to 0.46) (Andreae, 1983), probably suggesting that biomass burning had important contribution to fine carbonaceous particles in Beijing. In Shanghai, the  $K_{excess}/\text{EC}$  ratio exhibited somewhat

lower average with much larger deviation ( $0.19 \pm 0.15$ ) than that in Beijing, also implying that fine carbonaceous pollution in Shanghai was also significantly affected by biomass burning. This argument is supported by the work of Xu et al. (2002), who claimed that a significant fraction of the high OC mass in  $PM_{2.5}$  ( $44 \mu\text{g m}^{-3}$ ) measured at Linan in the rural Yangtze Delta Region was likely attributed to biomass burning activities after rice harvest.

$^{14}\text{C}$  analysis of a limited set of samples collected at Chegongzhuang in different seasons of 2001 showed the fraction of modern carbon, which originates from modern sources such as biomass burning and restaurant emissions as opposed to the fraction that originates from fossil fuel sources such as coal or petroleum based products, ranged from 33% to 48% with an overall average of 40% (Table 2). Given close annual coal consumption in Beijing in recent years, the obvious similarities in the average OC and EC concentrations ( $25.8$  and  $8.73 \mu\text{g m}^{-3}$ , respectively), the EC percentage of the total carbon (28%), and the total carbon percentage of the total  $PM_{2.5}$  mass (27%) for these selected samples and those in this study, it is likely that modern carbon fraction determined for these samples is representative of the modern fraction for this study period as well. It is noted that the modern fraction tended to be higher in the later part of 2001 (summer and autumn), likely due to intensive biomass burning – whether of agricultural residues in the field after harvest or land clearing for production of new agricultural fields. Duan et al. (2004) report that biomass burning emissions may sometimes account for 43% of OC in TSP at an urban site of Beijing during the wheat harvest season and suggest much more contribution for  $PM_{2.5}$  as biomass burning is almost entirely confined in the submicrometer sized-range. These authors conclude that Beijing aerosols may be heavily influenced by different types of biomass burning all the year long with the maximum influence in June, which corresponds to the date of our highest modern carbon fraction value. Overall, it is apparent that there is a significant contribution of modern carbon to the fine carbonaceous PM burden.

#### 4 Conclusions

OC and EC were at quite high levels in Beijing with annual concentration of  $23.9$  and  $8.79 \mu\text{g m}^{-3}$ , 55% and 30% greater than those in Shanghai, respectively, indicating Beijing was heavily polluted by fine carbonaceous particles and their majorities likely originate from anthropogenic sources. In the two megacities, OC and EC exhibited both weekly and seasonal co-variation patterns though different combustion sources presented both different emission characteristics for carbonaceous species and seasonal variations in emission amounts. Strong weekly changes and high levels of OC and EC concentrations occurred in heating season in Beijing, probably due to much enhanced combustion source emis-

sions coupled with frequent meteorological fluctuations between inversion and northerly cold front. The  $^{14}\text{C}$  analysis of limited samples suggests there was a significant contribution (33–48%) of modern carbon to the total fine carbonaceous PM burden in Beijing with higher fractions in the harvest seasons. The comparative analysis of EC and excessive potassium also implies fine carbonaceous particulate pollution in both Beijing and Shanghai was strongly influenced by biomass burning throughout the year.

*Acknowledgements.* This study was funded by the project (20322203) jointly supported by National Natural Science Foundation of China and General Motors Corporation, and the “863” project (2003AA641030) from Ministry of Science and Technology, P.R. China. The authors thank Q. Zhang and Y. Ma for their help in experiment. Thanks are also due to Y. Yan and D. Yao from the GM China Office for their help in handling samples and interfacing with the participants, and J. C. Chow at DRI and A. P. McNichols at WHOI for their timely TOR and  $^{14}\text{C}$  analyses, respectively. We thank two anonymous reviewers for providing constructive reviews.

Edited by: R. Hitzenberger

#### References

- Andreae, M. O.: Soot carbon and excess fine potassium: long-range transport of combustion-derived aerosols, *Science*, 220, 1148–1151, 1983.
- Andrews, E., Saxena, P., Musarra, S., Hildemann, L. M., Koutrakis, P., McMurry, P. H., Olmez, I., and White, W. H.: Concentration and composition of atmospheric aerosols from the 1995 SEAVS experiment and a review of the closure between chemical and gravimetric measurements, *J. Air & Waste Manag. Assoc.*, 50, 648–664, 2000.
- Cachier, H., Bremond, M. P., and Buat-Menard, P.: Carbonaceous aerosols from different tropical biomass burning sources, *Nature*, 340, 371–373, 1989.
- Cao, J. J., Lee, S. C., Ho, K. F., Zhang, X. Y., Zou, S. C., Fung, K., Chow, J. C., and Watson, J. G.: Characteristics of carbonaceous aerosol in Pearl River Delta Region, China during 2001 winter period, *Atmos. Environ.*, 37, 1451–1460, 2003.
- Castro, L. M., Pio, C. A., Harrison, R. M., and Smith, D. J. T.: Carbonaceous aerosol in urban and rural European atmospheres: estimation of secondary organic carbon concentrations, *Atmos. Environ.*, 33, 2771–2781, 1999.
- Chen, Z. L., Ge, S., and Zhang, J.: Measurement and analysis for atmospheric aerosol particulates in Beijing, (in Chinese with English abstract), *Res. Environ. Sci.*, 7 (3), 1–9, 1994.
- China National Environmental Monitoring Center: Background values of crustal elements in China, (in Chinese), China Environmental Science Press, Beijing, 1990.
- Chow J. C. and Watson J. G.: Guidelines for  $PM_{10}$  Sampling and Analysis Applicable to Receptor Modeling, US EPA, Office of Air Quality Planning and Standards, Washington D. C., EPA-452/R-94-009, 1994.
- Chow, J. C., Watson, J. G., Pritchett, L. C., Pierson, W. R., Frazier, C. A., and Purcell, R. G.: The DRI thermal/optical reflectance

- carbon analysis system: Description, evaluation and applications in U.S. air-quality studies, *Atmos. Environ.*, 27A, 1185–1201, 1993a.
- Chow, J. C., Watson, J. G., Lowenthal, D. H., Solomon, P. A., Magliano, K. L., Ziman, S. D., and Richards, L. W.:  $PM_{10}$  and  $PM_{2.5}$  composition in California's San Joaquin Valley, *Aerosol Sci. Technol.*, 18, 105–128, 1993b.
- Chow, J. C., Watson, J. G., Lu, Z., Lowenthal, D. H., Frazier, C. A., Solomon, P. A., and Thuillier, R. H.: Descriptive analysis of  $PM_{2.5}$  and  $PM_{10}$  at regionally representative locations during SJVAQS/AUSPEX, *Atmos. Environ.*, 30, 2079–2112, 1996.
- Currie, L. A., Kessler, J. D., Marolf, J. V., McNichol, A. P., Stuart, D. R., Donoghue, J. C., Donahue, D. J., Burr, G. S., and Bidulph, D.: Low-level (submicromole) environmental  $^{14}C$  metrology, *Nucl. Instr. and Meth. B*, 172, 440–448, 2000.
- Dan, M., Zhuang, G., Li, X., Tao, H., and Zhuang, Y.: The characteristics of carbonaceous species and their sources in  $PM_{2.5}$  in Beijing, *Atmos. Environ.*, 38, 3443–3452, 2004.
- Duan, F., Liu, X., Yu, T., and Cachier H.: Identification and estimate of biomass burning contribution to the urban aerosol organic carbon concentrations in Beijing, *Atmos. Environ.*, 38, 1275–1282, 2004.
- He, K., Yang, F., Ma, Y., Zhang, Q., Yao, X., Chan, C. K., Cadle, S., Chan, T., and Mulawa, P.: The characteristics of  $PM_{2.5}$  in Beijing, China, *Atmos. Environ.*, 35, 4959–4970, 2001.
- He, Z., Kim, Y. J., Ogunjobi, K. O., Kim, J. E., and Ryu, S. Y.: Carbonaceous aerosol characteristics of  $PM_{2.5}$  particles in North-eastern Asia in summer, *Atmos. Environ.*, 38, 1795–1800, 2004.
- Jacobson, M. Z.: Strong radiative heating due to the mixing state of black carbon in atmospheric aerosols, *Nature*, 409, 672–695, 2001.
- Jacobson, M. Z.: Control of fossil-fuel particulate black carbon and organic matter, possibly the most effective method of slowing global warming, *J. Geophys. Res.*, 107(D19), 4410, doi:10.1029/2001JD001376, 2002.
- Kim, B. M., Teffera, S., and Zeldin, M. D.: Characterization of  $PM_{2.5}$  and  $PM_{10}$  in the South Coast Air Basin of southern California: part 1–Spatial variations, *J. Air & Waste Manag. Assoc.*, 50, 2034–2044, 2000.
- Lary, D. J., Shallcross, D. E., and Toumi, R.: Carbonaceous aerosols and their potential role in atmospheric chemistry, *J. Geophys. Res.*, 104, 15 929–15 940, 1999.
- Lee, H. S. and Kang, B.: Chemical characteristics of principal  $PM_{2.5}$  species in Chongju, South Korea, *Atmos. Environ.*, 35, 739–746, 2001.
- Lin, J. J. and Tai, H. S.: Concentrations and distributions of carbonaceous species in ambient particles in Kaohsiung City, Taiwan, *Atmos. Environ.*, 35, 2627–2636, 2001.
- Mader, B. T., Schauer, J. J., Seinfeld, J. H., Flagan, R. C., Yu, J. Z., Yang, H., Lim, Ho-Jin, Turpin, B. J., Deminter, J. T., Heidemann, G., Bae, M. S., Quinn, P., Bates, T., Eatough, D. J., Huebert, B. J., Bertram, T., and Howell, S.: Sampling methods used for the collection of particle-phase organic and elemental carbon during ACE-Asia, *Atmos. Environ.*, 37, 1435–1449, 2003.
- Malm, W. C. and Day, D. E.: Optical properties of aerosols at Grand Canyon national park, *Atmos. Environ.*, 34, 3373–3391, 2000.
- McNichol, A. P., Jones G. A., Hutton D. L., Gagnon A. R., and Key R. M.: Rapid analysis of seawater samples at the National Ocean Sciences Accelerator Mass Spectrometry Facility, Woods Hole, MA, *Radiocarbon*, 36, 237–246, 1994.
- Menon, S., Hansen, J., Nazarenko, L., Luo, Y.: Climate effects of black carbon aerosols in China and India, *Science*, 297, 2250–2253, 2002.
- Na, K., Sawant, A. A., Song, C., and Cocker, D. R.: Primary and secondary carbonaceous species in the atmosphere of Western Riverside County, California, *Atmos. Environ.*, 38, 1345–1355, 2004.
- Pearson, A., McNichol, A. P., Schneider, R. J., von Reden, K. F., and Zheng, Y.: Microscale AMS  $^{14}C$  measurements at NOSAMS, *Radiocarbon*, 40, 61–75, 1998.
- Sheehan, P. E. and Bowman, F. M.: Estimated effects on temperature on secondary organic aerosol concentrations, *Environ. Sci. Technol.*, 35, 2129–2134, 2001.
- State Environmental Protection Administration of China: The 1997 China Environmental Situation Report, (in Chinese), [www.zhb.gov.cn/eic/649368290304458752/index.shtml](http://www.zhb.gov.cn/eic/649368290304458752/index.shtml), 1998.
- Singer, B. C., Kirchstetter, T. W., Harley, R. A., Kendall, G. R., and Hesson, J. M.: A fuel-based approach to estimating motor vehicle cold-start emissions, *J. Air & Waste Manag. Assoc.*, 49, 125–135, 1999.
- Streets, D. G., Gupta, S., Waldhoff, S. T., Wang, M. Q., Bond, T. C., and Bo, Y.: Black carbon emissions in China, *Atmos. Environ.*, 35, 4281–4296, 2001.
- Turpin, B. J. and Lim, H. J.: Species contributions to  $PM_{2.5}$  mass concentrations: revisiting common assumptions for estimating organic mass, *Aerosol Sci. Technol.* 35, 602–610, 2001.
- Turpin, B. J., Cary R. A., and Huntzicker J. J.: Identification of secondary organic aerosol episodes and quantification of primary and secondary organic aerosol concentrations during SCAQS, *Aerosol Sci. Technol.*, 12, 161–171, 1990.
- Turpin, B. J., Saxena, P., and Andrews, E.: Measuring and simulating particulate organics in the atmosphere: problems and prospects, *Atmos. Environ.*, 34, 2983–3013, 2000.
- Watson, J. G. and Chow, J. C.: Source characterization of major emission sources in the Imperial and Mexicali Valleys along the US/Mexico border, *Sci. Total Environ.*, 276, 33–47, 2001.
- Watson, J. G., Chow, J. C., and Houck, J. E.:  $PM_{2.5}$  chemical source profiles for vehicle exhaust, vegetative burning, geological material, and coal burning in Northwestern Colorado during 1995, *Chemosphere*, 43, 1141–1151, 2001.
- Xu, J., Bergin, M. H., Yu, X., Liu, G., Zhao, J., Marrico, C. M., and Baumann, K.: Measurement of aerosol chemical, physical, and radiative properties in the Yangtze delta region of China, *Atmos. Environ.*, 36, 161–173, 2002.
- Yang, F., He, K., Ma, Y., Zhang, Q., and Yu, X.: Variation Characteristics of  $PM_{2.5}$  mass concentration and its relationship with  $PM_{10}$  and TSP in Beijing, (in Chinese with English abstract), *China Environ. Sci.*, 22, 506–510, 2002.
- Yang, F., He, K., Ma, Y., Lei, Y., Yu, X., Tanaka, S., Okuda, T., Kato, J., Iwase, T., Mori, J., Ueda, H., and Tenmoku, H.: Characterization of chemical composition of aerosol, dry and wet atmospheric deposition in Beijing, China, in: Abstracts of The 8th International Conference on Atmospheric Science and Application to Air Quality, edited by: Takeuchi K., 204, Tsukuba Science City, Japan, 2003.



- Yang, F., He, K., Lei, Y., Ma, Y., Yu, X., Tanaka, S., Okuda, K., and Iwase, T.: Chemical characters of atmospheric precipitation in Beijing in years of 2001–2003, (in Chinese with English abstract), *China Environ. Sci.*, 24, 538–541, 2004.
- Yang, F., Ye, B., He, K., Ma, Y., Cadle, S. H., Chan, T., and Mulawa, P. A.: Characterization of Atmospheric Mineral Components of PM<sub>2.5</sub> in Beijing and Shanghai, China, *Sci. Total Environ.*, 343, 221–230, 2005.
- Ye, B., Ji, X., Yang, H., Yao, X., Chan, C. K., Cadle, S. H., Chan, T., and Mulawa, P. A.: Concentration and chemical composition of PM<sub>2.5</sub> in Shanghai for a 1-year period, *Atmos. Environ.*, 37, 499–510, 2003.
- Zhang, J., Smith, K. R., Ma, Y., Ye, S., Jiang, F., Qi, W., Liu P., Khalil, M. A. K., Rasmussen, R. A., and Thorneloe, S. A.: Greenhouse gases and other airborne pollutants from household stoves in China: a database for emission factors, *Atmos. Environ.*, 34, 4537–4549, 2000.
- Zhang, T. and Dong, X.: Carbonate carbon measurement in sand storm and dust storm source identification, (in Chinese with English abstract), *China Environmental Monitoring*, 18(2), 11–15, 2002.