

ONTOMETRIC: A Method to Choose the Appropriate Ontology

Adolfo Lozano-Tello

alozano@unex.es

Departamento de Informática. Universidad de Extremadura.

Avda Universidad s/n 10071. Cáceres. SPAIN

Asunción Gómez-Pérez

asun@fi.upm.es

Facultad de Informática . Universidad Politécnica de Madrid.

Campus de Montegancedo, s/n. 28660. Boadilla del Monte. Madrid. SPAIN

Abstract: In the last years, the development of ontology-based applications has increased considerably, mainly related to the semantic web. Users currently looking for ontologies in order to incorporate them into their systems, just use their experience and intuition. This makes it difficult for them to justify their choices. Mainly, this is due to the lack of methods that help the user to determine which are the most appropriate ontologies for the new system. To solve this deficiency, the present work proposes a method, *ONTOMETRIC*, which allows the users to measure the suitability of existing ontologies, regarding the requirements of their systems.

Keywords: OntoMetric, ontologies, metrics, selection of ontologies.

THE PROBLEM OF ONTOLOGIES SELECTION

In 1991, the ARPA Knowledge Sharing Effort (Neches, 1991) revolutionized the way in which intelligent systems were built in Artificial Intelligence when proposing the construction of knowledge-based systems by means of the “assembling” of reusable components. Reusable components become the base (or skeleton) of the new system, to which are added specialized knowledge and specific reasoning methods, characteristic of the task that the system attempts to solve. This vision allows building bigger

and more potent systems. The ontologies, used to represent the “static” knowledge of a domain, and the problem solving methods, used to carry out reasoning, become the key pieces that allow the reuse of knowledge and problem-solving methods (Gómez-Pérez, 1999a). The saving in costs and time that it is obtained in the software reuse (Bollinger, 1990; Poulin, 1997) is achieved in more scope in the reuse of these knowledge (ontologies and problem-solving methods), due to the enormous effort in the processes of knowledge acquisition of a domain, conceptual model's construction, formalization and implementation of such knowledge.

At the moment, the ontologies are implemented in a great variety of languages. At the beginning of the decade of the nineties, a group of languages was designed and used for the implementation of ontologies. The most representative languages are: Ontolingua (Gruber, 1993), LOOM (McGregor, 1991), OCML (Motta, 1999), FLogic (Kifer, 1995), etc. These languages receive the name of “classic languages” (Corcho, 2000), they follow a syntax based on LISP (to exception of FLogic), and they are in a phase of stable development. Recently, XML has been adopted as a standard language to exchange information in the web. In the field of the ontologies, several languages have been created based on XML to implement ontologies. For example RDF (Lassila, 1999), RDF Schema (Brickley, 1999), XOL (Karp, 1999), SHOE (Luke, 2000), OIL (Horrocks, 2000), DAML+OIL (Horrocks, 2001) and OWL (Dean, 2003). These languages, called “web-based languages”, are still in development phase and in continuous evolution.

Equally, methodologies for building ontologies have been numerous. Already in 1990, Lenat and Guha (1990) published some methodological considerations related with the development of the CYC ontology. Some years later, in 1995, Uschold and King (1995) published the main steps in the development of the Enterprise ontology. In the same year, Grüninger and Fox (1995) showed the methodology used in the development of the TOVE ontology (Virtual Toronto Enterprise). One year

later, Uschold (1996) carries out a proposal of unification of both methodologies. In the 12th European Conference for Artificial Intelligence the methodology used to build the project Esprit KACTUS project's ontologies (Bernaras, 1996) is presented. In 1997, METHONTOLOGY, appears (Fernández, 1997), which was extended later (Fernández, 1999a; Fernández, 2000). It proposes the steps that should be continued to build ontologies, some guides to carry out ontologies reengineering (Gómez-Pérez, 1999b) and ontologies evaluation (Gómez-Pérez, 1999c). Also in 1997, it is presented the methodology used to build domains ontologies from the SENSUS ontology (Swartout, 1997). All these methodologies do not consider the cooperative development of ontologies. The first methodology that includes development aspects in group is Co4 (Euzenat, 1995). A comparative study of some of these methodologies appears in (Fernández, 1999b).

Since 1996 there is an importance increase in the development of technological platforms related with the ontologies. The first ontology site was the Ontolingua Server (Farquhar, 1996), of the Knowledge Systems Laboratory (KSL) in the Stanford University. In 1997, Ontosaurus appeared (Swartout, 1997), developed by the Information Sciences Institute (ISI) in the University of South California. Later, several tools have been created based on Java technology: WebOnto (Domingue, 1998) developed in the Knowledge Media Institute (KMI) of the Open University (UK); OILed (Bechhofer, 2001), developed in the IST OntoKnowledge project; OntoEdit (Staab, 2000) developed by the AIFB of the Karlsruhe University; Protégé2000 (Noy, 2001) developed by the Stanford Medical Informatics (SMI) in the Stanford University; and WebODE (Arpírez, 2001) developed in the Universidad Politécnica de Madrid. In spite of the great increase that the use of ontologies has acquired, nowadays, the knowledge engineers need to look for ontologies disperse in quite a few of web servers. When they find several that can be adapted, they should examine their characteristics attentively and to decide which the best are to incorporate them to their system. This election procedure usually depends on the experience and the

engineer's intuition. If the system is being developed with commercial goals, it will be very difficult for them to justify the taken election.

Although most of the methodologies for building ontologies (Fernández, 1999b) propose a phase of ontology reuse, there are not works that indicate the users how to choose ontologies for a new project, and there are not methodologies that quantify the suitability of these ontologies for the system. This election problem would be palliated if it existed a metric that quantified, for each one of the candidates (ontologies), how of appropriate they are for a new system. The method that is described in this work (*ONTOMETRIC*) presents the set of processes that the user should carry out to obtain these measures.

This paper is organised as follows: Section 2 presents a set of general ontology characteristics to compare ontologies. Section 3 describes the building of an ontology in the ontology domain, called *Reference Ontology*. Finally, section 4 describes briefly the Analytic Hierarchy Process (AHP) in the taking of multi-criteria decisions and this section shows how we have adapted AHP in the choice of ontologies.

A FRAMEWORK TO COMPARE ONTOLOGIES

Existing Studies and Frameworks of Characteristics

There are different studies on identifying features for designing, comparing and classifying ontologies. The more elaborated, and also more recent proposals, tend to organize the groups of characteristics in a taxonomical fashion. A summary of the proposals, with the number of characteristics and the purpose for which were created, is shown in the table 1.

Author	Year	Number of characteristics	Purpose
Gruber	95	5	To establish design criteria
Uschold y Grüninger	96	3	To establish design criteria
Noy y Hafner	97	28	To study several ontology designs
Hovy	97	36	To compare linguistic ontologies
Uschold	98	10	To identify the ontology roles in applications

Table 1. Summary of works related with characteristics of ontologies.

On the one hand, the 5 characteristics of Gruber (1995) and the 3 characteristics pointed out by Uschold and Grüninger (1996) are very general features and were described as fundamental properties that should be considered in the design of ontologies and that should be kept in mind in the reuse process. The comparison framework of Noy and Hafner (1997) gathers 28 characteristics about ontologies, although the definition of some characteristics is not very precise and some features can include others. With this framework, they indicated the differences and similarities among 10 chosen ontologies. The aim of this study was to compare the different alternatives and designs of ontologies to clarify the description of a standard of ontology construction. Although, some characteristics can take values quite confused. Also, this framework is not appropriate to classify ontology according to the identified characteristics.

The Hovy's framework (Hovy, 1997) proposes a taxonomy of 36 characteristics about different aspects of ontologies. This framework was outlined to be able for comparing ontologies for natural language processing. The study was carried out like an unfinished technical report in the ISI. For this reason, some of the characteristics are not defined, some are not clearly defined, some definitions contradict the examples and there are several characteristics that are only relevant to natural language issues.

The 10 dimensions of characteristics indicated by Uschold (1998) were gathered from the point of view of the role that the ontologies play in an ontology-based application. The purpose of this framework was that new developers of ontology-based applications could use this information to build applications with the same requirements. The definitions of the characteristics of this framework are quite imprecise and, with the proposed framework, it is difficult to classify the ontologies appropriately.

To conclude, although there are some frameworks that identify characteristics related with the ontologies, they are only adequate to classify them partially and they are not useful to compare the suitability of several alternative ontologies with regard to the necessities of an application, because these

frameworks were not conceived for this purpose. So, none of the above frameworks are appropriate for deciding which of the different ontologies it is the best for using it in a system.

A Multilevel Framework of Characteristics to Compare Ontologies

In order to solve the above problem, in this work we present a taxonomy of 160 characteristics, called also **multilevel framework of characteristics**, that provides the outline to be able to choose and to compare existing ontologies. The framework is used, on the one hand, as representation template of the information about existing ontologies. On the other hand, it helps the user to select the necessary requirements that should complete the ontologies that will consider as candidates. Finally, it is the skeleton used to build the multilevel tree of characteristics used in the processes of the *ONTOMETRIC* method.

Ten expert developers of ontologies (from iSOCO and Knowledge Reuse Group - AI Lab of UPM) have validated the multilevel framework of characteristics by means of questionnaires. They identified some conceptual errors and mistakes in the list of characteristics. The questionnaire and the experts' opinions appear in appendices I and III of (Lozano-Tello, 2002).

The multilevel framework of characteristics possesses, in the superior level of the taxonomy, five basic aspects on the ontologies that are denominated **dimensions**. These dimensions are the main aspects that the user should consider to examine an ontology for using it in his/her project. These are: the **content** of the ontology and the organization of their contents, the **language** in which is implemented, the **methodology** that has been followed to develop it, the software **tools** used to build and edit the ontology, and the **costs** that the ontology will be necessary in a certain project. We have identified the characteristics of these dimensions from the referenced papers in section 2.1, and from works about content of the ontologies, implementation languages, development methodologies and environments of

ontologies, and costs. We have added others to complete the framework. The result of this task is a comparison framework of ontologies that serves like baseline work for the proposed method.

Tables 2, 3, 4, 5 and 6 show the identified characteristics for the dimensions: “tools”, “language”, “content”, “methodology”, and “costs”. Detailed definitions and justifications of these characteristics can be found in (Lozano-Tello, 2002).

DIMENSION: TOOLS	
CHARACTERISTIC	TYPE
CAPABILITIES (FACTOR)	(very_low, low, medium, high, very_high)
Local_Use	(non_supported, supported)
Network_Use	(non_supported, supported)
Internet-based_Use	(non_supported, supported)
Clarity_Of_User_Interface	(very_low, low, medium, high, very_high)
Response_Time	(very_low, low, medium, high, very_high)
Reliability	(very_low, low, medium, high, very_high)
VISUALIZATION (FACTOR)	(very_low, low, medium, high, very_high)
Browsers_Shows_Whole_Information_Of_Terms	(non_supported, supported)
Browser_Allows_Selection_Of_Detail_Level	(non_supported, supported)
Browser_Shows_Taxonomy	(non_supported, supported)
Browser_Shows_Ad-hoc_Relations	(non_supported, supported)
EDITION (FACTOR)	(very_low, low, medium, high, very_high)
Tool_Builds_The_Same_Of_Language	(non_supported, supported)
Tool_Allows_Edition_In_Any_Time	(non_supported, supported)
Tool_Shows_Taxonomy_Graphically	(non_supported, supported)
Tool_Allows_Definition_Of_New_Relations	(non_supported, supported)
INTERACTION (FACTOR)	(very_low, low, medium, high, very_high)
Tool_Allows_Independent_Use	(non_supported, supported)
Tool_Supplies_Access_Interfaces	(non_supported, supported)
Documentation_Using_Access_Interfaces	(very_low, low, medium, high, very_high)
Access_Interfaces_Are_OpenSource	(non_supported, supported)
Documentation_Programming_Access_Interfaces	(very_low, low, medium, high, very_high)
METHODOLOGICAL ASPECTS (FACTOR)	(very_low, low, medium, high, very_high)
Tool_Supports_Whole_Life_Cicle	(non_supported, supported)
Tool_Supports_Important_Development_Activities	(non_supported, supported)
Tool_Supplies_Documentation_About_Built_Products	(non_supported, supported)
Tool_Checks_Consistency	(non_supported, supported)
COOPERATIVE ASPECTS (FACTOR)	(very_low, low, medium, high, very_high)
Tool_Creates_Work_Groups	(non_supported, supported)
Tool_Allows_Simultaneous_Working	(non_supported, supported)
Tool_Looks_Edited_Ontologies	(non_supported, supported)
Tool_Looks_Edited_Terms	(non_supported, supported)
Tool_Notifies_The_Changes_To_Group	(non_supported, supported)
Tool_Identifies_The_User_Changes	(non_supported, supported)
TRANSLATION (FACTOR)	(very_low, low, medium, high, very_high)
Tool_Imports_From_Others_Langs	(non_supported, supported)
Tool_Imports_From_Markup_Langs	(non_supported, supported)
Tool_Exports_To_Langs	(non_supported, supported)
Tool_Exports_To_Markup_Langs	(non_supported, supported)
Translations_Lose_Minimum_Semantic	(non_supported, supported)
Translation_Is_Supervised	(non_supported, supported)
INTEGRATION (FACTOR)	(very_low, low, medium, high, very_high)
Ease_Of_Integration	(very_low, low, medium, high, very_high)
Difficulty_Of_Referring_New_Terms	(very_low, low, medium, high, very_high)
Tool_Allows_Selection_Of_Terms_To_Integration	(non_supported, supported)
Tool_Checks_Consistency_In_Integration_Or_Merge	(non_supported, supported)
Assistance_For_Manual_Merge	(non_supported, supported)
Semi-automatic_Merge	(non_supported, supported)

Table 2. Characteristics relates with the dimension “tool”.

DIMENSION: LANGUAGE	
CHARACTERISTIC	TYPE
DOMAIN KNOWLEDGE (FACTOR)	(very_low, low, medium, high, very_high)
CONCEPTS/ INSTANCES/ FACTS/ CLAIMS	(very_low, low, medium, high, very_high)
Allows_Instances_Of_Class	(non_supported, supported)
Has_MetaClasses	(non_supported, supported)
Can_Define_Classes_Without_MetaClasses	(non_supported, supported)
Allows_Facts	(non_supported, supported)
Allows_Claims	(non_supported, supported)
ATTRIBUTES	(very_low, low, medium, high, very_high)
Can_Define_Class_Attributes	(non_supported, supported)
Can_Define_Instance_Attributes	(non_supported, supported)
Can_Define_Local_Attributes	(non_supported, supported)
Can_Define_Global_Attributes	(non_supported, supported)
Can_Define_Polymorph_Attributes	(non_supported, supported)
Can_Define_Exceptions_In_Attributes	(non_supported, supported)
FACETS	(very_low, low, medium, high, very_high)
Has_Default_Attribute_Values	(non_supported, supported)
Has_Attribute_Types	(non_supported, supported)
Can_Define_Cardinality_Of_Attributes	(non_supported, supported)
Allows_Define_Procedural_Knowledge	(non_supported, supported)
Allows_New_Facets	(non_supported, supported)
RELATIONS	(very_low, low, medium, high, very_high)
Allows_Definition_Of_Functions	(non_supported, supported)
Arbitrary_N-ary_Relations	(non_supported, supported)
Allows_Define_Ad-hoc_Relations	(non_supported, supported)
Can_Constrain_The_Type_In_Relations	(non_supported, supported)
Can_Constrain_The_Value_In_Relations	(non_supported, supported)
Has_Operational_Definition	(non_supported, supported)
Can_Declare_Properties_In_Relations	(non_supported, supported)
TAXONOMIES	(very_low, low, medium, high, very_high)
Contain_SubclassOf_Relation	(non_supported, supported)
Contain_NotSubclassOf_Relation	(non_supported, supported)
Can_Define_Exhaustive_Decomposition	(non_supported, supported)
Can_Define_Disjoint_Decomposition	(non_supported, supported)
Multiple-Subclass-of_In_Classes	(non_supported, supported)
Multiple-Instance-of_In_Instances	(non_supported, supported)
AXIOMS	(very_low, low, medium, high, very_high)
Allows_Axioms_Embedded_In_Terms	(non_supported, supported)
Allows_Independent_Axioms	(non_supported, supported)
Allows_Axioms_In_First_Order_Logic	(non_supported, supported)
Allows_Axioms_In_Second_Order_Logic	(non_supported, supported)
PRODUCTION RULES	(very_low, low, medium, high, very_high)
Allows_Disjunctives_In_PRs	(non_supported, supported)
Allows_Conjunctives_In_PRs	(non_supported, supported)
Each_Rule_Has_Defined_A_Chaining_Mechanism	(non_supported, supported)
Each_Rule_Has_Defined_A_Priority	(non_supported, supported)
Procedures_In_The_Consequent_In_PRs	(non_supported, supported)
Certainty_Values_In_PR	(non_supported, supported)
INFERENCE MECHANISM (FACTOR)	(very_low, low, medium, high, very_high)
REASONING POTENTIAL	(very_low, low, medium, high, very_high)
Allows_Multiple_Inheritance	(non_supported, supported)
Allows_Monotonous_Reasoning	(non_supported, supported)
Allows_Non-Monotonous_Reasoning	(non_supported, supported)
Makes_Exceptions_In_Inheritance	(non_supported, supported)
Axioms_Keep_The_Consistency	(non_supported, supported)
Execute_Procedures	(non_supported, supported)
Inference_Mechanism_In_PR	(non_supported, supported)
INFERENCE ENGINE	(very_low, low, medium, high, very_high)
IE_Is_Sound_and_Complete	(non_supported, supported)
IE_Performs_Automatic_Classifications	(non_supported, supported)
IE_Deals_Exceptions	(non_supported, supported)
IE_Deals_Multiple_Inheritance	(non_supported, supported)
Allows_New_Inference_Engine	(non_supported, supported)

Table 3. Characteristics relates with the dimension “language”.

DIMENSION: CONTENT	
CHARACTERISTIC	TYPE
CONCEPTS (FACTOR)	(very_low, low, medium, high, very_high)
Essential Concepts	(very_low, low, medium, high, very_high)
Essential Concepts In Superior Levels	(very_low, low, medium, high, very_high)
Concepts Properly described In NL	(very_low, low, medium, high, very_high)
Formal Specification Of Concepts Coincides With NL	(very_low, low, medium, high, very_high)
Attributes Describe Concepts	(very_low, low, medium, high, very_high)
Number Of Concepts	(very_low, low, medium, high, very_high)
RELATIONS (FACTOR)	(very_low, low, medium, high, very_high)
Essential Relations	(very_low, low, medium, high, very_high)
Relations Relate Appropriate Concepts	(very_low, low, medium, high, very_high)
Formal Specification Of Relations Coincides With NL	(very_low, low, medium, high, very_high)
Arity Specified	(very_low, low, medium, high, very_high)
Formal Properties Of Relations	(very_low, low, medium, high, very_high)
Number Of Relations	(very_low, low, medium, high, very_high)
TAXONOMY (FACTOR)	(very_low, low, medium, high, very_high)
Several Perspectives	(very_low, low, medium, high, very_high)
Appropriate Not-Subclass-Of	(very_low, low, medium, high, very_high)
Appropriate Exhaustive-partitions	(very_low, low, medium, high, very_high)
Appropriate Disjoint-partitions	(very_low, low, medium, high, very_high)
Maximum Depth	(very_low, low, medium, high, very_high)
Average Of Subclasses	(very_low, low, medium, high, very_high)
AXIOMS (FACTOR)	(very_low, low, medium, high, very_high)
Axioms Solve Queries	(very_low, low, medium, high, very_high)
Axioms Infer Knowledge	(very_low, low, medium, high, very_high)
Axioms Verify Consistency	(very_low, low, medium, high, very_high)
Axioms Not Linked To Concepts	(very_low, low, medium, high, very_high)
Number Of Axioms	(very_low, low, medium, high, very_high)

Table 4. Characteristics relates with the dimension “content”.

DIMENSION: METHODOLOGY	
CHARACTERISTIC	TYPE
PRECISION (FACTOR)	(very_low, low, medium, high, very_high)
Delimitation Of Phases	(very_low, low, medium, high, very_high)
Specification Of Activities By Phases	(very_low, low, medium, high, very_high)
Specification Of Personnel By Phases	(very_low, low, medium, high, very_high)
Specification Of Techiques By Phases	(very_low, low, medium, high, very_high)
Specification Of Finished Products By Phases	(very_low, low, medium, high, very_high)
USABILITY (FACTOR)	(very_low, low, medium, high, very_high)
Clarity Of Activities and Techniques Description	(very_low, low, medium, high, very_high)
Quality Of Manuals	(very_low, low, medium, high, very_high)
Manuals With Complete Examples	(very_low, low, medium, high, very_high)
MATURITY (FACTOR)	(very_low, low, medium, high, very_high)
Number Of Developed Ontologies	(very_low, low, medium, high, very_high)
Number Of Different Domains	(very_low, low, medium, high, very_high)
Importance Of Developed Ontologies	(very_low, low, medium, high, very_high)

Table 5. Characteristics relates with the dimension “methodology”.

DIMENSION: COSTS	
CHARACTERISTIC	TYPE
Use Licences of the Ontology (FACTOR)	(very_low, low, medium, high, very_high)
Estimated costs of hw and sw (FACTOR)	(very_low, low, medium, high, very_high)
Costs of access interfaces (FACTOR)	(very_low, low, medium, high, very_high)
Use Licences of the ontology tools (FACTOR)	(very_low, low, medium, high, very_high)

Table 6. Characteristics relates with the dimension “costs”.

The dimensions are defined through a set of factors, as shown in above tables. The factors are the fundamental elements that should be analyzed to obtain the value of the dimensions. These factors are defined through a group of characteristics that allow calculating the value of their suitability. These characteristics can be defined, recurrently, by means of other characteristics, or more specific subcharacteristics, so that they describe them with more detail. It allows analyzing the criteria with more depth. Thus, the multilevel framework of characteristics is organized taxonomically, in which the dimensions are described by factors, the factors by characteristic, and these by other more specific subcharacteristics. It will use the term **criterion** to refer indistinctly to any element of the multilevel framework, that is: dimensions, factors, characteristics and subcharacteristics of the taxonomy.

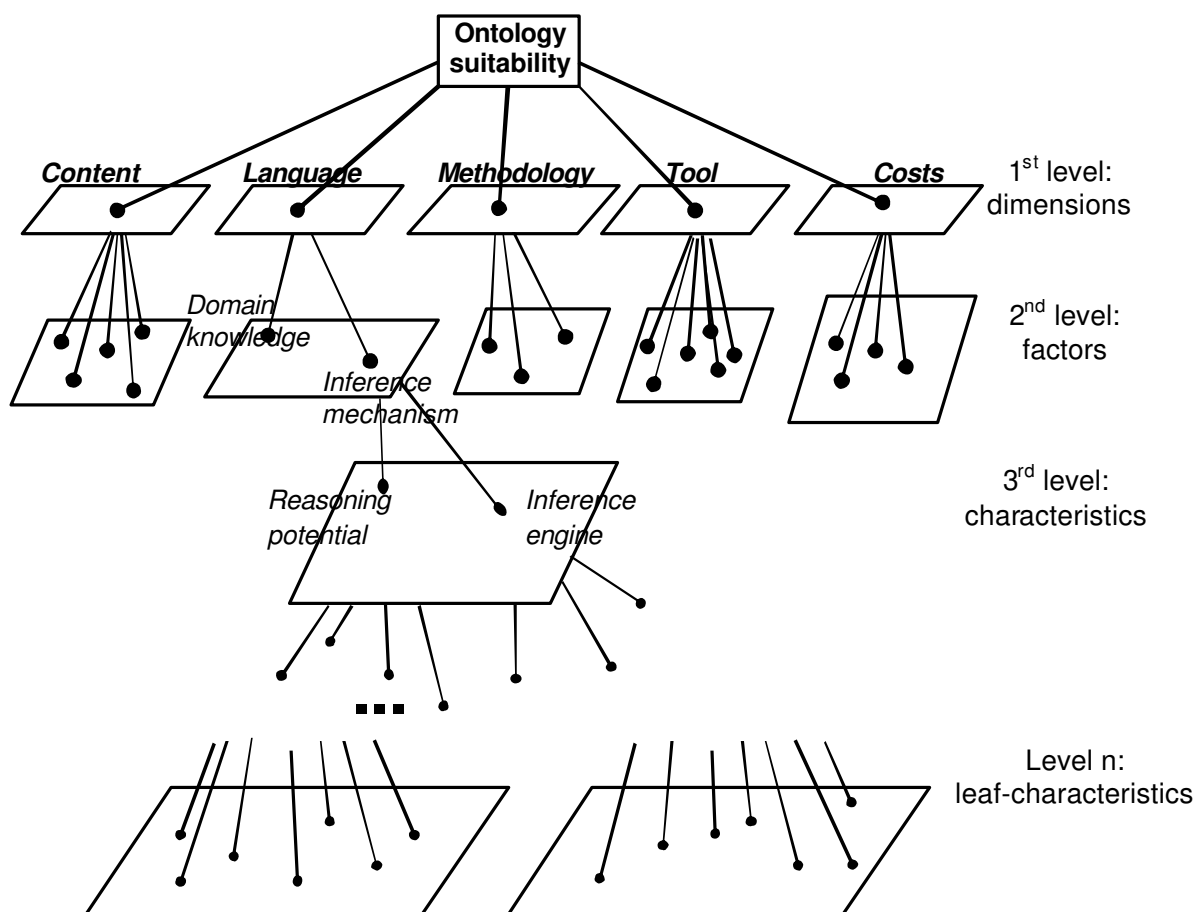


Figure 1. Representation of the multilevel tree of characteristics.

The multilevel framework of characteristics can be represented like a hierarchical tree, so that the criteria placed in son-nodes describe and represent the father-node's properties. Thus, the users will be able to extend or to prune the criterion that they considers opportune, so that the new tree depends on the particularities of the project, the business and the organization that will reuse the ontology. This tree is called **multilevel tree of characteristics** (abbreviated as MTC), and it can be represented in a graphic form as appears in the figure 1.

It should be kept in mind that the framework is subject to the conceptual and technological novelties that will appear in the future in the ontology field. In this sense, the MTC constitutes a set of "living" criteria that should be actualized according to the produced changes.

AN ONTOLOGY IN ONTOLOGY DOMAIN: THE *REFERENCE ONTOLOGY*

The multilevel framework of characteristics is the base to build an ontology in the ontology domain, called *Reference Ontology*. The conceptual model of this ontology gathers the characteristics of the framework exposed in the previous section. A direct relationship exists among all the descriptive characteristics identified in the dimensions, and the instance attributes specified in the *Reference Ontology*.

The development methodology of ontologies METHONTOLOGY (Fernández, 1997; and Gómez-Pérez, 1998) and the development environment of ontologies (that follows METHONTOLOGY) WebODE (Arpírez, 2001) were used to build the *Reference Ontology*.

In the *Reference Ontology* are defined, among other, the concepts: *Language*, *Methodology* and *Tool*, whose instance attributes are related to the criteria identified in the multilevel framework of characteristics on languages, methodologies and tools, respectively.

Also, in the *Reference Ontology* are defined the concepts: *Ontology*, *Class*, *Attribute*, *Instance*, *Relation* and *Axiom*. The Reference Ontology gathers information of these concepts from 160 existing ontologies.

The instance attributes of these concepts are not directly related to (like in *Language*, *Methodology* and *Tool*) the characteristics identified in the multilevel framework of characteristics in the dimensions “content” and “costs”. In this case, the user will must to determine the values in the characteristics indicated in the framework, from the knowledge included in the *Reference Ontology*.

Figure 2 shows the direct relationships among the concepts: *Ontology*, *Class*, *Attribute*, *Instance*, *Relation*, *Axiom*, *Language*, *Methodology* and *Tool* defined in the *Reference Ontology*.

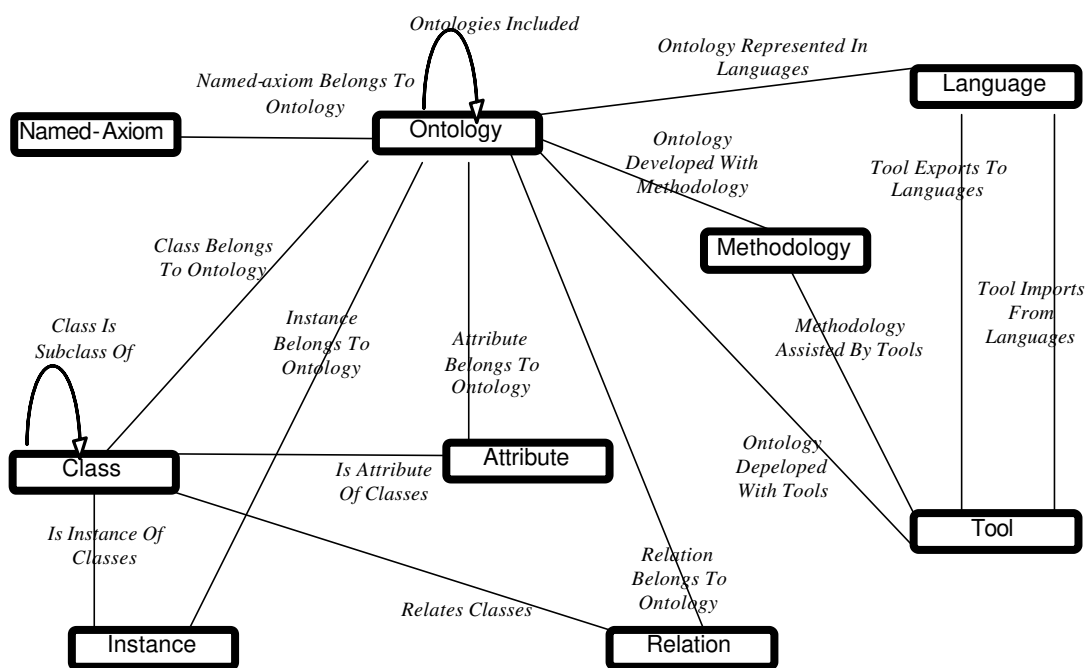


Figure 2. Diagram with direct relationships among the concepts in the *Reference Ontology*.

***ONTOMETRIC*: A METHOD TO CHOOSE ONTOLOGIES**

In this section we describe the *ONTOMETRIC* method. This method is based in AHP, adapting some processes for the reuse of ontologies. Next, we describe the steps of the AHP method, and later we explain the adaptation for the method *ONTOMETRIC*.

The Analytic Hierarchy Process

There are several methods and tools available to aid decision making (Triantaphyllou, 2002), some of them used in software projects (Fenton, 1996). The multi-criteria decision methods are useful to comparing several alternatives when, at the same time, several objectives need to be borne in mind. In these methods, the evaluator can directly assign a normalized weight to a criterion that will indicate the importance which that criterion has for the final objective. But the normalization and composition of weights, with regard to more than one criterion, obtains erroneous numbers; this is because the use of normalized groups of separate numbers destroys the linear relationship among them (Fenton, 1996). To avoid this, the AHP method compares, firstly, the relative importance that each criterion has with regard to all the others; this assessment enables the relative weights of the criteria to be calculated, and finally the method normalizes the weights in order to obtain the measures for the existing alternatives (Saaty, 1977); for this reason, AHP constitutes one of the best options to aid multi-criteria decision making.

The Analytic Hierarchy Process was devised by Thomas L. Saaty (1977) in the early seventies. It is a powerful and flexible tool for decision-making in complex multi-criteria problems. This method allows people to gather knowledge about a particular problem, to quantify subjective opinions and to force the comparison of alternatives in relation to established criteria. The method consists of the following steps:

STEP 1: define the problem and the main objective to make the decision.

STEP 2: build a hierarchy tree (as shown in figure 3) in this way: The root node is the objective of the problem, the intermediate levels are the criteria, and the lowest level contains the alternatives. This hierarchical organisation is used to obtain a general overview of the criteria and their relations.

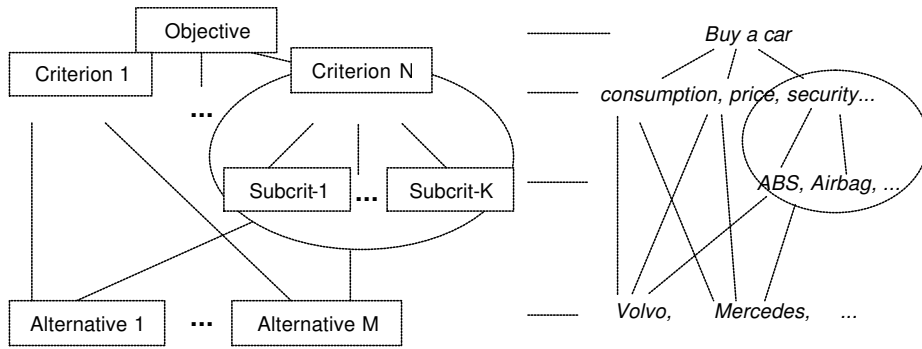


Figure 3. Hierarchical structure of the AHP method and example of the objective "Buy a car".

STEP 3: for each level, build a pairwise comparison matrix with the brothers (sons of the same node).

The matrix contains the weights of pairwise comparisons between brother nodes. This provides us with a pairwise comparison matrix (like example of table 7) for each father nodes.

	Consumption	Price	Security	...
Consumption	1	1/6	2	
Price	6	1	3	
Security	1/2	1/3	1	
...				

Table 7. Example of comparison matrix for the first level to "Buy a car." The user considers "Consumption" six times less important than "Price", twice as important as "Security", etc.

For each comparison matrix, an *eigenvector* must be calculated, using the equation: $|A - \lambda I| = 0$, where A is the comparison matrix, I is the identity matrix and λ is the *eigenvector*. This calculus must be performed for each level of the tree. The entire process can be studied in (Saaty, 1990).

STEP 4: value each alternative (leaf nodes) with a fixed scale previously. The scales for rating characteristics should be established and described in a precise way.

STEP 5: determine the value of each criterion using a weighted addition formula, with the weights from step 3 and the values from step 4. These results ascend up the tree to calculate the final value of the objective (root). This final value is used to make a decision about the objective.

ONTOMETRIC: Applying the Analytic Hierarchy Process in the Ontologies Choice

The AHP model can be apply to decide whether or not to reuse ontologies. This method is called *ONTOMETRIC*. In order to decide the reuse in a new software project, *ONTOMETRIC* can be used to: 1) select the most appropriate ontology among various alternatives or, 2) decide the suitability of a particular ontology for the project. For example, *ONTOMETRIC* can be applied to the evaluation of ontologies in order to be used on business systems analysis. Thus, the users can evaluate several existing ontologies for their analysis.

In this section, we describe the *ONTOMETRIC* method using the software tool, *OntoMetric Tool*, to assist the user in applying the method. We have used the tool to evaluate two ontologies: Chisholm's ontology (Chisholm, 1996) and BWW-ontology (Weber, 1997), in order to decide on the most appropriate ontology to be used in business systems analysis. The values used in the weights and the characteristics of the example (shown in the figures below) have been assigned for a hypothetical evaluation project. The real users that need to evaluate these ontologies will have to assign the weights and values depending on the objectives of their evaluation (precision, reliability, time, etc.).

Taking into account the general steps of AHP, described in section 4.1, we have adapted the method to be used in the reuse of ontologies:

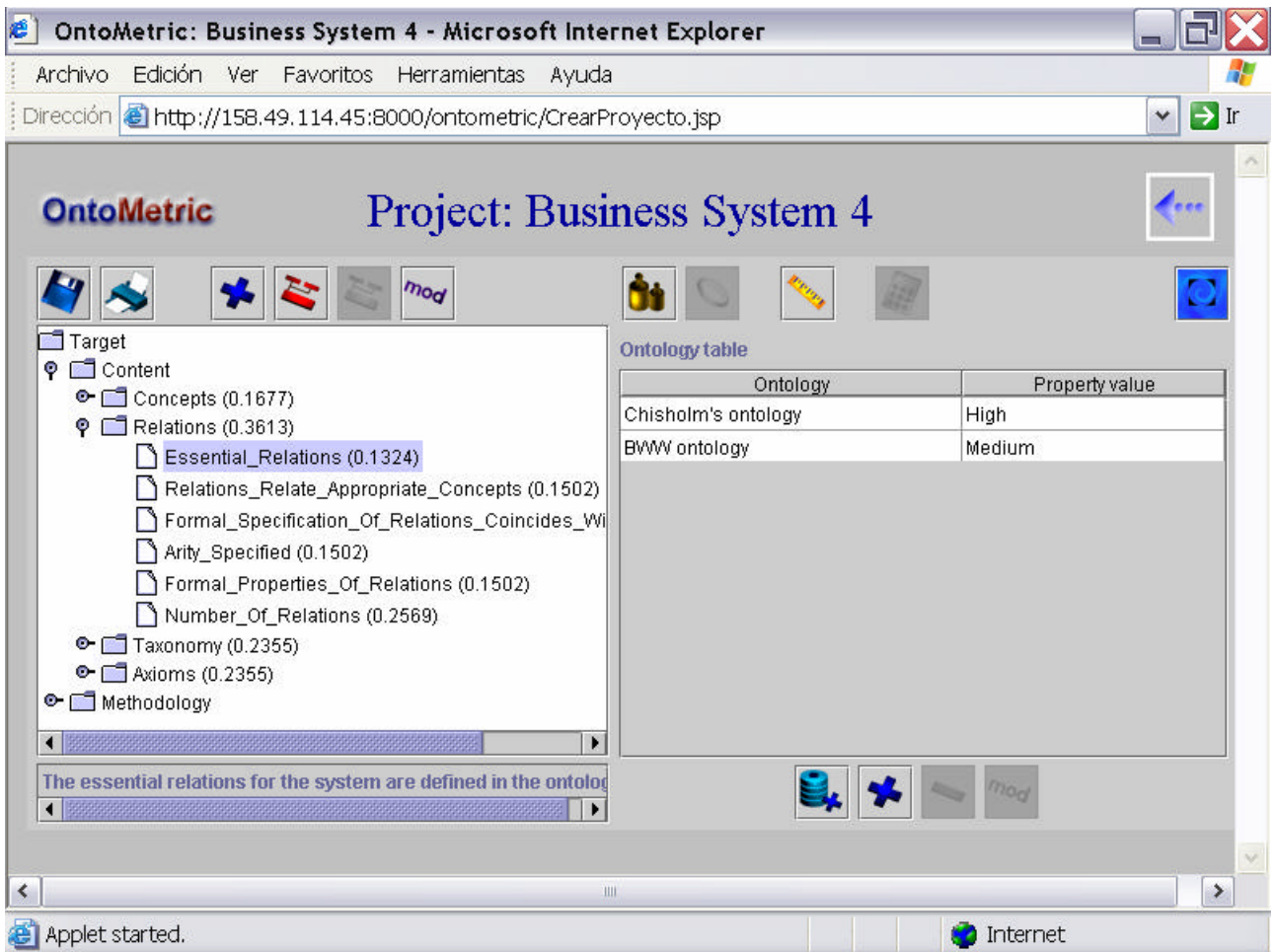


Figure 4. Adaptation of the multilevel tree of characteristics using *OntoMetric Tool*. Evaluation of two ontologies to be used on business systems analysis: *Chisholm's ontology* and *BWW ontology*.

STEP 1: specify the objectives of the project. The engineers should know the exact guidelines of their company and available resources in relation to the new business. For example, for business systems analysis, the evaluators must state the objectives and the aims of their analysis. They must decide on the importance of the terms of the ontology, the precision of the definitions, the suitability of relations between concepts, the reliability of the methodology used to build the ontology, etc.

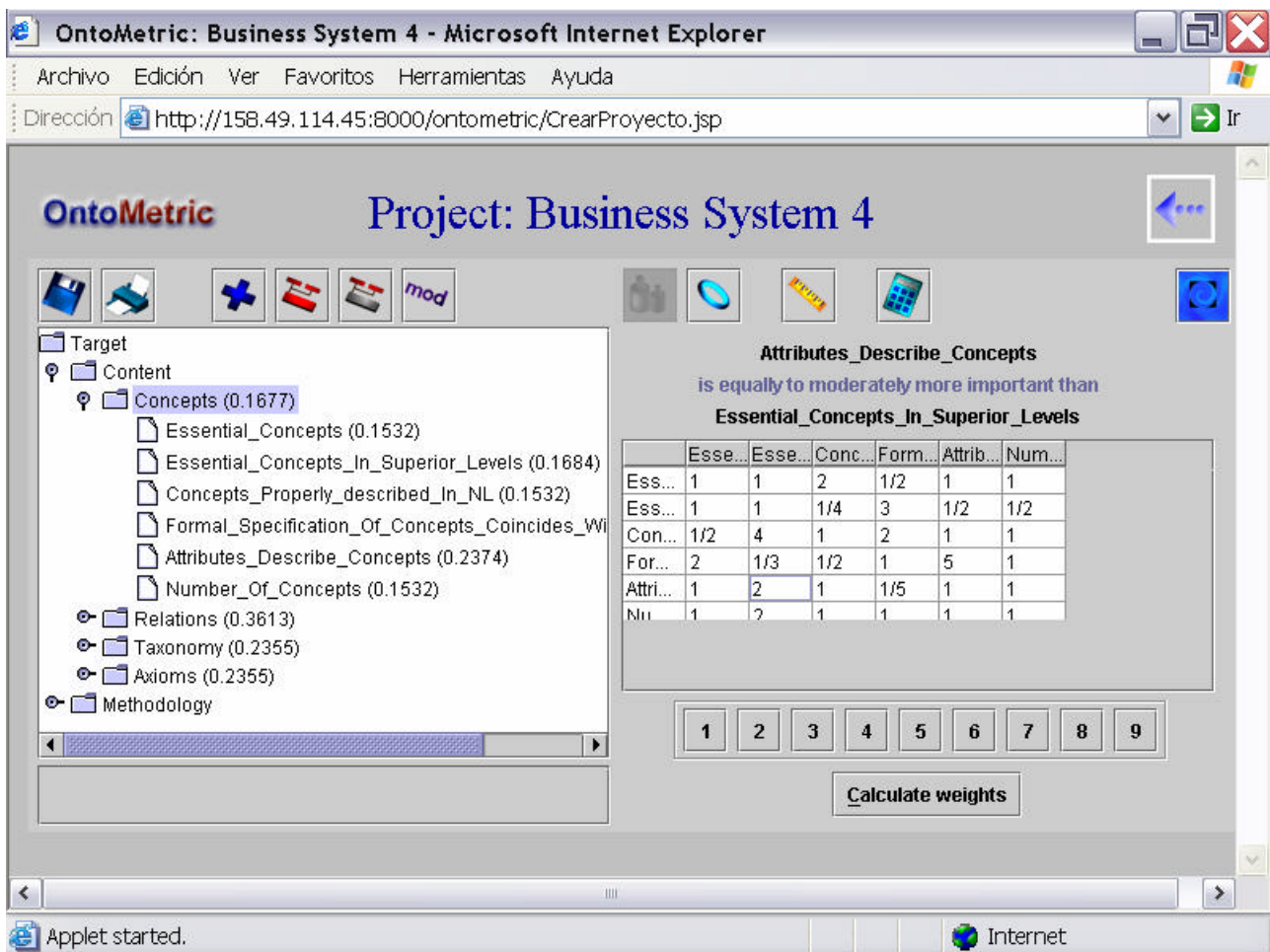


Figure 5. Building of the pairwise comparison matrixes using *OntoMetric Tool*.

STEP 2: build the decision tree from the MTC, so that the objective, "select the most appropriate ontology for a new software project", is placed at the root node; the dimensions (content, language, methodology, tool and costs) are placed at the first level; the factors of each dimension at the second level; and underneath these factors, the sub-trees of specific characteristics of the particular evaluation project. The general characteristics of all types of ontologies (shown in tables 2, 3, 4, 5 and 6) should be specialised according to: the particular ontology, the specific target project and the organization that will develop the project. *OntoMetric Tool* provides the default criteria tree with the characteristics identified in the *Reference Ontology*, but the users can adapt it to their necessities.

Figure 4 shows an example of adaptation of the criteria tree for the selection of ontologies in business systems analysis. This evaluation project considers that the only relevant dimensions are “content” and “methodology”. The example considers that “language”, “tool” and “costs” are not important dimensions because they bear no relevant in the analysis of the business system.

STEP 3: for each set of brother nodes, make the pairwise comparison matrixes with the criteria of the decision tree. These comparisons depend on the objectives and aims identified in step 1. The *eigenvectors* are calculated from these matrixes. You can use the pairwise comparison matrixes module (figure 5) of *OntoMetric Tool* to do this assessment and calculus.

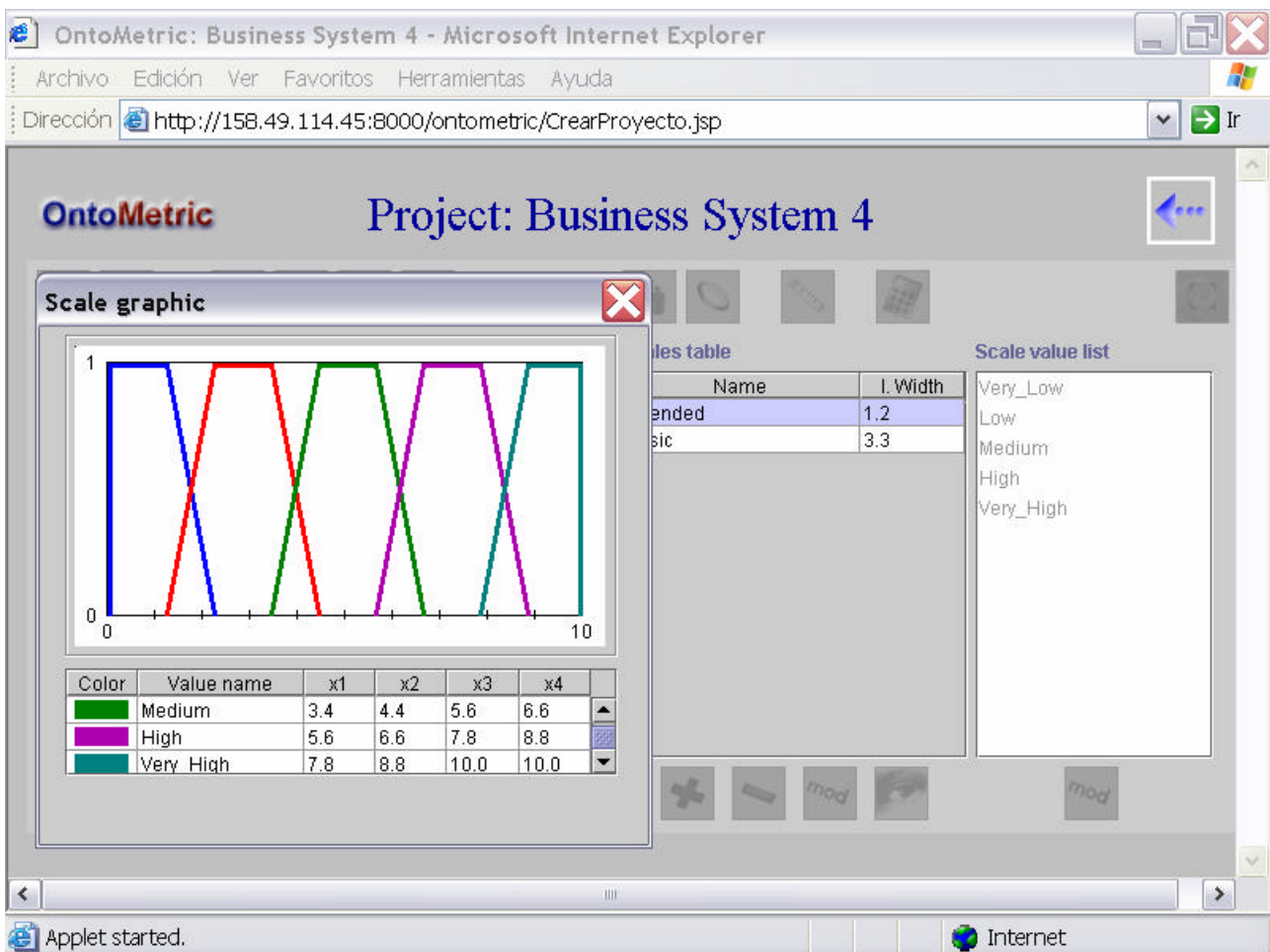


Figure 6. Establishing scales using *OntoMetric Tool*.

STEP 4: for each alternative ontology, assess its characteristics. These values will (always multiplying by the weights calculated in step 3) ascend up to the superior nodes of the tree, until the node root is calculated. For each one of these characteristics, the engineer should establish a scale of appropriate ratings.

STEP 4.1: this method assigns linguistic values (non-numbers) to the alternatives because the human beings, in their daily activities, usually make this type of judgement. For example, if analysts evaluate the “essential relations for the system are defined in the ontology”, they can assess this quality using the linguistic scale: *very_low*, *low*, *medium*, *high* and *very_high*. Figure 6 shows how *OntoMetric Tool* establishes the different scales. It is better than a numeric scale between zero and ten. In this process, it is important that the groups of the linguistic values are precisely defined.

However it is not possible to perform calculations with linguistic values. One possible representation of these linguistic values is fuzzy intervals (Gómez-Pérez, 1997). Their angular points in a scale from 0 to 10, as shown in figure 6, determine the fuzzy intervals.

By assigning linguistic values with fuzzy intervals let us perform basic mathematical operations for intervals. This way, it can be defined the operations of: sum of intervals (1) and product by a constant (2):

$$(a_1, a_2, a_3, a_4) + (b_1, b_2, b_3, b_4) = (a_1 + b_1, a_2 + b_2, a_3 + b_3, a_4 + b_4) \quad (1)$$

$$n * (a_1, a_2, a_3, a_4) = (n * a_1, n * a_2, n * a_3, n * a_4) \quad (2)$$

STEP 4.2: with these established linguistic scales for each one of the criteria, the engineer will proceed to study each one of the ontologies that have been considered as alternatives, and to value them using these scales.

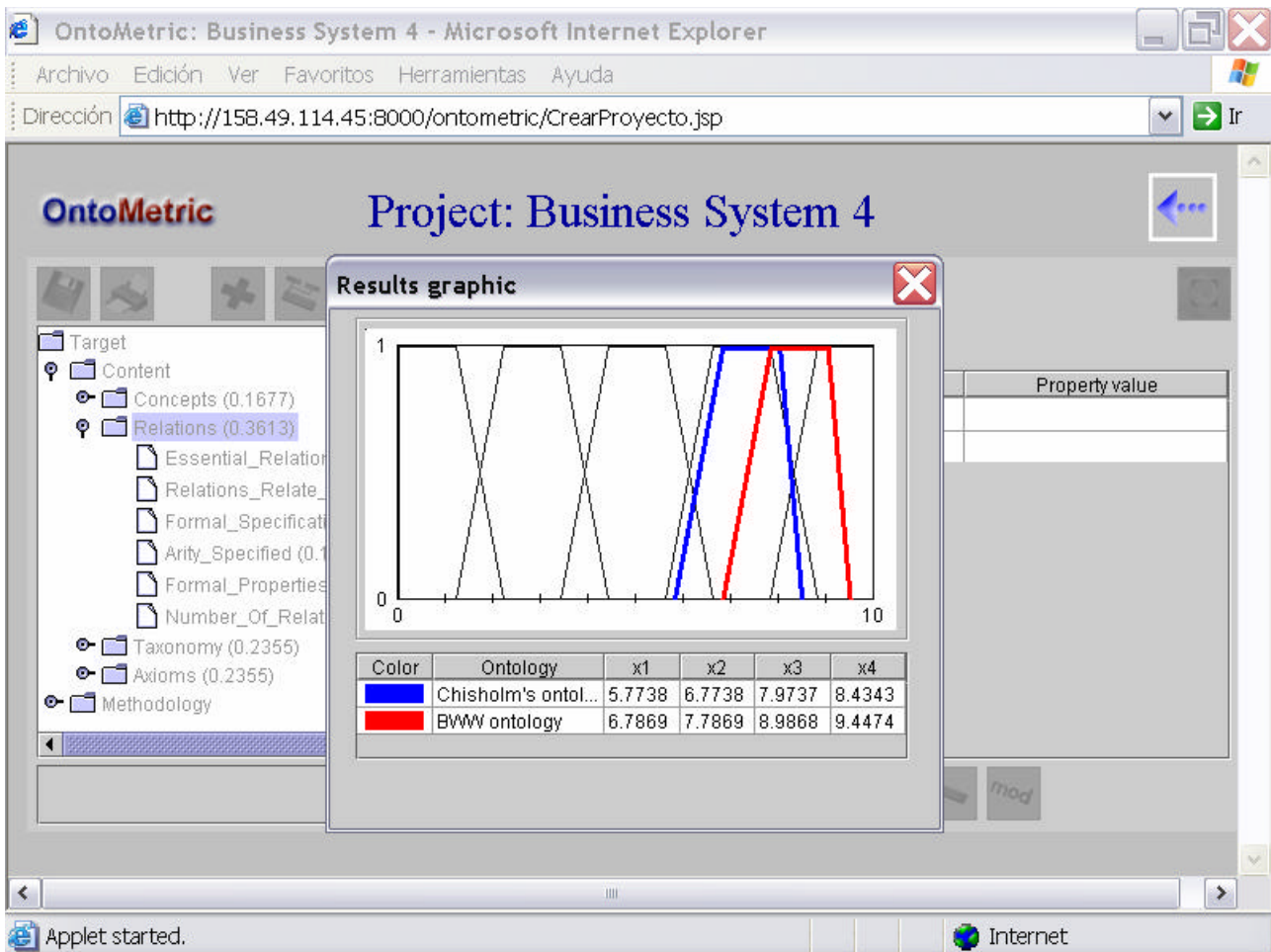


Figure 7. Suitability comparison of two ontologies (Chisholm's ontology and BWW ontology) in the factor "relations" using *OntoMetric Tool*.

STEP 5: lastly, combine the vectors of weights W obtained in step 3 with the values of the alternatives V , using the formula (e.g.): $\sum_n w_i \cdot v_i$. Figure 7 shows an example with the comparison of two alternatives (Chisholm's ontology and BWW ontology) in the factor "relations".

In large projects, which require a team of analysts, each person can provide their own values, and it will be necessary to reach an agreement. In this case, all the steps up to step 4.1 should reach a common consensus among the members of the evaluation team. Later, each analyst can value each one of the candidate ontologies in an individual way. Finally, the suitable ontology is chosen based on the results obtained.

CONCLUSIONS AND FUTURE WORK

ONTOMETRIC is an adaptation of the AHP method to help knowledge engineers choose the appropriate ontology for a new project; in order to do this, the engineer must compare the importance of the objectives, and study carefully the characteristics of ontologies. Although the specialisation of the characteristics and the assessment of the criteria of a particular ontology require considerable effort, the above framework provides a useful schema to carry out complex multi-criteria decision making. For example, the method can be applied to decide on the most appropriate ontology for business systems analysis. However, the evaluators need to specify in detail the aims of their analysis.

Feedback from project managers who have used the method, reveals that specifying the characteristics of a certain ontology is complicated and takes time, and its assessment is quite subjective; however, they state that, once the framework has been defined and if it is applied to one particular type of ontology, *ONTOMETRIC* helps to justify decisions taken, to "clarify ideas", and to weigh up the advantages and the risks involved in choosing one ontology from other options. The software tool, *OntoMetric Tool* (<http://158.49.116.183:8000/ontometric>), assists the knowledge engineer in applying the method. Shortly, it will be integrated in WebODE platform (Arpírez, 2001).

Future work will consist of adapting the method to different ontology scenarios (Uschold, 1999), and establishing formal metrics to assess the suitability of instances in knowledge-based systems for different domains.

ACKNOWLEDGMENTS

This work has been developed with the support of CICYT under contract TIC2002-04309-C02-01.

REFERENCES

- Arpírez J., Corcho O., Fernández-López M. and Gómez-Pérez A. (2001) *WebODE: a Workbench for Ontological Engineering*. First International Conference on Knowledge Capture (K-CAP'01). Victoria B.C.
- Bechhofer S. (2001) *OilEd*. University of Manchester. OntoWeb Workshop. Universal Ontology Editor Workshop. Vrije Universiteit Amsterdam.
- Bernaras A., Laresgoti I. and Corera J. (1996) *Building and Reusing Ontologies for Electrical Network Applications*. European Conference of Artificial Intelligence (ECAI'96). Edited by Wiley and Sons.
- Bollinger T. & Pfleeger S. (1990) *The Economics of Reuse: Issues and Alternatives*. Proceedings of the 8th Annual National Conference on Ada Technology. Atlanta. 436-447.
- Brickley D. and Guha R. (1999) *Resource Description Framework (RDF) Schema Specification*. W3C Proposed Recommendation. (<http://www.w3.org/TR/PR-rdf-schema>).
- Chisholm R.M. (1996) *A Realistic Theory of Categories. An Essay on Ontology*. Cambridge University Press.
- Corcho O. and Gómez-Pérez A. (2000) *A Roadmap to Ontology Specification Languages*. Proceedings of 11th European Workshop on Knowledge Acquisition. Modelling and Management (EKAW'00). 80-96. Jean-Les-Pins. 2000.
- Dean M., Connolly D., van Harmelen F., Hendler J., Horrocks I., McGuinness D.L., Patel-Schneider P.F., and Stein L.A. (2003). *OWL Web Ontology Language 1.0 Reference*. W3C Working Draft 21 February 2003.
- Domingue J. (1998) *Tadzebao and WebOnto: Discussing, Browsing, and Editing Ontologies on the Web*. Proceedings of the 11th Knowledge Acquisition Workshop. (KAW'98) B. Gaines and M. Musen. Banff.
- Euzenat J. (1995) *Building Consensual Knowledge Bases: Context and Architecture. Towards Very Large Knowledge Bases*. 2nd International Conference on Building and Sharing Very Large -scale Knowledge Bases (KBKS). Amsterdam IOS press. 143-155. Enschede.

- Farquhar A., Fikes R. and Rice J. (1996) *The Ontolingua Server: A Tool for Collaborative Ontology Construction*. Proceedings of the 10th Knowledge Acquisition for Knowledge-based Systems Workshop, 19, 1-44. Banff. Alberta.
- Fernández M., Gómez-Pérez A. and Juristo N. (1997) *METHONTOLOGY: From Ontological Art Toward Ontological Engineering*. Spring Symposium Series on Ontological Engineering. (AAAI'97). 33-40. Stanford.
- Fernández M., Gómez-Pérez A., Pazos A. and Pazos J. (1999a) *Building a Chemical Ontology Using METHONTOLOGY and the Ontology Design Environment*. IEEE Intelligent Systems, 14 (1), 37-46.
- Fernández M. (1999b) *Overview of Methodologies for Building Ontologies*. Proceedings of the IJCAI'99. Workshop on Ontologies and PSMs. Stockholm.
- Fernández M. (2000) *Método Bi-fase para la Conceptualización de Ontologías Basado en Meta-modelos*. Doctoral Thesis. Facultad de Informática. Universidad Politécnica de Madrid.
- Fenton N. and Pfleeger L. (1996) *Software Metrics, A Rigorous & Practical Approach*. 2nd Edition. International Thomson Press. London.
- Gómez-Pérez A. Knowledge Sharing and Reuse. (1998) *The Handbook of Applied Expert Systems*. J. Liebowitz, CRC Press.
- Gómez-Pérez A. and Benjamins R. (1999a) *Applications of Ontologies and Problem-solving Methods*. AI Magazine 20(1) 119-122.
- Gómez-Pérez A. (1999b) *Evaluation of Taxonomic Knowledge in Ontologies and Knowledge Bases*. Proceedings of the Knowledge Acquisition Workshop (KAW'99). University of Calgary/Stanford University.
- Gómez-Pérez A. and Rojas-Amaya M. (1999c) *Ontological Reengineering for Reuse*. Proceedings of the European Knowledge Acquisition Workshop (EKAW'99). Dagstuhl Castle. Germany.
- Gruber T. (1993) *A Translation Approach to Portable Ontology Specifications*. Knowledge Acquisition, 5 (2). 199-220.

- Gruber T. (1995) *Toward Principles for the Design of Ontologies Used for Knowledge Sharing*. International Journal of Human-Computer Studies, 43. 907-928.
- Gruninger M. and Fox M. (1995) *Methodology for the Design and Evaluation of Ontologies*. Proceedings of the IJCAI'95. Workshop on Basic Ontological Issues in Knowledge Sharing. Montreal.
- Horrocks I., Fensel D., Harmelen F., Decker S., Erdmann M. and Klein M. (2000) *OIL in a Nutshell*. Workshop on Applications of Ontologies and PSMs. European Conference of Artificial Intelligence (ECAI'00).
- Horrocks I. and van Harmelen F. (2001) *Reference Description of DAML+OIL Ontology Markup Language*. Draft Report. 2001.
- Hovy E. (1997) *What Would it Mean to Measure an Ontology?*. Internal Paper. ISI of the University of Southern California. Marina del Rey.
- Karp R., Chaundhri V. and Thomere J. (1999) *XOL: An XML-Based Ontology Exchange Language*. Technical Report. Artificial Intelligence Center. SRI International..
- Kifer M., Lausen G. and Wu J. (1995) *Logical Foundations of Object-Oriented and Frame-Based Languages*. Journal of the ACM, 42(4), 741-843.
- Lassila O. and Swick R. (1999) *Resource Description Framework (RDF). Model and Syntax Specification*. W3C Recommendations. (<http://www.w3.org/TR/PR-rdf-syntax>).
- Lenat D. and Guha R.V. (1990) *Building Large Knowledge-Based Systems: Representation and Inference in the Cyc Project*. Edited by Addison-Wesley Publishing Company, Inc. California.
- Lozano-Tello A. (2002) *Métrica de Idoneidad de Ontologías*. Ph.D. thesis. Departamento de Informática. Universidad de Extremadura.
- Luke S. and Heflin J. (2000) *SHOE 1.01. Proposed Specification*. SHOE Project. (<http://www.cs.umd.edu/projects/plus/SHOE/spec1.01.htm>).
- McGregor R. (1991) *Inside the LOOM classifier*. SIGART bulletin #2 (3) ,70-76.

- Motta E. (1999) *Reusable Components for Knowledge Modelling*. IOS Press. Amsterdam, 1999.
- Neches R., Fikes R., Finin T., Gruber T., Patil R., Senator T. & Swartout W (1991). *Enabling Technology for Knowledge Sharing*. AI Magazine. Fall 1991. 36-56.
- Noy N.F. and Hafner C. (1997) *The State of the Art in Ontology Design*. AI Magazine. Fall 1997. 53-74.
- Noy N.F. et al. (2001) *Creating Semantic Web Contents with Protege-2000*. IEEE Intelligent Systems 16(2). 60-71.
- Poulin J.S. (1997) *Measuring Software Reuse: Principles, Practices, and Economic Models*. Addison Wesley Longman Inc.
- Saaty, T. (1977) *A Scaling Method for Priorities in Hierarchical Structures*. Journal of Mathematical Psychology, vol.15, 234-281.
- Saaty, T. (1990): *How to Make a Decision: The Analytic Hierarchy Process*. European Journal of Operational Research, 48, 9-26.
- Staab S. and Maedche A. (2000) *Ontology Engineering Beyond the Modeling of Concepts and Relations*. Proceedings of the ECAI'00 Workshop on Applications of Ontologies and PSMs. Berlin.
- Swartout B., Patil R., Knight K. and Russ T. (1997) *Towards Distributed Use of Large-Scale Ontologies*. AAAI'97 Spring Symposium Series on Ontological Engineering. 138-148.
- Triantaphyllou E. (2002) *Multi-Criteria Decision Making Methods: A Comparative Study* Kluwer Academic Publishers.
- Uschold M. and King M. (1995) *Towards a Methodology for Building Ontologies*. Proceedings of the IJCAI'95. Workshop on Basic Ontological Issues in Knowledge Sharing. Montreal.
- Uschold M. (1996) *Building Ontologies: Towards a Unified Methodology*. Proceedings of Expert Systems (ES'96). Cambridge.

Uschold M. and Grüninger M. (1996) *Ontologies: Principles, Methods and Applications*. Knowledge Engineering Review, 2, 93-155.

Uschold M. (1998) *Where are the Killer Applications?*. Workshop on Applications of Ontologies and PSMs. (ECAI'98). Págs. 107-111. Brighton.

Uschold M. and Jasper R. (1999) *A Framework for Understanding and Classifying Ontology Applications* Proceedings of the IJCAI'99. Workshop on Ontologies and PSMs. Stockholm.

Weber R. (1997) *Ontological Foundations of Information Systems*. Coopers & Lybrand Accounting Research Methodology, Monograph No. 4, Melbourne.

Author	Year	Number of characteristics	Purpose
Gruber	95	5	To establish design criteria
Uschold y Grüninger	96	3	To establish design criteria
Noy y Hafner	97	28	To study several ontology designs
Hovy	97	36	To compare linguistic ontologies
Uschold	98	10	To identify the ontology roles in applications

Table 1. Summary of works related with characteristics of ontologies.

DIMENSION: TOOLS	CHARACTERISTIC	TYPE
CAPABILITIES (FACTOR)		(very_low, low, medium, high, very_high)
	Local Use	(non_supported, supported)
	Network Use	(non_supported, supported)
	Internet-based Use	(non_supported, supported)
	Clarity Of User Interface	(very_low, low, medium, high, very_high)
	Response Time	(very_low, low, medium, high, very_high)
	Reliability	(very_low, low, medium, high, very_high)
VISUALIZATION (FACTOR)		(very_low, low, medium, high, very_high)
	Browsers Shows Whole Information Of Terms	(non_supported, supported)
	Browser Allows Selection Of Detail Level	(non_supported, supported)
	Browser Shows Taxonomy	(non_supported, supported)
	Browser Shows Ad-hoc Relations	(non_supported, supported)
EDITION (FACTOR)		(very_low, low, medium, high, very_high)
	Tool Builds The Same Of Language	(non_supported, supported)
	Tool Allows Edition In Any Time	(non_supported, supported)
	Tool Shows Taxonomy Graphically	(non_supported, supported)
	Tool Allows Definition Of New Relations	(non_supported, supported)
INTERACTION (FACTOR)		(very_low, low, medium, high, very_high)
	Tool Allows Independent Use	(non_supported, supported)
	Tool Supplies Access Interfaces	(non_supported, supported)
	Documentation Using Access Interfaces	(very_low, low, medium, high, very_high)
	Access Interfaces Are OpenSource	(non_supported, supported)
	Documentation Programming Access Interfaces	(very_low, low, medium, high, very_high)
METHODOLOGICAL ASPECTS (FACTOR)		(very_low, low, medium, high, very_high)
	Tool Supports Whole Life Cycle	(non_supported, supported)
	Tool Supports Important Development Activities	(non_supported, supported)
	Tool Supplies Documentation About Built Products	(non_supported, supported)
	Tool Checks Consistency	(non_supported, supported)
COOPERATIVE ASPECTS (FACTOR)		(very_low, low, medium, high, very_high)
	Tool Creates Work Groups	(non_supported, supported)
	Tool Allows Simultaneous Working	(non_supported, supported)
	Tool Looks Edited Ontologies	(non_supported, supported)
	Tool Looks Edited Terms	(non_supported, supported)
	Tool Notifies The Changes To Group	(non_supported, supported)
	Tool Identifies The User Changes	(non_supported, supported)
TRANSLATION (FACTOR)		(very_low, low, medium, high, very_high)
	Tool Imports From Others Langs	(non_supported, supported)
	Tool Imports From Markup Langs	(non_supported, supported)
	Tool Exports To Langs	(non_supported, supported)
	Tool Exports To Markup Langs	(non_supported, supported)
	Translations Lose Minimu Semantic	(non_supported, supported)
	Translation Is Supervised	(non_supported, supported)
INTEGRATION (FACTOR)		(very_low, low, medium, high, very_high)
	Ease Of Integration	(very_low, low, medium, high, very_high)
	Difficulty Of Refering New Terms	(very_low, low, medium, high, very_high)
	Tool Allows Selection Of Terms To Integration	(non_supported, supported)
	Tool Checks Consistency In Integration Or Merge	(non_supported, supported)
	Assistance For Manual Merge	(non_supported, supported)
	Semi-automatic Merge	(non_supported, supported)

Table 2. Characteristics relates with the dimension “tool”.

DIMENSION: LANGUAGE	
CHARACTERISTIC	TYPE
DOMAIN KNOWLEDGE (FACTOR)	(very_low, low, medium, high, very_high)
CONCEPTS/ INSTANCES/ FACTS/ CLAIMS	(very_low, low, medium, high, very_high)
Allows_Instances_Of_Class	(non_supported, supported)
Has_Metaclasses	(non_supported, supported)
Can_Define_Classes_Without_Metaclasses	(non_supported, supported)
Allows_Facts	(non_supported, supported)
Allows_Claims	(non_supported, supported)
ATTRIBUTES	(very_low, low, medium, high, very_high)
Can_Define_Class_Attributes	(non_supported, supported)
Can_Define_Instance_Attributes	(non_supported, supported)
Can_Define_Local_Attributes	(non_supported, supported)
Can_Define_Global_Attributes	(non_supported, supported)
Can_Define_Polymorph_Attributes	(non_supported, supported)
Can_Define_Exceptions_In_Attributes	(non_supported, supported)
FACETS	(very_low, low, medium, high, very_high)
Has_Default_Attribute_Values	(non_supported, supported)
Has_Attribute_Types	(non_supported, supported)
Can_Define_Cardinality_Of_Attributes	(non_supported, supported)
Allows_Define_Procedural_Knowledge	(non_supported, supported)
Allows_New_Facets	(non_supported, supported)
RELATIONS	(very_low, low, medium, high, very_high)
Allows_Definition_Of_Functions	(non_supported, supported)
Arbitrary_N-ary_Relations	(non_supported, supported)
Allows_Define_Ad-hoc_Relations	(non_supported, supported)
Can_Constrain_The_Type_In_Relations	(non_supported, supported)
Can_Constrain_The_Value_In_Relations	(non_supported, supported)
Has_Operational_Definition	(non_supported, supported)
Can_Declare_Properties_In_Relations	(non_supported, supported)
TAXONOMIES	(very_low, low, medium, high, very_high)
Contain_SubclassOf_Relation	(non_supported, supported)
Contain_NotSubclassOf_Relation	(non_supported, supported)
Can_Define_Exhaustive_Decomposition	(non_supported, supported)
Can_Define_Disjoint_Decomposition	(non_supported, supported)
Multiple-Subclass-of_In_Classes	(non_supported, supported)
Multiple-Instance-of_In_Instances	(non_supported, supported)
AXIOMS	(very_low, low, medium, high, very_high)
Allows_Axioms_Embedded_In_Terms	(non_supported, supported)
Allows_Independent_Axioms	(non_supported, supported)
Allows_Axioms_In_First_Order_Logic	(non_supported, supported)
Allows_Axioms_In_Second_Order_Logic	(non_supported, supported)
PRODUCTION RULES	(very_low, low, medium, high, very_high)
Allows_Disjunctives_In_PRs	(non_supported, supported)
Allows_Conjunctives_In_PRs	(non_supported, supported)
Each_Rule_Has_Defined_A_Chaining_Mechanism	(non_supported, supported)
Each_Rule_Has_Defined_A_Priority	(non_supported, supported)
Procedures_In_The_Consequent_In_PRs	(non_supported, supported)
Certainty_Values_In_PR	(non_supported, supported)
INFERENCE MECHANISM (FACTOR)	(very_low, low, medium, high, very_high)
REASONING POTENTIAL	(very_low, low, medium, high, very_high)
Allows_Multiple_Inheritance	(non_supported, supported)
Allows_Monotonous_Reasoning	(non_supported, supported)
Allows_Non-Monotonous_Reasoning	(non_supported, supported)
Makes_Exceptions_In_Inheritance	(non_supported, supported)
Axioms_Keep_The_Consistency	(non_supported, supported)
Execute_Procedures	(non_supported, supported)
Inference_Mechanism_In_PR	(non_supported, supported)
INFERENCE ENGINE	(very_low, low, medium, high, very_high)
IE_Is_Sound_and_Complete	(non_supported, supported)
IE_Performs_Automatic_Classifications	(non_supported, supported)
IE_Deals_Exceptions	(non_supported, supported)
IE_Deals_Multiple_Inheritance	(non_supported, supported)
Allows_New_Inference_Engine	(non_supported, supported)

Table 3. Characteristics relates with the dimension “language”.

DIMENSION: CONTENT	
CHARACTERISTIC	TYPE
CONCEPTS (FACTOR)	(very_low, low, medium, high, very_high)
Essential Concepts	(very_low, low, medium, high, very_high)
Essential Concepts In Superior Levels	(very_low, low, medium, high, very_high)
Concepts Properly described In NL	(very_low, low, medium, high, very_high)
Formal Specification Of Concepts Coincides With NL	(very_low, low, medium, high, very_high)
Attributes Describe Concepts	(very_low, low, medium, high, very_high)
Number Of Concepts	(very_low, low, medium, high, very_high)
RELATIONS (FACTOR)	(very_low, low, medium, high, very_high)
Essential Relations	(very_low, low, medium, high, very_high)
Relations Relate Appropriate Concepts	(very_low, low, medium, high, very_high)
Formal Specification Of Relations Coincides With NL	(very_low, low, medium, high, very_high)
Arity Specified	(very_low, low, medium, high, very_high)
Formal Properties Of Relations	(very_low, low, medium, high, very_high)
Number Of Relations	(very_low, low, medium, high, very_high)
TAXONOMY (FACTOR)	(very_low, low, medium, high, very_high)
Several Perspectives	(very_low, low, medium, high, very_high)
Appropriate Not-Subclass-Of	(very_low, low, medium, high, very_high)
Appropriate Exhaustive-partitions	(very_low, low, medium, high, very_high)
Appropriate Disjoint-partitions	(very_low, low, medium, high, very_high)
Maximum Depth	(very_low, low, medium, high, very_high)
Average Of Subclasses	(very_low, low, medium, high, very_high)
AXIOMS (FACTOR)	(very_low, low, medium, high, very_high)
Axioms Solve Queries	(very_low, low, medium, high, very_high)
Axioms Infer Knowledge	(very_low, low, medium, high, very_high)
Axioms Verify Consistency	(very_low, low, medium, high, very_high)
Axioms Not Linked To Concepts	(very_low, low, medium, high, very_high)
Number Of Axioms	(very_low, low, medium, high, very_high)

Table 4. Characteristics relates with the dimension “content”.

DIMENSION: METHODOLOGY	
CHARACTERISTIC	TYPE
PRECISION (FACTOR)	(very_low, low, medium, high, very_high)
Delimitation_Of_Phases	(very_low, low, medium, high, very_high)
Specification_Of_Activities_By_Phases	(very_low, low, medium, high, very_high)
Specification_Of_Personnel_By_Phases	(very_low, low, medium, high, very_high)
Specification_Of_Techniques_By_Phases	(very_low, low, medium, high, very_high)
Specification_Of_Finished_Products_By_Phases	(very_low, low, medium, high, very_high)
USABILITY (FACTOR)	(very_low, low, medium, high, very_high)
Clarity_Of_Activities_and_Techniques_Description	(very_low, low, medium, high, very_high)
Quality_Of_Manuals	(very_low, low, medium, high, very_high)
Manuals_With_Complete_Examples	(very_low, low, medium, high, very_high)
MATURITY (FACTOR)	(very_low, low, medium, high, very_high)
Number_Of_Developed_Ontologies	(very_low, low, medium, high, very_high)
Number_Of_Different_Domains	(very_low, low, medium, high, very_high)
Importance_Of_Developed_Ontologies	(very_low, low, medium, high, very_high)

Table 5. Characteristics relates with the dimension “methodology”.

DIMENSION: COSTS	
<i>CHARACTERISTIC</i>	<i>TYPE</i>
Use Licences of the Ontology (FACTOR)	(very_low, low, medium, high, very_high)
Estimated costs of hw and sw (FACTOR)	(very_low, low, medium, high, very_high)
Costs of access interfaces (FACTOR)	(very_low, low, medium, high, very_high)
Use Licences of the ontology tools (FACTOR)	(very_low, low, medium, high, very_high)

Table 6. Characteristics relates with the dimension “costs”.

	Consumption	Price	Security	...
Consumption	1	1/6	2	
Price	6	1	3	
Security	1/2	1/3	1	
...				

Table 7. Example of comparison matrix for the first level to "Buy a car." The user considers "Consumption" six times less important than "Price", twice as important as "Security", etc.

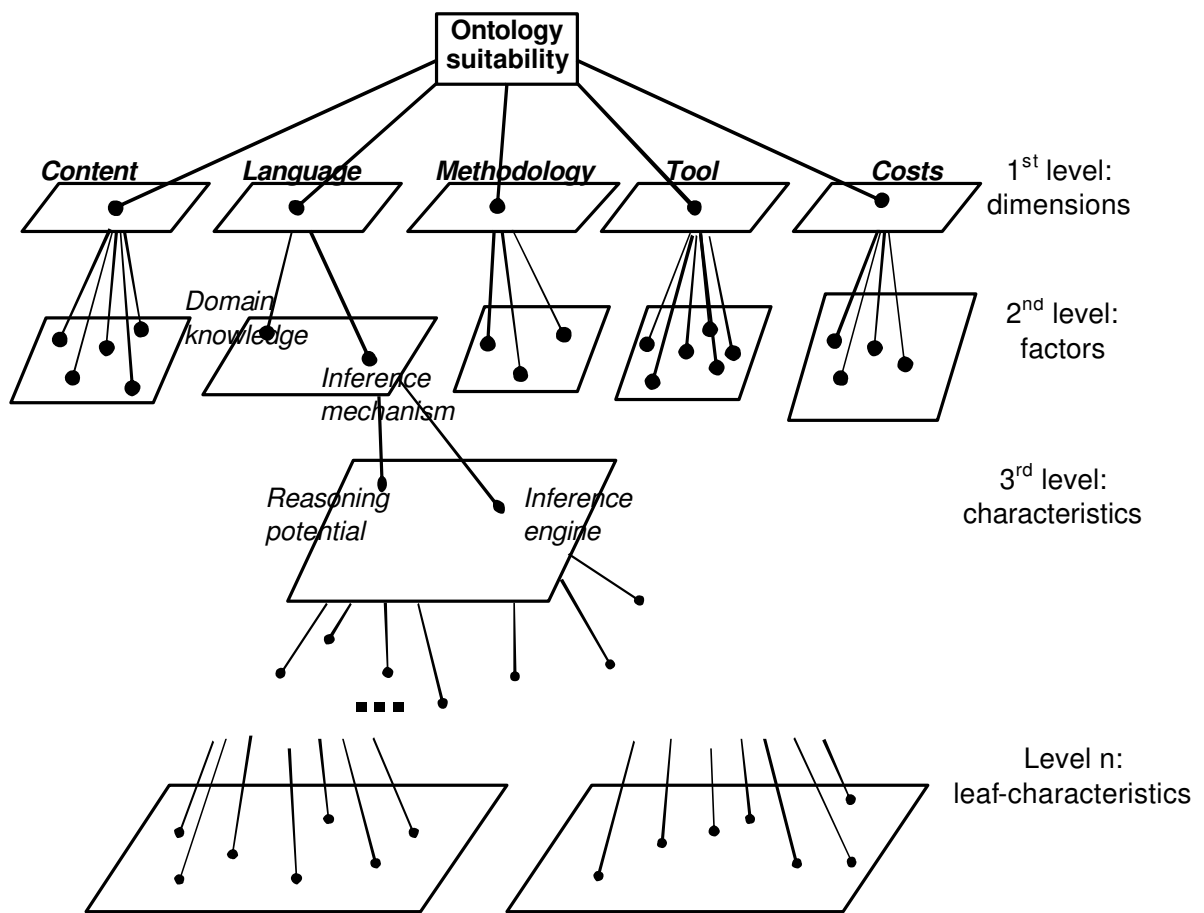


Figure 1. Representation of the multilevel tree of characteristics.

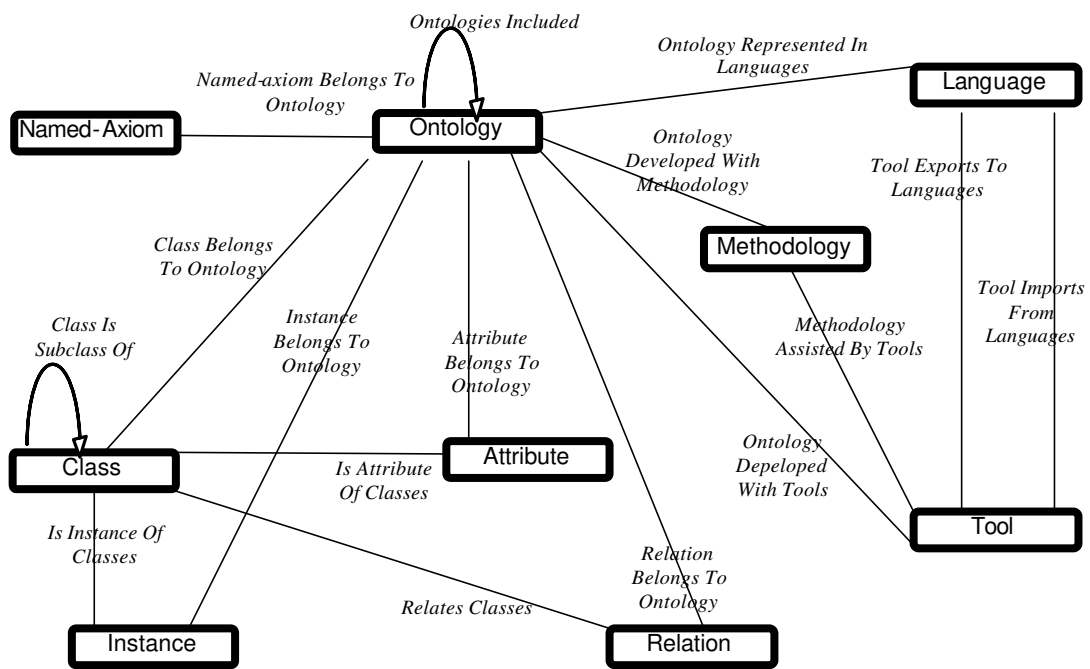


Figure 2. Diagram with direct relationships among the concepts in the *Reference Ontology*.

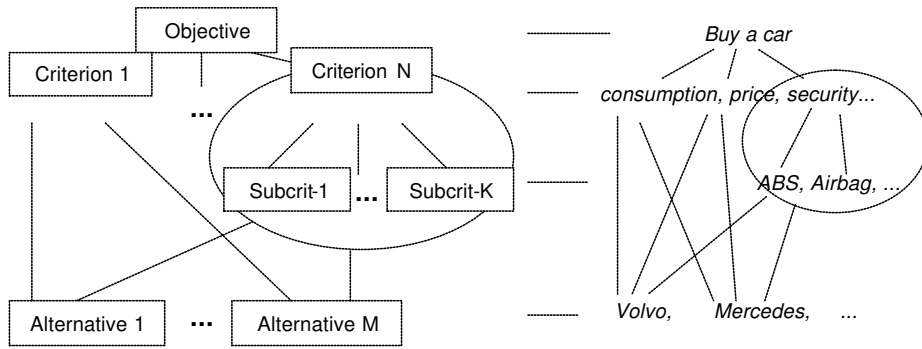


Figure 3. Hierarchical structure of the AHP method and example of the objective "Buy a car".

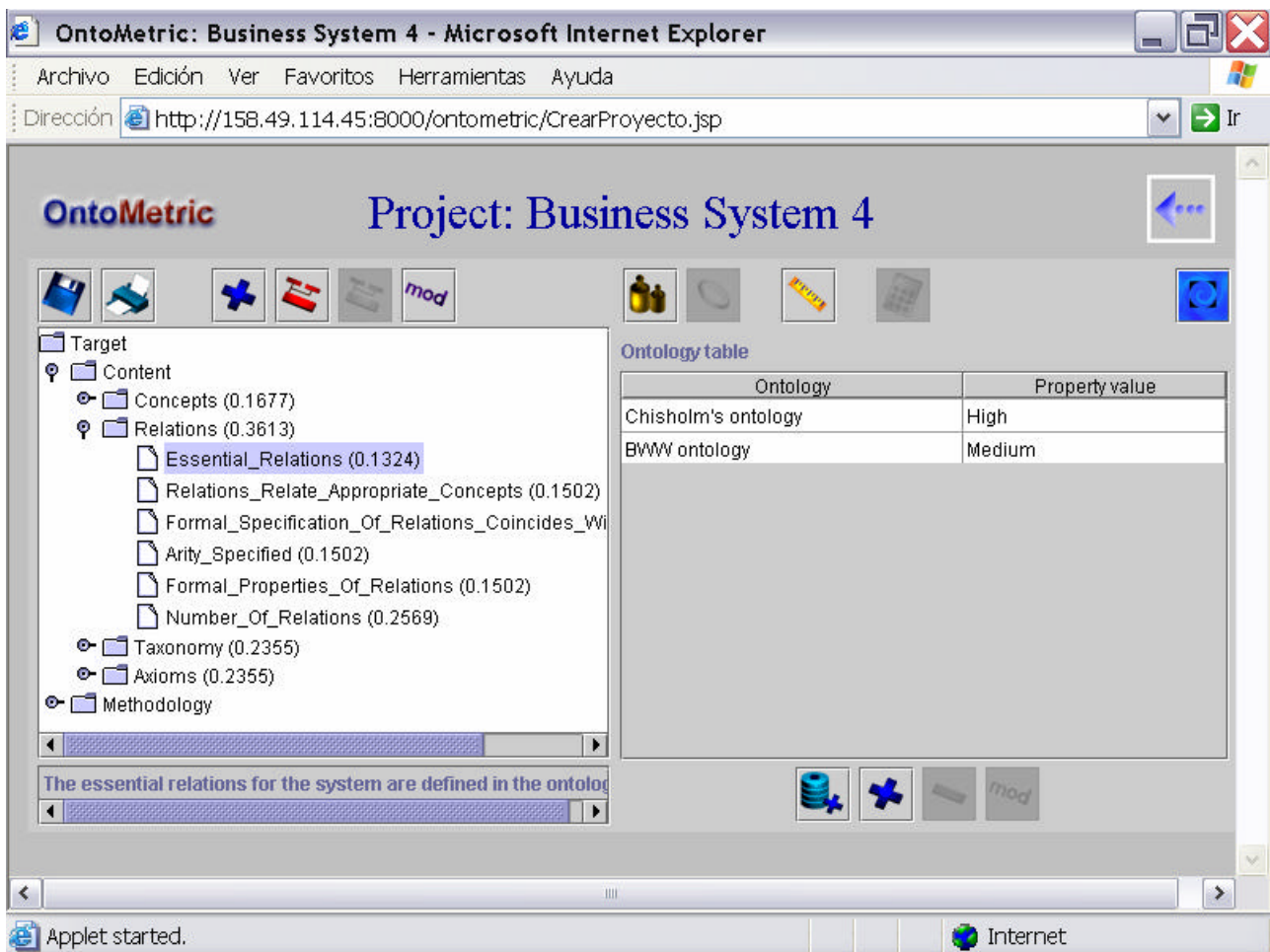


Figure 4. Adaptation of the multilevel tree of characteristics using *OntoMetric Tool*. Evaluation of two ontologies to be used on business systems analysis: *Chisholm's ontology* and *BWW ontology*.

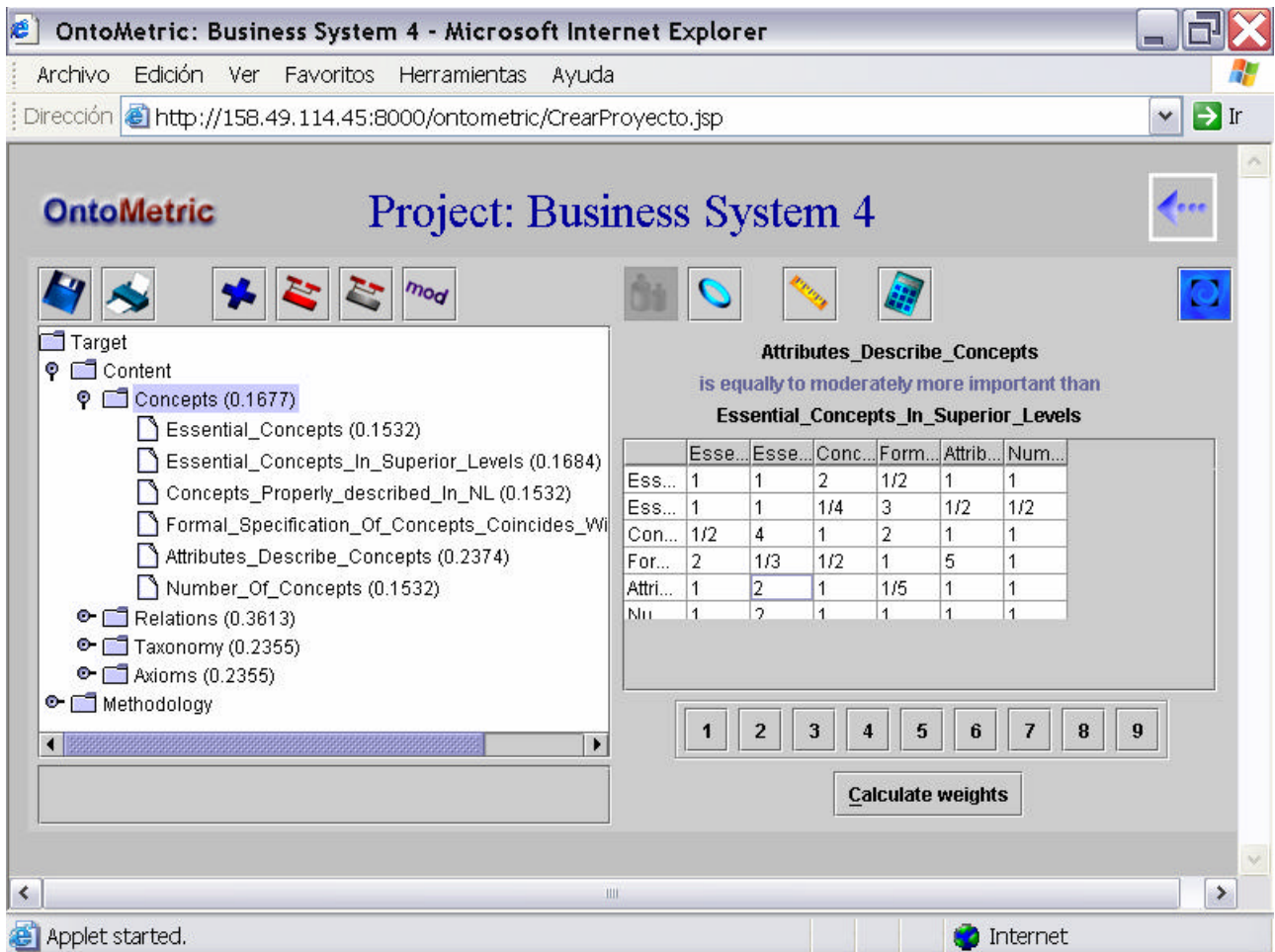


Figure 5. Building of the pairwise comparison matrixes using *OntoMetric Tool*.

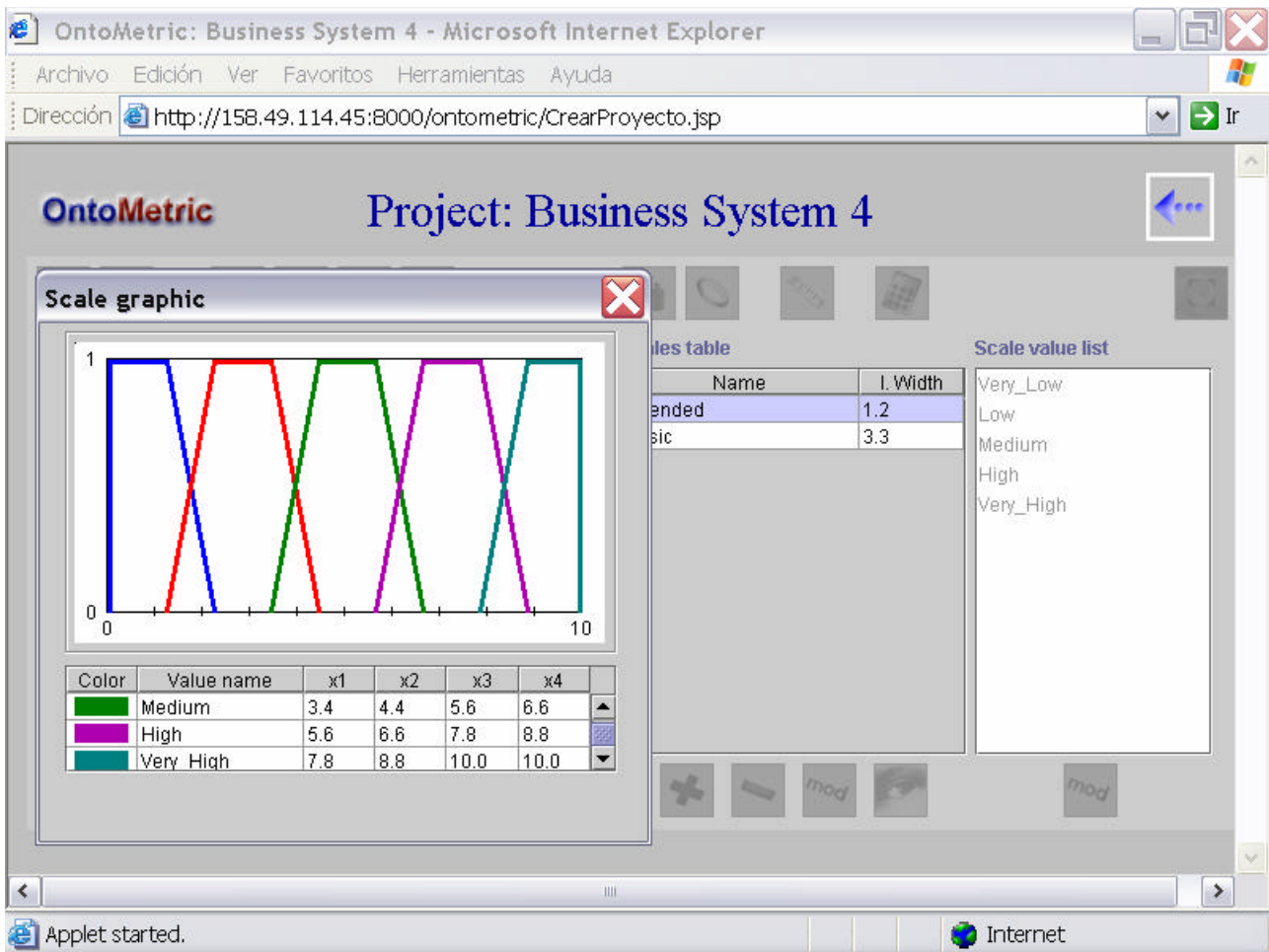


Figure 6. Establishing scales using *OntoMetric Tool*.

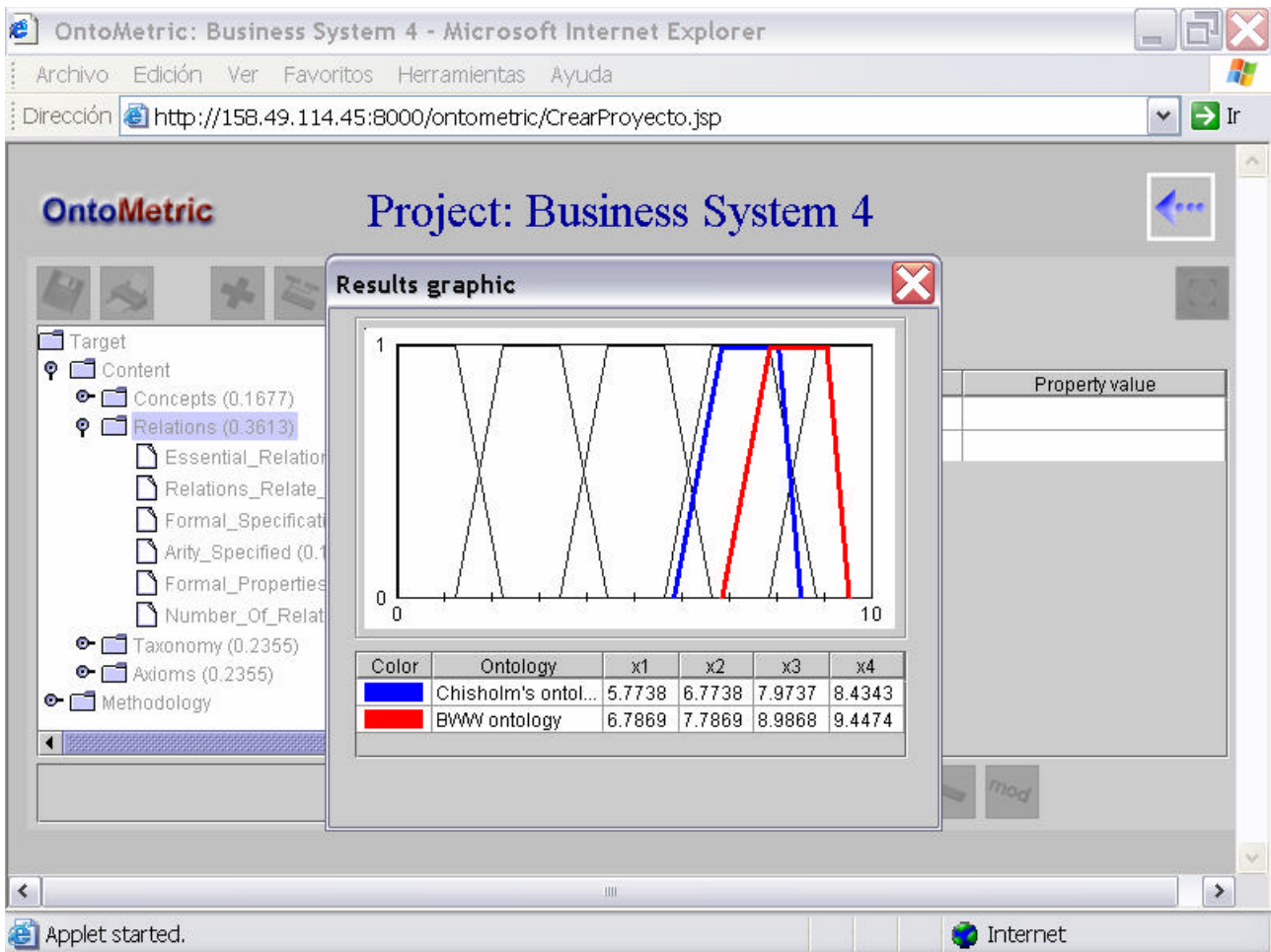


Figure 7. Suitability comparison of two ontologies (Chisholm's ontology and BWW ontology) in the factor "relations" using *OntoMetric Tool*.

Dr Adolfo Lozano-Tello is teaching/research assistant professor of Computer Languages and Systems since 1995 at the University of Extremadura, Spain. He received his BS in Computer Science from the University of Granada, Spain (1993). Lozano has worked at PROMAINEX (1993-1995) as computer consultant and programming team leader. He was director of computer science area in Minimally Invasive Surgery Centre, Cáceres, Spain (1995). He is a Ph.D. (2002) at Computer Science, University of Extremadura, Spain, with an special prize of extraordinary thesis. His Ph.D. research addresses the use of software components and ontologies in applications. His research interests include reusable software components rating, ontology design, and software component and ontology features identification. He has published more than 15 papers on the above issues on Software Engineering and Knowledge Engineering, and belongs to several projects related to these topics.

Dr Asunción Gómez-Pérez is the Director of the Ontology Group at UPM. She is BA in Computer Science (1990), MSc in Knowledge Engineering (1991), and PhD in Computer Science (1993) by Universidad Politécnica de Madrid (UPM). She is also MBA (1994) by Universidad Pontificia de Comillas. She was visiting (1994-1995) the Knowledge Systems Laboratory at Stanford University. She is Associate Professor at the Computer Science School at UPM. She was the Executive Director (1995-1998) of the Artificial Intelligence Laboratory at the school and she is currently a research advisor of the same lab. She is the director of the Ontology Group at the lab since 1995. Her current research activities include, among others: Interoperability between different kinds of ontology development tools, Methodologies and tools for building and merging ontologies, Ontological Reengineering, Ontology Evaluation and Ontology Evolution, as well as Uses of ontologies in applications related with Semantic Web, e-commerce and Knowledge Management. She acts as consultant of the European Commission on the FP6 program on the topic of Knowledge Technologies. She has published more than 70 papers on the above issues. She has leaded several national and international projects related to ontologies funded by various institutions and/or companies.

Adolfo Lozano-Tello

Address: Departamento de Informática. Universidad de Extremadura. Avda
Universidad s/n 10071. Cáceres. SPAIN

Phone: +34 927257204

FAX: +34 927257202

E-mail: alozano@unex.es

Asunción Gómez-Pérez

Address: Facultad de Informática . Universidad Politécnica de Madrid. Campus de
Montegancedo, s/n. 28660 Boadilla del Monte. Madrid. SPAIN

Phone: +34 913367439

FAX: +34 913367412

E-mail: asun@fi.upm.es