

Optical-to-X-ray emission in low-absorption AGN: results from the *Swift*–BAT 9-month catalogue

R. V. Vasudevan,¹* R. F. Mushotzky,² L. M. Winter³ and A. C. Fabian¹

¹*Institute of Astronomy, Madingley Road, Cambridge CB3 0HA*

²*Laboratory for High Energy Astrophysics, NASA/GSFC, Greenbelt, MD 20771, USA*

³*Center for Astrophysics and Space Astronomy, University of Colorado at Boulder, 440 UCB, Boulder, CO 80309-0440, USA*

Accepted 2009 July 9. Received 2009 July 9; in original form 2009 February 9

ABSTRACT

We present simultaneous optical-to-X-ray spectral energy distributions (SEDs) from *Swift*'s X-ray and UV–optical telescopes (XRTs and UVOTs) for a well-selected sample of 26 low-redshift ($z < 0.1$) active galactic nuclei (AGN) from the *Swift*/Burst Alert Telescope 9-month catalogue, the largest well-studied, hard X-ray-selected survey of local AGN to date. Our subsample consists of AGN with low intrinsic X-ray absorption ($N_{\text{H}} < 10^{22} \text{ cm}^{-2}$) and minimal spectral complexity, to more accurately recover the intrinsic accretion luminosity in these sources. We perform a correction for host galaxy contamination in all available UVOT filter images to recover the intrinsic AGN emission and estimate intrinsic dust extinction from the resultant nuclear SEDs. Black hole mass estimates are determined from the host galaxy Two-Micron All-Sky Survey *K*-band bulge luminosity. Accretion rates determined from our SEDs are on average low (Eddington ratios $\lambda_{\text{Edd}} \lesssim 0.1$) and hard X-ray bolometric corrections cluster at ~ 10 – 20 , in contrast with the higher values seen for quasars. An average SED for the 22 low accretion rate ($\lambda_{\text{Edd}} < 0.1$) objects is presented, with and without correction for extinction. Significant dust reddening is found in some objects despite the selection of low N_{H} objects, emphasizing the complex relationship between these two types of absorption. We do not find a correlation of the optical-to-X-ray spectral index with the Eddington ratio, regardless of the optical reference wavelength chosen for defining the spectral index. An anticorrelation of bolometric correction with black hole mass may reinforce ‘cosmic downsizing’ scenarios, since the higher bolometric corrections at low mass would boost accretion rates in local, lower mass black holes. We also perform a basic analysis of the UVOT-derived host galaxy colours for our sample and find hosts cluster near the ‘green valley’ of the colour–magnitude diagram, but better quality images are needed for a more definitive analysis. The low accretion rates and bolometric corrections found for this representative low-redshift sample are of particular importance for studies of AGN accretion history.

Key words: black hole physics – galaxies: active – galaxies: Seyfert.

1 INTRODUCTION

Active galactic nuclei (AGN) are known to emit radiation over the whole range of available energies observable using current detectors. Characterizing their spectral energy distribution (SED) is therefore important for understanding the different physical processes at work. The accepted paradigm behind the radiation output of AGN is accretion on to a supermassive black hole. The emission directly due to accretion emerges primarily in the optical, UV and X-ray regimes by a combination of thermal emission from an

accretion disc and inverse-Compton scattering of UV disc photons by a corona above the disc. A dusty torus partially absorbs the UV photons from the accretion disc, re-emitting them more isotropically in the infrared (IR). In this study, we aim to recover the true accretion luminosity in a representative sample of AGN, and use these results to identify trends between different SED parameters. However, recovering the true accretion luminosity can be complex, and previous studies have found a wide spread in the conversion factors (bolometric corrections) between the X-ray luminosity and the total accretion luminosity. This is, in a large part, due to intrinsic variation between objects in the whole AGN population, but is also complicated by numerous systematics and biases in the samples used.

*E-mail: ranjan@ast.cam.ac.uk

The pioneering study of Elvis et al. (1994, hereafter E94) presented radio-to-X-ray SEDs for 47 quasars and provided a useful template for determining bolometric corrections and identifying trends in the SED shapes across a range of AGN properties. Recent studies have confirmed the usefulness of the average bolometric corrections and SED parameters from E94, but the sample of quasars used was predominantly X-ray bright and their bolometric luminosities included the reprocessed IR emission. Richards et al. (2006) present IR-to-X-ray SEDs for 259 quasars selected by a combination of optical and mid-IR colour selection criteria, and highlight the spread in SED parameters within the sample. This large spread in SED parameters was known from E94, prompting refinements such as the template SED of Marconi et al. (2004) who employ the observed correlation between the X-ray-to-optical spectral index and X-ray luminosity to construct a luminosity-dependent SED, and importantly, they exclude the reprocessed IR emission to avoid double-counting of part of the accretion energy budget. A similar template is presented by Hopkins, Richards & Hernquist (2007) in their study on the bolometric quasar luminosity function. These SED templates allowed the diversity of SED shapes to be taken into account when calculating the supermassive black hole mass density from the X-ray background and AGN luminosity functions. More recently, Vasudevan & Fabian (2007, hereafter VF07) presented optical-to-X-ray SEDs for a sample of AGN observed by the Far Ultraviolet Spectroscopic Explorer (*FUSE*), which yielded interesting trends between the SED shape and Eddington ratio, later confirmed by Vasudevan & Fabian (2009, VF09 hereafter) using simultaneous data and reverberation mapping (RM) mass estimates to improve the accuracy of the bolometric luminosities and accretion rates. However, the sample of VF07 is by necessity UV bright, as it is selected by *FUSE*, and the sample of VF09 is restricted to those which are bright enough in the optical/UV for RM to be carried out.

These considerations emphasize the pressing need for a representative sample of AGN from which conclusions can be drawn about the accretion properties of the wider AGN population. One major factor influencing the selection of AGN for surveys is the nature of their absorption. It has been known for some time that X-ray and optical surveys detect different segments of the underlying AGN population (Mushotzky 2004), with X-ray surveys able to probe higher absorbing column density. The standard physical mechanisms for the generation of X-ray emission in AGN produce a power law, but often AGN exhibit X-ray spectra deviating significantly from this, in part due to absorption. The geometry of the absorption in X-rays is the subject of much debate, and the complex spectra in some sources can be accounted for with either ‘partial covering’ scenarios (Gierliński & Done 2004) or strong reflection from the accretion disc due to light bending (Miniutti & Fabian 2004), and warm absorbers can also complicate our view of the intrinsic emission (Reynolds et al. 1997; Blustin et al. 2005). Many of the reverberation-mapped AGN in VF09 showed signs of such spectral complexity, and the authors identified the difficulties in regaining the true accretion luminosity in these cases.

The Burst Alert Telescope (BAT) on board the *Swift* satellite proves invaluable for addressing many of these considerations. Canonical levels of absorption (column densities $N_{\text{H}} < 10^{24} \text{ cm}^{-2}$) imprint signatures on the 0.1–10 keV X-ray band, so the very hard X-ray sensitivity of the instrument (14–195 keV) provides the capability of observing AGN in a bandpass relatively unaffected by such absorption. The 9-month catalogue of BAT-detected AGN (hereafter the *Swift*/BAT catalogue; Tueller et al. 2008) therefore provides an unprecedented level of completeness (with respect to absorption) when surveying the AGN population as it is unbiased to all but the

Table 1. Central frequencies of the UVOT filters.

Filter	Central wavelength (Å)
<i>V</i>	5468
<i>B</i>	4392
<i>U</i>	3465
<i>UVW1</i>	2600
<i>UVM2</i>	2246
<i>UVW2</i>	1928

most heavily obscured sources. The study of Winter et al. (2009) presents a comprehensive overview of the X-ray spectral properties of the 153 sources in the *Swift*/BAT catalogue and allows us to select an appropriate sample from which we can be confident of calculating accurate luminosities and SED shapes. Most importantly, they present values of absorbing column density N_{H} for each source, determined from fits to the X-ray data from the literature and new fits by the authors themselves, and identify those sources in which significant spectral complexity is present. In this work, we preferentially select those with lower absorption and minimal spectral complexity, facilitating a more straightforward calculation of the accretion luminosity. We assume that for such sources, the accretion luminosity excludes the reprocessed IR emission and is principally seen in the optical-to-X-ray regime (as in VF07; VF09). Additionally, AGN with more X-ray absorption are expected to display higher levels of optical–UV reddening, the calculation of which depends on the precise form of the extinction curve and is difficult to account for when calculating the total luminosity. These considerations motivate our selection of objects with low N_{H} .

Variability in AGN can produce large changes in luminosity, over time-scales from hours to years. In order to catch an accurate snapshot of the total energy budget in an AGN at a given time, it is therefore highly desirable to use simultaneous data. The potential inaccuracies in SED parameter values from non-simultaneous SED data are discussed in detail in VF07 and VF09, with the latter following the approach of Brocksopp et al. (2006) by using contemporaneous optical-to-X-ray data from *XMM-Newton*’s EPIC-pn and Optical Monitor instruments. In this work, we make use of *Swift*’s own coaligned UV–optical telescope (UVOT) and X-ray telescope (XRT) to determine simultaneous SEDs. Many of our target sub-samples from the *Swift*/BAT catalogue have simultaneous UVOT and XRT observations available in the archives; typically, the UVOT data span six filters between 5468 Å and 1928 Å, providing a window on to a substantial fraction of the disc emission. The central frequencies of the UVOT filters are given in Table 1.

The large wavelength coverage, field of view and spatial resolution of the UVOT data also allow a correction for the host galaxy flux to be estimated for each AGN. We employ *GALFIT* for this purpose, a program for performing 2D fitting of point spread function (PSFs) and various analytical profile forms to galaxy images (Peng et al. 2002). For a detailed discussion of the requirements of *GALFIT*, the reader is directed to peruse the accompanying documentation.¹ We also present basic results on the host galaxies from the *GALFIT* fitting process. The UVOT data used in this study also clarify how the degree of host galaxy contamination varies with the wavelength (UVOT filter).

Understanding variations in the AGN SED is important, and one of the main drivers of these variations appears to be the accretion rate

¹ <http://users.ociw.edu/peng/work/galfit/galfit.html>

(parametrized as the Eddington ratio, $L_{\text{bol}}/L_{\text{Edd}}$, for an object with bolometric luminosity L_{bol} and Eddington luminosity $L_{\text{Edd}} = 1.38 \times 10^{38} [M_{\text{BH}}/M_{\odot}] \text{ erg s}^{-1}$ for a black hole of mass M_{BH}). The recent Principal Component Analysis of Kuraszkiewicz et al. (2009) on a sample of red Two-Micron All-Sky Survey (2MASS) AGN SEDs identifies the Eddington ratio as the ‘eigenvector 1’ for these AGN (being responsible for most of the variation in the SED shapes). Both VF09 and VF07 highlight substantial variations in the bolometric output (in comparison to the X-ray output) across the observed range of Eddington ratios, and numerous studies explore these themes further (Kelly et al. 2008; Shemmer et al. 2008). Eddington ratios require accurate estimates of the black hole mass in AGN, but since the most accurate estimates from RM are only available for 35 AGN, here we employ the $M_{\text{BH}}-L_{\text{bulge}}$ correlation to calculate black hole masses. The combination of robust determinations of the bolometric luminosity and sensible estimates of the black hole mass provides great opportunities for insight into the accretion process. In this work, we discuss the analysis of the *Swift* data, the construction of SEDs, the derivation of SED parameters, the identification of correlations and trends, and finally the host galaxy properties.

2 SAMPLE SELECTION

We firstly apply a cut in intrinsic column density $N_{\text{H}}^{(\text{int})}$, selecting only those with $\log(N_{\text{H}}^{(\text{int})}) < 22$ from the list of objects in the 9-month BAT catalogue as presented in Winter et al. (2009). This is the suggested cross-over point between ‘absorbed’ and ‘unabsorbed’ classes of AGN in their study, which also classifies the objects in the sample into two broad categories based on X-ray spectral properties: ‘simple’ (S) and ‘complex’ (C). The S class has X-ray spectra which are best fitted by a simple power law with intrinsic and galactic absorption (sometimes with a soft excess), whereas the C class displays more complex X-ray spectra which are better fitted by models such as double-power laws or partial covering (these models are illustrative in that they highlight the spectral complexity; more detailed fits including reflection may also be possible). We also eliminate any objects from the C class, as they will present difficulties when determining the true accretion luminosity (as discussed in VF09).

In order to facilitate profile fits to optical and UV images of the host galaxies, we also impose a redshift cut, requiring $z < 0.1$ for our selection. For $z < 0.1$, the angular resolution of the UVOT (~ 1.7 arcsec) allows separation of the nucleus from the galaxy to a physical length-scale of 3 kpc, thus allowing a reasonable galaxy–AGN separation while still yielding 54 potential objects for study from the sample. We then identify those for which *Swift* XRT and UVOT data are available from the High Energy Astrophysics Science Archive Research Center (*HEASARC*²), yielding 33 objects. For estimating black hole masses, we also obtain *K*-band magnitudes from the 2MASS catalogues. The key requirement for calculating black hole masses is an estimate of the bulge luminosity. The *K* band is least subject to the effects of Galactic reddening and predominantly traces the older stars in the bulge over the stellar populations of the galaxy disc, motivating its selection over the *J* and *H* bands also available in the 2MASS catalogues. The 2MASS data were gathered with two ground-based telescopes: the Whipple Observatory in Arizona, USA, and the Cerro Tololo telescope at La Serena, Chile. The limitations introduced by ground-based observations (most importantly, the level of seeing for each observation) need to be taken

into account when attempting to recover the bulge luminosity. This is discussed at greater length in Section 3.4 on black hole mass determination. We required the centroids reported for the 2MASS data to be within 2.0 arcsec of the NASA Extragalactic Database (NED) position in the initial case. For a few objects which lie just outside this limit, the 2MASS images were downloaded and the locations provided were checked against the refined positions obtained from the XRT and UVOT images; if a confident identification of a counterpart to the X-ray AGN was made, the 2MASS data were used in further processing. At any rate, objects with 2MASS centroids greater than 5.0 arcsec away from their NED positions were rejected altogether. Three potential objects are excluded from our sample by their absence from the catalogues (IGR 21277+5656, IGR J07597–3842 and LEDA 138501).

Finally, we check for blazars in the sample. The SED properties of blazars make them unsuitable for performing a bolometric luminosity calculation based on the ‘disc + power-law’ model employed here since their UV and X-ray luminosity is dominated by jet emission. Out of the 30 objects which satisfy all the above criteria, four objects are excluded based on their NED classification as blazars: Mrk 501, 2MASX J19595975+6508547, ESO 362–G021 (PKS 0521–36) and PKS 0548–322. The final selection of 26 objects is presented in Table 2, along with their redshifts and details of the *Swift* observations used.

3 PROCESSING OF MULTIBAND DATA

We download the optical–UV and X-ray data for our selection from HEASARC. When multiple observations were available, those with the maximum UVOT exposure time and maximum number of UVOT filters were preferentially selected. Pipeline-processed ‘level 2’ FITS files are readily available from HEASARC. The data for the 26 sources identified in section 2 were then processed according to the procedure outlined in the following sections.

3.1 Optical–UV photometry: correcting for the host galaxy

We employ the custom-built software tools designed specifically for processing UVOT data where possible. Each individual UVOT filter data file in general contains a number of exposures which were summed using the tool *UVOTIMSUM*. The *UVOTSOURCE* tool was then used to extract magnitudes from simple aperture photometry. Source and background regions were created for this purpose, with the position of the source region being obtained from the NED in the first instance, followed by fine adjustment of the source region position if necessary. The required source region size for *UVOTSOURCE* is 5 arcsec, and the background region can be of any size (at the time of writing): we used background regions with radii from 5 arcsec to ~ 30 arcsec depending on the frequency of other foreground sources in the image. The magnitudes from *UVOTSOURCE* provide a useful first-order estimate of the nuclear flux, and were saved for a later comparison with the more carefully determined nuclear fluxes using PSF fitting.

The images were then prepared for use within *GALFIT*. One of the requirements for accurately determining the nuclear flux is to have suitable PSFs available for each image. Preliminary studies of the UVOT PSF in the six filters show that the PSF shape may depend on a variety of factors including the position on the detector, count rate of the source and the filter being used. The average PSF full width at half-maxima (FWHM) range between 1.7 and 2.5 arcsec, when considering all six filters. As discussed by Kim et al. (2008a) in the context of *Hubble Space Telescope* (*HST*) images, the choice

² <http://heasarc.gsfc.nasa.gov/cgi-bin/W3Browse/swift.pl>

Table 2. Details of UVOT observations used for the objects in our sample.

AGN	Redshift	<i>Swift</i> observation ID	Total UVOT exposure time (ks)	XRT exposure time (ks)
UGC 06728	0.006518	00035266001	2.1	6.33
MCG–06-30-15	0.007749	00035068003	3.19	8.72
NGC 4593	0.009	00037587001	1.83	4.88
Mrk 766	0.012929	00030846039	1.34	3.71
ESO 548–G081	0.01448	00035250002	2.8	6.33
Mrk 352	0.014864	00035243002	6.38	15.91
NGC 7469	0.016317	00031245005	1.38	4.27
NGC 5548	0.017175	00030022062	1.84	5.13
WKK 1263	0.02443	00035268002	1.45	8.94
ESO 490–G026	0.02485	00035256001	2.87	8.51
Mrk 590	0.026385	00037590001	1.43	4.46
1RXS J045205.00+493248	0.029	00035281002	0.65	1.99
SBS 1301+540	0.0299	00035269001	2.3	7.85
Mrk 279	0.030451	00037591001	1.75	5.22
MCG +04-22-042	0.032349	00035263001	3.0	9.11
Ark 120	0.032713	00037593003	1.44	4.11
IRAS 05589+2828	0.033	00035255001	2.68	5.91
3C 120	0.03301	00036369001	2.1	6.37
Mrk 509	0.034397	00035469003	2.5	6.8
Mrk 841	0.036422	00035468002	3.33	8.4
Mrk 1018	0.042436	00035166001	1.41	4.53
NGC 985	0.043143	00036530005	3.16	8.65
3C 390.3	0.0561	00037596001	2.25	6.46
IRAS 09149–6206	0.0573	00035233002	1.87	5.04
SBS 1136+594	0.0601	00035265001	3.22	9.17
2MASX J21140128+8204483	0.084	00035624002	1.72	5.09

of the PSF can significantly affect PSF fitting results, since a poorly chosen PSF can give profile parameters that deviate dramatically from their ‘true’ values (also see Simmons & Urry 2008 for another discussion of the factors affecting the AGN–host galaxy decomposition). To mitigate these problems and minimize the PSF mismatch, we adopted the following approaches. The first and preferred approach was to generate a unique PSF for each filter image from a few known guide stars in the image, requiring the stars selected to be within a certain range of the count rate of the source of interest (as determined from simple aperture photometry with UVOT-SOURCE). First, the UVOT utility UVOTDETECT was used to provide a list of detectable sources in each image (UVOTSOURCE essentially uses the SEXTRACTOR package for this purpose). These were then cross-checked against published catalogues of known guide star positions. The XBROWSE tool in the HEASOFT suite of utilities provides access to many such catalogues, such as the *US Naval Observatory* (USNO) and *HST* guide star catalogues. Typically, the USNO catalogue was used to obtain a list of such stars, requiring them to be within 13 arcmin of the AGN of interest to ensure that they were within the UVOT field of view. Typically, between 3 and 20 guide stars were used to generate each PSF image. For the lowest energy *V* band, this translated into a requirement that the stars were typically within 0.1–0.2 dex of the target AGN count rate; for the highest energy *UVW2* band, the limits were typically within 1.5–2.0 dex of the target AGN count rate for obtaining a similar number of guide stars. Finally, the regions of the images containing these stars were then summed to form a final PSF image, using the IDL code by A. A. Breeveld³ designed specifically for generating PSFs from UVOT images. The resulting PSFs were used in GALFIT to model the central AGN in the galaxy profiles.

When this approach was not possible due to lack of guide star detections within reasonable count-rate limits (or lack of point sources which were also identified in the guide star catalogue), the filter image was viewed using the XIMAGE package and a ‘King’ profile model was fitted to an identifiable point source which looked similar in form and intensity to the AGN nucleus. The parameters from the fit were then used as a model for the PSF in GALFIT (via the ‘Moffat’ model option), in lieu of a real PSF image. In the vast majority of cases, a real PSF image could be extracted from the images and a ‘King/Moffat’ model PSF was rarely required. In only one filter image for one object, a Gaussian model was found to fit the nucleus better than other available models, with the Gaussian width fixed at the average FWHM of the UVOT PSF in that filter as reported in the CALDB documentation.⁴

The PSF or PSF model thus generated was then fitted along with other galaxy profile components in GALFIT. We performed tests to ascertain the level of detail discernible within the UVOT images, starting initially with a four-component model consisting of a constant sky background, a central nuclear point source, a Sersic profile for the galaxy bulge and an outer exponential disc. Such tests overwhelmingly indicated that four components incorporated too high a degree of degeneracy, due to the large UVOT PSF size. The PSF of the UVOT instrument is typically of the same size as the galaxy bulge would be in higher resolution images of galaxies near redshift ~ 0.05 , and indeed for some of the more distant sources, the UVOT PSF is as large as the host galaxy itself. Often the Sersic profile component would shrink to a size comparable to that of the PSF and would ‘absorb’ some of the flux which would otherwise be reported as coming from the PSF component. Therefore, three components were adopted as sufficient to give sensible model reconstructions of

³ Mullard Space Science Laboratory – <http://www.mssl.ucl.ac.uk/>⁴ <http://heasarc.nasa.gov/docs/heasarc/caldb/swift/docs/uvot/>

the profiles seen in the images (sky + PSF + exponential disc). To get as accurate a representation as possible of the nuclear flux, the following iterative algorithm was employed using GALFIT:

- (i) All bright foreground stars were excluded from the fit by creating a bad pixel mask which covered these unwanted objects.
- (ii) The sky background was fitted independently to a blank region of the sky close to the AGN of interest.
- (iii) The central point source and sky were fitted together, keeping the sky parameters constant from the previous step. The central point source magnitude was seeded with that obtained from UVOTSOURCE aperture photometry, to provide a sensible initial guess of the nuclear flux.
- (iv) The sky, central source and exponential disc components were fitted together, keeping the sky and central source parameters fixed at the values from the previous step.

After these steps, the resultant model fits were compared with the original images and the residual images obtained by subtracting the model from the data were inspected. In the first instance, the positions of the different components were left free to fit. If any obvious signs of the PSF mismatch or other problems with the fit were evident, then these positions were frozen manually by inspection and the fit was re-evaluated. In some cases, such as for point-like AGN at the higher end of our redshift range, a simpler model consisting of just a PSF and a constant background was adopted, if the first-pass attempt at fitting an exponential disc did not show a significant galaxy disc component. Where the PSF image displayed an obvious PSF mismatch, a ‘King’ profile fit was also attempted. The best fit obtained from all these approaches, determined by visual inspection of the residual image, was chosen to obtain the final nuclear magnitudes. An example of the sky–nucleus–disc decomposition is shown in Fig. 1. The choices of profiles used for each filter in each object are given in Table 3.

3.1.1 Comparison with the HST

The detailed study of Bentz et al. (2006) highlights the need to take into account host galaxy contamination when calculating nuclear luminosities from optical *HST* images, specifically in the context of determining the radius–luminosity relationship for the broad line region (BLR) in AGN. They find that even for an aperture of 1 arcsec, there can be significant host galaxy contamination. However, the *HST* Advanced Camera for Surveys (ACS) offers a significant advantage with a PSF of a FWHM of 0.0575 arcsec in contrast to the typical FWHM of ~ 2 arcsec for the UVOT PSFs. This somewhat limits our ability to determine the host galaxy contamination, since the stars used to model the PSF often are as wide in extent on the sky as some of the more distant galaxy discs in our sample. We attempt to gauge the possible underestimate of host galaxy contribution with the UVOT using publically available images from the *HST* ACS and Wide Field and Planetary Camera 2 (WFPC2) for one of our objects, NGC 4593. This object is known to have a clearly identifiable spiral galaxy structure surrounding the central AGN so it provides a good foundation for comparison between the UVOT and *HST* image quality (see Fig. 2). Our UVOT analysis also shows a clear discrepancy between the 5.0 arcsec aperture photometry results and those from PSF fitting in the optical (*V*, *B* and *U*) bands. Since some level of galaxy contamination is clearly identifiable using UVOT images, it should therefore be more readily identifiable in the *HST* images. We perform simple aperture photometry using the ds9 package on images from the ACS for the F550M and

F330W filters (centred on 5580 Å and 3353 Å, respectively). We extract counts from the nucleus with a circular region with a radius of 0.2 arcsec, which should provide an upper limit on the nuclear flux and contain >90 per cent of the counts from the nucleus. We also determine the total counts from a 5 arcsec region, as used with UVOTSOURCE for comparison.

In the F550M filter (closest to the UVOT *V* band in wavelength), we identify a difference of a factor of ~ 5 in flux between the smaller and larger apertures for the *HST*. In comparison, the difference in fluxes between the 5.0 arcsec UVOTSOURCE magnitude and that from PSF fitting to the UVOT image is a factor of ~ 2.4 . Assuming that the 5.0 arcsec fluxes from the two instruments should theoretically be identical, this implies that the flux reported to the nucleus by PSF fitting to UVOT images is a factor of $\sim 5.0/2.4$ too large. The problem is less acute in the F330W filter (closest to the UVOT *U* band), with an identical analysis yielding the fact that the nuclear flux from the UVOT image is a factor of $\sim 1.8/1.2$ of that from the *HST* image. There is also the issue of optical AGN variability, which could be artificially increasing these ratios (the continuum near 5100 Å is known to vary by factors of ~ 7 in the case of NGC 5548; see Peterson et al. 1999), but it is difficult to disentangle this from the error intrinsic to the instrument, and the factors we calculate here are therefore probably upper limits. This reflects a fundamental limitation of the resolution of the UVOT images, but the subsequent analysis shows that in many of the objects seen, attempting to remove the host galaxy does produce an optical–UV SED shape closer to that expected for an AGN despite possible overestimates of the nuclear flux. A more detailed analysis using observations from the Kitt Peak National Observatory (KPNO) 2.1 m telescope should provide a much more detailed galaxy profile decomposition (Koss et al. in preparation), which will make use of the smaller PSF available with the KPNO (FWHM ~ 1.0 – 1.4 arcsec).

3.2 Optical–UV photometry: correcting for coincidence loss and Galactic extinction

For AGN with very high count rates, the fluxes obtained from the UVOT images are highly susceptible to coincidence losses and therefore often appear lower than their true values. Coincidence loss refers to the phenomenon where multiple photons arrive at the same location on the detector during a single frame, and is discussed in detail in Poole et al. (2008). They present the theoretical correction to be applied to the measured count rate for individual pixels, but also point out the need to account for the spread of a point source over many pixels. They also provide an empirical correction which takes the latter effect into account. We correct all of our magnitudes from GALFIT for coincidence loss manually using these expressions; the UVOTSOURCE aperture photometry magnitudes are automatically corrected for coincidence loss.

There is some scope for error in the coincidence loss correction when the PSF image is not quite a point source, as the coincidence loss correction only holds good for point sources. This problem is especially pronounced for very bright sources. In these sources, the coincidence-corrected fluxes are sometimes even greater than those obtained from UVOTSOURCE, which should theoretically provide an upper limiting nuclear flux. In cases where this phenomenon is very pronounced, we do not use the magnitudes from GALFIT and instead employ the 5.0 arcsec aperture photometry magnitudes in any further analysis.

After calculation of magnitudes from both GALFIT and UVOTSOURCE, these magnitudes were corrected for Galactic extinction

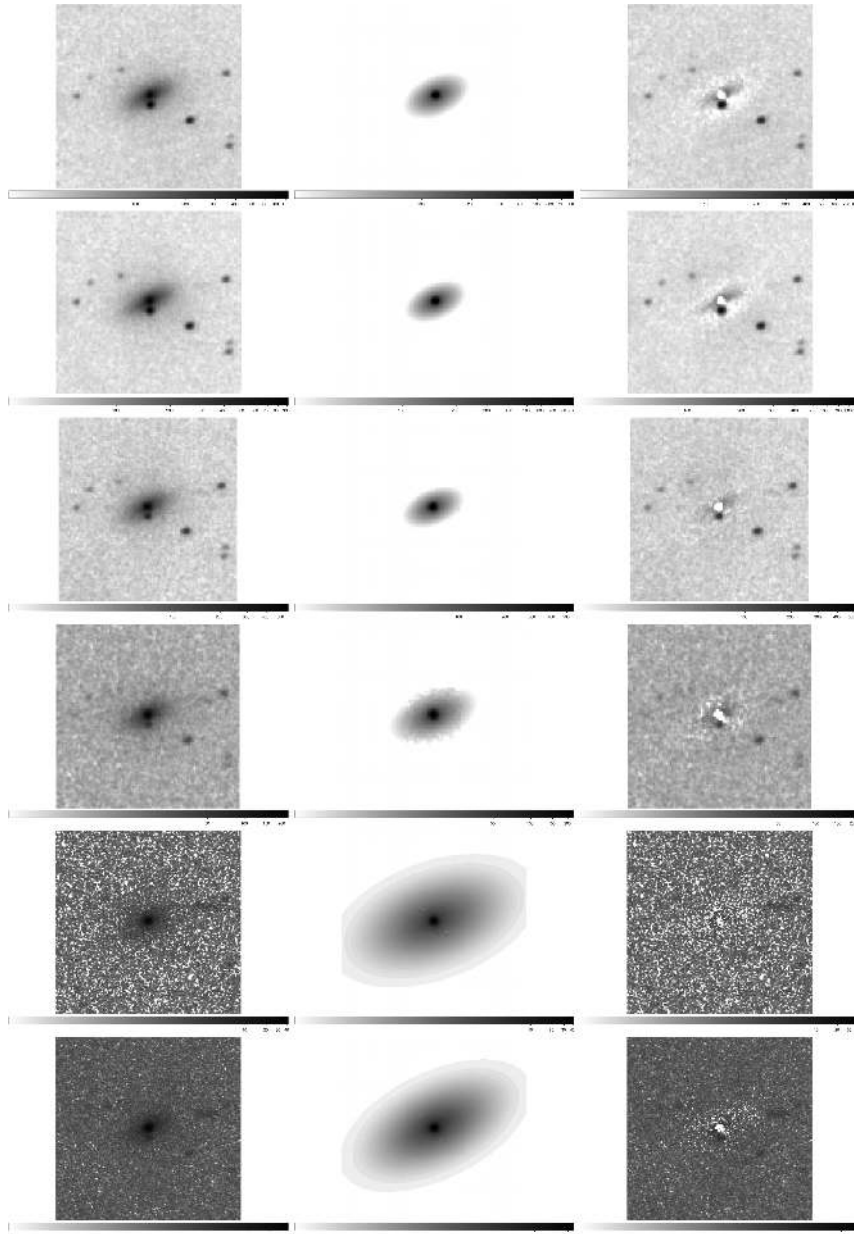


Figure 1. Example GALFIT profile fitting results for MCG–06-30-15. The first column in each row shows the original data image, the second shows the model fit and the third shows the residual obtained by subtracting the model from the data. The rows, from top to bottom, show the results for the V , B , U , $UVM1$, $UVM2$ and $UVW2$ bands, in that order. In the V and B bands, the residuals imply that a bulge component may also be discernible in this object, but the UVOT data did not allow robust fits including a bulge component for many of our objects. A simple analysis using ds9 regions indicate that the putative bulge may account for up to 10 per cent of the total galaxy flux in the V - and B -band images.

using the values for $E(B - V)_{\text{Gal}}$ from the NASA/IPAC Infrared Science Archive⁵ and the Galactic extinction curve of Cardelli, Clayton & Mathis (1989). The final magnitudes were turned into XSPEC PHA files using the FLX2XSP utility, to facilitate fitting along with the contemporaneous XRT data using the XSPEC analysis software.

3.3 X-ray spectra from XRT

The pipeline-processed event files from the XRT detector were processed using the XSELECT package, as directed in the *Swift* XRT

user guide. Source regions of 50 arcsec were used, with larger accompanying background regions (average radius ~ 150 arcsec). Background light curves were determined from the event files and inspected for flaring, but this was not found to be a problem in any of our observations. Source and background spectra were extracted, and the source spectra were grouped with a minimum of 20 counts per bin.

3.4 Black hole mass estimates using the 2MASS catalogues

The $M_{\text{BH}}-L_{\text{bulge}}$ correlation for galaxies provides a useful way of estimating their central black hole masses. The key challenge is to obtain an accurate estimate of the bulge luminosity. The study of

⁵ <http://irsa.ipac.caltech.edu/applications/DUST/>

Table 3. The model components used in `GALFIT` with each filter image for each AGN. ‘P’ signifies a PSF generated from guide stars within appropriate count-rate ranges, from each image, ‘M’ signifies a Moffat (King) profile with parameters estimated from a single point source in the image and ‘E’ signifies an exponential disc model component. *For ESO 548–G081, an extremely bright foreground star was located within ~ 30 arcsec of the AGN, rendering the photometry obtained susceptible to large errors.

AGN	V	B	U	UVW1	UVM2	UVW2
1RXS J045205.00+493248	P	P	P	P	–	–
2MASX J21140128+8204483	P+E	P	P+E	P	P+E	P+E
3C 120	P+E	P+E	P+E	P+E	M+E	P+E
3C 390.3	P+E	P+E	P	P	P+E	P+E
Ark 120	P+E	P+E	P+E	P+E	P+E	P+E
ESO 490–G026	P+E	P+E	P+E	P+E	P+E	P+E
ESO 548–G081*	P+E	P+E	P+E	P+E	M+E	M+E
IRAS 05589+2828	P	P	P	P	M	Gaussian
IRAS 09149-6206	P+E	M	P+E	P+E	P+E	P+E
MCG +04-22-042	P+E	P+E	P+E	P+E	M+E	P+E
MCG–06-30-15	P+E	P+E	P+E	P+E	P+E	P+E
Mrk 1018	P+E	P+E	P+E	P+E	M+E	M+E
Mrk 279	P+E	P+E	P+E	P+E	P+E	P+E
Mrk 352	P+E	P+E	P+E	P+E	P+E	M+E
Mrk 509	P+E	P+E	P+E	P+E	P+E	–
Mrk 590	P+E	P+E	P+E	P+E	P+E	P+E
Mrk 766	P+E	P+E	P+E	P+E	P+E	P+E
Mrk 841	P+E	P+E	P+E	P+E	M+E	P+E
NGC 4593	P+E	P+E	P+E	P+E	P+E	P+E
NGC 5548	P+E	P+E	P+E	P+E	P+E	P+E
NGC 7469	P+E	P+E	P+E	P+E	P+E	P+E
NGC 985	P+E	P+E	P+E	P+E	P+E	P+E
SBS 1136+594	P	P	P+E	P+E	P+E	P+E
SBS 1301+540	P+E	P	P+E	P	P	P+E
UGC 06728	P+E	P+E	P+E	P+E	–	P+E
WKK 1263	P+E	P+E	P	P	P	P

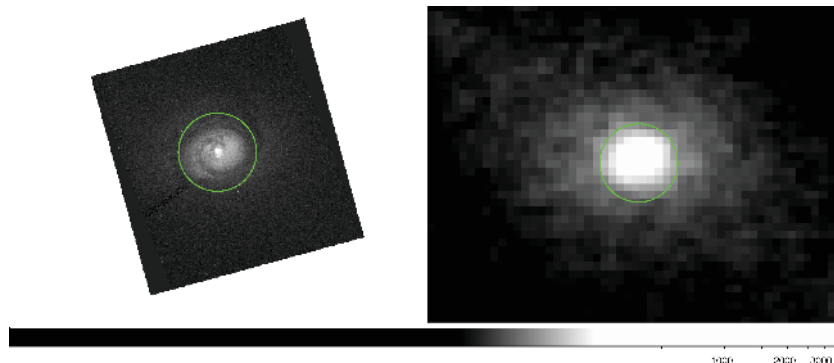


Figure 2. Comparison between images from the *HST* (left-hand panel) and *UVOT* (right-hand panel) for the source NGC 4593. A 5 arcsec circular region is shown for reference on both images.

Marconi & Hunt (2003) presents a decomposition of images from 2MASS using `GALFIT` to obtain the bulge luminosity and correlate it with the black hole mass from direct determination methods (stellar or gas kinematics, maser kinematics, etc.). However, the redshifts of the objects under scrutiny here are generally significantly higher than those in Marconi & Hunt (2003), presenting problems for performing a full nucleus–bulge–disc decomposition. Mushotzky et al. (2008) present a method for calculation of the black hole mass for the *Swift*–BAT catalogue AGN from 2MASS *K*-band total source magnitudes, which involves subtracting the central nuclear component from the extended source flux to estimate the bulge luminosity. We attempt to refine this method here by incorporating information

on the expected angular size of the bulge on the sky and the resolution limitations of the 2MASS data. The crucial factor is the degree of seeing affecting the 2MASS observations; typically, the seeing takes a value of 2.6 arcsec. For bulges with typical size ~ 0.5 –1 kpc (Graham & Worley 2008), the bulge becomes unresolvable at redshifts of about $z \approx 0.01$ (assuming $H_0 = 71 \text{ km s}^{-1} \text{ Mpc}^{-1}$, $\Omega_M = 0.27$ and a flat Universe). Therefore, for the overwhelming majority of objects in our sample, the bulge should be unresolved. Inspection of the atlas images from 2MASS for the lowest redshift objects in our sample confirms that the visually identifiable bulge component is not resolved. The bulge light is therefore mixed in with the nuclear light in these sources and identified as a ‘point source’. The point

sources identified by 2MASS have been collated, along with their magnitudes, in the *2MASS Point Source Catalogue (PSC)*; similarly extended sources have been catalogued in the *2MASS Extended Source Catalogue (XSC)*. Based on our assumption that the bulge is unresolved, we initially download only the magnitudes from the PSC for further use, as they will contain the bulk of the bulge light we wish to recover.

By way of calibrating our attempt to obtain black hole masses, we first turn to the RM sample of AGN presented by Peterson et al. (2004), representing the most secure mass determinations for AGN to date (augmented with the refined result from Denney et al. 2006 for NGC 4593). There are uncertainties in the RM method, connected to assumptions about the geometry of the BLR and whether it is gravitationally bound, but the ~ 35 AGN for which RM mass estimates exist nevertheless constitute the sample of AGN with the most carefully determined black hole masses. Initially, we download the 2MASS atlas images for those RM AGN below a redshift of 0.01, in which the bulge should be theoretically resolved and perform a GALFIT three-component decomposition using a Gaussian PSF for the nuclear point source, a Sersic bulge and an exponential disc. Our GALFIT analysis yields that there is a significant degree of uncertainty in the identification of the bulge component in these AGN, and the magnitude ascribed to the bulge is heavily dependent on the prior constraints imposed. We explore a number of different constraints on the model profiles; for example, the Sersic index n is often constrained to an upper limit to avoid the fitting routine confusing it with the nuclear point source and often requires a lower limit to avoid confusion with the disc component. Despite such strategies, in some sources the bulge and disc profiles acquire very similar or identical radii and ‘share’ the disc luminosity, with the Sersic profile partially tracing the disc instead of the bulge. In such sources, three-component model fits do not yield meaningful bulge parameters. Our attempts at constraining the bulge using GALFIT result in bulge luminosities that vary by up to an order of magnitude depending on the choice of model and constraints imposed; this shows that even for the close-by sources, the bulges are probably not resolved.

In light of this, we then employ the 2MASS PSC magnitudes to provide a simple estimate of the total bulge and nuclear flux. In order to estimate the relative contributions of the nucleus and bulge in the PSC magnitudes, we employ the IR SED templates presented in Silva, Maiolino & Granato (2004). In their study, they present nuclear IR SED templates constructed using available near-to-mid-IR data on 33 Seyferts, using a radiative transfer model for dust heating to interpolate between the wavelengths covered by the data. They also present host galaxy SED templates by subtracting the nuclear template contribution from the total photometry at each available wavelength. They present a number of different nuclear SED templates appropriate for different levels of X-ray absorption, and host SED templates are presented for different intrinsic 2–10 keV AGN luminosity (L_X) regimes. Using the appropriate nuclear SED along with the corresponding host galaxy SED, it is therefore possible to estimate the fraction of the total luminosity which can be accounted for by the host for an AGN with a particular L_X . In the process we make the assumption that, in the case of the K band, the host flux should be dominated by the bulge as discussed in Section 1. We calculate the ratio of host to total luminosity (nuclear plus host luminosity) from these SED templates in the K band for the four different luminosity regimes ($41.0 < \log(L_X) < 42.0$, $42.0 < \log(L_X) < 43.0$, $43.0 < \log(L_X) < 44.0$ and $44.0 < \log(L_X) < 45.0$). The fractions are plotted in Fig. 3 against the central luminosity of each bin. We also plot a logarithmic interpolation between the points, to

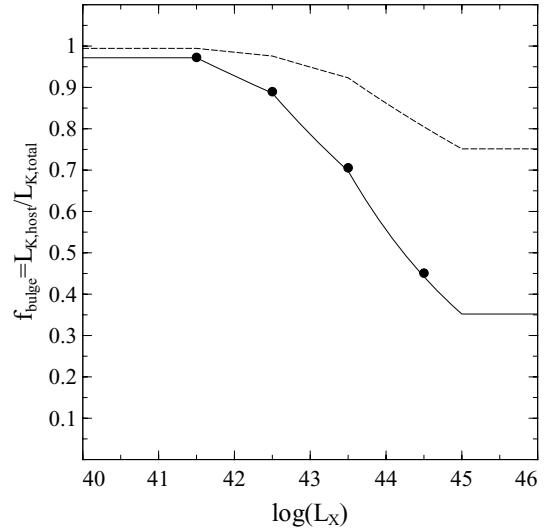


Figure 3. Variation of $L_{K,\text{host}}/L_{K,\text{total}}$ with X-ray luminosity, extrapolated from the host and nuclear IR SED templates of Silva et al. (2004) (black filled points – determined by using the four fiducial luminosities provided in their paper; solid line – extrapolation between points as detailed in the text). These fractions are employed to calculate the contribution of the bulge to the 2MASS point source magnitudes, for determining black hole masses. The curve for an AGN with intrinsic X-ray absorption $N_{\text{H}} = 10^{23.5} \text{ cm}^{-2}$ is shown (dashed line) for comparison (the curves for other absorptions above $N_{\text{H}} = 10^{22} \text{ cm}^{-2}$ are very similar; the significant difference is between obscured and unobscured AGN).

allow determination of the ratio of $L_{K,\text{host}}/L_{K,\text{total}}$ at a general value of L_X , assuming that the ratio varies continuously. For values of L_X greater than those spanned by the Silva et al. (2004) study, we simply employ the fraction calculated for $L_X = 10^{45} \text{ erg s}^{-1}$, extrapolating from the direction of the trend shown between the bins centred on $\log(L_X) = 43.5$ and 44.5 . For luminosities $\log(L_X) < 41.5$, we use the fraction evaluated at $\log(L_X) = 41.5$ (extrapolating from the trend would yield fractions larger than unity). The high luminosity extrapolation is clearly not likely to be accurate for extremely powerful objects ($\log(L_X) > 46$), but none of the reverberation-mapped AGN or the AGN in our *Swift*-BAT sub-sample is in this regime. In the absence of information on IR SEDs outside this luminosity range, we do not attempt a more complex extrapolation.

Before using these fractions to calculate bulge luminosities from the 2MASS PSC magnitudes, we consider potential sources of bias. Since Silva et al. (2004) adopt a reprocessing scenario to account for the K -band continuum; it is possible that the model nuclear K -band luminosity is a function of the Eddington ratio (since it is ultimately linked to the UV accretion disc luminosity, the dominant component of the total accretion luminosity). The X-ray luminosity can be recast as the product of the Eddington ratio, bolometric correction and black hole mass (via the Eddington ratio), so the trend seen in Fig. 3 could be the result of two functions of the Eddington ratio being plotted against each other. However, we again note the low X-ray luminosities probed by the *Swift*/BAT 9-month catalogue (up to a few times $10^{44} \text{ erg s}^{-1}$) and find that the host-to-total fraction varies at most by a factor of 2 in this regime. Therefore, the dependence is not strong and will not introduce significant biases compared to other sources of error, such as the intrinsic spread in RM masses and the intrinsic dispersion of the $M_{\text{BH}}-L_{K,\text{bulge}}$ relation. Regardless of the particular model used to predict the nuclear K -band continuum, it is clear that the fraction of an unresolved bulge that is attributable to the nucleus will decrease for lower luminosity

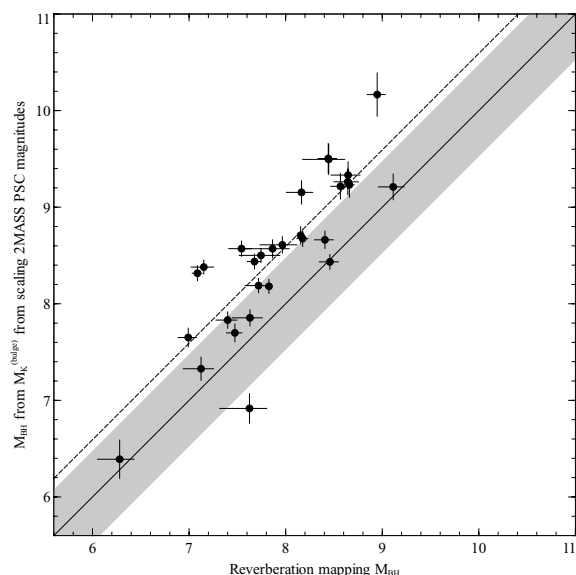


Figure 4. Comparison between masses from RM and masses estimated from K -band bulge luminosities. The solid line represents the desired one-to-one correspondence between the two methods and the shaded area depicts the intrinsic uncertainties in RM. The dashed line shows the best fit of the form $\log(M_{\text{BH},L_K,\text{bulge}}) = A + \log(M_{\text{BH},\text{revamp}})$.

AGN and vice versa; the simple relationship in Fig. 3 provides an observationally rooted estimate of this effect.

We employ the values of L_X from *XMM-Newton* reported in VF09 to calculate the K -band host-to-total ratio for each of the RM objects, and assume the Silva et al. (2004) Seyfert 1 IR SED template for all objects in the sample. In the absence of a detailed, uniform study on the absorbing columns of the RM AGN sample this is a reasonable assumption, since the RM sample is heavily biased towards Seyfert 1 AGN; none of the RM AGN is classified as Seyfert 2s in the NED. We scale the PSC magnitude by the appropriate fraction, using the expression

$$M_{K,\text{bulge}} = M_{K,\text{PSC}} - 2.5 \log_{10}(f_{\text{bulge}}(L_X)), \quad (1)$$

where the fraction $f_{\text{bulge}} = L_{K,\text{host}}/L_{K,\text{total}}$ is calculated as above. The black hole masses are then calculated using the $M_{\text{BH}}-L_{K,\text{bulge}}$ relation of Marconi & Hunt (2003). The resulting mass estimates are compared with RM mass estimates in Fig. 4.

A reasonable agreement between the two methods is seen, albeit with some significant deviation at higher masses. The grey shaded area highlights the uncertainties in RM masses due to the lack of precise knowledge of the BLR geometry. The largest discrepancy is for the AGN with the highest mass, 3C 273, for which the K -band bulge luminosity estimate gives a black hole mass which is an order of magnitude too high. This is known to be a very powerful object, and it is possible that our simple approach to estimating the bulge fraction in the point source light has still underestimated the powerful nucleus. There is also likely to be a significant synchrotron (non-accretion) contribution to fluxes at all wavelengths in this source, which further increases uncertainties. This AGN is far more powerful than the majority of the *Swift*-BAT catalogue AGN, so such problems are not likely to affect the lower power objects we consider here.

Marconi et al. (2008) point out that the previous reverberation mass estimates have been calculated with the assumption that the BLR is gravitationally bound, and introduce a correction based on an estimator of the accretion rate (the 5100 Å monochromatic

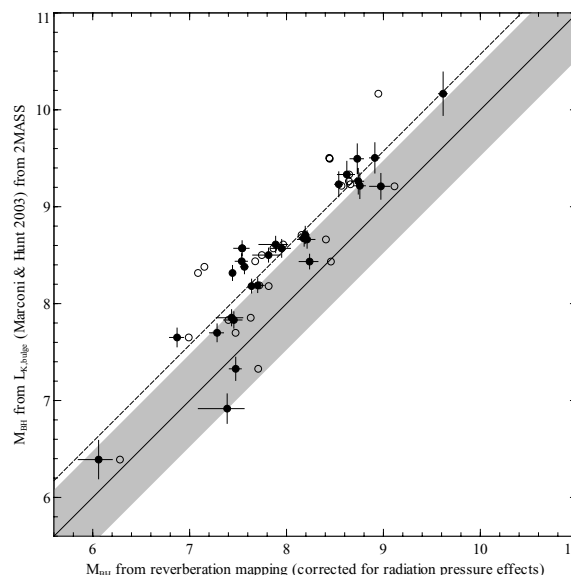


Figure 5. Comparison between masses from RM (corrected for radiation pressure effects as discussed by Marconi et al. 2008) and masses estimated from K -band bulge luminosities. The empty white circles show the results using the reverberation masses before correcting for radiation pressure. Other key conventions as in Fig. 4.

luminosity) to provide revised mass estimates for the RM AGN catalogue. We also provide a comparison with their revised mass estimates, in Fig. 5. The correlation between the two mass estimators is strengthened significantly if these first-order corrections to the reverberation masses are applied, and particularly reduces the scatter seen for those objects with high accretion rates (for which the correction is maximal and works to increase the reverberation mass estimate). The offset is still present however, and a simple fit of the form $\log(M_{\text{BH},L_K,\text{bulge}}) = A + \log(M_{\text{BH},\text{revamp}})$ yields $A \approx 0.57$ in both cases (using reverberation masses with or without correction for radiation pressure), implying an offset of a factor of up to ~ 3.7 in black hole mass, just outside the typical quoted tolerance for reverberation masses (a factor of ~ 3). We now suggest a possible contributor to this offset and present a correction for it.

The Silva et al. (2004) host galaxy SEDs have been calculated using large-aperture and extended-source data (such as the 2MASS XSC catalogue magnitudes) which could include more than the bulge light. If the galaxy disc is significant in some cases, the Silva et al. (2004) host-to-total ratios actually provide the fraction of bulge *plus galaxy disc* to the total luminosity rather than just the bulge, and therefore using them to scale the ‘nucleus plus bulge’ luminosities from the 2MASS PSC is not strictly correct. It is therefore necessary to gauge the effect of neglecting the galaxy disc in this calculation. We do this by obtaining the 2MASS ESC magnitudes (matching the centroids appropriately as before), using these fluxes as estimates of the total nuclear, bulge and disc light ($L_{\text{total}} = L_{\text{nuc}} + L_{\text{bulge}} + L_{\text{disc}}$). Employing the PSC magnitudes as the bulge and nuclear light as before ($L_{\text{bulge}} + L_{\text{nuc}}$), we can then utilize the fraction of nuclear-to-total luminosity predicted from the Silva et al. (2004) IR SED templates ($f_{\text{nuc}} = L_{\text{nuc}}/(L_{\text{nuc}} + L_{\text{bulge}} + L_{\text{disc}})$) to obtain a theoretically more accurate estimate of the bulge magnitude:

$$M_{K,\text{bulge}}^{(2)} = M_{K,\text{PSC}} - 2.5 \log_{10} \left(1 - f_{\text{nuc}} 10^{\frac{M_{K,\text{PSC}} - M_{K,\text{XSC}}}{2.5}} \right). \quad (2)$$

This expression is obtained by solving for L_{bulge} from the available quantities. Put simply, it arises by using the nuclear fraction from the IR SED templates to estimate the nuclear flux from the XSC

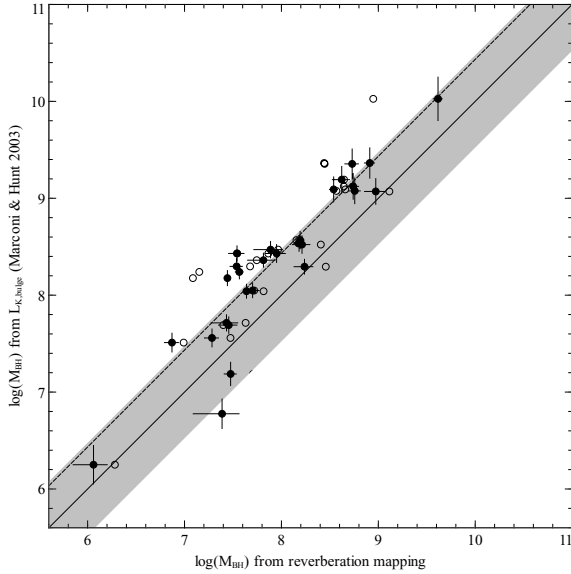


Figure 6. Comparison between masses from RM and masses estimated from K -band bulge luminosities (with offset due to underestimation of the galaxy disc contribution taken into account). Key as in Fig. 5.

flux; this nuclear component is then subtracted from the PSC flux to obtain the bulge flux. This estimate is not available for all of the objects available previously, as some objects do not have 2MASS XSC magnitudes. For a couple of sources, the predicted fraction $f_{\text{nuc}} = L_{\text{nuc}} / (L_{\text{nuc}} + L_{\text{bulge}} + L_{\text{disc}})$ from the Silva et al. (2004) templates was larger than the fraction $(L_{\text{nuc}} + L_{\text{bulge}}) / (L_{\text{nuc}} + L_{\text{bulge}} + L_{\text{disc}})$ found from the ratio of the PSC to XSC fluxes, leading to an impossible solution for L_{bulge} . This indicates that the nuclear-to-total fraction obtained from the Silva et al. (2004) templates is not appropriate for that object or that the bulge is not completely contained in the PSC flux. These problems limit the use of this method, but for those objects where a calculation is possible, we find that the new K -band mass estimates are systematically shifted down by 0.14 dex (a factor of 0.72) from the values from the simpler approach of using the PSC magnitude alone. We therefore apply this correction to all masses obtained using the PSC alone, which brings the best-fitting line for the new mass estimates within the tolerance of the reverberation masses (see Fig. 6). The strength of the correlation is good, as indicated by the Pearson correlation coefficients of 0.83 and 0.93 obtained (correlating with reverberation masses before and after radiation pressure correction). This analysis also indicates that the galaxy disc contribution in the host-to-total ratios is of the order of ~ 30 per cent, and a similar value applies to all AGN in the RM sample. There still remains some offset above reverberation and within the tolerance region, but any further attempt to account for this is somewhat redundant in light of the intrinsic uncertainties in reverberation masses, so we do not make any other corrections to our approach. The offset of virial mass estimates below the $M_{\text{BH}}-L_{\text{bulge}}$ relation has been noted and discussed in detail by Kim et al. (2008b); they find that it is a complex function of a variety of parameters including the black hole accretion rate and host galaxy morphology.

We finally calculate the masses using this approach for all of the $z < 0.1$ objects in the *Swift*-BAT 9-month catalogue for which 2MASS PSC magnitudes are available. The K -band host-to-total ratios are calculated using the L_X values reported in Winter et al. (2009), and the N_{H} values in the same paper are used to select be-

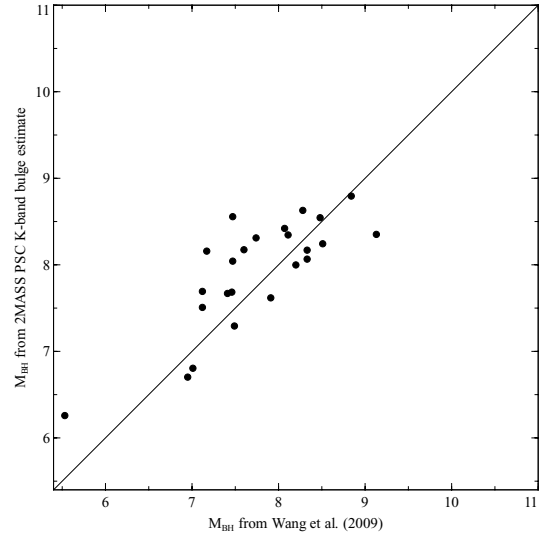


Figure 7. Comparison between masses from $H\beta$ linewidths (Wang et al. 2009) and masses estimated from K -band bulge luminosities. The solid line represents the desired one-to-one correspondence between the two methods. Wang et al. (2009) do not provide error estimates on their black hole masses, and the typical (random) error in the K -band estimates can be gauged from Figs 4 and 5 (it is typically dominated by uncertainties intrinsic to the $M_{\text{BH}}-L_{\text{bulge}}$ relation), although the discussion in the text highlights that systematic errors are likely to dominate.

tween the two host-to-total ratio curves for obscured or unobscured AGN (Fig. 3) as required. By way of another check on the accuracy of our mass estimates, the recent study of Wang, Mao & Wei (2009) presents virial mass estimates for a sample of Seyferts which partially overlaps with *Swift*-BAT 9-month catalogue AGN, using the single-epoch $H\beta$ linewidth-based black hole mass estimator (as given in Greene & Ho 2005). We plot a comparison between their values and ours in Fig. 7 for the 24 overlapping objects. While the relation shows some scatter, we caution that the linewidth-based black hole mass estimation methods also show significant scatter themselves when compared to RM. The two estimators still appear to trace each other (with a correlation coefficient of 0.80); additionally, preliminary calculations of black hole masses from the KPNO and *Sloan Digital Sky Survey* (SDSS) spectra for the *Swift*/BAT 9-month catalogue AGN also seem to match our estimates well, with a scatter of a factor of ~ 2 (Winter et al. 2009; Koss et al. in preparation). We see some indications that the local *Swift*-BAT 9-month catalogue AGN have predominantly low black hole masses, as expected in ‘antihierarchical’ structure formation scenarios. The masses thus determined are used in all subsequent analyses for the calculation of accretion rates and for constraining accretion disc models in SED construction.

4 GENERATION OF SPECTRAL ENERGY DISTRIBUTIONS

We fit the optical, UV and X-ray SED data points with a simple multicolour disc DISKPN and absorbed power-law model combination using *XSPEC*, following the approach outlined in VF09. In this work, we extend the approach of VF09 by inclusion of a multiplicative ZDUST component on the DISKPN model used for the UV bump, to estimate intrinsic reddening where possible. The presence of data in at least four UVOT filters for all of the objects in the sample makes this possible, and indeed since most of the objects have UVOT data

in all six filters, we are able to constrain the shape of the SED over a wider energy range than was generally possible in VF09. Signs of intrinsic reddening (such as an optical–UV spectrum steeply declining with energy) can then be more unambiguously identified.

The full model used in XSPEC consisted of the optical–UV reddening component multiplied by a thermal accretion disc model and a broken power law in X-rays with both Galactic and intrinsic absorption components [ZDUST(DISKPN) + WABS(ZWABS(BKNPOWER))]. The normalization of the DISKPN component was determined as in VF09, assuming an inclination angle of zero and a colour-to-temperature ratio of unity. Unification scenarios for AGN (Antonucci 1993) suggest that AGN with lower gas column densities such as those in this sample should be preferentially oriented with their accretion discs almost face-on, and therefore small inclination angles are appropriate (see VF09 for a discussion of the effect of varying inclination angles in the DISKPN component on luminosities calculated from SEDs). We also freeze the inner radius of the disc at 6.0 gravitational radii, which is appropriate for radiatively efficient accretion. The local Galactic absorption was determined using the NH utility from the FTOOLS suite and frozen in the fit. The low-energy branch of the BKNPOWER model was set to have negligible values within the energy range of the UV bump (as in VF09). We fit the XRT

data in the range 0.3–10.0 keV. While there is an interesting debate as to the precise nature of the intrinsic reddening in AGN (Gaskell et al. 2004), we adopt the Small Magellanic Cloud (SMC) reddening curve for our ‘first-order’ estimation of intrinsic extinction $E(B - V)$ and freeze the ratio of total-to-selective extinction, R_V , at 3.0. The intrinsic extinction $E(B - V)$, the intrinsic column density $N_{\text{H}}^{(\text{int})}$, the maximum temperature T_{max} for the DISKPN model and the parameters for the high-energy branch of the BKNPOWER component were all left free in the fit. Occasionally, if the combined optical, UV and X-ray data resulted in a photon index in the X-ray regime which was influenced by the slope between the optical and X-ray, the photon index was frozen at the value obtained by just fitting the X-ray data alone.

We freeze the normalization of the UV bump DISKPN component using the black hole mass estimate from the 2MASS K -band bulge luminosity estimate (normalization $K = M_{\text{BH}}^2 \cos(i) / D_L^2 \beta^4$ for black hole mass M_{BH} , inclination angle i , luminosity distance D_L and colour-to-effective temperature ratio β). We present the SEDs determined using this approach in Fig. 8. For a few objects, the DISKPN model thus constrained fits poorly to the data despite their relatively ‘blue’ optical–UV spectral shapes, thought to be typical for the lower energy part of an unreddened accretion disc spectrum

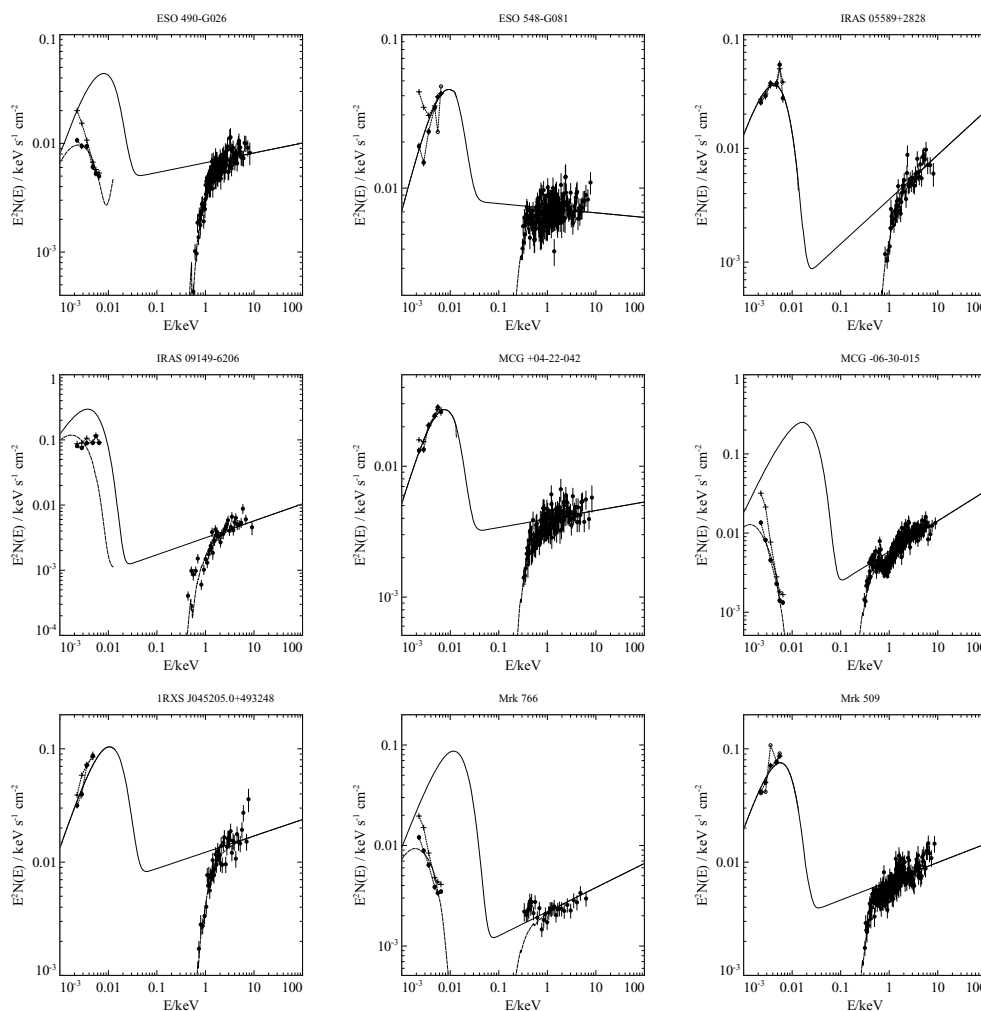


Figure 8. A selection of AGN SEDs. The crosses represent the 5 arcsec aperture photometry results from UVOTSOURCE and the filled circles represent the data points used for the fit. In the UV and optical regimes, the black filled points represent the fluxes with the host galaxy component removed using GALFIT as detailed in the text. Empty circles were not used in the fit in a few cases where significant coincidence losses risk affecting the accuracy of the fluxes.

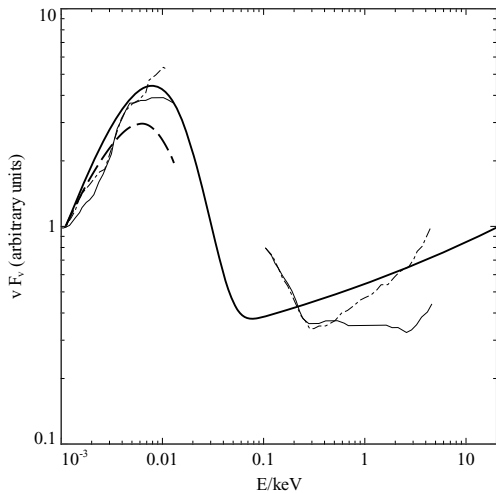


Figure 9. Average, reddening-corrected optical-to-X-ray SED for the 22 low Eddington ratio ($\lambda_{\text{Edd}} < 0.1$) AGN, normalized at 1 eV (thick black solid line). The average fit (in the optical–UV regime) with reddening included is shown using the thick black dashed line. The mean SEDs for radio-quiet and radio-loud quasars from E94 are also reproduced (thin black solid and dot-dashed lines, respectively).

(i.e. Ark 120, Mrk 1018, Mrk 509 and NGC 985), which is probably attributable to a slightly too large black hole mass. This is confirmed later in the case of Ark 120 for which a reverberation mass estimate is available (see Section 5.3). In the case of Mrk 590, the distinctly reddened optical–UV spectral shape is poorly fitted using the 2MASS black hole mass-derived DISKPN normalization, but the reverberation mass estimate produces a more plausible fit. The DISKPN model fit for IRAS 09149–6206 also looks poor, although this object possesses a rather unusual, flat optical–UV SED (noted initially by Kirhakos et al. 1991) unlike the other AGN in the sample, which may be due to some other process. These five cases might point to a genuine offset between the reverberation masses and our 2MASS-derived estimates, but the degeneracy of the mass with the inclination and other parameters in the DISKPN normalization could indicate, for example, unusual inclination properties in these few AGN. The remaining 21 objects all exhibit sensible model fits to the optical–UV points.

We present the average model SED (before and after correction for reddening) calculated for the 22 AGN with $\lambda_{\text{Edd}} < 0.1$ (normalized at 1 eV) in Fig. 9. This allows a useful comparison with the average SEDs presented in VF07 and VF09 for high and low Eddington ratio AGN, and the mean quasar SED templates of E94; the latter are also reproduced in Fig. 9. While the E94 template is representative of X-ray bright quasars, ours offers a similar template for local, X-ray unabsorbed and low accretion rate Seyferts, albeit calculated from the model fits instead of the data. Some differences between our average SED and those of E94 include the slightly reddened shape of the E94 SEDs in the optical–UV (their SEDs trace our extinguished SED more closely, at least at longer wavelengths) and the differing X-ray spectral shapes. The radio-quiet quasar X-ray spectrum in particular appears softer in the 0.5–2 keV band which would be expected for a brighter, higher accretion rate sample of AGN (according to the trends seen in e.g. Shemmer et al. 2008), but this could also be in part due to the inclusion of some X-ray absorbed objects in the E94 composite, depressing the flux at this part of the spectrum relative to the flux at higher energies. The

hard shape of the radio-loud template can be accounted for by the expected synchrotron contributions from jets. The E94 SEDs also show a prominent soft excess; due to the limited spectral resolution of the XRT, we do not consider the soft excesses in our SEDs here. We repeat the cautionary note from E94 that AGN properties determined from the average SED do not necessarily reflect the full degree of variation in the AGN population.

We follow the approach outlined in VF09 for calculating the unabsorbed hard X-ray (2–10 keV) and bolometric (0.001–100 keV) luminosities and errors in XSPEC, for use in determining accretion rates, bolometric corrections and other SED parameters. The results are presented in Table A1. As discussed in Section 1, we define the bolometric luminosity as being the primary emission due to accretion emerging in the optical-to-X-ray regime and assume that the IR is reprocessed emission; it is therefore not included in L_{bol} .

4.1 Extending the spectral energy distributions into hard X-rays

The BAT data allow us to extend the SEDs into hard X-rays (14–195 keV). Four-channel BAT spectra are publicly available on the Internet,⁶ time-averaged over periods of many months. We identify the four least variable objects in the 14–195 keV band using measurements of excess variance on the BAT light curves, in order to maximize confidence in luminosities extrapolated from fits to the combined X-ray and hard X-ray data. We present the SEDs for these four sources (NGC 5548, NGC 7469, Mrk 279 and 2MASX J21140128+8204483) including the four-channel BAT data in Fig. 10. We also present the fits to the more robust eight-channel data (the data themselves were not yet public at the time of writing) to illustrate any substantive differences between four- and eight-channel data sets. In all cases, the simple model fits (POWERLAW or PEXRAV) do not indicate a significant departure from the general shape implied by the four-channel data.

In three out of four of these low-variability sources, it appears that the BAT data may be capturing a reflection hump peaking at around ~ 30 keV, in accordance with standard scenarios for reflection from the accretion disc. There does not seem to be any pronounced reflection signature in NGC 5548. We corroborate this suggestion by fitting the model combination [WABS(ZWABSPowerLaw)+PEXRAV] to the XRT and BAT data together in XSPEC, linking the photon index of the illuminating source in PEXRAV to that for the POWERLAW component. The model fits (thin dot-dashed lines) agree well with the fits to the XRT alone at low energies, and show a plausible reflection hump fit to the BAT data at higher energies for NGC 7469, Mrk 279 and 2MASX J21140128+8204483. There are hints of accompanying Fe $K\alpha$ lines at 6.4 keV in the XRT data, as expected from reflection models, but the quality of the XRT data does not lend itself to a confident identification of this line. The superior quality of XMM-PN data presented for NGC 7469, Mrk 279 and NGC 5548 in VF09 show a much more convincing Fe $K\alpha$ line shape at 6.4 keV, although the line signature is less evident in NGC 5548, which would be expected for weaker reflection. The indications of reflection in these sources are confirmed by a more detailed analysis using XMM and BAT data (Mushotzky et al. in preparation).

⁶ <http://swift.gsfc.nasa.gov/docs/swift/results/bs9mon/>

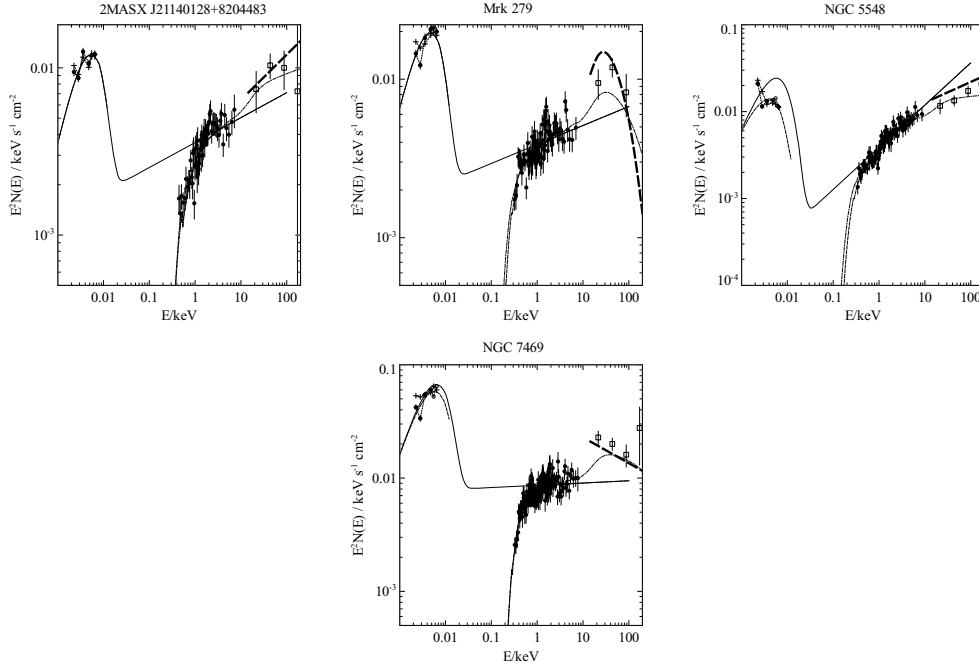


Figure 10. SEDs with BAT data included. Empty squares represent four-channel BAT data (publicly available). Thick dashed lines represent fits to the eight-channel data (not public at the time of writing). The thin dot-dashed line represents a fit to the XRT and BAT data combined, using the model [WABS(ZWABSPowerLaw)+PEXRav] to illustrate the plausibility of a reflection fit to the data.

5 DISCUSSION

5.1 Contamination of optical–UV continuum with emission lines

We briefly comment on the effect of emission lines in the optical–UV spectra of AGN which have the potential for introducing systematic effects in our SED measurements. The study of Francis et al. (1991) presents a high signal-to-noise composite quasar spectrum, allowing the parameters of such emission lines to be accurately determined. We identify the emission lines with the largest widths and highest peaks from figs 2 and 7 of their work and redshift them individually for each AGN in our sample to ascertain whether emission line fluxes are likely to contaminate the UVOT photometry.

As a first-order attempt to quantify this, we ascertain whether the central wavelength of the redshifted line lies within the bandpass of each of the UVOT filters, as obtained from the CALDB documentation. The most common contaminant from this analysis would seem to be the Mg II line at 2798 Å (rest frame), which is most likely to appear in the UVW1 filter and occasionally in the U filter for two high-redshift objects. Al III (1958 Å) and C III (1909 Å) are also likely to be common contaminants in UVM2 and UVW2 bands. For the four highest redshift sources (3C 390.3, IRAS 09149–6206, SBS 1136+594 and 2MASX J21140128+8204483), the redshifted O III lines (4959 Å and 5007 Å) appear in the UVOT V band and in the case of 2MASX J21140128+8204483, the H β line (4861 Å) also. The presence of these lines may explain, in part, the ‘angular’ behaviour of the optical–UV SEDs in these four sources. However, the V-band ‘bumps’ in more local sources (e.g. ESO 548–G081, Mrk 279, NGC 4593 and NGC 7469) are not accounted for by the presence of such lines and must have some other cause. In any case, for the vast majority of objects in the sample, the SED points in most filters are highly unlikely to be affected by the presence of any prominent emission lines.

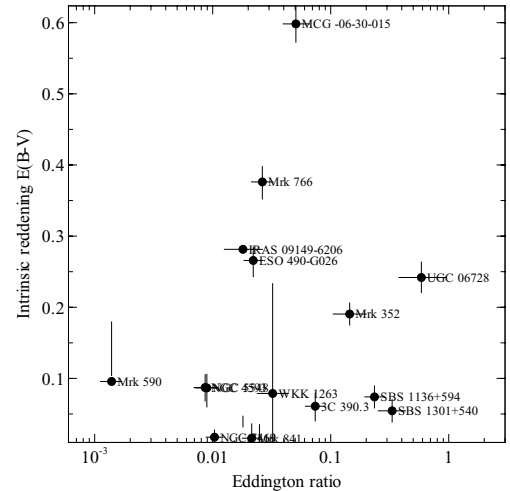


Figure 11. Intrinsic extinction $E(B - V)$ against the Eddington ratio λ_{Edd} , for those objects for which reddening was included in the model fit via the ZDUST XSPEC model.

5.2 Intrinsic reddening due to dust extinction

We present the values for intrinsic extinction $E(B - V)$ determined from the SEDs against the Eddington ratio in Fig. 11. This allows a comparison between the amount of estimated dust extinction in the source and the accretion power available from the central AGN. One notable feature of the distribution of $E(B - V)$ observed is that despite the selection of objects with low N_{H} , there appears to be significant dust reddening in many of these sources, based on the shape of their optical–UV spectrum. This was previously noted by Kraemer et al. (2000) and provided the basis for their ‘luke-warm absorber’ scenario to account for this discrepancy. Our results

contrast with those of Maiolino et al. (2001), who find that dust-to-gas ratios – $E(B - V)/N_{\text{H}}$ – are systematically lower in their sample AGN than in the Galaxy. However, their sample is selected specifically to include higher N_{H} objects with relatively unabsorbed optical/UV/IR broad lines, and the data used are not simultaneous. The results of both of these studies imply that objects which are significantly absorbed in X-rays can show little sign of dust extinction in the optical–UV and vice versa and, in general, that classifications of AGN into ‘obscured’ or ‘unobscured’ based on their optical properties can differ significantly from X-ray classifications. Our sample of objects confirms that optical and X-ray obscuration scenarios can differ significantly in an object, influenced as they are by different physical processes (as summarized in Crenshaw & Kraemer 2001). We caution against a degeneracy between the mass and $E(B - V)$ in the model fits [noting in the case of Mrk 590 that using its RM mass gives a best-fitting $E(B - V)$ of 0.33 compared to ~ 0.1 using the 2MASS mass estimate], although the SEDs for ESO 490–G026, MCG–06–30–15, Mrk 590 and Mrk 766 show more unambiguous signs of significant intrinsic extinction. In support of this, the aforementioned study on reddened Seyfert 1 galaxies of Crenshaw & Kraemer (2001) confirms that observations from the *International Ultraviolet Explorer* (*IUE*) also strongly suggest intrinsic reddening in MCG–06–30–15, Mrk 590 and Mrk 766. The high optical polarization for Mrk 766 discussed by Ulvestad, Antonucci & Goodrich (1995) may also be an indicator of the dust responsible for reddening in this source. Encouragingly, the more detailed study of MCG–06–30–15 by Reynolds et al. (1997) reports a lower limit on $E(B - V)$ very similar to the value of ~ 0.6 that we determine for this source, implying that our estimation of intrinsic extinction with the ZDUST model can provide reddening estimates in line with more detailed studies.

The studies of Fabian, Vasudevan & Gandhi (2008) and Fabian et al. (2009) highlight the connection between the radiation pressure exerted by the AGN and the configuration of the surrounding absorbing material. They identify the effective Eddington limit for dusty gas in the $N_{\text{H}}-\lambda_{\text{Edd}}$ plane; above this limit is a ‘forbidden region’ in the $N_{\text{H}}-\lambda_{\text{Edd}}$ space within which absorbing dusty gas clouds are unstable to radiation. They verify that most local and deep samples of AGN avoid the forbidden region, and the latter work in particular verifies that this in the case of the unbiased *Swift*/BAT catalogue. Objects near the effective Eddington limit are known to exhibit AGN winds/warm absorbers, which would be expected when radiation pressure locally exceeds gravity. Since the dust and gas are expected to be coupled, the dust extinction parametrized by $E(B - V)$ may also exhibit a similar distribution in the $E(B - V)-\lambda_{\text{Edd}}$ plane. We see from Fig. 11 that the majority of objects occupy the lower left part of the plot, and the only object with particularly high reddening – MCG–06–30–15 – is also known from Winter et al. (2009) to have a relatively high N_{H} ($\sim 1.9 \times 10^{21} \text{ cm}^{-2}$) and λ_{Edd} , placing it close to (but not within) the forbidden region. This object showcases a warm absorber, as expected for an object near the effective Eddington limit. The absorbing column reported from analyses of *BeppoSAX* and *ASCA* data is strongly model-dependent (see e.g. Reynolds et al. 1997 who find N_{H} to be an order of magnitude lower than the Winter et al. result, or Morales, Fabian & Reynolds 2000, whose detailed multizone warm absorber scenario gives a column density of $3 \times 10^{22} \text{ cm}^{-2}$).

These hints may suggest that an analogous ‘forbidden region’ could be proposed in the upper right portion of the $E(B - V)-\lambda_{\text{Edd}}$ plane. A more complete study of intrinsic reddening properties for a larger sample of sources spanning a wider range of X-ray column densities would be valuable for exploring this possibility further.

5.3 Bolometric corrections and Eddington ratios

We present the bolometric corrections $\kappa_{2-10 \text{ keV}} = L_{\text{bol}}/L_{2-10 \text{ keV}}$ against the Eddington ratio in Fig. 12. The bolometric corrections cluster between 10 and 20 with a low fraction of objects possessing higher bolometric corrections, and Eddington ratios are overwhelmingly below < 0.1 . The low bolometric corrections obtained are expected for low Eddington ratios (as found in VF07; VF09) and the few objects with high bolometric corrections generally lie at higher Eddington ratios as expected. Errors in luminosities take into account the errors in model parameters obtained from fitting the data, and the Eddington ratio additionally takes into account the random error in the black hole mass estimate (extrapolated from the uncertainties in the *K*-band magnitudes). However, the potential systematic errors due to intrinsic disparities between RM and *K*-band mass determination methods also contribute an uncertainty to both axes which is not represented in the error bars.

We therefore invoke RM mass estimates for nine sources common to the objects discussed by Peterson et al. (2004) to perform some simple comparisons which provide an estimate of the magnitude of this systematic effect. If the RM masses are used in the fitting process instead, we obtain bolometric corrections and Eddington ratios as given in Fig. 13. We also present the results from VF09 for comparison, which employed simultaneous data from *XMM-Newton*. If reddening is not included, as in VF09, we obtain very similar bolometric corrections and Eddington ratios as seen with *XMM* (left-hand panel in Fig. 13). However if reddening is taken into account, this generally increases both bolometric corrections and Eddington ratios (right-hand panel in Fig. 13) and in the case of objects such as Mrk 590 and NGC 7469, this change is very pronounced. However, in both scenarios, the general trend for bolometric correction increasing with the Eddington ratio identified in VF07 and VF09 is preserved.

We also perform a comparison between RM masses and masses from *K*-band luminosities using only the *Swift* simultaneous data, including intrinsic reddening effects in both cases (Fig. 14). Bolometric corrections and Eddington ratios are clustered at significantly higher values for this sub-sample when using the RM masses compared to the *K*-band masses. There is an increase of around ~ 1 dex in Eddington ratios when RM masses are used, accompanied by an increase in bolometric correction to an average of ~ 30 . The most extreme changes are for NGC 7469, Mrk 590 and Mrk 279. These results illustrate the degree of change which could be seen if the 2MASS *K*-band mass estimates need to be scaled down to bring them more in line with RM estimates, but given the BLR geometry uncertainty intrinsic to the RM masses, the bolometric corrections and Eddington ratios calculated using better-calibrated RM masses could also be reduced significantly. As depicted in Fig. 6, the two methods are broadly consistent within these uncertainties. We suggest that the true magnitude of any shift in results may lie in between these two extremes; the 2MASS masses may represent an upper limit whereas the reverberation estimates may represent a lower limit. Indeed, the radiation pressure corrections may require further calibration as discussed by Marconi et al. (2009), and could bring these estimates closer together, for example. More work is required on calibration between different black hole mass estimators for AGN before this issue can be addressed more convincingly, and at this stage we are only able to provide a crude estimate of the limiting uncertainties.

These analyses suggest that the typical bolometric corrections and Eddington ratios for this sample are low, even when uncertainties in the mass estimates are taken into account. The distribution of

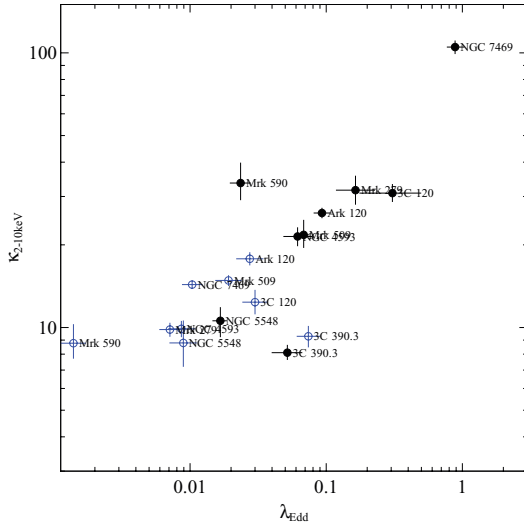


Figure 14. Hard X-ray (2–10 keV) bolometric correction against the Eddington ratio for the objects with RM mass estimates. Here we present a comparison between the values obtained using mass estimates from 2MASS *K*-band bulge luminosities (blue empty squares) and RM (black), using the UVOT and XRT data in both cases, with intrinsic reddening included in the fit.

the detection of these lines (VF07). We plot the ionizing fraction ($L_{E>13.6\text{eV}}/L_{\text{bol}}$) against the X-ray luminosity, bolometric luminosity and Eddington ratio in Fig. 16 to identify any possible trends. It appears that there is little correlation between $L_{E>13.6\text{eV}}/L_{\text{bol}}$ and luminosity (either X-ray or bolometric), but there may be indication of a more substantial correlation with the Eddington ratio. This is in line with the variation in the SED shape reported in VF07 and VF09, despite our sample spanning only the lower-Eddington ratio regime. The average ionizing fraction is ~ 0.6 , consistent with that adopted for the ionizing luminosity correction b_{ion} in Marconi et al. (2008), but there is a large spread; for low Eddington ratio objects this could drop to ~ 0.4 , and rise to ~ 0.8 for high Eddington ratios. We note that these ionizing fractions are extrapolated from the DISKPN big blue bump model fits and that there may be significant components contributing to this ionizing flux in the extreme-UV and soft X-ray regimes, which our approach cannot quantify; the

ionizing luminosity fractions presented here may therefore represent lower limits to the ‘true’ ionizing fractions. However, such a trend for increasing ionizing fraction with the Eddington ratio is also expected from combined accretion disc and corona models such as the one by Witt, Czerny & Zyci (1997). The distribution of values seen for the ionizing luminosity fraction may also need to be taken into account in the radiation pressure corrections to virial masses as discussed by Marconi et al. (2009), in a refinement over their 2008 work.

5.5 Optical–X-ray connections

The $\alpha_{\text{OX}}-L_{\nu}(2500\text{\AA})$ correlation reported in the literature (Stratava et al. 2005; Steffen et al. 2006) has been widely used to encapsulate a relationship between the UV accretion disc emission and the coronal X-ray emission, and the relation between optical and X-ray emission in AGN has been extensively studied observationally (e.g. the ROSAT International X-ray Optical Survey (RIXOS); Mason et al. 2000). The spectral index α_{OX} is defined as $-\log(L_{\nu}(2500\text{\AA})/L_{\nu}(2\text{keV}))/\log(\nu(2500\text{\AA})/\nu(2\text{keV}))$ and therefore the optical flux used in its calculation is measured at an energy significantly lower than the peak of the big blue bump (in the vicinity of $\sim 1000\text{\AA}$ for typical AGN black hole masses of $\sim 10^{7-8}M_{\odot}$, accreting at ~ 10 per cent of the Eddington limit). We assess how changing the optical reference point in the calculation of this optical-to-X-ray spectral index alters the correlations seen and denote the new spectral indices as α_{BX} , α_{UX} and α_{UVW2X} (which use the rest-frame *B*, *U* and *UVW2* bands as the optical reference point instead of 2500\AA). It is evident from the centre-left panel of Fig. 17 that this sample follows the established correlation from Steffen et al. (2006), within the expected scatter. We present spectral indices calculated both from the raw data (by interpolating to the desired optical wavelength, black filled circles) and from the dereddened model fit (white filled circles). In the case of α_{BX} , there seems to be little correlation as the *B* band is at the low-energy end of the disc component, where variations in the disc emission have relatively little effect. However, the correlations linking α_{UX} and α_{UVW2X} to their respective reference luminosities seem more substantial for the raw, interpolated values: the correlation coefficients decrease monotonically from -0.46 to -0.79 as the reference wavelength moves from the *B* to

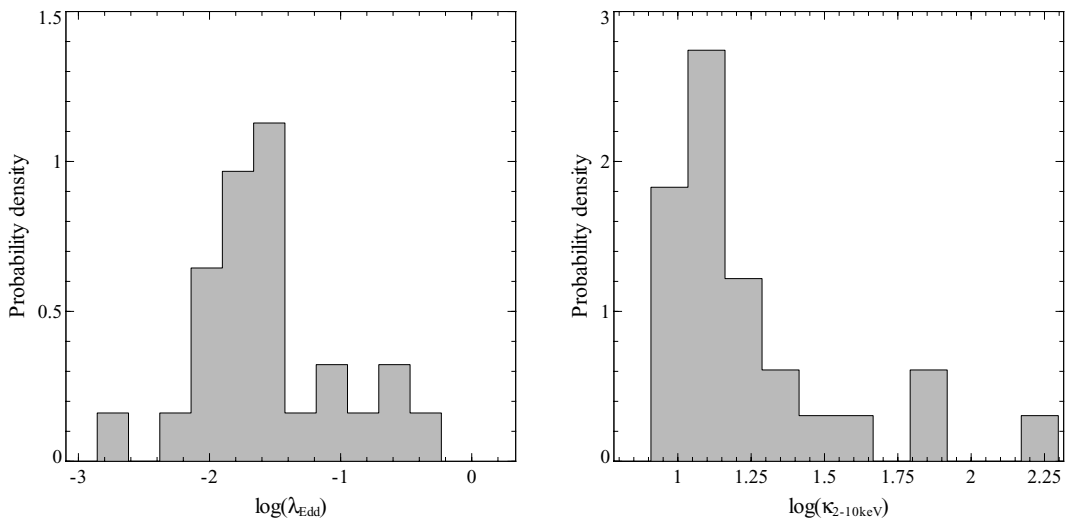


Figure 15. Histograms of Eddington ratios (left-hand panel) and bolometric correction (right-hand panel) for the sample.

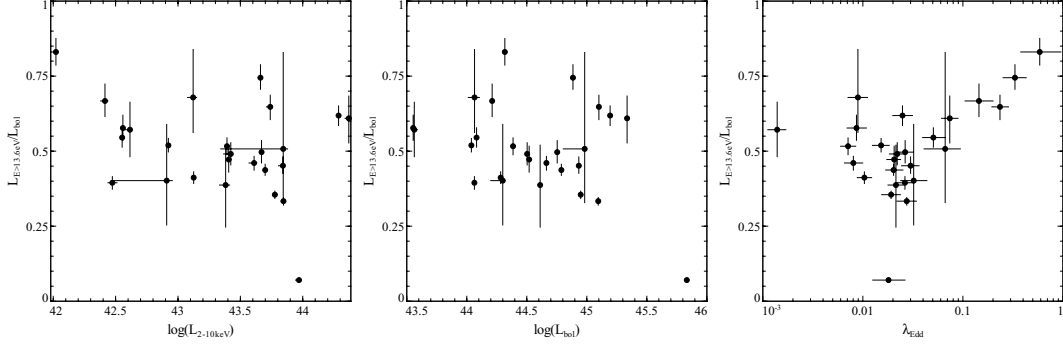


Figure 16. Ionizing fraction $L_{E>13.6\text{eV}}/L_{\text{bol}}$. *Left-hand panel:* $L_{E>13.6\text{eV}}/L_{\text{bol}}$ against the X-ray luminosity. *Middle panel:* $L_{E>13.6\text{eV}}/L_{\text{bol}}$ against the bolometric luminosity. *Right-hand panel:* $L_{E>13.6\text{eV}}/L_{\text{bol}}$ against the Eddington ratio.

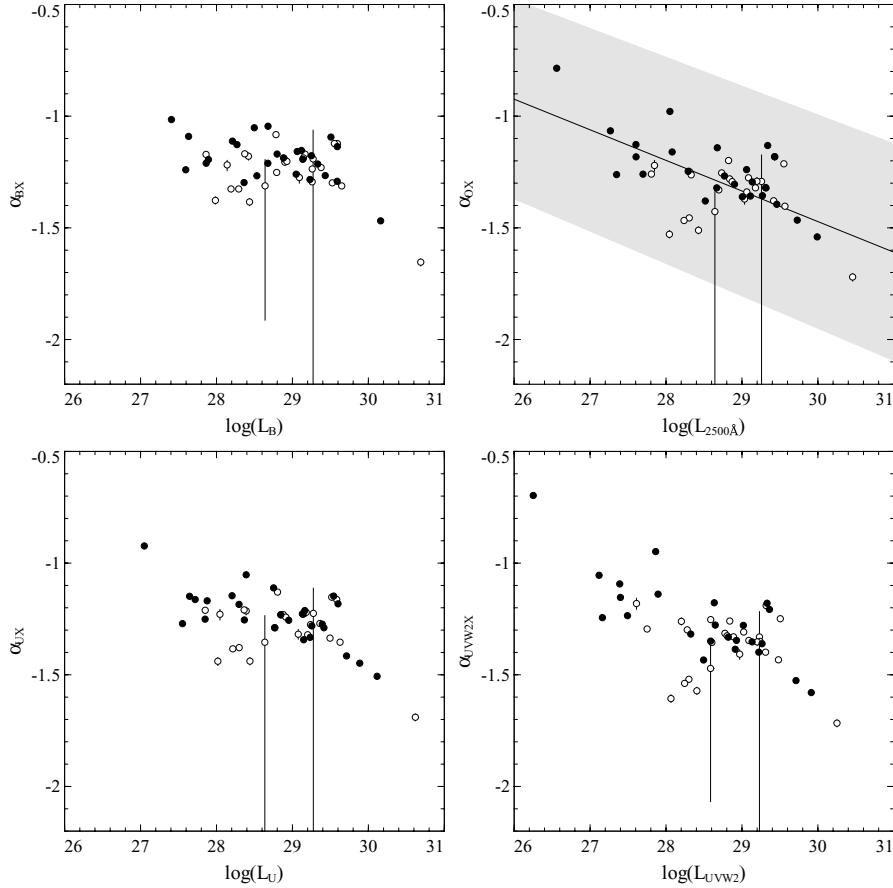


Figure 17. From left to right, top to bottom: spectral indices connecting the SED at the rest-frame B band, U band, 2500 \AA (α_{OX}) and $UVW2$ band with the SED at a rest frame of 2 keV . Each spectral index is plotted against the corresponding rest-frame reference luminosity in the optical/UV band (e.g. L_B for α_{BX} , L_U for α_{UX} etc.). The black filled circles represent the values obtained from interpolating at rest-frame energies from the data points (not corrected for intrinsic reddening) and the white filled circles show the indices calculated from the dereddened SED model fit. The solid line and shaded area in the top right-hand panel show the best fit and spread obtained by Steffen et al. (2006) for a sample of 333 optically selected AGN. The correlation coefficients of the dereddened, intrinsic spectral index against the luminosity are as follows: $\alpha_{\text{BX}} - L_B$: -0.27 , $\alpha_{\text{UX}} - L_U$: -0.24 , $\alpha_{\text{OX}} - L_{2500\text{\AA}}$: -0.19 , $\alpha_{\text{UVW2X}} - L_{\text{UVW2}}$: -0.16 .

the $UVW2$ band, demonstrating the stronger anticorrelations seen using a shorter reference wavelength. However, the intrinsic spectral indices do not show such trends: the correlation coefficients actually increase from -0.27 to -0.16 going from B to $UVW2$, which on visual inspection of these plots reveals a large degree of scatter between the reddening-corrected spectral indices and their reference luminosities.

This demonstrates the importance of accounting for reddening. Previous studies on α_{OX} have attempted to minimize the effects of reddening by carefully selecting the samples used; for example, Strateva et al. (2005) require their AGN to be bluer than a template AGN SED with fixed reddening; redshifting this template then provides a redshift-dependent colour threshold (see Richards et al. 2003) which they use to exclude ‘red’ AGN. This should

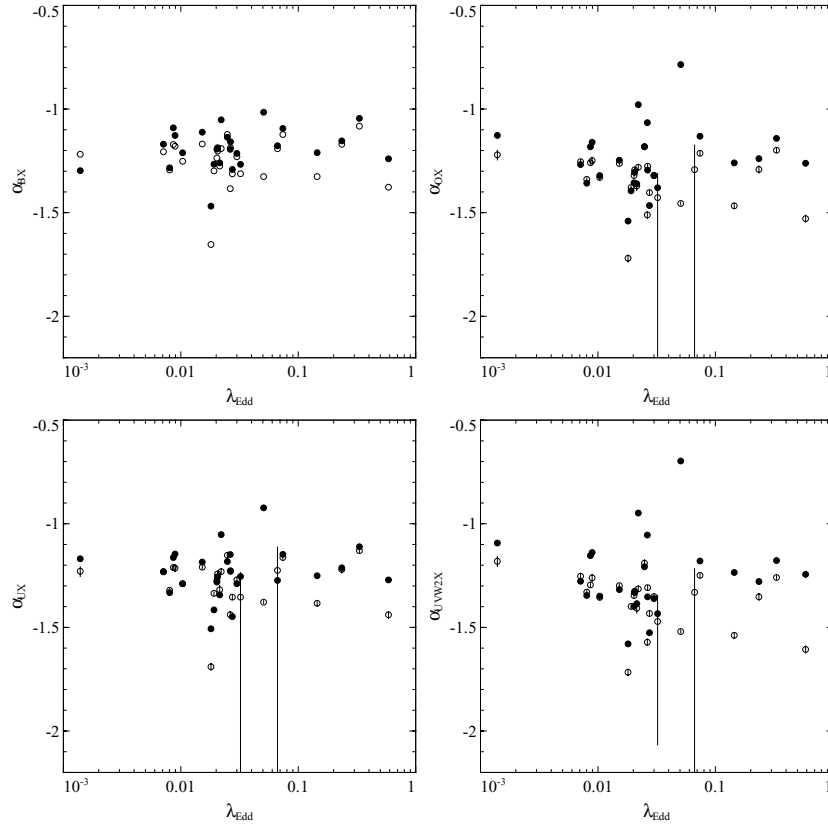


Figure 18. From left to right, top to bottom: spectral indices connecting the SED at the rest frame B band, 2500 \AA (α_{OX}), U band and $UVW2$ band with the SED at a rest frame of 2 keV . Each spectral index is plotted against the Eddington ratio. All conventions are as in Fig. 17.

statistically exclude heavily reddened AGN, but we find by *individually* dereddening our optical–UV AGN SEDs that reddening effects could still be significant. The anticorrelations between the raw spectral indices (uncorrected for reddening) and their respective reference luminosities appear strong because reddening in an object produces a flatter optical–X-ray spectral index and reduces the UV luminosity; this will tend to populate the top-left regions of each plot with reddened objects while the lower right regions will contain unreddened objects, producing an artificially robust-looking relationship. This effect may contribute to the strength of the $\alpha_{\text{OX}}-L_{2500 \text{ \AA}}$ correlation in the literature. From the perspective of understanding the accretion process, however, it is the *intrinsic*, dereddened optical–X-ray spectral indices which are of interest. We only use a small sample here, but if individually dereddened optical SEDs for AGN can be used to construct the $\alpha_{\text{OX}}-L_{2500 \text{ \AA}}$ relation anew with larger samples, it will clarify whether the versions of this relation seen in the literature can be used to robustly constrain the accretion process in AGN.

When plotted against the Eddington ratio instead of the optical/UV reference luminosity, even the anticorrelations between the raw, uncorrected indices and optical/UV reference luminosities disappear (see Fig. 18). This phenomenon was also observed by VF07 and Shemmer et al. (2008). The latter study suggests that the lack of significant correlation between the optical–X-ray spectral index and Eddington ratio could be because of inaccuracies in mass determination methods. They also discuss how the use of an X-ray-selected sample (such as the hard X-ray-selected BAT catalogue used here) should alleviate some selection effects which artificially could blur any correlation with the Eddington ratio, but this study seems to reinforce the lack of connection between the optical–X-ray spectral

index and Eddington ratio. This seems to be the case for both the ‘raw’ values of α_{OX} etc. from the data and the ‘intrinsic’ values calculated from dereddened SED fits. This may imply that the optical threshold needs to be moved further into the far-UV before an Eddington ratio correlation is reported, if present.

We also briefly discuss possible correlations of these spectral indices with mass. We remind the reader of the potential uncertainties with our K -band mass estimates discussed in Section 3.4, but we have found evidence that such estimates do trace more direct black hole mass estimators. We find only weak indications of a correlation between $\alpha_{\text{band,X}}$ and the black hole mass, but find that the correlation coefficient increases with a decreasing reference wavelength, increasing from 0.30 (B band) to 0.61 ($UVW2$ band; see Fig. 19), if the outlier IRAS 09149–6206 (the AGN with the highest black hole mass in this sample) is excluded. This relation implies that the spectrum flattens for higher mass objects, presumably indicating that the fraction of UV emission directly from the accretion disc is less. A plot of bolometric correction against the black hole mass (Fig. 20) displays this in a more pronounced fashion, confirming that the fraction of the luminosity appearing in X-rays, $1/\kappa_{2-10 \text{ keV}}$ (i.e. from the corona rather than the disc) increases with mass. This lends credibility to a scenario in which local, high mass black holes are radiating predominantly at low Eddington ratios: not only does the high mass lead to a low Eddington ratio, but lower bolometric correction reduces the bolometric luminosity further. Conversely, it is then expected that lower mass black holes exhibit higher Eddington ratios by virtue of their large bolometric corrections, in line with ‘cosmic downsizing’ scenarios in which the bulk of accretion activity shifts to lower mass objects at low redshift (Heckman et al. 2004). Since we are using the bulge luminosity to calculate the

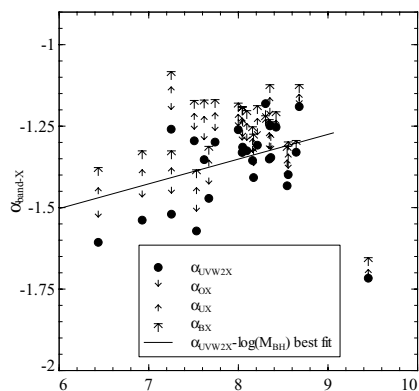


Figure 19. $\alpha_{O,B,U,UVW2X}$ against the black hole mass. The key provides details of the symbols used. The best fit (solid line) excludes outlier IRAS 09149–6206.

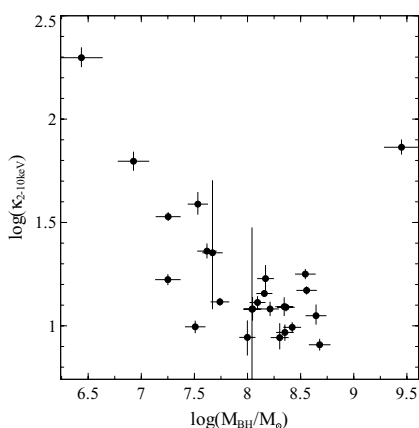


Figure 20. X-ray (2–10keV) bolometric correction against the black hole mass. The best fit (excluding the outlier IRAS 09149–6206) has the form $\log(\kappa_{2-10\text{keV}}) = 2.86 - 0.199 \log(M_{\text{BH}}/M_{\odot})$ (the spread in bolometric corrections is a factor of ~ 2 , by visual inspection).

black hole mass, the possibility of a correlation of bolometric correction with bulge luminosity is also interesting to consider. If real, it suggests that brighter bulge galaxies contain AGN accreting in states with a greater fraction of X-ray emission. This may indicate a link between the stellar populations of the host galaxy, the accretion state of the central black hole and the fuelling process; these themes are discussed in more detail by Kauffmann & Heckman (2009).

The data from VF09 on the reverberation-mapped sample do not exhibit any similar trends between either α_{OX} or bolometric correction and the black hole mass, despite the better quality mass estimates used. However, the reverberation sample is not well selected and the quantities in VF09 do not include reddening and host galaxy corrections in the optical–UV, so they do not necessarily provide a useful comparison for our purposes.

5.6 Host galaxy properties

The host galaxy properties of the 9-month BAT catalogue are discussed in some detail in Winter et al. (2009). Specific conclusions from their study include the lack of a convincing relation between the host galaxy inclination and X-ray absorbing column N_{H} , the large fraction of interacting systems in the whole catalogue (~ 54 per cent) and suggestions of evolution away from the elliptical, red hosts seen around AGN at $z \sim 1$ to systems with bluer

colours. The accretion rate estimates in their paper do not suggest, however, that interactions/mergers are triggers for AGN activity, as the interacting systems do not exhibit a different distribution of accretion rates to the whole population.

Our UVOT photometry results may provide interesting clues in understanding the host galaxy population of the catalogue. Here, we present a discussion of the host galaxy colours for our sample using the UVOT host galaxy magnitudes and compare our findings with the literature (the more detailed work using KPNO data (Koss et al. in preparation) will provide colours for the entire 9-month catalogue).

There has been much previous work suggesting that AGN hosts occupy the so-called green valley (SDSS $g - r$ colour in the range $\sim 0.5-0.9$) in the colour–magnitude diagram, mid-way between the late-type ‘red sequence’ ($g - r \sim 0.8-1.0$) and star-forming ‘blue cloud’ ($g - r \sim 0.2 - 0.5$) galaxies (see e.g. Nandra et al. 2007; Hickox et al. 2009). Recently, Schawinski et al. (2009) present the colours for a small sample of 16 AGN from the BAT catalogue which have SDSS data and find that their hosts also lie in this intermediate region. The studies of Silverman et al. (2008) and Westoby, Mundell & Baldry (2007) are also of interest as they probe high and low-redshift populations (from the Extended *Chandra* Deep Field South and the SDSS, respectively). Silverman et al. (2008) find that, accounting for biases caused by a large-scale structure, AGN hosts at $z \gtrsim 0.8$ have bluer hosts ($U - V < 0.7$) but the lower redshift counterparts ($z \lesssim 0.6$) tend to exhibit redder colours. Westoby et al. (2007) find a broad distribution of colours for their composite AGN sample, towards the red end of the colour distribution for normal galaxies, and covering the green valley. We note that, in making our comparison with the results of Silverman et al. (2008), we do not have any biases with respect to a large-scale structure due to the nature of the *Swift*–BAT catalogue, and additionally the only bias with respect to host galaxy properties would be the preferential selection of face-on galaxies (by virtue of our low N_{H} selection).

Using the prescription in the UVOT CALDB⁷ for converting the UVOT magnitudes into standard Johnson magnitudes, along with the prescription for calculating SDSS colours from Johnson colours, we present our colour–magnitude diagrams in Fig. 21. We present both the Johnson $U - V$ colour against absolute V -band magnitude M_V and SDSS $g - r$ colour against the absolute SDSS r -band magnitude $M(r)$; the $g - r$ colour is calculated using the transformation $g - r = 1.023(B - V) + 0.16(U - B) - 0.187$ (Karaali, Bilir & Tunçel 2005) and the r -band magnitude is interpolated using the UVOT points. We provide $U - V$ colours for 21 out of our 26 objects for which both U and V host galaxy magnitudes were available from our GALFIT analysis; three of these objects did not have a B -band magnitude for the transformation to $g - r$, reducing our sample of objects to 18 for the latter plot.

We see from Fig. 21 that the colours of our local sample show a distribution similar to the X-ray-selected AGN in fig. 3 of Silverman et al. (2008), but without a significant noticeable red population. In comparison with Westoby et al. (2007), we find a distribution similar to their composite AGN sample, with a handful of very blue AGN. We therefore seem to corroborate the suggestions in Winter et al. (2009) of an evolution away from red-type host galaxies to bluer host galaxies, with the majority of objects in the ‘green valley’. We also find somewhat bluer colours than those found for the 16 BAT AGN hosts in Schawinski et al. (2009) although there are only five objects overlapping between the two samples (NGC 7469, NGC 5548,

⁷ <http://heasarc.nasa.gov/docs/heasarc/caldb/swift/docs/uvot/>

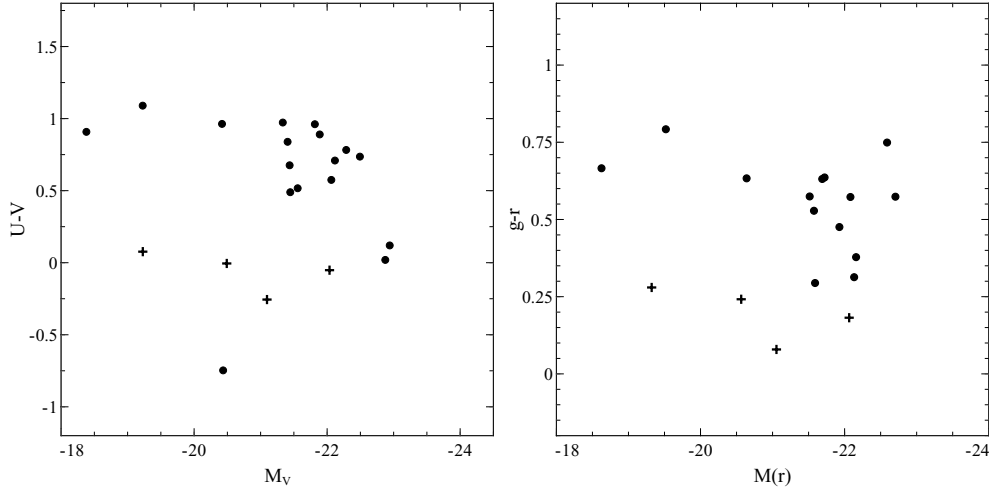


Figure 21. Left-hand panel: host galaxy colour $U - V$ against the absolute V -band magnitude for the host galaxies in the sample. *Right-hand panel:* SDSS $g - r$ colour against the absolute r -band magnitude for the sample. Crosses represent objects with point-like morphologies, for which the host galaxy colours should be treated with caution. GALFIT returns errors of $\pm \sim 0.01$ mag on magnitudes, but systematic errors due to the resolution of the UVOT are likely to dominate (see Fig. 22).

Mrk 766, MCG +04-22-042 and Mrk 1018; this list was obtained by private communication with the author). We caution that four of the bluest objects in Fig. 21 (Ark 120, Mrk 509, Mrk 841 and Mrk 352) have point-like morphologies in the UVOT images, and despite our efforts to minimize the PSF mismatch, if such a mismatch is present, the wings of the PSF could be mistaken for the host galaxy giving rise to artificial ‘hosts’ which are influenced by the bluer colours of the AGN. These objects are depicted using crosses in Fig. 21 for easy identification. This may indicate that the blueward shift is less pronounced than it may initially seem, but the colours for the rest of our sample do lie in the blue end of the green valley. The more accurate and complete analysis of Koss et al. (in preparation) will clarify these issues.

We also caution that the PSF size of the UVOT may impose limitations on the accuracy of our host galaxy magnitudes. In Section 3.1.1, we estimate the degree by which the nuclear flux is overestimated with the UVOT by comparison with *HST* ACS images for one source, NGC 4593. Based on the assumption that the flux spuriously attributed to the nucleus should actually be attributed to the host galaxy, we can make a naïve correction for this effect as follows. If the nuclear flux reported by the UVOT is $F_{\text{nuc}}^{\text{UVOT}} = F_{\text{nuc}}^{\text{HST}} + F_{\text{spurious}}$ (for the nuclear flux from the *HST* $F_{\text{nuc}}^{\text{HST}}$ and spurious flux F_{spurious}), we can solve for F_{spurious} using the estimate of the error in the UVOT nuclear flux from Section 3.1.1. We can then obtain a better estimate of the host galaxy flux seen by the *HST*, using $F_{\text{galaxy}}^{\text{HST}} = F_{\text{galaxy}}^{\text{UVOT}} + F_{\text{spurious}}$. The correction to the galaxy flux emerges as $F_{\text{spurious}} = F_{\text{nuc}}^{\text{UVOT}} [1 - (F_{\text{nuc}}^{\text{HST}}/F_{\text{nuc}}^{\text{UVOT}})]$. We employ the fractions $F_{\text{nuc}}^{\text{HST}}/F_{\text{nuc}}^{\text{UVOT}} \approx 2.4/5.0$ for the V band and $\approx 1.2/1.8$ for the U band based on the analysis of NGC 4593, and calculate the corrections to the host galaxy magnitudes as follows:

$$\Delta M = -2.5 \log \left(1 + \frac{F_{\text{nuc}}^{\text{UVOT}}}{F_{\text{galaxy}}^{\text{UVOT}}} \left(1 - \frac{F_{\text{nuc}}^{\text{HST}}}{F_{\text{nuc}}^{\text{UVOT}}} \right) \right). \quad (3)$$

It is not straightforward to predict whether the colours should generally increase or decrease under this correction, since the correction is dependent on two things: the ratio of the host galaxy flux to nuclear flux and the degree of error in the nuclear flux intrinsic to the UVOT, in a particular band. We plot the corrected $U - V$ colours in Fig. 22. If the corrective factors assumed here are reasonable,

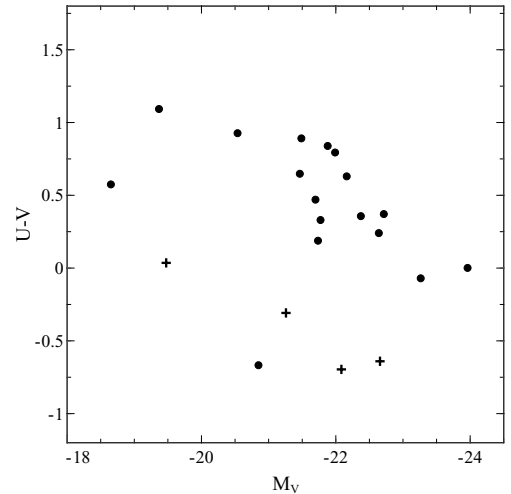


Figure 22. Host galaxy colour $U - V$ against the absolute V -band magnitude, partially corrected for a large PSF of the UVOT. Key as in Fig. 21.

we find that the $U - V$ colours generally become bluer, in some cases substantially so. As expected, the corrected host galaxy V -band magnitudes are brighter due to the extra contribution from the nucleus. We do not make an attempt to correct the SDSS $g - r$ magnitudes as these would require an estimate of the nuclear flux overestimate in the B band as well, and the r -band magnitudes require interpolation to wavelengths between the central UVOT filter wavelengths. It is therefore possible that better quality images may reveal even bluer hosts than our results indicate, but the limitations of the UVOT highlighted by this analysis suggest that the upcoming KPNO/SDSS work of Koss et al. (in preparation) will provide more definitive estimates of the host galaxy colours.

6 SUMMARY AND CONCLUSIONS

We have presented SEDs for a well-selected sub-sample of local AGN from the *Swift*-BAT 9-month catalogue of AGN. This study makes use of the unbiased and representative nature of the catalogue and offers numerous advancements over previous studies

of the AGN SED. The simultaneous optical-to-X-ray observations from *Swift* used here provide a more accurate snapshot of the accretion energy budget in AGN, as pioneered by Brocksopp et al. (2006) and adopted by VF09. We are also able to increase confidence in measurements of the accretion luminosity by employing a sub-sample of AGN with minimal spectral complexity (no strong signs of partial covering or strong reflection) and lack of heavy absorption [$\log(N_{\text{H}}/\text{cm}^{-2}) < 22$] which could complicate the picture: the X-ray spectra for these objects can all be fitted with absorbed power laws according to previous studies (Winter et al. 2009), allowing straightforward calculation of absorption-corrected X-ray luminosities. The data from *Swift*–UVOT typically cover at least four, if not all six, available optical–UV filters on the instrument, and allow for a detailed reconstruction of the optical–UV SED. This is useful on two counts: first, in understanding the degree of host galaxy contamination in the observed SED for these objects and secondly, in estimating how much dust extinction is responsible for the shape of the host-galaxy-corrected nuclear SED. The inclusion of black hole mass estimates from *K*-band bulge luminosities allows accretion rates to be calculated using a uniform method for the sample.

We consistently remove the host galaxy contribution from the UVOT data points by fitting a ‘PSF+disc’ profile to the UVOT images using *GALFIT* and obtain a corrected nuclear flux in all available filters. The host galaxy is often found to be a significant contaminant in the optical (*V*, *B* and *U*) bands, but far less significant in the *UV* bands. We also find that optical/UV emission lines are unlikely to contaminate the nuclear continuum significantly given the relatively large bandwidths of the UVOT filters (500–1000 Å). When fitted along with the simultaneous X-ray data with a simple ‘multicolour accretion disc + power-law’ model, including both Galactic and intrinsic absorption, we are able to recover many important parameters of the AGN SED and produce an average model SED for lower luminosity Seyferts with low accretion rates. The *GALFIT* fitting on the UVOT images also provides potential for understanding the host galaxy population of the unobscured BAT catalogue AGN.

(i) In this representative sample, the 2–10 keV bolometric corrections cluster around values of 10–20. These bolometric corrections are essential for calculations of bolometric luminosities and accretion rates from X-ray observations, and therefore are of importance in the wider picture of scaling up the total X-ray energy density due to supermassive black hole accretion in the X-ray background.

(ii) The Eddington ratios for the sample are typically below 0.1. Low bolometric corrections are expected for these low Eddington ratios (VF07; VF09), and furthermore, this may indicate that local, unobscured AGN are generally in an accretion state analogous to the ‘low/hard’ state in Galactic black holes. This reinforces previous findings that local Seyferts have low accretion rates, such as in early work by Sun & Malkan (1989), who fit accretion disc models to optical-to-IR SEDs for a sample of 60 bright quasars and Seyferts. We arrive at the same conclusion using a different approach and employing a different sample: here we also use X-ray data in the calculation of accretion rates on a lower luminosity sample selected for minimal absorption.

(iii) Some objects possess significant optical–UV dust reddening, even though these objects were selected for a low absorbing gas column. This is broadly consistent with the observations of Kraemer et al. (2000), Barcons, Carrera & Ceballos (2003) and Mateos et al. (2005) amongst others, and adds to the body of work suggesting that optical and X-ray obscuration classifications can show significant discrepancies (Comastri et al. 2001; Maiolino et al. 2001;

Silverman et al. 2005 are examples of studies which find evidence for the opposite effect in part or all of their samples, namely AGN with X-ray absorption but negligible optical–UV obscuration signatures). If we adopt a threshold of $E(B - V) \sim 0.1$ to divide heavily dust reddened and unreddened objects, approximately five to six out of our 26 AGN (~ 20 per cent) are heavily dust reddened, consistent with the proportions of ‘anomalous’ AGN with mismatching optical and X-ray classifications found in some of the above studies, but this obviously depends on the threshold adopted.

(iv) The reddening-corrected ionizing luminosity fraction increases with the Eddington ratio, as expected from combined accretion disc and corona models.

(v) We confirm that spectral indices linking the optical to the X-ray (α_{OX} etc.) show evidence for correlation with luminosity but not with the Eddington ratio, corroborating the findings of previous studies. We find that extinction effects may need to be more carefully considered when considering the correlation with luminosity than has been done in previous works. Dereddening objects *individually* in constructing the $\alpha_{\text{OX}} - L_{2500\text{\AA}}$ relation yields a weaker correlation, which may need to be investigated in larger samples to check the robustness of this correlation and its use in constraining the accretion process. The presence of a possible correlation of α_{UVW2X} with mass, coupled with the attendant anticorrelation of bolometric correction with mass, may reinforce cosmic downsizing scenarios where lower mass black holes dominate AGN activity in the local universe by virtue of their larger accretion rates.

(vi) The host galaxies for this sub-sample generally lie in the green valley or bluewards of it, in the standard colour–magnitude diagram. However, the UVOT images are of limited resolution and a better quality analysis with the KPNO/SDSS (Koss et al. in preparation) will shed more light on the host galaxy properties.

(vii) Adding the hard X-ray BAT data (14–195 keV) to these observations can help with ascertaining the presence of a reflection hump in the spectrum. We selected four sources with the lowest hard X-ray variability and find that three of these four showed a significant excess peaking at around ~ 30 keV which can plausibly be fitted with a reflection hump.

We have also discussed at length the calibration of the black hole mass estimation method used to obtain these conclusions. The Eddington ratios and bolometric corrections could be significantly affected by these uncertainties. We estimate the degree of this effect by comparison with results using reverberation mass estimates. This analysis reveals somewhat higher bolometric corrections and Eddington ratios, but the bulk of the sample lies consistently at lower Eddington ratios and exhibits low bolometric corrections. The bulge luminosity-based and RM methods require more accurate calibration before more definitive statements on the magnitudes of these uncertainties can be constrained.

The hard X-ray selection criteria used to specify the BAT catalogue eliminate potential biases. As an illustration of this, we note the presence of substantially more low accretion rate objects in this sample than the samples of VF07 and VF09 (the former was UV selected by *FUSE* and the latter selected for being optically bright enough for RM). The low accretion rates found here broadly corroborate the results of Winter et al. (2009) using X-ray luminosities (with no bolometric correction applied). Although these objects have low absorption and are situated at low redshift, they are similar in power to the obscured, higher redshift sources thought to be responsible for the bulk of the X-ray background. As suggested in Fabian (2004), we confirm that a lower bolometric correction is appropriate for these objects, based on our multipronged approach to

recovering the true bolometric luminosities in these sources. Bolometric corrections of the magnitude seen here are appropriate for reconciling the energy density from the X-ray background with the local black hole density. It remains to be seen if such properties are displayed in large samples of obscured AGN, the dominant class of AGN contributing to the X-ray background.

Useful extensions to this work would be to acquire simultaneous *Swift* observations for the remaining objects in the BAT catalogue, which would potentially confirm the trends we identify here, or highlight unknown biases in our chosen sample. What is of particular importance next is to understand the workings of the central engine of obscured AGN. In a companion paper (Vasudevan et al. in preparation) we hope to address this issue for both obscured and unobscured AGN in the *Swift*/BAT catalogue, using the reprocessed IR emission along with the hard X-ray BAT observations to estimate their bolometric properties, analogous to the work done by Pozzi et al. (2007) for eight higher redshift quasars. The well-studied 9-month catalogue again provides an excellent starting point for such work, and follow-up studies on the 22-month catalogue (Tueller et al. 2009) will offer new scope for constraining the accretion physics of a larger, representative sample of AGN.

ACKNOWLEDGMENTS

RVV acknowledges support from the Science and Technology Facilities Council (STFC) and ACF thanks the Royal Society for support. We thank the *Swift*/BAT team for the 9-month AGN catalogue data. We thank Stephen Holland for help with UVOT data analysis and Alice Breeveld for kindly providing and customizing her PSF generation code for UVOT images. We thank Jack Tueller for the use of results derived from the eight-channel BAT data and Kevin Schawinski for providing host galaxy colours and magnitudes from his paper for comparison with our study. We thank Richard McMahon for help in understanding the correct use of the data in the 2MASS catalogues. We also thank the anonymous referee for useful comments and suggestions which improved this work. This research has made use of the NED and the NASA/IPAC Infrared Science Archive, which are operated by the Jet Propulsion Laboratory, California Institute of Technology, under contract with the National Aeronautics and Space Administration.

REFERENCES

Antonucci R., 1993, *ARA&A*, 31, 473
 Barcons X., Carrera F. J., Ceballos M. T., 2003, *MNRAS*, 339, 757
 Bentz M. C., Peterson B. M., Pogge R. W., Vestergaard M., Onken C. A., 2006, *ApJ*, 644, 133
 Blustin A. J., Page M. J., Fuerst S. V., Branduardi-Raymont G., Ashton C. E., 2005, *A&A*, 431, 111
 Brocksopp C., Starling R. L. C., Schady P., Mason K. O., Romero-Colmenero E., Puchnarewicz E. M., 2006, *MNRAS*, 366, 953
 Cardelli J. A., Clayton G. C., Mathis J. S., 1989, *ApJ*, 345, 245
 Comastri A., Fiore F., Vignali C., Matt G., Perola G. C., La Franca F., 2001, *MNRAS*, 327, 781
 Crenshaw D. M., Kraemer S. B., 2001, *ApJ*, 562, L29
 Denney K. D. et al., 2006, *ApJ*, 653, 152
 Elvis M. et al., 1994, *ApJS*, 95, 1 (E94)
 Fabian A. C., 2004, in Ho L. C., ed., *Coevolution of Black Holes and Galaxies*. Cambridge Univ. Press, Cambridge, p. 446
 Fabian A. C., Vasudevan R. V., Gandhi P., 2008, *MNRAS*, 385, L43
 Fabian A. C., Vasudevan R. V., Mushotzky R. F., Reynolds L. M. W. C. S., 2009, *MNRAS*, 394, L89
 Francis P. J., Hewett P. C., Foltz C. B., Chaffee F. H., Weymann R. J., Morris S. L., 1991, *ApJ*, 373, 465

Gaskell C. M., Goosmann R. W., Antonucci R. R. J., Whysong D. H., 2004, *ApJ*, 616, 147
 Gierliński M., Done C., 2004, *MNRAS*, 349, L7
 Graham A. W., Worley C. C., 2008, *MNRAS*, 388, 1708
 Greene J. E., Ho L. C., 2005, *ApJ*, 630, 122
 Heckman T. M., Kauffmann G., Brinchmann J., Charlot S., Tremonti C., White S. D. M., 2004, *ApJ*, 613, 109
 Hickox R. C. et al., 2009, *ApJ*, 696, 891
 Hopkins P. F., Richards G. T., Hernquist L., 2007, *ApJ*, 654, 731
 Karaali S., Bilir S., Tunçel S., 2005, *Pub. Astron. Soc. Australia*, 22, 24
 Kauffmann G., Heckman T. M., 2009, *MNRAS*, 397, 135
 Kelly B. C., Bechtold J., Trump J. R., Vestergaard M., Siemiginowska A., 2008, *ApJS*, 176, 355
 Kim M., Ho L. C., Peng C. Y., Barth A. J., Im M., 2008a, *ApJS*, 179, 283
 Kim M., Ho L. C., Peng C. Y., Barth A. J., Im M., Martini P., Nelson C. H., 2008b, *ApJ*, 687, 767
 Kirhakos S., Strauss M. A., Yahil A., Griffith M., Fisher K. B., 1991, *AJ*, 102, 1933
 Kraemer S. B., George I. M., Turner T. J., Crenshaw D. M., 2000, *ApJ*, 535, 53
 Kuraskiewicz J., Wilkes B. J., Schmidt G., Smith P. S., Cutri R., Czerny B., 2009, *ApJ*, 692, 1180
 Maiolino R., Marconi A., Salvati M., Risaliti G., Severgnini P., Oliva E., La Franca F., Vanzani L., 2001, *A&A*, 365, 28
 Marconi A., Hunt L. K., 2003, *ApJ*, 589, L21
 Marconi A., Risaliti G., Gilli R., Hunt L. K., Maiolino R., Salvati M., 2004, *MNRAS*, 351, 169
 Marconi A., Axon D. J., Maiolino R., Nagao T., Pastorini G., Pietrini P., Robinson A., Torricelli G., 2008, *ApJ*, 678, 693
 Marconi A., Axon D., Maiolino R., Nagao T., Pietrini P., Risaliti G., Robinson A., Torricelli G., 2009, *ApJ*, 678, 693
 Mason K. O. et al., 2000, *MNRAS*, 311, 456
 Mateos S., Barcons X., Carrera F. J., Ceballos M. T., Hasinger G., Lehmann I., Fabian A. C., Streblynska A., 2005, *A&A*, 444, 79
 Miniutti G., Fabian A. C., 2004, *MNRAS*, 349, 1435
 Morales R., Fabian A. C., Reynolds C. S., 2000, *MNRAS*, 315, 149
 Mushotzky R., 2004, in Barger A. J., ed., *Astrophysics and Space Science Library*, Vol. 308, *Supermassive Black Holes in the Distant Universe*. Kluwer, Dordrecht, p. 53
 Mushotzky R. F., Winter L. M., McIntosh D. H., Tueller J., 2008, preprint (arXiv:0804.4695)
 Nandra K. et al., 2007, *ApJ*, 660, L11
 Peng C. Y., Ho L. C., Impy C. D., Rix H.-W., 2002, *AJ*, 124, 266
 Peterson B. M. et al., 1999, *ApJ*, 510, 659
 Peterson B. M. et al., 2004, *ApJ*, 613, 682
 Poole T. S. et al., 2008, *MNRAS*, 383, 627
 Pozzi F. et al., 2007, *A&A*, 468, 603
 Reynolds C. S., Ward M. J., Fabian A. C., Celotti A., 1997, *MNRAS*, 291, 403
 Richards G. T. et al., 2003, *AJ*, 126, 1131
 Richards G. T. et al., 2006, *ApJS*, 166, 470
 Schawinski K., Virani S., Simmons B., Urry C. M., Treister E., Kaviraj S., Kushkuley B., 2009, *ApJ*, 692, L19
 Shemmer O., Brandt W. N., Netzer H., Maiolino R., Kaspi S., 2008, *ApJ*, 682, 81
 Silva L., Maiolino R., Granato G. L., 2004, *MNRAS*, 355, 973
 Silverman J. D. et al., 2005, *ApJ*, 618, 123
 Silverman J. D. et al., 2008, *ApJ*, 675, 1025
 Simmons B. D., Urry C. M., 2008, *ApJ*, 683, 644
 Steffen A. T., Strateva I., Brandt W. N., Alexander D. M., Koekemoer A. M., Lehmer B. D., Schneider D. P., Vignali C., 2006, *AJ*, 131, 2826
 Strateva I. V., Brandt W. N., Schneider D. P., Vanden Berk D. G., Vignali C., 2005, *AJ*, 130, 387
 Sun W.-H., Malkan M. A., 1989, *ApJ*, 346, 68
 Tueller J., Mushotzky R. F., Barthelmy S., Cannizzo J. K., Gehrels N., Markwardt C. B., Skinner G. K., Winter L. M., 2008, *ApJ*, 681, 113

Tueller J. et al., 2009, preprint (arXiv:0903.3037)
 Ulvestad J. S., Antonucci R. R. J., Goodrich R. W., 1995, AJ, 109, 81
 Vasudevan R. V., Fabian A. C., 2007, MNRAS, 381, 1235 (VF07)
 Vasudevan R. V., Fabian A. C., 2009, MNRAS, 392, 1124 (VF09)
 Wang J., Mao Y. F., Wei J. Y., 2009, AJ, 137, 3388
 Westoby P. B., Mundell C. G., Baldry I. K., 2007, MNRAS, 382, 1541

Winter L. M., Mushotzky R. F., Reynolds C. S., Tueller J., 2009, ApJ, 690, 1322
 Witt H. J., Czerny B., Zycki P. T., 1997, MNRAS, 286, 848

APPENDIX A: RESULTS FROM SED FITTING
Table A1. Results from SED fitting.

AGN	M_{BH}/M_{\odot} (1)	Γ (2)	$L_{2-10\text{keV}}$ (3)	$\alpha_{\text{ox,A}}$ (4)	$E(B - V)$ (5)	L_{bol} (6)	$\alpha_{\text{ox,B}}$ (7)	λ_{Edd} (8)	$\kappa_{2-10\text{keV}}$ (9)
1RXS J045205.0+493248	8.04	1.86	43.8	(none)	0.0	45.0	-1.29	$0.067^{+0.028}_{-0.026}$	12^{+18}_{-6}
2MASX J21140128+8204483	8.68	1.85	44.3	-1.18	$0.000056^{+0.035000}_{-0.000056}$	45.2	-1.18	$0.0249^{+0.0064}_{-0.0050}$	$8.10^{+0.51}_{-0.47}$
3C 120	8.35	1.78	43.8	-1.32	0.0	44.9	-1.32	$0.0300^{+0.0065}_{-0.0056}$	$12.4^{+1.3}_{-1.2}$
3C 390.3	8.35	1.75	44.4	-1.13	$0.061^{+0.019}_{-0.021}$	45.3	-1.21	$0.074^{+0.015}_{-0.013}$	$9.29^{+0.80}_{-0.79}$
Ark 120	8.54	1.90	43.8	-1.47	$0.0^{+0.0}_{-0.0}$	45.1	-1.40	$0.0275^{+0.0068}_{-0.0055}$	$17.79^{+0.93}_{-0.88}$
ESO 490-G026	8.05	1.91	43.4	-0.979	$0.266^{+0.019}_{-0.023}$	44.5	-1.28	$0.0221^{+0.0044}_{-0.0036}$	$12.1^{+1.6}_{-1.4}$
ESO 548-G081	7.74	2.03	42.9	-1.25	0.0	44.0	-1.26	$0.0152^{+0.0031}_{-0.0028}$	$13.06^{+0.52}_{-0.47}$
IRAS 05589+2828	8.64	1.61	43.6	-1.36	$0.0^{+0.0}_{-0.0}$	44.7	-1.34	$0.0080^{+0.0019}_{-0.0015}$	$11.2^{+1.4}_{-1.0}$
IRAS 09149-6206	9.45	1.74	44.0	-1.54	$0.28^{+0.23}_{-0.25}$	45.8	-1.72	$0.0181^{+0.0083}_{-0.0055}$	$73.1^{+6.2}_{-5.3}$
MCG +04-22-042	8.09	1.94	43.4	-1.30	0.0	44.5	-1.29	$0.0206^{+0.0033}_{-0.0032}$	$12.97^{+0.86}_{-0.84}$
MCG -06-30-015	7.25	1.62	42.6	-0.785	$0.598^{+0.025}_{-0.026}$	44.1	-1.46	$0.051^{+0.016}_{-0.011}$	$33.7^{+1.5}_{-1.4}$
Mrk 1018	8.21	1.95	43.7	-1.29	0.0	44.8	-1.28	$0.0265^{+0.0053}_{-0.0042}$	$12.07^{+0.94}_{-0.86}$
Mrk 279	8.42	1.88	43.4	-1.27	0.0	44.4	-1.25	$0.0071^{+0.0014}_{-0.0011}$	$9.83^{+0.53}_{-0.54}$
Mrk 352	6.93	1.68	42.4	-1.26	$0.190^{+0.016}_{-0.015}$	44.2	-1.47	$0.145^{+0.055}_{-0.040}$	$62.5^{+6.6}_{-6.0}$
Mrk 509	8.56	1.83	43.8	-1.39	$0.0^{+0.0}_{-0.0}$	44.9	-1.38	$0.0192^{+0.0046}_{-0.0037}$	$14.84^{+0.60}_{-0.60}$
Mrk 590	8.30	1.88	42.6	-1.13	$0.096^{+0.084}_{-0.008}$	43.6	-1.22	$0.00139^{+0.00031}_{-0.00027}$	$8.8^{+1.5}_{-1.0}$
Mrk 766	7.53	1.76	42.5	-1.07	$0.376^{+0.021}_{-0.024}$	44.1	-1.51	$0.0263^{+0.0061}_{-0.0050}$	$38.8^{+5.4}_{-4.1}$
Mrk 841	8.17	1.89	43.4	-1.36	$0.016^{+0.020}_{-0.016}$	44.6	-1.37	$0.0214^{+0.0038}_{-0.0036}$	$16.9^{+2.6}_{-2.0}$
NGC 4593	7.51	1.62	42.6	-1.18	$0.087^{+0.018}_{-0.019}$	43.6	-1.26	$0.0086^{+0.0022}_{-0.0017}$	$9.89^{+0.64}_{-0.63}$
NGC 5548	8.00	1.51	43.1	-1.16	$0.087^{+0.019}_{-0.027}$	44.1	-1.25	$0.0089^{+0.0022}_{-0.0018}$	$8.8^{+1.8}_{-1.6}$
NGC 7469	8.16	1.98	43.1	-1.32	$0.017^{+0.010}_{-0.017}$	44.3	-1.33	$0.0104^{+0.0019}_{-0.0016}$	$14.33^{+0.42}_{-0.42}$
NGC 985	8.36	1.80	43.7	-1.36	$0.0^{+0.0}_{-0.0}$	44.8	-1.32	$0.0203^{+0.0049}_{-0.0033}$	$12.30^{+0.48}_{-0.48}$
SBS 1136+594	7.62	1.94	43.7	-1.24	$0.074^{+0.015}_{-0.016}$	45.1	-1.29	$0.235^{+0.051}_{-0.040}$	$23.0^{+1.9}_{-1.7}$
SBS 1301+540	7.25	1.81	43.7	-1.14	$0.054^{+0.016}_{-0.016}$	44.9	-1.20	$0.332^{+0.098}_{-0.079}$	$16.73^{+0.95}_{-0.93}$
UGC 06728	6.44	1.82	42.0	-1.26	$0.242^{+0.022}_{-0.021}$	44.3	-1.53	$0.59^{+0.37}_{-0.21}$	198^{+23}_{-19}
WKK 1263	7.67	1.68	42.9	-1.38	$0.079^{+0.150}_{-0.079}$	44.3	-1.43	$0.032^{+0.011}_{-0.008}$	23^{+28}_{-10}

(1) Log of the central black hole mass from the 2MASS K -band magnitude. Errors from K -band magnitudes translate into errors of ± 0.1 in values for $\log(M_{\text{BH}}/M_{\odot})$, but we refer the reader to the systematics discussed in the text.

(2) Photon index from the fit to the 0.3–10 keV regime.

(3) Log of 2–10 keV luminosity from the power-law fit to the 0.3–10 keV regime.

(4) Spectral index α_{ox} calculated by interpolation between the available UVOT data points to determine the 2500 Å luminosity.

(5) Intrinsic extinction $E(B - V)$ by fitting the `THE ZDUST(DISKPN)` model combination to UVOT data.

(6) Log of bolometric (0.001–100 keV) luminosity, corrected for X-ray absorption and optical–UV dust reddening.

(7) Spectral index α_{ox} calculated from the full optical-to-X-ray model fit, corrected for optical–UV dust reddening.

(8) Eddington ratio.

(9) Hard X-ray 2–10 keV bolometric correction $L_{\text{bol}}/L_{2-10\text{keV}}$.

Random error estimates are provided on values for intrinsic extinction, Eddington ratio and bolometric correction; random errors on all other quantities are omitted as systematic errors generally dominate.

This paper has been typeset from a \LaTeX file prepared by the author.