

**This is an electronic reprint of the original article.  
This reprint *may differ* from the original in pagination and typographic detail.**

**Author(s):** Suuronen, Anna; Lensu, Anssi; Kuitunen, Markku; Andrade-Alvear, Rodrigo; Celis, Natalia Guajardo; Miranda, Marcelo; Perez, Marcelo; Kukkonen, Jussi

**Title:** Optimization of photovoltaic solar power plant locations in northern Chile

**Year:** 2017

**Version:**

**Please cite the original version:**

Suuronen, A., Lensu, A., Kuitunen, M., Andrade-Alvear, R., Celis, N. G., Miranda, M., Perez, M., & Kukkonen, J. (2017). Optimization of photovoltaic solar power plant locations in northern Chile. *Environmental Earth Sciences*, 76(24), 824.  
<https://doi.org/10.1007/s12665-017-7170-z>

All material supplied via JYX is protected by copyright and other intellectual property rights, and duplication or sale of all or part of any of the repository collections is not permitted, except that material may be duplicated by you for your research use or educational purposes in electronic or print form. You must obtain permission for any other use. Electronic or print copies may not be offered, whether for sale or otherwise to anyone who is not an authorised user.

## Optimization of photovoltaic solar power plant locations in northern Chile

Anna Suuronen<sup>a,\*</sup>, Anssi Lensu<sup>a</sup>, Markku Kuitunen<sup>a</sup>, Rodrigo Andrade-Alvear<sup>b</sup>, Natalia Guajardo Celis<sup>c</sup>,  
Marcelo Miranda<sup>c</sup>, Marcelo Perez<sup>d</sup>, Jussi V.K. Kukkonen<sup>a</sup>

<sup>a</sup>University of Jyväskylä, Department of Biological and Environmental Science, Section of Environmental  
Science and Technology, P.O. Box 35, FI-40014 University of Jyväskylä, Finland.

\*Corresponding author Tel. +358 (0)14 260 1211, Fax: +358 (0)14 617 239, E-mail address:

annamsuuronen@gmail.com,

<sup>b</sup>Department of Zoology, Faculty of Natural Sciences and Oceanographics, University of Concepción,  
Concepción, Chile.

<sup>c</sup>Department of Ecosystems and Environment, Pontificia Universidad Católica de Chile, Santiago, Chile.

<sup>d</sup> Department of Electronics, Federico Santa María Technical University, Valparaíso, Chile.

### ABSTRACT

The optimization of photovoltaic (PV) solar power plants location in Atacama Desert, Chile, is presented in this study. The study considers three objectives: 1) Find sites with the highest solar energy potential, 2) determine sites with the least impact on the environment, and 3) locate the areas which produce small social impact. To solve this task, multi-criteria decision analyzes (MCDA) such as analytical hierarchy process (AHP) and ordered weighted averaging (OWA) were applied in a GIS environment. In addition, survey results of social impacts were analyzed and included into the decision-making process, including landscape values. The most suitable sites for solar energy projects were found near roads and power lines throughout the study area. Large suitable areas were found also from central valley from Arica and Parinacota to the north edge of Atacama region. In Atacama region, most suitable sites were found in the Andes. On the contrary, Andes were also found to have high environmental values and scenically valuable landscapes. Moderate and low suitability were found on the coast, especially in Atacama region. Factors such as slope and distance to power lines and roads influenced largely the sensitivity analysis. Area of high suitability increased by 15% when distance to roads was excluded and 18% when distance to power lines or slope was removed. MCDA-GIS method was found to be useful and applicable to the optimization of solar power plant locations in northern Chile.

**KEYWORDS:** AHP\_OWA -method, GIS, Multi-criteria decision analyze, Northern Chile, Photovoltaic solar power plants, Site selection

## 1. INTRODUCTION

Fossil fuels consumption has been increasing (Yonca Aydin et al. 2010) despite of the Paris Agreement to the United Nations framework convention on climate change (United Nations 2015). Maintaining the economic development without neglecting environmental issues has turned the focus of policies of several countries towards renewable energy systems (RES) (Yonca Aydin et al. 2010). Solar energy systems are air pollution free during their maintenance phase, and therefore, considered environmentally friendly forms to produce energy (Wang and Qiu 2009). Solar energy is an advantageous option especially in arid areas where solar energy potential is high (Moriarty and Honnery 2012). Phovoltaic (PV) solar power plants, especially so-called thin film panels, have gained popularity because the solar panels have recently become more affordable (Hosenuzzaman et al. 2015).

Sustainable energy as a part of sustainable development is defined as equality of providing energy to all people and protection of environment to the next generations (Omer 2008). Renewable energies have been approved to be sustainable. Nevertheless, there are still considerations related to the RES installation (Nguyen 2007; Yonca Aydin et al. 2010). RES have positive impacts such as mitigation of the effects of greenhouse gases (Alsema 2000; Shafiee and Topal 2009). Relevant negative environmental impacts of solar power plants are caused by the construction phase of panel areas when soil is removed and altered (Tsoutsos et al. 2005). Removal of the soil destroys biological crust (Johansen and Clair 1986) and local flora and fauna (Wu et al. 2014). In addition, maintenance phase of PV plants has ecological impacts such as habitat fragmentation, breaking of ecological corridors, and loss of habitats. Panels also alter microclimate that causes biota conditions to change, resulting in, for example, changes in species' abundances and/or compositions (Tsoutsos et al. 2005; Wu et al. 2014; Suuronen et al. 2017). Therefore, environmental and ecological impacts should be considered when planning PV plant projects.

Studies of biodiversity loss, climate change, etc. have proved that environmental problems cannot be solved only as environmental problems, but also social studies related to them are needed (Binder et al. 2013). Literature reveals that environmental and economic factors of landscape have been analyzed more profoundly than social factors (Parsons and Daniel 2002; Tolli et al. 2016). Tools to measure social factors are not fast and effective because opinions are hard to measure and analyze (Daniel 2001; Sevenant and Antrop 2009). Therefore, social factors are often left with less attention (Olson-Hazbourn et al. 2016; Tolli et al. 2016). Literature identifies that the most important social impacts of solar energy are public acceptance, job creation, and social benefits such as progress of the region, income, health benefits, etc. (Wang et al. 2009). In addition, public support to solar power

59 plants is not only due to environmental benefits, but also related to economical beliefs and landscape impacts  
60 (Olson-Hazbourn et al. 2016).

61 Optimal site selection for PV solar plants requires multidisciplinary data. Nevertheless, not all disciplines support  
62 the selection of the same geographical sites (Malczewski 1999). For example, energy potential of some area can  
63 be high but the area can possess high biodiversity value, and therefore, it is not suitable for PV solar plant projects.  
64 While working with spatial information, geographic information systems (GIS), such as ArcGIS (ESRI, Redlands,  
65 CA) are commonly used (Carver 1991; Arán Carrión et al. 2008; Yonca Aydin et al. 2010; Charabi and Gastli  
66 2011; Uyan 2013; Watson and Hudson 2015; among others). Complex databases need to be organized and  
67 managed with multi-criteria decision analysis (MCDA) techniques if taking several partly conflicting criteria into  
68 account (Malczewski and Rinner 2015). GIS and MCDA are commonly combined (GIS-MCDA) and often used  
69 during the recent years (Malczewski and Rinner 2015). MCDA with Saaty's (1997) analytic hierarchy process  
70 (AHP) has been demonstrated to be useful in the site selection of grid-connected solar power plant projects (Arán  
71 Carrión et al. 2008). MCDA combined with ordered weighted averaging (OWA) is even more powerful decision-  
72 making tool (Yager 1988; Boroushaki and Malczewski 2008). OWA includes into the calculations how many of  
73 the criteria should be accomplished to reach a satisfactory level of all criteria (Yager 1988). Combined method of  
74 AHP\_OWA is an effective tool in decision-making because it is more flexible than AHP alone (Boroushaki and  
75 Malczewski 2008). AHP alone is a robust method (Charabi and Gastli 2011; Jamali et al. 2014) and OWA allows  
76 the user to define the amount of acceptable uncertainty in the process (Malczewski 2006). By utilizing spatial  
77 information and by recognizing the consequences of PV power plants, governmental decision-making and site  
78 selection can be supported and the loss of cultural heritage, ecosystem services, biodiversity, and whole  
79 ecosystems can be avoided.

80 AHP\_OWA has been used in multiple cases of MCDA (Hokkanen and Salminen 1997; Bell et al. 2011; Joerin et  
81 al. 2001; Drobnik et al. 2017). AHP is commonly used to solve multi criteria problems of renewable energy  
82 (Chatzimouratidis and Pilavachi 2009; Sánchez-Lozano et al. 2013; Uyan 2013; Watson and Hudson 2015), but  
83 only a few articles include OWA as part of MCDA method of solar power plants site selection (Charabi and Gastli  
84 2011). In addition, social effects are poorly represented in these studies. Social factors such as aesthetics (Yonca  
85 Aydin et al. 2010) and landscape values (Bergmann et al. 2006; Chiabrande et al. 2011; Molina-Ruiz et al. 2011;  
86 Pasqualetti 2011) are sometimes included in the MCDA processes. Wide MCDA studies include social factors of  
87 renewable energy such as job creation (Kosenius and Ollikainen 2013; Ahmad and Tahar 2014), public acceptance

88 (Wüstenhagen et al. 2007; Amer and Daim 2011; Ahmad and Tahar 2014), and distances to historical sites and  
89 cities (Sánchez-Lozano et al. 2013; Watson and Hudson 2015).

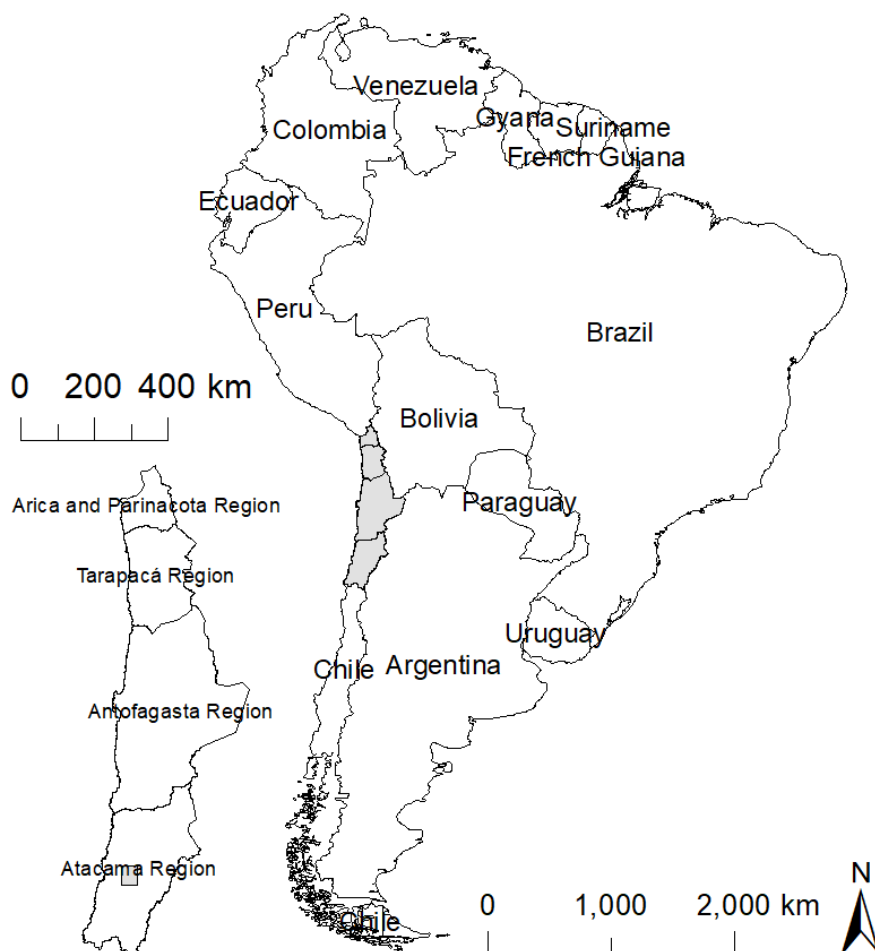
90 On one hand, studies are focused on numerous factors of energy efficiency and solar energy potential as well as  
91 on economical facts (Charabi and Gastli 2011), but on the other hand, multiple surveys of renewable energy  
92 attitudes exist (Krohn and Damborg 1999; Kaldellis 2005; Sardanou and Genoudi 2013; Ek and Persson 2014;  
93 Olson-Hazbourn et al. 2016; among others). Nevertheless, according to our knowledge, surveys have not been  
94 applied in GIS environment together with physical and environmental factors of solar power plants.

95 The present study identifies optimal areas for PV solar energy projects, along with multiple aspects of sustainable  
96 energy, including social factors in a form of survey results as GIS layers. Three aspects, solar energy potential,  
97 environmental facts, and social characteristics were considered. Suitable locations for PV solar energy projects  
98 were determined using spatial information of northern Chile. AHP\_OWA was used in the MCDA process to  
99 resolve the most suitable areas. Finally, the individual result layers were combined by using weighted summing.

## 100 **2. MATERIAL AND METHODS**

### 101 **2.1. Study area**

102 Study area includes four regions of Northern Chile (Fig. 1): Arica and Parinacota (XIV), Tarapacá (I), Antofagasta  
103 (II), and Atacama (III). These regions receive scarce precipitation mainly in the Andes and as coastal fogs in the  
104 coast (Moreira-Muñoz 2011). Opposite to the coastal area, inland has the world's driest desert, the Atacama  
105 Desert. Vegetation in the study area varies from non-vegetated true deserts to grasslands and scrubs, and contains  
106 small areas of forests (Pliscoff and Luebert 2006). Cities are mainly in the coastal area or situated close to mines.  
107 Agricultural land can be found in river valleys where water is available.



108  
 109 **Fig. 1.** Chile is on the Pacific Ocean side of South America shown on the right. Study area is situated on four  
 110 regions shown with grey color in the main map and enlarged on the left. Focus area used in sensitivity analysis is  
 111 indicated with grey color in Atacama region shown in the regional map at bottom left.

## 112 2.2. Methods

113 Site selection of PV plants was carried out using the multi-criteria decision-support system. The study had one  
 114 goal: Locate optimal sites for PV plants in northern Chile considering social and environmental aspects of  
 115 sustainable development. The goal was reached through three objectives: 1. Determine high solar energy potential  
 116 sites with economically reasonable distances to roads and power lines. 2. Exclude areas of conservation and/or  
 117 high biodiversity from optimal sites and prevent vegetation loss. 3. Consider the social impacts and find socially  
 118 acceptable sites. Downloadable georeferenced data were used to analyze the three objectives. In addition, a survey  
 119 was used in decision-making to characterize the chosen social aspects given below. Pretreatment of the  
 120 georeferenced data was done with ArcGIS ® v10.1. (ESRI, Redlands, CA) and all MCDA-related data analyzes  
 121 were performed with TerrSet® v18.20.

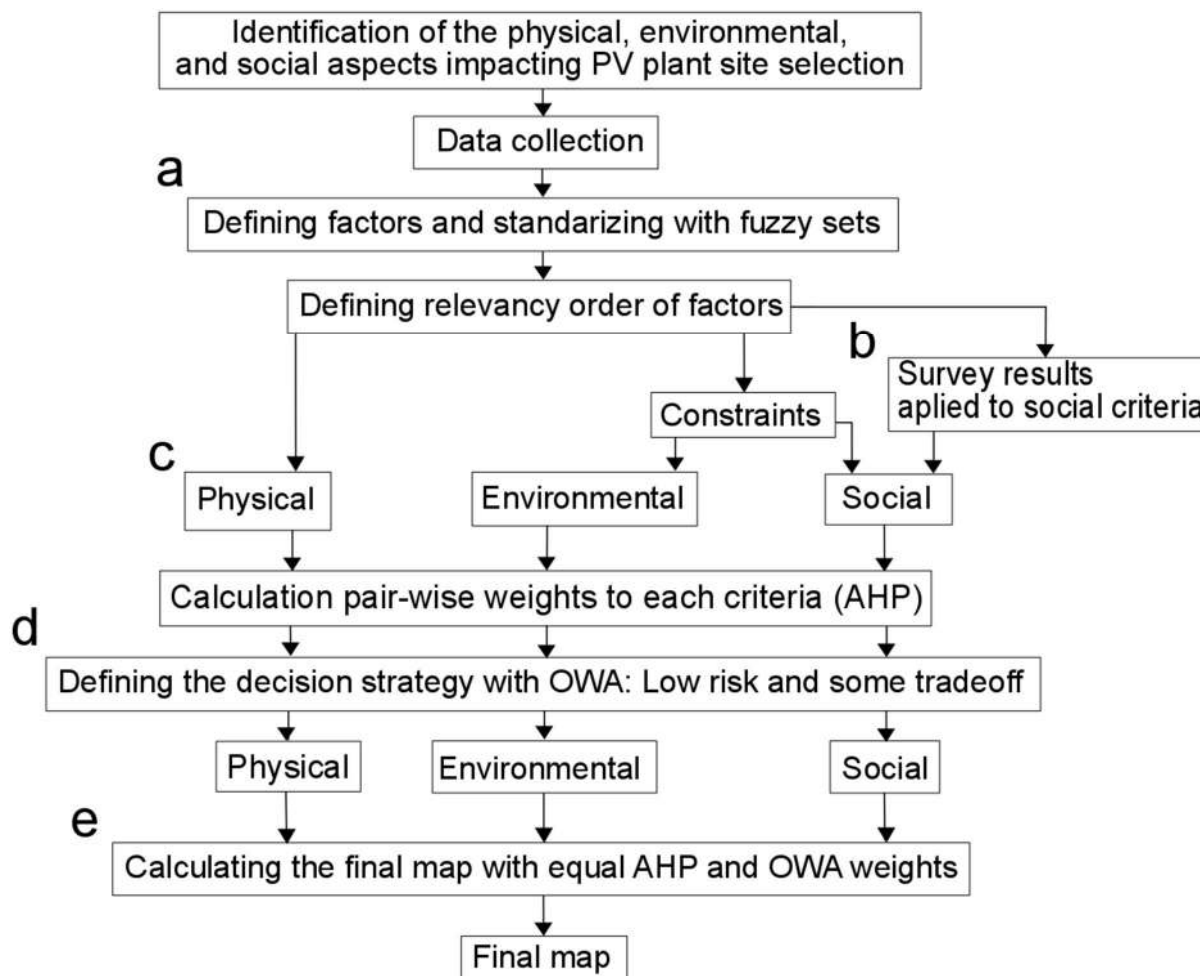
122 Objectives were characterized through three criteria: physical, environmental, and social (Table 1). Criteria were  
123 divided into factors (Table 1). Physical criteria were divided into 5 continuous factors: Average temperature  
124 (temperature hereafter), global irradiation, orography (i.e. slope and orientation), distance to power lines, and  
125 highway accessibility (i.e. distance to power lines). Environmental factors were divided into 2 continuous factors  
126 (biomass, vegetation type rarity), and one categorical factor (land use). Social factors were divided into two  
127 continuous factors (distance from the closest city and biomass), and one categorical factor (visibility from the  
128 roads) (see reasoning for the factors: “Defining decision rules”).

129 Constraints of the site selection were defined with binary values, 0 as non-suitable site and 1 as suitable (Table  
130 2). Environmental factors had several constraints including protected terrestrial and aquatic sites (Table 2). Social  
131 aspects had two constraints: visibility from historical sites and from typical zones. Typical zones were areas  
132 including cultural environment and traditional landscapes that are categorized as valuable to conserve by the  
133 Ministry of Public Education of Chile (2010). No solar power plants were allowed to be visible inside the 10-km  
134 radius from historical sites or typical zones. The continuous and categorical factors are given in Table 1 and the  
135 constraints in Table 2.

136 Continuous factors were standardized directly with fuzzy sets, by converting them into value range 0-255 (Table  
137 1), because using 8-bit (one byte) values makes the MCE calculations in TerrSet faster (Eastman 2015). In our  
138 case, value 0 indicates the least suitable and 255 the most suitable locations. Fuzzy sets are functions that change  
139 the values from non-membership to membership class smoothly so that sharp boundaries are not created (Eastman  
140 2016). Categorized factors were given relative importance values (Jamali et al. 2014) with expert judgement,  
141 before they were standardized with fuzzy sets (Table 1). Land use classes were given values from 1 to 4 according  
142 to the lands’ former introduction to anthropogenic use (Table 1). When giving the weights to land use  
143 anthropogenic affected sites (i.e. urbanized, cultivated, and mosaics) were weighted to be more suitable areas than  
144 sites at their natural state (i.e. shrubs, herbaceous coverage, and forests). Visibility was given values either 1 or 2  
145 according to 10-km radius (Table 1). Afterwards all factor levels were compared pair-wise and relative importance  
146 weights (RIWs) were calculated (Saaty 1997) (Table 3, Fig. 2). OWA-method (Yager 1988; Boroushaki and  
147 Malczewski 2008) was applied to all three aspects (environmental, social, and physical) (Table 4, Fig. 2). The  
148 final map was calculated with equal AHP-weights (0.333) and with weighted linear combination (WLC) to  
149 combine the conflicting suitability maps of criteria to find the best sites (Table 5, Fig. 2). Equal weights and WLC  
150 was used to obtain equality between the three aspects, because WLC aloud free tradeoff between the aspects. Each  
151 one of the aspects reaching high suitability values at certain pixel can be fully tradeoff with another aspect in

152 WLC. Therefore, the optimal areas of all tree aspects can be presented equally in a final map. Finally, a sensitivity  
 153 analysis was done by performing factor removal (Malczewski and Rinner 2015). All factors were first given equal  
 154 weights and then one factor at a time were taken off from the analysis to see the effect of that single factor, and to  
 155 enable the calculation of change in the amount of suitable areas (Malczewski and Rinner 2015).

156



157

158 **Fig. 2.** Work flow for location optimization of PV solar power plants. After identification and collection of the  
 159 data, a) factors were standardized with fuzzy sets and their relevancy order was evaluated, then b) environmental  
 160 and social constraints were defined and survey of social factors where applied to define the AHP weights of social  
 161 factors. Next, c) physical and environmental factors were given AHP values according to literature and expert  
 162 judgement. After AHP weighting, d) factors were given to tradeoff with OWA -method. For the final map, e)  
 163 equal AHP and OWA weights were used.



164 Table 1. Criteria and categorical factors used in the AHP\_OWA method. Mo. stands for “monotonically”.

Criteria	Factor	Fuzzy membership (Eastman 2015)		Class range / description	Motivation	Source (Additional information)
Physical		Function	Shape		To all physical factors: Arán-Carrión et al. (2008)	
	Slope	Sigmoidal	Mo. Decreasing	0 – 90°		ASTER GLOBAL DEM (2011), (Under 3 % suitable)
	Orientation	Sigmoidal	Symmetric	0 – 359°		ASTER GLOBAL DEM (2011), North most suitable.
	Global irradiation	Sigmoidal	Mo. Increasing	3.9 – 7.8 kWh / m <sup>2</sup> / day		Ministry of Energy, Chile (2013) (years 2006-2010)
	Temperature	Linear	Mo. Decreasing	(-6 °C) – 18 °C		Albers (2012), (Average: years 2001– 2012)
	Highway access	J-shaped	Mo. Decreasing	0 km – 4 km: a = 2 km and b = 4 km		Albers (2012)
	Distance to grid	J-shaped	Mo. Decreasing	0 km – 5 km: a = 2.5 km and b = 5 km		National Power System Coordinator, Chile (2016) (SIC and SING)
Environmental						
	Biomass (NDVI)	Sigmoidal	Mo. Decreasing	(-1) – 0.2	Pettorelli et al. (2005)	Landsat 5 TM, (August-December 2011)
	Vegetation type rarity	user defined	Mo. Increasing	1 434 – 4 197 000 ha	Margules and Pressey (2000)	Pliscoff and Luebert (2006); SINiA <sub>BETA</sub> (2016)
	Land use	Sigmoidal	Mo. Decreasing	Bare soil 1, Agricultural/urbanized 2, Mosaics* 3, Natural vegetation** 4	Expert judgement	Albers (2012)
Social						
	Distance from cities > 5000 inhabitants	J-shaped	Mo. Increasing	0 – 10 km	Arán-Carrión et al. (2008)	SINIAbeta
	Landscape***	Sigmoidal	Mo. Decreasing	Non-visible 1, Visible 2	SEIA (2003); Molina- Ruiz et al. (2011)	ASTER GLOBAL DEM (2011); Albers (2012); SINIAbeta,

165 \*Mosaic A: Crops-Shrubs-grasslands/ Mosaic B: Crops-Forest-other natural vegetation

166 \*\*Broadleaf forest, deciduous, closed/ Broadleaf forest, evergreen/ Cover with herbaceous/ Shrubs regularly waterlogged/ Shrub cover, closed-open, deciduous/ Herbaceous  
167 coverage, closed-open/ Low coverage with herbaceous shrubs/ Ice, snow

168 \*\*\*Landscape value seen from roads within a 10-km radius.

169

170 **Table 2.** Constraints of environmental and social factors.

---

Environmental	
Water	
	Wetlands
	Ramsar classified wetlands (2012)
	Protected aquifers XIV-II
Terrestrial	
	National parks
	Natural sanctuaries
	Priority areas to biodiversity
	Nationally conserved assets
	National reserves
	Conserved private areas
	Strategical regions for protection of biodiversity
	UNESCO bio reserve
Social	
	No visible PV solar plants within 10-km radius from typical zones and historical monuments.

---

171

172 Table 3. Pair-wise comparisons and AHP weights of the three criteria.

Physical*	Temperature	Global irradiation	Slope	Orientation	Distance to Roads	Distance to SIG or SING	Weights
Temperature	1						0.3825
Global irradiation	1/2	1					0.2504
Slope	1/3	1/2	1				0.1596
Orientation	1/4	1/3	1/2	1			0.1006
High way access	1/5	1/4	1/3	1/2	1		0.0641
Distance to SIG or SING	1/6	1/5	1/4	1/3	1/2	1	0.0428
Environmental**	Land use	NDVI	Vegetation type rarity				
Land use	1						0.5397
NDVI	1/2	1					0.2969
Vegetation type rarity	1/3	1/2	1				0.1633
Social**	Distance from the cities	Landscape value	Vegetation value (NDVI)				
Distance from the cities	1						0.5397
Landscape value	1/2	1					0.2969
Vegetation value (NDVI)	1/3	1/2	1				0.1633

Consistency ratios: 0.02\* and 0.01\*\*

174 **Table 4.** Low risk and some tradeoff consisting OWA weights.

	1 <sup>st</sup>	2 <sup>nd</sup>	3 <sup>rd</sup>	4 <sup>th</sup>	5 <sup>th</sup>	6 <sup>th</sup>	Equals to
Physical	0.500	0.300	0.125	0.050	0.025	0.000	1.000
Environmental	0.500	0.300	0.120	0.080			1.000
Social	0.500	0.300	0.200				1.000

175

176 **Table 5.** Equal AHP weights of the final map. WLC have the same values for 1<sup>st</sup>, 2<sup>nd</sup>, and 3<sup>th</sup> place which are the  
177 same as AHP values (0.3333).

Map with equal weights	Physical	Environmental	Social	Weights
Physical	1			0.3333
Environmental	1	1		0.3333
Social	1	1	1	0.3333

178

179 2.3. Defining decision rules

180 2.3.1. Rules for physical criteria

181 Solar energy potential maps have already been created in Chile (Escobar et al. 2014; Ministry of Energy, Chile  
182 2013). Despite of the importance of environmental and social criteria to sustainable site selection, physical solar  
183 energy potential still is the prime criterion. If sufficient solar energy potential is not reached, the installation of a  
184 new panel area is not reasonable (Borouhaki and Malczewski 2008). Physical factors were given importance  
185 weights in the following order: temperature, global irradiation, orography (slope, then orientation), highway  
186 accessibility and distance to power lines (Arán Carrión et al. 2008). Distance to power lines is not considered  
187 important, because the present study considers multiple purposes of local PV plant projects, which are not  
188 necessarily grid connected. Nevertheless, close distance to power lines gives an opportunity to connect the solar  
189 plant to grid when desired. Given the high potential of solar energy in northern Chile, risk of getting insufficient  
190 amount of solar radiation is small. Therefore, some tradeoff between the physical factor and intermediate risk with  
191 OWA weights was used.

192 2.3.2. Rules for environmental criteria

193 Considering the environmental criteria, water and vegetation are scarce in northern Chile. Therefore, they are the  
194 most important environmental factors and they were given 100 m buffer area to protect them. This distance was  
195 chosen based on Arán-Carrión et al. (2008). Areas with high biodiversity like national parks, private protected  
196 areas, nationally protected wetlands, etc. were considered as constraints (Table 2). Because environmental aspects  
197 are also closely related to social aspects (Liu et al. 2007), conserving water bodies, natural parks, and biodiversity

198 may also maintain the welfare of the people and protect their sources of livelihood. Therefore, the constraints in  
199 the present study included also social characteristics.

200 Other considered environmental factors were intensity of land use, biomass, and vegetation type rarity. Land use  
201 was considered to have the highest weight and biomass the second highest (Table 2). In fact, agricultural fields  
202 have the highest biomass values in the study area, but they do not necessarily possess high endemic biodiversity.  
203 On the other hand, agricultural land has a high value for human wellbeing. Therefore, land use was given the  
204 highest value. Vegetation type rarity was important because desert vegetation may be scarce, and therefore, not  
205 always characterized properly by the amount of biomass. Some tradeoff between environmental factors was  
206 allowed in OWA because the factors could compensate each other to some extent. For example, high biomass  
207 areas could be sacrificed if the current land use was agriculture.

### 208 2.3.3. Rules for social criteria

209 Landscape around historical monuments and culturally important zones (i.e. typical zones) were ruled out from  
210 site selection by constraints because those areas possess a high cultural heritage. Visibility from the roads was  
211 given less value for suitability, if landscape value (i.e. active volcanos, hills with slope over 15 % steep, high  
212 biodiversity sites, etc.) was expected to exist. According to Molina-Ruiz et al. (2011) 10-km visibility radius has  
213 the strongest visual impact to the viewer and, therefore, this constraint was chosen to the present study.

214 Social impact is known to be higher depending on how many people are affected by renewable energy installations  
215 (Fernandez Jimenez et al. 2015). More people will be affected by the visual effects of PV plants if they are seen  
216 from the cities than if they are seen from the roads. Therefore, highest weight was given to distance from the cities  
217 -factor and then visibility from the roads. If solar power plants would be right outside the city, social impacts  
218 would be strong. For example, movability from and in the city, would be affected because people must go around  
219 the power plant area (Tolli et al. 2006). Social factors were allowed to tradeoff (OWA) because of the uncertainty  
220 of the concern-based factors. Social factors decision rules were defined through distances from cities, 10-km  
221 radius non-visibility from the historical sites and typical zones, and applications from survey as described below.

## 222 2.4. Spatial referenced data

### 223 2.4.1. Obtaining data

224 Shapefiles of Chile such as regions, roads, vegetation, temperature, cities, and thematic maps (Tables 2 and 3)  
225 were downloaded from the webpages: IDE (2016), SINiA<sub>BETA</sub> (2016) and Albers (2012). Landscape values and  
226 environmental regulations were obtained from SEIA (2013). Two power line systems, found in northern Chile,

227 Central Interconnected System and Interconnected System of Norte Grande were obtained as point shapefiles  
228 from the National Power System Coordinator, Chile (2016). Landsat 5 Thematic Mapper (2011) images were  
229 downloaded from the U.S. Geological survey (USGS). The most accurate data, such as DEM and Landsat 5 TM  
230 (2011), had a resolution of 30 x 30 m. Global irradiation data was 500 x 500 m (Ministry of Energy, Chile 2013),  
231 and temperature had the lowest resolution of 4000 x 4000 m (Albers 2012). Global irradiation data did not contain  
232 the region Arica and Parinacota, and parts of mountainous regions. Global irradiation data were filled with less  
233 accurate data where the Weather Research and Forecasting model (WRF) was used from the same source. Raster  
234 data (elevation and satellite pictures) were downloaded from USGS. ASTER GLOBAL DEM with 1 arc second  
235 resolution was used to calculate slope and orientation. All data were converted into raster format for the analyzes  
236 using a raster size of 60 x 60 m (Fig. 3 a).

#### 237 2.4.2. Application of physical criteria

238 Missing global irradiation data in Parinacota and Arica was filled with lower quality irradiation data (WRF,  
239 Ministry of Energy, Chile 2013) (Fig. 3 b). Both Global irradiation and temperature data were interpolated with  
240 kriging method using trend removal with second (global irradiation) and third (temperature) order polynomial  
241 surfaces. DEM was converted from angular to linear metric units (resampled to 60 x 60 m). Two additional  
242 distance layers were created indicating the distances from each raster cell center to the closest road and to the  
243 closest power line. These distances were obtained by converting raster cell locations into points and by performing  
244 spatial joining of roads and power lines to them (Fig. 3 c). DEM was also used to create slope and orientation data  
245 (Fig. 3 d).

#### 246 2.4.3. Application of environmental criteria

247 Vegetation type rarity was calculated from Pliscoff and Lueberts' (2006) 40 vegetation zones found in the study  
248 area. One big ecosystem is better for the organisms than several small ones although the total surface area would  
249 be of the same size (Margules and Pressey 2000). Therefore, different vegetation types were given a numeric  
250 value by dividing the total surface area of the vegetation type with the amount of separate areas of certain  
251 vegetation type (Fig. 3 a). Vegetation zones with small surface areas were given lower suitability values than large  
252 vegetation zones. Land use was given values as described above (Fig. 3 a)

253 Rain falls to the Atacama Desert depending on El Niño Southern Oscillation (ENSO) (Troup 1965; Rasmusson  
254 and Wallace 1983; Vargas et al. 2000). It is an irregular oscillation in the Pacific Ocean, which changes wind and  
255 water temperatures. "El Niño" phenomenon brings warmer waters to the coast and more evaporation, which can

256 lead to rains over the Atacama Desert (Aceituno and Montecinos 1993; Vargas et al. 2000; Houston 2006). Rain  
257 falls typically between May and August (Aceituno and Montecinos 1993; Muñoz-Schick et al. 2001; Houston  
258 2006) and vegetation starts to bloom one month after the rain (Vidiella et al. 1999). Year 2011 was a typical “El  
259 Niño” year and, therefore, Landsat 5 TM data from August to November 2011 was used (Fig. 3 e). Landsat 5  
260 Thematic Mapper was used to calculate normalized difference vegetation index (NDVI) (Rouse et al. 1974) (Fig  
261 3 e). While mosaicking, NDVI maps resolution was set to 60 x 60 m.

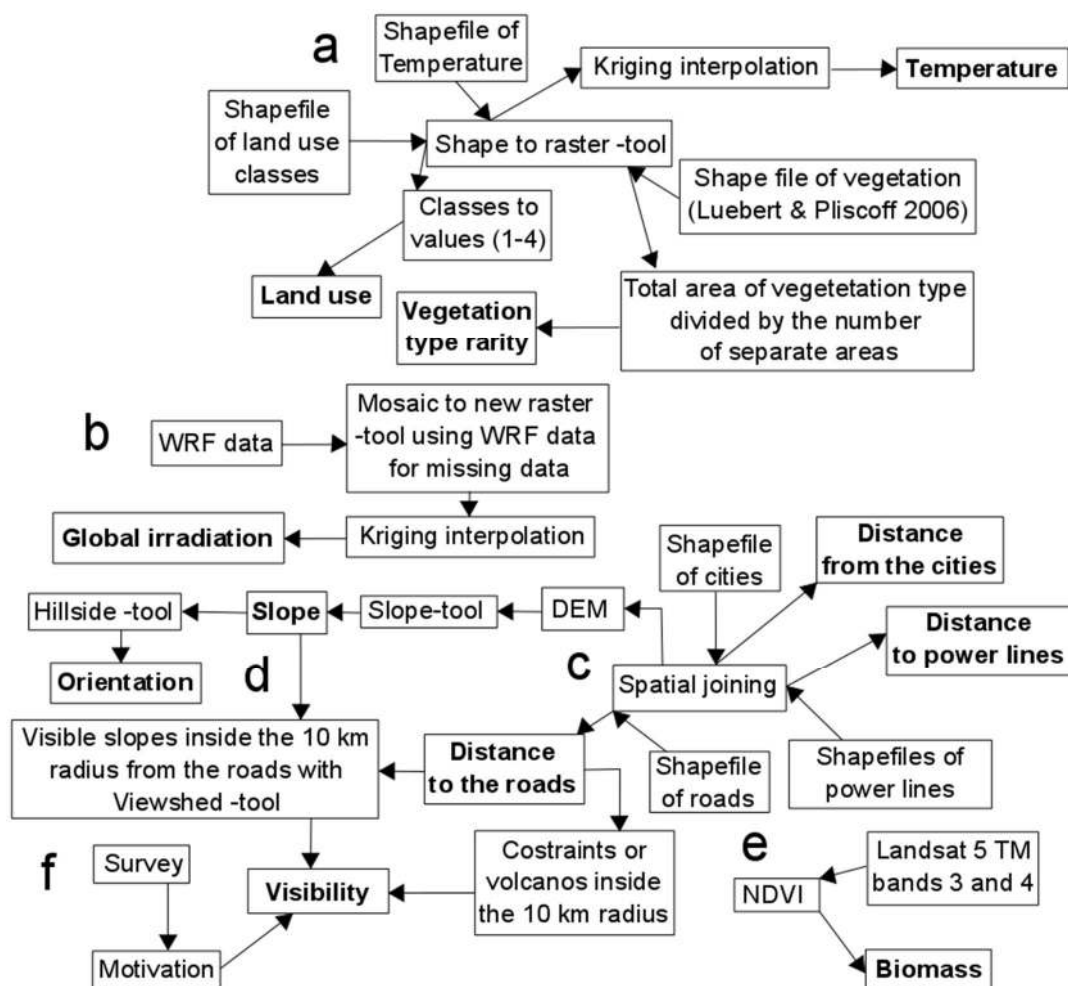
#### 262 2.4.4. Application of social criteria

263 Survey (Fig. 3 f) included concerns of possible environmental impacts of PV solar power plants and it was  
264 performed during 2014-2015 in Chile. Survey had 444 participants including professionals and students of  
265 engineering (14%) and environmentalist (22%). Survey was given to the students at four different universities and  
266 spread through professional networks of engineers and environmentalist. Also non-professional people were  
267 randomly asked to participate to the survey in several towns from Iquique to Concepción (64%). Engineers were  
268 working or studying electronics, civil engineering, mechanics, etc. and the environmentalists were biologists,  
269 agronomists, geographers, or environmental or forestry engineers. Questions were answered using a Likert’s scale.  
270 Public acceptance with scale: 1 = I haven’t thought about it, 2 = Not concerned at all, 3 = Little concerned, 4 =  
271 Quite concerned, 5 = Very concerned (Fig. 4). Explorative factor analysis (Thurstone 1935) was performed to  
272 group the questions. Cronbach’s alpha (Cronbach 1951) was calculated before and after doing the factor analysis,  
273 and the factor analysis grouping of variables was accepted if the alpha was improved or maintained the same  
274 value. For the higher concern areas, smaller suitability values were given. Three most important potential concerns  
275 in the survey were considered as important concerns (Fig. 4): loss of flora and fauna, loss of scenic landscape, and  
276 increase of groundwater uptake for the cleaning of the panels. AHP weights were given in the order presented  
277 above and in Table 3.

278 Concerns over loss of flora and fauna were included into the study by preferring low biodiversity areas. Therefore,  
279 NDVI layer was used again in this context, as “vegetation value”, but values were recalculated using the weights  
280 of social factors. In addition, human health is associated with ecosystems health (Tzoulas et al. 2007), and  
281 ecosystem services affect positively to human well-being (MEA 2005). Landscape was also considered important  
282 to be maintained and that was included in the visibility considerations. Since 10 km is considered as high visibility  
283 impact area (Molina-Ruiz et al. 2011), landscape values from the roads were considered with the same visibility  
284 radius, and were determined using the Viewshed tool of ArcGIS (Fig. 3 f). Visibility results from the roads, cities,  
285 and historical and natural monuments were calculated with ArcGIS Viewshed tool using digital elevation data

286 (DEM). Areas with potential mountain landscape value, where there was a slope of 15 % or more and with an  
 287 area of at least 500 x 500 m, were also defined, but it is not known if those areas are considered to have scenic  
 288 value. Distances from these slopes were defined a 10-km radius and extracted by masking the result with the  
 289 visibility layer to find those hillsides which can be seen from the roads. Areas with high biodiversity, water bodies,  
 290 protected areas, etc. were also included in the high visibility impact area. The visibility layer was edited manually,  
 291 by clipping out the 10-km radius buffer where landscape value targets were not found. Finally, to keep the social  
 292 impacts small, proper distance for solar power plants from the large cities was defined to be over 5 km (Arán  
 293 Carrión et al. 2008), and under the 5-km suitability decreased rapidly. Spatial joining was used to define the  
 294 distances from the cities (Fig. 3 d).

295



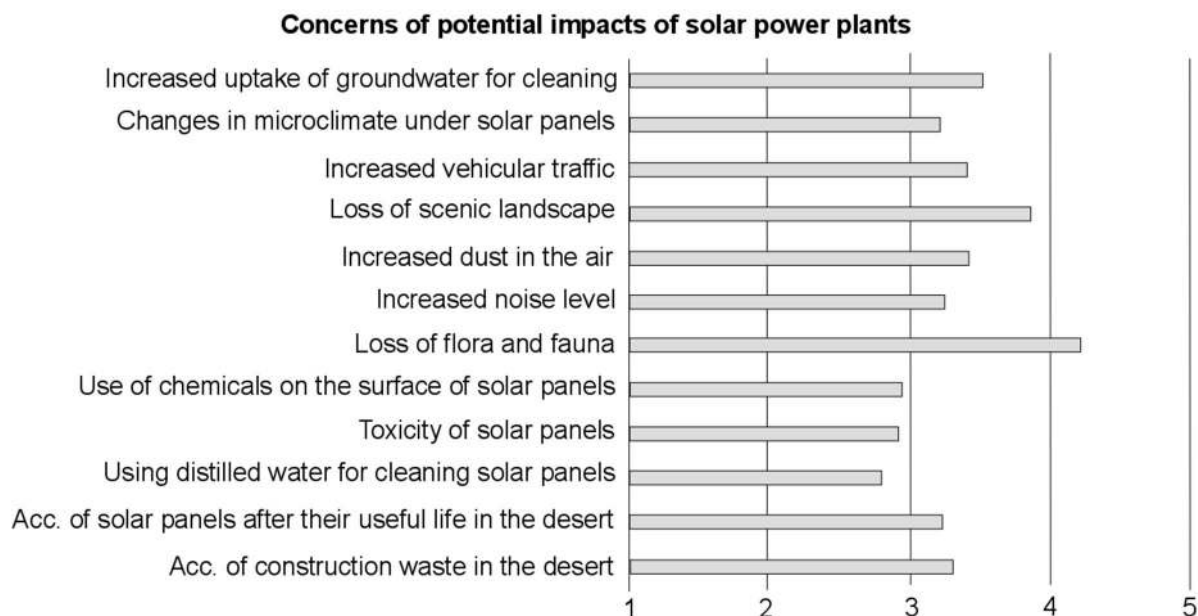
296

297 **Fig. 3.** Data modification of the factors: a) Shapefiles were converted to raster and given numerical values and  
 298 survey gave the motivation for the landscape values, b) two global irradiation data were joined, c) distance to the  
 299 roads and power lines, and distance from the cities were calculated with spatial joining using DEM cell center  
 300 based points, d) slope and orientation were calculated from the DEM, e) biomass was calculated using NDVI, and



301 f) shapefiles visibility layer was created identifying areas inside the 10 km from the roads containing landscape  
 302 value. Created layers (i.e. factors) are indicated with bold letters.

303



304

305 **Fig. 4.** Average concern answers of potential environmental impact of PV plants. Abbreviation Acc. stands for  
 306 accumulation.

### 307 **3. RESULTS AND DISCUSSION**

308 Created map is an overall view of the larger area and cannot substitute environmental impact assessments of  
 309 specific areas done with field work. Especially smaller important habitats of rare species cannot be found from  
 310 low-resolution satellite images, and therefore, are not shown on the resulting map.

311 Used OWA-method, with low risk and some tradeoff, can be over cautious considering that solar energy potential  
 312 is abundant in the whole study area. Therefore, the most suitable areas in the present study are highly suitable.  
 313 Allowing more tradeoff between the factors would make the estimated suitability more uncertain. Map  
 314 demonstrated large areas with high suitability for PV plant projects. Highest suitability areas were found alongside  
 315 roads and power lines in Antofagasta region. In addition, suitability grew higher towards the Andes in Atacama  
 316 region (Fig. 5). In fact, absolute desert in the central valley in Antofagasta, Tarapacá, and Arica and Parinacota  
 317 areas are highly suitable for solar power plant projects. In Atacama region, Andean area is more suitable than the  
 318 coastal region (Fig. 5) because of high biodiversity values and lower solar radiation potential of the coast.

319 Conflicting to high suitability at the Andes, mountainous areas were also defined having a high landscape value  
320 (Fig. 5).

321 Solar radiation is one of highest in the world in the study area (Corral et al. 2012; Jiménez-Estévez et al. 2015;  
322 Salazar et al. 2015). Nevertheless, suitability in the central valley is decreased by temperature (Fig. 5). Elevated  
323 temperatures lower the energy efficiency of solar panels (Dubey et al. 2013). For example, reduction of  
324 temperature by 3–9 °C, the electrical performance improves so that the same amount of energy can be produced  
325 with 2 m<sup>2</sup> smaller panel surface area (Dubey et al. 2013). Therefore, even the lowest values of global irradiation,  
326 3.89 kWh/m<sup>2</sup>/day, can be suitable for solar power plant projects if temperatures are lower. The Atacama Desert  
327 in northern Chile has one of the highest solar radiation potential in the world (Corral et al. 2012; Jiménez-Estévez  
328 et al. 2015; Salazar et al. 2015). Solar irradiation of northern Chile is between 3.89 – 7.80 kWh / m<sup>2</sup> / day, while  
329 similar studies reported 3.89 – 5.56 kWh / m<sup>2</sup> / day in Turkey (Uyan 2013) and 4.56 – 4.91 in Spain (Arán Carrión  
330 et al. 2008). Therefore, the Atacama Desert is an ideal location to install solar energy if only the solar energy  
331 potential is considered.

332 Even though the solar energy potential is high in some remote places, they are not reasonable places for  
333 installations, if there is no energy-demanding infrastructure nearby. However, these places can be attractive to  
334 local mines, which are abundant in the Andean region. Lowest priority was given to the distance to power lines  
335 and roads, but they are also clearly seen as higher score areas because other factors are high in those areas as well.

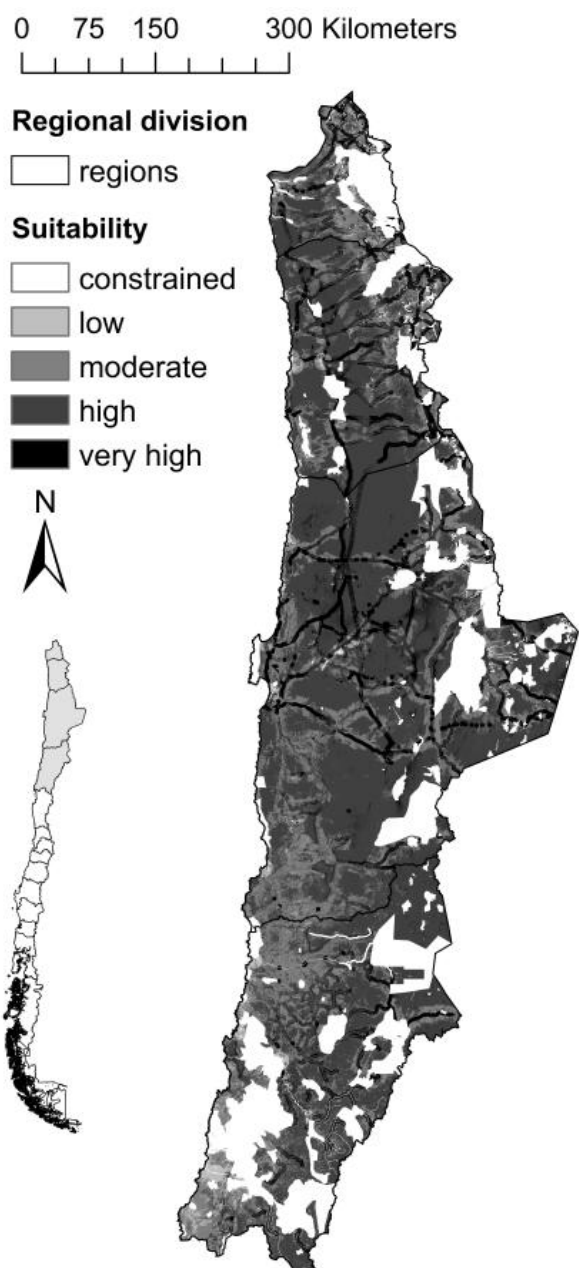
336 According to Gottschamer and Zhang (2016) environmental, technological, societal, policies, and economic  
337 factors should all be considered in RES projects, because they are all connected. In the present study, connection  
338 between social and environmental factors were clearly seen. Landscape values and amount of biomass had  
339 characteristics that were categorized in environmental and in social aspects. In contrast, survey results were not  
340 straightforward to interpret. Yonca Aydin et al. (2010) concluded that because solar energy is seen as clean energy,  
341 some people see renewable energy installations as positive. Nevertheless, other people might reject them. In the  
342 present study, people who rejected PV solar plant installations can also be more concerned of possible  
343 environmental or social impacts. Nevertheless, concerns gained by the survey, corresponded with the landscape  
344 values determined by SEIA (2003) national guide of environmental impact assessment.

345 Compared to other GIS-based MCDA studies (Arán Carrión et al. 2008; Yonca Aydin et al. 2010; Uyan 2013;  
346 Watson and Hudson 2015; among others), the method used here gave less suitability values to vegetated areas  
347 because vegetation is included as an index and because it has both cultural and environmental values. Areas with

348 possible landscape value are also defined here. For example, many mountainous roadsides show lower suitability  
349 (Fig. 5). Map predicts possible landscape value areas, which should be confirmed in the field. In fact, it is not  
350 known if these areas contain aesthetic values because of the physical area described above in application of social  
351 factors.

352 Absolute desert in the central valley from Arica and Parinacota to the northern part of Atacama region shows high  
353 suitability values also due to the land use and low NDVI values (Fig. 5). The coastal area, especially in Atacama  
354 region, shows low suitability values (Fig. 5). Coastal areas have fogs, which bring humidity to them, and therefore,  
355 possess higher amounts of biomass. Fogs decrease solar energy potential received by the ground and lower  
356 suitability further (Fig. 5). Cultivated areas have monocultures of grapes, but they do possess endemic vegetation  
357 as well. Nevertheless, they have higher suitability for PV plant projects than the surrounding mountains, because  
358 cultivated areas are highly modified compared to natural sites (Fig. 5).

359



360

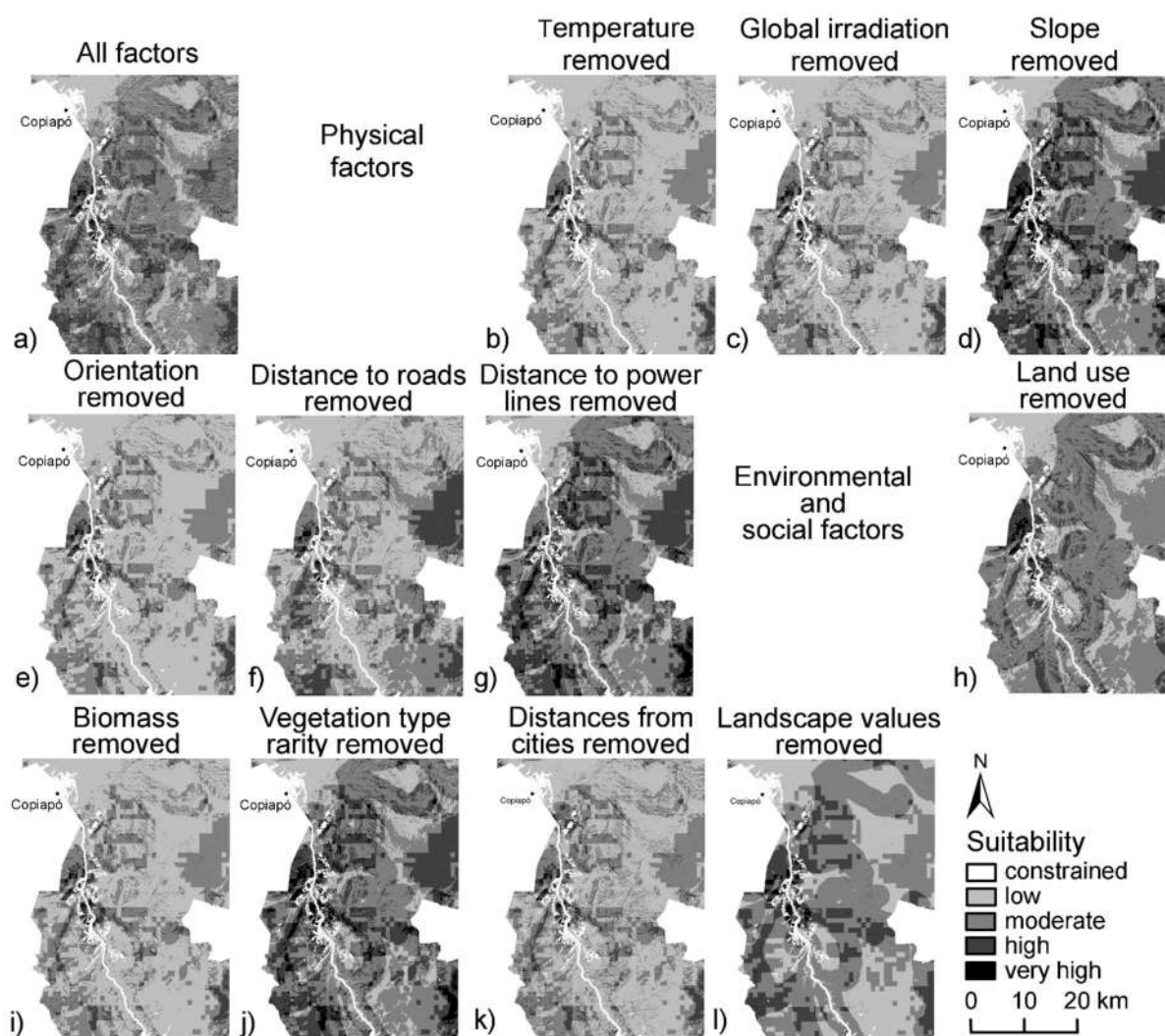
361 **Fig. 5.** Final map including physical, environmental, and social aspects of optimal site selection. Natural breaks  
 362 were used to classify the suitability areas into five classes given in the legend in ArcGIS.

### 363 3.1. Sensitivity analysis

364 Sensitivity analyses were conducted for all factors, and in each of them one factor was removed (Fig. 6). Removal  
 365 of factors slope, distance to roads, and distance to power lines, increased the area of very high suitability (Table  
 366 6) indicating that these factors defined where the very high suitability areas are (Fig. 6 d, f, g, j and l). Therefore,  
 367 they are highly important qualities when creating suitability map for PV solar power plants. Removal of  
 368 temperature, global irradiation, or biomass caused low suitability area to increase, while high suitability classes

369 decreased (Table 6). This means that more area was suitable for PV plant installations when these factors were  
 370 included in the analyzes.

371



372

373 **Fig. 6.** Suitability maps showing changes caused by factor removal method. First map was obtained with a) all  
 374 factors and equal weights, and then b)–l) show results obtained by removal of each factor. The maps are showing  
 375 the focus area, Valley of Copiapó in the Atacama region. Constraint on the left side of focus area is “desierto  
 376 florido” and on the right middle “Quebrada de Serna”. River Copiapó with 50 meters buffer runs from the South  
 377 East to the North West direction. Natural breaks method in ArcGIS was used to classify suitability.

378

379 **Table 6.** Factor removal sensitivity analysis showing changes caused by individual factors calculated as  
 380 percentages compared to equally weighted all-factors-included situation.

Factor removed	Low		Moderate		High		Very high	
	km <sup>2</sup>	%	km <sup>2</sup>	%	km <sup>2</sup>	%	km <sup>2</sup>	%
Temperature	13428	16	-1870	-2	-10535	-12	-1031	-1
Solar radiation	11595	13	-1093	-1	-9544	-11	-964	-1
Slope	-4532	-5	-7112	-8	-3920	-5	15570	18
Orientation	8972	10	-738	-1	-7498	-9	-779	-1
Distance to roads	-951	-1	-6237	-7	-5775	-7	12943	15
Distance to power lines	-4474	-5	-7013	-8	-3777	-4	15270	18
Land use	-85	0	4540	5	-4284	-5	-167	0
Biomass (NDVI)	11508	13	-1721	-2	-8830	-10	-958	-1
Vegetation type rarity	-4025	-5	-2273	-3	3658	4	2648	3
Distance to cities	8090	9	-1006	-1	-6361	-7	-770	-1
Landscape value	5213	6	-722	-1	-4690	-5	221	0

381

#### 382 4. CONCLUSIONS

383 Combined AHP\_OWA method applied here was found useful for preplanning of PV plant projects in northern  
 384 Chile. The present study does a comprehensive study of the whole northern Chile, but more local analyzes with  
 385 detailed information is encouraged. Method presented here, can be applied in any region of the world when  
 386 planning PV power plant locations if the same kind of data is available for the site. Method is most suitable to  
 387 deserts because water and natural vegetation were used as constraints.

388 Social impacts and locals' opinions should be included in the decision-making processes. Nevertheless, care  
 389 should be taken when evaluating social factors and displaying them on a map, because opinions are hard to  
 390 interpret. In fact, opinions differ among people and overall opinions can include conflicts. In addition, cultural  
 391 and environmental aspects are not always separable into two distinct categories of factors. Including social aspects  
 392 to PV solar plants site selection planning, conflicting sites, such as high energy potential areas with high  
 393 vegetation, can be detected. Therefore, possible conflicts between human welfare and solar energy projects can  
 394 be avoided. In the future, if available data exists, lands of the indigenous peoples should be added to spatial  
 395 decision-making studies.

396

397 **Acknowledgments**

398 The authors thank Cristian Orellana Urbina, Nelson Jara Arriagada y Pablo Espinoza Astudillo for collecting the  
 399 survey answers, and Eduardo Soto Sepúlveda for his ideas. Funding for the study was supplied by the Academy  
 400 of Finland (grant no 269468).

401

402 **REFERENCES**

403 Aceituno P, Montecinos A (1993) Análisis de la estabilidad de la relación entre la oscilación del sur y la  
 404 precipitación en América del sur. Bull Inst Fr Études Andines 22 (1):53–63.

405 Ahmad S, Tahar RM (2014) Selection of renewable energy sources for sustainable development of electricity  
 406 generation system using analytic hierarchy process: A case of Malaysia. Renew Energ 63:458–466.

407 Albers C (2012) Coberturas SIG para la enseñanza de la Geografía en Chile. Universidad de La Frontera. Temuco.  
 408 Retrieved in 2016 from [www.rulamahue.cl/mapoteca](http://www.rulamahue.cl/mapoteca).

409 Alsema EA (2000). Energy Pay-back Time and CO2 Emissions of PV Systems. Prog photovoltaics: Research and  
 410 Applications 8:17–25.

411 Amer M, Daim TU (2011) Selection of renewable energy technologies for a developing county: A case of  
 412 Pakistan. Energy for Sustainable Development 15:420–435.

413 Antrop M (2005) Why landscapes of the past are important for the future. Landscape Urban Plan 70:21–34.

414 Arán Carrión J, Espín Estrella A, Aznar Dols F, Zamorano Toro M, Rodríguez M, Ramos Ridaio A (2008)  
 415 Environmental decision-support systems for evaluating the carrying capacity of land areas: Optimal site selection  
 416 for grid-connected photovoltaic power plants. Renew Sust Energ Rev 12:2358–2380.

417 ASTER (Advanced Spaceborne Thermal Emission and Reflection Radiometer) (2016) Retrieved in 2016 from  
 418 <https://earthexplorer.usgs.gov/> ASTER GDEM is a product of NASA and METI.

419 Bell ML, Hobbs BF, Elliot EM, Ellis H, Robinson Z. (2011) An evaluation of multicriteria methods in integrated  
 420 assessment of climate policy. Journal of Multi-Criteria Decision Analysis 10:229–256.

421 Bergmann A, Hanleyb N, Wright R (2006) Valuing the attributes of renewable energy investments. Energ Policy  
 422 34:1004–1014.

- 423 Binder CR, Hinkel J, Bots PWG, Pahl-Wostl C (2013) Comparison of Frameworks for Analyzing Social-  
424 ecological Systems. *Ecology and Society* 18(4):26.
- 425 Boroushaki S, Malczewski J (2008) Implementing an extension of the analytical hierarchy process using ordered  
426 weighted averaging operators with fuzzy quantifiers in ArcGIS. *Comput Geosciences* 34:399–410.
- 427 Carver SJ (1991) Integrating multi-criteria evaluation with geographical information systems. *Int J Geogr Inf Syst*  
428 5(3):321–339.
- 429 Charabi Y, Gastli A (2011) PV site suitability analysis using GIS-based spatial fuzzy multi-criteria evaluation.  
430 *Renew Energ* 36:2554–2561.
- 431 Chatzimouratidis AI, Pilavachi PA (2009) Technological, economic and sustainability evaluation of power plants  
432 using the Analytic Hierarchy Process. *Energ Policy* 37:778–787.
- 433 Chiabrando R, Fabrizio E, Garnero G (2011) On the applicability of the visual impact assessment OASPP tool  
434 to photovoltaic plants. *Renew Sust Energ Rev* 15:845–850.
- 435 Corral N, Anrique N, Fernandes D, Parrado C, Cáceres G (2012) Power, placement and LEC evaluation to install  
436 CSP plants in northern Chile. *Renew Sust Energ Rev* 16:6678–6685.
- 437 Cronbach LJ (1951) Coefficient alpha and the internal structure of tests. *Psychometrika* 16:297–334.
- 438 Daniel TC (2001) Whither scenic beauty? Visual landscape quality assessment in the 21<sup>st</sup> century. *Landscape*  
439 *Urban Plan* 54:267–281.
- 440 Drobnik T, Huber R, Grêt-Regamey A (2017) Coupling a settlement growth model with an agro-economic land  
441 allocation model for securing ecosystem services provision. *J Environ Plann Man* 60(7): 1127–1152.
- 442 Dubey S, Sarvaiya JN, Seshadri B, 2013. Temperature Dependent Photovoltaic (PV) Efficiency and Its Effect on  
443 PV Production in the World a Review. *Energy Procedia* 33:311–321.
- 444 Eastman JR (2015) TerrSet tutorial. Clark University 1987–2015. [www.clarklabs.org](http://www.clarklabs.org)
- 445 Eastman JR (2016) TerrSet manual. Clark University 1987–2016. [www.clarklabs.org](http://www.clarklabs.org)
- 446 Ek K, Persson L (2014) Wind farms — Where and how to place them? A choice experiment approach to measure  
447 consumer preferences for characteristics of wind farm establishments in Sweden. *Ecol Econ* 105:193–203.



- 448 El Sistema de Evaluación de Impacto Ambiental (SEIA) (2003) Guía de Evaluación de Impacto Ambiental - Valor  
449 Paisajístico en el SEIA. Retrieved in 2016 from  
450 [http://www.sea.gob.cl/sites/default/files/migration\\_files/guias/Guia\\_Evaluacion\\_Paisaje\\_130926.pdf](http://www.sea.gob.cl/sites/default/files/migration_files/guias/Guia_Evaluacion_Paisaje_130926.pdf)
- 451 Escobar R, Cortés C, Pino A, Bueno Pereira E, Ramos Martins F, Cardemil JM (2014) Solar energy resource  
452 assessment in Chile: Satellite estimation and ground station measurements. *Renew Energ* 71:324–332.
- 453 Fernandez Jimenez A, Mendoza-Villena M, Zorzano-Santa MP, Garcia-Garrido E, Lara-Santillan P, Zorzano-  
454 Alba E, Falces A (2015) Site selection for new PV power plants based on their observability. *Renew Energ* 78:7–  
455 15.
- 456 Gottschamer L, Zhang Q (2016) Interactions of factors impacting implementation and sustainability of renewable  
457 energy sourced electricity. *Renew Sust Energ Rev* 65:164–174.
- 458 Hokkanen J, Salminen P. (1997) Locating a waste treatment facility by multicriteria analysis. *Journal of Multi-  
459 Criteria Decision Analysis* 6:175–184.
- 460 Hosenuzzaman M, Rahim NA, Selvaraj J, Hasanuzzaman M, Malek ABMA, Nahar A (2015) Global prospects,  
461 progress, policies, and environmental impact of solar photovoltaic power generation. *Renew Sust Energ Rev*  
462 41:284–297.
- 463 Houston J (2006) Variability of precipitation in the Atacama Desert: Its causes and hydrological impact. *Int J  
464 Climatol* 26:2181–2198.
- 465 Infraestructura de Datos Geospaciales (IDE) (2016) Retrieved in 2016 from <http://www.ide.cl/descarga/capas.html>.
- 466 Jamali IA, Mörtberg U, Olofsson B, Shafique M (2014) A Spatial Multi-Criteria Analysis Approach for Locating  
467 Suitable Sites for Construction of Subsurface Dams in Northern Pakistan. *Water Resour Manage* 28:5157–5174.
- 468 Jiménez-Estévez G, Palma-Behnke R, Latorre R, Morán L (2015) Heat and Dust - The Solar Energy Challenge in  
469 Chile. *IEEE Power & Energy Magazine* 3(2):71–77.
- 470 Joerin F, Theriault M, Musy A. (2001) Using GIS and outranking multicriteria analysis for land-use suitability  
471 assessment. *Int. J. Geogr. Inf. Sci* 15(2):153–174.
- 472 Johansen JRS, Clair LL (1986) Cryptogamic soil crusts: recovery from grazing near camp Floyd State Park, Utah,  
473 USA. *Great Basin Nat* 46:632–640.
- 474 Kaldellis JK (2005) Social attitude towards wind energy applications in Greece. *Energy Policy* 33:595–602.

- 475 Kosenius AK, Ollikainen M (2013) Valuation of environmental and societal trade-offs of renewable energy  
476 sources. *Energ Policy* 62:1148–1156.
- 477 Krohn S, Damborg S (1999) On Public Attitudes Towards Wind Power. *Renew Energ* 16:954–960.
- 478 Landsat 5 Thematic Mapper (2011) Retrieved in 2016 from <https://earthexplorer.usgs.gov/> courtesy of the U.S.  
479 Geological Survey.
- 480 Liu J, Dietz T, Carpenter SR, Alberti M, Folke C, Alberti M, Redman CL, Schneider SH, Ostrom E, Pell AN,  
481 Lubchenco J, Taylor WW, Ouyang Z, Deadman P, Kratz T, Provencher W (2007) Coupled human and natural  
482 systems. *Ambio* 36(8):639–649.
- 483 Malczewski J (1999) GIS and multicriteria decision analysis. New York: JohnWiley & Sons, Inc.
- 484 Malczewski J (2006) Ordered weighted averaging with fuzzy quantifiers: GIS-based multicriteria evaluation for  
485 land-use suitability analysis. *International Journal of Applied Earth Observation and Geoinformation* 8:270–277.
- 486 Malczewski J, Rinner C (2015) Multicriteria Decision Analysis in Geographic Information Science. In: Balram  
487 S, Dragicevic S (eds.) Burnaby, Canada. Springer New York Heidelberg Dordrecht London. pp. 1–331
- 488 Margules CR, Pressey RL (2000) Systematic conservation planning. *Nature* 405:243–253.
- 489 Millennium Ecosystem Assessment (MEA) (2005) Ecosystems and Human Well-being: Synthesis. Island Press,  
490 Washington, DC. Retrieved in 2016 from  
491 <http://www.millenniumassessment.org/documents/document.356.aspx.pdf>
- 492 Ministry of Energy, Chile (2013) retrieved in 2016 from <http://ernc.dgf.uchile.cl/Explorador/Solar2/info/SIG/>
- 493 Ministry of Public Education, Chile (2012) Law n° 17.288, Legisla sobre monumentos nacionales; modifica las  
494 leyes 16.617 y 16.719; deroga el decreto ley 651, de 17 de octubre de 1925. Latest version 2012. Retrieved in  
495 2017 from [file:///C:/Users/annasaar/Downloads/LEY-17288\\_04-FEB-1970.pdf](file:///C:/Users/annasaar/Downloads/LEY-17288_04-FEB-1970.pdf)
- 496 Molina-Ruiz J, Martínez-Sánchez JM, Pérez-Sirvent C, Tudela-Serrano ML, García Lorenzo ML (2011)  
497 Developing and applying a GIS-assisted approach to evaluate visual impact in wind farms. *Renew Energ* 36:1125–  
498 1132.
- 499 Moreira-Muñoz A (2011) Current Climate and Vegetation. In: Werger M.J.A. (ed.), *Plant geography of Chile*.  
500 Springer, Dordrecht, Heidelberg, London, New York, pp. 33–34.

- 501 Moriarty P, Honnery D (2012) What is the global potential for renewable energy? *Renew Sust Energ Rev* 16:244–  
502 252.
- 503 Muñoz-Schick M, Pinto R, Mesa A, Moreira-Muñoz A (2001) “Oasis de neblina” en los cerros costeros del sur  
504 de Iquique, region de Tarapacá, Chile, durante el evento El Niño 1997-1998. *Rev Chil Hist Nat* 74:389–405.
- 505 National Power System Coordinator, Chile (2016) SIC retrieved in 2016 from  
506 <https://sic.coordinadorelectrico.cl/sobre-sic/sic/> and SING from [http://cdec2.cdec-  
sing.cl/pls/portal/cdec.pck\\_web\\_cdec\\_pages.pagina?p\\_id=2](http://cdec2.cdec-<br/>507 sing.cl/pls/portal/cdec.pck_web_cdec_pages.pagina?p_id=2).
- 508 Nguyen KQ (2007) Wind energy in Vietnam: resource assessment, development status and future implications.  
509 *Energ Policy* 35:1405–13.
- 510 Olson-Hazbourn SK, Krannich RS, Robertson PG (2016) Public views on renewable energy in the Rocky  
511 Mountain region of the United States: Distinct attitudes, exposure, and other key predictors of wind energy.  
512 *Energy Research & Social Science* 21:1–179.
- 513 Omer AM (2008) Green energies and the environment. *Renew Sust Energ Rev* 12:1789–821.
- 514 Parsons R, Daniel TC (2002) Good looking: in defense of scenic landscape aesthetics. *Landscape Urban Plan*  
515 60:43–56.
- 516 Pasqualetti MJ (2011) Social barriers to renewable energy landscapes. *Geogr Rev* 101(2):201–223.
- 517 Pettorelli N, Vik JO, Mysterud A, Gaillard JM, Tucker CJ, Stenseth NC (2005) Using the satellite-derived NDVI  
518 to assess ecological responses to environmental change. *Trends Ecol Evol* 21(1):11.
- 519 Pliscoff P, Luebert F (2006) Sinopsis bioclimática y vegetacional de Chile, first ed. Editorial Universitaria.
- 520 Ramsar Chile (2012). The Ramsar Convention. Retrieved in 2016 from <http://www.ramsar.org/wetland/chile>.
- 521 Rasmusson EM, Wallace JM (1983) Meteorological Aspects of the El Niño/Southern Oscillation. *Science*  
522 222:1195–1202.
- 523 Rouse JW, Haas RH, Scheel JA, Deering DW (1974) Monitoring Vegetation Systems in the Great Plains with  
524 ERTS. Proceedings, 3rd Earth Resource Technology Satellite (ERTS) Symposium 1:48–62.
- 525 Saaty T (1997) A Scaling method for priorities in hierarchical structures. *J Math Psychol* 15:234–81.
- 526 Salazar G, Checura Diaz MS, Denegri MJ, Tiba C (2015) Identification of potential areas to achieve stable energy  
527 production using the SWERA database: A case study of northern Chile. *Renew Energ* 77:208–216.

- 528 Sánchez-Lozano JM, Teruel-Solano J, Soto-Elvira PL, García-Cascales MS (2013) Geographical Information  
529 Systems (GIS) and Multi-Criteria Decision Making (MCDM) methods for the evaluation of solar farms locations:  
530 Case study in south-eastern Spain. *Renew Sust Energ Rev* 24:544–556.
- 531 Sardanou E, Genoudi P (2013) Which factors affect the willingness of consumers to adopt renewable energies?  
532 *Renew Energ* 57:1–4.
- 533 Sevenant M, Antrop M (2009) Cognitive attributes and aesthetic preferences in assessment and differentiation of  
534 landscapes. *J. Environ Manag* 90:2889–2899.
- 535 Shafiee S, Topal E (2009) When will fossil fuel reserves be diminished? *Energ Policy* 37(1):181–9.
- 536 Siniabeta, Environmental Ministry of Chile (MMA) (2016). Retrieved in 2016 from <http://ide.mma.gob.cl/>.
- 537 Suuronen A, Muñoz-Escobar C, Lensu A, Kuitunen M, Guajardo Celis N, Espinoza Astudillo P, Ferrú M,  
538 Taucare-Ríos A, Miranda M, Kukkonen JVK (2017) The Influence of Solar Power Plants on Microclimatic  
539 Conditions and the Biotic Community in Chilean Desert Environments. *Environ Manage* doi:10.1007/s00267-  
540 017-0906-4
- 541 Thurstone LL (1935) *The vectors of mind: Multiple-factor analysis for the isolation of primary traits.* The  
542 University of Chicago Press.
- 543 Tolli M, Recanatesi F, Piccinno M, Leone A (2016) The assessment of aesthetic and perceptual aspects within  
544 environmental impact assessment of renewable energy projects in Italy. *Environ Impact Asses* 57:10–17.
- 545 Troup AJ (1965) The ‘southern oscillation’. *Q J Roy Meteor Soc* 14:490–506.
- 546 Tsoutsos T, Frantzeskakib N, Gekasb V (2005) Environmental impacts from the solar energy technologies. *Energ*  
547 *Policy* 33:289–296.
- 548 Tzoulas K, Korpela K, Venn S, Yli-Pelkonen V, Kaźmierczak A, Niemela J, James P (2007) Promoting ecosystem  
549 and human health in urban areas using Green Infrastructure: A literature review. *Landscape Urban Plan*  
550 81(3):167–178.
- 551 United Nations (2015) 21st Conference of the Parties of the UNFCCC in Paris. Retrieved in 2017 from  
552 <https://treaties.un.org/doc/Publication/UNTS/No%20Volume/54113/Part/I-54113-0800000280458f37.pdf>
- 553 Uyan M (2013) GIS-based solar farms site selection using analytic hierarchy process (AHP) in Karapinar region,  
554 Konya/Turkey. *Renew Sust Energ Rev* 28:11–17.

- 555 Vargas G, Ortlieb L, Rutlant J (2000) Aluviones históricos en Antofagasta y su relación con eventos El  
556 Niño/Oscilación del Sur. *Rev geol Chile* 27(2):157–176.
- 557 Vidiella PE, Armesto JJ, Gutiérrez JR (1999) Vegetation changes and sequential flowering after rain in the  
558 southern Atacama Desert. *J of Arid Environ* 43:449–458.
- 559 Wang JJ, Jing YY, Zhang CF, Zhao JH (2009) Review on multi-criteria decision analysis aid in sustainable energy  
560 decision making. *Renew Sust Energ Rev* 13:2263–2278.
- 561 Wang Q, Qiu HN (2009) Situation and outlook of solar energy utilization in Tibet, China. *Renew Sust Energ Rev*  
562 13:2181–2186.
- 563 Watson JJW, Hudson MD (2015) Hudson Regional Scale wind farm and solar farm suitability assessment using  
564 GIS-assisted multi-criteria evaluation. *Landscape and Urban Plan* 138:20–31.
- 565 Wu Z, Anping H, Chun C, Xiang H, Duoqi S, Zhifeng W (2014) Environmental impacts of large-scale CSP plants  
566 in North-Western China. *Environ Sci: Processes & Impacts* 16:2432–2441.
- 567 Wüstenhagen R, Wolsink M, Bürer MJ (2007) Social acceptance of renewable energy innovation: An introduction  
568 to the concept. *Energy Policy* 35:2683–2691.
- 569 Yager RR (1988) On Ordered Weighted Averaging Aggregation Operators in Multicriteria Decisionmaking. *IEEE*  
570 *T Syst Man Cyb* 18:183–190.
- 571 Yonca Aydin N, Kentel E, Duzgun S (2010) GIS-based environmental assessment of wind energy systems for  
572 spatial planning: A case study from Western Turkey. *Renew Sust Energ Rev* 14:364–373.