



## Overview of the DESI Legacy Imaging Surveys

Item Type	Article
Authors	Fan, Xiaohui; McGreer, Ian; Patej, Anna; Alvarez, A; Choi, Yumi; Jannuzi, Buell T; Lesser, Michael; Yang, Jinyi; Zaritsky, Dennis
Citation	Arjun Dey et al 2019 AJ 157 168
DOI	<a href="https://doi.org/10.3847/1538-3881/ab089d">10.3847/1538-3881/ab089d</a>
Publisher	IOP PUBLISHING LTD
Journal	ASTRONOMICAL JOURNAL
Rights	Copyright © 2019. The American Astronomical Society. All rights reserved.
Download date	27/08/2022 05:58:06
Item License	<a href="http://rightsstatements.org/vocab/InC/1.0/">http://rightsstatements.org/vocab/InC/1.0/</a>
Version	Final published version
Link to Item	<a href="http://hdl.handle.net/10150/633730">http://hdl.handle.net/10150/633730</a>



## Overview of the DESI Legacy Imaging Surveys

Arjun Dey<sup>1</sup>, David J. Schlegel<sup>2</sup>, Dustin Lang<sup>3,5,4</sup>, Robert Blum<sup>1,6</sup>, Kaylan Burleigh<sup>2</sup>, Xiaohui Fan<sup>7</sup>, Joseph R. Findlay<sup>8</sup>, Doug Finkbeiner<sup>9</sup>, David Herrera<sup>1</sup>, Stéphanie Juneau<sup>1</sup>, Martin Landriau<sup>2</sup>, Michael Levi<sup>2</sup>, Ian McGreer<sup>7</sup>, Aaron Meisner<sup>2</sup>, Adam D. Myers<sup>8</sup>, John Moustakas<sup>10</sup>, Peter Nugent<sup>2</sup>, Anna Patej<sup>7</sup>, Edward F. Schlafly<sup>2</sup>, Alistair R. Walker<sup>11</sup>, Francisco Valdes<sup>1</sup>, Benjamin A. Weaver<sup>1</sup>, Christophe Yèche<sup>12</sup>, Hu Zou<sup>13</sup>, Xu Zhou<sup>13</sup>, Behzad Abareshi<sup>1</sup>, T. M. C. Abbott<sup>11</sup>, Bela Abolfathi<sup>14</sup>, C. Aguilera<sup>11</sup>, Shadab Alam<sup>15</sup>, Lori Allen<sup>1</sup>, A. Alvarez<sup>11</sup>, James Annis<sup>16</sup>, Behzad Ansarinejad<sup>17</sup>, Marie Aubert<sup>18</sup>, Jacqueline Beechert<sup>19</sup>, Eric F. Bell<sup>20</sup>, Segev Y. BenZvi<sup>21</sup>, Florian Beutler<sup>22</sup>, Richard M. Bielby<sup>17</sup>, Adam S. Bolton<sup>1</sup>, César Briceño<sup>11</sup>, Elizabeth J. Buckley-Geer<sup>16</sup>, Karen Butler<sup>1</sup>, Annalisa Calamida<sup>23</sup>, Raymond G. Carlberg<sup>4</sup>, Paul Carter<sup>24</sup>, Ricard Casas<sup>25,26</sup>, Francisco J. Castander<sup>25,26</sup>, Yumi Choi<sup>7,27</sup>, Johan Comparat<sup>28</sup>, Elena Cukanovaite<sup>29</sup>, Timothée Delubac<sup>30</sup>, Kaitlin DeVries<sup>31</sup>, Sharmila Dey<sup>32</sup>, Govinda Dhungana<sup>33</sup>, Mark Dickinson<sup>1</sup>, Zhejie Ding<sup>34</sup>, John B. Donaldson<sup>1</sup>, Yutong Duan<sup>35</sup>, Christopher J. Duckworth<sup>36</sup>, Sarah Eftekhazadeh<sup>8</sup>, Daniel J. Eisenstein<sup>9</sup>, Thomas Etourneau<sup>12</sup>, Parker A. Fagrelus<sup>37</sup>, Jay Farihi<sup>38</sup>, Mike Fitzpatrick<sup>1</sup>, Andreu Font-Ribera<sup>38</sup>, Leah Fulmer<sup>1</sup>, Boris T. Gänsicke<sup>29</sup>, Enrique Gaztanaga<sup>25,26</sup>, Koshy George<sup>39</sup>, David W. Gerdes<sup>40</sup>, Satya Gontcho A Gontcho<sup>38</sup>, Claudio Gorgoni<sup>30</sup>, Gregory Green<sup>9</sup>, Julien Guy<sup>2</sup>, Diane Harmer<sup>1</sup>, M. Hernandez<sup>11</sup>, Klaus Honscheid<sup>41</sup>, Lijuan (Wendy) Huang<sup>1</sup>, David J. James<sup>42,43</sup>, Buell T. Jannuzi<sup>7</sup>, Linhua Jiang<sup>44</sup>, Richard Joyce<sup>1</sup>, Armin Karcher<sup>2</sup>, Sonia Karkar<sup>45</sup>, Robert Kehoe<sup>33</sup>, Jean-Paul, Kneib<sup>30,46</sup>, Andrea Kueter-Young<sup>47</sup>, Ting-Wen Lan<sup>48</sup>, Tod R. Lauer<sup>1</sup>, Laurent Le Guillou<sup>45</sup>, Auguste Le Van Suu<sup>49</sup>, Jae Hyeon Lee<sup>50</sup>, Michael Lesser<sup>7</sup>, Laurence Perreault Lévassieur<sup>51</sup>, Ting S. Li<sup>16</sup>, Justin L. Mann<sup>52</sup>, Robert Marshall<sup>1</sup>, C. E. Martínez-Vázquez<sup>11</sup>, Paul Martini<sup>53</sup>, Héliou du Mas des Bourboux<sup>54</sup>, Sean McManus<sup>1</sup>, Tobias Gabriel Meier<sup>30</sup>, Brice Ménard<sup>55</sup>, Nigel Metcalfe<sup>18</sup>, Andrea Muñoz-Gutiérrez<sup>56</sup>, Joan Najita<sup>1</sup>, Kevin Napier<sup>40</sup>, Gautham Narayan<sup>23</sup>, Jeffrey A. Newman<sup>57</sup>, Jundan Nie<sup>13</sup>, Brian Nord<sup>16,58</sup>, Dara J. Norman<sup>1</sup>, Knut A. G. Olsen<sup>1</sup>, Anthony Paat<sup>1</sup>, Nathalie Palanque-Delabrouille<sup>12</sup>, Xiyang Peng<sup>13</sup>, Claire L. Poppett<sup>59</sup>, Megan R. Poremba<sup>10</sup>, Abhishek Prakash<sup>60</sup>, David Rabinowitz<sup>61</sup>, Anand Raichoor<sup>30</sup>, Mehdi Rezaie<sup>34</sup>, A. N. Robertson<sup>1</sup>, Natalie A. Roe<sup>2</sup>, Ashley J. Ross<sup>62</sup>, Nicholas P. Ross<sup>15</sup>, Gregory Rudnick<sup>52</sup>, Sasha Safonova<sup>63</sup>, Abhijit Saha<sup>1</sup>, F. Javier Sánchez<sup>14</sup>, Elodie Savary<sup>30</sup>, Heidi Schweiker<sup>1</sup>, Adam Scott<sup>1</sup>, Hee-Jong Seo<sup>34</sup>, Huanyuan Shan<sup>64,65</sup>, David R. Silva<sup>1</sup>, Zachary Slepian<sup>66</sup>, Christian Soto<sup>1</sup>, David Sprayberry<sup>1</sup>, Ryan Staten<sup>33</sup>, Coley M. Stillman<sup>10</sup>, Robert J. Stupak<sup>1</sup>, David L. Summers<sup>1</sup>, Suk Sien Tie<sup>53</sup>, H. Tirado<sup>11</sup>, Mariana Vargas-Magaña<sup>56</sup>, A. Katherina Vivas<sup>11</sup>, Risa H. Wechsler<sup>67,68</sup>, Doug Williams<sup>1</sup>, Jinyi Yang<sup>7</sup>, Qian Yang<sup>69</sup>, Tolga Yapici<sup>21</sup>, Dennis Zaritsky<sup>7</sup>, A. Zenteno<sup>11</sup>, Kai Zhang<sup>2</sup>, Tianmeng Zhang<sup>13</sup>, Rongpu Zhou<sup>57</sup>, and Zhimin Zhou<sup>13</sup>

<sup>1</sup> National Optical Astronomy Observatory, 950 N. Cherry Avenue, Tucson, AZ 85719, USA; [dey@noao.edu](mailto:dey@noao.edu)

<sup>2</sup> Lawrence Berkeley National Laboratory, 1 Cyclotron Road, Berkeley, CA 94720, USA

<sup>3</sup> Dunlap Institute, University of Toronto, Toronto, ON M5S 3H4, Canada

<sup>4</sup> Department of Astronomy & Astrophysics, University of Toronto, Toronto, ON M5S 3H4, Canada

<sup>5</sup> Perimeter Institute for Theoretical Physics, Waterloo, ON N2L 2Y5, Canada

<sup>6</sup> LSST, 950 N. Cherry Avenue, Tucson, AZ 85719, USA

<sup>7</sup> Steward Observatory, University of Arizona, 933 N. Cherry Avenue, Tucson, AZ 85721, USA

<sup>8</sup> Department of Physics & Astronomy, University of Wyoming, 1000 E. University, Department 3905, Laramie, WY 8207, USA

<sup>9</sup> Harvard-Smithsonian Center for Astrophysics, 60 Garden Street, Cambridge, MA 02138, USA

<sup>10</sup> Department of Physics and Astronomy, Siena College, 515 Loudon Road, Loudonville, NY 12211, USA

<sup>11</sup> Cerro Tololo Inter-American Observatory, National Optical Astronomy Observatory, Casilla 603, La Serena, Chile

<sup>12</sup> IRFU, CEA, Université Paris-Saclay, F-91191 Gif-sur-Yvette, France

<sup>13</sup> Key Laboratory of Optical Astronomy, National Astronomical Observatories, Chinese Academy of Sciences, Beijing 100012, People's Republic of China

<sup>14</sup> Department of Physics and Astronomy, University of California, Irvine, Irvine, CA 92697, USA

<sup>15</sup> Institute for Astronomy, University of Edinburgh, Royal Observatory, Blackford Hill, Edinburgh, EH9 3HJ, UK

<sup>16</sup> Fermi National Accelerator Laboratory, P.O. Box 500, Batavia, IL 60510, USA

<sup>17</sup> Centre for Extragalactic Astronomy, Durham University, South Road, Durham, DH1 3LE, UK

<sup>18</sup> Aix Marseille Univ, CNRS/IN2P3, CPPM, Marseille, France

<sup>19</sup> Department of Physics, University of California at Berkeley, Berkeley, CA 94720, USA

<sup>20</sup> Department of Astronomy, University of Michigan, 1085 S. University Avenue, Ann Arbor, MI 48109, USA

<sup>21</sup> Department of Physics and Astronomy, University of Rochester, 500 Wilson Boulevard, Rochester, NY 14627, USA

<sup>22</sup> Institute of Cosmology & Gravitation, University of Portsmouth, Portsmouth, PO1 3FX, UK

<sup>23</sup> Space Telescope Science Institute, 3700 San Martin Drive, Baltimore, MD 21218, USA

<sup>24</sup> Institute of Cosmology & Gravitation, University of Portsmouth, Dennis Sciamia Building, Portsmouth PO1 3FX, UK

<sup>25</sup> Institute of Space Sciences (ICE, CSIC), Campus UAB, Carrer de Can Magrans, s/n, E-08193 Barcelona, Spain

<sup>26</sup> Institut d'Estudis Espacials de Catalunya (IEEC), E-08193 Barcelona, Spain

<sup>27</sup> Department of Physics, Montana State University, P.O. Box 173840, Bozeman, MT 59717-3840, USA

<sup>28</sup> Max-Planck Institut für extraterrestrische Physik, Postfach 1312, D-85741 Garching bei München, Germany

<sup>29</sup> Department of Physics, University of Warwick, Coventry CV4 7AL, UK

<sup>30</sup> Institute of Physics, Laboratory of Astrophysics, Ecole Polytechnique Fédérale de Lausanne (EPFL), Observatoire de Sauverny, 1290 Versoix, Switzerland

<sup>31</sup> Bentley School, 1000 Upper Happy Valley Road, Lafayette, CA 94549, USA

<sup>32</sup> University High School, 421 N Arcadia Avenue, Tucson, AZ 85711, USA

<sup>33</sup> Department of Physics, Southern Methodist University, 3215 Daniel Avenue, Dallas, TX 75205, USA

<sup>34</sup> Department of Physics and Astronomy, Ohio University, Clipping Labs, Athens, OH 45701, USA

<sup>35</sup> Boston University Physics Department, 590 Commonwealth Avenue, Boston, MA 02215, USA

- <sup>36</sup> School of Physics and Astronomy, University of St Andrews, North Haugh, St Andrews KY16 9SS, UK  
<sup>37</sup> Department of Physics, University of California, Berkeley, Berkeley, CA 94720, USA  
<sup>38</sup> Department of Physics and Astronomy, University College London, London WC1E 6BT, UK  
<sup>39</sup> Indian Institute of Astrophysics, Koramangala II Block, Bangalore, India  
<sup>40</sup> Department of Physics, University of Michigan, 450 Church Street, Ann Arbor, MI 48109, USA  
<sup>41</sup> Department of Physics, Ohio State University, 191 W. Woodruff Avenue, Columbus, OH 43210, USA  
<sup>42</sup> Center for Astrophysics Harvard & Smithsonian, 60 Garden Street, Cambridge, MA 02138, USA  
<sup>43</sup> Black Hole Initiative at Harvard University, 20 Garden Street, Cambridge, MA 02138, USA  
<sup>44</sup> Kavli Institute for Astronomy and Astrophysics, Peking University, Beijing 100871, People's Republic of China  
<sup>45</sup> Sorbonne Université, Université Paris-Diderot, CNRS-IN2P3, Laboratoire de Physique Nucléaire et de Hautes Energies, LPNHE, F-75005 Paris, France  
<sup>46</sup> Aix Marseille Université, CNRS, LAM (Laboratoire d'Astrophysique de Marseille) UMR 7326, F-13388, Marseille, France  
<sup>47</sup> Department of Physics & Astronomy, Rutgers University, 136 Frelinghuysen Road, Piscataway, NJ 08854-8019, USA  
<sup>48</sup> Kavli IPMU, The University of Tokyo (WPI), Kashiwa 277-8583, Japan  
<sup>49</sup> Aix Marseille University, CNRS, Institut Pytheas-Observatoire Haute Provence, F-04870 St-Michel-l'Observatoire, France  
<sup>50</sup> Physics Department, Harvard University, Cambridge, MA 02138, USA  
<sup>51</sup> Kavli Institute for Particle Astrophysics and Cosmology, Stanford University, Stanford, CA, USA  
<sup>52</sup> Department of Physics and Astronomy, University of Kansas, 1251 Wescoe Hall Drive, Room 1082, Lawrence, KS 66045, USA  
<sup>53</sup> Department of Astronomy and Center for Cosmology and Astroparticle Physics, The Ohio State University, Columbus, OH 43210, USA  
<sup>54</sup> Department of Physics and Astronomy, University of Utah, 115 S. 1400 E., Salt Lake City, UT 84112, USA  
<sup>55</sup> Johns Hopkins University, Department of Physics & Astronomy, 3400 N. Charles Street, Baltimore, MD 21218, USA  
<sup>56</sup> Instituto de Física, Universidad Nacional Autónoma de México, A.P. 20-364, 04510 Ciudad de México, México  
<sup>57</sup> Department of Physics and Astronomy and PITT PACC, University of Pittsburgh, 3941 O'Hara Street, Pittsburgh, PA 15260, USA  
<sup>58</sup> Kavli Institute for Cosmological Physics, University of Chicago, Chicago, IL 60637, USA  
<sup>59</sup> Space Sciences Lab, UC Berkeley, Berkeley, CA 94720, USA  
<sup>60</sup> Infrared Processing and Analysis Center (IPAC), California Institute of Technology, 1200 E. California Boulevard, Pasadena, CA 91125, USA  
<sup>61</sup> Yale University Physics Department, P.O. Box 2018120, New Haven, CT 06520-8120, USA  
<sup>62</sup> Center for Cosmology and AstroParticle Physics, The Ohio State University, Columbus, OH 43210, USA  
<sup>63</sup> Lawrence Livermore National Laboratory, 7000 East Avenue, Livermore, CA 94550, USA  
<sup>64</sup> Shanghai Astronomical Observatory (SHAO), Nandan Road 80, Shanghai 200030, People's Republic of China  
<sup>65</sup> Argelander-Institut für Astronomie, Auf dem Hügel 71, D-53121 Bonn, Germany  
<sup>66</sup> Department of Astronomy, University of Florida, 211 Bryant Space Science Center, Gainesville, FL 32611-2055, USA  
<sup>67</sup> Kavli Institute for Particle Astrophysics and Cosmology and Department of Physics, Stanford University, Stanford, CA 94305, USA  
<sup>68</sup> Department of Particle Physics and Astrophysics, SLAC National Accelerator Laboratory, Stanford, CA 94305, USA  
<sup>69</sup> Department of Astronomy, School of Physics, Peking University, Beijing 100871, People's Republic of China
- Received 2018 April 23; revised 2019 February 18; accepted 2019 February 18; published 2019 April 9

## Abstract

The DESI Legacy Imaging Surveys (<http://legacysurvey.org/>) are a combination of three public projects (the Dark Energy Camera Legacy Survey, the Beijing–Arizona Sky Survey, and the Mayall z-band Legacy Survey) that will jointly image  $\approx 14,000 \text{ deg}^2$  of the extragalactic sky visible from the northern hemisphere in three optical bands ( $g$ ,  $r$ , and  $z$ ) using telescopes at the Kitt Peak National Observatory and the Cerro Tololo Inter-American Observatory. The combined survey footprint is split into two contiguous areas by the Galactic plane. The optical imaging is conducted using a unique strategy of dynamically adjusting the exposure times and pointing selection during observing that results in a survey of nearly uniform depth. In addition to calibrated images, the project is delivering a catalog, constructed by using a probabilistic inference-based approach to estimate source shapes and brightnesses. The catalog includes photometry from the  $grz$  optical bands and from four mid-infrared bands (at 3.4, 4.6, 12, and  $22 \mu\text{m}$ ) observed by the *Wide-field Infrared Survey Explorer* satellite during its full operational lifetime. The project plans two public data releases each year. All the software used to generate the catalogs is also released with the data. This paper provides an overview of the Legacy Surveys project.

*Key words:* catalogs – surveys

## 1. Introduction

Explorations of the universe begin with images. In the last few decades, systematic surveys of the sky across the electromagnetic spectrum have revolutionized the ways in which we study physical processes in known astronomical sources, identify new astrophysical sources and phenomena, and map our environs (e.g., see Djorgovski et al. 2013, for an excellent summary). The amazing bounty of wide-field imaging surveys at optical wavelengths has been recently demonstrated by the Sloan Digital Sky Survey (SDSS; York et al. 2000; Abazajian et al. 2009; Aihara et al. 2011), Pan-STARRS1 (PS1; Chambers et al. 2016), and the Dark Energy Survey (The Dark Energy Survey Collaboration 2005), all of which continue to advance our knowledge of the universe in

multiple fields of astrophysics (e.g., Dark Energy Survey Collaboration et al. 2016).

In this paper we describe the DESI Legacy Imaging Surveys (hereafter the Legacy Surveys) aimed at mapping  $14,000 \text{ deg}^2$  of the extragalactic sky in three optical bands ( $g$ ,  $r$  and  $z$ ). The very wide areal coverage and the need to finish the survey in less than 3 years necessitated the use of three different telescope platforms: the Blanco telescope at the Cerro Tololo Inter-American Observatory; the Mayall Telescope at the Kitt Peak National Observatory; and the University of Arizona Steward Observatory 2.3 m (90 inch) Bart Bok Telescope at Kitt Peak National Observatory. In addition, the Legacy Surveys source catalogs incorporate mid-infrared photometry for all optically detected sources from new image stacks of data

from the *Wide-field Infrared Survey Explorer* satellite (Wright et al. 2010).

## 2. Motivation for a New Wide-field Imaging Survey

### 2.1. Imaging for the Dark Energy Spectroscopic Instrument Surveys

The Legacy Surveys are motivated by the need to provide targets for the Dark Energy Spectroscopic Instrument (DESI) survey. DESI is an international project that is constructing a 5000-fiber multi-object spectrograph for the Mayall 4 m telescope at the Kitt Peak National Observatory (DESI Collaboration et al. 2016b). Over a 5-year period (2019–2024), DESI will measure the redshifts of 35 million galaxies and quasars, including  $\sim 700,000$  QSOs at  $z > 2.1$ <sup>70</sup> suitable for probing the structure of the intergalactic medium at high redshift (DESI Collaboration et al. 2016a). The DESI Key Project will use these maps of the large-scale matter distribution traced by galaxies and the Ly $\alpha$  forest to measure the expansion history of the universe over the past 10 billion years. The goal is to provide sub-percent accuracy constraints on the equation of state of dark energy and its time evolution (see Alam et al. 2017). The DESI project will also provide precise constraints on the growth of structure in the universe by using measurements of redshift-space distortions (e.g., Guzzo et al. 2008; Blake et al. 2011; Pezzotta et al. 2017). In order to reach percent-level precision on the cosmological parameters, the DESI survey requires spatially dense samples of galaxy and QSO tracers across very large areas of the sky ( $> 10,000$  deg<sup>2</sup>). The SDSS and PS1 surveys are both too shallow to reliably select the DESI targets, and the contiguous extragalactic (i.e., at  $|b| \geq 15^\circ$ ) SDSS footprint is too small. The DES survey reaches adequate depth but covers only 5000 deg<sup>2</sup>, mainly in regions too far south to be reached from Kitt Peak. These considerations motivated the Legacy Surveys, which are deeper than SDSS and PS1 and cover a much larger area than DES in the northern sky. Imaging for the Legacy Surveys is on track to be completed prior to the start of the DESI spectroscopic survey in 2019. The detailed requirements placed by the DESI target selection on the imaging surveys are described in more detail in an appendix to this paper (see Appendix A).

### 2.2. Complementing Existing Spectroscopy

Beyond the primary goal of providing DESI targets, the imaging survey described in this paper has more wide-ranging astrophysical motivations. The Sloan Digital Sky Survey (SDSS; e.g., Abazajian et al. 2009; Abolfathi et al. 2018) project has overwhelmingly demonstrated the power of combining wide-field imaging and spectroscopic surveys within the same footprint. The SDSS-I,II,III/BOSS surveys contain  $\sim 2.8$  million spectra, including 300,000 unique stars, 700,000 galaxies at  $z < 0.2$ , 500,000 galaxies at  $0.2 < z < 0.5$ , 1 million galaxies at  $z > 0.5$ , 100,000 QSOs at  $z < 2$ , and 200,000 QSOs at  $z > 2$ .<sup>71</sup> The median extragalactic redshift of these samples is already  $z_{\text{med}} \approx 0.5$ , and SDSS-IV/eBOSS (Dawson et al. 2016, 2014–2020) is currently adding another 600,000 galaxies at  $0.6 < z < 1$  (Prakash et al. 2016; Raichoor et al. 2017) and 500,000 new QSOs at  $z > 0.9$

(Myers et al. 2015). Most of these data are already available publicly.

While most SDSS-I spectra targeted nearby galaxies ( $r < 17.77$ ; i.e., 4–5 mag brighter than the imaging detection limit), BOSS (SDSS-III) targeted much fainter sources (galaxies to  $i = 19.9$  and QSOs to  $g = 22$ ), near the limits of the original SDSS imaging (Dawson et al. 2013); eBOSS (SDSS-IV) goes even fainter (see, e.g., Abolfathi et al. 2018). While adequate for the study of large-scale structure, the full science impact of these data is limited by the depth and quality of the existing imaging. The bulk of existing spectroscopic redshifts are in the northern sky and have poor overlap with most deep, wide-field imaging surveys (see Figure 1). The SDSS imaging data (which provided the spectroscopic targets) do not provide precise photometry, well-resolved size measurements, detailed morphologies, or environmental measures for the bulk of the faint galaxies targeted by the existing spectroscopy.

The Legacy Surveys will greatly remedy this situation by imaging the entire BOSS footprint to magnitudes suitable for the study of the  $z > 0.5$  universe (see Figure 1). Based on the magnitude distribution of galaxies in the zCOSMOS catalog (Lilly et al. 2007), imaging to the  $5\sigma$  z-band depth of the Legacy Surveys will result in increasing the number of detected  $z > 0.5$  galaxies ( $z > 1$ ) galaxies by a factor of  $> 15$  ( $> 200$ ) over SDSS. Measuring  $g-r$  versus  $r-z$  colors cleanly isolates  $z > 0.5$  galaxies. Optical photometry coupled with the WISE mid-infrared photometry can be used to measure stellar masses and AGN activity for such galaxies (see, e.g., Section 3 of DESI Collaboration et al. 2016a, and references therein) can be used to resolve morphologies and structural parameters for all SDSS spectroscopic galaxies. The combination of the image quality (median FWHM in the z band of  $\approx 1''.1$ ) and depth of the Legacy Surveys can be used to measure improved morphologies and structural parameters for all SDSS spectroscopic galaxies.

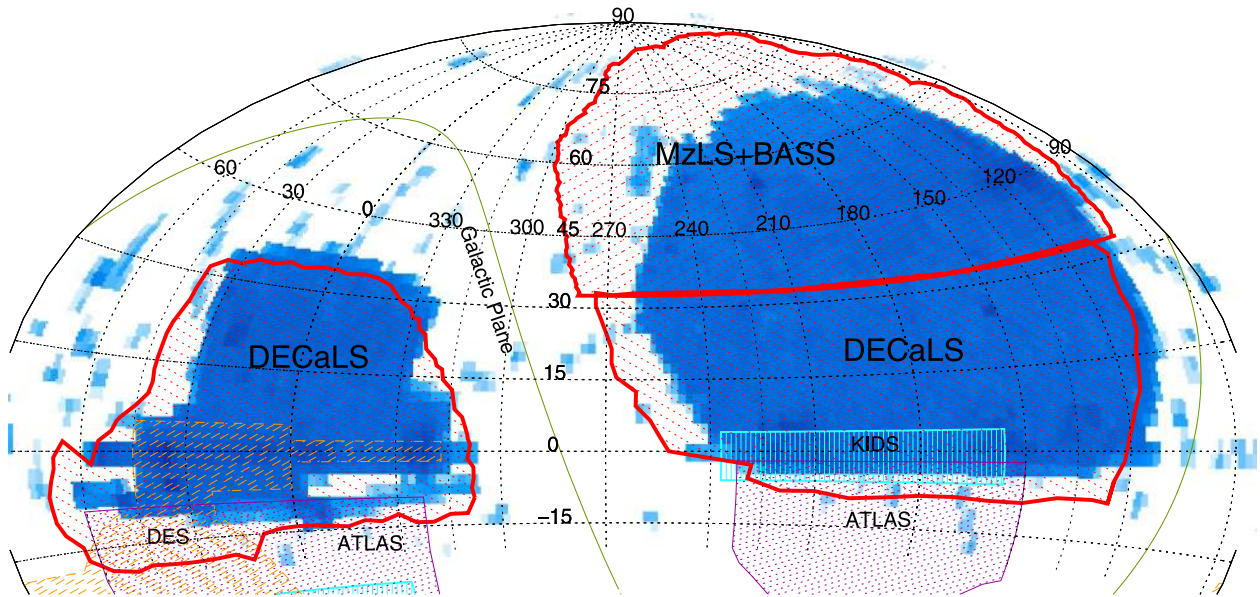
Spectroscopy complements deep imaging; it provides robust redshifts; a crisp 3D view of large-scale structure; dynamical information through velocity dispersions; spectral diagnostics of stellar populations, star formation rates, and nuclear activity; and probes of the intergalactic medium through absorption line studies. The combination enables numerous astrophysical studies. For example:

1. *The Evolution of Galaxy Clusters:* While SDSS has obtained redshifts of 1.5 million massive galaxies, often the central, brightest galaxies in groups and clusters, current imaging often cannot detect their satellites. The Legacy Surveys will significantly improve stellar mass models for these galaxies and enable a sensitive search for faint cluster members. Extrapolating from the SDSS Stripe 82 imaging (Rykoff et al. 2014, 2016), we expect to identify  $\sim 75,000$  clusters, nearly all of which will have spectroscopic redshifts available from SDSS. Spectroscopy provides three key benefits not available to photometric-only surveys: (1) calibration of cluster masses by stacked velocity dispersion measurements (e.g., Becker et al. 2007); (2) tests of general relativity by the comparison of the velocity field around clusters to the weak-lensing shear mass profile (e.g., Lam et al. 2012; Zu et al. 2014); and (3) calibration of cluster masses by detecting the weak-lensing magnification of the luminosity function of background galaxies and quasars

<sup>70</sup> We shall use the terms “quasar” and “QSO” interchangeably throughout this paper.

<sup>71</sup> <http://sdss3.org>





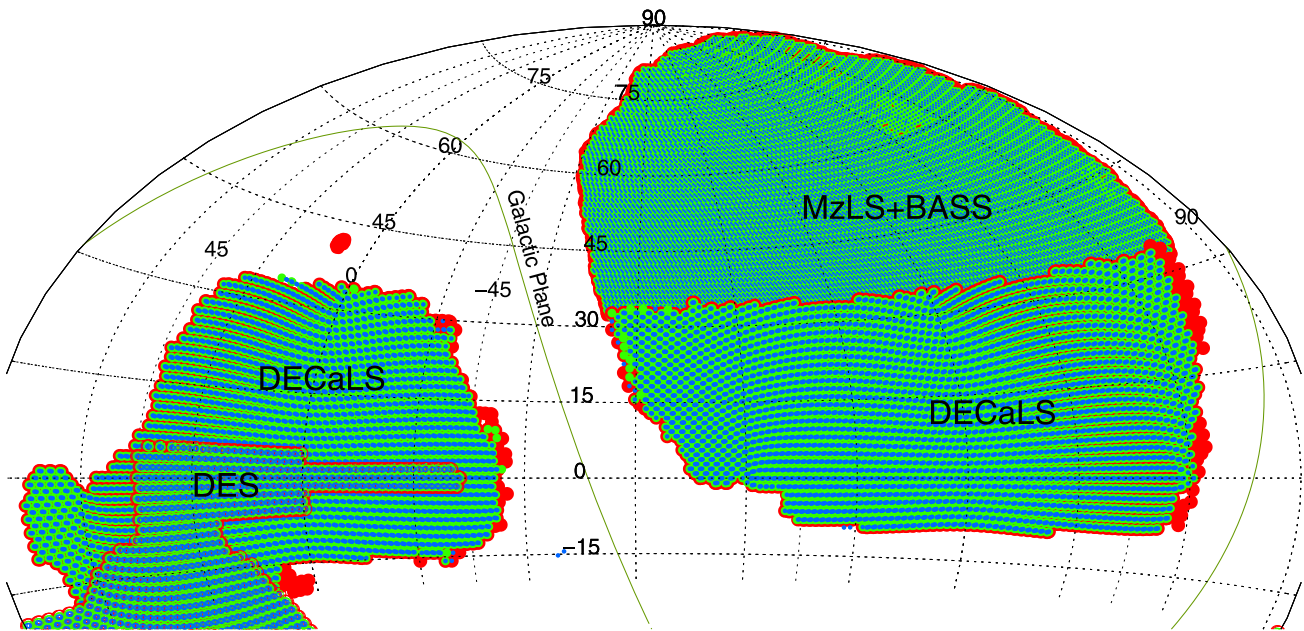
**Figure 1.** Footprints of the optical imaging surveys contributing to DESI imaging, demarcated by the thick red outlines, are shown here in an equal-area Aitoff projection in equatorial coordinates. The region covered by the BASS and MzLS surveys is almost entirely in the North Galactic Cap (NGC) at declinations  $\delta \geq +32^\circ$ , and DECaLS covers the entire South Galactic Cap and the  $\delta \leq +34$  regions in the NGC. The regions covered by existing wide-area spectroscopic redshift surveys (SDSS, 2dF, and BOSS; Colless et al. 2001; Abazajian et al. 2009; Abolfathi et al. 2018) are shown in the blue gray scale in the map provided, where the darker colors represent a higher density of spectroscopic redshifts. The Legacy Surveys provide deeper imaging and can leverage the existing spectroscopy in these regions, unlike most other existing or ongoing deep imaging surveys (e.g., DES, ATLAS, KIDS, etc.; The Dark Energy Survey Collaboration 2005; de Jong et al. 2015; Shanks et al. 2015).

(Coupon et al. 2013, 2015). Magnification-based methods have systematic uncertainties that are completely independent from the shape and photometric redshift systematics expected to dominate the error budget of imaging-only surveys like DES or LSST, thereby enabling a critical consistency test with these surveys.

2. *Galaxy Halos through Cosmic Time:* The contents (and shapes) of galaxy dark matter halos can be revealed from the cross-correlation of spectroscopic and imaging maps (Eisenstein et al. 2005; Tal et al. 2013) and from galaxy-galaxy weak lensing (e.g., Mandelbaum et al. 2016). These methodologies benefit substantially from deeper imaging, with statistical errors on cross-correlations and lensing signals often scaling as  $N_{\text{gal}}^{-1/2}$ . Higher precision is crucial: variations in clustering as a function of galaxy properties are often only of order 10%, so distinguishing between models requires percent-level clustering measurements. The  $z \approx 22.8$  AB mag  $5\sigma$  depth of the Legacy Surveys imaging will increase the samples available to these methodologies by factors of  $>15$  (based on comparisons to the  $z$ COSMOS catalogs; Lilly et al. 2007). Cross-correlation studies use angular correlations to tie deep photometric catalogs to overlapping spectroscopic maps, measuring the mean environments and clustering of galaxies and AGN with great accuracy. SDSS has provided high-precision results at lower redshift using these techniques (e.g., measuring the mean environment of galaxies as a function of luminosity, color, and scale; Hogg et al. 2003; Eisenstein et al. 2005; Masjedi et al. 2006; Jiang et al. 2012) and interpreting this to constrain halo populations and merger rates (Zheng et al. 2009; Watson et al. 2012). The Legacy Surveys will extend this to far larger ( $>10$ – $100\times$ ) spectroscopic and photometric samples at high redshift,

measuring the satellite distributions around central galaxies as a function of redshift, luminosity, stellar mass, color, major axis orientation, velocity dispersion, [O II] emission-line equivalent width, and so on. Cross-correlation also enables more robust clustering measurements around rare spectroscopic populations and the ability to calibrate galaxy redshift distributions from imaging data (Newman 2008; Myers et al. 2009; Ménard et al. 2013; Schmidt et al. 2013).

3. *The Evolution of Halo Gas:* SDSS spectra have already yielded  $>50,000$  Mg II absorption line systems at  $0.4 < z < 2.5$  toward background QSOs (Zhu & Ménard 2013), and eBOSS will increase the number of sightlines to nearly a million. By cross-correlating 2000 absorbers at  $z \sim 0.5$  with SDSS photometric galaxies, Lan et al. (2014) extracted new relations between galaxy properties and their surrounding gas (e.g., their Figure 2(a)). The Legacy Surveys will dramatically improve this type of analysis by extending its reach from  $z \sim 0.5$  to  $z \sim 2$ , sampling the full range of  $\sim 100,000$  identified absorbers. This will map the cosmic evolution of halo gas as a function of redshift, making it possible to understand its dependence on galaxy type, orientation, luminosity, star formation rate, environment, and so on.
4. *The Halo of the Milky Way:* The SDSS, PS1 and DES imaging surveys have revolutionized the study of the Milky Way, finding numerous stellar halo streams (e.g., Newberg et al. 2002; Yanny et al. 2003; Grillmair 2009; Bernard et al. 2016; Shipp et al. 2018) and dwarf galaxies (Willman et al. 2005; Laevens et al. 2014; Bechtol et al. 2015; Drlica-Wagner et al. 2015). The Legacy Surveys will map at least twice as far out into the Galactic halo over  $14,000 \text{ deg}^2$ , increasing the volume of the MW explored by a factor of  $\sim 5$  relative to SDSS+Pan-STARRS. This will enable tests of predictions that stellar



**Figure 2.** Current imaging coverage (as of 2019 March) of the Legacy Surveys. Red, green, and blue dots represent regions where there is at least a single  $z$ -,  $r$ -, or  $g$ -band observation, respectively. The MzLS  $z$ -band survey is now complete; BASS  $g$ - and  $r$ -band observations and all DECaLS  $grz$  observations will be completed by 2019 March. For a more up-to-date status, see <http://legacysurvey.org/status/>.

halo substructure dramatically increases with distance (Bell et al. 2008; Helmi et al. 2011). Our photometric parallax-based maps will extend to  $\sim 40$  kpc using main sequence stars (Jurić et al. 2008; Ivezić et al. 2008),  $\sim 80$  kpc using  $gr$ -selected main sequence turnoff stars (Bell et al. 2008), and  $\sim 150$  kpc using  $ugr$ -identified Blue Horizontal Branch (BHB) stars where  $u$  band is available (Ruhland et al. 2011). The deeper data on known streams (Odenkirchen et al. 2003; Carballo-Bello et al. 2018) will be used to test for the presence of “missing satellites” via their signatures in these streams (Carlberg 2009; Yoon et al. 2011). Imaging from the Legacy Surveys should be sufficient to discover 8–20 new dwarf galaxies. Each dwarf galaxy discovery immediately adds years of Fermi integration to the search for dark matter detection via gamma-rays (Albert et al. 2017). Finally, given the 10 yr time baseline between imaging from SDSS and the Legacy Surveys, proper motions should be measured to accuracies of a few milliarcsec per year for stars 2 mag fainter than the *Gaia* limits.

### 2.3. Photometry from the WISE Satellite

The Legacy Surveys will greatly enhance in the utility of the mid-IR imaging data from the *WISE* satellite by providing deep template  $grz$  optical images for matched photometry using *The Tractor* package (Lang et al. 2016a; see Section 8). By optimally matching *WISE* to deep optical imaging, one can partially deblend the images of confused *WISE* sources and improve the signal-to-noise ratio of their mid-infrared photometry and color measurements. Using SDSS  $r$ -band templates already shows substantial improvement, but the deeper Legacy Survey images will allow extraction of fainter, higher redshift sources. The extended *WISE* mission will more than quadruple the exposure time of the original *WISE* all-sky survey (see the AllWISE catalog) in the 3.4 and 4.6  $\mu\text{m}$  bands by the end of 2018 and provide multiple epochs for identification of

mid-infrared variable sources. The Legacy Surveys will provide matched *WISE* mid-infrared photometry for hundreds of millions of optical sources. Properly matched optical-to-mid-IR photometry will allow more robust estimation of stellar masses and improved photometric redshifts for extragalactic objects. Such photometry will also facilitate high-fidelity selection of massive galaxies to  $z \sim 1.5$ –2 and the selection of nearly all optically detected quasars.

### 3. Footprint

The footprint of the Legacy Surveys is designed to correspond to the DESI Survey footprint, which is defined to be the extragalactic sky above a Galactic latitude of  $b = 15^\circ$  that can be observed spectroscopically from Kitt Peak (i.e., at decl.  $\delta > -20^\circ$ ). These selections result in an  $\approx 14,000 \text{ deg}^2$  area, which contains two contiguous regions: one in the North Galactic Cap (NGC) covering  $9900 \text{ deg}^2$  and one in the South Galactic Cap (SGC) covering  $4400 \text{ deg}^2$ .

The basic criteria described result in a larger area in the NGC (A semester) relative to the SGC (B semester). However, we also need to conduct a uniform, wide-area extragalactic survey with fields that can be scheduled throughout the year, minimizing observations at high airmass (at low or high declinations) and in regions of high Galactic extinction or high stellar density. To minimize scheduling issues for DESI, the NGC portion of the footprint is trimmed to decl.  $\delta > -8^\circ 2$  and the SGC area extends southward to  $\delta \approx -13^\circ 3$  in regions not covered by the Dark Energy Survey (DES; The Dark Energy Survey Collaboration 2005), and to  $\delta \approx -18^\circ 4$  in the region covered by DES. These choices were informed by realistic simulations of the DESI survey, including a dynamic observing model similar to that described in Section 6.2.

Since the primary motivation is an extragalactic cosmological survey, additional cuts are imposed to remove those parts of the sky with the largest stellar density. For the survey regions closest to the Galactic center (i.e.,  $-90^\circ < l < +90^\circ$ ), only

**Table 1**  
Telescopes Used for the Legacy Surveys

Survey	Telescope/ Instrument	Bands	Area deg <sup>2</sup>	Location
DECaLS	Blanco/DECam	$g, r, z$	9000	NGC(decl. $\leq +32^\circ$ )+SGC
BASS	Bok/90Prime	$g, r$	5000	NGC (decl. $\geq +32^\circ$ )
MzLS	Mayall/Mosaic-3	$z$	5000	NGC (decl. $\geq +32^\circ$ )
<i>WISE</i> and <i>NEOWISE</i>	<i>WISE</i> W1, W2	3.4, 4.6 $\mu\text{m}$	all-sky	all-sky
<i>WISE</i>	<i>WISE</i> W3, W4	12, 22 $\mu\text{m}$	all-sky	all-sky

regions with Galactic latitude  $|b| > 18^\circ$  are selected; in the Galactic anti-center, a less stringent criterion of  $|b| > 14^\circ$  is imposed, allowing the survey to extend a bit closer to the Galactic plane.

Finally, the selected footprint is modified to both avoid small holes within the survey and to avoid largely disconnected regions that arise as a result of the  $E(B - V)$  cuts. For example, an “orphaned” area of 600 deg<sup>2</sup> in the northern part of the SGC has therefore been excluded from the DESI footprint.

The final footprint is shown in Figure 1. The DESI spectroscopic survey is expected to observe most or all this footprint, dependent upon the level of completion of the Legacy Surveys. The current coverage of the footprint is shown in Figure 2.

#### 4. The Three Surveys

The four target classes that will be used as cosmological tracers by DESI can be selected using a combination of optical imaging data in the  $g, r,$  and  $z$  bands and mid-infrared imaging in the 3.4 and 4.6  $\mu\text{m}$  *WISE* bands (see Appendix A for further details). DESI requires that the Legacy Surveys deliver  $5\sigma$  detections of a “fiducial”  $g = 24.0, r = 23.4$  and  $z = 22.5$  AB mag galaxy with an exponential light profile of half-light radius  $r_{\text{half}} = 0.45$  arcsec. DESI also requires the depth (and the resulting target selection) to be as uniform as possible across the survey footprint. Ideally, a cosmological survey would use the same imaging data to select all science and calibration targets. However, the ambitious footprint coupled with the short timeline for DESI and lack of very-wide-field imaging capabilities in the northern hemisphere necessitated using multiple platforms to cover the footprint.

Consequently, a combination of three telescopes is used to provide the optical imaging for the Legacy Surveys: the Blanco 4 m telescope at Cerro Tololo, the Bok 90 inch, and the Mayall 4 m telescope at Kitt Peak (see Table 1). The areas of the Legacy Surveys imaged using each of these telescopes are shown in Figure 1, and the next three subsections discuss these surveys and their current status in more detail. The status of the *WISE* data used in the Legacy Surveys catalogs is presented in Section 5.

DESI targeting requires uniformity in the imaging within each sub-footprint, and resorting to multiple platforms poses challenges. In order to minimize non-uniformity and cross-calibration issues, the overall footprint was divided into only three contiguous regions. Two of these three regions are being imaged using the Dark Energy Camera on the Blanco telescope, the instrument and telescope combination delivering the widest field of view (and therefore the fastest survey capability). The other region, which is in the NGC north of  $\delta \approx +34^\circ$ , is being imaged from Kitt Peak using the 90Prime Camera on the Bok telescope for the  $g$  and  $r$  bands, and the

**Table 2**  
Regions Where Surveys Overlap

Name	R.A. (deg)	Decl. (deg)	Area (deg <sup>2</sup> )
D33	100 to 280 to	+32.5 to +34.5	300
S82a	36 to 42	-1.3 to +1.3	13
S82b	350 to 10	-1.3 to +1.3	46
S82c	317 to 330	-1.3 to +1.3	30
COSMOS	330 to 336	-1.3 to +1.3	10

**Table 3**  
Observing Schedule

Survey	Telescope/ Instrument	Nights	Start	Finish	Bands
DECaLS	Blanco/DECam	145	2014 Aug	2019 Mar	$g, r, z$
BASS	Bok/90prime	250	2015 Jan	2019 Mar	$g, r$
MzLS	Mayall/Mosaic-3	383	2016 Feb	2018 Feb	$z$

Mosaic-3 camera on the Mayall telescope for the  $z$ -band observations. The sub-footprints of these individual surveys overlap in the NGC (in an area of  $\approx 300$  deg<sup>2</sup>) in the decl. range  $+32^\circ < \delta < +34^\circ$ , so that the color transformations between the different camera+telescope combinations can be calibrated to high precision and accuracy. An additional  $\approx 100$  deg<sup>2</sup> in SDSS Stripe 82 is also being imaged by all three surveys to aid the cross-calibration (see Table 2).

A fill factor of unity is not required for the DESI Key Project. As long as the detailed sky mask is well-characterized, the clustering analyses can make use of that mask with information loss proportional to this fractional loss of area. The DESI requirements are that the coverage to full depth in all three optical bands should exceed 90% of the footprint, and that 95% (98%) must be within 0.3 (0.6) magnitudes of full depth. The  $g, r,$  and  $z$  filter bandpasses used by the Legacy Surveys are shown in Figure 3. The observing nights allocated to each survey are shown in Table 3.

##### 4.1. DECaLS: The Dark Energy Camera Legacy Survey

The Dark Energy Camera (DECam; Flaugher et al. 2015) at the 4 m Blanco telescope at the Cerro Tololo Inter-American Observatory is the most efficient imager for wide-field surveys currently available. DECam has<sup>72</sup> 62 2048  $\times$  4096 pixel format 250  $\mu\text{m}$  thick LBNL CCDs arranged in a roughly hexagonal  $\approx 3.2$  deg<sup>2</sup> field of view. The pixel scale is  $\approx 0.262$  arcsec/pix. In addition to the wide field of view, DECam provides high sensitivity across a broad wavelength

<sup>72</sup> One CCD died before the survey, one is only partially usable, and one was inoperative for part of the survey.



**Table 4**  
Depths and Delivered Image Quality

Survey Name	Single-frame Depths <sup>a</sup>						DIQ <sup>d</sup>		
	PSF Depth <sup>b</sup>			Galaxy Depth <sup>c</sup>			(")		
	<i>g</i>	<i>r</i>	<i>z</i>	<i>g</i>	<i>r</i>	<i>z</i>	<i>g</i>	<i>r</i>	<i>z</i>
DECaLS <sup>e</sup>	23.95	23.54	22.50	23.72	23.27	22.22	1.29	1.18	1.11
BASS <sup>f</sup>	23.65	23.08		23.48	22.87		1.61	1.47	
MzLS <sup>g</sup>			22.60			22.29			1.01

**Notes.**

<sup>a</sup> In AB mag.

<sup>b</sup> Median  $5\sigma$  detection limit in AB mag for a point source in individual images.

<sup>c</sup> Median  $5\sigma$  detection limit in AB mag for the fiducial DESI target (galaxy with an exponential disk profile with  $r_{\text{half}} = 0''.45$ ).

<sup>d</sup> Delivered image quality, defined as the FWHM in arcseconds of the measured point-spread function. For comparison, the corresponding median FWHM for the SDSS imaging is  $\approx 0.85 \times \text{psfWidth}_{\text{SDSS}} = 1.22, 1.12, 1.10$  arcsec in the *g*, *r*, and *z* bands, respectively (see [https://www.sdss.org/dr14/imaging/other\\_info/#SeeingandSkyBrightness](https://www.sdss.org/dr14/imaging/other_info/#SeeingandSkyBrightness)).

<sup>e</sup> From Data Release 5.

<sup>f</sup> From Data Release 6.

<sup>g</sup> Based on all data obtained for the survey.

range ( $\sim 400\text{--}1000$  nm) and low operational overheads. We are therefore conducting the bulk of the imaging for the Legacy Surveys with DECam. DECam is already being used by the Dark Energy Survey (DES, The Dark Energy Survey Collaboration 2005) to cover  $\approx 5000$  deg<sup>2</sup> in the SGC,  $\approx 1130$  deg<sup>2</sup> of which lie within the DESI footprint. The Dark Energy Camera Legacy Survey (DECaLS) is targeting the remaining  $\approx 9350$  deg<sup>2</sup> ( $\approx 3580$  deg<sup>2</sup> in the SGC and  $\approx 5770$  deg<sup>2</sup> in the NGC). DECaLS was the first of the three Legacy Surveys to begin observations (in 2014 August) and therefore defined the *grz* bandpasses and strategy for the other two surveys described in this section.

For the DECaLS observations, we adopt a tiling pattern (from Hardin, Sloane and Smith<sup>73</sup>) that can cover the entire sky with 15,872 tiles and that results in an effective area per tile of 2.60 deg<sup>2</sup>. In order to fill gaps between the CCDs and achieve the required depth across the maximum area, we have chosen three similar, but offset, tiling patterns (labeled Pass 1, Pass 2, and Pass 3). Pass 2 is offset by  $(\Delta\alpha, \Delta\delta) = (0^\circ 29'17'', 0^\circ 08'33'')$  deg relative to Pass 1; Pass 3 is offset by  $(0^\circ 58'61'', 0^\circ 13'33'')$ . When the survey is complete, approximately 99.97%, 98.00%, 74.33%, and 23.8% of the survey will have, respectively, at least 1, 2, 3, and 4 exposure coverage.

DECam can reach the required depths for the fiducial DESI target (see Appendix A and Table 4) in total exposure times of 140, 100, and 200 s in *g*, *r*, *z* in “nominal” conditions, defined as photometric and clear skies with seeing FWHM of 1.3 arcsec, airmass of 1.0 (i.e., zenith pointing), and sky brightness of 22.04, 20.91, and 18.46 AB mag arcsec<sup>-2</sup>, respectively. Accounting for weather loss, DECam is capable of imaging 9000 deg<sup>2</sup> of the footprint of the Legacy Surveys to this depth in 157 scheduled nights. Observations in the *g*- and *r*-band filters are only obtained during dark periods when the moon is below the horizon; *z*-band observations are obtained when the moon is in the sky and during the morning and evening twilight. The DECam observations are conducted using a dynamic observing mode, where the exposure times and target field selection are modified on-the-fly based on the observing conditions to ensure uniform depth to the extent possible (see Section 6.2 for details). The median FWHM of

the delivered image quality (DIQ) is  $\approx 1.3, 1.2$ , and 1.1 arcsec in the *g*, *r*, and *z* bands, respectively, for the DECaLS survey (see Table 4).

“The DECam Legacy Survey of the SDSS Equatorial Sky” (NOAO Proposal ID no. 2014B-0404; PI: D. Schlegel and A. Dey) was initially proposed as a public survey beginning in semester 2014A as part of the NOAO Large Surveys programs. This project was initially allocated 64 nights and was aimed at imaging the existing SDSS footprint at  $\delta \leq +32^\circ$ . The imaging program has been supplemented to a total of 157 scheduled nights (first by NOAO Proposal ID no. 2016A-0190 and later using a director’s allocation) to enlarge the footprint to the full DESI equatorial footprint (i.e., the full region labeled DECaLS in Figure 1). The goal is to complete this survey in the 2019A semester.

The Legacy Surveys program also makes use of other DECam *grz* data within the DESI footprint, as those data become public. The most significant of these other data sets is from the Dark Energy Survey, which includes a 1130 deg<sup>2</sup> contiguous area in the SGC footprint of the Legacy Surveys. DECaLS is therefore *not* re-observing that area, and is instead making use of the DES raw data as they become public. Data from the early DECam science verification period have a number of problematic features, and are not currently included in the reductions or data releases from the Legacy Surveys.

#### 4.2. BASS: The Beijing–Arizona Sky Survey

The Beijing–Arizona Sky Survey (BASS; Zou et al. 2017b) is imaging the decl.  $\geq +32^\circ$  region of the DESI NGC footprint ( $\approx 5100$  deg<sup>2</sup>) in the *g* and *r* optical bands. BASS uses the 90Prime camera (Williams et al. 2004) at the prime focus of the Bok 2.3 m telescope. The Bok Telescope, owned and operated by the University of Arizona, is located on Kitt Peak, adjacent to the Mayall Telescope. The 90Prime instrument is a prime focus  $8k \times 8k$  CCD imager, with four University of Arizona ITL  $4k \times 4k$  CCDs that have been thinned and UV optimized with peak QE of 95% at 4000 Å (see Williams et al. 2004, for details). These CCDs were installed in 2009 and have been operating routinely since then. 90Prime delivers a  $1^\circ 12'$  field of view, with  $0''.45$  pixels and 94% filling factor. The median FWHM of the DIQ at the telescope is  $1''.6$  and  $1''.5$  in the *g* and

<sup>73</sup> <http://neilsloane.com/icosahedral.codes/>



$r$  bands, respectively. The throughput and performance in these bands were demonstrated with data in 2013 September.

BASS tiles the sky in three passes, similar to the DECaLS survey strategy. At least one of these passes is observed in photometric conditions (Pass 1) and seeing conditions better than  $1''.7$ . Observations in  $g$  band are restricted to dark time, when the moon is below the horizon. The typical individual exposure times are 100 s per band, with the requirement that three passes are needed to reach depth. As in the case of DECaLS, the exposure times are varied depending on the conditions, but limited between 50 and 250 s. We refer the reader to (Zou et al. 2017b) for further details.

BASS was awarded 56/100/100/90 nights in the 2015A/2016A/2017A/2018A semesters (PIs: Zhou Xu and Xiaohui Fan) to target  $5500 \text{ deg}^2$  in the NGC and  $\approx 100 \text{ deg}^2$  in the SGC.<sup>74</sup> These areas include  $\approx 400 \text{ deg}^2$  of overlap with regions covered by other components of the Legacy Surveys (Table 2) in order to cross-calibrate photometry. Prior to the start of BASS, it was determined that the existing Bok  $g$ -band filter was well matched to the DECam  $g$ -band filter, but the existing Bok  $r$ -band filter had a significantly different bandpass. A new  $r$ -band filter was therefore acquired from Asahi in 2015 April and was used for subsequent BASS observations. The 90Prime camera has excellent response at blue wavelengths, and as a result the effective throughput as a function of wavelength for the  $g$  and  $r$  photometric bands in the BASS survey is different than that for the same bands in the DECaLS survey.

The BASS survey began observations in spring 2015. A number of instrument control software updates, new flexure maps, and new observing tools were implemented that greatly improved the pointing accuracy, focusing of the telescope, and observing efficiency. A total of 15% of the  $g$ -band tiles and 2% of the  $r$ -band tiles were observed in spring 2015. It was discovered that those data suffered from defective electronics in the readout system that introduced analog-to-digital conversion errors, gain variations, and non-linearities. The 90Prime CCD controller electronics were replaced in September 2015 followed by a recommissioning of the system in fall 2015.

BASS completed 40% of its expected coverage in 100 scheduled nights in the 2016A semester (January–July). BASS is expected to complete observations by 2019 March. As of 2018 December, the BASS project has undergone two data releases that are detailed in Zou et al. (2017a, 2018).

### 4.3. MzLS: The Mayall $z$ -band Legacy Survey

The Mayall  $z$ -band Legacy Survey (MzLS) has imaged the  $\delta \geq +32^\circ$  region of the NGC footprint of the Legacy Surveys. These  $z$ -band observations complemented the BASS  $g$ - and  $r$ -band observations in the same  $\approx 5100 \text{ deg}^2$  sub-region of the Legacy Surveys. The DIQ at the Mayall telescope is significantly better than that at the Bok telescope (median of  $\approx 1''.0$  versus  $\approx 1''.6$ ) and hence the MzLS data are critical to deblending images and to deriving morphologies and source models for the photometric catalogs.

MzLS used the Mosaic-3 camera at the prime focus of the 4 m Mayall telescope at Kitt Peak National Observatory. In 2015, prior to the commencement of MzLS, the Mayall 4 m telescope's prime focus imaging system underwent a major upgrade aimed at improving its  $z$ -band efficiency. Details of the

Mosaic-3 camera upgrade are presented in Dey et al. (2016); here, we briefly describe the main modifications to the system.

The Mosaic-3 camera is a new version of the prime focus imaging system at the Mayall 4 m telescope. The previous version, known as Mosaic-1.1, was a blue-sensitive camera equipped with eight thinned  $2048 \times 4096 \text{ } 15 \mu\text{m}$  pixel format e2v CCDs. The camera had a twin, Mosaic-2, at the Blanco telescope at CTIO, which was decommissioned and replaced with the Dark Energy Camera. The Mosaic-3 upgrade repurposes the dewar from the CTIO Mosaic-2 camera, while retaining the rest of the Mosaic-1.1 mechanical system and guider. Yale University designed and built a new cold plate for the dewar, which was populated with four ( $500 \mu\text{m}$  thick) fully depleted LBNL  $4096 \times 4096 \text{ } 15 \mu\text{m}$  pixel CCDs. The new readout system consists of four prototype DESI controllers, one for each CCD, that are synchronized to a single clock in order to simultaneously read the four quadrants of each device. The dewar was delivered to NOAO in 2015 September where it was integrated with the Mosaic-1.1 mechanical enclosure, shutter, filter wheel, and acquisition and guider system. NOAO also purchased a new  $z$ -band filter, matched to the DECam filter bandpass, in order to minimize any differences between the DECam and Mosaic-3  $z$  surveys. In addition, the KPNO 4 m telescope control system and the imaging camera software were upgraded for improved operational efficiency (Abareshi et al. 2016; Dey et al. 2016). Mosaic-3 saw first light in 2015 October and underwent further on-sky commissioning runs in 2015 November and December. The  $z$ -band efficiency with Mosaic-3 is measured to be 60% better than that of its predecessor, the Mosaic-1.1 camera.

The MzLS survey uses a three-pass strategy, similar to DECaLS, and tiles the sky with  $\approx 122,765$  tiles per pass. Pass 1 is observed only in photometric conditions and seeing conditions better than  $1.3 \text{ arcsec}$ . For  $1.3 \text{ arcsec}$  seeing and a sky brightness of  $18.2 \text{ AB mag/arcsec}^2$ , the total time required is 200 s ( $\approx 67 \text{ s}$  per exposure) in  $z$ . As in the case of DECaLS, we limited the exposure times for individual exposures to be in the range  $80 \leq t_{\text{exp}} \leq 250 \text{ s}$ . Observations were made during all lunar phases, although during bright time we limited our observations to regions of the footprint lying  $>40$ – $50 \text{ deg}$  away from the Moon.

MzLS began official survey operations on 2016 February 2 and ended on 2018 February 12. During this period, MzLS used a total of 382.7 nights, 276.8 of which were clear enough to allow observations. During the second semester of observing (2017A), MzLS progress slowed because of poor weather and instrumental and operational problems.

The Mosaic-3 camera was decommissioned and the Mayall telescope shut down on 2018 February 12 to prepare for the installation of the DESI instrument.

## 5. WISE Data

The Legacy Surveys source catalogs include mid-infrared photometry from the *WISE* satellite for all optically detected sources. Mid-infrared imaging is critical to the DESI targeting algorithms for luminous red galaxies (LRGs) and quasars (QSOs). During its primary 7 month mission from 2010 January through 2010 August, *WISE* conducted an all-sky survey in four bands centered at 3.4, 4.6, 12, and  $22 \mu\text{m}$  (known as W1, W2, W3 and W4; Wright et al. 2010; Cutri et al. 2012). Following its primary 4-band mission, *WISE* continued survey operations in the three bluest bands for

<sup>74</sup> See <http://batc.bao.ac.cn/BASS>.

2 months, then the two bluest bands for an additional 4 months, resulting in a combined 13 month mission that completed in 2011 February. Through a mission extension referred to as *NEOWISE-Reactivation* (*NEOWISE-R*; Mainzer et al. 2014), NASA reactivated the satellite and resumed 2-band survey observations on 2013 December 13. *NEOWISE-R* observations remain ongoing. Annual *NEOWISE-R* data releases, each consisting of single-exposure (Level 1b) images and source extractions, have occurred on 2015 March 25, 2016 March 23, 2017 June 1 and 2018 April 19.

DESI target selection utilizes the two shortest-wavelength bands at  $3.4\ \mu\text{m}$  (W1) and  $4.6\ \mu\text{m}$  (W2). Photometry in these bands is measured using *The Tractor* algorithm (see Section 8), adopting source centroid and morphology parameters from the optical imaging, which has much better angular resolution than *WISE*. *The Tractor* measurements are based on custom stacks of *WISE/NEOWISE* exposures that are optimized for forced photometry and therefore preserve the native *WISE* resolution. These stacks are referred to as unWISE coadds (Lang 2014). DR1 made use of the Lang (2014) unWISE coadds based on the initial 13 month *WISE* data set, reaching  $5\sigma$  limiting magnitudes of 20.0 and 19.3 AB mag in W1 and W2. Subsequent Legacy Surveys releases have used a series of updated, deeper unWISE coadd data sets featuring progressively more *NEOWISE-R* imaging (Meisner et al. 2017a, 2017b, see Table 6). DR7 incorporates all five years of publicly available *WISE* and *NEOWISE-R* imaging, including that from the fourth-year *NEOWISE-R* release. The final catalogs from the Legacy Surveys will push even deeper at  $3\text{--}5\ \mu\text{m}$  by leveraging the full *WISE* and *NEOWISE-R* data sets.

In addition to the mid-infrared photometry measured from the “full-depth” W1/W2 unWISE stacks (which are required for DESI targeting), the Legacy Surveys DR3–DR7 also include W1/W2 forced photometry light curves corresponding to all optically detected sources. These light curves are measured from time-resolved unWISE coadds similar to those described in Meisner et al. (2018a, 2018b). Such light curves provide variability information on all optically-detected sources, which can be used, among other things, for the DESI quasar selection, although this possibility has not yet been tested in detail. In DR7, the Legacy Surveys W1/W2 light curves typically have 10 coadded epochs per band, spanning a  $\approx 7.5$  year time baseline.

## 6. Observations

In this section, we briefly describe the observing strategy employed by the Legacy Surveys. For a more detailed description of the implementation and algorithms, we refer the reader to K. Burleigh et al. (2019, in preparation).

### 6.1. Survey Strategy

As described in Section 4, all three surveys (DECaLS, BASS, and MzLS) use a three-pass strategy to tile the sky. This strategy is designed to account for the gaps between CCDs in the cameras, ensure that the surveys reach the required depth, remove particle events and other systematics, and ensure photometric and image quality uniformity across the entire survey. In order to calibrate the entire survey photometrically, we place requirements on the minimum observing conditions needed for each pass. Pass 1 tiles are only observed when the conditions are photometric (defined as the transparency being

better than 90% and the sky being clear) and when the seeing is better than a specified limit ( $1''.3$  for DECaLS and MzLS;  $1''.7$  for BASS). If only one of these conditions is met (i.e., seeing  $< 1''.3/1''.7$  or photometric), then we observe pass 2; if both are not met, we observe pass 3. The successful implementation of this strategy guarantees that we have at least one photometric and good-seeing image at every sky position, which can be used to calibrate the photometry across the entire survey footprint.

The determination of whether the conditions are photometric and the seeing measurements are made “on-the-fly” at the telescope, using a combination of the on-site telemetry, the observer’s periodic visual inspection of the sky, and quick analyses of every frame. At the Blanco telescope, the observers determine that pass to observe using the output of the Radiometric All-Sky Infrared Camera (RASICAM; Reil et al. 2014), the CTIO All-Sky Camera,<sup>75</sup> the output of the DECam “kentools” (created by S. Kent), and our own custom software. Our software identifies stars, matches to the PS1 Data Release 1 (DR1) catalog, and measures the seeing, transparency, sky brightness, and positional offset of the telescope from the desired pointing center. At the Mayall and Bok telescopes, the observers determine which pass to observe using the KPNO All-Sky Camera, weather satellite maps, and our own custom software.<sup>76</sup>

### 6.2. Dynamic Observing

In order to optimize the observing efficiency and create as uniform a survey as possible, we have implemented an observing mode which adjusts the exposure time and optimizes the selection of target fields for observation automatically based on the observing conditions. The observing strategy is described in detail in K. Burleigh et al. (2019, in preparation), but here we provide a brief overview.

The desired target depth of each exposure is defined as that for which the fiducial DESI target galaxy (see Appendix A) is detected with a signal-to-noise ratio of at least  $5/\sqrt{2}$  (i.e., that the survey reaches the requisite depth with two passes). To ensure that each image of the sky reaches the desired depth, we implement the following procedure. We plan image exposure times based on knowledge of the target field’s interstellar dust reddening, its position on the sky at the likely time of observation (which determines the likely atmospheric extinction, sky brightness, and modulates the seeing), and estimates of the observing conditions. As soon as an image is taken and written to disk, a sample CCD (or single amplifier of a CCD) is analyzed: sources are detected and their positions are cross-matched with a stellar catalog derived from the PS1 survey. This analysis produces estimates of the seeing, transparency (estimated by comparing the measured zero-point with the fiducial photometric zero-point of an observation through clear skies), the telescope pointing error, the sky brightness, and the resulting depth reached for the canonical DESI galaxy target. These measurements allow us to update the exposure time of subsequent observations to ensure that we reach the required depth. We scale exposure times by a factor  $f = T^{-2} 10^{0.8k_i(X-1)} 10^{0.8A_i E_B - V} 10^{-0.4(\Delta m_{\text{sky}})} (N_{\text{eff}}/N_{\text{eff, fid}})$ , where  $T$  is the transparency,  $k_i$  is the atmospheric extinction coefficient for band  $i$ ,  $X$  is the airmass,  $A_i$  is the Galactic dust extinction

<sup>75</sup> <http://www.ctio.noao.edu/noao/content/tasca-latest-image>

<sup>76</sup> <https://github.com/legacysurvey/obsbot>

coefficient for band  $i$ ,  $E_{B-V}$  is the Galactic dust reddening along the line of sight,  $\Delta m_{\text{sky}}$  is the difference in the sky brightness from the fiducial (i.e., 22.04, 20.91, 18.46 AB mag arcsec<sup>-2</sup> in  $g$ ,  $r$ ,  $z$ , respectively), and  $(N_{\text{eff}}/N_{\text{eff, fid}})$  is a measure of the PSF area (in pixels) relative to the fiducial. Exposure times are not allowed to fall below a minimum value in order to limit the overhead.<sup>77</sup> Additionally, exposure times are limited to a maximum value defined by the minimum of  $t_{\text{sky}}$  and  $t_{\text{max}}$ , where  $t_{\text{sky}}$  is the exposure time at which the sky counts = 20,000 adu, and  $t_{\text{max}}$  is a fixed maximum exposure time (e.g.,  $t_{\text{max}}$  is [200, 175, 250] s for DECam [ $g$ ,  $r$ ,  $z$ ] observations, respectively).

In practice, it takes a minimum lag of two exposures to update the queue with an observation that has a modified exposure time. At the Blanco, this lag was driven by the need to keep at least two exposures in the active queue to avoid stopping the queue inadvertently, and at the Mayall the transfer of images and the subsequent analyses resulted in this lag. Even with the current implementation, the result is a relatively uniform survey product (see K. Burleigh et al. 2019, in preparation, for details about the algorithms used and the implementation).

## 7. Data Reduction and Calibrations

All data from the Legacy Surveys are first processed at NOAO/Tucson through the NOAO Community Pipelines (“CPs”). Each instrument and telescope combination has its own CP that takes raw data as an input and provides detrended and calibrated data products. The NOAO Pipeline Scientist and architect is co-author F. Valdes, who is responsible for the development and continued operation of the CPs. The CPs include algorithms and code (from a variety of sources, the key ones being code developed by DES Data Management, the TERAPIX suite, and IRAF; Tody 1986; Bertin & Arnouts 1996; Bertin et al. 2002; Bertin 2011; Valdes et al. 2014), which are modified and packaged for the needs of the NOAO environment and characteristics of the different instruments. A common feature of all the CPs is the orchestration framework (The NOAO High Performance Pipeline System; Scott et al. 2007) that allows parallelized processing across the NOAO computing resources to handle the large volumes of data produced by NOAO observing programs.

The CPs provide instrumentally calibrated data products for observers, programs, and archival researchers. Instrumental calibrations include typical CCD corrections (e.g., bias subtraction and flat-fielding); astrometric calibration (e.g., mapping the distortions and providing a world coordinate system, or WCS); photometric characterization (e.g., magnitude zero-point calibration); and artifact identification, masking, and/or removal (e.g., removal of cross-talk and pupil ghosts, and identification and masking of cosmic rays). Data products delivered to the NOAO Science Archive include flux calibrated images (i.e., individual images with and without distortion corrections applied and image stacks), bad data masks, and weight maps.

The three cameras used by the Legacy Surveys (i.e., DECam, Mosaic-3, and 90Prime) each have their own CP. The basic steps of each CP are summarized in Table 5. Detailed

<sup>77</sup> For example, for DECam, these were initially defined as 50, 50, and 100 s for  $g$ ,  $r$ , and  $z$  respectively; after 2016 July 20, the minimum exposure time in  $g$  was increased to 70 s.

**Table 5**  
Calibration Steps in the NOAO Community Pipelines

Calibration Step	DECam	BASS	MzLS
1. Linearity correction	✓		
2. Cross-talk subtraction	✓	✓	✓
3. Overscan and bias subtraction	✓	✓	✓
4. Dome flat-fielding	✓	✓	✓
5. Amplifier gain balancing <sup>a</sup>	✓	✓	✓
6. Masking of bad pixels <sup>b</sup>	✓	✓	✓
7. Interpolation over bad/saturated pixels <sup>c</sup>	✓	✓	✓
8. Correction of line shifts <sup>d</sup>		✓	✓
9. Astrometric calibration <sup>e,f</sup>	✓	✓	✓
10. Removal of sky patterns/ gradients	✓	✓	✓
11. Pupil ghost subtraction	✓	only g band	✓
12. Fringe-pattern removal <sup>g</sup>	only z band	only r band	✓
13. Illumination correction (sky flat)	✓		
14. Removal of pattern/stripping noise		✓	✓

### Notes.

<sup>a</sup> DECam uses starflats and BASS/MzLS uses PS1. For MzLS the gain balancing is a function of the sky level.

<sup>b</sup> Bad pixels are detector defects, saturated, bleed trails, cosmic rays, and satellite trails.

<sup>c</sup> Stellar cores are masked but not interpolated.

<sup>d</sup> Some MzLS data suffered from one-third pixel shifts and dropped columns and BASS has systematic centroid shift due to CTE.

<sup>e</sup> DECam is referenced to a mixture of 2MASS and *Gaia* DR1. BASS and MzLS are referenced only to *Gaia* DR1.

<sup>f</sup> DECam has a fixed distortion map with second order adjustments. BASS and MzLS have full fourth order solutions.

<sup>g</sup> Implemented for DECam only in 2018, and so far only applied to the 2018 observations.

technical descriptions of each CP are in preparation<sup>78</sup> (Valdes et al. 2014, describes an early version of DECam CP). The CP for the DECaLS data evolved from the Dark Energy Survey pipeline such that it has algorithms and code from several sources. The key sources are code developed by DES Data Management, the TERAPIX suite, and IRAF (Tody 1986; Bertin & Arnouts 1996; Bertin et al. 2002; Bertin 2011; Valdes et al. 2014). Some calibrations are not perfect, with the detection and masking of artifacts being only partially effective and background pattern subtraction around very large and bright sources being prime examples. In particular, the CP can result in unmasked spurious sources in the final catalogs. First, the thick, deep depletion LBNL CCDs employed in the DECam and Mosaic-3 cameras are excellent detectors of particle events (see Groom 2004, for a more detailed discussion), a fraction of which are inadequately masked by the current CP. Second, asteroids and other moving targets are not flagged by the CP and may appear as detected sources in the catalogs (at least through DR7).

The CP-calibrated individual images, bad pixel masks, and weight maps are transferred to the National Energy Research Scientific Computing Center (NERSC), where post-processing is done in order to improve the astrometric and photometric calibrations and create the source catalogs. Similarly, the *WISE* satellite data are transferred to NERSC as they become public,

<sup>78</sup> A draft online DECam CP description is [https://www.noao.edu/noao/staff/fvaldes/CPDocPrelim/PL201\\_3.html](https://www.noao.edu/noao/staff/fvaldes/CPDocPrelim/PL201_3.html).



and new coadded stacks are constructed on an approximately yearly basis.

### 7.1. Astrometric Calibration

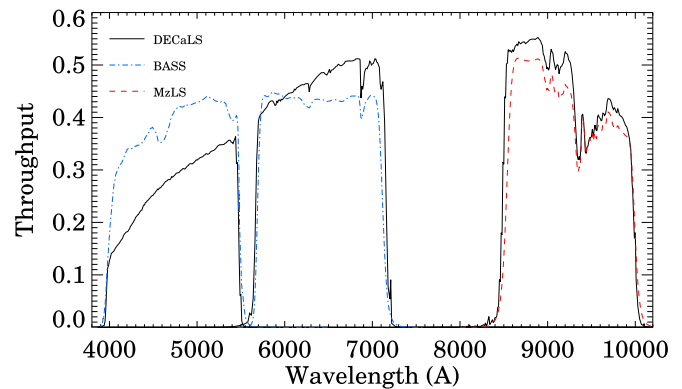
The NOAO CP reductions of all Legacy Survey imaging data derive a WCS, a function mapping pixel coordinates to celestial coordinates. The function (TPV: tangent plane projection with polynomial distortions<sup>79</sup>) is determined for each CCD by least square fitting to the pixel centroids of detected sources with known coordinates in a reference catalog. For the astrometric solution, the pixel centroids of reference stars are computed using intensity weighted means using Source Extractor (Bertin & Arnouts 1996) in the DECam CP, and using the *ACE* package in IRAF (Tody 1986; Valdes 2001) in the Mosaic-3 and 90Prime CPs. The final source positions in the catalogs are computed using *The Tractor*, as described in Section 8.

The reference coordinates were from the 2MASS catalog (Skrutskie et al. 2006) for DECam data from 2013 and 2014; later DECam data and all Mosaic-3 and 90Prime data use the *Gaia* DR1 catalog (Gaia Collaboration et al. 2016b). Since the calibration procedure ties source positions in each exposure to celestial sources, it effectively includes calibration for the atmospheric distortions (at some mean color) and, in the case of the Bok 90Prime data, correction for distortions resulting from the focusing procedures.

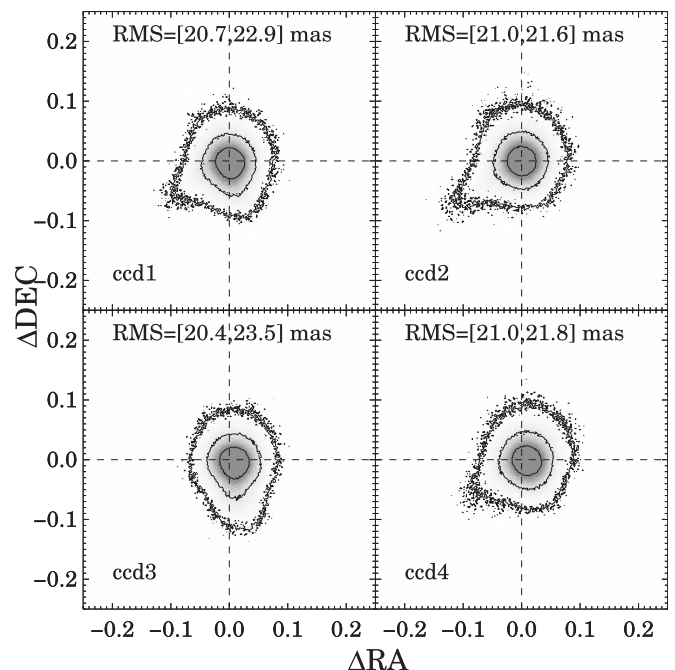
While this procedure corrects the data for global distortions (the TPV solutions are continuous and smooth across an individual CCD), it does not correct for some small-scale effects. For example, the DECam and Mosaic-3 CCDs are known to have very small-scale distortions known as “tree rings” (Plazas et al. 2014), and the Mosaic-3 CCDs show a residual astrometric pattern from bonding stresses. Differential chromatic refraction is also not accounted for in the astrometric solutions (see, e.g., Bernstein et al. 2017 for an excellent discussion of all the issues affecting the DECam astrometry). These combined effects affect the astrometric accuracy on individual CCDs at the level of  $\approx 10$ – $30$  mas and are currently not corrected in the post-processing catalog generation step.

In addition, the Mosaic-3 electronics occasionally read out with a missing starting column. The CP detects and corrects this; however, because the edges are masked anyway, this has no effect on the astrometry. Prior to MJD 57674 the readout electronics introduced a one-third pixel shift between amplifiers in the vertical transfer direction (corresponding to the east–west direction on the sky). Since this is a precise, discrete offset, the CP corrects this completely with no effect on the astrometry.

90Prime has charge transfer effects that affect centroid measurement and, in particular, introduce systematic opposing shifts between amplifiers in the serial transfer direction. This effect is evident as a discrete jump at the amplifier boundaries in the astrometric offset when comparing the astrometry of reference stars from the *Gaia* DR1 catalog with that measured from the Bok data using the best-fit smooth astrometric solution. The systematic offset between the two halves is  $\approx 160$  mas for CCD-1 and  $\approx 70$  mas for the other three CCDs. The CP applies a relative shift to the pixels from each amplifier so that the astrometric offset jump across the boundary is minimized. These corrections are applied to each exposure and they substantially reduce, but do not completely remove, this



**Figure 3.** Effective bandpasses used for the Legacy Surveys. The DECaLS, BASS and MzLS effective filter throughputs for the entire system are shown as solid (black), dashed (blue) and dotted–dashed (red) curves, respectively. These include the transmission of the atmosphere (at a median airmass of 1.1 for BASS and MzLS and of 1.4 for DECaLS), the reflectivity and obscuration of the primary mirror, the corrector transmission, and the quantum efficiency of the CCDs. The transmission data are archived on the Legacy Surveys’ website at <http://legacysurvey.org/dr6/description/> (BASS *gr* and MzLS *z*) and <http://legacysurvey.org/dr7/description/> (DECaLS *grz*).



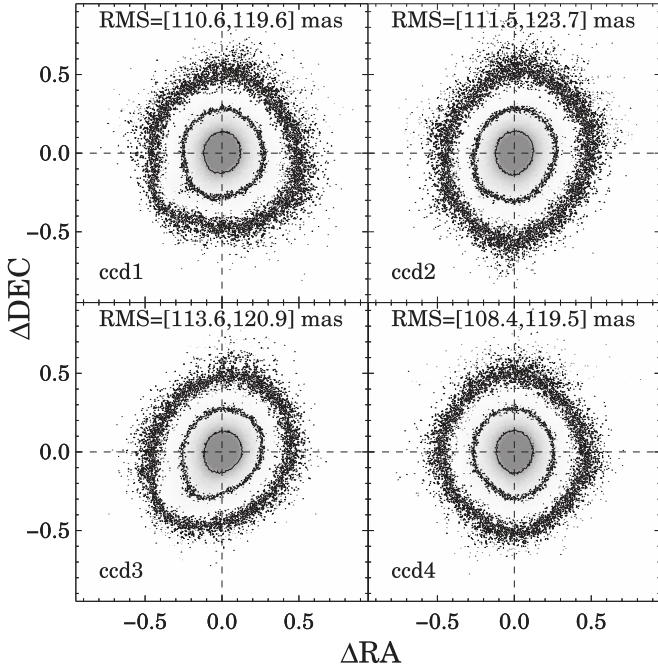
**Figure 4.** Astrometric precision of the four Mosaic-3 CCDs, computed by matching stars detected in the MzLS images with those in *Gaia* DR1 catalog. In each panel, the gray scales show the distribution of the differences (in units of arcseconds) between the derived positions (using the WCS) of the centroids of bright stars on a Mosaic-3 CCD and their positions in the *Gaia* DR1 catalog.

systematic effect. The residual difference does show small temporal variations (of order a few mas) from night-to-night; correcting for this residual would require a higher order correction to the astrometry (rather than just a zero-point offset at the boundary), which may result in changing the shape of the PSF.

As noted earlier, the CP data is only the first part of the Legacy Surveys calibrations. Small residual mean offsets per CCD are applied to the CP astrometric zero-point calibrations using a reference catalog constructed from stars color-selected from the PS1 DR1 catalog (Chambers et al. 2016) with

<sup>79</sup> <https://fits.gsfc.nasa.gov/registry/tpvwcs/tpv.html>





**Figure 5.** Astrometric precision of the four Bok 90Prime CCDs, computed by comparing the derived positions (using the WCS) of bright stars with their positions in the *Gaia* DR1 catalog.

positions from the *Gaia* DR1 catalog (Gaia Collaboration et al. 2016b). For all releases prior to (and including) DR3 of the Legacy Surveys, astrometric and photometric calibration is based on comparisons to a subset of PS1 catalog sources with magnitudes  $< 21.5$  AB mag and colors  $0.4 < (g - i)_{\text{PS1}} < 2.7$  AB mag. Starting with DR4 of the Legacy Surveys, PS1 positions of these sources were replaced with the *Gaia* DR1 catalog positions (i.e., post-DR3 astrometry is tied to *Gaia*). The astrometric residuals for bright stars relative to their *Gaia* DR1 catalog positions are shown in Figures 4–6. MzLS and DECaLS have rms scatters of  $\approx 20$  mas, with BASS showing slightly larger residuals. The residual scatter, outliers, and asymmetries visible in the distributions shown in Figures 4–6 are likely due to the following reasons: (1) the higher-order and small-scale pixel-level distortions, which are larger in the thick, deep depletion CCDs in the Mosaic-3 and DECam cameras; (2) the lack of proper motions in the *Gaia* DR1 catalog, which exaggerates the scatter and causes outliers because of the difference in epoch between the two images; (3) the plots shown include all data, irrespective of observed image quality. Corrections for the offsets due to the higher order pixel-level distortions and modeling of stars with known proper motions will be incorporated into *The Tractor* modeling in future data releases.

## 7.2. Photometric Calibration

The role of the CPs in photometric calibration is to remove any spatial variation in the photometric response of each CCD (i.e., to “flatten” each CCD) and to then estimate the conversion factor from analog digital units recorded by each CCD to photoelectrons. The CPs also provide the data quality masks and weight maps that are used for in the subsequent source detection and photometric calibration steps.

The Legacy Surveys are designed so that each part of the footprint is observed in photometric conditions at least once, and most of the footprint is observed in photometric conditions two or more times. Efforts to observe at the lowest possible airmasses and avoid the Moon drive an observing plan that features a rich set of overlaps between observations on different nights. Comparison of observations of the same stars on different nights and at different airmasses then enables determination of the system throughput and the transparency of the atmosphere for each photometric night of the survey. This procedure is the basis of the photometric calibration of the SDSS (Padmanabhan et al. 2008), as well as subsequent surveys like PS1 (Schlafly et al. 2012) and DES (Burke et al. 2018). Observations on nonphotometric nights will be calibrated by matching directly to overlapping observations taken on photometric nights.

The current photometric calibration for the Legacy Surveys (for all data releases through DR6) is, however, tied to the PS1 DR1 photometry through a set of color transformation equations. The magnitudes of PS1 DR1 catalog sources are first converted to the “native” system for each telescope + camera + filter, and the transformations are as follows:

$$g_{\text{DECaLS}} = g_{\text{PS1}} + 0.00062 + 0.03604(g - i)_{\text{PS1}} + 0.01028(g - i)_{\text{PS1}}^2 - 0.00613(g - i)_{\text{PS1}}^3 \quad (1)$$

$$r_{\text{DECaLS}} = r_{\text{PS1}} + 0.00495 - 0.08435(g - i)_{\text{PS1}} + 0.03222(g - i)_{\text{PS1}}^2 - 0.01140(g - i)_{\text{PS1}}^3 \quad (2)$$

$$z_{\text{DECaLS}} = z_{\text{PS1}} + 0.02583 - 0.07690(g - i)_{\text{PS1}} + 0.02824(g - i)_{\text{PS1}}^2 - 0.00898(g - i)_{\text{PS1}}^3 \quad (3)$$

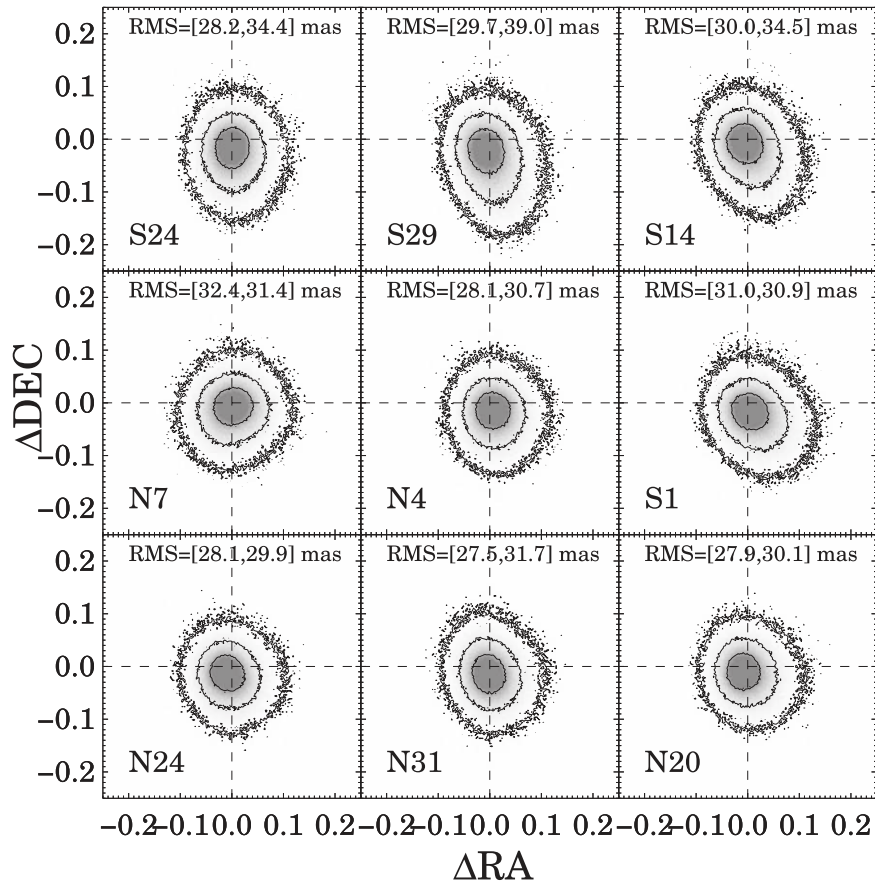
$$g_{\text{BASS}} = g_{\text{PS1}} + 0.00464 + 0.08672(g - i)_{\text{PS1}} - 0.00668(g - i)_{\text{PS1}}^2 - 0.00255(g - i)_{\text{PS1}}^3 \quad (4)$$

$$r_{\text{BASS}} = r_{\text{PS1}} + 0.00110 - 0.06875(g - i)_{\text{PS1}} + 0.02480(g - i)_{\text{PS1}}^2 - 0.00855(g - i)_{\text{PS1}}^3 \quad (5)$$

$$z_{\text{MzLS}} = z_{\text{PS1}} + 0.03664 - 0.11084(g - i)_{\text{PS1}} + 0.04477(g - i)_{\text{PS1}}^2 - 0.01223(g - i)_{\text{PS1}}^3. \quad (6)$$

These color transformations are measured empirically by comparing the Legacy Surveys and PS1 catalog data for stars with magnitudes  $< 21.5$  AB mag and colors  $0 < (g - i)_{\text{PS1}} < 2.9$ , and the absolute calibration is determined using the CALSPEC database<sup>80</sup> (see Bohlin et al. 2017, and references therein). The DECaLS transformations used herein are the same as those determined by Schlafly et al. (2018) for the DECaPS Galactic Plane Survey. The BASS and MzLS transformations were determined in a similar manner, using unresolved sources selected from PS1 DR1 with well-measured photometry (i.e., no flags) with colors in the range  $0 < (g - i)_{\text{PS1}} < 2.9$ . Constant terms in the calibration are intended to place the Legacy Surveys on the AB magnitude system (Oke & Gunn 1983), and were derived from comparison of the empirical transformations with synthetic transformations of calibrated *Hubble Space Telescope* standard stars, given the system throughputs of the DECam, BASS, and MzLS surveys. (The photometric transformations between the

<sup>80</sup> Specifically, the 2017 November version of the release. See <http://www.stsci.edu/hst/observatory/crds/calspec.html> for details.



**Figure 6.** Astrometric precision of the DECaLS CCDs, computed by comparing the derived positions (using the WCS) of bright stars with their positions in the *Gaia* DR1 catalog. The N4 CCD is one of two central CCDs in the DECam mosaic; the other eight CCDs shown are edge CCDs in the mosaic and represent regions with the largest astrometric and PSF distortions.

SDSS *grz* magnitudes and the Legacy Survey magnitudes are presented in Appendix B.)

We estimate a zero-point for each CCD independently, by (1) detecting sources on the pipeline-reduced data; measuring their instrumental magnitudes; (2) matching to the subset of PS1 DR1 catalog sources selected as calibrators; and then (3) comparing the instrumental magnitudes to the color-transformed PS1 DR1 magnitudes (i.e., as per Equations (1)–(6)). This procedure results in zero points for each CCD tied to the global PS1 calibration, but corrected to the “native” photometric frame for each individual survey.

In the future, we will migrate to an internal photometric calibration that will rely solely on data from each of the Legacy Surveys. The large network of repeat observations on different photometric nights enables the construction of a detailed description of the throughput of the various imaging systems used in the Legacy Surveys. We plan to not only measure overall system zero points and (gray) atmospheric transparency in each band on each night (see Padmanabhan et al. 2008), but also to determine how sensitivity varies within and among the different CCDs of each system as a function of time (see Schlafly et al. 2012, 2018). We can also determine and ameliorate systematic problems with aperture correction. Well-calibrated optical colors are now available from PS1 and *Gaia*, which will make it straightforward to remove systematic chromatic errors stemming from the different colors of stars and the varying effective throughput of the imaging system in different conditions (Li et al. 2016; Burke et al. 2018). The

DECam Plane Survey, which used a similar three-pass strategy to DECaLS, obtained 6–8 mmag precision for bright stars (Schlafly et al. 2018), without accounting for color-dependent calibration terms; we anticipate similar photometric precision for the Legacy Surveys data.

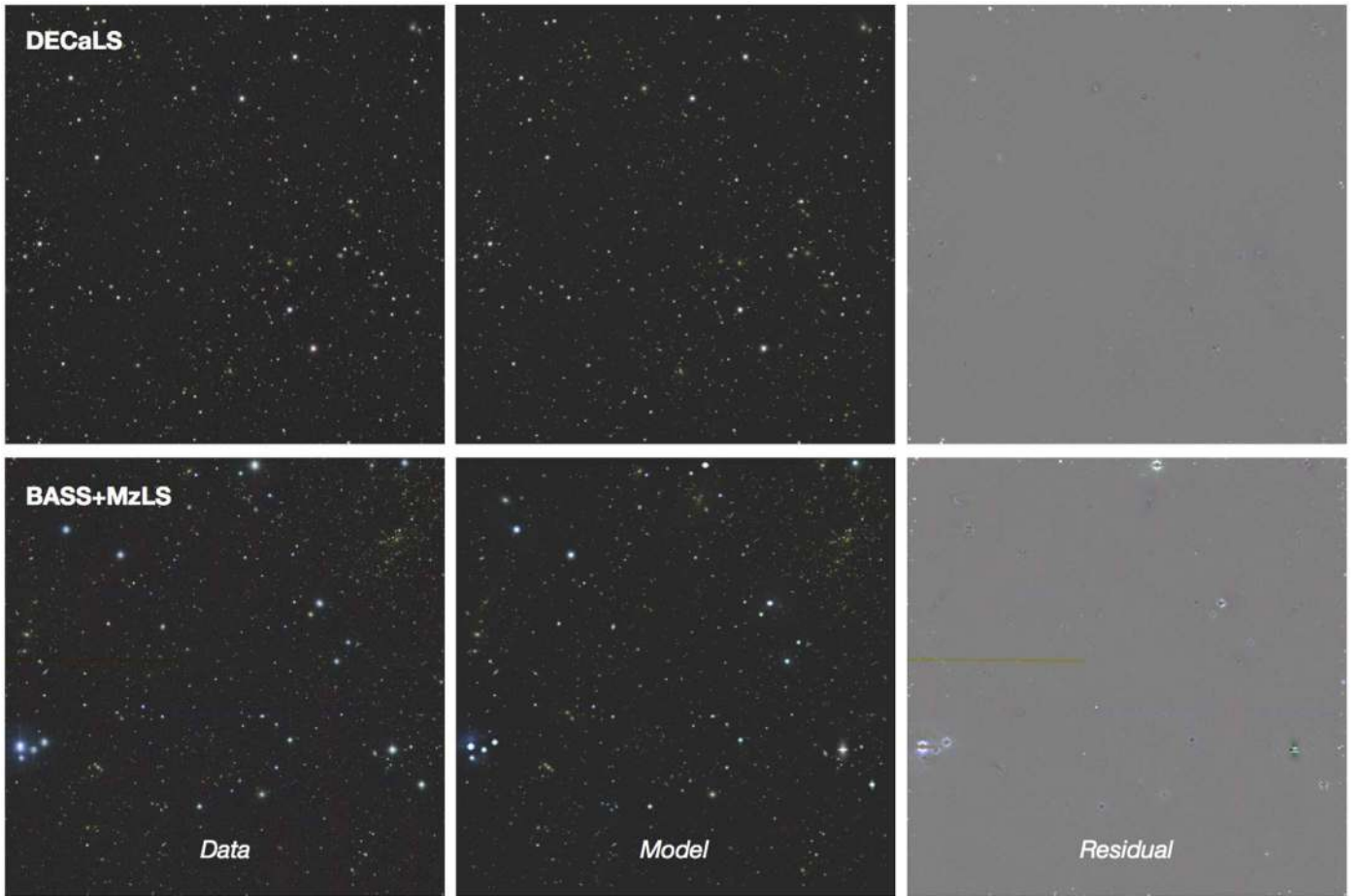
## 8. Inference Modeling with *The Tractor*

All the source catalogs from the Legacy Surveys project are constructed using *The Tractor*. Co-author D. Lang has developed *The Tractor*<sup>81</sup> as a forward-modeling approach to perform source extraction on pixel-level data. This algorithm is a statistically rigorous approach to fitting the differing PSF and pixel sampling of the different imaging data that compose the Legacy Surveys. This approach is particularly useful given the wide range in PSF shape and size exhibited by the Legacy Surveys data: the optical data have a typical PSF of  $\approx 1$  arcsec, and the *WISE* PSF FWHM is  $\approx 6$  arcsec in W1–W3 and  $\approx 12$  arcsec in W4.

For the Legacy Surveys, we have created a post-processing catalog generation pipeline called *legacypipe*,<sup>82</sup> which wraps *The Tractor*, and which proceeds as follows. The Legacy Surveys footprint is analyzed in  $0^{\circ}.25 \times 0^{\circ}.25$  regions called “bricks.” We first identify all the CCDs that overlap a given brick, and each CCD is analyzed to estimate and subtract the

<sup>81</sup> Publicly available at <https://github.com/dstndstn/tractor>.

<sup>82</sup> Publicly available at <https://github.com/legacysurvey/legacypipe>.



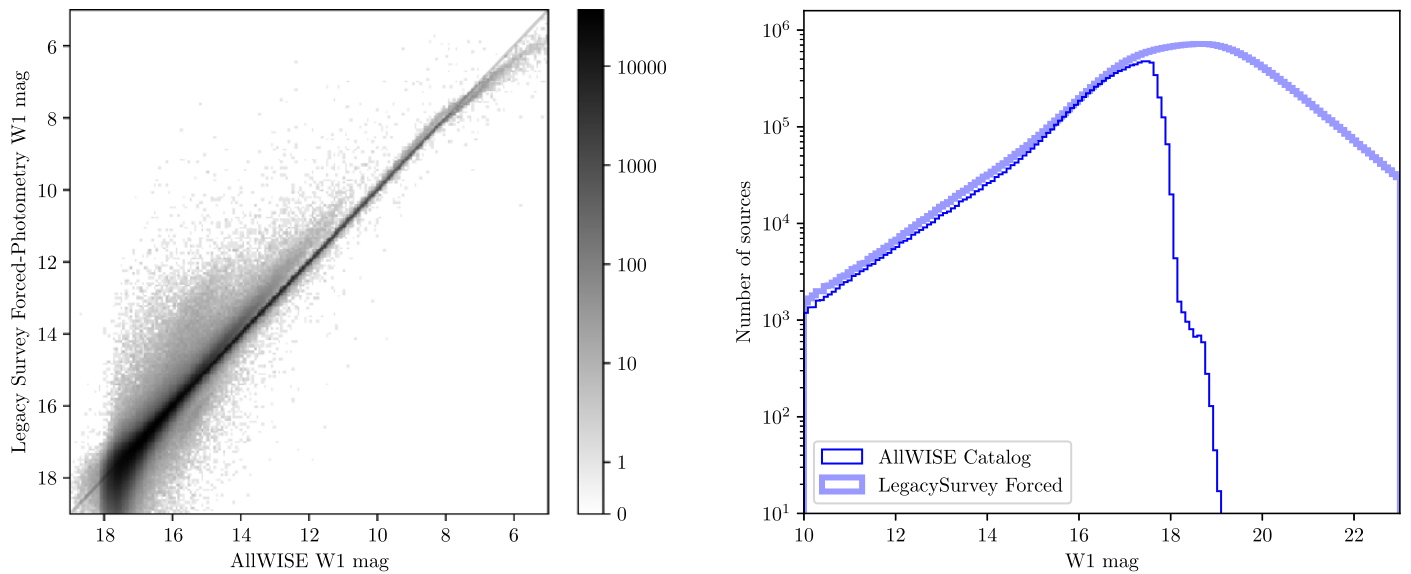
**Figure 7.** Example “bricks” covering  $0.25 \times 0.25 \text{ deg}^2$  from the DECaLS survey (top row; brick 2212p085) and the MzLS and BASS surveys (bottom row; brick 1689p532). From left to right, the panels show the actual *grz* imaging data, the rendered model based on *The Tractor* catalog of the region, and the residual map. *The Tractor* catalog represents an inference-based model of the sky that best fits the observed data. Readers can explore the data, models, and residual images in more detail using the Legacy Surveys *Imagine* sky viewer at <http://legacysurvey.org/viewer>.

sky. The initial sky estimate is computed by first subtracting a per-CCD median value of the unmasked pixels, then estimating a sliding median every 512 pixels on a box size of 1024 pixels, and fitting the result with a two-dimensional spline. This initial sky is biased by sources, but does remove slow variations in the sky background. Subtracting this initial sky model, we compute a five-pixel boxcar-smoothed image, detect and mask pixels above  $3\sigma$  (in boxcar-smoothed sigmas) plus a three-pixel margin, and recompute the spline background estimate using the remaining unmasked pixels. This iteration results in a sky estimate less biased by sources in the image. The PSF for each CCD is then estimated on the sky-subtracted image using PSFEx (Bertin 2011), and each individual sky-subtracted CCD is convolved with its own PSF in order to facilitate source detection. We then create five separate stacks for the purpose of source detection: a weighted sum of all the (PSF-convolved) CCDs in a given band (resulting in three such stacks), a weighted sum of all three bands to optimize for a “flat” SED (i.e., zero AB mag color), and a weighted sum of all three bands to optimize for a “red” SED (i.e., with colors  $g - r = 1 \text{ mag}$  and  $r - z = 1 \text{ mag}$ ). While these image stacks are weighted sums of the convolved images, the input images are not all convolved to a common PSF. Next, we detect sources on the three individual-band image stacks and the two *grz* image stacks using a simple thresholding algorithm, selecting

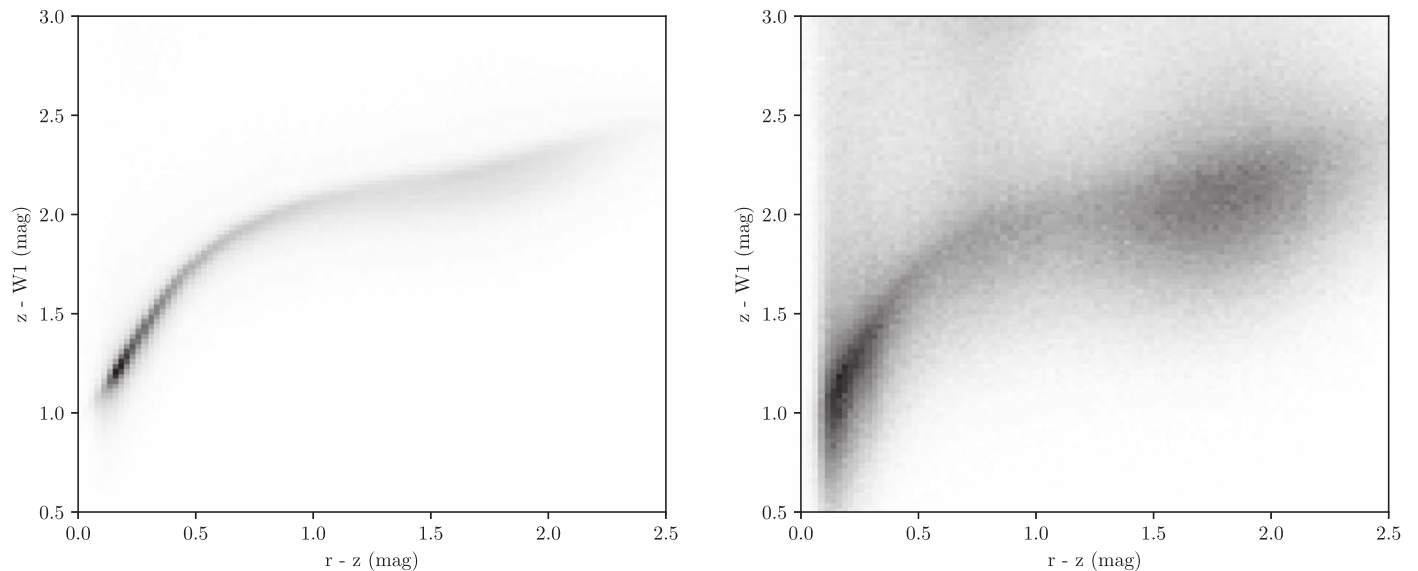
sources above  $6\sigma$ . This process identifies almost all sources in the images to faint magnitudes. The details of the entire legacy pipeline (and *The Tractor*) will be presented in a forthcoming paper (D. Lang et al. 2019, in preparation).

Next, we detect sources on the individual-band image stacks and the two *grz* image stacks using a simple thresholding algorithm, selecting sources above  $6\sigma$ . This process identifies almost all sources in the images to faint magnitudes. Each source is then modeled by *The Tractor*, which takes as input the NOAO pipeline-reduced individual images from multiple exposures in multiple bands, with different seeing in each. For each astronomical source, a source model is fit simultaneously to the pixel-level data of all images containing the source. *The Tractor* models each source using a small set of parametric light profiles: a delta function (for point sources); a de Vaucouleurs  $r^{-1/4}$  law; an exponential disk; or a “composite” de Vaucouleurs plus exponential. The best-fit model is determined by convolving each model with the specific PSF for each individual exposure, fitting to each image, and minimizing the residuals for all images. The PSF for each optical image is constructed using PSFEx (Bertin 2011). We make the assumption that the model is the same across all the bands. Thus, if a source is determined to be a point source, it is modeled as a point source in every band and every exposure and its catalog photometry is based on this





**Figure 8.** Forced photometry with *The Tractor* code, using information from Legacy Surveys detections and light profiles, allows us to measure the mid-infrared flux from objects in the *WISE* images to below the *WISE* detection limit. *Left panel:* a comparison of the *W1* photometric measurements in the Legacy Survey catalog (derived using *The Tractor*) with those in the ALLWISE catalog; the gray scale shows the relative density of points. The photometry agrees well for mid-infrared bright objects that are detected in the AllWISE catalog. The widening locus below  $W1 \sim 14$  is due to *The Tractor* photometry treating larger objects as truly extended, in contrast to the point-source-only assumptions in the public AllWISE catalog. *Right panel:* the number counts in the Legacy Survey catalog compared with those from AllWISE, demonstrating the increased depth made possible from using *The Tractor*. By using optical imaging from Legacy Surveys to detect objects, photometry is measured for objects that are well below the detection limit of the AllWISE catalog.



**Figure 9.** Forced photometry using *The Tractor*, contrasted with traditional “catalog-matching.” *Left:* color-color diagram of catalog-matched PSF sources from the Legacy Surveys and AllWISE catalogs. *Right:* color-color diagram of PSF sources from the Legacy Survey catalogs that have *no* matching object in the AllWISE catalog. Many of these will be sources that are well detected in the Legacy Surveys optical imaging, but below the detection threshold in the *WISE* imaging. We have applied a cut to show only *WISE* flux measurements above  $3\sigma$ ; with this cut, we nearly double the number of sources with measured *WISE* fluxes. The distributions shown in both panels are similar, demonstrating that the forced photometry measurements of the faint mid-infrared sources make astrophysical sense, despite being noisier.

model. Alternatively, if the source is spatially extended, then the same light profile (an exponential disk, de Vaucouleurs, or combination) is consistently fit to all images in order to determine the best-fit source position, source shape parameters, and photometry.<sup>83</sup>

<sup>83</sup> Further details regarding the catalog construction and source parameter extraction can be found at the Legacy Surveys’ website describing the latest data release (<http://legacysurvey.org/dr6/description/>).

*The Tractor* model fits are determined using only the optical *grz* data. The mid-infrared photometry for each optically-detected source is then determined by forcing the location and shape of the model, convolving with the *WISE* PSF and fitting to the *WISE* stacked image. This “forced photometry” approach allows us to deblend any confused *WISE* sources by using the higher-spatial-resolution optical data, but also limits the Legacy Surveys catalogs to only contain *WISE* photometry for sources that are detected at



**Table 6**  
Data Releases for the Legacy Surveys

DR	Release Date	Surveys	W1/W2 Depth (yr)	Image/Catalog Data Volume	Number of Sources
1	2015 May	DECaLS	1	15 TB/238 GB	140 million
2	2016 Jan	DECaLS	2	33 TB/301 GB	260 million
3	2016 Sep	DECaLS	2	57 TB/663 GB	478 million
4	2017 Jun	BASS+MzLS	3	30 TB/256 GB	183 million
5	2016 Oct	DECaLS	3	18 TB/969 GB	680 million
6	2018 Feb	BASS+MzLS	4	9 TB/449 GB	310 million
7	2018 Jul	DECaLS	4	21 TB/1.5 TB	835 million
8	2019 Feb	All	5		
9	2019 Jun	All	5		

**Table 7**  
Data Products from the Legacy Surveys

Data Product Name	Type	Description
image	image	Coadded image per band <sup>a</sup>
invvar	image	Inverse-variance map per band
model	image	Coadded model image per band
chi2	image	Coadded chi-squared image $((\text{image}-\text{model})^2 \times \text{invvar})$ per band
depth	image	PSF depth (as inverse-variance) per band
galdepth	image	Fiducial galaxy depth (as inverse-variance) per band
nexp	image	Number of exposures per band
tractor	catalog	Tractor catalog of measured sources, per brick

**Note.**

<sup>a</sup> The released coadded images are inverse-variance-weighted coadditions of the individual reduced and calibrated images per brick, where the individual images have not been convolved to a common PSF.

optical wavelengths. The procedure described produces object positions, fluxes, and colors that are consistently measured across the three Legacy Surveys.

Figure 7 shows examples of how *The Tractor* is being applied to the Legacy Surveys. The footprint of the Legacy Surveys is divided into “bricks” of size  $0^\circ.25 \times 0^\circ.25$ , and a model of the sky within each brick is computed using all CCDs that contribute data within that brick. The three sets of vertical panels show: the *grz* image data for a brick, the rendered *The Tractor* model, and the residual image (i.e., data – model). While most of the faint sources are well fit by the parametric models we used for the Legacy Surveys, more significant residuals are seen associated with very extended galaxies and the halos of bright, saturated stars.

*The Tractor* and our source detection algorithms do result in the catalog containing a small fraction of spurious sources. These are primarily due to inadequately masked particle events or satellite trails,<sup>84</sup> single-exposure detections of transient sources (primarily asteroids<sup>85</sup>), and sources identified in the extended scattered light halos or diffraction spikes associated with bright stars,<sup>86</sup> or in the diffuse emission associated with large galaxies.<sup>87</sup> In addition, spatially large, extended sources

with complex morphologies (e.g., large galaxies<sup>88</sup>) and crowded fields (e.g., globular clusters<sup>89</sup> and open star clusters<sup>90</sup>) are poorly modeled by *The Tractor*. Finally, a small number of sources are missed by *The Tractor* catalog; these are primarily very low surface brightness diffuse sources<sup>91</sup> or sources lying close to a (typically brighter) star or galaxy.<sup>92</sup>

The “forced photometry” approach we use to measure the mid-infrared photometry from the *WISE* images allows us to detect fainter sources than a traditional approach while preserving the photometric reliability. For bright objects that were cleanly detected by *WISE* alone (and recorded in the AllWISE catalog), the pixel-level measurements are consistent with catalog-level measurements (see Figure 8, left panel). However, we are also able to measure the fluxes of significantly fainter objects, as well as study collections of objects that are blended in the *WISE* images but are resolved in the optical images. The increased level of source counts in the force-photometered data observed at bright *WISE* magnitudes (i.e.,  $W1 \lesssim 16$  mag) in the right panel of Figure 8 is due to sources detected in the vicinity of bright stars or galaxies;  $\approx 50\%$  of these sources are real objects, and the

<sup>84</sup> <http://legacysurvey.org/viewer?ra=162.3716&dec=55.9808&zoom=14&layer=mzls+bass-dr6&sources-dr6>

<sup>85</sup> <http://legacysurvey.org/viewer?ra=242.3810&dec=8.6956&zoom=15&layer=decals-dr7>

<sup>86</sup> <http://legacysurvey.org/viewer?ra=163.7356&dec=55.8671&zoom=15&layer=mzls+bass-dr6>

<sup>87</sup> <http://legacysurvey.org/viewer?ra=161.3316&dec=55.9613&zoom=15&layer=mzls+bass-dr6>

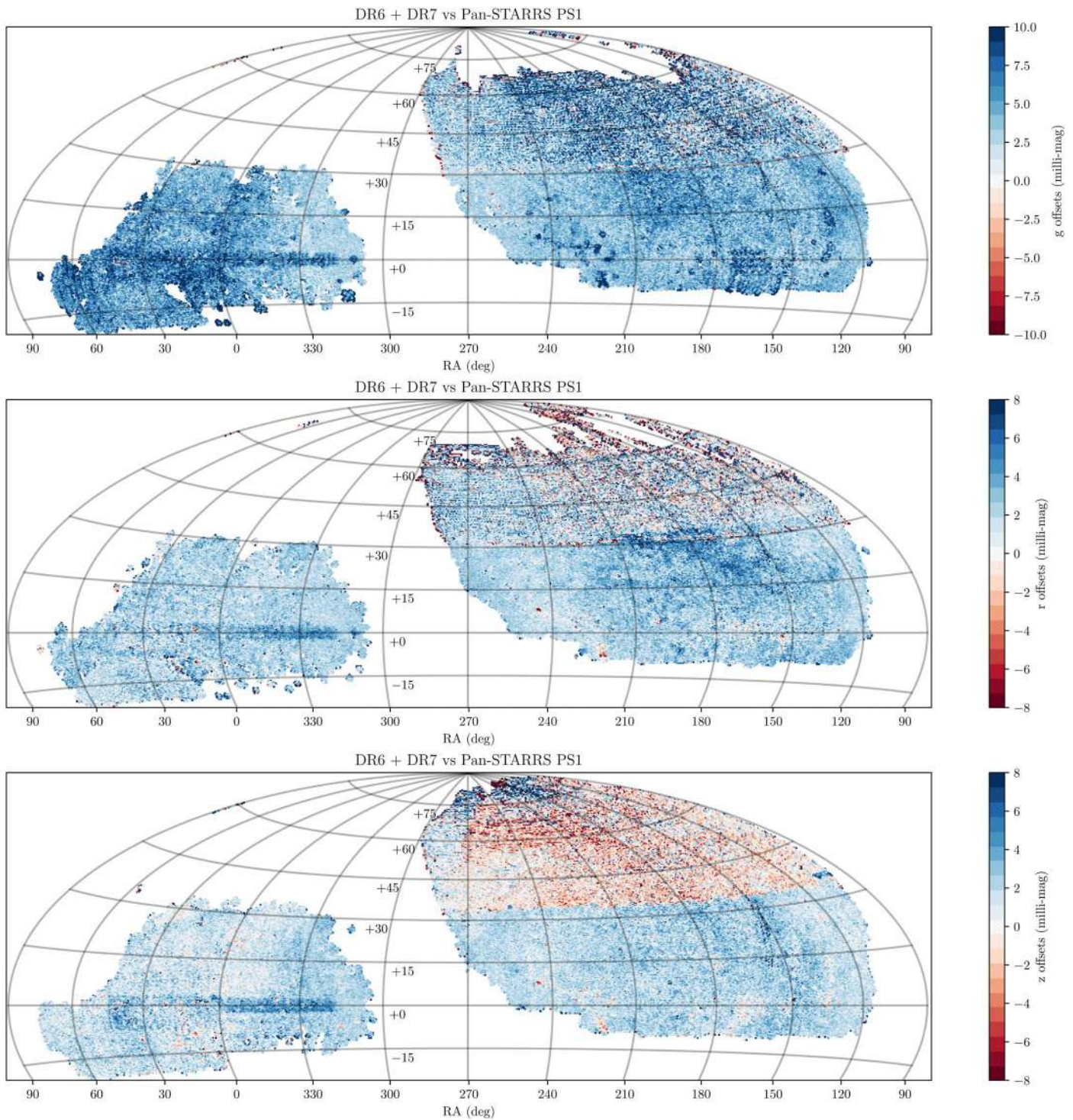
<sup>88</sup> <http://legacysurvey.org/viewer?ra=219.3117&dec=38.4544&zoom=13&layer=mzls+bass-dr6>

<sup>89</sup> <http://legacysurvey.org/viewer?ra=229.6407&dec=2.0808&zoom=13&layer=decals-dr7>

<sup>90</sup> <http://legacysurvey.org/viewer?ra=132.8378&dec=11.8321&zoom=12&layer=decals-dr7>

<sup>91</sup> <http://legacysurvey.org/viewer?ra=325.6999&dec=1.0124&zoom=15&layer=decals-dr7>

<sup>92</sup> <http://legacysurvey.org/viewer?ra=243.4308&dec=7.1181&zoom=16&layer=decals-dr7-resid>

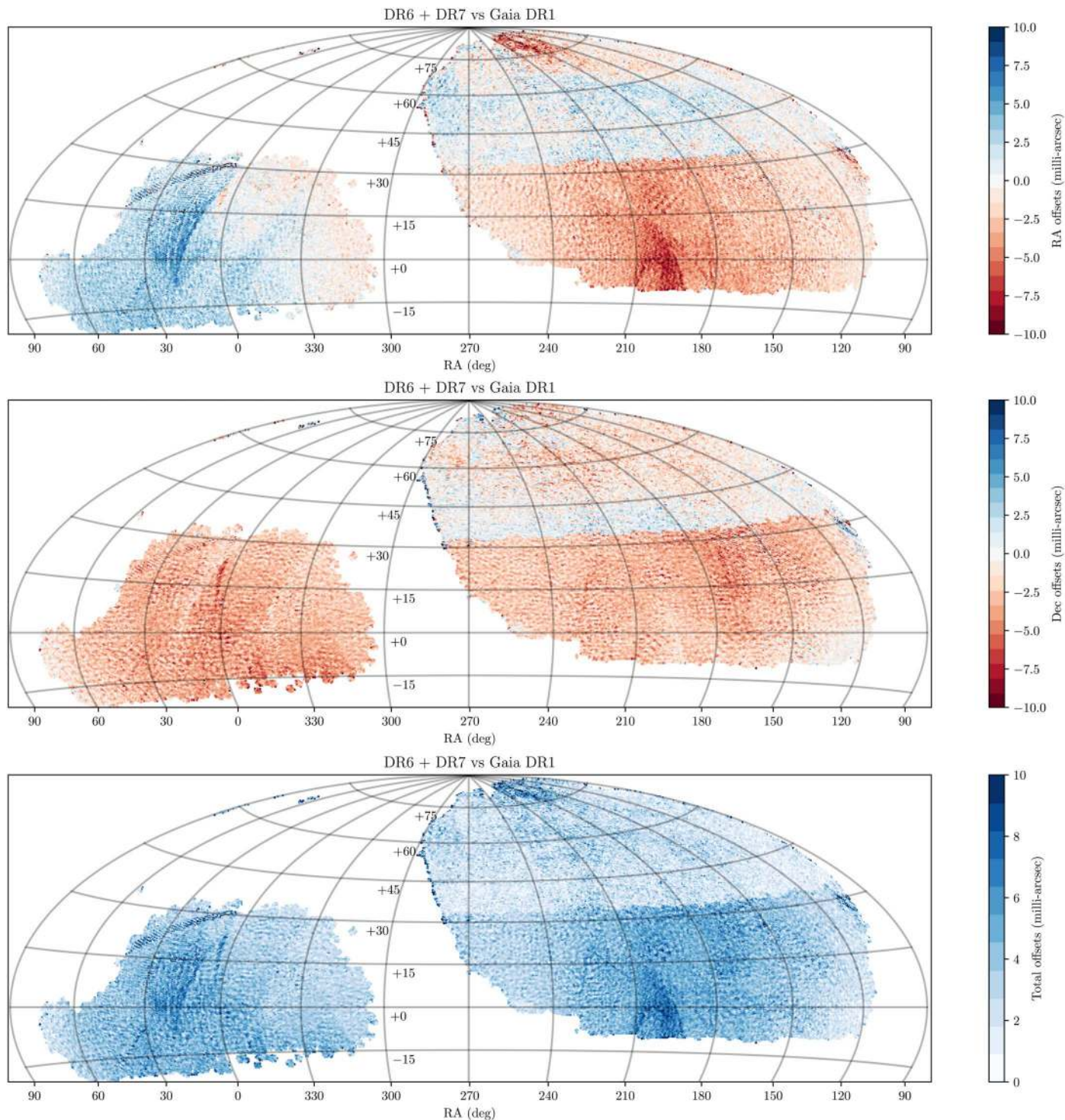


**Figure 10.** Spatial distribution (at  $0\text{'}$  resolution) of photometric residuals in the  $g$  (top),  $r$  (middle), and  $z$  band (bottom) in the Legacy Surveys DR6 and DR7 releases, computed relative to the Pan-STARRS survey. The comparison presented here is between stellar (i.e., unresolved) objects in the Legacy Surveys and PS1 catalogs, after correcting for the difference in the color terms between the two surveys.

remaining are spurious detections due to the halos or diffraction spikes around bright stars or the poorly modeled extended light of galaxies. All are located near other brighter targets, which is why they are compromised. We are currently working on improving the models for future data releases. Figure 9 compares a traditional optical-infrared color-color diagram, based on matching sources between catalogs at different wavelengths, to the

photometry derived from our *WISE* forced photometry, which requires no such matching. This demonstrates how *The Tractor* greatly increases the access to mid-infrared photometry for targets fainter than the AllWISE catalog detection limits, albeit with increased scatter. We have verified the reliability of the forced photometry detections and measurements by comparing *The Tractor* catalog results with those from deep *Spitzer* data in



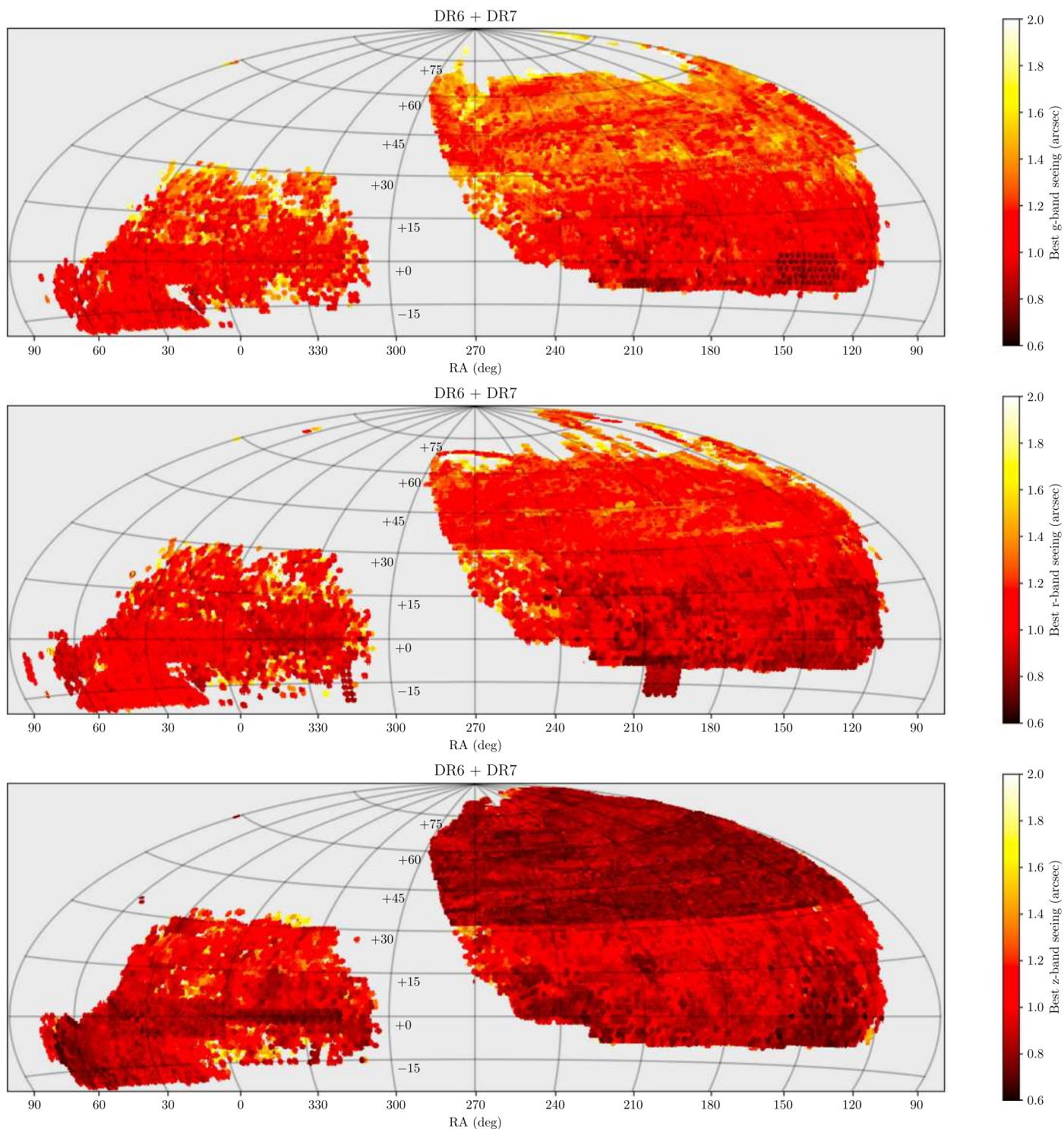


**Figure 11.** Spatial distribution (at  $0.5''$  resolution) of astrometric residuals in the Legacy Surveys DR6 and DR7 releases, computed relative to *Gaia* DR1 survey. While the rms scatter in the residuals is small ( $\sigma_{\text{R.A., decl.}} \approx 2$  mas), there remain spatially coherent systematic offsets at the  $\lesssim \pm 5$  mas level in the different survey regions. The systematic offset at the decl.  $+34^\circ$  boundary is due to differences in the way the astrometric zero points were computed in the DR6 and DR7 releases, and will be corrected in the Legacy Surveys DR8 release.

the COSMOS field (i.e., the S-COSMOS catalog from Sanders et al. 2007). Defining reliability as the fraction of *Spitzer* sources recovered, we find that the reliability is  $\geq 95\%$  for sources with W1 or W2 signal-to-noise ratios of  $\geq 5$ , corresponding to 21.3 and 20.4 AB mag, respectively. We have also compared the photometric measurements in our catalogs with those from

S-COSMOS and find that they are in good agreement with the  $\geq 5\sigma$  detections.

*The Tractor* should improve target selection for all DESI target classes by allowing information from low signal-to-noise ratio measurements to be utilized. *The Tractor* is particularly important for targeting QSOs. Up to 15% of QSO spectra exhibit



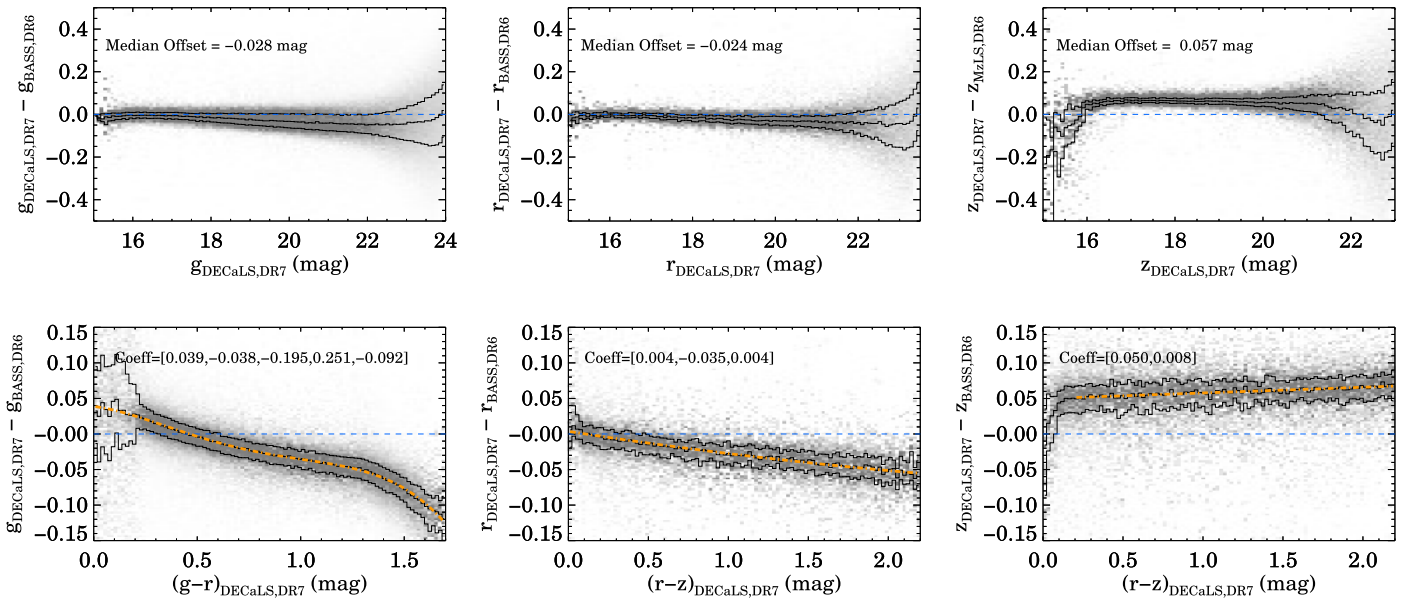
**Figure 12.** The spatial distribution (at  $0^{\circ}5$  resolution) of image quality represented by the best-seeing data in the  $g$  (top),  $r$  (middle), and  $z$  band (bottom) in the Legacy Surveys DR6 and DR7 releases. *The Tractor* source modeling is dependent on the data with the best delivered image quality at any given location. The DECaLS survey (covering the region south of  $\delta \sim +34^{\circ}$ ) is still incomplete, as reflected by the variable image quality in much of this region. The DR6 release of MzLS also did not include the full MzLS data set.

broad absorption lines that potentially reduce the measured flux in broadband imaging. In addition, high-redshift QSOs at  $z \geq 5.0$  ( $\geq 6.9$ ) will drop out of the  $g$  band ( $g$  and  $r$  bands) completely (e.g., see Bañados et al. 2018). Finally, the  $5\sigma$  optical limit at the extremes of DESI targeting corresponds to a  $<5\sigma$  limit in *WISE* for QSOs. *The Tractor* successfully differentiates

between the QSOs that are detected in *WISE* and those that are not detected, whereas traditional “catalog-matching” approaches would not be successful.

The SDSS-IV/eBOSS (Dawson et al. 2016), which began observations in 2014 July, also utilized *The Tractor* and the *WISE* component of the Legacy Surveys to target LRGs





**Figure 13.** Comparison of  $grz$  photometry (top panels) and color transformations (bottom panels) for unresolved, unmasked, high signal-to-noise ratio sources in common between the Legacy Surveys DR7 (DECaLS) and DR6 (BASS and MzLS) releases. In each panel the zero level is shown by a blue dashed line; the solid black lines represent the 25% median and 75% quantiles, and the orange dotted–dashed curve shows the polynomial fit. While there are significant color terms between the different telescope+camera combinations, the median differences are  $<30$  mmag. The zero-point offsets between the subsurveys are due to a change in the approach to absolute calibration between DR6 and DR7; future releases will be self-consistent.

(Prakash et al. 2016) and QSOs (Myers et al. 2015). For these eBOSS targets, *The Tractor* provided forced photometry based upon galaxy profiles measured by the SDSS imaging pipeline. Those profiles were convolved with the *WISE* PSF, and then a linear fit was performed on the full set of *WISE* imaging data. The result was a set of mid-infrared flux estimates for all SDSS objects, constructed so that the sum of flux-weighted profiles best matched the *WISE* images (Lang 2014; Lang et al. 2016b). The Legacy Surveys use the same fitting approach, using the deeper DECaLS, MzLS, and BASS optical images in place of the SDSS images.

*The Tractor* catalogs include source positions, fluxes, shape parameters, and morphological quantities that can be used to discriminate extended sources from point sources, together with errors on these quantities. *The Tractor* catalogs are vetted for DESI target selection using a series of image validation tests (as in, e.g., Appendix C).

## 9. Data Releases from the Legacy Surveys

The Legacy Surveys are being run as completely public projects. All raw optical imaging data are made available as soon as they are transferred from each telescope to the NOAO Science Archive.<sup>93</sup> The data transfer occurs within minutes for DECam and Mosaic-3 data, and by the following morning for 90Prime data. Pipeline-processed data are made public as soon as the reductions are completed, typically within a week of the observations. Finally, catalogs based on *The Tractor* and cross-matched data are released twice a year. All data (images, coadds, catalogs, and supplementary material) are available at the NOAO Science Archive and through the Legacy Surveys portal hosted at NERSC.<sup>94</sup> All the code used for creating the catalogs is publicly available.<sup>95</sup> In addition, the BASS data are

independently processed and released by the BASS team (e.g., see Zou et al. 2017a, 2018, for details).

Tables 3 and 6 show the observing schedule at the Blanco, Bok, and Mayall telescopes and our data release milestones. The data releases provide required deliverables such as object catalogs, depth maps, and coadded images, models, and residuals (see Table 7; see <http://legacysurvey.org> for details regarding the data release contents).

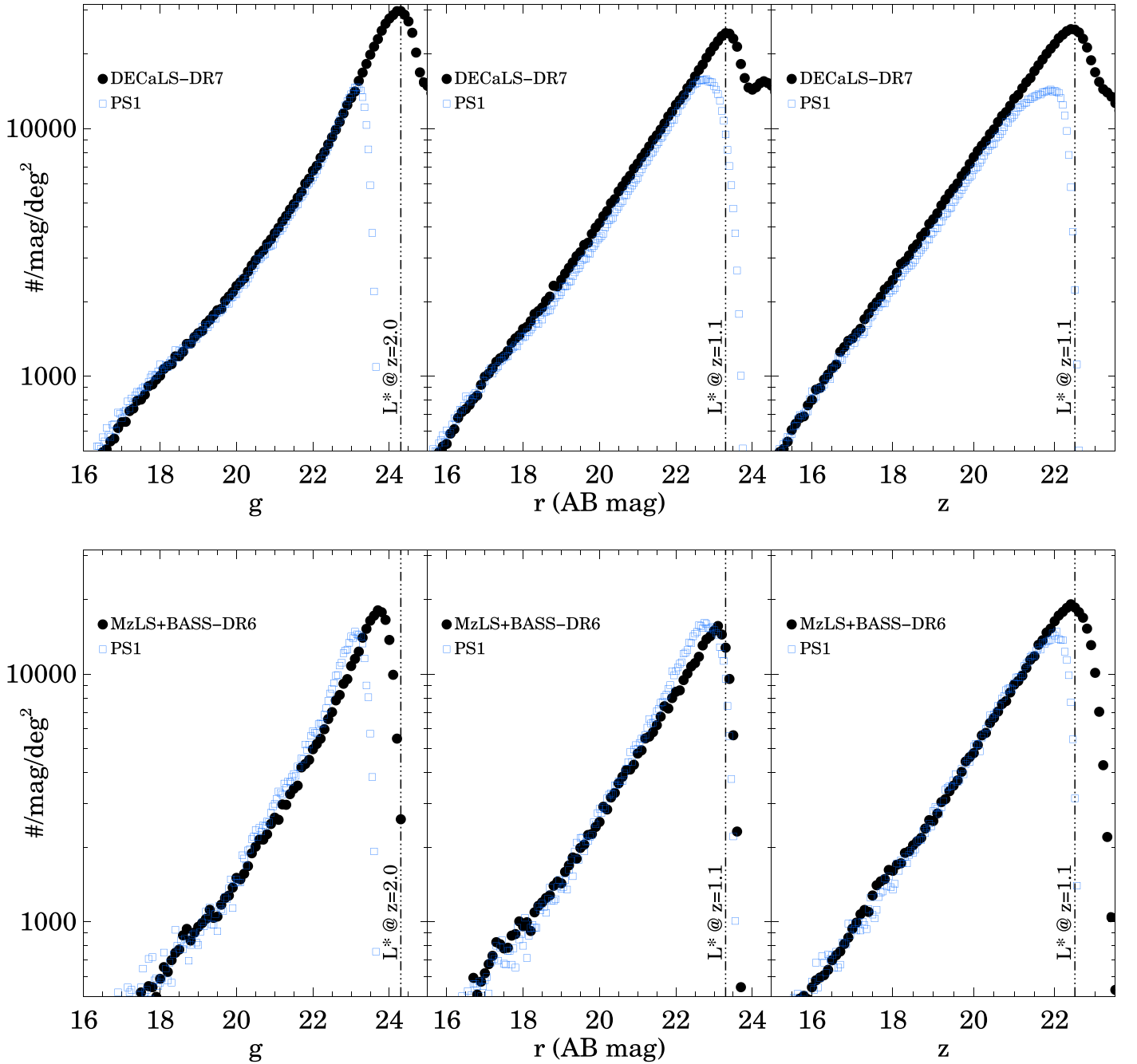
As of 2018 December, the two most recent data releases are DR6 (containing all the MzLS and BASS data obtained through 2017 December 9 and 2017 June 25, respectively) and DR7 (containing all the DECaLS data obtained through 2018 March); see Table 6. Together, DR6+DR7 jointly cover nearly the entire DESI footprint and have significant overlap. The DR7 data release presents DECaLS data over  $\approx 9766$  deg<sup>2</sup> in  $g$  band, 9853 deg<sup>2</sup> in  $r$  band, and 10,610 deg<sup>2</sup> in  $z$  band, with 9298 deg<sup>2</sup> of coverage in all three bands. There are approximately 835 million unique sources in DR7 spread over 180,102 bricks. The DR6 data release presents MzLS+BASS data covering  $\approx 4400$  deg<sup>2</sup> in  $g$  band, 4400 deg<sup>2</sup> in  $r$  band, and 5300 deg<sup>2</sup> in  $z$  band, with  $\approx 3900$  deg<sup>2</sup> with three-band coverage. There are approximately 310 million unique sources in DR6 spread over 92,287 bricks. Approximately 7500 bricks overlap between DR6 and DR7, each containing more than 1000 objects.

Figures 10–12 show, respectively, the spatial distributions of the photometric residuals in the  $g$ ,  $r$ , and  $z$  bands relative to the PS1 survey, the astrometric offsets relative to the *Gaia* DR1 catalog positions, and the best  $z$ -band image quality over the entire survey footprint. The three surveys provide nearly uniform coverage in photometry and astrometry, with rms scatter of  $<10$  mmag and  $<5$  mas for well-measured stars. Nevertheless, there remain systematic offsets between the subsurveys; these are particularly obvious at the boundary between the DECaLS and MzLS/BASS surveys, at decl.  $\approx +34^\circ$  in the NGC. The astrometric offset results from a

<sup>93</sup> <http://archive.noao.edu>, <https://datalab.noao.edu/decals/lr.php>

<sup>94</sup> <http://legacysurvey.org>

<sup>95</sup> <https://github.com/legacysurvey/legacypipe> and <https://github.com/dstndstn/tractor>.



**Figure 14.** Number counts of all detected sources measured from the Legacy Surveys DR6 and DR7 data releases compared with source counts from the PS1 survey. The DR7 number counts are measured in an  $\approx 20.4 \text{ deg}^2$  region centered on (R.A., decl.) = (243°311, 9°387). The DR6 number counts are measured in a  $\approx 3.3 \text{ deg}^2$  region centered on (245°55, 43°27). All the data shown are for sources detected at signal-to-noise ratios  $\geq 5$ , and the PS1 sources are required to be detected in at least two of the  $grz$  bands in order to exclude spurious sources.

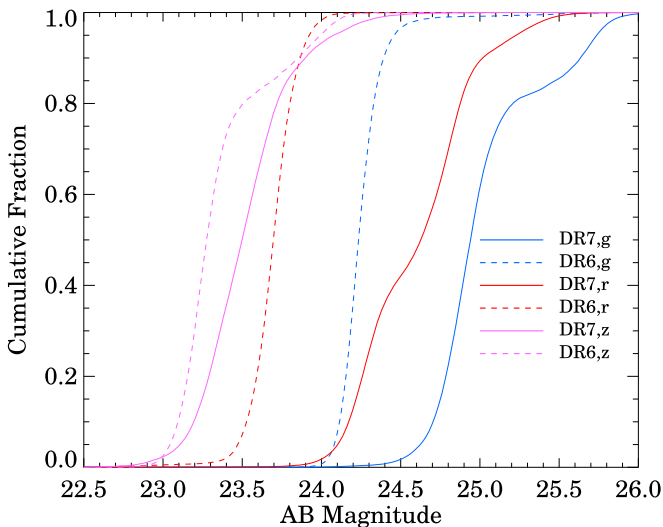
change in the way in which the *Gaia* positions were included in DR7: while the astrometric calibration in both DR6 and DR7 are tied to *Gaia* DR1, *Gaia* stars with proper motions in *Gaia* DR2 were modeled by *The Tractor* at the epoch of observation. Future Legacy Survey data releases will be consistently tied to the latest version of the *Gaia* catalog and self-consistently account for stars with well-measured proper motions.

Despite efforts to keep the filter passbands as similar as possible for the Kitt Peak and Cerro Tololo surveys, there remain significant differences in the effective throughput as a function of wavelength between the different surveys, especially in the  $g$  and  $r$  photometric bands (see Figure 3). A

direct comparison of the photometry for stellar sources observed by both sets yields the following color transformations (see Figure 13):

$$g_{\text{DR6,BASS}} = g_{\text{DR7,DECALS}} - 0.039 + 0.038(g - r)_{\text{DR7}} + 0.195(g - r)_{\text{DR7}}^2 - 0.251(g - r)_{\text{DR7}}^3 + 0.092(g - r)_{\text{DR7}}^4 \quad (7)$$

$$r_{\text{DR6,BASS}} = r_{\text{DR7,DECALS}} - 0.004 + 0.035(r - z)_{\text{DR7}} - 0.004(r - z)_{\text{DR7}}^2 \quad (8)$$



**Figure 15.**  $grz$   $5\sigma$  point-source depths in  $\geq 3$ -pass data in the Legacy Surveys DR7 (data from DECaLS survey) and DR6 (data from BASS+MzLS surveys) releases.

$$z_{\text{DR6,MzLS}} = z_{\text{DR7,DECaLS}} - 0.050 - 0.008(r - z)_{\text{DR7}}. \quad (9)$$

These color transformations are determined using unresolved objects (i.e., type “PSF” in both catalogs) with no masked pixels that are well detected ( $S/N \geq 5$ ) within the overlapping regions in both the DECaLS DR7 and BASS+MzLS DR6 catalogs (at  $149.9 < \text{R.A.} < 220.1$ ,  $31.9 < \text{decl.} < 33.6$ ). The polynomial least-squares fits were performed on samples restricted in magnitude and color:  $[15, 22]$  and  $0 < (g - r)_{\text{DR7}} < 1.7$  in  $g$  band; and  $[15, 21.5]$  and  $0 < (r - z)_{\text{DR7}} < 2.2$  in the  $r$  and  $z$  band. The photometry in the catalogs has not been corrected for these color transformations.

The median photometric zero-point offsets between DR6 and DR7 are

$$\langle g_{\text{DR6,BASS}} - g_{\text{DR7,DECaLS}} \rangle = -0.028 \text{ mag} \quad (10)$$

$$\langle r_{\text{DR6,BASS}} - r_{\text{DR7,DECaLS}} \rangle = -0.024 \text{ mag} \quad (11)$$

$$\langle z_{\text{DR6,MzLS}} - z_{\text{DR7,DECaLS}} \rangle = 0.057 \text{ mag}. \quad (12)$$

These medians are computed for unresolved sources (i.e., type “PSF” in both catalogs) with magnitudes and colors in the range  $[16, 22]$  and  $0 < (g - r) < 1.7$  for  $g$  band, and  $[16, 22]$  and  $0 < (r - z) < 2.2$  in the  $r$  and  $z$  bands. Part of the zero-point offset is due to a change in the way in which the photometry was absolutely calibrated between DR6 and DR7. All data releases prior to DR7 fixed the absolute calibration such that the PS1 and Legacy Surveys magnitudes agreed for stars at a PS1 color of  $(g - i)_{\text{PS1}} = 0$ , whereas DR7 and all future releases place the Legacy Survey photometry on the AB magnitude scale, where small magnitude differences are expected at  $(g - i)_{\text{PS1}} = 0$ . This change resulted in offset differences of  $+0.009$ ,  $-0.012$ , and  $+0.043$  mag for the  $g$ ,  $r$ , and  $z$  bands, respectively. In addition, some portion of the median offsets computed previously may be due to differences in the way the sky background is estimated in DR6 and DR7.

We are currently working on the sky estimation algorithms, and these results may change before our final data release.

Figure 14 shows the  $grz$ -band source number counts derived from DR6 and DR7 of the Legacy Surveys. Figure 15 shows the  $grz$ -band depths for the DR6 and DR7 data. The DR6 imaging (from BASS and MzLS) is shallower than the DR7 imaging (from DECaLS), but still satisfies the DESI target selection requirements.

Figure 16 shows the distributions, in  $grzW1$  color-color planes, of sources from the Legacy Surveys DR7 differentiated by their morphological type. Sources best fit by PSF models are dominated by stars (as exemplified by the clearly visible stellar locus) but also contain compact galaxies and QSOs. The sources best fit by spatially extended models (EXP: exponential disks; and DEV: de Vaucouleurs  $r^{1/4}$  profiles) trace the galaxy locus with minimal contamination from stars (since the star-galaxy separation is limited by the ground-based seeing).

Figure 17 shows cutouts of a wide variety of astronomical sources imaged by the Legacy Surveys, to demonstrate the depth and image quality of the surveys. The large time baseline between the Legacy Surveys and SDSS also enables the detection of faint transients and the measurement of proper motions for faint stars (Figure 18 shows an example). The sensitivity of the Legacy Surveys data to low surface brightness structures has been exploited in the new version of Galaxy Zoo (<https://blog.galaxyzoo.org/tag/decals/>) and for finding faint tidal features associated with galaxies (e.g., Hood et al. 2018). In addition, the depth of the Legacy Surveys data has resulted in their use for selecting emission-line galaxy (DECaLS component; Raichoor et al. 2017) and QSO targets (*WISE* component Myers et al. 2015) for the SDSS-IV/eBOSS spectroscopic survey.

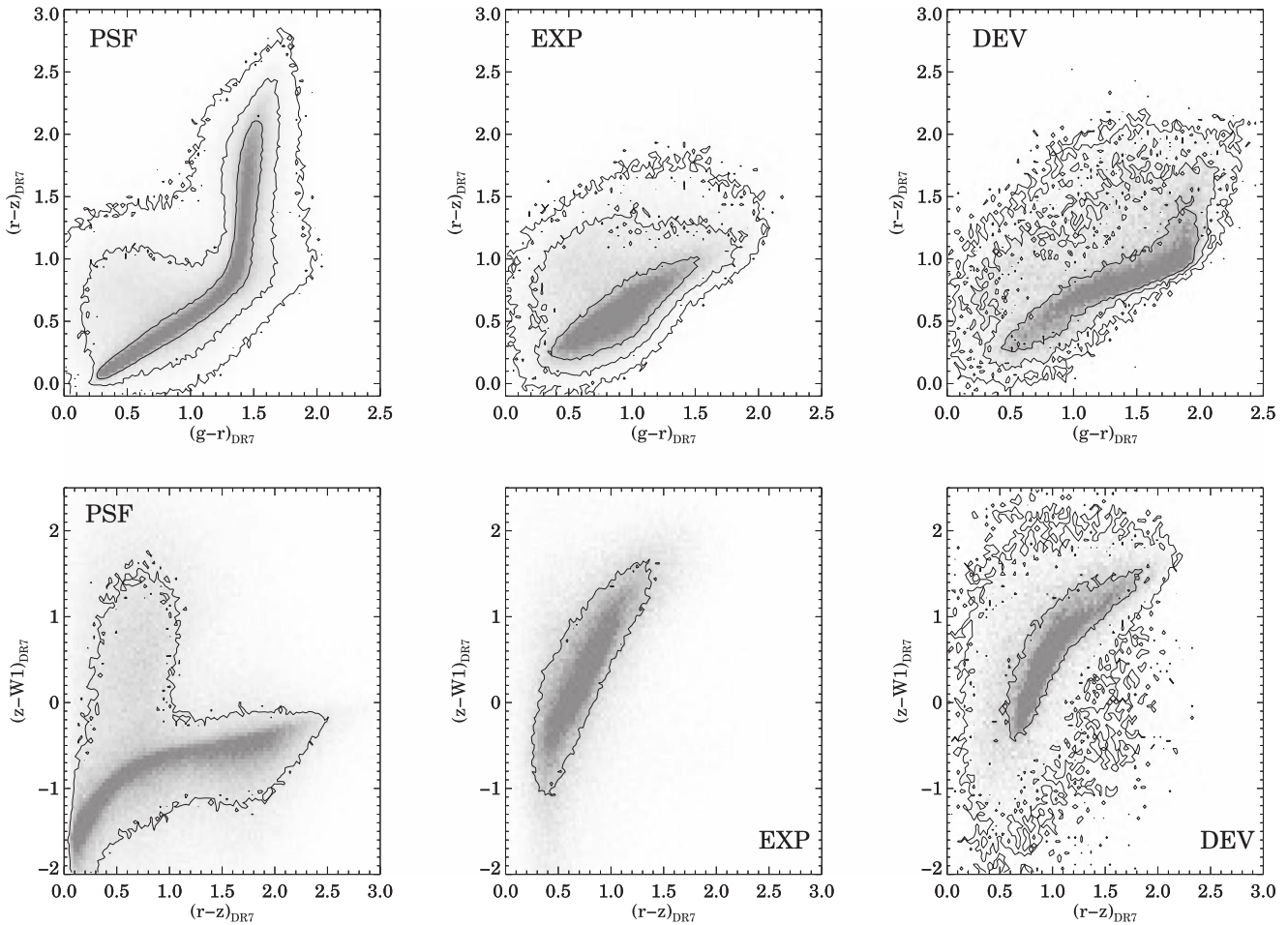
All observations for the MzLS completed on 2018 February 12. Observing for BASS will continue through 2018 July. Observing for DECaLS is estimated to continue until 2019 March. The goal of the Legacy Surveys is to consolidate the data from all the subsidiary surveys into a final data release by 2019 June.

## 10. Summary

We have begun three wide-area optical imaging surveys that will cover a total area of  $14,000 \text{ deg}^2$  in two contiguous portions and in three filters. These surveys are designed to provide targets for the DESI project, which will begin spectroscopic observations in 2019. The surveys include optical imaging data in three bands ( $g$ ,  $r$ , and  $z$  band) from three ground-based telescopes (CTIO Blanco, KPNO Mayall, and Steward Bok 90”) and will reach approximate  $5\sigma$  depths of  $g = 24.0$ ,  $r = 23.4$ , and  $z = 22.5$  AB mag for faint galaxies. In addition, the data releases will contain mid-infrared photometry based on new, multi-epoch stacks of imaging data from the *WISE* satellite created by the unWISE project. The three surveys are the Dark Energy Camera Legacy Survey (DECaLS), the Mayall  $z$ -band Legacy Survey (MzLS), and the BASS; these surveys are jointly referred to as the Legacy Surveys.

We have implemented an automated observing strategy for all surveys, where observing conditions are monitored in near real time and exposure times are modified and target field selection is optimized on-the-fly to ensure that each individual observation reaches the required depth. This strategy ensures that the ground-based surveys produce data sets that are as





**Figure 16.** Distribution, in the  $g - r - z - W1$  color-color planes, of three of the morphological model types from DR7. The PSF type (left panels) corresponds to unresolved sources, which include stars, distant QSOs, and some unresolved galaxies. The EXP and DEV types (middle and right panels respectively) are sources that are best fit by exponential disk or de Vaucouleurs  $r^{1/4}$  light profiles. All colors are in units of AB magnitudes.

uniform as possible. The data are pipeline processed using the NOAO Community Pipelines, and catalogs are then generated from the imaging data using an inference-based forward-modeling approach known as *The Tractor*, implemented at NERSC.

All the imaging data, source catalogs, and code from the Legacy Surveys are publicly available: the raw and pipeline-processed optical imaging data are made public as soon as they are available in the NOAO Archive and catalogs from the project are released approximately twice each year. There have been seven data releases thus far, which are described in detail in other papers. The imaging data are accessible from the Legacy Surveys website<sup>96</sup> and the NOAO Science Archive.<sup>97</sup> An image viewer (the *Imagine* sky viewer, at <http://legacysurvey.org/viewer>) is provided at the Legacy Surveys website that allows the user to examine the data, *The Tractor* models, and other supplementary data. A resource at the NOAO DataLab provides access to the catalogs through SQL queries or a Jupyter notebook interface.<sup>98</sup>

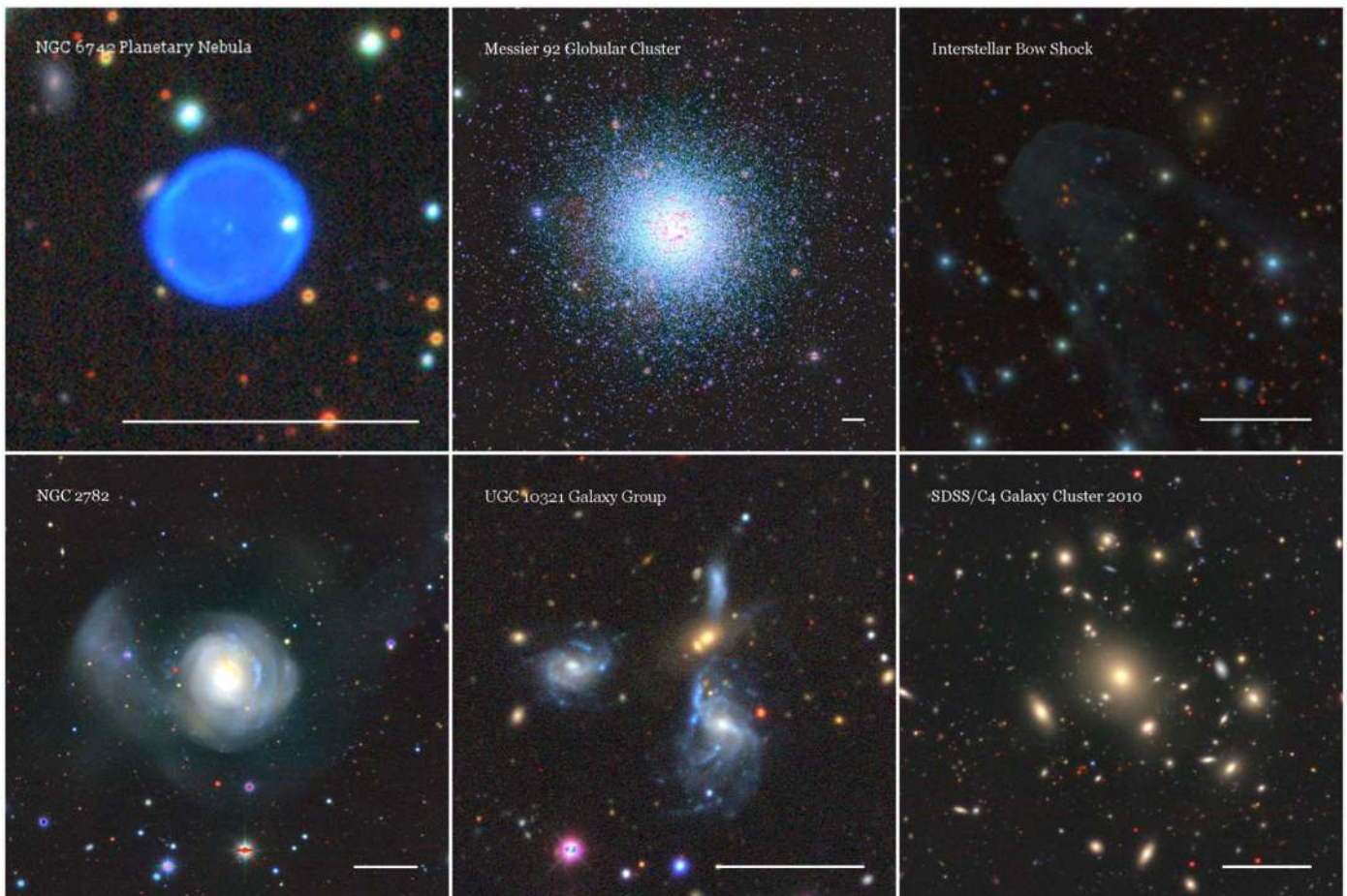
The Legacy Surveys are nearing completion. We anticipate completing the surveys before the start of DESI spectroscopic observations in late 2019.

This paper presents observations obtained at Cerro Tololo Inter-American Observatory, National Optical Astronomy Observatory (NOAO Prop. ID: 2014B-0404; co-PIs: D. J. Schlegel and A. Dey), which is operated by the Association of Universities for Research in Astronomy (AURA) under a cooperative agreement with the National Science Foundation. This paper also includes DECam observations obtained as part of other projects, namely the Dark Energy Survey (DES, NOAO Prop. ID: 2012B-0001); and 2012B-0003, 2012B-0416, 2012B-0506, 2012B-0569, 2012B-0617, 2012B-0621, 2012B-0624, 2012B-0625, 2012B-3003, 2012B-3011, 2012B-3012, 2012B-3016, 2012B-9993, 2012B-9999, 2013A-0327, 2013A-0360, 2013A-0386, 2013A-0400, 2013A-0455, 2013A-0529, 2013A-0609, 2013A-0610, 2013A-0611, 2013A-0613, 2013A-0614, 2013A-0618, 2013A-0704, 2013A-0716, 2013A-0717, 2013A-0719, 2013A-0723, 2013A-0724, 2013A-0737, 2013A-0739, 2013A-0741, 2013A-9999, 2013B-0325, 2013B-0438, 2013B-0440, 2013B-0453, 2013B-0502, 2013B-0531, 2013B-0612, 2013B-0613, 2013B-0615, 2013B-0616, 2013B-0617, 2014A-0073, 2014A-0191, 2014A-0239, 2014A-0255, 2014A-0256, 2014A-0270, 2014A-0306, 2014A-0313, 2014A-0321, 2014A-0327, 2014A-0339, 2014A-0348, 2014A-0386, 2014A-0390, 2014A-0412, 2014A-0415, 2014A-0429, 2014A-0496, 2014A-0608, 2014A-0610, 2014A-0611, 2014A-0613, 2014A-0620, 2014A-0621, 2014A-0622, 2014A-0623, 2014A-0624,

<sup>96</sup> <http://legacysurvey.org>, served by NERSC.

<sup>97</sup> <http://archive.noao.edu>

<sup>98</sup> See <https://datalab.noao.edu/decals/ls.php> for details.



**Figure 17.** Gallery of image cutouts from the DR6 Legacy Surveys data illustrating the variety of astronomical objects covered by the surveys and highlighting the capability of the surveys to image low surface brightness features. The horizontal bar in the bottom right corner of each panel represents an angular size scale of  $1'$ . In all images, north is up and east is to the left. More examples are shown in the DR6 and DR7 online image galleries (<http://portal.nersc.gov/project/cosmo/data/legacysurvey/dr6/gallery/>).

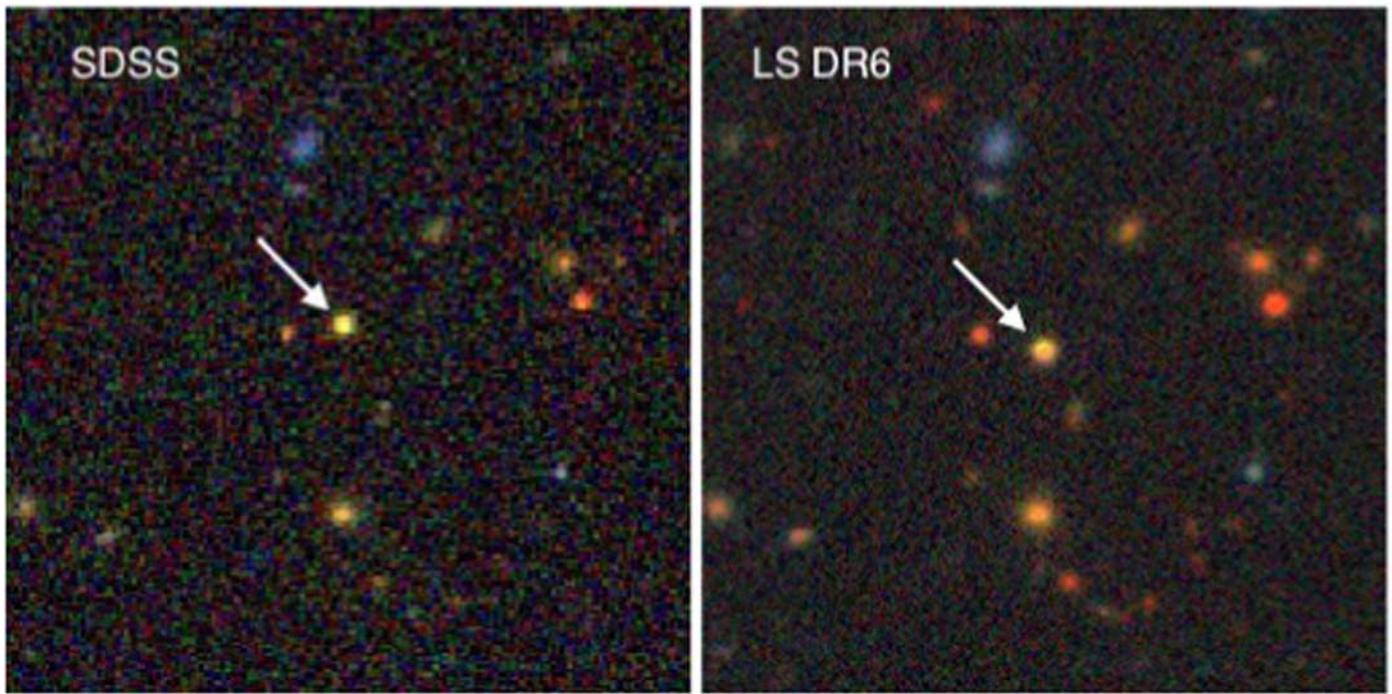
2014A-0632, 2014A-0640, 2014B-0146, 2014B-0244, 2014B-0608, 2014B-0610, 2014B-0614, 2015B-0187.

DECaLS used data obtained with the Dark Energy Camera (DECam), which was constructed by the Dark Energy Survey (DES) collaboration. Funding for the DES Projects has been provided by the U.S. Department of Energy, the U.S. National Science Foundation, the Ministry of Science and Education of Spain, the Science and Technology Facilities Council of the United Kingdom, the Higher Education Funding Council for England, the National Center for Supercomputing Applications at the University of Illinois at Urbana-Champaign, the Kavli Institute of Cosmological Physics at the University of Chicago, the Center for Cosmology and Astro-Particle Physics at the Ohio State University, the Mitchell Institute for Fundamental Physics and Astronomy at Texas A&M University, Financiadora de Estudos e Projetos, Fundação Carlos Chagas Filho de Amparo, Financiadora de Estudos e Projetos, Fundação Carlos Chagas Filho de Amparo à Pesquisa do Estado do Rio de Janeiro, Conselho Nacional de Desenvolvimento Científico e Tecnológico and the Ministério da Ciência, Tecnologia e Inovação, the Deutsche Forschungsgemeinschaft and the Collaborating Institutions in the Dark Energy Survey. The Collaborating Institutions are Argonne National Laboratory, the University of California at Santa Cruz, the University of Cambridge, Centro de Investigaciones Energéticas,

Medioambientales y Tecnológicas-Madrid, the University of Chicago, University College London, the DES-Brazil Consortium, the University of Edinburgh, the Eidgenössische Technische Hochschule (ETH) Zürich, Fermi National Accelerator Laboratory, the University of Illinois at Urbana-Champaign, the Institut de Ciències de l'Espai (IEEC/CSIC), the Institut de Física d'Altes Energies, Lawrence Berkeley National Laboratory, the Ludwig-Maximilians Universität München and the associated Excellence Cluster Universe, the University of Michigan, the National Optical Astronomy Observatory, the University of Nottingham, the Ohio State University, the University of Pennsylvania, the University of Portsmouth, SLAC National Accelerator Laboratory, Stanford University, the University of Sussex, and Texas A&M University.

The Mayall  $z$ -band Legacy Survey (MzLS; NOAO Prop. ID no. 2016A-0453; PI: A. Dey) uses observations made with the Mosaic-3 camera at the Mayall 4 m telescope at Kitt Peak National Observatory, National Optical Astronomy Observatory, which is operated by the Association of Universities for Research in Astronomy (AURA) under cooperative agreement with the National Science Foundation. The authors are honored to be permitted to conduct astronomical research on Iolkam Du'ag (Kitt Peak), a mountain with particular significance to the Tohono O'odham.





**Figure 18.** New high proper motion star at (R.A., decl.) = (223°7678, +33°7066) discovered serendipitously in DR6 of the Legacy Surveys. The left and right panels show  $\approx 67 \times 67''$  cutouts of the SDSS and DR6 images, respectively, extracted from the Legacy Surveys’ image viewer (<http://legacysurvey.org/viewer>); north is up and east is to the left. The  $g = 21.2$  AB mag MOV star (classified based on an SDSS spectrum; <https://dr12.sdss.org/spectrumDetail?mjd=54942&fiber=500&plateid=3315>) is moving at  $\approx 0''.2$  per year. The large time baseline ( $\approx 14$  yr) between the SDSS and Legacy Surveys data will enable proper motion measurements for stars fainter than the *Gaia* DR1 catalog limits.

The Beijing–Arizona Sky Survey (BASS; NOAO Proposal ID no. 2015A-0801; PIs: Zhou Xu and Xiaohui Fan) is a key project of the Telescope Access Program (TAP), which has been funded by the National Astronomical Observatories of China, the Chinese Academy of Sciences (the Strategic Priority Research Program “The Emergence of Cosmological Structures” Grant no. XDB09000000), and the Special Fund for Astronomy from the Ministry of Finance. The BASS is also supported by the External Cooperation Program of Chinese Academy of Sciences (Grant no. 114A11KYSB20160057), and Chinese National Natural Science Foundation (Grant no. 11433005). The Bok Telescope is located on Kitt Peak and operated by Steward Observatory, University of Arizona.

The Legacy Surveys imaging of the DESI footprint is supported by the Director, Office of Science, Office of High Energy Physics of the U.S. Department of Energy under Contract no. DE-AC02-05CH11231, by the National Energy Research Scientific Computing Center, a DOE Office of Science User Facility under the same contract, and by the U.S. National Science Foundation, Division of Astronomical Sciences under Contract no. AST-0950945 to NOAO. Travel and other support for the DECALS and MzLS projects are provided by the National Optical Astronomy Observatory, the Lawrence Berkeley National Laboratory, and the DESI Project.

This publication makes use of data from the Pan-STARRS1 Surveys (PS1) and the PS1 public science archive, which have been made possible through contributions by the Institute for Astronomy, the University of Hawaii, the Pan-STARRS Project Office, the Max Planck Society and its participating institutes, the Max Planck Institute for Astronomy, Heidelberg and the Max Planck Institute for Extraterrestrial Physics, Garching, Johns Hopkins University, Durham University, the University of Edinburgh, Queen’s University Belfast, the

Harvard-Smithsonian Center for Astrophysics, the Las Cumbres Observatory Global Telescope Network Incorporated, the National Central University of Taiwan, the Space Telescope Science Institute, the National Aeronautics and Space Administration under Grant no. NNX08AR22G issued through the Planetary Science Division of the NASA Science Mission Directorate, the National Science Foundation Grant no. AST-1238877, the University of Maryland, Eotvos Lorand University (ELTE), the Los Alamos National Laboratory, and the Gordon and Betty Moore Foundation.

This work has made use of data from the European Space Agency (ESA) mission *Gaia* (<https://www.cosmos.esa.int/gaia>), processed by the *Gaia* Data Processing and Analysis Consortium (DPAC, <https://www.cosmos.esa.int/web/gaia/dpac/consortium>). Funding for the DPAC has been provided by national institutions, in particular the institutions participating in the *Gaia* Multilateral Agreement.

This publication makes use of data products from the *Wide-field Infrared Survey Explorer* (and its successor, the *Near-Earth Object Wide-field Infrared Survey Explorer*), which is a joint project of the University of California, Los Angeles, and the Jet Propulsion Laboratory/California Institute of Technology, funded by the National Aeronautics and Space Administration.

This research used resources of the National Energy Research Scientific Computing Center, a DOE Office of Science User Facility supported by the Office of Science of the U.S. Department of Energy under Contract no. DE-AC02-05CH11231.

The research leading to these results has received funding from the European Research Council under the European Union’s Seventh Framework Programme (FP/2007-2013)/ERC Grant Agreement no. 320964 (WDTracer).



J.M. gratefully acknowledges support from the National Science Foundation grant AST-1616414. A.D. thanks the Radcliffe Institute for Advanced Study for their generous support during the year these surveys were initiated. A.D., D.J.S., and D.L. thank the Aspen Center for Physics, which is supported by National Science Foundation grant PHY-1066293, for their hospitality and support during summer 2015, when this work was conducted.

*Facilities:* KPNO:Mayall (Mosaic-3), Steward:Bok (90Prime), CTIO:Blanco (DECam), *WISE*, *Gaia*.

## Appendix A DESI Imaging Requirements

Imaging data from the Legacy Surveys will be used to select targets for DESI. In this appendix, we describe the basic requirements that the DESI project's main cosmological survey imposes on imaging. There are five target classes for the DESI dark energy experiment: (1) Bright Galaxy Sample (BGS), (2) LRGs, (3) Emission-line Galaxies (ELGs), (4) quasars (QSOs) at  $z < 2.1$ , and (5) quasars at  $z > 2.1$  for the measurement of the Ly $\alpha$  forest. The imaging surveys will also be used to select secondary targets such as other interesting object classes (rare objects, Milky Way stars, etc.), standard stars for spectro-photometric calibration, and locations for blank sky fibers.

In 2013, the DESI Project concluded that a three-band  $g/r/z$  optical imaging program complemented by *WISE* W1 and W2 photometry would be sufficient to select all target classes required for the DESI cosmology program. One optical band is sufficient to select the BGS, which is defined as a simple magnitude-limited sample. Two optical bands are necessary to select LRGs and quasars, as the *WISE* W1 infrared band provides adequate color information to clearly separate these targets from stars and other galaxies. Three optical bands are necessary to efficiently select the ELGs, as these galaxies are not well detected at the depth of the *WISE* data. Other imaging data (e.g.,  $u$  band) may be used to further refine the selection of the high-redshift QSOs, which is the one target class that is not required (by DESI) to have a uniform selection if used for Ly $\alpha$  forest maps.

The requirements that DESI targeting imposes on the optical imaging are

1. *Imaging will be in three optical bands to a depth of at least  $g = 24.0$ ,  $r = 23.4$ , and  $z = 22.5$ .* The depths are defined as the optimal-extraction (forced-photometry) depths for a galaxy near the depth limits of DESI, where that galaxy is defined to be an exponential profile with a half-light radius of  $r_{\text{half}} = 0.45$  arcsec. For such a profile, the effective number of pixels is well-approximated by  $N_{\text{eff}} = [(4\pi\sigma^2)^{(1/p)} + (8.91r_{\text{half}}^2)^{(1/p)}]^p$ , where  $\sigma$  is the standard deviation for a Gaussian fit to the seeing,  $r_{\text{half}}$  is the half-light radius for an exponential-profile galaxy, and  $p = 1.15$ . In addition to the optical imaging, 4 years of *WISE* data in the W1 and W2 bands are assumed.
2. *Imaging will cover at least 14,000 deg<sup>2</sup> of the DESI footprint.* This footprint is described in Section 3.
3. *The fill factor will be at least 90%.* The areas with coverage to full depth in all 3 bands should exceed 90% of the footprint. The science loss is approximately proportional to this fractional loss of area.
4.  *$z$ -band image quality will be smaller than 1.5 arcsec FWHM.* Many of the DESI galaxy targets appear small

(less than 1 arcsec) and are near the limit at which they can be resolved as extended sources rather than point sources. Because of this, a morphological separation between extended sources and point sources will not be required for DESI galaxy targets. The primary driver for reasonably good image quality is to minimize blending between targets and other sources on the sky, especially in regions of high stellar density, such as near the Galactic plane. Reasonable image quality in at least one band will allow the identification of otherwise blended objects and the optimal extraction of their photometry in all bands. All of the DESI targets will be detected in  $z$  band, which is expected to have the best image quality; therefore an image quality requirement is specified in that one band.

5. *No regions larger than 3 deg in diameter will be covered by only nonphotometric observations.* Photometric observations are defined as those obtained during nights demonstrated to have photometricity errors of 1% rms in  $g$  band and  $r$  band, or 2% rms in  $z$  band. Small regions, especially in CCD gaps on the imager focal planes, may be filled in with nonphotometric data and calibrated to neighboring photometric data.
6. *The random errors in astrometry will be less than 95 mas rms, and the systematic errors will be less than 30 mas.* Astrometric errors impact the effective throughput of the DESI instrument for the spectroscopic survey. The systematics errors in the astrometry will be well-controlled by tying individual CCD images to *Gaia* (Gaia Collaboration et al. 2016a). The astrometric positions can take advantage of the signal in all filters.

An inference modeling approach will be used for measuring the photometry in all bands from the optical and *WISE* imaging data. The DESI requirements for the imaging *reductions* are

1. *The model photometry will use the same model in all bands.* The model photometry uses the same model in all bands to minimize systematic errors in the flux ratios (i.e., colors) of galaxies, which is critical for all target selection algorithms.
2. *Systematic errors due to PSF mis-estimation will be controlled to better than 1%.*
3. *Systematic errors due to galaxy model mis-estimation will be controlled to better than 1%.* A simple  $\chi^2$  fit would suffer from biases in the galaxy photometry due to the models not matching the actual morphology of individual galaxies, and this would be S/N-dependent.
4. *Depth maps will be computed in each band at all locations.* The effective depth will be computed as a map for each filter. This is a function of the sky brightness, image quality, and sky transparency of all of the contributing images. In detail on small scales, it would include the features seen from bad columns on the CCD and increased noise near other sources on the sky.
5. *The ability will be provided to Monte Carlo simulated objects through the imaging pipeline.* This requirement implies access to all of the calibrated image frames, the versioned code used to construct the final targeting catalogs, and the ability to run this code. This Monte Carlo ability will be used to map the effects of bright stars and other source contamination problems, which can both

produce spurious targets and remove actual targets by blending them with other sources.

## Appendix B Transformations from SDSS to Legacy Surveys Photometry

We compared the SDSS and Legacy Surveys photometry in two regions using the “sweeps” files, which contain matched SDSS and Legacy Survey sources and are included as part of the DR6 and DR7 Legacy Survey releases. For the SDSS-DR6 comparison, we used the region  $230^\circ \leq \text{R.A.} \leq 240^\circ$  and  $2^\circ 0 \leq \text{decl.} \leq 2^\circ 5$ ; for the SDSS-DR7 comparison, we used the region  $160^\circ \leq \text{R.A.} \leq 170^\circ$  and  $2^\circ 0 \leq \text{decl.} \leq 2^\circ 5$ . The photometric transformations were then computed by fitting polynomials to the SDSS-Legacy Survey magnitude differences in the  $g$ ,  $r$ , and  $z$  bands as a function of the SDSS ( $g - i$ ) color. The fits were done in the color range  $-0.25 \leq (g - i)_{\text{SDSS}} \leq 3.5$  and restricted to bright stars (i.e.,  $i \leq 19$ ). The resulting transformations are

$$g_{\text{DR6,BASS}} \approx g_{\text{SDSS}} - 0.0125 - 0.0535(g - i)_{\text{SDSS}} + 0.0162(g - i)_{\text{SDSS}}^2 - 0.0047(g - i)_{\text{SDSS}}^3 \quad (13)$$

$$r_{\text{DR6,BASS}} \approx r_{\text{SDSS}} - 0.0215 - 0.0683(g - i)_{\text{SDSS}} + 0.0265(g - i)_{\text{SDSS}}^2 - 0.0084(g - i)_{\text{SDSS}}^3 \quad (14)$$

$$z_{\text{DR6,MzLS}} \approx z_{\text{SDSS}} - 0.0293 - 0.0387(g - i)_{\text{SDSS}} + 0.0123(g - i)_{\text{SDSS}}^2 - 0.0034(g - i)_{\text{SDSS}}^3 \quad (15)$$

$$g_{\text{DR7,DECaLS}} \approx g_{\text{SDSS}} + 0.0244 - 0.1183(g - i)_{\text{SDSS}} + 0.0322(g - i)_{\text{SDSS}}^2 - 0.0066(g - i)_{\text{SDSS}}^3 \quad (16)$$

$$r_{\text{DR7,DECaLS}} \approx r_{\text{SDSS}} - 0.0005 - 0.0868(g - i)_{\text{SDSS}} + 0.0287(g - i)_{\text{SDSS}}^2 - 0.0092(g - i)_{\text{SDSS}}^3 \quad (17)$$

$$z_{\text{DR7,DECaLS}} \approx z_{\text{SDSS}} + 0.0228 - 0.0229(g - i)_{\text{SDSS}} + 0.0049(g - i)_{\text{SDSS}}^2 - 0.0019(g - i)_{\text{SDSS}}^3 \quad (18)$$

The typical root-mean-square photometric scatter around these transformation relations is  $\sigma \approx 30$  mmag. These transformations are not valid for stars bluer or redder than the color range of the fit.

## Appendix C Comparing Subaru Hyper-SuprimeCam and Legacy Surveys Data

We have compared data from DR1 of the Subaru Hyper-SuprimeCam (HSC) surveys (Aihara et al. 2018)<sup>99</sup> with data from the Legacy Surveys in two regions: (1)  $244.5^\circ \leq \text{R.A.} \leq 246.5^\circ$ ,  $43^\circ \leq \text{decl.} \leq 44^\circ$ ; and (2)  $31.5^\circ \leq \text{R.A.} \leq 36^\circ$ ,  $-6^\circ \leq \text{decl.} \leq -4.5^\circ$ . The first region corresponds to the “HECTO-MAP” region in the HSC survey and is covered by the Legacy Surveys DR6 data. The second region corresponds to the XMM-LSS region in the HSC survey and is covered by the Legacy

Surveys DR7 data. Selecting Legacy Survey sources of type “PSF” detected with a signal-to-noise ratio  $\geq 5$ , we compared the HSC photometry to the DR6 and DR7 data and derived the following transformations:

$$g_{\text{DR6,BASS}} \approx g_{\text{HSC}} - 0.003 + 0.029(g - r)_{\text{HSC}} \quad (19)$$

$$r_{\text{DR6,BASS}} \approx r_{\text{HSC}} + 0.003 - 0.130(r - z)_{\text{HSC}} + 0.053(r - z)_{\text{HSC}}^2 - 0.013(r - z)_{\text{HSC}}^3 \quad (20)$$

$$z_{\text{DR6,MzLS}} \approx z_{\text{HSC}} - 0.011 - 0.076(r - z)_{\text{HSC}} + 0.003(r - z)_{\text{HSC}}^2 \quad (21)$$

$$g_{\text{DR7,DECaLS}} \approx g_{\text{HSC}} + 0.003 - 0.014(g - r)_{\text{HSC}} \quad (22)$$

$$r_{\text{DR7,DECaLS}} \approx r_{\text{HSC}} - 0.011 - 0.154(r - z)_{\text{HSC}} + 0.055(r - z)_{\text{HSC}}^2 - 0.013(r - z)_{\text{HSC}}^3 \quad (23)$$

$$z_{\text{DR7,DECaLS}} \approx z_{\text{HSC}} - 0.024 - 0.098(r - z)_{\text{HSC}} + 0.004(r - z)_{\text{HSC}}^2 \quad (24)$$

The 50% completeness limits (measured relative to HSC) in [ $g$ ,  $r$ ,  $z$ ] are [25.26, 24.84, 24.29] AB mag in DR7 and [24.535, 24.235, 23.336] AB mag in DR6, respectively. Of the 95,241 DR6 sources in region (1), 3506 (3.7%) have no matches in the HSC catalog. A total of 713 of these are bright sources ( $g \leq 17$ ,  $r \leq 18$ ,  $z \leq 17$ ) and are likely saturated in the HSC data; 1,431 are fainter than the 80% completeness limits. We examined 100 DR6 sources with magnitudes  $20 < g < 22$  that are missing in the HSC catalogs and found that 83 are fake sources: 33 due to particle events; 22 due to increased noise in, for example, regions near CCD edges; and 28 are fake sources created by *The Tractor* in the extended halos of bright (typically saturated) stars or galaxies. The remaining are real sources that have been split into multiple sources due to their complexity or mis-centered (due to low signal-to-noise data) in the DR6 catalog, or are low surface brightness sources not present in the HSC catalog. Despite these issues, the DR6 catalog reliability is higher than PS1 at faint magnitudes.

## ORCID iDs

Arjun Dey  <https://orcid.org/0000-0002-4928-4003>  
David J. Schlegel  <https://orcid.org/0000-0002-5042-5088>  
Dustin Lang  <https://orcid.org/0000-0002-1172-0754>  
Robert Blum  <https://orcid.org/0000-0002-8622-4237>  
Xiaohui Fan  <https://orcid.org/0000-0003-3310-0131>  
Doug Finkbeiner  <https://orcid.org/0000-0003-2808-275X>  
David Herrera  <https://orcid.org/0000-0003-2092-6727>  
Stéphanie Juneau  <https://orcid.org/0000-0002-0000-2394>  
Martin Landriau  <https://orcid.org/0000-0003-1838-8528>  
Michael Levi  <https://orcid.org/0000-0003-1887-1018>  
Ian McGreer  <https://orcid.org/0000-0002-3461-5228>  
Aaron Meisner  <https://orcid.org/0000-0002-1125-7384>  
John Moustakas  <https://orcid.org/0000-0002-2733-4559>  
Peter Nugent  <https://orcid.org/0000-0002-3389-0586>  
Edward F. Schlafly  <https://orcid.org/0000-0002-3569-7421>  
Alistair R. Walker  <https://orcid.org/0000-0002-7123-8943>  
Francisco Valdes  <https://orcid.org/0000-0001-5567-1301>  
Hu Zou  <https://orcid.org/0000-0002-6684-3997>  
T. M. C. Abbott  <https://orcid.org/0000-0003-1587-3931>  
Bela Abolfathi  <https://orcid.org/0000-0003-1820-8486>  
Lori Allen  <https://orcid.org/0000-0002-7789-5119>  
James Annis  <https://orcid.org/0000-0002-0609-3987>

<sup>99</sup> See <http://hsc.mtk.nao.ac.jp/ssp/survey/>.

Behzad Ansarinejad  <https://orcid.org/0000-0002-6443-3396>  
 Eric F. Bell  <https://orcid.org/0000-0002-5564-9873>  
 Segev Y. BenZvi  <https://orcid.org/0000-0001-5537-4710>  
 Florian Beutler  <https://orcid.org/0000-0003-0467-5438>  
 Annalisa Calamida  <https://orcid.org/0000-0002-0882-7702>  
 Raymond G. Carlberg  <https://orcid.org/0000-0002-7667-0081>  
 Ricard Casas  <https://orcid.org/0000-0002-8165-5601>  
 Francisco J. Castander  <https://orcid.org/0000-0001-7316-4573>  
 Yumi Choi  <https://orcid.org/0000-0003-1680-1884>  
 Mark Dickinson  <https://orcid.org/0000-0001-5414-5131>  
 Yutong Duan  <https://orcid.org/0000-0002-2611-0895>  
 Parker A. Fagrelus  <https://orcid.org/0000-0001-6974-5826>  
 Jay Farihi  <https://orcid.org/0000-0003-1748-602X>  
 Leah Fulmer  <https://orcid.org/0000-0001-9247-7794>  
 Enrique Gaztanaga  <https://orcid.org/0000-0001-9632-0815>  
 Koshy George  <https://orcid.org/0000-0002-1734-8455>  
 David W. Gerdes  <https://orcid.org/0000-0001-6942-2736>  
 Gregory Green  <https://orcid.org/0000-0001-5417-2260>  
 David J. James  <https://orcid.org/0000-0001-5160-4486>  
 Buell T. Jannuzi  <https://orcid.org/0000-0002-1578-6582>  
 Linhua Jiang  <https://orcid.org/0000-0003-4176-6486>  
 Richard Joyce  <https://orcid.org/0000-0003-0201-5241>  
 Sonia Karkar  <https://orcid.org/0000-0003-2832-777X>  
 Robert Kehoe  <https://orcid.org/0000-0002-7101-697X>  
 Ting-Wen Lan  <https://orcid.org/0000-0001-8857-7020>  
 Tod Lauer  <https://orcid.org/0000-0003-3234-7247>  
 Laurent Le Guillou  <https://orcid.org/0000-0001-7178-8868>  
 Michael Lesser  <https://orcid.org/0000-0002-7199-0537>  
 Robert Marshall  <https://orcid.org/0000-0002-6880-9987>  
 Paul Martini  <https://orcid.org/0000-0002-4279-4182>  
 Héliou du Mas des Bourboux  <https://orcid.org/0000-0001-8955-3573>  
 Nigel Metcalfe  <https://orcid.org/0000-0001-9034-4402>  
 Gautham Narayan  <https://orcid.org/0000-0001-6022-0484>  
 Jeffrey A. Newman  <https://orcid.org/0000-0001-8684-2222>  
 Brian Nord  <https://orcid.org/0000-0001-6706-8972>  
 Knut A. G. Olsen  <https://orcid.org/0000-0002-7134-8296>  
 Abhishek Prakash  <https://orcid.org/0000-0003-4451-4444>  
 Nicholas P. Ross  <https://orcid.org/0000-0003-1830-6473>  
 Gregory Rudnick  <https://orcid.org/0000-0001-5851-1856>  
 Sasha Safonova  <https://orcid.org/0000-0002-2240-7421>  
 Abhijit Saha  <https://orcid.org/0000-0002-6839-4881>  
 Heidi Schweiker  <https://orcid.org/0000-0001-9580-4869>  
 David R. Silva  <https://orcid.org/0000-0002-7678-2155>  
 Suk Sien Tie  <https://orcid.org/0000-0002-5249-1353>  
 A. Katherina Vivas  <https://orcid.org/0000-0003-4341-6172>  
 Jinyi Yang  <https://orcid.org/0000-0001-5287-4242>  
 Qian Yang  <https://orcid.org/0000-0002-6893-3742>  
 Tolga Yapici  <https://orcid.org/0000-0002-5306-4804>  
 Dennis Zaritsky  <https://orcid.org/0000-0002-5177-727X>  
 Kai Zhang  <https://orcid.org/0000-0002-9808-3646>  
 Tianmeng Zhang  <https://orcid.org/0000-0002-8531-5161>  
 Rongpu Zhou  <https://orcid.org/0000-0001-5381-4372>

## References

Abareshi, B., Marshall, R., Gott, S., et al. 2016, *Proc. SPIE*, 9913, 99131O  
 Abazajian, K. N., Adelman-McCarthy, J. K., Agüeros, M. A., et al. 2009, *ApJS*, 182, 543  
 Abolfathi, B., Aguado, D. S., Aguilar, G., et al. 2018, *ApJS*, 235, 42

Aihara, H., Allende Prieto, C., An, D., et al. 2011, *ApJS*, 193, 29  
 Aihara, H., Armstrong, R., Bickerton, S., et al. 2018, *PASJ*, 70, S8  
 Alam, S., Ata, M., Bailey, S., et al. 2017, *MNRAS*, 470, 2617  
 Albert, A., Anderson, B., Bechtol, K., et al. 2017, *ApJ*, 834, 110  
 Bañados, E., Venemans, B. P., Mazzucchelli, C., et al. 2018, *Natur*, 553, 473  
 Bechtol, K., Drlica-Wagner, A., Balbinot, E., et al. 2015, *ApJ*, 807, 50  
 Becker, M. R., McKay, T. A., Koester, B., et al. 2007, *ApJ*, 669, 905  
 Bell, E. F., Zucker, D. B., Belokurov, V., et al. 2008, *ApJ*, 680, 295  
 Bernard, E. J., Ferguson, A. M. N., Schlafly, E. F., et al. 2016, *MNRAS*, 463, 1759  
 Bernstein, G. M., Armstrong, R., Plazas, A. A., et al. 2017, *PASP*, 129, 074503  
 Bertin, E. 2011, in ASP Conf. Ser. 442, *Astronomical Data Analysis Software and Systems XX*, ed. I. N. Evans et al. (San Francisco, CA: ASP), 435  
 Bertin, E., & Arnouts, S. 1996, *A&AS*, 117, 393  
 Bertin, E., Mellier, Y., Radovich, M., et al. 2002, in ASP Conf. Ser. 281, *Astronomical Data Analysis Software and Systems XI*, ed. D. A. Bohlender, D. Durand, & T. H. Handley (San Francisco, CA: ASP), 228  
 Blake, C., Brough, S., Colless, M., et al. 2011, *MNRAS*, 415, 2876  
 Bohlin, R. C., Mészáros, S., Fleming, S. W., et al. 2017, *AJ*, 153, 234  
 Burke, D. L., Rykoff, E. S., Allam, S., et al. 2018, *AJ*, 155, 41  
 Carballo-Bello, J. A., Martínez-Delgado, D., Navarrete, C., et al. 2018, *MNRAS*, 474, 683  
 Carlberg, R. G. 2009, *ApJL*, 705, L223  
 Chambers, K. C., Magnier, E. A., Metcalfe, N., et al. 2016, arXiv:1612.05560  
 Colless, M., Dalton, G., Maddox, S., et al. 2001, *MNRAS*, 328, 1039  
 Coupon, J., Arnouts, S., van Waerbeke, L., et al. 2015, *MNRAS*, 449, 1352  
 Coupon, J., Broadhurst, T., & Umetsu, K. 2013, *ApJ*, 772, 65  
 Cutri, R. M., Wright, E. L., Conrow, T., et al. 2012, *Explanatory Supplement to the WISE All-Sky Data Release Products*, Tech. rep. Rep., 1  
 Dark Energy Survey Collaboration, Abbott, T., Abdalla, F. B., et al. 2016, *MNRAS*, 460, 1270  
 Dawson, K. S., Kneib, J.-P., Percival, W. J., et al. 2016, *AJ*, 151, 44  
 Dawson, K. S., Schlegel, D. J., Ahn, C. P., et al. 2013, *AJ*, 145, 10  
 de Jong, J. T. A., Verdoes Kleijn, G. A., Boxhoorn, D. R., et al. 2015, *A&A*, 582, A62  
 DESI Collaboration, Aghamousa, A., Aguilar, J., et al. 2016a, arXiv:1611.00036  
 DESI Collaboration, Aghamousa, A., Aguilar, J., et al. 2016b, arXiv:1611.00037  
 Dey, A., Rabinowitz, D., Karcher, A., et al. 2016, *Proc. SPIE*, 9908, 99082C  
 Djorgovski, S. G., Mahabal, A., Drake, A., Graham, M., & Donalek, C. 2013, in *Planets, Stars and Stellar Systems*, ed. T. D. Oswalt & H. E. Bond (Dordrecht: Springer), 223  
 Drlica-Wagner, A., Bechtol, K., Rykoff, E. S., et al. 2015, *ApJ*, 813, 109  
 Eisenstein, D. J., Blanton, M., Zehavi, I., et al. 2005, *ApJ*, 619, 178  
 Flaugher, B., Diehl, H. T., Honscheid, K., et al. 2015, *AJ*, 150, 150  
 Gaia Collaboration, Prusti, T., de Bruijne, J. H. J., et al. 2016a, *A&A*, 595, A1  
 Gaia Collaboration, Brown, A. G. A., Vallenari, A., et al. 2016b, *A&A*, 595, A2  
 Grillmair, C. J. 2009, *ApJ*, 693, 1118  
 Groom, D. 2004, *ASSL*, 300, 81  
 Guzzo, L., Pierleoni, M., Meneux, B., et al. 2008, *Natur*, 451, 541  
 Helmi, A., Cooper, A. P., White, S. D. M., et al. 2011, *ApJL*, 733, L7  
 Hogg, D. W., Blanton, M. R., Eisenstein, D. J., et al. 2003, *ApJL*, 585, L5  
 Hood, C. E., Kannappan, S. J., Stark, D. V., et al. 2018, *ApJ*, 857, 144  
 Ivezić, Ž., Sesar, B., Jurić, M., et al. 2008, *ApJ*, 684, 287  
 Jiang, T., Hogg, D. W., & Blanton, M. R. 2012, *ApJ*, 759, 140  
 Jurić, M., Ivezić, Ž., Brooks, A., et al. 2008, *ApJ*, 673, 864  
 Laevens, B. P. M., Martin, N. F., Sesar, B., et al. 2014, *ApJL*, 786, L3  
 Lam, T. Y., Nishimichi, T., Schmidt, F., & Takada, M. 2012, *PhRvL*, 109, 051301  
 Lan, T.-W., Ménard, B., & Zhu, G. 2014, *ApJ*, 795, 31  
 Lang, D. 2014, *AJ*, 147, 108  
 Lang, D., Hogg, D. W., & Mykytyn, D. 2016a, *The Tractor: Probabilistic Astronomical Source Detection and Measurement*, Astrophysics Source Code Library, ascl:1604.008  
 Lang, D., Hogg, D. W., & Schlegel, D. J. 2016b, *AJ*, 151, 36  
 Li, T. S., DePoy, D. L., Marshall, J. L., et al. 2016, *AJ*, 151, 157  
 Lilly, S. J., Le Fèvre, O., Renzini, A., et al. 2007, *ApJS*, 172, 70  
 Mainzer, A., Bauer, J., Cutri, R. M., et al. 2014, *ApJ*, 792, 30  
 Mandelbaum, R., Wang, W., Zu, Y., et al. 2016, *MNRAS*, 457, 3200  
 Masjedi, M., Hogg, D. W., Cool, R. J., et al. 2006, *ApJ*, 644, 54  
 Meisner, A. M., Lang, D., & Schlegel, D. J. 2017a, *AJ*, 154, 161  
 Meisner, A. M., Lang, D., & Schlegel, D. J. 2017b, *AJ*, 153, 38  
 Meisner, A. M., Lang, D., & Schlegel, D. J. 2018a, *AJ*, 156, 69



- Meisner, A. M., Lang, D. A., & Schlegel, D. J. 2018b, *RNAAS*, 2, 202
- Ménard, B., Scranton, R., Schmidt, S., et al. 2013, arXiv:1303.4722
- Myers, A. D., Palanque-Delabrouille, N., Prakash, A., et al. 2015, *ApJS*, 221, 27
- Myers, A. D., White, M., & Ball, N. M. 2009, *MNRAS*, 399, 2279
- Newberg, H. J., Yanny, B., Rockosi, C., et al. 2002, *ApJ*, 569, 245
- Newman, J. A. 2008, *ApJ*, 684, 88
- Odenkirchen, M., Grebel, E. K., Dehnen, W., et al. 2003, *AJ*, 126, 2385
- Oke, J. B., & Gunn, J. E. 1983, *ApJ*, 266, 713
- Padmanabhan, N., Schlegel, D. J., Finkbeiner, D. P., et al. 2008, *ApJ*, 674, 1217
- Pezzotta, A., de la Torre, S., Bel, J., et al. 2017, *A&A*, 604, A33
- Plazas, A. A., Bernstein, G. M., & Sheldon, E. S. 2014, *PASP*, 126, 750
- Prakash, A., Licquia, T. C., Newman, J. A., et al. 2016, *ApJS*, 224, 34
- Raichoor, A., Comparat, J., Delubac, T., et al. 2017, *MNRAS*, 471, 3955
- Reil, K., Lewis, P., Schindler, R., & Zhang, Z. 2014, *Proc. SPIE*, 9149, 91490U
- Ruhland, C., Bell, E. F., Rix, H.-W., & Xue, X.-X. 2011, *ApJ*, 731, 119
- Rykoff, E. S., Rozo, E., Busha, M. T., et al. 2014, *ApJ*, 785, 104
- Rykoff, E. S., Rozo, E., Hollowood, D., et al. 2016, *ApJS*, 224, 1
- Sanders, D. B., Salvato, M., Aussel, H., et al. 2007, *ApJS*, 172, 86
- Schlafly, E. F., Finkbeiner, D. P., Jurić, M., et al. 2012, *ApJ*, 756, 158
- Schlafly, E. F., Green, G. M., Lang, D., et al. 2018, *ApJS*, 234, 39
- Schmidt, S. J., Ménard, B., Scranton, R., Morrison, C., & McBride, C. K. 2013, *MNRAS*, 431, 3307
- Scott, D., Pierfederici, F., Swaters, R. A., Thomas, B., & Valdes, F. G. 2007, in ASP Conf. Ser. 376, *Astronomical Data Analysis Software and Systems XVI*, ed. R. A. Shaw, F. Hill, & D. J. Bell (San Francisco, CA: ASP), 265
- Shanks, T., Metcalfe, N., Chehade, B., et al. 2015, *MNRAS*, 451, 4238
- Shipp, N., Drlica-Wagner, A., Balbinot, E., et al. 2018, *ApJ*, 862, 114
- Skrutskie, M. F., Cutri, R. M., Stiening, R., et al. 2006, *AJ*, 131, 1163
- Tal, T., van Dokkum, P. G., Franx, M., et al. 2013, *ApJ*, 769, 31
- The Dark Energy Survey Collaboration 2005, arXiv:astro-ph/0510346
- Tody, D. 1986, *Proc. SPIE*, 627, 733
- Valdes, F., Gruendl, R., & DES Project 2014, in ASP Conf. Ser. 485, *Astronomical Data Analysis Software and Systems XXIII*, ed. N. Manset & P. Forshay (San Francisco, CA: ASP), 379
- Valdes, F. G. 2001, in ASP Conf. Ser. 238, *Astronomical Data Analysis Software and Systems X*, ed. F. R. Harnden, Jr., F. A. Primini, & H. E. Payne (San Francisco, CA: ASP), 507
- Watson, D. F., Berlind, A. A., & Zentner, A. R. 2012, *ApJ*, 754, 90
- Williams, G. G., Olszewski, E., Lesser, M. P., & Burge, J. H. 2004, *Proc. SPIE*, 5492, 787
- Willman, B., Dalcanton, J. J., Martinez-Delgado, D., et al. 2005, *ApJL*, 626, L85
- Wright, E. L., Eisenhardt, P. R. M., Mainzer, A. K., et al. 2010, *AJ*, 140, 1868
- Yanny, B., Newberg, H. J., Grebel, E. K., et al. 2003, *ApJ*, 588, 824
- Yoon, J. H., Johnston, K. V., & Hogg, D. W. 2011, *ApJ*, 731, 58
- York, D. G., Adelman, J., Anderson, J. E., Jr., et al. 2000, *AJ*, 120, 1579
- Zheng, Z., Zehavi, I., Eisenstein, D. J., Weinberg, D. H., & Jing, Y. P. 2009, *ApJ*, 707, 554
- Zhu, G., & Ménard, B. 2013, *ApJ*, 770, 130
- Zou, H., Zhang, T., Zhou, Z., et al. 2017a, *AJ*, 153, 276
- Zou, H., Zhang, T., Zhou, Z., et al. 2018, *ApJS*, 237, 37
- Zou, H., Zhou, X., Fan, X., et al. 2017b, *PASP*, 129, 064101
- Zu, Y., Weinberg, D. H., Jennings, E., Li, B., & Wyman, M. 2014, *MNRAS*, 445, 1885