

Pancreatic Hepatoid Carcinoma: A Review of the Literature

Giovanni Marchegiani^a Haytham Gareer^a Alice Parisi^b Paola Capelli^b
Claudio Bassi^a Roberto Salvia^a

Departments of ^aSurgery and ^bPathology, Verona University Hospital, Verona, Italy

Key Words

Ectopic liver cancer · Pancreatic hepatoid carcinoma · Rare pancreatic neoplasm

Abstract

Background: Hepatoid carcinomas (HCs) are extrahepatic neoplasms exhibiting features of hepatocellular tumors in terms of morphology and immunohistochemistry. They have been described in several organs, most notably in the stomach and ovary. They can present in pure forms or in association with other morphological aspects, such as endocrine tumors or ductal adenocarcinomas. The aim of this review is to describe aspects of hepatoid adenocarcinoma of the pancreas with regard to epidemiology, diagnosis, and treatment. **Methods:** The PubMed database was searched for publications addressing hepatoid adenocarcinoma of the pancreas. We have searched for articles including the following keywords: 'pancreatic hepatoid carcinoma', 'ectopic liver cancer' and 'rare pancreas neoplasm' published to date. As references, we used case reports and review articles. **Results:** Pancreatic forms of HCs are extremely uncommon: only 22 cases have been reported. **Conclusions:** The possibility of an HC of the pancreas should be considered in the differential diagnosis of an uncommon pathological mass of

the pancreas. Treatment seems to be related to the association with other neoplasms, tumor extension at the time of diagnosis and the possibility to perform a radical resection. The common embryologic origin of the pancreas and liver, together with peculiar environmental factors, may explain the development of pancreatic HCs. © 2013 S. Karger AG, Basel

Introduction

Hepatoid carcinoma (HC) is a neoplasm exhibiting features of hepatocellular carcinoma (HCC) in terms of morphology and immunohistochemistry which grows outside the liver [1–3]. The first case was reported by Ishikura et al. [4] and concerned HC in the stomach. Since then, its occurrence has been described in gonadal yolk sac as well as in several non-germ cell origin primary sites, including esophagus, ampulla of Vater, colon, lung, gallbladder, adrenal gland, kidney, urinary bladder, ovary, uterus, vagina, and testicle [1–16]. Microscopic 'stigmata' of those origins are typically detectable in tumor focal areas.

HC, much like HCC, is often associated with elevated serum α -fetoprotein (AFP) levels and usually presents in

elderly individuals [16]. Since the liver, pancreas and stomach all originate from the primitive embryonic foregut, it is likely that these organs retain a latent ability to produce AFP, or that the tumor cells differentiate into hepatic cells and intestinal mucosal cells. Recently, the absence in serum of the protein induced by vitamin K or elevated antagonist II (PIVKA-II), which is used for early diagnosis of HCC, has been reported with HC [16, 17].

These tumors can present in pure forms or in association with other morphological aspects, such as endocrine tumors or ductal adenocarcinomas. This hepatoid differentiation within the pancreas can be explained by the common embryologic foregut derivation of the pancreas and liver. In this report, we describe the clinical, cytologic and histopathologic features of a pure pancreatic HC. We reviewed published literature on HC of the pancreas to interpret diagnostic, treatment and prognostic issues, as well as possible etiological hypotheses of this rare disease.

Etiology and Cell Origin

Ectopic liver tissue is reported in several sites, such as the gallbladder, hepatic ligaments, omentum, retroperitoneum and thorax [18]. This suggests HC to be a tumor originating from ectopic pancreatic liver tissue [19, 20]. However, controversy still surrounds the etiology and the pathogenesis of HC of the pancreas. Early or late development of abnormalities on ectopic liver tissue may indeed occur, even though pancreatic liver tissue has never been described in the literature. Not even the 2 published papers supporting such hypothesis reported any ectopic normal liver tissue nearby the cancer area [19, 20]. Pancreas-to-liver ‘transdifferentiation’ has been assessed on animal models since 1991 [21], with many authors focusing on the histogenic mechanism of hepatocyte differentiation in the pancreas of the rat model following copper depletion-repletion [22]. Complete hepatocyte function following the switch has also been described as the pancreas of adult mice contains hepatocyte progenitor cells capable of significant therapeutic liver reconstruction [22]. Several authors claim this would be the key event of the pancreatic development of HCs [23–26]. Another pathogenetic mechanism relies on the common origin of pancreatic and liver tissue from the posterior foregut endodermic cells, keeping at a certain point distinct differentiation pathways. Pancreatic multipotent cells normally suppress hepatocytic differentiation genes, which could be activated during tumor genesis or for particular environmental con-

ditions [23]. As previously suggested by other authors, the presence of a common multipotent/stem cell in the coexistence of peculiar environmental conditions (e.g. production-specific cytokines by the intrapancreatic common bile duct) may be implicated in the hepatoid differentiation of pancreatic tumors. In this meaning, pancreatic HCs may be seen as a possibility in the wide spectrum of pancreatic pluriphenotypical differentiation.

Discussion and Review of the Literature

Epidemiology

The reported incidence of ectopic liver tissue in different organs ranges between 0.24 and 0.47% [18, 27]; however, the true incidence of HC of the pancreas is still not known since presentation is often silent until symptoms of compression, pain or bleeding occur, and it usually has an aggressive course [19, 49].

Patient Characteristics and Clinical Presentation

Table 1 summarizes patient characteristics and main features at presentation in hepatoid adenocarcinoma, as reported in the literature. Patients’ mean age was 52.9 years (range 21–80), about 15 years less than the age of patients with pancreatic ductal adenocarcinoma. Eight patients were female (36.4%), while 14 were male (63.6%).

Generally, HC is associated with a very poor prognosis due to its aggressive course [34, 36]. The diagnosis is typically made incidentally, since lesions usually remain silent until symptoms of compression, pain or bleeding occur [19].

Table 2 outlines features characterizing the tumor in reported literature. There was no apparent predilection for location in the pancreas, and sizes ranged from 0.5 to 11 cm in the greatest dimension of tumor. Most cases were asymptomatic or incidentally discovered (31.3%), the most common presenting symptoms were pain, either back or epigastric (27.3%), followed by jaundice (18.2%), nausea/vomiting (18.2%) and weight loss (13.6%). Such data are comparable to those related to other pancreatic/periapillary malignant tumors. Of particular interest, 2 patients (9.1%) complained of clinical symptoms referable to a concomitant pancreatic neuroendocrine tumor (1 insulinoma and 1 glucagonoma, respectively), underlining the possible association of pancreatic HC with other pancreatic neoplasms. Elevated AFP serum levels might be present at time of diagnosis in all HCs, despite tumor primary site [7, 8, 11, 12, 28–33, 34]. Our review of pancreatic forms indeed reports a rate of 54.5% (12 out of

Table 1. Patient characteristics and main features at presentation of hepatoid adenocarcinoma of the pancreas in the literature

Case	First author	Ref.	Year	Age	Sex	Presentation	Serum AFP levels at diagnosis	CEA	Location (pancreas)	Size, cm	Other component
1	Hruban	36	1987	53	F	subcutaneous fat necrosis	normal	N/A	tail	1	acinar
2	Gardiner	2	1992	61	F	jaundice and fatigue	elevated	elevated	head	N/A	ductal adenocarcinoma
3	Tanno	23	1999	65	F	epigastric and back pain, anorexia, weight loss	elevated	elevated	body-tail	6×5	ductal adenocarcinoma
4	Yano	34	1999	57	M	jaundice, epigastric pain, vomiting and fever	elevated	elevated	head	9×7×5	ductal adenocarcinoma
5	Paner	33	2000	57	M	vomiting, diarrhea, weight loss, skin rash	elevated	elevated	tail	6×4×3.5	glucagonoma
6	Paner	33	2000	28	M	abdominal and back pain	elevated	elevated	multifocal	8×8×6	ductal adenocarcinoma
7	Lam	30	2001	64	F	hypoglycemia and recurrent episodes of nocturnal sweating	elevated	N/A	tail	7×4×4	insulinoma
8	Cuilliere	46	2002	70	M	incidental (asymptomatic)	normal	N/A	body	3	serous microcystic adenoma
9	Hughes	11	2004	51	M	gastrointestinal bleeding	normal	normal	tail	6×5.5×5.5	no
10	Matsueda	24	2006	49	F	weight loss	elevated	normal	widespread	N/A	no
11	Shih	43	2006	32	M	incidental (asymptomatic)	normal	elevated	tail	7	no
12	Oh	25	2006	21	M	incidental (asymptomatic)	elevated	N/A	head	3×3×3	neuroendocrine
13	Hameed	28	2007	41	F	jaundice, abdominal pain	elevated	elevated	head	4.5×4×3	endocrine
14	Cardona	19	2007	58	M	back and flank pain	normal	N/A	body	3.3×2.5×2.5	no
15	Kubota	20	2007	56	M	diabetes	N/A	N/A	tail	6.3×6.2	no
16	Liu	44	2007	80	M	nausea, diarrhea, weight loss	normal	N/A	head	5×5×6	no
17	Jung	26	2010	46	M	dyspepsia	elevated	elevated	head	8×9	neuroendocrine
18	Petrelli	47	2011	37	M	incidental (abdominal mass)	N/A	normal	body	11	no
20	Kai	49	2012	79	F	incidental (asymptomatic)	elevated	elevated	tail	7	no
21	Kelly	48	2012	53	F	severe epigastric pain	elevated	N/A	body-tail	N/A	no
22	Huang	45	2012	52	M	incidental (asymptomatic)	N/A	elevated	head	0.5 nodule	neuroendocrine

CEA = Carcinoembryonic antigen; N/A = not available.

22 cases), bearing in mind that 3 papers did not report or did not assess AFP levels of their cases. However, AFP is not a specific marker: it can be elevated in acinar as well as in ductal, neuroendocrine and undifferentiated carcinomas of the pancreas [35] and, at the same time, it could be normal in the presence of an HCC. AFP serum level might therefore be more useful during the follow-up of surgically resected producing tumors. The radiological appearance of a diagnosed pancreatic HC is shown in figure 1, with an abdominal MRI revealing a 10-cm mass in the pancreatic head.

PIVKA-II, a tumor marker for HCC which was first described by Liebman in 1984, has become increasingly popular as a more specific and diagnostic serum marker than AFP [37–41]. Very rarely do malignant tumors other than HCC produce PIVKA-II, and it was discovered to be elevated in the case of HC of the pancreas [24]. Other tumor markers used for diagnosis include immunoreactivity with polyclonal antibodies against CEA, hepatocyte-specific Hep-Par1 antibody and albumin mRNA detected by in situ hybridization [28].

Table 2. Outline of the main features characterizing presentation in 22 adult patients as reported in the literature

Symptoms	
Incidental	31.8%
Pain (abdominal/back)	27.3%
Abdominal symptoms	18.2%
Jaundice	18.2%
Weight loss	13.6%
Site	
Head	31.8%
Tail	31.8%
Body	18.2%
Diffuse or multifocal	13.6%
Size range, cm	0.5–11
Age, years	
Range	21–80
Average	52.3
Gender	
Female:male	8:14
Metastatic	45.4%
Elevated AFP	57.1%
Elevated CEA	47.6%

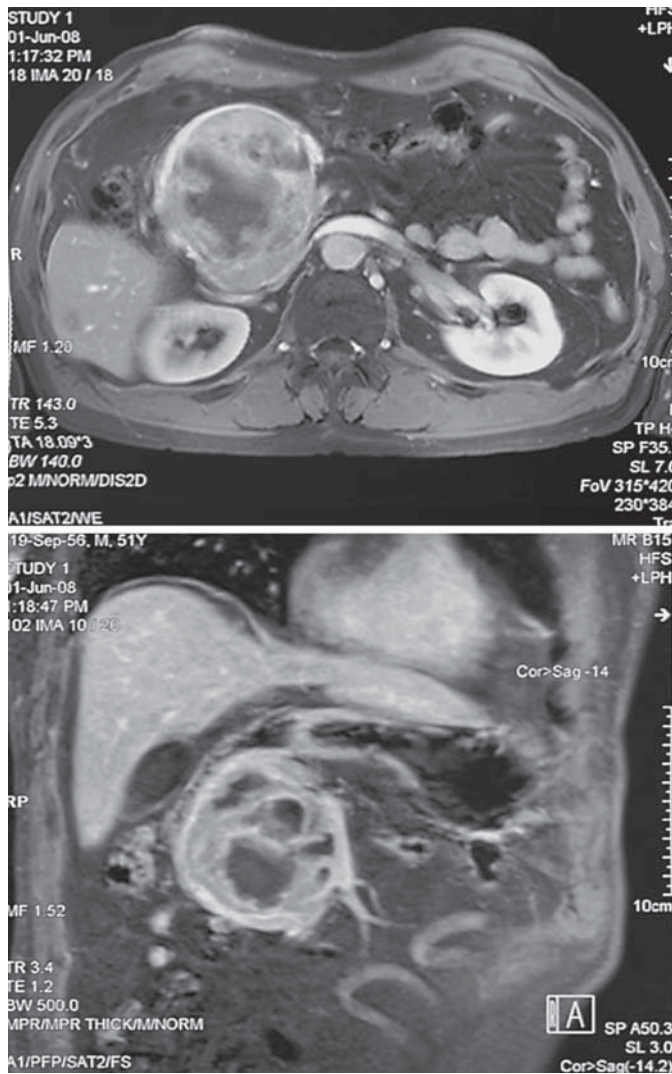


Fig. 1. Abdominal MRI of a well-delineated solid mass 10 cm in diameter involving the body of the pancreas.

Histological Features

In the literature, there were 10 reported cases of ‘pure’ HC [11, 19, 20, 24, 26, 34, 43, 44, 47–49] and 11 of HC associated with another component. The admixed were as follows: 4 cases with neuroendocrine carcinoma [25, 26, 30, 45], 1 case associated with malignant glucagonoma [33], 1 with malignant insulinoma [28], 1 case with acinar [36] and 4 with ductal adenocarcinoma [33]. Cuilliere et al. [46] documented the only reported case of a benign hepatocellular neoplasm arising in the pancreas, which was an encapsulated solid adenoma in the pancreas that showed exclusively hepatocellular differentiation. The tumor was considered benign due to lack of mitoses, nu-

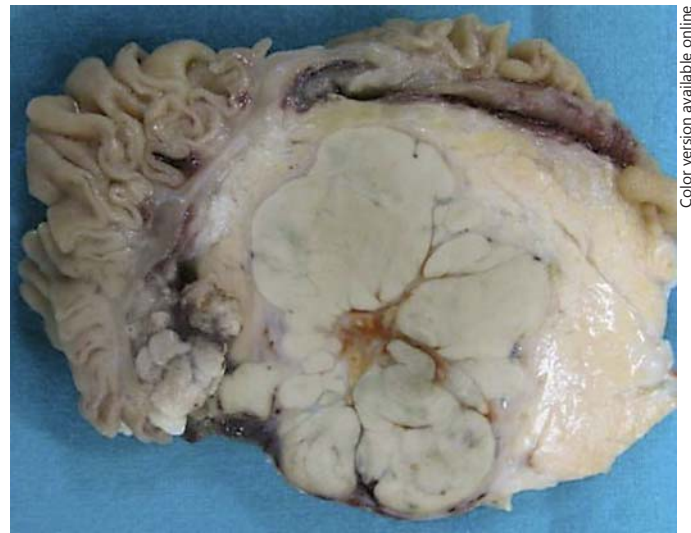


Fig. 2. Sectioning of resected specimen showing a 5-cm pseudolobulated greenish mass of the pancreatic head.

clear atypia, and vascular invasion. In cases where other components are associated with HC, the histological and immunohistochemical patterns of expression of these tumors would also be identified.

Gross examination of the tumor could present a lobulated gray-greenish lesion, which is a typical aspect of HCC. Histological diagnosis of a pure form of HC may be straightforward. Figure 2 shows a sectioning of resected specimen showing a 5-cm pseudolobulated greenish mass of a pancreatic hepatoid adenocarcinoma in the head of the organ. Thickened cell plates with round nuclei and eosinophilic cytoplasm in a predominantly trabecular pattern (as well as aspect of lymphatic-vascular invasion) represented the typical microscopic appearance of the tumor. The more frequent immunohistochemical stains used for detection of HC are cytoplasmic positive reaction of cells that strongly express AFP, hepatocyte antigen, cytokeratin, and positive proteins include keratin/cytokeratin, cell adhesion molecule 5.2/AE, albumin, ACT, prealbumin, α_1 -antitrypsin protease inhibitor, and transferrin. This characteristic molecular marker expression pattern suggests HC [26].

The evidence of medium to large polygonal cells, eosinophilic to clear cytoplasm with vesicular nuclei and prominent nucleoli growing in a perisinusoidal pattern, along with the demonstration of the presence of bile and an immunohistochemical profile characteristic of HCC represent pathognomonic features [42]. Figure 3 shows the hematoxylin and eosin microscopic image of a cyto-

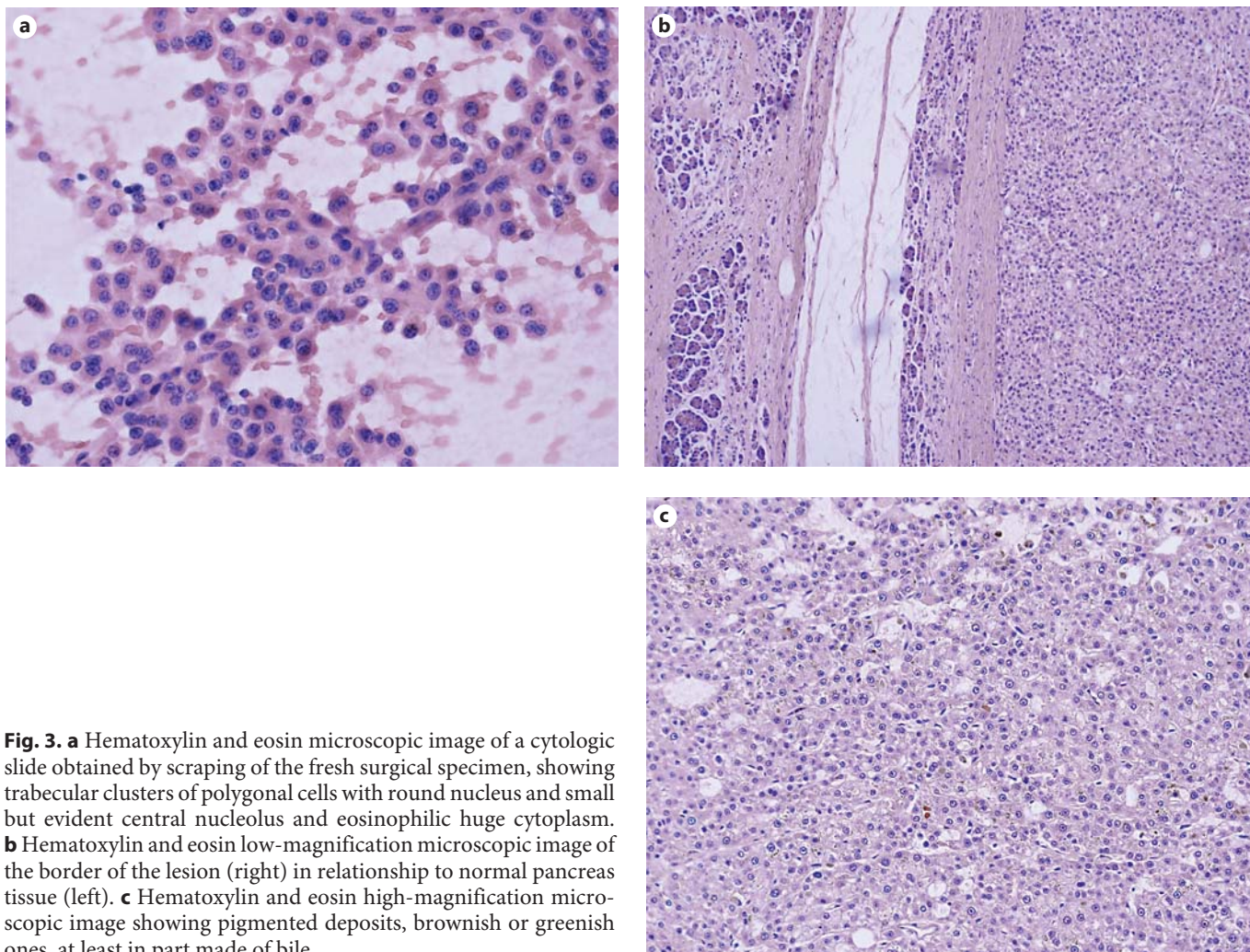


Fig. 3. **a** Hematoxylin and eosin microscopic image of a cytologic slide obtained by scraping of the fresh surgical specimen, showing trabecular clusters of polygonal cells with round nucleus and small but evident central nucleolus and eosinophilic huge cytoplasm. **b** Hematoxylin and eosin low-magnification microscopic image of the border of the lesion (right) in relationship to normal pancreas tissue (left). **c** Hematoxylin and eosin high-magnification microscopic image showing pigmented deposits, brownish or greenish ones, at least in part made of bile.

logic slide obtained by scraping of the fresh surgical specimen, showing the histologic appearance of the lesion. Figure 4 shows the immunohistochemistry with immunolabeling for anti-hepatocyte, for CD56, for CD10 and negative immunostaining for synaptophysin.

Differential Diagnosis

The histologic differential diagnosis of HC of the pancreas depends mostly on the degree of hepatoid differentiation, and the amount of the non-hepatoid component, if any. When diagnosing primary pancreatic HC, it is important to exclude metastatic HCC and ectopic HCC by clinical and pathological examination.

No standardized criteria for diagnosing HCs have been established, but morphological and immunohistochemical similarity to HCC is required. Morphological

features may suggest hepatocellular differentiation, and bile production is confirmatory, but is usually only seen in well-differentiated tumors. The incidence of HCC spreading to the pancreas is only 2.7–5.6%, and the metastasis is usually a late finding [39, 42]; however, metastatic HCC must be considered. Long-term follow-up is needed to exclude the possibility that the pancreatic tumor represents a metastasis from the liver.

HC and HCC share numerous clinicopathological features, such as morphology, elevated serum AFP and AFP-positive staining on histology, canalicular-pattern CEA, and α_1 -antitrypsin. This makes differential diagnosis particularly challenging with an unknown primary tumor. Differentiating between the two can be made essentially by immunohistochemistry, with an expressed profile of CK [47].

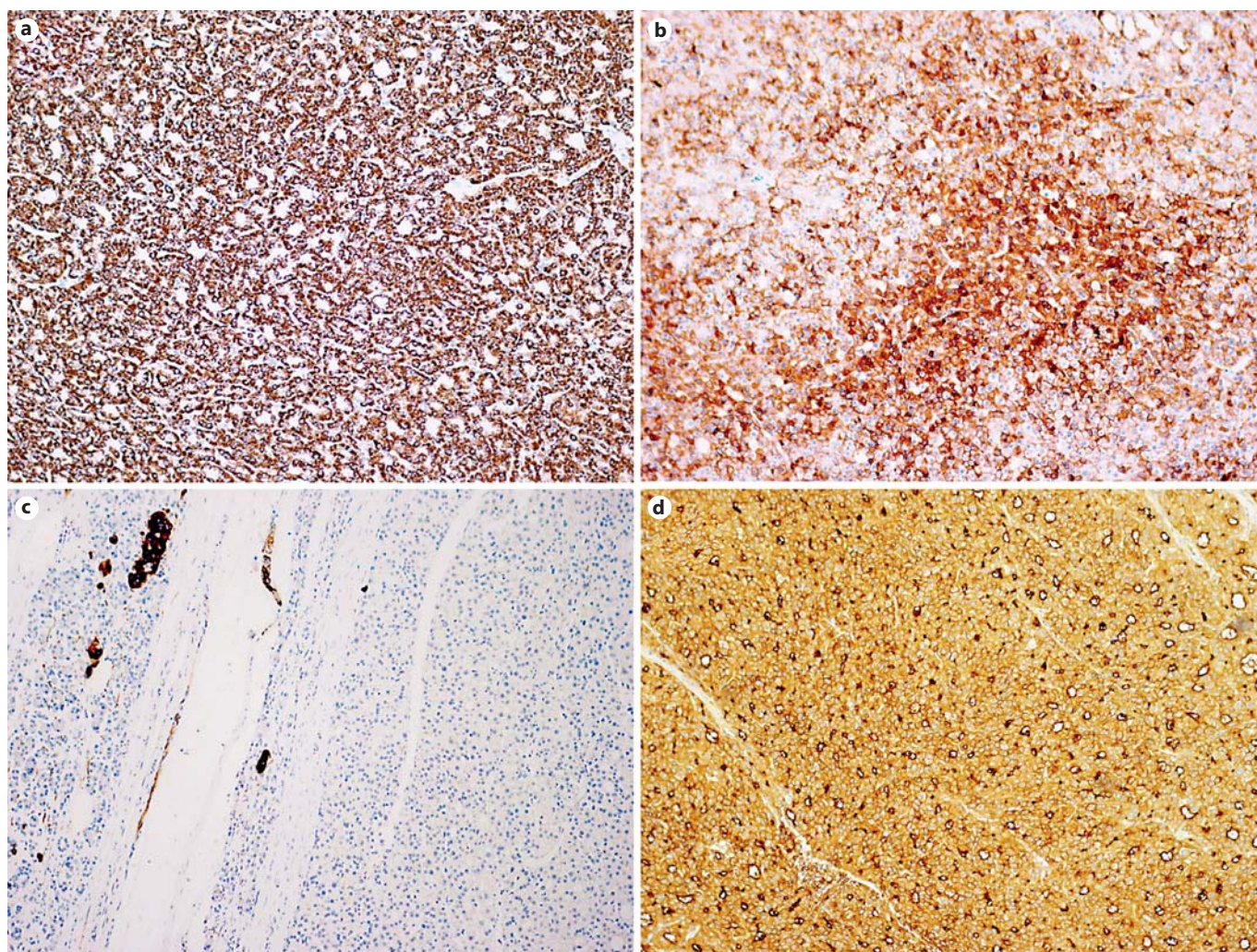


Fig. 4. **a** Immunolabeling for anti-hepatocytes. **b** Immunolabeling for CD56. **c** Immunolabeling for CD10. **d** Negative immunostaining for synaptophysin.

If bile production cannot be identified histologically, then the differential diagnosis would also include other pancreatic tumors that have large eosinophilic tumor cells, such as intraductal oncocytic papillary neoplasms, pancreatoblastoma, and acinar cell carcinoma [24].

Treatment Modalities and Long-Term Prognosis

The treatment associated with the best disease-free survival remains to be radical surgical resection [11, 19, 20, 25, 26, 30, 33, 43, 45–49]. Of the 22 adult cases reported in the literature, 10 (46%) had distant metastases at presentation, 16 (87%) underwent surgery and 9 (41%) died of the disease [2, 23, 28, 33, 34, 47, 48]. The mean survival rate of patients that died of disease was 18 months.

The role of adjuvant therapy after surgery resection is still unclear and is based on few experiences as shown in table 3. Although some authors have advocated adjuvant chemotherapy because of the metastatic potential of the tumor [28], others have indicated no discernible events [24, 28, 33]. A certain degree of response to chemotherapy with long-term survival was reported in locally unresectable, metastatic or recurrent disease [30, 33]. Therefore, aggressive treatment seems warranted even in the case of locally advanced diseases, and resection of metastases may be considered as well [24]. Due to its rarity, the natural history and prognosis of the disease cannot be accurately predicted. The longest period achieved without any adjuvant therapy was 48 months [43]. The longest

Table 3. Therapy and outcome of hepatoid adenocarcinoma of the pancreas as reported in the literature

Case	First author	Ref.	Year	Metastasis	Therapy	Follow-up, months	Outcome
1	Hruban	36	1987	liver	N/A	2.75	DOD
2	Gardiner	2	1992	no	N/A	N/A	N/A
3	Tanno	23	1999	liver	N/A	6	DOD
4	Yano	34	1999	liver	N/A	3	DOD
5	Paner	33	2000	liver	distal two thirds pancreatectomy with splenectomy and biopsy of a liver nodule → course of marked disease remissions and exacerbations → intravenous di-amino triazeno-imidazole carboxamide, 400 mg for 5 days every 6 weeks → clinical improvements and decreased circulating glucagon → patient survived for 8.5 years and died of a widespread hepatoid islet cell carcinoma	102	DOD
6	Paner	33	2000	widespread	unresectable tumor on exploration → chemotherapy regimens provided no discernible effect	14	DOD
7	Lam	30	2001	liver	distal pancreatectomy with splenectomy → TA chemoembolization of liver mets → six courses 5 FU + streptozocin alternating with adriamycin and dacarbazine → tumor regression of >50% and normoglycemic 16 months after treatment → liver metastases progressed + recurrent hypoglycemia and hyperinsulinemia	22	DOD
8	Cuilliere	46	2002	no	a distal two thirds pancreatectomy with splenectomy	12	ANED
9	Hughes	11	2004	no	conventional Whipple's operation	14	ANED
10	Shih	43	2006	no	distal pancreatectomy and splenectomy → gemcitabine 600 or 800 mg/body weekly or biweekly for 26 months → right lobectomy of the liver at 39 months → increase in tumor size + elevated AFP	18	ANED
11	Matsueda	24	2006	liver (at 12 months FU)	total pancreatectomy	48	alive
12	Oh	25	2006	no	pylorus-preserving Whipple's operation	7	ANED
13	Hameed	28	2007	liver	pancreatoduodenectomy → several cycles of cisplatin and irinotecan for 7 months → abdominal CT showed retroperitoneal lymphadenopathy + liver masses on FNA proved metastatic disease at 12 months follow-up → additional courses of systemic chemotherapy and chemoembolization of liver lesions → disease progressed with deteriorated general condition	26	DOD
14	Cardona	19	2007	no	distal pancreatectomy and splenectomy	15	ANED
15	Kubota	20	2007	no	distal pancreatectomy and splenectomy	36	ANED
16	Liu	44	2007	widespread	a simple tumorectomy and partial transverse colon resection (diffuse disease, patient believed intolerable of radical surgery because of age)	6	ANED
17	Jung	26	2010	no	Whipple operation (radical pancreaticoduodenectomy) → aggressive disease progression	4	ANED
18	Petrelli	47	2011	liver, lungs	advanced at presentation → patient refused classical chemotherapy but agreed to therapy with sorafenib (dosage of 400 mg was administered b.i.d. albumin and diuretics)	12	DOD
20	Kai	49	2012	no	distal pancreatectomy and splenectomy combined with resection of the left adrenal gland and total gastrectomy (penetrating tumor) → liver metastases were detected at 1 month after operation	2	DOD
21	Kelly	48	2012	no	distal pancreatectomy and splenectomy → residual tumor at 3 months → completion of pancreatectomy → adjuvant gemcitabine and carboplatin chemotherapy → developed liver metastases	22	alive
22	Huang	45	2012	no	pylorus-preserving Whipple's operation → oral sunitinib	16	ANED

ANED = Alive, no evidence of disease; DOD = died of disease; N/A = not available.

disease-free interval after resection reported in the literature is 102 months with adjuvant chemotherapy [33]. This suggests chemotherapy may have a role in recurrent, residual unresectable and metastatic disease, but data are limited.

So far, the limited data suggest that around 50% of adult patients will die of this disease within 3 years from initial diagnosis. Owing to its rarity, the treatment approach is far from being standardized. It is suggested therefore that surgical resection is the treatment of choice

whenever possible, and complete resection of the tumor appears to be the best option; however, long-term follow-up is warranted since recurrence seems common.

Survival and Outcome

Pancreatic forms of HC are extremely uncommon, with 22 cases [2, 11, 19, 20, 23–26, 28, 30, 33, 34, 43, 44–49] being reported at the time of writing this review. Literature review shows divergent results in terms of survival. Thirteen reports have long-term follow-up (over 1

year) [19, 20, 24, 28, 30, 33, 43, 46], with 1 patient disease free at 3-year postoperative follow-up [20]. Among the 22 reported cases of HC of the pancreas, 2 patients that underwent surgical resection had a good outcome; 1 patient survived for 18 months [24] and another patient died 8.5 years later. Results are shown in table 3.

Table 3 summarizes therapy and related outcome of adult pancreatic hepatoid adenocarcinoma. Patients presenting with metastatic HCs at the time of diagnosis showed the typical pattern of liver involvement from upper gastrointestinal tract malignancies, with a 10.5 months median of overall survival (range 1–102). Petrelli et al. [47] reported a case of a 37-year-old patient having a pancreatic mass and multiple liver nodules and treated with multi-target tyrosine kinase inhibitor sorafenib. Off-label chemotherapy resulted in 7 months of progression-free survival. The patient eventually died of disease 1 year after the diagnosis. Although evidence is limited, one may speculate that pancreatic HC shows the typical features of an aggressive malignant upper gastrointestinal tumor [47].

With regard to pure forms, the one reported by Yano et al. [34] had the worst outcome after radical surgery (5 months). Such outcome may be correlated with the extension of the neoplasm at the time of diagnosis and, in particular, with the reported massive vascular invasion. On the opposite side of the spectrum, Cuilliere et al. [46] report a good outcome after excision of a small, incidentally discovered and exempted from vascular invasion tumor (at 12 months after surgical resection, the patient is alive and disease free). Long-term outcome of HC appears unclear due to its rarity and possible heterogeneity. In the case of a double component, a concomitant ductal adenocarcinoma or a poorly differentiated endocrine tumor will reasonably affect the prognosis, more than the hepatoid component. Pure forms represent on the other hand tricky entities that should be considered on a case-by-case basis.

With regard to chemotherapeutic agents, fluorouracil can be used to provide some symptom control, and gemcitabine has proved useful as a palliative agent in patients with advanced pancreatic cancer. Doxorubicin-based regimens have the greatest efficacy but little impact on overall survival in HCC, indicating its minimal responsiveness to systemic chemotherapy. Likewise, as chemotherapeutic agents have limited effectiveness against tumors of the pancreas or liver, no standard therapy exists for treating hepatoid tumors [47].

Conclusion

Pancreatic HC is an extremely uncommon neoplasm. Preoperative diagnosis is challenging since diagnosis depends mainly on specific pathological findings, even with appropriate imaging and cytological examination. This neoplasm can share microscopic features with other more common pancreatic tumors, such as neuroendocrine tumors. Both the surgeon and pathologist should consider this entity in differential diagnosis of ‘unusual’ mass forming pancreatic tumors. Biological behavior of pure forms seems to be more indolent in comparison with heterogeneous tumors. Owing to its rarity, the treatment approach is far from being standardized; however, surgical resection is the treatment of choice whenever possible. Surgical excision may be associated with good long-term results, but further studies and longer follow-up are needed to correctly assess prognostic features. While complete resection of the tumor appears to be the best option, chemotherapy and radiotherapy may have a role in recurrent, residual unresectable and metastatic disease, but data are limited.

Disclosure Statements

The authors declare that they have no conflicts of interest.

References

- 1 Aoyama T, Mizuno T, Andoh K, Takagi T, Mizuno T, Eimoto T: alpha-Fetoprotein-producing (hepatoid) carcinoma of the fallopian tube. *Gynecol Oncol* 1996;63:261–266.
- 2 Gardiner GW, Lajoie G, Keith R: Hepatoid adenocarcinoma of the papilla of Vater. *Histopathology* 1992;20:541–544.
- 3 Hiroshima K, Iyoda A, Toyozaki T, Haga Y, Baba M, Fujisawa T, et al: Alpha-fetoprotein-producing lung carcinoma: report of three cases. *Pathol Int* 2002;52:46–53.
- 4 Ishikura H, Ishiguro T, Enatsu C, Fujii H, Kakuta Y, Kanda M, et al: Hepatoid adenocarcinoma of the renal pelvis producing alpha-fetoprotein of hepatic type and bile pigment. *Cancer* 1991;67:3051–3056.
- 5 Lopez-Beltran A, Luque RJ, Quintero A, Requena MJ, Montironi R: Hepatoid adenocarcinoma of the urinary bladder. *Virchows Arch* 2003;442:381–387.
- 6 Nakashima H, Nagafuchi K, Satoh H, Takeda K, Yamasaki T, Yonemasu H, et al: Hepatoid adenocarcinoma of the gallbladder. *J Hepatobiliary Pancreat Surg* 2000;7:226–230.

- 7 Shintaku M, Kariya M, Shime H, Ishikura H: Adenocarcinoma of the uterine cervix with choriocarcinomatous and hepatoid differentiation: report of a case. *Int J Gynecol Pathol* 2000;19:174–178.
- 8 Tanigawa H, Kida Y, Kuwao S, Uesugi H, Ojima T, Kobayashi N, et al: Hepatoid adenocarcinoma in Barrett's esophagus associated with achalasia: first case report. *Pathol Int* 2002;52:141–146.
- 9 Yachida S, Fukushima N, Nakanishi Y, Akasu T, Kitamura H, Sakamoto M, et al: Alpha-fetoprotein-producing carcinoma of the colon: report of a case and review of the literature. *Dis Colon Rectum* 2003;46:826–831.
- 10 Ishikura H, Fukasawa Y, Ogasawara K, Natori T, Tsukada Y, Aizawa M: An AFP-producing gastric carcinoma with features of hepatic differentiation. A case report. *Cancer* 1985;56:840–848.
- 11 Hughes K, Kelty S, Martin R: Hepatoid carcinoma of the pancreas. *Am Surg* 2004;70:1030–1033.
- 12 Ishikura H, Kirimoto K, Shamoto M, Miyamoto Y, Yamagiwa H, Itoh T, et al: Hepatoid adenocarcinomas of the stomach. An analysis of seven cases. *Cancer* 1986;58:119–126.
- 13 Nagai E, Ueyama T, Yao T, Tsuneyoshi M: Hepatoid adenocarcinoma of the stomach. A clinicopathologic and immunohistochemical analysis. *Cancer* 1993;72:1827–1835.
- 14 Pitman MB, Triratanachai S, Young RH, Oliva E: Hepatocyte paraffin 1 antibody does not distinguish primary ovarian tumors with hepatoid differentiation from metastatic hepatocellular carcinoma. *Int J Gynecol Pathol* 2004;23:58–64.
- 15 Tochigi N, Kishimoto T, Supriatna Y, Nagai Y, Nikaido T, Ishikura H: Hepatoid carcinoma of the ovary: a report of three cases admixed with a common surface epithelial carcinoma. *Int J Gynecol Pathol* 2003;22:266–271.
- 16 Ulbright TM: Germ cell tumors of the gonads: a selective review emphasizing problems in differential diagnosis, newly appreciated, and controversial issues. *Mod Pathol* 2005;18(suppl 2):S61–S79.
- 17 Inoue S, Nakao A, Harada A, Nonami T, Takagi H: Clinical significance of abnormal prothrombin (DCP) in relation to post-operative survival and prognosis in patients with hepatocellular carcinoma. *Am J Gastroenterol* 1994;89:2222–2226.
- 18 Collan Y, Hakkiluoto A, Hastbacka J: Ectopic liver. *Ann Chir Gynaecol* 1978;67:27–29.
- 19 Cardona D, Grobmyer S, Crawford JM: Hepatocellular carcinoma arising from ectopic liver tissue in the pancreas. *Virchows Arch* 2007;450:225–229.
- 20 Kubota K, Kita J, Rokkaku K: Ectopic hepatocellular carcinoma arising from pancreas: a case report and review of the literature. *World J Gastroenterol* 2007;13:4270–4273.
- 21 Reddy JK, Rao MS, Yeldandi AV, Tan XD, Dwivedi RS: Pancreatic hepatocytes. An in vivo model for cell lineage pancreas of adult rat. *Dig Dis Sci* 1991;36:502–509.
- 22 Rao MS, Reddy JK: Hepatic transdifferentiation in the pancreas. *Semin Cell Biol* 1995;6:151–156.
- 23 Tanno S, Obara T, Fujii T, Izawa T, Mizukami Y, Saitoh Y, et al: Alpha-fetoprotein-producing adenocarcinoma of the pancreas presenting focal hepatoid differentiation. *Int J Pancreatol* 1999;26:43–47.
- 24 Matsueda K, Yamamoto H, Yoshida Y, Notohara K: Hepatoid carcinoma of the pancreas producing protein induced by vitamin K absence or antagonist II (PIVKA-II) and α -fetoprotein (AFP). *J Gastroenterol* 2006;41:1011–1019.
- 25 Oh HJ, Cheung DY, Kim TH: A case of hepatoid carcinoma of the pancreas (in Korean). *Korean J Gastroenterol* 2006;47:389–393.
- 26 Jung JY, Kim YJ, Kim HM, Kim HJ, Park SW, Song SY, et al: Hepatoid carcinoma of the pancreas combined with neuroendocrine carcinoma. *Gut Liver* 2010;4:98–102.
- 27 Watanabe M, Matura T, Takatori Y, Ueki K, Kobatake T, Hidaka M, et al: Five cases of ectopic liver and a case of accessory lobe of the liver. *Endoscopy* 1989;21:39–42.
- 28 Hameed O, Xu H, Saddeghi S, Maluf H: Hepatoid carcinoma of the pancreas: a case report and literature review of a heterogeneous group of tumors. *Am J Surg Pathol* 2007;31:146–152.
- 29 Hiroshima K, Iyoda A, Toyozaki T, Haga Y, Baba M, Fujisawa T, et al: Alpha-fetoprotein producing lung carcinoma: report of three cases. *Pathol Int* 2002;52:46–53.
- 30 Lam K, Lo C, Wat M, Fan ST: Malignant insulinoma with hepatoid differentiation: a unique case with alpha-fetoprotein production. *Endocr Pathol* 2001;12:351–354.
- 31 Lattes C, Carella R, Faggioli S, Gabusi E, Grigioni WF: Hepatoid adenocarcinoma of the rectum arising in ulcerative colitis: report of a case. *Dis Colon Rectum* 2000;43:105–108.
- 32 Lopez-Beltran A, Luque RJ, Quintero A, Requena MJ, Montironi R: Hepatoid adenocarcinoma of the urinary bladder. *Virchows Arch* 2003;442:381–387.
- 33 Paner GP, Thompson KS, Reyes CV: Hepatoid carcinoma of the pancreas. *Cancer* 2000;88:1582–1589.
- 34 Yano T, Ishikura H, Wada T, et al: Hepatoid adenocarcinoma of the pancreas. *Histopathology* 1999;35:90–92.
- 35 Brandi G, Nobili E, Capizzi E, Corti B, Di Cilia R, Di Marco M: Exocrine-endocrine pancreatic cancer and alpha-fetoprotein. *Pancreas* 2008;37:223–225.
- 36 Hruban RH, Molina JM, Reddy MN, Boitnott JK: A neoplasm with pancreatic and hepatocellular differentiation presenting with subcutaneous fat necrosis. *Am J Clin Pathol* 1987;88:639–645.
- 37 Liebman HA, Furie BC, Tong MJ, Blanchard RA, Lo K-J, Lee S-D, et al: Des- γ -carboxy (abnormal) prothrombin as a serum marker of primary hepatocellular carcinoma. *N Engl J Med* 1984;310:1427–1431.
- 38 Nakagawa T, Seki T, Shiro T, Wakabayashi M, Imamura M, Itho T, et al: Clinicopathologic significance of protein induced vitamin K absence or antagonist II and α -fetoprotein in hepatocellular carcinoma. *Int J Oncol* 1999;14:281–286.
- 39 Nakao A, Taniguchi K, Inoue S, Takeda S, Harada A, Nonami T, et al: Clinical application of a new monoclonal antibody (19B7) against PIVKA-II in the diagnosis of hepatocellular carcinoma and pancreatobiliary malignancies. *Am J Gastroenterol* 1997;92:1031–1034.
- 40 Nomura F, Ishijima M, Kuwa K, Tanaka N, Nakai T, Ohnishi K: Serum des-gamma-carboxy prothrombin levels determined by a new generation of sensitive immunoassays in patients with small-sized hepatocellular carcinoma. *Am J Gastroenterol* 1999;94:650–654.
- 41 Miskad UA, Yano Y, Nakaji M, Kishi S, Itoh H, Kim SR, et al: Histological study of PIVKA-II expression in hepatocellular carcinoma and adenomatous hyperplasia. *Pathol Int* 2001;51:916–922.
- 42 Lowe CJ Jr, Riepe SP, Wood WC: Hepatocellular carcinoma presenting as a pancreatic head mass: report of an unusual case. *Am J Clin Oncol* 1997;20:509–510.
- 43 Shih NN, Tsung JS, Yang AH, Tsou MH, Cheng TY: A unique pancreatic tumor with exclusive hepatocytic differentiation. *Ann Clin Lab Sci* 2006;36:216–221.
- 44 Liu CZ, Hu SY, Wang L, Zhi XT, Jin B, Zhu M, et al: Hepatoid carcinoma of the pancreas: a case report. *Chin Med J* 2007;120:1850–1852.
- 45 Huang SC, Chang HC, Yeh TS, Ng KF, Chen TC: Hepatoid microcarcinoma of the pancreas: a case report and review of the literature. *Chang Gung Med J* 2012;35:285–291.
- 46 Cuilliere P, Lazure T, Bui M, Fabre M, Buffet C, Gayral F, et al: Solid adenoma with exclusive hepatocellular differentiation: a new variant among pancreatic benign neoplasms? *Virchows Arch* 2002;441:519–522.
- 47 Petrelli F, Ghilardi M, Colombo S, Stringhi E, Barbara C, Cabiddu M, et al: A rare case of metastatic pancreatic hepatoid carcinoma treated with sorafenib. *J Gastrointest Cancer* 2011;43:97–102.
- 48 Kelly PJ, Spence R, Dasari BV, Burt AD, Taylor M, Loughrey MB: Primary hepatocellular carcinoma of the pancreas: a case report and review of the heterogeneous group of pancreatic hepatoid carcinomas. *Histopathology* 2012;60:1012–1015.
- 49 Kai K, Nakamura J, Ide T, Masuda M, Kitahara K, Miyoshi A, et al: Hepatoid carcinoma of the pancreas penetrating into the gastric cavity: a case report and literature review. *Pathol Int* 2012;62:485–490.