

# Parallel Coordinates for Exploring Properties of Subsets

Gennady Andrienko and Natalia Andrienko

*Fraunhofer Institute AIS*

*Schloss Birlinghoven, 53754 Sankt Augustin, Germany*

*<http://www.ais.fraunhofer.de/and>*

*[gennady.andrienko@ais.fraunhofer.de](mailto:gennady.andrienko@ais.fraunhofer.de)*

## Abstract

*We describe our modifications of the technique of parallel coordinate plot for supporting visual exploration of object classes, in particular, resulting from cluster analysis. We strived at creating a tool that would be suitable for analysis of large datasets. The basic parallel coordinate plot technique with the traditional method for representing classes, multi-coloured brushing, fails to properly convey class-relevant information due to tremendous overlapping of lines. We have applied two general approaches to handling large amounts of data: aggregation and filtering. Thus, information concerning the distribution of characteristics in classes and the entire dataset is shown on parallel coordinates in an aggregated form. This is combined with displaying individual characteristics only for user-selected object subsets.*

## 1. Introduction

One of typical tasks in exploratory data analysis is comparative investigation of object sets or classes, where individual objects are described by values of some attributes, and, hence, a set of objects may be characterised by a distribution of attribute values and value combinations. For example, is there a difference in age structure of the population in coastal and inland municipalities of the country? What socio-demographic characteristics differentiate city districts with high crime rates from those where the rates are low or medium?

The topic of this paper is design of a data visualisation tool that would properly support subset investigation and comparison. We set the following requirements to the tool:

1. The tool must be able to work with quite large sets of objects (several thousands or more).
2. The tool must provide information concerning the distribution of characteristics in an entire object set and in its subsets (object classes). At the same time, it should be possible to see individual characteristics of selected objects and compare them to those of the classes. In the terms introduced by Bertin [B83], the

tool must support the elementary, intermediate, and overall levels of reading.

3. Object classes can be defined in various ways and dynamically re-defined. The tool must be able to represent characteristics of arbitrarily defined classes and to react properly to changes of the classes.

Currently, it is a standard for software tools for data visualisation to represent different aspects of data on multiple displays linked by means of “brushing” – identical marking of corresponding objects selected interactively by the user (see, for example, [BMMS91], [R98], [TS98], [HT98], [T02]). Typically, a subset is selected by means of interaction with one of the displays, e.g. mouse clicking on a display element representing one or more objects or dragging a frame around several such elements. Sometimes a tool supports a sophisticated multi-step procedure of subset selection, with a possibility to combine results of the last interaction with previous selection by applying various logical operations (and, or, xor etc.) ([HT98], [C03]).

Representing an object subset in a special way (highlighting) provides some possibilities for comparing characteristics of this subset to those of the entire set. Some software systems support multi-coloured brushing (for example, [HT98]), i.e. the user can select several object subsets, which are represented by different colours. However, this does not necessarily facilitate comparison of characteristics of these subsets.

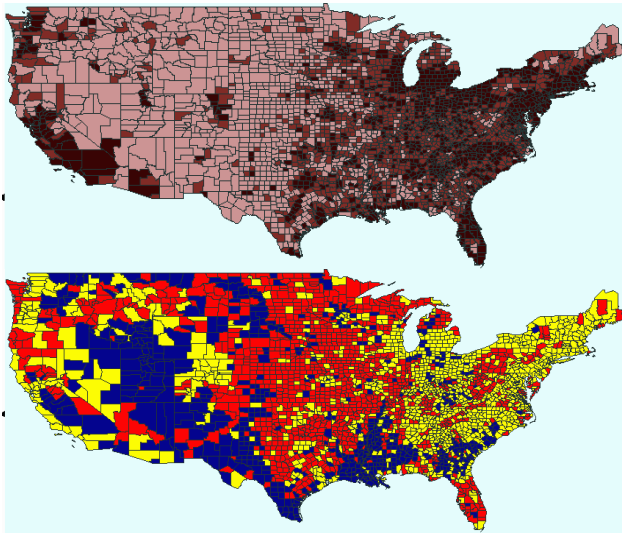
In this paper, we probe the suitability of the most popular data displays (scatterplot and matrix of scatterplots, table lens, frequency histogram, box plot, and parallel coordinate plot) for a comparative investigation of properties of several subsets (classes) of objects. On this basis, we substantiate a need for a new technique or extension of an existing technique that could effectively support this task. Then, we suggest our own extensions of parallel coordinate plot to make it more appropriate for class comparison.

We do not introduce any restrictions or assumptions concerning how object classes are defined except that each object must belong to at most one class. This means that there should be a general mechanism for reflecting arbitrary classifications and dynamic reaction to changes

of the classes, for example, like the mechanism for class propagation in our system CommonGIS [AA03].

As an example, Figure 1 shows two different classifications of the counties of USA. On the upper map, the counties are divided into 3 classes according to the population density in 1999. The variation of colour is used to distinguish the classes on the map: light corresponds to low density and dark to high density. The breaks between the intervals of low, medium, and high population density have been selected so that the resulting classes consist of approximately equal numbers of counties.

The lower map represents the results of grouping the counties into 3 clusters on the basis of 6 attributes representing proportions of different age groups in the population: below 5 years old, 5-17, 18-29, 30-49, 50-64, 65 or more years. The clustering was done using the method SimpleKMeans as it is implemented in the data mining system Weka [WF99].



**Figure 1.** Two example classifications of the counties of the USA.

The set of counties with their demographic characteristics and these two example classifications will be used throughout the paper for testing various display techniques. The set is rather large: it consists of 3140 objects. While this is sufficient for our study, we take into account that much larger sets exist and, hence, any technique should be evaluated in terms of the possibility to scale it to larger sets.

The model analysis task is to compare classes of countries with respect to the age structure of the population. For the first classification, this would allow one to see whether the age structure is somehow related to population density. For the second classification, this could help an analyst to understand the results of

clustering, i.e. what the groups defined by the data mining algorithm mean.

Let us now evaluate the suitability of the most popular techniques for data visualisation for a comparative analysis of object classes. We assume that classes can be defined arbitrarily, and relevant information (i.e. what objects each class consists of and what colour is assigned to it) can be transferred to any data display. The displays are automatically updated when the classification changes. Hence, the requirement 3 is taken for fulfilled, and we need to evaluate the techniques with respect to the first two requirements.

## 2. Class comparison with different data displays

We include the following types of data displays in our evaluation:

- Scatterplot (suitable for two attributes) and scatterplot matrix (suitable for more than two attributes);
- Table lens [RC94];
- Parallel coordinate plot ([I85], [I98]);
- Frequency histogram (suitable for a single attribute) and a group of coordinated histograms representing different attributes ([TS98]);
- Box-and-whiskers plot, or, shorter, box plot [T77].

Let us first look at these techniques from the perspective of the first requirement, i.e. the possibility to work with large sets of objects.

A common feature for the first three display types is that they represent individual characteristics of objects whereas the remaining two techniques provide only general (aggregate) information about the distribution of attribute values throughout the set of objects. A general problem for all displays representing individual objects is their poor suitability for large object sets. Such displays as scatterplot and parallel coordinate plot suffer from over-plotting, i.e. visual elements representing different objects fit into the same position in the display, and, hence, some of them are occluded. To fight over-plotting, transparent output is used in many implementations of scatterplot and parallel coordinate plot displays (see, for example, [T02]). This technique is useful for detecting clear-cut groupings of objects with close characteristics but does not work so well when the distribution of characteristics is more dispersed. Besides, the user can hardly estimate the number of objects fitting in this or that position within the plot area.

In a table lens, occlusion does not occur since it has a separate row for each object. However, since the size of the computer screen is limited, only a part of a large object set can be actually seen at each moment.

There are two basic approaches to handling very large data sets: filtering and aggregation. In filtering, only a selected subset of objects is viewed and analysed.

Therefore, this approach does not support the overall level of analysis. In aggregation, summary characteristics of object subsets rather than properties of individual objects are represented and investigated. This approach, which is followed in histogram and box plot displays, supports the overall and intermediate analysis levels but does not support the elementary level. Hence, both approaches conflict with our second requirement - support of all three levels of analysis.

A suitable compromise could be achieved by means of combining the approaches. Thus, a display could represent summary information concerning the entire object set and its subsets (aggregation) and, at the same time, individual characteristics of selected objects (filtering). This allows the user, in particular, to compare these individual characteristics with those of the whole set and the subsets. The objects to be represented individually are interactively selected by the user.

For a practical realisation of this idea, two ways are possible:

1. Take some display technique representing individual objects as a basis and modify it so that it could also show aggregated information.
2. Take some aggregated representation and extend it with a possibility to display individual characteristics.

The first method seems more promising than the second. At least, modifications of scatterplot and parallel coordinate plot techniques towards representing aggregated data already exist while it seems quite difficult to find a way to extend histogram and box plot displays for including individual data.

The modifications of scatterplot are known as binned scatterplot or two-variable histogram (see, for example, [C91] or [W99]). They exploit the idea of binning - dividing the plot area into small cells (bins) and counting the number of data instances fitting into each bin. The counts are then represented by painting the cells into different colours or shades of grey. There is a possibility to represent selected individual instances by symbols (e.g. small hollow circles) superimposed on such a representation. However, we did not find in the literature any mentioning of this being actually done. Various extensions of the parallel coordinate plot technique will be discussed later.

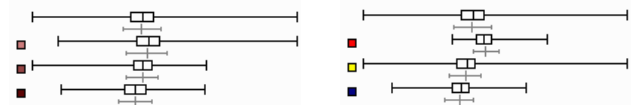
Let us now consider the possibilities for representing object classes on different types of graphical displays. Again, there are two basic approaches: either represent all classes within a common display area or clone a display as many times as there are classes and show each class on a separate display copy. Both approaches have their pluses and minuses. Display multiplication eliminates overlapping of information pertinent to different classes and is therefore more beneficial for an individual consideration of each class. One can also easily compare

general patterns of distribution of characteristics in the classes. However, comparison of attribute values is more complicated than in the case when all classes are represented on one and the same display. Another disadvantage of display multiplication is that it uses much more screen space. This problem becomes especially serious when many attributes are involved in analysis. Such display techniques as scatterplot matrix, coordinated histograms, and box plots already include multiple plots or charts, and further multiplication may cause significant difficulties for analysis. Thus, if there are N attributes and M classes, the user will have to analyse and compare  $N \times M$  displays.

From now on, we shall mostly focus on the approach with showing classes on the same display. Typically, display elements representing different classes are differently coloured, which allows one to distinguish between the classes. This approach is applicable to all the techniques under consideration except for the box plot.

Figures 2 to 6 demonstrate how object classes can be reflected on the different types of displays by the example of the classifications of counties of the USA shown in Figure 1.

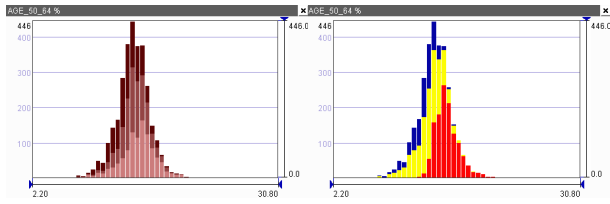
As we have mentioned, a box plot display can represent classes only by means of display multiplication (Figure 2). The visualisation supports analysis on the overall (entire set of objects) and intermediate (object classes) levels, but cannot represent individual characteristics of selected objects. Other disadvantages are too coarse aggregation and the necessity of using multiple plots in order to represent several attributes.



**Figure 2.** Representation of class characteristics by box plots. The group of box plots on the left corresponds to the classification of the counties of the USA according to the population density. On the right, the results of clustering are reflected. All box plots show the distribution of values of the attribute “Proportion of age group 50-64 years”. The topmost box plots correspond to the entire set of counties, and the plots below represent the classes. In addition, mean values and standard deviations for the respective object sets are shown below each box plot.

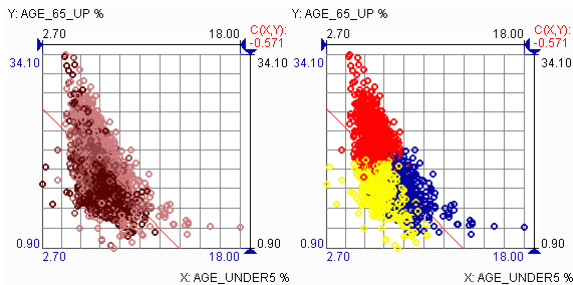
Figure 3 demonstrates representation of classes on a histogram. One can see the overall pattern of value distribution in the entire set of objects and compare it to the patterns for the classes. There are several bottlenecks in this visualization:

- The shape of a histogram depends on the chosen granularity.
- The technique supports well the comparison of one class (aligned to the baseline at the bottom) to the whole set. Making comparisons between classes is difficult.
- When working with large sets of objects, it is necessary to zoom the histogram for seeing details (for example, on the right and left ends of ranges of normally-distributed attributes). However, zooming destroys the overall view.
- Access to individual data instances is practically impossible.



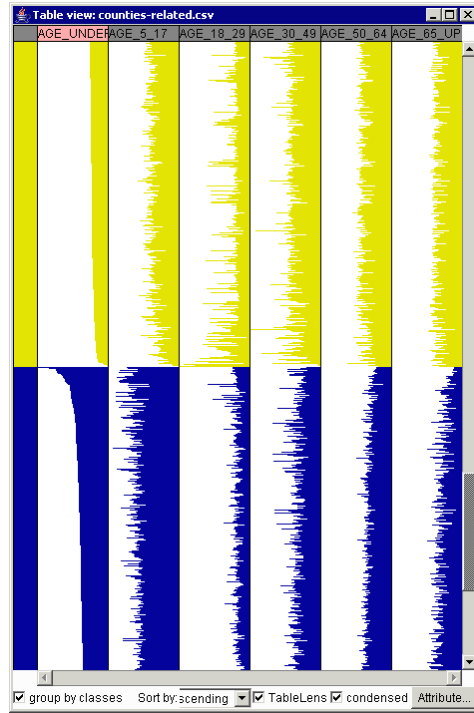
**Figure 3.** Histogram representation of the attribute “Proportion of age group 50-64 years” built with the granularity of 50 bins. The bars are divided into coloured segments according to the number of objects belonging to each of the classes. On the left, the classification according to population density is represented, on the right – the results of clustering.

In Figure 4, one can see how classes can be represented on a scatterplot. The problem with this display is overplotting: many points (probably, of different colour) may overlap. Therefore it is impossible to guarantee that the pattern perceived from such a display (if any) is correct. As we have mentioned, data binning eliminates overplotting. However, the use of binning excludes the possibility to represent several classes within a single display.



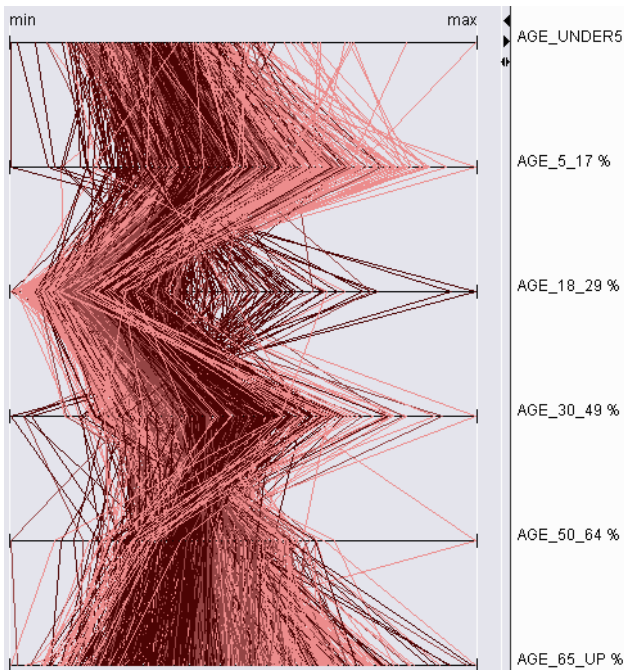
**Figure 4.** Scatter-plots of the attributes “Proportion of age group less than 5 years old” and “Proportion of age group 65 years and more”. The points are coloured according to the classes by population density (left) and to the clusters resulting from the cluster analysis (right)

Representation of classes on a table lens display can be done by means of colouring table rows according to the classes the respective objects belong to. Rows corresponding to the same class can be grouped together (Figure 5). Within a group, the rows can be sorted according to values of some attribute. However, as we have already mentioned, the technique is inappropriate for large object sets.



**Figure 5.** Table lens representation with grouping of rows by classes (results of cluster analysis). Only a part of data is visible due to the limitations of the screen size.

In a parallel coordinate plot (Figure 6), objects are represented by polygonal lines connecting points (“coordinates”) on parallel axes, which represent attributes. The lines can be painted according to class colours. In simple cases, this visualisation may be helpful for forming a general view of distribution of characteristics within an object subset (class). However, a great problem of this display is overplotting, which in most cases prevents perceiving properties of classes. This is illustrated in Figure 6. Even if some pixels are painted in a colour of a class, this does not guarantee that there are no lines corresponding to objects from other classes passing through the same point but not visible due to the high density of lines.



**Figure 6.** A parallel coordinate plot with the lines coloured according to the classes defined on the basis of population density.

As it follows from our analysis, none of the visualisation techniques fulfils our requirements to a tool for class investigation. Hence, such a tool needs to be designed, for example, by amending one of the existing tools. As we have discussed, a promising approach is combining data aggregation with data filtering, i.e. aggregated representation of the entire set and subsets (classes) with a superimposed display of individual characteristics of user-selected objects. From all techniques, we prefer parallel coordinate plot as the most suitable candidate for an extension in this direction. As to the remaining techniques, we found histograms and box plots unsuitable for representing individual instances. Although the scatterplot technique can be modified to represent aggregated data by means of “binning”, this extension is incompatible with representation of several classes on the same display. Besides, in a case of more than two attributes, multiple scatterplots are needed. We could not find a proper way for representing aggregated data on the basis of the table lens technique. With the parallel coordinate plot, we have been more successful.

Actually, various attempts to include aggregated information in a parallel coordinate plot (PCP) have been made before by other researchers. In next section, we briefly consider their suggestions.

### 3. Enhancing parallel coordinates

A.Inselberg introduced parallel coordinate plot in 80s as a geometrical abstraction for presenting selected projections of a multidimensional attribute space (see <http://www.cs.tau.ac.il/~aiisreal/> - “Home of Parallel Coordinates” – for the history of PCP). At about the same time, D.Schilling introduced a similar to PCP “value path” technique for multi-criteria optimisation problems [SRC83]. In early papers, various mathematical and algorithmic properties of PCP were studied ([I85], [ICR87]). Later, A.Inselberg and E.Wegman in parallel considered PCP as a tool for exploratory data analysis ([I90], [I98], [W90], [MW91]).

It is necessary to stress that the presence of N axes for N attributes does not mean that the plot fully reflects the N-dimensional space without losing important information. Actually, the plot displays values of N attributes in (N-1) pairwise projections.

The technique of PCP attracted attention of many researchers, who suggested various extensions and modifications. A complete overview of the related work is beyond the scope of this paper. We shall only consider the suggestions that introduce display of aggregated data into PCP and thereby make it more appropriate for large datasets. This includes drawing coloured bands along the axes to represent the attribute ranges for the whole data set and for classes ([S00]), putting box plots on the axes ([T02]), and even drawing histograms along axes ([OL96], [PT03]). Such enhancements can be called “parallel box plots” and “parallel histograms” [PT03]. These additions are very useful for the understanding of properties of subsets and their comparison. However, such additional graphics inside a PCP overlap with lines, which complicates the perception. Besides, each graph represents only a single attribute ignoring its relationships to other attributes.

Another way of introducing summary information is showing average or median lines for the whole set and for classes ([S00]). This is done by connecting positions on neighbouring axes corresponding to the mean or median values of the respective attributes. However, since the mean or median values are counted for each attribute independently, one needs to be cautious and avoid interpreting the resulting lines as the most typical profiles (i.e. combinations of characteristics) for the sets of objects.

In [MW91], it is proposed to draw a “line density plot” instead of individual lines. For this purpose, the area between axes is divided into zones (pixels), and the number of lines passing through each zone is counted. The so obtained counts are normalized and shown by painting the zones into different colours or colour grades. This technique, which is analogous to “binning” on a scatterplot, supports quite well the overall analysis level and is suitable for large and very large datasets. Although this was not suggested in [MW91], it can be easily

imagined how to superimpose drawing of selected individual lines upon the density-based background painting of the plot area. However, this technique does not allow us to represent object classes on the same display. Hence, the intermediate analysis level can only be supported by means of display multiplication.

Drawing bands, or envelopes, around selected subsets of lines provides yet another variety of aggregation. Extending PCP by showing envelopes of subsets of lines was proposed already as early as in [I85] and [ICR87]. Later, A.Inselberg proposed an iterative procedure of visual data mining [I98] that consists of sequential narrowing of envelopes by means of selecting subintervals of attribute values. In this procedure, subsets are defined by means of interaction with the PCP display. It is not relevant to investigation of arbitrary classes.

A combination of hierarchical clustering with PCP is proposed in [FWR99]. The authors represent clusters of objects by variable-width opacity bands rather than individual lines. Only cluster centres are shown on top of the bands by lines. Several clusters can be shown and analysed simultaneously. The outlines of the bands correspond to Inselberg's envelopes, and the opacity gradually decreased from cluster centres to the boundaries without taking into account line densities.

A similar approach was proposed in [HC00], where PCP was enhanced by rule induction methods. Discovered rules are visualised using semi-transparent overlapping bands.

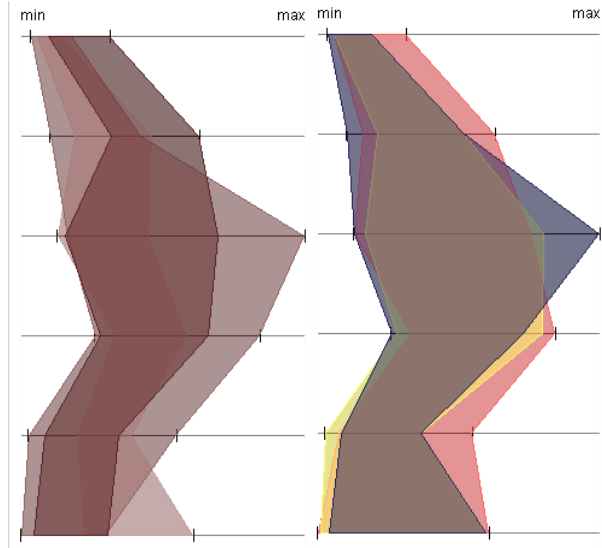
This method was further developed in [BH03] where a fuzzy membership function for object subsets resulting from hierarchical clustering was represented by varying opacity. The authors introduced special drawing hints to be used instead of alpha-blending – a rather slow technique of graphical output typically used for transparent drawing and painting on the computer screen.

Building envelopes around lines representing selected subsets of objects is a convenient tool for comparing characteristics of a subset (specifically, ranges of attribute values) to those of the whole data set. However, the applicability of this method for comparison of subsets is limited because overlapping of their envelopes complicates the analysis (see Figure 7).

As a conclusion from this overview, we find the following PCP modifications to be supportive for exploration of properties of object classes:

1. Replacing individual lines on a PCP by class envelopes.
2. Putting additional graphics on axes to represent the distribution of attribute values in the whole data set and in subsets.

These ideas were used in our own implementation of PCP-based technique for class investigation described in the next section.



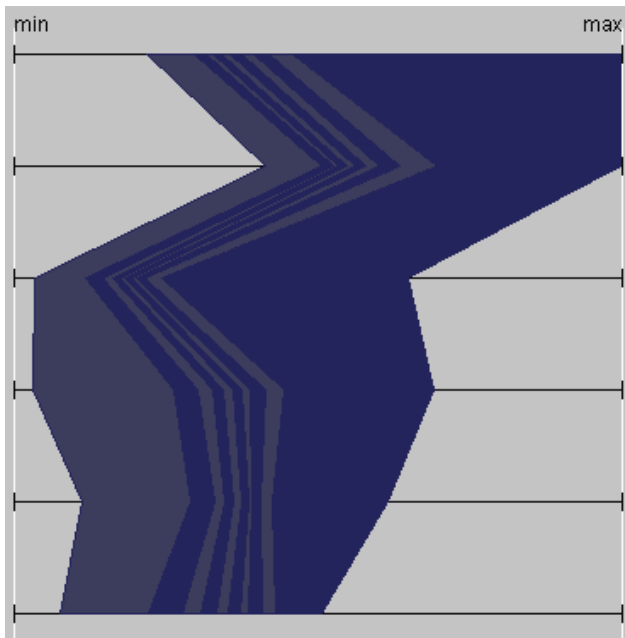
**Figure 7.** Transparent colour bands, or envelopes, represent the ranges of object characteristics for the classes of counties according to the population density (left) and the clusters according to the age structure (right).

#### 4. Our approach

In our implementation, it is possible to replace drawing of individual lines by either class envelopes or special graphics on the axes representing summary information about the distribution of attribute values in the whole object set and in different classes. Lines for user-selected objects can be overlaid on such an aggregated representation.

Let us now consider both aggregation modes in more detail, starting with class envelopes. Actually, envelopes in their “pure” form are not especially informative: they only show ranges of attribute values regardless of the distribution of the values within the ranges. Hence, just a single outlier can significantly increase the width of a band representing some class. Therefore, in most real-world cases, envelopes of different classes greatly overlap and do not help to reveal substantial differences in class characteristics. It would be good to build “smart envelopes” ignoring outliers. Alternatively, an envelope could be drawn so as to provide more information concerning value distribution of each attribute.

We have chosen the second option: we divide each value range into subintervals containing approximately equal number of lines and connect corresponding breaks (quantiles) on adjacent axes. As a result, an envelope is divided into stripes. For better visibility, stripes can be painted slightly differently, as is shown in Figure 8. The user can choose the desired number of subintervals. Thus, in Figure 8, division into 10 subintervals is represented.

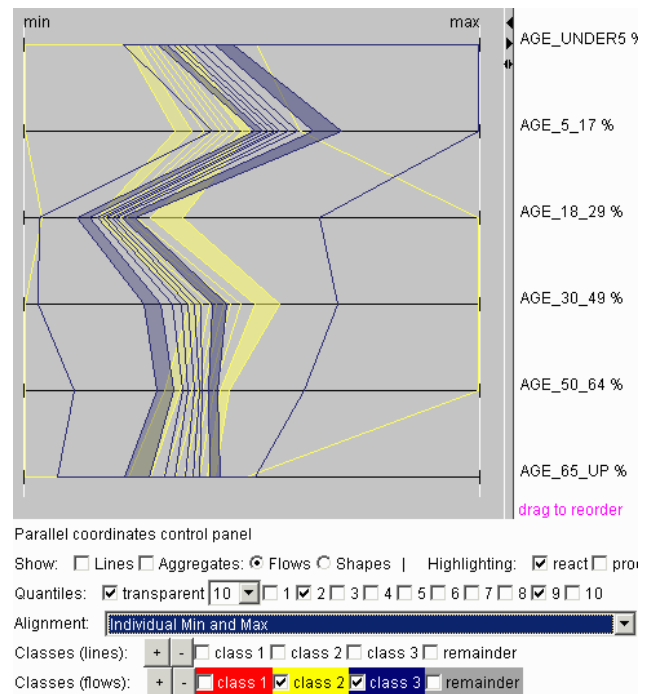


**Figure 8.** The distribution of object characteristics within a class is shown by dividing the value range of each attribute into 10 equal-frequency subintervals. Hence, each subinterval corresponds to 10% of objects of the class.

It may be seen from Figure 8 that a divided envelope gives much better understanding of characteristics of a class than just its outline. The main impression from the outline is that characteristics within the class greatly vary. However, the partition of the envelope shows us that 80% of values of each attribute lie within quite a narrow interval. It can be seen, for example, that the class is characterised by mostly low values of the third attribute (this is true at least for 90% of class members) and mostly medium values of the second attribute (again, at least 90% of class members have medium values of this attribute). Unfortunately, it is hard to say anything concerning how the first 90% are related to the second 90%. In general, these subsets are different, and discarding the leftmost and the rightmost stripes will not give us a band containing 80% of all lines. This is a consequence of the independent partition of the range of each attribute, which must be borne in mind to avoid misinterpretation of the display.

Despite of this problem, the stripe display can still be useful for investigation of class properties and comparison of classes. In our implementation, the user may switch on and off the representation of any class. This helps the user to focus on a particular class and to make pairwise comparisons between classes, which is easier than analysing three or more classes simultaneously. Class envelopes can be painted in a

transparent or opaque mode. Besides, the user can choose which stripes must be painted (filled) and which only shown by bounding lines. Thus, the display in Figure 9 represents two classes out of three: class 2 (lighter colour) and class 3 (darker colour), which is also shown in Figure 8. The class envelopes are divided into 10 stripes. The user has chosen the second and the ninth stripes to be painted in the transparent mode. For the remaining stripes, only outlines are shown.

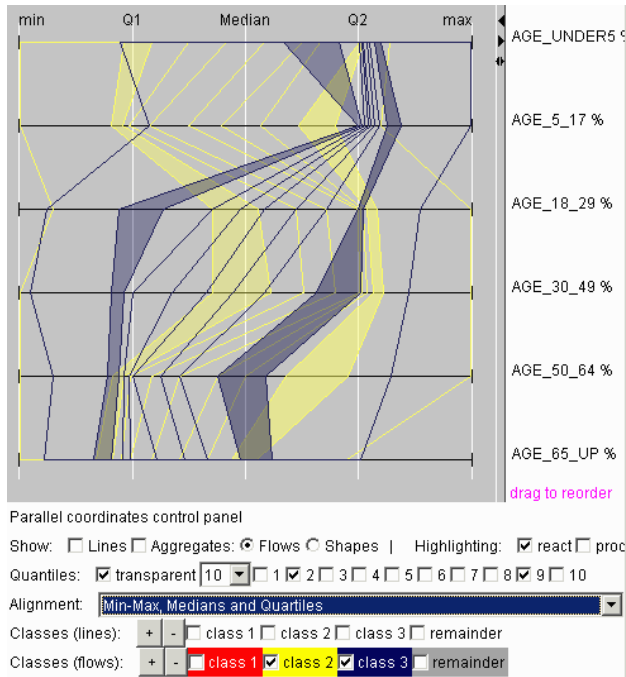


**Figure 9.** Comparison of distributions of attribute values in two classes. Class envelopes are partitioned into 10 stripes, of which only two (2<sup>nd</sup> and 9<sup>th</sup>) are painted, according to user's choice.

The display in Figure 9 shows us that class 2 and class 3 differ most significantly by values of the second attribute, proportion of the age group from 5 to 17 years. Quite substantial distinction exists also with respect to the proportion of children under 5 years old. There is no difference in proportions of people of the age 65 years or more.

In order to compare the distribution of characteristics within a class to that in the entire set of objects, it is possible to display analogous stripes for the whole set. An alternative way is statistics-based scaling of the axes, which is described in our earlier paper [AA01]. The technique is illustrated in Figure 10. The same information as in Figure 9 is represented, but the axes are distorted and aligned so that the centre of each axis corresponds to the median value of the respective

attribute and the middle positions between the centre and the ends correspond to the quartiles.



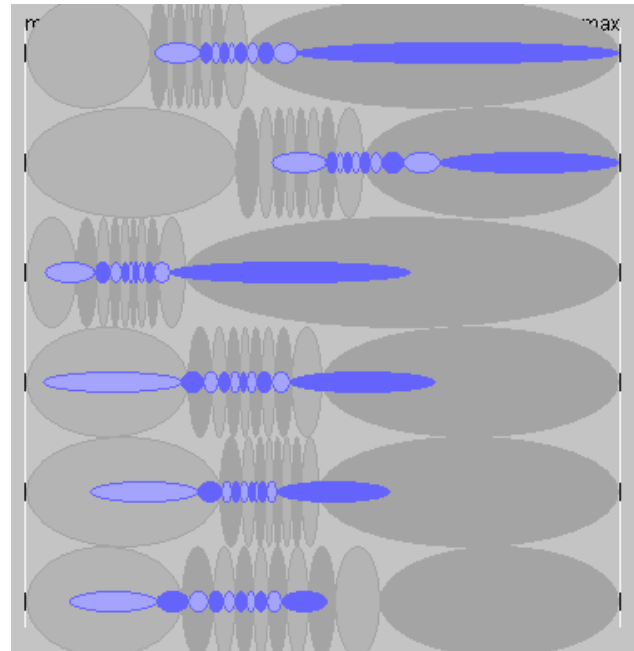
**Figure 10.** Comparison of value distributions in two classes to that in the entire dataset by means of statistics-based scaling of the axes.

From Figure 10, it can be noticed that class 3 (shown in the darker colour) substantially deviates from the whole set with respect to the proportions of the age groups under 5 years and from 5 to 17 years. Class 2 has more or less “standard” proportions of these age groups as well as the group 50-64 years: the bulk of values lie between the first and the last quartiles of the entire dataset. Concerning the age groups 18-29 years and 30-49 years, the proportions in class 3 are about “standard” while class 2 tends to have higher proportions than in class 3 and in the entire set in general. Both class 2 and class 3 have smaller proportions of the age group 65 and more years in comparison to the distribution for the whole set of counties. Class 3 is also characterised by smaller proportions of the age group 50-64 years.

The modification of the “enveloping” technique by partitioning envelopes into stripes can be viewed at the same time as a generalisation of putting box plots on plot axes. Thus, when the user chooses to divide the envelopes into 4 stripes, the division represents the medians and quartiles of the attributes, analogously to box plots. Finer partitions provide more detailed information about value distributions.

Drawing graphics on the axes is an alternative method provided in our implementation for displaying

information concerning value distributions. Instead of box plots, which show only medians and quartiles, we use graphs that may be called “ellipse plots”. Ellipse plots can represent arbitrary partitions, analogously to “striped” envelopes.



**Figure 11.** The same class as in Figure 8 (class 3) is represented by ellipse plots. For building the ellipses, the value ranges of the attributes are partitioned into 10 equal-frequency intervals. In the background, ellipse plots for the entire set of counties are shown.

Figure 11 illustrates how ellipse plots are built. Analogously to partitioning envelopes, the value range of each attribute (pertinent to a class or to the entire dataset) is divided into a desired number of equal-frequency subintervals. Then, instead of connecting corresponding quantiles on adjacent axes, as we do when striping envelopes, we draw ellipses around the subintervals, i.e. the horizontal diameters of the ellipses are proportional to the lengths of the subintervals. With this technique, we can also use the vertical diameters of the ellipses to convey additional information. We make them proportional to the sizes of the subsets represented by the ellipses.

In Figure 11, the smaller ellipses show the distribution of attribute values in the same class as is shown in Figure 8 by a “striped” envelope (specifically, class 3 resulting from the clustering). Like in Figure 8, division into 10 subintervals is applied, i.e. each ellipse represents 10% of the class members. Hence, all information available in Figure 8 can also be seen in Figure 11. Additionally, the bigger ellipses in the background represent the

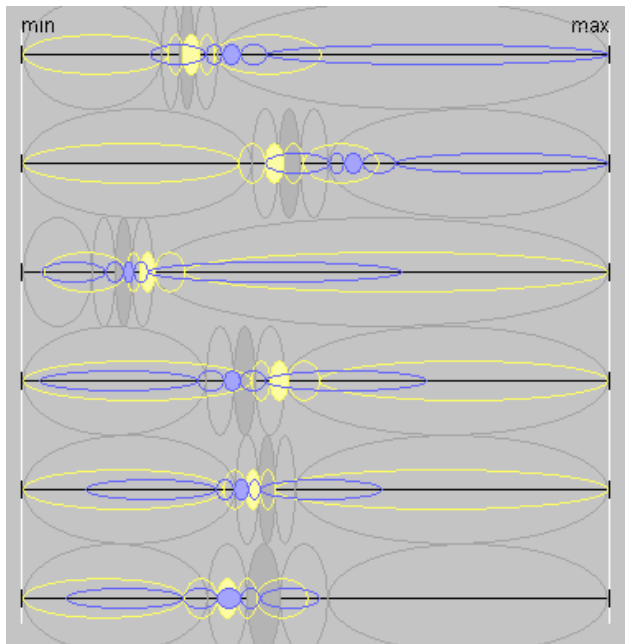


distribution of attribute values in the entire dataset, so that class 3 can be conveniently compared with the whole set of counties. Analogously to the smaller ellipses, each big ellipse stands for 10% of all counties. Thus, we can see on the upper axis that 10% of the whole set of counties that have the highest proportions of the age group below 5 years contain 40% members of class 3, and top 20% of the whole set contain almost 70% of the class members. A similar observation can be drawn from the second axis corresponding to the age group from 5 to 17 years: top 20% of the whole set contain about 80% of the class.

Besides comparing the distributions, we can also estimate the size of class 3 in relation to the size of the whole set: the proportions between the heights of the ellipses suggest that the class contains approximately one-fifth of all counties.

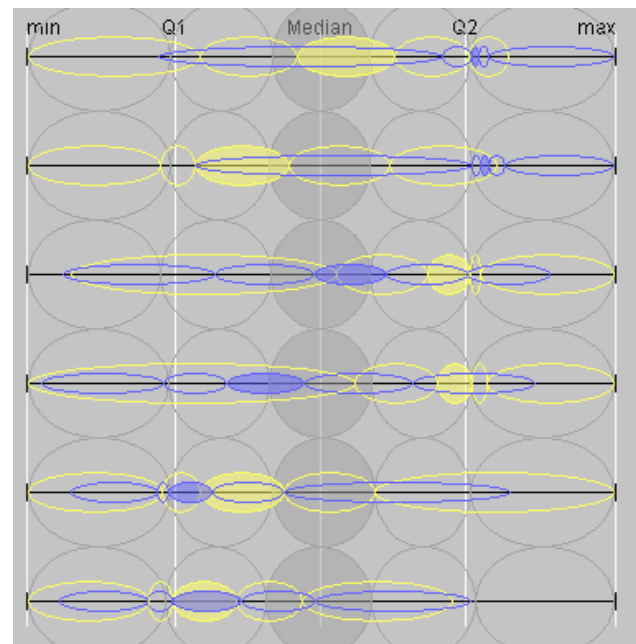
Ellipse plots can also be used for comparing two or more classes. Thus, in Figure 12 class 2, class 3, and the entire set are represented simultaneously. For easier comprehension, the attribute ranges are divided this time into 5 subintervals instead of 10. As can be seen from the figure, the user can choose which of the ellipses will be filled and which remain hollow. In this example, filling is used for the central ellipse in each ellipse plot (i.e. middle 20% of objects of the respective sets). The filling can be opaque, as in the figure, or transparent.

With Figure 12, we can make similar comparison of class 2 and class 3 as with Figure 9. Additionally, we can relate our observations concerning these two classes to the distributions of attribute values in the entire dataset. We can also estimate the relative sizes of the classes: class 2 is nearly two times bigger than class 3 and constitutes about 40% of the entire set of counties.



**Figure 12.** Value distributions in two classes (class 2 and class 3) and the entire dataset are represented by ellipse plots on the basis of partitioning into 5 equal-frequency intervals. Each ellipse stands for 20% of objects of the respective set. The vertical diameters of the ellipses are proportional to the sizes of the sets.

Like with envelopes, we can also apply statistics-based scaling of the axes. After applying this transformation, the display from Figure 12 looks as is shown in Figure 13. Now, the area around the median line can be viewed as a sort of “standard” range of characteristics, and we can investigate the deviations of the classes from this standard range. The information perceived from this picture is similar to what is conveyed by the “striped” envelopes in Figure 10.



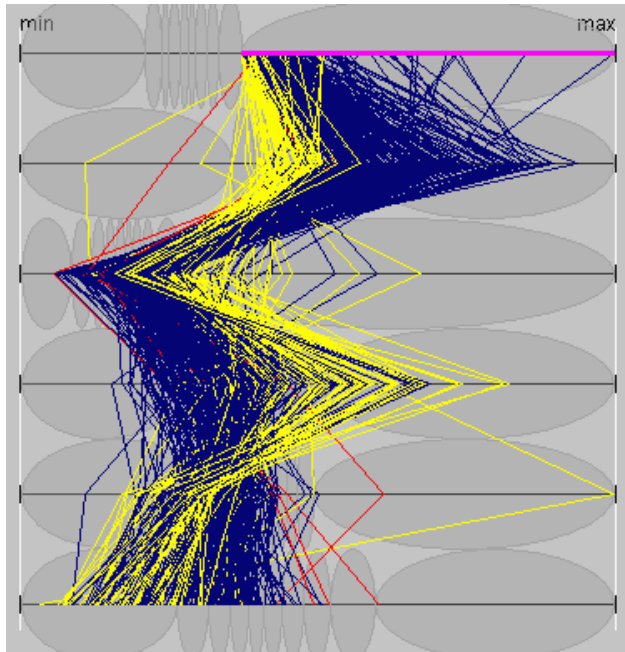
**Figure 13.** Statistics-based scaling of axes has been applied to the display in Figure 12.

In comparison to a “striped” envelope, a collection of ellipse plots representing the same information does not produce an integral image. This is a weakness and an advantage at the same time: a weakness because a single image is easier perceived (and, hence, easier compared with an analogous image of another set of objects) and an advantage since the misleading interpretation of stripes as line containers (i.e. that each line is fully contained in a single stripe) is precluded.

As compared to traditional box-and-whiskers plots, ellipse plots are more general: they can represent not only medians and quartiles but any number of quantiles (in our

implementation, from 2 to 10). We use ellipses rather than boxes because two adjacent ellipses touch just in a single point and, hence, can be easier distinguished visually.

Display of aggregated information can be combined with drawing lines for selected individual objects. Object selection can be done through any display. In particular, one can select objects by clicking or dragging on the parallel coordinate plot. The typical reaction is selection of the objects the lines of which come near the mouse position (in the case of clicking) or cross the rectangular area specified by mouse dragging. When some object classes are propagated to a PCP display, the lines of selected objects are coloured according to the classes the objects belong to (see Figure 14), otherwise the lines are shown in black.

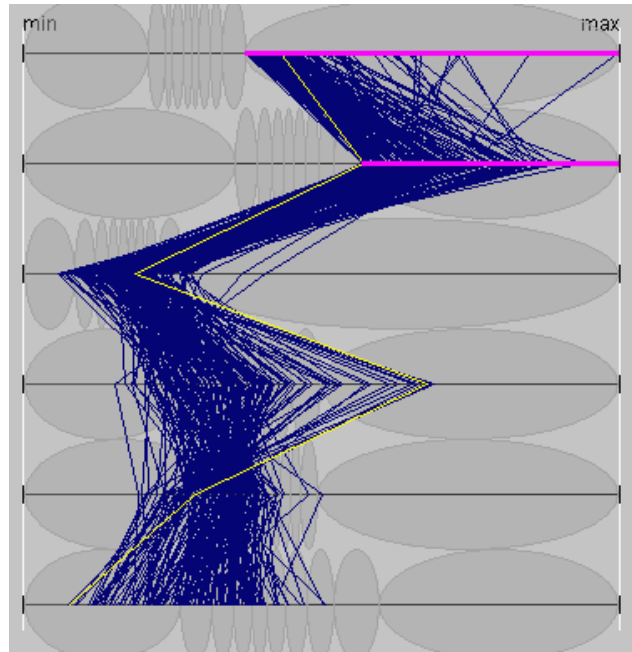


**Figure 14.** Clicking on an ellipse results in the corresponding objects being selected and their lines appearing on the plot. Here, clicking on the rightmost ellipse on the top axis has selected the top 10% of counties with respect to the proportions of children under 5 years old.

A special type of interaction is possible for a PCP display with ellipse plots. Clicking on an ellipse selects the objects from the corresponding subset. Thus, Figure 14 shows the result of clicking on the rightmost ellipse on the top axis. This ellipse represents the top 10% of the whole set of counties with respect to the proportions of children under 5 years old. The click on the ellipse has selected this group of objects. It can be seen that the group consists mostly from members of class 3 (dark

lines) with a smaller fraction of objects from class 2 (light lines) and only a few members of class 1. Unfortunately, the lines belonging to class 1 (red) cannot be distinguished from the lines of class 3 (blue) in a greyscale reproduction.

Clicking on another ellipse modifies the selection. Thus, Figure 15 shows how the plot from Figure 14 changes after clicking on the rightmost ellipse on the axis second from top, which corresponds to the proportions of the age group from 5 to 17 years old. The result is selection of the counties the lines of which belong to both ellipses clicked. These are the counties with proportions of the age groups less than 5 years old and 5 to 17 years old lying among the top 10% over the country. This subset of counties includes only one member of class 2; the remaining counties belong to class 3.



**Figure 15.** Clicking on the rightmost ellipse on the second axis has modified the selection from Figure 14. Now, selected are the lines of the counties with proportions of the age groups less than 5 years old and from 5 to 17 years old being among the top 10% over the country.

The general discipline for the interaction with ellipse plots is following: clicking on two or more ellipses on the same axis results in adding new selections to the previously made ones (logical “OR” operation); clicking on an ellipse on another axis results in intersecting the previous selection with the new one (logical “AND”).

## 5. Discussion and conclusion

Our work on PCP modification has been incited by the observation that this technique as well as other traditional methods for data visualisation and display coordination cannot properly support analysis of large datasets. Our special interest is analysis of object classes, in particular, results of applying clustering algorithms of data mining (in general, outputs of data mining procedures are often quite difficult to interpret; therefore, a proper visualisation support is required). A traditional approach for representing object classes on data displays is so-called multi-coloured brushing, i.e. painting display elements (dots on a scatterplot, lines on a parallel coordinate plot, etc.) in the colours of corresponding classes. However, due to overplotting, brushing often fails to convey correct information concerning the classes. Hence, for large datasets, brushing should be substituted by other methods of representing class-relevant information. We believe that the most appropriate approach is to provide such information in an aggregated form.

Our modifications of the basic parallel coordinate plot technique increase its appropriateness for large datasets at the cost of replacing representation of individual instances by the display of aggregated information concerning a dataset as a whole and its subsets (object classes). This allows one to apply parallel coordinate plots for data analysis on the overall and intermediate levels. The elementary level of analysis is supported by the possibility to show individual characteristics of selected objects on top of the aggregate representation.

We have suggested two alternative methods for representing aggregated information: “striped” envelopes and ellipse plots. Both are based on partitioning the value ranges of the attribute into equal frequency intervals. The envelope representation conveys information concerning value distribution in an object set through a single image whereas ellipse plots do not promote such an integral perception. While ellipse plots are perceptually more complex than “striped” envelopes, the latter may induce the misleading interpretation of lines being fully enclosed in the stripes without intersecting their boundaries. Ellipse plots can be better combined with drawing individual lines than envelopes.

The aggregate representations can gain from a proper scaling of PCP. Thus, statistics-based scaling decreases the influence of outliers and therefore can make the visualisation more effective. Additionally, it can convey overall level information concerning the distribution of characteristics in the entire dataset. At this cost, the envelope or ellipse plots corresponding to the whole dataset may be omitted from the display thus making it simpler and more legible.

An important feature of the proposed approach is its scalability. Overplotting is reduced because mostly aggregated characteristics are shown and, optionally, just

a subset of lines. The computational complexity is  $M*N*\log(N)$ , where  $N$  is a number of instances, and  $M$  is a number of their attributes. Therefore, the applicability is limited only by the amount of RAM on user’s computer.

This restriction can be removed by implementing the visualisation in a client-server mode and using a powerful database system on the server side. Thus, the database can compute and provide aggregated characteristics of data (particularly, value ranges, quantiles, and other necessary statistics). This is sufficient for the visualisation and interactive manipulation. Instance data can be transferred only on demand, for a selected area of interest.

However, a weakness of both “striped” envelopes and ellipse plots is that they convey summary information for each attribute independently of others. One can compare values distributions of different attributes in classes and entire dataset but cannot investigate relationships between the attributes and cannot explore the distribution of value combinations. Thus, neither envelopes nor ellipse plots give an idea concerning the “typical profiles” of class members.

This weakness can be partly compensated by the possibility to represent individual characteristics for selected object subsets. Appropriate selections can be made by means of interacting with the parallel coordinate plot. For example, the user may set a kind of “trajectory mask” by clicking on ellipses on different axes and see how many objects have their characteristics fitting in this mask, where these objects are on a map or other displays, and what classes they belong to. In principle, this is equivalent to applying a dynamic query tool [AWS92], but in the case of ellipse plots information about value distributions can be conveniently used. However, in this interactive way, the user cannot explore all possible masks (characteristic profiles) but only a few. Hence, additional tools are needed to properly support profile analysis.

We plan to implement a computational tool that would count all existing combinations of characteristics for a user-specified partitioning of value ranges of attributes. This may be a partitioning by quantiles, as in ellipse plots and “striped” envelopes, or a partitioning into a desired number of equal intervals. While the computation itself is rather simple, the combination analysis tool requires a convenient user interface for selecting and partitioning attributes and an effective visualisation of the results obtained. Another idea is to combine user-defined partitioning with an automated discovery of association rules by means of data mining followed by interactive visualisation and analysis of the results.

Similar ideas can be applied and further developed for the analysis of time-series data. In this case, we can assume that values for consecutive time moments are auto-correlated. This assumption may allow us to develop methods for more sophisticated visual analysis.

## Acknowledgement

This study was partly supported by the European Commission in project GIMMI (IST-2001-34245)

## References

- [1] [AA01] G. Andrienko and N. Andrienko, "Constructing Parallel Coordinates Plot for Problem Solving", in *Proceedings Smart Graphics*, New York 2001, ACM Press, 2001, pp.9-14
- [2] [AA03] N. Andrienko and G. Andrienko, "Informed Spatial Decisions through Coordinated Views", *Information Visualization*, 2 (4), 2003, pp.270-285
- [3] [AWS92] C. Ahlberg, C. Williamson, and B. Shneiderman, "Dynamic queries for information exploration: an implementation and evaluation", in: *Proceedings ACM CHI'92*, ACM Press, New York, 1992, pp. 619-626
- [4] [B83] J. Bertin, *Semiology of Graphics. Diagrams, Networks, Maps*, The University of Wisconsin Press, Madison, 1983
- [5] [BH03] M.R. Berthold and L.O. Hall, "Visualizing Fuzzy Points in Parallel Coordinates", *IEEE Transactions on Fuzzy Systems*, 11 (3), 2003, pp.369-374
- [6] [BMMS91] A. Buja, J.A. McDonald, J. Michalak, and W. Stuetzle, "Interactive data visualization using focusing and linking", in *Proceedings IEEE Visualization'91*, IEEE Computer Society Press, Washington, 1991, pp.156-163.
- [7] [C91] D.B. Carr, "Looking at Large Data Sets Using Binned Data Plots", in A. Buja, P.A. Tukey (eds.), *Computing and Graphics in Statistics*, Springer-Verlag, New York, 1991, pp. 7-39
- [8] [C03] H. Chen, "Compound brushing", in *IEEE Symposium on Information Visualization*, Seattle WA, October 2003, IEEE Computer Society Press, Washington, 2003, pp.181-188
- [9] [FWR99] Y.-H. Fua, M.O. Ward, and E.A. Rundensteiner, "Hierarchical parallel coordinates for exploration of large datasets", In *Proceedings IEEE Visualization*, San Francisco CA, October 1999, IEEE Computer Society Press, Washington, 1999, pp.43-50
- [10] [HC00] J. Han and N. Cercone, "RuleViz: a model for visualizing knowledge discovery process", In *Proceedings KDD 2000*, Boston MA, ACM Press, 2000, pp.244-253
- [11] [HT98] H Hoffmann and M. Theus, "Selection sequences in Manet", *Computational Statistics*, 13 (1), 1998, pp.77-87
- [12] [I85] A. Inselberg, "The plane with parallel coordinates", *The Visual Computer*, 1 (1), 1985, pp.69-91
- [13] [I90] A. Inselberg, "Parallel Coordinates : A Tool for Visualizing Multi-Dimensional Geometry", In *Proceedings IEEE Visualization*, 1990, IEEE Computer Society Press, Washington, 1990, pp.361-378
- [14] [I98] A. Inselberg, "Visual Data Mining with Parallel Coordinates", *Computational Statistics*, 13 (1), 1998, pp.47-63
- [15] [ICR87] A. Inselberg, T. Chomut, and M. Reif, "Convexity Algorithms in Parallel Coordinates", *Journal of the ACM*, 34 (4), 1987, pp.765-801
- [16] [MW91] J.J. Miller and E.J. Wegman, "Construction of line densities for parallel coordinate plots", in A. Buja and P.A. Tukey (Eds.) *Computing and Graphics in Statistics*, Springer-Verlag, 1991, pp.107-123
- [17] [OL96] H.-L. Ong and H.-Y. Lee, "Software report: WinViz – a visual data analysis tool", *Computers & Graphics*, 20 (1), 1996, pp.83-84
- [18] [PT03] K.B. Pratt and G. Tschapek, "Visualizing concept drift", in *Proceedings 9<sup>th</sup> ACM SIGKDD Conference*, Washington DC, August 2003, ACM Press, New York NY, 2003, pp.735-740
- [19] [RC94] R. Rao and S. Card, "The Table Lens: Merging graphical and symbolic representations in an interactive Focus+Context visualization for tabular data", in *Proceedings of ACM CHI'94 Conference on Human Factors in Computing Systems*, Boston MA, April 1994, ACM Press, New York, 1994, pp. 318-322.
- [20] [R98] J.C. Roberts, "On Encouraging Multiple Views for Visualisation", in *Proceedings Information Visualisation IV'98*, London UK, 29-31 July 1998, IEEE Computer Society Press, Washington, 1998, pp. 8-14
- [21] [S00] H. Siirtola, "Direct Manipulation of Parallel Coordinates", In *Proceedings Information Visualization 2000*, London UK, IEEE Computer Society Press, Washington, 2000, pp.373-378
- [22] [SRC83] D.A. Schilling, C. Revelle, and J. Cohon, "An approach to the display and analysis of multiobjective problems", *Socio-Economic Planning Sciences*, 17 (2), 1983, pp.57-63
- [23] [T77] J.W. Tukey, *Exploratory Data Analysis*, Addison-Wesley, Reading, 1977
- [24] [T02] M. Theus, "Interactive data visualization using Mondrian", *Journal of Statistical Software*, 7 (11), 2002
- [25] [TS98] L. Tweedie and R. Spence, "The projection matrix: a tool to support the interactive exploration of statistical models and data", *Computational Statistics*, 13 (1), 1998, pp.65-76
- [26] [W90] E.J. Wegman, "Hyperdimensional data analysis using parallel coordinates", *Journal of the American Statistical Association*, 85 (411), 1990, pp.664-675
- [27] [W99] L. Wilkinson, *The Grammar of Graphics*, Springer-Verlag, New York, 1999
- [28] [WF99] I.H. Witten, E. Frank, *Data Mining: Practical Machine Learning Tools and Techniques with Java Implementations*, Morgan Kaufmann, 1999