

*Participatory crop improvement and formal release of Jethobudho rice
landrace in Nepal*

S. Gyawali¹, B.R. Sthapit², B. Bhandari¹, J. Bajracharya³, P.K. Shrestha¹, M.P. Upadhyay³, and D.I. Jarvis^{4*}

¹ Local Initiative for Biodiversity, Research and Development (LI-BIRD), PO Box 324, Pokhara, Nepal; Present address: Agriculture and Agri-Food Canada, 107 Science Place Saskatoon, Canada

² Bioversity International, Sub-Regional Office for Asia Pacific and Oceania, New Delhi, India

³ Nepal Agricultural Research Council (NARC), Khumaltar, Kathmandu, Nepal

⁴ Bioversity International, Maccaresse, Italy

* Corresponding Author

Abstract: *Jethobudho* is an aromatic rice landrace of the Pokhara valley in middle hills of Nepal. Although local consumers are willing to pay a high price for its purchase, the landrace has a problem with quality variation. Decentralized participatory population improvement for specific market identified traits was conducted on “*Jethobudho*” populations collected from farmers’ fields in seven geographic regions of the valley in Nepal. The preferred post harvest quality traits, field tolerance to blast and, lodging, and superior post harvest quality traits of *Jethobudho* were established by a consumer market survey, and these traits were used for screening the materials. 338 sub-populations of

Jethobudho were evaluated for yield, disease, lodging resistance, and post harvest quality traits. Significant variation was found for culm strength, neck blast tolerance, awn characteristics, panicle length, number of grains per panicle, test grain weight and post harvest quality traits, whereas no significant variation was found in grain yield, plant height, tiller number, maturity period and leaf blast. Based on these identified traits and micro-milling evaluations, 183 populations were screened in on-farm and on-station nurseries, and in succeeding years populations were further screened by plant breeders and expert farmers in research trials resulting in the selection of 46 populations for post harvest quality traits. Six accessions with similar agronomic traits, field tolerance to blast and lodging, and superior post harvest quality traits, were bulked and evaluated on-farm using participatory variety selection (PVS). The enhanced *Jethobudho* accessions were also evaluated for aroma using simple sequence repeat (SSR) and found to have unique aromatic genetic constitution. Community based seed production groups were formed, linked to the Nepal District Self Seed Sufficiency Programme (DISSPRO), and trained to produce basic seeds (truthfully labeled) of *Jethobudho*. The National Seed Board of Nepal released the enhanced landrace in the name of “*Pokhareli Jethobudho*” in 2006, as the first bulk variety of traditional high quality aromatic rice improved through participatory plant breeding to be formally released in Nepal for general cultivation under the national seed certification scheme. Landrace improvement is shown as an important option for supporting programmes for *in-situ* conservation of landraces on-farm.

Keywords: Traditional variety, landrace enhancement, on-farm conservation, participatory plant breeding, community seed production, genetic diversity

Introduction

Traditional crop varieties or landraces are an important element of crop genetic resources and are valued by plant breeders and farmers because of diversity (a heterogeneous population), rarity (embodying unique traits) and adaptability (exhibiting wide ecological and socio-cultural adaptation) (Brush and Meng, 1998; FAO, 1998; Smale, 2006; Gauchan et al., 2006). Farmers throughout the world continue to maintain and manage these traditional varieties within their production systems (Frankel and Bennett, 1970; Hawkes, 1971; Duvick, 1984; Brush et al., 1995; Brush 2004; Jarvis et al., 2008; FAO 2010). Yet the value they contain for the farming communities that maintain them has not been fully capitalised on.

Not all landraces are equally valued by farmers. Some landraces are adapted to marginal ecosystems (Vandermeer, 1995, Bezancon et al., 2009; Barry et al., 2007; Rana et al., 2008). Others have cultural, religious, or nutritional value (Rana et al., 2007; Sthapit et al., 2008; Johns and Sthapit 2004). Some landraces maybe highly valued but their use is constrained by poor access to quality and quantity of seeds or planting materials (Tripp, 2001; Almekinders et al., 2006; Sperling et al., 2008; Hodgkin et al., 2007). Landrace populations may, themselves, not be uniform in their adaptive or quality traits, having significant variation both within and amount populations (Teshome et al. 2001; Harlan 1975; Mariac et al., 2006; Barry et al., 2007). One way of distinguishing those varieties that provide high public value is to classify those in terms of their immediate and future plant breeding benefits (Smale et al., 2004). This required consultation with farmers and breeders but also other concerned actions including consumers, millers and retailers (Sthapit et al., 2001; Sperling et al., 2001; Bellon et al., 2003; Witcombe et al., 2005).

The recent movement in participatory and decentralized plant breeding over the last decade has shown that improving varietal performance in low input systems can help improve local livelihoods (Ceccarelli et al., 2000; Smith et al., 2001; Almekinders and Elings, 2001; Zeven 2000; Dawson et al., 2008). Sthapit (1992) and colleagues (1996) and Witcombe and colleagues (1996) have demonstrated that the value of local cold tolerant rice varieties can be improved by selection of preferred traits from the heterogeneous populations, collected locally before any crop improvement programme is initiated. Genebank curators and plant breeders continue to collect traditional varieties for future use in plant breeding, and a significant amount of this conserved material is used in academic research (Dudnik et al., 2001). However, insufficient attention has been given to the potential use of the existing landrace variability in production systems to provide direct benefits to local communities (Sthapit and Rao, 2009).

Jethobudho is an aromatic rice landrace of the Pokhara valley in middle hills of Nepal. *Jethobudho* is valued for its superior cooking qualities such as softness, taste, aroma and volume expansion ability and for its superior milling recovery (Rijal et al., 1998; Sthapit et al., 2001). Variability in quality is the main concern of consumers and market entrepreneurs in marketing of this popular variety. Consumers are willing to pay a high price (Poudel and Johnsen, 2009) for its purchase, but the landrace has a problem with quality variation. This significant quality variation coupled with poor access to quality seed and inadequate policy support, including variety release policies and quality seed

production for landraces, has limited the ability of *Jethobudho* rice to be competitive in relation to other high quality rice varieties.

This study documents the eight year process of decentralized participatory population improvement for specific market identified traits of the *Jethobudho* rice landrace from the initial setting of breeding goals to the registration and release by the National Seed Board of Nepal for general cultivation under the national seed certification scheme. The enhanced landrace in “*Pokhareli Jethobudho*”, is the first Nepalese nationally released bulk variety of traditional high quality aromatic rice improved through participatory plant breeding.

Materials and methods

Site description

The study sites are located in the Pokhara valley, central Nepal (28° 11' 35.10" N and 83° 58' 6.62" E). The valley was formed from an ancient river terrace composed of calcareous, gravely and fluvial deposits and occupies an area of 625 km², with an annual rainfall of 3500 to 4500 mm. Mean air temperature from April to October is recorded above 20°C. Summers are warm with ample rainfall and winters are drier and colder. Rice is grown in the flat valley plains from <600m asl to terraced rice fields in the surrounding hills up to 2200m asl. Diverse types of rice ecosystems are found, which

include: upland (unbunded¹ and not irrigated), rainfed banded, irrigated and marshy land types (Rana, 2004; Rijal 2007). Earlier studies found that farming communities in this region maintain a substantial amount of rice varietal diversity at the community level. In Begnas, Kaski district, 73% of the rice farm area in the community is devoted to traditional varieties (landraces sensu Harlen, 1975), made up of 51 traditional rice varieties (Rana et al., 2007; Jarvis et al., 2008). Community identified *Jethobudho* as most preferred landrace for germplasm enhancement using participatory four cell analysis (Sthapit et al., 2001). *Jethobudho* falls into the category of traditional varieties that are commonly grown by many households on a larger area of their rice plots (Rana et al., 2007). Habitats for plant selection (target production environment) were located through consultations with expert farmers, consumers and local agricultural development officers. Table 1 lists the locations and different water regimes where the plant material for this study was collected.

Materials

Samples were then collected at the time of maturity from 338 *Jethobudho* populations in seven different “*phants*” or productive flat agricultural areas in the Pokhara valley where rice is grown (Figure 1 and Table 1). Five panicles (neck blast free) were randomly selected from each of the 338 *Jethobudho* populations, and the seed bulked together and marked as an accession. Each accession was divided into three packets and numbered. One packet of each of the bulked accession was used for blast screening and nursery

¹ Rice in upland is dry seeded during pre-monsoon in Ghaiya khet whereas bunds (mud walls around terrace) are created to retain water for transplanting rainfed or irrigated rice (Rana et al., 2007).

observation in the Malepatan Agriculture Research Station (850 m asl). The remaining two parts were used to conduct on-farm diversity assessment trials in two major target environments: Malmul (600m asl) and Fewa (900m asl) Phants.

Field screening

All 338 *Jethobudho* accessions from the seven geographic sites were grown on-station and on-farm conditions in 2000 in two locations of the Pokhara valley: on farm trials in Malmul, Begnas, and Malepatan research station. Plot size was 1.5m x 1m with 20 x 10 cm spacing. Thirty plants from each accession (both on farm and on-station) were measured for a set of qualitative (apiculus color, awn characteristics, culm strength leaf and neck blast and lodging tolerance) and quantitative traits (plant height, tillers number per plant, panicle length, grain numbers per plant, test weight and grain yield per row). The mean, standard deviation, range and coefficient of variation were estimated for *Jethobudho* landrace accessions for plant height (≤ 150 cm), number of tillers plant⁻¹, panicle length, number of grains panicle⁻¹, test grain weight, grain yield, leaf and neck blast tolerance, culm strength, lodging tolerance, and awn characteristics (Gyawali *et al.*, 2003).

In 2001, 183 *Jethobudho* accessions were screened for leaf and neck blast, lodging tolerance, and yield components. The accessions were exposed to the natural inoculum pressure of blast caused by *Magnaporthe grisea* (T. T. Hebert) M. E. Barr. in the field. The blast infection was scored in 0-5 scale for leaf and neck blast using Standard

Evaluation System for Rice (IRRI, 1996). The accessions scoring more than two were rejected for further evaluation in each year.

A lodging tolerance index was used to screen collected accessions similarly. The trials were conducted under farmers' management conditions and in lodging prone areas. Highly fertile rice fields with perennial source of water where farmers have experienced lodging of his/her source of *Jethobudho* every year were used to screen *Jethobudho* for lodging tolerance. The lodging tolerance was assessed in a scale of 0-5 (IRRI, 1996). *Jethobudho* accessions scoring more than two were rated as lodging prone and rejected from future selection. Lodging tolerance was also verified by the culm strength measured qualitatively.

Laboratory screening

We developed a laboratory method of screening large *Jethobudho* accessions using physical, micro-milling and organoleptic tests for post-harvest quality traits. We screened accessions based on the standard physio-chemical analysis (gel consistency, volume expansion, water absorption, and amylose contents).

Micro-milling (GRAINMAN micro-mill model no. 60-220-50-2AT) was then conducted on 143 of the 183 accessions. The number was reduced to 143 accessions because of insufficient seeds of 40 accessions. The 143 accessions were then screened for milling recovery traits by micro-milling, for blast, lodging, yield components using methods described above, and for organoleptic assessment (taste, aroma, softness, flakiness). To

determine organoleptic traits screening, a consumer survey was conducted on 60 individuals made up of millers, hotel chefs, supermarket owners, and consumers (consumers consisted of predominantly female farmers) to determine important grain and cooking quality traits of *Jethobudho*. These traits were used for organoleptic traits screening by a panel of judges, represented by hotels, millers and consumers.

Field trials

In 2002, 46 accessions screened from the 143 accessions were grown in on-farm trials in Malmul and Pame as well as on on-station trials at the Agricultural Research Station (ARS), Malepatan, Pokhara. The plot size was of 2 m x 1 m arranged in randomized complete block design (RCBD) with three replicates in each location. Again plants were evaluated for shorter plant height, higher effective tillers plant⁻¹, longer panicle length, higher test weight and grain yield. The aroma and other grain characters were evaluated and best accessions were selected as farmers' preferred traits. At the later stage of the breeding program during 2004-2005 when there was sufficient seed, *Jethobudho* accessions were evaluated in 9 m² (3 m x 3 m) plots arranged in RCBD with three replicates. During selection process in the field, farmers were invited to on-farm trials at the time of maturity to identify better accessions specially based on panicle types, neck blast, grain characters and general phenotypic acceptance. The selected best accessions were further evaluated for standard post harvest quality traits (IRRI 1996).

Consumer surveys

Consumer survey consisted of two focus group discussions (FGD) with 8-12 number of farmers in each group in 1999, followed by 60 individual surveys that included housewives, consumers who consume *Jethobudho* year round, cooks from hotels within valley and farmers in 2002. Surveys contain questions of farmers preferences for post-harvest quality traits, including physical appearances (grain type and grain color), milling traits (milling recovery, head rice recovery, broken rice) and organoleptic tests (aroma, cooking and eating qualities such as softness, taste and flakiness).

Participatory Variety Selection

Enhanced *Jethobudho* populations were evaluated in 208 participatory variety selection (PVS) trials during 2003-2005 to compare overall performance of enhanced *Jethobudho* with farmers' checks (farmers own source of *Jethobudho*) and to multiply seed on-farm. Participatory variety selection (Joshi and Witcombe, 1996) was employed in farmer's fields of Pokhara valley to compare the overall performance of enhanced *Jethobudho* with the farmer's own source of *Jethobudho* using farmer's own evaluation criteria. Each farmer received about 2 kgs of seed of the enhanced *Jethobudho* to compare with their own seed source of *Jethobudho*. In 2003, a limited number of farmers (15) participated PVS trials because of availability of limited seed where participating farmers were asked to keep the seed if other interested farmers are interested on enhanced *Jethobudho*. In 2004, 47 farmers participated in on-farm PVS of enhanced materials. In 2005, 147 PVS trials were conducted in collaboration with District Agriculture Development Office (DADO) and farmer's groups (Table 2). Evaluations conducted by researchers were validated by participatory variety selection technique as well. During 2003, 2004, and

2005, 90 farmers were surveyed with a formal household survey questionnaire one month after the harvest of crop to obtain farmers feedback on overall performance of enhanced *Jethobudho*. Selected accession for farmers' acceptance on post harvest quality traits in participatory variety selection (PVS) were analysed using household level questionnaires.

Molecular characterization of aroma in Jethobudho

Seven enhanced *Jethobudho* populations were evaluated for aroma along with three known aromatic varieties viz. Azucena (a japonica cultivar from IRRI), Pusa Basmati-1 (popular Indian aromatic variety), local Rato Basmati (aromatic landrace from Nepal), and IR36 (one non-aromatic modern variety). Seven SSR primers, distributed in rice genome having association with aroma in rice, were tested to understand this trait in enhanced *Jethobudho* populations using procedures developed by McCouch *et al.*, (1997). Markers examined were RM223, RM42, RM1, RM241, RM 348, RM 202, and RM229 distributed in chromosomes 8, 1, 4, and 11 (Chen *et al.*, 1997; Nagarju *et al.*, 2002). A pairwise similarity matrix was calculated using Jaccard's coefficient and employed to construct a dendrogram to show the relationships among cultivars for aroma (data not shown) (Bajracharya *et al.*, 2005). Genetic relationships among six enhanced *Jethobudho*, one bulk *Jethobudho* populations and four different aromatic and non-aromatic check varieties for aroma was detected by the allelic data of two SSR loci (RM42 and RM223) mapped in the location of RFLP probe RG1–RG28 linked to aroma in chromosome 8. In addition, five other markers (RM1, RM202, RM229, RM241, and RM348) were also used to understand the allelic behavior of enhanced *Jethobudho*

populations and compared the alleles with that of aromatic and non-aromatic check varieties under study.

Institutionalization of community seed production and marketing

Farmers growing *Jethobudho* were invited to participate in a series of village level meetings involving custodian farmers having knowledge of *Jethobudho* seed selection, rice millers and merchants, and District of Agriculture Development Office (DADO) officials. Farmers were identified from these meeting for community level seed production groups by their interest to maintain and multiply *Jethobudho* seeds. Three farmers, Man Bd Sunar and Ganga Giri from Fewa and Kedar Pd Kafle of Biruwa Phants were instrumental in forming the seed production groups. The Community level groups were formed into a seed network led by the Fewa Seed Production Group, which provided foundation seed to village level groups for seed multiplication. Official application for registration of Fewa Seed Production Group to the DADO was facilitated by a collaborative group of researchers from the Nepal Agricultural Research Council (NARC), Bioversity International, and Local Initiatives for Biodiversity Research and Development (LI-BIRD).

Varietal Release

The Variety Approval, Release and Registration Committee (VARRC) of Nepal² carried out field assessments organized both in farmer's fields and on on-station trials in 2005.

² A technical group of the national seed board of Nepal

The assessment included discussions with farmers and mill owners for direct feedback on the produce acceptance.

Statistical analysis

SPSS for windows version 10.1 was used to produce descriptive statistics of survey data. The ANOVA and Fischer's protected LSD were employed to compare variances and means of *Jethobudho* accessions using MINITAB Release 12.21 and MSTATC.

Results

The results of the eight years of collaborative work are divided into a five step process, (i) setting breeding goals; (ii) assessing populations for selected traits, (iii) enhancement of local populations for selected traits, (iv) evaluating improved populations, v) testing improved population against farmers' checks, (vi) seed multiplication and enhancing seed dissemination systems, and (vii) variety release.

Setting breeding goals

Farmers and breeders jointly decided to improve populations of *Jethobudho* landraces because of farmer's expressed interest and availability of intra-varietal variations for useful selection. The 60 surveyed farmers ranked softness and taste before flakiness and aroma as the most important quality traits, for which they would be willing to pay a higher price for *Jethobudho* compared to Basmati rice (Table 4). In addition to these post

harvest traits, the focus group discussions (FGDs) identified that more effective tillers, longer panicle length, dense grain setting, free from leaf and neck blast, and non-lodging as the traits appreciated by the farmers. The presence of awns in *Jethobudho*, a common characteristic of many landraces, was not preferred by farmers and mill owners. In addition, millers specifically identified high milling recovery with a low percent of broken rice grains as an important trait.

Assessing and selecting populations for selected traits

Characterization of 338 accessions in 2000 showed high variation in panicle length, grain number per panicle, grain weight, awn characteristics, disease tolerance (especially neck blast) and culm strength (data not shown). Of the 338 accessions, 183 accessions- ranked as neck blast tolerant under natural inoculums pressure, lodging tolerant in farmer's management conditions and with plant height shorter than 150 cm.

Organoleptic assessment of the 143 of the 183 accessions collected from seven sites³, which had sufficient seeds for micro milling, are shown in (Table 5). High overall values, based predominantly on softness, aroma, and brightness of the grain, came from Biruwa and Fewa Phants (Table 5). Forty-six accessions had more than 71% milling recovery and higher than 400 organoleptic weighted score; these accessions were selected for landrace enhancement (data not shown).

Enhancement of populations for selected traits

³ Of the 183 accession only 143 accession had sufficient seeds for micro-milling

Assessment by plant breeders along with expert farmers of agronomic performance in 2002 in two sites (Malmul site -on-farm and Malepatan site -on-station) of the selected 46 accessions showed significant variation for panicle length, number of grains per panicle, and 100 test weights, awn characteristics, neck blast, and culm strength indicating possible genetic gain from selection (Table 6). Variation in plant height and yield were not significant at the 0.05 probability level (Table 6). The lodging tolerance of *Jethobudho* accession was not significantly different but we found significant differences in strong culm strength and were selected to improve lodging tolerance. The *Jethobudho* accessions were found to be highly variable for volume expansion, water absorption and kernel elongation helped us to select for enhanced *Jethobudho* for post harvest quality traits. Six *Jethobudho* accessions of 46 accessions showed the most desirable post harvest quality traits and their overall performance for disease and lodging tolerance (Tables 7 and 8). There were no significant differences among important agronomic traits between the selected six *Jethobudho* accessions (Table 7). Therefore six enhanced lines were bulked, and distributed for participatory varietal selection (PVS; Joshi and Witcombe, 1996) as an improved *Jethobudho* variety.

Evaluation of enhanced materials

Tables 7, and 8 show the comparative evaluation of six enhanced *Jethobudho* accessions. Significant difference between enhanced *Jethobudho* and farmer's check were found for neck blast and lodging tolerance (Table 7). The micro-milling of selected *Jethobudho* accessions revealed that the length-width ratio ranged from 2-2.5 and none of the grains were found to have chalkiness; all were ghee color (translucent; Table 8). Enhanced

Jethobudho populations were found to be superior in milling recovery (72%), excellent physical appearance and better organoleptic weightage⁴ as compared to farmers own source of *Jethobudho* (Table 8). The selected *Jethobudho* accessions recorded excellent volume expansion (>300%), higher water absorption (>200%), 100% kernel elongation and 23-24% amylase content, good indicator for the consumer preferred trait of flakiness. The predicted response to selection for selected traits was difficult to estimate due to lack of heritability estimate for each trait, however, selection differential is shown at 4% selection intensity (Table 9).

Farmer's perception of the enhanced Jethobudho assessed by participatory variety selection

A total of 260 randomly selected *Jethobudho* growing farmers from Pokhara valley took part in a participatory variety evaluation of improved *Jethobudho* with their own source *Jethobudho* during 2003 and 2005. Table 10 shows farmer's perception on overall performance of enhanced *Jethobudho* rice variety over three years compared to local *Jethobudho*. In 2003, farmer perceived enhanced *Jethobudho* was better on traits such as blast disease tolerance, lodging tolerance, straw and grain yields, tillering ability, threshability and seedling establishment; however, they matured later than the farmer's own *Jethobudho*. Similar trends were found in PVS trials in 2004 and 2005 for most key traits.

⁴ Cumulative weightage indicates superior in organoleptic properties of the accessions.

Data of 47 PVS trials conducted in Kaski valley in 2005 showed that the enhanced materials was highly preferred for post harvest grain quality traits, especially for higher milling recovery, aroma, softness, flakiness and other cooking qualities by the farmers (Table 10; Figure 2).

Molecular Evaluation

All bulked and individual samples of enhanced accessions of *Jethobudho* were found similar at the two SSR loci (RM42 and RM223) with the same alleles as that of the check aromatic varieties: Azucena, Pusa Basmati-1, Rato Basmati local, but different from that of IR36 at these loci (Figure 3). IR36 had the allele different from the alleles in Azucena, Pusa Basmati-1, Rato Basmati and *Jethobudho* populations for RM223 except an individual DNA sample with big sized allele (shown by arrow in Figure 3a). The reported size of PCR products for RM223 in Azucena was 150bp. But RM42 was observed monomorphic with same product size across the *Jethobudho* and check varieties included in the study. *Jethobudho* had 2 alleles for RM223; alleles similar to aromatic checks: Azucena, Pusa Basmati-1, Rato Basmati and other one different from that of Azucena and IR36 (Figure 3). A dendrogram constructed on the basis of allelic polymorphism using Jaccard's similarity correspond the genetic relationships among the populations for aroma (Figure 3). All the enhanced *Jethobudho* populations except JB3 (JB-T3-103-237/12) correspond a high level of similarity coefficient and grouped into a cluster and showed close association with Azucena for aroma traits. *Jethobudho*

populations were found with unique bands for most the markers studied. However the JB3 behaved similarly as that of Pusa Basmati-1, Rato Basmati local and IR36.

Seed multiplication and enhancing seed supply systems

Custodian farmers now have enhanced skills on panicle selection, purity, and germination testing. Six of these custodian farmers, from where the materials were collected, were involved in the production of first generation (equivalent to foundation seed). A network of three community based seed production groups was set up, made up of six village level seed producer groups. One of the three seed production group, the Fewa Seed Producer Group, has been registered and formally linked to the District Seed Self-sufficiency Program (DISSPRO) of District Agricultural Development Office, Kaski (Table 12). Fewa Seed Producer Group initiated its seed production of enhanced *Jethobudho* with 80 kg of basic seed on-farm and 1.7 tonnes truthfully labeled seed produced in 2004. Seeds were supplied to “farmer breeders”, those farmers from whom the original seed was collected. The Fewa Group is involved in the marketing of truthfully labeled seed of enhanced *Jethobudho* in Kaski. In 2005, seed producer groups were willing to pay NPR 1600 per muri (70 kg husked paddy) compared to the NPR 1300 for the farmer’s variety. At that time, farmers produced 1000 kg of truthfully labeled seed of enhanced *Jethobudho* prior to release of the variety. In 2006 the community seed producer groups collected 3300 kg seed for marketing.

Official release of farmer's variety

Initially, the Variety Approval, Release and Registration Committee (VARRC) of Nepal was concerned on releasing a mixed bulk population of enhanced *Jethobudho* accessions. However, after assessment of the enhanced *Jethobudho* bulk population in the field, and discussion with farmers, mill owners and rice merchants, the VARRC established that the bulk population was phenotypically similar for agronomic, post harvest quality traits and market preferences and recommended the variety for release in 2005. The enhanced rice variety was formally registered, approved and released by the name of “*Pokhareli Jethobudho*” through the Variety Approval, Release and Registration Committee (VARRC) of Nepal, 20 June, 2006.

Discussion

Setting breeding goals for client oriented plant breeding requires both an understanding of needs and preferences of the producer, miller, and consumer, together with a determination of the potential and limitations of the available breeding materials. The quick purposive survey of farmers and millers, revealed a willingness to pay more for a “set” of post-harvest and organoleptic quality traits (softness, flakiness, taste, and high milling recovery) than a specific single trait such as taste or aroma. The perspective gained from this study showed that farmers did make a trade-off for “a set” of quality traits rather than a single quality trait such as aroma. One of the reasons for employing participatory plant breeding in rice is to capitalize farmers skills and knowledge on such tradeoff traits that support maintenance of genetic diversity (Witcombe et al.,2006). Such qualitative information is difficult to obtain using the current international quality

assessment developed by IRRI (1996). Such tradeoffs have also been shown by Ceccarelli and colleagues (2003) for barley, where selection among breeders and farmers were not significantly different for grain yield but were for other traits such as superior height under severe drought, and for maize in Mexico and Honduras where farmers select for a set of post harvest traits as trade offs for yield (Smith et al., 2001).

The current international standard for milled basmati rice is slender (length/width ratio should be 3.0), very long grain (7.51mm) with high amylose (23-25). The basmati type rice has longer grain and rice remains long and separated when rice is cooked. In contrast, milled *Pokhareli Jethobudho* rice fell into the short grain category (length/width ratio 2.2) with similar amylose content (23-24%). The 23-24% amylose content of *Jethobudho* makes its highly preferable for non-sticky rice and a good indicator for consumer preferred trait of flakiness. When the soaked rice is cooked, the volume of rice increases by over 300% and length of the kernel doubles. This ability to expand linearly, gives a soft quality that retains the characteristics of flakiness (characteristic of cooked rice that does not stick during serving and remain soft while eating). This trait is very good for cooking Pulao or Biryani (soaked rice cooked with vegetables and meat together with ghee and spices), which is common in Arabian and Asian food culture (Rani et al 2006). Singh *et al.*, (2000a) reported that the high export quality of Indian Basmati landraces should have more than 300% volume expansion, thus *Jethobudho* is highly suitable to meet these international standards of aromatic rice for export. The enhanced landrace also has a special aroma, which is distinct from basmati types (Bajracharya *et al.*, 2005). Bajracharya and colleagues (2005) reported that the enhanced *Jethobudho* rice accessions

carries the alleles of the site on the genome as detected in other aromatic varieties in her check, but that these alleles are different from IR36 for RM1 and RM223, establishing the uniqueness of the enhanced *Jethobudho*. Her study also showed that the post harvest grain quality traits were positively associated with aroma.

There is a growing global recognition of the importance of traditional varieties, both as components of sustainable production systems and as sources of genetic variation for modern plant breeding (Gepts 2006; Teklu and Hammer, 2006; Jarvis and Hogkin, 2008; FAO 2010;). However, even though considerable and unique local crop genetic diversity continues to be available in farmers' fields, the majority of breeding activities use of genebank materials, rather than materials currently maintained in the farmers' production system (Fowler and Hodgkin, 2004; Sthapit and Rao, 2009). The work presented here emphasizes the importance of the direct use of materials collected on farm in plant improvement programs. Thus use of the rich intra-specific diversity maintained on farm allows for the maintenance of diversity in some traits but without significant variation for the agronomic or quality traits selected for in the participatory improved materials (Ceccarelli 1994; Ceccarelli et al., 2001; Witcombe et al., 1996; Joshi et al., 2001, Gyawali et al., 2007). In the more developed economies of Europe, the use of on-farm materials is also emerging as method for farmer's union and associations, who question the conventional approaches to plant breeding, so use local materials (Chiffolleau and Descalux 2006; Finckh, 2008; van Bueren et al., 2008).

Although selection of *Jethobudho* landrace populations was made against awns, a trait not preferred by farmers and millers, the significant G x E interaction indicated a need of location-specific selection by farmers to minimize the presence of awns. Environmental heterogeneity of low-input environments makes it more difficult to apply consistent selection pressure in low-input systems (Haugerum and Collinson, 1990; Dawson et al., 2008). Ceccarelli and colleagues (2003) have shown that environment can have a significant effect on specific agromorphological traits such as growth habit, plant height and kernel weight for barley varieties in Syria.

A limitation to mainstreaming the use of participatory plant breeding products has been the lack of uptake by the formal seed sector to distribute seeds (Ceccarelli and Garndo 2007). The majority of participatory crop improvement programmes have relied on farmers' seed production to exchange and disseminate varieties (Almekinders and Elings, 2001; Aw-Hassan et al., 2008). These programmes have concentrated on local social institutions (Eyzaguirre and Dennis, 2007) and gaining an understanding the ways in which farmers produce, select, save and acquire healthy seeds (Hodgkin et al., 2007; Sperling et al. 2008, Weltzien and von Brocke, 2000; Cleveland and Soleri, 2007). Mainstreaming of the PPB projects have been constrained by limited linkages among local or community based organizations and the national seed distribution system. A community based seed production and distribution system for the farmer-bred, state-released, enhanced materials needed to both strengthen farmer-to-farmer seed systems and link community seed production with the local seed entrepreneurs (Devkota et al., 2008). In Nepal, the formal seed sector contributes less than 3 % of the total demand of

rice seed (Baniya *et al.*, 2003; Singh *et al.*, 2003), while the seeds disseminated through the informal seed system follow a diversity of seed exchange networks depending on differences in ecological and cultural differences (Subedi *et al.*, 2003). The Community Based Seed Production (CBSP) program, instigated through this work in Nepal, was designed to integrated community based seed production with the government initiated District level Seed Self-sufficiency Programme (DISSPRO) to create a market for local seed producers. Through this programme, the institutional capacity of Fewa Seed Producer Group was strengthened by a joint non-government organization (LIBIRD) and the local extension service, the District Agriculture Development Office (DADO) partnership that provided regular training, support, and services (Gyawali *et al.*, 2007). The strengthening of the capacity of the local seed producers group was key to the success of the growing demand for the seed of enhanced *Jethobudho* in Kaski valley, as well as neighboring districts with similar rice production domains.

With the approval of the proposal of enhanced *Jethobudho* release by the Variety Approval, Release and Registration Committee (VARRC) of Nepal in 2006 came the recognition of participatory data generated using PPB by VARRC and the release of the *Pokhareli Jethobudho*. The formal registration and release has both enhanced the access of quality seed of an enhanced bulked variety adapted to local conditions of the Nepali farmers, and improved the recognition of the importance of *in-situ* conservation of crop biodiversity in farmers' fields at local and national levels. In addition, the on-farm evaluation of accessions and use of micro-milling and organoleptic quality traits in *Jethobudho* has not only broaden the breeders understanding on landrace enhancement

initiatives but also helped screening best accessions to identify the superior landraces accessions for quick scaling up through Participatory Varietal Selection (PVS), community based seed production, creating market incentives and developing mechanisms for equitable sharing of benefits harvested due to the use of local landraces. It is important to understand that not all landraces can be conserved on-farms, and not all farmers can conserve them because of the costs involved (Smale and King, 2005). The challenge is to create incentives for maintaining diversity that can benefit both current and future farmers and breeders. Participatory crop improvement linked with national varietal release and supporting seed production units can be one method that allows farmers to benefit from their local resources while ensuring the continued maintenance and evolution of crop genetic diversity within agricultural production systems.

Acknowledgements

This work was carried out with the support from the NEDA, Netherlands, the International Development Research Centre, Ottawa, Canada, and the Swiss Agency for Development and Cooperation (SDC). The authors express their sincere gratitude *in-situ* project team members from 1998 to 2006 including farmers and their local institutions of Pokhara valley. Thanks are due to Dr. KD Joshi, Indra Poudel, Shree Ram Subedi, Mahendra Chaudhary, and Mahesh Shrestha from LI-BIRD and Radha Krishna Tiwari, Gopal Parajuli, Bimal Baniya and Ramesh Bhandari from NARC for their technical assistance. Thanks also to Chiara Boni for her assistance in editing the references. We would also thank Department of Agriculture (DoA) and their staffs for their support in variety release and community based seed production program.

References

Almekinders, C.J.M. & A. Elings, 2001. Collaboration of farmers and breeders:

Participatory crop improvement in perspective. *Euphytica* 122: 425-438.

Almekinders, C.J.M., G. Thiele & D.L. Dabial, 2006. Can cultivars from participatory plant breeding improve seed provision to small scale farmers? *Euphytica* DOI 10.1007/s106881-006-9201-9

Aw-Hassan, A., A. Mazid & H Salahieh, 2008. The role of informal farmer to farmer seed distribution in diffusion of new barley varieties in Syria. *Expl/ Agric.* 44:413-443.

Bajracharya J, S. Gyawali, BR Sthapit, DI Jarvis, 2005. *Jethobudho* landrace enhancement V: Molecular evaluation of enhanced populations for aroma by Single Sequence Repeats (SSR). In: Sthapit, BR, Upadhyay MP, Shrestha PK and Jarvis D, eds. 2005. On-farm conservation of agricultural biodiversity in Nepal. Vol II. Managing diversity and promoting its benefits, Proceedings of the Second National Workshop 25-27 August 2004, Nagarkot, Nepal. IPGRI, NARC, LI-BIRD.

Baniya, B. K., A. Subedi, R. B. Rana, R. K. Tiwari, and P. Chaudhary. 2003. Finger millet seed supply system in Kaski district of Nepal. In: On- Farm Management of Agricultural Biodiversity in Nepal, 171–175. Proceedings of a national workshop, April 24–26, 2001, Lumle, Nepal. Kathmandu, Nepal: narc/li- bird/ipgri.

Barry, M.B., J.L. Pham, B. Courtois, C. Billot & A. Ahmadi, 2007. Rice genetic diversity at farm and village levels and genetic structure of local varieties reveal need for in situ conservation. *Genetic Resources and Crop Evolution* 54: 1675-1690.

Bellon M.R., J. Berthaud, M. Smale, J.A. Aguire, S. Taba, F. Aragon, J. Diaz & H. Castro, 2003. Participatory landrace selection for on-farm conservation: An example from the central valleys of Oaxaca, Mexico. *Genetic Resource and Crop Evolution* 50: 401-416.

Bezancon G., Pham J., Deu M., Vigouroux Y., Sagnard F., Mariac C., Kapran I., Mamadou A., Ge´rard B., Ndjeunga J. & Chantereau J., 2009. Changes in the diversity and geographic distribution of cultivated millet (*Pennisetum glaucum* (L.) R. Br.) and sorghum (*Sorghum bicolor* (L.) Moench) varieties in Niger between 1976 and 2003. *Genetic Resources and Crop Evolution* 56: 223-236.

Brush, S., R. Kesselli, R. Ortega, P. Cisneros, K. Zimmerer & C. Quiros, 1995. Potato diversity in the Andean Center of Crop Domestication. *Conservation Biology* 9 (5): 1189-1198.

Brush, S. & E. Meng, 1998. Farmers' valuation and conservation of crop genetic resources. *Genetic Resources and Crop Evolution* 45:139-150.

Brush, S.B., 2004. *Farmers' Bounty: Locating Crop Diversity in the Contemporary World*. Yale University Press, New Haven.

Ceccarelli, S., 1994. Adaptation to low/high-input cultivation. *Euphytica* 92: 203-214.

Ceccarelli, S., S. Gando, R. Tutwiler, J. Baha, A.M. Martini, H. Salahieh, A. Goodchild & M. Michael, 2000. A methodological study on participatory barley breeding I. Selection phase. *Euphytica* 111: 91-104.

Ceccarelli, S., S. Gando, E. Bailey, A. Amri, M. El-Felah, F. Nassif, S. Rezgui & A. Yahyaoui, 2001. Farmer participation in barley breeding in Syria, Morocco and Tunisia. *Euphytica* 122: 521-536.

Ceccarelli, S., S. Gando, M. Singh, M. Michael, A. Shikho, M. Al Issa, A. Al Saleh, G. Kaleonjy, S.M. Al Ghanem, A.L. Al Hasan, H. Dalla, S. Basha & T. Basha, 2003. A methodological study on participatory barley breeding II. Response to selection. *Euphytica* 133: 185-200.

Ceccarelli, S. & S. Gando, 2007. Decentralized-participatory plant breeding: an example of demand driven research. *Euphytica* 155: 349-360.

Chen, X., S. Temnykh, Y. Xu, Y.G. Cho & S.R. McCouch, 1997. Development of a microsatellite framework map providing genome-wide coverage in rice (*Oryza sativa* L.). *Theor Appl Genet* 95: 553-567.

Chiffolleau, Y & D. Desclaux, 2006. Participatory plant breeding: the best way to breed for sustainable agriculture? *International Journal of Agriculture Sustainability* 4 (2): 119-130.

Cleveland, D.A. & D. Soleri, 2007. Extending Darwin's Analogy: Bridging Differences in Concepts of Selection between Farmers, Biologists, and Plant Breeders. *Economic Botany* 61 (2): 121-136.

Dawson J.C., K.M. Murphy & S.S. Jones, 2008. Decentralized selection and participatory approaches in plant breeding for low-input systems. *Euphytica* 160:143–154.

Devkota, K.P., M.P. Tripathi, K.D. Joshi, P.K. Shrestha & J.R. Witcombe, 2008. Community based seed production groups in Chitwan, Nepal. In: M.H. Thijssen, Z. Bishaw, A. Beshir & W.S. de Boef (Eds). *Farmers, seeds and varieties. Supporting informal seed supply in Ethiopia*. Pp. 263-270. Wageningen International, The Netherlands.

Dudnik, N.S., I. Thormann & T. Hodgkin, 2001. The Extent of Use of Plant Genetic Resources in Research- A Literature Survey. *Crop Science* 41: 6-10.

Duvick, D. N., 1984. Genetic diversity in major farm crops on the farm and in reserve. *Economic Botany* 38 (2): 161-178.

Eyzaguirre, P. B. & E. M. Dennis, 2007. The impacts of collective action and property rights on plant genetic resources. *World Development (Oxford)* 35 (9): 1489-1498.

FAO, 1998. The state of the world's plant genetic resources for food and agriculture, FAO, Rome.

FAO, 2010. Second report on the world's plant genetic resources for food and agriculture. Food and Agriculture Organization, Rome, Italy [in press] – Electronic version (<ftp://ftp.fao.org/docrep/fao/meeting/017/ak528e.pdf>).

Finckh, M.R., 2008. Integration of breeding and technology into diversification strategies for disease control in modern agriculture. *Eur J Plant Pathol* 121:399-409.

Fowler, C. & T. Hodgkin, 2004. Plant genetic resources for food and agriculture: assessing global availability. *Ann. Rev. Environ. Res.* 29: 143–179.

Frankel O.H. & E. Bennett, 1970. Genetic resources in plants-their exploitation and conservation. Blackwell Scientific Publ, Oxford.

Gauchan, D., M. Smale, N. Maxted & M. Cole, 2006. Managing rice biodiversity on-farms: The choices of farmers and breeders in Nepal. In: Valuing crop biodiversity: On-farm genetic resources and economic change. M. Smale (Ed). pp. ?? Wallingford, UK: CABI Publishing.

Gepts, P., 2006. Plant Genetic Resources Conservation and Utilization: The Accomplishments and Future of a Societal Insurance Policy. *Crop Science* 46: 2278-2292.

Gyawali S., K.D. Joshi, R.K.Tiwari, & B.R. Sthapit, 2003. Diversity assessment for the enhancement *Jethobudho* rice landraces of Kaski. In: On-farm management of agricultural biodiversity in Nepal. Sthapit BR, Upadhyay MP, Baniya BK, Subedi A and Joshi BK (eds.), pp 262-266, in Proc of a National Workshop, 24-26 April 2001, Lumle, Nepal, NARC, LI-BIRD and IPGRI.

Gyawali, S., S. Sunwar, M. Subedi, M. Tripathi, K.D. Joshi & J.R. Witcombe, 2007. Collaborative breeding with farmers can be effective. *Field Crop Research* 101: 88-95.

Harlan, J. R., 1975. Our vanishing genetic resources. *Science* 188: 618–621

Haugerum A. & M.P. Collinson, 1990. Plants, genes and people: improving the relevance of plant breeding in Africa. *Expl Agric* 26: 341-362.

Hawkes, A.G., 1971. Point Spectra of Some Mutually Exciting Point Process. *Journal of the Royal Statistical Society Ser. B* 33: 438-443.

Hodgkin T., R. Rana, J. Tuxill, B. Dibier, A. Subedi, I. Mar, D. Karamura, R. Valdivia, L. Colledo, L. Latournerie, et. al., 2007. Seed systems and crop genetic diversity in agroecosystems. In: Jarvis D.I., C. Padoch & D. Cooper, editors. *Managing biodiversity in agricultural ecosystems*. New York: Columbia University Press 77-116.

IRRI. 1996. *Standard Evaluation System for Rice*. Fourth Edition. International Rice Research Institute, Los Banos, Laguna, Philippines.

Jarvis, D.I., A.H.D. Brown, P.H. Cuong, L. Collado-Panduro, L. Latourniere-Moreno, S. Gyawali, T. Tanto, M. Sawadogo, I. Mar, M. Sadiki, et. al., 2008. A global perspective of the richness and evenness of traditional crop variety diversity maintained by farming communities. *Proc Natl Acad Sci USA* 108: 5326-5331.

Jarvis, D.I. & T. Hodgkin, 2008. The maintenance of crop genetic diversity on farm: supporting the convention on biological diversity's programme of work on agricultural biodiversity. *Biodiversity* 9: 23-38.

Johns, T. & B. R. Sthapit, 2004. Biocultural diversity in the sustainability of developing country food systems. *Food and Nutrition Bulletin* 25:143-155.

Joshi A. & J.R. Witcombe, 1996. Farmer participatory crop improvement. II. Participatory varietal selection, a case study in India. *Experimental Agriculture* 32: 461-477.

Joshi, K.D., B.R. Sthapit & J.R. Witcombe, 2001. How narrowly are the products of decentralized breeding? The spread of rice varieties from a participatory plant breeding programme in Nepal. *Euphytica* 122: 589-597.

Mariac, C., T. Robert, C. Allinne, M.S. Remigereau, A. Luxereau, M. Tidjani, O.Seyni, G. Bezancon, J. L. Pham & A. Sarr, 2006. Genetic diversity and gene flow among pearl millet crop/weed complex: a case study. *Theoretical and Applied Genetics* 113 (6 pp): 1003-1014.

McCouch S.R., X. Chen, O. Panaud, S. Temnykh, Y. Xu, Y.G. Cho, N. Huang, T. Ishii, M. Blair, 1997. Microsatellite marker development, mapping, and application in rice genetics and breeding. *Plant Mol. Biol.* 35: 89-99.

Nagarju J., M. Kathirvel, R.R. Kumar, E.A. Siddiq & S.E. Hasnain, 2002. Genetic analysis of traditional and evolved basmati and non-basmati rice varieties by using fluorescence-based ISSR-PCR, and SSR markers. www.pnas.org/cgi/doi/10.1073/pnas.042099099.

Poudel D. & F.H. Johnsen, 2009. Valuation of crop genetic resources in Kaski, Nepal: Farmers' willingness to pay for rice landraces conservation. *Journal of Environmental management* 90:483-491.

Rana, R.B., 2004. Influence of socio-economic and cultural factors on agrobiodiversity conservation on-farm in Nepal. PhD Thesis, The University of Reading, UK.

Rana R.B., C. Garforth, D. Jarvis & B. Sthapit, 2007. Influence of socio-economic and cultural factors in rice varietal diversity management on-farm in Nepal. *Agriculture and Human values* 24(4):461-472.

Rana R.B., C. Garforth, D. Jarvis & B. Sthapit, A. Subedi, P. Chaudhary & D. Jarvis, 2007. On-farm management of rice genetic diversity: understanding farmers' knowledge on rice ecosystems and variety deployment. *Plant Genetic Resources Newsletter*, 155:58-64.

Rana RB, C. Garforth & B.R.Sthapit, 2008. Farmers' management of rice varietal diversity in the mid hills of Nepal: Implications for on-farm conservation and crop improvement. *Plant Genetic Resources Characterization and Utilization* 28:1-14 doi: 10.1017/S1479262108048259

Rani N.S., M.K. Pandey, G.S.V. Prasad & I. Sudharshan, 2006. Historical significance, grain quality features and precision breeding for improvement of export quality basmati varieties in India. *Indian J. Crop Science*, 1(1-2): 29-41.

Rijal, D.K., K.K. Sherchand, B.R. Sthapit, Y.R. Pandey, N. Adhikari, K.B. Kadayat, Y.P. Gautam, P. Chaudhary, C.L. Poudyal, S.R. Gupta & P.R. Tiwari, 1998. Strengthening the scientific basis for in situ conservation of agrobiodiversity : findings of site selection in Kaski, Nepal. NP Working Paper 1/98.NARC/ LI-BIRD, Nepal and IPGRI, Rome, Italy.

Rijal, D.K., 2007. On-farm conservation and use of local crop diversity: adaptations of taro (*Colocasia esculenta*) and rice (*Oryza sativa*) diversity to varying ecosystems of Nepal. Ph. D Thesis. University of Life Science (UMB), Norway.

Singh R.K., U.S. Singh, G.S. Khush & R. Rohilla, 2000. Genetics and biotechnology of quality traits in aromatic rices. In: Singh RK, Singh US and Khush GS editors. *Aromatic rices*, pp 47-70.

Singh B.K., 2003. Role of Government and non government and community organizations in quality seed supply in Nepal. Proceeding of National Workshop on Quality seed production and supply in Nepal, organized by National Seed Board, HMG, Nepal.

Smale M., M.R. Bellon, D. Jarvis & B. Sthapit, 2004. Economic concepts for designing policies to conserve crop genetic resources on-farms. *Genetic Resources and Crop Evolution*, 51: 121-135.

Smale M. & A. King 2005. Genetic Resource Policies: What is diversity worth to farmers? Briefs 13-18. IPGRI and IFPRI.

Smale M., 2006. Valuing crop biodiversity: On-farm genetic resources and economic change. Wallingford, UK: CABI Publishing.

Smith, M.E., F.G. Castillo & F. Gomez, 2001. Participatory plant breeding with maize in Mexico and Honduras. *Euphytica* 122: 551-565.

Sperling, L., J.AQ. Ashby, M.E. Smith, E. Weltzien, & S. McGuire, 2001. A framework for analyzing participatory plant breeding approaches and results. *Euphytica* 122:439-450

Sperling, L., 2008. Moving towards more effective seed aid. *Journal of Development studies* 44(4):573-600.

Sthapit, B.R., 1992. Cold injury of rice crop in Nepal: A review. *Journal of the Institute of Agriculture and Animal Science* 13: 1-32.

Sthapit, B.R., K.D. Joshi & J.R. Witcombe, 1996. Farmer participatory crop improvement. III: Participatory plant breeding, a case study for rice in Nepal. *Experimental Agriculture* 32: 479-496.

Sthapit B.R., K.D. Joshi, R.B. Rana, M.P. Upadhaya, P. Eyzaguirre & D. Jarvis, 2001. Enhancing biodiversity and production through participatory plant breeding: Setting breeding goals. In pp. 29-54. *An Exchange of experiences from South and South East Asia: Proc of the International symposium on PPB and participatory plant genetic resource enhancement, Pokhara, Nepal, 1-5 May 2000, PRGA, CIAT, Cali.*

Sthapit, B., R. Rana, P. Eyzaguirre & D. Jarvis, 2008. The value of plant genetic diversity to resource-poor farmers in Nepal and Vietnam. *International Journal of Agricultural Sustainability*, 6 (2): 148-166.

Sthapit, B.R. & V.R. Rao, 2009. Consolidating Community's Role In Local Crop Development By Promoting Farmer Innovation To Maximise The Use Of Local Crop Diversity For The Well-Being Of People. *Acta Hort. (ISHS)* 806:669-676
http://www.actahort.org/books/806/806_83.htm.

Subedi, A., P. Chaudhary, B. Baniya, R. Rana, R. Tiwari, D. Rijal , D. Jarvis and B. Sthapit 2003. Who Maintains Crop Genetic Diversity and How: Implications for On-farm Conservation and Utilization. *Culture and Agriculture*. 25 (3): 41-50.

Teklu, Y. & K. Hammer, 2006. Farmers' perception and genetic erosion of tetraploid wheats landraces in Ethiopia. *Genetic Resources and Crop Evolution* 53: 1099–1113.

Teshome, A., A. H. D. Brown & T. Hodgkin, 2001. Diversity in landraces of cereal and legume crops. *Plant Breeding Reviews* 21:221–261.

Tripp, R., 2001. *Seed Provision and Agricultural Development*. London: Overseas Development Institute.

Vandermeer J., 1995. The ecological basis of alternative agriculture. *Annual Review of Ecology and Systematics* 26: 201-224.

Weltzien, E. & K. vom Brocke, 2000. Seed systems and their potential for innovation: Conceptual framework for analysis. In L. Sperling, ed., *Targeting Seed Aid and Seed System Interventions: Strengthening Small Farmer Seed Systems in East and Central Africa*, 9–13. Proceedings of a workshop, June 21–24, 2000, Kampala, Uganda. Kampala: CIAT.

Witcombe, J.R., A. Joshi, K.D. Joshi & B.R. Sthapit, 1996. Farmer participatory crop improvement. I: varietal selection and breeding methods and their impact on biodiversity. *Experimental Agriculture* 32: 445-460.

Witcombe, J.R., K.D. Joshi, S. Gyawali, A.M. Musa, C. Johansen, D.S. Virk & B.R. Sthapit, 2005. Participatory plant breeding is better described as highly client oriented plant breeding. I. Four indicators of client orientation in plant breeding. *Experimental Agriculture* 41 (3): 299-319.

Witcombe, J.R., K.D. Joshi, S. Gyawali, A.M. Musa, C. Johansen, D.S. Virk & B.R. Sthapit, 2005. Participatory plant breeding is better described as highly client oriented plant breeding. II. Optional farmer collaboration in the segregating generations. *Expl. Agric*, 42: 79-90.

Zeven, A.C., 2000. Traditional maintenance breeding of landraces: 1. Data by crop. *Euphytica* 116: 65-85.

Figure. 1 Locations of 338 *Jethobudho* accession collection in Pokhara valley, Nepal.

Figure 2. Typical grain and cooked rice characteristics of Pokhareli *Jethobudho*

Figure. 3 Agarose gel electrophoresis of SSR products amplified using primers (a) RM223 and (b) RM42 closely mapped to probe RG28 and linked to fragrance gene (*mgr*) for aroma in rice. The genetic structure of 7 selected *Jethobudho* populations for aroma are compared with aromatic and non-aromatic rice varieties. (Lanes 1-4 were Azucena, Basmati, Pusa Basmati, IR36, and lanes 5-39 were individual DNAs and bulk DNA of 4 individuals of JBT1-JBT7 enhanced accessions). Dendrogram of 7 *Jethobudho* enhanced accessions compared with aromatic and non-aromatic rice varieties based on SSRs associated with trait for aroma using UPGMA clustering.

Table 1 Collecting sites of *Jethobudho* sub-populations in Pokhara valley in 1999

Table 2 Roles of local organizations involved in community-based seed production systems in Nepal

Table 3 Distribution of participatory variety selection (PVS) trials in Pokhara valley, Nepal during 2003-2005

Table 4 Setting breeding goals for post harvest quality traits for *Jethobudho*

Table 5 Mean squares of agronomic traits combined over locations of *Jethobudho* enhancement in Malmul and Agricultural Research Station at Malepatan, Pokhara, 2002

Table 6 Mean squares of agronomic traits combined over locations of *Jethobudho* enhancement in Malmul and Agricultural Research Station at Malepatan, Pokhara, 2002

Table 7 Means of various agronomic traits† of *Jethobudho* measured in Fewa Phant in 2005

Table 8 Disease, micro-milling, and organoleptic quality traits of selected *Jethobudho* accessions in Kaski, 2003

Table 9 Estimates of selection differential for important traits in the original population of *Jethobudho* rice evaluated in Nepal

Table 10 Farmer's perception of enhanced *Jethobudho* on preferred traits compared to the local check in PVS†

Table 11 Participatory landrace enhancement program of *in-situ* conservation project in Kaski, Nepal

colour figure

[Click here to download high resolution image](#)

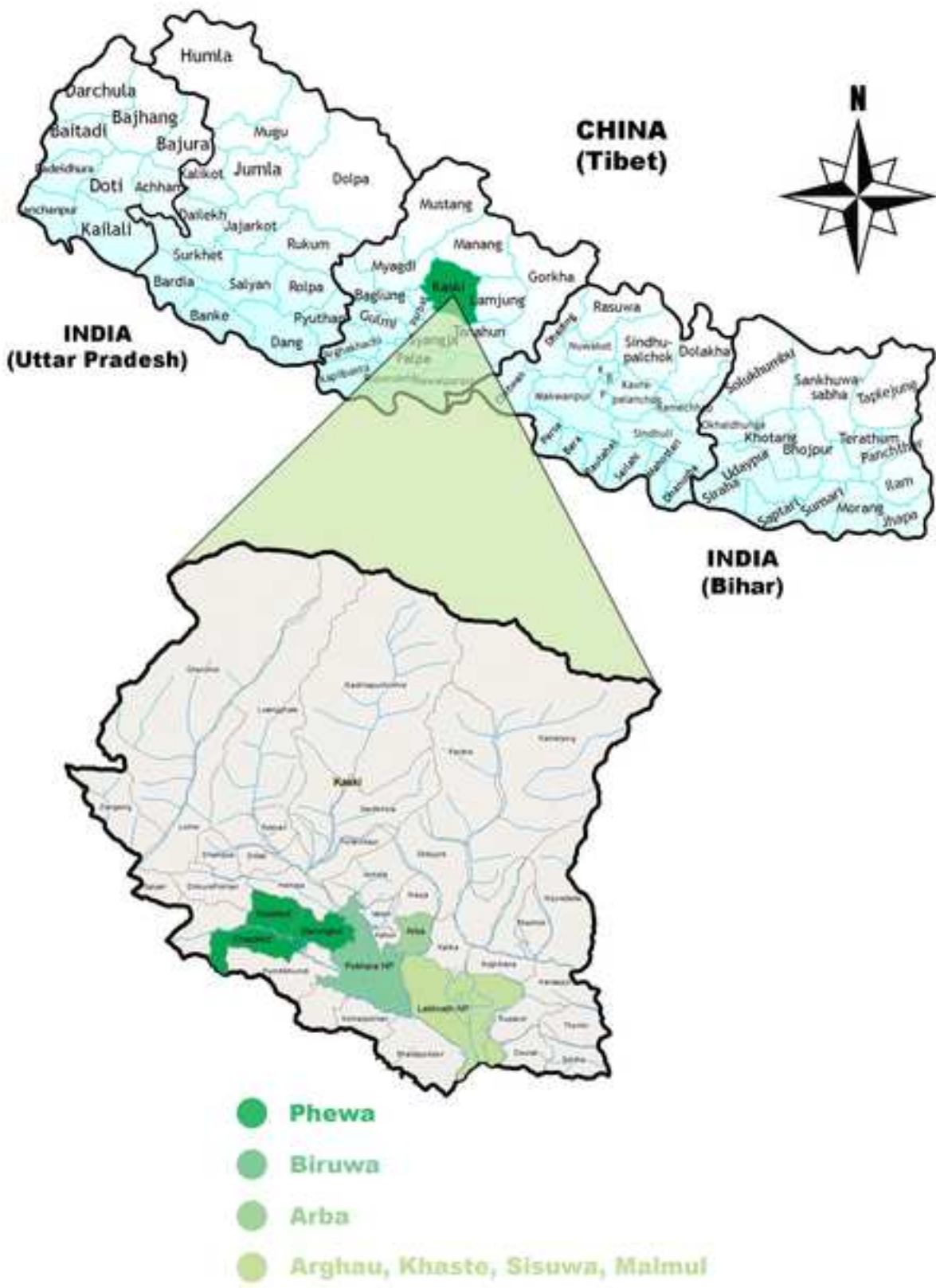




Figure 2.

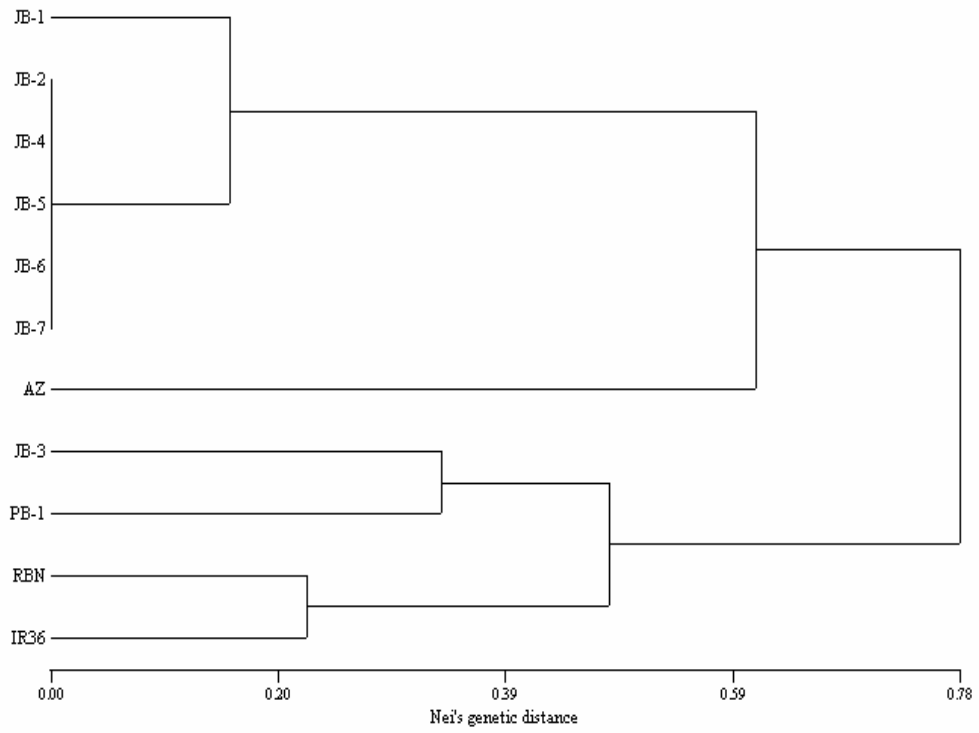
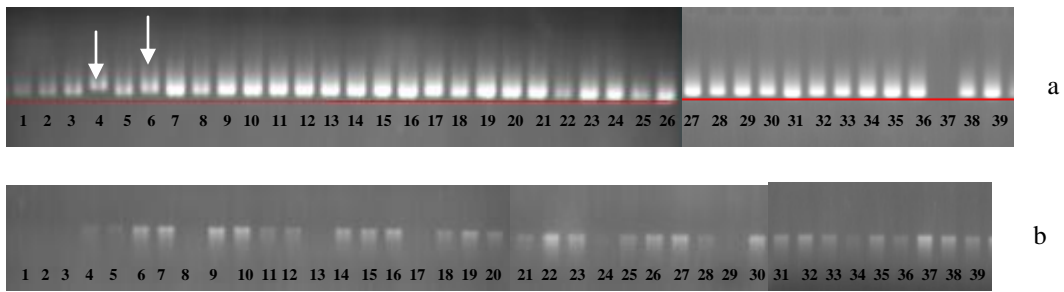


Figure 3

Table 1

Phant (geographic area)	Altitude m asl	Water regime and source of water †	No of farmers' plots sampled for seed
Satmuhane and Malmul	600	Partially irrigated; Rupa lake water	50
Sisuwa and Maldi	675	Partially irrigated; Begnas lake water	50
Khaste	700	Irrigated; Khaste lake water	35
Arghun and Rithepani	700	Irrigated; snowmelt Seti river water	50
Kundhar Arba and Kamal Pokhari	775-800	Partially irrigated; natural spring	50
Biruwa	850	Irrigated; Fewa lake water	51
Fewa	900	Irrigated; cold Harpen river	52

† *Jethobudho* grown in organic fertilizer with cold water is perceived to have better aroma and quality.

Table 2

Organization mobilizing farmers	Type of participation	Major roles and responsibilities
Fewa seed producer Group	Consultative	Organization of community-based seed producer groups, capacity building, planning for collective actions, internal seed production, monitoring and management, production of truthfully labelled seed and quality control, and marketing; local support for technical committee
NGO (LI-BIRD) Nepal Agricultural Research Council (NARC)	Collegiate	Maintenance breeding of enhanced Jethobudho; capacity building of Fewa seed producer group in terms of technical and institutional matters; technical monitoring of basic seed production of communities ; linkage with Department of Agriculture, and private entrepreneurs; policy advocacy for farmer's rights; support for technical committee
District Agriculture Development Office, Kaski	Collaborative	Integrate with the government initiated District Level Self Seed Sufficiency Program (DISSPRO) to create market for local seed producers; capacity building on truthfully labeled seed production; provision of government seed subsidies; support for technical committee; promotion of demand
Private entrepreneurs (Agrovet, SEAN, Karmacharya Brothers)	Informative	Link to market outlets

(Source: authors)

Table 3

Year	Total amount of seed distributed (kg)	No of farmers participated	No of farmers surveyed for HLQ	% of farmers responded
2003	30	15	10	66.7
2004	94	47	33	70.2
2005	292	146	47	32.2

Table 4

Traits	FGD†	Consumer survey††
Aroma	1	4
Taste	4	2
Softness	2	1
Flakiness	5	3
Volume expansion	3	5

† Ranking of traits from FGD meeting in Begnas village; †† Mean ranking of 60 individual survey representing farmers, millers, hotel chefs, housewives, retailers and researchers.

Table 5. Mean scores of organoleptic assessment of 143 *Jethobudho* accessions of seven different *Phant* of Pokhara valley in 2002.

Name of <i>phant</i>	Type of rice	Colour	Softness	Separate - ness	Taste	Aroma	Bright - ness	Overall ranking	Avg. score
Biruwa	2.57 [‡]	1.88	2.14	2.86	2.00	1.43	1.71	2.14	2.09
Check JB	3.71	3.29	3.14	2.29	4.43	4.29	3.86	4.14	3.64
Arghun	3.14	1.86	1.00	3.00	2.43	3.00	2.00	2.71	2.39
Malmul	3.00	2.29	2.43	3.00	3.29	3.71	1.86	2.71	2.79
Sisuwa	3.14	2.14	2.71	3.14	3.29	3.29	1.71	2.86	2.79
Sugandha-1	4.00	2.57	1.29	4.57	3.71	4.43	1.71	4.00	3.29
Kundahar	3.29	2.14	2.00	3.43	2.57	2.86	2.14	2.71	2.64
Fewa	2.43	2.29	2.29	2.29	2.29	2.29	2.57	2.43	2.36
Charade	2.86	2.14	2.00	2.29	2.14	1.57	2.43	2.57	2.25
Mean \pm SD [†]	3.01 ± 0.40	2.25 ± 0.44	2.21 ± 0.62	2.78 ± 0.44	2.80 ± 0.81	2.8 ± 0.99	2.28 ± 0.70	2.78 ± 0.59	2.61 ± 0.48

[†] Mean and SD does not include the value of Sugandha-1 which is not a *Jethobudho* (JB) landrace. Check JB (JB = *Jethobudho* collected from the market) and Sungadha-1 (a variety developed by PPB project of LI-BIRD) were included as check.

[‡] Lower scores represent the best-quality rice.

Table 6

Source of variation	df	PH	TL	PL	GPP	TW	GY	Awn	Leaf blast	Neck blast	Lodging tolerance	Culm strength
Location (L)	1	34434**	28.4**	7.9	148	107**	57.2	110	4.96	0.02	2.0	0.18
Error (a)	4	77.6	0.07	4.9	925	2.7	11.6	28	1.60	4.41	6.2	1.90
<i>Jethobudho</i> (JB)	45	67.9	0.70	3.1**	308**	3.3**	0.44	13**	0.12	0.85*	1.9	0.78**
JB x L	45	56.5	1.14	0.9	288**	1.4	0.57	13**	0.12	0.80*	0.8	0.35
Error (b)	180	53.9	0.83	0.8	160	1.4	0.46	7	0.14	0.55	0.55	0.25

**,* Significant at 0.01 and 0.05 probability level respectively.

PH= Plant height (cm), TL= Tiller per hill (Number), PL= Panicle length (cm), GPP= Grain panicle⁻¹ (number), TW= Test weight (g), GY= Grain yield (t ha⁻¹), Awn (0-5 scale), Leaf and neck blast (0-5 scale), Lodging (0-5 scale) and CS= Culm strength (0-5 scale as indicator for lodging resistance)

Table 7

<i>Jethobudho</i> accessions	PH (cm)	Till (n)	PL (cm)	GPP (n)	TW (g)	GY (t h⁻¹)	Neck Blast	Lodging (0-5 scale)
JB-T-010-025/5	167	4.7	27.7cd	156.8a	23.58a	2.71	1.66c	1.00b
JB-T-023-030/25	168	4.5	27.3cd	154.0ab	22.75ab	2.98	1.33c	1.00b
JB-T-103-237/12	166	4.8	27.5cd	154.7bcd	23.50a	2.78	1.66b	1.00b
JB-T-105-238/5	170	4.9	27.6ab	151.5ab	23.33ab	2.61	1.00c	1.00b
JB-T-147-296/6	172	4.8	28.2bc	150.6bcd	23.58ab	2.65	1.00c	1.00b
JB-T-168-316/3	170	4.9	27.5a	144.7b	22.58ab	2.69	1.00c	1.00b
Farmers localφ	167	4.8	26.8de	140.4bc	22.33ab	2.64	3.00b	2.00b
Farmers localφ	167	4.3	27.0cd	144.6cd	22.42b	2.54	3.33b	2.67b
Farmers localφ	169	4.5	27.2bc	143.7d	23.33a	2.66	3.33b	2.67b
Farmers localφ	165	4.3	26.4e	140.0e	21.08b	2.58	4.00a	4.00a
Mean	168	4.6	27.3	148.1	22.85	2.68	2.13	1.73
LSD	5.04	0.57	0.87	10.48	0.924	0.36	0.83	1.001
CV %	2.58	10.5	2.7	6.08	3.48	11.6	33.4	49.65

† PH= Plant height, Till= Tiller per hill, GPP= Grain panicle⁻¹, TW= Test weight, GY= Grain yield, letter followed by the same letter do not differ significantly at 0.05 probability level (DMRT).

φFarmers local *Jethobudho* as check variety

Table 8

<i>Jethobudho</i> Accessions	Source of materials	Blast (scale 0-5)	Head rice %	TWT of milled rice (g)	Length (mm)	Width (mm)	Water absorption (%)	Volume expansion (%)	Amylose (%)	Organoleptic weightage ¹
JB-T-010-025/5	D.B Karki [‡]	1	71	15.3	5.5	2.5	185	300	23.0	427.5
JB-T-023-030/25	M. Subedi [‡]	1	71	14.8	5.4	2.4	199	305	24.1	465.0
JB-T-103-237/12	G. Giri [‡]	1	68	15.3	5.3	2.4	209	333	24.3	427.5
JB-T-105-238/5	M.B. Sunar [‡]	1	72	15.4	-	-	213	313	23.8	427.5
JB-T-147-296/6	K.P Kafle [‡]	1	71	15.5	-	-	229	375	23.9	420.0
JB-T-168-316/3	B.P. Baral [‡]	1	77	15.7	-	-	252	350	23.7	450.0
<i>Jethobudho</i> under two cycles of selection	143 accessions	1±0.0	71±5	15±0.7	5.2±0.5	2.4±0.1	208±56	302±85	23.6±1.4	431±17
Farmers – non selected	10 samples	3±0.94	69±1.8	-	-	-	-	-	-	407±23

(Source: Gyawali *et al.*, 2005)

[‡]They are defined as custodian farmers from whom the original seeds were collected for germplasm enhancement in 1998.

- Information not available

Table 9

Traits	N†	Mean of unselected population (X)	n ^φ	Mean of selected population (x)	Selection differential (s ^d)
Blast (0-5 scale)	143	2.43±1.28	6	1.00±0.00	1.43
Awn (0-5 scale)	143	3.72±2.99	6	2.00±2.45	1.72
TGW (g 100 ⁻¹ grains)	143	2.07±0.09	6	2.15±0.05	0.08
Milling recovery (g)	143	113±8.17	6	116±6.65	3.00
Softness (0-5 scale)	143	1.38±0.48	6	1.00±0.00	0.38
Flakiness (0-5 scale)	143	1.30±0.45	6	1.17±0.41	0.13
Aroma (0-5 scale)	143	1.41±0.49	6	1.00±0.00	0.41
Overall cooking quality (0-5 scale)	143	1.41±0.49	6	1.00±0.00	0.42

† The number of *Jethobudho* accessions screened for major traits; φ mean of selected six accessions that bulked finally as “Pokhareli *Jethobudho*”.

Table 10

Traits	Better than the local check (%)	Same as the local check (%)	Worse than the local check (%)
Plant height			
2003	62.5 (5)	25 (2)	12.5 (1)
2004	30 (10)	52 (17)	18 (6)
2005	57 (27)	17 (8)	26 (12)
Neck blast tolerance			
2003	89 (8)	11 (1)	0
2004	78.1 (25)	18.8 (6)	3.1 (1)
2005	85.1 (40)	14.9 (7)	0
Lodging resistance			
2003	100 (10)	0	0
2004	88 (28)	12 (4)	0
2005	91 (43)	2 (1)	3 (7)
Grain yield			
2003	70 (7)	0	30 (3)
2004	35 (9)	46 (12)	19 (5)
2005	60 (28)	26 (12)	14 (7)
Milling recovery			
2003	89 (8)	11 (1)	0
2004	33.3 (1)	66.7 (2)	0
2005	87.8 (36)	9.8 (4)	2.4 (1)
Softness			
2003	67 (4)	33 (2)	0
2004	50 (1)	50 (1)	0
2005	85 (34)	13 (5)	2 (1)
Aroma			
2003	83 (5)	17 (1)	0
2004	86 (6)	14 (1)	0
2005	95 (38)	2.5 (1)	2.5 (1)
Flakiness			
2003	50 (3)	50 (3)	0
2004	-	-	-
2005	67.5 (27)	30 (17)	2.5 (1)
Overall preference			
2003	86 (6)	14 (1)	0
2004	56.3 (9)	37.5 (6)	6.3 (1)
2005	88.5 (40)	6.7 (3)	4.4 (2)

Values in the parenthesis indicate number of participating farmers who responded to HLQs.

†No. of participants that responded PVS feed back: 2003=10, 2004=33 and 2005=47

Table 11

Product innovation stage	Stage in crop improvement program	Purpose of client participation lead to better orientation	Client participatory techniques that aid research efficiency	Optional and more collaborative techniques
Product design	-Setting breeding goal (Specification of landrace and its traits to be improved)	-Identify the target clients need (agronomic, post harvest and market traits)	-Diversity fair, FCA involved farmers -Micro milling, organoleptic assessment with farmers, housewives, rice merchants -Physio-chemical properties with food technologists	
Product development	-Using existing diversity -Assessing diversity for various target population of traits (TPT) -Selection for improved agronomic, post harvest quality and market	-Used <i>Jethobudho</i> (high quality aromatic rice landraces) that meets clients/market need	- Farmers participation in <i>on-farm</i> experiments on diversity assessments of <i>Jethobudho</i> - Screening for blast and lodging tolerance in natural biotic and abiotic pressure under target population of environments (TPE) -Use local knowledge of farmers, housewives and rice merchants on post harvest quality traits -Used Physio-chemical knowledge base of researchers and extensionists	Farmers skills on selection enhanced through training
Product testing	-Testing of enhanced <i>Jethobudho</i> in on-farm: TPE -Testing <i>Jethobudho</i> for post harvest quality traits in the market with rice merchants and consumers	-Getting feedback of farmers on various agronomic traits -Testing <i>Jethobudho</i> for post harvest quality traits with the clients and incorporate them in selection process	-During PVS, micromilling and Organoleptic tests clients collaborate with the researchers and extensionists -Assessing quality aspect with house wives, cooks, rice millers and merchants	Market research with relevant clients add value to the selection process
Product Marketing	-Seed and grain supply	-To enhance the access of enhanced <i>Jethobudho</i> to the clients (Consumer chain)	-Community based seed production -Linking grain producer to rice millers and merchants	Linking seed initiatives of government and private sector
Consumer analysis	- Harvesting benefits for farmers -Outcome assessment	-To create market incentives to farmers as an encouragement to in-situ conservation if genetic resources	-Involvement of policy makers in the process to make them aware of in-situ conservation initiatives -Developing <i>Jethobudho</i> case study for <i>sui generis</i> systems for Nepal	Linking policy initiatives to grass root level farmers organizations