

Review

Open Access

## Pathogenesis of adolescent idiopathic scoliosis in girls - a double neuro-osseous theory involving disharmony between two nervous systems, somatic and autonomic expressed in the spine and trunk: possible dependency on sympathetic nervous system and hormones with implications for medical therapy

R Geoffrey Burwell\*<sup>1</sup>, Ranjit K Aujla<sup>1</sup>, Michael P Grevitt<sup>1</sup>, Peter H Dangerfield\*<sup>2</sup>, Alan Moulton<sup>3</sup>, Tabitha L Randell<sup>4</sup> and Susan I Anderson<sup>5</sup>

Address: <sup>1</sup>Centre for Spinal Studies and Surgery, Nottingham University Hospitals Trust, Queen's Medical Centre Campus, Nottingham, UK, <sup>2</sup>School of Biomedical Sciences, University of Liverpool, Liverpool, UK, <sup>3</sup>Department of Orthopaedic Surgery, King's Mill Hospital, Mansfield, UK, <sup>4</sup>Department of Child Health, Nottingham University Hospitals Trust, Queen's Medical Centre Campus, Nottingham, UK and <sup>5</sup>School of Biomedical Sciences, University of Nottingham, Nottingham, UK

Email: R Geoffrey Burwell\* - gburwell@tiscali.co.uk; Ranjit K Aujla - ranjit.aujla@gmail.com; Michael P Grevitt - mpg@doctors.org.uk; Peter H Dangerfield\* - spine92@liverpool.ac.uk; Alan Moulton - alan.moulton@ntlworld.com; Tabitha L Randell - Tabitha.Randell@nuh.nhs.uk; Susan I Anderson - susan.anderson@nottingham.ac.uk

\* Corresponding authors

Published: 31 October 2009

Received: 11 January 2009

Scoliosis 2009, 4:24 doi:10.1186/1748-7161-4-24

Accepted: 31 October 2009

This article is available from: <http://www.scoliosisjournal.com/content/4/1/24>

© 2009 Burwell et al; licensee BioMed Central Ltd.

This is an Open Access article distributed under the terms of the Creative Commons Attribution License (<http://creativecommons.org/licenses/by/2.0>), which permits unrestricted use, distribution, and reproduction in any medium, provided the original work is properly cited.

### Abstract

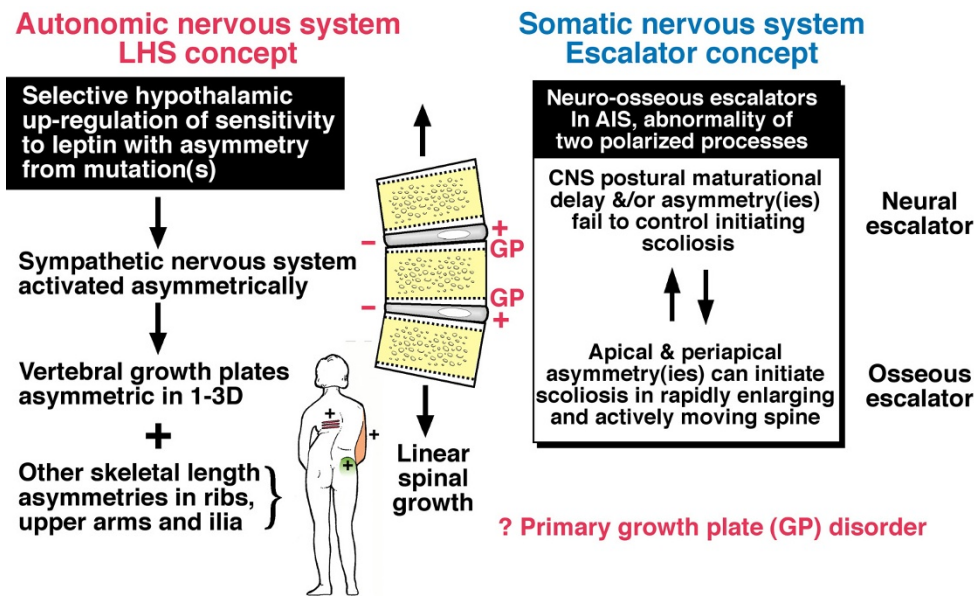
Anthropometric data from three groups of adolescent girls - preoperative adolescent idiopathic scoliosis (AIS), screened for scoliosis and normals were analysed by comparing skeletal data between higher and lower body mass index subsets. Unexpected findings for each of skeletal maturation, asymmetries and overgrowth are not explained by prevailing theories of AIS pathogenesis. A speculative pathogenetic theory for girls is formulated after surveying evidence including: (1) the thoracospinal concept for right thoracic AIS in girls; (2) the new neuroskeletal biology relating the sympathetic nervous system to bone formation/resorption and bone growth; (3) white adipose tissue storing triglycerides and the adiposity hormone leptin which functions as satiety hormone and sentinel of energy balance to the hypothalamus for long-term adiposity; and (4) central leptin resistance in obesity and possibly in healthy females. The new theory states that AIS in girls results from developmental disharmony expressed in spine and trunk between autonomic and somatic nervous systems. The autonomic component of this *double neuro-osseous theory* for AIS pathogenesis in girls involves *selectively increased sensitivity* of the hypothalamus to circulating leptin (genetically-determined up-regulation possibly involving inhibitory or sensitizing intracellular molecules, such as SOC3, PTP-1B and SH2B1 respectively), with asymmetry as an adverse response (hormesis); this asymmetry is routed bilaterally via the sympathetic nervous system to the growing axial skeleton where it may initiate the scoliosis deformity (leptin-hypothalamic-sympathetic nervous system concept = *LHS concept*). In some younger preoperative AIS girls, the hypothalamic up-regulation to circulating leptin also involves the somatotrophic (growth hormone/IGF) axis which exaggerates the sympathetically-induced asymmetric skeletal

effects and contributes to curve progression, a concept with therapeutic implications. In the somatic nervous system, dysfunction of a postural mechanism involving the CNS body schema fails to control, or may induce, the spinal deformity of AIS in girls (*escalator concept*). Biomechanical factors affecting ribs and/or vertebrae and spinal cord during growth may localize AIS to the thoracic spine and contribute to sagittal spinal shape alterations. The developmental disharmony in spine and trunk is compounded by any osteopenia, biomechanical spinal growth modulation, disc degeneration and platelet calmodulin dysfunction. Methods for testing the theory are outlined. Implications are discussed for neuroendocrine dysfunctions, osteopontin, sympathoactivation, medical therapy, Rett and Prader-Willi syndromes, infantile idiopathic scoliosis, and human evolution. AIS pathogenesis in girls is predicated on two putative normal mechanisms involved in trunk growth, each acquired in evolution and unique to humans.

**Introduction**

The autonomic nervous system through its hypothalamic neuroendocrine control of puberty, menarche and skeletal growth [1-3] contributes importantly to the pathogenesis of AIS [4-6]. Melatonin [7-13] and its signaling pathway dysfunction [14-20] and platelet-calmodulin dysfunction [21,22] detected in AIS subjects involve the autonomic nervous system. In AIS girls, autonomic nervous system activity was reported to be higher than controls [23].

The *double neuro-osseous theory* for AIS pathogenesis in girls postulates developmental disharmony between somatic [24] and autonomic [25,26] nervous systems [27-29] expressed in the spine and trunk and exaggerated by hormones producing systemic skeletal overgrowth (preoperative girls) (Figure 1) [30-45]. The theory predicates AIS pathogenesis in girls on dysfunction in one or both of two putative *normal* mechanisms involved in trunk growth, each acquired in evolution and unique to humans, namely:



**Figure 1**  
**Double neuro-osseous theory for the pathogenesis of AIS in girls.** Disharmony in spine and trunk between the two nervous systems, autonomic (*leptin-hypothalamic-sympathetic nervous system - LHS - concept*) and somatic (*escalator concept*). The drawing of the girl shows three extraspinal sites where left-right skeletal length asymmetries have been detected in AIS subjects - ribs [30,31], upper arms [32] and iliac height [33,34]; the latter two asymmetries correlate significantly with adjacent spinal curve severity suggesting the presence of vertebral growth plate asymmetries [32,34-36]. Asymmetries are also found in tibial lengths [34,37], femoral anteversion [38,39], femoro-tibial correlations [40,41] but not tibial torsion [39,42]. There is some evidence suggesting a "primary" vertebral growth plate disorder in AIS [43,44] but this is controversial [45].

(1) *Physiological trunk width skeletal growth* driven hormonally and supplemented by the sympathetic nervous system acting symmetrically [25,26,46-50].

(2) *Physiological trunk postural mechanisms of the somatic nervous system* adapting normally to the growing and biomechanically changing skeletal framework [24,51,52].

There is preliminary evidence suggesting that the hypothalamus of some normal juvenile girls, but not boys, functions with *central leptin resistance of the somatotropic (growth hormone/IGF) axis*. This mechanism may limit the energy invested in female skeletal growth thereby conserving energy for reproductive development [50]. AIS in girls is viewed here as commonly resulting from increased central leptin *sensitivity* of hypothalamic sympathetic functions and, in some girls, of the somatotropic (growth hormone/IGF) neuroendocrine axis.

These concepts provide an evolutionary and biological perspective [53] of energy homeostasis (bioenergetics) [54], particularly involving white adipose tissue storing excess energy as triglycerides, from which the double neuro-osseous theory is formulated. At the molecular level, disharmony between genes is established [55]. Gene variants that may impact the biology of AIS pathogenesis [56] are considered here in relation to body mass index (BMI), timing of puberty, leptin, leptin-receptor deficiency, changes in hypothalamic resistance/sensitivity to leptin, some hormones thought to be related to AIS pathogenesis, and certain genetically-modified mice.

The *double neuro-osseous theory* accommodates evidence that AIS may not be a single condition [51,57-65]. This it explains by different relative contributions to the trunk deformity by the autonomic (sympathetic nervous system and hormone effects) and somatic nervous systems (postural mechanisms), which can vary between subjects.

The aims of this paper are to:

- outline some anthropometric findings for AIS girls not explained by prevailing theories of pathogenesis;
- provide a novel theoretical framework for AIS pathogenesis in girls to explain the findings and connect knowledge from several biological fields;
- suggest tests of the theory including endocrine studies;
- focus on therapeutic implications and some possible manipulatable causes;

- consider an evolutionary perspective [53] for the pathogenesis of AIS in girls stemming from female fat accumulation in puberty; and

- foster new thinking and research to improve causal knowledge of AIS pathogenesis.

## Background

### General comments

Most experts agree that the causes of adolescent idiopathic scoliosis (AIS) are multifactorial with no generally accepted theory of pathogenesis (Appendix 1) [14,51,57,58,66-111]. This reflects shortcomings in our understanding of the complex biological and biomechanical multifactorial processes involved in AIS pathogenesis which needs innovative thinking [73], to which we add new findings not explained by prevailing theories. One recent review suggests that genetics and the unique mechanics of the fully upright human spine play a decisive role in AIS pathogenesis [75]. A genome-wide association study revealed 30 markers identified as the most useful prognostically [56].

### Biomechanical spinal growth modulation

A commonly held pathogenetic theory is that initiating changes in the spine of unknown origin lead to biomechanical spinal growth modulation causing curve progression [80-82,107]. Brace treatment is based on this view of pathogenesis.

### Neurological abnormalities

Studies over many years in AIS subjects have shown abnormalities of visual, vestibular, proprioceptive and postural control [67,69,70,94-96,99-104] involving the brain stem [69,95,97-99], cerebral hemispheres and corpus callosum [69,95,104,111-115], though not without controversy. Lowe et al [67] suggested that the pathogenesis of adolescent idiopathic scoliosis (AIS) results from a primary pathology in the hind brain causing a defect of central control, or processing in the central nervous system (CNS) that affects a normal growing spine [116]. Neurological abnormalities with AIS have been explained by four fairly comprehensive concepts for pathogenesis:

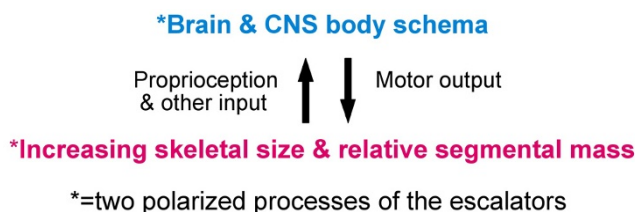
(1) *visuo-spatial perceptual impairment producing a motor control problem* [104];

(2) *body-spatial orientation concept* [69];

(3) *neurodevelopmental concept* [105,106]; and

(4) *sensory integration disorder* [102].

Abnormal asymmetries of brain structure and function are found in AIS girls for each of cerebral hemispheres [112-

**Figure 2**

**Normality.** Osseous escalator and neural escalator (brain and CNS body schema) [24,51].

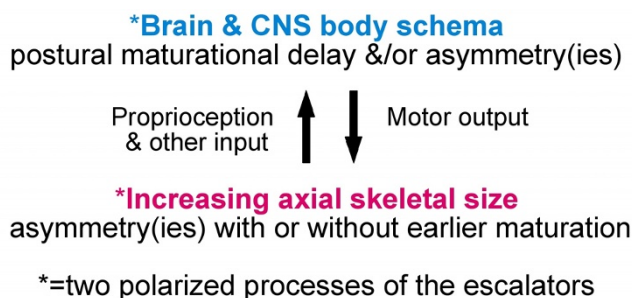
115], dichotic listening [112], brain stem [97-99] and, in preliminary research for left thoracic AIS, on MR brain scans, reduced white matter density in the left internal capsule and corpus callosum [114,115].

#### **Origins of the double neuro-osseous theory - the escalator concept**

Summarizing concepts of AIS pathogenesis in 2008 [51], we suggested a novel *neuro-osseous escalator concept* for AIS in girls (Figures 1, 2 and 3). This involves interaction between the growing skeleton and postural mechanisms of the maturing somatic nervous system. The dependence of AIS progression on growth is attributed not to growth\velocity, but to rapid skeletal enlargement hormonally-induced, *producing skeletal sizes for age* beyond the capacity of postural mechanisms of the *somatic nervous system* to control the initiating deformity.

#### **Origins of the double neuro-osseous theory - the LHS concept**

Later in 2008, from analyses of anthropometric data of adolescent girls - normal, screened and preoperative, we reported that relatively higher and lower subsets of body mass index (BMI) reveal different features of skeletal maturation [46,47,117-119] and asymmetries of spinal deformity and upper arm lengths [46,120,121] (Figure 1). Subsequently, skeletal overgrowth patterns for age were found in preoperative AIS girls compared with normal girls when analysed separately by higher and lower BMI subsets [29,122]. Then, in normal girls and boys, an excess of severe back humps was found to be associated with *lower BMI subsets* [123-125]. These and other findings were not explained by any of the theories surveyed (Appendix 1, items 1-15). A more comprehensive hypothesis for AIS pathogenesis in girls was needed incorporating energy homeostasis (bioenergetics) and the hypothalamus in a disorder presenting as abnormalities of trunk growth with axial and appendicular skeletal asymmetries and systemic skeletal features in preoperative girls. The components included in the new formulation are *white adipose tissue, leptin, hypothalamus* and *sympathetic nervous system (LHS concept)*. Together with the *escalator*

**Figure 3**

**AIS pathogenesis.** Abnormal neuro-osseous escalators as applied to the spine [24,51].

*concept*, they form the *double neuro-osseous theory* (Figure 1). It has common ground with the *thoracospinal concept* [59-63]. These findings for AIS girls and the severe trunk asymmetry of healthy adolescents [123-125] are consistent with the hypothesis that the control mechanisms of bioenergetics have relevance to the etiopathogenesis of such shape deformities/distortions.

#### **Scientific Basis of the Escalator Concept**

##### **The central nervous system and the changes of the human frame during development and growth**

Sporns and Edelman [126] wrote:

*"There is overwhelming evidence that the emergence of coordinated movements is intimately tied to both the growth of musculoskeletal system and to the development of brain. The neural development and learning cannot be considered outside of their biomechanical context. A key theoretical issue is how the changes in brain circuitry controlling muscles and joints become matched to simultaneously occurring developmental changes at the periphery."*

##### **CNS body schema ('body-in-the-brain')**

The CNS body schema in adults is defined as a *".....system of sensory-motor processes that continually regulate posture and movement - processes that function without reflective awareness or the necessity of perpetual monitoring."* [127]. This control involves the posterior parietal cortex which participates in the dynamic representation of the *body schema* integrated with other cortical areas [127-130].

#### **SOMATIC NERVOUS SYSTEM - the escalator concept**

##### **Normal adolescent girls**

We postulate that during normal growth and maturation, a physiological balance is continuously renewed between two synchronous polarized processes we term *neuro-osseous timing of maturation (NOTOM) escalators* (Figure 2) [24,51,111], namely:

(1) *Osseous escalator*. Increasing skeletal size, changing skeletal shape and relative mass of the different body segments which, through posture and motion of the body by producing developmental biomechanical and kinematic changes at the periphery, create developmentally-altering proprioceptive and visuo-spatial inputs to the neural escalator in the brain.

(2) *Neural escalator and postural control*. The brain and *CNS body schema* are recalibrated as they continuously adjust to skeletal enlargement, shape and relative mass changes to enable them to coordinate motor actions. The *posterior parietal cortex (Area 7)* in human clinical and experimental studies has been shown to participate in the dynamic representation of the *CNS body schema* (Figure 2) [127-130]. Leptin functionally enhances NMDA receptors which are critically involved in most models of learning and memory [131,132]. Increased circulating leptin levels may explain the reduced grey matter of certain brain areas in obese subjects [133].

The term *escalators* are applicable only during growth. Muscles are not included in this terminology because they do not primarily drive skeletal growth, but have key roles in sensory and motor function and contribute to segmental masses. Similar mechanisms are being evaluated in robotics and specifically the learning in, and from, brain-based devices [134].

#### Girls with AIS

Figures 1 and 3 provide an outline of the *escalator concept* for AIS pathogenesis in girls. Putative abnormalities of the two polarized components of the *escalators* - with asynchrony and asymmetry(ies) - provide the mechanisms of the *escalator concept* for AIS pathogenesis before and during the curve acceleration phase [5] in:

- (1) *spine* growing rapidly with asymmetry(ies), and
- (2) *brain and CNS body schema* with -
  - a) *postural maturational delay*, and/or
  - b) *brain asymmetry(ies)* [113-115].

Postural maturational delay in the *CNS* may be *relative to earlier skeletal maturation* [135-141], or *absolute* arising from an abnormality in afferent [100-103,142-145], central [104,113], or motor mechanisms [104,146]. A study of stroke subjects suggests that in axial postural control, the right hemisphere undertakes higher-order spatial processing than the left hemisphere [[147], see [148]].

The fate of early AIS - to progress, become static or resolve (rarely) according to the *double neuro-osseous theory* generally depends on the relative contribution and outcome of the disharmony (Figure 1) between:

- a) vertebral growth plate asymmetries in up to three dimensions arising wholly or in part from dysfunction in the autonomic nervous system [25-29];
- b) postural control, with or without asymmetries, of a rapidly enlarging and actively moving [52,71,149] adolescent spine; and
- c) postural maturity (see Discussion, *Explanations for undisputed facts about AIS, (2) Predilection for females b)*).

#### Postural scoliosis in melatonin-deficient mice

*Bipedal mice and the protection by melatonin*. Machida et al [150] suggested that the scoliosis development in bipedal melatonin-deficient mice and the protection from scoliosis by restoring melatonin levels, are crucial influences for a postural mechanism and bipedalism in scoliosis development. Deficiency of osteopontin or CD44 receptor also protect transgenic melatonin-deficient C57Bl/6J mice from scoliosis [19,20]. Later, we examine whether the scoliosis of these three mouse models may be markers of stress reactions involving the hypothalamus rather than crucial influences for scoliosis development (see Scientific basis of leptin-hypothalamic-sympathetic nervous system (*LHS*) concept, items 11 & 12).

#### Some Observations on Skeletal Maturation Relating to AIS not Explained by Pathogenetic Theories (Appendix I, Items I-15)

*Prescoliotics and early skeletal maturation of AIS subjects*  
Little discussed features of AIS pathogenesis are:

- Prescoliotics of both sexes show body height, sitting height, and growth of sitting height greater than in non-scoliotic children [135,136].
- Early radiological maturation at 11-12 years of age in AIS subjects [137].
- Early adolescent skeletal growth attained for age by AIS girls [38,39,41,121,135-141]. In the preoperative AIS girls of the relatively higher BMI subset, all the skeletal parameters we measured when plotted as standard deviation scores against age, showed negative regressions - several statistically significant, but not for the lower BMI subset of preoperative AIS girls (unpublished observations).

Together, these observations suggest that, collectively, AIS girls have a growth pattern different from normal, involving growth factors connected to the disease [137,151], confirmed in subsequent research [64,65,89,90,152].

#### **Extra-spinal skeletal length asymmetries detected with AIS**

Periapical ribs longer on the concavity of right thoracic AIS in elderly scoliosis cadavers were found [30] and given pathogenetic significance, but the finding is controversial [31,63]. In thoracic idiopathic scoliosis, upper arm length asymmetry (relatively longer on convexity) is significantly associated with each of apical vertebral rotation (AVR) and Cobb angle [32]. Also in scoliosis subjects but with lower spine scoliosis (thoracolumbar and lumbar), iliac height asymmetry (relatively taller on concavity) is associated with Cobb angle and apical vertebral rotation [34], confirming an observation for subjects with lumbar scoliosis [33].

It is unknown whether these asymmetries of upper arm, iliac height and also femoral anteversion [38,39] are pathogenetically-related to any local asymmetry in the AIS spine. We speculate that they are [24,25,32,34-37,40,41,105,106,120,121]. In this connection we outlined evidence supporting a common pathogenesis of upper arm length asymmetry and thoracic AIS spinal deformity [32]. In a similar way that the extraspinal general skeletal overgrowth for age in AIS girls is associated with the relative anterior spinal overgrowth (RASO) [64,65,89,90] giving it pathogenetic significance, we view the abnormal asymmetry of paired bones as *sentinels* of vertebral and/or rib growth plate asymmetries and having pathogenetic significance. There is some evidence of a primary vertebral growth plate disorder in AIS (Figure 1) [43,44,65,90]. Extra-spinal skeletal length asymmetry is also found in ilio-femoral lengths [35]. More such asymmetries need to be sought in other bilateral bones of AIS girls - sacral alae [153-155], clavicles and scapulae.

#### **Body Mass Index (BMI) Relating to AIS and Causal Genes**

BMI is usually expressed as weight in kg/height in m<sup>2</sup>. Standards are available for the UK in *The 'Healthy Living' Social Market Initiative* [156]. BMI does not distinguish between fat and muscle mass. The balance between energy intake and output determining BMI is largely controlled by powerful unconscious mechanisms within the autonomic nervous system (see Scientific basis of leptin-hypothalamic-sympathetic nervous system (LHS) concept, item 3).

#### **BMI and AIS**

In girls with AIS and young adults with scoliosis, lower body mass index [157-165] has been found by most but not by all workers [46,135,166,167] These findings have

implications for body development, abnormal spinal development, or nutrition of patients with AIS [165]. There is some evidence of disordered eating behavior [159,168,169], but the low body-mass index of girls with AIS is said not to be the result of the eating disorder [168].

#### **Overweight AIS patients**

There is a trend towards increasing numbers of adolescents with AIS in the overweight category [170,171]. The hypothesis that increased BMI can influence scoliosis presentation was tested in 427 adolescents with idiopathic scoliosis [170]. Female subjects who presented with larger curves (>50 degrees) were older and had a greater BMI than those with curves less than 50 degrees ( $p = 0.0557$ ). Possible curve detection difficulties, endocrine factors and an earlier puberty with increased fat mass were suggested for the association of the larger curves with obesity.

#### **Fat mass related to bone mass and genetic markers in normal children**

In humans, common variants at only two loci, *FTO* and *MC4R* (melanocortin-4 receptor) have been reproducibly associated with body mass index (BMI) [172,173]. Mutations of *MC4R* are the leading cause of severe childhood-onset obesity [172]. A meta-analysis of 15 genome-wide association studies for BMI identified six additional loci, including *SH2B1* [173]. Several of the likely causal genes are expressed, or known to act in the central nervous system [172-174]. Different versions of the human gene *FTO* strongly correlate with BMI [174]; the *FTO* gene with significant polymorphic variation has been identified in several papers as a candidate gene predisposing to obesity. In rats, *fto* is significantly up-regulated (41%) after food deprivation [174]. In humans, fat mass, and genetic markers for obesity genes *MC4R* and *FTO*, are strongly related to bone mineral content, total body and regional, measured by DXA [175].

*SH2B1* is a strong prior candidate for regulating body weight; it is implicated in leptin signaling; *Sh2b1*-null mice are obese; and the evidence suggests that the effects of this gene on obesity are mediated through the central nervous system [173] (see *Leptin, hypothalamus and AIS*).

Overall, these findings support the view that fat mass is on the causal pathway for bone mass in normal children [175].

#### **Fto gene in mice**

In mice, loss of the *Fto* gene leads to postnatal growth retardation, reduction of adipose tissue and serum leptin, increased energy expenditure, enhanced circulating levels of adrenaline and noradrenaline; these changes are attributed to sympathetic system activation (sympathoactiva-



tion) controlling energy expenditure through mitochondria and fatty acids/triglycerides [176,177]. In *Fto*-deficient mice the sympathoactivation associated with decreased circulating leptin levels is similar to the hypothalamic up-regulation and sympathoactivation we postulate for AIS girls, but without the skeletal overgrowth for age (see Autonomic nervous system - leptin-hypothalamic-sympathetic nervous system (*LHS*)-driven mechanism in health and *LHS* concept in AIS).

#### Relation of relatively higher and lower BMIs to skeletal sizes and asymmetries in AIS girls

Most previous research on AIS has evaluated BMI as a sole parameter, or in relation to a few skeletal features [163,164,167]. The genetic aspects of BMI for AIS have not been reported but it may be difficult in such research to disentangle the contributions of lower BMI from that of the AIS.

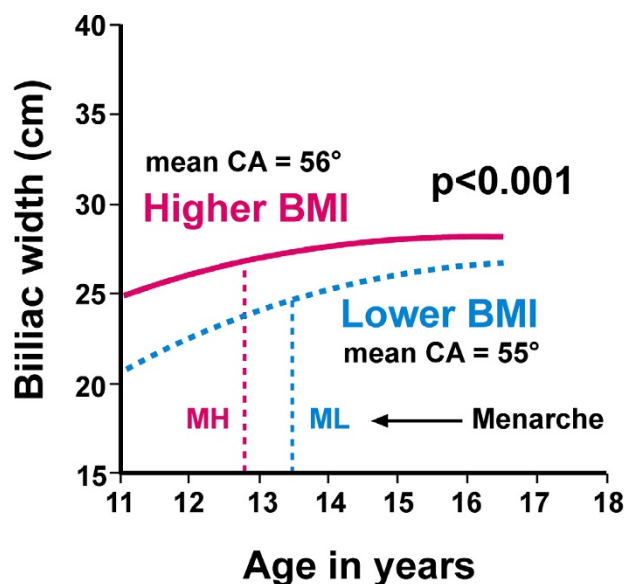
Our recent findings for AIS girls show that *higher and lower BMI subsets relative to median BMI values for age* have different patterns by each of (1) skeletal sizes for age, (2) bilateral skeletal length asymmetries, and (3) skeletal overgrowth for age in preoperative AIS compared with normal girls, which is systemically distributed suggesting hormonal effects.

#### Body Mass Index (BMI) Subsets in AIS and Normal Girls Reveal Effects of Energy Stores on Skeletal Maturation, Asymmetry and Overgrowth: Summary of Recent Findings

Three groups of adolescent girls were measured: normals ( $n = 274$  in 1973-81); routinely screened for scoliosis using a prescribed method [178] ( $n = 137$  in 1988-2001); and preoperative ( $n = 122$  in 1992-99). The possibility that observed skeletal differences were due to secular changes (except for sitting height at 10 years of age) was excluded by comparing data from healthy girls measured in 1994-6 with those measured in 1973-81 [140]. The BMIs were not significantly different between groups with 4.7%, 4.6% and 5.6% respectively outside the 95% confidence intervals of the BMI values, almost entirely overweight. These percentages are lower than expected from societal changes [156].

*Energy priority of trunk width growth is revealed by body mass index (BMI) subsets in adolescent girls (Figures 4 and 5) - intrinsic or extrinsic mechanisms? A contrast with vertebral length growth in melatonin-deficient mice*

Figure 4 shows that preoperative girls in the higher BMI subset have larger biiliac widths for age relative to those in the lower BMI subset ( $p < 0.001$ ). We reported that *BMIs above and below mean (now median) levels* separated girls with relatively earlier and larger trunk width at each of the

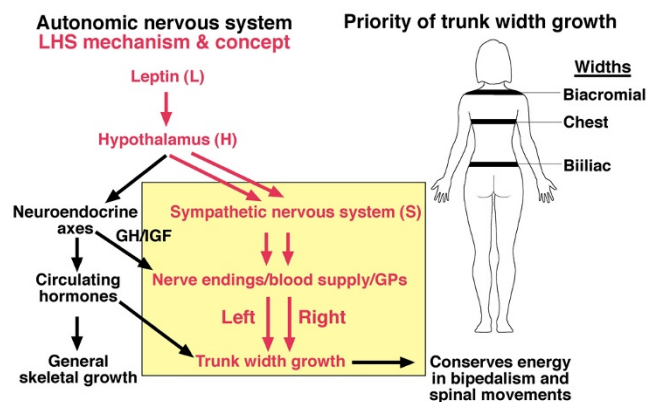


**Figure 4**  
**Biiliac widths for preoperative girls.** Graphs showing best-fit quadratic regression lines by age in years for higher ( $n = 65$ ) and lower ( $n = 57$ ) BMI subsets relative to median BMI values by each year of age (CA = Cobb angle, mean BMIs 21.7 and 17.3 respectively,  $p < 0.001$ ). The girls in the higher BMI subset have larger biiliac widths for age relative to those in the lower BMI subset ( $p < 0.001$ , correcting for menarcheal age  $p = 0.020$ ). Mean menarcheal ages for relatively higher (MH) and lower BMI (ML) subsets are 12.82 years and 13.43 years ( $p = 0.048$ , premenarcheal  $n = 7$  & 19 respectively)(analyses of variance correcting for age or menarcheal age).

pelvis, chest and shoulder girdle for each of a) preoperative, b) screened [46,117-119] (except for biacromial width in screened girls), c) normal adolescent girls [47,48], and d) normal juvenile girls at 5-10 years [49] with little or no such effect in limb segment lengths (Figure 5). We term this phenomenon *energy priority of trunk width growth*. Normal boys show this BMI effect on skeletal maturation in trunk widths and, unlike girls, also in the limbs during adolescence [47,48] and at 5-10 years [49].

- "Energy", is used because relatively higher BMI probably implies relatively higher circulating leptin indicating more energy available from fat.
- "Priority", is used because growth plates (GPs) contributing to the trunk width of girls, take priority over those in limbs in "tapping" available energy.

(1) How does the higher BMI subset of preoperative girls attain greater biiliac width for age than the lower



**Figure 5**  
**In the autonomic nervous system of normal adolescent girls, the leptin-hypothalamic-sympathetic nervous system (LHS)-driven mechanism (red) supplements bilaterally the blood-borne hormonal contribution (lowest oblique arrow) to trunk width growth at the pelvis, chest and shoulders (yellow box) with little or no sympathetic nervous system (SNS)-induced effect in the limbs (upper arms, forearm-with-hands, tibiae and feet) [46,117-119].** In the preoperative AIS girls, the LHS concept suggests that the GH/IGF axis (upper arrow labeled GH/IGF) and possibly estrogen [122], causes exaggeration of the SNS-induced vertebral/rib length asymmetry with both GH/IGF and sympathoactivation contributing to scoliosis curve progression (Figure 6) in an inverse pathogenetic relationship. The LHS concept suggests that both putative mechanisms, GH/IGF and SNS, provide therapeutic potential for progressive AIS in girls (GPs = growth plates, see Endocrine and Therapeutic Implications).

BMI subset? The earlier menarcheal age of the higher BMI subset with earlier puberty suggests hormonal effects cause earlier iliac maturation with relative overgrowth of younger AIS girls.

(2) Why is this BMI-related earlier maturation of trunk widths - biiliac, chest and biacromial in girls scarcely found in the limb lengths of girls? (Figure 5). The growth plates in trunk and limbs may respond -

- *intrinsically* and differently to hormones by genetic programs established in early embryogenesis, and/or
- *extrinsically* in the presence of any sympathetic nervous system innervation (see Autonomic nervous system - leptin-hypothalamic-sympathetic nervous system (LHS)-driven mechanism in health and LHS concept in AIS).

**Energy priority of trunk length growth in leptin-deficient mice?**

In leptin-deficient mice (*ob/ob*) altered leptin signaling has significantly different effects on bone growth in the axial and appendicular skeletons [179]. Compared with normal mice, leptin-deficient mice have significantly shorter femora, and significantly increased vertebral lengths, a trend confirmed in subsequent research [180]. Suggested reasons for this axial/appendicular skeletal growth difference in mice include: (1) decreased thigh muscle mass as a factor for the femoral shortening through mechanotransduction pathways [179]; and (2) vertebral growth plates respond to absent leptin signals in a fundamentally different manner from long bone growth plates [180]. The latter interpretation is consistent with the view that leptin-deficient mice have energy priority of *vertebral linear growth* relative to limb bones, in contrast to the energy priority of *trunk width growth* in girls (Figure 4). This apparent human/mouse difference is consistent with an evolutionary change to the trunk broadening of hominins (Figure 5) (hominins include living humans and fossil species that are ancestral to living humans, see Evolutionary Origins).

*Skeletal asymmetries*

**Mean upper arm length asymmetries in preoperative girls**

In the *lower BMI subset*, mean upper arm length asymmetry (7.0 mm, right minus left) is significantly greater preoperative than in screened (-0.8 mm) and normal girls (2.1 mm)(each  $p < 0.001$  with statistically significant variance ratios). In the *higher BMI subset*, mean upper arm length asymmetries are respectively 3.7 mm, 1.1 mm, and 2.4 mm, greater in preoperative than screened girls ( $p = 0.031$ ) (analyses of variance correcting for age) [46].

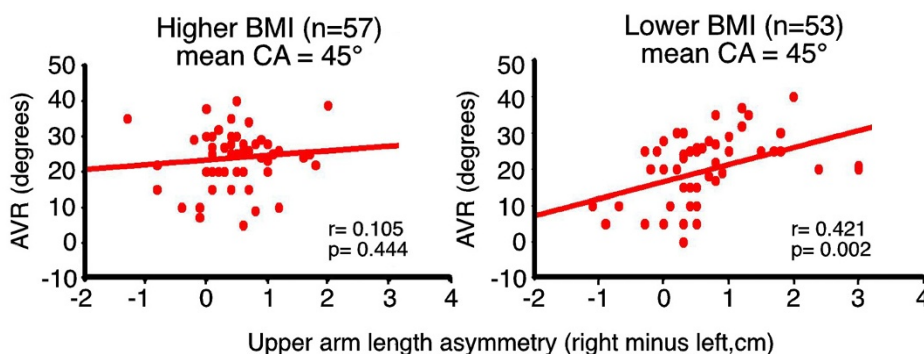
**Right thoracic AIS, curve severity and upper arm length asymmetries**

Figure 6[181] shows that apical vertebral rotation is significantly associated with upper arm length asymmetry for the *lower*, but not *higher BMI subset*, also for Cobb angle ( $p < 0.001$ ,  $r = 0.510$ ) [46,120,121]. These findings suggest that the abnormal upper arm length asymmetry of thoracic AIS [32] is not secondary to the spinal deformity but has a pathogenesis common to the spinal deformity [32].

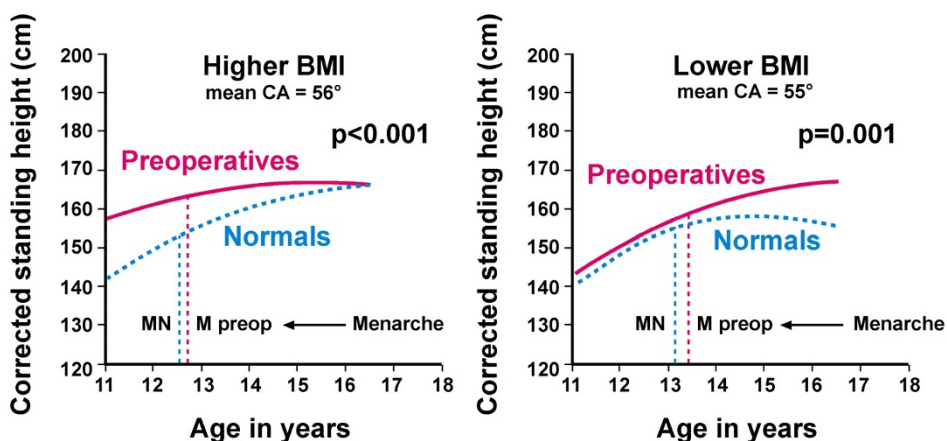
**Right thoracic AIS, upper arm length asymmetry and age**

In girls with right thoracic AIS, mean upper arm length asymmetry is significantly greater than normal girls (5.6/2.2. mm,  $p < 0.001$ ). The asymmetry is similar at 11-12 years of age in both higher and lower subsets. It negatively regresses on age in the *higher BMI subset* ( $p < 0.001$ ,  $r = -0.486$ ) but not significantly in the *lower BMI subset* ( $p = 0.125$ ,  $r = -0.212$ , variance ratio of lower to higher BMI subset = 2.05,  $p < 0.01$ ); and menarcheal age negatively regresses on upper arm length asymmetry in the *higher*





**Figure 6**  
**Right thoracic AIS girls from preoperative (n = 77) and screened (n = 33) girls.** Linear regression analyses, Pearson correlation coefficients and scatter diagrams of apical axial vertebral rotation (AVR, Perdriolle [181]) against upper arm length asymmetries (right minus left) for higher (n=57) and lower (n = 53) BMI subsets (mean BMIs 21.8 and 17.3 respectively,  $p < 0.001$ ). Note, the statistically significant correlation for the lower (p = 0.002, r = 0.421) but not higher BMI subset (p = 0.444, r = 0.105); the difference between higher and lower BMI subsets after correcting for menarcheal age is statistically significant for AVR (p = 0.001) but not Cobb angle (p = 0.199). Mean Cobb angles 45.4/45.4 degrees of similar curve types; mean AVR's 23.9/19.7 degrees (p = 0.015) both independent of age; mean upper arm length asymmetries (right minus left) 4.7/6.7 mm (p = 0.172) both significantly different from normals (p = 0.005/p < 0.001); mean menarcheal ages 12.69 years and 13.31 years (p = 0.046, premenarcheal n = 5 & 14 respectively) (ANOVAs correcting for age) [46,120,121].



**Figure 7**  
**Corrected stature by age for preoperative and normal girls.** Corrected standing height (by the Bjure-Nachemson formula [182]) plotted against age in years for relatively higher (n = 65) and lower (n = 57) BMI subsets (CA = Cobb angle). Graphs show best-fit quadratic regression lines for preoperative and normal girls with p values for differences between preoperatives and normals (correcting for menarcheal age p < 0.001 for each BMI subset). MN = menarcheal age of normals, M preop = menarcheal age of preoperative girls: mean menarcheal ages of preoperatives and normals in *higher BMI subset* 12.82 years and 12.59 years (p = 0.717); and *lower BMI subset* 13.43 years and 13.14 years (p = 0.825, premenarcheal for normals n = 45 & 63 respectively). Mean BMIs for preoperatives as in Figure 4, and for normals 21.0 (n = 139) and 17.3 (p < 0.001 n = 135) (ANOVAs correcting for age or menarcheal age) [29,122].

*BMI subset* ( $p = 0.027$ ,  $r = -0.325$ ). This 'transient' asynchronous upper arm length growth detected with abnormal systemic earlier skeletal overgrowth for age as in some younger preoperative girls (Figure 7), suggests a relation to pathogenesis. There were insufficient girls with left thoracic AIS for separate analyses ( $n = 12$  [46]) (see Discussion, *Upper arm length asymmetry and the higher BMI subset of right thoracic AIS, and Skeletal asymmetries and lower BMI subsets*).

#### **Skeletal overgrowth for age in preoperative AIS/normal girls (Figure 7)**

Figure 7[182] shows that with relatively *higher BMIs*, the younger AIS girls, have larger corrected stature for age than do the normal girls, becoming normal sizes by 16 years of age ( $p < 0.001$ , ANOVA with age correction). This pattern is found in each of 11 skeletal segments, four of them in bilateral limb segments suggesting a systemic response. Mean menarcheal ages are not significantly different. The skeletal pattern for age suggests earlier skeletal maturation with overgrowth in these younger girls probably from circulating hormones ? GH/IGF-I and possibly estrogen [29,122]. The AIS girls with *relatively lower BMIs* show a more complex pattern with two growth phases: earlier phase similar to normals, and later phase in most skeletal segments, mainly postmenarcheal, with larger overall skeletal growth attained for age in preoperatives relative to normals, ? estrogen effect [29,122]. The similar mean Cobb angle and apical vertebral rotation show that while curve severity at the time of surgery appears independent from (1) skeletal growth patterns, and (2) BMI subsets, we suggest that common factors in different proportions and other common factors, determine the similar curve severities in both subsets (see Discussion *Skeletal sizes for age - curve severity, sympathoactivation and hormonal stimulation*).

#### **Back contour asymmetry in normal girls and boys**

The excess of severe back humps in girls and boys was associated with *lower BMI subsets* [123-125].

#### **Considered together, the above findings are not explained by any of the prevailing theories of AIS pathogenesis (Appendix I, items 1-15)**

A more comprehensive hypothesis for girls with AIS was required involving energy homeostasis and the hypothalamus in a disorder presenting as abnormalities of trunk growth with axial and appendicular skeletal asymmetries and in preoperative girls with systemic skeletal features.

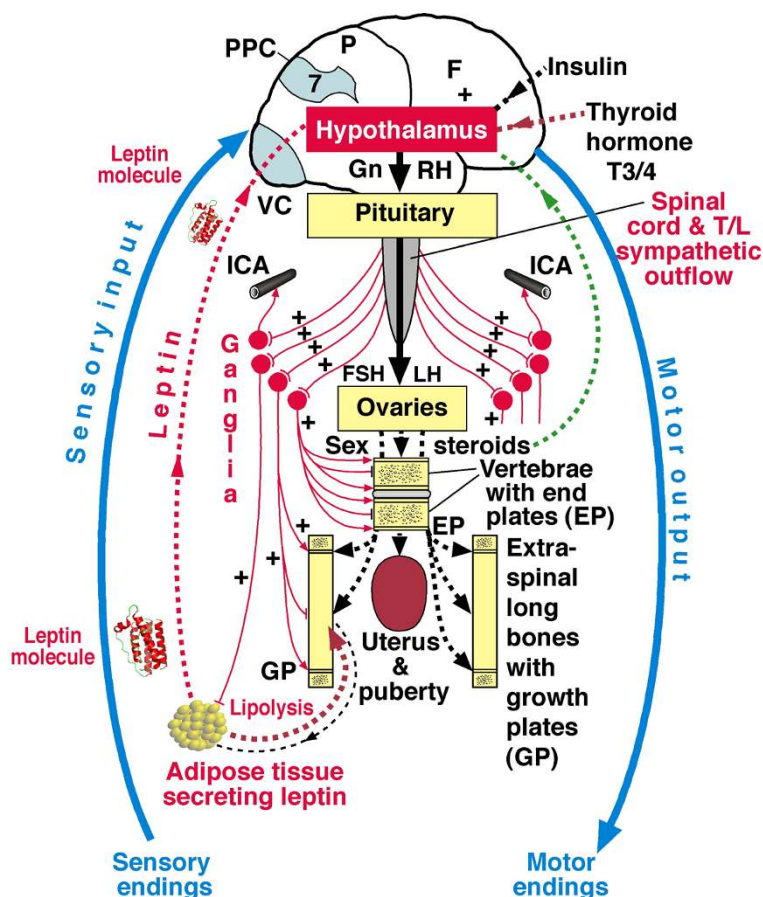
#### **Scientific Basis of Leptin-Hypothalamic-Sympathetic Nervous System (LHS) Concept**

From a novel interpretation of the above findings, the leptin-hypothalamic-sympathetic nervous system (LHS) concept for AIS pathogenesis was formulated [25,26] after surveying evidence relating to:

1. Thoracospinal concept.
2. New neuroskeletal biology.
3. Energy homeostasis and sympathetic nervous system.
4. White adipose tissue, *leptin*, hypothalamus, sympathetic nervous system and bone formation/resorption in health.
5. Leptin and bone growth in mice.
6. Leptin and bone growth in children.
7. Leptin, hypothalamus and AIS.
8. Central leptin resistance in obesity and possibly in healthy females.
9. AIS as a systemic disorder - platelet calmodulin dysfunction.
10. AIS as a systemic disorder - melatonin, melatonin signaling, osteopontin and soluble CD44 receptor.
11. Some melatonin-deficient mouse models of scoliosis - markers of developmental stress?
12. Osteopontin and bone remodeling in mice.
13. Melatonin receptor 1B (MT1B), AIS, glucose metabolism and type 2 diabetes.

#### **Thoraco-spinal concept**

Right thoracic, but not left thoracic AIS in girls, is considered by Sevastik and colleagues to be initiated by dysfunction of the sympathetic nervous system leading through vascular changes to relative overgrowth of concave periapical rib lengths [59-63]. This section is written in collaboration with Professor JA Sevastik. Compared with right thoracic AIS, the pathogenesis of left thoracic AIS in girls remains relatively unexplored [[114,115], see DISCUSSION (6)]. The thoracospinal concept of pathogenesis was established from anatomical and clinical evidence including left-right asymmetries of thoracic skin temperature, breast size and vascularity, and periapical rib length asymmetry [30]. Subsequent experimental studies [61] provided evidence for the correction of experimentally-induced scoliosis consistent with the pathogenetic conclusions. The thoracospinal concept is supported by recent studies on breast size [183], vascular [184,185] and peripheral nerve [186] findings. It does not encompass evidence relating to the new neuroskeletal biology, energy homeostasis, or white adipose tissue which is central to



**Figure 8**  
**Diagram of relevant somatic (blue) and autonomic nervous systems (ANS, red) in girls.** Note, *leptin, hypothalamic-pituitary-ovarian axis and sympathetic axis in the ANS.* The sensory input, motor output and PPC relate to the somatic nervous system and the rest illustrate *leptin, hypothalamus and sympathetic nervous system of the LHS mechanism and concept.* The neuroendocrine control of the female reproductive axis and the bilateral sympathetic nervous system control of skeletal and adipose tissues are shown. Ganglia = ganglionated sympathetic trunk. Sympathetic nerves are shown as thin continuous lines and hormones as interrupted lines. Pre- and post-ganglionic sympathetic nerves are shown bilaterally with arrows indicating enhancement of function, and blunted lines as inhibition. F = frontal lobe, P = parietal lobe, PPC = posterior parietal cortex (Area 7 with body schema), VC = visual cortex, GnRH = gonadotropin-releasing hormone, FSH = follicle stimulating hormone, LH = luteinizing hormone, ICA = intercostals artery, T/L = thoracolumbar.

the regulation of energy balance by adipokines, particularly leptin, hormones of the digestive system and metabolites, particularly glucose (Figure 8).

Biomechanical mechanisms are thought to be involved in pathogenesis. Evidence [60] showed that gradual elongation of one rib affects the position of the numerically corresponding vertebra in the three cardinal planes in a way similar to the apical vertebra in idiopathic scoliosis. The disc space wedging is explained by the rotational movement of the central vertebra in the frontal plane, and the lordotic tendency of the scoliotic segment is explained by ventral vertebral translation in combination with tilt in

the sagittal plane. Curve progression is attributed to biomechanical mechanisms [63,80-82].

**New neuroskeletal biology (Figure 8)**

In the last decade it was shown initially in mice, that the central nervous system regulates bone remodeling, and more recently longitudinal bone growth via the sympathetic nervous system linking leptin-responsive hypothalamic neurons to bone tissue [187-198]. In reviewing this new field of neuroskeletal biology, Patel and Elefteriou [195] summarize long-standing clinical observations relating to bone and the nervous system including reflex sympathetic dystrophy, hyperplastic callus associated with head injury and myelomeningocele, and osteope-

nia associated with stroke, spinal cord injury and peripheral neuropathy. Conflicting reports on the effect of  $\beta$ -blockers for risk of fractures are published, and randomized clinical trials are needed [199]. Theoretically, neuroskeletal mechanisms expressed via the sympathetic nervous system *through its bilaterality* (Figure 5), could create asymmetries, although from animal experiments there is no evidence for or against such asymmetries.

#### **Energy homeostasis and sympathetic nervous system (Figure 8)**

Bodily energy reserves are managed actively by complex systems that regulate food intake, substrate partitioning and energy expenditure thereby regulating long-term adiposity [200]. Energy homeostasis, fat and glucose metabolism are regulated by integratory centers in the central nervous system which receive, and convey information by signals from peripheral organs (such as adipocytes, gut and pancreatic islets - eg insulin and amylin both short-term satiety signals, the latter being a hind brain signal), and which send efferent neural and hormonal signals to peripheral tissues that regulate food intake, energy expenditure, metabolism and behavior (feeding) [200-203]. The obesity genes *MC4R*, *FTO* and *SH2B1* may participate in the central control of energy homeostasis [172-174,200,203]. A neuroanatomical framework explaining the effects of leptin on neuroendocrine and sympathetic nervous system function has been reported [204].

#### **White adipose tissue, leptin, hypothalamus, sympathetic nervous system and bone formation/resorption in health (Figure 8)**

Adipose tissue, where fatty acids are stored as triglycerides in lipid droplets, is central to the regulation of energy balance [205]. White adipose tissue constitutes separate depots that contribute with the hypothalamus as the key centre for integration and control of energy balance [200]. Leptin, best known as a satiety hormone, a signal of energy sufficiency and long-term adiposity, is one of several cytokine-like hormones secreted by adipocytes [1,2,200]. In girls there are gradual age- and BMI-related increases in circulating leptin levels [206]. Molna-Carballo et al [12] from a longitudinal study reported that the leptin concentration increases in both sexes with the progression of puberty, this value being 40% greater in girls, which correlates with the increase in body volume and fat accumulation [206,207]. Girls have higher serum leptin levels before, during, and after puberty than boys, even after accounting for the development of greater female adiposity [207]. The sexual dimorphism in leptin concentrations during puberty appears to be partly due to a stimulatory effect of estradiol on fat deposition and leptin concentration in females and a suppressive effect of testosterone on leptin concentration in males [207]. Leptin

levels in men are lower than women at all decades of life [208].

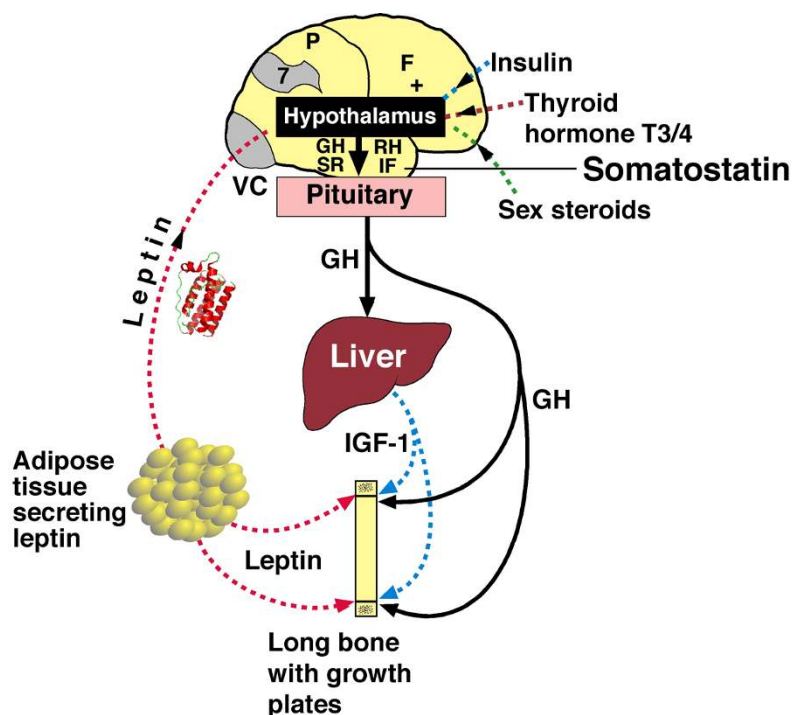
Leptin, the product of the obesity gene (*ob*) circulates in both free and bound form, and targets neurons including the arcuate nucleus and other nuclei of the hypothalamus [200]. Leptin is a master hormone that acts via a specific receptor (OB-R with six types of receptor, LepRa-LepRf; the longest form, LepRb is the only receptor isoform that contains active intracellular signaling domains). The leptin receptor is present in a number of hypothalamic nuclei, where it exerts its effects. within a complex web of signals with many regulatory functions for food intake, body weight, increasing energy expenditure through sympathoactivation, thermogenesis, other metabolic and endocrine functions, reproduction, immune/inflammatory responses, and wound healing, mainly through signaling to the hypothalamus including [1,2,200,209]:

- a) appetite repression and body weight control (*anti-obesity, anorexigenic*);
- b) initiation of puberty in girls as one gate with *kisspeptin* in a permissive role [1,2]; genetic variation in *LIN28B* on chromosome 6 is associated with the timing of puberty [210];
- c) stimulation of the sympathetic nervous system, more in females than in males, possibly because of their greater fat mass [211,212];
- d) in bone formation, *anti-osteogenic in mice* acting centrally through the sympathetic nervous system [187-192,194-197,213] involving the molecular clock and circadian regulation [214], possibly with an opposite direct effect on bone [190,195,196,198]. Several genes are identified having high levels of expression in the hypothalamus [192,195,196]. Mice lacking  $\beta$ -adrenergic receptors have increased bone mass [215]. In feedback, the skeleton exerts an endocrine regulation of energy metabolism through the *Esp* gene exclusive to osteoblasts controlling secretion of the hormone-like substance osteocalcin [216-218] (Figure 8).

Animal experimentation suggests a two-way interaction between leptin and the sympathetic nervous system, with leptin causing sympathoactivation, and the sympathetic nervous system exercising regulatory feedback inhibition over leptin release [219].

#### **Leptin and bone growth in mice (Figures 8 and 9)**

Leptin stimulates longitudinal bone growth in leptin-deficient (*ob/ob*) and leptin-receptor deficient (*db/db*) mice [180,194,220-222], and growth plates in culture



**Figure 9**  
**Diagram showing three hormonal ways in which leptin stimulates growth plates: (1) GH by stimulating GHRH-producing neurons and inhibiting somatostatin-producing neurons, (2) IGF-I; and (3) directly.** [GH = growth hormone, GHRH = growth hormone releasing factor, SRIF = somatotropin release inhibiting factor (somatostatin) (Diagram modified from Gat-Yablonski and Phillip [222]).

[180,222-224] being *chondro-osteogenic and angio-genic* [190]. The leptin appears to act centrally through the sympathetic nervous system (Figure 8) [190,194,213], growth hormone stimulation [180,190,220,222], and peripherally [190,222] with a direct effect on growth plate chondrocytes by its signaling receptor [180,220,222], regulating IGF-I receptor expression [190,223], and by other mechanisms (Figure 9) [180]. There is evidence for mice, that vertebral body growth plates may respond to leptin differently from long bone growth plates [179,180]. Iwaniec et al [194] propose that hypothalamic leptin plays a role in coupling energy homeostasis and bone growth, acting as an important permissive factor for normal bone growth. Leptin appeared in evolution with the bony skeleton [216].

#### **Leptin and bone growth in children**

Maor et al [223] reviewed clinical evidence that after craniopharyngioma surgery in children, circulating leptin may contribute to bone growth including normal height velocity [225]. Children with exogenous obesity usually show increased height velocity [226], and their serum leptin levels are approximately five times that of normal children [227], with obese children being taller than average

from 6-9 years [225], showing more advanced bone age/chronological age [227], earlier puberty and menarche [226] and no significant correlation of leptin and estradiol levels [228].

Montague et al [229] reported two severely obese consanguineous children with congenital leptin deficiency, the findings of which strongly suggested that leptin critically influences energy balance in prepubertal humans. One child developed abnormalities of growth in long bones of her legs treated by corrective surgery, an abnormality attributed to growth plate fragility [180]. Subsequently, in three children who were congenitally deficient in leptin and morbidly obese, Farooqi et al [230] reported radiological skeletal maturation was increased by 2.1 years, and that leptin therapy produced beneficial effects on the skeleton.

Severe dietary restriction, a common cause of leptin insufficiency and growth/length restriction in humans [194], is probably associated with, and explained by, decreased GH and IGF-I receptors in growth plates [231].



### **Leptin, hypothalamus and AIS**

Qiu and colleagues [163,164] reported a marked decrease in circulating leptin in AIS girls compared with controls, confirmed by Dr A Moreau (personal communication). Positive correlations were found between leptin and each of age, menstrual status, weight, corrected height, BMI, Risser sign, bone mineral content and bone mineral density (lumbar spine and femoral neck) but not Cobb angle, suggesting that leptin may play an important role in the lower BMI of AIS girls [164]. Longitudinal studies are needed.

### **Central leptin resistance in obesity and possibly in healthy females**

Central *leptin resistance* is defined as reduced ability of circulating leptin to suppress appetite and weight gain and to promote energy expenditure [232].

*In obesity.* Central leptin resistance is considered to be one of the main causes of obesity [232,233]. It is thought to result mostly from a state of diminished hypothalamic responsiveness to increased levels of circulating leptin [200] which may be selective [232-236].

*In healthy females: normal juvenile girls and somatotrophic axis.*

Central leptin resistance may occur normally in girls [227], and in pregnancy thereby permitting the accumulation of adipose tissue stores necessary for growth, reproduction and lactation [227,237]; leptin sensitivity returns, possibly by signaling mechanisms [232], or by altering the leptin dose-response curves [223,238]. There is preliminary evidence [50] suggesting that the hypothalamus of some normal juvenile girls, but not boys, functions with *central leptin resistance of the somatotrophic (growth hormone/IGF) axis*. This putative mechanism, is interpreted as limiting energy invested in female skeletal growth thereby conserving energy for reproductive development [50]. It may be related to the female predisposition to AIS.

### **Hypothalamic mechanisms of central leptin resistance in obesity**

Several mechanisms have been revealed to explain central leptin resistance in obesity [232], namely:

- (1) Impaired leptin transport across the blood-brain barrier e.g. *triglycerides* [238-240].
- (2) Serum leptin interacting proteins (SLIPs) such as *C-reactive protein* [[241], but see [200]].
- (3) Inflammation [239,242].
- (4) Intracellular inhibitory molecules (negative regulators) of leptin signaling including -

a) the *suppressors of the cytokine signaling* (SOCS) family [200,243,244],

b) *protein-tyrosine phosphatases* (PTPs) [200,245,246]; and

c) *OB-R gene related protein* (OB-RGRP) [247,248].

a) *Suppressors of the cytokine signaling* (SOCS). Howard et al [243] and Mori et al [244] noted that the leptin receptor is highly expressed in the hypothalamus and belongs to the cytokine-receptor superfamily that activates the Janus tyrosine kinase-signal transducers and the activators of transcription (JAK/STAT) pathway to modulate cellular responses in a negative feedback loop [[249,250], for detail and other pathways see [232]]. They report evidence for mice that SOCS-3 neuronal deletion enhances leptin sensitivity [244,250] as does haploinsufficiency of SOCS-3 [243]. SOCS-3 is also a human gene. SOCS-2, a genetic determinant of height growth in normal children, is involved in the regulation of IGF-I signaling [251].

b) *Protein-tyrosine phosphatases* (PTPs). PTP-1B also contributes to leptin resistance by inhibiting intracellular leptin receptor signaling by inhibiting JAK2 activation [232,240,252]. *PTP-1B deficient mice* by knockout and by an *antisense (anti-DNA) oligonucleotide* designed to blunt the expression of *PTP-1B*, showed improved leptin and insulin action [252]. *PTP-1B* is a major regulator of energy balance, insulin sensitivity, and body fat stores [246]. *PTP-1B* is also a human gene.

c) *OB-R gene related protein* (OB-RGRP). Couturier and colleagues [247,248,253] report that *OB-RGRP* negatively regulates the specific leptin receptor OB-R in the hypothalamus of mice. They comment that if the results obtained in the diet-induced obesity mouse model are transposable to humans, targeting the regulator of the leptin receptor rather than the receptor itself (either by RNA interference or by pharmacological antagonists), could be a more appropriate basis for identifying potential new therapeutic targets for a variety of diseases, including obesity.

(5) Intracellular stimulatory molecules (positive regulators) of leptin signaling. According to Morris and Rui [232], SH2B1 enhances leptin signaling. It appears to be required for the maintenance of leptin sensitivity, energy balance and body weight, ultimately through activation of the PI 3 kinase pathway. The ability of SH2B1 to enhance leptin sensitivity may be modulated by other members of the SH2B family. Cellular leptin sensitivity may be determined, at least in part, by a balance between positive (e.g. SH2B1) and negative (e.g. SOCS3 and PTP-1B) regulators.

(6) Chronic endoplasmic reticulum (ER) stress, mediated through *protein tyrosine phosphatase 1B* and not through *suppressors of cytokine signaling-3* [233], contributes to leptin resistance and obesity, presumably by activating various unfolding protein response signaling pathways, [232]. Inhibition of ER stress in the hypothalamus by either genetic or pharmacological means markedly improves leptin sensitivity and decreases food intake and body weight in mice [232].

(7) Defects in neural circuitry including impairment of MC4R signaling in the paraventricular nucleus, induce leptin resistance, hyperphagia and obesity, with genetic and environmental factors modulating the synaptic remodeling and rewiring of this circuitry [232].

The challenge is to develop diagnostic approaches for the different forms of central leptin resistance and design personalized healthcare programs to treat obesity [232].

#### **AIS as a systemic disorder - platelet calmodulin dysfunction [21,22,107]**

Lowe et al [21,22] suggested that altered paraspinal muscle activity explained the relationship between platelet calmodulin level changes and Cobb angle changes in AIS with calmodulin acting as a systemic mediator of tissues having a contractile system (actin and myosin). An alternative speculative concept to explain the findings of Lowe is that in predisposed subjects, platelet activation with calmodulin changes occurs within dilated vessels of deforming vertebral bodies [107]. The activated platelets in juxta-physal vessels release growth factors which, after extravasation, abet the hormone-driven growth of the already mechanically-compromised vertebral endplate physes to promote the relative anterior spinal overgrowth (RASO) and curve progression of AIS.

#### **AIS as a systemic disorder - melatonin, melatonin-signaling, osteopontin and soluble CD44 receptor**

##### *Melatonin deficiency*

Machida and colleagues [7] found *lower plasma melatonin (MLT) levels* through 24 hours with progressive AIS curves and concluded that MLT disturbance has a role in AIS progression more than its cause. They suggested that AIS is an inherited disorder of neurotransmitters from neuro-hormonal origin affecting MLT associated with a localized neuromuscular imbalance and torsion in the bipedal condition [8,9]. The relevance of lower circulating MLT levels to AIS pathogenesis is now controversial since no significant decrease in circulating MLT levels has been observed in a majority of studies [254-256].

- MLT and leptin are said not to interact in the initiation or progression of human pubertal development [11].

- The relationship between MLT and GH is poorly understood [10,257].

- How MLT may interact with estrogens is discussed by Leboeuf et al [258].

- Melatonin-calmodulin interaction may represent a major mechanism for regulation and synchronization of cell physiology [22,259].

##### *Systemic melatonin-signaling dysfunction*

In progressive AIS, Moreau et al [14] found melatonin-signaling transduction to be impaired in osteoblasts, myoblasts and lymphocytes caused by the inactivation of Gi proteins. These findings, extended in subsequent papers [15-18], led to the conclusion that melatonin-signaling dysfunction detected in osteoblasts, myoblasts and lymphocytes is a decisive factor for the pathogenesis of AIS [17].

##### *Osteopontin and soluble CD44 receptor*

Most recently, Moreau et al [19,20] reported mean plasma osteopontin (OPN) levels to be increased in:

- patients with idiopathic scoliosis, correlating significantly with curve severity, and
- "an asymptomatic at-risk group" (offspring born from at least one scoliotic parent).

In contrast, mean plasma levels of soluble CD44 receptor (sCD44) were significantly lower in patients with Cobb angles of 45 degrees or more. Drawing on evidence from mouse models, it was concluded that OPN is essential to induce scoliosis formation and curve progression through interactions with CD44 receptors, "thus offering a first molecular concept to explain the pathomechanism leading to the asymmetrical growth of the spine in idiopathic scoliosis." [19].

We ask whether:

- (1) in mice, the scoliosis of melatonin-deficient models has another interpretation; and
- (2) in the AIS subjects [19,20], the increased OPN levels are secondary to bone remodeling.

#### **Some melatonin-deficient mouse models of scoliosis - markers of developmental stress?**

Moreau et al [19,20] found all transgenic melatonin-deficient C57Bl/6J mice [150] devoid of OPN or CD44 receptor were protected against scoliosis, contrasting with wild-type ones. May this be, not because OPN is essential for

scoliosis pathogenesis, but because OPN deficiency reduces stress reactions in mice [260]?

For, in mice, circulating OPN plays a significant role in the body's reaction to stress by regulating hormones of the *hypothalamic-pituitary-adrenal axis* (HPA) [260] modulated by leptin which activates the JAK/STAT pathway. Stressors cause less up-regulation of the stress hormone corticosterone in OPN-deficient mice [260]. This may be tested in the model used for mice: (1) rendered bipedal at 3 weeks of age, and (2) kept in tall cages to make them reach up increasingly for food and water [150]. The *developmental stress hypothesis* [261], if confirmed, suggests that OPN deficiency through reduced corticosterone up-regulation causes less stress-reaction damage to the neural development of posture and so protects against the scoliosis. If so, these transgenic mice findings [19,20] may not be relevant to AIS pathogenesis.

#### **Osteopontin and bone remodeling in mice**

Osteopontin, a major non-collagenous bone matrix glycoprotein originally isolated from bone - sialic acid rich, phosphorylated and inhibitor of calcification - has a critical role in bone remodeling which in OPN-knockout mice was suppressed [262]. Hence, the interpretation under item 11. *above*, and the evidence from Fujihara et al [262], together raise caution about attributing a causal, rather than a consequential, role to increased plasma OPN in AIS pathogenesis.

#### **Melatonin receptor 1B (MT1B), AIS, glucose metabolism and type 2 diabetes**

Promoter polymorphisms of the gene for melatonin receptor 1B (*MT1B*) are associated with the occurrence of AIS, but not directly with curve severity; this supports the hypothesis of a MLT-signaling pathway dysfunction in AIS [263]. There is a lack of association between promoter polymorphism of the *MTNRIA* gene and AIS [264]. Genome-wide association studies have shown that melatonin receptor 1B variation is also associated with insulin and glucose concentrations; the risk genotype of this SNP predicts future type 2 diabetes suggesting that blocking the melatonin ligand-receptor system in the endocrine pancreas could be a therapeutic avenue for type 2 diabetes [265,266]. These genetic findings:

- are consistent with hormone receptors having a variety of parallel but independent downstream effects; and
- raise the question: Do post-operative AIS girls after 60 years of age have a lower prevalence of type 2 diabetes, because they are protected by being leaner and using their energy in a different way with a more efficient burn within their systemic disorder?

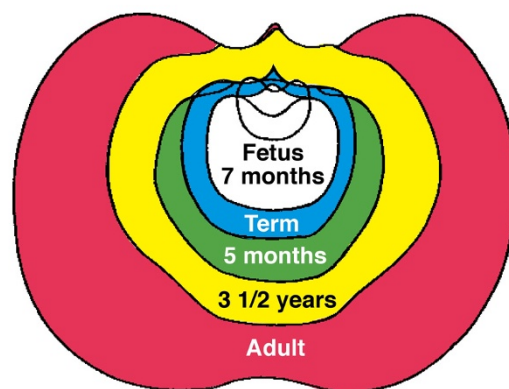
### **AUTONOMIC NERVOUS SYSTEM - leptin-hypothalamic-sympathetic nervous system (LHS)-driven mechanism in health and LHS concept in AIS (Figures 1, 4 and 5)**

#### **Trunk widening in normal adolescent girls and the putative LHS-driven mechanism**

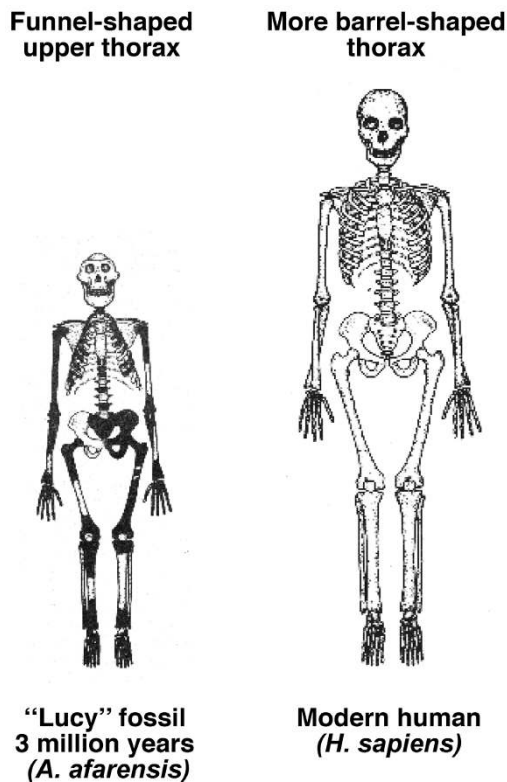
We postulate that in normal girls, trunk widening of the pelvis, ribcage and shoulder girdle, characteristic of humans, is contributed to by a *leptin-hypothalamic-sympathetic nervous system (LHS)-driven mechanism* acting bilaterally (Figure 5). Differential sympathetic innervation between axial and appendicular bones may be present [196]. The pattern of skeletal sizes for age [47-49] suggests that any differential innervation by the sympathetic nervous system may differ between girls and boys.

In normal human growth, biacromial broadening reflects widening mainly of the underlying upper thorax (Figures 10 and 11) [149,267-269], and pelvic broadening reflects iliac flaring and widening mainly of the sacral alae (Figure 12); the latter reaches its maximum in hominins to provide a firm base of support for the trunk during bipedal posture and locomotion (Figures 13, 14) [153,267,269-271]. Hominid lumbar vertebrae also exhibit a caudally progressive widening of their laminae and of the space separating their articular processes [270]. Pelvic inlet width is a predictor of pediatric chest width [272].

The evidence suggests that pelvic widening in the frontal plane [267] (which varies with climatic conditions), together with pelvic incidence in the sagittal plane



**Figure 10**  
Diagram of transverse sections of normal human thorax to show growth by age ranges: blue, fetus 7 months to term; green; term to 5 months; yellow, 5 months to 3 1/2 years; red, 3 1/2 years to adult. Thorax width relative to depth increases mostly after 3 1/2 years (Modified from [268]).



**Figure 11**  
**The change in the ribcage from funnel-shaped to barrel-shaped in 3 million years of evolution.** Reassembly of the fossil skeleton (black) of "Lucy" (*Australopithecus afarensis*) compared with the skeleton of a modern human female. The upper thorax is funnel-shaped with narrow shoulders, like modern-day chimpanzees (Figure 12). The blades of the ilia have turned in providing hip mechanics appropriate for erect walking. Compared with the modern adult human female, "Lucy" was much smaller with the relative brain size of a chimpanzee, chimpanzee-shaped thorax, a broad pelvis from iliac flaring and widening of sacral alae (possibly related to gut size), and totally bipedal (Diagram modified from [269] and Burwell et al [149]).

[273,274], provided hominins with conservation of energy [273] through biomechanical economy enabling -

- bipedalism with upright posture [75,153],
- modified spinal movements [275], and in the last 3 million years -
- increasing fetal brain size [270,271,276,277] with sagittal expansion of birth canal (Figure 12) [149,270,271], possibly with the bigger brain, from (1) a bigger baby,. (2) longer lumbar region, and (3)

**"Lucy" fossil 3 million years (*A. afarensis*)**



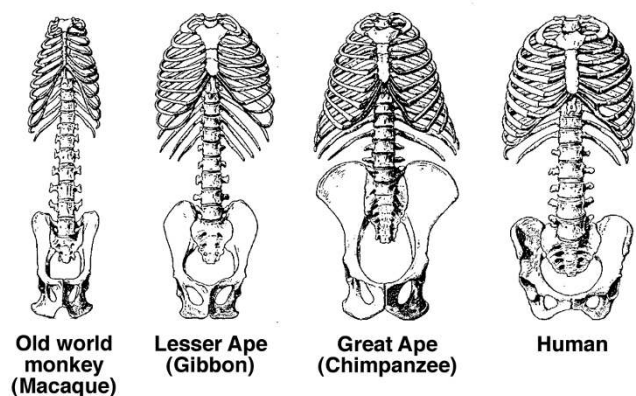
**Modern human (*H. sapiens*)**



**Figure 12**  
**Pelvis of "Lucy" and modern human female separated by 3 million years of evolution.** "Lucy's" sacral alae are wide thereby increasing separation at the hips, the ilia are more flared increasing the mechanical advantage for hip function, and frontal pelvic width greater than sagittal pelvic dimension. The major change visible in this view, namely the more ovoid form of the human pelvis, is accompanied by a sagittal expansion of the birth canal needed for the increase in brain size since "Lucy". (Modified from [271] and Burwell et al [149]).

ability to conceive of tool construction and usage [276].

The evidence suggests that the medio-lateral dimension of the birth canal has been relatively (but not absolutely) ample since the australopithecine stage about 3 million years ago (mya = megaannum) with a funnel-shaped upper thorax (Figure 11) [269], as in the contemporary chimpanzee (Figure 13). A more ovoid pelvic shape with increase particularly of the sagittal dimension, then evolved in response to increasing brain size particularly from about 0.5 mya (Figure 12) [270,271] (see Evolutionary Origins).



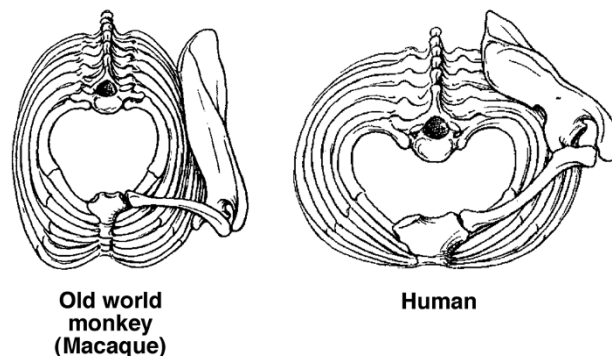
**Figure 13**  
**Trunk skeletons of female primates reduced to the same total length.** Widening of the trunk - chest, shoulder and pelvis, is characteristic of all higher primates. Chimpanzees have an inverted funnel-shaped upper thorax with narrow shoulders. The human pelvis has increased in width mainly through great enlargement of its sacral portions but it is short as in monkeys [267] (Diagram modified from Schultz [267] and Burwell et al [149]).

#### **The LHS concept for girls with AIS**

AIS in girls from the standpoint of the autonomic nervous system is viewed as expressing increased central leptin *sensitivity* of hypothalamic sympathetic functions and, in some girls, of the somatotrophic axis, which subsequently develop an inverse relationship. We speculate that AIS arises from dysfunction of the normal *LHS-driven* mechanism (Figure 5) by genetically-determined and selectively increased hypothalamic sensitivity (*up-regulation from mutations*) to circulating leptin leading to hypothalamic asymmetry. The asymmetry is viewed as an adverse response to stress [25,36], with asymmetric activity mediated via the sympathetic nervous system bilaterally to vertebrae and/or ribs (Figures 1 and 5), to upper arm lengths in thoracic AIS, and to iliac heights in thoracolumbar and lumbar AIS. The increased sensitivity of the hypothalamus to leptin is viewed as being enhanced by increasing circulating levels of leptin from the fat accumulation of adolescent girls [12], despite the lower leptin levels of AIS girls [163,164].

The requirements for the theory are that in dysfunction, the sympathetic nervous system (SNS)-driven effects contribute with neuroendocrine mechanisms to produce [25]:

- (1) Earlier skeletal maturation (hormonal).
- (2) Sympathoactivation expressed asymmetrically in vertebral growth plates in 1-3 dimensions - left-right,



**Figure 14**  
**Top views of thorax and left shoulder girdle in adult macaque and human.** In the macaque, the ribcage is narrow laterally and deep sagittally, while in truncally-erect forms it is expanded laterally and shallow from front to back, to keep the center of gravity over the feet. This trunk widening shifts the scapulae from the side to the back of the ribcage with clavicular lengthening, and the shoulder joints facing laterally rather than forward (Diagram modified from Schultz [267]).

front-back and/or torsionally - and in some paired bones (Figures 5 and 6).

- (3) General skeletal overgrowth for age systemically distributed (hormonal)(Figure 7) [152].
- (4) Left-right extra-spinal skeletal length asymmetries (ribs, upper arms and ilia) (Figure 1) with upper arm length asymmetry being a *signal* of thoracic vertebral and/or rib length asymmetry (Figure 6).
- (5) Increased hypothalamic sensitivity to circulating leptin (*up-regulation*) involves the somatotrophic (GH/IGF-I) axis [222] in some younger preoperative AIS girls (Figure 7, see Neuroendocrinology. *Sympathetic nervous system and GH/IGF axis*).
- (6) Hormonal effects of the GH/IGF axis cause exaggeration of the SNS-induced vertebral/rib length asymmetry contributing to curve progression of preoperative AIS girls in an inverse relationship (Figure 5, see Neuroendocrinology. *Sympathetic nervous system and GH/IGF axis*).
- (7) Relative osteopenia [88,278,279] which results in part from sympathoactivation.

The lower BMI [163,164] and body fat of AIS girls may be determined genetically [172-174] and contributed to by sympathoactivation [176,219] from the putative hypothalamic *up-regulation* to leptin (*LHS concept*) [25]. Over-



weight girls with AIS [170,171] probably reflect changes from genetic (leptin resistance in relation to satiety) and societal factors.

#### **Central leptin resistance/sensitivity and the LHS concept for AIS pathogenesis in girls**

The LHS concept for AIS pathogenesis of girls, views the increased hypothalamic sensitivity to leptin as being at the opposite end of the spectrum to the central leptin resistance of obesity. This increased sensitivity to circulating leptin affects the *hypothalamic sympathetic nervous system* and, in some AIS girls, the *somatotropic neuroendocrine axis*. The effects produced in growing bones by these neural and endocrine mechanisms are influenced by the availability of energy, allocated by the hypothalamus through hormones and the nervous system, modulated by circulating leptin levels that measure long-term adiposity.

#### **Autonomic Nervous System - Possible Factors Causing Selective Hypothalamic Up-Regulation in AIS**

We suggest five molecular mechanisms that might contribute to the selective up-regulation of some hypothalamic neurons to leptin in the *LHS* concept for AIS pathogenesis.

##### **G-protein coupled receptors**

The putative dysfunction of hypothalamic neurons in AIS - increased and asymmetric sensitivity to leptin, may result from an abnormality of a G-protein-coupled receptor, or G protein, to leptin [25]. The melatonin-signaling dysfunction caused by the inactivation of Gi proteins so far detected is peripheral [14-20], and it is unknown whether any hypothalamic mechanism of etiopathogenesis is involved [Dr A Moreau personal communication]. Melanocortin-3 (MC3R) and MC4R are G-protein coupled receptors highly expressed in the hypothalamus [232].

##### **Circulating osteopontin (OPN)**

Subject to the caveat expressed for circulating OPN levels having a causal role in AIS, increased levels of circulating OPN [19,20] may act as a gate for AIS in the hypothalamus as does *kisspeptin* for puberty through its G-protein-coupled membrane receptor GPR54 [2,280,281].

##### **Inhibitory molecules in the JAK/STAT pathway**

Subject to the demonstration of a significant functional variation in human populations, *inhibitory molecules such as SOCS-3* [232,243,244,250], *PTB-1B* [232,240,252] and possibly the *regulator of the leptin receptor (OB-RGRP)* [247,248,253] - all as negative regulators of leptin sensitivity, by their *decreasing* action, are candidates to *increase* hypothalamic sensitivity to leptin in the *LHS*-driven concept for AIS pathogenesis.

##### **Stimulatory molecules in the PI 3 kinase pathway**

As positive regulators of leptin sensitivity, members of the SH2B family by their *increasing* action [232], are candidates to *increase* hypothalamic sensitivity to leptin in the *LHS*-driven concept for AIS pathogenesis.

##### **Hormesis - the putative cause of asymmetry in the LHS concept for AIS**

*Hormesis* is a *bimodal dose response* to drugs and toxins, first stimulation and then an adverse response, usually inhibition [282-284]. There is evidence that this normal hormetic process applies to leptin [223]. The dose effect will be influenced by the combined effects of 1) increased hypothalamic sensitivity to leptin, and 2) raised circulating leptin levels from adolescent female fat accumulation. We speculate that in the hypothalamus the hormesis of leptin, in adversity leads *not to inhibition but to increased sensitivity and asymmetry* [36]. The concept is considered plausible by Dr EJ Calabrese [personal communication]. In rats, infused leptin increases sympathetic nervous system activity in a dose-dependent manner suggesting that leptin may act hormetically on the normal rat hypothalamus [285].

#### **Autonomic Nervous System - Rett and Prader-Willi Syndromes**

##### **Rett syndrome**

Rett syndrome is a genetic neuro-osseous developmental disorder much more prevalent in girls than boys, characterized by profound and progressive loss of intellectual functioning and growth failure [286,287]. Raised circulating leptin levels and overactivity of the sympathetic nervous system [288] are associated with its pathophysiology [286,287]. The skin sympathetic responses are related to the side of the scoliosis, on the foot ipsilateral to the convex side of the scoliosis where it shows a relatively lower amplitude [286]. These findings are consistent with the view that leptin and sympathetic nervous system dysfunction, under certain conditions, may be associated with scoliosis expression and curve laterality.

##### **Prader-Willi syndrome (PWS)**

PWS, a rare multisystem genetic disorder, is thought to result from a central hypothalamic-pituitary dysfunction [289,290]. It is associated with failure to thrive in infancy and progressive hyperphagia and obesity in childhood; there is short stature with growth hormone (GH) deficiency, obesity, eating disorders, decreased muscle mass, hypotonia, hypogonadism, and a high prevalence of scoliosis in infants, juveniles and adolescents (15-86%) with 67% affected at skeletal maturity [289,291,292]. The pathogenesis of the scoliosis is unknown [293]; it is unrelated to gender and BMI [292] and may be related to decreased muscle mass, hypotonia, and hypo-excitability of motor cortical areas with defective neurogenesis of cor-

tical tissue [294]. The contribution of the autonomic nervous system, if any, to the scoliosis appears to be unknown. PWS is not accompanied by deranged leptin concentrations and there was no evidence of an interaction of the GH/IGF axis with leptin metabolism in GH-deficient children [295]. While infants with PWS, have higher leptin levels than controls, suggesting a relative excess of fat to lean body mass [296], adults with PWS have leptin assessment corresponding to their degree of obesity [297] (see Endocrine and Therapeutic Implications, *GH treatment and the Prader-Willi syndrome (PWS)*).

### Evolutionary Origins

From the initial chimpanzee-human divergence about 5-7 mya, hominins may have evolved their loss of body hair by about 3.3 to 1.2 mya and its replacement with increased subcutaneous white adipose tissue (80% of all fat) for insulation and energy stores, more in maturing females than males [267,298-302]. About 2 mya, these changes were associated with the decoupling of head and trunk movements required for endurance running to hunt down prey [303], since when the hominid lineage leading to modern humans evolved significantly larger, and more sophisticated brains, than other primates [299-302].

### Melatonin decrease - the turning point of human evolution?

Explanations of "what makes us human" often include a bridge between culture and biology [51]. Recently, it has been suggested that decreased circulating melatonin levels due to light from campfires extending the day, "changed the timetable of growth, development and reproduction, because sitting by the fire altered the night's flow of melatonin and the cascade of hormones that follow it." [304].

### Fat - Brain Growth and Nutritional Stresses

Power and Schulkin [301] in their book, *The Evolution of Obesity*, outline an evolutionary hypothesis in relation to fat and hominin brain growth [299,300]. The book is one of the first to use an evolutionary framework to analyse a major body of neuroendocrine knowledge about a specific condition [53]. Power and Schulkin write:

"Human beings have evolved to become very good at storing fat; fat appears to have been very important in our evolution. For example, human babies are among the fattest of all mammals... The importance of fat, both in our diet and on our bodies, appears to have increased in human beings compared to our nonhuman primate relatives. We suggest that this change in nutritional biology was linked to the seminal evolutionary event in our lineage: our larger brain." [301].

Nutritionally, human brain growth is said not to be costly [299], but it does require docosahexaenoic acid (DHA), present in body fat more at birth than at any other time in

life [300]. The functioning human brain enlarging particularly in the first two years of postnatal life, imposes a burden on metabolism by -

- increasing energy demands, and
- restricting flexibility in energy allocation when nutritional supply is disrupted - as in the nutritional stresses of weaning and childhood infections [299,301,302].

The relation of leptin to brain growth is not considered here [133].

### Fat - Trunk Width Growth and the LHS Normal Mechanism

We suggest that another '*seminal evolutionary event*' - earlier in our lineage than brain growth, was trunk width growth which has increased more in human beings compared with our nonhuman primate relatives; the latter lack the extended childhood and rapid and large acceleration of growth velocity at adolescence in humans (Figures 11, 12, 13, 14) [153,267,270,271,303].

- *Pelvic width*. In hominins, increased pelvic as iliac and sacral width for habitual erect walking was established by about 3 mya (Figure 12).
- *Thorax and shoulder girdle width*. Ribcage widening, particularly of the upper thorax (Figure 11) happened in the last 3 million years. The wide shoulders characteristic of *Homo* [303] evidently resulted from upper ribcage widening relative to depth (Figures 10 and 11), with clavicular lengthening (Figure 14). This trunk widening at the shoulder girdles is likely to have been selected by:

- a) the evolution of upright posture giving an enhanced respiratory importance to the upper thorax [see [268]]; and
- b) counter-rotations of upper thorax and arms (but not the head) providing counter-balancing torques generated by shoulder girdles and arm-swinging needed to oppose torques created by the pelvic rotations of hominin bipedalism [71,149,268,303].

- *Brain and pelvic depth*. The large *fetal* brain size enabling a dramatic jump of adult brain size from about 0.5 mya, was made possible by further expansion of the birth canal, particularly sagittally (pelvic depth) (Figure 12) [75,267,299-303].

The *LHS mechanism* suggests that the fatness of hominins, starting over 3 mya, raised circulating leptin levels which, through the hypothalamus and sympathetic nervous system, supplemented the hormonally-driven growth in width of pelvis and ribcage [26] (Figures 10, 11, 12), and not in nonhuman primates [153,267] (Figures 5, 13 and 14). This mechanism, we suggest, provided a process in evolution that contributed to:

- pelvic widening mainly from sacral widening, enabling bipedalism with upright posture, later
- upper thorax with shoulder widening, and still later
- increased pelvic depth of *Homo sapiens* (Figure 12).

The *LHS mechanism* is interpreted as being evident today in normal human development as 'energy priority of trunk width growth' in girls (Figures 4 and 5) [47-49].

We speculate:

- In evolution, to reduce toxicity to the hypothalamus of the raised circulating leptin levels - signaling greater adipose tissue stores particularly in females, hypothalamic sensitivity to circulating leptin became *diminished* (*desensitized, or down-regulated, i.e. central leptin resistance*), possibly involving *increased* action of *inhibitory* molecules such as SOCS-3 and PTP-1B, or *decreased* action of *stimulatory* molecules such as SH2B1. It needs to be established whether humans deal with SOCS-3, PTP-1B, and SH2B1 differently from other apes.
- In evolution, the development of human bipedalism and upright posture necessitated adaptations of postural control by the somatic nervous system [51].
- *The putative central leptin resistance in the somatotrophic (GH/IGF) axis of normal juvenile girls* [[50], see [227,237]] is linked to a greater evolutionary *down-regulation* to leptin in the female than the male hominin hypothalamus.

#### **Fat - AIS in Girls and the LHS Concept of Pathogenesis**

The *LHS concept for AIS pathogenesis* suggests that the putative genetically-determined selectively increased hypothalamic sensitivity (*up-regulation from mutations*) to leptin leading to hypothalamic sympathetic asymmetry is rooted in the evolutionary origins of hominin fat deposition providing the energy needed for trunk width growth and later, brain growth and metabolism. We posit that increasing levels of circulating leptin associated with fat accumulation of adolescent girls [12], enhance the putative increased hypothalamic sensitivity (sympathetic and

somatotropic) to leptin of AIS girls. This raises the question: Is the societal fat accumulation of normal adolescent girls [156] associated with increasing severity [170,171] and/or prevalence of AIS?

Left-right asymmetries of the neuroendocrine system and of hypothalamic structure and sex-linked function are reported in normal animals [305].

#### **Endocrine and Therapeutic Implications**

Within the somatic nervous system the *escalator concept*, at present, does not provide any new therapy to improve postural control for early AIS. In contrast, in the autonomic nervous system, the *LHS concept for AIS pathogenesis* suggests two broad therapeutic strategies: through the hypothalamus, and neuroendocrinology.

#### **Hypothalamus**

Badman and Flier [200] state that the *improvement* in central leptin signaling by PTP-1B may provide a target for pharmacological intervention for weight-loss therapies [306]. Similarly, the *LHS concept for AIS pathogenesis* suggests that *impairment* of central leptin signaling may ultimately provide a target for pharmacological intervention for progressive AIS in girls, if this can be done selectively.

#### **Neuroendocrinology**

##### *Sympathetic nervous system and GH/IGF axis*

The *LHS concept* suggests manipulatable causes for therapy (Figure 5) relate to:

- (1) sympathetic nervous system causing asymmetries in spine, trunk, upper arms; and
- (2) increased levels of circulating growth hormone (GH)[136,307,308] for age in AIS girls notably from 7-12 years, and in pubertal stage 2, and/or IGF-I formerly known as somatomedin C [5,309].

Item (2) may exaggerate the putative sympathetic nervous system-induced vertebral asymmetry particularly in prepubertal and early pubertal growth and thereby contribute to curve progression (Figure 5). Hormonal involvement in AIS progression is supported by the finding that the initiation of the *curve acceleration phase* correlates with the timing of peak height velocity and simultaneously with digital changes in bone aging (400-425 of the Tanner-Whitehouse RUS III method, stage F covered phalangeal epiphysis to G capped phalangeal epiphysis [5]).

The GH/IGF axis is the pivotal system [310] with estrogen [311] for regulating axial growth during puberty. Evidence from normal juvenile girls with relatively higher BMIs suggests there is *central leptin resistance in the somatotrophic axis*

[[50], see [227,237]] which, through mutations causing central leptin sensitivity, may predispose some girls to AIS. Several papers suggest that the GH/IGF axis has a role in the pathogenesis of AIS [310,312,313], with IGF-I polymorphism affecting curve severity of AIS but not its onset [314]. Growth hormone treatment may increase the risk of progression of scoliosis [315-318].

We suggest that in preoperative AIS girls with relatively higher BMIs, the skeletal overgrowth for age (Figure 7) [38,39,41,135-141,152] results from earlier and *increased hypothalamic sensitivity of the GH/IGF axis to leptin for age* leading to increased GH/IGF secretions, and possibly estrogen through other neuroendocrine axes. In the lower BMI subset of preoperative AIS girls, there is no early and systemic skeletal evidence to suggest increased secretion of GH/IGF-I (Figure 7) According to the *LHS concept*, more sympathoactivation in the lower BMI subset is needed to account for curve magnitudes which are similar to those of the higher BMI subset (Figure 7). This interpretation implies that in AIS girls, GH/IGF axis secretion and sympathoactivation may have an inverse pathogenetic relationship (Figure 5, see Discussion, *Medical conditions showing inverse relation of GH/IGF axis secretion and sympathoactivation*).

The therapeutic implication for AIS girls is that, whatever the BMI, consideration be given, early in curve evolution, to decreasing -

- growth hormone and IGF synthesis by a *somatostatin analogue* as used in tall children [319] (Figure 9), and/or
- sympathetic nervous system activity by  $\beta$ -blockers (as being evaluated for fractures [199]) (Figures 5 and 8).

Either medication, separately or together, might decrease vertebral and/or rib asymmetry and limit scoliosis curve progression, possibly by also affecting bone remodeling [199]. This strategy ignores a possible role for sex hormones in pathogenesis.

#### *GH treatment and the Prader-Willi syndrome (PWS)*

That GH may increase the risk of scoliosis progression is currently being evaluated in PWS patients having GH treatment for the short stature [290,292,320,321]. In the first study of a large population of children with PWS treated with GH, beneficial effects were found with no adverse effects on the progression of scoliosis [321]. In the light of the *LHS concept for AIS*, the latter finding suggests that in PWS, vertebral growth asymmetries are not primarily involved in the cause of its scoliosis, which may reside in musculature and somatic nervous system.

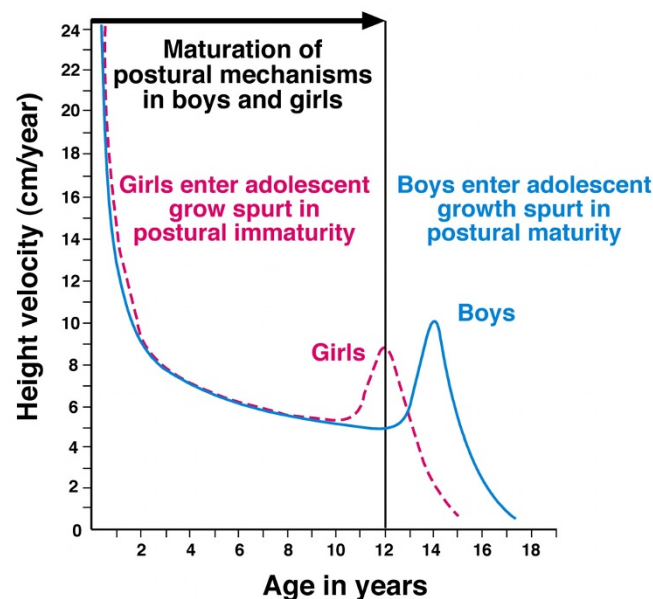
#### **Sex hormones**

##### *Estrogen and testosterone*

A third potentially manipulatable cause of AIS pathogenesis in girls relates to sex hormones in pubertal growth [17,258,311,322,323]. The relation of age at menarche to peak height velocity in AIS girls [5,6,258] and genetic findings [324-326] suggest a role for estrogens in susceptibility and/or curve progression. In the *LHS concept*, estrogens like GH, may exaggerate vertebral growth plate asymmetry and curve severity particularly in girls with relatively lower BMIs (Figure 7). Circulating levels of estrogen are reported to be normal or lower, and of testosterone raised, in AIS girls [307,327-329].

##### *Gonadotrophin analogues*

The *NOTOM concept* (Figure 15) [71,330-332] suggests a medical treatment for AIS, by administering a *gonadotrophin analogue* (Figure 8) to delay menarche and slow bone growth in early AIS [333] - as practised for children with *idiopathic precocious puberty*. This is not an ideal option, as delaying the timing of normal puberty adversely affects



**Figure 15**  
**Neuro-osseous timing of maturation (NOTOM) concept to explain the female susceptibility to progressive AIS in relation to the somatic nervous system.** Height velocity (cm/year) is plotted against age in relation to putative postural maturation at 12 years of age in both sexes. The postural immaturity of girls due to their earlier growth spurt makes them more susceptible to curve progression than boys. A curve initiating factor is not identified in this concept. The age and sex effect of postural sway in healthy children needs further evaluation [71]. (Diagram modified from Burwell and Dangerfield [330-332]).

bone mineralisation, and potentially could increase the risk of osteopenia long-term.

#### *Ballet dancers, hypoestrogenism and leptin*

The increased prevalence of mild right thoracic scoliosis in ballet dancers is associated with delayed menarche, secondary amenorrhea, anorectic behavior, osteopenia, fractures and prolonged hypoestrogenism [334]. The *LHS concept* for AIS pathogenesis applied to the scolioses of ballet dancers suggests that presumed low leptin levels [335] are associated with:

- (1) increased selective hypothalamic sensitivity to leptin;
- (2) increased sympathoactivation with asymmetry expressed in the spine as scoliosis;
- (3) limited energy being diverted away from the *gonadotroph-gonadal axis*, possibly also the *hypothalamic-pituitary-adrenal axis* [335] and *GH/IGF (somatotrophic) axis*; and
- (4) osteopenia and fractures.

Treatment for the menarcheal delay includes oral contraceptive therapy [335].

#### **Melatonin-signaling dysfunction [12-17]**

Other manipulatable causes of AIS pathogenesis are suggested by the *melatonin-signaling dysfunction* detected in osteoblasts and chondrocytes.

(1) *Osteoblasts*. *In vitro*, MLT significantly *stimulates osteoblast proliferation*, differentiation and mineralization from controls [336], but not in osteoblasts from AIS subjects [337,338]; this defect is suggested to play a role in the low bone mineral density of AIS patients and contribute to pathogenesis [338].

MLT-signaling dysfunction in AIS subjects has been revealed mainly using bone tissue because (a) osteoblasts respond to MLT, and (b) relative osteopenia is often observed in patients with AIS [14,15,88,278,279]. In some girls with AIS, a particular MLT-signaling defect is evident [17,256,258,337]. Correction of this defect *in vitro* by estradiol suggested that "the lack of estrogen that results in late menarche may be corrected by estrogen agonists having a positive effect on bone tissue remodeling" [256]. Leboeuf et al [258] suggest estrogens as important pharmacological targets to consider in AIS therapy directed to patients selected on their tissue response to MLT. This is in contradistinction to the suggestion of delaying the adolescent growth spurt for subjects in the lower BMI subset using a *gonadotrophin analogue* [330-333] (see Sex hormones).

(2) *Chondrocytes*. In cartilage from controls, MLT significantly *inhibits chondrocytes proliferation in vitro* but not from AIS subjects [339]. According to Wang and colleagues [339], the non-responsiveness (*i.e.* lack of inhibition) of AIS chondrocytes to MLT might play a role in the abnormally increased bone growth of AIS girls from dysfunction of the MLT-signaling pathway. In this connection, there is a decreasing expression of MT1 and MT2 mRNA in chondrocytes from AIS patients which may be related to the molecular pathogenesis of AIS [340].

#### **Research needs**

Rather than a clinical trial of a *somatostatin analogue* and  $\beta$ -blockers, we suggest that currently there is a need to evaluate circulating hormones and sympathoactivation in AIS girls by relatively higher and lower BMI subsets.

In addition to using *cellular dielectric spectroscopy* for AIS diagnosis based on G-protein coupled receptor detection [18], Moreau et al [19,20] suggest OPN and sCD44 as useful markers for diagnosis and prognosis of idiopathic scoliosis. Subject to further study, as already mentioned, OPN may be a potential target for therapeutic intervention in AIS subjects as suggested for psoriatic patients [341] (see *Some melatonin-deficient mouse models of scoliosis - markers of developmental stress?*).

#### **Discussion**

##### **Abnormalities revealed by higher and lower BMI subsets for AIS girls**

The analysis of our skeletal data by relatively higher and lower BMI subsets distinguishes two types of effect: skeletal sizes for age (Figures 4 and 7), and skeletal asymmetries (Figure 6).

*Skeletal sizes for age - energy priority of trunk width in girls.* The skeletal size for age effect in the girls is shown as differences between -

(1) *higher and lower BMI subsets* in each of preoperative, screened and normal girls (Figures 4 and 5) restricted mainly to the trunk [46,117-119]; and

(2) *preoperative and normal girls* in higher and lower BMI subsets (Figure 7).

The trunk width growth priority of girls is seemingly a human characteristic. It is not explained by any of the prevailing theories of AIS pathogenesis (Appendix 1, items 1-15) each of which solely addresses pathogenesis. The trunk width features are accommodated by the *LHS mechanism* which invokes the sympathetic nervous system and hormones (Figure 5).



#### *Skeletal sizes for age - curve severity, sympathoactivation and hormonal stimulation*

In both higher and lower BMI subsets of preoperative AIS girls, mean Cobb angles are similar (Figures 4, and 7) with similar mean ages and curve types. It could then be argued that BMI is irrelevant to AIS pathogenesis. But the earlier systemic skeletal overgrowth for age of the *higher BMI subset* of younger preoperative girls (Figure 7), suggests that abnormally increased hormonal stimulation ?GH/IGF secretions, is associated with AIS pathogenesis. This led to the hypothesis that GH/IGF secretions exaggerate the sympathetic-induced vertebral and/or rib asymmetry and increase scoliosis severity.

The *lower BMI subset* lacks evidence of earlier systemic skeletal overgrowth for age (Figure 7). In this subset, we postulate that less GH/IGF axis secretions are associated with more sympathoactivation in an inverse relationship (Figure 5). The combined sympathetic-hormonally-induced effects in the lower BMI subset produce mean Cobb angle and mean upper arm length asymmetry similar to, and mean AVR less than, the higher BMI subset (Figure 6) [46]. This postulate of an inverse relationship ignores other possible mechanisms that may contribute to curve progression common to each BMI subset, including osteopenia [88,278,279], biomechanical spinal growth modulation [80-82], intervertebral disc degeneration [45,342-351], and platelet calmodulin dysfunction [21,22,107].

#### *Medical conditions showing inverse relation of GH/IGF axis secretion and sympathoactivation*

Several conditions in health and disorder show an inverse relationship of GH/IGF secretions and sympathoactivation. GH/IGF (somatotrophic) axis secretions are associated with central sympathetic outflow [352,353] in an inverse relationship, though not for physical exercise [354]. In well-nourished subjects under basal conditions, evidence for an inverse relationship of GH secretion and sympathoactivation includes: acromegaly [355,356], GH-deficiency in adults [352,353,357], GH treatment of GH-deficient adults [353], idiopathic cardiomyopathy [358], middle-aged men with high waist-hip circumference ratios with reduced GH peak size concentrations [359], ageing men, with declining GH and IGF-I secretions [360], and growth hormone transgenic mice [356].

The need for this inverse relationship under basal conditions is shown by the following:

- (1) In well-nourished subjects, GH stimulation of IGF and insulin is important for the anabolic storage and growth of adipose tissue, glycogen reserves and lean body mass [361]. In fasting, other catabolic states and

stress, GH is lipolytic, liberating free fatty acids as an energy source.

- (2) The sympathetic nervous system and catecholamines are key components of lipid mobilization in stress [362,363].

#### *Skeletal asymmetries and lower BMI subsets*

In the *lower BMI subsets* skeletal asymmetries are found in:

- (1) preoperative girls upper arm length asymmetry is significantly greater than in screened and normal girls (each  $p < 0.001$ ) [46]; and
- (2) right thoracic AIS, wherein Cobb angle and apical vertebral rotation are each significantly associated with upper arm length asymmetry but only in the lower BMI subset (Figure 6) [46,120,121].

The abnormally increased upper arm length asymmetry with right thoracic AIS is explained by the *LHS concept* as resulting from the sympathetic-induced asymmetric effect on humeral linear growth. This asymmetry is not significantly different in magnitude between *lower and higher BMI subsets*. It is limited to proximal upper limbs (brachium), putatively to ribs and vertebrae, all putatively influenced by hormonal effects ?GH/IGF.

#### *Upper arm length asymmetry and the higher BMI subset of right thoracic AIS*

In the higher BMI subset of girls with right thoracic AIS, upper arm length asymmetry decreased significantly with age. The *LHS concept* explains this resolution as sympathetic- and hormonally-induced asynchronous upper arm growth affecting either:

- (1) younger more than older adolescent girls; or
- (2) all girls *transiently*, with the asymmetry starting in late juvenility with vertebral and/or rib length asymmetry that triggers the scoliosis.

Any associated vertebral osteopenia, possibly sympathetic- and/or hormonally-induced, may then predispose to curve progression. Any transience of the upper arm length asymmetry may result from the *neuroprotective action* [132] of rising circulating leptin levels during the early stages of puberty [206-208]. This could reduce the breadth of hypothalamic asymmetric dysfunction, which may not occur in the lower BMI subset with presumptively lower circulating levels of leptin producing less *neuroprotection* with a tendency to more asymmetry.

### Explanations for undisputed facts about AIS

Theories about the pathogenesis of AIS have to explain several undisputed facts [91,110,364].

#### (1) *Dependence of the deformity upon growth and growth rate.*

The relation of skeletal growth velocity to curve progression in AIS is established [4,5,137,365,366], but its mechanism of action is unclear - causative, conditional, amplifying, or coincidental [91]. In the *escalator concept*, the dependence of AIS progression on growth is explained not by velocity of growth, but by rapid spinal lengthening and trunk enlargement beyond the capacity of the postural mechanisms to control the deformity [24,51,111].

(2) *Predilection for females.* Two putative mechanisms explain the greater susceptibility of girls than boys to progressive AIS:

a) In the autonomic nervous system, the *increased sensitivity (up-regulation) of the hypothalamus* (sympathetic NS and somatotrophic axis) *to leptin by mutations with its asymmetries contributing to AIS*, greater in females than in males [25], is attributed to: i) *diminished sensitivity (down-regulation, i.e. resistance) to leptin of the female hypothalamus established by mutations in hominin evolution*; and ii) *central leptin resistance in the somatotrophic axis of normal juvenile girls* [50] which, through mutations causing central leptin sensitivity, may predispose some girls to AIS.

b) In the somatic nervous system, girls may enter their adolescent skeletal growth spurt in postural *immaturity*, compared with boys who may enter their adolescent growth spurt in postural *maturity* so they are protected from developing a scoliosis curve (Figure 15) [330-332].

(3) *Involvement of members in involved families.* This is determined by genetic factors operating in the autonomic and somatic nervous systems [56,77-79] and other mechanisms.

(4) *Curve types and laterality patterns.* Biomechanical factors involving ribs [59-63] and/or vertebrae [64,65,91-93] and spinal cord [64,65,92,93], acting during growth may localize AIS to the thoracic spine and cause the sagittal spinal shape alterations [83-90]. The non-random laterality of thoracic AIS curves has been explained by several factors including handedness, aorta, lungs, diaphragm, pre-existing lateral curve, axial rotation and embryology [367-371]. We suggest that the laterality and site of thoracic, thoracolumbar and lumbar curves is determined, in part, by the location of the putative abnormalities of the *LHS-driven* mechanism in the hypothalamus and sympathetic nervous system.

(5) *Varied progression patterns.* These are explained by the interaction of autonomic and somatic nervous systems in the spine and trunk compounded by any relative osteopenia of vertebrae [88,278,279], biomechanical spinal growth modulation [80-82], accelerated disc degeneration [45,342-351], and platelet calmodulin dysfunction [21,22,107]. Circulating leptin levels in AIS girls did not correlate significantly with Cobb angle [163,164]. This finding does not preclude circulating leptin levels acting with increased hypothalamic sensitivity to leptin to contribute to the magnitude of the hypothalamic asymmetry, and from that to the sympathetic nervous system-induced skeletal asymmetry(ies).

(6) *3-D rotatory deformity of the spine.* In thoracic AIS, Davids et al [372] found that the most valuable single MRI indicator for abnormal central nervous system findings was the absence of an apical segment lordosis. This and other evidence [91,373] suggests that in thoracic AIS, apical lordosis [83-87] is determined by processes either intrinsic to the spine ("primary", i.e. relative anterior spinal overgrowth = RASO [51,76]), and/or extrinsically by the sympathetic nervous system acting on vertebrae in 1-3D - left-right, front-back, and/or torsionally. Recent evidence shows that while right thoracic AIS has a reduced thoracic kyphosis (T5-12), increased pelvic incidence and sacral slope consistent with the RASO theory of pathogenesis [374], left thoracic AIS [374] has a normal thoracic kyphosis and pelvic incidence, not consistent with the RASO theory. This may signify that left thoracic AIS has a pathogenesis different from right thoracic AIS [374], possibly involving reduced white matter density of the central nervous system [114,115]. We suggest that right and left thoracic AIS in girls may be driven separately by the two nervous system components of the double neuro-osseous theory: right thoracic AIS mainly by the autonomic/sympathetic nervous system and left thoracic AIS, mainly by the somatic nervous system.

(7) *Vertebral bodies grow faster than the posterior vertebral elements* [64,65,83-90]. This is explained in part by a greater enhancing effect of the sympathetic nervous system on vertebral bodies and their growth plates than on posterior vertebral growth leading to asymmetry in the sagittal plane and the relative anterior spinal overgrowth (RASO) of progressive AIS.

(8) *AIS is exclusive to humans.* We suggest that AIS in girls is a consequence of abnormalities occurring in the putative physiological *LHS-driven* (Figure 5) and *escalator* (Figure 2) mechanisms of the theory, both of which are unique to humans [24,25,50] and emanating from these and other features of their evolution [298-303].

## Testing the Theory

The double neuro-osseous theory (Figure 1) cannot be tested as a singularity, but many of its components, framed as hypotheses, can be tested by refutation within ethical restraints. In the multidisciplinary approach needed, some problems to be addressed include the following.

(1) Genetic factors operating in somatic and autonomic nervous systems may be investigated in members of families with AIS girls, by genome-wide association studies in relation to postural control data [94] and objective evidence of autonomic dysfunction respectively (see below item (12)).

(2) Studies of brain imaging, function and asymmetries of AIS subjects compared with normals during adolescence need to be extended [113-115,375]. A basic question to be addressed is: Is the spinal and trunk deformity of AIS in girls the solitary expression in the spine and trunk of a brain that is the seat of several abnormalities of symmetry control?

(3) By relatively higher and lower BMI subsets, confirmation is needed for *energy priority of trunk width size* for age in normal and AIS girls (Figures 4 and 5), skeletal asymmetry growth patterns in girls with thoracic AIS (Figure 6), and skeletal overgrowth patterns for age in preoperative/normal girls (Figure 7). In normal babies, evaluate skull size and trunk width by relatively higher and lower BMI at each of birth, one and two years of age [376,377].

(4) By relatively higher and lower BMI subsets confirmation is needed of evidence suggesting *central leptin resistance in the somatotrophic (GH/IGF) axis* of normal juvenile girls [50] which, through mutations causing *central leptin sensitivity*, may predispose some girls to AIS. The possibility of other mechanisms explaining the findings needs to be evaluated by studies of leptin, soluble leptin receptor and free leptin index [378,379].

(5) Since bilateral skeletal asymmetry in humans and skeletal overgrowth for age may be the key factors for the development of AIS [76], etiopathogenetic research needs to focus on skeletal length asymmetries of normal and AIS girls (Figure 1), and their relation to each of skeletal size for age, and osteopenia. The evolution of upper arm length asymmetry in girls with right thoracic AIS [135] and normal right thoracic trunk asymmetry [123-125] needs to be established in longitudinal studies of higher and lower BMI subsets.

(6) In leptin-deficient *ob/ob* mice, evaluate whether vertebral growth plates respond to absent leptin signals in a

fundamentally different manner from limb bone growth plates [179,180].

(7) The energy sources of growth plates (GPs) in the trunk and limbs of humans and quadrupeds need studying [179,180,380]. Are there metabolic differences in GPs related to the anthropometric findings for girls [47-49], and in trunk width GPs of human babies compared with nonhuman primate babies? (see above, Evolutionary Origins).

(8) Evaluation of circulating hormones - leptin [12,163,164,206,207,381], high affinity leptin binding protein (soluble leptin receptor) [378,379], growth hormone [307,308], IGF-I and binding proteins [5,379], and estrogen levels [307,327-329] - in AIS girls by relatively higher and lower BMI subsets, with a view ultimately to a possible clinical trial of medical treatment by a somatostatin analogue [319] and  $\beta$ -blockers [199]. Cross-sectional [163,164] and longitudinal [12,381] studies are needed.

(8) Evaluation of receptors to hormones in growth plates and intervertebral discs including growth hormone, IGF-I, leptin, estrogens and melatonin by relatively higher and lower BMI subsets [180,220,222,223,382-384].

(10) In AIS spinal curves, correlation studies between MRI and histomorphology of spinal growth plates obtained at surgery [43-45] need extending.

(11) Sensory and sympathetic innervation of vertebral endplates in patients with idiopathic scoliosis needs more evaluation [385]. In this connection, sympathectomy as a possible prophylactic procedure for AIS in girls, and as a test of the LHS concept, needs consideration.

(12) Search for extra-spinal skeletal length asymmetries in AIS girls in other bilateral bones - sacral alae [153-155], clavicles and scapulae (Figure 1).

(13) Assessment of autonomic nervous system function in AIS girls [25,211,286,287,352,353,358,363,386,387]. In *lower BMI subset* AIS girls, is sympathoactivation stronger without any increase in GH/IGF secretion, and *vice versa* in *higher BMI subset* AIS girls?

(14) Estimates of body fat [386,388] including brown adipose tissue [205,299,389-395], BMI [161-171] and relation of the latter to calcium intake [396] and genetics [172-175] in AIS girls.

(15) The suggestion that the putative hypothalamic dysfunction of AIS in girls is enhanced by raised circulating leptin levels associated with fat accumulation of female puberty suggests that, where appropriate, lowering circu-

lating leptin levels from BMI reduction may diminish scoliosis curve progression in some girls. In this connection, besides dieting, increasing calcium intake [396] and manipulating the function of brown adipose tissue [299,389-395] need consideration.

(16) As in the Rett syndrome [286,287] skin sympathetic responses need studying in AIS girls, separately for higher and lower BMIs, and subjects with the Prader-Willi syndrome, with the recording electrodes placed on both sides of the trunk and at other sites.

(17) The hypothalamus, neuropharmacology and neuropsychology, all need evaluation by neuroscientists in relation to the LHS concept of the double neuro-osseous theory particularly of a) negative regulators of leptin transduction, including SOCS-3 [243,244,250], PTP-1B [240,252], and OB-RGRP [247,248,253], and b) the positive regulator SH2B1 [232]

(18) Whether SOCS-3, PTP-1B and SH2B1 are significant contributors to AIS pathogenesis has to start with an examination of genetic association between phenotype and variation at each of these genes.

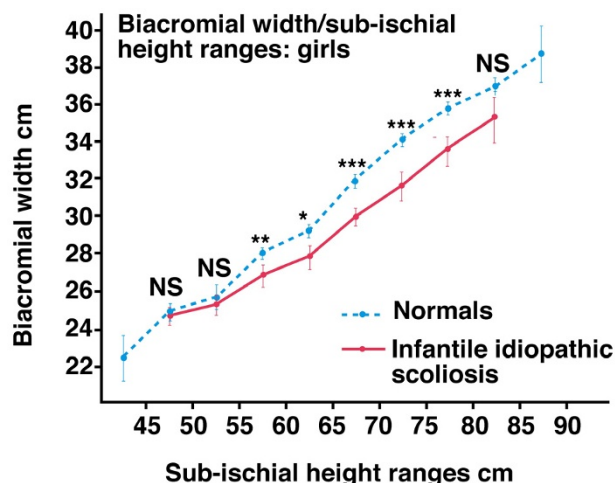
(19) According to Mattson [282], interventions that activate hormetic signaling pathways in neurons is a promising new approach for the prevention and treatment of a range of neurological disorders. *Hormesis* and the dose-response of leptin/bone growth in AIS girls [283-285] need more study [36] (Calabrese EJ, personal communication).

(20) The studies of girls with right thoracic AIS (Figure 6) need evaluating in girls with left thoracic and other types of AIS, and include hormonal and sympathoactivation comparisons.

(21) The above studies in girls, AIS and normals, need similar evaluation in boys [47-50,117-122] to establish gender similarities and differences [397]. Do adolescent boys with societally-increased fat accumulation have a raised prevalence of progressive AIS?

(22) *Infantile idiopathic scoliosis* (IIS, early onset scoliosis) occurs at the younger period of life when the human body is growing rapidly and both boys and girls accumulate fat transiently. Curve resolution/progression in boys and girls with IIS is established in relation to rib-vertebra angles [398,399]. The natural history of IIS, resolving and progressive, needs further study in relation to other variables including trunk widths, adipose tissue, and epidemiological findings that may be explained by the functions of white and brown adipose tissue (WAT and BAT). The variables are:

- the funnel-shaped upper chest in progressive IIS [400];
- *biacromial and biiliac widths* are narrow relative to *sub-ischial height* (SIH) in older IIS boys and girls (Figure 16), while SIH is not abnormal [401,402].
- in infants developing IIS under 6 months, there was an excess of curve onset in the two winter quarters and of premature low birth weight males [403];
- the declining prevalence of IIS [404] in lower socioeconomic groups in the UK [403] in relation to a) the interscapular pad of BAT, its sympathetic innervation and non-shivering thermogenesis [389,391,395,401,405,406], and b) the central heating of homes over the period of study;
- the loss of subcutaneous fat in subjects with malignant progressive IIS about 4-6 years of age [407]; and
- in normal boys and girls, the dramatic decline from chubbiness to a comparably lean condition by 5 years of age with greater interscapular BAT in premature than mature infants [299-302].



**Figure 16**  
**Girls with infantile idiopathic scoliosis (IIS) and normal girls.** Biacromial width plotted against 5 cm ranges of sub-ischial height (SIH = standing height minus sitting height). The shoulders of the girls with IIS are significantly narrower relative to the normal girls at most of the SIH ranges above 55 cm (mixed longitudinal data by two observers (RGB & PHD) from subjects in Birmingham, Nottingham and Liverpool during 1972-76; n = 91, means  $\pm$  1 standard error, statistical significance levels for p values from t-test \* = 1-5%, \*\* = 0.1-1%, \*\*\* p < 0.001, NS = not significant) (Diagram redrawn from Dangerfield et al [402]).

Overall, these findings suggest the hypothesis that white and brown adipose tissue, leptin, hypothalamus and the sympathetic nervous system may, collectively, play a role in the pathogenesis of IIS.

(23) In addition to the historical reductionist approach, a systems-biology approach [408] is needed to evaluate the pathogenesis of AIS, as for obesity [301]. This approach involves multidisciplinary research leading to new theories and new experiments.

## Conclusion

(1) The *double neuro-osseous theory* for AIS pathogenesis in girls postulates developmental disharmony between autonomic and somatic nervous systems expressed in the spine and trunk and exaggerated by hormones producing systemic skeletal overgrowth (preoperative girls) (Figures 1 and 7).

(2) The theory predicates AIS pathogenesis in girls on dysfunction in one or both of two putative *normal* mechanisms involved in trunk growth, each acquired in evolution and unique to humans.

(3) The autonomic component of the *double neuro-osseous theory* for AIS pathogenesis in girls usually involves *selectively increased sensitivity* of the hypothalamus to the circulating adipokine leptin, with asymmetry routed bilaterally via the sympathetic nervous system to the growing axial skeleton where it initiates the scoliosis deformity. We speculate that increasing levels of circulating leptin [12] with the fat accumulation of adolescent girls [299,301], enhance the increased hypothalamic sensitivity to leptin.

(4) In the autonomic nervous system, the putative dysfunction - selectively increased hypothalamic sensitivity to leptin as *up-regulation* from mutation(s), *may be regulated by one or more of five possible molecular mechanisms*. The abnormal hypothalamic asymmetry is attributed to hormesis [36,124,282-284].

(5) In the *somatic nervous system*, dysfunction of a putative *postural escalator mechanism* involving the *central body schema* fails to control, or may induce the spinal deformity of AIS girls (*escalator concept*) (Figures 1 and 3).

(6) The developmental disharmony in the trunk is compounded by any relative osteopenia of vertebrae, biomechanical spinal growth modulation, accelerated disc degeneration, and platelet calmodulin dysfunction.

(7) Biomechanical factors acting during growth may localize thoracic AIS and contribute to its sagittal spinal shape alterations [83-90]; these include ribs [59-63] and/or vertebrae [64,65,91-93], and spinal cord [64,65].

(8) The hypothalamic dysfunction of the double neuro-osseous theory is expressed as:

- Sympathoactivation expressed asymmetrically in vertebral plates - left-right, front-back and/or torsionally - and in some paired bones.
- Increased hypothalamic sensitivity to circulating leptin (*up-regulation*) in some younger AIS girls with larger curves also involves the GH/IGF-I axis [222] (Figures 5, 7 and 9).
- Hormonal effects cause exaggeration of the sympathetic-induced vertebral/rib asymmetry(ies) contributing to progression of larger (preoperative) AIS curves in girls.
- Curve progression is postulated to involve an inverse relation of sympathoactivation and GH/IGF secretions (Figure 5). An inverse relation of these functions is found in several medical conditions.

(9) Progress towards these interpretations started in 2008, when theories were summarized which led us to propose a novel *neuro-osseous escalator concept* for AIS pathogenesis in girls affecting the somatic nervous system (Figures 1, 2 and 3) [51,111].

(10) Subsequently, anthropometric data from three groups of adolescent girls - preoperative AIS, screened for scoliosis and normals, were analysed by an original method for scoliosis of comparing data between subsets of relatively higher and lower body mass index (BMI).

(11) New findings revealed: *energy priority of trunk width growth* (Figures 4 and 5) [46,117-119], *skeletal asymmetries* (Figure 6) [46,120,121], and *skeletal overgrowth patterns* for age (Figure 7) [29,122]. The contrasting skeletal features were not explained by any of the theories of AIS pathogenesis surveyed [51] including the *escalator concept* [51,111].

(12) The autonomic nervous system component of the theory (*LHS concept*) [25] draws evidence from several fields including:

- thoracospinal concept for the pathogenesis of right thoracic AIS in girls [59-63];
- new neuroskeletal biology relating the *sympathetic nervous system* to bone formation/resorption and bone growth [187-198];
- white adipose tissue, the adiposity hormone *leptin* secreted by adipose tissue which functions as a *sentinel*



of energy balance and long-term adiposity to the *hypothalamus*; and

- central leptin resistance in obesity and possibly in healthy females.

(13) A new hypothesis for AIS pathogenesis in girls is formulated incorporating white adipose tissue, energy homeostasis (bioenergetics), the hypothalamus and sympathetic nervous system, in a disorder presenting as asymmetric abnormalities of trunk growth and, as suspected in preoperative girls, with systemic skeletal overgrowth.

(14) The endocrine and therapeutic implications of the *LHS concept* are discussed. An immediate need is to evaluate circulating hormone levels in AIS girls by relatively higher and lower BMI subsets; and later a possible clinical trial of medical treatment by a somatostatin analogue and  $\beta$ -blockers.

(15) Some methods for testing the theory's hypotheses are outlined.

(16) The putative hypothalamic dysfunction is thought to have an evolutionary origin in hominid fat deposition which in more than 3 million years, may have provided energy needed *sequentially* for each of:

- trunk width growth at the pelvis (mainly sacral alae), (Figures 5 and 12);
- trunk width growth of upper thorax and shoulders (Figures 10 and 11); and
- brain growth with
- pelvic depth increase (Figure 12).

We postulate that white adipose tissue still provides for skeletal growth processes in fetal and post-natal normal human development [299-302].

(17) In some normal juvenile girls, but not boys, the hypothalamus may function with *central (hypothalamic) leptin resistance of the somatotrophic (GH/IGF) axis* to prevent too much energy being invested in female skeletal growth, thereby conserving energy for reproductive development. AIS is viewed as expressing central leptin *sensitivity* of hypothalamic sympathetic function and, in some younger preoperative girls, of the somatotrophic neuroendocrine axis (Figure 7).

(18) A new interpretation involving the hypothalamus for some melatonin-deficient mouse models of scoliosis is presented.

(19) Evidence for *infantile idiopathic scoliosis* is outlined suggesting a need to evaluate the hypothesis that white and brown adipose tissue, leptin, hypothalamus and the sympathetic nervous system may play a role in its pathogenesis.

### Competing interests

The authors declare that they have no competing interests.

### Authors' contributions

RGB and RKA undertook the day-to-day research producing results which RGB interpreted theoretically in relation AIS pathogenesis in discussion with MPG, PHD, AM, TLR and SIA. MPG has expert clinical knowledge of scoliosis, PHD in human growth studies including scoliosis, AM in research relating to pediatric orthopedics, TLR expert clinical knowledge of pediatric endocrinology and diabetes, and SIA special knowledge of bone biology.

### Appendix I

*Some theories of AIS pathogenesis* [51]

- (1) Genetics [75-79].
- (2) Biomechanical spinal growth modulation [80-82].
- (3) Relative anterior spinal overgrowth (RASO) [83-90].
- (4) Dorsal shear forces and axial rotation instability [75,91].
- (5) Asynchronous spinal neuro-osseous growth [64,65,92,93].
- (6) Postural abnormalities and hind brain dysfunction [69,94-103].
- (7) Motor control problem [104].
- (8) Body-spatial orientation concept [69].
- (9) Neurodevelopmental concept [105,106].
- (10) Thoracospinal concept [59-63].
- (11) Systemic melatonin deficiency [7-9].
- (12) Systemic melatonin-signaling pathway dysfunction [14-20].
- (13) Systemic platelet calmodulin dysfunction [21,22,107].
- (14) Symmetry control dysfunction - developmental instability [108-110].

(15) Collective and escalator models [51,111].

(16) Leptin-hypothalamic-sympathetic nervous system (LHS) dysfunction with disharmony between somatic and autonomic nervous systems in the spine and trunk [24-29].

## Acknowledgements

We are grateful for discussion and advice to Professor T Paus, Director, Brain and Body Centre, Department of Psychology, Dr Kirsten J McKenzie, Institute of Neuroscience, Professor FJP Ebling, Professor of Neuroendocrinology, School of Biomedical Sciences, and Professor J Armour, Professor of Human Genetics and Head of School of Biology, all the University of Nottingham, UK. Dr Alain Moreau generously discussed his research with Professor RG Burwell on 24<sup>th</sup> April 2009 and subsequently by e-mail for which we thank him. We thank: Professor JA Sevastik for reading the text, contributing to the section on the thoraco-spinal concept and making other suggestions; Dr TB Grivas who read the text and made suggestions; and Mr Lyndon Cochrane for the art work. We thank the Director of Education of Nottinghamshire for giving his permission for the schools to be approached, the Head Teachers for permitting access to the schools, the late-Dr Eleanor More, formerly Specialist in Community Medicine (Child Health), Nottinghamshire, The Nottingham School Nursing Service routinely screening students for scoliosis, Mr JK Webb FRCS referring patients, Mr AA Cole FRCS, Mr RK Pratt FRCS who contributed to the data collection on preoperative girls, Mrs FJ Polak MCSP, MSc, PhD and Mrs AS Kirby DCR, MSc. In previous years the research was funded by Action Medical Research, AO and Arthritis and Rheumatism Council.

## References

- Ebling FJP: **The neuroendocrine timing of puberty.** *Reproduction* 2005, **129**:675-83.
- Kaplowitz PB: **Link between body fat and the timing of puberty.** *Pediatrics* 2008, **121(Supplement)**:S208-S217.
- Bandini L, Must A, Naumova E, Anderson S, Caprio S, Spadano-Gasbarro J, Dietz W: **Change in leptin, body composition and other hormones around menarche - a visual representation.** *Acta Paediatr* 2008, **97(10)**:1454-9.
- Goldberg CJ: **Adolescent idiopathic scoliosis: is rising growth rate the triggering factor in progression?** *Eur Spine J* 1993, **2**:29-36.
- Sanders JO, Browne RH, McConnell SJ, Margraf SA, Cooney TE, Finegold DN: **Maturity assessment and curve progression in girls with idiopathic scoliosis.** *J Bone Joint Surg Am* 2007, **89(1)**:64-73.
- Grivas TB, Vasiladiis E, Mouzakis V, Mihos C, Koufopoulos G: **Association between adolescent idiopathic scoliosis prevalence and age at menarche in different geographic latitudes.** *Scoliosis* 2006, **1**:9.
- Machida M, Dubousset J, Imamura Y, Miyashita Y, Yamada T, Kimura J: **Melatonin. A possible role in pathogenesis of adolescent idiopathic scoliosis.** *Spine* 1996, **21(10)**:1147-52.
- Machida M: **Cause of idiopathic scoliosis.** *Spine* 1999, **24(24)**:2576-2583.
- Dubousset J, Machida M: **Possible role of the pineal gland in pathogenesis of idiopathic scoliosis: experimental and clinical studies.** *Bull de l'Acad Nat de Méd* 2001, **185**:593-602. discussion 602-604. (French)
- Macchi MM, Bruce JN: **Human pineal physiology and functional significance of melatonin.** *Front Neuroendocrinol* 2004, **25(3-4)**:177-95.
- Karasek M, Winczyk K: **Melatonin in humans.** *J Physiol Pharmacol* 2006, **57(Suppl 5)**:19-39.
- Molina-Carballo A, Fernández-Tardáguila E, Uberos-Fernández J, Seiquer I, Contreras-Chova F, Muñoz-Hoyos A: **Longitudinal study of the simultaneous secretion of melatonin and leptin during normal puberty.** *Horm Res* 2007, **68(1)**:11-9.
- Grivas TB, Savvidou OD: **Melatonin the "light of night" in human biology and adolescent idiopathic scoliosis.** *Scoliosis* 2007, **2**:6.
- Moreau A, Wang DS, Forget S, Azeddine B, Angeloni D, Frascini F, Labelle H, Poitras B, Rivard C-H, Grimard G: **Melatonin signaling dysfunction in adolescent idiopathic scoliosis.** *Spine* 2004, **29(16)**:1772-1781.
- Azeddine B, Letellier K, Wang DS, Moldovan F, Moreau A: **Molecular determinants of melatonin signaling dysfunction in adolescent idiopathic scoliosis.** *Clin Orthop Rel Res* 2007, **462**:45-52.
- Letellier K, Azeddine B, Blain S, Turgeon I, Wang da S, Boiro MS, Moldovan F, Labelle H, Poitras B, Rivard CH, Grimard G, Parent S, Ouellet J, Lacroix G, Moreau A: **Etiopathogenesis of adolescent idiopathic scoliosis and new molecular concepts.** *Med Sci (Paris)* 2007, **23(11)**:910-6.
- Moreau A, Akoumé Ndong MY, Azeddine B, Franco A, Rompré PH, Roy-Gagnon MH, Turgeon I, Wang D, Bagnall KM, Poitras B, Labelle H, Rivard CH, Grimard G, Ouellet J, Parent S, Moldovan F: **Molecular and genetic aspects of idiopathic scoliosis: Blood test for idiopathic scoliosis.** *Orthopade* 2009, **38(2)**:114-21. (German)
- Moreau A, Turgeon I, Samba Boiro M, Azeddine B, Franco A, Labelle H, Poitras B, Rivard CH, Grimard G, Ouellet J, Parent S, Cheng J, Brayda-Bruno M: **Clinical validation of a biochemical test for adolescent idiopathic scoliosis: an International Collaborative 19. Consortium [Abstract].** *Eur Spine J* 2008, **17**:768-769.
- Moreau A, Franco A, Azeddine B, Rompré PH, Bagnall KM, Poitras B, Labelle H, Rivard C-H, Grimard G, Ouellet J, Parent S: **High circulating levels of osteopontin are associated with idiopathic scoliosis onset and spinal deformity [Abstract].** *Proceedings of British Scoliosis Society 33rd Annual Meeting 23rd-24th April 2009, in The Curve, Rutland Street, Leicester, LE1 1SB UK J Bone Joint Surg Br, Suppl in press 2009.*
- Azeddine B, Franco A, Rompré PH, Roy-Gagnon M-H, Turgeon I, Boiro MS, Blain S, Boulanger H, Wang DS, Bagnall KM, Poitras B, Labelle HLL, Rivard C-H, Grimard G, Ouellet J, Parent S, Moreau A: **High circulating levels of osteopontin are associated with idiopathic scoliosis onset and spinal deformity progression [Abstract].** *Proceedings of Pediatric Orthopaedic Society of North America 25th Anniversary 2009 Annual Meeting Boston, Massachusetts, April 30-May 2 2009, Boston Marriott Copley Place, p128, and In Scoliosis Research Society 44th Annual Meeting and Course, San Antonio, Texas, USA, September 23-26 2009 :109.*
- Lowe TG, Lawellin D, Smith D, Price C, Maher T, Merola A, O'Brien M: **Platelet calmodulin levels in adolescent idiopathic scoliosis. Do the levels correlate with curve progression and severity?** *Spine* 2002, **27(7)**:768-775.
- Lowe TG, Burwell RG, Dangerfield PH: **Platelet calmodulin levels in adolescent idiopathic scoliosis: can they predict curve progression and severity? Summary of an electronic focus group debate of the IBSE.** *Eur Spine J* 2004, **13**:257-265.
- Enslin K, Chan DPK: **Multiparameter pilot study of adolescent idiopathic scoliosis.** *Spine* 1987, **12(10)**:978-82.
- Burwell RG, Dangerfield PH, Freeman BJ: **Etiologic theories of idiopathic scoliosis. Somatic nervous system and the NOTOM escalator concept as one component in the pathogenesis of adolescent idiopathic scoliosis.** *Stud Health Technol Inform* 2008, **140**:208-17.
- Burwell RG, Dangerfield PH, Moulton A, Anderson SI: **Etiologic theories of idiopathic scoliosis: autonomic nervous system and the leptin-sympathetic nervous system concept for the pathogenesis of adolescent idiopathic scoliosis.** *Stud Health Technol Inform* 2008, **140**:197-207.
- Burwell RG, Aujla RK, Kirby AS, Dangerfield PH, Moulton A, Cole AA, Polak FJ, Pratt RK, Webb JK: **Etiologic theories of idiopathic scoliosis: the leptin-hypothalamic-sympathetic nervous system (LHS) mechanism of normal trunk width growth in girls - evolutionary origin, energy allocation, motor pathways, dysfunction and pathogenesis [Abstract].** *Proceedings of the International Research Society of Spinal Deformities, 9-12th July 2008, Hope University, Everton Campus, Liverpool, UK, Abstract Book :21.*
- Burwell RG, Aujla RK, Dangerfield PH, Moulton A, Anderson SI: **Pathogenesis of adolescent idiopathic scoliosis in girls: A battle between two nervous systems, autonomic and somatic, fought out in the spine and trunk? [Abstract].** *Clin Anat* 2008, **21(7)**:746.

28. Burwell RG, Aujla RK, Grevitt MP, Dangerfield PH, Moulton A, Anderson SI: **Pathogenesis of adolescent idiopathic scoliosis in girls: a battle between two nervous systems, autonomic and somatic fought out in the spine and trunk - a theory [Abstract]**. *Proceedings of British Scoliosis Society Annual Meeting in conjunction with the British Scoliosis Research Foundation, 26th September 2008, Institute of Child Health, London WC1N 1EH, J Bone Joint Surg Br, Suppl in press 2009*.
29. Burwell RG: **Aetiopathogenesis of adolescent idiopathic scoliosis in girls. Disharmony between two nervous systems, somatic and autonomic, expressed in the spine and trunk. A double neuro-oseous theory [Abstract]**. *Magistral Lecture, ISICO Proceedings of Rachide & Rehabilitation multidisciplinare Quinto Evidence-Based Meeting, 21st March 2009, Jolly Hotel, Assago, Milan, Italy, in press 2009*. Italian
30. Normelli H, Sevastik J, Akrovics J: **The length and ash weight of the ribs of normal and scoliotic persons**. *Spine* 1985, **10(6)**:590-2.
31. Giampietro P, Ghebranious N, Raggio CL, Ivacic L, Staublj J, McPherson E, Glurich I, Burmester J, Pauli RM, Jacobsen FS, Rasmusen KJ, Faciszewski T, Boachie-Adjei O, Blank RD: **Rib length discrepancy in adolescent with idiopathic scoliosis**. *Scoliosis Research Society 43rd Annual Meeting and Course, Salt Lake City, Utah, USA, September 10-13 2008*:273.
32. Burwell RG, BJC Freeman, Dangerfield PH, Aujla RK, Cole AA, Kirby AS, Pratt RK, Webb JK, Moulton A: **Left-right upper arm length asymmetry associated with apical vertebral rotation in subjects with thoracic scoliosis: anomaly of bilateral symmetry affecting vertebral, costal and upper arm physes?** *Stud Health Technol Inform* 2006, **123**:66-71. and *J Bone Joint Surg Br* 2008, **90-B:Supp III**, 476
33. Schwender JD, Denis F: **Coronal plane imbalance in adolescent idiopathic scoliosis with left lumbar curves exceeding 40°**. *Spine* 2000, **25(18)**:2358-63.
34. Burwell RG, Aujla RK, Freeman BJC, Dangerfield PH, Cole AA, Kirby AS, Pratt RK, Webb JK, Moulton A: **Patterns of extra-spinal left-right skeletal asymmetries in adolescent girls with lower spine scoliosis: relative lengthening of the ilium on the curve concavity and of right lower limb segments**. *Stud Health Technol Inform* 2006, **123**:57-65. and *J Bone Joint Surg Br* 2008, **90-B:Supp II**, 445
35. Burwell RG, Aujla RK, Freeman BJC, Dangerfield PH, Cole AA, Kirby AS, Pratt RK, Webb JK, Moulton A: **Patterns of extra-spinal left-right skeletal asymmetries and proximo-distal disproportion in adolescent girls with lower spine scoliosis: ilio-femoral length asymmetry and bilateral tibial/foot length disproportion**. *Stud Health Technol Inform* 2006, **123**:101-108. and *J Bone Joint Surg Br* 2008, **90-B:Supp II**, 445
36. Burwell RG, Aujla RK, Grevitt MP, Dangerfield PH, Cole AA, Kirby AS, Polak FJ, Pratt RK, Moulton A, Webb JK, Anderson SI: **Leptin, asymmetric bone growth, pathogenesis of adolescent idiopathic scoliosis (AIS) and hormesis: lower spine scoliosis [Abstract]**. *Clin Anat* 2009, **22(3)**:411.
37. Burwell RG, Aujla RK, Freeman BJC, Cole AA, Dangerfield PH, Kirby AS, Pratt RK, Webb JK, Moulton A: **Proximo-distal skeletal length disproportion in lower limbs of girls with adolescent idiopathic scoliosis compared with normal girls: tibial length/foot length is greater bilaterally and associated with left-right tibial length asymmetry [Abstract]**. *Clin Anat* 20(1):467.
38. Burwell RG, Aujla RK, Kirby AS, Freeman BJC, Cole AA, Dangerfield PH, Polak FJ, Pratt RK, Webb JK, Moulton A: **Ultrasound femoral anteversion (FAV) is decreased and asymmetric after school screening for adolescent idiopathic scoliosis (AIS): femora show torsional anomalies that if in the trunk may initiate the deformity [Abstract]**. *Clin Anat* 2007, **20(7)**:855.
39. Burwell RG, Aujla RK, Kirby AS, Moulton A, Dangerfield PH, Freeman BJC, Cole AA, Polak FJ, Pratt RK, Webb JK: **Ultrasound femoral anteversion (FAV) and tibial torsion (TT) after school screening for adolescent idiopathic scoliosis (AIS)**. *Stud Health Technol Inform* 2008, **140**:225-230.
40. Burwell RG, Aujla RK, Kirby AS, Freeman BJC, Cole AA, Dangerfield PH, Polak FJ, Pratt RK, Webb JK, Moulton A: **Ultrasound femoral anteversion/tibial torsion correlations are significant, abnormal and asymmetric after school screening for adolescent scoliosis (AIS): lower limb torsional markers for initiation of the torsional trunk deformity of AIS? [Abstract]**. *Clin Anat* 2007, **20(7)**:855.
41. Burwell RG, Aujla RK, Kirby AS, Moulton A, Dangerfield PH, Freeman BJC, Cole AA, Polak FJ, Pratt RK, Webb JK: **Ultrasound femoral anteversion (FAV) relative to tibial torsion (TT) is abnormal after schoolscreening for adolescent idiopathic scoliosis (AIS): evaluation by two methods**. *Stud Health Technol Inform* 2008, **140**:37-43.
42. Burwell RG, Aujla RK, Kirby AS, Freeman BJC, Cole AA, Dangerfield PH, Polak FJ, Pratt RK, Webb JK, Moulton A: **Ultrasound tibial torsion (TT) and TT asymmetry are not abnormal after school screening for adolescent idiopathic scoliosis (AIS): in scoliosis boys TT is decreased relative to scoliosis girls without asymmetry - the result of altered maturation at knee tibial growth plates? [Abstract]**. *Clin Anat* 2007, **20(7)**:855.
43. Wang S, Qiu Y, Zhu Z, Ma Z, Xia C, Zhu F: **Histomorphological study of the spinal growth plates from the convex side and the concave side in adolescent idiopathic scoliosis**. *J Orthop Surg* 2007, **2**:19.
44. Day G, Frawley K, Phillips B, McPhee TB, Labrom R, Askin G, Mueller P: **The vertebral body growth plate in scoliosis: a primary disturbance in growth?** *Scoliosis* 2008, **3**:3.
45. Antoniou J, Arlet V, Goswami T, Aebi M, Alini M: **Elevated synthetic activity in the convex side of scoliotic intervertebral discs and endplates compared with normal tissues**. *Spine* 2001, **26(10)**:E198-206.
46. Burwell RG, Aujla RK, Kirby AS, Dangerfield PH, Moulton A, Cole AA, Polak FJ, Pratt RK, Webb JK: **Body mass index of girls in health influences menarche and skeletal maturation: a leptin-sympathetic nervous system focus on the trunk with hypothalamic asymmetric dysfunction in the pathogenesis of adolescent idiopathic scoliosis?** *Stud Health Technol Inform* 2008, **140**:9-21.
47. Burwell RG, Aujla RK, Kirby AS, Dangerfield PH, Moulton A, Cole AA, Polak FJ, Pratt RK, Webb JK: **Relation of trunk width timing to body mass index in girls and boys - suggesting a normal developmental mechanism that arose in human evolution to conserve energy in bipedalism [Abstract]**. *Clin Anat* 2008, **21(7)**:746.
48. Burwell RG, Aujla RK, Cole AA, Dangerfield PH, Moulton A: **Normal adolescent boys like girls show energy priority of growth in trunk width and unlike girls also in limb segments: leptin effects, central and/or peripheral? [Abstract]**. *Clin Anat* 2009, **22(3)**:411.
49. Burwell RG, Aujla RK, Randell TL, Dangerfield PH, Moulton A: **At age 5-10 years in normal girls and boys, body mass index (BMI) subsets reveal energy priority of trunk width growth and in the limbs of boys: sexually dimorphic developmental mechanisms that arose in evolution with bipedalism? [Abstract]**. *Clin Anat* 2009, **22(7)**:855-6.
50. Burwell RG, Aujla RK, Randell TL, Dangerfield PH, Moulton A: **Normal girls age 5-10 years with relatively higher body mass index (BMI) show less skeletal growth attained than boys: evidence suggesting central leptin resistance in the somatotrophic axis of juvenile girls [Abstract]**. *Clin Anat* 2009, **22(7)**:856.
51. Burwell RG, Dangerfield PH, Freeman BJC: **Concepts on the pathogenesis of adolescent idiopathic scoliosis. Bone growth and mass, vertebral column, spinal cord, brain, skull, extra-spinal left-right skeletal length asymmetries, disproportions and molecular pathogenesis**. *Stud Health Technol Inform* 2008, **135**:3-52.
52. Burwell RG, Aujla RK, Kirby AS, Dangerfield PH, Moulton A, Freeman BJC, Cole AA, Polak FJ, Pratt RK, Webb JK: **Leg-arm length ratios correlate with severity of apical vertebral rotation in girls after school screening for adolescent idiopathic scoliosis (AIS): a dynamic pathomechanism in the initiation of the deformity?** *Stud Health Technol Inform* 2008, **140**:189-93.
53. Nesse RM, Stearns SC, Omenn GS: **Medicine needs evolution**. *Science* 2006, **311**:1071. and Nesse RM: **Digesting evolution**. *Nature* 2009, **460**:461
54. Parsons PA: **Environments and evolution: interactions between stress, resource inadequacy and energetic efficiency**. *Biol Rev* 2005, **80**:589-610.

55. Burt A, Trivers R: *Genes in Conflict. The Biology of Selfish Genetic Elements* Cambridge, Massachusetts London, England, The Belknap Press of Harvard University Press; 2006.
56. Ward K, Nelson LM, Chettier R, Braun JT, Ogilvie JW: **Genetic profile predicts curve progression in adolescent idiopathic scoliosis [Abstract].** *Scoliosis Research Society 43rd Annual Meeting and Course, Salt Lake City, Utah, USA, September 10-13 2008* :59.
57. Nachemson AL: **Future research in scoliosis.** In *Scoliosis 1979* Edited by: Zorab PA, Siegler D. London: Academic Press; 1980:263-270.
58. Bagnall K: **How can we achieve success in understanding the aetiology of AIS?** *Stud Health Technol Inform* 2008, **135**:61-74.
59. Sevastik J: **The "thoracospinal" concept of the early development of idiopathic scoliosis. Experimental and clinical considerations.** In *International Symposium on 3-D Scoliotic Deformities joined with the Vllth International Symposium on Spinal Deformity and Surface Topography* Edited by: Dansereau J, dition de l'cole Polytechnique de Montr4al:Gustav Fischer Verlag; 1992:193-7.
60. Sevastik B, Xiong B, Lundberg A, Sevastik JA: **In vitro opto-electronic analysis of 3-D segmental vertebral movements during gradual rib lengthening in the pig.** *Acta Orthop Belg* 1995, **61(3)**:218-25.
61. Sevastik JA: **The thoracospinal concept of the etiopathogenesis of idiopathic scoliosis.** *Etiology of Adolescent Idiopathic Scoliosis: Current Trends and Relevance to New Treatment Approaches, State of the Art Reviews: Spine* 2000, **14(2)**:391-400.
62. Sevastik JA: **Dysfunction of the autonomic nerve system (ANS) in the aetiopathogenesis of adolescent idiopathic scoliosis.** *Stud Health Technol Inform* 2002, **88**:20-3.
63. Sevastik J, Burwell RG, Dangerfield PH: **A new concept for the etiopathogenesis of the thoracospinal deformity of idiopathic scoliosis: summary of an electronic focus group debate of the IBSE.** *Eur Spine J* 2003, **12**:440-50.
64. Chu WCW, Man GCW, Lam WWM, Yeung BHY, Chau WW, Ng BKW, Lam T-p, Lee K-m, Cheng JCY: **Morphological and functional electrophysiological evidence of relative spinal cord tethering in adolescent idiopathic scoliosis.** *Spine* 2008, **31**:673-80.
65. Chu WCW, Lam WWM, Ng BKW, Lam T-p, Lee K-m, Guo X, Cheng JCY, Burwell RG, Dangerfield PH, Jaspas T: **Relative shortening and functional tethering of spinal cord in adolescent scoliosis - Result of asynchronous neuro-osseous growth? Summary of an electronic focus group debate of the IBSE.** *Scoliosis* 2008, **3**:8.
66. Robin GC: *The aetiology of idiopathic scoliosis. A review of a century of research* Boca Raton, Florida: CRC Press Inc; 1990:1-259.
67. Lowe TG, Edgar M, Margulies JY, Miller NH, Raso VJ, Reinker KA, Rivard C-H: **Current concepts review: etiology of idiopathic scoliosis: current trends in research.** *J Bone Joint Surg Am* 2000, **82-A**:1157-68.
68. Wever DJ, Veldhuizen AG, Klein JP, Webb PJ, Nijenbanning G, Cool JC, Horn JR: **A biomechanical analysis of the vertebral and rib deformities in structural scoliosis.** *Eur Spine J* 1999, **8**:252-60.
69. Veldhuizen AG, Wever DJ, Webb PJ: **The aetiology of idiopathic scoliosis: biomechanical and neuromuscular factors.** *Eur Spine J* 2000, **9(3)**:178-84.
70. Burwell RG, Dangerfield PH: **Adolescent idiopathic scoliosis: hypotheses of causation.** In *Etiology of Adolescent Idiopathic Scoliosis: Current Trends and Relevance to New Treatment Approaches, State of the Art Reviews: Spine Volume 14. Issue 2* Edited by: Burwell RG, Dangerfield PH, Lowe TG, Margulies JY. Philadelphia, Hanley & Belfus Inc; 2000:319-333.
71. Burwell RG: **Aetiology of idiopathic scoliosis: current concepts.** *Pediatr Rehabil* 2003, **6(3-4)**:137-70.
72. Parent S, Newton PO, Wenger DR: **Adolescent idiopathic scoliosis: etiology, anatomy, natural history and bracing.** *AAOS Instructional Course Lectures* 2005, **54**:529-536.
73. Goldberg CJ, Moore DP, Fogarty EE, Dowling FE: **Scoliosis: a review.** *Pediatr Surg Int* 2008, **24**:129-144.
74. Weinstein SL, Dolan LA, Cheng JC, Danielsson A, Morcuende JA: **Adolescent idiopathic scoliosis.** *Lancet* 2008, **371(9623)**:1527-37.
75. Kouwenhoven J-WM, Castelein RM: **The pathogenesis of adolescent idiopathic scoliosis. Review of the literature.** *Spine* 2008, **33(26)**:2898-2908.
76. Wang WJ, Yeung HY, Chu WC-W, Tang NL-S, Lee KM, Burwell RG, Cheng JCY: **Top theories for the etiopathogenesis of adolescent idiopathic scoliosis.** *J Pediatr Orthop* 2009 in press.
77. Miller NH: **Genetics of familial idiopathic scoliosis.** *Clin Orthop Rel Res* 2007, **462**:6-10.
78. Cheng JC, Tang NL, Yeung HY, Miller N: **Genetic association of complex traits: using idiopathic scoliosis as an example.** *Clin Orthop Relat Res* 2007, **462**:38-44.
79. Gao X, Gordon D, Zhang D, Browne R, Helms C, Gillum J, Weber S, Devroy S, Swaney S, Dobbs M, Morcuende J, Sheffield V, Lovett M, Bowcock A, Herring J, Wise C: **CHD7 gene polymorphisms are associated with susceptibility to idiopathic scoliosis.** *Am J Hum Genet* 2007, **80(5)**:957-65.
80. Stokes IAF: **Hueter-Volkman effect.** In *Etiology of Adolescent Idiopathic Scoliosis: Current Trends and Relevance to New Treatment Approaches, State of the Art Reviews: Spine Volume 14. Issue 2* Edited by: Burwell RG, Dangerfield PH, Lowe TG, Margulies JY. Philadelphia, Hanley & Belfus Inc; 2000:349-57.
81. Stokes IAF: **Analysis and simulation of progressive adolescent scoliosis by biomechanical growth modulation.** *Eur Spine J* 2007, **16**:1621-8.
82. Stokes IAF, Burwell RG, Dangerfield PH: **Biomechanical spinal growth modulation and progressive adolescent scoliosis - a test of the 'vicious cycle' pathogenetic hypothesis: Summary of an electronic focus group debate of the IBSE.** *Scoliosis* 2006, **1**:16.
83. Somerville EW: **Rotational lordosis: the development of a single curve.** *J Bone Joint Surg Br* 1952, **34-B**:421-7.
84. Roaf R: **The basic anatomy of scoliosis.** *J Bone Joint Surg Br* 1966, **48-B**:786-92.
85. Deane G, Duthie RB: **A new projectional look at articulated scoliotic spines.** *Acta Orthop Scand* 1973, **44(4)**:351-65.
86. Neugebauer H: **Scoliosis, metabolism and growth of the vertebral column.** *Arch Orthop Unfallchir* 1976, **85(1)**:87-99.
87. Millner PA, Dickson RA: **Idiopathic scoliosis: biomechanics and biology.** *Eur Spine J* 1996, **5**:362-73.
88. Cheng JCY: **Osteopenia.** In *Etiology of Adolescent Idiopathic Scoliosis: Current Trends and Relevance to New Treatment Approaches, State of the Art Reviews: Spine Volume 14. Issue 2* Edited by: Burwell RG, Dangerfield PH, Lowe TG, Margulies JY. Philadelphia, Hanley & Belfus Inc; 2000:339-48.
89. Guo X, Chau W-W, Chan Y-L, Cheng J-Y-C: **Relative anterior spinal overgrowth in adolescent idiopathic scoliosis. Results of disproportionate endochondral-membranous bone growth.** *J Bone Joint Surg Br* 2003, **85-B**:1026-31.
90. Guo X, Chau W-W, Chan YL, Cheng J-C-Y, Burwell RG, Dangerfield PH: **Relative anterior spinal overgrowth in adolescent idiopathic scoliosis - result of disproportionate endochondral-membranous bone growth? Summary of an electronic focus group debate of the IBSE.** *Eur Spine J* 2005, **14**:862-73.
91. Castelein RM, van Dieën JH, Smit TH: **The role of dorsal shear forces in the pathogenesis of adolescent idiopathic scoliosis - a hypothesis.** *Med Hypoth* 2005, **65**:501-508.
92. Roth M: **Idiopathic scoliosis from the point of view of the neuroradiologist.** *Neuroradiol* 1981, **21**:133-138.
93. Porter RW: **The pathogenesis of idiopathic scoliosis: uncoupled neuro-osseous growth?** *Eur Spine J* 2001, **10**:473-481.
94. Lidström J, Friberg S, Lindström L, Sahlstrand T: **Postural control in siblings to scoliosis patients and scoliosis patients.** *Spine* 1988, **3(9)**:1070-4.
95. Edgar M: **Neural mechanisms in the etiology of idiopathic scoliosis.** In *Etiology of Adolescent Idiopathic Scoliosis: Current Trends and Relevance to New Treatment Approaches, State of the Art Reviews: Spine Volume 14. Issue 2* Edited by: Burwell RG, Dangerfield PH, Lowe TG, Margulies JY. Philadelphia, Hanley & Belfus Inc; 2000:459-68.
96. Williamson JB: **Postural control.** In *Etiology of Adolescent Idiopathic Scoliosis: Current Trends and Relevance to New Treatment Approaches, State of the Art Reviews: Spine Volume 14. Issue 2* Edited by: Burwell RG, Dangerfield PH, Lowe TG, Margulies JY. Philadelphia, Hanley & Belfus Inc; 2000:401-9.
97. Geissele AE, Kransdorf MJ, Geyer CA, Jelinek JS, Van Dam BE: **Magnetic resonance imaging of the brain stem in adolescent idiopathic scoliosis.** *Spine* 1991, **16(7)**:761-63.
98. Taylor TKF: **The brain stem and adolescent idiopathic scoliosis: a hypothesis.** In *Etiology of Adolescent Idiopathic Scoliosis: Current Trends and Relevance to New Treatment Approaches, State of the Art*

- Reviews: *Spine Volume 14*. Issue 2 Edited by: Burwell RG, Dangerfield PH, Lowe TG, Margulies JY. Philadelphia, Hanley & Belfus Inc; 2000:477-81.
99. Dretakis EK: **Brain-stem dysfunction and idiopathic scoliosis.** *Stud Health Technol Inform* 2002, **91**:422-7.
  100. Guo X, Chau WW, Hui-Chan CWY, Cheung CSK, Tsang WWN, Cheng JCY: **Balance control in adolescents with idiopathic scoliosis and disturbed somatosensory function.** *Spine* 2006, **31(14)**:E437-40.
  101. Simoneau M, Richer N, Mercier P, Allard P, Teasdale N: **Sensory deprivation and balance control in idiopathic scoliosis.** *Exp Brain Res* 2006, **170**:576-82.
  102. Beaulieu M, Toulotte C, Gatto L, Rivard CH, Teasdale N, Simoneau M, Allard P: **Postural imbalance in non-treated adolescent idiopathic scoliosis at different periods of progression.** *Eur Spine J* 2009, **18(1)**:38-44.
  103. Lao ML, Chow DH, Guo X, Cheng JC, Holmes AD: **Impaired dynamic balance control in adolescents with idiopathic scoliosis and abnormal somatosensory evoked potentials.** *J Pediatr Orthop* 2008, **28(8)**:846-9.
  104. Herman R, Mixon J, Fisher A, Maulucci R, Stuyck J: **Idiopathic scoliosis and the central nervous system: a motor control problem.** *The Harrington Lecture, 1983. Scoliosis Research Society.* *Spine* 1985, **10(1)**:1-14.
  105. Burwell RG, Freeman BJC, Dangerfield PH, Aujla RK, Cole AA, Kirby AS, Polak F, Pratt RK, Webb JK, Moulton A: **Neurodevelopmental concept of maturational delay of the CNS body schema ("body-in-the-brain") for adolescent idiopathic scoliosis [abstract].** *J Bone Joint Surg Br* 2008, **90-B(Suppl III)**:476.
  106. Burwell RG, Freeman BJC, Dangerfield PH, Aujla RK, Cole AA, Kirby AS, Polak F, Pratt RK, Webb JK, Moulton A: **Etiologic theories of idiopathic scoliosis: neurodevelopmental concept of maturational delay of the CNS body schema ("body-in-the-brain").** *Stud Health Technol Inform* 2006, **123**:72-9. and *J Bone Joint Surg Br* 2008, **90-B:Suppl II**, 434
  107. Burwell RG, Dangerfield PH: **Pathogenesis of progressive adolescent idiopathic scoliosis. Platelet activation and vascular biology in immature vertebrae: an alternative molecular hypothesis.** *Acta Orthop Belg* 2006, **72**:247-260.
  108. Goldberg CJ, Dowling FE, Fogarty EE, Moore DP: **Adolescent idiopathic scoliosis as developmental instability.** *Genetica* 1995, **96(3)**:247-55.
  109. Goldberg CJ, Fogarty EE, Moore DP, Dowling FE: **Scoliosis and developmental theory: adolescent idiopathic scoliosis.** *Spine* 1997, **22(19)**:2228-37.
  110. Goldberg CJ: **Symmetry control.** In *Etiology of Adolescent Idiopathic Scoliosis: Current Trends and Relevance to New Treatment Approaches, State of the Art Reviews: Spine Volume 14*. Issue 2 Edited by: Burwell RG, Dangerfield PH, Lowe TG, Margulies JY. Philadelphia, Hanley & Belfus Inc; 2000:327-8. Philadelphia, Hanley & Belfus Inc
  111. Burwell RG, Dangerfield PH, Freeman BJC: **Pathogenesis of adolescent idiopathic scoliosis: A collective model involving abnormality of the escalators of a normal neuro-osseous timing of maturation (NOTOM) system as the central concept [Abstract].** *Clin Anat* 2008, **21(2)**:195-6.
  112. Goldberg CJ, Dowling FE, Fogarty EE, Moore DP: **Adolescent idiopathic scoliosis and cerebral asymmetry. Examination of a nonspinal perceptual system.** *Spine* 1995, **20(15)**:1685-91.
  113. Liu T, Chu WC, Young G, Li K, Yeung BH, Guo L, Man GC, Lam WW, Wong ST, Cheng JC: **MR analyses of regional brain volume in adolescent idiopathic scoliosis: neurological manifestation of a systemic disease.** *J Magn Reson Imaging* 2008, **27(4)**:732-6.
  114. Chu W, Shi L, Wang D, Paus T, Pitiot A, Man G, Cheng A, Yeung H, Lee K, Cheng J: **Anatomical difference of brains in subjects with right thoracic and left thoracic adolescent idiopathic scoliosis (AIS): MR-based morphometric study [Abstract].** *J Bone Joint Surg Br* 2009, **91-B(Suppl III)**:429-490.
  115. Shi L, Wang D, Chu WCW, Burwell RG, Freeman BJC, Heng PA, Cheng JCY: **Volume-based morphometry of brain MR images in adolescent idiopathic scoliosis and normal controls.** *AJNR Am J Neuroradiol* 2009, **30**:1302.
  116. Enneking WF, Harrington P: **Pathological changes in scoliosis.** *Am* 1969, **51-A**:165-184.
  117. Burwell RG, Aujla RK, Kirby AS, Dangerfield PH, Moulton A, Cole AA, Polak FJ, Pratt RK, Webb JK: **Trunk width growth by age is relatively earlier in girls with relatively higher than lower body mass index: adolescent idiopathic scoliosis and normals [Abstract].** *Clin Anat* 2008, **21(7)**:746.
  118. Burwell RG, Aujla RK, Kirby AS, Dangerfield PH, Moulton A, Cole AA, Polak FJ, Pratt RK, Webb JK: **Chest diameter growth by age is relatively earlier in girls with relatively higher than lower body mass index: adolescent idiopathic scoliosis and normals [Abstract].** *Clin Anat* 2008, **21(7)**:745.
  119. Burwell RG, Aujla RK, Kirby AS, Dangerfield PH, Moulton A, Cole AA, Polak FJ, Pratt RK, Webb JK: **Trunk width growth by age is relatively earlier in girls with relatively higher body mass index: hypothesis linking leptin to AIS pathogenesis [Abstract].** *Proceedings of British Scoliosis Society Annual Meeting in conjunction with the British Scoliosis Research Foundation, 26th September 2008, Institute of Child Health, London WC1N 1EH. J Bone Joint Surg Br, Suppl in press 2009.*
  120. Burwell RG, Aujla RK, Kirby AS, Dangerfield PH, Moulton A, Cole AA, Polak FJ, Pratt RK, Webb JK: **Some skeletal asymmetries in girls with adolescent idiopathic scoliosis are associated with relatively lower body mass index [Abstract].** *Clin Anat* 2008, **21(7)**:746.
  121. Burwell RG, Aujla RK, Kirby AS, Dangerfield PH, Moulton A, Cole AA, Polak FJ, Pratt RK, Webb JK: **Some skeletal asymmetries in girls with adolescent idiopathic scoliosis are associated with relatively lower body mass index: a leptin effect? [Abstract].** *Proceedings of British Scoliosis Society Annual Meeting in conjunction with the British Scoliosis Research Foundation, 26th September, 2008 Institute of Child Health, London WC1N 1EH. J Bone Joint Surg Br, Suppl in press 2009.*
  122. Burwell RG, Aujla RK, Grevitt MP, Randell TL, Dangerfield PH, Cole AA, Kirby AS, Polak FJ, Pratt RK, Moulton A, Webb JK: **Different systemic skeletal overgrowth patterns in preoperative girls with adolescent idiopathic scoliosis (AIS) revealed by higher and lower body mass index (BMI) subsets [Abstract].** *Clin Anat* 2009, **22(7)**:855.
  123. Grivas TB, Vasiliadis E, Mihas C, Kaspiris A, Triandafyllopoulos G, Burwell RG: **Correlation between body mass index (BMI) and trunk asymmetry in children and adolescents 5-17 years old [Abstract].** *Oral presentation, 6th Hellenic Orthopaedic Research Meeting, Piraeus 28-30th November 2008.*
  124. Grivas TB, Burwell RG, Mihas C, Vasiliadis ES, Triandafyllopoulos G, Kaspiris A: **Relatively lower body mass index is associated with an excess of severe truncal asymmetry in healthy adolescents. Do body fat, leptin, hypothalamus and sympathetic nervous system influence truncal growth asymmetry? Scoliosis** 2009, **4(1)**:13.
  125. Grivas TB, Burwell RG, Mihas C, Vasiliadis ES, Triandafyllopoulos G, Kaspiris A: **Relatively lower body mass index is associated with an excess of severe truncal asymmetry in healthy adolescents. Do body fat, leptin, hypothalamus and sympathetic nervous system influence truncal growth asymmetry? [Abstract].** *Clin Anat* 2009, **22(7)**:858. and IMAST, 16th International Meeting on Advanced Spine Techniques, Hofburg Congress Center, Vienna, Austria, July 15-18 2009
  126. Sporns O, Edelman GM: **Solving Bernstein's problem: a problem for the development of coordinated movement by selection.** *Child Devel* 1993, **64(4)**:960-81.
  127. Gallagher S: **How the body shapes the mind.** Oxford: Clarendon Press; 2006:284.
  128. Reed CL: **What is the body schema?** In *The imitative mind, development, evolution, and brain bases Volume Chapter 13*. Edited by: Meltzoff AN, Prinz W. Cambridge University Press; 2002:233-43.
  129. PeliJeff A, Bonilha L, Morgan PS, McKenzie K, Jackson SR: **Parietal updating of limb posture: An event-related fMRI study.** *Neuroreport* 2006, **17(13)**:2685-90.
  130. Blakeslee S, Blakeslee M: **The body has a mind of its own: How body maps in your brain help you to do (almost) everything better.** New York:Random House; 2007:228.
  131. Oomura Y, Hori N, Shiraishi T, Fukunaga K, Takeda H, Tsuji M, Matsumiya T, Ishibashi M, Aou S, Li XL, Kohno D, Uramura K, Sougawa H, Yada T, Wayner MJ, Sasaki K: **Leptin facilitates learning and memory performance and enhances hippocampal CA1 long-term potentiation and CaMK II phosphorylation in rats.** 2006, **27(11)**:2738-49.
  132. Signore AP, Zhang F, Weng Z, Gao Y, Chen J: **Leptin neuroprotection in the CNS: mechanisms and therapeutic potentials.** *J Neurochem* 2008, **106(5)**:1977-90.

133. Pannacciulli N, Del Parigi A, Chen K, Le DS, Reiman EM, Tataranni PA: **Brain abnormalities in human obesity: a voxel-based morphometric study.** *Neuroimage* 2006, **31(4)**:1419-25.
134. Edelman GM: **Learning in and from brain-based devices.** *Science* 2007, **318**:1103-5.
135. Nissinen M, Heliövaara M, Seitsamo J, Poussa M: **Trunk asymmetry, posture, growth, and risk of scoliosis. A three-year follow-up of Finnish prepubertal school children.** *Spine* 1993, **18(1)**:8-13.
136. Hagglund G, Karlberg J, Willner S: **Growth in girls with adolescent idiopathic scoliosis.** *Spine* 1992, **17**:108-111.
137. Nordwall A, Willner S: **A study of skeletal age and height in girls with idiopathic scoliosis.** *Clin Orthop* 1975, **110**:6-10.
138. Goldberg CJ, Dowling FE, Fogarty EE: **Adolescent idiopathic scoliosis- early menarche, normal growth.** *Spine* 1993, **18(5)**:529-35.
139. Goldberg CJ: **Skeletal growth.** In *Etiology of Adolescent Idiopathic Scoliosis: Current Trends and Relevance to New Treatment Approaches, State of the Art Reviews: Spine Volume 14.* Issue 2 Edited by: Burwell RG, Dangerfield PH, Lowe TG, Margulies JY. Philadelphia, Hanley & Belfus Inc; 2000:401-409.
140. Cole AA: **Anthropometry in preoperative adolescent idiopathic scoliosis.** In *Quantitation of scoliosis before and after surgery. DM thesis Volume Chapter 1.* University of Nottingham, UK :12-43.
141. Burwell RG, Aujla RK, Kirby AS, Dangerfield PH, Freeman BJ, Moulton A, Cole AA, Polak FJ, Pratt RK, Webb JK: **Tibio-femoral index (TFI) of torsion: an increase with age in normal subjects but not in girls screened for scoliosis suggests earlier skeletal maturation: an ultrasound study [Abstract].** *Clin Anat* 2008, **21(2)**:195.
142. Jiang H, Greidanus N, Moreau M, Mahood J, Raso VJ, Russell G, Bagnall K: **A comparison of the innervation characteristics of the lateral spinal ligaments between normal subjects and patients with adolescent idiopathic scoliosis.** *Acta Anat (Basel)* 1997, **160(3)**:200-7.
143. Cheng JCY, Guo X, Sher AHL: **Posterior tibial nerve somatosensory cortical evoked potentials in adolescent idiopathic scoliosis.** *Spine* 1998, **23(3)**:S332-7.
144. Hausmann ON, Böni T, Pfirrmann CW, Curt A, Min K: **Preoperative radiological and electrophysiological evaluation in 100 adolescent idiopathic scoliosis patients.** *Eur Spine J* 2003, **12(5)**:501-6.
145. Chu WCW, Shi L, Wang D, Paus T, Burwell RG, Man GCW, Cheng A, Yeung HY, Lee KM, Heng PA, Cheng JCY: **Variations of semicircular canals orientation and left-right asymmetry in adolescent idiopathic scoliosis (AIS) comparing with normal controls: MR morphometry study using advanced image techniques.** *Stud Health Technol Inform* 2008, **140**:333. Also, *6th Annual World Congress for Brain Mapping and Image Guided Therapy, Annual Congress of the IBMISPS, 26-29 August 2009, Harvard Medical School, Boston, USA*
146. Mihaila D, Calancie B: **Is corticospinal tract organization different in idiopathic scoliosis? [Abstract].** *Stud Health Technol Inform* 2008, **140**:350.
147. Lafosse C, Kerckhofs E, Vereeck L, Troch M, Van Hoydonck G, Moeremans M, Sneyers C, Broeckx J, Dereymaeker L: **Postural abnormalities and contraversive pushing following right hemisphere brain damage.** *Neuropsychol Rehabil* 2007, **17(3)**:374-96.
148. MacNeillage PF, Rogers LJ, Vallortigara G: **Origins of the left & right brain.** *Sci Am* 2009, **301(1)**:60-7.
149. Burwell RG, Cole AA, Cook TA, Grivas TB, Kiel AW, Moulton A, Thirlwall AS, Upadhyay SS, Webb JK, Wemyss-Holden SA, Whitwell DJ, Wojcik AS, Wythers DJ: **Pathogenesis of idiopathic scoliosis. The Nottingham concept.** *Acta Orthop Belg* 1992, **58**:33-58.
150. Machida M, Dubouset J, Yamada T, Kimura J, Saito M, Shiraishi T, Yamagishi M: **Experimental scoliosis in melatonin-deficient C57BL/6J mice without pinealectomy.** *J Pineal Res* 2006, **41(1)**:1-7.
151. Nicolopoulos KS, Burwell RG, Webb JK: **Stature and its components in adolescent idiopathic scoliosis. Cephalo-caudal disproportion in the trunk of girls.** *J Bone Joint Surg Br* 1985, **67(4)**:594-601.
152. Siu King Cheung C, Tak Keung Lee W, Kit Tse Y, Ping Tang S, Man Lee K, Guo X, Qin L, Chun Yiu Cheng J: **Abnormal peri-pubertal anthropometric measurements and growth pattern in adolescent idiopathic scoliosis: a study of 598 patients.** *Spine* 2003, **28(18)**:2152-7.
153. Abitbol MM: **Evolution of the sacrum in hominoids.** *Am J Phys Anthropol* 1987, **74(1)**:65-81.
154. Boulay C, Tardieu C, Bénéaim C, Hecquet J, Marty C, Prat-Pradal D, Legaye J, Duval-Beaupère G, Pélissier J: **Three-dimensional study of pelvic asymmetry on anatomical specimens and its clinical perspectives.** *J Anat* 2006, **208(1)**:21-33.
155. Wu LP, Li YK, Li YM, Zhang YQ, Zhong SZ: **Variable morphology of the sacrum in a Chinese population.** *Clin Anat* 2009, **22(5)**:619-26.
156. Jebb S, Steer T, Holmes C: **The 'Healthy Living' Social Market Initiative: A Review of the Evidence.** In *MRC Human Nutrition Research* Cambridge, Department of Health, London, UK; 2007:1-33.
157. Shohat M, Shohat T, Nitzan M, Mimouni M, Kedem R, Danon YL: **Growth and ethnicity in scoliosis.** *Acta Orthop Scand* 1988, **59(3)**:310-3.
158. Cole AA, Burwell RG, Dangerfield PH, Grivas TB, Webb JK, Moulton A: **Anthropometry.** In *Etiology of Adolescent Idiopathic Scoliosis: Current Trends and Relevance to New Treatment Approaches, State of the Art Reviews: Spine Volume 14.* Issue 2 Edited by: Burwell RG, Dangerfield PH, Lowe TG, Margulies JY. Philadelphia, Hanley & Belfus Inc; 2000:411-21.
159. Smith FM, Latchford G, Hall RM, Millner PA, Dickson RA: **Indications of disordered eating behaviour in adolescents with idiopathic scoliosis.** *J Bone Joint Surg Br* 2002, **84(3)**:392-394.
160. Davey RC, Cochrane T, Dangerfield PH, Chockalingam N, Dorgan JC: **Anthropometry and body composition in females with adolescent idiopathic scoliosis.** In *International Research Society of Spinal Deformities Symposium 2004* Edited by: Sawatzky BJ. University of British Columbia; 2004:323-326.
161. Dangerfield PH, Davey RC, Chockalingam N, Cochrane T, Dorgan JC: **Body composition in females with adolescent idiopathic scoliosis (AIS)[Abstract].** *J Bone Joint Surg Br* 2005, **88-B(Suppl II)**:230.
162. Cheung CSK, Lee WTK, Tse YK, Lee KM, Guo X, Qin L, Cheng JCY: **Generalized osteopenia in adolescent idiopathic scoliosis: association with abnormal pubertal growth, bone turnover, and calcium intake?** *Spine* 2006, **31(2)**:330-338.
163. Qiu Y, Sun X, Qiu X, Li W, Zhu Z, Zhu F, Wang B, Yu Y, Qian B: **Decreased circulating leptin level and its association with body and bone mass in girls with adolescent idiopathic scoliosis.** *Spine* 2007, **32(24)**:2703-2710.
164. Sun X, Qiu Y, Qiu XS, Zhu ZZ, Zhu F, Xia CW: **Association between circulating leptin level and anthropometric parameters in girls with adolescent idiopathic scoliosis.** *Zhonghua Yi Xue Za Zhi* 2007, **87(9)**:594-8. Chinese
165. Barrios Pitarque C: **Analysis of anthropometric findings and body composition in girls with mild or moderate scoliosis treated orthopedically [Abstract].** *Eur Spine J* 2009, **18**:139.
166. Grivas TB, Arvaniti A, Maziotou C, Manesioti M, Fergadi A: **Comparison of body weight and height between normal and scoliotic children.** *Stud Health Technol Inform* 2002, **91**:47-53.
167. Goldberg CJ, Moore DP, Fogarty EE, Dowling FE: **Interrelationship between Cobb angle progression, BMI and growth rate in girls with adolescent idiopathic scoliosis [Abstract].** *Proceedings of British Scoliosis Society 33rd Annual Meeting 23rd-24th April 2009, in The Curve, Rutland Street, Leicester, LE1 1SB UK J Bone Joint Surg Br, Suppl in press 2009 .*
168. Smith FM, Latchford GJ, Hall RM, Dickson RA: **A cross-sectional investigation of eating pathology in adolescent females with scoliosis and diabetes.** *Adol Health* 2008, **42(1)**:58-63.
169. Alborghetti A, Scimeca G, Costanzo G, Boca S: **The prevalence of eating disorders in adolescents with idiopathic scoliosis.** *Eat Disord* 2008, **16(1)**:85-93.
170. Bruce BT, Talwalkar V, Iwinski H, Walker J, Milbrandt T: **Does obesity hide adolescent idiopathic scoliosis? Scoliosis Research Society 43rd Annual Meeting and Course, Salt Lake City, Utah, USA, September 10-13 2008 :196.**
171. Sucato DJ, Lubicky JP, Sarwark JW: **BMI is changing in children and adolescents presenting for scoliosis surgery. The Prospective Pediatric Scoliosis Database.** *Scoliosis Research Society 43rd Annual Meeting and Course, Salt Lake City, Utah, USA, September 10-13 2008 :252.*
172. Loos RJ, Lindgren CM, Li S, Wheeler E, Zhao JH, Prokopenko I, Inouye M, Freathy RM, Attwood AP, Beckmann JS, Berndt SI, Pros-



- tate, Lung, Colorectal, Ovarian (PLCO) Cancer Screening Trial, Jacobs KB, Chanock SJ, Hayes RB, Bergmann S, Bennett AJ, Bingham SA, Bochud M, Brown M, Cauchi S, Connell JM, Cooper C, Smith GD, Day I, Dina C, De S, Dermizakis ET, Doney AS, Elliott KS, Elliott P, et al.: **Common variants near MC4R are associated with fat mass, weight and risk of obesity.** *Nat Genet* 2008, **40(6)**:768-75.
173. Willer CJ, Speliotes EK, Loos RJ, Li S, Lindgren CM, Heid IM, Berndt SI, Elliott AL, Jackson AU, Lamina C, Lettre G, Lim N, Lyon HN, McCarroll SA, Papadakis K, Qi L, Randall JC, Roccascaccia RM, Sanna S, Scheet P, Weedon MN, Wheeler E, Zhao JH, Jacobs LC, Prokopenko I, Soranzo N, Tanaka T, Timpson NJ, Almgren P, Bennett A, Bergman RN, et al.: **Genetic Investigation of ANthropometric Traits Consortium: Six new loci associated with body mass index highlight a neuronal influence on body weight regulation.** *Nat Genet* 2009, **41(1)**:25-34.
174. Fredriksson R, Häggglund M, Olszewski PK, Stephansson O, Jacobsson JA, Olszewska AM, Levine AS, Lindblom J, Schiöth HB: **The obesity gene, FTO, is of ancient origin, up-regulated during food deprivation and expressed in neurons of feeding-related nuclei of the brain.** *Endocrinology* 2008, **149(5)**:2062-71.
175. Timpson N, Sayers A, Davey Smith G, Tobias J: **How does body fat influence bone mass in childhood? A Mendelian randomisation approach.** *J Bone Miner Res* 2009, **24(3)**:522-33.
176. Fischer J, Koch L, Emmerling C, Vierkotten J, Peters T, Brüning JC, Rüther U: **Inactivation of the Fto gene protects from obesity.** *Nature* 2009, **458**:894-98.
177. Shadan S: **Obesity. Fat chance.** *Nature* 2009, **457**:1095.
178. Burwell RG, Patterson JF, Webb JK, Wojcik AS: **School screening for scoliosis - The multiple ATI system of back shape appraisal using the Scoliometer with observations on the sagittal declive angle.** In *Surface Topography and Body Deformity. Proceedings of the 5th International Symposium, September 29-October 1, Wien 1998* Edited by: Neugebauer H, Wündischbauer G. Stuttgart: Gustav Fischer; 1990:17-23.
179. Hamrick MW, Pennington C, Newton D, Xie D, Isaacs C: **Leptin deficiency produces contrasting phenotypes in bones of the limb and spine.** *Bone* 2004, **34(3)**:376-83.
180. Kishida Y, Hirao M, Tamai N, Nampei A, Fujimoto T, Nakase T, Shimizu N, Yoshikawa H, Myoui A: **Leptin regulates chondrocyte differentiation and matrix maturation during endochondral ossification.** *Bone* 2005, **37(5)**:607-21.
181. Perdrille R: *La Scoliose, son etude tridimensionnelle.* Paris, Maloine SA 1979.
182. Bjure J, Nachemson A: **Non-treated scoliosis.** *Clin Orthop Rel Res* 1973, **93**:44-52.
183. Denoel C, Ismael Aguirre MF, Bianco G, Mahaudens PH, Vanwijck R, Garson S, Sinna R, Debrun A: **Idiopathic scoliosis and breast asymmetry.** *J Plast Reconstr Aesthet Surg* 2009, **62(10)**:1303-8.
184. Iliopoulos P, Korovessis P, Koureas G, Zacharatos S, Stergiou P: **Asymmetric evolution of anterior chest wall blood supply in female adolescents with progressive right-convex thoracic idiopathic scoliosis.** *Eur Spine J* 2007, **16**:1343-6.
185. Korovessis P, Iliopoulos P, Koureas G, Zacharatos S, Stergiou P: **Evolution of anterior chest wall blood supply in female adolescents with progressive right-convex thoracic idiopathic scoliosis.** *J Spinal Disord Tech* 2007, **20(3)**:190-4.
186. Repko M, Horký D, Krbeč M, Chaloupka R, Brichtová E, Lauschová I: **The role of the autonomic nervous system in the etiology of idiopathic scoliosis: prospective electron microscopic and morphometric stud.** *Childs Nerv Syst* 2008, **24(2)**:731-4.
187. Ducey P, Amling M, Takeda S, Priemel M, Schilling AF, Beil FT, Shen J, Vinson C, Rueger JM, Karsenty G: **Leptin regulates bone formation through a hypothalamic relay: a central control of bone mass.** *Cell* 2000, **100**:197-200.
188. Takeda S, Elefteriou F, Levasseur R, Liu X, Zhao L, Parker KL, Armstrong D, Ducey P, Karsenty G: **Leptin regulates bone formation by the sympathetic nervous system.** *Cell* 2002, **111**:303-17.
189. Elefteriou F, Takeda S, Ebihara K, Magre J, Patano N, Kim CA, Ogawa Y, Liu X, Ware SM, Craigen WJ, Robert JJ, Vinson C, Nakao K, Capeau J, Karsenty G: **Serum leptin level is a regulator of bone mass.** *Proc Natl Acad Sci USA* 2004, **101(9)**:3258-63.
190. Thomas T: **The complex effects of leptin on bone metabolism through multiple pathways.** *Curr Opin Pharmacol* 2004, **4**:295-300.
191. Elefteriou F, Ahn JD, Takeda S, Starbuck M, Yang X, Liu X, Kondo H, Richards WG, Bannon TW, Noda M, Clement K, Vaisse C, Karsenty G: **Leptin regulation of bone resorption by the sympathetic nervous system and CART.** *Nature* 2005, **434(7032)**:514-20.
192. Allison SJ, Baldock PA, Herzog H: **The control of bone remodeling by neuropeptide Y receptors.** *Peptides* 2007, **28**:320-5.
193. Crown A, Clifton DK, Steiner RA: **Neuropeptide signaling in the integration of metabolism and reproduction.** *Neuroendocrinol* 2007, **86(3)**:175-182.
194. Iwaniec UT, Boghossian S, Lapke PD, Turner RT, Kalra SP: **Central leptin gene therapy corrects skeletal abnormalities in leptin-deficient ob/ob mice.** *Peptides* 2007, **28(5)**:1012-9.
195. Patel MS, Elefteriou F: **The new field of neuroskeletal biology.** *Calc Tissue Int* 2007, **80**:337-47.
196. Elefteriou F: **Regulation of bone remodeling by the central and peripheral nervous system.** *Arch Biochem Biophys* 2008, **473(2)**:231-6.
197. Takeda S: **Central control of bone remodeling.** *J Neuroendocrinol* 2008, **20**:802-7.
198. Singh MK, Elefteriou F, Karsenty G: **Cocaine and amphetamine-regulated transcript may regulate bone remodeling as a circulating molecule.** *Endocrinology* 2008, **149(8)**:3933-41.
199. Wiens M, Etmann M, Gill SS, Takkouche B: **Effects of antihypertensive drug treatments on fracture outcomes: a meta-analysis of observational studies.** *J Intern Med* 2006, **260(4)**:350-62.
200. Badman MK, Flier JS: **The adipocyte as an active participant in energy balance and metabolism.** *Gastroenterology* 2007, **32(6)**:2103-15.
201. Morton GJ: **Hypothalamic leptin regulation of energy homeostasis and glucose metabolism.** *J Physiol* 2007, **583(Pt 2)**:437-43.
202. Taubes G: **Insulin resistance. Prosperity's plague.** *Science* 2009, **325**:256-60.
203. Ellacott KL, Halatchev IG, Cone RD: **Interactions between gut peptides and the central melanocortin system in the regulation of energy homeostasis.** *Peptides* 2006, **27(2)**:340-9.
204. Elmquist JK: **Hypothalamic pathways underlying the endocrine, autonomic, and behavioral effects of leptin.** *Int J Obes Relat Metab Disord* 2001, **25(Suppl 5)**:S78-82.
205. Tseng Y-H, Kokkatou E, Schulz TJ, Huang TL, Winnay JN, Taniguchi CM, Tran TT, Suzuki R, Espinoza DO, Yamamoto Y, Ahrens MJ, Dudley AT, Norris AV, Kulkarni RN, Kahn R: **New role of bone morphogenetic protein 7 in brown adipogenesis and energy expenditure.** *Nature* 2008, **454(7207)**:1000-4.
206. Clayton PE, Gill MS, Hall CM, et al.: **Serum leptin throughout childhood and adolescence.** *Clin Endocrinol* 1997, **46**:727-733.
207. Demerath EW, Towne B, Wisemandle W, et al.: **Serum leptin concentration, body composition, and gonadal hormones during puberty.** *Intern J Obesity* 23:678-685.
208. Gomez JM: **Serum leptin, insulin-like growth factor-I components and sex hormone binding globulin. Relationship with sex, age and body composition in healthy population.** *Protein and Peptide Letters* 2007, **4(7)**:701-711.
209. Malendowicz LK, Rucinski M, Belloni AS, Ziolkowska A, Nussdorfer GG: **Leptin and the regulation of the hypothalamic-pituitary-adrenal axis.** *Int Rev Cytol* 2007, **263**:63-102.
210. Ong KK, Elks CE, Li S, Zhao JH, Luan J, Andersen LB, Bingham SA, Brage S, Smith GD, Ekelund U, Gillson CJ, Glaser B, Golding J, Hardy R, Khaw KT, Kuh D, Luben R, Marcus M, McGeehin MA, Ness AR, Northstone K, Ring SM, Rubin C, Sims MA, Song K, Strachan DP, Volenweider P, Waeber G, Waterworth DM, Wong A, Deloukas P, Barroso I, Mooser V, Loos RJ, Wareham NJ: **Genetic variation in LIN28B is associated with the timing of puberty.** *Nat Genet* 2009 in press.
211. Flanagan DE, Vaile JC, Petley GW, Phillips DI, Godsland IF, Owens P, Moore VM, Cockington RA, Robinson JS: **Gender differences in the relationship between leptin, insulin resistance and the autonomic nervous system.** *Regul Pept* 2007, **140(1-2)**:37-42.
212. Krishnan B, Jeffery A, Metcalf B, Hosking J, Voss L, Wilkin T, Flanagan DE: **Gender differences in the relationship between heart rate control and adiposity in young children: a cross-sectional study (EarlyBird 33).** *Pediatr Diabetes* 2009, **10(2)**:127-34.
213. Hamrick MW, Ferrari SL: **Leptin and the sympathetic connection of fat to bone.** *Osteoporos Int* 2008, **19(7)**:905-12.
214. Fu L, Patel MS, Karsenty G: **The circadian modulation of leptin-controlled bone formation.** *Prog Brain Res* 2006, **153**:177-88.
215. Bouxsein ML, Devlin MJ, Glatt V, Dhillon H, Pierroz DD, Ferrari SL: **Mice lacking beta-adrenergic receptors have increased bone**

- mass but are not protected from deleterious skeletal effects of ovariectomy. *Endocrinology* 2009, **150**(1):144-52.
216. Lee NK, Sowa H, Hinoi E, Ferron M, Ahn JD, Confavreux C, Dacquin R, Mee PJ, McKee MD, Jung DY, Zhang Z, Kim JK, Mauvais-Jarvis F, Ducy P, Karsenty G: **Endocrine regulation of energy metabolism by the skeleton.** *Cell* 2007, **30**:456-69.
  217. Semenkovich CF, Teitelbaum SL: **Bone weighs in on obesity.** *Cell* 2007, **130**:409-178.
  218. Wolf G: **Energy regulation by the skeleton.** *Nutr Rev* 2008, **66**(4):229-33.
  219. Eikelis N, Schlaich M, Aggarwal A, Kaye D, Esler M: **Interactions between leptin and the human sympathetic nervous system.** *Hypertension* 2003, **41**(5):1072-9.
  220. Steppan CM, Crawford DT, Chidsey-Frink KL, Ke H, Swick AG: **Leptin is a potent stimulator of bone growth in ob/ob mice.** *Regul Pept* 2000, **92**(1-3):73-8.
  221. Lee NJ, Wong IP, Baldock PA, Herzog H: **Leptin as an endocrine signal in bone.** *Curr Osteoporos Rep* 2008, **6**(2):62-6.
  222. Gat-Yablonski G, Phillip M: **Leptin and regulation of linear growth.** *Curr Opin Clin Nutr Metab Care* 2008, **11**(3):393-8.
  223. Maor G, Rochwerger M, Segev Y, Phillip M: **Leptin acts as a growth factor on the chondrocytes of skeletal growth centers.** *J Bone Miner Res* 2002, **17**(6):1034-43.
  224. Nakajima R, Inada H, Koike T, Yamano T: **Effects of leptin to cultured growth plate chondrocytes.** *Horm Res* 2003, **60**(2):91-8.
  225. Matson DD: **Craniopharyngioma.** *Clin Neurosurg* 1964, **10**:116-29.
  226. Vignolo M, Naselli A, Di Battista E, Mostert M, Aicardi G: **Growth and development in simple obesity.** *Eur J Pediatr* 1988, **147**(3):242-4.
  227. Hassink SG, Sheslow DV, de Lancey E, Opentanova I, Considine RV, Caro JF: **Serum leptin in children with obesity: relationship to gender and development.** *Pediatrics* 1996, **98**(2 Pt 1):201-3.
  228. Klein KO, Larmore KA, de Lancey E, Brown JM, Considine RV, Hassink SG: **Effect of obesity on estradiol level, and its relationship to leptin, bone maturation, and bone mineral density in children.** *J Clin Endocrinol Metab* 1998, **83**(10):3469-75.
  229. Montague CT, Farooqi IS, Whitehead JP, Soos MA, Rau H, Wareham NJ, Sewter CP, Digby JE, Mohammed SN, Hurst JA, Cheetham CH, Earley AR, Barnett AH, Prins JB, O'Rahilly S: **Congenital leptin deficiency is associated with severe early-onset obesity in humans.** *Nature* 1997, **387**(6636):903-8.
  230. Farooqi IS, Matarese G, Lord GM, Keogh JM, Lawrence E, Agwu C, Sanna V, Jebb SA, Perna F, Fontana S, Lechler RI, DePaoli AM, O'Rahilly S: **Beneficial effects of leptin on obesity, T cell hyporesponsiveness, and neuroendocrine/metabolic dysfunction of human congenital leptin deficiency.** *J Clin Invest* 2002, **110**(8):1093-103.
  231. Gat-Yablonski G, Shtaf B, Abraham E, Phillip M: **Nutrition-induced catch-up growth at the growth plate.** *J Pediatr Endocrinol Metab* 2008, **21**(9):879-93.
  232. Morris DL, Rui L: **Recent advances in understanding leptin signaling and leptin resistance.** *Am J Physiol Endocrinol Metab* 2009 in press.
  233. Hosoi T, Sasaki M, Miyahara T, Hashimoto C, Matsuo S, Yoshii M, Ozawa K: **Endoplasmic reticulum stress induces leptin resistance.** *Mol Pharmacol* 2008, **74**(6):1610-9.
  234. Mark AL, Correia ML, Rahmouni K, Haynes WG: **Selective leptin resistance: a new concept in leptin physiology with cardiovascular implications.** *J Hypertens* 2002, **20**(7):1245-50.
  235. Correia ML, Haynes WG, Rahmouni K, Morgan DA, Sivitz WI, Mark AL: **The concept of selective leptin resistance: evidence from agouti yellow obese mice.** *Diabetes* 2002, **51**(2):439-42.
  236. Rahmouni K, Morgan DA, Morgan GM, Mark AL, Haynes WG: **Role of selective leptin resistance in diet-induced obesity hypertension.** *Diabetes* 2005, **54**(7):2012-8.
  237. Ladyman SR, Tups A, Augustine RA, Swahn-Azavedo AM, Kokay IC, Grattan DR: **Loss of hypothalamic response to leptin during pregnancy associated with development of melanocortin resistance.** *J Neuroendocrinol* 2009 in press.
  238. Tam J, Fukumura D, Jain RK: **A mathematical model of murine metabolic regulation by leptin: energy balance and defense of a stable body weight.** *Cell Metab* 2009, **9**(1):52-63.
  239. Banks WA: **The blood-brain barrier as a cause of obesity.** *Curr Pharm Des* 2008, **14**(16):1606-14.
  240. White CL, Whittington A, Barnes MJ, Wang Z, Bray GA, Morrison CD: **HF diets increase hypothalamic PTP1B and induce leptin resistance through both leptin-dependent and -independent mechanisms.** *Am J Physiol Endocrinol Metab* 2009, **296**(2):E291-9.
  241. Chen K, Li F, Li J, Cai H, Strom S, Bisello A, Kelley DE, Friedman-Einat M, Skibinski GA, McCrory MA, Szalai AJ, Zhao AZ: **Induction of leptin resistance through direct interaction of C-reactive protein with leptin.** *Nat Med* 2006, **12**(4):425-32.
  242. Moraes JC, Coope A, Morari J, Cintra DE, Roman EA, Pauli JR, Romanatto T, Carvalheira JB, Oliveira AL, Saad MJ, Velloso LA: **High-fat diet induces apoptosis of hypothalamic neurons.** *PLoS ONE* 2009, **4**(4):e5045.
  243. Howard JK, Cave BJ, Oksanen LJ, Tzamelis I, Bjørbaek C, Flier JS: **Enhanced leptin sensitivity and attenuation of diet-induced obesity in mice with haploinsufficiency of Socs3.** *Nat Med* 2004, **10**(7):734-8.
  244. Mori H, Hanada R, Hanada T, Aki D, Mashima R, Nishinakamura H, Torisu T, Chien KR, Yasukawa H, Yoshimura A: **Socs3 deficiency in the brain elevates leptin sensitivity and confers resistance to diet-induced obesity.** *Nat Med* 2004, **10**(7):739-43.
  245. Elchebly M, Payette P, Michaliszyn E, Cromlish WW, Collins S, Loy AL, Normandin D, Cheng A, Himms-Hagen J, Chan CC, Ramachandran C, Gresser MJ, Tremblay ML, Kennedy BP: **Increased insulin sensitivity and obesity resistance in mice lacking the protein tyrosine phosphatase-1B gene.** *Science* 1999, **283**(5407):1544-8.
  246. Klamann LD, Boss O, Peroni OD, Kim JK, Martino JL, Zabolotny JM, Moghal N, Lubkin M, Kim YB, Sharpe AH, Stricker-Krongrad A, Shulman GI, Neel BG, Kahn BB: **Increased energy expenditure, decreased adiposity, and tissue-specific insulin sensitivity in protein-tyrosine phosphatase 1B-deficient mice.** *Mol Cell Biol* 2000, **20**(15):5479-89.
  247. Peelman F, Couturier C, Dam J, Zabeau L, Tavernier J, Jockers R: **Techniques: new pharmacological perspectives for the leptin receptor.** *Trends Pharmacol Sci* 2006, **7**(4):218-25.
  248. Couturier C, Sarkis C, Séron K, Belouzard S, Chen P, Lenain A, Corset L, Dam J, Vauthier V, Dubart A, Mallet J, Froguel P, Rouillé Y, Jockers R: **Silencing of OB-RGR in mouse hypothalamic arcuate nucleus increases leptin receptor signaling and prevents diet-induced obesity.** *Proc Natl Acad Sci USA* 2007, **104**(49):19476-81.
  249. Bjørbaek C, Elmquist JK, Frantz JD, Shoelson SE, Flier JS: **Identification of SOCS-3 as a potential mediator of central leptin resistance.** *Mol Cell* 1998, **1**(4):619-25.
  250. Kievit P, Howard JK, Badman MK, Balthasar N, Coppari R, Mori H, Lee CE, Elmquist JK, Yoshimura A, Flier JS: **Enhanced leptin sensitivity and improved glucose homeostasis in mice lacking suppressor of cytokine signaling-3 in POMC-expressing cells.** *Cell Metab* 2006, **4**(2):123-32.
  251. Sovio U, Bennett AJ, Millwood IY, Molitor J, O'Reilly PF, Timpson NJ, Kaakinen M, Laitinen J, Haukka J, Pillas D, Tzoulaki I, Molitor J, Hoggart C, Coin LJ, Whittaker J, Pouta A, Hartikainen AL, Freimer NB, Widen E, Peltonen L, Elliott P, McCarthy MI, Jarvelin MR: **Genetic determinants of height growth assessed longitudinally from infancy to adulthood in the northern Finland birth cohort 1966.** *PLoS Genet* 2009, **5**(3):e1000409.
  252. Picardi PK, Calegari VC, Prada Pde O, Moraes JC, Araújo E, Marccondes MC, Ueno M, Carvalheira JB, Velloso LA, Saad MJ: **Reduction of hypothalamic protein tyrosine phosphatase improves insulin and leptin resistance in diet-induced obese rats.** *Endocrinology* 2008, **149**(8):3870-80.
  253. Couturier C, Jockers R: **Activation of the leptin receptor by a ligand-induced conformational change of constitutive receptor dimmers.** *J Biol Chem* 2003, **278**(29):26604-11.
  254. Reinker KA: **The role of melatonin and growth factors in the etiology of idiopathic scoliosis.** In *Etiology of Adolescent Idiopathic Scoliosis: Current Trends and Relevance to New Treatment Approaches, State of the Art Reviews: Spine Volume 14*. Issue 2 Edited by: Burwell RG, Dangerfield PH, Lowe TG, Margulies JY. Philadelphia, Hanley & Belfus Inc; 2000:431-439.
  255. Bagnall KM, Raso VJ, Hill DL, Moreau M, Mahood JK, Jiang H, Russell G, Bering M, Buzzell GR: **Melatonin levels in idiopathic scoliosis. Diurnal and nocturnal serum melatonin levels in girls with adolescent idiopathic scoliosis.** *Spine* 1996, **21**(17):1974-8.
  256. Letellier K, Azeddine B, Parent S, Labelle H, Rompré PH, Moreau A, Moldovan F: **Estrogen cross-talk with the melatonin signaling pathway in human osteoblasts derived from adolescent idiopathic scoliosis patients.** *J Pineal Res* 2008, **45**(4):383-93.

257. Kasuya E, Kushibiki S, Sutoh M, Saito T, Ito S, Yayou K, Sakumoto R, Hodate K: **Effect of melatonin injected into the third ventricle on growth hormone secretion in Holstein steers.** *J Vet Med Sci* 2006, **68(10)**:1075-80.
258. Leboeuf D, Letellier K, Alos N, Edery P, Moldovan F: **Do estrogens impact adolescent idiopathic scoliosis?** *Trends Endocrinol Metab* 2009, **20(4)**:147-52.
259. Lowe TG: **Skeletal muscle and platelet abnormalities in adolescent idiopathic scoliosis.** In *Etiology of Adolescent Idiopathic Scoliosis: Current Trends and Relevance to New Treatment Approaches, State of the Art Reviews: Spine Volume 14*. Issue 2 Edited by: Burwell RG, Dangerfield PH, Lowe TG, Margulies JY. Philadelphia, Hanley & Belfus Inc; 2000:441-446.
260. Wang KX, Shi YF, Ron Y, Kazanecki CC, Denhardt DT: **Plasma osteopontin modulates chronic restraint stress-induced thymus atrophy by regulating stress hormones: inhibition by an anti-osteopontin monoclonal antibody.** *J Immunol* 2009, **182(4)**:2485-91.
261. MacDonald IF, Kempster B, Zanette L, MacDougall-Shackleton SA: **Early nutritional stress impairs development of a song-control brain region in both male and female juvenile song sparrows (*Melospiza melodia*) at the onset of song learning.** *Proc Biol Sci* 2006, **273(1600)**:2559-64.
262. Fujihara S, Yokozeki M, Oba Y, Higashibata Y, Nomura S, Moriyama K: **Function and regulation of osteopontin in response to mechanical stress.** *J Bone Miner Res* 2006, **21(6)**:956-64.
263. Qiu XS, Tang NI, Yeung HY, Lee KM, Hung VW, Ng BK, Ma SL, Kwok RH, Qin L, Qiu Y, Cheng JC: **Melanin receptor 1B (*MTNR1B*) gene polymorphism is associated with the occurrence of adolescent idiopathic scoliosis.** *Spine* 2007, **32(16)**:1748-1753.
264. Qiu XS, Tang NL, Yeung HY, Cheng JC, Qiu Y: **Lack of association between the promoter polymorphism of the *MTNR1A* gene and adolescent idiopathic scoliosis.** *Spine* 2008, **33(20)**:2204-7.
265. Lysenko V, Nagorny CL, Erdos MR, Wierup N, Jonsson A, Spégel P, Bugliani M, Saxena R, Fex M, Pulizzi N, Isomaa B, Tuomi T, Nilsson P, Kuusisto J, Tuomilehto J, Boehnke M, Altshuler D, Sundler F, Eriksson JG, Jackson AU, Laakso M, Marchetti P, Watanabe RM, Mulder H, Groop L: **Common variant in *MTNR1B* associated with increased risk of type 2 diabetes and impaired early insulin secretion.** *Nat Genet* 2009, **41(1)**:82-8.
266. Prokopenko I, Langenberg C, Florez JC, Saxena R, Soranzo N, Thorleifsson G, Loos RJ, Manning AK, Jackson AU, Aulchenko Y, Potter SC, Erdos MR, Sanna S, Hottenga JJ, Wheeler E, Kaakinen M, Lysenko V, Chen WM, Ahmadi K, Beckmann JS, Bergman RN, Bochud M, Bonnycastle LL, Buchanan TA, Cao A, Cervino A, Coin L, Collins FS, Crisponi L, de Geus EJ, Dehghan A, Deloukas P, Doney AS, Elliott P, Freimer N, Gateva V, Herder C, Hofman A, Hughes TE, Hunt S, Illig T, Inouye M, Isomaa B, Johnson T, Kong A, Krestyaninova M, Kuusisto J, Laakso M, Lim N, Lindblad U, Lindgren CM, McCann OT, Mohlke KL, Morris AD, Naitza S, Orrù M, Palmer CN, Pouta A, Randall J, Rathmann W, Saramies J, Scheet L, Scuteri A, Sharp S, Sijbrands E, Smit JH, Song K, Steinthorsdottir V, Stringham HM, Tuomi T, Tuomilehto J, Uitterlinden AG, Voight BF, Waterworth D, Wichmann HE, Willemsen G, Witteman JC, Yuan X, Zhao JH, Zeggini E, Schlessinger D, Sandhu M, Boomsma DI, Uda M, Spector TD, Penninx BV, Altshuler D, Vollenweider P, Jarvelin MR, Lakatta E, Waeber G, Fox CS, Peltonen L, Groop LC, Mooser V, Cupples LA, Thorsteinsdottir U, Boehnke M, Barroso I, Van Duijn C, Dupuis J, Watanabe RM, Stefansson K, McCarthy MI, Wareham NJ, Meigs JB, Abecasis GR: **Variants in *MTNR1B* influence fasting glucose levels.** *Nat Genet* 2009, **41(1)**:77-81.
267. Schultz AH: **Origin of the human stock. The specializations of man and his place among the catarrhine primates.** *Cold Spring Harb Symp Quant Biol* 1950, **15**:37-53.
268. Grivas TB, Burwell RG, Purdue M, Webb JK, Moulton A: **A segmental analysis of thoracic shape in chest radiographs of children. Changes related to spinal level, age, sex, side and significance for lung growth and scoliosis.** *J Anat* 1991, **178**:21-38.
269. Johanson DC, Edey MA, Lucy : **The beginnings of human kind.** London: Penguin Books:413.
270. Lovejoy CO: **The natural history of human gait and posture. Part I. Spine and pelvis.** *Gait Posture* 2005, **21(1)**:95-112.
271. Lovejoy CO: **Evolution of human walking.** *Sci Am* 1988, **259**:82-9.
272. Emans JB, Ciarlo M, Callahan M, Zurakowski D: **Prediction of thoracic dimensions and spine length based on individual pelvic dimensions in children and adolescents: an age-independent, individualized standard for evaluation of outcome in early onset spinal deformity.** *Spine* 2005, **30(24)**:2824-9.
273. Mac-Thiong JM, Berthodnaud E, Dimar JR, Betz RR, Labelle H: **Sagittal alignment of the spine and pelvis during growth.** *Spine* 2004, **29(15)**:1642-7.
274. Boulay C, Tardieu C, Hecquet J, Benaim C, Mouilleseaux B, Marty C, Prat-Pradal D, Legaye J, Duval-Beaupère G, Pélissier J: **Sagittal alignment of spine and pelvis regulated by pelvic incidence: standard values and prediction of lordosis.** *Eur Spine J* 2006, **15(4)**:415-22.
275. Aiello L, Dean C: **The hominoid pelvis.** In *An Introduction to Human Evolutionary Anatomy Volume Chapter 20*. London: Academic Press; 1990:429-456.
276. Lynch G, Granger R: **The origin of big brains.** In *Big Brain. The origins and future of human intelligence Volume Chapter 11*. New York: Palgrave Macmillan; 2008:139-159.
277. Burwell RG, Aujla RK, Cole AA, Dangerfield PH, Moulton A: **Body frame size and pelvic width as a reference standard for weight? Possible biological significance and evolutionary origin [abstract].** *Clin Anat* 2009, **22(3)**:410-1.
278. Hung VVY, Qin L, Cheung CSK, Lam TP, Ng BKW, Tse YK, Go X, Lee KM, Cheng JCY: **Osteopenia: a new prognostic factor of curve progression in adolescent idiopathic scoliosis.** *J Bone Joint Surg Am* 2005, **87-A**:2709-2716.
279. Szalay EA, Bosch P, Schwend RM, Buggie B, Tandberg D, Sherman F: **Adolescents with idiopathic scoliosis are not osteoporotic.** *Spine* 2008, **33(7)**:802-6.
280. Kauffman AS, Clifton DK, Steiner RA: **Emerging ideas about kisspeptin- *GPR54* signaling in the neuroendocrine regulation of reproduction.** *Trends Neurosci* 2007, **30(10)**:504-11.
281. Roseweir AK, Kauffman AS, Smith JT, Guerriero KA, Morgan K, Pielecka-Fortuna J, Pineda R, Gottsch ML, Tena-Sempere M, Moenter SM, Terasawa E, Clarke IJ, Steiner RA, Millar RP: **Discovery of potent kisspeptin antagonists delineate physiological mechanisms of gonadotropin regulation.** *J Neurosci* 2009, **29(12)**:3920-9.
282. Mattson M, Calabrese E: **Best in small doses.** *New Sci* 2008, **199(2668)**:36-9.
283. Mattson MP: **Awareness of hormesis will enhance future research in basic and applied neuroscience.** *Crit Rev Toxicol* 2008, **38(7)**:633-9.
284. Calabrese EJ: **Hormesis and medicine.** *Br J Clin Pharmacol* 2008, **66(5)**:594-617.
285. Martin A, David V, Malaval L, Lafage-Proust MH, Vico L, Thomas T: **Opposite effects of leptin on bone metabolism: a dose-dependent balance related to energy intake and insulin-like growth factor-I pathway.** *Endocrinol* 2007, **148(7)**:3419-25.
286. Nomura Y, Kimura K, Arai H, Segawa M: **Involvement of the autonomic nervous system in the pathophysiology of Rett syndrome.** *Eur Child Adolesc Psychiatry* 1997, **6(Suppl 1)**:42-6.
287. Acampa M, Guideri F, Hayek J, Bardi P, De Lalla A, Zappella M, Auteri A: **Sympathetic overactivity and plasma leptin levels in Rett syndrome.** *Neurosci Lett* 2008, **432(1)**:69-72.
288. Haynes WG, Morgan DA, Walsh SA, Mark AL, Sivitz WI: **Receptor-mediated regional sympathetic nerve activation by leptin.** *J Clin Invest* 1997, **100(2)**:270-8.
289. Grugni G, Marzullo P, Ragusa L, Sartorio A, Trifirò G, Liuzzi A, Crinò A: **Impairment of GH responsiveness to combined GH-releasing hormone and arginine administration in adult patients with Prader-Willi syndrome. Genetic Obesity Study Group of the Italian Society of Pediatric Endocrinology and Diabetology.** *Clin Endocrinol (Oxf)* 2006, **65(4)**:492-9.
290. Iughetti L, Bosio L, Corrias A, Gargantini L, Ragusa L, Livieri C, Predieri B, Bruzzi P, Caselli G, Grugni G: **Pituitary height and neuroendocrine alterations in patients with Prader-Labhart-Willi syndrome.** *Eur J Pediatr* 2008, **167(6)**:701-2.
291. Odent T, Accadbled F, Koureas G, Cournot M, Moine A, Diene G, Molinas C, Pinto G, Tauber M, Gomes B, de Gauzy JS, Glorion C: **Scoliosis in patients with Prader-Willi Syndrome.** *Pediatrics* 2008, **122(2)**:e499-503.
292. de Lind van Wijngaarden RF, de Klerk LW, Festen DA, Hokken-Koelega AC: **Scoliosis in Prader-Willi syndrome: prevalence, effects of age, gender, body mass index, lean body mass and genotype.** *Arch Dis Child* 2008, **93(12)**:1012-6.

293. Diene G, de Gauzy JS, Tauber M: **Is scoliosis an issue for giving growth hormone to children with Prader-Willi syndrome?** *Arch Dis Child* 2008, **93(12)**:1004-6.
294. Civardi C, Vicentini R, Grugni G, Cantello R: **Corticospinal physiology in patients with Prader-Willi syndrome: a transcranial magnetic stimulation study.** *Arch Neurol* 2004, **61(10)**:1585-9.
295. Myers SE, Davis A, Whitman BY, Santiago JV, Landt M: **Leptin concentrations in Prader-Willi syndrome before and after growth hormone replacement.** *Clin Endocrinol (Oxf)* 2000, **52(1)**:101-5.
296. Haqq AM, Grambow SC, Muehlbauer M, Newgard CB, Svetkey LP, Carrel AL, Yanovski JA, Purnell JQ, Freemark M: **Ghrelin concentrations in Prader-Willi syndrome (PWS) infants and children: changes during development.** *Clin Endocrinol (Oxf)* 2008, **69(6)**:911-20.
297. Proto C, Romualdi D, Cento RM, Romano C, Campagna G, Lanzzone A: **Free and total leptin serum levels and soluble leptin receptors levels in two models of genetic obesity: the Prader-Willi and the Down syndromes.** *Metabolism* 2007, **56(8)**:1076-80.
298. Morgan E: **Explaining the fat layer.** In *The scars of evolution. What our bodies tell us about human origins Volume Ch 10*. London: Souvenir Press; 1990:114-123. and Not even a theory to cover our nakedness. *New Sci* 2009, **203(2726)**:28-29
299. Kuzawa CW: **Adipose tissue in human infancy and childhood: an evolutionary perspective.** *Am J Phys Anthropol* 1998:177-209.
300. Cunnane SC, Crawford MA: **Survival of the fattest: fat babies were the key to evolution of the large human brain.** *Comp Biochem Physiol A Mol Integr Physiol* 2003, **136(1)**:17-26.
301. Power M, Schulkkin J: **The evolution of obesity.** Baltimore: The Johns Hopkins University Press; 2009:392.
302. Gluckman Beedle A, Hanson M: **Principles of evolutionary medicine.** Oxford: University Press; 2009:296.
303. Bramble DM, Lieberman DE: **Endurance running and the evolution of Homo.** *Nature* 2004, **432(7015)**:345-52.
304. Burton FD: **Fire. The spark that ignited human evolution.** Albuquerque:University of New Mexico Press; 2009:231.
305. Gerendai I, Halász B: **Asymmetry of the neuroendocrine system.** *News Physiol Sci* 2001, **16**:92-5.
306. Kasibhatla B, Wos J, Peters KG: **Targeting protein tyrosine phosphatase to enhance insulin action for the potential treatment of diabetes.** *Curr Opin Investig Drugs* 2007, **8(10)**:805-13.
307. Skogland LB, Miller JA: **Growth related hormones in idiopathic scoliosis. An endocrine basis of accelerated growth.** *Acta Orthop Scand* 1980, **51(5)**:779-780.
308. Ahl T, Albertsson-Wikland K, Kalén R: **Twenty-four-hour growth hormone profiles in pubertal girls with idiopathic scoliosis.** *Spine* 1988, **13(2)**:139-42.
309. Kaplan SA, Cohen P: **The somatomedin hypothesis 50 years later.** *J Clin Endocrinol Metab* 2007, **92(12)**:4529-35.
310. Qiu XS, Tang NL, Yeung HY, Qiu Y, Cheng JC: **Genetic association study of growth hormone receptor and idiopathic scoliosis.** *Clin Orthop Relat Res* 2007, **462**:53-8.
311. Styne DM: **The regulation of pubertal growth.** *Horm Res* 2003, **60(Suppl 1)**:22-6.
312. Willner S, Nilsson KO, Kastrop K, Bergstrand CG: **Growth hormone and somatomedin A in girls with adolescent idiopathic scoliosis.** *Acta Paediatr Scand* 1976, **65(5)**:547-52.
313. Willner S, Johnell O: **Study of biochemical and hormonal data in idiopathic scoliosis in girls.** *Arch Orthop Trauma Surg* 1981, **98(4)**:251-5.
314. Yeung HY, Tang NL, Lee KM, Ng BK, Hung VW, Kwok R, Guo X, Qin L, Cheng JC: **Genetic association study of insulin-like growth factor-I (IGF-I) gene with curve severity and osteopenia in adolescent idiopathic scoliosis.** *Stud Health Technol Inform* 2006, **123**:18-24.
315. Dymling JF, Willner S: **Progression of a structural scoliosis during treatment with growth hormone. A case report.** *Acta Orthop Scand* 1978, **49(3)**:264-8.
316. Wang ED, Drummond DS, Dormans JP, Moshang T, Davidson RS, Gruccio D: **Scoliosis in patients treated with growth hormone.** *J Pediatr Orthop* 1997, **17(6)**:708-11.
317. Vidil A, Journeau P, Soulie A, Padovani JP, Pouliquen JC: **Evolution of scoliosis in six children treated with growth hormone.** *J Pediatr Orthop B* 2001, **10(3)**:197-200.
318. Docquier PL, Mousny M, Jouret M, Bastin C, Rombouts JJ: **Orthopaedic concerns in children with growth hormone therapy.** *Acta Orthop Belg* 2004, **70(4)**:299-305.
319. Hindmarsh PC, Pringle PJ, Stanhope R, Brook CG: **The effect of a continuous infusion of a somatostatin analogue (octreotide) for two years on growth hormone secretion and height prediction in tall children.** *Clin Endocrinol* 1995, **42(5)**:509-15.
320. Nagai T, Obata K, Ogata T, Murakami N, Katada Y, Yoshino A, Sakazume S, Tomita Y, Sakuta R, Niikawa N: **Growth hormone therapy and scoliosis in patients with Prader-Willi syndrome.** *Am J Med Genet* 2006, **140(15)**:1623-7.
321. de Lind van Wijngaarden R, de Klerk LW, Festen DA, Otten BJ, Hokken-Koelega AC: **Scoliosis and the effects of growth hormone treatment in children with Prader-Willi syndrome.** *Scoliosis Research Society 43rd Annual Meeting and Course, Salt Lake City, Utah, USA, September 10-13 2008* :109.
322. Neugebauer H: **Brace and hormone therapy of idiopathic scolioses. Report of a 6-year investigation.** *Wien Klin Wochenschr Suppl* 1974, **22**:3-30.
323. Drop SL, De Waal WJ, De Muinck Keizer-Schrama SM: **Sex steroid treatment of constitutionally tall stature.** *Endocr Rev* 1998, **19(5)**:540-58.
324. Inoue M, Minami S, Nakata Y, Kitahara H, Otsuka Y, Isobe K, Takaso M, Tokunaga M, Nishikawa S, Maruta T, Moriya H: **Association between estrogen receptor gene polymorphisms and curve severity of idiopathic scoliosis.** *Spine (Phila Pa 1976)* 2002, **27(21)**:2357-62.
325. Wu J, Qiu Y, Zhang L, Sun Q, Qiu X, He Y: **Association of estrogen receptor gene polymorphisms with susceptibility to adolescent idiopathic scoliosis.** *Spine (Phila Pa 1976)* 2006, **31(10)**:1131-6.
326. Zhang HQ, Lu SJ, Tang MX, Chen LQ, Liu SH, Guo CF, Wang XY, Chen J, Xie L: **Association of estrogen receptor beta gene polymorphisms with susceptibility to adolescent idiopathic scoliosis.** *Spine (Phila Pa 1976)* 2009, **34(8)**:760-4.
327. Edelmann P, Gupta D: **Hormonal investigations in adolescent idiopathic scoliosis.** *Acta Endocrinol (Kbh)* 1974:71.
328. Kulis A, Zarzycki D, Jaskiewicz J: **Concentration of estradiol in girls with idiopathic scoliosis.** *Ortop Traumatol Rehabil* 2006, **8(4)**:455-9.
329. Raczkowski JW: **The concentrations of testosterone and estradiol in girls with adolescent idiopathic scoliosi.** *Neuroendocrinol Letters* 2007, **28(3)**:302-304.
330. Burwell RG: **Biology is the future of scoliosis treatment.** *Stud Health Technol Inform* 2002, **88**:309-15.
331. Burwell RG, Dangerfield PH: **The NOTOM hypothesis for idiopathic scoliosis: is it nullified by the delayed puberty of female rhythmic gymnasts and ballet dancers with scoliosis?** *Stud Health Technol Inform* 2002, **91**:12-14.
332. Burwell RG, Dangerfield PH: **A possible neuroendocrine method for delaying the adolescent growth spurt and slowing scoliosis curve progression based on the NOTOM hypothesis. Potential of a medical treatment for progressive juvenile and adolescent idiopathic scoliosis.** *J Bone Joint Surg Br* 2003, **85-B(Suppl III)**:190-1.
333. King AG: **Modification of the spinal peak growth velocity as a possible treatment for adult scoliosis.** *Stud Health Technol Inform* 2002, **91**:489-491.
334. Warren MP, Brooks-Gunn J, Hamilton LH, Warren LF, Hamilton WG: **Scoliosis and fractures in young ballet dancers. Relation to delayed menarche and secondary amenorrhoea.** *N Engl J Med* 1986, **314(21)**:1348-53.
335. Warren MP, Stiehl AL: **Exercise and female adolescents: effects on the reproductive and skeletal systems.** *J Am Med Womens Assoc* 1999, **54(3)**:115-20.
336. Roth JA, Kim BG, Lin WL, Cho MI: **Melatonin promotes osteoblast differentiation and bone formation.** *J Biol Chem* 1999, **274(31)**:22041-7.
337. Man GC, Yeung YH, Wang WJ, Lee KM, Ng BK, Hung WY, Qiu Y, Cheng JC: **The effect of melatonin on proliferation and differentiation of osteoblasts in adolescent idiopathic scoliosis vs normal control (Abstract).** *Stud Health Technol Inform* 2008, **140**:373.
338. Man CWG, Wang W, Yeung HYB, Ng KW, Hung WY, Lee KMS, Ng TB, Qiu Y, Cheng JCY: **Abnormal responses to melatonin in osteoblasts cultured from adolescent idiopathic scoliosis**

- (Abstract).** In *Proceedings of Pediatric Orthopaedic Society of North America 25th Anniversary 2009 Annual Meeting Boston, Massachusetts, April 30-May 2 2009 Boston Marriott Copley Place*:212.
339. Wang WJ, Yeung YH, Man CWG, Lee KM, Ng BKW, Qiu Y, Cheng JCY: **Abnormal proliferative response of chondrocytes to melatonin in girls with adolescent idiopathic scoliosis.** *Stud Health Technol Inform* 2008, **140**:370.
  340. Sun G, Wang WJ, Hwang A, Cheng J, Qiu Y: **Expression of melatonin receptor in chondrocyte of adolescent idiopathic scoliosis.** *Stud Health Technol Inform* 2008, **140**:347.
  341. Buommino E, Tufano MA, Balato N, Canozo N, Donnarumma M, Gallo L, Balato A, Ayala F: **Osteopontin: a new emerging role in psoriasis.** *Arch Dermatol Res* 2009, **301(6)**:397-404.
  342. Taylor TFK, Melrose J: **The role of the intervertebral disc in adolescent idiopathic scoliosis.** In *Etiology of Adolescent Idiopathic Scoliosis: Current Trends and Relevance to New Treatment Approaches, State of the Art Reviews: Spine Volume 14*. Issue 2 Edited by: Burwell RG, Dangerfield PH, Lowe TG, Margulies JY. Philadelphia, Hanley & Belfus Inc; 2000:359-369.
  343. Roberts S, Catterson B, Urban JPG: **Structure and composition of the cartilage end plate and intervertebral disc in scoliosis.** In *Etiology of Adolescent Idiopathic Scoliosis: Current Trends and Relevance to New Treatment Approaches, State of the Art Reviews: Spine Volume 14*. Issue 2 Edited by: Burwell RG, Dangerfield PH, Lowe TG, Margulies JY. Philadelphia, Hanley & Belfus Inc; 2000:371-381.
  344. Akhtar S, Davies JR, Catterson B: **Ultrastructural localization and distribution of proteoglycan in normal and scoliotic lumbar disc.** *Spine* 2005, **30(11)**:1303-9.
  345. Yu J, Fairbank JC, Roberts S, Urban JP: **The elastic fiber network of the annulus fibrosus of the normal and scoliotic human intervertebral disc.** *Spine* 2005, **30(16)**:1815-20.
  346. Bertram H, Steck E, Zimmerman G, Chen B, Carstens C, Nerlich A, Richter W: **Accelerated intervertebral disc degeneration in scoliosis versus physiological ageing develops against a background of enhanced anabolic gene expression.** *Biochem Biophys Res Commun* 2006, **342(3)**:963-72.
  347. Grivas TB, Vasiladias E, Malakasis M, Mouzakis V, Segos D: **Intervertebral disc biomechanics in the pathogenesis of idiopathic scoliosis.** *Stud Health Technol Inform* 2006, **123**:80-83.
  348. Crean JK, Roberts S, Jaffray DC, Eisenstein SM, Duance VC: **Matrix metalloproteinases in the human intervertebral disc: role in disc degeneration and scoliosis.** *Spine (Phila Pa 1976)* 1997, **22(24)**:2877-84.
  349. Burke JG, G Watson RW, Conhyea D, McCormack D, Dowling FE, Walsh MG, Fitzpatrick JM: **Human nucleus pulposus can respond to a pro-inflammatory stimulus.** *Spine (Phila Pa 1976)* 2003, **28(24)**:2685-93.
  350. Roberts S, Evans H, Trivedi J, Menage J: **Histology and pathology of the human intervertebral disc.** *J Bone Joint Surg Am* 2006, **88(Suppl 2)**:10-4.
  351. Aulisa L, Papaleo P, Pola E, Angelini F, Aulisa AG, Tamburrelli FC, Pola P, Logroscino CA: **Association between IL-6 and MMP-3 gene polymorphisms and adolescent idiopathic scoliosis: a case-control study.** *Spine (Phila Pa 1976)* 2007, **32(24)**:2700-2.
  352. Sverrisdóttir YB, Elam M, Herlitz H, Bengtsson BA, Johannsson G: **Intense sympathetic nerve activity in adults with hypopituitarism and untreated growth hormone deficiency.** *J Clin Endocrinol Metab* 1998, **83(6)**:1881-5.
  353. Sverrisdóttir YB, Elam M, Caidahl K, Söderling AS, Herlitz H, Johannsson G: **The effect of growth hormone (GH) replacement therapy on sympathetic nerve hyperactivity in hypopituitary adults: a double-blind, placebo-controlled, crossover, short-term trial followed by long-term open GH replacement in hypopituitary adults.** *J Hypertens* 2003, **21(10)**:1905-14.
  354. McMurray RG, Hackney AC: **Interactions of metabolic hormones, adipose tissue and exercise.** *Sports Med* 2005, **35(5)**:393-412.
  355. Resmini E, Casu M, Patrone V, Murialdo G, Bianchi F, Giusti M, Ferone D, Minuto F: **Sympathovagal imbalance in acromegalic patients.** *J Clin Endocrinol Metab* 2006, **91(1)**:115-20.
  356. Andersson IJ, Barlund A, Nyström HC, Olsson B, Skøtt O, Mobini R, Johannsson M, Bergström G: **Reduced sympathetic responsiveness as well as plasma and tissue noradrenaline concentration in growth hormone transgenic mice.** *Acta Physiol Scand* 2004, **182(4)**:369-78.
  357. Scott EM, Greenwood JP, Stoker JB, Mary DA, Gilbey SG: **Sympathetic nerve hyperactivity is associated with increased peripheral vascular resistance in hypopituitary patients with growth hormone deficiency.** *Clin Endocrinol (Oxf)* 2002, **56(6)**:759-63.
  358. Capaldo B, Lembo G, Rendina V, Vigorito C, Guida R, Cuocolo A, Fazio S, Saccà L: **Sympathetic deactivation by growth hormone treatment in patients with dilated cardiomyopathy.** *Eur Heart J* 1998, **19(4)**:623-7.
  359. Ljung T, Holm G, Friberg P, Andersson B, Bengtsson BA, Svensson J, Dallman M, McEwen B, Björntorp P: **The activity of the hypothalamic-pituitary-adrenal axis and the sympathetic nervous system in relation to waist/hip circumference ratio in men.** *Obes Res* 2000, **8(7)**:487-95.
  360. Sverrisdóttir YB, Johannsson G, Jungersten L, Wallin BG, Elam M: **Is the somatotrophic axis related to sympathetic nerve activity in healthy ageing men?** *J Hypertens* 2001, **19(11)**:2019-24.
  361. Møller N, Jørgensen JO: **Effects of growth hormone on glucose, lipid, and protein metabolism in human subjects.** *Endocr Rev* 2009, **30(2)**:152-77.
  362. Weltman A, Pritzlaff CJ, Wideman L, Weltman JY, Blumer JL, Abbott RD, Hartman ML, Veldhuis JD: **Exercise-dependent growth hormone release is linked to markers of heightened central adrenergic outflow.** *J Appl Physiol* 2000, **89(2)**:629-35.
  363. Bartness TJ, Song CK: **Thematic review series: adipocyte biology. Sympathetic and sensory innervation of white adipose tissue.** *J Lipid Res* 2007, **48(8)**:1655-72.
  364. Asher MA: **Foreword.** In *Etiology of Adolescent Idiopathic Scoliosis: Current Trends and Relevance to New Treatment Approaches, State of the Art Reviews: Spine Volume 14*. Issue 2 Edited by: Burwell RG, Dangerfield PH, Lowe TG, Margulies JY. Philadelphia, Hanley & Belfus Inc; 2000:xiv-xv.
  365. Wever DJ, Tønseth KA, Veldhuizen AG, Cool JC, van Horn JR: **Curve progression and spinal growth in brace treated idiopathic scoliosis.** *Clin Orthop Relat Res* 2000, **377**:169-79.
  366. Sarwark J, Aubin CE: **Growth considerations of the immature spine.** *J Bone Joint Surg Am* 2007, **89(Suppl 1)**:8-13.
  367. Milenkovic SM, Kocijancic RI, Belojevic GA: **Left handedness and spine deformities in early adolescence.** *Eur J Epidemiol* 2004, **19(10)**:969-72.
  368. Goldberg CJ, Moore DP, Fogarty EE, Dowling FE: **Handedness and spinal deformity.** *Stud Health Technol Inform* 2006, **123**:442-8.
  369. Grivas TB, Vasiladias ES, Polyzois VD, Mouzakis V: **Trunk asymmetry and handedness in 8245 school children.** *Pediatr Rehabil* 2006, **9(3)**:259-66.
  370. Kouwenhoven JWM, Vincken KL, Bartels LW, Castelein RM: **Analysis of pre-existent vertebral rotation in the normal spine.** *Spine* 2006, **31(13)**:1467-72.
  371. Burwell RG, Dangerfield PH, Freeman BJ, Aujla RK, Cole AA, Kirby AS, Pratt RK, Webb JK, Moulton A: **Etiologic theories of idiopathic scoliosis: the breaking of bilateral symmetry in relation to left-right asymmetry of internal organs, right thoracic adolescent idiopathic scoliosis (AIS) and vertebrate evolution.** *Stud Health Technol Inform* 2006, **23**:1385-90.
  372. Davids JR, Chamberlin E, Blackhurst DW: **Indications for magnetic resonance imaging in presumed adolescent idiopathic scoliosis.** *J Bone Joint Surg Am* 2004, **86**:2187-95.
  373. Brockmeyer D, Golligly S, Smith JT: **Scoliosis associated with Chiari I malformations: the effect of suboccipital decompression on scoliosis curve progression. A preliminary study.** *Spine* 2003, **28(22)**:2505-9.
  374. Ugrinow VL, Bastrom T, Varley ES, Yaszay B, Newton PO: **Left thoracic curves are not a mirror image of right thoracic idiopathic curves.** *Scoliosis Research Society 44th Annual Meeting and Course, San Antonio, Texas, USA, September 23-26 2009*:61.
  375. Paus T: **Mapping brain maturation and cognitive development during adolescence.** *Trends Cogn Sci* 2005, **9(2)**:60-8.
  376. Dangerfield PH, Taylor CJ: **Anthropometric standards for term neonates.** *Early Hum Dev* 1983, **8(3-4)**:225-33.
  377. Dangerfield PH, Taylor CJ: **Liverpool growth study: Neonatal anthropometric standards.** In *Human growth and development* Edited by: Borms J, Hauspie R, Sand A, Suzanne C, Hebbelink M. London: Plenum Press; 1984:131-137.
  378. Kratzsch J, Lammert A, Bottner A, Seidel B, Mueller G, Thiery J, Hebebrand J, Kiess W: **Circulating soluble leptin receptor and**

- free leptin index during childhood, puberty, and adolescence. *J Clin Endocrinol Metab* 2002, **87(10)**:4587-94.
379. Li HJ, Ji CY, Wang W, Hu YH: **A twin study for serum leptin, soluble leptin receptor, and free insulin-like growth factor-I in pubertal females.** *J Clin Endocrinol Metab* 2005, **90(6)**:3659-64.
380. Shapiro IM, Srinivas V: **Metabolic consideration of epiphyseal growth: survival responses in a taxing environment.** *Bone* 2007, **40(3)**:561-7.
381. Ahmed ML, Ong KK, Morrell DJ, Cox L, Drayer N, Perry L, Preece MA, Dunger DB: **Longitudinal study of leptin concentrations during puberty: sex differences and relationship to changes in body composition.** *J Clin Endocrinol Metab* 1999, **84(3)**:899-905.
382. Lin J, Barb CR, Matteri RL, Kraeling RR, Chen X, Meinersmann RJ, Rampacek GB: **Long form leptin receptor mRNA expression in the brain, pituitary, and other tissues in the pig.** *Domest Anim Endocrinol* 2000, **19(1)**:53-61.
383. Serrat MA, Lovejoy CO, King D: **Age- and site-specific decline in insulin-like growth factor-I receptor expression is correlated with differential growth plate activity in the mouse hindlimb.** *Anat Rec (Hoboken)* 2007, **290(4)**:375-81.
384. Zhao CQ, Liu D, Li H, Jiang LS, Dai LY: **Expression of leptin and its functional receptor on disc cells: contribution to cell proliferation.** *Spine* 2008, **33(23)**:E858-64.
385. Brown MF, Hukkanen MV, McCarthy ID, Redfern DR, Batten JJ, Crock HV, Hughes SP, Polak JM: **Sensory and sympathetic innervation of the vertebral endplate in patients with degenerative disc disease.** *J Bone Joint Surg Br* 1997, **79(1)**:147-53.
386. Syme C, Abrahamowicz M, Leonard GT, Perron M, Pitiot A, Qiu X, Richer L, Totman J, Veillette S, Xiao Y, Gaudet D, Paus T, Pausova Z: **Intra-abdominal adiposity and individual components of the metabolic syndrome in adolescence: sex differences and underlying mechanisms.** *Arch Pediatr Adolesc Med* 2008, **162(5)**:453-61.
387. Korr IM, Wright HM, Chace JA: **Cutaneous patterns of sympathetic activity in clinical abnormalities of the musculoskeletal system.** *Acta Neuroveg. Wien* 1964, **25**:589-606.
388. Friedman JM: **Causes and control of excess body fat.** *Nature* 2009, **459**:340-2.
389. Cannon B, Nedergaard J: **Brown adipose tissue: function and physiological significance.** *Physiol Rev* 2004, **84(1)**:277-359.
390. Nedergaard J, Bengtsson T, Cannon B: **Unexpected evidence for active brown adipose tissue in adult humans.** *Am J Physiol Endocrinol Metab* 2007, **293(2)**:E444-52.
391. Farmer SR: **Be cool, lose weight.** *Nature* 2009, **458**:839-40.
392. van Marken Lichtenbelt WD, Vanhommerig JW, Smulders NM, Drossaerts JM, Kemerink GJ, Bouvy ND, Schrauwen P, Teule GJ: **Cold-activated brown adipose tissue in healthy men.** *N Engl J Med* 2009, **360(15)**:1500-8.
393. Cypess AM, Lehman S, Williams G, Tal I, Rodman D, Goldfine AB, Kuo FC, Palmer EL, Tseng YH, Doria A, Kolodny GM, Kahn CR: **Identification and importance of brown adipose tissue in adult humans.** *N Engl J Med* 2009, **360(15)**:1509-17.
394. Virtanen KA, Lidell ME, Orava J, Heglind M, Westergren R, Niemi T, Taittonen M, Laine J, Savisto NJ, Enerbäck S, Nuutila P: **Functional brown adipose tissue in healthy adults.** *N Engl J Med* 2009, **360(15)**:1518-25.
395. Whelan J: **The fat that makes you thin.** *New Sci* 2009, **203(2721)**:39-41.
396. Heaney RP, Davies KM, Barger-Lux MJ: **Calcium and weight: clinical studies.** *J Am Coll Nutr* 2002, **21(2)**:152S-155S.
397. Zivcinkjak M, Smolej Naranci N, Szivovicza L, Franke D, Hrenović J, Bisof V, Tomas Z, Skarić-Jurić T: **Gender-specific growth patterns of transversal body dimensions in Croatian children and youth (2 to 18 years of age).** *Coll Antropol* 2008, **32(2)**:419-31.
398. Mehta MH: **The rib-vertebra angle in the early diagnosis between resolving and progressive infantile scoliosis.** *J Bone Joint Surg Br* 1972, **54(2)**:230-43.
399. Kristmundsdóttir F, Burwell RG, James JI: **The rib-vertebra angles on the convexity and concavity of the spinal curve in infantile idiopathic scoliosis.** *Clin Orthop Relat Res* 1985, **201**:205-9.
400. Grivas TB, Burwell RG, Vasiliadis ES, Webb JK: **A segmental radiological study of the spine and rib-cage in children with progressive infantile idiopathic scoliosis.** *Scoliosis* 2006, **1**:17.
401. Burwell RG, Dangerfield PH, Vernon CL: **Anthropometry and scoliosis.** In *Scoliosis, Proceedings of a Fifth Symposium* Edited by: Zorab PA. London: Academic Press; 1977:123-163.
402. Dangerfield PH, Burwell RG, Vernon CL: **Anthropometry and scoliosis.** In *Spinal Deformities Volume Chapter 14.* Second edition. Edited by: Roaf R. Tunbridge Wells, Kent, UK; 1980:259-28.
403. Wynne-Davies R: **Causative factors, particularly in the first six months of life.** *J Bone Joint Surg Br* 1975, **57(2)**:138-41.
404. McMaster MJ: **Infantile idiopathic scoliosis: can it be prevented?** *J Bone Joint Surg Br* 1983, **65(5)**:612-7.
405. Morrison SF, Nakamura K, Madden CJ: **Central control of thermogenesis in mammals.** *Exp Physiol* 2008, **93(7)**:773-97.
406. Frühbeck G, Becerril S, Sáinz N, Garrastachu P, García-Veloso MJ: **BAT: a new target for human obesity?** *Trends Pharmacol Sci* 2009, **30(8)**:387-96.
407. Mehta MH: **The natural history of infantile idiopathic scoliosis.** In *Scoliosis, Proceedings of a Fifth Symposium* Edited by: Zorab PA. London: Academic Press; 1977:103-122.
408. Kirkwood TB: **A systematic look at an old problem.** *Nature* 2008, **451(7179)**:644-7.

Publish with **BioMed Central** and every scientist can read your work free of charge

"BioMed Central will be the most significant development for disseminating the results of biomedical research in our lifetime."

Sir Paul Nurse, Cancer Research UK

Your research papers will be:

- available free of charge to the entire biomedical community
- peer reviewed and published immediately upon acceptance
- cited in PubMed and archived on PubMed Central
- yours — you keep the copyright

Submit your manuscript here:  
[http://www.biomedcentral.com/info/publishing\\_adv.asp](http://www.biomedcentral.com/info/publishing_adv.asp)

