

**PEDIATRIC NON-ALCOHOLIC FATTY LIVER DISEASE**

## OBOLJENJE NE-ALKOHOLNE MASNE JETRE U PEDIJATRIJI

Edgard Delvin<sup>1,2</sup>, Natasha Patey<sup>2,4,5</sup>, Josée Dubois<sup>2,6,7</sup>, Melanie Henderson<sup>2,8</sup>, Émile Lévy<sup>2,9</sup><sup>1</sup>Departement of Biochemistry<sup>2</sup>CHU Sainte-Justine Research Center,<sup>4</sup>Department of Pathology, CHU Sainte-Justine<sup>5</sup>Department of Cell Biology and Pathology<sup>6</sup>Department of Radiology, CHU Sainte-Justine<sup>7</sup>Department of Medicine<sup>8</sup>Divisions of Genetics and Endocrinology, CHU Sainte-Justine<sup>9</sup>Department of Nutrition, University of Montreal, Montreal, Quebec, Canada

**Summary:** The rapidly increasing prevalence of childhood obesity and its associated co-morbidities such as hypertriglyceridemia, hyper-insulinemia, hypertension, early atherosclerosis, metabolic syndrome, and non-alcoholic fatty liver disease are major public health concerns in many countries. Therefore the trends in child and adolescent obesity should be closely monitored over time, as in the near future, we may anticipate a major increase of young adults with the stigmata of the metabolic syndrome, and of the related non-alcoholic fatty liver disease (NAFLD), that may lead to non-alcoholic steatohepatitis.

**Keywords:** paediatric obesity, non-alcoholic fatty liver disease, NAFLD, steatohepatitis

**Impact of childhood overweight and obesity on health**

The rapidly increasing prevalence of childhood obesity and its lot of associated co-morbidities, namely hypertriglyceridemia, hyper-insulinemia, hypertension, early atherosclerosis, metabolic syndrome, and non-alcoholic fatty liver disease (NAFLD) have become major public health concerns in developed and developing countries (1, 2). It follows that the trends in child and adolescent obesity should be closely monitored over time. However, this may prove

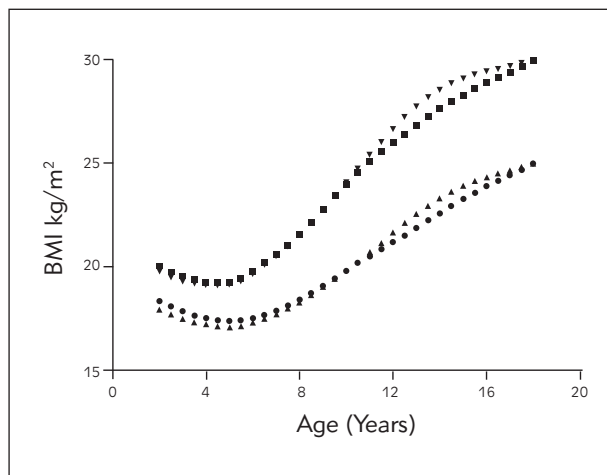
**Kratak sadržaj:** Naglo povećanje prevalencije gojaznosti u detinjstvu i pratećih ko-morbiditeta kako što su hipertrigliceridemija, hiper-insulinemija, hipertenzija, rana ateroskleroza, metabolički sindrom, i ne-alkoholna masna jetra su glavni zdravstveni problemi u mnogim zemljama. To znači da trendove gojaznosti kod dece i omladine treba pratiti blagovremeno, s obzirom da se u bliskoj budućnosti očekuje povećana učestalost metaboličkog sindroma u ovoj populaciji, kao i pratećih oboljenja kao što je oboljenje ne-alkoholne masne jetre (NAFLD), koja može prouzrokovati ne-alkoholni steatohepatitis.

**Ključne reči:** pedijatrijska gojaznost, ne-alkoholna masna jetra, NAFLD, steatohepatitis

to be more difficult than anticipated, as several definitions of child obesity are utilized, and as there are ethnic differences in body fat content (3). Body mass indices (BMI) ( $\text{weight}/\text{height}^2$ ) of  $30 \text{ kg}/\text{m}^2$  and of  $25 \text{ kg}/\text{m}^2$  are widely accepted as the cut-off points for obesity and overweight respectively in adults (4). However no such definite values can be used in childhood and adolescence, as body mass index changes substantially from birth to adulthood (5, 6). To circumvent this issue, Cole et al. (7), using different national age- and sex-specific data sets, have developed age- and sex-specific BMI cut-off points to define overweight and obesity by using different national age- and sex-specific weight data sets. These are illustrated in Figure 1. Being less arbitrary, these data should permit a more precise evaluation of youth obesity and may change the future evaluation of paediatric obesity prevalence. Independently of the defi-

Address for correspondence:

Edgard Delvin  
CHU Sainte-Justine Research Center,  
3175 Côte Ste-Catherine, Montreal, Quebec, Canada, H3T 1C5  
e-mail: delvine@sympatico.ca. Tel: (450) 681-1715



**Figure 1** International age- and sex-specific cut-off points for BMI for overweight and obesity.

Adapted with permission from Cole TJ et al. (7). Data was obtained by averaging the national centiles. BMI: Body Mass Index. Filled circles: curve for overweight boys; filled square: curve for obese boys; filled upward triangles: curve for overweight girls; filled downward triangles: curve for obese girls.

tion of childhood overweight and obesity, secular trends that whilst their prevalence have plateaued in some countries it has continued to rise in others (8–11).

Hence, in the near future, we may anticipate a major increase of young adults with the stigmata of the metabolic syndrome (MetS), and of the related non-alcoholic fatty liver disease (NAFLD), that may lead to non-alcoholic steatohepatitis (NASH) (12, 13).

### Epidemiology of the NAFLD and NASH

The term NAFLD refers to an array of conditions that range from hepatic steatosis alone to steatosis accompanied by inflammation and fibrosis (NASH) and cirrhosis (14). Due to the lack of specific non-invasive methods for the diagnosis of NAFLD, its prevalence in the paediatric population is ill defined. Schwimmer et al. (15), in an excellent retrospective autopsy-based study for all causes of death, conducted on 742 San Diego County children, aged between 2 and 19 years, reported a 9.6% prevalence of fatty liver disease (defined as 5% of hepatocytes containing macro-vesicular fat) after adjustment for age, gender, race, and ethnicity. Importantly, they pointed out that the prevalence rose to 38% in obese children. They further noted ethnic differences in the prevalence of fatty liver in obese children, Black children being less prone and Hispanic children being at higher risk. On the other hand, an early study in Japan conducted in 810 children aged between 4 and 12 years, estimated the prevalence at 2.6%

based on ultrasonographic examination of the liver (16). The establishment of the prevalence of NAFLD in the adult population is inconsistent because subjects are mostly asymptomatic in the early phase of the disease, and because the most frequently used non-invasive biomarkers have variable sensitivity and specificity. As a point in case, ALT and AST have been shown to be both insensitive and nonspecific for diagnosing chronic liver disease (17, 18). This is even truer in youths. North-American, European and Asian studies have reported prevalence in obese children that spanned between 10% and 77% (19–22). The paucity of conclusive reports on the prevalence of NAFLD in youths and adolescents supports the development of better methodologies than the current biochemical marker alanine-aminotransferase (ALT) or aspartate-aminotransferase (AST), two surrogate routine work-up markers for hepatocyte apoptosis.

### Natural history of NAFLD and NASH

Obesity is a major risk factor for developing NAFLD. Monteiro et al. (23) in a small group of overweight and obese youths, using the age- and sex-specific weight cut-off points derived by Cole et al. (7), have shown that intra-abdominal and total fat masses, evaluated by liver ultrasound, were important risk factors to develop NAFLD.

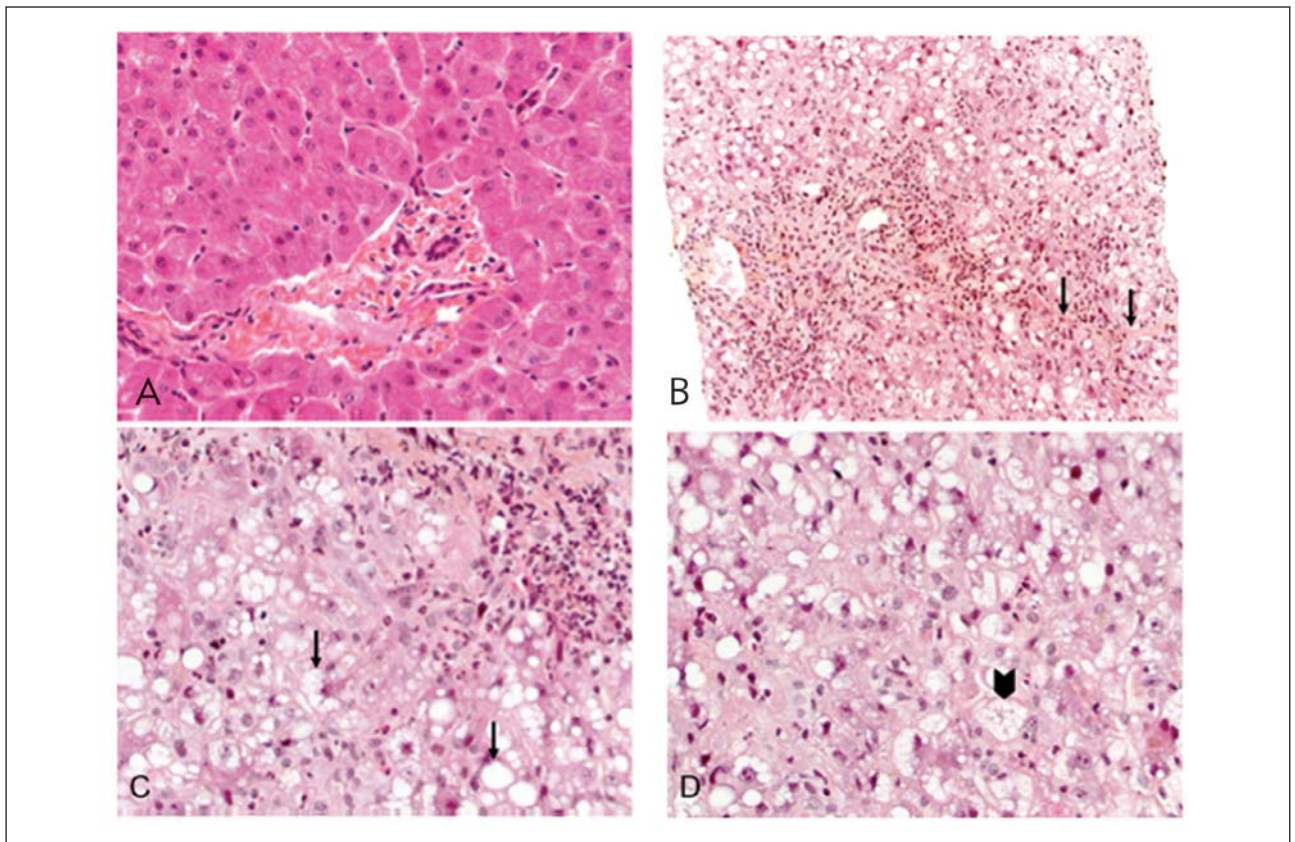
The development of NAFLD, clearly linked to the MetS, involves a multitude of extensively reviewed processes that are affected by the genetic background, the environment and the lifestyle (24–28). In brief, NAFLD refers to hepatic vesicular fat depots attributable to an impairment of free-fatty acid (FFA) mobilization and TG accumulation that likely result primarily from excessive carbohydrate consumption. These metabolic events inexorably lead to perturbations of insulin, insulin growth factors, leptin, adiponectin and other adipokines signalling pathways (28, 29). This first stage largely goes unnoticed and may be stable for years. In 5 to 10% of cases, patients evolve to the second stage in which hepatocellular ballooning (mostly in adults), inflammation and peri-sinusoidal fibrosis are observed (15). The inflammatory foci are most probably the result of a disrupted redox balance, linked to mitochondrial dysfunction, and activation of a number of cytokines that induce cell apoptosis (30, 31). This set of events is now being accepted as the »second hit« in the development of NASH (32). Finally, a fraction of patients (particularly adults) may progress to cirrhosis and liver failure that will require liver transplantation (33, 34). Brief overviews of the NAFLD/NASH histopathology characteristics as well as of the current imaging and biochemical markers used for their diagnosis follow.

## Histopathology

Figure 2 illustrates the histology of normal, NAFLD and NASH liver sections stained with haematoxylin and eosin. Panel A represent a normal liver section ( $\times 400$ ); Panels B-D are examples at different magnifications of a paediatric pattern of non-alcoholic steatohepatitis. In the paediatric population, the prominent histological features are localized chronic inflammation and fibrosis, severe steatosis, perisinusoidal fibrosis but absence of ballooning degeneration (35). Evolution of NAFLD to cirrhosis has been shown in  $\leq 1\%$ – $5\%$  of cases in the paediatric population (36). Schwimmer et al. (37) have classified this pattern of injury respectively as types 2 and 1 NAFLD. However, in some cases, an overlap occurs, and a shift from a type 2 to a type 1 pattern has been described in older children (38). Histological principal features of adult and paediatric NAFLD are graded utilizing activity-scoring systems, (NAS) that are summarized in Table 1. The degree of steatosis (0–3), lobular inflammation (0–2) and hepatocyte ballooning (0–2) and fibrosis (0–4) are combined into a score

ranging from 0 to 11. A NAS score  $\geq 5$  denotes a diagnosis of NASH, whereas, 3–4 corresponds to a borderline lesion and  $\leq 2$  denotes non-NASH lesions. However, since the paediatric injury is characterized by the presence of chronic portal inflammation associated with portal fibrosis in the absence of hepatocyte ballooning, Aly et al. (40) have proposed to grade the fibrosis in paediatric NAFLD using the Index of Fibrosis, PNFI (0=none; 1=periportal or perisinusoidal fibrosis; 2=perisinusoidal and portal/periportal fibrosis; 3=bridging fibrosis; and 4=cirrhosis). In this 0–4 accessory grading, the histological spectrum ranges from steatosis, necro-inflammation, ballooning to cirrhosis.

Percutaneous liver biopsy remains the gold standard for the diagnosis of NAFLD and NASH. However this invasive procedure is not without risk, even when guided by imaging technologies. It also requires deep sedation, and risks of haemorrhage, infection or injury to the liver are not totally excluded (41). Other non-invasive methods have thus been explored as surrogate diagnostic tools.



**Figure 2** Histological patterns for normal liver, liver steatosis and liver steatohepatitis.

Hematoxylin and eosin stain A: normal liver ( $\times 400$ ); B ( $\times 200$ ), C ( $\times 400$ ), D ( $\times 400$ ): non-alcoholic steatohepatitis (paediatric pattern) an example of scoring following the NASH Clinical Research network Scoring System, portal-based fibrosis (arrows) score 1C with portal inflammation score 3 and minimal lobular inflammation score 1, macro and micro-vesicular steatosis pan-acinar (black arrows) score 3 with contiguous patches, with few ballooning cells (arrow head) score 1. No granulomas, acidophil bodies, pigmented macrophages, mega mitochondria, glycogenated nuclei were observed.

**Table I** Histological NAFLD activity scoring systems.

Main scoring system (Ref. 39)	For adult and paediatric cases
Steatosis	0–3
Lobular inflammation	0–2
Hepatocyte ballooning	0–2
Fibrosis	4
Maximum score	11
Scores interpretation	
≥5	NASH
3–4	Borderline lesions
≤3	No NASH lesion
Accessory scoring for Fibrosis (Ref. 40)	Proposed for paediatric cases
No fibrosis	0
Periportal or perisinusoidal fibrosis	1
Perisinusoidal & portal/periportal fibrosis	2
Bridging fibrosis	3
Cirrhosis	4
Maximum score	4

### Imaging techniques

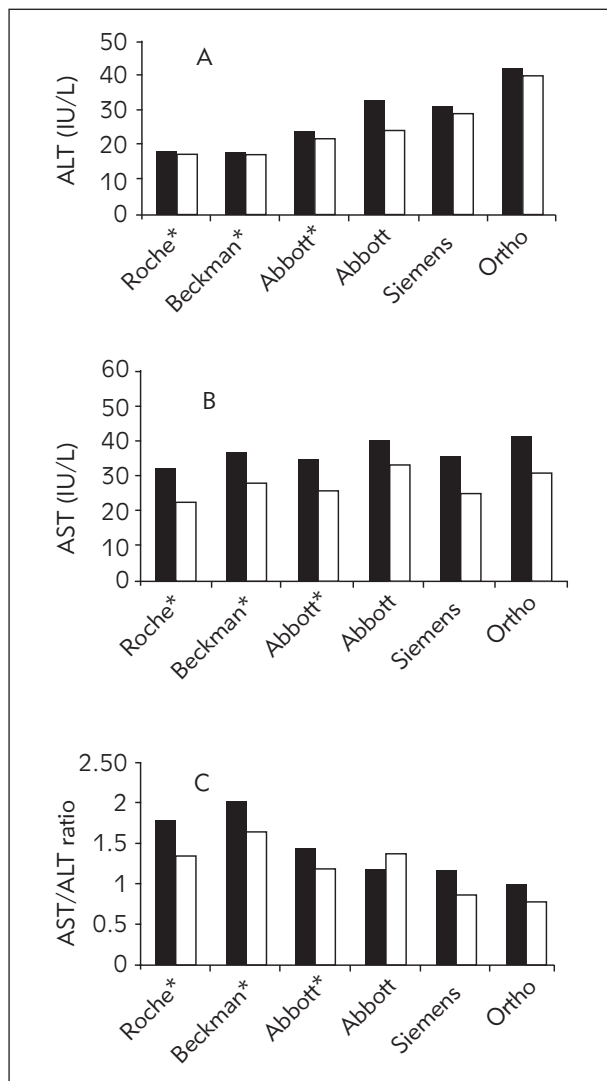
In the last decade, a number of non-invasive tests based on ultrasonography, transient elastography, and magnetic resonance imaging (MRI) have been developed to assess the extent of liver fibrosis. Although widely available, traditional ultrasonography has a poor sensitivity to detect mild steatosis and is inaccurate in quantifying liver fatty acid infiltration. Furthermore this technique is observer and operator-dependent, and its use in obese patients is subject of discussion (42, 43). Transient elastography, based on the assessment of liver stiffness, has also been shown to be useful in the evaluation of a significant fibrosis and cirrhosis (44–46). These approaches are however not universally accessible, and are mainly meant to detect fibrosis, an advanced stage of the disease.

Liver magnetic resonance imaging–estimated proton density fat fraction (PDFF) seems to be more sensitive and thus promising. It has been favourably compared to histopathology scores for hepatosteatosis. MR imaging-PDFF was significantly correlated to the histologic grades, and could discriminate between those patients with grade 0 and 1 or higher in one study (47) and between grade 1, 2 and 3 in another study (48). This technology, presently restricted to ter-

tiary care institutions, is expensive and demands experienced staff. In summary these imaging techniques are useful in detecting steatosis, but are relatively inefficient in determining the level of liver damage, particularly at an early stage. Therefore there is a need to develop biomarkers that will be easily measured in central laboratories.

### Aminotransferases as biomarkers

Despite not being an exclusive hepatic enzyme, serum alanine aminotransferase (ALT) has been the most commonly used laboratory test for the diagnosis of hepatic ailment for the past 60 years. Yet we are still confronted with interpretation-related problems, particularly in paediatrics, as there is no real consensus on the threshold value to adopt for detecting liver disease. The difficulties are due to a number of biological factors such as the circadian rhythm, anthropometric and demographic characteristics (49–52). The recent review of Pacifico et al. (53) covers the subject in details. Schwimmer et al. (54) have advocated the standardization of ALT reference intervals in children, and initiated the SAFETY study (Screening ALT For Elevation in Today's Youth) to develop them. To do so, they collected data from 43 acute care children's hospitals, from the 1999–2006 population-based National Health and Nutrition Examination Survey (NHANES) and from clinically characterized children with and without liver diseases. In addition they identified children with normal liver fat content using MRI. Using 982 NHANES healthy, metabolically normal and liver-disease-free participants, aged between 12 and 17 years, as reference group, they identified the upper limit of normal (95<sup>th</sup> percentile) for ALT as 25.8 IU/L for boys and 22.1 IU/L for girls. Importantly, the prevalence of abnormal ALT values among the entire NHANES was 2.4% for boys and 1.3% for girls, if the hospitals' cut-off values were used. Disturbingly, the prevalence however rose to 15% and 8.6% respectively when the NHANES upper limit of normal were used, thereby demonstrating the importance of using well defined biology-based thresholds. The lack of uniformity in upper ALT thresholds is further illustrated by Wiegand et al (55) who reported a NAFLD prevalence of 11% in 16390 overweight, obese and extremely obese adolescents. This relatively low prevalence in such at-risk population can partially be explained by the higher than usual ALT and/or AST of >50 IU/L. Hilsted et al. (56) recently reported reference intervals for 21 common biochemical tests, among which ALT, in 1429 Danish school children and adolescents. Upon rejecting outliers according to the Dixon rule, they reported the ALT upper reference range as 47 IU/L with a 95% confidence interval ranging from 33 to 69 IU/L. These are different from the often referred upper threshold of 40 IU/L, and if applied would decrease the prevalence of NAFLD in a given population.



**Figure 3A–C** Transaminases Reference values according to the analytical platform.

Legend: \*The transaminases were measured with exogenous pyridoxal phosphate added according to the Manufacturers instructions. Adapted from Estey et al. (54).

In the definition of reference values, methodological issues related to the analytical platforms, the buffer constitution, and the presence or absence of pyridoxal-phosphate as co-factor should not be underestimated. Neuschwander-Tetri et al. (57), using a CAP survey, have shown that although the intra-laboratory variations were small, there were non-negligible differences between analytical platforms. We have observed similar variations (Figure 3A) between 5 platforms tested in the CALIPER study (58). The short-term biological variability of serum ALT compounds the uncertainty of this test. Indeed, Lazo et al. (59) have reported that using the NHANES III cut-offs of normal levels, 31% of the adults with elevated ALT on the first measure would be classified normal upon a second investigation. This was linked to a high intra-

individual variability for this enzyme that could be due to exercise and circadian rhythm. Aspartate amino-transferase (AST) is the second enzyme used in the context of defining liver cell damage. Likewise however will the reference values depend on the analytical platform (Figure 3B). The AST/ALT ratio is also commonly used to detect liver impairment. In a series of 70 adults with NASH, Sorbi et al. (60) have shown elevated AST and ALST with a median ratio 0.9 (range 0.3–2.8). Two groups reported independently abated AST/ALT ratios. The first by Iacobellis in 2006 (61), concerned 69 children aged between 4 and 19 years, with persistent elevation of ALT and AST associated with liver echography suggestive of fatty infiltration. The mean  $\pm$  SD AST/ALT ratio in this series was  $0.7 \pm 0.3$  and  $0.9 \pm 0.5$  for patients without and with liver fibrosis respectively. The second study by Yang et al. (62), conducted in 77 obese children and adolescents, revealed a much lower AST/ALT ratios that were similar for the mild and significant fibrosis sub-groups. Interestingly, no mention was made of the methodology to measure the transaminases in either report. In view of the variability in the ALT and to a lesser extent AST paediatric reference ranges both according to age and to the analytical platform (51, 58) it is therefore inappropriate to use these values as thresholds for abnormality. The variable AST/ALT ratios obtained on the different platforms used for the CALIPER study (Figure 3C), clearly warrant a prospective reassessment of the validity of absolute values of ALT, AST and of the AST/ALT ratio in detecting NAFLD. Expressing the transaminases results as multiple of medians could possibly attenuate the methodological differences and allow a better comparison between studies.

### Other markers

The natural history of NAFLD and NASH involves liver insulin resistance with a progressive intra-hepatic fatty acid accumulation leading to mitochondrial dysfunction, oxidative stress, inflammation, and apoptosis followed by cell remodelling resulting in fibrosis. There are numerous non-invasive tests based on measuring extracellular turnover to detect and quantify liver fibrosis, with excellent performance late in the process (63–66). Hence it is logical to seek circulating biomarkers that that would not only precociously inform clinicians on the extent of liver damage, but also aid them monitoring the evolution of the disease and of the patient's response to treatment. Recent years have been fertile in the development of assays that allow for the measurement of such markers. However data showing their clinical validity are scarce. The following paragraphs give examples of proposed biomarkers related to paediatric NAFLD and NASH.

### Cell apoptosis markers

Hepatocyte programmed cell death has been shown to be an important factor in the initiation and progression of liver damage (67, 68). Three mechanistically related markers of cell apoptosis, Cytokeratin-18, N-terminal pro-collagen III and CD14<sup>+</sup> nK-cells have been reported. Upon activation of the apoptotic process, Caspase 3 (70) cleaves Cytokeratin18 (CK18), the major inter-filament protein of the hepatocyte cytoskeleton, yielding soluble fragments that are leaked into the circulation (69). Wieckowska et al. (70) were the first to demonstrate that CK-18 Caspase 3-generated fragments (C-terminal CK18Asp396 neo-epitope) were elevated in plasma of a small group of adult patients with suspected NAFLD. More recently, Feldstein et al. (71), in a multi-center validation study, derived from the non-alcoholic Steatohepatitis Clinical Research network (NASH CRN), demonstrated that the same circulating CK-18 neo-epitope predicted the severity of NASH. Shen et al. (72) using an identical technology with a cohort of 147 biopsy-proven adult patients with NAFLD, observed a higher serum concentration of CK18 fragments in NAFLD patients compared to controls with an excellent accuracy (AUROC >0.9). However this neo-epitope was less efficient in differentiating different stages of NASH. The authors, correctly warned that their study, and those of others, include a higher proportion of patients with risk factors and that the performance of biomarkers are likely to differ in a primary care setting, due to selection bias. Also, these markers are not specific to NAFLD or NASH as other diseases, such as hepatitis C will cause liver cell death and hence release of cytokeratin fragments into the circulation. Vos et al. (73) were the first to report the use of cytokeratin 18Asp396 neo-epitope as a diagnostic biomarker for NAFLD in children. They have shown that this biomarker was elevated in children with a clinical diagnosis of NAFLD (elevated ALT and hepatic steatosis determined by ultrasound or computed tomography). Two more recent reports confirm these data. The 1<sup>st</sup>, by Fitzpatrick et al. (74), compared the serum concentration of CK 18Asp396 neo-epitope in 3 small groups of children that had undergone a percutaneous needle liver biopsy for the purpose of classification (simple steatosis (NAS<2), borderline NASH (scores 2 & 3) and NASH (score 5). They included in their study the measurement of adiponectin, hyaluronic acid and high-sensitivity CRP, none of which showed to be effective in predicting steatohepatitis or fibrosis. The second report, by Lebensztejn et al. (75), also in children with biopsy-proven NAFLD, concluded that CK18Asp396 neo-epitope was suitable to predict liver fibrosis in children with NAFLD (AUC=0.672). As a note of warning, it must be realized that apoptosis is a fundamental process in almost all chronic liver conditions that include inflammation and fibrosis. Therefore although highly suggestive of NAFLD, other diseases have to be ruled out.

### Cell microparticles

Circulating cell membrane fragments (microparticles) such as those from CD14<sup>+</sup> and Natural Killer T Cells (NKT) generated during the early phase of cell apoptosis can be quantitated by flow cytometry. Their interest lies in the fact that they can be measured by fluorescence-activated cell sorting (FACS). Their measurement has been described in several conditions (76–78). Kornek et al. (79) have recently shown, in a case-control study involving 67 adult patients with histology proven NAFL or NASH and 44 controls, that CD14<sup>+</sup> and iNKT generated microparticles, known to mediate the development of NASH, were significantly augmented. They furthermore showed that the levels of these micro-particles correlated with levels of alanine aminotransferase and severity of NASH (histology proven) in patients with simple steatosis (NAFLD activity score [NAS] score <3) or NASH (NAS score >4). Along the same line of thought, De Vito et al. (80) reported in study involving 34 children with biopsy-proven NAFLD, that liver sections of patients with a NAFLD activity score (NAS) 5 contained a significantly greater number of immune cells with the common leukocyte antigen CD45 and the CD163 antigen, a member of the cysteine scavenger receptor family than those with a score < 5. Conversely there were fewer cells positive for the T cell lineage marker CD3 antigen. They further demonstrated an association between the number of CD45<sup>+</sup>, CD163<sup>+</sup> and CD3<sup>+</sup> antigen-positive cells and the severity of histological features related to inflammation, fibrosis and ballooning. This technology holds many promises especially if coupled to the discovery and characterization of neo-epitopes of factors involved in inflammation processes and the early phase of apoptosis.

### Inflammatory factors

The activation of the innate immune system resulting from the low-intensity systemic inflammation, the second phase in the development of NAFLD (32), results in the up-regulation of the expression of pro-inflammatory cytokines such as Interleukin-6 (IL-6) and Tumour Necrosis Factor-alpha (TNF $\alpha$ ) (81, 82), thereby making them logical candidates as markers for following the evolution from steatosis to NASH. This proved to be the case, as in a series of 47 adult patients with biopsy-confirmed NAFLD, Hauke-land et al. (83) reported elevated plasma levels IL-6 levels even after correction for sex, BMI and age. Notably, the plasma levels of this cytokine were elevated in cases with simple steatosis, implying that it could be used as a sentinel for early events in the development of the disease. Wieckowska et al. (84) reported similar findings in 50 patients suspected with NAFLD. They further documented an increased IL-6 hepatic expression that correlated with the extent of inflammation and fibrosis. While several studies have described the influence of TNF $\alpha$  in diabetes and in

NAFLD (85-88), its case is not as straightforward. In the study of Haukeland et al. (83) although patients in the NASH group exhibited raised TNF $\alpha$  plasma levels, there was no difference between the NAFLD patients and controls, implying that it may not be useful in detecting early liver pathology. Serum levels of C-C motif chemokine ligand-2 (CCL2)/monocyte chemo-attractant protein-1 (MCP-1), responsible for hepatic monocyte/macrophage infiltration, inflammation and fibrogenesis, and CCL 19 were significantly elevated in patients with NAFLD compared to simple steatosis.

### Future developments

Very few of above-cited reports were structured to test the diagnostic performance of the different factors associated with NAFLD. The advent of high throughput cutting-edge analytical tools has opened the Pandora box. They have allowed the development of genome-wide associations studies (GWAS) by different consortia that identified a plethora of metabolic pathways and networks associated with NAFLD. The enormous amount of information generated through these non-hypothesis driven biomarker discovery studies have now to be translated into effective clinical tools allowing precocious diagnosis of this condition. This will require large scale, well-structured controlled studies with common outcomes and design. Miller et al. (89) have published an excellent systematic review in which they cover the advantages and limitations of the biomarkers derived from non-targeted approach. A few examples of GWAS follow to give a glimpse of the wealth of information generated recently. In pilot GWAS involving 236 non-Hispanic Caucasian women, Chalasani et al. (90) analysing 324, 623 single nucleotide polymorphisms (SNPs) distributed on the 22 autosomal chromosomes, identified one SNP in the farnesyl diphosphate farnesyl transferase 1 gene (FDFT1), involved in cholesterol biosynthesis, associated with the NAFLD score. Following a similar approach, Kawaguchi et al. (91), demonstrated that the variant

rs738409 of the patatin-like phospholipase domain-containing 3/adiponutrin (PNPLA3) gene encoding an isoleucine to methionine substitution at amino acid position 148 leading to an inactivation of its triglyceride hydrolytic property, was strongly associated with the severity of NAFLD in Japanese subjects. This was confirmed in other studies performed in different groups or populations (92–95).

Other approaches based on prior physiology knowledge have also been applied to define potential biomarkers. For instance, Bell et al. (96), using the proteomic approach, demonstrated differential circulating protein expression patterns between control obese subjects and patients with different levels of NAFLD. The biological processes in which there were significant changes in priority 1 protein concentrations included, as expected, those involved in the immune and inflammatory regulatory systems, in the cholesterol and triglyceride homeostasis, in the cell cycle control and in structural and extracellular integrity. Hence these data are confirmatory.

### Conclusion

As can be perceived in this brief review, developing non-invasive biomarkers that are specific and sensitive particularly in the early phase of hepatic steatosis is difficult. The difficulty lies in that previous studies have used different techniques with different outcomes. The recent analytical tools coupled to powerful informatics have allowed non-hypothesis driven biomarker discovery. Their use will require that they go through the National Cancer Institute guidelines for the development of biomarkers (97), and that multi-center cohorts be used with standardized recruitment protocols, clinical end-points, analytical methods and reference intervals.

### Conflict of interest statement

The authors stated that they have no conflicts of interest regarding the publication of this article.

### References

1. Hossain P, Kowar B, El Nahas M. Obesity and diabetes in the developing world—a growing challenge. *N Engl J Med* 2007; 356: 213–5.
2. Das K, Das K, Mukherjee PS, Ghosh A, Mridha AR et al. Nonobese Population in a Developing Country Has a High Prevalence of Non-alcoholic Fatty Liver and Significant Liver Disease. *Hepatology* 2010; 51: 1593–1602.
3. Nazare J-A, Smith JD, Borel A-L, Haffner SM, Balkau B, Ross R et al. Ethnic influences on the relations between abdominal subcutaneous and visceral adiposity, liver fat, and cardiometabolic risk profile: the international study of prediction of intra-abdominal adiposity and its relationship with cardiometabolic risk/intra-abdominal adiposity. *Am J Clin Nutr* 2012; 96: 714–26.
4. World Health Organisation. Physical status: the use and interpretation of anthropometry. Geneva: WHO, 1995.
5. Rolland-Cachera MF, Sempé M, Guillaud-Bataille M, Patois E, Péquignot-Guggenbuhl F, Fautrad V. Adiposity indices in children. *Am J Clin Nutr* 1982; 36: 178–84.
6. de Onis M, Garza C, Onyango AW, Rolland-Cachera MF, le Comité de nutrition de la Société française de pédiatrie. WHO growth standards for infants and young children. *Arch Pédiatr* 2009; 16: 47–53.

7. Cole TJ, Bellizzi MC, Flegal KM, Dietz WH. Establishing a standard definition for child overweight and obesity worldwide: International survey. *BMJ* 2000; 320: 1–6.
8. Wabitsch M, Moss A, Kromeyer-Hauschild K. Unexpected plateauing of childhood obesity rates in developed countries. *BMC Medicine* 2014; 12: 17–21.
9. Mészáros Z, Mészáros J, Völgyi E, Sziva Á, Pampakas P, Prókai A et al. Body mass and body fat in Hungarian schoolboys: Differences between 1980–2005. *J physiol Anthropol* 2008; 27: 241–5.
10. Broyles S, Katmarzyk PT, Srinivasan SR, Chen W, Bouchard C, Freedman DS et al. The pediatric obesity epidemic continues unabated in Bogalusa, Louisiana. *Pediatrics* 2010; 125: 900–5.
11. Zong X-N, Li H. Secular trends in prevalence and risk factors of obesity in infants and preschool children in 9 Chinese cities, 1986–2006. *Plos One* 2012; 7: e46942.
12. Marchesini G, Brizi M, Bianchi G, et al. Non-alcoholic fatty liver disease: a feature of the metabolic syndrome. *Diabetes*. 2001; 50: 1844–50.
13. Nobili V, Manco M, Devito R, Di Ciommo V, Comparcola D, Sartorelli MR et al. Lifestyle intervention and antioxidant therapy in children with non-alcoholic fatty liver disease: A randomized, controlled trial. *Hepatology* 2008; 48: 119–28.
14. Brunt EM. Non-alcoholic steatohepatitis: definition and pathology. *Semin Liver Dis*. 2001; 21: 3–16.
15. Schwimmer JB, Deutsch R, Kahen T, et al. Prevalence of fatty liver in children and adolescents. *Pediatrics*. 2006; 118: 1388–93.
16. Tominaga K, Kurata JH, Chen YK, et al. Prevalence of fatty liver in Japanese children and relationship to obesity. An epidemiological ultrasonographic survey. *Dig Dis Sci* 1995; 40: 2002–9.
17. Mosley JW, Huang W, Stram DO, et al. Donor levels of serum alanine aminotransferase activity and antibody to hepatitis B core antigen associated with recipient hepatitis C and non-B, non-C outcomes. *Transfusion* 1996; 36: 776–81.
18. Mofrad P, Contos MJ, Haque M, et al. Clinical and histologic spectrum of non-alcoholic fatty liver disease associated with normal ALT values. *Hepatology* 2003; 37: 1286–92.
19. Strauss RS, Barlow SE, Dietz WH. Prevalence of abnormal serum aminotransferase values in overweight and obese adolescents. *J Pediatr* 2000; 136: 727–33.
20. Franzese A, Vajro P, Argenziano A, et al. Liver involvement in obese children. Ultrasonography and liver enzyme levels at diagnosis and during follow-up in an Italian population. *Dig Dis Sci* 1997; 42: 1428–32.
21. Chan DF, Li AM, Chu WC, et al. Hepatic steatosis in obese Chinese children. *Int J Obes Relat Metab Disord* 2004; 28: 1257–63.
22. Tazawa Y, Noguchi H, Nishinomiya F, Takada G. Serum alanine aminotransferase activity in obese children. *Acta Pediatr* 1997; 86: 238–41.
23. Monteiro PA, Mota J, Silveria LS, Cayre SU, de Moura M Antunes B, Araujo Fernandes R, Freitas jr IF. Morphological and metabolic determinants of non-alcoholic fatty liver disease in obese youth: A pilot study. *BMC res Notes* 2013; 6: 89–84.
24. Utzschneider KM, Kahn SE. Review: The role of insulin resistance in non-alcoholic fatty liver disease. *J Clin Endocrinol Metab* 2006; 91: 4653–61.
25. Ibrahim SH, Kohli R, Gores GJ. Mechanisms of lipotoxicity in NAFLD and clinical implications. *J Pediatr Gastroenterol Nutr* 2011; 53: 131–40.
26. de Alwis NM, Day CP. Non-alcoholic fatty liver disease: The mist gradually clears. *J Hepatol* 2008; 48(Suppl1): S104–12.
27. Day CP. Genetic environmental susceptibility to non-alcoholic fatty liver disease. *Dig Dis* 2010; 28: 25560.
28. Hui JM, Hodge A, Farrell GC, Kench JG, Kriketos A, George J. Beyond insulin resistance in NASH: TNF or adiponectin? *Hepatology* 2004; 40: 46–54.
29. Cnop M, Havel PJ, Utzschneider KM, Carr DB, Sinha MK, Boyko EJ et al. Relationship of adiponectin to body fat distribution, insulin sensitivity and plasma lipoproteins: Evidence for independent roles of age and sex. *Diabetologia* 2003; 46: 459–69.
30. Grattaglio I, de Bari O, Bernardo TC, Oliviera PJ, Wang DQ-H, Portincasa P. Role of mitochondria in non-alcoholic fatty liver disease-from origin to propagation. *Clin Biochem* 2012; 45: 610–8.
31. Feldstein AE, Canbay A, Angulo P, Taniai M, Burgart LJ, Lindor KD et al. Hepatocyte apoptosis and fas expression are prominent features of human non-alcoholic steatohepatitis. *Gastroenterology* 2003; 125: 437–43.
32. Day CP, James OF. Steatohepatitis: a tale of two "hits"? *Gastroenterology* 1998; 114: 842–845.
33. Vuppalanchi R, Chalasani N. Non-alcoholic fatty liver disease and non-alcoholic steatohepatitis. *Hepatology* 2009; 49: 306–17.
34. Ong JP, Younossi ZM. Epidemiology and natural history of NAFLD and NASH. *Clin Liver Dis* 2007; 11: 1–16.
35. Aly FZ, Kleiner D. Update on fatty liver disease and steatohepatitis. *Adv Anat Pathol* 2011; 18: 294–300.
36. Dam-Larsen S, Franzmann M, Andersen IB et al. Long term prognosis of fatty liver: Risk of chronic liver disease and death. *Gut* 2004; 53: 750–5.
37. Schwimmer JB, McGreal N, Deutsch R et al. Influence of gender, race, and ethnicity on suspected fatty liver in obese adolescents. *Pediatrics* 2005; 115: e561–e565.
38. Alkhoury N, Carter-Kent C, Lopez R et al. A combination of the pediatric NAFLD fibrosis index and enhanced liver fibrosis test identifies children with fibrosis. *Clin Gastroenterol Hepatol* 2011; 9: 150–5.
39. Kleiner DE, Brunt EM, Van Natta M, Behling C, Contos MJ, Cummings OW et al. Design and validation of a histological scoring system for non-alcoholic fatty liver disease. *Hepatology* 2005; 41: 1313–21.
40. Aly FZ, Kleiner D. Update on fatty liver disease and steatohepatitis. *Adv Anat Pathol* . 2011; 18: 294–300.
41. Govender P, Jonas MM, Alomari AI, Padua HM, Dillon BJ, Landrigan-Ossar MF et al. Sonography-guided percutaneous liver biopsies in children. *Am J Roentgenol* 2013; 201: 645–50.



42. Schwenger NF, Springer F, Schraml C, Stefan N, Machann J, Schick F. Non-invasive assessment and quantification of liver steatosis by ultrasound, computed tomography and magnetic resonance. *J Hepatology* 2009; 51: 433–45.
43. Strauss S, Gavish E, Gottlieb P, Kantsnelso L. Inter-observer and intra-observer variability in the sonographic assessment of fatty liver. *AJR Am J Roentgenol* 2007; 189: W320–3.
44. Alkhoury N, Sedki E, Alisi A, Lopez R, Pinzani M, Feldstein AE et al. Combined paediatric NAFLD fibrosis index and transient elastography to predict clinically significant fibrosis in children with fatty acid liver disease. *Liver Int* 2013; 33: 79–85.
45. Fitzpatrick E, Quaglia A, Vimalesvaran S, Basso MS, Dhawan A. Transient elastography is a useful non-invasive tool for the evaluation of fibrosis in paediatric chronic liver disease. *J Pediatr Gastroenterol Nutr* 2013; 56: 72–6.
46. Gaia S, Carezzi S, Barilli AL, Bugianesi E, Smedile A, Brunello F et al. Reliability of transient elastography for the detection of fibrosis in non-alcoholic fatty liver disease and chronic viral hepatitis. *J Hepatol* 2011; 54: 64–71.
47. Tang A, Tan J, Sun M, Hamilton G, Bydder M, Wolfson T et al. Nonalcoholic fatty liver disease: MR imaging of liver proton density fat fraction to assess hepatic steatosis. *Radiology* 2013; 267: 422–31.
48. Pacifico L, Di Martino M, Catalano C, panebianco V, Bezzi M, Anania C. T1-weighted dual-echo MRI for fat quantification in pediatric non-alcoholic fatty liver disease. *World J Gastroenterol* 2011; 17: 3012–9.
49. Córdoba J, O'Riordan K, Dupuis J, Borensztajn J, Blei AT. Diurnal variation of serum alanine transaminase activity in chronic liver disease. *Hepatology* 1998; 28: 1724–5.
50. Robinson D, Whitehead TP. Effect of body mass and other factors on serum liver enzyme levels in men attending for well population screening. *Ann Clin Biochem* 1989; 26: 393–400.
51. Colantonio DA, Kyriakopoulou L, Chan MK, et al. Closing the gaps in pediatric laboratory reference intervals: a CALIPER database of 40 biochemical markers in a healthy and multiethnic population of children. *Clin Chem* 2012; 58: 854–68.
52. England K, Thorne C, Pembrey L, Tovo PA, Newell ML. Age- and sex-related reference ranges of alanine aminotransferase levels in children: European paediatric HCV network. *J Pediatr Gastroenterol Nutr* 2009; 49: 71–7.
53. Pacifico L, Ferraro F, Bonci E, Anania C, Romaggioli S, Chiesa C. Upper limit of normal for alanine aminotransferase: Quo vadis? *Clin Chim Acta* (2013), <http://dx.doi.org/10.1016/j.cca.2013.03.030>
54. Schwimmer JB, Dunn W, Norman GJ, Pardee PE, Middleton MS, Kerkar N et al. SAFETY study: Alanine aminotransferase cut-off values are set too high for reliable detection of pediatric chronic liver disease. *Gastroenterology* 2010; 138: 1357–64.
55. Wiegand S, Keller K-M, Röbl M, l'Allemand D, Reinehr T, Widhalm K et al. Obese boys at increased risk for non-alcoholic liver disease: Evaluation of 16 390 overweight or obese children and adolescents. *Int J Obes* 2010; 34: 1468–74.
56. Hilsted L, Rustad P, Aksglæde L, Sørensen K, Juul A. Recommended Nordic paediatric reference intervals for 21 common biochemical properties. *Scand J Clin Lab Invest* 2013; 73: 1–9.
57. Neuschwander-Tetri BA, Ünalp A, Creer MH. Influence of local reference populations on upper limits of normal for serum alanine aminotransferase levels. *Arch intern Med* 2008; 168: 663–5.
58. Estey MP, Cohen AH, Colantonio DA, Kyriakopoulou L, Chan MK, Randell E et al. CLSI-based Transference of the CALIPER Database of Pediatric Reference Intervals: Direct Validation Using Reference Samples from the CALIPER Cohort. *Clin Biochem* 2013; in press.
59. Lazo M, Selvin E, Clark JM. Brief communication: Clinical implication of short-term variability in liver function test results. *Ann Intern Med* 2008; 148: 348–52.
60. Sorbi D, Boyton J, Linkor KD. The ratio of aspartate aminotransferase to alanine aminotransferase: Potential value in differentiating non-alcoholic steatohepatitis from alcoholic liver disease. *Am J Gastroenterol* 1999; 94: 1018–22.
61. Iacobellis A, Marcellini M, Andriulli A, Perri F, Leandro G, Devito R et al. Non invasive evaluation of liver fibrosis in paediatric patients with non-alcoholic steatohepatitis. *World J Gastroenterol* 2006; 12: 7821–5.
62. Yang HR, Kim HR, Kim MJ, Ko JS, Seo JK. Noninvasive parameters and hepatic fibrosis scores in children with non-alcoholic fatty liver disease. *World J Gastroenterol* 2012; 18: 1525–30.
63. Guha IN, Parkes J, Roderick P, Chattopadhyay D, Cross R, Harris S et al. Noninvasive markers of fibrosis in non-alcoholic fatty liver disease: Validating the European Liver Fibrosis Panel and exploring simple markers. *Hepatology* 2008; 47: 455–60.
64. Rosenberg WM, Voelker M, Thiel R, Becka M, Burt A, Schuppan D et al. Serum markers detect the presence of liver fibrosis: A cohort study. *Gastroenterology* 2004; 127: 1704–13.
65. Tanwar S, Trembling PM, Guha IN, Parkes J, Kaye P, Burt AD et al. Validation of terminal peptide of procollagen III for the detection and assessment of non-alcoholic steatohepatitis in patients with non-alcoholic fatty liver disease. *Hepatology* 2013; 57: 10311.
66. Nobili V, Alisi A, Torre G, De Vito R, Pietrobattista A, Morino G et al. Hyaluronic acid predicts hepatic fibrosis in children with non-alcoholic fatty liver disease. *Translational Res* 2010; 156: 229–34.
67. Feldstein AE, Gores GJ. Apoptosis in alcoholic and non-alcoholic steatohepatitis. *Front Sci* 2005; 10: 3093–9.
68. Feldstein AE, Canbay A, Angulo P, Taniai M, Burgart LJ, Lindor KG et al. Hepatocyte apoptosis and fas expression are prominent features of human non-alcoholic steatohepatitis. *Gastroenterology* 2003; 125: 437–43.
69. Danial NN, Kosmeyer SJ. Cell death: Critical control points. *Cell* 2004; 116: 205–19.
70. Wieckowska A, Zein NN, Yerian LM, Lopez AR, McCullough AJ, Feldstein AE. In vivo assessment of liver cell apoptosis as a novel biomarker of disease severity in non-alcoholic fatty liver disease. *Hepatology* 2006; 44: 27–33.

71. Feldstein AR, Wieckowska A, Lopez AR, Liu Y-C, Zein NN, McCullough AJ. Cytokeratin-18 fragment levels as a noninvasive biomarker for non-alcoholic steatohepatitis. A Multicenter validation study. *Hepatology* 2009; 50: 1072–8.
72. Shen J, Chan HL-Y, Wong GL-H, Chan AW-H, Choi PC-L, Chan H-Y et al. Assessment of non-alcoholic fatty liver disease using serum total cell death and apoptosis markers. *Aliment Pharmacol Ther* 2012; 36: 1057–66.
73. Vos MB, Barve S, Joshi-Barve S, Carew JD, Whittington PF, McClain CJ. Cytokeratin 18, a marker of cell death, is increased in children with suspected non-alcoholic fatty liver disease. *J Pediatr Gastroenterol Nutr* 2008; 47: 481–5.
74. Fitzpatrick E, Mitry RR, Quaglia A, Hussain MJ, deBruyne R Dhawan A. Serum level of CK18 M30 and leptin are useful predictors of steatohepatitis and fibrosis in paediatric NAFLD. *J Pediatr Gastroenterol Nutr* 2010; 51: 500–6.
75. Lebensztejn DM, Wierzbicka A, Socha P, Pronicki M, Skiba E, Werpachowska I et al. Cytokeratin-18 and hyaluronic acid levels predict liver fibrosis in children with non-alcoholic fatty liver disease. *Acta Biochem Polonica* 2011; 58: 563–6.
76. Roos MA, Gennero L, Denysenko T, et al. Microparticles in physiological and in pathological conditions. *Cell Biochem Funct* 2010; 28: 539–548.
77. Beyer C, Pisetsky DS. The role of microparticles in the pathogenesis of rheumatic diseases. *Nat Rev Rheumatol* 2010; 6: 21–9.
78. Kornek M, Popov Y, Libermann TA et al. Human T cell microparticles circulate in blood of hepatitis patients and induce fibrolytic activation of hepatic stellate cells. *Hepatology* 2011; 53: 230–42.
79. Kornek M, Lynch M, Mehta SH, Lai M, Exley M, Afdahal NH et al. Circulating Microparticles as Disease-Specific Biomarkers of Severity of Inflammation in Patients With Hepatitis C or Nonalcoholic Steatohepatitis. *Gastroenterology* 2012; 143: 448–58.
80. De Vito R, Alisi A, Masotti A, Ceccarelli S, Panera N, Citti A et al. Markers of activated inflammatory cells correlate with severity of liver damage in children with non-alcoholic fatty liver disease. *Int J Mol Med* 2012; 30: 49–56.
81. Federico A, D'Aiuto E, Borriello F, Barra G, Gravina AG, Romano M et al. Fat: A matter of disturbance for the immune system. *World J Gastroenterol* 2010; 16: 4762–72.
82. Odegaard JI, Chawla A. Connecting Type 1 and Type 2 diabetes through innate immunity. *Cold Spring Harb Perspect Med* 2012; 2: a007724.
83. Haukeland JW, Damås JK, Konopski Z, Løberg EM, Haaland T, Goverud I et al. Systemic inflammation in non-alcoholic fatty liver disease is characterized by elevated levels of CCL2. *J Hepatol* 2006; 44: 1167–74.
84. Wieckowska A, Papouchado BG, Liz Z, Lopez R, Zein NN, Feldstein AE. Increased hepatic and circulating interleukin-6 levels in human non-alcoholic steatohepatitis. *Am J Gastroenterol* 2008; 103: 1372–9.
85. Diehl AM. Tumor necrosis factor and its potential role in insulin resistance and nonalcoholic fatty liver disease. *Clin Liver Dis* 2004; 8: 619–38.
86. Wisse BE. The inflammatory syndrome: the role of adipose tissue cytokines in metabolic disorders linked to obesity. *J Am Soc Nephrol* 2004; 15: 2792–2800.
87. Hui JM, Hodge A, Farrell GC, Kench JG, Kriketos A, George J. Beyond insulin resistance in NASH: TNF-alpha or adiponectin? *Hepatology* 2004; 40: 46–54.
88. Li Z, Yang S, Lin H, Huang J, Watkins PA, Moser AB, et al. Probiotics and antibodies to TNF inhibit inflammatory activity and improve nonalcoholic fatty liver disease. *Hepatology* 2003; 37: 343–350.
89. Miller MH, Ferguson MA, Dillon JF. Systematic review of performance of non-invasive biomarkers in the evaluation of non-alcoholic fatty liver disease. *Liver Int* 2011; 31: 461–73.
90. Chalasani N, Guo X, Loomba R, Goodarzi MO, Haritunians, T, Kwon S et al. Genome-wide association study identifies variants associated with histologic features of non-alcoholic fatty liver disease. *Gastroenterology* 2010; 139: 1567–76.
91. Kawaguchi T, Sumida Y, Umemura A, Matsuo K, Takahashi M, Takamura T et al. Genetic polymorphisms in the human PNPLA3 gene are strongly associated with severity of non-alcoholic fatty liver disease in Japanese. *PLoS One* 2012; 7: e38322.
92. Kitamoto T, Kitamoto A, Yoneda M, Hyogo H, Ochi H, Nakamura T et al. Genome-wide scan revealed that polymorphisms in the PNPLA3, SAMM550, and PARVB genes are associated with development and progression of non-alcoholic fatty liver disease in Japan. *Hum Genet* 2013; 132: 783–92.
93. Hernaez R, McLean J, Lazo M, Brancati FL, Hirschhorn JN, Borecki IB et al. Association between variants in or near PNPLA3, GCKR, and PPP1R3B with ultrasound-defined steatosis based on data from the third national health and nutrition examination survey. *Clin Gastroenterol Hepatol* 2013; 11: 1183–90.
94. Larrieta-Carrasco E, Leon-Mimila P, Villarreal-Molina T, Villamil-Ramirez H, Romero-Hidalgo S, Jacobo-Albevara L et al. Association of the I148M/PNPLA3 variant with elevated alanine transaminase levels in normal-weight and overweight/obese Mexican children. *Gene* 2013; 520: 185–8.
95. Speliotes EK, Yerges-Armstrong LM, Wu J, Hernaez R, Kim LJ, Palmer CD et al. Genome-wide association analysis identifies variants associated with non-alcoholic fatty liver disease that have distinct effects on metabolic traits. *PLoS one* 2011; 7: e1001324.
96. Bell LN, Theodorakis JL, Vuppalanchi R, Saxena R, Bemis KG, Wang M et al. Serum proteomics and biomarker discovery across the spectrum of non-alcoholic fatty liver disease. *Hepatology* 2010; 51: 111–20.
97. Pepe MS, Etzioni R, Feng Z, Potter JD, Thompson ML, Thornquist M et al. Phases of biomarker development for early detection of cancer. *J Natl Cancer Inst* 2001; 93: 1054–61.