

# UC Irvine

## UC Irvine Previously Published Works

### Title

Persistence and Fadeout in the Impacts of Child and Adolescent Interventions.

### Permalink

<https://escholarship.org/uc/item/1kn271xs>

### Journal

Journal of research on educational effectiveness, 10(1)

### ISSN

1934-5747

### Authors

Bailey, Drew  
Duncan, Greg J  
Odgers, Candice L  
et al.

### Publication Date

2017

### DOI

10.1080/19345747.2016.1232459

Peer reviewed

## Persistence and Fadeout in the Impacts of Child and Adolescent Interventions

Drew Bailey<sup>a</sup>, Greg J. Duncan<sup>a</sup>, Candice L. Odgers<sup>b</sup>, and Winnie Yu<sup>c</sup>



### ABSTRACT

Many interventions targeting cognitive skills or socioemotional skills and behaviors demonstrate initially promising but then quickly disappearing impacts. Our article seeks to identify the key features of interventions, as well as the characteristics and environments of the children and adolescents who participate in them, that can be expected to sustain persistently beneficial program impacts. We describe three such processes: skill-building, foot-in-the-door and sustaining environments. We argue that skill-building interventions should target “trifecta” skills—ones that are malleable, fundamental, and would not have developed eventually in the absence of the intervention. Successful foot-in-the-door interventions equip a child with the right skills or capacities at the right time to avoid imminent risks (e.g., grade failure or teen drinking) or seize emerging opportunities (e.g., entry into honors classes). The sustaining environments perspective views high quality of environments subsequent to the completion of the intervention as crucial for sustaining earlier skill gains. These three perspectives generate both complementary and competing hypotheses regarding the nature, timing, and targeting of interventions that generate enduring impacts.

### KEYWORDS

interventions  
fadeout  
methodology

Far too often, impacts on outcomes targeted by intervention designers soon disappear. This is readily apparent in interventions begun in early childhood, with perhaps the most famous example being Perry Preschool, where the program’s large end-of-treatment impact on IQ (.75 *SD*) at age 5 had dropped to a statistically insignificant .08 *SD* by age 8 (Schweinhart et al. 2005; Figure 1). More generalizable—and worrisome—is the finding by Puma et al. (2012), based on a random assignment of 4,442 children to a national sample of Head Start centers, of noteworthy impacts at the end of the Head Start year, but virtually no statistically significant impacts on any cognitive skill or socioemotional skill or behavior over the next several years. On the other hand, a second famous early childhood intervention begun a decade after Perry—the Abecedarian Project—generated IQ impacts that persisted well beyond age 8 (Campbell, Pungello, Miller-Johnson, Burchinal, & Ramey, 2001; also shown in Figure 1). Both Perry and Abecedarian produced substantial favorable impacts in adulthood, although not always on the same outcomes.

**CONTACT** Greg J. Duncan  [gduncan@uci.edu](mailto:gduncan@uci.edu)  School of Education, University of California–Irvine, 2001 Education, Irvine, CA 92697-5500, USA.

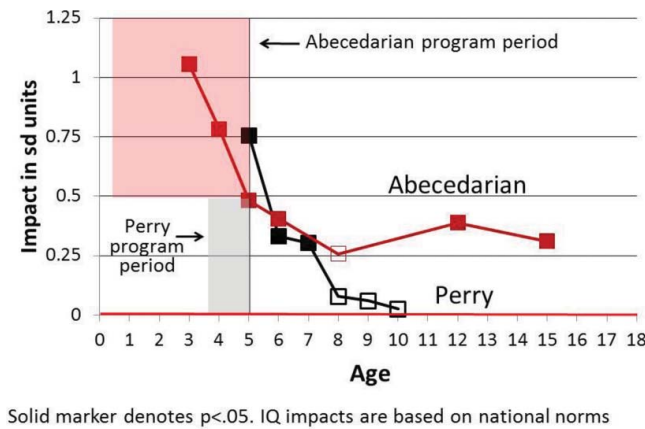
<sup>a</sup>University of California–Irvine, Irvine, California, USA

<sup>b</sup>Duke University, Durham, North Carolina, USA

<sup>c</sup>Orange, California, USA

Color versions of one or more of the figures in the article can be found online at [www.tandfonline.com/uree](http://www.tandfonline.com/uree).

© 2017 Taylor & Francis Group, LLC



**Figure 1.** IQ impacts in Perry and Abecedarian.

Examining this and other seemingly contradictory evidence on fadeout, we seek to identify the key features of child and adolescent interventions, as well as the characteristics and environments of their participants, that can be expected to generate persistent program impacts. We will speak of impacts on “skills” but use that term broadly to encompass any skill, behavior, capacity or psychological resource that helps individuals attain successful outcomes.<sup>1</sup> With some disciplines most comfortable with the term “noncognitive skill” and others most comfortable with some variant of “socioemotional skill or behavior,” we have opted to use the two sets of terms interchangeably.

We integrate findings from across multiple disciplines by using a very broad definition of skills, but where appropriate, provide examples of the specific socioemotional, behavioral, or cognitive skill targeted by the intervention. We consider interventions that are quite diverse in terms of their setting (both within and outside of classrooms), timing (encompassing various stages of childhood and adolescence), and populations (mostly at-risk children and adolescents in the United States but with some interventions offered to both at-risk and more advantaged populations).

We begin in the section “Patterns of Fadeout and Persistence” with a selective review of evidence on fadeout, choosing our examples to illustrate the diverse patterns of fadeout across outcomes within and across interventions. We then formulate three distinct processes that might sustain benefits for children and adolescents: skill building, foot-in-the-door skill or capacity boosts, and sustaining environments.

As detailed in “Skill-Building Models,” the skill-building perspective undergirds most cognitive theories of math and literacy learning. One version of it has been formalized in economists’ human capital model of the skill accumulation process. Key to skill building is that simpler skills support the learning of more sophisticated ones and, in the economic models, that skills acquired prior to a given skill- or capacity-building intervention increase the productivity of that investment.

Our main contribution here is to argue for the importance in this skill-building perspective of what we call “trifecta” skills—ones that are malleable, fundamental, and would not

<sup>1</sup>We do not concentrate on adult health outcomes because the physiological processes linking experiences in childhood, particularly early childhood, to adult health are only just beginning to be understood (Center on the Developing Child, 2010).

have developed in the absence of the intervention. We argue that all three conditions are needed to generate long-run effects, which limits substantially the kinds of interventions that might be expected to produce persistent benefits to children and adolescents. In the case of early childhood interventions, the third trifecta condition—eventual skill development in counterfactual conditions—is particularly problematic for interventions that build early literacy or math skills because most children are likely to eventually acquire at least minimal levels of these skills soon after entering school. Indeed, much of the “fadeout” effects of early childhood interventions have been attributed to this type of catch-up among the larger population of children.

As explained in the section “Foot-in-the-Door Interventions,” developmental timing is key to the foot-in-the-door perspective. Successful foot-in-the-door interventions equip a child with the right skills or capacities at the right time to avoid imminent risks (e.g., grade failure, teen drinking, or teen childbearing) or to seize emerging opportunities (e.g., entry into honors classes, SAT prep). The skill or capacity boosts need not be permanent, as with SAT prep that boosts chances of acceptance into a higher resourced college, a key step in a positive cascade that might influence human capital and labor market outcomes. For SAT prep, it is the enriched college resources, rather than any lingering test prep knowledge, that leads to a higher paying job.

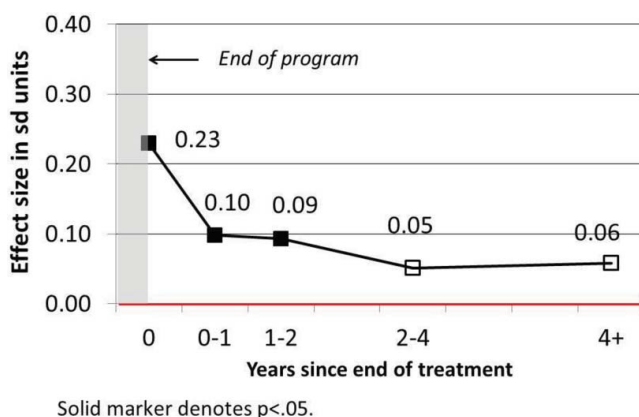
A third approach to understanding fadeout is what we call the “sustaining environments” perspective (fifth section). It recognizes the importance of interventions that build important skills and capacities, but views the quality of environments subsequent to the completion of the intervention as crucial for maintaining initial skill advantages. The final section summarizes some of the implications of our analysis.

## Patterns of Fadeout and Persistence

Original calculations, using information from a meta-analytic database of the evaluations of 67 high-quality early childhood education (ECE) interventions published between 1960 and 2007, produce the pattern of geometrically declining effect sizes shown in [Figure 2](#) for cognitive outcomes.<sup>2</sup> At the end of the programs, effect sizes averaged .23 standard deviations—considerably smaller than the end-of-treatment impacts shown for Perry and Abecedarian in [Figure 1](#). Posttreatment impacts measured no more than 12 months after the end of treatment had dropped by more than half, to .10 SD, and again by half one to two years later. [Figure 1](#) shows that although Perry’s IQ impacts approximate a geometric decline, Abecedarian’s IQ impacts were much more persistent (although they did decline substantially during the treatment period),

---

<sup>2</sup>The meta-analytic database is the product of the National Forum on Early Childhood Policy and Programs (<http://developingchild.harvard.edu/initiatives/forum/>) based on a comprehensive search of the literature from 1960 to 2007, when the coding project began. Studies had to have a treatment and control/comparison group, rather than simply assessing the growth of one group of children over time. Early childhood education programs were defined as structured, center-based early childhood education classes, day care with some educational component, or center-based child care. These include full preschool programs such as Head Start and other interventions conducted by researchers. Programs included were required to have provided services to children, their families, or staff at the program sites, and assessed program impacts on children’s cognitive and achievement outcomes. About one third of the ECE studies used random assignment, with the remainder following quasi-experimental designs such as change models, individual or family fixed-effects models, regression discontinuity, difference in difference, propensity score matching, interrupted time series, instrumental variables, and some other types of matching. Studies that used quasi-experimental designs must have had pretest and posttest information on the outcome or established baseline equivalence of groups on demographic characteristics determined by a joint test.



**Figure 2.** Cognitive impacts in 67 ECE studies.

which suggests that fadeout patterns based on cross-study average impacts are likely to conceal study-to-study variation.

Most interventions targeting children's cognitive, social, or emotional development fail to follow their subjects beyond the end of their programs (e.g., Durlak, Weissberg, Dymnicki, Taylor, & Schellinger, 2011; Smit, Verdurmen, Monshouwer, & Smit, 2008).<sup>3</sup> When they do, complete fadeout is common. As mentioned above, Puma et al. (2012) found virtually no statistically significant impacts of Head Start on either cognitive or noncognitive measures in kindergarten, first, or second grades. That said, Deming's (2009) sibling-based analysis shows that although initial impacts of Head Start on achievement in the early grades had faded to statistical insignificance by early adolescence, a number of significant differences in attainment and behavioral domains were detected in early adulthood.

A number of mathematics interventions for preschool or school-aged children also generate impressive initial effects that have been found to fade over time (Clements, Sarama, Wolfe, & Spitler, 2013; Smith, Cobb, Farran, Cordray, & Munter, 2013). Bus & van IJzendoorn's (1999) meta-analysis of early phonological awareness training found substantial effects on children's initial reading skills (.44 *SD*) but much smaller effects on reading skills (.16 *SD*) in the subset of studies with a follow-up assessment 18 months, on average, after the completion of the programs. Unfortunately, none of these studies include longer term follow-up information.

In some long-run studies such as Perry and Abecedarian, initial fadeout is followed by the detection of impacts in adulthood, although not always on the same kinds of developmental outcomes. In the case of teacher effects, Jacob, Lefgren, and Sims (2010) conclude that teacher-induced (value-added) learning and other measures of teacher quality have low persistence, with three quarters or more of teaching-year effects fading out within one year. However, Chetty, Friedman, and Rockoff (2014) found longer run impacts on both

<sup>3</sup>In the meta-analytic database used in Figure 2, only about one third of the studies followed subjects beyond the end of treatment. In a meta-analysis of adolescent alcohol using RCT designs, only 3 of 18 studies reported on long-term effects (>48 months; Smit et al. (2008). In the case of prevention of depressive symptoms, only 12 of 30 studies collected data past six months depression (Horowitz & Garber, 2006).

attainment and behavior in the same children when participants were tracked through adulthood via administrative records (but see Rothstein, 2015, for a critical review).

A pattern of fadeout and reemergence in young adulthood has also been documented for early social skills training. The Fast Track program provided a range of behavioral and academic services to a random subset of first-grade boys exhibiting conduct problems. Impacts in elementary school were uniformly positive, producing improvements in the boys' prosocial behaviors and classroom social competence and reductions in their aggressive and oppositional behaviors (Conduct Problems Prevention Research Group [CPPRG], 1999a, 1999b). By middle or high school, most of these effects had disappeared for all but the highest-risk boys (CPPRG, 2011), although impacts on some of these outcomes reappeared when the participants were assessed in their mid-20s (Dodge, Bierman, et al., 2015).

All in all, it appears that some well designed and well implemented cognitive, social, and emotional interventions produce immediate impacts on child and adolescent outcomes. Sharp reductions in subsequent intervention effects are typically observed among the regrettably small fraction of interventions where follow-up data are available. And, in a handful of some of the most rigorously implemented and evaluated early childhood interventions, this pattern of rapid intervention-effect fadeout has been followed by the detection of impacts on attainment, behavior, and sometimes health in adulthood.

## Skill-Building Models

How can we account for these patterns of fadeout and persistence in child and adolescent interventions? The next three sections draw from the limited conceptual literature on fadeout to formulate three distinct processes that may explain persistence and fadeout of intervention effects over time—skill building, foot-in-the-door capacity boosts needed to respond to windows of opportunity or risk across childhood and adolescence, and sustaining environments. And though short-term impacts of interventions can be beneficial (e.g., by reducing school districts' expenditures on special education programs), our article concentrates to the extent possible on longer run impacts that are detected years, and sometimes decades, after the intervention has ended.

Skill-building processes are most easily seen in the case of math and literacy, where early academic skills are the foundations upon which later skills are built. Counting serves as a causal basis for children's early addition problem solving, and addition is often employed as a subroutine of children's multiplication problem solving (Baroody, 1987; Clements & Sarama, 2004, 2014; Lemaire & Siegler, 1995). In the development of children's reading skills, children's ability to match letters to sounds supports their learning to recognize written words, which in turn supports their vocabulary learning, which then supports their reading comprehension (LaBerge & Samuels, 1974). Such relations are likely bidirectional, where basic skills are also practiced during the learning of more advanced skills (Stanovich, 1986).

Skill-building economic models of human development formalize thinking about the human capital production function and emphasize how investments and child endowments interact to create a child's accumulating stock of human capital. Cunha and Heckman (2007) describe a cumulative model of the production of human capital that, as summarized in their phrase "skill begets skill," results from two distinct processes. First is "self-productivity"—the process described above for math and literacy by which more complicated skills develop from simpler ones. This insight supports the idea that intervention impacts may be particularly

likely to persist when interventions are designed to build skills incrementally within any given developmental domain. An example would be a math intervention teaching the number line that facilitates the learning of higher level math skills in later grades (Siegler, 2009).

Cunha and Heckman (2007; also see Ceci & Papierno, 2005) also introduce the concept of “dynamic complementarity,” the idea that skills acquired prior to a given human capital investment increase the productivity of that investment. Thus, for example, children who enter school with the strongest cognitive skills and socioemotional skills and behaviors are assumed to profit most from K–12 schooling by, say, learning more from classroom instruction or being selected for gifted and talented programs in the early grades or for honors or AP classes in high school. Although this synergy between initial skills and later interventions may be observed for universal interventions such as K–12 schooling, it is less likely to hold for targeted programs such as Head Start, which have an explicit compensatory purpose (Purtell & Gershoff, 2013, but see also Aizer & Cunha, 2012).

The Cunha and Heckman model predicts greater impact persistence of early human capital interventions when the intervention: (a) boosts skills that are important for the production of later skills, and/or (b) boosts skills that best increase the productivity of later investments. The key intervention implication in this skill-building model is the need to identify fundamental cognitive and noncognitive skills, capacities, behaviors, or beliefs and develop them as early and efficiently as possible. Under this model, the quality of subsequent learning environments (e.g., K–12 schooling) may affect a child’s eventual level of skills, but the skill *gap* between treatment and control-group children resulting from an effective early childhood intervention ought to be maintained or even widen with time under a range of subsequent environmental conditions.

### ***Trifecta Skills in the Context of the Skill-Building Model***

Cunha and Heckman (2007) speak generally of cognitive and noncognitive skills, but do not identify which skills matter the most. We propose that to provide persistent intervention-generated benefits for children, the skills, behaviors, capacities or beliefs targeted by interventions must share three key features: they are *malleable* through intervention, they are *fundamental* for success, and they *would not develop eventually* in most counterfactual conditions. Although we sometimes refer to each of these criteria as though it were dichotomous, it is more accurate to view each as continuous and varying within and across individuals, depending on age, other personal characteristics, and circumstances. We also do not mean to imply that “less malleable” skills, behaviors, capacities, and beliefs are completely immutable. And because counterfactual conditions are often less conducive for healthy development for “at risk” populations, our trifecta skill analysis is particularly relevant for interventions targeting disadvantaged children and adolescents.

Our characterization of these skills as “trifecta” connotes the importance of meeting all three criteria, which we argue limits substantially the kinds of skills that interventions can target productively. Trifecta skills may be influenced directly, as by an intervention (e.g., direct classroom instruction) designed to influence children’s skill development, or indirectly, as through an intervention that changes children’s environments (e.g., targeting parent–child relationships, neighborhood and school safety) in ways that promote their fundamental skills.

	Fundamental ← → Peripheral	
More malleable ↑	<ul style="list-style-type: none"> <li>• Math &amp; literacy</li> <li>• Self-concept, academic motivation &amp; implicit theories of intelligence</li> <li>• Emotional self-regulation &amp; executive function</li> <li>• Social and relationship skills</li> </ul>	<ul style="list-style-type: none"> <li>• Test-specific knowledge</li> <li>• SAT test prep</li> <li>• FAFSA information</li> </ul>
↓ Less malleable	<ul style="list-style-type: none"> <li>• Conscientiousness (including grit)</li> <li>• General intelligence</li> </ul>	<ul style="list-style-type: none"> <li>• Ambidexterity</li> </ul>

**Figure 3.** Fundamentality and malleability in skills, behaviors, and beliefs.

### *Malleability and Fundamentality*

Setting aside for the moment a consideration of counterfactual conditions, we posit that to provide lasting benefits for children, interventions must target skills, behaviors, or beliefs that can be changed (malleability) and are crucial for achieving the desired outcomes (fundamentality). We define fundamental skills as those upon which later skills are built, and that influence positive life outcomes, such as attainment or labor market success. These long-term impacts may be direct effects of persistent skill gains (e.g., trained vocational skills may be rewarded in the labor market) or indirect effects of early skill gains via their effects on other skills (e.g., an early boost in English language proficiency may allow some children to learn more science, which may be rewarded in the labor market). As we discuss below, not all skills that generate positive long-run outcomes are “fundamental” because they may work indirectly through, for example, developmental cascades rather than skills themselves. [Figure 3](#) categorizes a variety of child and adolescent skills, capacities, beliefs, and characteristics according to their malleability and fundamentality. We begin our discussion in the lower left-hand quadrant, which contains fundamental but not readily malleable skills.<sup>4</sup>

### *Fundamental But Not Readily Malleable*

Because it supports performance across a wide variety of important tasks, general intelligence, or *g*, is perhaps the best example of a “fundamental” capacity. General intelligence is the single strongest predictor of many measured traits and abilities, including occupational level and performance (Schmidt & Hunter, 2004), and strongly predicts other life outcomes as well (Cawley, Conneely, Heckman, & Vytalil, 1997; Gottfredson, 1997; Heckman, 1995; Herrnstein & Murray, 1994).

Unfortunately, despite improvements in intelligence-test performance across cohorts over time (Flynn, 2012) and research suggesting a larger role for environmental factors in the

<sup>4</sup>We ignore the lower-right quadrant containing skills that are neither fundamental nor malleable. An example might be ambidexterity. It can be trained, but only with great difficulty (and is thus less malleable). It can offer an advantage (e.g., for NBA players), but for most individuals in the population would not confer a significant advantage in life (and is thus peripheral). Lacking both malleability and fundamentality, it exemplifies the least promising kinds of characteristics to target with interventions.



development of poor versus more affluent children's cognitive skills (Tucker-Drob & Bates, 2016), attempts to boost general intelligence experimentally in individuals within the commonly observed range of intervention intensity and child characteristics have rarely proved successful (Jensen, 1998; but see Nisbett et al. 2012 for a more optimistic review). Although performance on any particular intelligence test can be improved through training, some have argued that these gains rarely transfer broadly to cognitive performance in different domains (Haier, 2014; te Nijenhuis, van Vianen, & van der Flier, 2007), and tend to fade quickly after the conclusion of the intervention (Protzko, 2015). The existence of broad transfer resulting from cognitive training remains contested (see Au et al., 2015; Melby-Lervåg, Redick, & Hulme, 2016; Miles et al., 2016; Roberts et al., 2016).

The lack of consistent intervention impacts on children's IQ has problematic implications for interventions seeking to improve this fundamental capacity, because it means that training designed to enhance performance on a specific cognitive skill or domain may be unlikely to enhance children's general learning. As shown in Figure 1, at least one early childhood education intervention—Abecedarian—generated persistent effects on children's IQ scores, perhaps because of the intense nature of the Abecedarian program, combined with the conditions of relative deprivation facing control-group children and their families.

Conscientiousness—one of the “Big Five” personality traits identified by personality psychologists—is also likely to be fundamental.<sup>5</sup> Conscientiousness reflects the propensity to be self-controlled, responsible to others, hardworking, orderly, and rule-abiding (Roberts, Lejuez, Krueger, Richards, & Hill, 2014) and is the most powerful correlate in the personality domain of later job performance (Almlund, Duckworth, Heckman, & Kautz, 2011; Judge, Higgins, Thoresen, & Barrick, 1999). It is also associated with other important outcomes, such as children's grades in school, health behaviors, and longevity (Bogg & Roberts, 2004; Friedman et al., 1993; Poropat, 2014).

Historically, individual differences in traits such as conscientiousness have been viewed as largely stable across time (McCrae et al., 2000; for a review, see McAdams & Pals, 2006), with substantial continuity documented between childhood behavioral styles and personality in early adulthood (Caspi et al., 2003). Some evidence suggests that personality traits may be amenable to change, particularly during adolescence and young adulthood (Magidson et al., 2012; Roberts, Walton, & Viechtbauer, 2006). A recent study following university undergraduates reported evidence from two studies that goals to change one's personality caused changes in some personality traits during the semester, but goals to change conscientiousness were not associated with subsequent changes in conscientiousness in either study (Hudson & Fraley, 2015). Further research on personality change is certainly warranted, but currently there is little direct evidence from interventions demonstrating that broad personality characteristics such as conscientiousness are readily malleable.<sup>6</sup>

---

<sup>5</sup>Conscientiousness is highly correlated with the lower level construct “grit,” which has been found in some studies (but not others) to predict achievement outcomes above and beyond conscientiousness (Duckworth, Peterson, Matthews, & Kelly, 2007; Duckworth & Quinn, 2009; Ivcevic & Brackett, 2014). Other “Big Five” personality traits are openness to experience, extraversion, agreeableness, and neuroticism.

<sup>6</sup>Heckman, Pinto, and Savelyev (2012) show that Perry is a possible exception; see also Krasner et al. (2009) for recent evidence of intervention-driven change in conscientiousness among adults. Heckman and Kautz (2013) argue that behavioral outcomes, such as substance abuse and crime, are better operationalizations of “character” than self-reported measures. Although we agree with their concerns about measuring changes in conscientiousness using self-reported measures, using positive behavioral outcomes as effects of personality changes evidenced by these very outcomes is worrisome, especially given the possible changes in other skills and environments that might plausibly affect such outcomes (Benda, 2005).

### ***Malleable But Peripheral***

A second set of skills are malleable but peripheral (the upper right corner in Figure 3). A classic example is test-specific knowledge. Being able to identify a picture as a “blue house” might improve a young child’s score on an early intelligence assessment, but this piece of knowledge alone is unlikely to benefit a child’s later schooling or labor market success. Impacts from interventions that focus on improving children’s knowledge of a limited number of peripheral facts or test-specific test-taking skills will likely fade out quickly. Indeed, peripheral skill targeting of this kind has been proposed as an explanation for fadeout of IQ score effects produced by ECE interventions (Jensen, 1998).

That said, interventions targeting peripheral skills may still deserve intervention attention if those skills provide “foot-in-the-door” advantages linked to longer run benefits. An example might be test prep that increases chances of admission to a four-year or higher status college, which in turn leads to a higher paying job. But the mechanisms that sustain this effect over time are unlikely to be a direct result of a peripheral test prep skill, making this example different from our formulation of skill-building processes that sustain enduring treatment impacts. We discuss foot-in-the-door avenues for sustaining intervention impacts in the section “Foot-in-the-Door Interventions.”

### ***Fundamental and Malleable***

The fourth and most promising quadrant of Figure 3 contains skills, behaviors, or beliefs that have been—or may eventually be—shown to be both fundamental for later success and malleable through intervention. Examples listed in Figure 3 include academic skills, child-based social-cognitive behaviors and beliefs, and relation-based social and relationship skills.

The combination of fundamentality and malleability is most apparent in children’s early basic literacy and mathematics skills. As argued above, both of these early skills are fundamental for subsequent learning within and across achievement domains, and both can be effectively taught. Ample correlational evidence supports this skill-progression view of eventual learning; early academic skills are robust statistical predictors of children’s achievement much later in school, as well as of labor market outcomes (Duncan et al., 2007; Ritchie & Bates, 2013).

However, as can be seen from the fadeout pattern in Figure 2, ECE interventions targeting early mathematics or literacy skills, malleability and fundamentality alone do not guarantee impact persistence. Below we suggest that simple academic skills fail to meet a third trifecta skill condition—the absence of eventual development without the intervention.

Personality psychologists often make a distinction between hard-to-change *dispositional traits* (e.g., conscientiousness and other dimensions of the Big Five) and more malleable *characteristic adaptations* (McAdams & Pals, 2006). Characteristic adaptations include many motivational and sociocognitive features of personality, such as beliefs, values, goals, plans, strategies, and developmental tasks, some of which are viewed as both fundamental and malleable (Kenthirarajah & Walton, 2015; Yeager & Walton, 2011) as well as more closely linked than dispositional traits to an intervention’s targeted outcome (Littlefield, Stevens, & Sher, 2014). For example, children’s understanding of their ability to learn is hypothesized to be both malleable and fundamental for academic achievement (Wilson & Linville, 1982, 1985) because students who encounter difficulties in school but attribute these difficulties to transitory factors may be more likely to persist in their efforts to succeed, compared with students who encounter difficulties in school and attribute them to their own

persistent shortcomings. Such characteristic adaptations are also viewed as more context-specific than dispositional traits, and may express themselves differently in school versus family contexts.

Another set of capacities in the “malleable and fundamental” quadrant involve cognitive and emotional self-regulation, which have been defined as the “processes by which the human psyche exercises control over its functions, states, and inner processes” (Baumeister & Vohs 2004; Raver 2004). Emotional regulation includes the ability to control anger, sadness, joy, and other emotional reactions, and early measures of it predict such behaviors as aggression and internalizing problems (Bridges, Denham, & Ganiban, 2004; Eisenberg et al., 2005). Positive preschool intervention impacts on emotional regulation are reported in Morris et al. (2014), while positive impacts for later socioemotional interventions are summarized in Durlak et al. (2011).

Cognitive and developmental psychologists have viewed executive functions as fundamental for children’s self-regulation and school readiness (Blair & Razza, 2007). Executive functions are fundamental capacities for problem solving and goal-oriented behavior. The components of executive function—impulse control, working memory, and the ability to shift between tasks—are basic cognitive processes required in the performance of many everyday activities (Miyake, Friedman, Emerson, Witzki, & Howerter, 2000). Moreover, some evidence suggests that performance on tasks measuring executive functions can be altered in early childhood and later through curricula such as Tools of the Mind, which teaches children strategies for becoming deliberate, self-regulated learners who are capable of relating well to fellow students and engaging in teacher-directed activities (Diamond & Lee, 2011; but see null effects for Tools reported in Morris et al., 2014).

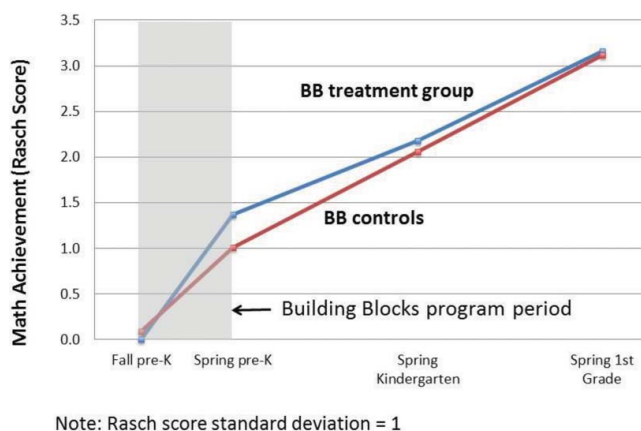
Some believe that targeting executive function skills in parents and/or children can play an important role in generating positive long-term outcomes for children. However, because these programs often contain multiple components (e.g., skills training for parents and children, after-care academic support, school-level engagement), it is difficult to isolate the specific contribution of changes in children’s executive functions to intervention effects and persistence (Jacob & Parkinson, 2015).

### ***Development in Counterfactual Conditions***

Merely targeting malleable and fundamental skills is insufficient for generating persistent impacts because many of these skills are soon mastered by children in the comparison groups. Rudimentary academic skills develop quickly in counterfactual conditions. For example, on nationally normed reading and mathematics tests, children learn over a full standard deviation of material between kindergarten and first grade (Hill, Bloom, Black, & Lipsey, 2008).<sup>7</sup> Thus, although these kinds of early cognitive skills may be among the most fundamental and malleable, the impacts of interventions that target them may fade out most quickly owing to the fact that virtually all children will eventually receive this instruction.

---

<sup>7</sup>Cascio and Staiger (2012) proposed that perhaps fadeout patterns and larger treatment effects of interventions earlier in development could be explained by a smaller variance of test scores earlier in development. However, their findings suggested that little of the fadeout following early interventions could be explained by increasing variance in test scores, especially in the period immediately following an intervention, during which the most pronounced fadeout occurs.



**Figure 4.** Math achievement during and after the pre-K building blocks program.

An example of fadeout caused by rapid growth among children in counterfactual conditions comes from Clements et al.’s (2013) TRIAD evaluation of the Building Blocks pre-K math intervention. Figure 4 shows that math achievement for children in the control group grew by nearly a full standard deviation between the fall and spring assessment points during the pre-K year, and then by about a full standard deviation in the annual intervals between spring of the pre-K year and spring of kindergarten as well as between the springs of kindergarten and first grade. Math achievement for children receiving the Building Blocks curriculum grew even faster—about .50 *SD* faster—than controls during the pre-K year, but not as quickly after that. The shrinking gap between the two groups after program completion reflects the fading of the program’s impacts after it ended, as well as the “catch-up” among those in the control condition.

The distinction between skills that do and do not develop quickly in most counterfactual conditions is akin to Paris’s (2005) distinction between “constrained” and “unconstrained” reading skills and Ackerman’s (2007) distinction between “closed” and “open” tasks. Constrained and closed skills require only a limited amount of knowledge and are simple enough for virtually all individuals who practice them to master. Intervention-induced impacts on these kinds of skills fade out because children would have acquired them in any case. Accordingly, the strong predictive power of early academic skills, many of which fall into the “closed” category, for later academic achievement likely reflects individual differences in more fundamental skills or environments that influence learning across time, rather than a causal impact on later achievement of the rudimentary literacy or numeracy skills themselves. In contrast, mastery of open tasks, such as general mathematics achievement or vocabulary, is always incomplete so that even extensive practice still leaves room for improvement. More complex closed tasks, such as fraction arithmetic or knowledge of basic scientific principles, may also never reach expert levels for many children without interventions beyond normative K–12 schooling.

More sophisticated skills develop at different speeds depending on the counterfactual conditions, with the slowest growth occurring for the most complex skills in conditions faced by most at-risk children. Thus, the nature of counterfactual conditions typically enhances the efficacy of interventions targeting more sophisticated skills for at-risk relative to more advantaged populations.

The moderation of malleability by counterfactual conditions has important implications for predicting which early intervention studies will show persistent effects on fundamental skills. Impacts from interventions that target children who face formidable environmental obstacles are likely to persist the longest owing to the environmental-induced problems facing children in the comparison groups.

### ***Trifecta Skills, Behaviors, and Beliefs***

Which skills meet all three criteria—malleable, fundamental, and unlikely to develop in the absence of the intervention? Our list, which should be viewed as tentative given the limited evidence that is currently available, includes advanced academic and concrete vocational skills as well as achievement-related beliefs and behaviors (Table 1). Owing to difficulties in meeting all three of our criteria, this list is not nearly as long as might be hoped and, in the top panel, includes almost nothing of relevance to early childhood education. In principle, we do not equate advanced skills with skills learned by children of more advanced ages and instead allow for the possibility that some skills learned by some very young children might never be mastered by most children a few years older. In practice, however, concrete examples of such skills elude us.

Although rapid development in counterfactual conditions means that lower-level academic skills such as counting or letter recognition do not make the cut, more advanced levels of literacy and numeracy might. Using data collected by the OECD, Hanushek, Schwerdt, Wiederhold, and Woessmann (2015) show that these more advanced skills are powerful correlates of labor market success, even after adjusting for worker differences in completed schooling, measurement error, and the possibility of reciprocal causation between worker skills and the nature of their jobs.

More focused studies have shown that although American children generally acquire rudimentary early mathematics and reading skills, many of them never master more

**Table 1.** Possible “trifecta” skills.

Possible trifecta skills, beliefs, or capacities by domain
<p>Academic skills</p> <ul style="list-style-type: none"> <li>• Advanced mathematics (e.g., fractions, algebra) and analytic skills</li> <li>• Advanced literacy and communication skills</li> <li>• Concrete vocational skills</li> </ul> <p>Beliefs, behaviors, and capacities</p> <ul style="list-style-type: none"> <li>• Implicit theories of intelligence</li> <li>• Academic motivation</li> <li>• Self-concept for adolescents facing stereotype threat</li> </ul>
Additional trifecta skills for children in very adverse environments
<ul style="list-style-type: none"> <li>• Normative cognitive, stress, and immune function for children in fetal or early life conditions characterized by “toxic stress”</li> <li>• General intelligence for young children in very unstimulating, nutritionally poor or toxin-laden early environments</li> <li>• Emotional self-regulation for adolescents in violent neighborhoods</li> <li>• Parenting and communication skills for parents, and parent–child dyads, experiencing multiple stressors</li> </ul>

advanced skills (e.g., fractions) that are taught in the later elementary years and used throughout advanced classes in secondary school and higher education (National Mathematics Advisory Panel, 2008; Siegler, Fazio, Bailey, & Zhou, 2013). Moreover, these skills are malleable: intensive interventions have successfully improved children's fraction knowledge (Fuchs, Geary, et al., 2013; Fuchs, Schumacher, et al., 2013), and additional algebra instruction for children who are at risk for failure in this subject increases children's subsequent math achievement as well as their likelihood of graduating from high school (Cortes & Goodman, 2014; see section "Foot-in-the-Door Interventions" for elaboration). Still, questions remain about the degree to which the factors targeted by these math interventions are fundamental, in and of themselves, for most children's later academic and labor market success (Bailey, Watts, Littlefield, & Geary, 2014).

As for vocational skills, the community college literature shows payoffs to completing the career-oriented courses such institutions offer, even if this does not lead to a vocational certificate (Belfield & Bailey, 2011). Moreover, rigorous evaluations of some models of vocationally oriented secondary education programs show long-term impacts on earnings; perhaps the most successful is Career Academies, which boosted earnings, postsecondary education and, for men, marriage rates (Kemple & Willner, 2008).

We see merit in arguments for the trifecta nature of schoolchildren's academic motivation and implicit theories about intelligence and self-concept (Yeager & Walton, 2011). In the case of motivation, the expectancy-value theory of academic motivation holds that children's cognitive representations of their own academic abilities shape their expectations for success, course choice, and, ultimately, the careers they pursue (Wigfield & Eccles, 2000). But positive self-appraisals are not enough; children also need to attach intrinsic or instrumental value to their academic pursuits. Interventions targeting some combination of expectations and values are potentially promising ways to boost motivation and promote academic performance. It is also possible that such interventions are achieving their effects via reductions in anxiety and task withdrawal which, in turn, create more opportunities for skill building and learning.

Gaspard et al. (2015) asked students to list arguments for the personal relevance of mathematics to their current and future lives and to write an essay explaining these arguments. Six months after the interventions, students who were randomly assigned this task had higher levels of mathematics motivation (more specifically, they valued mathematics more highly). A similar science-oriented intervention showed positive impacts on high school students' science grades (Hulleman & Harackiewicz, 2009). Although we lack longer run evidence on attainment impacts, if motivation can be affected by low-cost writing-based interventions, perhaps such interventions might be used persistently to boost children's academic motivation throughout their school years.

Implicit theories about intelligence and self-concept concentrate on the importance—and malleability—of a person's core beliefs and/or construal of the social world (Yeager & Walton, 2011). Students in a New York City public school learned study skills, and a random subset of them also learned about research showing that the brain grows connections and "gets smarter" when a person works on challenging tasks (Blackwell, Trzesniewski, & Dweck, 2007). Students learning only the study skills continued the downward decline in math grades commonly found in middle school, while students learning the incremental theory earned better math grades over the course of the year.

Cohen, Garcia, Purdie-Vaughns, Apfel, and Brzustoski (2009) found a substantial effect on low-performing African American students' grade-point averages two years after an



intervention in which the students (as seventh graders) wrote a series of essays in which they affirmed values important to them. The selective effectiveness of the intervention was attributed to the fact that the affected students faced environments that generated stereotype threat (Sherman & Cohen, 2006; Steele, 1988). However, it is notable that several attempts to replicate this intervention in larger samples have shown no consistent impacts (Dee, 2015; Hanselman, Rozek, Grigg, & Borman, 2016; Protzko & Aronson, 2016).

### ***Trifecta Skills in Very Adverse Counterfactual Conditions***

We began by noting that we would confine most of our discussion to children living in the normative range of environmental conditions found in the modern United States. However, the potential list of trifecta skills is likely to broaden for children growing up facing extreme forms of poverty and adversity. For example, very poor counterfactual conditions likely led to the long-term treatment effects on intelligence reported in randomized controlled trials in Jamaica and Guatemala, where children received nutritional supplementation (or nutritional supplementation and psychosocial stimulation in the Jamaican study; Maluccio et al., 2009; Walker, Chang, Powell, & Grantham-McGregor, 2005). And very dangerous neighborhood conditions may have been key to the success of the Chicago Crime Lab's *Becoming a Man* (BAM) curriculum, which provided youth living in high-poverty neighborhoods on Chicago's South Side with social-cognitive skill training focused on preventing them from responding to negative events by making hasty decisions, which in their dangerous neighborhoods often results in violence (Heller, Pollack, Ander, & Ludwig, 2013).

### ***Notable Omissions From the Trifecta List***

One reason that Table 1's list of trifecta skills is so short lies in some of the trade-offs inherent in trifecta conditions. Basic language and literacy skills are clearly fundamental and malleable but do not make the trifecta list because they develop from natural experiences under most counterfactual conditions or are specifically targeted in universally available early formal or informal learning environments. Executive function and rudimentary mathematics skills, both of which develop rapidly in early childhood, do not make our trifecta list for similar reasons.

Another limiting trade-off for trifecta skills is that some clearly fundamental skills that do not develop under most counterfactual conditions are not likely to be malleable by scalable interventions. This is why we do not include general intelligence or conscientiousness as trifecta skills. And while we do not dispute the malleability of performance on specific executive function tasks, evidence from twin studies of children and adults suggests that individual differences in higher level factors influencing performance across all executive function components show far less environmental variance (Engelhardt, Briley, Mann, Harden, & Tucker-Drob, 2015; Friedman et al., 2008). This does not mean we will never find a way to change these factors, particularly for children living in especially adverse counterfactual conditions or through interventions that begin very early in life. However, it does imply that those who fall within the existing range of environmental variation may have a limited influence on factors that influence performance on higher level cognitive skills.

## Foot-in-the-Door Interventions

Developmental timing is crucial for the foot-in-the-door perspective, which holds that building capacities or beliefs at the right time will reduce risk long enough to sustain individuals through periods of high vulnerability (Dodge, Greenberg, Malone, & CPPRG, 2008). Early adolescence is viewed as a particularly productive time for foot-in-the-door interventions, owing to the rapid biological, social, and emotional changes that are occurring in a young person's life, coupled with new opportunities for educational, vocational, and social skill development.

Pregnancy prevention is a classic foot-in-the-door intervention example because it seeks to delay the onset of sexual activity and pregnancy beyond the teen years rather than eliminating these outcomes altogether. Delaying early initiation into substance use is another example, as there is evidence that a delay beyond early adolescence can reduce the long-term risk of substance use and dependence (Chen et al., 2004; Dodge et al., 2009; Spoth et al., 2011).<sup>8</sup> Appropriately timed interventions might also equip a child with the right skills or capacities at the right time to seize emerging opportunities (e.g., entry into honors classes). Foot-in-the-door processes are key to the intervention approaches taken in prevention science (Coie et al., 1993).

Foot-in-the-door interventionists may thus leverage sensitive periods of development to alter children's trajectories. These periods are viewed as windows of opportunity and/or vulnerability, often marked by intense change in individuals and their contexts, as well as in the interactions between individuals and their contexts (Dahl & Spear, 2004; Masten et al., 2004).

The sensitive-period feature of foot-in-the-door processes differs fundamentally from skill building, which views the intervention task as one of identifying and improving key skills (e.g., grit, executive function, gratification delay, early numeracy) that will persist and generate life-long benefits. In contrast, foot-in-the-door views the intervention task as one of producing a potentially transitory augmentation of skills or beliefs that will sustain a child or adolescent through a period of risky environments or transitory opportunities to provide a solid foundation for entering the next developmental stage (e.g., from adolescence to adulthood).

On the other hand, both skill-building and foot-in-the-door approaches are embedded in developmental cascades theory. Within this framework, effects of early skills cascade over time to influence later skills via both direct (skill-begets-skill effects, with autoregressive paths through a similar construct over time) and indirect pathways (foot-in-the-door effects, with indirect pathways through more transitory skills). Developmental cascades may be both direct and indirect, as well as unidirectional, bidirectional, and/or reciprocal. A key aspect of the overall cascades approach is that the resulting effects decidedly are not transitory but instead alter the course of development (for a review, see Masten & Cicchetti, 2010). Within our framework, skill building and foot-in-the-door pathways represent two related, yet distinct pathways that can lead to sustained intervention effects, both of which could be represented, and simultaneously occur, within a more general developmental cascades model.

---

<sup>8</sup>Spoth et al. (2011) summarizes this view as follows: "The extant literature on universal interventions emphasizes the importance of timing program implementation to occur during the developmental window when adolescents are just beginning to initiate substance use. Epidemiological research suggests that well-timed interventions could accrue substantial public health and economic benefits, should they delay onset of substance use or delay transition to more serious use" (pp. 621–622).



### ***Foot-in-the-Door Processes Involving Early Childhood Education Programs***

Although early education programs such as Perry and Abecedarian are typically conceived as building a broad and durable set of early skills, it is difficult to distinguish between the mediating roles of subsequent skill-based versus foot-in-the-door processes. The first column of Table 2 shows impacts on special education placement and grade retention based on calculations from the meta-analytic database described earlier. Average effect sizes (as measured by Hedges's  $g$ ) from all of the early education programs behind Figure 2 that measured these outcomes are in the .30  $SD$  to .40  $SD$  range, more than enough to lead to subsequent advantages associated with staying on track in mainstream instruction.

If being held back in school or placed in special education leads to negative cascades for some children, perhaps some of the long-term positive outcomes associated with Abecedarian stem from foot-in-the-door processes, rather than being the direct result of skill-based factors such as higher IQ. In the Abecedarian Project, nearly half of the children in the control group were placed in special education; this was true of only 30% of the children who received the Abecedarian preschool treatment—a difference that translated into an effect size ( $-.45\ SD$ ) that was only slightly more negative than that of the meta-analytic average (Table 2). The effect size on special education in the Perry Preschool Project was smaller ( $-.31\ SD$ ) and statistically insignificant, but not far from the meta-analytic average.

In the case of grade retention, Abecedarian treatment and control rates were 34% and 58%, which generated an effect size ( $-.54\ SD$ ) that was almost twice as large as the meta-analytic average ( $-.29\ SD$ ). Perry's impact on grade retention was statistically insignificant ( $-.17\ SD$ ), but also not far from the meta-analytic average. Thus, Abecedarian's, but perhaps not Perry's, long-run impacts may have been sustained in part because of foot-in-the-door advantages in school structures and processes. Perhaps this is because the treatment effect on IQ persisted in Abecedarian. However, in Deming's (2009) sibling-based analysis of Head Start, grade repetition and learning disability status were affected despite fadeout of effects on children's cognitive test scores.

### ***Foot-in-the-Door Advantages From Algebra Mastery?***

Although algebra mastery may constitute a fundamental skill for the successful performance of some adult jobs, timely mastery of algebra in the early high school years may also provide crucial "foot-in-the-door" advantages for keeping a student on track for a chance at a four-year college education. Most colleges require successful completion of three years of math courses in high school, and the more competitive colleges require four. Algebra and geometry skills are also important for college entrance exams. Efforts to provide "just in time" boosts to algebra skills may yield the right skills at the right time for future success, even if the math skills themselves no longer matter.

Evidence suggesting that appropriately timed and targeted algebra instruction may convey foot-in-the-door advantages comes from the Chicago Public Schools' implementation of a policy that assigned children who performed below a certain level on an eighth-grade mathematics exam to take a "double dose" of algebra classes in ninth grade. Using a regression discontinuity design, Cortes and Goodman (2014) estimated that children just below the cutoff who received the extra algebra instruction earned higher grades in ninth-grade algebra, outperformed controls on an 11th-grade mathematics exam, were 12 percentage

**Table 2.** Impacts of early childhood education programs on two cascade channels—Special education and grade retention.

	Meta-analysis				Abecedarian				Perry			
	Impact	Odds ratio	Notes	Impact	Odds ratio	Notes	Impact	Odds ratio	Notes	Impact	Odds ratio	Notes
Special education	−0.397** (0.149)	0.609	Averaged over 7 studies and 15 effect sizes; 31.4% for control group, 21.8% for treatment group	−0.451** (0.226)	0.406 (0.412)	Ever received any special education services between grades K–9; 49% for control group, 30% for treatment group	−0.308 (0.202)	0.587 (0.368)	Ever received any special education services between grades K–12; 50% for control group, 37% for treatment group			
Retained in grade	−0.288** (0.074)	0.625	Averaged over 16 studies and 34 effect sizes; 34.9% for control group, 25.1% for treatment group	−0.540** (0.223)	0.373 (0.408)	Ever been retained between grades K–9; 58% for control group, 34% for treatment group	−0.169 (0.261)	0.706 (0.481)	Ever been retained between grades K–12; 20% for control group, 15% for treatment group			

Notes. \*\* $p < .05$ , \* $p < .10$  in two-tailed tests.

Meta-analysis and Abecedarian impacts are calculated by the authors using Hedges's  $g$ . Perry impacts are calculated using Hedges's  $g$  from Table 2 in Barnett (1995). Meta-analysis impacts come from McCoy et al. (2015).

points more likely to graduate from high school within five years, and were 11 percentage points more likely to enroll in college than children just above the cutoff.

It is difficult to evaluate the extent to which foot-in-the-door processes are responsible for Double Dose's persistent intervention effects. Did the program affect children's high school graduation rates because children who received the treatment learned a malleable and potentially fundamental skill (algebra), or because a higher likelihood of success in a key class at the beginning of high school set off a positive cascade, leading to more school engagement and, eventually, a higher likelihood of graduation?<sup>9</sup> Of course, these are not mutually exclusive hypotheses. However, the treatment effect of the double-dose algebra intervention was larger on students' 11th-grade ACT verbal scores than on their 11th-grade ACT math scores, suggesting that algebra knowledge alone was not responsible for the positive effects of the intervention (Cortes & Goodman, 2014).

### ***Light-Touch Interventions Relying on Foot-in-the-Door Processes***

Foot-in-the-door effects have several attractive qualities, including their often low implementation cost. For example, an intervention that sent college freshmen information via text messages on how and when to re-file FAFSA applications boosted community college students' continued enrollment into the spring of their sophomore years by 14 percentage points relative to control-group students who did not receive such messages (Castleman & Page, 2014; similar results have been reported by Bettinger, Long, Oreopoulos, & Sanbonmatsu, 2012, and Owen, 2012). The cost of the intervention averaged about \$5 per student served. Information about when and how to fill out FAFSA applications is clearly a peripheral rather than fundamental skill, given that it is not useful in other contexts. However, assisting students with their FAFSA applications generated persistent effects on college attendance because it opened the door to college enrollment. Regrettably, no data have been collected on the longer run impacts of more FAFSA knowledge.

Foot-in-the-door effects might justify efforts to teach children achievement skills that they would probably acquire soon in any event, provided that those gains trigger positive developmental cascades that propel children ahead of their peers in the years that follow. Thus, although teaching children how to count a few months early will not produce a permanent advantage in counting skills, it might allow children to learn simple addition strategies before their peers, which in turn could provide the opportunity for early learning of complex addition strategies and other higher level math skills. However, as shown in Figure 4, evidence from the Building Blocks experiment does not support the idea that foot-in-the-door processes sustained its pre-K math impacts.

Relying on foot-in-the-door positive cascades is not without risks. Learning a skill makes a child only probabilistically more likely to learn subsequent, more complex skills in the sequence. And peripheral skills leading to placement in an initially more positive environment do not guarantee that environmental advantages will persist over time. As the probabilities multiply, the estimated effects of an early intervention on later positive outcomes

---

<sup>9</sup>Another possible source of impacts is that the extended instructional time in the Double Dose condition enabled teachers to use instructional activities such as working in small groups and on boards and engaging in more probing and open-ended questions.

decrease geometrically. This is particularly likely in the case of early interventions. Nonetheless, foot-in-the-door processes may sustain treatment effects if multiple processes are triggered by the intervention. Alternatively, if the probability is close to 100% that the child will learn more advanced skills or enjoy more positive environments if he or she has learned a precursor skill or been placed in a positive environment, foot-in-the-door processes may fully sustain initial impacts.

### **Study the Doors?**

If foot-in-the-door processes support consequential positive or negative developmental cascades, then it becomes important to study the doors themselves to ensure that they promote rather than retard opportunity. Obvious examples of problematic doors are when a special-education track traps children into a sequence of inferior educational opportunities, or a school suspension policy increases the chances of involvement with the juvenile and, eventually, adult justice systems.

To the extent that the association between an early intervention and a mediating “door” or the effect of a “door” on subsequent life outcomes varies by time and place, the likely long-term outcomes of short-term interventions may also predictably vary. For example, if some school districts have very effective special education programs, avoiding special education placement would not be considered an important positive intermediate outcome.

Finally, if doors are relative goods (to extend the analogy, if getting in the door requires that someone else exits), interventions may generate negative externalities and will show smaller average positive effects at scale than at the individual level. An example would be entry into a limited number of slots in a gifted or talented program. When interventions enable treated children to benefit from these slots, this means that other children are crowded out of their slots. In these cases, the collective effects of an intervention conducted at scale would add up to less than the sum of its individual effects, and could even be negative (Penner, Domina, Penner, & Conley, 2015).

### **Sustaining Environments**

What we call the “sustaining environments” perspective recognizes the importance of building skills and capacities early in life, but views subsequent exogenous environments as crucial for the persistence of the early skill advantages wrought by prior interventions. Ramey and Ramey (2006) draw from their experience with the Abecedarian Project as well as a broader review of the early intervention literature and observe that sustained intervention effects require ongoing post-program educational supports to “maintain children’s positive attitudes and behavior and to encourage continued learning relevant to the children’s lives” (p. 455). They point out that if birth-to-age-five programs are to be deemed successful over the long term, treatment but not control-group children must exhibit rates of development after they enter school that parallel those of more advantaged children. In short, early intervention impacts can be sustained only if they are followed by environments of sufficient quality to sustain normative growth. Enriched post-intervention environments can be consciously planned and implemented, for example, by providing high-quality elementary school instruction that complements what has been taught before, or they may arise spontaneously.

Most of these ideas about sustaining environments differ from those in skill-building and foot-in-the-door models, both of which posit that the right kinds of skills and capacities equip children to take better advantage of any environmental opportunity (or in the case of foot-in-the-door, avoid risk) for further skill development. The sustaining environments perspective views early investments as unproductive *unless* they are accompanied by subsequent investments in sufficiently high-quality schools and other environmental contexts in which development takes place. Proponents of this perspective would not find it surprising that Abecedarian children, who entered desegregated and relatively high-quality Chapel Hill public schools in the 1970s, showed persistently higher IQs than control-group children, while Perry's children, who entered low-quality and overwhelmingly African-American public schools in Ypsilanti, Michigan, did not.<sup>10</sup>

### ***Sustaining Environments Following Early Childhood Education Programs***

Some proponents of early childhood interventions for children from low-income households argue that such programs can launch children on more positive “trajectories.” A pre-K program might succeed in boosting targeted outcomes at the end of pre-K, but what subsequent processes are needed to sustain or even amplify those initial impacts? As illustrated in [Figure 4](#), a key issue is how to design subsequent environments that preserve the math gains seen at the end of the pre-K year.<sup>11</sup>

One possible but unlikely process is akin to inoculation, with the pre-K program providing some sort of permanent increase in a key skill or capacity that provides a lifetime of benefits. In the case of vaccines, the antibodies generated in response to the vaccine provide continuous protection against infection for years to come. But it is hard to imagine counterparts for the vaccination analogy among the kinds of skills and capacities that we have been discussing. Indeed, it seems unlikely that the often-mediocre classrooms and other environments surrounding low-income preschoolers as they move through middle childhood and adolescence will make it possible for gains in the rudimentary skills fostered in pre-K to be translated into sustained gains in more sophisticated skills without some kind of extraordinary environmental enrichment.

Indirect evidence supporting the sustaining environments hypothesis for the Head Start program comes from Currie and Thomas (2000), who find that black Head Start children go on to attend schools of lower quality than other black children, which may have prevented longer run impacts. More direct but unsupportive evidence on the sustaining environments hypothesis comes from data from the National Head Start Evaluation Study. Jenkins et al. (2015) find no treatment effect interactions for a host of measures of kindergarten and first-grade classroom quality. In the case of data from the Building Blocks preschool mathematics intervention, they also fail to find treatment interactions between assignment to Building Blocks and a host of measures of the quality of kindergarten and first-grade math instruction. Further, children in the control group with similar levels of achievement as children in

---

<sup>10</sup> Although residential mobility enabled some Perry children to eventually attend higher resourced and more integrated middle and high schools, almost all spent at least their first few school years in Ypsilanti schools (L. Schweinhart, personal communication, August 15, 2015).

<sup>11</sup> Of course, it is also possible that enriched environments might boost the achievement of control-group children even more than treatment-group children. That pattern best fits the data on preschool impacts observed in Magnuson, Ruhm, and Waldfogel (2007).

the treatment group following the conclusion of the intervention learned more than children in the treatment group in the following year (Bailey et al., 2016). This difference was almost the size of the fadeout effect during this time, which is inconsistent with the hypothesis that relatively high-achieving students' learning is constrained by a low level of instruction they receive following the intervention. All of this evidence suffers from the methodological problem that the posttreatment environments were not randomly assigned.

A stronger design for understanding the effects of sustaining environments on impact persistence is to build sustaining environments into a third treatment condition. In a follow-on treatment condition, Building Blocks randomly assigned kindergarten and first-grade teachers in schools that housed the pre-K Building Blocks intervention to receive additional professional development (PD) designed to help bridge the gaps between preschool, kindergarten, and first grade. These additional PD sessions brought teachers from all three grades together to discuss what students learn in each grade and to minimize the amount of repeated content. Although this intervention generated somewhat higher math achievement at the end of first grade ( $p < .10$ ), it is not clear that the follow-up moderated the treatment persistence effect, given that the design did not assign the K–1 intervention to children who did not participate in Building Blocks during their pre-K year.

Other attempts to build treatment arms involving sustaining environments have not been successful. Half of Abecedarian's treatment group was randomly assigned at school entry to a three-year home and school resource program that provided individualized schoolwork assistance to children and help for parents in making home–school connections, plus a learning-oriented camp in each of the three summers. No IQ impacts were observed for the follow-on supplement to Abecedarian's birth to age-5 intervention, and modest impacts on math achievement at age 8 quickly disappeared. Reading achievement impacts may have been more persistent, but the study was underpowered to detect them.

There are too few experimental studies assessing the impacts of providing subsequent enriching environments to graduates of human capital intervention to warrant firm conclusions. The limited evidence that does exist suggests that (as with the Building Blocks teacher follow-through) it may be important for supplemental enrichment to be geared closely to the activities and goals of the original intervention.

## ***Sustained Environments***

Generating enriched subsequent environments can also be a conscious goal of the design of an early intervention. For example, prevention research often targets child–parent dyads in hopes of building parenting skills, and supporting higher quality parent–child interactions will persist long after the interventions end (Webster-Stratton & Taylor, 2001). In this case, the program's joint child–parent skill building is intended to generate immediate improvements in the quality of parent–child interactions, but also to provide exposure to better environments across the course of the child's development as parents work to monitor the

---

<sup>12</sup>The idea that children's skills built during the intervention can lead to more positive subsequent environments experienced by the child overlaps with the Cunha and Heckman (2007) hypothesis that early skills increase the productivity of subsequent investments. If the definition of "investments" includes, say, school- or community-based opportunities for establishing positive peer relations, then the right kind of early parent–child interventions may increase the chance that these opportunities are taken up.

behaviors of their children more closely and play a role in shaping the children's exposure to more positive home, school, and neighborhood environments.<sup>12</sup>

Indeed, targeting relation-based social and parenting skills to improve children's social, emotional, academic, and behavioral skills has a long and relatively successful history. A recent review of 46 randomized experimental trials of preventive parenting interventions reported positive effects on a wide range of outcomes from one to twenty years following the intervention (Sandler, Schoenfelder, Wolchik, & MacKinnon, 2011). Interventions that demonstrated long-run impacts from infancy and early childhood targeted parenting skills, warmth, and responsiveness, often in high-risk mothers (e.g., Nurse-Home Partnership; Olds et al., 2007). Long-term impacts have also been documented reliably in multicomponent family-level interventions with older children (e.g., Brotman et al., 2008). Unfortunately, despite the long-run impacts of preventive parenting interventions, there is still little evidence to explain the processes that account for these effects over time (Sandler, Ingram, Wolchik, Tein, & Winslow, 2015).

Notably, the positive downstream effects related to improved parenting skills are not exogenous to intervention treatment status, and may be better conceptualized in a skill-building framework than in the sustaining environments category described above. In this case, the trained "skill" may exist only in the context of the parent-child dyad, and is thus different than other skills considered in our discussion of skill building. The success of these parenting programs in improving children's outcomes and leading to long-run positive gains in academic, social, and health outcomes leads us to include parenting skills in adverse environments in the bottom panel of Table 1.

Enriched subsequent environments could also be a product of the scale of prior interventions. In the context of early childhood education interventions, the larger the scale at which ECE is offered, the larger the fraction of higher achieving and better behaved classmates in K-12 classrooms. This in turn could generate more positive peer effects and allow teachers to push their students through more advanced material, thereby increasing the likelihood of sustaining ECE gains. Some intriguing evidence suggesting that this might be the case comes from a series of articles on elementary school outcomes associated with expenditures on two North Carolina early childhood programs—Smart Start and More at Four (Dodge, Bai, Ladd, & Muschkin, 2015; Ladd, Muschkin, & Dodge, 2014; Muschkin, Ladd, & Dodge, 2015). Both programs rolled out across North Carolina's counties in the 1990s and early 2000s and produced large variation in county expenditures across time. Dodge et al. (2015) found that spending on both programs boosted test scores and reduced grade retention and special education placements. Most important for our focus on impact persistence, Dodge et al. (2015) found that test score impacts appearing in third grade were sustained through at least fifth grade.

Given the nature of the North Carolina data, it is impossible to distinguish among the direct impact of participating in these preschool programs, the boost to this direct impact from being surrounded by higher achieving and better behaved elementary school peers, and the benefits accruing to "untreated" children. However, taken together, these results suggest that some kinds of peer or instructional processes are at work, which argues against the intervention field's current practice of concentrating almost exclusively on small-scale evaluation studies.



## Some Implications for Interventions and Research

Bearing in mind the three routes to impact persistence that we have described above but also the limitations arising from the dearth of evidence on longer run impacts of promising interventions, we outline some of the implications we see for promising intervention approaches. An obvious implication is to ensure that human-capital interventions successfully target what we refer to as “trifecta” skills, behaviors, and beliefs—which can be changed, are fundamental for later success, and would not have developed in the absence of the intervention.

The third criterion is much more likely to be met in the case of at-risk as opposed to more advantaged children. But it also generates the most implications for interventions conducted prior to school entry. Indeed, failure to focus on skills that would not otherwise have developed may account for the fadeout patterns observed in many preschool literacy, math, and executive function interventions. A key question for ECE intervention design is this: in the absence of any intervention, what preschool literacy, numeracy, executive function, or emotional self-regulation skills do not develop reasonably well over the course of kindergarten and first grade for the population of children who would be targeted by the intervention?

Within the field of prevention science many interventions are focused less on skill building and more on remediation of skills and relationships that may have been damaged due to prolonged exposure to adversity and toxic stress. Shonkoff et al. (2012) describe toxic stress as “strong, frequent, or prolonged activation of the body’s stress response systems in the absence of the buffering protection of a supportive, adult relationship” (p. e236). Exposure to toxic stress is thought to occur among children in abusive or neglectful early environments and is related to a host of adverse changes in the brain that can affect cognitive functioning and mental health.

In the context of our framework, abusive or neglectful environments establish counterfactual conditions that do not lead children to develop normative functioning. Effective interventions targeting these children and/or their environments have the potential to place children back onto a healthy developmental trajectory or buffer the negative effects of the environment, which certainly constitutes building a broader set of fundamental capacities that do not appear in Table 1. It should be noted, however, that the most effective interventions efforts directed at unusually high-risk populations involve multicomponent interventions targeting multiple levels of the children and their environments (e.g., multisystemic therapy) rather than just the skill-building components as defined here. In other words, in the most disadvantaged populations interventions targeting trifecta skills alone are unlikely to generate sustained impacts. Instead, sustaining environments (self-selected or improved via the intervention) will also be required.

From a skill-building perspective, the list of early trifecta skills and behaviors that have reliable long-term impacts may be small indeed, which suggests that focusing on early intervention strategies alone may not be sufficient to promote positive long-run outcomes in children. Instead, developmentally timed interventions, successfully targeting higher level but far from universally acquired skills across development, may also be required. Examples of potential targets of interventions later in development are listed in the top panel of Table 1 and include vocational skills, an understanding of fractions or algebra, vocabulary, or background knowledge that substantially exceeds typical levels. The strategy of focusing on such skills, behaviors, or beliefs for disadvantaged children and adolescents is implicit in interventions such as Fast Track, double-dose algebra, and intensive tutoring programs aimed at



struggling readers. It is also behind interventions that target children's implicit theories of learning and self-concepts, which are also listed in [Table 1](#). Although some of these interventions appear promising, all are in need of much more development, testing (including replication of previous work), and longer run follow-up.

Disentangling skill-building versus foot-in-the-door processes requires measuring both in intervention follow-ups. Skill and capacity measurement is commonly done in skill-based intervention follow-ups, although not always for as broad a set of skills and capacities as one might like. Measurement of foot-in-the-door processes such as grade failure or school suspensions is most common in prevention science but needs to be a routine part of follow-ups to all interventions that might operate through foot-in-the-door processes.

Going beyond skill building, another promising intervention strategy might rely on beneficial peer, classroom, and other sustaining environmental effects generated by interventions conducted at scale. It is worrisome that we may be underestimating longer run impacts from scaled-up ECE intervention because their evaluations are based on small numbers of children scattered across dozens of elementary schools who are never present in sufficient numbers in any given post-intervention classroom to enable teachers to use more advanced curricula or to generate other kinds of peer benefits to the children themselves and their remaining "untreated" classmates. Understanding peer and classroom dynamics generated by large-scale interventions is clearly an important objective for future research. On the policy side, subsequent peer and classroom dynamics might justify universal preschool interventions targeting non-trifecta academic and socioemotional skills because they would support higher level instructional content in subsequent grades.

A third intervention approach is to target important but difficult-to-change skills or behaviors with very intensive interventions for subgroups of children most in need of help and least likely to develop those skills in the absence of the intervention. Abecedarian appears to have successfully boosted the IQ levels of children with low initial IQ scores who are living in families with multiple disadvantages. But pulling it off took five years' worth of year-round full-day center-based services, a highly structured and individualized curriculum focusing specifically on language and literacy, and ongoing monitoring of implementation by university researchers. To our knowledge, however, few interventions within the commonly observed range of intervention intensity that have targeted conscientiousness or its key components (e.g., grit) among children or adolescents have been successfully implemented.

We began by documenting that, on balance, cognitive impacts of early childhood education programs drop quickly after the end of the programs ([Figure 2](#)) and suggesting that, more generally, fadeout is a common feature of many early interventions. It is surprising, then, that growing evidence points to beneficial impacts in adulthood of an assortment of interventions ranging from model ECE (Campbell et al., 2014; Schweinhart et al., 2005) and behavior management programs (Dodge, Bierman, et al., 2015) to Head Start (Deming, 2009), a good kindergarten or middle-school teacher (Chetty et al., 2014; Chetty et al., 2010) and the MTO residential mobility program (Chetty, Hendren, & Katz, 2015).

---

<sup>13</sup>Chetty's analyses of classroom quality impacts in the Project STAR study also showed persistent effects on children's noncognitive skills (Chetty et al., 2010). In Abecedarian, impacts on the study's teacher-reported index of child hostility in the early grades were perversely positive (Haskins, 1985).

How might these long-run impacts have emerged, despite the fadeout of intervention effects on targeted skills?

The answer to this question is unclear, and probably varies across studies. In fact, a case can be made that all three of the processes we describe were at work in the case of Abecedarian and two were at work with Perry. For skill building, Heckman et al. (2012) argue that conscientiousness was an important mediator of Perry's long-term effects,<sup>13</sup> while Abecedarian showed persistent effects on intelligence test scores (Figure 1), and both Perry and Abecedarian had a persistent positive impact on children's academic achievement (Campbell et al., 2001; Schweinhart, Barnes, & Weikart, 1993).

In the case of foot-in-the-door, we have already shown that Abecedarian produced large reductions in both special education placement and early-grade retention, two important foot-in-the-door processes (Table 2). For sustaining environments, Ramey and Ramey (2006) argue that the resources available to Abecedarian children in desegregated, high-quality classrooms combined with the early-years treatment to enable many treatment children to "stay on track" across K-12 schooling. And discussions with individuals involved with interviewing Perry families point to the potential importance of persistently higher quality parental environments produced by Perry's weekly home visits.<sup>14</sup>

Allocating credit to each of these three intermediate mechanisms for interventions' successes is a difficult task. Skill building predicts persistent effects on children's skills between the end of treatment and adulthood, but a challenge in testing this hypothesis is identifying the causal effect of a skill on some outcome across development. Foot-in-the-door pathways do not require persistent effects on any skills, but predict that indirect effects of interventions via skills will be large after the intervention, while indirect effects of interventions via contextual factors (e.g., being in the grade predicted by one's age) will be larger later in development. Testing foot-in-the-door pathways presents the similar challenge of identifying the causal effect of an environment on some outcome across development. These two sets of explanations may be particularly difficult to differentiate, because it is unlikely that all pertinent skills or environments will be measured in any given study.

Sustaining environments hypotheses can be more easily tested in studies in which some treatment is crossed with a later exogenous treatment (e.g., a follow-up treatment) that allows for testing of the interaction between the two exogenous factors. Sustaining environments are present if the sustaining environment interacts positively with the initial treatment. Of course, sustaining environments are not often varied within a given study, and their effects may have to be generalized from studies in which similar potential sustaining environments are exogenous.

In sum, distinguishing among the three processes we highlight can be challenging, particularly in the absence of measures of all of the possible skill and structural pathways, as well as the absence of longer run information from all but a handful of interventions. Further, it is difficult to imagine that the same set of channels governed the process by which these various interventions generated their adult impacts. Finally, identifying such pathways is a somewhat unique challenge; the most prominent thinkers in the field of causal inference have primarily focused on estimating the effects of known causes (Shadish, 2010), while the mechanism puzzles we have identified require uncovering the unknown causes of known

---

<sup>14</sup> Conversation with Tomoko Wakabayashi, Cheryl Polk, and Mary Delcamp on March 10, 2016.

effects. Solving these mechanism puzzles is a particularly important task for future intervention research.

In the meantime, we encourage those invested in improving the long-run outcomes for children and adolescents to ask whether their intervention design targets skills that are fundamental, malleable, and unlikely to develop on their own. We also encourage intervention designs that allow for randomization to high-quality sustaining environments and for program evaluation plans to extend beyond the typical fadeout window of 12 months so that the reemergence of intervention effects via foot-in-the-door mechanisms can be more rigorously tested. More generally, we encourage others to add to our limited list of “trifecta skills” to help ensure the wise allocation of limited intervention resources and, ultimately, improve the lives and long-run outcomes of children and adolescents targeted by our interventions.

## Acknowledgments

We would like to extend thanks to Ruben Arslan, Peg Burchinal, Pamela Davis-Kean, Thad Domina, Ken Dodge, Dorothy Duncan, Dale Farran, Jarrod Ellingson, George Farkas, David Grissmer, Paul Hanselman, Jade Jenkins, Daniel Keating, Ron Haskins, Josh Lawrence, Andrew Littlefield, Susanna Loeb, Dan McAdams, Andrew Penner, Emily Penner, John Protzko, Maria Rosales-Rueda, Robert Siegler, Judy Singer, Jeff Smith, Aaron Sojourner, Larry Schweinhart, Deborah Vandell, Tyler Watts, Russ Whitehurst, and Hirokazu Yoshikawa; to seminar participants at the University of Michigan, the University of Bath, and the University Brisbane; and to many of those who attended a keynote address on this topic at the 2015 SREE spring conference for helpful comments on prior drafts.

## Funding

We are grateful to the Eunice Kennedy Shriver National Institute of Child Health & Human Development of the National Institutes of Health under award number P01-HD065704. Candice L. Odgers is supported by a Jacobs Foundation Advanced Research Fellowship.

## ARTICLE HISTORY

Received 28 August 2015

Revised 27 August 2016

Accepted 30 August 2016

## References

- Ackerman, P. L. (2007). New developments in understanding skilled performance. *Current Directions in Psychological Science*, 16, 235–239. doi:10.1111/j.1467-8721.2007.00511.x
- Aizer, A., & Cunha, F. (2012). *The production of human capital: Endowments, investments and fertility* (NBER Working Paper No. 18429). Cambridge, MA: National Bureau of Economic Research.
- Almlund, M., Duckworth, A. L., Heckman, J. J., & Kautz, T. D. (2011). *Personality psychology and economics* (NBER Working Paper No. 16822). Cambridge, MA: National Bureau of Economic Research.
- Au, J., Sheehan, E., Tsai, N., Duncan, G. J., Buschkuhl, M., & Jaeggi, S. M. (2015). Improving fluid intelligence with training on working memory: A meta-analysis. *Psychonomic Bulletin & Review*, 22(2), 366–377. doi:10.3758/s13423-014-0699-x
- Bailey, D. H., Nguyen, T., Jenkins, J. M., Domina, T., Clements, D. H., & Sarama, J. S. (2016). Fadeout in an early mathematics intervention: Constraining content or pre-existing differences? *Developmental Psychology*, 52(9), 1457–1469.

- Bailey, D. H., Watts, T. W., Littlefield, A. K., & Geary, D. C. (2014). State and trait effects on individual differences in children's mathematical development. *Psychological Science*, 25, 2017–2026. doi:10.1177/0956797614547539
- Barnett, W. S. (1995). Long-term effects of early childhood programs on cognitive and school outcomes. *The Future of Children*, 5(3), 25–50. doi:10.2307/1602366
- Baroody, A. J. (1987). The development of counting strategies for single-digit addition. *Journal for Research in Mathematics Education*, 18(2), 141–157.
- Baumeister, R. F., & Vohs, K. D. (Eds.). (2004). *Handbook of self-regulation: Research, theory, and applications*. New York, NY: Guilford Press.
- Belfield, C. R., & Bailey, T. (2011). The benefits of attending community college: A review of the evidence. *Community College Review*, 39(1), 46–68. doi:10.1177/0091552110395575
- Benda, B. B. (2005). The robustness of self-control in relation to form of delinquency. *Youth & Society*, 36(4), 418–444.
- Bettinger, E. P., Long, B. T., Oreopoulos, P., & Sanbonmatsu, L. (2012). The role of application assistance and information in college decisions: Results from the H&R Block FAFSA Experiment. *The Quarterly Journal of Economics*, 127(3), 1205–1242. doi:10.1093/qje/qjs017
- Blackwell, L. A., Trzesniewski, K. H., & Dweck, C. S. (2007). Implicit theories of intelligence and achievement across the junior high school transition: A longitudinal study and an intervention. *Child Development*, 78, 246–263. doi:10.1111/j.1467-8624.2007.00995.x
- Blair, C., & Razza, R. P. (2007). Relating effortful control, executive function, and false belief understanding to emerging math and literacy ability in kindergarten. *Child Development*, 78(2), 647–663. doi:10.1111/j.1467-8624.2007.01019.x
- Bogg, T., & Roberts, B. W. (2004). Conscientiousness and health behaviors: A meta-analysis of the leading behavioral contributors to mortality. *Psychological Bulletin*, 130, 887–919. doi:10.1037/0033-2909.130.6.887
- Bridges, L. J., Denham, S. A., & Ganiban, J. M. (2004). Definitional issues in emotion regulation research. *Child Development*, 75(2), 340–345. doi:10.1111/j.1467-8624.2004.00675.x
- Brotman, L. M., Gouley, K. K., Huang, K., Rosenfelt, A., O'Neal, C., & Klein, R. G. (2008). Preventive intervention for preschoolers at high risk for antisocial behavior: Long-term effects on child physical aggression and parenting practices. *Journal of Clinical Child & Adult Psychology*, 37(2), 386–396. doi:10.1080/15374410801955813
- Bus, A. G., & van IJzendoorn, M. H. (1999). Phonological awareness and early reading: A meta-analysis of experimental training studies. *Journal of Educational Psychology*, 91(3), 403–414. doi:10.1037/0022-0663.91.3.403
- Campbell, F., Conti, G., Heckman, J. J., Moon, S. H., Pinto, R., Pungello, E., & Pan, Y. (2014). Early childhood investments substantially boost adult health. *Science*, 343(6178), 1478–1485. doi:10.1126/science.1248429
- Campbell, F. A., Pungello, E. P., Miller-Johnson, S., Burchinal, M., & Ramey, C. T. (2001). The development of cognitive and academic abilities: Growth curves from an early childhood educational experiment. *Developmental Psychology*, 37(2), 231–242. doi:10.1037/0012-1649.37.2.231
- Cascio, E. U., & Staiger, D. O. (2012). *Knowledge, tests, and fadeout in educational interventions* (NBER Working Paper No. 18038). Cambridge, MA: National Bureau of Economic Research.
- Caspi, A., Harrington, H., Milne, B., Amell, J. W., Reremoana, F. T., & Moffitt, T. E. (2003). Children's behavioral styles at age 3 are linked to their adult personality traits at age 26. *Journal of Personality*, 71(4), 495–514. doi:10.1111/1467-6494.7104001
- Castleman, B. L., & Page, L. C. (2014). Summer nudging: Can personalized text messages and peer mentor outreach increase college going among low-income high school graduates? *Journal of Economic Behavior & Organization*, 115, 144–160. doi:10.1016/j.jebo.2014.12.008
- Cawley, J., Conneely, K., Heckman, J., & Vytlačil, E. (1997). Cognitive ability, wages, and meritocracy. In B. Devlin, S. D. Feinberg, D. P. Resnick, & K. Roeder (Eds.), *Intelligence, genes and success: Scientists respond to The Bell Curve* (pp. 179–192). New York, NY: Springer.
- Ceci, S. J., & Papierno, P. B. (2005). The rhetoric and reality of gap closing: When the “have-nots” gain but the “haves” gain even more. *American Psychologist*, 60(2), 149–160. doi:10.1037/0003-066X.60.2.149

- Center on the Developing Child at Harvard University. (2010). *The foundations of lifelong health are built in early childhood*. Retrieved from <http://www.developingchild.harvard.edu>
- Chen, C. Y., Dormitzer, C. M., Gutiérrez, U., Vittetoe, K., Gonzalez, G. B., & Anthony, J. C. (2004). The adolescent behavioral repertoire as a context for drug exposure: Behavioral autarcesis at play. *Addiction*, 99(7), 897–906. doi:10.1111/j.1360-0443.2004.00774.x
- Chetty, R., Friedman, J. N., Hilger, N., Saez, E., Whitmore, D., & Schanzenbach, D. Y. (2010). *How does your kindergarten classroom affect your earnings? Evidence from Project STAR* (NBER Working Paper No. 16381). Cambridge, MA: National Bureau of Economic Research.
- Chetty, R., Friedman, J. N., & Rockoff, J. E. (2014). Measuring the impacts of teachers II: Teacher value-added and student outcomes in adulthood. *The American Economic Review*, 104(9), 2633–2679.
- Chetty, R., Hendren, N., & Katz, L. F. (2015). *The effects of exposure to better neighborhoods on children: New evidence from the Moving to Opportunity experiment* (NBER Working Paper No. 21156). Cambridge, MA: National Bureau of Economic Research.
- Clements, D. H., & Sarama, J. (2004). Learning trajectories in mathematics education. *Mathematical Thinking and Learning*, 6(2), 81–89. doi:10.1207/s15327833mtl0602\_1
- Clements, D. H., & Sarama, J. (2014). *Learning and teaching early math: The learning trajectories approach*. New York, NY: Routledge.
- Clements, D. H., Sarama, J., Wolfe, C. B., & Spitler, M. E. (2013). Longitudinal evaluation of a scale-up model for teaching mathematics with trajectories and technologies: Persistence of effects in the third year. *American Educational Research Journal*, 50(4), 812–850. doi:10.3102/0002831212469270
- Cohen, G. L., Garcia, J., Purdie-Vaughns, V., Apfel, N., & Brzustoski, P. (2009). Recursive processes in self-affirmation: Intervening to close the minority achievement gap. *Science*, 324, 400–403. doi:10.1126/science.1170769
- Coie, J. D., Watt, N. F., West, S. G., Hawkins, J. D., Asarnow, J. R., Markman, H. J., ... Long, B. (1993). The science of prevention: A conceptual framework and some directions for a national research program. *American Psychologist*, 48, 1013–1022. doi:10.1037/0003-066X.48.10.1013
- Conduct Problems Prevention Research Group. (1999a). Initial impact of the Fast Track Prevention Trial for Conduct Problems: I. The high-risk sample. *Journal of Consulting and Clinical Psychology*, 67, 631–647. doi:10.1037/0022-006X.67.5.631
- Conduct Problems Prevention Research Group. (1999b). Initial impact of the Fast Track Prevention Trial for Conduct Problems: II. Classroom effects. *Journal of Consulting and Clinical Psychology*, 67, 648–657.
- Conduct Problems Prevention Research Group. (2011). The effects of the Fast Track preventive intervention on the development of conduct disorder across childhood. *Child Development*, 82(1), 331. doi:10.1111/j.1467-8624.2010.01558.x
- Cortes, K. E., & Goodman, J. S. (2014). Ability-tracking, instructional time, and better pedagogy: The effect of double-dose algebra on student achievement. *The American Economic Review*, 104(5), 400–405. doi:10.1257/aer.104.5.400
- Cunha, F., & Heckman, J. J. (2007). The technology of skill formation. *American Economic Review*, 97(2), 31–47. doi:10.3386/w12840
- Currie, J., & Thomas, D. (2000). School quality and the longer-term effects of Head Start. *Journal of Human Resources*, 35(4), 755–774. doi:10.2307/146372
- Dahl, R. E., & Spear, L. P. (2004). Adolescent brain development: Vulnerabilities and opportunities. *Annals of the New York Academy of Sciences*, 1021, 1–22.
- Dee, T. S. (2015). Social identity and achievement gaps: Evidence from an affirmation intervention. *Journal of Research on Educational Effectiveness*, 8(2), 149–168. doi:10.1080/19345747.2014.906009
- Deming, D. (2009). Early childhood intervention and life-cycle skill development: Evidence from Head Start. *American Economic Journal: Applied Economics*, 1(3), 111–134.
- Diamond, A., & Lee, K. (2011). Interventions shown to aid executive function development in children 4 to 12 years old. *Science*, 33(6045), 959–964. doi:10.1126/science.1204529

- Dodge, K. A., Bai, Y., Ladd, H., & Muschkin, C. (2015). *Impact of statewide early childhood programs and policies on educational outcomes through the end of elementary school*. Manuscript submitted for publication.
- Dodge, K. A., Bierman, K. L., Coie, J. D., Greenberg, M. T., Lochman, J. E., McMahon, R. J., & Pinderhughes, E. E. (2015). Impact of early intervention on psychopathology, crime, and well-being at age 25. *American Journal of Psychiatry*, 172(1), 59–70. doi:10.1176/appi.ajp.2014.13060786
- Dodge, K. A., Greenberg, M. T., Malone, P. S., & Conduct Problems Prevention Research Group. (2008). Testing an idealized dynamic cascade model of the development of serious violence in adolescence. *Child Development*, 79, 1907–1927. doi:10.1111/j.1467-8624.2008.01233.x
- Dodge, K. A., Malone, P., Lansford, J. E., Miller, S., Pettit, G. S., & Bates, J. E. (2009). A dynamic cascade model of the development of substance use onset. *Monographs of the Society for Research in Child Development*, 74(3), 1–120.
- Duckworth, A. L., Peterson, C., Matthews, M. D., & Kelly, D. R. (2007). Grit: Perseverance and passion for long-term goals. *Journal of Personality and Social Psychology*, 92, 1087–1101. doi:10.1037/0022-3514.92.6.1087
- Duckworth, A. L., & Quinn, P. D. (2009). Development and validation of the short grit scale (GRIT-S). *Journal of Personality Assessment*, 91, 166–174. doi:10.1080/00223890802634290
- Duncan, G. J., Dowsett, C. J., Claessens, A., Magnuson, K., Huston, A. C., Klebanov, P., ... Japel, C. (2007). School readiness and later achievement. *Developmental Psychology*, 43(6), 1428–1446. doi:10.1037/0012-1649.43.6.1428.supp
- Durlak, J. A., Weissberg, R. P., Dymnicki, A. B., Taylor, R. D., & Schellinger, K. B. (2011). The impact of enhancing students' social and emotional learning: A meta-analysis of school-based universal interventions. *Child Development*, 82, 405–432. doi:10.1111/j.1467-8624.2010.01564.x
- Eisenberg, N., Sadovsky, A., Spinrad, T. L., Fabes, R. A., Losoya, S. H., Valiente, C., ... Shepard, S. A. (2005). The relations of problem behavior status to children's negative emotionality, effortful control, and impulsivity: Concurrent relations and prediction of change. *Developmental Psychology*, 41(1), 193–211. doi:10.1037/0012-1649.41.1.193
- Engelhardt, L. E., Briley, D. A., Mann, F. D., Harden, K. P., & Tucker-Drob, E. M. (2015). Genes unite executive functions in childhood. *Psychological Science*. doi:10.1177/0956797615577209
- Flynn, J. R. (2012). *Are we getting smarter? Rising IQ in the twenty-first century*. Cambridge, England: Cambridge University Press.
- Friedman, H. S., Tucker, J. S., Tomlinson-Keasey, C., Schwartz, J. E., Wingard, D. L., & Criqui, M. H. (1993). Does childhood personality predict longevity? *Journal of Personality and Social Psychology*, 65, 176–185. doi:10.1037/0022-3514.65.1.176
- Friedman, N. P., Miyake, A., Young, S. E., DeFries, J. C., Corley, R. P., & Hewitt, J. K. (2008). Individual differences in executive functions are almost entirely genetic in origin. *Journal of Experimental Psychology: General*, 137(2), 201–225. doi:10.1037/0096-3445.137.2.201
- Fuchs, L. S., Geary, D. C., Compton, D. L., Fuchs, D., Schatschneider, C., Hamlett, C. L., ... Changas, P. (2013). Effects of first-grade number knowledge tutoring with contrasting forms of practice. *Journal of Educational Psychology*, 105, 58–77. doi:10.1037/a0030127
- Fuchs, L. S., Schumacher, R. F., Long, J., Namkung, J., Hamlett, C. L., Cirino, P. T., ... Changas, P. (2013). Improving at-risk learners' understanding of fractions. *Journal of Educational Psychology*, 105(3), 683–700. doi:10.1037/a0032446
- Gaspard, H., Dicke, A. L., Flunger, B., Brisson, B. M., Häfner, I., Nagengast, B., & Trautwein, U. (2015). Fostering adolescents' value beliefs for mathematics with a relevance intervention in the classroom. *Developmental Psychology*, 51(9), 1226–1240. doi:10.1037/dev0000028
- Gottfredson, L. S. (1997). Why g matters: The complexity of everyday life. *Intelligence*, 24, 79–132. doi:10.1016/S0160-2896(97)90014-3
- Haier, R. J. (2014). Increased intelligence is a myth (so far). *Frontiers in Systems Neuroscience*, 8, 34. doi:10.3389/fnsys.2014.00034



- Hanselman, P., Rozek, C. R., Grigg, J., & Borman, G. D. (2016). New evidence on self-affirmation effects and theorized sources of heterogeneity from large-scale replications. *Journal of Educational Psychology*. Advance online publication. doi:10.1037/edu0000141
- Hanushek, E. A., Schwerdt, G., Wiederhold, S., & Woessmann, L. (2015). Returns to skills around the world: Evidence from PIAAC. *European Economic Review*, 73, 103–130.
- Haskins, R. (1985). Public school aggression among children with varying day-care experience. *Child Development*, 56(3), 689–703. doi:10.2307/1129759
- Heckman, J. J. (1995). Lessons from *The Bell Curve*. *Journal of Political Economy*, 1091–1120. doi:10.1086/262014
- Heckman, J. J., & Kautz, T. (2013). *Fostering and measuring skills: Interventions that improve character and cognition* (NBER Working Paper No. 19656). Cambridge, MA: National Bureau of Economic Research.
- Heckman, J. J., Pinto, R., & Savelyev, P. A. (2012). *Understanding the mechanisms through which an influential early childhood program boosted adult outcomes* (NBER Working Paper No. 18581). Cambridge, MA: National Bureau of Economic Research.
- Heller, S., Pollack, H. A., Ander, R., & Ludwig, J. (2013). *Preventing youth violence and dropout: A randomized field experiment* (NBER Working Paper No. 19014). National Bureau of Economic Research.
- Herrnstein, R., & Murray, C. (1994). *The bell curve*. New York, NY: Simon & Schuster.
- Hill, C. J., Bloom, H. S., Black, A. R., & Lipsey, M. W. (2008). Empirical benchmarks for interpreting effect sizes in research. *Child Development Perspectives*, 2, 172–177. doi:10.1111/j.1750-8606.2008.00061.x
- Horowitz, J. L., & Garber, J. (2006). The prevention of depressive symptoms in children and adolescents: A meta-analytic review. *Journal of Consulting and Clinical Psychology*, 74(3), 401. doi:10.1037/0022-006X.74.3.401
- Hudson, N. W., & Fraley, R. C. (2015). Volitional personality trait change: Can people choose to change their personality traits? *Journal of Personality and Social Psychology*, 109(3), 490–507.
- Hulleman, C. S., & Harackiewicz, J. M. (2009). Promoting interest and performance in high school science classes. *Science*, 326(5958), 1410–1412. doi:10.1126/science.1177067
- Ivcevic, Z., & Brackett, M. (2014). Predicting school success: Comparing conscientiousness, grit, and emotion regulation ability. *Journal of Research in Personality*, 52, 29–36. doi:10.1016/j.jrp.2014.06.005
- Jacob, B. A., Lefgren, L., & Sims, D. P. (2010). The persistence of teacher-induced learning. *Journal of Human Resources*, 45(4), 915–943.
- Jacob, R., & Parkinson, J. (2015). The potential for school-based interventions that target executive function to improve academic achievement: A review. *Review of Educational Research*, 85(4), 512–552.
- Jenkins, J. M., Watts, T., Clements, D., Sarama, J., Wolfe, C. B., & Spitler, M. (2015). *Preventing pre-school fadeout through instructional intervention in kindergarten and first grade*. Manuscript submitted for publication.
- Jensen, A. R. (1998). *The g factor: The science of mental ability*. Westport, CT: Praeger.
- Judge, T. A., Higgins, C. A., Thoresen, C. J., & Barrick, M. R. (1999). The big five personality traits, general mental ability, and career success across the life span. *Personnel Psychology*, 52, 621–652. doi:10.1111/j.1744-6570.1999.tb00174.x
- Kemple, J. J., & Willner, C. J. (2008). *Career academies: Long-term impacts on labor market outcomes, educational attainment, and transitions to adulthood*. New York, NY: MDRC.
- Kenthirarajah, D. T., & Walton, G. M. (2015). How brief social–psychological interventions can cause enduring effects. *Emerging Trends in the Social and Behavioral Sciences: An Interdisciplinary, Searchable, and Linkable Resource*. doi:10.1002/9781118900772.etrds0026
- Krasner, M. S., Epstein, R. M., Beckman, H., Suchman, A. L., Chapman, B., Mooney, C. J., & Quill, T. E. (2009). Association of an educational program in mindful communication with burnout, empathy, and attitudes among primary care physicians. *JAMA*, 302(12), 1284–1293. doi:10.1001/jama.2009.1384
- LaBerge, D., & Samuels, S. J. (1974). Toward a theory of automatic information processing in reading. *Cognitive Psychology*, 6(2), 293–323. doi:10.1016/0010-0285(74)90015-2

- Ladd, H. F., Muschkin, C. G., & Dodge, K. A. (2014). From birth to school: Early childhood initiatives and third-grade outcomes in North Carolina. *Journal of Policy Analysis and Management*, 33(1), 162–187.
- Lemaire, P., & Siegler, R. S. (1995). Four aspects of strategic change: Contributions to children's learning of multiplication. *Journal of Experimental Psychology: General*, 124(1), 83.
- Littlefield, A. K., Stevens, A. K., & Sher, K. J. (2014). Impulsivity and alcohol involvement: Multiple, distinct constructs and processes. *Current Addiction Reports*, 1, 33–40. doi:10.1007/s40429-013-0004-5
- Magidson, J. F., Collado-Rodriguez, A., Madan, A., Perez-Camoirano, N. A., Galloway, S. K., Borckardt, J. J., & Miller, J. D. (2012). Addressing narcissistic personality features in the context of medical care: Integrating diverse perspectives to inform clinical practice. *Personality Disorders: Theory, Research, and Treatment*, 3(2), 196–208.
- Magnuson, K. A., Ruhm, C., & Waldfogel, J. (2007). The persistence of preschool effects: Do subsequent classroom experiences matter? *Early Childhood Research Quarterly*, 22(1), 18–38. doi:10.1016/j.ecresq.2006.10.002
- Maluccio, J. A., Hoddinott, J., Behrman, J. R., Martorell, R., Quisumbing, A. R., & Stein, A. D. (2009). The impact of improving nutrition during early childhood on education among Guatemalan adults. *The Economic Journal*, 119, 734–763. doi:10.1111/j.1468-0297.2009.02220.x
- Masten, A. S., Burt, K. B., Roisman, G. I., Obradovic, J., Long, J. D., & Tellegen, A. (2004). Resources and resilience in the transition to adulthood: Continuity and change. *Development and Psychopathology*, 16(4), 1071–1094. doi:10.1017/S0954579404040143
- Masten, A. S., & Cicchetti, D. (2010). Developmental cascades. *Development and psychopathology*, 22(03), 491–495. doi:10.1017/S0954579410000222
- McAdams, D. P., & Pals, J. L. (2006). A new Big Five: Fundamental principles for an integrative science of personality. *American Psychologist*, 61(3), 204–217.
- McCoy, D. C., Yoshikawa, H., Ziol-Guest, K. M., Duncan, G. J., Schindler, H. S., Magnuson, K. A., & Yang, R. (2015). *Long-term impacts of early childhood education programs on graduation, special education placement, and grade retention: A meta-analysis*. Manuscript in preparation.
- McCrae, R. R., Costa, P. T., Jr., Ostendorf, F., Angleitner, A., Hřebíčková, M., Avia, M. D., ... & Smith, P. B. (2000). Nature over nurture: Temperament, personality, and life span development. *Journal of Personality and Social Psychology*, 78, 173–186. doi:10.1037/0022-3514.78.1.173
- Melby-Lervåg, M., Redick, T. S., & Hulme, C. (2016). Working memory training does not improve performance on measures of intelligence or other measures of “far transfer”: Evidence from a meta-analytic review. *Perspectives on Psychological Science*, 11(4), 512–534.
- Miles, E., Sheeran, P., Baird, H., Macdonald, I., Webb, T. L., & Harris, P. R. (2016). Does self-control improve with practice? Evidence from a six-week training program. *Journal of Experimental Psychology: General*, 145(8), 1075.
- Miyake, A., Friedman, N. P., Emerson, M. J., Witzki, A. H., & Howerter, A. (2000). The unity and diversity of executive functions and their contributions to complex frontal lobe tasks: A latent variable analysis. *Cognitive Psychology*, 41(1), 49–100. doi:10.1006/cogp.1999.0734
- Morris, P., Mattera, S. K., Castells, N., Bangser, M., Bierman, K., & Raver, C. C. (2014). *Impact findings from the Head Start CARES Demonstration: National evaluation of three approaches to improving preschoolers' social and emotional competence* (OPRE Report 2014-44). Washington, DC: Office of Planning, Research and Evaluation, Administration for Children and Families, U.S. Department of Health and Human Services.
- Muschkin, C. G., Ladd, H. F., & Dodge, K. A. (2015). Impact of North Carolina's early childhood initiatives on special education placements in third grade. *Education Evaluation and Policy Analysis*, 37, 478–500. doi:10.3102/0162373714559096
- National Mathematics Advisory Panel. (2008). *Foundations for success: The final report of the National Mathematics Advisory Panel*. Washington, DC: U.S. Department of Education.
- Nisbett, R. E., Aronson, J., Blair, C., Dickens, W., Flynn, J., Halpern, D. F., & Turkheimer, E. (2012). Intelligence: New findings and theoretical developments. *American Psychologist*, 67(2), 130–159. doi:10.1037/a0026699



- Olds, D. L., Kitzman, H., Hanks, C., Cole, R., Anson, E., Sidora-Arcoleo, ... Bondy, J. (2007). Effects of nurse home visiting on maternal and child functioning: Age 9 follow-up of a randomized trial. *Pediatrics*, 120(4), e832–e845. doi:10.1542/peds.2006-2111
- Owen, L. (2012). *Narrowing the college opportunity gap: Helping students and families navigate the financial aid process* (Doctoral dissertation). Oregon State University, Corvallis, OR.
- Paris, S. G. (2005). Reinterpreting the development of reading skills. *Reading Research Quarterly*, 40, 184–202. doi:10.1598/RRQ.40.2.3
- Penner, A. M., Domina, T., Penner, E. K., & Conley, A. M. (2015). Curricular policy as a collective effects problem: A distributional approach. *Social Science Research*, 52, 627–641. doi:10.1016/j.ssresearch.2015.03.008
- Poropat, A. E. (2014). Other-rated personality and academic performance: Evidence and implications. *Learning and Individual Differences*, 34, 24–32. doi:10.1016/j.lindif.2014.05.013
- Protzko, J. (2015). The environment in raising early intelligence: A meta-analysis of the fadeout effect. *Intelligence*, 53, 202–210.
- Protzko, J., & Aronson, J. (2016). Context moderates affirmation effects on the ethnic achievement gap. *Social Psychological and Personality Science*, 7, 500–507. doi:10.1177/1948550616646426
- Puma, M., Bell, S., Cook, R., Heid, C., Broene, P., Jenkins, F., ... Downer, J. (2012). *Third grade follow-up to the Head Start Impact Study: Final report* (OPRE Report No. 2012-45). Retrieved from <http://eric.ed.gov/?id=ED539264>
- Purtell, K. M., & Gershoff, E. T. (2013, November). *The “skill begets skill” hypothesis and the experimental effects of Head Start on children’s academic skills and social behaviors*. Paper presented at the Association for Public Policy Analysis and Management Annual Meeting, Washington, DC.
- Ramey, S. L., & Ramey, C.T. (2006). Early educational interventions: Principles of effective and sustained benefits from targeted early education programs. In S. B. Neuman, & D. K. Dickinson (Eds.), *Handbook of early literacy research* (2nd ed., pp. 445–459). New York, NY: Guilford Publications.
- Raver, C. C. (2004). Placing emotional self-regulation in sociocultural and socioeconomic contexts. *Child Development*, 75(2), 346–53. doi:10.1111/j.1467-8624.2004.00676.x
- Ritchie, S. J., & Bates, T. C. (2013). Enduring links from childhood mathematics and reading achievement to adult socioeconomic status. *Psychological Science*, 24, 1301–1308. doi:10.1177/0956797612466268
- Roberts, B. W., Lejuez, C., Krueger, R. F., Richards, J. M., & Hill, P. L. (2014). What is conscientiousness and how can it be assessed? *Developmental Psychology*, 50(5), 1315–1330.
- Roberts, B. W., Walton, K. E., & Viechtbauer, W. (2006). Patterns of mean-level change in personality traits across the life course: A meta-analysis of longitudinal studies. *Psychological Bulletin*, 132(1), 1–25. doi:10.1037/0033-2909.132.1.1
- Roberts, G., Quach, J., Spencer-Smith, M., Anderson, P. J., Gathercole, S., Gold, L., ... Wake, M. (2016). Academic outcomes 2 years after working memory training for children with low working memory: A randomized clinical trial. *JAMA Pediatrics*, 170(5). doi:10.1001/jamapediatrics.2015.4568
- Rothstein, J. (2015). *Revisiting the impacts of teachers* (UC–Berkeley Working Paper). Retrieved from [http://eml.berkeley.edu/~jrothst/workingpapers/rothstein\\_cfr\\_oct2015.pdf](http://eml.berkeley.edu/~jrothst/workingpapers/rothstein_cfr_oct2015.pdf)
- Sandler, I., Ingram, A., Wolchik, S., Tein, J., & Winslow, E. (2015). Long-term effects of parenting-focused preventive interventions to promote resilience of children and adolescents. *Child Development Perspectives*, 9(3), 164–171. doi:10.1111/cdep.12126
- Sandler, I., Schoenfelder, E., Wolchik, S., & MacKinnon, D. (2011). Long-term impact of prevention programs to promote effective parenting: Lasting effects but uncertain processes. *Annual Review of Psychology*, 62, 299–329. doi:10.1146/annurev.psych.121208.131619
- Schmidt, F. L., & Hunter, J. (2004). General mental ability in the world of work: Occupational attainment and job performance. *Journal of Personality and Social Psychology*, 86, 162–173. doi:10.1037/0022-3514.86.1.162
- Schweinhart, L. J., Barnes, H. V., & Weikart, D. P. (1993). *Significant benefits: The High/Scope Perry Preschool Study through age 27*. Ypsilanti, MI: High/Scope Educational Research Foundation.

- Schweinhart, L. J., Montie, J., Xiang, Z., Barnett, W. S., Belfield, C. R., & Nores, M. (2005). *Lifetime effects: The High/Scope Perry Preschool study through age 40*. Ypsilanti, MI: High/Scope Press.
- Shadish, W. R. (2010). Campbell and Rubin: A primer and comparison of their approaches to causal inference in field settings. *Psychological Methods*, 15, 3–17.
- Sherman, D. K., & Cohen, G. L. (2006). The psychology of self–defense: Self–affirmation theory. *Advances in Experimental Social Psychology*, 38, 183–242. doi:10.1016/S0065-2601(06)38004-5
- Shonkoff, J. P., Garner, A. S., Siegel, B. S., Dobbins, M. I., Earls, M. F., McGuinn, L., ... Wood, D. L. (2012). The lifelong effects of early childhood adversity and toxic stress. *Pediatrics*, 129(1), e232–e246. doi:10.1542/peds.2011-2663
- Siegler, R. S. (2009). Improving the numerical understanding of children from low–income families. *Child Development Perspectives*, 3(2), 118–124. doi:10.1111/j.1750-8606.2009.00090.x
- Siegler, R. S., Fazio, L. K., Bailey, D. H., & Zhou, X. (2013). Fractions: The new frontier for theories of numerical development. *Trends in Cognitive Sciences*, 17(1), 13–19. doi:10.1016/j.tics.2012.11.004
- Smit, E., Verdurmen, J., Monshouwer, K., & Smit, F. (2008). Family interventions and their effect on adolescent alcohol use in general populations: A meta-analysis of randomized controlled trials. *Drug and Alcohol Dependence*, 97(3), 195–206. doi:10.1016/j.drugalcdep.2008.03.032
- Smith, T. M., Cobb, P., Farran, D. C., Cordray, D. S., & Munter, C. (2013). Evaluating math recovery: Assessing the causal impact of a diagnostic tutoring program on student achievement. *American Educational Research Journal*, 50(2), 1–32. doi:10.3102/0002831212469045
- Spoth, R., Redmond, C., Clair, S., Shin, C., Greenberg, M., & Feinberg, M. (2011). Preventing substance misuse through community–university partnerships: Randomized controlled trial outcomes 4 1/2 years past baseline. *American Journal of Preventive Medicine*, 40(4), 440–447. doi:10.1016/j.amepre.2010.12.012
- Stanovich, K. E. (1986). Matthew effects in reading: Some consequences of individual differences in the acquisition of literacy. *Reading Research Quarterly*, 21(4), 360–407.
- Steele, C. M. (1988). The psychology of self-affirmation: Sustaining the integrity of the self. In L. Berkowitz (Ed.), *Advances in Experimental Psychology* (Vol. 21, pp. 261–302). San Diego, CA: Academic Press.
- te Nijenhuis, J., van Vianen, A. E., & van der Flier, H. (2007). Score gains on g-loaded tests: No g. *Intelligence*, 35, 283–300. doi:10.1016/j.intell.2006.07.006
- Tucker-Drob, E. M., & Bates, T. C. (2016). Large cross-national differences in gene  $\times$  socioeconomic status interaction on intelligence. *Psychological Science*, 27, 138–149. doi:10.1177/0956797615612727
- Walker, S. P., Chang, S. M., Powell, C. A., & Grantham-McGregor, S. M. (2005). Effects of early childhood psychosocial stimulation and nutritional supplementation on cognition and education in growth-stunted Jamaican children: Prospective cohort study. *The Lancet*, 366, 1804–1807. doi:10.1016/S0140-6736(05)67574-5
- Webster-Stratton, C., & Taylor, T. (2001). Nipping early risk factors in the bud: Preventing substance abuse, delinquency, and violence in adolescence through interventions targeted at young children (0–8 years). *Prevention Science*, 2(3), 165–192. doi:10.1023/A:1011510923900
- Wigfield, A., & Eccles, J. S. (2000). Expectancy-value theory of achievement motivation. *Contemporary Educational Psychology*, 25(1), 68–81. doi:10.1006/ceps.1999.1015
- Wilson, T. D., & Linville, P. W. (1982). Improving the academic performance of college freshmen: Attribution therapy revisited. *Journal of Personality and Social Psychology*, 42(2), 367–376. doi:10.1037/0022-3514.42.2.367
- Wilson, T. D., & Linville, P. W. (1985). Improving the performance of college freshmen with attributional techniques. *Journal of Personality and Social Psychology*, 49(1), 287–293. doi:10.1037/0022-3514.49.1.287
- Yeager, D. S., & Walton, G. M. (2011). Social-psychological interventions in education: They're not magic. *Review of Educational Research*, 81, 267–301. doi:10.3102/0034654311405999