



## Original Article

# Persistence of long COVID symptoms in COVID-19 survivors worldwide and its potential pathogenesis - A systematic review and meta-analysis

Marhami Fahrhani<sup>1\*</sup>, Muhammad Ilmawan<sup>2</sup>, Jonny K. Fajar<sup>1,3</sup>, Helnida A. Maliga<sup>2</sup>, Andri Frediansyah<sup>4</sup>, Sri Masyeni<sup>5,6</sup>, Hanifah Yusuf<sup>7</sup>, Firzan Nainu<sup>8</sup>, Francesco Rosiello<sup>9</sup>, Salin Sirinam<sup>10</sup>, Synat Keam<sup>11</sup> and Youdiil Ophinni<sup>12</sup>

<sup>1</sup>Medical Research Unit, School of Medicine, Universitas Syiah Kuala, Banda Aceh, Aceh, Indonesia; <sup>2</sup>Faculty of Medicine, Universitas Brawijaya, Malang, East Java, Indonesia; <sup>3</sup>Brawijaya Internal Medicine Research Center, Department of Internal Medicine, Faculty of Medicine, Universitas Brawijaya, Malang, East Java, Indonesia; <sup>4</sup>Research Division for Natural Product Technology (BPTBA), Indonesian Institute of Sciences (LIPI), Wonosari, Indonesia; <sup>5</sup>Department of Internal Medicine, Faculty of Medicine and Health Sciences Universitas Warmadewa, Denpasar, Bali, Indonesia; <sup>6</sup>Department of Internal Medicine, Sanjiwani Hospital, Denpasar, Bali, Indonesia; <sup>7</sup>Department of Pharmacology, School of Medicine, Universitas Syiah Kuala, Banda Aceh, Aceh, Indonesia; <sup>8</sup>Faculty of Pharmacy, Hasanuddin University, Makassar, South Sulawesi, Indonesia; <sup>9</sup>Department of Public Health and Infectious Disease, Sapienza-University of Rome, Rome, Italy; <sup>10</sup>Department of Tropical Pediatrics, Faculty of Tropical Medicine, Mahidol University, Bangkok, Thailand; <sup>11</sup>School of Medicine, University of Western Australia, Perth, Western Australia, Australia; <sup>12</sup>Ragon Institute of MGH, MIT and Harvard, Harvard Medical School, Harvard University, Cambridge, MA, USA

\*Corresponding author: [marhamifahrhani@gmail.com](mailto:marhamifahrhani@gmail.com)

## Abstract

The study sought to determine the prevalence of persistent long COVID symptoms such as anxiety, depression, dizziness, chest pain, sleep difficulty, palpitations, weight loss, and hair loss among coronavirus disease 2019 (COVID-19) survivors worldwide and to discuss the potential pathogeneses. Potential studies were searched in three databases (PubMed, Scopus, and Web of Science) as of January 30, 2021. Data on study characteristics, patient characteristics during the follow-up, the number of patients with persistent long COVID symptoms and total COVID-19 survivors were collected according to PRISMA guidelines. To assess the quality of studies, the Newcastle-Ottawa scale was used. The estimated prevalence of each long COVID symptom and the association between COVID-19 severity and the occurrence of prolonged symptoms was assessed, if appropriate. The global prevalence of prolonged anxiety was 15.76% (95%CI: 6.36%, 25.15%). Chest pain persisted in 10.36% (239/3,224) of COVID-19 patients (95%CI: 4.92%, 15.80%). Prolonged depression was found in 24 of 548 COVID-19 survivors with an estimated prevalence of 4.32% (95%CI: 2.62%, 6.03%) and dizziness was presented in 4.83% (118/2,219, 95%CI: 1.50%, 8.16%) after recovery. Hair loss was complained by 527 of 2,251 recovered patients (cumulative prevalence of 24.76%, 95%CI: 19.60%, 29.91%), while weight loss was identified in 37 cases among 452 COVID-19 survivors (8.19%, 95%CI: 5.66%, 10.71%). Prolonged palpitation was experienced by 19.38% (211/1,926) survivors with 95%CI: 2.40%, 41.16%. Sleep difficulty was found in 541 of 2,622 COVID-19 survivors (17.87%, 95%CI: 7.55%, 28.20%). The association between COVID-19 severity and the occurrence of persistent long COVID symptoms was not analyzed due to the lack of data. In conclusion, persistent psychological symptoms are frequently reported among COVID-19 survivors. Follow-up studies with a longer duration and larger population are warranted to assess the extent of prolonged symptoms and the



quality of life of COVID-19 survivors. Despite various potential pathogeneses that have been hypothesized, a definitive mechanism is yet to be addressed. PROSPERO registration: CRD42021247172

**Keywords:** COVID-19, follow-up study, prolonged symptom, long COVID, systematic review

## Introduction

The coronavirus disease 2019 (COVID-19) was declared a global pandemic on March 11<sup>th</sup>, 2020. The disease, caused by severe acute respiratory syndrome coronavirus 2 (SARS-CoV-2), has caused more than 131 million confirmed cases and more than 2.8 million deaths, worldwide [1]. Not only causing socioeconomic disruption [2, 3], COVID-19 has also affected the healthcare system [4-7]. These concerns, along with the risk of discrimination [8] and stigmatization [9, 10] among patients and healthcare workers [11], can lead to psychological problems [12].

A study found that depressed mood (14.9%), anxiety (14.8%), post-traumatic stress disorder (PTSD) (32.2%), insomnia (12.1%), and irritability (12.8%) were frequently reported after severe acute respiratory syndrome (SARS) or Middle East respiratory syndrome (MERS) infection [13]. This could imply that SARS-CoV-2 infection may have a similar course of persistent long COVID symptoms to SARS or MERS infection following recovery of disease [13]. The global pandemic also has triggered a social discriminatory crisis and stigmatization against suspected, confirmed, and recovered COVID-19 patients [12]. Fear, panic, and misinformation about the transmission of COVID-19 have become reasons why verbal abuse and violent acts have occurred against COVID-19 patients and hospital workers [14]. One study reported that among 4,172 COVID-19 survivors in Wuhan, 615 patients had experienced depression, and 528 patients had anxiety with risk factors such as being female, living alone, had low income and had chronic comorbid disease [15]. In South Korea, a study reported that 10% and 50% of COVID-19 patients developed depression and PTSD, respectively one month after discharge from the hospital [16]. Another study reported that being female was significantly related to depressive emotion and PTSD while being retired and having good social support reduced the risk of psychological distress during the early convalescence of COVID-19 (14-days quarantine after hospital discharge) [17].

Several studies found that palpitations either as cardiovascular sequelae or long COVID disturbance have been reported during COVID-19 follow-up [18-20]. Sleep disturbance was also a concern not only during the follow-up but also since hospitalization with acute COVID-19. Longer hospitalization and higher depression rate were found in COVID-19 patients with poor sleep quality [21]. A study found that, after 38 days post-recovery, insomnia was found in 56.3% (89/158) of COVID-19 survivors [22]. Numerous studies have been conducted to identify the persistent symptoms in COVID-19 survivors, however, a detailed pooled analysis of the long COVID symptoms is scarce. Therefore, this systematic review sought to assess (a) the global estimated prevalence of persistent long COVID symptoms among COVID-19 survivors, including anxiety, depression, dizziness, chest pain, sleep difficulty, palpitations, weight loss, and hair loss, and (b) the association of COVID-19 severity during initial infection and persistent long COVID symptoms post-recovery.

## Methods

### Registration and protocol

We conducted a systematic review to estimate the prevalence of persistent long COVID symptoms such as anxiety, depression, dizziness, chest pain, sleep difficulty, palpitations, weight loss, and hair loss. The study protocol was registered to PROSPERO (CRD42021247172) and no ethical clearance was required. We followed the Preferred Reporting Items for Systematic Reviews and Meta-analyses (PRISMA) in searching the databases and reporting the results (**Supplementary material**) [23].

### Eligibility criteria of studies

Observational studies reporting at least one persistent long COVID symptom (anxiety, depression, dizziness, chest pain, sleep difficulty, palpitations, weight loss, and hair loss) in COVID-19 survivors were considered eligible. All editorials, commentaries, reviews, case reports, and case series with less than 10 patients were excluded. RT-PCR of SARS-CoV-2 RNA from nasal or oropharyngeal swab samples must be used to confirm COVID-19 diagnosis. Diagnosis based on clinical symptoms without nucleic acid testing and suspected cases were excluded. A COVID-19 survivor was defined based on discharge criteria from either WHO or China's National Health Commission [24, 25]. Persistent symptoms were described as symptoms that were presented since hospitalization or during the infection period which prolonged until the patient was discharged.

### Information sources and search strategy

Three databases (PubMed, Scopus, and Web of Science) were searched as of January 30<sup>th</sup>, 2021. The searches were limited to 2019-2021 and only articles written in English were considered eligible. The search strategies were as follows. PubMed ([Title]("SARS-CoV-2" OR "COVID-19" OR "Wuhan coronavirus" OR "Wuhan virus" OR "novel coronavirus" OR "nCoV" OR "severe acute respiratory syndrome coronavirus 2" OR "coronavirus disease 2019" OR "2019-nCoV" OR "2019 novel coronavirus" OR "SARS 2") AND ([Title]("prolong\*" OR "follow-up" OR "persistent" OR "sequelae" OR "consequen\*" OR "prospective" OR "cohort" OR "long-term" OR "follow\*" OR "longitudinal"). Web of Science ([Title]("SARS-CoV-2" OR "COVID-19" OR "Wuhan coronavirus" OR "Wuhan virus" OR "novel coronavirus" OR "nCoV" OR "severe acute respiratory syndrome coronavirus 2" OR "coronavirus disease 2019" OR "2019-nCoV" OR "2019 novel coronavirus" OR "SARS 2") AND ([Title]("prolong\*" OR "follow-up" OR "persistent" OR "sequelae" OR "consequen\*" OR "prospective" OR "cohort" OR "long-term" OR "follow\*" OR "longitudinal"). Scopus ([Title]("SARS-CoV-2" OR "COVID-19" OR "Wuhan coronavirus" OR "Wuhan virus" OR "novel coronavirus" OR "nCoV" OR "severe acute respiratory syndrome coronavirus 2" OR "coronavirus disease 2019" OR "2019-nCoV" OR "2019 novel coronavirus" OR "SARS 2") AND ([Title]("prolong\*" OR "follow-up" OR "persistent" OR "sequelae" OR "consequen\*" OR "prospective" OR "cohort" OR "long-term" OR "follow\*" OR "longitudinal").

### Study selection and data extraction

Information for relevant articles was imported to EndNote X9 (Thompson Reuters, Philadelphia, PA, USA) with duplicated references among the three databases removed. Initial screening of titles and abstracts was done to identify eligible articles. Two authors (MF and MI) downloaded and reviewed the full text of potentially eligible articles based on eligibility criteria and the availability of the data. Data from the eligible articles and supplementary materials were extracted and the list of references was retrieved for further relevant studies.

Study characteristics of the eligible articles including author(s), year of study, study site and country, study design, time of follow-ups conducted after discharge, number of COVID-19 patients who were followed, number of COVID-19 patients with prolonged specific long COVID symptom, and severity of the COVID-19 during admission in the hospitals were collected.

### Outcomes

There were two main outcomes in this study: (a) global prevalence of persistent long COVID symptoms such as anxiety, depression, dizziness, chest pain, sleep difficulty, palpitations, weight loss and hair loss in COVID-19 survivors; and (b) associations of COVID-19 severity with the presence of persistent long COVID symptoms. We also discussed the possible mechanisms of persistent long COVID symptoms in COVID-19 survivors.

### Risk of bias assessment

The quality of each study was assessed by using the Newcastle-Ottawa scale (NOS) [26]. Nine characteristics of a study were evaluated in NOS, including four items for sample selection, one item for group comparison and three items for the outcome. The scores ranged between 0 to 9 and the quality of the study was classified as low ( $\leq 4$ ), moderate (5–6), and high ( $\geq 7$ ).

### Data synthesis and statistical analysis

The estimated prevalence of each persistent long COVID symptoms was calculated as the number of patients who had prolonged symptoms divided by the total number of patients with or without the specific long COVID symptom during the follow-up and expressed as frequency (%) and 95% confidence interval (95%CI). The associations of the COVID-19 severity during infection and the risk of persistent long COVID symptoms were calculated and expressed as odds ratios (ODs) and 95% CI. Forest plots were used to visualize the data.

The heterogeneity of the pooled data was evaluated by the Q-test. Data was analyzed using a random-effects model. The publication bias was assessed by using Egger's test with  $p < 0.05$  considered as publication bias. Review Manager version 5.3 (the Cochrane Collaboration) was used to analyze the data [27].

## Results

### Study eligibility results

The search resulted in 4,050 eligible articles, with 2,045 duplicates. The titles and abstracts of the remaining 2,005 references were screened, and 1,244 articles were excluded. Screening of the full-text of 761 studies excluded an additional 747 references for reasons such as being reviews, case series, case reports, initial reports on COVID-19, letter/commentaries, studies on specific groups, recommendations, and studies with insufficient data. The final screening process yielded 14 articles which were included in the meta-analysis (Figure 1).

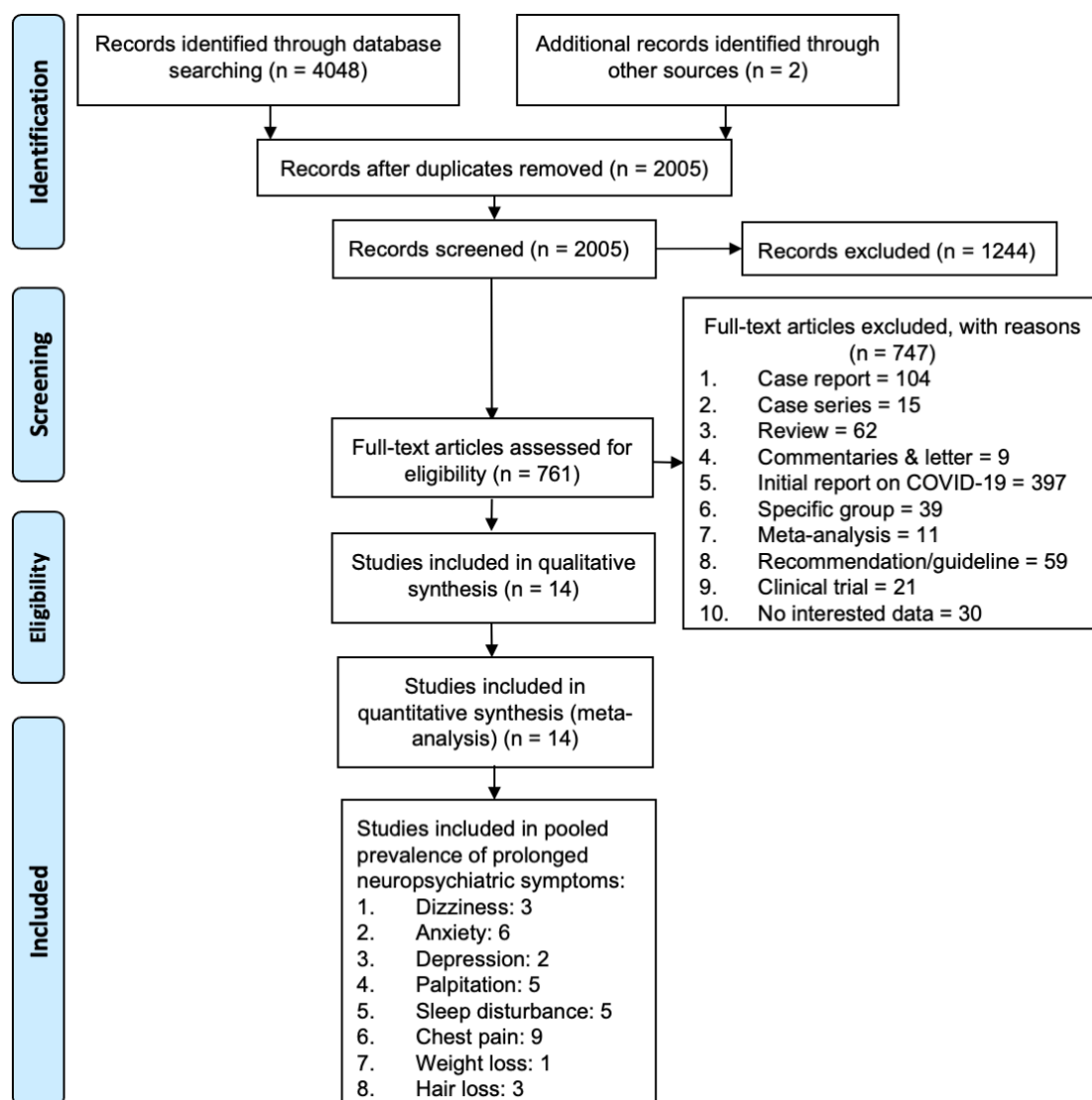


Figure 1. Flowchart of the results of literature search according to PRISMA

Table 1. The prevalence of persistent long COVID symptoms among COVID-19 survivors

Symptom	Year	Study design	Country	Days from discharge to follow-up	Followed up COVID-19			Association between COVID-19 severity and occurrence of symptoms						NOS	Ref
					Prolonged symptom	Total patient	%	Mild-moderate	Total	%	Severe	Total	%		
Dizziness	2021	Cohort	China	153 (146–160)	101	1655	6.10	92	1538	5.98	9	117	7.69	8	[28]
	2020	Cohort	USA	38 (21–49)	3	26	11.54							8	[29]
	2021	Prospective	China	97 (95–102)	14	538	2.60							8	[30]
	Total				118	2219	5.32								
Anxiety	2021	Cohort	China	153 (146–160)	367	1617	22.70	331	1506	21.98	36	111	32.43	8	[28]
	2020	Cohort	USA	38 (21–49)	8	26	30.77							8	[29]
	2021	Retrospective	China	30	20	304	6.58	16	243	6.58	4	61	6.56	7	[31]
	2021	Prospective	China	97 (95–102)	35	538	6.51							8	[30]
	2020	Prospective	China	14	17	337	5.04							7	[32]
	2020	Cohort	Italy	23 (20-29)	55	185	29.73							8	[33]
	Total				502	3007	16.69								
Depression	2021	Prospective	China	97 (95–102)	23	538	4.28							8	[30]
	2020	Prospective	South Korea	25 (13–50)	1	10	10.00							8	[16]
	Total				24	548	4.38								
Palpitation	2021	Cohort	China	153 (146–160)	154	1655	9.31	141	1538	9.17	13	117	11.11	8	[28]
	2020	Cohort	USA	38 (21–49)	6	26	23.08							8	[29]
	2020	Prospective	China	14	3	131	2.29	2	62	3.23	1	69	1.45	7	[34]
	2020	Prospective	China	28	1	38	2.63							7	[35]
	2020	Prospective	China	90	47	76	61.84							8	[36]
	Total				211	1926	10.96								
Sleep difficulties	2021	Cohort	China	153 (146–160)	437	1655	26.40	406	1538	26.40	31	117	26.50	8	[28]
	2020	Cohort	USA	38 (21–49)	7	26	26.92							8	[29]
	2021	Retrospective	China	30	21	304	6.91	12	243	4.94	9	61	14.75	7	[31]
	2020	Prospective	Iran	28	25	452	5.53	21	400	5.25	4	52	7.69	9	[37]
	2020	Cohort	Italy	23 (20-29)	51	185	27.57							8	[33]
	Total				541	2622	20.63								

Symptom	Year	Study design	Country	Days from discharge to follow-up	Followed up COVID-19			Association between COVID-19 severity and occurrence of symptoms						NOS	Ref
					Prolonged symptom	Total patient	%	Mild-moderate	Total	%	Severe	Total	%		
Chest pain	2021	Cohort	China	153 (146–160)	75	1655	4.53	65	1538	4.23	10	117	8.55	8	[28]
	2020	Cohort	USA	38 (21–49)	10	26	38.46							8	[29]
	2020	Retrospective	Iran	91 (±15.5)	9	52	17.31							8	[38]
	2021	Retrospective	China	30	15	304	4.93	7	243	2.88	8	61	13.11	7	[31]
	2020	Prospective	China	14	4	131	3.05	3	62	4.84	1	69	1.45	7	[34]
	2021	Prospective	China	97 (95–102)	66	538	12.27							8	[30]
	2020	Prospective	China	14	28	337	8.31							7	[32]
	2020	Prospective	Italy	60.3 (±13.6)	31	143	21.68							7	[39]
	2020	Prospective	China	28	1	38	2.63							7	[35]
		Total				239	3224	7.41							
Weight loss	2020	prospective	Iran	28	37	452	8.19	31	400	7.75	6	52	11.54	9	[37]
	Total				37	452	8.19								
Hair loss	2021	Cohort	China	153 (146–160)	359	1655	21.69	331	1538	21.52	28	117	23.93	8	[28]
	2021	Prospective	China	97 (95–102)	154	538	28.62							8	[30]
	2020	Prospective	Japan	108 (±23)	14	58	24.14							7	[40]
	Total				527	2251	23.41								

Among the 14 studies, three studies were included in meta-analysis to calculate the prevalence of prolonged dizziness [28-30], six studies for persistent anxiety [28-33], two studies for persistent depression [16, 30], five studies for palpitation [28, 29, 34-36], five studies for sleep disturbance [28, 29, 31, 33, 37], nine articles for prolonged chest pain [28-32, 34, 35, 38, 39], one study for weight loss [37] and three studies for hair loss [28, 30, 40]. The summary of studies included is presented in **Table 1**.

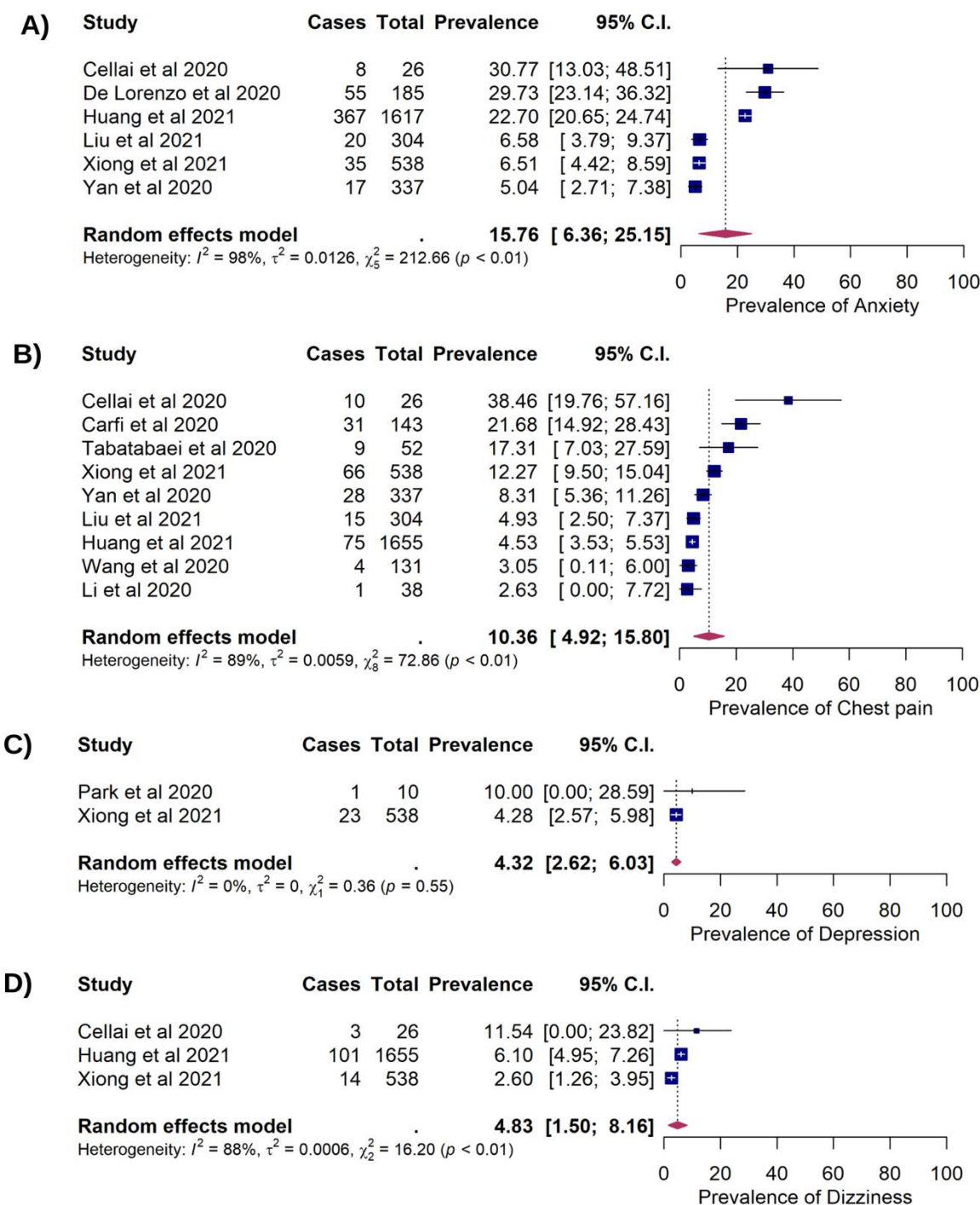


Figure 2. Forest plots showing of the long COVID symptoms in COVID-19 survivors. (A) The prevalence of anxiety (15.76%; 95%CI: 6.36%, 25.15%);  $p=0.001$ ;  $p_{Het} < 0.001$ ;  $p_{Egger}=0.085$ ; (B) The prevalence of chest pain (10.36%; 95%CI: 4.92%, 15.80%);  $p < 0.001$ ;  $p_{Het} < 0.001$ ;  $p_{Egger} < 0.001$ ; (C) The prevalence of depression (4.32%; 95%CI: 2.62%, 6.03%);  $p < 0.001$ ;  $p_{Het}=0.547$ ;  $p_{Egger} < 0.001$ ; (D) The prevalence of dizziness (4.83%; 95%CI: 1.50%, 8.16%);  $p=0.004$ ;  $p_{Het} < 0.001$ ;  $p_{Egger}=0.320$ ).

### Prevalence of persistent long COVID symptoms in COVID-19 survivors

Six studies which included 3,007 COVID-19 patients reported prolonged anxiety among 502 patients after recovery, with an estimated prevalence of 15.76% (95%CI: 6.36%, 25.15%). Nine studies reported prolonged chest pain in 239 of 3,224 COVID-19 patients (10.36%, 95%CI:4.92%, 15.80%). Prolonged depression presented in 24 of 548 COVID-19 patients which corresponded to a pooled prevalence of 4.32% (95%CI: 2.62%, 6.03%). The estimated prevalence of persistent dizziness among COVID-19 survivors was 4.83% (118/ 2,219 95%CI: 1.50%, 8.16%) (Figure 2). Hair loss was found in three studies consisting of 2,251 COVID-19 survivors, of which 527 patients were reported having the prolonged symptom (cumulative prevalence of 24.76%, 95%CI: 19.60%, 29.91%). Persistent palpitation was reported in 19.38% (211/1,926) survivors with 95%CI: 2.40%, 41.16%. Sleep difficulty was identified in 541 out of 2,622 COVID-19 survivors (17.87%, 95%CI: 7.55%, 28.20%) and weight loss was reported in 8.19% survivors (37/452, 95%CI: 5.66%, 10.71%) (Figure 3).

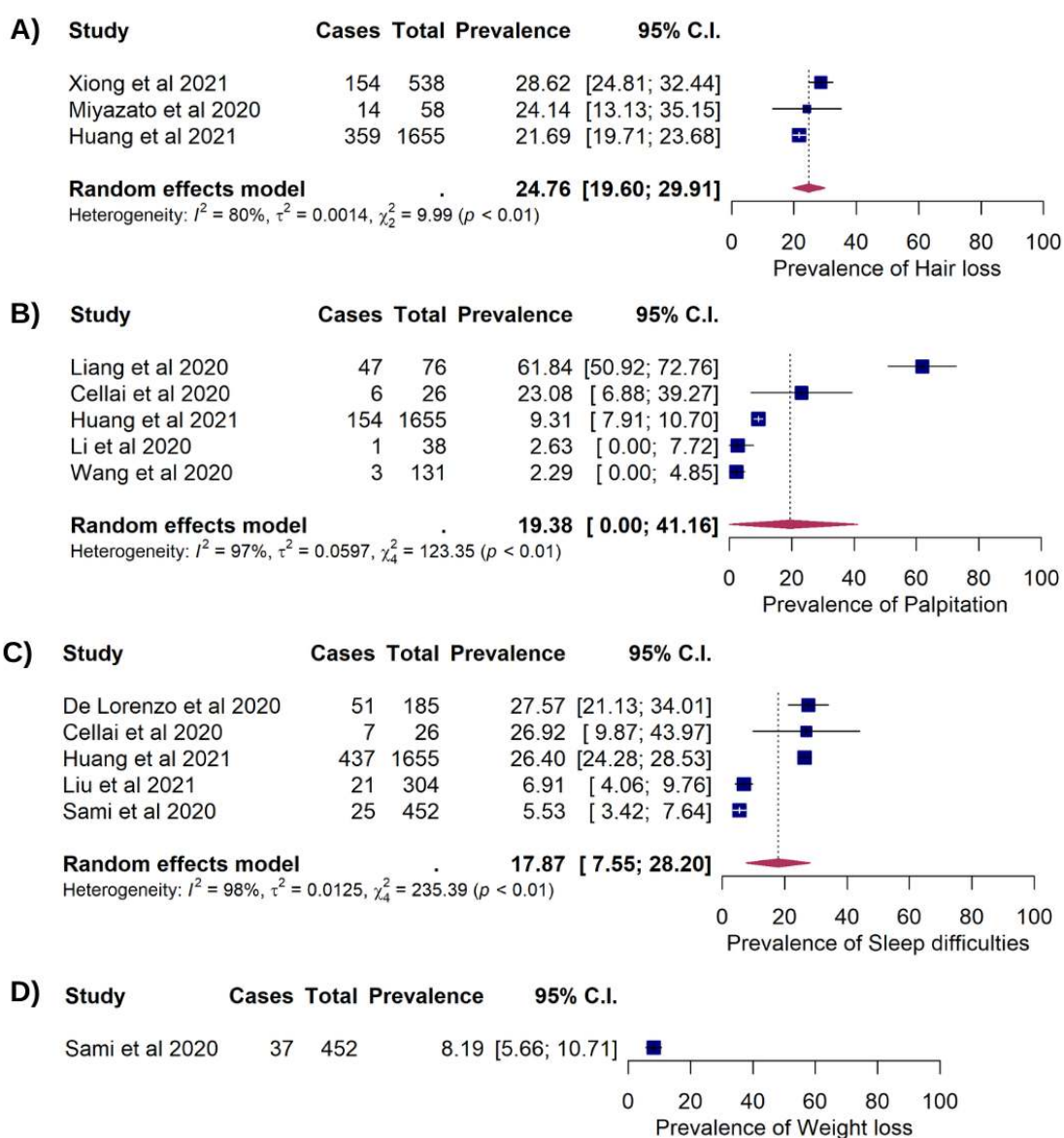


Figure 3. Forest plots showing the long COVID symptoms in COVID-19 survivors (A) The prevalence of hair loss (24.76%; 95%CI: 19.60%, 29.91%;  $p < 0.001$ ;  $p_{Het} = 0.006$ ;  $p_{Egger} = 0.875$ ); (B) The prevalence of palpitation (19.38%; 95%CI: 2.40, 41.16%;  $p = 0.081$ ;  $p_{Het} < 0.001$ ;  $p_{Egger} = 0.185$ ); (C) The prevalence of sleep difficulties (17.87%; 95%CI: 7.55%, 28.20%);  $p < 0.001$ ;  $p_{Het} < 0.001$ ;  $p_{Egger} = 0.328$ . (D) The prevalence of weight loss (8.19%; 95%CI: 5.66%, 10.71%).



### Association of COVID-19 severity and persistent long COVID symptoms

Due to the scarcity of data relating to persistent long COVID symptoms among mild-moderate and severe COVID-19 patients, the association between COVID-19 severity and the risk of persistent long COVID symptoms was unable to be determined.

### Discussion

The COVID-19 outbreak is an ongoing health crisis with concerns about patients' health status that arise not only during the initial infection but also post-recovery. Studies have reported persistent symptoms and prolonged lung function, physical and psychological problems in discharged patients [30, 39, 41-43].

Psychological issues during the COVID-19 pandemic were common due to social isolation, concern about transmitting the disease, and the fear of stigma and discrimination society [44]. Long-term quarantine and loneliness among COVID-19 patients might increase psychological distress, including severe depression and insomnia, leading to suicidal thoughts and behaviour [45]. While psychological distress increased universally among the general population [46, 47], this is apparent only in the initial period of the pandemic before swift recovery to baseline [48], indicating prolonged distress as a specific attribute of long COVID.

The host immune response also plays an important role in cognitive-behavioural changes in COVID-19 infection. High levels of interleukin (IL)-1 $\beta$ , IL-6, IL-4, IL-10, tumor necrosis factor-alpha (TNF- $\alpha$ ), chemokine (C-C-motif) ligand 2 (CCL2), granulocyte-macrophage colony-stimulating factor (GM-CSF) and interferon (IFN)- $\gamma$  suggests a cytokine dysregulation in SARS-CoV-2 infection that might lead to altered neurotransmitter signalling [49]. Cytokine dysregulation, particularly of IL-1 $\beta$ , IL-6, IL-10, IFN- $\gamma$  and TNF- $\alpha$  are known to be associated with the development and progression of psychological disorders, including depressive mood and anxiety [50-52]. There is evidence of SARS-CoV-2 causing changes in the brain parenchyma and blood vessels [53, 54]. These changes may induce brain inflammation, blood-brain-barrier dysfunction, neurotransmitter impairment and hypothalamic-pituitary adrenal (HPA) axis disruption which might induce neurological manifestation such as brain fog, tinnitus, and poor sleep quality [22].

Weight loss of more than 5% of initial body weight was found among 31% (48/156) hospitalized and 21% (12/57) non-hospitalized COVID-19 patients after recovery in Milan, Italy [55]. Several mechanisms may be involved in weight loss among COVID-19 patients. Vascular leakage combined with endothelial barrier disruption in COVID-19 patients may result in an inflammatory cascade, disrupting tissue homeostasis [56]. The presence of abundant acute phase proteins and cytokines in COVID-19 patients may cause dysregulation of metabolism [57-59], proteolysis [59-61], and the hypothalamus pathway, thereby increasing resting energy expenditure and muscle catabolism [62], that could further cause weight loss [63, 64]. Psychological problems also contribute to decreased food intake, consequently aggravating the COVID-19 patients' malnutrition [65-67]. As a result, these conditions contribute to tissue degeneration [68]. Additionally, appetite loss, fatigue, changes in smell and taste, anosmia, ageusia, and fever all contribute to malnutrition and cachexia [69, 70], which can result in anabolic failure and subsequent weight loss [71].

Chest pain is commonly complained by COVID-19 survivors [72]. Another study reported that chest pain was experienced by 60% of 430 patients on initial infection and 32.6% of 370 patients after COVID-19 recovery [73]. It is crucial to understand whether persistent chest pain in post-COVID-19 is due to musculoskeletal, cardiovascular, or lung lesions. As symptoms on chest are self-defined by the patient, sometimes it is also termed as chest tightness which is related to musculoskeletal symptoms or chest burn as cardiovascular symptoms [74]. Coronary microvascular ischemia has been reported to cause persistent chest pain in patients that have recovered from COVID-19 [75]. Chest discomfort is also attributed to pulmonary lesions, such as lung fibrosis [76], mild pleural effusion and bronchiectasis [77].

Data on hair loss in COVID-19 survivors is still limited and may be associated with androgenetic alopecia in men [78] or telogen effluvium in women [79]. Hair loss in COVID-19 patients could also be explained by vascular leakage caused by stress, as well as endothelial and

epithelial scalp cell death, which could trigger an inflammatory cascade by disrupting homeostasis, such as IL-1 [80, 81]. Inflammatory mediators are cytotoxic to hair cells [82, 83] and high IL-1 level has been linked to hair loss [84, 85].

This study compiled preliminary data on prolonged symptoms of COVID-19, such as anxiety, depression, dizziness, chest pain, sleep difficulty, palpitations, weight loss, and hair loss. Due to the small number of current studies on persistent symptoms of COVID-19, there is no standard data on the onset and duration of persistent symptoms of COVID-19. However, our study presents basic data on the prevalence and the duration of prolonged symptoms of SARS-CoV-2 infection. The low number of articles included in this meta-analysis significantly influenced the findings of our study and due to the lack of data on severity of COVID-19 in these studies, no association between persistent symptoms and the severity of COVID-19 could be determined. Therefore, further studies with larger populations and subgroup analysis are warranted to ascertain these findings, including determining the association between COVID-19 severity and the presence of prolonged symptoms in COVID-19 survivors.

## Conclusions

Persistent long COVID symptoms are prevalent in COVID-19 survivors. The result of our study suggested that longer follow-up studies within a larger population are needed. Supportive care is also necessary to ensure a smooth transition back to the community and increasing the quality of life of COVID-19 patients after discharge.

## Declarations

### Ethics approval

Not required.

### Acknowledgments

The authors would like to thank Narra Studio Journal Indonesia for assisting the writing processes.

### Conflict of interest

The authors declare that they have no competing interests.

### Funding

This study received no external funding.

### Supplementary material

PRISMA checklist is available from: <https://doi.org/10.6084/m9.figshare.14371784>.

## How to cite

Fahriani M, Ilmawan M, Fajar JK, *et al.* Persistence of long COVID symptoms in COVID-19 survivors worldwide and its potential pathogenesis - A systematic review and meta-analysis. *Narra J* 2021; 1(2): e36. <http://doi.org/10.52225/narraj.v1i2.36>.

## References

1. COVID-19 coronavirus pandemic. Available from: <https://www.worldometers.info/coronavirus/> (Accessed: 11 March, 2021).
2. Nicola M, Alsaifi Z, Sohrabi C, *et al.* The socio-economic implications of the coronavirus pandemic (COVID-19): A review. *Int J Surg* 2020; 78:185-193.

3. Martin A, Markhvida M, Hallegatte S, *et al.* Socio-Economic impacts of COVID-19 on household consumption and poverty. *Econ Disaster Clim Chang* 2020; 4(3):1-27.
4. Greene CJ, Burleson SL, Crosby JC, *et al.* Coronavirus disease 2019: International public health considerations. *J Am Coll Emerg Physicians Open* 2020; 1(2):70-77.
5. Lew HL, Oh-Park M, Cifu DX. The war on covid-19 pandemic: role of rehabilitation professionals and hospitals. *Am J Phys Med Rehabil* 2020; 99(7):571-572.
6. Giannakeas V, Bhatia D, Warkentin MT, *et al.* Estimating the maximum capacity of COVID-19 cases manageable per day given a health care system's constrained resources. *Ann Intern Med* 2020; 173(5):407-410.
7. Fahriani M, Anwar S, Yufika A, *et al.* Disruption of childhood vaccination during the COVID-19 pandemic in Indonesia. *Narra J* 2021; 1(1):e7.
8. Bhanot D, Singh T, Verma SK, *et al.* Stigma and Discrimination During COVID-19 Pandemic. *Front Public Health* 2020; 8(829):577018.
9. Badrfam R, Zandifar A. Stigma Over COVID-19; New conception beyond individual sense. *Arch Med Res* 2020; 51(6):593-594.
10. Badrfam R, Zandifar A. COVID-19 and melancholia: different perception of the concept of stigma and loss. *Iran J Psychiatry* 2020; 15(3):264-265.
11. Singh R, Subedi M. COVID-19 and stigma: Social discrimination towards frontline healthcare providers and COVID-19 recovered patients in Nepal. *Asian J Psychiatr* 2020; 53:102222.
12. Dye TD, Alcantara L, Siddiqi S, *et al.* Risk of COVID-19-related bullying, harassment and stigma among healthcare workers: an analytical cross-sectional global study. *BMJ Open* 2020; 10(12):e046620.
13. Rogers JP, Chesney E, Oliver D, *et al.* Psychiatric and neuropsychiatric presentations associated with severe coronavirus infections: a systematic review and meta-analysis with comparison to the COVID-19 pandemic. *Lancet Psychiatry* 2020; 7(7):611-627.
14. McKay D, Heisler M, Mishori R, *et al.* Attacks against health-care personnel must stop, especially as the world fights COVID-19. *The Lancet* 2020; 395(10239):1743-1745.
15. Mei Q, Wang F, Bryant A, *et al.* Mental health problems among COVID-19 survivors in Wuhan, China. *World Psychiatry* 2021; 20(1):139-140.
16. Park HY, Jung J, Park HY, *et al.* Psychological consequences of survivors of COVID-19 pneumonia 1 month after discharge. *J Korean Med Sci* 2020; 35(47):e409.
17. Cai X, Hu X, Ekumi IO, *et al.* Psychological distress and its correlates among COVID-19 survivors during early convalescence across age groups. *Am J Geriatr Psychiatry* 2020; 28(10):1030-1039.
18. Sun N, Wei L, Wang H, *et al.* Qualitative study of the psychological experience of COVID-19 patients during hospitalization. *J Affect Disord* 2021; 278:15-22.
19. Nalbandian A, Sehgal K, Gupta A, *et al.* Post-acute COVID-19 syndrome. *Nat Med* 2021; 27(4):601-615.
20. Carvalho-Schneider C, Laurent E, Lemaigen A, *et al.* Follow-up of adults with noncritical COVID-19 two months after symptom onset. *Clin Microbiol Infect* 2021; 27(2):258-263.
21. Akinci T, Melek Basar H. Relationship between sleep quality and the psychological status of patients hospitalised with COVID-19. *Sleep Med* 2021; 80:167-170.
22. Iqbal A, Iqbal K, Arshad Ali S, *et al.* The COVID-19 sequelae: a cross-sectional evaluation of post-recovery symptoms and the need for rehabilitation of covid-19 survivors. *Cureus* 2021; 13(2):e13080.
23. Moher D, Liberati A, Tetzlaff J, *et al.* Preferred reporting items for systematic reviews and meta-analyses: the PRISMA statement. *Plos Med* 2009; 6(7):e1000097.
24. World Health Organization. Clinical management of COVID-19: interim guidance, 27 May 2020. In.: World Health Organization; 2020.
25. China National Health Commission. Chinese clinical guidance for COVID-19 pneumonia diagnosis and treatment. 2020.
26. Stang A. Critical evaluation of the Newcastle-Ottawa scale for the assessment of the quality of nonrandomized studies in meta-analyses. *Eur J Epidemiol* 2010; 25(9):603-605.
27. Cochrane T. Review Manager (RevMan) 5.3. Copenhagen: The Nordic Cochrane Centre 2008; 373.
28. Huang C, Huang L, Wang Y, *et al.* 6-month consequences of COVID-19 in patients discharged from hospital: a cohort study. *Lancet* 2021; 397(10270):220-232.

29. Cellai M, O'Keefe JB. Characterization of prolonged COVID-19 symptoms in an outpatient telemedicine clinic. *Open Forum Infect Dis* 2020; 7(10):ofaa420.
30. Xiong Q, Xu M, Li J, *et al.* Clinical sequelae of COVID-19 survivors in Wuhan, China: a single-centre longitudinal study. *Clin Microbiol Infect* 2021; 27(1):89-95.
31. Liu HQ, Yuan B, An YW, *et al.* Clinical characteristics and follow-up analysis of 324 discharged COVID-19 patients in Shenzhen during the recovery period. *Int J Med Sci* 2021; 18(2):347-355.
32. Yan N, Wang W, Gao Y, *et al.* Medium term follow-up of 337 patients with coronavirus disease 2019 (COVID-19) in a Fangcang Shelter Hospital in Wuhan, China. *Front Med (Lausanne)* 2020; 7:373.
33. De Lorenzo R, Conte C, Lanzani C, *et al.* Residual clinical damage after COVID-19: A retrospective and prospective observational cohort study. *PLoS One* 2020; 15(10):e0239570.
34. Zhou L-p, Wang J, Xie R-h, *et al.* The effects of traditional Chinese Medicine as an auxiliary treatment for COVID-19: A systematic review and meta-analysis. *The Journal of Alternative and Complementary Medicine* 2020.
35. Levy C, Lassailly G, Parmentier E, *et al.* Caution with the use of lopinavir/ritonavir in severely ill patients for the treatment of SARS-CoV-2: A report of severe jaundice. *The American Journal of Gastroenterology* 2020.
36. Liang L, Yang B, Jiang N, *et al.* Three-month Follow-up study of survivors of coronavirus disease 2019 after discharge. *J Korean Med Sci* 2020; 35(47):e418.
37. Sami R, Soltaninejad F, Amra B, *et al.* A one-year hospital-based prospective COVID-19 open-cohort in the Eastern Mediterranean region: The Khorshid COVID Cohort (KCC) study. *PLoS One* 2020; 15(11):e0241537.
38. Tabatabaei SMH, Rajebi H, Moghaddas F, *et al.* Chest CT in COVID-19 pneumonia: what are the findings in mid-term follow-up? *Emerg Radiol* 2020; 27(6):711-719.
39. Carfi A, Bernabei R, Landi F, *et al.* Persistent symptoms in patients after acute COVID-19. *JAMA* 2020; 324(6):603-605.
40. Miyazato Y, Morioka S, Tsuzuki S, *et al.* Prolonged and late-onset symptoms of coronavirus disease 2019. *Open Forum Infect Dis* 2020; 7(11):ofaa507.
41. Huang Y, Tan C, Wu J, *et al.* Impact of coronavirus disease 2019 on pulmonary function in early convalescence phase. *Respir Res* 2020; 21(1):163.
42. Liu C, Ye L, Xia R, *et al.* Chest computed tomography and clinical follow-up of discharged patients with COVID-19 in Wenzhou City, Zhejiang, China. *Ann Am Thorac Soc* 2020; 17(10):1231-1237.
43. Zhao YM, Shang YM, Song WB, *et al.* Follow-up study of the pulmonary function and related physiological characteristics of COVID-19 survivors three months after recovery. *EClinicalMedicine* 2020; 25:100463.
44. Mazza MG, De Lorenzo R, Conte C, *et al.* Anxiety and depression in COVID-19 survivors: Role of inflammatory and clinical predictors. *Brain Behav Immun* 2020; 89:594-600.
45. Gillett G, Jordan I. Severe psychiatric disturbance and attempted suicide in a patient with COVID-19 and no psychiatric history. *BMJ Case Rep* 2020; 13(10):e239191.
46. Zhang J, Lu H, Zeng H, *et al.* The differential psychological distress of populations affected by the COVID-19 pandemic. *Brain Behav Immun* 2020; 87:49-50.
47. Qiu J, Shen B, Zhao M, *et al.* A nationwide survey of psychological distress among Chinese people in the COVID-19 epidemic: implications and policy recommendations. *Gen Psychiatr* 2020; 33(2):e100213.
48. Daly M, Robinson E. Psychological distress and adaptation to the COVID-19 crisis in the United States. *J Psychiatr Res* 2021; 136:603-609.
49. Ye Q, Wang B, Mao J. The pathogenesis and treatment of the cytokine storm in COVID-19. *J Infection* 2020; 80(6):607-613.
50. Hepgul N, Cattaneo A, Agarwal K, *et al.* Transcriptomics in interferon- $\alpha$ -treated patients identifies inflammation-, neuroplasticity-and oxidative stress-related signatures as predictors and correlates of depression. *Neuropsychopharmacology* 2016; 41(10):2502-2511.
51. Hou R, Garner M, Holmes C, *et al.* Peripheral inflammatory cytokines and immune balance in Generalised Anxiety Disorder: Case-controlled study. *Brain Behav Immun* 2017; 62:212-218.
52. Kubistova A, Horacek J, Novak T. Increased interleukin-6 and tumor necrosis factor alpha in first episode schizophrenia patients versus healthy controls. *Psychiatr Danub* 2012; 24 Suppl 1:S153-156.
53. Romero-Sanchez CM, Diaz-Maroto I, Fernandez-Diaz E, *et al.* Neurologic manifestations in hospitalized patients with COVID-19: The ALBACOVID registry. *Neurology* 2020; 95(8):e1060-e1070.
54. Reichard RR, Kashani KB, Boire NA, *et al.* Neuropathology of COVID-19: a spectrum of vascular and acute disseminated encephalomyelitis (ADEM)-like pathology. *Acta Neuropathol* 2020; 140(1):1-6.

55. Di Filippo L, De Lorenzo R, D'Amico M, *et al.* COVID-19 is associated with clinically significant weight loss and risk of malnutrition, independent of hospitalisation: A post-hoc analysis of a prospective cohort study. *Clin Nutr* 2021; 40(4):2420-2426.
56. Anker MS, Landmesser U, von Haehling S, *et al.* Weight loss, malnutrition, and cachexia in COVID-19: facts and numbers. In.: Wiley Online Library; 2021.
57. Laaksonen DE, Niskanen L, Nyyssonen K, *et al.* C-reactive protein and the development of the metabolic syndrome and diabetes in middle-aged men. *Diabetologia* 2004; 47(8):1403-1410.
58. Ventre J, Doebber T, Wu M, *et al.* Targeted disruption of the tumor necrosis factor-alpha gene: metabolic consequences in obese and nonobese mice. *Diabetes* 1997; 46(9):1526-1531.
59. Virgens IP, Santana NM, Lima SC, *et al.* Can COVID-19 be a risk for cachexia for patients during intensive care? Narrative review and nutritional recommendations. 2020:1-25.
60. Zamir O, Hasselgren P-O, Kunkel SL, *et al.* Evidence that tumor necrosis factor participates in the regulation of muscle proteolysis during sepsis. 1992; 127(2):170-174.
61. Clowes Jr G, Hirsch E, George BC, *et al.* Survival from sepsis. The significance of altered protein metabolism regulated by proteolysis inducing factor, the circulating cleavage product of interleukin-1. 1985; 202(4):446.
62. Wahlin-Larsson B, Wilkinson DJ, Strandberg E, *et al.* Mechanistic Links Underlying the Impact of C-Reactive Protein on Muscle Mass in Elderly. *Cell Physiol Biochem* 2017; 44(1):267-278.
63. Fruebis J, Tsao TS, Javorschi S, *et al.* Proteolytic cleavage product of 30-kDa adipocyte complement-related protein increases fatty acid oxidation in muscle and causes weight loss in mice. *Proc Natl Acad Sci U S A* 2001; 98(4):2005-2010.
64. Selvin E, Paynter NP, Erlinger TP. The effect of weight loss on C-reactive protein: a systematic review. *Arch Intern Med* 2007; 167(1):31-39.
65. Zhang C, Wu Z, Li JW, *et al.* Cytokine release syndrome in severe COVID-19: interleukin-6 receptor antagonist tocilizumab may be the key to reduce mortality. *Int J Antimicrob Agents* 2020; 55(5):105954.
66. Di Filippo L, De Lorenzo R, D'Amico M, *et al.* COVID-19 is associated with clinically significant weight loss and risk of malnutrition, independent of hospitalisation: A post-hoc analysis of a prospective cohort study. 2021; 40(4):2420-2426.
67. Bedock D, Bel Lassen P, Mathian A, *et al.* Prevalence and severity of malnutrition in hospitalized COVID-19 patients. *Clin Nutr ESPEN* 2020; 40:214-219.
68. Deshmukh V, Motwani R, Kumar A, *et al.* Histopathological observations in COVID-19: a systematic review. *J Clin Pathol* 2021; 74(2):76-83.
69. Morley JE, Kalantar-Zadeh K, Anker SD. COVID-19: a major cause of cachexia and sarcopenia? *J Cachexia Sarcopenia Muscle* 2020; 11(4):863-865.
70. Trachootham D, Thongyen S, Lam-Ubol A, *et al.* Simultaneously Complete but Not Partial Taste and Smell Losses were Associated with SAR-CoV-2 Infection. 2021.
71. Anker SD, Negassa A, Coats AJ, *et al.* Prognostic importance of weight loss in chronic heart failure and the effect of treatment with angiotensin-converting-enzyme inhibitors: an observational study. *Lancet* 2003; 361(9363):1077-1083.
72. Greenhalgh T, Knight M, A'Court C, *et al.* Management of post-acute covid-19 in primary care. *BMJ* 2020; 370:m3026.
73. Galal I, Hussein AARM, Amin MT, *et al.* Determinants of persistent post-COVID-19 symptoms: value of a novel COVID-19 symptom score. *The Egyptian Journal of Bronchology* 2021; 15(1):10.
74. Davis HE, Assaf GS, McCorkell L, *et al.* Characterizing long COVID in an International Cohort: 7 months of symptoms and their impact. *medRxiv* 2021:2020.2012.2024.20248802.
75. Vallejo N, Teis A, Mateu L, *et al.* Persistent chest pain after recovery of COVID-19: microvascular disease-related angina? *European Heart Journal - Case Reports* 2021; 5(3).
76. Shaw B, Daskareh M, Gholamrezanezhad A. The lingering manifestations of COVID-19 during and after convalescence: update on long-term pulmonary consequences of coronavirus disease 2019 (COVID-19). *Radiol Med* 2021; 126(1):40-46.
77. Spinner CD, Gottlieb RL, Criner GJ, *et al.* Effect of remdesivir vs standard care on clinical status at 11 days in patients with moderate COVID-19: a randomized clinical trial. *Jama* 2020; 324(11):1048-1057.

78. Goren A, Vano-Galvan S, Wambier CG, *et al.* A preliminary observation: Male pattern hair loss among hospitalized COVID-19 patients in Spain - A potential clue to the role of androgens in COVID-19 severity. *J Cosmet Dermatol* 2020; 19(7):1545-1547.
79. Mieczkowska K, Deutsch A, Borok J, *et al.* Telogen effluvium: a sequela of COVID-19. *Int J Dermatol* 2021; 60(1):122-124.
80. Cavalli G, De Luca G, Campochiaro C, *et al.* Interleukin-1 blockade with high-dose anakinra in patients with COVID-19, acute respiratory distress syndrome, and hyperinflammation: a retrospective cohort study. *Lancet Rheumatol* 2020; 2(6):e325-e331.
81. Theobald SJ, Simonis A, Kreer C, *et al.* The SARS-CoV-2 spike protein primes inflammasome-mediated interleukin-1-beta secretion in COVID-19 patient-derived macrophages. 2020.
82. Huang M, Dulon D, Schacht JJAoO, *Rhinology, et al.* Outer hair cells as potential targets of inflammatory mediators. 1990; 99(6\_suppl):35-38.
83. Mahe YF, Buan B, Billoni N, *et al.* Pro-inflammatory cytokine cascade in human plucked hair. *Skin Pharmacol* 1996; 9(6):366-375.
84. Hoffmann R, Eicheler W, Wenzel E, *et al.* Interleukin-1 $\beta$ -induced inhibition of hair growth in vitro is mediated by cyclic AMP. 1997; 108(1):40-42.
85. Hoffmann R, Happle RJD. Does Interleukin-1 Induce Hair Loss? 1995; 191(4):273-275.