

 Open access • Journal Article • DOI:10.1103/PHYSREVA.96.023839

Phase diagram of incoherently driven strongly correlated photonic lattices

— [Source link](#) 

Alberto Biella, Alberto Biella, F. Storme, José Lebreuilly ...+6 more authors

Institutions: Paris Diderot University, Nest Labs, University of Trento, University of Pisa ...+1 more institutions

Published on: 17 Aug 2017 - Physical Review A (American Physical Society)

Topics: Phase transition, Hubbard model, Phase diagram, Photon and Phase (waves)

Related papers:

- [Quantum fluids of light](#)
- [Observation of a dissipative phase transition in a one-dimensional circuit QED lattice](#)
- [Unconventional magnetism via optical pumping of interacting spin systems.](#)
- [Critical behavior of dissipative two-dimensional spin lattices](#)
- [Stabilizing strongly correlated photon fluids with non-Markovian reservoirs](#)

Share this paper:    

View more about this paper here: <https://typeset.io/papers/phase-diagram-of-incoherently-driven-strongly-correlated-mx8001nrqb>

Phase diagram of incoherently driven strongly correlated photonic latticesAlberto Biella,^{1,2,*} Florent Storme,¹ José Lebreuilly,³ Davide Rossini,^{4,2} Rosario Fazio,^{5,2}
Iacopo Carusotto,³ and Cristiano Ciuti¹¹*Université Paris Diderot, Sorbonne Paris Cité, Laboratoire Matériaux et Phénomènes Quantiques, CNRS-UMR7162, 75013 Paris, France*²*NEST, Scuola Normale Superiore and Istituto Nanoscienze-CNR, I-56126 Pisa, Italy*³*INO-CNR BEC Center and Dipartimento di Fisica, Università di Trento, I-38123 Povo, Italy*⁴*Dipartimento di Fisica, Università di Pisa and INFN, Largo Pontecorvo 3, I-56127 Pisa, Italy*⁵*ICTP, Strada Costiera 11, 34151 Trieste, Italy*

(Received 3 May 2017; published 17 August 2017)

We explore theoretically the nonequilibrium photonic phases of an array of coupled cavities in presence of incoherent driving and dissipation. In particular, we consider a Hubbard model system where each site is a Kerr nonlinear resonator coupled to a two-level emitter, which is pumped incoherently. Within a Gutzwiller mean-field approach, we determine the steady-state phase diagram of such a system. We find that, at a critical value of the intercavity photon hopping rate, a second-order nonequilibrium phase transition associated with the spontaneous breaking of the U(1) symmetry occurs. The transition from an incompressible Mott-like photon fluid to a coherent delocalized phase is driven by commensurability effects and not by the competition between photon hopping and optical nonlinearity. The essence of the mean-field predictions is corroborated by finite-size simulations obtained with matrix product operators and corner-space renormalization methods.

DOI: [10.1103/PhysRevA.96.023839](https://doi.org/10.1103/PhysRevA.96.023839)**I. INTRODUCTION**

Interacting many-particle systems driven away from the thermodynamic equilibrium exhibit a number of interesting features in both the classical [1–3] and quantum [4,5] regimes. Our understanding of such systems is limited by the fact that nonequilibrium can emerge in a broad variety of forms, making it difficult to develop a unitary picture. In contrast, in the equilibrium situation, very general paradigms allow us to predict the behavior of large ensembles of particles [6–9].

Nonequilibrium dynamics can be realized both in isolated quantum systems subject to quench dynamics [10] and in open systems under the effect of driving and dissipation. The investigation of nonequilibrium phenomena in extended open quantum systems is a complex problem: Theoretical efforts to develop analytical techniques [11,12] and numerical methods [13–18] have been carried out over the years. Another strategy involves the experimental realization of a tunable and well-controllable *quantum simulator* [19,20] which mimics the behavior of the *real* system under consideration.

The quantum simulation of many-body systems in equilibrium conditions has been implemented in very different contexts ranging from ultracold atoms in optical lattices [21,22] to trapped ions [23]. The impressive experimental advances of the last decade allowed researchers to extend this idea to the nonequilibrium realm using Rydberg atoms and trapped ions [24], exciton-polariton condensates [25], cold atoms in cavities [26], and arrays of coupled QED cavities [27,28]. Among them, coupled-cavity arrays are particularly appealing from the condensed-matter physics perspective

since they allow the simulation of archetypal (interacting) lattice models under nonequilibrium conditions [29].

The emergence of collective behaviors and critical phenomena in these platforms has attracted increasing interest over the years. Their phase diagram can be remarkably rich (see, for example, Refs. [30–38]): Exotic ordering [39] and phases without an equilibrium counterpart may appear [40]. Very recently, the buildup of quantum correlations and the peculiar behavior at criticality have begun to be investigated [41–44]. Like what happened for their equilibrium counterpart, the possibility to engineer and manipulate complex many-body states would allow us to study fundamental questions and obtain deep insight about the nature of phase transitions and spontaneous out-of-equilibrium ordering.

An important ingredient determining the dynamics in these systems is the competition between the on-site photon-photon interaction (mediated by the atoms) and the photon hopping between neighboring cavities: A large local interaction favors the formation of states with a fixed number of particles per site, while a large photon hopping allows delocalization and enhances the density fluctuations. The early works in the literature [45–47] explored this physics considering essentially the case of negligible photon losses. The large number of studies in this regime clearly showed the striking resemblance of the thermodynamic phases [46,48–50] as well as of the critical properties [51–53] to the celebrated Bose-Hubbard (BH) model (see also the reviews in [29] and references therein).

However, the unavoidable presence of photon dissipation and atomic relaxation affects the thermodynamic properties of these quantum simulators. The dissipative processes are counteracted by an external (coherent or incoherent) driving source which makes the long-time dynamics nontrivial: As a matter of fact, this is determined by the simultaneous interplay between Hamiltonian dynamics, dissipative processes, and external driving. As a result, the scenario is considerably

*alberto.biella@univ-paris-diderot.fr

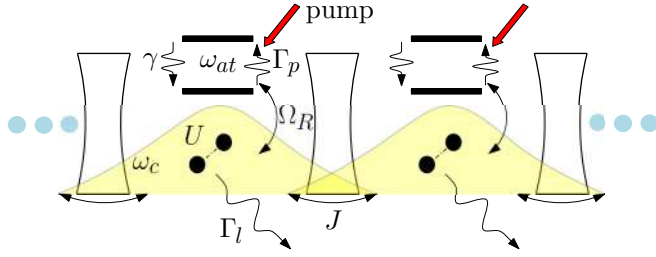


FIG. 1. A sketch of the considered photonic system, consisting of a lattice of coupled nonlinear cavities. Each lattice site is a cavity coupled to a two-level system, which is incoherently pumped at a rate Γ_p . Ω_R is the coherent coupling rate (vacuum Rabi frequency) between the cavity mode and the two-level emitter (with frequencies ω_c and ω_{at} , respectively), while U is the photon-photon Kerr on-site interaction. The coupling with the environment produces incoherent photon leakage and atomic relaxation at rates Γ_l and γ , respectively. Photons can hop between neighboring sites at a rate J .

enriched, and the intrinsic nonequilibrium nature of these platforms emerges in different aspects, ranging from their dynamical response [54] and transport properties [55,56] to the steady-state behavior [57–59]. Furthermore, nonequilibrium effects have been highlighted in single planar cavities, where complex shapes for the condensate wave function have been found and explained [60] and interesting dispersions for the Goldstone mode have been predicted [61]. Even if the competition between the photon hopping and on-site nonlinearities always plays an important role, the analogies with the underlying BH model are, in general, difficult to find.

In this work we study the steady-state phases of an incoherently driven photonic lattice (see sketch in Fig. 1). Each site is represented by a lossy nonlinear cavity, where the photon mode is coupled to a two-level system, which is pumped incoherently [62,63]. A recent study [64] has shown that, via a non-Markovian pump scheme based on a reservoir of two-level systems with engineered spectral features, it is possible to stabilize Mott-like states of photons in spite of the losses. However, a nonequilibrium phase diagram is unknown for this class of systems where a photonic lattice is incoherently driven. Here we determine the phase diagram within a Gutzwiller mean-field approach including both photon modes and two-level systems, showing the emergence of a second-order phase transition with a $U(1)$ symmetry breaking from a Mott-like incompressible fluid of light to a coherent delocalized phase. Our Gutzwiller theoretical predictions are consistent with finite-size numerical simulations obtained with two different methods (matrix product operators and corner-space renormalization).

This paper is organized as follows. In Sec. II we introduce our model, highlighting the main features of the incoherent driving scheme. In Sec. III we discuss the steady-state phase diagram of the system under the Gutzwiller mean-field approximation. In Sec. III C we go beyond the Gutzwiller approximation, and we show the signatures of our findings in cavity arrays, comparing the mean-field results with finite-size numerical simulations. Finally, in Sec. IV we draw our conclusions and discuss some future perspectives.

II. THE MODEL

We consider a driven-dissipative BH model for photons in a d -dimensional array of QED cavities (setting $\hbar = 1$),

$$\hat{H}_{ph} = \sum_i (\omega_c \hat{a}_i^\dagger \hat{a}_i + U \hat{a}_i^\dagger \hat{a}_i^\dagger \hat{a}_i \hat{a}_i) - J \sum_{(i,j)} \hat{a}_i \hat{a}_j^\dagger, \quad (1)$$

where \hat{a}_i (\hat{a}_i^\dagger) are bosonic photon annihilation (creation) operators associated with the i th cavity of the chain with natural frequency ω_c , which obey the canonical commutation relations ($[\hat{a}_i, \hat{a}_j^\dagger] = \delta_{ij}$, $[\hat{a}_i, \hat{a}_j] = 0$), J is the hopping rate, and U sets the scale of the Kerr nonlinearity.

Each cavity is coupled to a two-level emitter which is pumped incoherently and provides a driving source for the array. The atomic evolution and the coupling to the cavities are ruled by

$$\begin{aligned} \hat{H}_{at} &= \omega_{at} \sum_i \hat{\sigma}_i^+ \hat{\sigma}_i^-, \\ \hat{H}_l &= \Omega_R \sum_i (\hat{a}_i^\dagger \hat{\sigma}_i^- + \text{H.c.}), \end{aligned} \quad (2)$$

where $\hat{\sigma}_i^\pm = (\hat{\sigma}_i^x \pm i \hat{\sigma}_i^y)/2$ and $\{\hat{\sigma}_i^\alpha \mid \alpha = x, y, z\}$ are the Pauli matrices acting on the i th site.

The photon leakage from the cavities, atomic relaxation, and pumping processes are taken into account by means of a master equation for the density matrix in the Lindblad form,

$$\dot{\rho} = -i[\hat{H}, \rho] + \mathcal{L}[\rho], \quad (3)$$

where $\hat{H} = \hat{H}_{ph} + \hat{H}_{at} + \hat{H}_l$ and

$$\mathcal{L}[\rho] = \sum_i \left(\frac{\Gamma_l}{2} \mathcal{D}[\hat{a}_i; \rho] + \frac{\gamma}{2} \mathcal{D}[\hat{\sigma}_i^-; \rho] + \frac{\Gamma_p}{2} \mathcal{D}[\hat{\sigma}_i^+; \rho] \right), \quad (4)$$

with $\mathcal{D}[\hat{O}; \rho] = [2\hat{O}\rho\hat{O}^\dagger - \{\hat{O}^\dagger\hat{O}, \rho\}]$. A sketch of the system is provided in Fig. 1. In what follows we will be interested in the nonequilibrium steady state (NESS) of this model, as determined by computing the long-time limit of Eq. (3) $\rho(t \rightarrow \infty) = \rho^{SS}$.

III. RESULTS

In this section, we present our main results for the steady-state properties of the considered system obtained by solving the master equation (3) via several approaches. In Sec. III A, we first consider the single-cavity case and discuss the *photon number selection mechanism* that can be achieved with the considered incoherent pump scheme for the two-level emitters. In particular, in the limit of large nonlinearity (hard-core photons), we provide the exact analytical solution for the steady-state density matrix. In Sec. III B, we study the many-cavity case and explore its steady-state phase diagram within a Gutzwiller mean-field approach. Finally, in Sec. III C we compare our findings with exact finite-size simulations using two different techniques.

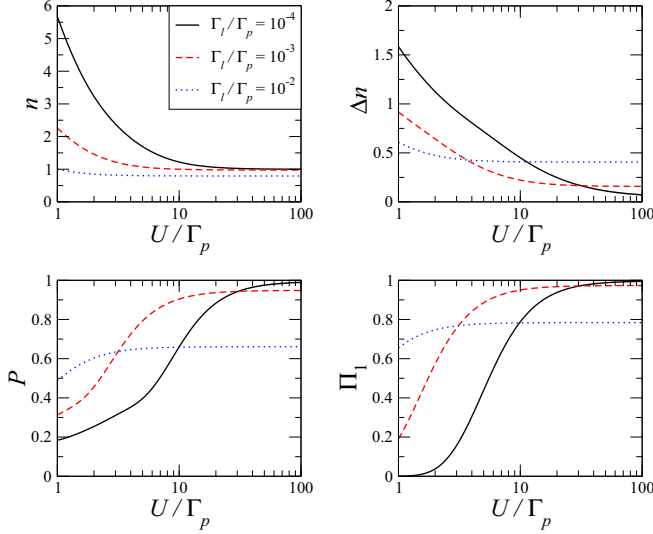


FIG. 2. Steady-state observables for a single-cavity system. The steady-state value of the photon number n , photon number fluctuations Δn , purity \mathcal{P} , and one-photon Fock state population Π_1 are plotted as a function of the nonlinearity U/Γ_p for different values of the cavity dissipation rate Γ_l/Γ_p , as indicated in the legend. The other parameters are $\omega_{at} = \omega_c$, $\Omega_R/\Gamma_p = 10^{-1}$, and $\gamma/\Gamma_p = 10^{-4}$.

A. Photon number selection in a single cavity

The eigenvalues of the Hamiltonian in Eq. (1) for $J = 0$ (labeled by their photon number) are

$$\omega_N = N\omega_c + N(N-1)U. \quad (5)$$

This implies that the $N \rightarrow N+1$ transition has a frequency $\omega_{N+1,N} = \omega_c + 2NU$. Choosing the emitter transition frequency to be resonant with the $N \rightarrow N+1$ transition (i.e., $\omega_{at} = \omega_{N+1,N}$), it is possible to obtain a NESS that is a mixed state (with no coherences) dominated by the $N+1$ photon state (and the atom in the excited state). While the specific conditions to obtain this for a generic integer N require a fine tuning of parameters, as discussed in full detail in [62], the ones for the $N = 1$ photon state have the simple form

$$\frac{\Gamma_{em}^0}{\Gamma_l} \gg 1, \quad \frac{\Gamma_{em}^0 \Gamma_p^2}{\Gamma_l U^2} \ll 1, \quad (6)$$

where $\Gamma_{em}^0 = 4\Omega_R^2/\Gamma_p$. We checked this (numerically) focusing on the $0 \rightarrow 1$ transition by solving the single-cavity master equation via diagonalization of the corresponding Liouvillian. In the following we will work in units of Γ_p . In Fig. 2 we show the steady-state value of the photon density $n = \langle \hat{a}^\dagger \hat{a} \rangle$ (where $\langle \hat{O} \rangle = \text{Tr}[\rho^{SS} \hat{O}]$ and $\text{Tr}[\rho^{SS}] = 1$) and its variance Δn as a function of U/Γ_p for different values of the cavity dissipation rate Γ_l/Γ_p . Moreover, we also show the purity of the density matrix $\mathcal{P} = \text{Tr}[(\rho^{SS})^2]$ and the population $\Pi_1 = \langle 1, \uparrow | \rho^{SS} | 1, \uparrow \rangle$, where $|1, \uparrow\rangle$ denotes the state with one photon in the cavity mode and the two-level system into its excited state. As highlighted in the bottom right panel of Fig. 2, it is possible to prepare the desired Fock state with arbitrary precision for large enough nonlinearity and small photon leakage.

When the nonlinearity is large enough to forbid the double occupation of a lattice site, Eq. (3) can be analytically solved for the steady state (see Appendix A). At resonance ($\omega_{at} = \omega_c$) the photon density reads

$$n = \frac{4\Gamma_p \Omega_R^2}{(\Gamma_p + \gamma + \Gamma_l)[\Gamma_l(\Gamma_p + \gamma) + 4\Omega_R^2]}. \quad (7)$$

Expanding Eq. (7) for a small effective loss-gain ratio $\eta = \Gamma_l/\Gamma_{em}^0$, we obtain

$$n = \frac{\Gamma_p}{\Gamma_{tot}} - \frac{\Gamma_p + \gamma}{\Gamma_{tot}} \eta + O(\eta^2), \quad (8)$$

where $\Gamma_{tot} = \Gamma_p + \gamma + \Gamma_l$. The expression above for the photon population tells us that, in the regime of large nonlinearity, it is possible to stabilize in the steady state a single-photon Fock state for small enough cavity and atomic dissipation rates. The number of photons fluctuates as

$$\Delta n^2 = \frac{\Gamma_p(\gamma + \Gamma_l)}{\Gamma_{tot}^2} - \frac{(\Gamma_p + \gamma)(\Gamma_p - \gamma - \Gamma_l)}{\Gamma_{tot}^2} \eta + O(\eta^2). \quad (9)$$

What we want to do next is to study what the effect of a finite coupling between neighboring cavities ($J \neq 0$) is.

B. Gutzwiller phase diagram for cavity lattices

In this section, we consider a lattice of cavities using the same kind of incoherent driving that we have analyzed for the single-cavity case. Due to the complexity of the problem, we perform a Gutzwiller mean-field approximation [58,59] assuming a factorized ansatz for the global density matrix

$$\rho_{MF} = \bigotimes_i \rho_i, \quad (10)$$

where ρ_i is the density matrix of the i th site. Inserting such an ansatz into Eq. (3) and assuming the translational invariance ($\rho_i = \rho_j, \forall i, j$), we get an effective master equation of the form

$$\dot{\rho}_i = -i[\hat{H}_{MF}, \rho_i] + \mathcal{L}_i[\rho_i], \quad (11)$$

where $\hat{H}_{MF} = \hat{H}_i + \hat{H}_B$. Here \hat{H}_i and \mathcal{L}_i contain all the local terms of the full Hamiltonian \hat{H} and of the superoperator \mathcal{L} [see Eq. (4)], respectively, acting on the i th site. The term $\hat{H}_B = -zJ(\hat{a}_i^\dagger \langle \hat{a} \rangle + \text{H.c.})$ (where z is the coordination number of the lattice) takes into account the mean-field interactions of site i with its neighbors. The steady state is reached dynamically after integrating Eq. (11) by means of a fourth-order Runge-Kutta method. The mean field is computed dynamically $\langle \hat{a} \rangle(t) = \text{Tr}[\hat{a} \rho_i(t)]$ and used to self-consistently evolve $\rho_i(t)$ until the steady state is reached. This approach has been proven to be very effective for determining the phase diagram of the coherently driven BH model [37,58,59] and similar systems [33] since the local pumping and decay drastically restrict the range of the correlations. We therefore expect that the Gutzwiller ansatz (10) is very suitable for capturing the physics of our system.

In Fig. 3 we show the value of the mean-field order parameter $|\langle \hat{a} \rangle|$, the photon density n , its fluctuations Δn , and the compressibility $\mathcal{K} = \Delta n^2/n$ [65] in the steady state as a

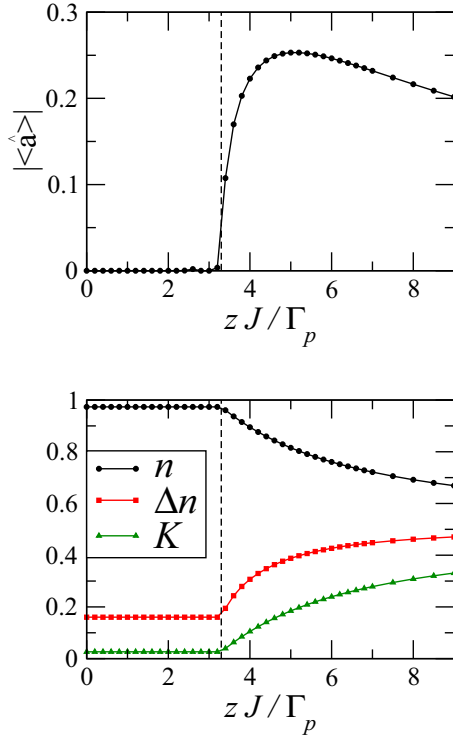


FIG. 3. The order parameter $|\langle \hat{a} \rangle|$ (top panel) and the number of photons n , its variance Δn , and the compressibility \mathcal{K} (bottom panel) of the steady state of Eq. (11) as a function of zJ/Γ_p in the hard-core limit ($U/J = +\infty$). Here $\Gamma_l/\Gamma_p = \gamma/\Gamma_p = 10^{-3}$, $\Omega_R/\Gamma_p = 10^{-1}$, and $\omega_{at} = \omega_c$. The dashed vertical line signals the predicted critical value of J (see Appendix B).

function of the intercavity hopping rate in the hard-core limit ($U/J = +\infty$). The main findings of the Gutzwiller mean-field theory can be summarized as follows.

For $0 \leq J < J_c^{\text{HC}}$ (where J_c^{HC} denotes the critical hopping rate in the in the hard-core limit), we get a vanishing value of the mean-field (MF) order parameter $|\langle \hat{a} \rangle| = 0$. As a consequence, each local steady-state density matrix can be approximately written as

$$\rho_i^{SS} \simeq |1, \uparrow\rangle\langle 1, \uparrow|. \quad (12)$$

By construction, a vanishing value of the MF order parameter forces ρ_i^{SS} to be the steady-state solution of the master equation (3) for a single cavity. However, the short-range coupling induced by the photon hopping may play an important role. Consequently, in order to characterize the phase with the unbroken symmetry it is necessary to go beyond the mean-field theory. This is done in Sec. III C, where we show that in a range of zJ/Γ_p compatible with the Gutzwiller prediction the number of photons remains very close to unity with very small fluctuations. This Mott-like phase is also characterized by an (almost) vanishing compressibility \mathcal{K} , analogous to what happens in equilibrium situations [66].

At $J = J_c^{\text{HC}}$, a second-order phase transition takes place. For $J > J_c^{\text{HC}}$, the system enters a coherent delocalized phase characterized by the emergence of limit cycles, namely,

$$\langle \hat{a} \rangle = |\langle \hat{a} \rangle| e^{-i\omega_L t}, \quad (13)$$

where ω_L depends on the system parameters. This transition is associated with the spontaneous breaking of the $U(1)$ symmetry possessed by Eq. (3) [67]. The steady-state density matrix becomes mixed (not shown), and the photonic population feels the transition: The number of photons starts to be significantly different from 1, and its fluctuations become relevant. The transition from a Mott-like to a coherent phase can be measured by monitoring the behavior of the compressibility, which becomes finite in the symmetry-broken phase. For large values of zJ/Γ_p the photon density remains finite, approaching asymptotically $n = 1/2$, and the steady-state density matrix becomes maximally mixed. We also note that the use of the translationally invariant ansatz (10) imposes that the condensate appears in the $\mathbf{k} = 0$ mode [68]. This restriction is, however, fully justified as the pumping conditions chosen for the numerics of Sec. III C (see Figs. 7 and 8) explicitly favor condensation into the $\mathbf{k} = 0$ mode.

Further information about the nature of the steady state can be extracted by looking at the Wigner quasiprobability distribution

$$W(\alpha) = \frac{2}{\pi} \text{Tr}[\rho_{ph}^{SS} \hat{D}(\alpha) e^{i\pi \hat{a}^\dagger \hat{a}} \hat{D}^\dagger(\alpha)], \quad (14)$$

where $\rho_{ph}^{SS} = \text{Tr}_{at}[\rho^{SS}]$ is the photonic reduced density matrix, $\hat{D}(\alpha) = e^{\alpha \hat{a}^\dagger - \alpha^* \hat{a}}$ is the displacement operator, and the prefactor ensures that $\int_{\mathbb{C}} d^2\alpha W(\alpha) = 1$. As shown in Fig. 4,

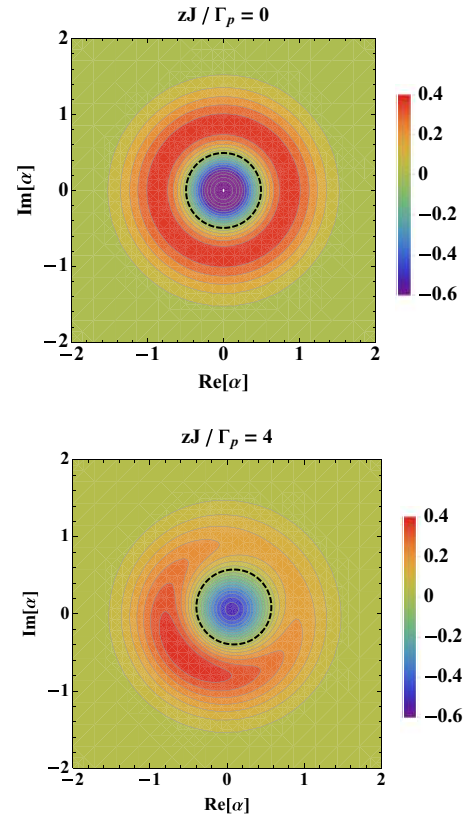


FIG. 4. Contour plot of the steady-state Wigner distribution $W(\alpha)$ in the Mott-like (top panel) and coherent (bottom panel) phases. Each contour denotes a variation of 0.05 of the value of $W(\alpha)$. The black dashed contour encircles the region with $W(\alpha) < 0$. The parameters are set as in Fig. 3.

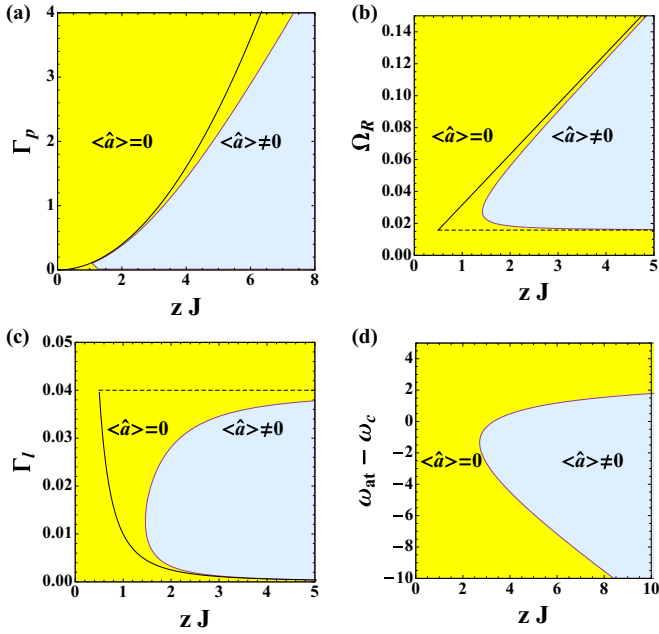


FIG. 5. Results of the Gutzwiller mean-field stability analysis in the hard-core regime ($U/J = +\infty$). The yellow area denotes the region where $\langle \hat{a} \rangle = 0$ is stable, while the light blue area is the region where the solution $\langle \hat{a} \rangle = 0$ is unstable and the symmetry is broken. When not varying them, we fixed the parameters as $\Gamma_p = 1$, $\Omega_R = 10^{-1}$, $\Gamma_l = \gamma = 10^{-3}$, $\omega_{at} = \omega_c$. The solid lines are the predictions for the critical hopping rate given by Eq. (17), which well approximates the phase boundary in the $\Gamma_{em}^0/\Gamma_l \gg 1$ limit [see Eq. (16)]. The dashed horizontal lines denote the $\Gamma_{em}^0/\Gamma_l = 1$ threshold. The condition $\Gamma_{em}^0/\Gamma_l > 1$ is necessary in order to have a significant population in the symmetry-broken phase.

for $0 \leq J < J_c^{\text{HC}}$ the steady state is approximately a one-photon Fock state, and then the Wigner distribution is negative around $\alpha = 0$ (see top panel), indicating strong nonclassicality [69]. For $J > J_c^{\text{HC}}$ the $U(1)$ symmetry is spontaneously broken in the steady state. The Wigner function thus becomes asymmetric and rotates at a frequency ω_L around $\alpha = 0$ (see bottom panel). Let us note that also in this case $W(\alpha)$ is negative around $\alpha = 0$, again indicating the nonclassical nature of the steady state at a low photon number per site.

The phase transition we observe is not related to the competition between photon hopping and nonlinearity since we explored a range of parameters such that the zJ/U ratio remains very small. Increasing J , we increase the bandwidth ($2zJ$); therefore the photons start to be off resonant with respect to the incoherent driving source provided by the atoms. As a consequence, the photons cannot be efficiently pumped into the array, and their number is no longer commensurate to the system size. The presence of a significant number of empty sites allows photons to move along the lattice and to establish a long-distance coherence. As we will discuss in Sec. III C, the transition can be characterized also in terms of spatial correlation functions: It is associated with the appearance of a long-range order in the first-order coherence function. Very recently, the transition between a Mott-like regime and a coherent one driven by the J - U competition was theoretically

investigated in [64] by making use of specifically designed emission spectra based on a non-Markovian reservoir.

Also for the configuration under examination in the present work, in spite of its nonequilibrium nature it is possible to trace an analogy with the phase diagram of the hard-core BH model at zero temperature [70]. The ground state of this model is a superfluid (in two dimensions) when the band is not completely filled (i.e., $|\mu/J| < z$, where μ is the chemical potential). Here this commensurability-driven transition is extended to the nonequilibrium realm, and the emergent coherent phase ($|\langle a \rangle| \neq 0$) has a mixed nature.

In the hard-core regime, it is also possible to exploit the single-cavity exact solution to infer the structure of the phase diagram. In the unbroken symmetry phase ($\langle \hat{a} \rangle = 0$), the MF master equation (11) always admits a stationary solution which corresponds to the single-cavity steady state. For certain values of the parameters such a solution becomes unstable, and the system approaches a stationary state with $\langle \hat{a} \rangle \neq 0$. The stability analysis reveals that, for the typical values of the parameters we are interested in, the single-cavity fixed point becomes unstable as the hopping rate is increased (see Fig. 5). The scaling of the instability point with the system parameters can be estimated by comparing the effective emission rate at the band boundary with the photon leakage rate,

$$\Gamma_{em}^0 \frac{(\Gamma_p/2)^2}{(\omega_{at} - \omega_c + zJ_c^{\text{HC}})^2 + (\Gamma_p/2)^2} \simeq \Gamma_l. \quad (15)$$

In the regime where the effective pumping rate dominates over the photon losses, that is,

$$\frac{\Gamma_{em}^0}{\Gamma_l} = \frac{4\Omega_R^2}{\Gamma_p\Gamma_l} \gg 1, \quad (16)$$

at resonance ($\omega_{at} = \omega_c$) we get

$$zJ_c^{\text{HC}} \simeq \sqrt{\frac{\Gamma_p}{\Gamma_l}} \Omega_R. \quad (17)$$

The prediction of Eq. (17) (solid black lines in Fig. 5) well reproduces the phase boundaries in the regime (16). The dashed horizontal lines in Fig. 5 denote the $\Gamma_{em}^0/\Gamma_l = 1$ threshold. The *lasing* condition $\Gamma_{em}^0/\Gamma_l \geq 1$ is necessary to have a significant population in the symmetry-broken phase. For the details of the Gutzwiller mean-field stability analysis see Appendix B.

It is interesting to extend our study considering finite values of the nonlinearity. In Fig. 6 we show the mean-field steady-state phase diagram in the U/Γ_p - zJ/Γ_p plane. For each value of U we explored, we found a critical value of the tunneling rate $J_c(U)$ such that for $J > J_c(U)$ the $U(1)$ symmetry is spontaneously broken ($|\langle \hat{a} \rangle| \neq 0$) and the system exhibits limit cycles. The value of the critical hopping rate increases as U is increased, approaching the value predicted in the hard-core limit $zJ_c^{\text{HC}}/\Gamma_p = 1.51$ (result of the Gutzwiller stability analysis).

C. Beyond the Gutzwiller approximation

In this section, we go beyond the Gutzwiller mean-field approximation employed in Sec. III B and present finite-size simulations using different numerical methods. The goal is

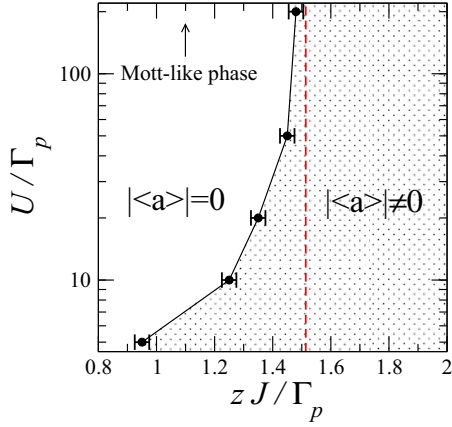


FIG. 6. Mean-field steady-state phase diagram in the $U/\Gamma_p - zJ/\Gamma_p$ plane. The white area corresponds to the region of the parameters for which $|\langle \hat{a} \rangle| = 0$, while in the dotted region the $U(1)$ symmetry is spontaneously broken and the steady state exhibits a limit cycle ($|\langle \hat{a} \rangle| \neq 0$). Here $\gamma/\Gamma_p = \Gamma_l/\Gamma_p = 10^{-2}$, $\Omega_R/\Gamma_p = 10^{-1}$, and $\omega_{at} = \omega_c$. The dashed vertical line denotes the critical hopping rate predicted by the Gutzwiller stability analysis $zJ_c^{\text{HC}}/\Gamma_p = 1.51$.

to show the fate of the phases predicted by the Gutzwiller mean-field theory. Since the Hilbert space dimension increases exponentially with the system size, the exact diagonalization of the full Liouvillian soon becomes impracticable. Numerically, the present problem is also particularly challenging since there are several time scales which differ by orders of magnitude (in particular, the two-level and cavity dissipation rates compared to the incoherent driving rate). In order to compute the steady state ρ^{SS} of Eq. (3) we use two methods: An algorithm based on the matrix-product-operator (MPO) formalism [71,72] and the corner-space renormalization method [16]. The MPO algorithm enables us to simulate relatively large chains of cavities (up to 20 sites) but is unable to explore the region where long-range spatial correlations develop (convergence with respect to the bond dimension was not achieved in that region). The MPO approach has therefore been used extensively to investigate the nature of the strongly localized Mott-like phase in large arrays. The corner-space renormalization approach allows us to compute the global density matrix with arbitrary accuracy across the critical region (and therefore can be used to access information as the entropy of the steady state), but it is more limited by the system size (we report here results across the critical region for chains with up to eight sites).

In Fig. 7 we show the average photon density $n = \sum_{i=1}^M \langle \hat{a}_i^\dagger \hat{a}_i \rangle / M$, its fluctuations $\Delta n^2 = \sum_{i=1}^M \Delta n_i^2 / M$, and the compressibility $\mathcal{K} = \sum_{i=1}^M \Delta n_i^2 / (n_i M)$ for different system sizes M as a function of the hopping rate zJ/Γ_p (here $z = 2$) in the hard-core limit. In these numerical calculations, we have chosen a slightly shifted atomic frequency $\omega_{at} = \omega_c - zJ$. Under this condition, gain is strongest at the bottom of the photon band, so that condensation into the $\mathbf{k} = 0$ mode is explicitly favored from the outset. This ensures that the spatially homogeneous condensation process that we have assumed in the mean-field calculation is not disturbed by mode-competition phenomena between pairs of modes with opposite wave vectors which display the same gain and

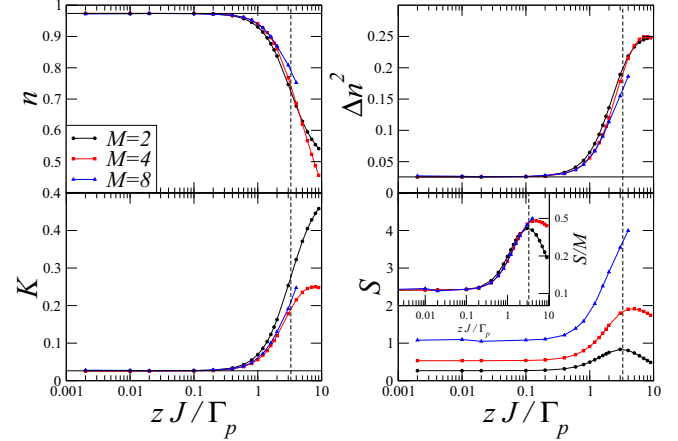


FIG. 7. Top: the average photon density n in the steady state (left panel) and its variance Δn^2 (right panel) as a function of J/Γ_p . Bottom: steady-state value of the compressibility \mathcal{K} (left panel) and of the entropy (right panel) as a function of J/Γ_p in the hard-core limit ($U/J = +\infty$). The various curves are for different sizes, as indicated in the legend. The solid horizontal lines are the single-cavity values ($J = 0$) of the quantity under consideration. The dashed vertical lines denote the critical hopping rates predicted by the Gutzwiller mean-field theory. The parameters are set as $\omega_{at} = \omega_c - zJ$, $\Gamma_l/\Gamma_p = \gamma/\Gamma_p = 10^{-3}$, $\Omega_R/\Gamma_p = 10^{-1}$. For the largest size considered ($M = 8$), the convergence of the considered quantities has been achieved with 3000 states in the corner space (the full Hilbert space has a dimension equal to $4^8 = 65536$).

could give rise to condensate fragmentation effects [73]. This fragmentation mechanism was likely the reason for the reduced coherence numerically found in [63].

We observe that the data collapse on the single-cavity predictions ($J = 0$) for $J \lesssim J_c^{\text{HC}}$. This result is in agreement with the findings of the mean-field analysis which predicts a region where local interactions dominate over cooperative effects. Such a Mott-like phase (highlighted by the logarithmic scale) is thus characterized by an almost integer local density and almost vanishing fluctuations and compressibility. This means that in this parameter range, the correlations among different cavities are very small, and cooperative effects are suppressed. As the photon hopping rate is increased ($J \gtrsim J_c^{\text{HC}}$), the system enters a regime with finite (significant) local-density fluctuations and, consequently, a large value of the compressibility. Our numerical results in one-dimensional systems are consistent with the expectation that in one dimension a *true* phase transition to a *lasing* regime, as predicted by the Gutzwiller theory, is replaced by a crossover from a Mott-like phase to a mixture of extended Tonks-Girardeau states with different numbers of photons [74,75]. We remark that the hard-core regime forbids the multiple occupation of a lattice site but allows for the multiple (eventually macroscopic) occupation of a given \mathbf{k} mode of the lattice.

The transition between these two phases is also signaled by a sharp variation of the entropy of the steady-state density matrix ($S = \text{Tr}[\rho^{SS} \ln(\rho^{SS})]$, bottom right panel of Fig. 7). As predicted at the mean-field level, in the Mott-like phases the system is an almost pure state, while the symmetry-broken phase has a strongly mixed character. This appears to be

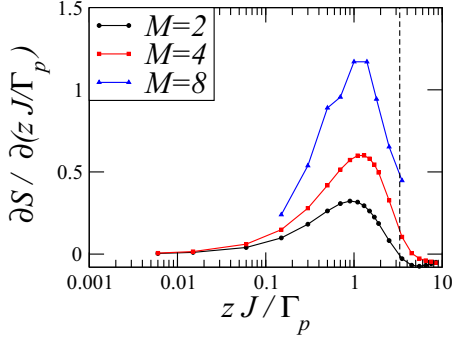


FIG. 8. Derivative of the entropy with respect to the hopping rate $\partial S/\partial(zJ/\Gamma_p)$ for different system sizes as indicated in the legend. The dashed vertical line denotes the critical hopping rate predicted by the Gutzwiller mean-field theory. The other parameters are set as in Fig. 7.

a common feature of phase transitions in driven-dissipative lattices [40,44]. In the inset, we show S/M , the entropy rescaled by the number of cavities. In the Mott-like phase, where the correlations among the cavities are very weak, the data referring to different system sizes collapse, indicating the extensive nature of the entropy. Indeed, when the steady-state density matrix is factorizable, one gets $S = M S_{sc}$, where S_{sc} is the single-cavity entropy.

In Fig. 8, we show $\partial S/\partial(zJ/\Gamma_p)$, the derivative of the entropy with respect to the hopping rate: It displays a peak that, for the considered range of sizes, becomes more pronounced and closer to the Gutzwiller mean-field critical coupling ($zJ_c^{\text{HC}}/\Gamma_p = 3.3$) as the number of sites is increased. However, it is expected that for one-dimensional systems in the thermodynamic limit no divergence of the entropy derivative occurs since the phase transition predicted by the mean-field theory should be replaced by a crossover between the two phases [76,77].

To better understand the buildup of the quantum correlations among the different cavities and to further characterize the Mott-like phase we also computed the one-body correlation function in the steady state,

$$c(i, j) = \langle \hat{a}_i^\dagger \hat{a}_j \rangle. \quad (18)$$

To do so we exploited an MPO algorithm which allows us to dynamically reach the steady state for large systems in the Mott-like regime. In Fig. 9 we show the behavior of $c(i, i+r)$ for $M = 20$ as zJ/Γ_p is varied. Since $c(i, j)$ has an oscillatory behavior due to the very large nonlinearity, we considered its absolute value. The one-body correlation function decays exponentially with the distance

$$|c(i, i+r)| \propto e^{-r/\lambda}, \quad (19)$$

where the correlation length λ increases as the photon hopping increases. In particular, it is possible to show that λ scales as

$$\lambda \propto \frac{1}{|\ln(J/\Gamma_p)|} \quad (20)$$

in the $J/\Gamma_p \ll 1$ limit. The details of the derivation of Eq. (20) can be found in Appendix C.

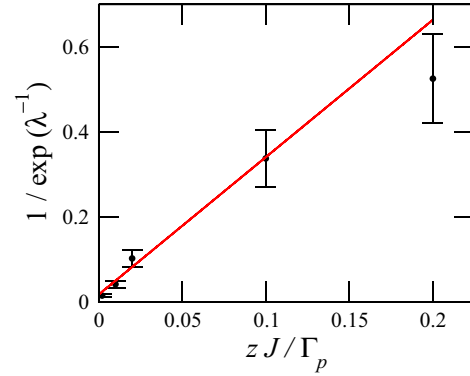
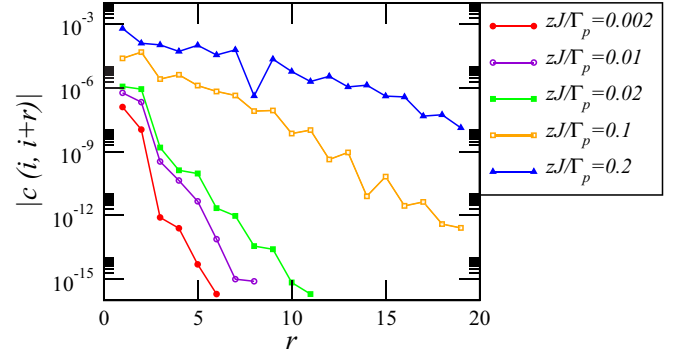


FIG. 9. Top: spatial decay of the correlation function $c(i, i+r)$ [as defined in Eq. (18)] with the distance r for $M = 20$, $\omega_{at} = \omega_c$ and different values of zJ/Γ_p , as indicated in the legend. Correlators have been chosen in a symmetric way with respect to the center of the chain. The other parameters are set as in Fig. 7. Bottom: the correlation length λ obtained fitting $c(i, i+r)$ with an exponentially decaying function. The solid line is the scaling predicted by Eq. (20). For all the values of the parameters considered, convergence has been achieved with a bond link dimension $\chi = 50$ for the MPO algorithm.

IV. CONCLUSIONS

In this work, we have investigated the steady-state phases of a photonic lattice in presence of incoherent driving, dissipation, and strong photon-photon interactions. We have explored a general model where each lattice site (a nonlinear Kerr resonator) is coupled to a two-level emitter, which is pumped incoherently. Via a Gutzwiller decoupling theory, we have determined the nonequilibrium phase diagram. We have found that the interplay between on-site interactions, photon hopping, and driven-dissipative processes lead to a second-order nonequilibrium phase transition related to the spontaneous breaking of the $U(1)$ symmetry possessed by the model. Furthermore, we have shown that such an incoherent driving scheme allows us to stabilize Mott-like phases of light characterized by an almost integer local density and almost vanishing compressibility. The picture predicted by the Gutzwiller mean field has been validated by numerical finite-size simulations using matrix product operators and the corner-space renormalization method. By driving the system across the critical point, we have characterized the transition in terms of both one-body correlation functions (which display long-range order) and the entropy of the system (which

increases in the symmetry-broken phase). The phase transition from an (almost) incompressible Mott-like photon fluid to a coherent delocalized phase is driven by commensurability effects. The control parameter of this transition can thus be deduced by comparing the effective emission rate at the band boundary with the photon leakage rate. The mixed character of the steady-state density matrix reflects the intrinsic nonequilibrium nature of the coherent phase. Remarkably, signatures of the phase transition are present already in small arrays.

The strongly correlated photon phases proposed here could be explored by using photonic quantum simulators based on circuit QED lattices [27]. In particular, in these systems, thanks to superconducting quantum resonators and Josephson junctions, it is possible to engineer large Kerr photon-photon interactions and to tailor the interaction with two-level emitters [78,79], paving the way to study strongly correlated quantum fluids of light and nonequilibrium phase transitions. The incoherent pump scheme we exploit can be implemented by coherently driving the emitter into a third metastable level from which it quickly decays into the excited state of the active transition, thus resulting in an effective incoherent pump [80]. The role of dimensionality, disorder, and criticality in these nonequilibrium quantum phases are intriguing topics that need to be explored experimentally and theoretically in the future.

ACKNOWLEDGMENTS

Discussions with L. Mazza are warmly acknowledged. A.B., F.S., and C.C. acknowledge support from ERC (via Consolidator Grant CORPHO No. 616233). A.B., C.C., D.R., F.S., I.C., and R.F. acknowledge the Kavli Institute for Theoretical Physics, University of California, Santa Barbara (USA) for the hospitality and support during the early stage of this work. We acknowledge the CINECA award under the ISCRA initiative for the availability of high-performance computing resources and support. J.L. and I.C. are supported by the EU-FET Proactive grant AQuS, Project No. 640800, and by the Autonomous Province of Trento, partially through the project ‘‘On silicon chip quantum optics for quantum computing and secure communications’’ (‘‘SiQuero’’). R.F. acknowledges Oxford Martin School Technologies and the Singapore Ministry of Education and National Research Foundation (QSYNC) for financial support.

APPENDIX A: SINGLE-CAVITY SOLUTION (HARD-CORE LIMIT)

When the nonlinearity is large enough to forbid the double occupation of a lattice site, one can map the bosonic degree of freedom into an effective spin,

$$\begin{aligned}\hat{a} &\rightarrow \hat{\Sigma}^-, \\ \hat{a}^\dagger &\rightarrow \hat{\Sigma}^+.\end{aligned}\quad (\text{A1})$$

In doing so, the single-cavity Hamiltonian becomes

$$\hat{H} = \frac{\omega_c}{2}(\hat{\Sigma}^z + 1) + \frac{\omega_a}{2}(\hat{\sigma}^z + 1) + \frac{\Omega_R}{2}(\hat{\Sigma}^x \hat{\sigma}^x + \hat{\Sigma}^y \hat{\sigma}^y).\quad (\text{A2})$$

In the Heisenberg representation the evolution of a given operator $\hat{\theta}$ is ruled by

$$\dot{\theta} = i[\hat{H}, \hat{\theta}] + \tilde{\mathcal{L}}[\rho],\quad (\text{A3})$$

where

$$\tilde{\mathcal{L}}[\rho] = \sum_i \left(\frac{\Gamma_l}{2} \tilde{\mathcal{D}}[\hat{a}_i; \rho] + \frac{\gamma}{2} \tilde{\mathcal{D}}[\hat{\sigma}_i^-; \rho] + \frac{\Gamma_p}{2} \tilde{\mathcal{D}}[\hat{\sigma}_i^+; \rho] \right),\quad (\text{A4})$$

with $\tilde{\mathcal{D}}[\hat{O}; \rho] = [2\hat{O}^\dagger \rho \hat{O} - \{\hat{O}^\dagger \hat{O}, \rho\}]$. Writing the equation of motion for $\langle \hat{\Sigma}^\alpha \rangle$, $\langle \hat{\sigma}^\alpha \rangle$, and $\langle \hat{\Sigma}^\alpha \hat{\sigma}^\beta \rangle$ (15 equations) and solving for the stationary state, one always find a single (stable) solution given by

$$\begin{aligned}\langle \hat{\Sigma}^x \rangle &= \langle \hat{\Sigma}^y \rangle = \langle \hat{\sigma}^x \rangle = \langle \hat{\sigma}^y \rangle = 0, \\ \langle \hat{\Sigma}^z \rangle &= \frac{-\Gamma_l(\Gamma_p + \gamma)\Lambda + 4\Omega_R^2[\Gamma_p^2 - (\gamma + \Gamma_l)^2]}{\Gamma_l(\Gamma_p + \gamma)\Lambda + 4\Omega_R^2\Gamma_{\text{tot}}^2}, \\ \langle \hat{\sigma}^z \rangle &= \frac{\Gamma_l(\Gamma_p - \gamma)\Lambda + 4\Omega_R^2[\Gamma_p^2 - (\gamma + \Gamma_l)^2]}{\Gamma_l(\Gamma_p + \gamma)\Lambda + 4\Omega_R^2\Gamma_{\text{tot}}^2}, \\ \langle \hat{\Sigma}^x \hat{\sigma}^z \rangle &= \langle \hat{\Sigma}^y \hat{\sigma}^z \rangle = \langle \hat{\Sigma}^z \hat{\sigma}^x \rangle = \langle \hat{\Sigma}^z \hat{\sigma}^y \rangle = 0, \\ \langle \hat{\Sigma}^x \hat{\sigma}^x \rangle &= \langle \hat{\Sigma}^y \hat{\sigma}^y \rangle = \frac{8\Gamma_p\Gamma_l\Omega_R\Delta\omega}{\Gamma_l(\Gamma_p + \gamma)\Lambda + 4\Omega_R^2\Gamma_{\text{tot}}^2}, \\ \langle \hat{\Sigma}^x \hat{\sigma}^y \rangle &= -\langle \hat{\Sigma}^y \hat{\sigma}^x \rangle = -\frac{4\Gamma_p\Gamma_l\Omega_R\Gamma_{\text{tot}}}{\Gamma_l(\Gamma_p + \gamma)\Lambda + 4\Omega_R^2\Gamma_{\text{tot}}^2}, \\ \langle \hat{\Sigma}^z \hat{\sigma}^z \rangle &= \frac{4\Omega_R^2(-\Gamma_p + \gamma + \Gamma_l)^2 - \Gamma_l(\Gamma_p - \gamma)\Lambda}{\Gamma_l(\Gamma_p + \gamma)\Lambda + 4\Omega_R^2\Gamma_{\text{tot}}^2},\end{aligned}\quad (\text{A5})$$

where $\Delta\omega = \omega_{at} - \omega_c$, $\Gamma_{\text{tot}} = \Gamma_p + \gamma + \Gamma_l$, and $\Lambda = \Gamma_{\text{tot}}^2 + 4\Delta\omega^2$.

APPENDIX B: MEAN-FIELD STABILITY ANALYSIS (HARD-CORE LIMIT)

At the mean-field level the dynamics in the hard-core regime is ruled by the master equation (A3), where the single-cavity Hamiltonian (A2) is replaced by

$$\hat{H} \rightarrow \hat{H} - \frac{zJ}{2}(\hat{\Sigma}^x \langle \hat{\Sigma}^x \rangle + \hat{\Sigma}^y \langle \hat{\Sigma}^y \rangle).\quad (\text{B1})$$

The single-cavity steady-state solution (A5) is always a fixed point of the single-site MF equations with $\langle \hat{a} \rangle = 0$ ($\langle \hat{\Sigma}^x \rangle = \langle \hat{\Sigma}^y \rangle = 0$) which becomes unstable for certain values of the parameters and allows the emergence of a phase characterized by $\langle \hat{a} \rangle \neq 0$. In order to study the stability of this solution we computed the Jacobian matrix of the MF equations [34,37,58] evaluated with respect to the single-cavity solution (A5). If the real part of one of its eigenvalues becomes positive for certain values of the parameters, then the single-cavity fixed point is unstable. In Fig. 5 we show the Heaviside step function of the real part of the most unstable eigenvalue of the Jacobian $\Theta[\text{Re}(\lambda_u)]$ as a function of the typical values of the system parameters. The result is a plot which highlights the stable ($\langle \hat{a} \rangle = 0$) and unstable ($\langle \hat{a} \rangle \neq 0$) regions in yellow and light blue, respectively.

APPENDIX C: SPATIAL CORRELATION FUNCTIONS (HARD-CORE LIMIT IN ONE DIMENSION)

In this appendix we provide a scaling law for the spatial decay of the one-body correlations in the $J/\Gamma_p \ll 1$ regime by using an ansatz for the photonic steady-state density matrix in the hard-core limit. Even if the derivation might at first appear somewhat *heuristic*, it will provide a good approximation of how the correlation length depends on the system parameters (see Sec. III C). In analogy with the equilibrium physics of hard-core bosons in one dimension, we suppose that the steady state is fermionized, i.e., that the photonic density matrix ρ is diagonal in the fermionic momentum basis, up to a unitary Jordan-Wigner transformation \hat{U} which antisymmetrizes the bosonic density matrix:

$$\rho^F = \hat{U} \rho^B \hat{U}^{-1}, \quad \rho^F = \otimes_k \rho_k^F. \quad (\text{C1})$$

The bosonic and fermionic annihilation operators are related through the unitary relation

$$\hat{a}_j^F = e^{i\pi(\sum_{l<j} \hat{n}_l)} \hat{U} \hat{a}_j^B \hat{U}^{-1}, \quad (\text{C2})$$

where the local particle number operator $\hat{n}_l = \hat{n}_l^{B/F}$ is left unchanged by the antisymmetrization process.

In the simple case of free bosons, the steady-state momentum distribution can be exactly calculated analytically:

$$\begin{aligned} n_k^{fb} &= \left(\frac{\Gamma_l}{\Gamma_{em}(\omega_c - \epsilon_k)} - 1 \right)^{-1} \\ &= \left\{ \frac{\Gamma_l}{\Gamma_{em}^0} [(\delta + 2\epsilon_k/\Gamma_p)^2 + 1] - 1 \right\}^{-1}, \end{aligned} \quad (\text{C3})$$

where $\delta = -2\Delta\omega/\Gamma_p$ and $\epsilon_k = -2J \cos(k)$. So a natural ansatz for the Fermi nonequilibrium distribution would be

$$n_k^{ff} = \left\{ \frac{\Gamma_l}{\Gamma_{em}^0} [(\delta + 2\epsilon_k/\Gamma_p)^2 + 1] + 1 \right\}^{-1}. \quad (\text{C4})$$

The analytical function

$$g(z) = \left\{ \frac{\Gamma_l}{\Gamma_{em}^0} [(\delta + z)^2 + 1] + 1 \right\}^{-1} \quad (\text{C5})$$

of the complex variable z can be expanded as

$$g(z) = \sum_n \alpha_n (z/r_c)^n, \quad (\text{C6})$$

where r_c is the convergence radius of this power series and α_n is a subexponential function of the variable n , which is dominated by any geometric function. The convergence radius is given by the modulus of the complex pole of $g(z)$ which is closest to the origin $z = 0$ and thus has the following expression: $r_c = \sqrt{1 + \delta^2 + \Gamma_{em}^0/\Gamma_l}$.

From the ansatz (C4), it is possible to calculate the long-range properties of the fermionic one-body correlation function

$$c^F(j) = \langle \hat{a}_j^F \hat{a}_0^{F\dagger} \rangle = \int_{-\pi}^{\pi} \frac{dk}{2\pi} e^{ikj} n_k^{ff}. \quad (\text{C7})$$

Exploiting the expansion (C6), we obtain

$$c^F(j) = \sum_{n \geq j} \alpha_n \left(\frac{2J}{r_c \Gamma_p} \right)^n \int_{-\pi}^{\pi} \frac{dk}{2\pi} e^{ikj} \cos^n(k), \quad (\text{C8})$$

as the integral on the right side is nonzero only for $n \geq j$. In the limit $2J/(r_c \Gamma_p) \ll 1$ we can keep only the lowest power of J in the series expansion, which corresponds to $n = j$,

$$c^F(j) \simeq \alpha_j \left(\frac{2J}{r_c \Gamma_p} \right)^j \int_{-\pi}^{\pi} \frac{dk}{2\pi} e^{ikj} \cos^j(k) \quad (\text{C9})$$

$$= \alpha_j \left(\frac{J}{r_c \Gamma_p} \right)^j \quad (\text{C10})$$

$$= \alpha_j e^{-j/\lambda_F}, \quad (\text{C11})$$

where α_j is subexponential. The fermionic autocorrelation thus spatially decays exponentially with a correlation length λ_F given by

$$1/\lambda_F = \ln \left(\frac{\Gamma_p \sqrt{1 + \delta^2 + \Gamma_{em}^0/\Gamma_l}}{J} \right) \quad (\text{C12})$$

and scales as $1/\ln(\Gamma_p/J)$ for small J/Γ_p .

The true photonic correlation function is related to the fermionic one as follows:

$$c(j) = \langle \hat{a}_j \hat{a}_0^\dagger \rangle = \langle \hat{a}_j^F e^{i\pi \sum_{0<l<j} \hat{n}_l} \hat{a}_0^{F\dagger} \rangle. \quad (\text{C13})$$

For a vanishing J , the fermionic distribution is nearly momentum independent, and the particles are thus fully localized with the uniform spatial density $n = 1/(\Gamma_l/\Gamma_{em}^0 + 1)$. The correlation function can be thus factorized as $c(j) \simeq \langle \hat{a}_j^F \hat{a}_0^{F\dagger} \rangle \prod_{0<l<j} \langle e^{i\pi \hat{n}_l} \rangle$. The local expectation value $\langle e^{i\pi \hat{n}_l} \rangle \simeq (1 - \Gamma_{em}^0/\Gamma_l)/(1 + \Gamma_{em}^0/\Gamma_l)$ is positive for hole-dominated statistics ($\Gamma_{em}^0/\Gamma_l < 1$) and negative for particle-dominated statistics ($\Gamma_{em}^0/\Gamma_l > 1$).

The expression for the photonic one-body correlation function in the $J/\Gamma_p \ll 1$ limit reads

$$c(j) \propto (-1)^j e^{-j/\lambda} \quad (\text{C14})$$

for particle-dominated statistics. The corresponding correlation length is given by

$$1/\lambda = \ln \left(\left| \frac{1 + \frac{\Gamma_{em}^0}{\Gamma_l}}{1 - \frac{\Gamma_{em}^0}{\Gamma_l}} \right| \frac{\Gamma_p \sqrt{1 + \delta^2 + \frac{\Gamma_{em}^0}{\Gamma_l}}}{J} \right). \quad (\text{C15})$$

It maintains the logarithmic scaling and is slightly shorter than the fermionic one due to a scrambling induced by sign changes when crossing intermediary particles.

- [1] M. C. Cross and P. C. Hohenberg, Pattern formation outside of equilibrium, *Rev. Mod. Phys.* **65**, 851 (1993).
- [2] T. Vicsek and A. Zafeiris, Collective motion, *Phys. Rep.* **517**, 71 (2012).
- [3] B. Schmittmann and R. K. P. Zia, in *Statistical Mechanics of Driven Diffusive Systems*, edited by C. Domb and J. L. Lebowitz, Phase Transitions and Critical Phenomena Vol. 17 (Academic Press, London, 1995).
- [4] H.-P. Breuer and F. Petruccione, *The Theory of Open Quantum Systems* (Oxford University Press, Oxford, 2007).
- [5] J. Eisert, M. Friesdorf, and C. Gogolin, Quantum many-body systems out of equilibrium, *Nat. Phys.* **11**, 124 (2015).
- [6] M. E. Fisher, The renormalization group in the theory of critical behavior, *Rev. Mod. Phys.* **46**, 597 (1974).
- [7] M. E. Fisher, Renormalization group theory: Its basis and formulation in statistical physics, *Rev. Mod. Phys.* **70**, 653 (1998).
- [8] R. K. Pathria, *Statistical Mechanics* (Butterworth-Heinemann, Oxford, 1996).
- [9] S. Sachdev, *Quantum Phase Transitions* (Cambridge University Press, Cambridge, 2000).
- [10] A. Polkovnikov, K. Sengupta, A. Silva, and M. Vengalattore, Colloquium: Nonequilibrium dynamics of closed interacting quantum systems, *Rev. Mod. Phys.* **83**, 863 (2011).
- [11] H. Weimer, Variational Principle for Steady States of Dissipative Quantum Many-Body Systems, *Phys. Rev. Lett.* **114**, 040402 (2015).
- [12] L. M. Sieberer, M. Buchhold, and S. Diehl, Keldysh field theory for driven open quantum systems, *Rep. Prog. Phys.* **79**, 096001 (2016).
- [13] R. Orús and G. Vidal, Infinite time-evolving block decimation algorithm beyond unitary evolution, *Phys. Rev. B* **78**, 155117 (2008).
- [14] E. Mascarenhas, H. Flayac, and V. Savona, Matrix-product-operator approach to the nonequilibrium steady state of driven-dissipative quantum arrays, *Phys. Rev. A* **92**, 022116 (2015).
- [15] J. Cui, J. I. Cirac, and M. C. Bañuls, Variational Matrix Product Operators for the Steady State of Dissipative Quantum Systems, *Phys. Rev. Lett.* **114**, 220601 (2015).
- [16] S. Finazzi, A. Le Boité, F. Storme, A. Baksic, and C. Ciuti, Corner-Space Renormalization Method for Driven-Dissipative Two-Dimensional Correlated Systems, *Phys. Rev. Lett.* **115**, 080604 (2015).
- [17] A. H. Werner, D. Jaschke, P. Silvi, M. Kliesch, T. Calarco, J. Eisert, and S. Montangero, A Positive Tensor Network Approach for Simulating Open Quantum Many-Body Systems, *Phys. Rev. Lett.* **116**, 237201 (2016).
- [18] A. Kshetrimayum, H. Weimer, and R. Orus, A simple tensor network algorithm for 2d steady states, [arXiv:1612.00656](https://arxiv.org/abs/1612.00656).
- [19] R. P. Feynman, Simulating physics with computers, *Int. J. Theor. Phys.* **21**, 467 (1982).
- [20] I. Buluta and F. Nori, Quantum simulators, *Science* **326**, 108 (2009).
- [21] I. Bloch, J. Dalibard, and W. Zwerger, Many-body physics with ultracold gases, *Rev. Mod. Phys.* **80**, 885 (2008).
- [22] R. Blatt and C. F. Roos, Quantum simulations with trapped ions, *Nat. Phys.* **8**, 277 (2012).
- [23] C. Monroe and J. Kim, Scaling the ion trap quantum processor, *Science* **339**, 1164 (2013).
- [24] M. Müller, S. Diehl, G. Pupillo, and P. Zoller, Engineered open systems and quantum simulations with atoms and ions, *Adv. At. Mol. Opt. Phys.* **61**, 1 (2012).
- [25] I. Carusotto and C. Ciuti, Quantum fluids of light, *Rev. Mod. Phys.* **85**, 299 (2013).
- [26] H. Ritsch, P. Domokos, F. Brennecke, and T. Esslinger, Cold atoms in cavity-generated dynamical optical potentials, *Rev. Mod. Phys.* **85**, 553 (2013).
- [27] A. A. Houck, H. E. Türeci, and J. Koch, On-chip quantum simulation with superconducting circuits, *Nat. Phys.* **8**, 292 (2012).
- [28] A. Tomadin and R. Fazio, Many-body phenomena in QED-cavity arrays, *J. Opt. Soc. Am. B* **27**, A130 (2010).
- [29] M. Hartmann, Quantum simulation with interacting photons, *J. Opt.* **18**, 104005 (2016); K. Le Hur, L. Henriot, A. Petrescu, K. Plekhanov, G. Roux, and M. Schiró, Many-body quantum electrodynamics networks: Non-equilibrium condensed matter physics with light, *C. R. Phys.* **17**, 808 (2016) C. Noh and D. Angelakis, Quantum simulations and many-body physics with light, *Rep. Prog. Phys.* **80**, 016401 (2017).
- [30] M. J. Hartmann, Polariton Crystallization in Driven Arrays of Lossy Nonlinear Resonators, *Phys. Rev. Lett.* **104**, 113601 (2010).
- [31] T. E. Lee, H. Häffner, and M. C. Cross, Antiferromagnetic phase transition in a nonequilibrium lattice of Rydberg atoms, *Phys. Rev. A* **84**, 031402 (2011).
- [32] R. O. Umucalilar and I. Carusotto, Fractional Quantum Hall States of Photons in an Array of Dissipative Coupled Cavities, *Phys. Rev. Lett.* **108**, 206809 (2012).
- [33] J. Jin, D. Rossini, R. Fazio, M. Leib, and M. J. Hartmann, Photon Solid Phases in Driven Arrays of Nonlinearly Coupled Cavities, *Phys. Rev. Lett.* **110**, 163605 (2013); J. Jin, D. Rossini, M. Leib, M. J. Hartmann, and R. Fazio, Steady-state phase diagram of a driven QED-cavity array with cross-Kerr nonlinearities, *Phys. Rev. A* **90**, 023827 (2014).
- [34] T. E. Lee, S. Gopalakrishnan, and M. D. Lukin, Unconventional Magnetism via Optical Pumping of Interacting Spin Systems, *Phys. Rev. Lett.* **110**, 257204 (2013).
- [35] M. Hoening, W. Abdussalam, M. Fleischhauer, and T. Pohl, Antiferromagnetic long-range order in dissipative Rydberg lattices, *Phys. Rev. A* **90**, 021603(R) (2014).
- [36] C.-K. Chan, T. E. Lee, and S. Gopalakrishnan, Limit-cycle phase in driven-dissipative spin systems, *Phys. Rev. A* **91**, 051601 (2015).
- [37] R. M. Wilson, W. K. Mahmud, A. Hu, A. V. Gorshkov, M. Hafezi, and M. Foss-Feig, Collective phases of strongly interacting cavity photons, *Phys. Rev. A* **94**, 033801 (2016).
- [38] M. Foss-Feig, P. Niroula, J. T. Young, M. Hafezi, A. V. Gorshkov, R. M. Wilson, and M. F. Maghrebi, Emergent equilibrium in many-body optical bistability, *Phys. Rev. A* **95**, 043826 (2017).
- [39] M. Schiró, C. Joshi, M. Bordyuh, R. Fazio, J. Keeling, and H. E. Türeci, Exotic Attractors of the Non-Equilibrium Rabi-Hubbard Model, *Phys. Rev. Lett.* **116**, 143603 (2016).
- [40] J. Jin, A. Biella, O. Viyuela, L. Mazza, J. Keeling, R. Fazio, and D. Rossini, Cluster Mean-Field Approach to the Steady-State Phase Diagram of Dissipative Spin Systems, *Phys. Rev. X* **6**, 031011 (2016).
- [41] E. G. Dalla Torre, E. Demler, T. Giamarchi, and E. Altman, Dynamics and universality in noise-driven dissipative systems, *Phys. Rev. B* **85**, 184302 (2012).

- [42] L. M. Sieberer, S. D. Huber, E. Altman, and S. Diehl, Dynamical Critical Phenomena in Driven-Dissipative Systems, *Phys. Rev. Lett.* **110**, 195301 (2013).
- [43] J. Marino and S. Diehl, Driven Markovian Quantum Criticality, *Phys. Rev. Lett.* **116**, 070407 (2016).
- [44] R. Rota, F. Storme, N. Bartolo, R. Fazio, and C. Ciuti, Critical behavior of dissipative two-dimensional spin lattices, *Phys. Rev. B* **95**, 134431 (2017).
- [45] M. J. Hartmann, F. G. S. L. Brandão, and M. B. Plenio, Strongly interacting polaritons in coupled arrays of cavities, *Nat. Phys.* **2**, 849 (2006).
- [46] A. D. Greentree, C. Tahan, J. H. Cole, and L. C. L. Hollenberg, Quantum phase transitions of light, *Nat. Phys.* **2**, 856 (2006).
- [47] D. G. Angelakis, M. F. Santos, and S. Bose, Photon-blockade-induced Mott transitions and XY spin models in coupled cavity arrays, *Phys. Rev. A* **76**, 031805(R) (2007).
- [48] S. Schmidt and G. Blatter, Strong Coupling Theory for the Jaynes-Cummings-Hubbard Model, *Phys. Rev. Lett.* **103**, 086403 (2009).
- [49] J. Zhao, A. W. Sandvik, and K. Ueda, Insulator to superfluid transition in coupled photonic cavities in two dimensions, [arXiv:0806.3603](https://arxiv.org/abs/0806.3603).
- [50] M. Aichhorn, M. Hohenadler, C. Tahan, and P. B. Littlewood, Quantum Fluctuations, Temperature, and Detuning Effects in Solid-Light Systems, *Phys. Rev. Lett.* **100**, 216401 (2008).
- [51] J. Koch and K. Le Hur, Superfluid-Mott-insulator transition of light in the Jaynes-Cummings lattice, *Phys. Rev. A* **80**, 023811 (2009).
- [52] M. Hohenadler, M. Aichhorn, S. Schmidt, and L. Pollet, Dynamical critical exponent of the Jaynes-Cummings-Hubbard model, *Phys. Rev. A* **84**, 041608 (2011).
- [53] D. Rossini and R. Fazio, Mott-Insulating and Glassy Phases of Polaritons in 1D Arrays of Coupled Cavities, *Phys. Rev. Lett.* **99**, 186401 (2007).
- [54] A. Tomadin, V. Giovannetti, R. Fazio, D. Gerace, I. Carusotto, H. E. Türeci, and A. Imamoglu, Signatures of the superfluid-insulator phase transition in laser-driven dissipative nonlinear cavity arrays, *Phys. Rev. A* **81**, 061801 (2010).
- [55] A. Biella, L. Mazza, I. Carusotto, D. Rossini, and R. Fazio, Photon transport in a dissipative chain of nonlinear cavities, *Phys. Rev. A* **91**, 053815 (2015).
- [56] C. Lee, C. Noh, N. Schetakakis, and D. G. Angelakis, Few-photon transport in many-body photonic systems: A scattering approach, *Phys. Rev. A* **92**, 063817 (2015).
- [57] F. Nissen, S. Schmidt, M. Biondi, G. Blatter, H. E. Türeci, and J. Keeling, Nonequilibrium Dynamics of Coupled Qubit-Cavity Arrays, *Phys. Rev. Lett.* **108**, 233603 (2012).
- [58] A. Le Boité, G. Orso, and C. Ciuti, Steady-State Phases and Tunneling-Induced Instabilities in the Driven Dissipative Bose-Hubbard Model, *Phys. Rev. Lett.* **110**, 233601 (2013); Bose-Hubbard model: Relation between driven-dissipative steady states and equilibrium quantum phases, *Phys. Rev. A* **90**, 063821 (2014).
- [59] M. Biondi, G. Blatter, H. E. Türeci, and S. Schmidt, Nonequilibrium phase diagram of the driven-dissipative photonic lattice, [arXiv:1611.00697](https://arxiv.org/abs/1611.00697).
- [60] M. Wouters, I. Carusotto, and C. Ciuti, Spatial and spectral shape of inhomogeneous nonequilibrium exciton-polariton condensates, *Phys. Rev. B* **77**, 115340 (2008).
- [61] M. Wouters and I. Carusotto, Excitations in a Nonequilibrium Bose-Einstein Condensate of Exciton Polaritons, *Phys. Rev. Lett.* **99**, 140402 (2007); Superfluidity and Critical Velocities in Nonequilibrium Bose-Einstein Condensates, **105**, 020602 (2010).
- [62] J. Lebreuilly, M. Wouters, and I. Carusotto, Towards strongly correlated photons in arrays of dissipative nonlinear cavities under a frequency-dependent incoherent pumping, *C. R. Phys.* **17**, 836 (2016).
- [63] J. Ruiz-Rivas, E. del Valle, C. Gies, P. Gartner, and M. J. Hartmann, Spontaneous collective coherence in driven dissipative cavity arrays, *Phys. Rev. A* **90**, 033808 (2014).
- [64] J. Lebreuilly, A. Biella, F. Storme, D. Rossini, R. Fazio, C. Ciuti, and I. Carusotto, Stabilizing strongly correlated photon fluids with a non-Markovian reservoir, [arXiv:1704.01106](https://arxiv.org/abs/1704.01106).
- [65] Let us note that the definition of compressibility we use, $\mathcal{K} = \Delta n^2/n$, corresponds to a renormalized photon density. It gets the physical meaning of a compressibility (which is a response in density to a change in chemical potential) only at equilibrium when it is possible to apply a fluctuation-dissipation theorem.
- [66] Let us note that the string-order parameter [81] used in equilibrium to witness the emergence of a Mott insulator phase in this case is strictly zero since the local density can never be exactly an integer.
- [67] We recall that since that dynamics is governed by the master equation (3), the U(1) symmetry does not lead to any conserved quantity, which would be the case in the absence of driving and dissipation. In such a case the U(1) symmetry is related to the conservation of the total number of excitations.
- [68] A richer physics could, of course, be described within the Gutzwiller approach by letting the local density matrix vary from site to site ($\rho_i \neq \rho_j$). The price for this generality would, however, be a physically more intricate behavior and a much less transparent theory. This could be of interest if one wants to describe, e.g., the effect of strong interactions on mode-competition effects.
- [69] S. Haroche and J.-M. Raimond, *Exploring the Quantum: Atoms, Cavities, and Photons*, Oxford Graduate Texts (Oxford University Press, Oxford, 2006).
- [70] G. Schmid, S. Todo, M. Troyer, and A. Dorneich, Finite-Temperature Phase Diagram of Hard-Core Bosons in Two Dimensions, *Phys. Rev. Lett.* **88**, 167208 (2002).
- [71] F. Verstraete, J. J. Garcia-Ripoll, and J. I. Cirac, Matrix Product Density Operators: Simulation of Finite-Temperature and Dissipative Systems, *Phys. Rev. Lett.* **93**, 207204 (2004).
- [72] M. Zwolak and G. Vidal, Mixed-State Dynamics in One-Dimensional Quantum Lattice Systems: A Time-Dependent Superoperator Renormalization Algorithm, *Phys. Rev. Lett.* **93**, 207205 (2004).
- [73] E. J. Mueller, T.-L. Ho, M. Ueda, and G. Baym, Fragmentation of Bose-Einstein condensates, *Phys. Rev. A* **74**, 033612 (2006).
- [74] M. Girardeau, Relationship between systems of impenetrable bosons and fermions in one dimension, *J. Math. Phys.* **1**, 516 (1960).
- [75] I. Carusotto, D. Gerace, H. E. Türeci, S. De Liberato, C. Ciuti, and A. Imamoglu, Fermionized Photons in an Array of Driven Dissipative Nonlinear Cavities, *Phys. Rev. Lett.* **103**, 033601 (2009).

- [76] M. Wouters and I. Carusotto, Absence of long-range coherence in the parametric emission of photonic wires, *Phys. Rev. B* **74**, 245316 (2006).
- [77] M. H. Szymańska, J. Keeling, and P. B. Littlewood, Nonequilibrium Quantum Condensation in an Incoherently Pumped Dissipative System, *Phys. Rev. Lett.* **96**, 230602 (2006).
- [78] A. Wallraff, D. I. Schuster, A. Blais, L. Frunzio, R.-S. Huang, J. Majer, S. Kumar, S. M. Girvin, and R. J. Schoelkopf, Strong coupling of a single photon to a superconducting qubit using circuit quantum electrodynamics, *Nature (London)* **431**, 162 (2004).
- [79] J. M. Fink, M. Göppl, M. Baur, R. Bianchetti, P. J. Leek, A. Blais, and A. Wallraff, Climbing the Jaynes-Cummings ladder and observing its nonlinearity in a cavity QED system, *Nature (London)* **454**, 315 (2008).
- [80] R. Ma, C. Owens, A. Houck, D. I. Schuster, and J. Simon, Autonomous stabilizer for incompressible photon fluids and solids, *Phys. Rev. A* **95**, 043811 (2017).
- [81] E. G. Dalla Torre, E. Berg, and E. Altman, Hidden Order in 1D Bose Insulators, *Phys. Rev. Lett.* **97**, 260401 (2006); E. Berg, E. G. Dalla Torre, T. Giamarchi, and E. Altman, Rise and fall of hidden string order of lattice bosons, *Phys. Rev. B* **77**, 245119 (2008).