

UC Riverside

UC Riverside Previously Published Works

Title

Photo-induced ultrafast active ion transport through graphene oxide membranes.

Permalink

<https://escholarship.org/uc/item/3b13c1w7>

Journal

Nature communications, 10(1)

ISSN

2041-1723

Authors

Yang, Jinlei
Hu, Xiaoyu
Kong, Xian
et al.

Publication Date

2019-03-01

DOI

10.1038/s41467-019-09178-x





Peer reviewed

ARTICLE

<https://doi.org/10.1038/s41467-019-09178-x>

OPEN

Photo-induced ultrafast active ion transport through graphene oxide membranes

Jinlei Yang^{1,2}, Xiaoyu Hu ³, Xian Kong ³, Pan Jia^{1,2}, Danyan Ji^{1,2}, Di Quan^{1,2}, Lili Wang¹, Qi Wen¹, Diannan Lu ³, Jianzhong Wu^{3,4}, Lei Jiang¹ & Wei Guo ¹

Layered graphene oxide membranes (GOM) with densely packed sub-nanometer-wide lamellar channels show exceptional ionic and molecular transport properties. Mass and charge transport in existing materials follows their concentration gradient, whereas attaining anti-gradient transport, also called active transport, remains a great challenge. Here, we demonstrate a coupled photon-electron-ion transport phenomenon through the GOM. Upon asymmetric light illumination, cations are able to move thermodynamically uphill over a broad range of concentrations, at rates much faster than that via simple diffusion. We propose, as a plausible mechanism, that light irradiation reduces the local electric potential on the GOM following a carrier diffusion mechanism. When the illumination is applied to an off-center position, an electric potential difference is built that can drive the transport of ionic species. We further develop photonic ion switches, photonic ion diodes, and photonic ion transistors as the fundamental elements for active ion sieving and artificial photosynthesis on synthetic nanofluidic circuits.

¹CAS Key Laboratory of Bio-inspired Materials and Interfacial Science, Technical Institute of Physics and Chemistry, Chinese Academy of Sciences, Beijing 100190, PR China. ²University of Chinese Academy of Sciences, Beijing 100049, PR China. ³State Key Joint Laboratory of Chemical Engineering, Department of Chemical Engineering, Tsinghua University, Beijing 100084, PR China. ⁴Department of Chemical and Environmental Engineering, University of California, Riverside, CA 92521, USA. These authors contributed equally: Jinlei Yang, Xiaoyu Hu, Xian Kong and Pan Jia. Correspondence and requests for materials should be addressed to D.L. (email: ludiannan@tsinghua.edu.cn) or to W.G. (email: wguo@iccas.ac.cn)

Liquid processing of colloidal 2D materials provides a facile and scalable way to produce membrane materials with densely packed sub-nanometer-wide channels for sustainable energy, environmental, and healthcare applications^{1–8}. Novel transport phenomena occurred in the angstrom range allows fast and precise sieving of ionic and molecular species through the interstitial space between restacked 2D nanosheets^{9,10}. However, mass and charge transport in existing membrane materials follows their concentration gradient^{11,12}. Attaining anti-gradient transport (*viz.*, active transport), as effective as natural counterparts^{13,14}, remains a great challenge in fully abiotic micro-nanosystems^{15,16}.

Existing artificial molecular transport systems reside in lipid or liquid membranes, and use the energy of light to pump protons or metal ions through the membrane against their concentration gradients^{17–19}. However, the supported liquid membranes become the bottleneck for practical applications, because they are fragile and hardly compatible with other components²⁰. Moreover, these molecular transport systems hinge on much larger ion-binding shuttle molecules for transmembrane ion transport²¹. In this case, a large portion of energy is spent on the movement of the shuttle molecule, which makes the ion transport process less efficient. A shuttle-free ion pumping system in solid-state materials is therefore needed to solve such problems.

Here, we report the generation of a net cationic flow through layered graphene oxide membrane (GOM) upon asymmetric light illumination. Against a concentration gradient, cations are moved thermodynamically uphill at rates orders of magnitude faster than that via simple diffusion. We propose a plausible mechanism to explain this phenomenon based on a carrier diffusion model and molecular dynamics (MD) simulations. Following the mechanism, we further develop photonic ion switches (PIS), photonic ion diodes (PID), and photonic ion transistors (PIT) as the fundamental elements for active ion sieving and artificial photosynthesis on synthetic nanofluidic circuits.

Results

Device and transport phenomenon. The GOMs were fabricated by vacuum filtration of liquid exfoliated GO nanosheets, followed by a mild thermal annealing process to improve their water stability²². The GOM is about 5- μm -thick (Fig. 1a, b). Scanning electron microscopy (SEM) observation shows a densely layered structure (Fig. 1c). The interlayer spacing (d) of wet GOMs is about 1.26 nm (Supplementary Note 1 and Supplementary Fig. 1). Taking into account the thickness of GO sheet (~ 0.34 nm), the effective height of the lamellar nanochannels is about 0.92 nm, allowing for the transport of water and most hydrated ions⁹. A piece of rectangular GO strip (15 mm \times 9 mm) was embedded in a transparent polydimethylsiloxane (PDMS) elastomer (Fig. 1a). The two sides of the sealed GOM were trimmed off to open the lateral ends. Two solution reservoirs were built on the two ends of the GOM. 3.5 ml ionic solution with concentrations of C_L and C_R was filled in each reservoir. Ag/AgCl electrodes were used to record the horizontal ion transport through the GOM²³.

With equivalent electrolyte solution (KCl, 1 μM) placed in the two reservoirs, we discover a synchronous photo-electric response without externally applied voltage, when the GO strip was irradiated locally by simulated sunlight from a xenon lamp (Fig. 1d). The recorded ionic current flows from the non-illuminated region to the illuminated region. For example, once the illumination (light intensity ~ 100 mW cm^{-2}) was applied to the right 1/3 (in length) of the GO strip, the net ionic current arises from zero to ~ -2.27 nA within 30 s (Fig. 1e). The direction of the photocurrent is reversed when the illumination shifts to the left 1/3 (in length) of the GO strip, without much altering its magnitude ($\sim +2.54$ nA). Surprisingly, if the light beam locates in the middle of the GO strip, no clear photo-response can be found.

The negatively charged sub-nm-wide lamellar channels in GOM are fully covered by the Debye screening layer²⁴. The photocurrent consists of nearly perfect cations ($t_+ > 0.97$, Supplementary Note 2, Supplementary Fig. 2 and Supplementary

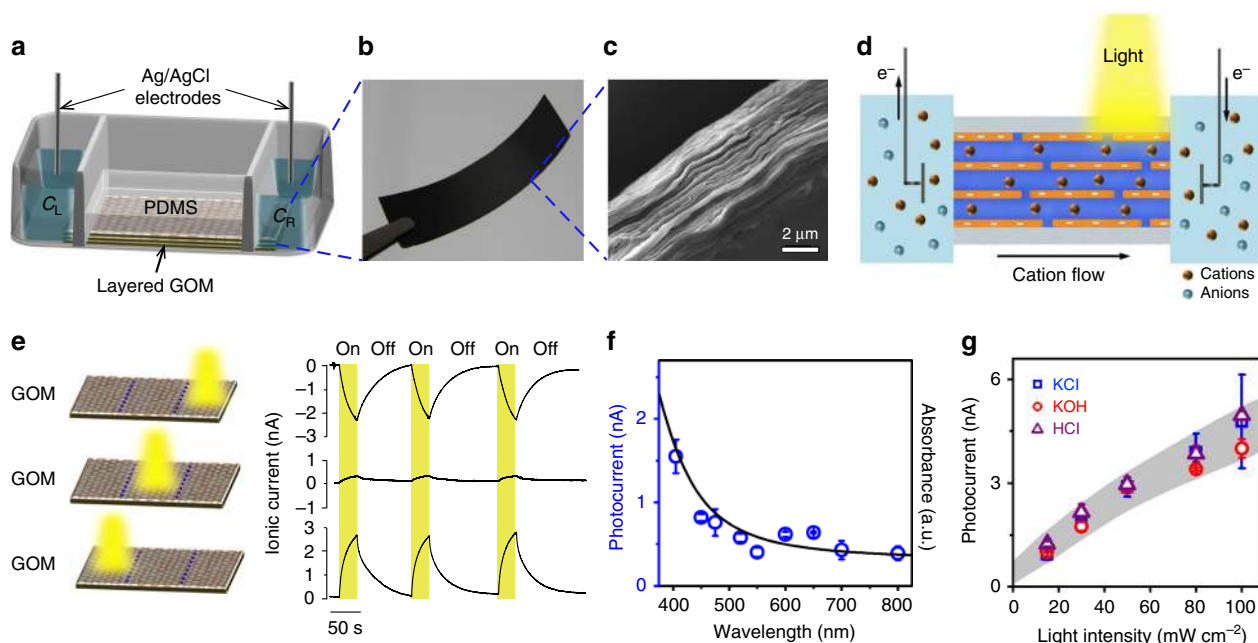


Fig. 1 Photo-induced ion transport through GOM. **a** Scheme of the device. **b** A photograph of the GO strip. **c** SEM image on the cross-section shows a layered structure. **d** Schematic illustration of the generation of net ionic flow through the GOM upon asymmetric light illumination. **e** Time traces of the photocurrent. Light illumination (100 mW cm^{-2} , 30 s duration) was applied separately on three different positions (right, middle, or left). **f** UV-vis absorption spectrum of GO dispersion (solid curve), and photocurrent at each wavelength (open circles). **g** Similar photo-response is found in KCl, KOH, or HCl solutions. The electrolyte concentrations were 1 μM . Error bars denote standard deviation

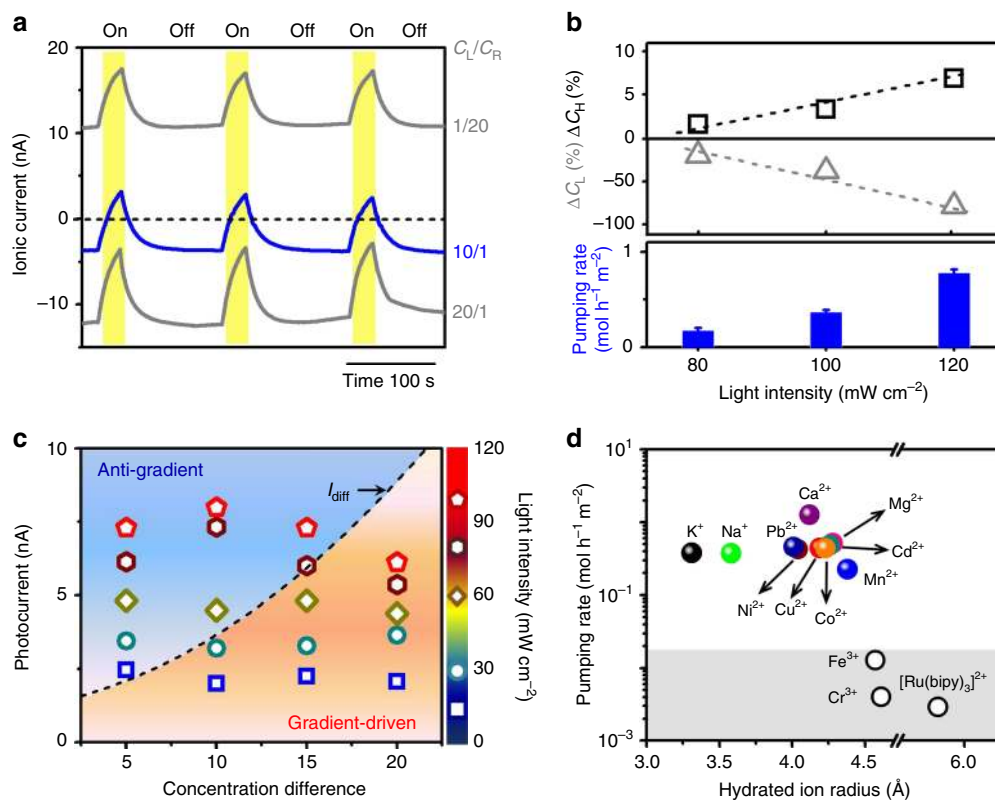


Fig. 2 Anti-gradient ion transport. **a** Time traces of photocurrent under concentration gradient. Light illumination (100 mW cm^{-2}) was on the left 1/3 of the GOM. When $C_L/C_R = 10/1$, the ionic current goes across the zero line, and further increases in the reverse direction, showing anti-gradient ion transport. But when the concentration gradient was too high (e.g., $C_L/C_R = 20/1$) or in the reverse direction ($C_L/C_R = 1/20$), no ionic current reversion was found. **b** Photo-induced variations in K^+ concentration and corresponding ion pumping rates measured by ICP-OES. After light illumination for 180 s, C_{high} further arises, while C_{low} falls down, showing anti-gradient ion transport. Error bars denote standard deviation. **c** Photocurrent against different concentration gradients and with varied light intensities. The dashed line indicates the diffusion current (I_{diff}). When the magnitude of the photocurrent is larger than I_{diff} , anti-gradient ion transport can be found. Otherwise, the ion transport is governed by the concentration gradient. **d** Pumping rates for different ionic species against 10-fold concentration gradient. The gray area indicates the below-detection limit of the measurements. The concentration change for Fe^{3+} , Cr^{3+} , $[\text{Ru}(\text{bipy})_3]^{2+}$ was not effectively detected

Table 1). The photocurrent and the incident photon to current efficiency measured at different light wavelength generally agree with the absorption spectrum of GO dispersion (Fig. 1f, Supplementary Note 3 and Supplementary Fig. 3). Direct heating on part of the GOM does not generate net ion transport, and the photocurrent is insensitive to the temperature from 4 to 40°C (Supplementary Note 4 and Supplementary Figs. 4–5). Although the light illumination may slightly reduce GO, its influence is limited (Supplementary Note 5, Supplementary Figs. 6–10, and Supplementary Tables 2–3). These evidences suggest that the observed photocurrent does not originate from the thermal effect²⁵.

Similar photo-response can be found in either neutral, acidic, or alkali electrolytes (Fig. 1g). The magnitude of photocurrent depends on light intensity. Besides GOM, the photo-induced ion transport phenomenon can be found in other types of 2D layered materials reconstructed from, for example, WSe_2 , MoS_2 , WS_2 , and reduced GO (Supplementary Note 6 and Supplementary Fig. 11). As control experiments, we also check the photo-response in pH test papers and cellulose acetate membranes (Supplementary Note 7 and Supplementary Fig. 12). No detectable photo-response was found.

Anti-gradient transport. More intriguingly, under concentration gradient, anti-gradient ion transport can be realized upon

asymmetric light illumination. For example, under a 10-fold concentration gradient ($C_L = 10 \mu\text{M}$, $C_R = 1 \mu\text{M}$), the initial diffusion current (I_{diff}) was about -3.67 nA (Fig. 2a). Upon light illumination (100 mW cm^{-2}) on the left 1/3 of the GO strip, the ionic current soon goes across the zero line and further increases in the reverse direction, leading to anti-gradient cation transport. By contrast, if the concentration gradient goes in the reverse direction ($C_L < C_R$), or if it is too high (e.g., 20-fold), no reversed ionic current (anti-gradient transport) can be observed (Fig. 2a).

The photo-induced active ion transport can be further confirmed by directly measuring the changes in ionic concentration in the two reservoirs via inductively coupled plasma optical emission spectroscopy (ICP-OES, Supplementary Note 8). For example, under a 10-fold concentration gradient, after light illumination for 180 s, K^+ concentration in the high-concentration reservoir (C_H) increases, while that in the low-concentration reservoir (C_L) declines (Fig. 2b and Supplementary Table 4), showing anti-gradient transport. The K^+ pumping rate increases with the light intensity, and approaches $0.78 \pm 0.04 \text{ mol h}^{-1} \text{ m}^{-2}$ with light intensity of 120 mW cm^{-2} . It also depends on the illumination position (Supplementary Note 9 and Supplementary Fig. 14) and the surface charge density of the GOM (Supplementary Note 10 and Supplementary Fig. 15).

Prolonging the illumination time (Supplementary Note 11 and Supplementary Fig. 16) or enhancing the light intensity (Supplementary Note 12 and Supplementary Fig. 17) facilitates

the anti-gradient ion transport. For a fixed illumination time of 30 s, we measured the photocurrent under a series of concentration gradients and with different light intensities (Fig. 2c). In the bottom-right part of the dashed line (I_{diff}), the ion transport is downhill, dissipating the concentration difference. While, in the upper-left part of the dashed line, the ion transport is against the concentration gradient, showing ion-pumping effect. Under lower concentration gradient, the anti-gradient ion transport can be realized with lower light intensity. But under higher concentration gradient, the minimum light intensity for anti-gradient ion transport should exceed a threshold value and rise with the concentration gradient.

Verified by ICP measurements, the photo-induced ion pumping against 10-fold concentration gradient (10/1 μM) can be achieved with many types of mono- and divalent ions (Fig. 2d and Supplementary Tables 5–6). Although having larger hydration radius, the pumping rate for divalent ions can be as high as the monovalent ions. Additionally, for ionic species larger than 4.5 Å, no effective changes in ionic concentration were found in both reservoirs. The cut-off size is quantitatively in agreement with the diffusion-driven ion permeation experiments⁹, and in accord with the effective height of the GO nanochannels (~0.92 nm). Considering the cross-sectional area (0.045 mm²) and the length (15 mm) of the GOM, the estimated ion permeation rate via classical diffusion under a 10 μM concentration difference is $\sim 10^{-5}$ mol h⁻¹ m⁻², which is about 5 orders of magnitude lower than the measured ion pumping rates over a broad concentration range of 1–100 μM (Supplementary Fig. 13).

Working principle. The observed net ion transport directly correlates with a concomitant electric potential difference on GOM (Supplementary Note 13 and Supplementary Figs. 18–20)²⁶. The photo-excited electrons and holes in the illuminated area would diffuse to the non-illuminated area driven by their concentration gradients (Supplementary Figs. 21–23). For GO-based materials, the diffusivity and mobility of holes are higher than that of the electrons (Supplementary Table 7). An electric potential difference is therefore established across the GOM via a diffusion-controlled charge separation²⁷. We further develop a one-dimensional continuum model to quantify the mechanism (Supplementary Note 14)²⁸. Asymmetric carrier diffusion in GO layers results in low electric potential in the illuminated area. If the illumination was applied to the central part, the electric potential distribution is symmetric and balanced between the two ends (Fig. 3a, middle). Otherwise, it leads to an electric potential difference (ΔV) (Fig. 3a, left and right), whose polarity and magnitude depends on the illumination position and light intensity (Supplementary Figs. 24 and 25). From the model, one can see that ΔV is a direct consequence of asymmetric carrier diffusion. Meanwhile, carrier recombination facilitates the generation of ΔV (Supplementary Note 15 and Supplementary Fig. 26).

Furthermore, we applied the light-induced redistribution of the charge profile on a model GO nanochannel to elucidate the generation of net ionic flow with MD simulations (Supplementary Note 16). The lamellar nanochannel (length = 10.0 nm, width = 3.2 nm, height = 1.3 nm, Supplementary Fig. 27) connected two solution reservoirs. The initial ionic concentrations were equal (1.0 M) in both reservoirs. We find asymmetric light illumination in vertical direction induces a horizontal cationic flow through the lamellar nanochannel (Fig. 3b). The direction of the ionic flow depends on the illumination position, from the non-illuminated region to the illuminated region (Supplementary Fig. 28), in accord with the experimental observations (Fig. 1e). The K⁺ transport rate approaches 2.2×10^8 ions s⁻¹ with light intensity of 100 mW cm⁻². Under light illumination, the GO nanochannel

remains perfectly cation-selective ($t_+ \rightarrow 1$, Supplementary Fig. 29). A positive correlation is found between the photocurrent and the surface charge density on GO sheets. The model is able to reproduce the above experimental observations. Both the photo-induced electric potential difference and the ionic current highly depend on the illumination position and light intensity (Fig. 3c, d). Under concentration gradient, the light-induced ion transport can counterbalance the diffusion current (Fig. 3e, f). Beyond a threshold light intensity, the ionic flow can be reversed against the concentration gradient. Detailed model parameters are summarized in Supplementary Note 17 and Supplementary Tables 8–9.

Furthermore, we experimentally applied an electric potential distribution along the GOM to simulate the influence of light, and confirm the generation of a net ionic current (Supplementary Note 18 and Supplementary Figs. 30–31). To achieve long-range transport, inter-sheet carrier hopping should be considered (Supplementary Note 19). While the multi-sheet model gives a more precise description to the inter-sheet carrier transport and refines the electric potential profile, both models render an excellent support to the experimental observations (Supplementary Fig. 32). The main conclusions in Fig. 3 are unaffected. More intriguingly, we find that, under a transmembrane concentration difference of 10^{-5} M, the predicted ion pumping rate from the simplified model can be also 5 orders of magnitude higher than the estimated ion permeation rate from classical diffusion (Supplementary Note 20, Supplementary Fig. 33, and Supplementary Table 10).

Discussion

Following this mechanism, we develop three types of fundamental elements for light-controlled nanofluidic circuits, termed PIS, PID, and PIT. As shown in Fig. 4a, upon asymmetric illumination, the photo-induced potential difference can be used to counterbalance an electric voltage in the same direction, and thereby blocks the transmembrane ionic current, forming a perfect switch-off state. The on-off ratio approaches 10^3 – 10^4 . By synergistically operating the light and the alternating electric field, one can use the asymmetric light illumination to block the ionic current at only desired voltage polarity (Fig. 4b, Supplementary Note 21, and Supplementary Fig. 34), forming a highly efficient PID with rectification ratio up to $\sim 10^4$. The polarity of the PID can be altered by changing the illumination position. Moreover, the localized low potential in the illuminated area can be treated as a photo-induced gate potential to control the horizontal ionic conductance²⁹, functioning as a PIT (Fig. 4c). From the output characteristics and transfer curves (Fig. 4d), the source-drain current (I_{SD}) increases with light intensity. The PIT shows p-type gating behavior. The photoresponsivity reaches up to 6.4 $\mu\text{A W}^{-1}$ (Supplementary Fig. 35).

The generation of photocurrent and electric potential difference across the GOM is almost instantaneous upon light illumination. But, it takes time to reach steady state (Supplementary Note 22 and Supplementary Fig. 36). Due to the finite thickness of the GOM, the intensity of light irradiation in the depth direction was not homogeneous. Besides, to establish a steady-state electric potential distribution upon light irradiation also depends on the disorder of the GO assemblies³⁰, as well as the intra- and inter-sheet charge traps³¹. This complex process may need more time to reach the equilibrium state. Similar results were found in previous photoconductivity measurements on macroscopic rGO membranes under continuous light illumination^{32,33}. The time scale approaches several tens of seconds.

The photo-induced directional ion transport in 2D layered materials provides a new way for remote, non-invasive, and active

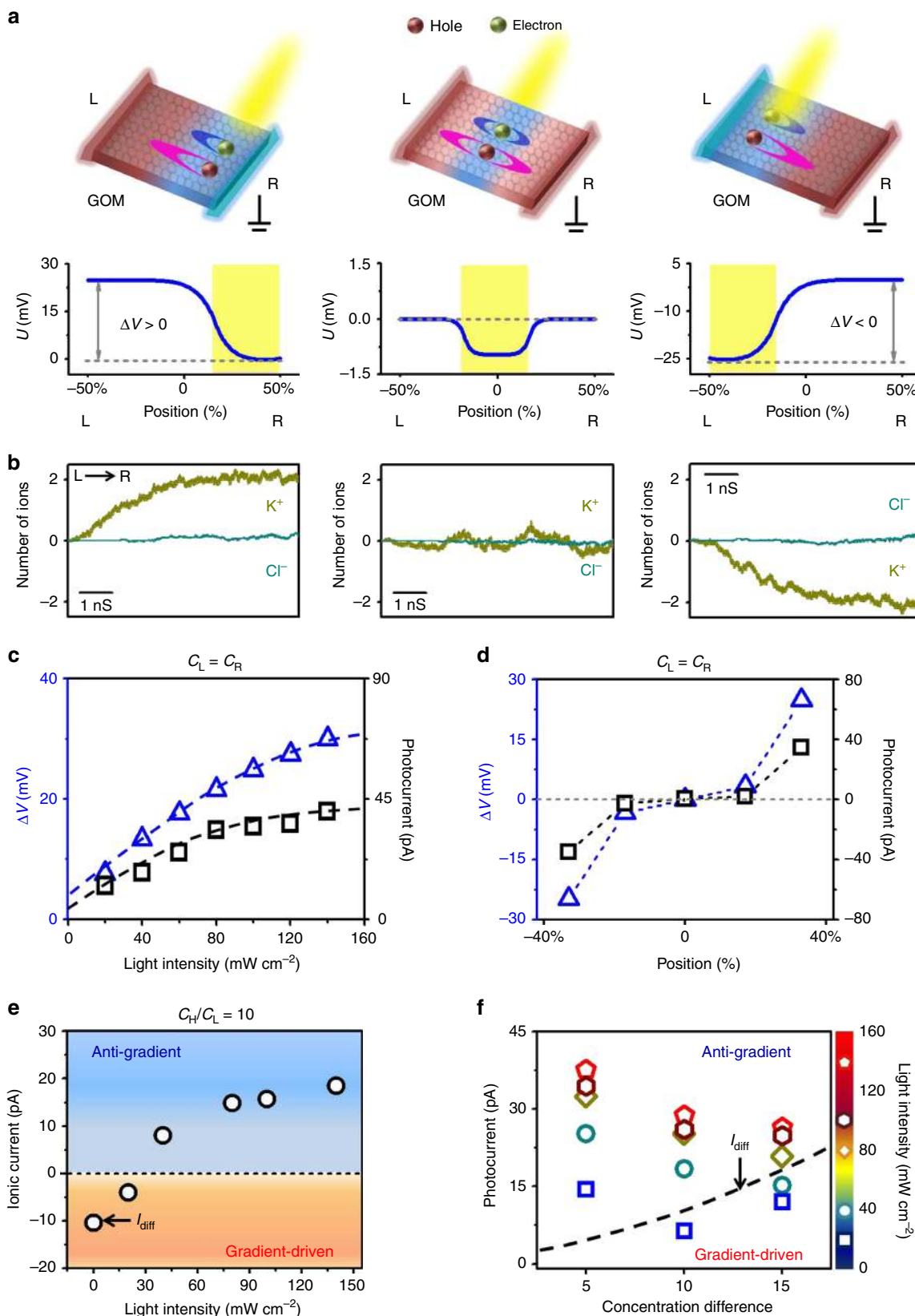


Fig. 3 Mechanism. **a** Asymmetric diffusion and electromigration of electrons and holes result in the redistribution of electric potential along the GO strip and local low electric potential in the illuminated area. When illumination was on an off-center position (left and right), an electric potential difference (ΔV) can be found. **b** MD simulations confirm the generation of horizontal cationic transport, depending on the illumination position. **c**, **d** The polarity and magnitude of ΔV and photocurrent depend on illumination position and light intensity. **e** Under 10-fold concentration gradient, photo-induced ion transport counterbalances diffusion current (I_{diff}). Over a threshold light intensity, ionic current reverses to anti-gradient direction. **f** Similar trends were found under 5- to 15-fold concentration gradients. The threshold light intensity increases with the concentration gradient. The dashed line in **(f)** indicates I_{diff}

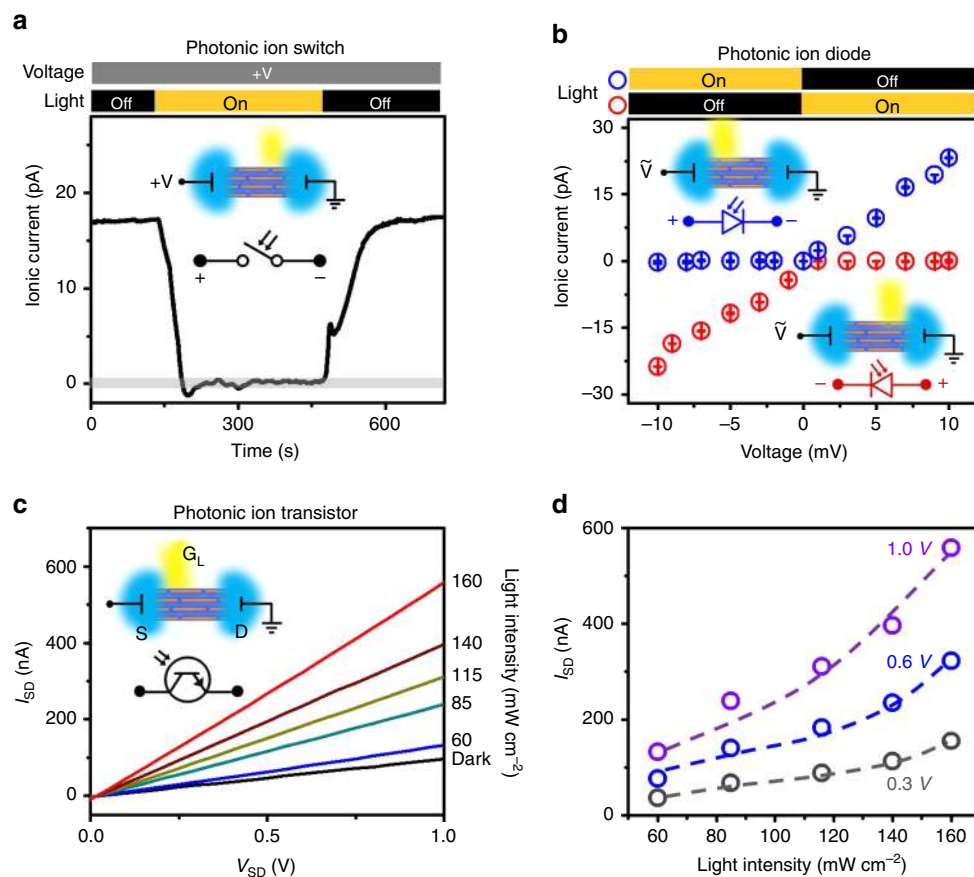


Fig. 4 Photonic nanofluidic devices. **a** Photonic ion switch (PIS). Asymmetric light illumination ($\sim 150 \text{ mW cm}^{-2}$) on GO strip perfectly switches off the ion transport driven by an electric voltage ($\sim 7 \text{ mV}$). **b** Photonic ion diode (PID). Under alternating electric field, photo-induced active ion transport blocks the ionic current at one voltage polarity with ultrahigh rectification ratio up to 10^4 . The polarity of PID depends on the illumination position. Error bars denote standard deviation. **c** Photonic ion transistor (PIT). Current-voltage (I_{SD} - V_{SD}) curves in dark and under light illumination. Light illumination is used as a photo-gate to control the ionic conductance between source and drain electrodes. **d** Transfer characteristics at V_{SD} of 0.3, 0.6, and 1.0 V. The electrolyte solutions were $1 \mu\text{M}$ KCl in **(a)**-**(d)**

control of the transport behaviors in synthetic systems. Sub-nanometer scale integration of atomically-thin 2D materials enables fabrication of highly compact nanofluidic architectures with extraordinarily high ionic pumping rates. By doping the 2D nano-building-blocks with photosensitive elements or molecules, their photo-responsiveness can be further extended for scalable and more precise applications in, for example, active ionic sieving, artificial photosynthesis, and modular nanofluidic computation.

Methods

Device fabrication. GOMs were prepared by vacuum filtration and stabilized via a thermal annealing process²². As schematically shown in Fig. 1a, the GO strip was top-sealed with a piece of transparent PDMS elastomer in a two-compartment electrochemical cell (made of Teflon) to avoid the leak of solution. Afterwards, the two ends of the sealed GO strip were trimmed off to connect with the solution reservoirs on the two sides. 3.5 ml ionic solution was filled in each reservoir. A pair of Ag/AgCl electrodes was used to record the transmembrane ionic current.

Electrical measurements. Ionic current signals were recorded by a Keithley 2636B source meter. No externally applied voltage was needed, otherwise specifically mentioned. Light illumination was generated from a xenon lamp (Perfectlight CHF-500W). A transparent window was applied above the GOM to select the illumination position. The actual change in cation concentration in each reservoir was analyzed by ICP-OES to determine the ion transport rate (Supplementary Note 8).

Theoretical methods. A one-dimensional continuity model was adopted to calculate the light-induced electric potential redistribution on GO surface, involving

time-dependent evolution of electric potential and carrier densities. Photo-excitation, recombination, diffusion, and electro-migration were considered in the model. The partial differential equations were numerically integrated with a time step of 0.1 ps. Steady distribution was achieved once the maximum relative change of carrier density was less than 10^{-9} . More details can be found in Supplementary Note 14.

MD simulation was conducted by NAMD package³⁴. A 1.3-nm-height GO nanochannel was placed between two solution reservoirs. The system dimensions were $28.8 \text{ nm} \times 3.2 \text{ nm} \times 5.5 \text{ nm}$. The initial surface charge density was -25 mC m^{-2} and uniformly distributed. The charge density distribution calculated from the above model was then assigned to the MD model sheet to calculate the light-induced redistribution of electric potential. The system was equilibrated in isothermal-isobaric (NPT) ensemble under one atmosphere at 300 K. Then, the simulation was conducted in canonical (NVT) ensemble for data collection. More details can be found in Supplementary Note 16.

Data availability

The authors declare that the main data supporting the findings of this study are contained within the paper. All other relevant data are available from the corresponding author upon reasonable request.

Received: 7 January 2019 Accepted: 27 February 2019

Published online: 12 March 2019

References

1. Koltonow, A. R. & Huang, J. Two-dimensional nanofluidics. *Science* **351**, 1395–1396 (2016).

- Gao, J., Feng, Y., Guo, W. & Jiang, L. Nanofluidics in two-dimensional layered materials: inspirations from nature. *Chem. Soc. Rev.* **46**, 5400–5424 (2017).
- Nair, R., Wu, H., Jayaram, P., Grigorieva, I. & Geim, A. Unimpeded permeation of water through helium-leak-tight graphene-based membranes. *Science* **335**, 442–444 (2012).
- El-Kady, M., Strong, V., Dubin, S. & Kaner, R. Laser scribing of high-performance and flexible graphene-based electrochemical capacitors. *Science* **335**, 1326–1330 (2012).
- Yang, X., Cheng, C., Wang, Y., Qiu, L. & Li, D. Liquid-mediated dense integration of graphene materials for compact capacitive energy storage. *Science* **341**, 534–537 (2013).
- Li, H. et al. Ultrathin, molecular-sieving graphene oxide membranes for selective hydrogen separation. *Science* **342**, 95–98 (2013).
- Lukatskaya, M. et al. Cation intercalation and high volumetric capacitance of two-dimensional titanium carbide. *Science* **341**, 1502–1505 (2013).
- Kelly, A. et al. All-printed thin-film transistors from networks of liquid-exfoliated nanosheets. *Science* **356**, 69–73 (2017).
- Joshi, R. et al. Precise and ultrafast molecular sieving through graphene oxide membranes. *Science* **343**, 752–754 (2014).
- Abraham, J. et al. Tunable sieving of ions using graphene oxide membranes. *Nat. Nanotechnol.* **12**, 546–550 (2017).
- Werber, J., Osuji, C. & Elimelech, M. Materials for next-generation desalination and water purification membranes. *Nat. Rev. Mater.* **1**, 16018 (2016).
- Zheng, Z., Grunker, R. & Feng, X. Synthetic two-dimensional materials: a new paradigm of membranes for ultimate separation. *Adv. Mater.* **28**, 6529–6545 (2016).
- Gadsby, D. Ion channels versus ion pumps: the principal difference, in principle. *Nat. Rev. Mol. Cell Biol.* **10**, 344–352 (2009).
- Feng, Y., Zhu, W., Guo, W. & Jiang, L. Bioinspired energy conversion in nanofluidics: a paradigm of material evolution. *Adv. Mater.* **29**, 1702773 (2017).
- Guo, W., Tian, Y. & Jiang, L. Asymmetric ion transport through ion-channel-mimetic solid-state nanopores. *Acc. Chem. Res.* **46**, 2834–2846 (2013).
- Park, H., Kamcev, J., Robeson, L., Elimelech, M. & Freeman, B. Maximizing the right stuff: the trade-off between membrane permeability and selectivity. *Science* **356**, eaab0530 (2017).
- Bennett, I. et al. Active transport of Ca^{2+} by an artificial photosynthetic membrane. *Nature* **420**, 398–401 (2002).
- Bhosale, S. et al. Photoproduction of proton gradients with pi-stacked fluorophore scaffolds in lipid bilayers. *Science* **313**, 84–86 (2006).
- Xie, X., Crespo, G., Mistlberger, G. & Bakker, E. Photocurrent generation based on a light-driven proton pump in an artificial liquid membrane. *Nat. Chem.* **6**, 202–207 (2014).
- Dekker, C. Solid-state nanopores. *Nat. Nanotechnol.* **2**, 209–215 (2007).
- Lai, C., Zhang, Y. & Schatz, G. Light-driven Ca^{2+} ion pump: how does it work? *J. Phys. Chem. B* **119**, 15110–15117 (2015).
- Ji, J. et al. Osmotic power generation with positively and negatively charged 2D nanofluidic membrane pairs. *Adv. Funct. Mater.* **27**, 1603623 (2017).
- Raidongia, K. & Huang, J. Nanofluidic ion transport through reconstructed layered materials. *J. Am. Chem. Soc.* **134**, 16528–16531 (2012).
- Stein, D., Kruithof, M. & Dekker, C. Surface-charge-governed ion transport in nanofluidic channels. *Phys. Rev. Lett.* **93**, 035901 (2004).
- Li, T. et al. Thermoelectric properties and performance of flexible reduced graphene oxide films up to 3,000 K. *Nat. Energy* **3**, 148–156 (2018).
- Chen, R. et al. Charge separation via asymmetric illumination in photocatalytic Cu_2O particles. *Nat. Energy* **3**, 655–663 (2018).
- Koppens, F. et al. Photodetectors based on graphene, other two-dimensional materials and hybrid systems. *Nat. Nanotechnol.* **9**, 780–793 (2014).
- Vicarelli, L. et al. Graphene field-effect transistors as room-temperature terahertz detectors. *Nat. Mater.* **11**, 865–871 (2012).
- Tang, Q. et al. Photoswitches and phototransistors from organic single-crystalline sub-micro/nanometer ribbons. *Adv. Mater.* **19**, 2624–2628 (2007).
- Tsou, C.-H. et al. Effect of microstructure of graphene oxide fabricated through different self-assembly techniques on 1-butanol dehydration. *J. Membr. Sci.* **477**, 93–100 (2015).
- Loh, K., Bao, Q., Eda, G. & Chhowalla, M. Graphene oxide as a chemically tunable platform for optical applications. *Nat. Chem.* **2**, 1015–1024 (2010).
- Ghosh, S., Sarker, B., Chunder, A., Zhai, L. & Khondaker, S. Position dependent photodetector from large area reduced graphene oxide thin films. *Appl. Phys. Lett.* **96**, 163109 (2010).
- Moon, I., Ki, B., Yoon, S., Choi, J. & Oh, J. Lateral photovoltaic effect in flexible free-standing reduced graphene oxide film for self-powered position-sensitive detection. *Sci. Rep.* **6**, 33525 (2016).
- Phillips, J. C. et al. Scalable molecular dynamics with NAMD. *J. Comput. Chem.* **26**, 1781–1802 (2005).

Acknowledgements

This work is financially supported by the National Natural Science Foundation of China (21522108, 11290163, 21476125) and the National Research Fund for Fundamental Key Projects (2013CB733604). Liping Ding, Prof. Dingjiang Xue, and Hui Wang are acknowledged for beneficial discussion.

Author contributions

W.G. conceived the idea, designed the experiments, proposed the mechanism, and directed the project. J.Y. and P.J. performed the experiments with technical help from D.J., D.Q., L.W. and Q.W. D.L., X.H. and X.K. performed the calculations. W.G. and D.L. wrote the paper. W.G., D.L., J.W. and L.J. discussed the manuscript.

Additional information

Supplementary Information accompanies this paper at <https://doi.org/10.1038/s41467-019-09178-x>.

Competing interests: The authors declare no competing interests.

Reprints and permission information is available online at <http://npg.nature.com/reprintsandpermissions/>

Journal peer review information: *Nature Communications* thanks the anonymous reviewers for their contribution to the peer review of this work.

Publisher's note: Springer Nature remains neutral with regard to jurisdictional claims in published maps and institutional affiliations.



Open Access This article is licensed under a Creative Commons Attribution 4.0 International License, which permits use, sharing, adaptation, distribution and reproduction in any medium or format, as long as you give appropriate credit to the original author(s) and the source, provide a link to the Creative Commons license, and indicate if changes were made. The images or other third party material in this article are included in the article's Creative Commons license, unless indicated otherwise in a credit line to the material. If material is not included in the article's Creative Commons license and your intended use is not permitted by statutory regulation or exceeds the permitted use, you will need to obtain permission directly from the copyright holder. To view a copy of this license, visit <http://creativecommons.org/licenses/by/4.0/>.

© The Author(s) 2019