

Submitted to SPIE Proceedings -  
APCCT 90 - SINGAPORE -  
Asia Pacific Conference on Optical Technology 22-27 October 1990

CONF-9010216--1

## PHOTON SCANNING TUNNELING MICROSCOPY \*

Jean Pierre GOUDONNET, L. SALOMON, F. DE FORNEL and G. CHABRIER  
Université de Bourgogne, Laboratoire de Physique du Solide, Groupe Photoélectricité,  
UA 785, Fac Sciences Mirande, BP 138, 21004 DIJON CEDEX - FRANCE

and

CONF-9010216--1

DE91 001215

R.J. WARMACK and T.L. FERRELL

Health and Safety Research Division, Oak Ridge National Laboratory, Oak Ridge,  
Tennessee 37831

### ABSTRACT

The Photon Scanning Tunneling Microscope (PSTM) is the photon analogue of the electron Scanning Tunneling Microscope (STM). It uses the evanescent field due to the total internal reflection of a light beam in a Total Internal Reflection (TIR) prism. The sample, mounted on the base of the prism, modulates the evanescent field. A sharpened optical fiber probes this field, and the collected light is processed to generate an image of the topography and the chemical composition of the surface. We give, in this paper, a description of the microscope and discuss the influence of several parameters such as - polarization of light, angle of incidence, shape of the end of the fiber - on the resolution. Images of various samples - glass samples, teflon spheres - are presented.

### I. INTRODUCTION

Photon Scanning Tunneling Microscopy (PSTM) belongs to the family of SXM microscopies (1,2) which exploit a distance dependent interaction for guidance of a probe tip and local information about this interaction. One of these new microscope - Scanning Tunneling Microscope (3) - demonstrated its capability to map atomic and molecular shapes, overcoming the fundamental limitation of any conventional microscope : diffraction obscures details smaller than about one half the wavelength of

\*Research sponsored by the Office of Health and Environmental Research, U.S. Department of Energy, under Contract No. DE-AC05-84OR21400 with Martin Marietta Energy Systems, Inc.

MASTER

The submitted manuscript has been authored by a contractor of the U.S. Government under contract No. DE-AC05-84OR21400. Accordingly, the U.S. Government retains a nonexclusive, royalty free license to publish or reproduce

DISTRIBUTION OF THIS DOCUMENT IS UNLIMITED

the radiation. The STM has been considerably described in the recent years and has imaged surface structure on a host of substance. However, the STM is restricted to imaging electrical conductors.

In 1988, at Oak Ridge National Laboratory, R.C. REDDICK, R.J. WARMACK and T.L. FERRELL (4) invented the PSTM which is a similar instrument to the STM but one which uses the tunneling of photons across the gap between the sample and a sharpened optical fiber probe tip. The PSTM uses a sample and a tip that are conductors for photons and is restricted to imaging transparent samples. If the sample is opaque it is possible to change the light source and switch to a wavelength at which the sample is not absorbing.

In chapter II a general description of the PSTM's operation is given and images of several samples is shown. A discussion of the optimization of the resolution of the microscope by acting on the important parameters is presented in chapter III. Application of PSTM - probing of optical waveguides, testing of optical surfaces are discussed in the last chapter.

## II. PRINCIPLES AND OPERATION OF THE PSTM:

### 1) Imaging

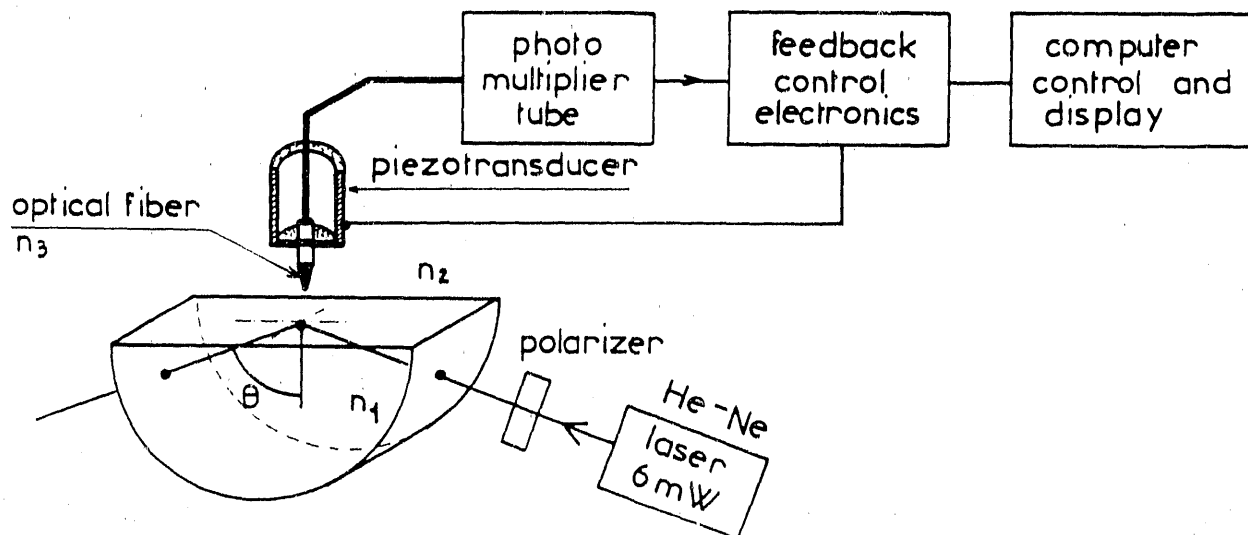


Figure 1. Schematic of experimental set up.

An evanescent field is formed by total internal reflection at the interface between two semi-infinite media of different indexes of refraction  $n_1$  et  $n_2$  ( $n_2 < n_1$ ). The light is totally reflected if the angle of incidence is larger than the critical angle  $\theta_c = \sin^{-1} n_2/n_1$ . This condition provides an exponentially decaying probability of photons tunneling from the sample surface to a fiber optic probe. The light is conducted by the fiber to a photomultiplier tube and converted to an electrical signal. The subsequent imaging process is identical to that of the STM.

The probe tip is mounted in a piezoelectric tube similar to those used in scanning tunneling microscopy (3). Voltages applied to the tube allow detailed control of the motion of the tip in three dimensions. Depending on the characteristics of the tube different scanning area are possible ranging from ( $1\mu\text{m} \times 1\mu\text{m}$ ) up to ( $100\mu\text{m} \times 100\mu\text{m}$ ) tangential to the sample.

The probe tip is formed by etching one end of a multimode graded-index optical fiber (50/125 CGE) in a solution of hydrofluoric acid.

The decay length of the exponentially decreasing light intensity in medium  $n_2$  can be calculated for p and s polarization by using the expression of the electric field in the different media. These calculations show (5) that the decay length for a PSTM is a function of the shape of the tip, the angle of incidence  $\theta$ , the polarization of the light, and the values of the three refractive indexes  $n_1$ ,  $n_2$ ,  $n_3$ . It is shown, also, that a decrease in decay length induces an increase in image resolution.

Figure 2 is an example of the exponential decay of the field intensity as a function of the increasing tip-sample distance, measured for several angles of incidence. In terms of decay lengths (or depth of penetration depending on different authors) it can be seen in Fig. 3 that a very small decay length (40 nm) can be reached by using a  $\lambda_2 = 2500 \text{ \AA}$  wavelength illumination and a near-grazing incidence. Since TIR may be observed for an enormous range of electromagnetic radiation, including X rays, we expect to endow the PSTM with resolution of the same order of scanning electron microscopy.

#### DISCLAIMER

This report was prepared as an account of work sponsored by an agency of the United States Government. Neither the United States Government nor any agency thereof, nor any of their employees, makes any warranty, express or implied, or assumes any legal liability or responsibility for the accuracy, completeness, or usefulness of any information, apparatus, product, or process disclosed, or represents that its use would not infringe privately owned rights. Reference herein to any specific commercial product, process, or service by trade name, trademark, manufacturer, or otherwise does not necessarily constitute or imply its endorsement, recommendation, or favoring by the United States Government or any agency thereof. The views and opinions of authors expressed herein do not necessarily state or reflect those of the United States Government or any agency thereof.

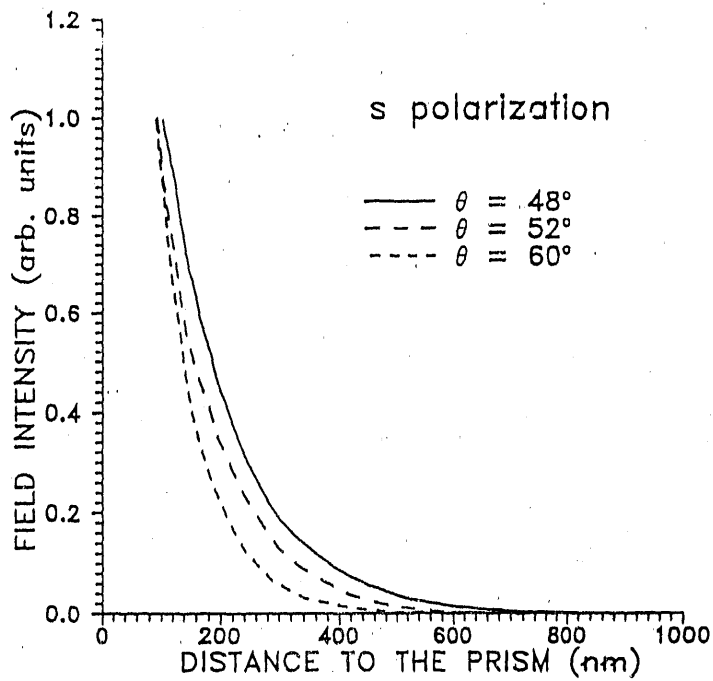


Figure 2 : Field intensity (Photomultiplier current) as a function of increasing distance  $d$  from the interface measured for s polarization and several angles of incidence at  $\lambda = 6328 \text{ \AA}$ .

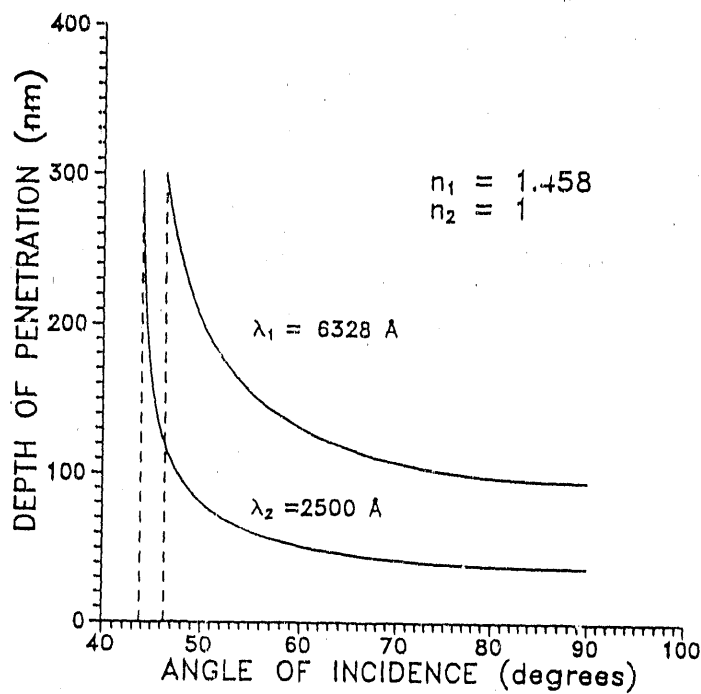


Figure 3 : Depth of penetration (or decay length) as a function of increasing angle of incidence for two wavelengths  $\lambda_1 = 6328 \text{ \AA}$  and  $\lambda_2 = 2500 \text{ \AA}$ . A glass-air interface has been considered.

PSTM images of two samples are shown in Fig. 4, and 5. Fig. 4 is the image of the surface of a quartz slide which was coupled to the prism base by an index-matching fluid. The subwavelength-sized roughness is seen with corrugations on the order of 10-20 nm deep. Fig. 5 is a PSTM image of teflon spheres ( $\phi = 225$  nm) deposited on the base of the prism.

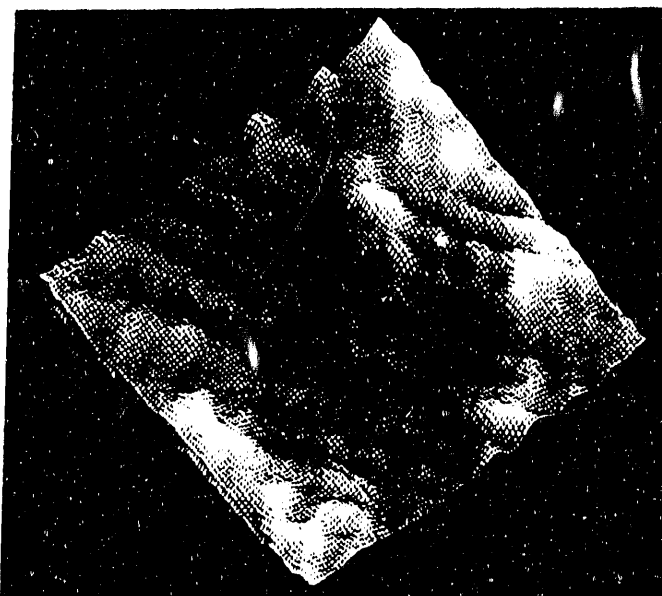


Figure 4 : Image of the surface of a quartz slide taken with a PSTM.  
The scan area is  $3 \times 3 \mu^2$ .

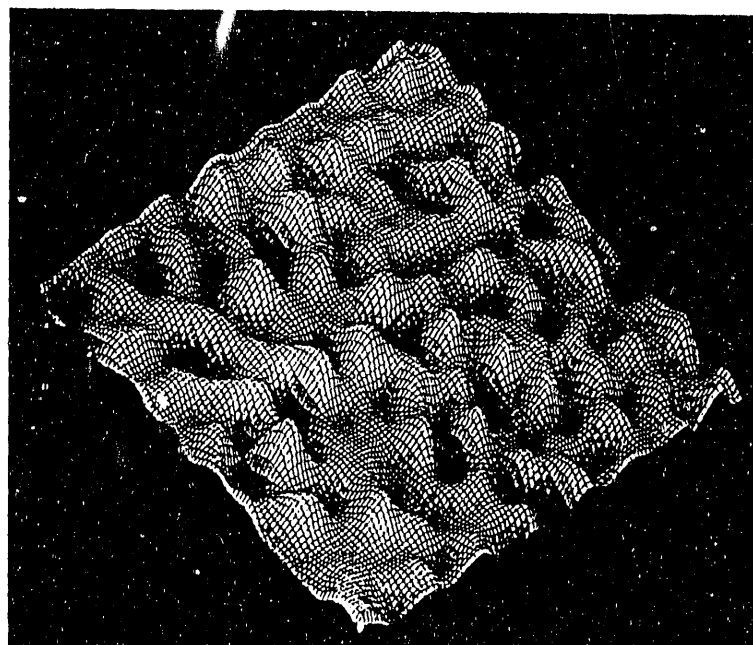


Figure 5 : Image of teflon spheres on the base of the prism

### III. RESOLUTION OF THE MICROSCOPE OPTIMIZATION

High spectral resolution being required, we have conducted a series of theoretical and experimental studies in order to optimize the parameters responsible of the variations of the penetration depth  $d_p$  - shape of the tip, polarization, angle of incidence (5).

These studies show that for both s and p polarizations the decay length decreases as the angle of incidence increases. The smallest values of  $d_p$  are obtained for the largest values of the angle of incidence and for s polarization (Fig. 6). In the PSTM the shape of the tip could be thought to be critical for the coupling between the evanescent field and the third medium. As a matter of fact it is not. The reason is that the strong dependence of energy flux on tip-to-surface distance makes only a fraction of the tip subtend any significant energy flux. This permits better tangential resolution than might be expected. The demonstration of this statement is easily made by assuming that the end of the fiber is a paraboloid (Fig. 7). It can be seen, that the variation of the intensity calculated for two models of paraboloid (a "needle"  $a = 4.10^7$  and an "infinite plane"  $a = 0$ ) are both similar to those of the experiments.

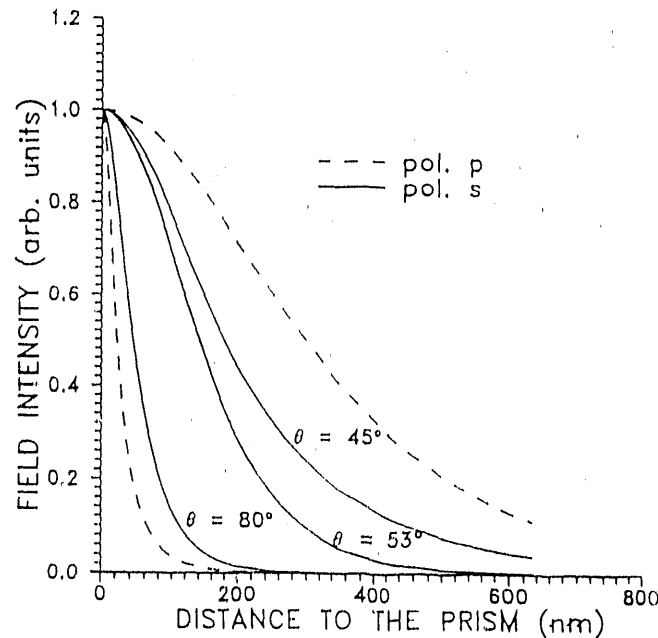


Figure 6 : Field intensity in medium 3 (optical fiber) calculated as a function of the distance to the prism and p (solid line) and s (dashed line) polarizations. For  $\theta = \theta_1 = 53^\circ$  the intensity is the same for both polarizations. For the calculations the following values of the parameters have been used :

$$n_1 = n_3 = 1.458, n_2 = 1, \theta_c = 43^\circ 30', \theta_1 = 53^\circ.$$

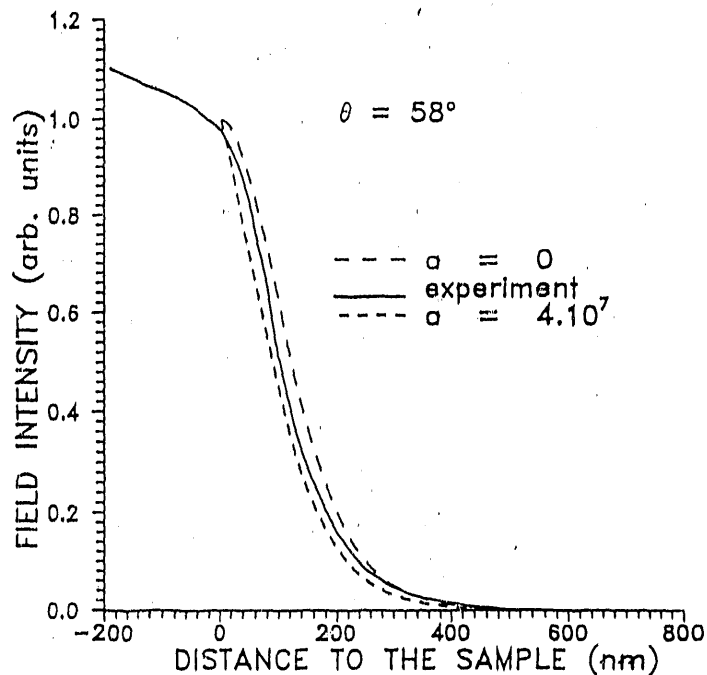


Figure 7 : Field intensity as a function of the tip-sample distance.

experiment  
 calculated with a flattered paraboloid model  
 calculated with a sharp paraboloid model.

If a sample to be studied has a spatially varying chemical composition, spectroscopy can be carried out simultaneously with the PSTM microscopy and a chemical map can be superimposed on the topology. The specific compound in a given region can be distinguished in the image by absorption or Raman spectroscopy. Results of these procedures will be published elsewhere (6).

The photoluminescence spectrum from a sample of ruby taken with a PSTM has been locally determined and the stress features present in the sample monitored in the region probed (7). The PSTM technique has been shown (8) to probe directly the evanescent field outside a planar and a channel waveguide. Surface scanning images in either constant height or constant intensity mode have been obtained and have the potential to reveal both local topographic and dielectric fluctuations.

## CONCLUSION

PSTM offers many exciting possibilities for surface science research. A variety of applications are forthcoming, microlithography, spectroscopies. Biological work could benefit from high resolution chemical mapping of samples in a more natural environment than that demanded by other probes.

## REFERENCES

- 1) For a review see D. POHL, Advances in Optical and Electron Microscopy, edited by Dr. C.J.R. Sheppard and T. Mulvey, to be published
- 2) H.K. WICKRAMASINGHE, Scientific American, p 98, October 1989
- 3) G. BINNIG, H. ROHRER, C. GERBER, and E. WEIBEL, Phys. Rev. Lett, 49, 57, 1982
- 4) R.C. REDDICK, R.J. WARMACK and T.L. FERRELL, Phys. Rev. B39, 767, 1989
- 5) L. SALOMON, F. DE FORNEL and J.P. GOUDONNET, proposed to Phys. Rev. B, Sept. 1990
- 6) J.P. GOUDONNET, F. DE FORNEL, L. SALOMON (unpublished)
- 7) P.J. MOYER, C.L. JAHNCKE, M.A. PIELER, R.C. REDDICK and R.J. WARMACK, Phys. Lett. A, 145, 343, 1990
- 8) DIN PING TSAI, H.E. JACKSON, R.C. REDDICK, S.H. SHARP and R.J. WARMACK, Appl. Phys. Lett., 56, 1515, 1990



**END**

**DATE FILMED**

11 / 21 / 90

