



ORIGINAL ARTICLE

Phylogenetic and environmental diversity of DsrAB-type dissimilatory (bi)sulfite reductases

Albert Leopold Müller^{1,2}, Kasper Urup Kjeldsen³, Thomas Rattei⁴, Michael Pester⁵ and Alexander Loy^{1,2}

¹Department of Microbiology and Ecosystem Science, Division of Microbial Ecology, Faculty of Life Sciences, University of Vienna, Vienna, Austria; ²Austrian Polar Research Institute, Vienna, Austria; ³Center for Geomicrobiology, Department of Bioscience, Aarhus University, Aarhus, Denmark; ⁴Division of Computational Systems Biology, Department of Microbiology and Ecosystem Science, Faculty of Life Sciences, University of Vienna, Vienna, Austria and ⁵Department of Biology, University of Konstanz, Konstanz, Germany

The energy metabolism of essential microbial guilds in the biogeochemical sulfur cycle is based on a DsrAB-type dissimilatory (bi)sulfite reductase that either catalyzes the reduction of sulfite to sulfide during anaerobic respiration of sulfate, sulfite and organosulfonates, or acts in reverse during sulfur oxidation. Common use of *dsrAB* as a functional marker showed that *dsrAB* richness in many environments is dominated by novel sequence variants and collectively represents an extensive, largely uncharted sequence assemblage. Here, we established a comprehensive, manually curated *dsrAB*/DsrAB database and used it to categorize the known *dsrAB* diversity, reanalyze the evolutionary history of *dsrAB* and evaluate the coverage of published *dsrAB*-targeted primers. Based on a DsrAB consensus phylogeny, we introduce an operational classification system for environmental *dsrAB* sequences that integrates established taxonomic groups with operational taxonomic units (OTUs) at multiple phylogenetic levels, ranging from DsrAB enzyme families that reflect reductive or oxidative DsrAB types of bacterial or archaeal origin, superclusters, uncultured family-level lineages to species-level OTUs. Environmental *dsrAB* sequences constituted at least 13 stable family-level lineages without any cultivated representatives, suggesting that major taxa of sulfite/sulfate-reducing microorganisms have not yet been identified. Three of these uncultured lineages occur mainly in marine environments, while specific habitat preferences are not evident for members of the other 10 uncultured lineages. In summary, our publically available *dsrAB*/DsrAB database, the phylogenetic framework, the multilevel classification system and a set of recommended primers provide a necessary foundation for large-scale *dsrAB* ecology studies with next-generation sequencing methods.

The ISME Journal (2015) 9, 1152–1165; doi:10.1038/ismej.2014.208; published online 24 October 2014

Introduction

The DsrAB-type dissimilatory (bi)sulfite reductase is a key microbial enzyme in both the reductive and the oxidative steps of the biogeochemical sulfur cycle. Utilized by microorganisms that catalyze redox reactions involving sulfur-containing compounds as components of energy metabolism, it catalyzes the reduction of sulfite to sulfide during anaerobic respiration with sulfate, sulfite or organosulfonates as terminal electron acceptor, and functions in reverse during sulfide oxidation. DsrAB

enzymes are heterotetramer proteins with an $\alpha_2\beta_2$ structure and possess iron-sulfur clusters and siroheme prosthetic groups (Dahl *et al.*, 1993). The α and β subunits are encoded by the paralogous genes *dsrA* and *dsrB*, respectively, which are organized in a single copy operon with *dsrA* preceding *dsrB* (Dahl *et al.*, 1993; Karkhoff-Schweizer *et al.*, 1995; Wagner *et al.*, 1998; Larsen *et al.*, 1999; Pereira *et al.*, 2011). Given the presumed antiquity of siroheme and the proposed existence of DsrAB before the separation of the domains *Bacteria* and *Archaea* (Wagner *et al.*, 1998; Dhillon *et al.*, 2005; Loy *et al.*, 2009), DsrAB enzymes are considered very ancient and might have had a fundamental role in mediating biological conversions of sulfur compounds by some of the first microorganisms in the anoxic, reduced atmosphere environments of the primordial Earth (Wagner *et al.*, 1998; Canfield and Raiswell, 1999; Huston and Logan, 2004).

Correspondence: A Loy, Department of Microbiology and Ecosystem Science, Division of Microbial Ecology, Faculty of Life Sciences, University of Vienna, Althanstrasse 14, Wien 1090, Austria.

E-mail: loy@microbial-ecology.net

Received 30 June 2014; revised 13 September 2014; accepted 23 September 2014; published online 24 October 2014

It is now recognized that the distribution of *dsrAB* among extant microorganisms was driven by a combination of divergence through speciation, functional diversification and lateral gene transfer (LGT) between unrelated taxa (Loy *et al.*, 2008b).

DsrAB enzymes are best known from sulfate-reducing microorganisms (SRMs) because of their global relevance for biogeochemical cycling of sulfur and carbon (Pester *et al.*, 2012; Bowles *et al.*, 2014). DsrAB catalyzes the last and main energy-conserving step in the dissimilatory sulfate reduction pathway that is conserved in all cultivated SRM, which are distributed in four bacterial (*Proteobacteria*—class *Deltaproteobacteria*, *Nitrospirae*, *Firmicutes*, *Thermodesulfobacteria*) and two archaeal phyla (*Euryarchaeota*, *Crenarchaeota*). The canonical pathway essentially consists of the enzymes ATP sulfurylase (Sat), adenosine 5'-phosphosulfate reductase (Apr) and dissimilatory (bi)sulfite reductase (Dsr). However, a new, yet unresolved pathway for sulfate reduction was suggested to operate in a syntrophic microbial consortium that mediated the anaerobic oxidation of methane coupled to sulfate reduction and polysulfide disproportionation (Milucka *et al.*, 2012). Surprisingly, sulfate was reduced by an unknown mechanism in the archaeal partner resulting in the formation of disulfide and not by the deltaproteobacterial partner that harbors the canonical DsrAB-based pathway.

DsrAB genes are also present in some microorganisms that are unable to use sulfate as a terminal electron acceptor including sulfite-reducing microorganisms (e.g., *Desulfitobacterium*, *Desulfitibacter* and *Pyrobaculum*) (Simon and Kroneck, 2013), sulfur-disproportionating bacteria (e.g., *Desulfocapsa sulfexigens*) (Finster, 2008) and in organisms that metabolize organosulfonates to internally produce sulfite for respiration (e.g., the taurine-consuming gut bacterium *Bilophila wadsworthia*) (Devkota *et al.*, 2012). The physiological role of DsrAB in anaerobic syntrophs of the spore-forming *Firmicutes* genera *Pelotomaculum* and *Sporotomaculum*, which possess and transcribe *dsrAB* but are incapable of reducing sulfite, sulfate or organosulfonates (Brauman *et al.*, 1998; Imachi *et al.*, 2006), is unknown.

Some but not all sulfur-oxidizing bacteria (SOB) carry a reversely operating DsrAB that is homologous, yet phylogenetically clearly distinct from DsrAB enzymes that function in sulfite reduction (Schedel and Trüper, 1979; Loy *et al.*, 2009). Unlike most SRM, SOB do not share a common sulfur metabolism pathway, but exploit various, partially redundant enzyme systems for the oxidation of a range of reduced sulfur compounds with intermediate oxidation states (Kelly *et al.*, 1997; Kletzin *et al.*, 2004; Friedrich *et al.*, 2005). DsrAB is essential for the oxidation of sulfur globule repositories (Pott and Dahl, 1998; Dahl *et al.*, 2005) and might thus provide these SOB with an advantageous backup sulfur metabolism in environments with varying

concentrations of reduced sulfur compounds. Thus far, *dsrAB* have been detected in free-living and symbiotic sulfur-storing SOB of the phyla *Proteobacteria* (classes *Alpha*-, *Beta*-, *Gamma*- and *Delta*-*proteobacteria*) and *Chlorobi* (Loy *et al.*, 2009; Swan *et al.*, 2011; Sheik *et al.*, 2014).

With a few significant exceptions that are indicative of LGT of *dsrAB* among major SRM taxa, DsrAB and 16S rRNA phylogenies are largely congruent (Klein *et al.*, 2001; Zverlov *et al.*, 2005; Loy *et al.*, 2009). Consequently, *dsrAB* have been frequently exploited as phylogenetic marker genes in amplicon sequencing-based environmental studies (Dhillon *et al.*, 2003; Nakagawa *et al.*, 2004; Leloup *et al.*, 2006; Loy *et al.*, 2009; Moreau *et al.*, 2010; Mori *et al.*, 2010; Pester *et al.*, 2010; Lenk *et al.*, 2011). Application of the *dsrAB* approach (Wagner *et al.*, 2005) in diverse environments has uncovered an extensive hidden diversity of *dsrAB* sequences that are not closely related to *dsrAB* from any recognized organisms. New sequencing techniques have opened up opportunities for large-scale α - and β -diversity studies of *dsrAB*. However, the currently available *dsrAB* sequence set is largely uncharacterized, which poses considerable problems in identifying and classifying newly obtained environmental sequences. A comprehensive classification framework for streamlined computational analyses of large *dsrAB* sequence data sets is thus urgently needed. A first step toward a *dsrAB* classification system has been made by a meta-analysis of *dsrAB* diversity that focused on freshwater wetland SRM (Pester *et al.*, 2012). This study highlighted the existence of at least 10 major monophyletic lineages that were only composed of environmental sequences and similar in intralocus diversity to known SRM families. Furthermore, several primers targeting reductive and oxidative *dsrAB* types have been published and applied for PCR-based environmental monitoring of the diversity and abundance of sulfur-cycling microorganisms (Wagner *et al.*, 1998; Kondo *et al.*, 2004; Geets *et al.*, 2005; Loy *et al.*, 2009; Mori *et al.*, 2010; Lenk *et al.*, 2011; Steger *et al.*, 2011; Lever *et al.*, 2013), but it is unclear how well these primers cover the currently known *dsrAB* diversity and thus how suitable they are for such purposes.

In the present study, we established a comprehensive, manually aligned and curated database of nucleic acid and inferred amino-acid sequences of *dsrAB* that are available in public sequence repositories, and provided a robust, taxonomically and phylogenetically informed classification system for the entire environmental *dsrAB* diversity. This allowed us to classify and systematically quantify the uncharted dimensions of *dsrAB* diversity and to reveal its distribution across various environments. We further used the database to determine the *in silico* coverage of all published *dsrA*- or *dsrB*-targeted primers to provide guidance for future PCR-based studies.

Materials and methods

Construction of a comprehensive dsrAB/DsrAB reference database

A *dsrAB/DsrAB* reference database (Zverlov *et al.*, 2005; Loy *et al.*, 2009), implemented with the ARB software package (Ludwig *et al.*, 2004), was updated to contain all publicly available *dsrAB* sequences (status August 2013). Sequences were retrieved by manually searching the NCBI nucleotide and genome databases using appropriate keywords (e.g., 'dsrAB', 'dsrA', 'dsrB', 'dissimilatory (bi) sulfite reductase', 'dissimilatory sulfite reductase', 'dissimilatory sulfite reductase') and by tblastx analysis (Supplementary Materials and methods) (Camacho *et al.*, 2009). Of more than 13 000 retrieved sequences, we retained 7695 sequences with <1% ambiguous nucleotides. This sequence assemblage represents a core data set of 1292 sequences that fully covered the ~1.9-kb region amplified by the most widely used primer variants DSR1F and DSR4R (which corresponds to ~77% of the entire ~2.5-kb-long *dsrAB*) and 6403 shorter sequences that covered at least 300 nucleotides in this region. Sequences were assigned to broad environmental categories (Supplementary Materials and methods). Alignments of nucleotide and inferred amino-acid sequences were manually corrected. The curated and annotated *dsrAB/DsrAB* database (Supplementary File S1) is available as ARB database in the download section at <http://www.microbial-ecology.net> and additionally provided as FASTA files of classified and environmentally annotated nucleotide (Supplementary File S2) and amino-acid sequences (Supplementary File S3).

Comparative sequence analyses and classification of dsrAB diversity

DsrAB phylogeny was calculated based on core data set sequences and by using alignment filters that exclude sequence regions with insertions and deletions (indel filters). Maximum-likelihood, maximum parsimony and neighbor-joining trees were used to construct consensus trees (Supplementary Materials and methods). Shorter *dsrAB* sequences (300 to <1590 nucleotides in the region used for treeing) were phylogenetically classified by adding each inferred amino-acid sequence separately to the consensus tree using the EPA algorithm (Berger *et al.*, 2011) in RAXML-HPC 7.5.6 (Stamatakis, 2006).

Environmental DsrAB sequences of the core data set that were not affiliated with recognized taxonomic families were assigned into individual lineages of approximate family-level diversity (Supplementary Materials and methods). Lineages were further summarized to superclusters if two or more known families and/or uncultured DsrAB lineages formed a monophyletic cluster with a bootstrap support of >70% in at least one treeing method.

Indications for LGT were obtained using a phylogenetic approach (Klein *et al.*, 2001; Koonin *et al.*, 2001). DsrAB and 16S rRNA consensus trees were manually compared for topological inconsistencies under the assumption that 16S rRNA genes were not subject to LGT and thus are markers for inferring the phylogeny of the analyzed species.

In silico coverage and specificity of dsrA- and dsrB-targeted primers

To obtain comparable coverage values and to avoid basing coverage estimates of primers on sequences that were obtained with the very same primers, we used a data set comprised of 177 full-length *dsrAB* sequences (the majority of which derive from genomes; 115 reductive and 62 oxidative bacterial-type *dsrAB*) for the evaluation of primers that bind at the (r)DSR1F or (r)DSR4R primer target region, and primer pairs that use at least one such primer. To test primers that target the region amplified by the (r)DSR1F/(r)DSR4R primer pair, we additionally used 1110 reductive- and 159 oxidative bacterial-type *dsrAB* sequences of the core data set that completely cover this region (Supplementary Tables S1–S4). Primer coverage was determined with the ARB Probe Match tool using perfect match and one weighted mismatch (standard base-pairing and positional weight settings in ARB). Target positions of primers are numbered relative to the *Desulfovibrio vulgaris* Hildenborough DSM 644 *dsrAB* sequence (NC_002937, 449 888...452 365) for reductive bacterial-type *dsrAB* sequences and the *Allochromatium vinosum* DSM 180 *dsrAB* sequence (NC_013851, 1 439 735...1 442 113) for oxidative bacterial-type *dsrAB* sequences.

Results and discussion

The DsrAB consensus tree provides a robust phylogenetic framework for environmental studies

For a *dsrAB* census, we created a comprehensive database of 7695 sequences with ≥ 300 nucleotides length and sufficient quality that derived from 530 amplicon sequencing, metagenome or genome studies. For more reliable phylogenetic inferences, we constructed a DsrAB consensus tree using a core data set of 1292 sequences with ~1.9-kb length (Figure 1 and Supplementary Figures S1–S3). The DsrAB tree has four main basal branches that delineate three major DsrAB protein families, namely the reductive bacterial type, the oxidative bacterial type and the reductive archaeal type. The fourth branch is so far only represented by the second *dsrAB* copy of *Moorella thermoacetica* (Pierce *et al.*, 2008; Loy *et al.*, 2009). Through paralogous rooting analysis, we show that this copy and the reductive archaeal-type DsrAB family represent the deepest branches in the DsrAB tree and add support to the previously proposed early evolution of DsrAB as a reductive enzyme

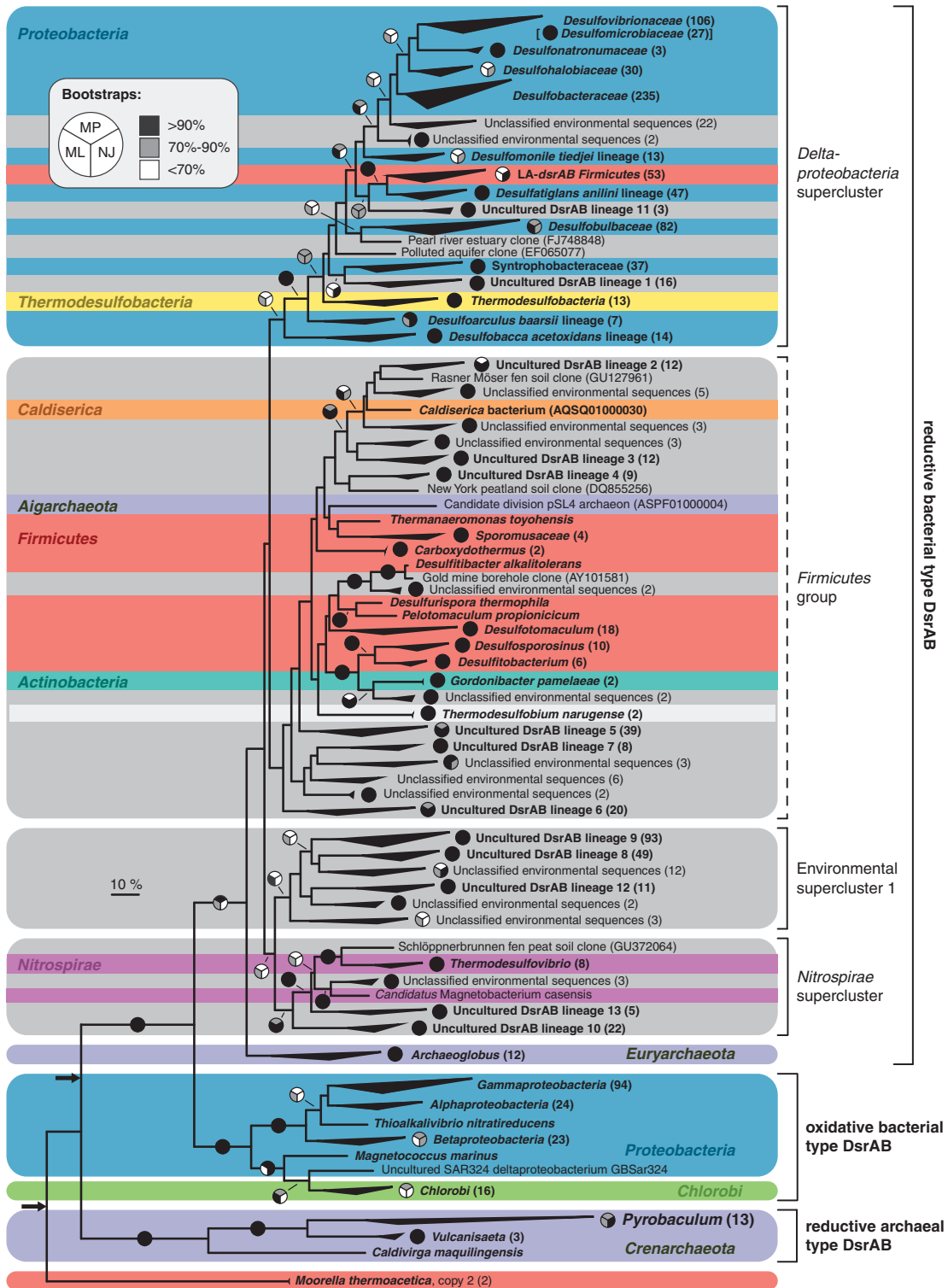


Figure 1 Consensus phylogeny of DsrAB sequences. Trees for reconstruction of the consensus tree (extended majority rule) were calculated using an alignment of 911 representative DsrAB sequences (clustered at 97% amino-acid identity) and an indel filter covering 530 amino-acid positions between the target sites of the most commonly used DSR1F and DSR4R primer variants. Remaining core sequences ($n = 378$) of the clusters were subsequently added to the consensus tree without changing its topology. Scale bar indicates 10% sequence divergence. Bootstrap support (100 resamplings) is shown by split circles (top: maximum parsimony; bottom left: maximum likelihood; bottom right: neighbor joining) at the respective branches, with black, gray and white/absence indicating $\geq 90\%$, $70\%–90\%$ and $<70\%$ support, respectively. DsrAB-carrying phyla are labeled in different background colors; gray background represents lineages with no closely related cultured representatives. Black arrows indicate the possible locations for the root of the tree according to paralogous rooting analysis. LA-dsrAB, laterally acquired dsrAB. *Moorella thermoacetica* dsrAB copy 1 clustered with the LA-dsrAB Firmicutes group.

(Wagner *et al.*, 1998) (Supplementary Results and discussion and Supplementary Figure S4).

To assess the minimum number of *dsrAB*-containing species that are currently represented in the 1292 sequence core data set, we initially inferred a species-level sequence identity cutoff from the linear regression in a plot of corresponding pairs of 16S rRNA gene and non-laterally acquired reductive- and oxidative bacterial-type *dsrAB* identities (Supplementary Figure S5) (Kjeldsen *et al.*, 2007). A *dsrAB* nucleic acid sequence identity of 92% over the ~1.9 kb fragment is equivalent to a 16S rRNA sequence identity of 99%, which is a frequently used threshold for delineating species-level OTUs (Stackebrandt and Ebers, 2006). We recommend using a more conservative threshold of 90% *dsrAB* sequence identity, because two organisms with <90% *dsrAB* identity generally have <99% 16S rRNA identity (Supplementary Figure S5) and will likely represent two different species, given that *dsrAB* is usually present as a single copy per genome. Application of the 90% threshold showed that already the core data set represents a minimum of 779 species-level OTUs, of which 647 are of the reductive and 118 of the oxidative bacterial DsrAB type. For comparison, ~240 species of SRM are currently present in the List of Bacterial Names with Standing in Nomenclature (Euzéby, 1997).

The reductive bacterial-type DsrAB family cluster mostly contains bacteria that use sulfate, sulfite or organosulfonates as terminal electron acceptors (Loy *et al.*, 2008b), and also from sulfate/sulfite-reducing archaea that received *dsrAB* via LGT from ancestral bacterial donors (see section below). Two hundred and ninety-nine environmental sequences of the core data set were not affiliated with members of described taxonomic families and clustered in 13 stable, monophyletic lineages, which were designated ‘uncultured DsrAB lineages 1 to 13’ (note that lineages 1 to 10 were defined previously; Pester *et al.*, 2012) using a combination of *dsrAB* sequence identity-based and phylogenetic criteria (Figure 1, Supplementary Figure S1 and Supplementary Materials and methods). Each of these 13 lineages could represent a taxonomic family whose members are yet uncultured or not known to possess *dsrAB*, illustrating the enormous unexplored diversity of *dsrAB*-harboring microorganisms in the environment. Our phylogenetic analysis even provided indications for further lineages of environmental *dsrAB* sequences (Figure 1), but these did not meet our conservative criteria to label them as an ‘uncultured family-level DsrAB lineage’. Importantly, only very few sequences ($n=4$) of the uncultured family-level lineages contain internal stop codons, which are not confirmed and might result from sequencing errors. Furthermore, non-synonymous/synonymous substitution rate ratios of the branches that lead to the 13 uncultured family-level lineages are clearly below one ($\omega=0.05\text{--}0.37$), which highlights strong purifying selection and

suggests that these *dsrAB* variants are being expressed as functionally active proteins (Yang, 1997; Yang *et al.*, 2000). Although a very recent loss of function will not be evident in the DsrAB sequence record, it is nevertheless unlikely that this vast environmental *dsrAB* diversity is primarily caused by uncontrolled mutation rates owing to the lack of or reduced selective pressure, for example, in viruses (Anantharaman *et al.*, 2014) or microorganisms that received *dsrAB* via LGT yet do not make use of them.

At a higher phylogenetic level, we could reproduce three previously described ‘superclusters’ (Pester *et al.*, 2012), namely the *Deltaproteobacteria* supercluster, the *Nitrospirae* supercluster, which was previously named *Thermodesulfovibrio* supercluster (Supplementary Results and discussion), and the environmental supercluster 1, which each comprise at least two uncultured DsrAB family-level lineages and/or known SRM families (Figure 1). DsrAB of the euryarchaeal genus *Archaeoglobus* and related sequences from thermophilic environments form a separate branch in the reductive bacterial-type DsrAB family tree. All remaining sequences, namely those that are not affiliated with the three superclusters and the *Archaeoglobus* cluster, did not group consistently at a higher phylogenetic level (Steger *et al.*, 2011; Pester *et al.*, 2012), and we have thus not designated them as a supercluster but as the *Firmicutes* group *sensu lato*. These high-order groups/superclusters are named after the main phylum/class that they affiliate with but do not necessarily imply a taxonomic affiliation. Similar to the *Deltaproteobacteria* supercluster, the highly diverse *Firmicutes* group contains *dsrAB* from cultivated members of different phyla and many environmental sequences (Supplementary Results and discussion).

Oxidative-type DsrAB sequences from SOB form a monophyletic enzyme family that is phylogenetically distinct from all other DsrAB sequences (Figure 1 and Supplementary Figure S4). The branching pattern of the tree suggests that oxidative DsrAB evolved by an ancient functional adaptation from an ancestral reductive DsrAB before the diversification into extant DsrAB-carrying phyla. Sequences from known SOB of the classes *Alpha-*, *Beta-* and *Gammaproteobacteria* and the phylum *Chlorobi* form separate clusters in the DsrAB tree that are generally in accordance with the organismal taxonomy (Figure 1, Supplementary Figure S2 and Supplementary Materials and methods). Only *Thioalkalivibrio nitratireducens* branches outside the *Gammaproteobacteria* cluster. Its DsrAB sequence is remarkably different (67–71% amino-acid identity) from the DsrAB of three other *Thioalkalivibrio* species (as opposed to 87–95% DsrAB identity among these three species). Metagenomic (Sheik *et al.*, 2014) and single-cell genome (Swan *et al.*, 2011) analyses have recently identified reverse *dsrAB* and accessory genes for sulfur

oxidation in members of the deltaproteobacterial SAR324 clade. These deltaproteobacterial reverse DsrAB branch with DsrAB of *Chlorobi* and *Magnetococcus marinus*, a species that has been provisionally included in the *Alphaproteobacteria* (Bazyliński *et al.*, 2013). Interestingly, the root of the oxidative-type DsrAB branch is not located between the *Proteobacteria* and the *Chlorobi*. Instead, *Chlorobi* form a monophyletic cluster with *M. marinus* and the putative sulfur-oxidizing deltaproteobacterium (Figure 1), which provides phylogenetic support for the acquisition of *dsrAB* by *Chlorobi* via LGT from a sulfide-oxidizing proteobacterial donor. Such a scenario has been previously postulated based on the absence of *dsrAB* in the deep-branching *Chlorobi* member *Chloroherpeton thalassium* (Frigaard and Bryant, 2008).

Archaeal-type *dsrAB* sequence diversity is mainly represented by sequenced genomes and metagenomes because PCR primers commonly used for amplification of *dsrAB* do not bind to archaeal-type *dsrAB*. So far, three genera within the hyperthermophilic family *Thermoproteaceae* (order *Thermoproteales*) of the phylum *Crenarchaeota*, namely species of *Pyrobaculum* ($n = 7$), *Vulcanisaeta* ($n = 2$) and *Caldivirga* ($n = 1$), are known to harbor this type of *dsrAB*, and each genus is represented by a distinct monophyletic group in the archaeal DsrAB tree (Figure 1 and Supplementary Figure S3). Members of all three genera of archaeal-type DsrAB-carrying organisms are able to reduce thiosulfate and elemental sulfur (Molitor *et al.*, 1998; Itoh *et al.*, 1999, 2002). So far, sulfate reduction has been shown only for *Caldivirga maquilensis* (Itoh *et al.*, 1999); however, *Vulcanisaeta* species might also be capable of sulfate reduction (Itoh *et al.*, 2002), as genes for the complete canonical sulfate reduction pathway are present in the genomes of *Vulcanisaeta distributa* (Mavromatis *et al.*, 2010) and *V. moutnovskia* (Gumerov *et al.*, 2011).

dsrAB are robust phylogenetic marker genes for sulfur compound-dissimilating microorganisms

Phylogenetic signal is blurred in genes that are subject to (i) frequent LGT between unrelated organisms and (ii) duplication and subsequent functional diversification (Koonin *et al.*, 2001; Gogarten *et al.*, 2002). The identification of *dsrAB* in members of bacterial (*Actinobacteria*, *Caldiclerica*, oxidative-type *dsrAB* in *Deltaproteobacteria*) and archaeal (*Aigarchaeota*; formerly known as pSL4 or hot water crenarchaeotic group I candidate division (Nunoura *et al.*, 2011); note that it is under debate whether *Aigarchaeota* members represent their own phylum or belong to the *Thaumarchaeota* (Brochier-Armanet *et al.*, 2011)) phyla previously not known to harbor these genes necessitates the re-evaluation of *dsrAB* as phylogenetic markers. Using an established phylogenetic approach (Zverlov *et al.*, 2005; Loy *et al.*, 2009), we directly compared

consensus trees of DsrAB and 16S rRNA sequences originating from 254 pure cultures and genome sequences for topological incongruences that are indicative of LGT. Owing to the apparent functional adaptation of DsrAB, this analysis was carried out separately for organisms using the reductive (Figure 2) and the oxidative sulfur energy metabolism (Figure 3). Our analysis confirms that reductive-type DsrAB and 16S rRNA branching patterns are generally similar and reproduces known topological inconsistencies regarding (i) a group of *Firmicutes* that most likely acquired *dsrAB* from deltaproteobacterial ancestors of the *Desulfatiglans anilini* (formerly *Desulfobacterium anilini*; Suzuki *et al.*, 2014) lineage (Figure 2) (Klein *et al.*, 2001; Zverlov *et al.*, 2005), (ii) members of the phylum *Thermodesulfobacteria* and (iii) members of the euryarchaeotal genus *Archaeoglobus* that possess bacterial-type *dsrAB*. Besides these documented cases, we have obtained evidence for further possible *dsrAB* LGT events (Supplementary Results and discussion and Supplementary Figure S6). The *Aigarchaeota* member clearly has a reductive-type *dsrAB* that was received either directly by LGT from a bacterial donor, possibly a member of the phylum *Firmicutes*, or indirectly from a yet unknown, bacterial *dsrAB*-containing archaeon (Figures 1 and 2). The presence of bacterial *dsrAB* in the *Aigarchaeota* member and members of the genus *Archaeoglobus* seems to be the result of at least two independent LGT events. The stable monophyletic grouping of the actinobacterium *Gordonibacter pamelaiae* with the *Firmicutes* genera *Desulfosporosinus* and *Desulfotobacterium* in the DsrAB tree (Figures 1 and 2) suggests LGT from an unknown donor. Although the deep, independent position of the *Caldiclerica* phylum member in both the DsrAB tree and the 16S rRNA tree is inconclusive regarding LGT, complementary analyses also indicate a foreign origin of its *dsrAB* (Supplementary Results and discussion and Supplementary Figure S6). These results provide a first view into the possible evolutionary paths that led to the presence of a reductive bacterial-type *dsrAB* in the bacterial phyla *Actinobacteria* and *Caldiclerica*, and the archaeal candidate phylum *Aigarchaeota*, but in-depth insights can only be obtained when more *dsrAB* sequences from members of these phyla are available.

Based on larger sequence data sets, we confirm that branching patterns of DsrAB and 16S rRNA trees of SOB are largely congruent (Loy *et al.*, 2009), with one exception (Figure 3). In the DsrAB tree, *T. nitratireducens* is not related to three other species of the genus *Thioalkalivibrio*, but branches independently from other *Proteobacteria*. One possible explanation for the phylogenetic position of DsrAB of *T. nitratireducens* is xenologous replacement of its orthologous *dsrAB* with *dsrAB* from an unknown and unrelated proteobacterial donor.

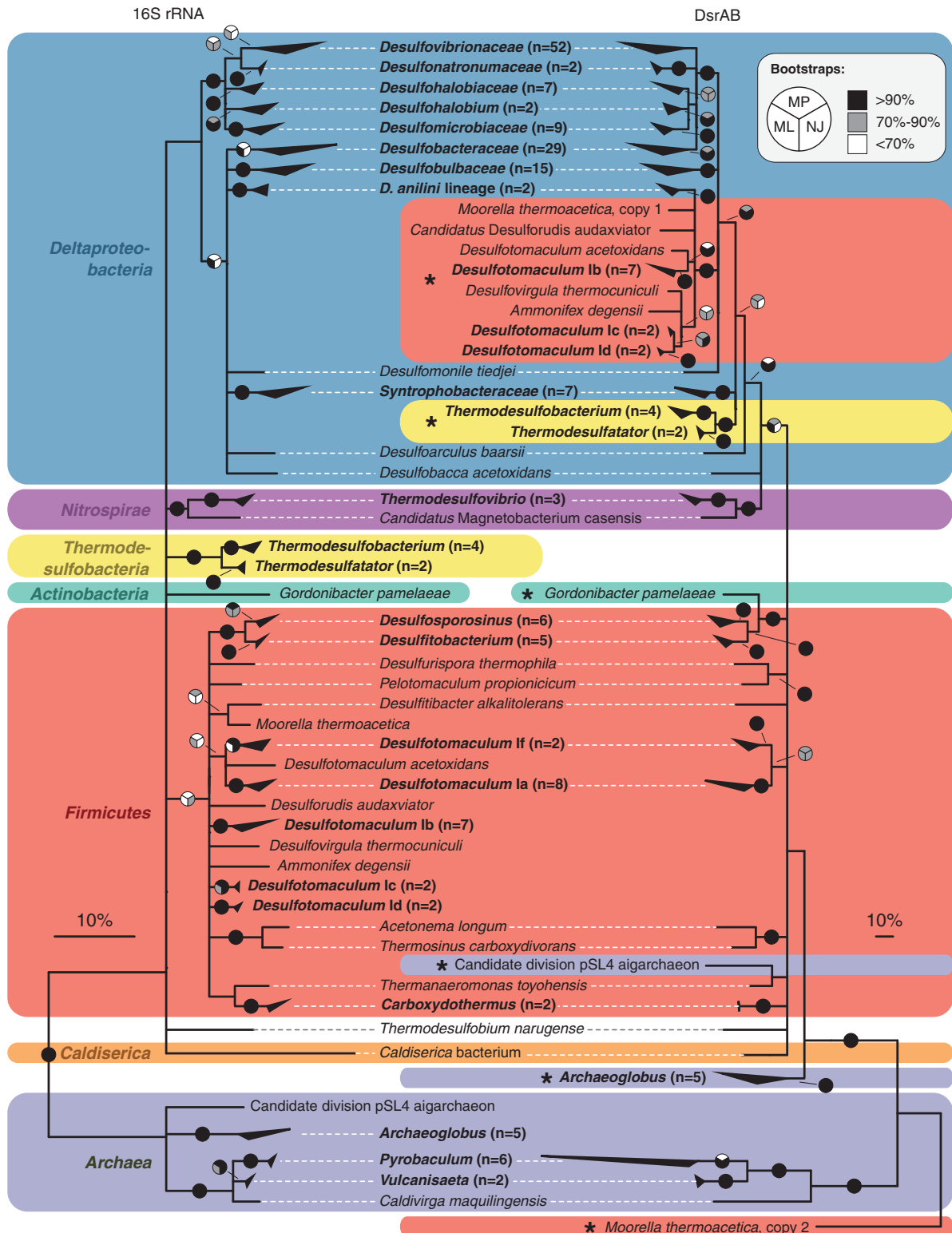


Figure 2 Comparison of 16S rRNA and reductive DsrAB trees. The strict consensus trees are based on corresponding sequence pairs of 16S rRNA and reductive DsrAB from 254 pure cultures and genomes. 16S rRNA and DsrAB trees were calculated using a 50% conservation filter for bacteria (1222 nucleotide positions) and an indel filter for reductive-type DsrAB (530 amino-acid positions), respectively. Scale bars indicate 10% sequence divergence. Both trees are collapsed at the family, genus or (in case of *Desulfotomaculum*) subcluster level. Sequences that branch inconsistently between the trees are marked with an asterisk. Bootstrap support (100 resamplings) is shown by split circles (top: maximum parsimony; bottom left: maximum likelihood; bottom right: neighbor joining) at the respective branches, with black, gray and white/absence indicating $\geq 90\%$, 70%–90% and $< 70\%$ support, respectively.

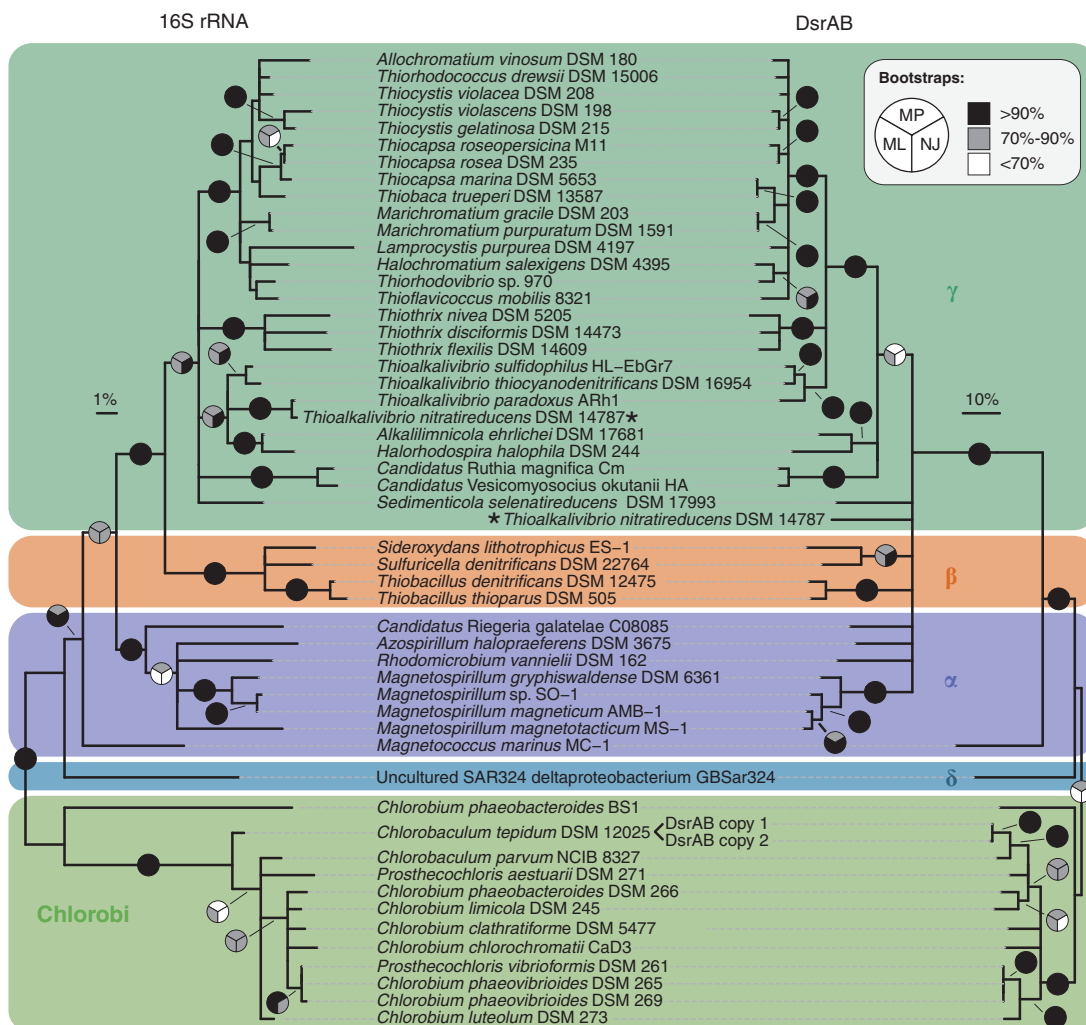


Figure 3 Comparison of 16S rRNA and oxidative DsrAB trees. The strict consensus trees are based on corresponding sequence pairs of 16S rRNA and oxidative DsrAB from 51 pure cultures and genomes. 16S rRNA and DsrAB trees were calculated using a 50% conservation filter for bacteria (1222 nucleotide positions) and an indel filter for oxidative-type DsrAB (552 amino-acid positions), respectively. Scale bars indicate 10% sequence divergence. Sequences that branch inconsistently between the trees are marked with an asterisk. Bootstrap support (1000 resamplings) is shown by split circles (top: maximum parsimony; bottom left: maximum likelihood; bottom right: neighbor joining) at the respective branches, with black, gray and white/absence indicating $\geq 90\%$, 70%–90% and $< 70\%$ support, respectively.

A robust DsrAB consensus tree and knowing the discrepancies in 16S rRNA and DsrAB-based phylogenies of described taxa are important for a phylogenetically well-informed interpretation of *dsrAB* diversity in environmental samples. The detection of reverse *dsrAB* in a metagenome bin (Sheik *et al.*, 2014) and single-cell genomes (Swan *et al.*, 2011) of the deltaproteobacterial SAR324 clade, whose sulfide-oxidizing members are related to deltaproteobacterial SRM in the 16S rRNA tree, illustrates that inferring general physiological traits such as sulfate/sulfite reduction or sulfur oxidation from 16S rRNA phylogeny can be problematic. In contrast, DsrAB phylogeny clearly distinguishes oxidative versus reductive sulfur metabolism. Despite some limitations, *dsrAB* also remain useful phylogenetic markers because an environmental

dsrAB sequence is identified with high certainty as a member of a recognized taxon if it clusters unambiguously within this taxon. In contrast, the taxonomic identity of an organism represented by an environmental *dsrAB* sequence that branches outside a recognized taxon, such as members of the 13 uncultured family-level DsrAB lineages, is uncertain.

Environmental distribution of dsrAB-carrying organisms
 We further examined the environmental distribution of the 1292 core *dsrAB* sequences and of 6403 partial *dsrA* or *dsrB* sequences with a minimum length of 300 nucleotides. Owing to the many non-overlapping sequences, partial *dsrA* and *dsrB* sequences could not be jointly clustered into sequence

identity-based species-level OTUs. Instead, they were phylogenetically placed into the consensus tree (Figure 1) without changing its topology (Figure 4). The majority of the 6403 shorter sequences is affiliated with described families and uncultured family-level lineages ($n=5893$; 92%) or unclassified environmental sequences of the core data set ($n=409$; 6%) (Figure 1). Only few sequences ($n=101$; 2%) do not branch within sequence clusters defined by the core data set. A large proportion ($n=2349$; 35%) of the 6686 sequences on the reductive bacterial DsrAB branch are not affiliated with known taxa (i.e., families, genera) that are represented by cultured organisms. For example, uncultured family-level lineage 9 ($n=559$) contains a similar number of sequences as the family *Desulfovibrionaceae* ($n=531$) that harbors many, taxonomically well-described *Desulfovibrio* species (Loy *et al.*, 2002; Muyzer and Stams, 2008).

We additionally grouped the 7695 *dsrAB* sequences into eight broad environmental categories

(i.e., marine, estuarine, freshwater, soil, industrial, thermophilic, alkali-/halophilic and symbiotic) (Supplementary Materials and methods) to gain insights into the environmental distribution patterns of members of major phylogenetic DsrAB lineages. Most sequences derive from marine environments (31%), followed by freshwater (24%), industrial (16%) and soil environments (11%). Members of most major DsrAB lineages are widely distributed among various environments with starkly contrasting biogeochemical properties, which provides limited indications of the possible ecological factors that gave rise to evolution of the many, phylogenetically distinct lineages at the approximate taxonomic rank of families (Figure 4). However, there are notable exceptions that are indicative of environmental preference. Members of the uncultured family-level lineages 2, 3 and 4 are almost exclusively found in marine environments. Not surprisingly, sequences affiliated with the deltaproteobacterial families *Desulfobacteriaceae*

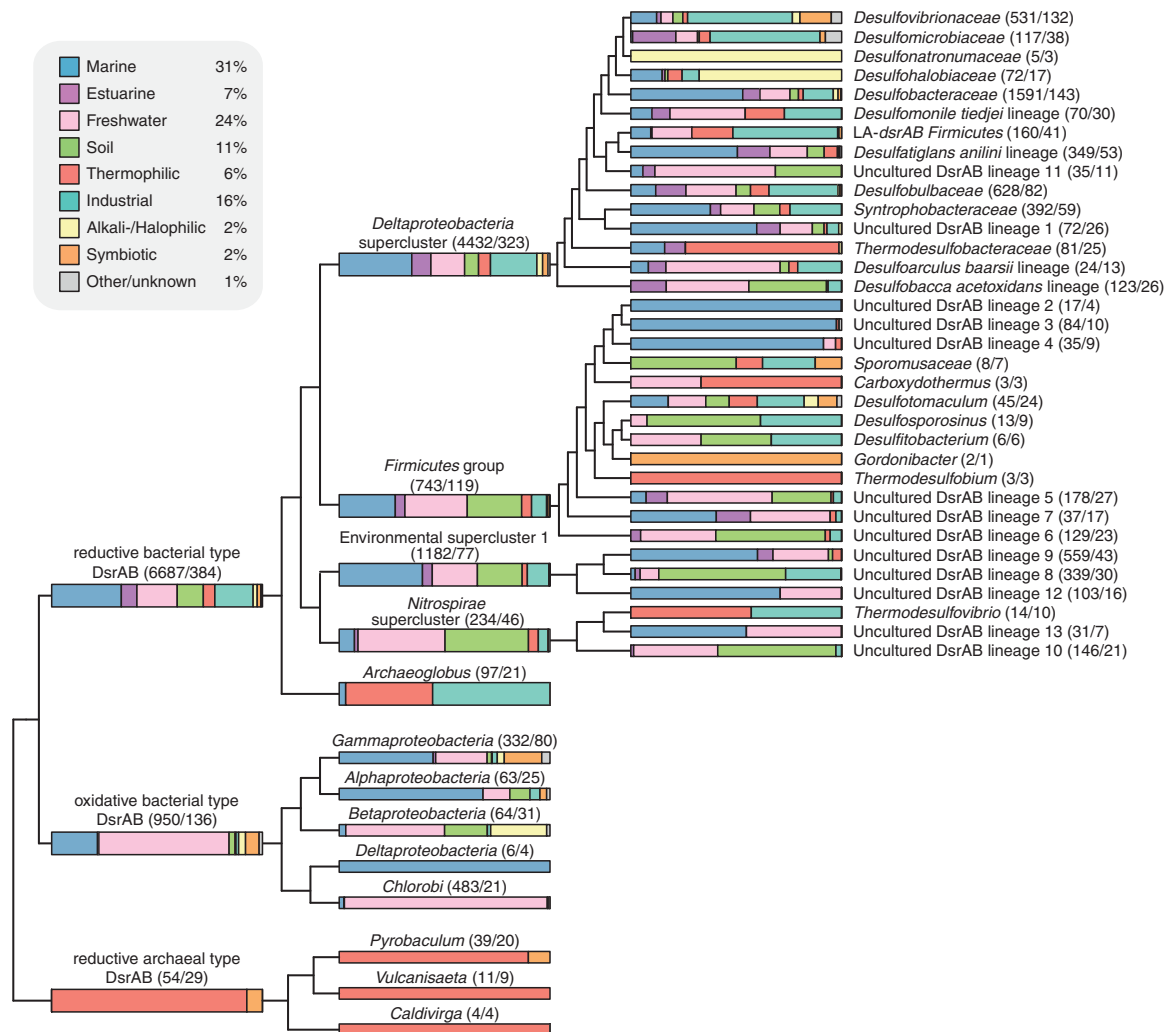


Figure 4 Environmental distribution of *dsrAB* diversity. Environmental classification of 7695 *dsrAB* sequences from 530 amplicon sequencing, metagenome or genome studies. Numbers within parentheses indicate the number of sequences/number of studies per lineage. Unclassified environmental sequences ($n=594$) are only shown as part of DsrAB types/superclusters.

and *Desulfonatronumaceae*, which include known halophilic and alkaliphilic SRM (Ollivier *et al.*, 1991; Pikuta *et al.*, 2003; Jakobsen *et al.*, 2006; Sorokin *et al.*, 2008), derive predominately from high-salt and/or high-pH environments. Oxidative bacterial-type *dsrAB* sequences of *Chlorobi* are most often detected in freshwater habitats. This is, however, possibly a biased representation, as two studies of freshwater environments have provided 94% of all available *Chlorobi dsrAB* sequences. Microorganisms with archaeal-type *dsrAB* seem to be restricted to hot environments, but this also needs to be interpreted with caution, because of the low number of available environmental sequences from this DsrAB enzyme family.

Analogous to marker genes for other functional guilds (Musmann *et al.*, 2011), detection of reductive and oxidative *dsrAB* or their transcripts in an environmental sample is not to be mistaken with the actual physiological capability for dissimilatory sulfate/sulfite reduction and sulfur oxidation, respectively (Pester *et al.*, 2012). In addition to the presence of *dsrAB* in syntrophic bacteria, which are

apparently incapable of using sulfate, sulfite or organosulfonates, environmental fragments of *dsrAB* might derive from viruses or virus-like particles that infect SRM (Rapp and Wall, 1987; Walker *et al.*, 2006; Stanton, 2007) or SOB (Anantharaman *et al.*, 2014), and thus possibly serve as vectors for LGT or supplement the sulfur metabolism of their microbial hosts. Although DsrAB has thus far been shown to function exclusively in dissimilation, it is conceivable that some organisms use it for detoxification of sulfite (Johnson and Mukhopadhyay, 2005; Lukat *et al.*, 2008).

A list of in silico-evaluated primers allows selection of best primer combinations for future environmental dsrAB surveys

We evaluated the *in silico* coverage (i.e., the fraction of sequences in the target group that is matched by the primer) of 103 published, individual *dsrAB*-targeted primers and primer mixtures and 28 primer pairs against the updated *dsrAB* sequence database (Supplementary Results and discussion and Supplementary Tables S1–S4).

Table 1 Recommended primers/primer pairs for the amplification of *dsrAB*

Name ^a	Target gene	Position ^b	Deg. ^c	Full-length <i>dsrAB</i> ^d (%)		Core data set <i>dsrAB</i> ^e (%)		Reference
				0 MM	1 wMM	0 MM	1 wMM	
<i>Primers targeting reductive bacterial-type dsrAB</i>								
DSR1Fmix/DSR4Rmix (1943 nt)	<i>dsrAB</i>	187–2129		47	92	NA	NA	Pester <i>et al.</i> (2010)
DSR1Fmix	<i>dsrA</i>	187–202	11	53	98	NA	NA	Pester <i>et al.</i> (2010)
DSR4Rmix	<i>dsrB</i>	2113–2129	10	77	94	NA	NA	Pester <i>et al.</i> (2010)
DSR67F/DSR698R (1941 nt)	<i>dsrAB</i>	189–2129		37	91	NA	NA	Suzuki <i>et al.</i> (2005)
DSR67F	<i>dsrA</i>	189–203	4	43	100	NA	NA	Suzuki <i>et al.</i> (2005)
DSR698R	<i>dsrB</i>	2113–2129	8	71	91	NA	NA	Suzuki <i>et al.</i> (2005)
dsrB F1a–h/4RSI1a–f (362 nt)	<i>dsrB</i>	1762–2123		27	83	NA	NA	Lever <i>et al.</i> (2013)
dsrB F1a–h	<i>dsrB</i>	1762–1776	8	35	86	44	89	Lever <i>et al.</i> (2013)
dsrB 4RSI1a–f	<i>dsrB</i>	2107–2123	1	62	97	NA	NA	Lever <i>et al.</i> (2013)
DSR1728mix/DSR4Rmix (368 nt)	<i>dsrB</i>	1762–2129		70	94	NA	NA	Steger <i>et al.</i> (2011)
DSR1728Fmix	<i>dsrB</i>	1762–1776	77	90	100	91	100	Steger <i>et al.</i> (2011)
<i>Primers targeting oxidative bacterial-type dsrAB</i>								
rDSR1Fmix/rDSR4Rmix (1865 nt)	<i>dsrAB</i>	169–2033		97	100	NA	NA	Loy <i>et al.</i> (2009)
rDSR1Fmix	<i>dsrA</i>	169–184	80	97	100	NA	NA	Loy <i>et al.</i> (2009)
rDSR4Rmix	<i>dsrB</i>	2017–2033	96	100	100	NA	NA	Loy <i>et al.</i> (2009)
rDSRA240F/rDSRB808R (1856 nt)	<i>dsrAB</i>	172–2027		69	79	NA	NA	Lenk <i>et al.</i> (2011)
rDSRA240F	<i>dsrA</i>	172–188	64	97	100	NA	NA	Lenk <i>et al.</i> (2011)
rDSRB808R	<i>dsrB</i>	2011–2027	144	69	79	NA	NA	Lenk <i>et al.</i> (2011)
DSR874F/rDSR4Rmix (1175 nt)	<i>dsrAB</i>	859–2033		71	100	NA	NA	Loy <i>et al.</i> (2009)
DSR874F	<i>dsrA</i>	859–877	96	71	100	70	100	Loy <i>et al.</i> (2009)
DSR1728mix/rDSR4Rmix (350 nt)	<i>dsrB</i>	1684–2033		90	100	NA	NA	Steger <i>et al.</i> (2011)
DSR1728Fmix	<i>dsrB</i>	1684–1698	77	90	100	95	99	Steger <i>et al.</i> (2011)
dsrB F1a–h/4RSI2a–h (344 nt)	<i>dsrB</i>	1684–2027		29	82	NA	NA	Lever <i>et al.</i> (2013)
dsrB F1a–h	<i>dsrB</i>	1684–1698	8	47	90	43	89	Lever <i>et al.</i> , 2013
dsrB 4RSI2a–h	<i>dsrB</i>	2011–2027	1	44	90	NA	NA	Lever <i>et al.</i> (2013)

Abbreviations: 0 MM, no mismatches; 1 wMM, one weighted mismatch; NA, not applicable for primers binding at the target sites or outside the amplification region of (r)DSR1F/(r)DSR4R; nt, nucleotide.

^aExpected length of the PCR amplicon for primer pairs is given within parentheses. For primer sequences please refer to Supplementary Tables S1 and 2.

^bPosition is relative to *Desulfovibrio vulgaris* Hildenborough *dsrAB* (NC_002937, 449 888...452 365) for reductive bacterial-type and *Allochrochromatium vinosum dsrAB* (NC_013851, 1 439 735...1 442 113) for oxidative-type *dsrAB* sequences.

^cDegeneracy is given as the number of oligonucleotides that comprise the primer.

^dData indicate primer coverage of all full-length reductive bacterial-type ($n = 115$) and oxidative-type ($n = 62$) *dsrAB* sequences.

^eData indicate primer coverage of all reductive bacterial-type ($n = 1110$) and oxidative-type ($n = 159$) *dsrAB* sequences of the core data set.

Although most primers are highly specific for *dsrAB* sequences, only few primers or primer mixes target $\geq 50\%$ (coverage of perfectly matched sequences) and/or $\geq 90\%$ (coverage of sequences with up to one weighted mismatch) of reductive- or oxidative bacterial-type *dsrAB* sequences (Supplementary Tables S1 and S2 and Supplementary Figure S7). The forward primers DSR1Fmix a–h, DSR1728Fmix A–E, DSR67F, *dsrB* F2a–i and reverse primers DSR4Rmix a–g, DSR698R, *dsrB* 4RSI1a–f have highest coverage values for reductive bacterial-type *dsrAB* and are recommended for future use. Reverse *dsrAB* sequences are best covered by forward primers rDSR1Fmix a–c, rDSRA240F, DSR1728Fmix A–E, DSR874F, *dsrB* F1a–h and reverse primers rDSR4Rmix a–b, rDSRB808R, PGdsrAR and *dsrB* 4RSI2a–h. It is noteworthy that DSR1728Fmix A–E and *dsrB* F1a–h have relatively high coverage for both reductive- and oxidative bacterial-type *dsrAB*.

Of the 28 previously published primer pair combinations (Supplementary Tables S3 and S4), only nine have a good coverage of $> 75\%$ when hits with up to one weighted mismatch are considered (Table 1) and are recommended for further use. Primer pairs DSR1Fmix a–h/DSR4Rmix a–g (~ 1.9 kb *dsrAB* PCR product) and DSR1728Fmix A–E/DSR4Rmix a–g (~ 0.4 kb *dsrB* PCR product) have highest perfect-match coverage of 47% and 70%, respectively, for reductive bacterial-type *dsrAB*. Primer pairs rDSR1Fmix a–c/rDSR4Rmix a–b and DSR1728Fmix A–E/rDSR4Rmix a–b, which amplify the homologous regions in SOB, have even higher coverage of 97% and 90%, respectively. Separate coverage values obtained for the five major groups within the reductive bacterial-type DsrAB tree indicate that the DSR1F/DSR4R primer pair mix is biased against sequences of the *Firmicutes* group *sensu lato* and the *Nitrospirae* supercluster. While new primer variants should be designed to improve *in silico* coverage, already many environmental sequences belonging to these two groups were obtained by using the DSR1F/DSR4R primer variants (Kaneko *et al.*, 2007; Martinez *et al.*, 2007; Leloup *et al.*, 2009; Wu *et al.*, 2009).

For an improved coverage of the environmentally occurring *dsrAB* diversity by amplicon sequencing, it is therefore recommended to apply the aforementioned primer pairs at low stringency (e.g., low annealing temperature) to allow for binding of non-perfectly matching target sequences. This also promotes more uniform amplification by the different primers in a degenerate primer mixture (Higuchi *et al.*, 1993). Amplification of complex environmental DNA extracts with highly degenerate primers (Supplementary Tables S1–S4) at low stringency unfortunately increases the likelihood for unspecific PCR products (Wagner *et al.*, 2005). This is particularly a problem if degenerate primers are applied for denaturing gradient gel electrophoresis, terminal restriction fragment length

polymorphism or real-time PCR analyses. Hence, PCR performance/biases must be carefully evaluated for each primer combination individually, and specificity of amplification should additionally be confirmed by sequencing of the environmental PCR product or the extracted denaturing gradient gel electrophoresis bands.

To assist researchers during the evaluation of existing and development of new *dsrAB*-targeted oligonucleotides, we have incorporated our database into the probeCheck webserver for straightforward *in silico* testing of primer specificity and coverage (Loy *et al.*, 2008a).

Conflict of Interest

The authors declare no conflict of interest.

Acknowledgements

We honor the pioneering work of Dave Stahl and Michael Wagner on the evolutionary history of DsrAB and are grateful for the inspiring discussions we had over the years. We further thank the former master/PhD students Ivan Barisic, Norbert Bittner, Christina Braunegger, Stephan Duller, Diana Leberherz-Eichinger, Sebastian Lückner, Doris Steger and Cecilia Wentrup for their contributions in updating and maintaining our in-house *dsrAB* database. Craig Herbold and Kenneth Wasmund are acknowledged for critically revising the manuscript. This work was financially supported by the Austrian Science Fund (FWF, P23117-B17 to MP and AL; P25111-B22 to AL), the Danish National Research Foundation (to KUK), the German Research Foundation (DFG PE 2147/1-1 to MP) and the Zukunftskolleg of the University of Konstanz (to MP).

References

- Anantharaman K, Duhaime MB, Breier JA, Wendt KA, Toner BM, Dick GJ. (2014). Sulfur oxidation genes in diverse deep-sea viruses. *Science* **344**: 757–760.
- Bazylnski DA, Williams TJ, Lefevre CT, Berg RJ, Zhang CLL, Bowser SS *et al.* (2013). *Magnetococcus marinus* gen. nov., sp. nov., a marine, magnetotactic bacterium that represents a novel lineage (Magnetococcaceae fam. nov., Magnetococcales ord. nov.) at the base of the Alpha-proteobacteria. *Int J Syst Evol Microbiol* **63**: 801–808.
- Berger SA, Krompass D, Stamatakis A. (2011). Performance, accuracy, and web server for evolutionary placement of short sequence reads under maximum likelihood. *Syst Biol* **60**: 291–302.
- Bowles MW, Mogollon JM, Kasten S, Zabel M, Hinrichs KU. (2014). Global rates of marine sulfate reduction and implications for sub-sea-floor metabolic activities. *Science* **344**: 889–891.
- Brauman A, Müller JA, Garcia JL, Brune A, Schink B. (1998). Fermentative degradation of 3-hydroxybenzoate in pure culture by a novel strictly anaerobic bacterium, *Sporotomaculum hydroxybenzoicum* gen. nov., sp. nov. *Int J Syst Bacteriol* **48**(Part 1): 215–221.

- Brochier-Armanet C, Forterre P, Gribaldo S. (2011). Phylogeny and evolution of the Archaea: one hundred genomes later. *Curr Opin Microbiol* **14**: 274–281.
- Camacho C, Coulouris G, Avagyan V, Ma N, Papadopoulos J, Bealer K *et al*. (2009). BLAST+: architecture and applications. *BMC Bioinform* **10**: 421.
- Canfield DE, Raiswell R. (1999). The evolution of the sulfur cycle. *Am J Sci* **299**: 697–723.
- Dahl C, Kredich NM, Deutzmann R, Trüper HG. (1993). Dissimilatory sulphite reductase from *Archaeoglobus fulgidus*: physico-chemical properties of the enzyme and cloning, sequencing and analysis of the reductase genes. *J Gen Microbiol* **139**: 1817–1828.
- Dahl C, Engels S, Pott-Sperling AS, Schulte A, Sander J, Lübke Y *et al*. (2005). Novel genes of the *dsr* gene cluster and evidence for close interaction of Dsr proteins during sulfur oxidation in the phototrophic sulfur bacterium *Allochromatium vinosum*. *J Bacteriol* **187**: 1392–1404.
- Devkota S, Wang Y, Musch MW, Leone V, Fehlner-Peach H, Nadimpalli A *et al*. (2012). Dietary-fat-induced taurocholic acid promotes pathobiont expansion and colitis in *Il10^{-/-}* mice. *Nature* **487**: 104–108.
- Dhillon A, Teske A, Dillon J, Stahl DA, Sogin ML. (2003). Molecular characterization of sulfate-reducing bacteria in the Guaymas Basin. *Appl Environ Microbiol* **69**: 2765–2772.
- Dhillon A, Goswami S, Riley M, Teske A, Sogin M. (2005). Domain evolution and functional diversification of sulfite reductases. *Astrobiology* **5**: 18–29.
- Euzéby JP. (1997). List of Bacterial Names with Standing in Nomenclature: a folder available on the Internet. *Int J Syst Bacteriol* **47**: 590–592.
- Finster K. (2008). Microbiological disproportionation of inorganic sulfur compounds. *J Sulfur Chem* **29**: 281–292.
- Friedrich CG, Bardischewsky F, Rother D, Quentmeier A, Fischer J. (2005). Prokaryotic sulfur oxidation. *Curr Opin Microbiol* **8**: 253–259.
- Frigaard N-U, Bryant D. (2008). Genomic and evolutionary perspectives on sulfur metabolism in green sulfur bacteria. In: Dahl C, Friedrich C (eds) *Microbial Sulfur Metabolism*. Springer: Berlin, Heidelberg, Germany, pp 60–76.
- Geets J, Borremans B, Vangronsveld J, Diels L, van der Lelie D. (2005). Molecular monitoring of SRB community structure and dynamics in batch experiments to examine the applicability of in situ precipitation of heavy metals for groundwater remediation. *J Soils Sedim* **5**: 149–163.
- Gogarten JP, Doolittle WF, Lawrence JG. (2002). Prokaryotic evolution in light of gene transfer. *Mol Biol Evol* **19**: 2226–2238.
- Gumerov VM, Mardanov AV, Beletsky AV, Prokofeva MI, Bonch-Osmolovskaya EA, Ravin NV *et al*. (2011). Complete genome sequence of ‘*Vulcanisaeta moutnovskia*’ strain 768-28, a novel member of the hyperthermophilic crenarchaeal genus *Vulcanisaeta*. *J Bacteriol* **193**: 2355–2356.
- Higuchi R, Fockler C, Dollinger G, Watson R. (1993). Kinetic PCR analysis: real-time monitoring of DNA amplification reactions. *Biotechnology (NY)* **11**: 1026–1030.
- Huston DL, Logan GA. (2004). Barite, BIFs and bugs: evidence for the evolution of the Earth’s early hydrosphere. *Earth Planet Sci Lett* **220**: 41–55.
- Imachi H, Sekiguchi Y, Kamagata Y, Loy A, Qiu YL, Hugenholtz P *et al*. (2006). Non-sulfate-reducing, syntrophic bacteria affiliated with desulfotomaculum cluster I are widely distributed in methanogenic environments. *Appl Environ Microbiol* **72**: 2080–2091.
- Itoh T, Suzuki K, Sanchez PC, Nakase T. (1999). *Caldivirga maquilungensis* gen. nov., sp. nov., a new genus of rod-shaped crenarchaeote isolated from a hot spring in the Philippines. *Int J Syst Bacteriol* **49**(Pt 3): 1157–1163.
- Itoh T, Suzuki K, Nakase T. (2002). *Vulcanisaeta distributa* gen. nov., sp. nov., and *Vulcanisaeta souniana* sp. nov., novel hyperthermophilic, rod-shaped crenarchaeotes isolated from hot springs in Japan. *Int J Syst Evol Microbiol* **52**: 1097–1104.
- Jakobsen TF, Kjeldsen KU, Ingvorsen K. (2006). *Desulfohalobium utahense* sp. nov., a moderately halophilic, sulfate-reducing bacterium isolated from Great Salt Lake. *Int J Syst Evol Microbiol* **56**: 2063–2069.
- Johnson EF, Mukhopadhyay B. (2005). A new type of sulfite reductase, a novel coenzyme F420-dependent enzyme, from the methanarchaeon *Methanocaldococcus jannaschii*. *J Biol Chem* **280**: 38776–38786.
- Kaneko R, Hayashi T, Tanahashi M, Naganuma T. (2007). Phylogenetic diversity and distribution of dissimilatory sulfite reductase genes from deep-sea sediment cores. *Mar Biotechnol (NY)* **9**: 429–436.
- Karkhoff-Schweizer RR, Huber DP, Voordouw G. (1995). Conservation of the genes for dissimilatory sulfite reductase from *Desulfovibrio vulgaris* and *Archaeoglobus fulgidus* allows their detection by PCR. *Appl Environ Microbiol* **61**: 290–296.
- Kelly DP, Shergill JK, Lu WP, Wood AP. (1997). Oxidative metabolism of inorganic sulfur compounds by bacteria. *Antonie Van Leeuwenhoek* **71**: 95–107.
- Kjeldsen KU, Loy A, Jakobsen TF, Thomsen TR, Wagner M, Ingvorsen K. (2007). Diversity of sulfate-reducing bacteria from an extreme hypersaline sediment, Great Salt Lake (Utah). *FEMS Microbiol Ecol* **60**: 287–298.
- Klein M, Friedrich M, Roger AJ, Hugenholtz P, Fishbain S, Abicht H *et al*. (2001). Multiple lateral transfers of dissimilatory sulfite reductase genes between major lineages of sulfate-reducing prokaryotes. *J Bacteriol* **183**: 6028–6035.
- Kletzin A, Urich T, Muller F, Bandejas TM, Gomes CM. (2004). Dissimilatory oxidation and reduction of elemental sulfur in thermophilic archaea. *J Bioenerg Biomembr* **36**: 77–91.
- Kondo R, Nedwell DB, Purdy KJ, Silva SD. (2004). Detection and enumeration of sulphate-reducing bacteria in estuarine sediments by competitive PCR. *Geomicrobiol J* **21**: 145–157.
- Koonin EV, Makarova KS, Aravind L. (2001). Horizontal gene transfer in prokaryotes: quantification and classification. *Annu Rev Microbiol* **55**: 709–742.
- Larsen O, Lien T, Birkeland NK. (1999). Dissimilatory sulfite reductase from *Archaeoglobus profundus* and *Desulfohalobium thermocisternum*: phylogenetic and structural implications from gene sequences. *Extremophiles* **3**: 63–70.
- Leloup J, Quillet L, Berthe T, Petit F. (2006). Diversity of the *dsrAB* (dissimilatory sulfite reductase) gene sequences retrieved from two contrasting mudflats of the Seine estuary, France. *FEMS Microbiol Ecol* **55**: 230–238.

- Leloup J, Fossing H, Kohls K, Holmkvist L, Borowski C, Jørgensen BB. (2009). Sulfate-reducing bacteria in marine sediment (Aarhus Bay, Denmark): abundance and diversity related to geochemical zonation. *Environ Microbiol* **11**: 1278–1291.
- Lenk S, Arnds J, Zerjatke K, Musat N, Amann R, Mussmann M. (2011). Novel groups of Gamma-proteobacteria catalyze sulfur oxidation and carbon fixation in a coastal, intertidal sediment. *Environ Microbiol* **13**: 758–774.
- Lever MA, Rouxel O, Alt JC, Shimizu N, Ono S, Coggon RM *et al.* (2013). Evidence for microbial carbon and sulfur cycling in deeply buried ridge flank basalt. *Science* **339**: 1305–1308.
- Loy A, Lehner A, Lee N, Adamczyk J, Meier H, Ernst J *et al.* (2002). Oligonucleotide microarray for 16S rRNA gene-based detection of all recognized lineages of sulfate-reducing prokaryotes in the environment. *Appl Environ Microbiol* **68**: 5064–5081.
- Loy A, Arnold R, Tischler P, Rattei T, Wagner M, Horn M. (2008a). probeCheck—a central resource for evaluating oligonucleotide probe coverage and specificity. *Environ Microbiol* **10**: 2894–2898.
- Loy A, Duller S, Wagner M. (2008b). Evolution and ecology of microbes dissimilating sulfur compounds: insights from siroheme sulfite reductases. In: Dahl C (ed) *Microbial Sulfur Metabolism*. Springer: Berlin, Germany, pp 46–59.
- Loy A, Duller S, Baranyi C, Mussmann M, Ott J, Sharon I *et al.* (2009). Reverse dissimilatory sulfite reductase as phylogenetic marker for a subgroup of sulfur-oxidizing prokaryotes. *Environ Microbiol* **11**: 289–299.
- Ludwig W, Strunk O, Westram R, Richter L, Meier H, Yadhukumar *et al.* (2004). ARB: a software environment for sequence data. *Nucleic Acids Res* **32**: 1363–1371.
- Lukat P, Rudolf M, Stach P, Messerschmidt A, Kroneck PM, Simon J *et al.* (2008). Binding and reduction of sulfite by cytochrome *c* nitrite reductase. *Biochemistry* **47**: 2080–2086.
- Martinez CE, Yanez C, Yoon SJ, Bruns MA. (2007). Biogeochemistry of metalliferous peats: sulfur speciation and depth distributions of dsrAB genes and Cd, Fe, Mn, S, and Zn in soil cores. *Environ Sci Technol* **41**: 5323–5329.
- Mavromatis K, Sikorski J, Pabst E, Teshima H, Lapidus A, Lucas S *et al.* (2010). Complete genome sequence of *Vulcanisaeta distributa* type strain (IC-017). *Stand Genom Sci* **3**: 117–125.
- Milucka J, Ferdelman TG, Polerecky L, Franzke D, Wegener G, Schmid M *et al.* (2012). Zero-valent sulphur is a key intermediate in marine methane oxidation. *Nature* **491**: 541–546.
- Molitor M, Dahl C, Molitor I, Schäfer U, Speich N, Huber R *et al.* (1998). A dissimilatory sirohaem-sulfite-reductase-type protein from the hyperthermophilic archaeon *Pyrobaculum islandicum*. *Microbiology* **144**(Pt 2): 529–541.
- Moreau JW, Zierenberg RA, Banfield JF. (2010). Diversity of dissimilatory sulfite reductase genes (dsrAB) in a salt marsh impacted by long-term acid mine drainage. *Appl Environ Microbiol* **76**: 4819–4828.
- Mori Y, Purdy KJ, Oakley BB, Kondo R. (2010). Comprehensive detection of phototrophic sulfur bacteria using PCR primers that target reverse dissimilatory sulfite reductase gene. *Microbes Environ* **25**: 190–196.
- Mussmann M, Brito I, Pitcher A, Sinnighe Damste JS, Hatzenpichler R, Richter A *et al.* (2011). Thaumarchaeotes abundant in refinery nitrifying sludges express amoA but are not obligate autotrophic ammonia oxidizers. *Proc Natl Acad Sci USA* **108**: 16771–16776.
- Muyzer G, Stams AJ. (2008). The ecology and biotechnology of sulphate-reducing bacteria. *Nat Rev Microbiol* **6**: 441–454.
- Nakagawa T, Nakagawa S, Inagaki F, Takai K, Horikoshi K. (2004). Phylogenetic diversity of sulfate-reducing prokaryotes in active deep-sea hydrothermal vent chimney structures. *FEMS Microbiol Lett* **232**: 145–152.
- Nunoura T, Takaki Y, Kakuta J, Nishi S, Sugahara J, Kazama H *et al.* (2011). Insights into the evolution of Archaea and eukaryotic protein modifier systems revealed by the genome of a novel archaeal group. *Nucleic Acids Res* **39**: 3204–3223.
- Ollivier B, Hatchikian C, Prensier G, Guezennec J, Garcia J-L. (1991). *Desulfohalobium retbaense* gen. nov., sp. nov., a halophilic sulfate-reducing bacterium from sediments of a hypersaline lake in Senegal. *Int J Syst Bacteriol* **41**: 74–81.
- Pereira IA, Ramos AR, Grein F, Marques MC, da Silva SM, Venceslau SS. (2011). A comparative genomic analysis of energy metabolism in sulfate reducing bacteria and archaea. *Front Microbiol* **2**: 69.
- Pester M, Bittner N, Deevong P, Wagner M, Loy A. (2010). A 'rare biosphere' microorganism contributes to sulfate reduction in a peatland. *ISME J* **4**: 1591–1602.
- Pester M, Knorr KH, Friedrich MW, Wagner M, Loy A. (2012). Sulfate-reducing microorganisms in wetlands—fameless actors in carbon cycling and climate change. *Front Microbiol* **3**: 72.
- Pierce E, Xie G, Barabote RD, Saunders E, Han CS, Detter JC *et al.* (2008). The complete genome sequence of *Moorella thermoacetica* (f. *Clostridium thermoaceticum*). *Environ Microbiol* **10**: 2550–2573.
- Pikuta EV, Hoover RB, Bej AK, Marsic D, Whitman WB, Cleland D *et al.* (2003). *Desulfonatronum thiodismutans* sp. nov., a novel alkaliphilic, sulfate-reducing bacterium capable of lithoautotrophic growth. *Int J Syst Evol Microbiol* **53**: 1327–1332.
- Pott AS, Dahl C. (1998). Sirohaem sulfite reductase and other proteins encoded by genes at the dsr locus of *Chromatium vinosum* are involved in the oxidation of intracellular sulfur. *Microbiology* **144**(Part 7): 1881–1894.
- Rapp BJ, Wall JD. (1987). Genetic transfer in *Desulfovibrio desulfuricans*. *Proc Natl Acad Sci USA* **84**: 9128–9130.
- Schedel M, Trüper HG. (1979). Purification of *Thiobacillus denitrificans* siroheme sulfite reductase and investigation of some molecular and catalytic properties. *Biochim Biophys Acta* **568**: 454–466.
- Sheik CS, Jain S, Dick GJ. (2014). Metabolic flexibility of enigmatic SAR324 revealed through metagenomics and metatranscriptomics. *Environ Microbiol* **16**: 304–317.
- Simon J, Kroneck P. (2013). Microbial sulfite respiration. *Adv Microb Physiol* **62**: 45–117.
- Sorokin DY, Tourova TP, Henstra AM, Stams AJ, Galinski EA, Muyzer G. (2008). Sulfidogenesis under extremely haloalkaline conditions by *Desulfonatronospira thiodismutans* gen. nov., sp. nov., and *Desulfonatronospira delicata* sp. nov.—a novel lineage of Deltaproteobacteria from hypersaline soda lakes. *Microbiology* **154**: 1444–1453.

- Stackebrandt E, Ebers J. (2006). Taxonomic parameters revisited: tarnished gold standards. *Microbiol Today* **33**: 152–155.
- Stamatakis A. (2006). RAxML-VI-HPC: maximum likelihood-based phylogenetic analyses with thousands of taxa and mixed models. *Bioinformatics* **22**: 2688–2690.
- Stanton TB. (2007). Prophage-like gene transfer agents—novel mechanisms of gene exchange for *Methanococcus*, *Desulfovibrio*, *Brachyspira*, and *Rhodobacter* species. *Anaerobe* **13**: 43–49.
- Steger D, Wentrup C, Braunegger C, Deevong P, Hofer M, Richter A *et al*. (2011). Microorganisms with novel dissimilatory (bi)sulfite reductase genes are widespread and part of the core microbiota in low-sulfate peatlands. *Appl Environ Microbiol* **77**: 1231–1242.
- Suzuki Y, Kelly SD, Kemner KM, Banfield JF. (2005). Direct microbial reduction and subsequent preservation of uranium in natural near-surface sediment. *Appl Environ Microbiol* **71**: 1790–1797.
- Suzuki D, Li Z, Cui X, Zhang C, Katayama A. (2014). Reclassification of *Desulfobacterium anilini* as *Desulfatiglans anilini* comb. nov. within *Desulfatiglans* gen. nov., and description of a 4-chlorophenol-degrading sulfate-reducing bacterium, *Desulfatiglans parachlorophenolica* sp. nov. *Int J Syst Evol Microbiol* **64**(Part 9): 3081–3086.
- Swan BK, Martinez-Garcia M, Preston CM, Sczyrba A, Woyke T, Lamy D *et al*. (2011). Potential for chemolithoautotrophy among ubiquitous bacteria lineages in the dark ocean. *Science* **333**: 1296–1300.
- Wagner M, Roger AJ, Flax JL, Brusseau GA, Stahl DA. (1998). Phylogeny of dissimilatory sulfite reductases supports an early origin of sulfate respiration. *J Bacteriol* **180**: 2975–2982.
- Wagner M, Loy A, Klein M, Lee N, Ramsing NB, Stahl DA *et al*. (2005). Functional marker genes for identification of sulfate-reducing prokaryotes. *Methods Enzymol* **397**: 469–489.
- Walker CB, Stolyar SS, Pinel N, Yen HC, He Z, Zhou J *et al*. (2006). Recovery of temperate *Desulfovibrio vulgaris* bacteriophage using a novel host strain. *Environ Microbiol* **8**: 1950–1959.
- Wu XJ, Pan JL, Liu XL, Tan J, Li DT, Yang H. (2009). Sulfate-reducing bacteria in leachate-polluted aquifers along the shore of the East China Sea. *Can J Microbiol* **55**: 818–828.
- Yang Z. (1997). PAML: a program package for phylogenetic analysis by maximum likelihood. *Comput Appl Biosci* **13**: 555–556.
- Yang Z, Nielsen R, Goldman N, Pedersen AM. (2000). Codon-substitution models for heterogeneous selection pressure at amino acid sites. *Genetics* **155**: 431–449.
- Zverlov V, Klein M, Lücker S, Friedrich MW, Kellermann J, Stahl DA *et al*. (2005). Lateral gene transfer of dissimilatory (bi)sulfite reductase revisited. *J Bacteriol* **187**: 2203–2208.



This work is licensed under a Creative Commons Attribution-NonCommercial-ShareAlike 3.0 Unported License. The images or other third party material in this article are included in the article's Creative Commons license, unless indicated otherwise in the credit line; if the material is not included under the Creative Commons license, users will need to obtain permission from the license holder to reproduce the material. To view a copy of this license, visit <http://creativecommons.org/licenses/by-nc-sa/3.0/>

Supplementary Information accompanies this paper on The ISME Journal website (<http://www.nature.com/ismej>)