



Palmer, A., Fernquest, S., Gimpel, M., Birchall, R., Judge, A., Broomfield, J., Newton, J., Wotherspoon, M., Carr, A., & Glyn-Jones, S. (2017). Physical activity during adolescence and the development of cam morphology: A cross-sectional cohort study of 210 individuals. *British Journal of Sports Medicine*, 52(9), 601-610. <https://doi.org/10.1136/bjsports-2017-097626>

Publisher's PDF, also known as Version of record

Link to published version (if available):
[10.1136/bjsports-2017-097626](https://doi.org/10.1136/bjsports-2017-097626)

[Link to publication record in Explore Bristol Research](#)
PDF-document

This is the final published version of the article (version of record). It first appeared online via BMJ at <http://bjsm.bmj.com/content/52/9/601>. Please refer to any applicable terms of use of the publisher.

University of Bristol - Explore Bristol Research

General rights

This document is made available in accordance with publisher policies. Please cite only the published version using the reference above. Full terms of use are available: <http://www.bristol.ac.uk/red/research-policy/pure/user-guides/ebr-terms/>



OPEN ACCESS

Physical activity during adolescence and the development of cam morphology: a cross-sectional cohort study of 210 individuals

Antony Palmer,¹ Scott Fernquest,¹ Mo Gimpel,² Richard Birchall,² Andrew Judge,^{1,3} John Broomfield,¹ Julia Newton,¹ Mark Wotherspoon,² Andrew Carr,¹ Sion Glyn-Jones¹

► Additional material is published online only. To view, please visit the journal online (<http://dx.doi.org/10.1136/bjsports-2017-097626>).

¹Nuffield Department of Orthopaedics, Rheumatology, and Musculoskeletal Sciences, University of Oxford, Oxford, UK
²Southampton Football Club, Southampton, UK
³MRC Lifecourse Epidemiology Unit, University of Southampton, Southampton, UK

Correspondence to

Antony Palmer, University of Oxford-Nuffield Department of Orthopaedics, Rheumatology, and Musculoskeletal Sciences, Oxford, UK; antony.palmer@ndorms.ox.ac.uk

Accepted 27 June 2017
Published Online First
10 August 2017

ABSTRACT

Introduction Cam morphology is a strong risk factor for the development of hip pain and osteoarthritis. It is increasingly thought to develop in association with intense physical activity during youth; however, the aetiology remains uncertain. The study aim was to characterise the effect of physical activity on morphological hip development during adolescence.

Methods Cross-sectional study of individuals aged 9–18 years recruited from Southampton Football Club Academy (103 male) with an age-matched control population (52 males and 55 females). Assessments included questionnaires and 3 Tesla MRI of both hips. Alpha angle, epiphyseal extension and epiphyseal tilt were measured on radial images.

Results Alpha angle and epiphyseal extension increased most rapidly between ages 12 and 14 years. Soft-tissue hypertrophy at the femoral head-neck junction preceded osseous cam morphology and was first evident at age 10 years. The greatest increase and highest absolute values of alpha angle and epiphyseal extension were localised at 1 o'clock. Maximum alpha angles were 6.7 degrees greater in males than females ($p=0.005$). Compared with individuals who play no regular sport, alpha angles were 4.0 degrees higher in individuals who play sport for a school or club ($p=0.041$) and 7.7 degrees higher in individuals competing at a national or international level ($p=0.035$). There was no association with leg dominance.

Conclusions Sporting activity during adolescence is strongly associated with the development of cam morphology secondary to epiphyseal hypertrophy and extension with a dose-response relationship. Males participating in competitive sport are at particularly elevated risk of developing cam morphology and secondary hip pathology.

INTRODUCTION

Cam morphology of the hip is a strong risk factor for the development of hip pain and osteoarthritis.¹ At present, the pathogenesis of cam morphology remains poorly understood.² The development of interventions to prevent cam formation and hence secondary injury and osteoarthritis requires an improved understanding of its causation.

Studies to date conclude that cam morphology develops around the time of physeal closure^{3–7}; however, it is not clear when morphological changes are first evident. This is critical to the timing of possible preventative interventions.

The prevalence of cam morphology is higher in adult athlete cohorts compared with non-athletic cohorts,⁸ which may explain the increased rates of hip osteoarthritis in retired footballers.^{9–11} Small studies suggest a higher prevalence of cam morphology among athletes for a number of sports including soccer,¹² basketball⁴ and ice hockey.¹³ One proposed mechanism of cam formation is epiphyseal extension at the anterosuperior head-neck junction.¹⁴ However, studies demonstrate limited correlation between epiphyseal extension and subsequent cam morphology.^{7,15} These studies address bony morphology and not the cartilaginous structures of skeletally immature hips. The lower prevalence of cam morphology among females compared with males suggests a possible gender-specific pathogenesis.¹⁶

Aims of this study were to i) explore when cam morphology first develops, ii) characterise the mechanism of cam development and iii) identify associations with cam morphology.

METHODS

Study design

Cross-sectional cohort study (participants will subsequently be followed-up longitudinally).

Population

Individuals aged 9–18 years were recruited from Southampton Football Club (SFC) Academy and local schools (controls) (see online supplementary figure S1 for recruitment flowchart and supplementary data for power calculations). Cohorts were loaded for younger age groups to ensure an adequate number of individuals with an open physis and to compensate for loss to follow-up during the planned longitudinal study.

At SFC, randomly selected individuals from each age category were invited to participate (two individuals declined). The control population was recruited through public engagement events at local schools. Specific age groups were targeted to recruit approximately age-matched cohorts, but no individual was declined participation. The only exclusion criterion was previous hip surgery.

Assessment

Participant demographics and activity levels

Questionnaires were completed with the assistance of parents where appropriate and included the collection of patient demographics (age, gender, body mass index (BMI), leg dominance)



To cite: Palmer A, Fernquest S, Gimpel M, et al. *Br J Sports Med* 2018;**52**:601–610.

and activity levels. Activity was evaluated using three methods: i) SFC Academy versus general population controls; ii) three-tier classification denoted 'Activity Level': a) 'no sport': no regular sport besides physical education classes at school, b) 'sport': regularly play sport for school or club team, c) 'athlete': compete at national or international level; iii) Physical Activity Questionnaire (PAQ) for older children (aged 9–13 years) and adolescents (aged 14–18 years).¹⁷ This collects information on sport and exercise undertaken during an average week and provides a summary score of physical activity levels (a score of 1 indicates low physical activity, whereas a score of 5 indicates high physical activity). It differentiates between active and inactive individuals but does not measure duration, frequency or intensity of activity.¹⁸

Imaging

Cam morphology was assessed with MRI of both hips using a 3 Tesla Philips Achieva platform and torso coil (Philips Healthcare). Two morphological sequences were acquired: three-dimensional (3D) water selective fluid (WATSf) to image joint cartilage and bone, and 3D proton density fat saturation (PDFS) to image the physeal scar (see online supplementary data for sequence parameters).

3D multiplanar reconstructions were performed using OsiriX Software (V.6.0.2, Pixmeo). Radial images were acquired around the axis of the femoral neck at 30 degree intervals (see online supplementary figure S2).

Imaging outcome measures

Cam morphology was quantified using the alpha angle for bone and cartilage, which was treated as a continuous variable given there is no agreed diagnostic threshold (figure 1).¹⁹ Radiographic epidemiological studies suggest alpha angles above 60 degrees are elevated and potentially diagnostic.²⁰ Cartilage alpha angle was chosen as the primary outcome measure because in the skeletally immature hip the secondary ossification centre does not accurately reflect overall hip shape. Furthermore, it is non-ossified structures that impact in femoroacetabular

impingement. The physis of each hip was scored as 'open' or 'closed' (see online supplementary figure S3).

Epiphyseal morphology was quantified using epiphyseal extension, which measures the distance the epiphysis extends along the femoral neck expressed as a ratio of femoral head diameter. Physeal tilt was quantified as the ratio of epiphyseal extension on either side of the physis (figure 1).¹³

Alpha angle and epiphyseal extension were measured using custom-developed software on the radial slices at 11 o'clock, 12 o'clock, 1 o'clock, 2 o'clock and 3 o'clock (figure 1) (see online supplementary data for reproducibility results). These positions were selected as they include the most frequent locations of cam morphology and pilot data suggested the magnitude of cam morphology was greatest at 1 o'clock.²¹ To account for variation in the location of cam morphology, the primary outcome measure was maximum cartilage alpha angle from 11 o'clock through to 3 o'clock.

Measurements were performed by an academic orthopaedic clinician (AP) blinded to participant information. Reproducibility readings were performed by a further academic orthopaedic clinician (SF).

Statistical analysis

Statistical calculations were performed using STATA V.14.1 (College Station, Texas, USA). Distribution of values was examined using histograms and kernel density plots. Comparison of means was undertaken using an independent two-tailed Student's t-test for parametric data and Wilcoxon rank sum test for non-parametric data. Linear regression modelling was adopted to assess variables that predict alpha angle and epiphyseal extension. Stepwise estimation identified variables for inclusion in multivariate analysis as age, gender and activity level. Residual plots of the regression models demonstrated normal distributions but evidence of heteroscedasticity. Therefore, the Huber-White-Sandwich estimator was adopted with clustering for laterality to account for the inclusion of left and right hips that are not independent measurements. Interactions were evaluated with linear regression of each combination of variables

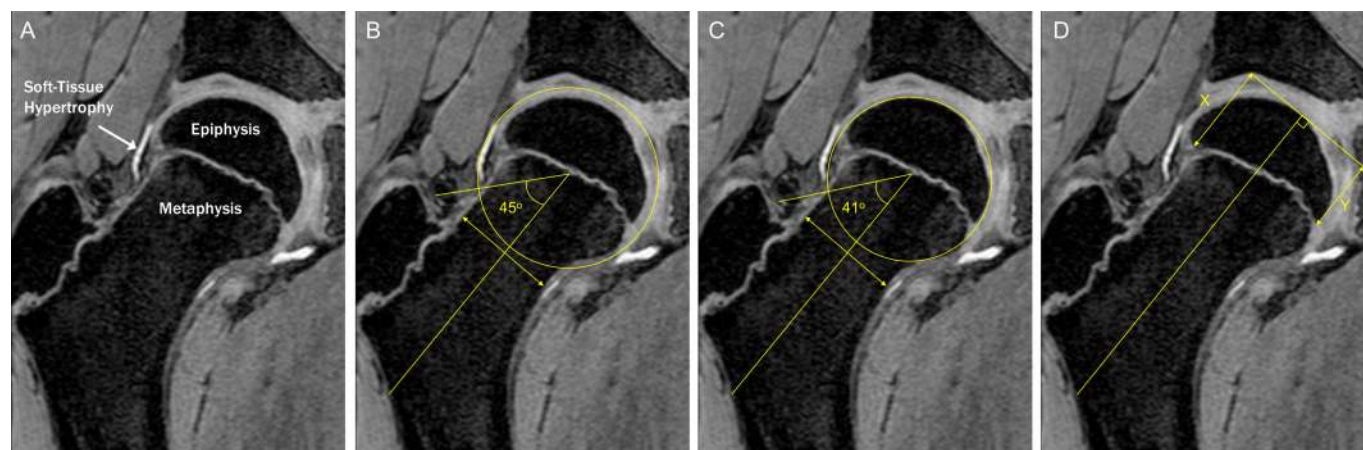


Figure 1 Soft tissue hypertrophy at the head-neck junction preceded epiphyseal extension and osseous cam morphology (A). Alpha angle was calculated by drawing a line from the centre of a best-fit circle surrounding the femoral head to the midpoint of a line transecting the narrowest portion of the femoral neck. A further line was then drawn from the centre of the best-fit circle to where the contour of the femoral head first exits this circle. The alpha angle is the angle between these two lines and was measured for cartilage (B) and bone (C). Epiphyseal extension (D) was quantified by measuring the distance from the medial femoral head to the most distal extent of the epiphysis along a line parallel to the axis of the femoral neck as was created when measuring the alpha angle. This distance was then divided by the diameter of the femoral head to produce a standardised ratio. Epiphyseal tilt was assessed as the ratio between epiphyseal extension on opposing sides of the femoral head (X/Y).

that predict maximum alpha angle and epiphyseal extension. None reached statistical significance, hence no interaction terms were included in the multivariate models. Statistical significance was set at $p < 0.05$. MRI outcomes were incomplete due to claustrophobia or movement artefact in five hips (two participants in SFC cohort and one female control) and the remaining dataset was complete. No imputation was performed.

RESULTS

Participant demographics

The study cohort consisted of 103 males from SFC (mean age 152 months), 52 control males (mean age 153 months) and 55 control females (mean age 167 months) (see online supplementary table S1). Mean BMI was 18.5 (SD 2.6) in the SFC cohort, 19.5 (SD 3.2) in control males and 20.4 (SD 3.7) in control females.

In the SFC cohort, the dominant leg was right in 77 individuals, left in 20 individuals, with 6 ambipedal. In male controls, the dominant leg was right in 36 individuals, left in 9 individuals, with 7 ambipedal. In female controls, the right leg was dominant in 41 individuals, left in 6 individuals, with 8 ambipedal. The primary sport of male and female active controls was football or rugby in 31 individuals and non-kicking sports in 40 individuals.

Activity scores

There were three classification systems for measuring activity: i) Participants were classed as SFC cohort ($n=103$), control males ($n=52$) or control females ($n=55$). ii) Participants were classed as 'no sport', 'sport' or 'athlete'. All SFC participants were classed 'athlete'. Control males consisted of 13 'no sport' and 39 'sport'. Control females consisted of 22 'no sport', 31 'sport'

and 2 'athlete'. iii) Participants completed the PAQ. Mean PAQ for males classed as 'athlete' was 3.08 (SD 0.73), 'sport' was 2.92 (SD 0.70) and 'no sport' was 2.66 (SD 0.67). Mean PAQ for females classed as 'athlete' was 3.11 (SD 0.59), 'sport' was 2.62 (SD 0.63) and 'no sport' was 2.07 (SD 0.63). Mean PAQ decreased with age in all groups.

Quantitative MRI morphology

Alpha angle

Cartilage alpha angle was greatest at the 1 o'clock position before and after physeal closure, and while values increased at all positions with age, the greatest increase was also at 1 o'clock (table 1). The most rapid increase in alpha angle was between age 12 and 14 years, with only a small increase beyond 14 years (table 2). Contrary to cartilage alpha angles, bone alpha angles were never elevated at the 1 o'clock position before age 12 years (see figure 2 and online supplementary figure S7).

Activity levels and maximum cartilage alpha angle

Maximum cartilage alpha angle increased with age and activity level (table 2 and figure 3).

Adjusting for age, female controls had a maximum cartilage alpha angle 7.4 degrees lower than male controls ($p=0.004$). Male controls had a maximum cartilage alpha angle 4.33 degrees lower than the SFC cohort ($p=0.042$).

Adjusting for age and gender, individuals who played sport for a school or club team had a maximum cartilage alpha angle 4.0 degrees greater than individuals who play no regular sport ($p=0.041$). Compared with individuals who play no regular sport, alpha angles were 7.6 degrees higher in individuals competing at a national or international level ($p=0.035$).

Table 1 Mean cartilage alpha angle, mean epiphyseal extension and mean epiphyseal tilt with an open and closed physis for all participants

Mean cartilage alpha angle							
Clockface position	Open physis (247 hips)		Closed physis (168 hips)		t-Test		p Value
	Mean	SD	Mean	SD	Difference		
11 o'clock	46.69	6.23	53.15	13.67	+6.46		<0.001
12 o'clock	49.99	9.10	60.29	15.39	+10.30		<0.001
1 o'clock	53.18	11.20	65.23	17.21	+12.06		<0.001
2 o'clock	52.21	7.78	63.14	13.94	+10.93		<0.001
3 o'clock	47.24	7.78	53.45	12.60	+6.21		<0.001
Maximum all positions	57.56	11.67	70.80	16.04	+13.24		<0.001
Mean physeal extension							
Clockface position	Open physis (247 hips)		Closed physis (168 hips)		t-Test		p Value
	Mean	SD	Mean	SD	Difference		
11 o'clock	0.716	0.037	0.770	0.052	+0.055		<0.001
12 o'clock	0.673	0.042	0.767	0.070	+0.095		<0.001
1 o'clock	0.682	0.052	0.799	0.075	+0.117		<0.001
2 o'clock	0.655	0.054	0.784	0.065	+0.130		<0.001
3 o'clock	0.577	0.051	0.690	0.063	+0.113		<0.001
Mean physeal tilt							
Clockface position	Open physis (247 hips)		Closed physis (168 hips)		t-Test		p Value
	Mean	SD	Mean	SD	Difference		
11 o'clock	1.59	0.180	1.40	0.153	-0.193		<0.001
12 o'clock	1.52	0.169	1.44	0.169	-0.089		<0.001
1 o'clock	1.56	0.220	1.58	0.220	+0.024		0.270
2 o'clock	1.31	0.199	1.42	0.207	+0.107		<0.001
3 o'clock	0.93	0.100	1.05	0.126	+0.120		<0.001

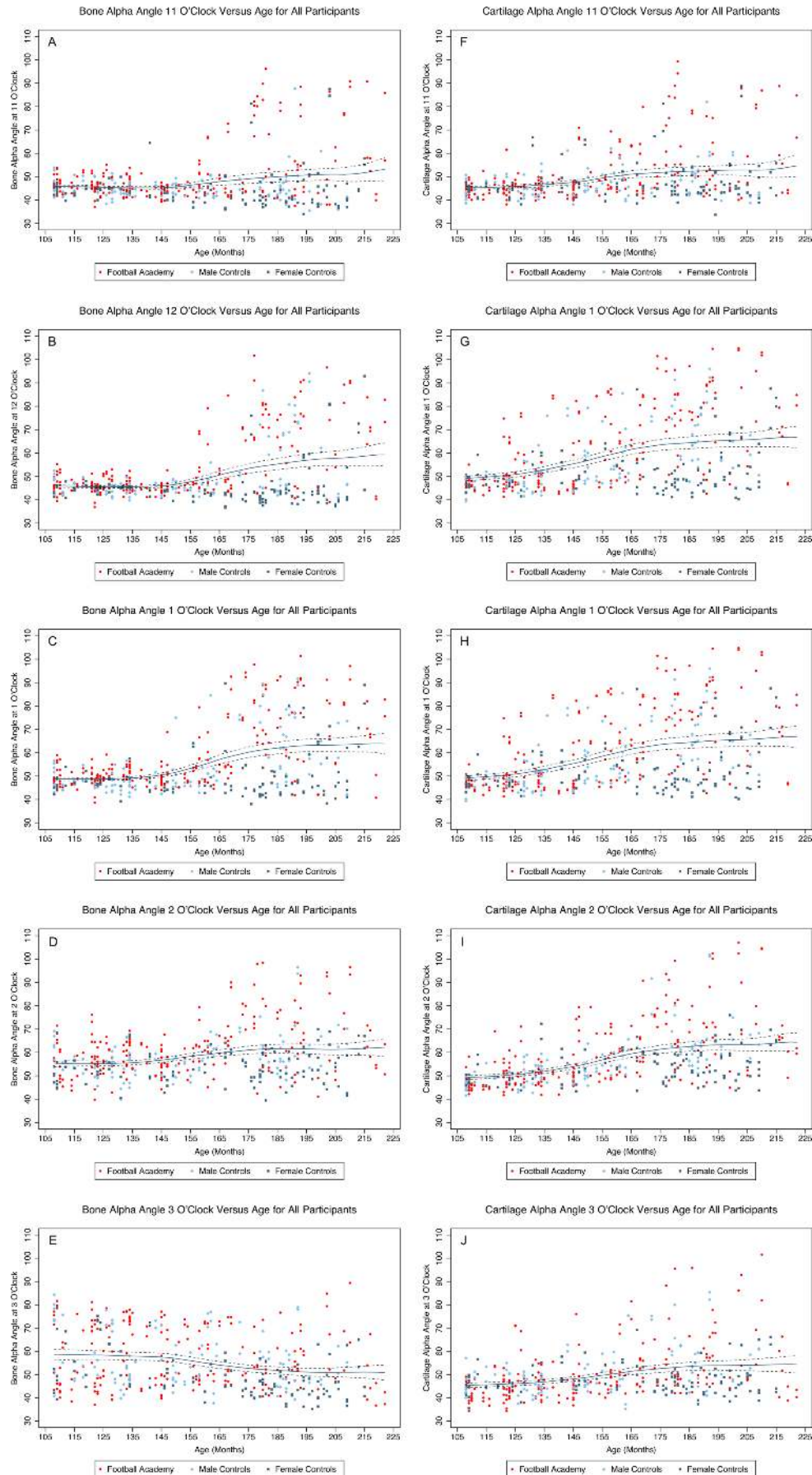


Figure 2 Bone (A–E) and cartilage (F–J) alpha angle vs age in all participants at 11 o'clock (A and F), 12 o'clock (B and G), 1 o'clock (C and H), 2 o'clock (D and I) and 3 o'clock (E and J) with polynomial regression fit and 95% CI.

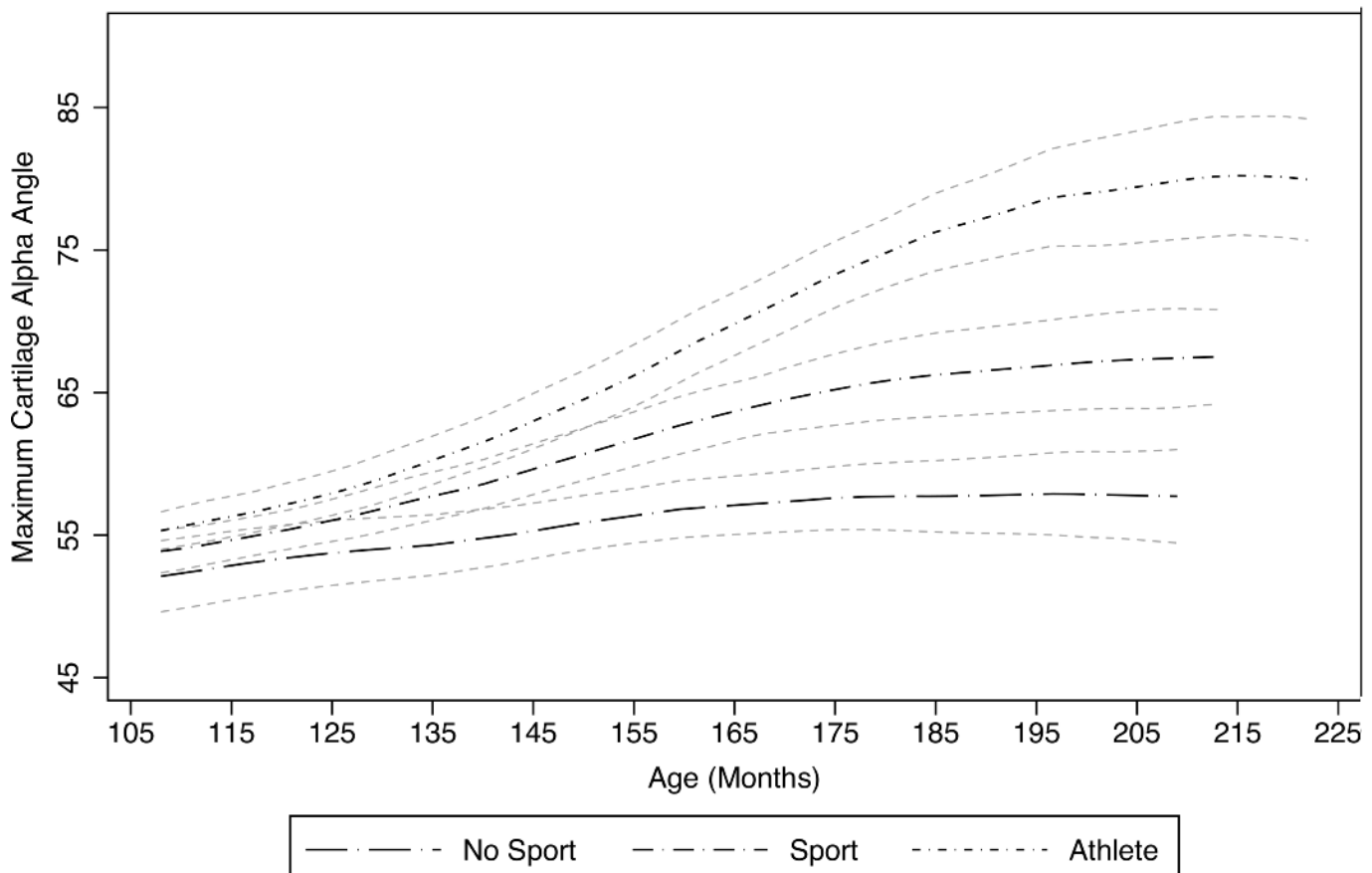


Figure 3 Maximum cartilage alpha angle with age for participants who play no regular sport ('no sport'), play sport for their school or a club team ('sport') or compete at a national or international level ('athlete'). Polynomial regression fit with 95% CI.

Adjusting for age and gender, maximum cartilage alpha angle increased with PAQ, but the relationship was not statistically significant. There was no statistically significant association between cartilage alpha angle and BMI or leg dominance when adjusting for age, gender, and activity levels.

Physal closure

In the SFC cohort, the physis was open in 135 hips and closed in 68 hips. Among male controls, the physis was open in 80 hips and closed in 24 hips. Among female controls, the physis was open in 32 hips and closed in 76 hips. The physis closed between ages 13 and 16 years in males and between 11 and 12 years in females. No difference was detected in the age of physal closure between the SFC cohort and male controls.

Epiphyseal extension

Epiphyseal extension increased at each clockface position with age but was greatest at 11 o'clock prior to physal closure and 1 o'clock after physal closure (table 1). This limits the value of using maximal epiphyseal extension to investigate the pathogenesis of cam development, hence this study focused on factors associated with extension at 1 o'clock.

Activity levels and epiphyseal extension at 1 o'clock

Epiphyseal extension at 1 o'clock increased with age and activity level, as with cartilage alpha angle (table 2).

Adjusting for age, female controls had an epiphyseal extension measurement 0.006 lower than male controls ($p=0.034$), and

male controls had an epiphyseal extension measurement 0.026 lower than the SFC cohort ($p=0.049$).

Adjusting for age and gender, individuals who play sport for a school or club team had an epiphyseal extension measurement 0.017 greater than individuals who play no regular sport ($p=0.043$). Compared with those who play no regular sport, epiphyseal extension was 0.032 greater in individuals competing at a national or international level ($p=0.022$).

Adjusting for age and gender, there was no statistically significant association between epiphyseal extension and PAQ. There was no statistically significant association between epiphyseal extension and leg dominance when adjusting for age, gender, and activity level, although BMI nearly reached statistical significance ($p=0.051$).

Physal tilt

With increasing age, physal tilt decreased at 11 o'clock and 12 o'clock (extension of inferior epiphysis relative to superior epiphysis) and increased at 2 o'clock and 3 o'clock (extension of anterior epiphysis relative to posterior epiphysis) (table 1). After physal closure, physal tilt was greatest at 1 o'clock and in the SFC cohort.

Relationship between epiphyseal measurements and alpha angle

The strongest correlation between epiphyseal extension and cartilage alpha angle was at 1 o'clock, with progressively weaker correlations either side of this location. This relationship was

only seen in male participants. In the SFC cohort, 50% of the variability in cartilage alpha angle was explained by adjacent epiphyseal extension ($p=0.043$) (see online supplementary table S2).

The relationship between physeal tilt and cartilage alpha angle was limited. A positive correlation at 3 o'clock only reached statistical significance in the SFC cohort ($p=0.014$). This positive correlation indicates anterior relative to posterior epiphyseal extension with increasing alpha angles (opposite to that expected in slipped upper femoral epiphysis (SUFE) (see online supplementary table S2).

Qualitative MRI morphology

Epiphyseal hypertrophy and extension was the most frequently observed source of cam morphology among

study participants and was particularly prevalent among the SFC cohort beyond 14 years of age. Although usually most pronounced at 1 o'clock, this hypertrophy and extension was concurrently observed at adjacent positions (figure 4). No epiphyseal extension was observed in participants aged 9 years, however, by 11 years of age there was often early extension that may progress to cam morphology (see online supplementary figure S4). Epiphyseal extension was rarely observed at 3 o'clock and 11 o'clock. Cam morphology at 3 o'clock was more frequently dictated by femoral neck retroversion and appeared independent of anterosuperior epiphyseal extension (see online supplementary figure S5). Cam morphology at 11 o'clock and 12 o'clock was frequently secondary to non-osseous tissue at the head-neck junction (see online supplementary figure S6).

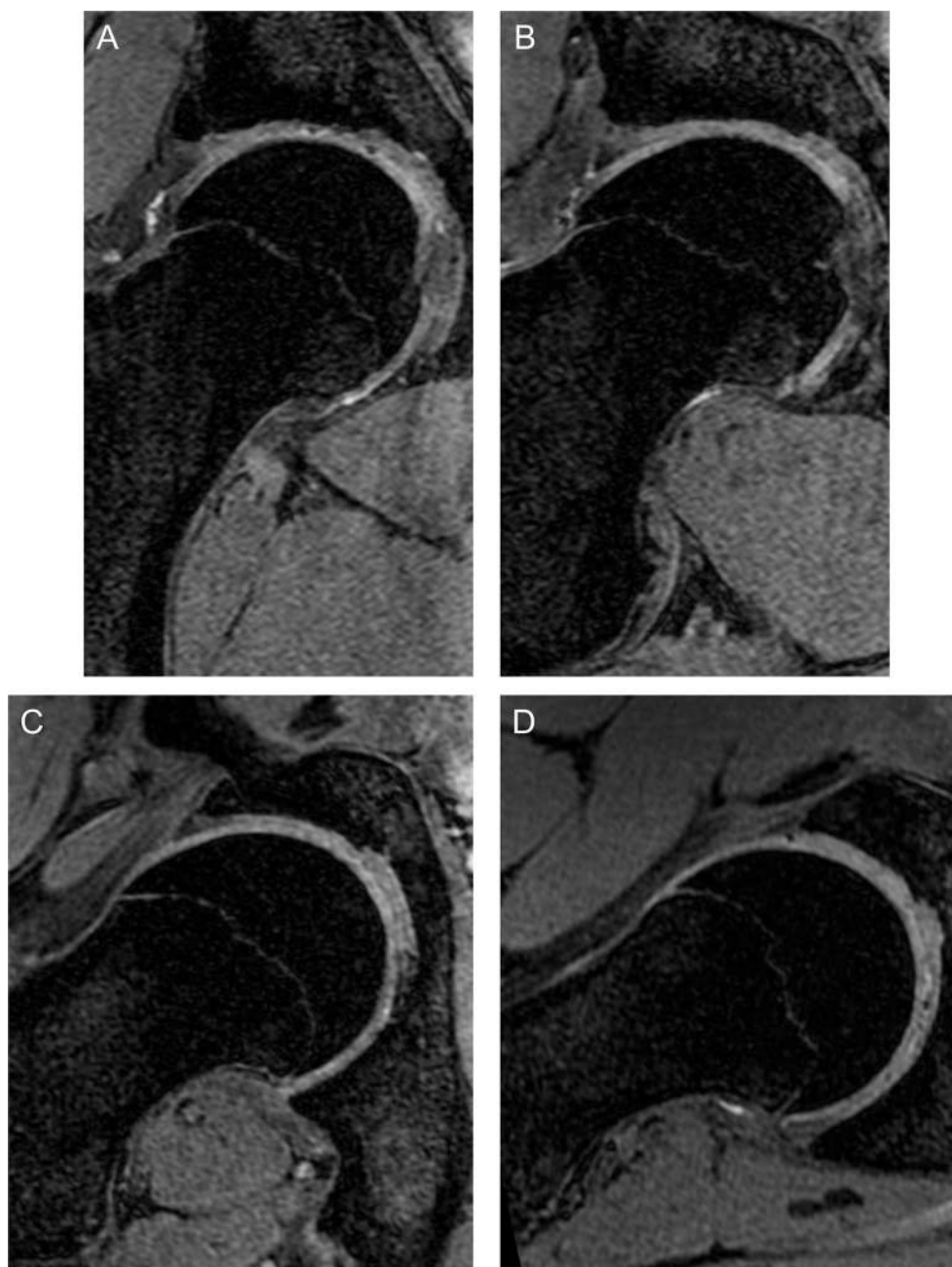


Figure 4 Three-dimensional water selective fluid (WATSf) MRI of SFC player aged 16 years with pronounced cam morphology. Epiphyseal hypertrophy and extension is maximal at 1 o'clock but also present in adjacent positions: 12 o'clock (A), 1 o'clock (B), 2 o'clock (C) and 3 o'clock (D).

DISCUSSION

This study demonstrates that intense sporting activity during youth is associated with the development of cam morphology arising secondary to epiphyseal hypertrophy and extension along the anterosuperior femoral neck.

Age of cam development

Cam morphology was quantified using the alpha angle. The magnitude of alpha angle that represents pathological morphology is likely to depend on femoral morphology, acetabular morphology, cartilage susceptibility and activity levels.¹⁹ Alpha angles were uniform across all participants aged 9 years; however, with increasing age there was an increasing range of alpha angle values consistent with cam development in a proportion of individuals. Cartilage alpha angles increased as early as age 10 years and qualitatively this represented soft-tissue hypertrophy at the head-neck junction that we propose precedes extension of the ossified epiphysis. Bone alpha angles were never elevated secondary to cam morphology before age 12 years, as described in similar studies.^{3 5} This observation suggests that measurements confined to osseous morphology are insensitive to early cam development and explains why loss of internal rotation precedes radiographic cam morphology (see online supplementary figure S7).⁷

The greatest increase in cartilage alpha angle occurred between age 12 and 14 years, with no statistically significant increase beyond age 14 years. This suggests cam development precedes physal closure, as concluded in comparable studies.^{3 5 7} There are studies that report higher alpha angles when the physis is open. We reproduced this observation when measuring bone rather than cartilage alpha angles at 2 o'clock and 3 o'clock. In the skeletally immature hip, the ossified femoral head is small relative to the metaphysis, giving rise to raised bone alpha angles that do not necessarily reflect cam morphology (see online supplementary figure S8). Bone alpha angle measurements must be interpreted with caution in the immature skeleton.

Prevalence of cam morphology in females was insufficient to allow robust comparisons in age of cam development between sexes. Crucially, interventions to reduce the risk of cam development should commence before age 10 years and may be ineffective beyond skeletal maturity.

Pathogenesis

Epiphyseal hypertrophy and extension represented the salient mechanism of cam development in this cohort. The greatest increase and absolute values of cartilage alpha angle and epiphyseal extension were at the 1 o'clock position, as in comparable studies.¹³ We demonstrate stronger correlations between epiphyseal extension and alpha angle than previously reported.¹⁵ In males, 50% of the variability in cartilage alpha angle was explained by adjacent epiphyseal extension. This supports the proposal that epiphyseal extension is a salient mechanism of cam development, but not the sole mechanism. Importantly, our adopted measure of epiphyseal extension provides only limited assessment of epiphyseal morphology and is not sensitive to epiphyseal hypertrophy without extension that also gives rise to cam morphology (see online supplementary figure S9). Active shape modelling is likely to provide improved assessment of epiphyseal morphology. The relationship between epiphyseal extension and alpha angle is particularly weak in females where alternative cam development pathogenesis may dominate, such as asphericity secondary to dysplasia.

Cam morphology at 3 o'clock appeared more frequently dictated by femoral neck retroversion than epiphyseal morphology; however, epiphyseal extension was responsible for the highest alpha angles. Retroversion was not formally quantified, but unlike epiphyseal extension, was evident among all age groups and we speculate a different pathogenesis. Interestingly, 3 o'clock was the only position where epiphyseal tilt correlated with cartilage alpha angle, compatible with anterior epiphyseal extension as the cause of cam morphology. Our proposed explanation for the absence of correlation at superior clock-face positions is variation in physis orientation in the coronal plane that is not seen in the axial plane. There was no qualitative or quantitative evidence of SUFE; however, epiphyseal changes may occur in response to stress across the physis without translation. Forces are greater with a more vertically orientated physis, which gives higher inferior epiphyseal extension values and counters increasing epiphyseal tilt measurements secondary to superior epiphyseal extension. Inferior epiphyseal extension was not associated with activity levels.

Associations with cam morphology

Cartilage alpha angle and epiphyseal extension were greater in males than females, as widely reported in general population cohorts.²² This gender difference remains unexplained. Interestingly, the sex ratio for cam morphology is similar to SUFE,²³ and perhaps the physis is more responsive to load in males. BMI was not associated with cartilage alpha angle or epiphyseal extension.

Activity levels were strongly associated with cartilage alpha angle and epiphyseal extension. There was a stepwise increase from participants who play no regular sport, to participants who play sport for a school or club, and then participants who compete at a national or international level. Some studies also found increased alpha angles⁴ and epiphyseal extension¹⁵ in athletes compared with controls, but others found no statistically significant differences, potentially due to insufficient statistical power.^{12 24} Our large cohort provides strong evidence that high activity levels during adolescence promote cam development secondary to epiphyseal extension with a dose-response relationship. This finding validates the proposed dose-response relationship between activity levels and cam morphology in other studies.^{3 25}

Activity levels are challenging to quantify. In this study, competitive level of sport participation was used as a surrogate measure of cumulative exercise intensity. General activity levels measured using the PAQ were not associated with cam morphology. PAQ is particularly responsive to exercise frequency and the limitation of this self-reported score for assessing sporting activity is illustrated by the significant decrease in PAQ with age among all study groups. Mean PAQ within the SFC cohort was 3.44 (SD 0.43) age 9–10 years, 3.36 (SD 0.68) age 11–12 years, 2.98 (SD 0.74) age 13–14 years, 2.51 (SD 0.66) age 15–16 years and 2.17 (SD 0.42) age 17–18 years. However, training load for academy football players increases with age from approximately 5 to 8 hours each week for under 9–12 years, 8–12 hours each week for under 13–16 years, to greater than 12 hours each week at under 18–23 years. Electronic activity trackers may aid future studies.

There was no difference in cartilage alpha angle or epiphyseal extension between dominant and non-dominant legs, reproducing findings of a previous study.¹² This observation counters hypotheses that kicking is responsible for cam formation by imparting forces across the physis that stimulate epiphyseal extension. Footballers are encouraged to kick with both feet, which may partially explain the finding; however, no difference was detected between control individuals who play kicking and

non-kicking sports. Repetitive high-intensity hip loading during sport played throughout a critical period of hip development may be the salient risk factor for cam development. Further research is required to determine whether similar adaptation to activity takes place within the acetabulum.

Limitations

Study limitations include the demonstration of association rather than causality from this cross-sectional data. In addition, it is possible that the control group is not entirely representative of the general population as individuals who regularly participate in sport may be more likely to volunteer for projects investigating effects of exercise. Nevertheless, there were statistically significant differences in hip morphology between the control and athlete cohorts. Alpha angle has a low positive predictive value for future pain and osteoarthritis, hence the clinical relevance of our findings remains unclear, but will be addressed with the longitudinal element of the study.

CONCLUSIONS

Intense sporting activity during adolescence is associated with cam morphology secondary to epiphyseal hypertrophy and extension along the anterosuperior femoral neck. Cam morphology is first evident as cartilaginous hypertrophy age 10 years. The pathogenesis of cam development currently remains insufficiently understood to recommend activity modification. The known cardiovascular and health benefits of exercise outweigh potentially adverse effects on hip development. However, males participating in high-level sports during adolescence are at particularly elevated risk of developing cam morphology and secondary hip pathology.

What are the findings?

- ▶ Osseous cam morphology is preceded by cartilaginous hypertrophy at the femoral head-neck junction. This appearance is first evident at 10 years of age.
- ▶ Sporting activity during adolescence is strongly associated with the development of cam morphology with a dose-response relationship. The salient mechanism is epiphyseal hypertrophy and extension along the anterosuperior femoral neck.
- ▶ Cam morphology is significantly more prevalent in males. General activity levels, leg dominance and kicking sports are not independently associated with cam morphology.
- ▶ Males participating in competitive sport during adolescence are at particularly elevated risk of developing cam morphology.

How might it impact on clinical practice in the future?

- ▶ A history of competitive sport during adolescence is strongly associated with cam morphology. Clinicians should be alert to the risk of secondary hip pathology.
- ▶ MRI is recommended to diagnose cam morphology in skeletally immature individuals as early non-osseous cam morphology may not be evident on radiographs.
- ▶ Proposed interventions to prevent the development of cam morphology should commence prior to 10 years of age.

Acknowledgements We received dedicated support from a large research team and we would like to thank Joanna Burchall, Claudio Pereira, Lis Ahlstrom, Kerri Haynes, Shauna Masters, Gail Lang, Jenny Piper, Sally Ogg, Stefan Kluzek, and Sam Folkard. Imaging expertise was kindly provided by Dr Eugene McNally, Dr Karen Partington, and Dr Leonard King. Statistical advice was gratefully received from Ines Rombach with methodological advice from Carol Cornelius. Software development for morphological imaging measurements was kindly supported by Mr David Hunter, Dr Kassim Javaid, and Prof Nigel Arden. We are also grateful for the MRI services provided by Cobalt Health. This study would not have been possible without generous support from Southampton Football Club, study participants and their families, to whom we offer our sincerest gratitude.

Contributors AJRP: study conception/design, data acquisition, data analysis and interpretation, drafting of manuscript. SF: data acquisition, data analysis and interpretation, critical revision. MG: study conception/design, data acquisition, critical revision. RB: data acquisition, critical revision. AJ: statistical expertise, data analysis and interpretation, critical revision. JB: data analysis and interpretation, critical revision. JN: study conception/design, critical revision. MW: study conception/design, critical revision. AC: study conception/design, data analysis and interpretation, critical revision. SGJ: study conception/design, data analysis and interpretation, critical revision.

Funding This study was funded by the National Institute for Health Research (NIHR) Oxford Musculoskeletal Biomedical Research Unit and Clinical Research Network. AJRP received funding from a Joint Royal College of Surgeons of England and Dunhill Medical Research Fellowship, and from Orthopaedic Research UK. Support was also received from the Arthritis Research UK Centre for Sport, Exercise and Osteoarthritis.

Competing interests None declared.

Patient consent Obtained.

Ethics approval Oxford University Medical Sciences Inter-Divisional Research Ethics Committee (MSD-IDREC-C2-2013-11).

Provenance and peer review Not commissioned; externally peer reviewed.

Data sharing statement No data sharing agreements in place at present. Collaborative studies in preparation.

Open Access This is an Open Access article distributed in accordance with the terms of the Creative Commons Attribution (CC BY 4.0) license, which permits others to distribute, remix, adapt and build upon this work, for commercial use, provided the original work is properly cited. See: <http://creativecommons.org/licenses/by/4.0/>

© Article author(s) (or their employer(s) unless otherwise stated in the text of the article) 2018. All rights reserved. No commercial use is permitted unless otherwise expressly granted.

REFERENCES

- 1 Agricola R, Waarsing JH, Arden NK, *et al*. Cam impingement of the hip: a risk factor for hip osteoarthritis. *Nat Rev Rheumatol* 2013;9:630–4.
- 2 Agricola R, Weinans H. What causes cam deformity and femoroacetabular impingement: still too many questions to provide clear answers. *Br J Sports Med* 2016;50:263–4.
- 3 Carsen S, Moroz PJ, Rakhra K, *et al*. The Otto Aufranc Award. On the etiology of the cam deformity: a cross-sectional pediatric MRI study. *Clin Orthop Relat Res* 2014;472:430–6.
- 4 Siebenrock KA, Ferner F, Noble PC, *et al*. The cam-type deformity of the proximal femur arises in childhood in response to vigorous sporting activity. *Clin Orthop Relat Res* 2011;469:3229–40.
- 5 Kienle KP, Keck J, Werlen S, *et al*. Femoral morphology and epiphyseal growth plate changes of the hip during maturation: MR assessments in a 1-year follow-up on a cross-sectional asymptomatic cohort in the age range of 9–17 years. *Skeletal Radiol* 2012;41:1381–90.
- 6 Monazzam S, Bomar JD, Dwek JR, *et al*. Development and prevalence of femoroacetabular impingement-associated morphology in a paediatric and adolescent population: a CT study of 225 patients. *Bone Joint J* 2013;95-B:598–604.
- 7 Agricola R, Heijboer MP, Ginai AZ, *et al*. A cam deformity is gradually acquired during skeletal maturation in adolescent and young male soccer players: a prospective study with minimum 2-year follow-up. *Am J Sports Med* 2014;42:798–806.
- 8 Frank JM, Harris JD, Erickson BJ, *et al*. Prevalence of Femoroacetabular Impingement Imaging Findings in Asymptomatic Volunteers: A Systematic Review. *Arthroscopy* 2015;31:1199–204.
- 9 Drawer S, Fuller CW. Propensity for osteoarthritis and lower limb joint pain in retired professional soccer players. *Br J Sports Med* 2001;35:402–8.
- 10 Klünder KB, Rud B, Hansen J. Osteoarthritis of the hip and knee joint in retired football players. *Acta Orthop Scand* 1980;51:925–7.
- 11 Lindberg H, Roos H, Gärdsell P. Prevalence of coxarthrosis in former soccer players. 286 players compared with matched controls. *Acta Orthop Scand* 1993;64:165–7.

- 12 Agricola R, Bessems JH, Ginai AZ, *et al.* The development of Cam-type deformity in adolescent and young male soccer players. *Am J Sports Med* 2012;40:1099–106.
- 13 Siebenrock KA, Kaschka I, Frauchiger L, *et al.* Prevalence of cam-type deformity and hip pain in elite ice hockey players before and after the end of growth. *Am J Sports Med* 2013;41:2308–13.
- 14 Siebenrock KA, Wahab KH, Werlen S, *et al.* Abnormal extension of the femoral head epiphysis as a cause of cam impingement. *Clin Orthop Relat Res* 2004;418:54–60.
- 15 Siebenrock KA, Behning A, Mamisch TC, *et al.* Growth plate alteration precedes cam-type deformity in elite basketball players. *Clin Orthop Relat Res* 2013;471:1084–91.
- 16 Dickenson E, Wall PD, Robinson B, *et al.* Prevalence of cam hip shape morphology: a systematic review. *Osteoarthritis Cartilage* 2016;24:949–61.
- 17 Crocker PR, Bailey DA, Faulkner RA, *et al.* Measuring general levels of physical activity: preliminary evidence for the Physical Activity Questionnaire for Older Children. *Med Sci Sports Exerc* 1997;29:1344–9.
- 18 Welk GJ, Corbin CB, Dale D. Measurement issues in the assessment of physical activity in children. *Res Q Exerc Sport* 2000;71 Suppl 2(Suppl 2):59–73.
- 19 Griffin DR, Dickenson EJ, O'Donnell J, *et al.* The Warwick Agreement on femoroacetabular impingement syndrome (FAI syndrome): an international consensus statement. *Br J Sports Med* 2016;50:1169–76.
- 20 Agricola R, Waarsing JH, Thomas GE, *et al.* Cam impingement: defining the presence of a cam deformity by the alpha angle: data from the CHECK cohort and Chingford cohort. *Osteoarthritis Cartilage* 2014;22:218–25.
- 21 Rakhra KS, Sheikh AM, Allen D, *et al.* Comparison of MRI alpha angle measurement planes in femoroacetabular impingement. *Clin Orthop Relat Res* 2009;467:660–5.
- 22 Laborie LB, Lehmann TG, Engesaeter IØ, *et al.* Prevalence of radiographic findings thought to be associated with femoroacetabular impingement in a population-based cohort of 2081 healthy young adults. *Radiology* 2011;260:494–502.
- 23 Loder RT, Skopelja EN. The Epidemiology and Demographics of Slipped Capital Femoral Epiphysis. *ISRN Orthop* 2011;2011:1–19.
- 24 Johnson AC, Shaman MA, Ryan TG. Femoroacetabular impingement in former high-level youth soccer players. *Am J Sports Med* 2012;40:1342–6.
- 25 Tak I, Weir A, Langhout R, *et al.* The relationship between the frequency of football practice during skeletal growth and the presence of a cam deformity in adult elite football players. *Br J Sports Med* 2015;49:630–4.