



On behalf of the International Children's Accelerometry Database (ICAD) Collaborators, Tarp, J., Child, A., White, T., Westgate, K., Bugge, A., Grøntved, A., Wedderkopp, N., Andersen, L. B., Cardon, G., Davey, R., Janz, K. F., Kriemler, S., Northstone, K., Page, A. S., Puder, J. J., Reilly, J. J., Sardinha, L. B., van Sluijs, E. M. F., ... Brage, S. (2018). Physical activity intensity, bout-duration, and cardiometabolic risk markers in children and adolescents. *International Journal of Obesity*, 42(9), 1639–1650. <https://doi.org/10.1038/s41366-018-0152-8>

Publisher's PDF, also known as Version of record

License (if available):  
CC BY

Link to published version (if available):  
[10.1038/s41366-018-0152-8](https://doi.org/10.1038/s41366-018-0152-8)

[Link to publication record in Explore Bristol Research](#)  
PDF-document

This is the final published version of the article (version of record). It first appeared online via AGU at <https://doi.org/10.1038/s41366-018-0152-8> . Please refer to any applicable terms of use of the publisher.

## University of Bristol - Explore Bristol Research

### General rights

This document is made available in accordance with publisher policies. Please cite only the published version using the reference above. Full terms of use are available: <http://www.bristol.ac.uk/red/research-policy/pure/user-guides/ebr-terms/>



# Physical activity intensity, bout-duration, and cardiometabolic risk markers in children and adolescents

Jakob Tarp<sup>1,2</sup> · Abbey Child<sup>3</sup> · Tom White<sup>1,2</sup> · Kate Westgate<sup>2</sup> · Anna Bugge<sup>1</sup> · Anders Grøntved<sup>1</sup> · Niels Wedderkopp<sup>1,4</sup> · Lars B. Andersen<sup>5</sup> · Greet Cardon<sup>6</sup> · Rachel Davey<sup>7</sup> · Kathleen F Janz<sup>8</sup> · Susi Kriemler<sup>9</sup> · Kate Northstone<sup>10</sup> · Angie S. Page<sup>11</sup> · Jardena J. Puder<sup>12</sup> · John J. Reilly<sup>13</sup> · Luis B. Sardinha<sup>14</sup> · Esther M. F. van Sluijs<sup>2,15</sup> · Ulf Ekelund<sup>16</sup> · Katrien Wijndaele<sup>2</sup> · Søren Brage<sup>2</sup> · On behalf of the International Children's Accelerometry Database (ICAD) Collaborators

Received: 27 February 2018 / Revised: 4 May 2018 / Accepted: 3 June 2018 / Published online: 13 July 2018  
© The Author(s) 2018. This article is published with open access

## Abstract

**Objectives:** To determine the role of physical activity intensity and bout-duration in modulating associations between physical activity and cardiometabolic risk markers.

**Methods:** A cross-sectional study using the International Children's Accelerometry Database (ICAD) including 38,306 observations (in 29,734 individuals aged 4–18 years). Accelerometry data was summarized as time accumulated in 16 combinations of intensity thresholds ( $\geq 500$  to  $\geq 3000$  counts/min) and bout-durations ( $\geq 1$  to  $\geq 10$  min). Outcomes were body mass index (BMI,  $\text{kg}/\text{m}^2$ ), waist circumference, biochemical markers, blood pressure, and a composite score of these metabolic markers. A second composite score excluded the adiposity component. Linear mixed models were applied to elucidate the associations and expressed per 10 min difference in daily activity above the intensity/bout-duration combination. Estimates (and variance) from each of the 16 combinations of intensity and bout-duration examined in the linear mixed models were analyzed in meta-regression to investigate trends in the association.

**Results:** Each 10 min positive difference in physical activity was significantly and inversely associated with the risk factors irrespective of the combination of intensity and bout-duration. In meta-regression, each 1000 counts/min increase in intensity threshold was associated with a  $-0.027$  (95% CI:  $-0.039$  to  $-0.014$ ) standard deviations lower composite risk score, and a  $-0.064$  (95% CI:  $-0.09$  to  $-0.038$ )  $\text{kg}/\text{m}^2$  lower BMI. Conversely, meta-regression suggested bout-duration was not significantly associated with effect-sizes (per 1 min increase in bout-duration:  $-0.002$  (95% CI:  $-0.005$  to  $0.0005$ ) standard deviations for the composite risk score, and  $-0.005$  (95% CI:  $-0.012$  to  $0.002$ )  $\text{kg}/\text{m}^2$  for BMI).

**Conclusions:** Time spent at higher intensity physical activity was the main determinant of variation in cardiometabolic risk factors, not bout-duration. Greater magnitude of associations was consistently observed with higher intensities. These results suggest that, in children and adolescents, physical activity, preferably at higher intensities, of any bout-duration should be promoted.

---

Members of International Children's Accelerometry Database (ICAD) are listed in Acknowledgements

---

**Electronic supplementary material** The online version of this article (<https://doi.org/10.1038/s41366-018-0152-8>) contains supplementary material, which is available to authorized users.

---

✉ Jakob Tarp  
jakob.tarp@nih.no

Extended author information available on the last page of the article

## Introduction

Cardiovascular disease accounted for 17.6 million deaths worldwide in 2016, making it the leading cause of non-communicable disease mortality [1]. While the disease is generally a concern in adulthood, cardiometabolic risk factors may be present from a much earlier age, for example endothelial damage that leads to atherosclerosis can develop during adolescence [2]. In addition, previous evidence suggests cardiometabolic risk factors may track from childhood and adolescence into adulthood [3]. This makes it important to understand the modifiable

determinants of cardiometabolic risk factors in young people. One such determinant is participation in physical activity [4–6].

Current national and international physical activity guidelines recommend adults should accumulate moderate-to-vigorous physical activity (MVPA) or vigorous physical activity in bouts of at least 10 min duration [7, 8]. For children and adolescents, a daily total of at least 60 min of MVPA is recommended [7, 8] but many countries (including the U.S. [9], U.K. [7], Australia [10], and Canada [11]) do not specify any minimum bout-duration for MVPA. However, a minimum bout-duration of 5 min was included in a previous version of the Canadian guidelines [12] and is included in some national guidelines [13]. Providing the optimal guidance on how to perform health-enhancing physical activity is important for authorities and clinicians. However, whether short bouts of activity confer similar benefits to longer durations remains unclear and available evidence on this issue remains scarce in young people [14–17]. Accelerometry is currently the de facto standard of objective physical activity assessment in large-scale epidemiological studies [18]. It is well-established that accelerometry-determined MVPA levels are highly influenced by the choice of intensity threshold [19] but it has not been sufficiently explored how varying the intensity threshold impacts on associations with cardiometabolic risk factors. Further, whether higher (or lower) intensity physical activity may be particularly beneficial for cardiometabolic risk factors at longer bout-durations has yet to be examined. Therefore, the purpose of this study was to assess how physical activity of different intensities and accumulated in bouts of varying duration relates to cardiometabolic health in young people. Since bout activity is highly correlated with total activity [14, 17], we also examined if an additional benefit of longer duration activity was evident after accounting for variation in total physical activity.

## Methods

### Study design and participants

This study was based on secondary data from the International Children's Physical Activity Database (ICAD, <http://www.mrc-epid.cam.ac.uk/research/studies/icad/>) which contains harmonized objectively measured physical activity data from studies in youth across the world [20]. All studies were based on participant/parental written informed consent and consulted with their respective research boards to ensure appropriate ethical approval of data-sharing. Included studies were conducted between 1997 and 2009 in 11

countries [21–38]. A total of 44,869 physical activity files were available from the ICAD database. Participants with sufficient physical activity data (criteria given below) and data on any of the considered outcomes were eligible for this study. After exclusion of participants due to insufficient (detailed below) or unreliable data (flagged by ICAD central processing) [20]—physical activity data ( $n = 5861$ ), age outside the 4–18 year range ( $n = 370$ ), or missing outcome data ( $n = 332$ )—a final sample size of 38,306 observations from 29,800 unique individuals was included. Two or more observations were available from 25.5% of the included sample.

### Physical activity data reduction

A detailed description of the protocol for harmonization of physical activity data is provided elsewhere [20]. In short, available raw data files were reanalyzed to create directly comparable variables across all contributing ICAD studies. Epoch length was harmonized to 60 s due to the lack of availability of shorter epochs in older studies (KineSoft version 3.3.20, KineSoft, Saskatchewan, Canada). For this analysis, all epochs producing counts  $\geq 30,000$  were deemed incompatible with human movement behavior and considered non-wear. Non-wear was further defined as strings of identical count values for  $>60$  consecutive min in the data time-series (<https://github.com/Thomite/pampro.git>). These strings were removed before summation of activity and wear time. As strings of identical count values are unlikely to represent true movement behavior, this approach will both remove continuous zero counts and reduce data with technical malfunction (i.e., count plateau). To avoid extreme outliers, days with recorded mean counts/min above the 99.9th percentile (2125 counts/min (cpm)) or below the 0.1th percentile (36 cpm) were discarded. Three or more days of  $\geq 500$  mins of wear-time between 7 a.m. and midnight (data outside these hours was discarded) were required for a participant to be included in this analysis [18]. To investigate the effect of higher intensity of physical activity we defined four increasing, but arbitrarily chosen, intensity thresholds;  $\geq 500$  cpm,  $\geq 1000$  cpm,  $\geq 2000$  cpm, and  $\geq 3000$  cpm. Further, we summarized time above these intensity thresholds as uninterrupted bouts of  $\geq 1$  (includes all activity),  $\geq 2$ ,  $\geq 5$  (medium), and  $\geq 10$  (long) min. A bout was terminated when counts dropped below the respective intensity threshold. As an example, the following min-by-min accelerometer sequence 0-3000-3000-3000-3000-3000-500-500-3000-3000-3000-3000-3000-0 would therefore be summarized as  $5 + 5 = 10$  min spent in  $\geq 5$  min bouts  $\geq 3000$  counts/min but zero min spent in  $\geq 10$ -min bouts (and similar for  $\geq 2000$  and  $\geq 1000$  counts/min intensities), whereas there would be 12 min accumulated in all the  $\geq 500$  counts/min bout variables. Variables were derived for each

day separately and averaged across valid days for analysis. These data reductions lead to 16 combinations of intensity and bout-duration.

### Assessment of cardiometabolic risk factors

Outcome variables consisted of two anthropometric (waist circumference and body mass index (BMI)) and five biological (insulin, glucose, triglyceride, HDL-cholesterol, and mean arterial pressure (MAP, calculated as  $1/3 \times$  systolic blood pressure +  $2/3 \times$  diastolic blood pressure) [39]) markers reflecting established cardiometabolic risk factors. Standardized methods were used to measure height and weight across all studies with BMI calculated as weight (in kilograms) divided by height (in meters) squared. BMI was used to define overweight and obesity (World Obesity Federation cut-offs) [40]. Waist circumference was measured by the same procedure (WHO) in all contributing studies except the U.S. National Health and Nutrition Examination Survey (NHANES). The latter used a metal anthropometric tape placed at the midaxillary line (just above the iliac crest) [33, 34], as opposed to the midpoint between the lowest rib and iliac crest [21, 22, 27, 28, 31, 32, 35–37]. We converted NHANES data to WHO measurement methodology by applying a correction formula [41]. Blood pressure was measured in 10 studies, all using repeated measurements with automated [21, 27, 28, 32, 36] or manual [33, 34] methods after at least 5 min of rest. Eight studies obtained fasting measures of lipid metabolism (triglyceride and HDL-cholesterol) and 7 studies measured glycaemic metabolism in the basal state (fasting glucose and insulin). All used standardized procedures [27, 28, 31, 33, 34]. To maximize information on the latent cardiometabolic risk profile, we additionally calculated two composite risk scores using standardized values ( $z$ -scores) of the risk factors [42]. The first composite score included BMI, the homeostasis assessment model of insulin resistance (HOMA-IR) [43], triglyceride, MAP, and inverse HDL-cholesterol. The second composite score was identical but excluded BMI (non-adiposity composite score). All variables were standardized for age and sex with MAP additionally standardized for body-height. BMI, HOMA-IR, and triglyceride were log-transformed before standardization. The composite score was standardized to a mean of zero and standard deviation of one before analysis.

### Statistical analysis

Central tendencies of continuous variables are presented as mean (standard deviation) or median (25th–75th percentiles) based on distributional properties. Bout/intensity inter-correlations were explored using Spearman's partial

correlation controlling for age, sex, wear-time, and study. Data from studies was pooled into one dataset, and separate multivariable linear mixed-effects regression models were used to analyze associations between the 9 outcomes and 16 combinations of intensity and bout durations while including the co-variables age, sex, and wear-time. Body-height was additionally included when MAP and waist-circumference were outcomes. A mixed-effects logistic regression model was used to calculate odds of being overweight/obese. The non-adiposity composite score, insulin, glucose, triglycerides, HDL-cholesterol, and MAP were additionally controlled for BMI in secondary models. Post-hoc models including age-by-intensity/bout-duration and weight status (normal weight versus overweight/obese)-by-intensity/bout-duration interaction terms were constructed to examine potential heterogeneity in associations. In all models, individual participants and studies were modeled as “random-effects” except in the logistic model where only one observation per individual was included due to failure of the models to converge (the earliest observation was used). Additional adjustment for number of included days produced minimal changes in coefficients. Regression models were visually inspected for normal-distribution of residuals, variance homoscedasticity, and linearity between independent and dependent variables, as well as for influential observations (Cook's D). All model assumptions were verified and no transformation of variables was necessary. Regression coefficients and 95% confidence intervals (CIs) are presented graphically in the form of forest plots, and represent the difference in outcome per 10 min/day positive difference in physical activity. To directly model whether physical activity spent in medium or long bouts confers an additional health benefit over an identical amount of time spent in shorter bouts of physical activity, we used an isotemporal substitution approach [44]. These models took the form (omitting error term):

$$Y = \beta_0 + \beta_1 \text{Physical Activity}_{\geq 5-9 \text{ min bouts at intensity}} + \beta_2 \text{Physical Activity}_{\geq 10 \text{ min bouts at intensity}} + \beta_3 \text{Total Physical Activity}_{\text{at intensity}} + \beta_4 \text{Wear-time} + \beta_5 \text{Age} + \beta_6 \text{Sex} + \zeta_1 \text{Study} + \zeta_2 \text{Participant}$$

This model constrains total physical activity above the intensity threshold, thereby allowing for investigation of its composition [45]. The coefficients  $\beta_1$  and  $\beta_2$  thus represents the effect of substituting time spent in physical activity of 1–4 min duration (short bout-duration) with an equal amount of time spent in medium or long bout-durations of MVPA [44]. We explored linear trends in the influence of intensity and bout-duration on the outcomes by including estimates from mixed linear regressions in a meta-regression model [46]. CI's in meta-regression models were adapted to account for non-independence of coefficients [47] by recalculating the standard error as:  $(\sqrt{(\text{number of coefficients} (20) - 1)}) \times$  the standard error obtained from

**Table 1** Participant characteristics

	Girls ( <i>n</i> = 18,810) <sup>a</sup>	Boys ( <i>n</i> = 10,990) <sup>a</sup>
Age (years)	11.8 (10.6 – 13.8)	11.4 (9.6 – 12.0)
Body-height (cm)	152.4 (141.9 – 159.8)	145.7 (135.5 – 155.6)
Body-weight (kg)	45.6 (35 – 55.7)	38.0 (30.2 – 49.8)
Wear-time (h/day) <sup>b</sup>	13.2 (1.3)	13.1 (1.3)
Counts/min	453 (348 – 586)	620 (491 – 768)

Values are median with 25th–75th percentile unless noted otherwise

<sup>a</sup>Unique individual participants

<sup>b</sup>Mean (SD)

the meta-regression. An intensity-by-bout duration interaction term was added in a separate meta-regression model to explore potential heterogeneity in associations across bout duration/intensity combinations. Estimates for bout-durations of  $\geq 3$  and  $\geq 7$  min (with intensity thresholds at  $\geq 500$  cpm,  $\geq 1000$  cpm,  $\geq 2000$  cpm, and  $\geq 3000$  cpm) were added to the meta-regression to increase information about the shape of the associations. Analyses were conducted using Stata/IC version 15.0. Significance tests were two-sided, and *p* values less than 0.05 were considered statistically significant. We did not include adjustment for multiple testing and provide an interpretation of data based on the pattern of results.

## Results

### Characteristics of the study sample

Participant and study characteristics, including number of available studies and participants, are presented in Table 1, Table 2 and in Supplementary File Table S1 and Fig. S1. The median age of participants was 11.7 (11.1–13.6) years and 26% of the sample was overweight or obese. Each observation contributed a median of 6 (4–6) days with a mean of 13.2 (1.2) hours of wear-time/day. The median percentage of wear-time  $\geq 500$  counts/min,  $\geq 1000$  counts/min,  $\geq 2000$  counts/min, and  $\geq 3000$  counts/min were 26.3% (20.6–32.9%), 15.7% (11.6–20.7%), 6.9% (4.6%–9.8%), and 3.1% (1.8–4.9%), respectively. Boys spent a higher percentage of their time above each intensity/bout combination threshold (all *p*-values  $< 0.001$ , Fig. 1). Correlations between bout-durations were high but decreased with higher intensity thresholds (correlation matrix shown in Supplementary File Table S2).

### Associations between combinations of intensity and bout-duration with cardiometabolic risk factors

Forest plots of bout/intensity combinations and their associations with the composite risk score, non-adiposity

composite risk score, and BMI from the linear mixed regression are shown in Figs. 2 and 3. As the overall pattern of association was similar for the remaining outcomes, we show results (with and without BMI adjustment if appropriate) for insulin, glucose, triglyceride, HDL-cholesterol, MAP, waist circumference, and odds of overweight/obesity in Supplementary File Figs S2–S8. Intensity/bout combinations were negatively associated with the cardiometabolic risk factors, suggesting participants with higher activity levels had more favorable risk profiles irrespective of intensity threshold and bout-duration in the range examined. Additional control for BMI attenuated effect-sizes, with attenuation appearing greater (absolute and relative) at higher intensities (Fig. 2 and Supplementary File Figs. S2–S6). Using waist circumference as covariate instead of BMI or exchanging waist circumference for BMI in the composite risk score did not produce noticeable changes (data not shown). Overall, the data suggested a pattern of increasing effect-sizes with activity accumulated at higher intensity thresholds e.g., a 10 min difference in total activity  $\geq 500$  cpm was associated with a  $-0.014$  standard deviations (95% CI:  $-0.018$  to  $-0.01$ ) lower composite risk score and a  $-0.016$  (95% CI:  $-0.022$  to  $-0.011$ )  $\text{kg/m}^2$  lower BMI. In comparison, additional 10 min of activity  $\geq 3000$  cpm was associated with a  $-0.069$  standard deviations (95% CI:  $-0.081$  to  $-0.056$ ) lower composite risk score and a  $-0.141$  (95% CI:  $-0.157$  to  $-0.125$ )  $\text{kg/m}^2$  lower BMI. A pattern of increasing effect-sizes with increasing bout-durations was observed within all intensity thresholds. For example, a 10 min difference in total activity  $\geq 2000$  cpm was associated with a  $-0.043$  standard deviations (95% CI:  $-0.051$  to  $-0.035$ ) lower composite risk score, while 10 min of the same intensity accrued in medium, and long bouts was associated with a  $-0.065$  (95% CI:  $-0.078$  to  $-0.052$ ) and  $-0.081$  (95% CI:  $-0.101$  to  $-0.061$ ) standard deviations lower composite score, respectively. Effect-sizes for glucose and triglycerides followed an irregular pattern at  $\geq 2000$  cpm and  $\geq 3000$  cpm with weaker associations observed with medium and long bout-durations (Supplementary File Fig. S3 and S4). The mean BMI of the quartile spending the highest percentage of time  $\geq 500$  cpm ( $> 32.9\%$  of wear time) was 0.28 (95% CI: 0.19 to 0.36)  $\text{kg/m}^2$  lower than the quartile spending the least time above the threshold ( $< 20.6\%$  of wear time). Being in the most active quartile of physical activity  $\geq 3000$  cpm ( $> 4.9\%$  of wear time) was associated with a 0.80 (95% CI: 0.71 to 0.89)  $\text{kg/m}^2$  lower BMI in comparison with the quartile accumulating the least activity above the threshold ( $< 1.8\%$  of wear time). Adding age-by-intensity/bout-duration interaction terms in separate models did not support heterogeneity of associations across participant age for the composite risk score. Conversely, a pattern of negative age-by-intensity/bout-duration interaction terms were observed for BMI, suggesting higher

**Table 2** Outcome characteristics

	No. of studies	Girls (%)	<i>n</i> <sup>a</sup>	Median <sup>b</sup>	25th–75th percentile <sup>b</sup>	ICC study	ICC participant	Contributing studies
Composite risk score	6	52	4279	−0.05	−0.65 to 0.61	0.08	0.51	4, 5, 6, 10, 12, 15
Non-adiposity composite score	6	52	4279	−0.01	−0.66 to 0.66	0.08	0.35	4, 5, 6, 10, 12, 15
Insulin (pmol/l)	7	52	4649	42.78	27.28 to 64.80	0.07	0.65	4, 5, 6, 10, 12, 15, 20
Glucose (mmol/l)	7	52	4685	5	4.70 to 5.30	0.17	0.13	4, 5, 6, 10, 12, 15, 20
Triglyceride (mmol/l)	8	52	5027	0.69	0.51 to 0.95	0.08	0.51	4, 5, 6, 10, 11, 12, 15, 20
Mean arterial pressure (mmHg)	10	52	13 598	73.8	69.2 to 78.9	0.16	0.35	1, 4, 5, 6, 9, 10, 11, 12, 14, 15
HDL-c (mmol/l)	8	51	7386	1.43	1.22 to 1.68	0.03	0.55	4, 5, 6, 10, 11, 12, 15, 20
BMI (kg/m <sup>2</sup> )	21	62	29 734	18.7	16.5 to 21.8	0.05	0.86	all
Waist circumference (cm)	14	52	18 992	64.5	58.8 to 72.0	0.07	0.80	1, 4, 5, 6, 9, 10, 11, 12, 13,
Overweight/obese (%)	21	62	29 734	18/8				all

<sup>a</sup>Unique participants

<sup>b</sup>For prospective studies, only study “baseline” data is included in the table. Overweight and obesity defined according to World Obesity Federation cut-offs. Study indicators (NHANES waves counted separately): 1: ALSPAC, 2: Belgium Pre-School Study, 3: CLAN, 4: CoSCIS, 5: Danish EYHS, 6: Estonian EYHS, 7: HEAPS, 8: IBDS, 9: MAGIC, 10: NHANES 2005-06, 11: Norway EYHS, 12: NHANES 2003-04, 13: PEACH, 14: Pelotas, 15: Portugal EYHS, 16: SPEEDY, 17: TAAG, 18: CHAMPS UK, 19: Ballabeina Study, 20: KISS, 21: CHAMPS US

intensities and bout-durations were associated with larger effect-sizes in older participants. Weight status (normal weight versus overweight/obese) modified the associations as indicated by statistically significant weight status-by-intensity/bout-duration interaction terms for both the composite risk score and BMI. The magnitude of associations was stronger in overweight/obese participants than in their normal weight peers, particularly for BMI (Supplementary File Figs. S9 and S10). The pattern of associations did not differ across weight status for the composite risk score.

Meta-regression suggested independent contributions of intensity for all outcomes except for glucose and triglyceride, wherein CI's overlapped the null (coefficients shown in Supplementary File Table S3). No statistical support for independent effects of bout-duration on outcomes was found. Each 1000 cpm increase in the activity threshold was associated with a −0.026 (−0.039 to −0.014) standard deviations and a −0.064 (−0.09 to −0.038) kg/m<sup>2</sup> difference in the beta-coefficient for the composite score and BMI, respectively. When adding the intensity-by-bout duration interaction term, this did not reach statistical significance for any outcome (coefficients shown in Supplementary File table S3).

### Isotemporal substitution of short for medium and long bouts of physical activity

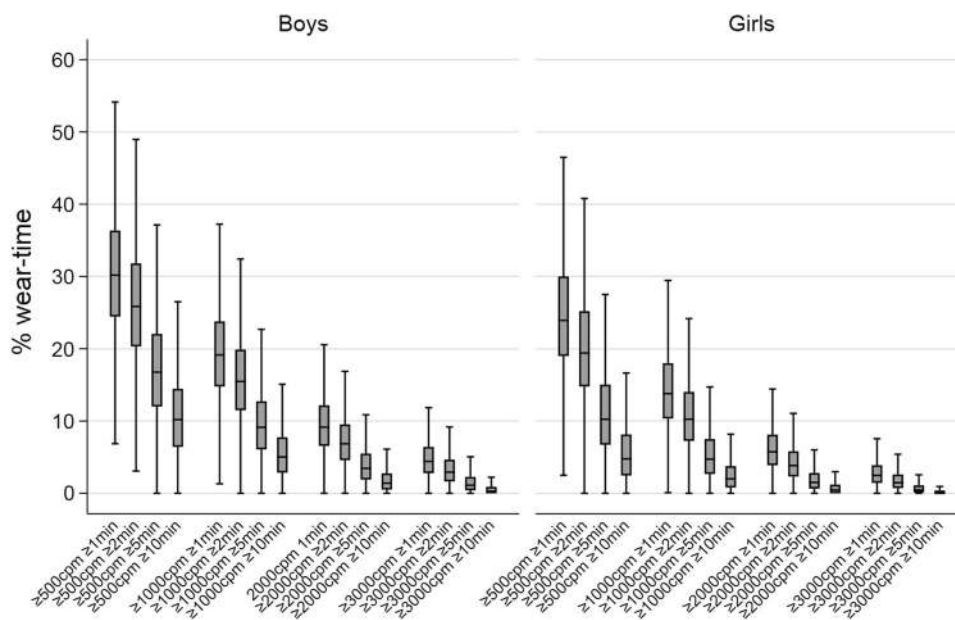
Supplementary file Table S4 includes quintiles of residual variation in bouted physical activity after controlling for total activity volume ( $\geq 1$  min bouts), sex, age, and wear-

time. Associations with isotemporal activity substitution and the composite risk score, non-adiposity risk score and BMI are shown in Table 3 (other outcomes shown in Supplementary File Tables S5 and S6). Replacing 10 min/day of activity accumulated in short bouts with an identical amount of same intensity time accumulated in medium or long bouts, produced mixed associations with the cardiometabolic risk factors. E.g., substituting short bout activity above 500 cpm with physical activity accumulated in long bouts was associated with a −0.032 (95% CI: −0.047 to −0.018) standard deviation lower composite score, but substituting 10 min of short bout activity above 3000 cpm with the same amount of activity accumulated in long bouts was associated with a 0.066 (95% CI: 0.013 to 0.118) standard deviation *higher* composite score.

## Discussion

These data suggest time spent in physical activity with increasing intensity is favorably associated with cardiometabolic risk markers in youth irrespective of bout-duration. Activity accumulated at higher intensities produced progressively greater magnitude of associations as indicated by lower levels of risk markers and a favorable body composition within the range of intensity and bout-duration examined. Meta-regression and isotemporal substitution models provided no evidence for an additional benefit of bouted activity above that of a strong correlation with total physical activity.

**Fig. 1** Activity patterns in 10,990 boys and 18,810 girls. Box-plot displays percentage of wear-time spent in intensity/bout combinations in boys and girls. Outside values not shown



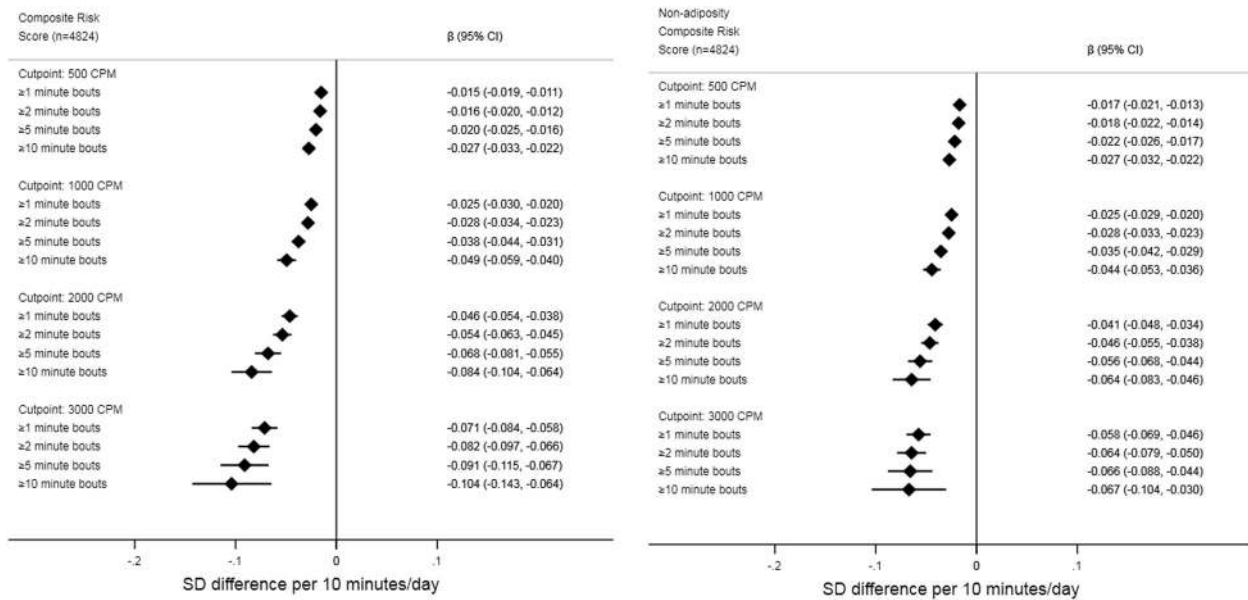
## Physical activity intensity

It is well-established that physical activity improves cardiometabolic risk factors in children and adolescents [4, 6, 48]. In epidemiological studies, physical activity is often operationalized by MVPA which is frequently derived by counting time spent at or above 2000 to 3200 cpm in youth [18]. We show that favorable associations with the cardiometabolic risk factors are already present at the lower end of the intensity spectrum, in the range of what is often considered light intensity physical activity, but effect-sizes increase in magnitude as intensity increases. In secondary models including control for adiposity we observed attenuation of effect-sizes. However, consistent with previous reports [49] adding adiposity to models did not fully attenuate the beneficial associations with physical activity. Models stratified by weight status supported this finding. Our operationalization of intensity included all activity above the respective threshold and did not consider an isolated intensity range (e.g., light intensity physical activity, moderate intensity physical activity). As such, our estimates of e.g.,  $\geq 500$  cpm would include more than one of the “conventional” intensity domains without distinguishing their relative contributions to the estimate. It would therefore be premature to promote physical activities within the lower end of the intensity spectrum for cardiometabolic benefits based on these data. In young people the role of light or total volume of physical activity intensity on the risk markers appears less convincing than that of higher intensity activities [50, 51]. Intensity-dependent associations are consistent with the results of randomized-controlled trials comparing high-intensity interval training

with continuous lower intensity exercise [52]. Our data supports the recommendation of high intensity intermittent activity patterns for cardiometabolic benefits in young people. In children, 3000 cpm corresponds to walking at approximately 4–5 km/h [53, 54] and physical activity above this intensity threshold should thus be readily attained by healthy individuals. As the sample spent on average  $\approx 3\%$  of their time above 3000 cpm and less than 50% of boys and girls accumulated any 10-min bout above this intensity threshold, increasing activities at particularly higher intensities may provide guidance for public health actions and interventions. An additional argument for higher intensity activity is potential fitness adaptations as higher fitness-levels in adolescence are strongly and inversely linked with future risk of cardiovascular disease [55].

## Physical activity bouts

Understanding the cardiometabolic benefits associated with physical activity accumulated in intermittent or continuous patterns have significant practical implications. For example, will the cardiometabolic benefits of activity accumulated in short intervals throughout the day be inferior to those of a prolonged continuous session? Achievement of cardiometabolic benefits irrespective of bout-duration would increase feasibility as some may find it more appealing to incorporate shorter activity bouts than having to allocate an extended period of time. It may also be easier to implement short breaks of high intensity activity into the school day than to prioritize resources for a longer continuous session. Consistent with existing literature, a strong correlation between bouted and total time engaged in



**Fig. 2** Forest plot of associations between intensity/bout combinations and composite risk scores. Beta-coefficients and 95% CI from linear mixed regression models controlled for age, sex, wear-time including study and participant as “random-effects”. Non-adiposity composite

risk score additionally controlled for BMI. Physical activity exposure is based on summarizing all activity exceeding the considered intensity/bout-duration threshold

physical activity was observed [14, 17]. This suggests a direct comparison of cardiometabolic risk factor associations between physical activity accumulated in shorter and longer bout-durations would be confounded by the amount of total activity. Therefore, an isothermal substitution approach was used to model the impact of replacing short bouts with medium and long bouts of activity while holding total activity constant. These models did not suggest physical activity accumulated in longer bout-durations will produce more pronounced benefits than shorter bouts (at least down to a 1 min bout) when the total volume (time and intensity) of activity are identical. Meta-regression supported this notion as neither the coefficient for bout-duration nor the interaction between bout-duration and intensity was statistically significant. The conclusion of no evidence for an additional benefit of long bouted activity above that of short bouted activity on cardiometabolic risk markers was also reached in a recent systematic review [51]. However, any additional health benefit from longer bouts of activity is difficult to extract from the literature as studies are discordant in their analytical approach for examining this issue. Any specific biological mechanism favouring longer bout-durations under identical total volumes of activity also remain unidentified.

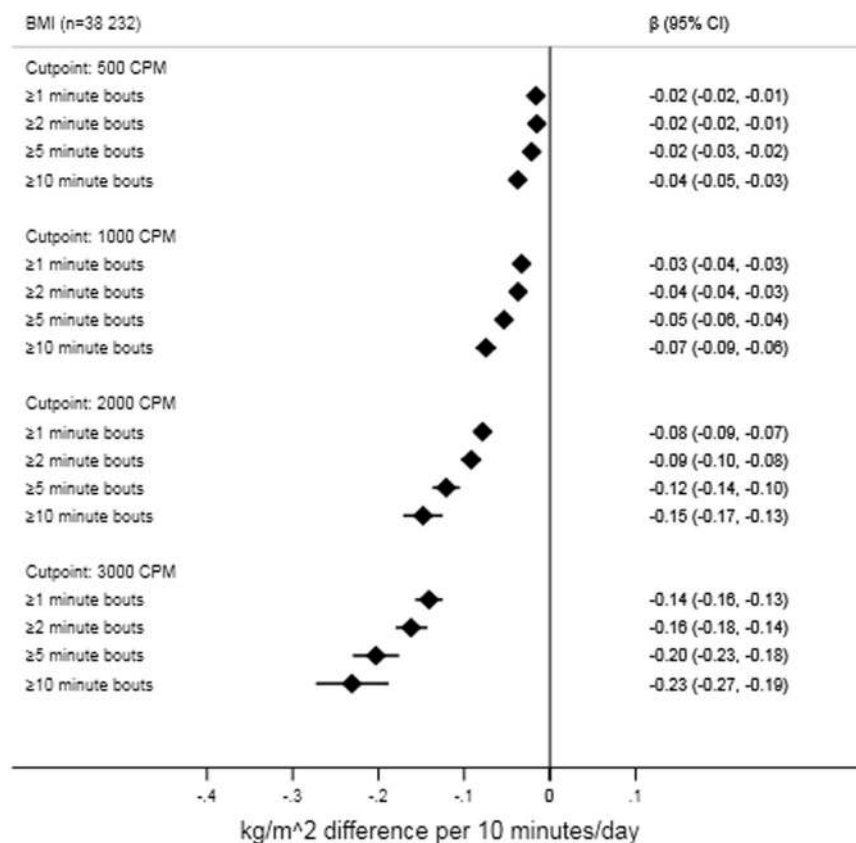
## Limitations

The pattern of results for substitution models was counter-intuitive with conflicting directions of associations. This

could suggest issues with collinearity which was indeed large. However, residual-analysis indicated meaningful (i.e., reasonable intervention target) variation in bouted activity remained after controlling for total activity and correlations did not differ substantially in magnitude from what is reported from e.g., substitution of distinct fatty acids [56]. Accumulation of particularly longer bouts of activity at higher intensities was low which could also reduce performance of the substitution models because of insufficient information. A min-for-min comparison of short and long bouts above a certain threshold may in fact be confounded by the intensity of the underlying behavior if the contrast is not isocaloric. The direction of this potential bias is likely to inflate effect-sizes for longer bout-durations [57]. Analogously, the substitution models did not account for activity below the intensity threshold, which could also be discordant between individuals engaging in activities of short and long bout-durations. The applied definition of bouts did not allow for interruptions in the time-series, and it remains unclear whether bouted behaviors are better captured by allowing for interruptions. Children’s physical activity is sporadic suggesting bout-durations and time above a given intensity threshold may be misclassified using a 60-s epoch as compared to a shorter epoch-duration. We expect this misclassification to be non-differential in relation to outcomes. Data was cross-sectional so we are unable to infer the direction of association. Prospective studies are needed to establish the temporal nature of our findings. It may be speculated that reverse causation bias is unlikely for



**Fig. 3** Forest plot of associations between intensity/bout combinations and BMI. Beta-coefficients and 95% CI from linear mixed regression models controlled for age, sex, wear-time including study and participant as “random-effects”. Physical activity exposure is based on summarizing all activity exceeding the considered intensity/bout-duration threshold



cardiometabolic risk factors whereas the association with BMI or waist circumference may be bi-directional [58]. We are also unaware of any controlled studies which have robustly examined the impact of short compared with longer bouts of habitual physical activity on cardiometabolic risk markers. Finally, we only controlled for age, sex and study, hence the possibility of bias owing to uncontrolled confounding sources such as diet quality and quantity [59], socioeconomic possibilities [60], and sexual maturity cannot be rejected. Uncontrolled confounding from these or other sources could significantly influence the strength and pattern of the observed associations.

## Conclusions

In this international observational study including up to 30,000 youth, physical activity intensity appeared a major determinant of variation in cardiometabolic risk factors within the ranges of intensity and bout-duration examined. Greater magnitudes of associations were consistently observed at higher intensities. These results do not support the inclusion of specific bout-durations in youth activity recommendations but suggests that physical activity, preferably at higher intensities, of any accumulation pattern

should be promoted by authorities, clinicians, and parents to improve cardiovascular health in young people.

## Availability of data and materials

Data from ICAD is available per request as a supported access resource. Analyzed data is de-identified from the main ICAD database, available only for the approved analyses, and cannot be shared by the authors. Analyses included in this manuscript can be reproduced by requesting a new data release.

**Acknowledgements** We would like to thank all participants and funders of the original studies that contributed data to ICAD. The ICAD Collaborators include: Prof LB Andersen, Department of Teacher Education and Sport, Western Norwegian University of Applied Sciences, Sogndal, Norway (Copenhagen School Child Intervention Study (CoSCIS)); Prof S Anderssen, Norwegian School for Sport Science, Oslo, Norway (European Youth Heart Study (EYHS), Norway); Dr AJ Atkin, Faculty of Medicine and Health Sciences, University of East Anglia, UK; Prof G Cardon, Department of Movement and Sports Sciences, Ghent University, Belgium (Belgium Pre-School Study); Centers for Disease Control and Prevention (CDC), National Center for Health Statistics (NCHS), Hyattsville, MD USA (National Health and Nutrition Examination Survey (NHANES)); Dr R Davey, Centre for Research and Action in Public Health, University of Canberra, Australia (Children’s Health and Activity Monitoring for Schools (CHAMPS)); Prof U Ekelund, Norwegian School of Sport

**Table 3** Associations for composite risk score, non-adiposity risk score, and BMI from isothermal substitution of short to medium and long bouts of physical activity

	Composite risk score ( <i>n</i> = 4338)			Non-adiposity composite risk score ( <i>n</i> = 4338) <sup>a</sup>			BMI ( <i>n</i> = 38,232)		
	Beta	95% CI	<i>p</i> -value	Beta	95% CI	<i>p</i> -value	Beta	95% CI	<i>p</i> -value
Medium bouts <sub>500 cpm</sub>	-0.06	-0.035 to 0.025	0.68	-0.02	-0.043 to 0.011	0.25	0.103	0.071 to 0.135	<0.001
Long bouts <sub>500 cpm</sub>	-0.03	-0.047 to -0.018	<0.001	-0.03	-0.040 to -0.013	<0.001	-0.02	-0.034 to 0.0002	0.052
Medium bouts <sub>1000 cpm</sub>	-0.04	-0.075 to -0.003	0.03	-0.04	-0.070 to -0.002	0.04	-0.02	-0.061 to 0.019	0.29
Long bouts <sub>1000 cpm</sub>	-0.04	-0.062 to -0.026	<0.001	-0.03	-0.046 to -0.012	0.001	-0.08	-0.100 to -0.058	<0.001
Medium bouts <sub>2000 cpm</sub>	-0.04	-0.091 to 0.015	0.17	0.057	-0.222 to 0.336	0.69	-0.08	-0.136 to -0.022	0.006
Long bouts <sub>2000 cpm</sub>	-0.01	-0.037 to 0.026	0.72	0.172	0.012 to 0.333	0.04	-0.07	-0.104 to -0.036	<0.001
Medium bouts <sub>3000 cpm</sub>	0.081	0.003 to 0.158	0.04	0.105	0.032 to 0.177	0.005	-0	-0.089 to 0.081	0.92
Long bouts <sub>3000 cpm</sub>	0.066	0.013 to 0.118	0.01	0.099	0.050 to 0.149	<0.001	0.022	-0.034 to 0.079	0.44

<sup>a</sup>Non-adiposity composite risk score controlled for BMI

Beta-coefficients with 95% confidence intervals from linear mixed regression models. Coefficients are interpreted as holding the volume of physical activity above the respective threshold constant, but replacing 10 min of physical activity accumulated in shorter bouts (1-4 min) with 10 min of same intensity physical activity accumulated in the respective bout-duration ( $\geq 5$ -9 (medium) or  $\geq 10$  (long) minute bouts). *Cpm* counts/min, *CI* confidence interval, *BMI* body mass index

Sciences, Oslo, Norway and MRC Epidemiology Unit, University of Cambridge, UK; Dr DW Esliger, School of Sports, Exercise and Health Sciences, Loughborough University, UK; Dr P Hallal, Post-graduate Program in Epidemiology, Federal University of Pelotas, Brazil (1993 Pelotas Birth Cohort); Dr BH Hansen, Norwegian School of Sport Sciences, Oslo, Norway; Prof KF Janz, Department of Health and Human Physiology, Department of Epidemiology, University of Iowa, Iowa City, US (Iowa Bone Development Study); Prof S Kriemler, Epidemiology, Biostatistics and Prevention Institute, University of Zürich, Switzerland (Kinder-Sportstudie (KISS)); Dr N Møller, University of Southern Denmark, Odense, Denmark (European Youth Heart Study (EYHS), Denmark); Dr K Northstone, School of Social and Community Medicine, University of Bristol, UK (Avon Longitudinal Study of Parents and Children (ALSPAC)); Dr A Page, Centre for Exercise, Nutrition and Health Sciences, University of Bristol, UK (Personal and Environmental Associations with Children's Health (PEACH)); Prof R Pate, Department of Exercise Science, University of South Carolina, Columbia, US (Physical Activity in Preschool Children (CHAMPS-US) and Project Trial of Activity for Adolescent Girls (Project TAAG)); Dr JJ Puder, Service of Endocrinology, Diabetes and Metabolism, Centre Hospitalier Universitaire Vaudois, University of Lausanne, Switzerland (Ballabeina Study); Prof J Reilly, Physical Activity for Health Group, School of Psychological Sciences and Health, University of Strathclyde, Glasgow, UK (Movement and Activity Glasgow Intervention in Children (MAGIC)); Prof J Salmon, Institute for Physical Activity and Nutrition (IPAN), School of Exercise and Nutrition Sciences, Deakin University, Geelong, Australia (Children Living in Active Neighbourhoods (CLAN) and Healthy Eating and Play Study (HEAPS)); Prof LB Sardinha, Exercise and Health Laboratory, Faculty of Human Movement, Universidade de Lisboa, Lisbon, Portugal (European Youth Heart Study (EYHS), Portugal); Dr LB Sherar, School of Sports, Exercise and Health Sciences, Loughborough University, UK; Dr EMF van Sluijs, MRC Epidemiology Unit and Centre for Diet and Activity Research, University of Cambridge, UK (Sport, Physical activity and Eating behavior: Environmental Determinants in Young people (SPEEDY)).

**Funding:** JT was funded by The TRYG Foundation (11683) and received financial support from "Christian og Otilia Brorsons

Rejselegat" while contributing to this work. TW is funded by a PhD studentship from MedImmune. KW is funded by a BHF fellowship (FS/12/58/29709). The work of KWe and SB were funded by the UK Medical Research Council (MC\_UU\_12015/3). UE has received funding from the Research Council of Norway (249932/F20). AG is funded by the European Research Council (716657) and The TRYG Foundation (115606). AB has received funding by The TRYG Foundation (104982). The pooling of the data was funded through a grant from the National Prevention Research Initiative (Grant Number: G0701877) (<http://www.mrc.ac.uk/research/initiatives/national-prevention-research-initiative-npri/>). The funding partners relevant to this award are: British Heart Foundation; Cancer Research UK; Department of Health; Diabetes UK; Economic and Social Research Council; Medical Research Council; Research and Development Office for the Northern Ireland Health and Social Services; Chief Scientist Office; Scottish Executive Health Department; The Stroke Association; Welsh Assembly Government and World Cancer Research Fund. This work was additionally supported by the Medical Research Council [MC\_UU\_12015/3; MC\_UU\_12015/7], The Research Council of Norway (249932/F20), Bristol University, Loughborough University and Norwegian School of Sport Sciences. We also gratefully acknowledge the contribution of Prof Chris Riddoch, Prof Ken Judge, Prof Ashley Cooper and Dr Pippa Griew to the development of ICAD. The UK Medical Research Council and the Wellcome Trust (Grant ref: 102215/2/13/2) and the University of Bristol provide core support for ALSPAC. ALSPAC data included for this research was specifically funded by the British Heart Foundation (Grant reference: PG106/145). The study sponsors were not involved in the design of the study; the collection, analysis, and interpretation of data; writing the report; or the decision to submit the report for publication.

**Author contributions:** JT analyzed and interpreted the data, drafted the initial manuscript, and revised the manuscript. AC, SB, and UE conceptualized the study, interpreted the data, and reviewed and revised the manuscript. TW, KWe, and KW processed the data, interpreted the data, and reviewed and revised the manuscript. AB, AG, NW, LBA, GC, RD, KFJ, SK, KN, AP, JJP, JJR, LBS, and EMFvS contributed data from original studies, interpreted the data, reviewed, and revised the manuscript. All authors approved the final manuscript as

submitted and agree to be accountable for all aspects of the work. JT is the guarantor of this work.

## Compliance with ethical standards

**Conflict of interest** The authors declare that they have no conflict of interest.

**Open Access** This article is licensed under a Creative Commons Attribution 4.0 International License, which permits use, sharing, adaptation, distribution and reproduction in any medium or format, as long as you give appropriate credit to the original author(s) and the source, provide a link to the Creative Commons license, and indicate if changes were made. The images or other third party material in this article are included in the article's Creative Commons license, unless indicated otherwise in a credit line to the material. If material is not included in the article's Creative Commons license and your intended use is not permitted by statutory regulation or exceeds the permitted use, you will need to obtain permission directly from the copyright holder. To view a copy of this license, visit <http://creativecommons.org/licenses/by/4.0/>.

## References

1. GBD Causes of Death Collaborators. Global, regional, and national age-sex specific mortality for 264 causes of death, 1980–2016: a systematic analysis for the Global Burden of Disease Study 2016. *Lancet*. 2017;390:1151–210.
2. Glowinska B, Urban M, Peczynska J, Florys B. Soluble adhesion molecules (sICAM-1, sVCAM-1) and selectins (sE selectin, sP selectin, sL selectin) levels in children and adolescents with obesity, hypertension, and diabetes. *Metabolism*. 2005;54:1020–6.
3. Koskinen J, Magnussen CG, Sinaiko A, Woo J, Urbina E, Jacobs DR, Jr. et al. Childhood Age and Associations Between Childhood Metabolic Syndrome and Adult Risk for Metabolic Syndrome, Type 2 Diabetes Mellitus and Carotid Intima Media Thickness: The International Childhood Cardiovascular Cohort Consortium. *J Am Heart Assoc*. 2017;16:6(8)
4. Ekelund U, Luan J, Sherar LB, Esliger DW, Griew P, Cooper A, et al. Moderate to vigorous physical activity and sedentary time and cardiometabolic risk factors in children and adolescents. *JAMA*. 2012;307:704–12.
5. Tarp J, Brønd JC, Andersen LB, Møller NC, Froberg K, Grøntved A. Physical activity, Sedentary behavior, And long-term cardiovascular risk in young people: A review and discussion of methodology in prospective studies. *J Sport Health Sci*. 2016;5:145–50.
6. Fedewa MV, Gist NH, Evans EM, Dishman RK. Exercise and insulin resistance in youth: a meta-analysis. *Pediatrics*. 2014;133:e163–74.
7. Department of Health (UK). Department of Health (UK). UK physical activity guidelines. 2018. <https://www.gov.uk/government/publications/uk-physical-activity-guidelines>. accessed 27 June 2018
8. World Health Organization. WHO Global Strategy on Diet, Physical Activity and Health. Global recommendations on physical activity for health. 2018. [http://www.who.int/dietphysicalactivity/factsheet\\_recommendations/en/](http://www.who.int/dietphysicalactivity/factsheet_recommendations/en/). accessed 27 June 2018
9. U.S. Department of Health and Human Services. Office of Disease Prevention and Health Promotion. U.S. Department of Health and Human Services. Office of Disease Prevention and Health Promotion. Physical Activity Guidelines for Children and Adolescents. 2008. <https://health.gov/paguidelines/guidelines/>. accessed 27 June 2018
10. Australian Government. Department of Health. Australia's Physical Activity and Sedentary Behaviour Guidelines. 2018. <http://www.health.gov.au/internet/main/publishing.nsf/content/health-pubhlth-strateg-phys-act-guidelines#apa512>. accessed 27 June 2018
11. Canadian Society for Exercise Physiology. Canadian 24-hour movement guidelines for children and youth: An Integration of Physical Activity, Sedentary Behaviour, and Sleep. 2018. [http://csepguidelines.ca/wp-content/themes/csep2017/pdf/Canada\\_n24HourMovementGuidelines2016\\_2.pdf](http://csepguidelines.ca/wp-content/themes/csep2017/pdf/Canada_n24HourMovementGuidelines2016_2.pdf). accessed 27 June 2018
12. Janssen I. [Guidelines for physical activity in children and young people]. *Appl Physiol Nutr Metab*. 2007;32(Suppl 2F):S122–35. accessed 27 June 2018 (DOI: 10.1139/H07-112)
13. Danish Health Authority. Danish Health Authority. Physical activity recommendations for children and adolescents (5–17 years old). 2018. <https://www.sst.dk/en/health-and-lifestyle/physical-activity/recommendations/recommendations-for-children-and-adolescents->. accessed 27 June 2018
14. Holman RM, Carson V, Janssen I. Does the fractionalization of daily physical activity (sporadic vs. bouts) impact cardiometabolic risk factors in children and youth? *PloS One*. 2011;6:e25733.
15. Mark AE, Janssen I. Influence of bouts of physical activity on overweight in youth. *Am J Prev Med*. 2009;36:416–21.
16. Willis EA, Ptomey LT, Szabo-Reed AN, Honas JJ, Lee J, Washburn RA, et al. Length of moderate-to-vigorous physical activity bouts and cardio-metabolic risk factors in elementary school children. *Prev Med*. 2015;73:76–80.
17. Stone MR, Rowlands AV, Middlebrooke AR, Jawis MN, Eston RG. The pattern of physical activity in relation to health outcomes in boys. *Int J Pediatr Obes*. 2009;4:306–15.
18. Cain KL, Sallis JF, Conway TL, Van Dyck D, Calhoun L. Using accelerometers in youth physical activity studies: a review of methods. *J Phys Act Health*. 2013;10:437–50.
19. Orme M, Wijndaele K, Sharp SJ, Westgate K, Ekelund U, Brage S. Combined influence of epoch length, cut-point and bout duration on accelerometry-derived physical activity. *Int J Behav Nutr Phys Act*. 2014;11:34.
20. Sherar LB, Griew P, Esliger DW, Cooper AR, Ekelund U, Judge K, et al. International children's accelerometry database (ICAD): design and methods. *BMC Public Health*. 2011;11:485.
21. Golding J, Pembrey M, Jones R, Team AS. ALSPAC--the Avon Longitudinal Study of Parents and Children. I. Study methodology. *Paediatr Perinat Epidemiol*. 2001;15:74–87.
22. Niederer I, Kriemler S, Zahner L, Burgi F, Ebenegger V, Hartmann T, et al. Influence of a lifestyle intervention in preschool children on physiological and psychological parameters (Ballabeina): study design of a cluster randomized controlled trial. *BMC Public Health*. 2009;9:94.
23. Cardon G, De Bourdeaudhuij I. Comparison of pedometer and accelerometer measures of physical activity in preschool children. *Pediatr Exerc Sci*. 2007;19:205–14.
24. Gidlow CJ, Cochrane T, Davey R, Smith H. In-school and out-of-school physical activity in primary and secondary school children. *J Sports Sci*. 2008;26:1411–9.
25. Pfeiffer KA, Dowda M, McIver KL, Pate RR. Factors related to objectively measured physical activity in preschool children. *Pediatr Exerc Sci*. 2009;21:196–208.
26. Crawford D, Cleland V, Timperio A, Salmon J, Andrianopoulos N, Roberts R, et al. The longitudinal influence of home and neighbourhood environments on children's body mass index and physical activity over 5 years: the CLAN study. *Int J Obes*. 2010;34:1177–87.
27. Bugge A, El-Naaman B, Dencker M, Froberg K, Holme IM, McMurray RG, et al. Effects of a three-year intervention: the Copenhagen School Child Intervention Study. *Med Sci Sports Exerc*. 2012;44:1310–7.

28. Riddoch C, Edwards D, Page A, Froberg K, Anderssen SA, Wedderkopp N, et al. The European Youth Heart Study—cardiovascular disease risk factors in children: rationale, aims, study design, and validation of methods. *J Phys Act Health*. 2005;2:115–29.
29. Salmon J, Campbell KJ, Crawford DA. Television viewing habits associated with obesity risk factors: a survey of Melbourne schoolchildren. *Med J Aust*. 2006;184:64–7.
30. Janz KF, Burns TL, Torner JC, Levy SM, Paulos R, Willing MC, et al. Physical activity and bone measures in young children: the Iowa bone development study. *Pediatrics*. 2001;107:1387–93.
31. Zahner L, Puder JJ, Roth R, Schmid M, Guldemann R, Puhse U, et al. A school-based physical activity program to improve health and fitness in children aged 6–13 years (“Kinder-Sportstudie KISS”): study design of a randomized controlled trial [ISRCTN15360785]. *BMC Public Health*. 2006;6:147.
32. Reilly JJ, Kelly L, Montgomery C, Williamson A, Fisher A, McColl JH, et al. Physical activity to prevent obesity in young children: cluster randomised controlled trial. *BMJ*. 2006;333:1041.
33. Center for Disease Control and Prevention. National Health and Nutrition Examination Survey. 2003–2004 Survey Operations Manuals. 2017. <https://www.cdc.gov/nchs/nhanes/ContinuousNhanes/manuals.aspx?BeginYear=2003>. accessed 27 June 2018
34. Center for Disease Control and Prevention. National Health and Nutrition Examination Survey. Laboratory Procedures Manual. 2005. [https://www.cdc.gov/nchs/data/nhanes/nhanes\\_05\\_06/LAB.pdf](https://www.cdc.gov/nchs/data/nhanes/nhanes_05_06/LAB.pdf). accessed 27 June 2018
35. Page AS, Cooper AR, Griew P, Davis L, Hillsdon M. Independent mobility in relation to weekday and weekend physical activity in children aged 10–11 years: The PEACH Project. *Int J Behav Nutr Phys Act*. 2009;6:2.
36. Victora CG, Hallal PC, Araujo CL, Menezes AM, Wells JC, Barros FC. Cohort profile: the 1993 Pelotas (Brazil) birth cohort study. *Int J Epidemiol*. 2008;37:704–9.
37. van Sluijs EM, Skidmore PM, Mwanza K, Jones AP, Callaghan AM, Ekelund U, et al. Physical activity and dietary behaviour in a population-based sample of British 10-year old children: the SPEEDY study (Sport, Physical activity and Eating behaviour: environmental Determinants in Young people). *BMC Public Health*. 2008;8:388.
38. Stevens J, Murray DM, Catellier DJ, Hannan PJ, Lytle LA, Elder JP, et al. Design of the Trial of Activity in Adolescent Girls (TAAG). *Contemp Clin Trials*. 2005;26:223–33.
39. Lewington S, Clarke R, Qizilbash N, Peto R, Collins R. Prospective Studies C. Age-specific relevance of usual blood pressure to vascular mortality: a meta-analysis of individual data for one million adults in 61 prospective studies. *Lancet*. 2002;360:1903–13.
40. Cole TJ, Bellizzi MC, Flegal KM, Dietz WH. Establishing a standard definition for child overweight and obesity worldwide: international survey. *BMJ*. 2000;320:1240–3.
41. Patry-Parisien J, Shields M, Bryan S. Comparison of waist circumference using the World Health Organization and National Institutes of Health protocols. *Health Rep*. 2012;23:53–60.
42. Brage S, Wedderkopp N, Ekelund U, Franks PW, Wareham NJ, Andersen LB, et al. Features of the metabolic syndrome are associated with objectively measured physical activity and fitness in Danish children: the European Youth Heart Study (EYHS). *Diabetes Care*. 2004;27:2141–8.
43. Matthews DR, Hosker JP, Rudenski AS, Naylor BA, Treacher DF, Turner RC. Homeostasis model assessment: insulin resistance and beta-cell function from fasting plasma glucose and insulin concentrations in man. *Diabetologia*. 1985;28:412–9.
44. Mekary RA, Willett WC, Hu FB, Ding EL. Isotemporal substitution paradigm for physical activity epidemiology and weight change. *Am J Epidemiol*. 2009;170:519–27.
45. Hu FB, Stampfer MJ, Rimm E, Ascherio A, Rosner BA, Spiegelman D, et al. Dietary fat and coronary heart disease: a comparison of approaches for adjusting for total energy intake and modeling repeated dietary measurements. *Am J Epidemiol*. 1999;149:531–40.
46. Harbord RM, Higgins JPT. Meta-regression in Stata. *Stata J*. 2008;8:493–519.
47. Atkin AJ, Ekelund U, Moller NC, Froberg K, Sardinha LB, Andersen LB, et al. Sedentary time in children: influence of accelerometer processing on health relations. *Med Sci Sports Exerc*. 2013;45:1097–104.
48. Bea JW, Blew RM, Howe C, Hetherington-Rauth M, Going SB. Resistance Training Effects on Metabolic Function Among Youth: A Systematic Review. *Pediatr Exerc Sci*. 2017;29:297–315.
49. Steele RM, Brage S, Corder K, Wareham NJ, Ekelund U. Physical activity, cardiorespiratory fitness, and the metabolic syndrome in youth. *J Appl Physiol*. 2008;105:342–51.
50. Garcia-Hermoso A, Saavedra JM, Ramirez-Velez R, Ekelund U, Del Pozo-Cruz B. Reallocating sedentary time to moderate-to-vigorous physical activity but not to light-intensity physical activity is effective to reduce adiposity among youths: a systematic review and meta-analysis. *Obes Rev*. 2017;18:1088–95.
51. Poitras VJ, Gray CE, Borghese MM, Carson V, Chaput JP, Janssen I, et al. [Systematic review of the relationships between objectively measured physical activity and health indicators in school-aged children and youth]. *Appl Physiol, Nutr, Metab*. 2016;41(6 Suppl 3):S197–239.
52. Garcia-Hermoso A, Cerrillo-Urbina AJ, Herrera-Valenzuela T, Cristi-Montero C, Saavedra JM, Martinez-Vizcaino V. Is high-intensity interval training more effective on improving cardiometabolic risk and aerobic capacity than other forms of exercise in overweight and obese youth? A meta-analysis. *Obes Rev*. 2016;17:531–40.
53. Romanzini M, Petroski EL, Ohara D, Dourado AC, Reichert FF. Calibration of ActiGraph GT3X, Actical and RT3 accelerometers in adolescents. *Eur J Sport Sci*. 2014;14:91–9.
54. Evenson KR, Catellier DJ, Gill K, Ondrak KS, McMurray RG. Calibration of two objective measures of physical activity for children. *J Sports Sci*. 2008;26:1557–65.
55. Crump C, Sundquist J, Winkleby MA, Sundquist K. Interactive effects of obesity and physical fitness on risk of ischemic heart disease. *Int J Obes*. 2017;41:255–61.
56. Wang DD, Li Y, Chiuve SE, Stampfer MJ, Manson JE, Rimm EB, et al. Association of specific dietary fats with total and cause-specific mortality. *JAMA Intern Med*. 2016;176:1134–45.
57. Andersen LB, Harro M, Sardinha LB, Froberg K, Ekelund U, Brage S, et al. Physical activity and clustered cardiovascular risk in children: a cross-sectional study (The European Youth Heart Study). *Lancet*. 2006;368:299–304.
58. Richmond RC, Davey Smith G, Ness AR, den Hoed M, McMahon G, Timpson NJ. Assessing causality in the association between child adiposity and physical activity levels: a Mendelian randomization analysis. *PLoS Med*. 2014;11:e1001618.
59. Daniels SR, Pratt CA, Hayman LL. Reduction of risk for cardiovascular disease in children and adolescents. *Circulation*. 2011;124:1673–86.
60. Lawlor DA, Sterne JA, Tynelius P, Davey Smith G, Rasmussen F. Association of childhood socioeconomic position with cause-specific mortality in a prospective record linkage study of 1,839,384 individuals. *Am J Epidemiol*. 2006;164:907–15.

## Affiliations

Jakob Tarp<sup>1,2</sup> · Abbey Child<sup>3</sup> · Tom White<sup>2</sup> · Kate Westgate<sup>2</sup> · Anna Bugge<sup>1</sup> · Anders Grøntved<sup>1</sup> · Niels Wedderkopp<sup>1,4</sup> · Lars B. Andersen<sup>5</sup> · Greet Cardon<sup>6</sup> · Rachel Davey<sup>7</sup> · Kathleen F Janz<sup>8</sup> · Susi Kriemler<sup>9</sup> · Kate Northstone<sup>10</sup> · Angie S. Page<sup>11</sup> · Jardena J. Puder<sup>12</sup> · John J. Reilly<sup>13</sup> · Luis B. Sardinha<sup>14</sup> · Esther M. F. van Sluijs<sup>2,15</sup> · Ulf Ekelund<sup>16</sup> · Katrien Wijndaele<sup>2</sup> · Søren Brage<sup>2</sup> On behalf of the International Children's Accelerometry Database (ICAD) Collaborators

<sup>1</sup> Research Unit for Exercise Epidemiology, Department of Sports Science and Clinical Biomechanics, Centre of Research in Childhood Health, University of Southern Denmark, Odense, Denmark

<sup>2</sup> Medical Research Council Epidemiology Unit, University of Cambridge, Cambridge, UK

<sup>3</sup> University of Cambridge, Cambridge, UK

<sup>4</sup> Sports Medicine Clinic, The Orthopedic Department, Hospital of Lillebaelt Middelfart, Institute of Regional Health Research, University of Southern Denmark, Odense, Denmark

<sup>5</sup> Department of Teacher Education and Sport, Western Norwegian University of Applied Sciences, Sogndal, Norway

<sup>6</sup> Department of Movement and Sports Sciences, Ghent University, 9000 Ghent, Belgium

<sup>7</sup> Centre for Research and Action in Public Health, University of Canberra, Canberra, Australia

<sup>8</sup> Department of Health and Human Physiology, University of Iowa, Iowa City, USA

<sup>9</sup> Epidemiology, Biostatistics and Prevention Institute, University of Zurich, Zurich, Switzerland

<sup>10</sup> Bristol Medical School, University of Bristol, Bristol, UK

<sup>11</sup> Centre for Exercise, Nutrition and Health Sciences, School for Policy Studies, University of Bristol, Bristol, UK

<sup>12</sup> Service of Endocrinology, Diabetes and Metabolism and Division of Pediatric Endocrinology, Diabetes and Obesity, University Hospital Lausanne, Lausanne, Switzerland

<sup>13</sup> University of Strathclyde, Physical Activity for Health Group, School of Psychological Sciences and Health, Glasgow, Scotland, UK

<sup>14</sup> Exercise and Health Laboratory, Faculty of Human Kinetics, Universidade de Lisboa, Lisbon, Portugal

<sup>15</sup> Centre for Diet and Activity Research (CEDAR), University of Cambridge, Cambridge, UK

<sup>16</sup> Department of Sports Medicine, Norwegian School of Sport Sciences, Oslo, Norway