

ARTICLE

Received 17 May 2013 | Accepted 2 Sep 2013 | Published 26 Sep 2013

DOI: 10.1038/ncomms3530

# Plant immune response to pathogens differs with changing temperatures

Cheng Cheng<sup>1,\*</sup>, Xiquan Gao<sup>2,3,\*</sup>, Baomin Feng<sup>1</sup>, Jen Sheen<sup>4</sup>, Libo Shan<sup>2</sup> & Ping He<sup>1</sup>

Temperature fluctuation is a key determinant for microbial invasion and host evasion. In contrast to mammals that maintain constant body temperature, plant temperature oscillates on a daily basis. It remains elusive how plants operate inducible defenses in response to temperature fluctuation. Here we report that ambient temperature changes lead to pronounced shifts of the following two distinct plant immune responses: pattern-triggered immunity (PTI) and effector-triggered immunity (ETI). Plants preferentially activate ETI signaling at relatively low temperatures (10–23 °C), whereas they switch to PTI signaling at moderately elevated temperatures (23–32 °C). The *Arabidopsis arp6* and *hta9hta11* mutants, phenocopying plants grown at elevated temperatures, exhibit enhanced PTI and yet reduced ETI responses. As the secretion of bacterial effectors favours low temperatures, whereas bacteria multiply vigorously at elevated temperatures accompanied with increased microbe-associated molecular pattern production, our findings suggest that temperature oscillation might have driven dynamic co-evolution of distinct plant immune signaling responding to pathogen physiological changes.

<sup>1</sup>Department of Biochemistry and Biophysics, Institute for Plant Genomics and Biotechnology, Texas A&M University, College Station, Texas 77843, USA. <sup>2</sup>Department of Plant Pathology and Microbiology, Institute for Plant Genomics and Biotechnology, Texas A&M University, College Station, Texas 77843, USA. <sup>3</sup>National Key Laboratory of Crop Genetics and Germplasm Enhancement, Cytogenetic Institute, Nanjing Agricultural University, Nanjing, Jiangsu 210095, China. <sup>4</sup>Department of Genetics, Harvard Medical School and Department of Molecular Biology and Center for Computational and Integrative Biology, Massachusetts General Hospital, Massachusetts 02114, USA. \* These authors contributed equally to this work. Correspondence and requests for materials should be addressed to P.H. (email: pinghe@tamu.edu).

Innate immunity is triggered by the activation of immune receptors through the detection of non-self components. The first line of innate immunity is initiated by the detection of pathogen-associated molecular patterns or microbe-associated molecular patterns (MAMPs) through pattern-recognition receptors. In plants, MAMPs are perceived by cell-surface receptor-like kinases (RLKs) or receptor-like proteins to mount pattern-triggered immunity (PTI)<sup>1,2</sup>. Bacterial flagellin and elongation factor Tu are perceived by leucine-rich repeat RLK (LRR-RLK), FLS2 and EFR, respectively<sup>3,4</sup>. Upon ligand perception, FLS2 and EFR rapidly associate with another LRR-RLK BAK1, thereby initiating downstream signaling<sup>5,6</sup>. A receptor-like cytoplasmic kinase BIK1 is quickly phosphorylated upon flagellin or elongation factor Tu perception. BIK1 is associated with FLS2/BAK1 and EFR/BAK1 receptor complexes and is directly phosphorylated by BAK1 (refs 7,8). MAPK (mitogen-activated protein kinase) cascades and CDPKs (calcium-dependent protein kinases) act downstream of LRR-RLK receptor complexes in transducing intracellular signaling events, which ultimately lead to transcriptional reprogramming<sup>9,10</sup>. PTI signaling could be downregulated by the turnover of MAMP receptors. Two E3 ubiquitin ligases PUB12 and PUB13 interact with and ubiquitinate FLS2 receptor for proteasome-mediated degradation upon flagellin perception<sup>11</sup>.

Adapted pathogens are able to suppress PTI by producing virulence effectors. In particular, many pathogenic bacteria deliver a plethora of effector proteins into host cells through type III secretion system (T3SS) to favour pathogen survival and multiplication and mediate effector-triggered susceptibility. Many of these effectors target important host components to sabotage host immune responses and physiology<sup>12–14</sup>. To confine or eliminate pathogens, plants further evolved intracellular nucleotide-binding domain leucine-rich repeat (NLR) proteins to directly or indirectly recognize effectors and initiate effector-triggered immunity (ETI)<sup>15,16</sup>. Plant NLR proteins share the structural similarity with mammalian NOD-like receptors that perceive intracellular MAMPs and danger signals to initiate inflammation and immunity<sup>17</sup>. *Pseudomonas syringae* effector AvrRpt2 is recognized by *Arabidopsis* NLR protein RPS2, whereas two sequence-unrelated effectors AvrRpm1 and AvrB are recognized by RPM1 to initiate ETI responses including transcriptional reprogramming and localized programmed cell death termed as hypersensitive response (HR). Instead of direct NLR–effector interaction, RPS2 and RPM1 monitor the perturbation of host protein RIN4 targeted by pathogen effectors to mount defense responses<sup>18,19</sup>. Specific calcium-dependent protein kinases downstream of NLR proteins sense sustained increase in cytosolic Ca<sup>2+</sup> concentration and regulate the bifurcate defense responses via phosphorylation of different substrates and subcellular dynamics<sup>20</sup>.

Environmental factors often have profound impacts on microbial invasion and host evasion<sup>21</sup>. Temperature fluctuates both daily and seasonally and has long been considered as one of the key determinants for disease epidemics<sup>22,23</sup>. In many cases, virulence genes of mammalian pathogens are induced at 37 °C, which is a typical body temperature of mammals, but are repressed below 30 °C (ref. 24). Accordingly, elevating mammalian body temperature to fever range results in an increase in MAMP-induced downstream signaling<sup>25</sup>. In contrast, many virulence determinants in plant pathogenic bacteria are induced at 16–24 °C and repressed at >28 °C (refs 26–28). For instance, *P. syringae* effectors HrmA and AvrPto were secreted at their highest amounts when the temperature was between 18 and 22 °C (ref. 26). The production of *P. syringae* phytotoxin coronatine is also temperature-sensitive: induced at 18 °C and repressed at 28 °C (ref. 29). Plant body temperature fluctuates

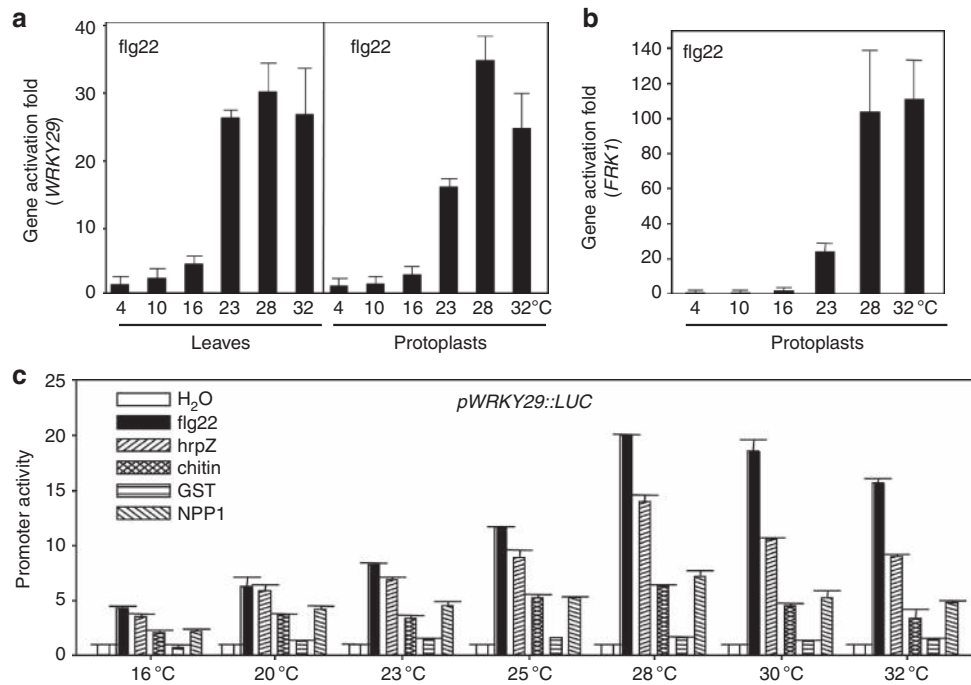
with their living environment on a daily basis. It remains unknown whether and how plants integrate ambient temperature oscillation with regulation of inducible defense programs triggered by distinct pathogen components.

Here we show that plant immunity is inextricably linked with ambient temperature changes. ETI signaling is preferentially activated at relatively low temperatures (10–23 °C), whereas PTI signaling is activated at moderately elevated temperatures (23–32 °C). The temperature preference for PTI and ETI signaling activation is coincident with the temperature effect on bacterial physiology: the elevated temperatures inhibit bacterial effector secretion but promote bacterial proliferation. The interplay between temperature and plant immunity is further supported by the enhanced PTI; however, reduced ETI responses in *Arabidopsis arp6* and *hta9hta11* mutants, which phenocopy plants grown at the elevated temperatures.

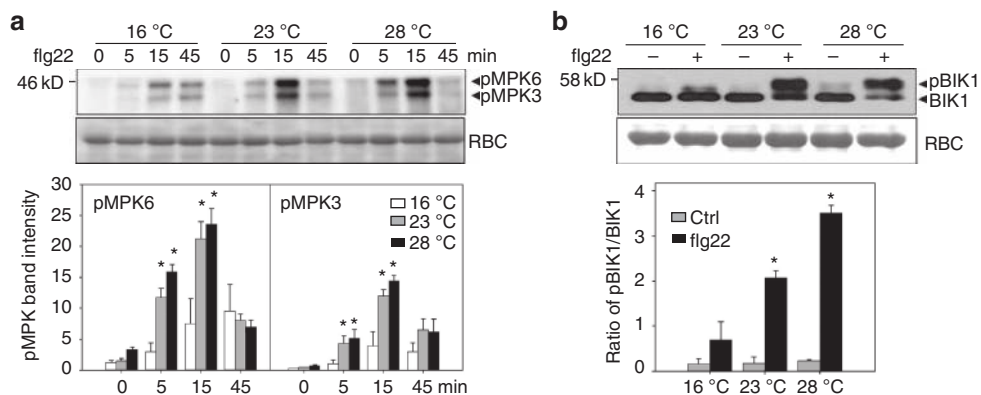
## Results

**Elevated temperatures promote PTI responses.** To monitor the specific immune responses at different ambient temperatures, we first tested the impact of different temperatures on PTI responses. Elicitation of PTI in *Arabidopsis* is accompanied by profound immune gene transcriptional reprogramming. The PTI marker genes *WRKY29* and *FRK1* were preferentially activated at the elevated ambient temperatures between 23 and 32 °C in response to flg22 (a 22-amino-acid peptide of bacterial flagellin) in *Arabidopsis* leaves or protoplasts (Fig. 1a,b). The optimal temperature for *WRKY29* and *FRK1* activation by flg22 was around 28 °C. The activation was dramatically reduced when the temperature was below 16 °C. Plants perceive a variety of MAMPs with different receptors. The similar temperature preference was observed for the activation of *pWRKY29::LUC* (the *WRKY29* promoter fused with a luciferase reporter) by other MAMPs, including bacterial harpin Z (HrpZ), fungal chitin and oomycete necrosis-inducing *Phytophthora* protein 1 (NPP1) (Fig. 1c). Perception of different MAMPs elicits convergent early signaling events, including MAPK activation. The MAPK activation in seedlings treated with flg22 became gradually pronounced with the increased ambient temperatures (Fig. 2a). Apparently, the activation of MAPKs by flg22 at 28 or 23 °C occurred faster and stronger than that at 16 °C. Consistently, flg22-induced phosphorylation of BIK1 was largely reduced at 16 °C but increased at 28 °C (Fig. 2b). It is unlikely that the enhanced kinase activation results from the elevated protein synthesis at higher temperatures, as the samples were incubated at different temperatures for a relatively short time period (from 5 to 45 min with 15 min pretreatment). Thus, plants exhibit a preference to operate PTI responses at a relatively high ambient temperature above 23 °C. The *in vitro* bacterial growth assay indicates that bacterium *P. syringae* pv. *tomato* DC3000 (*Pst*) multiplies more vigorously at the elevated ambient temperatures above 23 °C than at temperatures below 16 °C (Supplementary Fig. S1). The increased bacterial growth rate at the elevated ambient temperatures likely leads to the production of more MAMPs.

**Elevated temperatures inhibit ETI responses.** Our finding is surprising, as it is generally believed that plant defense responses are inhibited at moderately elevated temperatures<sup>30</sup>. We further determined the temperature regulation of ETI responses triggered by *P. syringae* effector AvrRpt2. To avoid the complication of bacterial physiology, multiplication and effector secretion/delivery at different temperatures, we examined the immune responses in dexamethasone (Dex)-inducible *AvrRpt2* transgenic plants<sup>31</sup>. Treatment with Dex induced the expression of the *WRKY46* gene in *Dex-AvrRpt2* plants<sup>20</sup>. Interestingly, the



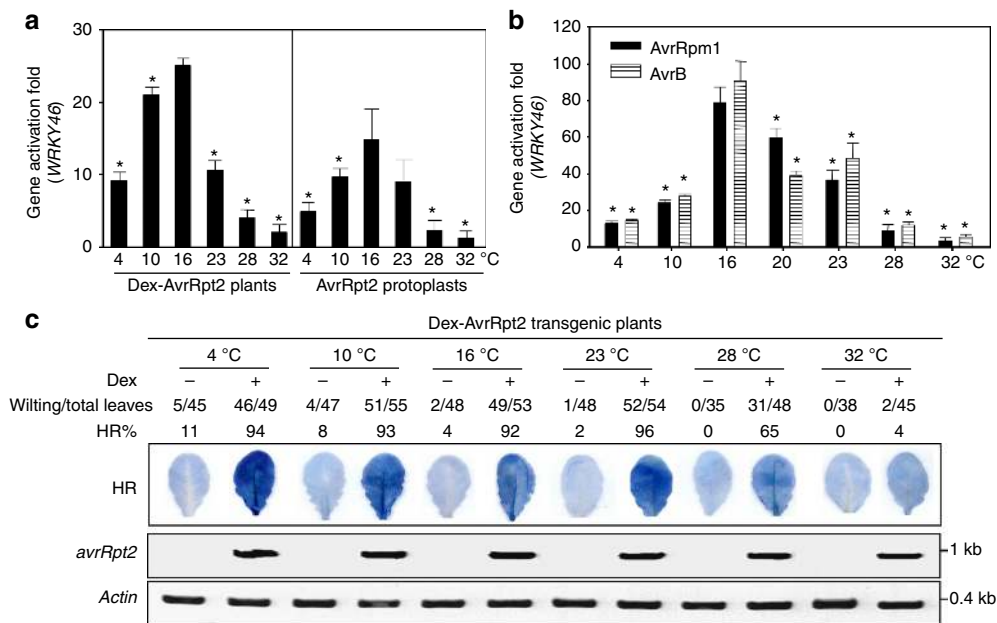
**Figure 1 | Elevated temperatures promote gene activation in PTI signaling.** (a) flg22-induced *WRKY29* activation in *Arabidopsis* leaves and protoplasts at different temperatures. Leaves or protoplasts from 4-week-old plants were treated with H<sub>2</sub>O or 100 nM flg22 for 3 h for RNA isolation and real-time RT-PCR (qRT-PCR) analysis. The expression of *WRKY29* was normalized to the expression of *UBQ10*. (b) flg22-induced *FRK1* activation in *Arabidopsis* protoplasts at different temperatures. Protoplasts from 4-week-old plants were treated with H<sub>2</sub>O or 100 nM flg22 for 3 h for RNA isolation and qRT-PCR analysis. The expression of *FRK1* was normalized to the expression of *UBQ10*. The gene activation fold is presented as the ratio of flg22 treatment to H<sub>2</sub>O treatment with the mean ± s.e.m. (*n* = 3) from three independent biological replicates. (c) Activation of *pWRKY29::LUC* by different MAMPs at different temperatures. The protoplasts were transfected with *pWRKY29::LUC* and *pUBQ::GUS* as an internal control and treated with 10 nM flg22, 10 nM HrpZ, 50 μg ml<sup>-1</sup> chitin, or 20 nM NPP1 for 3 h at the indicated temperatures. GST is the control for NPP1. The promoter activity was shown as the ratio of relative luciferase activity to GUS activity. The data are shown as mean ± s.e.m. (*n* = 3) from three independent biological replicates. The above experiments were repeated three times with similar results.



**Figure 2 | Elevated temperatures promote early PTI signaling.** (a) flg22-induced MAPK activation at different temperatures. Ten-day-old WT seedlings were treated with 100 nM flg22 at different temperatures for indicated time. MAPK activation was detected with an α-pERK antibody and Coomassie Brilliant Blue staining of Rubisco (RBC) protein is shown for equal loading control. (b) flg22-induced BIK1 phosphorylation in protoplasts at different temperatures. The band intensities of pMPK3, pMPK6, BIK1 and pBIK1 were quantified using the Image J software and presented with mean ± s.e.m. (*n* = 3) from three independent biological replicates. \* indicates a significant difference with *P* < 0.05 analysed with the SPSS software one-way ANOVA analysis when compared with corresponding data from 16 °C. The above experiments were repeated three times with similar results.

activation of *WRKY46* by AvrRpt2 was also temperature sensitive (Fig. 3a). However, a distinct temperature preference was observed for ETI compared with PTI. The *WRKY46* activation was detectable when temperature was as low as 4 °C, peaked at 16 °C, but was significantly attenuated when the temperature was

> 28 °C. A similar *WRKY46* induction pattern was observed when AvrRpt2 was expressed in protoplasts at different temperatures (Fig. 3a). We also detected the temperature modulation of *WRKY46* activation mediated by NLR protein RPM1 in response to *P. syringae* effector AvrRpm1 or AvrB (Fig. 3b).



**Figure 3 | Elevated temperatures inhibit ETI responses.** (a) Activation of *WRKY46* by *AvrRpt2* at different temperatures. Four-week-old *Dex-AvrRpt2* plants were hand-inoculated with H<sub>2</sub>O or 10 μM Dex, or the protoplasts were transfected with *AvrRpt2* or a vector control, and incubated at different temperatures for 6 h before sample collection for RNA isolation. The gene activation fold is presented as the ratio of *AvrRpt2* expression to controls with the mean ± s.e.m. ( $n = 3$ ) from three independent biological replicates. (b) Activation of *WRKY46* by *AvrRpm1* or *AvrB* at different temperatures. The protoplasts were transfected with *AvrRpm1*, *AvrB* or a vector control and incubated at different temperatures for 6 h before sample collection for RNA isolation. The data are shown as mean ± s.e.m. ( $n = 3$ ) from three independent biological replicates. \* indicates a significant difference with  $P < 0.05$  analysed with the SPSS software one-way ANOVA analysis when compared with corresponding data from 16 °C. (c) Cell death in *DEX-avrRpt2* transgenic plants at different temperatures. The *DEX-avrRpt2* transgenic plants were hand-inoculated with H<sub>2</sub>O or 10 μM Dex and incubated at different temperatures. The cell death was recorded 24 hpi for plants incubated at 16, 23, 28 and 32 °C, 40 hpi for plants at 10 °C and 48 hpi for plants at 4 °C. The cell death was shown with Trypan blue staining and % indicates the percentage of wilting leaves of total inoculated leaves. The expression of *avrRpt2* after DEX treatment is shown. Actin is the control for RT-PCR. The above experiments were repeated three times with similar results.

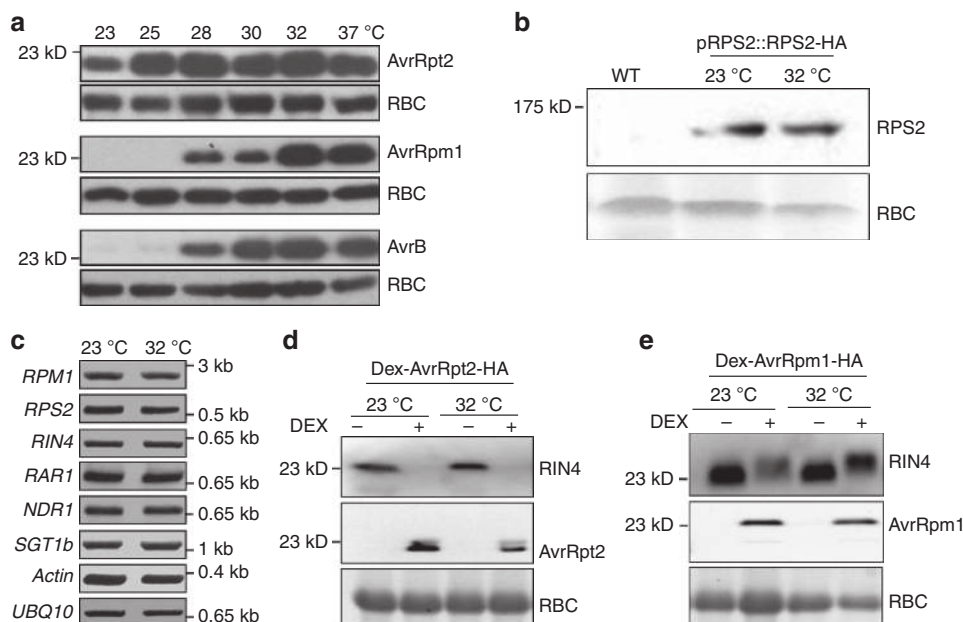
The optimal activation of *WRKY46* by *AvrRpm1* or *AvrB* was also observed at 16 °C, and the elevated temperatures suppressed *WRKY46* activation. In addition, the *AvrRpt2*-mediated cell death in *Dex-AvrRpt2* plants was significantly reduced at 28 °C and was almost completely abolished at 32 °C (Fig. 3c). Interestingly, cell death was clearly observed even at 4 °C. The *avrRpt2* gene was expressed at a similar level after Dex treatment at different temperatures (Fig. 3c). The cell death induced by bacteria *Pst* carrying *avrRpt2* was also inhibited at 32 °C (Supplementary Fig. S2A). Similarly, *AvrRpm1*- and *AvrB*-mediated cell death was significantly attenuated at the elevated temperatures when they were expressed in protoplasts (Supplementary Fig. S2B). The reduced activity of *AvrRpt2*, *AvrRpm1* and *AvrB* at the elevated ambient temperatures was not because of the reduced protein expression (Fig. 4a). The data indicate that elevated temperatures could suppress *Arabidopsis* NLR protein *RPM1* and *RPS2*-mediated ETI signaling. This observation is consistent with the finding that disease resistance and HR induced by *Pst* carrying *avrRpt2* or *avrRpm1* were reduced at 28 °C compared with that at 22 °C (ref. 30).

**Elevated temperature does not affect NLR and signaling gene expression.** The compromised NLR immune responses at the elevated temperatures could be a result of the reduced transcript/protein level of NLRs or other components in NLR signaling<sup>32</sup>. We compared the *RPS2* protein level in *pRPS2::RPS2-HA* transgenic plants at 23 and 32 °C. The *RPS2* protein level did not differ significantly in plants incubated at 32 °C for 9 h compared with that at 23 °C (Fig. 4b). Similarly, the transcripts of

*RPM1*, *RPS2*, *RIN4*, *RARI*, *NDR1* and *SGT1b* were comparable in plants incubated at 23 and 32 °C (Fig. 4c, primer sequences are in Supplementary Table). Thus, the short-term treatment with the elevated ambient temperatures unlikely changed NLR protein stability, signaling component transcripts or other plant physiology. However, we cannot rule out the possibility of other effects, such as differential subcellular localizations of NLR proteins caused by temperature changes. *AvrRpt2* degrades *Arabidopsis* *RIN4* protein to activate *RPS2* signaling<sup>18,19</sup>. Apparently, the *AvrRpt2*-mediated *RIN4* degradation still occurred at 28 and 32 °C, although the HR was significantly blocked at these elevated temperatures (Fig. 4d and Supplementary Fig. S2C). Similarly, *AvrRpm1*-mediated *RIN4* phosphorylation as shown with a mobility shift seems not to be affected by the elevated temperature (Fig. 4e). The data suggest that the temperature operation of ETI responses occurs independent or downstream of *RIN4* modification.

**Enhanced PTI responses in *arp6-10* and *hta9hta11* mutant plants.** Recent research has identified some important factors in response to ambient temperature changes in plants<sup>33</sup>. In particular, alternative histone H2A.Z nucleosomes are essential for *Arabidopsis* to precisely perceive ambient temperature and may function as an evolutionarily conserved thermosensor to regulate the ambient temperature transcriptome<sup>34</sup>. H2A.Z-containing nucleosomes wrap DNA more tightly than canonical H2A nucleosomes and can modulate transcription in a temperature-dependent manner. At elevated ambient temperature, H2A.Z nucleosome occupancy declines, which leads to the expression of





**Figure 4 | Elevated temperatures do not suppress expression of bacterial effector and plant defense-related genes.** (a) Expression of effector proteins at different temperatures. The protoplasts were transfected with *AvrRpt2*, *AvrRpm1* or *AvrB* and incubated at different temperatures for 6 h before sample collection for western blot with an  $\alpha$ -HA antibody. Western blot with an  $\alpha$ -RBC (Rubisco) antibody is shown as a loading control. (b) RPS2 protein level at 23 and 32 °C. The *pRPS2::RPS2-HA* plants were incubated at 23 and 32 °C for 9 h before sample collection for western blot with an  $\alpha$ -HA antibody. (c) Expression of plant resistance and signaling genes at 23 and 32 °C using RT-PCR analysis. The plants were incubated at 23 and 32 °C for 6 h before sample collection for RNA isolation. *AvrRpt2*-mediated RIN4 degradation (d) and *AvrRpm1*-mediated RIN4 phosphorylation (e) at different temperatures. Dex-*AvrRpt2-HA* (in Col-0 background) or Dex-*AvrRpm1-HA* transgenic plants (in *rpm1* background) were infiltrated with 10  $\mu$ M Dex or H<sub>2</sub>O for 8 h. Immunoblot was performed with an  $\alpha$ -RIN4 or  $\alpha$ -HA antibody. Staining of RBC shows equal loading. The above experiments were repeated three times with similar results.

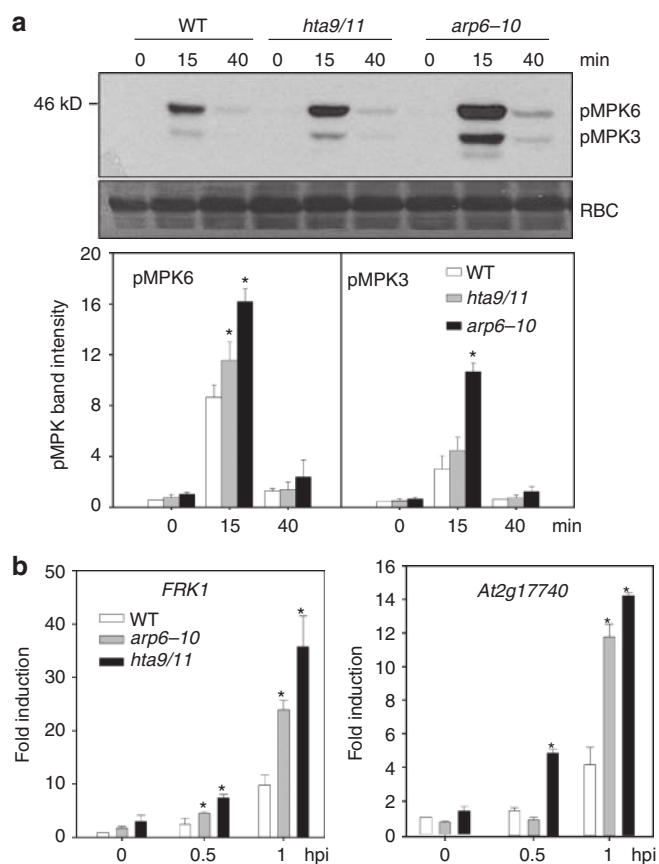
warm-temperature-responsive genes. Consistently, in the absence of H2A.Z deposition, plants display constitutive warm-temperature responses<sup>34</sup>. The *Arabidopsis* mutants deficient in incorporating H2A.Z into the nucleosomes, such as *arp6* and *hta9hta11*, phenocopy plants grown at the elevated ambient temperature and possess constitutive warm-temperature transcriptome<sup>34</sup>. We therefore determined the PTI and ETI responses in *arp6* and *hta9hta11* mutants. We first compared the flg22-induced MAPK activation in *hta9hta11* and *arp6* mutants at 23 °C. Apparently, the activation of MAPKs by flg22 was stronger in both *hta9hta11* and *arp6* mutants than that in wild-type (WT) plant seedlings, in particular 15 min after treatment (Fig. 5a). The induction of PTI marker genes, including *FRK1* and *At2g17740*, by flg22 treatment was also enhanced in *hta9hta11* and/or *arp6* mutants compared with that in WT seedlings (Fig. 5b). Consistent with the enhanced PTI responses, it has been reported that *hta9hta11* mutant displayed enhanced resistance to *Pst* infection<sup>35</sup>.

**Reduced ETI responses in *arp6-10* and *hta9hta11* mutant plants.** In contrast to the enhanced PTI responses, the ETI responses were reduced in the *hta9hta11* and *arp6* mutants. The inoculation of *Pst avrRpt2* or *avrRpm1* at a relatively high inoculum elicits an HR in WT *Arabidopsis* plants. The leaves inoculated with *Pst avrRpt2* show tissue collapse at about 12–24 h post inoculation (*hpi*), and the *Pst avrRpm1*-inoculated leaves show collapse at about 4–12 *hpi*. The progression of *Pst avrRpt2*- and *avrRpm1*-triggered HR was slower in the *hta9hta11* and *arp6* mutants than that in WT plants (Fig. 6a,b). We also quantified HR using an electrolyte leakage assay. Consistently, compared with WT plants, *hta9hta11* and *arp6* mutants showed a compromised increase in conductance because of the release of

electrolytes during cell death upon *Pst avrRpt2* or *avrRpm1* infection (Fig. 6c,d). The *in planta* bacterial multiplication of *Pst avrRpt2* increased about 10-fold in the *hta9hta11* and *arp6* mutants compared with that in WT plants (Fig. 7a). The bacterial multiplication of *Pst avrRpm1* increased about fivefold in the *arp6* mutant compared with that in WT plants (Fig. 7a). The *Pst avrRpt2* or *avrRpm1* infection induces expression of several defense-related genes, such as *AIG1* and *PR1*. The induction of *AIG1* and *PR1* by *Pst avrRpt2* or *avrRpm1* was significantly lower in *hta9hta11* and *arp6* mutants than that in WT plants (Fig. 7b). The data are consistent with the differential operation of two branches of plant innate immune signaling at different temperatures.

## Discussion

Microbe and host have co-evolved dynamically in their arms race for fitness and survival. Environmental factors often influence the physiological responses in both sides and have profound impacts on microbial pathogenesis and host immunity. In this study, we performed the quantitative assay of immune responses based on the activation of specific marker genes and found the differential temperature preference for the activation of two branches of plant innate immunity. Bacterial effector-triggered immune responses are preferentially activated at relatively low ambient temperatures, which are suitable for effector secretion, and are suppressed at the elevated ambient temperatures. The inhibition of ETI responses was not caused by the reduced expression of effectors, corresponding NLR receptors or known signaling components. In contrast, pattern-triggered immune responses are preferentially activated at the elevated ambient temperatures, which are optimal for bacterial growth, and are suppressed at low



**Figure 5 | Enhanced PTI responses in *arp6-10* and *hta9hta11* mutant plants.** (a) flg22-induced MAPK activation in WT and mutants. Ten-day-old seedlings were treated with 100 nM flg22 at room temperature for indicated time. MAPK activation was detected with an  $\alpha$ -pERK antibody. The band intensities of pMPK3 and pMPK6 were quantified using the Image J software and presented with mean  $\pm$  s.e.m. ( $n = 3$ ) from three independent biological replicates. \* indicates a significant difference with  $P < 0.05$  analysed with the SPSS software one-way ANOVA analysis when compared with data from WT plants. (b) flg22-induced PTI marker gene expression. Ten-day-old seedlings of WT and mutants were treated with 100 nM flg22 for 0.5 or 1 h. The gene expression of *FRK1* and *At2g17740* was detected using qRT-PCR and normalized to the expression of *UBQ10*. The data are shown as the mean  $\pm$  s.e.m. from three independent biological replicates. \* indicates a significant difference with  $P < 0.05$  analysed with the SPSS software one-way ANOVA analysis when compared with data from WT plants. The above experiments were repeated three times with similar results.

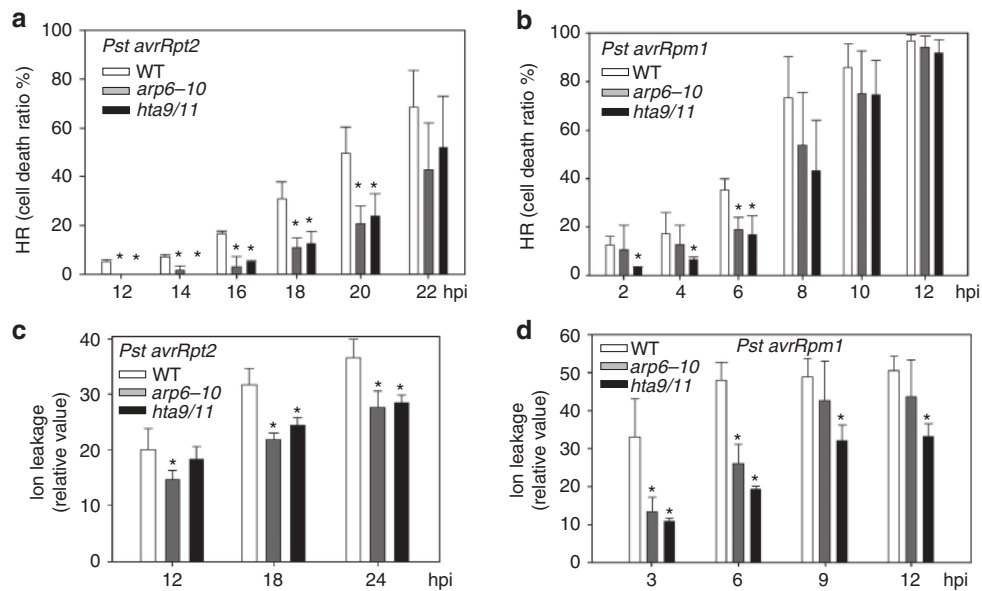
temperatures. Consistently, the immune responses of *arp6* and *hta9hta11* mutant plants, which are deficient in temperature sensing and phenocopy high-temperature-grown plants, mimic the responses of plants at the elevated temperatures with enhanced PTI signaling and yet reduced ETI signaling. Plant PTI signaling is initiated via cell-surface RLKs, whereas ETI signaling is mediated through intracellular NLR immune receptors. Although the precise mechanisms of how temperature sensing and signaling modulate the distinct plant immune responses are waiting to be elucidated, the differential temperature preferences of PTI and ETI responses suggest the distinct early signaling events downstream of cell-surface RLKs and intracellular NLR immune sensors. Our findings may have broad implication for agricultural practices to optimize plant immunity by considering the temperature-based defense strategies. Our

study also provides insight into the effects of the current global climate change on plant disease management.

Plant NLR proteins differ in the *N*-terminal domain and were further divided into coiled-coil (CC)-domain-containing- and Toll-interleukin-1 receptor (TIR)-domain-containing classes<sup>17,36</sup>. Growing evidence suggests the signaling activation in distinct subcellular compartments in TIR-NLR- and CC-NLR-mediated immunity<sup>37</sup>. In several cases, TIR-NLR-mediated immunity is temperature sensitive<sup>38–41</sup>. For instance, the tobacco mosaic virus resistance *N* gene- and *Arabidopsis* *SNC1* gene-mediated responses are compromised at the elevated ambient temperatures above 28 °C (refs 38,39). Interestingly, suppressor screens and targeted mutagenesis suggest that *SNC1* itself is a temperature-sensitive component of plant immune responses<sup>42</sup>. Several TIR-NLR immune receptors function in the nucleus<sup>40,41,43,44</sup>, whereas RPM1 and RPS2, the CC-NLR immune receptors, localize to the plasma membrane to initiate ETI signaling<sup>18,45</sup>. Our study indicates that RPM1- and RPS2-mediated responses are also largely compromised at temperatures  $> 28$  °C. Thus, both CC-NLR and TIR-NLR signaling pathways are modulated by ambient temperatures.

Unexpectedly, we found that cell-surface-resident RLK-mediated PTI signalling is also temperature sensitive, with a pattern distinct from ETI signalling. In contrast to gradually compromised ETI responses, PTI responses become incrementally active with the elevated ambient temperatures (Fig. 7c). The differential temperature preference for the optimal operation of PTI and ETI signaling reconciles an enigmatic observation that the elevated temperatures inhibit bacterial effector secretion and yet promote bacterial proliferation<sup>26,27</sup>. Accordingly, plants have evolved combating mechanisms to maximize the PTI responses and turn down specific NLR-mediated responses to cope with a broad spectrum of microbial invasions at the elevated temperatures. At low ambient temperatures, bacteria secrete a large suite of virulence effectors to promote pathogenicity<sup>26</sup>, which in turn stimulates plants to co-evolve and preferentially activate ETI signaling (Fig. 7c). The primary function of these virulence effectors is to suppress PTI and induce effector-triggered susceptibility, which is accompanied with ETI in the plants carrying the corresponding receptors. Our results suggest that ambient temperature fluctuation drives the dynamic co-evolution of bacterial pathogenesis and host immunity, and plants integrate ambient temperature sensing to regulate two distinct branches of innate immunity mediated by cell-surface RLK and intracellular NLR immune sensors.

ARP6 encodes a subunit of the evolutionarily conserved SWR1 complex that is necessary for inserting the alternative histone H2A.Z encoded by *HTA* gene family members into nucleosomes in place of H2A<sup>34,35</sup>. *Arabidopsis* *arp6* and *hta9hta11* mutants are deficient in incorporating histone H2A.Z into nucleosomes and display a constitutive warm-temperature transcriptome<sup>34</sup>. The finding that *arp6* and *hta9hta11* phenocopy the plants grown at high temperatures on immunity points at a possible link between temperature-driven immune responses and transcriptional changes. It will be interesting to test whether *arp6* and *hta9hta11* mutants could suppress the temperature-dependent cell death in *snc1-1*, *mek1* and *mpk4* mutants<sup>39,46</sup>. Notably, the *hta9hta11* mutant also displayed constitutive expression of certain defense-related genes, spontaneous cell death and increased resistance to *Pst* infections, suggesting a link between H2A.Z-regulated gene expression and plant immunity<sup>35</sup>. Consistent with this observation, we showed that *arp6* and *hta9hta11* mutants have enhanced flg22-mediated responses. However, the ETI responses are suppressed in *arp6* and *hta9hta11* mutants, suggesting the opposite role of H2A.Z-containing nucleosomes in modulating PTI and ETI responses. Future study will uncover



**Figure 6 | Reduced ETI cell death in *arp6-10* and *hta9hta11* mutant plants.** Compromised HR triggered by *Pst avrRpt2* (a) and *avrRpm1* (b) in *arp6-10* and *hta9/11* mutant plants. Four-week-old WT and mutant plants were hand-inoculated with bacteria at a concentration of  $1 \times 10^8$  cfu ml<sup>-1</sup>. HR was examined by counting the percentage of wilting leaves of total inoculated leaves (>20) at different time points after inoculation. Electrolyte leakage induced by *Pst avrRpt2* (c) and *avrRpm1* (d) was reduced in *arp6-10* and *hta9/11* mutant plants. Five leaf discs were excised from 4-week-old plants hand-inoculated with bacteria at  $1 \times 10^8$  cfu ml<sup>-1</sup> for each sample at each time point with three replicates. \* indicates a significant difference with  $P < 0.05$  analysed with the SPSS software one-way ANOVA analysis when compared with data from WT plants. The data are shown as mean  $\pm$  s.e.m. ( $n = 3$ ) from three independent biological replicates. The data were analysed with the SPSS software one-way ANOVA analysis for statistical test. The above experiments were repeated three times with similar results.

the molecular link between H2A.Z-mediated temperature perception and specific responses in ETI and PTI signaling.

## Methods

**Plant growth conditions and temperature treatment.** *Arabidopsis* WT (Col-0), *arp6-10* and *hta9hta11* mutant plants were grown in pots containing soil (Metro Mix 360) in a growth room at 23 °C, 60% relative humidity and  $75 \mu\text{E m}^{-2} \text{s}^{-1}$  light with a 12-h photoperiod for ~4 weeks before protoplast isolation, bacterial inoculation or different temperature treatments. The *arp6-10* and *hta9hta11* mutant seeds were obtained from Dr. P. Wigge of the John Innes Centre. To test temperature effects, plants were transferred to individual growth chambers set at different temperatures 15 min before treatments and treated for the indicated time.

**Bacterial inoculation assay.** *Pst*, *Pst avrRpm1* or *avrRpt2* strains were grown overnight at 28 °C in the KB medium containing rifamycin ( $50 \mu\text{g ml}^{-1}$ ) or in combination with kanamycin ( $50 \mu\text{g ml}^{-1}$ ). Bacteria were pelleted by centrifugation, washed and diluted to the desired density. The leaves were hand-inoculated with bacteria using a needleless syringe, collected at the indicated time for bacterial counting, cell death staining, electrolyte leakage assays or for RNA isolation. To measure bacterial growth, two leaf discs were ground in 100  $\mu\text{l}$  H<sub>2</sub>O, and serial dilutions were plated on KB medium with appropriate antibiotics. Bacterial colony forming units (cfu) were counted 2 days after incubation at 28 °C. Each data point is shown as triplicates.

At least three independent repeats were performed for all experiments. The representative data with similar results were shown. The statistical analysis was performed with the SPSS software one-way analysis of variance (ANOVA) analysis (SPSS Inc., Chicago).

**Protoplast transient assay.** Protoplast isolation and transient expression assays were conducted as described<sup>7,20</sup>. In general, 50  $\mu\text{l}$  protoplasts at the density of  $2 \times 10^5 \text{ ml}^{-1}$  and 10  $\mu\text{g}$  DNA were used for promoter activity; 100  $\mu\text{l}$  protoplasts and 20  $\mu\text{g}$  DNA were used for protein expression; and 500  $\mu\text{l}$  protoplasts and 100  $\mu\text{g}$  DNA were used for RT-PCR analyses. For reporter assay, *pUBQ10::GUS* was cotransfected as an internal transfection control, and the promoter activity was presented as LUC/GUS ratio. Protoplasts transfected with empty vector were used as a control.

**MAPK activity and BIK1 phosphorylation assays.** To detect MAPK activity, 10-day-old WT, *hta9hta11* and *arp6-10* seedlings grown on 1/2MS medium were

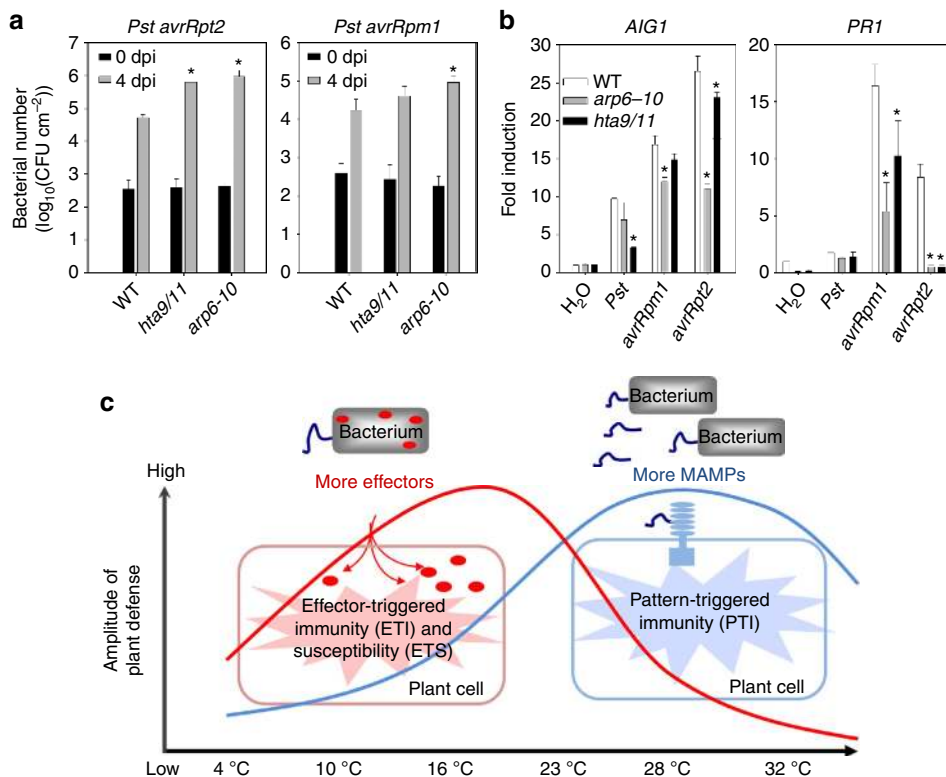
transferred to water for overnight and then treated with 100 nM flg22 or H<sub>2</sub>O for indicated time points and frozen in liquid nitrogen. The seedlings were homogenized in an extraction buffer containing 50 mM Tris-HCl, pH7.5, 100 mM NaCl, 15 mM EGTA, 10 mM MgCl<sub>2</sub>, 1 mM NaF, 0.5 mM NaVO<sub>3</sub>, 30 mM  $\beta$ -glycerophosphate, 0.1% IGEPAL, 0.5 mM PMSF and 1% protease inhibitor cocktail. Equal amount of total protein was electrophoresed on 10% SDS-PAGE. An  $\alpha$ -pERK antibody (1:2,000) (Cell Signaling) was used to detect phosphorylation status of MPK3 and MPK6 with an immunoblot. For different temperature treatments, the seedlings were pretreated at different temperatures for 15 min and then treated with 100 nM flg22 or H<sub>2</sub>O for 10 min.

For BIK1 phosphorylation assay, *Arabidopsis* protoplasts were transfected with HA epitope-tagged BIK1 and incubated at room temperature for overnight, pretreated at 16, 23 or 28 °C for 15 min and then treated with 100 nM flg22 or H<sub>2</sub>O for 10 min. Total protein was separated using 10% SDS-PAGE gels followed by an  $\alpha$ -HA immunoblot (1:2,000). Full blots are provided in Supplementary Figs S3–S7.

**Cell death assays.** For HR assays, the leaves of 4-week-old plants were hand-inoculated with 10  $\mu\text{M}$  DEX or different bacteria at  $1 \times 10^8$  cfu ml<sup>-1</sup>, and the cell death was calculated as the percentage of wilting leaves to total leaves inoculated.

For trypan blue staining, leaves of *DEX-AvrRpt2* plants were inoculated with H<sub>2</sub>O or 10  $\mu\text{M}$  DEX and collected at 24 hpi after treatment. The leaves were stained with trypan blue in lactophenol (lactic acid:glycerol:liquid phenol:distilled water = 1:1:1:1) solution, then destained with 95% ethanol/lactophenol solution and washed with 50% ethanol. For electrolyte leakage assays, five leaf discs (0.5 cm diameter) were excised from the WT or mutants infiltrated with bacteria and pre-floated in 10 ml of ddH<sub>2</sub>O for 10–15 min to eliminate wounding effect. The ddH<sub>2</sub>O was then changed and electrolyte leakage was measured using a conductivity meter (VWR; Traceable Conductivity Meter) at 12, 18 and 24 hpi for *Pst avrRpt2* or 3, 6, 9 and 12 hpi for *Pst avrRpm1* with three replicates per time point per sample.

**RT-PCR and qRT-PCR analyses.** Total RNA was isolated from leaves or protoplasts with TRIzol Reagent (Invitrogen). One microgram of total RNA was used for complementary DNA (cDNA) synthesis with oligo (dT) primer and reverse transcriptase (New England BioLabs). qRT-PCR analysis was carried out using iTaq SYBR green Supermix (Bio-Rad) supplemented with ROX in an ABI GeneAmp PCR System 9700. The expression of PTI and ETI marker genes was normalized to the expression of *UBQ10*. The regular RT-PCR was performed with 35 cycles. The primer sequences are described in Supplementary Table S1.



**Figure 7 | Compromised ETI-mediated restriction of bacterial growth and defense gene activation in *arp6-10* and *hta9hta11* mutant plants.**

(a) Bacterial growth assay. Four-week-old plants were hand-inoculated with *Pst avrRpm1* or *avrRpt2* at  $5 \times 10^5$  cfu ml<sup>-1</sup>. The bacterial growth was measured 0 days post inoculation (dpi) or 4 dpi. (b) ETI marker gene expression. Four-week-old plants were hand-inoculated with bacteria at  $1 \times 10^7$  cfu ml<sup>-1</sup>, and RNA was collected 6 hpi for qRT-PCR analysis. The expression of *AIG1* and *PR1* was normalized to the expression of *UBQ10*. The data are shown as the mean  $\pm$  s.e.m. ( $n=3$ ) from three independent biological replicates and the asterisk (\*) indicates a significant difference with  $P<0.05$  analysed with the SPSS software one-way ANOVA analysis when compared with data from WT plants. (c) A model of temperature operation of distinct plant innate immune responses. At low ambient temperatures, bacteria secrete a large suite of virulence effectors to promote pathogenicity (ETS), which in turn stimulates plants to co-evolve and preferentially activate ETI signaling. At the elevated temperatures, bacteria multiply vigorously and produce increased amount of MAMPs, which stimulate plants to switch to PTI signaling. Ambient temperature fluctuation likely drives the dynamic co-evolution of bacterial pathogenesis and host immunity. The above experiments were repeated three times with similar results.

## References

- Boller, T. & He, S. Y. Innate immunity in plants: an arms race between pattern recognition receptors in plants and effectors in microbial pathogens. *Science* **324**, 742–744 (2009).
- Monaghan, J. & Zipfel, C. Plant pattern recognition receptor complexes at the plasma membrane. *Curr. Opin. Plant Biol.* **15**, 349–357 (2012).
- Gomez-Gomez, L. & Boller, T. FLS2: an LRR receptor-like kinase involved in the perception of the bacterial elicitor flagellin in *Arabidopsis*. *Mol. Cell* **5**, 1003–1011 (2000).
- Zipfel, C. *et al.* Perception of the bacterial PAMP EF-Tu by the receptor EFR restricts *Agrobacterium*-mediated transformation. *Cell* **125**, 749–760 (2006).
- Heese, A. *et al.* The receptor-like kinase SERK3/BAK1 is a central regulator of innate immunity in plants. *Proc. Natl Acad. Sci. USA* **104**, 12217–12222 (2007).
- Chinchilla, D. *et al.* A flagellin-induced complex of the receptor FLS2 and BAK1 initiates plant defence. *Nature* **448**, 497–500 (2007).
- Lu, D. *et al.* A receptor-like cytoplasmic kinase, BIK1, associates with a flagellin receptor complex to initiate plant innate immunity. *Proc. Natl Acad. Sci. USA* **107**, 496–501 (2010).
- Zhang, J. *et al.* Receptor-like cytoplasmic kinases integrate signaling from multiple plant immune receptors and are targeted by a *Pseudomonas syringae* effector. *Cell. Host. Microbe* **7**, 290–301 (2010).
- Asai, T. *et al.* MAP kinase signalling cascade in *Arabidopsis* innate immunity. *Nature* **415**, 977–983 (2002).
- Boudsocq, M. *et al.* Differential innate immune signalling via Ca(2+) sensor protein kinases. *Nature* **464**, 418–422 (2010).
- Lu, D. *et al.* Direct ubiquitination of pattern recognition receptor FLS2 attenuates plant innate immunity. *Science* **332**, 1439–1442 (2011).
- Block, A. & Alfano, J. R. Plant targets for *Pseudomonas syringae* type III effectors: virulence targets or guarded decoys? *Curr. Opin. Microbiol.* **14**, 39–46 (2011).
- Feng, F. & Zhou, J. M. Plant-bacterial pathogen interactions mediated by type III effectors. *Curr. Opin. Plant Biol.* **15**, 469–476 (2012).
- Cui, F. *et al.* The *Pseudomonas syringae* type III effector AvrRpt2 promotes pathogen virulence via stimulating *Arabidopsis* auxin/indole acetic acid protein turnover. *Plant Physiol.* **162**, 1018–1029 (2013).
- Dodds, P. N. & Rathjen, J. P. Plant immunity: towards an integrated view of plant-pathogen interactions. *Nat. Rev. Genet.* **11**, 539–548 (2010).
- Spoel, S. H. & Dong, X. How do plants achieve immunity? Defence without specialized immune cells. *Nat. Rev. Immunol.* **12**, 89–100 (2012).
- Maekawa, T., Kufer, T. A. & Schulze-Lefert, P. NLR functions in plant and animal immune systems: so far and yet so close. *Nat. Immunol.* **12**, 817–826 (2011).
- Axtell, M. J. & Staskawicz, B. J. Initiation of RPS2-specified disease resistance in *Arabidopsis* is coupled to the AvrRpt2-directed elimination of RIN4. *Cell* **112**, 369–377 (2003).
- Mackey, D., Belkhadir, Y., Alonso, J. M., Ecker, J. R. & Dangl, J. L. *Arabidopsis* RIN4 is a target of the type III virulence effector AvrRpt2 and modulates RPS2-mediated resistance. *Cell* **112**, 379–389 (2003).
- Gao, X. *et al.* Bifurcation of *Arabidopsis* NLR immune signaling via Ca(2+)-dependent protein kinases. *PLoS Pathog.* **9**, e1003127 (2013).
- Wang, W. *et al.* Timing of plant immune responses by a central circadian regulator. *Nature* **470**, 110–114 (2011).
- Alcazar, R. & Parker, J. E. The impact of temperature on balancing immune responsiveness and growth in *Arabidopsis*. *Trends Plant. Sci.* **16**, 666–675 (2011).



23. Murdock, C. C., Paaijmans, K. P., Cox-Foster, D., Read, A. F. & Thomas, M. B. Rethinking vector immunology: the role of environmental temperature in shaping resistance. *Nat. Rev. Microbiol.* **10**, 869–876 (2012).
24. Konkel, M. E. & Tilly, K. Temperature-regulated expression of bacterial virulence genes. *Microbes. Infect.* **2**, 157–166 (2000).
25. Lee, C. T., Zhong, L., Mace, T. A. & Repasky, E. A. Elevation in body temperature to fever range enhances and prolongs subsequent responsiveness of macrophages to endotoxin challenge. *PLoS One* **7**, e30077 (2012).
26. van Dijk, K. *et al.* The Avr (effector) proteins HrmA (HopPsyA) and AvrPto are secreted in culture from *Pseudomonas syringae* pathovars via the Hrp (type III) protein secretion system in a temperature- and pH-sensitive manner. *J. Bacteriol.* **181**, 4790–4797 (1999).
27. Smirnova, A. *et al.* Thermoregulated expression of virulence factors in plant-associated bacteria. *Arch. Microbiol.* **176**, 393–399 (2001).
28. Wei, Z. M., Sneath, B. J. & Beer, S. V. Expression of *Erwinia amylovora* hrp genes in response to environmental stimuli. *J. Bacteriol.* **174**, 1875–1882 (1992).
29. Ullrich, M., Penaloza-Vazquez, A., Bailey, A. M. & Bender, C. L. A modified two-component regulatory system is involved in temperature-dependent biosynthesis of the *Pseudomonas syringae* phytotoxin coronatine. *J. Bacteriol.* **177**, 6160–6169 (1995).
30. Wang, Y., Bao, Z., Zhu, Y. & Hua, J. Analysis of temperature modulation of plant defense against biotrophic microbes. *Mol. Plant Microbe Interact.* **22**, 498–506 (2009).
31. McNellis, T. W. *et al.* Glucocorticoid-inducible expression of a bacterial avirulence gene in transgenic *Arabidopsis* induces hypersensitive cell death. *Plant J.* **14**, 247–257 (1998).
32. Bieri, S. *et al.* RAR1 positively controls steady state levels of barley MLA resistance proteins and enables sufficient MLA6 accumulation for effective resistance. *Plant Cell* **16**, 3480–3495 (2004).
33. Samach, A. & Wigge, P. A. Ambient temperature perception in plants. *Curr. Opin. Plant Biol.* **8**, 483–486 (2005).
34. Kumar, S. V. & Wigge, P. A. H2A.Z-containing nucleosomes mediate the thermosensory response in *Arabidopsis*. *Cell* **140**, 136–147 (2010).
35. March-Diaz, R. *et al.* Histone H2A.Z and homologues of components of the SWR1 complex are required to control immunity in *Arabidopsis*. *Plant J.* **53**, 475–487 (2008).
36. DeYoung, B. J. & Innes, R. W. Plant NBS-LRR proteins in pathogen sensing and host defense. *Nat. Immunol.* **7**, 1243–1249 (2006).
37. Heidrich, K., Blanvillain-Baufume, S. & Parker, J. E. Molecular and spatial constraints on NB-LRR receptor signaling. *Curr. Opin. Plant Biol.* **15**, 385–391 (2012).
38. Whitham, S. *et al.* The product of the tobacco mosaic virus resistance gene N: similarity to toll and the interleukin-1 receptor. *Cell* **78**, 1101–1115 (1994).
39. Yang, S. & Hua, J. A haplotype-specific Resistance gene regulated by BONZAI1 mediates temperature-dependent growth control in *Arabidopsis*. *Plant Cell* **16**, 1060–1071 (2004).
40. Burch-Smith, T. M. *et al.* A novel role for the TIR domain in association with pathogen-derived elicitors. *PLoS Biol.* **5**, e68 (2007).
41. Mang, H. G. *et al.* Abscisic acid deficiency antagonizes high-temperature inhibition of disease resistance through enhancing nuclear accumulation of resistance proteins SNC1 and RPS4 in *Arabidopsis*. *Plant Cell* **24**, 1271–1284 (2012).
42. Zhu, Y., Qian, W. & Hua, J. Temperature modulates plant defense responses through NB-LRR proteins. *PLoS Pathog.* **6**, e1000844 (2010).
43. Heidrich, K. *et al.* *Arabidopsis* EDS1 connects pathogen effector recognition to cell compartment-specific immune responses. *Science* **334**, 1401–1404 (2011).
44. Cheng, Y. T. *et al.* Nuclear pore complex component MOS7/Nup88 is required for innate immunity and nuclear accumulation of defense regulators in *Arabidopsis*. *Plant Cell* **21**, 2503–2516 (2009).
45. Gao, Z., Chung, E. H., Eitas, T. K. & Dangl, J. L. Plant intracellular innate immune receptor Resistance to *Pseudomonas syringae* pv. maculicola 1 (RPM1) is activated at, and functions on, the plasma membrane. *Proc. Natl Acad. Sci. USA* **108**, 7619–7624 (2011).
46. Gao, M. *et al.* MEKK1, MKK1/MKK2 and MPK4 function together in a mitogen-activated protein kinase cascade to regulate innate immunity in plants. *Cell Res.* **18**, 1190–1198 (2008).

### Acknowledgements

We thank Dr. B. Staskawicz for *DEX-avrRpt2* and *pRPS2::RPS2-HA* transgenic plant seeds, Dr. D. Mackey for *DEX-avrRpm1-HA* (*rpm1*) transgenic plant seeds, Dr. T. Nurnberger for HrpZ and NPP1 clones, Dr P. Wigge for *arp6-10* and *hta9hta11* mutant seeds and Dr. G. Coaker for  $\alpha$ -RIN4 antibody. This work was supported by NIH (R01 GM70567) to J.S., NSF (IOS-1030250), NIH (1R01GM097247) and The Robert A. Welch Foundation (A-1795) to L.S., NIH (R01GM092893) to P.H., and USDA National Institute of Food and Agriculture (2012-67013-19433) to L.S. and P.H.

### Author contributions

Conceived and designed the experiments: J.S., L.S. and P.H. Performed the experiments: C.C., X.G., B.F., L.S. and P.H. Analysed the data: C.C., X.G., B.F., J.S., L.S. and P.H. Wrote the paper: L.S. and P.H.

### Additional information

**Supplementary Information** accompanies this paper at <http://www.nature.com/naturecommunications>

**Competing financial interests:** The authors declare no competing financial interests.

**Reprints and permission** information is available online at <http://npg.nature.com/reprintsandpermissions/>

**How to cite this article:** Cheng, C. *et al.* Plant immune response to pathogens differs with changing temperatures. *Nat. Commun.* 4:2530 doi: 10.1038/ncomms3530 (2013).