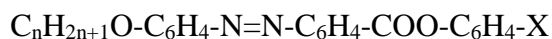


Supplementary data. Elemental analyses of the azo/esters, **I_n_{a-e}**,



Comp No.	<i>n</i>	X	Mol. Wt.	Elemental Analyses Calc. (Found)			
				% C	% H	% N	%halogen
I6_a	6	2-CH ₃	417.50	74.80 (75.21)	6.99 (6.81)	6.71 (6.92)	-
I6_b		3-CH ₃	417.50	74.80 (74.65)	6.99 (7.04)	6.71 (6.98)	-
I6_c		H	403.47	74.42 (74.71)	6.73 (6.52)	6.94 (7.22)	-
I6_d		2-F	421.49	71.25 (71.53)	6.21 (6.02)	6.65 (6.94)	4.50 (4.66)
I6_e		3-F	421.49	71.25 (71.06)	6.21 (6.44)	6.65 (6.77)	4.50 (4.34)
I6_f		2-Br	482.37	62.25 (62.09)	5.42 (5.67)	5.81 (6.12)	16.56(16.81)
I6_g		3-Br	482.37	62.25 (62.54)	5.42 (5.66)	5.81 (5.98)	16.56(16.90)
I6_h		3-CN	428.49	72.88 (73.20)	6.10 (6.38)	9.81 (10.12)	-
I8_a	8	2-CH ₃	445.55	75.49 (75.83)	6.55 (7.21)	6.29 (6.10)	-
I8_b		3-CH ₃	445.55	75.49 (75.25)	6.55 (7.21)	6.29 (6.08)	-
I8_c		H	431.52	75.16 (75.09)	7.23 (7.34)	6.49 (6.71)	-
I8_d		2-F	425.51	76.22 (76.12)	7.09 (7.36)	6.58 (6.77)	4.46 (4.56)
I8_e		3-F	425.51	76.22 (76.54)	7.09 (6.81)	6.58 (6.72)	4.46 (4.70)
I8_e		2-Br	510.42	63.54 (63.70)	5.91 (5.63)	5.49 (5.71)	15.65 (15.93)
I8_g		3-Br	510.42	63.54 (63.23)	5.91 (6.13)	5.49 (5.69)	15.65 (15.87)
I8_h		3-CN	456.54	73.67 (73.90)	6.61 (6.93)	9.20 (9.48)	-
I10_a	10	2-CH ₃	473.60	76.09 (76.13)	7.86 (8.11)	5.92 (6.23)	-
I10_b		3-CH ₃	473.60	76.09 (66.83)	7.86 (7.58)	5.92 (6.15)	-
I10_c		H	459.57	75.80 (76.12)	7.66 (7.86)	6.10 (6.33)	-
I10_d		2-F	453.56	76.80 (76.99)	7.54 (7.69)	6.18 (5.97)	4.19 (4.33)
I10_e		3-F	453.56	76.80 (76.55)	7.54 (7.35)	6.18 (6.45)	4.19 (4.02)
I10_f		2-Br	538.47	64.69 (64.44)	6.40 (6.66)	5.20 (5.12)	14.84 (15.13)
I10_g		3-Br	538.47	64.69 (64.36)	6.40 (6.23)	5.20 (5.46)	14.84 (14.58)
I10_h		3-CN	484.56	74.37 (74.48)	7.06 (7.29)	8.67 (8.79)	-
I12_a	12	2-CH ₃	501.65	76.62 (76.87)	8.22 (8.13)	5.58 (5.72)	-
I12_b		3-CH ₃	501.65	76.62 (76.90)	8.22 (8.43)	5.58 (5.31)	-
I12_c		H	487.62	76.36 (76.19)	8.05 (8.17)	5.75 (5.61)	-
I12_d		2-F	481.61	77.32 (77.58)	7.94 (8.23)	5.82 (6.13)	3.94 (4.22)
I12_e		3-F	481.61	77.32 (77.51)	7.94 (7.75)	5.82 (5.71)	3.94 (4.27)
I12_f		2-Br	566.52	65.73 (66.01)	6.75 (7.05)	4.94 (5.21)	14.10 (14.36)
I12_g		3-Br	566.52	65.73 (65.47)	6.75 (6.63)	4.94 (4.68)	14.10 (13.93)
I12_h		3-CN	512.61	74.99 (75.24)	7.46 (7.31)	8.20 (8.02)	-