

# Pollution indices as useful tools for the comprehensive evaluation of the degree of soil contamination—A review

Joanna Beata Kowalska · Ryszard Mazurek · Michał Gąsiorek · Tomasz Zaleski

Received: 29 December 2017 / Accepted: 29 March 2018 / Published online: 5 April 2018  
© The Author(s) 2018

**Abstract** The paper provides a complex, critical assessment of heavy metal soil pollution using different indices. Pollution indices are widely considered a useful tool for the comprehensive evaluation of the degree of contamination. Moreover, they can have a great importance in the assessment of soil quality and the prediction of future ecosystem sustainability, especially in the case of farmlands. Eighteen indices previously described by several authors ( $I_{\text{geo}}$ , PI, EF,  $C_f$ ,  $PI_{\text{sum}}$ ,  $PI_{\text{Nemerow}}$ , PLI,  $PI_{\text{ave}}$ ,  $PI_{\text{vector}}$ , PIN, MEC, CSI, MERMQ,  $C_{\text{deg}}$ , RI, mCd and ExF) as well as the newly published Biogeochemical Index (BGI) were compared. The content, as determined by other authors, of the most widely investigated heavy metals (Cd, Pb and Zn) in farmland, forest and urban soils was used as a database for the calculation of all of the presented indices, and this shows, based on statistical methods, the similarities and differences between them. The indices were initially divided into two groups: individual and complex. In order to achieve a

more precise classification, our study attempted to further split indices based on their purpose and method of calculation. The strengths and weaknesses of each index were assessed; in addition, a comprehensive method for pollution index choice is presented, in order to best interpret pollution in different soils (farmland, forest and urban). This critical review also contains an evaluation of various geochemical backgrounds (GBs) used in heavy metal soil pollution assessments. The authors propose a comprehensive method in order to assess soil quality, based on the application of local and reference GB.

**Keywords** Heavy metals · Pollution indices · Geochemical background · Different soil uses

## Introduction

The problem of high heavy metal content in soils is related to the latter's geo- and bioaccumulation ability (Fagbote and Olanipekun 2010; Gong et al. 2008; Hong-gui et al. 2012; Ogunkunle and Fatoba 2013; Oti Wilberforce 2015; Pejman et al. 2015; Sadhu et al. 2012) as well as the transport rate within the soil profile (Fagbote and Olanipekun 2010). Distribution of heavy metals within the soil profile could provide information about their origin (Chen et al. 2015; Pejman et al. 2015; Sołek-Podwika et al. 2016). Soil enrichment with heavy metals could reflect historical

---

**Electronic supplementary material** The online version of this article (<https://doi.org/10.1007/s10653-018-0106-z>) contains supplementary material, which is available to authorized users.

---

J. B. Kowalska (✉) · R. Mazurek · M. Gąsiorek · T. Zaleski

Department of Soil Science and Soil Protection, Institute of Soil Science and Agrophysics, University of Agriculture, Al. Mickiewicza 21, 31-120 Kraków, Poland  
e-mail: joanna.kowalska@urk.edu.pl

human activities (Shu and Zhai 2014; Sotek-Podwika et al. 2016; Tang et al. 2015; Mazurek et al. 2017). On the other hand, the present anthropogenic pollution sources, such as transport, industry and agriculture, have an undoubted influence on heavy metal accumulation in the soil (Gao and Chen 2012; Ogunkunle and Fatoba 2013; Sayadi et al. 2015). Heavy metals can be derived from both local and distant sources of emissions, and therefore can be deposited in situ or, due to their ability to be bound by dust, can be transported over long distances (Mohamed et al. 2014; Ripin et al. 2014; Mazurek et al. 2017). Most anthropogenic pollutants are emitted into the atmosphere and then are deposited on the soil surface (Liu et al. 2016; Ripin et al. 2014). Accumulation of metals may also be supported by natural processes. Heavy metals are considered substantial constituents of the Earth's crust (Grzebisz et al. 2002; Hawkes and Webb 1962; Rudnick and Gao 2003; Zhou et al. 2015); hence, the nature of the parent material and pedogenesis at the site can create favorable or unfavorable conditions for heavy metal accumulation. Furthermore, weathering of the parent material is a natural process affecting the amount of heavy metals in the soil (Chen et al. 2015; Kierczak et al. 2016).

The problem of high concentrations of heavy metals, especially in agricultural soils, creates a global environmental issue due to the crucial importance of food production and security (Chen et al. 2015; Kabata-Pendias 2011; Kelepertzis 2014). Incorporation of heavy metals into the trophic chain may affect animal and human health (Al-Anbari et al. 2015; Begum et al. 2014; Gao and Chen 2012; Mohamed et al. 2014; Mmolawa et al. 2011; Pejman et al. 2015; Sadhu et al. 2012; Varol 2011; Zhang et al. 2012). Growing awareness of ever-expanding industrialization as well as intensive agricultural soil use and their influence on the content of heavy metals in the soil necessitates the appropriate evaluation as well as determination of their ecological risk (Baran et al. 2018; Gao and Chen 2012; Håkanson 1980; Kowalska et al. 2016; Zhong et al. 2010). Heavy metal pollution is visible in urban centers and farmland located in the vicinity of pollution sources, but also occurs outside these areas as well (Al-Anbari et al. 2015). Analysis of studies of time trends of heavy metal content in soils allows the tracing back of the development of industrialization as well as the use of fertilizers in the last decades. This clearly shows that there is a

permanent tendency toward increased heavy metal accumulation (Al-Anbari et al. 2015; Gong et al. 2008; Hu et al. 2013; Wang et al. 2015). Therefore, it is necessary to use accurate and precise instruments in order to detect and, as far as possible, stop progressive soil degradation (Gong et al. 2008).

Numerous geochemical studies have contributed to the creation of an extensive database of heavy metal background values that can now be used for the evaluation of environmental quality (Gong et al. 2008; Obiora et al. 2016; Rodríguez et al. 2013; Wei and Yang 2010; Wu et al. 2015; Xia et al. 2011). However, analysis of the total contents of heavy metals in the soil may not always be a sufficient method of assessment (Caeiro et al. 2005; Hong-gui et al. 2012; Kowalska et al. 2016; Long et al. 1995). Therefore, for the assessment of heavy metal enrichment and its relationship with soil properties many computational tools have been applied (Gong et al. 2008; Mazurek et al. 2017). The total content, as well as statistical mechanisms and the relationship between the content of heavy metals and soil properties, such as correlation or regression, does not provide comprehensive information on the degree of soil contamination (Kowalska et al. 2016; Liu et al. 2016). In the case of comparisons of the content of heavy metals to the limiting values given in the literature, it is possible to only approximately determine the probability of contamination and this does not provide holistic information on the state of soil quality (Caeiro et al. 2005; Jiang et al. 2014; Nannoni and Protano 2016; Zhiyuan et al. 2011).

The key to the effective assessment of soil contamination with heavy metals lies in the use of pollution indices (Table 1). One of the first indices was created by Müller (1969) and Håkanson (1980). Pollution indices can be regarded as a tool and guide for a comprehensive geochemical assessment of the state of the soil environment (Caeiro et al. 2005; Dung et al. 2013; Gong et al. 2008; Kowalska et al. 2016; Mazurek et al. 2017). The comprehensive nature of assessing soil quality through the use of indices is also demonstrated by the opportunity it affords to estimate environmental risk as well as the degree of soil degradation (Adamu and Nganje 2010; Caeiro et al. 2005). The indices help to determine whether the accumulation of heavy metals was due to natural processes or was the result of anthropogenic activities (Caeiro et al. 2015; Elias and Gbadegesin 2011; Gong

**Table 1** Indices of heavy metal pollution given in the literature, their scope, strengths and weaknesses

Index	Application scope	Strengths	Weaknesses	Author(s)
Individual $I_{geo}$	Assessment of the pollution levels in soil of individual heavy metals	Allows the comparison of the present and previous contamination Widely used Simple quantity method GB application 1.5 multiplication factor reduces possible variation of lithogenic effects Precise scale	Incorrect choice of GB leads to mistaken results Possible natural fluctuation within the GB Omits the available ability of heavy metals Does not take into account natural geochemical variability	Abraham and Parker (2008), Begum et al. (2014), Chen et al. (2015), Dung et al. (2013), Fagbote and Olanipekun (2010), Gong et al. (2008), Guan et al. (2014), Ghazaryan et al. (2015), Grzebisz et al. (2002), Inengite et al. (2015), Karim et al. (2015), Kouamé et al. (2013), Li and Yang (2008), Liu et al. (2016), Loska et al. (2004), Mmolawa et al. (2011), Mohamed et al. (2014), Nikolaidis et al. (2010), Olojede (2014), Omatoso and Ojo (2015), Sayadi et al. (2015), Sadhu et al. (2012), Su et al. (2014), Tang et al. (2015), Wang et al. (2015), Varol (2011) and Zhiyuan et al. (2011)
PI	Evaluation of the degree of individual heavy metal contamination in topsoil	Easy to apply (calculated based the ratio between concentration in topsoil and GB values) Widely used GB application Precise scale	Does not require the variation of natural processes Omits the available ability of heavy metals The key is choice of appropriate GB	Al-Anbari et al. (2015), Begum et al. (2014), Chen et al. (2015), Gong et al. (2008), Hong-giu et al. (2012), Hu et al. (2013), Jiang et al. (2014), Karim et al. (2015), Li and Yang (2008), Mohamed et al. (2014), Mmolawa et al. (2011), Ogunkunle and Fatoba (2013), Olojede (2014), Ripin et al. (2014), Sadhu et al. (2012), Sayadi et al. (2015), Zhong et al. (2010) and Varol (2011)
EF	Effective tool for heavy metal content comparison Determination of heavy metal origin	Estimates anthropogenic impact Assessment of heavy metal origin Reduces metal variability Standardization of the element measures against one that is used for low occurrence variability elements Assessment of the pollution by individual heavy metals Precise scale	Measured with respect to reference values Evaluate above uncontaminated concentration The key is choice of appropriate GB	Abraham and Parker (2008), Fagbote and Olanipekun (2010), Gong et al. (2008), Hu et al. (2013), Inengite et al. (2015), Karim et al. (2015), Mohamed et al. (2014), Mmolawa et al. (2011), Nikolaidis et al. (2010), Olojede (2014), Omatoso and Ojo (2015), Sadhu et al. (2012), Sayadi et al. (2015), Sutherland (2000), Wang et al. (2015), Varol (2011) and Zhong et al. (2012)

Table 1 continued

Index	Application scope	Strengths	Weaknesses	Author(s)
$C_f$	Evaluation of soil quality Help to describe toxic substances	Simple and direct method Individual for each metal Comprising the difference between sample and reference values Obtained by dividing the concentration of each metal Precise scale	Does not require the variation of natural processes Omits the available ability of heavy metals Does not include GB Pre-industrial reference value is necessary	Håkanson (1980), Inengite et al. (2015) and Loska et al. (2004)
BGI	Evaluates the bioadsorption degree of contaminants	Shows vertical mobility of heavy metals Easy to calculate Precise scale	Does not require the variation of natural processes Omits the available ability of heavy metals	Mazurek et al. (2017)
Complex				
$PI_{sum}$	Assesses the overall contamination of heavy metals group	Combines all analyzed heavy metals Allows comparison of the pollution in different soil ecosystems Based on $PI$ values	Does not require the variation of natural processes Omits the available ability of heavy metals The key is choice of appropriate GB Lack of precise scale	Håkanson (1980), Inengite et al. (2015) and Loska et al. (2004)
$PI_{Nemerow}$	Assessment of the overall quality of soil	Directly reflects the soil environment pollution Highlights the most contaminated elements GB values, threshold as well as baseline values may be used Widely used Takes into account all individual elements Precise scale Based on $PI$ values	Does not include weighing factor Needs to rank elements	Al-Anbari et al. (2015), Gong et al. (2008), Guan et al. (2014), Hong-giu et al. (2012), Hu et al. (2013), Inengite et al. (2015), Ogunkunle and Fatoba (2013), Oti Wilberforce (2015), Shu and Zhai (2014) and Zhong et al. (2010)

Table 1 continued

Index	Application scope	Strengths	Weaknesses	Author(s)
PLI	Assessment of the level of contamination/ extent of heavy metal	Combines any number of analyzed heavy metals Easy to apply Widely used Allows comparison of the pollution in different soil sites GB application Represents the number of times by which heavy metal exceeds its natural content in soil Based on $PI$ values	With respect to GB Does not require the variation of natural processes Omits the availability of heavy metals	Begum et al. (2014), Karim et al. (2015), Kouame et al. (2013), Mohamed et al. (2014), Mmolawa et al. (2011), Olofade (2014), Pejman et al. (2015), Sadhu et al. (2012), Sayadi et al. (2015), Varol (2011)
$PI_{avg}$	Evaluation of soil quality due to contamination	Easy to apply Lack of threshold for maximum values Based on $PI$ values	Measured with respect to reference values Not widely used Takes into account the average	Gong et al. (2008) and Inengrte et al. (2015)
$PI_{vector}$	Overall assessment of heavy metal accumulation	Easy to calculate GB application Based on $PI$ values Combines any number of contaminations in one index	No precise scale Not much use in the literature Depends on $PI$ values Does not require the variation of natural processes No precise scale	Gong et al. (2008)
PIN	Overall assessment of heavy metal	Easy to calculate All contamination is integrated into a single value Precise scale Based on $PI$ values	Not widely used Does not consider natural geochemical processes Computation of $PI_{Class}$ is necessary	Cairo et al. (2005) and Gong et al. (2008)
MEC	Allows comprehensive assessment, including series of heavy metals	Easy to apply Gives information about heavy metal origin Takes into consideration all studied heavy metals	Kloke (1979) values are required Not widely used Does not consider natural geochemical processes No precise scale	Adamu and Nganje (2010) and Pejman et al. (2015)

Table 1 continued

Index	Application scope	Strengths	Weaknesses	Author(s)
CSI	Assessment of the intensity of heavy metal accumulation	<p>Helpful to determine the limit of toxicity</p> <p>All contamination is integrated into a single value</p> <p>Includes adverse biological effects</p> <p>Precise scale</p>	<p>Not widely used</p> <p>Requires values for ERM and ERL</p> <p>Needs weight of every heavy metal</p>	Pejman et al. (2015)
MERMQ	<p>Tool for recognizing harmful effects of heavy metals</p> <p>Assessment of pollution risk level</p>	<p>Application for reducing a large amount of pollutants into one index</p> <p>Can prioritize regions of potential hazards</p> <p>Helps assess biological effects</p> <p>Precise scale</p>	<p>Not much used in the literature</p> <p>ERM values are required</p> <p>Does not require the variation of natural processes</p>	Gao and Chen (2012) and Pejman et al. (2015)
$C_{deg}$	Evaluates the degree of contamination in soil	<p>The number of analyzed heavy metals is not limited</p> <p>Assesses a sum of contamination factors</p> <p>Precise scale</p>	<p>Not widely used</p> <p>Does not consider natural geochemical processes</p> <p>Does not include GB</p> <p>Pre-industrial reference value is necessary</p>	Håkanson (1980), Inengite et al. (2015) and Loska et al. (2004)
RI	<p>Evaluation potential ecological risk from heavy metals</p> <p>Contamination assessment</p>	<p>Comprehensive assessment</p> <p>Considers the synergy, toxic level and ecological sensitivity of heavy metals</p> <p>Widely used</p> <p>Precise scale</p>	<p>No GB values</p> <p>Necessity for toxic response values (however, only for Hg, Cd, As, Cu, Pb, Cr, Zn and Ni values are given)</p> <p>Ranking system of <math>E_r</math> is required</p>	Al-Anbari et al. (2015), Gong et al. (2008), Guan et al. (2014), Inengite et al. (2015), Ogunkumle and Fatoba (2013), Pejman et al. (2015), Sayadi et al. (2015), Tang et al. (2015), Wang et al. (2015) and Zhiyuan et al. (2011)
mCd	Assessment of overall degree of contamination	<p>Easy to apply</p> <p>Indicates heavy metal as well as organic pollution</p> <p>Without the resistance of an upper limit</p> <p>Taking into account all analyzed heavy metals</p> <p>Widely used</p>	<p>Does not require variation of natural processes</p> <p>Omits the available ability of heavy metals</p> <p>Does not include GB</p>	Abraham and Parker (2008) and Nikolaidis et al. (2010)

**Table 1** continued

Index	Application scope	Strengths	Weaknesses	Author(s)
ExF	Determination of the most polluted site point Overall soil assessment	Easy to apply Combines all heavy metals into one index	Not much used in the literature Does not allow the recognition of accumulation from natural contamination No precise scale	Bąbewska (2010) and Sutherland (2000)

$I_{geo}$  Geoaccumulation Index,  $PI$  Single Pollution Index,  $EF$  enrichment factor,  $C_f$  contamination factor,  $BGI$  Biogeochemical Index,  $PI_{sum}$  sum of contamination,  $PI_{Nemerow}$  Nemerow Pollution Index,  $PLI$  Pollution Load Index,  $PI_{avg}$  Average Single Pollution Index,  $PI_{vector}$  Vector Modulus of Pollution Index,  $PIIN$  background enrichment factor,  $MEC$  multi-element contamination,  $CSI$  Contamination Security Index,  $MERMQ$  the probability of toxicity,  $C_{deg}$  degree of contamination,  $RI$  potential ecological risk,  $mCd$  modified degree of contamination,  $ExF$  exposure factor,  $GB$  geochemical background

et al. 2008; Sutherland 2000). Further, pollution indices have a great importance for monitoring soil quality and ensuring future sustainability, especially in the case of agro-ecosystems (Ogunkunle and Fatoba 2013; Kelepertzis 2014; Ripin et al. 2014).

Calculation of soil pollution indices requires the assessment of the geochemical background (GB). This term was introduced to distinguish natural concentrations of heavy metals in the soil from abnormal concentrations (Reimann and Garret 2005). Many definitions have been used to characterize GB. Hawkes and Webb (1962) first defined GB as ‘the normal abundance of an element in barren earth material.’ According to Matschullat et al. (2000), GB ‘is characterized by spatio-temporal changes of the content of heavy metal, which is characteristic for the soil type or region’ and ‘reflects natural composition of heavy metals.’ Another definition of GB is given by Matschullat et al. (2000) as a ‘relative measure to distinguish between natural elements or compound concentrations and anthropogenically influenced concentration in real sample collections.’ Adamu and Nganje (2010) and Karim et al. (2015) concluded that GB ‘is a relative measure to differentiate between natural element or compound concentrations and anthropogenically-influenced concentrations in a given environmental sample.’ Reimann and Garret (2005) defined GB as ‘typical (normal, average) element concentrations in a specific area’ and ‘the concentration of a substance in a sample material at the distance to a source where the concentration of the substance can no longer be proven to originate from this source.’ According to Gałuszka (2007), GB ‘is a theoretical natural concentration range of a substance in a specific environmental sample (or medium), considering its spatial and temporal variability.’ Gałuszka and Migaszewski (2011) presented two approaches. Their first approach focuses on the difference between normal and anomalous contents of heavy metals in soil, water, etc., including the following definition: ‘GB is the normal concentration of a given element in a material under investigation, such as rock, soil, plants and water’ (Bates and Jackson 1984), encompassing the above-mentioned definition of Hawkes and Webb (1962). Their second approach is adequate for the definitions of GB mentioned before and given by Matschullat et al. (2000). A similar approach was mentioned by Dung et al. (2013).

GB used for the calculation of pollution indices should not be higher than the threshold, indicating the upper limit of the normal content of heavy metal concentrations in the soil (Reimann and Garret 2005). The term ‘threshold’ can also be defined as an ‘outer limit of background variation’ (Garrett 1991). GB definitions are connected with the term ‘baseline value.’ The baseline is the ‘present concentration of a chemical substance in a contemporary environmental sample’ (Garrett 1991) and ‘content of measuring levels “now” so that future change can be quantified’ (Reimann and Garret 2005).

Two kinds of GB were distinguished by Kowalska et al. (2016): reference and local (natural). The average content of heavy metals given in the literature, which can vary greatly due to localization differences and soil type, could be considered the reference geochemical background (RGB). In some regions of the world, geological magnetic anomalies occur, which should be taken into account during the selection of a GB (Chen et al. 2016; Lis and Pasiieczna 1997; Xu et al. 2015; Zhou et al. 2015). An expression of these anomalies is a higher content of heavy metals in soils affected by the occurrence of nonferrous metal ores and by climatic factors (Pająk et al. 2015, 2017; Reimann and Garret 2005; Zhou et al. 2015). A different approach uses the local geochemical background (LGB) in the calculation of pollution indices. LGB is the concentration of heavy metals conditioned by natural processes characteristic of a particular area. Soil material is considered the LGB when it is not affected by human activity (Abraham and Parker 2008; Reimann and Garret 2005).

So far, there has not been a comprehensive study related to the description of a wide spectrum of pollution indices including an indication of their strengths and weaknesses. The main objectives of this study are to: (1) present an exhaustive way to evaluate the ecological toxicology of heavy metals; (2) classify and compare the possibility of soil pollution assessment with the support of 18 relative indices given in the contemporary literature; (3) attempt to characterize the usefulness of indices according to land type use (farmland, forest and urban areas); and (4) solve the issue of choosing the appropriate GB.

## Methods

This review paper contains a comprehensive comparison of eighteen different indices of pollution chosen from the literature after an in-depth literature survey (Table 1). Equations for each of the described pollution indices and their suggested interpretations are also provided.

The reviewed pollution indices are divided into two groups: individual and complex. The first group contains indices that are calculated for each individual heavy metal separately. Complex pollution indices describe contamination of soil in a more holistic way, considering the content of more than one heavy metal or a sum of individual indices. Furthermore, in order to simplify the choice of appropriate indices, we have divided the pollution indices in terms of purpose and method of calculation (see Discussion section).

In order to show the similarities or differences between pollution indices, these were calculated based on the content of Cd, Pb and Zn given in the literature from 84 soils, representing different types of land use: farmland, forest and urban areas (Table 2). As a reference element, Sc content in soil given by Kabata-Pendias (2011) was used, which is necessary to calculate the enrichment factor (EF). For the calculation of BGI, the content of heavy metals in O and A horizons in forest soils was used. Calculations of pollution indices were conducted using heavy metal composition from the upper continental crust (UCC) proposed by Rudnick and Gao (2003) (Table 3). UCC constitutes an RGB that represents the lithogenic contents of heavy metals which are not under the influence of pedogenic processes. In this investigation, the reference (UCC) values and pollution indices provide a more universal character.

To aid in the determination of relationships between pollution indices, Ward’s hierarchical cluster analysis (HCA) method as well as principal component analysis (PCA) were applied using Statistica® version 12.0 software. HCA is considered a practical way to gather a variety of data sets by creating groups. This clustering is based on the agglomeration method that estimates linkage distance. In this case, the estimation of differences between particular groups takes place (Murtagh and Legendre 2014). HCA depends on organizing all the data in the structure in such a way that the degree of linkage of the objects (indices) belonging to the same



**Table 2** References used to calculate analyzed pollution indices

Author(s)	Location	Use	Numbers of profiles
Pan et al. (2016)	China	Farmland	1
Inboonchuay et al. (2016)	N Thailand	Farmland	1
Wei and Yang (2010)	China	Farmland	1
Gutierrez et al. (2016)	Spain	Farmland	1
Valladares et al. (2009)	Brazil	Farmland	1
Rodríguez et al. (2013)	Spain	Farmland	1
Redon et al. (2013)	France	Farmland	2
Gu et al. (2014)	China	Farmland	1
Hajduk et al. (2012)	E Poland	Farmland	6
Obiora et al. (2016)	Nigeria	Farmland	3
Hovmand et al. (2008)	S Scandinavia	Forest	1
Pajak et al. (2015)	Poland	Forest	10
Karczewska and Kabała (2002)	S Poland	Forest	4
Ekwere et al. (2014)	Nigeria	Urban area	4
Xia et al. (2011)	China	Urban area	6
Markiewicz-Patkowska et al. (2005)	UK	Urban area	1
Wei and Yang (2010)	China	Urban area	1
Stajic et al. (2016)	Serbia	Urban area	14
Salah et al. (2015)	Iraq	Urban area	20
Liu et al. (2016)	Beijing	Urban area	1
Mahmoudabadi et al. (2015)	Iran	Urban area	1
Wu et al. (2015)	China	Urban area	1
Nannoni and Protano (2016)	Siena City	Urban area	2

cluster is the greatest. In this study, data are presented as dendrograms (tree diagrams). The principles of dendrogram interpretation involve graphical analysis. This method results in the collation of an increasing number of indices on the basis of their characteristics (Murtagh and Legendre 2014). In turn, PCA is widely used as a way to identify patterns within a set of data (Rao 1964; Smith 2002; Wold et al. 1987; Zhiyuan et al. 2011). Presentation of data by PCA aims to highlight their similarities and differences (Smith 2002). Often, PCA is used when graphical presentation of data is not available. The PCA model is based on total variance. The main advantage of PCA consists in data compression by reducing the large number of variables to a small set, which nonetheless still contains most of the information across a wide range (Rao 1964; Wold et al. 1987). With PCA, unities are used in the diagonal of the correlation matrix computationally implying that

the variance is common (Smith 2002). In general, the interpretation of PCA is based on gathering all the similarities in one quarter: the closer the distance between components, the more the similarities that can be found between them (Gąsiorek et al. 2017; Zhiyuan et al. 2011). Further, PCA is useful for the comparison of patterns between studied pollution indices and the establishing of possible similarities (Chen et al. 2015; Varol 2011; Zhiyuan et al. 2011). Moreover, PCA allows the assessment of overall variability across the pollution indices.

In our study, PCA diagrams were drawn up for individual and complex pollution indices separately. Such a method of division was supported by specific values/numbers, e.g., GB, using for every pollution indice calculation. Due to the limited space for figures, we decided to show only those PCA diagrams where positive correlations were found between indices.

**Table 3** Geochemical backgrounds given in the literature and tolerable limits of heavy metals

Element	K-P (mg kg <sup>-1</sup> )	UCC	LCC	K
Ag	0.13	53	50	–
As	0.67	4.8	1.6	20
Cd	0.41	0.09	0.098	3
Cr	59.5	92	85	–
Cu	38.9	28	25	100
Ga	15.2	17.5	17	–
Hg	0.07	0.05	–	2
Mn	488	438.59	–	–
Ni	29	47	44	100
Pb	27	17	17	100
Sn	2.5	2.1	5.5	–
Zn	70	67	71	300

*K-P* Kabata-Pendias (2011), average content in surface horizons worldwide, *UCC* Rudnick and Gao (2003), composition in upper continental crust, *LCC* McLennan (2001), composition in lower continental crust, *K* Klokke (1979), tolerable levels in soils

## Pollution indices

### Individual indices

The individual indices group contains tools that can be used for the unitary assessment of soil pollution with particular heavy metals. Besides the content of heavy metals in soil, knowledge of the GB or other reference data obtained from the literature may be necessary.

### Geoaccumulation Index ( $I_{geo}$ )

$I_{geo}$  allows the assessment of soil contamination with heavy metal based on its contents in A or O horizons referenced to a specified GB (Müller 1969).

$$I_{geo} = \log_2 \left[ \frac{C_n}{1.5 GB} \right] \quad (1)$$

where  $C_n$ —concentration of individual heavy metal, GB—value of geochemical background and 1.5—constant, allowing for an analysis of the variability of heavy metals as a result of natural processes.

$I_{geo}$  values are helpful to divide soil into quality classes (Müller 1969; Nowrouzi and Pourhabbaz 2014). Please see Table S1 (Supplementary material) for interpretation of results.

### Single Pollution Index (PI)

An index that can be used to determine which heavy metal represents the highest threat for a soil environment is the Single Pollution Index (PI). This is also necessary for the calculations of some of complex indices, e.g., the Nemerow Pollution Index ( $PI_{Nemerow}$ ) (Guan et al. 2014) and the Pollution Load Index (PLI) (Varol 2011), and is described below.

$$PI = \frac{C_n}{GB} \quad (2)$$

where  $C_n$ —the content of heavy metal in soil and GB—values of the geochemical background.

Table S2 presents an interpretation of the PI values.

### Enrichment factor (EF)

EF is a measure of the possible impact of anthropogenic activity on the concentration of heavy metals in soil. To identify the expected impact of anthropogenesis on the heavy metal concentrations in the soil, the content of heavy metals characterized by low variability of occurrence (LV) is used as a reference, both in the analyzed samples and in GB. Reference elements are usually Fe, Al, Ca, Ti, Sc or Mn.  $EF$  is calculated using the following formula (Sutherland 2000):

$$EF = \frac{\left[ \frac{C_n}{LV} \right]_{\text{sample}}}{\left[ \frac{C_n}{LV} \right]_{\text{background}}} \quad (3)$$

where  $\left[ \frac{C_n}{LV} \right]_{\text{sample}}$ —content of analyzed heavy metal ( $C_n$ ) and one of the following metals Fe/Al/Ca/Ti/Sc/Mn (LV) in the sample and  $\left[ \frac{C_n}{LV} \right]_{\text{background}}$ —reference content of the analyzed heavy metal ( $C_n$ ) and one of the following metals Fe/Al/Ca/Ti/Sc/Mn (LV).

If the value of EF ranges from 0.5 to 1.5 (Table S3), it can be stated that the content of that particular heavy metal in the soil is caused by natural processes. However, if the value of EF exceeds 1.5, there is a possibility that the heavy metal contamination occurred as a result of anthropogenic activities (Elias and Gbadegesin 2011; Zhang and Liu 2002).

### Contamination factor ( $C_f$ )

The assessment of soil contamination can also be carried out using  $C_f$ . This index enables the assessment

of soil contamination, taking into account the content of heavy metal from the surface of the soil and values of pre-industrial reference levels given by Håkanson (1980) (Table S4).

$C_f$  is calculated by the following formula:

$$C_f = \frac{C_m}{C_{p-i}} \tag{4}$$

where  $C_m$ —mean content of heavy metal from at least five samples of individual metals and  $C_{p-i}$ —pre-industrial reference value for the substances (Table S4).

Table S5 provides an interpretation of  $C_f$  values.

### A newly introduced index: the Biogeochemical Index (BGI)

There is no universal index in the literature to evaluate the degree of heavy metal concentration in the O horizon of soils under forest and grassland vegetation. The Biogeochemical Index (BGI) (Mazurek et al. 2017) is designed to fill this gap. For the calculations, knowledge of the heavy metal content in the O horizon and the directly underlying A horizon is necessary. It can be assumed that the higher the BGI values, the greater the capability of the O horizon to sorb heavy metals and neutralize xenobiotics, as well as reduce phytotoxicity. BGI is calculated by:

$$BGI = \frac{C_nO}{C_nA} \tag{5}$$

where  $C_nO$ —content of a heavy metal in the O horizon and  $C_nA$ —content of a heavy metal in the A horizon.

Interpretations of BGI are suggested in Table S6. BGI is helpful to determine the ability of the O horizon to sorb pollutants. Thus, values above 1.0 demonstrate increased ability of heavy metal sorption by the O horizons of soil. However, one should take into account the fact that the index does not consider the density of soil particles of O and A horizons; hence, BGI is only an approximation (Mazurek et al. 2017).

### Complex indices

The complex indices group allows the specification, in a comprehensive way, of the degree of heavy metal pollution. For the calculation of each of the complex indices, total concentrations of all analyzed heavy

metals in soils as well as (in some cases) individual values of the calculated indices were used.

### Sum of contamination ( $PI_{sum}$ )

A commonly applied index of heavy metal contamination in soils is the sum of contamination ( $PI_{sum}$ ). It can be defined as the sum of all determined contents of heavy metals in the soil, expressed as PI (Gong et al. 2008). It is calculated using the formula:

$$PI_{sum} = \sum_{i=1}^n PI \tag{6}$$

where PI—calculated values for Single Pollution Index and  $n$ —the number of total heavy metals analyzed in this study.

### Nemerow Pollution Index ( $PI_{Nemerow}$ )

The Nemerow Pollution Index ( $PI_{Nemerow}$ ) allows the assessment of the overall degree of pollution of the soil and includes the contents of all analyzed heavy metals (Gong et al. 2008). It is calculated for both the O and A horizons, based on the following formula:

$$PI_{Nemerow} = \sqrt{\frac{(\frac{1}{n} \sum_{i=1}^n PI)^2 + PI_{max}^2}{n}} \tag{7}$$

where PI—calculated values for the Single Pollution Index,  $PI_{max}$ —maximum value for the Single Pollution Index of all heavy metals and  $n$ —the number of heavy metals.

Based on  $PI_{Nemerow}$ , five classes of soil quality were created (Table S7).

### Pollution Load Index (PLI)

For the total assessment of the degree of contamination in soil, the PLI is also used. This index provides an easy way to prove the deterioration of the soil conditions as a result of the accumulation of heavy metals (Varol 2011). PLI is calculated as a geometric average of PI based on the following formula:

$$PLI = \sqrt[n]{PI_1 \times PI_2 \times PI_3 \times \dots \times PI_n} \tag{8}$$

where  $n$ —the number of analyzed heavy metals and PI—calculated values for the Single Pollution Index.

PLI classes are shown in Table S8.

### Average Single Pollution Index ( $PI_{avg}$ )

$PI_{avg}$  was first used by Gong et al. (2008) and Inengite et al. (2015) in order to estimate soil quality. It can be defined as follows:

$$PI_{avg} = \frac{1}{n} \sum_{i=1}^n PI \quad (9)$$

where  $n$ —the number of studied heavy metals and  $PI$ —calculated values for the Single Pollution Index.

$PI_{avg}$  values in excess of 1.0 show a lower quality of the soil, which is conditioned by high contamination (Inengite et al. 2015).

### Vector Modulus of Pollution Index ( $PI_{vector}$ )

This index was introduced by Gong et al. (2008) and is defined as:

$$PI_{vector} = \sqrt{\frac{1}{n} \sum_{i=1}^n PI^2} \quad (10)$$

where  $n$ —the number of determined heavy metals and  $PI$ —calculated values for the Single Pollution Index.

### Background enrichment factor ( $PIN$ )

Introduced by Caeiro et al. (2005),  $PIN$  is helpful to assess the enrichment of soil by heavy metals using class contamination of  $PI$  (Table S2) as well as appropriate  $GB$  values.  $PIN$  is defined as:

$$PIN = \sum_{i=1}^n \frac{PIClass^2 \times Cn}{GB} \quad (11)$$

where  $PIClass$ —class of heavy metal pollution (given in Table S2),  $Cn$ —contamination by heavy metal and  $GB$ —geochemical background.

An interpretation of  $PIN$  values is given in Table S9.

### Multi-element contamination ( $MEC$ )

Using  $MEC$  gives a measure to assess contamination based on the content of heavy metals in surface soil horizons, with the limits given by Kloke (1979) (Table 3). This index was introduced by Adamu and Nganje (2010).  $MEC$  values above 1.0 testify to an anthropogenic impact on heavy metal concentration in

soil.  $MEC$  is calculated based on the following formula:

$$MEC = \frac{\left(\frac{C_1}{T_1} + \frac{C_2}{T_2} + \frac{C_3}{T_3} + \dots + \frac{C_n}{T_n}\right)}{n} \quad (12)$$

where  $C$ —content of heavy metal,  $T$ —tolerable levels given by Kloke (1979) (Table 3) and  $n$ —the number of heavy metals.

### Contamination Security Index ( $CSI$ )

$CSI$  is informative in terms of the concentration of heavy metals in the soil. It was introduced by Pejman et al. (2015). In order to calculate  $CSI$ , ‘effects range low’ (ERL) and ‘effects range median’ (ERM) values given by Long et al. (1995) (presented in Table S10) are used.  $CSI$  is also helpful to determine the limit of toxicity above which adverse impacts on the soil environment are observed. The index is calculated according to the formula:

$$CSI = \sum_{i=1}^n w \left( \left( \frac{C}{ERL} \right)^{\frac{1}{2}} + \left( \frac{C}{ERM} \right)^2 \right) \quad (13)$$

where  $W$ —computed weight of each heavy metal according to Pejman et al. (2015) (Table S11),  $C$ —concentration of heavy metal, and  $ERL$ ,  $ERM$ —values from Table S10.

An interpretation of  $CSI$  values is given in Table S12.

### The probability of toxicity ( $MERMQ$ )

This index is used as an instrument to recognize the harmful impact on the soil environment of heavy metals (Gao and Chen 2012; Pejman et al. 2015).  $MERMQ$  is calculated based on the following formula:

$$MERMQ = \frac{\sum_{i=1}^n \frac{Cn}{ERM}}{n} \quad (14)$$

where  $Cn$ —concentration of each analyzed heavy metal,  $ERM$ —values given by Long et al. (1995) (Table S10) and  $n$ —the number of analyzed heavy metals.

An interpretation of this index is shown in Table S13.

*Degree of contamination (C<sub>deg</sub>)*

According to Håkanson (1980), the assessment of contamination can be carried out by using the degree of contamination index, C<sub>deg</sub>, which is calculated as follows:

$$C_{deg} = \sum_{i=1}^n C_f \tag{15}$$

where C<sub>f</sub>—contamination factor and n—the number of analyzed heavy metals.

An interpretation of C<sub>deg</sub> is shown in Table S5.

*Potential ecological risk (RI)*

Potential ecological risk (RI) is an index applicable for the assessment of the degree of ecological risk caused by heavy metal concentrations in the water, air, as well as the soil. This index was introduced by Håkanson (1980), and it is calculated using the following formula:

$$RI = \sum_{i=1}^n E_r^i \tag{16}$$

where n—the number of heavy metals and E<sub>r</sub>—single index of the ecological risk factor calculated based on the equation:

$$E_r^i = T_r^i \times PI \tag{17}$$

where T<sub>r</sub><sup>i</sup>—the toxicity response coefficient of an individual metal (Håkanson 1980) (Table S4) and PI—calculated values for the Single Pollution Index.

Based on the potential ecological risk, five classes of soil quality were distinguished (Table S14).

*Modified degree of contamination (mCd)*

This index was first used by Abrahin and Parker (2008). It allows the assessment of the overall heavy metal soil contamination. To calculate this index, the sum of the content of heavy metals is necessary. An interpretation of mCd values is shown in Table S15. mCd is calculated using the following formula:

$$mCd = \frac{\sum_{i=1}^n C_n}{n} \tag{18}$$

where n—the number of analyzed heavy metals and C<sub>n</sub>—content of individual heavy metal.

*Exposure factor (ExF)*

ExF is very useful to assess where, in a given study area, the greatest heavy metal loads are located (Bąbełewska 2010), and it is calculated as follows:

$$y = \sum \frac{C_n - C_{av}}{C_{av}} \tag{19}$$

where C<sub>n</sub>—content of heavy metal at an analyzed sampling point and C<sub>av</sub>—average content of heavy metal in the soil profile.

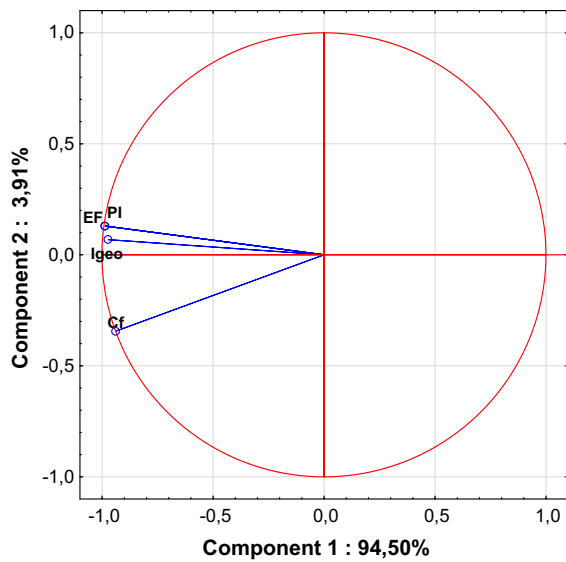
**Discussion**

Characterization of indices based on their scope, method of calculation as well as strengths and weaknesses

The contemporary approach presupposes that the simultaneous use of several indices has been found to more accurately assess heavy metal pollution in soil (Table 1). Several studies have reported that the selection of pollution index is connected with different aims, such as contamination level, heavy metal origin or ecological potential risk (Al-Anbari et al. 2015; Baran et al. 2018; Dung et al. 2013; Guan et al. 2014; Obiora et al. 2010; Qingjie et al. 2008).

Pollution indices can be divided into six groups based on the different purposes of calculation, i.e., to provide information about: (1) individual levels of pollution from each of the analyzed heavy metals (I<sub>geo</sub>, PI, C<sub>f</sub>); (2) the scale of total pollution (PI<sub>sum</sub>, PI<sub>Nemerow</sub>, PLI, PI<sub>ave</sub>, mCd, PI<sub>vector</sub>, C<sub>deg</sub>, PIN and SCI); (3) the source of heavy metals (EF and MEC); (4) the potential ecological risk (RI and MERMQ); (5) the area with the highest potential risk of heavy metal accumulation (ExF); and (6) the ability of the surface horizon to accumulate heavy metals (BGI).

Ward’s hierarchical cluster analysis (HCA), as well as principal component analysis (PCA), is helpful to standardize pollution indices to allow better comparison between them (Wang et al. 2015; Qingjie et al. 2008; Wold et al. 1987; Zhiyuan et al. 2011). The listed pollution indices have a lot of common attributes. Similarly, PCA showed that variation between indices is based mainly on the measurement of the health and quality of the soil (Figs. 1 and 2, Table 4). The clearest similarities result from the calculation methods (Dung et al. 2013; Guan et al.

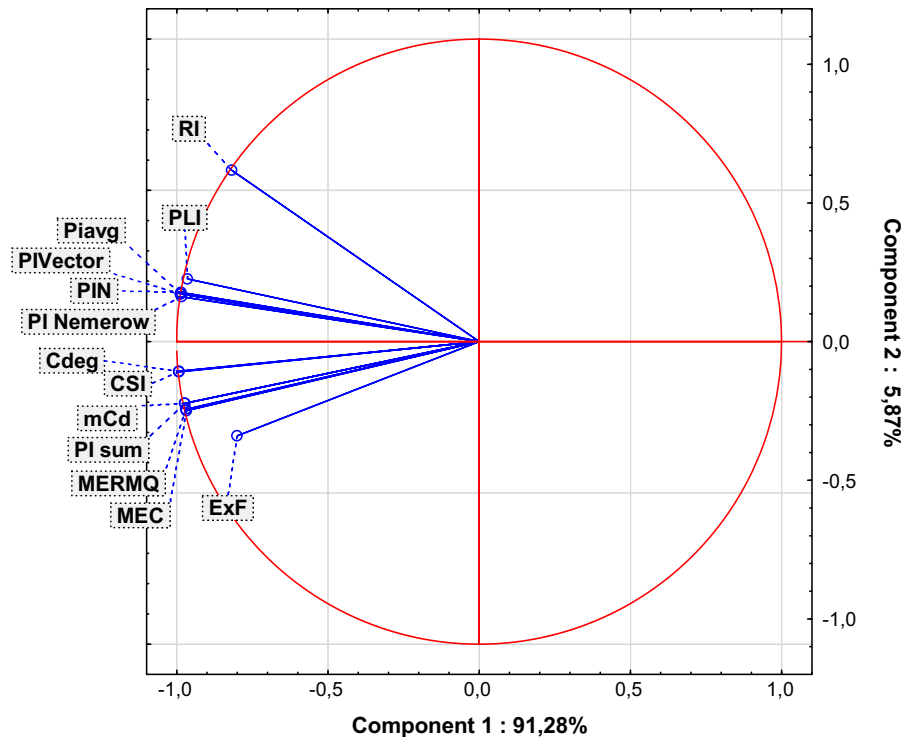


**Fig. 1** Principal component analysis (PCA) biplot for the individual indices

2014; Inengite et al. 2015). Across the individual and complex pollution indices descriptive statistics were used: geometric sum, geometric average or weighted

geometric values. Furthermore, some of the pollution indices are based on reference data, such as GB, or use other specified values which differ from traditional GB (Gao and Chen 2012; Wang et al. 2015). Hence, taking into consideration the method of calculation, pollution indices can be divided into three groups: (1) indices that are based on the calculation of GB values ( $EF$ ,  $I_{geo}$ ,  $PI$ ,  $PI_{sum}$ ,  $PI_{Nemerow}$ ,  $PI_{avg}$ ,  $PI_{Vector}$ ,  $PIN$  and  $PLI$ ); (2) indices that are calculated based on data other than GB given in the literature ( $C_f$ ,  $MEC$ ,  $C_{deg}$ ,  $RI$ ,  $MERMQ$  and  $CSI$ ); and (3) indices that are calculated based on heavy metal content in the analyzed soil profile but not in parent material ( $BGI$ ,  $mCd$  and  $ExF$ ).

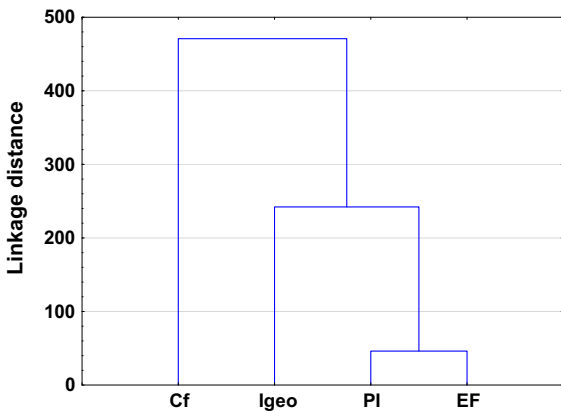
Despite the obvious similarities, the pollution indices differ from each other due to various factors that affect their importance (Kowalska et al. 2016). Thus, some of the studied pollution indices may not be readily comparable (Dung et al. 2013; Gao and Chen 2012). These differences are confirmed statistically by high linkage distances between clusters (Figs. 3 and 4). Theoretically, the higher the linkage distance, the more diverse the traits the two indices have. Hence,



**Fig. 2** Principal component analysis (PCA) biplot for the complex indices

**Table 4** Principal component loadings for complex index values

Index	PCA1	PCA2
PI <sub>sum</sub>	− 0.973	− 0.204
PI <sub>Nemerow</sub>	− 0.983	0.148
PLI	− 0.964	0.207
PI <sub>avg</sub>	− 0.987	0.157
PI <sub>Vector</sub>	− 0.987	0.157
PIN	− 0.986	0.162
MEC	− 0.967	− 0.228
CSI	− 0.992	− 0.100
MERMQ	− 0.969	− 0.223
C <sub>deg</sub>	− 0.992	− 0.097
RI	− 0.817	0.565
mCd	− 0.973	− 0.204
ExF	− 0.799	− 0.311



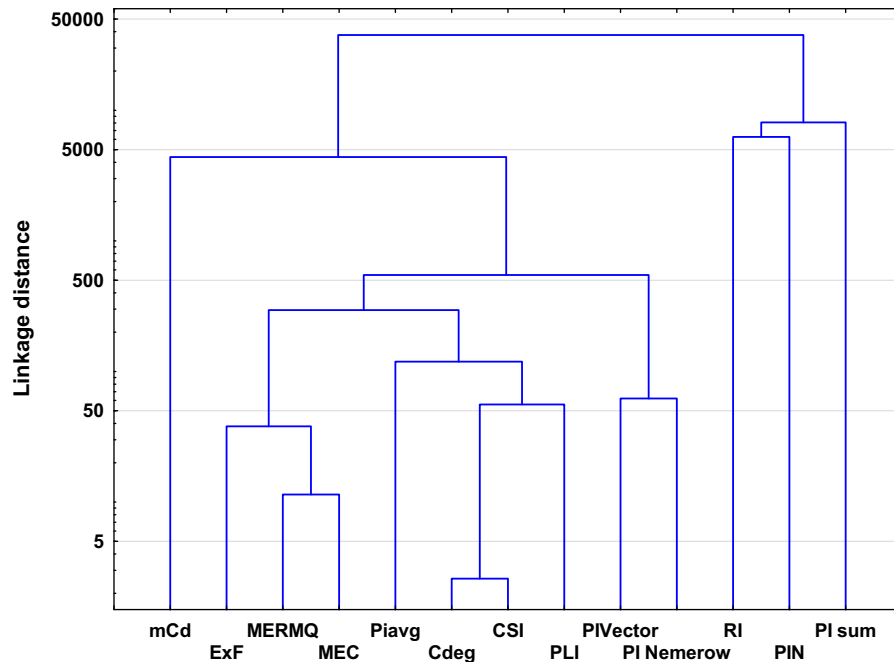
**Fig. 3** Ward's hierarchical cluster analysis of the studied individual pollution indices based on different land uses

analogously, the lower the linkage distances, the fewer the differences between indices (Murtagh and Legendre 2014). The discussion below and also Table 1 highlight the advantages and disadvantages of individual and complex pollution indices.

From among the individual pollution indices,  $I_{geo}$  and PI are considered to be the most accurate and have been used for a few decades to evaluate the degree of contamination (Table 1) (Begum et al. 2014; Karim et al. 2015; Li and Yang 2008; Sayadi et al. 2015). Those indices allow the comparison of previous and present contamination, which they treat in quite

similar ways.  $I_{geo}$  and likewise PI should be calculated with respect to appropriate GB. Thus, the key for appropriate calculation is the choice of GB (Kowalska et al. 2016; Matschullat et al. 2000). On the other hand, neither of these indices includes the variation of natural processes. One of the biggest disadvantages for the above-mentioned factors is the lack of consideration of the impact of heavy metals on edaphic properties and xenobiont behavior in the soil (Dung et al. 2013; Jiang et al. 2014; Mmolawa et al. 2011; Sayadi et al. 2015). Nevertheless, these indices are characterized by their very precise scale. Only  $I_{geo}$  allows minimization of the degree of accumulation resulting from artificial footprints of human activity (by the 1.5 factor), which offers a significant advantage over other individual indices (Li et al. 2016). Similarities between these two indices are clearly visible in the PCA diagram (Fig. 1).

An index based on differentiation between anthropogenic and natural pollution sources is EF (Dung et al. 2013; Kowalska et al. 2016; Reimann and De Caritat 2005). Calculation of EF is connected with the standardization of element measures (Reimann and De Caritat 2005). EF is the only one of the studied indices that includes low occurrence of variability elements (Abraham and Parker 2008; Bourennane et al. 2010; Karim et al. 2015). EF, similar to  $I_{geo}$  and PI, is a tool that involves the geochemical values. In the calculation of this index, RGB values have very often been used. Some authors have claimed that LGB should be taken into account as well (Kowalska et al. 2016). For the calculation of EF, it is necessary to know the level of enrichment of the sample and the reference values, which are often characterized by low occurrence variability (Omatoso and Ojo 2015). This measure is used in order to normalize the geochemical influence and differentiate between heavy metals originating from human activities and those of natural sources (Reimann and De Caritat 2005; Mmolawa et al. 2011; Sutherland 2000). The choice and determination of the element demonstrating low levels of variability (Table 1) should be connected with the type and properties of the studied soil, which may sometimes bring some uncertainty, and this may be one of the only drawbacks of this index. The fifth grade of the EF scale (Table S3) allows easy detection of anthropogenic influences (Gąsiorek et al. 2017; Reimann and De Caritat 2005; Wang et al. 2015; Varol 2011).



**Fig. 4** Ward's hierarchical cluster analysis of the studied complex pollution indices based on different land use

Distinct from other individual indices is  $C_f$ , a fact which has also been confirmed statistically (Figs. 1, 3). No GB data are needed in  $C_f$  calculations (Abraham and Parker 2008; Li et al. 2016; Loska et al. 2004; Varol 2011). Nevertheless, this index focuses on the ratio between actual contamination by an individual heavy metal and pre-industrial reference data given by Håkanson (1980) (Table S4). Such an approach excludes the possibility of the inappropriate choice of GB, thereby reducing inconsistencies in the obtained pollution index values. It should be noted that  $C_f$  also does not include the variation of natural processes (Dung et al. 2013; Loska et al. 2004; Varol 2011).

Another somewhat 'separated' pollution index is BGI. This index, similar to PI, is based on the ratio between contamination of different horizons/layers. It is important for highlighting pollution levels in forested areas, as has been confirmed by Mazurek et al.'s (2017) study. BGI needs to be calculated to characterize the natural buffering properties of the O horizon, which provides biosorption of contaminants (De Santo et al. 2002; Pająk et al. 2015). Moreover, BGI has the potential to show the vertical mobility of heavy metals (Mazurek et al. 2017).

The tools used for overall soil pollution evaluation are the complex indices (Table 1). Complex pollution indices integrate and average all available analytical data (Abraham and Parker 2008; Dung et al. 2013). Some of these provide complementary information and allow comparison of the degree of overall contamination in different sites due to the use of a specific, common scale (Qingjie et al. 2008). Among the complex pollution indices, a series of similar indices can be distinguished, i.e.,  $PI_{sum}$ ,  $PI_{Nemerow}$ ,  $PLI$ ,  $PI_{avg}$ ,  $PI_{Vector}$  and  $PIN$ . The similarities between these indices manifest themselves in their similar purposes (Inengite et al. 2015), calculations with regard to  $PI$  values, and are readily comparable due to their nature (Gong et al. 2008; Inengite et al. 2015). The above-mentioned similarities are confirmed by PCA scatter plots (Fig. 2, Table 4). All ' $PI$ -indices' are calculated (indirectly) with respect to GB (Gałuszka and Migaszewski 2011). Moreover, these pollution indices are characterized by their simplicity of application, can be easily understood and interpreted, and also show acceptable levels of contamination (Caeiro et al. 2005; Inengite et al. 2015; Shu and Zhai 2014). Some ' $PI$ -indices' have no precise scale or are 'single-scaled' ( $PI_{sum}$ ,  $PI_{Vector}$  and  $PI_{avg}$ , respectively), which represents a disadvantage in



some cases. ‘*PI*-indices’ depend on *PI* values, which are strictly connected with *GB* and may often lead to some shortcomings where the wrong choice of *GB* has been made (Kowalska et al. 2016; Mazurek et al. 2017).

*MEC* is a widely used tool for generating information about heavy metal origin (Adamu and Nganje 2010; Pejman et al. 2015). This may be comparable to the *EF* pollution index. *MEC* is quite a new index and thus has not been widely used (Adamu and Nganje 2010). *MEC* values are not dependent on *GB*; nevertheless, they are based on data given by Kloke (1979) (Table 3). The weaknesses of this index are their poor scale, which can provide less comprehensive information than other indices (Dung et al. 2013; Pejman et al. 2015). According to the results of statistical analyses (Figs. 2 and 4), *MEC* may be correlated with *MERMQ*, but this is only due to the similar method of calculation (Adamu and Nganje 2010; Pejman et al. 2015).

Other complex pollution indices which are not connected with conventional *GB* values are *CSI*, *MERMQ* and  $C_{deg}$  (Table 1). *CSI* and *MERMQ* are based on *ERM* (effects range median) and *ERL* (effects range low) values (Table S10) instead of *GB* (Gao and Chen 2012; Han et al. 2016; Pejman et al. 2015; Wang et al. 2015). *ERM* and *ERL* values have been determined based on numerous toxicity tests, field studies, and delineate concentration ranges for many elements (Gao and Chen 2012; Gąsiorek et al. 2017; Han et al. 2016; Long et al. 1995). These indices are able to provide spatially representative patterns of soil contamination (Pejman et al. 2015). Terminology used for these complex indices differs from each other due to assessments based on different grades (Table S12 and S13). *CSI* includes a computed weight for every heavy metal in terms of overall contamination, which confirms its accuracy (Pejman et al. 2015; Wang et al. 2015). In turn, *MERMQ* determines the percentage probability of toxicity and is useful to find harmful human effects, a key to recognition of exposure to pollution (Gao and Chen 2012; Pejman et al. 2015).  $C_{deg}$  is more reliable and appropriate for the determination of site-specific contamination (Håkanson 1980). However, this index is strictly dependent on  $C_f$  values.  $C_{deg}$  represents a straightforward method of calculation and simple interpretation (Abraham and Parker 2008). The similarities between the above-mentioned indices have also been

confirmed statistically, especially those between  $C_{deg}$  and *CSI* (Figs. 2, 4, Table 4).

Among the complex pollution indices, *RI* may be considered a guideline for recognition of potential ecological risk (Al-Anbari et al. 2015; Hong-gui et al. 2012; Håkanson 1980; Jiang et al. 2014; Obiora et al. 2016; Sayadi et al. 2015). *RI* is one of the first introduced and the best known pollution indices (Table 1). The interpretation of *RI* is essential for decision-making processes and management, including protection of natural resources, and considers toxic levels, ecological sensitivity and synergies between heavy metals (Caeiro et al. 2005; Gąsiorek et al. 2017; Mazurek et al. 2017). This index requires a specific toxicity response coefficient (Håkanson 1980). The toxicity response coefficient is equivalent to the different toxicity values of particular elements. *RI* is characterized by a high level of accuracy due to its precise scale (Table S14). A small disadvantage of *RI* is the fact that the toxicity response coefficient has not been determined for a wide range of heavy metals (Table 1). A lack of clear linkages between *RI* and other indices is apparent (Figs. 2, 4, Table 4), which may suggest the individuality of this index and its low similarity to other indices (Chen et al. 2015; Kowalska et al. 2016).

With regard to an overall measurement of heavy metals in the soil profile, and also their lack of any need for the use of *GB*, *mCd* and *ExF* were considered (Table 1). There is not much information about these indices in the literature (Abraham and Parker 2008, Bąbalewska 2010; Pejman et al. 2015). *ExF* does not allow the differentiation of anthropogenic accumulation from natural contamination, and there is no clear threshold between polluted and unpolluted sites (Bąbalewska 2010; Nikolaidis et al. 2010; Sutherland, 2000). In contrast to the other indices, *ExF* is able to identify locations with the highest probability of the occurrence of contaminants (Bąbalewska 2010; Pejman et al. 2015). Differences for this index relative to others (e.g., *PI*-indices) are also found based on statistical analyses, i.e., correlation or regression (Figs. 2, 4, Table 4). Moreover, a strongly negative connection has been noted between variability principal components of *ExF* and other indices, which proves the association between the spatial arrangement of environmental risk and the variance between index values (Fig. 2). Both *ExF* and *mCd* allow the ranking of primary contaminants (Abraham and Parker

2008; Bąbelska 2010; Nikolaidis et al. 2010). The mCd index has an advantage over ExF due to the development of a more precise scale (Table S15).

Taking into account their strengths and weaknesses, some of the pollution indices may be recommended by the authors of this review as being the most useful. Among individual pollution indices, we note both  $I_{geo}$ , which provides information concerning contamination level, as well as EF, on the basis of which the origin of heavy metals can be determined (Abraham and Parker 2008; Kowalska et al. 2016; Mazurek et al. 2016). Among the complex pollution indices the most useful as well as most universal in character are CSI and RI (Gąsiorek et al. 2017; He 2015). CSI is helpful to assess the overall level of accumulation of heavy metals and further determines their intensity (He 2015; Ololade 2014). In turn, RI is important because of its ability to define ecological risk (Håkanson 1980; Gong et al. 2008; Kowalska et al. 2016).

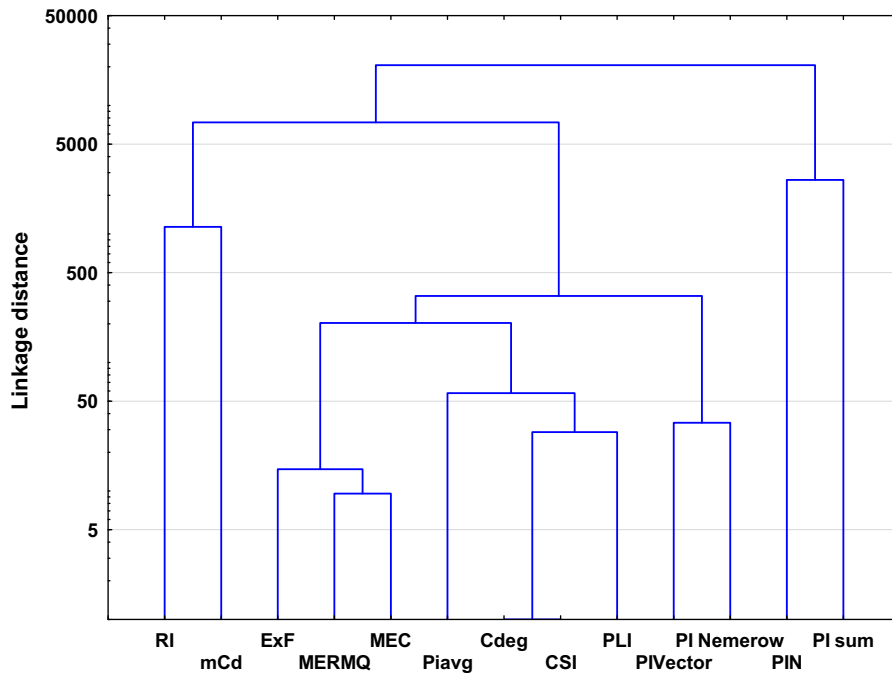
Choice of useful pollution indices according to soil use (farmland, forest and urban areas).

The appropriateness of the various pollution indices differs depending on soil use (Gąsiorek et al. 2017; Mahmoudabadi et al. 2015; Mazurek et al. 2017; Ololade 2014; Wu et al. 2015). To understand the degree of pollution at a particular site, choice of appropriate indices is key and is based on both the risks resulting from their use as well as the purpose for which the pollution indices were developed (Begum et al. 2014; Chen et al. 2015; Gong et al. 2008; Kowalska et al. 2016). On farmland soils, understanding the degree of pollution is important for proper environmental management (Kelepertzis 2014; Kouamé et al. 2013; Rodríguez et al. 2013). Knowledge about soil pollution is important to reduce the risk of environmental exposure and to protect valuable ecosystems (Pan et al. 2016). Moreover, most agricultural practices (e.g., fertilizer and biocide application) contribute to overall heavy metal enrichment of soil and groundwater (Kouamé et al. 2013; Su et al. 2014). Hence, considerably disturbed soil can be attributed to multiple sources—natural and anthropogenic. We suggest that the most appropriate choice of individual pollution indices for farmland soils should include EF, as this will help identify the source of contamination (Kowalska et al. 2016). Further, it is important to use complex pollution indices which allow the determination of the potential ecological risk, as well as indication of the overall degree of

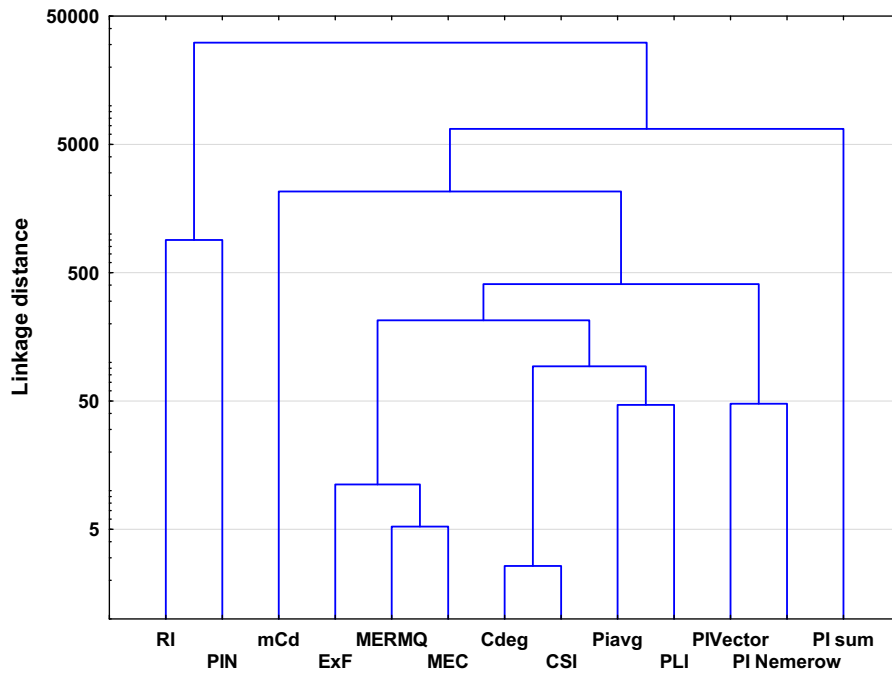
pollution (Al-Anbari et al. 2015; Chen et al. 2015; Obiora et al. 2016). In the selection of appropriate pollution indices, cluster analysis may be helpful (Murtagh and Legendre 2014). Based on HCA, two main clusters are recognized (Fig. 5); the choice of index to assess the overall level of farmland soil pollution should include one of the ‘*PI*-indices,’ and one of the following indices: mCd, ExF, MERMQ, MEC,  $C_{deg}$  and CSI. RI does not exhibit similarity with the other complex pollution indices (Fig. 5), so its calculation is mandatory in the case of farmland soils.

Forest soil ecosystems require the assessment of heavy metal pollution within the surface O and A horizons (De Santo et al. 2002; Hovmand et al. 2008; Kaste et al. 2011; Karczewska and Kabała 2002; Kawahigashi et al. 2011; Mazurek et al. 2017). The pollution of organic matter with heavy metals could directly limit nutrient availability in soil (Kaste et al. 2011; Karczewska and Kabała 2002). The decomposition of organic matter may entail great changes in metal speciation over short timescales (Schroth et al. 2008). In the case of the composition of coniferous forest litter, it has been found that higher values for heavy metal content exist in needles compared with other organic components (Mazurek and Wiczorek 2007; Pająk et al. 2015). O horizons are able to bind large amounts of heavy metals from anthropogenic sources, which may be transferred over long distances and deposited on the surface horizon. These allogenic components contribute to changes in soil chemical composition (Kawahigashi et al. 2011; Pająk et al. 2017). Comprehensive assessment of heavy metal pollution within forest soils should include application of some complex indices.

Statistical analysis revealed that similar to the case of farmland soils, for overall assessment of contamination in forest soils, application of one of the ‘*PI*-indices’ is required or mCd, ExF, MERMQ, MEC,  $C_{deg}$  as well as CSI should be chosen, with consideration given to their strengths and weaknesses (Fig. 6). We suggest that apart from the assessment of the overall contamination as well as determination of the potential ecological risk (RI), specificity of soils with O horizon requires the use of BGI (Kaste et al. 2011; Mazurek et al. 2017; Medyńska-Juraszek and Kabała 2012; Pająk et al. 2017). It should be mentioned that despite the obvious differences between BGI and other individual pollution indices, PCA diagrams created based on individual pollution index raw data show



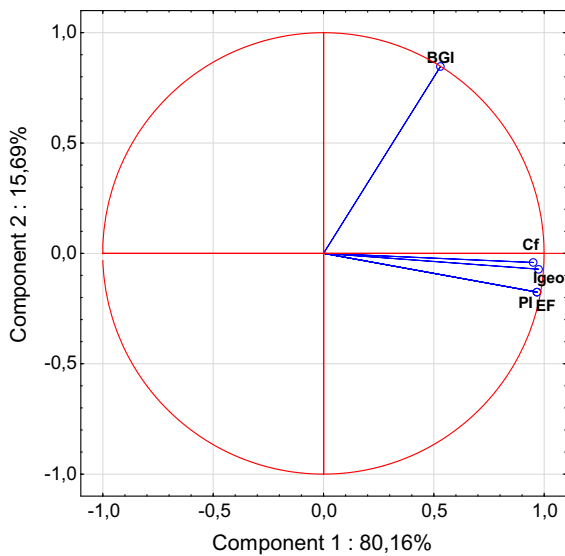
**Fig. 5** Ward's hierarchical cluster analysis of the studied complex pollution indices based on farmland soils



**Fig. 6** Ward's hierarchical cluster analysis of the studied complex pollution indices based on forest soils

strong positive correlations between their values (Fig. 7). The main variability model component is connected with soil contamination as well as the

sorption ability of O horizons (Błońska et al. 2016; Medyńska-Juraszek and Kabała 2012; Pająk et al. 2017; Zawadzki et al. 2007). Such situation may be a



**Fig. 7** Principal component analysis (PCA) biplot for the individual indices computed for forest soils

result of the similar method of calculation, which includes the presence of absolute values of contamination. Moreover, for forest soils, knowledge of heavy metal origin may be useful (Kawahigashi et al. 2011; Pająk et al. 2017); hence, we also suggest the use of EF.

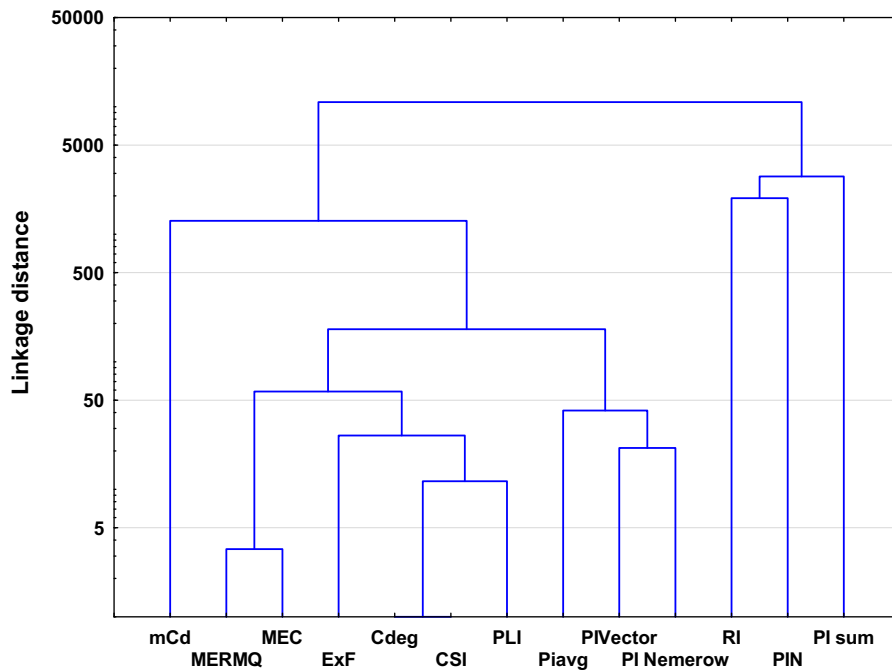
It is obvious that soils within urban areas are likely to be exposed to anthropogenic heavy metal pollution (Błońska et al. 2014; Markiewicz-Patkowska et al. 2005; Wei and Yang 2010). Enrichment by heavy metals may be a result of different industrial and commercial activity as well as historical pollution (Kowalska et al. 2016). Some studies have shown that soils in urban areas may be affected by enrichment with individual metals, which is often associated with the type of industry in the city and its surroundings (Ekwere et al. 2014; Elias and Gbadegesin 2011; Mazurek et al. 2017). It is also important in urban areas to compare the pre-industrial state of soil with present conditions (Błońska et al. 2014; Golyeva et al. 2014; Halecki and Gąsiorek 2015; Kowalska et al. 2016). In our opinion, a comprehensive approach to urban soil quality evaluation requires application of some individual indices to assess contamination with individual heavy metals ( $I_{geo}$ , PI or  $C_i$ ). These indices show statistical similarities (Fig. 1), so they might to some extent be interchangeable, including in terms of their purpose, as well as their advantages and

disadvantages. Further, EF should be applied in order to identify the origin of pollution (Gao and Chen 2012; Kowalska et al. 2016). Similar to farmland and forest soils, clusters created for complex pollution show two main groups; thus, the choice of an appropriate pollution index should include one of the ‘PI-indices’ or one of the following indices: mCd, ExF, MERMQ, MEC,  $C_{deg}$  or CSI. It should be noted that the latter cluster includes RI (Fig. 8). Nevertheless, because of the fact that RI values are able to recognize potential ecological risks (Table 1), we propose to use them regardless of any correlations with other indices within urban soil quality assessment processes.

### Geochemical background

Application of GB focuses on the reliability of the characterization and quantification of heavy metals in soil (Gąsiorek et al. 2017; Loska et al. 2004; Matschullat et al. 2000; Xu et al. 2015). Furthermore, choice of an appropriate GB plays an important role in the interpretation of heavy metal enrichment (Gąsiuzka and Migaszewski 2011; Varol 2011). A common problem regarding soils, sometimes due to the variable origin of parent material or parent materials (Waroszewski et al. 2017), is the question of which layer or horizon should be considered the GB (Kowalska et al. 2016). Various GBs (local and reference) could be applied in order to produce a more accurate examination of pollution index values. A crucial point is to recognize which GB should be used, and this may be dependent on the possibility of the contamination of individual soils/sites (Dung et al. 2013; Gąsiuzka 2007; Karim et al. 2015; Tomaškin et al. 2013; Varol 2011). Many biogeochemical questions are related to the application of appropriate RGB and LGB.

In general, RGB includes the concentration of heavy metals in UCC, LCC or mean heavy metal content in the topsoil (surface) horizons worldwide (Table 3) and has a relationship with the general geological reference level (Gąsiuzka 2007; Xu et al. 2015). Some papers focusing on the assessment of heavy metal concentration have applied RGB to compare current pollution with ‘pre-civilization’ ranges (e.g., Abraham and Parker 2008; Kowalska et al. 2016). It should be mentioned that RGBs do not involve natural variability or natural heavy metal anomalies (Kabata-Pendias 2011; Tomaškin et al.



**Fig. 8** Ward's hierarchical cluster analysis of the studied complex pollution indices based on urban soils

2013; Xu et al. 2015). Moreover, by using only RGB it is not always possible to recognize natural influences and anthropogenic heavy metal contamination (Gałuszka and Migaszewski 2011; Kowalska et al. 2016). Nevertheless, the use of RGB makes a great deal of sense for global models of heavy metal assessment or concerning regional and more difficult aspects of pollution (Karim et al. 2015; Matschullat et al. 2000). RGB allows information concerning soil quality evaluation to be considered at a global scale and allows comparisons beyond the local scale. Pollution indices that need RGB in their calculation can have a more multi-purpose character. Together with the rapid increase in urbanization and industrialization, significant inputs of human-derived substances deposited in and/or on soil profiles entail difficulties or make it impossible to determine the degree of pollution using only RGB (Karim et al. 2015; Lis and Pasieczna 1997; Reimann and Garret 2005; Zhou et al. 2015).

Considering the above-mentioned conditions, LGB is increasingly used (Kowalska et al. 2016; Mazurek et al. 2017). LGB includes heavy metal accumulation in the most pristine sites or heavy metal composition in rocks and the mean content of sample populations (Chen et al. 2016; Evseev and Krasovskaya 2015;

Reiman and Garret 2005; Tomaškin et al. 2013). LGB considers a certain degree of human impact (Karim et al. 2015). Furthermore, it allows comparison of pollutant concentration in the upper layers with subsoil horizons of the same soil profile and also takes into account the heavy metal cycle (Kabata-Pendias 2011; Kowalska et al. 2016). LGB is also recommended for individual sites under the influence of natural processes (Kierczak et al. 2016; Matschullat et al. 2000). LGB use is suggested especially when anthropogenic impact and high levels of contamination are suspected. However, LGB may vary significantly across lithogenic conditions and its level should be assessed within pedologically and geologically homogenous areas.

It has been established that RGB as well as LGB values should be used to obtain complete information (Gąsiorek et al. 2017; Kowalska et al. 2016; Mazurek et al. 2017; Reiman and Garret 2005). A holistic approach is meaningful in order to avoid confusion during the choice of soil quality evaluation algorithm. Independent of the background used and degree of heavy metal pollution, indices might not always be able to show environmental threats in an accurate way, as the threshold level of toxicity to human health is still not clear and is highly individual (Dung et al.

2013; Galuszka 2007; Matschullat et al. 2000). Hence, we suggest considering a comprehensive method that includes the application of indirect and direct data (RGB and LGB, respectively) as well as absolute heavy metal content.

## Conclusions

Calculation of indices characterized by various features helps to find or establish the right theoretical basis for appropriate interpretation of soil conditions. In this paper, 18 different indices of pollution have been reviewed and initially divided into individual and complex groups. Pollution indices include the newly introduced Biogeochemical Index (BGI), which is significant for O horizon quality assessment. Nevertheless, pollution indices are seemingly characterized by several similarities. Hence, they may be divided into five additional groups based on their different purposes, and into three groups based on the method of calculation. Statistical analysis confirmed some differences and similarities between the studied indices. Furthermore, a comparison of the strengths and weaknesses of each index has been made. This approach allows us to point out the specific limitations of each index in various configurations. According to the authors, among the individual pollution indices  $I_{geo}$  and EF are considered the most useful and universal, whereas of the complex pollution indices RI and CSI have been found to be the most important. To appropriately understand the degree of pollution, the choice of proper index is key, and both the soil use and the purpose of pollution indices calculation should be considered. Specific selection of pollution indices, based on their purposes, advantages and disadvantages, can be applied to comprehensive assessment of soil conditions under various uses—farmland, forest and urban areas.

Some of the pollution indices require the determination of the geochemical background (GB). Establishing an appropriate GB plays an important role and should be based on soil- and site-specific criteria as well as the purpose and scale of the heavy metal assessment process. We suggest a comprehensive approach based on the application of local and reference GBs to assess the quality of a given soil sample. A holistic approach is advisable in order to

avoid confusion and uncertainty during soil quality evaluation.

**Acknowledgements** This Research was financed by the Ministry of Science and Higher Education, Republic of Poland.

**Open Access** This article is distributed under the terms of the Creative Commons Attribution 4.0 International License (<http://creativecommons.org/licenses/by/4.0/>), which permits unrestricted use, distribution, and reproduction in any medium, provided you give appropriate credit to the original author(s) and the source, provide a link to the Creative Commons license, and indicate if changes were made.

## References

- Abraham, G. M. S., & Parker, R. J. (2008). Assessment of heavy metal enrichment factors and the degree of contamination in marine sediments from Tamaki Estuary, Auckland, New Zealand. *Environmental Monitoring and Assessment*, 136, 227–238.
- Adamu, C. L., & Nganje, T. N. (2010). Heavy metal contamination of surface soil in relationship to land use patterns: A case study of Benue State, Nigeria. *Materials Sciences and Applications*, 1, 127–134.
- Al-Anbari, R., Abdul Hameed, M. J., Obaidy, Al, & Fatima, H. A. A. (2015). Pollution loads and ecological risk assessment of heavy metals in the urban soil affected by various anthropogenic activities. *International Journal of Advanced Research*, 2, 104–110.
- Bąbelewska, A. (2010). The impact of industrial emissions on heavy metal and sulphur contamination level within the area of the projected Jurassic National Park. *Pracownicy Studies and Reports of the Prof Władysław Szafer Museum*, 20, 135–145.
- Baran, A., Wiczorek, J., Mazurek, R., Urbański, K., & Klimkowicz-Pawlas, A. (2018). Potential ecological risk assessment and predicting zinc accumulation in soils. *Environmental Geochemistry and Health*, 40(1), 435–450.
- Bates, R. L., & Jackson, J. A. (1984). *Dictionary of geological terms*. New York: Anchor Books. A Division of Random House Inc.
- Begum, K., Mohiuddin, K. M., Zakir, H. M., Moshfiqur Rahman, M., & Nazmul Hasan, M. (2014). Heavy metal pollution and major nutrient elements assessment in the soils of Bogra City in Bangladesh. *Canadian Chemical Transactions*, 3, 316–326.
- Błońska, E., Lasota, J., Szuszkiewicz, M., Łukasik, A., & Klammerus-Iwan, A. (2016). Assessment of forest soil contamination in Krakow surroundings in relation to the type of stand. *Environmental Earth Sciences*. <https://doi.org/10.1007/s12665-016-6005-7>.
- Bourennane, H., Douay, F., Sterckeman, T., Villanneau, E., Ciesielski, H. & King, D. (2010). Mapping of anthropogenic trace elements inputs in agricultural topsoil from Northern France using enrichment factors. *Geoderma*, 157, 165–174.

- Caeiro, S., Costa, M. H., Ramos, T. B., Fernandes, F., Silveira, N. & Coimbra, A. (2005). Assessing heavy metal contamination in Sado Estuary sediment: An index analysis approach. *Ecological Indicators*, *5*, 151–169.
- Chen, Z., Chen, J., Tian, S., & Xu, B. (2016). Application of fractal content-gradient method for delineating geochemical anomalies associated with copper occurrences in the Yangla ore field. *China Geoscience Frontiers*, *8*(1), 189–197.
- Chen, H., Teng, Y., Lu, S., Wang, Y., & Wang, J. (2015). Contamination features and health risk of soil heavy metals in China. *Science of the Total Environment*, *512*–*513*, 143–153.
- De Santo, A. V., Fierro, A., Berg, B., Rutigliano, F. A., & De Marco, A. (2002). Heavy metals and litter decomposition in coniferous forests. *Developments in Soil Science*, *28*, 63–78.
- Dung, T. T. T., Cappuyns, V., Swennen, R., & Phung, N. K. (2013). From geochemical background determination to pollution assessment of heavy metals in sediments and soils. *Reviews in Environmental Science & Biotechnology*, *12*, 335–353.
- Ekwere, A. S., Ekwere, S. J., Ephraim, B. E., & Ugbara, A. N. (2014). Distribution of heavy metals in urban soils; a case study of Calabar Area, South-Eastern Nigeria. *Geosciences*, *4*, 23–28.
- Elias, P., & Gbadegesin, A. (2011). Spatial relationships of urban land use, soils and heavy metal concentrations in Lagos Mainland Area. *Journal of Applied Sciences and Environmental Management*, *15*, 391–399.
- Fagbote, E. O., & Olanipekun, E. O. (2010). Evaluation of the status of heavy metal pollution of soil and plant (*Chromolaena odorata*) of Agbabu Bitumen Deposit Area, Nigeria. *American-Eurasian Journal of Scientific Research*, *4*, 241–248.
- Gałuszka, A. (2007). A review of geochemical background concepts and an example using data from Poland. *Environmental Geology*, *52*, 861–870.
- Gałuszka, A., & Migaszewski, Z. (2011). Geochemical background: An environmental perspective. *Mineralogia*, *42*, 7–17.
- Gao, X., & Chen, C. T. A. (2012). Heavy metal pollution status in surface sediments of the coastal Bohai Bay. *Water Research*, *46*, 1901–1911.
- Garrett, R. G. (1991). The management, analysis and display of exploration geochemical data. Exploration geochemistry workshop. Ottawa Geological Survey of Canada; Open File 2390.
- Gąsiorek, M., Kowalska, J., Mazurek, R., & Pająk, M. (2017). Comprehensive assessment of heavy metal pollution in topsoil of historical urban park on an example of the Planty Park in Krakow (Poland). *Chemosphere*, *179*, 148–158.
- Ghazaryan, K. A., Gevorgyan, G. A., Movsesyan, H. S., Ghazaryan, N. P. & Grigoryan, K. V. (2015). The evaluation of heavy metal pollution degree in the soils around the Zangezur Copper and Molybdenum Combine, Rome, Italy May 17, pp. 161–166.
- Golyeva, A., Zazovskaia, E., & Turova, I. (2014). Properties of ancient deeply transformed man-made soils (cultural layers) and their advances to classification by the example of Early Iron Age sites in Moscow Region. *CATENA*, *137*, 605–610.
- Gong, Q., Deng, J., Xiang, Y., Wang, Q., & Yang, L. (2008). Calculating pollution indices by heavy metals in ecological geochemistry assessment and a case study in parks of Beijing. *Journal of China University of Geosciences*, *19*, 230–241.
- Grzebisz, W., Cieśla, L., Komisarek, J., & Potarzycki, J. (2002). Geochemical assessment of heavy metals pollution of urban soils. *Polish Journal of Environmental Studies*, *11*, 493–499.
- Gu, J. G., Li, Q. S., Fang, J. H., He, B. Y., Fu, H. B., & Tong, Z. J. (2014). Identification of heavy metal sources in there claimed farm land soils of the pearl river estuary in China using a multivariate geostatistical approach. *Ecotoxicology and Environmental Safety*, *105*, 7–12.
- Guan, Y., Shao, Ch., & Ju, M. (2014). Heavy metal contamination assessment and partition for industrial and mining gathering areas. *International Journal of Environmental Research and Public Health*, *11*, 7286–7303.
- Gutierrez, C., Fernandez, C., Escuer, M., Campos-Herrera, R., Rodríguez & M. E. B., Carbonell, G. (2016). Effect of soil properties, heavy metals and emerging contaminants in the soil nematodes diversity. *Environmental Pollution*, *213*, 184–194.
- Hajduk, E., Kaniuczak, J., & Właśniewski, S. (2012). The content of heavy metals in farmland soils from the vicinity of the Stalowa Wola power plant. *Soil Science Annual*, *63*, 22–26.
- Håkanson, L. (1980). An ecological risk index for aquatic. Pollution control: A sedimentological approach. *Water Research*, *14*, 975–1001.
- Halecki, W., & Gąsiorek, M. (2015). Seasonal variability of microbial biomass phosphorus in urban soils. *Science of the Total Environment*, *502*, 42–47.
- Han, D., Cheng, J., Hu, X., Jiang, Z., Mo, L. & Xu, H. (2016). Spatial distribution, risk assessment and source identification of heavy metals in sediments of the Yangtze River Estuary, China. *Marine Pollution Bulletin*, *115*(1–2), 141–148.
- Hawkes, H. E., & Webb, J. S. (1962). *Geochemistry in mineral exploration* (pp. 1–415). New York: Harper & Row.
- He, Z. (2015). Heavy metal contamination of soils: Sources, indicators, and assessment. *Journal of Environmental Indicators*, *9*, 17–18.
- Hong-gui, D., Teng-feng, G., Ming-hu, L., & Xu, D. (2012). Comprehensive assessment model on heavy metal pollution in soil. *International Journal of Electrochemical Science*, *7*, 5286–5296.
- Hovmand, M. F., Kemp, K., Kystol, J., Johnsen, I., Riis-Nielsen, T., & Pacyna, J. M. (2008). Atmospheric heavy metal deposition accumulated in rural forest soils of southern Scandinavia. *Environmental Pollution*, *155*, 537–541.
- Hu, Y., Liu, X., Bai, J., Shih, K., Zeng, E. Y., & Cheng, H. (2013). Assessing heavy metal pollution in the surface soils of a region that had undergone three decades of intense industrialization and urbanization. *Environmental Science and Pollution Research*, *20*, 6150–6159.
- Inboonchuay, T., Suddhiprakarn, A., Kheoruenromne, I., Anusontpornperm, S., & Gilkes, R. J. (2016). Amounts and

- associations of heavy metals in paddy soils of the Khorat Basin. *Thailand, Geoderma Regional*, 7, 120–131.
- Inengite, A. K., Abasi, C. Y., & Walter, C. (2015). Application of pollution indices for the assessment of heavy metal pollution in flood impacted soil. *International Research Journal of Pure & Applied Chemistry*, 8, 175–189.
- Jiang, X., Lu, W. X., Zhao, H. Q., Yang, Q. C., & Yang, Z. P. (2014). Potential ecological risk assessment and prediction of soil heavy-metal pollution around coal gangue dump. *Natural Hazards and Earth Systems Sciences*, 14, 1599–1610.
- Kabata-Pendias, A. (2011). *Trace elements of soils and plants* (4th ed., pp. 28–534). Boca Raton: CRC press, Taylor & Francis Group.
- Karczewska, A., & Kabała, C. (2002). Trace elements in soils in the Stołowe Mountains National Park. *Szczeliniac*, 6, 133–160.
- Karim, Z., Qureshi, B. A., & Mumtaz, M. (2015). Geochemical baseline determination and pollution assessment of heavy metals in urban soils of Karachi, Pakistan. *Ecological Indicators*, 48, 358–364.
- Kaste, J. M., Bostick, B. C., Heimsath, A. M., Steinnes, E., & Friedland, A. J. (2011). Using atmospheric fallout to date O horizon layers and quantify metal dynamics during decomposition. *Geochimica et Cosmochimica Acta*, 75, 1642–1661.
- Kawahigashi, M., Prokushkin, A., & Sumida, H. (2011). Effect of fire on solute release from O horizons under larch forest in Central Siberian permafrost terrain. *Geoderma*, 166, 171–180.
- Kelepertzis, E. (2014). Accumulation of heavy metals in agricultural soils of Mediterranean: Insights from Argolida basin, Peloponnese, Greece. *Geoderma*, 221–222, 82–90.
- Kierczak, J., Pedziwiatr, A., Waroszewski, J., & Modelska, M. (2016). Mobility of Ni, Cr and Co in serpentine soils derived on various ultrabasic bedrocks under temperate climate. *Geoderma*, 268, 78–91.
- Kloke, A. (1979). Content of arsenic, cadmium, chromium, fluorine, lead, mercury, and nickel in plants grown on contaminated soils, United Nations-ECE symposium, Geneva, pp. 51–53.
- Kouamé, I. K., Kouassi, L. K., Dibi, B., Adou, K. M., Rascanu, I. D., & Romanescu, G. (2013). Potential groundwater pollution risks by heavy metals from agricultural soil in Songon Area (Abidjan, Côte d'Ivoire). *Journal of Environmental Protection*, 4, 1441–1448.
- Kowalska, J., Mazurek, R., Gąsiorek, M., Setlak, M., Zaleski, T., & Waroszewski, J. (2016). Soil pollution indices conditioned by medieval metallurgical activity: A case study from Krakow (Poland). *Environmental Pollution*, 218, 1023–1036.
- Li, M. S., & Yang, S. X. (2008). Heavy metal contamination in soils and phytoaccumulation in a manganese mine Wasteland, South China. *Air, Soil and Water Research*, 1, 31–41.
- Li, M., Yang, W., Sun, T., & Jin, Y. (2016). Potential ecological risk of heavy metal contamination in sediments and macrobenthos in coastal wetlands induced by freshwater releases: A case study in the Yellow River Delta, China. *Marine Pollution Bulletin*, 103, 227–239.
- Lis, J., & Pasieczna, A. (1997). Geochemical anomalies of Pb-Zn-Cd in soils of Upper Silesia. *Przegląd Geologiczny*, 45(2), 182–189.
- Liu, R., Wang, M., Chen, W., & Peng, C. (2016). Spatial pattern of heavy metals accumulation risk in urban soils of Beijing and its influencing factors. *Environmental Pollution*, 210, 174–181.
- Long, E. R., MacDonald, D. D., Smith, L., & Calder, F. D. (1995). Incidence of adverse biological effects within ranges of chemical concentrations in marine and estuarine sediments. *Environmental Management*, 19, 81–97.
- Loska, K., Wiechulab, D., & Korus, I. (2004). Metal contamination of farming soils affected by industry. *Environment International*, 30, 159–165.
- Mahmoudabadi, E., Sarmadian, F., & Nazary Moghaddam, R. (2015). Spatial distribution of soil heavy metals in different land uses of an industrial area of Tehran (Iran). *International Journal of Environmental Science and Technology*, 12, 3283–3298.
- Markiewicz-Patkowska, J., Hursthouse, A., & Przybyla-Kij, H. (2005). The interaction of heavy metals with urban soils: sorption behaviour of Cd, Cu, Cr, Pb and Zn with a typical mixed brownfield deposit. *Environment International*, 31, 513–521.
- Matschullat, J., Ottenstein, R., & Reimann, C. (2000). Geochemical background—Can we calculate it? *Environmental Geology*, 39, 990–1000.
- Mazurek, R., & Wieczorek, J. (2007). Mercury concentration in organic and humus horizons of soils in the Babiogórski National Park. *Ecological Chemistry and Engineering*, 14(5–6), 497–503.
- Mazurek R., Kowalska J., Gąsiorek M. & Setlak M. (2016). Micromorphological and physico-chemical analyses of cultural layers in the urban soil of a medieval city—A case study from Krakow, Poland. *Catena*, 141, 73–84.
- Mazurek, R., Kowalska, J., Gąsiorek, M., Zadrożny, P., Józefowska, A. & Zaleski, T. (2017). Assessment of heavy metals contamination in surface layers of Roztocze National Park forest soils (SE Poland) by indices of pollution. *Chemosphere*, 168, 839–850.
- McLennan, S. M. (2001). Relationships between the trace element composition of sedimentary rocks and upper continental crust. *Geochemistry, Geophysics, Geosystems* 2 (Article No. 2000GC000109).
- Medyńska-Juraszek, A., & Kabała, C. (2012). Heavy metal pollution of forest soils affected by the copper industry. *Journal of Elementology*, 17(3), 441–451.
- Mmolawa, K. B., Likuku, A. S., & Gaboutloeloe, G. K. (2011). Assessment of heavy metal pollution in soils along major roadside areas in Botswana. *African Journal of Environmental Science and Technology*, 3, 186–196.
- Mohamed, T. A., Mohamed, M. A. K., Rabeiy, R., & Ghandour, M. A. (2014). Application of pollution indices for evaluation of heavy metals in Soil close to phosphate fertilizer plant, Assiut, Egypt. *Assiut University Bulletin for Environmental Researches*, 17(1), 45–55.
- Müller, G. (1969). Index of geoaccumulation in sediments of the Rhine River. *GeoJournal*, 2, 108–118.
- Murtagh, F., & Legendre, P. (2014). Ward's hierarchical agglomerative clustering method: Which algorithms



- implement Ward's criterion? *Journal of Classification*, 31, 274–295.
- Nannoni, F., & Protano, G. (2016). Chemical and biological methods to evaluate the availability of heavy metals in soils of the Siena urban area (Italy). *Science of the Total Environment*, 568, 1–10.
- Nikolaidis, C., Zafiriadis, I., Mathioudakis, V., & Constantinidis, T. (2010). Heavy metal pollution associated with an abandoned lead–Zinc mine in the Kirki Region, NE Greece. *Bulletin of Environmental Contamination and Toxicology*, 85, 307–312.
- Nowrouzi, M., & Pourkhabbaz, A. (2014). Application of geoaccumulation index and enrichment factor for assessing metal contamination in the sediments of Hara Biosphere Reserve, Iran. *Chemical Speciation & Bioavailability*, 26, 99.
- Obiora, S. C., Chukwu, A., & Davies, T. C. (2016). Heavy metals and health risk assessment of farmland soils and food crops around Pb-Zn mining localities in Enyigba, southeastern Nigeria. *Journal of African Earth Sciences*, 116, 182–189.
- Ogunkunle, C. O., & Fatoba, P. O. (2013). Pollution loads and the ecological risk assessment of soil heavy metals around a mega cement factory in Southwest Nigeria. *Polish Journal of Environmental Studies*, 22, 487–493.
- Ololade, I. A. (2014). An assessment of heavy-metal contamination in soils within auto-mechanic workshops using enrichment and contamination factors with geoaccumulation indexes. *Journal of Environmental Protection*, 5, 970–982.
- Omatoso, O. A., & Ojo, O. J. (2015). Assessment of some heavy metals contamination in the soil of river Niger floodplain at Jebba, central Nigeria. *Water Utility Journal*, 9, 71–80.
- Oti Wilberforce, J. O. (2015). Pollution indices and bioaccumulation factors of heavy metals in selected fruits and vegetables from a derelict mine and their associated health implications. *International Journal of Environmental Science and Toxicology Research*, 3, 9–15.
- Pajak, M., Gąsiorek, M., Cygan, A., & Wanic, T. (2015). Concentrations of Cd, Pb and Zn in the top layer of soil and needles of scots pine (*Pinus Sylvestris L.*); A case study of two extremely different conditions of the forest environment in Poland. *Fresenius Environmental Bulletin*, 24, 71–76.
- Pajak, M., Halecki, W., & Gąsiorek, M. (2017). Accumulative response of Scots pine (*Pinus sylvestris L.*) and silver birch (*Betula pendula Roth*) to heavy metals enhanced by Pb-Zn ore mining and processing plants: Explicitly spatial considerations of ordinary kriging based on a GIS approach. *Chemosphere*, 168, 851–859.
- Pan, L., Ma, L., Wang, X., & Hou, H. (2016). Heavy metals in soils from a typical county in Shanxi Province, China: Levels, sources and spatial distribution. *Chemosphere*, 148, 248–254.
- Pejman, A., Gholamrez Nabi, B., Saeedi, M., & Baghvanda, A. (2015). A new index for assessing heavy metals contamination in sediments: A case study. *Ecological Indicators*, 58, 365–373.
- Qingjie, G., Jun, D., Yunchuan, X., Qingfei, W., & Liqiang, Y. (2008). Calculating pollution indices by heavy metals in ecological geochemistry assessment and a case study in Parks of Beijing. *Journal of China University of Geosciences*, 19(3), 230–241.
- Rao, R. C. (1964). The use and interpretation of principal component analysis in applied research. *The Indian Journal of Statistics, Series A*, 26(4), 329–358.
- Redon, P. O., Bur, T., Guiesse, M., Probst, J. L., Toiser, A., & Revel, J. C. (2013). Modelling trace metal background to evaluate anthropogenic contamination in farmland soils of south-western France. *Geoderma*, 206, 112–122.
- Reimann, C., & De Caritat, P. (2005). Distinguishing between natural and anthropogenic sources for elements in the environment: Regional geochemical surveys versus enrichment factors. *Science of the Total Environment*, 337, 91–107.
- Reimann, C., & Garret, R. G. (2005). Geochemical background: Concept and reality. *Science of the Total Environment*, 350, 12–27.
- Ripin, S. N. M., Hasan, S., Kamal, M. L., & Hashim, N. M. (2014). Analysis and pollution assessment of heavy metal in soil, Perlis. *The Malaysian Journal of Analytical Sciences*, 18, 155–161.
- Rodríguez, M. J. A., Ramos-Miras, J. J., Boluda, R., & Gil, C. (2013). Spatial relations of heavy metals in farmland and greenhouse soils of a Mediterranean environment region (Spain). *Geoderma*, 200–201, 180–188.
- Rudnick, R. L., & Gao, S. (2003). Composition of the continental crust, treatise on geochemistry. *Treatise on Geochemistry*, 3, 1–64.
- Sadhu, K., Adhikari, K., & Gangopadhyay, A. (2012). Assessment of heavy metal contamination of soils in and around open cast mines of Raniganj area, India. *International Journal of Environmental Engineering Research*, 2, 77–85.
- Salah, E. A., Turki, A. M., & Mahal, S. N. (2015). Chemometric evaluation of the heavy metals in urban soil of Fallujah City, Iraq. *Journal of Environmental Protection*, 6, 1279–1292.
- Sayadi, M. H., Shabani, M., & Ahmadpour, N. (2015). Pollution index and ecological risk of heavy metals in the surface soils of Amir-Abad Area in Birjand City, Iran. *Health Scope*, 4, 121–137.
- Schroth, A. W., Bostick, B. C., Kaste, J. M., & Friedland, A. J. (2008). Lead sequestration and species redistribution during soil matter decomposition. *Environmental Science and Technology*, 42(10), 3627–3633.
- Shu, Y., & Zhai, S. (2014). Study on soil heavy metals contamination of a lead refinery. *Chinese Journal of Geochemistry*, 33, 393–397.
- Smith, L. I. (2002). A tutorial on principal components analysis introduction. *Statistics (Ber.)*, 51, 52.
- Sołek-Podwika, K., Ciarkowska, K., & Kaleta, D. (2016). Assessment of the risk of pollution by sulfur compounds and heavy metals in soils located in the proximity of a disused for 20 years sulfur mine (SE Poland). *Journal of Environmental Management*, 180, 450–458.
- Stajic, J. M., Milenkovic, B., Pucarevic, M., Stojic, N., Vasiljevic, I., & Nikezic, D. (2016). Exposure of school children to polycyclic aromatic hydrocarbons, heavy metals and radionuclides in the urban soil of Kragujevac city, Central Serbia. *Chemosphere*, 146, 68–74.
- Su, C., Jiang, L., & Zhang, W. (2014). A review on heavy metal contamination in the soil worldwide: Situation, impact and

- remediation techniques. *Environmental Skeptics and Critics*, 2, 24–38.
- Sutherland, R. A. (2000). Bed sediment-associated trace metals in an urban stream, Oahu, Hawaii. *Environmental Geology*, 39, 611–627.
- Tang, Q., Li, Y., & Xu, Y. (2015). Land suitability assessment for post-earthquake reconstruction: A case study of Lushan in Sichuan, China. *Journal of Geographical Sciences*, 25, 865–878.
- Tomaškin, J., Tomaškinová, J., Kmet'ová, J., & Drimal, M. (2013). The concentration of heavy metals in grassland ecosystems of the central Slovakia national parks. *Carpathian Journal of Earth and Environmental Sciences*, 8, 35–40.
- Valladares, G. S., Camargo, O. A., Carvalho, J. R. P., & Silva, A. M. C. (2009). Assessment of heavy metals in soils of a vineyard region with the use of principal component analysis. *Science in Agriculture*, 66, 361–367.
- Varol, M. (2011). Assessment of heavy metal contamination in sediments of the Tigris River (Turkey) using pollution indices and multivariate statistical techniques. *Journal of Hazardous Materials*, 195, 355–364.
- Wang, Z., Wang, Y., Chen, L., Yan, C., Yan, Y., & Chi, Q. (2015). Assessment of metal contamination in coastal sediments of the Maluan Bay (China) using geochemical indices and multivariate statistical approaches. *Marine Pollution Bulletin*, 99, 43–53.
- Waroszewski, J., Sprafke, T., Kabala, C., Musztyfaga, E., Łabaz, B., & Woźniczka, P. (2017). Aeolian silt contribution to soils on mountain slopes (Mt. Ślęza, southwest Poland). *Quaternary Research*. <https://doi.org/10.1017/qua.2017.76>.
- Wei, B., & Yang, L. (2010). A review of heavy metal contaminations in urban soils, urban road dusts and agricultural soils from China. *Microchemical Journal*, 94, 99–107.
- Wold, S., Esbensen, K., & Geladi, P. (1987). Principal component analysis. *Chemometrics and Intelligent Laboratory Systems*, 2(1–3), 37–52.
- Wu, S., Peng, S., Zhang, X., Wu, D., Luo, W. & Zhang, T. (2015). Levels and health risk assessments of heavy metals in urban soils in Dongguan, China. *Journal of Geochemical Exploration*, 148, 71–78.
- Xia, P., Meng, X. W., Yin, P., Cao, Z. M., & Wang, X. Q. (2011). Eighty-year sedimentary record of heavy metal inputs in the intertidal sediments from the Nanliu River estuary, Beibu Gulf of South China Sea. *Environmental Pollution*, 159, 92–99.
- Xu, G., Liu, J., Pei, S., Hu, G., & Kong, X. (2015). Geochemical background and ecological risk of heavy metals in surface sediments from the west Zhoushan Fishing Ground of East China Sea. *Environmental Science and Pollution Research*, 22, 20283–20294.
- Zawadzki, J., Fabijańczyk, P., & Magiera, T. (2007). The influence of forest stand and organic horizon development on soil surface measurement of magnetic susceptibility. *Polish Journal of Soil Science*, 40(2), 113–124.
- Zhang, J., & Liu, C. L. (2002). Riverine composition and estuarine geochemistry of particulate metals in China: Weathering features, anthropogenic impact and chemical fluxes. *Estuarine Coastal Shelf Science*, 54, 1051–1070.
- Zhang, W., Liu, X., Cheng, H., Zeng, E. Y., & Hu, Y. (2012). Heavy metal pollution in sediments of a typical mariculture zone in South China. *Marine Pollution Bulletin*, 64, 712–720.
- Zhiyuan, W., Dengfeng, W., Huiping, Z., & Zhiping, Q. (2011). Assessment of soil heavy metal pollution with principal component analysis and geoaccumulation index. *Procedia Environmental Sciences*, 10, 1946–1952.
- Zhong, L., Liming, L. & Jiewen, Y. (2010). Assessment of heavy metals contamination of paddy soil in Xiangyin county, China. In *Symposium 4.1.2 management and protection of receiving environments, 19th world congress of soil science, soil solutions for a Changing World 191–6 August 2010*, Brisbane, Australia, pp. 17–20.
- Zhou, S., Zhou, K., Cui, Y., Wang, J., & Ding, J. (2015). Identifying geochemical anomalies according to the content and coefficient variance of trace elements. *Scientia Geologica Sinica*, 50, 1014–1022.