

 Open access • Journal Article • DOI:10.1080/10807039.2019.1634466

Pollution, sources, and risks of heavy metals in coastal waters of China

— [Source link](#) 

Jun Wu, Jian Lu, Cui Zhang, Yuxuan Zhang ...+2 more authors

Institutions: Ludong University, Chinese Academy of Sciences, Tongji University

Published on: 13 Sep 2020 - Human and Ecological Risk Assessment (Taylor & Francis)

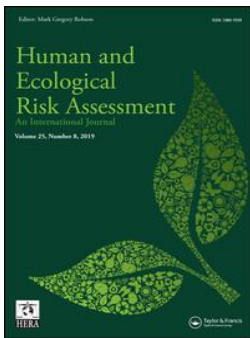
Topics: Pollution and Scale (ratio)

Related papers:

- [A review of soil heavy metal pollution from industrial and agricultural regions in China: Pollution and risk assessment.](#)
- [Soil heavy metal contamination and health risk assessment associated with development zones in Shandong, China](#)
- [A review of soil heavy metal pollution from mines in China: pollution and health risk assessment.](#)
- [Assessment of heavy metals concentration in groundwater and their associated health risks near an industrial area](#)
- [Risk Assessment of Heavy Metals Pollution in Urban Environment](#)

Share this paper:    

View more about this paper here: <https://typeset.io/papers/pollution-sources-and-risks-of-heavy-metals-in-coastal-211see1v9b>



Pollution, sources, and risks of heavy metals in coastal waters of China

Jun Wu, Jian Lu, Cui Zhang, Yuxuan Zhang, Yichen Lin & Juan Xu

To cite this article: Jun Wu, Jian Lu, Cui Zhang, Yuxuan Zhang, Yichen Lin & Juan Xu (2019): Pollution, sources, and risks of heavy metals in coastal waters of China, Human and Ecological Risk Assessment: An International Journal, DOI: [10.1080/10807039.2019.1634466](https://doi.org/10.1080/10807039.2019.1634466)

To link to this article: <https://doi.org/10.1080/10807039.2019.1634466>



Published online: 02 Jul 2019.



Submit your article to this journal [↗](#)



Article views: 110



View related articles [↗](#)



View Crossmark data [↗](#)



Pollution, sources, and risks of heavy metals in coastal waters of China

Jun Wu^a, Jian Lu^{b,c}, Cui Zhang^b, Yuxuan Zhang^b, Yichen Lin^b, and Juan Xu^d

^aSchool of Resources and Environmental Engineering, Ludong University, Yantai, Shandong, People's Republic of China; ^bCAS Key Laboratory of Coastal Environmental Processes and Ecological Remediation, Yantai Institute of Coastal Zone Research (YIC), Chinese Academy of Sciences (CAS); Shandong Key Laboratory of Coastal Environmental Processes, YICCAS, Yantai, Shandong, People's Republic of China; ^cCenter for Ocean Mega-Science, Chinese Academy of Sciences, Qingdao, People's Republic of China; ^dState Key Laboratory of Marine Geology, Tongji University, Shanghai, People's Republic of China

ABSTRACT

Comprehensive information on heavy metals in coastal waters at national scale of China is limited. Therefore, this study investigated the distribution, pollution, and ecological-health risks of heavy metals in coastal waters along 18,000 km coastline of China. Total 13 target heavy metals in coastal waters along coastline of China showed drastic spatial variations with average concentrations ranging from .14 (Cd) to 136.26 (Cu) $\mu\text{g/L}$. Cu was the dominant heavy metal with the maximal concentration of 1485.92 $\mu\text{g/L}$. Three methods including heavy metal pollution index (*HPI*), Nemerow index (*NI*), and contamination degree (*CD*) were adopted to explore heavy metal pollution. *HPI* obtained the worst-case evaluation results to illustrate that heavy pollution occurred at over 50% of sampling sites. Anthropogenic sources were the main sources of heavy metals in the coastal waters. Approximately 28.13% and 9.38% of sampling sites illustrated considerable and very high ecological risks, respectively. Metals including Cu, As, and Hg were the main pollution and risk contributors. Heavy metals in coastal waters posed high cancer risks and unacceptable non-cancer risks to both adults and children. Therefore, effective control of heavy metals is necessary for regional sustainability and well-beings of residents in coastal regions of China.

ARTICLE HISTORY



Received 12 May 2019
Revised manuscript
accepted 17 June 2019

KEYWORDS

heavy metal; coastal regions; ecological risks; health risks; source apportionment

Introduction

Coastal regions, possessing several geomorphological features accompanying with specific dynamics (Carapuço *et al.* 2016), play critical functions for human society and ecosystems (Lewison *et al.* 2016). Approximately 40% of global population lived in coastal regions in 2005 (Agardy and Alder 2005), and same in China until now (Meng *et al.* 2017). Covering 13% of the total landmass in China (Meng *et al.* 2017), coastal regions are disturbed by extensive anthropogenic activities in China. Therefore, pollution

CONTACT Jian Lu  jlu@yic.ac.cn  CAS Key Laboratory of Coastal Environmental Processes and Ecological Remediation, Yantai Institute of Coastal Zone Research (YIC), Chinese Academy of Sciences (CAS); Shandong Key Laboratory of Coastal Environmental Processes, YICCAS, Yantai Shandong 264003, P. R. China.

Color versions of one or more of the figures in the article can be found online at www.tandfonline.com/bher.

including heavy metal pollution in these regions has been frequently reported (Feng *et al.* 2011; Wang *et al.* 2013; Xu *et al.* 2017).

Heavy metals, referred to metals or metalloids with a density larger than 5 g/cm^3 (Oves *et al.* 2012), have attracted global attention due to inherent toxicity, nondegradability, persistence, and frequent detection in different matrices (Ranjbar Jafarabadi *et al.* 2017; Toro *et al.* 2016; Wang *et al.* 2013; Zhang *et al.* 2017). Heavy metals in coastal water significantly affect water quality and aquatic ecosystem if their concentrations exceed certain thresholds (Tueros *et al.* 2008). Moreover, heavy metals in aquatic system directly or indirectly play critical role in human health owing to their bioaccumulation and biomagnifications through food chain and carcinogenic effects (Zhang *et al.* 2017). Therefore, it is of urgent importance to discuss issues on heavy metals in coastal waters.

China has one of the longest coastlines in the world and stretches from Liaoning ($53^{\circ}30'$ N) in the north to Guangxi ($18^{\circ}15'$ N) in the south (Degger *et al.* 2016). Although, pollution in some local coastal regions of China including Bohai Bay, Laizhou Bay, and South China has become research hotspot (Feng *et al.* 2011; Wang *et al.* 2013; Xu *et al.* 2017), comprehensive information on pollution in large-scale region is still limited because most of research focused on local/small-scope areas. It is necessary to obtain comprehensive and thorough information on heavy metal pollution in coastal waters along Chinese coastline to provide basis for making environmental protection policies.

Therefore, this study collected coastal water samples to analyze the concentrations of typical heavy metals along typical coastline of China. The objectives of this study are to determine the distribution of heavy metals in coastal water and discuss the potential ecological-health risks posed by heavy metals in coastal waters. The final aim of this study is to address research basis for sustainable development in coastal regions of China and other countries.

Materials and methods

Study area, sampling, and analysis

Field sampling was carried out during November of 2017. Coastal water samples were collected from four representative coastal regions in China including Yellow Sea Area (Y1-Y11), Bohai Area (B1-B8), East China Sea Area (E1-E6), and South China Sea Area (S1-S7; [Figure 1](#)). Sampling locations included different functional zones such as the maricultural zones, bathing beaches, estuaries, and ports.

Surface coastal water samples were collected from .5 m below the water surface using 1 L pre-cleaned amber glass sample bottles. The water samples were filtered using $.45\ \mu\text{m}$ membrane filters (Pall Life Sciences, Ann Arbor, MI, USA) before analysis. Water samples were analyzed using an Agilent7900 inductively coupled plasma mass spectrometry (ICP-MS, Agilent Inc, USA). Concentrations of 13 typical heavy metals including antimony (Sb), arsenic (As), cadmium (Cd), chromium (Cr), cobalt (Co), copper (Cu), vanadium (V), lead (Pb), mercury (Hg), molybdenum (Mo), nickel (Ni), tin (Sn), and zinc (Zn) were determined. Method detection limit (MDL) for As/Cd/Cr/Co/Cu/Sb/V/Pb/Hg/Mo/Ni/Sn/Zn was 164/16/96/12/132/14/29/17/8/29/36/17/336 ng/L. Two purewater samples spiked with standard mixture solution of target heavy metals were

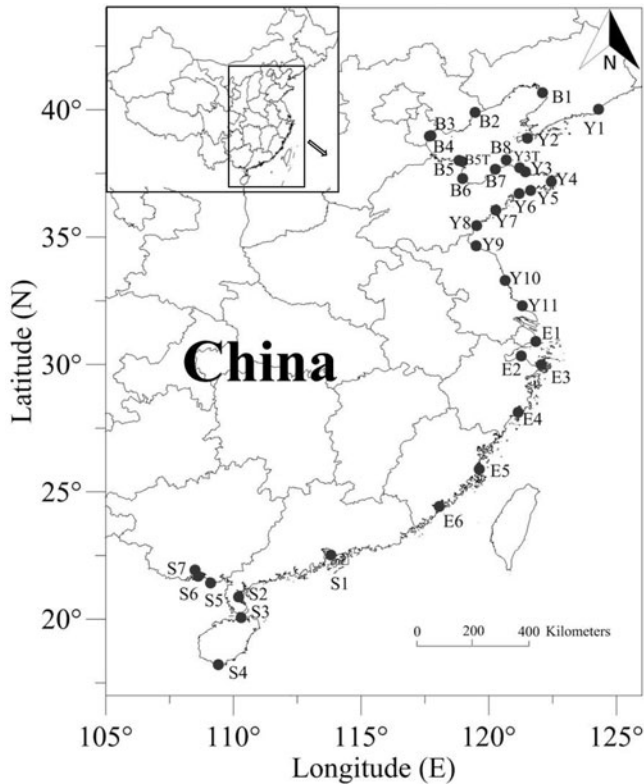


Figure 1. Location of sampling sites.

inserted for analysis series of every 5 real water samples to ensure quality control. The recoveries of target heavy metals ranged from 92.4% to 114.3% to indicate that the ICP-MS analysis was satisfactory for requirement of data quality.

Salinity of each water sample was determined by a portable refractometer (LH-Y100, Lohand Biological, China). Concentrations of total nitrogen (TN) and total phosphorus (TP) in coastal water samples were analyzed using a continuous flow analyzer (AutoAnalyzer III, Seal, Germany). A total organic carbon analyzer (TOC-VCPh, Shimadzu, Japan) was used to measure total organic carbon (TOC).

The comparison on concentrations of heavy metals at different sites was evaluated using analysis of variance (ANOVA) by calculating the least significant differences (LSD, $p = .01$).

Correlation analysis and positive matrix factorization model

Pearson correlation coefficients were employed to determine the relationship between water quality parameters and heavy metals. Correlation analysis was performed using SPSS 19.0 (IBM, NY, USA).

Positive matrix factorization (PMF) was used to determine the possible sources of heavy metals in coastal waters. The detailed information on PMF was provided by USEPA (2014).

Pollution assessment of heavy metals in coastal waters

The Nemerow index (NI), heavy metal pollution index (HPI), and contamination degree (CD) were used to evaluate the pollution of heavy metals in coastal waters along Chinese coastline.

NI was calculated according to the following equation (Liu *et al.* 2015; Vu *et al.* 2017):

$$NI = \sqrt{\frac{\left(\frac{C_i}{S_i}\right)_{\text{mean}}^2 + \left(\frac{C_i}{S_i}\right)_{\text{max}}^2}{2}}$$

where C_i and S_i refer to the measured concentration ($\mu\text{g/L}$) and assessment standard concentration ($\mu\text{g/L}$) of the target heavy metal in coastal water; $\left(\frac{C_i}{S_i}\right)_{\text{mean}}$ and $\left(\frac{C_i}{S_i}\right)_{\text{max}}$ stand for the average value and maximal value of $\left(\frac{C_i}{S_i}\right)$ among all target heavy metals. Values of S_i used in this study were set as the Class II levels of “Sea water quality standard of China (GB 3097-1997)” which targeted at aquaculture zones, bathing beaches, sporting, or entertainment zones, and industrial water supply zones relating with human consumption. Four pollution categories were given including insignificant pollution (Class I, $NI < 1$), slight pollution (Class II, $1 \leq NI < 2.5$), moderate pollution (Class III, $2.5 \leq NI < 7$), and heavy pollution (Class IV, $NI \geq 7$) according to evaluation criterion (Liu *et al.* 2015; Vu *et al.* 2017).

HPI model was given by the following equation (Qu *et al.* 2018):

$$HPI = \frac{\sum_{i=1}^n \left(\frac{C_i}{S_i} \times 100\right) \times \left(\frac{k}{S_i}\right)}{\sum_{i=1}^n \frac{k}{S_i}}$$

where k is a proportionality constant and set as 1 (Qu *et al.* 2018) and n represents the numbers of target heavy metals. Comprehensively comparing the current criteria (Edet and Offiong 2002; Qu *et al.* 2018), this study adopted the following evaluation categories: low pollution (Classes I, $HPI < 15$), moderate pollution (Class II, $15 \leq HPI \leq 30$), moderate-to-heavy pollution (Class III, $30 < HPI \leq 100$), and heavy pollution (Class IV, $HPI > 100$).

The following equation showed the calculation of CD (Sharifi *et al.* 2016):

$$CD = \sum_{i=1}^n \frac{C_i}{S_i}$$

Sharifi *et al.* (2016) also provided the evaluation criterion: low pollution (Classes I, $CD < 6$), moderate pollution (Class II, $6 \leq CD < 12$), considerable pollution (Class III, $12 \leq CD < 24$), and very heavy pollution (Class IV, $CD \geq 24$).

Ecological risk assessment of heavy metals in coastal waters

The potential ecological risks posed by heavy metals in coastal waters were evaluated using the following ecological risk index (ERI) model (Sharifi *et al.* 2016):

$$ERI = \sum_{i=1}^n T_i \times \frac{C_i}{S_i}$$

where T_i is the potential ecological risk coefficient of a target heavy metal. The values of T_i for all target heavy metals were selected from the literatures (Hakanson 1980; Sharifi *et al.* 2016). Sharifi *et al.* (2016) listed the ranking criterion for ecological risks: low risk ($ERI < 110$), moderate risk ($110 \leq ERI < 200$), considerable risk ($200 \leq ERI < 400$), and very high risk ($ERI \geq 400$).

Health risk assessment of heavy metals in coastal waters

The health risks were evaluated using cancer risks and hazard quotients by the following equations (USEPA 2004):

$$\begin{aligned} CR(\text{individual}) &= DAD \times \frac{SF_O}{GIABS} = DA_{\text{event}} \times \frac{EV \times ED \times EF \times SA}{BW \times AT} \times \frac{SF_O}{GIABS} \\ &= K_P \times C_W \times t_{\text{event}} \times \frac{EV \times ED \times EF \times SA}{BW \times AT} \times \frac{SF_O}{GIABS} \end{aligned}$$

$$\begin{aligned} HQ(\text{individual}) &= DAD \times \frac{1}{RfD_O \times GIABS} = DA_{\text{event}} \\ &\times \frac{EV \times ED \times EF \times SA}{BW \times AT} \times \frac{1}{RfD_O \times GIABS} \\ &= K_P \times C_W \times t_{\text{event}} \times \frac{EV \times ED \times EF \times SA}{BW \times AT} \times \frac{1}{RfD_O \times GIABS} \\ CR &= \sum CR(\text{individual}) \end{aligned}$$

$$HQ = \sum HQ(\text{individual})$$

where DAD and DA_{event} are absorbed dose by dermal contact and absorbed dose of each event, respectively; SF_O represents oral slope factor; $GIABS$ is the fraction of chemical absorbed in gastrointestinal tract; RfD_O refers to oral reference dose; EV , ED , and EF represent the event frequency, exposure duration, and exposure frequency, respectively; SA refers to skin surface area; BW means body weight; AT is average lifespan; K_P refers to dermal permeability coefficient of pollutant; C_W is concentration of pollutant in coastal water; t_{event} represents event duration. The values of parameters were obtained from the references (Akhbarizadeh *et al.* 2016; IRIS 2018; Ranjbar Jafarabadi *et al.* 2017; Sarria-Villa *et al.* 2016; USEPA 2004, 2016). The values of parameters were listed in Table 1. Based on ranking criterion (Ge *et al.* 2013), cancer risks were categorized into five levels including very low ($CR \leq 1 \times 10^{-6}$), low ($1 \times 10^{-6} < CR \leq 1 \times 10^{-4}$), moderate ($1 \times 10^{-4} < CR \leq 1 \times 10^{-3}$), high ($1 \times 10^{-3} < CR \leq .1$), and very high ($CR > .1$). Unacceptable threshold of non-cancer risks was set as 1 (Qu *et al.* 2018; Zhang *et al.* 2017).

Table 1. Parameters employed for human health risk assessment.

Parameter	Unit	Value		References
		Children	Adults	
<i>EY</i> (event frequency)	event/day	1	1	Akhbarizadeh et al. (2016); USEPA (2004)
<i>ED</i> (exposure duration)	year	6	26	USEPA (2004, 2016)
<i>EF</i> (exposure frequency)	days/year	150	150	Akhbarizadeh et al. (2016)
<i>SA</i> (skin surface area)	cm ²	6600	20,000	Akhbarizadeh et al. (2016); USEPA (2004)
<i>BW</i> (body weight)	kg	15	60	USEPA (2004); Zhang et al. (2017)
<i>AT</i> (average lifespan)	days	2190 (for CR) 2190 (for HQ)	25,550 (for CR) 9490 (for HQ)	Ranjbar Jafarabadi et al. (2017); Sarría-Villa et al. (2016); USEPA (2004)
<i>SF_D</i> (oral slope factor)	(kg-day)/mg	Chemical-specific	Chemical-specific	IRIS (2018); USEPA (2004)
<i>RD₀</i> (oral reference dose)	mg/(kg-day)	Chemical-specific	Chemical-specific	IRIS (2018); USEPA (2004)
<i>GIABS</i> (absorption fraction in GIT)	unitless	Chemical-specific	Chemical-specific	USEPA (2016)
<i>K_p</i> (dermal permeability coefficient)	cm/h	Chemical-specific	Chemical-specific	USEPA (2004)
<i>t_{event}</i> (event duration)	h/event	.58	.58	USEPA (2004)
<i>C_w</i> (pollutant concentration)	mg/L	Measured	Measured	This study

Note: GIT refers to gastrointestinal tract; CR and HQ refer to cancer risk and hazard quotient, respectively.

Results and discussion

Occurrence and distribution of heavy metals in coastal waters

Statistical summary on concentrations of heavy metals in coastal waters was shown in Table 2. The average concentrations of heavy metals ranged from .14 (Cd) to 136.26 (Cu) $\mu\text{g/L}$. Significant differences in concentrations of heavy metals were proved by ANOVA results. Cu was the dominant heavy metal in coastal waters with the concentrations ranging from 6.24 (at S2) to 1485.92 (at B5) $\mu\text{g/L}$, illustrating the most significant spatial variation. As surprisingly showed high concentrations varying from 4.20 (at S2) to 112.64 (at B2) $\mu\text{g/L}$ with the average value of 78.08 $\mu\text{g/L}$. Zn and V also showed the relatively high average concentrations. The minimal/maximal concentrations of Zn and V occurred at Y5/Y3 and S2/B5, respectively. Concentrations of Mo varied from 1.91 (at S2) to 14.35 (at B5) $\mu\text{g/L}$, showing the relatively low fluctuation in contrast with Cu, Ni, Zn, Co, V, Cd, Sn, Sb, Hg, and Pb. Except E4 and S2 at which Ni was not detected, concentrations of Ni ranged from 2.48 (Y1) to 46.68 (at B5) $\mu\text{g/L}$. Except Y4 and Y6 at which Pb was not detected, concentrations of Pb were in the range of .02 (at Y3)-5.67 (at Y5) $\mu\text{g/L}$. Concentrations of Cr were in the range of 1.36 (at S7)-4.68 (at B5) $\mu\text{g/L}$, also exhibiting relatively low fluctuation similar to Mo. Concentrations of Hg ranged from .006 (at E3) to 1.68 (at Y8) $\mu\text{g/L}$ at sampling sites except Y9, Y10, E5, E6, S1, and S3-S7. The minimal and maximal concentrations of Cd occurred at B5 and E4, respectively. In summary, distribution of heavy metals exhibited drastic spatial variations.

The maximal average concentration of many target heavy metals (Cr, Co, Ni, Cu, As, Mo, Cd, Sn, Sb) in coastal waters occurred in Bohai Area. The maximal average concentration of V, Zn, and Hg in coastal waters occurred in Yellow Sea Area while that of Pb occurred in South China Sea Area. Average concentration of Cr, As, and Mo in coastal waters followed the order of Bohai Area > Yellow Sea Area > East China Sea Area > South China Sea Area while that of Co, Ni, and Cu followed the order of Bohai Area > Yellow Sea Area > South China Sea Area > East China Sea Area. Average concentration of V and Zn in coastal waters followed the order of Yellow Sea Area > Bohai Area > South China Sea Area > East China Sea Area while that of Cd and Sb followed the order of Bohai Area > East China Sea Area > South China Sea Area > Yellow Sea Area.

Concentrations of several heavy metals including Cr, Cd, Ni, Zn, and Pb in coastal waters of this study were lower than those in surface water near Yeongil Bay, Korea

Table 2. Statistical summary on salinity, TOC, TN, TP, and heavy metal concentrations in coastal waters ($\mu\text{g/L}$ for all heavy metals; ‰ for salinity; mg/L for TOC, TN, and TP).

	V	Cr	Co	Ni	Cu	Zn	As	Mo	Cd	Sn	Sb	Hg	Pb	salinity	TOC	TN	TP
Mean	29.44	2.55	.92	13.59	136.26	32.42	78.08	10.09	.14	.39	1.38	.56	2.08	26	6.32	1.93	.05
SE	2.86	.14	.07	1.39	45.52	2.73	3.82	.59	.01	.06	.13	.10	.26	2	.98	.15	.01
Median	25.55	2.27	.89	13.35	60.52	27.38	82.59	11.16	.13	.29	1.22	.44	1.76	30	4.50	1.97	.04
Minimum	4.09	1.36	.21	BDL	6.24	18.30	4.20	1.91	.02	.03	.43	BDL	BDL	2	2.47	.56	.01
Maximum	59.47	4.68	1.68	46.68	1485.92	88.40	112.64	14.35	.30	1.55	4.35	1.68	5.67	35	29.42	3.87	.17

Note: TOC, TN, and TP refer to total organic carbon, total nitrogen, and total phosphorus; SE means standard error; BDL means below the detection limit.

(Kim *et al.* 2014). Concentrations of Cd and Co in coastal waters of China (this study) were lower than those in Sagami River and Bay of Japan (Takata *et al.* 2012). Concentrations of Cd, Cr, Ni, and Pb in coastal waters of SW Gulf of California coast were higher than those of this study (Jonathan *et al.* 2017) while concentrations of Pb and Cd in coastal waters of this study were comparable with those in coastal regions of South-Western Sardinia, Italy (Cherchi *et al.* 2009).

Heavy metal pollution along Chinese coastline

Pollution of individual heavy metals including Cr, Ni, Cu, Zn, As, Cd, Hg, and Pb was evaluated by comparing corresponding Class II standards of “Sea water quality standard of China (GB 3097-1997)” which only listed these metals. Concentrations of Cd and Cr in coastal waters were much less than Class II levels of 5 (Cd) and 100 (Cr) $\mu\text{g/L}$, respectively. Concentrations of Pb at B5 and S1 exceeded its standard (5 $\mu\text{g/L}$) while those at the remaining sites were less than quality standard. Concentrations of Zn at 3 sites (B5, Y3, and S1) exceeded its standard (50 $\mu\text{g/L}$) while those at the remaining sites were less than quality standard. Cu and As showed significant pollution since concentrations of them at 30 sites exceeded Class II standards. Concentrations of Ni at 25 sites exceeded its standard (10 $\mu\text{g/L}$) while those of Hg at 16 sites exceeded the Class II standard (.2 $\mu\text{g/L}$). Heavy metals including Cu, As, Ni, Hg, Zn, and Pb generally caused pollution in coastal waters to different extents.

Three methods were used to evaluate the comprehensive pollution caused by Cr, Ni, Cu, Zn, As, Cd, Hg, and Pb since only these 8 metals possessed assessment standard concentrations (Figure 2). *NI* values ranged from 1.91 (at S2) to 106.00 (at B5). Based on *NI* ranking criterion, total 6, 14, and 12 out of 32 sampling sites exhibited slight, moderate, and heavy pollution, respectively. *NI* used average and maximal values of $\frac{C_i}{S_i}$ for evaluation so that heavy metals possessing the highest $\frac{C_i}{S_i}$ value would become the dominant pollution contributor. Metalloid As served as the predominant contributor of pollution at sampling sites Y1, Y10, E1, E2, E3, and S7. Hg was the main contributor of pollution at sampling sites of B1, E4, and S2. Cu served as the predominant contributor of pollution at the remaining sites, followed by As and Hg.

HPI values of sampling sites varied from 7.39 (at Y10) to 787.98 (at Y8). Approximately 25%, 18.75%, 3.13%, and 53.13% of sampling sites showed low, moderate, moderate-to-heavy, and heavy pollution, respectively. Cu served as the predominant pollution contributor of 13 sampling sites (B5, B7, Y9, Y10, E3, E5, E6, S3, S4, S5, S6, and S7) while Hg was the main pollution contributor for the rest of sampling sites. Heavy metal pollution assessed by *HPI* was more serious than that evaluated by *NI*.

CD values ranged from 4.8 (at S2) to 158.78 (at B5). Based on *CD* ranking criterion, approximately 2, 15, 5, and 10 out of 32 sampling sites illustrated low, moderate, considerable (heavy), and very heavy pollution, respectively. Cu was the main pollution contributor for most of sampling sites. Heavy metal pollution assessed by *CD* was also more serious than that evaluated by *NI*.

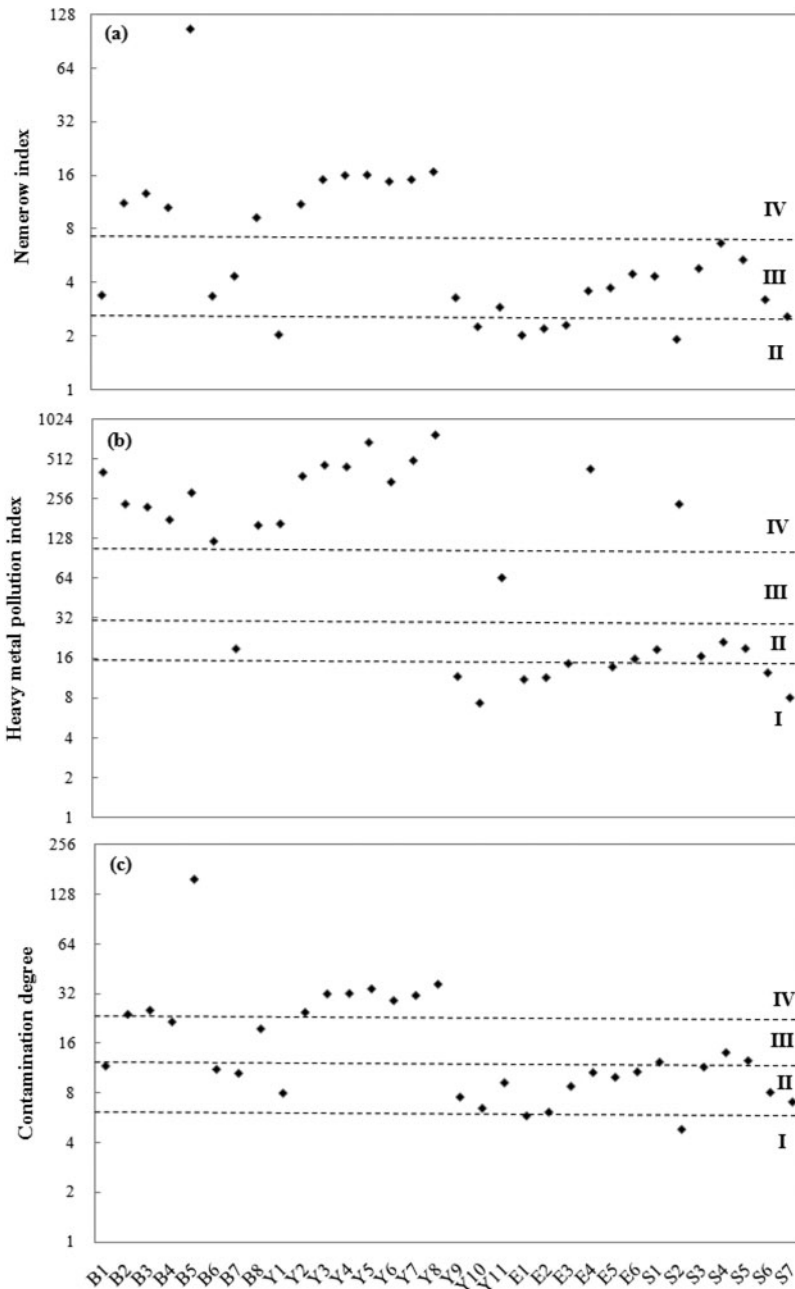


Figure 2. Heavy metal pollution of coastal waters using different evaluation methods. Classes II, III, and IV of Nemerow index represent slight, moderate, and heavy pollution, respectively; Classes I, II, III, and IV of heavy metal pollution index refer to low, moderate, moderate-to-high, and heavy pollution, respectively; Classes I, II, III, and IV of contamination degree stand for low, moderate, considerable, and very heavy pollution, respectively.

In general, Yellow Sea Area and Bohai Area showed more serious heavy metal pollution than East China Sea Area and South China Sea Area. The most serious heavy metal pollution occurred in the region near B5. Northern

Chinese coastline needs urgent and effective heavy metal pollution control and management.

Possible sources of heavy metals in coastal waters

Pearson correlation coefficients were used to analyze the potential relationship among heavy metals and water quality parameters (Table 3). Significantly positive relationship existed between every two metals of V, Cr, Co, Ni, Cu, and Mo, indicating that these metals might originate from the same source. Sn was significantly related with V and Sb at $p < .01$ while Pb was significantly related with Hg and Sb at $p < .01$. Cu was positively related with Zn and negatively related with Cd at $p < .05$ while Hg was also related with Cr, Co, and Sn at $p < .05$. Salinity was significantly related with V, Cr, Co, Ni, Mo, and Sn while TOC was significantly related with Co, Mo, Sn, Sb, and Pb. TN was significantly related with As, Sn, and Hg while TP was significantly negatively related with Hg. Complex relationship between heavy metals illustrated that multiple sources might affect the distribution of heavy metals in coastal waters.

Three possible sources were determined based on PMF analysis (Figure 3). Metals including V, Co, Ni, Cu, As, Mo, and Cd were mainly controlled by Factor 3 that might originate from discharge of industrial wastewater and sewage, agricultural runoff, and mining inputs. Pb, Zn, and Sn were mainly from industrial wastewater and traffic source (Factor 2) since these three metals frequently occurred in industrial wastewater and Pb were also an important component of fuel. Hg was mainly controlled by Factor 1 that might be from combustion of fossil fuels and reverine inputs. Heavy metals in coastal waters often concurrently originated from three possible sources, suggesting the source complexity and challenge of effective pollution control. Three possible sources were mainly triggered by the anthropogenic activities, illustrating that rational industry planning is critical for sustainability of the coastal regions.

Potential ecological risks of heavy metals in coastal waters

Potential ecological risks of heavy metals were evaluated using ecological risk index based on ranking criterion (Figure 4). Approximately 15, 5, 9, and 3 out of 32 sampling sites illustrated low, moderate, considerable, and very high risk, respectively. Cu, Hg, and As accounted for most of the ecological risks, serving as the dominant risk contributors for 14, 13, and 5 sampling sites, respectively. Sites B5, Y5, and Y8 exhibited very high ecological risks, which corresponded with very high heavy metal pollution at the same site. Ecological risks of heavy metals in 64% of sampling sites in Yellow Sea Area were considerable or very high, more serious than those in the other areas. Accordingly, approximately 50% of sampling sites in Bohai Area showed considerable or very high ecological risks. South China Sea Area showed low (86%) or moderate (14%) ecological risks of heavy metals, exhibiting the lowest risks among 4 sampling areas. Ecological risks increased with more strict assessment standard concentrations (S_i). Approximately 6, 7, 4, and 15 sites showed low, moderate, considerable, and very high risk, respectively when Class I standards of “Sea water quality standard of China (GB 3097-1997)” were

Table 3. Pearson correlation coefficients between trace elements and water quality parameters.

	V	Cr	Co	Ni	Cu	Zn	As	Mo	Cd	Sn	Sb	Hg	Pb	Salinity	TOC	TN	TP
V	1.000																
Cr	.798**	1.000															
Co	.890**	.733**	1.000														
Ni	.747**	.716**	.820**	1.000													
Cu	.584**	.628**	.580**	.917**	1.000												
Zn	.227	.099	.226	.426*	.425*	1.000											
As	.234	.072	.093	-.053	.132	.050	1.000										
Mo	.813**	.608**	.898**	.696**	.429*	.092	.229	1.000									
Cd	-.047	-.030	.190	-.154	-.369*	-.029	-.229	.244	1.000								
Sn	-.514**	-.297	-.277	-.247	-.229	-.102	.026	-.336	.129	1.000							
Sb	-.236	-.029	-.001	.101	.134	.070	.077	-.042	.041	.682**	1.000						
Hg	.546**	.440*	.459*	.087	-.057	-.070	-.173	.355	-.020	-.444*	-.413	1.000					
Pb	-.231	.074	-.176	.303	.343	.303	-.079	-.307	-.147	.363*	.476**	-.608**	1.000				
Salinity	.797**	.529**	.799**	.572**	.299	.045	.119	.888**	.277	-.461**	-.296	.387	-.345	1.000			
TOC	-.484**	-.226	-.433*	-.243	-.131	-.035	-.179	-.484**	-.109	.397*	.464**	-.319	.467**	-.693**	1.000		
TN	-.222	-.146	-.229	-.261	-.184	-.246	.385*	.011	.028	.422*	.265	-.429*	.084	-.015	-.078	1.000	
TP	-.333	-.322	-.198	-.185	-.150	-.026	.205	-.010	.327	.345	.311	-.538**	.007	-.050	-.063	.543**	1.000

Note: ** means significance level at $p < .01$; * means significance level at $p < .05$.

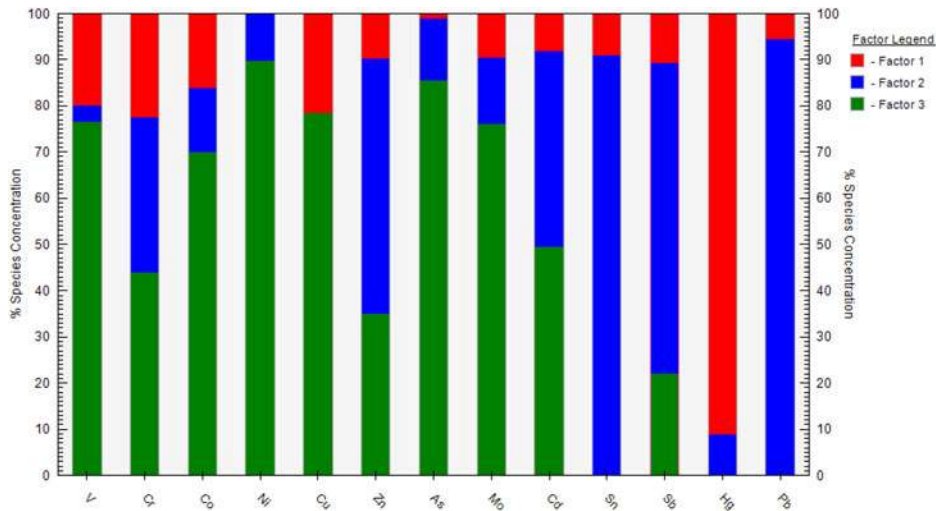


Figure 3. Factor fingerprints of heavy metals in coastal waters along Chinese coastline.

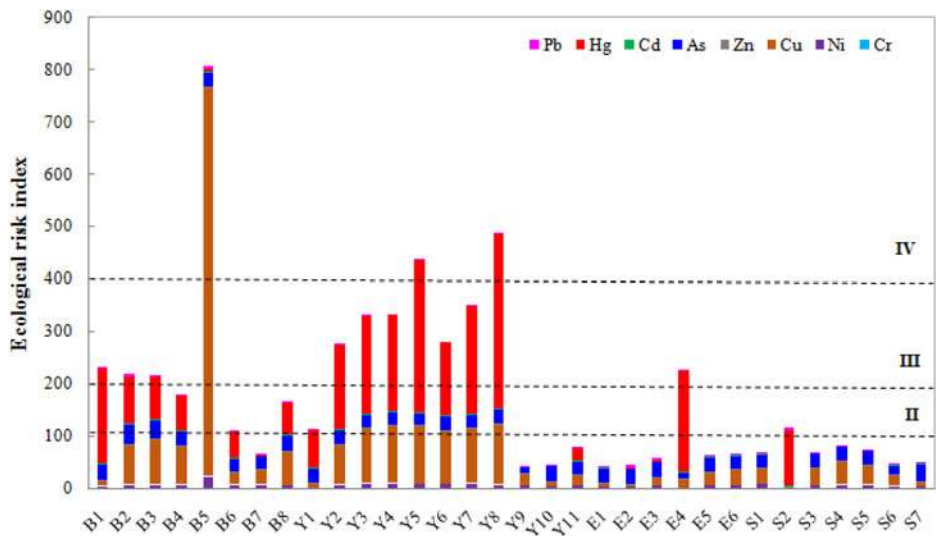


Figure 4. Potential ecological risks posed by heavy metals in coastal waters. Classes I, II, III, and IV refer to low risk, moderate risk, considerable risk, and very high risk, respectively.

used as S_i values to evaluate the risks, more serious than those assessed by Class II standards. Ecological risk index method is usually employed to determine the potential ecological risks posed by heavy metals in soils, sediments, and dusts (Barac *et al.* 2016; Hakima *et al.* 2017; Trujillo-González *et al.* 2016) while its application in risk assessment on heavy metals in water especially coastal waters is limited. Therefore, this study provided new insight on ecological risks posed by heavy metals in coastal waters along Chinese coastline. Effective strategies should be proposed to control potential ecological risks of heavy metals in Chinese coastal waters.

Potential health risks of heavy metals in coastal waters

Heavy metals in coastal waters posed potential health risks mainly through dermal contact. Therefore, health risks of heavy metals were evaluated using cancer risks and non-cancer risks (Figure 5). Cancer risks were in the range of 8.71×10^{-3} – 8.32×10^{-2} for adults and 3.09×10^{-2} – 2.96×10^{-1} for children, respectively. Heavy metals in coastal waters of the study area exerted high cancer risks for adults at all sampling sites while they posed high and very high cancer risks for children at 50% of sampling sites, respectively. Cancer risks for children were usually several times those for adults, suggesting that children are more susceptible to hurt of heavy metals. V, Cr, As, Ni, and Cu were the main contributors for cancer risks, accounting for 90.98–98.60% of cancer risks.

Hazard quotients were in the range of 6.44–32.12 for adults and 22.90–114.13 for children, respectively. Hazard quotients for adults and children all exceeded the

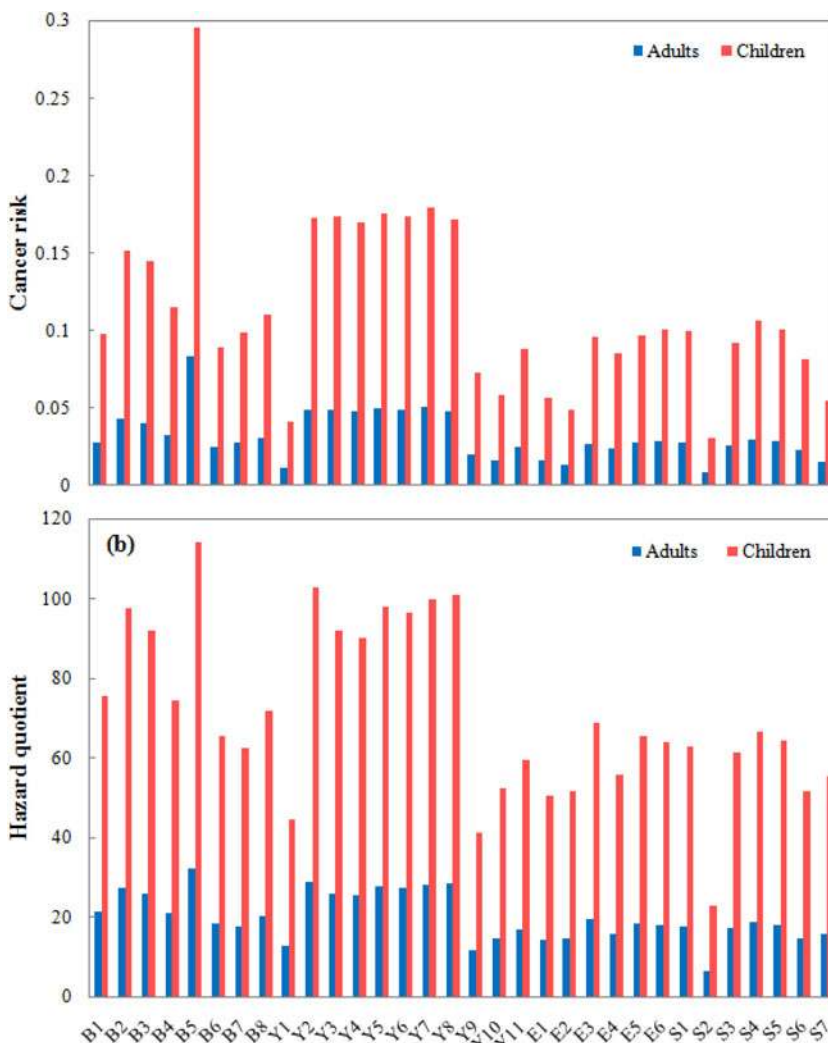


Figure 5. Cancer risks (a) and non-cancer risks (b) posed by heavy metals in coastal waters.

unacceptable threshold of 1.0, suggesting that non-cancer risks posed by heavy metals in coastal waters were high for human beings, especially children. Elements including As, Cr, V, Hg, and Sb were the main contributors for non-cancer risks, accounting for 93.96–98.88% of non-cancer risks.

Heavy metals in coastal waters along coastline of China exerted high health risks for human beings. Therefore, effective control of heavy metals is necessary for regional sustainability and well-beings of residents.

Conclusions

Total 13 heavy metals were detected in coastal waters along Chinese coastline with significant spatial variations. Cu was the dominant heavy metal with the concentrations ranging from 6.24 to 1485.92 $\mu\text{g/L}$. Heavy metal pollution index approach among three assessment methods obtained the worst-case evaluation results, showing that heavy pollution of heavy metals in coastal waters occurred at over 50% of sampling sites. Metals including Cu, As, and Hg were the main pollution contributors. Anthropogenic sources such as industrial wastewater, sewage, traffic, and fuel combustion were the main sources of heavy metals in the coastal waters. Taking Class II levels of “Sea water quality standard of China (GB 3097-1997)” as assessment standards, approximately 46.88%, 15.63%, 28.13%, and 9.38% of sampling sites illustrated low, moderate, considerable, and very high ecological risks, respectively. Cu, Hg, and As also accounted for most of the ecological risks. Heavy metals in coastal waters posed high cancer risks for adults at all sampling sites while they exerted high and very high cancer risks for children at 50% and 50% sampling sites. Heavy metals posed unacceptable non-cancer risks for both adults and children. Therefore, heavy metal pollution control in the coastal regions of China is in urgent need.

Acknowledgment

The authors would like to thank the reviewers for their valuable suggestions and comments on the manuscript.

Funding

This work was supported by National Natural Science Foundation of China (41671319), Taishan Scholar Program of Shandong Province (No. tsqn201812116), One Hundred Talents Program of Chinese Academy of Sciences (Y629041021), and Two-Hundred Talents Plan of Yantai (Y739011021).

References

Agardy T and Alder J. 2005. Coastal systems. In: *Ecosystems, Human Well-Being: Current State, Trends, Volume 1, Findings of the Condition*, pp. 513–549. Trends Working Group of the Millennium Ecosystem Assessment Island Press, Washington, DC. <http://www.millenniumassessment.org/documents/document.288.aspx.pdf>

- Akhbarizadeh R, Moore F, Keshavarzi B, *et al.* 2016. Aliphatic and polycyclic aromatic hydrocarbons risk assessment in coastal water and sediments of Khark Island, SW Iran. *Mar Pollut Bull* 108:33–45. doi:10.1016/j.marpolbul.2016.05.004
- Barac N, Škrivanj S, Bukumirić Z, *et al.* 2016. Distribution and mobility of heavy elements in floodplain agricultural soils along the Ibar River (Southern Serbia and Northern Kosovo). Chemometric investigation of pollutant sources and ecological risk assessment. *Environ Sci Pollut Res* 23:9000–11. doi:10.1007/s11356-016-6142-2
- Carapuço MM, Taborda R, Silveira TM, *et al.* 2016. Coastal geoindicators: Towards the establishment of a common framework for sandy coastal environments. *Earth-Sci Rev* 154:183–90. doi:10.1016/j.earscirev.2016.01.002
- Cherchi A, Da Pelo S, Ibba A, *et al.* 2009. Benthic foraminifera response and geochemical characterization of the coastal environment surrounding the polluted industrial area of Portovesme (South-Western Sardinia, Italy). *Mar Pollut Bull* 59:281–96. doi:10.1016/j.marpolbul.2009.09.016
- Degger N, Chiu JMY, Po BHK, *et al.* 2016. Heavy metal contamination along the China coastline: A comprehensive study using Artificial Mussels and native mussels. *J Environ Manage* 180: 238–46. doi:10.1016/j.jenvman.2016.05.008
- Edet AE and Offiong OE. 2002. Evaluation of water quality pollution indices for heavy metal contamination monitoring. A study case from Akpabuyo-Odukpani area, Lower Cross River Basin (southeastern Nigeria). *GeofJournal* 57:295–304 doi:10.1023/B:GEJO.0000007250.92458.de
- Feng H, Jiang H, Gao W, *et al.* 2011. Metal contamination in sediments of the western Bohai Bay and adjacent estuaries, China. *J Environ Manage* 92:1185–97. doi:10.1016/j.jenvman.2010.11.020
- Ge J, Woodward LA, Li QX, *et al.* 2013. Composition, distribution and risk assessment of organochlorine pesticides in soils from the Midway Atoll, North Pacific Ocean. *Sci Total Environ* 452–453:421–6. doi:10.1016/j.scitotenv.2013.03.015
- Hakanson L. 1980. An ecological risk index for aquatic pollution control, a sedimentological approach. *Water Res* 14:975–1001 doi:10.1016/0043-1354(80)90143-8
- Hakima Z, Mohamed M, Aziza M, *et al.* 2017. Environmental and ecological risk of heavy metals in the marine sediment from Dakhla Bay, Morocco. *Environ Sci Pollut Res* 24:7970–81. doi:10.1007/s11356-017-8367-0
- IRIS (Integrated Risk Information System by United States Environmental Protection Agency). 2018. https://cfpub.epa.gov/ncea/iris/search/index.cfm?first_letter=C (accessed September 16, 2018)
- Jonathan MP, Muñoz-Sevilla NP, Góngora-Gómez AM, *et al.* 2017. Bioaccumulation of trace metals in farmed pacific oysters *Crassostrea gigas* from SW Gulf of California coast, Mexico. *Chemosphere* 187:311–9. doi:10.1016/j.chemosphere.2017.08.098
- Kim S, Lee S, Kim C, *et al.* 2014. In vitro and in vivo toxicities of sediment and surface water in an area near a major steel industry of Korea: Endocrine disruption, reproduction, or survival effects combined with instrumental analysis. *Sci Total Environ* 470–471:1509–16. doi:10.1016/j.scitotenv.2013.08.010
- Lewis RL, Rudd MA, Al-Hayek W, *et al.* 2016. How the DPSIR framework can be used for structuring problems and facilitating empirical research in coastal systems. *Environ Sci Policy* 56:110–9. doi:10.1016/j.envsci.2015.11.001
- Liu S, Zhang Y, Bi S, *et al.* 2015. Heavy metals distribution and environmental quality assessment for sediments off the southern coast of the Shandong Peninsula, China. *Mar Pollut Bull* 100: 483–8. doi:10.1016/j.marpolbul.2015.09.028
- Meng W, Hu B, He M, *et al.* 2017. Temporal-spatial variations and driving factors analysis of coastal reclamation in China. *Estuar Coast Shelf S* 191:39–49. doi:10.1016/j.ecss.2017.04.008
- Oves M, Khan MS, Zaidi A, *et al.* 2012. Soil contamination, nutritive value, and human health risk assessment of heavy metals: An overview. In: Zaidi A, Wani PA, and Khan MS (eds), *Toxicity of Heavy Metals to Legumes and Bioremediation*, pp. 1–27. Springer, Wien.

- Qu L, Huang H, Xia F, *et al.* 2018. Risk analysis of heavy metal concentration in surface waters across the rural-urban interface of the Wen-Rui Tang River, China. *Environ Pollut* 237: 639–49. doi:10.1016/j.envpol.2018.02.020
- Ranjbar Jafarabadi A, Riyahi Bakhtiyari A, Toosi AS, *et al.* 2017. Spatial distribution, ecological and health risk assessment of heavy metals in marine surface sediments and coastal seawaters of fringing coral reefs of the Persian Gulf, Iran. *Chemosphere* 185:1090–111. doi:10.1016/j.chemosphere.2017.07.110
- Sarria-Villa R, Ocampo-Duque W, Páez M, *et al.* 2016. Presence of PAHs in water and sediments of the Colombian Cauca River during heavy rain episodes, and implications for risk assessment. *Sci Total Environ* 540:455–65. doi:10.1016/j.scitotenv.2015.07.020
- Sharifi Z, Hossaini SMT, and Renella G. 2016. Risk assessment for sediment and stream water polluted by heavy metals released by a municipal solid waste composting plant. *J Geochem Explor* 169:202–10 doi:10.1016/j.gexplo.2016.08.001
- Takata H, Aono T, Tagami K, *et al.* 2012. Influence of dissolved organic matter on particle-water interactions of Co, Cu and Cd under estuarine conditions. *Estuar Coast Shelf S* 111:75–83. doi: 10.1016/j.ecss.2012.06.014
- Toro PPV, Bedoya LFV, Correa ID, *et al.* 2016. Impact of terrestrial mining and intensive agriculture in pollution of estuarine surface sediments: Spatial distribution of trace metals in the Gulf of Urabá, Colombia. *Mar Pollut Bull* 111:311–20. doi:10.1016/j.marpolbul.2016.06.093
- Trujillo-González JM, Torres-Mora MA, Keesstra S, *et al.* 2016. Heavy metal accumulation related to population density in road dust samples taken from urban sites under different land uses. *Sci Total Environ* 553:636–42. doi:10.1016/j.scitotenv.2016.02.101
- Tueros I, Rodríguez JG, Borja A, *et al.* 2008. Dissolved metal background levels in marine waters, for the assessment of the physico-chemical status, within the European Water Framework Directive. *Sci Total Environ* 407:40–52. doi:10.1016/j.scitotenv.2008.08.026
- USEPA (U.S. Environmental Protection Agency). 2004. Risk Assessment Guidance for Superfund Volume I: Human Health Evaluation Manual (Part E, Supplemental Guidance for Dermal Risk Assessment). Office of Superfund Remediation and Technology Innovation, Washington, DC.
- USEPA (U.S. Environmental Protection Agency). 2014. EPA Positive Matrix Factorization (PMF) 5.0 Fundamentals and User Guide. EPA/600/R-14/108
- USEPA (U.S. Environmental Protection Agency). 2016. Regional Screening Levels (RSLs) - User's Guide. <https://www.epa.gov/risk/regional-screening-levels-rsls-users-guide-may-2016>
- Vu CT, Lin C, Shern C-C, *et al.* 2017. Contamination, ecological risk and source apportionment of heavy metals in sediments and water of a contaminated river in Taiwan. *Ecol Indic* 82: 32–42. doi:10.1016/j.ecolind.2017.06.008
- Wang S-L, Xu X-R, Sun Y-X, *et al.* 2013. Heavy metal pollution in coastal areas of South China: A review. *Mar Pollut Bull* 76:7–15. doi:10.1016/j.marpolbul.2013.08.025
- Xu L, Wang T, Wang J, *et al.* 2017. Occurrence, speciation and transportation of heavy metals in 9 coastal rivers from watershed of Laizhou Bay, China. *Chemosphere* 173:61–8. doi:10.1016/j.chemosphere.2017.01.046
- Zhang Y, Chu C, Li T, *et al.* 2017. A water quality management strategy for regionally protected water through health risk assessment and spatial distribution of heavy metal pollution in 3 marine reserves. *Sci Total Environ* 599–600:721–31. doi:10.1016/j.scitotenv.2017.04.232