



CrossMark
click for updates

Cite this: *RSC Adv.*, 2017, 7, 10737

Polymorphism of a hexadecane–heptadecane binary system in nanopores

Jian Sui,^a Shi Qi Zhang,^a Min Zhai,^a Fang Tian,^a Jian Zhang^b and Xiao Zheng Lan^{*a}

Inspired by the interest in the confinement effect on polymorphism of alkane mixtures, phase behaviors of a hexadecane–heptadecane (n -C₁₆H₃₄–C₁₇H₃₆, C₁₆–C₁₇) binary system in the bulk and in nanopores of controlled porous glasses (CPGs) are investigated using differential scanning calorimetry (DSC) and temperature-dependent powder X-ray diffraction (XRD). As reported, bulk C₁₆–C₁₇ mixtures form two intermediate phases with monoclinic (M_{dcl}) and orthorhombic (O_p) structures in a low temperature range and rotator phase R_I in high temperature range. In the pores of CPG (300 nm), these solid phases appear in the temperatures slightly below the bulk system. The R_I one-phase region extends a bit in temperature range in the mixtures of high C₁₇ components. In CPG (8.1 nm), the solid phases come up in much lower temperatures than the bulk. The rotator R_I is found in a larger range of the temperature and composition than the bulk and in CPG (300 nm). A new phase, the rotator R_{II}, is observed in a narrow temperature range of high C₁₇ composition just before melting. XRD analysis shows diffractions from the alkane layered ordering in CPG (300 nm) with a more roughened layer surface than the bulk. Lamellar stacking of the solids in CPG (8.1 nm) is heavily perturbed. The variation in the polymorphism of C₁₆–C₁₇ mixtures in the nanopores is associated with the reduced ordering of the molecule arrangements. These results can help to understand the influence of confinement effect on binary mixtures of alkanes, the chain molecules.

Received 14th December 2016
Accepted 31st January 2017

DOI: 10.1039/c6ra28210e

rsc.li/rsc-advances

Introduction

Since Jackson and McKenna's first work in 1990, the nanoconfinement effect on physical properties of materials has been investigated in many fields such as adsorption, intrusion, catalysis, design and drug delivery and fabrication of energy-related nanomaterials.^{1–7} It is found that the freezing/melting points of many pure fluids as water, organic liquids confined in nanopores follow the Gibbs–Thomson equation.^{3,8–11} In a more general model, the transition temperature of a confined fluid can be estimated from the size, the relative interface interactions of fluid–fluid to fluid–wall, and pore geometries.^{5,12–14} Basically, the existing states of the molecules in nanopores determine the properties of the confined fluids. As a common case, the molecules can form a non-freezing layer near the pore wall and a freezable core which also may be in a heterogeneous state. For the crystalline phase, the non-polymorphic fluid normally takes the same structure as the bulk, for example water inside SBA-15 in a defective hexagonal crystal.⁴ Polymorphic materials in nanopores, like glycine or acetaminophen in CPGs or anodic aluminum oxide film (AAO),⁶

may show much different crystallization behaviour to the bulk. The metastable or uncommon forms are stabilized under nanoconfinement, which might be favoured by nucleation mechanism, competition among growing crystal species and free path length.^{6,15–17} Although with the previous efforts, it is still a challenge to predict the nanoconfinement effect such as the influence to the heterogeneous distribution of molecules in the pores, the preference of a structure in polymorphic materials. It therefore needs more experiments to reveal new physical phenomena in confined space.

Polymorphism of normal alkanes (C_{*n*}) in nanopores provides an interesting system for observation of nanoconfinement effect on polymorphs and phase transitions of chain molecules.¹⁸ According to Huber's work, pure C₁₂ in CPG (10 nm) shows a same phase sequence between triclinic structure and liquid phase, T₁₂ ↔ L, as the bulk on both cooling and heating. In the same porous matrix, a new phase rotator R_I, one of specific plastic solids of the chain-molecule alkanes, appears on cooling of C₁₄, and both on cooling and heating of C₁₆.¹⁹ Besides rotator R_I and stable orthorhombic phase (O₁₉) as in the bulk, a new phase rotator R_{II} was observed in C₁₉ in CPG (~7 nm) upon cooling and heating.²⁰ In our work, C₁₆ displays new rotators R_I and R_{II} on cooling and R_I on heating in CPG (8.1 nm), new R_I and R_{II} on cooling and heating in SBA-15 (7.8 nm) and carbon-filmed C-SBA-15 (15.6 nm), new R_I on cooling and heating in SBA-15 (17.2 nm) and KIT-6 (8.6 nm).²¹ C₁₈ in CPG

^aCollege of Chemistry and Materials Science, Shandong Agricultural University, Tai'an 271018, Shandong, China. E-mail: lanxzh@sdau.edu.cn; Fax: +86-538-8242251; Tel: +86-538-8247753

^bDalian Institute of Chemical Physics, Chinese Academy of Sciences, Dalian 116023, China



(8.1 nm) exhibits new rotators R_I and R_{II} on heating.²² C_{16} – C_{18} binary system in CPG (8.1 nm) varies largely compared to the bulk.²² A new rotator phase R_{II} in mixtures is found in a range of several degrees before melting. These results present a general more complicated polymorphism of the normal alkanes under nanoconfinement.

Normal alkanes are not only useful model systems in investigation of crystallization of polymers and bio-membranes but the important products in petroleum industry.²³ As an even-numbered member, bulk C_{16} has a stable crystalline form of triclinic structure T_{16} with unit cell parameters $a = 4.29 \text{ \AA}$, $b = 4.82 \text{ \AA}$, $c = 22.36 \text{ \AA}$, $\alpha = 84.57^\circ$, $\beta = 67.31^\circ$, $\gamma = 72.73^\circ$,²⁴ space group $P\bar{1}$.²⁵ The T_{16} phase melt directly into isotropic liquid after heated to melting point. As an odd-numbered member, bulk C_{17} owns a stable orthorhombic crystal (O_I) ($a = 7.432 \text{ \AA}$, $b = 4.956 \text{ \AA}$, $c = 46.87 \text{ \AA}$, space group $Pbcm^{24,25}$), and a stable rotator R_I . The C_{16} – C_{17} mixtures possess intermediate phases O_p and M_{dei} in low temperatures, and a wide scope of R_I phase in high temperature range.²⁶ Research of phase behaviour of C_{16} – C_{17} system in nanopores can provide more information of confinement effect on binary system, which is little known at present and cannot be predicted as the Gibbs–Thomson equation for a pure material. Although the phase behaviour of C_{16} – C_{18} system in some nanopores is investigated, those results are highly expected not to be the same for C_{16} – C_{17} binary mixtures. It is because the two systems in bulk have completely different phase regions in the structure of solid phases, especially in temperature and mole fraction boundaries, which shows even-even and even-odd effect in the binary alkanes. The difference in the phase behaviours of the two systems at nanoscale will display the effect of the average chain length of the alkane mixtures and stabilities of alkane solids, whether/how the possible new phase appears.

In this paper, we report the phase behaviours C_{16} – C_{17} mixtures in nanopores of CPG (8.1 nm, and 300 nm) characterized by DSC and temperature-dependent powder X-ray diffractions. In CPG (300 nm), the solid phases are almost the same as those in the bulk. In CPG (8.1 nm), the solid phases appear in much lower temperatures with different compositions. A new phase rotator R_{II} was observed in a narrow temperature range before melting. The confinement effect on polymorphism of C_{16} – C_{17} binary system is discussed from the point of the size effect, and the defect-driven mechanism.

Experimental

Materials

Normal alkanes hexadecane, heptadecane and tricosane used in the experiments are products from Aladdin Reagents Co. with a purity in mass fractions larger than 0.99 controlled pore glasses (Millipore) with pore diameter of $d = 8.1$ – 300 nm are used as confinement matrix. The specifications of the CPGs are listed in Table 1, as provided by the manufacturer. Here the pore size distribution means 80% of the pores of CPG have a pore diameter within \pm the value shown on certificate of analysis of the nominal diameter. For example, if the pore size distribution for a particular lot of CPG3000 is shown on the

Table 1 Specifications of controlled pore glasses as provided by the manufacturer

Product name	Mean pore diameter (nm)	Pore size distribution (%)	Specific pore volume ($\text{cm}^3 \text{g}^{-1}$)	Specific surface area ($\text{m}^2 \text{g}^{-1}$)
CPG3000	300	6	1.08	10
CPG1000	107.6	5	1.59	31
CPG500	46.4	3	1.31	64
CPG240	25.2	3.9	0.89	79
CPG120	11.5	7.3	0.49	119.5
CPG75	8.1	9	0.49	>120

certificate of analysis as 6%, then it means that 80% of the pores have a pore diameter within 6% of 3000 Angstrom. Before use, the glass powder was cleaned with concentrated nitric acid according to a method recommended by the supplier. The treatment was reported to result in negligible influence on the pore diameter and distributions.²⁷

DSC and XRD analysis

In experiments, C_{16} , C_{17} and C_{23} were used as obtained; the mixtures of C_{16} and C_{17} were obtained by accurate weighing them together to specific molar ratios. Preparation of samples CPG filled with C_{16} , C_{17} or the mixtures, and C_{23} were as follows. In one sample, CPG powder (>10 mg for DSC, ~60 mg for XRD measurement) was put into a piece of glass tube and outgassed under a vacuum of 10^{-1} Pa for 2 h at 50°C . After cooled to room temperature, the alkane liquid was transferred into the glass tube by a clean glass capillary under protection of dried nitrogen atmosphere. The pore fillingness of the alkane is less than the total pore volume of CPG, 90–95%, to avoid interference of excess liquid. After sealed, the sample in the glass tube was equilibrated for more than 2 h at room temperature to 30°C , after stored in a refrigerator for some time. The bulk alkanes were also posed to such a same thermal treatment before analysis.

DSC analysis of the sample was performed on Q10 (TA Instruments) under a high purity nitrogen atmosphere. In a typical way, the sample was cooled to a temperature 30 – 50°C below the transition temperature at a rate of around 2°C min^{-1} . Then heat flow signals were recorded in heating process with a scanning rate of 5°C min^{-1} . The temperature scale of the DSC instrument was calibrated using high purity indium, water and adamantane. In most cases, transition temperatures of the bulk and confined alkanes were reproducible to within 0.5°C .

Temperature-dependent powder X-ray diffraction analysis was done on a Philips X'Pert Pro MPD type diffractometer in the same temperature range as those for the DSC measurements. The diffractometer uses $\text{Cu K}\alpha$ (1.54 \AA) radiation source at a power of $40 \text{ mA}/40 \text{ kV}$. The sample was placed in an aluminum vessel with a size of $2 \times 1.6 \times 1 \text{ mm}^3$. After the sample was cooled to expected temperature at a rate of 2°C min^{-1} , diffraction patterns were recorded in rotating angle $2\theta = 5$ – 40° at selected temperatures in heating process. Before each scan, the sample was equilibrated for 10 minutes. The $\text{Cu K}\alpha$



backgrounds were subtracted from the raw data in presentation of the diffraction patterns.

Diffraction patterns of C_{23} in CPG (nominal $d = 12\text{--}300\text{ nm}$) were scanned on the station (4B9A) of Beijing Synchrotron Radiation Facility (BSRF) at room temperature ($\sim 24\text{ }^\circ\text{C}$), using the six circle diffractometer Huber 5020 and the scintillation crystal detector Huber 9910, with a synchrotron radiation wavelength of 1.54 \AA . Data were collected in steps of $\Delta(2\theta) = 0.02^\circ$.

Results and discussion

DSC analysis

Thermal analysis was performed for three series of samples: $C_{16}\text{--}C_{17}$ binary mixtures in the bulk, and that confined in nanopores of CPG (8.1, and 300 nm). DSC curves of representative compositions of $x_{C_{17}} = 0\text{--}1$ in the heating scans are shown in Fig. 1. Endothermic thermal anomalies are solid-liquid (s-l) and solid-solid (s-s) transitions of the alkane solids in pure component or mixtures. In the left panel, the bulk system shows clear transition peaks in every composition, which is in agreement with the previous results.²⁸ In the middle, the transitions of the pore mixtures in CPG (300 nm) get a bit weak and widened in most cases, appearing at close temperatures with the bulk. In the right panel, the melting peaks of the mixtures in CPG (8.1 nm) are still fairly strong but the s-s transitions are so weak to be seen. They happen at temperatures almost $25\text{ }^\circ\text{C}$ lower than those in the bulk and in CPG (300 nm). Depression of s-l or s-s transition temperature of pure C_{16} and C_{17} may be qualitatively understood from the Gibbs-Thomson equation under the condition of a middle strength interface interactions between the alkane molecules and the glass pore wall.^{6,29} As the two components only have difference of one $-\text{CH}_2-$ unit in the chains, their mixtures have the similar compositions as them and also follow lowering in the transition temperatures. The smaller transition peaks or enthalpies in the nanopores together with the depressed transition temperatures are the

common phenomena observed in nanoparticles, because of the defective crystal structures.³⁰

Table 2 lists s-l and s-s transition temperatures of the alkane solids from the DSC analysis for the bulk, and confined in CPG (8.1, and 300 nm), which are defined as the onset point of the DSC curve extrapolated from the leading edge of the peak to intersection with the base line. It includes some transition temperatures determined from XRD measurements in the

Table 2 The phase transition temperatures (T_{tr} , s-l and s-s)^a of $C_{16}\text{--}C_{17}$ binary system in the bulk, and confined in CPG (d , nm)

Mole fraction of C_{17}	Temperature of the phase transition ($^\circ\text{C}$)						
	Bulk		CPG (d/nm)				
	s-l	s-s	300		8.1		
			s-l	s-s	s-l	$S_{\text{LT}}\text{--}R_{\text{I}}$	$R_{\text{I}}\text{--}R_{\text{II}}^b$
0	17.4		16.7		8.6		
0.05	16.5	13.0	16.2	7.7	9.2	−3.0	
0.10	16.6	1.9	−3.1	16.6	2.2	9.1	−22.0
0.15	16.8	−5.0		16.6	−5.5	9.3	−33.5
0.20	16.9	−6.1		16.9	−6.1	9.5	−30.4
0.25	16.0	−7.0	−5.0	17.1	−6.5	9.9	−31.8
0.30	17.2	−6.6		16.3	−7.5	10.0	−29.8
0.40	17.7	−6.4		17.8	−6.3	10.6	−30.9
0.50	18.2	−5.4	−7.0	18.2	−5.4	11.2	−26.8
0.60	18.8	−4.5		18.8	−4.5	11.8	−29.5
0.70	19.5	−2.9	−4.0	19.5	−3.0	12.6	−28.3
0.75	19.6	−0.9		18.9	−2.9	12.1	−25.8
0.80	20.3	−1.0	−5.3	20.3	−1.0	13.5	−28.3
0.90	21.2	4.5	−3.0	20.2	3.4	14.2	−23.3
0.95	21.5	6.0		21.6	7.7	14.7	−17.8
1.00	21.9	11.1		22.0	10.9	15.0	−12.5
							13.0–14.0

^a The average deviations are mostly within $0.5\text{ }^\circ\text{C}$. ^b The range refers to the highest temperature of R_{I} to the lowest temperature of R_{II} detected in X-ray diffractions. The rest of data are obtained from DSC analysis. LT refers to low temperature (phase).

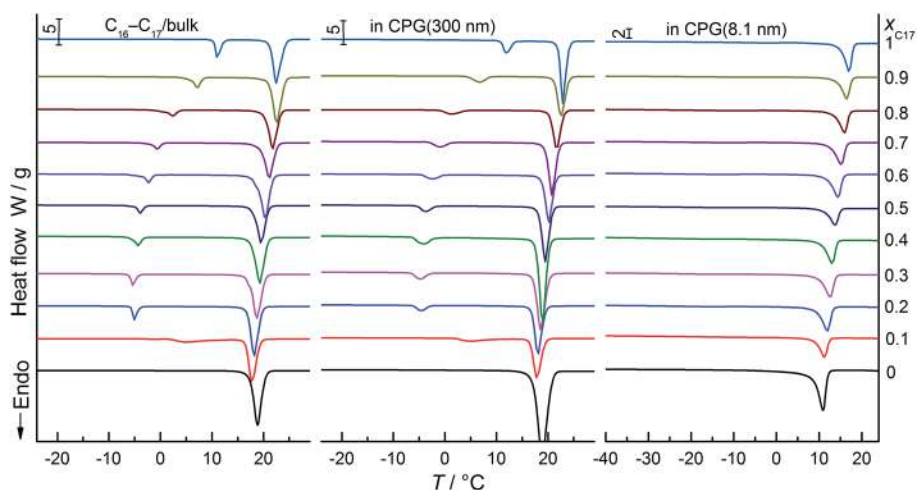


Fig. 1 DSC curves of C_{16} , C_{17} and the mixtures (molar fraction interval of $x_{C_{17}} = 0.1$) in the bulk, and confined in CPG (8.1, and 300 nm), recorded in heating processes.



following sections. These data are used to depict diagram of phase boundary as a function of mole fraction. The crystal structures of the solid phases of the bulk and under confinement will be decided by XRD measurements afterward. Normally, the solids can be well recognized before and after a certain temperature the transition taken place on the DSC curves, especially in nanopores of CPG (300 nm). However, most of the $s-s$ transitions of the mixtures in CPG (8.1 nm) can be found in the diffraction scans but not in the thermal analysis. In the case, the thermal effect is very weak to be detected. Therefore, the combined DSC and XRD analysis are reliable to probe the nano-sized phases in the low temperature range.

Phase behaviour of C_{16} – C_{17} system in the bulk and in CPG (300 nm)

In Fig. 2, the phase transition temperatures of C_{16} – C_{17} binary system in the bulk, and confined in CPG (300 nm) are plotted as a function of mole fraction of C_{17} , $x_{C_{17}}$. The circles over each composition are the temperature points where the diffraction patterns of the corresponding solid phases are recorded as partly shown in Fig. 3. As a well-established method, phase boundaries between liquid and solid phase (e.g. $L \leftrightarrow R_1$) and among the high and low temperature domain (e.g. $R_1 \leftrightarrow O_p$, M_{dci} , O_i) are determined by fitting the transition temperatures from the DSC analysis, which is consistent with the literature in the bulk system.²⁸ In low temperature range, the phase boundaries among different phase regions (e.g. T_p , O_p , M_{dci} , and O_i) of the bulk in dashed lines (left) are drawn from results in the ref. 28. Those in CPG (300 nm) (right) are estimated from the XRD measurements. For example, at $T < -10$ °C the diffraction patterns of the mixture of $x_{C_{17}} = 0.25$ indicate an O_p crystal in referred to the bulk; the mixture of $x_{C_{17}} = 0.3$ is a mixture of O_p and M_{dci} phase. Thus, the O_p one-phase region and the $[O_p + M_{dci}]$ two-phase region is separated between $x_{C_{17}} = 0.25$ and 0.3 with a max uncertainty of 0.05 unit, where the boundary shifts a bit to the C_{16} side compared to the bulk

system of $x_{C_{17}} > 0.3$. Similarly, the boundary between the M_{dci} one-phase region and the $[O_p + M_{dci}]$ two-phase region in CPG (300 nm) is marked between $x_{C_{17}} = 0.65$ and 0.7 with a max uncertainty of 0.05 unit, which moves a bit closer to the C_{17} side in reference with the bulk. The other boundaries related to T_p and O_p phase, and O_i and M_{dci} phase are not so accurate. The changing in of the O_p , and M_{dci} one-phase region in the phase boundary indicates a variation in the packing of the alkane molecules in CPG (300 nm), also as seen from the diffraction patterns in the following and discussion.

In Fig. 3 panel a, diffraction patterns of T_p , O_p , M_{dci} , O_i , and R_1 phase of several bulk mixtures are displayed. The (00 l) reflections from the layered arrangements of the alkane molecules are in the angle range of $2\theta < 18^\circ$. Other reflections, for example from ab in-plane lattice, are in angles $2\theta > 18^\circ$. The low temperature domain T_p , O_p , M_{dci} , and O_i change little in diffraction positions with the increasing temperature, indexed according to lattice parameters in literature^{26,31} and the standard PDF cards.^{24,32} Here, the solid solution with T_p structure has the characteristic (010), (011), (013) and (111) planes, O_p structure with (110), (200), (203) and (020) planes, M_{dci} structure with (111), (200), (20–6) and (2014) planes, and O_i structure with (110), (200), (205), (207) and (0,1,18) planes. The R_1 rotator phase shows its typical in-plane reflections of (110) and (200) lines, where the latter moves to lower angle on heating because of expansion of the lattice as the molecular chains rotate around the long axes.³³

Fig. 3 panels (b–f) show the diffractions of five mixtures ($x_{C_{17}} = 0.05$ – 0.95) confined in CPG (300 nm) in the heating processes. The solid phases with T_p , O_p , M_{dci} , and O_i structure in each composition can be recognized from their reflections of in-plane lattice and mixed indexes at $2\theta > 18^\circ$ in referred to the bulk. The R_1 phase exhibits in-plane reflections of (110) at $2\theta = 21.04$ – 21.08° and (200) at $2\theta = 23.55$ – 23.10° at $T = -7$ to 16 °C, the same as in the bulk mixtures. Also, the (200) reflection peak shifts to lower angles with the increasing temperature. These diffraction peaks are fairly strong, in most cases not reduced

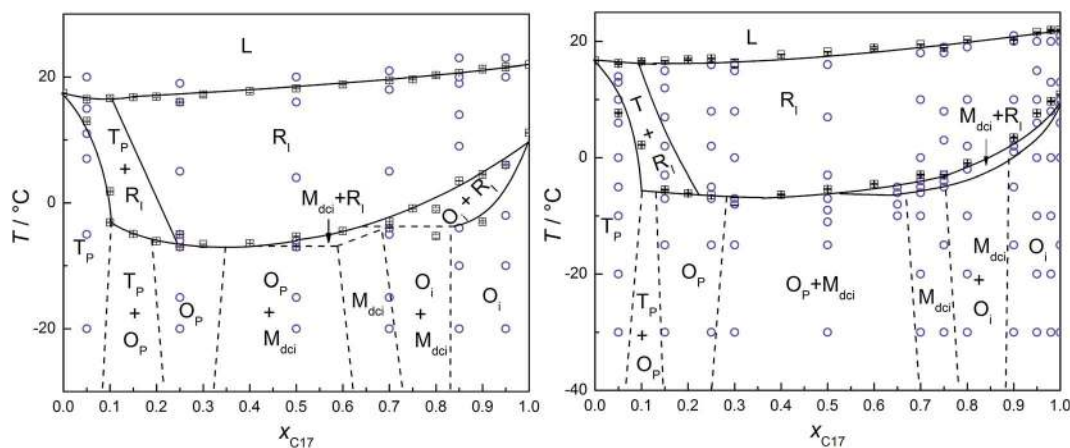


Fig. 2 (Left) Solid–liquid phase diagram of C_{16} – C_{17} binary system. The dotted lines are drawn according to the ref. 28. (Right) Phase transition temperature of C_{16} – C_{17} system confined in CPG (300 nm) as a function of mole fraction of heptadecane $x_{C_{17}}$, determined using DSC (solid line, \square) in the heating processes. Error bars are the average deviations of the corresponding transition temperatures. The circles (\circ) are the successive temperature points of the XRD scans. The dotted lines were estimated from the diffraction results.



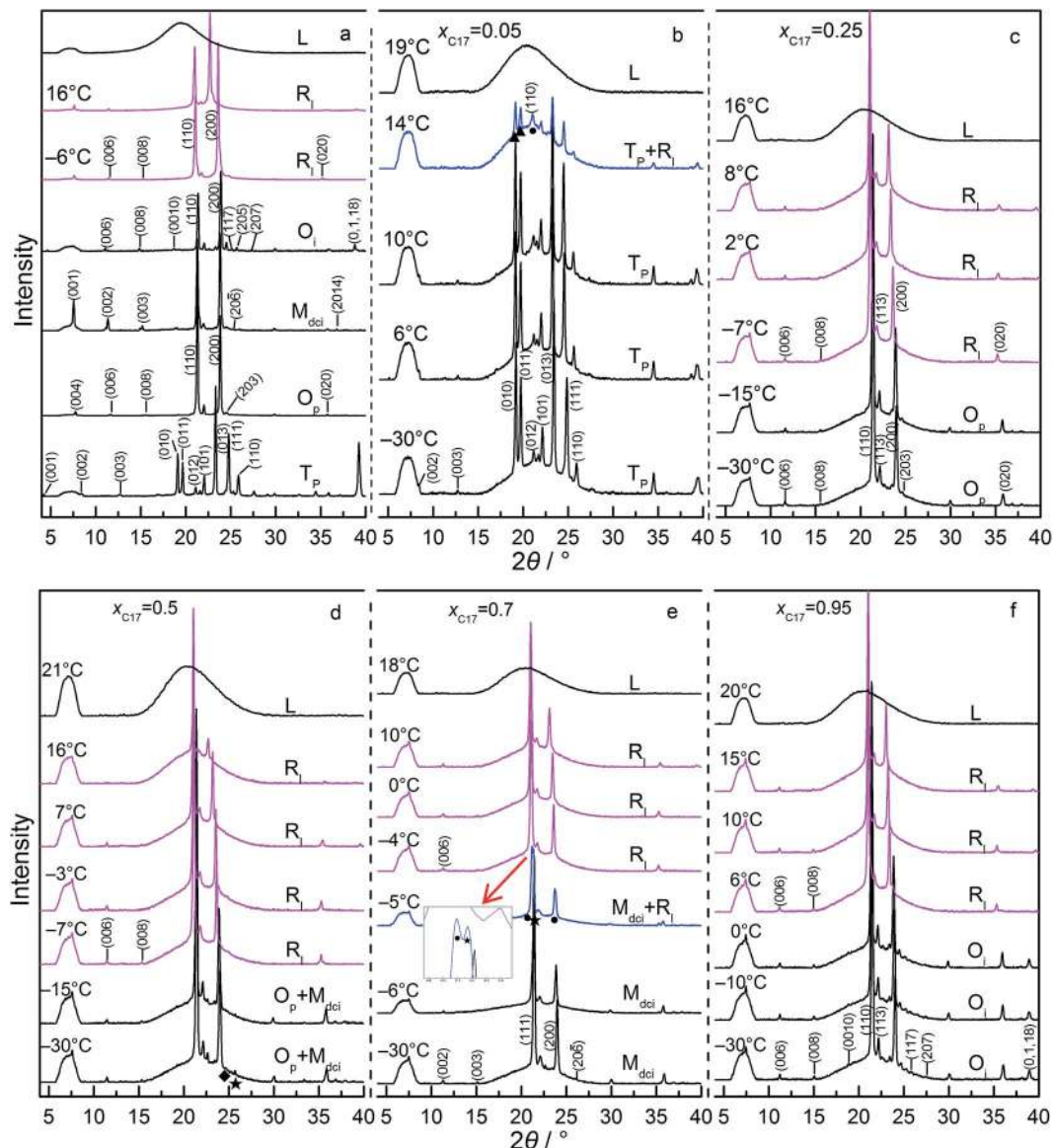


Fig. 3 Temperature-dependent XRD patterns of C_{16} – C_{17} mixtures in the bulk of $x_{C_{17}} = 0.05$ (T_P), 0.25 (O_P), 0.75 (M_{dci}), 0.95 (O_i) and 0.50 (R_i) (a), and of $x_{C_{17}} = 0.05$ (b), 0.25 (c), 0.50 (d), 0.7 (e), and the pure C_{17} (f) confined in CPG (300 nm), respectively, recorded in the heating processes. Rotator phase R_i (●) and low-temperature stable crystal T_P (▲), O_P (◆) and M_{dci} (★) are labeled to each diffraction pattern. The humps at $2\theta = 5.5$ – 8.5° were the backgrounds of the XRD instrument.

much. In the case, the lateral ordering of the chain molecules in the alkane solids are well kept to produce strong reflections from the regular lattices. The layered ordering is also observed as evidenced from the (00 l) reflections, but with much weakened intensities.

From Fig. 2, the phase regions of C_{16} – C_{17} system in the bulk and confined in CPG (300 nm) are similar in the composition and temperature ranges, only that in CPG (300 nm) the [O_P + M_{dci}] two-phase region expands some in composition and the R_i one-phase region extends a bit to lower temperatures in the compositions of $x_{C_{17}} \geq 0.75$. The similarity in their phase behaviours is understandable since the alkane solids in the nanopores still possess the lateral and lamellar ordering, the sign of complete crystals, as observed from the diffractions.

Meanwhile, the expansion of the R_i and [O_P + M_{dci}] phase regions suggests an extra disordering in the molecular arrangements, mainly end-gauche defects, induced from the pore confinement in reference with the well-established knowledge on the bulk system behaviours. The phenomena were also found previously in other nanoconfined binary systems,²² and will be discussed later from the changing in the (00 l) reflection intensities especially those larger l . Following this, the enlarged [O_P + M_{dci}] region in CPG (300 nm) simply reflects the influence of this additional disordered packing gathering at the interlayer area among the alkane layers. This is because in the nanopores a part of the mixtures with higher $x_{C_{17}}$ of the O_P one-phase region becomes unstable due to enough disturbance in the packing of the chain-ends by the defects and



turns into its competitive species, the M_{dci} phase. As a result, the O_{p} solid phase ends inevitably in smaller $x_{\text{C}_{17}}$ composition and some of the O_{p} phase original in the bulk changes into a coexistence with the M_{dci} phase. In the other side, the $[O_{\text{p}} + M_{\text{dci}}]$ two-phase region finishes in higher $x_{\text{C}_{17}}$ in CPG (300 nm) to meet the M_{dci} one-phase region. The reason is maintenance of the M_{dci} one-phase region in the pores needs more portion of C_{17} (less C_{16}) molecules and thus less end-gauche defects due to the mismatch in the chain length of the two components, so as to counteract the defects in the chain-ends introduced by the confinement. Thus, the defects in the layer surface of the alkane molecules due to the inherent movements of the chains and the exterior confinement (molecule to pore wall) is balanced to obtain or keep the stability of a phase. In addition, the expansion of the R_{I} region in higher $x_{\text{C}_{17}}$ composition under the confinement again can be ascribed to the influence of the

increased disordering in the layer stacking. The extra defects in the layer surface just satisfy the conditions for the formation or stabilization of the rotator phase as found in the bulk and the other nano-sized alkane systems.³⁴

Phase behaviour of C_{16} – C_{17} binary system confined in CPG (8.1 nm) (8.1 nm)

Fig. 4 shows the s–l and s–s phase transition temperatures of C_{16} – C_{17} binary mixtures in CPG (8.1 nm) as a function of $x_{\text{C}_{17}}$, determined from DSC and XRD measurements in the heating processes. The circles along each composition are the temperatures for the reflection patterns scanned, as partly shown in Fig. 5. The phase boundaries of the s–l transition at around 10 °C and the s–s transition at about –30 °C are obtained by fitting the transition temperatures from DSC analysis. Just before melting, there appears a new rotator phase R_{II} in a narrow temperature range in the composition range of $x_{\text{C}_{17}} = 0.50$ – 1.00 , found in the diffractions. The solid line between the rotator R_{II} and R_{I} is the fitting among the phase transition temperatures identified through the reflection patterns. For example, the alkane solid of $x_{\text{C}_{17}} = 0.5$ is in the rotator R_{I} phase at 9 °C, while changing into a rotator R_{II} on heating up to 10 °C. A mid-point of 9.5 °C is chosen as the transition point with an uncertainty of 0.5 °C. Similarly, another solid line between the R_{I} phase and the low temperature domain is decided in the range of $x_{\text{C}_{17}} \approx 0.15$ – 1.00 at around –20 °C. The boundary lines in vertical direction are drawn according to the diffraction results, but sometimes with a bit larger uncertainties. Here, the reflection patterns of the mixture of $x_{\text{C}_{17}} = 0.05$ shows a T_{p} structure, mixed $[T_{\text{p}} + O_{\text{p}}]$ phases in composition of $x_{\text{C}_{17}} = 0.10$ and 0.15. Thus the two regions is divided between $x_{\text{C}_{17}} = 0.10$ and 0.05 with an uncertainty of 0.03 unit. On increasing to $x_{\text{C}_{17}} = 0.25$, the reflection patterns show no the T_{p} phase but the O_{p} or M_{dci} , or their mixture (designated as $[O_{\text{p}} + \text{or } M_{\text{dci}}]$), the details given later. Likewise, the boundary lines are marked in between $x_{\text{C}_{17}} = 0.85$ and 0.90 for separation of the $[O_{\text{p}} + \text{or } M_{\text{dci}}]$

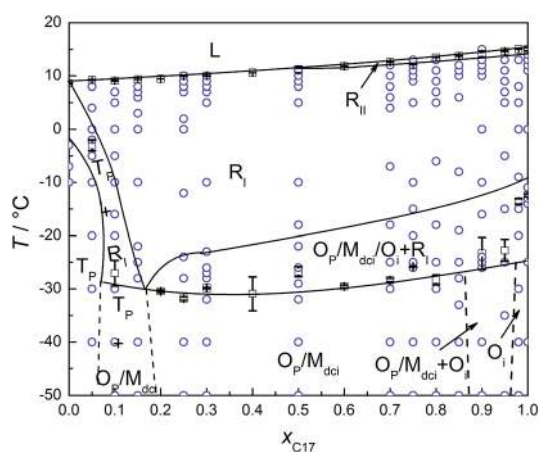


Fig. 4 Phase transition temperature of C_{16} – C_{17} binary system confined in CPG (8.1 nm) as a function of mole fraction of $x_{\text{C}_{17}}$, estimated using DSC (\square) and temperature-dependent XRD (\circ) in the heating processes. The dotted lines were estimated from the diffraction results.

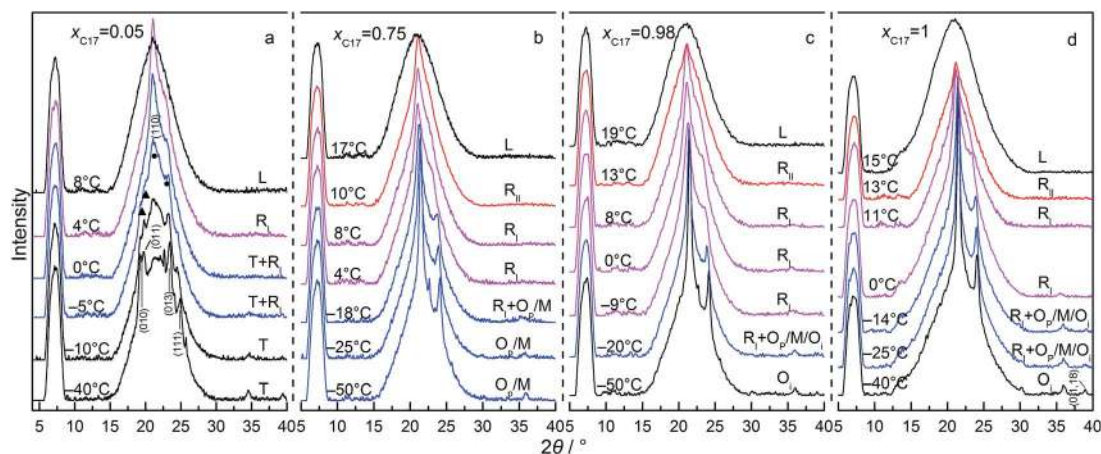


Fig. 5 Temperature-dependent XRD patterns of C_{16} – C_{17} mixtures of $x_{\text{C}_{17}} = 0.05$ (a), 0.75 (b), 0.98 (c), and C_{17} (d) confined in CPG (8.1 nm) respectively, recorded in the heating process. Rotator phase R_{I} , R_{II} and low-temperature crystal O_{p} , T_{p} and O_{I} are assigned to each diffraction pattern. The symbols \blacktriangle and \bullet correspond to the T_{p} and R_{I} forms, respectively. The humps from $2\theta = 5.5$ – 8.5° were the backgrounds of XRD instrument. $O_{\text{p}}/M_{\text{dci}}/O_{\text{I}}$ refers to the mixed phase in the low temperature domain, possibly comprised of O_{p} , and/or M_{dci} , and/or O_{I} phase.



and this region mixed with O_i phase, in between $x_{C_{17}} = 0.95$ and 0.98 for the O_i one-phase region, with uncertainties no larger than 0.03 .

The reflection patterns of the representative solid mixtures of $x_{C_{17}} = 0.05, 0.75, 0.98,$ and 1.00 are presented in Fig. 5. It is found the $(00l)$ reflections at $2\theta < 18^\circ$ disappear in the patterns. The diffraction peaks appear at angles $2\theta > 18^\circ$, mostly in $2\theta = 18\text{--}25^\circ$, but much widened and even vanished. Here, the T_p solid solution is found by the (010) and (011) planes at $2\theta = 19.2^\circ$ and 19.7° , respectively, the same as in the bulk. The solid solution with the $O_p, M_{dci},$ or O_i structure show the relatively strong reflections of (110) and (200) planes at the same angles of $2\theta \approx 21^\circ$ and 23° , respectively, while these are not enough other lines for distinguishing them. Different to the O_p phase, the O_i phase has a weak $(0,1,18)$ peak at $2\theta = 39^\circ$ and the M_{dci} phase sees an even weak peak at $2\theta = 36^\circ$. The rotator R_I is recognized from the typical reflections of (110) ($2\theta = 20.8\text{--}20.9^\circ$) and (200) ($2\theta = 22.7\text{--}24.0^\circ$) planes, the latter still movable as the temperature increases as in the bulk and in CPG (300 nm). Moreover, a new phase rotator R_{II} characterized by one (110) peak appears in the mixtures of $x_{C_{17}} > 0.5$ in a narrow temperature span $< 2^\circ\text{C}$ before melting of the solid phases. With the increasing temperature, the low temperature $O_p, M_{dci},$ or O_i phase change into the R_I phase, and then some to the R_{II} phase when the (200) plane moves to and merges with the (110) plane finishing a transformation from orthorhombic to hexagonal lattice.

Comparing with the bulk, the melting line of the $C_{16}\text{--}C_{17}$ mixtures in CPG (8.1 nm) is depressed to lower temperatures by about 10°C . The rotator phase region covers a temperature range of $\sim 22^\circ\text{C}$ in the bulk and in CPG (300 nm), whereas being an average $\sim 30^\circ\text{C}$ in CPG (8.1 nm). The T_p one-phase region is similar with that in the bulk and in CPG (300 nm). The low temperature domain the O_p, M_{dci} and O_i phase in CPG (8.1 nm) locates at temperatures $\sim 25^\circ\text{C}$ below the bulk. The O_i one-phase region shrinks ~ 0.1 mole fraction unit to the C_{17} side. In a large composition between the T_p and the O_i one-phase region, there exist the O_p or M_{dci} phase or their mixture, which is difficult to discern them due to the same reflection patterns in the small pores. At $T = -(20\text{--}30)^\circ\text{C}$ and $x_{C_{17}} > 0.15$, there is a transition region of the R_I phase mixed with the O_p, M_{dci} phase or their mixture, also indistinguishable. The pore C_{17} has a sequence $[O_i] \rightarrow [R_I + O_i] \rightarrow [R_I] \rightarrow [R_{II}] \rightarrow L$, different with the bulk behaviour. The pore C_{16} experiences a phase sequence $[T_{16}] \rightarrow [R_I + T_{16}] \rightarrow L$ on heating.

Clearly, there is a significant changing in the phase behaviour of the $C_{16}\text{--}C_{17}$ system in CPG (8.1 nm) in reference with the bulk. From the absence of $(00l)$ reflections in the high and low temperature domains, the layered ordering of the arrangements of the alkane molecules in CPG (8.1 nm) has been heavily perturbed. This indicates a more extent of the longitudinal diffuse of the chains and the defects of end-gauche or kinks than in the bulk and in CPG (300 nm), which rightly favours the formation of the rotator phase as found in the bulk and the nano-sized systems.³⁴ The growth of the R_I region in the temperature span of $\sim 8^\circ\text{C}$ manifests this increased disordering in the layer interface. At elevated temperatures, the appearance of the new rotator R_{II} phase is favoured by the weakened lamellar coupling

due to the disordered or random positions of the end groups of the chains.³⁵ The R_{II} phase comes up in the mixtures of higher C_{17} concentrations of $x_{C_{17}} \geq 0.5$ with average chain length $\bar{n} \geq 16.5$, where \bar{n} is defined as sum of the products of carbon number and mole fraction of the composition, $(x_n n + x_{n'} n')$, with $n = 16$ and $n' = 17$. Meanwhile, the phase regions in the low temperature domain also change significantly in the compositions. Taking an example, the obvious shrinking of the O_i one-phase region can be ascribed to the increased defects of the alkane molecules in the nanopores, which disrupt the stability of the O_i phase with some compositions originally in the bulk. In the case, a part of the mixtures change into another competitive phase, *e.g.*, possibly the M_{dci} phase. Again, this C_{17} -dominated one-phase region could maintain its specific molecular arrangements by discarding some "impurity", C_{16} molecules, to compensate for the extra disordering in the alkane molecules from the nanoconfinement.

Structural consideration of the confinement effect on phase behaviour of $C_{16}\text{--}C_{17}$ binary system

In the above sections, $C_{16}\text{--}C_{17}$ system shows size-dependent phase behaviour under confinement. From the bulk to that in CPG (300 nm) and in CPG (8.1 nm), the phase behaviour indicates an increased disordering in the molecular arrangements since the lamellar structure is clear in bulk phases in the low and high temperatures while absence in the smallest pores. As a crucial rule, the extra disordering or defects in the lamellar packing with the variation of the pore size should be tracked more detailed in the evolution of the phase behaviours.

Actually, some information of the confinement effect on the layer stacking of the alkane molecules may be obtained from a qualitative consideration of the $(00l)$ reflections in different pore size. The estimation is on the basis of findings in the bulk alkanes: a roughening of layer interface of alkane solids (*e.g.*, C_{23}) due to longitudinal diffuse of the chains and defects such as end-gauche, kinks can lead to a steep decrease in intensity of $(00l)$ peaks with increasing l , and even disappearance of higher-order $(00l)$ lines in rotator phase.³⁶ Then, could the $(00l)$ reflections still be such a probe for alkane interlayer area in nanopores? In Fig. 6, diffractions of tricosane C_{23} in CPG (nominal $d = 12\text{--}300$ nm) are recorded at room temperature ($\sim 24^\circ\text{C}$) well below the corresponding transition point, where it is in the low temperature phase (orthorhombic O_i, O_{23}) except in 12 nm-pore with the rotator R_I or R_{II} or both of them. The layered reflections of $(00l)$ lines at $2\theta < 20^\circ$ in the nanopores are present, together with those vertical lines from the PDF card of bulk C_{23} . From the bulk to that in CPG (12 nm), their intensities (height) of the diffraction peaks show a decreasing trend with the decreasing size. However, they vary differently in lamellar and lateral packings: the $(00l)$ lines for the layered ordering decreases largely as the pore diameter decreases; the others, *e.g.* (110) and (200) reflections from ab in-plane lattice, do not change too much in $d = 24\text{--}300$ nm. Some higher-order $(00l)$ lines are widened to become weak: 0014 line is barely visible in C_{23}/CPG (300 nm), 0014 line invisible in CPG (100 nm), 0014 and 0012 line invisible in CPG (50 nm), 0014 and 0012 line



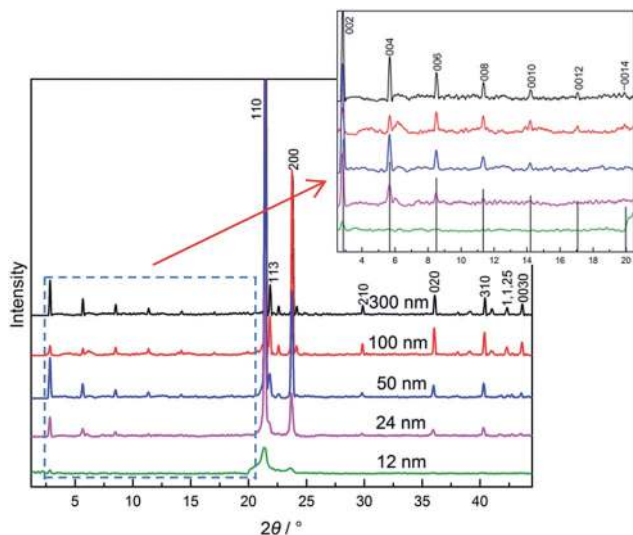


Fig. 6 Reflection patterns of C_{23} in CPG (nominal $d = 12$ – 300 nm) recorded at room temperature (~ 24 °C) in the low temperature phase, orthorhombic O_i (O_{23}), together with the vertical lines of from the standard PDF card of C_{23} .

invisible and 0010 hardly visible in CPG (24 nm), 004 to 0014 line all invisible in CPG (12 nm). In comparison with those vertical lines of the bulk, the (00 l) lines of C_{23} at each size decrease steeply with the increasing l and this trend is more tense with the decreasing pore size. Considering other lines (in $d = 24$ – 300 nm) at $2\theta > 20^\circ$ without large changing, the steep decrease in the intensities of the (00 l) lines should be attributed mainly to influence of the disordering of the molecular packing in the interlayer regions in relative to the bulk. And this disorder in lamellar stacking is intensified as the pore size decreases. Accordingly, the intensities of the (00 l) lines under the confinement can reflect the orderliness of the methyl layer at the interface of alkane solids. In contrast to an ordered packing of the molecules of the bulk, the above analysis indicates that the O_{23} phase in the pores contains some defects, which should be the same in the low temperature stable phases of other alkanes so that to bring about a significant change in their phase behaviours. The diffraction analysis of the lamellar ordering now turns to the present system. In the bulk C_{16} – C_{17} system, the (00 l) reflections in each composition are clear in both the low and high temperature domains, which do not show sharp decrease in the intensities, as seen in Fig. 3 panel (a). Among them, the highest-order l line (the smallest) has a ratio of signal to noise in height of $s/n = 6$ (T_p) and 13 (R_I) in $x_{C_{17}} = 0.05$, and 15–20 in $x_{C_{17}} \geq 0.25$, where the noise n is the standard deviation of base line in several degrees of angles around the peak. In contrast, the (00 l) reflections for the counterparts in CPG (300 nm) are weak, especially in the highest-order l lines that are listed in the following,

- $x_{C_{17}} = 0.05$, 003 line almost invisible ($s/n = 2.6$) in T_p one-phase region ($T < -10$ °C), and then weak ($s/n \approx 8$) in R_I one-phase region ($T > -10$ °C);
- $x_{C_{17}} = 0.25$, 008 line almost invisible ($s/n \approx 5$) in O_p , and then R_I one-phase region;

- $x_{C_{17}} = 0.5$, 008 line almost invisible ($s/n \approx 4$) in [$O_p + M_{dci}$] mixed two-phase region, and then invisible ($s/n \approx 1.6$) in R_I one-phase region;
- $x_{C_{17}} = 0.7$, 003 line almost invisible ($s/n = 2.6$) in M_{dci} one-phase region ($T < -10$ °C), and then weak ($s/n \approx 8$) in R_I two-phase region ($T > -10$ °C);
- $x_{C_{17}} = 0.95$, 0010 line weak ($s/n \approx 10$) in O_i , and then R_I one-phase region;
- $x_{C_{17}} = 1$, 0010 line obvious ($s/n = 9.3$) in O_i , and then obvious ($s/n = 6.7$) in R_I phase.

Here pure C_{17} and the mixture of $x_{C_{17}} = 0.95$ in CPG (300 nm) have larger intensities than the others in the highest-order l line. All the mixtures in CPG (300 nm) display much reduced intensity in the highest-order l line in referred to the bulk, actually almost invisible in most cases. In the meantime, the lateral arrangements of the alkane molecules are still well kept to show comparable intensities with the bulk. In the case, the steep reduction in the intensities of the (00 l) lines can be attributed to a more roughened layer interface generated from the confinement than the bulk through longitudinal diffuse and twisting of the alkane chains.³⁵ The changing in molecule packing is important for understanding the phase behaviours of the C_{16} – C_{17} mixtures in the nanopores.

Moreover, the occurrence of the rotator R_{II} in the mixtures and C_{17} is also the evidence for the increased defects in the packing of the alkane molecules otherwise only the rotator R_I exists as in the bulk. The rotator R_I is limited to pure C_{17} or the mixtures with enough long or average chain lengths. With the increasing temperature, the transformation from low to high temperature domain is accompanied by the expansion of the ab plane with the rotating of the alkane chains around their long axes, as shown in Fig. 7 panel (a) of three compositions of $x_{17} = 0.25$ ($O_p/M_{dci}/O_i$), 0.75 ($O_p/M_{dci}/O_i$), and 1 (O_i) in CPG (8.1 nm). The ratio of a/b changes slightly in the low temperature domain and the orientational ordering is kept in the alkane molecules. The a/b value increases with the transition to R_I phase as the molecular chains rotate partly in limited angles and lose orientational ordering. Then it reaches a maximum value $3^{1/2}$ on coming up of the rotator R_{II} with fully rotating chains. Panel (b) shows the schemes of relative free energies *versus* temperature of the representative transitions, involving the bulk C_{16} (left),¹⁶ the rotator R_I (middle), and the rotator R_{II} (right) respectively.

In most cases, the pore confinement seems simply to bring about more defects and chain diffuse in the layer surface, which results in the changing of the existing temperatures and compositions of the alkane solids. While one may see the phase behaviour reflecting directly the confinement effect, for example the mixed R_I with T_p or O_i phase appeared in the two pure components C_{16} and C_{17} in CPG (8.1 nm) but not in the bulk. These unique behaviours suggest an inhomogeneous existence of these alkane phases in the very small pores, very likely a radial distribution of the phases in the pores.³⁷ In a reasonable consideration, the alkane molecules near the pore surface correspond to the R_I phase where they are in the scope of the effective pore wall attractions. The rest of the alkane molecules around the core are in the packing of the low



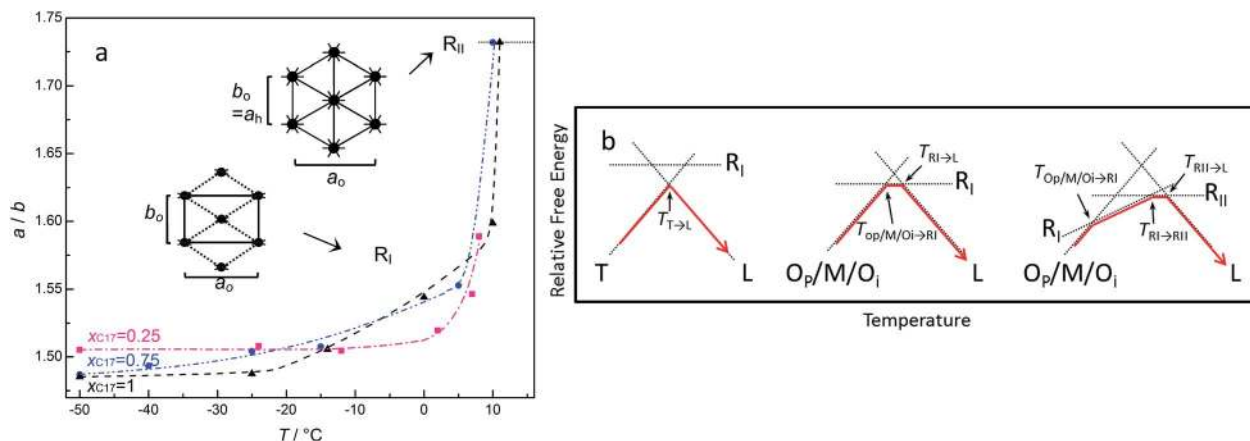


Fig. 7 (a) Temperature dependence of the cell parameter ratio a/b for compositions $x_{17} = 0.25$ (■), 0.75 (●), and 1 (O_i , ▲) of the C_{16} – C_{17} system in CPG (8.1) with the phase transformation from low temperature phase ($O_p/M_{dc}/O_i$ in mixture, O_i in C_{17}) to R_I and R_{II} phase. The insets are schematic view of the ab in-plane arrangements of the two rotator phases. R_I rotator is orthorhombic phase, subscript o ; rotator R_{II} is hexagonal subcell, subscript h . (b) Schemes of relative free energies versus temperature during transition to the bulk C_{16} (left), the rotator R_I (middle), and the rotator R_{II} (right) in CPG (8.1) respectively. The dotted lines are the equilibrium free energy curves.

temperature domain T_p or O_i phase, which is much less influenced by the wall attractions in a space “far” away from the pore surface. As discussed in the previous work, formation of R_I phase near the pore wall may be favoured by the irregular adsorption of the chain molecules on the rough surface of the glass, where the defects in the chain ends or amidst the chains can be compensated by the interface interactions.^{38,39} In other words, it is reasonable to assume the molecules near the pore wall contain some more defects such as end gauche. This part of the T_p or O_i phase becomes unstable and turns into its competitive R_I phase at elevated temperatures when the total defects in the chain ends disrupt the dense packing of the low temperature domain. As a result, a coexistence of mixed R_I with T_p or O_i phase is formed as a binary for the pure C_{16} and C_{17} in CPG (8.1 nm). With increased temperatures, the transformation of the mixed phase to melt (C_{16}), or R_I and R_{II} phase (C_{17}) can be understood from thermal energy excitation, schemed in Fig. 8 panels (a–b). However, it is not time for a consideration of the distribution of the two-phase region of C_{16} – C_{17} mixtures because of the same number of (two) phases in the nanopores with the bulk, and insufficient experimental facts available.⁴⁰

It should be noted the chain length of pure alkane or the average chain length of mixtures also plays an important role in their phase behaviours. In the pure alkanes, new phases the rotators appear in C_{16} (R_I), C_{17} (R_{II}), C_{18} (R_I and R_{II}) and C_{19} (R_{II}) in the nanopores of CPG (8.1 nm). Here, the odd–even effect fails in even-numbered alkane C_{16} and C_{18} in CPG (8.1 nm) in the knowledge of the bulk systems. With more types of the rotators, the longer chain member C_{18} shows more complicated phase behaviour than the shorter C_{16} . Although with the same phase sequence, the longer member C_{19} has a larger temperature range of the R_{II} phase than C_{17} , which means the stability of the rotators is strengthened in the longer chain members.²⁰ In the alkane mixtures, both C_{16} – C_{17} and C_{16} – C_{18} binary system in CPG (8.1 nm) exhibit a new R_{II} phase region. While latter system contains a wider composition range and a larger temperature scope than the former. The difference in their phase behaviours can also be attributed to the difference of the chain length or flexibility of the chains where longer (average) chains can generate more defects in the chains so as to favour the formation of R_I or even R_{II} rotator.

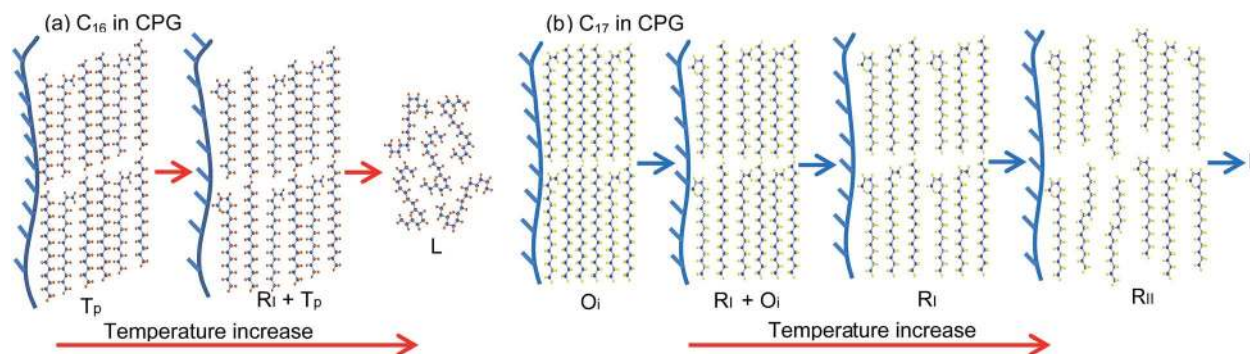


Fig. 8 Possible structural transformations of C_{16} from T_{16} in bulk to [R_I + T_{16}] and melt confined in CPG (8.1 nm) (a), and C_{17} from O_{17} in bulk to [R_I + O_{17}], R_I , and R_{II} phase confined in CPG (8.1 nm) (b).



Conclusions

The confinement of the glass pores with diameter $d = (8.1, \text{ and } 300) \text{ nm}$ changes the phase behaviour of C_{16} – C_{17} binary system. In CPG (300 nm), the binary system has the same types of the phase regions with the bulk, coming up in close positions. The high temperature domain of the R_I one-phase region expands a little in the mixtures of high C_{17} component. In the low temperatures, the one-phase regions with T_p and O_i structure tend to shrink slightly and the two-phase region [$O_p + M_{dci}$] become larger in composition. In CPG (8.1 nm), the high and low temperature domains shift to lower temperature range, reaching a difference of about 25 °C in referred to the bulk. The R_I one-phase region covers a wider temperature range than the bulk and that in CPG (300 nm). The one-phase regions with T_p and O_i structure become even smaller in composition coverage, the latter being very narrow. Meanwhile, a new R_{II} phase comes out in the mixtures with high C_{17} concentrations. In diffraction analysis, the confinement gives rise to additional disordering in the packing of the chain molecules, as evidenced by steep decrease in the intensities of (00 l) reflections especially in the high order l , which is intensified with the decreasing pore size. Meanwhile, the ab in-plane packing is well kept in the alkane molecules. The phase behaviour of the C_{16} – C_{17} mixtures can be understood from the point of defects in the chains in nanopores as in the bulk system, besides the influence of the composition, the chain length and temperature. The results may also help in elucidation of crystallization in early stages of bulk materials, and new physical phenomena of nano-sized soft mater.

Acknowledgements

We thank the financial support from National Natural Science Foundation of China (No. 21273138, 23173215).

References

- 1 C. Alba-Simionesco, B. Coasne, G. Dudziak, K. E. Gubbins, R. Radhakrishnan and M. Sliwinska-Bartkowiak, *J. Phys.: Condens. Matter*, 2006, **18**, R15.
- 2 M. Beiner, *J. Polym. Sci., Part B: Polym. Phys.*, 2008, **46**, 1556–1561.
- 3 G. Dosseh, Y. Xia and C. Alba-Simionesco, *J. Phys. Chem. B*, 2003, **107**, 6445–6453.
- 4 P. Huber, *J. Phys.: Condens. Matter*, 2015, **27**, 103102.
- 5 K. C. Hugo, *J. Phys.: Condens. Matter*, 2001, **13**, R95.
- 6 Q. Jiang and M. D. Ward, *Chem. Soc. Rev.*, 2014, **43**, 2066–2079.
- 7 Y. Long, J. C. Palmer, B. Coasne, M. Sliwinska-Bartkowiak and K. E. Gubbins, *Phys. Chem. Chem. Phys.*, 2011, **13**, 17163–17170.
- 8 J. Haddad, H. G. Steinuck, H. Hlaing, S. Kewalramani, D. Pontoni, H. Reichert, B. M. Murphy, S. Festersen, B. Runge, O. M. Magnussen, A. Magerl, M. Deutsch and B. M. Ocko, *J. Phys. Chem. C*, 2015, **119**, 17648–17654.
- 9 C. L. Jackson and G. B. McKenna, *J. Chem. Phys.*, 1990, **93**, 9002–9011.
- 10 D. Morineau, G. Dosseh, C. Alba-Simionesco and P. Llewellyn, *Philosophical Magazine Part B: Physics of Condensed Matter. Electronics, Optical and Magnetic Properties*, 1999, **79**, 1847–1855.
- 11 M. Sliwinska-Bartkowiak, G. Dudziak, R. Sikorski, R. Gras, R. Radhakrishnan and K. E. Gubbins, *J. Chem. Phys.*, 2001, **114**, 950–962.
- 12 F. Kleitz, F. Berube, R. Guillet-Nicolas, C. M. Yang and M. Thommes, *J. Phys. Chem. C*, 2010, **114**, 9344–9355.
- 13 R. Radhakrishnan, K. E. Gubbins and M. Sliwinska-Bartkowiak, *J. Chem. Phys.*, 2000, **112**, 11048–11057.
- 14 M. Sliwinska-Bartkowiak, G. Dudziak, R. Gras, R. Sikorski, R. Radhakrishnan and K. E. Gubbins, *Colloids Surf., A*, 2001, **187–188**, 523–529.
- 15 H. Duran, M. Steinhart, H. J. Butt and G. Floudas, *Nano Lett.*, 2011, **11**, 1671–1675.
- 16 E. B. Sirota and A. B. Herhold, *Science*, 1999, **283**, 529–532.
- 17 E. B. Sirota, *Langmuir*, 1998, **14**, 3133–3136.
- 18 G. Graubner, G. T. Rengarajan, N. Anders, N. Sonnenberger, D. Enke, M. Beiner and M. Steinhart, *Cryst. Growth Des.*, 2014, **14**, 78–86.
- 19 P. Huber, V. P. Soprunyuk and K. Knorr, *Phys. Rev. E*, 2006, **74**, 031610.
- 20 P. Huber, D. Wallacher, J. Albers and K. Knorr, *Europhys. Lett.*, 2004, **65**, 351.
- 21 L. P. Wang, J. Sui, M. Zhai, F. Tian and X. Z. Lan, *J. Phys. Chem. C*, 2015, **119**, 18697–18706.
- 22 L. P. Wang, Q. F. Li, C. Wang and X. Z. Lan, *J. Phys. Chem. C*, 2014, **118**, 18177–18186.
- 23 W. R. Turner, *Product Research and Development*, 1971, **10**, 238–260.
- 24 S. C. Nyberg, F. M. Pickard and N. Norman, *Acta Crystallogr., Sect. B: Struct. Crystallogr. Cryst. Chem.*, 1976, **32**, 2289–2293.
- 25 S. R. Craig, G. P. Hastie, K. J. Roberts and J. N. Sherwood, *J. Mater. Chem.*, 1994, **4**, 977–981.
- 26 D. Mondieig, F. Rajabalee, V. Metivaud, H. A. J. Oonk and M. A. Cuevas-Diarte, *Chem. Mater.*, 2004, **16**, 786–798.
- 27 A. Mataz and B. M. Gregory, *J. Phys.: Condens. Matter*, 2005, **17**, R461.
- 28 A. Wurflinger, D. Mondieig, F. Rajabalee and M. A. Cuevas-Diarte, *Z. Naturforsch.*, 2001, 626–634.
- 29 J. M. Ha, B. D. Hamilton, M. A. Hillmyer and M. D. Ward, *Cryst. Growth Des.*, 2009, **9**, 4766–4777.
- 30 D. Fu, Y. Su, X. Gao, Y. Liu and D. Wang, *J. Phys. Chem. B*, 2013, **117**, 6323–6329.
- 31 R. D. Heyding, K. E. Russell, T. L. Varty and D. St-Cyr, *Powder Diffr.*, 1990, **5**, 93–100.
- 32 A. Iler, *Proc. R. Soc. London, Ser. A*, 1932, **138**, 514–530.
- 33 S. R. Craig, G. P. Hastie, K. J. Roberts, J. N. Sherwood, R. D. Tack and R. J. Cernik, *J. Mater. Chem.*, 1999, **9**, 2385–2392.
- 34 X. Gao, D. Fu, B. Xie, Y. Su and D. Wang, *J. Phys. Chem. B*, 2014, **118**, 12549–12555.
- 35 M. Maroncelli, H. L. Strauss and R. G. Snyder, *J. Phys. Chem.*, 1985, **89**, 5260–5267.



- 36 J. Doucet, I. Denicolo, A. Craievich and A. Collet, *J. Chem. Phys.*, 1981, **75**, 5125–5127.
- 37 R. Montenegro, M. Antonietti, Y. Mastai and K. Landfester, *J. Phys. Chem. B*, 2003, **107**, 5088–5094.
- 38 E. B. Sirota, H. E. King Jr, H. H. Shao and D. M. Singer, *J. Phys. Chem.*, 1995, **99**, 798–804.
- 39 Y. V. Mnyukh, *J. Struct. Chem.*, 1960, **1**, 346–365.
- 40 S. Calus, B. Jabłońska, M. Busch, D. Rau, P. Huber and A. V. Kityk, *Phys. Rev. E*, 2014, **89**, 062501.

