

RESEARCH

Open Access

Polyunsaturated fatty acids in various macroalgal species from north Atlantic and tropical seas

Vincent JT van Ginneken^{1†}, Johannes PFG Helsper^{2*†}, Willem de Visser¹, Herman van Keulen¹ and Willem A Brandenburg¹

Abstract

Background: In this study the efficacy of using marine macroalgae as a source for polyunsaturated fatty acids, which are associated with the prevention of inflammation, cardiovascular diseases and mental disorders, was investigated.

Methods: The fatty acid (FA) composition in lipids from seven sea weed species from the North Sea (*Ulva lactuca*, *Chondrus crispus*, *Laminaria hyperborea*, *Fucus serratus*, *Undaria pinnatifida*, *Palmaria palmata*, *Ascophyllum nodosum*) and two from tropical seas (*Caulerpa taxifolia*, *Sargassum natans*) was determined using GCMS. Four independent replicates were taken from each seaweed species.

Results: Omega-3 (n-3) and omega-6 (n-6) polyunsaturated fatty acids (PUFAs), were in the concentration range of 2-14 mg/g dry matter (DM), while total lipid content ranged from 7-45 mg/g DM. The n-9 FAs of the selected seaweeds accounted for 3%-56% of total FAs, n-6 FAs for 3%-32% and n-3 FAs for 8%-63%. Red and brown seaweeds contain arachidonic (C20:4, n-6) and/or eicosapentaenoic acids (EPA, C20:5, n-3), the latter being an important "fish" FA, as major PUFAs while in green seaweeds these values are low and mainly C16 FAs were found. A unique observation is the presence of another typical "fish" fatty acid, docosahexaenoic acid (DHA, C22:6, n-3) at ≈ 1 mg/g DM in *S. natans*. The n-6: n-3 ratio is in the range of 0.05-2.75 and in most cases below 1.0. Environmental effects on lipid-bound FA composition in seaweed species are discussed.

Conclusion: Marine macroalgae form a good, durable and virtually inexhaustible source for polyunsaturated fatty acids with an (n-6) FA: (n-3) FA ratio of about 1.0. This ratio is recommended by the World Health Organization to be less than 10 in order to prevent inflammatory, cardiovascular and nervous system disorders. Some marine macroalgal species, like *P. palmata*, contain high proportions of the "fish fatty acid" eicosapentaenoic acid (EPA, C20:5, n-3), while in *S. natans* also docosahexaenoic acid (DHA, C22:6, n-3) was detected.

Background

Polyunsaturated fatty acids (PUFAs) are essential nutrients which cannot, or only to a limited extent, be synthesised by mammals. Therefore, they must be ingested via dietary sources [1,2]. The two main PUFA classes are omega-3 (n-3) and omega-6 (n-6). The n-3 PUFAs are provided by fish and plant sources, whereas the n-6 PUFAs are ingested mainly via vegetable oil [2,3].

Degenerative diseases related to inappropriate fatty acid consumption form a major, potential death cause

for two thirds of the population living in affluent, industrialised nations [4]. Sixty eight percent of the people die from three conditions which involve fatty acid (FA) degeneration: cardiovascular disease (43.8%), cancer (22.4%), and diabetes (1.8%) [5,6].

Two PUFAs which cannot be synthesized by humans and other vertebrates are linoleic acid (C18:2, n-6) and α -linolenic acid (C18:3, n-3). The PUFAs include two metabolic series of compounds: the n-6 and the n-3 FAs. Linoleic acid belongs to the n-6 series while linolenic acid refers to both α -linolenic (C18:3, n-3) and γ -linolenic acid (C18:3, n-6). Within the body both can be converted to other PUFAs such as arachidonic acid (C20:4, n-6), eicosapentaenoic acid (EPA, C20:5, n-3) and docosahexaenoic acid (DHA, C22:6, n-3). There are two pathways for the

* Correspondence: hans.helsper@wur.nl

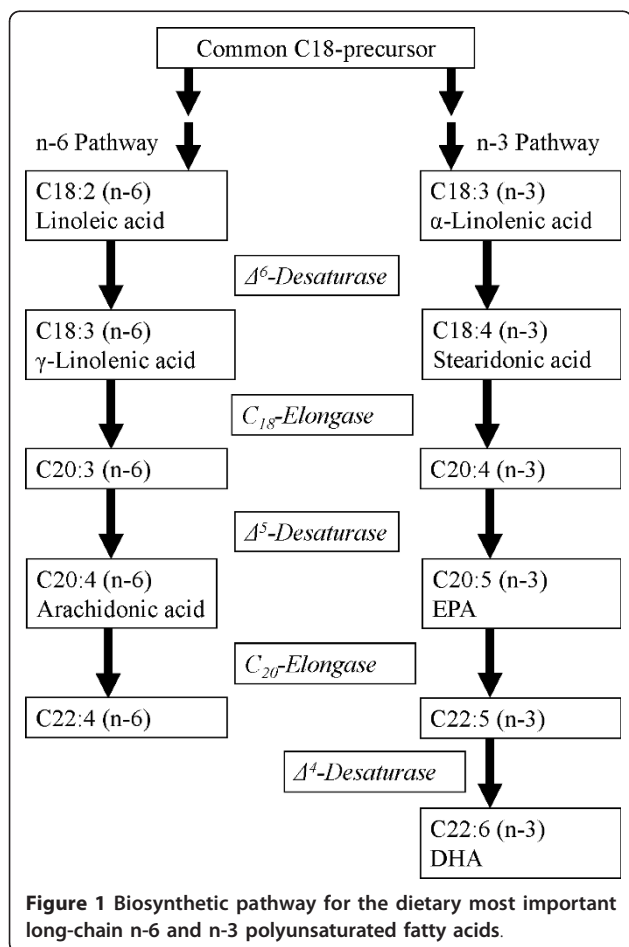
† Contributed equally

²Plant Research International, Business Unit Bioscience, P.O. Box 619, 6700 AP Wageningen, The Netherlands

Full list of author information is available at the end of the article

conversion of C18 PUFAs to long chain PUFAs: Linoleic acid is converted to arachidonic acid in the n-6 series and α -linolenic acid is converted to EPA and DHA in the n-3 series (Figure 1, reviewed [3,7]).

It is important to maintain an appropriate balance of n-3 and n-6 in the diet as these FAs work together to promote health: n-3 FAs have been recognised to exhibit anti-inflammatory and antioxidant activity, which may contribute to their beneficial cardiac effects [3,8,9], but also to the prevention of breast cancer [10]. In contrast, most n-6 FAs (precursors of arachidonic acid and prostaglandin E₂) tend to promote inflammation and tumour growth [11,12]. Recently, it became clear that besides prevention of cardiovascular diseases [9,13,14] some n-3 PUFAs, especially EPA and DHA, are major components of brain cells and crucial for proper development and functioning of the brain and the nervous system [15,16]. Also with a world-wide increase in lifetime expectancy [17] it is an important observation that dietary n-3 fatty acid supplementation to the elderly results in an increased muscle protein synthesis, in this way preventing sarcopenic obesity [18].



Until now the major source of n-3 and n-6 long-chain PUFAs, such as arachidonic acid, EPA and DHA, is fish oil [19]. However, it is noteworthy that the original source of these long-chain PUFAs is not the fish itself, but marine algae and phytoplankton which form their major dietary source [20].

A recent study [21,22] predicts a rapid worldwide depletion of fish populations. Already 29% of edible fish and seafood species has declined by 90%, which indicates a collapse of fisheries and salt-water fish extinction by the year 2048 [22]. Therefore, other sources for n-3 and n-6 FAs have to be found. Seaweeds are abundant and poorly exploited. Three major groups of seaweeds can be distinguished: Chlorophyta (1200 species), Phaeophyceae (2000 species) and Rhodophyta (6000 species) [23]. Although in general their lipid content is low we hypothesise that n-3 and n-6 PUFAs can be extracted from these macroalgae.

In addition, the n-6: n-3 ratio, which is currently recommended by the WHO [24] to be lower than 10 in the diet, can possibly be improved by addition of certain edible seaweeds because of their high n-3 content.

Methods

Seaweeds

Fronds of nine different species of benthic marine macrophytes (macroalgae) with different growth strategies and morphologies were collected from the upper and mid-littoral zone in September and October 2009. Four replicates were sampled for every seaweed species on each location. The seaweed species collected at the various locations were:

- *Ulva lactuca* (Chlorophyta): Katse Heule, Eastern Scheldt, the Netherlands. Approximate coordinates: 51° 32'30 N and 3°52' E
- *Laminaria hyperborea* (Phaeophyceae), *Chondrus crispus* (Rhodophyta), *Fucus serratus* (Phaeophyceae): Concarneau, France. Approximate coordinates: 47°52' N and 3°55' W
- *Palmaria palmata* (Rhodophyta), *Undaria pinnatifida* (Phaeophyceae): Kilcar, West Donegal, Ireland. Approximate coordinates: 54°37' N and 8°37' W
- *Ascophyllum nodosum* (Phaeophyceae): Island Solund, Norway. Approximate coordinates: 61°03' N and 4°52' E
- *Sargassum natans* (Phaeophyceae): Atlantic Ocean. Approximate coordinates: 37°08' N and 32°22' W
- *Caulerpa taxifolia* (Chlorophyta) (origin Denpasar, Bali, Indonesia, purchased from Marinelife, Spijk, The Netherlands). Approximate coordinates: 8°41' S and 115° 17' E.

Representative samples of about 5 g for each replicate were frozen in liquid nitrogen, ground to a fine powder using a laboratory mill (IKA, model A11B, Staufen,

Germany) and stored at -80°C until analysis. Aliquots of about 250 mg of these powders were weighed and extracted with 4 ml chloroform/methanol (4:5, v/v), which contained glyceryl-triheptadecanoate, equivalent to 4 $\mu\text{g}/\text{ml}$ of margaric acid (C17:0), as an internal standard for quantification. After addition of 2.5 ml water and thorough mixing, phase separation was achieved by centrifugation. The methanol/water phase was washed twice with 1.0 ml chloroform. The combined chloroform phases, containing acyl lipids and other apolar compounds, were evaporated to dryness under a nitrogen stream. Hydrolysis and methylation of acyl lipids to fatty acid methyl esters (FAMES) were achieved by heating in 3 ml methanol, containing 5% concentrated sulphuric acid, for 3 h at 70°C . FAMES were partitioned by phase separation into 3 ml *n*-hexane, which was washed twice with 1.0 ml water. Hexane fractions were passed over a small amount of water-free sodium sulphate to remove traces of water and acid before analysis on GCMS.

Aliquots (1 μl) were analysed on an Agilent 7890A gas chromatograph, connected to an Agilent 5975A mass selective detector, equipped with a ZB225-column (30 m length \times 0.25 mm i.d. \times 0.25 μm film thickness; Phenomenex, Utrecht, The Netherlands). The oven was programmed at an initial temperature of 60°C for 2 min, followed by heating at $20^{\circ}\text{C}/\text{min}$ to 120°C , $3^{\circ}\text{C}/\text{min}$ to 165°C , $2^{\circ}\text{C}/\text{min}$ to 215°C and a final time of 10 min. Helium was used as a carrier gas at 0.7 ml/min. The injector (splitless mode), interface, MS source and detector temperatures were 250°C , 290°C , 178°C and 290°C , respectively. Dry matter (DM)-based concentrations of fatty acids were calculated from fresh weight (FW)-based measurements through FW-to-DM conversion factors, determined after drying for 24 h at 60°C and then for one night at 105°C .

Results

Total acyl lipid concentration

Table 1 shows that *Ascophyllum nodosum* and *Fucus serratus* growing in the colder regions of the Atlantic, show the highest acyl lipid concentration with 45 and 37 mg per g dry matter (DM), respectively. *Ulva lactuca* and *Chondrus crispus*, which grow at the surface in the water column, have intermediate lipid concentrations of about 22 and 15 mg per g DM, respectively. Similar concentrations are observed for *Laminaria hyperborea*, *Undaria pinnatifida* and *Palmaria palmata* which are collected from the French and Irish region of the Atlantic Ocean. The tropical seaweeds *Caulerpa taxifolia* and *Sargassum natans* have the lowest concentrations of about 10 mg per g DM.

Fatty acid composition

Palmitic acid (C16:0) was measured in all species at relatively high concentration. The lowest absolute value was

measured in *C. crispus* (2.7 mg per g DM, 19% of total FA) and the highest absolute value in *F. serratus* (7.3 mg per g DM, 19% of total FA). The n-9 FAs were in the range of 3%-56% for *P. palmata* and *A. nodosum*, respectively. The important n-3 PUFA α -linolenic acid (C18:3) had the highest concentration in *U. lactuca* (4.5 mg per g DM, 20%) and another n-3 PUFA stearidonic acid (C18:4) had the highest absolute concentration in *L. hyperborea* and *U. pinnatifida* (2.3 mg per g DM, 12-13% of total fatty acids). The important "fish" n-3 PUFA eicosapentaenoic acid (EPA, C20:5) was the most abundant FA in *P. palmata* (8.3 mg per g DM, 59% of total FA, Figure 2).

A unique observation is the presence of another typical "fish" fatty acid, C22:6 at approximately 1 mg/g DM in *S. natans*.

The n-6 PUFA linoleic acid (C18:2) was found at the highest concentration of about 5 mg per g DM in *U. lactuca* and *A. nodosum*, while in *U. lactuca* also the highest proportion, 25% of total FA, was observed. Another n-6 PUFA, γ -linolenic acid, was only found in small amounts ranging from 1-3% of total FAs in some analyzed seaweeds. The n-6 FA arachidonic acid (C20:4) was found in the highest concentration in *F. serratus* and *A. nodosum* (about 4.5 mg per g DM, 13% and 10% of total FAs, respectively) and in *U. pinnatifida* (3 mg per g DM, 16%). The n-6: n-3 ratio in seaweeds was ≤ 1.0 for all species with the exception of *F. serratus* (2.44) and *A. nodosum* (2.75) (Table 1).

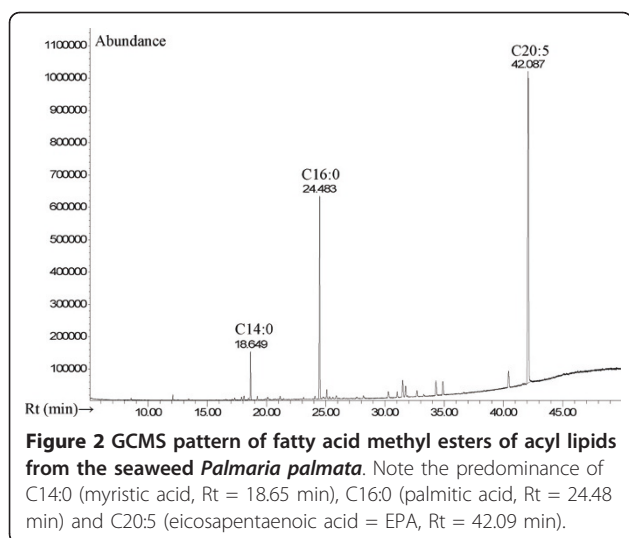
Discussion

Lipid content has been described to be very low in seaweeds, ranging from 1 to 5% of dry matter and varies strongly between species [25], but their PUFA content can be as high as that of land plants [23,26] or even higher [27]. Fishery products and oil seeds contain much higher concentrations of PUFA over 20 and 50% of dry matter, respectively [2]. It should be noted that these PUFA supplies might become limiting in the near future. As stated in the introduction, the original source of long-chain PUFAs is not the fish itself, but marine algae and phytoplankton which form their major dietary source [20]. In the present study we also found lipid concentrations of 1-5% of dry matter for the nine seaweed species investigated and confirm that seaweeds can be a rich source of polyunsaturated fatty acids (PUFAs). They contain n-3 PUFAs such as C16:3 (isomer n-3), C16:4 (n-3), C18:3 (α -linolenic acid), C18:4 (stearidonic), and also long-chain n-3 PUFAs, e.g. C20:5 (EPA: eicosapentaenoic acid) and C22:6 (DHA: docosahexaenoic acid). In addition, we found the following n-6 PUFAs: C18:2 (linoleic acid), C18:3 (γ -linolenic acid), C20:4 (arachidonic acid) and C22:5 (docosapentaenoic acid). These results corroborate with the results of other

Table 1 Fatty acid (FA) composition of macroalgal species.

Fatty acid	n-Classification for unsaturated carbon	<i>Ulva lactuca</i>	<i>Chondrus crispus</i>	<i>Laminaria hyperborea</i>	<i>Fucus serratus</i>	<i>Undaria pinnatifida</i>	<i>Palmaria palmata</i>	<i>Caulerpa taxifolia</i>	<i>Ascophyllum nodosum</i>	<i>Sargassum natans</i>	
		µg FA per g dry matter (% of total fatty acid)									
C14:0*		28 ± 13 (<1)	1170 ± 186 (8)	1297 ± 89 (7)	2354 ± 641 (6)	1163 ± 80 (6)	681 ± 56 (5)	236 ± 10 (2)	3027 ± 395 (7)	162 ± 24 (2)	
C16:0*		2768 ± 808 (12)	2718 ± 186 (19)	3178 ± 173 (18)	7266 ± 1849 (19)	2935 ± 101 (16)	3500 ± 156 (25)	4942 ± 44 (39)	3693 ± 682 (8)	3006 ± 259 (41)	
C16:1*	n-9	75 ± 61 (<1)	1512 ± 260 (10)	402 ± 57 (2)	566 ± 103 (1)	1147 ± 143 (6)	204 ± 47 (1)	443 ± 18 (4)	462 ± 74 (1)	325 ± 29 (4)	
C16:3	n-3	119 ± 43 (1)	n.d.	n.d.	n.d.	n.d.	n.d.	1085 ± 45 (9)	n.d.	n.d.	
C16:4	n-3	429 ± 8 (2)	n.d.	n.d.	n.d.	n.d.	n.d.	n.d.	n.d.	n.d.	
C18:0*		n.d.	n.d.	n.d.	316 ± 42 (1)	147 ± 6 (1)	133 ± 21 (1)	n.d.	240 ± 79 (<1)	369 ± 44 (5)	
C18:1*	n-9	4502 ± 2204 (20)	2437 ± 296 (17)	3616 ± 53 (20)	15387 ± 6147 (41)	2339 ± 99 (13)	298 ± 59 (2)	882 ± 58 (7)	23193 ± 4833 (54)	1095 ± 147 (15)	
C18:1	unknown	919 ± 707 (4)	212 ± 35 (1)	n.d.	76 ± 91(<1)	n.d.	179 ± 26 (1)	222 ± 17 (2)	120 ± 42 (<1)	74 ± 85 (1)	
C18:2*	n-6	5548 ± 2108 (25)	312 ± 26 (2)	398 ± 37 (2)	3081 ± 906 (8)	800 ± 24 (4)	125 ± 40 (1)	n.d.	4884 ± 236 (11)	230 ± 29 (3)	
C18:3*	n-3	4459 ± 865 (20)	233 ± 30 (2)	n.d.	1065 ± 149 (3)	1195 ± 65 (7)	312 ± 152 (2)	2161 ± 119 (18)	688 ± 19 (2)	121 ± 17 (2)	
C18:3	n-6	484 ± 128 (2)	396 ± 21 (3)	n.d.	225 ± 68 (1)	243 ± 16 (1)	n.d.	n.d.	235 ± 42 (<1)	n.d.	
C18:4	n-3	1846 ± 1648 (8)	1735 ± 282 (12)	2287 ± 92 (13)	547 ± 117 (1)	2255 ± 240 (12)	346 ± 111 (2)	354 ± 14 (3)	869 ± 354 (2)	n.d.	
C20:3	n-9	n.d.	n.d.	n.d.	342 ± 116 (1)	n.d.	n.d.	n.d.	378 ± 46 (1)	n.d.	
C20:4	n-6	355 ± 219 (2)	2158 ± 284 (15)	2095 ± 290 (12)	4775 ± 1150 (13)	2943 ± 155 (16)	332 ± 136 (2)	439 ± 38 (3)	4592 ± 2986 (10)	581 ± 81 (8)	
C20:5*	n-3, EPA	234 ± 215 (1)	1216 ± 135 (8)	4781 ± 327 (26)	1424 ± 251 (4)	2858 ± 128 (16)	8339 ± 340 (59)	997 ± 87 (8)	1569 ± 127 (4)	329 ± 38 (5)	
C22:4	n-9	n.d.	398 ± 116 (3)	n.d.	n.d.	n.d.	n.d.	n.d.	n.d.	n.d.	
C22:5	n-6	610 ± 319 (3)	n.d.	n.d.	n.d.	n.d.	n.d.	n.d.	n.d.	n.d.	
C22:6*	n-3, DHA	n.d.	n.d.	n.d.	n.d.	n.d.	n.d.	n.d.	n.d.	970 ± 109 (13)	
C24:0		n.d.	n.d.	n.d.	n.d.	n.d.	n.d.	156 ± 204 (1)	n.d.	n.d.	
Total		22387	14669	18054	37413	18191	14448	12592	44670	7262	
Total n-9		21%	30%	22%	43%	19%	3%	11%	56%	19%	
Total n-6		32%	20%	14%	22%	21%	3%	4%	22%	11%	
Total n-3		32%	22%	39%	9%	35%	63%	38%	8%	20%	
Ratio n-6: n-3		1.0	0.91	0.36	2.44	0.60	0.05	0.11	2.75	0.55	

Seven species were collected from the North Sea (*U. lactuca*, *C. crispus*, *L. hyperborea*, *F. serratus*, *U. pinnatifida*, *P. palmata*, *A. nodosum*) and two species from tropical seas (*C. taxifolia*, *S. natans*). Results are expressed as mean ± standard deviation in µg FA per g dry matter (n = 4) and, between brackets, as relative concentration (in % of total FA). FAs marked with * are identified on the basis of retention index similarity of authentic standards and of mass spectrum comparison with a Wiley library data base of their methyl esters. Unmarked FAs are identified on the basis of mass spectrum comparison with a Wiley library data base. Abbreviations: EPA = eicosapentaenoic acid (C20:5, n-3); DHA = docosahexaenoic acid(C22:6, n-3); n.d. = not detectable.



studies [27-30] although our study covered a larger variety of seaweed species.

One of the most interesting observations of this study was that the highest relative concentration of PUFAs in the red seaweed *Palmaria palmata* was observed for eicosapentaenoic acid (C20:5, EPA) accounting for 59% of the total fatty acid content. EPA is a very important n-3 FA in fish oil [19].

The total n-6 content was very low (only 3%) which corresponds to literature data [24,31] leading to a very low n-6: n-3 ratio (see Table 2). A low n-6: n-3 ratio is considered as a positive characteristic associated with

Table 2 Ratios of n-6: n-3 fatty acids in various seaweed species, as reported in earlier studies.

Seaweed species	Ratio n-6: n-3	Reference
<i>Porphyra</i> sp.	1.32	[35]
<i>Saccorhiza polyschides</i>	0.71	[24]
<i>Himanthalia elongata</i>	0.81-1.32	
<i>Laminaria ochroleuca</i>	0.83	
<i>Undaria pinnatifida</i>	0.49	
<i>Palmaria</i> sp.	0.13	
<i>Porphyra</i> sp.	1.21	
<i>Nereocystis luetkeana</i>	0.68	[36]
<i>Porphyra perforata</i>	0.46	
<i>Fucus distichus</i>	1.38	
<i>Fucus</i> sp.	1.49	
<i>Pterigophora</i> sp.	0.40	
<i>Ulva fenestra</i>	0.11	
<i>Porphyra</i> sp. from Japan, Korea	0.6	[37]
<i>Porphyra</i> sp. from China	1.8	
<i>Undaria pinnatifida</i>	0.5	
<i>Laminaria</i> sp.	1.3	
<i>Hizikia fusiforme</i>	0.3	

prevention of inflammatory, cardiovascular and neural disorders. This may be a more general characteristic of red seaweeds because a similar result was observed in the edible red macroalga *Grateloupia turuturu* where the most abundant fatty acids were palmitic acid (C16:0) and EPA (C20:5) at proportions of 52% and 12%, respectively [32].

Hitherto, the margarine industry used both plants and seeds as the primary source of PUFAs. Seed oils, margarines and related products are rich in C18:2 and C18:3 [33]. n-6 PUFAs are mainly found in vegetable products. Linoleic acid (C18:2) is found in soybean, corn, nut, and sunflower oils, and γ -linolenic acid (C18:3) in borage, evening prim-rose and blackcurrant oils [2]. The major n-6 long chain PUFA is arachidonic acid (C20:4), which is found in egg yolk and muscle tissue [2]. The n-3 PUFA α -linolenic acid is also present in vegetable products (rapeseed, soybean and nut oils). The n-3 long chain PUFAs, e.g. C20:5 and C22:6, are mainly found in oily fish (e.g. mackerel, herring, and salmon) and fish oils [19], while smaller amounts are found in meat. DHA and its precursor EPA are common in marine fish and shellfish from cold waters [2,19]. Fish and shellfish from warmer marine or fresh water have ubiquitous DHA and EPA, however also the arachidonic acid (n-6) content is generally higher [2,19]. The n-6: n-3 ratio in the diet is currently recommended by the WHO to be less than 10 [24] in order to prevent inflammatory, cardiovascular and neural disorders. The n-6: n-3 ratio found in our study for seaweeds is approximately 1.0. In addition, seaweeds are reported to also contain much lower concentrations of trans fatty acids than today's diet [3,34].

Table 2 (see also [24], [35]-[37]) gives an overview for the n-6: n-3 ratios of various seaweed sources, reported in the scientific literature. In our study we found several PUFAs in different concentrations in seven seaweed species from the North Sea (*Ulva lactuca*, *Chondrus crispus*, *Laminaria hyperborea*, *Fucus serratus*, *Undaria pinnatifida*, *Palmaria palmata*, *Ascophyllum nodosum*) and two tropical seaweeds (*Caulerpa taxifolia*, *Sargassum natans*). If we compare our data from Table 1 with other literature data of PUFAs in seaweeds, the following features arise:

- Green seaweeds like *Caulerpa* sp. and *Ulva* sp. are rich in C16:0 (palmitic acid) [38].

- Relatively high contents of polyunsaturated C16-fatty acids, which are uncommon in plants, were found in the green seaweeds *U. lactuca* and *C. taxifolia*. The C16 FAs were proposed to be taxonomically important among green macrophyte algae [39].

- These seaweeds also contained the essential fatty acids C18:2 (linoleic acid, n-6), C18:3 (α -linolenic acid, n-3), C20:4 (arachidonic acid, n-6) and C20:5

(eicosapentaenoic acid, n-3) [38]. For *Ulva* spp. from Turkey also high proportions of palmitic (C16:0), palmitoleic (C16:1), oleic (C18:1, n-9), linoleic acid (C18:2, n-6) and conjugated linolenic acids (C18:3, n-3 and n-6) were found [27]. In the study of El-Shoubaky *et al.* [27] the same compounds were found for *Ulva rigida* from Egypt and *U. fasciata* but in these species no C20:4 (n-6) and C20:5 (n-3) were found.

- Like reported in our study for *Sargassum natans*, palmitic (C16:0) and oleic acids (C18:1, n-9) were the most abundant FAs in *S. polycystum* [30]. However, in our study we found no docosapentaenoic acid (C22:5, n-6). Our observations for the PUFA content of *S. natans* correspond to those for other *Sargassum* spp. [30,40,41].

- For *Caulerpa taxifolia* we found low amounts of PUFAs. This is in agreement with Matanjan *et al.* [30] where in *C. lentillifera* also a low PUFA content in comparison to *Euchema cottonii* and *S. polycystum* was observed. In this study, *C. lentillifera* contained all the essential fatty acids linoleic acid (C18:2, n-6), α -linolenic acid (C18:3, n-3), and eicosapentaenoic acid (C20:5, n-3).

- In *Laminaria hyperborea* the highest concentrations were found for palmitic acid (C16:0), arachidonic acid (C20:4, n-6), oleic acid (C18:1, n-9), linoleic acid (C18:2, n-6) which is comparable to the observations of Dawczynski *et al.* [37]. In contrast to the study of Dawczynski *et al.* [37] we found no α -linolenic acid (C18:3, n-3).

- Characteristic for *Undaria pinnatifida* is the relatively high concentration of stearidonic acid (C18:4, n-3) which corresponds to earlier studies [37,42,43].

- In our study we investigated also two red seaweeds. Both had a totally different PUFA composition. *Chondrus crispus* has a high level of arachidonic acid (C20:4, n-6) which is in agreement with Fleurence *et al.* [43]. *Palmaria palmata* is a very interesting red seaweed. It contains eicosapentaenoic acid (EPA, C20:5, n-3) as the predominant fatty acid, and marginal concentrations of arachidonic acid (C20:4, n-6), linoleic acid C18:2, n-6). These data correspond to those found in earlier studies [37,42,43].

From the coherence between various studies on PUFA content between macroalgal species we can conclude that there is a strong genetic component in determining the PUFA content. The question remains to what extent the PUFA concentration and composition are determined by genus and environment [44,45].

Our study with seven seaweeds from the North Sea, each with a typical fatty acid composition, confirms that genetic factors are of major importance as also stated by Matanjan *et al.* [30] from a study with three tropical seaweeds and by Khotimchenko [29] with seven *Sargassum* species.

Other studies showed the effects of environmental factors, like temperature [36], annual cycle [32,46-48],

salinity [49] and mineral content of the growth medium [50,51]. In *S. piluliferum* increasing salinity was associated with increasing levels of C18:4 (n-3), C20:4 (n-6), C20:5 (n-3), total n-3 and total n-6 PUFAs [49]. For *Ascophyllum nodosum*, the degree of fatty acid desaturation is associated with a lower water temperature, which is probably an adaptation of cell membranes to maintain their fluidity [27]. Also Colombo *et al.* [36] reported that the PUFA content and degree of desaturation of seaweeds harvested in cold regions (Canada) was higher than those harvested in tropical waters of southern China and the Indo-Pacific region [36]. In general, high contents of saturated fatty acids have been reported in warm water tropical seaweeds [40,52].

Our observations substantiate the conclusion that an appropriate choice of macroalgal species, given their high PUFA content and low n-6: n-3 ratio, may form a promising strategy to enhance food quality, e.g. to prevent inflammatory, cardiovascular diseases and nervous system disorders. Given the growing world population and increasing demand for qualitative and quantitative food supply, the present food sources, also for PUFAs, will almost certainly be insufficient in the near future [53]. Therefore, new sources have to be explored from which Integrated Multi-Trophic Aquaculture (abbreviated IMTA) is a strategy, which is presently being investigated for its economic and agronomic feasibility. Sea farming in marine off-shore systems of macroalgae forms part of this approach [54,55]. From these studies it becomes evident that general predictions on agricultural potential and economic cost-benefit balances are difficult to give, since they are strongly dependent on factors related to local circumstances, e.g. appropriate algal species, tidal range and scale size. Already at this stage of development a production for macroalgae of about 50 tons per ha has been achieved and this yield will increase when the potential of using off-shore farming seaweed agriculture is further optimized [56]. Because 70% of our globe is covered with ocean, seaweeds are a durable and virtually inexhaustible, additional source for PUFAs, but also of amino acids [37] and other useful bioactive ingredients [32,57], which are undeniably also accessible for developing countries.

Conclusions

Marine macroalgae form a good, durable and virtually inexhaustible source for polyunsaturated fatty acids with an (n-6) FA: (n-3) FA ratio of about 1.0. This ratio is recommended by the World Health Organization to be less than 10 in order to prevent inflammatory, cardiovascular and nervous system disorders. Some marine macroalgal species, like *Palmaria palmata*, contain high proportions of the "fish fatty acid" eicosapentaenoic acids (EPA, C20:5, n-3), while in *Sargassum natans* also

docosahexaenoic acid (DHA, C22:6, n-3) was detected. Especially EPA and DHA are crucial for proper development of the nervous system and prevention of cardiovascular diseases.

List of abbreviations

DHA: docosahexaenoic acid; DM: dry matter; EPA: eicosapentaenoic acid; GCMS: Gas Chromatography Mass Spectrometry; PUFA: PolyUnsaturated Fatty Acid.

Acknowledgements

The authors are indebted to Job Schipper, Hortimare, Texel, The Netherlands, who kindly provided the Norwegian seaweed species *Ascophyllum nodosum*.

Author details

¹Plant Research International, Business Unit Agrosystems Research, P.O. Box 616, 6700 AP Wageningen, The Netherlands. ²Plant Research International, Business Unit Bioscience, P.O. Box 619, 6700 AP Wageningen, The Netherlands.

Authors' contributions

All authors have read and approved the final manuscript. VvG is the leading scientist in this study. Together with HvK and WB he developed the concept of using marine macroalgae as source for long chain polyunsaturated fatty acids. VvG collected the samples of the macroalgal species investigated. VvG and JH contributed equally to the manuscript. JH coordinated the processing of plant material, the subsequent chemical analyses and interpretation of data. Together with VvG and WdV, JH performed the chemical analyses and developed the protocols for processing of plant material. JH and VvG contributed equally to the manuscript. WdV performed the majority of processing of plant material and contributed substantially in the protocol for taking representative samples of the heterogeneous plant material. He also performed GCMS analyses and primary data processing. HvK developed, together with VvG and WB, the concept of exploring the efficacy of using marine macroalgae for supply of long chain polyunsaturated fatty acids. WB is the principal investigator and responsible for research on application of marine sources for food and industrial purposes. Together with VvG and HvK he developed the concept of exploring the efficacy of using marine macroalgae for supply of long chain polyunsaturated fatty acids.

Competing interests

The authors declare that they have no competing interests.

Received: 29 April 2011 Accepted: 22 June 2011

Published: 22 June 2011

References

- Gerster H: Can adults adequately convert α -linolenic acid (18:3n-3) to eicosapentaenoic acid (20:5n-3) and docosahexaenoic acid (22:6n-3)? *Int J Vit Nutr Res* 1998, **68**:15-173.
- Broadhurst CL, Wang Y, Crawford MA, Cunnane SC, Parkington JE, Schmidt WF: Brain-specific lipids from marine, lacustrine, or terrestrial food resources: potential impact on early African *Homo sapiens*. *Comp Biochem Physiol Part B* 2002, **131**:653-673.
- Simopoulos AP: The importance of the Omega-6/Omega-3 Fatty Acid Ratio in Cardiovascular Disease and other chronic diseases. *Exp Biol Med* 2008, **233**:674-688.
- Salem N, Simopoulos AP, Galli C, Lagarde M, Knapp HR, eds: Fatty acids and lipids from cell biology to human disease. *Lipids* 1996, **31**(suppl): S1-S326.
- Horrobin DF, Bennett CN: Depression and bipolar disorder: relationships to impaired fatty acid and phospholipid metabolism and to diabetes, cardiovascular disease, immunological abnormalities, cancer, ageing and osteoporosis. *Prostaglandins Leukot Essent Fatty Acids* 1999, **60**:217-234.
- Terry P, Lichtenstein P, Feychting M, Ahlbom A, Wolk A: Fatty fish consumption and risk of prostate cancer. *Lancet* 2001, **357**:1764-1766.
- John WB, Brent RC, Murray HGM, Peter TN, Michèle RP: Marine natural products. *Nat Prod Rep* 2003, **20**:1-48.
- Hang HL, Wang BG: Antioxidant capacity and lipophilic content of seaweeds collected from the qingdao coastline. *J Agric Food Chem* 2004, **52**:4993-4997.
- Mozaffarian D, Ascherio A, Frank BH, Stampfer MJ, Willett WC, Siscovick DS, Rimm EB: Interplay between different polyunsaturated fatty acids and risk of coronary heart disease in men. *Circulation* 2005, **111**:157-164.
- Patterson RE, Flatt SW, Newman VA, Natarajan L, Rock CL, Thomson CA, Caan BJ, Parker BA, Pierce JP: Marine fatty acid intake is associated with Breast cancer prognosis. *J Nutr* 2011, **141**:201-206.
- Okuyama H, Kobayashi T, Watanabe S: Carcinogenesis and metastasis are affected by dietary n-6/n-3 fatty acids. In *Food Factors for Cancer Prevention*. Edited by: H Ohigashi T, Osawa J, Terao S. Watanabe 1997:509-512.
- Tokudome S, Nagaya T, Okuyama H, Tokudome Y, Imaeda N, Kitagawa I, Fujiwara N, Ikeda M, Goto C, Ichikawa H, Kuriki K, Takekuma K, Shimoda A, Hirose K, Usui T: Japanese versus Mediterranean diets and cancer. *Asian Pacific J Cancer Prev* 2000, **1**:61-66.
- Horrobin DF: The membrane phospholipid hypothesis as a biochemical basis for the neurodevelopmental concept of schizophrenia. *Schizophr Res* 1998, **30**:193-208.
- Einvik G, Killemsdal TO, Sandvik L, Hjerkin EM: A randomized clinical trial on n-3 polyunsaturated fatty acids supplementation and all-cause mortality in elderly men at high cardiovascular risk. *Eur J Cardiovasc Prev Rehabil* 2010, **5**:588-592.
- Sinclair AJ, Begg D, Mathai M, Weisinger RS: Omega 3 fatty acids in the brain: review of studies in depression. *Asia Pac J Clin Nutr* 2007, **16**:391-397.
- Murakami K, Miyake Y, Sasaki S, Tanaka K, Arakawa M: Higher Fish and n-3 Polyunsaturated Fatty acid intake and Depressive symptoms: Ryukyus Child Health Study. *Pediatrics* 2010, **126**:e623-e630.
- Lutz W, Sanderson W, Scherbov S: The coming acceleration of global population ageing. *Nature* 2008, **451**:716-719.
- Smith GI, Atherton P, Reeds DM, Mohammed BS, Rankin D, Rennie MJ, Mittendorfer B: Dietary Omega-3 Fatty Acid supplementation increases the rate of muscle protein synthesis in older adults: a randomized controlled trial. *Am J Clin Nutr* 2011, **93**:402-412.
- Lands WEM: Nutritional evaluation of long chain fatty acids in fish oil. Edited by: Barlow SM, Stansby ME. Academic Press, London; 1982:25-88.
- Nordy A, Dyerberg J: Omega-3 fatty acids in health and disease. *J Int Med* 1989, **225**:81-83.
- Myers RA, Worm B: Rapid worldwide depletion of predatory fish communities. *Nature* 2003, **423**:280-283.
- Worm B, Hilborn R, Baum JK, Branch TA, Collie JS, Costello C, Fogarty MJ, Fulton EA, Hutchings JA, Jennings S, Jensen OP, Lotze HK, Mace PM, McClanahan TR, Minto C, Palumbi SR, Parma AM, Ricard D, Rosenberg AA, Watson R, Zeller D: Rebuilding Global Fisheries. *Science* 2009, **325**:578-585.
- Chapman VJ, Chapman DJ, eds: Seaweeds and their uses. Chapman and Hall, New York; 3 1980:IX:334, ISBN 04-12157403.
- Sánchez-Machado DI, López-Cervantes J, López-Hernández J, Paseiro-Losado P: Fatty acids, total lipid, protein and ash contents of processed edible seaweeds. *Food Chem* 2004, **85**:439-444.
- Jensen A: Present and future needs for algae and algal products. *Hydrobiologia* 1993, **260/261**:15-23.
- Darcy-Vrillon B: Nutritional aspects of the developing use of marine algae for the human food industry. *Int J Food Sci Nutr* 1993, **44**:23-35.
- El-Shoubaky GA, Moustafa AMY, Salem EAE: Comparative phytochemical investigation of beneficial essential Fatty Acids on a variety of marine seaweeds algae. *Research J Phytochemistry* 2008, **2**:18-26.
- Lopez A, Gerwick WH: Two new icosapentaenoic acids from the temperate red seaweed *Ptilota filicina* J. Agardh. *Lipids* 1987, **22**:190-194.
- Khotimchenko SV: Fatty acid composition of seven *Sargassum* species. *Phytochemistry* 1991, **30**:2639-2641.
- Matanjun P, Mohamed S, Mustapha NM, Muhammad K: Nutrient content of tropical edible seaweeds, *Euclima cottonii*, *Caulerpa lentillifera* and *Sargassum polycystum*. *J Appl Phycol* 2009, **21**:75-80.
- Mishra YK, Temellii F, Ooraikul Shacklock PF, Craigie JS: Lipids of the red algae *Palmaria palmata*. *Bot Mar* 1993, **36**:169-174.
- Denis C, Moranças M, Li M, Deniaud E, Gaudin P, Wielgosz-Collin G, Barnathan G, Jaouen P, Fleurence J: Study of the chemical composition of edible red macroalgae *Grateloupa turuturu* from Brittany (France). *Food Chem* 2010, **119**:913-917.

33. Bemelmans WJE, Broer J, Feskens EJM, Smit AJ, Muskiet FAJ, Lefrandt JD, Bom VJJ, May JF, Meyboom-de Jong B: **Effect of increased intake of α -linolenic acid and group nutritional education on cardiovascular risk factors: The Mediterranean alpha-linolenic enriched Groningen dietary intervention (margarin) study.** *Am J Clin Nutr* 2002, **75**:221-227.
34. Simopoulos AP, Leaf A, Salem N Jr: **Workshop on the essentiality of and recommended dietary intakes for omega-6 and omega-3 fatty acids.** *J Am Coll Nutr* 1999, **18**:487-489.
35. Mahan KL, Escott-Stump S: **Nutricio'n y dietoterapia, de Krause.** Madrid, Spain: McGraw-Hill Interamericana; 2002, ISBN 0-7817-3760-5.
36. Colombo ML, Risè P, Giavarini F, De Angelis L, Galli C, Bolis CL: **Marine Macroalgae as sources of Polyunsaturated Fatty Acids.** *Plant Foods for Human Nutr* 2006, **61**:67-72.
37. Dawczynski C, Schubert R, Jahreis G: **Amino acids, fatty acids, and dietary fibre in edible seaweed products.** *Food Chem* 2007, **103**:891-899.
38. Ratana-arporn P, Chirapart A: **Nutritional evaluation of tropical green seaweeds.** *Kasetsart J (Nat.Sci.)* 2006, **40**(Suppl):75-83.
39. Johns RB, Nichols PD, Perry GJ: **Fatty acid composition of ten marine algae from Australian waters.** *Phytochemistry* 1979, **18**:799-802.
40. Hamdy AEA, Dawes CJ: **Proximate constituents and lipid chemistry in two species of *Sargassum* from the west-coast of Florida.** *Bot Mar* 1989, **31**:79-81.
41. Herbreteau F, Coffard LJM, Derrien A, De Roeck-Holzharuer Y: **The fatty acid composition of five species of macroalgae.** *Bot Mar* 1997, **40**:25-27.
42. Takagi T, Asahi M, Itabashi Y: **Fatty acid composition of twelve algae from Japanese waters.** *Yukagaky* 1985, **34**:1008-1012.
43. Fleurence J, Gutbier G, Mabeau S, Leray C: **Fatty acids from eleven marine macroalgae of the French Brittany coast.** *J Appl Phycol* 1994, **6**:527-532.
44. Ito K, Hori K: **Seaweed: chemical composition and potential food uses.** *Food Rev Intern* 1989, **5**:101-144.
45. Narayan B, Miyashita K, Hosakawa M: **Comparative evaluation of fatty acid composition of different *Sargassum* (Fucales, Phaeophyta) species harvested from temperate and tropical waters.** *J Aq Prod Technol* 2004, **13**:53-70.
46. Floreto EAT, Hirata H, Ando S, Yamasaki S: **Fatty acid composition of *Ulva pertusa* Kjellman (Chlorophyta) and *Gracilaria incurvata*. Okamura (Rhodophyta) in Japanese coastal water.** *Bot Mar* 1993, **36**:217-222.
47. Nelson MM, Phleger CF, Nichols PD: **Seasonal lipid composition in macroalgae of the northeastern Pacific Ocean.** *Bot Mar* 2002, **45**:58-65.
48. Honyia M, Kinoshita T, Ishikawa M, Mori H, Nisizawa K: **Seasonal variation in the lipid content of cultured *Laminaria japonica* : fatty acids, sterols, β -carotene and tocopherol.** *J Appl Phycol* 1994, **6**:25-29.
49. Floreto EAT, Teshima S: **The fatty acid composition of seaweeds exposed to different levels of light intensity and salinity.** *Bot Mar* 1998, **41**:467-481.
50. Carvalho AP, Malcata FX: **The effects of culture media on production of polyunsaturated fatty acids by *Pavlova lutheri*.** *Cryptogamie Algologie* 2000, **21**:59-71.
51. Sanina NM, Goncharova SN, Kostosky EY: **Fatty acid composition of individual polar lipid classes from marine macrophytes.** *Phytochemistry* 2004, **65**:721-750.
52. Bhaskar N, Kinami T, Miyashita K, Park S-B, Endo Y, Fujimoto K: **Occurrence of conjugated polyenoic Fatty Acids in seaweeds from the Indian Ocean.** *Z Naturforsch* 2004, **59**:310-314.
53. FAO/FWT Expert workshop: **Comparative assessment of the environmental costs of aquaculture and other food production sectors.** In *FAO Fisheries Proceedings. Volume 10.* Vancouver, Canada; 2006:24-28, ISBN 978-92-5-105863-3.
54. Troell M, Joyce A, Chopin T, Neori A, Buschmann AH, Fang J-G: **Ecological engineering in aquaculture - Potential for integrated multi-trophic aquaculture (IMTA) in marine offshore systems.** *Aquaculture* 2009, **297**:1-9.
55. Bostock J, McAndrew B, Richards R, Jauncey K, Telfer T, Lorenzen K, Little D, Ross L, Handisyde N, Gatward I, Corner R: **Aquaculture: global status and trends.** *Phil Trans R Soc B* 2010, **365**:2897-2912.
56. Reith JH, Deunwaarder EP, Hemmes K, Curvers AWP, Kamermans P, Brandenburg W, Lettings G: **BIO-OFF-SHORE: Large scale culture of seaweeds in combination with offshore windmill parcs in the North Sea (Grootschalige teelt van zeeieren in combinatie met offshore windparken in de Noordzee).** *ECN report ECN-C-05-008* 2005, **137**, In Dutch with English summary.
57. Smit AJ: **Medicinal and pharmaceutical uses of seaweed natural products: a review.** *J Appl Phycol* 2004, **16**:245-262.

doi:10.1186/1476-511X-10-104

Cite this article as: van Ginneken *et al.*: Polyunsaturated fatty acids in various macroalgal species from north Atlantic and tropical seas. *Lipids in Health and Disease* 2011 **10**:104.

Submit your next manuscript to BioMed Central and take full advantage of:

- Convenient online submission
- Thorough peer review
- No space constraints or color figure charges
- Immediate publication on acceptance
- Inclusion in PubMed, CAS, Scopus and Google Scholar
- Research which is freely available for redistribution

Submit your manuscript at
www.biomedcentral.com/submit

