



香港城市大學  
City University of Hong Kong

專業 創新 胸懷全球  
Professional · Creative  
For The World

## CityU Scholars

### Population genomics of finless porpoises reveal an incipient cetacean species adapted to freshwater

Zhou, Xuming; Guang, Xuanmin; Sun, Di; Xu, Shixia; Li, Mingzhou; Seim, Inge; Jie, Wencai; Yang, Linfeng; Zhu, Qianhua; Xu, Jiabao; Gao, Qiang; Kaya, Alaattin; Dou, Qianhui; Chen, Bingyao; Ren, Wenhua; Li, Shuaicheng; Zhou, Kaiya; Gladyshev, Vadim N.; Nielsen, Rasmus; Fang, Xiaodong; Yang, Guang

**Published in:**

Nature Communications

Online published: 10/04/2018

**Document Version:**

Final Published version, also known as Publisher's PDF, Publisher's Final version or Version of Record

**License:**

CC BY

**Publication record in CityU Scholars:**

[Go to record](#)

**Published version (DOI):**

[10.1038/s41467-018-03722-x](https://doi.org/10.1038/s41467-018-03722-x)

**Publication details:**

Zhou, X., Guang, X., Sun, D., Xu, S., Li, M., Seim, I., Jie, W., Yang, L., Zhu, Q., Xu, J., Gao, Q., Kaya, A., Dou, Q., Chen, B., Ren, W., Li, S., Zhou, K., Gladyshev, V. N., Nielsen, R., ... Yang, G. (2018). Population genomics of finless porpoises reveal an incipient cetacean species adapted to freshwater. *Nature Communications*, 9, [1276]. <https://doi.org/10.1038/s41467-018-03722-x>

**Citing this paper**

Please note that where the full-text provided on CityU Scholars is the Post-print version (also known as Accepted Author Manuscript, Peer-reviewed or Author Final version), it may differ from the Final Published version. When citing, ensure that you check and use the publisher's definitive version for pagination and other details.

**General rights**

Copyright for the publications made accessible via the CityU Scholars portal is retained by the author(s) and/or other copyright owners and it is a condition of accessing these publications that users recognise and abide by the legal requirements associated with these rights. Users may not further distribute the material or use it for any profit-making activity or commercial gain.

**Publisher permission**

Permission for previously published items are in accordance with publisher's copyright policies sourced from the SHERPA RoMEO database. Links to full text versions (either Published or Post-print) are only available if corresponding publishers allow open access.

**Take down policy**

Contact [lbscholars@cityu.edu.hk](mailto:lbscholars@cityu.edu.hk) if you believe that this document breaches copyright and provide us with details. We will remove access to the work immediately and investigate your claim.

ARTICLE

DOI: 10.1038/s41467-018-03722-x

OPEN

# Population genomics of finless porpoises reveal an incipient cetacean species adapted to freshwater

Xuming Zhou<sup>1,2</sup>, Xuanmin Guang<sup>3,4</sup>, Di Sun<sup>1</sup>, Shixia Xu<sup>1</sup>, Mingzhou Li<sup>5</sup>, Inge Seim<sup>6</sup>, Wencai Jie<sup>3</sup>, Linfeng Yang<sup>3</sup>, Qianhua Zhu<sup>3</sup>, Jiabao Xu<sup>3</sup>, Qiang Gao<sup>3</sup>, Alaattin Kaya<sup>2</sup>, Qianhui Dou<sup>2</sup>, Bingyao Chen<sup>1</sup>, Wenhua Ren<sup>1</sup>, Shuaicheng Li<sup>7</sup>, Kaiya Zhou<sup>1</sup>, Vadim N. Gladyshev<sup>2</sup>, Rasmus Nielsen<sup>8</sup>, Xiaodong Fang<sup>3</sup> & Guang Yang<sup>1</sup>

Cetaceans (whales, dolphins, and porpoises) are a group of mammals adapted to various aquatic habitats, from oceans to freshwater rivers. We report the sequencing, de novo assembly and analysis of a finless porpoise genome, and the re-sequencing of an additional 48 finless porpoise individuals. We use these data to reconstruct the demographic history of finless porpoises from their origin to the occupation into the Yangtze River. Analyses of selection between marine and freshwater porpoises identify genes associated with renal water homeostasis and urea cycle, such as urea transporter 2 and angiotensin I-converting enzyme 2, which are likely adaptations associated with the difference in osmotic stress between ocean and rivers. Our results strongly suggest that the critically endangered Yangtze finless porpoises are reproductively isolated from other porpoise populations and harbor unique genetic adaptations, supporting that they should be considered a unique incipient species.

<sup>1</sup>Jiangsu Key Laboratory for Biodiversity and Biotechnology, College of Life Sciences, Nanjing Normal University, 210023 Nanjing, China. <sup>2</sup>Division of Genetics, Department of Medicine, Brigham and Women's Hospital, Harvard Medical School, Harvard Medical School, Boston, MA 02115, USA. <sup>3</sup>BGI-Shenzhen, 518083 Shenzhen, China. <sup>4</sup>The Key Laboratory of Conservation Biology for Endangered Wildlife of the Ministry of Education, College of Life Sciences, Zhejiang University, 310058 Hangzhou, China. <sup>5</sup>Institute of Animal Genetics and Breeding, College of Animal Science and Technology, Sichuan Agricultural University, 611130 Chengdu, China. <sup>6</sup>Comparative and Endocrine Biology Laboratory, Translational Research Institute-Institute of Health and Biomedical Innovation, School of Biomedical Sciences, Queensland University of Technology, Woolloongabba, QLD 4102, Australia. <sup>7</sup>Department of Computer Sciences, City University of Hong Kong, 999077 Hong Kong, China. <sup>8</sup>Department of Integrative Biology, University of California, Berkeley, CA 94720, USA. These authors contributed equally: Xuming Zhou, Xuanmin Guang, Di Sun, Shixia Xu. Correspondence and requests for materials should be addressed to R.N. (email: [rasmus\\_nielsen@berkeley.edu](mailto:rasmus_nielsen@berkeley.edu)) or to X.F. (email: [fangxd@genomics.cn](mailto:fangxd@genomics.cn)) or to G.Y. (email: [gyang@nju.edu.cn](mailto:gyang@nju.edu.cn))

Whales, dolphins, and porpoises are collectively termed cetaceans. Having evolved from terrestrial ancestors to occupy aquatic niches<sup>1</sup>, these mammals fascinate scientists and the public alike. The finless porpoise (*Neophocaena* spp.) is a group of small cetaceans, which were characterized by spade-shaped teeth, a short, blunt snout and lack of a true dorsal fin, inhabiting coasts of southern and eastern Asia. Some molecular evidence placed finless porpoises as the most basal clade of extant porpoises (family Phocoenidae)<sup>2–5</sup>. After originating from a marine ancestor, finless porpoises gradually evolved to inhabit different aquatic niches. For example, in China, its distribution covers all coastal waters and particularly, one population dispersed into the Yangtze River and established the sole freshwater porpoise population in the world (i.e., the Yangtze finless porpoise<sup>6–8</sup>), which makes it an ideal natural model to study the evolutionary adaptation of cetaceans to freshwater. Moreover, the Yangtze finless porpoise is likely the sole cetacean living in the Yangtze River as another river dolphin, the “white-flag” dolphin or baiji (*Lipotes vexillifer*), has been recognized as functionally extinct since large-scale surveys conducted in 2006 sighted no individual in the wild<sup>9</sup>. Recent surveys indicated that the population size of Yangtze finless porpoise is around 1000 individuals<sup>10</sup>, and it is experiencing an annual population decline of ~13.7%<sup>11</sup>. It has, therefore, since 2013 been considered critically endangered by the IUCN<sup>12</sup> and may eventually go extinct, if effective measures of conservation are not urgently implemented.

Finless porpoises have traditionally been classified into a single species, *N. phocaenoides*, with three geographic populations or subspecies, that have colonized freshwater (Yangtze River) and saltwater environments along the coasts of the Indo-Pacific Ocean<sup>13</sup>. Previous analyses of different markers (e.g., mtDNA haplotypes and morphological variables such as the structure of the dorsal ridge, tubercled area, etc.) proposed two models for the taxonomy of finless porpoises: (i) the three subspecies hypothesis, which assigned the finless porpoises to a single species with three subspecies (wide-ridged *N. p. phocaenoides*, narrow-ridged *N. p. asiaorientalis*, and *N. p. sunameri*)<sup>6, 7</sup>, and (ii) the two species hypothesis that invoked two distinct species, Indo-Pacific finless porpoises *N. phocaenoides* (the wide-ridged form) and narrow-ridged finless porpoises *N. a. asiaorientalis*<sup>8</sup>, the latter of which includes two subspecies (*N. a. asiaorientalis* endemic to the mainstream Yangtze River and the river-communicating lakes of China, and *N. a. sunameri* from the Yellow/Bohai Sea, northern East China Sea, and Japan Sea). A primary objective of this paper is to resolve this issue using whole-genome sequencing in order to facilitate current and future conservation efforts.

Here, we apply a whole-genome shotgun strategy to sequence the genome of a finless porpoise to a depth of 106× (~265.5 Gb) (Supplementary Table 1). We also sequenced the genomes of an additional 48 finless porpoises from different geographical regions, at a depth of ~10× to 30× for each individual (~1.87 trillion base in total). Our analyses strongly suggest that Yangtze finless porpoises are genetically isolated from other porpoise populations and reveal the genomic signatures of adaptation to the freshwater environment of this incipient species.

## Results

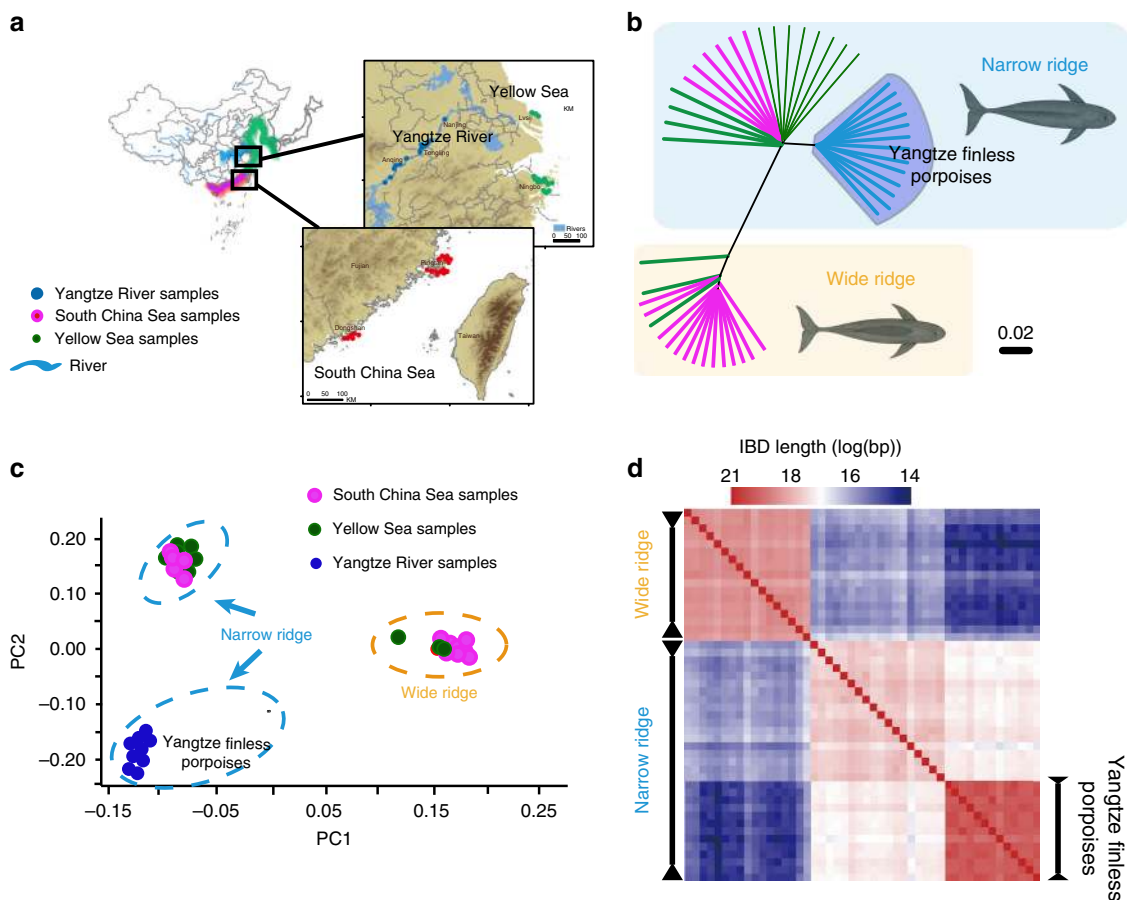
**Finless porpoise genome assembly and genomic variation.** The finless porpoise genome assembly was approximately 2.30 Gb in length (scaffold), with contig and scaffold N50 values of 26.7 Kb and 6.3 Mb, respectively (Supplementary Table 2). Characterization of GC content, repeats diversity and noncoding RNAs prediction can be found at Supplementary Note 1, Supplementary Tables 3–13, and Supplementary Figs. 1–3. We employed homology and de novo methods, combined with blood

transcriptome sequencing (RNA-seq) data, to predict 22,014 protein-coding genes in the finless porpoise genome (93.0% were functionally classified, Supplementary Tables 8 and 9). Using these protein-coding genes, we generated a timescale for mammalian evolution and identified 57 positively selected genes (PSGs) in the finless porpoise using a branch site model<sup>14</sup> (Supplementary Fig. 4, Supplementary Table 14, and Supplementary Note 2).

To gain a better understanding of the phylogenetic relationships and evolutionary history of the members of this species-complex, we sequenced 48 finless porpoises to an average sequencing depth of ~14.5× per individual resulting in 98.6% sequencing coverage. The 48 wild finless porpoises samples collected and sequenced here represent the main natural populations of finless porpoises from the middle and lower reaches of the Yangtze River and the coastal China seas (Fig. 1a, Supplementary Fig. 65, and Supplementary Tables 15 and 16). After applying stringent quality control criteria (Methods, Supplementary Note 3), we identified a total of 13.3 million (M) SNPs in the finless porpoise populations (Supplementary Tables 16–18 and Supplementary Fig. 6).

**Phylogeny and population structure of finless porpoises.** We first clustered individuals using average genomic distance by both phylogenetic reconstruction and principal components analysis (PCA)<sup>15</sup>. Both analyses provided strong support for the subdivision of finless porpoises in Chinese waters into three distinct groups (Fig. 1b, c, Supplementary Figs. 7, 8, and Supplementary Table 19). Particularly, the first cluster contained the individuals with wide ridge from the South China Sea and Yellow Sea, the second cluster was mainly comprised of all narrow-ridge individuals from Yellow/Bohai Sea, and South China Sea (Ningbo, Pingtan and Lvshi), and all individuals from the Yangtze River were grouped into a distinct group within narrow-ridged cluster. Varying the number of ancestry components (*K*) using frappe<sup>16</sup> also recapitulated these findings (Supplementary Fig. 9). As an example, with *K* = 2, we observed a division between wide-ridged form and narrow-ridged form finless porpoises. When *K* = 3, individuals from the Yangtze River were further separated from the narrow-ridged form cluster; this finding was corroborated by cross-validation and was generally consistent with the phylogeny and biogeographic distribution (Supplementary Fig. 10). Measures of haplotype identity-by-descent (IBD) (Fig. 1d and Supplementary Fig. 11) and linkage disequilibrium (LD) (Supplementary Fig. 12) further supported that larger haplotypes segments were shared among Yangtze River porpoises.

**Demographic history and species delimitation.** To reconstruct the demographic history of finless porpoises, we first employed the pairwise sequentially Markovian coalescent (PSMC) method<sup>17</sup>. Unsurprisingly, we found that the effective population sizes (*N<sub>e</sub>*) of the three major groups are highly correlated until ~20 k years ago. We observed two peaks of *N<sub>e</sub>* at ~0.5 million years ago and ~60 thousand years ago and a reduction in population size ~0.1 million years ago (Fig. 2a, Supplementary Fig. 13, and Supplementary Note 4). Narrow-ridged finless porpoises showed relative higher *N<sub>e</sub>* than wide-ridged forms from 0.5 million years ago to 20 thousand years ago and the *N<sub>e</sub>* difference of two forms achieved its maximum at ~100 thousand years ago ( $1.95 \times 10^4 \pm 0.06 \times 10^4$  individuals in “marine” wide-ridged vs.  $1.27 \times 10^4 \pm 0.04 \times 10^4$  individuals in narrow-ridged finless porpoises). The split of *N<sub>e</sub>* curves within narrow-ridged finless porpoises occurred ~20 thousand years ago, perhaps suggesting a divergence of the populations at this time, or perhaps resulting from the well-known difficulties in estimating recent values of *N<sub>e</sub>*



**Fig. 1** Phylogeny and population structure of finless porpoises. **a** Current geographic distribution of the finless porpoise. The map was retrieved from <http://www.natureearthdata.com> (Public Domain; date accessed: Feb 2017) and generated using ArcGIS 9.3<sup>62</sup>. **b** Neighbor-joining tree constructed from the allele-sharing matrix of variants of 48 finless porpoises. The finless porpoise images were created by Chen Yu in Adobe Photoshop CS6. **c** Principal components analysis (PCA) of 48 finless porpoises. In particular, the first eigenvector separate the two main morphological forms, i.e., the wide-ridged form and narrow-ridged (variance explained = 12.92%, Tracy-Widom  $P = 3.26 \times 10^{-11}$ ), and the second eigenvector separate the Yangtze River population from the other narrow-ridged individuals (variance explained = 2.53%, Tracy-Widom  $P = 8.72 \times 10^{-50}$ ). **d** Estimated haplotype sharing in the finless porpoises. The heat map colors represent the total length of IBD blocks for each pairwise comparison

using the PSMC method. We further inferred split times among populations based on relative cross-coalescent rates (RCCR) using a multiple sequentially Markovian coalescent approach (MSMC)<sup>18</sup>. The MSMC curves are compatible among different individuals when comparing narrow-ridged to wide-ridge formed porpoises, and also when comparing Yangtze River to Yellow Sea narrow-ridged porpoises (Fig. 2b). The RCCR curves converged to zero for recent times, and showed no evidence of cross-coalescences within the last 5 kya, indicating no current gene flow between the population groups. The curves reached a value of 0.5 at ~40 kya and 100 kya ago for the two comparisons, respectively (Fig. 2b), and converged to their maximum values at about 100 kya and 500 kya, respectively. A previous study suggested that the ancestral population of finless porpoise was interrupted by a land bridge connecting Taiwan and mainland China during the LGM ~18 thousand years ago<sup>19</sup>. Our analysis, which provided a much older estimation of the divergence of finless porpoises, suggested instead that Pleistocene glaciation may have contributed to the isolation of ancient finless porpoises. The divergence of the Yangtze River population from other narrow-ridged individuals between 5000 and 40,000 years ago may suggest that sea-level oscillation before and after LGM could have contributed to the isolation of the freshwater population. Also, analyses using f3-statistics<sup>20</sup> indicated no ancient admixture in the Yangtze River population and other finless porpoises (f3-statistics = 0.059, Z-

scores = 123.7) (Supplementary Table 20). The complete reproductive isolation of the three groups of finless porpoises was also supported by a species delineation analysis using Bayes factors<sup>21</sup>, which provided strong statistical support for a “three-species model” (marginal log likelihood =  $-5.7 \times 10^6$ ) rather than a “two-species model” (marginal log likelihood =  $-6.9 \times 10^6$ ) (Supplementary Table 21).

#### Signatures of positive selection in hypoxia-associated genes.

Despite being sympatric in the Taiwan Strait and surrounding waters, the two major forms of finless porpoise are highly morphologically differentiated. For example, in the wide-ridged finless porpoises, the greatest width of the tubercled area varies from 4.0 to 10.0 cm and there are between 10 and 18 rows of tubercles, whereas in narrow-ridged finless porpoises the width of the tubercled area is between 0.3 and 0.7 cm and there are only 3–5 rows of tubercles<sup>8, 19</sup>. To detect genomic footprints of positive selection in finless porpoises that might be related to these differences, we used the recent improved version of the composite likelihood ratio (CLR) test<sup>22</sup> implemented in SweepFinder2<sup>23</sup>. We identified 218 genes and 144 candidate genes embedded in 39 CLR peaks with strong selective sweep signals in wide- and narrow-ridged form populations, respectively (Fig. 3a, Supplementary Tables 22, 23, and Supplementary Note 5). Those candidate genes are significantly enriched in biological process

such as regulation of postsynaptic membrane potential ( $P = 1.30 \times 10^{-5}$ , Fisher's exact test), neuronal action potential ( $P = 3.60 \times 10^{-5}$ , Fisher's exact test), neuropeptide signaling pathway ( $P = 2.10 \times 10^{-2}$ , Fisher's exact test), and response to biotic stimulus ( $P = 3.70 \times 10^{-4}$ , Fisher's exact test) (Supplementary Tables 24, 25). This is to some degree consistent with the proposed sensory function of tubercles, as they possess an abundance of nerve endings<sup>24</sup>.

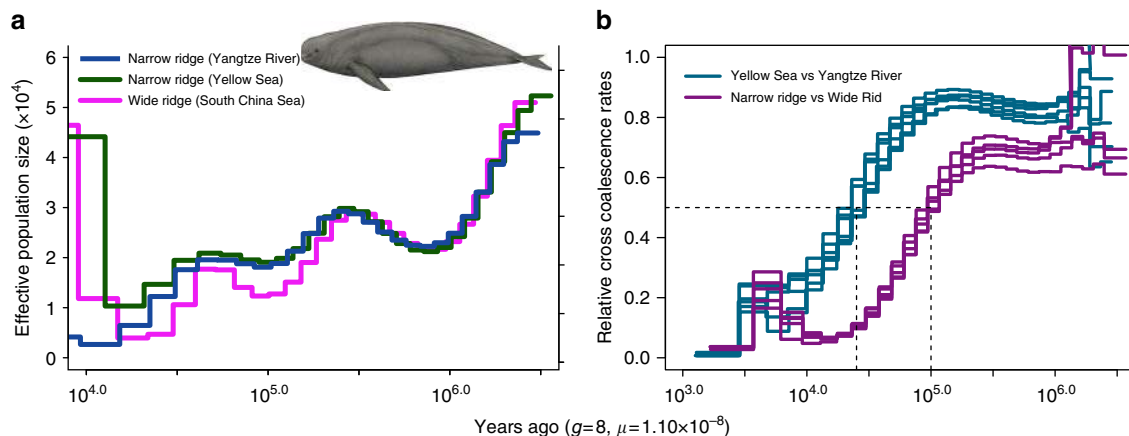
The genomic region with the highest CLR in wide-ridged porpoises was embedded with six intergenic, three upstream, one downstream, and one intronic mutations of *Atf4*, which is a transcription factor induced by environmental stress including nutrient stress<sup>25</sup> and hypoxia<sup>26</sup>. Further examination of the candidate genes reveals seven genes (*KCNMA1*, *VCAM1*, *TXN2*, *ADSL*, *CAPN2*, *ERCC3*, and *PLAU*) associated with response to hypoxia ( $P = 2.10 \times 10^{-3}$ , Fisher's exact test) in the wide-ridged form of finless porpoises. The possible connection to hypoxia is interesting, because the typical habitats of two forms finless porpoises differ drastically in terms of sea level. In particular, narrow-ridged finless porpoises is found in temperate coastal waters from the Taiwan Strait northwards to Korea and central Japan, including the middle and lower reaches of the Yangtze River, which are generally shallow ocean regions and almost entirely less than 150 m deep. However, the average sea level for habitats of wide-ridged form finless porpoises (the tropical and subtropical waters of the Indian Ocean and Southeast Asia) is comparatively deeper. For example, the South China Sea is 1212 m deep, with more than 5500 m at its deepest. Nevertheless, it is noteworthy that both narrow- and wide-ridged forms of finless porpoises are sympatric in the Taiwan Strait. Future experimental studies aimed at exploring physiological differences between these species are vital for understanding possible adaptations to hypoxia in finless porpoises.

### Genetic adaptation to freshwater of Yangtze River porpoises.

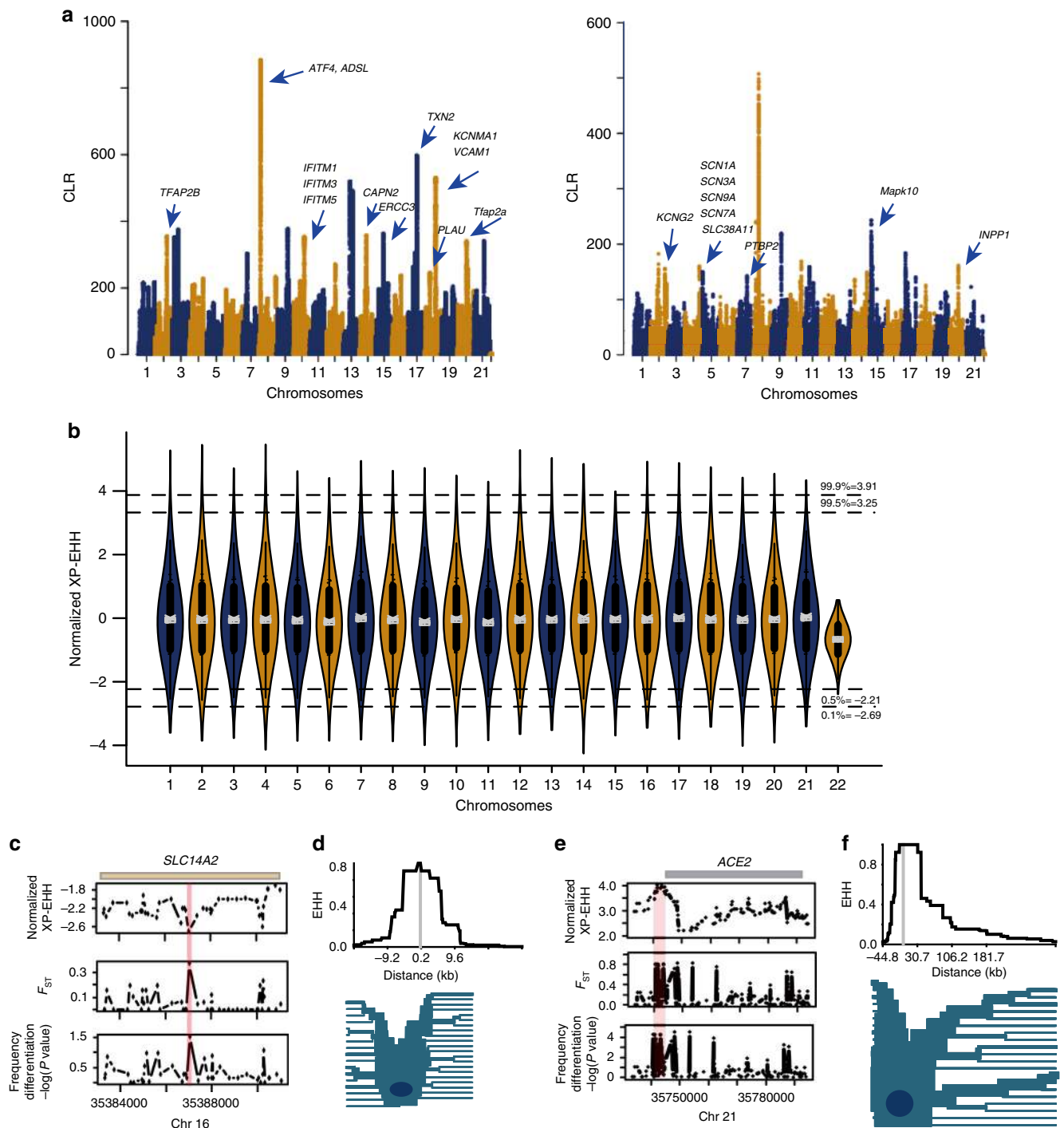
Finless porpoises have colonized both freshwater and saltwater, and our data suggested that the freshwater Yangtze River population emerged 5000–100,000 years ago. To identify candidate mutations that may have been under positive selection specifically in the Yangtze River population or the marine populations of the narrow-ridged finless porpoise, we used the XP-EHH tests of neutrality<sup>27</sup>. Employing a normalized XP-EHH threshold of 3.91 (top 0.1%) and  $-2.70$  (lowest 0.1%), we identified 6035 candidate

SNPs in the Yangtze finless porpoises (83 genes) and their marine counterparts (187 genes) (Fig. 3b, Supplementary Data 1, Supplementary Data 2, and Supplementary Note 5). Interestingly, these genes were significantly enriched in “kidney development” ( $P = 4.10 \times 10^{-4}$ , Fisher's exact test) and “ureteric bud development” ( $P = 5.70 \times 10^{-3}$ , Fisher's exact test) (Supplementary Tables 26 and 27), which could contribute to the distinct kidney structures of freshwater and marine finless porpoises<sup>28</sup>. For example, three genes (*ADCY1*, *DYNC2H1*, and *SLC14A2*) associated with the gene ontology terms “renal water homeostasis,” “vasopressin-regulated water reabsorption,” and “urea transport” were candidates in the marine porpoises. One of them, *SLC14A2*, which harbored one intronic candidate SNP, is a key protein that encodes one of the two urea transporters in mammals that interacts with vasopressin and regulates the plasma urea<sup>29</sup>. Positive selection of this gene in cetaceans has previously been described<sup>30</sup>. In addition, analyses of the renal transcriptome have revealed differential expression of *SLC14A2* between freshwater and marine finless porpoises<sup>31</sup>. The selection signature (Fig. 3c, d) on these genes is consistent with previous studies that have shown a significantly higher urine but lower serum urea in East Asian porpoises (urine:  $74.96 \pm 20.06$  mM L<sup>-1</sup>, serum:  $14.35 \pm 3.11$  mM L<sup>-1</sup>) than in Yangtze finless porpoises (urine:  $40.7 \pm 15.78$  mM L<sup>-1</sup>, serum:  $16.75 \pm 3.19$  mM L<sup>-1</sup>) and other marine cetaceans<sup>32</sup>. Similarly, the urine osmolality of Yangtze finless porpoises (866 mosM) was previously found to be statistically lower than that of their marine counterparts (1645 mosM)<sup>28</sup>, consistent with their living in the hypotonic freshwater environment.

In the freshwater finless porpoises, a top candidate gene is *ACE2* (associated with 6 intergenic candidate SNPs of which one has a normalized XP-EHH = 4.13,  $F_{ST} = 0.70$ , and frequency  $P$  value = 0.0003) (Fig. 3e, f). This gene also ranked among the top 0.12% of genes (represented by a SNP with normalized XP-EHH = 3.85,  $F_{ST} = 0.56$ , and frequency  $P$  value = 0.002) in a comparison between freshwater porpoises and all Yellow Sea porpoises. The protein encoded by *ACE2* is a monocarboxyl peptidase that functions in the renin-angiotensin system and plays important roles in cardiovascular, renal, pulmonary, and central nervous systems<sup>33</sup>. Loss of the *ACE2* gene in mice leads to progressive kidney injury and increased urinary albumin excretion<sup>34</sup>. Additionally, the development of glomerular injury and an increase in urinary albumin/creatinine ratio was found in mice treated with the inhibitor of *ACE2*<sup>35</sup>. Similarly to *SLC14A2*, *ACE2*



**Fig. 2** Demographic histories of finless porpoises. **a** Demographic histories of finless porpoises using the PSMC model.  $g$  (generation time) = 8 years;  $\mu$  (neutral mutation rate per generation) =  $1.10 \times 10^{-8}$ . The finless porpoise image was created by Chen Yu in Adobe Photoshop CS6. **b** Relative cross-coalescence rates (CCR) between finless porpoise populations. Wide-ridged/narrow-ridged form pairs are shown in pink colors, pairs within narrow-ridged forms (Yangtze River/Yellow Sea populations pairs) in blue colors. The relative cross-coalescence rate is close to one when the two populations are well mixed, and zero after they have fully split



**Fig. 3** Identification of selective sweeps in finless porpoise genomes. **a** Selective sweep regions identified in the narrow-ridged and wide-ridged finless porpoises. Plot of composite likelihood ratio (CLR) values that estimated in the wide-ridge (left panel) and narrow-ridge (right panel) finless porpoises. Genes residing within the selected regions that functioned in neuronal processes and response to biotic stimulus are presented for each peak according to their locations. **b** Violin plots of normalized XP-EHH values were generated by comparing the Yangtze River population and their marine relatives (Yellow Sea population) (the medians are shown). **c** Normalized XP-EHH values, population differentiations ( $F_{ST}$ ), and frequency differences of the selected region near gene *SLC14A2*. **d** The EHH at varying distances from the core region (upper panel) and Haplotype bifurcation diagrams (lower panel) for core haplotype at *SLC14A2*. **e** Normalized XP-EHH values, population differences ( $F_{ST}$ ), and frequency differences of the selected region near gene *ACE2*. **f** The EHH at varying distances from the core region (upper panel) and Haplotype bifurcation diagrams (lower panel) for core haplotype at *ACE2*

show multiple cetacean-specific changes<sup>36</sup>, suggesting that evolution of this gene is crucial for adaption of cetaceans to different habitats. Adaptation to freshwater driven by genetic variants regulating kidney function has previously been observed in other marine and freshwater sticklebacks<sup>37</sup>.

**Discussion**

Our analyses have shown that the three main groups of finless porpoises are reproductively isolated and have not shared gene flow for thousands of years. They show unique individualized signatures of genetic adaptation to different environments. In

comparisons of narrow-ridge and wide-ridged finless porpoises, we found a number of candidate genes related to hypoxia showing strong evidence of selection, possibly a consequence of the difference in sea-level in the environments inhabited by these two groups. The genetic differentiation between two groups is perhaps not surprising given that they also are easily distinguishable by a number of morphological features. It might be more surprising that the Yangtze River populations and the marine populations of the narrow-ridge finless porpoise show many signatures of selection relating to renal function, highly likely related to differential adaptation to marine and freshwater habitats. Although the Yangtze finless porpoise was first treated as a separate species in 1970s<sup>38, 39</sup>, it has not been accepted by most other researchers so far, and nearly all subsequent studies supported the subspecies status of the Yangtze finless porpoise in *Neophocaena phocaenoides* or *Neophocaena asiaorientalis*<sup>2, 40, 41</sup>. However, the present findings of significant population differentiation, lack of gene flow, and unique adaptive divergence in the Yangtze finless porpoise make it clear that the Yangtze finless porpoise is genetically and reproductively isolated from its marine counterpart and thus represent an incipient species. Thus, the classification of the narrow-ridged finless porpoises into two species, i.e., the Yangtze finless porpoise *Neophocaena asiaorientalis* Pilleri and Gehr, 1972 and the East Asia finless porpoise *Neophocaena sunameri* Pilleri and Gehr, 1972, should be restored. The Yangtze finless porpoise, *Neophocaena asiaorientalis*, is a distinct endemic Chinese species inhabiting the Yangtze River, and is a new flagship species for conserving the biodiversity and the aquatic ecosystem of the Yangtze River.

## Methods

**Samples and data.** All finless porpoises that were used for de novo sequencing and whole-genome sequencing have been preserved at Nanjing Normal University at  $-20^{\circ}\text{C}$ . They were all killed incidentally in fishing nets or were found stranded between 1979 and 2009, before the initiation of this research project. Genomic DNA was extracted from skeletal muscles. The de novo assembly of a male finless porpoise (narrow ridged) was sequenced at  $106\times$  depth coverage and the whole genomes of additional 48 finless porpoises were sequenced at intermediate depth coverage (an average of  $\sim 13\times$ ) (see Supplementary Note 1). All DNA libraries were sequenced on the Illumina HiSeq 2000 platform. After filtering out the adapter sequences, low-quality reads and duplicate reads, a total of 265.5 Gb of high-quality data, were used for genome assembly. The fresh blood from two finless porpoise individuals (narrow ridged) for RNA-seq sequencing were sampled from the Tongling Freshwater Porpoise National Nature Reserve (Tongling City, China) and was approved by the Nanjing Normal University Animal Care Committee. Two sequencing libraries were constructed using an Illumina standard mRNA-Seq Prep Kit and the sequencing was performed on Illumina HiSeq 2000 platform following the manufacturer's instructions. A detailed description of genome size estimation, assembly, annotation, gene structure prediction (based on homology, de novo prediction and RNA-seq data) and functional annotation, and RNA-seq is included in the Supplementary Note 1.

**Gene family and positively selected genes.** All mammalian genomes with significant sequence coverage from the current Entrez Genome Project at NCBI were used in this study (a total of 24 organisms). The genome sequence of the bowhead whale was retrieved from The Bowhead Whale Genome Resource (<http://www.bowhead-whale.org/>). Gene families were constructed using TreeFam<sup>42</sup>. The phylogenetic tree was reconstructed using the 3911 single-copy genes shared by the finless porpoises, 6 other cetaceans and 10 other mammals using the maximum-likelihood algorithm as implemented in RAxML software<sup>43</sup>. The divergence times for the taxa were estimated by RelTime<sup>44</sup> on the basis of fourfold degenerate codon sites. The branch site model<sup>44</sup> was used to detect positive selection along a target branch.  $P$  value of each gene was computed using the likelihood ratio tests (LRTs) and all gene alignment with  $P$  value less than 0.05 were manually checked.

**Reads mapping and variant calling.** The high-quality reads were aligned to finless porpoise assembly using BWA mem software<sup>45</sup> and the alignment was processed using a Bayesian approach as implemented in the package SAMtools (version 1.2)<sup>46</sup>. Variant calling was performed following the standard pipeline through Picard (<http://broadinstitute.github.io/picard>) and the Genome Analysis Toolkit (GATK, v3.4)<sup>47</sup> with the analysis type of HaplotypeCaller based method of HMM likelihood

function. To determine pseudo-chromosome position for SNPs, the scaffolds of finless porpoise were mapped and assembled onto the chromosomes based upon their synteny with the cattle genome (UMD3.1).

**Phylogenetics and population structure.** Phylogenetic trees of 48 finless porpoise individuals were reconstructed using neighbor-joining (NJ) method implemented in VCF-kit (<http://vcf-kit.readthedocs.io/>) and maximum-likelihood (ML) method using RAxML (version 7.2.3)<sup>48</sup>. The principal component analysis (PCA) was conducted using EIGENSOFT3.0 and the significance of eigenvectors were determined with the Tracey–Widom test<sup>15</sup>. FDIS<sup>49</sup> was used to determine presumably neutral SNPs for PCA analyses and phylogeny reconstruction. Population structure was inferred by ADMIXTURE<sup>50</sup> with tenfold cross-validation. The ancestral sequences of finless porpoises were inferred using the program frappe<sup>16</sup> without assuming any prior information about their structure. Identical-by-descent (IBD) haplotypes was estimated using BEAGLE<sup>51</sup> and linkage disequilibrium (LD) pattern and the coefficient of determination between any two loci was calculated using Haploview for each population or genetic cluster<sup>52</sup>.

**Demographic history reconstruction and gene flow.** The PSMC model was utilized to estimate changes in effective population size using heterozygous sites across the genome and this method has been widely used in other mammals<sup>17, 53–56</sup>. The estimated TMRCA (time to the most recent common ancestor) is in units of  $2N_0$  time and the mean generation time was set at 8 years and  $\mu$  (unit: nt/generation) was estimated as  $1.10 \times 10^{-8}$ . SNPs located in scaffolds homologous to cow X chromosomal regions were excluded and the remaining SNPs were used for PSMC analyses and estimation of the relative cross coalescence rates<sup>18</sup>. The  $f_3$ -statistics was implemented in ADMIXTOOLS<sup>20</sup>. Bayes factor delimitation was employed in SNAPP<sup>57</sup> and BEAST<sup>58</sup> by estimating the marginal likelihood<sup>59</sup> for each competing species delimitation model, and then Bayes factors<sup>21, 60</sup> was used to assess support for comparing models. The path sampling analyses for each model included 20 steps and tree sampled 100,000 generations with a burn-in of 8000 generations.

**Detecting SNPs under selection.** To investigate the selection signals of wide-ridged and narrow-ridged forms of finless porpoises, we first scanned the genome for target regions of positive selection using Sweepfinder<sup>22, 23</sup>, which uses local deviations of the site frequency spectrum (SFS). The composite likelihood ratio (CLR) was estimated for each SNP and the top 20 genome “peaks” with a CLR higher than 0.2% of all CLRs were used to define sweep candidates. Genes that overlapped with or were near (within 1 Mb flanking the sweep region) were extracted. We also identified selected regions across the genome between Yangtze and marine finless porpoises using the XP-EHH tests of neutrality as implemented in the Selscan package<sup>61</sup> and Sweep<sup>27</sup>. SNPs were pruned for minor allele frequency (MAF)  $>1\%$  in each population. The XP-EHH values were normalized by subtracting the genome-wide mean XP-EHH and dividing by the standard deviation. Top XP-EHH value was selected and if it falls into top 0.1% of XP-EHH values, the window was selected for genes in the 5-kb flanking region around the highest XP-EHH value. In order to estimate the difference of allele frequency for each allele ( $i$ ) in two compared groups (for example, groups A and B), we first calculated the accumulated distance of allele frequency in A and B groups  $T_{id} = \sum_{i=1}^n (\text{Freq } Ai - \text{Freq } Bi)^2$ . Then, the relative contribution of allele was determined and a  $P$  value was calculated for each SNP based on the empirical distribution of its relative contribution.

**Data availability.** The data discussed in this publication have been deposited in NCBI's short read archive under the accession number SRP090345. This Whole Genome Shotgun project has been deposited at DDBJ/ENA/GenBank under the accession number MKKW00000000.

Received: 18 September 2017 Accepted: 7 March 2018

Published online: 10 April 2018

## References

1. Thewissen, J. G. M., Cooper, L. N., Clementz, M. T., Bajpai, S. & Tiwari, B. N. Whales originated from aquatic artiodactyls in the Eocene epoch of India. *Nature* **450**, 1190–1194 (2007).
2. Rosel, P. E., Haygood, M. G. & Perrin, W. F. Phylogenetic relationships among the true porpoises (Cetacea: Phocoenidae). *Mol. Phylogenet. Evol.* **4**, 463–474 (1995).
3. McGowen, M. R., Spaulding, M. & Gatesy, J. Divergence date estimation and a comprehensive molecular tree of extant cetaceans. *Mol. Phylogenet. Evol.* **53**, 891–906 (2009).
4. Steeman, M. E. et al. Radiation of extant cetaceans driven by restructuring of the oceans. *Syst. Biol.* **58**, 573–585 (2009).

5. Rosel, P. E. et al. A review of molecular genetic markers and analytical approaches that have been used for delimiting marine mammal subspecies and species. *Mar. Mamm. Sci.* **33**, 56–75 (2017).
6. Gao, A. L. & Zhou, K. Y. Growth and reproduction of three populations of finless porpoise, *Neophocaena phocaenoides*, in Chinese waters. *Aquat. Mamm.* **19**, 3–12 (1993).
7. Gao, A. L. & Zhou, K. Y. Geographical variation of external measurements and three subspecies of *Neophocaena phocaenoides* in Chinese waters. *Acta Theriol. Sin.* **15**, 81–92 (1995).
8. Jefferson, T. A. Preliminary analysis of geographic variation in cranial morphometrics of the finless porpoise (*Neophocaena phocaenoides*). *Raffles Bull. Zool.* **10**(Suppl), 3–14 (2002).
9. Turvey, S. T. et al. First human-caused extinction of a cetacean species? *Biol. Lett.* **3**, 537–540 (2007).
10. Zhao, X. et al. Abundance and conservation status of the Yangtze finless porpoise in the Yangtze River, China. *Biol. Conserv.* **141**, 3006–3018 (2008).
11. Mei, Z. et al. The Yangtze finless porpoise: on an accelerating path to extinction? *Biol. Conserv.* **172**, 117–123 (2014).
12. Wang, D., Turvey, S. T., Zhao, X. & Mei, Z. *Neophocaena asiaorientalis* ssp. *asiaorientalis*. *The IUCN Red List of Threatened Species* <http://www.iucnredlist.org/details/43205774/0> (2013).
13. Reeves, R. R., Smith, B. D., Crespo, E. A. & Notarbartolo di Sciarra, G. *Dolphins, Whales and Porpoises: 2002-2010 Conservation Action Plan for the World's Cetaceans* (IUCN, Gland, Switzerland and Cambridge, UK, 2003).
14. Zhang, J., Nielsen, R. & Yang, Z. Evaluation of an improved branch-site likelihood method for detecting positive selection at the molecular level. *Mol. Biol. Evol.* **22**, 2472–2479 (2005).
15. Patterson, N., Price, A. L. & Reich, D. Population structure and eigen analysis. *PLoS Genet.* **2**, e190 (2006).
16. Tang, H., Peng, J., Wang, P. & Risch, N. J. Estimation of individual admixture: analytical and study design considerations. *Genet. Epidemiol.* **28**, 289–301 (2005).
17. Li, H. & Durbin, R. Inference of human population history from individual whole genome sequences. *Nature* **475**, 493–496 (2011).
18. Schiffels, S. & Durbin, R. Inferring human population size and separation history from multiple genome sequences. *Nat. Genet.* **46**, 919–925 (2014).
19. Wang, J., Frasier, T., Yang, S. & White, B. Detecting recent speciation events: the case of the finless porpoise (genus *Neophocaena*). *Heredit* **101**, 145–155 (2008).
20. Patterson, N. et al. Ancient admixture in human history. *Genetics* **192**, 1065–1093 (2012).
21. Grummer, J. A., Bryson, R. W. & Reeder, T. W. Species delimitation using Bayes factors: simulations and application to the *Sceloporus scalaris* species group (Squamata: Phrynosomatidae). *Syst. Biol.* **63**, 119–133 (2014).
22. Nielsen, R. et al. Genomic scans for selective sweeps using SNP data. *Genome Res.* **15**, 1566–1575 (2005).
23. DeGiorgio, M., Huber, C. D., Hubisz, M. J., Hellmann, I. & Nielsen, R. SweepFinder2: increased sensitivity, robustness and flexibility. *Bioinformatics* **32**, 1895–1897 (2016).
24. Kasuya, T. *Handbook of Marine Mammals* (eds Ridgway, S. H. & Harrison, R.) 411–442 (Academic Press, San Diego, 1999).
25. Siu, F., Bain, P. J., LeBlanc-Chaffin, R., Chen, H. & Kilberg, M. S. ATF4 is a mediator of the nutrient-sensing response pathway that activates the human asparagine synthetase gene. *J. Biol. Chem.* **277**, 24120–24127 (2002).
26. Blais, J. D. et al. Activating transcription factor 4 is translationally regulated by hypoxic stress. *Mol. Cell Biol.* **24**, 7469–7482 (2004).
27. Sabeti, P. C. et al. Genome-wide detection and characterization of positive selection in human populations. *Nature* **449**, 913–918 (2007).
28. Ni, J. Z. & Zhou, K. Rencular structural indices and urinary concentrating capacity of *Neophocaena phocaenoides*. *Acta Zool. Sin.* **3**, 243–250 (1988).
29. Sands, J. M., Blount, M. A. & Klein, J. D. Regulation of renal urea transport by vasopressin. *Trans. Am. Clin. Climatol. Assoc.* **122**, 82–92 (2011).
30. Xu, S. et al. Adaptive evolution of the osmoregulation-related genes in cetaceans during secondary aquatic adaptation. *BMC Evol. Biol.* **13**, 189 (2013).
31. Ruan, R., Guo, A. H., Hao, Y. J., Zheng, J. S. & Wang, D. De novo assembly and characterization of narrow-ridged finless porpoise renal transcriptome and identification of candidate genes involved in osmoregulation. *Int. J. Mol. Sci.* **16**, 2220–2238 (2015).
32. Guo, A., Hao, Y., Wang, J., Zhao, Q. & Wang, D. Concentrations of osmotically related constituents in plasma and urine of finless porpoise (*Neophocaena asiaorientalis*): Implications for osmoregulatory strategies for marine mammals living in freshwater. *Zool. Stud.* **53**, 10 (2014).
33. Ferreira, A. J. et al. Therapeutic implications of the vasoprotective axis of the renin-angiotensin system in cardiovascular diseases. *Hypertension* **55**, 207–213 (2010).
34. Oudit, G. Y. et al. Loss of angiotensin-converting enzyme-2 leads to the late development of angiotensin II-dependent glomerulosclerosis. *Am. J. Pathol.* **168**, 1808–1820 (2006).
35. Soler, M. J. et al. ACE2 inhibition worsens glomerular injury in association with increased ACE expression in streptozotocin-induced diabetic mice. *Kidney Int.* **72**, 614–623 (2007).
36. Yim, H. S. et al. Minke whale genome and aquatic adaptation in cetaceans. *Nat. Genet.* **46**, 88–92 (2014).
37. Jones, F. C. et al. The genomic basis of adaptive evolution in three spine sticklebacks. *Nature* **484**, 55–61 (2012).
38. Pilleri, G. & Gahr, M. Contribution to the knowledge of the cetaceans of Pakistan with particular reference to the genera *Neomeris*, *Sousa*, *Delphinus* and *Tursiops* and description of a new Chinese porpoise (*Neomeris asiaorientalis*). *Investig. Cetacea* **4**, 107–162 (1972).
39. Pilleri, G. & Gahr, M. On the taxonomy and ecology of the finless black porpoise, *Neophocaena* (Cetacea, Delphinidae). *Mammalia* **39**, 657–673 (1975).
40. Gao, A. & Zhou, K. Geographical variations of skull among the populations of *Neophocaena* in Chinese waters. *Acta Theriol. Sin.* **15**, 161–169 (1995).
41. Gao, A. & Zhou, K. Geographical variations of postcranial skeleton among the populations of *Neophocaena* in Chinese waters. *Acta Theriol. Sin.* **15**, 246–253 (1995).
42. Li, H. et al. TreeFam: a curated database of phylogenetic trees of animal gene families. *Nucleic Acids Res.* **34**, D572–D580 (2006).
43. Stamatakis, A. RaxML-VI-HPC: maximum likelihood-based phylogenetic analyses with thousands of taxa and mixed models. *Bioinformatics* **22**, 2688–2690 (2006).
44. Tamura, K. et al. Estimating divergence times in large molecular phylogenies. *Proc. Natl Acad. Sci. USA* **109**, 19333–19338 (2012).
45. Li, H. & Durbin, R. Fast and accurate short read alignment with burrows-wheeler transform. *Bioinformatics* **25**, 1754–1760 (2009).
46. Li, H. et al. The sequence alignment/map format and SAMtools. *Bioinformatics* **25**, 2078–2079 (2009).
47. McKenna, A. et al. The Genome Analysis Toolkit: a MapReduce framework for analyzing next-generation DNA sequencing data. *Genome Res.* **20**, 1297–1303 (2010).
48. Stamatakis, A., Hoover, P. & Rougemont, J. A rapid bootstrap algorithm for the RAXML Web servers. *Syst. Biol.* **57**, 758–771 (2008).
49. Beaumont, M. A. & Nichols, R. A. Evaluating loci for use in the genetic analysis of population structure. *Proc. R. Soc. Lond. B* **263**, 1619–1626 (1996).
50. Alexander, D. H. & Lange, K. Enhancements to the ADMIXTURE algorithm for individual ancestry estimation. *BMC Bioinformatics* **2**, 246 (2011).
51. Browning, B. L. & Browning, S. R. Improving the accuracy and efficiency of identity-by-descent detection in population data. *Genetics* **194**, 459–471 (2013).
52. Barrett, J. C., Fry, B., Maller, J. & Daly, M. J. Haploview: analysis and visualization of LD and haplotype maps. *Bioinformatics* **21**, 263–265 (2005).
53. Zhou, X. et al. Baiji genomes reveal low genetic variability and new insights into secondary aquatic adaptations. *Nat. Commun.* **4**, 2708 (2013).
54. Zhou, X. et al. Whole-genome sequencing of the snub-nosed monkey provides insights into folivory and evolutionary history. *Nat. Genet.* **46**, 1303–1310 (2014).
55. Zhou, X. et al. Population genomics reveals low genetic diversity and adaptation to hypoxia in snub-nosed monkeys. *Mol. Biol. Evol.* **33**, 2670–2681 (2016).
56. Zhao, S. et al. Whole-genome sequencing of giant pandas provides insights into demographic history and local adaptation. *Nat. Genet.* **45**, 67–71 (2013).
57. Leaché, A. D., Fujita, M. K., Minin, V. N. & Bouckaert, R. R. Species delimitation using genome-wide SNP data. *Syst. Biol.* **63**, 534–542 (2014).
58. Bouckaert, R. et al. BEAST 2: a software platform for Bayesian evolutionary analysis. *PLoS Comput. Biol.* **10**, e1003537 (2014).
59. Baele, G. et al. Improving the accuracy of demographic and molecular clock model comparison while accommodating phylogenetic uncertainty. *Mol. Biol. Evol.* **29**, 2157–2167 (2012).
60. Kass, R. E. & Raftery, A. E. Bayes factors. *J. Am. Stat. Assoc.* **90**, 773–795 (1995).
61. Szpiech, Z. A. & Hernandez, R. D. Selscan: an efficient multithreaded program to perform EHH-based scans for positive selection. *Mol. Biol. Evol.* **31**, 2824–2827 (2014).
62. ESRI – Environmental Systems Research Institute ArcGIS Professional GIS for the Desktop v9.3 (Esri, 2006).

## Acknowledgements

This work was supported by the Key Project of the National Natural Science Foundation of China (NSFC) (grant no. 31630071 to G.Y.), the National Science Fund for Distinguished Young Scholars (grant no. 31325025 to G.Y.), the National Key Programme of Research and Development, Ministry of Science and Technology of China (grant no.



2016YFC0503200 to G.Y. and S.X.), the National Natural Science Foundation of China (NSFC) (grant nos. 31370401 to W.R. and 31570379 to S.X.), and the Priority Academic Program Development of Jiangsu Higher Education Institutions (PAPD).

### Author contributions

G.Y. and X.Z. conceived and supervised the project. X.Z., X.G., D.S., X.F., W.J., L.Y., J.X., Q.G. and Q.Z. performed genome assembly and annotation, comparative genomics analyses, and population genomic analyses with input from R.N. X.Z. wrote the manuscript with critical input from R.N., D.S., I.S., M.L., V.N.G., S.X., G.Y., K.Z., S.L., A.K., Q.D., B.C., and W.R.

### Additional information

**Supplementary Information** accompanies this paper at <https://doi.org/10.1038/s41467-018-03722-x>.

**Competing interests:** The authors declare no competing interests.

**Reprints and permission** information is available online at <http://npg.nature.com/reprintsandpermissions/>

**Publisher's note:** Springer Nature remains neutral with regard to jurisdictional claims in published maps and institutional affiliations.



**Open Access** This article is licensed under a Creative Commons Attribution 4.0 International License, which permits use, sharing, adaptation, distribution and reproduction in any medium or format, as long as you give appropriate credit to the original author(s) and the source, provide a link to the Creative Commons license, and indicate if changes were made. The images or other third party material in this article are included in the article's Creative Commons license, unless indicated otherwise in a credit line to the material. If material is not included in the article's Creative Commons license and your intended use is not permitted by statutory regulation or exceeds the permitted use, you will need to obtain permission directly from the copyright holder. To view a copy of this license, visit <http://creativecommons.org/licenses/by/4.0/>.

© The Author(s) 2018