

SCIENTIFIC REPORTS



OPEN

Potential bias of daily soil CO₂ efflux estimates due to sampling time

Alejandro Cueva¹, Stephen H. Bullock¹, Eulogio López-Reyes¹ & Rodrigo Vargas²

Soil respiration (Rs) has been usually measured during daylight hours using manual chambers. This approach assumes that measurements made during a typical time interval (e.g., 9 to 11 am) represent the mean daily value; locally, this may not always be correct and could result in systematic bias of daily and annual Rs budgets. We propose a simple method, based on the temporal stability concept, to determine the most appropriate time of the day for manual measurements to capture a representative mean daily Rs value. We introduce a correction factor to adjust for biases due to non-optimally timed sampling. This approach was tested in a semiarid shrubland using 24 hr campaigns using two treatments: trenched plots and plots with shrubs. In general, we found optimum times were at night and potential biases ranged from -29 to $+40\%$ in relation to the 24 hr mean of Rs, especially in trenched plots. The degree of bias varied between treatments and seasons, having a greater influence during the wet season when efflux was high than during the dry season when efflux was low. This study proposes a framework for improving local Rs estimates that informs how to decrease temporal uncertainties in upscaling to the annual total.

Soil respiration (Rs) represents the second largest flux within the terrestrial carbon cycle, being surpassed only by gross primary productivity¹. This flux is estimated to be an order of magnitude greater than the CO₂ input to the atmosphere from anthropogenic fossil fuel combustion². Rs represents a net loss of carbon derived from root respiration and from microbial metabolism of soil carbon^{3,4}, the largest carbon pool globally⁵. Rs has complex spatio-temporal biophysical controls that vary on different scales⁶ as a consequence of changes in biotic (e.g., photosynthesis^{7–10}, microbial community¹¹) and abiotic (e.g., soil temperature^{12,13}, soil moisture^{14,15}, soil texture¹⁶) factors. It is important to recognize that a small change within this pool could represent a significant feedback to the earth system¹⁷. Thus, sampling schemes and measurement strategies should be discussed to improve reports of Rs at the site level and across the world.

Rs is a composite of two main sources, heterotrophic (e.g., microbial metabolism) and autotrophic (root and mycorrhizae respiration)⁴. Partitioning of those sources is commonly done using trenching experiments¹⁸, where roots are excised and excluded from small plots so that microbial metabolism can be assumed to be the only source of Rs. Understanding the contributions of autotrophic and heterotrophic respiration is important because they may respond differently to temperature, with different temporal correlations on a variety of time scales¹⁹.

Rs has been measured for almost 90 years²⁰ and commonly has been measured using non-steady-state, manually-initiated portable chambers. Manual measurements have been popular around the world because of their portability, low implementation costs, and fewer power and security issues. Measurements using manual chambers are rapid (samples obtained within minutes), object-oriented (looking for differences between treatments without limits to their distribution), and involve visual assessment of the sample unit for every measurement. Results from these manual measurements have relatively good information of spatial variability (due to easy implementation) and are usually integrated to estimate longer-period emissions²¹. These temporal integrations include annual fluxes, although this derives from a record with temporal gaps²² due to the low frequency of sampling typical of manual chambers (Fig. 1). Furthermore, measurement campaigns are commonly done in daylight hours, and assume that measurements made at a specific time interval (e.g., 9 to 11 am) represent the mean daily value. Locally, that assumption could cause systematic under- or over-estimation and contribute to bias or error in annual estimates from local to global scales (see Barton, *et al.*²¹ for an example of N₂O fluxes and Vargas and Allen²³ for CO₂ fluxes).

¹Departamento de Biología de la Conservación, Centro de Investigación Científica y de Educación Superior de Ensenada, B. C., Ensenada, Baja California, 22860, Mexico. ²Department of Plant and Soil Sciences, University of Delaware, Newark, DE, 19716, USA. Correspondence and requests for materials should be addressed to A.C. (email: alexcueva88@gmail.com)

Received: 3 February 2017

Accepted: 6 June 2017

Published online: 20 September 2017

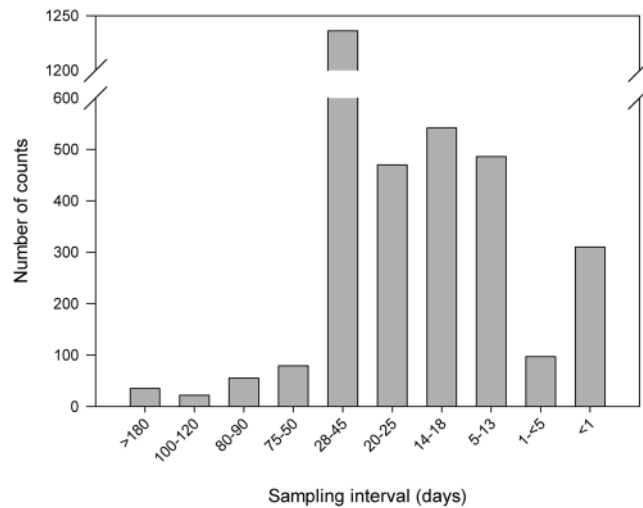


Figure 1. Histogram of number of entries sorted by sampling interval reported in the Soil Respiration Database (SRDB V3.0)²⁴. Note that the most common sampling interval is from 28–45 days (e.g., monthly, $n = 1236$), followed by 14–18 (e.g., biweekly, $n = 542$). Also note that, despite the sampling interval, the annual coverage could be less than 365 days. The total number of entries in the SRDB V3.0 is 5174, but only 3332 reported a sampling interval. The SRDB V3.0 has data from 1961 to 2011.

Individual efforts to monitor R_s at the local scale are commonly performed in order to understand the temporal and spatial biophysical controls of R_s , as well as to estimate seasonal to annual carbon budgets. Those local results may be collected and input to databases of R_s for estimating global carbon budgets. However, any error in the measurements of R_s at the local scale could be propagated to the global estimation. Thus, it is important to obtain the best possible estimates at the local scale, in order to decrease uncertainties for upscaling purposes. For instance, the Global Soil Respiration Database²⁴ has been constructed mostly from manual measurements of R_s . Remarkably, despite the long history of R_s measurements, little attention has been paid to how the sampling time during 24 hr influences the estimation of R_s , while other shortcomings and pitfalls of sampling have been addressed (e.g., systematic^{25,26} and random^{27,28} errors in instrument measurements, sample size and strategy^{29–31}).

The present work addresses the need to determine the effect of sampling time on R_s measurements. We based our analysis on the temporal stability concept^{32,33}. R_s for each hour has a relative difference (RD) with the 24 hr site-level mean R_s . In turn, these values of RD may be relatively stable across hours for some months (e.g., seasonally) and can be represented by their mean (MRD). Then, MRD values close to zero indicate sampling times that are optimum, being closest to the 24 hr mean; the concept can also be applied using the standard deviation or other moment. We performed our analysis on 24 hr R_s data from two treatments intended to separate heterotrophic and autotrophic respiration in a Mediterranean-climate shrubland. Our purpose was to determine the time at which R_s measurements are most representative of the daily mean value and how the estimate of annual R_s could be affected by this artifact. Here we also introduce a correction factor to address the possibility of adjusting R_s measurements that are less representative due to sampling time.

Results and Discussion

Using the temporal stability framework, we found that mean relative difference (MRD) values showed biases from -13 to $+17\%$ in the shrub treatment, and from -29 to $+40\%$ in the trench treatment (Fig. 2; Table 1). During daylight hours (e.g., from 8:00 to 19:00) measurements frequently over-estimated R_s in relation to the daily mean value of both trench and shrub treatments.

In general, we found that MRD values in the trench treatment had higher variability ($-0.08 \pm 22.1\%$; median \pm standard deviation) than the shrub treatment ($1.23 \pm 8.1\%$; Fig. 2; Table 1). Furthermore, R_s in the trench treatment was often under-estimated: MRD median values were not close to zero because most hours were below the daily average (Table 1; Fig. 2). There was usually a greater negative bias during the dry season (-12% for trench and -3.14% for shrub) than during the wet season (-4.95% for trench and -0.1% for shrub) (Table 1).

The most appropriate time intervals for measuring R_s at our study site were not in the customary morning hours but rather from 17:00 to 19:00 in the shrub treatment and 20:00 to 21:00 in the trench treatment (Fig. 2). This could be due to R_s having a diurnal cycle, with its lowest values before sunrise, increasing through the morning and then decreasing more slowly sometime after noon and into the night. However, it has to be noted that the diurnal cycle of R_s did not follow a sinusoidal trajectory (as has been suggested for N_2O fluxes³⁴) in which case there would be two non-consecutive ideal hours that represent the mean daily value of R_s . Also, the hours with lowest MRD did not match those with the lowest SDMRD. Thus, the “ideal” hour may present difficulties both in terms of concepts (accuracy of estimates of the annual budget) and logistics (sampling near noon or midnight); thus, other criteria for choosing the sampling hours may have to be taken into account. Furthermore, we found differences when we evaluated the most appropriate time intervals for the dry and wet seasons. For example, during the dry season there was a more irregular pattern than during the wet season, such that appropriate hours

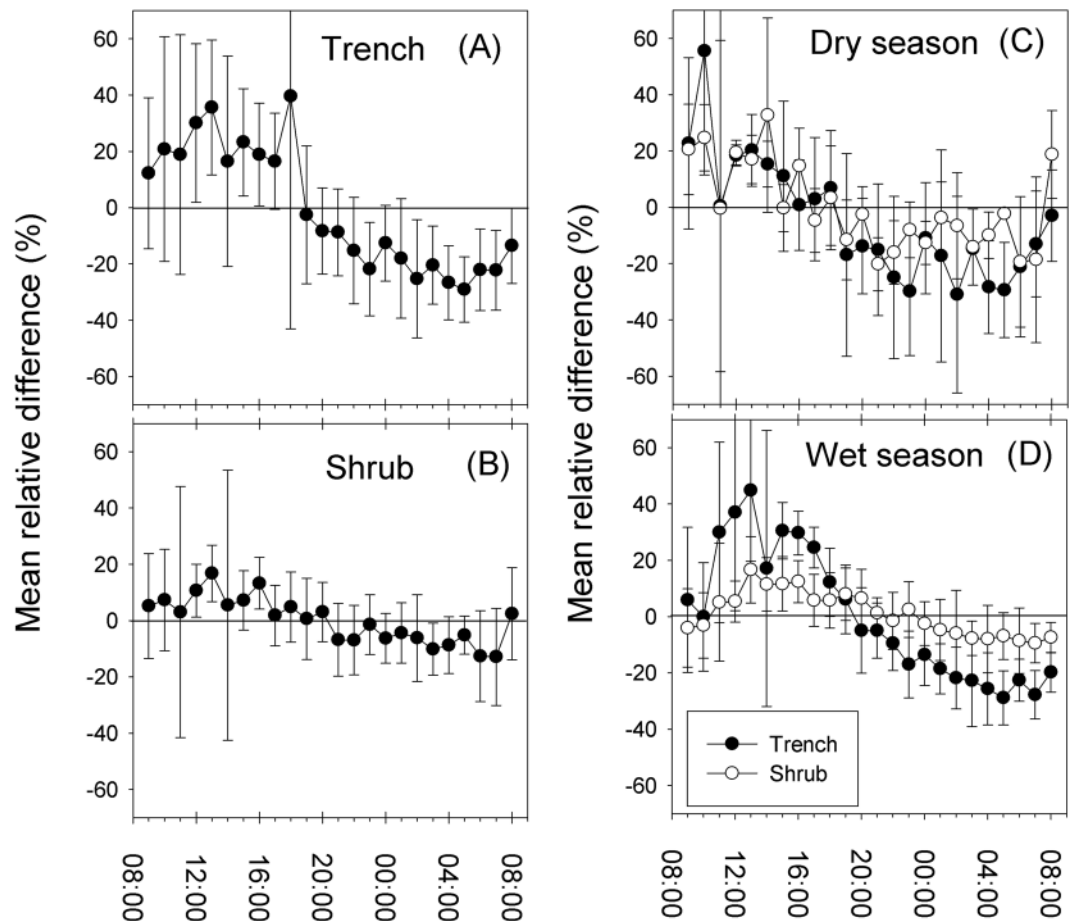


Figure 2. Mean relative difference (MRD) values \pm standard deviation for all the 24 hr campaigns for the treatments (A) Trenched and (B) Shrub, and separated in (C) dry season and (D) wet season.

Treatment/Season	$\bar{\mu}$ (%)	σ (%)	Min (%)	Max (%)
Trench-All data	-0.08	22.1	-29.1	39.6
Shrub-All data	1.23	8.1	-12.9	16.8
Trench-Dry season	-11.99	21.2	-31.02	55.6
Shrub-Dry season	-3.14	15.4	-20.22	32.7
Trench-Wet season	-4.95	23.2	-28.9	44.9
Shrub-Wet season	-0.1	7.8	-9.5	16.6

Table 1. Summary statistics for mean relative difference (MRD) values. $\bar{\mu}$: median; σ : standard deviation; Min: minimum value; Max: maximum value.

for sampling R_s were dispersed across the 24 hr (Fig. 2). During the wet season, in contrast, the most appropriate hours to measure R_s were easily identifiable and consecutive (consecutive assigned ranks), ranging from 20:00 to 22:00 in the trench treatment and from 21:00 to 00:00 in the shrub treatment.

It is likely that optimal hours derived from the methodology we tested will vary among sites. For example, Davidson, *et al.*²⁵ suggested that in a temperate mixed-hardwood forest the diel bias was $\pm 25\%$ of the daily mean, the most adequate hours to measure R_s being in the mid-morning. In a young poplar forest, Gana, *et al.*³⁵ found that the average of measurements made from 6:00 to 12:00 and 16:30 to 22:30 could represent the daily mean value of R_s , with potential biases of $\pm 20\%$. Moreover, in a temperate rainforest, Perez-Quezada, *et al.*³⁶ found that daytime measurements of R_s always overestimated the R_s mean daily value derived from 24 h high-frequency measurements. Thus, the sampling times to obtain a representative daily R_s are likely to depend on the ecosystem or conditions studied, and should be determined for each site and season. Of course, study conditions include manipulations as in flux-partitioning experiments: our results showed that trenched plots had higher temporal bias and different optimal timing.

When we applied the constant offset (Equation 4 in the Material and Methods Section; specific constant offsets for the dry and wet season) to our dataset, we found significant differences (Bayes Factor > 3) between

Treatment	Season	μ ($\mu\text{mol CO}_2 \text{ m}^{-2} \text{ s}^{-1}$)	σ ($\mu\text{mol CO}_2 \text{ m}^{-2} \text{ s}^{-1}$)	Difference (%)	Bayes Factor*
Shrub-corrected	All year	1.20	0.77	-11.1	582.1
Shrub-uncorrected	All year	1.35	0.85		
Trench-corrected	All year	0.95	0.61	-25.2	22.08
Trench-uncorrected	All year	1.27	0.89		
Shrub-corrected	Dry season	0.66	0.47	-15.4	4.41
Shrub-uncorrected	Dry season	0.78	0.56		
Trench-corrected	Dry season	0.57	0.38	-14.9	5.17
Trench-uncorrected	Dry season	0.67	0.45		
Shrub-corrected	Wet season	1.73	0.64	-9.9	36.03
Shrub-uncorrected	Wet season	1.92	0.71		
Trench-corrected	Wet season	1.32	0.58	-29.4	20.07
Trench-uncorrected	Wet season	1.87	0.81		

Table 2. Annual and seasonal average (μ) \pm standard deviation (σ) of soil respiration from monthly mid-day measurements in trench and shrub treatments, corrected and uncorrected for temporal bias. *Values of Bayes Factor >1 indicate that data are n times better supported by the alternative hypothesis than by the null hypothesis.

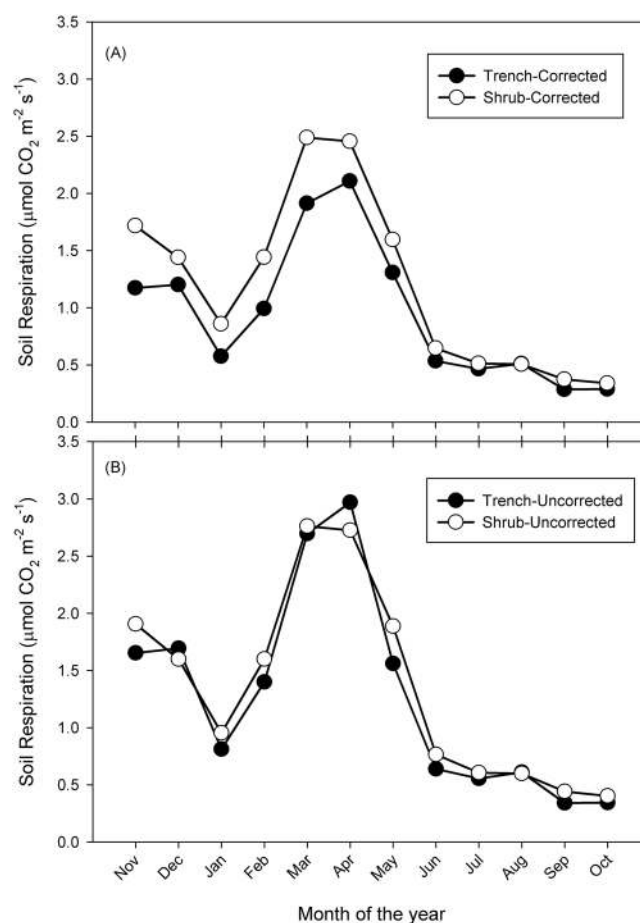


Figure 3. Corrected (A) and uncorrected (B) annual series of soil respiration. Note that we use a hydrological year (from November to October) instead of a calendar year (January to December).

corrected and uncorrected estimations of R_s at the annual scale, as well as during the dry and wet season (Table 2; Fig. 3). When we compared the annual uncorrected values between the trench and the shrub treatments we did not find significant differences (Bayes Factor = 1.04; Supplementary Table 1). However, the contrast of the annual corrected values of R_s between the shrub and the trench treatments was significant (Bayes Factor = 37.41;

Supplementary Table 1). Strong differences were always found during the wet season (Bayes Factor >3; Supplementary Table 1), but not during the dry season for either corrected or uncorrected values (Supplementary Table 1). This suggests that during the season of low ecosystem metabolic activity, together with an irregular pattern of the most representative sampling hours, the sampling time was not substantially influencing the estimations of Rs. However, during the wet season, sampling time influenced the estimations of both trenched and shrub treatments. We found that our previous system of sampling around midday could be over-estimating Rs by approximately 11 to 25% at the annual scale and by 10 to 30% during the wet season (Table 2).

When we compared the relationships of Rs with its main drivers (i.e., soil temperature and soil moisture), we did not find significant differences between corrected and uncorrected values of Rs at seasonal or annual scales (95% confidence intervals; Supplementary Table 2). Also, the variance explained remained similar between corrected and uncorrected values (Supplementary Table 2). Thus, functional relationships of Rs were not affected by correcting suboptimal estimates of mean Rs by a constant offset, although there were important effects on the estimates of seasonal and annual Rs.

Conclusion

Our findings show that measurement of Rs in the customary morning to midday hours may not be appropriate for integrating temporal variability of Rs. At our study site, Rs measurements in daylight hours tend to overestimate the mean daily value of Rs, especially in the growing season. Repeated 24 hr campaigns can define sampling times that yield measurements most representative of the daily mean for each season. Such intensive but limited campaigns can also yield appropriate corrections for non-optimal timing of sampling in monitoring programs. It is noteworthy that the implications of this research may be geographically broad, and also may apply to other GHG emissions from soil (e.g., N₂O, CH₄), especially in treatment-effect experiments. For studies with manual systems, with one measurement per sampling position per sampling date, there should be baseline work on the 24 hr cycle, preferably per season, because convenient sampling could lead to over- or under- estimation of the annual Rs flux. It is important to combine locally appropriate timing of measurements with accurate spatial representation because these site-specific measurements provide information to databases that are used to estimate regional-to-global Rs.

Material and Methods

Estimation of the most representative time interval. Here we present a method to determine the most representative time interval to measure Rs, based on the temporal stability concept³². For a collection of sample positions where Rs is measured at nearly the same times over 24 hr, there is a stable relationship of the mean (or other statistic) for any time to the mean of the collection over all the times. This relationship may differ among the sample times and may also show seasonal changes. Then, the relative difference between an hourly mean of Rs and the daily mean Rs will have a range of values, and the closest to zero indicates the optimal time for sampling. This method could easily be applied regardless of site characteristics and to any periodic measurements, including other soil greenhouse gases.

The relative difference (RD) of Rs with respect to its expected value is given by:

$$RD_j = \frac{x_{ij} - \frac{\sum_{i=1}^n x_{ij}}{n}}{\frac{\sum_{i=1}^n x_{ij}}{n}}, \quad (1)$$

where j represents the treatment (e.g., trench), x represents the Rs measurement at the i th time interval (e.g., 9:00 am), and n represents the number of intervals (e.g., $n = 24$ (hours) in a day). The RD values are specific for each 24 hr period. Thus, in order to determine a robust estimate of the most representative time interval, various 24 hr periods should be taken into account. Then, to integrate the RD of different 24 hr periods, the mean relative difference (MRD) is estimated as:

$$MRD_i = \frac{\sum_N^{\max} RD_i}{N}, \quad (2)$$

where N is the number of campaigns; we note that if $N = 1$ then $MRD = RD$. Thus, MRD values should range between -1 and 1 , or may be multiplied by 100 to be expressed as percentage. The standard deviation of the MRD (SDMRD) is defined by:

$$SDMRD_i = \sqrt{\frac{\sum_N^{\max} (RD_i - MRD_i)^2}{n - 1}} \quad (3)$$

The most representative sample interval should be that with MRD closest to zero (e.g., the minimum difference in relation with its daily mean value) and lowest SDMRD (e.g., the minimum variability in relation with its mean value)³⁷. Thus, MRD quantifies the systematic bias of Rs at each sampling time, while SDMRD quantifies the precision of the bias. Finally, ranks are assigned in ascendant order to each MRD value (i.e., 1 is the lowest negative MRD and 24 is the highest positive MRD). Thus, we propose that the “ideal” time interval to measure Rs would be that with the middle ranking (12 or 13 for 24 hourly samples).

In order to adjust for sampling in “non-ideal” time intervals, a correction factor can be used³³:

$$\widehat{Rs}_i = \frac{Rs_i}{1 + MRD_i}, \quad (4)$$

where \widehat{Rs}_i is the Rs_i measurement at time i th corrected by the offset derived from the MRD_i for time i th.

Study site. El Mogor is a MexFlux³⁸ site (MX-EMg) located within the Valle de Guadalupe, Baja California, México (32.02982 N, 116.60449 W, 409 m asl). The climate at El Mogor is semiarid Mediterranean, with warm-dry summers and cool-moist winters. Vegetation is a mixture of chaparral and less-sclerophyllous species. The site was severely burned in 1988 and has recovered to ~50% shrub cover. For further information about El Mogor, see previous publications^{39–41}.

Sampling design and measurements. In August 2011 we established three 1 × 1 m trenched plots, within the chaparral but lacking shrubs; we installed three PVC collars of 10 cm diameter within each plot. A trench of ~20 cm width and ~50 cm depth was excavated around each plot, lined with plastic sheeting (~1 mm thick) and backfilled. The excavation depth was decided on the basis of previous studies of the depth distribution of chaparral roots, which showed >85% of the roots were in the upper 40 cm of the soil profile^{42,43}. Herbaceous plants were removed as necessary during the study period. In areas surrounding the trenched plots (<5 m) we inserted three more collars, placed within 50 cm of the main stem of a shrub. The total number of collars was 2 (treatments; herein *trench* and *shrub*) × 3 (plots) × 3 (collars) = 18. Measurements in the trench and shrub plots were initiated three months after trenching (November 2011), to minimize the influence of disturbance.

We performed eight 24 hr campaigns during 2014 (March, April, June, October, and November), 2015 (November), and 2016 (January and April). Those sampling campaigns represented the growing (wet) and non-growing (dry) seasons, with 4 campaigns per season. Measurements of Rs , soil moisture and soil temperature were made hourly from 9:00 of day T to 8:00 of day $T + 1$. Furthermore, we made monthly measurements of Rs , from 12:00 to 14:00 at 25 collars on a grid pattern across 0.125 ha, in order to estimate annual carbon loss via Rs .

Soil respiration was measured using a LI-8100 (LI-COR, Lincoln, NE, USA) and a 10 cm survey chamber (model 8100-102). Measurements of soil temperature and volumetric water content (Theta Probe, ML2x) were done at ~10 cm depth within 30 cm of the Rs chamber.

Statistical analysis. Differences between means were tested using the inverse of Bayes factors (a value of Bayes Factor > 1 indicates that data are n times better supported by the alternative hypothesis than by the null hypothesis⁴⁴) for Student's t -test. Furthermore, we used Bayesian linear regressions in order to test if functional responses of Rs with its main drivers (soil temperature and soil moisture) were maintained or affected by Equation 4. All statistical analyses were made in JASP (V0.8.0.0; available at <https://jasp-stats.org/>).

References

1. Raich, J. W. & Potter, C. S. Global patterns of carbon dioxide emissions from soils. *Global Biogeochemical Cycles* **9**, 23–36, <https://doi.org/10.1029/94GB02723> (1995).
2. Reichstein, M. & Beer, C. Soil respiration across scales: The importance of a model–data integration framework for data interpretation. *Journal of Plant Nutrition and Soil Science* **171**, 344–354, <https://doi.org/10.1002/jpln.200700075> (2008).
3. Ryan, M. G. & Law, B. E. Interpreting, measuring, and modeling soil respiration. *Biogeochemistry* **73**, 3–27, <https://doi.org/10.1007/s10533-004-5167-7> (2005).
4. Hanson, P. J., Edwards, N. T., Garten, C. T. & Andrews, J. A. Separating root and soil microbial contributions to soil respiration: A review of methods and observations. *Biogeochemistry* **48**, 115–146, <https://doi.org/10.1023/A:1006244819642> (2000).
5. Lal, R. Soil carbon sequestration to mitigate climate change. *Geoderma* **123**, 1–22, <https://doi.org/10.1016/j.geoderma.2004.01.032> (2004).
6. Vargas, R., Carbone, M. S., Reichstein, M. & Baldocchi, D. D. Frontiers and challenges in soil respiration research: from measurements to model–data integration. *Biogeochemistry* **102**, 1–13, <https://doi.org/10.1007/s10533-010-9462-1> (2011).
7. Kuzyakov, Y. & Gavrichkova, O. REVIEW: Time lag between photosynthesis and carbon dioxide efflux from soil: a review of mechanisms and controls. *Global Change Biology* **16**, 3386–3406, <https://doi.org/10.1111/j.1365-2486.2010.02179.x> (2010).
8. Bahn, M., Schmitt, M., Siegwolf, R., Richter, A. & Bruggemann, N. Does photosynthesis affect grassland soil-respired CO₂ and its carbon isotope composition on a diurnal timescale? *New Phytologist* **182**, 451–460, <https://doi.org/10.1111/j.1469-8137.2008.02755.x> (2009).
9. Vargas, R. *et al.* Looking deeper into the soil: environmental controls and seasonal lags of soil CO₂ production and efflux across multiple vegetation types. *Ecological Applications* **20**, 1569–1582, <https://doi.org/10.1890/09-0693.1> (2010).
10. Mencuccini, M. & Holta, T. The significance of phloem transport for the speed with which canopy photosynthesis and belowground respiration are linked. *New Phytologist* **185**, 189–203, <https://doi.org/10.1111/j.1469-8137.2009.03050.x> (2010).
11. Nannipieri, P. *et al.* Microbial diversity and soil functions. *European Journal of Soil Science* **54**, 655–670, <https://doi.org/10.1046/j.1365-2389.2003.00556.x> (2003).
12. Lloyd, J. & Taylor, J. A. On the temperature dependence of soil respiration. *Functional Ecology* **8**, 315–323, <https://doi.org/10.2307/2389824> (1994).
13. Davidson, E. & Janssens, I. A. Temperature sensitivity of soil carbon decomposition and feedbacks to climate change. *Nature* **440**, 165–173, <https://doi.org/10.1038/nature04514> (2006).
14. Kim, D. G., Vargas, R., Bond-Lamberty, B. & Turetsky, M. R. Effects of soil rewetting and thawing on soil gas fluxes: a review of current literature and suggestions for future research. *Biogeosciences* **9**, 2459–2483, <https://doi.org/10.5194/bg-9-2459-2012> (2012).
15. Vicca, S. *et al.* Can current moisture responses predict soil CO₂ efflux under altered precipitation regimes? A synthesis of manipulation experiments. *Biogeosciences* **11**, 2991–3013, <https://doi.org/10.5194/bg-11-2991-2014> (2014).
16. Cable, J. M., Ogle, K., Williams, D. G., Weltzin, J. F. & Huxman, T. E. Soil Texture Drives Responses of Soil Respiration to Precipitation Pulses in the Sonoran Desert: Implications for Climate Change. *Ecosystems* **11**, 961–979, <https://doi.org/10.1007/s10021-008-9172-x> (2008).
17. Reichstein, M. *et al.* Modeling temporal and large-scale spatial variability of soil respiration from soil water availability, temperature and vegetation productivity indices. *Global Biogeochemical Cycles* **17**, 1104, <https://doi.org/10.1029/2003GB002035> (2003).
18. Bond-Lamberty, B., Bronson, D., Bladyka, E. & Gower, S. T. A comparison of trenched plot techniques for partitioning soil respiration. *Soil Biology and Biochemistry* **43**, 2108–2114, <https://doi.org/10.1016/j.soilbio.2011.06.011> (2011).

19. Bond-Lamberty, B., Wang, C. & Gower, S. T. A global relationship between the heterotrophic and autotrophic components of soil respiration? *Global Change Biology* **10**, 1756–1766, <https://doi.org/10.1111/j.1365-2486.2004.00816.x> (2004).
20. Lundegårdh, H. Carbon dioxide evolution of soil and crop growth. *Soil Science* **23**, 417–453, <https://doi.org/10.1097/00010694-192706000-00001> (1927).
21. Barton, L. *et al.* Sampling frequency affects estimates of annual nitrous oxide fluxes. *Scientific Reports* **5**, 15912, <https://doi.org/10.1038/srep15912> (2015).
22. Gomez-Casanovas, N., Anderson-Teixeira, K. J., Zeri, M., Bernacchi, C. J. & Delucia, E. H. Gap filling strategies and error in estimating annual soil respiration. *Global Change Biology* **19**, 1941–1952, <https://doi.org/10.1111/gcb.12127> (2013).
23. Vargas, R. & Allen, M. F. Environmental controls and the influence of vegetation type, fine roots and rhizomorphs on diel and seasonal variation in soil respiration. *New Phytologist* **179**, 460–471, <https://doi.org/10.1111/j.1469-8137.2008.02481.x> (2008).
24. Bond-Lamberty, B. & Thomson, A. A global database of soil respiration data. *Biogeosciences* **7**, 1915–1926, <https://doi.org/10.5194/bg-7-1915-2010> (2010).
25. Davidson, E. A., Savage, K., Verchot, L. V. & Navarro, R. Minimizing artifacts and biases in chamber-based measurements of soil respiration. *Agricultural and Forest Meteorology* **113**, 21–37, [https://doi.org/10.1016/S0168-1923\(02\)00100-4](https://doi.org/10.1016/S0168-1923(02)00100-4) (2002).
26. Pumpanen, J. *et al.* Comparison of different chamber techniques for measuring soil CO₂ efflux. *Agricultural and Forest Meteorology* **123**, 159–176, <https://doi.org/10.1016/j.agrformet.2003.12.001> (2004).
27. Cueva, A., Bahn, M., Litvak, M., Pumpanen, J. & Vargas, R. A multisite analysis of temporal random errors in soil CO₂ efflux. *Journal of Geophysical Research: Biogeosciences* **120**, 737–751, <https://doi.org/10.1002/2014jg002690> (2015).
28. Savage, K., Davidson, E. A. & Richardson, A. D. A conceptual and practical approach to data quality and analysis procedures for high-frequency soil respiration measurements. *Functional Ecology* **22**, 1000–1007, <https://doi.org/10.1111/j.1365-2435.2008.01414.x> (2008).
29. He, Y., Gibbons, J. & Rayment, M. A two-stage sampling strategy improves chamber-based estimates of greenhouse gas fluxes. *Agricultural and Forest Meteorology* **228**, 52–59, <https://doi.org/10.1016/j.agrformet.2016.06.015> (2016).
30. Yim, M. H., Joo, S. J., Shutou, K. & Nakane, K. Spatial variability of soil respiration in a larch plantation: estimation of the number of sampling points required. *Forest Ecology and Management* **175**, 585–588, [https://doi.org/10.1016/S0378-1127\(02\)00222-0](https://doi.org/10.1016/S0378-1127(02)00222-0) (2003).
31. Rodeghiero, M. & Cescatti, A. Spatial variability and optimal sampling strategy of soil respiration. *Forest Ecology and Management* **255**, 106–112, <https://doi.org/10.1016/j.foreco.2007.08.025> (2008).
32. Vachaud, G. P., de Silans, A., Balabanis, P. & Vauclin, M. Temporal Stability of Spatially Measured Soil Water Probability Density Function. *Soil Science of America Journal* **49**, 822–828, <https://doi.org/10.2136/sssaj1985.03615995004900040006x> (1985).
33. Xia, Y., She, D., Li, Y. & Yan, X. Impact of sampling time on chamber-based measurements of riverine nitrous oxide emissions using relative difference analysis. *Geoderma* **214–215**, 197–203, <https://doi.org/10.1016/j.geoderma.2013.09.011> (2014).
34. Alves, B. J. R. *et al.* Selection of the most suitable sampling time for static chambers for the estimation of daily mean N₂O flux from soils. *Soil Biology and Biochemistry* **46**, 129–135, <https://doi.org/10.1016/j.soilbio.2011.11.022> (2012).
35. Gana, C., Nouvellon, Y., Marron, N., Stape, J. L. & Epron, D. Sampling and interpolation strategies derived from the analysis of continuous soil CO₂ flux. *Journal of Plant Nutrition and Soil Science*, doi:<https://doi.org/10.1002/jpln.201600133> (2016).
36. Perez-Quezada, J. F. *et al.* How many measurements are needed to estimate accurate daily and annual soil respiration fluxes? Analysis using data from a temperate rainforest. *Biogeosciences* **13**, 6599–6609, <https://doi.org/10.5194/bg-13-6599-2016>, 2016 (2016).
37. Ran, Y. *et al.* Spatial representativeness and uncertainty of eddy covariance carbon flux measurements for upscaling net ecosystem productivity to the grid scale. *Agricultural and Forest Meteorology* **230–231**, 114–127, <https://doi.org/10.1016/j.agrformet.2016.05.008> (2016).
38. Vargas, R. *et al.* Progress and opportunities for monitoring greenhouse gases fluxes in Mexican ecosystems: the MexFlux network. *Atmósfera* **23**, 325–336 (2013).
39. León, E. *et al.* Hot spots, hot moments, and spatio-temporal controls on soil CO₂ efflux in a water-limited ecosystem. *Soil Biology and Biochemistry* **77**, 12–21, <https://doi.org/10.1016/j.soilbio.2014.05.029> (2014).
40. Franco-Vizcaino, E. & Sosa-Ramírez, J. Soil properties and nutrient relations in burned and unburned Mediterranean-climate shrublands of Baja California, Mexico. *Acta Oecologica* **18**, 503–517, [https://doi.org/10.1016/S1146-609X\(97\)80037-9](https://doi.org/10.1016/S1146-609X(97)80037-9) (1997).
41. Villareal, S. *et al.* Contrasting precipitation seasonality influences evapotranspiration dynamics in water-limited shrublands. *Journal of Geophysical Research - Biogeosciences* **121**, 494–508, <https://doi.org/10.1002/2015JG003169> (2016).
42. Sternberg, P. D., Anderson, M. A., Graham, R. C., Beyers, J. L. & Tice, K. R. Root distribution and seasonal water status in weathered granitic bedrock under chaparral. *Geoderma* **72**, 89–98, [https://doi.org/10.1016/0016-7061\(96\)00019-5](https://doi.org/10.1016/0016-7061(96)00019-5) (1996).
43. Kummerow, J., Krause, D. & Jow, W. Root systems of chaparral shrubs. *Oecologia* **29**, 163–177, [https://doi.org/10.1016/0016-7061\(96\)00019-5](https://doi.org/10.1016/0016-7061(96)00019-5) (1977).
44. Méndez-Alonzo, R., López-Portillo, J., Moctezuma, C., Bartlett, M. K. & Sack, L. Osmotic and hydraulic adjustment of mangrove saplings to extreme salinity. *Tree Physiology*, doi:<https://doi.org/10.1093/treephys/tpw073> (2016).

Acknowledgements

AC acknowledges support from CONACYT through a doctoral scholarship and an academic exchange grant, and from CICESE through the Life Sciences graduate program. SHB acknowledges support from CICESE (681115) and SEP- CONACYT (CB-2010-152671-F). RV acknowledges support from NASA under Carbon Monitoring Systems (NNX13AQ06G) and USDA (2014-67003-22070). We thank Natalia Badán Dangón for allowing us to maintain our study site at Rancho El Mogor. We acknowledge field support from Carlos Aguirre, David Gómez, and Yadira Romero. We thank Josep Barba and Natalia Kowalska for helpful discussion. AC was a member of CABEMAS while writing this manuscript.

Author Contributions

Conceived the experiment: A.C., S.H.B.; designed the experiment: A.C., R.V.; performed the experiment: A.C., E.L.R., S.H.B.; analyzed the data: A.C.; wrote the manuscript: A.C.; drafting of manuscript: A.C., S.H.B., R.V.

Additional Information

Supplementary information accompanies this paper at <https://doi.org/10.1038/s41598-017-11849-y>.

Competing Interests: The authors declare that they have no competing interests.

Publisher's note: Springer Nature remains neutral with regard to jurisdictional claims in published maps and institutional affiliations.



Open Access This article is licensed under a Creative Commons Attribution 4.0 International License, which permits use, sharing, adaptation, distribution and reproduction in any medium or format, as long as you give appropriate credit to the original author(s) and the source, provide a link to the Creative Commons license, and indicate if changes were made. The images or other third party material in this article are included in the article's Creative Commons license, unless indicated otherwise in a credit line to the material. If material is not included in the article's Creative Commons license and your intended use is not permitted by statutory regulation or exceeds the permitted use, you will need to obtain permission directly from the copyright holder. To view a copy of this license, visit <http://creativecommons.org/licenses/by/4.0/>.

© The Author(s) 2017