

# Practical High-Performance Liquid Chromatography

***FIFTH EDITION***

**Veronika R. Meyer**  
Swiss Federal Laboratories  
for Materials Testing and  
Research (EMPA),  
St. Gallen,  
Switzerland



A John Wiley and Sons, Ltd., Publication



Practical High-Performance  
Liquid Chromatography

Fifth Edition



# Practical High-Performance Liquid Chromatography

***FIFTH EDITION***

**Veronika R. Meyer**  
Swiss Federal Laboratories  
for Materials Testing and  
Research (EMPA),  
St. Gallen,  
Switzerland



A John Wiley and Sons, Ltd., Publication

This edition first published 2010  
© 2010 John Wiley and Sons, Ltd.

*Registered office*

John Wiley & Sons Ltd, The Atrium, Southern Gate, Chichester, West Sussex, PO19 8SQ, United Kingdom

For details of our global editorial offices, for customer services and for information about how to apply for permission to reuse the copyright material in this book please see our website at [www.wiley.com](http://www.wiley.com).

The right of the author to be identified as the author of this work has been asserted in accordance with the Copyright, Designs and Patents Act 1988.

All rights reserved. No part of this publication may be reproduced, stored in a retrieval system, or transmitted, in any form or by any means, electronic, mechanical, photocopying, recording or otherwise, except as permitted by the UK Copyright, Designs and Patents Act 1988, without the prior permission of the publisher.

Wiley also publishes its books in a variety of electronic formats. Some content that appears in print may not be available in electronic books.

Designations used by companies to distinguish their products are often claimed as trademarks. All brand names and product names used in this book are trade names, service marks, trademarks or registered trademarks of their respective owners. The publisher is not associated with any product or vendor mentioned in this book. This publication is designed to provide accurate and authoritative information in regard to the subject matter covered. It is sold on the understanding that the publisher is not engaged in rendering professional services. If professional advice or other expert assistance is required, the services of a competent professional should be sought.

The publisher and the author make no representations or warranties with respect to the accuracy or completeness of the contents of this work and specifically disclaim all warranties, including without limitation any implied warranties of fitness for a particular purpose. This work is sold with the understanding that the publisher is not engaged in rendering professional services. The advice and strategies contained herein may not be suitable for every situation. In view of ongoing research, equipment modifications, changes in governmental regulations, and the constant flow of information relating to the use of experimental reagents, equipment, and devices, the reader is urged to review and evaluate the information provided in the package insert or instructions for each chemical, piece of equipment, reagent, or device for, among other things, any changes in the instructions or indication of usage and for added warnings and precautions. The fact that an organization or Website is referred to in this work as a citation and/or a potential source of further information does not mean that the author or the publisher endorses the information the organization or Website may provide or recommendations it may make. Further, readers should be aware that Internet Websites listed in this work may have changed or disappeared between when this work was written and when it is read. No warranty may be created or extended by any promotional statements for this work. Neither the publisher nor the author shall be liable for any damages arising herefrom.

*Library of Congress Cataloging-in-Publication Data*

Meyer, Veronika.

[Praxis der Hochleistungs-Flüssigchromatographie. English]

Practical high-performance liquid chromatography / Veronika R. Meyer. – 5th ed.

p. cm.

Includes bibliographical references and index.

ISBN 978-0-470-68218-0 (cloth) – ISBN 978-0-470-68217-3 (pbk.)

1. High performance liquid chromatography. I. Title.

QD79.C454M4913 2010

543'.84–dc22

2009052143

A catalogue record for this book is available from the British Library.

ISBN H/bk 978-0470-682180 P/bk 978-0470-682173

Set in 10/12pt, Times Roman by Thomson Digital, Noida

Printed and bound in Great Britain by TJ International, Padstow, Cornwall

Cover photo:

Allmenalp waterfall at Kandersteg, Switzerland (Veronika R. Meyer)

## To the memory of Otto Meyer

Alles ist einfacher, als man denken kann,  
zugleich verschränkter, als zu begreifen ist.

Goethe, *Maximen*

*Everything is simpler than can be imagined,  
yet more intricate than can be comprehended.*





# Contents

<b>Preface to the Fifth Edition</b> . . . . .	xiii
<b>Important and Useful Equations for HPLC.</b> . . . . .	1
<b>1 Introduction</b> . . . . .	5
1.1 HPLC: A powerful separation method . . . . .	5
1.2 A first HPLC experiment . . . . .	5
1.3 Liquid chromatographic separation modes . . . . .	8
1.4 The HPLC instrument. . . . .	9
1.5 Safety in the HPLC laboratory . . . . .	10
1.6 Comparison between high-performance liquid chromatography and gas chromatography . . . . .	11
1.7 Comparison between high-performance liquid chromatography and capillary electrophoresis . . . . .	12
1.8 Units for pressure, length and viscosity . . . . .	13
1.9 Scientific journals . . . . .	14
1.10 Recommended books . . . . .	15
<b>2 Theoretical Principles</b> . . . . .	17
2.1 The chromatographic process . . . . .	17
2.2 Band broadening . . . . .	19
2.3 The chromatogram and its purport . . . . .	23
2.4 Graphical representation of peak pairs with different degree of resolution . . . . .	30
2.5 Factors affecting resolution . . . . .	35
2.6 Extra-column volumes (dead volumes) . . . . .	40
2.7 Tailing . . . . .	41
2.8 Peak capacity and statistical resolution probability . . . . .	46
2.9 Effects of temperature in HPLC . . . . .	49
2.10 The limits of HPLC . . . . .	51
2.11 How to obtain peak capacity . . . . .	55

<b>3</b>	<b>Pumps</b>	59
3.1	General requirements	59
3.2	The short-stroke piston pump	59
3.3	Maintenance and repair	62
3.4	Other pump designs	63
<b>4</b>	<b>Preparation of Equipment up to Sample Injection</b>	65
4.1	Selection of the mobile phase	65
4.2	Preparation of the mobile phase	67
4.3	Gradient systems	68
4.4	Capillary tubing	70
4.5	Fittings	72
4.6	Sample injectors	74
4.7	Sample solution and sample volume	78
<b>5</b>	<b>Solvent Properties</b>	81
5.1	Table of organic solvents	81
5.2	Solvent selectivity	83
5.3	Miscibility	83
5.4	Buffers	84
5.5	Shelf life of mobile phases	87
5.6	The mixing cross	88
<b>6</b>	<b>Detectors</b>	91
6.1	General	91
6.2	UV detectors	96
6.3	Refractive index detectors	99
6.4	Fluorescence detectors	101
6.5	Electrochemical (amperometric) detectors	103
6.6	Light-scattering detectors	104
6.7	Other detectors	106
6.8	Multiple detection	107
6.9	Indirect detection	108
6.10	Coupling with spectroscopy	109
<b>7</b>	<b>Columns and Stationary Phases</b>	117
7.1	Columns for HPLC	117
7.2	Precolumns	119
7.3	General properties of stationary phases	120
7.4	Silica	125
7.5	Chemically modified silica	126
7.6	Styrene-divinylbenzene	129

7.7	Some other stationary phases . . . . .	133
7.8	Column care and regeneration. . . . .	136
<b>8</b>	<b>HPLC Column Tests . . . . .</b>	<b>141</b>
8.1	Simple tests for HPLC columns . . . . .	141
8.2	Determination of particle size . . . . .	143
8.3	Determination of breakthrough time. . . . .	144
8.4	The test mixture . . . . .	146
8.5	Dimensionless parameters for HPLC column characterization . . . . .	148
8.6	The van Deemter equation from reduced parameters and its use in column diagnosis . . . . .	152
8.7	van Deemter curves and other coherences . . . . .	153
8.8	Diffusion coefficients. . . . .	155
<b>9</b>	<b>Adsorption Chromatography: Normal-Phase Chromatography . . . . .</b>	<b>159</b>
9.1	What is adsorption? . . . . .	159
9.2	The eluotropic series. . . . .	162
9.3	Selectivity properties of the mobile phase. . . . .	165
9.4	Choice and optimization of the mobile phase . . . . .	166
9.5	Applications . . . . .	168
<b>10</b>	<b>Reversed-Phase Chromatography . . . . .</b>	<b>173</b>
10.1	Principle . . . . .	173
10.2	Mobile phases in reversed-phase chromatography . . . . .	174
10.3	Solvent selectivity and strength . . . . .	177
10.4	Stationary phases . . . . .	181
10.5	Method development in reversed-phase chromatography . . . . .	185
10.6	Applications . . . . .	188
10.7	Hydrophobic interaction chromatography. . . . .	191
<b>11</b>	<b>Chromatography with Chemically Bonded Phases . . . . .</b>	<b>195</b>
11.1	Introduction . . . . .	195
11.2	Properties of some stationary phases . . . . .	195
11.3	Hydrophilic interaction chromatography . . . . .	200
<b>12</b>	<b>Ion-Exchange Chromatography . . . . .</b>	<b>203</b>
12.1	Introduction . . . . .	203
12.2	Principle . . . . .	203
12.3	Properties of ion exchangers. . . . .	204

12.4	Influence of the mobile phase . . . . .	207
12.5	Special possibilities of ion exchange . . . . .	208
12.6	Practical hints . . . . .	210
12.7	Applications . . . . .	213
<b>13</b>	<b>Ion-Pair Chromatography . . . . .</b>	<b>217</b>
13.1	Introduction . . . . .	217
13.2	Ion-pair chromatography in practice. . . . .	218
13.3	Applications . . . . .	220
13.4	Appendix: UV detection using ion-pair reagents . . .	221
<b>14</b>	<b>Ion Chromatography . . . . .</b>	<b>225</b>
14.1	Principle . . . . .	225
14.2	Suppression techniques . . . . .	226
14.3	Phase systems . . . . .	226
14.4	Applications . . . . .	230
<b>15</b>	<b>Size-Exclusion Chromatography. . . . .</b>	<b>231</b>
15.1	Principle . . . . .	231
15.2	The calibration chromatogram. . . . .	234
15.3	Molecular mass determination by means of size-exclusion chromatography. . . . .	238
15.4	Coupled size-exclusion columns. . . . .	241
15.5	Phase systems . . . . .	243
15.6	Applications . . . . .	244
<b>16</b>	<b>Affinity Chromatography. . . . .</b>	<b>249</b>
16.1	Principle . . . . .	249
16.2	Affinity chromatography as a special case of HPLC . .	251
16.3	Applications . . . . .	252
<b>17</b>	<b>Choice of Method . . . . .</b>	<b>255</b>
17.1	The various possibilities . . . . .	255
17.2	Method transfer . . . . .	260
<b>18</b>	<b>Solving the Elution Problem. . . . .</b>	<b>263</b>
18.1	The elution problem . . . . .	263
18.2	Solvent gradients . . . . .	264
18.3	Column switching . . . . .	270
18.4	Comprehensive two-dimensional HPLC . . . . .	272

18.5	Optimization of an isocratic chromatogram using four solvents . . . . .	273
18.6	Optimization of the other parameters . . . . .	276
18.7	Mixed stationary phases . . . . .	284
<b>19</b>	<b>Analytical HPLC</b> . . . . .	<b>285</b>
19.1	Qualitative analysis . . . . .	285
19.2	Trace analysis . . . . .	287
19.3	Quantitative analysis . . . . .	291
19.4	Recovery . . . . .	296
19.5	Peak-height and peak-area determination for quantitative analysis . . . . .	299
19.6	Integration errors. . . . .	303
19.7	The detection wavelength . . . . .	304
19.8	Derivatization. . . . .	306
19.9	Unexpected peaks: Ghost and system peaks . . . . .	308
<b>20</b>	<b>Quality Assurance</b> . . . . .	<b>311</b>
20.1	Is it worth the effort? . . . . .	311
20.2	Verification with a second method . . . . .	312
20.3	Method validation . . . . .	312
20.4	Standard operating procedures . . . . .	314
20.5	Measurement uncertainty . . . . .	315
20.6	Qualifications, instrument test and system suitability test . . . . .	317
20.7	The quest for quality . . . . .	318
<b>21</b>	<b>Preparative HPLC</b> . . . . .	<b>321</b>
21.1	Problem . . . . .	321
21.2	Preparative HPLC in practice . . . . .	322
21.3	Overloading effects . . . . .	325
21.4	Fraction collection . . . . .	328
21.5	Recycling . . . . .	330
21.6	Displacement chromatography . . . . .	331
<b>22</b>	<b>Separation of Enantiomers</b> . . . . .	<b>333</b>
22.1	Introduction . . . . .	333
22.2	Chiral mobile phases . . . . .	335
22.3	Chiral liquid stationary phases . . . . .	336
22.4	Chiral solid stationary phases . . . . .	337
22.5	Indirect separation of enantiomers . . . . .	345

<b>23</b>	<b>Special Possibilities.</b>	<b>349</b>
23.1	Micro, capillary and chip HPLC	349
23.2	High-speed and super-speed HPLC	352
23.3	Fast separations at 1000 bar: UHPLC	353
23.4	HPLC with supercritical mobile phases	355
23.5	HPLC with superheated water	359
23.6	Electrochromatography	361
<b>24</b>	<b>Appendix 1: Applied HPLC Theory</b>	<b>363</b>
<b>25</b>	<b>Appendix 2: How to Perform the Instrument Test</b>	<b>373</b>
25.1	Introduction	373
25.2	Test sequence	373
25.3	Preparations	374
25.4	Pump test.	377
25.5	UV detector test	379
25.6	Autosampler test.	383
25.7	Column oven test	383
25.8	Equations and calculations.	384
25.9	Documentation.	385
<b>26</b>	<b>Appendix 3: Troubleshooting</b>	<b>387</b>
26.1	Pressure problems	387
26.2	Leak in the pump system	389
26.3	Deviating retention times	389
26.4	Injection problems	390
26.5	Baseline problems	390
26.6	Peak shape problems	392
26.7	Problems with light-scattering detectors	393
26.8	Other causes	394
26.9	Instrument test	395
<b>27</b>	<b>Appendix 4: Column Packing</b>	<b>397</b>
	<b>Index of Separations</b>	<b>401</b>
	<b>Subject Index</b>	<b>403</b>

## Preface to the Fifth Edition

A small jubilee! This book started 30 years ago with the first German edition, with no idea that it could become a success story. Its content became younger with every edition, a fact which is not true concerning the author. In fact, I am sure that the latter cannot be a serious wish. No question: decades of experience are for the benefit of the book.

A new topic is now included: Chapter 20 about quality assurance. Part of it could be found before in chapter 19 but now the subject is presented much broadly and independent of 'Analytical HPLC'. Two chapters in the appendix were updated and expanded by Bruno E. Lendi, namely the ones about the instrument test (now chapter 25) and troubleshooting (now chapter 26). Some new sections were created: 1.7, comparison of HPLC with capillary electrophoresis; 2.11, how to obtain peak capacity; 8.7, van Deemter curves and other coherences; 11.3, hydrophilic interaction chromatography; 17.2, method transfer; 18.4, comprehensive two-dimensional HPLC; 23.3, fast separations at 1000 bar; 23.5, HPLC with superheated water. In addition, many details were improved and numerous references added.

Jump into the HPLC adventure! It can be a pleasure if you know the craft and its theoretical background.

St. Gallen, July 2009

Veronika R. Meyer





# Important and Useful Equations for HPLC

This is a synopsis. The equations are explained in Chapters 2 and 8.

Retention factor:

$$k = \frac{t_R - t_0}{t_0}$$

Separation factor,  $\alpha$  value:

$$\alpha = \frac{k_2}{k_1}$$

Resolution:

$$R = 2 \frac{t_{R2} - t_{R1}}{w_1 + w_2} = 1.18 \frac{t_{R2} - t_{R1}}{w_{1/2_1} + w_{1/2_2}}$$

Number of theoretical plates:

$$N = 16 \left( \frac{t_R}{w} \right)^2 = 5.54 \left( \frac{t_R}{w_{1/2}} \right)^2 = 2\pi \left( \frac{h_P \cdot t_R}{A_P} \right)^2$$

$$N \sim \frac{1}{d_p}$$

Height of a theoretical plate:

$$H = \frac{L_c}{N}$$

Asymmetry, tailing:

$$T = \frac{b_{0.1}}{a_{0.1}} \quad \text{or} \quad T = \frac{w_{0.05}}{2f}$$

Linear flow velocity of the mobile phase:

$$u = \frac{L_c}{t_0}$$

Porosity of the column packing:

$$\varepsilon = \frac{V_{\text{column}} - V_{\text{packing material}}}{V_{\text{column}}}$$

Linear flow velocity of the mobile phase if  $\varepsilon = 0.65$  (chemically bonded stationary phase):

$$u(\text{mm/s}) = \frac{4F}{d_c^2 \pi \varepsilon} = 33 \frac{F(\text{ml/min})}{d_c^2(\text{mm}^2)}$$

Breakthrough time if  $\varepsilon = 0.65$ :

$$t_0(\text{s}) = 0.03 \frac{d_c^2(\text{mm}^2) L_c(\text{mm})}{F(\text{ml/min})}$$

Reduced height of a theoretical plate:

$$h = \frac{H}{d_p} = \frac{L}{N d_p}$$

Reduced flow velocity of the mobile phase:

$$v = \frac{u \cdot d_p}{D_m} = 1.3 \times 10^{-2} \frac{d_p(\mu\text{m}) F(\text{ml/min})}{\varepsilon D_m(\text{cm}^2/\text{min}) d_c^2(\text{mm}^2)}$$

Reduced flow velocity in normal phase (hexane, analyte with low molar mass, i.e.  $D_m \approx 2.5 \times 10^{-3} \text{ cm}^2/\text{min}$ ) if  $\varepsilon = 0.8$ :

$$v_{\text{NP}} = 6.4 \frac{d_p(\mu\text{m}) F(\text{ml/min})}{d_c^2(\text{mm}^2)}$$

Reduced flow velocity in reversed phase (water/acetonitrile, analyte with low molar mass, i.e.  $D_m \approx 6 \times 10^{-4} \text{ cm}^2/\text{min}$ ) if  $\varepsilon = 0.65$ :

$$v_{\text{RP}} = 33 \frac{d_p(\mu\text{m}) F(\text{ml/min})}{d_c^2(\text{mm}^2)}$$

*Note:* Optimum velocity at approx.  $v = 3$ ; then  $h = 3$  with excellent column packing (analyte with low molar mass, good mass transfer properties).

Reduced flow resistance:

$$\Phi = \frac{\Delta p d_p^2 d_c^2 \pi}{4 L_c \eta F} = 4.7 \frac{\Delta p (\text{bar}) d_p^2 (\mu\text{m}^2) d_c^2 (\text{mm}^2)}{L_c (\text{mm}) \eta (\text{mPas}) F (\text{ml/min})}$$

*Note:*  $\Phi = 1000$  for properly packed and not clogged columns with particulate stationary phase.

$$\Delta p \sim \frac{1}{d_p^2}$$

Total analysis time:

$$t_{\text{tal}} = \frac{L_c d_p}{v D_m} (1 + k_{\text{last}})$$

Total solvent consumption:

$$V_{\text{tal}} = \frac{1}{4} L_c d_c^2 \pi \varepsilon (1 + k_{\text{last}})$$

$$V_{\text{tal}} \sim d_c^2$$

Peak volume:

$$V_{\text{peak}} = \frac{d_c^2 \pi L_c \varepsilon (k + 1)}{\sqrt{N}}$$

$A_P$	peak area
$a_{0.1}$	width of the leading half of the peak at 10% of height
$b_{0.1}$	width of the trailing half of the peak at 10% of height
$d_c$	inner diameter of the column
$D_m$	diffusion coefficient of the analyte in the mobile phase
$d_p$	particle diameter of the stationary phase
$F$	flow rate of the mobile phase
$f$	distance between peak front and peak maximum at 0.05 $h$
$h_P$	peak height
$k_{\text{last}}$	retention factor of the last peak
$L_c$	column length
$t_R$	retention time

$t_0$	breakthrough time
$V$	volume
$w$	peak width
$w_{1/2}$	peak width at half height
$w_{0.05}$	peak width at 0.05 $h$
$\eta$	viscosity of the mobile phase
$\Delta p$	pressure drop

# 1 Introduction

## 1.1 HPLC: A POWERFUL SEPARATION METHOD

A powerful separation method must be able to resolve mixtures with a large number of similar analytes. Figure 1.1 shows an example. Eight benzodiazepines can be separated within 70 seconds.

Such a chromatogram provides directly both qualitative and quantitative information: each compound in the mixture has its own elution time (the point at which the signal appears on the screen) under a given set of conditions; and both the area and height of each signal are proportional to the amount of the corresponding substance.

This example shows that *high-performance liquid chromatography* (HPLC) is very efficient, i.e. it yields excellent separations in a short time. The ‘inventors’ of modern chromatography, Martin and Synge,<sup>1</sup> were aware as far back as 1941 that, in theory, the stationary phase requires *very small particles* and hence a *high pressure* is essential for forcing the mobile phase through the column. As a result, HPLC was sometimes referred to as *high-pressure liquid chromatography*.

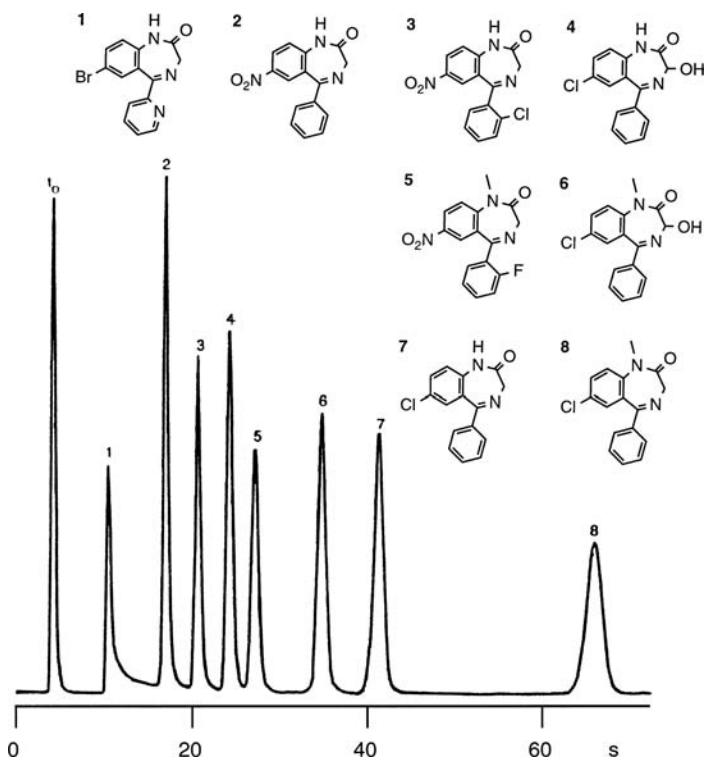
## 1.2 A FIRST HPLC EXPERIMENT

Although this beginner’s experiment described here is simple, it is recommended that you ask an experienced chromatographer for assistance.

It is most convenient if a HPLC system with two solvent reservoirs can be used. Use water and acetonitrile; both solvents need to be filtered (filter with  $< 1 \mu\text{m}$  pores) and degassed. Flush the system with pure acetonitrile, then connect a so-called reversed-phase column (octadecyl ODS or C<sub>18</sub>, but an octyl or C<sub>8</sub> column can be used as well)

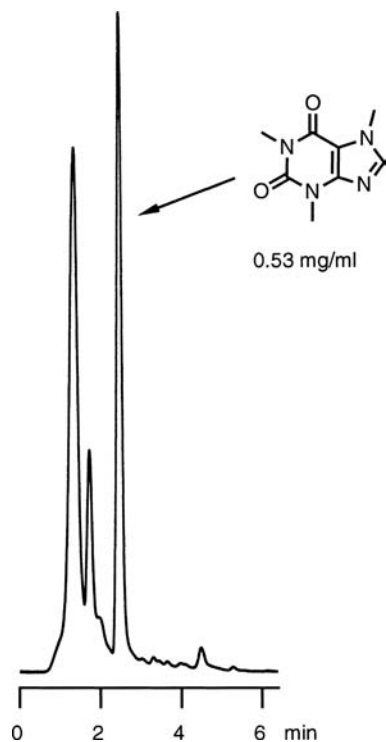
---

<sup>1</sup> A.J.P. Martin and R.L.M. Synge, *Biochem. J.*, **35**, 1358 (1941).



**Figure 1.1** HPLC separation of benzodiazepines (T. Welsch, G. Mayr and N. Lammers, *Chromatography*, InCom Sonderband, Düsseldorf, 1997, p. 357). Conditions: samples: 40 ng each; column: 3 cm × 4.6 mm i.d.; stationary phase: ChromSphere UOP C18, 1.5 μm (nonporous); mobile phase: 3.5 ml min<sup>-1</sup> water–acetonitrile (85:15); temperature: 35 °C; UV detector 254 nm. Peaks: 1 = bromazepam; 2 = nitrazepam; 3 = clonazepam; 4 = oxazepam; 5 = flunitrazepam; 6 = hydroxydiazepam (temazepam); 7 = desmethyldiazepam (nordazepam); 8 = diazepam (valium).

with the correct direction of flow (if indicated) and flush it for *ca.* 10 min with acetonitrile. The flow rate depends on the column diameter: 1–2 ml min<sup>-1</sup> for 4.6 mm columns, 0.5–1 ml min<sup>-1</sup> for 3 mm and 0.3–0.5 ml min<sup>-1</sup> for 2 mm columns. Then switch to water–acetonitrile 8 : 2 and flush again for 10–20 min. The UV detector is set to 272 nm (although 254 nm will work too). Prepare a coffee (a ‘real’ one, not decaffeinated), take a small sample before you add milk, sugar or sweetener and filter it (< 1 μm). Alternatively you can use tea (again, without additives) or a soft drink with caffeine (preferably without sugar); these beverages must be filtered, too. Inject 10 μl of the sample. A chromatogram similar to the one shown in Figure 1.2 will



**Figure 1.2** HPLC separation of coffee. Conditions: column, 15 cm  $\times$  2 mm i.d.; stationary phase, YMC 120 ODS-AQ, 3  $\mu$ m; mobile phase, 0.3 ml min<sup>-1</sup> water–acetonitrile (8:2); UV detector 272 nm.

appear. The caffeine signal is usually the last large peak. If it is too high, inject less sample and vice versa; the attenuation of the detector can also be adjusted. It is recommended to choose a sample volume which gives a caffeine peak not higher than one absorption unit as displayed on the detector. If the peak is eluted late, e.g. later than 10 min, the amount of acetonitrile in the mobile phase must be increased (try water–acetonitrile 6 : 4). If it is eluted too early and with poor resolution to the peak cluster at the beginning, decrease the acetonitrile content (e.g. 9 : 1).

The caffeine peak can be integrated, thus a quantitative determination of your beverage is possible. Prepare several calibration solutions of caffeine in mobile phase, e.g. in the range 0.1–1.0 mg ml<sup>-1</sup>, and inject them. For quantitative analysis, peak areas can be used as well as peak heights. The calibration graph should be linear and run through the origin. The caffeine content of the beverage can vary within a large range and the value of 0.53 mg ml<sup>-1</sup>, as shown in the figure, only represents the author's taste.

After you have finished this work, flush the column again with pure acetonitrile.

## 1.3 LIQUID CHROMATOGRAPHIC SEPARATION MODES

### Adsorption Chromatography

The principle of adsorption chromatography (normal-phase chromatography) is known from classical column and thin-layer chromatography. A relatively polar material with a high specific surface area is used as the stationary phase, silica being the most popular, but alumina and magnesium oxide are also often used. The mobile phase is relatively nonpolar (heptane to tetrahydrofuran). The different extents to which the various types of molecules in the mixture are adsorbed on the stationary phase provide the separation effect. A nonpolar solvent such as hexane elutes more slowly than a medium-polar solvent such as ether.

*Rule of thumb:* polar compounds are eluted later than nonpolar compounds.

*Note:* polar means water-soluble, hydrophilic; nonpolar is synonymous with fat-soluble, lipophilic.

### Reversed-Phase Chromatography

The reverse of the above applies:

- (a) The stationary phase is very nonpolar.
- (b) The mobile phase is relatively polar (water to tetrahydrofuran).
- (c) A polar solvent such as water elutes more slowly than a less polar solvent such as acetonitrile.

*Rule of thumb:* nonpolar compounds are eluted later than polar compounds.

### Chromatography with Chemically Bonded Phases

The stationary phase is covalently bonded to its support by chemical reaction. A large number of stationary phases can be produced by careful choice of suitable reaction partners. The reversed-phase method described above is the most important special case of chemically bonded-phase chromatography.

### Ion-Exchange Chromatography

The stationary phase contains ionic groups (e.g.  $\text{NR}_3^+$  or  $\text{SO}_3^-$ ) which interact with the ionic groups of the sample molecules. The method is suitable for separating, e.g. amino acids, ionic metabolic products and organic ions.

### Ion-Pair Chromatography

Ion-pair chromatography may also be used for the separation of ionic compounds and overcomes certain problems inherent in the ion-exchange method. Ionic sample



molecules are 'masked' by a suitable counter ion. The main advantages are, firstly, that the widely available reversed-phase system can be used, so no ion exchanger is needed, and, secondly, acids, bases and neutral products can be analysed simultaneously.

### **Ion Chromatography**

Ion chromatography was developed as a means of separating the ions of strong acids and bases (e.g.  $\text{Cl}^-$ ,  $\text{NO}_3^-$ ,  $\text{Na}^+$ ,  $\text{K}^+$ ). It is a special case of ion-exchange chromatography but the equipment used is different.

### **Size-Exclusion Chromatography**

This mode can be subdivided into gel permeation chromatography (with organic solvents) and gel filtration chromatography (with aqueous solutions).

Size-exclusion chromatography separates molecules by size, i.e. according to molecular mass. The largest molecules are eluted first and the smallest molecules last. This is the best method to choose when a mixture contains compounds with a molecular mass difference of at least 10%.

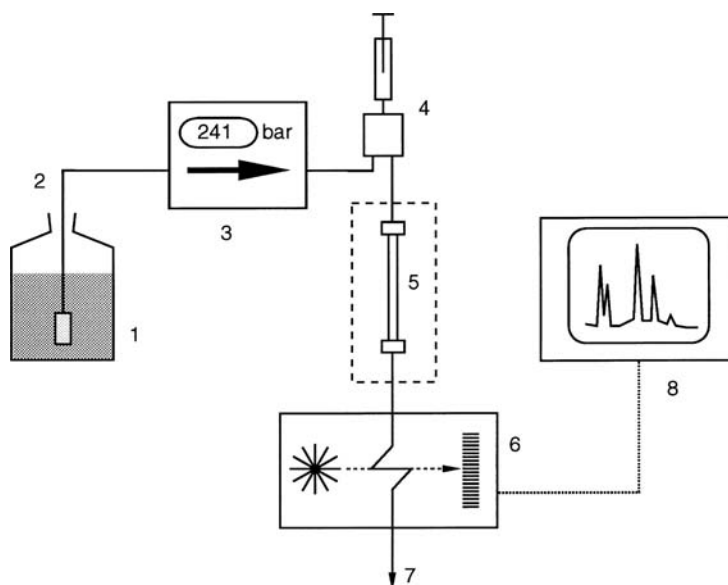
### **Affinity Chromatography**

In this case, highly specific biochemical interactions provide the means of separation. The stationary phase contains specific groups of molecules which can only adsorb the sample if certain steric and charge-related conditions are satisfied (cf. interaction between antigens and antibodies). Affinity chromatography can be used to isolate proteins (enzymes as well as structural proteins), lipids, etc., from complex mixtures without involving any great expenditure.

## **1.4 THE HPLC INSTRUMENT**

An HPLC instrument can be a set of individual modules or elements, but it can be designed as a single apparatus as well. The module concept is more flexible in the case of the failure of a single component; moreover, the individual parts need not be from the same manufacturer. If you do not like to do minor repairs by yourself you will prefer a compact instrument. This, however, does not need less bench space than a modular set.

An HPLC instrument has at least the elements which are shown in Figure 1.3: solvent reservoir, transfer line with frit, high-pressure pump, sample injection device, column, detector, and data acquisition, usually together with data evaluation. Although the column is the most important part, it is usually the smallest one. For



**Figure 1.3** Schematic diagram of an HPLC unit. 1 = Solvent reservoir; 2 = transfer line with frit; 3 = pump (with manometer); 4 = sample injection; 5 = column (with thermostat); 6 = detector; 7 = waste; 8 = data acquisition.

temperature-controlled separations it is enclosed in a thermostat. It is quite common to work with more than one solvent, thus a mixer and controller are needed. If the data acquisition is done by a computer it can also be used for the control of the whole system.

## 1.5 SAFETY IN THE HPLC LABORATORY

Three health risks are inherent in HPLC, these being caused by:

- Toxic solvents,
- Pulmonary irritation from the stationary phase, and
- Dangers resulting from the use of high pressures.

Short- and long-term risks of exposure to solvents and vapours are generally known but too little attention is paid to them. It is good working practice to provide all feed and waste containers with perforated plastic lids, the hole being just large enough to take a PTFE tube for filling or emptying purposes, so that no toxic vapours can escape into the laboratory environment and no impurities can contaminate the highly pure solvent. A good ventilation system should be provided in the solvent handling areas.

The fact that particles of 5  $\mu\text{m}$  and less, as used in HPLC, may pass into the lungs (they are not retained by the bronchial tubes but pass straight through) is less well known and the potential long-term risk to health has not yet been adequately researched. Amorphous silica, as used for stationary phases, is not hazardous<sup>2</sup> but inhalation should be avoided anyway. As a safety precaution, any operation involving possible escape of stationary phase dust (opening phials, weighing etc.) must be carried out in a fume cupboard.

The high-pressure pump does not present too much of a risk. In contrast to gases, liquids are almost incompressible (approximately 1 vol% per 100 bar). Hence, liquids store very little energy, even under high-pressure conditions. A jet of liquid may leak from a faulty fitting but there is no danger of explosion. However, this liquid may cause serious physical damage to the body. A column under pressure which is open at the bottom for emptying purposes must not be interfered with in any way. The description of an accident resulting from this type of action is strongly recommended for reading.<sup>3</sup>

## 1.6 COMPARISON BETWEEN HIGH-PERFORMANCE LIQUID CHROMATOGRAPHY AND GAS CHROMATOGRAPHY

Like HPLC, gas chromatography<sup>4</sup> (GC) is also a high-performance method, the most important difference between the two being that GC can only cope with substances that are volatile or can be evaporated intact at elevated temperatures or from which volatile derivatives can be reliably obtained. Only about 20% of known organic compounds can be analysed by gas chromatography without prior treatment. For liquid chromatography, the sample must be dissolved in a solvent and, apart from cross-linked, high-molecular-mass substances, all organic and ionic inorganic products satisfy this condition.

The characteristics of the two methods are compared in Table 1.1. In comparison with gas chromatography there are three important differences:

- (a) The diffusion coefficient of the sample in the mobile phase is much smaller in HPLC than in GC. (This is a drawback because the diffusion coefficient is the most important factor which determines the speed of chromatographic analysis.)
- (b) The viscosity of the mobile phase is higher in HPLC than in GC. (This is a drawback because high viscosity results in small diffusion coefficients and in high flow resistance of the mobile phase.)

---

<sup>2</sup> C.J. Johnston *et al. Toxicol. Sci.*, **56**, 405 (2000).

<sup>3</sup> G. Guiochon, *J. Chromatogr.*, **189**, 108 (1980).

<sup>4</sup> H.M. McNair, J.M. Miller and F.A. Settle, *Basic Gas Chromatography*, Wiley-Interscience, New York, 2009.

**TABLE 1.1 Comparison of GC AND HPLC**

Problem	GC	HPLC
Difficult separation	Possible	Possible
Speed	Yes	Yes
Automation	Possible	Possible
Adaptation of system to separation problem	By change in stationary phase	By change in stationary and mobile phase
Application restricted by	Lack of volatility, thermal decomposition	Insolubility
Typical number of separation plates	Per column	Per metre
GC with packed columns	2000	1000
GC with capillary columns	50 000	3000
Classical liquid chromatography	100	200
HPLC	5000	50 000

- (c) The compressibility of the mobile phase under pressure is negligibly small in HPLC whereas it is not in GC. (This is an advantage because as a result the flow velocity of the mobile phase is constant over the whole length of the column. Therefore optimum chromatographic conditions exist everywhere if the flow velocity is chosen correctly. Moreover, incompressibility means that a liquid under high pressure is not dangerous.)

## 1.7 COMPARISON BETWEEN HIGH-PERFORMANCE LIQUID CHROMATOGRAPHY AND CAPILLARY ELECTROPHORESIS

Capillary electrophoresis<sup>5</sup> (also termed capillary zone electrophoresis, CZE) is suited for electrically charged analytes and separates them, simply speaking, according to their ratio of charge to size. In addition, the shape of the molecules is another parameter which influences their speed, therefore the separation of isomers or of analytes with identical specific charge is possible. Cations (positively charged molecules) move faster than anions (negatively charged molecules) and appear earlier in the detector. Small, multiply charged cations are the fastest species whereas small, multiply charged anions are the slowest ones.

<sup>5</sup> P. Schmitt-Kopplin, *Capillary Electrophoresis*, Humana Press, Totowa, 2008; S. Wren, *Chromatographia Suppl.*, **54**, S-15 (2001).

The separation is performed at high voltage. An electric field of up to 30 kV is applied between the ends of the separation capillary. As a consequence, the buffer solution within the capillary moves towards the negatively charged cathode. The capillaries have a length of 20–100 cm and an inner diameter of 50–250  $\mu\text{m}$ . In contrast to HPLC they are not packed with a stationary phase in the chromatographic sense but in some cases with a gel which allows the separation of the analytes by their size (as in size-exclusion chromatography).

The separation performance can be of much higher order of magnitude than in HPLC (up to  $10^7$  theoretical plates), making CE an extremely valuable method for peptide mapping or DNA sequencing. However, small molecules such as amino acids or inorganic ions can be separated as well. The absolute sample amounts which can be injected are low due to the small volume of the capillaries. A major drawback is the lower repeatability (precision) compared to quantitative HPLC. Preparative separations are not possible.

Electrokinetic chromatography (see Section 23.6) is a hybrid of HPLC and CE. For this technique the capillaries are packed with a stationary phase and the separation is based on partition phenomena. The mobile phase acts as in CE; it consists of a buffer solution and moves thanks to the applied electrical field.

## 1.8 UNITS FOR PRESSURE, LENGTH AND VISCOSITY

### Pressure Units

The common pressure unit of HPLC is bar, but the SI unit is pascal (Pa):  $1 \text{ Pa} = 1 \text{ N m}^{-2}$ . The atmosphere (atm or at, respectively) should no longer be used. The unit psi (pounds per square inch) is American and is still in use. Note the difference between psia = psi absolute and psig = psi gauge (manometer), the latter meaning psi in excess of atmospheric pressure.

$$1 \text{ bar} = 10^5 \text{ Pa} = 10^5 \text{ kg m}^{-1} \text{ s}^{-2} = 0.987 \text{ atm} = 1.02 \text{ at} = 14.5 \text{ lb in}^{-2} \text{ (psi)}$$

*Conversion data:*

$$1 \text{ MPa} = 10 \text{ bar (megapascal)}$$

$$1 \text{ atm} = 1.013 \text{ bar (physical atmosphere)}$$

$$1 \text{ at} = 0.981 \text{ bar (technical atmosphere, } 1 \text{ kp cm}^{-2}\text{)}$$

$$1 \text{ psi} = 0.0689 \text{ bar}$$

*Rule of thumb:*

$$1000 \text{ psi} \approx 70 \text{ bar, } 100 \text{ bar} = 1450 \text{ psi}$$

## Length Units

English units are often used in HPLC to indicate tube or capillary diameters, the unit being the inch (in or "). Smaller units are not expressed in tenths but as 1/2, 1/4, 1/8, or 1/16 in, or multiples of these.

*Outer diameters:*

1" = 25.40 mm	1/2" = 12.70 mm	3/8" = 9.525 mm	1/4" = 6.35 mm
3/16" = 4.76 mm	1/8" = 3.175 mm	1/16" = 1.59 mm	

*Inner diameter of capillaries:*

0.04" = 1.0 mm	0.02" = 0.51 mm	0.01" = 0.25 mm	0.007" = 0.18 mm
----------------	-----------------	-----------------	------------------

## Viscosity Units

The SI unit of the dynamic viscosity is the pascal second:  $1 \text{ Pa s} = 1 \text{ kg m}^{-1} \text{ s}^{-1}$ . Solvents have viscosities around  $1 \cdot 10^{-3} \text{ Pa s} = 1 \text{ mPa s}$ . The old unit was the centipoise (cP):  $1 \text{ mPa s} = 1 \text{ cP}$ .

## 1.9 SCIENTIFIC JOURNALS

*Journal of Chromatography A* (all topics of chromatography) ISSN 0021-9673.

*Journal of Chromatography B* (biomedical sciences and applications) ISSN 1570-0232.

Until volume 651 (1993) this was one journal with some volumes dedicated to biomedical applications. Afterwards the journal was split and continued with separate volumes having the same number but not the same letter (e.g. 652A and 652B). Elsevier Science, P.O. Box 211, NL-1000 AE Amsterdam, The Netherlands.

*Journal of Chromatographic Science*, ISSN 0021-9665, Preston Publications, 6600 W. Touhy Avenue, Niles, IL 60714-4588, USA.

*Chromatographia*, ISSN 0009-5893, Vieweg Publishing, P.O. Box 5829, D-65048, Wiesbaden, Germany.

*Journal of Separation Science* (until 2001 *Journal of High Resolution Chromatography*), ISSN 1615-9306, Wiley-VCH, P.O. Box 10 11 61, D-69451 Weinheim, Germany.

*Journal of Liquid Chromatography & Related Technologies*, ISSN 1082-6076, Marcel Dekker, 270 Madison Avenue, New York, NY 10016-0602, USA.

*LC GC Europe* (free in Europe, formerly *LC GC International*), ISSN 1471-6577, Advanstar Communications, Advanstar House, Park West, Sealand Road, Chester CH1 4RN, UK.